

Red Carpet Days

Town & Country Motors

"Our Reputation Sells For Us"



2000 Ford Taurus SES
Alloys, All Power
\$14,995/\$305 Mo.



1999 Mazda Miata
19,000 Miles, Loaded, Alloys
\$14,995/\$284 Mo.



1998 Saturn
4 Dr., Auto, Air, 22K, Stereo, Mint
\$9,995/\$202 Mo.

2000 Chev. Impala, Red, Loaded, Spoiler	\$15,995/\$318 Mo.
2000 Chev. Malibu, V6, Loaded, Spoiler, Indigo Blue, Gold Pkg.	\$12,995/\$259 Mo.
2000 Mercury Grand Marquis, Low Miles, Perfect	\$17,500/\$325 Mo.
2000 Mitsubishi Galant ES, Loaded, Spoiler	\$13,995/\$279 Mo.
2000 Plymouth Neon, 4 Dr., Auto	\$10,200/\$208 Mo.
2000 Chev. Metro LSI, 4 Dr., Auto, Air	\$8,750/\$177 Mo.
1999 Chev. Lumina, Loaded	\$10,995/\$220 Mo.
1999 Nissan Altima GXE, Auto, Loaded, Spoiler	\$10,995/\$220 Mo.
1999 Kia Sephia, 4 Dr., Auto, Air, 19K, 60K Warranty	\$8,500/\$172 Mo.
1998 Toyota Camry LE, Loaded, Sunroof, Spoiler, Alloys, CD	\$14,995/\$284 Mo.
1998 Mitsubishi Eclipse, Alloys, Spoiler, CD	\$10,995/\$220 Mo.
1998 Olds Aurora, Every option, Leather, Mint	Save Thousands
1997 Chev. Monte Carlo, Loaded, Low Miles, Local	\$9,450/\$205 Mo.
1996 Dodge Intrepid, Loaded, Great Shape, Local Trade	\$6,995/\$165 Mo.
1996 Buick Regal, 4 Dr., Loaded, 48K, Local, Perfect	\$8,995/\$214 Mo.
1995 Chev. Lumina LS, Local Trade, Great Shape	\$3,995

Trade-Ins Wholesale to Public

93 Ford Probe, Auto, Sunroof	\$2,995	86 Buick Somerset	\$600
86 Nissan Maxima	\$800	89 Grand Prix	\$600
93 Cadillac Sedan DeVille	\$2,995	90 Ford Crown Victoria	\$1,200
91 Pontiac Grand Prix	\$1,500	82 Ford F-250, 4x4, Works Good	\$2,500
		89 Grand Am - \$1,000	



1997 Kia Sportage
4 Dr., 4x4, Leather, CD, 36K 60K Warranty
\$10,500/\$229 Mo.



1997 Jeep Grand Cherokee
Laredo Limited, V8, Sunroof, Leather,
\$17,500/\$356 Mo.



1997 Mercury Villager
GS, Loaded, Rear Air, Low Ks
\$12,500/\$270 Mo.

2000 Chev. Silverado LS Z71, 4x4, V8, Auto, Loaded, 2K	\$21,995/\$415 Mo.
1999 Chev. Tracker, 4 Dr., 4x4, Auto, 6K	\$13,995/\$282 Mo.
1998 Ford F-150 XL, 4 Dr., Auto, Air, Like New	\$12,995/\$264 Mo.
1999 Dodge Grand Caravan SE, 4 Dr., Loaded	\$12,995/\$264 Mo.
1997 Nissan Pathfinder, 4x4, Auto, Loaded, Gold Pkg	\$14,500/\$317 Mo.
1997 Dodge Grand Caravan SE, Both Side Doors, All Power, Rear Air, 31K	\$13,995/\$299 Mo.
1997 Ford F-150 Stepside, Air, Stereo, 22K	\$11,995/\$240 Mo.
1996 Mazda Pick-up SE, Alloys, Like New, 46K	\$6,880/\$163 Mo.
1995 Nissan Pathfinder, 4x4, Auto, Air, Local	\$9,450/\$244 Mo.
1995 Ford Windstar Van LX, Rear Air, Local Trade, Looks & Runs Good	\$5,995/\$159 Mo.
1992 GMC Jimmy, V6, Auto, 4x4, 2 Dr., Low Miles	\$5,995

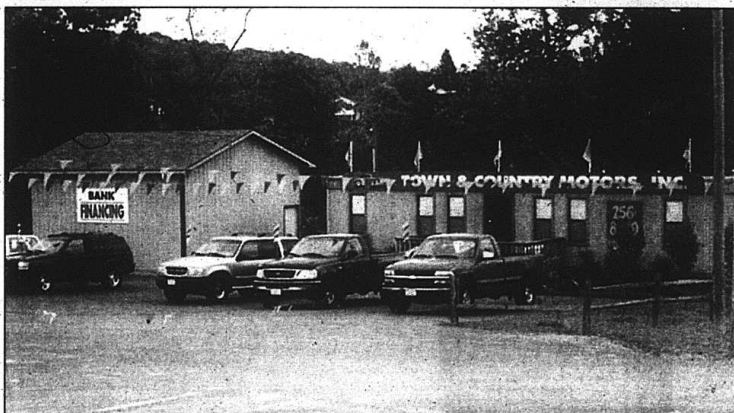
Plus Tax & license Only • Term & Rate Determined by Credit Score

Town & Country Motors

MT. VERNON
Across From High School
461 Hwy. 461
256-8049

Great Selection of Hand-Picked Vehicles
Top Dollar on Trade-Ins • Different Inventory Weekly
Our Reputation Speaks for Itself

LANCASTER
1238 Stanford Rd.
Next to Burger House
792-6958



Town and Country Motors

At Town and Country Motors on the Hwy. 461 by-pass in Mt. Vernon you will find only the best in pre-owned cars and trucks.

Owners Larry Gooch and Andy Hiatt have over 30 years experience in the car business and know that service after the sale is just as important as selling quality vehicles at affordable prices.

At Town and Country Motors you won't get pressured by a sales person trying to sell you something you may not be interested in just to meet a sales quota. What you will get is good service before and after the sale. All retail vehicles at Town and Country are sold with a warranty.

Stop in today and talk to Larry Gooch, Andy Hiatt or Tommy Gooch at either their Hwy. 461 by-pass location in Mt. Vernon or at their Lancaster location on Stanford Road, next to Burger Hut. Phone (606) 256-8049 or (859) 792-6958.

Brodhead Farm Equipment & Trailers

"Downtown Brodhead" • 758-9532

Farm Equipment Including:

Tractors, Hay Balers, Hay Rakes, Scraper Boxes

Just About Everything!!

Parts Department - Shop Work on Most Farm Equipment

Gary Chasteen • Jackie McKinney • Danny McKinney