

Agricultural News

By: Warden Alexander, FSA Director

Cross County Leasing Referendum Coming Soon!

The referendum is now being held through October 27th to determine whether cross-county leasing of burley tobacco quotas should be permitted. Ballots will be counted in January 2000. FSA conducted a referendum on cross-county leasing. At that time, 59 percent of the

Burley tobacco producers that voted favored cross-county leasing of quota within the state of Kentucky. On March 30, 2000, Judge Karl S. Forrester enjoined USDA and FSA from allowing the lease and transfer of burley tobacco across county lines in Kentucky. In the Judge's opinion he stated the intent of Congress was to require approval by a majority of the

producers. Congress in the recently enacted Agricultural Risk Protection Act of 2000 clarified their original intention by allowing that a majority of those voting, as opposed to majority of those that could have voted, will be sufficient to determine the outcome of cross-county leasing referendum.

Because of the controversy and in light of the recent change in the law, USDA will conduct referenda in the states that had previously approved such leasing. In addition to Kentucky, this affects Tennessee, Ohio and Indiana.

If more than 50 percent of the eligible burley tobacco producers voting in a state referendum favor cross-county leasing, then the lease and transfer of a burley quota from one farm to any other farm in the state would be permitted. If 50 percent or more of the producers voting in the state referendum disapprove, the lease and transfer of burley quota would continue only for leases and transfers with the same county.

The eligibility to vote in the referendum will be limited to active burley tobacco producers.

County Committee (COC) Election

The Farm Service Agency (FSA) is now soliciting everyone's help in obtaining names and addresses of all eligible voters before the COC election scheduled for December 2000. FSA continues to seek voters and candidates for the upcoming COC election. All eligible voters, including spouses, are urged to contact the local FSA office if they have not received election ballots in the past.

Nomination forms are now available from the FSA office for the area of LAA#2, Community B. This area is the southeast section of Rockcastle County bound by Pulaski and Laurel County. Highway boundaries are Highway 70, Highway 150 and 25.

To work best, the COC must represent the whole of local agriculture. By seeking diversity, FSA will bring a greater range of expertise, different perspectives, and a broader understanding of the various business and marketing aspects of the committee's work.

Loan Deficiency Payment

Producers who retain beneficial interest in a commodity eligible for a loan or a loan deficiency payment (LDP) are eligible for payment if all of the following remain with the producer:

- Control of the commodity
 - Risk of loss
 - Title of the commodity
- One of the eligibility requirements for Loans and LDP's is the crop must have been produced on contract acreage (AMTA), exception to soybeans. A recent bill will now allow non-contract crops to be eligible for LDP's for 2000 year only.

For further information on the LDP program contact the local FSA office.

Wool and Mohair Market Loss Assistance Program

On October 23, 2000 USDA announced that Wool and Mohair Market Loss Assistance Program (WAMLAP) which will provide relief to domestic wool and domestic mohair producers who suffered economic loss due to low prices during the 1999 marketing year.

The program, mandated by Congress in the Agricultural Risk Protection Act of 2000, is available to producers who produced and sheared wool and mohair from January 1, 1999 through December 31, 1999. Signup for WAMLAP will end December 29, 2000. No late file applications will be accepted.

Eligible wool or mohair must have been shown in the U.S. and livestock must have been owned for 30 days or more prior to shearing. The wool or mohair must have been produced during the 1999 marketing year.

The payment rates are: 20 cents per pound for wool and 40 cents per pound for mohair.

Other requirements apply. For more information contact your local FSA office.

Phase II Tobacco Payments Tobacco growers/stemmers, quota owners and growing farm operators who produced tobacco in 1999 and shared in the risks of production are eligible to receive a portion of Kentucky's share of the National Tobacco Growers Settlement Trust (Phase II). The funds will be divided equally with 1/3 for quota, 1/3 for land, and 1/3 for labor.

Applications have been mailed, like last year, to all farm operators involved in tobacco production. The forms are to be submitted by October 31, 2000.

A toll-free phone help line is available by calling 1-877-549-2537. Funds will be distributed by December 31, 2000. Exact rates for payment will be known after November 15, 2000.

The Farm Service Agency has been authorized to help operators fill out the Phase II forms by phone at 256-2525 or in the office on Mondays and Tuesdays only. If anyone needs assistance completing their applications on other days, we encourage you to call the Rockcastle County Extension Office at 256-2403 or the toll free number of Phase II.

FSA Quiet Time
The Farm Service Agency will be

processing payments on Wednesday mornings, therefore, limited service will be available during these quiet hours. Applications and other documents may be left on the front counter. The quiet time became effective Wednesday, September 20, 2000.

2000 Oiled Seed Program
Rockcastle County Farm Service Center announces an oiled sign-up is continuing through January 12, 2001. Eligible producers must have planted or shared in the production of an eligible oiled seed in 2000. Eligible oiled seeds are as follows: Soybeans, cantola, cramble, flax seed, mustard seed, rapeseed, safflower seed, sesame and sunflower seed. A producer who planted an eligible oiled seed in 2000 is eligible for payment only for that specific oiled seed. Planting 1 oiled seed does not make another oiled seed eligible for payment.

Oiled seed applications shall be submitted to the county that controls a producer's payment limitation for the producer. A new producer of an oiled seed is a producer who shared in the production of an oiled seed in 2000, but did not share in the production of that specific oiled seed in 1997, 1998 or 1999 on any farm. A producer may be considered a new producer of an oiled seed and an established producer of another oiled seed. New producers are eligible to receive payment on their share of the 2000 planted acreage.

If a producer did not file a 578 (crop report) the final date to report acreage using FSA-578D is January 12, 2000, for producers submitting CCC-280 for the first time, under the 2000 Oiled Seed Program.

A postcard was mailed from KCFITSDO the week of October 16, 2000, to notify 2000 oiled seed producers of possible eligibility, provide the address of control County office, instruct the producer to apply at the control County Office.

2000 OP payments will be issued after the end of the sign-up which is January 12, 2001.



Couples Dance Contest winners at the Bittersweet Festival are pictured above from left: Ernie and Janice Croomer, Brenda McKinney and Lonnie Vanwinkle and Doug and Gearl Bullock.



Jessica Thacker, left, daughter of Jeff Thacker and Lisa Thacker, won the Little Miss Pageant at the Bittersweet Festival. Samantha Callahan, center, daughter of Hershel and Brenda Callahan was first runner-up and Erica Clouse, right, daughter of Norman and Angela Clouse was second runner-up.

E-mail the Signal at:

mvsignal@sun-spot.com

Two Roses Beauty Salon

We have closed due to illness. We may reopen in the Spring. However, our customers can reach us at 862-1400 for your hair care needs.

We are working in London.

Thank You & God Bless

862-1400 Great Clips • 256-1804 Home • 862-1535 Happy Scissors

Try this simple cost-cutting exercise.

Cut, clip, snip or rip these money-saving coupons.

Save 40¢

Save 40¢ on a two-liter bottle of Coca-Cola® Classic or Diet Coke® with purchase of FormulaShell® gasoline. 8 gallon minimum. Take this coupon to a Shell station listed below.



Save 40¢

Save 40¢ on a two-liter bottle of Coca-Cola® Classic or Diet Coke® with purchase of FormulaShell® gasoline. 8 gallon minimum. Take this coupon to a Shell station listed below.



Free Car Wash

Free car wash with a fill-up of FormulaShell® gasoline. 8 gallon minimum. Present this coupon at a participating Shell station listed below.



Free Car Wash

Free car wash with a fill-up of FormulaShell® gasoline. 8 gallon minimum. Present this coupon at a participating Shell station listed below.



NOW OPEN!!

AUTOMATIC CAR WASH at Shell Food Mart Exit 62, Renfro Valley (Across from Hardee's)

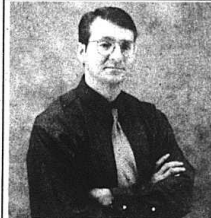
Featuring:

Foam Brite Car Wash • Foam Bath • Under Car Wash
Tire Chemical Spray • Wheel Scrub • Rinse • Hot Wax
Double Power Dry • Vacuum

Open 6:30 a.m. to 10 p.m. 7 Days A Week

Phone 606-256-3818

Danny Smith, Manager • Angie Smith, Asst. Manager



Let a CPA Help You

Plan Your

Financial Future!

Davidson Financial Services

Anthony A.
Davidson, CPA

Investment Advisor Representative

Complete Investment and Tax Planning

Services include:

Rollovers • Account Transfers • IRAs
Retirement Plans • Educational
Accounts • Mutual Funds

Invest Proceeds From:

Lawsuits • Sale of Business
Inheritance • Gifts
Settlements • Divorce

Lexington, KY

(859) 245-5880

Toll free - 1-877-543-9506

Securities and Investment Advisory Services offered through Donahue Securities, Inc.
Member NASD and SIPC