

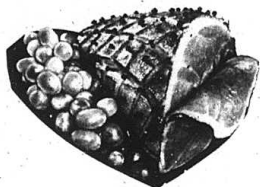
# FOOD WORLD

AD PRICES VALID Monday, Nov. 13 thru Wednesday, Nov. 22, 2000

We reserve the right to limit quantities and to correct typographical and/or pictorial errors. None sold to dealers!

Open 7 Days A Week  
Monday thru Sunday  
8 a.m. to 9 p.m.  
**PHONE**  
**256-2514**

Food Stamps & Wic  
Glady Accepted  
Manufacturer's Coupons  
Redeemed



Gwaltney Shank Portion

**Smoked Ham**

Whole/Half  
Gwaltney  
Spiral  
Sliced Ham  
**249**  
Lb.

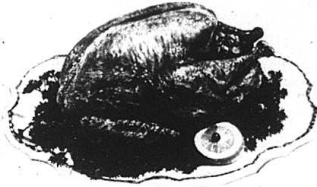
**1 19**  
Lb.



10 lb. bag  
**Idaho Potatoes**

YAMS  
**49¢**  
Lb.

**1 39**  
Lb.



10 lbs. and Up Grade A Basted Young

**Shurfresh Turkeys**

L-1w/520 Additional Order

Butterball  
Turkeys  
**99¢**  
Lb.

**59¢**  
Lb.

18 oz. Asst. Var.  
**Betty Crocker  
Cake Mix**

**89¢**



**Crisco  
Shortening**

3 lb. Asst. Var.

**1 99**

5 lb. Plain or Self Rising  
**Gold Medal  
Flour**

**69¢**



5 lb. Asst. Var.  
**Martha  
White  
Corn Meal**  
**2/\$3**

**Dixie Crystal  
SUGAR**

5 Lb.

**1 69**



**Kraft  
Miracle Whip**

**1 99**

32 oz. Asst. Var.

**Breyer's  
Ice Cream**

1/2 Gal. Asst. Var.

Buy 1 - Get 1  
**FREE**



14 oz. Asst. Var.  
**Sweet Sue  
Broth**  
**2/\$1**

20 Oz. Asst. Var.  
**Dole  
Pineapple**

**99¢**



**Green Giant  
Vegetables**

**3/\$1**

11-15.25 oz. Asst. Var.

**Libby's  
Pumpkin**

15 oz.

**99¢**



16 oz. Asst. Var.  
**KARO  
Syrup**  
**1 89**

**Deluxe Turkey Dinner**  
includes 10-12 lb. fully-cooked  
Turkey, 2 lbs. Stuffing, 1 lb. Turkey  
Gravy, 4 lbs. mashed potatoes & 1 lb.  
Cranberry Relish

**34<sup>99</sup>**

**Spiral Ham Dinner**  
includes  
7-8 lb. Spiral Ham, 2 lbs. Baked Beans,  
1 lb. Brown Gravy, 4 lbs. Potatoes, 1 lb.  
Cranberry Relish

**34<sup>99</sup>**

*Great Produce Buys*

- Fresh Crisp Celery ..... ea. **79¢**
- Fresh Cranberries ..... 12 oz. **2/\$3**
- Fresh Green Onions ..... **2/79**
- Short Cut Carrots ..... 2 lb. bag **2/\$5**
- Fresh Broccoli ..... ea. **99¢**
- Washington State Extra Fancy Red/Gold Del. Apples  
lb. **89¢**

Our Special Touch Dinner Rolls ..... 32 count **2<sup>39</sup>** Sara Lee Fruit or Pumpkin Pies ..... 37 oz. Asst. Var. **2<sup>99</sup>**  
Stove Top Stuffing ..... 6-8.37 oz. Asst. Var. **99¢** Cool Whip Dessert Topping ..... 8 oz. Asst. Var. **99¢**