

## Bank Sold

(Cont. from front)  
hopes will include the current board. He said that other people may also be added to the board.

However, an advisory board is usually much different than a regular board of directors. An advisory board, in most cases, meets only once every three months and has little say in the business dealings of the bank. Community Trust is based in

Pikeville. They are the state's second largest independent banking company with 58 banks in Kentucky and six in West Virginia and has assets of 2.2 billion dollars.

Jean R. Hale is his President and Chief Executive Officer.

"Community Trust understands the needs of areas such as Rockcastle County and Pulaski County and they don't have the same big town mentality that a Bank One or PNC does," Jury said.

"They have told us that they plan to be very involved in the community and provide quality services to our customers," he said.

## Road Dispute

(Cont. from front)

supported to.

Regardless Oscar Isaacs road continues to be a problem for many and the problems are certain to continue for months to come.

## Death Bulletins . . .

### Albert Owens

Albert C. Owens, 81, of Rt. 2 Mt. Vernon, died Wednesday. Services at 11 a.m. Saturday at Chestnut Ridge Church of Christ. Visitation from 6 to 9 p.m. Friday at Dowell and Martin Funeral Home.

A more complete obituary will appear in next week's Signal.

### Roy Pace

Roy Pace, 96, of Rt. 3 Mt. Vernon, died Tuesday. Services at 11 a.m. Friday at Hickory Grove Pentecostal Church. Visitation from 6 to 9 p.m. Thursday at Dowell and Martin Funeral Home.

A more complete obituary will appear in next week's Signal.

### Shelter donations needed for Fairview Cemetery

We are in the process of building a shelter at the Fairview Cemetery at Mullins Station. Anyone wishing to give to this cause may do so by sending your donation, checks please, to:

Mr. Billy R. Cummins  
215 Joyce St.  
Mt. Vernon, KY 40456  
(606) 256-4902

As most know by now the church building is gone and in case of bad weather there is no shelter. We can't always depend on tents. The shelter can be used for family get-togethers, etc. We must remember our loved ones gone on before by continuing to have the Mullins Reunions for the upkeep of the cemetery.

## Church News

### Christmas Bazaar

Mt. Vernon Church of God will be having a Christmas Bazaar, Craft and Bake Sale Dec. 2nd from 9 to 4. Lots of handmade items, food and baked goods. Everyone invited.

### Singing

Third Saturday night gospel singing at McNew Chapel Baptist Church on Cove Branch Rd. at Orlando Sat., Nov. 18th at 7 p.m. Singers will be Penny Powell and the Guiding Ways. Pastor Jerry Ballinger and church welcomes everyone.

### Community Thanksgiving Service

Community Thanksgiving Service, Wednesday, November 22nd at 7 p.m. in auditorium of First Christian Church, 160 West Main St., Mt. Vernon.

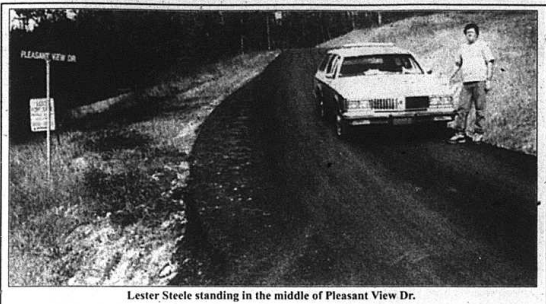
### Youth Explosion

Lighthouse Assembly of God presents Youth Explosion, the youth group will be leading a service of praise and worship. New Frontier, Praise Music, Skilanta Nicely & Skit Team, Skits: Jacob and Jarrod Bardette; Word of God. December 9th from 6:30 - 8:30 p.m. The church is located at the first right past Jean's Restaurant. Pastor Gene Cassman and Youth Director Rick Nicely invite everyone to attend.

### Revival

Calvary Apostolic Lighthouse, Fri. 7:30, Sat. 7:00 and Sun. 6:00 with Evangelist Rusty Akers. Pastor James Blanton welcomes everyone. Church is located on Negro Town Hill.

For Rent:  
Doublewide on Hwy.  
1505. Call 256-0736



Lester Steele standing in the middle of Pleasant View Dr.

## Speedway

(Cont. from front)

expected heavy volume of traffic coming in and out of the Speedway.

He also said he would ask the Sheriff's department and KSP for help with traffic control.

Bates told the court that he and his partner would run a first class operation at the new track.

Bates said he and his partner would invest a half million dollars in the new Speedway and that it would take about \$15,000 to break even each time there is an event at the Speedway.

An owners and drivers meeting is scheduled for Monday night at Renfro Valley.

For more information contact Ronnie Bates at (606)379-6065.



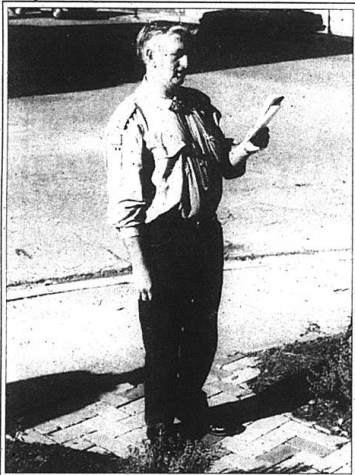
Will Derby City's second shift every be the same after this Halloween? Sharon Smith as "Granny Smith", Ella Jones as "Elmer Fudd", Jean Bullock as "Elle Mae", Darlene Sturgill as "A Maverick Rejeat", Trenea Thomas as "Steve Urkel"



Local Veteran Alfred McNew places a wreath at the war memorial on the lawn of the Rockcastle County Courthouse last Saturday. (Photo by Jim Cox)



Richard Sewell, Gordon R. Albright, Tim Cameron and Rene DeBord raise the American Flag and a new MIA Flag on the lawn of the Rockcastle County Courthouse during Veterans Day services last Saturday. (Photo by Jim Cox)



Vietnam Veteran James Bretz spoke during a ceremony to honor Veterans, which was held on the courthouse lawn on Sunday.

## Cookbook Available

Fill in Order Form Below. Cut Out and Mail

You may order as many copies of our Cookbook as you wish for the regular price, plus \$2.00 postage and packing per book ordered. Mail to:

Livingston Community Homemakers  
P.O. Box 341  
Livingston, KY 40445

Please mail all orders to the address above. \$7.25 each, plus \$2.00 postage and packing per book ordered.

Mail books to:

Name \_\_\_\_\_

Address \_\_\_\_\_

City, State, Zip \_\_\_\_\_

For Information call 453-9164

# NOTICE Rockcastle County Schools Plan For Inclement Weather School Closings Early Dismissal

Every effort will be made to keep parents and concerned citizens informed as to school closings, early dismissals and possibly a delay plan.

The number one concern is the safety of students. After an extensive evaluation of road conditions in the county, taking into consideration all roads, a decision will be made in regard to closing school.

School closings will be announced on radio stations and three television stations. They are as follows: Radio - WRVK (AM 1460), WVLK (FM 93), WBUL (FM 98.1), WMXL (FM 94.5), WLAP (630 AM), WRSL (FM 96.3), WLKT (FM 104.5) WKQQ (FM 100.1). Television - WKYT (Channel 27), WLEX (Channel 18), WTVQ (Channel 36). If possible, the closing will be announced the evening before the closing date. If a determination cannot be made the day prior to the closing date, every possible effort will be made to reach a decision by 6:00 a.m. The announcement will be made no later than 6:30 a.m. This will be conducted the same for the delay plan, if it is concluded the delay plan would be the appropriate plan of action.

If the delay plan is used, breakfast will be served upon the arrival of students at school.

Early dismissal of school due to inclement weather will be announced on WRVK. Roads will be closely monitored as school is in session to determine if there is a need for early dismissal. If the need for early dismissal does occur, parents should make arrangements to meet children as they arrive safely.

Parents and students should not call any radio or television stations to inquire about school closings. This could delay the information distribution to the necessary channel by tying up the phone lines.

## Rockcastle County School System Delay Plan

Occasionally, there are mornings when an additional hour is needed to check bus routes and temperatures/weather conditions sometimes can change between 6 a.m. and 7 a.m. As a result, the Rockcastle County School System will consider a one hour delay in school opening due to weather conditions.

If a one-hour delay status is warranted, the delay will be announced by the following radio stations: WRVK (AM 1460), WVLK (FM 93), WBUL (FM 98.1), WMXL (FM 94.5), WLAP (630 AM), WRSL (FM 96.3), WLKT (FM 104.5), WKQQ (FM 100.1), and the following television stations: WLEX (Channel 18), WKYT (Channel 27), WTVQ (Channel 36), at 6:00 a.m. or as soon as possible.

There may be a time when a few isolated bus routes may not be made or may be delayed for an hour while the rest of the bus routes will be made on the regular schedule. These bus routes will be announced only on WRVK radio station.

In instances of a delay schedule, breakfast will be served as soon as students arrive at school.