

## Library Notes

New books received at the Rockcastle County Library from the Department of Libraries.

**THE COMPLETE BOOK OF CHILDREN'S MEATER** by Vernon Howard. More than 350 non-royalty plays, skits and monologues for home, youth group and classroom use.

**HALLS OF THE MIGHTY**, by Richard Riedel. A personal portrait gallery of the world's most exclusive "club" - the United States Senate.

**THE HOUSE ON THE STRAND**, by Depne du Maurier. Set in Cornwall, The House on the Strand concerns a young man's experiments and travels back and forth in time to the mysteries of fourteenth century England.

**JOB'S TAKE YOU PLACES-HERE AND ABROAD**, by Adrian Parodi. An excellent guide to vocational opportunities in each of the fifty states and positions in business, government, and voluntary agencies abroad.

**THE KING'S PLEASURES**, by Noreh Lefts. A great historical novelist focuses her talent on Katharine of Aragon who was Henry VIII's first wife.

**MARTIN LUTHER KING, JR.**, by William Miller. Concise but carefully detailed and thoroughly documented, it provides not only a full-length portrait of the mature Martin Luther King but de-

scribes the process of his growing up.

**MY TURN AT BAT**, by Ted Williams. Possibly the greatest hitter that baseball has ever seen, and without question one of its most controversial characters, tells the true story of his life and his fabulous career.

**PATCHWORK TODAY**, by Doris Marston. Marston's book fills the need for a practical book on "piece" patchwork and applique-patchwork.

**THE PETER PRINCIPLE**, by Laurence Peter and Raymond Hull. Why is the human race foundering in a morass of occupational, academic and administrative inefficiency? Here, at last, is the answer in the delightful, dead-pan humor of this book.

**THE WINE OF VIOLENCE**, by Wesley Egan. A fast-moving novel of suspense. **BLACKBOARD BEAR**, by Martha Alexander. Older children often overlook younger children, a fact illustrated in this small volume. A youngster who has been overlooked gains the attention of the other children in a most unusual way. Grades k-2.

**THE DUCK IN THE GUN**, by Jay Cowley. What is the best way to stop a war? A duck provides a surprising answer in this tale of war. Pre-School.

**GEORGE'S STORIES**, by Frank Asch. George owned

a store which sold everything. He made it a hobby to guess what each customer wished to purchase and was usually right until the day the little lady walked into the store. Grades k-1.

**I HAVE A TREE**, by Lillie D. Chaffin. A tree can be a wondrous thing to a small child, a large tree providing a hiding place, a playground, and a place of learning. Grades k-1.

**INSPIRE OF ALL TERROR**, by Hester Burton. The cities of England in 1940 were not safe for young people like Liz Howlin. Liz found herself in the country, a part of an aristocratic family and taking part in England's valiant struggle. Grades 7-10.

**JUMBO THE BOY AND ARNOLD THE ELEPHANT**, by Dag Greenberg. Two babies being mixed up at birth provide the basis for this amusing tale. Pre-school.

**KING OF THE NOGS**, by Oliver Postgate. A mock-heroic epic in which Noggin of Nog embarks on a quest involving a series of adventures as he searches for a bride in the land of the Nooks. Grades 1-4.

**MORNING IS A LITTLE CHILD**, by Joan Walsh Anglund. A delightful collection of verse by an ever popular author-artist. Grades k-3.

**OLIVER AT SEA**, by Christopher B. Wilson. Oliver is very fond of drawing pictures, pictures which sometimes are a bit unusual. This picture of ships and



**NIGHTTIME IN MISTER ROGERS' NEIGHBORHOOD**—In his usual simple way, Fred Rogers reaches into common fantasies which children have about the night and comes up with an hour-long special for young children and their families, seen on Kentucky Educational Television network, Tuesday, Nov. 25 at 6:30 and Thursday, Nov. 27 at 6:30 p.m.

the sea provide unusual entertainment. Grades k-3.

**PLANTS FOR POTS**, by D.X. Fenten. A guide to projects for indoor gardeners, this volume offers advice on choice of plants for indoor growth, actual care of such plants, and finally, various projects for each month of the year. Grades 5-9.

**SHRIEKS AT MIDNIGHT**, by Sara and John E. Brewton. A collection of poetry for the brave with ghost, ghouls, and beasts running rampant. Grades 4-8.

**SIMON'S SONG**, by Barbara and Ed Emberley. Simple Simon had the pizman are familiar characters to everyone. However, Simon had other adventures which are not so well known, which are presented in this colorful volume. Grades k-2.

**A SPY CASE BUILT FOR TWO**, by Amelia Elizabeth Walden. Another of Amelia Walden's entertaining spy stories involving the CIA and international intrigue. Grades 7-10.

**STORM OVER WALES**, by Hilda Boden. Nationalist Wales is the site of an exciting adventure story involving Welsh patriots and gold smugglers. Grades 7-up.

**READ THE CLASSIFIEDS** That Get Results Fast!

costs the license buyers a good deal of money to perpetuate a deer herd. It actually costs more than it should when one considers that a lot of thieves take deer by spotlighting at night without having to pay one cent. But say the average deer will dress out at 100 pounds, which we believe is a conservative figure, then the kill of 6,400 deer would mean 640,000 pounds of meat. Any kind of old meat will sell at a dollar a pound these days, so last year Kentuckians lived high on the deer to the tune of \$640,000.

**PRINTS FOR PARK** Mrs. Nellie Meadows, talented artist of Powell County, a limited edition of whose work is being introduced by Fayette Park Prints, Lexington, has presented a complete set of her wildflower prints "To Natural Bridge, Kentucky's Oldest State Park." Descriptions were written by Newell Shackelford, author and naturalist.



**BULLOCK'S SHOE SHOP**  
Ph. 256-2293 Mt. Vernon, Ky.

## We're heaven on earth.



### Try us.

We'll drain your swamp, or build you a pond. Clear a woods or build you a road. Grade your land or terrace it to stop erosion. Fill a gully or build you an irrigation ditch. Anything to make your land easier to farm, more productive in yield. We're an experienced Farm Power Contractor... and use Caterpillar-built equipment, sold and serviced by Wayne Supply Co. And we can handle your earth problems for a lot less money than you probably think. It's your best deal for greater farming profits all the way around. Give us a call. We'll move the earth for you!

## TERRILL CHANDLER

Phone 758-3771 Brodhead, Ky.

YOU CAN'T GO WRONG WITH FAMOUS BRAND *Geffer* Especially this



Model 186F Electric (Also Available in Gas) **SPEED QUEEN**  
**Appliance Service Center**  
Mt. Vernon, Ky. Roy Winstead



**KLENZO BLUE ORAL Mi-31**  
You'll be thankful for the anti-bacterial, deodorizing action of these anti-septic mouthwashes... and so will your friends!  
each, 16 oz.

**REXALL Timed Action COLD CAPSULES**  
Give thanks for fast, long-lasting relief of cold miseries!  
10's

**REXALL THRU Liniment**  
Actually goes THRU the skin to kill muscle pain deep inside. No harsh rubbing is necessary. Relieves muscular sprains, strains, temporary rheumatic pain.  
2 OUNCES \$1.49

**Analgesic Pain Relief BALSAM**  
Pay the poor pilgrims! This ain't your usual balm for muscular aches and pains... but you can't live without it!  
98c

TAKE THE CHILL OFF WITH REXALL WARMERS  
**MAGGARD DRUG STORE**  
Mt. Vernon, Ky.

# WANT ADS DO THE JOB FAST!

## CLASSIFIED RATES

Local Rates: 4¢ per word - minimum 75¢  
 Card of Thanks: 3¢ per word - minimum 75¢  
 In Memory: 3¢ per word - minimum 75¢  
 Classifieds Charged: 5¢ per word - minimum \$1.00  
 Display Classified: \$1.00 per column inch

### For Sale

FOR SALE: Bulldozer, D-6 Caterpillar, 9-U Series, Hydraulic Angle Blade, Serial No. 29,000, Priced to sell, Elmo Anderkin, Mt. Vernon, Ky. Phone 256-2819. 9xmf

FOR SALE: Pigs, ready to wean. Also, a Kelvinator dryer, mattress, springs, and bed. Ted Scott, Route 3, Crab Orchard, 758-2285. Call after 5 p.m.

FOR SALE: Handmade quilts, and old and colored glassware. House in front of cemetery. 9x2

FOR SALE: Coal block, blaker, chunk. Henry Dosh. Ph. 256-4128. 4x3e

Evergreens, Flowering Shrubs, Shade and Flowering Trees, Standard and Dwarf Fruit Trees, Grape Vines and berry plants, Evergreens and Shrubs as low as Three for \$1.00. Free Evergreens and shrubs with every order. See our new Dark Green Hemlock for sale only by Mink's Nurseries, Dutch Bulbs, Peat Moss and Fertilizers. We deliver and plant, help you with your plants. Terms if you like. Mink's Nurseries, South Dixie St., London, Ky. 40241. Ph. 864-5863. 6x6

FOR SALE: Restaurant and building with four bedroom apartment upstairs. See Roman McFerron, Brodhead, Ky. 7x4p

FOR SALE: Admiral and Zenith televisions. New and used antennas. Installation and service. ROCK CASTLE FARM SERVICE, Mt. Vernon, Ky. ntf

1,000 Address Labels, two colors, with any name, any post office with any zip code. Delivered for only 75¢ per 1,000. See, write or call: Estill L. Mullins, Route 2, Box 62-C, Mt. Vernon, Ky. 10x2

FOR SALE: Antique Story Clark Organ. Solid Walnut. Has been refinished and is in perfect playing condition. Must be seen to be appreciated. Call 758-4701. 10x2p

FOR SALE: Registered English Setter Dog, Six months old. Henry Dash 256-4125. 10x2p

FOR SALE: 1957 3/4 ton Fleetside. Also shotgun's and rifles. Complete sell out. See Robert E. Cummins, Pine Hill. 9x. 10x2p

FOR SALE: One mother Chihuahua dog and four Chihuahua pups. Will sell one or all together. See, write, or call Beatrice Robinson, Route 2, Livingston, Ky. 455-3363. 11x2

FOR SALE: 1965 Oldsmobile, A-1 condition, \$800. Seat James Owens House, McGuire Subdivision, anytime after 4 p.m. 11x1p

FOR SALE: Two registered Angus Bulls. Top blood lines. Curtis Bradley, Route 1, Brodhead, Ky. 40409, Telephone 758-2431, Highway 70. 11xmf

FOR SALE: Used clothing at the Antique Shop, Livingston, Ky. Owner Walter Carpenter. 11x3p

FOR SALE: Motel buildings, known as Belly Acres Motel, 10 units. Could be moved in three units. Would make ideal cabins for fishing camp on new lake. Will accept bids until 2 p.m., Saturday, December 13, 1969 at location. Each unit includes air conditioner, electric heating unit, bathroom fixtures, bedroom suite. For further information write or call, Vance Mills or Jimmy Renfro, Box 378, Barbourville, Ky., Ph. 546-3909. We reserve the right to reject any or all bids. 11x3

EDP SALE: 35 acres, about 4 miles south of Mt. Vernon on Highway 461. One-half acre tobacco base. Well fenced, well watered, all in grass except tobacco allotment. Water in 6-room house. All cropland. Good buildings. See Ben Bullock, owner or call 256-2531 or 256-2431. 11x3

### For Rent

FOR RENT: Furnished apartments. Mrs. Milzie Swinney, 256-2395. 9xmf

FOR RENT: Furnished apartment and small house trailer. Phone 453-2331. C.J. Webb. 9xmf

FOR RENT: 2 or 3 room furnished or unfurnished apartments. Steam heated. At Rockcastle Hotel. Also sleeping rooms rented by month. See Roy Winstead at APPLIANCE SERVICE CENTER.

FURNISHED apartments for rent. Estle Bullock, Rockmont St., Mt. Vernon 256-4215.

FOR RENT: Furnished apartments at Mt. Vernon Court. Call 256-2282. Don't

### Wanted

HELP WANTED: Excellent business opportunity available in life insurance in Rockcastle County. Old established company. Age or experience not a qualification. Write James I. Miller, P.O. Box 231, Berea, Ky. 11x3p

WANTED: Three-bedroom house to rent. Call 256-2918 between 9 a.m. and 6 p.m.

WANTED: Truck drivers for local and long distance tobacco hauling. Must be experienced in tractor and trailer driving and must be 21 or older. Also need warehouse men to load tobacco. Hubbard Transfer. Call 256-4455 or 256-2398. 11x1p

DRIVERS NEEDED (Tractor Trailer) Training now for major truck lines. For application write: Nation Wide Semi Division, P.O. Box 5B, West Somerset, Kentucky 42501. 9x3.

HELP WANTED: Earn extra Christmas money. We need three women to display the latest fashions in your leisure time. Call Berea collect 986-8239 between 8 a.m. and 10 a.m. or 4 p.m. and 7 p.m. 8x5

WANTED: To let us clean and beautify your garments to keep them looking their best. "Let Johnny on the spot." Your professional quality cleaners. SANITARY CLEANERS Ph. 256-2551.

COAL HAULING: By load or ton. Contact Henry Van Winkle, Phone 256-2713. 4xmf

Professional Floor Sanders. Call John Brown 256-2839 or Wilburn Barnes 256-4216. Satisfaction Guaranteed. Fee Estimates. 8x2p

SEALED BIDS will be accepted by the Rockcastle County Board of Education until 4:30 p.m., December 4, 1969 for the building and grounds of the Poplar Gap School. A quit claim deed will be issued. Bids will also be received for the coal house at Maple Grove School. The Board reserves the right to reject any and all bids. 9x3

Read The Classifieds ... They Get Fast Results

### Notice

NOTICE: See us for all your monument needs. H.C. McNew Monument Sales, U.S. 25 North, Mt. Vernon, Ky. Ph. 256-2242. 38xmf

### NOTICE

Notice is hereby given that Mattie E. Sower, Brodhead, Kentucky, and Diane Masters, Route 3, Crab Orchard, Kentucky, have been appointed co-administratrix of the estate of John Sower, deceased. All persons having claims against said estate shall present them verified according to law to the said Mattie E. Sower, Route 3, Brodhead, Ky., and Diane Masters, Route 3, Crab Orchard, Ky., or to Allen and Clontz, Mount Vernon, Kentucky, attorneys for said estate, no later than March 1st, 1970. 9x3

NOTICE: Hamm Bros. Water Well Drilling and Contracting, Brodhead, Ky. Ph. 256-2024 or 256-2049. ntf

## SEW FOR HOLIDAYS

### Double Knit Nylon Washable 60" wide

### Bonded Wool Plaids & Solids 54" wide



### Cotton & Rayon Lining



### JUST ARRIVED BATES COTTONS 44" wide

USE LAY-A-WAY PLAN

### MC BEE DEPT. STORE

Mt. Vernon, Ky.

## TWO WEEKS ONLY AT CROUTCHER - WILLIAMS MOTOR COMPANY

Big Hill Ave.

Richmond, Ky.

These Cars are Safety Checked and Winterized For The Cold Weather Driving Ahead.

### CARS

"SAVE NOW ON A WINTER-READY USED CAR OR TRUCK."	
1968 TEMPEST, Safari, Automatic, Power, One Owner	\$2350.00
1966 IMPALA. SS. 2 Door, HT, 4-Speed, 396	\$1250.00
1965 FORD, Galaxie 500, 4 Door, V.8, Automatic, Power	\$ 950.00
1965 FORD, Fairlane, 500, Wagon, 6 Cyl., Standard Shift	\$ 850.00
1964 CATALINA, 2 Dr., Automatic	\$ 750.00
1963 IMPALA, 4 Door, Automatic	\$ 550.00
1962 CADILLAC, 4 Door, HT, Automatic, Power, Air Cond.	\$ 550.00
1961 CHEVY, 2 Door, V.8, Standard Shift	\$ 105.00
1954 CHEVY, 4 Door, Standard Shift	\$ 95.00

### TRUCKS

1965 GMC, Pick-Up LWB	\$ 40.00
1965 INTERNATIONAL, Pick Up	\$820.00
1964 GMC, Pick-Up	\$650.00
1959 GMC, 1 1/2 Ton Fla	\$375.00

OVER EIGHTY OTHER USED CARS AND ALL AT REDUCED PRICED.

### LOG MARKET

Best poplar log market in Eastern U.S. Your poplar logs should average between \$85.00 to \$120.00 per thousand feet, depending on their quality and size. We are going all out to get two million feet of poplar logs for winter cutting. Cash every load. Cut your poplar trees while prices are at an all-time high and before the tight money situation brings on a slump in lumber. Can be seen from Interstate 75 and Kentucky 80 interchange.

Highway 80, London, Kentucky.

Donald Binder Lumber Company

### GOFORTH'S SLAUGHTERING HOUSE

IS NOW OPEN 6 DAYS A WEEK  
 OPENING TIME 7:30 A.M.  
 FOR BUTCHERING HOGS OR BEEF.  
 LOCATED: 3 Miles North of Mt. Vernon on U.S. 150 at Frank Huston's Place.

BOONE GOFORTH PHONES: 256-2824 or 453-3262

### COMBS GRAND THEATRE

Mt. Vernon, Ky.

SPECIAL MATINEE Friday at 1:00 P.M. ALSO

FRI. - SAT. - SUN. - MON.

THE HAPPIEST LOVE-IN OF THE YEAR!



DEAN MICHELE DAVID BUDDY JONES LEE TOMLINSON HACKETT  
 with FLYNN FONG AND GRANATULLI  
 Story by BILL WALSH... DON DAGRADI... BILL WALSH  
 Directed by ROBERT STEVENSON TECHNICAL COLOR

### COLOR HIT NO. 2



WALT DISNEY PRESENTS HANG YOUR HAT ON THE WIND TECHNICAL COLOR

### MOBILE HOMES FOR RENT

New Liberty 12' Wide Washer & Dryers-Carpet-Furnished

AVAILABLE DEC. 1, 1969

NOW LEASING

Mt. Vernon Corp.  
 Call: Bill Mahan 256-4364

### COMBS GRAND THEATRE

Mt. Vernon, Ky.

BIG HOLIDAY SHOW TONIGHT AT 7:00 P.M. Thurs. Thanksgiving-Day Shows All Day Starts At 2 P.M. On Our Screen



Doris Day and Brian Keith "With Six You Get Eggnog"

### COLOR HIT NO. 2



SINGING... SWINGING... DOING THEIR OWN THING! HERMAN'S HERMITS  
 with ANNE GLEN PRODUCTION  
 Mrs. Brown, you've got a lovely daughter  
 Starts Friday 11/28/69

THE LOVE BUG

HANG YOUR HAT ON THE WIND

NOTE: See "The Love Bug" On The Grands Now Big 1970 Screen

Now Sound - Now Carpet Lots Lots More To Come

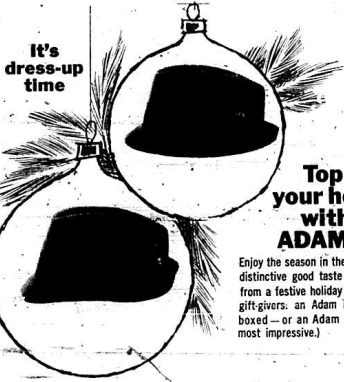
# WE HAVE MOVED !!

## ACROSS THE STREET

TO THE BUILDING FORMERLY OCCUPIED BY THE WESTERN AUTO STORE, NEXT DOOR TO THE K.U. OFFICE.

We Invite You To Come In And See Our New Modern Clothing Store, Featuring The Latest Fashions For Men, Women And Boys.

It's dress-up time



**Top off your holiday with an ADAM HAT**

Enjoy the season in the celebrated style, the distinctive good taste of an Adam! Choose from a festive holiday collection. Attention, gift-givers: an Adam hat, attractively gift-boxed - or an Adam Gift Certificate - is most impressive!

Use Our Convenient Lay-A-Way Plan Shop Early

WATCH FOR OUR GRAND OPENING

Put-ons you can put together



The clean smooth lines are here with that special look for any occasion. The elegant sleeveless skimmer with A-line styling and optional monogrammed bodice is of 100% Dacron Polyester. Machine wash and dry. Regular 10-18, Short 6-16; 23.00. Wear the Soho belted six-button coat for an accented ensemble—it's a great topper for your other outfits, too. 100% Dacron Polyester. Machine washable and dryable. Regular 8-20, Short 6-16, 32.00. In Aqua Mist, Lemon Creme, Peach Sherbet and Rose Mauve.

June Fox

You can be a lot tougher on these shoes than they can be on you.

Weyenberg Massagics are custom engineered to give ideal comfort—even if you wear them under conditions that are much less than ideal.

Here's how we do it. By using only the finest leathers. A double rubber cushion in the heel. An air-celled cushion in the sole. A steel shank for extra strength. And a molded sponge rubber support for the arch.

You see, there's no secret to making the world's most comfortable shoe. It just takes the best materials plus a lot of time and effort. In fact we're surprised that nobody else sees it quite this way.

**WEYENBERG MASSAGIC**



LOOK AT THESE GOODIES FOR BOYS



Suits and Sport Coats By H.I.S.

# ROBINSON'S

In Order To Better Serve You We Are Expanding Jim's Dollar Discount

## Growing Trees Grow Dollars

Timber production is big business in Kentucky and especially in southeastern Kentucky. Almost half of Kentucky's 26 million acres of land area is forested. In 1962, 137 million cubic feet of Kentucky wood was used for timber products. The value of the 1962 output at point of first sale was about \$30 million.

But of what significance is this to the small private landowner of southeastern Kentucky. A source of income for many a Kentucky woodland owner is the occasional sale of trees for sawtimber. Knowing when to sell his trees is important if he is to realize maximum returns.

Woodland owners and many sawmill operators often consider hardwood trees 12 and 14 inches in diameter (breast height) to be merchantable for sawtimber. However, a glance at the chart below will show that this is not true. This chart compares returns that an owner could expect from various-sized trees, assuming that he sold his timber on the stump for \$25 per thousand board-feet (Doyle Scale), and that the trees of all diameters had two 16-foot sawlogs and good form.

TREE DIAMETER (INCHES)	STUMP VALUE PER TWO LOG TREES (DOLLARS)
12	\$1.17
16	3.12
20	6.00
24	10.00

The differences in value between 12 inch and larger trees will normally be much greater than shown. Seldom will a 12-inch hardwood tree have more than one 16-foot log. Increased, merchantable length normally develops along with increased tree diameter. Quality also normally increases with diameter size. Buyers can afford, and are willing, to pay more per thousand board feet for good large logs and trees, than for good small ones. On any specific sale, individual tree values may vary markedly from the values given in this article because of tree defects, differences in species, merchantable length, and sale price. For information on the market prices of forest products, ask for Miscellaneous 104-K, Kentucky Forest Utilization Survey (for 1969), a report which is published annually.

Growth studies in the central states show that average sawtimber-sized trees are increasing a little more than 2 inches in diameter every 10 years. But vigorous, healthy trees on good sites are growing much faster, often as much as 4 inches in 10 years. This means that fast-growing, 12-inch trees, now worth about \$1.17 apiece, will likely more than double their value in 10 years. In contrast, it usually takes at least 35 or 40 years to grow the tree to the 12- or 14- inch diameter size.

From these facts it is evident that timber owners, when they make sawtimber sales, can increase their income by keeping the vigorous, fast-growing well-formed 12- and 14-inch trees. These trees may be recognized by their large, dense, well-balanced crowns; their sound, straight trunks; and their general appearance of health and vigor.

...and, of course, by trees of the same size. Owners can start at managing their woodlands and increase their timber income by selling only the large, mature trees (18 inch diameter and larger) which are ready for harvest and those smaller trees which are not likely to make good growth in the future because of poor form, rot, or other defects.

For assistance in timberland management and timber marketing, contact the Kentucky Division of Forestry, P.O. Box 31, Pineville, Kentucky 40977.

## County Statistics

### Marriage Licenses

Thumey Ray Rowe, Route 1, Mt. Vernon, laborer, to Bonnie Lou McFerron, Mt. Vernon, November 15, 1969.

Charles H. Brandenburg, New Carlisle, Ohio, service station attendant, to Charlene Mae Roy, New Carlisle, Ohio, November 15, 1969.

### Deeds Recorded

Oscar and Christine Hayes, property located on Roundstone Creek, to Oscar F. Hayes and Albert J. Hayes, \$200 tax.

T.S. and Ruth Wolfe, property in Mt. Vernon, to Marie Tolan and Earl Price, \$250 tax.

Peggy Ann Ambergue to James E. and Mary C. Roberts, property located in Brodhead, \$4.50 tax.

Alice McFerron, Delbert and Dorothy McFerron, Jessie and Lorita June McFerron, property in Mt. Vernon, to Emmitt and Nellie McClure, \$3.50 tax.

Emmitt and Nellie McClure, property in Mt. Vernon, to Delbert and Dortha

McFerron, \$250 tax.

Asa and Ruby Mink, Lewis and Edna Mink, Carrie Zoudermilk, land located in Rockcastle County, to Oscar B. and Nettie M. Mullins, \$3.00 tax.

Olen and Ada L. Martin, land in Rockcastle County, to T.D. and Addie Webb, \$9.00 tax.

PATIENTS REGISTER 11/17-11/18/69

### Admitted:

William Drew, Orlando; Viola Gentry, Mt. Vernon; Lorene Bostic, Mt. Vernon; John Hasty, Brodhead; Eliza Barnett, Mt. Vernon; Ina Todd, Crab Orchard; Burgess Daugherty, Livingston; Kathy Gibbons, Mt. Vernon; Della Allen, Livingston; Bradley Saylor, Mt. Vernon; Raymond Sargent, Brodhead; Clara Robinson, Mt. Vernon; Thane Arnold, Mt. Vernon; Sue Nelson, Fla.; Luther Hurley, Livingston; Janice Higgins, Mt. Vernon; Rebecca Crech, Mt. Vernon; Mattie Estes, Richmond; W.C. Johnson, Mt. Vernon; Loretta Tolle, Mt. Vernon; Melvina Taylor, Bloss.

becca Crech, Mt. Vernon; Pete Wynn, Mt. Vernon; W.C. Johnson, Mt. Vernon; Mattie Estes, Richmond; Loretta Tolle, Mt. Vernon; Melvina Taylor, Bloss; Laura M. Cromer, Mt. Vernon; Marie Wynn, Mt. Vernon; Thomas Wagner, Livingston; Nancy Hood, Orlando; Barbara Chestnut, Orlando; Ben Childress, Mt. Vernon.

### Released:

Hilda Hignite, Brodhead; William Smith, Wildie; William Drew, Orlando; Lorene Bostic, Mt. Vernon; John Hasty, Brodhead; Eliza Barnett, Mt. Vernon; Ina Todd, Crab Orchard; Burgess Daugherty, Livingston; Kathy Gibbons, Mt. Vernon; Della Allen, Livingston; Bradley Saylor, Mt. Vernon; Raymond Sargent, Brodhead; Thane Arnold, Mt. Vernon; Sue Nelson, Fla.; Luther Hurley, Livingston; Janice Higgins, Mt. Vernon; Rebecca Crech, Mt. Vernon; Mattie Estes, Richmond; W.C. Johnson, Mt. Vernon; Loretta Tolle, Mt. Vernon; Melvina Taylor, Bloss.

### IN MEMORIAM

Mattie (Whitaker) Cromer, in memory of Mattie Cromer who passed away November 29, 1964. She bade no one a last farewell. She said goodbye to none. Her loving heart ceased to beat. Her precious smile was gone. Our hearts still ache with loneliness. Our eyes shed many tears. Only God knows how much we miss her. At the close of five sad years.

The Family



ZENITH DONATES COLOR TV—The Zenith Television Company recently donated a color television set, through their local dealer, Rockcastle Farm Service, to the Harry Sparks Vocation School for use in their Radio and Television repair class. Zenith is donating these televisions to schools under their "Operation Tech-Tuck" program and will provide a total of 54 sets to vocational schools under this program. Clement Rafau, second from left, a division service manager for Zenith, is shown presenting the set to Henry E. Todd, radio and television instructor of the Vocational School. Looking on is Charles W. Cave, for left, teacher-coordinator of the Electronics Department of the Louisville Board of Education, and Lloyd Cain, director of the Vocational School.

IN PERSON  
**CONWAY TWITTY**  
AT THE  
**HOWARD THEATRE**  
"HOME OF THE CRAB ORCHARD JAMBOREE"  
**THUR., NOV. 27**  
2 BIG SHOWS 7 AND 9 P.M.

**LOCUST POST**  
Rugged boots for rugged men.

These boots are made for walking and working and climbing and hunting and stomping... with support and protection. Wide range of sizes.

Sturdy logger boot built to take hard hitting rugged action

**\$19.95**

Heavy duty outdoor boot with extra thick cushion arch and long wearing Paracork neoprene sole

**\$11.95**

Lightweight glove leather quick lacing boot. Cushion insole. Available with insulation

**\$13.95**

Available in a full range of sizes and widths.

**SAMPLE SHOE CENTER**  
Richmond, Ky.

Every day, says the March of Dimes, 700 babies are born with defects in the United States.

FEAST YOUR EYES ON THESE...  
**THANKSGIVING SAVINGS!**

**COFFEE 59¢**  
Tin Only 1 Lb.

Reuben Hammons, Owner

Hunt's **PEACHES**  
Half or Slices **3/89¢**

10 Oz. Jar Folgers **COFFEE 99¢**  
Instant

Fresh Grade A **FRYERS 23¢** lb.

Carnation Evaporated **MILK 6/98¢** Tall Cans

**BOLOGNA** By The Roll lb. **27¢**

Fischer's Quick Cut **HAMS** lb. **89¢**  
Whole or Halves

Fischer's Select Center Cut **PORK CHOPS** lb. **69¢**

100% Pure **GROUND BEEF** lb. **49¢**

**CHEESE** 2 Lb. Box **89¢**  
SPREAD

**SMOKED PICNICS** lb. **39¢**

Fresh Pork **BACK BONE** lb. **25¢**

**REUBEN'S SUPER MARKET**  
U.S. 25 So. Mt. Vernon

**NOW EARN 5%**

**5% PAID ON CERTIFICATES OF DEPOSIT**

**4% PAID ON REG. PASSBOOK SAVINGS**

**SAVE WHERE IT'S SAFE**

**The Bank Of Mt. Vernon**  
Mt. Vernon, Ky.  
**FDIC**

# Mount Vernon Signal

"WHERE THE BOONENEY JOINS THE DIXIE"

THURSDAY, NOVEMBER 28, 1969

VOLUME 83 - NUMBER 11

MOUNT VERNON, KENTUCKY 40456

## On The Hardwood

The Broadhead Tigers went down to defeat last Friday night at the hands of Madison Model 64 to 46. The Tigers trailed 17 to 12 at the end of the first quarter and, despite a rally in the second quarter which pulled them within one point, 28 to 27 at half-time, the Tigers again fell behind in the third period to stay behind for the loss.

Leading scorer for the Tigers was Scoggin with 14, followed by McWhorter and Adams with 9 each, Goff with 7, Pope 6, and Bray 1.

The Mt. Vernon Red Devils opened their 1969-70 basketball season by losing to a tough Oneida team 83 to 70 last Saturday night. The game was nip-and-tuck throughout and the tall Oneida team was only able to pull away from the tiring Red Devils in the last three minutes.

For Oneida, scoring was led by Lee with 19, Delph with 20, and Combs with 24. The Devils were led by Dale Coffey with 27, and Tommy Coffey and Rudy Burdette, each with 18.

Coach Jack Laswell said he was well pleased with the strong performance given by his team, despite the opening game mistakes of easy missed field goals, "shots" and floor errors.

This is going to be a good team with the addition of David McCauley and should have a good game to game," Coach Laswell further said.

Commenting on the individual performances of his players, Coach Laswell said, "Dale Coffey is returning leftman from last year, played an outstanding floor game and with his slick passing gave his teammates some nice goods. Dale is much improved over last year. Tommy Coffey, Rudy Burdette, and George Powell showed up well in rebounding. Stanley Burton, with an injury, could not operate at full strength.

With three of the Livingston Blue Devils weakened by illness and another one receiving an eye injury during the game, the Blue Devils were no match for a

tough Lone Jack team in a game played at Livingston last Monday night, the 17th. The Devils were defeated 104 to 56.

Lone Jack led all the way, and scored 22 points down at half-time and they were unable to rally in the third quarter which ended 79 to 44 in favor of Lone Jack.

According to Coach Preston Parrett, "the boys did a good job and put forth a good effort. We did not have the endurance to stay with Lone Jack the whole game due to three of our starters being weakened by illness and another one receiving an injury over the eye. I give every coach has a favorite team and this one

(Cont. to 7)

### SCHOOL BOARD MEETING DATE CHANGED

The Rockcastle County Board of Education will begin meeting on the first Thursday night of each month effective with their December meeting, according to Charles Parsons, Superintendent.

The board's regular meeting date had been on Monday night.

### WILLIAM W. BLANTON DIES SUDDENLY

William W. Blanton, 56, of Route 2, Brodhead, passed away Sunday, November 23, at his home. He was born in Harlan County, April 25, 1913, the son of the late Ephraim and Sarah Wilson Blanton. He had been a farmer and a member of the Holiness Church. Survivors are his sister, Mrs. Viola Pannell of Melvindale, Mich; four brothers, Matt, Blanton, of Harrodsburg, Ohio; Stanley Blanton of Route 2, Brodhead; Stanley Blanton of Dearborn, Mich.; and Delbert Blanton of Lincoln Park, Michigan.

Funeral services will be held Wednesday, (today) November 25, at 10 a.m. at the Union Chapel Holiness Church with Bro. Virgil Brock officiating. Burial was in the Negro Creek Cemetery.

Watson Funeral Home was in charge of arrangements.



**FUND RAISING PROJECT**— Pam Parrott, center, and Joan Paynter, members of the Rockcastle County Band are shown with the two styles of cushions which the band is selling to earn money for new uniforms. The Broadhead Tigers and the Mt. Vernon Red Devils are depicted on the pillows which will be on sale for \$2.00 each at the Broadhead Thanksgiving Tournament. Robert Pybas, Band Director, looks on.

## Rockcastle Band Begins Fund Raising Project

The Rockcastle County Band members from Brodhead and Mt. Vernon will begin a fund-raising drive selling seat cushions this week. This is the first step in an effort to raise eventually about \$7,000 for new and much needed uniforms, especially since the schools will soon be consolidated.

Presently, the county band is using uniforms bought for the Mt. Vernon band. These, somewhat outdated uniforms have been added to in recent years in order to provide each member with a uniform. Next year, there will not be enough uniforms to outfit the band since it continues to increase in number each year and it would not be practical to buy additional uniforms and add to old ones which are already outdated.

New uniforms will cost at least \$100 each and the band needs approximately 70 within the next two years. The proceeds from the sale of the cushions, as well as future projects,

will go into a savings account set aside for the future purchase of these new uniforms.

### HEALTH CENTER ADDS SERVICE

On Thursday, November 20, 1969, the Southeastern Kentucky Mental Health Center added another basic service for area residents. This service, emergency care, involves having psychiatric services available on a twenty-four hour basis for those in need.

The psychiatric emergency has been defined as, "any urgent psychiatric condition."

(Cont. to 7)

### CHRISTIAN CHURCH BAZAAR NOV. 28

The Mt. Vernon Christian Church Willing Workers will hold a Bazaar Saturday, November 28 beginning at 10 a.m. at the old bank building next to the Mt. Vernon Hotel.

For sale will be handmade artifacts, food, and white elephants.

## Development Corp. Meets; Factory, Telephones Discussed

Mayor Clyde Linville told the Rockcastle County Development Association Monday night that a sewing factory, which has shown considerable interest in locating in Rockcastle County, would not be locating here.

Mayor Linville said, however, that a representative of the Department of Commerce had told him that another factory, which manufactures Paper products, is showing interest in locating in Rockcastle.

A committee was also formed at the meeting to prepare a resolution concerning telephone service in Rockcastle County. The resolution will list complaints concerning the telephone company's service and will be forwarded to the Public Service Commission at Frankfort. Named to the committee were Jack Owens, Chairman, Wade Ray, Clyde Linville, Wayne Stewart, and Clay Colson.

### IVE FROM HERE STUDENT TEACHING

Five students from Rockcastle County are among 340 teachers at Eastern Kentucky University who have begun student teaching at 120 Kentucky schools. They will work at student teaching 10 weeks in elementary and secondary schools in Richmond, Middlesboro, and other schools throughout the state.

The subject with the greatest number of these teachers is physical education, with 40, followed by history and social science, 33, and business education and industrial education, 28 each. Their preparation includes six weeks of class work in professional methods and the fundamentals of teaching, plus observing classes at Eastern's Model Laboratory School. Each student teacher is supervised by an experienced teacher.

The student teachers from Rockcastle County include: Juanita Faye Cox, Jamie Lynn Mullins, both of Mt. Vernon; Edward E. Daugherty, Linda Jean Houston, Tula K. Pritchett, all of Brodhead.

### XMAS LIGHTING MONDAY NIGHT

Monday night, December 1 there will be a community Christmas lighting program in Mt. Vernon at 7 p.m. The new Christmas lights across Main Street will be turned on at that time to officially open the Christmas season in Mt. Vernon.

The program will be held in front of the Bank of Mt. Vernon. Main Street will be roped off at 6 p.m. and the stores will remain open until 7 p.m.

The Mt. Vernon Boy and Girl Scouts, the Jaycees and the Mt. Vernon Night Homemakers will all participate in the program along with the Rockcastle County Band. "The Christmas Story" will also be read.

Garth Craig, Director of the Cumberland Valley Development District, told the group that the Ottawa Conservation Project was now in the Program Development Office at Frankfort and that he thought the chances were very good that the project would be approved.

Several water district now under consideration

## I-75 Opens From London To Corbin

The last incomplete section of I-75 in Kentucky, from Burr Hill to London, is scheduled for completion by December 15, according to Bruce Hadley, director of the Kentucky Department of Highway's Office of Public Affairs.

The formal dedication for this span and the London to Corbin section will be held near London, Mr. Hadley said, at a date to be announced later.

An 11.5 mile section of Interstate 75, from Corbin to London, opened to traffic Friday, November 14. There were five inches of ice and snow on the section when it was opened.

Six traffic accidents occurred on the islands at the intersection of US 25 - Ky 80 from the opening of the new stretch of I-75 through Wednesday of last week.

The Highway Department is reportedly reassessing the situation due to the number of accidents in such a short span of time.

### 6 CALLED FOR PHYSICAL

Six Rockcastle youths have been called for physical examinations on December 16, according to Mrs. Delia M. Seals, clerk of Local Board No. 85.

Called for physicals are: Barry Walter Renner, George Thacker, Jr., Leon Roy Singleton, Estill William Moore, Shirley Wayne Mounce, and Robert Glenn Mason.

The induction call for December is zero.

in the county were discussed. One, which includes Level Green, Wil-Lailla, Quail, Ottawa, and a portion of the Brindle Ridge Area, is in the planning stages. Another one on the Chestnut Ridge Road, which includes about 20 houses, is also progressing. It was reported by Chairman Roy Brown.

## MRS. GLADYS HORNING DIES AT RESIDENCE

Mrs. Gladys M. Horning, 52, of Louisville, passed away Friday, November 21, at her home. She was born in Livingston on August 5, 1917, the daughter of the late George and Ella Mae Waddle McClure. She was a member of the Livingston Christian Church.

Besides her husband, Russell Horning, she is survived by one son, Ronnie Horning of Louisville; one sister, Mrs. Lauda Ulrich of Chester, Va.; and two brothers, Oscar McClure of Louisville and Paul McClure of Henderson.

Funeral services were held Monday, November 24 at the Livingston Christian Church. Burial was in the Ward Cemetery.

Cox Funeral Home was in charge of arrangements.

### BOND SALES

Series E and H Savings Bonds and Note sales in Rockcastle County during September were \$93,000 bringing the year's sales to \$31,668 or 40.5% of the County's annual goal of \$78,000.

For Kentucky, sales for the month were \$4,505,965 while cumulative sales reached \$40,168,618 or 71.9% of the \$55,800,000 annual goal.

Additionally, the sales of Series E and H Savings Bonds and Notes for the same month were \$351 million. The cash value of Bonds and Notes outstanding reached \$52,107 million.



**OFFICIAL OPENING**— Mt. Vernon Mayor Clyde Linville is shown cutting the ribbon to officially open the new Western Auto Store in Mt. Vernon. Taking part in the ceremony are, from left: Earl Williams, Western Auto Representative; J.M. Lane, Wholesale Manager, Nashville District; Mr. Linville; Estill Hodges, owner;

Tommy Hodges, Johnny Tyler, Carl Renner, Bob Bartlett, Company Representative. Prize winners in the drawings held during the store's grand opening were Eugene Alcorn, a bicycle; Billy Lovell, a shotgun, and Bernice Hammond, hairdryer.



**NEW STORE**— Mr. and Mrs. James Robinson, owners of Robinson's, are shown in their new clothing store located in the building formerly occupied by Western Auto next to the K.U.'s office in Mt. Vernon. A Grand Opening will be held at a later date. With Mr. and Mrs. Robinson is Mrs. Homer Scott, for left, one of their clerks.

# A HAPPY THANKS TO ALL

**SANTA COMES TO**

**MT. VERNON**

**SEE SANTA ARRIVE!**

**SATURDAY, NOV. 29, at 11:00 a.m.**

**During Our Merchant's**

**CHRISTMAS  
OPENING**

**Santa Will Have Candy For The Kids !!!**

**THE GLOWING SPIRIT OF THE HOLIDAY SEASON IS  
UPON US!**

Tinsel and glitter... music and lights. Santa's coming in a flurry of bright festivity this week-end! Oh, how his jolly spirit has infused our stores and shops with the gala shopping excitement of another Holiday Season. All the merchants have their shelves and counters a-dazzle with the widest selections of sparkling new giftables... priced for the finest values you've seen this year! Find all kinds of inspired gift ideas in this Christmas Opening section... naturals for him, for her, for every member of the family, and then some! Santa himself couldn't have written a better list of suggestions than you will find in here!

**LEAF THROUGH THE PAGES OF THIS PAPER  
... SEE WHAT OUR SPIRITED MERCHANTS  
HAVE IN STORE FOR YOU!**



**This Ad Sponsored By The Mt. Vernon Businessmen's Association**

# Mount Vernon Signal

PUBLISHED EVERY THURSDAY -  
Main Street, Mount Vernon, Kentucky  
Entered at Mt. Vernon, Ky. Post Office  
as Second Class Matter  
In Rockcastle Co. \$3.15 Outside of County \$4.00  
Elmo C. and James Anderkin, Jr., Publishers  
Patricia M. Anderkin, Editor  
Member of Ky. Press Assn. and National Editorial Assn.

## Letter To The Editor

Dear Editor,

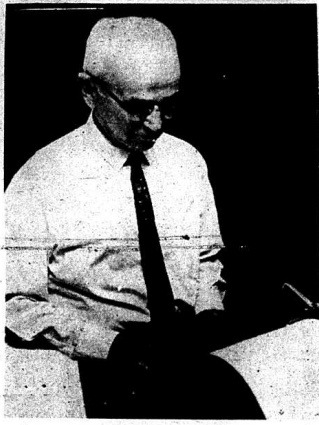
Jobs, what a great idea, now you can sit back and say, "I've done my part; Poverty can't be overcome without jobs." What a beautiful way to bury your head in the sand. Make sure you don't ask yourself any of the following questions, because the answer may not be very likeable. What right do we have as a husband/volunteer District have to decide what the poor need? As they did in turning down the Appalachian Volunteers application. Why couldn't the poor decide for themselves if they wanted that program? Why was the Head Start dropped in Rockcastle County? Could it be because one of CEO's children state that each Head Start must have parent's advisory board that includes poor people? Now, don't tell me Head Start was dropped because we don't have a community action agency, because I'm not, I want to help make the decisions that affect my life.

I'm not trying to belittle you, I agree they are need-

why doesn't Rockcastle have a community action agency? Who has kept us from getting all these programs other places have? Now I ask you honestly would jobs have given the answer to any of these questions, would jobs have helped the Roundstone School situation? You know not only were poor people represented there but also middle income people, I'm sure you are very aware of what happened there, the voice of the people was ignored.

It appears to me that a group has set themselves up as being something special (is dictators the wrong word to use here?) and are saying the people of Rockcastle are stupid, they don't know what they need so we'll make all of their decisions for them! Are these people speaking for you? Are you satisfied to let them make your decisions? I'm not, I want to help make the decisions that affect my life.

I'm not trying to belittle you, I agree they are need-



**TELLING THE KENTUCKY STORY** is the job of historian Dr. Joseph O. Van Hook who is currently revising the state's most widely adopted history text. Scheduled to be off the press before next summer, the latest third edition of *The Kentucky Story* will contain an altered last chapter extending coverage to the end of the '80s. Dr. Van Hook is working in Frankfort in the Department of Public Information on the revision.

## Capitol Digest

Edited By: Thornton McConnell

**\$101 MILLION POWER PLANT**  
The Kentucky Utilities Company plans to build a \$101 million coal-fired, 510,000-kilowatt electric power plant at Ghent and start operating it in May 1974, the office of Gov. Louie B. Nunn announced. It is estimated the new plant will burn 1,300,000 tons of Kentucky coal yearly.

The K.U. move was hailed by a spokesman for the Governor as "evidence that Kentucky is moving progressively into the 1970's" and "foretells accelerated growth in the near future." K.U. also plans trans-

ed desperately, but just as important is the fact that people, poor or otherwise, should have a say in the programs or anything else that affects their lives.

"I'm not satisfied with the situation in Rockcastle County and I'm working to try to change it. What are you doing? Are you sitting and waiting for a factory that will do away with poverty? My suggestion to you don't hold your breath until it happens.

Sincerely yours,  
Faye Baker  
VISTA Volunteer  
Climax, Ky. 40413

## Fence to fence protection



The **FARMOWNERS** package policy offers Kentucky farmers all-in-one protection. It covers all insured property against fire and extended coverage, plus vandalism, theft, your home, garage, and it protects your assets with farm liability insurance. Thousands of your neighbors already have this modern FARMOWNERS package policy.

**YOUR OWN KENTUCKY FARM BUREAU MUTUAL INSURANCE COMPANY**

See your local agent  
**William K. Bullen**  
Ph. 256-2051 Night 256-2448

## LEGISLATIVE PANEL

Restriction on the use of DDT to these purposes for which no effective substitute has been found was recommended by a special legislative sub-committee. The federal government plans to phase out all "essential uses" of DDT over the next two years. The subcommittee felt that federal action to restrict the dangerous pesticide might take much longer.

## ADVISERS APPOINTED

An advisory committee to help the Reclamation Division control the surface mining of sand and gravel, rock asphalt and fluorospar was appointed by Governor Nunn. The members are: Chairman W.D. Milne, Louisville, president of the Kentucky Stone Co.; W.J. Sparks, Lexington, vice-president, The Central Rock Co.; Richard Cooper, general manager,

## THE MOUNT VERNON SIGNAL, THURSDAY, NOVEMBER 28, 1969 PAGE THREE

Somerset Stone Co., Stuart Adams, Pikeville, president, Adams Construction Co.; Steve M. Click Jr., Louisville, district manager, Standard Materials Corp.; T.R. Thomas, Frankfort, executive secretary, Kentucky Crushed Stone Assn. Thomas and Mays will serve ex officio. The Reclamation Division is an arm of the Department of Natural Resources.

## SENIOR LAW STUDENTS

The Kentucky Court of Appeals has given final approval to a change in State Bar Association rules under which senior law students will be allowed to practice, on a limited basis, in any court in any state. In criminal cases above the misdemeanor level, the law student would have to be accompanied to court by a practicing attorney. The new rules will make more legal help available to in-

## 3 MORE CIRCUIT JUDGES

The Louisville Bar Association will sponsor legislation to add three judges to the Jefferson County Circuit Court: one each in the chancery, common pleas and criminal branches. If the General Assembly approves the additions, Gov. Louie B. Nunn would appoint the three new judges, who would serve until after the 1975 judicial elections.

## I-75 SPAN

I-75 has been temporarily narrowed to two lanes at the Clays Ferry cross-over over the Kentucky River and U.S. 25. The south-bound bridge will be closed for about three weeks, for repairs. There will be one-lane traffic, each way, via the northbound span.

## STREAM POLLUTION SUIT

The attorney general has

been requested by the Water Pollution Control Commission to file a penalty suit against the City of Middleboro for the continued pollution of Yellow Creek. Asst. Atty. Gen. William B. Martin said he is still gathering evidence. The law provides penalties of up to \$1,000 a day.

## TUITION BELOW REGIONAL FIGURES

Tuition in Kentucky's State-supported colleges is a bargain compared to the fees in such adjacent states as Ohio, West Virginia, and Missouri, according to figures from the Council on Higher Education. The University of Kentucky \$280 tuition is \$160 below the regional median. The \$240 charge at Eastern, Western, Morehead, Murray and Kentucky State is \$120 below the regional median for comparable schools.

(Cont. To 3)

## Now!! At... Glenn Pennington Automobiles Berea, Ky.

### Open Till 7 P.M. Each Evening

- 1969 BUICK Skylark, Custom, 2 Dr., HT, Air Cond., White vinyl roof
- 1969 CHEVROLET, Impala Custom Coupe, Air Cond., Gold/black vinyl roof
- 1968 CHEVELLE, Malibu, Super Sport, HT, 396", 4 speed, red
- 1968 CHEVROLET, Biscayne, 2 Dr., blue
- 1968 FORD LTD, 10 passenger station wagon, green
- 1968 MUSTANG, 2 Dr., HT, blue/white vinyl roof
- 1968 OLDS 442, 2 Dr., HT, red/black vinyl roof
- 1968 PONTIAC, Bonneville, Braughm, 4 Dr., HT, Air Cond., Gray blue
- 1967 CHEVROLET, Impala, 4 Dr., HT, gold/black vinyl roof
- 1967 CHEVROLET, Belair, 4 Dr., 8 Cyl., Air Cond., Turquoise
- 1967 CHRYSLER, 300, 4 Dr., HT, Air Cond., Green/black vinyl roof
- 1967 MUSTANG, Convertible, Red/black top
- 1967 OLDS Holiday Coupe, Air Cond., Green/White vinyl roof
- 1967 OLDS Delmont 425, 4 Dr., HT, Air Cond., Charcoal/black vinyl roof
- 1967 FIREBIRD 400, Convertible, Blue/black interior
- 1966 CHEVELLE, Malibu, Super Sport 396", 4 Speed, maroon
- 1966 CHEVELLE, 2 Dr., HT, blue
- 1966 FORD, Galaxie 500, Convertible, chestnut
- 1966 OLDS Dynamic 88, 2 Dr., HT, Blue
- 1965 Honda Motorbike
- 1965 MERCURY, 4 Dr., Breezeway, Green
- 1965 MERCURY, Montclair, 2 Dr., HT
- 1965 MUSTANG, Fastback, 2 Dr., 6 Cyl., Red
- 1965 OLDS 98, 4 Dr.
- 1965 OLDS Luxury Sedan, Air Cond., Green/black vinyl roof
- 1965 OLDS 88, 4 Dr., HT, Green
- 1965 PLYMOUTH Fury 111, 4 Dr., HT
- 1965 PONTIAC, Catalina, 2 Dr., HT, Green
- 1965 PONTIAC, Bonneville, 4 Dr., HT, Beige
- 1965 VOLKSWAGEN, 2 Dr.
- 1964 BUICK Wildcat, 4 Dr., HT, blue
- 1964 CHEVROLET, Biscayne, 4 Dr., 6 Cyl., Straight Shift
- 1964 FORD, 4 Dr., 6 Cyl., Straight Shift
- 1964 FORD, Galaxie 500, 4 Dr., black
- 1964 FORD, Galaxie 500, 2 Dr., HT, blue
- 1964 OLDS, Jetstar-1, 2 Dr., HT, Air Cond., Beige
- 1964 PONTIAC, Grand Prix, HT, Dark blue/white top

Phone 986-3117

PLUS SEVERAL MORE TO CHOOSE FROM WITH ALL TYPES OF PAYMENT PLANS AVAILABLE.

**Glenn Pennington Automobiles**

NORTH-CITY LIMITS  
BEREA, KY.

Open Till 7 P.M. Each Evening

# PRE HOLIDAY SALE

## Rockcastle Auto Parts

### Have Slashed Prices on Merchandise For A Big - Pre - Holiday Sale.

- HURST SHIFTS
- SHIFT KNOBS
- BATTERY CHARGERS
- CAL CUSTOM ACCESSORIES
- CRANE REVERSE WHEELS
- HEAVY DUTY BOOSTER CABLES
- STEWART - WARNER GAUGES
- "500" CUSTOM STEERING WHEELS
- SCAT COMPETITION MUFFLERS
- BABY MOON HUB CAPS

## "IF WE DON'T HAVE IT, IT'S HARD TO FIND"

# PRE - HOLIDAY SPECIALS

Gibbs & Automatic  
Radio 8-Track Stereo  
Auto Tape Players on Sale For **\$55.95**

Cassette Tape Recorder &  
Player Reg. Value \$59.95 Now **\$48.39**

Home 8-Track  
Stereo Tape Players For **\$79.95**

Solid State Tape Recorder  
Reg. Value \$22.50 Now **\$14.95**

Norelco - Triple  
Header Electric Shavers  
Reg. Value \$32.95 Now **\$22.70**

Challenger - 15 pc. Socket Set Reg.  
Value \$21.95 Now **\$13.88**

Indy 500 Mag Wheels  
Reg. Value \$179.50 Now **\$147.50**

**RECORDS & TAPES**

8 - Track Stereo Tapes Reg. Value \$6.95 NOW **\$5.50**

**RECORDS**

Stereo L.P. Albums Reg. Value \$4.98 NOW **\$3.94**

45's (Singles) Reg. Value .98c NOW **88c**

Phono Accessories AT SPECIAL SAVINGS

Phono Needles **\$1.00 & \$1.75**



Don't Miss Out On

**SANTA'S TOY & GIFT SALE**  
Now In Progress

**HIATT'S 5 & 10**

MT. VERNON

Great Selection of Toys  
And Gifts At Special Prices.

CONSULT YOUR TOY BOOK

Shop Early  
While Selections  
Are Complete

**"CAPITOL COMMENTS"**  
(Cont. From Page 2)  
**GOVERNOR TO ADDRESS**  
Governor Nunn will address the Assembly of States, sponsored by the Council of State Governments, in Lexington Monday (Nov. 24).

**GOSS URGES ACTION**  
Prompt action on planning more boulevards and expressways to meet the growing needs of cities was advised by Highway Commissioner Eugene Goss in an address to the annual Kentucky Highway Conference at Lexington. Goss said Louisville and Jefferson County need \$192,000,000 in new arteries now and the Lexington area needs \$20 million immediately.

**KENTUCKY'S FIRST LADY**  
Lunching with Mrs. Louise B. Nunn, Mrs. John Sherman Cooper, wife of Kentucky's senior U.S. Senator, admitted the governor's mansion and confessed that the idea of the Coopers becoming the next tenants is tempting.

Mrs. Cooper said she doesn't know whether the senator is considering running for governor in 1971, but she knows he "wouldn't like to retire and sit on the beach" when he leaves the Senate. His present term expires in 1972.

**NUNN APPOINTS THREE**  
To settle an election dispute, Governor Nunn appointed Mayor Richard H. White, R. B. Goadler and Joe Myatt as members of the Hickman City Commission, to take office in January. The election of a fourth commissioner, Brock

Creed, was not disputed.  
**TO PRODUCE PLAY**  
An unusual venture combining the talents of business leaders and actors is embodied in a play to be produced Tuesday at the Brown Theatre, in Louisville, by the Louisville Area Chamber of Commerce and the Actors Theatre. The curtain will rise at noon on "The Seventies Belong to Louisville." A luncheon will follow.

**Consumer Comments**

By: John B. Breckinridge, Attorney General

In one of the first "Consumer Comments" I said the column would serve two major purposes: to inform citizens about matters which might help them to avoid a consumer problem or complaint; and to make people aware of the fact that the Office of Attorney General, through its Consumer Protection Division, offers advice and assistance to consumers having problems or complaints.

Just how many of the complaints coming into the Division are the result of "Consumer Comments," we do not know. However, many persons writing to the office say their letter was brought about by something they read in a particular "Consumer Comments."

One column referred to by a number of persons was the one dealing with "Bait and switch" schemes. Because so many people have written concerning this scheme, I felt it worthwhile



**KOUTY KINDERGARTEN CLASS**—Members of the Kouty Kindergarten Class are shown in the above photo. The kindergarten is in its second year under the direction of Mrs. Roland Mullins. Mrs. Henry Porrott is the teacher. Enrolled are, first row from left:

Dobbie Reynolds, Tommy Hamm, Regina Brown, Stacey Durham. Second row, from left: Tim Mink, Dyche Mullins, Scott Henderson, Scott Honsel. Third row, from left: Willie Lee Hiatt, Jeff Stevens, Perry Noe, Jack Douglas Lewis, Tim Young.

to present that message again.

There it is, a reprocessed, brand name sewing machine at a ridiculously low price. You rush to the phone and call the number that appears in the paper. The lady promises to send a salesman out right away. When he arrives, the salesman brings a disappituted and beat-up machine covered with grime and dirt. The salesman then explains the obvious — this machine is not suited for your purposes. However, the sales-

man just happens to have a more suitable machine out in his car. It turns out to be a brand you have never heard of and at a price many times what you had intended to pay. If you buy, you have been the victim of one of the oldest schemes on the books — the "Bait and Switch."

This scheme is used to sell many different types of products from sewing machines to swimming pools. The idea is to bait the consumer with the offer to sell a product that is never meant to be sold and then switch him to a more expensive and profitable model. I strongly suggest that Kentucky buyers beware of such sales tactics and promptly report them to my Consumer Protection Division.

\*\*\*\*\*  
Citizens who have a complaint involving a consumer matter are invited to contact my assistant, Robert V. Bjillock, Director, Consumer Protection Division, Office of the Attorney General, Frankfort, 40601, or phone 564-3235, Area Code 502.

**CARD OF THANKS**  
We would like to thank everyone who was so kind to us during the death of our loved one, Tom England. We especially wish to thank those who sent food flowers, Cox Funeral Home, and Bro. George Murphy.

Daughter and Granddaughter



**SECOND BIRTHDAY**—Terry Shayne Owens, son of Mr. and Mrs. Terry L. Owens, celebrated his second birthday November 16 at his home. Maternal grandparents are Mr. and Mrs. Jesse Cummins and paternal grandmother, Mrs. Hazel Owens.

**MENTAL HEALTH CENTER**  
With Dr. Dale Farabee, state commissioner of mental health as a speaker, ground was broken for the new \$346,000 Pennyroyal Regional Mental Health

Center at Hopkinsville. The center, to be completed within 10 months, will provide outpatient mental health services for Caldwell, Christian, Lyon, Todd and Tigg counties.

Flip into Fall with light and lively... **Match Makers**

Low heelers for the free wheelers

ONLY \$5.95 PER PAIR

Gold studded dazzler with modified square toe and square back heel.

Upfront center toe makes the slip on a thing of art.

Decorative flow on a pretty top in all fall colors. Comes in men's for fall selections.

**One Table of Loafers**

\$3.98

**SAMPLE SHOE CENTER**  
Richmond, Ky.

**CHRISTMAS IS THAT SPECIAL SHOPPING TIME**  
Give The Gift of Perfection  
Give Jewelry From **RUSH'S JEWELRY**

Diamonds for Him & Her Only \$130.00 A Set

Shop Early Use Our Lay-Away Plan  
All Major Credit Cards Honored

**Murphy Motors**  
**Used Car & Truck Sale**  
WHEN THEY GOTTA GO—THEY GOTTA GO  
We Are Loaded With Fine New Car & Truck Trade-Ins

59	CHEV. Malibu Spt Cpe, V8 Automatic, Low Miles	\$2595
68	MUSTANG, V8 Automatic, Air Cond., Power Steering, Like New	\$2450
68	MERCURY Montego MX, V6 Auto, Air Cond., Power	\$2345
68	FORD HT, Fast Back, V8, Auto, Air, Power, Sharp	\$2395
67	FORD HT, V8 Auto, Air, Power, Red, Blk Vinyl Roof	\$1895
66	T BIRD HD, Pwr. St. & Brk, Air Cond., Extras, Sharp	\$1895
66	FAIRLANE 500 WAGON, V8 Auto, Power & Air	\$1595
65	Olds Cutlass Holiday Cpe, Stick, 2 Tone, Clean	\$1395
65	FORD 4 Door, V8 Automatic, Power & Air, Nice	\$1095
65	FORD 4 Dr. HT, V8 Auto, Power & Air, Vinyl Top	\$995
65	FORD 2 Dr. HT, V8 Auto, New 2 Tone Paint	\$895
64	CHEV. Convertible, V8 Auto, Power, Air Cond.	\$895
64	FAIRLANE 500 4 Dr., V8 Auto, Extra Nice	\$645
64	FORD 2 Door, Stick	\$645
64	FAIRLANE 4 Door, 6 Cylinder, Stick	\$645
64	RAMBLER Wagon, 6 Cylinder, Stick Shift	\$445
63	PONTIAC 4 Dr HT, Auto, Bonneville, All Power	\$945
63	CHEV. Bel Air, 4 Dr., 6 Cylinder, Stick Shift	\$545

**TRUCKS -- TRUCKS**  
SEVERAL MORE CHEAPER ONES ON OUR LOT

66	BRONCO Wagon, 4 Wheel Drive, Warn Hubs	\$1695
66	FORD Pickup, 6 Cyl, Cust. Cab, Long Wide Bed, 2 Tone	\$1345
55	CHEV. 3/4 Ton, 6 Cyl, Wide Bed, 4 Speed, Power Brakes	\$1295
64	FORD 1/2 Ton Pickup, Long Narrow Bed, 6 Cyl	\$1045
64	FORD 1/2 Ton Pickup, Long Wide Bed, 6 Cyl, New Paint	\$895

These Are Priced to Sell Fast  
Give Them a Look  
WE APPRECIATE YOUR BUSINESS  
Courteous Service - On the Spot Financing

We Have a 1969 FORD Hardtop Demonstrator, New 1969 COUGAR, 1969 F600 Long Wheel Base 2 Ton Truck at Hundreds of Dollars Savings.

**MURPHY MOTORS**  
Your Friendly Ford & Mercury Dealer  
STANFORD, KY. PH. 365-2156



# Social And Women's News

Mr. and Mrs. William Black, Jr. were week end guests of her uncle and aunt, M. and Mrs. Henry Cox. They were enroute to their new home near Westover, Massachusetts where they are stationed with the Air Force.

Mrs. James H. Mullins spent the week end in Crab Orchard with her father, Earl C. Baker, at which time all the Baker children were home.

Mr. and Mrs. J.W. Cummins of Shelbyville, accompanied by Mr. and Mrs. Sidney Sutherland, spent Saturday with their son, Rev. Ray Cummins, Mrs. Cummins, and sons, Billy and Bobby, and attended services at the Baptist Church Saturday evening.

Mrs. Amy Meadows of Lexington spent the week end with her daughter, Mrs. Cummins, her grandson, Alfred Cummins and family, and also visited other friends in Mt. Vernon.

Mrs. Hazel Cummins spent the week end with her daughter, Mrs. Sylvia Bledsoe, in Richmond, Ky. Mr. and Mrs. Frank Mc-

Hargue and daughters, Fran and Peggy, of Frankfort spent Saturday with his father, Joe Motargue.

Mrs. Hazel Cummins, Mrs. Bobbie Chesnut, and Joe McHugh were in Somerset Tuesday shopping.

Mrs. Ken Clayton of Shelbyville, wife of the evangelist conducting the revival at the First Baptist Church, spent the week end in Mt. Vernon and visited with Rev. Ray Cummins and family.

Mrs. Eliza Barnett is a patient at the Rockcastle County Baptist Hospital.

**BIRTHDAY CELEBRATION**  
The W.R. Hansel family met at the home of their son, Kenneth Hansel, and family in Lexington Sunday for the celebration of the 5th Birthday of Stevie Hansel. Those attending were Mr. and Mrs. Bobbie Hansel and children of West Chester, Ohio, Mr. and Mrs. Paul Hansel and children, Mr. and Mrs. W.R. Hansel, Joyce and Gary, of Mt. Vernon and Mr. and Mrs. Larry Hansel.

## SNIDER

Mr. and Mrs. Sin Sutton of Jackson, Michigan and Mrs. Alia Philbeck of Mt. Vernon were Wednesday night supper guests of Mr. and Mrs. Eli Barnett.

Mr. and Mrs. Sin Sutton and Mr. and Mrs. Eli Barnett were supper guests of their brother, Tommie Philbeck and Mrs. Philbeck, Friday, night.

Mr. and Mrs. Eli Barnett visited Mr. and Mrs. Mackie Phillips and children at Richmond Saturday evening. Mr. and Mrs. Wayne Renfro of Richmond visited her parents, Mr. and Mrs. Eli Barnett, Sunday.

Mr. and Mrs. Billy Coucher of Dayton, Ohio and Mrs. Ed Croucher of Disputants visited Mr. and Mrs. Bodie Van Winkle Saturday.

Bodie Van Winkle is on the sick list. We wish him a speedy recovery.

## BOONE

Mrs. Elsie Banks returned home last Sunday evening from Winchester after visiting her daughter, Mrs. Joe Mathis, and family. Mrs. Banks is recovering from a recent illness.

W.R. Durham was taken to the Rockcastle County Baptist Hospital Tuesday morning. We returned home Wednesday afternoon where he is slowly improving.

Those visiting W.R. Durham since his return home were Frank Scudder of Berea, Chester Baker of Berea, Mrs. Elsie Banks and Floyd Darnell of Boone. Mr. and Mrs. Bill Burdine held prayer meeting in their home Friday night with Bro. Ira Dean of Berea presiding.

Mrs. Roy McCollum visited Mrs. Mary Smith and son at Paint Lick Thursday.

Mrs. Bill Burdine visited Mrs. Christine Moore one day last week.

Mr. and Mrs. Roy McCollum and family visited Mr. and Mrs. Donald Coffey and children of Conway Saturday.

Mr. and Mrs. Roy McCollum and family were supper guests of Mr. and Mrs. Bobby Smith at Paint Lick Sunday night.

Buy U.S. Savings Bonds & Freedom Shares



Mrs. Lola Pointer Murphy celebrated her 95th birthday November 20 at the home of Mrs. Hattie Mullins in Mt. Vernon. Mrs. Pointer, who was born near Brodhead, spent her early childhood in South Dakota near the Canadian border. At the age of six, Mrs. Pointer, crossed the border into Canada and saw Queen Victoria, there on a royal visit. She and her husband, Bill Murphy, ran a railroad restaurant in Brodhead from 1920 to 1948. Her parents were H.H. and Rachel White Pointer. Mrs. Murphy was entertained on her birthday with a party given at the Catholic Church Rectory. She received many gifts.

## THE MOUNT VERNON SIGNAL, THURSDAY, NOVEMBER 28, 1969 PAGE FIVE

**CLARK ABOARD USS HORNET**  
Aviation Maintenance Administrationman Third Class Kenneth C. Clark, USN, son of Mrs. L. Clark of Route 3, and husband of the former Miss Lavlene Cope of Route 3, all of Mount Vernon, Ky., is serving aboard the USS Hornet, the primary recovery ship for the Apollo 12 moon mission.

The 44,000 ton aircraft carrier is positioned near the splash-down point 385 miles east of American Samoa. The crew of the Hornet is no stranger to the job of astronaut recovery. The Hornet was the primary recovery vessel for Apollo 8, 10 and 11.

A successful bone marrow transplant to correct an immunologic deficiency, performed by a March of Dimes medical research grantee, has given a two-year-old boy a new lease on life.

**ELDER'S PIANO SERVICE TUNING & REPAIR**  
CALL COLLECT OR WRITE  
606-987-3145  
Route 4, Paris, Ky.

## NEW GARAGE All Work Guaranteed

ALL KINDS OF MECHANICAL WORK DONE  
Automatic Transmissions, Gas and Diesel Motors Overhauled, Bulldozer and heavy machinery repairs.

## PARSON'S EQUIPMENT CO. Charles Bussell Mechanic

**When a death occurs out of town . . .**

Cox maintains contact with funeral directors in cities throughout the world to assure you complete and responsible representation in handling every detail. You never see your home as a faded or personal attention to details. Simply call us day or night.

**COX FUNERAL HOME**  
NEW AND MODERN CHAPEL  
Air Conditioned  
256-2345 Phone 256-4444  
Mt. Vernon, Kentucky

**CUMMINS & FOLEY AUTOMOBILES**  
Vernon Cummins C.V. Foley  
**USED CAR SPECIALS**

- 1968 CHEVROLET, 327 Snd. Drive, Solid Red, Like new \$1995.00
- 1967 CHEVROLET, Impala, 2 Dr., HT, Yellow and Black vinyl roof Really Sharp \$1995.00
- 1964 CHEVROLET, Impala, Super Sport, 33,200 Miles, Turquoise \$1150.00
- 1965 OLDSMOBILE, Delta, 4 Dr., HT, Like New and loaded \$1295.00
- 1967 OLDSMOBILE, Tomado, Fully Equipped, 35,389 Miles Full Price \$3195.00
- 1966 PONTIAC, Bonneville, 4 Dr., HT, All Extras, One Owner, Blue Metallic \$1895.00
- 1967 PONTIAC, Tempest Custom, Air and Full Power, 26,689 Miles, Solid White, blue interior \$1895.00
- 1966 BUICK, Wildcat Convertible, Solid Black, Full Power, One Owner Car \$1900.00
- 1966 BUICK, Grand Sport, 2 Dr., HT, Solid White, red interior \$1895.00
- 1965 CHEVROLET, Impala, 2 Dr., HT, Snd. Drive, Solid black, red interior \$1195.00
- 1965 CHEVROLET, Chevy 2 Nova, Station Wagon, Radio Heater, Automatic, One Owner \$1195.00
- 1965 PONTIAC, Catalina, 2 Seater Station Wagon, All Extras \$1495.00
- 1966 BUICK, Electra 225, Loaded and it's like new, Maroon with black interior \$2250.00
- 1965 BUICK, Wildcat, Custom, 38,486 Miles \$1795.00
- 1966 FORD, 2 Dr. Custom, 6 Cyl., Snd. Drive Red and White \$995.00
- 1964 FORD, 2 Dr., HT, Fastback \$895.00
- 1962 CHEVROLET, Station Wagon, Snd. Drive \$500.00
- 1962 CADILLAC, 4 Dr., HT, Loaded, solid white \$1150.00
- 1963 FORD, Convertible, Solid Red, Black top \$750.00
- 1968 CHEVLE, Malibu, Loaded, Black and White \$2495.00

"Profits Small Business Great That's The Way We Operate."

3 FINANCE COMPANIES TO CHOOSE FROM AT BANK RATE FINANCING

**CUMMINS & FOLEY AUTOMOBILES**  
U. S. HIGHWAY 25, NORTH BERA, KY. 40403  
Phone 986-1017

## Social Security News

"If you're a woman, your chances of collecting social security benefits are better than those of your husband or your brother," according to James Mustian, manager of social security in Somerset.

"Fifty-one percent of our beneficiaries are adult women," said Mustian, "while only 34 percent are adult men. In addition, he noted, it is women who manage most of the benefits paid to the 15 percent of socially security beneficiaries who are children."

"A woman who works builds valuable retirement and disability protection for herself and her dependents," Mustian pointed out. And you can be eligible to her children in the event of her death just as in the case of men. "A woman who has not worked outside her home may qualify for social security benefits on her husband's record. "You might say," Mustian said, "that the social security law recognizes that being a housewife and mother is a special career."

"Some of the ways you can qualify for social security payments as a woman, according to Mustian, are:

- (1) As a wife, when your husband is getting social security benefits and you are 62 or older, or have children under 18, or disabled children in your care;
- (2) As a widow at age 60 or older as early as 50 if severely disabled; (3) As a young widow if you have children under 18 or disabled children in your care;
- (4) In certain cases, even a divorced wife may qualify for payments, Mustian said.

"Since the possibility of a woman getting social security benefits is greater, there is perhaps a greater need for a woman to find out about social security, no matter whether she is a working woman or a housewife."

Every day, says the March of Dimes, 700 babies are born with defects in the United States.

**PRISON ADVISERS**  
Wardlaw L.W. Wingo said at Eddyville that a nine-member advisory committee named by Governor Nunn for Kentucky State Penitentiary will hold its first meeting at the Penitentiary Nov. 21. Three of the members are layobservers from a previous committee. Six are new.

## Make it a Bright Christmas WITH FAMOUS BRAND Appliances

**MAKE IT A G.E. APPLIANCE**

<p><b>VERSATILE DRYER</b> no over-drying</p> <p>Electronic sensor "feels" clothes for perfect drying. • Choice of heavy, normal or delicate settings to match the load. • Permanent Press cycle with wrinkles.</p> <p>MODEL 0070E \$189.95</p>	<p><b>WASHDAY SHORTENER</b> with Mini-Basket</p> <p>Exclusive Mini Basket is for small loads — saves you time and water. • Two wash speeds, two spin speeds. • Filter-Pop system washes lint fast. • Permanent Press cycle with "cool down" to keep your ironing at a minimum.</p> <p>MODEL 1070E \$249.95</p>	<p><b>AUTOMATIC ELECTRIC RANGE</b> for "busy" families</p> <p>Automatic timer sets like an alarm, starts and times your meals. • Push-button controls command five exact measured heats. • Oven door removes for easy cleaning.</p> <p>MODEL 211E \$209.95</p>	<p><b>"NO-FROST" REFRIGERATOR</b> 17.6 cu. ft. capacity</p> <p>Freezer holds up to 165 lbs. and has a jet-freeze ice compartment. • Four cabinet shelves, two vegetable bins, two door shelves, butter compartment and removable egg bin.</p> <p>MODEL 1711E \$339.95</p>
--	--	--	---

<p><b>Holds up to 517 lbs. frozen foods.</b></p> <p>Model CB-18DE</p> <p>General Electric 34.8 cu. ft. Chest Freezer</p> <p>Get better nutrition with more convenience.</p> <p>Priced low, only \$209.95</p> <p>Also available with 29 and 34.7 cu. ft. capacity.</p>	<p><b>use as portable now. CONVERTIBLE DISHWASHER</b> build-in later!</p> <p>Model 3000E \$249.95</p> <p>Provides extra counter top space when used as a portable, but can be built-in in your new home. • Many cycle selection of 3 cycles: normal wash, short wash or rinse and dry. • Built-in soft food disposer ends need of scraping and hand rinsing. Just tip off large or hard scraps.</p>	<p><b>lightweight PORTABLE ENTERTAINMENT</b> in rugged case</p> <p>Model 1000E \$149.95</p> <p>32 1/2 lbs. light, yet gives you 184 square inches of viewing pleasure. • High impact polystyrene cabinet takes the hand knocks and keeps its handsome woodgrain finish. • Solid copper circuitry for long life. • Insta-View gives you picture and sound almost instantly.</p>	<p><b>use in any room. ROLL-A-ROUND COLOR TELEVISION</b> with Insta-Color</p> <p>Model 1000E \$499.95</p> <p>29 1/2 sq. inches of viewing area. • Pre-set automatic fine tuning keeps the color picture "locked in" each time the channel is selected. • Insta-Color gives you a colorful picture and sound almost instantly. • Roll-a-round stand an optional extra.</p>
---	---	--	---

**BRYANT BROS. - MT. VERNON**  
We Service Well The GE's We SELL

# Around BRODHEAD

**WOULD YOU BELIEVE IT?**

By: Leon Jasper



An automobile is referred to as a she or her because it is so much like a woman. You will find that the newest models are most in demand, they are greatly improved by a paint job. Body style is essential, they are temperamental, unpredictable, expensive to have around and hard to do without. Mobile homes could be referred to much in the same way, they are becoming more and more improved and are in great demand; they are stylish and designed to command attention but they are never unpredictable or temperamental, for they are built for dependability in every detail and are less expensive to own and maintain than any conventional home and once you see the fabulous models on display at JASPER & JASPER MOBILE HOMES, INC., you will wonder why you waited so long to join the ranks of pre-built, relocatable, modern mobile home owners. JASPER & JASPER MOBILE HOMES, INC. 2 MILES SOUTH OF SOMERSET ON U.S. 27 Phone 678-5432

Leslie Harris and Dr. Abe Fossen of Lexington spent Sunday bird hunting on the Clyde Harris farm. We are glad to report Mrs. Jesse Norton able to be home after spending several days in the Central Baptist Hospital at Lexington. Mr. and Mrs. Larry Harris and children of Olive Hill visited their parents, Mr. and Mrs. Clyde Harris and Mrs. Gladys Harris recently. Mrs. W. M. Cox is numbered with the sick this week. Mrs. Faye Ledford and Sgt. Michael Ledford were guests of Mr. and Mrs. Nathan Roberts at Walton Wednesday night. Mr. and Mrs. Clarence Cox, Miss Dona Cox of Brodhead, and Mr. and Mrs. Paul Cox of Frankfort spent Sunday with Mr. and Mrs. Richard Owens in Louisville. Mrs. Faye Ledford and Michael visited Mr. and Mrs. Bill Houston in Morrow, Ohio Thursday. Mrs. Irene Adams returned home Saturday from the Ephraim McDowell Hospital much improved. Mr. and Mrs. Jack Wilden spent Friday night with Mr. and Mrs. Lester Helton. Mr. and Mrs. Howard C. Owens and sons of Dayton, Ohio were week end guests of their parents, Mr. and Mrs. Noah Messer and Howard Owens. Mrs. Yarny Martin, Mrs. Elizabeth Huff and Mr. and Mrs. Vernon Moore were dinner guests of Mr. and Mrs. Ronnie Noe in Lexington Sunday in honor of Mr.

Noe's birthday. Mr. and Mrs. Delbert Harper and Mrs. Carl Nicoley were Sunday guests of Mr. and Mrs. Sherman Holcomb and Leonard. Mr. and Mrs. Jack Walden of Reading, Ohio and Mrs. Vernon Farris of West Chester, Ohio were week end guests of Mr. and Mrs. Dee Bussell. Patsy Singleton and McKie have moved to Lexington for the winter. Mr. and Mrs. Arthur Messer of Cumberland were Saturday visitors of his parents, Mr. and Mrs. Noah Messer. Mrs. Lester Helton was in Berea Wednesday to consult a doctor. Jim Adams spent Tuesday night with his daughter, Mrs. Lester Helton and Mr. Helton. Sorry to hear of Mrs. Carl Brock's accident. She had a car wreck Monday near Cedar Creek bridge and was taken to the Stanford Hospital for treatment. We wish her a speedy recovery. Mrs. Robert Sizoo is spending a few days with her husband in Pennsboro, West Virginia. David Riddle, son of Mr. and Mrs. Billy Riddle, is on the sick list this week. Mrs. Ted Scott is home with the flu. We wish her a speedy recovery. Saturday visitors of Mr. and Mrs. Clyde Harris were Mr. and Mrs. W.C. Holcomb and baby of Jamestown, Mr. and Mrs. Larry Harris

of Olive Hill. Mrs. Gladys Hunt of Mt. Vernon and L.A. McKinney. We are sorry to hear Mrs. Sadie McKinney and Bradley Saylor are on the sick list. We wish them a speedy recovery. Mr. and Mrs. 'ohany Ham visited Mr. and Mrs. C.H. Harris recently. Mr. and Mrs. Payne Lear and children and Mrs. Douglas Lear were visitors of Mr. and Mrs. Givens Lear Sunday. Mrs. Alkie Brock has returned home after spending two weeks in Hadan with relatives and friends. Mrs. Maggie Lear celebrated her birthday with her granddaughter, Jennifer Sue. Both were on November 18th. Mrs. Douglas Lear and children spent Sunday afternoon with her parents, Mr. and Mrs. Jake Ross, at Paint Lick. Mr. and Mrs. E.J. Taylor and children and Mrs. Ruby Carter spent the week end in Hamilton, Ohio with relatives. We are sorry to report Raymond Sargent a patient in the Veterans Hospital at Lexington. We wish him a speedy recovery. Mr. and Mrs. Lawson Whitt were business visitors at Somerset Saturday afternoon. Miss Gail Burton was Sunday afternoon guest of Mrs. Faye Ledford. Charlie DeBorde was taken to the Rockcastle County Baptist Hospital Saturday evening. Mrs. Faye Ledford and Sgt. Michael Ledford, Mrs. Sharon Simpson and Jac-

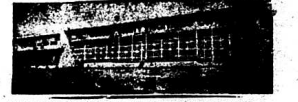
queline, and Mrs. Gertrude Owens visited Mrs. Raye and Sheila in Berea last Wednesday. We are glad to report R.H. Atkinson able to come home after spending two weeks at the Norton Infirmary in Louisville. H.J. McKinney brought his home Wednesday morning. Delbert Laswell is on the sick list. We wish him a speedy recovery. Mrs. Billy Lear and children and Suda Holcomb were at Paint Lick Thursday to see Mrs. Ethel Ross who is very much improved from a fall she received last week. Mrs. Eva Sparks and daughter of Mt. Vernon visited friends at Dix Point Saturday. Barry W. Lunsford of Junction City spent the week with his grandparents, Mr. and Mrs. Jim Lunsford. Mrs. Elmer Isbell of Lancaster visited her sister, Mrs. and Mrs. Clint Sayers Saturday. Ronnie Cash was at Eastern Kentucky University in Richmond Tuesday on business. Well don't say we can't raise large turps in Kentucky. There is one on display weighing four and three-fourths pounds at Dix Point Restaurant. Mrs. Myrtle Middleton brought it in from the country Friday. Mrs. Almada Harris spent several days in Georgetown visiting her daughter, Mr. and Mrs. Larry Caudill.

**WILLAILLA**  
Frank Childers suffered a severe heart attack recently. He is in the Somerset City Hospital. A speedy recovery is wished for him. Maurice Brown is ill in the Somerset City Hospital. A speedy recovery is wished for him. Mrs. Julia Norton has been ill. A speedy recovery is wished for her. W.E. Burton remains about the same. Sympathy is extended to the family of Burgess Prows. Recent visitors of Mr. and Mrs. W.E. Burton were Mr. and Mrs. Willard Barker of Woodway, Virginia; Mr. and Mrs. Charles McClure, Lewis Brown, Mr. and Mrs. Owen Burton and Janet, G.D. Burton, Mr. and Mrs. Gover Burton, J.M. Burton, Mrs. M. M. Gentry of Cincinnati, Ohio, and Mrs. Gennie Thompson. Recent visitors of Mrs. Julia Norton were Mrs. Steve Vaughn, Mrs. Nadean Stevens, and Arvil Barton. Mr. and Mrs. Willard Barker visited Maurice Brown at the Somerset City Hospital Sunday. Arvil Burton and Mary Jane Randolph visited Mrs. Don Burton and Mrs. Wilma Burton and Stephen recently. Mrs. Gertrude Eastham is reported feeling better. A speedy recovery is wished for her.

Based on new knowledge of genetics, doctors can tell many prospective parents what the odds are of their having a defective child, says the March of Dimes.

**BRYANTS SERVICE WELL**  
THE GE THEY SELL

**NOW OFFERED IN ROCKCASTLE COUNTY**  
**Burton's Home Repair Service**  
Plumbing, Electrical, Heating, Air Conditioning, Painting (small jobs), and Roof Repairs.  
"Don't Fuss - Call Us!"  
**256-4178**




**FEDERAL-STATE MARKET NEWS SERVICE, Lancaster, Ky.** Friday, Nov. 21, 1949.  
Total Receipts 2,964  
Cattle - Receipts, 2,246; Calves, 205; compared to last week, slaughter cows fully steady, slaughter bulls fully 50¢ higher, slaughter calves and vealers 50¢-1.00 lower, feeder steers strong to 50¢ higher advance on weights under 550 lb., feeder heifers fully steady.  
Slaughter heifers - Standard and Good 800-1000 lb. 21.00-24.50; slaughter cows - Commercial 18.00-19.50, Yield grade 5 offerings 16.90-18.00, Utility 18.50-20.20, Catter 17.00-18.50, Canner 15.00-17.00. Few light weight Canner down to 13.00.  
Slaughter Bulls - Utility to Good over 1000 lb. 23.50-25.80, Cutter and 800-1000 lb. weights 21.00-23.40. Slaughter Calves and Vealers - Choice 240-300 lb. slaughter calves 32.00-37.00 Good 300-450 lb. 26.50-29.50, Standard 23.00-26.50, Good Choice vealers weighed past 220 lb. 41.00, Lot. Mostly Good 179 lb. 35.00 Feeder Steers - Choice 550-750 lb. 29.00-31.00, Good 27.00-29.00, Standard mostly holsteins 23.50-27.00, Choice 750-900 lb. 26.00-27.80, Good 24.00-25.00, Standard mostly holsteins 22.00-24.00, Choice 400-550 lb. 31.00-34.10, few lots, 300-360 lb. 34.80-35.10, Good and Choice 29.50-31.00, Good 27.50-29.50, Standard 24.50-27.50. Feeder Heifers - Choice 500-700 lb. 27.00-28.90, Good 25.00-27.00, Standard 22.50-25.00.  
Hogs - Receipts, 489; Compared to last week, barrows and gilts steady to 20¢ lower, sows 50¢ lower, barrows and gilts - U.S. 2-3 190-230 lb. 25.60, U.S. 2-4 230-250 lb. 25.30, U.S. 3-4 260-300 lb. 24.90-25.00, U.S. 2-3 170-180 lb. 23.00. Slaughter Sows - U.S. 1-3 350-600 lb. 21.20-21.50 ...  
Horses, ponies and mules - Receipts, 24, No quotations.

**Garrard County Stockyards Co.**  
Check Day Of Sale  
Sales Of All Classes Of Livestock Every Friday  
LANCASTER, KENTUCKY  
Under U. S. Government Supervision & Bonded For Your Protection.


**QUAIL**  
Mr. and Mrs. M.J. McMullin visited Mrs. Chester Hysinger Tuesday afternoon. Mrs. Benton Owens and Mrs. Pattie Baker were in Mt. Vernon Monday on business. Mr. and Mrs. C.E. Taylor were at Somerset Tuesday. Mrs. Willie Todd and Bonnie and Mrs. Benton Owens visited Mr. and Mrs. J.C. Rogers and Jill Thursday evening. Mr. and Mrs. Ronnie Payne of Somerset spent Tuesday night with her parents, Mr. and Mrs. Jesse Taylor and family. Mr. and Mrs. M.J. McMullin visited her sister, Mrs. Pattie Baker Friday. They also visited Mrs. Roy Brown, Mrs. Maude Brown and Mrs. Clarence Eastham. Mrs. Eastham is on the sick list. Mrs. Benton Owens visited Mrs. Roy Graves Thursday afternoon. Mrs. Shirley Caldwell and Ella and Mrs. Mary Scott visited Mrs. Pattie Baker Friday evening. Mrs. Baker is still on the sick list. Mr. and Mrs. Bobby Brock of Ohio visited her parents Saturday. Mr. and Mrs. Robert Hayes and Sandy were at Versailles to visit their daughter, Mr. and Mrs. Batch Good. Mrs. Pattie Baker is a patient at the Rockcastle County Baptist Hospital.

**OTTAWA**  
Roy Sayers of Covington spent the week end with Mr. and Mrs. Arch French. Mr. and Mrs. Denver Marcum of Cincinnati, Ohio visited Mr. and Mrs. Don Smith and Mrs. Mae and Jim Blanton over the week end. Mr. and Mrs. Dewey Roberts and Mrs. Effie Jones visited Mr. and Mrs. Bill Coffey and family at Brandy Ridge Sunday. Mrs. Cordie Cash is visiting friends and relatives in Cincinnati, Ohio this week. Mr. and Mrs. Ell Harper and Tammy of Cincinnati, Ohio visited Mr. and Mrs. Virgil Lawrence and Mark over the week end. We are glad to report Mrs. Alba Hamm home after being a patient at the Fort Logan Hospital in Stanford. Mr. and Mrs. Alton Bradley are the proud parents of baby boy born November 22 at the Somerset City Hospital. Mrs. Petty Farris, Mrs. Mamie Hamm, Elzie Bishop and Elzie Laswell were in Somerset Monday to consult a doctor for Mrs. Farris.

**SELL YOUR**




**AT**



**Tobacco Warehouse Richmond**

Sales Begin:  
**MONDAY, NOVEMBER 24**



**SALE EVERY DAY**

**Flowers**

By Ruth Fain  
JUST LOOK AT THE FLOWERS

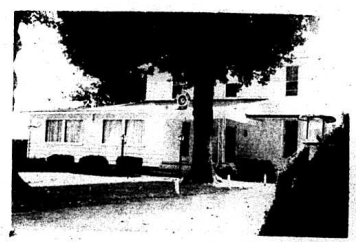
Those you are an expert, look at the flowers, but don't touch because they may be dangerous. Wild plants are often beautiful, but are poisonous. There are numerous wild plants which are poisonous enough to cause skin irritation when contacted by man and serious illness if eaten by an animal or child.

Wild plants often contain toxic chemicals in the roots, stems, leaves, fruits or flowers. Children should be warned not to eat berries, fungi and plants because of the chance of serious illness. In fact, poisonous plants rank sixth in the cause of medical emergencies. So, keep looking - but don't touch.

Flowers for teaching are available at our plant shop. They are lovely to look at and completely harmless. A touch of flowers for all occasions. Orders will be delivered locally or wired to other cities.

**MT. VERNON FLORIST**  
256-2091

**Sparks Funeral Home**  
"HOMELIKE ATMOSPHERE"  
LADY ATTENDANT



**24 HOUR OXYGEN EQUIPPED AMBULANCE SERVICE**  
Opposite Baptist Church W. Main Street  
MEMBER - KY. FUNERAL DIRECTORS BURIAL ASSN.

**Dial 256-2991**  
If No Answer, 256-2485  
W. MAIN MT. VERNON



**BRODHEAD ROYALTY**-- Miss Lynette Hunt, daughter of Mr. and Mrs. Hubert Hunt, and Gary Gentry, son of Mr. and Mrs. Bill Gentry, were crowned Queen and King of this Brodhead Halloween Carnival. They are members of the Junior Class at Brodhead. Miss Kathy Hamm, daughter of Mr. and Mrs. Paul Hamm, and David Brown, son of Mr. and Mrs. David Brown, were chosen Prince and Princess.

They are students in the fourth grade. The crown bearers were Britt Stamper, Oppie Sowder, Tracy Bengel and Jody Chondler. Flower girls were Sheila Lamb, Connie Roberts, Kimberly Bollock, and Michelle Taylor. Also in the photo are, back row, from left, Jean Poynter, last year's princess, Anita Helton, last year's queen, and Jackie Goff, last year's prince.

ment would increase or contribute to the patient's likelihood of recovery or provide urgently needed protection." The emergency services may be utilized weekdays from 8:00 a.m. until 4:30 p.m. by calling the Mental Health Clinic in Corbin, Phone 528-5232, or by coming to the clinic. After 4:30 p.m. and on weekends, these services are available at the Southwestern Kentucky Baptist Hospital in Corbin, Phone 528-1212.

the opening game of Brodhead's Thanksgiving Tournament this Friday night, the 28th. The winner of this game will meet the winner of the Brodhead-Crab Orchard game Saturday night for the championship. December 5, the Devils will host the Mt. Vernon Red Devils.

The March of Dimes reports that at least 60,000 Americans die every year as a result of birth defects.

**MULLINS HONORED WITH DINNER**

A. B. (Moon) Mullins was honored with a retirement dinner Wednesday evening, November 5 at Potter's Restaurant in Paducah by the First District State Highway Department employees.

Mr. Mullins recently ended a 33-year career with the highway department which began on April 3, 1922 as a roadman. He has worked in the first district since 1961 and for the past three years was a technical engineering witness.

He is a veteran of World War II and a former Federal employee.

Some 50 persons attended the dinner. Mullins was presented with a rifle by fellow employees.

He and his wife are now making their home in Mt. Vernon.

**TRAIT SPECIAL FOR EVERYONE**

**FIRST TIME EVER OFFERED**

**AT 99¢**

Plus 50¢ Camera Fee

**GENUINE FULL COLOR PORTRAITS!**

**SATISFACTION GUARANTEED** or your money refunded.

**FOR ALL AGES!** Babies, children, adults. Groups photo-duplicated at an additional charge.

**LIMITED OFFER!** One per subject, one per family.

**GROUPS INVITED!**

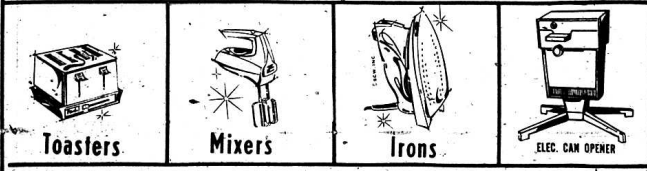
Bring your old photo for copying. 9 a.m. - 5 p.m.

**MONDAY, DECEMBER 8**

**JIM JIM'S 5 DISCOUNT, MT. VERNON**

**SMALL APPLIANCES**

**GIVE BIG PLEASURE!**



**C.C. Cox Hardware** \* A Small Deposit Will Hold \* Any Item Until Christmas \*

PH. 256-2815 - MT. VERNON, KY.

**CORRECTION**

In last week's Signal, we ran a story concerning the hospital. In that story, we stated that Mrs. Joyce Brown would be Head of Nurses. This information was incorrect and the Signal regrets the error.



**"BASKETBALL"** (Cont. from front)

Jennifer Sue Lear, daughter of Mr. and Mrs. Douglas Lear, celebrated her second birthday November 12 at the home of her grandparents, Mr. and Mrs. Givins Lear, at Brindle Ridge.

**"HEALTH CENTER"** (Cont. From Front)

tional, functional or organic, for which immediate treat-

is mine. These boys are so small I am afraid someone will step on them but they are big in the courage department and that's what the world needs a little more of right now." Coach Parrett further said, "These boys are a pleasure to coach and I'm real proud to have that opportunity. This is going to be a good ball team."

The leading scorer for the Devils was Donald Holt with 16, followed by Hurley with 8, Kenneth Mink 6, Shepherd and Bullock 2 each, Reynolds and

She's Sure To Love

Our

**Sportswear**

Russ

Junior House

Lisa Deb

Hosiery By

**BERKSHIRE**

**LUXURIOUS LINGERIE**

Special Purchase

Gift that special someone on your list with the beautiful peignoir or gown she's always wanted... now specially priced for the holidays! We have a wide selection of famous names!

**Jean - Faye Fashions**

**new GIFT CENTER**

**SIZZLER**

**Blackboard Peg Table**  
Chalkboard, pegboard, surface for wipe-off crayons!  
W.A. Exclusive! **\$4.77** Reg. **\$5.99**

**SIZZLER**

**Cuddly Musical Bear**  
Plays children's tunes! Thick, rich pile, vinyl nose!  
50¢ holds Christmas! **\$2.99** Reg. **\$3.19**

**Western Auto 6TH ANNIVERSARY**

Choose from 34 Western Flyer bikes at W.A.!

**Economy Priced Buzz Bike**  
Chromed fenders, two-tone fiddle!  
**\$42.95**

**Lightweight Style at a Budget Price!**  
3-speed gears, Chrome fenders!  
Calliper-type hand brakes! 26 in.  
**\$42.88**

**Daisy Air Rifles at Low Prices!**

**Pump-Action Air Rifle**

**Ladies' Times Watch**  
Sculptured Yellow Case, Expansion Band!  
**\$12.95**

**SIZZLER**

**Mustang Springhorse**  
Handsome strawberry roan gives a high-stepping ride!  
51 holds Christmas! **\$12.88** Reg. **\$14.99**

**SIZZLER**

**W.A. Trailer Truck**  
Steel trailer for long haul! 4 tandem wheels, 2 doors!  
50¢ holds Christmas! **\$4.99** Reg. **\$5.99**

- Bicycles
- Trikes • Cars
- Footballs
- Basketballs
- Ball Gloves
- Skates • Sleds
- All Kinds Games
- Sporting Goods
- Hunting Equipment
- Fishing Equipment
- Cameras • Clocks
- Televisions
- Radios
- Stereo • Hi Fi
- Tape Recorders
- Musical Instruments
- Watches
- Home Appliances
- Table Appliances
- Furniture
- Luggage
- Power Tools

**Plus A GREAT SELECTION OF TOYS FOR ALL AGES!**

**SIZZLER**

**Talk N' Tell Telephone**  
Push buttons, phone talks back with 1 of 10 savings!  
50¢ holds Christmas! **\$3.66** Less Reg. **\$4.11**

**Eagle Basketball**  
Ideal "free" ball for beginners! Official size & weight. Weatherproof rubber! Pebble grain finish!  
**\$3.88** Reg. **\$4.11**

**WESTERN AUTO STORE MT. VERNON**

# County Agent's Notes

By: H. Lee Durbin  
County Extension Agt.

## Fanner's Tax Guide

The 1970 edition of Fanner's Tax Guides are now available at the county extension office. This publication has been revised to October, 1969 and includes information on such items as: filing requirements and return forms, income to be reported, depreciation depletion, capital gains and losses, self employment social security tax, other deductions and personal exemptions, tax credit and completing your return. The availability of this publication is limited in number and will be given out on a first come first serve basis. If interested in the above publication please contact the local extension office.

## Cattle Lice Big Pest At This Time of Year

Cattle rubbing themselves against stanchions, posts, fences? Chances are the pestiferous cattle louse is at work.

Two types of lice infest cattle. One is the short-nosed cattle louse, bluish colored, a blood sucker, the other is the yellowish-white, biting louse with a reddish head. Both types annoy cattle exceedingly.

Closer quarters for cattle in winter increase the chances of spread of the pest. Hunt for lice in the hair

and folds of skin on head, neck and shoulders of animals. Poorly fed animals will be chief targets of lice. Infestations can increase rapidly. Even though lice are found on just a few animals, the whole herd should be treated.

**Control measures:**  
**LICE:** ANIMALS: Use Clodrin, the one pound per gallon strength liquid, at the rate of 2 1/2 pints for each 15 gallons of water. Spray animals using 250 to 300 pounds pressure per square inch. Use one gallon of this mixture per head. Rotenone dust, one percent strength, also is useful. Apply liberal amounts to animals.

**BEET ANIMALS:** Use Corral, the 25 percent strength wettable powder, at the rate of one pound per 25 gallons of water. If Ruene is desired, use the 25 percent strength liquid concentrate at two quarts in 25 gallons of water. If Lindane is preferred, use the 25 percent wettable powder at the rate of one-quarter of a pound in 25 gallons of water. Toephene is useful, too, the 60 percent strength emulsifiable concentrate, at one quart per 40 gallons of water. Spray animals to run off point.

Other materials that can be used on beef cattle are Clodrin, Malathion, Korlan or Methoxychlor. Follow label directions and safety precautions when using any material.

Regardless of material used, be sure to use on dairy cattle or beef cattle only the recommended materials for that type animal. Be sure to use it only at the rate suggested on the label. Observe label restrictions on days from last application until slaughter time. If you spray animals in cold weather, don't keep them in an enclosed barn afterward; let them out into the open air, to avoid the getting pneumonia.

## Increased Nitrogen Use Creates Additional Need for Lime

The overriding factor which limits total crop production in Kentucky is acid soils. Most crops grown in the state do not use applied fertilizer as efficiently under acid conditions as they do at near-neutral conditions. As a general statement this means soils should be limed to a pH of 6.7 to 7.0, dependent on the par-

## Season's Feastings Are Great With Canned Gravy



Season's Feastings Are Great With Canned Gravy

No matter how Christmas traditions differ from one country to another, we all have at least two things in common: universal joy and spectacular feasting. Let your cooking reflect the joy of the season with a menu featuring golden roasted capons with rice-spinach stuffing.

Capons with this slightly unusual stuffing, are a twist to the traditional turkey breast stuffing fare; but tradition welcomes this delicious new combo. Canned chicken gravy (creamy smooth) with real chicken stock is added to the stuffing to give it a moist, perennially seasoned flavor. The remainder of the gravy is cooked with capon drippings and light cream, resulting in a superb sauce with minimum effort and no worry.

This venturesome dish with the old familiar—cranberry relish, orange squash, creamed peas and onions, and apple or pumpkin pie.

What this means is that in order to produce higher crop yields through application of higher rates of nitrogen, the use of additional lime is required. While many of the better producers in the state have made this adjustment in their crop production systems, have not. This is evidenced by the decrease from nearly 2.7 million tons agricultural limestone sold in Kentucky during 1966 to the slightly over 2.3 million tons sold in 1968. Contrast this to the estimated need of about 4.5 million tons per year.

Most of the lime used is bought through the cost-sharing programs of county ACP officers. (2.2 million tons of the 1.9 million tons used in 1968 was cost-shared.) Lime use on acid soils as the basis of crop production is an economic investment which will pay off in higher yields as the result of more efficient use of applied fertilizer. Insufficient ACP funds to cost-share for all the lime needed should not limit the amount of lime used. If average crop yields on acid soils in Kentucky are to be increased, the use of more lime is a basic must.

## Shell-Toons By George Owens



Shell-Toons By George Owens

It will be pleased TOO. It's in REAL use.

## OWENS Shell Service

Minnows & Nite Crawlers  
Phone 256-2719  
Corner 150 & U.S. 25 Hwy.

## Re-discover Kentucky

### Fall and Winter VACATIONS

at These Kentucky State Resort Parks:

- Cumberland Falls at Corbin
- General Butler at Carrollton
- Jenny Wiley at Prestonsburg
- Kentucky Dam Village at Gilbertsville
- Lake Cumberland at Jamestown
- Natural Bridge at Slade
- Carter Caves at Olive Hill

Meals, entertainment, lodging (double occupancy). Luxurious evening with 2 double beds. Sunday evening dinner to Thursday lunch every week from October 12, 1969 to March 26, 1970 (except Christmas week, December 21-27).

FALL & WINTER VACATION PLAN IS IN EFFECT FROM OCTOBER 12, 1969 THRU MARCH 26, 1970 (except Christmas Week, Dec. 21-27)

Call Central Reservations, Frankfort, Ky. (502) 225-2326 or see your local travel agent

# 5 DAYS 4 NIGHTS \$44

double occupancy • per person

Modern Resort Lodge Room with Two Double Beds • All Meals from Sunday Evening thru Thursday Lunch

- Recreation Programs
- Special Evening Entertainment

BankAmericard and any INTERBANK card honored

TRAVEL, Dept. KT-69  
Frankfort, Ky. 40601

Send Information on Kentucky's Fall & Winter Vacations

Send General Kentucky Travel Information

Name \_\_\_\_\_  
Address \_\_\_\_\_  
City \_\_\_\_\_ State \_\_\_\_\_ Zip \_\_\_\_\_

## HUNTING AND FISHING IN KENTUCKY

Game management has many tools and birds in the field are measured. To be sure they aren't 100 per cent correct always, but then who is to refute the figures as given by field men who are close to game than anyone else. In other words, no one can prove they are wrong.

For instance, in the past deer hunting season many persons were of the opinion that there were more deer hunters who harvested more game this year than last year. Until the final figures are tabulated, and projected through a special mechanism service, furnished by the Department by the North Carolina State University this summation of field men will have to stand.

Their report was given by eyewitness "observation" from looking through the conservation officers throughout the state and this report in the past has been fairly accurate. As example, last year, (1968 deer season) the report was that the harvest had dropped during the previous year. This was by observation, while the

final figures were in this statement held up. The harvest was down. Then there were reasons given for the decline, the most prominent of which was the inclement weather that occurred during the season. Few hunters who said that the deer population was down.

Relying on statistics again, which is the safest yardstick, we must point out that the harvest per hunter has varied very little since 1961 when complete records were started on deer hunting. More deer progressively harvested but by the same token the number of hunters was up.

Even in 1968 when the kill was projected at 6,400 for the entire state, it was found that about one out of every four deer hunters had bagged a deer and that's a good percentage in anybody's league. For last year over 27,000 deer hunting tags were sold, which does not necessarily mean that there were that number of hunters. Some could have purchased tags but for one reason or another did not get to go hunting.

This approximately 27,000 hunters is a far cry from the 11,970 who purchased tags in 1961 and who bagged a total of 2,710 deer. Percentage wise this 1961 season was not greatly different. (Cont. To 9)

**BIG SALE**  
**SATURDAY, DECEMBER 6 AT 10 A.M.**

Pair of Hales: Three Fat Hogs (ready to butcher); two 3-year-old Holstein, Milk Cows; one Yearling Steer; 1963 One-Ton Chevrolet Truck; Horse Drawn Farm Machinery, and 100 Bushels of Corn.

Sale will be held at Bert Mullins' Barn, 3 miles from Livingston on the Red Hill Road.

**W.B. HAMMONDS, OWNER**

# Make It A G.E. Christmas

## Buy Now From A Full Stock

### USE OUR LAY-A-WAY PLAN

Your child will love

### GE'S RADIO/PHONO-VIEWER



Model A610 — Charcoal Gray and Mist Gray

**For the FUN of it!**  
Perfect home entertainment for children • Transistorized Radio • Shows full color pictures in time to words and music • Over 100 Picturesound™ Programs from which to choose. Plays all records up to 12" LP. • Do kids love Radio/Phono-Viewers? You bet they do.

**\$34.95**

When a portable sounds this good ... buy it!



Model P2300 — Black and silver Built-in cord, Two-way power

FM or AM, battery or plug-in — this portable's got everything. And sounds it!

- Solid state design
- AC/Battery operation
- Full-fidelity 6" oval speaker
- Treble/bass tone control
- IF Tuned circuits for crisp reception
- Drift-free FM with AFC
- Dual antenna system

Priced right, too!

**\$59.98**

What's so special about this special?



Model T1175 — Soft white

Crisp good looks... full rich sound... and a special low price. What more could you ask of a radio? Just look!

- Solid state design
- Front-fired 4-inch Dynamic speaker
- Drift Compensation loops station locked in
- AVC for steady volume level
- Handsome high-impact polystyrene cabinet
- Built-in antenna system

**\$10.95**

## NEW miniature styling



Model P2700 — Black and Silver Gift pack: Radio, battery, earphone

With this GE miniature, you're traveling in style. A fine class performer.

- New sculptured styling
- Direct tune slide-rule dial
- Big 2 1/2" dynamic speaker
- Convenient carry thong and holster style carry case
- Gift pack includes radio, battery, earphone.

**\$7.25**

**YOURS FOR A SONG!**



Model RP3020 — White and Blue

Here's music for playing and daddymaking. Music that makes every day a fun day!

This handsome GE Monaural Portable Phonograph is easy to use, ruggedly built to take the bumps and bruises.

- 4 speed turntable • 4 inch Alnico V magnet dynamic speaker • built-in storage for ten 45-RPM records • dual synthetic sapphire stylus • tough shock-resistant case

**\$17.95**

IT'S A CLOCK IT'S A RADIO IT'S A SPECIAL VALUE!



Model C405 — Cocoa beige

Here's a remarkable value. A dependable GE clock/alarm system teamed with a fine GE Radio... and a special low price.

- Solid state design
- Large 4-inch Dynamic speaker
- Wake-to-music control
- Simple, sure direct tune dialing
- Compact Junior Flair design
- Built-in antenna system

**only \$16.98**



Model P1720 — Black and Silver

The going's great when you travel with this brilliant little GE/Monaural portable. Crisp, clean styling, too, for good sound.

- Big 2 1/2" x 1 1/2" dynamic speaker
- Solid-state design
- Battery-saver circuit
- AFC on FM for drift-free reception
- Five tuned IF circuits for positive station separation
- Slide rule dial, Variter tuning
- Two antennas
- Gift pack includes radio, battery, earphone, carry case

**\$19.98**



Model N8305 — Desert Sand

Real music. Melodies with chords, right from the start. GE's new electric chord and holter style carry case.

- Just push the easy-play color identified coded keys
- Three-octave range — 37 melodic keys, 12 major and minor chord keys
- Pilot light glows when organ is on volume control
- Variable volume control
- Music book included

**\$34.98**



Model M8021 — Grey

Gift pack includes Recorder Batteries and reel of tape.

Three inch portable tape recorder great for notes and after-school party fun.

- Plays on 4" D" size batteries
- Dynamic remote control mike stores in cabinet
- Adjustable speed control
- Solid-state design

A rugged unit at a value price

**only \$22.98**



Model M8131 — Black

This 3" portable recorder has two speeds and capstan drive for faithful sound... and

- Solid-state design for instant-on sound
- Plays on 4" D" size batteries
- Permanently connected, dynamic remote control mike
- Rugged case for carefree use

**only \$29.98**

**BRYANT BROS. - MT. VERNON**