

"FINANCIAL STATEMENT" (Cont. From 7)

Table listing financial items and amounts for the 'FINANCIAL STATEMENT' section, including names like Eddie Ballinger, Betty Baker, James H. Bradley, etc.

Table listing financial items and amounts for the 'Ky State Treasurer, Teachers' Ret.' section, including Blue Cross Hospital Plan, Inc., Ky State Treasurer, Co. Emp's Ret., etc.

Table listing financial items and amounts for the 'MAY' section, including Junia Witt, Travel Expense, Terry Cummins, Travel Expense, etc.

Table listing financial items and amounts for the 'Rockcastle Co. Ky School Constr., Reimbursement' section, including Rockcastle Co. Ky School Constr., Reimbursement, Fed Res Bank of Cleveland, Taxes, etc.

Table listing financial items and amounts for the 'Rockcastle Co. Ky School Constr., Reimbursement' section, including Rockcastle Co. Board of Educ., Reimbursement, Fed Res Bank of Cleveland, Taxes, etc.

"STATE GOVERNMENT" (Cont. From 7)

Table listing financial items and amounts for the 'STATE GOVERNMENT' section, including solicitors-one for every 15 employees-who, after training in how to solicit, will contact each person face-to-face.

Text discussing the face-to-face encounter between solicitors and employees, the importance of a united giving program, and the yearly system provided to support all of these worthwhile services on a 12-month basis.

Social Security News

Text discussing Social Security news, including earnings from summer jobs affecting monthly payments, and the impact of the new measure on students and other young people.

CAPITOL DIGEST

Text discussing Capitol news, including a spokesman for the Patrick Petroleum Corp. in Knox County, and the firm's information on the Public Service Commission.

Text discussing the problem of gas shortages in Columbia, the firm's request to limit its sales to existing industrial customers, and the firm's request to accept new industrial patrons.

Text discussing the firm's request to allow more gas than it originally proposed to three industrial customers after September 1, and the Public Service Commission chairman William Logan directed attorneys for both sides to file briefs within 15 days.

Text discussing the firm's request to allow more gas than it originally proposed to three industrial customers after September 1, and the Public Service Commission chairman William Logan directed attorneys for both sides to file briefs within 15 days.

Text discussing the firm's request to allow more gas than it originally proposed to three industrial customers after September 1, and the Public Service Commission chairman William Logan directed attorneys for both sides to file briefs within 15 days.

Text discussing the firm's request to allow more gas than it originally proposed to three industrial customers after September 1, and the Public Service Commission chairman William Logan directed attorneys for both sides to file briefs within 15 days.

Text discussing the firm's request to allow more gas than it originally proposed to three industrial customers after September 1, and the Public Service Commission chairman William Logan directed attorneys for both sides to file briefs within 15 days.

Table listing financial items and amounts for the 'APRIL' section, including Educational Audio Visual, Acct., Postmaster, Mt. Vernon, Stamps & Postage, Junia Witt, Travel Expense, etc.

Table listing financial items and amounts for the 'MAY' section, including Junia Witt, Travel Expense, Terry Cummins, Travel Expense, etc.

Table listing financial items and amounts for the 'MAY' section, including Junia Witt, Travel Expense, Terry Cummins, Travel Expense, etc.

Table listing financial items and amounts for the 'JUNE' section, including 3M Business Products Sales, Acct., Costume Rental Services, Acct., C.C. Cox Hardware, Acct., etc.

Table listing financial items and amounts for the 'JUNE' section, including 3M Business Products Sales, Acct., Costume Rental Services, Acct., C.C. Cox Hardware, Acct., etc.

Table listing financial items and amounts for the 'JUNE' section, including 3M Business Products Sales, Acct., Costume Rental Services, Acct., C.C. Cox Hardware, Acct., etc.

Advertisement for 'Flameless Electric Heat: Warmth plus Peace of Mind!' featuring an illustration of a family and text describing the benefits of electric heat, including safety, cleanliness, and ease of use.

Classified Rates

Local Rates: 4c per word - minimum 75c
Card of Thanks: 3c per word - minimum 75c
In Memory: 2c per word - minimum 75c
Classified: Charged 5c per word - minimum \$1.00
Display Classifieds - \$1.00 per column inch

For Sale

farm on Chestnut Grove Road, 1280 pounds tobacco base, 5 room house, bath and full basement; electric heat, hardwood floors. Two bedroom trailer with electric trim. Located five miles north of Brodhead. Phone 758-4468. Priced at \$50,000. Contact Betty Sutton, 47x4

NEW HOMES FOR SALE: Apple Grove Park, Berea, Kentucky. John Stephenson, 936-3225, Builder of National Homes, 43x6

FOR SALE: 47 acre farm at Ottawa, Houegwood barn, 1379 pound tobacco base, 9 acre corn base, Contact Hiram Campbell or phone Stanford 365-7029, 45x4p

FOR SALE: 1971 GMC pickup, V8 straight shift. Phone 256-4174, John Hamm, 44x4m

FOR SALE: Large compressor, twin engine, 1 1/2 horse motor, runs off 110 or 220 volts. Plenty of hoses, spray gun and gauges. Phone 453-3311, 44x4m

FOR SALE: 1968 Volkswagon and 1968 Lancer, both in good condition. Phone 256-2285, 32x4m

FOR SALE: Typewriter: IBM Executive, 10 in carriage, very good condition. New cost app. \$700., sell for \$395, Vary manual, old and ugly but good condition. Suitable for home or practice use, \$90.00. Stereo: Consoles with AM-FM Radio. Almost new. Retail almost \$200 will sell for \$100. Zenith Portable Television, 19 in. with cart. Very good condition, \$60. General Electric Tape Recorder with extra tapes. Retail about \$100, in fair condition, \$25.00. All prices, cash. Contact Joe Harmon.


FOR SALE: First in Kentucky, "Ruger Security six revolver," 357 mag. double action #41 BBL, Best offers. 256-4754, 42x4m

LOTS FOR SALE: Green Acres Subdivision, six miles north of London just off Hwy. 25 on the Woodcock - Waterworks Road. Choice lots now available. See or call Henry Gilbert, 945-7557, 42x4p

FARM FOR SALE: Good 62 acre

SALE DISCOUNT FABRIC SHOP
Located in Trailer on Williams Street near Mt. Vernon School
MRS. VIRGIN HASTY, OWNER

ASPHALT
PAVING



***ROADS**
***DRIVEWAYS**
***PARKING LOTS**
(We also have Blacktop Sealer for sale and can apply it for you if you desire)

J.C. Newland & Son
CONTRACTORS
Ph. 758-3345 Brodhead, Ky.

GARRARD COUNTY STOCKYARDS
SALE FOR ALL CLASSES OF LIVESTOCK - EVERY FRIDAY

PHONE 792-2118
KIRBY TEATER HOGAN TEATER

AVON CAN HELP you earn extra cash for summer vacation, new clothes - or your heart's desire! Work spare time near home. CALL NOW: 623-4119 or Write - JUANITA PARSONS BOX 74 RICHMOND, KY.

Four room modern home for sale, Call Livingston 453-2201, 46x4m

FOR SALE: 47 acre farm at Ottawa, Houegwood barn, 1379 pound tobacco base, 9 acre corn base, Contact Hiram Campbell or phone Stanford 365-7029, 45x4p

FOR SALE: 71 house trailer. Model Atlantic, 12x60. For further information call 256-2859, 46x2p

FOR SALE: House and 22 1/2 acres, 1200 pound tobacco base. Located on Hwy. 39 at Pulaski and Lincoln Co. Line. Phone 423-3488, Science Hill, or 758-4726, 43-334, 47x1

FOR SALE: Camper for narrow or wide bed pick-up. Complete with stove, ice box, wash basin, water storage, table. Sleeps 4, \$350.00 cash. 47x1 Ph. 256-4334, 47x1

FOR SALE: Lot and 2 houses in Brodhead. One house has 4 rooms and bath, other has three rooms with partial bath. Sewer line to each house. See Dewey Cromer at Cromer's Discount Store in Brodhead or call 758-4401 or 758-3471, 47x3

SALE: The Rockcastle County Board of Education will sell public section at 10:00 a.m. Saturday, August 12, 1972 at the Mt. Vernon Elementary School Gym surplus school furniture consisting of used tablet arm chairs, tables, desk, refrigerators, typing tables, stoves and deep freeze, 47x2

FOR SALE: House trailer, 8 x 35, completely furnished. Got to sell at once. Call 256-2201, 47x4m

FOR SALE: '64 Dodge Station Wagon. Good family car, practically new tires, reasonably priced. See at Scenic View Motel, 47x2p

FOR SALE: 1965 Ford, 2 ton, tip cab, with or without milk tank. In good shape. Phone 758-3287, 47x3p

FOR SALE: 86 acre farm at Wildie. Contact Edward Fish, Wildie, 47x1

Wanted

WANTED: Small Dozier, Bogging and Backhoe Work. Call 256-2047, 47x4m

WANTED: Floor sanding and refinishing. Also, carpets shampooing. Call 256-2539 after 6 p.m., 17x24p

BLOWN IN INSULATION. Aluminum siding, storm windows and doors. For free estimate, contact Preston Collins, Route 2, Berea, Ky. Ph. 453-2001, 15x4m

NOTICE: Oil Heater Service Clean and Repair. Let us do it NOW. Call 866-2828, R.H. Hanna Oil Co., Mt. Vernon, Ky. 47x4m

NOTICE: Hamm Bros. Water Well Drilling and Contracting. Call 256-2024 anytime after 5 p.m., 46x4m

NOTICE: See Johnny Sams at Sanitary Cleaners for all your medical needs - strings for all instruments and accessories. Phone 256-2551, 49x4m

For Rent

FOR RENT: Floor sanding Equipment, "Do-It-Yourself." Varieties of all kinds - Gym Seal, Fabulon Fillers and Sealers. Everything you need for a Professional Job. Appliance Service Center, Mt. Vernon, 26x4m

WANTED: Electric Plumbing Work. Baths installed by the Job. Call Albert Smith 453-2251, 15x4m

WANTED: Few ghosts or hogs. Suitable for November meat hogs. Phone 256-2757, 45x3p

WANTED: Bulldozing, plumbing, sewer lines, work. Contact Bill Brock, Brodhead, Ky, 46x3p

NOTICE

Notice is hereby given that Joe B. Noe and Lucille Ponder of Mount Vernon, Kentucky, have by this date appointed co-administrators of the estate of Mabel B. Noe, deceased. All persons having claims against said estate shall present them verified according to law to the said Joe B. Noe and Lucille Ponder at Allen, Clontz and Cox, Attorneys at Law, Mount Vernon, Kentucky, no later than October 29, 1972, 45x3

NOTICE

Notice is hereby given that Cleveon Abney of Berea, Kentucky, has this day been appointed the executor of the estate of Verle Abney, deceased. All persons having claims against said estate shall present them verified according to law to the said Cleveon Abney or to Allen, Clontz & Cox, Attorneys at Law, ter than October 29, 1972, 45x3

NOTICE

Notice is hereby given that Betty Mink, Pine Hill, Kentucky has been appointed administratrix of the estate of Eddie H. Mink, deceased. All persons having claims against said estate shall present them verified according to law to the said Betty Mink or to James W. Lambert, Mt. Vernon, Kentucky, attorney on or before November 3, 1972, 45x3

NOTICE

Notice is hereby given that Mrs. M.M. Smock, Mt. Vernon, Kentucky has been appointed administrator of the estate of M.M. Smock, deceased. All persons having claims against said estate shall present them to the said Mrs. M.M. Smock before November 3, 1972, 45x3

NOTICE: August Special, Monday, Tuesday and Wednesday haircut, shampoo and set, \$3.50. Mary's Beauty Salon, Brodhead. Phone 758-3932, 47x4

NOTICE: Reward offered for return of 35 m.m. Miranda camera, Raynox light meter attached. Contact Berea Citizens, 47x2p

NOTICE: Appalachian Computer Service, Inc., London, Ky. We have many applications for the position of key-punch operator. Several positions are available. Experience required. Part-time or full-time positions available. For information call Bill Deaton 606-864-4151, 47x2

CARD OF THANKS

We wish to thank our friends and neighbors for their kindness shown through the death of our mother, Nannie Hays. We also want to thank those who sent flowers and food and especially Bro. Pack and Bro. Dean, Powell & Martin Funeral Home, and everyone who had any part in any way. Our deepest thanks. The children of Nannie Hays: CARPETS and life too can be beautiful if you use Blue Lustre. Rent electric shampooer \$1. C.C. Cox Hardware, Main St., Mt. Vernon, 47x1

NOTICE: Plan your vacation for the Brodhead Fair - August 7 - 12, 30x30p

NOTICE

Notice is hereby given that I will not be responsible for any debts made by anyone other than those made by myself. Respectfully, W.F. (Fortner) Mink, Sr.

NOTICE: No hunting or trespassing on my property located on Brindle Ridge, Charles D. Holbrook, Route 1, Brodhead, 45x3p


NOTICE: No hunting or trespassing on my property (former Remley McKinney) located at Brindle Ridge, Everett Wilcott, 47x12p

NOTICE: Mason's General Contracting, Block, brick, concrete and carpentry. See David Mason, Route 2, Mt. Vernon or call 256-2270, 47x3p

TUES., WED., THURS., MORNINGS
HEAR OUR RED HOT SPECIALS
ON WIXI

WAYMAN'S DEPT. STORE IN BERA **MT. VERNON SIGNAL**

THAT'S A FACT
DON'T ADD WATER!



YOU CAN... BUY CHARACTER! IT TAKES CHARACTER TO SAVE - AND BY BUYING SAVINGS BONDS THROUGH THE PAYROLL SAVINGS PLAN YOU'RE SHOWING YOUR DETERMINATION TO INSURE A BETTER FUTURE FOR YOURSELF AND YOUR FAMILY.

BACK TALK!
DON AN IS THE ONLY ANIMAL WHO SLEEPS ON HIS BACK

REAL ESTATE FOR SALE

Newly remodeled 6 room house on Newcomb St. in Mt. Vernon. This modern house is complete with aluminum siding, refinished pine floors, built-in kitchen cabinets, insulation, storm doors and windows, and large lot with plenty of garden space. Price \$12,000.

A good country brick home on blacktop road with 14 acres of land. Located on the Red Hill Road 12 miles south of Mt. Vernon. The house consists of: living room, built-in kitchen, 3 bedrooms, and a bath. There is also a full basement with den, automatic washer and dryer hook-up, full insulation and oil furnace heat. Price \$19,500.

Nice two bedroom home located on Lewis St. in Mt. Vernon. This compact home is modern in every way with: wall to wall carpet, completely built-in kitchen, electric heat, 1 1/2 baths, garage, automatic washer and dryer hook-up, and full basement. Located in the basement is a modern beauty shop with all the equipment. House and business ideal selling for the reasonable price of \$22,900.

Nice five room home located on Owens St. in Mt. Vernon. It has the following features: oil furnace heat, aluminum siding, storm doors and windows, 1/2 basement and is located on a lot measuring 72 x 236. Price \$14,500.

Good 5 room house located 2 miles out of Livingston on the Red Hill Road with 5 acres of ground. The house is modern with oil furnace heat, full insulation, built-in kitchen cabinets, storm doors and windows. The 5 acre lot is fenced. Here's your opportunity to own a good baby farm. Priced at \$11,000.

Modern 6 room home located 1 mile south of Livingston on the Sand Hill Rd. It features: wall to wall carpet and hardwood floors, oil furnace heat, 4 bedrooms, built-in kitchen cabinets, automatic washer and dryer hook-up, bath and full basement. Priced at \$10,500.

Five room house located on Chestnut Ridge 2 miles south of Mt. Vernon. This house consists of 3 bedrooms, hardwood floors, paneled walls, large lot with garden space, surrounded by woodland with city water on the way. Price \$5,500.

One acre lot located near Fairground Hill with a beautiful view. Ideal building site or mobile home site. Price \$2,500.

Good 5 room house located on Town Hill in Mt. Vernon. The house has 3 bedrooms, living room, kitchen, and bath. Priced right at \$6,500.

Five room house located between Brodhead and Crab Orchard at Gum Sulpher. This modern home has built-in kitchen cabinets, hardwood floors, stokeromatic heat, and bath. The house is situated on a lot measuring approximately 175 x 175. It has a new fence around the property and new stock barn, and plenty of space for gardening. Priced at \$6,500.

Eight acres located between Brodhead and Mt. Vernon, 1 mile off Hwy. 150 with concrete block house. Ideal for building sites. Reasonably priced at \$6,500.

THIS IS ONLY A PARTIAL LIST OF OUR MANY LISTINGS.
Shown by appointment with realtor only
Complete Real Estate Service

Col. Sam Ford
Auctioneer-Realtor
Mt. Vernon, Ky.
Office 256-4545
Residence 758-2875



Laura Lee Holland
"Miller's Daughter"



Larry Jentry
"King's Son"



Hazel Marshall
"Nurse"

"Rumplestiltskin" was presented by Somerset Community College Friday night, July 28 and Saturday night, July 29 at Stoner Auditorium. Shown above are three members of the cast.

"CAPITOL DIGEST"
(Cont. From 8)

prior to the 1973 election day. Material submitted by county clerks showing Kentucky's present voting status was nearly 1.5 million.

Although the measure provides for registration forms to be made available at the state's 3000 precincts, Mrs. Sivoli expected county clerks to work out easy methods of obtaining registration.

"Door to door canvassing, re-registering through the mail and other methods may be tried to encourage the voters."

Under present voting operations, it has taken several weeks before figures from all 120 counties were received by the Secretary of State's Office. The goal for November 1973 is to have official state counts complete within a matter of days.

9 MILLION TO BE SPENT FOR KY. CRIME PREVENTION
Kentucky Crime Commission Executive Director Charles L. Owen said a plan to spend \$9.6 million over the next 12 months will take "imm adiate and effective measures to combat crime in rural state areas as well as continue funding priorities in high-crime urban areas."

The money will be used to finance the 1972 statewide Comprehensive Law Enforcement Plan through the KCC.

Federal funds allocated for the program total \$7.2 million, the remainder matched in state funds. Local government agencies can apply for funds in 24 project categories including: a police training and incentive program for local law enforcement officers; a statewide police communications system, toward which

several localities have already received federal approval for implementation; a police crime prevention team; updating court equipment; and improvement of jail detention and rehabilitation facilities.

Governor Ford budgeted \$6.7 million for the crime commission during the next two years, which will match an expected \$9 million from the federal government.

LABOR STANDARDS ASST. DIRECTOR ACCEPTED AS INTERN

Labor Commissioner James H. Yocum has announced that Charles McCoy, assistant director of Labor Standards, has been accepted as an executive intern by the Labor Management Relations Service in Washington, D.C.

Yocum said McCoy's nomination is the first step in establishing a comprehensive mediation service in the department as required by law.

McCoy, who has been employed in state government for eight years, is a native of Owen County.

COUNTY AGENT'S NOTES

By: H. Lee Durban
Use of DDT and TDE on Tobacco
Under no circumstances can DDT be used legally on tobacco in Kentucky. Several laws relating to the use of certain insecticides have created some confusion on this issue so that growers feel that there may be some exceptions.

In 1969, when registration of pesticides still rested with the USDA, the use of DDT was banned in four specific areas. One of these four areas included all uses on tobacco.

Later TDE (DDD, Rhothane) was also banned on tobacco. A provision in these bans allowed for the sale and use of these chemicals already in channels of trade as long as it did not move in interstate trade.

At the same time, western European countries were proposing to set DDT-TDE residue limits on imported tobacco. These limits were being set so low that U.S. tobacco could not meet these limits if growers continued to use the DDT

and TDE still in channels of trade. To discourage the use of DDT and TDE on hand, the ASCS in early 1970 required that to be eligible for price support, all growers had to sign an affidavit that DDT or TDE was not used on the tobacco crop after it was set in the field. One of the reasons for use on tobacco beds was estimated that in some parts of the U.S., some beds were or would be already treated with these insecticides by the time the affidavit notice was given. This same affidavit was required for the 1971 season and will be required for the 1972 season.

The wording of the affidavit and letters pertaining to it imply that it is permissible for Kentuckians to use DDT or TDE on tobacco beds. This may be true as far as ASCS regulations are concerned, but not as far as Kentucky law is concerned. In 1970, the Kentucky law banned all uses of DDT except for control of rats, bats, mice and termites. No provision was made for using DDT in the normal way on other crops that was still in stock.

In summary: The 1969 USDA ban prohibited the use of DDT or TDE on tobacco except that which was in channels of trade. In 1970 the ASCS prohibited the use on field tobacco if eligibility for price support was desired, but also in 1970 Kentucky law prohibited the use of DDT on all tobacco with no exceptions.

Aside from the legal aspects of DDT and TDE on tobacco there are other concerns. Excessive residues of these pesticides could jeopardize Kentucky's export tobacco market.

For the good of the tobacco industry and the marketability of their own tobacco, growers should not use DDT, TDE or other illegal or use of chemicals to produce their tobacco crop.

Increasing numbers of tobacco budworms are appearing in Kentucky tobacco. This rust-colored to pale-green striped worm can cause serious damage by destroying buds or by causing ragged, worthless leaves. The worms present hatched from white dome-shaped eggs laid singly on the underside of leaves by the female moths. Hatching takes place in approximately 5 days, then the budworm crawls to the bud to feed from 10-31 days. When the larvae are full-grown (caterpillars) they leave the plant, crawl in the soil and pupate. They remain in the pupal stage for a week to 10 days. Then the new adults emerge. There are two generations per year, with the second generation often feeding on seed pods and suckers.

Chemical treatment may be needed if the grower finds as many as three budworms per 100 plants. Azodrin, Bacillus thuringiensis, Lonmate, Savin and Thiodan are recommended spray materials for budworms. Remember, spraying an insecticide too close to the bud can result in bud damage. A chemical preparation of homomade bait of Dylax and cornmeal can also be used.

For control, a pinch of bait for each bud should provide control. Be sure to read the label. Refer to Misc. 270-1 for further tobacco insect information.

FOSTER CAST TO PRESENT

FRANKFORT, Ky. — Performances of the award-winning musical "Hello Dolly" will be presented by cast members of "The Stephen Foster Story" on three consecutive Monday evenings, Aug. 7, 14, and 21 in Talbot Amphitheatre My Old Kentucky Home State Park, Bardonia, at 8:30.

Miss Dawn Mashy, Louisville, will play Dolly. She received her Bachelor's and Master's degrees from Westminster Choir College in Princeton, New Jersey, and has additional training at Indiana University and Hochschule fur Musik in Hamburg, Germany.

She has performed with the Indiana University Opera Theatre, Louisville Bach Society, and Kentucky Opera Association.

Mike Cheak, Shelbyville, is cast in the male lead as Horace Vandergelder. Cheak, a Western Kentucky University drama major, has appeared in and directed college productions. He was a member of the Shawnee Professional Summer Stock Company, Bloomfield, Indiana, last summer.

Reservations for "Hello Dolly" may be obtained by calling (502) 348-5971 or writing to P.O. Box D, Bardonia, Ky. 40004. Tickets cost \$4 and \$3.

YOUNG CRAFTERS

By Lois Campbell
State News Bureau

FRANKFORT, Ky. — The past decade has witnessed a renewal of the mania for things made by hand, for folk art and traditional crafts.

The pursuit of a handcrafted, independent, committed work to produce ethically viable objects, has become a worldwide movement.

Witness the success of two young leather craftsmen—Brenda and Edgar Hume, members of the Kentucky Guild of Artists and Craftsmen.

After proving their success at Murray State University and in a Western Kentucky tourist village, the Humes opened shop in Lexington near the University of Kentucky last December. Since then, business at the 343 S. Limestone Leather Shop has boomed.

"People seem anxious to buy anything that is made by human hands," Edgar explains. "And the husband and wife team, with the help of three full-time employees, can create just about anything you want in leather."

Custom-made sandals, garments, belts, handbags, leather sculpture—all express Brenda and Edgar's individuality and concern for quality as concretely as the curved H trademark that adorns every product.

"We are attempting to create well-designed, well-crafted and long lasting items," Brenda said. All items are guaranteed and the Humes do leather repairs as well.

One of their specialties is orthopedic sandals but they hope to soon expand into shoes and boots. For making belts they use English and French leathers and design many of the brass and pewter buckles in their collection which Edgar claims is the largest in Kentucky.

Feeling that the need for beautiful handmade items arises out of the same consciousness that impels the user to go to a museum to look at painting and sculpture, they regard themselves as artists as much as craftsmen.

So does the Kentucky Arts Commission. At the Berea Artists and Craftsmen Fair last spring, the commission purchased the Humes' handcrafted leather sculpture for its traveling exhibit. The couple has exhibited their leather sculpture in a

number of other craft shows and eventually hope to exhibit in art museums.

The Humes are at ease in their mill slab paneled shop with its trim of the century tools.

Standing before a 1902 treadle sewing machine, Hume explains, "It's not only what we produce but the life that is important. It is relaxed. We don't feel we have to make it big."

"We avoid grinding ton many sandals, or just one type of thing," Brenda insets. Inevitably, the craftsman is also a small business man and the Humes admit they've had

to learn a lot through experience.

But with an ancient 19th century cash register coughing up sales, these young Kentuckians, like their fellow craftsmen, are making a statement to an affluent but increasingly impersonal society—there is fulfillment in creating—beautifully crafted items by hand, whether it be in leather, metal, wood, glass or clay.

CRIME—The Kentucky Crime Commission said the state will spend \$9.6 million over the next 12 months for immediate and effective measures to combat crimes in both rural and high-crime urban areas.

THIS NEWSPAPER TO PUBLISH

PICTURES WILL BE TAKEN IN COLOR

PICTURES OF LOCAL CHILDREN (RURAL INCLUDED)

FREE NO OBLIGATION!

TAKEN IN NATURAL COLOR

TAKEN IN LIVING COLOR

HERE IS THE TIME AND THE PLACE
Thursday, Aug. 17
at Mt. Villa Motel
HOURS: 11 - 7 P.M.
Call - 256-4554

SEE NEWS STORY FOR ADDITIONAL DETAILS.

Join the **END-OF-SUMMER SAVINGS SPREE!**

AT YOUR **REXALL** DRUG STORE

REXALL MOUTHWASH & GARGLE

Light & Lively **SPRING GREEN**
Cool, Refreshing **BLUE ORAL**
Spicy, Cinnamon-Flavored **KLENZO**
Bright & Briskly **MI-31**

99c

REXALL FIRST AID SPRAY

Stops pain... speeds healing!
3 oz. **1.39**

REXALL QUIK PADS

Sterile gauze bandages for first aid!
2" x 6" 12's **41c**

Maggard Drug Store

NORGE by FEDDERS

UL listed

20 LB. WASHER & DRYER

SAVE even more by buying a matched pair.

We have a complete line of Appliances,
Refrigerators, Stoves, Air Conditioners, etc.

JIM & JACK'S
Hardware & Appliance, Inc.

WILLIAMS ST. PHONE 256-4363

AUCTION
SATURDAY, AUG. 19
1:00 P.M.
PERSONAL PROPERTY
of the late Mr. Fred Baker

Located on Main St. in Mt. Vernon, Ky.

The personal property consists of the following: 1956 2 ton Chevrolet with Heavy Duty Holmeswrecker, 1956 Chevrolet 2 door hardtop, small house trailer 8x20, modern upright coca cola machine, safe from the old Mt. Vernon bank, floorsafe, Remington adding machine, Underwood typewriter (manual), 15th, counter, 2 center top showcases, small cash register, antique 10 drawer national cash register with crank, 2 oil tanks and pumps, round showcase (very unusual), odd chairs, 1 ice cream chair, 1 ladder back chair, odd counters, bolts and nuts of every description, chrome of all sizes and description, 20" truck wheels, new fenders for older cars, radiators, car and truck axles, brake drums, springs, pistons, fan belts, and just about any part for older model cars plus many more miscellaneous items.

Keep in mind that Mr. Baker was the Chevrolet dealer here for many years until he closed a few years ago. Should you need parts or accessories for older car don't miss this sale.

OWNER - MRS. ETHEL BAKER **ATTORNEYS - ALLEN, CLONTZ & COX**

FOR ADDITIONAL INFORMATION CONTACT:

COL. SAM FORD
AUCTIONEER - REALTOR

COL. SAM FORD Phone 256-4545 office
REALTOR - AUCTIONEER 758-2875 residence

Col. Danny Ford
Auctioneer

Mount Vernon Signal

MOUNT VERNON, KENTUCKY 40456

VOLUME 83 - NUMBER 48

THURSDAY, AUGUST 10, 1972

3,418 Receive

Food Stamps In June

During June, 3,418 low-income persons in Rockcastle County received food stamps valued at \$97,595, the Department of Economic Security announced today.

This record compares to 3,504 low-income persons who received food stamps valued at \$90,078 during May, 1972.

In Kentucky, the food stamp program is administered jointly by the Department of Economic Security's Bureau of Public Assistance and the Food and Nutrition Service of the U.S. Department of Agriculture.

Commissioner Huecker pointed out that the program attempts to safeguard the health of the nation's low-income families through better nutrition.

Needy families in the program exchange an amount of their own money, usually spent on food, to purchase coupons. In addition, families receive bonus coupons to boost their buying power.

During June, a total of 299,600 low-income Kentuckians received food stamps valued at \$7,890,767. In June 1971, 282,628 persons received food stamps with a total coupon value of \$6,991,812.

At present, 77 counties are participating in the department's food stamp program. This figure will increase to 88 by December.

REALLY NOT HERE

As you read? This issue, you can, we hope, realize that this is our vacation issue and while you are looking this over, we are taking it easy. Anyway, we will be home next week and hope to catch up on all the local news happening here.

Kentucky camping is . . .

MULTIFUN



On the beaches, on the trails, on the water, you can bank in good times by taking part in the many activities surrounding most Kentucky State Park campgrounds. If you don't have a boat you can rent one. If boating is not your bag, rent a horse for a trail ride. Sit in the sun, sleep in the shade, or whatever today's camper can find pleasure for his entire family in Kentucky.



One of the highlights of the highly praised production of Paul Green's historical drama "Wilderness Road" is the extensive use of music of the Civil War period. The group of Confederate soldiers, led by Dugg McDonough as Davie Freeman, await the morning and the coming battle as they sing one of the Confederate songs included in the production. Soon they are answered by a similar song from the Union troops awaiting the battle while around their campfire on another hillside. The musical drama of the Civil War is now playing nightly in Berea, Kentucky. Performances are 8:30 p.m., Tuesday through Sunday of each week. Information and tickets may be obtained by writing "Wilderness Road," CPO Box 2355, Berea, Kentucky 40403 or by telephoning (606) 986-9403.



There will soon be another new motel in the Rendro Valley area. The above photo is of Gregory's Motel presently under construction one mile north of Mt. Vernon on U.S. 25 at the Rendro Valley Interchange. The motel is located on a twenty-acre site and is owned by Mr. and Mrs. David Gregory, who presently operate a motel on Richmond Street in Mt. Vernon. The two-story complex will consist of 25 units and a manager's apartment and is being constructed by McGregor and Neal of Lexington. Completion date is expected to be mid-September. An unusual feature of the motel will be the heated drive leading up to it from U.S. 25.

Berea College Info & Tourist Service Accommodates Visitors

"Is this Rendro Valley?" This is just one of the many questions which must be answered by the Berea College Information and Tourist Service.

Miss Maureen Faulkner, coordinator of the Service, said, "The misconceptions held by people who come here are amazing." She and the guides spend a good deal of time explaining, so there is no wax museum in Berea that we know

of, yes, the tour and literature are free; no, we are not a vocational school.

"Before I became a tour guide, I didn't know any more about John C. Fee and Berea's history than what I'd read on the plaque beside the red light," said Jo Howell, a guide. Jo, a sophomore nursing student from Burnsville, N.C., was "just looking for a job" when she applied for this position.

Now she exudes excitement about what she is doing there. The Information and Tourist Service was established to accommodate the many visitors which "Wilderness Road" brought to the town and to the campus this summer. In preparation for their jobs as walking information centers, student guides were given a week-long training program which included learning not only about one college and its heritage, but also about the surrounding community—location of motels, picnic sites, and points of interest. The guides visited White Hall, home of Cassius Clay, and of course, viewed "Wilderness Road."

The staff of the Information Service are equipped to talk easily about the college curriculum, the crafts, or the local plant life. They have much more than just information, they have a sense of history, and an appreciation for Berea's ideals through study of the fervor and zeal of Clay and Fee and Rogers, founders of the college.

The prevailing positive attitude of the service is contagious. Beyond the pleasant atmosphere expected of a tour service, students have a driving loyalty and an urgency to let people know about their school. "Every student should have this experience, so they'd know

what the college is all about. There is so much we take for granted," said Fred Baker, a junior English major from Covington, Virginia.

During the school year, visitors to the campus have been given a choice of taking an academic tour or a crafts tour. This summer, the two have been combined so that integrated views of the college is presented. Miss Faulkner explained, "We are a fine college and I think people should know that we do more here than just make brooms, as proud as I am of our brooms."

The tours have a personal touch. Guide Iris Cawood, a senior, knows the names of all the trees and the history of Phelps Stokes Chapel and does a good job of presenting the data. But something special happens between her and the people she guides when she talks casually to her family in Bluff City, Tennessee, or alludes to her forthcoming wedding.

The summer has been a strengthening process for the guides. When a visiting psychologist questions the sincerity of guide Willie Davis of Talladega, Alabama, Willie thinks about it, reexamines his values, and maybe he believes more strongly he is a part of a great institution.

The Information Service handles over a hundred visitors a day. Some visitors merely want to know where to eat or how to get to a camp site; others are more demanding, expecting guides to remember a building torn down in 1910, or asking Miss Faulkner to rent them a couple of horses.

"It's really frantic to find a beautician on Saturday afternoon but we've done it," said Jo Howell. The guides' awareness of the community has been whetted, because they need to be able to tell people about the facilities offered by the town.

Miss Faulkner urges the townspeople to visit the service and share the wealth of information. A visit would certainly be worthwhile and would be a pleasant and enriching way to spend an afternoon entertaining out-of-town guests.

The service, located in Anna Smith Dormitory on Prospect Street next to the Boone Tavern parking lot, is open daily from 9 a.m. to 8 p.m., except Sundays when it is open 12 noon to 8 p.m. Eight scheduled tours are given each day. Tours for any number may be arranged by calling 986-8511.

Country Entertainers Headline State Fair

The 1972 Kentucky State Fair Country-Western Spectacular will headline Loretta Lynn, Conway Twitty and Anthony Armstrong Jones.

As a team, Twitty and Miss Lynn have recorded such hits as "We Only Make Believe" and "After the Fire is Gone."

(Cont. to 4)

1972-73 School Budget Is \$1,864,254; Up \$249,776

The general budget of the Rockcastle County School system, recently compiled by the school superintendent's office, estimates that expenditures will be \$1,864,254 for the period from July 1, 1972 through June 30, 1973. This year's budget is up \$249,776 over last year's budget of \$1,614,478.

The largest expenditure in the budget is \$1,155,000 which has been allocated for instruction in the form of salaries for principals, supervisors, regular classroom teachers, clerical staff, etc. Last year's figure was \$1,045,000 which was increased this year because of the pay increase granted teachers.

Set aside for administration - salaries, office supplies, miscellaneous expenses in connection with the operation of the office of the school superintendent - is \$39,000. In this office are the superintendent, secretaries, finance officer and secretary to the board.

Pupil transportation took a \$50,000 jump for the 1972-73 school year up to \$200,000. The increase comes from the fact that Title I has discontinued using funds for transportation and the general fund must absorb the extra cost of transporting students formerly transported with Title I funds. The \$200,000 figure includes salaries of bus drivers and other employees in the transportation system, plus fuel, repair parts, insurance and bus replacement.

Operation of the school plants, including custodial services, utility, cost-charge services, salaries, has been set at \$105,000; while maintenance of the plants and grounds, repair and replacements has been fixed at \$35,000.

Attendance services, made up of salaries of the director

of pupil personnel, school social worker, secretaries and clerical and travel expenses, has been allotted \$13,694. Fixed charges will amount to \$41,000. This includes social security payments, insurance, fidelity bonds, employee insurance and rentals.

Capital outlay for the year will amount to \$85,000 and debt service (on the new school and Roundstone School) will amount to \$199,560.

Grand total of all estimated receipts for the 1972-73 school year coincides with the expenditure budget of \$1,864,254 with revenue expected from the following sources:

Balance on hand: \$204,010.50; general taxes, \$133,031.75; tax receipts from public service companies, \$30,641.56; bank shares, \$3,363.81; poll tax, \$4,800.00. These receipts from local sources will be reduced by \$12,000.00 by the following deductions: cost of tax collections, \$7,500.00; exonerations, \$500; delinquencies, \$400 and discounts, \$3,600.

The board also expects to receive \$152.38 from previous tax delinquencies; \$1,500 from rental of school facilities and \$1,000 from all other revenue receipts.

Receipts from sources other than local will amount to (estimated) \$1,502,254. This breaks down as follows: foundation program, \$1,453,754; other state aid, \$3,500; public law 854, \$1,400; public law 89-10, \$5,000; other federal aid through state, \$4,000; public law 874, \$20,000; sale of real property and equipment, \$6,000 and net insurance receipts, \$100.

Kiddie Picture

Is Aug. 17

Thursday, August 17 is the big day set to take Living Color pictures of your little ones. The Signal is having pictures taken of all children, accompanied by their parents or other guardian, to the Mt. Villa Motel between 11 a.m. and 7 p.m. absolutely free of any charge or obligation.

The Signal wants to publish a picture of your child in a photographic feature series of local children entitled "Children of Tomorrow."

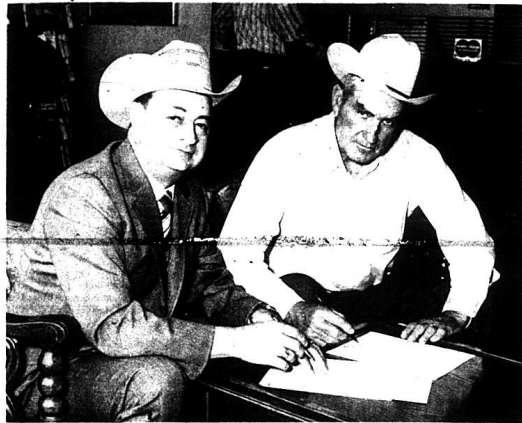
A professional children's photographer will take the pictures in Direct Living Color. We emphasize, therefore, that you dress the children colorfully so as to take full advantage of the beauty of Color photography.

There is no charge or obligation for taking the pictures. Parents don't even have to be a subscriber to the Signal nor even a reader. You do not have to purchase pictures either.

Proofs will be shown in Color and you may obtain Color portraits by arranging direct with the studio representative if you want them. That is entirely up to you! The pictures appearing in the newspaper will be in black and white.

In keeping with the quality feature policy of this newspaper, we want to make this a memorable feature. This means we want all the pictures of local youngsters we can get to run in the paper. Kiddies and parents alike will reap the end of fun and pride as the pictures appear in the paper. Mothers and fathers of children

(Cont. to 2)



J. Hal Smith, president of Entertainment Corporation of America, has signed with Foville Rodeo Company for the production of an IRA Championship Rodeo to be staged at Smith's Rendro Valley, Kentucky August 25 & 26. Shown at the contract signing are Smith and Preston Foville, well-known rodeo producer.



THIS IS MY WORLD -- Becky Blake of St. Albans, W. Va., answers questions of Berea College visitors as she leads a campus tour. Miss Blake's skirt is a product of the Fireside Weaving, a student craft industry.

ROCKCASTLE COUNTY SCHOOLS 1971-72

AGES OF ROCKCASTLE COUNTY SCHOOL EMPLOYEES 1971-72 SCHOOL YEAR	
Joanna Allen	5923.07
Mabel Anglin	5397.95
Marta Barnett	5023.79
Doris Bevis	5090.71
Abbe Bray	5205.67
Ernest Brinegar	4323.40
Charlotte Burdette	5173.00
Elonora Burke	5093.43
Wilma Bussell	5162.18
Margaret Cash	4210.72
Mary N. Cash	5007.65
Yvonda Center	4932.28
Shirley Christian	5060.71
Ona Coffey	2737.92
Ruby Cornelius	5788.20
Juanita Cox	3924.83
Marie Cox	5323.87
Neil Craig	5505.07
Sue Cromer	5444.03
Linda Cummins	4125.32
Frances Dickerson	5315.63
Barbara Dillman	5353.69
Alwanda Falls	5117.19
Geraldine French	5444.03
Sue French	5681.27
Carla Hale	5125.32
Mary B. Hamm	4407.80
Sarah Hamm	5444.03
Bernice Hammond	5287.86
David Hansel	5444.03
Lacy Harris	5444.03
Martha Hill	5367.15
Geraldine Holbrook	5066.81
Harry L. Holland	5364.02
Donald Holt	5442.91
Virginia Holt	5483.39
Linda Houston	4262.36
Hubert Hunt	5791.36
Katharine Hunt	5101.89
Mary A. Hunt	4165.46
Lucille Hysinger	5444.03
Mary J. Hysinger	4560.81
Ruth Jordan	5324.47
Christine Krueger	4824.04
Ruth Lambert	5321.32
Hazel Lindville	4920.50
John D. Love	5209.87
Shirley Martin	5610.36
Edna McGuire	2417.96
Cynthia McNew	5196.43
Eva Mullins	3774.11
Pauline Mullins	4738.35
Charles Napier	3940.81
Reba Noe	4216.44
Barbara Norris	5467.95
Juanita Norris	4695.04
Linda Oetborne	4363.68
Olene Owens	5444.03
Alene Parrett	6244.59
Preston Parrett	5505.07
Bonnie Parsons	5196.43
Jill Parsons	4695.04
Lilma Pike	5095.53
Brenda Powell	4075.56
Caroleene Pybas	5057.36
Barbara Rader	5318.95
Joyce Remer	4165.46
Dolite Roberts	5741.12
Vella Scoggin	5199.75
Debra Scott	4862.51
Kath Singleton	5200.97
Anna Lee Smith	5385.91
Cleda Southard	5100.82
Juanita Stanley	5184.71
Jane Taylor	5465.03
William Wallie	4352.88
Oliver Whitaker	5797.28
John Wilcox	4695.04
Cora Williams	5092.71
Dorinda Williams	4833.40
Linda Williams	5060.71
Alberta Winstead	5096.23
Oneta Witt	5299.20
Yvonne Witt	5444.03
Albert Albright	5335.66
Charles Baker	5618.31
Betty Cain	5138.72
Billy Cameron	4949.25
Ronnie Cash	4863.36
Dorothy Cheatham	5318.95
Kenneth Cornell	5497.03
Jimmy Cox	5004.19
Josephine Dickerson	5315.63
Loretta Dillingham	5315.18
Jean Gearty	3053.16
Betty Glorak	4695.04
Catherine Graves	4941.65
Connie Hamm	3995.56
Johnny Hamn	5390.11
Sue Hamm	3002.24
Richard Harris	5505.07
Robert Hendrickson	5010.79
Alyne Hodges	5289.21
Paul Holbrook	5787.95
Jack Laswell	5970.07
William Lynch, Jr.	4118.80
Judy Martin	3053.16
Diane Masters	5067.38
Scott Masters	5200.87

ANNUAL REPORT - FINANCIAL STATEMENT	
RECEIPTS	
At Balance on hand beginning of year	
Cash and Securities	120,656.87
General Property Tax	384.34
General Property Delinquent Tax	97,001.18
Public Service Complainee Tax	3001.92
Bank Shares Tax	4940.38
Roll Tax	4950.00
Transfer Tuition	7500.00
Earn. from Invest. Sav. Accts. & Cert. of Dep.	7700.00
Rent of School Buildings & Grounds	17.50
Other Rental	3888.70
Other Revenue Receipts	1,182,905.29
Foundation Program Fund	1251.46
Travel	2348.90
Other	9039.74
Public Law 89-10; ESEA, Title II	12,842.48
Other	32,420.00
Total	1,999,214.89

NON-REVENUE RECEIPTS	
SALE OF PROPERTY	
Real Estate	1760.00
Equipment	3396.75
Reimbursement for Transportation	10,058.12
Reimbursement - Other	12,049.80
C. Total Non-Rvenue Receipts	27,264.87
D. Total Receipts (B and C)	1,451,553.95
Transfers - STATE FUNDS	178,560.00
Foundation Program Capital Outlay Fund	2417.22
Other	4388.93
Total	1,638,860.17

OTHER TRANSFERS	
Refunds	946.38
Other	288.00
E. Total Below-the-Line Receipts	5493.16
F. Total of All Receipts (D & E)	2,139,397.37
G. Total All Receipts Plus Balance (A & F)	2,250,337.02

EXPENDITURES	
TRANSFERS - FEDERAL FUNDS THROUGH STATE	
School Food Services	127,016.70
Public Law 89-10; ESEA Title I	368,519.50
Public Law 86-4; Titles III & V-A	5600.29
Other	4388.93
Total	500,525.42

RECAPITULATION AND BANK RECONCILIATION	
Balance at Beginning of Year	\$11,037.65
Total receipts for the year	\$7,139,339.37
Total balance and receipts	\$7,250,377.02
Total disbursed during the year	\$2,046,346.52
Balance at close of year (Book Balance)	\$ 204,010.50
Balance in bank at close of year (Total)	\$ 288,785.46
Checks outstanding at close of year (Total)	\$ 214,774.96
Actual Cash	\$ 54,010.50
Securities	\$ 150,000.00
Actual Balance (Cash) Certificates of Deposit	\$ 204,010.50

The undersigned hereby certifies to the accuracy of the above statement.

/s/ Lloyd G. Shotts, Treasurer
Rockcastle County Board of Education

This is to certify that the balance to the credit of the Rockcastle County Board of Education account on June 30, 1972 was \$428,785.46.

/s/ Jess F. Bullock, Vice President
Official of Depository Bank

Sworn to and subscribed before me this the 24 day of July, 1972

/s/ Virginia C. Machal
Notary Public, State of Kentucky

My commission expires December 4, 1972

TOTAL OF ALL F-40-s	
Total	\$23,118.18

TOTAL OF ALL F-40-s	
Total	\$23,118.18

HOME LINE

By: Cheryl Witt

Plantful Vegetables Featured in August

Shop, Look, and Compare. See what you buy—don't just buy what you want! Look for buys for August include milk and dairy products, turkey, broiler fryers, eggs, peanut butter, fresh potatoes, garden vegetables, green beans, cake applesauce, and flour. Take advantage of their low prices and high food value by planning your August meals around these foods.

Fresh fruits and vegetables area a real treat because they taste good and they are good for you. They have vitamins and minerals needed for your health. Look for good buys. Fresh fruits and vegetables are usually cheaper and best quality when they are in season. When there are large supplies of a certain fruit or vegetable, the price is very reasonable. Look for special notices in the store or in the newspaper.

Shop carefully. Good quality fresh fruits and vegetables look fresh. Don't buy fresh fruits or vegetables that have large bruises, cuts, or spots of decay, even if the price is low. When you trim off the bad part, what you have left may not be enough to be a bargain. Handle fresh fruits and vegetables carefully when you pick them out in the store and when you bring them home from the garden. Someone may have used fresh fruit and vegetables lost by rough handling. In the long run, it might be better.

Buy only what you can use. It doesn't pay to buy more fresh fruits or vegetables than you might use right away or store properly, so they won't spoil. Most fresh fruits and vegetables will keep at cold temperatures for 2 to 5 days. Apples, grapefruit, oranges, lemons, limes, and melons will keep the refrigerator for 1 or 2 weeks. Onions, potatoes, sweet potatoes and turnips will keep for several months at a cool temperature (not in the refrigerator).

Look for signs of quality. You may see U.S. Department of Agriculture grade names on packages of some fresh fruits and vegetables. "U.S. Fancy" or "U.S. No. 1" means these fruits and vegetables should be of good quality.

Most fresh green vegetables keep well and stay crisp if placed in covered containers or plastic bags and then stored in the refrigerator. Green, leafy vegetables quickly wilt and change flavor as water evaporates from tissues. Always sort vegetables before storing. Discard, or use immediately any bruised or soft vegetables. Do not store bruised or soft vegetable in plastic bags. Too much moisture can hasten decay.

For top quality use the following vegetables within 2 to 5 days: Asparagus, broccoli, brussel sprouts, cauliflower, celery, cucumbers, peppers, snap beans, salad greens, mushrooms and okra. Beets, cabbage, carrots, parsnips and radishes should be used within 2 weeks. Store beets, carrots and radishes without tops.

Smart shoppers—take advantage of nutritious fresh fruits and vegetables while they are at their abundance and low prices. Plan ahead to use them in your summer menu. Decide upon menu needs before shopping and then buy only the amount of fresh vegetables you need.

'CHILDREN PHOTOS'

(Cont. From Front)

In the area which this newspaper circulates, please help us and remember the date, Thursday, August 17 at Mt. Villa Middle School and bring your children to be photographed.

If you have not already made an appointment for this community event do not call Nancy Previtt at 256-4554 and avoid the possibility of a long wait.

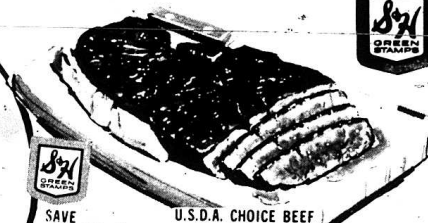


ROUND STEAK

U.S.D.A. CHOICE BEEF

THE FINEST BEEF YOU CAN BUY
SAVE 30¢ LB.

99¢



SIRLOIN STEAK

U.S.D.A. CHOICE BEEF
SAVE 40¢ LB.
\$1.29 LB.

100 S & H Stamps
With \$10.00 to \$19.99
Order

50 S & H Stamps
With \$5.00 to \$9.99
Order

HOME GROWN SALAD
TOMATOES
PKG. OF 13
39¢

BONELESS RUMP ROAST
LIMIT 2 STEAKS
\$1.29 LB.

FRESH LEAN GROUND BEEF
GROUND DAILY
67¢ LB.

THRILL 55¢ ONLY
SAVE 28¢
FOOD FAIR STORE WITH THIS COUPON
AUG. 16 WITHOUT COUPON 83¢
LIMIT 1 COUPON PER PURCHASE

COUPON WORTH 50 S & H Green Stamps
With the purchase of 7 Pkg. or More Fresh Cube Steaks
MV Coupon Expires 8/16/72

COUPON WORTH 50 S & H Green Stamps
With the purchase of 7 Pkg. or More Fresh Cube Steaks
MV Coupon Expires 8/16/72

COUPON WORTH 50 S & H Green Stamps
With the purchase of 10 Lb. or More Any Potatoes
MV Coupon Expires 8/16/72

COUPON WORTH 50 S & H Green Stamps
With the purchase of 1 Lb. Bag of Oranges
MV Coupon Expires 8/16/72

COUPON WORTH 50 S & H Green Stamps
With the purchase of 7 Pkg. or More Any Grades
MV Coupon Expires 8/16/72

COUPON WORTH 50 S & H Green Stamps
With the purchase of 7 Pkg. or More Sandwich Meats
MV Coupon Expires 8/16/72

COUPON WORTH 50 S & H Green Stamps
With the purchase of 7 or More 1 Pound Boxes of Keeble Cookies
MV Coupon Expires 8/16/72

COUPON WORTH 50 S & H Green Stamps
With the purchase of 11.00 or More Health & Beauty Aids
MV Coupon Expires 8/16/72

COUPON WORTH 50 S & H Green Stamps
With the purchase of 1 or More Bars of Ladies Party Hats or Ties
MV Coupon Expires 8/16/72



CRACKERS
2 BOXES LB. **59¢**

MAXWELL HOUSE COFFEE
SAVE 70¢
\$1.69

BIG 14 OZ. JAR
SAVE 60¢

WITH COUPON BELOW & 7th OR MORE ORDER
save 60¢ WITH THIS COUPON WHEN YOU BUY A 14 OZ. JAR OF INSTANT
MAXWELL HOUSE COFFEE AT FOOD FAIR
14 OZ. JAR ONLY \$1.69 WITH COUPON
ONE COUPON PER FAMILY • OFFER EXPIRES 8/16/72

SHORTENING
SAVE 30¢
3 LB. CAN
59¢

Martha White Macaroni & Cheese Dinners
6 for **\$1.00**

DEL MONTE TOMATO JUICE
3 CANS **\$1.00**

FOOD FAIR POTATO CHIPS
TWIN BAG **39¢**
SAVE 20¢

MEADOW GOLD ICE MILK
1/2 GAL. **47¢**
SAVE 22¢

BANANAS
GOLDEN RIPE
3 FOR **\$1.00**
LIMIT (3) SAVE 36¢

TREMENDOUS VALUE!
GIANT SIZE (3 LB. 10 OZ.) Gain
69¢ (1)
1 YOU PAY 69¢ for one box of Giant Size Gain
2 YOU GET 45¢ refunded by mail. (See full details in the Refund Certificate below.)
3 NET COST: 14¢ plus postage and tax where applicable.

NU SOFT FABRIC SOFTNER
FOOD FAIR COUPON
1/2 GAL. REG. 1.19
SAVE 50¢
\$1.09
Coupon Expires 8/16/72

NIAGARA SPRAY STARCH
FOOD FAIR COUPON
22 OZ. SIZE REG. 69¢
SAVE 20¢
49¢
WITH THIS COUPON
Coupon Expires Aug. 16

BANQUET TV DINNERS
EXCEPT BEEF & HAM
3 FOR **\$1.00**
LIMIT (3) SAVE 36¢

CHECKER DRINKS
6 FOR **59¢**

"FINANCIAL STATEMENT"
(Cont. From 2)

Virgil Mullins, Bd. Meeting & Exp.	12.96
Willie Taylor, Bd. Meeting & Exp.	11.60
Willie Taylor, Bd. Meeting & Exp.	11.60
Chas. B. Parsons, Travel Exp.	84.29
Nancy L. Williams, Travel Exp.	19.44
Melvin D. Hamm, Travel Exp.	50.88
Russell Parsons, Travel Exp.	47.03
Ted Ramsey, Travel Exp.	39.65
June Stevens, Travel Exp.	62.61
Livington Water Works, Acct.	48.15
Mt. Vernon Water Works, Acct.	82.35
Jackson Co. RECC, Acct.	102.20
Dr. Arville Wheeler, In-Service	50.00
Lena Rucker, Contractual Cleaning	49.00
Bill Brock, Contractual Labor	25.00
Ed Reynolds, Mileage	38.24
Pauline Mullins, Contractual Auditing	104.73
Mitchell Gilbert, Mowing School Yard	5.00
Marvin E. Owens, Contractual Labor	74.00
Billy Kirby, Sheriff, Over Payment of Taxes	22.27
Mt. Vernon Signal, Acct.	8.80
Mt. Vernon Signal, Financial Statement	50.00
Anderson Office Supply Co., Inc., Acct.	25.65
Institutional Distributors, Inc., Acct.	52.80
London Laundry, Acct.	14.40
Thompson's San. Supp. House, Inc., Acct.	82.79
Central Sch. Supply Co., Acct.	162.22
The Master Teacher, Acct.	18.36
The Kentucky History Co., Acct.	54.60
Mall-A-Music Co., Acct.	24.00
Dalley's Electric, Acct.	96.80
Appliance Service Center, Acct.	25.83
Armstrong & Elec. Co., Acct.	18.76
Cumberland Elec. Supp. Co., Inc., Acct.	3.18
Nicely & Lovell, Acct.	50.44
Broadhead Hardware Co., Acct.	10.28
C. C. Cox, Acct.	8.80
S. T. Proctor Lbr. Co., Acct.	202.85
Jim & Jack's Htve & App. Store, Acct.	26.99
Bryan Brothers, Acct.	6.50
Billy B. Russell, Bus Delivery Exp.	25.00
Tenoco, Inc., Acct.	21.99
Gulf Oil Corp., Acct.	21.29
Standard Oil Co., Acct.	185.00
Southern Tire Distributors, Acct.	17.45
Livington Motor Co., Acct.	2.65
Gertrude Hilton, Acct.	396.99
Mt. Vernon Automotive, Inc., Acct.	15.57
Auto-Electric, Inc., Acct.	30.00
Rockcastle Wrecking Co., Acct.	44.23
CENTRAL Body Service, Inc., Acct.	14.00
Rental Uniform Service, Inc., Acct.	28.95
Bob Mullins Ford, Inc., Acct.	317.47
Ridgeway Distributors, Acct.	10.50
Wayne Sales, Inc., Acct.	93.90
Truck Parts & Equip., Inc., Acct.	9.76
Western Auto. Assoc. Store, Acct.	155.45
International Harvester Co., Acct.	26.05
Rockcastle Auto Parts, Acct.	42.23
Postmaster, Mt. Vernon P.O., Postage Stamps	24.00
Jerry's Tire Center, Acct.	900.00
Bob Mullins Ford, Acct.	80.00
Baty Baker, Contract Hauling	100.00
Eddie Ballinger, Contract Hauling	100.00
Travis Cope, Contract Hauling	100.00
Willie Cope, Contract Hauling	120.00
Barbara Deborah, Contract Hauling	30.00
Leslie Durham, Contract Hauling	37.50
Delbert Galtiff, Contract Hauling	60.00
Robert Hubbard, Contract Hauling	215.00
Sam Mullins, Contract Hauling	165.00
John Owens, Contract Hauling	140.00
Opal Robinson, Contract Hauling	155.00
Willie Vanzant, Contract Hauling	115.00
Title I ESEA-89-10, Transfer of Funds	19,172.00
Ky. Utilities Co., Acct.	403.32
J.C. Newland, Rent	150.00
State Treas. (Res. Tal.) III IS 21.01 21.02 21.03 21.04 21.05 21.06 21.07 21.08 21.09 21.10 21.11 21.12 21.13 21.14 21.15 21.16 21.17 21.18 21.19 21.20 21.21 21.22 21.23 21.24 21.25 21.26 21.27 21.28 21.29 21.30 21.31 21.32 21.33 21.34 21.35 21.36 21.37 21.38 21.39 21.40 21.41 21.42 21.43 21.44 21.45 21.46 21.47 21.48 21.49 21.50 21.51 21.52 21.53 21.54 21.55 21.56 21.57 21.58 21.59 21.60 21.61 21.62 21.63 21.64 21.65 21.66 21.67 21.68 21.69 21.70 21.71 21.72 21.73 21.74 21.75 21.76 21.77 21.78 21.79 21.80 21.81 21.82 21.83 21.84 21.85 21.86 21.87 21.88 21.89 21.90 21.91 21.92 21.93 21.94 21.95 21.96 21.97 21.98 21.99 22.00 22.01 22.02 22.03 22.04 22.05 22.06 22.07 22.08 22.09 22.10 22.11 22.12 22.13 22.14 22.15 22.16 22.17 22.18 22.19 22.20 22.21 22.22 22.23 22.24 22.25 22.26 22.27 22.28 22.29 22.30 22.31 22.32 22.33 22.34 22.35 22.36 22.37 22.38 22.39 22.40 22.41 22.42 22.43 22.44 22.45 22.46 22.47 22.48 22.49 22.50 22.51 22.52 22.53 22.54 22.55 22.56 22.57 22.58 22.59 22.60 22.61 22.62 22.63 22.64 22.65 22.66 22.67 22.68 22.69 22.70 22.71 22.72 22.73 22.74 22.75 22.76 22.77 22.78 22.79 22.80 22.81 22.82 22.83 22.84 22.85 22.86 22.87 22.88 22.89 22.90 22.91 22.92 22.93 22.94 22.95 22.96 22.97 22.98 22.99 23.00 23.01 23.02 23.03 23.04 23.05 23.06 23.07 23.08 23.09 23.10 23.11 23.12 23.13 23.14 23.15 23.16 23.17 23.18 23.19 23.20 23.21 23.22 23.23 23.24 23.25 23.26 23.27 23.28 23.29 23.30 23.31 23.32 23.33 23.34 23.35 23.36 23.37 23.38 23.39 23.40 23.41 23.42 23.43 23.44 23.45 23.46 23.47 23.48 23.49 23.50 23.51 23.52 23.53 23.54 23.55 23.56 23.57 23.58 23.59 23.60 23.61 23.62 23.63 23.64 23.65 23.66 23.67 23.68 23.69 23.70 23.71 23.72 23.73 23.74 23.75 23.76 23.77 23.78 23.79 23.80 23.81 23.82 23.83 23.84 23.85 23.86 23.87 23.88 23.89 23.90 23.91 23.92 23.93 23.94 23.95 23.96 23.97 23.98 23.99 24.00 24.01 24.02 24.03 24.04 24.05 24.06 24.07 24.08 24.09 24.10 24.11 24.12 24.13 24.14 24.15 24.16 24.17 24.18 24.19 24.20 24.21 24.22 24.23 24.24 24.25 24.26 24.27 24.28 24.29 24.30 24.31 24.32 24.33 24.34 24.35 24.36 24.37 24.38 24.39 24.40 24.41 24.42 24.43 24.44 24.45 24.46 24.47 24.48 24.49 24.50 24.51 24.52 24.53 24.54 24.55 24.56 24.57 24.58 24.59 24.60 24.61 24.62 24.63 24.64 24.65 24.66 24.67 24.68 24.69 24.70 24.71 24.72 24.73 24.74 24.75 24.76 24.77 24.78 24.79 24.80 24.81 24.82 24.83 24.84 24.85 24.86 24.87 24.88 24.89 24.90 24.91 24.92 24.93 24.94 24.95 24.96 24.97 24.98 24.99 25.00	5,547.44
Social Sec. Rev. Fund, III 225.01 513 512 513 512 71.01 71.02 852	1,613.16
Ky State Treas. (Co. Res.) III 225.01 513 512 71.01 71.02 852	469.12
State Treas. (St. Tax) III IS 21.01 21.02 21.03 21.04 21.05 21.06 21.07 21.08 21.09 21.10 21.11 21.12 21.13 21.14 21.15 21.16 21.17 21.18 21.19 21.20 21.21 21.22 21.23 21.24 21.25 21.26 21.27 21.28 21.29 21.30 21.31 21.32 21.33 21.34 21.35 21.36 21.37 21.38 21.39 21.40 21.41 21.42 21.43 21.44 21.45 21.46 21.47 21.48 21.49 21.50 21.51 21.52 21.53 21.54 21.55 21.56 21.57 21.58 21.59 21.60 21.61 21.62 21.63 21.64 21.65 21.66 21.67 21.68 21.69 21.70 21.71 21.72 21.73 21.74 21.75 21.76 21.77 21.78 21.79 21.80 21.81 21.82 21.83 21.84 21.85 21.86 21.87 21.88 21.89 21.90 21.91 21.92 21.93 21.94 21.95 21.96 21.97 21.98 21.99 22.00 22.01 22.02 22.03 22.04 22.05 22.06 22.07 22.08 22.09 22.10 22.11 22.12 22.13 22.14 22.15 22.16 22.17 22.18 22.19 22.20 22.21 22.22 22.23 22.24 22.25 22.26 22.27 22.28 22.29 22.30 22.31 22.32 22.33 22.34 22.35 22.36 22.37 22.38 22.39 22.40 22.41 22.42 22.43 22.44 22.45 22.46 22.47 22.48 22.49 22.50 22.51 22.52 22.53 22.54 22.55 22.56 22.57 22.58 22.59 22.60 22.61 22.62 22.63 22.64 22.65 22.66 22.67 22.68 22.69 22.70 22.71 22.72 22.73 22.74 22.75 22.76 22.77 22.78 22.79 22.80 22.81 22.82 22.83 22.84 22.85 22.86 22.87 22.88 22.89 22.90 22.91 22.92 22.93 22.94 22.95 22.96 22.97 22.98 22.99 23.00 23.01 23.02 23.03 23.04 23.05 23.06 23.07 23.08 23.09 23.10 23.11 23.12 23.13 23.14 23.15 23.16 23.17 23.18 23.19 23.20 23.21 23.22 23.23 23.24 23.25 23.26 23.27 23.28 23.29 23.30 23.31 23.32 23.33 23.34 23.35 23.36 23.37 23.38 23.39 23.40 23.41 23.42 23.43 23.44 23.45 23.46 23.47 23.48 23.49 23.50 23.51 23.52 23.53 23.54 23.55 23.56 23.57 23.58 23.59 23.60 23.61 23.62 23.63 23.64 23.65 23.66 23.67 23.68 23.69 23.70 23.71 23.72 23.73 23.74 23.75 23.76 23.77 23.78 23.79 23.80 23.81 23.82 23.83 23.84 23.85 23.86 23.87 23.88 23.89 23.90 23.91 23.92 23.93 23.94 23.95 23.96 23.97 23.98 23.99 24.00 24.01 24.02 24.03 24.04 24.05 24.06 24.07 24.08 24.09 24.10 24.11 24.12 24.13 24.14 24.15 24.16 24.17 24.18 24.19 24.20 24.21 24.22 24.23 24.24 24.25 24.26 24.27 24.28 24.29 24.30 24.31 24.32 24.33 24.34 24.35 24.36 24.37 24.38 24.39 24.40 24.41 24.42 24.43 24.44 24.45 24.46 24.47 24.48 24.49 24.50 24.51 24.52 24.53 24.54 24.55 24.56 24.57 24.58 24.59 24.60 24.61 24.62 24.63 24.64 24.65 24.66 24.67 24.68 24.69 24.70 24.71 24.72 24.73 24.74 24.75 24.76 24.77 24.78 24.79 24.80 24.81 24.82 24.83 24.84 24.85 24.86 24.87 24.88 24.89 24.90 24.91 24.92 24.93 24.94 24.95 24.96 24.97 24.98 24.99 25.00	1,733.36
Federal Reserve Bank of Cleveland (Fed. Tax) III IS 21.01 21.02 21.03 21.04 21.05 21.06 21.07 21.08 21.09 21.10 21.11 21.12 21.13 21.14 21.15 21.16 21.17 21.18 21.19 21.20 21.21 21.22 21.23 21.24 21.25 21.26 21.27 21.28 21.29 21.30 21.31 21.32 21.33 21.34 21.35 21.36 21.37 21.38 21.39 21.40 21.41 21.42 21.43 21.44 21.45 21.46 21.47 21.48 21.49 21.50 21.51 21.52 21.53 21.54 21.55 21.56 21.57 21.58 21.59 21.60 21.61 21.62 21.63 21.64 21.65 21.66 21.67 21.68 21.69 21.70 21.71 21.72 21.73 21.74 21.75 21.76 21.77 21.78 21.79 21.80 21.81 21.82 21.83 21.84 21.85 21.86 21.87 21.88 21.89 21.90 21.91 21.92 21.93 21.94 21.95 21.96 21.97 21.98 21.99 22.00 22.01 22.02 22.03 22.04 22.05 22.06 22.07 22.08 22.09 22.10 22.11 22.12 22.13 22.14 22.15 22.16 22.17 22.18 22.19 22.20 22.21 22.22 22.23 22.24 22.25 22.26 22.27 22.28 22.29 22.30 22.31 22.32 22.33 22.34 22.35 22.36 22.37 22.38 22.39 22.40 22.41 22.42 22.43 22.44 22.45 22.46 22.47 22.48 22.49 22.50 22.51 22.52 22.53 22.54 22.55 22.56 22.57 22.58 22.59 22.60 22.61 22.62 22.63 22.64 22.65 22.66 22.67 22.68 22.69 22.70 22.71 22.72 22.73 22.74 22.75 22.76 22.77 22.78 22.79 22.80 22.81 22.82 22.83 22.84 22.85 22.86 22.87 22.88 22.89 22.90 22.91 22.92 22.93 22.94 22.95 22.96 22.97 22.98 22.99 23.00 23.01 23.02 23.03 23.04 23.05 23.06 23.07 23.08 23.09 23.10 23.11 23.12 23.13 23.14 23.15 23.16 23.17 23.18 23.19 23.20 23.21 23.22 23.23 23.24 23.25 23.26 23.27 23.28 23.29 23.30 23.31 23.32 23.33 23.34 23.35 23.36 23.37 23.38 23.39 23.40 23.41 23.42 23.43 23.44 23.45 23.46 23.47 23.48 23.49 23.50 23.51 23.52 23.53 23.54 23.55 23.56 23.57 23.58 23.59 23.60 23.61 23.62 23.63 23.64 23.65 23.66 23.67 23.68 23.69 23.70 23.71 23.72 23.73 23.74 23.75 23.76 23.77 23.78 23.79 23.80 23.81 23.82 23.83 23.84 23.85 23.86 23.87 23.88 23.89 23.90 23.91 23.92 23.93 23.94 23.95 23.96 23.97 23.98 23.99 24.00 24.01 24.02 24.03 24.04 24.05 24.06 24.07 24.08 24.09 24.10 24.11 24.12 24.13 24.14 24.15 24.16 24.17 24.18 24.19 24.20 24.21 24.22 24.23 24.24 24.25 24.26 24.27 24.28 24.29 24.30 24.31 24.32 24.33 24.34 24.35 24.36 24.37 24.38 24.39 24.40 24.41 24.42 24.43 24.44 24.45 24.46 24.47 24.48 24.49 24.50 24.51 24.52 24.53 24.54 24.55 24.56 24.57 24.58 24.59 24.60 24.61 24.62 24.63 24.64 24.65 24.66 24.67 24.68 24.69 24.70 24.71 24.72 24.73 24.74 24.75 24.76 24.77 24.78 24.79 24.80 24.81 24.82 24.83 24.84 24.85 24.86 24.87 24.88 24.89 24.90 24.91 24.92 24.93 24.94 24.95 24.96 24.97 24.98 24.99 25.00	9,972.20
TOTAL OF ALL F-40's	\$ 7,202.60

OCTOBER	
Title I ESEA-89-10, Transfer of Funds	10,899.00
Kenneth Adams, Bd. Meeting & Exp.	11.28
LeRoy Burdette, Bd. Meeting & Exp.	12.96
Virgil Mullins, Bd. Meeting & Exp.	11.60
Willie Taylor, Bd. Meeting & Exp.	11.60
Chas. B. Parsons, Travel Exp.	51.60
Ed Reynolds, Mileage	54.84
Nancy L. Williams, Travel Exp.	19.44
Melvin D. Hamm, Travel Exp.	51.28
Russell Parsons, Travel Exp.	18.17
Ted Ramsey, Travel Exp.	39.64
Baty Baker, Travel Exp.	31.51
Loretta Dillingham, Travel Exp.	24.70
Ed Reynolds, Travel Exp.	34.48
Ky. Utilities Co., Acct.	101.16
Brohead Municipal Water Works, Acct.	326.89
Livington Water Works, Acct.	109.55
Mt. Vernon Water Works, Acct.	130.79
Gulf Oil Corp., Acct.	487.89
Auto-Electric, Inc., Acct.	1,092.07
Atlantic Richfield Co., Acct.	33.41
Atlantic Richfield Co., Acct.	38.06
Atlantic Richfield Co., Acct.	303.75
Standard Oil Co., Acct.	164.72
Standard Oil Co., Acct.	176.37
Jerry's Tire Center, Acct.	452.48
Southern Tire & Retreading, Inc., Acct.	246.00
Through Motor Express, Acct.	9.14
Mt. Vernon Automotive, Inc., Acct.	233.13
Auto-Electric, Inc., Acct.	127.87
Rental Uniform Service, Inc., Acct.	28.55
Wayne Sales, Inc., Acct.	82.05
International Harvester Co., Acct.	159.30
Rockcastle Wrecking Co., Acct.	5.00
Cumberland Welders Supp. Co., Acct.	6.96
Bob Mullins Ford, Inc., Acct.	123.00
P.T. Brake Lining Co., Acct.	62.17
London Laundry, Acct.	42.75
Mattins Refrigeration, Acct.	123.00
Howard's Refrigeration Serv. Acct.	35.00
Lansford Plumbing, Acct.	19.20
Appliance Service Center, Acct.	19.20
Rockcastle Co., Inc., Acct.	2.50
Cumberland Elec. Supp. Co., Inc., Acct.	49.78
Rockcastle TV Service, Acct.	7.25
Jim & Jack's Htve & App. Store, Acct.	14.31
Billy Adams, Driver Training	18.50
Beulah Durham, Driver Training	18.50
Lawrence Fortoyca, P.H.A. Job	16.00
Bennett Mullins, Flying Trojans Sch. Yard	10.00
MASA P.L. 874 Consultant Fund, Fee	96.82

Bennett's Grocery, Acct.	36.52
3M Business Products Sales, Inc., Acct.	83.80
Brohead School, Reimb.	1,808.98
Hansen's S & I, Acct.	2.02
Kenneth Cash, Reimb. Supplies	17.32
Virgilia Holt, Reimb. Supplies	30.00
Central School Supply Co., Acct.	8.95
R.R. Bowker Co., Acct.	8.95
The Cincinnati Co., Inc., Acct.	83.42
Joseph's Catalog Card Corp., Acct.	30.00
Bro-Dart, Inc., Acct.	233.57
Ingram Book Co., Acct.	31.89
Specialized Serv. & Supp. Co., Acct.	34.11
Jackson Co. RECC, Acct.	149.72
School Service Co., Acct.	7,528.85
School Service Co., Acct.	651.60
School Service Co., Acct.	760.20
School Service Co., Acct.	760.20
School Service Co., Acct.	760.20
Basic Adult Education, Transfer of Funds	212.71
The Bank of Mt. Vernon, Certificate of Deposit (100,000.00)	139.34
Jackson Co. RECC, Acct.	80.00
Baty Baker, Trans.	70.00
Eddie Ballinger, Trans.	100.00
Travis Cope, Trans.	120.00
Willie Cope, Trans.	60.00
Barbara Deborah, Trans.	65.00
Delbert Galtiff, Trans.	215.00
Robert Hubbard, Trans.	185.00
Sam Mullins, Trans.	140.00
Letter Owens, Trans.	155.00
Opal Robinson, Trans.	115.00
Willie Vanzant, Trans.	43,711.14
Title I ESEA-89-10, Transfer of Funds	634.52
Ky. Utilities Co., Acct.	80.00
Postmaster, Mt. Vernon, Postage Stamps	150.00
J.C. Newland, Rent	150.00
Blue Cross Hosp. Plan, III IS 21.01 21.02 21.03 21.04 21.	

"FINANCIAL STATEMENTS" (Cont. From 4)

Table listing financial transactions for APRIL, including items like 'Ted Ramsey, Travel Exp.', 'Robert N. Pybas, Travel Exp.', and 'Pallina Mullins, Travel Exp.' with associated dollar amounts.

Table listing financial transactions for FEBRUARY, including items like 'Title I ESEA-89-10, Transfer of Funds', 'Basic Adult Education, Transfer of Funds', and 'Federal Reserve Bank of Cleveland (Fed. Tax)'.

Table listing financial transactions for APRIL, including items like 'Jackson Co. RECC, Acct.', 'Eastli Kirby, Coal', 'Walker Hines, Contractual Services', and 'Title I ESEA-89-10, Transfer of Funds'.

Table listing financial transactions for APRIL, including items like 'Kenneth Adams, Bd. Meeting & Exp.', 'Rudolph Burdette, Bd. Meeting', and 'Virgil Mullins, Bd. Meeting & Exp.'.

YOU & THE DRAFT
A "draft shocker" may be a white envelope containing a notice of declassification from 1-1 to 4-F.
A young man, identified as Clayton, along with more than 40,000 other young Kentuckians, is now being notified of a change in his "draft" classification.
It is easy to understand why Clayton might be concerned with being reclassified 4-F, especially if there was no previous communication from the "draft" board of the imminence of his change in "draft" status.
In the past, "draft" registrants not found qualified for military service for either a physical or moral reason were awarded a classification of 1-Y instead of 4-F. Such rejection would not be a disqualifying factor in time of national emergency.
The 1-Y classification's past usefulness primarily was twofold, was a categorical process of young men who could be tapped for military service in case of an all-out emergency and it did "mark" such individuals with a stigma of being 4-F. The 4-F classification was also a hindrance to certain individual employment.
Congress, when it amended the "draft act" in 1971, eliminated the classification of 1-Y. Under the new regulations, a young man is acceptable for military service or is not, based upon an examination made by an armed forces examining and entrance station. If found acceptable, he will be classified 1-A; if not, he will be considered for 4-F.
To further illustrate the change, Clayton was born June 5, 1950, and his lottery number was 28. He enrolled in college in the fall of 1967 having earned an athletic scholarship as a member of the 1967 All-State high school basketball team.
Clayton met the continued requirements for a student deferment, maintaining his 2-S classification during the four years in college. In May, 1971, he was graduated from college and was no longer eligible for a Student Deferment. Had he not been in a military service, he would have been prime vulnerability would have been 1970.
In July, 1971, he was processed for physical examination, in the examining process, it was found that his height was 69 1/2". Under the standards of acceptance, a minimum height was 80 inches. As he was one inch over the maximum height, he was rejected.
Upon notice of not being found acceptable for military service, the "draft" board classified Clayton 1-Y.
The instructions from the Acting National Director of Selective Service, "draft" board's were directed to reclassify all 1-Y registrants to either 1-A or 4-F, whichever was appropriate. Some 1-Y's went to 1-A because the armed forces examining and entrance station, on initial examination, had indicated re-examination was believed justifiable. Others in Class 1-Y, when re-examination was believed justifiable, were eligible to be considered for Class 4-F.
Under these circumstances, Clayton went from 1-Y to 4-F.
For further clarification, some young men born in 1951, who were in Class 1-Y, with a low lottery number and under new regulations, were found acceptable and reclassified 1-A. These men got a break as the lottery number was not required to deliver registrants for induction during the first quarter of 1972.
On April 1, 1972, such persons were eligible to be moved into a reduced priority status and consequently, be less vulnerable for the "draft."
On the other hand, some young men born in 1952, with low lottery numbers, and under new regulations, were found acceptable and reclassified 1-A. These men got a break as the lottery number was not required to deliver registrants for induction during the first quarter of 1972.
Should their lottery number be not reclassified during the current calendar year and they are still 1-A on January 1, 1973, they too will become eligible to be moved into a reduced selection group.

"FINANCIAL STATEMENT"

(Cont. From 5)

Table listing various items and their amounts, including Broadhead Lunch Room, Sand Springs Lunch Room, Mt. Vernon Lunch Room, etc.

Table listing various items and their amounts, including Nascoste Farm Service, Acct., W. H. Myers Assoc. Associate Store, etc.

Table listing various items and their amounts, including Ky State Treasurer, Taxes, Soc Sec Revolving Fund, etc.

Table listing various items and their amounts, including SEPTEMBER, Conrad Thomas, Contract Hauling, etc.

FINANCIAL STATEMENT FOUNDATION PROGRAM CAPITAL OUTLAY FUND

Table listing various items and their amounts, including BUNE, Basic Adult Education, Sand Springs Lunch Room, etc.

Table listing various items and their amounts, including Balance July 1, 1971, Receipts, Transfers from General Fund, etc.

Table listing various items and their amounts, including Darlene Cameron, Tatvia Dougherty, Juanita Davis, etc.

Table listing various items and their amounts, including OCTOBER, Juanna Witt, Travel Expense, Willard Whitaker, etc.

NAVY TO INSTITUTE PHASIS/SCIP INPUT Navy applicants who qualify but are not able to obtain a reservation for an advance recruit training now will be guaranteed that classroom opportunity within the first 19 months of their enlistment.

Additional information on the Programmed School Input concept is available from CTCB...

During the past 5 1/2 years the Somerset Regional Supplemental Educational Center (SRSEC), a Title III ESEA project, has functioned to develop procedures...

As a result of this need, a new Title III, ESEA, project...

The staff of SRSEC will continue to work for the new Title III project...

OPEN-BURNING - The Kentucky Air Pollution Control Commission has been presented proposed changes on the state's open-burning regulation.

The first part of this project will be spent on development of curricula materials and training of school administrators and teachers of the region.

Table listing financial entries for Joe Daugherty, Contract Hauling; Ken Renner, Contract Hauling; Lewis Rowe, Contract Hauling; Beatrice Kirby, Contract Hauling; Keith Singleton, Contract Hauling; Bern Potter, Contract Hauling; Harry L. Holland, Contract Hauling; Johnny Hamm, Contract Hauling; Fed Res Bank of Cleveland, Taxes; Ky State Treasurer, Taxes; Soc Sec Revolving Fund, Soc Sec; Blue Cross Hospital Plan, Inc., Insurance; Ky State Treasurer, Ret.; Soc Sec Revolving Fund, Matching Soc Sec; Ky State Treasurer, Matching Co. Employees' Ret.; Fed Res Bank of Cleveland, Taxes; Ky State Treasurer, Taxes; Ky State Treasurer, Ret.; Blue Cross Hospital Plan, Inc., Ins.; Ky State Treasurer, Matching Teachers' Ret.; Fed Res Bank of Cleveland, Taxes; Ky State Treasurer, Taxes; Ky State Treasurer, Teachers' Ret.; Soc Sec Revolving Fund, Soc Sec; Blue Cross Hospital Plan, Inc., Ins.; Ky State Treasurer, Co. Employees' Ret.; Ky State Treasurer, Matching Teachers' Ret.; Soc Sec Revolving Fund, Matching Soc Sec; Ky State Treasurer, Matching Co. Employees' Ret.; TOTAL ALL FORMS F-40-c's

Table listing financial entries for Young's Pharmacy, Acct.; Jack D. Lewis, M.D., Acct.; Hansel's Variety Store, Acct.; Genesco, Acct.; Elder Dry Goods, Acct.; Broadhead's to S Store, Acct.; Eddie Ballinger, Contract Hauling; Betty Baker, Contract Hauling; James R. Bradley, Contract Hauling; Lewis Chaney, Contract Hauling; John H. Cromer, Jr., Contract Hauling; John H. Cromer, Contract Hauling; Curtis Eversole, Contract Hauling; Kermit French, Contract Hauling; Delbert Gallif, Contract Hauling; Ovie Jones, Contract Hauling; Christine Kirby, Contract Hauling; Carl Miller, Contract Hauling; Raymond McKinney, Contract Hauling; Sam Mullins, Contract Hauling; Luther Owens, Contract Hauling; H.L. Renner, Contract Hauling; Frank Thacker, Contract Hauling; Grace Hayes Whitaker, Contract Hauling; George Wynn, Contract Hauling; Barbara Deborde, Contract Hauling; Russell Barron, Contract Hauling; Gerald Bullock, Contract Hauling; Billie J. Howard, Contract Hauling; Keith Singleton, Contract Hauling; Elwood Saylor, Contract Hauling; Lloyd Robbins, Contract Hauling; Terry Mullins, Contract Hauling; Lawrence Fordyce, Contract Hauling; Rovie Singleton, Contract Hauling; Jesse Taylor, Contract Hauling; Edna Cameron, Contract Hauling; Raymond L. Lavigne, Contract Hauling; John Morris, Contract Hauling; Murphy Martin, Contract Hauling; Joe Daugherty, Contract Hauling; Lois Renner, Contract Hauling; Lewis Rowe, Contract Hauling; Beatrice Kirby, Contract Hauling; Keith Singleton, Contract Hauling; Bern Potter, Contract Hauling; Harry L. Holland, Contract Hauling; David Coffey, Contract Hauling; Charlene Gentry, Contract Hauling; Margie Cromer, Contract Hauling; Federal Reserve BANK OF Cleveland, Taxes; Ky State Treasurer, Taxes; Soc Sec Revolving Fund, Soc Sec; Blue Cross Hospital Plan, Inc., 225.02; Ky State Treasurer, Co. Ret.; Soc Sec Revolving Fund, Matching Soc Sec; Ky State Treasurer, Matching Co. Ret.; Fed Res Bank of Cleveland, TAXES; Ky State Treasurer, Taxes; Ky State Treasurer, Ret.; Ky Education Association, Dues & Ins.; Blue Cross Hospital Plan, Inc., Ins.; Ky State Treasurer, Matching Ret.; Rockcastle Co. Ky School Construction Acct., Acct.; Rockcastle Co. Ky School Construction Acct., Acct.; Fed Res Bank of Cleveland, Taxes; Ky State Treasurer, Taxes; Soc Sec Revolving Fund, Matching Soc Sec; Ky State Treasurer, Teachers' Ret.; Soc Sec Revolving Fund, Soc Sec; Ky Education Association, Dues & Ins.; Blue Cross Hospital Plan, Inc., Ins.; Ky State Treasurer, Co. Ret.; Ky State Treasurer, Matching Teachers' Ret.; Soc Sec Revolving Fund, Matching Soc Sec; Ky State Treasurer, Matching Co. Emp. Ret.; TOTAL OF ALL FORMS F-40-c's

Table listing financial entries for Ky State Treasurer, Matching Co. Employees Ret.; Fed Res Bank of Cleveland, Taxes; Ky State Treasurer, Taxes; Soc Sec Revolving Fund, Soc Sec; Ky Education Association, Dues & Ins.; Blue Cross Hospital Plan, Inc., Ins.; Ky State Treasurer, Co. Employees' Ret.; Ky State Treasurer, Matching Teachers' Ret.; Soc Sec Revolving Fund, Matching Soc Sec; Ky State Treasurer, Matching Co. Employees' Ret.; Fed Res Bank of Cleveland, Taxes; Ky State Treasurer, Ret.; Ky State Treasurer, Retirement; Ky State Treasurer, Matching Ret.; TOTAL OF ALL FORMS F-40-c's

Table listing financial entries for FEBRUARY; Postmaster, Mt. Vernon, Postage; Juanita Witt, Travel Expense; Willard Whitaker, Travel Expense; Nancy L. Williams, Travel Expense; Doris G. Towery, Travel Expense; Terry H. Cummins, Travel Expense; Ina F. St. Clair, Travel Expense; Mildred Hunt, Travel Expense; School Supply Co. Acct.; 3M Business Products Sales, Inc., Acct.; A.B. Dick Products, Acct.; School Supply Co., Acct.; Audio Visual Services, U of K, Acct.; A.B. Morgan, M.D., Acct.; School Supply Co., Acct.; Kay Surgical, Acct.; Frank M. Jenkins, M.D., Acct.; Maggie Drug Acct. Hauling; School Supply Co., Acct.; The H. Zussman & Son Co., Acct.; Rockcastle Co. Ky School Construction Acct., Cons.; Rockcastle Co. Ky School Construction Acct., Cons.; Ky State Treasurer, Taxes; Ky State Treasurer, Ret.; Ky Education Assoc., Dues & Ins.; Blue Cross Hospital Plan, Inc., Ins.; Ky State Treasurer, Matching Teachers' Ret.; Fed Res Bank of Cleveland, Taxes; Ky State Treasurer, Taxes; Ky State Treasurer, Ret.; Ky State Treasurer, Matching Ret.; Eddie Ballinger, Contract Hauling; Betty Baker, Contract Hauling; James R. Bradley, Contract Hauling; Lewis Chaney, Contract Hauling; John H. Cromer, Jr., Contract Hauling; John H. Cromer, Contract Hauling; Curtis Eversole, Contract Hauling; Kermit French, Contract Hauling; Ovie Jones, Contract Hauling; Christine Kirby, Contract Hauling; Carl Miller, Contract Hauling; Raymond McKinney, Contract Hauling; Sam Mullins, Contract Hauling; Luther Owens, Contract Hauling; Frank Thacker, Contract Hauling; Grace Hayes Whitaker, Contract Hauling; George Wynn, Contract Hauling; Barbara Deborde, Contract Hauling; Gerald Bullock, Contract Hauling; Billie J. Howard, Contract Hauling; Lewis Adams, Contract Hauling; Elwood Saylor, Contract Hauling; Lloyd Robbins, Contract Hauling; Terry Mullins, Contract Hauling; Lawrence Fordyce, Contract Hauling; Rovie Singleton, Contract Hauling; Jesse Taylor, Contract Hauling; Edna Cameron, Contract Hauling; Raymond L. Lavigne, Contract Hauling; John Morris, Contract Hauling; Murphy Martin, Contract Hauling; Joe DAUGHERTY, Contract Hauling; Lois Renner, Contract Hauling; Lewis Rowe, Contract Hauling; Beatrice Kirby, Contract Hauling; Keith Singleton, Contract Hauling; Bern Potter, Contract Hauling; Harry L. Holland, Contract Hauling; Charlene Gentry, Contract Hauling; Margie Cromer, Contract Hauling; Elmo Lavinille, Contract Hauling; Lloyd Vance, Contract Hauling; Fed Res Bank of Cleveland, Taxes; Ky State Treasurer, Taxes; Soc Sec Revolving Fund, Soc Sec; Blue Cross Hospital Plan, Inc., Insurance; Ky State Treasurer, Co. Ret.; Soc Sec Revolving Fund, Matching Soc Sec; Federal Reserve Bank of Cleve., Taxes; Ky State Treasurer, Taxes; Ky State Treasurer, 311.02; Soc Sec Revolving Fund, Soc Sec; Ky Education Association, Dues & Ins.; Blue Cross Hospital Plan, Inc., Ins.; Ky State Treasurer, Co. Emp. Ret.; Ky State Treasurer, Matching Teachers' Ret.; Soc Sec Revolving Fund, Matching Soc Sec; Ky State Treasurer, Matching Co. Emp. Ret.; TOTAL OF ALL FORMS F-40-c's

By Mary Kay Fryor
State News Bureau
FRANKFORT, Ky - The antique brick Market House in Paducah will provide the setting for its second annual Folk Festival, Aug. 10-13. Proceeds from the four-day festival will be used to continue operation of the facility.

Market House, on the Ohio River waterfront, was remodelled 10 years ago by local women's clubs to preserve the heritage of the building, built in 1836. The market was made into a museum and theatre during restoration.

The festival will consist of a melodrama, auction, gospel singing, vaudeville routines, along with arts and crafts shows. The play, "He Done Wrong" or "She Was Wedded But No Wife" will be presented on Aug. 10, 11 and 13. Following these 8 p.m. performances by local residents, a vaudeville act will be staged.

Proceeds from an art gallery auction on Friday, from 4 to 8 p.m., will be used to maintain the building.

A spokesman for the festival said, "The object of this festival is not primarily to raise money, but to make people more aware of Paducah's heritage something all Kentuckians may be proud of."

McCarty NAMED... FRANKFORT, Ky - GH McCarty, an insurance analyst with the Department of Insurance since 1966, has been named deputy commissioner of the Division of Life and Health by Commissioner Harold McGuffey. McCarty, a Frankfort resident, is a 1954 graduate of Campbell University and is attending tuition at State University, majoring in economics and accounting. A graduate of the Life Underwriters Training Council (LUTC), McCarty was employed by the Metropolitan Life Insurance Co. from 1958-64 and zone sales manager of Big Per Cent Co. before accepting a position as analyst.

McCarty is vice-president of the Frankfort Lions Club, a former president and vice-president of the Frankfort Life Underwriters Assn., and a former Jaycee.

STATE GOVERNMENT SETS EXAMPLE... By Peggy Freney
State News Bureau
"Thanks to you, it is working." This 1972 United Community Fund drive motto includes such agencies as the Salvation Army, YWCA, Red Cross, Boy Scouts, Central Palsy, 4-H, USO, and the Council on Aging.

Last year approximately 10,000 state employees in Frankfort gave \$15,500. Gov. Wendell Ford has charged every employee to make the 1972 drive, which begins Sept. 18, success by topping the established goal of \$20,000 for Frankfort state employees.

The largest employer in Kentucky, state government has inherited a leadership position and other employers look to it as an example. To insure that the good example is set in giving to the United Fund (UF), a fund chairman Arthur (Dutch) Johnson is a deputy commissioner of the state Department of Personnel, has appointed key persons to serve as assistant campaign chairman.

These persons have the responsibility of appointing (Cont. to 8)

NOVEMBER

Table listing financial entries for Juanita Witt, Travel Expense; Willard Whitaker, Travel Expense; George H. Griffith, M.D., Acct.; John W. Garden, Jr., Acct.; J. Courtney Horton, Jr., Acct.; Mrs. Curtis Allen, Contract Hauling; Eddie Ballinger, Contract Hauling; Betty Baker, Contract Hauling; John H. Cromer, Jr., Contract Hauling; John H. Cromer, Contract Hauling; Curtis Eversole, Contract Hauling; Kermit French, Contract Hauling; Delbert Gallif, Contract Hauling; Ovie Jones, Contract Hauling; Ed Redcor, Contract Hauling; Christine Kirby, Contract Hauling; Carl Miller, Contract Hauling; Raymond McKinney, Contract Hauling; Sam Mullins, Contract Hauling; Luther Owens, Contract Hauling; H.L. Renner, Contract Hauling; Frank Thacker, Contract Hauling; Grace Hayes Whitaker, Contract Hauling; George Wynn, Contract Hauling; Barbara Deborde, Contract Hauling; Russell Barron, Contract Hauling; Gerald Bullock, Contract Hauling; Billie J. Howard, Contract Hauling; Lewis Adams, Contract Hauling; Elwood Saylor, Contract Hauling; Lloyd Robbins, Contract Hauling; Terry Mullins, Contract Hauling; Lawrence Fordyce, Contract Hauling; Rovie Singleton, Contract Hauling; Jesse Taylor, Contract Hauling; Edna Cameron, Contract Hauling; Raymond L. Lavigne, Contract Hauling; John Morris, Contract Hauling; Murphy Martin, Contract Hauling; Joe Daugherty, Contract Hauling; Lois Renner, Contract Hauling; Lewis Rowe, Contract Hauling; Beatrice Kirby, Contract Hauling; Keith Singleton, Contract Hauling; Bern Potter, Contract Hauling; Harry L. Holland, Contract Hauling; Johnny Hamm, Contract Hauling; David Coffey, Contract Hauling; Charlene Gentry, Contract Hauling; Ronnie Bradley, Contract Hauling; Bobbie Machal, Contract Hauling; Fed Res Bank of Cleveland, Taxes; Ky State Treasurer, Taxes; Soc Sec Revolving Fund, Soc Sec; Blue Cross Hospital Plan, Inc., Ins.; Ky State Treasurer, Co. Ret.; Soc Sec Revolving Fund, Matching Soc Sec; Blue Cross Hospital Plan, Inc., Ins.; McVern Bargain Store, Acct.; McBee Department Store, Acct.; Central School Supply Co., Acct.; Central School Supply Co., Acct.; Central School Supply Co., Acct.; Associated Educational Materials, Acct.; McGraw-Hill Book Co., Acct.; Central School Supply Co., Acct.; The Economy Co., Acct.; Central School Supply Co., Acct.; McGraw-Hill Book Co., Acct.; Central School Supply Co., Acct.; Eye Gate House, Acct.; Rockcastle Co. Ky School Construction Acct.; Rockcastle Co. Ky School Construction Acct.; Fed Res Bank of Cleveland, Taxes; Ky State Treasurer, Taxes; Ky State Treasurer, Ret.; Blue Cross Hospital Plan, Inc., Ins.; Ky State Treasurer, Matching Teachers' Ret.; Fed Res Bank of Cleveland, Taxes; Ky State Treasurer, Taxes; Ky State Treasurer, Ret.; Soc Sec Revolving Fund, Soc Sec; Blue Cross Hospital Plan, Inc., Ins.; Blue Cross Hospital Plan, Inc., Ins.; Ky State Treasurer, Co. Ret.; Ky State Treasurer, Matching Ret.; Soc Sec Revolving Fund, Matching Soc Sec; Ky State Treasurer, Matching Co. Ret.; Rockcastle Co. Ky School Construction Acct.; TOTAL OF ALL FORMS F-40-c's

JANUARY

Table listing financial entries for Sandra Mullins, Travel Expense; Juanita Witt, Travel Expense; Willard Whitaker, Travel Expense; Dorothy Lovell, Travel Expense; Doris Towery, Travel Expense; Mildred Hunt, Travel Expense; Audio Visual Services, U of K, Acct.; McGraw-Hill Book Co., Acct.; Young's Pharmacy, Acct.; General Electric Co., Acct.; Elyatt Brothers, Acct.; Elder's; Ade-Lexington Dry Goods Co., Acct.; Audio Visual Services, U of K, Acct.; The Zussman & Son Co., Acct.; School Supply Co., Acct.; Eddie Ballinger, Contract Hauling; Betty Baker, Contract Hauling; James R. Bradley, Contract Hauling; Lewis Chaney, Contract Hauling; John H. Cromer, Jr., Contract Hauling; John H. Cromer, Contract Hauling; Curtis Eversole, Contract Hauling; Kermit French, Contract Hauling; Ovie Jones, Contract Hauling; Christine Kirby, Contract Hauling; Carl Miller, Contract Hauling; Raymond McKinney, Contract Hauling; Sam Mullins, Contract Hauling; Luther Owens, Contract Hauling; H.L. Renner, Contract Hauling; Frank Thacker, Contract Hauling; Grace Hayes Whitaker, Contract Hauling; George Wynn, Contract Hauling; Barbara Deborde, Contract Hauling; Russell Barron, Contract Hauling; Gerald Bullock, Contract Hauling; Billie J. Howard, Contract Hauling; Lewis Adams, Contract Hauling; Elwood Saylor, Contract Hauling; Lloyd Robbins, Contract Hauling; Terry Mullins, Contract Hauling; Lawrence Fordyce, Contract Hauling; Rovie Singleton, Contract Hauling; Jesse Taylor, Contract Hauling; Edna Cameron, Contract Hauling; Raymond L. Lavigne, Contract Hauling; John Morris, Contract Hauling; Murphy Martin, Contract Hauling; Joe Daugherty, Contract Hauling; Lois Renner, Contract Hauling; Lewis Rowe, Contract Hauling; Beatrice Kirby, Contract Hauling; Keith Singleton, Contract Hauling; Bern Potter, Contract Hauling; Harry L. Holland, Contract Hauling; Charlene Gentry, Contract Hauling; Margie Cromer, Contract Hauling; Elmo Lavinille, Contract Hauling; Fed Res Bank of Cleveland, Taxes; Ky State Treasurer, Taxes; Soc Sec Revolving Fund, Soc Sec; Blue Cross Hospital Plan, Inc., Insurance; Ky State Treasurer, Co. Ret.; Soc Sec Revolving Fund, Matching Soc Sec; Federal Reserve Bank of Cleve., Taxes; Ky State Treasurer, Taxes; Ky State Treasurer, 311.02; Soc Sec Revolving Fund, Soc Sec; Ky Education Association, Dues & Ins.; Blue Cross Hospital Plan, Inc., Ins.; Ky State Treasurer, Co. Emp. Ret.; Ky State Treasurer, Matching Teachers' Ret.; Soc Sec Revolving Fund, Matching Soc Sec; Ky State Treasurer, Matching Co. Emp. Ret.; TOTAL OF ALL FORMS F-40-c's

MARCH

Table listing financial entries for Juanita Witt, Travel Expense; Terry Cummins, Travel Expense; Willard Whitaker, Travel Expense; Doris Towery, Travel Expense; Follett Publishing Co., Acct.; CTP/McGraw-Hill, Acct.; School Supply Co., Acct.; Soughan Mullin, Acct.; Transylvania Printing, Acct.; Carl Fischer of Chicago, Acct.; Singspiration, Zondervan Corp., Acct.; Bourne Co., Acct.; Charing Cross Music, Acct.; Lorenz Industries, Acct.; Shawnee Press, Inc., Acct.; The H. Zussman & Son Co., Acct.; Elder Dry Goods, Acct.; Hansel's Variety Store, Acct.; A.B. Dick Products, Acct.; Arnold B. Combs, M.D., Acct.; George H. Griffith, M.D., Acct.; Rockcastle Co. Ky School Construction Acct.; Rockcastle Co. Ky School Construction Acct.; Fed Res Bank of Cleveland, Taxes; Ky State Treasurer, Taxes; Ky State Treasurer, Ret.; Ky Education Association, Dues & Ins.; Blue Cross Hospital Plan, Inc., Ins.; Ky State Treasurer, Matching Teachers' Ret.; Fed Res Bank of Cleveland, Taxes; Ky State Treasurer, Taxes; Ky State Treasurer, Teachers' Ret.; Ky State Treasurer, Matching Teachers' Ret.; TOTAL OF ALL FORMS F-40-c's

DECEMBER

Table listing financial entries for Kay Surgical, Acct.; Central School Company, Acct.; Juanita Witt, Travel Expense; Willard Whitaker, Travel Expense; Doris Towery, Travel Expense; Dorothy Lovell, Travel Expense; Pat Stokes, Travel Expense; Gustava Peters, Travel Expense; Mildred Hunt, Travel Expense; Kay Surgical, Acct.; Stanley Bowman Co., Acct.; Hansel's Variety Store, Acct.; 3M Business Products Sales, Acct.; George R. Grinnin, M.D., Acct.

Table listing financial entries for Kay Surgical, Acct.; Central School Company, Acct.; Juanita Witt, Travel Expense; Willard Whitaker, Travel Expense; Doris Towery, Travel Expense; Dorothy Lovell, Travel Expense; Pat Stokes, Travel Expense; Gustava Peters, Travel Expense; Mildred Hunt, Travel Expense; Kay Surgical, Acct.; Stanley Bowman Co., Acct.; Hansel's Variety Store, Acct.; 3M Business Products Sales, Acct.; George R. Grinnin, M.D., Acct.

Table listing financial entries for Kay Surgical, Acct.; Central School Company, Acct.; Juanita Witt, Travel Expense; Willard Whitaker, Travel Expense; Doris Towery, Travel Expense; Dorothy Lovell, Travel Expense; Pat Stokes, Travel Expense; Gustava Peters, Travel Expense; Mildred Hunt, Travel Expense; Kay Surgical, Acct.; Stanley Bowman Co., Acct.; Hansel's Variety Store, Acct.; 3M Business Products Sales, Acct.; George R. Grinnin, M.D., Acct.

(Cont. to 8)