

"HOME LIST"

"FINANCIAL STATEMENT"

(Cont. From 13)  
minutes and pour to 1/4 inch of top of jar. Wipe off anything spilled on top of threads of jar. Put dome lid on jar, screw band tight. Process pints fifteen minutes, quarts twenty minutes, at 10 pounds steam pressure, or fifty minutes in boiling-water bath.

77587 James Cox, Trans. 150.00  
77588 John Crómer, Jr., Trans. 70.00  
77589 John H. Crómer, Trans. 40.00  
77590 Joe Daugherty, Trans. 40.00  
77591 Barbara DeBorde, Trans. 125.00  
77592 Curtis Eversole, Trans. 135.00  
77593 Kermit Messer, Trans. 20.00  
77594 John L. Gadd, Trans. 20.00  
77595 Geneva Centy, Trans. 50.00  
77596 Martha Hines, Trans. 100.00  
77597 Harry L. Holland, Trans. 125.00  
77598 Caleb Lamb, Trans. 95.00  
77599 Homer Jones, Trans. 105.00  
77600 Ovie Jones, Trans. 60.00  
77601 Susie Kidwell, Trans. 50.00  
77602 Christine Kirby, Trans. 30.00  
77603 Lloyd Kirby, Trans. 40.00  
77604 Raymond Lavigne, Trans. 20.00  
77605 Murphy Martin, Jr., Trans. 30.00  
77606 Raymond McKinney, Trans. 50.00  
77607 Carl Miller, Trans. 100.00  
77608 Elmer Mink, Trans. 100.00  
77609 Linda Montjoy, Trans. 125.00  
77610 Sam Mullins, Trans. 360.00  
77611 Terry Mullins, Trans. 50.00  
77612 Luther Owens, Trans. 150.00  
77613 Janice Mason, Trans. 100.00  
77614 Lois Renner, Trans. 75.00  
77615 Onal Robinson, Trans. 145.00  
77616 Lewis Renner, Trans. 50.00  
77617 Rovine Singleton, Trans. 40.00  
77618 Frank Thacker, Trans. 105.00  
77619 Lloyd Vance, Trans. 100.00  
77620 Willie VanZant, Trans. 125.00  
77621 Margaret Whitaker, Trans. 20.00  
77622 Dorothy Wynn, Trans. 100.00  
77623 Title I-ESEA 89-10, Transfer of Funds 23,810.62  
77624 Blue Cross Hospital Plan 2,627.10  
77625 K. V. Education Association 1,550.56  
77626 Citizen Security Life Ins. Co. 232.06  
77627 State Treasurer 6,641.33  
77628 Soc. Sec. Rev. Fund 1,570.84  
77629 K. V. Education Assoc. 571.20  
77630 State Treas. 2,435.96  
77631 Fed. Res. Bank of Cleveland 13,703.00

Total of All F-40's

\$118,337.85

Tomato Ketchup

Use sound, firm, red-ripe tomatoes. Yield depends upon thickness of ketchup and variety of tomato used.  
4 quarts cored and chopped tomatoes  
1 cup chopped onion  
1 cup seeded and chopped red sweet pepper  
1 1/2 tsp. each celery and mustard seed  
1/2 tsp. each whole cloves, all spice, and black pepper  
1-3 inch stick of cinnamon  
1/2 break into small pieces  
1/2 tsp. cayenne pepper  
2 tsp. paprika  
1 tsp. salt  
1/2 cup sugar  
1/4 cup vinegar

Wash, core, chop and measure tomatoes into kettle; add onions and pepper. Slowly cook vegetables (no water needed) until tomato juice runs freely. Increase heat and boil until vegetables are soft; then put through sieve to remove skins and seed. Return tomato mixture to kettle and boil about twenty minutes. Add whole spices tied in a piece of cloth to make spice "bag." Continue boiling until mixture is almost as thick as ketchup. Then add the remaining ingredients and boil until ketchup is as thick as wanted. Discard spice "bag," taste ketchup and add more sugar and salt if wanted. Pour hot ketchup to 1/8 inch of top of half-pint jar. Wipe off anything spilled on top of threads of jar. Put dome lid on jar; screw band tight. Process jars five minutes in boiling water bath.

BRINDLE RIDGE

There was good attendance for church over the weekend. Our pastor was back after being on vacation. Bro. Cecil Roundtree of Bee Lick, a member of Bro. Prewitz last weekend. We're sorry to report Danny Mullins remains in the sick list. He was transferred from Rockcastle Hospital to a Lexington Hospital where he will have surgery. Our prayers are for a quick recovery and that he will soon be back home. This community extends our sympathy to the family of Mrs. Boss Clark Allen. Mrs. Allen is a cousin of Mrs. Minnie Mink.

Mr. and Mrs. Harrison Burdette and children and Mr. and Mrs. Bill Cameron and boys spent the weekend with Mr. and Mrs. L. C. Burdette of Lynn, Indiana.

Mr. and Mrs. Harrison Mink visited Mr. and Mrs. Roy Pace Sunday afternoon.

Mr. and Mrs. Charlie Cummins were Sunday dinner guests of Mr. and Mrs. Jimmy Cummins of Boone. Afternoon visitors were Mr. and Mrs. Arvel Burdette.

Mrs. Geneva Allen of Boone spent Saturday night with her mother Mrs. Etta Proctor.

Mrs. Lydia Livesay and family of Cincinnati spent the weekend with her daughter Mrs. Ann Burdette and family.

BOONE

Mrs. Matilda Cain had the misfortune of hurting her foot. She was in Berea Monday morning to see a doctor.

Mr. and Mrs. Ronald Anglin, David, Vonda and Jimmy of Walton visited his mother Mr. and Mrs. Ken Logg and her mother Mrs. Grace Willis at Berea Tuesday afternoon.

Mr. and Mrs. Darrell Isaacs have moved their mobile home to this vicinity. Darrell is the son of Mr. and Mrs. Alvin Isaacs.

Ken Logg celebrated his birthday Tuesday.

77609 Linda Montjoy, Trans. 125.00  
77610 Sam Mullins, Trans. 360.00  
77611 Terry Mullins, Trans. 50.00  
77612 Luther Owens, Trans. 150.00  
77613 Janice Mason, Trans. 100.00  
77614 Lois Renner, Trans. 75.00  
77615 Onal Robinson, Trans. 145.00  
77616 Lewis Renner, Trans. 50.00  
77617 Rovine Singleton, Trans. 40.00  
77618 Frank Thacker, Trans. 105.00  
77619 Lloyd Vance, Trans. 100.00  
77620 Willie VanZant, Trans. 125.00  
77621 Margaret Whitaker, Trans. 20.00  
77622 Dorothy Wynn, Trans. 100.00  
77623 Title I-ESEA 89-10, Transfer of Funds 23,810.62  
77624 Blue Cross Hospital Plan 2,627.10  
77625 K. V. Education Association 1,550.56  
77626 Citizen Security Life Ins. Co. 232.06  
77627 State Treasurer 6,641.33  
77628 Soc. Sec. Rev. Fund 1,570.84  
77629 K. V. Education Assoc. 571.20  
77630 State Treas. 2,435.96  
77631 Fed. Res. Bank of Cleveland 13,703.00

Total of All F-40's

\$118,337.85

APRIL, 1974

77696 Kenneth Adams, Bd. Meeting & Exp. 11.28  
77697 Rudolph Burdette, Bd. Meeting 10.00  
77698 Billy Burdine, Bd. Meeting & Exp. 11.60  
77699 Isabel Mason, Bd. Meeting & Exp. 10.80  
77700 Willie Taylor, Bd. Meeting & Exp. 11.60  
77701 Charles B. Parsons, Travel 74.72  
77702 Nancy L. Williams, Travel 42.80  
77703 Melvin D. Hamm, Travel 45.55  
77704 Rudolph Burdette, Travel 77.20  
77705 Bill Ponder, Travel 36.88  
77706 Ruby Cornelius, Travel 94.24  
77707 Ovie Whitaker, Travel 122.96  
77708 Robert N. Pybas, Travel 76.88  
77709 James L. Bullock, Travel 89.44  
77710 Margie Wilcox, Travel 15.04  
77711 Mt. Vernon Water Works, Acct. 390.28  
77712 Ky. Telephone Co., Acct. 85.88  
77713 Ky. Utilities Co., Acct. 3,926.31  
77714 Livingston Elementary School, Reimb. Supplies 629.11  
77715 Mt. Vernon Elem. School, Reimb. Supplies 4,078.68  
77716 Lena Barker, Cont. Labor 64.00  
77717 Ed Reynolds, Jr., Contract Driving 84.00  
77718 Ed Reynolds, Jr., Truck Rental 30.00  
77719 Standard Oil Co., Acct. 479.81  
77720 Atlantic Richfield Co., Acct. 3,349.45  
77721 Atlantic Richfield Co., Acct. 97.30  
77722 Jerry's Tire Center, Acct. 89.44  
77723 Livingston Motor Co., Acct. 409.00  
77724 Retail Uniform Service, Inc., Acct. 34.00  
77725 W. Somerset Wrecking Co., Acct. 20.00  
77726 Wheel - Axle Service, Acct. 127.17  
77727 Auto Electric, Inc., Acct. 20.35  
77728 Rockcastle Auto Parts, Acct. 20.64  
77729 Mt. Vernon Automotive, Inc., Acct. 228.84  
77730 Tire & Wheel Service, Inc., Acct. 45.00  
77731 Hughes Motor Co., Acct. 454.30  
77732 Douglas Drywall Co., Acct. 46.08  
77733 Vulcan Hart Corp., Acct. 26.74  
77734 Gene Martin, Repairing Mower 38.85  
77735 Standard Armature & Elec. Co., Acct. 1.25  
77736 S. T. Proctor Lbr. Co., Acct. 8.23  
77737 C. C. Cox, Acct. 53.49  
77738 Cumberland Elec. Supp. Co., Inc., Acct. 198.48  
77739 Rembrandt Hardware, Acct. 58.43  
77740 Thompson's San. Supp. House, Inc., Acct. 90.63  
77741 Mt. Vernon Signal, Acct. 11.50  
77742 Beekley Cardy Co., Acct. 2.90  
77743 School Supply Co., Inc., Acct. 175.00  
77744 Ky. Farm Bureau Mut. Inc. Co., Ins. Prem. 6,418.82  
77745 Ky. Farm Bureau Ins. Agency, Ins. Prem. 600.00  
77746 D. G. Albright, Co. 1,028.96  
77747 Blue Springs Lunch Room, Inc. in Reimb. Rate 182.36  
77748 Broadhead Lunch Room, Inc. in Reimb. Rate 3,393.45  
77749 Livingston Lunch Room, Inc. in Reimb. Rate 2,930.17  
77750 Mt. Vernon Lunch Room, Inc. in Reimb. Rate 2,362.10  
77751 Rockcastle Co. High School Lunch Room, Inc. in Reimb. Rate 1,911.91  
77752 Roundstone Lunch Room, Inc. in Reimb. Rate 2,281.23  
77753 Blue Springs Lunch Room, Lunch Reimb., Feb. 386.79  
77754 Broadhead Lunch Room, Lunch Reimb., Feb. 3,475.84  
77755 Livingston Lunch Room, Lunch Reimb., Feb. 3,393.45  
77756 Mt. Vernon Lunch Room, Lunch Reimb., Feb. 5,928.75  
77757 Rockcastle Co. High School Lunch Room, Lunch Reimb., Feb. 3,499.40  
77758 Roundstone Lunch Room, Lunch Reimb., Feb. 2,724.00  
77759 Basic Adult Education, Transfer of Funds 294.73  
77760 Livingston Water Works, Acct. 151.20  
77761 Northern Rockcastle Co. Water Dept., Acct. 87.36  
77762 Jackson Co. RECC, Acct. 195.00  
77763 Broadhead Municipal Water Works, Acct. 120.00  
77764 City of Albany, Acct. 234.25  
77765 Demco Educational Corp., Acct. 9.80  
77766 Educational Record Sales, Inc., Acct. 91.59  
77767 Singer, Acct. 28.28  
77768 Gene Research Co., Acct. 32.90  
77769 Mellinger's, Inc., Acct. 9.65  
77770 Instructional Materials Lab, Acct. 65.97  
77771 W. Pepper of So. Ind., Acct. 92.51  
77772 Baker and Taylor Co., Acct. 65.00  
77773 Lewis Adams, Trans. 20.00  
77774 Russell Barnes, Trans. 120.00  
77775 James B. Bradley, Trans. 30.00  
77776 Jerald Bullock, Trans. 75.00  
77777 Edna Cameron, Trans. 30.00  
77778 Dean Carpenter, Trans. 90.00  
77779 Lewis Chaney, Trans. 30.00  
77780 Travis Cope, Trans. 130.00  
77781 Willie Cope, Trans. 150.00  
77782 James Cox, Trans. 70.00  
77783 John Crómer, Jr., Trans. 40.00  
77784 John H. Crómer, Trans. 40.00  
77785 Joe Daugherty, Trans. 125.00  
77786 Barbara DeBorde, Trans. 135.00  
77787 Curtis Eversole, Trans. 20.00  
77788 Kermit Messer, Trans. 20.00  
77789 John L. Gadd, Trans. 20.00  
77790 Geneva Centy, Trans. 50.00  
77791 Martha Hines, Trans. 100.00  
77792 Harry L. Holland, Trans. 125.00

77943 Caleb Lamb, Trans. 95.00  
77944 Homer Jones, Trans. 105.00  
77945 Ovie Jones, Trans. 60.00  
77946 Susie Kidwell, Trans. 50.00  
77947 Christine Kirby, Trans. 30.00  
77948 Lloyd Kirby, Trans. 40.00  
77949 Raymond Lavigne, Trans. 11.00  
77950 Murphy Martin, Jr., Trans. 30.00  
77951 Raymond McKinney, Trans. 50.00  
77952 Carl Miller, Trans. 60.00  
77953 Elmer Mink, Trans. 100.00  
77954 Linda Montjoy, Trans. 125.00  
77955 Sam Mullins, Trans. 360.00  
77956 Terry Mullins, Trans. 50.00  
77957 Luther Owens, Trans. 150.00  
77958 Janice Mason, Trans. 100.00  
77959 Lois Renner, Trans. 75.00  
77960 Onal Robinson, Trans. 145.00  
77961 Lewis Renner, Trans. 50.00  
77962 Rovine Singleton, Trans. 40.00  
77963 Frank Thacker, Trans. 105.00  
77964 Lloyd Vance, Trans. 100.00  
77965 Willie VanZant, Trans. 125.00  
77966 Margaret Whitaker, Trans. 20.00  
77967 Dorothy Wynn, Trans. 30.00  
77968 Blue Cross Hospital, Transfer of Funds 2,627.10  
77969 K. V. Education Assoc. 1,550.56  
77970 Citizen Security Life Ins. Co. 232.06  
77971 State Treas. 6,641.33  
77972 Soc. Sec. Rev. Fund 1,570.84  
77973 K. V. Education Assoc. 571.20  
77974 State Treas. 2,435.96  
77975 Fed. Res. Bank of Cleveland 13,693.60

Total of All F-40's

\$90,688.61

MAY, 1974

78040 Capital Outlay Funds, Transfer of Funds 60,000.00  
78041 Basic Adult Education, Transfer of Funds 277.60  
78042 Blue Springs Lunch Room, Lunch Reimb., March 412.57  
78043 Broadhead Lunch Room, Lunch Reimb., Mar. 4,829.00  
78044 Livingston Lunch Room, Lunch Reimb., Mar. 4,969.29  
78045 Roundstone Lunch Room, Lunch Reimb., Mar. 3,972.22  
78046 Kenneth Adams, Bd. Meeting & Exp. 11.28  
78047 Rudolph Burdette, Bd. Meeting 10.00  
78048 Billy Burdine, Bd. Meeting & Exp. 11.60  
78049 Isabel Mason, Bd. Meeting & Exp. 10.80  
78050 Willie Taylor, Bd. Meeting & Exp. 11.60  
78051 Charles B. Parsons, Travel Exp. 62.94  
78052 Nancy L. Williams, Travel Exp. 28.24  
78053 Russell Parsons, Travel Exp. 16.00  
78054 Bill Ponder, Travel Exp. 33.48  
78055 Melvin D. Hamm, Travel Exp. 16.24  
78056 Robert N. Pybas, Travel Exp. 67.68  
78057 Ruby Cornelius, Travel Exp. 116.00  
78058 Onal Robinson, Travel Exp. 148.08  
78059 Naomi Mink, Travel Exp. 14.72  
78060 Ky. Telephone Co., Acct. 83.47  
78061 Ky. Utilities Co., Acct. 3,275.05  
78062 Jackson Co. RECC, Acct. 176.62  
78063 Broadhead Municipal Water Works, Acct. 134.72  
78064 Livingston Water Works, Acct. 115.35  
78065 Mt. Vernon Water Works, Acct. 341.19  
78066 Northern Rock Co. Water Dist., Acct. 85.88  
78067 Beech Elementary School, Reimb. Supplies 546.13  
78068 Livingston Elem. School, Reimb. Supplies 496.66  
78069 Roundstone Elementary School, Reimb. Supplies 1,548.45  
78070 Standard Oil Co., Acct. 974.17  
78071 Atlantic Richfield Co., Acct. 2,721.51  
78072 Atlantic Richfield Co., Acct. 71.29  
78073 Gulf Oil Corp., Acct. 14.23  
78074 Ed Reynolds, Contract Driving 84.00  
78075 Ed Reynolds, Rental Service Truck 30.00  
78076 Southern Tire & Retreading, Inc., Acct. 342.46  
78077 Jerry's Tire Center, Acct. 86.10  
78078 Livingston Motor Co., Acct. 160.32  
78079 Mt. Vernon Automotive, Inc., Acct. 90.40  
78080 Wayne Miller, Acct. 26.10  
78081 Carrington Dist. Co., Acct. 96.40  
78082 Wheel & Axle Service, Acct. 227.03  
78083 Auto Electric, Inc., Acct. 40.16  
78084 Ky. School Bus Assoc., Dues 146.38  
78085 Rockcastle Auto Parts, Acct. 96.04  
78086 Norton Ins. Agency, Trans. Bond Prem. 52.51  
78087 Interstate Printers & Pub. Inc., Acct. 102.00  
78088 Ruby J. Godwin, Reimb. Supplies 177.38  
78089 James D. Love, Reimb. Supplies 15.60  
78090 John L. W. Pepper of Atlanta, Inc., Acct. 35.25  
78091 Britton Chev.-Olds, Inc., 1/2 ton Chev. Pick-up 2,990.00  
78092 S. T. Proctor Lbr. Co., Acct. 25.20  
78093 Jasper Iron & Metal Co., Acct. 18.80  
78094 Rockcastle Farm Service, Acct. 3.50  
78095 C. C. Cox, Acct. 34.50  
78096 H. S. & Co., Acct. 10.40  
78097 H. H. Miller, Acct. 12.07  
78098 James Harris, Tractor Rental 480.00  
78099 Instructional Distributors, Inc., Acct. 95.60  
78100 Mt. Vernon Lunch Room, Lunch Reimb.-Mar. 8,065.36  
78101 Rockcastle Co. High School Lunch Room, Lunch Reimb.-Mar. 4,534.52  
78102 Rockcastle Co. High School Lunchroom, Lunch Reimb.-April 2,691.32  
78103 Blue Springs Lunch Room, Trans. of Funds 182.36  
78104 The Sherwin-Wms. Co., Acct. 83.40  
78105 Broadhead Lunch Room, Lunch Reimb.-April 423.18  
78106 Livingston Lunch Room, Lunch Reimb.-Apr. 4,485.49  
78107 Mt. Vernon Lunch Room, Lunch Reimb.-Apr. 3,994.89  
78108 Rockcastle Co. High School Lunch Room, Lunch Reimb.-April 4,078.71  
78109 Roundstone Lunch Room, Lunch Reimb.-April 3,530.85  
78110 Broadhead Lunch Room, Lunch Reimb.-April 3,475.84  
78111 Broadhead Lunch Room, Lunch Reimb.-April 3,393.45  
78112 Broadhead Lunch Room, Lunch Reimb.-April 5,928.75  
78113 Broadhead Lunch Room, Lunch Reimb.-April 3,499.40  
78114 Broadhead Lunch Room, Lunch Reimb.-April 2,724.00  
78115 Broadhead Lunch Room, Lunch Reimb.-April 2,947.73  
78116 Broadhead Lunch Room, Lunch Reimb.-April 151.20  
78117 Broadhead Lunch Room, Lunch Reimb.-April 87.36  
78118 Broadhead Lunch Room, Lunch Reimb.-April 195.00  
78119 Broadhead Lunch Room, Lunch Reimb.-April 120.00  
78120 Broadhead Lunch Room, Lunch Reimb.-April 234.25  
78121 Broadhead Lunch Room, Lunch Reimb.-April 9.80  
78122 Broadhead Lunch Room, Lunch Reimb.-April 91.59  
78123 Broadhead Lunch Room, Lunch Reimb.-April 28.28  
78124 Broadhead Lunch Room, Lunch Reimb.-April 32.90  
78125 Broadhead Lunch Room, Lunch Reimb.-April 9.65  
78126 Broadhead Lunch Room, Lunch Reimb.-April 65.97  
78127 Broadhead Lunch Room, Lunch Reimb.-April 92.51  
78128 Broadhead Lunch Room, Lunch Reimb.-April 65.00  
78129 Broadhead Lunch Room, Lunch Reimb.-April 20.00  
78130 Broadhead Lunch Room, Lunch Reimb.-April 120.00  
78131 Broadhead Lunch Room, Lunch Reimb.-April 30.00  
78132 Broadhead Lunch Room, Lunch Reimb.-April 75.00  
78133 Broadhead Lunch Room, Lunch Reimb.-April 30.00  
78134 Broadhead Lunch Room, Lunch Reimb.-April 90.00  
78135 Broadhead Lunch Room, Lunch Reimb.-April 130.00  
78136 Broadhead Lunch Room, Lunch Reimb.-April 150.00  
78137 Broadhead Lunch Room, Lunch Reimb.-April 70.00  
78138 Broadhead Lunch Room, Lunch Reimb.-April 40.00  
78139 Broadhead Lunch Room, Lunch Reimb.-April 40.00  
78140 Broadhead Lunch Room, Lunch Reimb.-April 125.00  
78141 Broadhead Lunch Room, Lunch Reimb.-April 135.00  
78142 Broadhead Lunch Room, Lunch Reimb.-April 20.00  
78143 Broadhead Lunch Room, Lunch Reimb.-April 20.00  
78144 Broadhead Lunch Room, Lunch Reimb.-April 50.00  
78145 Broadhead Lunch Room, Lunch Reimb.-April 100.00  
78146 Broadhead Lunch Room, Lunch Reimb.-April 125.00  
78147 Broadhead Lunch Room, Lunch Reimb.-April 30.00  
78148 Broadhead Lunch Room, Lunch Reimb.-April 75.00  
78149 Broadhead Lunch Room, Lunch Reimb.-April 168.75  
78150 Broadhead Lunch Room, Lunch Reimb.-April 25.00  
78151 Broadhead Lunch Room, Lunch Reimb.-April 25.00  
78152 Broadhead Lunch Room, Lunch Reimb.-April 125.00  
78153 Broadhead Lunch Room, Lunch Reimb.-April 156.25  
78154 Broadhead Lunch Room, Lunch Reimb.-April 168.75  
78155 Broadhead Lunch Room, Lunch Reimb.-April 25.00  
78156 Broadhead Lunch Room, Lunch Reimb.-April 25.00  
78157 Broadhead Lunch Room, Lunch Reimb.-April 125.00  
78158 Broadhead Lunch Room, Lunch Reimb.-April 156.25  
78159 Broadhead Lunch Room, Lunch Reimb.-April 118.75  
78160 Broadhead Lunch Room, Lunch Reimb.-April 181.25  
78161 Broadhead Lunch Room, Lunch Reimb.-April 125.00  
78162 Broadhead Lunch Room, Lunch Reimb.-April 175.00  
78163 Broadhead Lunch Room, Lunch Reimb.-April 62.50  
78164 Broadhead Lunch Room, Lunch Reimb.-April 37.50  
78165 Broadhead Lunch Room, Lunch Reimb.-April 125.00  
78166 Broadhead Lunch Room, Lunch Reimb.-April 125.00

78461 Linda Montjoy, Trans. 156.25  
78462 Sam Mullins, Trans. 456.00  
78463 Terry Mullins, Trans. 62.50  
78464 Luther Owens, Trans. 187.50  
78465 Janice Mason, Trans. 135.00  
78466 Lois Renner, Trans. 38.75  
78467 Onal Robinson, Trans. 181.25  
78468 Lewis Renner, Trans. 31.25  
78469 Rovine Singleton, Trans. 50.00  
78470 Frank Thacker, Trans. 125.00  
78471 Lloyd Vance, Trans. 135.25  
78472 Willie VanZant, Trans. 156.25  
78473 Margaret Whitaker, Trans. 37.50  
78474 Dorothy Wynn, Trans. 52.00  
78475 Title I-ESEA 89-10, Transfer of Funds 22,939.30  
78476 Title I-ESEA 89-10, Transfer of Funds 20,000.00  
78477 Blue Cross Hospital Plan 2,627.10  
78478 Ky. Education Assoc. 1,550.56  
78479 Citizen Security Life Ins. Co. 232.06  
78480 State Treas. 6,641.33  
78481 Soc. Sec. Rev. Fund 1,570.84  
78482 K. V. Education Assoc. 571.20  
78483 State Treas. 2,435.96  
78484 Fed. Res. Bank of Cleveland 13,703.00

Total of All F-40's

\$218,678.18

JUNE, 1974

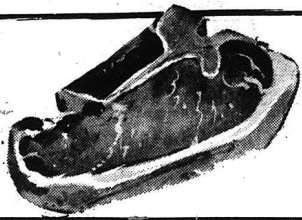
78527 Rudolph Burdette, Bd. Meeting 10.00  
78528 Billy Burdine, Bd. Meeting & Exp. 11.60  
78529 Willie Taylor, Bd. Meeting & Exp. 11.60  
78530 Charles B. Parsons, Travel Exp. 62.94  
78531 Nancy L. Williams, Travel Exp. 28.24  
78532 Russell Parsons, Travel Exp. 16.00  
78533 Bill Ponder, Travel Exp. 33.48  
78534 Melvin D. Hamm, Travel Exp. 16.24  
78535 Pauline Mullins, Travel Exp. 179.04  
78536 Naomi Mink, Travel Exp. 5.56  
78537 Robert N. Pybas, Travel Exp. 67.68  
78538 Ruby Cornelius, Travel Exp. 116.00  
78539 Ovie Whitaker, Travel Exp. 106.40  
78540 Smith T. Powell, Jr., Travel Exp. 77.48  
78541 Onal Robinson, Travel Exp. 148.08  
78542 Ky. Telephone Co., Acct. 104.18  
78543 Broadhead Municipal Water Works, Acct. 140.60  
78544 Livingston Water Works, Acct. 135.82  
78545 Mt. Vernon Water Works, Acct. 380.22  
78546 Ky. Utilities Co., Acct. 3,104.74  
78547 Jackson Co. RECC, Acct. 174.52  
78548 Rockcastle Co. High School, Reimb. Supplies 1,241.80  
78549 Roundstone Elem. School, Reimb. Supplies 115.11  
78550 Standard Oil Co., Acct. 819.98  
78551 Atlantic Richfield Co., Acct. 3,284.83  
78552 Atlantic Richfield Co., Acct. 29.56  
78553 Robert Clark, Contract Driving 77.00  
78554 Ed Reynolds, Rental Service Truck 30.00  
78555 Ed Reynolds, Jr., Truck Rental 30.00  
78556 Mt. Vernon Automotive, Inc., Acct. 8.40  
78557 Auto Electric, Inc., Acct. 50.72  
78558 Hughes Motor Co., Acct. 271.66  
78559 Rideway Distributors, Acct. 184.73  
78560 Wayne Sales, Inc., Acct. 157.40  
78561 C. T. Massey Motor Co., Acct. 37.44  
78562 Jeannette Adams, Reimb. Supplies 1.76  
78563 Rockcastle Auto Parts, Acct. 18.27  
78564 Cumberland Welders Supp. Co., Acct. 7.60  
78565 Retail Uniform Service, Inc., Acct. 32.80  
78566 Wheel & Axle Service, Acct. 189.13  
78567 H. H. Miller, Acct. 10.40  
78568 Bryant Bros., Acct. 13.02  
78569 Anderson Office Supply Co., Inc., Acct. 7.51  
78570 Bumpa Tel. Inc., Acct. 399.88  
78571 Jim Jackson, Reimb. Motor Exp. 2.20  
78572 The Ky. Stone Co., Acct. 196.90  
78573 C. H. Webb, Acct. 221.50  
78574 Balfour, Acct. 457.58  
78575 Estle Bullock, Acct. 30.00  
78576 Harcourt Brace Jovanovich, Inc., Acct. 72.80  
78577 Clifford Blake, Clerk, Acct. 5.50  
78578 Thompson's San Supp. House, Inc., Acct. 146.52  
78579 Ky. State Treas., Acct. 12.07  
78580 Ky. School Bus Assoc., Dues 146.38  
78581 C. C. Cox, Acct. 19.19  
78582 Norton Ins. Agency, Trans. Bond Prem. 52.00  
78583 Interstate Printers & Pub. Inc., Acct. 9.88  
78584 Ruby J. Godwin, Reimb. Supplies 177.38  
78585 James D. Love, Reimb. Supplies 15.60  
78586 John L. W. Pepper of Atlanta, Inc., Acct. 35.25  
78587 Britton Chev.-Olds, Inc., 1/2 ton Chev. Pick-up 2,990.00  
78588 S. T. Proctor Lbr. Co., Acct. 25.20  
78589 Jasper Iron & Metal Co., Acct. 18.80  
78590 Rockcastle Farm Service, Acct. 3.50  
78591 C. C. Cox, Acct. 34.50  
78592 H. S. & Co., Acct. 10.40  
78593 H. H. Miller, Acct. 12.07  
78594 James Harris, Tractor Rental 480.00  
78595 Instructional Distributors, Inc., Acct. 95.60  
78596 Mt. Vernon Lunch Room, Lunch Reimb.-Mar. 8,065.36  
78597 Rockcastle Co. High School Lunch Room, Lunch Reimb.-Mar. 4,534.52  
78598 Rockcastle Co. High School Lunchroom, Lunch Reimb.-April 2,691.32  
78599 Blue Springs Lunch Room, Trans. of Funds 182.36  
78600 The Sherwin-Wms. Co., Acct. 83.40  
78601 Broadhead Lunch Room, Lunch Reimb.-April 423.18  
78602 Livingston Lunch Room, Lunch Reimb.-Apr. 4,485.49  
78603 Mt. Vernon Lunch Room, Lunch Reimb.-Apr. 3,994.89  
78604 Rockcastle Co. High School Lunch Room, Lunch Reimb.-April 4,078.71  
78605 Roundstone Lunch Room, Lunch Reimb.-April 3,530.85  
78606 Broadhead Lunch Room, Lunch Reimb.-April 3,475.84  
78607 Broadhead Lunch Room, Lunch Reimb.-April 3,393.45  
78608 Broadhead Lunch Room, Lunch Reimb.-April 5,928.75  
78609 Broadhead Lunch Room, Lunch Reimb.-April 3,499.40  
78610 Broadhead Lunch Room, Lunch Reimb.-April 2,724.00  
78611 Broadhead Lunch Room, Lunch Reimb.-April 2,947.73  
78612 Broadhead Lunch Room, Lunch Reimb.-April 151.20  
78613 Broadhead Lunch Room, Lunch Reimb.-April 87.36  
78614 Broadhead Lunch Room, Lunch Reimb.-April 195.00  
78615 Broadhead Lunch Room, Lunch Reimb.-April 120.00  
78616 Broadhead Lunch Room, Lunch Reimb.-April 234.25  
78617 Broadhead Lunch Room, Lunch Reimb.-April 9.80  
78618 Broadhead Lunch Room, Lunch Reimb.-April 91.59  
78619 Broadhead Lunch Room, Lunch Reimb.-April 28.28  
78620 Broadhead Lunch Room, Lunch Reimb.-April 32.90  
78621 Broadhead Lunch Room, Lunch Reimb.-April 9.65  
78622 Broadhead Lunch Room, Lunch Reimb.-April 65.97  
78623 Broadhead Lunch Room, Lunch Reimb.-April 92.51  
78624 Broadhead Lunch Room, Lunch Reimb.-April 65.00  
78625 Broadhead Lunch Room, Lunch Reimb.-April 20.00  
78626 Broadhead Lunch Room, Lunch Reimb.-April 120.00  
78627 Broadhead Lunch Room, Lunch Reimb.-April 30.00  
78628 Broadhead Lunch Room, Lunch Reimb.-April 75.00  
78629 Broadhead Lunch Room, Lunch Reimb.-April 30.00  
78630 Broadhead Lunch Room, Lunch Reimb.-April 90.00  
78631 Broadhead Lunch Room, Lunch Reimb.-April 130.00  
78632 Broadhead Lunch Room, Lunch Reimb.-April 150.00  
78633 Broadhead Lunch Room, Lunch Reimb.-April 70.00  
78634 Broadhead Lunch Room, Lunch Reimb.-April 40.00  
78635 Broadhead Lunch Room, Lunch Reimb.-April 40.00  
78636 Broadhead Lunch Room, Lunch Reimb.-April 125.00  
78637 Broadhead Lunch Room, Lunch Reimb.-April 135.00  
78638 Broadhead Lunch Room, Lunch Reimb.-April 20.

# CLAYTON HAMMOND SUPERMARKET

Highway 461 Mt. Vernon, Ky.  
Phone 256-4100

"ORIGINAL HOME OF BARGAINS"

We Gladly Accept  
Federal Food Stamps



1/4 FRESH  
**PORK LOIN 89**¢  
Lb.

Southern Star

**Wieners**

12-Oz.  
Pack **59**¢



**FRESH**

**WHOLE  
FRYERS**

**39**¢  
Lb.

1 Lb. Box Saltine Crackers 39¢

J.F.G.

**SALAD DRESSING 79**¢  
Quart Size

Kounty Kist **PEAS 89**¢  
3 Cans 303 Size

Sweepstake  
**Mackerel 89**¢  
2 Cans

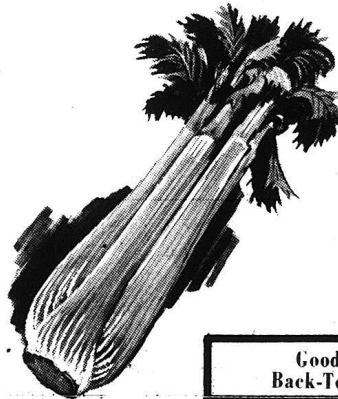
Durkee **Hamburger 49**¢  
Dill Slices

Nu-Trol Canned Milk \$**1.00**  
4 Cans

Coffee-Mate Coffee Creamer  
16 Oz. Jar  
**98**¢

**CABBAGE**

**10**¢  
LB.



Jumbo  
Stalk of

**CELERY 25**

Good Selection of  
Back-To-School Supplies

3 Lb. Bag

**ONIONS 39**¢



Fleecy White  
**BLEACH 59**¢  
Gallon

**WHOLE BARBECUE CHICKEN (Ready To Eat) \$2.19**

**"ROCKCASTLE RECOLLECTIONS"**  
(Cont. From 6)

an experienced woodsman, named Crabtree, came along Boone's Trace soon after it was located and told him that it was a rather crooked route and that he could straighten it somewhat. At Boone's request that he do so, Crabtree split off from the trace near the headwaters of Roundstone Creek and made certain changes which were incorporated into the road, but at points now unknown.

Colonel Richard Henderson and party following Boone along this new-cut trail only a few days later was able to make much better time, as indicated by the journal kept by William Calk, a member of another party who joined them along the trail and traveled with them all the way to Boonesboro. Also falling in with Henderson's group on its way thence, Powell's Valley army traveling with them as far as the Hazel Patch, were Benjamin Logan and William Gillespie who, with their slaves, were on their way to locate land for a settlement on the Kentucky frontier. Not being willing to go on to Boonesboro and take up land under Henderson's plan, they continued along the old trail - the Hunter's Path - and Skaggs Trace - to what is now Stanford, Kentucky.

Regardless of who gets the engineering credit, Boone or the Buffalo, later road-making activities have proven the wisdom of Rockcastle County being chosen as the corridor for North-South highways. I well recall that in 1937, while in the area, still broadcasting from WLW in Cincinnati, with Renfro Valley Settlement not yet completed and ready to move to, we became greatly alarmed over rumors to the effect that the new super highway to be built running south from Cincinnati, would leave Renfro Valley then in use, near Richmond or Berea, traveling out Big Hill Country and coming back into the highway at or near London. This would have left Renfro Valley, many miles off the new highway and would have completely killed our plans. At about this time, King George and Queen Elizabeth of England, came to America to visit President and Mrs. Roosevelt. As part of the entertainment for the royal couple, Mrs. Roosevelt planned a musical at the White House, intended to show the different forms of music popular in America. The Tibbels and Marjorie Anderson, among others, were chosen to represent classical and popular, while as the most representative examples of American Folk music, she invited me to bring the Coon Creek Girls to sing and play for royalty at her White House party.

Prior to this time, I had become acquainted with a very personable young man who headed one of the many Government projects of that time, with headquarters in Cincinnati. He went along with us to Washington, and when I learned that he was a personal friend of President and Mrs. Roosevelt, I lost no time in asking him if, through connections, he could get to the proper sources to find out for me something about the plans for the road turning to the West, about Lexington and going South through Somerset, which would be just as bad for our hopes for Renfro Valley. You who can remember the long tussel between Routes 27 and 25 know how long it took the U.S. Highway Engineers to make up their minds.

What they were planning for, apparently, looking years into the future, was a super-highway North and South, with limited access that could be used as a transit route in case of wartime emergency. Years of planning went into the project. Everything that science and engineering skill and money and research could do, was done, and that road, I-75, is now a reality, following a median across Rockcastle County between old Skaggs Trace and the road that runs across an unknown wilderness two hundred years ago, and nowhere is it very far from either.

Maybe the buffalo, Henry Skaggs and old Daniel Boone knew something about laying out roads, after all.

**County Agent's Notes**

By: H. Lee Durham  
County Extension Agent  
for Agriculture

**Feed Production and Utilization Suggestions.....**

Farmers who do not find feeder calf prices acceptable this fall, may want to hold their lightweight calves over until next year and market them at heavier weights. Many who do this will need more feed. Here are some suggestions for getting more feed for anyone interested in getting higher production and better utilization of feed crops.

1. Some plant species lose quality rapidly after frost and therefore should be grazed or otherwise harvested before frost. These are: corn, bermudagrass, sorghum, such as sudan grass and hybrid forage sorghums, and lespedeza.
2. Red clover and alfalfa

fields can be grazed or mowed about September 10. They should be grazed off again after they freeze down, say about November 1st.

3. Cover crops should be seeded on all two crops fields as early as possible to get maximum vegetative growth for grazing. Rye will make more growth during the fall, winter and early spring than any of the other small grains.

4. Many farmers have strip planted their tobacco for the last few years. Don't forget the feed on these sod strips between tobacco strips.

5. Corn and soybean residues can be either plowed out of the field with cattle or put into big bales or stacks. If bales or stacks are made from corn stalks or hogs should be used to clean out shattered grain and dropped ears. Young

cattle usually gain weight for a while after being turned into fields from which corn has been picked.

6. Feeding big bales or stacks can result in feeding losses of up to 50%. Some kind of feeding rack around the bales or stacks will hold losses to a minimum. When no racks are used, enough bales should be before the cattle to provide only one foot of periphery for each mature animal. That is, if the distance around the bale is 25 feet, there should be 25 mature animals feeding on the bale.

7. Nitrogen fertilizer can be applied to fescue and bluegrass in August and growth accumulated until mid-November before grazing is begun. Quality of this accumulated growth will be excellent until mid-December. At Lexington over a period of three years, fescue and bluegrass averaged 2900 and 1600 lbs. of dry matter per acre per year respectively with 45 lbs. of N per acre and 3900 and 2100 lbs. per year respectively with 90 lbs. of N.

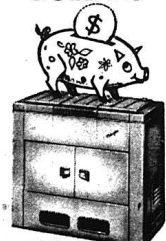
8. Locate now the fields which are to be renovated next spring. Get soil tests on these fields and apply needed lime and fertilizer this fall. If fertilizers which are used contain nitrogen, the nitrogen will give a stimulation of grass growth this fall, but all nitrogen will be gone before spring. Phosphorus and Potassium will be held in the soil and available to the spring seeded legumes. Fall purchase of fertilizers will probably save some money since prices are expected to continue rising.

9. Ad lib feeding of corn silage and high quality legume hay results in consumption above needs for adequate nutrition of dry pregnant cows. Animals should be separated and fed according to their needs. Feeding of dry cows and calves in the same group may result in over-feeding cows and/or under-feeding calves.

10. Follow the "top grazing" technique with all feeds whether in the field or stored. This technique permits maximum utilization of feed and to have first access to a field bale or stack; lactating cows next; and dry cows last, being forced to better clean up what remains.

11. Small grains, from which grain is to be harvested, can be grazed in the fall. Dr. Morris Bitzer says grazing should be started when plants are about eight inches high and plants should be grazed no closer than three-four inches in the fall. Actually, some fall grazing - especially of early seeded small grains, can increase grain yields. Any spring grazing will probably reduce grain yields.

**SAVE FUEL DOLLARS**



Heat Your Home Better



**OIL HOME HEATER**

It's true. You get better heat at less cost with this compact, stylish home heater. Provides Super Floor Heat; pays for itself with the fuel it saves. Styling and engineering blend to offer you the efficiency and beauty that have made the name Sieglers tops in home comfort. Come in soon.

Appliance Service Center  
Roy Winstead & Son  
Phone 256-2626



**STATE FARM - The World's Number One Homeowners Insurer**

More people insure their homes with State Farm than with any other company. That's because they've found State Farm to be the best in service, protection and economy. Give me a call. I'll be glad to give you all the details.

**Bill Bailey**

Mt. Vernon, Kentucky  
Phone 256-4913



Like a good neighbor, State Farm is there.  
STATE FARM FIRE AND CASUALTY COMPANY  
Home Office: Bloomington, Illinois

**EVERY APPLIANCE IN THE STORE... ON SALE!**  
**SAVE \$10 to \$100**

(Transportation Included In Prices)  
SALE ENDS SATURDAY SEPT. 7TH AT 6 P.M.

- |   |   |
|---|---|
| <p><b>Refrigerators</b><br/>15 Cu. Ft., 2 Doors <b>314.01</b><br/>17 Cu. Ft., 2 Doors <b>341.96</b><br/>22 Cu. Ft., 3 Door <b>465.86</b></p> <p><b>NEW</b><br/>NOW <b>289.95</b><br/><b>299.95</b><br/><b>419.95</b></p> <p><b>Washers &amp; Dryers</b><br/>Your Choice of 18 or 20 Lb. Heavy Duty BOTH WASHER &amp; DRYER FOR ONLY \$400.00 - Was \$512.82 [Never again at this price!]</p> <p><b>Grandfather Clocks</b><br/>ONLY 5 IN STOCK<br/>WALNUT AND PECAN FINISH<br/>NOW \$249.94 - Was \$299.95</p> | <p><b>Paint</b><br/>OUTSIDE WHITE LATEX<br/>WAS \$10.68 PER GAL. - NOW ONLY \$6.53 PER GAL.<br/>ONLY 60 GAL. LEFT AT THIS PRICE<br/>Next Shipment Will Be Higher</p> <p><b>Lawn Chairs &amp; Lounge Sets</b><br/>WAS \$31.93 FOR THREE-PIECE SET<br/>NOW \$30.51 FOR THREE-PIECE SET<br/>...CHOICE OF COLORS...</p> |
|---|---|



**STOP IN, SEE IT BUY IT NOW** SERVICE NATIONWIDE USE WARDS CHARG-ALL PLAN

**We Are Now Paying**

**5%**

**On Regular Passbook Savings**

**Your Money Available At Any Time**

at  
**THE BANK OF MT. VERNON**

MT. VERNON, KY.





# Mount Vernon Signal

"WHERE THE BOONEWAY JOINS THE DIXIE"

THE MOUNT VERNON SIGNAL, MOUNT VERNON, KENTUCKY 40456

VOLUME 87 NUMBER 51

THURSDAY, AUGUST 19, 1971

## Cost of Accidents \$2,520,000 Locally

Do residents of Rockcastle County lead safer or more hazardous lives than people in other parts of the country? Are they more liable or less liable to be involved in an accident of some sort automobile or otherwise during the course of a year? According to government statistics, local people seem to be more accident-prone than the average.

The accident figures for the local area and for communities in other sections of the United States were compiled by the Public Health Service as part of its annual vital statistics surveys.

All types of accidents were taken into account, whether they occurred in the home or at work, while driving, swimming, boating or hunting.

Based upon the last three annual reports, fatal accidents in Rockcastle County have been averaging ten per year, with five of them attributed to automobiles. Included in the figures are all accidents in which local people were involved, wherever they happened. Excluded were those affecting non-residents.

Related to population, the toll in the area was at the rate of eighty-three fatalities per 100,000 people during the three year period.

### PROPERTY SOLD.....

Three Public Auctions were held Friday and Saturday, August 16th and 17th, by Ford Healy & Auction Company in Mt. Vernon.

The Ideal Cafe Building, owned by Mrs. Margie Owens, was sold to Mr. and Mrs. Johnny McFerron of Mt. Vernon for \$16,200.

On Saturday morning, two houses and an extra lot of Mr. and Mrs. David Gregory in Berea was sold to Mr. and Mrs. Henry Hollingsworth of Cincinnati, Ohio for \$23,100.

Mr. and Mrs. Herbert Isaacs of Canaway were the purchasers of Mr. and Mrs. David Powell's house and one acre on Copper Creek Road near Conway. Purchase price was \$7,250.

### SPAGHETTI SUPPER AUGUST 30TH.....

On Friday, August 30, from 6 to 8 p.m. there will be a Spaghetti Supper at the Rockcastle County Library Recreation Room.

Cost will be \$2.00 for adults and \$1.00 for children, with proceeds to be used for the Rockcastle County Child Development Centers. Tickets will be on sale at the door.

Plan now to bring the family and support these Centers for the County. Everyone is welcome.

It was a higher rate than was found in most other communities in the United States, where the average was fifty-eight per 100,000. The rate in the East South Central States was seventy-five.

Throughout the country, according to the National Safety Council, about 1,000 fewer persons died in traffic accidents in 1970 than in 1972. It attributes the unusual drop to the fact that people did less driving and traveled at reduced speeds toward the end of the year, because of the energy crisis.

Accidents have been responsible for a huge economic loss in recent years, it finds. The average over the last three years is placed at \$29 billion a year. This takes into account loss of wages, medical expenses, insurance payments, reduced production and property damage.

Rockcastle County's proportionate share of this cost, applying the average loss per accident locally, is approximately \$2,520,000 a year.

### SEPTEMBER 8-14 BREATH OF LIFE WEEK

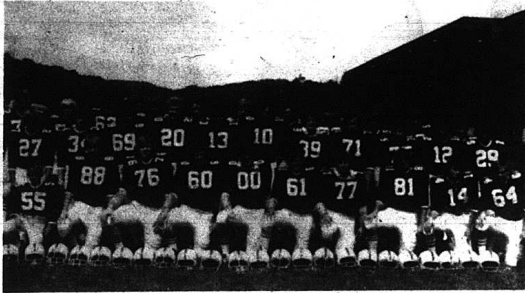
A proclamation officially declaring September 8-14 Breath of Life Week in Mt. Vernon was signed into effect today by Mayor Mullins urging all citizens to support the National Cystic Fibrosis Research Foundation's Breath of Life Campaign, conducted by the Mid-South Cystic Fibrosis Chapter on behalf of children who suffer chronic respiratory diseases.

Mrs. Julianne Harris, 1974 Chairman of the fund raising drive for the Chapter, stressed that parents and prospective parents should become more aware of the symptoms of Cystic Fibrosis, the most serious lung damaging disease, and the other diseases affecting children's breathing. "We should all be more informed about the programs of research and care for these youngsters, available in Mt. Vernon," she said.

Cystic Fibrosis is inherited when both parents carry the recessive gene for Cystic Fibrosis, usually without knowing it. Mrs. Harris said it was believed that one in every twenty people may be a carrier of the Cystic Fibrosis gene, or about ten million people in the U.S. Current Research, funded by the NCFRF, is seeking a practical test to identify these carriers. Although Cystic Fibrosis is still incurable, improved therapy is now making it possible for many affected children to survive into young adulthood.

Mayor Mullins reported that a tremendous upsurge of scientific interest in genetic diseases is being felt throughout

(Cont. to 4)



The Rockcastle Rockets will take the home field Friday night at 8 p.m. to open their 1974 season with a game against the Berea Pirates. Members of this year's squad, coached by Glen Polly, Larry Travis and Jim Cox, are, from row, from left: David Woodall, Larry Lakes, Shazam Franklin, Billy Baker, David Hunt, Wally Trebbelo, Larry Welch, David Noe, Dale Bradley and Larry Baker. Second row: Larry Kirby, John Teater, Ronnie Mink, Jerry Pensel, Kenny Burton, John Clontz, Tommy Smith, Val Franklin, Jeff Carr, Charlie Lakes and Joe Coffey. Back row: Jimmy Hale, David Pensel, Danny Hunt, Mark Holbrook, Robert Owens, Mike Carr, Joe Clontz, Bobby Boring, Richard Aderink, Paul Rice and Earl Lewis Hammons

## FmHA To Guarantee Emergency Loans

Financial assistance to livestock and poultry producers under the Emergency Livestock Credit Act will become available next week through a new loan guarantee authority of the Farmers Home Administration (FmHA), a rural credit service of the U.S. Dept. of Agriculture.

John H. Burris, FmHA State Director, said the agency will be prepared to implement the recently-enacted law by guaranteeing up to eighty percent of possible loss on loans made by legally organized lenders to livestock and poultry producers.

Under terms of the act, the loan guarantee program will be in effect through July 25, 1975. It may be extended for six months beyond that date if the Secretary of Agriculture determines that it is needed to help the livestock industry obtain sufficient credit.

The law calls for loans to be made by banks or other legally organized lenders. Mr. Burris said producers are urged to make application to, and complete loan arrangements with lending institutions. The lender will, in turn, ask FmHA for a loan guarantee if one is required. The lender will process the application, close the loan and service it.

The maximum loan to any single borrower that can be assisted by an FmHA guarantee is \$250,000. Loans will be repayable in three years, although renewal for two years may be authorized. Interest rates are determined between borrower and lender.

Mr. Burris said the agency is authorized to guarantee up to eighty percent of the loss that a lender may incur on loans to

bonafide farmers and ranchers who breed, raise, fatten or market beef, dairy or cattle, hogs, sheep, goats, chickens and turkeys. A majority of the borrower's income must come from the operation, and a majority portion of the borrower's time must be devoted to the livestock or poultry enterprise.

In the case of a corporation or partnership, assistance can be extended only when the majority partners or stockholders are primarily engaged in the livestock or poultry enterprise.

FmHA guarantees will be made only when the bonafide farmer or rancher cannot obtain financing without a guarantee. Loans may not be used to expand operations.

Mr. Burris said the county FmHA office serving the area where the borrower's livestock or poultry operations are conducted will handle requests

### HOMECOMING.....

There will be a Homecoming at the Bond Holiness Church on September 8th. Featured speaker for the occasion will be Rev. John Carter of Hamilton, Ohio and other visiting ministers. Dinner will be served after the service at Shepherd's Park.

### DEER HUNTING DATES SET BY DEPOT.....

Four weekends in October and November have been set for deer hunting at the Lexington-Blue Grass Army Depot near Richmond. The dates are October 12-13, 29-30 for bow hunting and November 9, 10, 23 and 24th for shotgun with slugs. Both buck and doe may be taken.

This is only the second time in the long history of public hunting at the Blue Grass Army Depot that hunts are being conducted on consecutive days.

Only a limited number of sportsmen are allowed to hunt, therefore permits are issued through a lottery method. Names are drawn by prominent local officials from a hopper containing hundreds of post cards.

Hunting request should be submitted on post card only and addressed to: Chairman, Wildlife Management Subcommittee, Building S14, Lexington-Blue Grass Army Depot, Lexington, Kentucky 40507. The card must contain the following: Name of hunter; (only one); address; telephone number and desired method of hunting; bow or gun. Card must be postmarked between August 15 and September 15. All others are ineligible. More than one card from an applicant will disqualify the applicant on consecutive days.

All Kentucky deer hunting regulations apply to these hunts.

## Deaths and Funerals

### MRS. REBECCA J. OWENS

Mrs. Rebecca Jane Owens, age 87, of Brodhead, Route 1, passed away Monday, August 26 at the Rockcastle County Hospital. She was born in Rockcastle County on January 3, 1887, the daughter of the late Joe William and Sidney Elizabeth Cromer Minks and was a member of the Providence Church of Christ.

She is survived by: one step-daughter, Mrs. Delphia Minks of Brodhead, Route 1, three brothers, Marion Minks and Ben Minks, both of Route 1, Mt. Vernon and Ed Minks of Route 3, Brodhead; one sister, Mrs. Bertha Arnold of Route 1, Mt. Vernon, five step-grand children and seven step-great grandchildren. She was preceded in death by her husband, Harvey Owens; two brothers, Hayes Minks and Tony Minks; and one sister, Mrs. Pearl Taylor.

Funeral services for Mrs. Owens were held Wednesday, August 26, at 2 p.m. at the Providence Church of Christ by Bro. Hugh Thomas and Bro. Lorraine Wilson. Burial was in the Providence Cemetery.

Arrangements were by the Dowell and Martin Funeral Home.

### MRS. HATTIE L. DUVALL

Mrs. Hattie L. Duvall, 84, of Route 1, Brodhead and formerly of Prathersville, Ky., passed away August 25, 1971 at the Berea Hospital. She was born in

Garrard County on December 18, 1889, the daughter of the late Andrew and Janie Likens Rigby. She was a member of the Methodist Church in Prathersville.

Survivors are: two daughters, Miss Dorothy Jane Duvall of Lexington and Mrs. Betty Marie Burton of Route 1, Brodhead; four sons, Raymond Andrew of Route 2, Crab Orchard, Clarence William of Conersville, Indiana, Henry Lee of Lexington and Robert L. of Lebanon, Ohio; one sister, Mrs. Grace Ledbetter of Jack-sonville, Illinois; three brothers, Dave and Charlie Rigby, both of Chesterfield, Illinois and Robert Rigby of Hartford, Illinois. Eleven grandchildren and ten great grandchildren also survive. She was preceded in death by her husband, Owen, and one son, Samuel David.

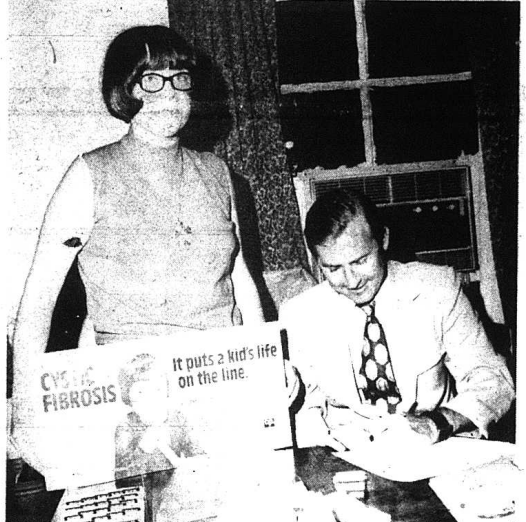
Services were held Wednesday, August 23, 1971 at 2 p.m. at the Watson Funeral Home with Bro. Leroy Davis officiating. Interment was in the Lancaster Cemetery.

### JACKIE HELLARD

Jackie Hellard, age 44, of Richmond, Indiana and formerly of Rockcastle County, passed away Tuesday, August 20, in a Richmond Hospital. He was born in Kentucky, the son of Mrs. Larmie Hellard and the late Peter Hellard.

Besides his mother, he is survived by: his wife, Mrs. Juanita Bowles Hellard of Richmond; one son, John of

(Cont. to 8)



Mt. Vernon Mayor Roland Mullins has proclaimed the week of September 8-14 as "Breath of Life Week" in Rockcastle County. The week is being observed in conjunction with the local fund-raising campaign for Cystic Fibrosis being headed up by Mrs. Julianne Harris, also in the above photo.



Oscar Pain, center, a member of the Superior Food Market men's softball team, received the Good Sportsmanship award at the conclusion of the men's summer softball league at Mt. Vernon Elementary. Shown presenting Mr. Pain with the award is John Biallock, a member of the Mt. Vernon Recreation Council, and Paul Thomason, Playground Director.



THE MIDDNIGHTERS brought home the honors in the recently completed Crab Orchard Women's Softball Tournament by defeating the Wandering Angels in a double-elimination tournament, 4 to 2 and 23 to 9. The Midnighters also received the trophy on the left for the best league record. Members of the team are, front row, from left: Debbie White, Connie McClure, Judy Biallock, Teresa Russell and Sue Kintler. Back row, from left: Debbie Morris, Cheryl Riddle, Pat Smith, Rose Smith, Cathy Strain, Janice Mooney and Precis Cobb, manager. The team also came in fourth in Regional play.



# September Food Savings

WE WILL BE OPEN LABOR DAY FROM  
9:00 TILL 6:00 P.M.



3 LB. CANNED  
**CUDAHY HAM**  
\$ **3.79**  
LIMIT (1)



1 LB. SOUTHERN STAR  
**BACON**  
Limit 4 with \$7.50 order  
U.S. GOVERNMENT INSPECTED  
**WHOLE FRYERS**  
\$ **1.09**  
Limit 2

2 OZ. SOUTHERN STAR  
**SLIM JIM WEINERS**  
\$ **1.65**  
L.B.



FRESH LEAN **GROUND BEEF**  
NO ADDITIVES ADDED

**79**¢ Lb.



LARGE 24 SIZE  
**LETTUCE**  
2 FOR **45**



GOLDEN RIPE  
**BANANAS**  
2 LBS. **25**

250 S & H Stamps  
With \$25.00 Or More  
Order

100 S & H Stamps  
With \$10.00 to \$24.99  
Order

WORTH 50  
S & H Green Stamps  
with the purchase of  
2 Pkg. or more  
of any  
Carnation Milk  
mv cpn exp. 9-4-74

WORTH 50  
S & H Green Stamps  
with the purchase of  
10 Lb. or more  
of any  
Columbia Potatoes  
mv cpn exp. 9-4-74

WORTH 50  
S & H Green Stamps  
with the purchase of  
12 Oz. or more  
of any  
Carnation Milk  
mv cpn exp. 9-4-74

WORTH 50  
S & H Green Stamps  
with the purchase of  
12 Oz. or more  
of any  
Carnation Milk  
mv cpn exp. 9-4-74

WORTH 50  
S & H Green Stamps  
with the purchase of  
12 Oz. or more  
of any  
Carnation Milk  
mv cpn exp. 9-4-74

WORTH 50  
S & H Green Stamps  
with the purchase of  
12 Oz. or more  
of any  
Carnation Milk  
mv cpn exp. 9-4-74

WORTH 50  
S & H Green Stamps  
with the purchase of  
12 Oz. or more  
of any  
Carnation Milk  
mv cpn exp. 9-4-74

WORTH 50  
S & H Green Stamps  
with the purchase of  
12 Oz. or more  
of any  
Carnation Milk  
mv cpn exp. 9-4-74

WORTH 50  
S & H Green Stamps  
with the purchase of  
12 Oz. or more  
of any  
Carnation Milk  
mv cpn exp. 9-4-74

WORTH 50  
S & H Green Stamps  
with the purchase of  
12 Oz. or more  
of any  
Carnation Milk  
mv cpn exp. 9-4-74

WORTH 50  
S & H Green Stamps  
with the purchase of  
12 Oz. or more  
of any  
Carnation Milk  
mv cpn exp. 9-4-74

WORTH 50  
S & H Green Stamps  
with the purchase of  
12 Oz. or more  
of any  
Carnation Milk  
mv cpn exp. 9-4-74

VALUABLE COUPON  
LV. 25  
3 1/2 King Size  
**Cascade**  
Only 93c  
WITH THIS COUPON  
Food Fair  
LIMIT ONE COUPON PER PURCHASE

VALUABLE COUPON  
LV. 20 32 fl oz (1 qt)  
KING SIZE  
**Joy**  
ONLY 81c  
WITH THIS COUPON  
Food Fair  
LIMIT ONE COUPON PER PURCHASE

SAVE 40%  
WITH THIS COUPON WHEN  
YOU BUY A 1 LB. BAG OF  
MAXWELL HOUSE OR  
ELECTRA PERK COFFEE  
AT FOOD FAIR MKTS.  
Offer 1 Lb. Only 89¢  
With Coupon  
Expires 9-4-74  
Limit (1) 75¢ Order

STORE COUPON  
1-502422  
with this coupon  
**AXION**  
LAUNDRY PRE-SOAK  
Save 40%  
59¢  
25 Oz. SIZE  
This coupon redeemable only at Food Fair Stores

VALUABLE COUPON  
3.5 oz. Personal Size  
**IVORY**  
44¢  
WITH THIS COUPON  
55¢  
Food Fair  
GOOD THROUGH 9-4-74  
Limit one coupon per family. Cash value 1/20 of one cent. Gov't regulations apply.

SARA LEE  
WILL DONATE **10¢** TO MUSCULAR  
DYSTROPHY  
for any Sara-Lee package you send in.  
**BROWNIES**  
CHOCOLATE CAKE  
DEVIL OR GERMAN **89¢**  
NEW FREEDOM  
From Notes **35¢**  
Box

FREE MEAT OFFER  
WORTH \$2.00  
Just send one front label from each of the above products, plus cash register tape with your \$2.00 (or more) meat purchase printed, this mail-in coupon and your clearly printed name & address (including zip code) on a separate piece of paper to: Meats Free Meat Offer, Box 29, D. St., Pittsburgh, Pa. 15202. We'll send you a check for \$2.00 by mail. Please allow six weeks for delivery. Hourly, unless express August 31, 1974. Limit one coupon per family. This coupon may not be mechanically reproduced and other rights may not be assigned or transferred. Cash value 1/20 of 1¢. \*To remove label, soak bottle or jar in warm water for 20 minutes and peel off.

MAIL-IN COUPON  
2 PACKAGES FOR  
**VIVA**  
Big Roll for 85¢  
FOOD FAIR  
BREAD  
16 OZ. LOAVES  
3 FOR 87¢

MEADOW GOLD  
VIVA  
ICE MILK  
1/2 GALLON  
69¢  
5 OZ. CAN  
VIENNA SAUSAGE  
3 FOR 95¢  
Giant Size  
AJAX DETERGENT  
89¢

FOOD FAIR  
POTATO CHIPS  
Twin Bag  
55¢  
KELLY'S  
5 OZ. CAN  
VIENNA SAUSAGE  
3 FOR 95¢

14 1/2 Oz. Can  
Showboat  
PORK & BEANS  
4 Cans \$1.09

2 LB. FREEZER QUEEN DINNERS  
Except Beef  
\$1.19  
6 OZ. CAN  
FROZEN  
DONALD DUCK  
ORANGE JUICE  
\$1.09  
19 OZ.  
OREO COOKIES  
25 Lb. Friskies  
DOG FOOD MIX \$3.79

10 LB. BAG  
U.S. NO. 1 LONG WHITE  
POTATOES  
**99**¢

TALL CANS  
**CARNATION MILK**  
MILK  
4 FOR **1.00**

15 Oz. Kelly's  
CHILI WITH  
BEANS  
2 For 89¢  
8 OZ. CRACKERS  
Chicken In  
Basket,  
Bacon Things,  
Cheddar &  
Chips &  
Sociables  
59¢

MARTHA  
WHITE  
HOT RIZE  
CORN MEAL  
5-LB. BAG  
79¢

WORTH 50  
S & H Green Stamps  
with the purchase of  
12 Oz. or more  
of any  
Carnation Milk  
mv cpn exp. 9-4-74

WORTH 50  
S & H Green Stamps  
with the purchase of  
12 Oz. or more  
of any  
Carnation Milk  
mv cpn exp. 9-4-74

# Mount Vernon Signal

PUBLISHED EVERY THURSDAY

MAIN STREET IN MT. VERNON, KENTUCKY 40456  
Entered at Mt. Vernon Post Office  
as Second Class Matter

In Rockcastle Co. \$4.20 - Outside of County \$5.00

James Anderkin, Jr., Publisher  
Parlina M. Anderkin, Editor

JOHN NICHOLS'

## Frankfort Watchline

Despite the surface divorce of government and politics during this campaign season in the capitol City, one is aware of at least a smirking flirtation between the two.

And if a Frankfort watcher isn't careful, he'll allow himself to get carried away with that, often ignoring the good that is, somehow, accomplished ... though the tendency here these days is to turn each conversation to, "How is the Senate race shaping up?"

One of the bright spots is the recent addition of 1.6 million dollars to efforts to do something about the pitifully lax dispensation of justice in the Commonwealth.

If you've ever been a juror ... if you've ever been a witness ... if you've once been the victim of a crime ... or if you've been accused of a crime, then you know first-hand how tortuously slow the wheels of justice turn.

And it's a case in which you really cannot blame the system. Oh, perhaps there's something a little bit old-fashioned about the way our courts are set up, but the voters get a chance a year from November to do something about that in a constitutional referendum.

No, it's just a matter of too much load for the courts to handle. Aware of that, the Department of Justice and the Federal Government have pinpointed some critical wrongs in our courts operation.

The \$1.6 million is the largest segment of some \$8 million that Washington is passing out for this kind of remedy grant, and Henry Mangot, that soft-spoken attorney who so efficiently heads up Kentucky's justice effort, feels that one of the greatest needs is a turn-around in the negative attitude Kentuckians have toward their courts.

And after all, if we don't trust our courts, what's left?

So, what will the money go for? Much of it will be used to give commonwealth's attorneys across the state much more help ... a greater ability to handle cases more quickly. For instance, instead of ten part-time assistants in Jefferson County, Commonwealth's Attorney Edwin Schroering will have ten full-time helpers.

But how will the public know what's being done in its behalf? Well, what's called "law reform education" will be a subject treated in depth by

Kentucky Education Television. Some of the federal dollars will fund TV programs to tell us about the new penal code that takes effect next year (possibly detailing the qualified return of the death penalty) and about other areas of criminal justice about which the public needs to know.

And finally, there's an ombudsman program for which part of the funds are targeted. In specified Kentucky counties, presumably where there's been a good deal of breakdown because of case overload, individuals called "juror-wis-ness-victim coordinators" will give personalized service to those closely involved in the courts process.

These new creatures of the justice crunch will tell witnesses what time they must be in court ... they'll tell victims about the kinds of public assistances available to them ... and they'll coordinate the comings and goings of jurors so that an individual's experience as a juror won't be something he'll remember as a time-wasting experience.

A few facts from Mangot on this point: an average juror spends seventeen percent of his time hearing a case; he spends four percent of his time deciding a case; and he spends 79 percent of his time waiting somewhere for someone to put him to work.

No wonder judges are faced daily with often weak but desperate pleas by potential jurors that their time is too valuable to play this waiting game. Carrying little say and bearing awesome constitutional responsibilities, the call to jury duty has been reduced to something almost as feared as a summons or subpoena.

It's Mangot's hope that these attitudes can be salvaged and made wholesome again.

And it's to our interest to share that hope. Who knows in what part of our personal lives the court system might someday play a heavy role? Wouldn't it be nice for us if it were running as smoothly as possible?

...Marriage Licenses...

Jerry Michael Smith, 22, Route 2, Crab Orchard, factory worker, to Genevieve Bussell, 17, Brodhead, August 23, 1974. David Andrew Richmond, 22, Mt. Vernon, clerk, to Brenda Lee Gault, 20, Mt. Vernon, August 23, 1974.

...County Court...  
Petit Larceny, \$50.00 and costs, Donald Iworski.  
Speeding, \$10.00 and costs - Roy McNeal, Wayne Henley, Della M. Flores, Jack E. Blalock, Douglas L. Petree, Cressula S. Everett, Robert Lee Ritter, Roy G. Stubblefield, Norman Grossman, Patricia A. Hardin, Kimberly Ann Silvernail, Clint Merida, Stinnie Townsel, Sharon Lucille Martens, Fred Allen, Gavin S. Dudley, Dorothy M. Johnson, Orlin Gilkerson and Manuel Smith.  
Drinking Beer on Highway, \$10.00 and costs - Edward Jackson.

Operating a Motor Vehicle While Under the Influence of Intoxicants, Amended to Reckless Driving - Floyd Rowe, \$50.00 and costs; Jacob Van-Winkle, \$100.00 and costs; Reckless Driving, \$10.00 and costs - Philip Dale Price.  
Public Drunkenness, \$10.00 and costs - Ray Sizemore, Franklin Carter, Kenneth Lovell Fletcher, Luther Bustie, Ballard White.

Transporting Alcoholic Beverages in Local Option Territory for Purpose of Resale, \$100.00 and costs - Ray Sizemore.

...CEDAR RAPIDS...  
...CORNER...  
Menus for the weekend at Cedar Rapids Recreation Center are as follows:

Friday Night: Fried Chicken and Gravy, Mashed Potatoes, Peas, Glazed Carrots, Hot Biscuits and Jelly, Tossed Salad.

Sunday Lunch: Turkey and Dressing, Giblet Gravy, Baked Ham, Mashed Potatoes, Cranberries, Broccoli Casserole, Green Beans, Baked Peas, Tossed Salad, Relish Tray, Hot Rolls and Cake.

Don't Forget! All members should plan to attend the Labor Day Pot Luck Picnic to be held at the Recreation Center next Monday. The picnic will begin at 5:30; and since this will also be the last day for the swimming pool to be open, come on out early and enjoy a swim.

William D. and Gwen Abney, real property located on the waters of Roundstone Creek, to Beverly Jean Hellard, N.T.

Charles F. and Faye Carr, real property located on the waters of Negro Creek, to James and Jewel Benge, Tax \$12.00.

William D. and Gwen Abney, real property located on the waters of Roundstone Creek, to John G. Eaton and Pauline P. Mullins, Tax \$18.00.

Ardella Mullins, real property located on the waters of Piney Branch, to Eva Furman, Tax \$4.00.

J. W. and Dorothy Hurd, real property located on the West Side of Floyd Street in Mt. Vernon, to Roger and Peggy Ann Bray, N.T.

Margie Owens, real property located on Quarry Street in Mt. Vernon, to Hie H. and Ruby A. Nee, Tax \$22.50.

Rex and Jenny Stevens, real property located on the waters of Negro Creek, to Larry M. and Vincenta Howard, Tax \$30.00.

Walter E. and Glenda Jean Riddle, real property located near Brodhead, to David and Norine Bradley, Tax \$19.50.

Paul K. and Joan E. Jones, real property located in Brodhead, to Walter G. and Barbara Schumacher, Tax \$18.00.

...County Statistics...  
...Deeds Recorded...  
Dean and Rose Mary Jones, real property located in Rockcastle County, to Walter and Daisy Chaney, Tax \$10.00.

Homer and Sallie Hale, real property located on the waters of Renfro Creek, to Troy or Dorothea Bernice Gibbs, Tax \$4.00.

Leon and Jean Hellard, real property located on the waters of Roundstone Creek, to Beverly Jean Hellard, N.T.

Charles F. and Faye Carr, real property located on the waters of Negro Creek, to James and Jewel Benge, Tax \$12.00.

William D. and Gwen Abney, real property located on the waters of Roundstone Creek, to John G. Eaton and Pauline P. Mullins, Tax \$18.00.

Ardella Mullins, real property located on the waters of Piney Branch, to Eva Furman, Tax \$4.00.

J. W. and Dorothy Hurd, real property located on the West Side of Floyd Street in Mt. Vernon, to Roger and Peggy Ann Bray, N.T.

Margie Owens, real property located on Quarry Street in Mt. Vernon, to Hie H. and Ruby A. Nee, Tax \$22.50.

Rex and Jenny Stevens, real property located on the waters of Negro Creek, to Larry M. and Vincenta Howard, Tax \$30.00.

Walter E. and Glenda Jean Riddle, real property located near Brodhead, to David and Norine Bradley, Tax \$19.50.

Paul K. and Joan E. Jones, real property located in Brodhead, to Walter G. and Barbara Schumacher, Tax \$18.00.

...County Court...  
Petit Larceny, \$50.00 and costs, Donald Iworski.  
Speeding, \$10.00 and costs - Roy McNeal, Wayne Henley, Della M. Flores, Jack E. Blalock, Douglas L. Petree, Cressula S. Everett, Robert Lee Ritter, Roy G. Stubblefield, Norman Grossman, Patricia A. Hardin, Kimberly Ann Silvernail, Clint Merida, Stinnie Townsel, Sharon Lucille Martens, Fred Allen, Gavin S. Dudley, Dorothy M. Johnson, Orlin Gilkerson and Manuel Smith.  
Drinking Beer on Highway, \$10.00 and costs - Edward Jackson.

Operating a Motor Vehicle While Under the Influence of Intoxicants, Amended to Reckless Driving - Floyd Rowe, \$50.00 and costs; Jacob Van-Winkle, \$100.00 and costs; Reckless Driving, \$10.00 and costs - Philip Dale Price.  
Public Drunkenness, \$10.00 and costs - Ray Sizemore, Franklin Carter, Kenneth Lovell Fletcher, Luther Bustie, Ballard White.

Transporting Alcoholic Beverages in Local Option Territory for Purpose of Resale, \$100.00 and costs - Ray Sizemore.

...CEDAR RAPIDS...  
...CORNER...  
Menus for the weekend at Cedar Rapids Recreation Center are as follows:

Friday Night: Fried Chicken and Gravy, Mashed Potatoes, Peas, Glazed Carrots, Hot Biscuits and Jelly, Tossed Salad.

Sunday Lunch: Turkey and Dressing, Giblet Gravy, Baked Ham, Mashed Potatoes, Cranberries, Broccoli Casserole, Green Beans, Baked Peas, Tossed Salad, Relish Tray, Hot Rolls and Cake.

Don't Forget! All members should plan to attend the Labor Day Pot Luck Picnic to be held at the Recreation Center next Monday. The picnic will begin at 5:30; and since this will also be the last day for the swimming pool to be open, come on out early and enjoy a swim.

William D. and Gwen Abney, real property located on the waters of Roundstone Creek, to Beverly Jean Hellard, N.T.

Charles F. and Faye Carr, real property located on the waters of Negro Creek, to James and Jewel Benge, Tax \$12.00.

William D. and Gwen Abney, real property located on the waters of Roundstone Creek, to John G. Eaton and Pauline P. Mullins, Tax \$18.00.

Ardella Mullins, real property located on the waters of Piney Branch, to Eva Furman, Tax \$4.00.

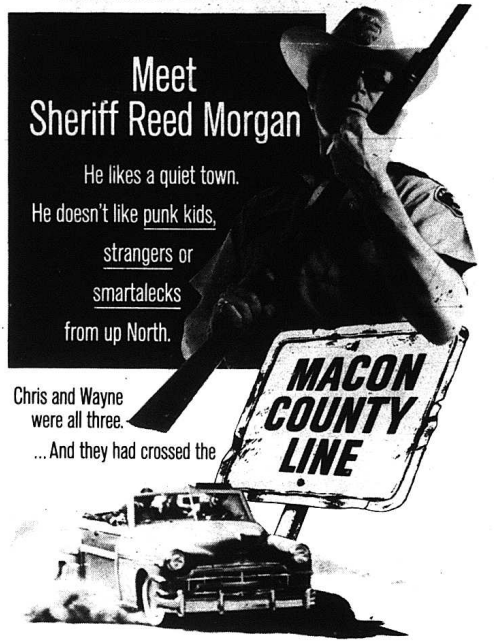
J. W. and Dorothy Hurd, real property located on the West Side of Floyd Street in Mt. Vernon, to Roger and Peggy Ann Bray, N.T.

Margie Owens, real property located on Quarry Street in Mt. Vernon, to Hie H. and Ruby A. Nee, Tax \$22.50.

Rex and Jenny Stevens, real property located on the waters of Negro Creek, to Larry M. and Vincenta Howard, Tax \$30.00.

## Deadline for news items Is 4 p.m. Tuesday

RICHMOND DRIVE-IN THEATRE, 8 Miles N. of Berea  
NOW SHOWING - ENDS TUESDAY - STARTS 7:45 P.M.



Meet Sheriff Reed Morgan

He likes a quiet town.  
He doesn't like punk kids,  
strangers or smartalecks  
from up North.

Chris and Wayne were all three.  
...And they had crossed the

Samuel Z. Arkoff presents a Max Baer production  
starring Alan Vint - Cheryl Waters - Geoffrey Lewis - Joan Blackman - Jesse Vint and Max Baer  
original music by Stu Phillips - executive producer Roger Camras - screenplay by Max Baer and Richard Compton - story by Max Baer - produced by Max Baer - directed by Richard Compton  
"Another Place, Another Time" composed and sung by Bobbie Gentry color by CRI  
an American International release

ALSO BARBARA HERSHEY "BOX CAR BERTHA"

## Somebody must pay

Even while many Americans face critical shortages, Kentuckians enjoy an abundance of electric energy. But there is a price for every good thing. And the price is climbing . . . fast!

Somebody has to pay for coal and copper and all the other things that go into the cost of providing electric energy. That "somebody" is the consumer . . . you. Call your electric cooperative for energy and money saving ideas.

**Electricity is too good to waste!**

**Jackson Co Rural Electric Cooperative**  
McKee, Kentucky

## WE ARE OVERSTOCK ON USED CARS AND WE MUST MAKE ROOM FOR THE TRADE-INS ON THE 75's. SO WE'RE GOING TO MOVE 'EM THREE BIG DAYS ALL ARE ON SALE HERE ARE JUST A FEW OVER 70 CARS TO CHOOSE FROM:

1974 Rotary Mazda Sta. Wgn. Sharp	73 Gremlin Std. Sport
1974 El Camino Pup air cond, full power	1973 Showabout Extra low mileage
1973 Custom 10 Long Wh. Base, auto, power, real step bumper	1969 Chevrolet Caprice Cpe. air
1973 Gremlin X auto, Extra sharp	70 Mercury Spoiler 4 speed, sharp
1972 Vega Sta. Wgn. 4 speed	1970 Mercury Brougham 2 Dr., H-top, air, full power
1971 Vega Sedan Cpe.	1973 Chevrolet Caprice Cpe. air, power auto, extra sharp
1971 Buick Skylark 2 Dr., H-top, air, full power	1970 Volkswagen Bug One Owner
1972 Buick LeSabre 2 Dr., H-top, air full power, one owner	1969 Volkswagen 4 speed
1973 Buick LeSabre 4 Dr., sedan, air, power, extra sharp	1973 Volkswagen 4 speed, new tires
1972 Mustang Mach I auto, extra sharp, Red-Black trim	1973 Opel GT 4 speed, new
1972 Oldsmobile 88 4 Dr., air, power	1973 Opel Manta sun-roof, automatic
1970 Rebel Machine One owner	1973 Opel Manta 4 speed
1970 Chev. Impala 4 to choose from All carry our 100 per cent 1 yr. 12,000 mile Warranty. Good at anyones shop.	1972 Electra Limited 4 Dr., H-top
1971 Mercury Capri 4 speed, White, extra sharp	1974 Javelin 2 Dr., H-top, gold cpe., air-power
1974 Gremlin X air, full power	1968 Buick LeSabre 4 Dr., H-top

**On The Lot Financing-On The Lot Insurance  
No Payment Till October.**

"Volume Makes Us Easy" **986-3173**

## DAVIS-WILLIAMS INC.

On The Strip In Berea Open till 6:00 daily  
Buick-Opel-American Motors Buick-Opel-American Motors

# AROUND BRODHEAD

Out of town guests of the Albert Albright recent, were Mrs. Phil Hamm and Billy Joe of Wichita, Kansas, Miss Jean Rippmann and Gleason Greig of Bradenton, Florida, Mr. and Mrs. Guy Albright of Louisville, Mr. and Mrs. Bud Hadsell of Springdale, Ohio and Mr. and Mrs. Vernice Jones of Blue Ash, Ohio.

Mickey Pruitt and Mrs. Mary McWhorter were in Lexington Thursday to pick up Bob Singleton of Chicago at the airport. Master Scotty Moore of Lexington accompanied them home for a visit.

Mrs. Brenda Moore and Scotty and Mickey Pruitt were at Kings Island Saturday.

Weekend visitors of Mr. and Mrs. Ed McWhorter were Mr. and Mrs. Ron Singleton and children of Louisville, Mr. and Mrs. Paul Crowley and Danny of Dayton, Ohio, Mr. and Mrs. Freddie Pruitt and Mickey, Mr. and Mrs. Jimmy Parsons of Lexington, Mrs. Bertha Moore and Scotty of Lexington.

Miss Mickey Pruitt celebrated her 8th birthday Sunday with her family.

Mr. and Mrs. Gerry Singleton of London visited Mr. and Mrs. Ed McWhorter Friday. Mrs. Ron Crutcher, Tovia and Jill of Berea visited Mr. and Mrs. Ed McWhorter Friday.

Mrs. Bertha Adams has returned home after recuperating from surgery at the home of her daughter.

Mr. and Mrs. R. C. Crawford were recent dinner guests at Boone Tavern of Mr. and Mrs. Sammy Ford. They attended the "Wilderness Road" Drama following dinner.

Mr. and Mrs. John Jerrett of California visited Mr. and Mrs. Ed Payne last week.

Joppie Adams of Indiana visited Mr. and Mrs. Ed Payne last Tuesday.

Mr. and Mrs. Jerry Maynus

of Reading, Ohio were last week visitors of Mr. and Mrs. Ed Payne. Mr. and Mrs. Dale Mink and family of Reading, Ohio are visiting Mr. and Mrs. Ed Payne and Mrs. Tony Mink. They are here for the funeral of his aunt, Mrs. Rebecca Owens.

Mr. and Mrs. Ed Payne were in Danville Sunday to visit his sister, Mrs. Leticia Owens at the Nursing Home.

Mr. and Mrs. Walter Baldwin and children were in London Saturday night.

Mr. and Mrs. Bobby Machal and Anthony and Alicia were in Lexington shopping Wednesday.

Mr. and Mrs. Bobby Machal and Mr. and Mrs. E. J. Smith were in Lexington Saturday night to attend the Barn Dinner Theatre.

Mrs. Lela Mae Harrison and children, Mrs. Ollie Harrison and Mrs. Ruby Adams spent the weekend in Ohio visiting relatives.

Mr. Johnny Newland and Chris and Mrs. Frank Watson were in Lexington shopping Monday.

Mr. and Mrs. D. A. Wright and Stephen of Somerset visited Mr. and Mrs. M. F. Allen Sunday.

Mrs. E. J. Smith and Jon were in Danville Wednesday and in Somerset Thursday shopping.

Mr. E. J. Taylor, Sherri and Patty, have returned home from a visit with her mother in Ohio.

Mrs. Eddie Cash and children were in Somerset Monday afternoon.

Tena Sue Halcomb, daughter of Mr. and Mrs. Roy Eugene Halcomb of Brodhead, celebrated her third birthday Saturday, August 24th at her home with a party. Guests were her parents Mr. and Mrs.

## PAGE FOUR

Hascorn, her sister Sherri Lyane, Mrs. Mayne Halcomb, Libby, Vince and Teresa Halcomb, Mrs. Douglas-Caudill, Carl Stevens and the Caudill family, Jennie, Lynn and Phyllis Biehop, all of Brodhead. Tina Sue is the granddaughter of Rose Mae Wilson and Mrs. Mayne Halcomb of Brodhead.

Mr. and Mrs. W. L. and Mrs. Otis Ray of Norwood, Ohio visited Mr. and Mrs. Ed Payne Sunday.

Mr. and Mrs. Joe Busell and family of Mason, Ohio spent the weekend with Mrs. Arch Buseason.

Drop-in guests of Mrs. Lucy Smith this weekend were Mr. and Mrs. Delmer Smith of Versailles, Indiana, Mrs. Susie Masters, Gary Masters, David Petrey and Miss Donna Smith of Corbin and Mr. and Mrs. Carl Thompson of Frazerchburg.

Mr. and Mrs. W. E. Burgin of Stanford spent Saturday night with Mr. and Mrs. E. J. Smith and Jon.

Rev. and Mrs. O. O. Cloyd of Corbin attended church Sunday night at the Christian Church.

Bro. and Mrs. Mike Deskin, April and Scott, missionaries to Antioch visited friends in Brodhead Friday.

Mr. and Mrs. Kelly Carson and John of Richmond and Miss Edna Carson of Lexington visited Everett Waislin last weekend.

\*\*\*\*\*

LIVINGSTON

Last Sunday visitors of Mr. and Mrs. Russell Mullins were Mr. and Mrs. Jerry Waddle and daughter Tonya. Mr. and Mrs. Phil Childress and Brent of Louisville, Mr. and Mrs. Curtis McHargue and Darlene, Mrs. Mattie Kelly of Hamilton, Ohio and W. F. Kelly of Laurel County.

Mr. and Mrs. Dean Brock of Pineville visited her sister Mr. and Mrs. Willard Stallworth and Leonard last week.

Mr. and Mrs. Dave Vanchn have returned from a two-weeks visit with their son Cloyd in Indianapolis, Indiana. They were accompanied home by their son and his wife.

Mr. and Mrs. Arnel Taylor, Mr. and Mrs. Garrett Taylor, Mr. and Mrs. Eugene Taylor and boys of Richmond, Mr. and Mrs. Quilan Raines and boys of Dandaloio, Ohio and Mr. and Mrs. Cloy C. Angel and Dennis spent the weekend at Dale Hollow, Tennessee.

Mr. and Mrs. Esmer Mullins of Richmond, Indiana visited Mrs. Nettie Bullock and Desmond over the weekend.

Recent visitors of Mr. and Mrs. M. H. Clark were Mr. E. McCollum, Mr. and Mrs. Preston Allen and children and Mrs. Elora Allen of Louisville, Mr. and Mrs. Hubert Allen and children of New Albany, Indiana, Mr. and Mrs. Hayes Clark of Hamilton, Ohio, and Mr. and Mrs. C. F. Mullins and Bro. Wayne Phifer.

Mr. and Mrs. David Hines and daughter Melanie of New Lebanon, Ohio spent the weekend with her mother Mrs. Gene Gilford.

Mr. and Mrs. Jack Cornelius and daughters of Columbus, Ohio visited her aunt Mrs. Carrie Loudermik and Mr. and Mrs. Oscar Mullins last week.

Mr. and Mrs. Joseph French and daughters visited her grandmother Mrs. Jane Smith en route to their home in Grove City, Ohio after a two-week vacation in Florida where they visited Disney World and other places of interest.

Mr. and Mrs. Oscar Mullins and Martin Mullins and son of Indianapolis, Indiana and Mrs. Carl Sahli and Joy and Bruce spent Sunday at Jackson, Ky. with their son Mr. and Mrs. James A. Mullins and Doris where they all celebrated the homecoming of Mr. and Mrs. Donald David Mullins. They have just returned home from two years in Japan.

Mr. and Mrs. Chester Halcomb spent the weekend in Louisville.

Mr. and Mrs. Clinton March of South Augusta, S. C. visited Mr. and Mrs. C. F. Mullins and Mr. and Mrs. Arthur Argenbright last week.

Ronald Argenbright of Cincinnati spent the weekend with Mr. and Mrs. Roger Robinson.

Mrs. Fred Shehan who had the misfortune to fall and break her leg, has returned to her home from a Lexington hospital.

Sympathy is extended to the Allen and McHargue family in the sudden death of Mrs. Rosa Allen.

Mr. and Mrs. Ed Pace of Louisville spent the weekend with her parents Mr. and Mrs. Clyde Fordyce and were accompanied home by their little daughter Gina.

\*\*\*\*\*

Interest will benefit research underway to find a control for Cystic Fibrosis, which is considered a model for genetic disorders."

## CARD OF THANKS

The family of Walter Junior



STEVE RATLIFF OF ROUTE 5, RICHMOND, KY. CAUGHT A TAG FISH THAT WON HIM \$200.00 AT SPILLMAN'S FISHING LAKE, U.S. 25 SOUTH OF BEEBA, KY. LARRY HARRIS (ON THE LEFT) IS HELPING TO HOLD THE PRIZE FISH.

SPILLMAN'S FISHING LAKE OPEN ALL NIGHT, FRIDAY & SATURDAY DAILY TO 11:00 P.M.

WE HAVE PAID GROCERIES, AND FISHING SUPPLIES. NO FISHING LICENSES REQUIRED.

Niceley would like to thank everyone for their kindness and sympathy in a time it was deeply appreciated, to those who sent flowers and food, also to Bro. Don Cummins for his comforting words, to Cox Funeral Home, Buddy and Gary, to Jerry Niceley's wife and the

choir who sang the beautiful songs, and to the pallbearers. May God bless each and everyone for everything. Mother, Brothers and Sisters.

SUBSCRIBE TO THE SIGNAL

Watch Next Week's Signal For Details Of

## AUCTION

Of Mr. and Mrs. Sam Ford's 60-Acre Farm, Located -Just Outside South City Limits of Mt. Vernon, Off Old U.S. 25 On Carter Ridge.

SATURDAY, September 14 10:30 A.M.

For Additional Information, Contact

FORD REALTY & AUCTION

# ESTATE AUCTION

of

The Late Mr. Ray Adams

# 63 ACRE FARM

more or less

AND PERSONAL PROPERTY

SAT., SEPT. 7th - 10:30 A.M.



Located - about two (2) miles out of Brodhead, Ky. on the Chestnut Grove Road near Brindle Ridge. Turn off U.S. 150 in Brodhead at Sowder Nursing Home. Follow auction signs to sale.

REAL ESTATE - This good farm contains sixty-three (63) acres, more or less, by ASCS survey with approximately fifty-five (55) acres of cropland and the balance in woods. Stock water is provided by two ponds and two concrete troughs.

The basic tobacco allotment on the farm is 1811 lbs. and it has a 4.2 acre corn base and 1 1/4 barley base.

Improvements on the farm consist of the above-pictured modern five-room house. The house has a living room, kitchen, dining room, two bedrooms, bath and basement. It also has a good oil furnace, full insulation, storm doors and windows. Water is provided by a cistern and also a well.

In addition to the house, there are also two barns. One barn is 30 x 40 dairy barn with 12-ft. shed, and the other is a 30 x 40 tobacco barn with two 12-ft. sheds. There's also a concrete block stripping room, a chicken house, garage, and smoke house. The farm also has a trench silo.

PERSONAL PROPERTY - Tobacco bed roller, grinder, platform scales, furnace pipes, wheat drill fertilizer spreader, horse drawn plow and cultivator, post hole digger, homemade grade blade, picks, shovels, hammer, and small hand tools of all descriptions.

TERMS: Real Estate - 20% down day of sale; balance in thirty (30) days upon delivery of deed. Personal Property - Cash.

AUCTIONEER NOTE: Purchaser will receive one-half of 1974 tobacco crop.

For additional information, contact: Mrs. Mary Adams at 758-8443, or



**Ford Realty & Auction Co.**  
REALTOR®

Mt. Vernon, Ky.  
Office  
Phone: Office - 258-4545; Nights - 758-8440



COL. SAM FORD  
Auctioneer-Realtor

COL. BILL RANDOLPH  
Auctioneer

COL. JERRY HAM  
Auctioneer

COL. DANNY FORD  
Realtor-Auctioneer

## Real Estate For Sale

**NEW BRICK** - Total electric - In the all new Valley Manor Subdivision. House has three bedrooms, living room, kitchen, utility room, ceramic tile bath, built in oak cabinets, waste disposal, wall to wall carpet, storm doors and windows. You'd better hurry \$28,000.

**SMALL FAMILY HOUSE** - Total electric, four rooms, new, modern, bath, city water, just outside city limits. Only \$8,500.

**ALMOST NEW BRICK HOME** - Between Brodhead and Crab Orchard on Slaty Branch Road - four acres, more or less - two bedrooms, living room, kitchen, space for bath - barn, chicken house, garage - well water. A bargain at \$16,500.

**NEW BRICK** - Total electric - Shirley Street in Mt. Vernon - three bedrooms, living room, kitchen, dining room, two full baths - walk in basement with patio, built in oak cabinets, wall to wall carpet, storm doors and windows. Yours for only \$30,000.

**FIVE-ROOM MODERN HOME** - Five minutes from Main Street in Mt. Vernon. Large lot - city water and sewer - three bedrooms, living room, kitchen, bath and cellar.

**NEW BRICK** - Total electric in the all new Valley Manor Subdivision - Three bedrooms, living room, kitchen, utility room, and 1 1/2 baths, built in oak cabinets, waste disposal, wall to wall carpet, storm doors and windows. A good buy at \$27,500.

**MODERN BRICK HOUSE** - located on Negro Creek in Rockcastle County - One-acre lot, three bedrooms, living room, kitchen and bath, full basement, electric heat, automatic washer-dryer hook up, storm doors and windows. Reasonable at \$18,000.

**FIVE-ROOM HOUSE** - Needs some repairs. Excellent corner lot, Brodhead, Kentucky. Priced at \$5,000.

**1974 PENT III 12** - Total Electric Mobile Home - Total electric, three bedrooms, kitchen, living room and bath. Large lot 100 x 135. Bargain \$8,500.

**FORTY ACRE FARM** - Two miles West of Mt. Vernon on Rusby Road - Ideal for subdivision development. City water on the way. 1,196 lbs. tobacco. Dandy barn. Priced at \$33,000.

**100 ACRES "WILD AND WOOLY"** - Four miles Southeast of Mt. Vernon. Excellent investment. Two springs. \$10,500.

**45 ACRES** - On Bowling Ridge near Brodhead, Kentucky. Almost new tobacco barn - 1100 lbs. tobacco base. Blacktop road. All for \$20,000.

**TOWN THEATRE BUILDING** - With all theatre equipment located in Brodhead, Ky. Ready to open for business. Newly remodeled inside and new sound system. Priced at \$6,500.

**25-UNIT KENTUCKIAN MOTEL** - Near the Mt. Vernon-Livingston interchange at I-75 on U.S. 25. Twelve acres for future development - Service Station with fifteen-year lease.

**COMMERCIAL BUILDING** - Main Street in Mt. Vernon. Two stories - Both levels rented - Priced \$28,000.

**COMMERCIAL BUILDING AND ONE ACRE** - Located three miles west of Mt. Vernon, U.S. 25 known as Whitson's Coffee Shop. The way available.

**BEAUTIFUL WOODED LAKE LOTS** located on Lake Livinville on Rose Hill Road. All lots are large and spacious and overlook the lake.



**Ford Realty & Auction Co.**  
REALTOR®

Mt. Vernon, Ky.  
Office  
Phone: Office - 258-4545; Nights - 758-8440



COL. SAM FORD  
Auctioneer-Realtor

COL. BILL RANDOLPH  
Auctioneer

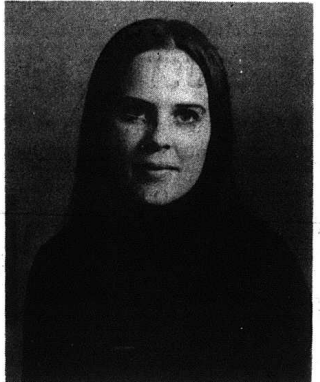
COL. JERRY HAM  
Auctioneer

COL. DANNY FORD  
Realtor-Auctioneer

the world. "This heightened



# Social and Women's News



**WEDDING DATE SET**— Mr. and Mrs. Charles T. Baker announce the forthcoming marriage of their daughter, Janice Paige, to Billy Dean Sowder, son of Mr. and Mrs. Edward Sowder, Jr. The wedding will be Sunday, September 22 at 2:30 p.m. at the First Baptist Church in Mt. Vernon with the custom of Open Church being observed. All friends and relatives of the couple are invited to attend.



**ENGAGEMENT ANNOUNCED**— Mr. and Mrs. William H. Hale of Mt. Vernon would like to announce the engagement of their daughter, Williametta, to Johnnie Dearl Cromer, son of Mr. and Mrs. Fred Cromer of Mt. Vernon. Miss Hale is a senior at Rockcastle County High School. Mr. Cromer is employed at Mullins' Texaco. No date has been set for the wedding.

### Family Reunion

A very pleasant day was spent Sunday, August 25 by the W.C. Johnson family at the old Johnson Homeplace at Cove. Mr. Johnson, who is 98 and very alert, enjoyed every minute of the day. His five daughters and their families were present for the occasion: Mrs. Glenna Fenington of Dayton, Ohio; Mrs. Jessie Mobley of Manchester; Mrs. Rena Jordan and Mrs. Dorothy French, both of Mt. Vernon; and Mrs. Georgia Cunningham of McKee. His son, Frank, of Ohio, was unable to attend due to the illness of his wife.

### MASON REUNION

The Mason Family Reunion was held at the home of Mr. and Mrs. Elmer C. Hancock, Frankfort, Kentucky on August 25, 1974. A picnic lunch was enjoyed by all at the Fish & Wildlife Game Farm.

Those attending were Mr. and Mrs. Henry R. Mason, Mrs. David Gregory, Mr. and Mrs. William D. Gregory, Bill David, Joe, and Cindy, all of Mt. Vernon, Mr. and Mrs. Marlin T. Mitchell and daughter, Marla Jane, of Midway, Mr. and Mrs. Ted Ponder of Richmond, Mr. and Mrs. James Grady Mason and granddaughter, Jennifer Emrich of Dayton, Ohio, Mr. and Mrs. William A. Loudermilk and Tina and Tony of Turmet's Station, Mr. and Mrs. Farris Mason of Danville, Mr. and Mrs. Luther F. Mason and Alex of Jeffersville, Indiana, Mr. and Mrs. Deward Brake of Harrogate, Tennessee, Mr. and Mrs. Delbert Roberts, Debbie, Mindy and David, of Charlestown, Indiana, Mrs. Charlene Rosenthal and daughters Terry and Dori of Lusville, Mr. and Mrs. Robin Hancock of Cookeville, Tennessee, Mrs. Floyd Hancock and daughter Jill of Albany and their guest Sandra Williams.

### PERSONALS

Ariah Cameron of Eaton, Ohio spent the week end with her sister, Dollie Krahnbohl, and visited her mother, Mrs. Leanna Nicoley, who is a patient in the Rockcastle County Hospital.

Mr. and Mrs. Elijah Clark of Richmond spent the week end visiting her parents, Mr. and Mrs. Harold Jones and his parents, Mr. and Mrs. Joseph Clark, in Livingston.

Mrs. Ella Ponder spent last week in Cincinnati, Ohio with her daughter, Mrs. Frank McDaniel, and family.

The McDaniels had their homecoming Sunday and their son, Frank L. McDaniel, and family of Jacksonville, Florida and Miss Fairy Dooley of Reading, Ohio were present for the occasion.

Mr. and Mrs. Virgil J. Mullins of Englewood, Ohio are here due to the illness of Mr. Mullins' father, W.D. Mullins, who is a patient in the Good Samaritan Hospital in Lexington.

Mr. and Mrs. Albert Hampton of Florence and Mrs. John Kincer of Erlanger accompanied Miss Valerie Hampton to Richmond Sunday where she entered Eastern Kentucky University. The Hamptons spent the remainder of the day with his parents in Crab Orchard while Mrs. Kincer visited relatives here.

Weekend guests of Mr. and Mrs. Roy Brown were: her mother, Mrs. Cleo Hurst; her sisters, Miss Martha Hurst, Mrs. Betty Hollars, and Mr. and Mrs. Lee-Ross and Toni, all of Cincinnati, Ohio, Mr. and Mrs. Shirley Shearer and Sheila of Indianapolis, Indiana, and Mr. and Mrs. Bob Callohan of Reseda, California; her brothers, Mr. and Mrs. Harold Hurst of Cincinnati, Ohio and Mr. and Mrs. Willie Hurst of Morrow, Ohio. Other guests were Mrs. Sally DeBorde of Level Green, Mr. and Mrs. Darrel Worley of Cincinnati, Ohio, Mr. and Mrs. Charles Stalon and family, Mr. and Mrs. Paul Hassel and family, and Mr. and Mrs. Wayne Taylor and family.

**THE MOUNT VERNON SIGNAL THURSDAY AUGUST 29, 1974 PAGE FIVE**

returned home after spending several days in the Foxboro Hospital at Stamford. Those visiting her while in the hospital were Mr. and Mrs. Troy Roberts of Rutledge, Tennessee, Mr. and Mrs. Darrell Owens of Route 3, Somerset, Mrs. Ida Abney of Renfro Valley, Mr. and Mrs. Bennett Burton and Sheila, Mr. and Mrs. Robert Anglin and Nancy of Mt. Vernon and George Burton and Mr. and Mrs. Harris Burton.

Recent visitors of Mr. and Mrs. George Burton were Mr. and Mrs. Robert Anglin and Nancy.

Nancy, Mr. and Mrs. Harris Burton and Kenny, Mr. and Mrs. Bennett Burton and Sheila, Mrs. Darrell Owens, Mrs. Lillian Anglin, Debra Ramsey and W. R. Coffey, Mrs. Clara Burton, Mrs. Ora York, Mrs. Robert Ford.

Mrs. Celia Jones is a patient in the Berea Hospital.

Mr. and Mrs. Tom Wells of Hamilton, Ohio visited G. W. Burton and family Sunday.

W. R. Coffey visited his sister Mrs. Lou Moore and

Sept.

# clearance sale

• FURNITURE • FLOOR COVERINGS • BEDDING

LIVING ROOMS REDUCED

SLEEP SHOP CLEARANCE

## SALE DAYS: SEPT. 1 - 15th

CLEARANCE OF DINETTES

The best buy for your budget in a colorful, durable Carpet is ...

Carpets by **Congoleum**

Also Reduced for Clearance

**Whirlpool Appliances & RCA Television.**

## TRADER BILL'S Furniture and Appliances

PHONE 986-9791 U.S. 25 South (Appalachian Village) BERE A, KY.

## ESTATE AUCTION

### Saturday, September 7

10:00 A.M. Rain or Shine

### 54 CHOICE ACRES

Prime location - Subdivided to Settle Estate of B. F. Spires

Located on U.S. 27, one mile South of Halls Gap, 5 miles South of Stanford, 15 miles South of Lancaster, 50 miles South of Lexington, 25 miles North of Somerset. This land fronts on both the East and West side of U.S. 27 and the East side of Old U.S. 27.

Land to be surveyed by day of sale and offered in tracts, reserving right to sell separately or as a whole. Approximately 12 acres with home and buildings and approximately 42 acres on East side of U.S. 27.

TRACT NO. 1 Approximately 12 acres on West side of U.S. 27, with 6 room frame house, front and rear porches, metal roof, stone foundation, storm doors and windows, cistern, day well and plenty of beautiful shade trees. All in good grass.

Improvements: Tobacco barn, stock barn, double crib, buggy shed, chicken house, wood shed, plus other good outbuildings. Also 3 room tenant house. All under metal roof and all farm buildings painted red.

TRACT NO. 2 Contains approximately 42 acres on East side of U.S. 27 most of which is cleared and is good productive land. This tract has tobacco barn on it.

TOBACCO: Basic tobacco allotment for 1974 is 2,716 pounds to be divided by A.S.C.S. if sold separately.

### PERSONAL PROPERTY

2 bedroom office, 2 couches, sewing machine, 2 odd tables, 6 chairs, victrola, rug, trunk, coffee table, T.V. 29" color (2 years old), like new Hotpoint refrigerator, safe, buffet, table and chairs, rocking chair, kitchen cabinet, electric cooking stove, washing machine, pictures, frames, pots, pans, skillets, rugs, plus lots of other household items too numerous to mention.

**FARMING TOOLS:** All kinds of farm hand tools, shovels, rakes, hoes, fence tools, etc.

**FEED:** Approximately 700 bales of good hay.

**TERMS:** Real estate 20% down day of sale. Balance in 30 days with delivery of deed. Possession to be announced day of sale.

**PERSONAL PROPERTY:** Cash.

Any announcement made day of sale has precedence over written matter. Not responsible in case of accidents.

For more information contact:

Mrs. Ophelia Vashook, Executrix of the estate of B. F. Spires, Phone 365-2748 - Cabell Francis, Attorney, Phone 365-2286.

Open for inspection Friday, Sept. 6  
Dinner on the Ground

**J.B. MESSER**  
Realtor-Auctioneer  
Ph. 355-2861

**J.T. GOVER**  
Realtor Assoc. and Auctioneer  
Ph. 355-2261

**C.N. SCOTT**  
Realtor  
Ph. 355-2204

**CRAB ORCHARD KY**

Be There, Be Neighbory and Bring a Friend

# 10%

(ANNUAL INTEREST RATE)

## certificates of deposit

## on \$100,000 or more

## for 30, 60 or 90 days.

## Peoples Bank & Trust

Berea

If amounts are withdrawn from certificates prior to maturity, a substantial penalty will be imposed (under Federal law).

**FDIC**

# Rockcastle Recollections

© John Lair

The settling of Kentucky was not as simple and romantic as we at this distance are wont to believe. It was not the gradual invasion of a few daring pioneer families, encroaching upon the dark and forbidding wilderness to establish homes. Back of it all were groups of well organized, well financed businessmen, who envisioned nothing more romantic than ample profits from real estate transactions. One such group was the Loyal Land Company, which sent Dr. Walker on the first land hunting expedition into Kentucky in 1750. The Ohio Company of which

George Washington was a member, was another such group, employing Christopher Gist for a like purpose in the area north of Dr. Walker's operations. An association of businessmen essentially to be known as The Transylvania Company twenty-five years after the exploits of Walker and Gist, really got things moving when they purchased, outright from its Indian claimants, an immense tract of land in Kentucky and immediately set about the settlement of it in a business-like manner. But it was to Daniel Boone, The Pathfinder, rather than to Richard Henderson, promoter and financier, that public credit was accorded, largely as a result of the publicity given him in John Filson's "Kentucke and the Adventures of Col. Daniel Boone," published in 1784, which made Boone's name synonymous with that of Kentucky.

Boone, however, was not without his detractors: Nathaniel Hart, son of Captain Nathaniel Hart, a member of the Transylvania Company, killed by Indians near Boonesborough in 1782, laughed at the idea of Boone as The Great Pathfinder and expressed his opinion that Boone did not cut a bush between Cumberland Gap and Boonesborough, following buffalo paths all the way. William Bush, an early traveller on Boone's Trace, said that the first time he followed it, in 1775, it was a big buffalo road up Roundstone Creek. Unquestionably, Boone took full advantage of all buffalo trails that would serve his purpose, but his job as a road-cutter was by no means an easy one. Felix Walker, who traveled with Boone's road-cutting crew, reported that after leaving Rockcastle River, they were forced to cut their way through twenty miles of dead brush (probably blow-downs, such as the downed trees Dr. Walker wrote about on the south side of the river twenty-five years earlier and similar to those resulting from a tornado in the same vicinity in the Spring of 1974). The area indicated by Felix Walker in his journal included Brush Creek, which may account for its being so named. He also mentioned cutting through thirty miles of thick cane, but that was mostly after they passed out of the Rockcastle area and so out of our notice. At any rate, cutting a new road through the wilderness was no picnic and Nathaniel Hart's aspersions on Boone's efforts along that line seem scarcely justified.

Rockcastle Countians' interest in Boone's road begins with his arrival at the Hazel Patch, later to be a point in Rockcastle County's boundary line, where he left the trail he had been following and turned sharply to the north, beginning the new trail he was to establish from there to Boonesborough settlement. Following down Parker's Creek to its confluence with Rockcastle River, he crossed the river there and traveled down it to Trace Branch, running in from his right, following that stream to near its head, then across Gauley Mountain and down to Crooked Creek, where he camped that night. Near the Parker's Creek crossing some of the axemen had come upon a large Sycamore tree, in the hollow of which they found the skeleton of a man. Calling Boone's attention to their find, he was able to identify it, by the powder horn found with it, as the remains of his former hunting companion, John Stuart, thereby solving a mystery of five years standing. Five years before, when Boone and Stuart had spent some time in the vicinity of Great Salt Pever, Stuart had disappeared on a lone hunting trip and had never returned. It was now assumed that he had been wounded by an Indian but had managed to conceal himself in this hollow tree, where he had later died.

Being in the dead brush country previously referred to, their progress was slow as they went down Crooked Creek to its junction with Roundstone and up that creek to an encampment on Cove Branch, where, near the old Cove Schoolhouse, in 1915, the DAR erected a bronze marker by the spring where the party, at least a part of them, spent the night. Since no trouble was anticipated from the Indians, and since the road crew generally consisted of thirty or more men, they often broke up into smaller groups for convenience in camping.

David Singleton, for many years one of our most diligent local historical researchers, believes that after leaving Cove Valley, the Boone party crossed over Buckeye Ridge, coming down to Renfro Creek at a spot near the Old Buckeye Church house, then across the creek and up and over Green Hill, then back down to Roundstone Creek and up that stream to Boone's Gap, on the present line between Rockcastle and Madison Counties, where we leave them to continue their journey to Boonesborough. Others

contend that after reaching Roundstone Creek, Boone never left it until he reached its headwaters, which took him through Boone's Gap. The Green Hill cut-off saved a little distance, but the Roundstone route seemed much the more logical and easier to follow.

We do not know who gave Roundstone Creek its name, but it was fairly obvious why that name was chosen. At one time, a number of elliptical-shaped stones could be found along the edge of the stream or on its shoals. These were a pale reddish-brown in color, varying in circumference between the size of a dinner plate to that of a dishpan. When I was a boy, it was a fad among the women and girls in a farm family to have one or more of these odd-shaped stones visible in the front yard as ornaments. They were generally treated with a coat of red wagon paint and were often seen surmounting stumps of trees which had been cut down for that purpose. A few of these same stones were found near the headwaters of Renfro Creek, as well as on Roundstone, but are seldom seen any more. Roundstone Creek was known by that name as early as 1776, according to Joseph Kennedy, who said he was on the creek in that year and had heard it called Round Stone Creek, also Round Stone Lick Creek. This information first came to my attention in an article in the Register of the Kentucky Historical Society, written by Neal O. Hammon, who has researched much detailed history from land suit depositions on file in the Madison County Courthouse, at Richmond, Kentucky.

There were several licks along Roundstone Creek, which, no doubt, accounted for the well-worn buffalo trail along it when Boone and his party first appeared on the scene. Probably the principal one, known as Roundstone Lick, was situated near the head of the stream, and is a call point in the survey separating Rockcastle and Madison Counties. One of the old Long Hunters. (Cont. to 16)

## SCHOOL MENUS

E. J. Smith, School Foods Supervisor, has announced the following breakfast and lunch menus for all county schools for the week of September 3-6.

### BREAKFAST MENU

**Tuesday:** Cereal, Milk, Orange Juice.  
**Wednesday:** French Toast, Syrup/Butter, Milk.  
**Thursday:** Cereal, Milk, Orange Juice.  
**Friday:** Bacon, Eggs, Toast and Jelly, Milk.

### LUNCH MENU

**Tuesday:** Hot Dog on Bun, French Fries, Cole Slaw, Milk, Apple Sauce Cake.  
**Wednesday:** Fish, Baked Beans, Mashed Potatoes, Cornbread/Butter, Milk, Jello/Fruit.  
**Thursday:** Spaghetti and Meat Balls, Peas, Tossed Salad, Rolls and Butter, Milk, Pudding.  
**Friday:** Pinto Beans with Pork, Cole Slaw, Buttered Potatoes, Cornbread with Butter, Milk, Cake with Caramel Icing.

## "Our son knew he'd get Navy computer training even before he joined"

Mrs. M. O. Miller, Noble, Illinois.



"Our son, Gayle, came home with a written guarantee from the Navy. It promised he'd be trained as a Data Processing Technician. And he was." That's what Mrs. Miller says about the Navy's training guarantee.

Any high school graduate who qualifies can get the same guarantee. Talk to your local Navy Recruiter for more information.

### Be Someone Special in the Navy.

CHIEF BEN HOLBROOK  
U.S. NAVY RECRUITING STATION  
FEDERAL BUILDING, ROOM 118  
RICHMOND, KENTUCKY  
PHONE: 623-4210 (COLLECT)

## OLD FASHIONED?

SOMETIMES ... When we hear or read about all the bad things happening in the world today, we tend to forget the good. But the good things -- old-fashioned to some perhaps -- will always be with us. Things like kindness, courtesy, compassion, honesty, understanding and a willingness to help. These are the things to which the staff at the Cox Funeral Home are dedicated to providing. In that -- they never fail.



Cox Funeral Home

Mt. Vernon, Kentucky  
256-2345 256-4444



## Doubleheader ABSOLUTE

# AUCTION

Mr. and Mrs. Tommy Carpenter's House and 3 Acres - More or Less

SAT., AUG., 31 10:30 a.m.

Located near the Burr 1-75 Interchange on the Orlando Road, just past Newman's Restaurant. Watch for signs at the property.

The house consists of three rooms and would be ideal for a small family. There is ample space for a garden. This property has 258 feet frontage on the Orlando road, making it ideal to develop for building lots. City water is also available at the property. The house is in need of some repairs. There is mail service and also school bus service at the door. Also to be sold: 1963 Chevrolet and a horse-drawn wagon.

### 4 Building Lots

Sat., August 31 11 a.m.

Located: Just off 1004, the Brush Creek Road. Watch for signs to the property.

These are large lots with plenty of room for a house and garden. They are located in one of the fastest growing areas of Rockcastle County.

Lots will be sold individually, then offered as a whole, selling whichever way reflects the best returns.

TERMS: 20% Down Day of Sale; Balance Due in Thirty (30) Days Upon Delivery of Deed.

For Additional Information, Contact:

**Ford Realty & Auction Co.**  
REALTOR

Mt. Vernon, Ky.

Office Phone: 626-3446, Nights: 758-4400  
COL. SAN FORD REALTOR  
COL. BILL RANDOLPH AUCTIONEER  
COL. JERRY HAM AUCTIONEER  
COL. DANNY FORD REALTOR-AUCTIONEER

# TOMBSTONE JUNCTION

☆☆☆ Home Of The Stars ☆☆☆

Special

## Labor Day Weekend Shows

SATURDAY August 31

SUNDAY September 1

MONDAY September 2



ERNEST TUBBS & The Texas Troubadours



THE KITTY WELLS SHOW  
Starring: Kitty Wells - Johnny Wright - Bobby Wright - The Tennessee Mountain Boys



THE OSBORNE BROTHERS (Sonny & Bobby)

Don't Miss This Big Weekend!

ADMISSION:

\$1.00 And \$2.00 (Plus Tax)

Includes Gun Fights And Stage Shows (Train Ride Optional)  
NASHVILLE STARS EVERY SUNDAY

1 Mile West Of Cumberland Falls On Ky. 90

WESTERN TOWN SCENIC RAILROAD



## Classified Rates

Local Rates - 4¢ per word with minimum of 75¢  
 Out of State - 5¢ per word - minimum 75¢  
 Classifieds Billed - 5¢ per word - minimum \$1.00  
 Display Classified - \$1.00 per column inch

## For Sale

**Custom Made Rubber Stamps**  
 Phone 256-5259. Ideal Press and Advertising Company, Mt. Vernon, Ky. 47xntf

**LOTS FOR SALE** at Orlando, Ky. Small down payment. Will do own financing. Call 256-2047. 32xntf

**FOR SALE:** Sharp '55 Chevy, 2 door, hardtop, call 256-4863. 49xntf

**WEDDING INVITATIONS and SOCIAL ANNOUNCEMENTS** now available at Ruth's Jewelry and Gifts, Main Street, Mt. Vernon. 47xntf

**MONUMENTS** - Standard Monument Works. Harold DeMarcus, Owner. Delmo Mink, Agent for Rockcastle County. Call 256-2588. 42xntf

**FOR SALE:** 1 Holstein Heifers, one year old. Excellent out of top cows. 1 Holstein Heifer. Close up. Call 256-4252, or see Alonzo Brown, Sand Springs Road. 45xntf

**FOR SALE:** 1957 Chevrolet, 6-cylinder. Call 256-2187. 48xntf

**MONUMENTS** - On Display at Dowell and Martin Funeral Home. nt

**FOR SALE:** 8 foot slide-in camper with cabinets. Call 256-4139 after 3 p.m. 49xntf

**FOR SALE:** New Wizard Air Conditioner, used one month. 13,000 BTU. Like new Columbus gas stove. Call 256-4266. 49x4p

**FOR SALE:** 1972 Ventura II, Pontiac 3 speed, top engine, low mileage, low gas mileage. Call 758-8186. 49x4p

**FOR SALE:** 1968 Chevrolet Impala SS. Call 758-9417. 50x2

**Ford - Shag - Chopper FOR SALE:** Like New. Call 256-2385. 50x2p

**FOR SALE:** 1968 Chevrolet, good shape, three speed transmission, power brakes and power steering, new tires, vinyl top. Call 256-2450 after 6 p.m. 50x2

**POINTER PUPS FOR SALE:** One male, one female, eight weeks old, white and lemon. Papers to register, top blood lines. \$100 each. Carl R. Clontz. Call 256-2268. 50x2

**CAMPER FOR SALE:** Good as new, one-half ton pick-up. Call 256-2450 after 6 p.m. 50x2

**FOR SALE:** Good Mixed Hay \$1.00 a bale. Call 453-4622. 50x2

**Registered Hereford Bulls FOR SALE:** Excellent breeding stock. Call 256-2453 after 4 p.m. 50x2

**FOR SALE:** Used Automatic Washer and Dryer, also deep or shallow Well Pump. Call 758-8146. 50x2

**GRAVE MARKERS and MONUMENTS** in stock at all times. McNew Monument Sales, U.S. 25, four miles North of Mt. Vernon. Phone 256-2232. nt

**Holstein Low and Call FOR SALE:** Call 256-4863. 50x2

**FOR SALE:** 6 room frame house with aluminum siding located on Chestnut Ridge just off U.S. 25. Newly remodeled. See Alben Griffin or call 256-4153. 49xntf.

**FOR SALE:** 3 Shovels, 130 lbs. weight each. Phone 758-8905. 51x1

**Clontz & Cox, Mount Vernon, Kentucky, attorneys for said Estate, no later than December 11, 1974. 1x3**

**LOST:** Large Size Poodle, black with grey, eyes by the name of Prince. Belongs to Alice Ballinger. Reward of \$25.00 to anyone who finds this dog. Call 256-4565. 51x2p

**FOR SALE:** Good Mixed Hay, \$1.00 a bale. Call 453-4622. 51x2

**Large Tub Maytag Washer FOR SALE:** Like new, \$75.00. Call 256-4197. 51x1p

**YARD SALE Saturday, August 31st from 9 to 3. E. J. Smith's residence, West Street, Brodhead. 51x1**

**HOUSE FOR SALE:** 7 Rooms and Bath with 1/2 Basement, fuel oil furnace. Lot measures 70 x 240. See Paul Howard or call 256-4543. 51x3

**HAMM BROS. Water Well Drilling and Contracting, Call 256-2024 anytime after 5 p.m. 16xntf**

**SEE JOHNNY SAMS at Sanitary Cleaners for all your MUSICAL NEEDS - Strings for all instruments and accessories. Phone 256-2551. 49xntf**

**MADISON TERMITE CO., Berea, Ky. Phone 988-3707. Free inspection. Local calls - Jack Parsons, Wildlife, 256-2268 and C. H. Webb, Livingston, 453-9331. 37xntf**

**MASON'S CUSTOM HAULING and BACKHOE WORK. Call 256-2047. nt**

**FOR RENT:** two or three rooms furnished or unfurnished Apartments. Steam heated, at Rockcastle Hotel. See Roy Winstead at Appliance Service Center. 48xntf

**FOR RENT:** One four-room House, furnished. One furnished apartment, one trailer. Call 453-9391. 48xntf

**Floor Sanding Equipment - "Do-It-Yourself"** Vanishes of all kinds - Gym Seal, Fabulon Fillers and Sealers - Everything you need for a professional job. APPLIANCE SERVICE CENTER. Mt. Vernon, 32xntf

**FOR RENT:** Metal Scaffolding. See R. H. Hamm or call 256-2123. 48xntf

**FOR RENT:** Large modern house located on Fairground Hill. Roger Rickels, Phone 256-2604. 51x1

**FOR RENT:** Trailer, furnished. Located at Renfro Valley Park Dock. Call 256-2213 and ask for Glen Cromer. 51x1

**Don Minton 8 a.m. - 1 p.m. at 686/678-8383**

**JIM WALTER HOMES, INC. Somerset, Kentucky 50x5**

**NOTICE:** Powell Bros. Construction Co. will do all types of roofing, block laying and concrete work. Phone 256-4152. 49x4

**WANTED:** Person with an economy car to deliver Sunday and daily Courier - Journal in Mt. Vernon. Earnings in excess of \$250 per month, requires one hour each morning, excellent opportunity for right person to supplement present income. Writer: Roger Wilson, Route 7, Box 14, London. Cash Bond Required. 46xntf

**G & G CONSTRUCTION Remodeling Aluminum Siding Call John Glovak (758-8159)**

**Frank Glovak (758-8530) Brodhead, Kentucky 25xntf**

**NOTICE:** I will not be responsible for any debts made by anyone other than myself. Henry Coates. 50x3

**NOTICE:** HAMM REUNION - September 1st at the Brodhead Fairgrounds, Brodhead, Ky. All relatives and friends invited. 50x2p

**NOTICE:** The MULLINS REUNION will be held September 1st, 1974 at Mullins Station

**EXECUTRIX NOTICE**  
 Notice is hereby given that Sarah Louise Selzer, of 112 West 53rd Avenue, Gary, Indiana has been appointed Executrix of the Estate of Rose McFarlane Allen, deceased. All persons having claims against said Estate shall present them, verified according to law, to the said Sarah Louise Selzer, or to Allen, Clontz & Cox, Mount Vernon, Kentucky, attorneys for said Estate, no later than December 11th, 1974. 51x3

**BLOWN IN - INSULATION**  
 Aluminum siding, storm windows and doors. For free estimates, contact Preston Collins, Route 2, Mt. Vernon, Phone 453-2161. 15xntf

**Blanche Garmon Powell, on the 22nd day of July, 1974, appointed and qualified as Administratrix of the Estate of Leonard Lloyd Powell, deceased, and all persons having claims are hereby notified to present same, verified according to law, to said Administratrix of said estate or to her attorney on or before October 22, 1974, and any persons owing said estate are requested to pay same on or before the aforesaid date.**

**Blanche Garmon Powell, Administrator of the Estate of Leonard Lloyd Powell Estate Conway, Kentucky**

**Nicholas W. Williams Attorney for Leonard Lloyd Powell Estate Short Street Berea, Kentucky 40403 49x3**

**Excutor Notice**  
 Notice is hereby given that Randall Clark, appointed and qualified as Executor of the Estate of Ada C. Clark, deceased, and all persons having claims are hereby notified to present same verified according to law, to said Executor of said Estate or to his attorney on or before November 9, 1974, and any persons owing said estate are requested to pay same on or before the aforesaid date.

**Randall Clark Executor of Estate of Ada C. Clark 3708 Fallen Timber Drive Louisville, Kentucky 40022 49x3**

**Nicholas W. Williams Attorney for Ada C. Clark Estate, Short Street Berea, Kentucky 40403 49x3**

**NOTICE:** I will not be responsible for debts made by anyone other than myself. Billy Ray Doan. 51x2p

**WANTED MEN TO START WORK AT ONCE.** No experience necessary. See Mr. Billiter, 2 to 4 p.m. at the Kentucky State Employment Office, Somerset, Ky., Friday, August 30th. No phone calls, please. 51x1

**YARD SALE: Saturday, Sunday and Monday at the home of Earl Adams on the Old Brodhead - Mt. Vernon Road. 51x1**

**CLAYTON MOBILE HOMES 723 Hill Avenue Richmond, Kentucky Phone 623-9404**

**Six different models of double-wides to choose from. 12 Wide, three bedrooms, all-electric.**

**BURGE SURGE DAIRY EQUIPMENT. Crouch Surge Service Danville, Ky. Phone 236-9525**

**James A. Crouch Danville - Phone 236-3831**

**Glen Price Harrodsburg, Ph. 734-9644**

**A. L. Kelly Lancaster, Ph. 792-3718**

**Mike Montgomery Deville Phone 236-7588**

**NOTICE:** We, the parents of Juanita Hellard, want to express our thanks and deep appreciation to those who were so kind to us during the death of our son-in-law, Jackie Hellard, who passed away in Reid Memorial Hospital in Richmond, Indiana August 20, 1974. Thanks to all those who sent food and flowers or who helped in any way, to Bro. Charles Shivers and Bro. Jimmy Miller for their consoling words, to Dowell and Martin Funeral Home for their kindness and consideration. We also want to thank the Cromer Singers for their comforting words in songs so beautifully rendered.

**Mr. and Mrs. Anderson Bowles, Wife Juanita Hellard & Children 51x1p**

**GLENN PENNINGTON AUTOMOBILES On The Strip (U.S. 25 North) BEREA**

**1974 CONTINENTAL Mark 4, fully equipped, yellow with green vinyl roof**

**1974 CHEVROLET 1/2 ton pick-up air, yellow**

**1973 BUICK Century 2 door, Colonnade, air, yellow**

**3-1973 CHEVROLET Impala 4-door, H.T.'s, all with air**

**1973 CHEVROLET Impala custom coupe, air, blue with white vinyl roof**

**3-1973 VEGA Hatchbacks, all with air**

**2-1973 VEGA Notebacks, both with air**

**1973 VEGA, 2 door, automatic, air, yellow**

**2-1973 CHEVILLE Malibu, 2-doors, both with air**

**1973 NOVA Hatchback, air, dark green**

**1973 FORD Galaxie 500, 4-door H.T., air, brown with beige vinyl roof**

**2-1973 FORD Pinto, 2-doors, both with air**

**1973 GMC 1/2 ton pick-up, straight shift, burnt orange**

**1973 OLDS Royale, 4-door H.T., air, olive with black vinyl roof**

**1973 OLDS Luxury Coupe, fully equipped, brown with black vinyl roof**

**1972 VW Square Back, auto, orange**

**1972 HORNET Station Wagon, auto, air, green with white trim**

**2-1972 CHEVROLET Impala, 4-door H.T.'s, both with air**

**1972 CHEVROLET Impala Custom Coupe, air, red with white vinyl roof**

**1972 VEGA, 2-door, straight shift, gold**

**1972 FORD Galaxie 500, 2-door H.T., air, brown**

**1972 FORD Pinto Runabout, 0 speed, yellow**

**1972 FORD Pinto, 2-door, auto, air, yellow**

**1972 OLDS Delta, 2-door H.T., air, blue with black vinyl roof**

**1972 PLYMOUTH Fury 3, 4-door, H.T., air, baby blue with black vinyl roof**

**1972 PONTIAC Granville, 2-door H.T., silver with black vinyl roof**

**1972 PONTIAC Catalina, 2-door H.T., air, light green with white vinyl roof**

**1971 CHEVROLET Impala, 4-door, H.T., air, bronze with black vinyl roof**

**1971 DODGE Fakers Brougham 4-door, H.T., air, green with green vinyl roof**

**1971 CHEVROLET Impala, 4-door, H.T., air, light green with white vinyl roof**

**1971 CHEVROLET Impala, 4-door, H.T., air, light green with white vinyl roof**

**1971 CHEVROLET Impala, 4-door, H.T., air, light green with white vinyl roof**

**1971 CHEVROLET Impala, 4-door, H.T., air, light green with white vinyl roof**

**1971 CHEVROLET Impala, 4-door, H.T., air, light green with white vinyl roof**

**1971 CHEVROLET Impala, 4-door, H.T., air, light green with white vinyl roof**

**1971 CHEVROLET Impala, 4-door, H.T., air, light green with white vinyl roof**

**1971 CHEVROLET Impala, 4-door, H.T., air, light green with white vinyl roof**

**1971 CHEVROLET Impala, 4-door, H.T., air, light green with white vinyl roof**

**1971 CHEVROLET Impala, 4-door, H.T., air, light green with white vinyl roof**

**1971 CHEVROLET Impala, 4-door, H.T., air, light green with white vinyl roof**

**1971 CHEVROLET Impala, 4-door, H.T., air, light green with white vinyl roof**

**1971 CHEVROLET Impala, 4-door, H.T., air, light green with white vinyl roof**

**1971 CHEVROLET Impala, 4-door, H.T., air, light green with white vinyl roof**

**1971 CHEVROLET Impala, 4-door, H.T., air, light green with white vinyl roof**

**1971 CHEVROLET Impala, 4-door, H.T., air, light green with white vinyl roof**

**1971 CHEVROLET Impala, 4-door, H.T., air, light green with white vinyl roof**

**1971 CHEVROLET Impala, 4-door, H.T., air, light green with white vinyl roof**

**1971 CHEVROLET Impala, 4-door, H.T., air, light green with white vinyl roof**

**1971 CHEVROLET Impala, 4-door, H.T., air, light green with white vinyl roof**

**1971 CHEVROLET Impala, 4-door, H.T., air, light green with white vinyl roof**

**1971 CHEVROLET Impala, 4-door, H.T., air, light green with white vinyl roof**

**1971 CHEVROLET Impala, 4-door, H.T., air, light green with white vinyl roof**

**1971 CHEVROLET Impala, 4-door, H.T., air, light green with white vinyl roof**

**1971 CHEVROLET Impala, 4-door, H.T., air, light green with white vinyl roof**

**1971 CHEVROLET Impala, 4-door, H.T., air, light green with white vinyl roof**

**1971 CHEVROLET Impala, 4-door, H.T., air, light green with white vinyl roof**

**1971 CHEVROLET Impala, 4-door, H.T., air, light green with white vinyl roof**

**1971 CHEVROLET Impala, 4-door, H.T., air, light green with white vinyl roof**

**HENSLEY'S USED CARS**  
 Highway 1004, Salt Petre Cave Road  
 Route 2, Orlando, Kentucky  
 PHONE 256-4336

**WANTED: OPERATORS at COWDEN'S, Lancaster Co. LANCASTER, KY. \*\*\***

**-APPLY WEEKDAYS- 8 A.M. - 12 NOON**

**No Experience Necessary Trained On The Job**

**"Equal Opportunity Employer"**

**GLENN PENNINGTON AUTOMOBILES On The Strip (U.S. 25 North) BEREA**

**1974 CONTINENTAL Mark 4, fully equipped, yellow with green vinyl roof**

**1974 CHEVROLET 1/2 ton pick-up air, yellow**

**1973 BUICK Century 2 door, Colonnade, air, yellow**

**3-1973 CHEVROLET Impala 4-door, H.T.'s, all with air**

**1973 CHEVROLET Impala custom coupe, air, blue with white vinyl roof**

**3-1973 VEGA Hatchbacks, all with air**

**2-1973 VEGA Notebacks, both with air**

**1973 VEGA, 2 door, automatic, air, yellow**

**2-1973 CHEVILLE Malibu, 2-doors, both with air**

**1973 NOVA Hatchback, air, dark green**

**1973 FORD Galaxie 500, 4-door H.T., air, brown with beige vinyl roof**

**2-1973 FORD Pinto, 2-doors, both with air**

**1973 GMC 1/2 ton pick-up, straight shift, burnt orange**

**1973 OLDS Royale, 4-door H.T., air, olive with black vinyl roof**

**1973 OLDS Luxury Coupe, fully equipped, brown with black vinyl roof**

**1972 VW Square Back, auto, orange**

**1972 HORNET Station Wagon, auto, air, green with white trim**

**2-1972 CHEVROLET Impala, 4-door H.T.'s, both with air**

**1972 CHEVROLET Impala Custom Coupe, air, red with white vinyl roof**

**1972 VEGA, 2-door, straight shift, gold**

**1972 FORD Galaxie 500, 2-door H.T., air, brown**

**1972 FORD Pinto Runabout, 0 speed, yellow**

**1972 FORD Pinto, 2-door, auto, air, yellow**

**1972 OLDS Delta, 2-door H.T., air, blue with black vinyl roof**



**Rockcastle County Child Development Centers**

**Are Now Accepting Applications For Child Care Services. For More Information, Contact:**

**ROCKCASTLE COUNTY ECONOMIC OPPORTUNITY COUNCIL, INC. Post Office Box 538 Mt. Vernon, Ky. 40456**

**CONWAY VILLAGE**

**ALL NEW SUBDIVISION ON U.S. 25 AT CONWAY. 25 BEAUTIFUL BUILDINGS AND MOBILE HOME LOTS. SOME OVER AN ACRE IN SIZE. WIDE ROADS - CITY WATER RUNS TO MOST LOTS. WHY PAY RENT? COME ON OUT AND PICK THE LOT OF YOUR CHOICE. SOME RESTRICTIONS. SMALL DEPOSIT WILL HOLD.**

**Call 256-5207 or see Owner on Property**

**Your Motorists agent is the man to see for all your insurance needs.**

**He can provide for all your insurance requirements auto, home, business, plus a full line of life insurance. Call him for more information.**

**Sam Ford**  
 Mt. Vernon, Ky.  
 Phone 256-4545

**Motorists Insurance Companies**

**Tired of Painting?**

**Let us give your home a new LOOK with famous Tedlar Aluminum Siding and Trim. We cover everything with a 40-year guarantee. Also storm windows and doors and patio covers. Free estimates.**

**Call 256-4159**

**Rockcastle Aluminum Prods.**

**GEORGE HURLEY, OWNER**

**Mt. Vernon, Ky. 40456**

**If It's a PEST call Terminix!**

**For Guaranteed Protection**

**TERMITES or ANY Household Pests ... Rats, Mice, Ants, Water Bugs, Silverfish, Carpet Beetles... Flying Ants... WHATEVER it is we will get them out and KEEP them out!**

**Call S. T. Proctor Lumber Co. 256-2521**

**All Work Done By Terminix Company, Lexington, Kentucky**



**"JACKIE HELLARD"**  
(Cont. From Front)

Richmond; two daughters - Cheryl and Lori, both of Richmond; one brother, James of Hamerville, Ohio; three half brothers, Robert Pinkerton of New Orleans, Kent Pinkerton of Milford, Ohio and Bill Pinkerton of Lexington; two half sisters, Mrs. Christine Revok of Dallas, Texas and Mrs. Mann of Covington.

Services were held at 3 p.m. Friday, August 23, 1974 at the Dowell and Martin Funeral Home.

Interment was in the Ross Cemetery at Livingston.

**MRS. ERBIE S. DAUGHERTY**

Mrs. Erbie Seal Daugherty, 61, of Fort Mitchell, Kentucky passed away Friday, August 23, 1974 at the Booth Hospital in Covington, Ky. She was born September 7, 1912 in Tennessee, the daughter of the late Thomas and Cornelia Edens Seal. She was a member of the Latonia Baptist Church.

Survivors are: her husband, John D. Daugherty of Fort Mitchell; one son, John C. Daugherty of Cincinnati, Ohio; one brother, Andrew Seal of Santa Rosa, California; three sisters, Mrs. Mabel Fry of St. Petersburg, Florida, Mrs. Evelyn Thomas of Mt. Vernon and Mrs. Kathleen Sills of Dayton, Ohio. Three grandchildren also survive.

Funeral services for Mrs.

Daugherty were held Monday, August 26, 1974 at 1 p.m. at the Scaffold Creek Baptist Church with Rev. Wayne Scott officiating. Burial was in the Elmwood Cemetery.

Arrangements were by the Swindler Funeral Home in Covington, with local arrangements by the Cox Funeral Home.

**MRS. MILDRED L. GATLIFY**

Mrs. Mildred Gatlify, age 62, of Fort Thomas, Kentucky and formerly of Rockcastle County, passed away Monday, August 26, 1974 at the Good Samaritan Hospital in Cincinnati, Ohio. She was born in Rockcastle County on January 18, 1912, the daughter of Mrs. Bird Hard Albright of Brodhead and the late Arch Albright. She was a retired school teacher, a member of the Eastern Star, and a member of the Fort Thomas Baptist Church.

Survivors are: her husband, Joel Gatlify of Fort Thomas; three sisters, Mrs. Carter Hoskins of Mt. Vernon, Mrs. Lucille Purcell of Route 1, Brodhead, and Mrs. Marguerite Shafer of Lexington; two brothers, J. B. Albright of Eubank and Guy Albright of Louisville. She was preceded in death by her father and two sisters, Lydia and Edith.

Services will be held Thursday, August 29, (today) at 1 p.m. at the Brodhead Baptist Church with Rev. R. C. Flynn officiating. Interment will be in the Pine Grove Cemetery. Arrangements are by Cox Funeral Home.

**PAGE EIGHT**  
Church with Rev. R. C. Flynn officiating. Interment will be in the Pine Grove Cemetery. Arrangements are by Cox Funeral Home.

**MRS. ROSA McHARGUE ALLEN**

Mrs. Rosa McHargue Allen, age 65, of Mt. Vernon, Route 2, passed away Saturday morning, August 24, at the Rockcastle County Hospital. She was born in Rockcastle County on September 9, 1908, the daughter of the late Henry and Sarah Malicote Clark and was a member of the Livingstone Free Pentecostal Holiness Church.

She is survived by: her husband, Bill; four sons, Claude McHargue of Pine Hill, Clyde McHargue of Fairborn, Ohio, Cusis McHargue of Livingston, and Lloyd McHargue of Makena, Illinois; one daughter, Mrs. Sarah Louise Setser of Gary, Indiana; three brothers, Chester and Bice Clark of Reading, Ohio and Hayes Clark of Hamilton, Ohio; two sisters, Mrs. Sally Chaney of Route 1, Mt. Vernon and Mrs. Hattie McHargue of Route 1, Orlando. Seventeen grandchildren also survive.

Services were held Monday, August 26, 1974 at 1 p.m. at the Dowell and Martin Funeral Home with Bro. Charles Shivel, Bro. Matt Powell, Bro. Jimmy Miller officiating. Interment was in the McHargue Family Cemetery at Pine Hill. Arrangements were by the

Dowell and Martin Funeral Home where funeral arrangements were held.

Barry and Garry Hurst, twin sons of Mr. and Mrs. Donald Hurst, celebrated their tenth birthday August 21st with a party at their home. Those present were Gina and Dick

Martin, Lisa Parsons, Jennifer and Bryan Riddle, Cindy Taylor, Tammy Hansel, Karen Hamm, Barry Proctor, Gina, Robin and Michelle Gooch and Teresa and Betty Jo Gooch. They received many nice and useful gifts.

Miss Evelyn Howard who spent several days in Rockcastle County Hospital for treatment

and was transferred to the Clinic in Lexington for tests, X-rays, etc., has now returned home, and the report is that she was pronounced well.

**ASSIGNED**  
Dennis D. Bray, son of Mr. and Mrs. Donald C. Bray of Route 1, Brodhead, has been

assigned to Rhein-Main AB, Germany, from McConnell AFB, Kansas. An Air Force airman first class, Bray is a liquid fuel systems maintenance specialist with the 322nd Civil Engineering Squadron. He is a 1972 graduate of Reading, Ohio High School.

**SUPERIOR FOOD MARKET**  
US 25 South MT. VERNON  
Tip Reppert, Part Owner & Manager

**DIXIE PLATES** EASY DAY **89c**

**DIXIE GOLD CUPS** 100 - 7 OZ CUPS **89c**

**FRYERS** FRESH WHOLE **39c**

**PRICES EFFECTIVE** Aug. 29 thru Sept. 4

**WE WELCOME FEDERAL FOOD STAMP SHOPPERS**

**ARMOUR BACON** 1 19

**Melosweet BONELESS HAM** 18-12 LB. AVG **\$1 29**

**SOUTHERN STAR WIENERS** 69c

**SOUTHERN STAR PATIO POP WIENERS** 89c

**ARMOUR VIENNA SAUSAGE** 5 OZ CANS **3/\$1**

**TOWN HOUSE OVAL CRACKER** 16 OZ BOX **49c**

**JUMBO BOLOGNA** BY THE PIECE **69c** SLICED 7 1/2 LB.

**ARMOUR Little Rotisserie TURKEY** 4-8 LB. AVG. **69c**

**HY-TOP BUNS** 8-PAK HAMB OR HOT DOG **2/ 69c**

**ORANGE GRAPEFRUIT JUICE** DONALD DUCK UNSWEETENED 46 OZ. CANS **2/ 89c**

**SMUCKER'S SLICED HAMBURGER DILL PICKLES** 32 OZ JAR **59c**

**GARDEN FRESH PRODUCE**

**FRESH FIRM HEAD LETTUCE** 2 heads **49c**

**VINE RIPE TOMATOES** **29c**

**GOLDEN RIPE BANANAS** 2 LBS. FOR **29c**

**STAR KIST TUNA** CHUNK LIGHT 8 1/2 OZ CANS **2/\$1**

**VIVA TOWELS** JUMBO ROLL **2/ 79c**

**MAXWELL HOUSE COFFEE** 2 LB CAN **\$1 99**

**Save** **GOLD STRIKE** HELPING SUPERIOR CUSTOMERS LIVE BETTER

**D & W AUTO SALES**

D & W AUTO SALES, on the strip in Berea, is offering some of the cleanest low-mileage late model Used Cars than can be found anywhere. All cars have been thoroughly inspected and have a easy payment plan to suit your budget.

This week's selection of cars and trucks --

- |  |   |
|--|---|
| 73 BUICK Apollo<br>2-Door Hatchback<br>Auto - Power                        | 70 CHEVROLET Impala<br>2-Door H.T.<br>Auto - Power - Air  |
| 73 CHEVROLET - Nova<br>2-Door Hatchback<br>Auto - Air - Power              | 70 BUICK Electra 225<br>4-Door H.T.<br>Air - Tape - LOADED  |
| 73 CHEVROLET - Nova<br>4-Door Sedan<br>Auto - Power                        | 70 FORD Galaxie 500<br>2-Door H.T.<br>Air - Auto - Power  |
| 73 CHEVROLET Chevelle<br>4-Door Sedan<br>Air - Auto - Power                | 70 FORD Fairlane<br>4-Door Sedan<br>Air - Power<br>ONLY \$895.00  |
| 73 CHEVROLET Impala<br>4-Door H.T.<br>Air - Auto - Power                   | 69 CHEVROLET Chevelle<br>4-Door H.T.<br>Auto - Power  |
| 73 CHEVROLET Vega<br>Hatchback<br>Auto - ONLY \$1895.00                    | 68 FORD L.T.D.<br>2-Door H.T.<br>ONLY \$695.00  |
| 73 FORD Pinto<br>Auto - ONLY \$1895.00                                     | 68 FORD Station Wagon<br>10-Passenger<br>Auto - Power<br>ONLY \$895.00  |
| 73 CHEVROLET Monte Carlo<br>Air - Auto - Power<br>Low Mileage              | 67 CHEVROLET 295.00<br>67 CHEVROLET 225.00<br>65 MERCURY, 2-dr. 195.00<br>65 MERCURY, 4-dr. 195.00<br>67 CHEVROLET S/S 395.00 |
| 72 OLDS Cutlass Supreme<br>Air - Auto - Power<br>EPA CLEAN                 | <b>T R U C K S</b>  |
| 72 PLYMOUTH Gran Coupe<br>Air - Auto - Extra Power<br>ONLY \$2195.00       | 72 CHEVROLET Cheyenne<br>Long Wide Bed, Auto plus P/B<br>EXTRA SHARP!   |
| 72 FORD Gran Torino<br>4-Door Sedan<br>Air - Power - Auto                  | 72 FORD Custom<br>Auto - Long Wide Bed<br>26,000 Miles  |
| 72 CHEVROLET Impala<br>2-Door H.T.<br>Air - Power - Auto<br>ONLY \$2195.00 | 71 GMC<br>Auto plus Power Brakes<br>Long Wide Bed<br>38,000 Miles   |
| 72 VEGA GT<br>4-Speed<br>ONLY \$1695.00                                    | 69 CHEVROLET<br>Standard Shift<br>Long Wide Bed   |
| 71 PLYMOUTH Duster<br>2-Door, 6-Cylinder, Auto<br>LOW MILEAGE              | 67 CHEVROLET<br>2 Ton, 5-Speed Transmission<br>Long Wheel Base  |
| 71 FORD Galaxie 500<br>2-Door H.T.<br>Air Power - Auto                     | 73 DODGE Pickup<br>Long Wide Bed<br>6-Cylinder, Auto<br>EXTRA NICE!   |
| 70 CHEVROLET Monte Carlo<br>Air - Power - Auto<br>-LIKE NEW-               |   |
| 70 FORD Maverick<br>6-Cylinder - Auto.                                     |   |

On The Lot Financing

On The Lot Insurance

Easy Payment Plan

OPEN 'TILL 8:00 P.M. NIGHTLY

**D & W AUTO SALES**

Where Price, Quality and Plain Honesty Does Make a Difference.  
On the Strip U.S. 25 North Berea, Ky. Ph. 986-4817

WILLAILLA

Irvin Denney has been visiting Mr. and Mrs. James Hasty in Louisville and has returned home.
Mrs. Julia Norton remains ill in Sunrise Manor Nursing Home at Somerset. A speedy recovery is wished for her.
Ernest Ping is ill in Somerset. City Hospital. A speedy recovery is wished for him.
Willard Barker of Pennington Gap, Virginia visited Mr. and Mrs. J. H. Pennington Sunday.
Mrs. Hallie Reynolds is ill at her home. A speedy recovery is wished for her.
Mr. and Mrs. Connie Taylor attended the State Fair at Louisville Saturday night.
Mr. and Mrs. G. D. Burton spent the weekend with Mrs. Betty Lou Vaughn and Sam at Frankfort over the weekend and attended the State Fair at Louisville.
Joyce Burton of Cincinnati preached at Fairview Church of Christ Sunday and Sunday night.
Lloyd Burton, Jimmie Burton, Paula Burton, all of Cincinnati, are visiting his parents Mr. and Mrs. Grover Burton.
Recent guests of Mr. and Mrs. Marshall Thompson are Mr. and Mrs. Tex Payne and Rochelle Lynn of Cincinnati, Mr. and Mrs. Tex Payne and Rochelle Lynn are vacationing here.
Mr. and Mrs. Cossie McKinney have been vacationing in Florida with her sister Ruby and family.
Mr. and Mrs. Wayne Denney and family have been vacationing in Orange Park, Florida and visited Mrs. Beulah McClaine and son en route home from Florida. They also visited Mr. and Mrs. James Hasty and Irvin Denney in Louisville en route home.
Mrs. Cleo Hurst of Cincinnati visited her daughter Mrs. Flora Mae Brown, Mr. Brown and family over the weekend. Mrs. Sally DeBrie of Level Green also was dinner guest.
Mr. and Mrs. Keith Adams and sons of Cincinnati attended church at Fairview Sunday.
Recent guests of Mrs. Zora Mae Burton and family were Mr. and Mrs. Willard Barker of Pennington Gap, Virginia, Owen Smith and Sue Burton, Mrs. Ethel Thompson, Mrs. Norcia Thompson, Willis Thompson, Lewis Brown, Lloyd Burton of Cincinnati, Ohio, Mr. and Mrs. G. D. Burton, Mr. and Mrs. Grover Burton, Mr. and Mrs. Paul Garner and Kevin and a friend of Anderson, Indiana, Mr. and Mrs. Guy Abright of Louisville, Mrs. Elizabeth Mullins of Broadhead, Mrs. Arch Abright of Broadhead, and Mrs. Carol Martin and Joe.
Mr. and Mrs. R. G. Whitaker and Arvil Burton attended the Rodeo at Renfro Valley Friday night.
Mrs. Joyce Thompson of Cincinnati visited Mr. and Mrs. Wayne Burton and Gerry over the weekend.
Mr. and Mrs. Paul Evans and daughters of Somerset visited his mother Mrs. Beulah Evans at Barling Sunday.
Mr. and Mrs. Charles Bray and family of Lexington visited her parents Mr. and Mrs. Charles McClure.
Mrs. Virgie Brown visited Mr. and Mrs. Austin Sunday.
Mr. and Mrs. Brownie Martin of Willalla entertained with a cocktail Saturday night at their home in honor of his father's and brother's birthdays, Albert and Danny Martin.
Those present were Mr. and Mrs. Albert Martin and Danny, Mr. and Mrs. Keith Adams, Chris and Grant of Mason, Ohio,

Mr. and Mrs. Brownie Martin, Tim, Jill, Micki, Gina and Dick, Mrs. Ethel Thompson, Benita Adams baked the birthday cake. All present enjoyed the occasion.
\*\*\*\*\*
"PERSONALS"
(Cont. From 5)
brother Jim Coffey at Berea during the weekend.
Last Thursday guests of Mrs. Sinnie Noe and Mrs. Pearl Hysinger were Mr. and Mrs. Floyd Wages and daughter of Lockdon, Ohio. Mrs. Edna Williams of West Chester, Ohio. They also visited Lee Earl and Mary Hysinger.
Last Thursday guests of Mrs. Pearl Hysinger and Mrs. Sinnie Noe were Mr. and Mrs. M. L. Bass of Covington.
Mr. and Mrs. LaMar Douz of Easton, Ohio entertained at dinner Mr. and Mrs. Lloyd Payne and Mr. and Mrs. James Adams of Hamilton, Ohio after graduation exercises at Miami University at Oxford, Ohio.
Mrs. Douz received a degree from the University.
Mr. and Mrs. Walter Hendon and son of Taylorville, Indiana are visiting his mother, Mrs. Rosie Hendon this week.
Mrs. Lorenz Carroll was in the University Hospital in Lexington for treatment Wednesday.
Dr. and Mrs. John J. Riddle of Los Angeles, California, Mr. and Mrs. John Dyche Ponder, students at Colorado University in Fort Collins, Colorado, and Mrs. Hazel Elliott of Lexington were all guests of the Misses Fannie and Jerry Riddle last week.
Cecil Hysinger, who was in the University Hospital for several days, has returned home.
\*\*\*\*\*
BOND SALES
Sales of Series E and H Savings Bonds in Rockcastle County for June were \$5,929.

Charlie Davis and Jack Pinell drove over Tuesday from Lagrange to see Mr. Davis' sisters, Mrs. Amanda Maggard, Mrs. Emma Thompson and Mrs. Leola Stokes. Mr. Davis was much improved from a recent operation and he and Mrs. Davis plan to return to their home in Brownsville, Texas soon.
Mrs. Virginia Sutton Bray and son, Mark, and Mrs. Lula Sutton returned to their home in Richmond Sunday. Mrs. Sutton was in Eastern Kentucky University.
Friends and relatives of Mrs. Louanna Cromer are grateful for the report that she is recovering nicely from recent surgery in Lexington and will be able to return home soon.
Mrs. Elmer Hopkins has returned to her home in Loyal after a visit to her daughter, Mrs. David McCauley, and family. Mrs. Hopkins who is president of the Mt. Vernon High School Association, classes 1914-36 inclusive, was checking on the final plans for the annual homecoming dinner at the high school Saturday, September 7th at 6:30 p.m.
Evelyn Cotton, who was in the Veterans Hospital in Lexington last week to consult with doctors, will return there September 10th for surgery.
Mrs. Lorenz Carroll was in the University Hospital in Lexington for treatment Wednesday.
Dr. and Mrs. John J. Riddle of Los Angeles, California, Mr. and Mrs. John Dyche Ponder, students at Colorado University in Fort Collins, Colorado, and Mrs. Hazel Elliott of Lexington were all guests of the Misses Fannie and Jerry Riddle last week.
Cecil Hysinger, who was in the University Hospital for several days, has returned home.
\*\*\*\*\*
BOND SALES
Sales of Series E and H Savings Bonds in Rockcastle County for June were \$5,929.

Barbara Norris 2,541.59
Nancy Parkerson 1,906.70
Sue Hoff 6,916.40
Janice Coffey 4,703.84
Alma Daugherty 1,675.73
Patsy White 2,114.12
Barbara Browning 1,409.18
Charlotte Bullock 1,789.93
Darlene Cameron 1,651.62
Alma J. Kendrick 556.46
Edna Cameron 772.13
Juanita Davis 1,531.11
Alma Daugherty 813.62
Mary C. Leach 1,415.73
Lorene McClure 1,570.22
Thelma Mullins 1,261.29
Vivian Mullins 1,593.86
June Parsons 1,570.22
Carol J. Riddle 1,651.62
Ina F. St. Clair 1,554.02
Carleen Anderson 1,570.22

Linda Francis 823.10
Mattie Wheat 1,672.01
Edna Williams 1,631.82
Doris Wright 1,281.29
Mabel Cash 1,370.22
Vernie Mink 1,647.96
Gustava Peters 1,570.22
Kay Singleton 1,570.22
Alma Preeti Cobb 1,013.74
Telvis Dauberty 702.76
Cora Hayes 323.36
Bonnie Kirby 668.09
Byrda McCall 1,415.90
Elizabeth Mullins 1,085.00
Bertie B. Rice 735.00
Ola Smith 861.00
Flossie Baker 4,697.76
Willard Whitaker 1,290.36
Doris Towery 6,796.00

10402 Central School Supply Co., 44.86
10403 Willard Whitaker, 352 Travel Expense, 41.25
10404 George H. Griffith, M.D., 1181 Act., 8.00
10405 Postmaster, Mt. Vernon, 153 Postage, 120.00
10431 Fed. Res. Bank of Cleveland, 225.01 225.02, 643.80
10432 Ky. State Treasurer, 225.01 225.02 411.02, 86.65
10433 Soc. Sec. Revolving Fund, 225.01 225.02 411.02, 330.02
10434 Blue Cross Hospital Plan, Inc., 225.02 Insurance, 71.02
10435 Ky. State Treasurer, 225.01 225.02 411.02, 160.85
10436 Soc. Sec. Revolving Fund, 851 Matching Soc. Sec., 390.02
10437 Ky. State Treasurer, 852 Matching Co. Employees' Ret., 231.54
10438 Fed. Res. Bank of Cleveland, 215 216.02, 1,398.20
10439 Ky. State Treasurer, 215 216.02 216.04 Taxes, 247.90
10438 Ky. State Treasurer, 215 216.02 216.04, 720.11
10439 Ky. Education Association, 215 216.04 Dues & Ins., 118.61
10440 Blue Cross Hospital Plan, Inc., 215 Insurance, 150.63
10441 Citizens Security Life Ins. Co., 215 Insurance, 42.05
10462 Ky. State Treasurer, 852 Matching Teachers' Ret., 720.11
10463 Fed. Res. Bank of Cleveland, 215 Taxes, 72.10
10463 Ky. State Treasurer, 215 Taxes, 9.25
10466 Ky. State Treasurer, 215 Retirement, 86.23
10467 Ky. Education Association, 215 Dues & Ins., 30.01
10468 Blue Cross Hospital Plan, Inc., 215 Insurance, 14.00
10469 Ky. State Treasurer, 215 Matching Teachers' Ret., 36.23
10471 James Pack, 267 Travel Expense In-Service, 60.00
10475 Fed. Res. Bank of Cleveland, 113 311.02, 291.50
10476 Taxes, 53.22
10476 Ky. State Treasurer, 113 311.02 411.01 Taxes, 53.22
10477 Ky. State Treasurer, 113 311.02 Teachers' Retirement, 59.10
10478 Soc. Sec. Revolving Fund, 113 311.02 Soc. Sec., 69.29
10479 Ky. Education Association, 215 Dues & Ins., 35.51
10480 Blue Cross Hospital Plan, Inc., Insurance, 39.21
10481 Citizens Security Life Ins. Co., Insurance, 47.38
10482 Ky. State Treasurer, County Emp's Ret., 4.87
10483 Ky. State Treasurer, 852 Matching Teachers' Ret., 69.10
10484 Soc. Sec. Revolving Fund, 851 Matching Soc. Sec., 59.20
10485 Ky. State Treasurer, 852 Matching Co. Emp's Ret., 85.88

10486 School Supply Company, 450.00
10487 J. Courtney Horton, Audit, 25.00
10488 Central School Supply Company, Act., 131.12
10489 J. Courtney Horton, Jr., Audit, 175.00
10490 Central School Supply Co., Act., 196.90
10491 Central School Supply Co., Act., 17.00
10492 Garrard Publishing Company, Act., 131.12
10493 Patsy Baker, Travel Expense, 18.02
10494 Doris Towery, Travel Expense, 34.88
10495 Cuisenaire Company of America, Act., 75.26
10496 Cuisenaire Co. of America, Act., 85.36
10497 School Supply Company, Act., 17.75
10498 General Medical of Lexington, Act., 59.52
10499 Central School Supply Co., Act., 49.30
10500 Central School Supply Co., Act., 100.05
10501 Central School Supply Co., Act., 60.75
10502 School Supply Co., Act., 3,200.00
10503 School Supply Co., Act., 99.47
10504 Hazard Drug, Act., 15.20
10506 Willard Whitaker, Travel Expense, 72.32
10507 Doris Towery, Travel Expense, 30.40
10508 Young's Pharmacy, Act., 38.87
10509 Red. Res. Bank of Cleveland, Taxes, 645.30
10533 Ky. State Treasurer, Taxes, 88.77
10538 Soc. Sec. Revolving Fund, Soc. Sec., 330.47
10537 Blue Cross Hospital Plan, Inc., Insurance, 78.12
10538 Ky. State Treasurer, County Employees' Ret., 71.00
10539 Soc. Sec. Revolving Fund, Matching Soc. Sec., 330.47
10540 Ky. State Treasurer, Matching Co. Employees' Ret., 292.10
10540 Fed. Res. Bank of Cleveland, Taxes, 249.18
10561 Ky. State Treasurer, Taxes, 733.09
10562 Ky. State Treasurer, Ret., 140.05
10563 Ky. Education Association, Dues & Ins., 2.00
10564 Blue Cross Hospital Plan, Inc., Insurance, 46.78
10565 Citizens Security Life Ins. Co., Ins., 733.09
10566 Ky. State Treasurer, Matching Ret., 36.23
10568 Fed. Res. Bank of Cleveland, Taxes, 99.20
10570 Ky. State Treasurer, Retirement, 72.10
10571 Ky. Education Association, Dues & Ins., 18.01
10572 Blue Cross Hospital Plan, Inc., Ins., 15.75
10573 Ky. State Treasurer, Matching Teachers' Ret., 36.23
10574 Fed. Res. Bank of Cleveland, Taxes, 291.90
10580 Ky. State Treasurer, Taxes, 53.22
10581 Ky. State Treasurer, Teachers' Ret., 69.29
10582 Soc. Sec. Revolving Fund, Soc. Sec., 69.29
10583 Ky. Education Association, Dues & Ins., 39.06
10584 Blue Cross Hospital Plan, Inc., Insurance, 49.67
10585 Citizens Security Life Ins. Co., Ins., 4.87
10586 Ky. State Treasurer, County Ret., 67.28
10587 Ky. State Treasurer, Matching Teachers' Ret., 49.19
10588 Soc. Sec. Revolving Fund, Matching Soc. Sec., 49.23
10589 Ky. State Treasurer, Matching Co. Ret., 85.88

Total of All Forms F-40's 9161,079.27

JULY

10256 School Supply Co., 175.00
10257 Hiatt's & S. 10, Act., 21.80
10258 Central School Supply Co., 18.78
10259 Hadden Films, Act., 35.30
10260 Central School Supply Co., 89.80
10261 McGraw-Hill Book Co., 56.74
10262 Random House, Inc., 10.87
10263 A. B. Dick Products, Act., 30.82
10264 Pauline Mullins, Evaluation, 42.56
10265 Tax. Sec. Revolving Fund, 21.84
10266 Willard Whitaker, Travel Expense, 200.00
10267 George H. Griffith, M.D., Medical Consultant, 200.00
10268 Charles T. Baker, Contract Labor, 42.25
10269 Hadden Films, Act., 23.35
10270 Hiatt's & S. 10, Act., 10.09
10272 Hiatt's & S. 10, Act., 129.50
10273 Soc. Brothers, Act., 215.73
10274 Scout, Foreman, Act., 125.67
10275 Harper & Row, 1161, 287.08
10276 Holl, Rinehart and Winston, Act., 126.00
10277 Lee, Inc., Act., 129.07
10278 Lyons Bargain Store, Act., 51.00
10279 Vn Band, Act., 200.00
10280 Guidance Associates, Act., 305.00
10281 Science Research Associates, Act., 293.55
10282 J. C. Exeter Lumber, Act., 176.82
10283 Postmaster, Mt. Vernon, Postage, 131.00
10288 Fed. Res. Bank of Cleveland, 113 311.02, 502.40
10289 Fed. Res. Bank of Cleveland, 113 311.02 411.01 1121 Taxes, 84.82
10290 Ky. State Treasurer, 311.02 Teachers' Ret., 59.10
10291 Soc. Sec. Revolving Fund, 113 411.01 1121 Soc. Sec., 80.82
10292 Ky. State Treasurer, 113 411.01 County Employees' Ret., 47.87
10293 Ky. State Treasurer, 852 Matching Teachers' Retirement, 47.87
10294 Soc. Sec. Revolving Fund, 851 Matching Soc. Sec., 80.82
10295 Ky. State Treasurer, 852 Matching County Emp's Ret., 86.78
Total of All Forms F-40's 4,383.98

10296 Central School Supply Co., Act., 453.00
10297 American Book Co., Act., 139.10
10298 Ginn & Co., Act., 88.56
10299 Central School Supply Co., Act., 15.50
10300 W. R. Isaacs, Act., 35.00
10301 Willard Whitaker, Travel Expense, 27.04
10306 Fed. Res. Bank of Cleveland, 113 311.02 411.01 1121 Taxes, 84.82
10307 Ky. State Treasurer, 113 311.02 411.01 1121, 502.40
10308 Ky. State Treasurer, 311.01 Retirement, 59.10
10309 Soc. Security Revolving Fund, 113 411.01, 80.82
10310 Ky. State Treasurer, 113 411.01 Co. Employees' Retirement, 47.87
10311 Ky. State Treasurer, 852 Matching Teachers' Ret., 59.10
10312 Soc. Sec. Revolving Fund, 851 Matching Soc. Sec., 80.82
10313 Ky. State Treasurer, 852 Matching Co. Employees' Ret., 86.78
Total of All Forms F-40's 1,565.39

AUGUST

10314 Mt. Vernon Bargain Store, Act., 79.00
10315 Mt. Vernon Signal, Act., 20.87
10316 Willard Whitaker, Travel, 20.16
10317 School Supply Co., Act., 30.13
10318 Fed. Res. Bank of Cleveland, 215 216.02, 1,398.20
10337 Ky. State Treasurer, 215 216.02 216.04 Taxes, 247.90
10338 Ky. State Treasurer, 215 216.02 216.04 Teachers' Ret., 720.11
10339 Ky. State Treasurer, 852 Matching Teachers' Ret., 720.11
10341 Fed. Res. Bank of Cleveland, 215 Taxes, 9.25
10342 Ky. State Treasurer, 215 Taxes, 36.23
10343 Ky. State Treasurer, 215 Teachers' Ret., 36.23
10340 Fed. Res. Bank of Cleveland, 225.01 225.02 411.02, 623.30
10371 Ky. State Treasurer, 225.01 225.02 411.02 Taxes, 87.32
10372 Soc. Sec. Revolving Fund, 225.01 225.02, 325.19
10373 Ky. State Treasurer, 225.01 225.02 411.02 Co. Ret., 157.77
10374 Soc. Sec. Revolving Fund, 851 Matching Soc. Sec., 325.19
10375 Ky. State Treasurer, Matching Co. Ret., 285.96
10378 Fed. Res. Bank of Cleveland, 311.02 Taxes, 120.70
10379 Ky. State Treasurer, 311.02 Taxes, 24.70
10380 Ky. State Treasurer, 311.02 Retirement, 29.10
10381 Ky. State Treasurer, 852 Matching Ret., 59.10
10384 Fed. Res. Bank of Cleveland, 113 411.01 Taxes, 200.20
10385 Ky. State Treasurer, 113 411.01 Taxes, 35.12
10386 Soc. Sec. Revolving Fund, 113 411.01 Soc. Sec., 72.80
10387 Ky. State Treasurer, 113 411.01 County Employees' Ret., 53.80
10388 Soc. Sec. Revolving Fund, 851 Matching Soc. Sec., 53.80
10389 Ky. State Treasurer, 852 Matching Co. Employees' Ret., 96.43
Total of All Forms F-40's 6,373.30

SEPTEMBER

10390 School Supply, 264.01 Act., 25.09
10391 McGraw-Hill Book Co., 264.01 Act., 188.56
10392 Loyola Co. Graham, 264.01 Act., 25.09
10393 Central School Supply Co., 264.01 Act., 25.09
10394 School Supply Co., 264.01 Act., 72.83
10395 McGraw-Hill Book Co., 264.01 Act., 11.35
10397 A. B. Dick Products, 264.01 Act., 11.35
10398 Central School Supply Co., 264.01 Act., 25.09
10399 School Supply Co., 264.01 Act., 72.83
10400 McGraw-Hill Book Co., 264.01 Act., 11.35
10401 National Textbook, 264.01 Act., 65.20

10396 Ky. State Treasurer, 215 216.02 216.04 Taxes, 247.90
10397 Ky. State Treasurer, 215 216.02 216.04 Teachers' Ret., 720.11
10398 Ky. State Treasurer, 215 216.02 216.04, 720.11
10399 Pat Baker, Travel Exp., 27.35
10399 Claudina Cash, Travel Exp., 45.03
10399 Charlotte Burdette, Travel Exp., 120.24
10399 Mary Alice Hunt, Travel Exp., 10.31
10399 Dorothea Williams, Travel Exp., 65.30
10399 Kathryn Payne, Travel Exp., 25.84
10399 Shelby Dunn, Travel Exp., 29.16
10399 Lena Hayes, Travel Exp., 71.00
10399 Lucy Bullock, Travel Exp., 15.56
10399 Shelby J. Poynter, Travel Exp., 6.55
10400 Barbara Ray, Travel Exp., 11.60
10400 Willard Whitaker, Travel Expense, 61.56
10400 Kay Singleton, Travel Exp., 11.28
10400 Gustava Peters, Travel Exp., 16.58
10400 Mabel Cash, Travel Exp., 44.86
10400 Doris Towery, Travel Exp., 37.84
10400 Steck-Vaughn Co., Act., 62.64
10400 A. B. Dick Products, Act., 177.95
10400 Central School Supply Co., Act., 110.90
10400 Science Research Associates, Act., 89.13
10401 Field Educational Publications, Act., 145.98
10401 Lyons and Carnahan, Act., 79.21
10401 Creative Publications, Act., 41.04
10401 George H. Griffith, M.D., Act., 4.00
10401 Rockcastle Co. Hospital, Act., 18.60
10401 Vernie Mink, Travel Exp., 11.60
10401 Fed. Res. Bank of Cleveland, Taxes, 635.10
10404 Ky. State Treasurer, Taxes, 87.87
10404 Soc. Sec. Revolving Fund, Soc. Sec., 327.24
10404 Blue Cross Hospital Plan, Inc., Insurance, 61.56
10404 Ky. State Treasurer, Ret., 169.89
10404 Ky. State Treasurer, Ret., 327.24
10404 Ky. State Treasurer, Matching Co. Employees' Ret., 268.89
10404 Ky. State Treasurer, Matching Co. Ret., 97.22

10404 Fed. Res. Bank of Cleveland, Taxes, 215 216.02, 1,398.20
10404 Ky. State Treasurer, 215 216.02 216.04, 720.11
10404 Soc. Sec. Revolving Fund, 215 216.02 216.04, 118.61
10404 Blue Cross Hospital Plan, Inc., 215 Insurance, 150.63
10404 Citizens Security Life Ins. Co., 215 Insurance, 42.05
10404 Ky. State Treasurer, 852 Matching Teachers' Ret., 720.11
10404 Ky. State Treasurer, 215 Taxes, 9.25
10406 Ky. State Treasurer, 215 Retirement, 86.23
10407 Ky. Education Association, 215 Dues & Ins., 30.01
10408 Blue Cross Hospital Plan, Inc., 215 Insurance, 14.00
10409 Ky. State Treasurer, 215 Matching Teachers' Ret., 36.23
10410 Citizens Security Life Ins. Co., Insurance, 47.38
10412 Ky. State Treasurer, County Emp's Ret., 4.87
10413 Ky. State Treasurer, 852 Matching Teachers' Ret., 69.10
10414 Soc. Sec. Revolving Fund, 851 Matching Soc. Sec., 59.20
10415 Ky. State Treasurer, 852 Matching Co. Emp's Ret., 85.88
10416 School Supply Company, 450.00
10417 J. Courtney Horton, Audit, 25.00
10418 Central School Supply Company, Act., 131.12
10419 J. Courtney Horton, Jr., Audit, 175.00
10420 Central School Supply Co., Act., 196.90
10421 Central School Supply Co., Act., 17.00
10422 Garrard Publishing Company, Act., 131.12
10423 Patsy Baker, Travel Expense, 18.02
10424 Doris Towery, Travel Expense, 34.88
10425 Cuisenaire Company of America, Act., 75.26
10426 Cuisenaire Co. of America, Act., 85.36
10427 School Supply Company, Act., 17.75
10428 General Medical of Lexington, Act., 59.52
10429 Central School Supply Co., Act., 49.30
10430 Central School Supply Co., Act., 100.05
10431 Central School Supply Co., Act., 60.75
10432 School Supply Co., Act., 3,200.00
10433 School Supply Co., Act., 99.47
10434 Hazard Drug, Act., 15.20
10435 Willard Whitaker, Travel Expense, 72.32
10436 Doris Towery, Travel Expense, 30.40
10437 Young's Pharmacy, Act., 38.87
10438 Red. Res. Bank of Cleveland, Taxes, 645.30
10439 Ky. State Treasurer, Taxes, 88.77
10438 Soc. Sec. Revolving Fund, Soc. Sec., 330.47
10437 Blue Cross Hospital Plan, Inc., Insurance, 78.12
10438 Ky. State Treasurer, County Employees' Ret., 71.00
10439 Soc. Sec. Revolving Fund, Matching Soc. Sec., 330.47
10440 Ky. State Treasurer, Matching Co. Employees' Ret., 292.10
10440 Fed. Res. Bank of Cleveland, Taxes, 249.18
10441 Ky. State Treasurer, Taxes, 733.09
10442 Ky. State Treasurer, Ret., 140.05
10443 Blue Cross Hospital Plan, Inc., Insurance, 46.78
10444 Citizens Security Life Ins. Co., Ins., 733.09
10445 Ky. State Treasurer, Matching Ret., 36.23
10446 Fed. Res. Bank of Cleveland, Taxes, 99.20
10447 Ky. State Treasurer, Retirement, 72.10
10448 Ky. Education Association, Dues & Ins., 18.01
10449 Blue Cross Hospital Plan, Inc., Ins., 15.75
10450 Ky. State Treasurer, Matching Teachers' Ret., 36.23
10451 Fed. Res. Bank of Cleveland, Taxes, 291.90
10452 Ky. State Treasurer, Taxes, 53.22
10453 Ky. State Treasurer, Teachers' Ret., 69.29
10454 Soc. Sec. Revolving Fund, Soc. Sec., 69.29
10455 Ky. Education Association, Dues & Ins., 39.06
10456 Blue Cross Hospital Plan, Inc., Insurance, 49.67
10457 Citizens Security Life Ins. Co., Ins., 4.87
10458 Ky. State Treasurer, County Ret., 67.28
10459 Ky. State Treasurer, Matching Teachers' Ret., 49.19
10458 Soc. Sec. Revolving Fund, Matching Soc. Sec., 49.23
10459 Ky. State Treasurer, Matching Co. Ret., 85.88

Total of All Forms F-40's 911,682.18

DECEMBER, 1973

10459 Pat Baker, Travel Exp., 27.35
10459 Claudina Cash, Travel Exp., 45.03
10459 Charlotte Burdette, Travel Exp., 120.24
10459 Mary Alice Hunt, Travel Exp., 10.31
10459 Dorothea Williams, Travel Exp., 65.30
10459 Kathryn Payne, Travel Exp., 25.84
10459 Shelby Dunn, Travel Exp., 29.16
10459 Lena Hayes, Travel Exp., 71.00
10459 Lucy Bullock, Travel Exp., 15.56
10459 Shelby J. Poynter, Travel Exp., 6.55
10460 Barbara Ray, Travel Exp., 11.60
10460 Willard Whitaker, Travel Expense, 61.56
10460 Kay Singleton, Travel Exp., 11.28
10460 Gustava Peters, Travel Exp., 16.58
10460 Mabel Cash, Travel Exp., 44.86
10460 Doris Towery, Travel Exp., 37.84
10460 Steck-Vaughn Co., Act., 62.64
10460 A. B. Dick Products, Act., 177.95
10460 Central School Supply Co., Act., 110.90
10460 Science Research Associates, Act., 89.13
10461 Field Educational Publications, Act., 145.98
10461 Lyons and Carnahan, Act., 79.21
10461 Creative Publications, Act., 41.04
10461 George H. Griffith, M.D., Act., 4.00
10461 Rockcastle Co. Hospital, Act., 18.60
10461 Vernie Mink, Travel Exp., 11.60
10461 Fed. Res. Bank of Cleveland, Taxes, 635.10
10464 Ky. State Treasurer, Taxes, 87.87
10464 Soc. Sec. Revolving Fund, Soc. Sec., 327.24
10464 Blue Cross Hospital Plan, Inc., Insurance, 61.56
10464 Ky. State Treasurer, Ret., 169.89
10464 Ky. State Treasurer, Ret., 327.24
10464 Ky. State Treasurer, Matching Co. Employees' Ret., 268.89
10464 Ky. State Treasurer, Matching Co. Ret., 97.22

10464 Fed. Res. Bank of Cleveland, Taxes, 215 216.02, 1,398.20
10464 Ky. State Treasurer, 215 216.02 216.04, 720.11
10464 Soc. Sec. Revolving Fund, 215 216.02 216.04, 118.61
10464 Blue Cross Hospital Plan, Inc., 215 Insurance, 150.63
10464 Citizens Security Life Ins. Co., 215 Insurance, 42.05
10464 Ky. State Treasurer, 852 Matching Teachers' Ret., 720.11
10464 Ky. State Treasurer, 215 Taxes, 9.25
10406 Ky. State Treasurer, 215 Retirement, 86.23
10407 Ky. Education Association, 215 Dues & Ins., 30.01
10408 Blue Cross Hospital Plan, Inc., 215 Insurance, 14.00
10409 Ky. State Treasurer, 215 Matching Teachers' Ret., 36.23
10410 Citizens Security Life Ins. Co., Insurance, 47.38
10412 Ky. State Treasurer, County Emp's Ret., 4.87
10413 Ky. State Treasurer, 852 Matching Teachers' Ret., 69.10
10414 Soc. Sec. Revolving Fund, 851 Matching Soc. Sec., 59.20
10415 Ky. State Treasurer, 852 Matching Co. Emp's Ret., 85.88
10416 School Supply Company, 450.00
10417 J. Courtney Horton, Audit, 25.00
10418 Central School Supply Company, Act., 131.12
10419 J. Courtney Horton, Jr., Audit, 175.00
10420 Central School Supply Co., Act., 196.90
10421 Central School Supply Co., Act., 17.00
10422 Garrard Publishing Company, Act., 131.12
10423 Patsy Baker, Travel Expense, 18.02
10424 Doris Towery, Travel Expense, 34.88
10425 Cuisenaire Company of America, Act., 75.26
10426 Cuisenaire Co. of America, Act., 85.36
10427 School Supply Company, Act., 17.75
10428 General Medical of Lexington, Act., 59.52
10429 Central School Supply Co., Act., 49.30
10430 Central School Supply Co., Act., 100.05
10431 Central School Supply Co., Act., 60.75
10432 School Supply Co., Act., 3,200.00
10433 School Supply Co., Act., 99.47
10434 Hazard Drug, Act., 15.20
10435 Willard Whitaker, Travel Expense, 72.32
10436 Doris Towery, Travel Expense, 30.40
10437 Young's Pharmacy, Act., 38.87
10438 Red. Res. Bank of Cleveland, Taxes, 645.30
10439 Ky. State Treasurer, Taxes, 88.77
10438 Soc. Sec. Revolving Fund, Soc. Sec., 330.47
10437 Blue Cross Hospital Plan, Inc., Insurance, 78.12
10438 Ky. State Treasurer, County Employees' Ret., 71.00
10439 Soc. Sec. Revolving Fund, Matching Soc. Sec., 330.47
10440 Ky. State Treasurer, Matching Co. Employees' Ret., 292.10
10440 Fed. Res. Bank of Cleveland, Taxes, 249.18
10441 Ky. State Treasurer, Taxes, 733.09
10442 Ky. State Treasurer, Ret., 140.05
10443 Blue Cross Hospital Plan, Inc., Insurance, 46.78
10444 Citizens Security Life Ins. Co., Ins., 733.09
10445 Ky. State Treasurer, Matching Ret., 36.23
10446 Fed. Res. Bank of Cleveland, Taxes, 99.20
10447 Ky. State Treasurer, Retirement, 72.10
10448 Ky. Education Association, Dues & Ins., 18.01
10449 Blue Cross Hospital Plan, Inc., Ins., 15.75
10450 Ky. State Treasurer, Matching Teachers' Ret., 36.23
10451 Fed. Res. Bank of Cleveland, Taxes, 291.90
10452 Ky. State Treasurer, Taxes, 53.22
10453 Ky. State Treasurer, Teachers' Ret., 69.29
10454 Soc. Sec. Revolving Fund, Soc. Sec., 69.29
10455 Ky. Education Association, Dues & Ins., 39.06
10456 Blue Cross Hospital Plan, Inc., Insurance, 49.67
10457 Citizens Security Life Ins. Co., Ins., 4.87
10458 Ky. State Treasurer, County Ret., 67.28
10459 Ky. State Treasurer, Matching Teachers' Ret., 49.19
10458 Soc. Sec. Revolving Fund, Matching Soc. Sec., 49.23
10459 Ky. State Treasurer, Matching Co. Ret., 85.88

Total of All Forms F-40's 911,682.18

FINANCIAL STATEMENT

Table with 3 columns: Description, Amount, Date. Includes Balance July 1, 1973, Receipts July 1, 1973 through June 30, 1974, Total Balance and Receipts, Less Disbursements through June 30, 1974.

WAGES OF ROCKCASTLE COUNTY SCHOOL EMPLOYEES

Table with 3 columns: Name, Amount, Date. Lists wages for employees like Carolya Brown, Lucy Bullock, Shelby Burdette, etc.

Joe. Carson Kuhns celebrated his 5th birthday August 20th with a party at the home of his grandparents...





**"QUAIL"**  
(Cont. From 10)

and Mrs. Dean Barron, Mrs. Ronald Rogers and Jill, Mr. and Mrs. Wayne Todd.  
Mr. and Mrs. Kenneth Chattelle and Scott visited his mother Mrs. Arthur Lodge at Covington Friday night.  
Sunday afternoon visitors of Mrs. Maude Hasty were Mrs. Glenn Hasty, Mrs. Don Hopkins, Robbie Maray, Mr. and Mrs. Jesse Norton, Mr. and Mrs. Quentin Allen and family.  
Mrs. Charlie Lowery and family of Somerset visited her sister Mrs. Irene Taylor and Tommy Sunday afternoon.  
Mr. and Mrs. Estil Anderson of Indiana visited Mr. Willie Logsdon and Mrs. Delta Brown Thursday afternoon.  
Weekend visitors of Mr. and Mrs. Estil Gentry were Mr. and Mrs. Leslie Watson and son and Mr. and Mrs. Ray Brown and son of Ohio. Billy McKinney and Jim Brown.  
Mr. and Mrs. Jesse Taylor and Mrs. Irene Taylor visited Mr. and Mrs. Marshall Smithers at Crab Orchard Tuesday.  
Homer Scott, Mrs. Helen Cash and family, Minnie DeBorje, Mrs. Rufus Taylor, Mrs. Jackie Lee Cash and daughter and Ray Scott and Betty were all visitors of Mrs. Scott.

Mr. and Mrs. M. J. McMullin were Sunday dinner guests of Mrs. Pattie Baker. They visited Mrs. Sella Scoggin in the afternoon.  
\*\*\*\*\*  
**GINGER STRESSES NEED FOR COMMUNICATION**  
By: Jennifer Kaye Robinson

Dr. Lyman V. Ginger, state superintendent of public instruction, stressed the need for open communication among parents, teachers, administrators, students and the news media in a recent address before the Kentucky Association of School Administrators.  
"It is not enough, in my opinion, to say that we are teaching boys and girls how to read and spell. The biggest problem in this nation and in the world today is: how do we live with, work with and get along with people? What do we do to help boys and girls adjust and react in the proper way?" Ginger asked.  
Regarding sex discrimination, Ginger said that federal guidelines will encompass much more than Kentucky girls' basketball bill.

"Believe me, the same people that pushed so hard with the federal courts to make sure that schools were integrated, are pushing just as hard, and perhaps a little harder, at the moment to be sure that every girl has the same opportunity as the boys."  
"This is going to mean, in the next few years, some real changes in your operation of your programs, and I think the sooner you tool up on it the better." Two changes he mentioned were opening "all vocational courses to women and possibly building a girls' gymnasium at each school."  
Outlining ways that some of the surplus \$8 million allocated to education by Gov. Wendell H. Ford will be spent, Ginger said that \$5 million will cover over-runs in the cost of constructing and expanding vocational schools. \$300,000 will be used to set up a central computer for schools throughout the state to use for a variety of tasks including attendance records and school fees, and \$855,000 will pay for increases in the cost of textbooks.

Ginger's speech to the Kentucky Association of School Administrators was part of their annual convention which was held in Louisville August 4-6.  
\*\*\*\*\*  
**Solution for Penny Shortage - Lawyer Philip E. Wilson**  
of Lexington asked the Attorney General's Office to issue an opinion on the legality of a bank promotion aimed at increasing the penny supply. The bank plans to pay, in its paper currency in exchange for one hundred pennies. Additionally, the participant would receive a cash stub with a random drawing for prizes. The Attorney General's office said that since the promotion primarily serves only to place in circulation one-cent coins, the promotion is not an unlawful lottery or gift enterprise.

**"FINANCIAL STATEMENT"**  
(Cont. From 10)

D. Total Receipts (B & C)	\$1,582,708.24
Foundation Program Capital Outlay Fund	802,160.00
School Food Services	306,460.82
Public Law 89-10, ESEA, Title I	3,501.11
Other	207.44
Refunds	10,803.60
Other	

E. Total Below-the-Line Receipts	733,297.47
F. Total of All Receipts (D & E)	2,316,005.71
G. Total All Receipts Plus Balance (A & F)	\$2,493,821.85

JULY, 1973	
1111 Joel C. & Jane Gentry	\$2,400.00
Total	\$2,400.00

AUGUST, 1974	
1112 Faulkner-Clark Material Sales, Inc.	1,583.00
1113 Mazon's Custom Hauling	450.00
1114 Wenger Corporation	301.67
Total	\$2,334.67

SEPTEMBER, 1973	
1115 J. C. Newland & Son	1,987.00
1116 J. K. Stone Co.	1,185.30
1117 Ted Holman	585.00
1118 Joe Holman	657.10
Mrs. Shirley Caldwell, Mrs. Carl Caldwell, Mrs. Jackie Lee Cash and daughter visited Mr. and Mrs. Marshall Smithers at Crab Orchard Tuesday.	
1119 Donald B. Shelton	79.03
1120 Donald B. Shelton	139.79
1121 Dunsmore & Son	989.00
Total	\$5,618.22

OCTOBER, 1973	
1122 The Ky. Stone Co.	2,377.18
1123 Parsons Gas & Electric Service, Inc.	294.20
Total	\$2,671.38

NOVEMBER, 1973	
1124 Co. of Rockcastle School Bldg. Bond & Int. Redemption Fund - 1970	61,018.75
1125 Donald E. Shelton	3,955.23
1126 Gooch & Reynolds	600.00
Total	\$65,574.98

DECEMBER, 1973	
1127 County of Rockcastle - School Bldg. & Int. Redemption Fund - 1970	18,731.25
1128 Brock-McVey Co.	2,967.50
1129 Dailey's Electric	452.60
1130 A. W. Thomason	120.00
1131 Forbes-Morris Building Company	77,917.00
1132 Dick's Electric Service	300.00
Total	\$100,458.35

JANUARY, 1974	
1133 Kentucky Utilities Co.	100.95
1134 Central School Supply Co.	70.20
1135 Donald B. Shelton	191.22
1136 Dailey's Electric	56.55
Total	\$992.92

FEBRUARY, 1974	
1137 Donald B. Shelton	1,000.00
1138 Virginia Metal Products Division	10,383.35
Total	\$11,383.35

MARCH, 1974	
1139 Forbes-Morris Bldg. Co.	600.00
Total	\$600.00

APRIL, 1974	
1140 The Singer Co.	616.00
1141 Donald B. Shelton	2,035.95
Total	\$2,651.95

MAY, 1974	
1142 County of Rockcastle School Bldg. Bond & Int. Redemption Fund - 1970	71,018.75
1143 County of Rockcastle School Bldg. Bond & Redemption Fund	1,327.50
Total	\$72,346.25

JUNE, 1974	
1144 Dailey's Electric	412.00
1145 C. L. Hollar	328.66
1146 Rockcastle Co. Bd. of Educ.	10,000.00
1147 Joel C. Gentry	100.00
Total	\$10,740.66

**THE MOUNT VERNON SIGNAL THURSDAY AUGUST 29, 1974 PAGE ELEVEN**

4549.96	5499.96	Gary D. Whitaker	4577.70	75160 A. F. St. Clair & Son, Acct.	4,639.71
5494.96	5494.96	Margie Wilson	5494.96	75161 A. F. St. Clair & Son, Acct.	2,440.84
5315.85	5315.85	Florence Winestead	5437.19	75162 A. F. St. Clair & Son, Acct.	2,105.87
5977.96	5977.96	Laura Durham	6611.11	75163 Roundstone Elementary School	
5374.57	5374.57	Barbara Hiatt	3586.80	Reimbursement Supplies	253.64
4814.00	4814.00	Lora Lee Mink	3232.52	75164 A. B. Dick Products of Lexington, Inc. Acct.	10.48
5977.96	5977.96	Barbara Parkerson	2411.78	75165 School Supply Co., Inc. Acct.	18.25
5175.43	5175.43	Nancy Parkerson	2247.77	75166 K. V. State Treas. Acct.	27.30
5334.27	5334.27	Melvin D. Hamm	9610.39	75167 James W. Lambert, Preparing Deed	15.00
6131.40	6131.40	Harry L. Holland	11,010.49	75168 Ford Realty & Auction Co. Commission	180.00
5993.41	5993.41	Doris Harris	9148.18	75169 Westbrook's, Acct.	23.00
5866.52	5866.52	Virginia Holt	4388.71	75170 R. H. Hamm Oil Co. Acct.	18.95
4838.56	4838.56	Vincenta Howard	9038.46	75171 Central Body Service, Acct.	45.35
6235.99	6235.99	Hubert Hunt	8277.55	75172 Ballour, Acct.	4.15
5914.11	5914.11	Christine Krueger	9858.38	75173 Central School Supply Co., Acct.	20.00
4610.01	4610.01	Virginia Hunt	9010.19	75174 Norton Insurance Agency, Bond	20.00
4993.44	4993.44	Mary J. Hysinger	9773.00	75175 The Bank of Mt. Vernon, Box Rent	3.00
5534.27	5534.27	Rea Jordan	8207.75	75176 Ky. School Bd. Assoc., Dues	685.00
6315.90	6315.90	Christine Krueger	8395.41	75177 Visual Educ. Consultants, Inc. Acct.	24.29
5733.81	5733.81	Hazel Linnville	2359.80	75178 Changing Times Education Serv. Acct.	232.00
4722.96	4722.96	Naomi Mink	2349.19	75179 International Harvester Co., Bus. Chassis	3,509.89
5182.71	5182.71	John D. Love	2052.55	75180 Lester Motors, Inc., Bus. Chassis	4,167.00
5933.27	5933.27	Shelia Martin	2139.80	75181 Lester Motors, Inc., Bus. Chassis	4,185.00
5669.03	5669.03	Scott Masters	2502.90	75182 Bard Bus Sales, Bus. Body	2,680.00
5702.67	5702.67	Edna McGuire	3131.18	75183 Wayne Sales, Inc., Bus. Body	2,718.98
5830.41	5830.41	Rose S. McKinney	2299.34	75184 Wayne Sales, Inc., Bus. Body	2,669.96
5685.71	5685.71	Robert J. Mink	1892.22	75185 Livingston Water Works, Acct.	17.21
4953.91	4953.91	Pauline Mullins	1240.29	75186 Mt. Vernon Water Works, Acct.	238.45
3984.11	3984.11	Charles Napier	750.87	75187 Jackson Co. RECC, Acct.	211.48
5987.89	5987.89	Reba Nore	3948.44	75188 Susie Kidwell, Duplicate Ch. #74485	.00
5987.89	5987.89	Juanita Norris	2872.28	75189 Rockcastle Co. High School Lunch Room	2,691.32
5919.79	5919.79	Marshall Norton	2540.04	75190 Title ESEA-89-10, Transfer of Funds	15,000.00
5977.96	5977.96	Linda Osborne	3060.96	75191 State Farm Fire & Casualty Co., Workmen's Comp. P. & B.	373.00
5967.68	5967.68	Ona K. Owens	820.20	75200 Harry L. Holland, Contract Hauling	2420.00
5977.96	5977.96	Alene Parrett	1897.68	75201 Charles T. Baker, Contract Hauling	546.00
5977.96	5977.96	Imogene McClure	3572.88	75202 Joyce Renner, Contract Hauling	144.00
5977.96	5977.96	Asa B. McGuire	3891.67	75203 Buford Parkerson, Travel Exp.	20.80
5977.96	5977.96	Bonnie Parsons	3469.28	75204 Lawrence Farnsworth, Apr. & Hauling	45.00
5767.44	5767.44	Linda Parsons	4615.80	75205 E. J. Smith, Contract Hauling	61.20
4575.61	4575.61	Margaret Phillips	1623.59	75206 Naomi Mink, Contract Hauling	57.00
5052.52	5052.52	Jess T. Pike	1437.45	75207 State Treas. (Ret.)	842.77
5128.93	5128.93	Margaret Phillips	1981.22	75208 Soc. Sec. Revolving Fund	624.04
5929.40	5929.40	James T. Pike	1741.77	75209 Ky. State Treas. (Co. Ret.)	85.83
5565.05	5565.05	Carolene Pybas	1508.94	75210 State Treas. (St. Tax)	386.44
4482.23	4482.23	Janet Rader	800.27	75212 Fed. Res. Bank of Cleveland (Tax)	2,064.50
5977.96	5977.96	Willard Whitaker	2114.44	Total of All F-40's	\$63,351.67
5977.96	5977.96	Barbara Pain	1828.82		
5977.96	5977.96	Carolene Pybas	1785.34		
5977.96	5977.96	John Cromer, Jr.	1598.94		
5977.96	5977.96	James Cummins	123.39		
5977.96	5977.96	Bennie Durham	1828.82		
5977.96	5977.96	Leon Durham	1775.27		
5977.96	5977.96	Clyde Fordyce	1785.34		
5977.96	5977.96	Henry C. Anglin	1546.57		
5977.96	5977.96	James T. Boone	1508.94		
5977.96	5977.96	Jackie Burdette	1828.82		
5977.96	5977.96	Billy Bussell	1741.77		
5977.96	5977.96	Saul Carpenter	1828.82		
5977.96	5977.96	Albert Cash	1828.82		
5977.96	5977.96	Everett Cash	1828.82		
5977.96	5977.96	John Cromer, Jr.	1785.34		
5977.96	5977.96	James Cummins	1598.94		
5977.96	5977.96	Bennie Durham	123.39		
5977.96	5977.96	Leon Durham	1828.82		
5977.96	5977.96	Clyde Fordyce	1775.27		
5977.96	5977.96	Henry C. Anglin	1741.77		
5977.96	5977.96	James T. Boone	1508.94		
5977.96	5977.96	Jackie Burdette	1828.82		
5977.96	5977.96	Billy Bussell	1741.77		
5977.96	5977.96	Saul Carpenter	1828.82		
5977.96	5977.96	Albert Cash	1828.82		
5977.96	5977.96	Everett Cash	1828.82		
5977.96	5977.96	John Cromer, Jr.	1785.34		
5977.96	5977.96	James Cummins	1598.94		
5977.96	5977.96	Bennie Durham	123.39		
5977.96	5977.96	Leon Durham	1828.82		
5977.96	5977.96	Clyde Fordyce	1775.27		
5977.96	5977.96	Henry C. Anglin	1741.77		
5977.96	5977.96	James T. Boone	1508.94		
5977.96	5977.96	Jackie Burdette	1828.82		
5977.96	5977.96	Billy Bussell	1741.77		
5977.96	5977.96	Saul Carpenter	1828.82		
5977.96	5977.96	Albert Cash	1828.82		
5977.96	5977.96	Everett Cash	1828.82		
5977.96	5977.96	John Cromer, Jr.	1785.34		
5977.96	5977.96	James Cummins	1598.94		
5977.96	5977.96	Bennie Durham	123.39		
5977.96	5977.96	Leon Durham	1828.82		
5977.96	5977.96	Clyde Fordyce	1775.27		
5977.96	5977.96	Henry C. Anglin	1741.77		
5977.96	5977.96	James T. Boone	1508.94		
5977.96	5977.96	Jackie Burdette	1828.82		
5977.96	5977.96	Billy Bussell	1741.77		
5977.96	5977.96	Saul Carpenter	1828.82		
5977.96	5977.96	Albert Cash	1828.82		
5977.96	5977.96	Everett Cash	1828.82		
5977.96	5977.96	John Cromer, Jr.	1785.34		
5977.96	5977.96	James Cummins	1598.94		
5977.96	5977.96	Bennie Durham	123.39		
5977.96	5977.96	Leon Durham	1828.82		
5977.96	5977.96	Clyde Fordyce	1775.27		
5977.96	5977.96	Henry C. Anglin	1741.77		
5977.96	5977.96	James T. Boone	1508.94		
5977.96	5977.96	Jackie Burdette	1828.82		
5977.96	5977.96	Billy Bussell	1741.77		
5977.96	5977.96	Saul Carpenter	1828.82		
5977.96	5977.96	Albert Cash	1828.82		
5977.96	5977.96	Everett Cash	1828.82		
5977.96	5977.96	John Cromer, Jr.	1785.34		
5977.96	5977.96	James Cummins	1598.94		

SNIDER "FINANCIAL STATEMENT" (Cont. From 11)

Mr. and Mrs. Eddie Owens and Mr. and Mrs. George Allen of Richmond, Indiana visited Mr. and Mrs. Edgar Barnett over the weekend. Mr. and Mrs. Alford Carpenter and Mr. and Mrs. J. Lamb visited Mr. and Mrs. Ralph Carpenter Sunday. Mr. and Mrs. Tommy Philbeck were guests of Mr. and Mrs. Eli Barnett Friday evening. Mr. and Mrs. Eli Barnett visited Mr. and Mrs. Howard Rowlett of Berea Sunday afternoon.

In Memory of Bodie VanWinkle - August 28th, two years ago, you left me all alone. I am sad and lonesome since you've been gone. Someday we will be together again, no one but the Lord knows when. Sadly missed by your wife, Pearl, VanWinkle.

Blood Transfusion - A Medical Act - In response to Dr. McDowell, a Louisville nurse, the Kentucky General's office says that a registered nurse who has adequate instruction and experience in such procedures may administer blood transfusions under the direct supervision of a licensed physician.

Likewise, a certified nurse anesthetist could administer an anesthetic, under the supervision of a licensed dentist. The provision to administer a blood transfusion would be a medical act since this is part of the diagnosis of the treatment. The nurse performing the administrative act of blood transfusion under the careful eye of a physician is merely the extension of the hands of the physician.

QUAIL

Cable Reunion The Cable Reunion will be held at the Bradshaws' home, Sunday, September 1st at noon. All friends and relatives are invited to attend this get-together.

Mr. and Mrs. C. F. Hassell of Ohio spent a few days last week with her sisters Mrs. Myrtle Brown and Mrs. Sophia Barker and brother Brock, Cable and Mrs. Coy Brown. Mrs. and Mrs. Lana, were Friday supper guests of his parents Mr. and Mrs. J. L. Brown.

Recent guests of Mr. and Mrs. J. L. Brown were Mrs. Bill Long, Melanie, Janice and Greg, of Jeffersontown, Mr. and Mrs. Wayne Taylor of Fern Creek, Mr. and Mrs. Dan McKelney and Angie of Monticello, Mr. and Mrs. Marshall Lawwell, Janice and Mrs. of High Point, Ohio, Mr. and Mrs. Bill Ponder and Mr. and Mrs. Darrell Cash, of Brodhead, and Kingman Brown of Ohio.

NATIONAL FOREST TIMBER FOR SALE

Sealed bids will be received by the Forest Supervisor, 100 Vaught Road, Winchester, Ky. 40391, up to 10:00 a.m. local time at the place of bid opening on September 30, 1974, and opened immediately thereafter. All timber marked or designated for cutting is located on an area of about 320 acres within the Daniel Boone National Forest, Happy Top Ridge on Red Lick Creek drainage, Berea Ranger District. Compartment No. 11, 24, 25 and 30, estimated to be 505 MBF of sawtimber.

Minimum acceptable bid by species including sale and betterment is: Yellow Poplar & White Oak, Sawtimber, \$42.00; White Oak, N. Red Oak, So. Yellow Pine, Sawtimber, \$38.00; Mixed Oak and Mixed Hardwood, Sawtimber, \$12.18; Black Walnut, Sawtimber, \$221.77.

Table listing various insurance agencies and services with associated amounts. Includes entries like Atlantic Richfield Co. Acct., Gulf Oil Co. Acct., Vernon Automotive, Inc. Acct., etc.

Table listing various insurance agencies and services with associated amounts. Includes entries like Kenneth Adams, Bd. Meeting & Exp., Willie Taylor, Bd. Meeting & Exp., etc.

Table listing various insurance agencies and services with associated amounts. Includes entries like Norton Insurance Agency, Bond Vernon Signal, Acct., Vernon Signal, Subscription, etc.

NOVEMBER

Table listing various insurance agencies and services with associated amounts. Includes entries like Capital Outlay Fund, Basic Adult Education, 1481 St. Transfer of Funds, etc.

Table listing various insurance agencies and services with associated amounts. Includes entries like Vernon Automotive, Inc. Acct., Hillmanver Automotive, Acct., Cumberland Welders Supp. Co. Acct., etc.

DECEMBER

Table listing various insurance agencies and services with associated amounts. Includes entries like Capital Outlay Fund, Transfer of Funds, Kenneth Adams, Bd. Meeting & Exp., etc.



# Home Line

By Cheryl Witt  
County Extension Agent  
for Home Economics

## CANNING LATE SUMMER VEGETABLES

If you have hesitated to can vegetables because of fear of spoilage, remember the organisms blamed for spoilage are just doing what comes naturally. The real culprit is the ignorant, careless, or stubborn-not-about-to-use-modern-methods person who does the canning.

The most common type of spoilage in canned vegetables is called flat-sour. The food may look right and smell right, but has an unpleasant sourish taste. It is neither fit to eat, nor poisonous. The bacteria causing flat-sour can start growing in vegetables which have stood too long between steps in gathering, preparing, putting into jars and processing. This particularly is true of corn and other starchy vegetables. If necessary to hold vegetables several hours or overnight, they should be refrigerated.

Botulism is another widely misunderstood type of food spoilage. It is by no means confined to canned foods. It has been found in frozen, smoked, and pickled sea foods; dried, smoked, and pickled meats; pickled beets and also home-made cheese. The invisible-to-the-eye spores of bacteria which cause botulism are harmless until they find their way into an airless space containing very little acid and start growing. Then they give off a deadly toxin. Unless the illness of a person who has eaten the contaminated food is promptly diagnosed and the right antitoxin quickly obtained, the patient may not survive.

The first step in preventing botulism is to use only strictly fresh, sound vegetables. No matter how clean they may seem, wash them as if they were dirty. Then quickly prepare them into jars and process in a steam-pressure can for the right length of time at the right pressure for your altitude. Then your canned vegetables will be as safe as any food can be. But if you still have a misgiving, turn the food into a masepang and let it boil fifteen minutes, or longer, often, before tasting. Never, never, taste food of any kind to learn whether it is spoiled.

If new at canning, the first thing needed is an up-to-date canning bulletin or book. You may be able to obtain a government bulletin on canning county agricultural extension home economist.

You can make the canning job easier and quicker by collecting all needed equipment carefully, inspecting every part to make sure the top is smooth (one tiny nick or chip can prevent sealing), read the instructions ahead of time. Prepare, pack, and process the food in small quantities.

**Mixed Vegetables.....**  
Any go-together mixture of vegetables may be canned. The mixture must be processed the length of time needed for vegetable in mixture requiring the longest processing time. Perhaps you would like to try canning corn and lima beans together. This is called Succotash. Be sure to start with strictly fresh vegetables. Boil corn five minutes. Cut from cob. Do not chop. Combine with one-half pint of equal amount of green lima beans. Heat mixture to boiling, pour in one inch of top of jar. This amount of head space is needed because these vegetables tend to swell while processing. Add 1/4 teaspoon salt to mixture, one teaspoon to quart. Be sure to add enough water to cover vegetables. Wipe off anything spilled on top or threads of jar. Put dome lid on jar, screw band tight. Process pints 55 minutes, quarts 85 minutes at ten pounds per square pressure.

**Spanish Sauce**  
Use firm, sound, red-ripe tomatoes. Do not use the so-called low-acid tomatoes; they are short on flavor. To fill three or four half-pint jars, use:  
2 quarts prepared tomatoes  
1 medium-sized green sweet pepper  
1 small red sweet pepper  
1/2 cup chopped onion  
1/2 cup sliced celery  
1 clove garlic - mince or put through garlic press  
1 tsp. dried basil  
1/2 tsp. salt or amount to suit taste.

Wash, rinse and drain vegetables. Scald, core, skin, chop and measure tomatoes. Remove stem and blossom end from pepper. Discard seeds and cut pepper into small pieces. Combine all ingredients; boil ten

## "FINANCIAL STATEMENT"

(Cont. From 12)

76407 Basic Adult Education, Transfer of Funds	31,842
76408 Jackson Co. RECC, Acct.	1,466.52
76409 D. G. Albright, Coal	1,519.10
76410 Blue Springs Lurchroom, Lunch Reimb.	384.48
76411 Livingston Lurchroom, Lunch Reimb.	3,856.94
76412 Rockcastle County High School Lurchroom Lunch Reimbursement	3,581.12
76413 Roundstone Lurchroom, Lunch Reimb.	3,337.72
76414 The Bank of Mt. Vernon, C.D.	(100,000.00)
76415 Title I ESEA-89-10, Transfer of Funds	50,000.00
76416 Lewis Adams, Trans.	65.00
76417 James R. Bradley, Trans.	120.00
76418 Jerald Bullock, Trans.	30.00
76419 Edna Cameron, Trans.	75.00
76420 Lewis Chaney, Trans.	98.00
76421 Travis Cope, Trans.	115.00
76422 Willie Cope, Trans.	130.00
76423 James Cox, Trans.	150.00
76424 John Cromer, Jr., Trans.	40.00
76425 John H. Cromer, Trans.	70.00
76426 Joe Daugherty, Trans.	75.00
76427 Barbara DeBorde, Trans.	125.00
76428 Barney Evans, Trans.	135.00
76429 Curtis Eversole, Trans.	150.00
76430 Kermit French, Trans.	50.00
76431 Geneva Gentry, Trans.	20.00
76432 Martha Hines, Trans.	100.00
76433 Harry L. Holland, Trans.	125.00
76434 Caleb Lamb, Trans.	85.00
76435 Homer Jones, Trans.	105.00
76436 Ovie Jones, Trans.	60.00
76437 Susie Kidwell, Trans.	50.00
76438 Christine Kirby, Trans.	30.00
76439 Lloyd Kirby, Trans.	40.00
76440 Raymond Lavigne, Trans.	20.00
76441 Murphy Martin, Jr., Trans.	30.00
76442 Raymond McKinney, Trans.	50.00
76443 Carl Miller, Trans.	100.00
76444 Elmer Mink, Trans.	100.00
76445 Linda Montjoy, Trans.	125.00
76446 Sam Mullins, Trans.	360.00
76447 Terry Mullins, Trans.	150.00
76448 Luther Owens, Trans.	150.00
76449 Janice Mason, Trans.	100.00
76450 Lois Renner, Trans.	75.00
76451 Opal Robinson, Trans.	25.00
76452 Lewis Rowe, Trans.	145.00
76453 Rovie Singleton, Trans.	40.00
76454 Frank Thacker, Trans.	105.00
76455 Willie Van Zant, Trans.	95.00
76456 Willie Van Zant, Trans.	125.00
76457 Margaret Whitaker, Trans.	30.00
76458 Dorothy Wynn, Trans.	100.00
76459 Curtis Eversole, Acct.	121.03
76460 Stinson's Catalog Card Corp., Acct.	7.13
76461 Gaylor Bros., Inc., Acct.	49.93
76462 The Highsmith Co., Inc., Acct.	58.85
76463 Lewis Chaney, Trans.	166.76
76464 The Baker & Taylor Co., Acct.	203.32
76465 Blue Cross Hospital Plan, Inc., 11/01 11/15 21/01 21/02 21/3 21/4 21/5 21/6 21/6.02 22/02 22/03 22/04 22/05 22/06 22/07 22/08 22/09 22/10 22/11 22/12 22/13 22/14 22/15 22/16 22/17 22/18 22/19 22/20 22/21 22/22 22/23 22/24 22/25 22/26 22/27 22/28 22/29 22/30 22/31 22/32 22/33 22/34 22/35 22/36 22/37 22/38 22/39 22/40 22/41 22/42 22/43 22/44 22/45 22/46 22/47 22/48 22/49 22/50 22/51 22/52 22/53 22/54 22/55 22/56 22/57 22/58 22/59 22/60 22/61 22/62 22/63 22/64 22/65 22/66 22/67 22/68 22/69 22/70 22/71 22/72 22/73 22/74 22/75 22/76 22/77 22/78 22/79 22/80 22/81 22/82 22/83 22/84 22/85 22/86 22/87 22/88 22/89 22/90 22/91 22/92 22/93 22/94 22/95 22/96 22/97 22/98 22/99 22/100	2,655.47
76466 Federal Reserve Bank of Cleveland, 11/01 11/15 21/01 21/02 21/3 21/4 21/5 21/6 21/6.02 22/02 22/03 22/04 22/05 22/06 22/07 22/08 22/09 22/10 22/11 22/12 22/13 22/14 22/15 22/16 22/17 22/18 22/19 22/20 22/21 22/22 22/23 22/24 22/25 22/26 22/27 22/28 22/29 22/30 22/31 22/32 22/33 22/34 22/35 22/36 22/37 22/38 22/39 22/40 22/41 22/42 22/43 22/44 22/45 22/46 22/47 22/48 22/49 22/50 22/51 22/52 22/53 22/54 22/55 22/56 22/57 22/58 22/59 22/60 22/61 22/62 22/63 22/64 22/65 22/66 22/67 22/68 22/69 22/70 22/71 22/72 22/73 22/74 22/75 22/76 22/77 22/78 22/79 22/80 22/81 22/82 22/83 22/84 22/85 22/86 22/87 22/88 22/89 22/90 22/91 22/92 22/93 22/94 22/95 22/96 22/97 22/98 22/99 22/100	1,542.55
76467 Social Security Life Insurance Co., 11/01 11/15 21/01 21/02 21/3 21/4 21/5 21/6 21/6.02 22/02 22/03 22/04 22/05 22/06 22/07 22/08 22/09 22/10 22/11 22/12 22/13 22/14 22/15 22/16 22/17 22/18 22/19 22/20 22/21 22/22 22/23 22/24 22/25 22/26 22/27 22/28 22/29 22/30 22/31 22/32 22/33 22/34 22/35 22/36 22/37 22/38 22/39 22/40 22/41 22/42 22/43 22/44 22/45 22/46 22/47 22/48 22/49 22/50 22/51 22/52 22/53 22/54 22/55 22/56 22/57 22/58 22/59 22/60 22/61 22/62 22/63 22/64 22/65 22/66 22/67 22/68 22/69 22/70 22/71 22/72 22/73 22/74 22/75 22/76 22/77 22/78 22/79 22/80 22/81 22/82 22/83 22/84 22/85 22/86 22/87 22/88 22/89 22/90 22/91 22/92 22/93 22/94 22/95 22/96 22/97 22/98 22/99 22/100	251.54
76468 State Treas., 11/01 11/15 21/01 21/02 21/3 21/4 21/5 21/6 21/6.02 22/02 22/03 22/04 22/05 22/06 22/07 22/08 22/09 22/10 22/11 22/12 22/13 22/14 22/15 22/16 22/17 22/18 22/19 22/20 22/21 22/22 22/23 22/24 22/25 22/26 22/27 22/28 22/29 22/30 22/31 22/32 22/33 22/34 22/35 22/36 22/37 22/38 22/39 22/40 22/41 22/42 22/43 22/44 22/45 22/46 22/47 22/48 22/49 22/50 22/51 22/52 22/53 22/54 22/55 22/56 22/57 22/58 22/59 22/60 22/61 22/62 22/63 22/64 22/65 22/66 22/67 22/68 22/69 22/70 22/71 22/72 22/73 22/74 22/75 22/76 22/77 22/78 22/79 22/80 22/81 22/82 22/83 22/84 22/85 22/86 22/87 22/88 22/89 22/90 22/91 22/92 22/93 22/94 22/95 22/96 22/97 22/98 22/99 22/100	6,623.55
76469 Social Security Revolving Fund, 11/01 11/15 21/01 21/02 21/3 21/4 21/5 21/6 21/6.02 22/02 22/03 22/04 22/05 22/06 22/07 22/08 22/09 22/10 22/11 22/12 22/13 22/14 22/15 22/16 22/17 22/18 22/19 22/20 22/21 22/22 22/23 22/24 22/25 22/26 22/27 22/28 22/29 22/30 22/31 22/32 22/33 22/34 22/35 22/36 22/37 22/38 22/39 22/40 22/41 22/42 22/43 22/44 22/45 22/46 22/47 22/48 22/49 22/50 22/51 22/52 22/53 22/54 22/55 22/56 22/57 22/58 22/59 22/60 22/61 22/62 22/63 22/64 22/65 22/66 22/67 22/68 22/69 22/70 22/71 22/72 22/73 22/74 22/75 22/76 22/77 22/78 22/79 22/80 22/81 22/82 22/83 22/84 22/85 22/86 22/87 22/88 22/89 22/90 22/91 22/92 22/93 22/94 22/95 22/96 22/97 22/98 22/99 22/100	1,570.68
76470 Federal Reserve Bank of Cleveland, 11/01 11/15 21/01 21/02 21/3 21/4 21/5 21/6 21/6.02 22/02 22/03 22/04 22/05 22/06 22/07 22/08 22/09 22/10 22/11 22/12 22/13 22/14 22/15 22/16 22/17 22/18 22/19 22/20 22/21 22/22 22/23 22/24 22/25 22/26 22/27 22/28 22/29 22/30 22/31 22/32 22/33 22/34 22/35 22/36 22/37 22/38 22/39 22/40 22/41 22/42 22/43 22/44 22/45 22/46 22/47 22/48 22/49 22/50 22/51 22/52 22/53 22/54 22/55 22/56 22/57 22/58 22/59 22/60 22/61 22/62 22/63 22/64 22/65 22/66 22/67 22/68 22/69 22/70 22/71 22/72 22/73 22/74 22/75 22/76 22/77 22/78 22/79 22/80 22/81 22/82 22/83 22/84 22/85 22/86 22/87 22/88 22/89 22/90 22/91 22/92 22/93 22/94 22/95 22/96 22/97 22/98 22/99 22/100	2,429.57
76471 State Treasurer, 11/01 11/15 21/01 21/02 21/3 21/4 21/5 21/6 21/6.02 22/02 22/03 22/04 22/05 22/06 22/07 22/08 22/09 22/10 22/11 22/12 22/13 22/14 22/15 22/16 22/17 22/18 22/19 22/20 22/21 22/22 22/23 22/24 22/25 22/26 22/27 22/28 22/29 22/30 22/31 22/32 22/33 22/34 22/35 22/36 22/37 22/38 22/39 22/40 22/41 22/42 22/43 22/44 22/45 22/46 22/47 22/48 22/49 22/50 22/51 22/52 22/53 22/54 22/55 22/56 22/57 22/58 22/59 22/60 22/61 22/62 22/63 22/64 22/65 22/66 22/67 22/68 22/69 22/70 22/71 22/72 22/73 22/74 22/75 22/76 22/77 22/78 22/79 22/80 22/81 22/82 22/83 22/84 22/85 22/86 22/87 22/88 22/89 22/90 22/91 22/92 22/93 22/94 22/95 22/96 22/97 22/98 22/99 22/100	13,658.10

76751 School Supply Co., Inc., Acct.	45.00
76752 Livingston School, Reimb., Supplies, etc.	657.88
76753 D. G. Albright, Coal	3,194.37
76754 Blue Springs Lurchroom, Lunch Reimb. Nov.	325.24
76755 Brodhead Lurchroom, Lunch Reimb. Nov.	325.24
76756 Livingston Lurchroom, Lunch Reimb. Nov.	3,501.93
76757 Mt. Vernon Lurchroom, Lunch Reimb. Nov.	5,772.19
76758 Rockcastle Co. High School Lurchroom, Lunch Reimbursement, November	3,627.72
76759 Roundstone Lurchroom, Lunch Reimb. Nov.	2,993.30
76760 Lewis Adams, Trans.	65.00
76761 Russell Barnes, Trans.	20.00
76762 James R. Bradley, Trans.	120.00
76763 Jerald Bullock, Trans.	30.00
76764 Edna Cameron, Trans.	75.00
76765 Lewis Chaney, Trans.	98.00
76766 Travis Cope, Trans.	115.00
76767 Willie Cope, Trans.	130.00
76768 James Cox, Trans.	150.00
76769 John Cromer, Jr., Trans.	40.00
76770 John H. Cromer, Trans.	70.00
76771 Joe Daugherty, Trans.	75.00
76772 Barbara DeBorde, Trans.	125.00
76773 Barney Evans, Trans.	9.00
76774 Curtis Eversole, Trans.	135.00
76775 Kermit French, Trans.	50.00
76776 Jerald Gadd, Trans.	20.00
76777 Geneva Gentry, Trans.	100.00
76778 Martha Hines, Trans.	125.00
76779 Harry L. Holland, Trans.	85.00
76780 Caleb Lamb, Trans.	105.00
76781 Homer Jones, Trans.	60.00
76782 Ovie Jones, Trans.	50.00
76783 Susie Kidwell, Trans.	30.00
76784 Christine Kirby, Trans.	40.00
76785 Lloyd Kirby, Trans.	20.00
76786 Raymond Lavigne, Trans.	30.00
76787 Murphy Martin, Jr., Trans.	50.00
76788 Raymond McKinney, Trans.	60.00
76789 Carl Miller, Trans.	100.00
76790 Elmer Mink, Trans.	125.00
76791 Sam Mullins, Trans.	360.00
76792 Terry Mullins, Trans.	150.00
76793 Luther Owens, Trans.	150.00
76794 Janice Mason, Trans.	100.00
76795 Lois Renner, Trans.	75.00
76796 Opal Robinson, Trans.	25.00
76797 Lewis Rowe, Trans.	145.00
76798 Rovie Singleton, Trans.	40.00
76799 Frank Thacker, Trans.	105.00
76800 Willie Van Zant, Trans.	95.00
76801 Willie Van Zant, Trans.	125.00
76802 Margaret Whitaker, Trans.	30.00
76803 Dorothy Wynn, Trans.	100.00
76804 Curtis Eversole, Trans.	25.00
76805 Blue Cross Hosp. Plan, Inc., 11/01 11/15 21/01 21/02 21/3 21/4 21/5 21/6 21/6.02 22/02 22/03 22/04 22/05 22/06 22/07 22/08 22/09 22/10 22/11 22/12 22/13 22/14 22/15 22/16 22/17 22/18 22/19 22/20 22/21 22/22 22/23 22/24 22/25 22/26 22/27 22/28 22/29 22/30 22/31 22/32 22/33 22/34 22/35 22/36 22/37 22/38 22/39 22/40 22/41 22/42 22/43 22/44 22/45 22/46 22/47 22/48 22/49 22/50 22/51 22/52 22/53 22/54 22/55 22/56 22/57 22/58 22/59 22/60 22/61 22/62 22/63 22/64 22/65 22/66 22/67 22/68 22/69 22/70 22/71 22/72 22/73 22/74 22/75 22/76 22/77 22/78 22/79 22/80 22/81 22/82 22/83 22/84 22/85 22/86 22/87 22/88 22/89 22/90 22/91 22/92 22/93 22/94 22/95 22/96 22/97 22/98 22/99 22/100	2,611.35
76806 Federal Reserve Bank of Cleveland, 11/01 11/15 21/01 21/02 21/3 21/4 21/5 21/6 21/6.02 22/02 22/03 22/04 22/05 22/06 22/07 22/08 22/09 22/10 22/11 22/12 22/13 22/14 22/15 22/16 22/17 22/18 22/19 22/20 22/21 22/22 22/23 22/24 22/25 22/26 22/27 22/28 22/29 22/30 22/31 22/32 22/33 22/34 22/35 22/36 22/37 22/38 22/39 22/40 22/41 22/42 22/43 22/44 22/45 22/46 22/47 22/48 22/49 22/50 22/51 22/52 22/53 22/54 22/55 22/56 22/57 22/58 22/59 22/60 22/61 22/62 22/63 22/64 22/65 22/66 22/67 22/68 22/69 22/70 22/71 22/72 22/73 22/74 22/75 22/76 22/77 22/78 22/79 22/80 22/81 22/82 22/83 22/84 22/85 22/86 22/87 22/88 22/89 22/90 22/91 22/92 22/93 22/94 22/95 22/96 22/97 22/98 22/99 22/100	1,542.55
76807 Social Security Life Ins. Co., 21/4 21/5 21/6 21/6.02 22/02 22/03 22/04 22/05 22/06 22/07 22/08 22/09 22/10 22/11 22/12 22/13 22/14 22/15 22/16 22/17 22/18 22/19 22/20 22/21 22/22 22/23 22/24 22/25 22/26 22/27 22/28 22/29 22/30 22/31 22/32 22/33 22/34 22/35 22/36 22/37 22/38 22/39 22/40 22/41 22/42 22/43 22/44 22/45 22/46 22/47 22/48 22/49 22/50 22/51 22/52 22/53 22/54 22/55 22/56 22/57 22/58 22/59 22/60 22/61 22/62 22/63 22/64 22/65 22/66 22/67 22/68 22/69 22/70 22/71 22/72 22/73 22/74 22/75 22/76 22/77 22/78 22/79 22/80 22/81 22/82 22/83 22/84 22/85 22/86 22/87 22/88 22/89 22/90 22/91 22/92 22/93 22/94 22/95 22/96 22/97 22/98 22/99 22/100	232.06
76808 State Treasurer, 11/01 11/15 21/01 21/02 21/3 21/4 21/5 21/6 21/6.02 22/02 22/03 22	