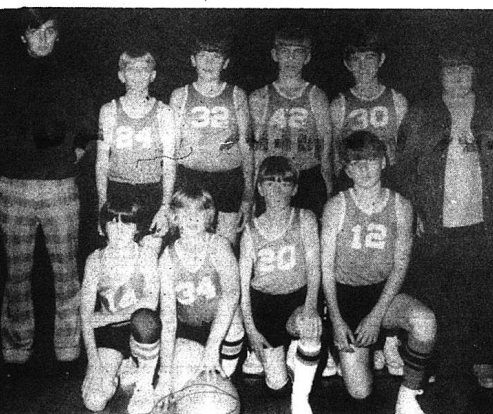


BES FIFTH & SIXTH GRADE BOYS' TEAM - Front row, from left: Ricky Bullock, Jerry DeBorde, Bill Lear, Barry Hurst, Gary Hurst, Tommy DeBorde, Rodney Alcorn, Ronnie Cameron and Freddie Holcomb. Second row: Robert DeBorde, Edward

Whitaker, Greg Rose, Jeff DeBorde, Gordon Whithead, Steve Phelps, Craig White. Third row: Barry Proctor, Robbie Brown, Bryan Durham, Garfield Brock, David Burdine, Oppie Sowder, William Fig, James Jones and Keith Cable.



BES 8th Grade Team - Front row, from left: David Riddle, Mark Bishop, Warren Cash, Ricky Lawrence and Kevin Robbins. Second row: Manager Billy Cameron, Hammonds, Randall Robbins, John Masters, Eddy Thompson, Randall Caudill, Jerry Cash and Gary Scott, Coach.



BES SEVENTH GRADE TEAM - Front row, from left: Randy Randolph, Anthony Holbrook, David Bussell and David Riddle. Second row: Coach Gary Scott, Keith Bussell, Shannon Cash, Matt Poynter, Kevin Robbins and Billy Cameron, Manager.



BES GIRLS' TEAM - First row, from left: Teresa Albright and Mary Alap. Second row: Pat Alap, Marguerita Taylor, Lyne Burton, Pam McClure. Third row: Janice Vanhook, Regina Burdette, Sharon Caudill, Sherri Taylor, Connie Brown and Geri Seel, Coach.

"Fairview" (Cont. From 13)
 best, in all you strive to do. To know that you are wanted and you feel that you belong. Can banish any doubt you have and make your life a song. Friends are angels who give faith and hope and strength to you.
 To carry on from day to day, and make your dreams come true.
 Only God can help you more than all your friends on earth.
 As he created all of them and he allowed your birth.
\$30,000 NEEDED TO MATCH KREGE GRANT
 The Cumberland River Comprehensive Care Center is involved in a building program - the purchase and renovation of the Harlan Center and the construction of a new regional center at Corbin, Kentucky, at a total cost of \$803,177.82. Money reallocated from State and Federal grants will pay \$250,280.84 of this cost, leaving the Center's 25% share amounting to \$252,897.98 to be raised locally. The local share on the

paired. The Center also works with the disadvantaged, blind, those with speech and hearing defects, multiple sclerosis, etc. Our twenty day Care Centers and three Child Development Centers find these children and work with them and their parents until they are sixteen years old. They may then go on to one of the thirteen Adult Activity units, where they have therapy and training. Many of them may go on to high school or college or into one of our three Sheltered Workshops. Sev-

Kentucky Afield

By Hope Carleton
 Dept. of Fish and Wildlife

By: Hope Carleton
 Dept. of Fish and Wildlife

Those who hunt rabbits this fall may be in for a pleasant surprise since game management division reports indicate rabbit populations are up as much as 20 percent in some areas and that only parts of eastern Kentucky indicate a slight decrease over last year's crop.

In general, the reports (from wildlife biologists and managers of Department of Fish and Wildlife Resources' wildlife management areas) reveal that statewide the numbers of rabbits have increased over those of the last few years and, in certain areas, more rabbits will be found than in the past five years.

Just what these increases will mean to the individual hunter will depend, of course, on how often and how well he hunts, but even the sportsman who goes afield in search of rabbits no more than two or three times during the season should fare better than he did last season. And the novice hunter, too, will probably find he's spending more time shooting and less time looking for rabbits than he did last time out.

For the expert with the good dog, this season should be a banner one. Not only is the rabbit population up, but the extended season will allow him more days in the field.

(The first phase of the rabbit hunting season will open

entirely in cold water. This almost eliminates the problem of loose hair getting into the meat and works well with squirrels, too, by the way.

If the meat is not to be eaten immediately and you decide to freeze it, cut the rabbit into sections, place them in containers and cover with water. This will eliminate freezer burn.

Rabbit hunting is an excellent sport and provides many a good meal for Kentuckians. Make sure your rabbit hunting memories will all be happy ones by practicing good sportsmanship and, above all, good gun safety procedures.

Good luck and good hunting!

COL. JAMES DAY TO RUN FOR OFFICE OF LT. GOV.

Col. James O. Day, 45, a native of Menifee County and now residing in Morehead, has announced that he would run for the office of Lt. Governor of Kentucky in the Democratic Primary in the Spring.

Col. Day retired July 31, 1974 after thirty-two years of distinguished service in the United States Army. He is married to the former Dorothy Hill of Temple, Texas and they have four children.

His military career began when he was appointed to the United States Military Academy at West Point, New York by the late Congressman Joe B. Eates of Gretna, Kentucky. After graduating in 1952 he was commissioned a Second Lieutenant in Field Artillery and went on to serve in both the Korean and Vietnam conflicts. For the past six years he has been assigned in the Washington, D. C. area with assignments in the Pentagon, and other high level Army headquarters.

Subscribe To
The Signal

| | | |
|--------|----------|------|
| MATE | POMP | GRY |
| OREN | LATR | HOE |
| TRHIFT | EVES | SHI |
| COLI | ENTER | |
| ASE | DUPES | SIP |
| TERM | MINARETS | |
| WANT | TO | |
| INFO | DIABLE | |
| MAN | DIRIN | DOOR |
| HAL | PAC | GIN |
| HAL | PAC | GIN |

Answer to Puzzle

Our picture is worth a thousand words!

Because we believe in the performance of General Electric's 100% Solid State Color TV, we're offering a money-back guarantee program

...here are the details.

General Electric Early American 100% Solid State 25" diagonal Color TV

Features GE's new: Ten-Dot Color-Bit Auto-Tune One Touch Color System Black Matrix Tube Custom Picture Control GE's "Color-Clear"

\$67995*

General Electric Mediterranean 100% Solid State 25" diagonal Color TV

Pro-Dot Concealed Controls Black Matrix "TV Picture Tube" Color System "Tune-It" Color System GE's "Color-Clear"

\$74995*

General Electric 100% Solid State 19" diagonal Color TV

Black Matrix "Super-Black" TV Picture Tube Automatic One-Touch Color System Black Matrix "TV Picture Tube" Color System "Tune-It" Color System GE's "Color-Clear"

\$47995*

General Electric Early American 100% Solid State 25" diagonal Color TV

Automatic One-Touch Color System Black Matrix "TV Picture Tube" Color System "Tune-It" Color System GE's "Color-Clear"

\$69995*

General Electric 100% Solid State 19" diagonal Color TV

Black Matrix "Super-Black" TV Picture Tube Automatic One-Touch Color System Black Matrix "TV Picture Tube" Color System "Tune-It" Color System GE's "Color-Clear"

\$47995*

General Electric 100% Solid State 19" diagonal Color TV

Black Matrix "Super-Black" TV Picture Tube Automatic One-Touch Color System Black Matrix "TV Picture Tube" Color System "Tune-It" Color System GE's "Color-Clear"

\$47995*

General Electric 100% Solid State 19" diagonal Color TV

Black Matrix "Super-Black" TV Picture Tube Automatic One-Touch Color System Black Matrix "TV Picture Tube" Color System "Tune-It" Color System GE's "Color-Clear"

\$47995*

General Electric 100% Solid State 19" diagonal Color TV

Black Matrix "Super-Black" TV Picture Tube Automatic One-Touch Color System Black Matrix "TV Picture Tube" Color System "Tune-It" Color System GE's "Color-Clear"

\$47995*

General Electric 100% Solid State 19" diagonal Color TV

Black Matrix "Super-Black" TV Picture Tube Automatic One-Touch Color System Black Matrix "TV Picture Tube" Color System "Tune-It" Color System GE's "Color-Clear"

\$47995*

General Electric 100% Solid State 19" diagonal Color TV

Black Matrix "Super-Black" TV Picture Tube Automatic One-Touch Color System Black Matrix "TV Picture Tube" Color System "Tune-It" Color System GE's "Color-Clear"

\$47995*

General Electric 100% Solid State 19" diagonal Color TV

Black Matrix "Super-Black" TV Picture Tube Automatic One-Touch Color System Black Matrix "TV Picture Tube" Color System "Tune-It" Color System GE's "Color-Clear"

\$47995*

General Electric 100% Solid State 19" diagonal Color TV

Black Matrix "Super-Black" TV Picture Tube Automatic One-Touch Color System Black Matrix "TV Picture Tube" Color System "Tune-It" Color System GE's "Color-Clear"

\$47995*

General Electric 100% Solid State 19" diagonal Color TV

Black Matrix "Super-Black" TV Picture Tube Automatic One-Touch Color System Black Matrix "TV Picture Tube" Color System "Tune-It" Color System GE's "Color-Clear"

\$47995*

General Electric 100% Solid State 19" diagonal Color TV

Black Matrix "Super-Black" TV Picture Tube Automatic One-Touch Color System Black Matrix "TV Picture Tube" Color System "Tune-It" Color System GE's "Color-Clear"

\$47995*

General Electric 100% Solid State 19" diagonal Color TV

Black Matrix "Super-Black" TV Picture Tube Automatic One-Touch Color System Black Matrix "TV Picture Tube" Color System "Tune-It" Color System GE's "Color-Clear"

\$47995*

General Electric 100% Solid State 19" diagonal Color TV

Black Matrix "Super-Black" TV Picture Tube Automatic One-Touch Color System Black Matrix "TV Picture Tube" Color System "Tune-It" Color System GE's "Color-Clear"

\$47995*

General Electric 100% Solid State 19" diagonal Color TV

Black Matrix "Super-Black" TV Picture Tube Automatic One-Touch Color System Black Matrix "TV Picture Tube" Color System "Tune-It" Color System GE's "Color-Clear"

\$47995*

General Electric 100% Solid State 19" diagonal Color TV

Black Matrix "Super-Black" TV Picture Tube Automatic One-Touch Color System Black Matrix "TV Picture Tube" Color System "Tune-It" Color System GE's "Color-Clear"

\$47995*

General Electric 100% Solid State 19" diagonal Color TV

Black Matrix "Super-Black" TV Picture Tube Automatic One-Touch Color System Black Matrix "TV Picture Tube" Color System "Tune-It" Color System GE's "Color-Clear"

\$47995*

General Electric 100% Solid State 19" diagonal Color TV

Black Matrix "Super-Black" TV Picture Tube Automatic One-Touch Color System Black Matrix "TV Picture Tube" Color System "Tune-It" Color System GE's "Color-Clear"

\$47995*

General Electric 100% Solid State 19" diagonal Color TV

Black Matrix "Super-Black" TV Picture Tube Automatic One-Touch Color System Black Matrix "TV Picture Tube" Color System "Tune-It" Color System GE's "Color-Clear"

\$47995*

General Electric 100% Solid State 19" diagonal Color TV

Black Matrix "Super-Black" TV Picture Tube Automatic One-Touch Color System Black Matrix "TV Picture Tube" Color System "Tune-It" Color System GE's "Color-Clear"

\$47995*

General Electric 100% Solid State 19" diagonal Color TV

Black Matrix "Super-Black" TV Picture Tube Automatic One-Touch Color System Black Matrix "TV Picture Tube" Color System "Tune-It" Color System GE's "Color-Clear"

\$47995*

General Electric 100% Solid State 19" diagonal Color TV

Black Matrix "Super-Black" TV Picture Tube Automatic One-Touch Color System Black Matrix "TV Picture Tube" Color System "Tune-It" Color System GE's "Color-Clear"

\$47995*

General Electric 100% Solid State 19" diagonal Color TV

Black Matrix "Super-Black" TV Picture Tube Automatic One-Touch Color System Black Matrix "TV Picture Tube" Color System "Tune-It" Color System GE's "Color-Clear"

\$47995*

General Electric 100% Solid State 19" diagonal Color TV

Black Matrix "Super-Black" TV Picture Tube Automatic One-Touch Color System Black Matrix "TV Picture Tube" Color System "Tune-It" Color System GE's "Color-Clear"

\$47995*

General Electric 100% Solid State 19" diagonal Color TV

Black Matrix "Super-Black" TV Picture Tube Automatic One-Touch Color System Black Matrix "TV Picture Tube" Color System "Tune-It" Color System GE's "Color-Clear"

\$47995*

General Electric 100% Solid State 19" diagonal Color TV

Black Matrix "Super-Black" TV Picture Tube Automatic One-Touch Color System Black Matrix "TV Picture Tube" Color System "Tune-It" Color System GE's "Color-Clear"

\$47995*

General Electric 100% Solid State 19" diagonal Color TV

Black Matrix "Super-Black" TV Picture Tube Automatic One-Touch Color System Black Matrix "TV Picture Tube" Color System "Tune-It" Color System GE's "Color-Clear"

\$47995*

General Electric 100% Solid State 19" diagonal Color TV

Black Matrix "Super-Black" TV Picture Tube Automatic One-Touch Color System Black Matrix "TV Picture Tube" Color System "Tune-It" Color System GE's "Color-Clear"

\$47995*

General Electric 100% Solid State 19" diagonal Color TV

Black Matrix "Super-Black" TV Picture Tube Automatic One-Touch Color System Black Matrix "TV Picture Tube" Color System "Tune-It" Color System GE's "Color-Clear"

\$47995*

General Electric 100% Solid State 19" diagonal Color TV

Black Matrix "Super-Black" TV Picture Tube Automatic One-Touch Color System Black Matrix "TV Picture Tube" Color System "Tune-It" Color System GE's "Color-Clear"

\$47995*

General Electric 100% Solid State 19" diagonal Color TV

Black Matrix "Super-Black" TV Picture Tube Automatic One-Touch Color System Black Matrix "TV Picture Tube" Color System "Tune-It" Color System GE's "Color-Clear"

\$47995*

General Electric 100% Solid State 19" diagonal Color TV

Black Matrix "Super-Black" TV Picture Tube Automatic One-Touch Color System Black Matrix "TV Picture Tube" Color System "Tune-It" Color System GE's "Color-Clear"

\$47995*

General Electric 100% Solid State 19" diagonal Color TV

Black Matrix "Super-Black" TV Picture Tube Automatic One-Touch Color System Black Matrix "TV Picture Tube" Color System "Tune-It" Color System GE's "Color-Clear"

\$47995*

General Electric 100% Solid State 19" diagonal Color TV

Black Matrix "Super-Black" TV Picture Tube Automatic One-Touch Color System Black Matrix "TV Picture Tube" Color System "Tune-It" Color System GE's "Color-Clear"

\$47995*

General Electric 100% Solid State 19" diagonal Color TV

Black Matrix "Super-Black" TV Picture Tube Automatic One-Touch Color System Black Matrix "TV Picture Tube" Color System "Tune-It" Color System GE's "Color-Clear"

\$47995*

General Electric 100% Solid State 19" diagonal Color TV

Black Matrix "Super-Black" TV Picture Tube Automatic One-Touch Color System Black Matrix "TV Picture Tube" Color System "Tune-It" Color System GE's "Color-Clear"

\$47995*

General Electric 100% Solid State 19" diagonal Color TV

Black Matrix "Super-Black" TV Picture Tube Automatic One-Touch Color System Black Matrix "TV Picture Tube" Color System "Tune-It" Color System GE's "Color-Clear"

\$47995*

General Electric 100% Solid State 19" diagonal Color TV

Black Matrix "Super-Black" TV Picture Tube Automatic One-Touch Color System Black Matrix "TV Picture Tube" Color System "Tune-It" Color System GE's "Color-Clear"

\$47995*

General Electric 100% Solid State 19" diagonal Color TV

Black Matrix "Super-Black" TV Picture Tube Automatic One-Touch Color System Black Matrix "TV Picture Tube" Color System "Tune-It" Color System GE's "Color-Clear"

\$47995*

General Electric 100% Solid State 19" diagonal Color TV

Black Matrix "Super-Black" TV Picture Tube Automatic One-Touch Color System Black Matrix "TV Picture Tube" Color System "Tune-It" Color System GE's "Color-Clear"

\$47995*

General Electric 100% Solid State 19" diagonal Color TV

Black Matrix "Super-Black" TV Picture Tube Automatic One-Touch Color System Black Matrix "TV Picture Tube" Color System "Tune-It" Color System GE's "Color-Clear"

\$47995*

General Electric 100% Solid State 19" diagonal Color TV

Black Matrix "Super-Black" TV Picture Tube Automatic One-Touch Color System Black Matrix "TV Picture Tube" Color System "Tune-It" Color System GE's "Color-Clear"

\$47995*

General Electric 100% Solid State 19" diagonal Color TV

Black Matrix "Super-Black" TV Picture Tube Automatic One-Touch Color System Black Matrix "TV Picture Tube" Color System "Tune-It" Color System GE's "Color-Clear"

\$47995*

General Electric 100% Solid State 19" diagonal Color TV

Black Matrix "Super-Black" TV Picture Tube Automatic One-Touch Color System Black Matrix "TV Picture Tube" Color System "Tune-It" Color System GE's "Color-Clear"

\$47995*

General Electric 100% Solid State 19" diagonal Color TV

Black Matrix "Super-Black" TV Picture Tube Automatic One-Touch Color System Black Matrix "TV Picture Tube" Color System "Tune-It" Color System GE's "Color-Clear"

\$47995*

General Electric 100% Solid State 19" diagonal Color TV

Black Matrix "Super-Black" TV Picture Tube Automatic One-Touch Color System Black Matrix "TV Picture Tube" Color System "Tune-It" Color System GE's "Color-Clear"

\$47995*

General Electric 100% Solid State 19" diagonal Color TV

Black Matrix "Super-Black" TV Picture Tube Automatic One-Touch Color System Black Matrix "TV Picture Tube" Color System "Tune-It" Color System GE's "Color-Clear"

\$47995*

General Electric 100% Solid State 19" diagonal Color TV

Black Matrix "Super-Black" TV Picture Tube Automatic One-Touch Color System Black Matrix "TV Picture Tube" Color System "Tune-It" Color System GE's "Color-Clear"

\$47995*

General Electric 100% Solid State 19" diagonal Color TV

Black Matrix "Super-Black" TV Picture Tube Automatic One-Touch Color System Black Matrix "TV Picture Tube" Color System "Tune-It" Color System GE's "Color-Clear"

\$47995*

General Electric 100% Solid State 19" diagonal Color TV

Black Matrix "Super-Black" TV Picture Tube Automatic One-Touch Color System Black Matrix "TV Picture Tube" Color System "Tune-It" Color System GE's "Color-Clear"

\$47995*

General Electric 100% Solid State 19" diagonal Color TV

Black Matrix "Super-Black" TV Picture Tube Automatic One-Touch Color System Black Matrix "TV Picture Tube" Color System "Tune-It" Color System GE's "Color-Clear"

\$47995*

General Electric 100% Solid State 19" diagonal Color TV

Black Matrix "Super-Black" TV Picture Tube Automatic One-Touch Color System Black Matrix "TV Picture Tube" Color System "Tune-It" Color System GE's "Color-Clear"

\$47995*

General Electric 100% Solid State 19" diagonal Color TV

Black Matrix "Super-Black" TV Picture Tube Automatic One-Touch Color System Black Matrix "TV Picture Tube" Color System "Tune-It" Color System GE's "Color-Clear"

\$47995*

General Electric 100% Solid State 19" diagonal Color TV

Black Matrix "Super-Black" TV Picture Tube Automatic One-Touch Color System Black Matrix "TV Picture Tube" Color System "Tune-It" Color System GE's "Color-Clear"

\$47995*

General Electric 100% Solid State 19" diagonal Color TV

Black Matrix "Super-Black" TV Picture Tube Automatic One-Touch Color System Black Matrix "TV Picture Tube" Color System "Tune-It" Color System GE's "Color-Clear"

\$47995*

General Electric 100% Solid State 19" diagonal Color TV

Black Matrix "Super-Black" TV Picture Tube Automatic One-Touch Color System Black Matrix "TV Picture Tube" Color System "Tune-It" Color System GE's "Color-Clear"

\$47995*

General Electric 100% Solid State 19" diagonal Color TV

Black Matrix "Super-Black" TV Picture Tube Automatic One-Touch Color System Black Matrix "TV Picture Tube" Color System "Tune-It" Color System GE's "Color-Clear"

\$47995*

General Electric 100% Solid State 19" diagonal Color TV

Black Matrix "Super-Black" TV Picture Tube Automatic One-Touch Color System Black Matrix "TV Picture Tube" Color System "Tune-It" Color System GE's "Color-Clear"

\$47995*

General Electric 100% Solid State 19" diagonal Color TV

Black Matrix "Super-Black" TV Picture Tube Automatic One-Touch Color System Black Matrix "TV Picture Tube" Color System "Tune-It" Color System GE's "Color-Clear"

\$47995*

General Electric 100% Solid State 19" diagonal Color TV

Black Matrix "Super-Black" TV Picture Tube Automatic One-Touch Color System Black Matrix "TV Picture Tube" Color System "Tune-It" Color System GE's "Color-Clear"

\$47995*

General Electric 100% Solid State 19" diagonal Color TV

Black Matrix "Super-Black" TV Picture Tube Automatic One-Touch Color System Black Matrix "TV Picture Tube" Color System "Tune-It" Color System GE's "Color-Clear"

\$47995*

General Electric 100% Solid State 19" diagonal Color TV

Black Matrix "Super-Black" TV Picture Tube Automatic One-Touch Color System Black Matrix "TV Picture Tube" Color System "Tune-It" Color System GE's "Color-Clear"

\$47995*

General Electric 100% Solid State 19" diagonal Color TV

Black Matrix "Super-Black" TV Picture Tube Automatic One-Touch Color System Black Matrix "TV Picture Tube" Color System "Tune-It" Color System GE's "Color-Clear"

\$47995*

General Electric 100% Solid State 19" diagonal Color TV

Black Matrix "Super-Black" TV Picture Tube Automatic One-Touch Color System Black Matrix "TV Picture Tube" Color System "Tune-It" Color System GE's "Color-Clear"

\$47995*

General Electric 100% Solid State 19" diagonal Color TV

Black Matrix "Super-Black" TV Picture Tube Automatic One-Touch Color System Black Matrix "TV Picture Tube" Color System "Tune-It" Color System GE's "Color-Clear"

\$47995*

General Electric 100% Solid State 19" diagonal Color TV

Black Matrix "Super-Black" TV Picture Tube Automatic One-Touch Color System Black Matrix "TV Picture Tube" Color System "Tune-It" Color System GE's "Color-Clear"

\$47995*

General Electric 100% Solid State 19" diagonal Color TV

Black Matrix "Super-Black" TV Picture Tube Automatic One-Touch Color System Black Matrix "TV Picture Tube" Color System "Tune-It" Color System GE's "Color-Clear"

\$47995*

General Electric 100% Solid State 19" diagonal Color TV

Black Matrix "Super-Black" TV Picture Tube Automatic One-Touch Color System Black Matrix "TV Picture Tube" Color System "Tune-It" Color System GE's "Color-Clear"

\$47995*

General Electric 100% Solid State 19" diagonal Color TV

Black Matrix "Super-Black" TV Picture Tube Automatic One-Touch Color System Black Matrix "TV Picture Tube" Color System "Tune-It" Color System GE's "Color-Clear"

\$47995*

General Electric 100% Solid State 19" diagonal Color TV

Black Matrix "Super-Black" TV Picture Tube Automatic One-Touch Color System Black Matrix "TV Picture Tube" Color System "Tune-It" Color System GE's "Color-Clear"

\$47995*

General Electric 100% Solid State 19" diagonal Color TV

Black Matrix "Super-Black" TV Picture Tube Automatic One-Touch Color System Black Matrix "TV Picture Tube" Color System "Tune-It" Color System GE's "Color-Clear"

\$47995*

General Electric 100% Solid State 19" diagonal Color TV

Black Matrix "Super-Black" TV Picture Tube Automatic One-Touch Color System Black Matrix "TV Picture Tube" Color System "Tune-It" Color System GE's "Color-Clear"

\$47995*

General Electric 100% Solid State 19" diagonal Color TV

Black Matrix "Super-Black" TV Picture Tube Automatic One-Touch Color System Black Matrix "TV Picture Tube" Color System "Tune-It" Color System GE's "Color-Clear"

\$47995*

General Electric 100% Solid State 19" diagonal Color TV

Black Matrix "Super-Black" TV Picture Tube Automatic One-Touch Color System Black Matrix "TV Picture Tube" Color System "Tune-It" Color System GE's "Color-Clear"

\$47995*

General Electric 100% Solid State 19" diagonal Color TV

Black Matrix "Super-Black" TV Picture Tube Automatic One-Touch Color System Black Matrix "TV Picture Tube" Color System "Tune-It" Color System GE's "Color-Clear"

\$47995*

General Electric 100% Solid State 19" diagonal Color TV

Black Matrix "Super-Black" TV Picture Tube Automatic One-Touch Color System Black Matrix "TV Picture Tube" Color System "Tune-It" Color System GE's "Color-Clear"

\$47995*

General Electric 100% Solid State 19" diagonal Color TV

Black Matrix "Super-Black" TV Picture Tube Automatic One-Touch Color System Black Matrix "TV Picture Tube" Color System "Tune-It" Color System GE's "Color-Clear"

\$47995*

General Electric 100% Solid State 19" diagonal Color TV

Black Matrix "Super-Black" TV Picture Tube Automatic One-Touch Color System Black Matrix "TV Picture Tube" Color System "Tune-It" Color System GE's "Color-Clear"

\$47995*

General Electric 100% Solid State 19" diagonal Color TV

Black Matrix "Super-Black" TV Picture Tube Automatic One-Touch Color System Black Matrix "TV Picture Tube" Color System "Tune-It" Color System GE's "Color-Clear"

\$47995*

General Electric 100% Solid State 19" diagonal Color TV

Black Matrix "Super-Black" TV Picture Tube Automatic One-Touch Color System Black Matrix "TV Picture Tube" Color System "Tune-It" Color System GE's "Color-Clear"

\$47995*

General Electric 100% Solid State 19" diagonal Color TV

Black Matrix "Super-Black" TV Picture Tube Automatic One-Touch Color System Black Matrix "TV Picture Tube" Color System "Tune-It" Color System GE's "Color-Clear"

\$47995*

General Electric 100% Solid State 19" diagonal Color TV

Black Matrix "Super-Black" TV Picture Tube Automatic One-Touch Color System Black Matrix "TV Picture Tube" Color System "Tune-It" Color System GE's "Color-Clear"

\$47995*

General Electric 100% Solid State 19" diagonal Color TV

Black Matrix "Super-Black" TV Picture Tube Automatic One-Touch Color System Black Matrix "TV Picture Tube" Color System "Tune-It" Color System GE's "Color-Clear"

\$47995*

General Electric 100% Solid State 19" diagonal Color TV

Black Matrix "Super-Black" TV Picture Tube Automatic One-Touch Color System Black Matrix "TV Picture Tube" Color System "Tune-It" Color System GE's "Color-Clear"

\$47995*

General Electric 100% Solid State 19" diagonal Color TV

Black Matrix "Super-Black" TV Picture Tube Automatic One-Touch Color System Black Matrix "TV Picture Tube" Color System "Tune-It" Color System GE's "Color-Clear"

\$47995*

General Electric 100% Solid State 19" diagonal Color TV

Black Matrix "Super-Black" TV Picture Tube Automatic One-Touch Color System Black Matrix "TV Picture Tube" Color System "Tune-It" Color System GE's "Color-Clear"

\$47995*

General Electric 100% Solid State 19" diagonal Color TV

Black Matrix "Super-Black" TV Picture Tube Automatic One-Touch Color System Black Matrix "TV Picture Tube" Color System "Tune-It" Color System GE's "Color-Clear"

\$47995*

General Electric 100% Solid State 19" diagonal Color TV

Black Matrix "Super-Black" TV Picture Tube Automatic One-Touch Color System Black Matrix "TV Picture Tube" Color System "Tune-It" Color System GE's "Color-Clear"

\$47995*

General Electric 100% Solid State 19" diagonal Color TV

Black Matrix "Super-Black" TV Picture Tube Automatic One-Touch Color System Black Matrix "TV Picture Tube" Color System "Tune-It" Color System GE's "Color-Clear"

\$47995*

General Electric 100% Solid State 19" diagonal Color TV

Black Matrix "Super-Black" TV Picture Tube Automatic One-Touch Color System Black Matrix "TV Picture Tube" Color System "Tune-It" Color System GE's "Color-Clear"

\$47995*

General Electric 100% Solid State 19" diagonal Color TV

Black Matrix "Super-Black" TV Picture Tube Automatic One-Touch Color System Black Matrix "TV Picture Tube" Color System "Tune-It" Color System GE's "Color-Clear"

\$47995*

General Electric 100% Solid State 19" diagonal Color TV

Black Matrix "Super-Black" TV Picture Tube Automatic One-Touch Color System Black Matrix "TV Picture Tube" Color System "Tune-It" Color System GE's "Color-Clear"

\$47995*

General Electric 100% Solid State 19" diagonal Color TV

Black Matrix "Super-Black" TV Picture Tube Automatic One-Touch Color System Black Matrix "TV Picture Tube" Color System "Tune-It" Color System GE's "Color-C

by a statute providing for a district court.

County judges and magistrates would retain their regular planning and fiscal duties, but they would be relieved from holding court.

All judges in the four-tiered system will be elected on a non-partisan ballot and will be required to be licensed attorneys.

Written into the proposed amendment are the new Court of Justice's components:

*A Supreme Court of seven members elected from the seven current Court of Appeals districts;

*A Court of Appeals of fourteen members, two each elected from the same appellate court districts;

*Circuit Courts to sit in each judicial circuit and, additionally, to serve each county of the district as the only courts of trial jurisdiction;

*District Courts, having limited powers, to sit in each county; This would remove the trial jurisdiction from police, county, quarterly, juvenile and justice of the peace courts.

Under the proposed amendment, there would be a Judicial Commission with power to remove any justice or judge for reasons of disability or other good causes. There also would be a Judicial Nominating Commission to recommend to the governor persons who may

be appointed to fill the vacated office of a justice or a judge.

Anyone desiring more information may contact Bubenhofner or Amato at the KCJI office, 101 St. Clair Street, Frankfort. The telephone number is 502-875-1140.

FAMILY MEDICINE CABINET--

ALTHOUGH STILL A DANGER ZONE FOR THE KIDIES--A LITTLE LESS SO NOW, "CHILD PROOF" PLASTIC MEDICINE BOTTLE CAPS, WHICH MUST BE PULSED DOWNWARD AND TURNED BEFORE



OPENS ARE HELPING REDUCE THE HALF-MILLION CASES OF CHILD POISONING IN THE U.S. EACH YEAR...
NEW PLASTIC EMERGENCY SPINNY MAY BECOME THE CONSTANT COMPANION OF HIKERS, SKIERS AND MOUNTAIN CLIMBERS WEIGHING LESS THAN A POUND AND ROLLABLE INTO A COMPACT PACKAGE. THE KIT CONTAINS TWO SEPARATE MATERIALS WHICH MIX TO FORM A HARD PLASTIC RESIN IN 10 MINUTES.

SUBSCRIBE TO THE SIGNAL

Watch Next Week's Signal For Details Of

AUCTION

Of Mr. and Mrs. Harold Cable's General Store

SATURDAY, NOVEMBER 30 10:30 A.M.

Located On Route 70 At Ottawa, Ky.

For Additional Information, Contact

FORD REALTY & AUCTION

"The New Horizon" representing Kentucky Christian College of Grayson, will be conducting a "Youth Quaker" at the First Christian Church of Mt. Vernon November 16th and 17th. "The New Horizon" sang at the Kentucky Christian Assembly in June and have sung at major Christian gatherings throughout the summer. They will be presenting special music at each service and Steve Kerr, a member of the group, will do the preaching. First Christian extends a warm invitation to the community to attend this meeting being held for the young and the young at heart. All ages are invited to come to these services beginning at 7 p.m. Saturday and Sunday nights and at 11 a.m. on Sunday morning.

Judicial Reform To Be An Issue In 1975...

By: Sue Ann Salmon

Although election day has barely passed, the Kentucky Citizens for Judicial Improvement already is preparing for the elections of 1975. That's when Kentuckians will vote on a constitutional amendment to revamp and streamline the state's court system.

The KCJI, created by executive order in early 1973, is composed of private citizens who have been studying judicial reform. These citizens, with the aid of a public opinion poll and the advice of legal scholars, helped draft the amendment.

Since the referendum on the proposed Judicial Article is set for November 4, 1975, KCJI is stepping up its informational and educational efforts, says staffer Rick Bubenhofner.

So far this month, James Amato, executive director of

KCJI, is scheduled to participate in a television panel discussion on the proposed article, to lecture two college classes and to speak at a County Judges' Association meeting at Louisville and a Chamber of Commerce meeting at Lexington.

There also are about 125 attorneys across the state who speak to community groups which request information about the proposed Judicial Article.

With Amato, they form a KCJI speakers' bureau.

The lawyers' speeches and the KCJI's newsletter attempt to describe the need for modernization of the state's courts, which were established by the 1891 Constitution. The proposed Judicial Article includes new statutes to create a four-tiered Court of Justice—a supreme court, a court of appeals, a circuit court and a

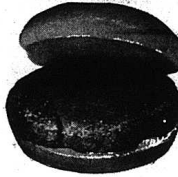
district court. Current statutes providing for quarterly, police and magistrate courts would be abolished and would be replaced

CLAYTON HAMMOND SUPERMARKET

Highway 461 Mt. Vernon, Ky. Phone 256-4100

"ORIGINAL HOME OF BARGAINS" We Gladly Accept Federal Food Stamps

Pure **GROUND BEEF**



77¢ lb.



CHUCK ROAST

U.S. CHOICE

69¢ lb.

12 oz. pack

FISCHERS WEINERS

59¢

2 LB. ROLL FIELD'S SAUSAGE

\$1.29

Stokely's **CORN**

3 cans 99¢

U.S. CHOICE **ARM ROAST**

79¢

VELVETTA CHEESE 2 lb. box **\$1.00**

Rainbo or Butternut BREAD 4 loaves \$1.00

26 oz. Box **TABLE SALT 10¢**

Fireside Assorted

COOKIES

3 pkgs. **\$1.00**

24 oz. can

Kelly's Beef Stew 69¢

CHAPPELL'S Qt. Bottle Pure **Orange Juice**

39¢

DelMonte Cut GREEN BEANS 3 cans **89¢**

Northern

PAPER TOWELS

2 roll pack **49¢**

2 pkgs. CARROTS 29¢

4 lb. Bag APPLES 59¢

Friskies Dog Food 5 lb. Bag **\$1.19**

SPORTS TALK
Chuck Hardy

FRAZIER WANTS ALI

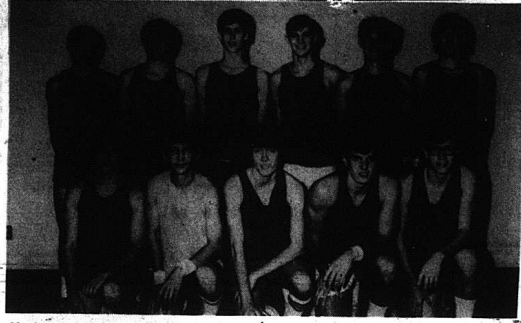
BY THE TIME your eyes peep this copy the press, television, radio and word of mouth, will have echoed the name MUHAMMAD ALI to the farthest flung civilized areas, perpetuating a household name known in every hamlet throughout the world. The 32-year-old former champion — after a seven-year wait — became the second man in boxing history to regain the heavyweight championship of the world when he gave George Foreman his first beating.

NOW JOE FRAZIER who lost his title to Foreman after being knocked out in the second round, January 1973 in Kingston, Jamaica, wants to become the third man in history to regain the championship. Floyd Patterson was the first heavyweight champion to lose the title and win it back during his first two out of three fights with Ingemar Johansson.

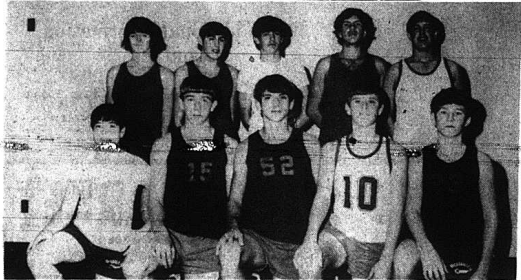
MUHAMMAD ALI, before dethroning Foreman, hinted that the fight in Zaire would be his last, but now is ready to go at least one more time — state's say for 10 millions bucks. And Frazier is the man. Smokey Joe outpointed Ali in a 1971 extravaganza at Madison Square Garden. But Ali was awarded a 12-round decision over Frazier in their Garden rematch earlier this year.

SMOKEY JOE said, "As far as I'm concerned I whipped Cassius Clay twice," using Ali's other name. Obviously, Frazier wants to meet Ali in a rubber match in the worst possible way. The promoter of the Foreman-Ali bout, Don King, mentioned Frazier as the next challenger, provided Muhammad is willing. And he hinted that New York might be the place, King said, "You get the best exposure in New York, but there's a state tax problem that would have to be alleviated."

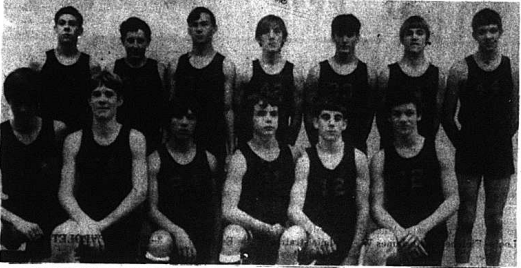
A BRIEF CAPSULE of the epic-making account of how the colorful and handsome Muhammad Ali wrestled the crown from formerly rough-tough George Foreman, as seen by your sportstalker on closed-circuit TV at Radio City Music Hall, was scored as follows: The first round was fairly even. Foreman was ahead in round two. Ali took rounds three and four by an edge. Round five was even. Ali by a comfortable margin in round six. Foreman won round seven. At this stage—the bout was up for grabs. Foreman kept pressing the attack, hammering away at the body. But his head bombs were mostly misses, or only caught leather as Ali used the ropes to advantage. In round eight Foreman was leg weary and arm heavy, and looked drunk. With two minutes, 58 seconds of the round gone, the temperature 80-plus degrees and the humidity in the 90s, Muhammad Ali's blasting fists (a left-right combination) connected on Foreman's jaw. He went crashing to the canvas in the center of the ring. Foreman was up at the count of 10, but certainly in no condition to continue.



Members of this year's **ROCKETS** Varsity Team are, front row, from left: David Whitehead, Jeff Lawwell, Dale Whitaker, John Glantz and Roger Keyzolic. Second row, from left: Jeff Halcomb, Bill Belcher, Tony Arvin, Eddie Hammond, Randy Linville and Bill Henderson. Also members of the team but not present are Dwight Griffin and Garlan Vanhook.



The **RCHS B TEAM** is made up of the following members, front row, from left: Ricky Lay, Mike Hammonds, Tim Whitehead, Jeff Burdette, Daniel Smith. Second row, from left: Tim Chasteen, Danny Smith, Eddie Mink, Monroe King and David Noe. The B Team will open their season December 3rd at McCreary County.



The **FRESHMEN TEAM** at RCHS will open their season Monday night at Oneida in a 6:30 p.m. game. They are coached by Charles Norton. Members of the squad are, front row, from left: Tim Arvin, Jerry Dick, David Owens, Dusty Carolotis, Earl Lewis Hammons and Billy Hackworth. Second row: Dale Brown, Mike Smith, Jackie Sparks, Gerald Holcomb, Frankie Durham, Larry Harmon and Randy Fugate.



Members of the first **RCHS GIRLS' TEAM** are the above girls, front row, from left: Jennifer Hansel, Debbie Calhoun, Faye Newton, Darla Reams, Debbie Morris and Nancy French. Second row, from left: Coach Bill Riddle, Sharon Farthing, Beverly Deatherage, Anita Lakes, Alicia Dick, Pam McClure, Kim Payne, Regina Ruppe, Patsy Bussell and Theresa Bussell. Their first game will be next Monday night at Oneida at 8 p.m.

REVIVAL
BIBLE BAPTIST CHURCH
Nov. 18th through Nov. 24th
7:30 P.M.

Located Two Miles S. Of Mt. Vernon
 On U.S. 25 At Burr, Ky.

EVANGELIST - REV. ROBERT BARKER
 Pastor of the Durbin Memorial Baptist
 Church in Lexington, Ky.

PASTOR - REV. PAUL BURTON
 Special Singing Nightly
EVERYONE WELCOME

Banquet Held

The Annual Farmers-Businessmen's Banquet was held last Saturday night at the Rockcastle County High School Cafeteria with an estimated crowd of 150 farmers and businessmen present.

Mr. Parsons talked in general about the present beef cattle crisis facing the American farmer. Having just returned from Chicago as a member of the American Meat Institute, Mr. Parsons told those assembled that the general consensus in

the beef industry is that the present situation will not ease before 1976 due to over-population of cattle. Mr. Parsons also stated that the days of cheap grain for the American farmer were over due to the demand for grain in the world market.

DOUBLE HEADER ESTATE

AUCTION

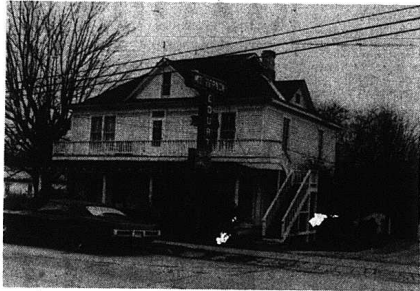
of the Late Mrs. Ada Clark

APARTMENT HOUSE

TOURIST COURT

PERSONAL PROPERTY

SATURDAY, NOV. 23rd - 10:30 A.M.



Located - on Richmond Street in Mt. Vernon, Ky. Watch for auction sign in yard.

This modern money-making apartment house consists of five-room living quarters and bath on the first floor, 2 two-room apartments with bath on second floor, and a two-room apartment with bath on the third floor. Most of the first floor has wall to wall carpet. The first floor could be rented as two additional apartments if you wanted to increase the nearly \$10,000 annual gross income it's already producing. The second and third floor apartments have their own private entrance. A practically new oil furnace heats the house, and there's also a one-half basement with outside entrance.

TOURIST COURT - consists of 4 two-room apartments - each with a bath, a mobile home, and two single rooms. All of the units of the tourist court are heated by oil heaters.

If you're wanting property that'll bring you in a good rental income and also provide living quarters, then look no further. This desirable property is in one of Mt. Vernon's best locations and the house is in excellent condition. The lot measures approximately 100 x 200.

PERSONAL PROPERTY - Large beautiful round oak table, extra nice three-piece bedroom suite, two-piece living room suite, air conditioner, Electrolux vacuum cleaner, Hotpoint electric stove; Hotpoint refrigerator, Maytag wringer washer, five-piece wood dinette set, night stand, stand table, antique mirror, GE automatic washer, old rocking chair, Captain's chair, couch (makes a bed), large wardrobe, quilts, bedspreads, lawn chairs, lamps, clothes hamper, electric fans, ironing board, odd tables and chairs, two half-beds, plus other miscellaneous items.

SATURDAY, NOV. 23rd. - 1:30 P.M.

NINE (9) ACRES more or less

Located - just North of city limits of Mt. Vernon near Sowder Grocery on the Negro Town Hill Road, overlooking U.S. 25. Watch for auction signs.


Four (4) lots fronting on the Negro Town Hill Road, each measuring approximately 120 x 200 with city water. Ideal for building or mobile home.

Approximately seven (7) acres, also fronting on the Negro Town Hill Road. This is an ideal small farm and has a dandy spring. This conveniently located property also has residential and commercial potential.

Owners reserve the right to sell each lot and tract, individually, and then combined, selling whichever way reflects the best returns for owners. For copy of the plat of these nine (9) acres, contact selling agents prior to sale date.


TERMS: Real Estate - 20% down day of sale; balance due in thirty (30) days upon delivery of deed. **Personal Property** - Cash.

For additional information contact: Randall Clark, M.D., Executor of the Estate at 502/426-7607; Nicholas Williams, Attorney for Estate, Berea, Ky. 986-3871; or



Ford Realty & Auction Co.
REALTOR

Office
 Phone: Office - 256-4545; Nights - 756-8400



COL. SAM FORD
Auctioneer-Realtor

COL. BILL RANDOLPH
Auctioneer

COL. JERRY HAM
Auctioneer

COL. DANNY FORD
Realtor-Auctioneer

CLASSIFIED FIND IT QUICK

Classified Rates

Local Rates - 4¢ per word with minimum of 75c
Card Of Thanks - 3¢ per word - minimum 75c
In Memory - 3¢ per word - minimum 75c
Classified Billed - 5¢ per word - minimum \$1.00
Display Classified - \$1.00 per column inch

For Sale

Custom Made Rubber Stamps - Phone 256-5259. Ideal Press and Advertising Company. Mt. Vernon, Ky. 47421

LOTS FOR SALE at Orlando, Ky. Small down payment - Will do own financing. Call 256-2047. 52x21

WEDDING INVITATIONS and SOCIAL ANNOUNCEMENTS now available at Bank's Jewelry and Gifts. Main Street, Mt. Vernon. 47421

FOR SALE: Typewriters (2). Use Office Manuals. These machines have been cleaned and lubricated and are in good condition, \$50. and \$75. (3) Used Adding Machines, clean, good condition. Reasonable. Joe Harmon, Mt. Vernon. 3x21

GRAVE MARKERS and MONUMENTS in stock at all times. McNew Monument Sales, U.S. 25, four miles North of Mt. Vernon. Phone 256-2232. nfr

FOR SALE: 6-Rm Frame House with aluminum siding located on Chestnut Ridge just off U.S. 25. Newly remodeled. See Albert Griffin or call 256-4153. 49x21

MONUMENTS - On Display at DOWELL & MARTIN FUNERAL HOME, nfr

FOR SALE: 8-Ft. Slide-In Camper With Cabinets. Call 256-4139 after 3 p.m. 49x21

1967 RAMBLER FOR SALE. Call 256-2316 after 2 p.m. 52x21

FOR SALE: HOUSE AND LOT. Two-Bedroom Home with bath, newly remodeled, electric heat, fireplace, inner and outer carpet, storm cellar, excellent garden. Located at Wildie. Phone 256-2349. 7x21

FOR SALE: Mill Silt Sand. Contact Curtis Miller, Wood Springs, \$12.00 per cord. 7x4p

FOR SALE...1972 SUZUKI JEEP - 12,000 Miles. Contact Richard Conley or J. C. Bowling at 256-5280 or 256-2839. 4x21

FOR SALE: I sow and six-week old pigs; 1 meat hog ready to butcher; 4 large sows; 4 acres corn in field; 1,7500 BTU Oil Stove, like new; 2 - 27-gallon oil tanks, complete with hook-up material. See Ed Sams, one mile off Salt Pate, Crick Road on Crooked Creek. 5x21

BRADLEY'S SADDLE & BRIDLE SHOP Located on Main Street in Brodhead, Ky. "Home of the George Ford Morris Album" - dated 1914. Full Line of Horse Supplies in Stock.

Bits Blankets Bridle Accessories

BENTLEY SPARKS, Owner Phone 758-8811 or Home Phone, 256-4447

FOR SALE: Firewood, \$15.00 cord, cut any length desired. Call 788-8832. 9x2p

Like New Mini Bike FOR SALE. Call 256-4432. 9x2

TERMINIX! If It's a PEST call Terminix!

For Guaranteed Protection

TERMITES OR ANY Household Pests

...Rats, Mice, Ants, Water Bugs, Silverfish, Carpet Beetles... Flying Ants... WHATEVER it is we will get them out and KEEP them off!

Call
S. T. Proctor Lumber Co.
256-2521

All Work Done by Terminix Company, Lexington, Kentucky

1973 PLYMOUTH Gold Duster FOR SALE. 11,000 miles, power steering, slant six engine. Call 256-4796. 10x21

FOR SALE: 9-Lb. capacity washing machine, with spin dryer. Ideal for trailers or apartments. Also, Clabot Condition Hair Setter. Call 256-5245 after 5:00 P.M. 10x2p

1947 DODGE ton truck, runs good, has good double tires, inspected and licensed. Price \$175.00. Call 256-4794. 10x2p

FOR SALE: 6-Room House with bath and garage. Call 453-2271 or contact George Howard, Livingston, Ky. 10x1

HOUSE FOR SALE OR RENT - Also Basement Sale - have dishes, cookware, used clothing - \$2.00 for large bag. Anna Wright, Ottawa, Ky. 10x1

FOR SALE: "Casual" 72 Model Cab Over Camper for pick-up truck. Stove, sink, ice box, cabinets, sleeps six, AC & DC Current, jacks, like new - cheap! Call 256-2857 or 256-2589, Otis Miracle. 10x2w21

Auction, Auction, Auction. Friday, November 15, 5 p.m. Rev. Ray Dean's home, U.S. 25, ten miles N. of Mt. Vernon. Proceeds for Fairview Baptist Church. Items include antiques, new deep freeze, U.S. gold coin, bakery items, quilts, folding stairway, farm tools and many, many more. 10x1p

Auction, Auction, Auction. Friday, November 15, 5 p.m. Rev. Ray Dean's home, U.S. 25, ten miles N. of Mt. Vernon. Proceeds for Fairview Baptist Church. Items include antiques, new deep freeze, U.S. gold coin, bakery items, quilts, folding stairway, farm tools and many, many more. 10x1p

SPINET PIANO BARGAIN Local party will sacrifice a like-new, beautiful finish, fully guaranteed Spinet Piano. Take over small monthly payments. Must have good credit. Or will loan free until sold. Write L. E. Clark Piano Company, 1625 Windsor Place, Louisville, Ky. 40204. 10x1p

FOR SALE: General Electric Cook Stove (Slightly used). Call Ester Fulverice, 453-2541. 10x1

HOUSE FOR SALE... Two bedrooms, full bath, fully carpeted. \$8500.00. If interested, Call 256-5299 after 6 p.m. 9x1

FOR SALE: General Electric Cook Stove (Slightly used). Call Ester Fulverice, 453-2541. 10x1

HOUSE FOR SALE... Two bedrooms, full bath, fully carpeted. \$8500.00. If interested, Call 256-5299 after 6 p.m. 9x1

FOR SALE: General Electric Cook Stove (Slightly used). Call Ester Fulverice, 453-2541. 10x1

HOUSE FOR SALE... Two bedrooms, full bath, fully carpeted. \$8500.00. If interested, Call 256-5299 after 6 p.m. 9x1

FOR SALE: General Electric Cook Stove (Slightly used). Call Ester Fulverice, 453-2541. 10x1

HOUSE FOR SALE... Two bedrooms, full bath, fully carpeted. \$8500.00. If interested, Call 256-5299 after 6 p.m. 9x1

FOR SALE: General Electric Cook Stove (Slightly used). Call Ester Fulverice, 453-2541. 10x1

HOUSE FOR SALE... Two bedrooms, full bath, fully carpeted. \$8500.00. If interested, Call 256-5299 after 6 p.m. 9x1

FOR SALE: General Electric Cook Stove (Slightly used). Call Ester Fulverice, 453-2541. 10x1

HOUSE FOR SALE... Two bedrooms, full bath, fully carpeted. \$8500.00. If interested, Call 256-5299 after 6 p.m. 9x1

FOR SALE: General Electric Cook Stove (Slightly used). Call Ester Fulverice, 453-2541. 10x1

HOUSE FOR SALE... Two bedrooms, full bath, fully carpeted. \$8500.00. If interested, Call 256-5299 after 6 p.m. 9x1

FOR SALE: General Electric Cook Stove (Slightly used). Call Ester Fulverice, 453-2541. 10x1

HOUSE FOR SALE... Two bedrooms, full bath, fully carpeted. \$8500.00. If interested, Call 256-5299 after 6 p.m. 9x1

FOR SALE: General Electric Cook Stove (Slightly used). Call Ester Fulverice, 453-2541. 10x1

HOUSE FOR SALE... Two bedrooms, full bath, fully carpeted. \$8500.00. If interested, Call 256-5299 after 6 p.m. 9x1

FOR SALE: General Electric Cook Stove (Slightly used). Call Ester Fulverice, 453-2541. 10x1

Wanted

Want someone to do babysitting in my home. Phone 256-4540. 6x21

WANT TO RENT Unfurnished Apartment. Would like four-room apartment with bath, heat furnished, in city. Call 256-2870. 7x21

WANTED: Person with economical car to make Home Deliveries of The Daily and Sunday Courier-Journal. Earnings in excess of \$250.00 per month. Requires only 1 1/2 hours each morning. Excellent opportunity for right person to supplement present income. Write: Roger Wilson, Box 14, London, Ky. Cash Bond Required. 6x21

WANTED: Roofing and Remodeling Work. Free Estimates. Work Guaranteed. Call 788-8856. 9x1

WANTED: Full or Part Time Distributors for Sales. Refuses Monthly. Retirement Potential. Write: Rawleigh Distributor, William McClanahan, 411 West Second Street, Paris, Ky. 40361. 9x2p

HELP WANTED... Female, age 18 and over. Several openings available. Work your own hours. Earnings \$100 - \$300 per week, part time. Every applicant carefully considered. Send name, address, telephone number for confidential interview to P.H.S., Box 252, West Somerset, Ky. 42664. 10x2

WANTED: Lady, man or student, with car, for light delivery work. Full or part time. Apply in person only to Pat Parlin at the Kentuckian Motel beginning Monday, November 18, after 9 a.m. 10x1

WANTED: Lady, man or student, with car, for light delivery work. Full or part time. Apply in person only to Pat Parlin at the Kentuckian Motel beginning Monday, November 18, after 9 a.m. 10x1

WANTED: Lady, man or student, with car, for light delivery work. Full or part time. Apply in person only to Pat Parlin at the Kentuckian Motel beginning Monday, November 18, after 9 a.m. 10x1

WANTED: Lady, man or student, with car, for light delivery work. Full or part time. Apply in person only to Pat Parlin at the Kentuckian Motel beginning Monday, November 18, after 9 a.m. 10x1

WANTED: Lady, man or student, with car, for light delivery work. Full or part time. Apply in person only to Pat Parlin at the Kentuckian Motel beginning Monday, November 18, after 9 a.m. 10x1

WANTED: Lady, man or student, with car, for light delivery work. Full or part time. Apply in person only to Pat Parlin at the Kentuckian Motel beginning Monday, November 18, after 9 a.m. 10x1

WANTED: Lady, man or student, with car, for light delivery work. Full or part time. Apply in person only to Pat Parlin at the Kentuckian Motel beginning Monday, November 18, after 9 a.m. 10x1

WANTED: Lady, man or student, with car, for light delivery work. Full or part time. Apply in person only to Pat Parlin at the Kentuckian Motel beginning Monday, November 18, after 9 a.m. 10x1

WANTED: Lady, man or student, with car, for light delivery work. Full or part time. Apply in person only to Pat Parlin at the Kentuckian Motel beginning Monday, November 18, after 9 a.m. 10x1

WANTED: Lady, man or student, with car, for light delivery work. Full or part time. Apply in person only to Pat Parlin at the Kentuckian Motel beginning Monday, November 18, after 9 a.m. 10x1

WANTED: Lady, man or student, with car, for light delivery work. Full or part time. Apply in person only to Pat Parlin at the Kentuckian Motel beginning Monday, November 18, after 9 a.m. 10x1

WANTED: Lady, man or student, with car, for light delivery work. Full or part time. Apply in person only to Pat Parlin at the Kentuckian Motel beginning Monday, November 18, after 9 a.m. 10x1

WANTED: Lady, man or student, with car, for light delivery work. Full or part time. Apply in person only to Pat Parlin at the Kentuckian Motel beginning Monday, November 18, after 9 a.m. 10x1

WANTED: Lady, man or student, with car, for light delivery work. Full or part time. Apply in person only to Pat Parlin at the Kentuckian Motel beginning Monday, November 18, after 9 a.m. 10x1

WANTED: Lady, man or student, with car, for light delivery work. Full or part time. Apply in person only to Pat Parlin at the Kentuckian Motel beginning Monday, November 18, after 9 a.m. 10x1

WANTED: Lady, man or student, with car, for light delivery work. Full or part time. Apply in person only to Pat Parlin at the Kentuckian Motel beginning Monday, November 18, after 9 a.m. 10x1

WANTED: Lady, man or student, with car, for light delivery work. Full or part time. Apply in person only to Pat Parlin at the Kentuckian Motel beginning Monday, November 18, after 9 a.m. 10x1

WANTED: Lady, man or student, with car, for light delivery work. Full or part time. Apply in person only to Pat Parlin at the Kentuckian Motel beginning Monday, November 18, after 9 a.m. 10x1

WANTED: Lady, man or student, with car, for light delivery work. Full or part time. Apply in person only to Pat Parlin at the Kentuckian Motel beginning Monday, November 18, after 9 a.m. 10x1

WANTED: Lady, man or student, with car, for light delivery work. Full or part time. Apply in person only to Pat Parlin at the Kentuckian Motel beginning Monday, November 18, after 9 a.m. 10x1

WANTED: Lady, man or student, with car, for light delivery work. Full or part time. Apply in person only to Pat Parlin at the Kentuckian Motel beginning Monday, November 18, after 9 a.m. 10x1

WANTED: Lady, man or student, with car, for light delivery work. Full or part time. Apply in person only to Pat Parlin at the Kentuckian Motel beginning Monday, November 18, after 9 a.m. 10x1

WANTED: Lady, man or student, with car, for light delivery work. Full or part time. Apply in person only to Pat Parlin at the Kentuckian Motel beginning Monday, November 18, after 9 a.m. 10x1

G & G CONSTRUCTION

Carpenter Contractors Remodeling Aluminum Siding

Call: JOHN GLOVAR (758-8159) or FRANK GLOVAR (758-8538) Brodhead, Kentucky 40409 23x21

MATTOX ELECTRIC REFRIGERATION AND HEATING Phone 256-4822 or 256-5277

...All Work Guaranteed... 10x1p

NOTICE: Cakes and Candles Baked To Your Specifications. Call 256-4129. Place Your Thanksgiving Order Now. Maple Grove Day Care/Child Care Center. 10x2

SINGING - The Rockcastle County Singing will be held at the Livingstone Christian Church Sunday, November 24, at 2 p.m. All singers and everyone welcome. 10x2

ATTENTION: Students, Retired Persons and Homeless! Can you use \$50-\$75 extra income each week? **Olan Mills Studios** need you 20 to 24 hours each week 9 a.m. to 1 p.m. or 5 p.m. to 9 p.m. each day. Apply in person to Pat Parlin at the Kentuckian Motel beginning Monday, November 18, after 9 a.m. 10x1

ATTENTION: Students, Retired Persons and Homeless! Can you use \$50-\$75 extra income each week? **Olan Mills Studios** need you 20 to 24 hours each week 9 a.m. to 1 p.m. or 5 p.m. to 9 p.m. each day. Apply in person to Pat Parlin at the Kentuckian Motel beginning Monday, November 18, after 9 a.m. 10x1

ATTENTION: Students, Retired Persons and Homeless! Can you use \$50-\$75 extra income each week? **Olan Mills Studios** need you 20 to 24 hours each week 9 a.m. to 1 p.m. or 5 p.m. to 9 p.m. each day. Apply in person to Pat Parlin at the Kentuckian Motel beginning Monday, November 18, after 9 a.m. 10x1

ATTENTION: Students, Retired Persons and Homeless! Can you use \$50-\$75 extra income each week? **Olan Mills Studios** need you 20 to 24 hours each week 9 a.m. to 1 p.m. or 5 p.m. to 9 p.m. each day. Apply in person to Pat Parlin at the Kentuckian Motel beginning Monday, November 18, after 9 a.m. 10x1

ATTENTION: Students, Retired Persons and Homeless! Can you use \$50-\$75 extra income each week? **Olan Mills Studios** need you 20 to 24 hours each week 9 a.m. to 1 p.m. or 5 p.m. to 9 p.m. each day. Apply in person to Pat Parlin at the Kentuckian Motel beginning Monday, November 18, after 9 a.m. 10x1

ATTENTION: Students, Retired Persons and Homeless! Can you use \$50-\$75 extra income each week? **Olan Mills Studios** need you 20 to 24 hours each week 9 a.m. to 1 p.m. or 5 p.m. to 9 p.m. each day. Apply in person to Pat Parlin at the Kentuckian Motel beginning Monday, November 18, after 9 a.m. 10x1

ATTENTION: Students, Retired Persons and Homeless! Can you use \$50-\$75 extra income each week? **Olan Mills Studios** need you 20 to 24 hours each week 9 a.m. to 1 p.m. or 5 p.m. to 9 p.m. each day. Apply in person to Pat Parlin at the Kentuckian Motel beginning Monday, November 18, after 9 a.m. 10x1

ATTENTION: Students, Retired Persons and Homeless! Can you use \$50-\$75 extra income each week? **Olan Mills Studios** need you 20 to 24 hours each week 9 a.m. to 1 p.m. or 5 p.m. to 9 p.m. each day. Apply in person to Pat Parlin at the Kentuckian Motel beginning Monday, November 18, after 9 a.m. 10x1

ATTENTION: Students, Retired Persons and Homeless! Can you use \$50-\$75 extra income each week? **Olan Mills Studios** need you 20 to 24 hours each week 9 a.m. to 1 p.m. or 5 p.m. to 9 p.m. each day. Apply in person to Pat Parlin at the Kentuckian Motel beginning Monday, November 18, after 9 a.m. 10x1

ATTENTION: Students, Retired Persons and Homeless! Can you use \$50-\$75 extra income each week? **Olan Mills Studios** need you 20 to 24 hours each week 9 a.m. to 1 p.m. or 5 p.m. to 9 p.m. each day. Apply in person to Pat Parlin at the Kentuckian Motel beginning Monday, November 18, after 9 a.m. 10x1

ATTENTION: Students, Retired Persons and Homeless! Can you use \$50-\$75 extra income each week? **Olan Mills Studios** need you 20 to 24 hours each week 9 a.m. to 1 p.m. or 5 p.m. to 9 p.m. each day. Apply in person to Pat Parlin at the Kentuckian Motel beginning Monday, November 18, after 9 a.m. 10x1

ATTENTION: Students, Retired Persons and Homeless! Can you use \$50-\$75 extra income each week? **Olan Mills Studios** need you 20 to 24 hours each week 9 a.m. to 1 p.m. or 5 p.m. to 9 p.m. each day. Apply in person to Pat Parlin at the Kentuckian Motel beginning Monday, November 18, after 9 a.m. 10x1

ATTENTION: Students, Retired Persons and Homeless! Can you use \$50-\$75 extra income each week? **Olan Mills Studios** need you 20 to 24 hours each week 9 a.m. to 1 p.m. or 5 p.m. to 9 p.m. each day. Apply in person to Pat Parlin at the Kentuckian Motel beginning Monday, November 18, after 9 a.m. 10x1

ATTENTION: Students, Retired Persons and Homeless! Can you use \$50-\$75 extra income each week? **Olan Mills Studios** need you 20 to 24 hours each week 9 a.m. to 1 p.m. or 5 p.m. to 9 p.m. each day. Apply in person to Pat Parlin at the Kentuckian Motel beginning Monday, November 18, after 9 a.m. 10x1

ATTENTION: Students, Retired Persons and Homeless! Can you use \$50-\$75 extra income each week? **Olan Mills Studios** need you 20 to 24 hours each week 9 a.m. to 1 p.m. or 5 p.m. to 9 p.m. each day. Apply in person to Pat Parlin at the Kentuckian Motel beginning Monday, November 18, after 9 a.m. 10x1

ATTENTION: Students, Retired Persons and Homeless! Can you use \$50-\$75 extra income each week? **Olan Mills Studios** need you 20 to 24 hours each week 9 a.m. to 1 p.m. or 5 p.m. to 9 p.m. each day. Apply in person to Pat Parlin at the Kentuckian Motel beginning Monday, November 18, after 9 a.m. 10x1

ATTENTION: Students, Retired Persons and Homeless! Can you use \$50-\$75 extra income each week? **Olan Mills Studios** need you 20 to 24 hours each week 9 a.m. to 1 p.m. or 5 p.m. to 9 p.m. each day. Apply in person to Pat Parlin at the Kentuckian Motel beginning Monday, November 18, after 9 a.m. 10x1

ATTENTION: Students, Retired Persons and Homeless! Can you use \$50-\$75 extra income each week? **Olan Mills Studios** need you 20 to 24 hours each week 9 a.m. to 1 p.m. or 5 p.m. to 9 p.m. each day. Apply in person to Pat Parlin at the Kentuckian Motel beginning Monday, November 18, after 9 a.m. 10x1

ATTENTION: Students, Retired Persons and Homeless! Can you use \$50-\$75 extra income each week? **Olan Mills Studios** need you 20 to 24 hours each week 9 a.m. to 1 p.m. or 5 p.m. to 9 p.m. each day. Apply in person to Pat Parlin at the Kentuckian Motel beginning Monday, November 18, after 9 a.m. 10x1

ATTENTION: Students, Retired Persons and Homeless! Can you use \$50-\$75 extra income each week? **Olan Mills Studios** need you 20 to 24 hours each week 9 a.m. to 1 p.m. or 5 p.m. to 9 p.m. each day. Apply in person to Pat Parlin at the Kentuckian Motel beginning Monday, November 18, after 9 a.m. 10x1

ATTENTION: Students, Retired Persons and Homeless! Can you use \$50-\$75 extra income each week? **Olan Mills Studios** need you 20 to 24 hours each week 9 a.m. to 1 p.m. or 5 p.m. to 9 p.m. each day. Apply in person to Pat Parlin at the Kentuckian Motel beginning Monday, November 18, after 9 a.m. 10x1

ATTENTION: Students, Retired Persons and Homeless! Can you use \$50-\$75 extra income each week? **Olan Mills Studios** need you 20 to 24 hours each week 9 a.m. to 1 p.m. or 5 p.m. to 9 p.m. each day. Apply in person to Pat Parlin at the Kentuckian Motel beginning Monday, November 18, after 9 a.m. 10x1

ATTENTION: Students, Retired Persons and Homeless! Can you use \$50-\$75 extra income each week? **Olan Mills Studios** need you 20 to 24 hours each week 9 a.m. to 1 p.m. or 5 p.m. to 9 p.m. each day. Apply in person to Pat Parlin at the Kentuckian Motel beginning Monday, November 18, after 9 a.m. 10x1

NOTICE OF BIDS

The Rockcastle County Fiscal Court will accept bids until 9 a.m., December 3, 1974 for three 1975 trucks with a trade-in price and a cash price with the following specifications: F700 Model Ford or equivalent to F700 Ford 4-speed transmission, 2-speed axle 900x20 tires, 8-foot dump body, mud lug tires on rear, 360 V-8 motor or its equivalent, with upright hoist, GI type trailer hitch. Bid must be accompanied by verified check in the amount of \$3,000 and delivery made within sixty days from opening of bids. The Court reserves the right to reject any or all bids. 10x3

NOTICE OF BIDS The Rockcastle County Fiscal Court will accept bids until 9 a.m., December 3, 1974 for the sale of a late-model four-wheel tandem trailer which can be used in farm Bureau trucks. The Court reserves the right to reject any or all bids. 10x3

NOTICE OF FIDUCIARIES The following fiduciaries were appointed by the Rockcastle County Court for the month of October, 1974:

Edith Smith, Administratrix of the Estate of Glen Allen Smith, Deceased - Renfro Valley, Ky.

Garnett B. Howard, 8130 Monon Avenue, Cincinnati, Ohio 45214, Administratrix of the Estate of Laura Howard, Deceased.

Mildred Louise Fletcher, Route 1, Livingston, Kentucky, Administratrix of the Estate of Curtis Estil Fletcher, Deceased.

Ruby Stokes Griffin, Mt. Vernon, Kentucky, and Ruth Stokes Brown, 751 Albany Road, Lexington, Kentucky, co-Executrix of the Estate of Eugene Stokes, Deceased.

Bernice S. Cox and Jerry J. Cox, Mt. Vernon, Kentucky, co-Executors of the Estate of William H. Cox, Deceased.

Mildred Louise Fletcher, Route 1, Livingston, Kentucky, Administratrix of the Estate of Curtis Estil Fletcher, Deceased.

Ruby Stokes Griffin, Mt. Vernon, Kentucky, and Ruth Stokes Brown, 751 Albany Road, Lexington, Kentucky, co-Executrix of the Estate of Eugene Stokes, Deceased.

Bernice S. Cox and Jerry J. Cox, Mt. Vernon, Kentucky, co-Executors of the Estate of William H. Cox, Deceased.

Mildred Louise Fletcher, Route 1, Livingston, Kentucky, Administratrix of the Estate of Curtis Estil Fletcher, Deceased.

Ruby Stokes Griffin, Mt. Vernon, Kentucky, and Ruth Stokes Brown, 751 Albany Road, Lexington, Kentucky, co-Executrix of the Estate of Eugene Stokes, Deceased.

Bernice S. Cox and Jerry J. Cox, Mt. Vernon, Kentucky, co-Executors of the Estate of William H. Cox, Deceased.

Mildred Louise Fletcher, Route 1, Livingston, Kentucky, Administratrix of the Estate of Curtis Estil Fletcher, Deceased.

Ruby Stokes Griffin, Mt. Vernon, Kentucky, and Ruth Stokes Brown, 751 Albany Road, Lexington, Kentucky, co-Executrix of the Estate of Eugene Stokes, Deceased.

Bernice S. Cox and Jerry J. Cox, Mt. Vernon, Kentucky, co-Executors of the Estate of William H. Cox, Deceased.

Mildred Louise Fletcher, Route 1, Livingston, Kentucky, Administratrix of the Estate of Curtis Estil Fletcher, Deceased.

Ruby Stokes Griffin, Mt. Vernon, Kentucky, and Ruth Stokes Brown, 751 Albany Road, Lexington, Kentucky, co-Executrix of the Estate of Eugene Stokes, Deceased.

Bernice S. Cox and Jerry J. Cox, Mt. Vernon, Kentucky, co-Executors of the Estate of William H. Cox, Deceased.

Mildred Louise Fletcher, Route 1, Livingston, Kentucky, Administratrix of the Estate of Curtis Estil Fletcher, Deceased.

Ruby Stokes Griffin, Mt. Vernon, Kentucky, and Ruth Stokes Brown, 751 Albany Road, Lexington, Kentucky, co-Executrix of the Estate of Eugene Stokes, Deceased.

Bernice S. Cox and Jerry J. Cox, Mt. Vernon, Kentucky, co-Executors of the Estate of William H. Cox, Deceased.

WILLAILLA
By: Arvil Burton

Rockcastle Recollections

©John Lair

Bill Brown has returned home from the Rockcastle County Hospital at Mt. Vernon. He is reported feeling some better, and we wish him a speedy recovery.

Irvin Denny remains on the sick list.

Mrs. Janice Denney is ill in the hospital. A speedy recovery is wished for her.

Sunday visitors of Mr. and Mrs. Wayne Burton and Gerry were Mrs. Dorothy Todd, Mrs. Ruth Ann Lark and Marty.

Tim Martin spent Thursday night with Gerry Burton. Kathy Hamm had a wiener roast at her home Friday night.

Ann Stevens spent Friday night with Kathy Hamm.

Kandy Hamm was in Lexington recently to consult an eye specialist.

Mrs. Ruby Hamm visited her parents Mr. and Mrs. George Hamm Sunday.

Mrs. Hazel Hamm visited Mrs. Ruby Hasty Sunday evening.

Judy Brown of Danville spent the weekend with her parents Mr. and Mrs. Jonas W. Brown, Jr.

Mr. and Mrs. Owen Burton, Janet, and Mrs. Mary Jane Randolph visited Mrs. Betty Lou Vaughn and Sam Sunday in Frankfort.

Mr. and Mrs. Henry Owens visited Mr. and Mrs. Earl Stamper at Richmond recently.

Mr. and Mrs. Don Long visited Mr. and Mrs. Clarence Reynolds Sunday.

Sympathy is extended to the family of Floyd Bullock.

Janet Burton of Richmond spent the weekend with her parents Mr. and Mrs. Owen Burton.

Lloyd Thomas of Ohio spent Saturday night with Mr. and Mrs. Hugh Thomas.

Hugh Thomas preached at Fairview Sunday night.

Mrs. Fannie L. Albright has been visiting Mr. and Mrs. Frank Savage in Chicago, Illinois. She has returned home.

Recent guests of Mrs. Zora Burton were Mr. and Mrs. Russell Long, Mr. and Mrs. Owen Burton and Janet, Mr. and Mrs. Charley Anderson, Austin Ping, Mrs. Edna Whitaker, Willis Thompson, Mr. and Mrs. Carter Mink, Mrs. Martha Hamm, Karen and Kandy.

Mr. and Mrs. Marshall Thompson and Mr. and Mrs. Victor Todd visited Mr. and Mrs. Casper Owens Sunday.

Energy Conservation Tip

Attorney General Ed W. Hancock, in his Consumer Comments, furnished us with an excellent tip concerning heating. He suggests that we be wary of the furnace inspector who drops in free of charge and who may try to persuade you to spend needless money on furnace repairs. He offers several bits of advice: don't let anyone take your furnace apart for cleaning or inspection unless you are sure he is qualified; don't take his word that he is qualified - check him out; and during an inspection, watch carefully - a fraudulent inspector may bring his own broken parts with him and pretend they are yours. But, still, it is a good idea to have your furnace inspected by a reputable person before cold weather comes in full force.

Inflation hasn't changed the price of ashes.

But it has changed the price of your home. For example, if you bought a \$20,000 home in 1968—today it's worth about \$27,000. Don't be left with a costly pile of ashes. See me about a State Farm Homeowners Policy that will cover your home for all its worth—no matter how steep that way with automatic inflation coverage.

AGENT
BILL BAILEY
MT. VERNON, KENTUCKY
PHONE 256-4913

STATE FARM
Fire and Casualty Company
Home Office
Bloomington, Illinois

Uncle Bill Arnold and Uncle Reuben Baker, during their long lifetimes, told many stories of their experiences in the Civil War in connection with Mt. Vernon. Both remembered the many occasions when soldiers passed through or bivouaced here. Both were in the service themselves, although quite young at the time. Both remembered that there were only a few houses in town, situated on the higher ground of Main Street and that much of the land now within the corporate limits lying toward Brodhead was mostly swamp. They well remembered when the corduroy road was laid down to enable the Army wagons to get through; in fact, Uncle Reuben participated in laying it.

Not too many years ago the remains of this corduroy road were encountered eight or ten feet below the surface, where it passed over Main Street, in front of the present Christian Church building. Many who were present when the excavation was taking place reported that most of these logs were still sound and in good condition, after almost a century.

In low ground near the site of the Industrial School building there was, during the war and for many years thereafter, a large pond. Old timers maintained that when one of the armies, retreating before the advance of the other and destroying what they could not easily take with them, pushed a cannon into the deeper water of the pond, which, sinking of its own weight into the silty bottom of the pond, was soon lost from sight. About ten years ago when I started trying to locate it, I talked with old men with good memories, such as Johnnie Ramsey, and all declared that the cannon had been put there and never, so they knew, been removed. Some of them made sort of a half-hearted attempt to locate it with a metal detector but turned up nothing bigger than an old rusty plowpoint. Actually, we did not really know just where to look for it and, for all anybody knows, it may still be there, with several feet of dirt over it. We have been told that one of the armies was engaged in a struggle and that they had a cannon with which they fired practice shots, some of the balls later being found on the hillside, back of Mt. Vernon's old waterworks.

During some of the encampments in this area, stragglers and deserters roamed the immediate country, carrying away poultry and livestock and pillaging and robbing generally. A Union soldier was killed on the doorstep of the old log house built by the Hysingers and later occupied for many years by the Purcells. It was said that he was killed by a rifle in the hands of Elizabeth Hysinger, who later married Frank Phillips and lived in a cabin nearby which we children passed daily on our way to Redbud Schoolhouse. Mrs. Everett Purcell once pointed out to me a dark stain on the stone step which they had never been able to remove and which tradition said was the blood of the slain man. Incidentally, Mrs. Purcell also told me that her great-grandfather John Stewart and two of his sons watched the Battle of Wildcat Mountain, between personal friends of the Union commander, Col. T. T. Garrett. They watched the Confederate troops push a disabled cannon into Rockcastle River before beginning their retreat. After the war was over, her grandfather, Robert Stewart, helped recover the cannon from Rockcastle River and had it through Cumberland Gap to Tazewell, Tennessee, from which point it was shipped to Roanoke, Virginia.

Collins' History reports another action in Rockcastle County, on November 25, 1868, when Clute's Confederate Cavalry captured a body of Federal troops at Mt. Vernon. Also, on August 23rd, 1862, on Big Hill in Rockcastle County, Col. Leonidas Metcalf, with four hundred Federal Cavalry, dismounted and on foot, attacked a Confederate force of probably superior numbers. They were received with such a shower of bullets and shells that three fourths of them remounted their horses and fled in all directions, leaving ten dead and forty wounded or captured. The small portion of the Federals who stood firm, after one and one-half hours of hard fighting stoped the advance of the Rebels.

Richard Mullins has just called me to report that he has found a lot of soldier names and dates in a little-used side passage in Great Saltpetre Cave, lending additional authenticity to accounts of its occupancy by soldiers of each side from time to time. There is the story, not fully corroborated, that following a pitched battle inside the cave between partisans of the opposing armies, thirty-one soldiers were buried there where they fell. I also have an account, which I cannot at this time lay hands on, of a Union soldier who was one of a squad left to guard the cave for some time during the latter days of the war. It is fact attested to by many that various people in the county, including residents of Mt. Vernon, at one time hid their favorite saddle horses in the cave when troops of either side were in the area.

In my search for material for this chapter I have come across several instances of the Government paying farmers in the county for supplies furnished the soldiers. Many of these represented payments to James Crayd, of near Brodhead, for corn, oats and hay. At least one similar instance involving payment by Confederate officers was found in a bill presented by M. P. Newcum, \$80.50 for hay, corn and bacon. Hay was invoiced at 75¢ per 100 pounds; corn at 50¢ per bushel; and bacon at 14¢ per pound.

While officers in many cases took what supplies were available and issued vouchers to be paid for by their governments, privates were not restrained by any such scruples, but took what they could find that suited their appetite or fancy, as has always been the case in all wars. While such practices worked great hardships on civilians, there were amusing incidents sometimes brought to light. My Grandmother Lair used to tell of the time when soldiers swarmed over their farm and some of them came into the kitchen where she was and asked her if there were any chickens on the place. She had just finished assuring them that there were not, when an old rooster let out a lusty crow from under the house where she had hidden them. It was the last time he ever had anything to crow about. That same summer my Grandfather Lair's favorite saddle mare, a blue roan named Jenny Lind in honor of the favorite singer of the day, was taken by soldiers on their way North. He followed them to their encampment at Crab Orchard, where he went boldly into the commanding Colonel's tent and demanded her return. Strangely enough, he got her back and just at dusk rode proudly up to his own front door to show the family proof of his successful mission.

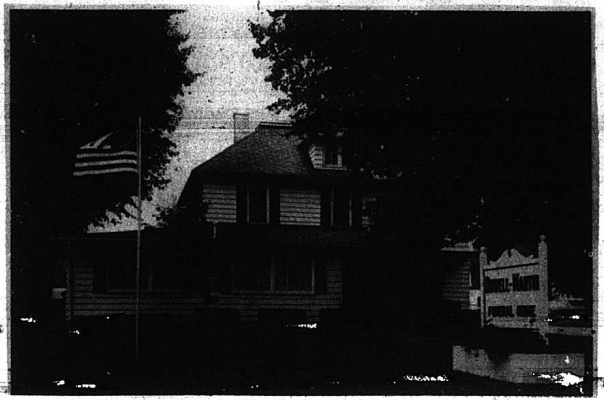
Speaking of horses, there is the story of the Confederate troops coming through Mt. Vernon and catching George Proctor with a good horse, which they took, leaving him in its stead an old bag-of-bones horse that seemed hardly worth keeping. George latched him up, however, and he turned out to be the best horse in the county. George named him "Old Rab" and he lived to be twenty-three years old. Young Henry Sigler had a somewhat similar experience when the soldiers caught him riding a good horse, near Green Hill school house. They took his horse, leaving him an old, worn-out, sway-backed animal in his place. He rode him home and called out to his father "Pap, I just swapped horses. Come see if you think I got cheated."

Boating Fatalities Show Marked Decline - Records of the state Division of Water Enforcement indicate that boating fatalities have decreased substantially on Kentucky's waters through October 31, 1974, as compared to the same period last year. Non-boating fatalities, predominantly accidental drownings, are on the increase. There were six water-related fatalities recorded in October, 1973, while in the same month this year, only two have been reported.

AM Still Available For Disaster Victims - So far, few Kentucky tornado victims have taken advantage of a disaster aid program which would enable them to obtain up to \$5,000 to meet related expenses. Anyone who has not received sufficient funds to meet those expenses from other available services is urged to apply at the Bureau of Social Insurance office.

CALL NEWS ITEMS TO 256-2244

SERVICE



The Dowell and Martin Funeral Home is beginning its sixth year of service to the people of Rockcastle County and the surrounding area. We have strived to provide the utmost in funeral service and will continue to do so in the years to come. We feel that we have given the type of service that the people desire and deserve and will continue giving these services with reverence and dignity. Our services are always complete and never hurried and are conducted in the same manner, regardless of the circumstances.

Our Funeral Home is designed with "home-like" surroundings to provide a warm and friendly atmosphere where friends and relatives can pay their respects and feel right at home.

As evidence of our services, the Dowell and Martin Funeral Home was received into the "Order of the Golden Rule" in 1970. The Order of the Golden Rule is an international organization of dependable funeral directors. Membership in this Order is open only to funeral directors of high professional standing.

The Dowell and Martin Funeral Home is proud to be Rockcastle County's only member of the Order of the Golden Rule.



Dowell Martin
FUNERAL HOME

MT. VERNON, KENTUCKY

Phones-
256-2991 256-2997

Member of Kentucky Funeral Directors Burial Association.

Mount Vernon Signal

-3,950 Copies Printed This Week-

"WHERE THE BOONE WAY JOINS THE DIXIE"

THE MOUNT VERNON SIGNAL - MOUNT VERNON, KENTUCKY 40456

VOLUME 88 NUMBER 9

THURSDAY, NOVEMBER 7, 1974

Braden Steel To Begin Production By Late December



Aerial view of 44,000 square foot steel fabricating facility near Broodhead that has been leased by Braden Steel Corporation for the manufacture of silencing systems for the power generating industry.

Have Leased Building Formerly Occupied By Clow

Braden Steel Corporation of Tulsa, Oklahoma has announced plans to lease the former Clow Company plant, East of Broodhead, for the fabrication of silencing systems for the power generation industry.

James C. Lewis, Braden president, said that modification work on the 44,000 square foot plant had already begun and that equipment is being purchased which will allow the firm to begin limited production by late December for March shipments.

"We will begin immediately to build the necessary jigs and fixtures," Lewis said, "and to hire the approximately forty workmen, fitters and welders that will be required to handle initial production."

Lewis said that other than a plant manager and plant superintendent, who will be transferred to the Broodhead plant from Tulsa, all personnel will be hired locally.

Braden presently operates two manufacturing plants in Tulsa, both of which are located on a sixty-acre industrial site in Northeast Tulsa. The Special Products Division plant which produces silencing systems contains more than 145,000 square feet of steel fabricating space. A second plant, 31,000 square feet in size, is devoted to manufacturing of metal building systems which are marketed through a nationwide network of builder-contractors.

During the recent fiscal year which ended September 30, Braden had employment of more than seven hundred at their Tulsa complex and had sales in excess of \$30 million.

Braden was founded in 1923, primarily to build prefabricated buildings for the booming oil industry. In recent years, the vast majority of their work has been in producing silencing systems for the power generation industry which have been shipped throughout the United States and exported to Canada, Mexico, Venezuela, Puerto Rico, Taiwan, Lybia, Saudi Arabia and Indonesia.

In 1971, the firm entered the engineering and construction industry, utilizing their half a century of building fabrication (Cont. to 4)



Gene Schockemoehl Broodhead Plant Superintendent



Bob Lee, Manager Braden's Broodhead Plant



Forest C. Shepard Newly appointed Controller for Braden's Broodhead Plant.

City Council Votes To Hire Engineering Firm For 201 Planning Survey

The Mt. Vernon City Council, at its regular monthly meeting Monday night, voted to enter into a tentative agreement with Crawford and Crawford Engineers and their associates, Schimpeler-Corradino Associates, to conduct a 201 Facilities Planning Survey.

This survey was brought to the attention of the Council as a necessity if the Council wishes to get any federal grant monies for required sewer and water expansion projects.

With an approved 201 planning project, the cost of these expansions would then be paid with a 75% grant and 25% local money.

The cost of the survey, roughly estimated at \$30,000, will also be paid with 75% grant money and 25% local money.

In passing the motion, the Council agreed that the survey would be of benefit to the county in helping with planning of expansions besides the fact of the needed grant money which would not be forthcoming without the survey.

The subject of housing for the Central Ambulance Service also came before the Council again. Last month, when Buddy Cox, a director of the service, brought the request before the Council, it was decided that final approval would be left up to whether or not something could be worked out with Fire Chief John Cox so that room in the hallway, adjacent to the office area, could be utilized. Mr. Cox reported to the Council that this agreement had been reached and a partition and door installed in front of the area. The Council then put the permission in the form of a motion which passed unanimously.

This triggered a surprise move by City Clerk Ercel Cromer later in the meeting when Mrs. Cromer presented her letter of resignation to the Council, effective December 31, 1974. Mrs. Cromer read the letter to the Council, which in itself gave no details as to her actual reason for resigning her position. Then, in a personal

comment, Mrs. Cromer told the Council that she personally felt that there were better locations for the ambulance service than in City Hall and that she did not feel that she could take the responsibility for the office area with the ambulance service housed in the same building. Mrs. Cromer went on to say that her feelings were nothing personal against members of the service, but, she felt that an office space as that type was too often used as a hanging out place for too many people.

Mrs. Cromer's resignation caught the Council completely by surprise. Councilman Conrad Parrett reminded Mrs. Cromer that, in the discussion with Mr. Cox concerning the use of the area, that he (Mr. Cox) had agreed that authorized personnel only would be allowed to be in the ambulance service office and that any complaints would be cause for immediate removal of the service from the building.

Drive Continues To Raise Funds For Field Lighting

The drive to raise \$12,000, to light the football field at the Rockcastle County High School is still underway. To date, a total of \$3,500, has been donated or pledged toward this worthy cause. Contributions are being received by the following individuals:

- Mr. Glen Polly, Football Coach, RCHS; Mr. Larry Travis, Assistant Football Coach, RCHS; Mr. Jimmy Cox, Assistant Football Coach, RCHS; Mr. Jim Earl Hammond, President, Rockcastle Athletic Boosters Club, Mt. Vernon; Mr. Jim Anderkin, Owner, Mt. Vernon Signal; Mr. Denver Miller, Jaycee, Mt. Vernon.

Contributions can be sent to any of the above individuals. Your name and the amount of your contribution will be listed in the Mt. Vernon Signal. The following contributions and pledges have been received:

He, and several other members of the Council, asked Mrs. Cromer to reconsider at least for another month, her resignation so that the matter could be discussed further and something possibly worked out with Mr. Cox. Mrs. Cromer indicated her willingness to do this and the matter was closed for the time being.

Mr. Ramsey, operator of the City's Boat Dock on Lake Linville, was also before the Council with a request that his lease fee be halved effective October 1, 1974. Mr. Ramsey said that the season had been a disaster financially for him at the Dock and he felt that the present lease fee of \$4,300 was just too unreasonable in view of the difficulties in making the dock a paying operation. He also asked that the lease be set up on a year-to-year basis with either party having the right of refusal 90 days before the lease runs out (Cont. to Page 8)

- Laurel Grocery Company - \$100.00; Carter's Food Market - \$500.00; C. T. Massey - \$100.00; Edd Winstead - \$100.00; Mr. and Mrs. Walker Treboloc - \$100.00; Clifford Baker - \$50.00; Mt. Vernon School Athletics - \$25.00; Mrs. Bobby Jean Gilford - \$5.00; Livingston School Workers Club - \$25.00; Larry Tarter - \$5.00; Mrs. Jane Smith - \$10.00; Bullock Shoe Store - \$10.00; Bryant Brock - \$5.00; Mr. and Mrs. Jerry Mullins - \$100.00; Mt. Vernon Dairy Freeze - \$20.00; Robinson Style Shop - \$10.00; Young's Pharmacy - \$50.00; C. C. Cox Hdw. - \$10.00; Rockcastle Auto Parts - \$10.00; Coffey Furniture Store - \$5.00; Bullock's Barber Shop - \$5.00; Rockcastle Farm Service - \$25.00; Hen House Cafe - \$25.00; Fain Furniture Store - \$100.00; Mt. Vernon Cleaners - \$100.00; C.

Prolonged Coal Strike Could Affect Local Schools

Even though school officials have made a strong effort to stockpile coal in preparation for the impending coal strike, a prolonged shutdown at the mines could pose some problems in keeping schools open.

It is expected that the Mt. Vernon Elementary School will run into trouble first since the coal bins will hold only a three weeks supply. However, D. G. Albright, contract coal hauler for the Board, thinks he will be able to haul a few loads during the strike period since it is desulfid coal and not under union.

In an effort to conserve the school's supply of coal now on hand, the County School Superintendent has asked the

principals of the elementary schools to do everything possible to save fuel. Mr. Parsons has asked the principals to curtail night activities at the schools so that furnaces can be turned down early in the afternoon until the strike has ended and a supply of coal is available. Activities at the high school will not be affected as severely since the building is heated electrically. However, if one school runs short on fuel, all schools would be closed at the same time. However, with luck, the schools can remain open.

STUDENTS URGED TO BUY BALLGAME TICKETS IN ADVANCE

Gleason Saylor, principal of Rockcastle County High School, has announced that admission to all varsity games will be \$1.00 at the door. However, students may buy advance tickets at their respective schools for 75 cents. All varsity games will be held on Tuesday and Friday nights, and students may purchase their tickets at least a day or so before the night of the game. Admission for other games to be played on Monday and Thursday nights between Freshmen, B-Team, or the Girls' Teams will be 75 cents for adults and 50 cents for students. These tickets will only be sold at the door, with no advance ticket sales.

All elementary school games which were to be played at night have been cancelled temporarily, due to the coal strike situation. However, as soon as the games begin, information will be given in the Signal on the games and admission to these games will be listed also.

ATTENTION - FARM BUREAU MEMBERS

Farm Bureau members can now order citrus fruit direct from Florida through the Farm Bureau office until November 25th. For further information, call 266-2050.

VOTER BOOKS NOW OPEN

Voter registration books are now open for registration, according to County Court Clerk Clifford Bales.

If you have never registered, have recently married, moved or anything that would affect your right to vote, please check in the office of the County Court Clerk. Also, Mr. Bales has asked us to thank all the election officers for the fine job turned in by them in the recent election. Mr. Bales said that out of fifty officers, fifty-one attended the pre-election meeting and attributed the fine job well to their ability.

4-H VARIETY SHOW

4-Hers have an opportunity each year to display their talent at the annual 4-H Variety Show. The purpose of a variety show is to promote group spirit and provide an opportunity for 4-H members to gain pride and self-confidence.

The 1974 Variety Show will be held Tuesday, November 19, at 7 p.m. at the Broodhead Elementary School. The show is open to the public. There will be no admission charge.

Each 4-H club may have one club act and one specialty act. Registration for each act should be in the County Extension Office by November 15. To (Cont. to 6)

BROODHEAD CHILD DEVELOPMENT TO HOLD CHILI SUPPER

Friday night, November 15th, the Broodhead Child Development Center will have a Chili Supper at the Broodhead School Cafeteria, from 4:30 to 7:30 p.m. Menu will consist of Chili and crackers, Cheese, Salad, Dessert, and Drinks. Admission to the Supper will be \$1.25 for adults and \$.75 for children age 12 and under. (Cont. to 6)

Rockets Open Season By Hosting Oneida

The Rockcastle ROCKETS kick off their 1974-75 season this Friday night when they host Oneida at Mt. Vernon.

The Rockets have several returning lettermen in the person of Garlan Vanhook, 1923, Madison High, home; Garrard County, home; January 14; Jackson County, home; January 21; Middleboro, away; February 15; Richmond Model, away; February 21; Jackson County, away; and February 28 - Casey County, home.

On December 8th, the Rockets will travel to McCree County where the B-Team will play the preliminary game. The remainder of the Rockets' schedule is as follows: December 6 - Berea, home; (Cont. to 6)

BENEFIT SHOW FOR RESCUE SQUAD

There will be a Country - Blue Grass and Gospel Jam-boree held at the Red Barn in Renfro Valley Thursday night, November 21st at 7 p.m. Proceeds from the show will go to the Rockcastle County and Tri-City Rescue Squad. Admission will be \$1.00 for adults and 50 cents for students. The regular cost of the Red Barn will perform, plus other special guests.

December 13, Laurel County - away; December 17 - Knox Central, home; and December 20 - Mercer County, away. January 8 - Madison Central, home; January 7 - Whitley County, away; January 10 - Ansville, home; January 14 - Garrard County, home; January 17 - Berea, away; January 21 - Jackson County, home; January 24 - Madison High, home; January 25 - Somerset, away; and January 28 - Pulaski County, away. February 4 - McCree County - home; February 7 - Monticello, home; February 11 - Lincoln County, away; February 14 - Middleboro, away; February 15 - Richmond Model, away; February 21 - Jackson County, away; and February 28 - Casey County, home.

Around BRODHEAD

By: Betty Smith

Personals

Mrs. Willa Baker of London spent Sunday night with Mr. and Mrs. Ed McWhorter. Mrs. Baker and Mrs. McWhorter went to Louisville Monday to visit Mrs. Mae Bowles at the Georgetown Manor Nursing Home.

Mrs. Cuba Crowley spent Monday night with Mr. and Mrs. Ed McWhorter.

Mrs. Julie Hunt and Mr. and Mrs. Ed McWhorter were in London last Thursday visiting Mr. and Mrs. Gervis Singleton and family.

Mrs. E. J. Smith was in London Thursday to attend an Avon Sales Meeting. She was presented a ruby pin and was welcomed into Avon's President's Club.

Mrs. John William Payne and daughter of Dayton, Ohio spent Thursday with Mr. and Mrs. Ed Payne.

Mrs. Albert Martin and Mrs. Brownie Martin were in London to attend an Avon meeting and shopping Thursday.

Mrs. E. J. Smith and Jon spent Tuesday in Stanford with Mr. and Mrs. W. E. Burgin.

Mrs. Patsy Herrin Renner and Mr. and Mrs. Andrew Herrin of the Cincinnati area were guests of Mr. and Mrs. Albert Albright Tuesday. They were en route to Pulaski County to attend the funeral of Virgil Norton.

Mr. and Mrs. P. J. Bagke were dinner guests of Mr. and Mrs. John Burke of Lexington last Saturday night.

Mr. and Mrs. Dale Mink and children of Reading, Ohio spent the weekend with Mr. and Mrs. Ed Payne.

Mrs. Johnny Newland and Chris and Mrs. Frank Watson were in Lexington shopping Saturday night.

Mr. and Mrs. Johnny Newland and Cris and Everett Watson were dinner guests Sunday of Mr. and Mrs. Frank Watson.

The Annual Community Thanksgiving Service will be held Wednesday night, November 27, at 7:30 p.m. at the Brodhead Christian Church. All congregations are invited to participate.

Sympathy is extended to the Elbert Denny family.

Mrs. Paul Cash was in Somerset Tuesday shopping.

Sunday dinner guests of Mr. and Mrs. Ed McWhorter were Mr. and Mrs. Bert McWhorter, Mrs. Vera Brown, Mr. and Mrs. Jim Parsons, Mr. and Mrs. Freddie Pruitt and Mickey.

BOWLING NEWS

-Briar Bowl-

"BRAND STEEL"
(Cont. From Front)

experience to develop a high quality line of buildings for commercial and industrial applications. Currently, Braden has more than 70 authorized Builder distributors... operating in 24 states.

James C. Pharr, Braden vice president and manager of the firm's Special Products Division, said that Bob Lee, currently Manager of Production Planning for the Tulsa plant has been named Manager of the Brodhead plant and that Gene Schockemohr, a Foreman in Tulsa, will serve as Plant Superintendent. Both men and their families will be moving to the area shortly.

Pharr also announced that Forest C. Shepard, formerly plant controller for Clow Corporation, has joined Braden as Controller of the Brodhead plant. Shepard will work closely with Bob Lee in the areas of purchasing and personnel.

ROCKETS END SEASON WITH 20-14 WIN

The Rockcastle ROCKETS ended their 1974 season in a winning way last Friday night by downing Russell County 29-14. Jerry Pensol had a big offensive night for the Rockets scoring all three touchdowns, two on passes from quarterback John Clontz.

The Buckaroos lead the Saturday night League at the Briar Bowl in Somerset with an outstanding 29 wins and 7 losses. In second is Reynolds Grocery at 25 and 11 and Nerfleets' Garage is holding down third at 22 1/2 and 13 1/2.

High team series for the night went to the Moonlighters with a 2-170 and the Browns took high team game with a 753. Individual highs for the week were: high series, men: Hulon Simpson, 546; James E. "Doc" Brown, 523; and Danny Carroll and Allen Wilson, 518 each. High game, men: James E. "Doc" Brown and Bobby Proctor, 211 each; Hulon Simpson, 210 and Allen Wilson, 188.

High series, women: Debbie Kieser, 495; Jewel Brown, 357 and Clara Brown, 465. High game, women: Jewel Brown, 208; Debbie Kieser, 196 and Clara Proctor, 176.

Both teams went scoreless the first half and Russell County got all their points in the second quarter - the Rockets scored once, on a thirteen-yard run by Pensol and the score at half-time was 14 to 6, in favor of Russell. The Rockets came to within two in the third quarter on a 40 yard pass from Clontz to Pensol and in the fourth quarter, Tommy Smith, intercepted a

Russell County pass which set up the winning touchdown, a 20-yard pass again from Clontz to Pensol. The third try at the conversion was successful with Clontz scoring on the third one.

The Rockets recovered two fumbles - one by Larry Welch and one by Billy Baker and intercepted two passes - one by Clontz and the other by Smith.

Offensively, the Rockets racked up eight first downs to Russell's 19 and 71 yards rushing to Russell's 163. The Rockets picked up 104 yards through the air, a total equalled by Russell County.

Leading ground gainer was Clontz with 35 yards in ten carries, Pensol accounted for 20 yards in 7 carries and Smith got 13 in 7 tries. Kenny Burton also was responsible for 50 yards on a kick-off return.

Defensively, the Rockets were in individual tackles by Shannon Franklin with 5, Jim Browning and Billy Baker were credited with four each, Pensol and Dale Bradley and Jerry Pensol got 3 each with Mike Carr accounting for 2. Leading in the assists department were: Pensol, 12; Billy Baker, 10; Welch, 7; Franklin, 6; Smith, 6 each; Browning and Bullock, 5; Mike Carr, 4 and Trebalo and Teater, 3 each.

Over the season, the Rockets were 7 and 4 and we take this opportunity to congratulate Coach Glen Polly, Assistant Coaches Jim Cox and Larry Travis and each member of the football team for an excellent and enjoyable season.

Deaths and Funerals

MRS. PHOEBE B. HOWARD DIES MONDAY NIGHT

Mrs. Phoebe Bryant Howard, age 79, of Livingston passed away Monday night, November 11, 1974 at the Rockcastle County Hospital. She was born in Rockcastle County, Kentucky on June 7, 1895, the daughter of the late Henry and Mary Swinney and was a member of the Livingston Christian Church.

She is survived by: three sons, Bill of Gainesville, Florida, Rolie Bryant of Livingston, and Jimmy Bryant of Corpus Christi, Texas; two daughters, Mrs. Flossie Jones of Livingston and Mrs. Ruby May of Jackson County; ten grandchildren and three great-grandchildren also survive.

Services will be held Thursday, November 14, 1974 at 2 p.m. at the Dowell and Martin Funeral Home with Bro. Billy Medley officiating. Interment will be in the Oak Hill Cemetery.

FLOYD R. BULLOCK DIES AT RESIDENCE

Floyd R. Bullock, 65, of Route 1, Brodhead passed away Thursday, November 7 at his home.

He was born in Pulaski County on April 5, 1909, the son of the late Benjamin and Nancy Bullock and was a retired

factory worker and farmer and a member of the Ottawa Baptist Church.

Survivors are his wife, Mrs. Eva Payne Bullock of Route 1, Brodhead; four daughters, Mrs. Louise Renner of Lockland, Ohio, Mrs. Annalee Renner of Deer Park, Ohio, Mrs. Reba Cash of Route 1, Brodhead and Mrs. Elva Cook of St. Louis, Missouri; five sons, Charles Bullock of Brodhead, Ray Bullock of Route 1, Brodhead, Bobby Bullock of Crab Orchard and Henry and Jimmy Bullock, both of Blue Ash, Ohio; three sisters, Mrs. Flossie Payne and Mrs. Edna Harty, both of Route 1, Mt. Vernon and Mrs. Sybil Verdery of Route 1, Brodhead; and 23 grandchildren.

Mr. Bullock was preceded in death by one brother, Harold Bullock.

Funeral services were held Sunday, November 10 at 2 p.m. at the Ottawa Baptist Church with Bro. Sam Sowder and Bro. R.C. Flynn officiating.

Mr. Bullock was in the Freedom Cemetery.

Cox Funeral Home was in charge of arrangements.

MRS. LUCY J. CHILDRESS DIES IN LEXINGTON

Mrs. Lucy J. Childress, age 51, of Mt. Vernon, passed away Thursday, November 12, 1974 in a Lexington Hospital. She was born in Madison County on October 6, 1923, the daughter of the late Bert and Louisa Hensley Johnson and was a member of the First Baptist Church of Mt. Vernon.

She is survived by her husband, Paul Childress of Mt. Vernon; one daughter, Mrs. Paula Curry of Cody, Wyoming; one brother, Maurice Johnson of

Berea; four sisters, Mrs. Carrie Childress of Mt. Vernon, Mrs. Dorie Taylor, Mrs. Gladys Grant and Mrs. Sallie McKay, all of Berea; two grandchildren, Gilbert Leigh and Heather Dawn.

Services will be held at 10 a.m. Friday, November 15, 1974 at the Dowell and Martin Funeral Home with Rev. Jack Bruce officiating. Burial will be in the Elmwood Cemetery.

ADULT WELDING CLASS AT VOCATIONAL SCHOOL

An adult welding class is now in progress at the Harry Sparks Vocational School and will last six weeks with classes two nights a week (Monday and Thursday) from 6 to 9 p.m.

You may enroll by going to the Vocational School Thursday night, November 14th (tonight) or by calling 266-4846.

ALCOHOL DRIVER EDUCATION COURSES OFFERED

By: Paul Howard

A total of 145 Kentuckians convicted of driving while under

the influence of an intoxicant completed an Alcohol Driver Education course offered for the first time during October. In doing so, they took advantage of a recently changed state law and kept their driver's licenses.

Prior to passage of House Bill 190 by the 1974 General Assembly, Kentucky law had required the Department of Transportation to revoke for six months the license of any driver convicted of operating a vehicle while under the influence of intoxicants.

THE BANK OF MT. VERNON

MEMBER FEDERAL RESERVE BANK
A MEMBER OF THE FIRST NATIONAL BANK OF KENTUCKY

MEMBER OF THE FIRST NATIONAL BANK OF KENTUCKY
PHONE 266-2177

EFFECTIVE NOVEMBER 27, 1974

THE FEDERAL DEPOSIT INSURANCE CORPORATION WILL INCREASE THE INSURANCE COVERAGE ON ALL BANK ACCOUNTS IN THE BANK OF MT. VERNON, MT. VERNON, KENTUCKY FROM TWENTY THOUSAND DOLLARS (\$20,000.00) TO FORTY THOUSAND DOLLARS (\$40,000.00).

THE BANK OF MT. VERNON
MT. VERNON, KENTUCKY

LOOK
LOOK
LOOK

On The Lot Financing And Insurance

D & W AUTO SALES

...Price Reduction Sale...

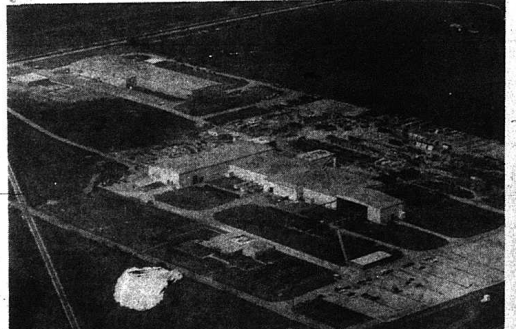
| | | |
|---|--|---|
| <p>73 NOVA Hatchback Auto Air Power Was 3195. Now 2895.</p> <p>73 IMPALA 4 Dr. Sedan Auto Air Power Was 3295. Now 2995.</p> <p>73 OLDS Omega 2 Dr. Auto Air Power Was 2995. Now 2695.</p> <p>73 CHEVELLE 4 Dr. Auto Air Power Was 3195. Now 2895.</p> <p>73 BUICK Century 2 Dr. Auto Air Power Was 3395. Now 3095.</p> <p>731 N HIAIC Ventura II 6 Cyl. Auto. P-Steering Was 2995. Now 2795.</p> <p>73 IMPALA 4 Dr. H.T. Auto Air Power Was 3195. Now 2995.</p> <p>73 PINTO 2 Dr. Auto. Sun Roof Was 2295. Now 1995.</p> <p>73 CHEVROLET Vega Auto. 16,000 Miles Was 2295. Now 1995.</p> <p>72 CHEVROLET Monte Carlo Auto Power Top Was 2995. Now 2795.</p> | <p>72 BUICK LeSabre 2 Dr. Auto Air Power Was 2995. Now 2795.</p> <p>72 PLYMOUTH GLYM Coupe Auto. Extra Power. Air Was 2495. Now 3195.</p> <p>71 PONTIAC LeMans Sport Auto Power. Air Sharp! Was 2395. Now 2195.</p> <p>71 PLYMOUTH Duster 2 Dr. 6 Cylinder Auto Was 1895. Now 1695.</p> <p>72 PLYMOUTH Satellite 2 Dr. Auto Power Was 2495. Now 2195.</p> <p>70 NOVA Super Sport 4 Speed. Power Steering Was 1495. Now 1295.</p> <p>70 VW 4 Speed Was 1495. Now 1295.</p> <p>70 CHEVROLET Impala 2 Dr. H.T. Auto. Air Power Was 1695. Now 1395.</p> <p>70 FORD Fairlane 4 Dr. Auto Air Power Only 895.</p> | <p>70 CHEV. Van - Sharp!!</p> <p>69 CHEVELLE 4 Dr. Auto Power Only 1295.</p> <p>69 CHEVELLE S/S 4 Speed Only 1395.</p> <p>69 CAMARO S/S 4 Speed Real Sharp!! Only 1495.</p> <p>68 FORD Station Wagon 9 Passenger Only 895.</p> <p>...TRUCKS...</p> <p>74 CHEV. 1/2 Ton Wide Bed - Standard</p> <p>73 CHEV. 1/2 Ton Auto Air Power</p> <p>73 EL CAMINO Auto Air Power</p> <p>72 CHEV. Cheyenne 1/2 Ton 26,000 Miles</p> <p>72 CHEV. Cheyenne Super Black Sharp!</p> <p>72 CHEV. 1 Ton NICE!!</p> |
|---|--|---|

Prices Like These Aren't To Be Found Anywhere Except -

D & W AUTO SALES

OWNERS
Dwayne Brinegar Walter Powell, Jr.

Telephone No. 986-4817 "On The Strip" U.S. 25 Berea, Kentucky



Aerial view of Braden's general offices and manufacturing plant in Tulsa.

\$125 million power station completed last year in which Braden furnished more than \$1 million in siding equipment, as well as the main building and modules waste heat boilers, shown on the left.

Social And Women's News

TEST DRIVE CHEVROLET'S NEW EFFICIENCY SYSTEM.



Impala Sport Coupe



Monte Carlo Coupe



Camaro Type LT Coupe



Nova Custom Coupe



Malibu Classic Coupe

1975... CHEVROLET'S NEW EFFICIENCY SYSTEM.*

It's designed to make our 1975 cars run leaner (more economically), run cleaner on unleaded fuel (to meet federal emission standards) and save you money every mile. That's why it makes sense for you to come in, see our lineup of beautiful '75 Chevrolets and take a test drive. Now's the right time to discover that our new Chevrolets are more efficient, more economical to operate than last year's models. Now's the right time, too, to see and feel Chevrolet's new Efficiency System with your own test drive. *See us at...*

*Not all features of the Efficiency System are on all 1975 Chevrolet models.

"TAKE TIME TO KNOW US"

BRITTON CHEVROLET - OLDS., Inc.

Phone 986-3169

U.S. 25 North - Berea, Kentucky

A weekly Crafts Class is being held on Tuesday mornings for members of the Adult Work Activity and Partial Hospitalization Class. The crafts class is being taught by Mrs. Tilla Weaver and Mrs. Pearl Reams from the Regional Library at London. The Adult Work Activity, and Partial Hospitalization Class is taught locally by Mrs. Lucille Hysinger, Mrs. Betty Lewis, Mrs. Virginia Bray and Diane Perry, aide, from Berea College. Mrs. Hysinger pointed out that the ladies from London donate their time free to the class and furnish most of the materials used.

Personals

Mrs. Hazel Pullinger and Mrs. Ida Webb have returned home after spending several days in the Central Baptist Hospital at Lexington to injuries received in a car accident.

Mrs. Lona Logsdon visited home from the Rockcastle County Hospital last Wednesday afternoon.

Robert Ford has returned home from the Rockcastle County Hospital. We wish him a speedy recovery.

Mrs. and Mrs. Addison Ramsey and children of Henderson visited Mr. and Mrs. Robert Anglin and Nancy and W. R. Coffey and Lillian Anglin during the weekend.

Mrs. Katie Stokes fell last week and broke her hip. She is in a Lexington Hospital. A speedy recovery is wished for her.

Mr. and Mrs. Darrell Owens, Mrs. Robert Anglin and Nancy and Mr. and Mrs. Bennett Burton visited Mr. and Mrs. George F. Burton Sunday evening.

Stella Burton visited Lizzy York Sunday evening.

Joe McFarlane is patient in a Lexington Hospital. A speedy recovery is wished for him.

Mr. and Mrs. Harmon Jones visited Mrs. Lona Logsdon Saturday evening.

Mrs. Lona Logsdon has been confined to her home a few days due to illness. A speedy recovery is wished for her.

Mrs. Bennett Burton attended the Gospel Singing at the Renfro Valley Barn Sunday.

Mrs. Zula Drew has been ill and confined in Rockcastle County Hospital the past week. Sunday visitors of Mrs. Zula Drew at Rockcastle County Hospital were her children and grandchildren, Mr. and Mrs. Charles Drew, Debbie and Terry of Millard, Ohio, Mr. and Mrs. Earl Smith, Gary, Gregg and Todd and Doug Drew, all of Connersville, Indiana. They were all dinner guests of their aunt Mrs. Fanny McDay.

Relatives attending the W. H. Cox funeral from out of town were: Mr. and Mrs. William S. Cox, Cindy, Steve and Pam, of Dayton, Ohio; Mr. and Mrs. Gram Howard and son Billy of

Knoxville, Tenn.; I. Gentry Hasack and daughters, Mrs. Bettie Rhule, Mrs. Barbara Kindles and Mrs. Linda Slay of Pittsburg, Pa.; Richard Cox, Jr. of Auburn; Dr. Albert N. Cox of Midway; Mrs. Bonnie Cox of London; Mr. and Mrs. Roy King of Lexington; Mr. and Mrs. Herman Peyton and son Bill of Houstonville; Herbert E. Cox of Kankakee, Illinois; Peter Cox of Canton, Ohio and Tom Cox of Salem, Ohio (sons of the late Herbert Cox); and Mr. and Mrs. Robert Snodgrass.

Mr. and Mrs. Sherman Johnson of Marietta, Ohio were recent visitors of their son Bro. Ernie Johnson and family.

Mrs. Imogene Robbins and Mr. and Mrs. Eddie Harper of Hamilton, Ohio, Butch Robbins of Lexington and Mrs. Doris Robbins and little daughter Anita Joan were weekend guests of Mrs. Leanna Niebel and Mrs. Dolly Krahenbuch.

Mrs. McFarlane is in the Central Baptist Hospital. Friends wish him a speedy recovery.

Mr. and Mrs. Elmer Brossart have returned to Covington from a recent visit with relatives and friends here.

James Johnson of Marietta, Ohio was the guest last week of his brother Ernie Johnson and family.

Mr. and Mrs. Robert Kirk, Mrs. Robert Peterson, Mrs. Thomas Wright and little son Scott of Dearborn, Michigan were guests last week of Mrs. Jewell Brown.

Robert DeBorde of Blue Ash, Ohio spent the weekend with his mother Mrs. Sally DeBorde.

Mrs. George Dowell, Mrs. Lillian Dowell and Mrs. Cartelle Shelley of Lockland, Ohio visited relatives and friends in Mt. Vernon Saturday.

Little Miss Sonia Morgan, daughter of Mr. and Mrs. Eddie Morgan, has returned home from Lexington Hospital and is doing nicely.

Mrs. Ella Ponder left Sunday for a visit to her daughters' Mrs. Florence Mullins and family in Englewood, Ohio and Mrs. Ann McDanel and family in Cincinnati, Ohio.

Mrs. Joyce Lakes and daughter Sherry of Berea visited Mrs. Lakes' mother, Mrs. Dorothy French during the weekend.

Mr. and Mrs. Jess Coffey of Richmond, Indiana spent the weekend with her mother Mrs. Louanna Cromer and his father J. M. Coffey.

Mr. and Mrs. Robert Hubbard have returned from a visit in West Palm Beach, Florida with her sister.

Mr. and Mrs. Jack Parker and children Sherry, Jeff, Mike and Lisa have returned to their home in Rantoul, Illinois from a recent visit to his parents Mr. and Mrs. Seil Parker and her mother Mrs. Lula Cloud.

Miss Lula Menifee of Berea spent Sunday night with her sister Mrs. Emma Taylor.

Mrs. Mazy Russell has been confined at home with the flu for a few days.

Mrs. Kate Stokes, who fell last Friday and broke her hip, was taken by ambulance, accompanied by her daughter Mrs. Ruby Griffin, to the Central Baptist Hospital, Lexington, where she underwent surgery Monday.

Mrs. Pearl Bowman and Mrs. Ann Farris, wife of Berea Saturday to visit Mrs. Fannie Price in the hospital there.

Mrs. Margaret Whitaker remains very ill at the Rockcastle Hospital.

Mr. and Mrs. John Mink and Mr. and Mrs. Leonard Kirby visited their mother and sister, Mrs. Ella Mink at the Stanford Hospital Sunday.

Mrs. Anna Abrams of Louisville visited Willis Johnson Monday.

Mrs. Abrams, formerly Anna Johnson of Jackson County, is the only first cousin of Mr. Johnson's living.

Mr. and Mrs. Jim Hughes of Chattanooga, Tenn. were weekend guests of her mother Mrs. Zelma Bullock.

Mrs. Ruby Rice of Brindle Ridge area visited Mrs. Fannie Thomson Sunday.

Mrs. Sallie Whitaker and her sister Mrs. Effie Norris of Sowder Nursing Home spent the day recently with their niece Mrs. Ollie Harrison at Brodhead.

Mr. and Mrs. Earl Cornett were in Lexington Monday and Tuesday when Mr. Cornett was to see his doctor at the VA Hospital.

Mrs. Mollie Westerfield was at the University Hospital Tuesday for treatment.

Mrs. Stella Mink visited her uncle Arthur Miller and Mrs. Miller Tuesday.

Mrs. Amy Cox of the Sowder Nursing Home in Brodhead enjoyed last Sunday at her home with Mr. and Mrs. Roy King and Phobias of Lexington, Mr. and Mrs. John Cox, Mr. and Mrs. Jim Cox and daughters, Jennifer and Jamie, Mr. and Mrs. Henry Cox and Mrs. Laura McFarlane.

Mr. and Mrs. Francis Jenkins of Lebanon Junction are visiting Mr. and Mrs. John Cox and other relatives in the county.

Mrs. Hazel Cummins and Mrs. Laura McFarlane visited Joe McFarlane recently. Mr. McFarlane is a patient at the Central Baptist Hospital in Lexington.

A good report was received to the effect that Russell Ramsey was released from St. Joseph Hospital to the home of his daughter, Mrs. Carl T. Ashley, 201 Crinkwood, Lexington, where he and Mrs. Ramsey will remain for an extended stay.

Mr. and Mrs. Floyd Owens and Mrs. Hazel Owens were in Lexington Monday to see Mr.

ORDINANCE NO.

AN ORDINANCE OF THE CITY OF MOUNT VERNON, KENTUCKY ACCURATELY DEFINING THE BOUNDARIES OF UNINCORPORATED TERRITORY PROPOSED TO BE ANNEXED TO THE AREA OF SAID CITY.

THE CITY COUNCIL OF THE CITY OF MOUNT VERNON, KENTUCKY DOES HEREBY ORDAIN AS FOLLOWS:

Section 1. The City of Mount Vernon, Kentucky, desires to annex the following unincorporated territory to the now existing boundaries of the City of Mount Vernon, Kentucky, to-wit:

Beginning at a point in the existing line of the City of Mount Vernon, corner to Emory Martin and Keith L. Coffey; thence North 19 West 209 feet; thence South 56 West 309 feet; thence South 19 East 209 feet; thence North 56 East 209 feet to the beginning corner.

Section 2. This Ordinance, in compliance with KRS 91.230 and Chapter 42, shall be published in the Mount Vernon Signal, a weekly publication.

/s/ Roland R. Mullins

Mayer, City of Mount Vernon, Kentucky

ATTENT:

/s/ Errol Cromer

Clerk, City of Mount Vernon, Kentucky

LONDON TOBACCO MARKET

London, Kentucky

NOW OPEN

TO RECEIVE AND WEIGH YOUR TOBACCO

For Quick Service And Highest Sale Bring Your Tobacco To The FIRST AND OLDEST BURLEY MARKET IN SOUTHEASTERN KENTUCKY

GRADE FOR GRADE - TOBACCO SELLS HIGHER IN LONDON
LONDON TOBACCO MARKET

LOCALLY OWNED AND OPERATED

Scott Dean Barney Tucker Cecil Anderson
Harold Douglas

(Cont. to 6)

County Agent's Notes

By H. Lee Durham

Corn Stalks, Soybeans Straw Can Supply Winter Feed For Beef Cows -

Cornstalks and soybean straw are materials which can be found in abundance on many Kentucky farms at this time of year. These salvage materials, if supplemented properly, can provide most of the feed needed to winter dry beef cows. And salvage materials may be needed to substitute for hay this winter.

Materials such as cornstalks, soybean straw and sorghum straw should be considered as sources of energy for dry cows. These salvage feeds are high in cellulose, which can be used as an energy source by ruminant animals such as cattle.

The corn plant has about 50.5 percent of its weight in stalks, leaves, husks, and cobs, all of which are left in the field after combining. This amounts to two to three tons of dry matter per acre in fields producing 100 bushels per acre grain yields.

A cow's daily need for energy can be met with 15-18 pounds of this material. Thus there is potentially enough corn residue available from an acre to provide the energy need of two dry cows through the winter.

Although salvage feeds will supply the energy needs of two dry cows, the animals will probably need some extra protein. Mature dry beef cows need a minimum of six percent protein in their diet, and cornstalks and soybean straw usually contain slightly less protein than this.

Cows with nursing calves need a ration which contains about ten percent protein, and growing steers and heifers need eleven percent protein. Thus, salvage feeds are best used for feeding dry cows.

Salvage feeds also need to be supplemented with vitamins and minerals. Crop residue is low in phosphorus, and all of the Vitamin A which cows need - about 30,000 IU per day - should be provided in the mineral-vitamin supplement.

Turning cows out into cornfields after harvest is a common practice which makes sure of some corn residues. However, studies show that only about 25-30 percent of the total residue is utilized through grazing. Strip grazing or rotational grazing of stalkfields will result in somewhat better utilization.

Many of the new machines recently developed for making large round bales or stacks of

corn also be used for baling or stacking crop residue. These machines make it possible to get more complete use of the crop residue, and provide the option of moving the feed to the cattle.

Some method of restricting access to large round bales and stacks when they are fed is necessary to prevent waste. Removing crop residue from a field removes additional potassium, and soil test results should be checked closely when fertilizing for winter crops. Removal of residue also makes soil more subject to erosion, and thus, cover crops should be planted where erosion is a problem.

Home Line

By Cheryl Witt
County Extension Agent
for Home Economics

Hunters Beware - Think - Food Safety in the Field & Home!

Whether your hunter is searching for a four-ounce bobwhite or a 2,000 pound moose, food safety is of vital importance - not only in the field, but also in the home. Bacteria can cause a meat spoilage problem in the field, and a food safety hazard in the kitchen.

Most hunters know that if your quarry is stumbling or staggering, making an abnormal amount of noise, appears partially or completely blind, or is unusually aggressive, it may well have rabies or some other disease. Calling a wildlife control officer, at the first opportunity, is the best thing you can do. But, don't bag it, warns the Animal and Plant Health Inspection Service of the U.S. Department of Agriculture. Federal meat and poultry inspectors have a classification of animals they can't (dead, dying, diseased, disabled) and if your wild game's in this category - don't bring it home to your family. The potential risks are enormous.

Once you have the bird (or whatever) firmly in hand, the next step is dressing the game. And that is critical, from the safety standpoint. Clean and chill it as quickly as possible. Warm, freshly killed game is an ideal place for salmonella and other bacteria responsible for food poisoning and spoilage to grow. Chilling the meat stops their growth cold. If your prize is small (quail or doves) carry a cooler with you - in your car - and you can cut the birds with clean utensils and drop them right in the ice chest.

Of course, if it's below 35 F., you really don't have that much

to worry about. But you can do a number of other things to prevent a problem with your meat. Be sure to wash and sanitize your game bag in chlorine bleach after each use. Carry plastic gloves along with you, and use them when cleaning game. Keep your hands as clean as possible.

When you get the meat home, make sure that the meat and/or is cooked well - don't cross-contaminate by using the same platters or utensils for raw and cooked meat without washing between handlings. Wash your hands thoroughly. Don't leave cooked meat sitting out for long periods at a time. If it's hot - keep it hot; cold, keep it cold.

Bacteria grow best between 40 and 140°F. Remember, one time exposure to 155°F kills common strains of Salmonella. And meat that is not to be used immediately should be frozen at once.

Traditionally, holiday time is when hunters like to bag ducks and geese, partridges, or venison from the fields and forests for their dinner fare. It's fine - if you're careful, but game taken afield has a greater chance of bacterial contamination than that bought at your local market. Simple rules such as sanitary conditions, thorough cooking and chilling the meat when obtained are safety rules that make the difference in your holiday. Make plans for food-safe holidays.

SCHOOL LUNCH

Week Of
Nov 18-22

BREAKFAST:
Monday - Cereal, Orange Juice and Milk.
Tuesday - Sweetened Rice with Butters, Toast, Milk.
Wednesday - Cereal, Orange Juice and Milk.
Thursday - Ham and Eggs, Toast, Milk.
Friday - Cereal, Orange Juice and Milk.

LUNCH:

Monday - Hot Dog on Bun, French Fries, Sauerkraut, Milk, Apple Sauce Cake.
Tuesday - Chicken and Noodles, Creamed Potatoes, Green Beans, White Bread, Milk, Jello With Fruit.
Wednesday - Beef Pot Pie, Green Beans, Milk, Fruit Cobbler.
Thursday - Bologna Sandwich, Baked Beans, Lettuce and Tomato, Carrot Sticks, Milk, Cake with Caramel Icing.
Friday - Meat Loaf, Mashed Potatoes, Peas and Carrots, Cranberry Sauce, Milk, Hot Rolls with Butter, Pudding.

Burley Tobacco Situation And Outlook This Year

The total supply of burley tobacco has decreased from a high of 2,032 million pounds in 1964 to an estimated 1,838.8 million pounds on October 1, 1974. The supply use ratio has decreased from a high of about 3.5 in the mid-sixties to a low of 2.5. The "Desired" (legislatively defined) ratio of supply to use is 2.8.

Total disappearance has increased since 1970 to an estimated 630 million pounds for the years ending September 30, 1974.

Domestic disappearance is an estimated 545 million pounds for the 1973-74 marketing year. Domestic disappearance has increased each year since 1970 but has not increased to the disappearance level of 560.6 million pounds attained in 1964. Exports of burley tobacco are estimated to be a record 85 million pounds for the marketing year ending September 30, 1974.

The size of each of the burley crops for the past three years has been less than the effective quota and less than total usage in the corresponding marketing years. Indications are that the 1974 crop (estimated 676 million pounds) will be short of total disappearance for the respective marketing year.

Uncommitted burley loan stocks as of the end of August, 1974, was 59.2 million pounds according to the September Tobacco Situation. However, since then there have been further sales and to date less than ten million pounds remain in the pool stocks.

The 1973 crop sold for an average of 92.9 cents per pound. The support price was 78.9 cents

per pound. The support price for the 1974 crop is 85.8 cents per pound.

Beginning with the 1961 crop, price supports are determined as follows: the base figure is the 1959 support level (57.2 cents per pound); this is adjusted in accordance with the change between the 1959 parity index (the index of prices paid by farmers, including interest, taxes and wage rates) and the average of the parity indexes for the three calendar years preceding the year for which the support level is being determined) i.e., the average of the three years parity indexes is divided by the 1959 parity index and the quotient used to multiply the 1959 support price (57.2 cents per pound) to arrive at the support price for the crop year desired.

Since 1961 there has been an increase of 19 percent in the support price of burley tobacco - from 57.2 cents per pound in 1961 to 85.8 cents per pound for the 1974 crop. The increase has been 23 percent since 1970.

Average price paid per pound has increased from the 66¢ per pound level in the early 1960's to the 92.9 cents per pound paid for the 1973 crop for an increase of 54.8 percent.

Though these increases may seem substantial, farmers overall cost of production has increased more rapidly. The index of prices paid by farmers in (1967 - 100) was 175 on September 15, 1974. This indicated that there has been a 75% increase in the index of prices paid by farmers since 1967. Too, in the formula for computing support prices, for burley tobacco the average of

the three preceding years fully the increased cost of indexes is used. This understates the rise in cost of production for the current crop year. Thus, the support price does not reflect fully the increased cost of producing burley tobacco. Neither has the average price-per-pound-paid increased proportionally to the increased cost of production. To insure adequate supplies at equitable prices the price paid per pound will have to reflect



In Morocco, a knife is placed under the pillow of a sick man to keep the demons from getting him.

★ RICHMOND DRIVE IN ★

8 Miles N. Berea On U.S. 25
Movie Starts 7:30 P.M. Admission \$1.50
NOW SHOWING...Ends Sunday

HIGH ADVENTURE AND A TRIO OF TROUBLE!

WALT DISNEY PRODUCTIONS presents

The Bears and I

Hear "Sweet Surrender" Composed and Performed by JOHN DENVER

Walt Disney's **SLUGDOG**

TECHNICOLOR®

Open Friday, Saturday and Sunday For the Winter Months

One pollution solution.

Kentucky Utilities' \$52 million investment in pollution control equipment

Electricity plays a vital role in pollution control. First, because most pollution abatement equipment requires the use of electricity. Secondly, because the generation of electricity itself can adversely affect the environment.

It's in this second area that we're spending \$52 million between 1973 and 1977. To make sure we generate electricity in compliance with environmental standards.

- Where does this \$52 million go?
- Into electrostatic precipitators that remove 99 per cent of the dust and ash from stack emissions at our coal-fired generating stations.
 - Into equipment that removes sulphur oxides from coal-fired generating unit stack gases.
 - Into cooling towers at generating stations, where they are needed, to reduce the temperature and quantity of warm water returned to lakes and streams.
 - Into equipment required to monitor, on a continuing basis, the environmental impact of our stations.

As you can see, clean air and water are obviously no longer free. We are doing our best to minimize these costs since, naturally, the cost of environmental safeguards must become part of the price of electricity.



It's wise to use electricity...use it wisely!

Save for a you-know-what kind-of-day.



A high-interest Savings Account.
A top-interest Certificate of Deposit.
Either way, your money grows. Quickly. Safely.
And when the right day comes, you'll be ready for it.

The Bank Of Mt. Vernon

"Going one step further"

Jerry's Tire Center

Dealers in Goodyear Tires, RCA Televisions And Stereo's, And Whirlpool Appliances.

RICHMOND ST. PH. 282-2122 MT. VERNON

Appliance Service Center

For The Best in Appliance Service, Refrigerators & Speed Queen

REPAIR WORK

PHONE 282-2200 NOT WINSTRAID

Brodhead Hardware

Speed Queen - Maytag Whirlpool Appliances (Oil and Electric)

PLUMBING HEATING SALES & SERVICES MAIN ST. PHONE 785-5281 - BRODHEAD, KY.

Rockcastle Farm Service

Dealers in Hotpoint Refrigerators & Range

Admiral - South Western Television

Unico - Dress Processors

WILLIAMS ST. PH. 282-2204 - MT. VERNON, KY.

4-H CANDY SALE TO BEGIN...

The Rockcastle County 4-H Council is sponsoring a candy sale for November 22 - December 6. Proceeds from this fund raising project will be supporting the 4-H program in Rockcastle County.

Each 4-H'ers in Rockcastle County will have the opportunity to participate in the Candy Sale. Madison Candies which are so popular especially around the holiday season, which will be sold. Young persons who sell the most candy in the candy sales will receive prizes. These include:

- First Prize - stereo on a pedestal;
- Second Prize - tape recorder;
- Third Prize - radio;
- Fourth Prize - instamatic camera;
- Fifth Prize - transistor radio;
- Sixth Prize - pocket radio;
- Seventh Prize - basketball; and
- Eighth Prize - Volleyball.

In addition, anyone who sells two cases of candy will receive their choice of a stuffed animal or puppet. Every time a person sells two cases of candy, they will have their name put into a drawing for a ten-speed bicycle.

The prizes will be on display at The Bank of Mt. Vernon.

Help support the 4-H program in Rockcastle County by buying a box of candy from them. This may also help them gain a nice Christmas present.

"City Council" (Cont. From Front)

each October 1. The Council was very sympathetic to Mr. Ramsey's problems at the dock and on a motion by Councilman Conrad Parrett, the Council voted unanimously to lower the lease fee to \$2,500 on a year-to-year basis.

Mayor Roland Mullins

brought before the Council a proposal by members of the Recreation, Conservation and Development project (RC&D) that Mt. Vernon be used as a pilot project and an application for a 60% Federal grant be applied for by Mt. Vernon that would share the cost of recreational improvements at the boat dock and camping areas. These improvements would include such things as putting water to the boat dock, building shelters, constructing hiking trails, etc. Mayor Mullins stressed the approval for this application would not commit the City in any way toward accepting the grant and putting up the shafing monies. The Council, on a motion by Virgil Alcorn, and second by Jimmy Robinson, approved the proposal unanimously.

The condition of the county's trash dumps, in and around Mt. Vernon, was also brought before the Council by Councilman Parrett. Mr. Parrett told the Council that these dump sites were in terrible condition and he personally felt that unless the County were willing to take better care of these sites then perhaps the City should re-examine their pledge to contribute \$2,000 toward this project.

Councilman Chester Heland expressed the opinion that perhaps Maggy General Hancock's office should be written for an opinion concerning the legality of this contribution and also the \$2,000 contribution to the ambulance service. No action was taken on this question other than a direction to City Clerk Erel Cromer to write a letter to the County from the Council expressing the sentiments of the Council concerning better upkeep of the dump sites.

Area Church News

HIGH ATTENDANCE DAY IN SUNDAY SCHOOL.

Southern Baptist Churches have a goal for five million in Sunday School next Sunday, November 17th, and each church is asked to promote high attendance day and report the number present to the missionary from 3 to 4 p.m. this same date, the 17th.

MT. ZION BAPTIST CHURCH
Rev. Joe Mobley, Pastor

Sunday Services: Sunday School, 10 a.m.; Worship Service, 11 a.m.; Training Union, 6 p.m.; and Evening Worship 7 p.m.

On Wednesday, Prayer Meeting at 7 p.m.; on Thursday, Visitation, 7 p.m.; and on Saturday, Prayer Meeting at 7 p.m.

Everyone welcome.

CARD OF THANKS....

The family of Bert Allen 4237 expresses their sincere and heartfelt thanks to all the people who offered their sympathy in so many different ways at our time of loss. A special thank you to all who brought food to the house, and to the Cromer family that sang so beautifully and the Rev. Virgil Mullins of London and Rev. Roland Cornelius of Mt. Vernon.

May God bless all those who came or sent such beautiful flowers out of respect for our father and husband. Also a special thank you to Buddy and Shirley Cox of Cox's Funeral Home.

The Wife and Children of Bert Allen
PHARMACY BOARD ANNOUNCES EXAMS

J. H. Voige, executive secretary of the Board of Pharmacy, has announced that examinations for pharmaceutical interns and recent graduate students are scheduled for January 13, 14, and 15. These comprehensive exams will be both written and oral and also will include a demonstration of laboratory competence.

The Board has been engaged in improving and updating their existing regulations as required by legislation passed in the last General Assembly.

The next Board meeting will be on Wednesday, December 4, 9:30 a.m. at the Frankfort office.

Participating in SE Kentucky Health Professions Scholarship Program.....

Two Rockcastle County natives are participating in the Southeastern Kentucky Health Professions Scholarship Program being conducted at the University of Kentucky Medical Center and the University of Louisville. They are: E. Howard Saylor, son of Mr. and Mrs. Clesion Saylor of Broadhead and Jerry L. Poynter, son of Mr. and Mrs. Perry Lee Poynter of Livingston.

Mr. Saylor is studying to be a pharmacist at the UK College of Pharmacy. He attended Cumberland College following graduation from Mt. Vernon High School.

After graduation from Eastern Kentucky University, Mr. Poynter enrolled in the University of Louisville School of Dentistry. He is a graduate of Livingston High School.



G. I have heard that cancer has certain "warning signals." What are these signals and what should a person do if one is spotted?

A. The seven signs of cancer as described by the American Cancer Society are: 1) A change in bowel or bladder habits. 2) A sore that does not heal. 3) Unusual bleeding

- or discharge. 4) A thickening or lump in a breast or elsewhere. 5) Indigestion or difficulty in swallowing. 6) Obvious change in a wart or mole. 7) Nagging cough or hoarseness. Pain is often a late symptom of cancer, so medical

advice should be sought promptly if a sign is spotted even if nothing actually hurts. With early detection and prompt treatment, cancer is curable. If it's not cancer, a trip to the doctor is the best way to restore peace of mind.



At one time, eggs were so plentiful, it was considered wasteful to pay for them!

SUPERIOR FOOD MARKET

3

US 25 South MT. VERNON Tip Reppert, Part Owner & Manager

STUDOL OF QUALITY

ROUND STEAK

1.29

U.S. CHOICE LB

| | | | | | | | | | | | | | |
|---|---|---|---|--|--|---|---|----------------------------------|----------------------------------|---------------------------------|---|---|---------------------------------|
| PRICES EFFECTIVE NOV. 14 THRU NOV. 17 | <table border="1" style="width: 100%; border-collapse: collapse;"> <tr> <td style="padding: 5px;">BONELESS ROUND STEAK U.S. CHOICE</td> <td style="text-align: right; padding: 5px;">\$1.39 LB</td> </tr> <tr> <td style="padding: 5px;">SIRLOIN TIP ROAST U.S. CHOICE</td> <td style="text-align: right; padding: 5px;">\$1.49 LB</td> </tr> </table> | BONELESS ROUND STEAK U.S. CHOICE | \$1.39 LB | SIRLOIN TIP ROAST U.S. CHOICE | \$1.49 LB | | | | | | | | |
| BONELESS ROUND STEAK U.S. CHOICE | \$1.39 LB | | | | | | | | | | | | |
| SIRLOIN TIP ROAST U.S. CHOICE | \$1.49 LB | | | | | | | | | | | | |
| We Welcome Food Stamp Customers. | <table border="1" style="width: 100%; border-collapse: collapse;"> <tr> <td style="text-align: center; padding: 5px;"> FISCHER'S SMOKED PIGNICS </td> <td style="text-align: right; padding: 5px;"> <h1 style="margin: 0;">69c</h1> <p style="font-size: 8px;">LB</p> </td> </tr> </table> | FISCHER'S SMOKED PIGNICS | <h1 style="margin: 0;">69c</h1> <p style="font-size: 8px;">LB</p> | | | | | | | | | | |
| FISCHER'S SMOKED PIGNICS | <h1 style="margin: 0;">69c</h1> <p style="font-size: 8px;">LB</p> | | | | | | | | | | | | |
| <table border="1" style="width: 100%; border-collapse: collapse;"> <tr> <td style="padding: 5px;"> SAUSAGE FISCHER'S MELLWOOD MORNING </td> <td style="text-align: right; padding: 5px;"> <h1 style="margin: 0;">\$1.79</h1> <p style="font-size: 8px;">2 LB BAG</p> </td> </tr> </table> | SAUSAGE FISCHER'S MELLWOOD MORNING | <h1 style="margin: 0;">\$1.79</h1> <p style="font-size: 8px;">2 LB BAG</p> | <table border="1" style="width: 100%; border-collapse: collapse;"> <tr> <td style="padding: 5px;"> FISCHER'S WIENERS ALL MEAT </td> <td style="text-align: right; padding: 5px;"> <h1 style="margin: 0;">65c</h1> <p style="font-size: 8px;">12 OZ PKG</p> </td> </tr> </table> | FISCHER'S WIENERS ALL MEAT | <h1 style="margin: 0;">65c</h1> <p style="font-size: 8px;">12 OZ PKG</p> | | | | | | | | |
| SAUSAGE FISCHER'S MELLWOOD MORNING | <h1 style="margin: 0;">\$1.79</h1> <p style="font-size: 8px;">2 LB BAG</p> | | | | | | | | | | | | |
| FISCHER'S WIENERS ALL MEAT | <h1 style="margin: 0;">65c</h1> <p style="font-size: 8px;">12 OZ PKG</p> | | | | | | | | | | | | |
| <table border="1" style="width: 100%; border-collapse: collapse;"> <tr> <td style="padding: 5px;"> HY-TOP MILK GRADE A VITAMIN D </td> <td style="text-align: right; padding: 5px;"> <h1 style="margin: 0;">\$1.59</h1> <p style="font-size: 8px;">gal.</p> </td> </tr> </table> | HY-TOP MILK GRADE A VITAMIN D | <h1 style="margin: 0;">\$1.59</h1> <p style="font-size: 8px;">gal.</p> | <table border="1" style="width: 100%; border-collapse: collapse;"> <tr> <td style="padding: 5px;"> NABISCO COOKIE SALE! CHOC PINWHEELS 12 OZ </td> <td style="text-align: right; padding: 5px;"> <h1 style="margin: 0;">85c</h1> </td> </tr> <tr> <td style="padding: 5px;"> IDEAL PEANUT BARS </td> <td style="padding: 5px;"></td> </tr> </table> | NABISCO COOKIE SALE! CHOC PINWHEELS 12 OZ | <h1 style="margin: 0;">85c</h1> | IDEAL PEANUT BARS | | | | | | | |
| HY-TOP MILK GRADE A VITAMIN D | <h1 style="margin: 0;">\$1.59</h1> <p style="font-size: 8px;">gal.</p> | | | | | | | | | | | | |
| NABISCO COOKIE SALE! CHOC PINWHEELS 12 OZ | <h1 style="margin: 0;">85c</h1> | | | | | | | | | | | | |
| IDEAL PEANUT BARS | | | | | | | | | | | | | |
| <table border="1" style="width: 100%; border-collapse: collapse;"> <tr> <td style="padding: 5px;"> GRADE A 2% Corina TOMATO SAUCE </td> <td style="text-align: right; padding: 5px;"> <h1 style="margin: 0;">4/59c</h1> <p style="font-size: 8px;">8 OZ CAN</p> </td> </tr> </table> | GRADE A 2% Corina TOMATO SAUCE | <h1 style="margin: 0;">4/59c</h1> <p style="font-size: 8px;">8 OZ CAN</p> | <table border="1" style="width: 100%; border-collapse: collapse;"> <tr> <td style="padding: 5px;"> TRI-VALLEY PEACHES NO. 2 1/2 GANS SLICED OR HALVES </td> <td style="text-align: right; padding: 5px;"> <h1 style="margin: 0;">2/99c</h1> </td> </tr> </table> | TRI-VALLEY PEACHES NO. 2 1/2 GANS SLICED OR HALVES | <h1 style="margin: 0;">2/99c</h1> | | | | | | | | |
| GRADE A 2% Corina TOMATO SAUCE | <h1 style="margin: 0;">4/59c</h1> <p style="font-size: 8px;">8 OZ CAN</p> | | | | | | | | | | | | |
| TRI-VALLEY PEACHES NO. 2 1/2 GANS SLICED OR HALVES | <h1 style="margin: 0;">2/99c</h1> | | | | | | | | | | | | |
| <table border="1" style="width: 100%; border-collapse: collapse;"> <tr> <td style="padding: 5px;"> COOKIES 3 for \$1.00 </td> <td style="padding: 5px;"> <table border="1" style="width: 100%; border-collapse: collapse;"> <tr> <td style="padding: 5px;"> POTATOES U.S. NO. 1 WHITE 20 LB BAG </td> <td style="text-align: right; padding: 5px;"> <h1 style="margin: 0;">\$1.39</h1> </td> </tr> <tr> <td style="padding: 5px;"> CORN FRESH 5 EARS FOR </td> <td style="text-align: right; padding: 5px;"> <h1 style="margin: 0;">49c</h1> </td> </tr> <tr> <td style="padding: 5px;"> DELICIOUS APPLES RED OR GOLDEN 3 LB BAG </td> <td style="text-align: right; padding: 5px;"> <h1 style="margin: 0;">59c</h1> </td> </tr> <tr> <td style="padding: 5px;"> ONIONS YELLOW 3 LB BAG </td> <td style="text-align: right; padding: 5px;"> <h1 style="margin: 0;">39c</h1> </td> </tr> </table> </td> </tr> </table> | COOKIES 3 for \$1.00 | <table border="1" style="width: 100%; border-collapse: collapse;"> <tr> <td style="padding: 5px;"> POTATOES U.S. NO. 1 WHITE 20 LB BAG </td> <td style="text-align: right; padding: 5px;"> <h1 style="margin: 0;">\$1.39</h1> </td> </tr> <tr> <td style="padding: 5px;"> CORN FRESH 5 EARS FOR </td> <td style="text-align: right; padding: 5px;"> <h1 style="margin: 0;">49c</h1> </td> </tr> <tr> <td style="padding: 5px;"> DELICIOUS APPLES RED OR GOLDEN 3 LB BAG </td> <td style="text-align: right; padding: 5px;"> <h1 style="margin: 0;">59c</h1> </td> </tr> <tr> <td style="padding: 5px;"> ONIONS YELLOW 3 LB BAG </td> <td style="text-align: right; padding: 5px;"> <h1 style="margin: 0;">39c</h1> </td> </tr> </table> | POTATOES U.S. NO. 1 WHITE 20 LB BAG | <h1 style="margin: 0;">\$1.39</h1> | CORN FRESH 5 EARS FOR | <h1 style="margin: 0;">49c</h1> | DELICIOUS APPLES RED OR GOLDEN 3 LB BAG | <h1 style="margin: 0;">59c</h1> | ONIONS YELLOW 3 LB BAG | <h1 style="margin: 0;">39c</h1> | <table border="1" style="width: 100%; border-collapse: collapse;"> <tr> <td style="padding: 5px;"> VAN CAMP'S CHUNK LIGHT TUNA 1/2 SIZE CANS </td> <td style="text-align: right; padding: 5px;"> <h1 style="margin: 0;">49c</h1> </td> </tr> </table> | VAN CAMP'S CHUNK LIGHT TUNA 1/2 SIZE CANS | <h1 style="margin: 0;">49c</h1> |
| COOKIES 3 for \$1.00 | <table border="1" style="width: 100%; border-collapse: collapse;"> <tr> <td style="padding: 5px;"> POTATOES U.S. NO. 1 WHITE 20 LB BAG </td> <td style="text-align: right; padding: 5px;"> <h1 style="margin: 0;">\$1.39</h1> </td> </tr> <tr> <td style="padding: 5px;"> CORN FRESH 5 EARS FOR </td> <td style="text-align: right; padding: 5px;"> <h1 style="margin: 0;">49c</h1> </td> </tr> <tr> <td style="padding: 5px;"> DELICIOUS APPLES RED OR GOLDEN 3 LB BAG </td> <td style="text-align: right; padding: 5px;"> <h1 style="margin: 0;">59c</h1> </td> </tr> <tr> <td style="padding: 5px;"> ONIONS YELLOW 3 LB BAG </td> <td style="text-align: right; padding: 5px;"> <h1 style="margin: 0;">39c</h1> </td> </tr> </table> | POTATOES U.S. NO. 1 WHITE 20 LB BAG | <h1 style="margin: 0;">\$1.39</h1> | CORN FRESH 5 EARS FOR | <h1 style="margin: 0;">49c</h1> | DELICIOUS APPLES RED OR GOLDEN 3 LB BAG | <h1 style="margin: 0;">59c</h1> | ONIONS YELLOW 3 LB BAG | <h1 style="margin: 0;">39c</h1> | | | | |
| POTATOES U.S. NO. 1 WHITE 20 LB BAG | <h1 style="margin: 0;">\$1.39</h1> | | | | | | | | | | | | |
| CORN FRESH 5 EARS FOR | <h1 style="margin: 0;">49c</h1> | | | | | | | | | | | | |
| DELICIOUS APPLES RED OR GOLDEN 3 LB BAG | <h1 style="margin: 0;">59c</h1> | | | | | | | | | | | | |
| ONIONS YELLOW 3 LB BAG | <h1 style="margin: 0;">39c</h1> | | | | | | | | | | | | |
| VAN CAMP'S CHUNK LIGHT TUNA 1/2 SIZE CANS | <h1 style="margin: 0;">49c</h1> | | | | | | | | | | | | |
| <table border="1" style="width: 100%; border-collapse: collapse;"> <tr> <td style="padding: 5px;"> PREMIUM CRACKERS POUND BOX </td> <td style="text-align: right; padding: 5px;"> <h1 style="margin: 0;">59c</h1> </td> </tr> </table> | PREMIUM CRACKERS POUND BOX | <h1 style="margin: 0;">59c</h1> | <table border="1" style="width: 100%; border-collapse: collapse;"> <tr> <td style="padding: 5px;"> PILLSBURY FLOUR PLAIN OR SELF-RISING </td> <td style="text-align: right; padding: 5px;"> <h1 style="margin: 0;">69c</h1> <p style="font-size: 8px;">5 LB BAG</p> </td> </tr> </table> | PILLSBURY FLOUR PLAIN OR SELF-RISING | <h1 style="margin: 0;">69c</h1> <p style="font-size: 8px;">5 LB BAG</p> | | | | | | | | |
| PREMIUM CRACKERS POUND BOX | <h1 style="margin: 0;">59c</h1> | | | | | | | | | | | | |
| PILLSBURY FLOUR PLAIN OR SELF-RISING | <h1 style="margin: 0;">69c</h1> <p style="font-size: 8px;">5 LB BAG</p> | | | | | | | | | | | | |
| <table border="1" style="width: 100%; border-collapse: collapse;"> <tr> <td style="padding: 5px;"> VALLEYDALE LARD 6 LB BUCKET </td> <td style="text-align: right; padding: 5px;"> <h1 style="margin: 0;">3.99</h1> </td> </tr> </table> | VALLEYDALE LARD 6 LB BUCKET | <h1 style="margin: 0;">3.99</h1> | <table border="1" style="width: 100%; border-collapse: collapse;"> <tr> <td style="padding: 5px;"> MAXWELL HOUSE COFFEE POUND TIN </td> <td style="text-align: right; padding: 5px;"> <h1 style="margin: 0;">99c</h1> </td> </tr> </table> | MAXWELL HOUSE COFFEE POUND TIN | <h1 style="margin: 0;">99c</h1> | | | | | | | | |
| VALLEYDALE LARD 6 LB BUCKET | <h1 style="margin: 0;">3.99</h1> | | | | | | | | | | | | |
| MAXWELL HOUSE COFFEE POUND TIN | <h1 style="margin: 0;">99c</h1> | | | | | | | | | | | | |

Limit 1 with order

Russell Stover

CANDIES

oh so good!

ASSORTED CHOCOLATES
1 lb. \$2.60 2 lbs. \$5.15

Young's Pharmacy

Main Street - Mt. Vernon

SALES POSITION

Offering:

- Guaranteed Salary - 1st 90 Days
- New Car
- Paid Vacation
- Company Benefits
- Opportunity Unlimited

Qualifications:

- Desire For Success
- Apply In Person

Britton Chevrolet-Olds, Inc.

U.S. 25 North, Berea, Ky.
Between 1:00 - 6:00 P.M.

Emergency

24-HOUR COMPREHENSIVE CARE SERVICE

(Mental Health-Mental Retardation)

LOCATION: Main Street - Mt. Vernon

Office Hours: Monday - Friday, 8-4:30

PHONE: 256-2129

Down On The Farm



Members of the PCA Advisory Council and other guests met Friday night, October 25th at the home of Mr. and Mrs. Roy Brown at Quail.

By: Roy G. Brown
Assistant Vice President
Cumberland PCA

In the above photo are some of the members and guests enjoying the meal.

The Cumberland Production Credit Association's Advisory Council met at the home of Mr. and Mrs. Roy G. Brown on Friday, October 25, 1974 for a dinner and business meeting. Those present were Mr. and Mrs. W. E. Proctor, Mr. and Mrs. H. Lee Durham, Mr. and Mrs. Kenneth York, Mr. and Mrs. Sammy Ford, Mr. and Mrs. John Houston, Mr. and Mrs. Kenneth Stewart, Mr. and Mrs. Bill Norton, Mr. and Mrs. Tommy H. Mink, Wayne Stewart, Mr. and Mrs. J. B. Dailey, Mr. and Mrs. Jerry Hansel and son, and Mr. and

Mrs. Douglas Edwards. Special guests who attended from Somerset were Mr. and Mrs. Robert Durham and son, Mr. and Mrs. D. C. Sherman, Mr. and Mrs. Leonard Colyer, and Mr. Barkley Colson. Guests from Mt. Vernon were Mrs. Perla Anderkin and daughter Sara. Special guest from Federal Intermediate Credit Bank of Louisville was Mr. Martin Bonar, Assistant to the President.

Mr. D. C. Sherman, President of Cumberland Production Credit Association of Somerset, presented six members with a ten-year plaque in appreciation of their dedication and service to the local PCA Office. They were Kenneth G. Stewart, John Houston, H. Lee Durham, W. E. Proctor, Wayne Stewart and Clay Colson.

The Week At Livingston

By: Mrs. Eva Black

Mr. and Mrs. W. H. Clark spent part of last week with their son Mr. and Mrs. Raymond Clark in Loveland, Ohio.

Dr. Hazel Noble of Mt. Vernon spent Thursday afternoon with Mrs. Bertie Rice. Mr. and Mrs. Herbert Moore visited his father W. R. Moore and his sister Miss Carrie Moore Saturday. They were returning to their home in Covington after a three-weeks vacation in Florida.

Misses Josephine and Francis Dickerson were in London Saturday on business. Ray Scoggins of Lexington was in town Saturday.

Mr. and Mrs. Walter Mason of Brush Creek visited Mr. and Mrs. M. H. Clark Saturday. Ronald Argenbright of Cincinnati spent the weekend with his uncle Mr. and Mrs. Arthur Argenbright.

Mr. and Mrs. Jimmy Everole and Mrs. Guy Bullock were in Knoxville, Tennessee Sunday to visit Mrs. Hobert Everole who underwent surgery there Friday.

Miss Nell Nicoley of Springfield, Ohio was here to attend O.E.S. Thursday night and spent the weekend with Mr. and Mrs. C. L. Mounds.

Otis Mobley is ill at this writing.

Mr. and Mrs. Clyde

Fordyce were in Corbin last week.

M. H. Clark and John S. Hall were in Loveland, Ohio on business last Friday.

Mr. and Mrs. G. L. Mounds visited her brothers in Indianapolis, Scottsburg and Salem, Indiana last week.

Mr. and Mrs. Archie Bales were in Somerset and Nancy Saturday on business.

Mr. and Mrs. Elmer Halcomb of Frankfort visited his mother Mrs. Pearl Halcomb Saturday.

Mr. and Mrs. Jewell Boas of Cincinnati visited her mother Mrs. Miriam King last week.

Mr. and Mrs. Harry Gilford, their son Harry, Jr. and daughter Evelyn of Gate City, Florida were all recent visitors of Will Gilford and Mrs. Jean Gilford.

Mr. and Mrs. Michael French and three children of Cincinnati spent last weekend with her parents Mr. and Mrs. Willard Stallworth and Leonard.

Bob Wilson is a patient in Rockcastle County Hospital. Mrs. Fanny McCoy visited Mrs. Pearl Rice Friday evening.

Mrs. Carl Moore and Mrs. Moore of East Bernstadt and Mrs. Mrs. P. L. Poynter visited Mr. and Mrs. Willard Stallworth Sunday evening.

Mrs. Phoebe Bryant is in the Rockcastle County Hospital in serious condition.

Mrs. Pearl Bales of London visited her daughter Mrs. Bertie Rice and Mrs. Flora Baker Sunday.

Mrs. Hershel Nicoley is on the sick list.

Mrs. Lucy Cunnigim and children of Covington visited her sister Mrs. Billy Burdine and family last week.

O.E.S. met and installed officers for the coming year. A good number was present.

Mr. and Mrs. had the following visitors over the weekend, Mr. and Mrs. Lenzo Watson and son Ray and granddaughter Angie of New Town, Ohio, Mr. and Mrs. Eugene Taylor and sons of Richmond, Mr. and Mrs. Mitchell Taylor of Lexington, Mrs. Jane Taylor of Latonia, Indiana and Mr. and Mrs. Garrett Taylor of Livingston.

..Hospital Report...

-Admitted-
Tina Robinson, Orlando;
Billy Burdine, Livingston; Ro-

bert Cummins, Mt. Vernon; George Payne, Mt. Vernon; Torsha Lear, Mt. Vernon; Osborne Campbell, Mt. Vernon; Lois Reams, Mt. Vernon; Wanda Navarre, Mt. Vernon; Berneice Cromer, Mt. Vernon; Linda Sowler, Mt. Vernon; Richard Lawrence, Brodhead; Ramona Carpenter, Livingston; Margaret Whitaker, Mt. Vernon; Donald Hellard, Mt. Vernon; Jeffrey Payne, Mt. Vernon; Lula Felts, Mt. Vernon; James Mary McCracken, Barva; Sarah DeBorde, Brodhead; Phoebe Howard, Livingston; Zula Drew, Mt. Vernon; Robert Ford, Mt. Vernon; Billie Mae, Orlando; Oscar Delaney, Brodhead; Mañala Falin, Mt. Vernon; Melberta Robbins, Brodhead; Mary McCracken, Barva; Sarah DeBorde, Brodhead; Rev. Alan Mink, Mt. Vernon; Janice Denney, Brodhead; Vera Allen, Mt. Vernon; Woodrow Cromer, Brodhead; Sherri L. Prewitt, Mt. Vernon.

Released-
George Parrett, Mink; Dora Martin, Walker Norton, Homer Scott, Orville Stevens, Johnny Allen, Billy Burdine, Vera Mahaley, Vivian Pittman, Susan Morgan, Bob Cummins, Melvin Cox, Barbara Graves, William Brown, Bernes Cromer, Dill Sizemore, Torgal Lear, Connie Payne, Tina Robinson, Henry Parrott, Zula

ard Lawrence, Bertha A. Mink, Lois Reams, Wanda Navarre, Emma Vaughn, Susan DeBorde, Robert Ford, Donald Hellard, Ramona Carpenter.

..County Statistics..

..Deaths Recorded..

Boyd and Margaret Cates, real property located on town of Caper Creek, to Chester Copeland and Edward C. Wuskell. Tax \$7.00.

Ester Fullerville, and W. M. Allen, real property in City of Livingston, to Sarah Louise Setser. Tax \$2.00.

Emma P. and Arthur Shubert, real property in town of Brodhead, to Rose C. Bullock, Paul E. Doyle, Larry W. Doyle. Tax \$5.00.

Clarence and Louise Carter, lots lying and being in Adams Addition of Elmwood Cemetery, to Rev. Willie Griffin. Tax \$3.50.

Richard and Patricia Smith, real property located in Rockcastle County, to Russell Smith. Tax \$1.00.

Johnny and Margie Wilcox, Mondell D. and Bernard Hall, real property located in Rockcastle County, to Mary T. Gregory, Lydia A. Roberts, Ann Brown Matheny. Tax \$14.50.

Kenneth and Ethel E. Bryant, real property on waters

of Negro Creek, to Lena Toler. James Troy Foley, \$50.00 and costs.

Codie Parrett, real property located in Rockcastle County, to Louise Kirby. Tax \$3.00.

Operating Motor Vehicle While Under Influence of Intoxicants, \$100.00 and costs - William Fitzpatrick, Drinking Beer on Highway, \$10.00 and costs - Kenneth Begley and David Waldo Brown, Possession of Beer by Minor, \$10.00 - Dale Thompson, Transporting Alcoholic Beverages Through Local Option Territory for Purpose of Resale - Mike Thompson, \$50.00 and costs and 30 days in jail (30 days probated) and Arnold Wyatt, \$50.00 costs and 30 days in jail (30 days probated).

..County Court..
Operating Motor Vehicle - Richard Leonard Jennings and While Under Influence of Sue H. Flynn.
Intoxicants, Charge Amended to \$10.00 and costs Walker Barnes, \$50.00 and costs; James Woodrow Norton, Woodson P. Jones, \$100.00 and costs; and Sandlin, Travis Neal Forsythe,

Spending, \$10.00 and costs

Operating Motor Vehicle - Richard Leonard Jennings and While Under Influence of Sue H. Flynn.
Intoxicants, Charge Amended to \$10.00 and costs Walker Barnes, \$50.00 and costs; James Woodrow Norton, Woodson P. Jones, \$100.00 and costs; and Sandlin, Travis Neal Forsythe,

AUCTION

Of
Mr. and Mrs. C. B. Eastham's
FARM MACHINERY
And
PERSONAL PROPERTY
SATURDAY, NOVEMBER 16
10:30 A.M.

Located - Just off Highway 70, Nine (9) Miles Southwest of Mt. Vernon and Eight (8) Miles Southeast of Brodhead. Watch For Auction Signs Leading To The Sale.

Mr. Eastham is retiring from farming and has authorized our firm to sell his Machinery and Personal Property at Public Auction.

FARM MACHINERY - 1953 Ferguson 30 tractor, Ford 2-bottom 14" plow, 12" posthole digger, cultipacker, tractor hitch, Ford 501 mowing machine, 6 ft., power take-off hitch, manure loader, boom, disc, cultivator, manure spreader - Ferguson, tin roofing, dump trailer, rubber tire wagon with steel bed, and wagon.

PERSONAL PROPERTY - Coldspot deep freeze, Westinghouse refrigerator, GE electric range, GE refrigerator, Admiral TV, living room suite, Easy washing machine, kitchen table, small oil heater, camera, breakfast set - six chairs, curtain stretcher, coil springs, rugs, studio couch and chair, piano, three metal windings, tire chains, plus other miscellaneous items.

TERMS: Cash.
For additional information, contact Mr. and Mrs. C. B. Eastham at 758-8685, or

Ford Realty & Auction Co.

CROSSWORD PUZZLE

| | | | | | | | | | | | | | | | | | | | | | | | | | | | | | | | | | | | | | | | | | | | | | | | | | | | | | | | | | | | |
|--------|---|---|---|---|---|---|---|---|----|----|----|----|----|-------------|----|--------|----|----|----|----|----|----|----|----|----|----|----|----|----|----|----|----|----|----|----|----|----|----|----|----|----|----|----|----|----|----|----|----|----|----|----|----|----|----|----|----|----|----|----|
| ACROSS | | | | | | | | | | | | | 41 | Girl's name | 11 | Number | | | | | | | | | | | | | | | | | | | | | | | | | | | | | | | | | | | | | | | | | | | |
| 1 | 2 | 3 | 4 | 5 | 6 | 7 | 8 | 9 | 10 | 11 | 12 | 13 | 14 | 15 | 16 | 17 | 18 | 19 | 20 | 21 | 22 | 23 | 24 | 25 | 26 | 27 | 28 | 29 | 30 | 31 | 32 | 33 | 34 | 35 | 36 | 37 | 38 | 39 | 40 | 42 | 43 | 44 | 45 | 46 | 47 | 48 | 49 | 50 | 51 | 52 | 53 | 54 | 55 | 56 | 57 | 58 | 59 | 60 | |
| 1 | 2 | 3 | 4 | 5 | 6 | 7 | 8 | 9 | 10 | 11 | 12 | 13 | 14 | 15 | 16 | 17 | 18 | 19 | 20 | 21 | 22 | 23 | 24 | 25 | 26 | 27 | 28 | 29 | 30 | 31 | 32 | 33 | 34 | 35 | 36 | 37 | 38 | 39 | 40 | 41 | 42 | 43 | 44 | 45 | 46 | 47 | 48 | 49 | 50 | 51 | 52 | 53 | 54 | 55 | 56 | 57 | 58 | 59 | 60 |

AUCTION SALE

LOWELL AND SUE ACTON'S 65 ACRE FARM.

SAT., NOV. 23rd AT 10 A.M.

LOCATION - About 13 miles North of Somerset Turn off Highway 39 at Deatons Store on to The Hazeldale Road and go about 3 miles. (Watch for Signs).

LAND - 65 Acres more or less all good tendable tractor land except 5 acres of woods. Basic Tobacco poundage for 1974 is 1,525 pounds. Corn Base is 8.4 acres.

IMPROVEMENTS - New all electric Brick Home, Has 3 bedrooms, kitchen and dining room combination, living room, and bath. Built-in kitchen cabinets, and full basement. Fully insulated and has storm doors and windows. Home is not completely finished. Other buildings include 32 x 50 foot tobacco barn, 50 x 40 foot stock barn, and garage. New 16 x 35 foot upright silo with dome.

WATER - Good spring furnishes water for home. 2 ponds supply livestock water.

Reason for sale - Mr. & Mrs. Acton have bought a Larger farm.

TERMS - 20% Sale Day Balance with Deed in 30 Days. Possession with deed.

Any Announcement Made Sale Day Has Precedence over Written Material.

Any Announcement Made Sale Day Has Precedence over Written Material.

COL. AUDIE PRICE, JR.

Real Estate Broker and Auctioneer
R-1 Eubank
Not Responsible for Accidents

GOOD YEAR

SNOW PAIRS

FOR \$39

Size A78-13
blackwall plus
\$.75 per tire
F.E.T. no trade
rebated.

SUBURBANITE POLYESTER
Multi-angle cleats... for real grip-and-go traction • Deep center, shoulder grooves... built to bite deep • Four bias piles of triple-tempered polyester cord • Whitewalls slightly higher in most sizes

| Shoulder Treadless | Price | Plus F.E.T. per tire no trade rebated |
|--------------------|------------|---------------------------------------|
| 6.00-12 | 2 for \$83 | \$1.52 |
| 6.50-13 | 2 for \$46 | \$1.40 |
| 6.75-13 | 2 for \$59 | \$1.78 |
| 6.75-14 | 2 for \$54 | \$1.59 |
| 6.90-14 | 2 for \$49 | \$1.55 |
| 6.90-15 | 2 for \$57 | \$1.67 |
| 6.75-14 | 2 for \$54 | \$2.07 |
| 6.75-14 | 2 for \$59 | \$2.15 |
| 6.75-14 | 2 for \$61 | \$2.24 |
| 6.75-14 | 2 for \$64 | \$2.41 |
| 6.75-14 | 2 for \$67 | \$2.56 |
| 6.75-14 | 2 for \$72 | \$2.77 |
| 6.90-15 | 2 for \$59 | \$1.78 |
| 6.90-15 | 2 for \$67 | \$1.99 |
| 6.75-13 | 2 for \$68 | \$2.42 |
| 6.75-13 | 2 for \$74 | \$2.63 |
| 6.75-13 | 2 for \$74 | \$2.82 |

JERRY'S TIRE CENTER
Mt. Vernon
R.H. & Jerry Hamm
256-2122



The Brothhead Elementary School Beta Club is now organized for the year under the sponsorship of Garland Cummins. Members of the Club, not in order of the above picture, are: Tommy Anglin, Susie Baldwin, Vicki Benge, Darlene Brown, Marilyn Brown, Mary Jo Brown, Kathy Bullock, Mary Ann Busell, Tracy Gabbard,

Jennifer Gentry, Teresa Glovak, Jeffrey Hammonds, Virginia Hopkins, Kathy Hurley, Janice Jones, Jill Martin, John Masters, Pamela McClure, Mark McFerron, Faye Miller, Mary Miller, Penny Mink, Audrey Morgan, Kelli Payne, Rebecca Pingleton, Randall Robbins, Eddie Thompson and Harold Whitaker.

BRINDLERIDGE

There was good attendance for church over the weekend.

We're glad to report Mrs. Minnie Mink is improving at home after spending several days in the hospital. She had several visitors the past few days. Mr. and Mrs. Gilbert Smith of Renfro Valley visited them Sunday afternoon.

Mr. and Mrs. Arvel Burdette were Sunday dinner guests of Mr. and Mrs. Willis Coffey and boys.

Shawn Burdette, small son of Mr. and Mrs. Glenn Burdette spent a few days in Somerset Hospital with pneumonia.

Sherri, Vicky and Ricky Burdette spent Sunday night with Mr. and Mrs. Bill Cameron and boys.

Tommy Burdette, Harold

Mink, Edward Burdette and Brian spent a couple of nights in Richmond, Indiana the past week.

Mrs. Pearl Burdette, Mike and Chris, spent Saturday night with her mother Mrs. Lydia Livesey and family of Cincinnati.

Mr. and Mrs. Danny Mullins, Jr. and family of Ohio visited Mr. and Mrs. Danny Mullins, Sr. over the weekend.

We were very glad to see Danny Mullins at church Sunday after being sick and unable to attend your several months.

Jelleta Burdette spent Sunday with Lavada Adams.

Bobby Tolle spent Friday night with Jeffery Burdette.

Mrs. Vernon Sowder and daughter, Mr. and Mrs. George Wyatt and daughters visited

their parents, Mr. and Mrs. W. L. Coffey and daughters.

QUAIL

Mr. and Mrs. Lee Otis Hubble of Louisville were recent guests of Mr. and Mrs. Victor Todd, also Mrs. Elzada Burton and Mr. and Mrs. Victor Otis Todd.

Our deep sympathy is extended to the family of Floyd Bullock, in the loss of their loved one.

Mr. and Mrs. Victor Todd and Mr. and Mrs. Lee Otis Hubble and Elzada Burton visited Mr. and Mrs. Casper Owens Friday.

Mrs. Owens just returned home from the hospital and is slowly improving. We wish her a speedy recovery.

Mrs. Josephine Burdette of Indiana spent the weekend with

her mother Mrs. Bertie Taylor. Mr. and Mrs. Walter Barker and family of Ohio recently visited Mr. and Mrs. Willie Taylor.

Mrs. Eugene Albright spent last week in Ohio with Mr. and Mrs. Charlie Cupp and Jeffrey and other relatives. She was accompanied home by Mr. and Mrs. Jimmy Cupp, Teresa and Jason, who spent the weekend.

Mrs. Madge Hasty was Sunday dinner guest of Mr. and Mrs. Chester Noe at Shopville.

Sunday visitors of Mrs. Willie Todd were Mr. and Mrs.

LES CHEERLEADERS - Glenn Robinson, Tammy Nicely, Donna Smith, Lisa Waddle, Connie Ballinger and Stephanie Tiller.

Ronald Rogers and Jill and Mr. and Mrs. Wayne Todd. Mr. and Mrs. Charlie B. Owens visited Mr. and Mrs. John Owens Tuesday afternoon.

Mr. and Mrs. Benton Owens spent a few days in Ohio with their children Mr. and Mrs. Estil J. Owens and family and Mr. and Mrs. Charlie N. Owens and Shawn last week.

W. A. Owens and Mark of Ohio spent a few days with his parents Mr. and Mrs. Charlie B. Owens last week.

Mr. and Mrs. Kenneth Bullock and Mike visited Mr. and Mrs. Delmus Bullock and sons Friday evening.

Verna Lewis visited Mr. and Mrs. Casper G. Owens Friday afternoon.

Mr. and Mrs. Woodrow Brown of Ohio spent the weekend with Mr. and Mrs. Estil Gentry.

Mrs. Casper G. Owens returned home Thursday from Somerset City Hospital.

During the week visitors of Willie Logsdon and Mrs. Delta Brown were Mr. and Mrs. Gene Jackson of Indiana, Mr. and

Mrs. Andrew Herrin, Elsie Herrin, Mrs. George Hamm and Mrs. Glenn Hasty.

Mr. and Mrs. Steve Dyer and Amy of Berea visited her parents Mr. and Mrs. Robert Hayes and family.

Sunday visitors of Mr. and Mrs. Robert Hayes and family were Mr. and Mrs. Butch Carl and family and Mr. and Mrs. Steve Tracy of Versailles and Mr. and Mrs. Donnie Whitaker and family.

Mrs. Uls Gibson and family of Danville visited her sister Mr. and Mrs. Rolla Perry Monday morning.

Mr. and Mrs. Hubert Adams visited Mr. and Mrs. Rolla Perry Monday evening.

Mrs. Beth Brown and Mrs. Lovanna Cash visited Mrs. Mary Scott Wednesday afternoon.

Mrs. Shirley Caldwell, Mrs. Carl Caldwell visited Mr. and Mrs. Marshall Smothers at Crab Orchard Thursday.

CARD OF THANKS

The family of Warren M. Kimbro wishes to take this

opportunity to express our deep gratitude for the many kindnesses shown to us during sickness and loss of our husband and father, to those who sent food, flowers and helped in any way, to Cox Funeral Home. We never will forget our many friends. We were so grateful that you were with us. Thanks to all.

Wife, Edas Brown Kimbro and Children

10c1p
CALL NEWS ITEMS TO 256-2244

OTTAWA By: Della Mae Wilmet

Mr. and Mrs. Wallace Proctor, Della Mae Wilmet and Mrs. Alta Bullock attended the funeral of Virgil Norton at Liberty Wednesday.

Much sympathy is extended to the wife and children of Floyd Bullock, also to the families of W. H. Cox and Virgil Norton.

John D. Wallen of Atlanta. (Cont. to 11)

shop and save!

Men's Sample Western Boots
Real Leather
\$16.88
8-9 1/2-9

Missy-Ladie's Saddle Oxfords
5 to 10
Blk. Tan. Wh. Beige
\$7.95
were \$10.95

Ladie's Missy Chukka Hiking Shoes
Suede uppers
to \$9.95
Value

Non Skid Gripper Soles
\$5.95

Sizes 4 to 9

Boy's Long Sleeve Shirts
Knits Prints \$2.88
No Iron

8 to 18

Boys Slacks \$3.88

Jacket Sale

Sample Jackets
some one of a kind

Boy's, Men's, Girl's

Some School Jackets

\$7.88 to \$24.75

WAYMAN'S Dept. Store
Chestnut Street - In Berea

MONTGOMERY WARD
Catalog Sales Agency

TIRES! TIRES!

**PRICES SLASHED!
FOR FAST SELLOUT**

**ALL TIRES PRICED AND TAGGED
FOR IMMEDIATE SALE—HURRY IN!
STOCKS LIMITED . . .**

| SIZE | DESCRIPTION | 2/For Price |
|---------|-----------------------------------|-------------|
| E-78-14 | Grappler, Steel Belted | 2/63.94 |
| G-78-14 | Grappler, Steel Belted | 2/72.58 |
| G-78-15 | Grappler, Steel Belted | 2/74.72 |
| E-78-14 | Road Tamer, Fiberglass Belted | 2/53.64 |
| F-78-14 | Road Tamer, Fiberglass Belted | 2/58.90 |
| G-78-14 | Road Tamer, Fiberglass Belted | 2/63.12 |
| G-78-15 | Road Tamer, Fiberglass Belted | 2/63.22 |
| H-78-15 | Road Tamer, Fiberglass Belted | 2/67.72 |
| G-78-14 | Snow Tires, 4-Ply, Polyester Cord | 2/60.10 |
| G-78-15 | Snow Tires, 4-Ply, Polyester Cord | 2/62.26 |

Prices Include Federal Excise Tax and Transportation. Installation Not Included.

LET US ARRANGE FOR INSTALLATION AND MOUNTING.

MONTGOMERY WARD CATALOGUE SALES AGENCY
Main Street Mt. Vernon Phone 256-2179
...Locally Owned And Operated...