

"County Agent's Notes" (Cont. From 10)

MANAGEMENT SUGGESTIONS

Minimize potential nitrate problems in your herd by following good management practices:

- 1. Do not feed forage (especially corn) grown under such conditions direct to cattle without doing a chemical analysis for nitrate level.
2. Consider making silage out of drought stricken forage. The ensiling process will remove 50-90 percent of nitrate.
3. Do not suddenly start to feed high nitrate feeds to cattle. Introduce into ration slowly and allow animals to adapt.
4. Dilute suspected high nitrate feeds with other feeds known to contain no nitrate.
5. Feed a balanced ration at all times.
6. Supply adequate quantities of calcium, phosphate, trace minerals and Vitamin A.
7. The highest percentage of nitrate appears in the stem of plant. If necessary high levels of nitrate are known to exist, raise the cutter bar and leave the portion of the stalk containing highest nitrate.

OPINIONS FROM THE OFFICE OF THE ATTORNEY GENERAL

HEAD START NOT ELIGIBLE TO PURCHASE BUSES

Diane Deason, director of Pennyrite Allied Community Services, Inc. of Hopkinsville, asked if the Head Start program her corporation sponsors is eligible to purchase its own schoolbuses. It is the opinion of the office of the Attorney General that Head Start would not be able to do so. Under Kentucky statutes, such buses are centrally purchased by political subdivisions and while the area served by this program encompasses the same area as the Pennyrite Area Development District the Head Start Program as well the corporation sponsoring it, can only be described as an agency of the political subdivision, not the political subdivision itself.

SCHOOL BOARD CANNOT REMOVE COMMISSION MEMBERS

Frank Farmer, Berea city councilman, asked if the city council holds the authority to remove members of the Berea school board and zoning commission which they voted. It neither appoints nor removed commission members by the opinion of the Office of the Attorney General. The mayor appoints a commission member with the consent of the city council and he can also remove those members' authority for inefficiency, neglect of duty, malfeasance or conflict of interest - and all commission members are entitled to a hearing. In light of the above, it would appear there are no valid grounds for removal.

SCHOOL BOARD'S AUTHORITY UPHELD

Jerry C. Alleyne, director of the Frankfort office of the Kentucky Education Association, asked whether a school board policy of transferring a teacher to one building solely on the basis that he or she happens to be married to a person teaching in another building is a form of discrimination. It is the opinion of the Attorney General's Office that the policy is a valid exercise of the power of the board of education and that the regulation is not discriminatory.

GROUP DOES NOT NEED TO REGISTER

State representative from Cold Spring, Arthur L. Schmidt, asked if a group organized to support or oppose a public question when its election is not being held is required to register with the Registry of Election Finance. Schmidt also asked if a citizens advisory committee for education or a group organized to support or oppose a zone change violates the Corrupt Practices Act by not reporting contributions in excess of \$1,000 to the registry. It is the opinion of the Attorney General's Office that such groups when not dealing with a referendum are not governed by the election finance act and do not have to register with, or report to, the registry.

TOTAL OF ALL F-40's

MAY
1801 Capital Outlay Fund, Transfer of Funds 138,610.00
1814 Lewis Adams, Trans. 160.50
1812 Charles Baker, Trans. 21.40
1813 Russell Barnes, Trans. 72.00
1814 J.C. Bradley, Trans. 100.00
1815 James B. Bradley, Trans. 144.45
1816 Arnold Brown, Trans. 32.10
1817 Gerald Bullock, Trans. 48.00
1818 Terry Burdette, Trans. 80.25
1819 Edna Cameron, Trans. 32.10
1820 Dean Carpenter, Trans. 96.25
1821 Lewis Chaney, Trans. 18.82
1822 Arthur Cox, Trans. 139.10
1823 Willie Cope, Trans. 21.40
1824 Glen Cromer, Trans. 74.90
1825 John H. Cromer, Jr., Trans. 42.80
1826 John H. Cromer, Trans. 80.25
1827 Joe Daugherty, Trans. 138.75
1828 Barbara DeBorde, Trans. 21.40
1829 Lermitt French, Trans. 107.00
1830 John G. Gadd, Trans. 138.75
1831 Martha Hines, Trans. 126.00
1832 Harry L. Holland, Trans. 88.80
1833 Homer Jones, Trans. 98.00
1834 Ovie Jones, Trans. 30.00
1835 Lloyd Kirby, Trans. 50.00

"FINANCIAL STATEMENT" (Cont. From 10)

Table with 2 columns: Item Name and Amount. Includes entries like 81802 Arthur Cox, Trans. 75.00; 81803 Willie Cope, Trans. 181.00; 81804 Glen Cromer, Trans. 21.40; 81805 John H. Cromer, Jr., Trans. 74.90; 81806 John H. Cromer, Trans. 42.80; 81807 Joe Daugherty, Trans. 80.25; 81808 Barbara DeBorde, Trans. 138.75; 81809 Lermitt French, Trans. 21.40; 81810 John L. Gadd, Trans. 21.40; 81811 Martha Hines, Trans. 107.00; 81812 Harry L. Holland, Trans. 138.75; 81813 Homer Jones, Trans. 126.00; 81814 Ovie Jones, Trans. 38.80; 81815 Lloyd Kirby, Trans. 50.00; 81816 Caleb Lamb, Trans. 101.95; 81817 Murphy Martin, Jr., Trans. 32.10; 81818 Janice Mason, Trans. 107.00; 81819 Raymond McKinney, Trans. 53.50; 81820 Carl Miller, Trans. 64.20; 81821 Elmer Mink, Trans. 127.00; 81822 Linda Montjoy, Trans. 133.75; 81823 Sam Mullins, Trans. 370.00; 81824 Terry Mullins, Trans. 53.50; 81825 Luther Owens, Trans. 160.50; 81826 Marvin Ponder, Trans. 65.00; 81827 Les Renner, Trans. 75.00; 81828 Opie Robbins, Trans. 155.15; 81829 Rovel Siongleton, Trans. 54.00; 81830 Frank Thacker, Trans. 112.35; 81831 Lloyd Vance, Trans. 112.35; 81832 Willie Van Zant, Trans. 32.10; 81833 Paul Whitaker, Trans. 107.00; 81834 Dorothy Wynn, Trans. 107.00; 81835 Title I ESEA-89-10, Transfer of Funds 25,000.00; 81836 Basic Adult Education, Transfer of Funds 29,589.73; 81837 Kenneth Adams, Bd. Meeting & Exp. 11.80; 81838 Rudolph Burdette, Board Meeting 10.00; 81839 Isabel Mason, Bd. Meeting & Exp. 11.00; 81840 Willie Taylor, Bd. Meeting & Exp. 12.00; 81841 Russell Parsons, Travel 67.30; 81842 Bill Ponder, Travel 36.96; 81843 Melvin D. Hamm, Travel 67.24; 81844 Robert N. Pyba, Travel 97.80; 81845 Ruby Cornelius, Travel 215.50; 81846 Olive Whitaker, Travel 94.80; 81847 Ky. Telephone Co., acct. 103.10; 81848 Jackson Co. RECC, acct. 352.22; 81849 Kentucky Utilities Co., acct. 5,696.62; 81850 Broad Municipal Water Works, Acct. 235.53; 81851 Livingston Water Works, Acct. 115.35; 81852 Mt. Vernon Water Works, Acct. 358.65; 81853 Northern Rock C. Water Dist., Acct. 103.74; 81854 New Big Creek Mining Co., Acct. 6,410.30; 81855 Livingston School, Reimb. 602.18; 81856 Standard Oil Co., Acct. 847.93; 81857 R.H. Hamm Oil Co., Acct. 3,187.38; 81858 Atlantic Richfield Co., Acct. 58.31; 81859 Town & Country Standard Serv. St., Acct. 32.08; 81860 Jerry's Tire Center, Acct. 99.49; 81861 Burdine's Arco Serv. St., Acct. 34.75; 81862 Livingston Motor Co., Acct. 171.52; 81863 Carrington Dist. C. of C., Acct. 13.23; 81864 Bob Mullins Ford, Acct. 52.53; 81865 Wheel & Axel Service, Acct. 69.60; 81866 Mt. Vernon Automobile, Inc., Acct. 201.00; 81867 Ky. Electric, Inc. 210.77; 81868 Ridgeway Distributors, Acct. 648.46; 81869 Cumberland Welding Supp Co. Inc., Acct. 9.50; 81870 Central Body Service, Acct. 10,087.77; 81871 Rockcastle Auto Parts, Acct. 67.77; 81872 London Laundry, Acct. 22.25; 81873 Rockcastle Auto Parts, Acct. 22.25; 81874 Thompsons San Supp House, Inc., Acct. 510.63; 81875 Cumberland Elec Supp Co. Inc., Acct. 120.92; 81876 Jim & Jacks Hove & App. Inc., Acct. 25.92; 81877 F.P. L. Toy, Acct. 95.15; 81878 London Bucket Co., Acct. 12.15; 81879 C.C. Cox, Acct. 108.48; 81880 S.T. Proctor Lbr. Co., Acct. 8.25; 81881 Basic Supp. Acct. 20.00; 81882 Dalley's Electric, Acct. 59.03; 81883 Norton Insurance Agency, Textbook Bond 24.00; 81884 Mt. Vernon Signal, Acct. 25.70; 81885 E.D. Thomas, Acct. 16.00; 81886 R.H. Hamm Oil Co., Acct. 95.15; 81887 Beckley-Cardy Co., Acct. 3.38; 81888 Livingston Motor Co., Acct. 70.20; 81889 Ky. State Treas., Acct. 22.90; 81890 NASCO, Acct. 43.40; 81891 Anderson Office Supp Co. Inc., Acct. 371.49; 81892 Simplex Time Recorder Co., Acct. 20.75; 81893 Ky Farm Bureau Mut. Ins. Co., Ins. Prem. 8,771.49; 81894 International Bu. Machines, Acct. 655.00; 81895 International Bu. Machines, Acct. 45.99; 81896 L. Adams, Acct. 61.80; 81897 Ky Farm Bureau Ins. Agency, Inc. Ins Prem 510.00; 81898 Kenneth Adams, Bd. Meeting & Exp. 11.80; 81899 Billy Burdine, Bd. Meeting & Exp. 12.00; 81900 Rudolph Burdette, Bd. Meeting & Exp. 10.00; 81901 Willie Taylor, Bd. Meeting & Exp. 12.00; 81902 D.G. Albright, Hauling Co. 347.52; 81903 Blue Cross Hosp. Plan 2,959.25; 81904 Ky Education Association 1,632.87; 81905 Citizens Sec. Life Ins. Co. 371.49; 81906 Ky State Treasurer 8,004.22; 81907 Soc. Sec. Revolving Fund 1,714.00; 81908 Ky State Treasurer 1,099.00; 81909 State Treasurer 2,798.10; 81910 Fed Res. Bank of Cleveland 15,266.80

TOTAL OF ALL F-40's

Table with 2 columns: Item Name and Amount. Includes entries like 81896 Caleb Lamb, Trans. 101.95; 81897 Elmer Mink, Trans. 127.00; 81898 Janice Mason, Trans. 107.00; 81899 Raymond McKinney, Trans. 53.50; 81900 Carl Miller, Trans. 64.20; 81901 Elmer Mink, Trans. 127.00; 81902 Linda Montjoy, Trans. 133.75; 81903 Sam Mullins, Trans. 370.00; 81904 Terry Mullins, Trans. 53.50; 81905 Luther Owens, Trans. 160.50; 81906 Marvin Ponder, Trans. 65.00; 81907 Les Renner, Trans. 75.00; 81908 Opie Robbins, Trans. 155.15; 81909 Rovel Siongleton, Trans. 54.00; 81910 Frank Thacker, Trans. 112.35; 81911 Lloyd Vance, Trans. 112.35; 81912 Willie Van Zant, Trans. 32.10; 81913 Paul Whitaker, Trans. 107.00; 81914 Dorothy Wynn, Trans. 107.00; 81915 Title I ESEA-89-10, Transfer of Funds 25,000.00; 81916 Basic Adult Education, Transfer of Funds 29,589.73; 81917 Kenneth Adams, Bd. Meeting & Exp. 11.80; 81918 Rudolph Burdette, Board Meeting 10.00; 81919 Isabel Mason, Bd. Meeting & Exp. 11.00; 81920 Willie Taylor, Bd. Meeting & Exp. 12.00; 81921 Russell Parsons, Travel 67.30; 81922 Bill Ponder, Travel 36.96; 81923 Melvin D. Hamm, Travel 67.24; 81924 Robert N. Pyba, Travel 97.80; 81925 Ruby Cornelius, Travel 215.50; 81926 Olive Whitaker, Travel 94.80; 81927 Ky. Telephone Co., Inc. Acct. 103.10; 81928 Jackson Co., Inc. Acct. 352.22; 81929 Kentucky Utilities Co., Inc. Acct. 5,696.62; 81930 Broad Municipal Water Works, Acct. 235.53; 81931 Livingston Water Works, Acct. 115.35; 81932 Mt. Vernon Water Works, Acct. 358.65; 81933 Northern Rock C. Water Dist., Inc. Acct. 103.74; 81934 New Big Creek Mining Co., Acct. 6,410.30; 81935 Livingston School, Reimb. 602.18; 81936 Standard Oil Co., Acct. 847.93; 81937 R.H. Hamm Oil Co., Acct. 3,187.38; 81938 Atlantic Richfield Co., Acct. 58.31; 81939 Town & Country Standard Serv. St., Acct. 32.08; 81940 Jerry's Tire Center, Acct. 99.49; 81941 Burdine's Arco Serv. St., Acct. 34.75; 81942 Livingston Motor Co., Acct. 171.52; 81943 Carrington Dist. C. of C., Acct. 13.23; 81944 Bob Mullins Ford, Acct. 52.53; 81945 Wheel & Axel Service, Acct. 69.60; 81946 Mt. Vernon Automobile, Inc., Acct. 201.00; 81947 Ky. Electric, Inc. 210.77; 81948 Ridgeway Distributors, Acct. 648.46; 81949 Cumberland Welding Supp Co. Inc., Acct. 9.50; 81950 Central Body Service, Acct. 10,087.77; 81951 Rockcastle Auto Parts, Acct. 67.77; 81952 London Laundry, Acct. 22.25; 81953 Rockcastle Auto Parts, Acct. 22.25; 81954 Thompsons San Supp House, Inc., Acct. 510.63; 81955 Cumberland Elec Supp Co. Inc., Acct. 120.92; 81956 Jim & Jacks Hove & App. Inc., Acct. 25.92; 81957 F.P. L. Toy, Acct. 95.15; 81958 London Bucket Co., Acct. 12.15; 81959 C.C. Cox, Acct. 108.48; 81960 S.T. Proctor Lbr. Co., Acct. 8.25; 81961 Basic Supp. Acct. 20.00; 81962 Dalley's Electric, Acct. 59.03; 81963 Norton Insurance Agency, Textbook Bond 24.00; 81964 Mt. Vernon Signal, Acct. 25.70; 81965 E.D. Thomas, Acct. 16.00; 81966 R.H. Hamm Oil Co., Acct. 95.15; 81967 Beckley-Cardy Co., Acct. 3.38; 81968 Livingston Motor Co., Acct. 70.20; 81969 Ky. State Treas., Acct. 22.90; 81970 NASCO, Acct. 43.40; 81971 Anderson Office Supp Co. Inc., Acct. 371.49; 81972 Simplex Time Recorder Co., Acct. 20.75; 81973 Ky Farm Bureau Mut. Ins. Co., Ins. Prem. 8,771.49; 81974 International Bu. Machines, Acct. 655.00; 81975 International Bu. Machines, Acct. 45.99; 81976 L. Adams, Acct. 61.80; 81977 Ky Farm Bureau Ins. Agency, Inc. Ins Prem 510.00; 81978 Kenneth Adams, Bd. Meeting & Exp. 11.80; 81979 Billy Burdine, Bd. Meeting & Exp. 12.00; 81980 Rudolph Burdette, Bd. Meeting & Exp. 10.00; 81981 Willie Taylor, Bd. Meeting & Exp. 12.00; 81982 D.G. Albright, Hauling Co. 347.52; 81983 Blue Cross Hosp. Plan 2,959.25; 81984 Ky Education Association 1,632.87; 81985 Citizens Sec. Life Ins. Co. 371.49; 81986 Ky State Treasurer 8,004.22; 81987 Soc. Sec. Revolving Fund 1,714.00; 81988 Ky State Treasurer 1,099.00; 81989 State Treasurer 2,798.10; 81990 Fed Res. Bank of Cleveland 15,266.80

TOTAL OF ALL F-40's

Table with 2 columns: Item Name and Amount. Includes entries like 81902 Arthur Cox, Trans. 75.00; 81903 Willie Cope, Trans. 181.00; 81904 Glen Cromer, Trans. 21.40; 81905 John H. Cromer, Jr., Trans. 74.90; 81906 John H. Cromer, Trans. 42.80; 81907 Joe Daugherty, Trans. 80.25; 81908 Barbara DeBorde, Trans. 138.75; 81909 Lermitt French, Trans. 21.40; 81910 John L. Gadd, Trans. 21.40; 81911 Martha Hines, Trans. 107.00; 81912 Harry L. Holland, Trans. 138.75; 81913 Homer Jones, Trans. 126.00; 81914 Ovie Jones, Trans. 38.80; 81915 Lloyd Kirby, Trans. 50.00

Table with 2 columns: Item Name and Amount. Includes entries like 81896 Caleb Lamb, Trans. 101.95; 81897 Elmer Mink, Trans. 127.00; 81898 Janice Mason, Trans. 107.00; 81899 Raymond McKinney, Trans. 53.50; 81900 Carl Miller, Trans. 64.20; 81901 Elmer Mink, Trans. 127.00; 81902 Linda Montjoy, Trans. 133.75; 81903 Sam Mullins, Trans. 370.00; 81904 Terry Mullins, Trans. 53.50; 81905 Luther Owens, Trans. 160.50; 81906 Marvin Ponder, Trans. 65.00; 81907 Les Renner, Trans. 75.00; 81908 Opie Robbins, Trans. 155.15; 81909 Rovel Siongleton, Trans. 54.00; 81910 Frank Thacker, Trans. 112.35; 81911 Lloyd Vance, Trans. 112.35; 81912 Willie Van Zant, Trans. 32.10; 81913 Paul Whitaker, Trans. 107.00; 81914 Dorothy Wynn, Trans. 107.00; 81915 Title I ESEA-89-10, Transfer of Funds 25,000.00; 81916 Basic Adult Education, Transfer of Funds 29,589.73; 81917 Kenneth Adams, Bd. Meeting & Exp. 11.80; 81918 Rudolph Burdette, Board Meeting 10.00; 81919 Isabel Mason, Bd. Meeting & Exp. 11.00; 81920 Willie Taylor, Bd. Meeting & Exp. 12.00; 81921 Russell Parsons, Travel 67.30; 81922 Bill Ponder, Travel 36.96; 81923 Melvin D. Hamm, Travel 67.24; 81924 Robert N. Pyba, Travel 97.80; 81925 Ruby Cornelius, Travel 215.50; 81926 Olive Whitaker, Travel 94.80; 81927 Ky. Telephone Co., Inc. Acct. 103.10; 81928 Jackson Co., Inc. Acct. 352.22; 81929 Kentucky Utilities Co., Inc. Acct. 5,696.62; 81930 Broad Municipal Water Works, Acct. 235.53; 81931 Livingston Water Works, Acct. 115.35; 81932 Mt. Vernon Water Works, Acct. 358.65; 81933 Northern Rock C. Water Dist., Inc. Acct. 103.74; 81934 New Big Creek Mining Co., Acct. 6,410.30; 81935 Livingston School, Reimb. 602.18; 81936 Standard Oil Co., Acct. 847.93; 81937 R.H. Hamm Oil Co., Acct. 3,187.38; 81938 Atlantic Richfield Co., Acct. 58.31; 81939 Town & Country Standard Serv. St., Acct. 32.08; 81940 Jerry's Tire Center, Acct. 99.49; 81941 Burdine's Arco Serv. St., Acct. 34.75; 81942 Livingston Motor Co., Acct. 171.52; 81943 Carrington Dist. C. of C., Acct. 13.23; 81944 Bob Mullins Ford, Acct. 52.53; 81945 Wheel & Axel Service, Acct. 69.60; 81946 Mt. Vernon Automobile, Inc., Acct. 201.00; 81947 Ky. Electric, Inc. 210.77; 81948 Ridgeway Distributors, Acct. 648.46; 81949 Cumberland Welding Supp Co. Inc., Acct. 9.50; 81950 Central Body Service, Acct. 10,087.77; 81951 Rockcastle Auto Parts, Acct. 67.77; 81952 London Laundry, Acct. 22.25; 81953 Rockcastle Auto Parts, Acct. 22.25; 81954 Thompsons San Supp House, Inc., Acct. 510.63; 81955 Cumberland Elec Supp Co. Inc., Acct. 120.92; 81956 Jim & Jacks Hove & App. Inc., Acct. 25.92; 81957 F.P. L. Toy, Acct. 95.15; 81958 London Bucket Co., Acct. 12.15; 81959 C.C. Cox, Acct. 108.48; 81960 S.T. Proctor Lbr. Co., Acct. 8.25; 81961 Basic Supp. Acct. 20.00; 81962 Dalley's Electric, Acct. 59.03; 81963 Norton Insurance Agency, Textbook Bond 24.00; 81964 Mt. Vernon Signal, Acct. 25.70; 81965 E.D. Thomas, Acct. 16.00; 81966 R.H. Hamm Oil Co., Acct. 95.15; 81967 Beckley-Cardy Co., Acct. 3.38; 81968 Livingston Motor Co., Acct. 70.20; 81969 Ky. State Treas., Acct. 22.90; 81970 NASCO, Acct. 43.40; 81971 Anderson Office Supp Co. Inc., Acct. 371.49; 81972 Simplex Time Recorder Co., Acct. 20.75; 81973 Ky Farm Bureau Mut. Ins. Co., Ins. Prem. 8,771.49; 81974 International Bu. Machines, Acct. 655.00; 81975 International Bu. Machines, Acct. 45.99; 81976 L. Adams, Acct. 61.80; 81977 Ky Farm Bureau Ins. Agency, Inc. Ins Prem 510.00; 81978 Kenneth Adams, Bd. Meeting & Exp. 11.80; 81979 Billy Burdine, Bd. Meeting & Exp. 12.00; 81980 Rudolph Burdette, Bd. Meeting & Exp. 10.00; 81981 Willie Taylor, Bd. Meeting & Exp. 12.00; 81982 D.G. Albright, Hauling Co. 347.52; 81983 Blue Cross Hosp. Plan 2,959.25; 81984 Ky Education Association 1,632.87; 81985 Citizens Sec. Life Ins. Co. 371.49; 81986 Ky State Treasurer 8,004.22; 81987 Soc. Sec. Revolving Fund 1,714.00; 81988 Ky State Treasurer 1,099.00; 81989 State Treasurer 2,798.10; 81990 Fed Res. Bank of Cleveland 15,266.80

TOTAL OF ALL FORM F-40's

Table with 2 columns: Item Name and Amount. Includes entries like 81902 Arthur Cox, Trans. 75.00; 81903 Willie Cope, Trans. 181.00; 81904 Glen Cromer, Trans. 21.40; 81905 John H. Cromer, Jr., Trans. 74.90; 81906 John H. Cromer, Trans. 42.80; 81907 Joe Daugherty, Trans. 80.25; 81908 Barbara DeBorde, Trans. 138.75; 81909 Lermitt French, Trans. 21.40; 81910 John L. Gadd, Trans. 21.40; 81911 Martha Hines, Trans. 107.00; 81912 Harry L. Holland, Trans. 138.75; 81913 Homer Jones, Trans. 126.00; 81914 Ovie Jones, Trans. 38.80; 81915 Lloyd Kirby, Trans. 50.00

TOTAL OF ALL FORM F-40's

Table with 2 columns: Item Name and Amount. Includes entries like 81902 Arthur Cox, Trans. 75.00; 81903 Willie Cope, Trans. 181.00; 81904 Glen Cromer, Trans. 21.40; 81905 John H. Cromer, Jr., Trans. 74.90; 81906 John H. Cromer, Trans. 42.80; 81907 Joe Daugherty, Trans. 80.25; 81908 Barbara DeBorde, Trans. 138.75; 81909 Lermitt French, Trans. 21.40; 81910 John L. Gadd, Trans. 21.40; 81911 Martha Hines, Trans. 107.00; 81912 Harry L. Holland, Trans. 138.75; 81913 Homer Jones, Trans. 126.00; 81914 Ovie Jones, Trans. 38.80; 81915 Lloyd Kirby, Trans. 50.00

Table with 2 columns: Item Name and Amount. Includes entries like 82029 Atlantic Blockhead Co. Acct. 134.24; 82030 Lester Ford, Acct. 126.52; 82031 Jerry's Tire Center, Acct. 104.05; 82032 Burdine's Arco Serv Station, Acct. 74.40; 82033 Bob Mullins Ford, Acct. 39.55; 82034 Carrington Dist. Co. Acct. 97.90; 82035 C.T. Massey Motor Co. Acct. 64.46; 82036 Rockcastle Auto Parts, Acct. 25.94; 82037 Mt. Vernon Automobile, Inc. Acct. 261.98; 82038 Rental Uniform Service, Inc. Acct. 86.06; 82039 Auto-Electric, Inc., Acct. 188.02; 82040 R.H. Hamm Oil Co. Acct. 3,483.27; 82041 R.H. Hamm Oil Co., Acct. 13.75; 82042 A.P. St. Clair & Son, Acct. 1,934.70; 82043 London Laundry, Acct. 12.78; 82044 C.C. Cox, Acct. 69.56; 82045 C.H. Webb, Acct. 15.66; 82046 Bryant Brothers, Acct. 19.89; 82047 Mt. Vernon Signal, Acct. 17.10; 82048 Ballour, Acct. 539.47; 82049 Ruby Cornelius, Reimb. - Supp 14.92; 82050 Ky School Board Assoc., Dues 851.25; 82051 Elva Mobley, Crescote Pout 28.00; 82052 Norton Ins. Agency, Treas. Bond 559.00; 82053 General Electric, Acct. 12.00; 82054 Burdette Sales Co., Acct. 95.00; 82055 Lunsford Deatherage, Acct. 277.50; 82056 Hiett's 5 & 10, Acct. 15.34; 82057 Ted Holman, Tractor Rental 378.00; 82058 Fred Holman, Tractor Rental 187.92; 82059 The Lincoln Electric, Acct. 82.82; 82060 Cumberland Welders Supp Co., Inc. Acct. 10.68; 82061 Mt. Vernon Automobile, Inc. Acct. 21.00; 82062 Virginia Associates, Acct. 23.72; 82063 Hugh Griffin Co., Acct. 21.72; 82064 Institutional Jobbers Co., Acct. 154.95; 82065 Institutional Jobbers Co., Acct. 98.70; 82066 National Learning System, Acct. 46.65; 82067 Livingstone Water Works, Acct. 139.22; 82068 Mt. Vernon Water Works, Acct. 331.92; 82069 Northern Rock Co. Water Dist., Acct. 114.98; 82070 Basic Adult Education, Transfer of Funds 548.75; 82071 Rock Co. School Food Serv., Reimb. 31,007.06; 82072 Lewis Adams, Trans. 67.19; 82073 Charles Baker, Trans. 200.63; 82074 Russell Barnes, Trans. 26.75; 82075 J. C. Bradley, Trans. 100.00; 82076 James R. Bradley, Trans. 126.80; 82077 Arnold Brown, Trans. 186.56; 82078 Gerald Bullock, Trans. 40.13; 82079 Terry Burdette, Trans. 60.00; 82080 Edna Cameron, Trans. 100.31; 82081 Dean Carpenter, Trans. 40.13; 82082 Lewis Chaney, Trans. 120.38; 82083 Arthur Cope, Trans. 93.75; 82084 Willie Cope, Trans. 173.88; 82085 Glen Cromer, Trans. 26.75; 82086 John Renner, Jr., Trans. 93.75; 82087 John H. Cromer, Trans. 53.50; 82088 Joe Daugherty, Trans. 160.31; 82089 Barbara DeBorde, Trans. 107.19; 82090 Kermit French, Trans. 26.75; 82091 John L. Gadd, Trans. 26.75; 82092 Martha Hines, Trans. 133.75; 82093 Harry L. Holland, Trans. 167.19; 82094 Homer Jones, Trans. 126.00; 82095 Ovie Jones, Trans. 65.85; 82096 Lloyd Kirby, Trans. 62.50; 82097 Caleb Lamb, Trans. 127.44; 82098 Murphy Martin, J.M.R., Trans. 40.13; 82099 Janice Mason, Trans. 133.75; 82100 Raymond McKinney, Trans. 68.88; 82101 Carl Miller, Trans. 80.25; 82102 Elmer Mink, Trans. 158.75; 82103 London Mullins, Trans. 167.19; 82104 Homer Mullins, Trans. 166.63; 82105 Sam Mullins, Trans. 370.00; 82106 Terry Mullins, Trans. 66.88; 82107 Luther Owens, Trans. 200.63; 82108 Marvin Ponder, Trans. 81.25; 82109 Les Renner, Jr., Trans. 33.75; 82110 Opal Robinson, Trans. 193.94; 82111 Rovel Siongleton, Trans. 69.00; 82112 Frank Thacker, Trans. 140.44; 82113 Lloyd Vance, Trans. 133.75; 82114 Willie Van Zant, Trans. 180.00; 82115 Paul Whitaker, Trans. 40.13; 82116 Dorothy Wynn, Trans. 133.75; 82117 Jackson Co. RECC, Acct. 286.56; 82118 Basic Adult Education, Transfer of Funds 1,291.90; 82119 Rock Co. School Food Serv. Lunch Reimb. 4,839.14; 82120 Jerry J. Browning, Tractor Rental 75.00; 82121 Ted Holman, Tractor Rental 213.00; 82122 Ky State Treasurer 35,059.38; 82123 Soc. Sec. Revolving Fund 1,728.02; 82124 Ky State Treasurer 1,046.42; 82125 Ky State Treasurer 5,048.25; 82126 Fed Reserve Bank of Cleav. 23,288.81

TOTAL OF ALL FORM F-40's

FOUNDATION PROGRAM CAPITAL OUTLAY FUND

Balance, July 1, 1974 \$76,671.17

Receipts:

Foundation Program Capital Outlay Allotment \$205,610.00

Total Receipts 205,610.00

Total Balance and Receipts 282,281.17

Total Disbursements 219,788.26

Balance, June 30, 1975 \$62,492.81

FINANCIAL STATEMENT

JULY

None

AUGUST

1148 Donald B. Shelton 687.26

"PERSONALS"
(Cont. From 5)

Sunday.
Mr. and Mrs. Verner Ballinger have returned home from a visit to their children in Ohio.
Mrs. Mary Gorman of Dayton, Ohio visited her parents and Mrs. Verner Ballinger.
Mrs. Effie Kirby, Mrs. Verner Ballinger, Mrs. Mary Gorman and Miss Elizabeth Kirby were in Richmond shooting Friday.
Mrs. Louise Fletcher and family and Mrs. Minnie Fletcher of Cincinnati, Ohio were Sunday visitors of Mr. and Mrs. Verner Ballinger.
Mrs. Betty Rose of Dayton, Ohio and her mother, Mrs. Molly Ballinger were recent visitors of Mrs. Elizabeth Zieger.
Mrs. Ora Prasier of Gulfport, Florida visited Mr.

and Mrs. Verner Ballinger recently.
Lillian Anglin spent the week end in Henderson with her daughter Mrs. Anderson Ramsey and family.
W.R. Coffey visited Mr. and Mrs. U.G. Ramsey Friday evening.
Mr. and Mrs. Robert Henderson and daughter Valerie of Somerset visited his mother Mrs. Lona Logsdon Sunday evening.
Sympathy is extended to the family of Mrs. Marion Hamilton who passed away last Friday at the Rockcastle County Hospital. Also to the family of Cory Phillip's family in their sorrow.
George Burton was in London Monday.
Mrs. Ollie McHargue of Hamilton visited Mrs. Hazel Cummings Friday.
Mrs. Robert Anglin and Nancy + W.R. Coffey, Mr. and

The Week at Livingston
By: Mrs. Eva Black

Those who gathered at the home of Mr. and Mrs. Elmer Spivey Sunday for the homecoming were 2Mr. and Mrs. J.Hack Robinson of Richmond, Indiana, Mr. and Mrs. Elmer Spivey, Jr. and family of Florida, Mr. and Mrs. Denver Howard and daughters Mr. and Mrs. Wayne McNew and Mr. and Mrs. Estill Cornelius.
Recent visitors of Mr. and Mrs. M.H. Clark were Mr. and Mrs. Norris Clark of Lexington, Mrs. Bobby Clark and mother of London and Mr. and Mrs. Henry Clark of Frankfort.
Henry Loudermilk of Cincinnati, Ohio spent the week with his mother, Mrs. Carrie Loudermilk.
Mrs. Beulah Peters has returned to her home in Florida after a visit with her mother, Mrs. Lula McClure. While here, they visited Mrs. McClure's daughter, Mrs. Relliss Spivey and family in Dayton Ohio and Mrs. and Mrs. Ray Barrier in Nashville, Tenn.
Mrs. Ed Ping and daughter, June, and Mrs. Eva Black were in London Monday on business and visited Mr. and Mrs. Ray Cornett.
Mr. and Mrs. Clyde Force spent Monday night with his sister, Mrs. Minnie Hopper in Corbin.
Mrs. Carrie Loudermilk was Monday evening dinner guest of Mr. and Mrs. Ralph Allen.
Mr. and Mrs. Tughman Miller and son, Timm of Erlanger spent their vacation with her parents, Mr. and Mrs. Elvis Hammer. While here they visited Mr. and Mrs. Thomas Kirby in Nashville, Tenn.
Mr. and Mrs. George Hurley visited Mr. and Mrs. Arnel Taylor Sunday.
Mr. and Mr. Jerry Wade Waddle of Louisville, formerly of Livingston, are the proud parents of twin sons who have been named Jamie Glenn and Jason Lynn. Mrs. Wade will be remembered as the former Denise McClure, daughter of Mrs. Curtis McHargue. Grandparents are Mr. and Mrs. Arthur Waddle and great grandparents are Mr. and Mrs. Russell Mullins. The twins were welcomed home by a seven year-old sister, Conya.
Mr. and Mrs. Edgar Taylor and son of Richmond visited Arnel Taylor last week.
Mr. and Mrs. Gene Jackson and children of Pittsburg and Dr. and Mrs. Jerry Poynter of London visited their parents, Mr. and Mrs. P.L. Poynter Sunday.
Mr. and Mrs. Wayne Mullins and daughter and Mrs. Lyman Gibson of Richmond, Indiana and Ronald Mullins of Frankfort visited their mother, Mrs. Yashti Mullins, over the week end.
Mr. and Mrs. Oscar Mullins and J.S. H. Hays were in Cincinnati, Ohio Monday. They were accompanied home by Hubert Mullins, who has been a patient

in the Veterans Hospital at Lexington. Bill Mullins visited them Monday.
Mr. and Mrs. Charles Fields of Cincinnati, Ohio visited her niece, Mrs. Charles McClure Friday.
Rudolph Hammonds visited his mother last week. He was accompanied by his mother, Mrs. Elaine Blackburn a d.J.S. Hall back to the Veterans Hospital in Lexington.
Mr. and Mrs. Ernest Tyree and children of Illinois visited Mr. and Mrs. Charles McClure last week.
Mr. and Mrs. C.H. Webb visited her sister, Mrs. Elbert Taylor of Woodbine recently.

SINGLETON REUNION HELD AT SATISFACTION CAVE
The Singleton Reunion was held on August 10th at Salt P. Cave.
The six living children of the late Mr. and Mrs. P.P. Singleton were present. They are Mr. and Mrs. Otha Hines (Margaret), Mr. and Mrs. James A. Warren (Laura), Mr. and Mrs. Aden Thomas (Mary), Mr. and Mrs. John Singleton, Col. and Mrs. Claude Rowlings (Beulah), Mr. and Mrs. Charlie Owens (Naomi).
Other relatives present were Mrs. Edna Mae Singleton, widow of the late Jones Singleton, Mr. and Mrs. Dale Singleton and Darrin, Mr. and Mrs. Keith Singleton and Steven, Mr. and Mrs. Phillip Singleton, Derrick and Dana. Mr. and Mrs. Douglas Singleton, Lesha and Mike, Mr. and Mrs. Donnie Singleton, Mr. and Mrs. Phillip Hines, Nancy and Jane, Mr. and Mrs. Eddie Williams and Sharon, Ginger Brown, Tommy and Steven, Mr. and Mrs. Glen Jennings and Melissa, 2Mr. and Mrs. Bill Dulaney, Mr. and Mrs. Lex Lawrence, Dave, Steve, Pat, Keven, Jim Pearson, George, Bill and Holly Rawlins, Margaret, Hines and Terry, Kenneth Warren, Wayne Warren, Mr. and Mrs. Lowell Warren, Melanie Davis, and Troy, Lori McSwain, Mr. and Mrs. Larry Stidham and Larry Shannon, Mr. and Mrs. Gene Mueller, David, Mark and Jimmy, Mary E. Leach, W.O. Singleton, Mr. and Mrs. Charles Singleton, Mr. and Mrs. Manley

McGuire, Everett Higgins, Chester Singleton and Mrs. Elba Hurley.
Others present were Cora Morris, Kathryn Morris, Mr. and Mrs. Alonzo Morris, Virginia Galloway, Tena Dennon, Fortner Mink.
Everyone enjoyed the beautiful and delicious basket lunch and the visitation with relatives and friends.

CONSUMER COMMENTS
By: Ed W. Hancock, Attorney General
Consumers who buy and sell stocks should begin by taking stock of their brokerage firms' commission rates on stock transactions. For the first time in 188 years, stock exchanges no longer fix the commission rates, thanks to a Securities and Exchange Commission regulat-

ion which prohibits this type of price fixing.
Now competition in the name of the game. Consumers may compare shop the stock brokerage firms for lower commission rates and may negotiate with brokers for special rates.
To take advantage of this new opportunity, however, consumers should check with several brokerage firms to find the lowest rates. The rates may be simple, such as \$30 commission to sell 100 shares of stock that are selling for \$10 a share. The rates also may be fairly complex, as in the case of Washington, D.C. broker charging a percentage of the transaction, plus a given money amount multiplied by 1.2995.

If you're thinking of buying or selling, ask about any minimum charges on stock commissions. As in all consumer transactions, deal with a reliable firm. And, if you don't understand a transaction, wait until you've spoken with someone who can explain it to you. It's your money and it will be your stock.
If you have a consumer complaint, let us know about it. Contact the Attorney General's Division of Consumer Protection. We ask that all complaints be put in writing, so send your complaint to: Office of the Attorney General, Division of Consumer Protection, the Capitol Room 34, Frankfort, Ky., 40601. If you need immediate assistance, call us on the toll-free consumer hotline - 1-800-372-2860.

Now competition in the name of the game. Consumers may compare shop the stock brokerage firms for lower commission rates and may negotiate with brokers for special rates.
To take advantage of this new opportunity, however, consumers should check with several brokerage firms to find the lowest rates. The rates may be simple, such as \$30 commission to sell 100 shares of stock that are selling for \$10 a share. The rates also may be fairly complex, as in the case of Washington, D.C. broker charging a percentage of the transaction, plus a given money amount multiplied by 1.2995.
If you're thinking of buying or selling, ask about any minimum charges on stock commissions. As in all consumer transactions, deal with a reliable firm. And, if you don't understand a transaction, wait until you've spoken with someone who can explain it to you. It's your money and it will be your stock.
If you have a consumer complaint, let us know about it. Contact the Attorney General's Division of Consumer Protection. We ask that all complaints be put in writing, so send your complaint to: Office of the Attorney General, Division of Consumer Protection, the Capitol Room 34, Frankfort, Ky., 40601. If you need immediate assistance, call us on the toll-free consumer hotline - 1-800-372-2860.

Subscribe to the Signal

NEWS OF HEALTH

CARNIVALS TO CONQUER DISEASE

Step right up, folks, and see some of the nicest people you'll ever hope to meet engage in no holds-barred attack on a vicious crippling, muscular dystrophy. They're the kids who stage backyard carnivals, the children's TV personalities who inspire the youngsters, and the every day people in communities across the country whose support puts the Carnivals Against Muscular Dystrophy program over the top.
Expected to be the most successful yet, the 1975 Carnival program will raise funds to support the camp program of the Muscular Dystrophy Association. In addition to its life-giving patient service and research programs, the voluntary health agency maintains 64 summer and winter camps in 35 states attended by both children and adults afflicted by muscular dystrophy and related disorders.
The 75 Carnivals season will have to go some to beat the 1974 record as the most successful in the 14-year history of the project. Last year, 50,000 youngsters participated, organizing more than 42,000 carnivals in towns and cities across the country. With 193



radio outlets cooperating, 14,672 Carnival income was \$1,482,755.
Highlight of a recent Miami carnival was the "grease pole", pictured here is a brave contestant trying to reach the top.
Serving as National Carnivals Chairman is exuberant "Slipper" Chuck Zink, children's TV personality of Miami's WTVJ. "Slipper" Chuck says that one of the prime aims of the 1975 program will be to expand its activities throughout the South and Midwest, and in major cities on both coasts.
Among the entertainment and sports stars backing the Carnival program are Chad Everett, Bob Griese, David Hartman, Florence Henderson, Arnie Johnson, Michael London, and Karen Valentine.

MONTEGOMERY WARD Tire Sale.

Steel belted Grappler Radial.



50% to 68% off 2nd tire.
when you buy 1st at regular price with trade-ins.

TUBELESS WHORLWALL SIZE	CATALOG NUMBER	REGULAR PRICE EACH	SALE PRICE EACH 2ND TIRE	SAVE IN PAIRS
BR78-131	8037	44.16	20.16	\$24
BR78-14	8044	49.40	24.40	\$25
FR78-11	8005	28.55	23.55	\$27
FR78-14	8038	55.67	27.67	\$28
GR78-14	8039	60.89	29.89	\$31
HR78-14	8040	67.09	30.09	\$37
BR78-151	8047	49.30	15.30	\$34
GR78-15	8031	65.96	31.96	\$34
HR78-15	8032	70.17	34.17	\$36
LR78-15	8045	74.31	35.31	\$39
LR78-15	8036	78.46	37.46	\$41

[Single radial ply. Price includes Federal Excise Tax, Transportation, mounting, balancing extra.

JUST SAY "CHARGE IT" AT WARDS

More power to you!



MAIN STREET, MT. VERNON, KENTUCKY
PHONE 256-2179
Jerry Makin, Owner-Manager

UNSUING HEROES

In the United States today, there are some 38,000 people working as trained dietitians. In hospitals, corporations, dining facilities, school cafeterias and homes for the disabled, they are responsible for both individual and large-scale nutritional decisions.
There are more than two million people in the United States who are members of the Teamsters Union. Often unfairly stereotyped, they are frequently Cub Scout leaders, church deacons, Little League coaches, state legislators and good neighbors, as well as concerned citizens of America, who work for such things as better transit systems and energy conservation.
America's first industrial nurse was Betty Moulder, who was employed at a coal mining company in 1888. Today, industrial nurses work in plants, help visitors in places like Disneyland and engage in community-oriented health programs.



Paramount. The beautiful pickle.

WALL-TO-WALL SAVINGS!

When You Think of Carpet ... Think of Jerry's

Your Local Headquarters for Carpet or Linoleum

Barwick mills
Armstrong
Westpoint Pepperell
Congoleum

FOR FREE ESTIMATE PHONE 256-2122

Jerry's Carpet Center
RICHMOND STREET
MT. VERNON, KY 40456

JERRY HAMM OWNER-MGR.
20 YRS. EXPER.
JAMES KINCAID INSTALLER

CLASSIFIED ADS

FIND IT QUICK

CLASSIFIED RATES

Local rates - 4c per word with minimum of 75c
 Grad of thanks - 3c per word - minimum of 75c
 In Memory - 3c per word - minimum of 75c
 Classifieds Billed - 5c per word - minimum \$1.00
 Display Classified - \$1.00 per column inch

For Sale

FOR SALE: 18 pound heavy duty Westinghouse washer. Used three months. Call 758-8315. 51x4.

FOR SALE: 1972 750 Honda. \$1500. Contact Quentin Allen, Broodhead, Route 1. Phone 758-8784. 51x5.

GRAVE MARKERS and MONUMENTS in stock at all times. McNew Monument Sales, U.S. 25. Four miles north of Mt. Vernon. Phone 256-2232. ntf

FOR SALE: New three-bedroom brick home with living room, kitchen, dinette, bath and carport. Fully carpeted, all electric. Fully approved by F.H.A. loan. On 1/2 acre lot. See Graze Bowling call 256-2338 or John Glovak at 758-8139. 52x41x1

FOR SALE: Strip mined coal, mine run loaded with shovel or block and egg, loaded with fork

by hand. For prices and delivery call Elmo Anderkin at 256-2819 or Anderson's 6-10 Market at 256-4713. Mt. Vernon. 48x11.

LOTS FOR SALE at Orlando, Ky. Small down payment - Will do own financing. Call 256-2047.

FOR SALE: TD9 International travel. Also, 41 acre farm - all tending. Contact Quentin Allen, Route 1, Broodhead, Ky. Phone 758-8784. 49x5.

NOTICE: On Thursday, August 28th at 1 p.m. at the 1-75 Arco, I will sell the following described automobile for storage and repairs. 1968 Ford Falcon, Serial No. 8B127145732. Kenneth Whitaker, P.O. Box 119, Mt. Vernon, Ky. 49x3p.

FOR SALE: 1966 Mercury Comet, V8, 4 speed, 4 new tires, mag wheels. Contact Michael Peters, Route 3, Mt. Vernon at Fairview. 49x3p.

FOR SALE: 1975 Kawasaki 125 KX Racer, plus helmet. In

excellent condition. Call 256-2988 after 5 p.m. or contact Roger Sowder. 51x2.

\$1 BAG SALE: Fill a bag with clothing, shoes, books, etc. You have a choice. No limit on bags. 3 days only, Thursday, 28th, through Saturday 30th. At Berez Attie, Berea, Kentucky. Hwy 25 South. 51x2.

FOR SALE: Firewood, any specification, \$18 a cord delivered. Also, tree work of any kind. Call 453-2835. 51x4p.

FOR SALE: 1969 Trootwood travel trailer. Complete, self contained, 8x22. Very good shape. Call 256-4205. 51x2p.

YARD SALE: At home of Juanita Norris in Broodhead. Saturday, August 30 from 9 a.m. to 6 p.m. 51x1.

YARD SALE: At home of Mrs. Don Gabbard at Conway, Wednesday, September 10 thru Saturday September 13. 10 a.m. to 5 p.m. 51x2.

YARD SALE: Thursday and Friday from 9:00 to 5:00 at the home of Mrs. Sue Halcomb on Sigmond Street, Broodhead, Ky. 51x1p.

YARD SALE: 3 Family Yard Sale Saturday August 30 and Sunday August 31 at the home of Mrs. John E. Moore off Highway 150 in Mt. Vernon. Dishes, clothing and other misc. items. Held from 9-5. 12x1p.

FOR SALE: House and 3 acres of land. Located on Broodhead-Crab Orchard Road, 2 miles this side of Crab Orchard. Phone 355-7243. George W. Coldron. 51x4p.

FOUR FAMILY YARD SALE: Saturday August 30th and Monday September 1st at the home of Willie Wallin at Broodhead. 9 a.m. to 6 p.m. Clothing and misc. 51x1.

BIG YARD SALE: Friday and Saturday, August 29-30, 10 a.m. to 6 p.m. Furniture, rugs, bedding, dishes, pots and pans, school clothes. On Tyree Street in Broodhead. 51x1p.

THREE FAMILY YARD SALE: Sunday, August 30th. Dinettes set, iron bed and springs, chest, end tables, saddle, clothes and other items. On Flat Gap Road at Boone, just off U.S. 26, second trailer on right. In case of rain, cancelled. 51x1.

FOR PRIVATE SALE: 100 Register Polled Hereford Cattle Cows, bred and open heifers, bulls of all ages - top blood lines, performance records on most. May Brothers Farm - 3 miles West Enhank on 70. Phone 379-4832 or 379-2872. 51x2.

FOR SALE: Stereo, console, nice, cabinet. 4 speed changer. AM-FM radio. Good condition. \$95. Call 256-4639. 51x1.

FOR SALE: Cash register, service station model. Reconditioned and guaranteed. Large wooden office desk - double pedestal, center drawer. New or used adding machine. Used manual typewriters. Joe Harmon, Mt. Vernon. 256-4639. 51x1.

FOR SALE: Monogram Wood burner stove. Less than a year old. \$200.00. Call Billy Bryant, Lamer. 453-3427. 51x1p.

FOR SALE: Nice young laying hens. Call 256-4557. 51x1p.

FOR SALE: 1971 Opel Station Wagon, 1900 Series. Just returned from 2100 mile trip; used one quart oil and got 31 mpg. Call John E. Holbrook at 758-8341. 51x1.

FOR SALE: Former property of Berez Allen. Large lot with 7 room house and lot on Perciful Street. Call Arley Allen at 1-513-274-9336. Dayton, Ohio. Or Joe Daugherty at 453-4956. 51x4p.

HOUSE FOR SALE: 4 Rooms with bath. Located near Livingston with 2 acres of land. Call 453-4111 or see Bob Woodall. 51x4p.

FOR SALE: 450 Honda. New 10" extra-wide, high rise handles, new tires, padded assy bar, 2 helmets, \$700. See Dallas or James Cromer at Reno Valley Barn. 51x1.

FOR SALE: Two acres for \$2,500 and take over payments on 1974 three bedroom, 1 1/2 bath mobile home. Located 2 miles up Tarhill Road off Negro Creek Road. 50x11.

FOR SALE: 1974 Yamaha 250 Endura motorcycle. Call 256-4444. 48x11.

FOR SALE: 1967 Dodge Van Short wheel base, 6 cyl. Standard shift. Call 256-5234. 49x11.

HOUSE FOR SALE: 5-Room house with bath. Located on dead-end street. Approximately 1/2 acre of ground. House has been remodeled. Has washer and dryer hook-up. 5 minutes walk to church, school, and town. Phone 256-5234. 50x11.

MONUMENTS On display at Dowell and Martin Funeral Home. ntf

LOTS FOR SALE: Beautiful 1/2 acre level lots facing U.S. 25. City water wide roads. Regular price \$2,000. Reduced to \$1,500. \$300 down - \$100 a month for 12 months. Park or build. Why pay more? Also, acre or more lots for \$2500. Phone 256-5207, 49x3.

FOR SALE: 8 acre of beautiful level land, 7 miles north of Mt. Vernon on U.S. 25. 670 ft. highway frontage. City water. Ideal for trailer park. Baby farm, etc. \$18,000 or make offer. Phone 256-5207, 49x3.

FOR SALE: 65x12 mobile home, 3 bedrooms, \$4,795 cash. No financing available. Call 758-8823 for appointment. Set up on lot in Broodhead. Total electric. Has washer and dryer. 50x2.

FOR SALE: 6 room house with bath, city water, two acres. On U.S. 25, 2 miles south of Berea. Call 256-2589. 50x11

FOR SALE: One mare riding pony with male Yearling colt. Also Western saddle and bridle. Also male rabbits. Call 758-8192. 50x2.

FOR SALE: 10x40 mobile home. Take over payments. Call or contact Michael Goforth at 256-2987. 50x3p.

FOR SALE: One work pony. Try before you buy. Call 256-2854. 50x2.

FOR SALE: Turkeys - half grown. \$4 each. Phone 758-8561. Hazel Bray. 50x2p.

FOR SALE: Five year old Polled Registered Hereford Bull. Also 15-18 month old Polled Hereford Bulls. Also 1/2 Duroc Boars. See Benny C. Craig, Route 1, Box 320, Mt. Vernon. Phone 758-8892. 50x2.

FOR SALE: 1970 Ford pick-up, long wide bed with top. Call 256-2350. 49x3

For Rent

Two or Three Rooms, Furnished or Unfurnished Apartments, Steam Heated at ROCKCASTLE HOTEL. See Roy Winstead at Applance Service Center. ntf

Floor Sanding Equipment - "Do It Yourself" varieties of all kinds. Gym Sals, Padlocks. Filers and Sealers - Everything you need for a professional job!!

Appliance Service Center Mt. Vernon, Ky.

FOR RENT: Trailer space in Mt. Vernon. \$25 per month. Call 256-2089. 49x11.

Notice

K AND K BUILDERS BLOCK LAYING CONCRETE WORK ALL TYPES BUILDING CONST.

Call Vernon Kirby at 256-2380 44x4p.

HAMM BROTHERS Water Well Drilling and Contracting. Call 256-2244 anytime after 5 p.m. ntf

Reduce stress fluids with Fluidex. Lose weight with Dex A Diet capsules at Young's Pharmacy 43x8

BLOWN IN INSULATION Aluminum siding, storm doors and doors. For free estimates. Contact Preston Collins, Route 2, Mt. Vernon. Phone 453-2161 ntf

G & G CONSTRUCTION

Carpenter Contractors Remodeling Aluminum Siding

CALL John Glovak 758-8159

or Frank Glovak 758-8530 Broodhead, Kentucky 40409

The Cumberland Valley District Health Department, Manchester, Kentucky, will soon be providing Home Health Services in rockcastle County.

In order to initiate these services, the following employees are needed: Community Health Nurse I Education and Experience: Graduation from a diploma or associate degree program in nursing that is state approved with a current license to practice as a registered nurse in Kentucky. No work experience required. Salary, \$3.56 per hour. Social Worker I Training and Experience: Graduation from an accredited four year college or university, preferably Licensed Practical Nurse - Minimum Qualifications: Graduation from a school of practical nursing which meets the minimum requirements set by the state law. Current license to practice as a Practical Nurse in Kentucky. Salary \$2.95 per hour.

Applications may be obtained by writing or calling the Cumberland Valley District Health Department, P.O. Box 128, Manchester, Ky. 40962. Phone: 598-5564. Applications may also be obtained at the Rockcastle County Health Department, Mount Vernon, Ky.

All applications must be filed no later than September 2, 1975.

NOTICE: Remove unwanted hair permanently with Electrolysis treatments. Call Dorothy Martin. 256-4244 for appointment. 36x12

NOTICE: If you need Electrical Work of any kind, call DICK'S ELECTRIC SERVICE, Route 1, Broodhead at 758-8339. Free Estimates. ntf

SUPERIOR MOTOR CARS

U.S. 25 North "On The Strip" - Berea, Ky. Owners - Evelyn Pope and Howard Allen

- 1973 Chevrolet Impala 4 Dr. H.T. A/C Brown/Beige VR
- 1973 Pinto Runabout, Green
- 1973 Javelin 2 Dr. Automatic, Brown
- 1972 Plymouth Duster, 2 Dr. 6 Cyl. Gold/Gold VR
- 1972 Chevrolet Impala 2 Dr. H.T. Green/BVR
- 1971 Volkswagon Super Beetle, Blue

Plus More To Choose From. Low Overhead Means Lower Prices For Our Customers. ON-THE-LOT FINANCING

Superior Motor Cars BERE A, KENTUCKY PHONE: 986-3471

Your Motorists agent is the man to see for all your insurance needs.

He can provide for all your insurance requirements - auto, home, business, plus a full line of life insurance. Call him for more information.



Sam Ford

Phone 256-4545

Mt. Vernon, Ky.

Motorists Insurance Companies

LET YOUR EVENINGS WITH SUE BENNETT COLLEGE BRIGTHEN YOUR DAYS:

Sue Bennett College will be offering two courses for college credit this fall at Mt. Vernon Elementary School. These classes will begin on September 10, 1975, at 6:00 p.m. The cost for these classes will be \$28.00 per semester hour. Books for these classes may be purchased at the first class meeting. Classes to be offered are:

Course	No.	Name of Course	Cr. Hrs.	Day	Time	Instructor
History	133	U.S. History	3	Wed.	6-8:30	Dwight Hoskins
English	131	Composition	3	Wed.	6:8:30	Staff

To register for classes fill out the card below and mail to Sue Bennett College before September 8. The classes must have a minimum of 8 students per class to materialize.

NAME: _____

ADDRESS: _____

HIGH SCHOOL ATTENDED: _____

DATE OF GRADUATION: _____

PLEASE CHECK COURSE DESIRED:

English 131 _____ History 133 _____

MAIL TO:

Director of Admissions Sue Bennett College London, KY 40741



IMPALA - CAPRICE - MONTE CARLO - CHEVY TRUCKS - NOVA - VEGA - CAMARO - MONZA - CORVETTE - CHEVY TRUCKS - IMPALA - CAPRICE - MONTE CARLO

87 MPG - Chev. Vega Notback With ZBC Carb. and Stand. Trans.

"America's No. 1 Car" BRITTON CHEVROLET-OLDS, INC.

U.S. 25 NORTH 986-3169 BERE A, KY.

60,000 mi. On Chev. 140 cu. in. 4 Cyl. Engine available in Vega and Monza

MONTE CARLO - NOVA - CAPRICE - IMPALA - CAPRICE - NOVA - CORVETTE - CHEVY TRUCKS - IMPALA - MONZA - CHEVELE - VEGA - CAMARO - CORVETTE

CLAYTON HAMMOND SUPERMARKET

Highway 461 Mt. Vernon, Ky.
Phone 256-4100

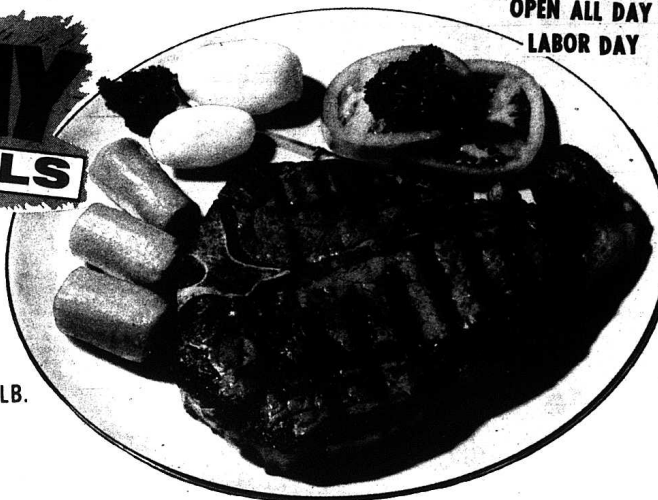
"ORIGINAL HOME OF BARGAINS"

We Gladly Accept
Federal Food Stamps

OPEN ALL DAY
LABOR DAY

LABOR DAY SPECIALS

SWIFT'S PROTEIN T-BONE STEAK
BEEF \$ **1.39** LB.
Sale



Sirloin	\$1.29 lb.	Sirloin Tip Roast ...	\$1.19 lb.
Round	\$1.19 lb.	Rump Roast ...	\$1.19 lb.
Rib	\$1.29 lb.	Pure Ground Beef79 lb.
Cube Steak	\$1.39 lb.	Armour Bacon	\$1.29
		12 oz. Partridge Weiners	69¢

Del-Monte Tomato Juice	Del-Monte Prune Juice	8 Roll Family Pack Toilet Tissue	Armour Star SAUSAGE
55¢	59¢	99¢	89¢

Robin Hood Flour	Purina Cat Chow	Coke, Sprite, Tab, and Mr. Pibb
\$1.59	4 lb. BAG \$1.59	99¢

HARVEST PRODUCE SPECIALS	Cat's Pride Cat Litter	Royal Scott Salad Dressing	Tall Cans Carnation Milk
Jumbo Head LETTUCE	5 lb. bag \$3.99	qt. size \$0.79	4 cans \$1.00
3 lb. bag ONIONS	Del-Monte Tomato Catsup	Cut Rite Wax Paper	Rainbo or Home Style BREAD
49¢	14 oz. bottle \$0.39	125 ft. roll \$0.49	4 loaves \$1.00
CABBAGE			
10¢ lb.			

Deaths and Funerals

MRS. DOVIE NORTON DIES
SUDDENLY AUGUST 25

Mrs. Dovie Norton, 87, of Route 1, Mt. Vernon, passed away suddenly Monday, August 25 at her home. She was born October 13, 1907 in Rockcastle County, the daughter of the late Andrew and Dora Blackburn McKinney.

Survivors include her husband, Foist Norton of Route 1, Mt. Vernon; four sons, Norman Norton of Somerset, Herdman Norton of Indianapolis, Ind., Sherman Norton of Beres and Joe Norton of Richmond; four daughters, Mrs. Melba Mize of London, Mrs. Mildred Pace and Mrs. Iris Slaven, both of Indianapolis, Ind., and Mrs. Dora Pace of Mooreville, Ind.; two brothers, Jess McKinney of Fairfield, Ohio and Rollie McKinney of Indianapolis, Ind.; two sisters, Mrs. Della Harper of Sharonville, Ohio and Mrs. Viola Sizemore of Westchester, Ohio; twelve grandchildren and a host of nieces and nephews.

Funeral services will be held Thursday (today), August 28 at the Cox Funeral Home Chapel with Rev. Paul Burton officiating. Burial will be in the McKinney Cemetery.

MRS. DOLORA E. HAMLIN
DIES AUGUST 22

Mrs. Dolora E. Hamlin, 80, of 304 Vernon died Friday, August 22, 1975 at the Rockcastle County Hospital.

She was born in Rockcastle County on September 21, 1894, the daughter of the late Whit and Emma Boyd and was a member of the First Baptist Church in Mt. Vernon.

Survivors include her husband, Marion Hamlin of Mt. Vernon; two daughters, Mrs. Lela Mae Griffin of Mt. Vernon and Mrs. Geneva Berry of Louisville; four grandchildren, Mrs. Doris Towery of Mt. Vernon, Robert C. Berry, Jr. of Louisville, Rev. John Hamlin Berry of Shelby, Ohio and Miss Jeanne Lamar Berry of Louisville; two great-grandchildren, Bill Towery of Mt. Vernon and Laura Lamar Berry of Shelby, Ohio; four nephews, Cecil and Estil Boyd, both of Hamilton, Ohio and Max and Ray Boyd, both of Indianapolis, Indiana; and two nieces, Mrs. Ruth Potts of Hamilton, Ohio and Mrs. Dorothy Sheridan of Indianapolis, Indiana.

Funeral services were held Saturday afternoon at the Dowell and Martin Funeral Home Chapel with Rev. Raymond Rodden and Rev. Harvey Pensol officiating.

Burial was in the Elmwood Cemetery.

MRS. BESSIE MAE BAKER
DIES AT LOCAL HOSPITAL

Mrs. Bessie Mae Baker, 83, of Route 1, Brodhead, died Wednesday, August 20, 1975 at the Rockcastle County Hospital in Mt. Vernon. Mrs. Baker was born in Rockcastle County on April 11, 1912, the daughter of the late Jake and Elizabeth Cummins McLemore and was a member of the Brodhead Baptist Church.

Survivors are her husband, Frank Russell Baker of Route 1, Brodhead; one son, John R. Baker of Route 1, Brodhead; four daughters, Mrs. Frances Carter and Mrs. Ellen Dailey, both of Mt. Vernon, Mrs. Lena Melcher of Brodhead and Mrs. Joann McWhorter of Louisville; four brothers, Sherman McLemore of Crab Orchard, Raymond McLemore of Lockland, Ohio, Ralph McLemore of Texas and Clarence McLemore of Michigan; five sisters, Mrs. Cora Brock of Lancaster, Mrs. Lela Duvall and Mrs. Laura Smith, both of Preachersville, Mrs. Rosie Byrd and Mrs. Cordia Yates, both of Indianapolis, Indiana; fourteen grandchildren and five great-grandchildren.

Funeral services were held Friday, August 22 at the Brodhead Baptist Church with burial in the Piney Grove Cemetery.

Watson Funeral Home was in charge of arrangements.

HAPPY GOSPEL JUBILEE
AT BIG BARN AUG. 29

The 2nd Big Happy Gospel Jubilee will be held Friday night, August 29, beginning at 7:30 p.m. in the Big Barn in Renfro Valley.

Featured will be the Pathway's from Cleveland, Ohio; the Brightens from Brighton, Michigan and Diana Bullock of Fairfield, Ohio. Local entertainers will include: The Renner Family, The Bluegrasses Templeaires and The Rockcastle Gospel Singers.

"OLD JOE" AT RED BARN
SATURDAY NIGHT

Old Joe Clark will be making a special guest appearance this Saturday night at the Red Barn in Renfro Valley. Old Joe was a feature on Renfro Valley shows for many years and is considered one of the more entertaining acts in Renfro Valley's colorful history. Also appearing with Old Joe will be his No. 1 son, Terry

Joe, and if you haven't seen these two work together, you're in for some surprises. Shows will be presented at 7 p.m. and 8:30 p.m. Adv.

CEEDAR RAPIDS CORNER
Menu

Friday night, August 29th - Fried fish, oysters, barbecued chicken, baked beans, hominy, fried green tomatoes, french fried potatoes and onion rings, choice of salads, cake with Hawaiian fresh fruit.
Sunday dinner, August 31st - Oven baked steak and gravy, baked ham, mashed potatoes, green beans, baked apples, succotash, choice of salads, homemade cream pies.

The Cedar Rapids Recreation Center dining room will be open through September for Friday and Sunday buffet. Special events, dinner will not be served on Sunday September 14 and 21.

School Menu

September 2-5

BREAKFAST

Tuesday - Cereal, Toast, orange juice, milk.

Wednesday - Toasted cheese sandwich, orange juice, milk.

Thursday - Cereal, Toast, orange juice, milk.

Friday - Pancakes, Syrup, butter, milk.

LUNCH

Tuesday - Fish on bun, cole slaw, mashed potatoes, milk, cake.

Wednesday - Pig in blanket, mashed potatoes, krait, milk, pudding.

Thursday - Spagetti with meat sauce, green beans, cole slaw, white bread, milk, jello.

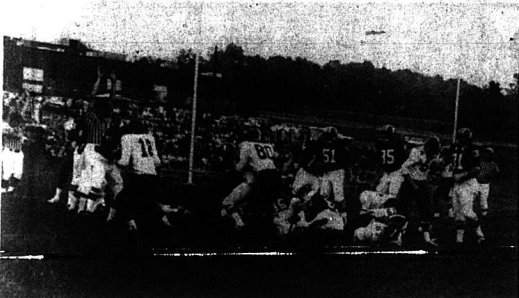
Friday - Hamburger on bun, cheese sandwich, pickle, lettuce, tomato, french fries, milk, cookies.

There currently are more than 1,700 inmates at the state reformatory at LaGrange, which has an official rated capacity of only 1,200. The reformatory is Kentucky's largest prison.



Manners - The art of wearing appropriate masks.

The Russell County Lakers' quarterback [No. 5] goes for yardage as Larry Welch, No. 77, and Mark Hookrock, No. 70, give chase. In the bottom photo, Joe Clontz goes over for the first Rockets' touchdown of the



Russell Co. Wins Opening Game 12-6; Rockets Travel To Berea Fri. Night

The opening game of 1975 for the Rockcastle Rockets football team on their new field at the high school wasn't particularly successful as they went down to defeat to the Russell County Lakers 12-6.

The Rockets also lost the services of a sophomore starter, Mike Polly, son of Head Coach Glen Polly, who suffered a broken leg in the fourth quarter of the game.

The opening toss was won by the Lakers and they began their drive on their own 40 yard line. The drive was stopped short of the 20 yard line which the Rockets recovered on their 43 yard line. The Rockets were able to get anything going and had to punt which David Noe did successfully, driving Russell County back to their 10 yard line. The Lakers were stalled on their second play from scrimmage when they fumbled and the Rockets recovered.

On the fourth down, Joe Clontz went over from the three yard line for the score. The try for the extra points was stymied but the Rockets led at the end of the first quarter 6-0.

Both teams had a hard time holding onto the ball the second quarter with Russell County's first drive of the quarter stymied on the Rockets' 28 yard line. Jerry Pensol then gained good yardage for the Rockets for a first down but their second try for a first down was unsuccessful and the Rockets had to punt.

Noe got another good punt off and Russell County took over on their 33. The Rockets immediately picked up a first down and almost broke loose for a score on a long run, but were finally stopped by Billy Hackworth. The Lakers couldn't move the ball for a first down after this, and were forced to turn the ball over to the Rocket after a fourth down pass was knocked down by Billy Hackworth and the Rockets took over on their own 20. The Rockets couldn't get anything going on their drive and a punt to the Lakers gave them the ball on their 25-yard line. Two fifteen yard penalties put the Lakers within striking distance of the goal line and David Hunt saved a touchdown on this series. Time ran out in the first half with the Lakers unable to pnt any points on the board.

The Lakers had to kick off to the Rockets to begin the second half and Hackworth returned the kick-off to the Rockets 31 yard line. The Rockets were moving the ball but a fumble on third down gave the ball to Russell County on the Rockets 43. The Lakers moved the ball for a first down but on the next play, Hackworth intercepted a pass and returned it to the Rockets' 22. The Rockets were unable to put together a successful series and Noe was once again called upon to punt the ball away. The Lakers took the forty yard punt on their own 30 and ran it back to the Rockets' 30 yard line where they were stopped by

cost the Rockets the game as they turned the ball over to the Lakers five times on mistake. This Friday night, the Rockets travel to Berea to take on the Pirates.

umble returned the ball to Russell County on the Rockets' 29 yard line. The Lakers' quarterback then completed a pass to his man on the Rockets' 16. But, a pass on the next play is intercepted by Shane Bullock who returned the ball to the Rockets' 28 yard line.

An offside penalty against the Rockets helped stop their drive and they were forced to punt with Russell County taking the ball on their own 44 and returning it to the Rockets' 18 yard line. On this play, Mike Polly sustained his injury and had to be carried from the field.

On the next play, Russell County went to the Rockets' 18 and over for the touchdown on the next play. The running try for extra points was not successful but to Lakers held a 12-6 lead with 4:10 remaining in the game.

Following the kick-off, the Rockets began their series of downs on their own 40 yard line. The Rockets moved the ball to Russell County's 45 yard line with the aid of a long gain by Jerry Pensol and a force-mack penalty against Russell County where it is first and ten. But, it was not to be, as the Rockets once again turned the ball over to Russell County on a fumble and the Lakers sat on the ball until time ran out.

Statistically, The Rockets' offense rushed for 128 yards compared with 238 yards for Russell County. Five first downs were obtained by the Rockets while Russell County was garnering twelve. Individually, Joe Clontz gained 50 yards in 11 carries; David Owens picked up 22 yards in 4 carries; Jerry Pensol gained 28 yards in 6 carries; Billy Hackworth was 4 yards for 2 carries and Tim Whitehead got 10 yards in 5 carries.

One really bright spot for the Rockets is their kicker, David Earl Noe, who punted 5 times for an average of 35 yards each punt.

Defensively, the Rockets were led by Jerry Pensol who accounted for 7 tackles and 2 assists; Bobby Boring was 5 and 1; David Hunt and Larry Baker were both 4 and 1; Larry Welch was 3 and 7; Hackworth 3 and 4; Clontz 3 and 0; David Owens 2 and 3; Noe, 2 and 2; Whitehead, 2 and 2; Shane Bullock, 1 and 1; Mark Hookrock 3 and 1; Mike Polly 2 and 1 and Jeff Carr, 1 and 3.

This Friday night, the Rockets journey to Berea to take on the Pirates.

State police have issued more than 77,000 speeding tickets during the first seven months of 1975 as compared with 57,805 for the same period a year ago and 61,230 for all of 1973.

HUDSON FIGHTS INFLATION



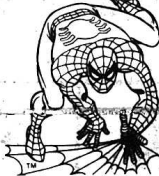
100 Capsules \$4.38 **\$2.99**
100 Capsules \$7.69 **\$4.99**
100 Capsules \$11.49 **\$6.89**

available, while supplies last, at

UPTON DRUG STORE 430 Chestnut St. and BEREA WALGREEN DRUG

"On The Strip" BEREA, KY.

NEW FROM HUDSON
DELICIOUS SPIDER-MAN
CHEWABLE MULTIPLE VITAMINS in the shape of America's Greatest Superhero



U-40 Insulin \$1.08
U-80 Insulin \$2.07
U-100 Insulin \$2.58

Where Rheumatism Pain Strikes

Rheumatic and Arthritic Pain can strike the joints in any of the indicated areas (see arrows on chart)



Puts Pain to SLEEP

Now for the first time, overnight blessed temporary relief from the pain of arthritis, bursitis, rheumatism, soreness, stiffness. Just rub Icy-Hot's creamy balm over the affected joints or muscles, and you can actually feel the pain start lessening. Begin to sleep peacefully again. If you don't have relief in 24 hours we'll refund your money. \$3.00 for 3 1/2 oz. jar or \$5.00 for 7 oz. jar.

Maalox 12 ounce \$1.39
Mylanta 12 oz. \$1.59
Bayer Aspirin 100's .89c

For Your Prescription and Drug Needs:
Berea Walgreen Drug Is
Open Every Sunday
10:00 A.M. to 7 P.M.

Suit Filed Against County; As Result of Garbage Dispute

A suit was filed last Friday in Rockcastle Circuit Court by Kenneth Cromer against Rockcastle County asking damages in the sum of \$35,000.

The suit stems from action taken by the Fiscal Court at their August meeting when the court terminated garbage collection service in Rockcastle County. Mr. Cromer and Guy C. Martin had been rendering the service since 1973.

The termination of the services came after a dispute arose concerning the manner in which the trash was being collected and the maintenance of the areas around the containers.

The suit reads: "On January 7, 1973, plaintiff, Kenneth Cromer and defendant entered into a contract whereby Kenneth Cromer agreed to furnish 33 garbage containers as specified locations within the county and to empty said containers weekly. The payment for service was the sum of \$18,975 per year.

Said contract provided, inter alia, that it was to continue for one year from March 1, 1973, "with option to continue at the price bid so long as revenues sharing was continued."

Although said contract did not specify which party had the option to continue the contract, the option to continue was exercised and the contract was extended until March 1, 1975 which was the end of the then

existing revenue sharing plan. On August 4, 1975, Rockcastle County wrongfully breached said contract and ordered plaintiff to remove his containers and stopped making payments under said contract, to plaintiff's damage in the sum of \$35,000."

The County has until September 11 to file an answer to the suit.

Michael Polly, 15, Injured In Football Season Opener

Not only did the Rockcastle Rockets go down to defeat in their season opener against Russell County last Friday night, but they also sustained what is probably the worst injury suffered by a player in the history of football in Rockcastle County.

The injury came in the fourth quarter to Mike Polly,

son of Head Coach Glen Polly, who suffered a break of the left leg above the knee. Mike, a sophomore, is now a patient at a Louisville Hospital and will be there for several weeks. His mailing address is Michael Polly, Sisters Mary and Elizabeth Hospital, 401 Churchman Street, Louisville, Ky. 40215.

Coy Phillips, 55, Shot To Death; George Drew Charged With Murder

Coy Phillips, 55, of Route 8, Austin, Texas, was shot and killed about 3 a.m. Sunday morning in the yard of the home of Mrs. Dicie Drew about 20 miles south of Mt. Vernon on Highway 1955 at Red Hill.

Charged with shooting is George Drew, 45, of Route 2, Livingston, Ky. Drew was arrested about 6 a.m. Sunday morning by State Trooper Greg Ennis on Highway 1955 and charged with murder in the first degree in the Rockcastle County Jail and an examining trial is set for Thursday (today).

According to Trooper Ennis, four men were in the yard of the Drew home when George Drew allegedly took a pistol out and shot Mr. Phillips five or six times. The witnesses, William Drew, brother of George and Willis Drew, a distant relative, said argument led up to the shooting. Following the shooting, Drew walked out of the yard and was later arrested by Ennis. Coroner Bill Wood said that death was instantaneous.

Mr. Phillips, a retired Air Force Lieutenant Colonel, was here on vacation with his son at the home of his father, C.W. "Wally" Phillips of Red Hill.

The shooting is being investigated further by Sheriff Manuel Shepherd and Trooper Ennis.

Mr. Phillips was born June 11, 1920 in Jackson County, the son of C.W. Phillips and the late Isabelle Drew Phillips. He was a veteran of World War II, a retired Lieutenant Colonel in the Air Force, a member of St. Luke's Episcopal Church, and a member of Ashland-Masonic Lodge #640 F&AM.

Besides his father, he is survived by his wife, Mrs. Cherry Parnell Phillips of Jerry Makin Is Now Radio Shack Dealer

Makin's Catalog Sales Agency located at Main Street in Mt. Vernon is now a Radio Shack Authorized Sales Center.

According to Jerry Makin, the store's owner, Makin's Catalog Sales Agency will stock a selected line of products from Radio Shack. Their products include Realistic hi-fi and citizens band equipment, Archer antennas, Micronix test instrument, Science Fair and Archer electronic and hobby kits.

Radio Shack, a division of Tandy Corporation (NYSE), head-quartered in Fort Worth, Texas, operates a chain of 2600 stores in all 50 states, Canada, and the South American continent. The company expects to establish a network of 2000 Authorized Sales Centers like Makin's Catalog Sales Agency across the nation.

Makin's Catalog Sales Agency has been serving the Mt. Vernon area since 1973.

Write this ad in newspaper for details of grand opening.

Austin, Texas, one son, Greg Phillips, Austin, Texas, and one daughter, Mrs. Margaret Ann Westerman also of Austin, Texas; four brothers, Carlos Phillips of Hamilton, Ohio, John Phillips of Great Falls, Montana, Clint Phillips of Route 2, Mt. Vernon and Guy "Butch" Phillips of Nashville, Tennessee.

Funeral services will be held Thursday, August 28 at noon at the Lakeway Church of Lakeway, Texas with military graveside services to follow in the Fort Sam Houston National Cemetery.

Cox Funeral Home was in charge of local arrangements.

One Project Added To Road Program

Gov. Julian Carroll has announced approval of a request to add one project to the rural secondary road program for Rockcastle County during this fiscal year (1975-76).

According to Carroll, the newly approved project will provide initial blacktop surfacing along Hurricane School Road for 7 miles.

Funds for the additional work will come out of monies already allotted to the county for rural secondary road work in the current fiscal year. That amount, as announced earlier, was \$286,181.

Please Don't Block Rural Mail Boxes

Postmaster James O. Smith has asked that people be especially careful and block mailboxes on rural routes in the county, especially Route 4.

Mr. Smith said that he had received several complaints about this from rural postal carriers and he also pointed out that mail carriers are not required to leave their vehicle to put mail in boxes. Therefore, if a box is blocked when the mail comes through, the mail is delayed until the next day.

Community Flea Market Is This Saturday

The Community Flea Market was the main topic of discussion at the regular meeting of the Mt. Vernon Lions Club held last week.

The flea market is scheduled for Saturday, August 30 on the grounds at the Mt. Vernon Elementary School, and the club is renting space at \$3.00 for a ten foot square to anyone who wishes to sell at the market. The club is encouraging housewives to bring their yard sale items and farmers to bring produce and antique dealers to set up a table and anyone who has something to sell to rent a space and set up a table. Those who rent a space are asked to bring their own table.

The club also stated that if anyone wishes to donate it to the Lions Club Table, where the club will sell and keep the money for their charity and

COME AND SEE - Cumberland River Comprehensive Care Center's district office staff recently staged an open house for its new building above, in Corbin. The \$500,000 facility headquarters mental health-mental retardation services and programs for eight southeastern Kentucky counties. From community advocates top left, discuss the center's accomplishments and future plans. They are, from left: C. Vernon Cooper, Hazard, State Health Services Council member instrumental in the facility's construction; Randall Stivers, Corbin, board member; Mrs. Edith Feltsner, Corbin, chairperson of the center's first board of directors and Roland D. Mullins, executive director of the center. Center staff members and wives gather at the punch bowl, top right, and Mrs. Elizabeth Baker, left, Director of Developmental Disabilities explains new audio-visual equipment at the center to the Rev. Singleton, family of Orlando while they watch themselves on closed circuit television. The equipment is used by both staff and clients during various physical and psychological therapy programs.

Grand Jury Raps Courthouse Condition, Lack of Deputy Sheriff and Juvenile Facility

The July, 1975 term of the Rockcastle County Grand Jury recently recessed and their final report concerned such matters as the condition of the courthouse and jail facilities, the need for juvenile detention facilities and the matter of a deputy for the sheriff's office.

The report reads as follows: On Monday, August 18th, 1975, we, the July 1975 Grand Jury, inspected the Rockcastle County Courthouse-Jail facilities and especially noted points which had been the subject of previous Grand Jury reports. We find:

1. The bedding in the jail was dirty and some mattresses torn to shreds, the cells were generally dirty and commodious dirty and unsanitary.
2. The kitchen in the jail was adequate but dirty.
3. The office part of the jail was in a disgraceful and filthy condition, and had a bad odor about it. The bad odor was throughout the jail.
4. The security seemed adequate at the time of the inspection. Prisoners were under lock.
5. The offices in the Courthouse appeared to be reasonably clean. Most occupants seemed satisfied with the upkeep and cleaning of the building except trash pick-up.
6. The restrooms on the first and second floor are in a deplorable condition, very dirty and insanitary.
7. The floors in the hallways of this building and the stairway are very dirty and unsightly, and in bad need of cleaning.
8. All vents throughout the Courthouse are dirty.
9. Many lights throughout the Courthouse are dirty.
10. Walls and ceilings in the Circuit Courtroom need repairing from a water leak.
11. Leaks around the windows in the County Agent's Office.
12. There is a report of roaches in the County Agent's office.
13. In the Soil Conservation Office, there are leaks around the windows and the plaster is

falling.
14. Plaster is falling in the sheriff's office and there is a hole in the ceiling.
15. Leaks in the hall on the second floor.

The Grand Jury has discussed the matter of Law Enforcement in Rockcastle County, and have found that to date, no arrangements have been made for a Deputy Sheriff as was mandated by the March Grand Jury. The County Judge and Sheriff were directed to find additional funds with which to employ an additional deputy sheriff.

The Grand Jury heard

County Child Development Centers Will Reopen Monday, September 8

The Rockcastle Child Development Centers will reopen September 8th. There are three centers serving this area: Maple Grove Center at Orlando, Bridge, Ridge Center - six miles north of Mt. Vernon and the Broadhead Center located behind the elementary school. The operating hours will vary depending on the needs of working parents.

The centers try to create an environment where a child will be happy, learn a wide variety of skills and work co-operatively with other children and adults. Each center is well-staffed with three teachers, a cook, a teacher, bus driver, and a family worker who serves as a direct link between home and center. The center provides two nutritious meals (breakfast and lunch) and an afternoon snack each day. As one of our services, we offer transportation to and from the center. While transporting children another adult is present on the bus.

Each center is divided into four learning areas. The areas are:
1. Large Muscles, which contain tricycles, balls, balance boards, climbing apparatus, and etc. This area helps develop motor skills such as balancing, throwing and catching, climbing and eye-hand co-ordination.
2. Small muscles provides

evidence of problems concerning the high rate of juvenile crime in the county. The County Judge and Fiscal Court are hereby directed to provide for adequate detention facilities for juveniles and runaways and the Juvenile Judge is requested to use the facilities in appropriate cases to slow down the increasing juvenile crime problem. These matters are to be completed by the time the November Grand Jury convenes so that the Jury can take appropriate action to enforce these provisions.

The Jailor shall clean up the jail and especially his room, and shall rid the jail of loafers. He shall also see that the Courthouse is kept clean.

This is the last time a Rockcastle Grand Jury needs to address itself to these problems. The last four grand juries have requested action and very little has been done. The next time, legal action should be taken by the Grand Jury.

/s/ Barbara Ann Browning, Marianna Messer, John L. Bullock, Fern Caldwell, Proctor Brock, Lucille B. Carlisle, Lafayette Lamb, Mable H. Capps, Dale McGuire, Ora Lee Hurst, David W. Ballinger, Jackie Lee Cash, Foreman.

color games, and science table which includes an aquarium, nature exhibits and materials for simple experiments. This area helps provide stimulation for the development of language, listening and discrimination skills, number concepts and recognition of shapes and colors.

3. Sensory, has a selection of books, films, lotto and match games; number, size, shape and working parents.
Eight County Crafts Day To Be Held

The Extension Home-makers' Association of the Wilderness Trail Area is sponsoring the third annual crafts day camp day for homemakers in this area. The camp will be held Tuesday, September 9 at the J.M. Feltnor Memorial 4-H Camp at London. The camp will begin at 10:00 a.m. and be over by 2:30 p.m. Each participant is asked to bring a sack lunch. One or more of the following crafts can be learned: tie wall hangings, rock painting, paper toys, broken glass pictures, necklaces from paper, dried pressed flower pictures, quilting, and making hurricane lamps. For some items there will be no cost; for others the fee ranges from 50c to \$2.00.

If you are interested in attending the crafts camp, register by calling the County Extension Office at 252-3403.

color games, and science table which includes an aquarium, nature exhibits and materials for simple experiments. This area helps provide stimulation for the development of language, listening and discrimination skills, number concepts and recognition of shapes and colors.

3. Sensory, has a selection of books, films, lotto and match games; number, size, shape and working parents.
Eight County Crafts Day To Be Held

The Extension Home-makers' Association of the Wilderness Trail Area is sponsoring the third annual crafts day camp day for homemakers in this area. The camp will be held Tuesday, September 9 at the J.M. Feltnor Memorial 4-H Camp at London. The camp will begin at 10:00 a.m. and be over by 2:30 p.m. Each participant is asked to bring a sack lunch. One or more of the following crafts can be learned: tie wall hangings, rock painting, paper toys, broken glass pictures, necklaces from paper, dried pressed flower pictures, quilting, and making hurricane lamps. For some items there will be no cost; for others the fee ranges from 50c to \$2.00.

If you are interested in attending the crafts camp, register by calling the County Extension Office at 252-3403.

Men's Pants Sewing Class To Be Held

Needing some pointers on making pants for the man in your life? A class on sewing boys and mens pants will be taught by Cheryl Witt, County Extension Agent for Home Economics at the Sunset Fabric Shop on Telvis Street in Mt. Vernon. The class will be held Thursday, September 4, 1975, at 7:00 - 9:00 (Cont. to 6)

Small muscles provides

Labor Day FOOD SAVINGS

FRIENDLY SERVICE ALL THE WAY TO YOUR CAR
WE WELCOME FOOD STAMP CUSTOMERS
WE TRY HARDER



LAY'S
SMOKED PICNICS
SLICED 89' LB.
79
LB.

FRESH LEAN
GROUND BEEF

NO ADDITIVES ADDED
79
3 LB. OR MORE

U.S.D.A.
CHUCK ROAST

79
LB.
Pkg. Of 8 Food Fair
HOT DOG or
HAMBURGER BUNS
2 For **79**

ENGLISH ROAST
89
LB.

LAY'S 12 OZ.
BACON

\$1.29



LAY'S 12 OZ.
WEINERS
ALL BEEF OR REG.

73



12 Oz. Size Lay's
SAUSAGE

79
3 LB.
SWIFT
CANNED
HAM

250 S & H Stamps
With \$25.00 Or More
Order

100 S & H Stamps
With \$10.00 to \$24.99
Order

COUPON
WORTH 50
S & H Green Stamps
With the purchase of
1 Pkg. of more
Lays Sausage Meats
mv cpn exp 9-3-75

COUPON
WORTH 50
S & H Green Stamps
With the purchase of
1 Pkg. of more
Lays Sausage Meats
mv cpn exp 9-3-75

COUPON
WORTH 50
S & H Green Stamps
With the purchase of
1 Pkg. of more
Lays Sausage Meats
mv cpn exp 9-3-75

COUPON
WORTH 50
S & H Green Stamps
With the purchase of
1 Pkg. of more
Lays Sausage Meats
mv cpn exp 9-3-75

COUPON
WORTH 50
S & H Green Stamps
With the purchase of
1 Pkg. of more
Lays Sausage Meats
mv cpn exp 9-3-75

COUPON
WORTH 50
S & H Green Stamps
With the purchase of
1 Pkg. of more
Lays Sausage Meats
mv cpn exp 9-3-75

COUPON
WORTH 50
S & H Green Stamps
With the purchase of
1 Pkg. of more
Lays Sausage Meats
mv cpn exp 9-3-75

COUPON
WORTH 50
S & H Green Stamps
With the purchase of
1 Pkg. of more
Lays Sausage Meats
mv cpn exp 9-3-75

COUPON
WORTH 50
S & H Green Stamps
With the purchase of
1 Pkg. of more
Lays Sausage Meats
mv cpn exp 9-3-75

COUPON
WORTH 50
S & H Green Stamps
With the purchase of
1 Pkg. of more
Lays Sausage Meats
mv cpn exp 9-3-75

COUPON
WORTH 50
S & H Green Stamps
With the purchase of
1 Pkg. of more
Lays Sausage Meats
mv cpn exp 9-3-75

COUPON
WORTH 50
S & H Green Stamps
With the purchase of
1 Pkg. of more
Lays Sausage Meats
mv cpn exp 9-3-75



RED KIDNEY BEANS
CHILI HOT BEANS
4 For **\$1**

BUSH'S
CHOPPED TURNIP GREENS
WHITE HOMINY or
GOLDEN HOMINY
6 For **\$1**

Bush's 303 Size Can
SWEET PEAS
3 For **89**

Showboat
300 Size
SPAGHETTI
5 For **\$1**

300 Size
DOG FOOD
7 For **\$1**

GRANT SIZE
BREEZE
10' OFF
\$1.29
LIMIT (1)

1/2 GALLON
PUREX BLEACH
49

BONUS OFFER!
4 BATH SIZE BARS FOR
THE PRICE OF 3
99c
4 - 5.0 Oz
Bars
Only

Sea Pak 1 Lb.
FROZEN PERCH FILLET
89

WE WILL BE OPEN
MONDAY SEPT. 1st
FROM 9 Till 6:00
REG. HOURS THE
REST OF THE WEEK

9 OZ.
PRINGLES
TWIN PAK
89

14 OZ. HEINZ
CATSUP
2 For **79**
Limit 2

10 LB. ROBIN HOOD
FLOUR
Plain Or Self-Rising
\$1.79

4 LB. LITTLE FRISK
CAT FOOD
\$1.49

3 OZ.
NESTEA
\$1.49



4 For
6 OZ. Frozen
LEMONADE
99

12 OZ. KRAFT
CHEESE
SLICES
89

TALL CANS
CARNATION MILK
4 For **\$1**
Limit (4) With *10" Or
More Order

3 LB.
YELLOW ONIONS
65

3 LB.
YELLOW APPLES
99

8 OZ.
MARGARINE
3 For **99**

1 GALLON
RICH & READY
ORANGE DRINK
99



300 Size Can
PORK & BEANS
4 For **89**

Dixie
Belle
CRACKERS
1 Lb. Box
2 For **89**

2 LB.
STRAWBERRY
PRESERVES
\$1.19

RED OR
WHITE
GRAPES
49
LB.

NEW WHITE
POTATOES
\$1.15

DIET
OR REG.
12 OZ.
CANS
SHASTA
SOFT DRINKS
6 For **89**

32 OZ.
CHARCOAL LIGHTER
49



BIG 2 LB. JAR
GRAPE OR PEACH
PRESERVES
95

2 For **85**

32 OZ. GENUINE
DILL PICKLES
59

1 GALLON ROYAL SUN PURE
ORANGE JUICE
79

10 LB. U.S. NO. 1
NEW WHITE
POTATOES
\$1.15

32 OZ.
CHARCOAL LIGHTER
49



\$4.99

HEINZ 16 OZ.
BARBECUE SAUCE
59

MORRELL POTTED MEATS
3 Oz. Can
6 For **89**

32 OZ. GENUINE
DILL PICKLES
59

10 LB. U.S. NO. 1
NEW WHITE
POTATOES
\$1.15

DIET
OR REG.
12 OZ.
CANS
SHASTA
SOFT DRINKS
6 For **89**

32 OZ.
CHARCOAL LIGHTER
49

1 GALLON
RICH & READY
ORANGE DRINK
99

12 Oz. Size Lay's
SAUSAGE

79
3 LB.
SWIFT
CANNED
HAM

\$4.99

MORRELL POTTED MEATS
3 Oz. Can
6 For **89**

HEINZ 16 OZ.
BARBECUE SAUCE
59

32 OZ. GENUINE
DILL PICKLES
59

1 GALLON ROYAL SUN PURE
ORANGE JUICE
79

DIET
OR REG.
12 OZ.
CANS
SHASTA
SOFT DRINKS
6 For **89**

32 OZ.
CHARCOAL LIGHTER
49

1 GALLON
RICH & READY
ORANGE DRINK
99

250 S & H Stamps
With \$25.00 Or More
Order

100 S & H Stamps
With \$10.00 to \$24.99
Order

COUPON
WORTH 50
S & H Green Stamps
With the purchase of
1 Pkg. of more
Lays Sausage Meats
mv cpn exp 9-3-75

COUPON
WORTH 50
S & H Green Stamps
With the purchase of
1 Pkg. of more
Lays Sausage Meats
mv cpn exp 9-3-75

COUPON
WORTH 50
S & H Green Stamps
With the purchase of
1 Pkg. of more
Lays Sausage Meats
mv cpn exp 9-3-75

COUPON
WORTH 50
S & H Green Stamps
With the purchase of
1 Pkg. of more
Lays Sausage Meats
mv cpn exp 9-3-75

COUPON
WORTH 50
S & H Green Stamps
With the purchase of
1 Pkg. of more
Lays Sausage Meats
mv cpn exp 9-3-75

COUPON
WORTH 50
S & H Green Stamps
With the purchase of
1 Pkg. of more
Lays Sausage Meats
mv cpn exp 9-3-75

COUPON
WORTH 50
S & H Green Stamps
With the purchase of
1 Pkg. of more
Lays Sausage Meats
mv cpn exp 9-3-75

COUPON
WORTH 50
S & H Green Stamps
With the purchase of
1 Pkg. of more
Lays Sausage Meats
mv cpn exp 9-3-75

COUPON
WORTH 50
S & H Green Stamps
With the purchase of
1 Pkg. of more
Lays Sausage Meats
mv cpn exp 9-3-75

COUPON
WORTH 50
S & H Green Stamps
With the purchase of
1 Pkg. of more
Lays Sausage Meats
mv cpn exp 9-3-75

COUPON
WORTH 50
S & H Green Stamps
With the purchase of
1 Pkg. of more
Lays Sausage Meats
mv cpn exp 9-3-75

COUPON
WORTH 50
S & H Green Stamps
With the purchase of
1 Pkg. of more
Lays Sausage Meats
mv cpn exp 9-3-75

**FRANKFORT
WATCHLINE**

BY: GARY AUXIER

There are several thousand people in the Commonwealth who will likely base their vote for governor on the single issue of the Red River Dam.

And of these few thousand, as one observer put it, about half are for and half are against it.

So by taking a stand on either side, a politician ends up gaining about half of "several thousand votes."

Conversely, he loses the other half.

Enough said that it probably doesn't matter a great deal which half he wins or loses, unless he can develop something more of the issue.

That is what Bob Gable is trying to do. He has taken a stand in opposition to the Red River Dam and it is a dead certainty that because of it he has picked up half of "several thousand votes."

Like his party compatriot, former Sen. Marlow Cook, Gable also stands to gain some other conservationist-oriented votes, but more importantly in this vein it would tend to ease the burden he must carry in some quarters of being a coal operator.

Now, let's suppose for a moment that Gov. Julian Carroll decides to take a stand in opposition to the Red River Dam, and suppose further that he decides to announce it prior to the election.

Carroll would bring back to the fold probably most of the half of several thousand votes that Gable had won, if for no other reason than the fact that of three of them are Democrats and all things being equal...

Further, he would pick up most of the half that want the dam, since two thirds of them are Democrats anyway and all things being equal on that one issue...

However, Carroll stands to make a few people more than a little unhappy if he stands opposed to the dam.

Not the least among them is the venerable U.S. Rep. Carl D. Perkins, who all but violently wants the thing.

Former Governor and now Senator, Wendell Ford, who supported the dam as governor, might be a little perturbed.

While it is not very likely either of these would attempt to thwart Carroll in November because of it, it is not entirely out of the question to think that Julian Carroll occasionally thinks about his political future.

Now let's suppose - and this is not too difficult - that Carroll decides no stand is better than either stand, at least at this time.

Carroll still picks up half of several thousand votes left when Gable took his stand.

He might keep some of the several thousand Gable has collected who are convinced that Carroll will eventually oppose the dam.

And for the time being, he runs no risk of alienating those of the politically powerful who believe strongly the dam should be built.

Further, there is little or no risk in waiting if Carroll is right in saying that he can wait as long as next year before making a decision.

Politically speaking, then, there is just no harm in taking a position now, even if Carroll were ready to make a



The Midnighters took second place in the Ladies Softball Tournament held at London last week. The ladies also came in 5th in the Anderson County Softball Tournament recently. Members of the squad are, front row, from left: Debbie White, Precia Bowling - coach, Debbie Morris, Connie McClure, Sue Kindrick. Back row, from left: Pat Thacker, Cathy Satter, Pat Smith, Rose Smith, Nellie Smith, Janice Mooney, Teresa Russell and Judy Bullock. The Midnighters were defeated by one run in the final game.

decision, which he says he is not. In fact, if Carroll is inclined to oppose the dam, the political percentage appears to favor waiting, for as the weight of further evidence against it increases, the lessens alienation of those who want the dam. All the politics aside, a lot of people are anxiously awaiting his position.

**HOSPITAL
NOTES**

ADMITTED: Julie Cromer, Mt. Vernon; William Noe, Mt. Vernon; Winnie Rowe, Mt. Vernon; Bernard Riddle, Brodhead; Thomas Lee McCracken, Orlando; Joann Stewart, Crab Orchard; Daniel L. Singleton, Orlando; Mae E. Lawrence, Brodhead; Timothy V. Bullock, Brodhead; Oma B. Sutton, Brodhead; Thirsis Taylor, Brodhead; Glenda Slusher, Livingston; Lloyd Monk, Brodhead.

RELEASED: Judy Hopkins, Hopkins baby, Dimple

Goff, Terry Griffith, Lucy Owens, Roscoe Kidwell, Lisa Robbins, Sadie Barrett, Julie Cromer, Leslie Polly, Rosa Griffin, Thomas McCracken, Joann Stewart, Ernest Robinson, Georgia Bradley, Fred Merritt, Lula Stephens, Tim Bullock.

New Arrivals

A girl, born to Glenda Jean Slusher of Livingston.

**Letter
to the
Editor**

Route 3
Crab Orchard, Ky.
Copper Creek Section of
Rockcastle County

Dear Editor,

I live in the district of the Magistrate that did not vote to have the garbage containers removed.

In last week's Signal, Mr. Clark wrote a letter concerning the garbage. It seemed as if he didn't know what he was going to do with his garbage.

In the State of Kentucky, with the exception of Louisville, there is no law against having an incinerator in your yard to burn garbage and in the county, you can burn your garbage on your own property.

If you had one of these garbage containers sitting one hundred feet from your home and you use the monstrous flies and rats, then walk in your yard and your nose burn from the awful odor, you would be glad to see these garbage containers removed.

So, I say more power to you Mr. Mason and the Fiscal Court, stay in there and fight.

A Rockcastle County Citizen

/s/ J.T. Mobley

**ADULT ED. CLASSES
TO BEGIN AT LEST**

Registration and enrollment for adult education classes at Livingston Elementary School will be held Tuesday night, September 2 at 6 p.m. at the school.

The classes will also begin Tuesday night, September 2 and will be held twice weekly on Tuesday and Thursday, Jerry Mink will be instructor for the classes.

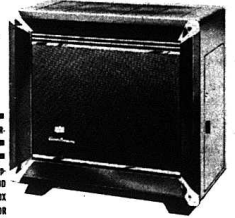
More than 500 of Kentucky's 4,577 licensed attorneys are now a part of the state's public defender program for indigent defendants. That's more attorneys than ever before to participate in the three-year-old statewide program.



Janie Lynn Lear, daughter of Mr. and Mrs. Terry Lear of Route 3, Mt. Vernon, celebrated her second birthday, Sunday, August 17. Paternal grandparents are Mr. and Mrs. Herbert Lear of Route 3 Mt. Vernon and maternal grandparents are Mrs. Mary Delaney of Mt. Vernon and the late Edward Delaney.

**NEW
Warm Morning
model 701
WOOD HEATER**

Gives You AUTOMATIC Warm Floor Heating!



**MODEL 701
WOOD BURNING
CIRCULATOR**
With These Great
Warm Morning
Features:

- SLIDE-OUT ASH DRAWER
- CAST-IRON GRATES
- PORCELAIN ENAMEL FINISH
- AUTOMATIC THERMOSTAT
- FORCED AIR BLOWER (Optional)
- HOLDS 25' WOOD
- FIBERGLASS-LINED FIREBOX
- LARGE SIDE-LOADING DOOR

Plentiful, low cost wood becomes the most modern of fuels when burned in this great new circulator of Warm Morning's... the Model 701! You'll enjoy the warm floor comfort and ease of heating your home with this ultra-modern, automatic wood-burning circulator that provides ample heat for up to five rooms. A built-in thermostat automatically controls draft to maintain the desired rate of burning and a three-speed blower (an optional feature) spreads a carpet of warmth over the floors. The beautifully styled cabinet has a long lasting porcelain enamel finish. The large ash drawer can be pulled out to 25" length and ash removal's a cinch with the handy slide-out ash drawer. No finer wood heater has ever been built!

Fain Furniture

256-2201

MT. VERNON

**WATCH NEXT WEEK'S
SIGNAL FOR DETAILS OF
AUCTION OF**

**MR. AND MRS. GORDON
GRAHAM'S
RESTRICTED BUILDING
LOTS, NEAR MT. VERNON
ELEMENTARY SCHOOL.**

**SATURDAY,
SEPTEMBER 13 AT
10:30 A.M.**

For more information,
CONTACT

Ford Realty & Auction

PHONE 256-4545

AUCTION

of

**Mr. and Mrs. William Broughton's
HOUSE AND ACRE LOT**

**SATURDAY
SEPTEMBER 6, 1975
1:30 P.M.**

Willalla Section of Rockcastle County, Ky.

Located - 10 miles South of Brodhead, 13 miles Southwest of Mt. Vernon on Owen School Road in the Willalla section of Rockcastle County.

Having purchased a small farm Mr. and Mrs. Broughton will soon be moving and have contracted our firm to sell their good home for the high dollar.

This excellent five room house has three bedrooms, living room, and kitchen. Water is provided by a good well but city water is on the way. The house has masonry siding on the exterior and storm windows. The acre lot is completely level and gives you ample space for a garden. Mail and school bus service are available at the front door. Don't miss this sale if you're in the market for a good country home.

TERMS - 20 percent down day of sale, balance due in 30 days upon delivery of deed.

For additional information contact Mr. and Mrs. William Broughton at 758-8845 or

Ford Realty & Auction Co.
Mt. Vernon, Ky.

Phone: Office 256-4545, Nights, 758-8400

COL. SAM FORD REALTOR-AUCTIONEER
COL. BILL RANDOLPH AUCTIONEER
COL. JERRY HAM AUCTIONEER
COL. DANNY FORD REALTOR-AUCTIONEER

**Times Have Changed But
Not Cox Service...**

COX FUNERAL HOME
MOUNT VERNON, KENTUCKY

Life's bound to change, techniques have changed. Priorities have changed. People, however, are much the same as they were and have always been.

The hurts, the happiness, the fears, and the hopes inside people go on and on as the landscape changes. So, in a way, the services we provide today for our friends and neighbors are not different than those provided by our founder, W.A. Cox, over sixty years ago. The quality of our professional care and the type of personal attention we give has established a reputation you can depend on.

COX FUNERAL HOME
MOUNT VERNON, KENTUCKY

Phone 256-2345
256-4444

**MEMBER KENTUCKY FUNERAL DIRECTORS BURIAL
ASSOCIATION**

Social and Women's News



Mrs. Ronald Clay Wilson

Miss Donna Lee Jones Weds Ronald Clay Wilson

The marriage of Miss Donna Lee Jones, daughter of Mr. and Mrs. James Carl Jones of Mt. Sterling, and Ronald Clay Wilson, son of Mr. and Mrs. Harold Turner Wilson of Paris, was solemnized at 3:30 p.m. Sunday, August 10, 1976, at the Reid Village Baptist Church in Mt. Sterling.

The Reverend L. Paul Prather officiated at the double ring ceremony. The vows were exchanged before an altar of brass candelabra and white candles entwined with spring-aria and yellow roses and baskets of white gladioli punctuated with yellow daisies. The couple knelt for prayer on a white and brass double kneeling bench.

A program of wedding music was presented by Miss Betty Sue Stator, organist, and Miss Lou Ann Still, pianist. Miss Susan McCoy, soloist, sang "The Lord's Prayer."

Given in marriage by her father, the bride wore a gown of white, satin finished organza, fashioned with an empire bodice enhanced with an overlay of re-embroidered alencon lace, portrait neckline edged with Venise lace, and full bishop sleeves, accented with lace appliques. The A-line skirt highlighted with lace edged panels of peau-de-se and deep pea hemline border, extended into a full chapel train. Her short, imported silk illusion veil edged with Venise lace was held by a lace shell, headpiece crisscrossed with pearls. She carried a cascade bouquet of yellow roses and white gardenias.

Miss Ellen Vance, Mt. Sterling, served as maid of honor. She wore a floor-length sleeveless gown of lemon yellow chiffon, styled with a low oval

neckline with organza. Matching satin ribbon circled the raised waistline and the softly shirred skirt, enhanced with a deep, gathered hemline flounce. She wore a dyed-to-match picture hat of lace hairband. Misses Leigh Anne Hatt of Mt. Vernon, cousin of the bride, and Annette Schwicker of Lexington, wore identical gowns and hats of Nile green. They carried nosegays of carnations, daisies, and babies breath.

Edward Wilson, Mt. Sterling, served his brother as best man. John Hilton Jones, brother of the bride, and Joseph Wilson, brother of the groom, served as groomsmen.

Following the ceremony, a reception was held at Days Inn Dining Room. Assisting with the serving were Mrs. Edward Wilson, Miss Harriet Keller, Miss Linda Nelson, Mrs. Jasper Reynolds, and Miss Nancy Curtis, all of Mt. Sterling, and Mrs. Joe Adams of Lexington. Miss Connie Estes presided at the guest book. Miss Kathy Cassidy presided at the gift table. Misses Regina, Kay, and Phyllis Wilson, cousins of the groom, distributed the rice bags.

The bride is a graduate of Montgomery County High

School and Morehead State University and is employed by the Montgomery County Board of Education.

The groom is a graduate of Bourbon County High School and Eastern Kentucky University and is employed by the United States Postal Service in Lexington.

After a wedding trip south, the couple is residing in Mt. Sterling.

The following showers and parties were given in honor of Miss Donna Lee Jones, recent bride of Ronald Clay Wilson.

A miscellaneous shower on May 21, given by the Montgomery County Y-Teens at Montgomery County High School.

A miscellaneous shower given by Miss Ellen Vance and Miss Schwicker on July 18 at the Mt. Sterling National Bank Community Room.

A bridesmaid luncheon at the Phoenix Hotel in Lexington on July 19, given by Mrs. Gertrude Hilton, grandmother of the bride, of Mt. Vernon.

A luncheon given by Mrs. John Schwicker of Mt. Sterling, at the Old South Inn in Winchester on August 2.

A cook-out given by Mr. and Mrs. Billy Hiatt at their home in Mt. Vernon on August 3.

A rehearsal dinner given by Mr. and Mrs. Harold Wilson, parents of the groom, at the Old South Inn in Winchester on August 9. *****

Personal

Mr. and Mrs. Jerry Kirby, and Mr. and Mrs. Charles Robinson attended the State Fair in Louisville Saturday.

Rev. and Mrs. William Payne were Sunday dinner guests of Mrs. Opal Williams of Warren, Michigan.

Mr. and Mrs. Ben C. French and daughters, Benedetta and Vincenta, and Mr. and Mrs. Robert Kiefer of Hamilton, Ohio and Mr. and Mrs. Earl French of Dayton, Ohio recently spent a week on vacation in Ontario, Canada.

Kenneth Sturgill of Hamilton, Ohio, who is attending school in Nashville, Tennessee, visited Mr. and Mrs. Ben C. French Sunday.

Miss Jill Harmon of Lexington, has returned home after spending several days visiting her father, Joe Harmon.

Mr. and Mrs. Edward Clark, of Hamilton, Ohio visited his father Mr. Charles Clark and Mrs. Clark last week.

Clifton Quinlan has returned home after spending a few days in Rockcastle County Hospital for treatment. He is reported improving.

Mrs. Nannie Robinson, has returned to her home in Ohio after visiting Mrs. Rissie Wright and Mrs. Elsie Cress several

days. Mrs. Hazel Cummins and Mrs. Robert Anglin and Nancy were in Somerset shopping last Tuesday.

Delora Ramsey spent last Tuesday night with Nancy Anglin.

Mrs. Virgil Brock and Mrs. Lona Logsdon spent last Tuesday with Mr. and Mrs. Robert Kirby.

Sympathy is extended to the family of Mrs. Bessie Baker who passed away last week.

Mrs. Hazel Cummins and Mrs. Robert Anglin and Nancy were in Stanford last Wednesday.

Dewey McGuire and George Burton were at Lancaster Friday.

W.R. Coffey spent the week end with Mr. and Mrs. Robert Anglin and Nancy.

Visiting friends in Ohio last week end were Mr. and Mrs. Manuel Rader, Anthony and Lisa, Robert Miller, Mr. and Mrs. Bruce Houk, Mr. and Mrs. David Fredericks, Tony and Roy. While there, they visited Mr. and Mrs. Earl Shepley and family of Maud, Ohio. Mr. and Mrs. Gib Boreing and Mr. and Mrs. Carl Johnson and Danny of Reading, Ohio and all attended the hydroplane boat races Sunday on the Ohio River in Cincinnati.

Mr. and Mrs. Charles Baker and family of Dayton, Ohio and Mrs. Weldon Ashley and son, Weldon, Jr. of Campbellsville returned to their homes Monday after spending the week end with their parents, Mr. and Mrs. U.G. Ramsey.

Ray Hysinger of Kettering, Ohio visited his mother, Mrs.

Pearl Hysinger last week end. Mr. and Mrs. Jimmy Hysinger were in Jefferson Dayton, Ohio were week end guests at the home of his sisters Mrs. Clifford Fry and family.

Mrs. Ed Griffin of Oklahoma is visiting Mr. and Mrs. Robert Robinson.

Mrs. Ollie Harrison of Brohead visited Mrs. Sallie Whitaker Tuesday.

Mrs. Fannie Thompson has returned home from a weeks stay in Berea Hospital.

Several members of the W.C. Johnson family was held last Sunday at the old Johnson Home Place on Cove Branch.

The funeral of the W.C. Johnson family was held last Sunday at the old Johnson Home Place on Cove Branch.

Several members of the W.C. Johnson family was held last Sunday at the old Johnson Home Place on Cove Branch.

Recent visitors of Mrs. Effie Kirby were Mr. and Mrs. Tony Kirby, Rebecca and Karen and Mrs. Opha Marler of Cincinnati, Ohio. Mrs. Effie Kirby accompanied them to the Mountains on their vacation.

Mr. and Mrs. Tim Gormican, Wendell Lovell and Mrs. Betty Rose of Dayton, Ohio were recent guests of Mr. and Mrs. Verner Ballinger and Mrs. Effie Kirby.

Mrs. Pearl Hysinger accompanied her granddaughter

The Mount Vernon Signal Thursday, August 26, 1976 Page Five

Mrs. Clifford Try, Jr. to Lexington Monday where Mrs. Hysinger was in consultation with her doctor.

Misses Vicki and Elizabeth and Randy Spurlock of Sopomerset are visiting their grandmother, Mrs. Amanda Maggard before their school starts next week.

Mrs. Shirley Raye and Joanne Riddle are with their grandparents Mr. and Mrs. Shirley B. Riddle and have entered Rockcastle County High School. The Charles Riddle family are moving here from Somerset.

Mr. and Mrs. Marvin Hines and children of Wilkeson, Ohio are visiting his parents Mr. and Mrs. Charlie Hines.

Mrs. Lela Mae Harrison and daughter Gale and son, Tim, Harrison of "Brookside" were in Mt. Vernon Friday. Mrs. Stewart was to see her doctor.

Monday though was a sad time for the Johnsons and others as they received word that Plez Mobley's father, Mr. Steve Mobley had passed away in Manchester. He was 85 years old. Funeral for Mr. Mobley was Wednesday.

Recent visitors of Mrs. Effie Kirby were Mr. and Mrs. Tony Kirby, Rebecca and Karen and Mrs. Opha Marler of Cincinnati, Ohio. Mrs. Effie Kirby accompanied them to the Mountains on their vacation.

Mr. and Mrs. Tim Gormican, Wendell Lovell and Mrs. Betty Rose of Dayton, Ohio were recent guests of Mr. and Mrs. Verner Ballinger and Mrs. Effie Kirby.

Mrs. Pearl Hysinger accompanied her granddaughter

Mr. and Mrs. James Hughes and friends of Chattanooga, Tennessee spent the week end with Mrs. Hughes' mother, Mrs. Zelma Bullock.

Mr. and Mrs. John Graves of Lancaster visited his mother, Mrs. Della Miller

(Cont. to 12)

CARD OF THANKS

The family of Bill Nickell would like to thank everyone from all our hearts, for their kindness and help during the death of my husband.

A special thanks to Watson Funeral Home, Rev. Merrell Campbell, the pallbearers, and everyone who traveled so far to attend the funeral.

May God bless each and everyone.
Rosa Lee Nickell

WATCH NEXT WEEK'S SIGNAL FOR DETAILS OF AUCTION OF MR. AND MRS. W.M. HOPKINS' THREE HOUSES AND LOTS LOCATED IN BRODHEAD, KY. FRIDAY, SEPTEMBER 12 AT 6:30 P.M. FOR MORE INFORMATION CONTACT Ford Realty & Auction PHONE 256-4545

HAIL THE CAESAR SALAD!



"The greatest original dish to come out of the United States in the past 50 years," declared the International Society of Dietitians in Paris some years ago. They were speaking of Caesar Salad's famous salad. There had been so many holiday guests at Cardini's restaurant one day that the lady was almost empty when a new group arrived. Undaunted, the resourceful host put together Romaine lettuce, a egg, croutons, some other available ingredients and, as a final flourish, a few dashes of Lea & Perrins Worcestershire sauce.

Cardini used Worcestershire as a convenient way of adding a blend of savory flavors, creating an almost instant dressing. Though Caesar Salad is the most famous, many salads contain this "secret" today.

- CAESAR SALAD
- 2 tablespoons oil
 - 2 teaspoons original Worcestershire sauce
 - 2 teaspoons fresh lemon juice
 - 1/2 teaspoon salt
 - 1 clove garlic, halved
 - 1 head Romaine lettuce, torn into bite-size pieces (about 6 cups)
 - 1 tablespoon grated Parmesan cheese
 - 1 coddled egg*
 - 1/2 cup croutons

In a small container combine oil, Worcestershire sauce and lemon juice; mix well. Rub surface of a wooden salad bowl with salt and garlic; discard garlic. Add lettuce and cheese. Cut open egg over lettuce and cheese. Toss to coat. Add oil mixture; toss well. Sprinkle with croutons. Serve immediately. Yield: 8 portions. *Place whole egg in gently simmering water to cover. Cook gently for 1 minute.

GENERAL REVENUE SHARING	ACTUAL EXPENDITURES	THE GOVERNMENT OF BRODHEAD CITY
(A) CATEGORIES	(B) CAPITAL	(C) OPERATING / MAINTENANCE
1 PUBLIC SAFETY	\$ 4,435	\$
2 ENVIRONMENTAL PROTECTION	\$	\$
3 PUBLIC TRANSPORTATION	\$	\$
4 HEALTH	\$	\$
5 RECREATION	\$	\$
6 LIBRARIES	\$	\$
7 SOCIAL SERVICES	\$	\$
8 FINANCIAL ADMINISTRATION	\$	\$ 22.00
9 MULTIPURPOSE AND GENERAL GOVT.	\$	\$
10 EDUCATION	\$	\$
11 SOCIAL DEVELOPMENT	\$	\$
12 HOUSING & COMMUNITY DEVELOPMENT	\$	\$
13 ECONOMIC DEVELOPMENT	\$	\$
14 OTHER (Specify)	\$	\$
15 TOTALS	\$ 4,435	\$ 22.00

(D) TRUST FUND REPORT (refer to instruction D)

1. Balance as of June 30, 1974	\$ 6,170
2. Revenue Sharing Funds Received from July 1, 1974 thru June 30, 1975	\$ 3,147
3. Interest Received or Credited (July 1, 1974 thru June 30, 1975)	78
4. Funds Returned from Obligations	\$
5. Sum of lines 1, 2, 3, & 4	\$ 9,395
6. Funds Returned to OHS	\$
7. Total Funds Available	\$ 9,395
8. Total Amount Expended (Sum of lines 16, column B and column C)	\$ 4,435
9. Balance as of June 30, 1975	\$ 4,960

(E) THE NEWS MEDIA HAVE BEEN ADVISED THAT A COMPLETE COPY OF THIS REPORT HAS BEEN PUBLISHED IN A LOCAL NEWSPAPER OF GENERAL CIRCULATION. I HAVE A COPY OF THIS REPORT AND RECORD OF THE REPORT CONTENTS. THEY ARE OPEN FOR PUBLIC SCRUTINY AT City Hall, Brodhead, Ky 40009

Johnnie H. Hite - Chairman

TYLENOL acetaminophen tablets

Now at a...
NEW LOW PRICE
100's TABLETS
\$1.09
Young's Pharmacy

NOVEMBER	DECEMBER	JANUARY	FEBRUARY	MARCH	APRIL	MAY	JUNE
1158 County of Rockcastle School Bldg. Bond & Interest Redemption Fund-1970	60,668.75						
1154 A.W. Thomason	160.00						
TOTAL	\$60,828.75						
1156 King School Equipment Co.	481.80						
1159 Donna L. Shelton	452.84						
1167 J.C. H. Land and Son	385.00						
1158 Design Concepts	11,122.00						
1159 County of Rockcastle School Bldg. Interest & Redemption Fund	19,327.50						
TOTAL	\$31,769.14						
1160 Vireo Mfg. Corporation	1,203.39						
TOTAL	\$1,203.39						
None							
None							
1161 Donald B. Shelton	270.00						
TOTAL	\$270.00						
None							
1162 Co. of Rockcastle School Bldg. Int. & Redemption Fund-1970	75,668.75						
1163 Co. of Rockcastle School Bldg. Int. & Redemption Fund	900.00						
TOTAL	\$76,568.75						
1164 Donald B. Shelton	102.00						
TOTAL	\$102.00						



Nine members of the Rockcastle County Future Farmers participated in the 1975 Kentucky State Fair. Jeff Taylor, far left, placed first in Seed Identification and Selection contest, receiving first place rosette and \$30 in prize money. Doug Adams, second from left, received a blue ribbon in the dairy holder contest and was also an alternate on the dairy judging team which received 13th in the Dairy Cattle Judging Contest. Other members of the Dairy Judge Team were, Harold Ballinger, Jr., second from right, and Danny Hunt, right. Another member of the team, Johnny Bengo, is not in the picture. Johnny also placed 4th and received a blue ribbon in the Tractor Trouble Shooting Contest. Others participating from the local caper were Dennis Lawrence, Bobby Bell and Tommy Russell in the livestock contest and Myron Caudill placed third, thirteenth and sixteenth out of five entries in the FFA cured burley tobacco contest.



The above are members of the Rockcastle County Chapter of Future Farmers of America who attended the FFA Camp at Hardinsburg, Kentucky this summer. The camp was held June 30 to July 4th in order to train our chapter officers and committee chairmen for this school year. Those attending were from left to right: Junior Bullen, treasurer; Tommy Russell, sentinel; Dennis Lawrence, secretary; David Burton, committee chairman; Dwain Adams, president; Doug Adams, vice president; and Jeff Taylor, committee chairman.

steak dinner had more than a day's requirement. But the low-cost diet was much lower in saturated fat.

Low-cost menu - each serving - \$2.20 (four servings)
1 1/2 cups of peas, navy or great northern cooked with ham hock.

Cole slaw.
2 pieces of homemade cornbread with margarine.
1/2 cup of applesauce.
2 purchased oatmeal cookies.

Instant coffee, and milk.
Standard dinner would cost approximately \$3.80 (four servings).

One serving:
1/2 cup of tomato juice, 3 ounces of ground beef,

1/2 cup mashed potatoes (made from scratch with margarine and milk)
1/2 cup canned green beans.

Tossed salad with lettuce and radishes plus a dollop of French dressing.

Bread and margarine.
Slice of homemade apple pie.

Instant coffee with half milk, half creamer.
Or you can jump to the "expensive" meal at a cost of \$11.80 for four people - a higher priced cut of meat plus an extensive use of ready-prepared foods jacked up the cost.

One serving:
Ready-to-serve shrimp cocktail.
Baked potato and sour cream.
Tossed salad with lettuce, green pepper, tomato, and radishes with purchased blue cheese dressing.
Brand name sesame seed rolls with butter.
Slice of purchased brand name apple pie.
Brewed coffee and table cream.

lard, butter, margarine, drippings, and opened containers of cooking and salad oils.

When selecting apples - it's usually important to look for good color, which usually indicates full flavor.

If you're not interested in using bananas immediately you should select slightly green-colored ones for use within a few days. In warm weather they tend to ripen very fast.

Grapes should be plump, fresh in appearance and firmly attached to the stems. Most white or green varieties should have a slightly amber tone.

The color usually is a indicator for good melons (except watermelons). Ripe cantaloupes should have a yellowish surface color; honeydews, a creamy color.

"SEWING CLASS" (Cont. From Front)
The class will be open to anyone wishing to attend. There is no fee or obligation. Call the County Extension Office at 256-2408 if you are planning to attend so there will be literature available for you.

MULLINS REUNION IS SUNDAY, AUGUST 30
The annual Mullins Reunion will be held Sunday, August 30th at the Fairview Christian Church at Mullins Station beginning at 10 a.m.

Each month more than 40 percent of the cases handled by the State Police Narcotics Section involved either trafficking or possession of marijuana.

The state's new Office of Crime Prevention hopes to contact more than 300,000 Kentucky households and offer to provide electronic tools to make personal belongings.

LOCAL REP. ATTENDS WORKSHOP IN LOUISVILLE

Mrs. Nancy Hopkins, an employee at the Rockcastle County Hospital, participated in a Workshop for medical record administrators, technicians and other practitioners, sponsored by the Kentucky Medical Records Association, August 13-15 at the Holiday Inn, South, in Louisville.

The three-day workshop featured medical specialists and medical record administrators from the University of Kentucky College of Medicine and other major hospital facilities and agencies within the state.

Topics covered a wide range of medical record department functions including medical record standards, content and analysis and statistical and legal processes.

Each month more than 40 percent of the cases handled by the State Police Narcotics Section involved either trafficking or possession of marijuana.

The state's new Office of Crime Prevention hopes to contact more than 300,000 Kentucky households and offer to provide electronic tools to make personal belongings.

ESTATE AUCTION

of the late Mr. Howard Owens

40 ACRES More or Less

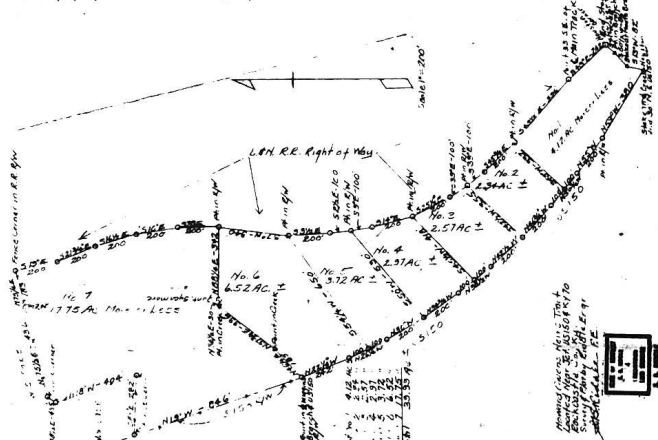
SAT., SEPT. 6, 1975 at 10:30 A.M.
NEAR BRODHEAD, KY.

Located approximately 2 miles east of Brodhead, 4 miles west of Mt. Vernon on U.S. 150 near the junction of Highway 70.

40 ACRES DIVIDED INTO 7 TRACTS

Owners reserve the right to sell each tract separately or combined in any manner to reflect best returns.

The entire farm contains approximately 40 acres by survey and most of it is tillable cropland. There's over 3,000 feet of road frontage along busy U.S. 150. Since there are no buildings on the property, you can build to suit yourself. City water is available on the property. Tobacco allotment is 1,365 pounds.



- Tract #1 - 4.12 Acres - 76 Lbs. Tobacco
- Tract #2 - 2.24 Acres - 84 Lbs. Tobacco
- Tract #3 - 2.57 Acres - 93 Lbs. Tobacco
- Tract #4 - 2.97 Acres - 107 Lbs. Tobacco
- Tract #5 - 3.72 Acres - 134 Lbs. Tobacco
- Tract #6 - 6.52 Acres - 234 Lbs. Tobacco
- Tract #7 - 17.75 Acres - 637 Lbs. Tobacco

Each of the tracts make a good baby farm in itself.

Keep in mind that each tract will be offered separately than as a whole unit.

TERMS: 20% down day of sale. Balance in 30 days upon delivery of deed.

For additional information, contact Mr. and Mrs. Earl Kidwell at 758-8857 or E.L. Owens, Executor of Estate at 899-2767, Morrow, Ohio or



Ford Realty & Auction Co.

Mt. Vernon, Ky.

Phone: Office 256-4545 Nights 758-8400

COL. SAM FORD
Auctioneer-Realtor

COL. BILL RANDOLPH
Auctioneer

COL. JERRY HAM
Auctioneer

COL. DANNY FORD
Realtor-Auctioneer

Home Line

By Cheryl Witt
County Extension Agent
For Home Economics

LOW-COST MEALS - WITH A HIGH RETURN

Beans as nutritious as steak? Sounds a little ridiculous, doesn't it? But, a U.S. Department of Agriculture economist, found that a wide variety of foods, at different cost levels could provide approximately the same nutritional levels.

Menus from beans to steaks all figured out at about 1,000 calories (per portion), and had about the same amounts of vitamins and minerals. But, prices of meals - all for a family of four - ranged from \$2.20 (for the beans), to \$11.80 (for steak). Sandwiched in between was a "standard" meal, (with ground beef and fresh vegetables) that cost \$3.80.

The low-cost and standard meals had adequate protein - each provided about 1/2 of a day's requirements, while the

WATCH NEXT WEEK'S SIGNAL FOR DETAILS OF AUCTION OF THE FORD MANSION

ARMOUR CREAMERY BUILDING ON OLD U.S. 25 IN MT. VERNON.

SATURDAY SEPTEMBER 13 AT 1:30 P.M.

FOR MORE INFORMATION CONTACT

Ford Realty & Auction

PHONE 256-4545

You Are Now Free On Each Third Of The Month



Social Security Recipients may now arrange to have their monthly checks mailed directly to their banks.

It is simple to arrange and is a FREE service.

Just come in and fill out a form.

THE BANK OF MT. VERNON

MT. VERNON, KY.



Financial Statement

By: Mrs. Vivian Owens

FINANCIAL STATEMENT - TITLE I, ESEA - June 30, 1975

Balance, July 1, 1974	\$9,962.39
Receipts July 1, 1974 thru June 30, 1975	241,243.00

FINANCIAL STATEMENT - TITLE I, ESEA - JUNE 30, 1975

Balance, July 1, 1974	\$9,962.39
Receipts July 1, 1974 thru June 30, 1975	241,243.00

Total Balance and Receipts	\$251,205.39
Less Disbursements thru June 30, 1975	243,087.80

BALANCE, JUNE 30, 1975	\$7,617.59
-------------------------------	-------------------

WAGES OF ROCKCASTLE COUNTY SCHOOL EMPLOYEES

TITLE I - 1974-75

Carolyn Brown	\$6,823.91	Alma R. Daugherty	1,565.60
Lucy Bullock	6,181.23	Linda Francisco	1,565.60
Charlotte Burdette	6,461.15	Theresa E. Leach	1,400.14
Delphia Cox	6,145.91	Maryella Mullins	1,233.92
James C. Durham	6,923.91	Vivian Mullins	1,810.43
Lena Hayes	6,378.43	Paul Parsons	1,565.60
Mary Alice Hunt	4,784.13	Carleean Singleton	1,565.60
Kathryn Payer	5,038.58	Edna F. St. Clair	1,565.40
Shelby Poynter	6,233.91	Mattie Wheat	1,882.90
Barbara Rader	6,026.75	Ida Williams	1,666.72
Dorothy Williams	6,114.96	Doris Wright	1,233.92
Janita Witt	6,591.83	Mabel Cash	1,385.80
1197 E. G. Smith, Acct.	7,362.08	Frances Dickerson	1,882.90
Mary J. Hysinger	3,396.55	Gustava Peters	1,577.22
Lora Lee Mink	5,538.40	Kay Singleton	1,565.60
Nancy Parkerson	3,251.91	Josephine Dickerson	52.50
Barbara Browning	4,870.16	John Smith	105.00
Janice Coffey	4,870.16	Jane Smith	105.00
Carol J. Riddle	2,067.86	Patsy Baker	4,951.84
Patsy Whit	1,962.00	Willard Whitaker	3,339.40
Mr. Willie Logsdon and Della Brown were Mr. and Mrs. Shirley Caldwell and Mrs. Mary Scott.	1,475.04	Doris TOWAY	5,786.98
Darlene Cameron	1,640.81	TOTAL	146,466.55
Edna Cameron	1,565.60		

1131 School Supply Co., Acct.	36.40
1132 Postmaster, Mr. Vernon P.O. Postage	120.00
1133 Social Sec. Revolving Fund, Soc. Sec.	500.00
1134 CTB/McGraw-Hill, Acct.	320.01
1135 Dr. T.E. Walden, Acct.	105.00
1136 Dr. W.R. Isaacs, Acct.	35.00
1137 E. G. Smith, Acct.	7.00
1138 Orson L. Arvin, M.D., Acct.	39.00
1139 Fed. Reserve Bank of Cleveland, Taxes	78.20
1140 Ky. State Treasurer, Taxes	12.46
1141 Social Sec. Revolving Fund, Soc. Sec.	32.18
1142 Ky. State Treasurer, County Employees' Ret.	40.24
1143 Social Sec. Revolving Fund, Matching Soc. Sec.	32.47
1144 Ky. State Treasurer, Matching County Employees' Ret.	40.24

TOTAL OF ALL FORMS F-40's - 1,580.15

AUGUST

1134 Postmaster, Mr. Vernon P.O. Postage	120.00
1137 Anderson Office Supply Co., Acct.	133.81
1138 School Supply Co., Acct.	103.87
1139 School Supply Co., Acct.	242.07
1140 Central School Supply Co., Acct.	107.14
1142 Fed. Res. Bank of Cleveland, Taxes	78.20
1143 Social Sec. Revolving Fund, Soc. Sec.	12.46
1144 Ky. State Treasurer, Matching Teachers' Ret.	40.24
1145 Social Sec. Revolving Fund, Soc. Sec.	32.18
1146 Ky. State Treasurer, County Employees' Ret.	40.24
1147 Social Sec. Revolving Fund, Matching Soc. Sec.	32.47
1148 Ky. State Treasurer, Matching County Employees' Ret.	40.24

TOTAL OF ALL FORMS F-40-C 944.12

SEPTEMBER

1153 Mr. Vernon Signal, Account	194.00
1154 Walker C. Baldwin, Contract Labor	130.00
1157 Fed. Res. Bank of Cleveland, Taxes	2,154.70
1158 Ky. State Treasurer, Taxes	372.68
1159 Ky. State Treasurer, Teachers' Ret.	819.33
1160 Social Sec. Revolving Fund, Soc. Sec.	336.39
1161 Ky. State Treasurer, County Employees' Ret.	179.55
1162 Ky. State Treasurer, Matching Teachers' Ret.	819.33
1163 Social Sec. Revolving Fund, Matching Soc. Sec.	336.39
1164 Ky. State Treasurer, Matching County Employees' Ret.	179.55
1165 Social Sec. Revolving Fund, Soc. Sec.	138.90
1166 Ky. State Treasurer, Taxes	18.99
1167 Ky. State Treasurer, Teachers' Ret.	22.61
1168 Social Sec. Revolving Fund, Soc. Sec.	42.08
1169 Ky. State Treasurer, County Employees' Ret.	19.20
1170 Ky. State Treasurer, Matching Teachers' Ret.	42.08
1171 Social Sec. Revolving Fund, Matching Soc. Sec.	42.08
1172 Ky. State Treasurer, Matching County Employees' Ret.	34.50
1173 Social Sec. Revolving Fund, Soc. Sec.	120.00
1174 Fed. Res. Bank of Cleveland, Taxes	148.90
1175 Ky. State Treasurer, Taxes	28.80
1176 Social Sec. Revolving Fund, Soc. Sec.	32.47
1177 Ky. State Treasurer, County Employees' Ret.	22.20
1178 Social Sec. Revolving Fund, Matching Soc. Sec.	32.47
1179 Ky. State Treasurer, Matching County Employees' Ret.	40.24

TOTAL OF ALL FORMS F-40's - 6,513.78

OCTOBER

1142 James Pack, Treasurer, Travel Registration & Fees	65.00
1143 Barbara Hiett, Travel Expense	7.84
1144 Willard Whitaker, Travel Expense	1,751.51
1145 Social Sec. Revolving Fund, Soc. Sec.	2,745.55
1146 Shlosson Educational Publications, Acct.	2.75
1147 McBees Dept. Store, Acct.	3.50
1148 Hanes's 5 & 10, Acct.	6.70
1149 Fed. Res. Bank of Cleveland, Taxes	1,834.46
1150 Ky. State Treasurer, Taxes	309.24
1151 Ky. State Treasurer, Teachers' Retirement	698.31
1152 Social Sec. Revolving Fund, Soc. Sec.	397.47
1153 Ky. Education Assn., Dues & Ins.	110.54
1154 Blue Cross Hospital Plan, Inc., Insurance	254.82
1155 Citizens Security Life Ins. Co., Ins.	47.14
1156 Ky. State Treasurer, County Employees' Ret.	180.35
1157 Ky. State Treasurer, Matching Teachers' Ret.	688.31
1158 Social Sec. Revolving Fund, Matching Soc. Sec.	397.47
1159 Ky. State Treasurer, Matching County Employees' Ret.	328.89
1160 Fed. Res. Bank of Cleveland, Taxes	138.90
1161 Ky. State Treasurer, Taxes	15.99
1162 Social Sec. Revolving Fund, Soc. Sec.	25.85
1163 Social Sec. Revolving Fund, Soc. Sec.	17.41
1164 Blue Cross Hospital Plan, Inc., Insurance	47.14
1165 Citizens Security Life Ins. Co., Ins.	47.14
1166 Ky. State Treasurer, County Employees' Ret.	180.35
1167 Ky. State Treasurer, Matching Teachers' Ret.	688.31
1168 Social Sec. Revolving Fund, Matching Soc. Sec.	397.47
1169 Ky. State Treasurer, Matching County Employees' Ret.	328.89
1170 Fed. Res. Bank of Cleveland, Taxes	138.90
1171 Ky. State Treasurer, Taxes	15.99
1172 Social Sec. Revolving Fund, Soc. Sec.	25.85
1173 Social Sec. Revolving Fund, Soc. Sec.	17.41
1174 Blue Cross Hospital Plan, Inc., Insurance	47.14
1175 Citizens Security Life Ins. Co., Ins.	47.14
1176 Ky. State Treasurer, County Employees' Ret.	180.35
1177 Ky. State Treasurer, Matching Teachers' Ret.	688.31
1178 Social Sec. Revolving Fund, Matching Soc. Sec.	397.47
1179 Ky. State Treasurer, Matching County Employees' Ret.	328.89
1180 Fed. Res. Bank of Cleveland, Taxes	138.90
1181 Ky. State Treasurer, Taxes	15.99
1182 Social Sec. Revolving Fund, Soc. Sec.	25.85
1183 Social Sec. Revolving Fund, Soc. Sec.	17.41
1184 Blue Cross Hospital Plan, Inc., Insurance	47.14
1185 Citizens Security Life Ins. Co., Ins.	47.14
1186 Ky. State Treasurer, County Employees' Ret.	180.35
1187 Ky. State Treasurer, Matching Teachers' Ret.	688.31
1188 Social Sec. Revolving Fund, Matching Soc. Sec.	397.47
1189 Ky. State Treasurer, Matching County Employees' Ret.	328.89
1190 Fed. Res. Bank of Cleveland, Taxes	138.90
1191 Ky. State Treasurer, Taxes	15.99
1192 Social Sec. Revolving Fund, Soc. Sec.	25.85
1193 Social Sec. Revolving Fund, Soc. Sec.	17.41
1194 Blue Cross Hospital Plan, Inc., Insurance	47.14
1195 Citizens Security Life Ins. Co., Ins.	47.14
1196 Ky. State Treasurer, County Employees' Ret.	180.35
1197 Ky. State Treasurer, Matching Teachers' Ret.	688.31
1198 Social Sec. Revolving Fund, Matching Soc. Sec.	397.47
1199 Ky. State Treasurer, Matching County Employees' Ret.	328.89
1200 Fed. Res. Bank of Cleveland, Taxes	138.90
1201 Ky. State Treasurer, Taxes	15.99
1202 Social Sec. Revolving Fund, Soc. Sec.	25.85
1203 Social Sec. Revolving Fund, Soc. Sec.	17.41
1204 Blue Cross Hospital Plan, Inc., Insurance	47.14
1205 Citizens Security Life Ins. Co., Ins.	47.14
1206 Ky. State Treasurer, County Employees' Ret.	180.35
1207 Ky. State Treasurer, Matching Teachers' Ret.	688.31
1208 Social Sec. Revolving Fund, Matching Soc. Sec.	397.47
1209 Ky. State Treasurer, Matching County Employees' Ret.	328.89
1210 Fed. Res. Bank of Cleveland, Taxes	138.90
1211 Ky. State Treasurer, Taxes	15.99
1212 Social Sec. Revolving Fund, Soc. Sec.	25.85
1213 Social Sec. Revolving Fund, Soc. Sec.	17.41
1214 Blue Cross Hospital Plan, Inc., Insurance	47.14
1215 Citizens Security Life Ins. Co., Ins.	47.14
1216 Ky. State Treasurer, County Employees' Ret.	180.35
1217 Ky. State Treasurer, Matching Teachers' Ret.	688.31
1218 Social Sec. Revolving Fund, Matching Soc. Sec.	397.47
1219 Ky. State Treasurer, Matching County Employees' Ret.	328.89
1220 Fed. Res. Bank of Cleveland, Taxes	138.90
1221 Ky. State Treasurer, Taxes	15.99
1222 Social Sec. Revolving Fund, Soc. Sec.	25.85
1223 Social Sec. Revolving Fund, Soc. Sec.	17.41
1224 Blue Cross Hospital Plan, Inc., Insurance	47.14
1225 Citizens Security Life Ins. Co., Ins.	47.14
1226 Ky. State Treasurer, County Employees' Ret.	180.35
1227 Ky. State Treasurer, Matching Teachers' Ret.	688.31
1228 Social Sec. Revolving Fund, Matching Soc. Sec.	397.47
1229 Ky. State Treasurer, Matching County Employees' Ret.	328.89
1230 Fed. Res. Bank of Cleveland, Taxes	138.90
1231 Ky. State Treasurer, Taxes	15.99
1232 Social Sec. Revolving Fund, Soc. Sec.	25.85
1233 Social Sec. Revolving Fund, Soc. Sec.	17.41
1234 Blue Cross Hospital Plan, Inc., Insurance	47.14
1235 Citizens Security Life Ins. Co., Ins.	47.14
1236 Ky. State Treasurer, County Employees' Ret.	180.35
1237 Ky. State Treasurer, Matching Teachers' Ret.	688.31
1238 Social Sec. Revolving Fund, Matching Soc. Sec.	397.47
1239 Ky. State Treasurer, Matching County Employees' Ret.	328.89
1240 Fed. Res. Bank of Cleveland, Taxes	138.90
1241 Ky. State Treasurer, Taxes	15.99
1242 Social Sec. Revolving Fund, Soc. Sec.	25.85
1243 Social Sec. Revolving Fund, Soc. Sec.	17.41
1244 Blue Cross Hospital Plan, Inc., Insurance	47.14
1245 Citizens Security Life Ins. Co., Ins.	47.14
1246 Ky. State Treasurer, County Employees' Ret.	180.35
1247 Ky. State Treasurer, Matching Teachers' Ret.	688.31
1248 Social Sec. Revolving Fund, Matching Soc. Sec.	397.47
1249 Ky. State Treasurer, Matching County Employees' Ret.	328.89
1250 Fed. Res. Bank of Cleveland, Taxes	138.90
1251 Ky. State Treasurer, Taxes	15.99
1252 Social Sec. Revolving Fund, Soc. Sec.	25.85
1253 Social Sec. Revolving Fund, Soc. Sec.	17.41
1254 Blue Cross Hospital Plan, Inc., Insurance	47.14
1255 Citizens Security Life Ins. Co., Ins.	47.14
1256 Ky. State Treasurer, County Employees' Ret.	180.35
1257 Ky. State Treasurer, Matching Teachers' Ret.	688.31
1258 Social Sec. Revolving Fund, Matching Soc. Sec.	397.47
1259 Ky. State Treasurer, Matching County Employees' Ret.	328.89
1260 Fed. Res. Bank of Cleveland, Taxes	138.90
1261 Ky. State Treasurer, Taxes	15.99
1262 Social Sec. Revolving Fund, Soc. Sec.	25.85
1263 Social Sec. Revolving Fund, Soc. Sec.	17.41
1264 Blue Cross Hospital Plan, Inc., Insurance	47.14
1265 Citizens Security Life Ins. Co., Ins.	47.14
1266 Ky. State Treasurer, County Employees' Ret.	180.35
1267 Ky. State Treasurer, Matching Teachers' Ret.	688.31
1268 Social Sec. Revolving Fund, Matching Soc. Sec.	397.47
1269 Ky. State Treasurer, Matching County Employees' Ret.	328.89
1270 Fed. Res. Bank of Cleveland, Taxes	138.90
1271 Ky. State Treasurer, Taxes	15.99
1272 Social Sec. Revolving Fund, Soc. Sec.	25.85
1273 Social Sec. Revolving Fund, Soc. Sec.	17.41
1274 Blue Cross Hospital Plan, Inc., Insurance	47.14
1275 Citizens Security Life Ins. Co., Ins.	47.14
1276 Ky. State Treasurer, County Employees' Ret.	180.35
1277 Ky. State Treasurer, Matching Teachers' Ret.	688.31
1278 Social Sec. Revolving Fund, Matching Soc. Sec.	397.47
1279 Ky. State Treasurer, Matching County Employees' Ret.	328.89
1280 Fed. Res. Bank of Cleveland, Taxes	138.90
1281 Ky. State Treasurer, Taxes	15.99
1282 Social Sec. Revolving Fund, Soc. Sec.	25.85
1283 Social Sec. Revolving Fund, Soc. Sec.	17.41
1284 Blue Cross Hospital Plan, Inc., Insurance	47.14
1285 Citizens Security Life Ins. Co., Ins.	47.14
1286 Ky. State Treasurer, County Employees' Ret.	180.35
1287 Ky. State Treasurer, Matching Teachers' Ret.	688.31
1288 Social Sec. Revolving Fund, Matching Soc. Sec.	397.47
1289 Ky. State Treasurer, Matching County Employees' Ret.	328.89
1290 Fed. Res. Bank of Cleveland, Taxes	138.90
1291 Ky. State Treasurer, Taxes	15.99
1292 Social Sec. Revolving Fund, Soc. Sec.	25.85
1293 Social Sec. Revolving Fund, Soc. Sec.	17.41
1294 Blue Cross Hospital Plan, Inc., Insurance	47.14
1295 Citizens Security Life Ins. Co., Ins.	47.14
1296 Ky. State Treasurer, County Employees' Ret.	180.35
1297 Ky. State Treasurer, Matching Teachers' Ret.	688.31
1298 Social Sec. Revolving Fund, Matching Soc. Sec.	397.47
1299 Ky. State Treasurer, Matching County Employees' Ret.	328.89
1300 Fed. Res. Bank of Cleveland, Taxes	138.90
1301 Ky. State Treasurer, Taxes	15.99
1302 Social Sec. Revolving Fund, Soc. Sec.	25.85
1303 Social Sec. Revolving Fund, Soc. Sec.	17.41
1304 Blue Cross Hospital Plan, Inc., Insurance	47.14
1305 Citizens Security Life Ins. Co., Ins.	47.14
1306 Ky. State Treasurer, County Employees' Ret.	180.35
1307 Ky. State Treasurer, Matching Teachers' Ret.	688.31
1308 Social Sec. Revolving Fund, Matching Soc. Sec.	397.47
1309 Ky. State Treasurer, Matching County Employees' Ret.	328.89
1310 Fed. Res. Bank of Cleveland, Taxes	138.90
1311 Ky. State Treasurer, Taxes	15.99
1312 Social Sec. Revolving Fund, Soc. Sec.	25.85
1313 Social Sec. Revolving Fund, Soc. Sec.	17.41
1314 Blue Cross Hospital Plan, Inc., Insurance	47.14
1315 Citizens Security Life Ins. Co., Ins.	47.14
1316 Ky. State Treasurer, County Employees' Ret.	180.35
1317 Ky. State Treasurer, Matching Teachers' Ret.	688.31
1318 Social Sec. Revolving Fund, Matching Soc. Sec.	397.47
1319 Ky. State Treasurer, Matching County Employees' Ret.	328.89
1320 Fed. Res. Bank of Cleveland, Taxes	138.90
1321 Ky. State Treasurer, Taxes	15.99
1322 Social Sec. Revolving Fund, Soc. Sec.	25.85
1323 Social Sec. Revolving Fund, Soc. Sec.	17.41
1324 Blue Cross Hospital Plan, Inc., Insurance	47.14
1325 Citizens Security Life Ins. Co., Ins.	47.14
1326 Ky. State Treasurer, County Employees' Ret.	180.35
1327 Ky. State Treasurer, Matching Teachers' Ret.	688.31
1328 Social Sec. Revolving Fund, Matching Soc. Sec.	397.47
1329 Ky. State Treasurer, Matching County Employees' Ret.	328.89
1330 Fed. Res. Bank of Cleveland, Taxes	138.90
1331 Ky. State Treasurer, Taxes	15.99
1332 Social Sec. Revolving Fund, Soc. Sec.	25.85
1333 Social Sec. Revolving Fund, Soc. Sec.	17.41
1334 Blue Cross Hospital Plan, Inc., Insurance	47.14
1335 Citizens Security Life Ins. Co., Ins.	47.14
1336 Ky. State Treasurer, County Employees' Ret.	180.35
1337 Ky. State Treasurer, Matching Teachers' Ret.	688.31
1338 Social Sec. Revolving Fund, Matching Soc. Sec.	397.47
1339 Ky. State Treasurer, Matching County Employees' Ret.	328.89
1340 Fed. Res. Bank of Cleveland, Taxes	138.90
1341 Ky. State Treasurer, Taxes	15.99
1342 Social Sec. Revolving Fund, Soc. Sec.	25.85
1343 Social Sec. Revolving Fund, Soc. Sec.	17.41
1344 Blue Cross Hospital Plan, Inc., Insurance	47.14
1345 Citizens Security Life Ins. Co., Ins.	47.14
1346 Ky. State Treasurer, County Employees' Ret.	180.35
1347 Ky. State Treasurer, Matching Teachers' Ret.	688.31
1348 Social Sec. Revolving Fund, Matching Soc. Sec.	397.47
1349 Ky. State Treasurer, Matching County Employees' Ret.	328.89
1350 Fed. Res. Bank of Cleveland, Taxes	138.90
1351 Ky. State Treasurer, Taxes	15.99
1352 Social Sec. Revolving Fund, Soc. Sec.	25.85
1353 Social Sec. Revolving Fund, Soc. Sec.	17.41
1354 Blue Cross Hospital Plan, Inc., Insurance	47.14
1355 Citizens Security Life Ins. Co., Ins.	47.14
1356 Ky. State Treasurer, County Employees' Ret.	180.35
1357 Ky. State Treasurer, Matching Teachers' Ret.	688.31
1358 Social Sec. Revolving Fund, Matching Soc. Sec.	397.47
1359 Ky. State Treasurer, Matching County Employees' Ret.	328.89
1360 Fed. Res. Bank of Cleveland, Taxes	138.90
1361 Ky. State Treasurer, Taxes	15.99
1362 Social Sec. Revolving Fund, Soc. Sec.	25.85
1363 Social Sec. Revolving Fund, Soc. Sec.	17.41
1364 Blue Cross Hospital Plan, Inc., Insurance	47.14
1365 Citizens Security Life Ins. Co., Ins.	47.14
1366 Ky. State Treasurer, County Employees' Ret.	180.35
1367 Ky. State Treasurer, Matching Teachers' Ret.	688.31
1368 Social Sec. Revolving Fund, Matching Soc. Sec.	397.47
1369 Ky. State Treasurer, Matching County Employees' Ret.	328.89
1370 Fed. Res. Bank of Cleveland, Taxes	138.90
1371 Ky. State Treasurer, Taxes	15.99
1372 Social Sec. Revolving Fund, Soc. Sec.	25.85
1373 Social Sec. Revolving Fund, Soc. Sec.	17.41
1374 Blue Cross Hospital Plan, Inc., Insurance	47.14
1375 Citizens Security Life Ins. Co., Ins.	47.14
1376 Ky. State Treasurer, County Employees' Ret.	180.35
1377 Ky. State Treasurer, Matching Teachers' Ret.	688.31
1378 Social Sec. Revolving Fund, Matching Soc. Sec.	397.47
1379 Ky. State Treasurer, Matching County Employees' Ret.	328.89
1380 Fed. Res. Bank of Cleveland, Taxes	138.90
1381 Ky. State Treasurer, Taxes	15.99
1382 Social Sec. Revolving Fund, Soc. Sec.	25.85
1383 Social Sec. Revolving Fund, Soc. Sec.	17.41
1384 Blue Cross Hospital Plan, Inc., Insurance	47.14
1385 Citizens Security Life Ins. Co., Ins.	47.14
1386 Ky. State Treasurer, County Employees' Ret.	180.35
1387 Ky. State Treasurer, Matching Teachers' Ret.	688.31
1388 Social Sec. Revolving Fund	

WILLIAMS

"FINANCIAL STATEMENT" (Cont. From 7)

Mr. Bob Whitaker remains about the same. Irvin Denney is getting along pretty good. Mrs. Donald Thompson was at Fort Knox last week to visit with Rickie Thompson.

Rickie Thompson is stationed at Fort Sill Oklahoma. Phillip Thompson is doing pretty good. Mr. & Mrs. Charles McClure, Mrs. Maggie Harris, visited Mr. & Mrs. Junior Burdine at Somerset Sunday and had lunch at Long John Silvers.

A large crowd attended the funeral of Mr. & Mrs. Homer Hewitt at Woodstock Baptist Church last week. Robert Thompson of Somerset visited Mr. Edward K. Cook recently.

Recent guests of Mr. & Mrs. Grover Burton were Mr. & Mrs. W.A. Owens, and Mr. & Mrs. Mason, Ohio and Mr. & Mrs. Carl Burton and Allen of Cincinnati. Bill Phelps went on the trail ride Saturday night.

Mr. & Mrs. Bill Phelps, Mr. & Mrs. Noel Taylor visited Mr. & Mrs. Joe Long in Plainfield, Indiana a few days ago. Recent guests of Mr. & Mrs. Austin Ping were Mr. & Mrs. Jim Stevens, Jack Goff, Roy Hasty of Louisville, and Mr. & Mrs. Lester Ping and family.

Mrs. George Bumgardner, Mr. & Mrs. Randy Bumgardner and family of Plainfield, Ind. attended church at fairview Sunday. Mrs. Barbara Owens painted a beautiful picture in the baptistry at the Fairview Church of Christ recently.

Miss Pam McClure spent Sunday night with Jill Martin. Steve McClure spent Monday night with Dick Martin. Michelle Stanton spent Friday night with Mickie Martin. Mrs. Carol Martin and girls were in Somerset shopping Monday.

Mrs. Carl Reynolds of Michigan is visiting his parents. Mrs. and Mrs. Logue Reynolds and other relatives. Recent visit of Mrs. Zora Burton were: wase ruffell, Mr. and Mrs. Owen Burton, Janet Michele Ledford of Richmond, Mrs. Carol Martin, Jill Martin, Mr. & Mrs. G.D. Burton, Mrs. Maggie Herritt, Casper G. Owens was Sunday dinner guest of Mr. and Mrs. Marshall Thompson.

A Stanley party, as hostess at the home, Ora Lee Hurs Saturday night. Kevin Adams of Somerset is visiting his grandparents in J. and Mrs. G.D. Burton. *****

Down On The Farm By: Roy G. Brown Assistant Vice President Cumberland PGA Farmers are getting real busy now, with all the tobacco and all tobacco growers know the hard work that goes in a tobacco crop.

The tobacco crop in Rockcastle County is looking real good thanks to the good rains from above. We depend a great deal on our tobacco for a living.

All the talk by a few against tobacco as a health hazard, they fail to say anything about alcohol which is the world's most dangerous thing not only because of who use it, but to the innocent who are killed and crippled by cars, guns, and other weapons in the hands of people who drink, not to say anything about the homes and children who suffer hunger, heartaches and many other things.

Without tobacco for income DOWN ON THE FARM, farmers of Rockcastle and the rest of Kentucky would go bankrupt. *****

SNIDER Mrs. Bulah Rose of Oxford, Ohio and Mrs. Delilah Duncan of Hamilton, Ohio visited Mrs. Pearl VanWinkle and Mr. and Mrs. Edgar VanWinkle Saturday morning. Mr. & Mrs. Ernest Kirby and Mrs. Pearl VanWinkle and Mr. & Mrs. Ed Croucher of Mrs. Georgia Alexander and Mr. & Mrs. Logan McCool and children, Mr. & Mrs. Jimmy Dean of Berea and several others were at the Jackson State Park Sunday and took dinner. There was a gospel singing there with singers from Ohio and Tennessee. Everyone enjoyed the singing.

Mrs. Charles Long and son Scottie visited her parents Mr. & Mrs. Edgar Barnett over the week end. *****

Balance on hand beginning of Year 618.70 Total receipts for year 2,466,887.26 Total balance and receipts 2,467,545.11 Balance at close of year (Book Balance) 188,968.21 Balance in bank at close of year (Total) 186,060.53 Actual Cash -11,017.79 Actual balance (Cash) Securities 200,000.00 Certificates of Deposit 188,968.21

Name of Depository Bank The Bank of Vernon, Kentucky, Date June 30, 1975. /s/ Lloyd G. Shotts, Treasurer, Rockcastle County Bd. of Educ. This is to certify that the balance to the credit of the Rockcastle County Board of Education account on June 30, 1975 was \$196,060.53.

SWORN TO AND SUBSCRIBED BEFORE ME THIS 15 DAY OF JULY, 1975. Martha Cox, Notary Public State of Kentucky My Commission Expires October 28, 1977

WAGES OF ROCKCASTLE COUNTY SCHOOL EMPLOYEES 1974-75 SCHOOL YEAR 2261.993 Diane Masters 6283.91 Dora Nisley 8457.84 Charles Norton 6615.67 Barbara Owens 8619.87 Russell Parsons 6285.12 Glen Polly 7852.68 William E. Ponder 6418.12 Gloria Prater 5648.74 Rodney Purcell 7068.56 Robert N. Pybas 7875.12 William D. Riddle 7636.40 Mary Taylor 7195.27 June Stevens 6285.01 Lawrence Travis 7359.47 Glen Van Winkle 5112.98 Clarence Van Zant 4950.16 Marzie Wilcox 5834.16 Florence Winstead 289.78 Laura W. Durham 7011.45 Barbara Hiatt 3476.68 Mary Lee Mink 3326.47 Nancy P. Hysinger 3498.32 Melvin D. Hamm 9806.68 Charles B. Parsons 11,654.31 Lloyd G. Shotts 9630.47 Bessie Burdett 4900.16 Grover T. Payne 3181.83 Ronnie Cash 5924.16 Charles Cornelius 8755.03 Robert J. Mink 8901.83 Buford Parkinson 9367.85 Grover T. Payne 8357.89 Cleston Saylor 10,114.40 E.J. Smith 8364.74 Bigg Towery, Jr. 8939.01 Marge A. Hunt 1121.46 Blanche Johnson 2269.36 Naomi Mink 2269.36 Shirley Mullins 2269.36 Geraldine Nunneley 2266.12 Barbara Thacker 2266.96 Joyce Q. Barnett 2896.96 Jesse C. Bradley 4024.08 Betty L. Bullock 4024.08 Ollie Carpenter 1186.30 Precade Holt 695.18 Dorothy Jones 2896.96 Homer Jones 2725.92 J.T. Lovell 3515.88 Ernest Mink 2312.12 Lena Rucker 2266.96 Edna E. Owens 2941.50 Walter L. Shepherd 1202.32 Bruce Shoemaker 4437.20 William Taylor 3437.20 Paul D. Owens 4251.00 William Bell, Jr. 8913.14 Ed Reynolds, Jr. 4739.48 Willard Whitaker 5563.23 Barbara Fay 804.81 Carol F. French 1768.50 Charles G. French 1033.07 Sondra Mullins 2252.11 Henry C. Anglin, Jr. 1792.84 James T. Boone 1564.69 Jackie Burdine 857.87 Robert N. Pybas 2248.97 Carl Carpenter 11.40 Albert Cash 1959.52 Everett Cash 1959.52 Robert Clark 1792.84 James Cox 1819.80 Betty Craig 1793.84 John Cromer, Jr. 1915.95 James Cummings 1564.69 Roy Daugherty 204.84 Leon Durham 1876.27 Lawrence Fordyce 942.78 Coy French 414.11 Claude L. Hansel 1981.98 Paul Hansel 995.22 Sherman Hansel 1724.29 Russell Hensley 1740.25 Harry Holman 1017.25 Albert B. Martin 1792.84 William F. Martin 1629.30 Robert C. Wilson 1715.55 Dan McGuire 1876.27 James Moore 860.29 Earl Ponder 1652.88 Marvin Ponder 1872.38 Robert C. Wilson 622.15 Robert N. Pybas 822.15 King Rowland 1792.84 Sherman Sargent 1717.28 Keith Singleton 1675.02 Robert C. Wilson 1211.38 Henry Wynn 1892.71 Willard Wynn 1807.54 Estle Bullock 387.50 Renee Burdett 730.00 Nancy Bussell 3995.18 Jeannine Cummins 1222.50 Frances Dickerson 1015.00 Joseph Dickerson 1750.00 Kathy Edwards 87.50 Norma Everts 37.50 Edna Pate 2625.00 Edwina Fields 240.00 Sun Ford 860.00

Elizabeth Mullins 2485.00 Della Scoggin 2012.00 James N. Mullins 30.00 Vickie Scott 635.00 Jane Smith 21.00 Terry Perry 2885.00 Vickie Smith 290.00 Carol Phillips 185.00 Jerry L. Smith 270.00 Alma Pike 1438.00 Bill D. Sower 247.50 Gordon Pope 30.00 Debra Stevens 125.00 Virginia Saylor 1032.50 Coln G. Wilson 2320.00

78948 Kenneth Adams, Bd. Meeting & Exp. 11.28 78947 Rudolph Burdette, Bd. Meeting 10.00 78948 Isabel Mason, Bd. Meeting & Exp 10.80 78949 Willie Taylor, Bd. Meeting & Exp. 11.60 78950 Chas. B. Parsons, Travel Exp. 61.25 78951 Lloyd G. Shotts, Travel Exp. 19.20 78952 Betty Cain, Travel Exp. 47.30 78953 Loreita Dillingham, Travel Exp. 43.20 78954 John Stevens, Travel Exp. 49.75 78955 Russell Parsons, Travel Exp. 60.30 78956 Bill Ponder, Travel Exp. 78.39 78957 Melvin D. Hamm, Travel Exp. 154.55 78958 Bigg Towery, Jr., Travel Exp. 118.81 78959 R. J. Telephone Co., Act. 11.55 78960 Ky. Utilities Co., Act. 1,623.71 78961 Broadham Municipal Water Works, Act. 62.38 78962 Mt. Vernon Water Works, Act. 1,134.55 78963 Gulf Oil Corp., Act. 2.70 78964 Standard Oil Co., Act. 728.98 78965 Atlantic Richfield Co., Act. 2,241.28 78966 Atlantic Richfield Co., Act. 32.64 78967 Jerry's Tire Center, Act. 20.00 78968 Central Body Service, Act. 37.56 78969 Hughes Motor Co., Act. 21.15 78970 Wayne Sales, Inc., Act. 171.59 78971 Mt. Vernon Automotive, Inc., Act. 155.08 78972 Rockcastle Auto Parts, Act. 519.23 78973 Wheel & Axle Service, Inc., Act. 20.00 78974 Cumberland Welders Shop, Co., Inc., Act. 31.80 78975 Leni Truck Uniform Service, Inc., Act. 30.00 78976 Ed Reynolds, Jr., Truck Rental 31.80 78977 Lena Rucker, Contractual Labor 211.30 78978 Mt. Vernon Signal, Act. 49.75 78979 A.F. St. Clair & Son, Act. 1,196.73 78980 A.F. St. Clair & Son, Act. 1,507.06 78981 A.F. St. Clair & Son, Act. 1,392.23 78982 The Sherwin-Williams Co., Act. 461.50 78983 Bolton Building Supply, Act. 49.83 78984 Clay Ingle's Co., Inc., Act. 6.95 78985 Applied Service Center, Act. 246.00 78986 Compton Tile, Act. 6.95 78987 Douglas Drywall Co., Act. 42.24 78988 S.T. Hyson Lbr. Co., Act. 28.98 78989 C.C. Co., Act. 113.70 78990 Ed Payne, Act. 20.00 78991 McGraw-Hill, Act. 50.00 78992 Clifford Bales, Clerk, Fees 45.03 78993 Anderson Office Supply Co., Inc., Act. 97.30 78994 Dunsmead & Son, Act. 1,475.00 78995 Sausley Implement Co., Act. 29.33 78996 RCA Service Co., Act. 184.50 78997 Central School Supply Co. & A.V. Elec., Act. 54.00 78998 School Supply Co., Inc., Act. 20.00 78999 Livingstone Lunchroom, Lunch Reimb. May 82.11 79000 Mt. Vernon Water Works, Act. 84.95 79001 Northern Rock, Co. Water Dist. 1,252.20 79002 Jackson Co. RECC, Act. 166.46 79003 The Bank of Mt. Vernon, C-D 100,000.00 79004 Kenneth Adams, Bd. Meeting & Exp. 11.60 79047 Rudolph Burdette, Bd. Meeting 10.00 79042 Billy Burdette, Bd. Meeting & Exp. 12.00 79043 Willie Taylor, Bd. Meeting & Exp. 11.60 79044 Charles B. Parsons, Travel Exp. 86.20 79045 Nancy L. Williams, Travel Exp. 19.00 79046 Russell Parsons, Travel Exp. 192.20 79047 Bill Ponder, Travel Exp. 44.85 79048 Buford Parkinson, Travel Exp. 11.05 79049 Bigg Towery, Jr., Travel Exp. 30.00 79050 Melvin D. Hamm, Travel Exp. 13.50 79051 Mt. Vernon Municipal Water Works, Act. 21.61 79052 Livingston Water Works, Act. 29.35 79053 Mt. Vernon Water Works, Act. 97.66 79054 Northern Rock, Co. Water Dist., Act. 101.34 79055 Ky. Telephone Co., Act. 795.27 79056 Ky. Utilities Co., Act. 11,459.00 79057 Thompson San. Supp. House, Inc., Act. 485.35 79058 Atlantic Richfield Co., Act. 290.24 79060 Atlantic Richfield Co., Act. 39.84 79061 Claude L. Hansel, Trans. 12.00 79062 Sherman Hansel, Trans. 120.00 79063 Mt. Vernon Automotive, Inc., Act. 76.86 79064 Hughes Motor Co., Act. 210.38 79065 Bob Mullins Ford, Act. 30.44 79066 C.T. Massey Motor Co., Act. 41.29 79067 Rim & Wheel Serv., Inc., Act. 99.19 79068 Hughes Motor Co., Inc., Act. 289.99 79070 Wheel & Axle Service, Inc., Act. 338.48 79071 Auto & Electric, Inc., Act. 77.95 79072 Wholesale Plumbers & Elec. Suppl. Act. 8.00 79073 C.C. Cox, Act. 84.46 79074 S.T. Proctor Co., Act. 141.06 79075 Crane Supply Co., Act. 23.70 79076 Bryant Bros., Act. 17.95 79077 Farmers Feed & Supp., Act. 22.00 79078 Ky. Concrete Pipe Co., Act. 78.20 79079 Clay Ingle's Co., Inc., Act. 153.95 79080 The Sherwin-Williams Co., Act. 53.30 79081 Broadham Hardware, Act. 246.17 79082 P.L. Poynter, Act. 124.19 79083 Paul G. Schubert Co., Act. 165.96 79084 Cumberland Elec. Supp., Inc., Act. 153.95 79085 Norton Insurance Agency, Bond Prem. 101.00 79086 Lumber, Act. 4.05 79087 The Eight-Eight News Letter, Sub 25.00 79088 Griffin's Grocery, Act. 8.50 79089 Ky. State Trans. Act. 82.00 79090 D. Thomas, Act. 112.00 79091 Preston Parrett, Contract Labor 22.36 79092 Central School Supply Co., Act. 25.00 79093 Robert Kirby, Contract Hauling 25.00 79094 Rockcastle Farm Service, Act. 38.20 79095 G.C. Cox, Act. 34.85 79096 Jim & Jack's Hdw. & App., Inc., Act. 142.20 79097 Jim & Jack's Hdw. & App., Inc., Act. 179.61

RECAPITULATION AND BANK RECONCILIATION

Balance at Beginning of Year 618.70 Total receipts for year 2,466,887.26 Total balance and receipts 2,467,545.11 Balance at close of year (Book Balance) 188,968.21 Balance in bank at close of year (Total) 186,060.53 Actual Cash -11,017.79 Actual balance (Cash) Securities 200,000.00 Certificates of Deposit 188,968.21

Name of Depository Bank The Bank of Vernon, Kentucky, Date June 30, 1975. /s/ Lloyd G. Shotts, Treasurer, Rockcastle County Bd. of Educ. This is to certify that the balance to the credit of the Rockcastle County Board of Education account on June 30, 1975 was \$196,060.53.

SWORN TO AND SUBSCRIBED BEFORE ME THIS 15 DAY OF JULY, 1975. Martha Cox, Notary Public State of Kentucky My Commission Expires October 28, 1977

WAGES OF ROCKCASTLE COUNTY SCHOOL EMPLOYEES 1974-75 SCHOOL YEAR 2261.993 Diane Masters 6283.91 Dora Nisley 8457.84 Charles Norton 6615.67 Barbara Owens 8619.87 Russell Parsons 6285.12 Glen Polly 7852.68 William E. Ponder 6418.12 Gloria Prater 5648.74 Rodney Purcell 7068.56 Robert N. Pybas 7875.12 William D. Riddle 7636.40 Mary Taylor 7195.27 June Stevens 6285.01 Lawrence Travis 7359.47 Glen Van Winkle 5112.98 Clarence Van Zant 4950.16 Marzie Wilcox 5834.16 Florence Winstead 289.78 Laura W. Durham 7011.45 Barbara Hiatt 3476.68 Mary Lee Mink 3326.47 Nancy P. Hysinger 3498.32 Melvin D. Hamm 9806.68 Charles B. Parsons 11,654.31 Lloyd G. Shotts 9630.47 Bessie Burdett 4900.16 Grover T. Payne 3181.83 Ronnie Cash 5924.16 Charles Cornelius 8755.03 Robert J. Mink 8901.83 Buford Parkinson 9367.85 Grover T. Payne 8357.89 Cleston Saylor 10,114.40 E.J. Smith 8364.74 Bigg Towery, Jr. 8939.01 Marge A. Hunt 1121.46 Blanche Johnson 2269.36 Naomi Mink 2269.36 Shirley Mullins 2269.36 Geraldine Nunneley 2266.12 Barbara Thacker 2266.96 Joyce Q. Barnett 2896.96 Jesse C. Bradley 4024.08 Betty L. Bullock 4024.08 Ollie Carpenter 1186.30 Precade Holt 695.18 Dorothy Jones 2896.96 Homer Jones 2725.92 J.T. Lovell 3515.88 Ernest Mink 2312.12 Lena Rucker 2266.96 Edna E. Owens 2941.50 Walter L. Shepherd 1202.32 Bruce Shoemaker 4437.20 William Taylor 3437.20 Paul D. Owens 4251.00 William Bell, Jr. 8913.14 Ed Reynolds, Jr. 4739.48 Willard Whitaker 5563.23 Barbara Fay 804.81 Carol F. French 1768.50 Charles G. French 1033.07 Sondra Mullins 2252.11 Henry C. Anglin, Jr. 1792.84 James T. Boone 1564.69 Jackie Burdine 857.87 Robert N. Pybas 2248.97 Carl Carpenter 11.40 Albert Cash 1959.52 Everett Cash 1959.52 Robert Clark 1792.84 James Cox 1819.80 Betty Craig 1793.84 John Cromer, Jr. 1915.95 James Cummings 1564.69 Roy Daugherty 204.84 Leon Durham 1876.27 Lawrence Fordyce 942.78 Coy French 414.11 Claude L. Hansel 1981.98 Paul Hansel 995.22 Sherman Hansel 1724.29 Russell Hensley 1740.25 Harry Holman 1017.25 Albert B. Martin 1792.84 William F. Martin 1629.30 Robert C. Wilson 1715.55 Dan McGuire 1876.27 James Moore 860.29 Earl Ponder 1652.88 Marvin Ponder 1872.38 Robert C. Wilson 622.15 Robert N. Pybas 822.15 King Rowland 1792.84 Sherman Sargent 1717.28 Keith Singleton 1675.02 Robert C. Wilson 1211.38 Henry Wynn 1892.71 Willard Wynn 1807.54 Estle Bullock 387.50 Renee Burdett 730.00 Nancy Bussell 3995.18 Jeannine Cummins 1222.50 Frances Dickerson 1015.00 Joseph Dickerson 1750.00 Kathy Edwards 87.50 Norma Everts 37.50 Edna Pate 2625.00 Edwina Fields 240.00 Sun Ford 860.00

Elizabeth Mullins 2485.00 Della Scoggin 2012.00 James N. Mullins 30.00 Vickie Scott 635.00 Jane Smith 21.00 Terry Perry 2885.00 Vickie Smith 290.00 Carol Phillips 185.00 Jerry L. Smith 270.00 Alma Pike 1438.00 Bill D. Sower 247.50 Gordon Pope 30.00 Debra Stevens 125.00 Virginia Saylor 1032.50 Coln G. Wilson 2320.00

78948 Kenneth Adams, Bd. Meeting & Exp. 11.28 78947 Rudolph Burdette, Bd. Meeting 10.00 78948 Isabel Mason, Bd. Meeting & Exp 10.80 78949 Willie Taylor, Bd. Meeting & Exp. 11.60 78950 Chas. B. Parsons, Travel Exp. 61.25 78951 Lloyd G. Shotts, Travel Exp. 19.20 78952 Betty Cain, Travel Exp. 47.30 78953 Loreita Dillingham, Travel Exp. 43.20 78954 John Stevens, Travel Exp. 49.75 78955 Russell Parsons, Travel Exp. 60.30 78956 Bill Ponder, Travel Exp. 78.39 78957 Melvin D. Hamm, Travel Exp. 154.55 78958 Bigg Towery, Jr., Travel Exp. 118.81 78959 R. J. Telephone Co., Act. 11.55 78960 Ky. Utilities Co., Act. 1,623.71 78961 Broadham Municipal Water Works, Act. 62.38 78962 Mt. Vernon Water Works, Act. 1,134.55 78963 Gulf Oil Corp., Act. 2.70 78964 Standard Oil Co., Act. 728.98 78965 Atlantic Richfield Co., Act. 2,241.28 78966 Atlantic Richfield Co., Act. 32.64 78967 Jerry's Tire Center, Act. 20.00 78968 Central Body Service, Act. 37.56 78969 Hughes Motor Co., Act. 21.15 78970 Wayne Sales, Inc., Act. 171.59 78971 Mt. Vernon Automotive, Inc., Act. 155.08 78972 Rockcastle Auto Parts, Act. 519.23 78973 Wheel & Axle Service, Inc., Act. 20.00 78974 Cumberland Welders Shop, Co., Inc., Act. 31.80 78975 Leni Truck Uniform Service, Inc., Act. 30.00 78976 Ed Reynolds, Jr., Truck Rental 31.80 78977 Lena Rucker, Contractual Labor 211.30 78978 Mt. Vernon Signal, Act. 49.75 78979 A.F. St. Clair & Son, Act. 1,196.73 78980 A.F. St. Clair & Son, Act. 1,392.23 78982 The Sherwin-Williams Co., Act. 461.50 78983 Bolton Building Supply, Act. 49.83 78984 Clay Ingle's Co., Inc., Act. 6.95 78985 Applied Service Center, Act. 246.00 78986 Compton Tile, Act. 6.95 78987 Douglas Drywall Co., Act. 42.24 78988 S.T. Hyson Lbr. Co., Act. 28.98 78989 C.C. Co., Act. 113.70 78990 Ed Payne, Act. 20.00 78991 McGraw-Hill, Act. 50.00 78992 Clifford Bales, Clerk, Fees 45.03 78993 Anderson Office Supply Co., Inc., Act. 97.30 78994 Dunsmead & Son, Act. 1,475.00 78995 Sausley Implement Co., Act. 29.33 78996 RCA Service Co., Act. 184.50 78997 Central School Supply Co. & A.V. Elec., Act. 54.00 78998 School Supply Co., Inc., Act. 20.00 78999 Livingstone Lunchroom, Lunch Reimb. May 82.11 79000 Mt. Vernon Water Works, Act. 84.95 79001 Northern Rock, Co. Water Dist. 1,252.20 79002 Jackson Co. RECC, Act. 166.46 79003 The Bank of Mt. Vernon, C-D 100,000.00 79004 Kenneth Adams, Bd. Meeting & Exp. 11.60 79047 Rudolph Burdette, Bd. Meeting 10.00 79042 Billy Burdette, Bd. Meeting & Exp. 12.00 79043 Willie Taylor, Bd. Meeting & Exp. 11.60 79044 Charles B. Parsons, Travel Exp. 86.20 79045 Nancy L. Williams, Travel Exp. 19.00 79046 Russell Parsons, Travel Exp. 192.20 79047 Bill Ponder, Travel Exp. 44.85 79048 Buford Parkinson, Travel Exp. 11.05 79049 Bigg Towery, Jr., Travel Exp. 30.00 79050 Melvin D. Hamm, Travel Exp. 13.50 79051 Mt. Vernon Municipal Water Works, Act. 21.61 79052 Livingston Water Works, Act. 29.35 79053 Mt. Vernon Water Works, Act. 97.66 79054 Northern Rock, Co. Water Dist., Act. 101.34 79055 Ky. Telephone Co., Act. 795.27 79056 Ky. Utilities Co., Act. 11,459.00 79057 Thompson San. Supp. House, Inc., Act. 485.35 79058 Atlantic Richfield Co., Act. 290.24 79060 Atlantic Richfield Co., Act. 39.84 79061 Claude L. Hansel, Trans. 12.00 79062 Sherman Hansel, Trans. 120.00 79063 Mt. Vernon Automotive, Inc., Act. 76.86 79064 Hughes Motor Co., Act. 210.38 79065 Bob Mullins Ford, Act. 30.44 79066 C.T. Massey Motor Co., Act. 41.29 79067 Rim & Wheel Serv., Inc., Act. 99.19 79068 Hughes Motor Co., Inc., Act. 289.99 79070 Wheel & Axle Service, Inc., Act. 338.48 79071 Auto & Electric, Inc., Act. 77.95 79072 Wholesale Plumbers & Elec. Suppl. Act. 8.00 79073 C.C. Cox, Act. 84.46 79074 S.T. Proctor Co., Act. 141.06 79075 Crane Supply Co., Act. 23.70 79076 Bryant Bros., Act. 17.95 79077 Farmers Feed & Supp., Act. 22.00 79078 Ky. Concrete Pipe Co., Act. 78.20 79079 Clay Ingle's Co., Inc., Act. 153.95 79080 The Sherwin-Williams Co., Act. 53.30 79081 Broadham Hardware, Act. 246.17 79082 P.L. Poynter, Act. 124.19 79083 Paul G. Schubert Co., Act. 165.96 79084 Cumberland Elec. Supp., Inc., Act. 153.95 79085 Norton Insurance Agency, Bond Prem. 101.00 79086 Lumber, Act. 4.05 79087 The Eight-Eight News Letter, Sub 25.00 79088 Griffin's Grocery, Act. 8.50 79089 Ky. State Trans. Act. 82.00 79090 D. Thomas, Act. 112.00 79091 Preston Parrett, Contract Labor 22.36 79092 Central School Supply Co., Act. 25.00 79093 Robert Kirby, Contract Hauling 25.00 79094 Rockcastle Farm Service, Act. 38.20 79095 G.C. Cox, Act. 34.85 79096 Jim & Jack's Hdw. & App., Inc., Act. 142.20 79097 Jim & Jack's Hdw. & App., Inc., Act. 179.61

OTHER REVENUE FROM LOCAL SOURCES 5,000.00 Earn. from Invest. Sav. Accts. & Cert. of Deposit 6,992.92 Rent of School Buildings & Grounds 212.80 Total Local Revenue Receipts 12,205.72

OTHER REVENUE RECEIPTS 1,458,541.08 Foundation Program Fund 3,525.70 Public Law 864, Title III 90,118.78 Public Law 89-10, ESEA, Title II 1,362.87 Other Public Law 874 18,289.85 TOTAL OTHER REVENUE RECEIPTS 1,745,088.48

RECEIPTS 146,496.26 Balance on hand beginning of Year 618.70 General Property Delinquency Tax 1,152.57 Revenue in Lieu of Taxes 900.30 Public Service Companies Tax 35,520.32 Bank Shares Tax 4,378.25 Poll Tax 44.77

Year Ending June 30, 1976 Rockcastle County School District, County of Rockcastle

Balance on hand beginning of Year 618.70 Total receipts for year 2,466,887.26 Total balance and receipts 2,467,545.11 Balance at close of year (Book Balance) 188,968.21 Balance in bank at close of year (Total) 186,060.53 Actual Cash -11,017.79 Actual balance (Cash) Securities 200,000.00 Certificates of Deposit 188,968.21

Name of Depository Bank The Bank of Vernon, Kentucky, Date June 30, 1975. /s/ Lloyd G. Shotts, Treasurer, Rockcastle County Bd. of Educ. This is to certify that the balance to the credit of the Rockcastle County Board of Education account on June 30, 1975 was \$196,060.53.

SWORN TO AND SUBSCRIBED BEFORE ME THIS 15 DAY OF JULY, 1975. Martha Cox, Notary Public State of Kentucky My Commission Expires October 28, 1977

WAGES OF ROCKCASTLE COUNTY SCHOOL EMPLOYEES 1974-75 SCHOOL YEAR 2261.993 Diane Masters 6283.91 Dora Nisley 8457.84 Charles Norton 6615.67 Barbara Owens 8619.87 Russell Parsons 6285.12 Glen Polly 7852.68 William E. Ponder 6418.12 Gloria Prater 5648.74 Rodney Purcell 7068.56 Robert N. Pybas 7875.12 William D. Riddle 7636.40 Mary Taylor 7195.27 June Stevens 6285.01 Lawrence Travis 7359.47 Glen Van Winkle 5112.98 Clarence Van Zant 4950.16 Marzie Wilcox 5834.16 Florence Winstead 289.78 Laura W. Durham 7011.45 Barbara Hiatt 3476.68 Mary Lee Mink 3326.47 Nancy P. Hysinger 3498.32 Melvin D. Hamm 9806.68 Charles B. Parsons 11,654.31 Lloyd G. Shotts 9630.47 Bessie Burdett 4900.16 Grover T. Payne 3181.83 Ronnie Cash 5924.16 Charles Cornelius 8755.03 Robert J. Mink 8901.83 Buford Parkinson 9367.85 Grover T. Payne 8357.89 Cleston Saylor 10,114.40 E.J. Smith 8364.74 Bigg Towery, Jr. 8939.01 Marge A. Hunt 1121.46 Blanche Johnson 2269.36 Naomi Mink 2269.36 Shirley Mullins 2269.36 Geraldine Nunneley 2266.12 Barbara Thacker 2266.96 Joyce Q. Barnett 2896.96 Jesse C. Bradley 4024.08 Betty L. Bullock 4024.08 Ollie Carpenter 1186.30 Precade Holt 695.18 Dorothy Jones 2896.96 Homer Jones 2725.92 J.T. Lovell 3515.88 Ernest Mink 2312.12 Lena Rucker 2266.96 Edna E. Owens 2941.50 Walter L. Shepherd 1202.32 Bruce Shoemaker 4437.20 William Taylor 3437.20 Paul D. Owens 4251.00 William Bell, Jr. 8913.14 Ed Reynolds, Jr. 4739.48 Willard Whitaker 5563.23 Barbara Fay 804.81 Carol F. French 1768.50 Charles G. French 1033.07 Sondra Mullins 2252.11 Henry C. Anglin, Jr. 1792.84 James T. Boone 1564.69 Jackie Burdine 857.87 Robert N. Pybas 2248.97 Carl Carpenter 11.40 Albert Cash 1959.52 Everett Cash 1959.52 Robert Clark 1792.84 James Cox 1819.80 Betty Craig 1793.84 John Cromer, Jr. 1915.95 James Cummings 1564.69 Roy Daugherty 204.84 Leon Durham 1876.27 Lawrence Fordyce 942.78 Coy French 414.11 Claude L. Hansel 1981.98 Paul Hansel 995.22 Sherman Hansel 1724.29 Russell Hensley 1740.25 Harry Holman 1017.25 Albert B. Martin 1792.84 William F. Martin 1629.30 Robert C. Wilson 1715.55 Dan McGuire 1876.27 James Moore 860.29 Earl Ponder 1652.88 Marvin Ponder 1872.38 Robert C. Wilson 622.15 Robert N. Pybas 822.15 King Rowland 1792.84 Sherman Sargent 1717.28 Keith Singleton 1675.02 Robert C. Wilson 1211.38 Henry Wynn 1892.71 Willard Wynn 1807.54 Estle Bullock 387.50 Renee Burdett 730.00 Nancy Bussell 3995.18 Jeannine Cummins 1222.50 Frances Dickerson 1015.00 Joseph Dickerson 1750.00 Kathy Edwards 87.50 Norma Everts 37.50 Edna Pate 2625.00 Edwina Fields 240.00 Sun Ford 860.00

Elizabeth Mullins 2485.00 Della Scoggin 2012.00 James N. Mullins 30.00 Vickie Scott 635.00 Jane Smith 21.00 Terry Perry 2885.00 Vickie Smith 290.00 Carol Phillips 185.00 Jerry L. Smith 270.00 Alma Pike 1438.00 Bill D. Sower 247.50 Gordon Pope 30.00 Debra Stevens 125.00 Virginia Saylor 1032.50 Coln G. Wilson 2

Kentucky Afied

John Wilson, Guest Writer

Kentucky's dove hunters don't really need to be reminded that the opening of the season is near. Chances are, most of them already have their eyes on grain or silage fields or have started to get their shooting form back in shape after the long summer lay-off of breaking a few clay pigeons.

The dove regulations this year are very similar to those of the past few seasons. From the Sept. 1 opening date, the first part of the season runs through October 21, with the second part of the season Dec. 13 - Dec. 21. The limits remain at 12 daily and 24 in possession after two or more days of hunting. (Remember that possession limits apply to transporting or storage and that more than the limit cannot be possessed while the hunter is in the field.)

Shooting hours for doves are from noon until one-half hour before sunset, prevailing time. All shotguns used for dove hunting must be plugged to hold no more than three shells (one in the chamber and two in the magazine), and shooting over a "baited" field (check complete regulations for a definition of "baiting") is prohibited.

Fields which contain grain as the result of valid agricultural operations or those where grain has been grown for wildlife management purposes are legal. The key to successful dove shooting is finding areas where silage or grain crops have been planted since doves congregate there to feed. When these fields are cut depends largely on the weather. So far this year, the situation looks good. Of course, a rainy spell after this month could delay harvesting until later on in the season.

The dove population also looks good this year, according to Dan Russell, a wildlife biologist with the Department of Fish and Wildlife Resources and an expert on the doves. All in all, conditions now look right for a good dove season, Russell says.

Russell also should know what he's talking about. Not only has he worked with doves since 1949, but he also has recently written a book on the subject, "The Dove Shooter's Handbook" (Winchester Press).

Newcomers to dove shooting or even old hands at the sport who would like to increase their knowledge of this fine game bird, should get a copy of Russell's book. Not only does he give invaluable tips on hunting doves, but he also goes into detail about the habits, life history and management of this species.

In "The Dove Shooter's Handbook," Russell gives some very interesting figures about the value of doves as a renewable natural resource. On a nationwide basis, he says, this bird provides 12 to 15 million recreation days each year for some 2.5 million hunters, or a total of \$16 million worth of shells.

For an annual return of \$16 million, he goes on to say it would be necessary to invest \$200 million at 8 per cent interest. When the cost of food, drink, clothing, gasoline, and so on are added, the total value of the nation's dove population exceeds \$1 billion.

Russell also points out that dove hunters contribute a greater share, proportionally, to the Federal Aid to Wildlife Restoration funds than do most other hunters because they use so many shells. Ammunition, as well as most other hunting equipment, carries an 11 percent excise tax, which is returned to the states for use in wildlife projects.

Thus, Russell says, the dove provides much more revenue for wildlife funds than is spent on its management, so it lends financial support to many other game and non-game species that need to be studied and managed but generate less revenue.

I don't know about you, but all this makes me feel a lot better. The next time (probably Sept. 1) I come home from a dove shoot with nothing in my game bag but three or four boxes of spent shells, I'll figure that the day wasn't a total loss—at least I've made some contribution to the economy and to wildlife management.

Now, if Dan Russell could only come up with a sure cure for a sore shoulder...

Kentucky is the only state in the nation without an auto title law. An effort to get such a law passed by the 1974 General Assembly failed, but it will be renewed in the 1976 session.

"FINANCIAL STATEMENT"

(Cont. From 8)

70908 Jim & Jack's Hdw. & App. Inc.	852.69
70909 Demco Educational Corp.	172.96
70910 The Bank of Mt. Vernon, Box Rent	8.00
70911 Jackson Co. RECC, Acct.	85.40
70912 George Deatherage, Contract Labor	80.00
70913 State Treas.	1091.43
70914 Soc. Sec. Revolving Fund	656.46
70915 Ky. State Treasurer	526.74
70916 State Bank of Cleveland	512.57
70917 Fed. Res. Bank of Cleveland	2,581.20
TOTAL OF ALL F-40's	\$22,995.53

SEPTEMBER

70918 Kenneth Adams, Board Meeting & Exp.	11.80
70919 Rudolph Burdette, Board Meeting	10.00
70920 Isabel Mason, Board Meeting & Exp.	11.00
70921 Willie Taylor, Bd. Meeting & Exp.	12.00
70922 Charles B. Parsons, Travel Exp.	21.70
70923 Nancy L. Williams, Travel Exp.	11.47
70924 Betty Cain, Travel Exp.	94.96
70925 Loretta Dillingham, Travel Exp.	81.70
70926 June Stevens, Travel Exp.	145.15
70927 Bill Ponder, Travel Exp.	93.72
70928 Melvin D. Hamm, Travel Exp.	32.80
70929 Robert N. Pybas, Travel Exp.	50.00
70930 Willard Whitaker, Travel Exp.	102.50
70931 Reese H. H. Walker, Travel Exp.	102.50
70932 Ky. Telephone Co., Acct.	1,340.81
70933 Ky. Utilities Co., Acct.	58.09
70934 Brothead Municipal Water Works, Acct.	50.00
70935 Postmaster, Mt. Vernon P.O., Postage Stamps	8.26
70936 Atlantic Richfield Co., Acct.	72.53
70937 John H. Cornett, Used Bus Parts	118.22
70938 Wheel & Axle Service, Acct.	241.58
70939 P.T. Brake Lining Co., Inc., Acct.	25.84
70940 Hughes Motor Co., Acct.	149.35
70941 Auto Electric, Inc., Acct.	15.37
70942 Rental Uniform Service, Inc., Acct.	35.20
70943 Rockcastle Auto Parts, Acct.	48.29
70944 Vernon Automotive, Inc., Acct.	289.91
70945 Town & Country Stan. Serv. Sta., Acct.	399.00
70946 The Sherwin-Williams Co., Acct.	170.63
70947 N. H. Corbett, Used Bus Parts	583.20
70948 London Laundry, Acct.	14.46
70949 Davidson Bros. & Co., Acct.	85.50
70950 Thompson Sanitary Supp. House, Inc., Acct.	310.73
70951 The Sherwin-Williams Co., Acct.	4.35
70952 C. C. Co., Acct.	75.08
70953 T. S. Proctor Lbr. Co., Acct.	121.56
70954 Compton Tile, Acct.	276.00
70955 Ky. Concrete Pipe Co., Acct.	47.82
70956 P. L. Poynter, Acct.	140.70
70957 Standard Hardware, Acct.	100.98
70958 Bill Cash & Son, Acct.	50.00
70959 George Deatherage, Contract Labor	127.58
70960 Pauline P. Mullins, Contract Auditing	20.00
70961 William B. Riddick, Contract Labor	77.50
70962 Jim & Jack's Hdw. & App. Inc., Acct.	7.00
70963 Clifford Bates, Clerk, Contract Labor	25.10
70964 Brown's Office Supply, Acct.	166.25
70965 complex Tim Recorder Co., Acct.	27.78
70966 Norton Inc., Agency, Bond - J. Nunnelley	30.00
70967 State Treasurer, Acct.	97.08
70968 NASCO, Acct.	44.07
70969 Cumberland Welder's Supp. Co., Acct.	34.23
70970 Mt. Vernon Water Works, Acct.	795.00
70971 Lexington Water Works, Acct.	900.00
70972 North Rock Co. Water District, Acct.	72.12
70973 John H. Stricker, Jr., Inc., Chevy Carryall	975.00
70974 Jackson Co. RECC, Acct.	10.87
70975 Uniroyal Tire Co., Acct.	10.00
70976 Basic Adult Education, Transfer of Funds	127.50
70977 Atlantic Richfield Co., Acct.	877.58
70978 Lewis Adams, Trans.	69.75
70979 Charles T. Baker, Trans.	11.40
70980 Russell Barnes, Trans.	21.40
70981 James R. Bradley, Trans.	144.45
70982 Arnold Brown, Trans.	32.10
70983 Gerald Bullock, Trans.	80.25
70984 Edna Cameron, Trans.	36.10
70985 Dean Carpenter, Trans.	92.30
70986 Lewis Chaney, Trans.	125.05
70987 Anthur Cope, Trans.	139.10
70988 Willie Chaney, Trans.	21.40
70989 John Cromer, Jr., Trans.	74.90
70990 John H. Cromer, Trans.	42.80
70991 Joe Daugherty, Trans.	80.25
70992 Barbara De Borte, Trans.	138.75
70993 Raymond McKinney, Trans.	21.40
70994 Ernest Jones, Trans.	107.00
70995 Dixie Kidwell, Trans.	58.50
70996 Christine Kirby, Trans.	32.10
70997 John L. Holland, Trans.	50.00
70998 Caleb Lamb, Trans.	101.95
70999 James Mason, Trans.	32.10
71000 Murphy Martin, Jr., Trans.	107.00
71001 James Mason, Trans.	107.00
71002 Raymond McKinney, Trans.	58.50
71003 Carl Miller, Trans.	64.20
71004 Elmer Mink, Trans.	127.00
71005 Linda Montjoy, Trans.	138.75
71006 John L. Gadd, Trans.	37.00
71007 Terry Mullins, Trans.	53.50
71008 Luther Owens, Trans.	160.50
71009 Drewsella Pigg, Trans.	60.00
71010 Lois Renner, Trans.	75.00
71011 Opal Robson, Trans.	15.00
71012 Rovie Singleton, Trans.	45.00
71013 Frank Thacker, Trans.	112.35
71014 Loyde Van Zant, Trans.	107.00
71015 Willie Van Zant, Trans.	138.75
71016 Margaret Whitaker, Trans.	32.10
71017 Dorothy Wynn, Trans.	107.00
71018 Title I ESEA 89-10, Transfer of Funds	20,000.00
71019 Advanced T. & Electronics, Acct.	614.85
71020 Blue Cross Hospital Plan	2,880.47
71021 Ky. Education Association	1,625.35
71022 Citizens Security Life Ins. Co.	290.70
71023 State Treasurer, Ret.	7,999.83
71024 Soc. Sec. Rev. Fund	1,741.82
71025 Ky. State Treasurer, Co. Ret.	1,122.06
71026 State Treasurer, St. Tax	2,804.73
71027 Fed. Res. Bank of Cleveland	15,321.40
TOTAL OF ALL F-40's	\$83,305.39

NOVEMBER

70980 Capital Outlay Fund, Transfer of Funds	70,000.00
70981 The Bank of Mt. Vernon, Cert of Dep.	100,000.00
70982 Kenneth Adams, Bd. Meeting	11.80
70983 Rudolph Burdette, Bd. Meeting	10.00
70984 Isabel Mason, Bd. Meeting & Exp.	11.00
70985 Willie Taylor, Bd. Meeting & Exp.	12.00
70986 Charles B. Parsons, Travel Exp.	116.36
70987 Nancy L. Williams, Travel Exp.	109.01
70988 Margaret Whitaker, Travel Exp.	578.58
70989 Bill Ponder, Travel Exp.	124.36
70990 Melvin D. Hamm, Travel Exp.	71.45
70991 Ruby Cornelius, Travel Exp.	124.90
70992 Olive Whitaker, Travel Exp.	111.80
70993 Robert N. Pybas, Travel Exp.	100.20
70994 Ky. Telephone Co., Acct.	91.28
70995 Auto Electric, Inc., Acct.	4,082.41
70996 Brod. Mun. Water Works, Acct.	111.49
70997 Livingston Water Works, Acct.	139.92
70998 Mt. Vernon Water Works, Acct.	210.22
70999 Northern Rock Co. Water Dist., Acct.	89.97
71000 Rockcastle Co. High School, Reimb. Supp.	4,778.20
71001 Standard Oil Co., Acct.	685.75
71002 R.H. Hamm Oil Co., Acct.	5,218.73
71003 Atlantic Richfield Co., Acct.	374.95
71004 Atlantic Richfield Co., Acct.	87.02
71005 Town & Country Standard St.	165.83
71006 Reese H. H. Walker, Acct.	287.87
71007 Central Body Service, Acct.	1,822.35
71008 Ridgeway Distributors, Acct.	444.24
71009 Wheel & Axle Service, Acct.	809.65
71010 Auto Electric, Inc., Acct.	98.49
71011 Rockcastle Auto Parts, Acct.	52.13

70980 Mt. Vernon Automotive, Inc., Acct.	784.50
70981 P.T. Brake Lining Co., Inc., Acct.	55.87
70982 Rental Uniform Service, Inc., Acct.	58.50
70983 John Cromer, Jr., Acct.	45.00
70984 London Laundry, Acct.	41.10
70985 Thompson Stan. Supp. House, Inc., Acct.	300.91
70986 Mt. Vernon Signal, Acct.	9.40
70987 Ky. Valley Press, Acct.	9.40
70988 Dept. of Ins., Acct.	14.00
70989 Wilcop Cable TV, Acct.	250.00
70990 James B. Dalley, Acct.	132.87
70991 C.C. Cox, Acct.	278.52
70992 S.T. Proctor Lbr. Co., Acct.	101.80
70993 Cumberland Ele. Supp., Inc., Acct.	68.89
70994 Boone & Sumner, Acct.	107.85
70995 Jim & Jack's Hardware & App. Acct.	227.11
70996 Jim & Jack's Hardware & App. Acct.	90.00
70997 R.H. Hamm Oil Co., Acct.	40.30
70998 John Havel, Acct.	68.89
70999 Glen McGuire, Contract Hauling	35.00
71000 Luther McKinney, Contract Hauling	60.00
71001 Lena Rucker, Contract Labor	280.00
71002 A.B. Dick Products of Lex., Acct.	29.65
71003 School Supply Co., Inc., Acct.	453.70
71004 Schoep, Acct.	220.06
71005 Hillenmeyer Nurseries, Acct.	171.00
71006 Hillenmeyer Nurseries, Acct.	97.00
71007 Jackson Co. RECC, Acct.	941.53
71008 Basic Adult Educ. Transfer of Funds	453.70
71009 Lewis Adams, Trans.	79.75
71010 Charles T. Baker, Trans.	160.50
71011 Russell Barnes, Trans.	21.40
71012 J.C. Bradley, Trans.	72.00
71013 James R. Bradley, Trans.	100.00
71014 Arnold Brown, Trans.	144.45
71015 Gerald Bullock, Trans.	32.10
71016 Edna Cameron, Trans.	36.10
71017 Dean Carpenter, Trans.	48.00
71018 Lewis Chaney, Trans.	80.25
71019 Edna Cameron, Trans.	32.10
71020 Raymond McKinney, Trans.	21.40
71021 Carl Miller, Trans.	64.20
71022 Elmer Mink, Trans.	127.00
71023 Linda Montjoy, Trans.	138.75
71024 Sam Mullins, Trans.	370.00
71025 Terry Mullins, Trans.	53.50
71026 Jerry Mullins, Trans.	190.50
71027 Marvin Ponder, Trans.	94.96
71028 Roy Renner, Trans.	155.15
71029 Rovie Singleton, Trans.	45.00
71030 Ruby Cornelius, Trans.	124.90
71031 John L. Holland, Trans.	50.00
71032 Margaret Whitaker, Trans.	32.10
71033 Dorothy Wynn, Trans.	107.00
71034 Blue Cross Hospital Plan	3,000.00
71035 Citizens Security Life Ins. Co.	1,639.50
71036 Citizens Security Life Ins. Co.	260.70
71037 State Treasurer	7,999.83
71038 Soc. Sec. Revolving Fund	1,686.06
71039 Ky. State Treasurer	1,741.82
71040 State Treasurer	2,759.03
71041 Fed. Res. Bank of Cleveland	15,327.30
71042 D. G. Albright, Coal Hauling	427.68
71043 State Farm Mutual Auto. Ins. Co., Inc. Prem	2,931.30
71044 Rock Co. School Food Service, Transfer of Funds	281.20
71045 Macmillan Publishing Co., Inc., Acct.	120.40
71046 Counselor Films, Inc., Acct.	67.50
71047 McKnight Publishing Co., Acct.	586.15
71048 School Supply Co., Acct.	24.85
71049 Guidance Associates, Acct.	61.20
71050 Singer School Supply, Inc., Acct.	319.59
71051 American Guidance Serv., Inc., Acct.	188.51

TOTAL OF ALL F-40's \$169,531.07

DECEMBER

70985 Kenneth Adams, Board Meeting & Exp.	11.80
70986 Rudolph Burdette, Board Meeting	10.00
70987 Isabel Mason, Board Meeting & Exp.	11.00
70988 Willie Taylor, Board Meeting & Exp.	12.00
70989 Charles B. Parsons, Travel	38,000.00
70990 Nancy L. Williams, Travel	68.40
70991 Russell Barnes, Travel	22.20
70992 Bill Ponder, Travel	19.20
70993 Ruby Cornelius, Travel	118.30
70994 Olive Whitaker, Travel	110.80
70995 Robert N. Pybas, Travel	76.90
70996 Ky. Telephone Co., Acct.	87.40
70997 Hillenmeyer Nurseries, Acct.	4,588.83
70998 Brothead Municipal Water Works, Acct.	158.00
70999 Mt. Vernon Water Works, Acct.	339.39
71000 Northern Rock Co. Water Dist., Acct.	138.04
71001 Brothead Elementary School, Reimb. Supplies	2,196.03
71002 Ted Holman, Acct.	63.00
71003 Joe Hansel, Acct.	35.00
71004 Title I ESEA 89-10, Transfer of Funds	1,755.00
71005 Charles B. Parsons, Travel	68.40
71006 Nancy L. Williams, Travel	68.40
71007 Russell Barnes, Travel	22.20
71008 Bill Ponder, Travel	19.20
71009 Ruby Cornelius, Travel	118.30
71010 Olive Whitaker, Travel	110.80
71011 Robert N. Pybas, Travel	76.90
71012 Ky. Telephone Co., Acct.	87.40
71013 Hillenmeyer Nurseries, Acct.	1,755.00
71014 Mt. Vernon Automotive, Inc., Acct.	11.25
71015 Sears Roebuck Co., Acct.	108.47
71016 Cumberland Ele. Supp., Inc., Acct.	9.20
71017 James Harris, Acct.	92.00
71018 Rockcastle Farm Service, Co., Acct.	410.00

(Cont. to 10)

"FINANCIAL STATEMENT"

(Cont. From Page 9)

Table listing financial transactions for August 1976, including items like '80199 3M Business Products Sales, Inc. Acct.', '80200 Livingston Water Works, Acct.', and '80201 R.H. Hamm Oil Co. Acct.'.

TOTAL OF ALL F-40's \$128,772.78

JANUARY

Table listing financial transactions for January 1976, including items like '80482 Basic Adult Education, Transfer of Funds', '80483 D.G. Albright, Cost', and '80484 Kenneth Adams, Board Meeting & Exp.'.

Table listing financial transactions for February 1976, including items like '80712 Macmillan Publishing Co., Inc. Acct.', '80713 Modern Binding Corp., Acct.', and '80714 The Baker & Taylor Co. Acct.'.

TOTAL OF ALL F-40's \$89,887.62

FEBRUARY

Table listing financial transactions for February 1976, including items like '80800 Lewis Adams, Trans.', '80801 Charles T. Baker, Trans.', and '80802 Russell Barnes, Trans.'.

TOTAL OF ALL F-40's \$129,655.45

MARCH

80189 Lewis Adams, Trans. 69.75

Table listing financial transactions for March 1976, including items like '80140 Charles T. Baker, Trans.', '80141 Russell Barnes, Trans.', and '80142 J.C. Bradley, Trans.'.

TOTAL OF ALL F-40's \$118,873.77

APRIL

Table listing financial transactions for April 1976, including items like '81401 Lewis Adams, Trans.', '81402 Charles T. Baker, Trans.', and '81403 Russell Barnes, Trans.'.

County Agent's Notes

By: H. Lee Durham

TREE REACTION.

Because of the dry July weather we had many trees are now reacting as if they were now fall. In some cases, their leaves are turning color and in other cases, the leaves are dropping, especially if they are under attack by sucking insects. It is questionable whether it is worthwhile at this time in the season to apply chemical controls for certain kinds of insects that do not overwinter on the trees. The leaves have served most of their useful function so not much is gained by saving them a little longer. Many insects leave the trees for winter and return next year. Killing the insects now will not prevent reinfestation of insects that overwintered on the untreated trees. Exceptions to this general rule are SCALE insects and MITES which overwinter on the trees. These insects should be controlled when they are doing damage or during the dormant season. The use of defoliation of conifers by insects should be controlled immediately because these trees do not refoliate as fast as the deciduous trees and made prone to other problems before they regain their needles. Although SAWFLIES are difficult to control now, every step should be taken to control them on conifers now, even if it means handpicking.

HORN AND FACE FLY CONTROL

HORN FLY numbers are at damaging levels in central Kentucky. These insects are easily controlled using back rubbers, backlovers or dust bags. These devices work fine as long as they have insecticide in them. Check the defoliation of HORN FLY and FACE FLY numbers are high, the control devices are probably empty or not available to the cattle.

CORN INSECTS

CORN. Any insecticide application to field corn in the state would be unjustified. However, for late patches of sweet corn, as soon as silks appear, apply a presentable grade of Sevin, mixed at the rate of two level tablespoons in a gallon of water. This amount will take care of 100 feet of row. Make applications every 2 or 3 days until the silks dry. Direct spray at the ears. We have gotten a lot of calls concerning PIGNIC BEETLES in and around corn ear tips. They are normally attracted to rotting plant material in fields that have been damaged by other insects, such as CORN EARWORM and EUROPEAN CORN BORER. Occasionally, they will feed upon healthy ear tips. Even when this occurs, we have not been able to show any correlation between controlling them in field corn. A further problem is that after the beetles are down in the silk chutes, they will feed on the silks to reach with an insecticide.

POISONING OF SILOS

Plants containing nitrates are capable of producing poisonous gases during the ensiling process. Nitrogen dioxide, a reddish brown gas, and nitrogen tetroxide, a yellow gas, are formed by the reduction of nitrate to nitrous oxide gas, a colorless and odorless gas. Nitrous oxide upon contact with air combines with oxygen to form nitric oxide. Two molecules of nitrogen dioxide gas form nitrogen tetroxide. Carbon dioxide gas is also produced by the fermentation process.

All of these gases are dangerous and may be present in the silage before it is blown. The gases, which are heavier than oxygen, accumulate above the silage chute or accumulate in the feed room. To avoid injury or death be sure to: (1) run the silage blower for 10-20 minutes before entering the silo and leave it on while you are in the silo; (2) remove doors just above the silage level to help ventilate the silo; (3) never jump down into a silo below the level of the doors; (4) do not go up and down silage chute until gases have drained away; (5) open doors and windows of the feed room; (6) keep children and animals away from silo for three-four days after filling; (7) never enter a sealed silo without proper equipment.

(Cont. to 11)

(Cont. to 11)