

Sandwiches are natural foods for summer because they're quick (to make and to eat), cool and casual. They're even more natural with another natural food, milk. Serve it in a tall glass, cool, nourishing and easy to pour.

There's no limit on the way to serve sandwiches, or their variety. Confetti Sandwiches are made from cheese and olives, spiked with onion, flecked with pimiento and held together with dairy sour cream. Heat them under the broiler just long enough for the cheese to melt.

The Loser is not what you think. That name is given it because the sandwich is a calorie counter's triumph, with pumpernickel bread, cottage cheese and lean roast beef helping to keep the calories low but flavor high.

Muenster cheese, beef, dairy sour cream and onions star in Popeye Cheese and Beef sandwiches. Need more be said?

Crisp vegetable relishes are excellent accompaniments for any sandwiches. Choose from carrot, celery and green pepper sticks, cucumber slices, tomatoes and raw cauliflower-crests. Serve with a tall glass of well chilled milk.

#### CONFETTI SANDWICHES

- 2 cups (8 oz.) shredded Cheddar cheese
- 3/4 cup chopped pitted ripe olives
- 1/4 cup finely sliced green onion
- 1 jar (2 oz.) chopped pimiento, drained
- 1/2 cup dairy sour cream
- 8 sandwich buns, split, toasted, buttered

Combine cheese, olives, onion and pimiento. Gently fold in sour cream. Spread evenly on bun bottoms. Broil 3 to 5

minutes or until cheese melts. Cover with bun tops. 8 servings.

#### THE LOSER (Calorie Counters' Triumph)

- 6 tablespoons (3/4 stick) butter
- 2 teaspoons prepared mustard
- 12 slices pumpernickel bread
- 1 1/2 cups small curd cottage cheese
- 1 tablespoon prepared horseradish
- 6 thin slices (1-oz. each) roast beef
- 12 slices tomato
- Salt
- 3/4 cup chopped watercress or curly endive

Beat together butter and mustard until light and fluffy; spread evenly over bread. Combine cottage cheese and horseradish; spread on 6 slices of bread. Place beef and tomato slices on cottage cheese mixture; sprinkle with salt. Sprinkle with watercress. Cover with remaining slices of bread. 6 servings.

#### POPEYE CHEESE AND BEEF

- 1 package (5 oz.) frozen fried onion rings
- 1/3 cup dairy sour cream
- 1 teaspoon prepared horseradish

- 12 slices dark rye bread, buttered
- 12 to 18 slices cooked roast beef
- 6 slices (6 oz.) Muenster cheese
- Raw spinach leaves
- 6 slices tomato

Prepare onion rings according to package directions; set aside. Combine sour cream and horseradish; spread on bread. Top 6 slices of bread with 2 to 3 slices roast beef, a slice of cheese, spinach, a slice of tomato and 2 to 3 onion rings. Top with remaining bread. 6 servings.



Milk offers a natural accompaniment to a colorful Confetti Sandwich, but it's also at home with a Calorie Counters' Triumph, Popeye Cheese and Beef or any of a thousand other combos.



**1930** There was a time when cows didn't know anything but the warm hand of a dairy farmer who milked twice a day, seven days a week. The method left a lot to be desired on the part of the dairy farmer, his cows, and in the quality of milk produced. Cows are still milked twice a day, each day of the week, but today's modern milking machines efficiently and gently milk each cow, and send milk flowing through stainless steel and glass tubes to huge sanitary storage tanks. Here the milk is stored until a refrigerated truck picks up the milk for transporting to processing plants, and ultimately to consumers. And today, high quality standards for milk, makes it the best to be found in the world. Milk tastes better and stays fresh much longer. You can depend on dairy farmers and their industry to produce good quality milk, and to have it readily available at a fair price.

The employees of **Young's Pharmacy** in Mt. Vernon take this opportunity to congratulate the Dairy Farmers of Rockcastle County.

We feature a complete-line of Health and Beauty Aids Including Coty Cosmetics

*Russell Stover Candies*

Open 6 days a week to serve you Call 256-4613



## Production Stays at 115 Billion Pound Level for Third Straight Year.

Per capita civilian milk consumption in 1975 will approximate 547 pounds (four pounds higher than last year) on a milk equivalent basis. This means expressing dairy products in terms of the amount of milk of standard butterfat content that would be required to produce the product.

The quantity of milk actually used to produce one pound of each product depends chiefly upon the butterfat content of the milk, and this varies throughout the country. Here are some approximations:

To make one pound of:	Requires:
Butter	21.2 pounds whole milk
Whole Milk Cheese	10.0 pounds whole milk
Evaporated Milk	2.1 pounds whole milk
Condensed Milk	2.3 pounds whole milk
Whole Milk Powder	7.4 pounds whole milk
Powdered Cream	13.5 pounds whole milk
Ice Cream (one gallon)	12.0 pounds whole milk
Cottage Cheese	6.25 pounds skim milk
Nonfat Dry Milk	11.00 pounds skim milk

Dairy sales were strong in 1975, up about one percent from the preceding year with fluid sales up 2.5 percent. Sales of butter, ice cream and lowfat milk also were up. Cheese sales stayed at about the 1974 level, but sales of whole, evaporated and nonfat milk declined.

Total milk production in 1975 was 115 plus billion pounds, the third consecutive year at this same level.

The number of milk cows declined slowly in 1975 to 17,149,000, only 72,000 less than in 1974. Large numbers of replacement heifers, low cull cow prices, and limited economic alternatives for dairymen contributed to the slow decline. And 1975 production per cow at 10,539 pounds was higher than that of 1973 and 1974.

### Dairying Improved in 1975

Cash receipts from dairying in 1975 were \$9.8 billion, up from \$9.4 billion in 1974.

"The dairy situation in 1975 was much improved compared to the previous year," said Glenn Lake, president of United Dairy Industry Association. "This resulted from fewer dairy imports, higher price support levels and a stronger consumer demand for milk and dairy products."

Lake noted that the dairy industry is still not in a satisfactory situation. "Dairymen continue to be faced with rising production costs for milk and consumer resistance to higher retail prices brought on by an inflationary economy," he warned.

The dairy industry continues to grow in importance to American consumers, to the nation's agriculture and

second largest segment of American agriculture, packaging, processing and distribution of milk products provide employment throughout the country. The retail value of dairy products sold in 1975 exceeded \$21 billion.

### What Is the 1976 Forecast?

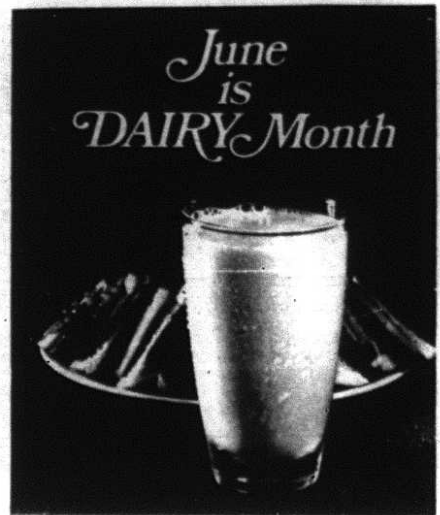
The drop in cow numbers is not likely to accelerate sharply in 1976. Large feed supplies have resulted in substantially lower feed prices

barn feeding season, and considerably higher farm milk prices likely will result in heavier grain feeding in 1976. Milk output per cow will continue to increase.

Most experts predict that increased milk flow per cow will offset the small decline in cow numbers. A good crop in 1976 will probably increase milk production about one percent above the 1975 level.



Milk production for the first half of 1976 could show an increase of around one percent. Output later in the year will depend on milk prices, cull cow prices, crop conditions and subsequent feed prices, and developments in the general economy.

If milk-feed price relationships are favorable next fall, gains in milk output could continue throughout 1976. On the other hand, shortfalls in feed output, sharp increases in herd culling, or sluggish dairy prices could cause milk production to slow during the second half of the year.




THE BICENTENNIAL YEAR is an excellent time to salute the dairy industry for its important role, past and present, in making America great. After all, milk and cows are as American as blueberry pie.

than a year ago. Expected feed costs, averaging below year-earlier levels during the


# THE SOUTHEASTERN GRADED MILK PRODUCERS ASSOCIATION WISHES TO SALUTE THE DAIRY FARMERS OF ROCKCASTLE COUNTY

GET EXTRA MILK FOR...




... BREAKFAST

GET EXTRA MILK FOR...



... SNACKS



GET EXTRA MILK FOR...



... LUNCH

## WHO PRODUCE MILK TO THE ASSOCIATION AND TO SOUTHERN BELLE FOR PRODUCING HIGH QUALITY MILK.

Southeastern Graded Milk Producers Assoc.  
and  
Southern Belle Dairy  
Somerset, Ky



## JUNE IS DAIRY MONTH

(Cont'd from front)

cooperators farms. This survey is important information in planning proper land use - including corpland, pasture and hayland, or woodland. In addition to the soil survey, planning assistance for all land users is available through the local conservation district.

The Conservation District, assisted by the U. S. Soil Conservation Service, stands ready to assist landowners at all times and congratulates the Dairyman and others connected with the dairy industry especially during the Month of June.

## AGRICULTURE 1976

(Cont'd from front)

cross hybrids and big protein corn hybrids (opaque 2 corn); four-wheel drive tractors and vehicles; innovations in growing techniques such as narrower rows and increased populations of planting; the development of soybeans as a major world-wide protein source; and edge-of-the-future innovations such as ova transfer in cattle.

I don't want to take anything away from the pioneers - they were heroic individuals. But the agriculturists of today are making advances that will be looked back in history books of 200 years from now as truly earth-shaking in their importance. It's exciting to think we are meeting these new pioneers every day in meetings such as "Dairy Day." Saluting the past is a noble endeavor, saluting the present - a most honorable one.

## SYLLABUS AND TRIFLES

(Cont'd from front)

### SYLLABUS

Syllabus is a drink usually made with wine and cream and is part of the history of Virginia during the Revolution. It is likely that originally syllabus was served, along with cookies and cakes, in Colonial Virginia on New Years.

(Adapted from *The Frugal Housewife*, 1772)

- 3 tablespoons sugar
- 1 cup heavy cream
- 1 teaspoon graded lemon rind
- 4 teaspoon lemon juice
- 1/2 cup white wine
- 2 egg whites, beaten to soft peaks.

Blend sugar into cream with wire whisk, add lemon rind and juice and wine and blend well. Fold in beaten egg whites and beat for about 5 minutes. Sprinkle with nutmeg. Serves 6.

For larger groups, try this modern version:

- 1 gallon vanilla ice cream, softened
- 1 quart milk
- 5 tablespoons grated lemon rind
- 3 tablespoons lemon juice
- 1 cup white wine

Mix softened ice cream, milk, lemon juice and wine. Mix in wine garnish with lemon slices. Serves 30.

### YORKSHIRE PUDDING

- 1 cup milk
- 1 cup all purpose flour
- salt and pepper to taste
- pinch nutmeg
- 1/2 cup melted fat or beef drippings, divided

Pre-heat oven to 425 degrees 10 minutes before pudding is ready to go in. Beat eggs for 1 minute with an electric mixer on highest speed. Add milk and gradually beat in the flour. Add

seasoning and 2 tablespoons of melted fat or drippings and beat 1 minute on highest speed. Refrigerate at least 30 minutes. Place remaining fat in a 7 1/2 inch black skillet to cover the bottom by 1/8 inch and heat in the oven until sizzling hot. Add chilled mixture and bake at 425 degrees for 30 minutes. Reduce heat to 350 degrees and bake an additional 10-15 minutes. Do not be dismayed when center falls - this is characteristic of Yorkshire Pudding. (Note: It would be helpful to save drippings from previous roasts to use in making this dish). 6-8 servings.

### KING'S SOUP

(This recipe is adapted from *The Ladies Companion*, a cookbook published in 1753, which was owned by Martha Washington). 2 large Bermuda onions, thinly sliced

- 1 quart milk
- 1/2 teaspoon mace blades
- 1/2 cup butter
- 1 1/2 teaspoons salt
- 1 egg yolk
- chopped parsley
- croûtons

Place onions, milk, mace, butter and salt in a sauce pan. Bring to a boil, then reduce heat, and cook closely for 30-40 minutes or until onions are very tender. Pick out mace blades and discard. Beat egg yolk in a small bowl, then add a little of the hot soup, beating constantly. Pour egg mixture into soup and cook a minute or two to thicken slightly.

Sprinkle each serving with finely chopped parsley, then add a few croûtons. Serves 4.

### TRIFLE

(Adapted from *The Art of Cookery*, 1796).

- 2 1/2 cups vanilla custard (or 2 large boxes instant pudding)
- 1 sponge cake (sliced) or 24 lady fingers
- 3/4 cup medium sherry (or 2 tablespoons almond extract)
- 8 oz. raspberry (or blackberry jam)
- 3/4 cup candied cherries, sliced
- 3/4 cup toasted sliced almonds
- 1 cup heavy cream
- 3 tablespoons sugar
- 1/2 teaspoon vanilla extract

Make a thin vanilla custard. In your best 2 quart crystal bowl, arrange a layer of sponge cake or lady fingers on bottom and sides of bowl. Sprinkle with sherry or almond extract. Pour half of custard over cake. Dot with jam, half of cherries, and one third of almonds. Arrange another layer and repeat, saving about 12 cherry halves for decoration. Whip the cream, sweeten with sugar and flavor with vanilla. Spread enough to cover over top of trifle and decorate with cherry halves and sliced almonds. Chill. Must be made 6-8 hours before serving to mingle flavors. 6-8 servings.

These recipes were compiled by the Dairy and Food Nutrition Council of the Southeast, Inc., Midwest Division.

### MILK

(Cont'd from front)

protect the bones and teeth of the mother and to supply the calcium needed by the baby during the prenatal and early infancy period, the mother should use at least a quart of milk daily during pregnancy and the nursing period.

Milk is a good source of phosphorous, which also is essential for building muscles, bones and teeth and in regulating the body processes.

Vitamins - Butterfat is one of our best sources of vitamin A, which is essential for growth and health. A deficiency of this vitamin lowers the resistance to respiratory infections and causes night blindness. An extreme deficiency causes stunted growth and an eye disease known as xerophthalmia. The vitamin A content of foods deteriorates rapidly in an acid medium. Therefore, cream should be ripened quickly before churning, and not allowed to become rancid.

Milk is a good source of vitamin B1 and B2. Vitamin B1 is necessary for growth of children and health of everyone. A deficiency of vitamin B1 in the diet causes nervous and digestive disorders and a susceptibility to infections of the digestive tract. A deficiency of B2 causes nervousness, eyestrain, cracked and sore lips. Light destroys B2, so cartoned milk should be placed in the refrigerator as soon as possible after it is purchased.

Protein - Milk is a good source of protein essential for building muscles. Young children and elderly people get much of their protein from this source.

Fat - The fat of milk is a valuable source of energy, in addition to being a carrier of vitamin A.

Milk is now available in several forms - fresh, evaporated, condensed, and dried. Grade A raw milk is produced from healthy cows and under sanitary conditions. Pasteurized milk has been processed at a temperature that destroys bacteria. In homogenized milk, the fat globules are broken up and stay suspended in the milk. Evaporated milk has approximately 50 percent of the water removed and is canned under approved canning conditions. The addition of equal amounts of water brings it back to the consistency of fresh milk. During the processing, the natural sugar is heated enough to give a somewhat caramelized flavor. Condensed is another form of canned milk. Large amounts of sugar have been added, sometimes as much as 50 percent. This milk is very sweet and should be used only for making desserts.

Dry skimmed milk is now available in small packages. The butterfat and moisture have been removed. It is much cheaper than fresh milk and is an excellent source of calcium, protein and vitamin B's. Often children and elderly persons or those who are ill do not eat enough food for good health. Extra dry milk powder or solids may be added to many recipes to

increase the mineral, vitamin, and protein content of the diet.

Dry milk may be reliquefied by sprinkling on the top of warm water (about 90 degrees F) and beating with a rotary beater. Usually one cup of the powdered milk will make one quart of reliquefied milk; however, read the directions on the box. It can then be substituted for fresh milk in cooking or baking. (Keep in mind that the fat has been removed).

In many recipes such as biscuits, muffins, cornstarch puddings, the milk powder may be mixed with the other dry ingredients and water used in place of liquid milk. Dry milk solids are very convenient in preparing mixes to be kept on hand for busy days or emergencies. Some mixes that may be kept are for quick bread, cake, white sauce, thickening and puddings.

\*\*\*

Depending on her care and inherited ability, the cow will produce anywhere from 8,000 to 30,000 pounds of milk a year. This is approximately 3,700 to 13,950 quarts.

\*\*\*

Cows have a unique stomach with four compartments that allow them to eat things not considered edible by humans.

\*\*\*

# WE SALUTE YOU MR. DAIRY FARMER

Attend Dairy Day  
and Stop at the

Snack Shack for one of our Delicious



# DAIRY DELIGHTS

or Phone 256-2212 for

QUICK 'N EASY  
FOODS  
TO GO!



# SNACK SHACK

Richmond Street Mr. and Mrs. Herb Coffey Mt. Vernon



# Mount Vernon Signal

"WHERE THE BOONEWAY JOINS THE DIXIE"

The Mount Vernon Signal Mount Vernon, Kentucky 40456

Volume 89 - Number 42

Thursday, June 24, 1976

## "Optimism" Comes to Rockcastle

The final organizational meeting for the Mt. Vernon-Rockcastle Optimist Club was held Monday night, June 21st, at the Holiday Steak House. The club was formed and chartered as a part of Optimist International. Paul Gorman of Optimist International presided over the meeting which consisted of election of officers and discussion of aims and objectives.

Elected officers were: Gary R. Cromer, president; Roy A. Martin, vice president; Howard Saylor, secretary; Tommy Parsons, secretary-treasurer. Officers elected hold a special honor as they are charter officers in the fifth club set up by the Williamsburg Optimist Club this year. This is a new record in Optimist history.

The Optimist Club was organized for the purpose of serving the youth of a community with programs aimed at youth development and maturity in a constructive, beneficial manner. Programs such as Youth Week, oratorical competition, beauty pageants, an old-time county fair and Bicycle Safety Week are held annually by the Williamsburg club.

A total of 40 charter members were recruited for the Optimist Club locally and 28 of those were present Monday evening.

It is now too late to be a charter member of the Mt. Vernon-Rockcastle Optimist Club but memberships are still open to all who wish to serve the youth of the county. Contact any member of the Optimist Club and fill out an application.

The club looks forward to a better future for the youth of Rockcastle County and wants you to be a part of it.

Charter members of the Optimist Club in Rockcastle County are:

William J. Parsons, Roland Mullins, Estill Hodges, Roy Martin, Billy Dowell, Howard Saylor, Cleston Saylor, Gary Cromer, William Gregory, Joe Lambert, Joe Young, Bro. Ernie Johnson, Robert Pybas, Bro. Raymond Roaden, James Anderkin, Jr., William G. Thompson, Hubert Thacker, Kenny Robinson, Paul Thomason, Kenneth Cornelius, Tommy S. Parsons, Richard C. Sweeney, Jimmie Dale Silvers, William K. Bullen, Kenton Parkey, Billy Hiatt, John C. Bullock, John Parsons, Tommy H. Mink, Jack Brent Lawless, Larry Burdette, Roger W. Coldron, Clinton Graves, Jan Stevens, Kenneth Stewart, Robert Cromer, David F. Parsons, James William Mullins and Charles David Riddle.

## ASA Softball Tournament To Be Held in Lancaster

The 1976 ASA District Six-Pitch Softball Tournament will be held in Lancaster, Kentucky and the final day to enter this tournament is July 1st, 1976. The ASA Sanction Fee and entry fee for this tournament is \$20.00. Player Sanction Forms may be secured from James F. Reeves, the 23rd District Commissioner or Julian Moss. The 23rd District is composed of Lincoln and

(Cont'd to p. 11)



After many years of effort, the City of Mt. Vernon is erecting street signs throughout town. Many people are finding out for the first time what street they live on.



Officers for the Mt. Vernon-Rockcastle Optimist Club were elected Monday night at a meeting at the Holiday Steak House. They are, from left: Roy Martin, vice president; Tommy Parsons, secretary-treasurer; Gary R. Cromer, president and Howard Saylor, vice president.



Gary R. Cromer was pinned by Optimist Governor John Renfro to signify Mr. Cromer's election as Charter President of the local club. To the extreme left in the photo is Paul Gorman of Optimist International.

## Final Assessment is \$65,991,860

According to Property Valuation administrator Robert Cromer, the final recapitulation of the 1976 tax assessment shows a total assessment for Rockcastle County of \$65,991,860 as compared to \$59,018,227 for 1975.

After the first recapitulation, figures were compiled again for an exact total and the final amount shows an increase of \$830,900 from the first recapitulation.

There were increases of \$322,976 in Real Estate-Residential bringing that total to \$18,996,045; a \$145,750 increase

in Farm Land for a total assessment of \$23,016,465 and a \$82,500 increase in Commercial and Industrial Property for a total assessment there of \$5,351,625.

The two other major increases between the first and final recapitulation, were in the assessment of motor vehicles which was increased by \$175,353 for a total of \$8,938,405 and an increase of \$88,740 in Merchants Inventory for a final figure there of \$1,689,865.

Rockcastle County has 6,305 taxpayers.

## Greg Stephens Named Acting District Conservationist

The Soil Conservation Service has a new Acting District Conservationist to help the Rockcastle Conservation District carry on its program of soil and water conservation. Greg Stephens, the new Acting D.C., is from Union County and began working out of the Mt. Vernon Field Office on Monday morning, June 21.

Greg received a B.S. degree in Forestry from the University of Kentucky before coming to work for SCS. His duties in Rockcastle County

will be assisting the District and landusers in applying and maintaining conservation practices on the land.

Mary Lee, his wife, and their son, Ames Benjamin, will be moving to Rockcastle County with Greg. Mrs. Stephens is also a graduate of the University of Kentucky, with a B.S. degree in nursing.

"We are anxiously looking forward to moving to Rockcastle County and hope we can be of service to the community," Mrs. Stephens said.

## Contract Awarded To Repair County Bridges

A contract for repairs for the decks of three bridges on US 25 (the Mt. Vernon-Richmond Road) in Rockcastle County was one of the 56 contracts totaling \$14.3 million awarded by the state department of Transportation on May 27.

According to Transportation Secretary John C. Roberts, the contract calls for bridge deck repairs for the following bridges:

The bridge over Renfro Creek about 1.8 miles north of Mt. Vernon.

The bridge spanning Roundstone Creek six miles north of Mt. Vernon.

The bridge across Roundstone Creek 8.6 miles north of the L & N Railroad crossing at Mt. Vernon.

The \$50,502 contract was awarded to Cee, Inc. of Lexington.

## Two Escape Serious Injury In Car-Truck Accident

Two people escaped serious injury in a two vehicle accident on Highway 25 in Pine Hill Monday evening.

According to State Police reports an auto driven by William D. French was attempting to make a U-turn when it was struck by a pick-up driven by George Hurley. Neither Mr. French nor Mr. Hurley were seriously injured. The pick-up skidded approximately one hundred feet before coming to rest in a ditch on the north side of the highway. The French auto was stopped by a fencepost. Trooper Jack Lawless and Jimmie Silvers investigated the accident.

## Health Information Program Planned by Local Agencies

The Cumberland River Comprehensive Care Center is sponsoring a "Community Health Information" day for Rockcastle County.

All local care givers have been invited to participate. Information will be shared on the services provided to citizens of our area and how they may be obtained. A question and answer session will follow each presentation.

Those participating, in addition to the Comprehensive Care Center will be

Rockcastle County - Home Health Services, the Rockcastle County Hospital, Sowder Nursing Home, Senior Citizens, Department of Human Resources, Rockcastle County Ambulance Service and the Rockcastle County Health Department.

The program will be held in the Circuit Courtroom of the Rockcastle County Courthouse on Monday, June 28th at 1 p.m. and the public is invited to attend. Refreshments will be served.

# At Kentucky Christian Camp, Young People Receive Learning, Inspiration and Fellowship

By Roger Coldiron



Senior Counselors at the camp were, seated, from left: Gene Carter, Ernie Johnson, Larry Ray Travis, Doug Parkey. Back row, from left: Leah Riddle, Joan Spurlock, Jenny Whetstone, D. N. Whetstone and Kenton Parkey.

Kentucky Christian Assembly held its Junior Week of Camp last week with the largest attendance ever. There were 92 campers, instructors and counselors at the week-long session directed by Bro. Ernie Johnson, pastor of First Christian Church in Mt. Vernon.

The camp is sponsored by area Christian Churches and the duties associated with housing, feeding and instructing the large number of children (4th grade through 8th) are shared by members of the various congregations and their pastors.

The camp is situated approximately one and a half miles from Brodhead on 15 acres of land donated by Clay Colson for this purpose.

The cleared area on top of the mountain has three large block buildings. Two of the buildings are used for the boys and girls dormitories and the third provides a meeting place, dining hall and recreation area, whatever the need might be. Two permanent shelters have also been built on the site and they are used for classrooms. In addition, this year, the attendance was such that a tent was also needed for classes. In fair weather, there is an area for a pulpit and pews to be set-up outside.

In addition to the buildings, there are sites for softball, basketball and volleyball and the camp schedule provides for time to enjoy these sports, along with time spent learning the Bible under some of the acknowledged Bible scholars in the area.

The buildings at the camp were constructed mainly of volunteer labor from members of the various congregations. The same type of help also provides the labor necessary to feed the campers three very well-balanced meals a day.

In addition to increasing their knowledge of the Bible and the fellowship they receive from being with other young people, the campers also participate in organized sports and a few not so organized we understand and such as pillow fights, etc.

All these facilities and advantages to youngsters in the area is provided at a nominal cost to them of \$20. Of course, this is possible only with each subsidizing the expenses of the camp.

The children attending the camp seem to realize the work that goes into making the annual event a resounding success and are obviously grateful and enjoy themselves to the utmost. As Bro. Johnson says, "That's all the thanks we want."



The Kentucky Christian Assembly Camp is located approximately 1 1/2 miles from Brodhead in one of the most peaceful parts of the county. The hilltop site is surrounded by deep woods.

# Mount Vernon Signal

PUBLISHED EVERY THURSDAY  
Main Street in Mt. Vernon, Kentucky 40456  
Entered at Mt. Vernon Post Office  
as Second Class Matter  
In Rockcastle Co. \$4.20 Outside of County (in State) \$5.25  
Out of State \$5.00

JAMES ANDERKIN, JR., PUBLISHER  
PERLINA M. ANDERKIN, EDITOR  
Member Kentucky Press Association

## FRANKFORT WATCHLINE

By Ferrel Welman

How many times have you been finishing off a cool drink when that last bit of ice and liquid stick in the bottom of the cup. You tilt the container and tap the bottom when suddenly the ice breaks free and smacks you in the face. That's how Kentucky mayors must feel...like they have been smacked in the face and something sticky is dripping off their chin.

Being mayor of a city these days requires more fancy balancing than Olga Korbut. Billie Sol Estes and Karl Walenda. Kentucky cities are facing the loss of a good slice of their revenue and with nothing on the fiscal horizon to replace it.

The recently approved judicial reform amendment to the state's constitution pries away local courts. It puts all courtroom activity under state government's thumb.

The article established a four tiered court system. The Supreme Court is comprised of the judges from the old Kentucky Court of Appeals. The bill is finally rolling on filing the 14 slots on the new Appeals Court. There are 86 circuit courts operating which are always here.

The 1976 General Assembly appropriated \$15.7 million for the upper three tiers. However no money was available for the 120 district courts which will be gavelled into order on January 1, 1978.

The district courts will replace the jammed maze of more than 600 police

magistral, quarterly, and county courts now operating. A budget for the district courts, their method of operation, and the judges salaries will be the primary concern of a special session of the legislature which Governor Julian Carroll will summon in late November.

Extensive research on where the district courts will be established is now being undertaken by workers in a small white office just west of Frankfort. It's the office of Judicial Planning, and it has been trying to determine caseloads in each county. It's not easy work. Eventually, the OJP's suggestions will be given to a legislative committee laying the groundwork for the special session's work on judicial reform. An aide to the governor says all of the details will be ironed out before the special session is called so when the lawmakers unpack their bags in Frankfort most of the work will be done for them.

It's a ticklish situation. The small courts which are going the way of the dinosaur, Whig Party, and the Kentucky Colonels provide a good deal of the revenue for cities from South to Sturgis. OJP realizes this. In the other states which have undertaken judicial reform some type of plan has always been established to return some of the lost revenue back to the local governments. In addition, the director of the Office of Judicial Planning, William Davis, says, "I know the local courts are an important source of revenue for the small cities." So does Marshall Long.

Long is the mayor of Shelbyville. In 1975 Shelbyville's overhead for operation of its police court was less than \$2,000. The judge for example receives

\$200 a month. The court took in \$40,000, roughly 15 percent of the city's budget. Mayor Long leaves little doubt as to the money's importance. "If we lose the police court, we'll have to cut services. We may have to cut the main branch of police department and go to a volunteer form of fire protection."

Mayor Long is an attorney, than other mayors and local officials. In Carrollton a city councilman admits "...we didn't know what we were voting for." It seems likely some policy will be easy to retrace to return some money to the city or county where the line was paid. However, until that percentage is determined, Kentucky mayors will keep four-pulling golf greens and breaking their shoe laces.

## County Statistics

### COURT COSTS

Speeding: Newlin Chester Clark, Annette O. Youkam, Beatrice Niemi, Harold A. Kubiak, Richard Walter Webber, Paul E. Porterfield, Laird T. Orr, Lawrence W. Hayden, Linda Louise Bosterfield, Alvin August, Carl Frederick Holzabarger, William E. Tipton, \$10 and cost.

Operating a motor vehicle while under the influence of intoxicants: William L. Carswell, (suspended to reckless driving), \$100 and cost; Billy Robinson, (suspended to public intoxication), \$10 and cost.

Public Intoxication: Myrtle Kidwell, Floyd William Honesty, Charles Woodall, Charles Wendell Bradley, Ruth E. Swann, \$10 and cost.

No for hire authority: Eugene Greens, Robert A. Pruitt, \$50 and cost.

### MARRIAGE LICENSES

Michael Owen Cromer, 19, Mt. Vernon, Ky., Brandon Stuel, to Sandy Carlene Smith, 18, Mt. Vernon, unemployed, June 16, 1976.

Joseph Dean Hampton, 21, Mt. Vernon, electrician, to Charlotte Darlene Reynolds, 18, Brodhead, Ky., Factory worker, June 18, 1976.

Michael Earl Sandlin, 19, Mt. Vernon, construction, to Charlotte Louise Begley, 15, Mt. Vernon, unemployed, June 19, 1976.

### DEEDS RECORDED

Walter and Edna Hasty, real property located in Rockcastle Co. to E.B. and Janis Hasty, no tax.

Walter and Edna Hasty, real property located in Rockcastle Co. to Sharon and Harold Long, no tax.

Gary L. and Jana P. Cromer, real property located in Rockcastle Co. to Linda H. and John H. Eaton, Jr., \$33.00.

Ruffin and Jim Barnett, real property located in Rockcastle Co. to Tommy and Alta Philbeck, tax \$2.50.

Stephena C. and Joyce Bullen, real property located in Rockcastle Co. to Virginia and Robert Brancum, no tax.

Tommie Carpenter, real property located in Rockcastle Co. to Ernest M. Mason, tax \$3.00.

Marie and Travis Cope, real property located in Rockcastle Co. to Robert M. Barnes, tax \$1.00.

Clifford and Rachel Pittman, real property located in Rockcastle Co. to George R. Pittman, no tax.

Stanley and Eula Bullock, real property located in Rockcastle Co. to William and Lois Lawwell, tax \$2.50.

## Hospital Report

### ADMITTED

Edward Hundley, Berea; Dorothy Wagers, Richmond; Roscoe Denny, Mt. Vernon; Darlene McClure, Livingston; Berta Fish, Wildie; Ida Priscilla, Mt. Vernon; Ben Carpenter, Mt. Vernon; Pam Bradley, Mt. Vernon; Tom Roberts, Mt. Vernon; Mary Cromer, Brodhead; L.J. Johnson, Mt. Vernon; David Siewert, Orlando; Mary Henley, Orlando; Elijah Burke, Mt. Vernon; Myrtle Miller, Brodhead; Phyllis

Childress, Mt. Vernon; Kathryn Reed, Mt. Vernon; Elizabeth Renner, Mt. Vernon; Timothy Smith, Orlando; Irene Renner, Berea; Lois Bussell, Mt. Vernon; Elizabeth McClure, Livingston; Thomas Hines, Mt. Vernon; Flossie Blair, Mt. Vernon; Dollie Krabeubuhl, Mt. Vernon; Mary Saunders, Brodhead; Billy O'Quinn, Yosemite; Hazel Machal, Mt. Vernon; MIT Payne, Lamerco.

### RELEASED

Joan Hayes, Byrd Cummins, Leonard Doan, Deanna Baker, Wanda Mink, Charles Woodall, Mink Newborn, Solie Alcorn, Myrtle Mason, Elijah Burke, Berta Fish, James Gabbard, Darlene McClure, Dorothy Wagers, Roscoe Denny, Mary Cromer, Phyllis Childress, Mammie Baker, Mary Henley, Tim Smith, Hensley Newborn, Kathy Reed, Reed Newborn, Elizabeth McClure, Ida Priscilla, Tom Roberts, Pamela Bradley, Edward Hundley, Ben Carpenter, Elizabeth Renner.

### NEWBORNS

Sottie Dale Hensley, born to John and Mary Margaret Hensley of Orlando.

Jerome Nathan Benson, born to Barry Walter and Mildred Irene Benson of Berea.

Carrie Michelle Reed, born to Jerry Randall and Kathryn Ann Reed of Mt. Vernon.

Crystal Lynn Bussell, born to Teddy Dean and Lois Lorene Bussell of Mt. Vernon.

competed against candidates sponsored by Rotary clubs throughout the Eastern Kentucky district before he was selected for the award to represent Eastern Kentucky as a good will ambassador in Italy.

In addition to offering a great opportunity for contact with the exciting, warm culture of the Italian people, the award pays for round trip transportation to and from the host study country, living and educational costs for a three month intensive language training program, living, incidental and educational costs for the equivalent of one academic year, and limited educational travel throughout Italy and surrounding areas. Monetary amount of the award equals \$7,810.00 U.S. dollars.

Mr. Tyler will begin a three months study program of the Italian language at the Università Italiana per Stranieri in Perugia, after which he plans to travel some around Europe before enrolling in a 1-1/2 year program of study in Latin and Italian historical linguistics at the Università Degli Studi in Naples, Italy, in the fall in addition to his academic work. Mr. Tyler will also be traveling around Italy throughout the year delivering addresses to various Rotary clubs and other organizations about Kentucky Rotary programs and the

people and customs of this area. He will return home in the summer of 1977.

Mr. Tyler is a 1971 graduate of Mt. Vernon High School and holds a B. A. degree in Classical Languages from Berea College (1973). He has recently completed a year of graduate work in classical languages and literatures at the University of Kentucky, where he also taught beginning and intermediate Latin under a teaching assistantship. He invited all friends to stay in contact with him through the following address: Kenneth W. Tyler, c/o Mr. Mauro Galimucci, Università Italiana per Stranieri, Palazzo Gallenga, Piazza Fortebraccio, 06100 Perugia, Italy.

### BIRTH ANNOUNCEMENT

Mr. and Mrs. Jerry Reed, Route 3, Mt. Vernon, Ky., announce the birth of their second child, a daughter, born June 13, 1976 at the Rockcastle County Hospital. She weighed 8 lb. 15 oz. and was 19 inches long. Sister, Michelle, She is welcomed home by a niece, Jeanita Deane, age 2.

Paternal grandparents are Mr. and Mrs. Sam Reed, Route 3, Mt. Vernon and maternal grandparents are Mr. Wayne Barnes of Mt. Vernon and the late Juanita Barnes.

## A THOUGHT TO REMEMBER

From: Bud Cox

Church attendance always shows a decrease in the summer months. Clergymen are of course concerned about it. A certain clergyman decided he would at last try to do something about it. He prepared a unique check list in the Sunday bulletin. He captioned the list with "I can't attend church services because:". He listed the most commonly known excuses underneath the heading with the request "Please check your reason."

Below the itemized list of reasons, he inserted a suggestion on how to use the list when it was checked off...He did not specify an address but he made his point quite clear...He wrote "Please tear off and mail to God."

There is no epilogue to this story...We don't know whether it increased church attendance - but we are sure it caused some needed thinking...Robert L. Cox, Cox Funeral Home, Mt. Vernon, Ky. Ph. 256-2345.

## SUPERIOR MOTOR CARS

- 75 Chevrolet malibu Classic, 2 Dr., H.T., A/C, White/Beige V.R.
- 75 Datsun 210, 4 Speed, Blue
- 75 Gremlin, 2 Dr., Auto., A/C, Red
- 74 Nova, 2 Dr., Hatchback, Blue
- 73 Chevrolet Impala, 4 Dr., A/C, Brown
- 73 Mercury Monterey Custom, 4 Dr., H.T., A/C, White
- 72 Cadillac Sedan De Ville, A/C, Gold/Brown V.R.
- 72 Nova, 2 Dr., Green

If you didn't trade at Superior Motors, you paid too much.

Plus More to Choose From  
Lower overhead means lower prices for our customers

On the Lot Financing

## Superior Motor Cars

Berea, Kentucky PHONE 986-3471

## GENERAL REVENUE SHARING PLANNED USE REPORT

General Revenue Sharing provides federal funds directly to local and state governments. This report of your government's plan is published to encourage citizen participation in determining your government's plan on how the money will be spent. Note: Any complaints or discrimination in the use of these funds may be sent to the Office of Revenue Sharing, Wash. D.C. 20228.

PLANNED EXPENDITURES		THE GOVERNMENT OF BRODHEAD CITY	
(A) CATEGORIES	(B) CAPITAL	(C) OPERATING/ MAINTENANCE	ANTICIPATING A GENERAL REVENUE SHARING PAYMENT OF \$ 4,295
1 PUBLIC SAFETY	\$ 4,295	\$	FOR THE SEVENTH ENTITLEMENT PERIOD, JULY 1, 1976 THROUGH DECEMBER 31, 1976. PLAN TO SPEND THESE FUNDS FOR THE PURPOSES SHOWN
2 ENVIRONMENTAL PROTECTION	\$	\$	ACCOUNT NO. 18 2 102 001
3 PUBLIC TRANSPORTATION	\$	\$	BRODHEAD CITY 669
4 HEALTH	\$	\$	CHAIRMAN BOARD OF TRUSTEES
5 RECREATION	\$	\$	BRODHEAD KENTUCKY 40409
6 LIBRARIES	\$	\$	
7 SOCIAL SERVICES	\$	\$	
8 HOUSING OR FOOD	\$	\$	
9 FINANCIAL ADMINISTRATION	\$	\$	
10 MULTIPURPOSE AND GENERAL GOV.	\$	\$	
11 EDUCATION	\$	\$	
12 COMMUNITY DEVELOPMENT	\$	\$	
13 ECONOMIC DEVELOPMENT	\$	\$	
14 OTHER (Specify)	\$	\$	
15 TOTALS	\$ 4,295	\$	

(D) Submit proposals for funding consideration by July 5, 1976  
Frances Whitehead A copy of this report, and supporting documents, are open for public scrutiny  
City Hall - Brodhead, Ky 40409  
AS ABSENCES (Refer to instruction E) I assure the Secretary of the Treasury that the information and other data furnished in this report, and the instructions accompanying this report will be completed with by this recipient government in respect to the entitlement period reported hereon.  
Johnnie Wilcox Chairman 6-7-76  
Ref: s & Title - Public Print Date

# AUCTION

Of  
Mr. and Mrs. E. P. Massey's

## Museum Items - Antiques Old Newspapers and Collectibles SAT, JUNE 26, 1976, 10:30 A.M.

Near Somerset, Kentucky

Located: 3 miles north of Somerset, Kentucky, 27 miles south of Crab Orchard, Ky. on Hwy. 39.

MUSEUM ITEMS - ANTIQUES - COLLECTIBLES - Large hued out most though approximately 200 years old, measures 12 ft. in length, 3 1/2 ft. in width and 18 inches deep; copper plate and spoons believe to date in 1600's; Brass Winchester shotgun shells 1870's; brace and bit believed to date approximately 1735; Civil War cannon balls; Civil War bullets; Coca Cola Tray; Side sword used in Revolutionary War; World War I helmet; Canteen and Ford; Apple Peeler; Devils Hope Barbwire; Blenko water jug; lambeth vase; blue and white with cherries; all kinds of old silver coins; hundreds of wheat pennies; old paper money; Wagon with sat bed; cane mill and pan slip scraper; logging bolsters; ice tong; scales of all description; sheep shearing machine; branding iron; cast iron tea kettle; dog iron; old silverware; keroseene lamps; school desk; wagon wheels; several old vases; handmade butter mold; shoe last; buggy lap robe; ox yoke; hued out quilting frames; cradle; jury fence; 1 1/2 gallons used to squeeze juices; sausage mill; butchers saw; knives; paper rack and knife sharpener; old knitting machine; wood cheese boxes; organ stool; crocks; striking hammers; double barrel muscle loader shotgun-damaged; several pictures; and iron; gimlet used to drill holes for wooden pegs; curling iron; sheep bells; collection of gem stones; ginseng boxes; broad ax; wooden barrels; copper whiffkey funnel; steam whistle; square nails; drawing knives; tie picks; coal picks; several items believed to be cave men's tools; survivors chain; musical flexatone; arrow heads; posthole diggers; aluminum over copper kettle; hames; collars; bridles; all kinds of dishes; old tobacco knives; keroseene lanterns; rolling pins; all kinds of tools; anvils; spring seat for wagon; cane hooks; hay knife; corn sheller; several unusual bottles; trestle table and benches and much, much more.

NEWSPAPERS-(1) New York Herald "Death of the President" April 15, 1865 - Assassination of President Lincoln. (2) Cincinnati Times and Star, "Armistice Terms Strip Germany of Guns, Ship and Airplanes" - November 12, 1918. (3) The Cincinnati Post, "U.S. Troops Slash Near Berlin, Truman Takes Office" - April 13, 1945 (4) The Cincinnati Post, "Congress Votes State of War" Monday, December 8, 1941 (5) The Cincinnati Post, "Victory Official" - V.E. Day Proclaimed by Truman-Churchill" Tuesday, May 8, 1945 (6) The Cincinnati Post, "F.D.R. Far Ahead" Wednesday, November 6, 1940 (7) The Somerset Journal, "United States at War with Axis" Thursday, December 11, 1941. (8) The San Diego Union, "Rockefeller Rules Out Race for President" December 27, 1959 (9) The Courier-Journal "Hercules Rescue Saves most of 1,709 as Italian Liner Sinks" Friday 27, 1956 (10) The Greenville Sun, "Kennedy Dead" Friday Afternoon, November 22, 1963.

Mr. and Mrs. Massey have collected these items over the past several years and are now offering them to you at Public Auction. Whether you're a collector or a dealer, don't miss this fine sale Saturday June 26, 1976 10:30 a.m. There will be something for everyone.

TERMS: Cash or good check day of sale.  
Lunch will be available.

## Ford Realty & Auction Co.

REALTOR\* Mt. Vernon, Ky.  
Office Phone: 256-4545 - Nights 758-9490  
COL. SAN FORD REALTOR-AUCTIONEER COL. BILL RANDOLPH REALTOR-AUCTIONEER COL. JERRY BAN REALTOR-AUCTIONEER COL. DANNY FORD REALTOR-AUCTIONEER



# OUR TOP PRIORITY

Stretching Your Food Dollars!

FRIENDLY SERVICE ALL THE WAY TO YOUR CAR  
WE GIVE S&H GREEN STAMPS  
BECAUSE WE APPRECIATE YOUR BUSINESS



**CHUCK ROAST**  
**69** Lb.  
**ENGLISH ROAST**  
**79** Lb.  
**SHOULDER ROAST**  
**99** Lb.

**CHOICE ROUND STEAK**  
**\$1.29** Lb.  
Fresh Lean **GROUND BEEF**  
No Additives Added  
3 Lb. or More  
**89** Lb.  
Boneless Roll **RUMP ROAST**  
**\$1.59** Lb.  
**CUBE STEAKS**  
**\$1.79** Lb.  
Hot or Mild Webber's **SAUSAGE**  
1 Lb. Roll 2 Lb. Roll  
**\$1.25** **\$2.49**



**LIMIT 2**  
**\$1.15** Lb.  
Fat Back **SALT BACON**  
**45** Lb.  
Frozen **PORK or BEEF LIVER**  
Sliced **39** Lb.  
Lay's 1 Lb. Vacuum Pak **BOLOGNA**  
**97**



5 LB. **PURE CANE SUGAR**  
**69**  
Limit (1) With '10" Or More Order



42 OZ. **SWIFTING**  
**79**  
Limit (1) With '10" Or More Order



5 LB. BAG **ROBIN HOOD FLOUR**  
**59**  
Limit (1) With '10" Or More Order

250 S&H Stamps  
With \$25.00 Or More  
Order

100 S&H Stamps  
With \$10.00 to \$24.99  
Order

COUPON  
WORTH 50  
S&H Green Stamps  
With the purchase of  
1 Pkg. of more  
Sandwich Meats  
m.c.p.n. exp. 6-30-76

COUPON  
WORTH 50  
S&H Green Stamps  
With the purchase of  
1 lb. of more  
Chicken or Chicken Parts  
m.c.p.n. exp. 6-30-76

COUPON  
WORTH 50  
S&H Green Stamps  
With the purchase of  
1 lb. of more  
Ground Beef  
m.c.p.n. exp. 6-30-76

COUPON  
WORTH 50  
S&H Green Stamps  
With the purchase of  
1 lb. of more  
Hot Dog Beef  
m.c.p.n. exp. 6-30-76

COUPON  
WORTH 50  
S&H Green Stamps  
With the purchase of  
1 lb. of more  
Any Pastes  
m.c.p.n. exp. 6-30-76

COUPON  
WORTH 50  
S&H Green Stamps  
With the purchase of  
1 lb. of more  
Health & Beauty Aids  
m.c.p.n. exp. 6-30-76

COUPON  
WORTH 50  
S&H Green Stamps  
With the purchase of  
1 lb. of more  
Whole Watermelons  
m.c.p.n. exp. 6-30-76

COUPON  
WORTH 50  
S&H Green Stamps  
With the purchase of  
1 lb. of more  
Food Fair Bread  
m.c.p.n. exp. 6-30-76

COUPON  
WORTH 50  
S&H Green Stamps  
With the purchase of  
1 lb. of more  
Food Fair Eggs  
m.c.p.n. exp. 6-30-76

COUPON  
WORTH 50  
S&H Green Stamps  
With the purchase of  
1 lb. of more  
Light Butter  
m.c.p.n. exp. 6-30-76

COUPON  
WORTH 50  
S&H Green Stamps  
With the purchase of  
1 Pkg. of more  
Ice Cream Bars  
m.c.p.n. exp. 6-30-76

**Niagara**  
Food Fair Coupon  
With This Coupon  
22 Oz. **NIAGARA**  
**SPRAY STARCH**  
**59**  
Expires 6-26-76

**GOLDEN GRIDDLE**  
Syrup  
24 OUNCES  
**\$1.29** Save 30¢  
WITH THIS COUPON  
LIMIT ONE COUPON PER PURCHASE  
OFFER EXPIRES 6-26-76

**FREEZER QUEEN**  
7 Oz.  
**SLICED BEEF, SALISBURY**  
**STEAK & MEAT LOAF**  
All with Potatoes  
2 For **79**

**FROZEN PIZZA**  
Chief Boy-a-Joe  
PIZZA  
Cheese,  
Sausage,  
Pepperoni  
& Beef & Cheese  
14 Oz.  
**89**

**Macaroni & Cheese**  
Dinner  
4 For **\$1.00** 3 For **79**

**SCHOOL DAY**  
**PEAS**  
3 For **69**

**BUSH**  
40 Oz.  
**Showboat**  
**PORK & BEANS**  
m.c.p.n. exp. 6-30-76

**strained juices**  
HEINZ  
Food Fair Coupon  
With This Coupon  
**HEINZ BABY JUICES**  
6 For **59**  
Save 35¢  
Expires 6-26-76

4 Lb. Lay's Cloverleaf  
**LARD**  
**\$1.27**

10% Oz.  
**P.D.Q. CHOCOLATE**  
**79**

**PRELATE**  
**PINK SALMON**  
**\$1.59**  
16 Oz. Can

**KELLY'S**  
**HOT DOG SAUCE**  
4 For **\$1**

**KELLY'S**  
**HOT DOG SAUCE**  
4 For **\$1**

COUPON  
WORTH 50  
S&H Green Stamps  
With the purchase of  
1 lb. of more  
Any Pastes  
m.c.p.n. exp. 6-30-76

**3 OZ. DREAM WHIP**  
**55**

**PUREX**  
**69**

32 Oz. Sauers  
**MUSTARD**  
Save 10¢  
**39**  
Sauers 7 Oz.  
**MINCED ONIONS**  
**87**

**FOOD FAIR**  
**ICE CREAM**  
1/2 GALLON  
**95**

**PRELATE**  
**PINK SALMON**  
**\$1.59**  
16 Oz. Can

**VIENNA SAUSAGE**  
3 For **1**

COUPON  
WORTH 50  
S&H Green Stamps  
With the purchase of  
1 lb. of more  
Whole Watermelons  
m.c.p.n. exp. 6-30-76

**dial**  
Bath Size  
**DIAL SOAP**  
4 For **1**  
Save 5¢  
Expires 6-26-76

**JELLO**  
3 Oz.  
**JELL-O**  
3 For **59**

18 Oz.  
**GRAPE JELLY**  
**Or JAM**  
**59**

**PRELATE**  
**PINK SALMON**  
**\$1.59**  
16 Oz. Can

16 Oz. Keebler  
**CHOCOLATE FUDGE**  
**COOKIES**  
**77**  
SAVE 12¢

**SALAD TOMATOES**  
PKG. OF 9 OR MORE  
**45**

COUPON  
WORTH 50  
S&H Green Stamps  
With the purchase of  
1 lb. of more  
Food Fair Bread  
m.c.p.n. exp. 6-30-76

**cheer**  
GIANT **CHEER**  
**\$1.19**

Des Pak  
**TRASH BAGS**  
12-25 Count  
**\$1.89**

Des Pak  
**SANDWICH**  
**BAGS**  
80 Count  
2 For **67**

**FRESH**  
**YELLOW CORN**  
6 For **69**

**6 PAK**  
**BALLARD BISCUITS**  
**BUTTERMILK & SWEET**  
**59**  
Limit (2) With '10" Or More Order

**APPLE SAUCE**  
3 For **89**

COUPON  
WORTH 50  
S&H Green Stamps  
With the purchase of  
1 Pkg. of more  
Ice Cream Bars  
m.c.p.n. exp. 6-30-76

**teri**  
**TERI TOWELS**  
2 For **1.09**

**teri**  
**TERI TOWELS**  
2 For **1.09**

**15 OZ. WINDEX**  
**59**

**2 For 69**  
**99**  
RICH & READY **MARGARINE**  
1 Gallon

**6 PAK**  
**BALLARD BISCUITS**  
**BUTTERMILK & SWEET**  
**59**  
Limit (2) With '10" Or More Order

**APPLE SAUCE**  
3 For **89**

COUPON  
WORTH 50  
S&H Green Stamps  
With the purchase of  
1 Pkg. of more  
Ice Cream Bars  
m.c.p.n. exp. 6-30-76



# Around Brodhead

By Mrs. E.J. Smith

Mrs. Frank Watson and Mr. and Mrs. Johnny Newland and Chris were in Louisville Sunday afternoon visiting Mrs. Hugh Melber and Eugene McBees.

Mrs. E.J. Taylor and Patsy, Mrs. Mike Miller and Mrs. Gary Asher were in Somerset Saturday shopping.

Mr. and Mrs. Mike Miller of Hamilton, Ohio spent the week end with Mr. and Mrs. E.J. Taylor and family.

Mr. and Mrs. Robert Adams of Crab Orchard visited Mr. and Mrs. E.J. Taylor and family Saturday evening.

Mr. and Mrs. E.J. Smith, Heather and Jan, were in Beres Monday afternoon.

Mrs. Everett Bradley, Kathy and Chris, were in Somerset Tuesday.

Mr. and Mrs. Kenneth Stevens and children of Louisville visited Mr. Lucille Belcher and Bill over the week end.

Mr. and Mrs. John D. Burke of Whitesburg visited Mr. and Mrs. P.J. Burke Tuesday.

Mr. and Mrs. Dale Mink, Jeff and Jill of Reading, Ohio spent the week end with Mr. and Mrs. Ed Payne.

Mr. and Mrs. Reggie Laswell and children of Wisconsin are visiting his parents, Mr. and Mrs. Tony Laswell.

Several children from Brodhead are attending camp at Kentucky Christian Assembly this week.

Mr. and Mrs. Andy Carrera have returned from Florida where they visited his brother and family. Their nephews and niece returned to spend the summer with them in Brodhead.

Mr. and Mrs. D.A. Robbins have returned from a European Tour during which they visited England, Switzerland and other countries. They report a very enjoyable time.

Mr. and Mrs. Craig Holman have moved into their new home on Tyree Street.

Mr. and Mrs. Ronnie Johnson and children of Tennessee visited Mr. and Mrs. Craig Holman over the week end.

Mr. and Mrs. Jimmy Parsons, Mr. and Mrs. Ham McMillin and Scotty of Lexington were week end guests of Mr. and Mrs. Ed McWhorter.

The Mt. Vernon Signal P 4 Thursday, June 24, 1976

Mrs. E.P. Whitl and Mrs. R.C. Crawford were in Somerset Tuesday on business.

Bro. and Mrs. E.P. Whitl's grandchildren of California are here visiting with them and other relatives.

## Brodhead Wiling Workers Meet

The Brodhead Wiling Workers Homemakers Club met at the home of Mrs. Margie Shivel Thursday, June 17th with nine members present and one guest, Mrs. Norita Thompson of the Quail Homemakers Club.

Mrs. Thompson-assisted Mrs. Ella Mae Martin in teaching the rest of the club members the art of macrame. Each one made a beautiful hanging flower pot holder.

After the reading of Mrs. Margie Woot's letter by Mrs. Emily Crawford concerning Alita Dick's planned tour of Europe this summer with a group of 22 students, the club voted to donate \$10.00 toward the expenses of this trip.

Mrs. Elmore Gray told the group about the schedule of campsites for James Robertson's hiking journey following Daniel Boone's Trail from Nashville, Tennessee and that the hikers planned to camp at the Brodhead Fairgrounds on Friday, June 25th after spending June 23rd at Great Salspeter Cave and June 24th at Rentro Valley.

The William Whitley House at Crab Orchard will be their camp site on June 26th.

The club decided to welcome this group of hikers to Brodhead.

Delicious refreshments were served by the hostess before adjournment.

## Manis Reunion Held

The Manis Family Reunion was held Sunday at the Brodhead fairground. Those attending were Mr. and Mrs. Bill Manis, Paul, Theresa, and Michael Manis, Mr. and Mrs. Bill Hasty, Don Bradley, Mr. and Mrs. Henry Fahn and family of Mt. Vernon, Mr. and Mrs. Woody Reed and daughter of Ashland, Ky., Mr. and Mrs. Danny Lemons and

son of Rockwood, Tennessee, Mr. and Mrs. Malcolm Blair and daughter of Kingston, Tennessee, Mr. and Mrs. Carl Felix, and family and Mr. and Mrs. Mike Eaton of Corbin, Ky., Mrs. Ruby Jeffers of Phoenix, Arizona, Mr. and Mrs. Wayne McMillin and daughters of Pittsburg, Pa., Mrs. Louis Hendricks and family, Ind., Mr. and Mrs. Ray Manis and daughters, Mr. and Mrs. Andrew Sowder, Mrs. Charles Tallot and family, Mr. and Mrs. Esell Reynolds, Mr. and Mrs. Jack Reynolds and sons, Mr. and Mrs. Don Sowder and daughters, Mr. and Mrs. Russell Halcomb and family, Mr. and Mrs. Edward Halcomb, and family, Mr. and Mrs. John Synder and family, Mr. and Mrs. Mike Rogers and son, all of Ohio.

## Cedar Rapids Menu

Friday, June 25 - Fried Liver with onions, Turkey with noodles, Baked potato, Carrots and peas, Baked Apples, Pickled beets, Choice of salad, Cornbread and biscuits, Gingerbread with hot sauce and Watermelon.

Sunday, June 27 - Swiss Steak, Baked Ham, Green Beans, Mashed Potatoes, Cabbage with Ham, Deviled Eggs, Grits Casserole, Choice of Salad, Muffins and Biscuits, Lemon Spiced Cake and Fruit.

## Kenny Rogers To Appear At Tombs Junction

Mark June 27th on your calendars because that's the day that Kenny Rogers will be at Tombs Junction!

Kenny Rogers began his musical career by singing in the church choir. He formed a band in high school and after he graduated he wandered from group to group until he joined the New Chigley Minstrels. After leaving the Minstrels he formed another group and this one became the very popular Kenny Rogers and the First Edition.

Success was on the way for the First Edition. Their very first record "Just Dropped in to See What Condition My Condition Was In" became an instant hit. In fact, all the First Edition records became hits, such as "But You Know I Love You," "Ruby," "Tell It All Brodhead," "Sometimes Burning," "Rollin On the River," and "Ruben James". Along with a string of hit records, Kenny Rogers and the First Edition also hosted their own TV series for two years called Rollin.

Each step Kenny Rogers takes in his brilliant career brings him more success and now Kenny has made another change. He is now a solo performer and his new records "Love Lifted Me" and "Home Made Love" are bound to bring Kenny Rogers closer to super-stardom.

Rogers will be giving 3 performances at The Music Hall in Tombs Junction. Showtimes are 1:00, 3:15 and 5:30 p.m. EDC.

For a day of continuous live entertainment, visit Tombs Junction on Kentucky Highway 90, one mile west of Cumberland Falls State Park.

## Kentucky Afield

Several lakes around Kentucky are now reporting that the white bass are in the jumps. This is a signal for those who like their fishing fast-paced and exciting to hitch up the boat and head for the water.

Basically, jump fishing means locating of forage fish. Most of the time they aren't hard to locate, since much of the activity is on the surface. Once the angler spots the feeding fish and moves quietly into casting range, he may catch a fish, or at least get a strike, on each cast until the school submerges.

Tackle for jump fishing should be designed for long casts. This means a fairly light line, a long rod, and a comparatively heavy lure with little wind resistance. Flashing spoons and weighted spinners are favorites.

Jump fishermen on Herrington Lake have developed another lure that works well—the "plunker and fly" combination. This is a top-water popping lure with the hooks removed and a streamer fly attached to the rear with about 18 inches of strong monofilament line. The hookless lure not only gives the combination the necessary weight for long casts, but the sounds it makes also possibly attract fish by imitating the splash of a feeding white bass.

While retrieving the lure near the surface is productive, it will often produce only small fish. The older, smarter and bigger white bass sometimes stay beneath the school of forage fish, waiting for minnows crippled by the energetic youngsters to sink.

To catch these larger fish, just reel your lure into the school and let it sink. A fish will often take it as it flutters down through the water.

Sometimes, particularly in shallow lakes such as Kentucky and Barkley, the forage fish will not be on the surface but congregated around some underwater cover, such as gravel or sand bars. Although there will be no sign of surface activity, the white bass will be feeding in the same areas. Trolling is a good way to locate these underwater schools.

Another good area to look for schooling whites is around bridge pilings, particularly if there is a current. Cast as close to the pilings as possible, even letting the lure bump them.

White bass will be active in the jumps all summer and into the early fall. Since black bass fishing often slows down considerably in the hot summer months, it's usually a good idea to take a jump-fishing rig along, even if your primary quarry is black bass. If the black bass bite, you can get a couple of some hungry white bass willing to keep you from having a fishless trip.

## Consumer Comments

By Robert F. Stephens  
Attorney General

Have you ever received an offer to purchase magazines at your door or by telephone? The likelihood of such contracts will increase considerably with the coming of 1977. It is important to know what to look for so you can act wisely in these situations.

First, be sure the salesperson you are dealing with is from a reputable firm. According to Kentucky law, the solicitor must show a registration receipt issued by the county court clerk's office which authorizes the salesperson to sell subscriptions in your county. If the solicitor is offering to sell by phone, the number of the registration receipt must be given. Any subscription contract you make shall be void and unenforceable at your option if this requirement of Kentucky law.

(Cont'd to p 10)

## REAL ESTATE FOR SALE

DANDY 22 ACRE FARM located at Roundstone, approximately 20 acres cleared and in grass. Balance in timber. There is a small pond, fence, city water available and plenty of road frontage.

7 ACRE BABY FARM located at Covington. This baby farm is cleared and in grass, city water available, front of US 25. Ideal for the person who would like to build and get one of two lots.

45 ACRES located near Brodhead on Bowling Ridge. The farm is in grass, 2836 tobacco barn, small pond and spring, approximately 1200 pounds tobacco. At an unbelievable price.

8 ROOM COLONIAL HOUSE Located on Main Street in Livingston. The house has a kitchen with new built-in maple cabinets, family room, den, bedroom and bath, washer and dryer and carpet downstairs. Four additional rooms upstairs which can be used for bedrooms or could easily be made into an apartment. Two front porches and a back porch with plenty of shade and a good garden. Lot measures approximately 75x120 is close to stores, church and school. Partial financing is available to qualified prospects. Ideal for the large family or the investor. PRICED TO SELL.

CALL ANY TIME FOR AN APPOINTMENT

J. B. Messer Wendrence  
Realtor & Auctioneer Realtor & Auctioneer  
Crab Orchard, Ky. Brodhead, Ky.  
758-8115

Sun. June 27



Kenny Rogers  
3 SHOWS: 1 PM 3:15 PM - 5:30 PM  
ADMISSION: \$2.50 & \$5.00 (Plus Tax)

## TOMBSTONE JUNCTION

1 Mile West of Cumberland Falls on Ky. 90

OPEN DAILY  
Gunfight-Stage Shows  
& Optional Train Ride

COMING ATTRACTIONS:  
July 4...Billy "Crash" Craddock  
July 11...Jerry Clower & Jim Ed Brown  
July 15...Tanya Tucker

RECEIVES RECOGNITION: The Kentucky School for the Deaf held an Awards Day Program on June 3 to bestow honors and recognition for scholarship, service, citizenship, leadership and dependability during the school year. Ricky Pittman, son of Mrs. Pearl Pittman, Route 4, Mt. Vernon was the recipient of the Most Improvement in English I sponsorship by Corning Glass Company of Danville.

CELEBRATES FIRST BIRTHDAY-Rodney Wayne Richardson celebrated his first birthday May 27, 1976. He is the son of Debbie and Gerald Richardson of Richmond, Ky. Grandparents are Janis and Kenneth Souder of Mt. Vernon and Mr. and Mrs. Paul Richardson of Richmond, Ky.

## GARRARD COUNTY STOCKYARDS SALE FOR ALL CLASSES OF LIVESTOCK-EVERY FRIDAY

PHONE  
792-2118



LANCASTER,  
KENTUCKY

HOGAN TEATER

J.L. TEATER

WILLIAM KIRBY TEATER

# GOLDEN PASSBOOK

Beginning July 1, 1976, You Can Earn

# 5 1/2%

On Your Savings (\$100 Minimum) With a

## GOLDEN PASSBOOK ACCOUNT

Interest will be paid on the last day of March, June, September and December on these accounts. Come in for additional information and open your GOLDEN PASSBOOK ACCOUNT after July 1st and earn 5 1/2% on your savings.

(Substantial interest penalty for early withdrawal.)

# THE BANK OF MT. VERNON

Mt. Vernon, Ky. 40456 Phone 256-2172

**FDIC**

Visitors at the First Christian Church for Sunday morning services were: George Nash and family of Pomeroy, Ohio; Mrs. Hazel Gray and son, Douglas, and wife of Ypsilanti, Michigan; Mrs. Barbara Lair Smith and sons of Newport News, Virginia; Mrs. Marguerite Brown Boster of Clyde, Ohio; Dr. and Mrs. Herman Blair, Mallisa, Rebecca and Terry of Lexington; Mrs. Jan Sparks Doty of Frankfort and Mr. and Mrs. Bigg W. Towery and son, Bill. Also there were students from Kentucky Christian College at Grayson. These students are a gospel group known as "The Living Testaments" and "Are composed of Robert Caudle, Bob Holden, Pete Kunkle, Jerry Bowman, Janet McKinney, Molly Wolfel and Greg Sanderson.

Eddie Hammonds of Livingston and Roxanne Hammons, both students at Kentucky Christian College, are at home for the summer.

Dr. Albert N. Cox of Midway College held the annual Cox Reunion on the college campus June 19 and 20.

Among those attending were his mother, Mrs. Bonnie Cox of London, Richard Cox, Jr. of Auburn, Ky.; Mr. and Mrs. Byron Cox of El Paso, Texas; Mrs. Billie Cox and daughter, Mrs. Sharon Black, of Houston, Texas; Pete Cox of Canton, Ohio; Mrs. Ruth Ann Hupson of Dearborn, Mich.; Mrs. Barbara Kinder and Mrs. Betty Rhule of Pennsylvania; Mr. and Mrs. Grant Howard and Mr. and Mrs. William G. Howard, all of Knoxville, Tennessee; Charles Cox and son, David of Floyd Knob; Mr. and Mrs. Roy King and family of Lexington; Mr. and Mrs. Henry Cox, Mr. and Mrs. John Cox and granddaughters, Jennifer and Jean, Mr. and Ms. Buddy Cox and Mr. and Mrs. Jerry Cox, all of Mt. Vernon.

Mrs. W.H. Cox and guests, Mrs. Mattie Fields of Dayton, Ohio are vacationing in Florida.

Mr. and Mrs. Ballard Rodgers of Paris, La. and Mr. and Mrs. Harold Rodgers and children of Richmond and Roscoe Hysinger of Brodhead visited Mr. and Mrs. Wade Hysinger Sunday.

Randall Mullins of California visited his mother, Mrs. Rita Mullins, recently. He and his mother also visited relatives in Richmond, Indiana.

Mr. and Mrs. Eddie B. Rice of the Brindley Ridge section visited her aunt, Mrs. Fannie Thomason, Monday.

The Mt. Vernon boys who are attending the basketball clinic at Berea College are: Tim Young, Willie Hatt, Dyrche Mullins, Jack Lewis, Scott Henderson, Wade and Buckley Gregory.

Mrs. Dorothy French and daughter, Sue, were in Lexington Monday shopping.

W.C. Johnson enjoyed Father's Day with several guests dropping in, telephone calls one from his son, Mrs. Theresa Johnson Calkin in California, and receiving cards and gifts.

Mrs. Louise Gibson and daughter, Vanessa, have returned to their home in Pikeville from a visit with her parents, Mr. and Mrs. Coy Jordan.

Mrs. Bill W. Dowell and daughters, Julie and Angie, are visiting her parents in the Twinhillville.

Mr. and Mrs. Bill McKenzie of Florida are visiting her parents, Mr. and Mrs. W.C. Dowell.

Mrs. Maggie Dowell was here from Berea Wednesday to see her brother, W.C. Dowell, who is confined to his home in ill health.

Mrs. Beatie Cummins is very ill in the Standard Hospital.

Mr. and Mrs. James L. Davis were in Fern Creek and Louisville during the week end and Mr. and Mrs. Carol Gilland and son and Mrs. Annie McKenzie.

Mr. and Mrs. Jimmy Cummins and sons, Randy, Rick and Doug of Independence visited Mr. and Mrs. Bert Croome and Mr. and Mrs. Ewell Cummins over the week end.

Mr. and Mrs. Lonnie Brown, Marsha and Mark of Terre Haute, Indiana visited Mr. and Mrs. Ewell Cummins and Mrs. Jean Towery recently. Mrs. Towery and her brother, Lonnie and family, attended services Sunday evening at the Kentucky Christian Assembly at Brodhead for the opening of Senior Camp Week.

Mr. and Mrs. James Al Davis and sons of Lexington spent Sunday with parents, Mr. and Mrs. James L. Davis, and grandparents.

Visitors of Mr. and Mrs. Roy Hanel last week were Mrs. Annabess Shatto

and son, Dana Alan, of Holder, Florida, Mrs. Kathy Renner and children, Joni Gale and Jimmy of Deland, Florida, Darrell Renner of Erlanger and Mr. and Mrs. Barry Renner and daughter, Regina, of Berea.

Leonard Davis, a senior at the University of Kentucky in Lexington, is home for the summer.

Mr. Ann Farris is in the Central Baptist Hospital at Lexington this week. The Gray Reunion was held Sunday, June 20th at the Flat Rock Baptist Church. Those present were Mrs. Hazel Gray and sons and their families from Michigan; Mr. and Mrs. Matt Gray and son, Foster, of Florida; Matt Gray, Jr. and family and Hubert Gray of Virginia; the late Dan Gray's daughter, Mrs. Minnie Ballinger of Cincinnati, Ohio; Earl Gray and wife of Tennessee; Virgil Gray and family of Indianapolis, Indiana; Lewis Gray and family of Jackson County; Mrs. Coy Gray, Johnny Gray and children, Eugene Gray and children and Mr. and Mrs. Tyree Gray, Jr. and two sons of Mt. Vernon.

Mrs. Frances Henderson Pennington and daughter, Elizabeth, of Winchester visited her mother, J.D. Henderson, Monday.

Mr. and Mrs. Shelby Graves and daughter, Mrs. Elizabeth, visited Mrs. Zora M. Miller this week.

Mr. and Mrs. Walter Pennington, enroute to their home in Dayton, Ohio from a visit of Mrs. Matt Gray and Mrs. Georgia Cunningham of McKee, Mr. and Mrs. Pleaz Mobley of Manchester and Mr. and Mrs. Coy Jordan visited their father, W.C. Johnson, this week.

Mr. and Mrs. William G. Howard, of Knoxville, Tennessee, visited Mr. and Mrs. Matt Gray and Mrs. Georgia Cunningham of McKee, Mr. and Mrs. Pleaz Mobley of Manchester and Mr. and Mrs. Coy Jordan visited their father, W.C. Johnson, this week.

Mr. and Mrs. Roy King and family of Lexington, Mr. and Mrs. Henry Cox, Mr. and Mrs. John Cox and granddaughters, Jennifer and Jean, Mr. and Ms. Buddy Cox and Mr. and Mrs. Jerry Cox, all of Mt. Vernon.

Mrs. W.H. Cox and guests, Mrs. Mattie Fields of Dayton, Ohio are vacationing in Florida.

Mr. and Mrs. Ballard Rodgers of Paris, La. and Mr. and Mrs. Harold Rodgers and children of Richmond and Roscoe Hysinger of Brodhead visited Mr. and Mrs. Wade Hysinger Sunday.

Randall Mullins of California visited his mother, Mrs. Rita Mullins, recently. He and his mother also visited relatives in Richmond, Indiana.

Mr. and Mrs. Eddie B. Rice of the Brindley Ridge section visited her aunt, Mrs. Fannie Thomason, Monday.

The Mt. Vernon boys who are attending the basketball clinic at Berea College are: Tim Young, Willie Hatt, Dyrche Mullins, Jack Lewis, Scott Henderson, Wade and Buckley Gregory.

Mrs. Dorothy French and daughter, Sue, were in Lexington Monday shopping.

W.C. Johnson enjoyed Father's Day with several guests dropping in, telephone calls one from his son, Mrs. Theresa Johnson Calkin in California, and receiving cards and gifts.

Mrs. Louise Gibson and daughter, Vanessa, have returned to their home in Pikeville from a visit with her parents, Mr. and Mrs. Coy Jordan.

Mrs. Bill W. Dowell and daughters, Julie and Angie, are visiting her parents in the Twinhillville.

Mr. and Mrs. Bill McKenzie of Florida are visiting her parents, Mr. and Mrs. W.C. Dowell.

Mrs. Maggie Dowell was here from Berea Wednesday to see her brother, W.C. Dowell, who is confined to his home in ill health.

Mrs. Beatie Cummins is very ill in the Standard Hospital.

Mr. and Mrs. James L. Davis were in Fern Creek and Louisville during the week end and Mr. and Mrs. Carol Gilland and son and Mrs. Annie McKenzie.

Mr. and Mrs. Jimmy Cummins and sons, Randy, Rick and Doug of Independence visited Mr. and Mrs. Bert Croome and Mr. and Mrs. Ewell Cummins over the week end.

Mr. and Mrs. Lonnie Brown, Marsha and Mark of Terre Haute, Indiana visited Mr. and Mrs. Ewell Cummins and Mrs. Jean Towery recently. Mrs. Towery and her brother, Lonnie and family, attended services Sunday evening at the Kentucky Christian Assembly at Brodhead for the opening of Senior Camp Week.

Mr. and Mrs. James Al Davis and sons of Lexington spent Sunday with parents, Mr. and Mrs. James L. Davis, and grandparents.

Visitors of Mr. and Mrs. Roy Hanel last week were Mrs. Annabess Shatto

Mrs. Clinton Smith of Richmond, Indiana; Daniel Ferguson of Newport News, Va.; Mr. and Mrs. Bob Jennings, Mr. and Mrs. Lawrence Russell and Mrs. Ed Myers, all of Newport; Mr. and Mrs. Elijah Clark of Paint Lick, Mr. and Mrs. Jerry Kaler of Richmond; Mr. and Mrs. Jerry Hayes and daughter, Miss Rhonda Hayes; James Nathan Mullins, II; Bentley Harmon; Mr. and Mrs. Alton Parsons and Bill Mullins, all of Lexington and Mr. and Mrs. B.J. Anderson of Berea.

Mr. and Mrs. Gene Brown of Ohio visited Mr. and Mrs. Burdette Brown and Mr. and Mrs. Bert Herron, recently.

Mrs. Florella Brown of Ohio visited her brother, Mr. Burdette Brown and Mrs. Brown recently.

Mr. and Mrs. Cecil Century of Brodhead, Mr. and Mrs. Foster Brown of Brodhead and Mrs. and Mrs. Edward Mink of Brodhead recently visited Mr. and Mrs. Burdette Brown of Mt. Vernon.

Mr. and Mrs. Phillip Brown visited Mr. and Mrs. Burdette Brown and Frank Brown, recently.

Mr. and Mrs. Charles Roy of Camden, Ohio were Sunday dinner guests of his aunt, Mr. and Mrs. Arthur Ramsey. Mr. and Mrs. Roy were enroute to Oak Ridge, Tennessee for a vacation. They also visited Mrs. Minnie Nively.

Mrs. Karen Vallance and daughter, Sonja visited her mother, Mrs. Robert French and Mr. French over the week end.

Mr. Matt E. Saylor had the misfortune of falling and breaking his leg last Friday. He was taken to the Central Baptist Hospital in Lexington. We wish him a speedy recovery.

Mr. and Mrs. Andrew Cox, Jr. visited Mr. and Mrs. Harris Burton awhile last Tuesday night.

Mr. and Mrs. George Burton and Mr. and Mrs. Robert Anglin and Nancy visited Mr. and Mrs. Harris Burton, Sunday.

Sympathy is extended to the families of Bill Sowder, Mrs. George Harmshead also the Shearer family in their sorrow.

Mr. Harmon Jones has returned home after spending several weeks in the Central Baptist Hospital in Lexington.

Mrs. Hazel Pullinger visited Mrs. Lona Logsdon Sunday afternoon. They attended the Gospel singing at Wentworth Valley.

Mr. and Mrs. Carol Blanton, Jr. and family and Mr. and Mrs. Bennett Burton and Sheila visited Mr. and Mrs. Carol Blanton, Sr., Sunday evening.

Debra Ramsey of Henderson is visiting Mrs. Lilian Anglin, W.R. Coffey and other relatives here.

Recent visitors of Mr. and Mrs. George Burton were Mrs. Darrell Owens, Jeannetta and Chris Owens, Mrs. Robert Anglin and Nancy, Mr. and Mrs. Bennett Burton and Sheila and Mrs. Gravelly Burton.

Chan Hayes and Leo Hayes were in Ohio over the week end to visit Ernest Hayes who is very sick.

Recent visitors of Mrs. Celia Jones of Hamilton, Ohio visited her mother Celia Jones during the week end.

Mr. and Mrs. Jack Jones of Ohio and family, visited Mrs. Celia Jones, last week.

Mrs. Minnie Hansel, Carol and Cletus Clemmons visited Mr. and Mrs. Ora Reeves of Louisville last week. Mrs. Helen Keranan of Hamilton, Ohio spent a few days last week with Mrs. Minnie Hansel and David.

Mr. and Mrs. Robert Barron and children of Paris and Mr. and Mrs. Edward Stephens and children of Lexington, were week end visitors of Mr. and Mrs. Robert Kirby.

Mr. and Mrs. Virgil Brock visited Mr. and Mrs. Robert Kirby Sunday afternoon.

(Cont'd to p 10)

The Mt. Vernon Signal P-5 Thursday, June 24, 1976

Congratulations Dairy Farmers of Rockcastle County

JUNE SPECIAL SALE

10% OFF

On All Items

Ariens Tillers

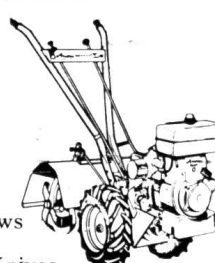
Poulan Chain Saws

Pow Point Mower Section Knives

Shop And Save At

Robinson's Equipment Co.

Main Street Mt. Vernon



Rev. and Mrs. W.J. Hamilton of Berea will celebrate their 50th wedding anniversary with an Open House at their home July 3rd from 2 p.m. to 5 p.m. Rev. and Mrs. Hamilton were married July 8, 1926 in Berea. They have six children. All friends and relatives of the couple are invited to attend.

AUCTION

At Absolute Auction 115.84 Acre Farm and Personal Property To Settle The Estate Of The Late Mrs. Audie Chaney.

SATURDAY, JUNE 26th at 10 A.M.

LOCATION - 6 1/2 miles North of Somerset or 1 1/4 miles North of Science Hill, Ky. Turn East off Highway 27 on to the Flat Road and go about 1 1/2 miles (Right hand sign). 115.84 Acres More Or Less To Be Sold In 6 Tracts.

See Plot On Reverse Side

TRACT NO. 1 - Consists of 16.48 acres and has 12115.3 foot frontage on backstop. Spring branch on this tract.

TRACT NO. 2 - Approximately 33.05 acres. Frontage on this tract is 1,434 feet.

TRACT NO. 3 - Consists of 16.25 acres. Road frontage 1,000 feet.

TRACT NO. 4 - About 2.13 acres. Practically all in good timber, also small barn, 657 foot frontage.

TRACT NO. 5 - This tract is 2.25 acres. Road frontage 230.5 feet. All in good timber.

TRACT NO. 6 - Consists of 45.68 acres with a 343 foot frontage. Creek and pond supply water for livestock.

About 90 acres is good tenable productive tractor land, balance in good timber, several thousand feet mostly oak and some poplar. Every tract has some timber on it except no. 3. Basic tobacco poundage is 1,961 pounds but has been leased this yr. Owners reserve the right to group any or all tracts.

PERSONAL PROPERTY

Electric range, refrigerator, living-room suite, 4 beds, table lamps, warm morning stove, wood range stove, odd chairs, dinette set, rocking chair, platform rocker, dresser, cedar wardrobe, lawn chairs, krait cutter, new lavatory, oval iron kettle, fruit jars, dishes. Several power lawn mowers, iron fence post, platform scales, wheat cradle, broad ax, on, yoke, bark wire stretchers, turning plow, 3 foot plow, 5 and 10 gal. milk cans, cow bell, hames, 5 gal. gas cans, 1 roc. coop planter, 2 snaking tubes, vise, post hole diggers, several old wood planes, a log of new bolts, hand carpenter tools, hinges, lay off plow, 1 lot of lumber, wrenches, hose drawn disk harrow, also several hales of hay, many more items.

TERMS - 20% Day of sale and balance and possession in 30 days with deed. Cash for personal property.

Any Announcement Made Late Day Not Precedence Over Written Material. Not Responsible For Accidents.

COL. AUDIE PRICE, JR. BROKER AND AUCTIONEER

ROUTE 1, EUBANK, KY. PHONE 423-2331

Col. Donald Hill & Col. Gene Evans, Auctioneers

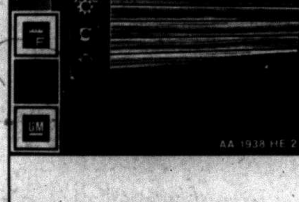
Enjoy energy saving operation, sweep a big room with comfort. From Frigidaire.

19,000 Btu/hr\*

This high efficiency Frigidaire Room Air Conditioner is rated at 7.6 EER! This means lower operating costs for you because a higher EER, for units with the same capacity, generally means lower energy consumption. And, thanks to the Electric-Saver control that automatically turns off the fan when the compressor shuts off, more energy can be saved because no electricity is used when more cooling is needed. What's more, the Frigidaire Comfo-Matic feature sweeps a cooling breeze across your room, then back again, without using additional electricity.

\*Manufacturer certified to AHAM standards when operating on 230 volts, 18,700 Btu/hr and 7.6 EER at 90% voltage. Ratings shown are as listed in the Association of Home Appliance Manufacturers January, 1976 Greenbook Report on Room Air Conditioners.

Appliance Service Center Mt. Vernon, Ky. 426-2828



The Environment Makers from Frigidaire.

AUCTION

of Mr. and Mrs. Gene Noe's

167 ACRES more or less

FRI., JULY 2, 1976, 1:30 P.M.

Green Hill Section, Rockcastle Co., Ky.

LOCATED: Approximately 5 miles North of Mt. Vernon, 10 miles South of Berea at Green Hill. Turn East off US 25 at Green Hill and follow the auction signs to the sale.

The 167 acres is made up of mostly woodland, of which would be suitable for development. There are several beautiful homesteads on the property and there is plenty of privacy. Also some of the land could be cleared and used as farmland.

If you are in the market for a piece of property that could be developed or a large track of raw land for investment DON'T MISS THIS SALE - Friday, July 2nd - 1:30 p.m.

TERMS: 20 percent down day of sale, balance in 30 days with delivery of deed.

For additional information contact Mr. and Mrs. Gene Noe at 256-4590 or

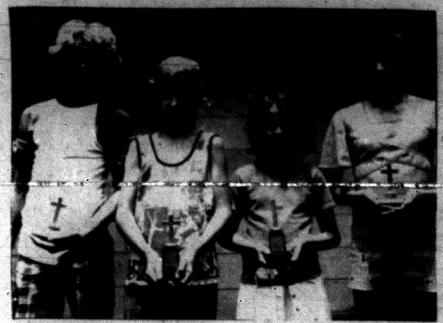
Ford Realty & Auction Co. REALTOR





A total of 92 campers showed up for a week of inspiration, learning and fun at the Christian Assembly Camp last week. This week, Senior Camp is in progress.

**Activities At  
Kentucky  
Christian  
Assembly**



Winners and runners-up for the "Camper of the Week" award were, from left: Tim Powell, runner-up; Willie Hiatt, winner; Jane Anderkin, winner and Connie Ballinger, runner-up. The award is given for participation in activities and cooperation.



Try hitting a beachball with a plastic bat sometime - and then run the bases in a wheelbarrow. As a kicker, make the fielders catch the ball with laundry baskets or trash cans and you have all the ingredients for a fun ballgame.



Bro. Cecil Dailey, one of the trustees of the Kentucky Christian Camp, is shown conducting a Bible-study class during the Junior camp session last week.



Winners of the Athletic Award were Gary Fielder and Susan Minor.



The Mt. Vernon Signal P66 Thursday, June 24, 1976

Subscribe To The Signal



Because of the number of people attending Kentucky Christian Camp this year, some classes had to be held in tents.



Permanent shelters have been built at the camp and classes are held in them.

**"All Fords Are Created Equal"**  
**RUSS POWELL FORD**  
*Makes The Difference*

**USED CARS**

- |                      |                         |
|----------------------|-------------------------|
| 1973 Nova            | 1972 Vega               |
| 1972 Torino          | 1965 Comet, 6 Cyl       |
| 1974 Gremlin, 6 Cyl. | 1974 Mustang, One Owner |
| 1970 Hornet, 6 Cyl.  | 1962 Comet*             |

**USED TRUCKS**

- 1974, F100, Cruisematic
- 1975 F100, 4 plus 4, Cruisematic
- 1973 F600, Like new
- 1974 C10, Chevrolet, Like New
- 1964 C10, \$100

The closer you look, the better we look.

**RUSS POWELL FORD, INC.**

U.S. 25 South - Berea

Ph. 986-3171



**ANNOUNCING**

**WESTERN PIONEER LIFE INSURANCE CO.**

*Currently is expanding its Sales Force.*

*Several positions for highly qualified individuals  
Now Open in this Area.*

*Unlimited Opportunity with experience in sales  
not required.*

Our representatives, throughout the State, tell the "Western Pioneer Story" daily and, as a part of this outstanding team, you will be contacting present Stockholders and Policyholders as well as new clientele.

*\$200 Per Week plus Commissions plus Bonuses  
plus Insurance Benefits*

Applications will be taken at the Ramada Inn in London, Kentucky, from 4:00 p.m. to 8:00 p.m., Wednesday, June 23, and Thursday, June 24, and on Friday Morning, June 25, from 9:00 a.m. to 10:00 a.m., by State Managers Gordon Rice and James Osborne.



## County Correspondents

### Brindle Ridge

There was good attendance for church over the week end with 82 present Sunday morning. The Vacation Bible School is progressing this week, each evening from 6:00 to 9:00 p.m.

This community extends their sympathy to the family of Benny Shearer of Mt. Vernon. Mrs. Etta Ponder visited her sister Mrs. Lillie Sigmon of Mt. Vernon, Thursday afternoon.

Mrs. Kathy Parrett and children, Tammy, Timmy, Missy and Curtis and Miss Gail Grutcher of Richmond, Ind. spent part of last week with Mr. and Mrs. Billy Cameron and boys.

Sgt. and Mrs. David Holland and children of Illinois spent last week end with his mother Mrs. Pat Holland and family.

Sherry and Vicky Burdette and Nancy and Tammy Coffey spent last Sunday night with Debbie and Michelle Adams.

Miss Mattie York of Richmond, Ind. visited her parents Mr. and Mrs. Charles York.

Mr. and Mrs. Roy Mink and daughters of Lexington visited his parents, Mr. and Mrs. Coleman Mink over the week end.

Mrs. Glynn Burdette and family spent Saturday night with her parents, Mr. and Mrs. Berkeley Bullock of Williams.

Mr. and Mrs. Charles Bushelmann and Charla of Covington spent last week end with her parents, Mr. and Mrs. Danny Mullins.

Mrs. Irene Heron of London visited her parents, Mr. and Mrs. Danny Mullins over the week end.

### Clear Creek

Clear Creek Church ended a one week Vacation Bible School Sunday night. Everyone enjoyed it very much. There was an average attendance of 54.

Mr. and Mrs. Claude Long of Missouri are spending a few days with his brother, Floyd Long and wife.

Mr. and Mrs. Larry Miller spent the week end with Mr. and Mrs. Raymond Hurley.

Mr. and Mrs. Dennis Thomas were here last week visiting Mrs. Thomas' mother, Mrs. Emma Mullins, who has suffered another stroke. Mrs. Mullins is reported better and we wish her well.

Mr. and Mrs. Rick Everett and children Lari and Scott were in Ohio Monday and Tuesday visiting his mother and grandparents.

Mrs. Mary Thomas spent Sunday evening with her sister, Mr. and Mrs. Raymond Hurley and his parents, Mr. and Mrs. Henderson Hurley while on vacation last week.

Mr. W.L. Campbell, Mr. and Mrs. Warren Berry and Philip visited Mr. and Mrs. Hubert Berry over the week end.

Darla Sue and Terry Joe Campbell are spending this week with grandparents, Mr. and Mrs. Hubert Berry.

Miss Karne Harding is at Christian Church Camp this week. Mrs. Bernice Harding and Angela visited Mr. and Mrs. Howard Harding Saturday night.

### Ottawa

By Mrs. Della Mae Wilcott

Della Mae Wilcott was one of the Senior Citizens who went to Camp Nelson last week. They had a pot luck dinner and a boat ride. All had a good time.

Mrs. Clarice Payne and Christine and Mrs. Jeanette Neff and children and a friend, Bobby of Dayton, Ohio have been here for the past week. She stayed in her mobile home which she recently painted. They visited Mr. and Mrs. Guy Hamm while here.

Mr. and Mrs. Ed Payne of Brohead visited Mrs. Clarice Payne one evening last week.

Bro. Lawrence Davis of Copper Creek preached at Ottawa Sunday morning and Sunday evening, filling in for Bro. Sowder, who is on vacation.

Mrs. Eva Bullock visited Mr. and Mrs. Frank Cook in Missouri and her grandson, Jeffrey Cook accompanied her home for a short stay.

We are glad to report Mrs. Amy Brown home.

Mr. and Mrs. Joe Gentry and family of Somerset visited Mrs. Anna Wright and Bobby one day last week. Anna accompanied them home for a few days.

### Poplar Gap

Mr. and Mrs. Raymond Wynn, Mr. and Mrs. Floyd Chestnut, Mr. and Mrs. Lonnie McGuire and Jeanie Lynn, and Mr. and Mrs. William Wynn were week end guests of Mr. and Mrs. Gilbert Wynn.

Mr. and Mrs. Bobby Bond and children are visiting their parents, Mr. and Mrs. Earl Higgins and Mr. and Mrs. Harve Bond.

Mrs. Walter Bond and George, Mr. and Mrs. Harve Bond and children, Mr. and Mrs. Richard Mullins, Jr., Mr. and Mrs. Mosey Cameron and Timmy were Sunday guests of Mr. and Mrs. Richard Mullins and attended the Bond Reunion at Salt Petre Cave.

Recent guests of Mr. and Mrs. Manley McGuire were Mr. and Mrs. Willie Barnett of Tullahoma, Tennessee, Mr. and Mrs. Arvill Barnett of Fairfield, Ohio, Mr. and Mrs. Ronald Barnett of Milwaukee, Wisconsin, Mrs. Martha Hughes of Louisville, Ky., Mr. and Mrs. Ellis and family of Dayton, Ohio, Bobby Denny, Truman, Bruce, and Tony and their families of Maude and Mason, Ohio, Mr. and Mrs. Conrad Thomas, Mr. and Mrs. Hubert Jennings, Mrs. Nancy

Mullins, Mrs. Vicki Higgins, Mr. and Mrs. Boyd McGuire, Mr. and Mrs. Louisa McGuire, Dewey McGuire, Mr. and Mrs. Gilbert Wynn and Alice Carpenter and children.

### Quail

By Mrs. Vician Owens

Mrs. Verla Casey of Valley Station spent a few days with her mother, Florence Albright, and attended the funeral of her uncle, George Major at the Somerset funeral home. He was buried in the Providence Cemetery.

Miss Peggy Nicely and Linda Ponder spent Tuesday night with Rose Bullock and Mr. and Mrs. Donald Bullock and Tana.

Mr. and Mrs. Elmer Ponder and Linda, Mrs. Verla Casey and Mrs. Deborah Rogers and Jennifer were guests of Florence Albright, Sunday.

Mr. Billy Owens has returned to his home after being a patient in the Rockcastle Co. Hospital.

Mrs. Billy Owen and Rusty spent Friday night with her parents, Mr. and Mrs. Elmer Ponder and Linda.

Mrs. Aubrey Phelps, Mrs. Ruby Phelps, Mrs. I. Lee Clark, Mrs. Mary Scott, recently.

Miss Doris Brown was in Lexington, Saturday on business.

Mr. and Mrs. Newman Reynolds and Mrs. and Mrs. Gorman Reynolds of Ohio visited Mr. and Mrs. Clifford Reynolds. They were here due to the death of George Major.

Mr. Woodrow Brown of Ohio visited Mr. and Mrs. Estil Gentry over the week end.

Ray Taylor, son of Mr. and Mrs. Jesse Taylor returned to Alaska after spending a few weeks with his parents.

Mr. and Mrs. Delmus Bullock and sons were Thursday dinner guests of his sister, Mrs. Janie McKinney and family.

Mr. and Mrs. M.J. McMullin were in Somerset Friday on business and visited Mr. and Mrs. Bishop Burton.

Mrs. Celia Taylor of Ohio spent a few days with Mr. and Mrs. Jesse Taylor and family.

Mr. and Mrs. Fred Bullock and sons visited Mr. and Mrs. Delmus Bullock and sons Tuesday evening.

Mr. and Mrs. Robert Hytes and family were Monday dinner guests of their daughter Mr. and Mrs. Bobby Brook and Chris at Lexington.

Mrs. Irene Taylor and Tommy spent Thursday night with her sister, Mr. and Mrs. Charlie Lowery and family of Somerset.

Mrs. Delta Brown spent Monday and Monday night with her aunt Mrs. Mary Scott.

Mr. and Mrs. Roy Perry and family of Wisconsin spent a few days last week with his parents, Mr. and Mrs. Rolla Perry.

Sunday visitors of Mr. and Mrs. Robert Hayes and family were Bro. Ed Gibbs of Lexington, Mr. and Mrs. Bobby Brook and Chris, Mr. and Mrs. Donnie Whitaker and family, Mr. and Mrs. Dennis Bowling and Mr. and Mrs. Lowell Mink and Mr. and Mrs. Steve Dyer and Amy of Berea.

Mrs. Maude Hasty enjoyed a cook out Thursday evening at the home of Mr. and Mrs. Robert Hayes and family.

Mrs. Sara Owens, Miss Viola Keiter of Ohio visited Mr. and Mrs. Charlie B. Owens, Wednesday.

During the week visitors of Mr. Della Brown were Mr. and Mrs. Marvin Mink, David Eaton, Mrs. Albert Long, Mrs. Helen Cash and family and Mr. Albin Brown and Mrs. Ruby Hasty.

Mrs. Della Brown visited Mrs. Zora Brown and Mrs. Mary Jane Randolph, Sunday afternoon.

Mr. W.A. Owens and Lisa spent a few days last week with his parents, Mr. and Mrs. Charles W. Owens.

Mrs. Butch Carl and family and Mrs. Steve Tracy of Versailles spent a few days last week with their parents, Mr. and Mrs. Robert Hayes and family.

Mr. and Mrs. Thurnia Barron and family and Mr. and Mrs. Kenneth Bullock, Sunday evening.

Mrs. Kenneth Bullock and family, Mrs. Willie Todd, Jill Rogers, and Mrs. Ethel Barron were Wednesday dinner guests of Mrs. Dean Barron and family.

Mr. and Mrs. Robert Hayes and family spent a few days with her grandmother, Mrs. Willie Todd.

Mrs. Willie Todd spent Wednesday night with her daughter, Mr. and Mrs. Ronald Rogers and Jill.

Sunday visitors of Mrs. Willie Todd were Mr. Gorman Reynolds, Jr. of Ohio and Mr. and Mrs. Ronald Rogers and Jill.

Mr. Wayne Todd and Mrs. Willie Todd were Sunday supper guests of Mr. and Mrs. Bobby Barron.

### Willalla

By Arvill Barton

Those among the sick this week are Mrs. Susi Cash, Mr. John Mobley and Irvin Deane.

Sympathy is extended to the family George Major.

Funeral services were held in Somerset Sunday for Mr. George Major. Burial was in the Providence Cemetery.

Owen Burton and Mary Jane Randolph attended the funeral of George Major at Somerset, Sunday.

Bill Phelps and a group of men were in Ft. Knox for a few days taking National Guard training. They have returned home.

Recent guests of Mr. and Mrs. Grover Burton were Mr. and Mrs. Jack Nicholson of Indianapolis, Indiana and W.A. Owens of Mason, Ohio.

Mrs. Wilma Bastin and daughter of Indianapolis, Ind. spent the week end visiting her parents, Mr. and Mrs. Russell Long.

Andy Long of Indianapolis, Indiana visited his grandparents, Mr. and Mrs. Russell Long recently.

Mr. Lewis Brown is ill in a nursing home in Dayton, Ohio.

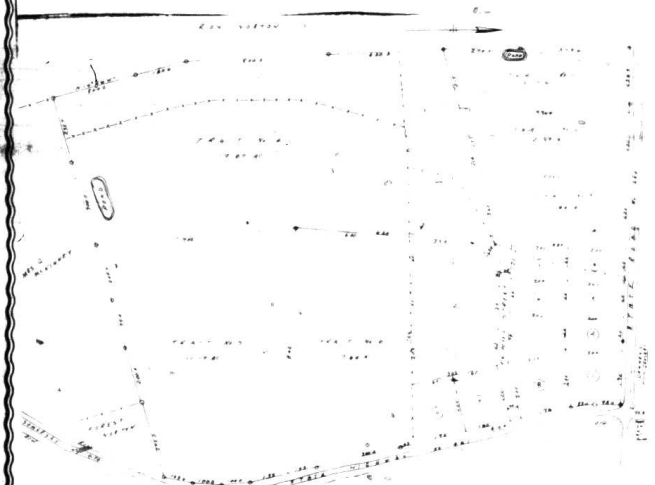
Recent guests of Mrs. Zora Burton were Mike Leiger of Mt. Vernon, Mrs. Verla Brown, Mrs. Clara Mae Deane, Mr. and Mrs. Grover Burton, G.D. Burton, Mr. and Mrs. Owen Burton and Janet, Mrs. Gail Lee Ledford and Michele of Richmond, Russell Long, Gemie Burton, Bill Cash of Brohead, Mrs. Delta Brown, Mrs. Lillie Gooch and M.J. McMullin.

The Mt. Vernon Signal P-7 Thursday, June 24, 1976

# AUCTION

of  
**Mr. and Mrs. James Payne's**  
**58 ACRE FARM**  
SUBDIVIDED INTO TRACTS AND LOTS  
**SAT. JULY 3, 1976, 10:30 A.M.**  
Hwy. 461 - ROCKCASTLE CO., KY.

LOCATED: Approximately 3 miles Southwest of Mt. Vernon, Kentucky on Highway 461. The Somerset Road. Next to Denny's Grocery. Watch for the Auction Signs.



Mr. and Mrs. Payne are in the process of partially retiring from the farm and offer this very desirable farm for the high dollar. They do reserve the right to sell each tract individually and then, together selling which ever way reflects the best returns for the owner.

LOTS

Lots 1 thru 13. Are all larger than average lots and have city water available. These lots are all well laying lots. Some lots front on Highway 461 and some on State Road 1250. Each lot has ample space for a home with a large garden and yard area.

MINI-FARMS

TRACE # 1. 3.17 acres, fronts on State Road 1250, a pond, all tillable land, city water available, tobacco allotment 114 lbs.

TRACE # 2. 2.93 acres, fronts on State Road 1250, all tillable land, city water available, tobacco allotment 118 lbs.

TRACE # 3. 2.84 acres, fronts on State Road 1250, all tillable land, city water available, tobacco allotment 118 lbs.

TRACE # 4. 19.67 acres, a good sized farm within itself, pond, most all of it is cropland, city water available, tobacco allotment 797 lbs.

TRACE # 5. 11.17 acres, fronts on Highway 461, city water available, all cleared land and is in grass, with excellent hunting sites, tobacco allotment 453 lbs.

TRACE # 7. 7.64 acres, fronts on Highway 461, city water available, all cleared land and is in grass, with excellent hunting sites, tobacco allotment 276 lbs.

This is without a doubt one of the best located farms that we have had the opportunity to sell. Whether you be a young or elderly couple wanting a good spacious lot or you want space enough to have a home and keep a couple of horses then we have the small tracts for you. Perhaps you have enough space to actually do some farming then we have that tract of land for you. So mark your calendar NOW to attend this sale. Call your relatives and friends that live in Indiana and Ohio and want to return to Kentucky and tell them about this sale.

**EASY TERMS - 10 percent down the day of sale, 19 percent in 30 days upon delivery of deed, balance financed by owners over 10 years in equal installments at only 7 percent interest.**

ANNOUNCEMENTS DAY OF SALE TAKE PRECEDENCE OVER PRINTED MATTER

For additional information contact Mr. and Mrs. Payne at 256-2438 or

## Ford Realty & Auction Co.

REALTOR®

Mt. Vernon, Ky.  
Office  
Phone: 256-4545 - Nights 758-8400

COL. SAM FORD  
REALTOR-AUCTIONEER

COL. BILL RANDOLPH  
AUCTIONEER

COL. JERRY HAM  
AUCTIONEER

COL. DANNY FORD  
REALTOR-AUCTIONEER

## AUCTION

**Edgar And Emma Bullock's Beautiful 3 Bedroom Home And 13.37 Acres To Be Sold In Tracts.**

**SATURDAY, JULY 3rd AT 10 A.M.**  
LOCATION - Turn South off East Mt. Vernon Street in Somerset, Ky. on to Highway 769 (Rush Branch Road) and go about 5 1/2 miles.

SEE PLAT ON REVERSE SIDE

TRACT NO. 1 - Contains 2.34 Acres, and has 205.5 foot frontage on blacktop.

TRACT NO. 2 - Consists of 2.41 acres, blacktop frontage on this tract is 294 feet.



TRACT NO. 3 - Has 1.69 acres with 226.8 foot frontage on blacktop. Home shown in picture at left is a combination of brick and stone.

This well constructed home has 3 bedrooms, family room, living room, kitchen and dining room combination and 2 1/2 baths on first level, also 2 fire places, brick kitchen cabinets with built-in range, home is electric heated. Bedrooms, living room and hall have w/w carpet. Other rooms are covered with congregate. 2 window air conditioners, washer and dryer hook up, & plenty of closet space. Lower level has two car garage with automatic door opener, large recreation room, shower, washer and dryer hook up. Place has plenty of natural shade, swimming pool, 50 foot antenna tower & patio. This Home contains over 3800 square feet and has a beautiful view.

TRACT NO. 4 - About 1.10 acres. Blacktop frontage is 316.3 feet. Some trees on this tract.

TRACT NO. 5 - Approximately 1.23 acres has 210 foot frontage on gravel road. All in woodland. Barn on this tract is 30x30 feet.

TRACT NO. 6 - 4.60 acres with 809 foot frontage on gravel road. All in woodland. City water will soon be available. Owners reserve the right to group any or all tracts. This place is only 4 1/2 miles from Buck Creek Boat Dock and about 8 miles from Omega Park.

TERMS - 20% Day of Sale and Balance and Possession in 30 Days with Deed.

Any Announcement Made Sole Day Has Precedence Over Written Material. Not Responsible For Accidents.

COL. AUDIE PRICE, JR.  
BROKER AND AUCTIONEER

ROUTE 1, EUBANK, KY.

PHONE 423-2331

REALETY Auction Co.

Col. Gene Evans & Col. Wendell Lawrence, Auctioneers



**SURPRISE BIRTHDAY!** A surprise birthday party was held for Mrs. Sallie McGuire June 18th on the occasion of her 97th birthday at the home of her grandson, Wayne Young, and Mrs. Young at Big Hill and granddaughter, Mrs. Charles Hancock of Cleves, Ohio. She received several nice presents and everyone enjoyed a nice picnic lunch with cake, ice cream and soda pop.



This 82 inch kettle was killed near Hummel by Kermit Mullins of Brohead and his nephew, Dana Bowman. The two men were hunting Gensing at the time they killed the rattler which had 12 rattles and a button.

# Fishing Report

Several lakes are reporting fair to good jump fishing for white bass, and bluegill fishing is generally fair around Kentucky. The lake by lake rundown, as compiled by the Department of Fish and Wildlife Resources.

**Cumberland:** In lower lake, white bass and crappie fair night fishing off points and deep banks, white bass fair in the jumps early and late in the day; in the upper lake, bluegill good in inlets and bays, crappie fair over submerged cover during the day; in tailwaters, trout good, crappie, sauger and white bass fair; clear to murky to muddy, rising slowly, 26 feet below limestone and 78 degrees.

**Cave Run:** Musky fair casting and trolling crank baits and deep runners over old road banks and drop offs, black bass fair night fishing surface lures in inlets and bays; in tailwaters, crappie

slow, clear, stable at pool and 78 degrees.

**Laurel:** Black bass fair on crank baits and artificial nightcrawlers in inlets and bays and over drop offs; crappie fair over submerged cover; clear, stable at pool and 78 degrees.

**Dewey:** Crappie fair over submerged cover; bluegill fair in inlets and bays; clear, rising slowly, at pool and 78 degrees.

**Rough River:** Crappie fair night fishing over submerged cover; bluegill slow in shallow water areas; in tailwaters, crappie slow; clear, stable at pool and 78 degrees.

**Harren:** Bluegill good along deep banks; black bass good in lower lake on surface lures and artificial nightcrawlers around rocky points and rip rap; white bass fair jump fishing and trolling spinners in the upper lake; clear to murky, rising slowly, 1 1/2 feet above pool and 78 degrees.

**Nolin:** Black bass good at night casting spinner baits and artificial nightcrawlers along shallow banks; bluegill fair in inlets and bays; in

tailwaters, white bass fair, falling slowly, eight inches above summer pool and 80 degrees.

**Kentucky:** Sauger fair to good casting and trolling deep runners over channel bank drop offs; crappie fair to good over deep submerged cover; in tailwaters, sauger good and catfish fair to good; clear, stable at pool and 81 degrees.

**Barkley:** Black bass good on spinner baits and artificial nightcrawlers in inlets and bays; bluegill good around gravel bars and rip rap and over old food beds; in tailwaters, catfish and bluegill fair; clear to murky to muddy, stable at pool and 78 degrees.

**Dale Hollow:** White bass fair night fishing off deep points and banks; walleye slow trolling deep runners off deep banks and gravel bars; clear to murky to muddy, rising slowly, two feet above pool and 78 degrees.

**Fishtrap:** Bluegill good along shallow banks; black bass slow casting shallow runners in inlets and bays early and late in the day; in tailwaters, trout good; clear, stable at one foot above pool

and 74 degrees.

**Grayson:** Bluegill good around gravel points; black bass fair at night on artificial nightcrawlers; white bass fair over drop offs in tailwaters, bluegill and trout fair; clear to murky, rising slowly, 1 1/2 feet above pool and 79 degrees.

**Buckhorn:** Black bass fair on artificial nightcrawlers along deep banks; bluegill fair off deep banks; clear to murky to muddy, stable at pool and 79 degrees.

**Herrington:** Bluegill good drift fishing along deep banks; white bass fair in the jumps; clear, stable at one foot below pool and 80 degrees.

## MENTAL HEALTH BOARD MEETS NEXT TUESDAY

The annual meeting of the Cumberland River District Mental Health-Mental Retardation Board, Inc. will be held at 6:30 p.m., Tuesday, June 29, 1976 at the Corbin Comprehensive Care Center, American Greening Road, Corbin.

New Board of Directors for the coming fiscal year will be selected for counties in which vacancies or expired terms occur. Citizens interested in serving on

this Board should contact the Cumberland River District Comprehensive Care Center, American Greening Road, Corbin, Kentucky 40701 prior to the annual meeting.

## NOTICE

County Occupational License will expire June 30, 1976. You may obtain your new license in our office or, if you prefer, we can send it by mail. The rates are listed below. If you want the license mailed, please check the license you want and return this card along with the indicated fee.

Restaurant	\$11.50
Soft Drinks	6.50
Ice Cream	6.50
Soft Drinks & Ice Cream	11.50
Tobacco	11.50

Clifford Bales  
County Court Clerk  
Mt. Vernon, Ky.

The Mt. Vernon Signal P-8  
Thursday, June 24, 1976

# REAL ESTATE FOR SALE



**EXTRA NICE BRICK HOME** Located about 1 mile south of Mt. Vernon. The house has living room, built-in kitchen, dining room, 2 car garage, utility room and 2 1/2 baths. The home has electric heat, 2 fireplaces, wall to wall carpet, thermopane windows, trash compactor, refrigerator, built-in stove and double oven, dishwasher and much more for only \$55,000.



**IN THE COUNTRY** 6 room house and 1/2 acre lot located in the Ottawa Section. House has 3 bedrooms, living room, kitchen, small den and full bath. The home is carpeted throughout, has built-in cabinets, fireplace, plus a garage. All this for \$19,900.00.



**HOME AND BUSINESS IN TOWN!** Located near the Rockcastle County High School. House has 3 bedrooms, living room, kitchen, full bath and built-in back porch. Home also has new water, storm doors and windows. In addition to the house, there is a store building which is presently occupied as a fabric shop but could be converted into several other types of businesses. The store building measures 15x40. Financing is available to qualified prospects. Both for \$26,500.00.



**ALMOST NEW BRICK** located on Shirley Street in Mt. Vernon, Ky. House has 3 bedrooms, living room, kitchen, 1/2 basement, formal dining room, garage and 2 full baths. House has city water and sewer, built-in cabinets, storm doors and windows, wall to wall carpet, total electric and blacktop drive. Only \$32,900.00.

**ALMOST NEW BRICK** 1 1/2 acres located on Hwy. 150 between Mt. Vernon and Brodhead. House has 3 bedrooms, living room, kitchen, garage, family room with fireplace, full basement and ceramic tile bath. Home has wall to wall carpet, built-in cabinets, washer and dryer hook-up, city water, built-in intercom system throughout, stove, refrigerator, dishwasher and thermopane windows. \$39,995.00.



**NEW BRICK HOME** Located in the Valley Manor Subdivision. This house has 3 bedrooms, living room, kitchen, utility room, carpet and 1 1/2 baths. It is total electric, wall to wall carpet, built-in cabinets and much more for only \$26,000.



**APARTMENT BUILDING** Located on Richmond Street. Main building has 11 rooms. 1st floor is presently used as living quarters, has living room, kitchen, 3 bedrooms and bath. 2nd floor has 2 two-room apartments with 4 bath and a two-room apartment with bath on the third floor. In addition to the main bldg., there are 4 two-room apartments, each with a bath, a mobile home and two single rooms. The lot measures about 100x200. Here is your opportunity to have an income-producing property and a home too. All the apartments are presently rented. All this for only \$39,500.



**IN THE COUNTRY** 4 room house located just off Hwy. 150 between Brodhead and Crab Orchard. House has 2 bedrooms, living room, kitchen and bath. In addition to the house, there is about 4 acres, more or less, barn, garage and other outbuildings. All this for only \$18,500.00.



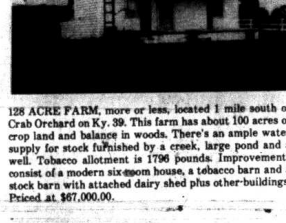
**ALMOST NEW BRICK** in the Valley Manor Subdivision. House has 3 bedrooms, living room, kitchen, utility room, carpet and 1 1/2 baths. The house has wall to wall carpet, built-in cabinets, storm doors and windows, washer and dryer hook-up, is total electric and blacktop drive. Only \$29,900.00.



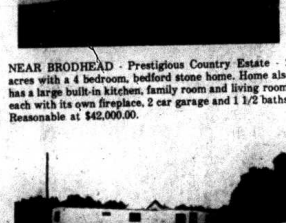
**NEW HOUSE** Located in the Frith Subdivision - Brodhead, Kentucky. This house has 3 bedrooms, living room, kitchen, family room, large utility room and a full bh. House is carpeted, has built-in cabinets, city water and sewer, storm doors and windows and is total electric.



**1971 CRIMSON MOBILE HOME** with 2 bedrooms, living room, kitchen and dining area combined and bath. The mobile home has wall to wall carpet, oil furnace and is completely furnished all for \$4,995.00.



**128 ACRE FARM**, more or less, located 1 mile south of Crab Orchard on Ky. 39. This farm has about 100 acres of crop land and balance in woods. There's an ample water supply for stock furnished by a creek, large pond and a Tobacco allotment is 1796 pounds. Improvements consist of a modern six-room house, a tobacco barn and a stock barn with attached dairy shed plus other buildings. Priced at \$67,000.00.



**NEAR BRODHEAD - Prestigious Country Estate** - 2 acres with a 4 bedroom, bedford stone home. Home also has a large built-in kitchen, family room and living room, each with its own fireplace, 2 car garage and 1 1/2 baths. Reasonable at \$42,000.00.



**NICE 5 ROOM HOUSE** Located on Locust Street, Mt. Vernon. The house has 3 bedrooms, living room, kitchen, hall and full bath, heated by an oil furnace. It has washer and dryer hook-up, city water, front porch, aluminum siding, built-in cabinets. Lot measures 60x200. Can be yours for only \$16,900.00.



**10 ACRE BABY FARM**, located at Woodstock, Ky. approximately 64 acres crop land, balance in woods. Stock water is furnished by a creek, plus a tobacco 5 room frame house and barn.



**5 ROOM HOUSE** Located near the Mt. Vernon Elementary School. House has living room, kitchen, 2 bedrooms, full bath and large utility room which could be used as a bedroom. City water and sewer. All for \$14,900.00.

**LOTS**  
**BEAUTIFUL NEW SUBDIVISION** Located 1 1/2 miles west of Mt. Vernon near city limits. Large spacious lots, city water, wide streets, restricted. Starting at \$3,000.00.  
**NICE COMMERCIAL LOT** located outside the Mt. Vernon city limits on US 25 near Cromer's Dollar Store. There is over 800 ft. of road frontage along US 25. The parking area is blacktopped and there is a trailer hook-up on the lot. \$25,000.  
**THREE ONE-ACRE LOTS** located about 1 mile south of Mt. Vernon. Lots have city water, blacktop road and are surrounded by fine homes. \$3,500 each.  
**TWO LOTS** located in Cedar Heights Subdivision just outside city limits of Mt. Vernon. \$1,200 each.

**GOOD LEVEL BUILDING LOTS** located near the Country Club. City water, on blacktop road, restricted. \$3,000.00 each.  
**4 RESTRICTED BUILDING LOTS** located near the Mt. Vernon Elementary School. The lots have city water, blacktop street and are within walking distance of town. \$4,000 and up.  
**9 BLDG. LOTS** located in the Orlando Subdivision. Lots have city water and blacktop road.  
**1 1/2 ACRE LOTS** located in Mt. Vernon. Trees and privacy for only \$4,500.00.  
**1/2 ACRE LOT** Located on Tark Hill Road out of Brodhead, Ky. \$1,900.00.

**ACREAGE**  
**140 ACRES NEAR RENFRO VALLEY** at Hummel, Ky. 800 lb. tobacco base. Priced for quick sale at \$15,500.  
**80 ACRES**, more or less, retreat land with cottage in the hills of Rockcastle County. Only \$14,500.00.

**Ford Realty & Auction Co.**  
REALTOR • COL. DANNY FORD REALTOR - AUCTIONEER  
254-4545 • 254-4448  
Mt. Vernon, Ky. 758-8400  
COL. SAM FORD REALTOR-AUCTIONEER





Out-of-town guests at the Optimist Club Charter meeting were Don Mills, Lt. Governor; Zone 2: Steve McCoy, Governor Elect; International: Clarence Duggins and Jim Meeks of the Williamsburg Optimist Club.

## Area Deaths and Funerals

### Mrs. Georgia Clark Harmon Dies Wednesday, June 16th

Mrs. Georgia Clark Harmon, 52, of Lexington, and formerly of Rockcastle County, died Wednesday, June 16, 1976 in Lexington.

Mrs. Harmon was born in Rockcastle County May 12, 1924, the daughter of John Clark and the late Ada Carpenter Clark and was formerly the assistant editor of the Newport News Daily Press and was a member of the Christian Church.

Survivors are a daughter, Miss Nancy Gayle Harmon of Hampton, Virginia; her father, John Clark of Route 2, Livingston; one sister, Mrs. Theima Mullins of Mt. Vernon; a brother, Dr. Randall Clark of Louisville; her maternal grandmother, Mrs. Martha Carpenter of Mt. Vernon; one niece; three nephews and her stepmother, Mrs. Mayfre Clark of Route 2, Livingston.

Funeral services were held Sunday afternoon, June 20th at the Dowell and Martin Funeral Home with Bro. Glen Polly officiating. Burial was in the Elmwood Cemetery.

Palbearers were Wayne Stewart, Jimmy Mullins, Jerry Kalop, Lige Clark, Lemon Clark and Burchell Clark.

### Della Henson, 42 Dies June 16 in Lexington

Mrs. Della Henson, age 42, of Lamer, Ky., passed away after a long illness Wednesday, June 16, 1976 in a Lexington Hospital. She was born in Jackson County on June 17, 1933 the daughter of Lula Summers Carpenter and the late Bert Carpenter and attended the Holiness Church.

Besides her mother, Mrs. Lula Carpenter of Bond, Ky. she is survived by: Her husband, Mr. Delmer Gene Henson of Lamer, one son, Lowell

Henson of Lamer, two brothers, Sherman Carpenter of Bond, Ky., and Virgil Carpenter of Waneta, Ky. One sister, Mrs. Annie Mae Jones of Mt. Vernon, Ky. also survive.

Services were held Friday, June 18 at 2 p.m. at the Morning-View Holiness Church with Bro. Huey Carpenter, Jasper Carpenter and Dean Carpenter officiating.

Interment was in the Red Hill Cemetery and arrangements were by the Dowell and Martin Funeral Home.

### Bennie Shearer, 68 Dies in Lexington

Mr. Bennie Shearer, 68, of Mt. Vernon passed away Sunday, June 20, 1976 at the University of Kentucky Medical Center in Lexington after a short illness. He was born November 4, 1907 in Rockcastle County, the son of Mrs. Fleary Abney Shearer of Mt. Vernon and the late Will Shearer. He was a retired factory worker and a member of the Wildie Christian Church.



Selected to the Board of Directors of the newly organized Optimist Club were, from left: David Parsons, Bill Gregory, Billy Hatt, John Bullock, Paul Thomason and Richard Sweeney.

Survivors besides his mother are two sons: William and Alfred Shearer both of Richmond, Indiana; three daughters, Mrs. Alene Abney, Mrs. Rosella VanWinkle and Anna Mae Shearer, all of Richmond, Indiana; four sisters, Mrs. Rosey Adams, and Mrs. Daisy Hines both of Berea, Ky. Mrs. Davie Jordan of Centerville, Indiana and Mrs. Flossie Chaney of Mt. Vernon. Several grandchildren also survive.

Funeral services were held Tuesday, June 22, at 2:00 p.m. at the Cox Funeral Home with Bro. Homer McNew officiating. Burial was in the Johneta Cemetery.

Arrangements were by the Cox Funeral Home.

### Mrs. Deborah Gregg, 22 Dies After Short Illness

Mrs. Deborah Gregg, 22, of McDonald, Ohio and formerly of Brodhead passed away Thursday, June 17, 1976 at the Trumbull Memorial Hospital in Warren, Ohio after a short illness. She was born September 23, 1953 in Lincoln County, the daughter of Mrs. Thelma Vaughn Shean of McDonald, Ohio.

Survivors besides her mother are: one son, Jason Kevin Gregg, at home; one brother, Gleason Gregg of Mississippi; her grandparents, Mr. and Mrs. Ance Vaughn of Brodhead, and her step-father, Edward Shean of McDonald, Ohio.

Funeral services were held Monday, June 21, at 2:00 p.m. at the Brodhead Baptist Church with Ro. R.C. Flynn and Bro. Glenneth Clark officiating. Burial was in the Pine Grove Cemetery.

Arrangements were by the Watson Funeral Home.

### William D. Sowder, 70 Dies at Residence

Mr. William D. Sowder, 70 of Route 3, Mt. Vernon passed away Thursday, June 17, 1976 at his home after a long illness. He was born October 11, 1905, in Rockcastle Co., the son of the late Will and Rosa Herald Sowder. He was a retired Kentucky Utilities employee and a member of the Buckeye Christian Church.

Survivors are his wife, Mrs. Ollie Peters Sowder of Route 3, Mt. Vernon, one son, Edward D. Sowder of Route 3, Mt. Vernon, five daughters, Mrs. Elizabeth Robinson, of Rt. 3, Mt. Vernon, Mrs. Linda Hayes and Mrs. Christine McFerron both of Mt. Vernon, Mrs. Lucille Underwood of Louisville and Mrs. Beulah Merriman of Lexington; five brothers, Chester of Dayton, Ohio, Leroy of Louisville, Ky., Roscoe of West Alexandria, Ohio, Shirley and Kenneth both of Mt. Vernon; four sisters, Mrs.

Sible Morgan of Paris, Mrs. Lela Mae Allen of London, Mrs. Nanale Thomas of Mt. Vernon and Mrs. Dovie Harrison of Bedford, Indiana. Twenty-two grandchildren and nine great grandchildren also survive. He was preceded in death by one son, Charles E. Sowder and one brother, Casper Sowder.

Funeral services were held Saturday, June 19, at the Cox Funeral Home Chapel with Bro. Cecil Dailey. Burial was in the Elmwood Cemetery.

### Hubert Haskins, 56 Dies at Berea Hospital

Mr. Hubert Haskins, 56 of Rt. 4, Mt. Vernon passed away Wednesday, June 16, 1976 at the Berea Hospital in Berea, Ky. He was born in Tennessee, April 25, 1920, the son of Mrs. Beulah Cole Haskins of Baton Rouge, Louisiana and the late Elbert Haskins. He attended the Baptist Church.

Survivors besides his mother are his wife, Mrs. Laura Anderkin Haskins of Rt. 4, Mt. Vernon; two sons, Hubert G. Haskins and Phillip Haskins both of Spooner, Wisconsin. Two step-sons: Jerry Renk of Bowling Brook, Illinois and Fred Renk of Chicago, Illinois; one daughter, Miss Terry Lynn Haskins of Rt. 4, Mt. Vernon; one brother, Mr. Joseph Haskins of Baton Rouge, Louisiana and one sister, Mrs. Irene Anderson of Chicago, Illinois, and eight grandchildren.

Funeral services were held Saturday, June 19, at the Nelson Funeral Home.

### The Mt. Vernon Signal P-9 Thursday, June 24, 1976



## STATE FARM - The World's Number One Homeowners Insurer

More people insure their homes with State Farm than with any other company. That's because they've found State Farm offers the best in service, protection and economy. Give me a call. I'll be glad to give you all the details.

**BILL BAILEY**  
Mt. Vernon, Ky.  
Ph. 256-2119



Like a good neighbor, State Farm is there  
STATE FARM FIRE AND CASUALTY COMPANY  
Home Office: Bloomington, Illinois

# do you know... about our customer service department?

If you have a question about your bill or want a change made in your service (such as a phone moved, an extension installed, or your directory listing changed) call our **business office**. If your phone is out of order, (the bell doesn't ring, you can't hear or be heard, or you have a continuing problem of any kind), call our **repair service number**. Whatever your question about your service, look in the front information pages of your directory for the number to call. Helping you... an important part of Continental's job.

**Kentucky Telephone Company**  
A member of Continental Telephone System  
An Equal Opportunity Employer



# AUCTION

OF

MR. AND MRS. TONY SUTTON'S

## 1975 DOUBLEWIDE MOBILE HOME

AND

1 1/2 ACRES more or less

FRIDAY, JUNE 25, 1976, 6:30 P.M.

Chestnut Grove Section - Rockcastle Co., Ky

LOCATED: 3 1/2 miles North of Brodhead, Kentucky just off the Chestnut Grove Road.

The mobile home is a 1976 Columbia, has large living room, kitchen, 3 bedrooms and a bath. It also has wall carpet, built-in cabinets, washer hookup, stove and refrigerator and is total electric. The home is situated on approximately 1 1/2 acres giving you ample room for a garden. Water is furnished by a good spring.

The mobile home and lot will be offered separately, then together. Selling whichever way reflects the best return.

TERMS: 20% down day of sale, balance in 20 days with deed.

FOR ADDITIONAL INFORMATION, CONTACT MR. AND MRS. SUTTON OR



**Ford Realty & Auction Co.**

Mt. Vernon, Ky.  
Office  
Phone: 256-4545 - Nights 758-8400

COL. SAM FORD  
REALTOR-AUCTIONEER

COL. BILL RANDOLPH  
AUCTIONEER

COL. JERRY HAM  
AUCTIONEER

COL. DANNY FORD  
REALTOR-AUCTIONEER



**MT. VERNON PERSONALS**  
(Cont'd from p. 5)  
Mr. and Mrs. George Burton and Mrs. Noah Brock visited Mr. and Mrs. Gravelly Burton Sunday evening.

**The Mt. Vernon Signal P-10**  
Thursday, June 24, 1976

Ellis York has returned home after spending three weeks with relatives in Ohio.  
Mrs. Sammy Ford has returned home from the Central Baptist Hospital in Lexington after undergoing surgery. She is reported doing nicely.  
Mrs. Hazel Cummins and Mrs. Laura McLargue were at Somerset, last week.

Mr. and Mrs. Billy Ray Sowder and David and Clyde Burton visited Mr. and Mrs. Erwin Barrow, Sunday.  
Mr. and Mrs. Jim Burgette visited Mrs. Harris Burton, Saturday evening.

Mr. George Bond and sister Margaret of East Bernstadt visited Mrs. Lydia Howard over the week end.  
Mrs. Nancy Steele of Florence, Miss. Delores Bond of Hamilton, Ohio, Mrs. Grace Miller and daughter Pauline of Pine Hill visited Mrs. Lydia Howard over the week end.

**CONSUMER COMMENTS**  
(Cont'd from p. 5)

You should do business only in the basis of a written contract since the terms of the sale will then be in black and white before you sign your name. Be sure, however, that you carefully read and completely understand the contract before signing it.

One important thing to look for in a contract is a statement of your right of cancel within three business days after you make it. This law is frequently disregarded by people calling from out of state.

When magazine subscriptions are solicited by telephone, call the caller where the call is originating. Avoid making oral agreements. Many times companies will try to force you to pay for magazines they say you ordered over the telephone. They may also state that they have a tape recording of your suggestion. As you might expect, their version of the agreement often differs greatly from yours. You are then asked to pay much more than you thought for magazines you do not want. Don't be forced into buying anything by gimmicks of this type. Make the company show you the contract you signed.

When signing any subscription contract, request a clear copy that contains all the information upon which the transaction was based. In the event of a problem with the sale, a written agreement will save you both time and trouble. To quote an old saying, "An ounce of prevention is worth a pound of cure."

If you have a consumer complaint, write to the Attorney General's Division of consumer Protection, Room 34, The Capitol, Frankfort, Kentucky 40601. The office has found that it can deal most effectively with written complaints and encourages you to write when you have a complaint. However, if you have an emergency situation, call the consumer hotline. The number is 1-800-372-2960.

**WANTED:** Home to rent, preferably in Mt. Vernon, 5 or 6 rooms. Call 256-4889 or 256-2150, Ext. 31. 41xmf

**Poetry Corner**

A poem composed by Willis Johnson at the age of 89 in memory of his wife who departed this life June 17, 1970.

Her loss is great  
It does create  
Much grief as all can see,  
But she has gone to Christ above  
Forever there to be.

My children cry  
No mother by  
To take them on her knee.  
But why should I  
Lament my ease, since God thought it  
best  
To take her soul from hence away to its  
eternal rest.

Come my dear friends  
And mourn with me  
In my afflicted state  
I am bereaved  
As all can see  
Of my dear loving mate.

Her heart was bound  
With mine in love  
Good works to maintain  
But our loss here on earth  
Is indeed Heaven's gain.

**Home Line**

By Cheryl Witt  
County Extensions Agent  
For Home Economics



**SHOULD YOU PRESSURE CANN TOMATOES?**

No. When it comes to canning, tomatoes, the recommendations of UK Extension foods specialists are the same as ever: use only firm-ripe and sound tomatoes, process them in your boiling-water-bath-canner, use standard canning jars and lids and make sure the seals are tight before you store them away.

Never use the open-kettle method

to can tomatoes. The only food you can safely use this method for is jelly. Never can over-ripe (too red and soft) tomatoes, either, because there is a change of spoilage.

Other vegetables must be canned in a steam-pressure canner because of the higher heat needed to kill the spore that causes the deadly Botulism toxin to grow. But the high acid content of tomatoes, all fruits and pickled vegetables does not support the growth

of this toxin, and boiling-water-bath processing is hot enough to kill other spoilage bacteria.

**CAN YOU FREEZE TOMATOES?**  
Yes. Just blanch tomatoes and remove skins, pack into containers, leave enough headspace, and freeze. These tomatoes are fine in casseroles and soups. They are also satisfactory  
(Cont. 'd to P-11)



Graduation exercises at the Maple Grove Child Development Center were held last Friday afternoon, June 18th. Graduating were, from left: Kim Harvey, Donna Barnett, Rainbo Klotzbach, Perry Mason, Mark Isaacs, William Singleton and Tim Singleton.

**NOTICE OF PUBLIC HEARING**

THERE WILL BE A PUBLIC HEARING  
In the Office of the Rockcastle County Judge  
at 9 a.m., Wednesday, June 30, 1976.

Said hearing is relative to the usage of coal severance monies for option of property intended for Rockcastle County's public use.

COMMENTS FROM THE PUBLIC ARE WELCOME.

**AUCTION**

**6.22 Acres Of Land Belonging To Mr. and Mrs. W.C. (Cooper) Smith.**  
**SATURDAY, JULY 3rd AT 1:00 P.M.**  
LOCATED - 14 Miles North Of Somerset, Ky., On Highway 33 Next To Woodstock School.

These are nice building tracts, 3 of them have some large oak trees on them.  
Tract No. 5 Has a small barn on it  
City water is available. Owners reserve the right to group any or all tracts.

**BASIC TOBACCO POUNDAGE IS 977 POUNDS.**

TRACT 4 0.44 ACRE
TRACT 1 0.43 ACRE
TRACT 2 0.42 ACRE
TRACT 1 0.42 ACRE
TRACT 3 3.71 ACRE

TERMS 20% Day of Sale and balance and possession in 30 days with deed  
Any Announcement Made Sale Day Has Precedence Over Written Material.  
Not Responsible For Accidents

COL AUDIE PRICE, JR.  
BROKER AND AUCTIONEER

**PRICE**

ROUTE 1, EUBANK, KY.  
PHONE 423 2331

**REALTY - Auction Co.**  
Col. Gene Evans & Col. Wendell Lawrence, Auctioneers

**ROCKCASTLE AUTO PARTS**

Main Street PH. 256-2298 Mt. Vernon, Ky.

**HEADQUARTERS FOR**

- A.C. Products
- A.P. Mufflers
- Concorde Tires
- Gates Products
- Hastings Rings
- Thompson Engine Parts
- DuPont Paint

**Your CB Headquarters**

Large selection of name brand CB Radios.

Lafayette, Johnson, Pearce, Simpson, Pace, Midland

Full selection of antennae and accessories.

**We Salute The Dairy Farmers of Rockcastle County**

**AUCTION**

Mr. A. A. Proffitt's

**House AND 6 Acre Farm**

GRISTMILL EQUIPMENT AND PERSONAL PROPERTY

**SAT., JULY 3, 1976, 2:00 P.M.**

In City Limits - Brodhead, Ky.

LOCATED: on Albright Street In Brodhead, Kentucky.

**REAL ESTATE** - This dandy little farm is located in the city limits of Brodhead, Kentucky. The farm has 1188 lbs. tobacco base.

Improvements consist of the above pictured four room house. The house has living room, kitchen, bedroom, dining room and bath. It has both a front and back porch and storm windows. There's also a 16x32 building from which Mr. Proffitt operated his gristmill for several years.

In addition there's also the above pictured good 38x40 combination stock and tobacco barn. There's also a cellar and a one car garage.

Here's a rare opportunity to purchase acreage in the city limits of Brodhead. This would be ideal for the part time farmer or it would be excellent property to divide into a subdivision.

**GRISTMILL EQUIPMENT AND PERSONAL PROPERTY** - 10 HP. Gristmill - works good. Platform scales, grinders, Monogram oil heater, oil tank, power lawn mower, 3 HP. radio, iron bed, Maytag washer - good, warm morning heating stove, G. E. Electric range - with self cleaning oven, kitchen cabinet, G. E. Refrigerator, breakfast set with 4 chairs, china cabinet buffet, Jenny Lind Bed, 1/2 size iron bed, water hose, milk can, utility cabinet, several lawn and garden tools plus many many more items too numerous to mention.

**TERMS:** Real Estate - 20 percent down day of sale - balance in 30 days upon delivery of deed. Personal property - cash the day of sale.

For additional information contact Mr. Jesse Proffitt at 606-355-7405 or

**Ford Realty & Auction Co.**

REALTOR\*

Mt. Vernon, Ky.  
Office  
Phone: 256-4545 - Nights 758-8400

COL. SAM FORD REALTOR-AUCTIONEER  
COL. BILL RANDOLPH AUCTIONEER  
COL. JERRY HAN AUCTIONEER  
COL. DANVY FORD REALTOR-AUCTIONEER

AREA DEATHS  
(cont'd from p 9)  
Home in Chicago, Illinois. Burial was in the Graceland Cemetery in Chicago.

Illinois  
Local arrangements were by the Cox Funeral Home.

# GE TV JUNE BRIDE SALE



**TOWNHOUSE™ COLLECTION - WYC7526AP**  
High impact plastic cabinet with simulated Antique Pine finish. Designer coordinated base optional, extra.

**WYC7526AP**  
17" Diagonal Color TV  
• 100% Solid State Chassis  
• Modular Chassis Design  
• Black Matrix In-Line Picture Tube System  
• One Touch Color® System

- Custom Picture Control
- DC Restoration
- Full Pincushion Correction Circuit
- Digital Channel Readout
- Cable-Ready® Antenna Connector

**10% Off On All T.V.'s Thru June 30**

**Bryant Bros.**  
Main St. Mt. Vernon

## Henry E. "Epp" Bullock Dies in Veterans Hospital

Mr. Henry Esmer (Epp) Bullock, 55 of Louisville, Kentucky and formerly of Rockcastle County passed away Monday, June 21, 1976 at the Veterans hospital in Louisville, Kentucky. He was born September 26, 1910 in Rockcastle County, the son of the late William and Maude Langford Bullock. He was a veteran of World War II and a member of the Church of Christ.

Survivors are three sons, Ray of Rt. 1, Mt. Vernon, Bob of Windloch, Washington and Stanley of Louisville; four daughters, Mrs. Daisy Crump of Rt. 6, Cynthia, Mrs. Aileen Robbins of Rt. 1, Smithville, Ky., Mrs. Mildred Bell of Rt. 3, Crestwood, Ky. and Mrs. Juanita Whitaker of Louisville; four brothers, Shirley and Russell, both of Rt. 1, Orlando, Raymond of Rt. 1, Brodhead, and Robert of Summerville, South Carolina; three sisters, Mrs. Mary T. Leger of Covington, Ky., Mrs. Dessie Robinson of London and Mrs. Helen Cameron of Rt. 1, Orlando; three half brothers, three step brothers, two half sisters. Twenty four grandchildren and five great-grandchildren also survive.

Funeral services were held Wednesday, June 23, at the Cox Funeral Home with Bro. Leslie Hubble officiating. Burial was in the Cove Branch Cemetery.

## Miss Lisa Lewis Selected To Visit Europe and Russia

Lisa Ellen Lewis, the daughter of Betty R. Lewis of Mt. Vernon and Dr. Jack D. Lewis of Berea has been selected to visit Europe and Russia this summer as a participant of the 4-H Citizen Ambassador Program.

Lisa will join other 4-H Citizen Ambassadors in Washington, D.C. on June 26 for an orientation program prior to a 38 day People-to-People visit in England, France, Belgium, Switzerland, Germany, Denmark, the Netherlands and Russia.

She will be traveling in a group of 33-35 youth chaperoned by Mr. and Mrs. Baird Foree of Lexington. The group will travel by air and bus as they experience homestays with host families, visits with European 4-H and other youth groups; tour historical sites and meet new friends from many different cultures in Europe, as well as other youth in the U.S.A. from other states.

The 1976 Citizen Ambassadors are



The staff of the Rockcastle County Hospital has caused to be erected a plaque in memory of Miss Mary Ann Watts. Miss Watts, a lab technician at the hospital, was killed recently in an auto-train accident in Crab Orchard. Shown in the photo are Larry Bullock, lab technician, left, and Henry Hoskins, administrator.



Those attending the Extension Homemakers Cultural Arts Camp from Rockcastle County June 14th were: Glenn Brooks, Emily Crawford, Ella Mae Martin, Marjorie Shivel and Barbara Watson of the Broadhead Willing Workers, Virginia Hansel, Christine Taylor and Norietta Thompson of the Quail Homemakers and Merita McGuire and Shirley Wallin of the Chestnut Ridge Homemakers. The camp was held June 14 at the J.M. Felner Memorial 4-H Camp at London. The homemakers participated in basket weaving, creative stitchery, paper pottery and string art. Shown in the photo are Virginia Hansel, Christine Taylor and Ella Mae Martin working with paper pottery. One hundred ninety four homemakers from the eight-county Wilderness Trail Area attended the day camp.



Junior Counselors for the camp last week were, front row, from left: Vanessa Hopkins, Shirley Riddle, Jill Stevens, Rick Anderkin, Jennifer Hansel, Leighanne Hatt and JoAnn Riddle. Back row, from left: Shirley Powell, Kim Marking, Linda Powell, Leslie Mullins and Debbie Brown.

## "HOME LINE" (Cont'd from P-10)

stewed, although the flavor is different from the canned product.

For more detailed canning and freezing directions, stop by the county Extension office in the Courthouse in Mt. Vernon for free copies of our food preservation circulars.

## DOES SALT STOP SPOILAGE IN HOME-CANNED FOODS?

No. When it comes to canning meats, poultry, and vegetables, salt is an option. It adds flavor only, and has nothing to do with preventing spoilage.

If you do use salt, buy special canning and pickling salt which contains no anti-caking agents or iodine. This kind gives the best results.

The Mt. Vernon Signal P-11 Thursday, June 24, 1976



**CHAMPION IV**  
WHOLE-HOUSE  
AIR CONDITIONING



**AND ONLY YORK HAS THE FlatTop COIL**



**CALL NOW FOR A FREE ESTIMATE**

**Rockcastle Refrigeration**

Richmond St.  
Mt. Vernon, Ky.



# COUNTRY MUSIC SHOW

**FRIDAY, JUNE 25 - 8 P.M.**

in the

## OLD BARN IN RENFRO VALLEY

Featuring:

The Countrymen  
J. and Mary Lou Perkins

Ernie Sowder  
Eddie Price and  
The Bluegrass Traditions

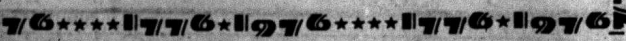
Plus Other Local Talent

Pete Stamper  
Virginia Sutton Bray

Al Ballinger  
Country Charlie  
The Hensley Brothers

Admission: Adults - \$1.50 ea., Children, 6 and over - \$1.00, Under 6 Free

Proceeds go to Rockcastle Co. Jaycees toward cost of erecting monument.



4-H and other youth 16-20 years old from Alabama, Alaska, Arkansas, California, Georgia, Idaho, Iowa, Kansas, Kentucky, Maryland, Montana, New Hampshire, New Jersey, Nevada, Ohio, Oregon, Pennsylvania, South Carolina, South Dakota, Texas, and Washington.

Operating under the auspices of the National 4-H Foundation and People-to-People, the U.S. program is coordinated by Mrs. Ruth J. Shane, a former Idaho and Washington Extension 4-H Agent, living in Moscow, Idaho. Youth wanting information about the 1977 program should contact: Mrs. Ruth J. Shane, U.S. Program Director, 4-H Citizen Ambassador Program, P.O. Box 332, Pullman, Washington 99163. Phone (509) 564-1213; Lisa Lewis; Cheryl Witt, their County Extension Agent or State 4-H Office.

## "SOFTBALL" (Cont'd from front)

Rockcastle Counties. For further information regarding this tournament, you can contact the District Commissioner by phone, Day No. 792-3018, and Home Phone 792-2893.

## "RECORDS OPEN" (Cont'd from front)

public records pertaining to a prospective location of a business. Also excluded are records of law enforcement agencies that, if disclosed, would interfere with law enforcement actions.

The bill provides that a citizen refused access to a public record can request the state Attorney General to review the agency's denial and deliver an opinion.

A person who successfully uses an agency in the circuit courts to get access to records will be awarded all costs, including attorney fees incurred in the litigation.

## Revival at Livingston Begins June 27th

A Revival will begin at the Livingston Pentecostal Church on Sunday, June 27, with the Birdsong Family from Purcell, Oklahoma. Services will begin at 7:30 p.m. nightly. Everyone is welcome.

Use the Classifieds  
They Get Results!

# AUCTION

OF  
**Mr. & Mrs. William Tinch's FARM MACHINERY AND PERSONAL PROPERTY**

**Fri., July 2, 1976, 6:30 P.M.**

**Near Woodstock, Pulaski Co., Ky.**

LOCATION Turn off Highway 39 near Woodstock onto Highway 934. Follow 934 approximately 1 1/2 miles to the sale.

MACHINERY 1974 International 140 gas tractor, cultivators for 140, mower, disk, plow, 2 wheel trailer and truck flat.

PERSONAL PROPERTY Picnic tables, 3/4 rollaway bed, 1 rollaway bed, 1/2 maple bed, Console TV, Motorola TV, fans barbed wire, lawn mower, iron post, oil drum, picks, shovels, posthole diggers, wheels, log chains, plus much more.

STOCK 1 1/2 year old mixed Jersey milk cow, 1 hereford heifer, 6 Laying hens, 1 rooster and 2 rabbits.

TERMS - Cash day of sale.

For additional information contact Mr. and Mrs. Tinch at 379-6604 or

By set owner's request, all property shown by appointment with auctioneer only. Call today for an appointment.

**Ford Realty & Auction Co.**

Col. Sam Ford  
Realtor Auctioneer

Mt. Vernon, KY  
OFFICE 256-1315

D. Danny Ford  
Realtor Auctioneer

nights 758-8400

NIGHTS 256-4446



# WANTED ADS

WHATEVER YOU NEED

## CLASSIFIED RATES

Local rates - 5c per word, minimum \$1.00  
 Card of Thanks - 3c per word, minimum 75c  
 In Memory - 3c per word, minimum 75c  
 Classifieds paid in advance except to businesses  
 Display Classifieds - \$1.50 per column inch

## For Sale

**FOR SALE** F750 with a factory dead tandem, 20 ft. bed, new paint job (inside and out) \$4,700. Truck may be seen at Burdine's Area at Livingston or contact Jackie McClure, Mt. Vernon, Ky. Call 453-4411 from 8 a.m. to 6 p.m. or 256-2331 after 6 p.m. 40xntf

**The Mt. Vernon Signal P-12 Thursday, June 24, 1976**

## ALUMINUM GUTTERS INSTALLED

Seamless Colors  
**T & S BUILDERS**  
 256-2104 256-4372



## SEPTIC TANKS

Sales and Service  
 750 Gal. 1,000 Gal.  
 Distribution Boxes  
 1,000 Gal. Water Distribution Tanks

**J & J Concrete Tanks**  
 Jim & Jack's S&T Store  
 256-4363  
 After 5 p.m. 256-2580



**Floyd (Bill) Raines**  
 DOZER WORK  
 SPECIALIZING IN SMALL JOBS  
 LIVINGSTON, KY.  
 Ph. 453-4161

**W. B. HELLARD CONSTRUCTION CO.**  
 General Contractor  
 Specializing in Concrete Work  
 FHA Home Building  
 Installation of Chain Link Fence  
 Phone 443-7547  
 Route 1, Box 344  
 East Bernstadt, Ky. 40729 36xsp

## REPAIRS

Sewing Machines Repaired All makes and Models 17 years experience Work fully guaranteed Three Day Service  
**TERMITES'**  
 Call Madison Termite Co., Berea, Ky.  
 Free Inspection Phone 986-3757  
 Local Calls  
 Jack Parsons, Wides 256-2286 or  
 C. H. Webb, Livingston, 453-9331 25xntf

**HENSLEY'S USED CARS**  
 ROUTE 2  
 ORLANDO, KY.  
 PHONE 256-4336

**FOR SALE:** New and used vacuum cleaners. Call 758-8584. 35xntf

**FOR SALE:** 1966 Chevy Long Wheel base ton truck. Good condition. \$1,290.00 Call 256-4949. 42xlp

**FOR SALE:** Electric well pump. See Gilbert Smith at Renfro Valley or call 256-4871. 42xlp

**FOR SALE:** 1974 Suzuki GT 380 Street Bike. 1300 miles, one owner, excellent condition, easy bar and pad, crash bars, windshield, 2 helmets. Must sell immediately in College. \$900 cash or take over payments. Ph. 986-9600 after 5 p.m. or 256-4557. 42xlp

**FOR SALE:** 1970 Chevy van. Call 256-2051. 42xlp

**YARD SALE:** of Lela Mae Harris at the home of Pate Bullock on Sigmon Street in Broodhead Saturday and Sunday, June 26 and 27, 10 a.m. to 8 p.m. Good men, women and children's clothing, curtains, jewelry and lots of other items. Cancelled in case of rain. 42xlp

**FOR SALE:** 1960 GMC 2 ton truck with new 16 foot flat bed in perfect condition. Tires good, call fair \$450.00. Call 453-4956 or 453-4953. 42xlp

**FOR SALE:** A modern 7 room house, garage, barn and outbuilding with 4 acres of land. Price reduced. Also, electric stove and wash hog. Yard sale all week at my home. Anna Wright. Call 758-8881. 42xlp

**YARD AND GARAGE SALE:** Saturday, July 3rd, Robert Noe, Tyrree Street, Broodhead, Ky. 42xlp

**FOR SALE:** 1965 International tandem dump truck, 13 1/2 yard steel bed, 30 ton hoist, v8 engine, \$4,500. Can be seen at Marie McKinney, Route 1, Box 150, Mt. Vernon 42x2p

**YARD SALE:** 3 family, June 25 and 26 at the home of Emmett Roberts, West Main St., Mt. Vernon. Baby clothes, quilt tops, dishes, etc. 42xlp

**FOR SALE:** Trenching for pipe laying, 10c per foot, 6 inches by 30 inches by length in dirt. \$15 minimum per job. Call Eddie Moore at 256-4707. Berea area, call 986-9110 ask for Gary Miracle. 42xlp

**FOUR FAMILY YARD SALE:** Saturday, June 26th at the home of Ruby Saylor at Widdie Knit dresses, pants and many more items. 42xlp

**FOR SALE:** 14'11" boat with trailer, \$350.00. 1969 25 hp Johnson motor with electric starter, \$350.00 or both for \$600.00. Also, one nice pick up camper 7' long, wide bed \$225.00. Cost \$325.00. Ph. 256-2286. 41xntf

**FOR SALE:** 1974 Suzuki, 125, \$425 and 1974 Suzuki, 400, \$475. Call 758-8192. 41x3

**FOR SALE:** Fisher amplifier, Fisher tuner, dual turn table, 2 AX speakers. Will take best offer. Call 256-2287. 41x3

## WANTED BACKHOE WORK



Gravel-Fill Dirt-Top Soil Hauled



**JIM & JACK'S S&T STORE**  
 PHONE 256-4363  
 After 5 p.m. 256-2580

**YARD SALE:** 2 Family, June 25 and 26, 9 a.m. to 6 p.m. at residence of Billy Kirby on Bowling Ridge. Guns, all sizes of men, women and children's clothing, dishes, draperies, jewelry, shoes, purses, odds and ends. 42xlp

**FOR SALE:** Twenty volume set World Book Encyclopedia One 1968 Year Book, \$65.00. Also, collection of Avon bottles. Call 256-4116. 42x2

**FOR SALE:** 14 ft. Norris Craft Runabout, 35 hp. Evinrude motor and trailer. Good condition, two tanks and new cushions. \$700.00. Roy, Winstead, Mt. Vernon. Days 256-2626 and nights 256-2204. 42xntf

**FOR SALE:** Three-month-old Norwegian Elk Hounds. Good for hunting - squirrel, rabbit and deer. \$30 each. Call 758-8339. 42xlp

**FOR SALE:** 50 Honda Mini-Bike. Call 256-2972. 30xntf

**CUSTOM PICTURE FRAMING:** Collector prints and others by Jim Oliver, Don Ensor, Ben Hampton, Sawyer, Middleton, Coblebach, Gene Gray, Grahnoff, Russel Madsen and many other artists. "Western Art." Teresa's Antiques & Gallery, Prospect St., Berea, Ky. 986-9147. 8 a.m. to 6 p.m., Monday through Saturday. 31xntf

**FOR SALE:** Building lots in Willilla section on Hwy. 70. Call G.D. Burton at 758-8171. 31xntf

**FOR SALE:** Woodworking tools and equipment, table saws, radial arm saws, drill press, other miscellaneous items. Call 256-2328 after 5 p.m. 26xntf

**1/2 PRICE:** High Quality Hy-Klas brand paint. Limited Supply. So Hurry. Come in to Parsons Gas at Roundstone or call 256-2288. 29xntf

**FOR SALE:** Business in small town, National Chain Organization. Good growing business. Low rent, low overhead, long term lease. Large apartment overhead. Owner going into bigger business. Phone Mt. Vernon 256-2614. Nights 758-9677. 35xntf

**FOR SALE:** 13 acre baby farm with good house and good barn. 2,665 lb. tobacco base. Located 5 miles west of Broodhead. Call 758-9653. 35xntf

**FOR SALE:** Angus Bulls, ready for service, tested and free of any disease. See John H. Holbrook, Route 1, Broodhead (Brindle Ridge) 36xlp

**FOR SALE:** Eight week old pigs \$35 each. Ph. 256-4489. 35xntf

**FOR SALE:** 1975 Suzuki motorcycle. Like new. Only 2,000 miles. Call 758-8753. 41x2

**GRAVE MARKERS AND MONUMENTS:** in stock at all times. McNew Monument Sales, U.S. 25, four miles north of Mt. Vernon. Phone 256-2232. ntf

**F&H CARPET SALES:** Hwy. 25 & 150 across from Exxon Service Center in Mt. Vernon behind Hale's Furniture. Installation Available. Wayne Hylander & Clifford & Frances Fry. Owners. PRICES \$7.99 up and 27xntf

**FOR SALE:** Local Farm Equipment Business. Reason for selling. 111 Health. Call 256-4829 or 758-8399. 26xntf

**FOR SALE:** Silos, silo unloaders, feeders and wagons. Contact CHARLES HACKLEY, Ph. 355-1437 nights. 24x52p

**HOUSE FOR SALE:** Located on Poplar Street in Mt. Vernon. Four rooms and bath. Just remodeled, has carpet throughout, new kitchen cabinets, washer and dryer hook-up, garage, smokehouse, garden, big lot. Call 256-4831. 34xntf

**FOR SALE:** 2 acre lots, city water available. Old Mt. Vernon-Brindle Ridge Road. Ph. 758-8399. 32xntf

**FARM SALE:** 22 Acre Farm of the late Mr. and Mrs. Mode Hamm. On Route 70, Ottawa Section. 5 room modern house with new roof, full basement, well insulated. Also, a two room house and nice barn. Tobacco allotment is 1,727 pounds. Immediate Possession. Approximately 900 feet frontage on 70. City Water Available. Contact R.H. Hamm, Adm. at 758-8454 or 256-2123. 35xntf

**YARD SALE:** Friday and Saturday, June 25 and 27 at the home of Janet Brooks on Copper Creek Road. Trash and Treasures - Dishes, toys, bottles, clothes (baby and childrens, sizes 2-7), men's and ladies. Something for everyone. Cancelled in case of rain. 42xlp

**YARD SALE:** Friday and Saturday, June 25 and 27 at the home of Janet Brooks on Copper Creek Road. Trash and Treasures - Dishes, toys, bottles, clothes (baby and childrens, sizes 2-7), men's and ladies. Something for everyone. Cancelled in case of rain. 42xlp

**YARD SALE:** Saturday, June 26th, 9 a.m. to 4 p.m. Trailer park across from hospital. Men, women and children's clothing and household items. 42xlp

**HOUSE FOR SALE:** 5 room house with bath and garden, one mile off US 25 on Route 1004 at Orlando. Ph. 256-2873. 42x2p

**FOR SALE:** 45 Acre farm near Ottawa: Farmall International tractor with cultivator with turning plow, disc, tobacco sifter and oak pick-up truck racks. Call Clinton Allen at 855-7171. 42x3p

**THE ATTIC**  
 Used Clothing and Household Articles at prices to suit your budget.  
 Open 9 a.m. to 5 p.m.  
 Monday thru Saturday  
 Williams St., Mt. Vernon  
 Call 256-4919

**YARD SALE:** At the home of Carter Hgkins, Broodhead across from Baptist Church, Friday and Saturday, June 25 and 26, 10 a.m. to 6 p.m. 42xlp

**FOR SALE:** Nice dune buggy. Ph. 758-8906. 42x1

**REDUCE EXCESS FLUIDS WITH FLUIDEX** Lose weight with Dex A Diet capsules. YOUNGS PHARMACY. 42x2p

**ZINC** from Harvestime Nutritionals... the mineral associated with healing. Now at Young's Pharmacy. 37x3p

**NOTICE:** Will stay day and night with elderly woman or babysit for \$50.00 a week with Saturday and Sunday off. Experienced. Contact Mamie Reynolds, Route 1, Broodhead, Negro Creek Road or Phone 758-8653. Bill Brummett's Grocery. 41x3p

**OLEIKA'S 28th SHRINE CIRCUS**  
 COMING TO LEXINGTON  
 June 25, 26, 27  
 University of Kentucky COLISEUM  
 MATINES  
 Friday-Saturday  
 2:30 P.M.  
 Sunday, 3 P.M.  
 EVENINGS  
 Friday-Saturday  
 8:15 P.M.  
 Phone  
 277-6869 or 278-0601  
 For Reserved Seats  
 20 BIG ACTS

**LIKE TO HAVE AN OUTSIDE BUILDING 12x24?**  
 You can with Economy and Ease.  
  
**A-1 PORTABLE BUILDINGS**  
 Route 229 London 878-8425  
**CAMPER TOPS**  
 From \$199.00 Installed!

**Need a Musical Instrument?**  
 Then try Johnnie Sams at the Sanitary Cleaners.  
 We have, in stock, guitars (both electric and flat-top), Banjos, mandolins, violins, bass guitars and every accessory for all instruments.  
 Come in and ask for what you want - we're sure to have it - If we don't, we can get it.  
 So, put some fun and joy in your life, learn to play an instrument and JOHNNIE has them for sale.

**AT SANITARY CLEANERS**  
**HENSLEY'S USED CARS**  
 ORLANDO, KY.

1972 Chevrolet Pick-up, 3/4, V8	\$1,275.00
1970 Chevrolet Pick-up, V8, Automatic	1,275.00
1970 Dodge, 6 Cylinder	995.00
1965 Chevrolet Pick-Up 6 Cylinder	375.00
1964 Dodge, 6 Cylinder	375.00
1959 Chevrolet Pick-Up	250.00
1963 Ford Pick-Up, V8	295.00
1967 International Pick-Up, V8, Automatic	475.00
1960 Oldsmobile, 4 Door	250.00
1971 Dodge Dart, 2 Dr., 6, Automatic	1,275.00
1971 Plymouth Scamp, 6 Cylinder	995.00
1970 Ford, 4 Door, V8, Blue	475.00
1967 Mercury Cougar, V8, Stick	475.00
1968 Ford, 4 Door, Green, V8, Automatic	375.00
1968 Ford, 6 Cylinder, Automatic, White	395.00
1969 Ford, V8, 390, Automatic	475.00
1972 Plymouth, 4 Door, V8, Automatic	995.00
1967 Plymouth, 4 Door, Yellow	275.00
2 Ford Station Wagons [Your Choice]	99.00
1968 Chevrolet, 2 Door, Red, V8, Automatic	275.00

COME BY AND MAKE ME AN OFFER  
**HENSLEY'S USED CARS**  
 Route 2, Orlando, Ky.  
 Phone 256-4777

**Country Music Show**  
 FRIDAY, JUNE 25th, 7:30 P.M.  
**Renfro Valley Barn**  
 ADMISSION:  
 \$1.50 Adults \$1 Children  
 All Proceeds Go To Help Erect War Memorial Monument.  
 Sponsored By Rockcastle County Jaycees

IMPALA - CAPRICE - MONTE CARLO - CHEVELLE - VEGA - CAMERO - MONZA - CORVETTE - CHEVY TRUCKS - IMPALA - CAPRICE - MONTE CARLO - NOVA  
**"America's No. 1 Car"**  
**BRITTON CHEVROLET-OLDS, INC.**  
 U.S. 25 NORTH 986-3169 BEREA, KY.  
 50 Gal. Gas Free On any car purchase.  
 The Best \$200 worth of options for only \$19.76  
 CORVETTE - CAMERO - VEGA - CHEVELLE - MONZA - IMPALA - CHEVY TRUCKS - CORVETTE - NOVA - CAPRICE - IMPALA - CAPRICE - NOVA - MONTE CARLO



# WANTS

**WHATEVER YOU NEED**

## Notice

**HAMM BROTHERS** Water Well Drilling and Contracting. Call 256-2024 anytime after 5 p.m. ntf

**BLOWN IN INSULATION** Aluminum Siding, Storm Windows and doors. For free estimates, contact Preston Collins, Route 2, Mt. Vernon or call 453-2161. ntf

**POSTED:** Land belonging to Abbe Ben Allen on Piney Branch at Livingston. 39x12p

**POSTED:** Land on Piney Branch belonging to heirs of Edna Collins. 39x12p

**NOTICE:** The Ph.H. Painting and Carpet Cleaning Co.'s inside and outside painting, gutters cleaned and repaired or replaced. Your carpet steam cleaned by people who know carpets. Call 788-8216 for free estimates. 29xntf

Insured Bonded  
679-2333

**Cumberland Seamless Gutters**  
Star Route Box 531 A  
Nancy, Ky.  
After 5 p.m.  
Ronald Dye  
Free Estimates All Work Guaranteed  
32xntf

**MONUMENTS ON DISPLAY** at Dowell and Martin Funeral Home. ntf

**POSTED:** I am not responsible for accidents on my farm near Lake Linville. Mitchell Abney. 34x12p

**NOTICE:** Check our prices on silos and feed handling equipment. Charles Harkley, Crab Orchard, Phone 355-7437. 25x52

**POSTED:** Land belonging to Robert Collins at Livingston. 39x12p

**POSTED:** No trespassing on land belonging to Raymond E. Sargent, Route 3, Brodhead (Brodhead-Conway Road). 39x12p

**POSTED:** No hunting or trespassing on my property located on L.C. Hickey PLEASE. 37x12p

**POSTED:** No hunting or trespassing on my land located at Cave Ridge, Ky. on Hwy. 1955. Paul Griffin. 37x12p

**POSTED:** No hunting, fishing or trespassing on my farm located at Flat Gap Road at Boone, Ky. Will not be responsible for accidents. Lewis Linville. 36x12p

**PLAN YOUR VACATION** for the **BRODHEAD FAIR** August 9th thru 14th. 35x12

If you need Electrical Work of any kind, call **DICK'S-ELECTRIC SERVICE**, Route 1, Brodhead at 788-8339. Free Estimates. 22xntf

**POSTED:** No hunting or trespassing whatever on my farm located at Mullins Station on Crooked Creek. Casper Mullins. 33x12p

**NOTICE:** To Dairy Farmers, we have all cleaning supplies and DElabel equipment for sale. Call 788-8171. 31xntf

**POSTED:** No hunting or trespassing on property of L.C. Hickey on waters of Wolfe Creek. 40x5p

**POSTED:** Killing groundhogs and foxes will not be responsible for anyone getting hurt on my property. STAY OUT. No Trespassing. Chester Baker, Boone. 41x16p

**POSTED:** No hunting or trespassing on land belonging to Willie Sargent, Route 3, Brodhead, Ky. 40x09 40x3

**NOTICE:** It is the policy of the Harry Sparks Area Vocational Education Center not to discriminate on the basis of sex in its educational programs, activities or employment policies as required by Title IX of the 1972 Education Amendments. Inquiries regarding compliance with Title IX may be directed to Mr. Lloyd Cain, Coordinator at P.O. Box 186, Mt. Vernon, Ky. 256-4446 or to the Director of the Office for Civil Rights. 42x1

**POSTED:** No trespassing on Joel C. and Jane Gentry adjoining RCHS. Violators will be prosecuted. 42x12p

**POSTED:** No Trespassing on my property located on West Main St. adjoining Sowder Property. Will not be responsible for accidents. James T. Wolfe. 42x12

**WANTED:** Someone to dy bysitting in my home (Disputants, Arpa). Call 256-4670 after 5:30 p.m. 42x2

**WANTED:** Odd Jobs, carpenter, painting and roofing, repair. Phone 256-2656 42ntf

## For Rent

**FLOOR SANDING EQUIPMENT:** Do-It-Yourself Varieties of all kinds. Gy Seal, Fabulon Fillers and Sealers. Everything you need for a professional job! Appliance Service Center, Mt. Vernon, Ky. 42x1

**FOR RENT:** Two or three rooms, furnished or unfurnished apartments. Steam heated. At Rockcastle Hotel. See Roy-Winstead at Appliance Service Center. 42x1

**FOR RENT:** 3 bedroom house with bath located on Hwy. 461, 3 miles from Mt. Vernon. Call 256-2464. 39x4p

**FOR RENT:** House trailer lots on city water and sewerage. Good location, nice shade trees. See D.H. Gray, Brodhead. 40x3

**FOR RENT:** Carpet Cleaning Equipment. Uses hot water to clean, rinse and vacuum out dirt in a single sweep. Everything you need for a professional job. Call 256-2288 or come in to Parson Gas and Appliance Service at Roundstone. 21xntf

## Wanted

**HELP WANTED:** Part-time waitress. Apply in person. Town House Restaurant, Mt. Vernon or Phone 256-1933. 38xntf

## PAINTING INTERIOR - EXTERIOR

Call 453-4691 or 453-4695

Experienced

**WANTED TO BUY:** Dried wild ginseng roots, if dried well. Will pay \$50 per pound. John H. Holbrook, Route 1, Brodhead (Bridle Ridge). 38x10

**ATTENTION Students, Housewives or Retired Persons:** Could you use \$50-\$75 extra income each week? Full or part-time. Olan Mills Studios needs you 20-24 hours per week. From 9 a.m. to 1 p.m. or 5 p.m. to 9 p.m. each day. Apply in person to Pat Parter at the Kentuckian Motel beginning Monday, June 21st after 9 a.m. 41x2

## D&D Carpet & Tile Cleaning

We can clean those room size runs and clean, strip and re wax tile floors. Free Estimates "Give the Dirt Diggers A Call"

Box 471 Phone 758-8840  
Mt. Vernon

**BIDS WANTED:** The Rockcastle County Board of Education will receive sealed bid proposals to resurface a blacktop area of Roundstone Elementary School until 7 p.m., July 5, 1976. Specifications and bid forms are available at the office of the Superintendent, Mt. Vernon, Ky. The board reserves the right to reject any and all bids. 41x3

**BIDS WANTED:** The Rockcastle County Board of Education will receive sealed bids for the construction of a scout-keeper/concession stand at the Superintendent's office, Mt. Vernon, Ky. The board reserves the right to reject any and all bids. 41x3

**TERESA'S ANTIQUES AND GALLERY:** Custom Picture Framing, Oval Mats and others. Limited Editions and Old Master prints, Victorian furniture, some antiques and ready made frames. Prospect Street, Berea, Ky. 986-9173 a.m. to 6 p.m. Monday through Saturday. 41xntf

**OWN YOUR OWN DRESS SHOP:** Factory fresh latest styles - Over 150 name brands to choose from Junior and Missy styles. Complete training 4 Different Fixture Decors to choose from. Visit our shops or talk to our owners. Compare our shops with anyone. Investment required \$17,500.00. Call collect (813) 922-0788 for Mr. Crofton. 41x2

**Call Classified to 256-2244**  
By 4 p.m. Tuesday

## CARD OF THANKS

We, the family of Georgia Clark Harmon, wish to thank everyone who helped us in any way in the death of our beloved daughter and sister.  
John Clark and Family  
\*\*\*\*

## CARD OF THANKS

We, the family of William "Slick" Sowder, would like to show our appreciation for the kindness shown us during the illness and death of our husband and father.  
A special thank to Sally Morris, the nurses, the McGaur Singers and those

who sent flowers and food. And, a very special thanks to Bro. Cecil Dailey for his kind words.

The Sowder Family  
Wife and Children

**The Mt. Vernon Signal P-13**  
Thursday, June 24, 1976

## COAL FOR SALE

**Block Coal**  
4 tons or less 29.50 per ton  
Over 4 ton \$28.00 per ton

**Home Stoker**  
4 tons or less \$31.50 per ton  
over 4 ton \$30.00 per ton

Open Monday Saturday  
7 a.m. to 5 p.m.

**RODA ENTERPRISES**  
Rt. 3, Box 425A, Ph. 256-5118  
Berea, Ky.

Per capita civilian consumption of milk in all dairy products total 546 pounds in 1975, three pounds higher than in 1974.

Per person use in 1975 of milk and cream total 283 pounds, butter consumption was 47 pounds per capita, cheese 18.5 pounds and cottage cheese 4.8 pounds per person.

Over 6,000 years ago, milk had already become an important food as recorded in the world's earliest written records found in the Sanskrit of ancient India

## GLENN PENNINGTON AUTOMOBILES

On the Strip  
(U.S. 25 North)

## FEATURED CARS THIS WEEK

- 76 Chev. Nova, 2 Dr. Colonade, Auto.
- 6, 6,000 Mi. Blue/Blue VR
- 75 Cadillac Coupe DeVille, Fully Eq'd White/White Leather Interior/Burgundy Roof
- 75 Cadillac Coupe DeVille, Fully Eq'd. Fremist Metallic/White Caberlet VR
- 75 Chev. Monte Carlo, 8 Auto, Air, Stereo Tape, Lt. Green/Green VR
- 75 Monte Carlo, Air, Silver/Burgundy VR
- 75 Mercury Comet G.T. 2 Dr. 6 Auto, Red/Black Stripe
- 75 Pontiac Grand Prix, Air, Black/Black VR
- 74 Chev. Vega, 2 Dr. Green
- 74 Chev. Nova Hatchback, Air, Auto, Brown/Brown VR
- 74 Chev. Impala Custom Coupe, Air, Lime Green
- 74 Chev. Monte Carlo Landau, Air, Am/Fm Stereo, Beige/White VR
- 74 Chevrolet Malibu Classic, 4 Dr. Air, 8, Dark Green/Lt. Green VR
- 74 Chev. 1/2 Ton Pick Up, 6, St. Shift, Metallic Brown
- 74 Datsun Pick Up, Orange
- 74 Ford Maverick, 2 Dr. 6 Auto, Air, Green/Green VR
- 74 Pontiac Grand Prix, Fully Eq'd, Green/White VR
- 74 VW Super Beetle, Dark Green
- 74 VW Sun Bug, Beige
- 73 Chev. Monte Carlo, White/Black VR
- 73 Jeep Wagoneer, Auto, 4 Wheel Drive, Orange
- 73 Chev. Vega Station Wagon, Auto, Green
- 73 Ford Maverick, 2 Dr. 8 Auto, Metallic Green/Green VR
- 73 Ford Galaxie 500, 4 Dr., Sedan, Air, Lt. Blue/White VR
- 73 Gremlin, 2 Dr., Auto, Beige
- 73 Pontiac LeMans Sport, 2 Dr. HT, St. Shift, White/Black/Red Stripe
- 72 Chev. Caprice, 2 Dr., HT, 8 Auto, 4 Dr. Brown/Black VR
- 72 Chev. Malibu Super Sport, 8 4 Speed, Red/Black VR
- 72 Chev. 1/2 Ton Pick Up, 8, St. Shift, Green/White VR
- 72 Ford Torino, 2 Dr. HT, 8, St. Shift, Red/Black VR
- 72 Pontiac Catalina, 2 Dr. HT, Air, Green/White VR

30-Day 100% Guarantee (On Most Cars)

...Financing To Suit Your Budget...  
**BEREA**  
Phone 986-3117  
"Now in our 17th year"

## MT. VERNON OFFICE SUPPLIES



**YOUR COMPLETE STATIONER**

**Legal Pads**  
Jr. Size 28c ea. or \$3.00/doz.  
Letter Size 55c ea. or \$6.20  
Legal Size 65c ea. or \$7.25

Mimeograph Paper \$3.85  
Red-Ruled Legal Bond 10.85  
Red-Ruled Onion Skin 8.30  
ype-Erase Bond \$9.00  
ype-Erase Onion Skin \$5.90

**Ko-Rec-Type \$1.19**  
**Bi-C Pens 25c to 49c**  
**Taperase \$1.19**  
**Liquid Paper 99c**

**Steno Books 55c or \$6.00 dz.**



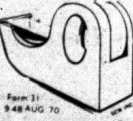
Typewriter and Adding Machine Ribbons  
All Types and Sizes

Carbon Paper 49c pkg.  
Telephone List Finder \$4.50

**SWINGLINE STAPLERS \$5.25 to \$24.95**

**Acco Fasteners \$4.80 bx. Bases \$2.80 bx.**

Swingline Staples \$1.90 bx.



Liquid Paper and Thinner (All Colors)



All Types of Record Books

\$3.28

\$3.50 and \$5.50

6x9 Envelopes 10c each  
9x12 Envelopes 12c each

For Office Machines - Sales and Service - Call 256-4639

Mimeograph Paper - Stencils - Liquid Ink - Duplicating Ink

FOR FREE DELIVERY OF ANY ORDER - CALL 256-2244

## WATCH NEXT WEEK'S SIGNAL FOR DETAILS OF Estate Auction

of the Late Harrison Holman's House and Lot Garage and Equipment

Located Near Brodhead, Rockcastle Co., Ky. Saturday, July 10, 1976-10:30 a.m.

**Ford Realty & Auction Co.**

Phone 256-4545

Mt. Vernon

## RICHMOND DRIVE-IN

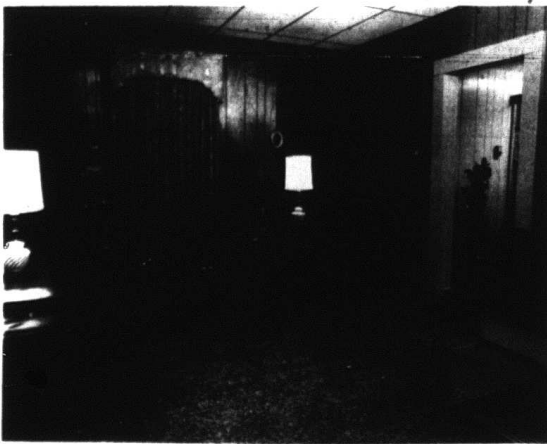
8 Miles North Berea on US 25

Now Showing - Ends Saturday At Dusk

Free wheeling... fun loving...  
**WALT DISNEY** presents  
**BLACKBEARD'S GHOST**  
with **USTINOV JONES PLESHETTE**  
Technicolor  
**THE ISLAND AT THE TOP OF THE WORLD**  
with **HARTMAN SANDER SMITH JONES MAJOR RAND AND CIVILLIAN JACK BENTLEY**  
Technicolor  
Sunday, Monday and Tuesday

They're hot  
**BURT REYNOLDS CATHERINE DENEUVE**  
"HUSTLE"  
A Paramount Production in Color  
A Paramount Picture  
**THE MIRSCH PRODUCTION COMPANY** presents  
**"THE MAGNIFICENT SEVEN RIDE!"**  
Color-Colorized  
United Artists

*"Sincere Personal Service"*



The Dowell and Martin Funeral Home is especially designed with homelike settings to provide an atmosphere of comfort and beauty. A place where old friends and familiar surroundings bring warmth and dignity to the family and guests.

Since our beginning, we have completely remodeled, refurnished and re-equipped our facilities - always keeping abreast, and sometimes even ahead, of the newest ideas and methods.

All of this has been done to achieve one goal. To provide this community with funeral facilities comparable to the finest our profession can offer and, most of all, your complete satisfaction.

We like to think that our firm is an ideal combination of two things - Large enough to provide complete and modern facilities and small enough to offer "Sincere, Personal Service."



*Dowell-Martin*  
**FUNERAL HOME**  
MT. VERNON, KENTUCKY

Billy Dowell

Roy Martin

Phones-  
256-2991 256-2997

MEMBER KENTUCKY FUNERAL DIRECTORS BURIAL ASSOCIATION

# Mount Vernon Signal

SPECIAL DAIRY SECTION

MOUNT VERNON, KENTUCKY 40456

THURSDAY, JUNE 24, 1976

## Dairy Field Day In Rockcastle Set For Friday, June 25th

### Will Be Held On Billy Lawrence Farm

The Dairy Day Planning Committee elected this year to carry out the observance of June Dairy Month in Rockcastle County in a little different vein than in past years.

Instead of the usual Dairy Day activities scheduled for Mt. Vernon on the last Saturday in the month, there will be a Dairy Field Day held at Mr. and Mrs. Billy Lawrence's dairy farm in the Quail section of the county on Friday, June 25th.

The day will begin with the judging of the Dairy Princess contest at 10 a.m. followed by a tour of the Lawrence farm from 10:15 to 11:30. Kenneth Evans, Agronomy speciality, University of Kentucky, will be present on the tour to discuss a forage program for the dairy farmer.

At 11:30, Miss Sheila Greenwade, State Dairy Princess, will give a talk and lunch will be served by the Quail Homemakers from 11:45 to 1 p.m.

At 1 p.m., there will be a drawing for prizes, and also at this time, Mr. and Mrs. Billy Lawrence, a former Dairy Family, will give a welcome to the crowd.

The Dairy judging contest will be held from 1:15 to 2 p.m. and prizes will be awarded the best judges. This will be followed by another drawing for prizes and at 2 p.m., there will be the

recognition of Outstanding Dairy Leadership by Roy Brown, Vice President, Production Credit Assn.

At 2:15, the Mini-Olympics will be held and at 2:45, one lucky young lady will be crowned Rockcastle County Dairy Princess by Gwennilyn Harris, last year's princess.

Following this, there will be another drawing for prizes and as the last item of the day, the

drawing for the dairy heifer will be held. The heifer is donated annually by The Bank of Mt. Vernon.

Members of this year's Dairy Committee were: Roy Brown, Billy Lawrence, Jack Owens, Harold Ballinger, Bill James, Estil McBee, Alier Hunt, Dorothy Lawrence, Flora MacBrown, H. Lee, Durham, June Stewart, Cheryl Witt and John Cox.

## Syllabus and Trifles

Cheryl Witt  
County Extension Agent  
for Home Economics

Since this is the nation's Bicentennial year and this week we celebrate Dairy Day in Rockcastle County, it is very fitting that we take a look at how milk products were used in foods two hundred years ago. Most foods of the early settlers were plain and contained ingredients which were easy to obtain from nature and their domestic livestock. Many families had a cow or goat to provide milk.

There was no modern refrigeration to keep milk fresh over a period of time. The fresh milk could be held for a couple of days in a spring house. Thus, those families who were fortunate enough to have milk, took advantage of it.

Here are some foods of the colonists which were adapted from original recipes of the era. Some of these foods are still served today. Though they may be slightly revised, they represent the beginning of 200 years of good eating.

(Cont'd to back)

## Milk

H. Lee Durham  
County Extension Agent  
for Agriculture

Milk is one of the foods which every person should have daily for normal growth and health. Nations which have not provided an abundant supply of good milk have developed people of small stature. Dr. E. V. McCallum says, "The people who have made liberal use of milk as a food, have in contrast, attained greater size, greater longevity, and have been much more aggressive than the non-milk using people, and have achieved much greater advancement in literature, science and art." Dr. Mary Swartz Rose says in her

book, FOUNDATIONS OF NUTRITION: "Milk contains the greatest assortment of nutritive substances of all single food materials, and constitutes the foundation upon which an adequate diet can most safely and most easily be constructed."

Minerals. Milk is the richest food source of calcium, which is necessary for the growth and hardening of the bones and teeth, and the regulating of various body processes. It is very difficult for the housewife to supply her family with enough calcium for growth and health unless she uses one quart for every child and one pint for every adult each day. In order to

(Cont'd to back)

## Keeping A Cow

Harold Ballinger  
Director ASCS Office

Two hundred years ago, "Ole Betsy" roamed around the homestead munching on weeds and wild grasses that Mother Nature provided. Today, she is treated like a Queen having luscious grasses and legumes delivered to her castle.

Keeping a cow today requires the careful attentive hand of a professional 365 days per year. He shall provide an abundant supply of delicious feed, cool clear drinking water, open space to roam, clean comfortable housing with waste disposal facilities, refrigeration or storage, pest control, health insurance, nursery care, be a friend of the banker, and a kindly

visit once a year. In return, Ole Betsy will convert inedible grasses and legumes into milk, one of nature's most wholesome foods, meat for the table, provide full time employment, insure economic security, giving a feeling of importance, and you will see your banker smiling.

This agreement made and entered into by mutual consent this day and forward between "Ole Betsy" and the dairy farmer.

Witnesseth. In consideration of good faith and fair treatment parties agree to provide for one another from this time forward.

Signed: Ole Betsy and Dairy Farmer



State Dairy Princess Miss Sheila Greenwade Will be here for Dairy Field Day Activities

## Agriculture 1976

Clay A. Colson, Chairman  
Rockcastle County Livestock  
Improvement Association

A lot has been said about the history of farming, and I wouldn't want to downplay that. But, in this column I want to devote some attention to the present and the future. The reason we are celebrating our history is because it has led us up to the most productive and efficient agricultural system in the world.

It seems to me that farming today is the most dynamic and progressive industry in America. Look at the innovations that

have been made by farmers in the last couple of decades, as compared to any other field of endeavor. I don't think enough people reflect on how much agricultural history is being made in our lifetime.

Here are just a few of the dramatic improvements in farming that have come up in the last 20 years: No-till farming; double cropping; most of our present-day chemical weed control and animal drugs; Anhydrous Ammonia; giant automated feed lots and hog finishing houses; new seed varieties such as single

(Cont'd to back)

## June Is Dairy Month

S. T. Vanover  
Soil Conservation Service

To different people, the Month of June means different things. To the boating enthusiast, a time to take to the water; to the bride-to-be, the choice wedding month; to the student, freedom from the classroom; to the dairyman, hay making time, but most of all June is Dairy Month.

June is a time to turn our attention to the importance of dairying, the economic impact that it has on our community and the wholesome products provided daily by the dairy industry. Yes, June is a time to salute those persons who are so devoted to their enterprise that they are willing to milk twice a day, seven days a week; to constantly make herd improvements; to invest in expensive buildings and equipment; and to plan and conduct a good forage production program which is of

vital importance in any dairy operation.

Here, in Rockcastle County, we have some 20,000 acres of grassland compared to 30,000 acres of rotation cropland and 130,000 acres of woodland. This pastureland must provide grazing for both the dairy and beef industry in the county.

More than half of the pastureland in the county needs improvement by renovation, proper liming and fertilization, or brush control. It would be reasonable to conclude that this unimproved pasture land is not producing capacity high quality forage necessary for successful dairying.

Now is a good time to evaluate your forage program. If your pastures are not producing top quality grasses and legumes, improvements should be made.

The Soil Conservation Service can provide a free soil survey on conservation district

(Cont'd to back)

## Down On The Farm

Roy G. Brown  
Assistant Vice President  
Cumberland PCA

A hearty salute to the dairy farmer for providing the world with some of the most delightful and healthful foods in the world. The dairy farmers have worked long hard hours since the founding of our great country 200 years ago. When the pioneers started moving west from Plymouth Rock in a covered wagon with their families and few belongings, most of them had an old faithful milk cow tied behind their wagons.

Today dairying has become one of the farmers most important means for income to pay debts, living expenses, and education for children. All of this means that we have to do a better job, and the key to doing this is:

1. High producing cows;
2. High production of good feed;
3. Plenty of good clean fresh water;
4. Fly and disease control programs.

Again congratulations to all you dairy farmers for what you have meant to our country for the last 200 years, and will mean in the years ahead.

From all of us at PCA, congratulations, and we will expect to see all of you Dairy at Billy Lawrence's. DOWN ON THE FARM.



## Dairy Farmer Efficiency

Total U.S. milk production in 1974 was almost exactly the same as in 1945 - 26.84 billion half-gallons in 1974 - actually a rise of just under 1 percent over the thirty years. In 1945, 1,163,000 farm families were producing milk for commercial use. Today, approximately 263,000 farmers are producing and selling milk - a staggering drop of 900,000 dairy farm families since 1945.

With 77 percent fewer commercial dairy farmers in 1974, than there were in 1945 producing milk, how has domestic milk production kept pace? Mainly this remarkable efficiency has been possible through better breeding, feeding and marketing.

### AVERAGE HERD SIZE HAS INCREASED

First, average herd size has increased from 5 1/3 cows per farm in 1945 to over 40 cows per farm in 1975. Almost one fourth of all dairy farmers today have herds of 50 or more cows. Since 1959, the total number of herds averaging 50 or more cows has increased from 37,000 to over 62,000.

Through mechanization dairy farmers have been able to handle substantially larger numbers of cows. Efficient labor saving farm equipment has been employed to clean barns, plant and harvest feed, and for the actual milking process.

Expanding the average herd size would not have enabled dairy farmers to maintain total national milk production, unless they had also been able to steadily expand production per cow.

### PLANNED FEEDING HAS INCREASED PER COW PRODUCTION

Better breeding techniques, a steady upgrading in cow quality, and better care and housing of cows, have contributed to more production. But the huge increase in cow production was primarily due to increased and a more scientifically planned feeding.

If fed more food (up to a certain point) cows of equal quality, will produce more milk. How much high protein milk feed a dairy farmer decides to give the cows depends in any given period on the price of the feed vs. the price he received for his milk.

The U.S. Department of Agriculture keeps a monthly calculation of the relationship between feed prices and milk prices, the milk feed price ratio, which is a good rough guide for estimating whether dairy farmers are making a fair return on their investments. The milk feed price ratio gauges how many pounds of feed the farmer can buy for the price of a pound of milk. For example, the average national milk feed ratio was 1.78 in November 1975, which indicated that the farmer could buy 1.78 pounds of feed for the price he received for one pound of milk. As the milk feed price ratio drops toward 1.1, the dairy farmer loses money. Feed costs alone will amount to one-third to one-half of his total operating costs.

### FEED PRICES HAVE DISCOURAGED PRODUCTION

Since 1972, when the world price for feed grains experienced sharp rises, production per cow has tended to level out because

farmers were not getting enough for their milk to offset the higher feed costs. But for many years the output per cow rose dramatically.

The national average for production per cow in 1945 was 1,113 half-gallons per year. By 1973 that figure has risen to 2,354 half-gallons - more than doubling. Between 1973 and 1974 the average production per cow climbed nationally just under 2 percent, while in the Southeast production per cow rose by 5 percent.

Today nearly a fourth of all milk production is by dairy farmers milking 100 or more cows, and a single dairy farmer milking 100 or more cows, will produce (with a slightly higher production per cow than smaller herds) enough milk to supply the dairy product needs of 3,761 Americans or 1,213 families.

### DAIRY COOPERATIVES

### HAVE AIDED INCREASED EFFICIENCY

The moving and marketing of such large amounts of milk are extremely critical to the dairy farmer. This task is performed for them by their cooperative, which arranges for pick-up, temporary storage, and transportation to a variety of users - bottling plants, cheese and butter manufacturing plants - often moving milk hundred of miles to the point of greatest demand on any given day.

In order to transport and market huge amounts of milk across entire regions of the country, dairy cooperatives have joined together to form regionalized organizations. They achieve economies of scale, and are able to move milk freely across substantial distances.

Cooperatives further provide their farmer-owners with a guaranteed market for the milk they produce daily. With this kind of assurance, dairy farmers can be encouraged to expand their operations knowing that the cooperative will be able to sell all the milk they produce at the best possible price. The

relative security that dairy farmer owned marketing cooperatives provide is clearly one of the primary reasons for the increased per-farm expansion in milk production.

### IT IS IN THE CONSUMER'S INTEREST THAT DAIRY FARMERS STAY IN BUSINESS

Despite the steady growth of productivity through 1972, and the vigorous efforts of the cooperatives to market milk, a seasonal shortage of milk and dairy products began to appear in 1973, as dairy farmers continued to leave their farms for better financial opportunities.

Most of those who quit the business through the 1960's were small farmers - with less than 20 cows. But today the farmers who quit milking are often those with larger and more efficient operations. When one farmer milking 100 cows goes out of business, he makes a sizeable dent in the U.S. milk supply, and when the supply and demand for dairy products are so nearly in balance as they have been over the past several years, it becomes

a matter of real consumer concern if the most efficient dairy farmers are among those quitting the business.

The enormous increase in productivity of the dairy industry has so far managed to maintain an adequate supply of milk and dairy products for the American consumer at prices in recent years rising less than average for food in general. But whether the remaining quarter of a million commercial dairy farmers are going to continue to increase their investments and their productivity to sufficiently maintain the domestic U.S. milk supply in the future, is becoming a serious question.

\*\*\*

Everytime you drink a glass of milk it provides enough energy to walk for a mile, or dance an hour, or climb 196 stairs, or play 9 holes of golf, or 3 1/2 hours of cards, or sew for a couple of hours, or houseclean for 2 hours.

\*\*\*

## CUMBERLAND PRODUCTION CREDIT ASSOCIATION

### EXTENDS

## CONGRATULATIONS!

TO THE DAIRY FARMERS OF ROCK-CASTLE COUNTY for the excellent job they are doing. We in PCA know they work long hours to provide the most delicious food in the world.

We wish them better prices for their dairy products in the future because they deserve all they get and more.

Anytime we in PCA can be of service in any way feel welcome to visit, call or write your friendly partners in farming.

Roy G. Brown

Assistant Vice President

Jewell Hansel

Assistant Office Manager

Douglas Edwards

Assistant Manager

Mary A. Bullock

Secretary



## An Editorial: A COW IS AN INCREDIBLE MILK MAKING MACHINE

Dairy cows do much more than produce wholesome milk and nutritious meat. Being female, these incredible milk making machines tidy up nature's house and make do with leftovers. They graze where plows cannot go and transform inedible food byproducts unfit for human consumption into nourishing and necessary milk.

And cows are naturalists, too. They irrigate and fertilize grazing lands and leave enough weed and grass stems for sheep and goats to enjoy. They juggle nature's imbalance and tolerate man's shortsightedness.

Every year dairy cows munch a mountain of some 13 million tons of byproducts. Because of microorganisms living in their rumen, cows have the unique ability to transform these worthless materials into nutrients that can be used to produce milk.

### More from Less

Something more from something less is a refreshing change in this era of decreasing expectations. Cows graze placidly while man frets about decreasing oil supplies and sometimes overlooks his four-footed natural resource.

Animal agriculture is being challenged today as a luxury our modern society can no longer afford. Some contend that grain produced on an acre of land should be fed directly to humans and not be converted into animal products. Others suggest eating less meat in this country would solve world hunger elsewhere.

That simply is not true.

Feed for dairy cows consists mainly of rough, fibrous materials unsuitable for man, or coarse feed grains man doesn't eat in large amounts. In addition, cows forage on lands that would provide little or nothing to human food requirements. In fact, taking cows out of the food producing business, would actually decrease the food available for human consumption.

The dairy cow is the most efficient farm animal in converting forage and grain into food. Future agricultural planning should concentrate on crop and animal production that will provide the greatest yield for the lowest cost. It is estimated that cows can be maintained on a ration of 80-100 percent non-grain feeds.

There are more than 50 references to cows and milk in the Old Testament of the Bible.

A high-producing dairy cow may weigh 1,200 pounds or more and consume many times that weight in feed yearly.



MILK PRODUCTION will be up 1 percent for the first six months of 1976. If that increase rate holds for the entire year, total milk production will approximate 116.6 billion pounds.

### JUNE DAIRY MONTH

In June, 1937, National Milk Month was begun to salute the dairy farmers for producing milk, so important to the nation's health and economic welfare. The nationwide program evolved into June Dairy Month with its reminder to consumers of the nutritional importance of dairy foods in the family diet.

The original summer campaign noted that cow's pro-

duction of milk went up during the green grass months. Today, even though June is not the highest milk producing month, the month-long JDM salute is accepted by newspaper editors and expected by consumers.

Modern dairy technology has equalized monthly milk production. So June becomes a promotional platform for dairy farmers to mention

milk to consumers and to emphasize the importance of the \$21 billion dairy industry to the field of agriculture and allied industries.

The dairy industry considers every day "D" for Dairy all year long. But it's fun for everyone to think about milk during June Dairy Month and to drink a milk treat to dairy farmers and their industry.



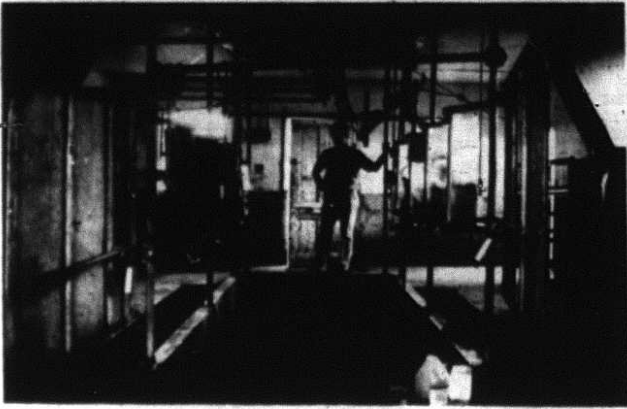
**Mr. and Mrs. Robert L. "Bud" Cox and Staff take this opportunity to extend their Congratulations to the Dairy Farmers of Rockcastle County on a job well done.**

**Cox Funeral Home**

Mt. Vernon, Kentucky

256-2345 256-4444

## Stewart Farm Has Highest Production In County



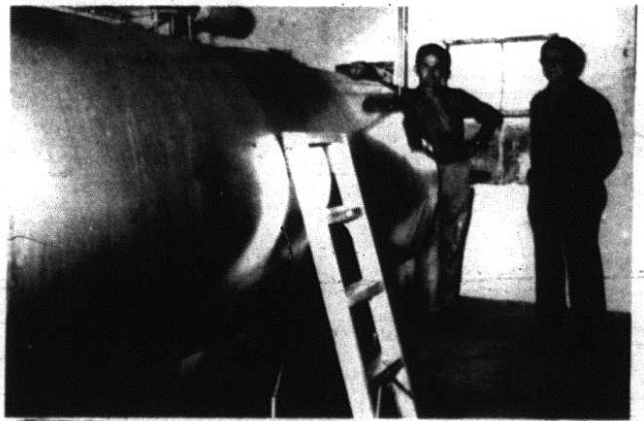
Kenneth Stewart in his four-stall milking parlor.



Part of the Stewart herd which averaged 13,000 lbs. of milk per cow in 1975.



Kenneth Stewart watches his herd as they are driven in for milking.



Mr. Stewart and Roy Brown, right, with his 1,000 gallon capacity bulk cooling tank. Mr. Stewart averages 450 gallon milk per day.

### HALE'S FURNITURE

Main Street  
Mt. Vernon

*Carrying a full line of your home furnishing needs at low prices.*

**FREE DELIVERY**

**Congratulations  
Dairy Farmers  
of  
Rockcastle County**



The Stewart loading barn which has 101 stalls. At extreme right is the entrance to his milking parlor.

Kenneth Stewart operates a 100 acre dairy farm in the Wildie section of Rockcastle County and was the top producer for this county in 1975. His average yield was 13,000 pounds of milk per cow annually.

Mr. Stewart has a 1,000 gallon capacity cooling tank which is emptied every other day. His cows normal output is 450 gallons daily.

Mr. Stewart operates a four-stall milking parlor. Willy Powell takes care of the milking chores and Boyd Mullins handles the feeding. The herd consists of 200 dairy cattle and Mr. Stewart also owns 200 head of beef cattle.

The Stewart farm produces 1200 to 1400 tons of silage annually which is stored in slit trenches. In addition to 80 acres of corn, there are 200 acres of hay, 16 acres in tobacco and 400

acres of pastureland.

Mr. Stewart operates the largest dairy farm in the county and attributes his success not only to the latest breeding techniques but to improved feeding. The cost of labor is significantly lower due to the use of a round-baler rather than the conventional square type. He says there is a 5-10% loss of hay. Mr. Stewart feels that there is little loss, if any, with this method of baling alfalfa and feels that the loss is more than offset by the saving in labor.

There is no great desire on Mr. Stewart's part, he says, to add to either his herd or his farm but he does desire to simply improve what he has. At 13,000 lbs. per year per cow - one would wonder where there would be room for much improvement.



# Is Man Fair To The Cow?

This red, white and blue bicentennial year might be a good time to evaluate man's treatment of the cow since she was brought to the U.S. some 365 years ago. Women's groups, ethnic organizations and various government bureaus protect and defend the rights of certain animals. But other than the Humane Society, who speaks up for the four-footed animals, especially the cow?

This "Foster Mother of the Human Race" turns herself inside out to please man. The greatest portion of a dairy cow's diet, from 60-90 percent, consists of forages and by-product feeds that humans cannot use. Through her unique digestive system, the cow converts these inedible plant materials into milk, popularly known as "nature's most nearly perfect food." And if her milk production falls below assigned quotas, man ships her to hamburger heaven. Today, the dairy industry supplies more than 25 percent of all meat eaten in America. How have things changed?

In the beginning, cows over produced to help man feed his family. Then, when milk production started to decline, man kept a cow contented with calf.

Later, when dairy farming became systematized, the warm, familiar hand of the dairy farmer was replaced by the automatic milker. This was followed by artificial insemination with the local vet making barn calls to save bulls' traveling time.

We've prodded and pushed and analyzed and psychoanalyzed cows. We've improved breeding and feeding techniques, investigated the effects of temperature changes and played music to milk by. With all of these changes in her life, the dairy cow is the most efficient producer of animal foods when you compare the percent of food eaten to produce that food.

Cows have been fed everything from corn cobs to newspaper pulp to orange peels. They can utilize energy and protein sources that humans cannot (legumes, factory by-products, brewery wastes and bran) and convert them into nutritious milk and meat. The cow can also take non-protein sources like urea and turn them into protein through associated micro-organisms. How does man reward his ever-faithful cow?

He's investigating ova transfers, making methane gas from manure to ease the energy crisis, and drying manure for fertilizer.

Man has been unfair to the cow in developing language, too. "Cowbird" is a poisonous plant, a "cowbird" lays its eggs in the nest of other birds, to "cow" is to intimidate and to be a "coward" is to show disgraceful fear.

In the spirit of '76, let's do our part to make things better for our favorite animal, the cow. If you can't take a cow to lunch, do the next best thing, drink milk and make her happy.

An average cow's yearly menu includes 2 1/2 tons of hay; 5 1/2 tons of silage made of chopped green corn, sorghum, and grass legume mixtures; and the grass of two or more acres of good pasture.

# The Dairy Industry—Changing to Meet Consumer Needs

By: Roger Coldron

Who works in a world of gleaming, stainless steel pipes, hoses, pumps, gauges, pressures, controlled temperatures and constant bacterial monitoring? Sounds like a space capsule doesn't it? Well, today's dairy farmer works in one of the most carefully controlled environments in existence. He is the man who procures the milk for all dairy products consumed by the world. As such, he has a responsibility to all he feeds to see that his product is of the

highest quality available.

Stainless steel is used in all phases of the milking operation because of its ease of cleaning, its resistance to corrosion and its freedom from taste. Required by law, it is used in every milking parlor in the United States.

The temperature at which milk must be maintained is also carefully controlled. Because of its relatively high bacterial population, milk must be stored below 40 degrees at all times to halt bacterial growth. The

tanks are also cleaned each time they are emptied and completely sanitized.

The old days of the farmer milking his cows by hand are long gone and the cows are grateful. The gentle milking machines with their uniform pressure are a good deal easier on the cow. They also save a great deal of time.

So, not only are there strict requirements to which the farmer must conform, but there is still the public pressure for

more and more. The American farmer has long fed over 50 percent of the world's population. But, his struggle becomes fiercer and his challenge greater day by day as he continues to struggle in his gleaming environment to reach the ultimate goal—to feed the world.

A cow drinks between 4,000 and 7,000 gallons of water each year—equivalent of 40 to 70 very large bathtubs filled to capacity.



- for fresh and refreshing Dairy Foods
- for dedicated effort and enterprise
- for helping our community thrive

## HERE'S WHERE WE COME IN...

To boost income and aid improvements, to help the Dairy Farmer as he helps our total local economy, this bank stands ready as a source of credit to meet every farm and farm family need.

With full appreciation of the vital contribution of our local dairy industry to the health, happiness and financial well-being of this community, we invite Dairy Farmers to take advantage of our Full Banking Services.

We salute the Dairy Farmer on this occasion — annually dedicated to honoring his services to the community and consumers.



Each depositor insured to \$40,000  
**FDIC**  
 FEDERAL DEPOSIT INSURANCE CORPORATION

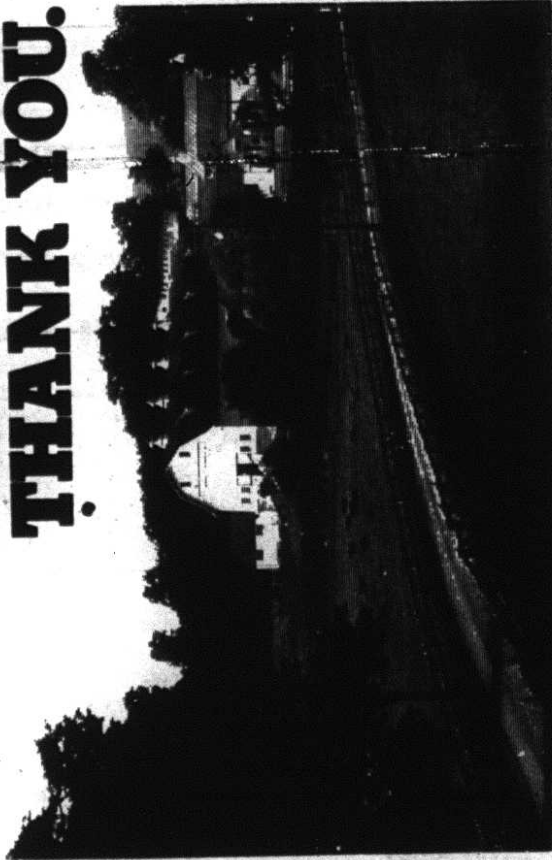
# Citizens Bank

BRODHEAD, KENTUCKY

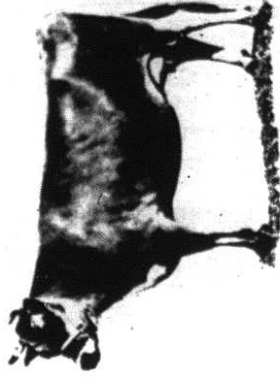
**JUNE IS  
DAIRY  
MONTH**

**CONGRATULATIONS to our  
DAIRY INDUSTRY**

**DAIRY MONTH  
IS A NATURAL  
TIME TO SAY  
THANK YOU.**



The dairy farmers and their families who live and work around our community deserve a great deal of thanks. Their stability helps our community remain stable and healthy. Their insistence on offering only the highest quality milk and dairy products sets an example for us all, and improves the quality of our lives. We congratulate them now, during Dairy Month, and thank them for their contributions.



This month is a good time for all of us to take a closer look at our Dairy Industry. One thing is certain, it has become big business and is getting bigger every day. And our dairy farmers have done an excellent job in increasing production to meet growing demands. They are using the most modern, up-to-date equipment in rigidly controlled modern plants.

# June is Dairy Month

We salute them for a job well done!

## This Page Sponsored By The Following Merchants

### Young's Pharmacy

PHONE 256-4813  
MAIN STREET MT. VERNON

### Robinson's

MAIN STREET MT. VERNON

### Jim's Dollar Discount

### Ford Realty & Auction Co.

PHONE 256-4545 or Home 758-6400  
MT. VERNON, KY.

### Thrifty Lumber Co.

Williams St. 256-2521 Mt. Vernon

### Fain Furniture & Appliances

West Main Street 256-2201 Mt. Vernon

### Mt. Vernon Florist

"Your FTD Florist"  
256-2091 Mt. Vernon

### Cox Funeral Home

Mr. and Mrs. Baddy Cox  
256-4444 or 256-2345 Mt. Vernon

### Jim & Jack's S&T Hardware and Appliances

256-4363 Williams St. Mt. Vernon

### Dowell-Martin Funeral Home

Roy Martin Billy Dorell  
256-2991 or 256-2997 West Main Street

### Brodhead Mills

758-4113 Brodhead

### Jerry's Tire Center

256-2122  
Goodyear Three-Whisper Appliances  
Mt. Vernon

### McBee Department Store

256-2751 Main St. Mt. Vernon

### Mt. Vernon Produce

256-2241 Mt. Vernon

### Jasper Farm Supply

758-8513 Williams St.

### Appliance Service Center

Mr. and Mrs. Roy Whitstead  
Mr. and Mrs. Dale Whitstead  
256-2626 U.S. 25 Mt. Vernon

### Food Fair Supermarket

"Friendly Service All The Way To Your Car"  
Williams St. 256-2918 Mt. Vernon

### Rockcastle Farm Service

256-2516 Mt. Vernon

### Bullen and Harmon Insurance Agency

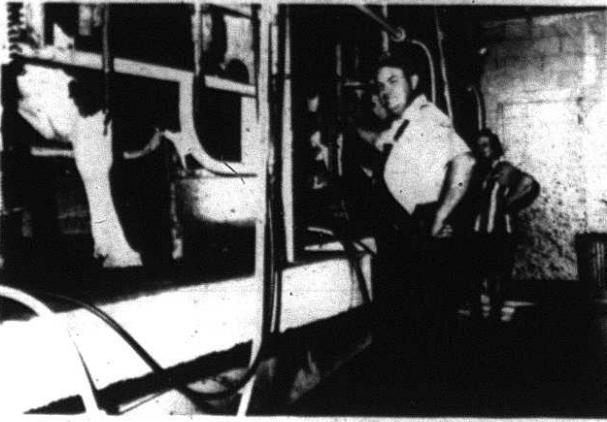
WILLIAM K. BULLEN  
PHONE 256-2448

HARRY HARMON  
Phone 256-2454

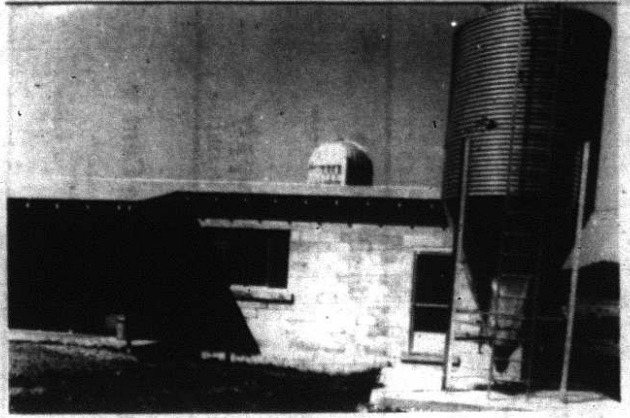
OFFICE 256-2050



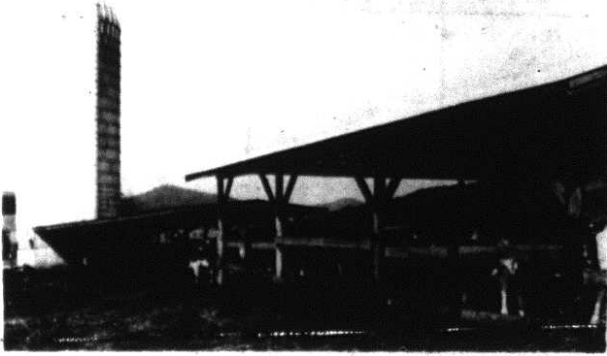
## Dairy Day Festivities To Be At Lawrence Farm



Mr. and Mrs. Billy Lawrence in their three-in-line milking parlor.



The outside of the Lawrence milking parlor. At right is an auto-feed silo.



Part of the Lawrence herd waiting for milking. At left is his 400-ton capacity silo.



Dairy Field Day will be held on the Billy Lawrence Dairy Farm at Quail this year.

# WE SALUTE THE DAIRY FARMERS OF ROCKCASTLE COUNTY

AT C.C. COX & SON HARDWARE  
In Mt. Vernon

*You will find housewares, storm windows,  
door repair kits, hardware items, home and  
farm needs and lawn and garden tools.*

**"IF WE DON'T HAVE IT - WE'LL GET IT"**



Billy Lawrence with his 600 gallon bulk cooling tank.

Billy Lawrence of Rockcastle County will host Dairy Field Day activities this Friday on his farm located in the Quail section of the county. Mr. Lawrence was featured in the November, 1975 issue of "Progressive Farmer" magazine in recognition of his perseverance and achievements as a Dairy Farmer.

Mr. Lawrence started out with one cow and 7 acres of farmland - this he has increased, over a period of years, to 124 acres and 77 head of dairy cattle. His land is distributed as follows: 12 acres of alfalfa, 78 acres of corn and 3,000 pounds of tobacco. In addition, the Lawrence family leases 10 acres of land for corn

and 5,000 pounds of tobacco. They produce 450 tons of silage annually.

The milk is procured in a three-in-line Surge milking parlor. The parlor also has a 600 gallon cooling tank which is emptied on a daily basis and 325 gallons is the average daily yield. This tallies to a figure of 11,000 pounds of milk per cow annually - a production which puts the Lawrences in the top three producers in the county.

The Lawrences have owned and operated their farm for the past 15 years. Already a Grade A farm, they hope to continue to grow along with the dairy industry in Rockcastle County.