



## State Deer Gun Season Is December 4 - 8

Kentucky's hunters who take deer during the Dec. 4 through Dec. 8 gun season must visit a deer check station for validation of their deer tags, according to regulations adopted this year by the Department of Fish and Wildlife Resources.

Check stations will be set up in all counties open to deer hunting. These stations are at sports shops, country grocery stores, sporting stores, wildlife management areas or other locations, and each location will display a sign designating it as an official check station.

At the station, the hunter will fill out a special portion of the deer permit, which will be retained by the station operator. The remainder of the tag will be stamped for validation.

A state-wide list of check stations is available wherever deer permits are sold or from all county court clerk's offices. Hunters buying deer tags should receive this list when the tag is purchased.

All conservation officers may also check deer and validate tags. The deer must be taken to the nearest officer or to the nearest open check station no later than 4 a.m. on the day after the deer is harvested.

The purpose of the check stations, according to Game Management Director Joe Brana, is to allow fish and wildlife to obtain a quick and accurate assessment of the total harvest in the state.

In past years, harvest estimates were obtained by a post season, mail

survey, with the results coming in too late for the information to be used in setting seasons for the coming year. Brana said, adding that the check station method of obtaining information will prove useful in a variety of deer management projects around the state.

Bow hunters need not check their deer, except at a few areas with specially managed hunts. However, bow hunters who purchased their permits before the check station list was distributed and who plan to gun hunt during Dec. 4 through Dec. 8 season should obtain this list. Deer check stations for Rockcastle County are: Ernie's T&M Market located on Hwy. 25 just north of Mt. Vernon; Wildlife General Store, Hwy. 1786 at Wildie, 5 miles north of Mt. Vernon; Bradley's Service Station, Hwy. 150 at Broadhead, 6 miles Northwest of Mt. Vernon; George Pridmore General Store, Hwy. 25 at Livingston, 8 miles Southeast of Mt. Vernon and the Sand Springs General Store, on Hwy. 1249, 5 miles Southwest of Mt. Vernon.

All deer gun hunters must check in to their deer at the station nearest to the location where the deer was killed.

## Fishing Report

Some of the state's 15 major lakes continue to report fair to good black bass and crappie activity while others are now reporting no activity. The

lake-by-lake rundown, as compiled by the Kentucky Department of Fish and Wildlife Resources:

**Cumbelee:** Black bass fair to good on the lower lake casting spinner baits, artificial nightcrawlers and duffies with prok rind in inlets and bays and trolling medium and deep runners along steep rocky banks; crappie fair over submerged cover, in tailwaters, trout good; clear, rising, 39 feet below the timberline and 57 degrees.

**Buckhorn:** Black bass fair to good on surface lures in weed beds; crappie fair over submerged cover; clear to murky to muddy, stable; five feet above winter pool and 45 degrees.

**Green:** Black bass fair to good on deep runners off points; crappie fair over submerged cover; clear, falling, five feet above winter pool and 45 degrees.

**Kentucky:** Black bass fair to good on medium to deep runners over shoreline cover; crappie fair over submerged cover; in tailwaters, sasser slow to fair, cutfish slow; clear to murky, stable at winter pool and 52 degrees.

**Barkley:** Crappie fair around stick ups and stump beds; in tailwaters, catfish fair; crappie and white bass slow; clear, stable at winter pool and 48 degrees.

**Laurel:** Trout good trolling deep runners and still fishing worms and nightcrawlers on the lower lake; black bass slow on medium and deep running crank baits off deep banks; clear, stable at power pool and 49 degrees.

**Dale Hollow:** Black bass fair to good on medium running crank baits; spinner baits and duffies along points and over drop-offs; crappie slow over submerged cover; clear, stable, three feet below winter pool and 54 degrees.

**Barren:** Crappie fair to good on the upper lake over river channel drop-offs; black bass slow on medium running crank baits, deep runners and spinner baits along rocky and deep banks, clear to murky, rising slowly, 15 feet above winter pool and 60 degrees.

**Rough River:** Black bass fair on the south fork casting deep running crank baits and artificial nightcrawlers; crappie slow to fair over submerged cover and around stick ups; clear to murky, falling, 15 feet above winter pool and 52 degrees.

**Nolin:** Black bass fair on deep runners along deep rocky points; crappie fair still and drift baits; minnows over submerged cover; clear, falling slowly, 15 feet above winter pool and 52 degrees.

**Fishtrap:** Black bass slow on medium running crank baits off rocky points; clear to murky, stable, 12 feet above winter pool and 52 degrees.

**Herrington:** Crappie slow to deep over submerged tree tops; clear, stable, seven feet above winter pool and 52 degrees.

**Cave Run:** No activity, murky, falling slowly, two feet above winter pool and 48 degrees.

**Grayson:** No activity; clear to murky, falling, three feet above winter pool and 48 degrees.

Rockcastle County Extension Agent, says the school is restricted to persons who prepare income tax returns for others. While generally oriented to preparing farm tax returns, the workshop will also offer information relating to all types of income tax returns, he adds.

The Louisville District Internal Revenue Service and the Kentucky Department of Revenue are cooperating in presenting the workshops and are providing special district instructors.

Special attention will be given to problem federal income tax topics such as: What's New, Retirement Plans, Capital Gains & Losses, Comprehensive Farm Problems; 1976 Tax Reform Act; Investment Credit; Back to Basics; Partnership Balance Sheet and Ky. Income Tax.

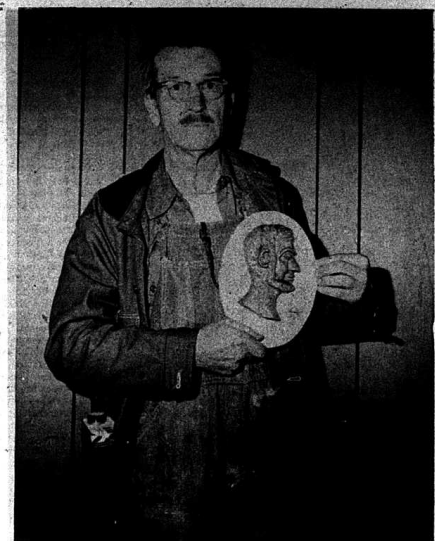
Advance registration is requested, since enrollment will be limited to the number than can be accommodated comfortably. More detailed information and applications for enrollment are available at the Rockcastle County Extension Office, 2nd floor of the courthouse, Mt. Vernon - Phone 256-2408 or you may send a letter stating the workshop you want to attend, along with a check for \$10 payable to Farm Income Tax Workshop, to Steve Allen, Department of Agricultural Economics, University of Kentucky, Lexington, Kentucky 40506.

**The General Agricultural Situation**  
And Outlook  
Prepared by: Dr. Wilson Hourigan, Extension Professor, Agricultural Policy, University of Kentucky.

Farmers are expected to market a record volume of crop and livestock products in 1976. However, strong domestic and foreign demand will help bolster prices. Livestock and product prices will average 5 to 7 percent above a year ago as increased domestic consumption absorbs the large output. Crop marketings from the large 1975 and 1976 harvests will be well above a year ago, but strong export demand as well as increased domestic feeding will about maintain average crop prices.

Higher prices and larger marketings will result in a record floor of cash receipts to farmers. For all of 1976, cash receipts are likely to total 7 to 9 percent above 1975's \$90 billion. First half 1976 receipts increased around 13 percent led by the sharp boost in livestock receipts mainly from higher prices. Cash receipts will continue to climb in the second half, although at a slower rate, as livestock prices hold near July - December 1975 highs.

Production expenses continue to rise but larger receipts should be offsetting. Increases in the prices paid by farmers as well as larger purchases of some production inputs will push farm production expenses this year some 6 to 8 percent above 1975's \$75 billion. Overall, prices of inputs continue to rise, although some items, notably fertilizer and seed, are priced below year-earlier



Russell Bullock of Orlando is shown with a bust-relief profile which he whittled of President Abraham Lincoln out of Red Cedar. Mr. Bullock, who along with his two sons builds custom made furniture, said it took him about 4 hours to do the actual whittling but that another four hours was spent in studying President Lincoln's features from a small picture. This is the first face which Mr. Bullock has done and he said that he did it mainly to try to stimulate interest in whittling among young people.

levels and price increases for others have slackened.

Total net farm income, which includes the value of farmers' unsold inventories at the end of the year, could match 1975's nearly \$28 billion. The net income position of farmers during the second half of 1976 is likely to hold close to the first half's \$26 billion seasonally adjusted annual rate.

Looking at the first half of 1977, little change in the net income of farmers is indicated. If feed supplies are available at reasonable prices, as expected, output of animal products should remain large. Strong foreign demand should help maintain crop prices, despite a somewhat larger volume of marketings. Consequently, gains in cash receipts from farm marketings from first half of 1976 should about balance expected increases in production expenses. But the outcome will depend heavily on US and world crops as well as on domestic

and foreign demand for our farm products.  
For consumers, the outlook is for continued large food supplies for the rest of 1976 and early 1977. Per capita food consumption for all of 1976 is expected to be up about 2 percent from last year's depressed level and could exceed 1972's record high. For all of 1976 retail food prices are likely to average about 4 percent above 1975.

It appears likely the farmer's share of the consumer's dollar for this year will return to the 40 cent level of the late 1960's or early 1970's, down from 42 cents in 1975 and 43 cents in 1974. This year's drop reflects lower farm values as well as increases in food prices.

U.S. Exports of agricultural products in fiscal 1977 may run nearly the same as 1976's \$22 billion. Export prospects have brightened recently due

(Cont. to 19)

### GOING OUT OF BUSINESS

## AUCTION

# SAYLOR'S USED CARS

SAT., NOVEMBER 13, 1976, 9:30 A.M.

Renfro Valley, Rockcastle Co., Ky.

LOCATED: Next door to Renfro Valley Excon - Renfro Valley, Kentucky

Since Mr. Matt Saylor has decided to retire from the retail auto business we will sell at auction the remaining cars on his car lot for the high dollar.

In addition to the automobiles we will also be selling a travel trailer now occupied as the office for the lot and a metal storage building.

There will be several cars to choose from, so if you need an auto for your own personal use or a 2nd auto please be sure to attend this sale and buy at your own price!

TERMS: Cash or good check the day of the sale.


For additional information contact:



## County Agent's Notes

**Farm Income Tax Workshop**  
Set for Tax Practitioners and consultants from Rockcastle County will be brought up to date on latest federal and state income tax rules and regulations during a two day school, Monday and Tuesday, November 22 and 23 at Somerset Community College. The farm income tax workshop is one of 10 being presented throughout the state by the University of Kentucky Cooperative Extension Service. H. Lee Durham,


"FINANCIAL STATEMENT"		(Cont'd from P-15)	
9497 Kentucky Stone Company	527.84	9549 Maxie Falin	25.00
9498 Harp Enterprises	148.82	9550 Sandra Mason	25.00
9499 Rockcastle Auto Parts	127.00	9551 Bill Cole	25.58
9500 Livingston Motor Co.	14.80	9552 Ebel Abney	25.00
9501 Inland Equipment Company	26.64	9553 David Abney	25.00
9502 Central Vending Machine Company	50.00	9554 Pearl Newcomb	25.00
9503 George Pridemore	25.00	9555 Mable Mullins	25.88
9504 Curtis Roberts	15.00	9556 Eva Black	25.00
9505 Vanzant Store	15.00	9557 Juanita Purdyne	25.00
9506 Nathan Mullins	15.00	9558 Lloyd Owens	25.88
9507 Dewey Lamb	15.00	9559 Jewel Thomas	25.88
9508 Marge Herrin	15.00	9561 William McClure	25.00
9509 Wayne Jasper	15.00	9562 Robert Gentry	25.00
9510 Clifford Bales	24.00	9563 Curtis Bradley	25.88
9511 Hay Kirby	20.00	9564 Christine Taylor	25.00
9512 Joyce Baker	25.00	9565 Davis Noe	25.88
9513 Laura Melliarue	25.00	9566 Ruby Hasty	25.00
9514 Robert Fish	25.00	9567 Beulah Riddle	25.56
9515 Christine Hensley	25.00	9568 Amanda LaFavers	25.88
9516 Ron Ann Halcomb	25.00	9569 Della Mae Wilcott	25.00
9517 Willits Owens	25.00	9570 Lillian Collett	25.56
9518 Mary Lovell	25.00	9571 Dewey Brock	25.00
9520 Grace Bowling	25.00	9572 Georgia McWhorter	25.56
9521 Edith Childress	25.00	9573 Betty Cross	25.56
9522 Louella Bussell	25.00	9574 Nellie Coburn	25.00
9523 Mary Brock	25.00	9575 Kentucky Utilities	7.48
9524 Mrs. John Reynolds	25.00	9576 James W. Lambert	26.00
9528 Hazel Cummins	25.00	9577 Joe Daugherty	5.00
9529 Rockcastle County Retirement	124.00	9578 C.W. Phelps	5.00
9528 Rockcastle County Social Security	16.65	9579 Dewey Brock	20.00
9529 B & F Gulf Service Station	39.40	9580 Clifford Bales	10.00
9530 B & F Gulf Service Station	43.60	9581 Clyde Barnett	20.00
9531 Sear Service Station	28.00	9582 Victor Hayinger	20.00
9532 Mt. Vernon Signal	24.75	9583 Manuel Shepherd	20.00
9533 Kentucky Stone Company	97.86	9584 Clifford Bales	20.00
9534 Keith Cromer	41.43	9585 Clyde Barnett	500.00
9535 Nevell H. Chappell	25.98	9586 Central Office Supply	11.10
9536 Carl Williams	25.96	9587 Mt. Vernon Signal	44.68
9537 Casper McCracken	25.00	9588 Appalachia Computer Center	49.18
9538 Mary Cope	25.00	9589 Robert Cromer	151.68
9539 Edith Abney	25.80	9590 Clifford Bales	56.00
9540 Minnie Brock	25.80	9591 Mt. Vernon Signal	67.24
9541 Ray Coffey	25.00	9592 Clifford Bales	20.00
9542 James E. Reynolds	25.00	9593 John Hansel	54.37
9543 Liza A. Mullins	25.70	9594 Kentucky Concrete Pipe Co.	204.00
9544 Mrs. Boyd VanWinkle	25.00	9595 The Kentucky Stone Company	162.74
9545 Lloyd Phillips	25.00	9596 Everett Benner	182.74
9546 Andy Cox	25.00	9598 J.R. Grench	50.00
9547 Richard Mullins	25.88	9599 Rockcastle County Social Security	22.04
9548 Myrtle Bowman	25.88	9600 Elmer Decker	285.38
		TOTAL	112,087.82



# BOB MULLINS FORD

(Only 20 minutes to SE Kentucky's High Volume Dealer)

US 25 South 864-5178 London



Bob Mullins, Jr. and Richard Conley

Richard Conley, right, of Mt. Vernon is Bob Mullins' Sales Representative in Rockcastle Co. Call him at home, 256-5280, or at work and he will be more than glad to come by your home and discuss your automotive needs.

**The Strike Is Over And The Fords, Mercurys, Lincolns, And Trucks Are Rolling In Daily.**

**Come Get Our Price.**

# Home Line

BY CHERLY WITT  
COUNTY EXTENSION AGENT  
FOR HOME ECONOMICS

### Making Apple Butter

Here's a good recipe for making about 5 pints of apple butter. Good cooking apples make the best apple butter.

- 6 pounds apples (about 24)
- 2 quarts apple juice
- 3 cups sugar
- 1 1/2 teaspoons ground cinnamon
- 1 teaspoon ground allspice
- 1 teaspoon ground cloves

Wash and slice apples. Add juice and cook until tender. Press through a sieve or food mill to remove skins and seeds. Measure out 3 cups of pulp and cook until thick enough to round up on a spoon. As pulp thickens, stir frequently to prevent sticking. Add sugar and spices. Cook slowly, stirring often, until thick - about 1 hour. Pour hot into hot clean pint jars. Leave 1/4 inch headspace. Seal and process for 10 minutes in boiling-water-bath canner.



Freeze and can late apples and pears for winter meals.

### Freezing Pears

Select well-ripened firm pears, but not hard ones. Wash, peel, cut into halves or quarters and remove cores. Heat pears in boiling 50 to 40 percent syrup for 1 to 2 minutes, depending on size of pieces. Drain and cool.

Pack into containers and cover with cold syrup. For a better product, add 3/4 teaspoon crystalline ascorbic acid to a quart of cold syrup. Leave 1/2 inch headspace, seal and freeze.

To make syrup, dissolve sugar in hot or cold water. You can mix it up the day before and keep it cold in the refrigerator. Use the following proportions: 30 percent syrup - 2 cups sugar, 4 cups water; 35 percent syrup - 2 1/2 cups sugar, 4 cups water; 40 percent syrup - 3 cups sugar, 4 cups water.

### Freezing Apples

Sliced frozen apples are handy for pie making. Select full-flavored apples that are crisp and firm. Don't use mealy textured ones. Wash, peel, and core. Cut 12 slices from a medium-size apple and 16 from a large one.

To prevent darkening, slice apples into a solution of 2 tablespoons salt to a gallon of water. Hold in this solution no more than 15 to 20 minutes. Drain. Over each quart of apple slices, sprinkle 1/2 cup sugar, and stir. Or you can omit the sugar. Pack apples into containers and press fruit down lightly. Leave 1/2 inch headspace, seal and freeze.

### \*\*\*\*\*

This Week's Recipe - Moist Spice Cake  
From Mrs. Lillie Saylor, R.3, Brodhead

- 1 package spice cake mix
- 2 eggs
- 1 1/2 cups pumpkin pie mix
- 2/3 cup water

Combine cake mix, eggs, pie mix and water in bowl. Mix until light and fluffy. Add 1 cup nuts or 1 cup raisins or both. Bake at 350 degrees F. for 45 minutes in bundt or tube cake pan which has been buttered and floured. Cool cake 10 minutes before removing from pan.

### \*\*\*\*\*

\*\*\*\*\*

## Kentucky Afraid

By John Wilson

With Kentucky's small game season opening Nov. 18, the commonwealth's hunters are wondering what kind of

success they can expect afield this year. The survey, according to one survey conducted by the Department of Fish and Wildlife Resources, is that hunters will find slightly higher populations of quail and rabbits throughout the state. The survey, based on sightings made by rural mail carriers during June, July and August, shows that quail populations are up 2 1/2 percent statewide, with the biggest increase in the far western part of the state. The rabbit population shows a slight increase - 93 percent statewide over last year, with the Hills of Bluegrass showing the largest jump. Quail and rabbit hunting regulations remain basically unchanged from past years. The daily limit on quail is 10, with a possession limit of 20 after two or more days of hunting. The daily bag limit on rabbits is 6, with a possession limit of 12. Rabbit season will close Jan. 31, while hunting for quail and grouse will continue for another month, through Feb. 28. Shotgun use for small game, dove and waterfowl hunting must be "plugged" to hold no more than three shells (one in the chamber and two in the magazine). Shotgunners are not permitted to carry slugs or buckshot in the field while small game hunting. Remember also that small game seasons will close during the Dec. 4 through Dec. 8 gun deer season. Squirrel hunting will also resume November 18th with generally much better hunting conditions than those encountered during the early part of the season. The foliage will be off most of the trees, and squirrels will be more concentrated around mast producing trees such as oak, beech or walnut.

So if your luck wasn't too good during the August and September squirrel hunts, don't give up yet. Winter hunting can be very productive. After the records for the Dec. 4 through Dec. 8 deer season, squirrel hunting will continue through Dec. 31 with a daily limit of six and a possession limit of 12. The taking season for furbearers will also open November 18, and the big change in regulations this year is a limit on raccoons. This limit is one racoon per hunter or three per hunting party of three or more hunters. This is a daily limit; there is no possession limit as such on raccoons.

For a complete rundown of Kentucky's hunting regulations, write for a free "Hunter's Packet" from the Department of Fish and Wildlife Resources, Division of Public Relations, Capital Plaza Tower, Frankfort, Kentucky, 40601. \*\*\*\*\*

## Quail

By Vivian Owens

Mrs. J.C. Reynolds, Jamie and Rhonda and Florence Albright visited Mrs. Billy Owens and Rusty Lee. Florence Albright spent Thursday night with Mr. and Mrs. J.C. Reynolds and family.

Roxanne Reynolds spent Monday night with her grandparents, Mr. and Mrs. Ray Long are ill at their home.

Mr. and Mrs. Gary Cummins and Rebecca and Ruth Mink were supper guests of Mr. and Mrs. Roy Mink and family of Berea Saturday evening.

Mrs. Logan Bryant visited Ruth Mink, Friday afternoon.

Mrs. J.C. Reynolds, Jamie and Rhonda spent Monday night with Florence Albright.

Mr. and Mrs. Lucian Blankenship, Mrs. Floinie Brown and Mrs. Delta Brown visited in Barbourville, recently.

Mrs. Jack Cash is on the sick list.

Mr. and Mrs. Fred Bullock and family visited their son Mr. and Mrs. Delmus Bullock and sons.

Mrs. Pattie Baker visited Mrs. Shirley Caldwell, Wednesday afternoon.

Mrs. Martha Owens visited her daughter, Mr. and Mrs. Rayme Cummins, Sunday.

Mr. and Mrs. Charlie Nelson, Owens and Shawn of Ohio spent the week end with their parents, Mr. and Mrs. R.C. Anderson, Mrs. Betty Lou Hodge and Mr. and Mrs. Benton Owens.

Mrs. Dorothy Ham returned home Monday from a Lexington Hospital where she underwent surgery. We wish her a speedy recovery.

Mrs. Bradley Mink of Somerset spent last week with her daughter, Mr. and Mrs. Jerry Ham and family.

Mrs. Delmus Bullock visited her parents, Mr. and Mrs. Curt Bullock, Sunday afternoon.

Mrs. Pattie Baker was Saturday dinner guests of her son, Mr. and Mrs. Cleidis Baker and family.

Sunday visitors of Mrs. Willie Todd were Mr. and Mrs. Ronald Rogers and Jill and Mr. and Mrs. Wayne Todd and Jessica.

Mr. and Mrs. Roscoe Adams visited Mr. and Mrs. Charlie B. Owens Thursday afternoon.

During the week visitors of Mrs. Christine Brown were Mr. and Mrs. Marshall Thompson, Mr. Casper G.

Owens, Mr. and Mrs. Bobby Broughton and family and Mr. and Mrs. Celdis Brown and son.

During the week visitors of Mrs. Mary Scott were Mr. Ray Scott of Ohio, Mrs. Henry Hellard, Mrs. Shirley Caldwell and Mrs. Fren Caldwell and Mrs. Maggie Herring.

Mr. and Mrs. Charlie B. Owens visited Mr. and Mrs. Jess Bray, Sunday afternoon.

Mr. and Mrs. M.J. McMullin visited Mr. and Mrs. Gene Burton and family at Plato Sunday afternoon.

Mr. Joe Helton and son of Danville visited Mrs. Delta Brown, Saturday. \*\*\*\*\*

## Consumer Comments

By Robert F. Stephens

Would you like to save up to five percent of the purchase price of some item by simply paying cash instead of

using your credit card?

Each time an item is bought with a credit card, the merchant pays a percentage to the card user. This percentage that the merchant pays ranges up to six percent of the purchase price of each item. Since October of 1975, merchants have been allowed by the Federal Fair Credit Billing Act to offer cash discounts to induce consumers to pay by cash, check or similar means rather than use of credit card. These discounts can be up to five percent of the price of any merchandise bought. To offer cash discounts a merchant must follow three procedures. First, notices informing consumers of the cash discount must be available to all prospective buyers—credit card holders and non-holders. Third, any advertising which mentions an acceptance of bank credit cards must also state that cash discounts are given. Any restriction on the extent of cash discounts must be disclosed.

Consumers should note that merchants are not required to give these cash discounts. If you are in a store

that honors credit cards, ask each time you shop, about these discounts. Merchants will consider giving these discounts when consumers ask about them and when buying decisions are based on whether these discounts are given.

If you have a consumer complaint, write to the Attorney General's Division of Consumer Protection, Frankfort, Ky., 40601. The office has found that it can most effectively deal with written complaints and encourages you to write when you have a complaint. However, if you have an emergency situation, call the Consumer Hotline. The number is 1-800-372-2960. \*\*\*\*\*



The greatest reliable egg reported for a monkey is about 45 years for a male mandrill baboon named "George."

# 8 1/2%

AT CITIZENS BANK IN BRODHEAD  
WE HAVE CUT OUR INTEREST RATE  
FOR ALL-TYPE LOANS TO  
(8% Interest Rate Does Not Apply To Installment Loans.)

# 8 1/2%

AT CITIZENS BANK  
BRODHEAD, KENTUCKY

# WE ARE PAYING

# 6 1/2% INTEREST

30 Month Certificates  
(Substantial Interest Penalty Required For Early Withdrawal)

**6%**

1 To 2 Year Certificates  
(\$1,000 MINIMUM)

**5 1/2%**

6 Months Certificates  
(\$500 MINIMUM)

**5%**

Regular Passbook Savings

Banking Hours: 8:30 A.M. To 2:30 P.M.  
Monday through Saturday

CITIZENS BANK  
BRODHEAD, KY

Deposits Insured up to \$40,000.00  
"Serving Your Community Since 1904"

## 24-Hour Wrecker Service

"SPECIAL" \$95  
Anti-Freeze Installed

GARY M. REPPERT - OWNER  
I-75 & U.S. 25  
Renfro Valley, Ky.  
256-9340



# WANTED ADS

**WHATEVER YOU NEED**

P-18 The Mt. Vernon Signal Thursday, Nov. 11, 1976

## CLASSIFIED RATES

Local Rates - 5c per word, minimum \$1.00  
 Card of Thanks - 3c per word, minimum 75c  
 In Memory - 3c per word, minimum 75c  
 Classifieds Paid in advance, except to businesses  
 Display Classifieds - \$1.50 per column inch

## For Sale

**FOR SALE:** Apartment size Hoover washer, very economical. Call 256-5375. 10x1

**MISCELLANEOUS SALE:** Saturday, November 13, 10 a.m. till dark, inside at home of Same Cromer in Brodhead. Glassware, curtains, bed spreads, tire changer, tools and odds and ends. 10x1

**FOR SALE:** School bus camper, 1954 GMC. Runs \$350.00. See C.S. or Marie McKinney, Route 1, Mt. Vernon. 10x2p

**FOR SALE:** Firewood, \$18.00 per rick. Cut to your specification. Free delivery if two or more ricks ordered. Also, will do tree trimming work. Call 453-8761. 8x1nf

**FOR SALE:** New and Used Vacuum Cleaners. Call 758-8584. 8x1nf

**INTERNATIONAL AND GENERAL ELECTRIC**

Parts Available at **Bryant Bros.** Mt. Vernon

**FOR SALE:** Used metal roofing. Corrugated. Mostly 12 ft. long. Fair. \$3.00 per sheet. Shorter lengths \$2.00. 256-2757. 9x2p

**FOR SALE:** 1973 Dodge truck, 10 1/2 ft. camper (fully self-contained). Call 256-4139. 9x2

**FOR SALE:** Brick home, 1 year old, with 3 bedrooms, garage, full basement, located on 1/2 acre lot on Hwy. 70 near Brodhead. Call 758-8521. 9x1nf

**FOR SALE:** 41 Acres located on Copper Creek Road. Backlog on two sides of property. To settle the estate of Lonnna Jones. See Lorene Baker, Rt. 3, Crab Orchard. 8x3p

**CUSTOM PICTURE FRAMING,** limited edition prints, ready-made frames, Victorian furniture, etc. Teresa's Antiques and Gallery, Berea, Ky. Open Sunday 1 to 5 p.m., Monday-Saturday, 8 a.m. to 6 p.m. 986-9147. nif

**FOR SALE:** Silos, silo unloaders, feeders and wagons. Contact CHARLES HACKLEY, Ph. 256-4232. 24x52p

**FOR SALE:** Nice building lots, from 1 to 5 acres in Limehollow Heights on 461. See Frank Mason or call 256-5275. 2x1nf

**FOR SALE:** 1973 Olds, Cutlass, automatic, air conditioned, power brakes and steering, radial tires, excellent condition. \$2,500 firm. See Dale Winstead, Appliance Service Center or call 256-2626 or 256-4300. 6x1nf

**FOR SALE:** Building lots. See Albert or Alma Griffin. 5x1nf

**GRAVE MARKERS AND MONUMENTS** in stock at all times. McNew Monument Sales, U.S. 25, four miles north of Mt. Vernon. Ph. 256-2232. nif

**FOR SALE:** Mixed Hay, 90c a bale. See Bill Sigmon or call 256-4240. 8x3

**HEATING-REFRIGERATION AIR CONDITIONING HOME APPLIANCE REPAIR**

**ELECTRICAL WORK**

**GREG'S HEATING AND COOLING**  
 Brodhead, Ky. 40409  
 Ph. 758-8339

**FOR SALE:** Living room suite, Blond Gretsch Electric Guitar and Amplifier. Also, Eika Electric double keyboard organ. 758-8959. 5x1nf

**L & H ELECTRIC SERVICE**

24 HOUR SERVICE  
 CALL 256-4055 6x12

**FOR SALE:** 18 ft. 1975 inboard-outboard Rinker-built boat with walk-thru windshield and complete cover. Ph. 256-4141 after 5 or 256-5213. 7x1nf

## Wanted

**WANTED:** Bookkeeper, experience required. Contact Tom Wilson, Phoenix Prods., Inc., Tynar, Ky. 40488. Ph. 864-5141. 10x2

**WANTED:** Odd jobs, carpenter, painting and roofing repair. See Frank Culhens or call 256-5490. 47x1nf

**WANTED TO RENT:** 3 bedroom house in Brodhead area. 758-8688. 2x1nf

**WANTED:** Good used piano. Call 256-2626. 10x2

**WANTED:** Ride from Richmond daily between 3:30 and 4 p.m. Call 256-4121. Also, will do babysitting in my home. 10x1p

**WANTED:** Raw fur. See Bill Bradley, Route 1, Mt. Vernon near Breddon Church. Licensed buyer. Will pay good prices. 10x12

**TERMITES?**  
 Call Madison Termit Co., Berea, Ky-7  
 Free Inspection. Phone 986-3757

**Local Calls**  
 Jack Parsons, Wildlife, 256-2268 or C.H. Webb, Livingston, 453-9331 5x1nf

**WANTED:** Industrious adult or high school student to deliver daily and Sunday Courier-Journal in Mt. Vernon. Now pays approximately \$75 per week and requires about 2 hours Monday through Saturday and 3 hours on Sunday. This would be ideal for retired person or to supplement your present income. If interested, please call 1-800-292-6568. Cash bonded and references required. 10x2

**WANTED:** Your job work, rubber stamps, office supply orders at The Mt. Vernon Signal. 24-hr. service on most cut/3m printing a good supply of office supplies in stock with 2-3 day delivery on special orders.

\*\*\*\*\*

**DRY WALL**

**PAINTING**

**GEORGE McMULLIN**

256-4539  
 after 5 p.m.

**GUARANTEED WORK**

\*\*\*\*\*

**FOR RENT:** 3 Bedroom trailer in city. Furnished. Ph. 256-2768. 10x2

**CUSTOM-MADE KITCHEN CABINETS**

FREE ESTIMATES

CALL 256-2702 6x4p

"Forget injuries, never forget kindness." Confucius

**GOAL FOR SALE**

Block Coal 4 tons or less	\$31.00 per ton
Over 4 tons	\$29.00 per ton

**Olded Home Stoker**

4 Tons or less	\$33.00 per ton
Over 4 Tons	\$31.50 per ton

**OPEN MONDAY - SATURDAY**  
 7:30 A.M. TO 6 P.M.

**BODA ENTERPRISES**  
 Rt. 3, Box 425A Ph. 256-5118  
 BEREA, KY.

**TRAILER LOT FOR RENT:** Large size with private Imperial Mobile Home Court, West Main and Poplar Streets in Mt. Vernon. Call Clyde Barnett at 256-2251 or 256-2377. 51x1nf

**FOR RENT:** Two or three rooms, furnished or unfurnished apartments. Steam-heated. At Rockcastle Hotel. See Roy Winstead at Appliance Service Center. nif

**FOR RENT:** Carpet Cleaning Equipment. Uses hot water to clean, rinse and vacuum out dirt in a single sweep. Everything you need for a complete job. Call 256-2288 or come in to Parsons Gas and Appliance Service at Roundstone. nif

**FOR RENT:** 2 apartments located in Mt. Vernon. Ph. 256-4215 Estle Bullock. 7x4

**FOR RENT:** Four room furnished house with bath in Livingston. Prefer retired couple. One small child accepted. References. Ph. 453-4281. 5x1nf


## Notice

**NOTICE:** Due to the increased cost of billing, all classified ads must be paid in advance effective January 1, 1977.

**POSTED:** No hunting or trespassing on Reynolds land between Wildie and Green Hill. Vester Maples. 10x12p

**NOTICE:** Office Supplies, Rubber Stamps, Job Printing. For any or all of these - see us at the Mt. Vernon Signal.

**O&M Trenching**



Trenching, Backhoe & Excavation

CALL EDDIE MOORE  
 256-4707

IN BEREA AREA CALL  
 GARY MIRACLE  
 986-9110 51x1nf

"Know thyself and do your own." Plato

**Septic TANKS**

**J & J CONCRETE TANKS**

Jim & Jack's S&T Store  
 Phone 256-4383  
 After 5 p.m. 256-2580

**SEPTIC TANKS**  
 Sales and Service  
 750 Gal. - 1,000 Gal.  
 Distribution Boxes  
 1,000 Gal. Water Distribution Tanks.

**D & D CARPET AND TILE SERVICE**

**FALL SPECIAL**

We Clean Two Rooms and Hall For \$35.00

We also clean Braided Rugs - Tile Floors

"GIVE THE DIRT DIGGERS A CALL"

Box 471 Mt. Vernon Phone 758-8840

**HENSLEY'S USED CARS**

**ROUTE 2 ORLANDO, KY. PHONE 256-4336**

**NOTICE to Dairy Farmers:** We have all cleaning supplies and DeLaval Equipment for sale. Call 758-8171. 31x1nf

**NOTICE:** We will pay you high dollar for your used mobile home. Call 365-9606 collect. O.K. Mobile Homes, Stanford. 6x4

**NOTICE:** Custom made kitchen cabinets of all types. Call 379-8258. 52x1nf

**HAMM'S WATER WELLS DRILLING and Contracting.** Call 256-2024 anytime. nif

**MONUMENTS ON DISPLAY** at Dowell and Martin Funeral Home. nif

**GRAPEFRUIT PILL** with Diadax, eat satisfying meals and lose weight. Now, extra strength formula. Young's Pharmacy. 52x12p

**GLENN PENNINGTON AUTOMOBILES**

On the Strip (U.S. 25 North)

- 76 Ford Ranger 1/2 p-up F100 8, Auto, Black
- 75 Ford Elite A/C, White/Burgundy
- 75 Chev. Monte Carlo Landau, A/C Am/Fm Stereo, Tape, Silver/White Vr.
- 75 Chev. Bel Air Sta. Wgn. 4 Dr. Cruise, A/C, Blue/White
- 75 Ford Elite A/C, White/Burgundy Vr.
- 75 Ford Elite A/C, White/White Vr.
- 75 Olds Delta Royal, 4 Dr. Sedan, Full Eq'd, Beige/Brown Vr.
- 75 Olds Cutlass Supreme, A/C, Met. Brown/Brown Vr.
- 75 Pont. LeMans Sport Cpe, A/C, Black/Black Vr.
- 74 Chev. Caprice Classic 4 Dr. Fully Eq'd. Lt. Blue/Blue Vr.
- 74 Ford Maverick 2 Dr. A/C, Burnt Orange/Beige Vr.
- 74 Olds Cutlass Supreme Fully Eq'd. Green
- 74 Olds Cutlass Supreme, A/C, Am/Fm, Red/Black Landau Vr.
- 74 Ply. Valiant 4 Dr. Cust. 6, Auto, A/C, Am/Fm, Burgundy/Black Vr., Pont. Grand Prix, A/C, White/White Vr.
- 74 Pont. Grand Prix, Fully Eq'd, Beige/Brown Vr.
- 73 Chev. Cheyenne 1/2 ton pick-up, Auto, Gold/White
- 73 Chev. Monte Carlo, A/C, Gold/White Vr.
- 73 Chev. Caprice Classic, 4 Dr. Am/Fm, Green
- 73 Gremlin, 2 Dr. Auto, Beige
- 73 Olds Cutlass Supreme, A/C, Blue/Black Vr.
- 73 Ply. Gold Duster, 2 Dr. HT, 3 Speed, Black/Saddle 1/2 roof
- 73 Pont. Catalina 9 Pass. Sta. Wgn. A/C, Green/Woodsliding
- 72 Buick Skylark 2 Dr. HT, A/C, Pale Green
- 72 Capri 2 Dr. 4 Speed, White
- 72 Chev. Caprice 2 Dr. HT, A/C Brown/Black Vr.
- 71 Audi 100 LS, 4 Dr. Auto, Maroon/Black Vr.
- 71 Dodge Charger 2 Dr. HT, A/C, White/Black Vr.
- 71 Ford Brougham, A/C, Green/Green
- 71 Ford 24 Sport Cpe, 5 Speed, Green
- 71 Ply. Gran Fury 4 Dr. HT, A/C Beige/Brown

**POSTED:** No hunting or trespassing on either side of Lake Laville on Property belonging to Mitchell Abney. 51x1nf

**HYSINGER CARPETS** Located behind Hale's Furniture across from Exxon Service Station. Shag from \$2.99 up. Commercial carpet of all kinds. Fading and installation available. Call 256-5413 2x1nf

**COMING "RING RIOT"** Simulated diamonds, Saturday, December 11th. Saylor Pharmacy, \$3.95 - \$24.95. Ladies' mens, clusters, solitaires, birthstones, wedding - engagement sets, turquoise, tiger eyes, 3,000 rings displayed on sale day. 10x4

**BLOW-IN INSULATION.** Aluminum Siding, Storm Windows and Doors. For free estimates, contact Preston Collins, Route 2, Mt. Vernon or call 453-2161 or 256-5361. nif

**CUSTOM-MADE KITCHEN CABINETS**

FREE ESTIMATES

PHONE 379-6258 6x1nf

**"Low rates are a big reason we're the largest home insurer. But there are more..."**

Low rates wouldn't mean much without our first-class service. Drop by or give me a call.

**BILL BAILEY MT. VERNON PH. 256-2119**

Like a good neighbor, State Farm is there.

STATE FARM HOME AND CASUALTY COMPANY Home Office: Bloomington, Illinois

**LISTEN EACH SATURDAY AT 3 P.M. TO GOSPEL TIMES**

With Bro. Elmer Hickey over WRVK Gospel Singing & Preaching

**BIG RUMMAGE SALE**

Saturday, Nov. 20 from 9 a.m. to 5 p.m. Sponsored by the Mt. Vernon Chapter Eastern Star #468. Anyone wishing to donate items for the sale should bring them to Robinson's Equipment Store on Main Street in Mt. Vernon Friday afternoon, November 19 or Saturday, November 20th. 10x2

**FOR SALE**

**BURIAL LOTS IN ELMWOOD CEMETERY**

See David Bates or Call 256-2831 or 256-4973 9x2

READ AND USE THE WANT ADS! THEY GET RESULTS.

Watch next week's SIGNAL for details of **AUCTION** of Mr. and Mrs. Bill Proctor's 106 ACRES, MORE OR LESS FARM MACHINERY AND PERSONAL PROPERTY Located on the Frog Branch Road and Halcomb Lane Garrard County, Kentucky

**SATURDAY, NOVEMBER 27, 1976 10:30 a.m.**

**Ford Realty & Auction Co.**

256-4545 Mt. Vernon

**GARRARD COUNTY STOCKYARDS**

**SALE FOR ALL CLASSES OF LIVESTOCK-EVERY FRIDAY**

LANCASTER, KENTUCKY

PHONE 792-2118

J.L. TEATER HOGAN TEATER WILLIAM KIRBY TEATER



# WANTED ADS

WHATEVER YOU NEED

## LEGAL NOTICES

### LEGAL NOTICE

Pursuant to the provisions of Kentucky Revised Statute 337.552, I, or my authorized agent, will on November 16, 1976, commencing on or about 10:00 A.M. (EST), in the Conference Room, Department of Transportation, Bureau of Highways, 8th Highway District Office, U. S. 27, Somerset, Kentucky, hold a hearing to consider a revision of the prevailing wage rates for laborers, workmen and mechanics engaged in construction of public works projects in a locality consisting of the following counties of this State: BELL, CASEY, CLAY, HARLAN, KNOX, LAUREL, LESTIE, MCCREARY, PULASKI, ROCKCASTLE, RUSSELL, WAYNE and WHITLEY. This locality has been determined by the Office of the Commissioner, Department of Labor. This Locality shall be referred to as Locality 12. At this time, evidence relating to fringe benefits provided through irrevocable agreements between employers and employees shall be considered in establishing a prevailing rate of wages. All interested persons desiring to present evidence or offer testimony on this date are invited to attend the hearing.

James R. Yocum, Commissioner  
Kentucky Department of Labor

### EXECUTRIX NOTICE

Notice is hereby given that Rachel Lake, Route 3, Mt. Vernon, Ky. has been appointed Executrix of the Estate of Casper Lake, deceased. Any persons having claims against said estate shall present them, verified according to law, to the said Rachel Lake or to James W. Lambert, Mt. Vernon, Ky. on or before February 18, 1977.

### ADMINISTRATRIX NOTICE

Notice is hereby given that Hazel R. Elliot, 905 Celia Lane, Lexington, Ky. 40504 has been appointed Administratrix of the Estate of Fannie Riddle, deceased. All persons having claims to the said estate shall present them, verified according to law, to the said Hazel R. Elliot or to James W. Lambert, Mt. Vernon, Ky., Attorney for said estate, on or before January 28, 1977.

### INSULATE NOW

Blown Fiberglass  
6-8 or 10 Inches  
T&S BUILDERS  
256-2104 or 256-4372

### HASTY'S T.V. SERVICE

is located one mile south of Mt. Vernon, Ky. on U.S. 25.  
We sell Boosters, Antennas, Tubes and Stereo Needles. Good Used T.V. For Sale.  
Open 8 a.m. to 8 p.m.  
Phone 256-4636

### REPAIRS

Sewing Machines Repaired. All Makes and Models. 17 years experience. Work fully guaranteed. Three-Day Service.

### LEROY DAVIS

Crab Orchard St.  
Lancaster, Ky.  
Ph. 792-3148



### DOZER WORK

JAMES CARPENTER  
Route 3  
Mt. Vernon, Ky. 40456  
256-5370

### ADMINISTRATRIX NOTICE

Notice is hereby given that Arnela Alcorn, Mt. Vernon, Kentucky has been appointed administratrix of the estate of Virgil L. Alcorn, deceased. All persons having claims against said estate shall present them, verified according to law to the said Arnela Alcorn or to Clontz & Cox, P.O. Box 578, Mt. Vernon, Kentucky, attorneys for said estate, no later than January 6, 1977.

### CARD OF THANKS

The family of Mae Jones wishes to express their appreciation to each and everyone who sent flowers, food or visited during their sorrow. A special thanks to Bro. Roland Cornelius and Bro. Lester Arnold and the Dowell and Martin Funeral Home.

Roy Jones and family

### Card of Thanks

We would like to express a very special "thank you" to all the people of Broadhead for all their help and support and most of all their prayers during Ricky Payne's illness.

Floyd Payne and Family



Gravel-Fill Dirt - Top Soil Hauled



JIM & JACK'S  
S&T STORE  
Ph. 256-4363  
After 5 p.m. 256-2580

### Card of Thanks

We, the family of George W. Parrett, wish to thank everyone who was so kind to us during the illness and

## The Mt. Vernon Signal Thursday, Nov. 11, 1976 P-19

death of our beloved father.

A special thanks to Dr. G.H. Griffith, the hospital staff, Sowder Nursing Home, Mrs. and Mrs. H. Lee Durham for the beautiful music, Bro. Harvey Penso and Bro. Raymond Roaden, Cox Funeral Home and those who brought food and sent flowers and food.

Your kindness will always be remembered.

The Children  
Mrs. Lena Machal  
Cesar Parrett  
Mrs. Minnie Lee Barnett

### "COUNTY AGENT'S NOTES"

(Cont. From 16)

to accelerated economic activity abroad and reduced crop prospects in Europe.

With expected large supplies grain export prices may average lower this next year. But supplies will be tighter for soybeans, oilmeal and cotton.

Higher prices will account for most of the anticipated increase in the value of U.S. farm imports in fiscal 1977. Imports are up 14 to 18 percent from 1975/76's \$10.0 billion record high. Value gains are anticipated for coffee, meat, crude rubber, and dairy products.

The U.S. agricultural trade balance should be \$10 plus billion compared to \$12 billion in 1975/76.

CALL  
256-2178

Anytime, Day or Night  
If You Need Assistance  
From the  
Mt. Vernon City Police

## Commissioner's Sale

ROCKCASTLE CIRCUIT COURT  
Civil Action, File No. 3137

Bank of Danville Plaintiff  
V. Notice of Sale  
William Russell Abney and  
Emmie Osborne Abney and Defendant  
Citizens Bank, Broadhead, Kentucky

By virtue of a judgment and order of sale of the Rockcastle Circuit Court, rendered on October 4th, 1976, in the above cause, for the sum of FIFTEEN THOUSAND ONE HUNDRED FIFTY DOLLARS (\$15,150.00) together with interest thereon at the rate of eight and one-half percent (8 1/2%) per annum from date of April 30, 1975 until paid and for the sum of TWENTY THOUSAND NINE HUNDRED SIXTEEN DOLLARS AND SIXTY CENTS (\$20,916.60) plus interest at the rate of eight percent (8%) per annum from October 2nd, 1976 until paid, and its costs therein, I shall proceed to offer for sale at the Courthouse door, Main Street, Mount Vernon, Rockcastle County, Kentucky, to the highest bidder at public auction on the 19th day of November, 1976, at the hour of 10:30 A.M., Local Time, or thereafter, the following described property, or so much thereof as necessary to satisfy the judgment of this Court, to-wit:

Tract No. 1 (Parcel 1) Beginning on top of the ridge at William Mink's white oak corner; thence running southwest with his line to Negro Creek Road; thence running northwest with the meanders of the road to Bill Hilton's line; thence northward with said Hilton line to a chestnut corner; thence southeast with Atkesson's line to the beginning, containing twenty (20) acres.

Tract No. 1 (Parcel 2) Beginning on a white oak; thence South 30 West—across creek to a black oak on top of a ridge; South 61—84 poles to a spotted oak, poplar and locust, a corner of Ford's 1890 survey on a side of hill that leads to John Estes; thence Ford's line, North 47 East 102 poles to Manuel's line; thence his line, North 16 West 21 poles to a black oak and hickory; thence down the hollow northwest to John Helton's beginning corner; thence up Atkesson branch northeast to a hickory; thence south to the beginning, containing one hundred twenty (120) acres.

And being the same real property which the defendants obtained by deed dated October 24, 1959, executed by Zella Harris, a single woman, of record in Deed Book 130, page 339, in the office of the clerk of the Lincoln County Court, Stanford, Kentucky.

Tract No. 2 Beginning at a stone in Bishop's line; thence South 89 East 30 poles to a stone, Bishop's corner; thence South 85 East 33 1/2 poles to a stone at the foot of the hill; thence South 16 West 29 poles and 18 links to a post by a pile of stones; thence South 4 1/2 West, 11 poles and 9 links to a post by a pile of stones; thence South 2 West 21 poles and 11 Links to a stake; thence South 5 East 12 poles and 3 links to a stake at the branch; thence South 48 West 21 poles and 4 links to a horseman between the forks of the branch; thence North 89 1/2 West 82

poles to a stone; thence North 8 1/4 East 90 poles to the beginning and containing thirty-three and one-half (33 1/2) acres.

And being the same real property which Eunice Osborne Abney obtained by deed dated November 28th, 1968, executed by Opal E. Osborne, single, of record in Deed Book 88, page 409, in the office of the clerk of the Rockcastle County Court, Mount Vernon, Kentucky.

Tract No. 3 Beginning at a stone in the county road, second corner to Lot No. 2; thence North 41 3/4 East 102 poles and 21 links to a stone; thence South 47 1/2 East 38 3/5 poles to a stone; thence South 89 1/2 West 103 2/5 poles to a stone by the road; thence North 49 1/2 West 21 1/2 poles to a stake in the road; thence North 43 3/4 West 18 poles to the beginning, containing twenty-four and one-half (24 1/2) acres, more or less.

Roadway 12 foot wide on the end adjoining Abe Brown is excluded from this deed.

And being the same real property which the defendants obtained by deed dated June 30th, 1973, executed by Opal E. Osborne, a wife, of record in Deed Book 94, page 168, office of the clerk of the Rockcastle County Court, Mount Vernon, Kentucky.

Each of the above tracts may be sold separately or then as a whole.

Terms of Sale of Real Property: The property will be sold to the highest bidder on terms of ten percent (10%) of the purchase bid in cash at the time of sale, the balance in six (6) months, with purchaser being required to execute bond with surety thereon to be approved by the Commissioner, to secure the unpaid balance of the purchase price; said bond to bear interest at the rate of eight and one-half percent (8 1/2%) per annum from date of sale until paid, and the bond shall have the same force and effect as judgment and shall remain and be a lien on the said property until fully paid. The purchaser shall have the privilege of paying all of the purchase price in cash, or paying said bond before maturity by paying the principal amount thereof together with all interest accrued thereon until the date of such payment.

In addition to the above described real property, the following described personal property will be sold:

#29 Rake - Serial No. 5313138758  
#42 Mower - 7 ft. cut - Serial No. 238-455663

Hay Baler #12 - Serial No. 996-534091

Manure Spreader - 130 bushel - Serial No. 162-009475

1965 International Tractor, Model No. \_\_\_\_\_, serial number 01413

One (1) 1975 Ford Pickup Truck, 8 cylinders, S/S Style Body, model number F291V, identification number

F25 YCO 90758, bearing 1975 Rockcastle County, Kentucky, registration number F18-933.

1/8 Money E. Cummins  
Master Comm., Rock. Circuit Court

CLONTZ & COX  
Attorneys at Law  
Mount Vernon, Kentucky

## PRICES THAT WON'T HURT WHEN FRANK MOVES YOUR DIRT -



Frank Mason & Sons  
Backhoe Work  
Serving Rockcastle Co.  
Ph. 256-5275

Well Experienced  
Licensed  
Master Plumber

HAUL  
Rock  
Top Soil  
Fill Dirt  
Firewood

INSTALLING  
Septic Tanks  
& Lines  
Waterlines  
Culverts

DIG  
Footers  
Basements  
Ponds  
Ditching

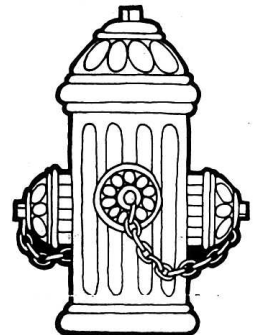
"YOUR BUSINESS APPRECIATED"  
Free Estimates

## Ellison Auto Painting And Body Work

FREE ESTIMATES

Phone Day Or Night

758-8906



## Fire Protection

It's nice to live within a few feet of a fire hydrant. But it's even nicer to know that you have the coverage you need in case a fire does strike.

When you insure with us, you're insured of getting the protection you need - and at the best rates possible.

We're an independent agency and that means we shop around to get the best coverage for you from the best insurance company for your particular need.

We can't bring the hydrant closer to you - but we can give you enough fire insurance protection.

## Singleton-Ford Insurance Agency

MT. VERNON, KY.  
Phone 256-2611  
Doranne Singleton, Agent



## SUPERIOR MOTOR CARS

U.S. 25 North "On The Strip" Berea, Ky.  
OWNERS: Evelyn Pope and Howard Allen

- 1975 Monte Carlo, Loaded, Copper/B VR
  - 1975 Chevrolet Malibu Classic, 2 Dr., HT, A/C, White/Beige VR
  - 1974 Chevrolet Pick-Up Truck, Green and White
  - 1974 Pinto Station Wagon, 4 Speed, Green
  - 1974 Pontiac Grand Am, Loaded, White/W VR
  - 1974 Volkswagen, 2 Dr., Yellow
  - 1974 Vega Hatchback, Green
  - 1974 Ford Galaxie 500, 2 Dr., A/C, Green
- If you didn't Trade at Superior Motors, you paid too much.

Plus More to Choose From  
Lower overhead means lower prices for our customers

### ON THE LOT FINANCING

## Superior Motor Cars

BEREA, KENTUCKY PHONE 986-3471

Watch next week's SIGNAL for details of

## AUCTION

of  
Mr. and Mrs. Charles Burke's

20 ACRES, more or less

Located at Hummel, Rockcastle County, Ky.

SATURDAY NOVEMBER 27, 1976 2:30 p.m.

For additional information, contact:

Ford Realty & Auction Co.  
256-4545 Mt. Vernon

IMPALA - CAPRICE - MONTE CARLO - CHEVELLE - NOVA - VEGA - CAMARO - MONZA - CORVETTE - CHEVY TRUCKS - IMPALA - CAPRICE - MONTE CARLO - NOVA

LEASING

12 to 36 months

## "America's No. 1 Car" BRITTON CHEVROLET-OLDS, INC.

U.S. 25 NORTH

986-3169

BEREA

GMAC Financing  
MIC Insurance

CORVETTE - CAMARO - VEGA - CHEVELLE - MONZA - IMPALA - CHEVY TRUCKS - CORVETTE - NOVA - CAPRICE - IMPALA - CAPRICE - NOVA - MONTE CARLO

CHEVY TRUCKS

# WORLD MISSION CONFERENCE

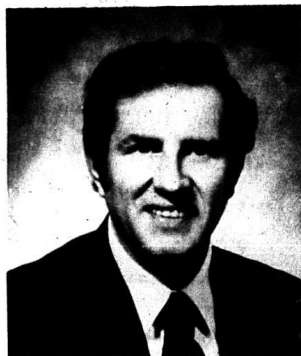
## NOVEMBER 15 - 16, 1976

Freedom Baptist Church - Nov. 15  
Poplar Grove Baptist Church - Nov. 16



Rev. Larry N. Keaton is a Southern Baptist missionary to Spain. He is a native of Ohio and received a BA from Carson Newman College, and received a Master of divinity from Southern Seminary, Louisville, Ky. He will be speaking at Freedom Baptist Church on November 15, 1976 and at Poplar Grove Baptist Church on November 16, 1976.

Pine Hill Baptist Church - Nov. 15  
Sand Hill Baptist Church - Nov. 16



Rev. Norman F. Lytle is a Southern Baptist missionary to Israel. He is a native of Ohio. He graduated from Georgetown College and received a Bachelor of divinity from Southern Seminary, Louisville. He will be speaking in Pine Hill Baptist Church, November 15, 1976 and in Sand Hill Baptist Church, November 16, 1976.

Brindle Ridge Baptist Church - Nov. 15  
Flat Rock Baptist Church - Nov. 16



Rev. and Mrs. Archie V. Jones are Southern Baptist Missionaries to Cuenca, Ecuador. He is a native of Davie County, N.C. He graduated from Mars Hill College with an Associate of Arts, from Wake Forest College with a BA and from Southeastern Baptist Seminary. Rev. Jones will be speaking at Brindle Ridge Baptist Church November 15, 1976 and Flat Rock Baptist Church, November 16, 1976.

Macedonia Baptist Church - Nov. 15  
Northside Baptist Church - Nov. 16



Rev. Douglas A. Bryant is a Southern Baptist missionary to Ghana. He is a native of Georgia. He graduated from Belmont college of Nashville, Tenn. He holds a Master of theology from New Orleans Seminary. He will be speaking in Macedonia Baptist Church on November 15, 1976 and at Northside Baptist Church on November 16, 1976.

Conway Baptist Church - Nov. 15  
Pleasant Run Baptist Church - Nov. 16



Rev. and Mrs. S.D. Sprinkle are Southern Baptist missionaries to San Jose, Costa Rica. He is a native of Fort Worth, Texas. He graduated from Baylor University and Southern Seminary, Louisville, Ky. Bro. Sprinkle will be speaking in Clear Creek Baptist Church November 15, 1976 and in Mt. Pleasant Baptist Church November 16, 1976.

Clear Creek Baptist Church - Nov. 15  
Mt. Pleasant Baptist Church - Nov. 16



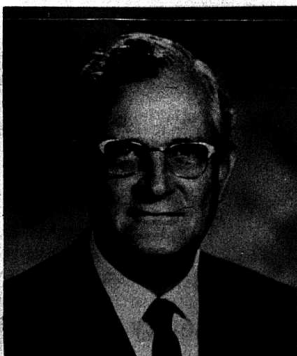
Dr. and Mrs. Thomas O. High are Southern Baptist missionaries to Nigeria. He is a native of Spartanburg, S.C. He received a BA from Wofford College, MA from Vanderbilt University and the bachelor of divinity and doctor of theology from Southern Seminary, Louisville, Ky. He will be speaking in Conway Baptist Church, November 16, 1976.

Mt. Zion Baptist Church - Nov. 15  
First Baptist Church - Nov. 16



Mrs. Norman (Martha) Lytle is a Southern Baptist missionary to Israel. She is a native of Ohio. She graduated from Georgetown College. She will be speaking at Mt. Zion Baptist Church, November 15, 1976 and First Baptist Church, Mt. Vernon on November 16, 1976.

Roundstone Baptist Church - Nov. 15  
Watts Chapel - Nov. 16



Brother Alex Herring is a Southern Baptist missionary to Taiwan. He was born in China, the son of a family of missionaries. He studied at Furman University, Greenville, S.C. He received the bachelor of Christian training from New Orleans Seminary. He will speak at Roundstone Baptist Church November 15, 1976 and at Watts Chapel, November 16, 1976.

**Ten speakers will be at 20 area Baptist Churches on these 2 days to give informative talks about their work in the mission fields. Sponsored by the Rockcastle Southern Baptist Association in cooperation with the Southern Baptist Foreign Mission Board.**

**EVERYONE IS INVITED  
TO ATTEND THESE MEETINGS**

Scaffold Cane Baptist Church - Nov. 15  
Maretburg Baptist Church - Nov. 16



Rev. Sam Pittman is presently on the Staff of the Southern Baptist Foreign Mission Board. He is a native of Greenville, S.C. He has a BA from Furman University. He has a Master of theology from Southern Baptist Seminary, Louisville. He will be speaking at Scaffold Cane Baptist Church, November 15, 1976 and Maretburg Baptist Church on November 16, 1976.

Fairview Baptist Church - Nov. 15  
Brodhead Baptist Church - Nov. 16



Miss Ethel Harmon, Southern Baptist Missionary, retired in July 1972 after 34 years of service in Nigeria. She is a native of Whitley County, Kentucky. She received a BA from Georgetown College and Master of religious education from Southern Seminary, Louisville. She will be speaking in Fairview Baptist Church, November 15, 1976 and in Brodhead Baptist Church, November 16, 1976.



# Mount Vernon Signal

"WHERE THE BOONEWAY JOINS THE DIXIE"

The Mount Vernon Signal Mount Vernon, Kentucky 40456

Volume 90 - Number 10

November 11, 1976



A one-story frame building, belonging to Charles Machal, was completely destroyed by fire about noon Tuesday. Fire Chief John Cox said the fire apparently started from trash burning in back of the building. Mr. Machal used the building to store chemicals, records, etc. No clothing was stored in the building. Chief Cox said that no one had been in the building recently which was located at the rear of Mt. Vernon Cleaners on West Main Street in Mt. Vernon.

## Certificate of Excellence Received In All-Kentucky City Competition

A slide and tape presentation, by representatives of Rockcastle Co., Mt. Vernon at the regional judging for the 1976 All Kentucky City award, received a Certificate of Excellence. The judging was held November 3 and 4 at Cumberland Falls State Park.

Attending the meeting from the county were: Judge Hubert Thacker, Danny Ford, Donnie Singleton, Gerald Thompson, Bill James and Gattiff Craig who is also Executive Director of the Cumberland Valley Area Development

District. To receive a Certificate of Excellence, you must obtain an excellent rating in at least two categories. The local presentation was rated excellent in Industry and Resources Development and Health and Welfare Services and Facilities. To advance to state competition, a presentation must receive an excellent in at least four categories. The Certificate will officially be awarded sometime in January at the time of the

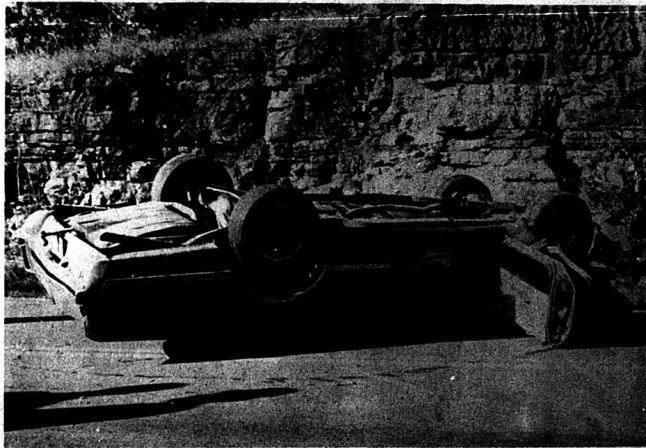
## Open Houses Scheduled For County Grade Schools

All four elementary schools will observe an Open House Program next week during American Education Week. Parents are encouraged to attend the Open House in their child's school. During the program, parents will have an opportunity to visit the classrooms and talk with teachers about various educational concerns.

The total school program will be more efficient only if parents and teachers communicate and cooperate together in achieving the highest quality of education for each child.

Open Houses are scheduled in the various schools as follows:

- Livingston Elementary  
Tuesday Night, November 16th beginning at 7 p.m.
- Mt. Vernon Elementary  
Monday night, November 15th from 8:30 to 9:30 p.m.
- Roundstone Elementary  
Monday night, November 15th from 6 p.m. to 8 p.m.
- Broadhead Elementary  
Thursday night, November 18th



Glenn Griffin, 22, of Route 4, Berea, lost a hand in this non-fatal accident which occurred last Thursday morning 4 miles east of Mt. Vernon on U.S. 25. Griffin was driving the car when, according to State Police reports, it left the road on the east side, traveled 416 feet, came back onto 25, traveled 200 feet across the road, struck a rock wall and overturned several times before coming to rest on its top. Griffin's right hand was

averted in the accident. He was taken to a Lexington hospital where he is expected to be released later this week. A passenger in the car, Edward Ray Lear, 18, of Route 3, Mt. Vernon received cuts and bruises in the accident and was released from the hospital Saturday. State Police said the car was apparently traveling at a high rate of speed. The car's motor was thrown approximately 100 feet from the accident.

## Industrial Development Advisory Team To Visit Here Thursday, November 11th

A group of approximately 20 members of the Kentucky Department of Commerce Industrial Development Advisory Team will be visiting Rockcastle County Thursday, November 11th. The purpose of the visit will be to have the team offer suggestions which might help in obtaining industry for Rockcastle County.

### SCHOOL JANITOR ROBBED AT GUNPOINT

Quinton Barnett, custodian of Mt. Vernon Grade School, reported to City Police Monday morning that he was held up and robbed of \$65 in cash about 4 a.m. Monday morning at the grade school.

Mr. Barnett said that he had gone to the school at 4 a.m. to fire the furnace and that shortly afterwards, a man in his early thirties and a much younger woman entered the furnace room. The man pointed a pistol at Mr. Barnett and demanded his money and Mr. Barnett handed them his billfold.

The couple took \$65 from the wallet and returned it to Mr. Barnett when he asked for it. The couple then left, warning Mr. Barnett not to attempt to pursue them. Luckily, \$40 hidden in the wallet in a secret compartment was not discovered by the thieves.

Mr. Barnett said the couple left in a brown car and that there was a third person in the car when it left the school.

### MRS. GENTON NAMED DIRECTOR OF NURSING

Mrs. Gertrude Genton of Ottenheim was recently named Director of Nursing at the Rockcastle County Hospital.

She is a graduate of Berea College and prior to coming to the local hospital served as In-Service Education Director and Assistant Director of Nursing at Walker Memorial Hospital in Florida and as Director of Nursing at Fletcher Hospital in North Carolina.

Miss Kathy Sattler, who served as Director of Nursing for the past two years, has been named as In-Service Training Director.

### FARMERS-BUSINESSMEN'S BANQUET IS NOVEMBER 12TH

The annual Farmers-Businessmen's Banquet is this Friday night, November 12th at the Rockcastle County High School 7 p.m.

Tom Harris, Commissioner of Agriculture, will be guest speaker.

The farmers are hosting the businessmen to this year's event.

### REGISTRATION BOOKS NOW OPEN

Mrs. Irene Bales, County Clerk, reminds voters that Registration Books reopened Monday, November 8th.

If you are not registered to vote, you may do so now in order to vote in the May primary.

### THANK YOU

The staff of the Rockcastle County Health Department would like to thank all the volunteers who helped in the Swine Flu Immunization Clinic held recently.

The agenda for the day's visit is as follows:

- 7:30 a.m., breakfast will be served compliments of The Bank of Mt. Vernon at the Rockcastle Steak House.
- 8:30 a.m., a bus tour of the industrial sites and local communities will begin.
- 10:30 a.m., a question and answer

## City Council Meets

At Monday night's meeting of the Mt. Vernon City Council, very little of interest was the agenda, but one important decision by the Council did come out of the meeting and it concerned that old, old question of parking tickets.

The Council had earlier told City Policemen not to leave town to serve warrants of persons with overdue parking tickets because they did not want to leave the town unguarded while this was being done. However, they decided Monday night to have city policemen serve warrants issued for this violation on persons living within city limits and to ask Sheriff Manuel Shepherd to serve warrants outside the city limits.

So if you have an overdue parking ticket (tickets), you had better get hustling because it looks as if they are going to get us one way or the other.

### ORDER CITRUS FRUIT BY NOVEMBER 16TH

If you wish to order Florida Citrus Fruit through the local Farm Bureau office, you must do so by Tuesday, November 16th.

Please come into the office on Main Street in Mt. Vernon by this date.

## Kentucky Telephone Company Granted \$1 Million Increase

The Kentucky Public Service Commission recently granted Kentucky Telephone Company rate increases totaling approximately \$1,030,000 in additional annual revenues. We asked for \$1,683,292 in May, 1976," said J. Wallace Black, District Commercial Manager for the company in London.

"We are disappointed that we were not granted the full amount, but we're pleased that the Commission recognized our need for increased revenues."

Monthly local rate increases for residential customers range from \$1.30 to \$2.20 per month; for business customers, increases range from \$1.40 to \$3.65 per month. An individual customer's increase depends upon location, exchange size, and type of service. (A full listing of rates will be available for public inspection at the telephone company business office).

"In addition," said Black, "The Commission granted our proposed increases in service connection charges and a change in the way they're figured. We've gone to a four-tier pricing plan so that the cost to the customer corresponds to the amount of work involved."

The tiers and their respective charges are: Service Order Charge, per Order Written, \$8, residence and \$12,

session between the Industrial Development Advisory Team and Rockcastle Counties will be held in the Community Room of the Production Credit Association Building.

12:00 Dutch treat luncheon at the Holiday Family Restaurant with adjournment at 1:30 p.m.

### BASKETBALL UNIFORM DONATIONS BEING SOLICITED

Several mothers are presently soliciting donations from businessmen in Mt. Vernon for donations to purchase new basketball uniforms for the 5th and 6th grade teams at MVGS.

It will take approximately \$400-\$450 to buy these uniforms. The school earlier sold tumbler to purchase new uniforms for the 7th and 8th grade teams.

Soliciting donations will be: Mrs. Kay Singleton, Mrs. Louise Bailey, Mrs. Loretta Dillingham, Mrs. Patricia Harmon and Mrs. Ruby Cornelius.

### SOMERSET YMCA SPONSORS BENEFIT BASKETBALL GAME

The Pulaski YMCA of Somerset is proud to bring to this area a University of Kentucky Blue-White basketball game. The game will be held in the (Cont. to 7)

### SWINE FLU SHOTS TO BE GIVEN AT HEALTH DEPARTMENT

If you were unable to receive your Swine Flu immunization at the recent clinic held at the high school, you can do so on the next two Wednesdays at the local Health Department in the Courthouse.

The dates are Wednesday, November 17th and Wednesday, November 24th.

For further information, call 256-2242.

Regional judging for the 1976 All Kentucky City Award was held at Cumberland Falls State Park, November 3 and 4, and several local community leaders were there to make a presentation on behalf of Rockcastle County and Mt. Vernon.

Delegates: Danny Ford, Judge Hubert Thacker, Gerald Thompson, another judge and Bill James.

Vice President, Northern Kentucky Chamber of Commerce; Cecil Murray, Executive, Park-Bourbon County Chamber of Commerce and Wilbur Macchore, Frankfort. Standing area, from left: Donnie Singleton; Joe Gilmore, KU; Shown in the above photo, seated; are the judges for the award: Walter Dunsley, Executive



# Mount Vernon Signal

PUBLISHED EVERY THURSDAY

Main Street in Mt. Vernon, Kentucky 40456

Entered at Mt. Vernon Post Office as Second Class Matter.

In Rockcastle Co. \$4.20 Outside of County (In State) \$5.25 Out of State \$5.00

JAMES ANDERKIN, JR., PUBLISHER  
FERINA M. ANDERKIN, EDITOR

Member Kentucky Press Association

## FRANKFORT WATCHLINE

By Ferrell Wellman

Hal Rogers smiled meekly. Rogers was the director of President Ford's Kentucky campaign. As the votes rolled in from Western Kentucky and Jimmy Carter's lead continued to mount, Rogers knew it was time for a concession statement. Rogers conceded, but not to Jimmy Carter. Rogers conceded Kentucky to Governor Julian Carroll. It was the right choice.

The Governor proved his political punch hasn't turned limp since he moved into the mansion last year. An early supporter of Carter, Carroll's reputation was on the line to deliver. He did.

As the Republicans gained momentum in the final days of the campaign, the Democrats realized the keys to a Carter victory in Kentucky would be the first and seventh districts. On the Saturday before election day, Carroll joined Congressman Carl Perkins in a swing through Eastern Kentucky with stops at several courthouse rallies.

On Saturday night, Carroll turned west attending a first district rally in Paducah. On election eve Carroll made a last minute blitz through the first district in an effort to get the voters out on election day. It worked. Western Kentucky Democrats poured into the polls and gave Carter a 55,000 vote margin in the first district. The vote created a soft spot in his heart for Kentucky, and it gave Governor Carroll an open door to the White House.

The Governor's only embarrassment

during the election occurred in the races for the 14 slots on the new Court of Appeals. Four of the Governor's appointees were opposed, but four of the ten faced challenges were beaten despite efforts by Carroll to get his men elected. Losses by Joseph Eckert of Louisville and Robert Duwell of the third district in Southeastern Kentucky must have been especially disheartening for the administration.

Hal Rogers of Somerset could not be blamed for Ford's 83,000 vote whipping in Kentucky. With nearly 1.2 million votes, he simply got buried in the landslide of Democratic Party members at the polls. Rogers and GOP state chairman Lee Nunn did a good job of uniting the party after a nasty primary. Talking with Rogers on election night, he wouldn't say if he would run for governor in 1979, but he would say he would "stay in touch with those who make the decisions in the party." Like fourth district Congressman Gene Snyder, Rogers would be an attractive candidate for the Republicans.

As difficult as it is to imagine, two years from today we may be listening to ambitious politicians announce their intentions for governor and lieutenant governor. With heated primaries expected, some office seekers are sure to

try to get the early jump on their opponents.

The man thought to be the front-runner for the Democratic gubernatorial nomination has been mentioned around the Capital as one man who did not do his share to get Jimmy Carter elected. During a rally in Paducah, Congressman Carroll Hubbard called President Ford a decent, honest man minutes before the Governor blasted the Ford Administration.

"I've heard the rumors, but I'll let the facts speak for themselves," is the way Governor Carroll responded to a question about Hubbard's efforts on behalf of the President in the fifth district.

**RED-FACE DEPARTMENT:** Midway through the campaign I noted that in tight races, Eugene McCarthy's ability to draw the liberal vote from Carter could be enough to swing the state to Ford. Not only did McCarthy's efforts in Kentucky go down the drain, he ran fourth in the state behind American Party candidate Tom Anderson whom I had never mentioned. Shucks. \*\*\*\*\*

### LETTER TO THE EDITOR

Dear Editor: A recent article in your newspaper prompted me to write this letter.

I am referring to the article concerning the proposal by the State Police which would require the re-examination of all licensed drivers in the state and the subsequent re-examination every two years.

This is absolutely ridiculous and an injustice to those of us who for years have driven with few, if any, traffic accidents. I bitterly resent the fact that every one is being lumped together as ignorant or reckless drivers. Can they truly believe this is justice for all? If, no, do not!

If something is to be done about unsafe drivers, who not check the records or ask the Insurance Companies who pay claims for these reckless drivers. Wouldn't it be more intelligent to institute a law whereby those who are involved in three (for example) accidents a year are required to be re-examined. This seems to be a fair solution and perhaps will provide an incentive for drivers to exercise more caution, knowing a stiff test awaits those who disregard safe driving.

The proposal now being considered is unjustified and without merit totally and completely. Respect and confidence in our law enforcement agencies are being eaten away by travesties such as this.

If half a dozen residents of a community commit murder, does the whole community go on trial for murder also? Ridiculous, you say? Of course it is, but it makes as much sense as does this license re-examination proposal!!!!

Mrs. Beatrice Owens \*\*\*\*\*

## County Statistics

### COURT COSTS

**Speeding:** Barbara Farley, Walter F. Hester, Albert Edward Timmins, James C. Walden, Samuel D. Lee, Clyde J. Long, Marie Bradford Walker, Karen Lynn Kofles, Ellen Saylor, Robert John McCarroll, Frank J. Longa, Dale D. McCracken, Billy Forest, Truman Daniel McDonald, Carolyn Caswell, Orlene R. Day, Charles H. Hess, Jerry M. Campbell, Beatrice W. Hughes, Thomas P. Szmoke, Charlotte H. Sullivan, Wanda Marlen Smith, Edna M. Jackson, Hubert L. Moses, Richard Serofino Moruzzi, Arthur Harper, David Lee Woods, Charles M. Mason, John C. Jones, \$10 and cost; Raymond L. Wiley (amended to disorderly conduct), \$100 and cost; John R. Collins, (amended to def. equip.), \$10 and cost.

**Public Intoxication:** Carl Edward Winkler, Kate Eula Gonnell, Clifford Middleton, Pearl G. Minnard, William D. Bourne, \$10 and cost.

**Improper Use of Dealer Plate:** Roy E. Plank, \$10 and cost.

**No Vehicle Identification Card:** Kenneth A. Meek, \$10 and cost.

**Operating a Motor Vehicle While Under the Influence of Intoxicants:** Lee R. Love (amended to reckless driving), \$100 and cost; Martha A. Gonnell (amended to reckless driving), \$50 and cost; James C. Farmer (amended to reckless driving), \$40 and cost; Joseph H. Wallingford (amended to public intoxication) \$10 and cost; Lester Earl Owens, (amended to Reckless driving) \$50 and cost.

**Transporting Alcoholic Beverages in local option territory for sale:** Lawrence E. Coffey, \$100 and cost. \*\*\*\*\*

### MARRIAGE LICENSES

Paul Edward Calhoun, 20, Rt. 2, Mt. Vernon, Ky., logging, to Mitzi Helen McCauley, 21, Mt. Vernon, Ky., nurse, November 4, 1976.

David Robin Maddens, 20, Mt. Vernon, Ky., unemployed, to Linda Faye Clark, 16, Mt. Vernon, Ky., unemployed, November 6, 1976.

Donald David Chappell, 25, Tyner, \*\*\*\*\*

Ky., factory worker, to Brenda Louise Harding, 25, Rt. 3, Mt. Vernon, Ky., factory worker, October 27, 1976.

### DEEDS

Earl and Elizabeth Roberts, real property located in Rockcastle County to Lonnie and Loreta H. Ennis, tax \$2.00.

Otis B. and Ruth Wavelene Mullins, real property located in Rockcastle County to Evelyn Lou Mullins and Shellee L. and Linda C. Mullins, tax \$25.00.

Katie Doyle, real property located in Rockcastle Co. to Thomas E. and Joyce W. Shaffer, tax \$1.00.

Edel and Alberta Wintstead, real property located in Rockcastle County to James W. and Anna M. Weaver, tax \$2.50.

Mark and Clara Fugate, real property located in Rockcastle Co. to Greg L. and Loreta H. Ennis, tax \$2.00.

Everett G. and Elizabeth Hamm, Ambrose and Jewell H. Albright, Lance and Charles H. Dillingham, R.H. and Audrey Hamm, real property located in Rockcastle Co. Ernest and Jessie VanHoose, tax \$45.50.

Dwight J. and Mary Francis Whitehead, real property located in Rockcastle County to Delroy D. Bishop, Janet Bishop, Bobby C. Bishop and Margie Bishop, tax \$22.50.

John and Betty Glovak and Frank and Janet Glovak, real property located in Rockcastle Co. to Terry L. and Cathy Lee Gillespie, \$22.50.

Hubert and Mae Adams, real property located in Rockcastle Co. to Ronald Jay Todd, tax \$9.00.

Hubert and Mae Adams, real property located in Rockcastle Co. to Gregory L. and Mary Lee Stephens, tax \$30.00.

Robert and Dicie Ford, real property located in Rockcastle Co. to James David and Ketraka Shivel and Charles and Elsie Shivel, tax \$3.50.

W.M. and Nora Farthing, real property located in Rockcastle Co. to John P. and Edna Brookman, tax \$30.00.

W.M. and Lutisha Allen, real property located in Rockcastle Co. to Jerry and Mary L. Sparks, tax \$16.00.

Jerry Dale and Mary Louise Sparks, real property located in Rockcastle Co. to Earl and Faye Baker, tax \$2.50.

Curtis L. and Darla Miller, real property located in Rockcastle Co. to Martha Adkins and Patricia Miller, tax \$16.50.

Monty and Mary Phillips, John and Mable Hutton, real property located in Rockcastle Co. to Kenneth Lee and Janet Mae Mason, tax \$22.50. \*\*\*\*\*

## Hospital Report

ADMITTED: Ethel Owens, Broodhead; Carrie Bakery, Mt. Vernon; Elijah Burke, Sr.,

Mt. Vernon; Diana Singleton, Irvington; Dennis Gibbs, Mt. Vernon; Thomas W. Southard, Mt. Vernon; Lewis Mullins, Cilbert; Dewey Cromer, Mt. Vernon; Elbert E. Allen, East Barnstead; Jessie Dale Doan, Mt. Vernon; Homer R. Hendrickson, Crab Orchard; Ricky Dale Mink, Orlando; Barbara Vance, Mt. Vernon; Theodore McGill, Georgia; Carol Ann Kirby, Mt. Vernon; Patricia Ann Doan, Mt. Vernon; Bernice Marler, Mt. Vernon; Edward Ray Lear, Mt. Vernon; Yvonda Mason, Orlando; Lillian D. Adams, Mt. Vernon; Sharolite Bowles, Broodhead; Cora E. Callahan, Berea; and Nancy Pigg.

### RELEASED

Bonnie Riley, Pamela McKinney, Juanita Harrington, Lester Bullock, Sadie Hacker, Carrie Baker, Champ Crawford, Ethel Owens, Diana Singleton, Carol Kirby, Theodore McGill, Homer R. Hendrickson, Jessie Doan, Barbara Vance.

### RSP ACTIVITY REPORT FOR OCTOBER 1976

During the month of October the Kentucky State Police at London report the following activity for the London area:

1295 motorists were issued citations for moving hazardous violations; 675 motorists were issued citations for other traffic violations; 883 persons were issued warnings for faulty equipment and different traffic citations; 831 motorists were assisted with tourist information, break downs, etc.

A total of 255 traffic accident investigations were made. Of these 168 were property damage accidents only; 85 were personal injury accidents; there were 3 fatal accidents; 151 persons were injured and 4 persons were killed.

111 motorists were arrested for driving while under the influence of intoxicants; 244 criminal investigations were made resulting in 184 criminal arrests; 14 stolen vehicles were recovered; and 540 persons attended 17 safety programs conducted by the Kentucky State Police.

During the month of October the Kentucky State Police at London report the following activity for Rockcastle County:

230 motorists were issued citations for moving hazardous violations; 44 motorists were issued citations for other traffic violations; 69 persons were issued warnings for faulty equipment and different traffic citations; 43 motorists were assisted with tourist information, break-downs, etc.; 30 total traffic accidents were investigated; of these 25 were property damage accidents only; 9 were personal injury accidents; there were no fatal accidents; 17 persons were injured and no persons were killed; 11 motorists were arrested for driving while under the influence of intoxicants; 17 criminal investigations were made resulting in 8 criminal arrests; and 4 stolen vehicles were recovered.

## MASONITE SIDING

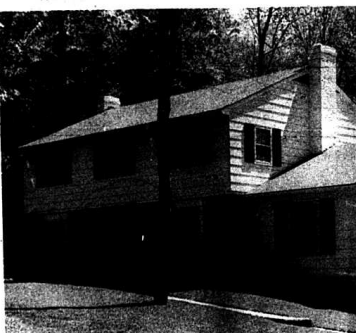
"Lap or Panel"



hardboard siding  
COLORLOK®  
lap siding

Tough, smooth, beautiful, Colorlok Lap Siding in currently favored colors, including white. A positive mechanical fastening arrangement not only supports and aligns the siding for fast, easy application, but conceals the nailing for a blemish free installation. Color-matched joint moldings, furnished with the product, cover the butt joints for improved appearance and protection. Other color-matched accessories are available to finish any installation. See page 16.

Sizes  
Width: 12" and 9 3/4" (nominal)  
Length: 16'  
Thickness: 7/16" (nominal)



panel sidings

MASONITE brand sidings, for design, performance, and value!



Batt-n-Panel

**Batt-n-Panel**—This latest addition to the Woodman series is a most unique siding product — traditional in character and styling, but completely new in concept. The integral eased battens on 12" centers not only reduce installation time and cost in comparison to separate battens, but also are weather tight and can't work loose. Edges are shipped, surface is available unpainted or with Primcoate for field finishing.

Sizes—All Panels  
Width: 4'  
Lengths: 8' and 9'  
Thickness: 3/4" (nominal)

Limited Guarantee

Sizes—All Panels  
Width: 4'  
Length: 8' and 9'  
Thickness: 3/4" (nominal)

One Day Service On

WALLPAPER

Come in and check our books

Vinyl or Vinyl Coated Prepared

## THRIFTY LUMBER COMPANY

256-2521

Mt. Vernon, Ky.

PHONE  
864-5043

# LONDON TOBACCO MARKET

## KENTUCKY'S FINEST

### NONNIE PIPE

We will now remain open the year around in better serve you

We are pleased to announce that Mr. Terry Purcell is now associated with the London Tobacco Market. Any assistance Mr. Purcell may be to you in the handling or selling of this year's crop, kindly phone Somerset, Kentucky 679 5046 or London, Kentucky 864 5043.

## THE BURLEY INFORMATION CENTER.

# SHOP HAPPY SAVE WITH A SMILE

FRESH LEAN  
**GROUND BEEF**  
3 LB. OR MORE  
**79**¢/Lb.

CENTER CUT  
**CHUCK ROAST**  
**59**¢/Lb.

ENGLISH ROAST  
**79**¢/Lb.  
SHOULDER ROAST  
**89**¢/Lb.

Whole  
**SMOKED PICNICS**  
**69**¢/Lb.

SLICED  
**WEBBER'S SAUSAGE**  
1 Lb. Webber's SAUSAGE  
**1**°99

Fresh  
**BOSTON BUTTS**  
Sliced  
**89**¢/Lb.

12 OZ. LAY'S  
**SLICED BACON**

Lay's 3 Little Pigs  
**WEINERS**  
12 Oz.  
**69**¢

FROZEN  
**TURKEY BREAST**  
**99**¢/Lb.



250 S&H Stamps  
With \$25.00 Or More  
Order

100 S&H Stamps  
With \$10.00 to \$24.99  
Order

**GOLDEN GRIDDLE**  
Syrup  
OUNCES  
**1**°39  
WITH THIS COUPON  
PRICE WITHOUT COUPON  
**1**°89

**HELLMANN'S MAYONNAISE**  
QUART  
**99**¢  
PRICE WITHOUT COUPON  
**1**°39  
WITH THIS COUPON  
GOOD ONLY AT Food Fair Stores  
OFFER EXPIRES 11-17-76  
LIMIT ONE COUPON PER PURCHASE

303 Cans Old Virginia  
**APPLE SAUCE**  
3 For **1**°

TALL CANS  
**WILSON'S MILK**  
3 For **89**¢

Food Fair Coupon  
2 Lb.  
**MAXWELL HOUSE COFFEE**  
With This Coupon  
**3**°98  
Expires 11-17-76  
Limit (1) With '10° Or More Order

Food Fair Coupon  
20 Oz.  
**LUCKY CHARM CEREAL**  
With This Coupon  
**99**¢  
Expires 11-17-76

FOOD FAIR 16 OZ. LOAVES  
**BREAD**  
4 For **1**°

3 Oz. Swift Premium  
**POTTED MEATS**  
5 For **95**¢

PILLSBURY  
**CAKE MIXES**  
2 For **79**¢  
7 Varieties  
Limit (2) With '10° Or More Order

**teri**  
DISPOSABLE  
TOWELS  
COLORS AND  
PRINTS  
**59**¢

28 Oz. Box Country Store  
**MASHED POTATOES**  
**89**¢  
2 BATH BARS FOR  
**59**¢  
WITH THIS COUPON  
Limit: 1 Coupon per purchase  
Redeemable only at Food Fair Stores  
Expires 11-17-76 Without coupon, price is .82

LUCK'S  
**CHILI WITH BEANS**  
15 Oz. Can  
2 For **95**¢

2 LB. BOX  
**ZESTA CRACKERS**  
**93**¢

**Cottonelle**  
4 Roll Pack From Scott Paper Co.  
**75**¢

8 Oz. ROSE MILK  
LOTION  
**1**°05

FOOD FAIR  
**ICE CREAM**  
1/2 GALLON  
**85**¢

**BANANAS**  
2 Lb. For **29**¢

**Wisk**  
**1**°05  
WITH THIS COUPON  
SAVE 29¢  
Limit one COUPON per purchase  
Redeemable only at Food Fair Stores  
Expires 11-17-76 Without coupon price is \$1.34

Big Savings  
On Repeat Purchase!  
**40¢ COUPON**  
good on next purchase  
inside  
KING SIZE cheer  
5 LB. 4 OZ.  
**2**°19

5 Lb. Martha White  
**MEAL**  
**85**¢

32 OZ.  
**GRAPE JELLY OR JAM**  
**89**¢

**Fina Touch**  
**99**¢  
WITH THIS COUPON  
Limit: 1 Coupon per purchase  
Redeemable only at Food Fair Stores  
Expires 11-17-76 Without coupon, price is \$1.07

Hunter's  
Choice  
**DOG FOOD**  
25 Lb. Chunk Ration  
**3**°39

SWIFT PREMIUM 12 OZ.  
**PREM**  
**97**¢

32 Oz. Borden's  
**BREAKFAST DRINK**  
**1**°59

COUPON WORTH 100 S&H Green Stamps with the purchase of 100 S&H Green Stamps  
Borden's Turkey  
mv cpn exp 11-17-76

COUPON WORTH 50 S&H Green Stamps with the purchase of 50 S&H Green Stamps  
Chicken or Chicken Parts  
mv cpn exp 11-17-76

COUPON WORTH 50 S&H Green Stamps with the purchase of 50 S&H Green Stamps  
Pillsbury or Pillsbury Dough  
mv cpn exp 11-17-76

COUPON WORTH 50 S&H Green Stamps with the purchase of 50 S&H Green Stamps  
1 Oz. or more  
mv cpn exp 11-17-76

COUPON WORTH 50 S&H Green Stamps with the purchase of 50 S&H Green Stamps  
2 Pkg. or more  
mv cpn exp 11-17-76

COUPON WORTH 50 S&H Green Stamps with the purchase of 50 S&H Green Stamps  
1 1/2 Pkg. or more  
mv cpn exp 11-17-76

COUPON WORTH 50 S&H Green Stamps with the purchase of 50 S&H Green Stamps  
1 1/2 Pkg. or more  
mv cpn exp 11-17-76

COUPON WORTH 50 S&H Green Stamps with the purchase of 50 S&H Green Stamps  
1 1/2 Pkg. or more  
mv cpn exp 11-17-76

COUPON WORTH 50 S&H Green Stamps with the purchase of 50 S&H Green Stamps  
1 1/2 Pkg. or more  
mv cpn exp 11-17-76

COUPON WORTH 50 S&H Green Stamps with the purchase of 50 S&H Green Stamps  
1 1/2 Pkg. or more  
mv cpn exp 11-17-76

COUPON WORTH 50 S&H Green Stamps with the purchase of 50 S&H Green Stamps  
1 1/2 Pkg. or more  
mv cpn exp 11-17-76

COUPON WORTH 50 S&H Green Stamps with the purchase of 50 S&H Green Stamps  
1 1/2 Pkg. or more  
mv cpn exp 11-17-76



# Around Brodhead



Mr. and Mrs. Dwight G. Whitehead of Brodhead, Kentucky wish to announce the engagement and forthcoming marriage of their daughter, Cynthia Dawn, to Terry Franklin Barton, son of Mr. and Mrs. Otis Burton of Rt. 1, Brodhead. The bride-elect is presently attending Somerset Community College and employed by the Rockcastle County Hospital, Inc. The prospective groom is a graduate of Somerset Community College and is presently employed as Lab technician at the Rockcastle County Hospital. The wedding is to be an event of November 20, 1976 at 6:00 p.m. at the Brodhead Baptist Church. All friends and relatives of the couple are invited to attend.

## PERSONALS

By Margerie Shivel

Mr. and Mrs. Danny Adams of Lancaster visited Mr. and Mrs. Herbert Adams Friday night.

Mr. and Mrs. Robert Coffey and Kevin of Greenville, South Carolina were here due to the death of his uncle, Mrs. John Coffey. They visited her parents, Mr. and Mrs. Mitchell Russell while here.

Mrs. Lena Adams, Mrs. Ruby

Hamm, Miss Mollie Hamm and Mrs. Johnny Adams and Courtney were in Danville Tuesday on business.

Mr. and Mrs. Bobby Proctor, Paula and Elizabeth Ann visited Mr. and Mrs. Derrill Proctor in Covington, Tuesday. They also visited Mrs. Proctor's parents, Mr. and Mrs. Carter Casdill.

Mrs. Karen Reynolds and children visited her mother, Mrs. Lucille Belcher, Saturday.

Mrs. Jean Dennis has been a patient in the Rockcastle County Hospital for a few days.

Mr. Jack Russell has returned to his home from a Lexington Hospital after minor surgery.

Mr. and Mrs. Carter Casdill of Covington visited their daughter and family, Mr. and Mrs. Bobby Proctor, Doug, Paul and Elizabeth Ann, Wednesday and Thursday.

Mrs. Kathy Shivel and Robyn, Mrs. Richard Shivel and Jennifer and Miss Theresa Glovak were in Somerset, Sunday afternoon.

Mr. Donnie Brooks is visiting his parents, Mr. and Mrs. George Brooks. Mrs. Jean Wilmont has returned to her job after several weeks sick leave. We are glad she is improving.

Mrs. Myrtle Barger spent Tuesday night and Wednesday with her brother Mr. and Mrs. Ulysses Baker at Green Hill.

Mr. and Mrs. Joe Russell of West Carrollton, Ohio visited his mother, Mrs. Lula Russell over the weekend.

Mr. and Mrs. Russell Jones of Lockland visited her mother, Mrs. Ollie Harrison last weekend, due to the death of Russell's mother, Mrs. May Jones.

Mrs. Lucy Smith and Mrs. Nancy Bradley visited Mrs. Smith's granddaughter, Mrs. Carolyn Smith at Preachersville, Wednesday.

Mrs. Anna Casdill, Mrs. Clara Proctor and Mrs. Mahala Wren were in Danville Thursday on business and shopping.

Mrs. Vickie Cromer and Andy of Lockland was here due to the death of her grandmother, Mrs. May Jones. She visited her other grandmother, Mrs. Ollie Harrison while here.

Mrs. Lula Russell went home with her son, Mr. and Mrs. Joe Russell of Lockland, Ohio for a short visit.

Mr. and Mrs. E.J. Smith, Jon and Heather were in Lexington Saturday, shopping.

Wednesday night supper guests of Mr. and Mrs. John Glovak, Sr., were Mr. and Mrs. E.J. Smith, Jon and Heather.

Jon Smith celebrated his 17th birthday Friday night with a supper. Those helping him celebrate were his parents and sister, Mr. and Mrs. E.J. Smith and Heather, and his grandparents, Mrs. Lucy Smith and Mr. and Mrs. W.E. Burgin of Stanford.

Mr. E.J. Smith and Jon were in Richmond last Friday to consult a dentist for Jon.

Mr. and Mrs. W.E. Burgin and Mr. and Mrs. E.J. Smith, Jon and Heather were in Somerset, Sunday afternoon.

Mr. and Mrs. Frank Glovak were in Richmond on business, recently.

Mr. and Mrs. Homer Smith, Jr. visited Mrs. Lucy Smith one night last week.

Mrs. Thelma Fletcher of Mt. Vernon visited her daughter, Mrs. Glenna Brooks and Jerry Brooks, Tuesday.

## Ottawa

By Della Mae Wilmont

Mr. and Mrs. Logan Bryant of Mt. Vernon visited Mr. and Mrs. Bob Holt, Sunday afternoon.

Mrs. Christine Brown and Doris visited Mr. and Mrs. Bob Holt, Sunday evening.

Remember the Revival at Ottawa, November 14th through the 21st with Bro. F.R. Sasser of London as evangelist. Bro. Sam Gardner is pastor of the church. Everyone is invited.

Mr. and Mrs. Gene Bishop and Angela of Lexington visited Mr. and Mrs. Shiri Brown over the week end.

Mrs. Edith Harris is visiting her mother, Mrs. Effie Jones and Frankie.

Mr. and Mrs. Paul Cash spent the week end in Atlanta, Georgia.

Mr. and Mrs. R.L. Hamm and Mr. and Mrs. Dewey Roberts were in Nashville, Tennessee last week end.

Mrs. Novara Proctor visited Della Mae Wilmont, Monday afternoon.

## TWO LOCAL STUDENTS ENROLL AT CENTRE COLLEGE

Shane Bullock and Joseph Clontz of Mt. Vernon have enrolled as freshmen at Centre College in Danville. Bullock is the son of Mr. and Mrs. Jesse F. Bullock, of School St., Mt. Vernon and a 1976 graduate of Rockcastle High School. While there he participated in baseball and football.

Clontz is the son of Mr. and Mrs. Carl Clontz of Mt. Vernon and a 1976 graduate of Rockcastle County High School. While there he was a member of the basketball team and the football team.

## Area Deaths and Funerals

### MRS. CELO PARRET ANGLIN PASSES AWAY IN OHIO

Mrs. Celio Anglin, passed away Wednesday, October 5th in Mason, Ohio at the home of her sister. She was formerly from Cove Branch, Kentucky.

She is survived by one daughter, Connie and two sons, Larric and Bruce; four sisters, Winnie Bryant, Mason, Ohio, Dorothy Sharp, Cincinnati, Ohio, Alma Baran and Pansy Robinson of Hamilton, Ohio; two brothers, James Parrett, Indiana and Henry Parrett of Michigan. One grandson and a host of nieces and nephews also survive.

Funeral services were held at the Web Funeral Home, Hamilton, Ohio. Burial was in the Oak Hill Cemetery, Sharonville, Ohio.

### JOHN M. COOPER OF OHIO PASSES AWAY RECENTLY

Mr. John M. Cooper, of Springdale, Ohio and formerly of Lockland passed away Friday, October 22, 1976.

He is survived by his wife Ruth Bell Cooper, formerly of Rockcastle County; one daughter, Virginia R. Cooper and one son John R. Cooper; two grandchildren Perry and Randy Cooper.

Funeral services were held Tuesday, October 26th, 1976 at the Vorhis Funeral Home in Lockland. Burial was in the Oak Hill Cemetery in Springdale, Ohio.

## ARRARARA

"A" is the first letter of every alphabet, except the old German, in which it is the fourth, and the Ethiopian, in which it is the 13th!

Becky Ray Moore celebrated his 1st birthday, Saturday, November 6th at his home. Many also gifts were received. He is the son of Mr. and Mrs. Lonnie May Moore of Mt. Vernon and grandson of Mr. and Mrs. Lee Moore of Mt. Vernon and Mr. and Mrs. Mosley McGuire, of Orlando, Ky.



Mr. and Mrs. Homer Jones of Brodhead, Ky. wish to announce the engagement of their daughter, Elizabeth Ann to Derrill Stewart, son of Mr. and Mrs. Lloyd Stewart of Orlando, Ky. The wedding will be an event of December 20, 1976 at 1:00 p.m. at the bride-elect's home in Brodhead. All friends and relatives of the couple are invited.

This Thursday, Friday and Saturday at

JEAN-FAYE FASHIONS

Mt. Vernon, Ky.

30% OFF

ALL WINTER SPORTSWEAR

Junior and Misses Sizes

## AUCTION

of Mr. and Mrs. Carl Blevins'

84 ACRES more or less

SAT., NOVEMBER 13, 1976, 1:30 P.M.

Near Bethel Church of Christ-Bee Lick, Rockcastle Co., Ky



Located: Eight miles south of Crab Orchard, 1/2 mile East of Ky. 39.



Since Mr. Blevins doesn't have the time to devote to the farming operation, he has authorized our firm to sell this highly desirable farm for the high dollar.

The farm consists of 84 acres more or less of which approximately 55 acres is cropland. The basic tobacco allotment for the farm is 1459 pounds. Stock water is supplied by a pond and creek. Most of the farm is under good fence and there is also some marketable timber.

The property is improved with the above pictured 5 room frame house. The house has living room, kitchen, 3 bedrooms, and bath. In addition the house has aluminum siding, built in cabinets, large front porch, washer/dryer hookup and fully insulated. Besides the house there are 2 barns 32 x 40 tobacco barn and combination stock and tobacco barn.

If you are in the market for a good farm, conveniently located with plenty of privacy then be sure to attend this sale.

TERMS: 20 percent down day of sale and balance in 30 days upon delivery of deed.

For additional information contact Mr. Carl Blevins at 355-7342 (after 5 p.m.) or:



Col. Sam Ford Realtor - Auctioneer  
Col. Bill Randolph Auctioneer  
Col. Roy Adams Auctioneer  
Col. Jerry Ham Auctioneer  
Col. Danny Ford Realtor - Auctioneer

Office—Phone 256-1545 — Night 758-8400

## AUCTION

of Mr. & Mrs. Henry Brown's PERSONAL PROPERTY

SAT., NOV. 20, 1976, 3:00 P.M.

Willilla Section of Rockcastle Co., Ky.

LOCATION: 10 Miles South of Brodhead, 13 miles Southwest of Mt. Vernon on Owens School Road in the Willilla Section of Rockcastle Co. 2 miles West of Ky. 70.

Mr. and Mrs. Brown have built a new home and are offering these household goods, which they don't need, for the high dollar. This personal property has been well cared for and most of it is like new. The following is a partial list:

One 90" couch and chair - bluegreen; one couch - green; one hide-a-bed horsehide; 2 recliners - blue and gray plaid with contrasting trim; 3 breakfast sets; Whirlpool electric range and Whirlpool refrigerator; Avocado; Norge washer and dryer - avocado - good; 1 - 4 pc. bedroom suite; 1 - 4 pc. bedroom suite with springs & mattress; cedar chests; Murray riding lawn mower - 6 hp; 2 maple rockers; cedar wardrobe with mirrors in roll-away bed with mattress, black cast iron bean kettle, 2 kerosene lamps, 1 alladin lamp, electric cookers, copying machine, Royal typewriter - manual, old butter mold, 2 woven seat chairs, desk and chair, 2 hampers; 2 storm doors, trunk, cart, table, curtain rods and shades, lawn chairs, large steak knife set, children's swing set, 2 large woven rugs - 8 1/2 x 11 and 9 x 12 - plus many throw rugs, radio, 2 trailers - army type, record player, 2 mail boxes, pictures, men's and women's clothes, dishes, 3 garment racks, 2 chrome, bedspreads and ends and ends of all kinds, long garment suit case, 2 bath room scales, drapes and curtains plus many more items too numerous to mention.

Mark your calendar today and call your friends and neighbors about this dandy personal property sale.

TERMS: Cash or a good check with proper identification day of sale.

For additional information contact Mr. or Mrs. Brown at 758-8552 or:



Col. Sam Ford Realtor - Auctioneer  
Col. Bill Randolph Auctioneer  
Col. Roy Adams Auctioneer  
Col. Jerry Ham Auctioneer  
Col. Danny Ford Realtor - Auctioneer

Office—Phone 256-1545 — Night 758-8400



# Social & Women's News



Mr. and Mrs. Oscar B. Mullins

## Mullins' Celebrate Anniversary

Mr. and Mrs. Oscar B. Mullins of Livingston celebrated their 50th wedding anniversary Sunday, November 7th with a dinner at the Ramada Inn in London given by their children.

Mr. and Mrs. Mullins were married November 11, 1926 at Pine Hill by Bro. Grubbs in a double-wedding ceremony with Mr. and Mrs. Levi Mullins, now of Covington. Mr. Mullins is a retired employee of L & N Railroad.

The couple have four children: James, Fern Sahli, Martin and Jerry, and six grandchildren. Present at the

dinner were: Mr. and Mrs. James Mullins, Doris, David Cornett, all of Jackson, Ky.; Mr. and Mrs. Donald Mullins of Louisville; Mrs. Fern Sahli and Bruce and Mr. and Mrs. Kenny Robinson, all of East Bernstadt; Mr. and Mrs. Marjine Mullins and Gary of Indianapolis, Indiana and Mr. and Mrs. Jerry Mullins and David of Mt. Vernon.

## Personals

Mr. and Mrs. Burgess Stokes of

Lookland, Ohio visited relatives in Mt. Vernon last week and attended the revival at the First Baptist Church where they were warmly greeted by many friends.

Friends of Mrs. Floyd Stokes were pleased to see her able to attend the revival following a recent fall.

Mrs. Ettie Kirby, who has been recuperating at the home of her sister, Mrs. Mollie Ballinger since undergoing surgery at the Pattie A. Clay Hospital in Richmond, was able Friday to return to her own home. Her son and wife, Mr. and Mrs. Sylvester Kirby are with her.

James Johnson of Marietta, Ohio visited his brother, Ernie Johnson, and family from Thursday until Tuesday.

Mrs. Anne Logan Bradshaw of Frankfort spent Wednesday here with her parents, Mr. and Mrs. Bentley Sparks, before they left for Florida last Thursday.

Mrs. Etta Mullins has received word that her brother's wife, Mrs. Heiri Anderkin, is very ill in a hospital in Cincinnati, Ohio. She also received word that her 86-year-old aunt in Knoxville, Tennessee is in very poor health.

Mrs. James Hughes of Chattanooga, Tenn. was in Mt. Vernon the first of the week and was accompanied to Indiana by her mother, Mrs. Zelma Bullock, to visit the latter's sons, Norman and Charles Childress and their families.

Mr. and Mrs. Charlie Davis of Brownville, Texas, who has been visiting Mrs. Davis' relatives in Hardinsburg and Mrs. John Kincer of Erlanger visited their sisters, Mrs. Emma Thompson, Mrs. Amanda Maggard and Mrs. Leila Stokes during the week end.

Mr. and Mrs. Albert Hampton of Florence, who were in here Sunday evening to see her uncle, Mr. Davis, and Mrs. Davis were accompanied home by her mother, Mrs. Kincer.

Mrs. Bessie Chesnut, who underwent eye surgery last week at the St. Joseph Hospital in Lexington returned home Saturday and is wonderfully improved.

Dr. and Mrs. William G. Griffith were in Tennessee last week end.

Mr. and Mrs. Arvin Purcell of Lavonia, Michigan were guests last week of Miss Dorothy Purcell, Bernard Purcell and Mr. and Mrs. Aden Ramsey.

Mr. and Mrs. Tennon Abney and daughter, Michelle, of Lexington visited their grandmother, Mrs. Rosie Mullins, last Sunday.

Mrs. Bettie Barnett phoned her mother, Mrs. John Kincer, Sunday morning at the home of her aunt to tell her (Mrs. Kincer) that she had a new great granddaughter born earlier that morning to Mr. and Mrs. Daniel McElfresh. Mother and daughter were welcomed home at Crescent Springs, Erlanger, this week by Mr. McElfresh and son, Danny, Jr.

Estil McNew, Cincinnati, Ohio and his sister, Mrs. Mary McKinney, of Florence visited Willis Johnson last Thursday.

Mr. and Mrs. Walter Pennington of Dayton, Ohio, who attended the funeral of his uncle, George Parrett, visited her father, W.C. Johnson and their daughter, Mrs. Lucille Bullock.

We regret to hear that Mrs. Vernon Cox's nephew, Charles Parrett, who is in very poor health in St. Joseph's Hospital in Lexington.

Bro. Ernie Johnson visited the sick at Berea Hospital in Berea Tuesday. Rev. and Mrs. Albert Gene Griffin and Denise and Mrs. Debra Riger and daughter, Lee Ann, of Mt. Sterling attended the funeral of George Parrett Wednesday.

Mr. and Mrs. Dave Martin Proctor of Cynthia attended the birthday party of his sister, Mrs. Robert Leger, Saturday evening.

Mrs. Janie Dowell and daughter, Mrs. Ruby McKenzie, attended the 50th Wedding Anniversary of Mr. and Mrs. V.R. Dowell in Liberty Sunday afternoon.

Mrs. Ruth Brown of Lexington visited her mother, Mrs. Eugene Stokes, this week. She and her sister, Mrs. Ruby Griffin, were in London Tuesday shopping.

Mr. and Mrs. Frank Johnson of Tip City, Ohio spent the week end with his father, W.C. Johnson and family, Frank, formerly of this county, wondered if anyone had any information regarding the family of Blake Taylor, who attended school at Cove in Rockcastle Co. would write him at 375 Coach Drive, Tipp City, Ohio 45371.

Mr. and Mrs. Joe Dooley of Dayton, Ohio visited her sister, Mrs. U.G. Ramsey and Mr. Ramsey in Mt. Vernon. Mr. and Mrs. Byron Baker of Route 3 and Mrs. Okla Hammond of near Bee Lick over the week end. Mr. and Mrs. Dooley and U.G. Ramsey called on Willis Johnson Saturday.

Mr. and Mrs. U.G. Ramsey spent last week in Campbellsville with Mr. and Mrs. R.B. Tischer.

Mrs. Winnie Bryant, Mrs. Dorothy Sharp, Mrs. Alma Barnes and Mrs. Pansy Robinson of Ohio, all daughters of Film Parrett, attended the funeral of George Parrett Wednesday.

Mrs. Mary McCollum is improving at her home after undergoing surgery at the Berea Hospital.

Mr. and Mrs. James Seals and Kim spent last week end in Johnson City, Tennessee.

Frank Mullins and Harold Lunaford were Saturday night supper guests of Mr. and Mrs. Donald Seals.

James Seals and Billy Seals were in Atlanta, Georgia over the week end to attend the stock car races.

By Mr. Geo. Burton

Recent visitors of Mr. and Mrs.

George York and Eliza were Mr. and Mrs. Carlo Saylor of Briar Ridge, Mrs. Frank Thacker and daughter of Scaffold Cane, Miss Gloria Lear, Mr. and Mrs. Freddie Lear of Berea, Mrs. Ada Pittman, Danny and Mark McClure of Mt. Vernon, Mrs. Elizabeth Stokes, Miss Lisa Burns of Mt. Vernon, Mr. and Mrs. Gregory Stevens and son Amos of Bee Lick and Mr. Henry York of Berea.

Miss Marsha Whitaker is a patient in the Patty A. Clay Hospital at Richmond, where she underwent surgery last week. We wish her a speedy recovery.

Cecil Hysinger visited Marsha Whitaker at the Patty A. Clay Hospital in Richmond Sunday. He also visited Mrs. Pearl Hysinger at the extended care unit at Berea Hospital.

Mr. and Mrs. Arvin Purcell of Luconia, Michigan visited Bernard and Dorothy Purcell last week.

Mr. and Mrs. Arvin Purcell were dinner guests of Mr. and Mrs. Aden Ramsey, Sunday. They were also supper guests of Mr. and Mrs. Everett Purcell and Johnny last Wednesday night.

Wade Hysinger and Arvin Purcell visited Mrs. Pearl Hysinger at the extended care unit at the Berea Hospital last Tuesday.

Mr. and Mrs. Harris Burton and Penny were in Centerville, Indiana, Saturday.

Mrs. Robert Anglin and Mrs. Lillian Anglin visited Mrs. Andrew Cox, Sr. and other relatives at Disputana, one evening last week.

Robert Henderson of Somerset visited his mother, Mrs. Lona Logsdon, Sunday afternoon. They attended the Gospel Singing at Renfro Valley.

Sympathy is extended to the family of Mrs. Roy Jones in their sorrow.

Mrs. Andrew Cox, Sr. is a patient in the Rockcastle County Hospital. We wish her a speedy recovery.

Mr. and Mrs. Gravelly Burton were in Stanford last Wednesday.

Mr. and Mrs. Hubert Childress of Clay City visited Mr. and Mrs. Everett Purcell and Johnny, Sunday.

Mrs. George Burton, Mrs. Darrell Owens, Mrs. Mark Denny and Mrs. David Denny were in Lexington shopping, Saturday.

Mrs. Gravelly Burton visited Mr. and Mrs. Dearn McKinney and family and Mrs. Remy McKinney one evening last week.

Mrs. Floyd Stokes is able to be out after being confined to her home for



50TH ANNIVERSARY - Mr. and Mrs. Estel Bullock of Mt. Vernon will celebrate their Golden Wedding Anniversary Saturday, November 13th. The couple were married November 13, 1926 by Rev. Mahan in Mt. Vernon with T. Opal Williams and Mrs. Mahan as witnesses, at the Mahan residence in Mt. Vernon. The Bullocks have one child, Mrs. Glenn Sowler of Newwood, Ohio and one grandson, Lonnie. Both Mr. and Mrs. Bullock are retired schoolteachers with Mr. Bullock teaching for 50 years and Mrs. Bullock having taught 34 years, all in the Rockcastle County School System.

some time with a broken ankle. George Burton was in Somerset, Monday.

Mrs. Bill James had the misfortune of cutting her foot recently. Gravelly Burton celebrated his birthday November 9. We wish him many returns of the day.

"He who has clear ideas can command." Goethe

## REVIVAL SERVICES

Revival services will begin November 15th and continue through November 19th at the Livingston Baptist Church. Evangelist Robert Earl Johnson will be the speaker each evening.

Services start at 7:00 p.m. nightly. Carl S. Moore is the pastor. The church invites everyone to attend.

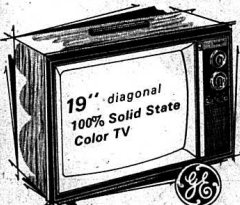
# General Electric Factory Sale Days



Model TBF 18SR

GE 17.6 cu. ft. NO-FROST REFRIGERATOR-FREEZER with 4.65 cu. ft. freezer—all only 30 1/2" wide! Power Saver Switch can help reduce operating cost! 3 cabinet shelves—2 adjust! Add automatic ice-maker now or later (optional at extra cost.)

**\$479<sup>95</sup>**



GE 100% SOLID STATE COLOR TV with Black Matrix Spectra-Brite® TV Picture Tube; AFC... Automatic Fine Tuning Control; 70 Position "Click-In" UHF Tuning; Automatic Color Control (ACC) Insta-Color® Circuit; Sharpness Control.

Model GB 7422-WD

**\$450<sup>00</sup>**

**BRYANT BROS.**

# AUCTION

Of

Mr. and Mrs. Dewey Cromer's

## 3 HOUSES & LOTS

**SAT., NOV. 20, 1976, 10:30 A.M.**

Near Brodhead, Rockcastle Co., Ky.

LOCATION: Approx. 2 miles West of Brodhead, Ky. on Hwy 150, watch for auction signs in the yard.



(1) The floor plan for this house consists of 3 bedrooms, living room, kitchen, and full bath. The house has been completely remodeled, has wall to wall carpet, new roof, new paint, job, city water, storm doors and windows, stove and refrigerator, oil heater and much more. The lot measures approx. 400 ft. x 150 ft. having ample space for a garden.

TERMS: 20 percent down day of sale and balance in 30 days with delivery of deed.



(2) Floor plan for this consist of 3 bedrooms, living room, kitchen, dining room and full bath. House has wall to wall carpet, city water, paneled throughout, stove and refrigerator, gas furnace, and large front porch. The lot measures approx. 50' x 160' having ample space for a garden. In addition to the house there is a utility building.

TERMS: 25 percent down day of sale and balance carried by owners on low monthly payments at 8 percent interest or 20 percent down day of sale and balance in 30 days with delivery of deed.



(3) Floor plan for this house consists of two bedrooms, living room, kitchen, dining room and full bath. House has wall to wall carpet, gas and electric heat, city water, stove and refrigerator, paneled throughout. In addition to the house there is a 2 car shed. Lot measures approx. 85 ft. x 165 ft. giving ample space for a garden.

TERMS: 25 percent down day of sale and balance carried by owners on low monthly payment at 8 percent interest.

For additional information contact Mr. or Mrs. Cromer at 768-8722 or:



Col. Sam Ford  
Realtor - Auctioneer

Col. Bill Randolph  
Auctioneer

Col. Roy Adams  
Auctioneer

Col. Jerry Ham  
Auctioneer

Col. Danny Ford  
Realtor - Auctioneer

Office—Phone 256-1545 — Night 738-8400

# CLAYTON HAMMOND'S SUPERMARKET

Highway 461  
The Somerset Road

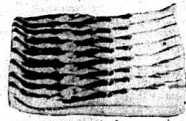
"HOME OF BARGAINS"

Prices Good  
Nov. 11 thru Nov. 17th



Fresh Cut, End  
**PORK CHOPS**  
**59¢** Lb.

FIELD'S SPACE AGE



**BACON**  
**43¢** Lb.



Fresh Whole  
**FRYERS**  
**33¢** Lb.



100% Pure  
**GROUND BEEF**  
**79¢** Lb.  
(3 lb. or more)



Fields  
Old Fashioned  
**PURE PORK SAUSAGE**  
**\$1.19**  
2 lb.

KRAFT  
**MACARONI AND CHEESE DINNER**

25 LB. BAG  
**BOW-WOW DOG FOOD**

**2.98**

3 FOR  
**89¢**

DEL-MONTE  
**TUNA**  
**59¢** CAN

7 1/2 OZ. BOX  
Dixie Belle  
**CRACKERS**  
1 LB. BOX  
**39¢**

SWEEPSTAKE  
TALL CAN

**MACKEREL** **39¢**

**ARGO PEAS**  
4 For  
**89¢**

(13 oz. can)  
**KELLY'S BEEF, PORK OR SALISBURY STEAK AND GRAVY**  
**69¢**



SHEDD'S SPREAD 2 LB. BOWL  
**MARGARINE** **79**

KELLY'S  
**VIENNA SAUSAGE** **\$1.39**

Pringles  
Twin Pak  
**POTATO CHIPS**  
**79¢**

TIDE  
**SOAP POWDER**  
**\$1.98**  
KING SIZE

FARM FRESH  
**PRODUCE BANANAS**  
**15¢**

**CABBAGE**  
**10¢** Lb.

**LETTUCE**  
**39¢** HEAD

5 Lb. Martha White  
SELF-RISING  
**FLOUR** **69¢**

**CARROTS**  
**19¢** PACK



**FAIRVIEW**  
By: Mrs. Hubert Chasteen

Sunday School attendance at the Fairview Baptist Church November 7th was 102 with a few more for worship service. Thank the Lord for each one.

The Scaffold Cane Baptist Church conducted a baptismal service at the Fairview Baptist Church Sunday afternoon November 7th. We thank God for this lovely young lady and pray God's richest blessings upon her and her family. We enjoyed so much the service.

and the fellowship of these good people. May God ever bless them and all our churches everywhere who are laboring for the Lord.

Mrs. Willard (Louise) Todd of Rockford remains very ill at her home. Please continue to pray for her.

Delbert Alexander of Macedonia is a patient in the University Hospital at Lexington where he submitted to surgery last week. He is reportedly improving for which his family and friends are very thankful. We all wish him a speedy recovery.

Mrs. Dan (Emma Lambert) Saylor

of Dayton, Ohio passed away Monday, October 11th. Our entire community was saddened by her passing. We have all known and loved this family for many years. Many of us were in grade school with her and had such good times together. This was a large family and we have seen them depart this life one by one until there is only one member left, Alonzo. We extend our heartfelt sympathy to Emma's husband and family and to Alonzo and family and her other relatives. May God be very near each one in this time of sorrow. I'm very sorry I hadn't mentioned this death earlier. Please forgive me.

Right here, I'd like to mention that we have all seen many of our loved ones and friends depart this life and one day our time will come too and the way we die is the way we'll face God. Be it saved or unsaved. Salvation is free, all you have to do is reach out and accept it. Jesus loves you and wants to give you a home in Heaven. If you aren't saved, please think about it, take Jesus as your Saviour and be ready to go when death comes. God bless you.

Mrs. Hubert Chasteen and granddaughter, Tonya Church, were recent dinner guests of Mrs. Della Bullen of Macedonia. Bless her heart, she has always been such a dear friend of ours for many years and I thank God for her.

Mr. and Mrs. Buddy Gabbard and daughter, Gail Lee, and Mrs. Gladys Rose recently vacationed a few days at Fontana Village, North Carolina. Mr. and Mrs. Preston Anderkin and Cheryl also of Fairview were overnight guests of the Gabbards on Saturday. They enjoyed a nice time together and attended church services and Sunday School on Sunday.

On Sunday, October 31st, Mr. and Mrs. Eugene Alexander and son, Kenneth, spent the day in Crossville, Tennessee visiting his mother, Mrs. John Vaughn. Mr. Vaughn and Bertie, his sister, Mrs. Kenneth Carey, Mr. Carey and family and also at the home of Mr. and Mrs. Ira Reppert and family.

Mrs. Hazel Roe of Lexington has been a recent guest of her brother and family, Mr. and Mrs. Willie Cope. She attended church at Fairview last Sunday. It was good to see her again.

Mrs. Hubert Chasteen and Mrs. Darlene Church and daughters visited at the home of Mr. and Mrs. Willard Todd Tuesday of last week.

Mr. and Mrs. Bill Baker of Roundstone were Friday night guests of Mr. and Mrs. Eugene Alexander.

Sunday evening guests of Mr. and Mrs. Willie Cope were Mr. and Mrs. Boyd Wren and Melora of Fairview and Mr. and Mrs. George Cope and Mrs. Helen Powell and son, Dwayne of Berea.

Mr. and Mrs. Eugene Alexander visited his father, Delbert Alexander at the University Hospital, Lexington Saturday night.

Mr. and Mrs. R.J. Ridgell and Ricky visited his parents in Corbin Sunday



The Adult Activities Program, taught by Mrs. Mary Shigleton, and the Day Care Program, taught by Miss Ann Stewart, held a joint Halloween Party at the in the Adult Activities Classroom recently.

afternoon.

The Fairview Baptist Church is planning a Homecoming on Sunday, November 21st. Everyone is cordially invited. A special invitation is given to all the former pastors and members.

Wherever you are, we urge you to come and spend the day with us. We hope to make it a day of Thanksgiving, fellowship and blessings. Please try to come November 21st. God bless and keep you all in my prayer.

**"Benefit Basketball"**  
(Cont. From Front)

Pulaski County High School gym on Wednesday, November 17 at 7:30 P.M. Advance tickets are \$3.00 for adults and \$2.00 for students. All tickets will be \$3.00 at the door.

Tickets are available at the Pulaski YMCA and all Somerset banks or by writing the Pulaski YMCA, 209 S. Maple Street, Somerset, Kentucky 42501.

The proceeds will go to support the YBA basketball and other YMCA programs.

**"Certificate of Excellence"**  
(Cont. From Front)

The purpose of entering this type of competition is to gain publicity for your community. If a town should happen to win an All-Kentucky City award, then selection of the All-Kentucky Cities.

The purpose of entering this type of competition is to gain publicity for your community. It shows interest and involvement by members of the community thereby making it easier to interest industry in locating in the area.

The All Kentucky City award is presented each year by the Kentucky Chamber of Commerce to communities

**Administrators Notice**

Notice is hereby given that James W. Lambert, Mt. Vernon, Ky. 40456 has been appointed Administrator of the Estate of Robert Mullins, deceased.

All persons having claims against said estate shall present them, verified according to law, to the said James W. Lambert on or before February 25, 1977. 10x3

FOR LEASE: Office Space in Mt. Vernon. Contact William D. Gregory, 256-4440. 10x11

that participate in the Opportunity for Progress program and demonstrate outstanding achievement in community development.

The slides and tape used in the local presentation are available and any group wishing to use them should contact Bill James or Gerald Thompson.

**"Custodian Robbed"**  
(Cont. From Front)

Mr. Barnett said the couple left in a brown car and that there was a third person in the car when it left the school.

**DR. RICHARD M. COOK**  
FOOT SPECIALIST  
PODIATRIST

**ANNOUNCES THE OPENING**  
OF HIS MEDICAL OFFICE  
IN THE COMPTON BLDG.  
430 OGDEN ST. SOMERSET, KY. 42501

PHONE 678-8037

**AUCTION**

Sat., November 13, 1976, 1 P.M.

**SURPLUS DORMITORY FURNITURE AND OFFICE MACHINES**

Located at Building and Grounds Dept. of Berea College, Walnut Meadow Road, Berea, Ky.

Partial Listing  
Student desks (oak, maple), Chests of drawers, televisions, couches, chairs, refrigerator, piano, adding machines, calculators, dictating machine, beds, typewriters, mirrors, much, much more.

**JOHN W. GILLIAM**  
REALTOR & AUCTIONEER  
327 Chestnut St., Berea, Ky.

**O K MOBILE HOME SALES, INC.**

Highway 27 Stanford, Ky.

**WE HAVE OVER 150 HOMES TO CHOOSE FROM.**

Come and see the largest selection of mobile homes in central Kentucky -- over 70 used home and over 80 new homes.

All sizes from 10 x 40 to 14 x 70.

**"Wouldn't you drive 25 miles to save from \$500 to \$1,000 on the home of your choice?"**

Free Delivery and Set-Up  
Anywhere In State  
Call Collect 365-9717

**AUCTION**

of Mr. Gene Abbott's  
**PERSONAL PROPERTY**

SAT., NOV. 13, 1976, 3:30 P.M.

Bee Lick Section, Pulaski Co., Ky.

LOCATED: Approximately 2 miles off Ky. 39 at Bee Lick Turn West off Ky. 39 onto State Road 328 - Go one Mile and turn left. Follow auction signs to the sale.

Mr. Abbott has sold his farm, and is moving to Indiana to live with his children, and has employed our firm to dispose of his personal property.

Personal Property - Monogram oil heater, Oil tank and approximately 270 gallons of oil, Motorola TV, like new, 2 swivel rockers, Hide-a-bed, stand tables, rocking chairs, lamp, rugs, treadle sewing machine, Eureka Vacuum cleaner - new, kerosene lamp, couch, 3 pc. poster bedroom suit with springs and mattress, fan, 2 electric heaters, wardrobe, iron bed with springs and mattress, like new, 7 pc. dinette set, Admiral refrigerator-self defrost, like new, Frigidaire electric range, Speed Queen spin dry washer, kitchen cabinets, cast iron broiler, new sheet iron stove, Speed Queen wringer washer, wood cook stove, Admiral 16 cu. ft. freezer-like new, lawn mower, hand tools, wood bed springs and mattress, toaster, pots and pans and much more.

TERMS: Cash or good check day of sale.

For additional information contact Mr. Gene Abbott at 379-2975 or:

**FORD**  
REALTY & AUCTION CO.  
Mt. Vernon, Ky.

Col. Sam Ford  
Realtor - Auctioneer

Col. Bill Randolph  
Auctioneer

Col. Ray Adams  
Auctioneer

Col. Gene Ham  
Realtor - Auctioneer

Col. Ches West  
Realtor - Auctioneer

Office - Phone 256-1515 - Night 256-4400

**\$500 REWARD**

FOR INFORMATION LEADING TO THE ARREST AND CONVICTION OF PERSON OR PERSONS WHO BROKE WINDOWS AND VANDALIZED HOUSES OF MINE IN MARLOR HOLLER (SAND SPRINGS COMM.).

Contact: Lance Dillingham  
Sheriff Manuel Shepherd or the State Police.





These four students from the Harry Sparks Vocational School attended the FBLA Southern Region Conference in Birmingham, Alabama October 14-16 along with their advisor, Shelby Jean Falbergill. The Conference was made up of 1700 people attending from 12 Southern states. In the photo are, from left: Shari Martin, Carolyn Lamb, Miss Falbergill, Phyllis Bishop and Teresa McKinney.



Mrs. Sibil Randall, Somerset, Area Counselor for Luzier Cosmetics is shown giving a demonstration of Luzier Cosmetics to members of the FBLA Club at the Vacation School last week. Mrs. Randall was the guest speaker for the club's November meeting.

\*\*\*\*\*

### RICHMOND DRIVE-IN

4 Miles South on US 25  
Friday, Saturday, Sunday - 7:30 p.m.

WHERE WESTWORLD STOPPED  
**FUTUREWORLD**  
BEGINS!

ENTRY FEE  
\$1,200  
PER DAY  
EXIT FEE  
YOUR LIFE!

PETER FONDA • BLYTHE DANNER  
"FUTUREWORLD"  
ARTHUR HILL [PO]  
YUL BRYNNER

Also Forest Tucker-Max Baer  
"The Wild McCullochs" PG



Miss Carolyn Lamb attended the FBLA State Executive Council meeting at Kentucky Dam Village, Saturday and Sunday, October 30 and 31. Carolyn was elected Vice President of Region V, FBLA in April and is a member of the State Executive Board, Vice President of the highest office in Region V.

#### SCHOOL MENU

**BREAKFAST**  
Monday: Cereal, toast, jelly, juice and milk.  
Tuesday: Toasted cheese sandwich,

juice and milk.  
Wednesday: Ham, eggs, toast, jelly, juice and milk.  
Thursday: Popartas, juice and milk.  
Friday: Peanut butter and jelly sandwich, juice and milk.

Friday: hamburger on bun, cheese slice, lettuce, pickles, tomato, french fries, milk and jello with fruit.

Birthday dinner guests of Mrs. Edith Harris and Mr. Harris last Wednesday were Mrs. Lola Roberts and Jenny Ann DeBorde, Mrs. Helen Taylor and Angie, Mrs. Effie Jones and Mrs. Frankie Brown.

### Ottawa

By Della Mae Wilmont

[Delayed]

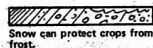
**LUNCH**  
Monday: Tuna sandwich, french fries, cole slaw, milk, apple turnover.  
Tuesday: Meatloaf, green beans, corn, cranberry sauce, rolls, milk and fruit.  
Wednesday: Chili, crackers, cheese slice, celery sticks, milk and applesauce cake.  
Thursday: Turkey and dressing, mashed potatoes, green beans, cranberry sauce, white bread, milk and cookie.

Mr. and Mrs. Robert Jones of Paris spent last Wednesday night with Mrs. Minnie Jones.

Mr. and Mrs. Marshall Laswell of Cincinnati, Ohio was here to attend the funeral of Mrs. Dessie Cable and to visit homefolks.

Sunday afternoon visitors of Mrs. Effie Jones and Frankie were Mr. and Mrs. Jesse Taylor and family, Mr. and Mrs. R.H. Hamm, Mr. and Mrs. Dewey Roberts and Mr. and Mrs. Casper Jones and Gene.

Mrs. Anna Wright visited Mr. and Mrs. Walter Bullock, Sunday.



Snow can protect crops from frost.

# AUCTION

of  
Mr. and Mrs. Arthur Norton's

**23 ACRES** more or less  
and  
**FARM MACHINERY**  
**SAT., NOVEMBER 13, '76-11:30 A.M.**

Hwy. 70, Rockcastle Co., Ky.



LOCATED 6 1/2 miles Southeast of Brodhead, Ky. 8 1/2 miles Southwest of Mt. Vernon, Ky. on Hwy 70. Watch for auction signs in yard.



Mr. and Mrs. Norton have purchased a home in town and are offering this desirable farm at public auction.

**TRACT NO. 1** Contains 6.27 acres more or less. This tract is improved with this modern home. The house has 2 bedrooms, living room, kitchen with new built in cabinets, built in back porch, partial basement and bath. The house has wall to wall carpet, storm doors and windows, masonite siding, fuel oil furnace, washer and dryer hookup, water is furnished by a well and city water is available. In addition to the house there is an excellent stock and hay barn, tobacco barn, and garage. 473 pounds tobacco allotment.

**TRACT NO. 2** Contains 2.94 acres more or less, fronting on Hwy 70. City water is available; 228 pounds tobacco allotment.

**TRACT NO. 3** Contains 3.25 acres more or less, all tillable. 236 pounds tobacco allotment.

**TRACT NO. 4** Contains 3.42 acres more or less, all tillable. 268 pounds tobacco allotment.

**TRACT NO. 5** Contains 6.27 acres more or less, all tillable. 488 pounds tobacco allotment.

When combined there is a total of 23.08 acres more or less with approximately 1693 pounds basic tobacco allotment. Each tract will be sold separately then grouped in any manner selling whichever way reflects the best returns for the owners.

**FARM MACHINERY** 1956 Ford tractor - gas, disc - new, grader blade - new 12" - 2 bottom turning plow, Ford 12" post hole diggers, Ford mowing machine - 6 ft. cut, farm trailer, hay - mixed, tobacco spray - shoulder type, and much more.

If you are in the market for a small tract of land with privacy or a baby farm - Don't miss this sale!!!!

**TERMS:** Real Estate - 20 percent down day of sale and balance in 30 days with delivery of deed.  
Farm Machinery - Cash or a good check day of sale.

For Additional Information contact:

**FORD**  
REALTY & AUCTION CO.  
Mt. Vernon, Ky.

**R** REALTOR

Col. Sam Ford  
Realtor - Auctioneer

Col. Bill Randolph  
Auctioneer

Col. Roy Adams  
Auctioneer

Col. Jerry Ham  
Auctioneer

Col. Danny Ford  
Realtor - Auctioneer

Office - Phone 256-4545 - Night 758-8400

Get the premium rate on your savings up to

# 7%

Earn up to 7% annual interest on our Certificates of Deposit. Every dollar is insured of deposit, up to \$40,000, by the FDIC.

PLAN	TERM	Minimum Deposit	Annual Interest
Regular Passbook	None	None	5%
Golden Passbook	3 Months	\$100	5 1/2%
Certificate of Deposit	3 Months	1,000	5 1/2%
Certificate of Deposit	12 Months	1,000	6%
Certificate of Deposit	30 Months	1,000	6 1/2%
Certificate of Deposit	48 Months	1,000	7%

\*Substantial Interest Penalty for Early Withdrawal

**ANNOUNCING**  
**CHECK-A-MONTH**  
Get a monthly interest check on deposits of \$20,000 or more.

**BMV** THE BANK OF MT. VERNON  
MT. VERNON, KENTUCKY 40456

"The Leadership Bank"

MEMBER F.D.I.C. TELEPHONE 256-2172



PIC-PAC  
LOW PRICES,  
PLUS  
**150 FREE**  
Quality Stamps

**50 FREE**  
Quality Stamps  
WITH THIS COUPON  
AND PURCHASE OF  
49 OZ. HYDE PARK  
DETERGENT  
VALID THRU 11-13-76

**50 FREE**  
Quality Stamps  
WITH THIS COUPON  
AND PURCHASE OF  
44 OZ. HYDE PARK  
WHITE SYRUP  
VALID THRU 11-13-76

**50 FREE**  
Quality Stamps  
WITH THIS COUPON  
AND PURCHASE OF  
6-12 OZ. HYDE PARK  
SOFT DRINKS  
VALID THRU 11-13-76

PRICES GOOD THRU NOV. 13, 1976

- WENNING'S SMOKED
- PICNICS.....LB. **59¢**
  - ARMOUR VERIBEST QTR.
  - PORK LOIN.....LB. **89¢**
  - MARHOEFER CANNED HAM.....<sup>3 LB. CAN</sup> **\$5.69**
  - HICKORY MOUNTAIN FARM'S WHOLE COUNTRY HAM.....LB. **\$1.59**
  - KINGSFORD MEAT PATTIES.....<sup>16 OZ. PKG.</sup> **99¢**

WE REDEEM FEDERAL FOOD STAMPS.

BUTCHER'S PRIDE U.S.D.A. CHOICE

# CHUCK ROAST



BLADE CUT

LB.

# 69¢

QUANTITY RIGHTS RESERVED

- U.S.D.A. CHOICE SHOULDER
- ROAST.....LB. **89¢**
  - U.S.D.A. CHOICE BONELESS RIB EYE STEAKS.....<sup>LB.</sup> **\$2.59**
  - U.S.D.A. CHOICE ENGLISH CUT ROAST.....LB. **89¢**
  - U.S.D.A. CHOICE RIB STEAKS.....LB. **\$1.49**
  - WENNING'S WIENERS.....<sup>12 OZ. PKG.</sup> **63¢**



## FROZEN FAVORITES

- HYDE PARK FRENCH FRIES.....<sup>2 LB. PKG.</sup> **59¢**
- PEPPERIDGE FARM'S CAKES.....<sup>Six 17 OZ. PKG.</sup> **\$1.09**
- HYDE PARK CUT GREEN BEANS.....<sup>Cauliflower & Lima Beans 14 OZ. PKG.</sup> **59¢**
- HYDE PARK REGULAR PIE SHELLS.....<sup>2 CT. PKG.</sup> **29¢**
- HYDE PARK CORN ON THE COB.....<sup>8 CT. PKG.</sup> **69¢**

HYDE PARK

## FRUIT COCKTAIL

**3 89¢**

<sup>17 OZ. CANS</sup>

VAN CAMP

## PORK & BEANS

**3 89¢**

<sup>21 OZ. CANS</sup>

## DAIRY DELIGHTS

- HYDE PARK ORANGE JUICE.....<sup>64 OZ. BTL.</sup> **79¢**
- PHILADELPHIA Cream Cheese.....<sup>2 3 OZ. PKGS.</sup> **45¢**
- HYDE PARK MARGARINE.....<sup>Qtrs. 3 LB. PKGS.</sup> **\$1**
- HYDE PARK SLICED CHEESE.....<sup>American, Pimento 12 OZ. PKG.</sup> **89¢**
- HYDE PARK Cinnamon Rolls.....<sup>9 1/2 OZ. CAN</sup> **45¢**

STOKELY

## GREEN BEANS

CUT GREEN OR SHELLIE

**3 29 OZ. CANS \$1**

# pick o' the patch PRODUCE



## POTATOES

U. S. NO. 1 IDAHO

- 10 LB. BAG **89¢**
- WASH. EXTRA FANCY APPLES.....<sup>Golden Delicious 6 FOR</sup> **89¢**
- FLORIDA ORANGES.....<sup>6 FOR</sup> **39¢**
- RED, RIPE CRANBERRIES.....<sup>LB. PKG.</sup> **39¢**

MONEY SAVER COUPON

HYDE PARK

## Pure Cane SUGAR

**59¢**

<sup>5 LB. BAG</sup>

Limit 1 With Coupon & \$10 Addn. Order Valid At Pic-Pac Thru 11-13-76

## STOCK UP NOW

- HYDE PARK DECORATED Paper Towels.....<sup>2 JUMBO ROLLS</sup> **89¢**
- HYDE PARK BEANS.....<sup>4 15 OZ. CANS</sup> **89¢**
- GAIN DETERGENT.....<sup>49 OZ. BOX</sup> **\$1.39**
- STOKELY Pear Halves.....<sup>2 17 OZ. CANS</sup> **89¢**
- SCHOOL DAY PEAS.....<sup>3 17 OZ. CANS</sup> **79¢**

- YELLOW ONIONS.....<sup>3 LB. BAG</sup> **59¢**
- CRISP CARROTS.....<sup>LB. PKG.</sup> **29¢**
- YELLOW SWEET CORN.....<sup>5 EARS</sup> **59¢**

## QUALITY VALUES

- STOKELY GOLDEN CORN.....<sup>Whole Kernel, Cream Style 3 17 OZ. CANS</sup> **89¢**
- VAN CAMP Beane Weenee.....<sup>3 8 OZ. CANS</sup> **89¢**
- STOKELY TOMATO JUICE.....<sup>46 OZ. CAN</sup> **49¢**
- STOKELY Chopped, Shredded KRAUT.....<sup>3 17 OZ. CANS</sup> **79¢**
- STOKELY CATSUP.....<sup>32 OZ. BTL.</sup> **79¢**

**KING'S PIC-PAC**  
U.S. 150 WEST  
MT. VERNON, KY.

Valuable Coupon

BREAKFAST CEREAL

### POST TOASTIES

18 OZ. BOX **59¢**

Limit 1 With This Coupon Valid at Pic-Pac Thru 11-13-76

Valuable Coupon

KARO PANCAKE SYRUP

Green Label 16 OZ. BTL. **49¢**

Limit 1 With This Coupon Valid at Pic-Pac Thru 11-13-76

Valuable Coupon

STAIN REMOVER

### SHOUT

12 OZ. CAN **79¢**

Limit 1 With This Coupon Valid at Pic-Pac Thru 11-13-76

## Local M.D. Receives Fellowship in AAFP

Dr. Robert F. Hendrickson, Jr. of Mt. Vernon has been named a Fellow of the American Academy of Family Physicians.

The Degree of Fellowship may be obtained in either of two ways: successful completion of 600 or more hours of accredited continuing medical study, or achievement of diplomate status in the specialty of family practice as a result of passing a certifying examination administered by the American Board of Family Practice.

Fellowship entitles the conferee to use the title "Fellow of the American Academy of Family Physicians," or "FAAFP." The degree was conferred September 21 upon more than 800 members of the Academy in conjunction with the AAFP's annual convention and scientific assembly in Boston. Ceremonies were held in Boston's Hynea

Veterans Auditorium before some 2,000 persons. Fellowship candidates wore academic robes and mortarboard caps. They were recognized according to state chapter groups and the oath of fellowship was recited en masse.

The Academy, representing more than 37,000 family doctors, pioneered among national medical groups in requiring members to take continuing study, a minimum of 150 accredited hours every three years. The AAFP, headquartered in Kansas City, is the largest of medicine's specialty groups.

### OLD FASHIONED SERVICES

The Brush Creek Holiness Church will host an old-fashioned service Saturday November 13th at 7 p.m. Bro. Olen McGuire welcomes everyone.

## Down On The Farm

BY ROY G. BROWN  
ASSISTANT VICE-PRESIDENT  
CUMBERLAND PCA

The Burley tobacco market opens to receive tobacco Friday, November 12th and will begin sales Monday, November 22.

Many farmers have already stripped a large part of their crop and will soon be ready to take it to market. The tobacco companies are again requesting that tobacco be graded according to grades and take good care of tobacco. Don't let it get in to higher case, that it would be marked wet.

From all reports the price this year for tobacco looks good. Probably around \$1.20 per pound. The support price this year is over \$1.09 per pound.

We as farmers need every cent we can get out of it because of the high cost of producing it. The tobacco farmers won a victory in last Tuesday's election when Senator Frank Moss from Utah was defeated for reelection. He has been the No. 1 enemy of tobacco program for many years.

Well, have you gathered your walnuts, hickory nuts, and other fall crops that are usually ripened by a few big white frosts "Down on the Farm."

### SPECIAL SINGING AT MT. ZION SUNDAY NIGHT

The Rock of Ages Quartet from Russell County, Kentucky will be at the Mt. Zion Baptist Church Sunday night, November 14 at 7 p.m.

Come and listen to this fantastic group as they praise the Lord in song. Everyone is invited to attend.

### OPTIMIST CLUB TO HOLD REGULAR MEETING

The Mt. Vernon-Rockcastle Optimist Club will hold its regularly scheduled meeting on Thursday, Nov. 11 at the Holiday Family Restaurant at 7:30 p.m.

Since the pens, raffle tickets and television has arrived, all members are encouraged to attend and pick up his allotment. Each member will be given 25 pens and tickets to be sold for a drawing on the black and white portable television. Come and support your Optimist Club.

### BOWLING NEWS By Betty Cramer League Secretary

The Rockets took high team series for the week of November 4th in the Rockcastle Mixed League at Maroon Lanes in Richmond. Second were the Gutter Dusters with a 1738 and third was the Rolling Stones with a 1715.

Team high game for the week was taken by The Rockets with a 691. The Rolling Stones had second high team game with a 608 and The Streakers were third with a 606.

Individual highs were as follows: high series, men: Jack Noe, 528; James Bradley, 497; Donald Clark, 487. High game, men: David Eaton, 222; James Noe, 196 and James Bradley, 196.

High series, women: Fay Thompson, 499; Ailee Bray, 460 and Fern Brown, 434. High game, women: Ailee Bray,

182; Charlene Eaton, 174, and Fay Thompson, 168.

Jackpot winners for the week were the Rockets with a 2306.

Next week's schedule is: Jets vs. Ding Bats-Gutter Dusters vs. Crushers. Streakers vs. Stragglers. East Main vs. Hi Voltage. Hi Lo's vs. 461. Rolling Stones vs. Rockets.

### Local "Milk of Human Kindness" Knocked By Frankfurt Resident

Mt. Vernon Mayor Roland Mullins recently received a letter from a Frankfurt resident which is self-explanatory.

We are reprinting it here so that you can know one man's opinion of the attitude of our town toward strangers.

"I would like to call your attention to an incident which occurred in your town yesterday, 2 Nov. 1976.

My 16-year-old son, Donald, had spent a long week end in Knoxville (Tenn.) and was returning to Frankfurt. He ran out of gas in your town. He had set his remaining cash but I had fortunately, I thought, provided him with a signed blank check on my personal bank - Farmers Bank and Capital Trust Co. of Frankfurt - for his use in the event of an emergency.

The check was personalized with my name, address, phone number, etc. The boy walked the streets of your town for three hours attempting to cash the check for \$5.00. Just enough to buy enough gas to get home. He even offered to leave a CE radio worth \$150 in security. It ended when I drove down with cash.

On one person in your town would help that boy. Not one. I have always liked Mt. Vernon. My job involves travel and I pass thru there frequently. My cousin is one of your doctors.

Needless to say, I will never spend another cent in your town and I shall make it a point to influence as many of my friends and acquaintances to avoid a town where so much "milk of human kindness" flows.

Respectfully,  
John L. Tucker

Rt. 1 Royal Parkway  
Owensboro, Ky. 40061

### SUBSCRIBE TO THE SIGNAL

## Rockets End Season With 28-15 Loss to Russell Co.

The Rockcastle Rockets closed out their season last Friday night with a 28-15 loss to Russell County who were 6-5 on the year.

The Rockets led the game 6-0 on a touchdown by David Owens from the two yard line up by an interception by Ty Huffines. Russell came back with a scoring drive of their own and led the game 7-6 when a surprise third down 37-yard field-goal attempt by quarterback Earl Hammons was good, and the Rockets took the lead 9-7. Russell struck again before the half however and went into half-time with a 14-9 lead.

The Lakers scored once again before the Rockets were able to put more points on the board on a 15-yard pass from Hammons to Rick Anderkin in the end zone. Later, the Lakers added another TD to end scoring in the game.

One sad note was an injury to running back Billy Hackworth, on the last play of the game. Russell County had intercepted a Rocket's pass and on their next play from scrimmage (with 11 seconds to go in the game) ran the ball

into the end zone for what appeared to be a little thing on the cake. However, the touchdown was called back because of a clipping penalty against the Lakers on Hackworth. It was later found that Hackworth had suffered a fracture of the left lower leg and pulled ligaments. He is expected to be in a cast for about five weeks.

### REWARD OFFERED

A reward of \$100.00 if offered by the Staggs Creek Baptist Church, for information leading to the arrest and conviction of the person or persons who took two window fans, two P.A. speakers, a General Electric clock, vacuum cleaner attachments, and an unknown number of extension cords from the church sometime between November 1st and November 4th.

WATCH Next Week's SIGNAL FOR DETAILS OF AUCTION OF Mr. & Mrs. Leroy Morris'

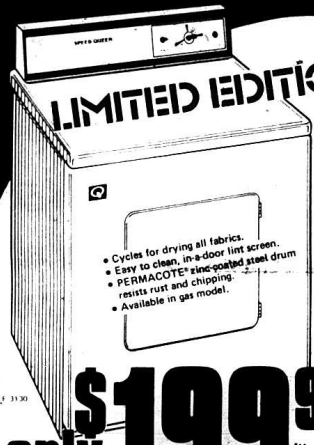
HOUSE AND LOT and PERSONAL PROPERTY

SATURDAY, NOV. 27, 1976 1 P.M.

WENDELL LAWRENCE Realtor & Auctioneer Brodhead, Ky. Ph. 758-8115 C.N. SCOTT Realtor Ph. 355-2204

# NEW! Dryer!

LIMITED EDITION




- Cycles for drying all fabrics.
- Easy to clean, in-a-door front screen.
- PERMACOTER® zinc-coated steel drum resists rust and chipping.
- Available in gas model.

Model L2 3130

## only \$199.95\*

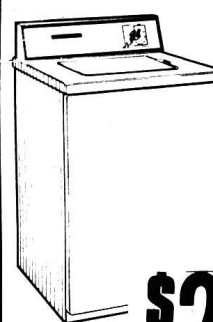
\*Manufacturer's Suggested Retail Price



"Now's the time to buy... we're offering the most sensational price ever on a durable Speed Queen dryer! Come in today for a demonstration of this rugged, heavy duty dryer. You'll agree that Speed Queen's built better. Don't delay. Supplies are limited."

CHUCK CONNORS

# WASHER



Model FA 3030

- 10-year transmission parts warranty.
- Multi-cycle timer.
- Family size tub.

## only \$299.95

APPLIANCE SERVICE CENTER  
256-2626 Mt. Vernon, Ky.  
SPEED QUEEN  
Built better to last longer.

MGR. SO-459-760


## Hard to believe, but true!

You must build a wall 86 face bricks thick to have the same thermal protection in your home as just one 6-inch batt of insulation.

Adequate insulation resists the flow of heat and keeps in the energy you pay for. 65% of all energy used in the home goes for heating. So, no matter whether you heat with electricity or other fuels, don't overlook insulation.

November 8-13 is Energy Conservation Awareness Week in Kentucky. Do your part.

Electricity... Use It Wisely!



KENTUCKY UTILITIES COMPANY

## Real Estate For Sale

13 ACRE FARM 5 miles from Brodhead with 2,665 basic tobacco poundage. The two-story house has vinyl siding, storm windows and doors. The floor plan consists of bedroom, living room, dining room, and kitchen downstairs and 3 bedrooms upstairs. It is wired for electric stove and dryer. The water for the house and farm is supplied by a good well. In addition to the house, there is a 40 x 70 tobacco barn. Ideal for the gentleman farmer. Reasonable.


6 ROOM FRAME HOUSE at the Corner of Popular and Quarry Street in Mt. Vernon. The floor plan consist of 2 bedrooms, kitchen, dining room, living room and bath downstairs and two bedrooms upstairs. House also has wall to wall carpet and vinyl floors throughout, built in cabinets, storm doors and windows, small basement, oil furnace, fireplace and washer and dryer hook-up. It is situated on a large corner lot with a new garage and is within walking distance of church, grocery and school.

NEW SUBDIVISION Beautiful lots and acreage of your size and choice in Quail Nest Estates, located in the Quail section of Rockcastle County. City water is available and partial financing to qualified prospects. Want in the country with plenty of privacy? Then look no further. Hurry while we have a large selection. Priced to sell.


BUILDING LOT located at Corner of Joyce and T Street. Lot has city water, sewer, blacktop street, nice shade trees, and within walking distance of town.

HOUSE AND BUSINESS located at Conway on US 25. The house is brick with 3 bedrooms, living room, den with wall to wall carpet, dining room and kitchen with built-in cabinets, utility room, bath and carport. House also has gas furnace, storm doors and windows and hardwood floors and is situated on a beautiful acre lot with city water available. In addition, there is a 2-bay service station. This excellent business is presently rented and showing a healthy profit. Here is your opportunity to own an established business. Must be seen to be appreciated.

NEW STONE HOME in the country, 5 room house and large lot located in the Orlando Section of Rockcastle County. House has 3 bedrooms, living room, kitchen, utility room, bath, carport and full basement. There are wall to wall carpets throughout, insulated, paneled walls and city water. Priced for a quick sale.



WENDELL LAWRENCE Realtor & Auctioneer Brodhead, Ky. Ph. 758-8115



C. N. SCOTT Realtor Ph. 355-2204



# Experimental greenhouse... Ventilated by air from abandoned mine

A way to employ "used" energy—and to extend the worth and usefulness of coal mines that have been mined out and abandoned—that's what has resulted from an experimental research program on greenhouses.

There seemingly was no earthly connection between an abandoned coal mine and a greenhouse—until University of Kentucky College of Agriculture researchers discovered a direct link.

The research project involves the growing of vegetables and flowers in a greenhouse built on a ledge in the mountains of Southeastern Kentucky—the greenhouse being ventilated by air pumped from an abandoned mine.

The project was conceived by Dale Anastasi, Extension horticulturist, at the University's Robinson Forest Substation at Quicksand. One cold winter day, he stood at the mouth of an abandoned coal mine and was warmed by air coming out of the old shaft. His mind framed the idea of utilizing the warm air from the mine to heat a greenhouse to produce vegetables and flowers out of season.

Anastasi, who helped in the design of the project, was joined in the development of the idea by J.N. Walker, of UK's Department of Agricultural Engineering, after which J.W. Buxton and Dean Knavel, both of the Department of Horticulture, joined the project. An abandoned drift mine near Whitesburg, Pike County was selected for the experiment. Drift mine is a designation given a deep mine.

A steel and plastic greenhouse was erected on the ledge and linked to the mouth of the mine by an air duct through which the mine air was pumped into the greenhouse.

Data was taken for a year, using a wide variety of instruments to ascertain the condition of the air and its components. In October of 1975, the first plantings were made in the greenhouse. Larry Collins, a research technician, joined the project in July of that year to become the resident director. He maintains a daily vigil at the greenhouse, recording all information on growth and conditions, traveling about 30 miles daily from his home at Blackey, near Whitesburg, to the project site. He travels the distance over an old logging road so bumpy that he has to have new shock absorbers put on his car about three times a year.

The first tests in the project were in regard to the effect of the pumped-in mine air on the environment of the greenhouse. No toxic gases were detected, but carbon dioxide was found to be at a level of 600-700 parts per million. Collins says that now the carbon dioxide readings are

running as high as 3,000 parts per million.

Three fans, operating together or separately, pull the air from the depths of the mine, which has about 50 miles of caverns, according to Collins. The electricity to operate the fans and to provide lighting when necessary, is the only energy used in the operation, so the cost of fuel to ventilate the greenhouse is only a seventh of the cost to operate a normal greenhouse.

Originally the three fans ran 24 hours a day, but it was found that the sun's rays on cold days warmed the interior so the fans were not needed to run continually to keep the temperature at a constant 55 degrees. As a result, temperature controls were installed and located at three strategic points in the greenhouse. The controls click on one, two or all three fans, depending on the need. The air pulled up from the



**CHECKING THE GROWTH**—Larry Collins, a research technician who is the resident director of the mine air-ventilated greenhouse research project, checks over azalea plants that are currently being tested in the environment. Collins, who maintains a rigorous daily vigil and keeps voluminous notes on the project, is surrounded by a wide variety of flowers that have thrived in the mine air atmosphere. There are three plantings of everything grown in the greenhouse so as to observe the growth of the varieties under three different conditions. At the right is a miniature "greenhouse" in which seeds are germinated under controlled heat conditions.



mine acts as a warming element in the winter and a cooling element in the summer.

One of the problems is to keep the entire length of the 100-foot greenhouse at the same temperature. The farther away from the air duct, the more variable the temperature. Plans are to divert the air more directly to all parts of the greenhouse to solve that problem.

The temperature in the greenhouse, ventilated with the mine air, is maintained at 50-55 degrees at night and 60-80 degrees during the day, depending on the intensity of the sun in the daylight hours. Relative humidity remains at 100 per cent much of the time. In the colder weather, but does drop to as low as 40-50 per cent on bright summer days. A constant check is kept on the humidity—and there is a humidity recording device outside the greenhouse as well to make comparisons with that in the created environment. Humidity, however, is another of the problems—too much humidity in the winter and at times too little in the summer. In the winter the humidity causes a near virtual rain condition in the greenhouse, with

**MINE AIR VENTILATES GREENHOUSE**—A duct through which 55-degree air is pulled from an abandoned coal mine ventilates a greenhouse built on a mountain shelf in Eastern Kentucky. The project, an experiment being conducted by researchers of the University of Kentucky College of Agriculture, is hoped to open new economic avenues in year-round flower and vegetable growing employing "used" energy from old deep shaft mines. Flanking the greenhouse entrance are bedding plants that were grown inside and transplanted outside.



**VENTILATING FANS**—This battery of three fans pulls the air from the abandoned mine shaft, maintaining the greenhouse interior at warmer temperatures in the winter and cooler temperatures in the summer. In the foreground is a temperature and humidity measuring device, two others being located in other sections of the greenhouse.

the floor becoming almost solid mire as a result of the extreme moisture.

Three plantings are made of everything grown in the greenhouse—one planting is at the end near the ventilating fans, another in the middle and a third at the far end.

The created environment was found ideally suited for lettuce and spray chrysanthemums—the chrysanthemum cuttings rooting well under the conditions. "We rooted everything we could—and everything rooted," Collins says triumphantly. The plantings were all in soil boxes made of wood, the individual boxes for the purpose of giving an opportunity for various growing conditions.

Geraniums were started from seed in a miniature greenhouse—as were a lot of bedding plants. The miniature greenhouse was outfitted with a heating unit to keep the temperature at a necessary 70 degrees. The bedding plants thrived after replanting—as did the geraniums. The geraniums grew to maturity, strong and stemmed flowering plants in six weeks. The bedding plants were later planted outside the greenhouse entrance and thrived in the rather rocky soil.

Casilliflowers has been grown in the greenhouse and develops quickly. Tomatoes also grow well, but tomatoes may pose a problem in that they may not pollinate and produce because of the very wet conditions in the winter.

Carnations and snapdragons take well to the spring-summer environment and develop exceptionally strong stems. Research is being conducted on how much soil is actually needed for plantings. Lettuce was grown in individual soil boxes containing one inch, three inches and six inches of soil. The one inch of soil posed problems, but the lettuce thrived in the deeper soil.

Old hubcaps have been used to make "hanging planters" and petunias and house plants thrive in the small amount of soil.

Experiments are currently being conducted with the growing of azaleas in the greenhouse. Soil for all plantings is

mixed in a small cement mixer. The mixture is usually one part soil, one part peat and one part vermiculite or perlite. In pots, the formula is changed slightly, using two parts vermiculite or perlite in order to give room for a bountiful root system.

Collins conducts countless experiments as to fertilizing and chemical use in the created environment of the greenhouse and keeps voluminous data on all plants—when the plant flowers, if it yellows and when, or if it dies—seeking to find the reason for any adverse condition. He has begun his graduate work toward a masters degree and plans to use the data to write his thesis on the greenhouse research project.

Few disease problems have been encountered in the plants during the experiments. Water has been another problem. An active mine below the abandoned shaft has been the source of water for the

**Mt. Vernon Signal Thurs Nov. 11, 1976 P-11**  
greenhouse. But mines are being reduced or entirely absorbed by the coal operation.

Everything points to a supplementary industry blossoming in mining areas like those of Southeastern Kentucky. The researchers note there are plenty of mine shafts and plenty of cheap land surrounding the old mines.

There are still bugs to be worked out, but in general the experiment has proven a success—and the success of the research points to the possibility that abandoned mines are not the only source for such greenhouses—that air from active underground mines could be employed to ventilate greenhouses. Since exhaust fans must be kept in operation in active mines, greenhouses ventilated by mine air are also feasible by using the active mines, with electrical costs to operate the ventilating fans

Leo Brauer  
UK College of Agriculture



At no point in any of the 56 short stories and four novels that Arthur Conan Doyle wrote about his famous detective does Sherlock Holmes say "Elementary, my dear Watson."

## 7 Years of "Sincere, Personal Service"



BILLY DOWELL



ROY MARTIN

December 1st will mark the 7th Anniversary of Dowell and Martin Funeral Home - Seven successful years on which we can look back with satisfaction, knowing we have put forth our best efforts to serve people in their time of need.

We have always felt the trust a family places in us is very personal and the service we give should be very personal too. Therefore, everything we do at the Dowell and Martin Funeral Home is guided by the family's individual wishes.

Also, for the sixth consecutive year, Dowell and Martin Funeral Home has been accepted for membership in The Order of the Golden Rule. Membership in the Order of the Golden Rule is a sign of reassurance to you, the public, of excellence and reliability you can depend on.

We are proud of the reputation we have established in this community in the past 7 years and pledge our efforts toward continuing to provide "Sincere, Personal Service."



**Dowell-Martin**  
**FUNERAL HOME**  
MT. VERNON, KENTUCKY

Billy Dowell

Roy Martin

Phones  
256-2991 256-2997

**ESTATE**

# AUCTION

of The Late H. C. Owens'  
**HOUSE & LOT**

**SAT., NOV. 20, 1976, 9:30 A.M.**

**Brodhead, Rockcastle County, Ky.**

**LOCATION:** On Pike Street, Brodhead, Kentucky.

The house is in some need of repairs, however, it could be fixed up or you could dispose of the house and have an excellent building lot. Both city water and sewer are available and it is on a blacktop street. This property is within walking distance of churches, schools and main street.

The lot measures approximately 50 x 150.

If you are in the market for some good investment property please be sure to attend this sale.

for additional information contact Mr. and Mrs. John Noe at 256-4645 or:

**FORD**  
REALTY & AUCTION CO.  
Mt. Vernon, Ky.

**R**  
REALTOR

**Equal Housing Opportunity**

Col. Sam Ford Realtor - Auctioneer    Col. Bill Blandish Col. Roy Adams Auctioneer    Col. Dave Ford Realtor - Auctioneer    OFFICE - Phone 256-1315 - Night 256-1309

**STATE TRANS. SECRETARY APPROVES FUNDING FOR KY.**

State Transportation Secretary John C. Roberts has approved nearly one-half million dollars in second fiscal year continuation funding for transportation planning at the regional Area

Development District (ADD) level in Kentucky.

The money will be made available to each participating ADD district through the Kentucky Department for Local Government during the current fiscal year on a 75:25 state regional fund matching basis. Some federal money

also will be made available for special projects.

According to Roberts, the regional government, industry and citizens a greater voice in determining the future development and operation of transportation systems and services, "both within their own areas and the statewide as a well."

"Rather than simply telling each locality what we in Frankfort think they need by way of short- and long-range programs," he said, "we are asking that they look at their present services, evaluate them in terms of both current and future need, and then tell us where they believe construction, maintenance, expansion and development will do the most good for the most people."

Each ADD district has formed its own transportation advisory committee made up of local officials, citizens and business people from the district area. The committee also receives administrative and technical support from the Department of Transportation Division of Urban and Regional Planning at Frankfort.

Calvin Grayson, state transportation planning engineer, said that present scheduling calls for each ADD district to complete its regional transportation plan by the end of the 1978 fiscal year.

"Much of the current emphasis on planning at the regional level now seems to be in the area of local roads, public transportation and airport development," he said.

As an example of the work being done locally, Grayson cited a number of ADD studies recently completed.

Among them were an assessment of county road needs by the eight-county Purchase ADD in far western Kentucky, bikeways studies in two other ADD districts and several regional studies on public transportation.

**ORIGINAL SMOKEY BEAR DIES**

The original Smokey Bear who was brought from New Mexico in June of 1950 to serve as the first living symbol of the Smokey Bear forest fire prevention program in the U.S.A., died November 9th in his retirement cage at the National Zoo in Washington, D.C.

The original Smokey Bear served for 25 years at his post before being retired and replaced by a similar bear at ceremonies at the National Zoo in May of 1975. As required by a Joint Resolution of Congress on August 29, 1974, the remains of the original Smokey Bear will be transported to Capitan, N.M. He will be buried in several days at the Smokey Bear Historical Park at Capitan, not far from where he was found in 1950 as a cub, badly burned from a forest fire that swept through a portion of the Lincoln National Forest. A short burial ceremony is now being planned by the New Mexico State Park Commission.

The current living symbol, Smokey Bear, lives on happily at the National Zoo in Washington, D.C., carrying on the work of forest fire prevention.

The Smokey Bear forest fire prevention campaign is a cooperative program of the Forest Service, U.S. Department of Agriculture and the National Association of State Foresters.

**MY OLD KENTUCKY HOME CLOSES FOR FACE-LIFT**

The Kentucky Department of Parks has announced plans to refurbish Federal Hill, the southern mansion known around the world as My Old Kentucky Home. The home will be closed December 20, 1976 through March 15, 1977.

The home is located in Bardstown, Kentucky and is normally open to visitors year round. The park's gift shop on the grounds near the mansion will remain open for business as usual. Refurbishing plans include new carpeting and draperies throughout the mansion, refinishing and upholstering of furnishings and painting of interior walls and woodwork.

William B. Floyd, Curator of Historic Properties, is directing the project.

Over 100,000 visitors toured the Kentucky state park last year.

**THEN & NOW!**



THEN, in the court of Queen Elizabeth of England, gift-giving for the royal wardrobe was a ritual of practicality. Courtesans were expected to contribute to the Queen's dress every Christmas. And even the royal garbage collector gave two bolts of fine linen.



NOW, gift-giving today can also combine practicality with elegance. It's for a queen. This year, for example, many women are receiving a home beauty salon in a razer with 11 extra beauty attachments for manicures and facials in an attractive chocolate and cream case. It's the Norelco Ladybug Salon—an all-in-one gift.

# AUCTION

of  
**Mr. & Mrs. Jesso Doan's**

## 2 HOUSES & LOTS

**FRIDAY, NOV. 19, '76, 4:30 P.M.**

**Sand Springs, Rockcastle Co., Ky.**

LOCATION: Approx. 5 miles S. of Mt. Vernon, Ky. just off state road 1249 at Sand Springs Ky. Follow the auction signs to the sale.

House # 1 is a 4 room house, floor plan consists of 2 bedrooms, living room, and kitchen. The house has storm doors and windows, hardwood floors, paneled throughout, oil furnace and much more. The lot measures one (1) acre more or less.

House # 2 is a five room frame. Floor plan consists of living room, kitchen and 3 bedrooms. The house is in need of repairs. Water is furnished by a cistern. The lot measures one (1) acre more or less.

If you are in the market for a home or investment, property don't miss this sale

TERMS: 20 percent down day of sale balance in 30 days with delivery of deed.

For additional information contact Mr. or Mrs. Doan at 256-2845 or:



# "BIG CLEAN" MACHINE

## Whirlpool AUTOMATIC WASHER

An extra large tub and an extra large SURGILATOR® agitator help this super-capacity automatic washer dig in and deliver. Even gets dirty, heavy denim deep-down clean... because it's built with that down-deep kind of Whirlpool quality.

\*Whirlpool selected Load - see Laundry Guide

ONLY

\$259.88

Model LDA 3700

## MATCHING WASHER & DRYER

Both Only **439.88**

JERRY'S TIRE CENTER

U.S. 25 North
Jerry Hamm
Mt. Vernon



## One weekend Jim Murray burned some leaves, the trash, and most of the neighborhood.

The wind was brisk. The forest, dry. And Jim decided it was a perfectly beautiful day for clearing and burning trash and debris. The outcome? A tragic wildfire in neighboring woods.

Remember. Any form of unauthorized trash burning is illegal. And dangerous. Because it can rage out of control. Call your local forestry agent before burning debris. And protect that perfectly beautiful day for you, and others.

Wildfire. It's a crime against you.

A Public Service of This Newspaper & The Advertising Council

# AUCTION

of Mr. and Mrs. Willie Bishop's

## 83 ACRE FARM more or less IN TWO TRACTS

### SAT., NOVEMBER 20, 1976, 1:30 P.M.

Negro Creek  
Section  
of  
Rockcastle  
County

LOCATION: Turn off Hwy 150 onto the Negro Creek Road, follow the Negro Creek road 1 mile to the Mark Hill Road and follow the auction signs to the sale.

TRACT NO. 1 - Consists of 70 acres more or less of which approx. 21 acres is cropland and the balance in woods. The tobacco allotment for this tract is 1206 pounds, the stock water is provided by a creek. This tract is improved with the above pictured 6 room house. The floor plan consists of living room, kitchen and 2 bedrooms downstairs and 2 bedrooms upstairs. In addition this tract is improved by the above pictured 36 x 40 ft. combination stock and tobacco barn.

TRACT NO. 2 - Consists of 12 1/2 acres more or less of which approx. 7 acres is cropland and the balance in woods. The tobacco allotment for this tract is 389 lbs.

When combined there is a total of 83 acres more or less with 1595 lbs. basic tobacco allotment.

Each tract will be sold separately then together selling whichever way reflects the best returns for the owners.

TERMS: 20 percent down day of sale and balance in 30 days with delivery of deed.

For additional information contact:

Col. Sam Ford  
Realtor - Auctioneer
Col. Bill Randolph  
Auctioneer
Col. Roy Adams  
Auctioneer

Col. Jerry Ham  
Auctioneer
Col. Danny Ford  
Realtor - Auctioneer

Office—Phone 256-1543 — Night 738-8400





Mr. and Mrs. Michael Barr have recently joined the staff at Rockcastle County Hospital. Mr. Barr is a licensed physical therapist and a certified respiratory therapist. Mrs. Barr is a medical technologist and her husband's assistant. The Barrs are both graduates of the University of Minnesota. With the addition of the Barrs to the hospital staff, the hospital can now offer breathing treatments for patients with lung problems such as black lung, asthma, emphysema, etc. and special exercises and treatment for patients with injured limbs (such as stroke victims). In the past, it was necessary for patients to travel to surrounding towns to receive this type of treatment. Out-patient treatment is also now available.

## Burley Signs Favor Good 1976-77 Market

By Bennet Roach

Boasted by a favorable supply-and-demand situation, with auction dates set, and price-support rates finally OK'd from Washington, the 1976-77 burley tobacco crop appears to be heading for another good market.

Even the weather has been cooperating, affording nearly ideal curing and stripping conditions. With market opening set for November 22, there were reports this week that 50% to 75% of the crop is stripped. Already a scattered few crops have been delivered to warehouses at some of the 35 markets in the five-state area where the Burley Tobacco Growers Cooperative Association administers price supports — in Kentucky, Indiana, Ohio, West Virginia and Missouri.

As announced by the U.S. Department of Agriculture, the loan rates range from 75¢ to \$1.20 per pound and reflect an average of \$1.02 1/2 per pound, or 13.2¢ above the 1975 support level.

Although several areas were hit by extremely dry weather last summer, much of the crop is extra good, and some markets are expected to receive uniformly choice tobacco. As a whole the crop is reported better than last year's, with more variability.

USDA economists report burley supplies adequate at a level of 2.8 years use, with exports taking about 22 percent. Nearly three-fourths of burley now is going into U.S. cigarettes, and worldwide demand for this product is up sharply.

The Burley and Dark Leaf Export Association notes that U.S. burley exports are up 27% in quantity and 40%

in value over the 1975 fiscal year, with sizeable increases in Switzerland, Korea, United Kingdom and Northern Ireland and the Philippines and Australia.

Although foreign markets take only 15% of U.S. burley that trade is important in the price structure. One exporter at the Burley and Dark Leaf Association convention recently at Gallatinburg, Tenn. called for emphasis on top quality and even urged that price supports put a premium on higher quality leaf. This speaker claimed that the export market is largely responsible for having pushed prices upward in recent years, as foreign manufacturers require top quality burley (for taste and aroma) to blend with the less flavorful non-USA types which they use.

## Willalla

By Arvil Burton

Those sick in our community are Mr. Irvin Denny, Mr. John Mobley, Mrs. Susie Cash and Mrs. Nellie Emerson.

Mrs. Zora Burton is improving at her home.

This community was saddened to learn of the passing away of Mrs. Cecil Bullock. She used to live in this community. Sympathy is extended to the family.

Mr. and Mrs. Donald Ping and daughter of Indiana, Mr. and Mrs. Melvin Ping and sons of Indianapolis, Indiana, Sue West, Barbara Westerington and Pam Ping of Junction City, Ky. were weekend visitors of Mr. and Mrs. Austin Ping.

Mr. Austin Ping is on the sick list but is improving at his home.

Mrs. Mattie Burton is visiting Mr. and Mrs. W.A. Owens in Mason, Ohio. Larry Thompson of Cincinnati visited Mr. and Mrs. Wayne Burton and family.

Recent visitors of Mr. and Mrs. Herbert Ray Adams and Kevin were Mr. and Mrs. Johnnie Adams and baby of Mt. Vernon; and Mrs. Gladys Dick of Westchester, Ohio.

Mrs. Gladys Dick of Westchester, Ohio is visiting Mr. and Mrs. G.D. Burton.

Recent guests of Mr. and Mrs. Russell Long were Mr. and Mrs. Roscoe Ping and Darwin of Plainfield, Indiana. Mrs. Gladys Dick of Westchester, Ohio, Mrs. Dovie McClure.

Mrs. Louise Ping visited her mother, Mrs. Dovie McClure Sunday night.

Recent guests of Mrs. Zora Burton were Mrs. Okley Hammonds, Mrs. Gladys Dick of Ohio, Mrs. Clara Mae Denney, Mrs. Goldie Pittman, Mr. and Mrs. Russell Long, Mr. and Mrs. R.G. Whitaker, Mr. and Mrs. Owen Burton, Janet Burton and Mr. and Mrs. G.D. Burton.

Ernest Taylor and Casper G. Owens are on the sick list.

Mrs. Dianne Adams underwent surgery at Lake Cumberland Medical Center at Somerset. She has returned to her home in Somerset.

Mr. and Mrs. Sam Ping and Mrs.

Maude Ping of Indianapolis, Indiana spent Saturday night with Mrs. Berthena VanHook.

Mrs. Thelma Brown is visiting Mr. and Mrs. Marlon Smith in Cincinnati.

## MISS KENTUCKY TEEN-AGER PAGEANT PLANS FINALIZED

Final preparations are now being made for the 6th Annual Miss Kentucky Teen-ager Pageant to be held again this year at Georgetown College. The Pageant is planned for February 25, 26, and 27, 1977. The reigning Miss Kentucky Teen-ager, Lynn Riddle, of Paducah, will crown Miss Kentucky Teen-ager, 1977.

The Miss Kentucky Teen-ager Pageant is the Official State Finals to the Miss National Teen-ager Pageant to be held in Atlanta in August. All 50 states and the District of Columbia compete at the National Pageant for \$10,000 in CASH Scholarships.

\$500 CASH and an all expense paid trip to the national Pageant are among prizes awarded to Miss Kentucky Teen-ager. Contestants will be judged on scholastic achievement-leadership; poise-personality; and beauty. Each contestant will recite a 100 word speech on "What's Right About America."

Applications must be submitted immediately. Contestants in the 1977 Pageant will be entertained at an

## The Mt. Vernon Signal Thursday, Nov. 11, 1976 P-13

Water District will hold their regular monthly meeting this Monday night, November 15th at 7:30 p.m. at the home of Mr. and Mrs. Byron Baker, Route 8, Mt. Vernon.

Application may be obtained by writing Mrs. R.C. Forrest, P.O. Box 10182, Charleston, S.C. 29411 or by telephoning 803-571-2332. The Pageant is open to all girls 13-17 years of age.

## NRCWD TO HOLD MONTHLY MEETING

The Northern Rockcastle County

"Money makes iron float."  
 Indian Proverb

Watch next week's SIGNAL for details of

Mr. and Mrs. Tom Herrington's  
 HOUSE AND 2 ACRES, more or less

Located in the Ottawa Section of Lincoln County

SATURDAY, NOVEMBER 27, 1976 3:00 P.M.

For additional information, contact:

**Ford Realty and Auction Co.**

256-4545

Mt. Vernon

# REAL ESTATE FOR SALE

New Brick located in the Valley Major Subdivision. This house has 3 bedrooms, living room, kitchen, full bath, and 1 1/2 baths. It is total electric, wall to wall carpet, blind curtains and much more.

24 Acres secluded land in the Chestnut Ridge Area of Rockcastle County. Beautiful home sites - good spring - plenty of privacy. Only \$150. per acre.

HOME AND BUSINESS IN TOWN! Located near the Rockcastle County High School. House has 3 bedrooms, living room, kitchen, full bath and built in back porch. Home also has city water, storm doors, and windows and in addition to the house there is a store bldg. which is presently occupied as a fabric shop but could be converted into several other types of businesses. The store bldg. measures 15 x 40. Financing is available to qualified prospects. Both for \$26,500.00.

41 Acre Farm - located on the Parlor Grove Rd. at Waynesburg, Ky. The farm has a good 6 room frame house which consists of 4 bedrooms, living room, kitchen, and full bath. In addition to the house there is a combination stock and tobacco barn. The farm has good fencing and stock water is furnished by a good pond. Approx. 1400 lbs. of tobacco, approx. 20 acres cropland and the balance in pasture. \$37,900.00.

Nice Commercial Lot located outside the Mt. Vernon city limits on US 26. The parking area is blacktop and there is a trailer hook up on the lot. \$25,000.00.

Nice Brick located on Hwy. 150 between Brodhead and Crab Orchard. House has 3 bedrooms, living room, kitchen and full bath. Total electric, built in range and washer/dryer hook up. All for \$29,500.00.

1973 Double Wide Mobile Home - located on Mill Street, Mt. Vernon, Ky. Home has 3 bedrooms, living room, kitchen and full bath. Total electric, both front and back porch, wall to wall carpet, washer/dryer hook up, city water and sewer, stove and refrigerator and is situated on a 50 x 100 lot. All this for \$11,900.00.

5 Room House and 17 Acres located at Pine Hill, Ky. House has 3 bedrooms living room and kitchen. Home is heated with a wood burner stove and water is furnished by a spring. There is some coal on the property. \$18,000.

House and 1 1/4 Acres Lot - located on the Parlor Grove Rd. at Waynesburg, Ky. Home has 4 bedrooms, living room, kitchen, and family room, floors are covered with vinyl and the house is completely covered with aluminum siding. Water is furnished by good well and in addition to the house there are 7 outbuildings. \$10,900.00.

100 Acres Raw Land located about 5 miles S. of Mt. Vernon in the Chestnut Ridge area. There is some timber and coal on the property. Priced right at only \$15,000.00.

Beautiful New Subdivision located 1 1/2 miles W. of Mt. Vernon near city limits. Large spacious lots - city water, wide streets - restricted. Starting at \$3,000.00 each.

1 1/2 Acre Lot - located in Mt. Vernon - trees and privacy for only \$4,500.00.

3 Restricted Bldg. Lots located near the Mt. Vernon Elementary School. Lots have city water, blacktop street and are within walking distance of town. Reduced to \$3,500.00 and up.

Good 6 Room House located on US 150. House has living room, kitchen, dining room, 3 bedrooms, and a bath. The house has wall to wall carpet in 3 rooms, also a washer/dryer hook up and storm doors and windows, and city water. There is approx. 4 acres of land which gives ample space for a garden. Priced right at only \$19,000.00.

Good Level Building Lots located near the County Club - city water, on blacktop road. Restricted, \$3,000.00.

Approx. 130 Acres undeveloped land located on blacktop road. This land 12 miles S. of Mt. Vernon. There is both coal and timber on approx. 12,500.000.

Almost New Brick House & 1 1/2 acres on Hwy. 150 between Brodhead and Mt. Vernon. House has 3 bedrooms, living room, kitchen, dining room, family room, bath, full basement and garage.

House and Lot located on McFerron St., Mt. Vernon. House has 4 rooms, and a bath and is within walking distance of town, school and churches. Priced right at only \$5,500.

47 Acre Farm located at Waynesburg, Ky. on the Parlor Grove Rd. The farm has approx. 135 acres tillable ground and balance in grass. There is approx. 1500 lbs. of tobacco. Stock water is provided by 2 ponds. In addition there are 2 dwellings. The main dwelling has 5 rooms - 3 bedrooms, living room and kitchen, aluminum siding, storm doors and windows, washer/dryer hook up, tenant house is frame - 4 rooms. All for \$40,000.00.

BY EACH OWNER'S REQUEST, all property shown by appointment with realtor only. Call today for an appointment.

## NOTICE

We would like to express our appreciation to the democratic voters of Rockcastle County for the excellent support given to the Democratic candidates.

The individual community efforts of the voters made a good showing on behalf of the Democratic Party.

Rockcastle Co. Democratic Executive Committee

Howard Linville  
 County Chairman,  
 Democratic Party

Wayne Stewart  
 Treasurer,  
 Democratic Party



REALTOR®

# Ford Realty & Auction Co.

Col. Sam Ford  
 Realtor-Auctioneer  
 758-8400

Mt. Vernon, Ky.  
 Office Phone 256-4545

Col. Danny Ford  
 Realtor-Auctioneer  
 256-4446

Rockcastle Co. Financial Statement

ANNUAL TREASURY REPORT JULY 1, 1975 - JUNE 30, 1976

Accounting of General Fund Balance on Hand - July 1, 1975 Received for Deposit Paid out by Order of Court Balance on Hand - June 30, 1976 Received & Disbursed to Health Department Extension District Library Fund Soil Conservation Timber Fund TOTAL

TREASURER'S REPORT JULY 1975

8316 Dewey Lamb 15.00 8317 Maggie Herrin 15.00 8318 James Nease 15.00 8319 Kentucky State Treasurer 656.47 8320 Boston Daugherty 5.00 8321 Virgil Alcorn 5.00 8322 Dewey Brock 5.00 8323 Clifford Bales 10.00 8324 Ellis Kirby 20.00 8325 Kentucky Utilities Co. 655.73 8326 Kentucky Telephone Co. 165.97 8327 Oscar Saylor 3.00 8328 Ola Burton 3.00 8329 Elmer Hale 3.00 8330 Shush Brooks 3.00 8331 Sue Burdett 3.00 8332 Charles Shepherd 3.00 8333 W.S. Siewart 3.00 8334 Ed Westead 3.00 8335 Joe Mink 3.00 8336 Vivian Owens 3.00 8337 St. Louis Morris 3.00 8338 Verma Martin 3.00 8339 Ernest Kirby 3.00 8340 Joyce Whitaker 3.00 8341 Bradley Arco Ser. Sta. 32.81 8342 James Lambert 20.00 8343 Royce Sargent 25.00 8344 Darrel Wayne Whitaker 12.50 8345 Carol McKinney 30.00 8346 Pauline Dees 12.50 8347 Clyde Barnes 135.00 8348 Clifford Bales 98.00 8349 Central Vending Co. 45.00 8350 John Hansel 125.67 8352 Luther McKinney 62.14 8353 Aster VanWinkle 20.72 8354 Rockcastle Co. Retirement Fund 50.00 8355 Hubert Thacker 639.30 8356 Chester Whitaker 234.40 8357 J.R. Boone Cromer 234.40 8358 Sherman Sargent 234.40 8359 W. H. Wren 234.40 8360 Earneus Mason 234.40 8361 Clifford Bales 12.50 8362 Clifford Bales 50.00 8363 Money E. Cummins 41.22 8364 Billy Dowell 165.00 8365 Lois Reid 80.82 8366 Mt. Vernon Water Works 545.00 8367 Manuel Shepherd 556.00 8368 Mt. Vernon Signal 9.19 8369 Mt. Vernon Signal 10.00 8370 Money E. Cummins 117.50 8371 Howard Shaw 18.30 8372 Lloyd Press 1.06 8373 Hatt's S & S 6.00 8374 Hubert Thacker 5.00 8375 Legislative Research 100.00 8376 Ky. Association of Counties 277.23 8377 Mt. Vernon Signal 90.00 8378 Hans Baldwin Law Publishing Co. 336.00 8379 Mt. Vernon Signal 604.59 8380 Harp Enterprises Inc. 28.50 8381 International Business Mach. 18.00 8382 Mt. Vernon Signal 53.22 8383 International Business Mach. 27.48 8384 American Business Supplies 114.42 8385 Central Office Supplies 100.44 8386 International Business Mach. 49.39 8387 Clifford Bales 16.37 8388 Central Office Supplies 134.70 8389 A & R Business Machine 104.85 8390 Mt. Vernon Signal 228.01 8391 Clifford Bales 7.21 8392 Clifford Bales 113.52 8393 Howard Shaw 218.68 8395 Phil Clure Co. 73.86 8396 C.C. Cox Hardware 4.76 8397 C. F. Cox 28.46 8398 Kentucky Stone Co. 419.87 8399 Kentucky Stone Co. 522.80 8400 Kentucky Stone Co. 56.28 8401 Kentucky Concrete Pike 13.26 8402 Mt. Vernon Automotive Parts 397.35 8403 Jim & Jack Hardware 227.04 8404 Robinson Equipment Co. 479.24 8405 Whyane Supply Co. 47.83 8406 Mt. Vernon Shell 36.25 8407 Mt. Vernon Shell 250.46 8408 William D. Kirby 40.04 8409 Dean Kirby 856.01 8410 R.H. Hamm Oil Co. 429.37 8411 R.H. Hamm Oil Co. 82.85 8412 R.H. Hamm Oil Co. 82.85 8413 Robert Southard 82.85 8414 Robert Southard 82.85 8415 Danville Office Supply 65.38 8416 Ky. State Treasurer 2698.17 8417 Ky. State Treasurer 2635.76 8418 Rockcastle County Sinking Fund TOTAL 18,406.89

SEPTEMBER 1975

8518 Rockcastle County Ret. Fund 50.00 8519 Hubert Thacker 768.00 8520 Chester Whitaker 249.60 8521 J.R. Boone Cromer 249.60 8522 Sherman Sargent 249.60 8523 W.H. Wren 249.60 8524 Ernest Mason 249.60 8525 Ellis Kirby 25.00 8526 Clifford Bales 12.50 8527 Clifford Bales 50.00 8528 Money E. Cummins 165.00 8529 Lois Reid 150.00 8530 Billy Dowell 25.00 8531 Ernest Mason 83.95 8532 Mt. Vernon Water Works 200.25 8533 Kentucky Telephone Co. 731.08 8534 Kentucky Utilities Co. 10.00 8535 James W. Lambert 30.00 8536 Clifford Bales 20.00 8537 Victor Hysinger 140.95 8538 Central Body Service 5.00 8539 Clifford Bales 109.22 8541 Larry Goff 220.00 8542 William J. Adams 25.56 8543 Luther McKinney 97.23 8544 Jack Goff 60.00 8545 Money E. Cummins 10.00 8546 Manuel Shepherd 220.00 8547 Kentucky Farm Bureau Insurance 30.00 8548 Pauline Ramsey 30.00 8549 Enter Thomas 220.00 8550 Willie Sargent 3.00 8551 Doris Cash 3.00 8552 Hugh Ramsey 3.00 8553 Perry Lee Poynter 3.00 8554 Vira Gentry 3.00 8555 Edna Caldwell 3.00 8556 Mary Hasty Brock 3.00 8557 Ed Taylor 3.00 8558 Alice Hunt 3.00 8559 Flora Mae Brown 3.00 8560 Bill Cole 3.00 8561 Bill Goff 730.00 8562 Mt. Vernon Signal 366.00 8563 Harp Enterprises Inc. 51.79 8564 R. H. Hamm 10.30 8565 R. H. Hamm Oil Co. 30.48 8566 R. H. Hamm Oil Co. 36.07 8567 R. H. Hamm Oil Co. 18.04 8568 Rockcastle Auto Parts 86.77 8569 Noe's Gulf Service Sta. 77.24 8570 The Kentucky Stone Co. 154.93 8571 The Kentucky Stone Co. 44.94 8572 The Kentucky Stone Co. 28.55 8573 Dooley Shell Oil 87.4 8574 Dooley Shell Oil 210.14 8575 Bradley Service Station 1230.50 8576 Allen, Clontz and Cox 25.89 8577 Wendell Van Winkle 10.30 8578 Wendell Van Winkle 186.42 8579 Waldon Brown 72.50 8580 William D. Kirby 30.00 8581 Aster VanWinkle 93.21 8582 Aster VanWinkle 29.20 8583 Aster VanWinkle 23.30 8584 Bentley Cromer 145.00 8585 Bentley Cromer 77.67 8586 Bentley Cromer 50.71 8587 Clifford Bales 30.48 8588 Rockcastle Co. Ret. Fund 134.00 8589 Rockcastle Co. Soc. Sec. 67.95 8590 Kentucky Concrete Pike 70.35 8591 Olen McGuire 46.60 8592 Kentucky State Treasurer 95.48 8593 Kentucky State Treasurer 73.22 8594 Manual Shepherd 10,587.58

OCTOBER 1975

8594 Hubert Thacker 252.28 8595 Rockcastle County Retirement Fund 44.00 8596 Chester Whitaker 38.00 8597 J.R. Boone Cromer 8.00 8598 Sherman Sargent 3.00 8599 W.H. Wren 3.00 8600 Earnest Mason 3.00 8601 Ellis Kirby 3.00 8602 Victor Harding 3.00 8603 Clifford Bales 3.00 8604 Money E. Cummins 41.22 8605 Lois Reid 165.00 8606 Billy Dowell 153.67 8607 Mt. Vernon Water Works 84.45 8608 Kentucky Telephone Co. 231.76 8609 Kentucky Utilities Co. 722.00 8610 M. A. Walker 92.35 8611 Diamond Motor Co. Inc. 84.45 8612 Gene Cornett 136.50 8613 National Linen Service 12.00 8614 Mt. Vernon Signal 12.00 8615 Clifford Bales 45.18 8616 Void 0.00 8617 Bullock Garage 30.10 8618 Manuel Shepherd 148.00 8619 Bronaugh Motor Express 174.00 8620 Money E. Cummins 20.00 8621 James Lambert 10.00 8622 Cash Welding Repair 28.00 8623 Appalachian Computer Service 20.00 8624 Manual Shepherd 20.00 8625 Clyde Barnett 20.00 8626 Victor Hysinger 20.00 8627 Clifford Bales 20.00 8628 Clifford Bales 13.75 8629 Clifford Bales 757.13 8630 Lewis Mullins 3.00 8631 Verla Brown 3.00 8632 Gram Cummins 3.00 8633 Orville Alcorn 94.74 8634 Bill Bradley 42.95 8635 Marie Noe 500.00 8636 Clifford Bales 30.12 8637 Janice Hines 14.27 8638 Virgil Abney 6.00 8639 Robert Cromer 309.00 8640 Danville Office Supplies 13.09 8641 Livingston Motor 741.74 8642 Bob Sparks Garage 23.61 8643 The Ky. Stone Co. 217.58 8644 William Dean Kirby 41.45 8645 William Dean Kirby 77.67 8646 Aster VanWinkle 95.83 8647 Aster VanWinkle 20.71 8648 Aster VanWinkle 20.71 8649 R.H. Hamm Oil Co. 22.64 8650 Aster VanWinkle 77.12 8651 Hopkins Machine Shop 21.62 8652 The Kentucky Stone Co. 350.00 8653 N. A. Walker Co. 207.09 8654 Poynter's Grocery 21.68 8655 Manuel Shepherd 149.41 8656 B & F Gulf 8.00 8657 B & F Gulf 22.65 8658 B & F Gulf Service Station 2.00 8659 B & F Gulf Service Station 1.00 8660 Delmo Mink 6.00 8661 Kentucky State Treasurer 70.48 8662 R. H. Hamm Oil Co. 70.33 8663 R. H. Hamm 30.00 8664 R. H. Hamm 238.86 8665 R. H. Hamm 10.30 8666 TOTAL 20,093.07

NOVEMBER 1975

8693 Rockcastle Co. Retirement System 50.00 8694 Hubert Thacker 768.00 8695 Chester Whitaker 249.60 8696 J.R. Boone Cromer 249.60 8697 W.H. Wren 249.60 8698 Sherman Sargent 249.60 8699 Ernest Mason 249.60 8700 Ellis Kirby 12.50 8701 Clifford Bales 50.00 8702 Clifford Bales 50.00 8703 Money E. Cummins 165.00 8704 Lois Reid 150.00 8705 Billy Dowell 80.00 8706 Phil Clure Co. 16.49 8707 Appliance Service center 3.78 8708 Howard Shaw 9.74 8709 Money E. Cummins 10.00 8711 Larry Goff 730.00 8712 Berea Farm Service, Inc. 100.00 8713 Kentucky State Treasurer 191.83 8714 R.H. Hamm Oil Co. 25.89 8715 R.H. Hamm Oil Co. 25.89 8716 R.H. Hamm Oil Company 13.97 8717 R.H. Hamm Oil Company 221.28 8718 R.H. Hamm Oil Company 80.00 8719 George Coleman 400.00 8720 Calvin Webb 3.00 8721 Sallie Mullins 3.00 8722 Rinda Brown 3.00 8723 Mary Perry 3.00 8724 Rufus Baker 3.00 8725 W.F. Peters 3.00 8726 Lillian Collett 3.00 8727 Amanda Maggard 3.00 8728 Elizabeth Mullins 3.00 8729 Steve Bullen 3.00 8730 Breucilla Lawrence 3.00 8731 Joe C. Gentry 3.00 8732 Curtis Bullock 3.00 8733 Everett Purcell 3.00 8734 Johnnie B. McGuire 3.00 8735 Ernest Mason 54.75 8736 J.C. Newland & Son 850.00 8737 Bradley Service Station 67.75 8738 Sanitary Cleaners 15.00 8739 Clifford Bales 1.40 8740 Bronaugh Motor Express 14.38 8741 Rockcastle Civil Defense 500.00 8742 Clyde Barnett 80.00 8743 Clifford Bales 80.00 8744 Manual Shepherd 80.00 8745 Victor Hysinger 80.00

8746 Bullock Sales & Service 87.19 8747 Elmer Decker 285.38 8748 Lloyd Decker 64.40 8749 Wendell Van Winkle 23.30 8750 Wendell Van Winkle 168.18 8751 Bentley Cromer 20.17 8752 Bentley Cromer 173.65 8753 Bentley Cromer 10.38 8754 Lorene Sanders 80.00 8755 Void 0.00 8756 Void 0.00 8757 W.H. Wren 72.92 8758 Ballard Parson's Grocery 13.81 8759 Luther McKinney 124.28 8760 Luther McKinney 75.08 8761 Luther McKinney 62.14 8762 J.D. French 120.00 8763 MT. Vernon Water 51.48 8764 Kentucky Utilities Co. 382.82 8765 Kentucky Telephone Co. 232.67 8766 National Linen Service 22.88 8767 Ideal Press 4.00 8768 Central Office Supply 25.92 8769 National Insurance Agency 102.00 8770 Manual Shepherd 174.00 8771 William D. Kirby 41.43 8772 William D. Kirby 238.00 8773 Keith Cromer 41.43 8774 Keith Cromer 25.00 8775 Keith Cromer 12.90 8776 B & F Gulf Service Station 12.16 8777 B & F Gulf Service Station 63.50 8778 B & F Gulf Service Station 16.65 8779 Sears Service Station 27.00 8780 Rockcastle Auto Parts 62.14 8781 Sears Enterprises Inc. 15.72 8782 S.P. Proctor Lumber Co. 1.58 8783 Town & Country Service Station 5.85 8784 Olen McGuire 156.02 8785 Aster VanWinkle 178.65 8786 Aster VanWinkle 18.12 8787 Kentucky Farm Bureau Insurance 67.20 8788 Kentucky Farm Bureau Insurance 29.40 8789 Kentucky Farm Bureau Insurance 23.40 8790 Kentucky Farm Bureau Insurance 981.52 8791 The Kentucky Stone Co. 105.04 8792 The Kentucky Stone Co. 303.45 8793 The Kentucky Stone Co. 141.78 8794 The Kentucky Stone Co. 771.60 8795 Terry Bradley 103.37 8796 Terry Bradley 41.43 8797 Mt. Vernon Signal 116.38 8798 Jim & Jack's S & T Store 116.38 8800 Howard Bullock 194.40 8801 Phil Core Co. 77.12 8802 Rockcastle Co. Retirement Fund 134.00 8803 Rockcastle Co. Social Sec. Fund 123.03 8804 Kobax 269.75 8805 Kobax 89.10 8806 United Laboratories 296.44 8807 Noe's Gulf 39.45 8808 Noe's Gulf Service Station 61.74 8809 Noe's Gulf Service Station 8.25 8810 Noe's Gulf Service Station 14.05 8811 Danville Office Supplies 31.38 8812 Danville Office Supplies 10.00 8813 Kentucky Farm Bureau Insurance 32.70 8814 Bill Hale 123.50 8815 Wright Implement Co. 1,127.06 8816 W.H. Wren 129.00 8817 Irene Bales 12.50 8818 Janice Taylor 12.50 8819 Norma Houk 12.50 8820 C.H. Webb 15.00 8821 J.W. Griffin 15.00 8822 Vance Store 15.00 8823 Nathan Mullins 15.00 8824 Dewey Lamb 15.00 8825 Maggie Herron 15.00 8826 Wayne Jasper 15.00 8827 Mrs. Pauline Dees 15.00 8828 Rickey Kirby 26.00 8829 Joyce Baker 25.00 8830 Robert Fisk 25.00 8831 Laura McHargue 25.00 8832 Christine Hensley 25.00 8833 Bonnie Halcomb 25.00 8834 Bonnie Halcomb 25.00 8835 Willetta Owens 25.00 8836 Jerry Lovell 25.00 8837 Juanita Scott 25.00 8838 Grace Bowling 25.00 8839 Grace Bowling 25.00 8840 Edith Childers 25.00 8841 Lovella Russell 25.00 8842 Mary Brock 25.00 8843 Hazel Owens 25.00 8844 Hazel Owens 25.00 8845 Irene Reynolds 25.00 8846 Hazel Cummins 25.00 8847 Nevel H. Chappell 25.00 8848 Carl Williams 25.00 8849 Casper McCracken 25.00 8850 Mary Cope 25.56 8851 Bronco Abney 25.56 8852 Minnie Brock 25.56 8853 Ray Coffey 25.56 8854 James Reynolds 25.56 8855 Liza Annett VanWinkle 25.72 8856 Mrs. Boyd VanWinkle 25.72 8857 Owen Allen 25.00 8858 Andy Cole 25.56 8859 Richard Mullins 25.00 8860 Myrtle Bowman 25.00 8861 Jack Hensley 25.00 8862 Karen Mason 25.56 8863 Bill Cole 25.56 8864 Ethel Abney 25.56 8865 Daiha Neve 25.80 8866 Pearl Newcomb 25.80 8867 Mable Mullins 25.80 8868 Eva Black 25.80 8869 Juanita Fordyce 25.80 8870 Lloyd Owens 15.80 8871 Mrs. Wm. Thomas 25.00 8872 William McClure 25.00 8873 Robert Gentry 25.80 8874 Curtis Bradley 25.80 8875 David Neve 25.76 8876 Walter Hasty 25.00 8877 Beulah Riddle 25.56 8878 Amanda LaFavers 25.00 8879 Della Mae Willmott 25.00 8880 Lillian Collett 25.56 8881 Dewey Brock 25.56 8882 Betty Cross 25.56 8883 Mildred Rigby 25.56 8884 Mae Holbrook 25.56 8885 Christine Taylor 25.56 8886 TOTAL 16,443.08

DECEMBER 1975

8885 Rockcastle County Retirement 50.00 8886 Hubert Thacker 768.00 8887 Chester Whitaker 249.60 8888 J.R. Boone Cromer 249.60 8889 W.H. Wren 249.60 8890 Sherman Sargent 249.60 8891 Ernest Mason 249.60 8892 Ellis Kirby 25.00 8893 Clifford Bales 12.50 8894 Clifford Bales 50.00 8895 Money E. Cummins 60.00

(Cont'd to P-15)