

RCHS Junior, Shari Martin, Elected President Of CKSMA

Miss Shari Martin, a junior and library assistant at RCHS was elected president of the Central Kentucky Student Media Association, Friday, April 1. The meeting, held at Shakerstown, Pleasant Hill, Kentucky, is made up of high schools of the Central Education District.

The program for the day included business, election and installation of officers, tours of Shaker Village and lunch in the famous Shaker Dining Room. Guest speaker of the day was Jan Farley an authority on Folk Music and History who has just returned from participation in an exchange program in Poland.

Attending the annual meeting from RCHS were Shari Martin, Leola Wynn, Shari's campaign chairman; Frances McClure, executive voting delegate; Jane Alcorn, Sherri Barnett, Ruth Bunch, Brenda Graves, Lesha Isaacs, Sandy Lear, Vicki Martin, Sadie Mink,



Priscilla Napier, Mary Pingleton, Anita Price, Pearl Brummett, Mrs. Sonda Mullins, Library Clerk and Mrs. Laura Durham, Sponsor.

CKSMA Officers for 1977-78 are: President-Shari Martin, Rockcastle County High School; vice President-Jan Costello, Franklin County High School; Secretary-Treasurer-Debbie Bosses, Franking High School; Reporter Michelle Saville, Scott County High School; Chaplain-Toole Toole, Jessamine County High School.

Kentucky Afield

By John Wilson

Forty years ago, the beaver was almost completely eliminated from its original range east of the Mississippi. But today, thanks to modern wildlife management beavers are so numerous in some sections of the Southeast that control of their numbers is necessary.

New environmental protection regulations severely limit the steps a professional wildlife manager can take to control wildlife "pests."

Wildlife biologists can now use space satellites to help them classify and evaluate wildlife habitat.

Those are among the items members of the Department of Fish and Wildlife's game management division discussed at a day long continuing education conference in Frankfort March 30.

Sponsored by Auburn University and the Kentucky fish and wildlife department, this short course for wildlife professionals is part of an experimental program designed to bring continuing education to those working in the natural resources, according to Dr. Edward P. Hill, assistant unit leader at Auburn's Cooperative Wildlife Research Unit.

The program is designed to acquaint wildlife biologists with recent techniques and new developments in the wildlife sciences. "What we are trying to do is acquaint professionals with what has happened since they left college," Hill explained, adding that the short course has received favorable responses from seven southeastern states.

Although it is now on a trial basis, this program may become permanent, according to Commissioner Arnold L. Mitchell of the department of fish and wildlife. Future programs could be funded by a combination of state and

federal money, Mitchell said.

Hill, who presented the session on beaver population control, Dr. Michael Golden, assistant professor of forestry at Auburn and Chuck Danner, a wildlife biologist with the U.S. Department of Fish and Wildlife Service, were the instructors for the conference.

Golden spoke on the forest habitat classification, stressing the importance of evaluating the productivity of land for wildlife purposes. He described a new technique he and other scientists at Auburn are developing, a technique which uses satellite photographs. Golden said that a satellite map showing the forest habitat regions of Kentucky should be available soon.

Danner, who is stationed in Lexington, brought the participants up to date on the latest theories and techniques of wildlife pest control. "We used to speak of the eradication of pest species," Danner said. "Now we talk of reducing the level of damage caused by wildlife. This change in attitude reflects both a practical assessment of the situation and a change in moral attitude on the part of wildlife professionals."

Danner explained the legal problems of dealing with endangered species which might become pests, such as an endangered bat in someone's attic, and he expounded upon recent Environmental Protection Agency regulations governing the use of pesticides.

Hill discussed controlling beaver populations in Alabama, where he has been engaged in a variety of beaver control experiments. Most beaver damage, Hill said, occurs from the flooding their dams cause, although their diet of wood can cause destruction of timber or ornamental trees.

Hill's studies show that commercial trapping offers the best control measure, since it only eliminates the beavers from problem-areas but also provides income for the trappers.

A Prestonsburg native, Hill is a former biologist with the Kentucky Department of Fish and Wildlife Resources. He thinks beavers have the potential for improving the watershed in strip-mined areas of Kentucky by their dam building activities.

Approximately 20 wildlife managers from around the state attended the conference.

"MENTAL HEALTH MATTERS"

Single Female Parent

Are you the single female parent with a young son who begs you to play football each fall, baseball each spring, and take him fishing in the summertime? Do you find that these sports are not for you and also that you can't provide the role model your son needs to follow or imitate?

There are some measures you can take to ease some of the pressures of being a single parent. An organization called "Big Brothers" can be of great assistance in providing your son with a male companion for a few hours each week. They will enjoy each other's company and do the fun things all young boys need and enjoy.

You can also sometimes take your son to visit male relatives and friends for opportunities of companionship. Sometimes a high school age boy in the neighborhood will also be a good friend for your son. Perhaps a retired man in your neighborhood may serve as a father substitute.



The Rockcastle County Jaycees presented \$100 checks to two local fire departments on Tuesday of this week. In the top photo, Bill James, Jaycees Treasurer, is shown presenting the check to John Cox, Mt. Vernon Fire Department Chief and in the bottom photo, Donnie Singleton, Jaycees President, presents Everett Bradley, Chief of the Broadhead Fire Department, with a check.



Photo Finishing Special!

CLIP & SAVE

12 EXPOSURE
COLOR ROLL \$2.29

20 EXPOSURE ROLL \$3.29
KODACOLOR, GAF, OR FUJICOLOR
Processing: Kodak Paper

TOP QUALITY — NO LIMIT — TWO DAY SERVICE

Kodak paper. For a good look at the times of your life.

This coupon must accompany order
OFFER EXPIRES THURSDAY, APRIL 14, 1977
Good at any store serviced by

THOMAS-HUSTON
Your Photo Finisher

Take Your Film to:
Hatt's 5&10 Saylor Pharmacy
Young's Pharmacy Dillingham's Sundry

AUCTION

Of
Mr. and Mrs. Shirley Rogers'

HOUSE & 2 ACRES

more or less

Fri., April 8 '77- 2 P.M.

Brodhead, Kentucky



LOCATED Behind Martin's Garage in Brodhead, Kentucky. Watch for auction signs on US 150 leading to the sale.

Mr. and Mrs. Rogers have purchased other property and have contracted to sell this desirable property for the high dollar.

The house has 3 bedrooms, living room and kitchen. City water is in the house. An electric range and new kitchen sink will go with the house.

There are several good garden spots on the property.

If you're in the market for a good country home be sure and attend this sale!

TERMS: 20 percent down day of sale and balance in 30 days.

For additional information contact:

FORD REALTY & AUCTION CO.
Mt. Vernon, Ky.

Office—Phone 256-1511 — Night 256-4000

REALTOR

Cal. Ann Ford Broker - Auctioneer
Cal. Jerry Hise Broker - Auctioneer
Cal. Bill Bushback Broker - Auctioneer
Cal. Roy Adams Broker - Auctioneer
Cal. Danny Ford Broker - Auctioneer

QUALITY FIELD SEED LAWN SEED GARDEN SEED

Ky. 31 & Bluegrass
Kenland Clover
Korean Lespedeza
Kobe Lespedeza
Ladino Clover

Cort. Clair Timothy
Clinton 64 Oats
Hybrid Seed Corn
Hybrid-Sudan Grass

PLANTS - FLOWERS - SHRUBBERY
BULK GARDEN SEED

Insecticides Fertilizer

SOW QUALITY SEEDS

Rockcastle Farm Service
Mt. Vernon, Ky.
256-2516

Brodhead Mills
Brodhead, Ky.
758-3811

HIGH HIDING... with PORTER EASY-HIDE

The white house paint that STAYS WHITE! ... A tough, durable exterior paint, Porter Easy-Hide dries to a uniform gloss, even over uneven and weathered surfaces. Chalk-resistant and lead-free. Retains its gloss beauty longer, protects surfaces longer, gives high hiding quality ... usually with only one coat.

SAVE \$1.00

Per Gallon On All Paint During Our Spring Sale

Beginning April 1st
2 weeks only

APPLIANCE SERVICE CENTER
Mt. Vernon, Ky. 256-2626

Cover Your Walls With Happiness

with happy flowers for your girl's room
... bold dashing designs for your boy's room
... charming prints for your guest room
... cheery patterns for your kitchen and bath

PORTER WALLCOVERINGS

Come in soon and ask for our Porter books of easy-to-apply wallcoverings in pre-pasted, vinyls, do-it-yourself coated washables, and the new stripable materials that are so easy to remove. We'll be glad to help you make your home glad.

FARM

News

County Agent's Notes

By H. LEE DURHAM
COUNTY EXTENSION AGENT
FOR AGRICULTURE

Bell and pimiento peppers have become important cash crops for many of you. They may be grown on a wide range of soil types. However, the best yields have been on well-drained fertile uplands. Yields have varied considerably on rich bottomlands. Most of the rich bottomland has too much nitrogen during the first month or so after the plants are set in the field. This may result in big, vigorous plants, but plants with very few peppers.

Disease is more likely to be a problem when peppers are grown on bottomland. Air drainage is usually poor, so plants do not dry as quickly as those grown on higher land. It is known fact that most of the diseases that bother peppers develop more rapidly when plants are wet.

The pepper is a member of a large family of plants known as nightshades. Other commonly grown crops which belong to this family are tobacco, potatoes, and tomatoes. These crops have some of the same disease, which

may live over in the soil for two or more years. For this reason, it is best to rotate these crops so they do not follow each other more often than once every three years.

Select a soil which has good supply of organic matter. One of the best soils is one that has been in sod for 5 to 10 years. A good cover crop will supply adequate organic matter and, of course, another source is manure.

If possible, avoid land that tends to be droughty. Peppers do a poor job of shading the ground and preventing moisture loss.

Soil preparation should begin at least a month before peppers are to be set. The field should be disked every 7 to 10 days to destroy weeds and work the soil into a firm, fine seedbed. Plants set in a well-prepared soil start off quickly and produce bigger yields.

Mr. Kenneth Stewart will be buying bell peppers this season for Moody Dunbar, Inc. the price to be paid for bell peppers will be \$105.00 per ton with an extra \$5.00 bonus as stated in the contract. For a contract, contact Mr. Stewart at 256-2166 or your local county agent.

1977 in a Nutshell on the Farm

Reduced cattle numbers, increased hog supplies and a slight increase in feedgrain supplies are seen for 1977, according to John C. Gamble, extension specialist in livestock marketing with UK's Agricultural Economics Department.

Gamble made the observations in an "overview" of the 1977 agricultural situation.

He said a cutback in cattle numbers have developed among beef producers and that fact could result in lower beef consumption and higher prices in 1977 and beyond.

This cutback will also have some impact on feed grain use this year. However, if cattle feeders place cattle on feed despite poor returns from feeding, any negative impact on grain prices may be limited.

In looking at the increase in hog supplies, Gamble noted the ultimate result will be lower prices and unfavorable returns. But, until such time comes that swine inventories are actually reduced, hogs will consume more feedgrains and support demand for grains, he pointed out. Hogs are expected to consume about 12 to 15 percent more feedgrains this year than last.

Feedgrain supplies are estimated to be five percent larger than the previous year, however, total disappearance may only be up from one to two percent. Domestic feed use may increase up to three percent, with most of the gain stemming from the pork and poultry industries.

Feedgrain exports are expected to be lower than last year, although considerably above the levels in the 1960's and early 1970's.

In essence, carryover stocks should increase from last year, but remain below the 1960's and early 1970's level. Prices for feedgrains may not average as high as last year, and are not expected to deviate substantially from recent levels until more is known about the new crop. Good domestic feed consumption, tight farmer holding and export demand may support prices.

He said exports are projected to drop this spring, however, the weather and the new crop anticipations will likely be the dominant price factors in the market at that time.

countries, favorable news.

Now the unfavorable: Increasing word of U.S. burley pricing itself out of the market.

These are some of the early returns from a spring visit to the area by R.C. (Dick) Travis, vice president for export promotion, Burley Tobacco Growers Cooperative Association.

Travis will make a report of his visit at the monthly meeting of the Association's board of directors later in April, at Lexington. Here are some items from his letters enroute:

Thailand: Bought 4.8 million pounds of this year's U.S. burley market, thus is one of our best customers. Ninety-five percent of their leaf imports are from U.S.A. But, to rectify a hard fact of life, many of our customers have low per capita income. They want flavor to blend with their mid local filler and Korean burley. No, they don't like Korean burley but they like the price.

Philippines: Burley is doing a real job here. Last year the Philippines bought 4 1/2 million pounds of U.S. burley and this year will take a big amount. Will buy some more leaf grades from the pool, right off the middle of the stalk. Beginning to buy Korean burley at 80c a lb. The higher our leaf gets the less it will be used. They want only leaf grades, as they grow their own filler, or can get it elsewhere, for very attractive prices.

Hong Kong: Some 65 percent of all cigarettes consumer in Hong Kong are imported. Leading U.S. and local brands are close together in retail price. Hong Kong manufacturers buy four grades of good leaf and cutters. To cut costs have reduced use of U.S. flue-cured, and are using more from China that costs 50c lb.

Some notes on personal encounters: (In some of these areas Travis in past years helped set up blends using U.S. burley).

In Thailand a Mr. Uthai, asst. managing director of the country's tobacco monopoly, mentioned he preferred U.S. burley off the Shellyville market because he likes flavor. "And he couldn't possibly have known it was my town," wrote Travis.

The Thai tobacco man asked Dick to recommend a school to send two students to learn cigarette-making techniques of casing and flavoring. "As far as I know there isn't any. But like so many things in this strange world of tobacco, why isn't there?"

Travis put U.S. burley in the Philippines 25 years ago. Now a U.S. tobacco man he brought there is

An Editorial

Burley Tobacco has been the chief money crop in this country through generations of farm families. It is a mainstay in the country's economy.

Now a carefully-planned national campaign is under way by anti-smoking forces to not only limit smoking but to end federal support for the protection and marketing of tobacco.

An avowed objective is to "phase out" the government's leaf support program, over a period of five years. It is part of a plan called "Target 5." You'll be hearing more about it, as "forums" are being orchestrated around the country by a so-called "National Commission on Smoking and Public Policy."

To speed up the legislative drive against tobacco, an "anti-smoking caucus" is to be formed in the U.S. House and Senate, composed of legislators from non-tobacco growing states and urban areas.

Numerous attacks have been made in Congress in recent years to kill the tobacco program. Misguided foes of crop subsidies have repeatedly attacked tobacco supports, under the false claim that vast sums are squandered in subsidizing farmers.

But this latest attack comes in the form of an organized campaign based on the health issue. It seeks to consolidate

technical advisor to the largest company in Manila, and not only uses American burley in his own business, but imports it as agent for other firms. "So U.S. burley is being looked after."

the long standing anti-farm program sentiment and to capitalize on it.

Knowledge about smoking and health is far from complete. Scientific research programs have been under way for 25 years and more, but the results are still inconclusive. The tobacco industry itself contributes millions of dollars every year toward searching for the answer.

Farmers are as deeply concerned about the health issue as anyone. They fervently hope that the tremendous research efforts now under way will some day ferret out the truth. But until that time, it is reckless and irresponsible to condemn and wreck the industry that annually ranks fourth or fifth among farm cash crops, by which over 400,000 farm families earn a living.

Actually the farm commodity price-support program is an inexpensive service by the government, when weighed against its contribution to the nation's economy. Since it began in 1933 the federal tobacco program has accounted for less than 1 percent of all government agricultural supports. It is a program that pays its way and more, since tobacco returns \$6 billion a year in taxes, contributes \$1.5 billion toward the U.S. balance of trade and generates \$17 billion annually in retail business.

The community doing the best job in the clean-up campaign will receive an award to be erected in that community. The judging will be judged in five different categories: roadside, buildings, yards, fencing and over-all appearance, making up to a total of 100 points.

This is something every person in Rockcastle County should be alarmed about is the beauty of county and is something everybody can have a part in.

Nothing looks any worse than roads, yards, buildings, fences, and other things littered, unpainted and desrayed.

But on the other hand when roads, sides, buildings, fences, and yards are cleaned, painted and fixed-up, there is nothing that looks any nicer.

This is a good project for many groups, such as 4-H clubs, F.F.A., women's Clubs to get in on to win the award to be erected in some worthy community "Down on the Farm."

"Knowledge is the food of the soul." Plato

To the Citizens of Rockcastle County:



I am a candidate for the office of Jailer of Rockcastle County. I have worked and lived in Rockcastle County all my life.

We need a clean jail for the next four years and if I am elected as your next Jailer, there will be new equipment put in the jail. Also, the Police Radio will be dispatched twenty-four hours a day.

In order to get the jail cleaned up and new equipment put in the jail, I need your help and support on May 24, 1977.

THANK YOU

Virgil L. Alcorn

pd. for by candidate

Burley Abroad

Good News and Bad
by Bennett Roach

Hints of a rising demand for U.S. grown burley in several Far Eastern

TOOL AUCTION

Tues., April 19, 1977

7 P.M.

Located on US 25 in The Big Red Barn, Renfro Valley, Ky.

Air impact wrenches, 3/8-1/2-3/4-1"	Glassware	Wheel goods
Electric impact wrenches	Stereo Units	Drill press
Hand power saws, 7 1/2-7 3/4"	Carpenter's tools	Channlock tools
Saber saws	Metric socket set	Hand tools (hammer, pliers)
Orbital sanders	Metric Wrenches	Measurement tapes
Belt type sanders	Open end Box end	Hacksaws
Disk Grinders and Buffers	Tap and die sets, standard	Hacksaw blades
Electric drills (all sizes)	Floor jacks	Creepers
Air power chisels, drills & sanders	Routers	Trouble lights
Bench vises (large and small)	Reciprocal saws	Yard lights
Hydraulic jacks	Adjustable wrench	Trailer hitchers
Bench grinders	Channel lock wrenches	Portable type Air compressor
Large assortment of socket sets	Nutbreaker sets	Roll around tool boxes
Sizes - 1/4, 3/8, 1/2, 3/4	Knife sets	Marker and tail lights
Extension cords	Impact sockets, 1/2-3/4"	Open and boxed end wrenches
Hedge trimming tools	Torque wrenches	Mechanics hand soap
Plumbing tools	Pipe wrenches	Electric soldering kits
Tap & Die sets	Fire Extinguishers	Electrical tape
Drill bit sets	Easy outs	Truck tarps
Tool boxes (all sizes)	Allen wrenches	Trailer hitchers
Air hoses	Small appliances	Battery chargers
Torch hoses	Drop cords	Shop push brooms
Screwdriver sets	Cable power pulls	Cup cleaning kits
Table saws	Universal socket set	Yard Games
Transistor radios	Electric chain saws	Sandpaper
	Trikes	

Plus other items to numerous to mention. All items are new and guaranteed by factory warranty, and can be inspected after 5:30 P.M. day of sale.

TERMS: Cash or check with proper ID. Concessions available.

BRING THIS HANDBILL FOR FREE DRAWING

Announcements day of sale take precedence over written material.

Not responsible for accidents or changes due to shipping schedules.

For additional information, contact:

Col. Wendell Lawrence, Auctioneer
Brodhead, Ky. 758-8115

COL. AUDIE PRICE AUCTIONEER
J. T. GOVER

To The Voters Of Rockcastle County

As a candidate for your next sheriff, I feel that I understand the needs and problems of the people of Rockcastle County.

I do not have a lot of promises to make other than I will serve our county with HONESTY and HARD WORK.

I will work toward better communications with the people of our county. Also I will work toward achieving better cooperation between law enforcement and governmental agencies.

I hope you share my concern for our YOUNG GENERATION and the future of our county as a more desirable environment in which to live.

I also fell a great need for the protection of the ELDER CITIZENS of our county.

Your questions and suggestions are welcome. Your support and vote, appreciated.

YOUR CONCERNED CANDIDATE FOR SHERIFF

Clinton Graves

pd. for by candidate



SHORT ROWS

By Nevyle Shackelford

The three basic plant foods are nitrogen, phosphate, and potash. There are other chemical elements, of course, but they are used in such small quantities that only in exceptional cases are they exhausted from the soil. The first three elements mentioned, however, are subject to rapid exhaustion and in order to have good crops, must be replaced from time to time in the soil.

Nitrogen makes the leaf and stem, promotes fast growth and gives good color to the foliage. Phosphate promotes fruit and flower, makes strong roots and insures crop maturity. Potash promotes the general health of both fruit and flowers, contributes to the strength of stem and stalk and increases the size and flavor of fruits. The trick to successful farming and gardening is largely knowing, or finding out when and how much, or in what proportion, to use these elements on various types of plants. If this is now known, the advice is: Get in touch with the local extension agent, talk the situation over, get a soil test made and then follow recommendations.

In any case, though, use chemical fertilizers sparingly. Usually far more fertilizing material is used than necessary and is therefore wasted. Chemical fertilizer readily dissolves in water and is soon washed into the subsoil where plant roots cannot reach and absorb it. Something else, know or find out about the fertilizer and upon what crop to use for best results.

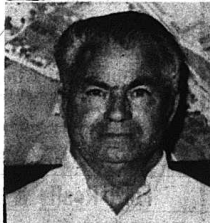
Nitrogen, for example, applied in proper quantities to a lettuce bed will give fine results because it fosters the growth of leaves. On the other hand, if applied in excess to beets and other root crops it will cause them to "go to tops" instead of to desired roots. Good root crops come from fertilizers with greater amounts of phosphates and potash.

The three elements, or plant foods mentioned are vital to the growing of

satisfactory crops, but are sufficient only in combinations of other factors. Along with these nutrients, there must also be moisture, sunshine, humus and bacteria. Food elements are useless, unless the solution form because plants do not eat.

Bacteria extract such elements as calcium, hydrogen, nitrogen, and sulphur from humus. These elements combine chemically with other substances that act as carriers that, in turn, make nutrients available to the plants.

Actually, no one can expect much success until he has learned something about what makes plants grow, what makes plants healthy in some locations and sickly in others, and what makes for a fertile soil. Once started out along this line, a good farmer or gardener will not only produce better crops, but will also gain a greater appreciation of plant life in general.



HONORED FOR SERVICE: Clyde B. Owens, of Rt. 4, Mt. Vernon, has completed 30 years of service with the federal government. An employee of the Lexington-Blue Grass Army Depot, he received a certificate and tie tack during ceremonies at the Blue Grass Activity. Colonel L.A. Floro, Jr., acting commander, made the presentation.

1977 Hog Supply and Price Situation

Despite the "hard winter" and a number of disease problems that brought anticipations of a possible lower future hog population, the number of market hogs on farms in Kentucky is up eight per cent over a year ago, according to John C. Gamble, UK extension specialist in livestock marketing.

He said the inventory of market hogs and pigs as of the early part of March was 847,000 head, compared to 784,000 a year ago.

The winter did take its toll in baby pig losses, with the result that animals weighing under 60 pounds, totaled 339,000, compared to 368,000 a year ago. However, in the 60-119 pounds category, the total was up considerably at 225,000. A year ago the total was 153,000.

All the other weight categories

were up as well—the total weighing 120-179 pounds being 148,000 compared to 141,000 last year at the same time, with 110,000 in the 180-219 pounds group, compared to 102,000 last year, and 25,000 in the 220 pounds and numbers, compared to 20,000 last year.

Gamble said the figures were from the most recent USDA hog and pig report, adding that data from the 14 major hog producing states revealed hog populations were up in all areas.

With the current price of corn showing signs of weakness with each drop of rain, Gamble noted, "livestock producers appear to be scrambling for available feeder pig and feeder calf supplies."

He said prices for both feeder calves and feeder pigs "have shown substantial strength in recent weeks." If spring and summer rains continue to fall in the major corn producing areas, Gamble said he looked for feeder calf prices to continue their upward trend, but saw feeder pig prices "most likely starting to move in the opposite direction in the not too distant future."

Slaughter hog price expectations during the latter half of 1977 do not look promising and I anticipate the feeder pig price decline to precede the anticipated slaughter hog price decline," Gamble added.

He said the timing of future hog marketings will be critical if hog producers are going to realize the maximum dollar potential during a given marketing period. "Granted, Kentucky figures show an eight percent decline in pigs under 60 pounds, however, the date of the 14 major hog states indicates a four percent increase," the marketing specialist observed. He predicted a "clouded, somewhat distorted picture" in the variance of hog production in the separate categories among those states—for example, Iowa accounted for 31 percent of the hogs in the 14-state total, while the number of hogs under 60 pounds on the farms in that state was up 10 percent.

An estimated seven percent increase in the December 1976-February 1977 hog crop in the 14 states was attained with an aggregate average decline of .3 pigs per litter, Gamble said. "Based on a return to normal in litter size in the upcoming months, coupled with a current moderately strong slaughter hog and feeder pig price situation, I look for actual

farrowings during the next six to eight months to exceed current expectations," he predicted.

This situation, he said, pointed to "substantially reduced hog prices the latter part of 1977 and on into 1978."

VOTE FOR Frank DeBorde



FOR
MAGISTRATE
First District
Your Vote and Support Appreciated

pd. for by candidate

VOTE FOR MANUEL SHEPHERD



TO SERVE AND PROTECT

**Candidate for County Judge-Executive
Rockcastle County
Republican Primary - May 24, 1977**

pd. for by candidate

AUCTION

Of
Mr. and Mrs. Robert Wilson's

13 ACRE FARM more or less
and
HOUSE BARN

SAT., APRIL 9, 1977 - 10:30 A.M.

Bowling Ridge Section-Near Brodhead-Rockcastle Co., Ky.



LOCATION: From Rockcastle County - Turn off Hwy. 150 near Powder Nursing Home onto West Street (Brodhead) and proceed 4 miles - follow auction signs to the sale. From Lincoln County - Take Hwy. 39 south of Crab Orchard, approximately 4 miles, turn East on Bowling Ridge Road and follow auction signs to the sale.

Mr. and Mrs. Wilson have purchased property in Lincoln County and have authorized our firm to sell this highly desirable farm at public auction.

The farm consists of 13 acres, more or less, of which 11.6 acres is tillable cropland. The basic tobacco allotment is 2665 lbs. Stock water is furnished by a spring. The farm is improved with the above-pictured house and barn. The house is a 6 room frame home with living room, kitchen and one bedroom on the first floor and three bedrooms on the second floor. The house also has storm doors and windows. Water for the house is furnished by a well. The barn is a 40x70 tobacco barn. This is without a doubt one of the best barns we've had the privilege of selling.

If you're in the market for a small farm, with an extra large tobacco base and good buildings conveniently located near Brodhead and Crab Orchard, mark your calendar today - and be sure to attend this sale!!!

TERMS - 20% DOWN DAY OF SALE - BALANCE IN 30 DAYS WITH DELIVERY OF DEED.

For additional information, contact Mr. and Mrs. Wilson at 758-8635 or:

FORD
Realty & Auction Co., Inc.
Mt. Vernon, Ky.

R
REALTOR

Col. Sam Ford
Realtor - Auctioneer

Col. Bill Handolph
Auctioneer

Col. Roy Adams
Auctioneer

Col. Jerry Hahn
Auctioneer

Col. Danny Ford
Realtor - Auctioneer

Office—Phone 256-1513 — Night 758-8400

P-A6 The Mt. Vernon Signal Thursday, April 7, 1977

Classified Rates

Local Rates - 5c per word, minimum \$1.00
Card of Thanks - 3c per word, minimum 75c
In Memory - 3c per word, minimum 75c
Classifieds Paid in advance, except to businesses
Display Classifieds - \$1.50 per column inch

For Sale

FOR SALE: One-half acre building lot in Maple Grove Subdivision, foundation already poured for house. \$1,800. See Vernon Kirby or call 256-2380. 28x4p

FOR SALE: 1 Beams, two, 18 Ft. long; wo 19 feet long, six 16 ft. long, 14" high and 6" wide. Call 256-4231 or 256-2108. Ioman McFerron. 30x2p

FOR SALE: 1972 Whirlway 3 bedroom trailer. Call 758-8367 after 5 p.m. 29xntf

FOR SALE: All varieties of African Violets. Also, vining African violets and all colors. Phone 256-2784. 30x2

FOR SALE: Small farm, 14 acres more or less, with Holly Park Mobile Home, 12x65 and 2 barns, 600 lbs. tobacco base, city water, blacktop road. \$25,000. Call 256-2564. \$25,000. 30x2p

FOR SALE: 3 bedroom home with living room, dining room, kitchen, bath, utility room, washer-dryer hook up, front and back porches, oil furnace, wall to wall carpet, storm doors and windows. Located on spacious lot in Broadhead. \$23,500.00. Call 758-8897. 28xntf

HORSE SALE: All classes, Garrard Co. Stockyards, Lancaster, Ky., Saturday, April 16, 1977. Tack sale at 5 p.m., horse sale, 6 p.m. Inquire at 792-2118. 31x2

FOR SALE: Two or three bedroom house with new-furnished bathroom, city water, natural gas. Located on nice-sized lot, 417 Laurel St., Richmond, Ky. Priced \$13,700.00. Call 623-5564, Richmond, Ky. 31x1p

FOR SALE: Almost new maple twin bed mattress and box springs. Call 256-5470 after 4 p.m. 31x2p

FOR SALE: Lot, 135x150. Call 758-8651 after 6 p.m. 31x4p

FOR SALE: New modern frame house with 3 bedrooms, wall to wall carpet, washer and dryer hook-up and total electric. Located in Owens Subdivision on Paul Street. Call 256-4231, or 256-2108, Roman McFerron. Lot size 85x155. 30x4p

FOR SALE: 1976 Plymouth Duster. 3

speed with over-drive transmission, slant G engine, averages 30 miles per gallon gasoline, mag wheels, steel belted radials, will sell for \$2,700. Call 453-4497 or 453-3021, or contact Leamon Clark on the Galley Branch Road. 30x2p

FOR SALE: 3 bedroom brick, on Poplar Street. Call 256-4603. 26xntf

GRAVE MARKERS AND MONUMENTS in stock at all times. McNew Monument Sales, U.S. 25, four miles north of Mt. Vernon. Ph. 256-2232. nt

FOR SALE: Silos, silo unloaders, feeders and wagons. Contact Charles Hackley. Ph. 355-7437 nights. 24x52p

FOR SALE: Laying Hens, \$1 each; Bantams, \$5 a pair. Call 256-4373 or 256-2205. 31x1

FOR SALE: Two hand-quilted quilts, Country Lanes and Amish. 256-2286; Ada Bustle. 31x2p

FOR SALE: '72 Honda, 350, Street Bike. Gold and black. New cylinders. Good condition. Contact Curtis McHargue. Livingston on week ends or phone 453-4371. 31xntf

FOR SALE: Two wheel trailer, heavy steel frame, \$75.00. Ph. 758-8339. 31x1

FOR SALE: 1971 Gremlin, 6 cylinder, automatic, sunroof, needs painting. \$700. Ph. Berea 986-4927. 31x2

MONUMENTS ON DISPLAY at Dowell and Martin Funeral Home. nt

HAMMS WATER WELL DRILLING AND CONTRACTING. Call 256-3921 anytime. nt

TERESA'S ANTIQUES & GALLERY (We make picture frames in our shop). Hundreds of prints, great selection of your favorite artist. Note cards, etc., reproduction victorian furniture, gift certificates, Master Charge, Bank Americard. Prospect St., 5 blocks from Boone Tavern Hotel, Berea, Ky. 9 a.m. to 5 p.m. Monday thru Saturday. Call 966-9147. 26xntf



On May 16, 1866 a five cent coin first appeared in America. It was known as a "nickel."

Yard Sales

4 Family Garage Sale, Friday and Saturday, April 8 and 9 at the home of Edie Raines on the Galley Branch Road. Antique glassware, dolls, c also ceramics, clothing, mini-bike, wringer washer and many other items. 31x1

YARD SALE: Friday and Saturday, April 8 and 9 at the home of Mrs. Donald Bray on Hwy. 70 near Bengo Grocery. 31x1

GARAGE SALE: 2 Family at the home of Johnny Cromer on the Old Broadhead-Mt. Vernon Road below McClure's Auto Sales. Clothes, lamps, bed, night stand, gas dryer and many more items. Priced very cheap. April 23-24, 1977. 31x3

YARD SALE: Friday and Saturday from 10 a.m. to 6 p.m. at the home of E.J. Smith in Broadhead on West Street. 31x1

GARAGE SALE: Saturday, April 9 from 9 a.m. to 5 p.m. at the home of Mrs. Davy Eaton, Barnett Subdivision. Last brick house on right. Men and women's clothing, all sizes; children's clothing, infant to size 6; new baby walker, curtains, toys, dishes and many other items. Will be held in case of rain. 31x1p

Wanted

WANTED: Odd jobs, carpenter work, painting, and roof repairing. See Frank Collins or call 256-5490. 30xntf

HELP WANTED: Immediate opening for salad girls and cooks at Old Captain's Quarters, Clays Ferry. Transportation available. Call 256-4079 for more information. 31x1

HELP WANTED: Local firm now needs 25 people to start work immediately. Must be neat in appearance and have automobile. \$150.00 weekly guaranteed. Also, summer and part-time positions available. Call 679-4471, Saturday and Monday, 10 a.m. to 3 p.m. 31x1

WANTED: Could you use a milk check twice per month? Buy some dairy cows and start selling manufacturing milk. Kraft Foods, Stanford. Call 365-9874, 365-2794 or 365-7568. 27x8

COAL WANTED: Mine-run coal. Interested in leasing coal properties in Laurel County, Kentucky and surrounding counties. Call Texas Pioneer Coal Company (606) 256-5324, Mt. Vernon, Kentucky. 30x2

INCOME TAX SERVICE: DORIS DURHAM Call 256-4135
 Open Monday thru Saturday

Septic TANKS

J&J CONCRETE TANKS
 Jim & Jack's S&T Store
 Phone 256-4363
 After 5 p.m. 256-2580

SEPTIC TANKS
 Sales and Service
 750 Gal. - 1,000 Gal.
 Distribution Boxes
 1,000 Gal. Water Distribution Tanks

WANTED: Responsible man to mow Pine Hill Cemetery. Call 256-4245. 29x3p

For Rent

FOR RENT: 2 Apartments, 256-4215. 31x2

FOR RENT: Three-bedroom house trailer with central air conditioning. In Mt. Vernon. Call 256-2758. 31x1

FOR RENT: Two or three rooms, furnished or unfurnished apartments. Steam heated at Rockcastle Hotel. See Roy Winstead at Appliance Service Center. nt

FOR RENT: Carpet cleaning equipment. Uses hot water to clean, rinse, and vacuum out dirt in a single sweep. Everything you need for a professional job. Call 256-2288 or come in to Parsons Gas and Appliance Service at Roundst... nt

IN MEMORY
 of my father, Stalard Travillion.

THE DREAM
 I had a dream the other night.
 It seemed so real to me.
 Of Jesus walking up the hill,
 That led to Calvary.

He bore the sins of all the world.
 As well as a heavy cross.
 His brow was enwreathed in a crown of thorns,
 While harsh words round him were loosed.

Cruel shouts and jeers bade him "Save yourself!"
 If a true king you be,
 But he merely smiled with sadness and love.
 And thought only of you and me.
 Such sadness I felt, as I stood and looked on,
 Not knowing just what I could do.
 How could we let such a thing happen,
 To one who's devotions so true.

He trudged up the hill.

INSULATE NOW

Brown Fiberglass
 6-8 or 10 Inches

T&S BUILDERS
 256-2104 or 256-4372

NEED PAINTING?

Call 453-4691 or 453-4695

Interior and Exterior Work
 GUARANTEED
 Years of Experience

LOUIS THOMPSON 26x5p

"Low rates are a big reason we're the largest home insurer. But there are more..."

Low rates wouldn't mean much without our first-class service. Drop by, or give me a call.

BILL BAILEY
 MT. VERNON
 PH. 256-2119

Like a good neighbor, State Farm is there.

STATE FARM FIRE AND CASUALTY COMPANY
 Home Office: Bloomington, Illinois

To be nailed to the that tree.
 And with horrible suffering.
 He saved you and me.

"Dear Jesus, I'm so glad,
 To be in your tender care.

I'll sure be glad,
 All your sufferings are o'er,
 And you're waiting there for me,
 On that happy golden shore." Amen

Carolyn Travillion Jones

Watch Next Week's SIGNAL for Details of

AUCTION

of Mr. and Mrs. Ambres Rader's
MODERN BRICK HOME AND LARGE LOT
 Located on Lovell Court, Mt. Vernon, Ky.

SATURDAY, APRIL 23, 1977 - 10:30 A.M.

For additional information, contact:

Ford Realty & Auction Co., Inc.
 256-4545 Mt. Vernon, Ky.

NOTICE

Closed This Weekend

Due To Screen Damage

From High Winds

Richmond Drive-In

Singleton-Ford Insurance Agency

Donnie Singleton, Agent

HOMEOWNERS Insurance

YOUR Independent Insurance AGENT
 SERVES YOU FIRST

Mt. Vernon, Ky.
 Phone: Office 256-2611
 Home 256-4476

SUPERIOR MOTOR CARS

U.S. 25 North "On The Strip" Berea, Ky.
 OWNERS: Evelyn Pope and Howard Allen

1977 Hornet Station Wagon, Red
 1977 Gremlin, Automatic, White
 1975 Cadillac Sedan DeVille, A/C, Brown/VR
 1975 Cadillac Cpe. DeVille, Loaded, Maroon/White VR
 1974 Buick Regal, 2 Dr., HT, A/C, Blue/W VR
 1973 Pontiac Ventura, 4 Door, Brown
 1974 Chevrolet Impala, 4 Door, HT, A/C, Dark Blue
 1972 Chev. Impala, 2 Dr., HT, A/C, White/Black VR

If you didn't Trade at Superior Motors, you paid too much.
 Plus More to Choose From
 Lower overhead means lower prices for our customers

ON THE LOT FINANCING

Superior Motor Cars

BEREA, KENTUCKY PHONE 966-3471

For all your Office Supply Needs - See us at the Mt. Vernon Signal. Call 256-2244 for free delivery.

GARRARD COUNTY STOCKYARDS
 Sale For All Classes Of Livestock Every Friday

Phone 792-2118

J.L. Teater Hogan Teater William Kirby Teater

Lancaster, Kentucky

IMPALA - CAPRICE - MONTE CARLO - CHEVELLE - NOVA - VEGA - CAMARO - MONZA - CORVETTE - CHEVY TRUCKS - IMPALA - CAPRICE - MONTE CARLO - NOVA

LEASING 12 to 36 months

"America's No. 1 Car"

BRITTON CHEVROLET-OLDS, INC.

U.S. 25 NORTH 256-3109 BEREA

GMAC Financing MIC Insurance

CORVETTE - CAMARO - VEGA - CHEVELLE - MONZA - IMPALA - CHEVY TRUCKS - CORVETTE - NOVA - CAPRICE - IMPALA - CAPRICE - NOVA - MONTE CARLO

WHAT'S HAPPENING IN THE...

CASHFIELD SECTION

Notice

NOTICE: Anyone wishing to donate to the upkeep of the Roberts Cemetery, may send donations to Gene Noel, Route 1, Mt. Vernon, Ky. 31x2

Grapefruit plan with Diadax, eat satisfying meals and lose weight, now extra strength formula. Young's Pharmacy. 31x6p

SPORTSWEAR FACTORY OUTLET - NEW SHIPMENT! Ladies Jean \$5.95 (double-knit and polyester), sizes 3/4 thru 38; Blouses, sizes small thru 46, \$2.95 thru \$5.95. Also, men's jeans and knit shirts. Open Tuesday through Saturday, 10 a.m. to 6 p.m., Sunday 2 p.m. to 6 p.m. Turn left on N. 25 at New Salem Baptist Church, 1 mile out on Fisherman's Cove Road. 31x1nf

HYNSINGER CARPETS located behind Hale's Furniture, across from Exxon Service Station. Shag from \$2.99 up. Commercial carpet of all kinds and Armstrong Vinyl. Padding and installation available. Call 256-5413. 31x1nf

NOTICE: This area now available for Service and Sales of Electrolux. Write: Factory Branch, P.O. Box 746, Danville, Ky. 40422 or call 236-4310. Equal Opportunity Employer. 29x4

NOTICE: Donations for the upkeep of Pine Hill Cemetery can be made to Betty Mink, Rt. 2, Mt. Vernon. 29x3p

NOTICE: Custom-made cabinets. Call 453-4991. Taylor's Workshop, Arnel C. Taylor, Or. cr. 28x4p

BLOW-IN INSULATION Aluminum Siding, storm windows and doors. For free estimates, contact Preston Collins, Route 2, Mt. Vernon or call 453-2161 or 256-5361. ntf

POSTED: No hunting or trespassing on property of Jesse M. Coffey and James M. Coffey heirs. 30x12

NOTICE: Custom made kitchen cabinets of all types. Call 579-6263. 52x1nf

NOTICE: Bgcome a trained beautician. Enroll for our new classes beginning at the first of each month. Grants are available for all students. Make application at the Eastern School of Hair Design, 112 South Second Street, Richmond, Ky. or phone 623-5472. 26x9

NOTICE: Allen and Dye Building and Remodeling. Free estimates. Call 453-4121. 27x6

NOTICE: Reduce safe and fast with GoBese Tablets & Vap "water pills". Young's Pharmacy, Main St., Mt. Vernon, Ky. 30x10p

NOTICE: The Cumberland Valley Area Development District is now accepting applications for a physical planner for this area. Position expected to be available within 30 days. Salary range \$11,000 to \$13,000 depending upon qualifications.

Qualifications: Bachelor's degree from an accredited college or university in planning (city or regional) plus two years related work experience or a master's degree in city or regional planning. Applicant should have a demonstrated ability to write and prepare plans, reports and forms concisely and accurately. Sample of work illustrating this ability is requested as a part of the resume.

Resumes should be forwarded prior to 4 p.m., April 11, 1977. Send to Cumberland Valley Area Development District, Moberly Building, 106 South Broad Street, London, Kentucky 40341. Qualified applicants will be contacted for an interview.

This is an equal opportunities employer. 30x2

Legal Notice

ADMINISTRATRIX NOTICE

Notice is hereby given that Marie Cobb, Route 3, Mt. Vernon, Ky., has been appointed Administratrix of the Estate of Burman C. Cobb, deceased. Anyone having claims against said estate shall present them, verified according to law, to the said Marie Cobb or to James W. Lambert, Mt. Vernon, Ky., attorney for estate, on or before July 21, 1977. 31x3

CARD OF THANKS

We would like to take this opportunity to express our appreciation for the kindness shown to us during the recent death of our beloved husband and father, Mitchell H. Bussell.

A special thanks to Dr. Hendrickson and Dr. Griffith and the Rockcastle County Hospital Staff. Also to Bro. Raymond Flynn and Bro. Robert Coffey for their consoling words.

The flowers and food that was sent by church members and friends was greatly appreciated.

And thanks the Mrs. Linda Witt, the pianist.

Wife, Sons, Daughter

CARD OF THANKS

To begin with I have always said I wanted my flowers while I lived so I could thank each one of my friends for their thoughtful kindness. I now thank each one of you many times for thinking of me through this misfortune that I am having to face. What more can I say. Then may God bless you all. And hoping this never comes to any of you again.

Thanks,
Just a 74 year old citizen
Lizlie Holcamb

IN APPRECIATION

I want to thank every one who brought food, sent flowers, the pallbearers, Dr. Arvin, the staff at the hospital, Dowell & Martin Funeral Home, and the others who were so kind and thoughtful at the time of Bert's death. I want to thank Bro. Harvey Penso for his consoling words, especially want to thank the ambulance driver and attendant for their concern and care.

Vennie Herrin & Family

HENSLEY'S USED CARS
ROUTE 2
ORLANDO, KY.
PHONE 256-4777

TERMITES!
Call Madison Termite Co., Berea, Ky.
Free Inspection - Phone 866-3757

Local Calls
Jack Parsons, Wildie, 256-2288 or
C.H. Webb, Livingston, 453-9331
25x1nf

INTERNATIONAL AND GENERAL ELECTRIC
Parts & Service at
Bryant Bros.
Mt. Vernon

WANTED BACKHOE WORK

Gravel - Fill Dirt - Top Soil Hauled

Jim & Jack's S&T Store
Ph. 256-4363
After 5 p.m. 256-2580

CARD OF THANKS

The family of Charlie Evans wishes to express their appreciation for the thoughtful kindness shown to them during the death of their loved one. We wish to thank those who brought food, sent flowers and special thanks to Bro. Zade McClure and the singers, Dowell & Martin Funeral Home for all their kindness.

The Evans Family

NOTICE

Separate sealed bids for the following: Contract I: Sewage Treatment Facility and Contract II: Sewage Collection System for the City of Livingston will be received by the Mayor and City Council at the City Hall until 2:00 o'clock p.m. Eastern Standard Time, April 25, 1977 and then at said office publicly opened and read aloud before those present in the City Hall.

The description of the contracts are as follows: Contract I: Construction of a 40,000 gallon per day treatment plant enclosed within a pre-fabricated metal building. Said building will also house chlorination, sanitary and office facilities for the operation of the plant. There is included aerobic digestion and sludge drying facilities and necessary earth fill to remove plant from flooding hazards.

Contract II: Will consist of construction of approximately 9000 feet of 8 inch sewer and associated manholes and connection to the pump station and approximately 800 feet of 4 inch force main are included.

The formation for Bidders: Form of Bid, Form of Contract, Specifications, and Forms of Bid, Performance and Payment bonds and other contract documents may be examined at the following places:

Livingston City Hall, LIVINGSTON; Mayes, Suddeth and Etheredge, Inc. 201 Short Street, Lexington, Ky.; Dodge Plan Room, Lexington; Dodge Plan Room, Louisville, Ky.; Blue Grass Chapter of Associated General Contractors of America, Inc., Lexington; bullder Exchange, Louisville, Ky.

Copies may be obtained at the office of Mayes, Suddeth & Etheredge, Inc. located at 210 W. Short Street, Lexington, Ky., upon payment of \$7.00 for each set. Any plan holder, upon returning each set within 30 days and in good condition, will be refunded \$35. The Owner reserves the right to waive

When you think of termites,

Each bidder must deposit with his bid, security in the amount, form and subject to the conditions provided in the information for bidders.

Attention of Bidders is particularly called to the requirements as to conditions of employment to be observed and minimum wage rates to be paid under the contract.

No Bidder may withdraw his bid within 30 days after the actual date of the opening thereof. 31x3

NOTICE: On Thursday, April 21, 1977, I will sell at my residence at Conway, Ky. a 1965 Pontiac GTO. Serial No. is 2Z375F349911. Ph. 256-5203, Marvin Chastean. 31x3p

NOTICE: I will not be responsible for any debts made by anyone other than myself or any checks written other than my own. Jerry Reynolds. 31x1p

LET US BRIGHTEN YOUR DAY!



Super Steam Extraction Carpet Cleaning
Free Estimate-No Obligation
256-5375

Gary Kerr Mt. Vernon, Ky.

DOZER WORK
FIELD DIRT TOP SOIL

Tommy Philbeck Ph. 256-4431 30x3p

A present for the future.

The perfect gift for '76. Bicentennial-issue U.S. Savings Bonds. They're completely redesigned in honor of America's 200th. And the new look features a different historical engraving on each denomination. So celebrate America's birthday (and all your loved ones' birthdays, too). It's a piece of your country's past. Going toward your family's future.

Series E Bonds pay 6% interest when held for maturity of 5 years (4 1/2% the first year). Interest is not subject to state or local income taxes, and federal tax may be deferred until redemption.

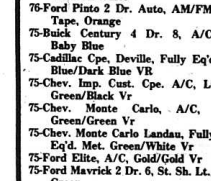
The Mt. Vernon Signal
Thursday, April 7, 1977 P-A7

GLENN PENNINGTON AUTOMOBILES

On the Strip
(U.S. 25 North)

- 76-Chev. Imp. Cust. Cpe. A/C, Silver/Black Vr
- 76-Ford Cust. 1/2 ton pick-up, 6, St. Sk. Red/White Vr
- 76-Ford Pinto 2 Dr. Auto. AM/FM, Tape, Orange
- 75-Buick Century 4 Dr. 8, A/C, Baby Blue
- 75-Cadillac Cpe. Deville, Fully Eq'd Blue/Dark Blue VR
- 75-Chev. Imp. Cust. Cpe. A/C, Lt. Green/Black Vr
- 75-Chev. Monte Carlo, A/C, Green/Green Vr
- 75-Chev. Monte Carlo Landau, Fully Eq'd. Met. Green/White Vr
- 75-Ford Elite, A/C, Gold/Gold Vr
- 75-Ford Maverick 2 Dr. 6, St. Sh. Lt. Green
- 75-Dodge Dart Sport, 6, St. Sh. Maroon/White Vr
- 75-Merc. Marach 4 Dr. A/C, 8, Am/Fm Stereo, Silver Blue Silver Blue Vr
- 74-Hornet 2 Dr. Hatchback, 6, Auto, Red LTD Brougham, 4 Dr. HT, White Vr
- 74-Ford LTD Brougham, 4 Dr. HT, White Vr
- 74-Ply. Duster 2 Dr. 6, Auto, Green/White Vr
- 74-Pont. Luxury Lemans 2 Dr. Colonnade, A/C, Blue/White Vr
- 73-Ford Mustang Mach I, 2 Dr. 8, Auto, Blue/Black Vr
- 72-Capri 2 Dr. 4 Speed, White
- 72-Chev. Malibu 2 Dr. HT, 4 Speed, Red/Black Vr
- 72-Olds Toronado, Fully Eq'd. Gold/White Vr
- 72-Ford LTD, 2 Dr. A/C, Green/Dark Green Vr
- 72-Ply. Duster 2 Dr. HT, 6, Auto, A/C, Green/Green Vr
- 72-Pont. Grand Prix A/C, Yellow Black Vr
- 72-Ply. Ventura 2 Dr. HT, Auto, Green/White Stripes
- 71-Dodge Charger 2 Dr. 8, White Black Vr
- 71-Ford 124 Sport Cpe. 5 Speed, Green 70-Chev. Nova Auto, 8, Blue/Black Vr
- 70-Chev. Camaro, 8, Auto, Blue/White Vr

When you think of termites,



think of me.

I can kill the termites in your house. And keep the rest of the termites in your neighborhood from taking their place. After treatment, Terminix can guarantee most homes up to \$150,000 against further termite damage.

I'm Ken Sams, the Mt. Vernon Terminix man. Call me at **THRIFTY LUMBER CO.** Phone 256-2521.

TERMINIX
All work done by Terminix of Lexington

ATTENTION CANDIDATES!


GET YOUR CAMPAIGN SUPPLIES AT

Mt. Vernon Printing

Mt. Vernon Signal Building
256-2244

Plus Many More
To Choose From
...Financing to Suit
Your Budget...
PRRRA
Phone 986-3117
"Now in our 18th Year"

Real Estate For Sale



New Listing: 4 room house on Highway 150 in Mt. Vernon, 2 bedrooms, living room, eat-in kitchen, and bath. House also has carpet and vinyl floors throughout, storm doors and windows, aluminum siding, and situated on a large lot with ample space for a garden. In addition to the house, there are 2 small outbuildings. Heaven for two! Has city sewer and water.

New Listing: 3 room frame house on Main Street in Broadhead. This house has 2 bedrooms, family room, den, dining room, kitchen, and bath downstairs, and two bedrooms upstairs. Heat is furnished by a gas furnace and the home also has storm doors and windows and carpet downstairs. In addition to the house, there is a two car garage and a large outbuilding situated on a large lot. Space to spare and then some.

NEW SUBDIVISION Beautiful lots and acreage of your size and choice in Quail Nest Estates, located in the Quail section of Rockcastle County. City water is available and partial financing to qualified prospects. Want in the country with plenty of privacy? Then look no further. Hurry while we have a large selection. Priced to sell.

Two Acre Building Lot on Bowling Ridge in Lincoln County. Plenty of road frontage and a good buy.

WENDELL LAWRENCE Realtor & Auctioneer
Broadhead, Ky.
Ph. 758-811F

C. N. SCOTT Realtor
Ph. 355-2204

Stanford Office Phone 365-2832

ANNOUNCEMENT

The new Thompson Chiropractic Clinic will open on March 28, 1977.

It has moved from 508 West Main Street, Richmond, Ky. to its new location at 1215 West Main Street, Richmond, Ky. (formerly Jerry's and Bisotti's Restaurant).

The Telephone Number Will Remain the Same:
623-3780

Rockcastle Recollections

By John Lair

When "Rockcastle Recollections" is printed it will like other books and especially those historical in nature carry a list of the principal books and other printed matter useful to me in its compilation. This is known as the bibliography and in this instance will be a somewhat lengthy list, as I have combed all the libraries within my reach and in many cases referred to rare books and records not found in the average libraries, which I have picked up during many years of book collecting.

In addition to such books as could be found on related subjects, I have had to depend largely upon recollections and verbal accounts furnished me by the people from whom I have sought information from time to time. They have been very helpful, which I greatly appreciate, and my greatest fear is that I may fail to mention them all by name. Practically everybody I have known and talked to in this area properly belongs on this list. I can't remember many conversations have held with anybody that did not sooner or later get around to a discussion of Rockcastle County history, of one kind or another.

My first source of information, going back to my early childhood, was my father's mother, Ann French Lair, whose stories of her own childhood days on Rockcastle River was the first I remember hearing. As I grew old enough to understand, she told me many stories of relatives and kin, going back to the dim and misty

legends of their early home in faraway England, of their coming to the new land of America, finding their way into the Kentucky wilderness, with its perils from savage beasts and to less savage Indians. Her childhood experience with a black bear, told elsewhere in the book, I liked best and remembered longest.

Having spent a part of her early childhood as a ward "Devil Bill" Adams she was able to give me a better account of his deeds and character than I was ever to get from the many stories told of this unusual pioneer by others, including two of his grandsons who passed the century mark with sharp minds and clear memories. Much of the early Rockcastle you find in "Rockcastle Recollections" you will be seeing through the eyes of Ann French Lair. Her husband and my grandfather, Jerome Burke Lair, was a well-read and intelligent man, whose mind was more on the present than on the past, was well versed in county history of the time, but had little time to spend on going over days past and gone.

My mother's mother, Paulina Hayes Coffey, I never knew, she having died when my mother herself was just a little girl. My mother's father was Thomas Jefferson Coffey, whom I barely remember and consequently, from who I got nothing of the history of the county. Harry Chasteen, with whom I was connected on my mother's side, proved in later years to be my most authentic source of information on the history of my family and Renfro Valley. Until his death at an advanced age, his retentive memory gave me the answers to many questions. He could take me through the

extensive old Renfro Valley Cemetery, and give me a complete history on everyone buried there, including William Peaslee Hiatt (the oldest), "Cripple Billy" Hayes, who had his knee cap set by an Indian tomahawk and walked with a limp ever after, the Conn family, with such a large number of children, all but one dying in infancy and the double grave of the Hayes sisters, twins, who perished together in their burning home.

From Edna Hayes Coffey, who died in her nineties, I was able to get much history of various Rockcastle Families. She had spent many years of her life in family research and was long considered the "double historian" of the county. Her extensive hand-written is still in existence, having been passed down to a member of the family.

Among other older people no longer living who shared with me their recollections were Mrs. Bettie Davis, who lived out a century in and around Mt. Vernon, and her husband, Bill Davis, one time editor and publisher of the Mt. Vernon Signal, left a manuscript history of Mt. Vernon in the eighties, which was passed on to me. Our Renfro Valley neighbors "Pappy" and "Mammy" Hiatt, both of whom lived to an advanced age, gave me much information on their own and connected families. His sister, Laura Hiatt Baker, dying in recent years at the advanced age of 108 and probably the oldest woman in Kentucky, remembered and told of older days in the county. Johnny Ramsey, who did most of the stone work in the building of the Renfro Valley Settlement, dying in his late nineties, probably knew more about Renfro Valley than anyone then living. He was able to point out the site of the old Renfro Cabin, the first home built by a white man in the Valley, and built on top spot the wellcur drinking fountain in our little town. Uncle Johnny Coffey, who also in his nineties, located for me the unmarked graves of John and Lulu Renfro, who built and occupied that first cabin.

Older friends yet living and aiding in this compilation of the book are: Mr. Willis Johnson now in his one hundred first year, who did most of the stone work in memory, Mrs. Tom O'Mara, authority on all things pertaining to early Mt. Vernon and it's inhabitants; Jamie Thompson, who comes back from Rochester, New York occasionally, to set me straight on various matters; Judge Charles Carter, who with his background of five terms as county judge of Rockcastle County, who also in his nineties, which he has held, knows its political history better than I will ever know it.

Other willing and much-appreciated contributors are Janie Ramsey, D.A.R. historian and compiler of marriage records and county cemeteries; D. Graves, expert on Skages Crocker and that side of the county; Chester Whitaker, who knows a lot about Rockcastle County and owns more of it than any other one man; Bill Thompson, now living in Florida, who put much work and effort into gathering up histories of some of the older and more numerous families before his traveling became restricted; Logan D. Bryant, who furnishes an article on the coming of the automobile to Rockcastle County.

Probably the most active and productive of all present helpers are Mrs. Roscoe Adams and Mrs. Carl Ashley, who now lives in Lexington, Kentucky, Mrs. Adams (Mary Elizabeth Lawrence) has a wealth of material in old photographs, newspapers and scrapbooks, all of which she makes available to me. Mrs. Ashley Ramsey has access to state records in Frankfort, the Margaret I. King Library at the University of Kentucky, in Lexington and has developed into a very effective researcher, specializing in genealogy. Unlike most young historians, she has a sense of knowing where to look for information and how to bring conclusions after she finds it.

But with all due respect to those mentioned, it is to the living generation that I owe the greatest debt for helping to bring together this the first written history of our county. Prominent among these were Colonel James Maret, who came here from neighboring Garrard County in 1877, as agent for the newly-arrived L&N Railroad. Being energetic and friendly, with a historical turn of mind, he soon knew everything

and everybody that was to know in the county. A year after his coming he has organized the Mountain Signal, printing the first copy (which I have) in November of 1877. Without Jim Maret's writings, preserved in old copies of the Mt. Vernon Signal, no one now could produce an authentic history of Rockcastle County. Years after he had gone on to higher things Ralph Griffith had collected the most complete file known of this paper and started reprinting them in the current copies of the still active Signal, with much additional information from his own personal files. Ralph, with his delightful style of writing, could have done a most acceptable job of a Rockcastle County history and intended doing so, but for reasons which I can now fully understand and appreciate, became discouraged and discontinued his work short of publication. Now it appears that I am next in line to take a stab at it. With the information to which I have fallen heir and the continued help of current historians, my job appears to be more that of an editor than an author and surely I should be able to bring it all together within the covers of the about-to-be "Rockcastle Recollections".

Dr. Griffith Retains

AAFP Membership

George H. Griffith, M.D., has completed continuing education requirements to retain active membership in the American Academy of Family Physicians, the national association of family doctors. The Academy formerly was called the American Academy of General Practice.

The requirements call for members to complete a minimum of 150 hours of accredited continuing medical study every three years. Members become eligible for re-election at the end of the third year following their election of membership. The Academy, which was called the American Academy of medical association, is the only national

medical group that requires members to keep up with medical progress through continuing education.

The Academy, founded in 1947 and headquartered in Kansas City, Missouri, was instrumental in the establishment of a new primary specialty in family practice in 1969. The new specialty is expected to increase the numbers of family physicians available to serve the public in the future. The Academy's continuing education program is the foundation of eligibility for family doctors now in practice who apply for certification in the new specialty.

Saddle Club

Schedule for April

Mr. Jack Owens, Reporter for the Rockcastle Saddle Club, provided the Signal with a list of all the rides scheduled for this year. The first week of each month, we will print a run-down of the rides, place and trail boss of each.

Rides scheduled for the month of April are: April 9, Saturday, Weiner roast and ride at Renfro Valley at 1:30 p.m.; April 10 and April 17 are open; April 23-24, Rough-It-Ride at Charley French's at Pine Hill, leave at 9:30 a.m.

CVADD Board Meeting

Terry McBrayer, Commissioner will be in Southeast, Kentucky Wednesday April 13th. He will address the Cumberland Valley Area Development District at a dinner meeting at the Coburn Holiday Inn.

The development of the area is of high interest to the Commissioner. The talk will be followed by a Hearing for the Appalachian Regional Commission at the same location. Local issues will be identified at the hearing and included in text writing of the 1978 ARC Plan. The ARC Hearing will start at 7:30.

Yard Sale for Church

To Be Held April 9th

There will be a multi-family Yard Sale Saturday, April 9, one mile North of Livingston on U.S. 25. The sale is being sponsored by the Ladies of the Sand Hill Baptist Church. All proceeds will go to the church remodeling fund.

"Truth never grows old." Thomas Fuller

Vote For

Jerry Warren Carter


Republican Candidate

for

County Court Clerk

Your Vote and Support Appreciated.

Paid For By Candidate



Announcing

Due to the fact that I have now retired from the Lexington-Blue Grass Army Depot, I will be operating S&W Auto Sales on a full-time basis, effective April 18, 1977. We are located on Poplar Street in Mt. Vernon and will be open Monday through Saturday from 9:30 a.m. to 5:00 p.m.

Compare our cars and prices before you buy.



This Week's Special

1975 Ford LTD 4 Dr. Sedan *2395⁰⁰
(Book Value *3475)

- 1976 Chev. LUV, 4 Cyl., 1/2 ton, A.C., A.T., P.S.
- 1975 Ford LTD, 4 Dr., PS.
- 1975 Chev. Malibu, 2 Dr., H.T., PS.
- 1975 Ford Panel Econoline 100, 6 Cyl, Auto. Trans.
- 1975 Ford 1/2 ton F100, 6 Cyl.
- 1974 GMC Jimmy, V8, 4 WD, 1/2 ton, Auto. Trans.
- 1974 Dodge Charger, V8, H.T., 2 Dr., A.C., A.T., AM-FM Stereo
- 1974 Vega, 4 Cyl, A.T., A.C.
- 1974 Buick, 2 Dr., V8, Apollo, A.C., A.T., PS
- 1974 Hornet, 6 Cyl, 2 Dr., Manual Trans.
- 1974 Mercury Comet, 2 Dr., 6 Cyl., A.T., PS
- 1974 Cadillac, 4 Dr., Sedan
- 1973 Ford LTD, 2 Dr., H.T.
- 1973 Chev. Monte Carlo, V8, A.T., PS, A.C.
- 1973 Ply. Grand Fury, V-8, 2 Dr., H.T., A.T., PS, A.C.
- 1973 Buick LeSabre, 4 Dr., H.T., A.T., PS, A.C.
- 1973 Gremlin, 6 Cyl. A.T.
- 1973 Chev. Wagon, 4 Dr.
- 1973 Ply. Satellite Plus, 2 Dr., H.T., PS, A.C., A.T.
- 1972 Ford Courier, 4 Cyl., 1/2 ton, P/U
- 1972 Chev. Caprice, V8, 4 Dr., Hard Top
- 1971 Ford 3/4 ton Pick Up w/ camper
- 1970 Ford 2 ton Pick Up w/ camper
- 1971 Ford Maverick, 2 Dr., 6 Cyl. A.T., A.C., PS
- 1971 GMC Van Rally Wagon, V8, A.C., A.T., PS
- 1965 Ford 1/2 ton, V8
- 1965 Ford 1/2 ton, V8
- Dune buggy
- 1970 Chev., 4 Dr.
- 1970 Ford Maverick, 2 Dr.
- 1969 Chev., 4 Dr.,
- 1970 GTO Pontiac, 2 Dr., A.C., A.T., PS
- 1969 VW, Cpe. (K-Ghia)
- 1974 Matador, 2 Dr., H.T. Real nice

And others to Choose From

S & W Auto Sales

Poplar St.
Ernest Stanley

Mt. Vernon
Ph. 256-4637

Bill's Carpet

1315 E. Mt. Vernon
Somerset, Ky.

Rubberback
Commercial
Carpet

\$3⁹⁵ per square yard

Rubberback
Shag

\$4⁹⁵ per square yard

ABSOLUTE

AUCTION

THE 117 ACRE OSBORNE FARM IN TRACTS and PERSONAL PROPERTY

Sat., April 9, 1977-1:30 P.M.



Lincoln County
Near
Crab Orchard, Ky.



LOCATED: 4 miles south of Crab Orchard, Ky. on Hwy. 39

Mr. Andrew Osborne and sisters have purchased a new home in Crab Orchard and have authorized our company to sell this highly desirable farm for the absolute high dollar. This farm has been in the Osborne Family since 1919. The farm will be sold in individual tracts, reserving the right to group or combine in any manner.

TRACT #1 - Contains 11.41 acres and is improved with the above pictured modern six room farmhouse. The house has four bedrooms, large living room, kitchen, dining room and bath. It has electric heat, hardwood floors, storm doors and windows and water is provided by 2 good cisterns. In addition to the house, there is a concrete block garage and 2 combination barns.

There is a good pond for stock water and the property fronts on Hwy. 39 and also a gravel country road.

TRACT #2 - Contains 9.88 acres in grass and fronts on Hwy. 39.

TRACTS #3 THRU #8 - Each contains approximately 11.6 acres and all front on a gravel country road. Tracts 3 and 6 each have a good pond. Tracts 4, 5 and 6 have some good timber. All tracts are fairly level - making it good crop or pasture land.

TRACT #9 - Contains approximately 26.03 acres with some good timber and also some good crop and pasture land. This tract also fronts on the county gravel road.

When offered as a whole, there are 117.01 acres, by survey, with approximately 93 acres of cropland. The basic tobacco allotment is 1722 lbs. Should the farm sell in tracts, the Lincoln County ASCS office will divide the tobacco allotment, according to cropland. There is a good stand of marketable timber on this land.

PERSONAL PROPERTY - 2 iron beds, roll-away bed, dresser, bowls, pitchers, bread board and rolling pin, books, bedspread, china cabinets, hoes, rakes, feed bags, wheelbarrow, wardrobe, flower pots, plus other miscellaneous items.

TERMS - real estate - 20% down day of sale - balance in 30 days upon delivery of deed. **PERSONAL PROPERTY** - Cash day of sale.

For additional information, contact:

F O R D

Realty & Auction Co., Inc.
Mt. Vernon, Ky.

Col. Sam Ford
Realtor - Auctioneer

Col. Bill Randolph
Auctioneer - Auctioneer

Col. Jerry Ham
Auctioneer

Col. Donny Ford
Realtor - Auctioneer

Office - Phone 256-1543 - Night 758-4800

University of Kentucky Library Lexington, Ky. 40506

University of Kentucky Library

Mount Vernon Signal

15c

per single copy

"WHERE THE BOONEWAY JOINS THE DIXIE"

The Mt. Vernon Signal, Mt. Vernon, Ky. 40456

VOLUME 90 - NUMBER 31

Thursday, April 7, 1977

Fiscal Court Discusses 74-75 Audit; Split over Clerk's Excess Fees

At Tuesday's regular meeting of the Fiscal Court, a representative of the State Auditor of Public Accounts office was before the Court to go over with them the recently completed audit of county records for 1974-75.

The audit's main recommendations concerned the keeping of an inventory of county-owned property and the setting up of a disbursements ledger by the county treasurer. County Court Clerk Irene Bales reported to the Court that there was now a complete inventory of county property on file in her office.

The court voted unanimously to accept the audit report. What to do with the excess fees reported by Mrs. Bales from her office as County Court Clerk for 1976 resulted in something of a split among the five magistrates.

Mrs. Bales reported excess fees in the amount of \$7,049.88 for 1976 and the court accepted the settlement subject, of course, to the state audit. However, shortly after this, Magistrate Danny Sargent made a motion to put \$1,000 of the excess monies in each of the magistrate's accounts for road work and the remaining \$2,049.88 into the general road fund. But, Magistrate Ernest Mason had other ideas and made an opposing motion that District 2, 4 and 5 (Magistrates Boone Cromer, Bill Wren and Mr. Mason's district) be allocated \$2,000 each for road work and the remaining \$1,049.88 be put into the general road fund. Mr. Mason used as his reasoning for the motion that Magistrates Danny Sargent and Chester Whitaker have some funds still in their accounts with which to work on roads while the other three districts are without money. Magistrate Mason told the Court that ever since he had taken office he had used his salary from the Fiscal Court to buy rock for roads in his district and that he felt it was only fair that the districts most needing the money receive it. A vote was taken first.

Ford Elected President of Auctioneer's Assn.

Sam Ford, of Ford Realty and Auction Co. in Mt. Vernon, was recently elected President of the Kentucky Auctioneer's Association. The election was held during a convention at Stoufflers Inn in Louisville.

The state auctioneer's association promoted professionalism in auctioneering and continuing education and improvement of the auctioneering profession.

Stewart Named Foreman of Grand Jury

William Stone Stewart was chosen foreman and Mrs. Bessie Mae St. Clair, secretary, for the Grand Jury of the March Term of Rockcastle Circuit Court.

Other members of the grand jury are: Gwen Abney, Virgil Lee Abney, Thelma Lou Adams, Patsy Noe Baker, Fielden Carpenter, Everett Higgins, Charles T. Machal, John Halls Mullins, Doris Jean Pope and Curt Roberts.

Sunrise Services at Livingston Christian

Sunrise services will be held at the Christian Church in Livingston Sunday morning at 6 a.m. Everyone is welcome and invited to attend.

NOTICE

The Northern Rockcastle County Water District will meet Monday, April 11th, at 7:30 p.m. at the home of Bryon Baker, Rt. 3, Mt. Vernon.

First Grade Enrollment Will Be April 26th

The various elementary schools of Rockcastle County will pre-register children in the first grade for the 1977-78 school year on April 26th, from 9 a.m. to 2 p.m.

Your child will be registered in the school of your district, provided that they are six years of age or will be by December 31, 1977.

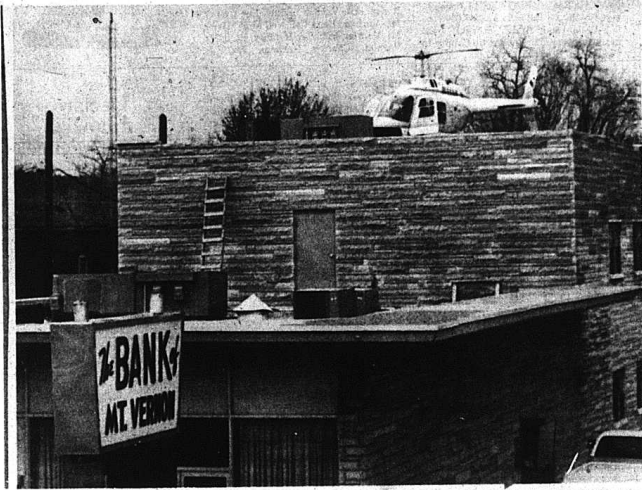
Penso! Hired as Playground Director

By: Betty Cameron, Secretary

The Mt. Vernon Recreation Council met Tuesday night, April 5th at the Jaycees Caboose with the following members present: Bro. Ernie Johnson, president; Phyllis Bishop, vice president; Betty Cameron, secretary; David Owens, Clyde Owens, Willata Owens, Bro. Harvey Penso, James Smith, Anna DeLozier, Oscar Fain.

During the meeting, the Council hired Jerry Penso as Playground Director for 1977. We urge each one who has a baseball team or softball team to get their team together and contact Jerry as soon as possible.

We urge each person who has a baseball or softball team to get the roster and contact Jerry as soon as possible. Once again, we wish to stress that this is a county playground and we want everyone to feel free to use the facilities. The Recreation Council will meet again May 3, 1977 at 7 p.m. at the Jaycees Caboose. All members please be present.



There was a little excitement in Mt. Vernon Tuesday afternoon when a helicopter, owned by Tracy Farmer, chairman of the Board of the Bank of Mt. Vernon, landed on top of the bank's new addition. The helicopter was flown here with FAA officials to look over a possible landing site on top of the bank. C.T.

Huffines, president, said Wednesday that the bank's new drive-in facilities are expected to be operational within the next two weeks. After this is accomplished, renovation on the lobby of the older section of the bank.

Board Hires Certified Personnel; Approves Pay Raise for Teachers

By: Roger Coldiron

The Rockcastle County Board of Education voted Monday night to rehire all certified personnel for the 1977-78 school year with 5 and possibly 6 exceptions.

Five persons have already filed for retirement and a sixth is contemplating doing so. The board voted to retain all other certified personnel presently employed. Mandatory retirement age is 70.

The board also voted a \$705 per year raise for teachers now in their employ who teach 9 1/4 months in a school year. Other school employees will be granted raises based on the number of months they work during the school year. The raise for teachers is 100% of that which was voted by the Legislature under the Foundation Program.

Brock McVey of Lexington submitted the lone bid for two new boilers for Brothead Elementary School. The bid was for \$16,000 and the board withheld a decision on the matter.

In other business, the board voted to allow Shriners to use 10 school buses to transport children to the Shrine Circus in Lexington on April 15. All expenses are paid by the Shriners for the annual loan.

In addition, Lucian Bevins was hired as a substitute bus driver for the next school year.

Shriners Will Sponsor Local Children to Shrine Circus

The Rockcastle Shrine Club will be sponsoring children from Rockcastle County who wish to attend the Oleika Temple 1977 Shrine Circus to be held at Rupp Arena in Lexington on Saturday, April 16.

Buses will be loading at Brothead, Livingston, Roundstone and Mt. Vernon Elementary Schools at 12:30 p.m. for children, ages 6-13, who wish to attend the circus.

For further information, contact: Manuel Shephard, president, 256-2031 or Joe C. Bullen, secretary, 256-2607.

Highlands Association To Meet Here April 13

Commissioner James C. Vernon of the state Department of Public Information will be the featured speaker at the annual Highlands Association meeting April 13.

The commissioner will speak at 11:00 a.m. in the Renfro Valley Lodge. At 1:30 he will present a multi-media showing on Kentucky's benefits for commercial ventures and tourists in the Renfro Valley Barn. A Kentucky booth will also be on display at the Renfro (Cont. to 11)

66 is Final Candidate Count for May 24th Primary Election

A total of 66 candidates have filed for office in the May 24th Primary (61 Republicans and 5 Democrats).

Offices without opposition will not be on the ballot in the Primary and they are as follows, with the office seeker's name following: County Attorney - incumbent James W. Lambert; Property Valuation Administrator - incumbent Robert Cromer; Coroner - incumbent Bill Dowell; County Surveyor - incumbent Joel C. Gentry and one Magisterial office - District 3 - incumbent Sherman "Danny" Sargent. However, Mr. Sargent will face opposition in the November General Election in the form of George Parsons, Democrat.

Other candidates for office are: County Judge Executive - Charles C. Carter, Robert Robinson, Eli Lewis Chastain, G.H. "Hobe" Griffin, Hubert Thacker (incumbent), Manuel Shephard and Charles D. Holbrook.

County Clerk - Irene Bales (incumbent) and Jerry Warren Carter. Sheriff - Oscar "Larney" Durham, Sherman Dennis, Fennis Gentry, Thurman (Jack) Raines, Clinton Graves, Henry Lee Abney and Lloyd K. Albright, Democrat.

Jailer - Billy Kirby, Virgil Alcorn, Donnie Doan, Robert Kirby and Carl Kirby.

Magistrate, District 1 - Chester Whitaker (incumbent), Roger Coldiron

and Frank DeBorde. Magistrate - District 2 - J.R. "Boone" Cromer (incumbent), Leonard Hammonds, James Donald Rice, Nivra Ann Senter and Lee Faulkner, Democrat.

Magistrate, District 4 - W.H. Wren (incumbent), Henry Wynn and Amos Burdette.

Magistrate, District 5 - Ernest Mason (incumbent), C.W. "Wally" Phillips, Joe Clark, Tommy Philbeck and Roy "Schooner" Lucas.

Constable, District 1 - Andy Martin, Edward Barnett, Clyde Payne, Carl R. Miller.

Constable, District 2 - M.B. Kincer, Dallas Kirby, Eddie Fletcher, Eugene Senter, Jesse L. Baker, L.D. Bond and Carter Renner.

Constable, District 3 - Leonard Bishop, Ted Rose and Johnny C. Taylor, Democrat.

Constable, District 4 - Charlie York and Richard Dean.

Constable, District 5 - Gilliam McLemore, Ben Carpenter, Fred Hansel, Mack Warf and Benny Allen, Democrat.

REPRESENTATIVE RACE The other race which will be on ballots across the county is that of State Representative for the 80th Legislative District.

Opposing incumbent Harold DeMarcus for this office is local attorney William D. Gregory.



CONSTABLE CANDIDATE - Richard E. Dean of Route 3, Mt. Vernon, has filed for the office of Fourth District Constable, subject to the May 24th Republican Primary. Mr. Dean, 29, is employed at Parker-Seal in Berea and is married to the former Anita Childress. They have one child, a son, Lee, 1.



FILES FOR JAILER - Donnie Doan, 24, of Brothead recently filed for the office of Jailer of Rockcastle County, subject to the May 24th Republican Primary. Mr. Doan is presently employed at the Renfro Standard Station and, prior to that, worked one year for the City of Mt. Vernon as a policeman. He is the son of George Decker of Mt. Vernon and Elmer Doan of Indiana.



FLECS - Carl E. Miller, 23, of Route 1, Mt. Vernon, has filed for the office of First District Constable, subject to the May 24th Republican Primary. Mr. Miller, a farmer, is married to the former Gladys Todd of this county and they have four children. He is the son of Mr. and Mrs. Robert Miller of Route 1, Mt. Vernon.

In other action, the court: Approved the purchase of right-of-way from Albert Cash for \$400 so that the Ottawa School Branch Road might be improved. The state has allocated \$50,000 for upgrading this road but obtaining right-of-way was a necessity and school property, back to the tenant house presently occupied, felt that he should receive some compensation for that. Approved the transfer of a right-of-way for a road, adjoining Dr. George W. Griffith's property in Barnett's Subdivision and leading to the school property, back to the original owner, Goldie Barnett. Accepted two roads (one in the Maple Grove Subdivision and one in the Orlando Subdivision) from Clarence Carter, developer. Approved a claim of \$507.90 by Bill Dowell for the purchase of a beeper and encoder for the Coroner's office, when funds become available. And, accepted the road behind the KOA Campgrounds on U.S. 25 north for maintenance. The ambulance report was also presented to the Court and showed some improvement over past months. The report showed a beginning balance, as of March 1, 1977, of \$833.72 with cash receipts of \$2060.56 during March, less expenditures of \$1,571.57, for a balance at the end of March of \$1,422.71.

Founder's Day To Be Held At Renfro Valley Saturday, April 23

The first annual Founder's Day Observance will be held in Renfro Valley on April 23 from 2 to 5 p.m.

On this day, Renfro Valley will become a landmark in our state and be included in Kentucky's history. A historical marker will be unveiled on this date, on the premises, recognizing the contributions of John Lair and Renfro Valley in the music, culture and customs of our state and national heritage.

Main speakers for the event will be a representative from the Governor's office and Lieutenant Governor Thelma Stovall. Hospitality Chairman will be Colonel Sanders. Among those of the "old" acts to be present will be Whitey Ford, The Duke of Paducah, and Jethro Burns of Homer and Jethro. Red Foley will be represented by family members and Lily May will be here for the Coon

YOU

TOURISM - LET US SHOW IT TO YOU

Tourism is now the third largest industry in Kentucky, going over the one billion dollar mark last year. Governor Julian Carroll is recognized this and made all of his staff aware of the fact. An office has been set up in Brussels. (Cont. to 14)

Creek Girls. This event will be covered by newspapers, magazine and TV and there will be a Country Music Show at the Big Barn around 3 p.m., followed by the Dedication Ceremony around 4 p.m. at the site of the first log cabin in the valley.

The public is cordially invited to attend and share in the day's festivities.

For further information, contact Mrs. Gineale Lair King, Renfro Valley, Ky.

L.D. Bond Files for Constable

L.D. Bond, 46, of Livingston has filed for the office of Second District Constable, subject to the May 24th Republican Primary.

Mr. Bond is Post Commander of the Rockcastle-Laurel County VFW Post 6839 and a veteran of the Korean War. He is married to the former Irene Jones of Livingston and they have four children - Mrs. Judy Mason, Patty, Danny and Mark Bond.

Dober Assumes Position as New Hospital Administrator

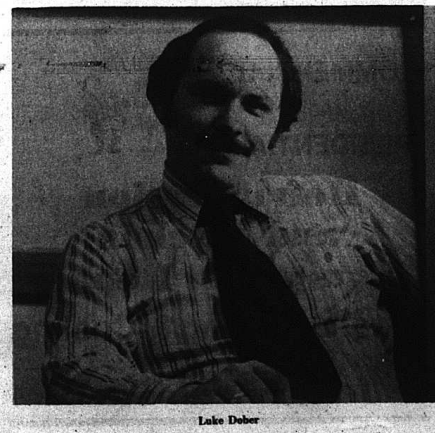
Luke Dober, 27, has been hired to be the new administrator for the Rockcastle County Hospital, effective April 1, 1977.

Mr. Dober is originally from Fort Thomas, Ky, and more recently from Waterloo, Iowa where he was finance director for Allan Memorial Hospital. He has been in hospital administration for

the past eight years and in hospital work for eleven years.

Mr. Dober is a graduate of Thomas Moore College in Covington where he graduated from in 1971 with a Bachelor of Arts in Business Administration.

He, his wife, Diane, and their two children, Chris, 6 and Amy, 5, are presently seeking a home in Mt. Vernon



Luke Dober

Mount Vernon Signal

PUBLISHED EVERY THURSDAY

Main Street in Mt. Vernon, Kentucky 40456

Entered at Mt. Vernon Post Office

as Second Class Matter - Permit No. 1

In County - \$5 Out of County - \$6

James Anderkin, Jr., Publisher

Perlina M. Anderkin, Editor

Member Kentucky Press Association

FRANKFORT WATCHLINE

By: Ferrell Wellman

"Pledges to be serious a matter to be left to politicians," said Charles de Gaule, Governor Julian Carroll has a similar maxim, only his deals with our schools. "Education is too important to be left to educators," says the governor.

With this axiom in mind, the governor has now appointed a 40-member steering committee which he said will direct a Task Force on Education. The duties of the task force, according to the governor's office, will be to identify educational problem areas in the state. That's not a small chore. Carroll says the system is in need of planning from kindergarten through the graduate level.

Carroll says he wants citizen involvement in developing a statewide educational program. Named by the governor to the steering committee were prominent Kentuckians representing the business community, local government, education and religious groups. The steering committee will oversee the work of 33 subcommittees. Among the topics to be investigated will be schooling, funding, student behavior, teacher functions, transportation, administration, school board activity and public conference. The governor says he hopes approximately 600 people will serve on the subcommittees. Another 300 Kentuckians will be chosen as delegates to a task force meeting in October.

Carroll says improving primary and secondary education in Kentucky is the principle goal of his administration. During the first 30 months of the Carroll administration, Kentucky's support of its school children has jumped from 49th among the states to 43rd. When the 1976 regular session of the legislature was under way, the governor saw that giant steps were taken in the right direction to raise teacher salaries, increase funding for local schools, eliminate classroom fees and begin a system of distributing free textbooks.

The goal of the governor's task force is to formulate legislation in time for consideration by the 1978 legislature. That doesn't give the members much time since most of them have other full-time duties and some as members of other state commissions or boards in addition to their professional responsibilities.

With the myriad problems facing public and private education in Kentucky six months doesn't seem to be an adequate amount of time for a part-time task force to conduct a sweeping, yet painstaking, investigation. However, Governor Carroll makes it clear that he wants to leave an improved school system as the monument to his term. Carroll made a point of telling the steering committee members during a meeting at the Executive Mansion that the 1978 legislature would be his final opportunity to leave his mark on the state's educational system.

While the proposed blueprint for education is a first, another first has occurred in Kentucky in the field of public higher education. Recently, the executive director of the Kentucky Council on Public Higher Education sat down with the newspaper editors and student body presidents from the state's public universities to discuss tuition increases for the 1977-78 school term.

Using what appeared to be a mixture of savvy public relations and genuine concern, Executive Director Harry Snyder explained that a 35

percent rise in the rate of inflation since the last tuition hike in 1973 had forced the institutions to seek the higher charges. Snyder said Kentucky was falling behind neighboring states in tuition costs. He said the schools have lost flexibility in their operating budgets, and he was afraid the quality of instruction would soon begin to suffer.

While Snyder might not have convinced all of the students during the two-hour meeting in Frankfort, the mood was one of the polite give-and-take as the doors of the state's higher educational bureaucracy were opened to the young people for the first time. Snyder's only serious problem came from the out-of-staters who were upset because their tuition was jumping by 25 percent while in-state tuition was increasing by only 14 percent. Their attempts to get Snyder to recommend that the 25% hike be phased in over two years were unsuccessful.

Just the same, Snyder's unprecedented meeting with the students was a coup. It was something some educational observers in Frankfort have felt was needed for a long time. More meetings like it would mean better communication between the state and the 110,000 students who use its public universities. However, the enthusiasm for such meetings might not be shared by some in power at the various schools who could feel that Snyder is usurping his authority. *****

County Statistics Quarterly Court

Speeding: Roy Maurice Runyon, Henry L. Baker, Charles R. Logsdon, Billy J. Phillips, Timothy A. Weaver, Gregory D. Powell, Edwin Prewitt Kirkpatrick, Susan A. Henry, Michael Blackburn, William E. Harrison, 310 and cost.

Operating a Motor Vehicle While Under the Influence of Intoxicants: Gary Wayne Frazier, \$100 and cost; David S. Wells, \$100 and cost.

Failure to Display Ky. Cab Card: John Clinton Falls, \$19.00 and cost.

Drinking Beer on Highway: Garry D. Clark, \$10 and cost.

Deeds Recorded

Margaret Parret, real property located in Rockcastle County to Matt M. Singleton and Rita French, tax \$21.00.

DO YOU NEED A LAWYER?

Call Toll Free:

800-372-2999

Kentucky Bar Association Lawyer Referral Service Frankfort, Kentucky



COMMERCIAL AND RESIDENTIAL

Refrigeration and Kitchen Equipment Repair
Greg's Heating & Cooling

758-8339

David R. Bales, real property located in Rockcastle County to Cora Hill, tax \$0.
Barbara F. Thompson, real property located in Rockcastle County to Donald and Agnes Smith, tax \$8.50.
James H. and Ann R. Mullins, real property located in Rockcastle Co. to Joel C. and Jane Gentry, tax \$4.50.
Joel C. and Jane Gentry, real property located in Rockcastle County to Rockcastle County Board of Education, tax \$19.00.
Ray and Lois Philbeck, real property located in Rockcastle County to Joyce Kirby, no tax.
Tommy H. and Laura Lee Mink, real property located in Rockcastle County to I.T. Baldwin, tax \$5.00.
Ernest and Isabelle Mason, real property located in Rockcastle County to Eddie and Joyce Norton, tax \$36.00.
Jerry and Carol Jean Hamm, real property located in Rockcastle County to Eddie and Joyce Norton, tax \$4.00.
Bruce and Georgia M. Brunley, real property located in Rockcastle County to Leroy & Betty Lou Griffin, tax \$4.50.
Curtis and Betty Jean Durham, real property located in Rockcastle County to Danny Pennington, tax \$2.50.
Russell and Norma Lois Houk, real

property located in Rockcastle County to Terrill and Joyce J. Houk, tax \$12.00.
Robert and Dicie Ford, real property located in Rockcastle County to Amos and Bessie Owens, tax \$10.50.
Paul K. and Joan Jones, real property located in Rockcastle County to John O. and Lois McPherson, tax \$35.50.
John Randolph Nugent, Jr., Rt. 3, Mt. Vernon; James Madison McKinney, Rt. 1, Mt. Vernon; Ronald Earl Ashbill, Rt. 3, Mt. Vernon; Randall Hugh Robbins, Rt. 1, Mt. Vernon; Stephen Douglas Center, Rt. 3, Berea; Clinton Wayne Barron, Rt. 3, Brodhead; Libby Gail Ramsey, Mt. Vernon; Sheila Jo Sturgill, Livingston; Lisa Marguerite Hansel, Mt. Vernon; James Lee Coffey, Mt. Vernon; Lena Caldwell Mink, Rt. 1, Mt. Vernon; Billy Lee Ramsey, Rt. 3, Mt. Vernon; Charley Durham, Jr., Mt. Vernon.
Albert and Thelma Owens, real property located in Rockcastle County to Jimmy and Debbie Owens Oliver, tax \$1.00.
Hughie and Ollie Carpenter, real property located in Rockcastle County to Clyde and Bernice Carpenter, tax \$5.00.
"What is now proved was once only imagined."
William Blake

LICENSES AND PERMITS
Mr. Mopey Ed Cummins, Circuit Court Clerk reports the following persons were issued a driver's license, learner permit, or motorcycle permit.
LICENSE
John Randolph Nugent, Jr., Rt. 3, Mt. Vernon; James Madison McKinney, Rt. 1, Mt. Vernon; Ronald Earl Ashbill, Rt. 3, Mt. Vernon; Randall Hugh Robbins, Rt. 1, Mt. Vernon; Stephen Douglas Center, Rt. 3, Berea; Clinton Wayne Barron, Rt. 3, Brodhead; Libby Gail Ramsey, Mt. Vernon; Sheila Jo Sturgill, Livingston; Lisa Marguerite Hansel, Mt. Vernon; James Lee Coffey, Mt. Vernon; Lena Caldwell Mink, Rt. 1, Mt. Vernon; Billy Lee Ramsey, Rt. 3, Mt. Vernon; Charley Durham, Jr., Mt. Vernon.
PERMITS
Brenda Sue Price, Rt. 1, Brodhead; Robbin Lee Bishop, Rt. 3, Crab Orchard; Jo Ann Evans, Rt. 1, Mt. Vernon; George Timothy Kirby, Rt. 4, Mt. Vernon; Debra Sherman McKnight, Rt. 3, Berea; Dwight Franklin Burdine, Rt. 3, Brodhead; David Allen Holcomb, Rt. 1, Brodhead; Janet Leigh Robbins, Brodhead; Melissa Dawn Waddle, Livingston; Linda Lee Jackson, Mt.

Vernon: Rita Faye Hale, Johnetta; Darrell Wilson, Rt. 1, Brodhead; Michael Dean Lear, Rt. 3, Brodhead.
MOTORCYCLE PERMIT
Proctor Dale Brock, Rt. 3, Crab Orchard; Andrew Kirk York, II, Rt. 4, Mt. Vernon; Anthony Bruce French, Rt. 2, Orlando.

LIBERTY BELL
Declare financial independence.
Take stock in America. Buy U.S. Savings Bonds.

REAL ESTATE FOR SALE

FARM LAND - 140 acres located just inside Lincoln County line. There is approximately 35 acres of tillable ground, the balance being in woods. The basic tobacco allotment is 1280 lbs. The farm is improved by a 32x42 stock and tobacco barn and stock water is provided by a creek. There is some young timber and it is priced to sell at only \$24,500.00.

BRICK IN THE COUNTRY - Located approximately 4 miles out of Brodhead. House has 3 bedrooms, living room, kitchen and dining room combination, full bath and basement. The house is total electric, carpeted, washer/dryer hookup. Can be yours for only \$24,500.00.

MOBILE HOME AND LOT located on Fairground Hill. All ready to move into for the low price of only \$5,000.00.

LAKE LOT - Located on Woods Creek Lake. The lot measures 162x170. Fish from your back porch on this lot for only \$2,500.

HOW ABOUT THIS ONE - This fine home has 4 bedrooms, living room, kitchen, den, utility room and bath. There is also aluminum siding, oak cabinets, carpet, air conditioning, storm doors and windows and much more. The house is situated on a lot measuring 100x200 and is located about 1 mile south of Mt. Vernon. All this can be yours for only \$31,500.

CHEAP CHEAP - Here is a truly words describe this small, new, 3 bedroom home located on Maple Grove near the Rockcastle County. The house is carpeted throughout and is situated on about 1 acre of ground.

BE YOUR OWN BOSS - This is what you can do with this going Transmission and Service Station business located on Hwy. 70. Building has 3 bays, lobby area, storage room and 2 restrooms with all equipment necessary for operation of the business included. All for \$43,000.00.

HERE IT IS - The small farm you've been looking for, we've just listed! 23.4 acres, more or less, located near the Quail Section of Rockcastle County. The farm has approx. 18 acres of cropland. Basic tobacco allotment is 1235 pounds. The farm is improved by a 6 room frame house and a 32x32 stock and tobacco barn combination. Owner will finance. Priced at only \$39,900.

LOTS located near Mt. Vernon in Country Club Estates.

BABY FARM - 19 acre baby farm located at Renfro Valley, Ky. There is approx. 170 ft. of road frontage along US 25 with 435 lbs. basic tobacco allotment and stock water furnished by a pond and creek - city water is available. This property would be ideal for residential or commercial development. Could you believe only \$16,500.

6 Building Lots located in Renfro Valley Minor Subdivision. Lots have city water and sewer all backstop ready.

NEAR TOWN - This 8 room home is conveniently located on Richmond Street within walking distance of Main Street, churches and school. It has 5 bedrooms, living room, kitchen, utility room and 2 baths. Heat is furnished by a gas furnace and the home also has hardwood and carpeted floors, city water and sewer, aluminum siding and you can have possession immediately. In addition to the main house, there is a two-room cottage which is presently rented for \$65.00 per month. All this can be yours for only \$23,900.00.

LOT located on Williams Street near the Mt. Vernon Elementary School. The lot measures over 1 acre and has city water and sewer. This is one of Mt. Vernon's best and is priced at only \$5,750.00.

ATTENTION COUNTRY GENTLEMAN - You will have to see this home yourself to believe and appreciate all the value that goes with it. This beautiful home is only 1 year old and has the features to compliment a life style of gracious living. With features unreamed of in the average home, you'll appreciate the decorator's touch here. There is central heat and air conditioning, kitchen has all built-ins, 2 baths, formal dining room, plus 1 to 10 private acres. In the \$40's.

LARGE ONE - Near Mt. Vernon Elementary School. This home has extra large living room, formal dining room, kitchen, 5 bedrooms and 1 1/2 baths. House is heated by a gas furnace, storm windows, hardwood floors and much more. Only \$18,900.

MOBILE HOME AND BUILDING LOTS - Located at Conway, Kentucky. City water and backstop road. \$1,588. each.

100 ACRES, MORE OR LESS - Located approx. 5 miles south of Mt. Vernon in the Chestnut Ridge area. Water is furnished by a spring and there is some coal and timber. Priced at only \$16,500.

LIVE IN TOWN - Here is a brand new room house located on Wallis Street in Brodhead, Ky. This home has 3 bedrooms, living room, dining room, kitchen and bath. The house has a full oil furnace, city water and sewer and is situated on a large lot measuring approximately 85x271.

AWAY FROM IT ALL - With this 24 acre tract located near Mt. Vernon, you'll have all the privacy you want. The subdivision has some sites, good spring and only \$150 per acre.

SPACIOUS LOTS in this beautiful new subdivision. Located 1 1/2 miles west of Mt. Vernon, city water and restricted. \$3,000 to \$4,000.

PRIVATEY - ACREAGE - 60 Acres, more or less, in the Scaffold Cane Area, 5 room house with extra large rooms, good small barn, 232 lbs. tobacco base, mail and school bus service available at the front door. All for \$15,500.

BUILDING LOT located near the Rockcastle County High School. This is a large lot with ample space for a home or mobile home and a garden.

REDUCED REDUCED - That is what we've done on this 6 room home located on Hwy. 150 between Brodhead and Crab Orchard. We've reduced to \$8,500.

COAL - OUR NEAREST THING TO GOLD - 100 Acres located at Brodhead, Ky. This home has 3 bedrooms, living room, dining room, kitchen and bath. This home has a 28-32 inch seam of coal open. Financing available with sufficient collateral.

THREE LOTS located near the Mt. Vernon Elementary School in one of Mt. Vernon's finest subdivisions. \$3,500 and up.

33 ACRES ON BOWLING RIDGE in Lincoln County. Good road frontage, 12 acres in grass - balance in timber at only \$12,000.

WHAT! \$150 PER ACRE! - Unbelievable isn't it? But the owner says to sell this 165 acre tract located only 5 miles south of Mt. Vernon.

Extra Nice Mobile Home and Lot - Located at Conway, Ky. Lot measures 125x150. Mobile home is a 12x52 Stanford Model with a rock foundation, fuel oil furnace, nice outside grill - all for only \$8,750.

75 ACRES WOODED LAND near Renfro Valley, Ky. \$120 per acre.

BRAND NEW BEAUTY - 3 bedrooms, bath, living room, eat-in kitchen, brick home approximately 4 miles south of Mt. Vernon. Can be yours for only \$25,000. Financing available to qualified prospects.

TIMBER AND COAL FILL POCKETS WITH GOLD! Here is your opportunity to buy 100 acres of Ky. hill and located in the Lamero section. Has some coal and timber. Owner will finance. \$18,000.

LIVE BY THE LAKE - This is a city water, backstop road, electric and telephone service.

NICE LOT located at Orlando, Ky. The lot measures approximately 100x200, city water is available and it is situated on a backstop road. Can be yours for only \$3,000.

ALL THIS FOR \$6,500 - 1972 12x60 mobile home, 3 bedrooms, fuel oil furnace and much more. In addition to the mobile home, there are 3 outbuildings and the property is only 5 miles south of Mt. Vernon, Ky.

MONEY MAKING OPPORTUNITY - One of Southeastern Kentucky's most modern restaurant operations. All new equipment in the heart of Mt. Vernon. A long term lease on the building. An excellent man and wife opportunity. Priced right at only \$25,000.

GENTLEMAN FARMER - 23 acres located on Hwy. 150 approx. 1 mile west of Brodhead, Ky. The farm is improved with 5 room frame house with living room, kitchen, 2 bedrooms, dining room and large bath. House has carpet and linoleum throughout, storm windows, washer/dryer hook-up and water for the house is furnished by a well. In addition to the house, there is a good stock and hay barn, good storage and chicken house. Stock water is provided by a spring. \$23,500.

RING THE BARGAIN BELL - 100 acres of raw land located only 5 miles south of Mt. Vernon. There is coal and timber. Truly a Bargain Bell Ringer at only \$150 per acre.

2 BUILDING LOTS located at Renfro Valley, Ky. The lots have city water and backstop road.

By Each Owners Request - All property shown by appointment with realtor only. Call today for an appointment.
WE HAVE F.H.A. APPROVED HOMES AVAILABLE TO QUALIFIED PROSPECTS - NO DOWN PAYMENT - LOW MONTHLY PAYMENTS

FORD
Realty & Auction Co., Inc.
Mt. Vernon, Ky.

FORD REALTOR
Col. Sam Ford Realtor-Auctioneer Home Ph. 758-8400
Col. Roy Adams Realtor-Auctioneer Home Ph. 256-4454
Col. Danny Ford Realtor-Auctioneer Home Ph. 256-4446
Office Phone 256-4545



EASTER FOOD FESTIVAL

3 Lb. Swift
CANNED HAM
\$4⁹⁹

SHANK PORTION
79¢ Lb.

LAY'S WHOLE SMOKED HAM
14-16 LB.
89¢ Lb.

BUTT HALF
89¢ Lb.

PORK OR BEEF LIVER
39¢ Lb.

BONELESS ROLLED RUMP ROAST
U.S.D.A. CHOICE
\$1⁴⁹ Lb.

Lay's 12 Oz. BACON
89¢ Lb.
Limit 2

GRADE A FOOD FAIR
LARGE EGGS
69¢ DOZ.
NO LIMIT

Betty Crocker CAKE MIXES
7 Varieties
2 FOR 79¢

Limit (2) Boxes With '10⁰⁰ Or More Order.

Betty Crocker FROSTING
89¢

FOOD FAIR BROWN & SERVE ROLLS
2 For 79¢

250 S&H Stamps
With \$25.00 Or More Order

100 S&H Stamps
With \$10.00 to \$24.99 Order

COUPON WORTH 50 S&H Green Stamps
With the purchase of 2 Pkg. or more Betty Crocker Muffin & Pancake Mixes
mv cpn exp 4-13-77

200 S&H Green Stamps
With This Coupon & Any Size Turkey or Turkey Roast
EXPIRES APRIL 9th

STORE WILL BE CLOSED
EASTER SUNDAY, APRIL 10th

WE WELCOME FOOD STAMP CUSTOMERS

FRIENDLY SERVICE ALL THE WAY TO YOUR CAR.

FRESH LEAN GROUND BEEF
3 LB. OR MORE
79¢ Lb.

WHOLE PICNICS Sliced

Lay's 3 Little Pigs SAUSAGE 1 Lb. Pkg. 77¢	SALT BACON 59¢	4 Lb. Lay's PURE LARD \$1⁵⁵
--	--------------------------	--

Old Folks' All Beef SAUSAGE
1 Lb. Pkg. **\$1²⁹**

SWIFTN'ING SHORTENING
89¢

Limit (1) With '10⁰⁰ Or More Order

DEL MONTE - DEL MONTE - DEL MONTE

FOOD FAIR COUPON

32 OZ. HELLMANN'S **SPIN BLEND**
With This Coupon **SAVE 50¢**
Expires 4-10-77
69¢

Anchor Hocking Custard/Dessert Dish
5 oz. size
89¢

free
Anchor Hocking Custard/Dessert Dish
5 oz. size

one free with \$10⁰⁰ order
(3) free with \$20⁰⁰ order

Robin Hood FLOUR
25 Lb. Robin Hood Plain or Self-Rising
\$2⁹⁹

303 Size Del Monte **FRUIT COCKTAIL**
2 For 85¢

303 Size Del Monte **CORN**
W/K or Cream Style
3 For 89¢

25 FL. REYNOLDS WRAP
2 For 69¢

20⁰⁰ OFF 32 Oz. DAWN
\$1⁰⁹

ALL TEMPERATURE CHEER
3⁹⁹

Limit (1) With '10⁰⁰ Order Or More

Del Monte 303 Size **PEAR HALVES**
2 For 85¢

Del Monte **TOMATO JUICE**
46 Oz. Can **55¢**

303 Size **ARGO PEAS** 4 Cans **89¢**

R.C. Cola
8-16 oz. Cans

HI-DRI SINGLE ROLL TOWELS
2 For 85¢

Purina CAT FOOD 4 For **87¢**

Purina CAT CHOW 4 Lb. Bag **\$1⁶⁹**

Ken-L Ration DOG FOOD Beef Only
6 For **99¢**

FRESH STRAWBERRIES Pint
79¢

Chiquita BANANAS 2 Lbs.
47¢

U.S.D.A. Idaho POTATOES 10 Lb.
\$1³⁹

GREEN ONIONS 2 For **33¢**

YAMS 2 Lbs. **49¢**

24 Size LETTUCE **37¢**

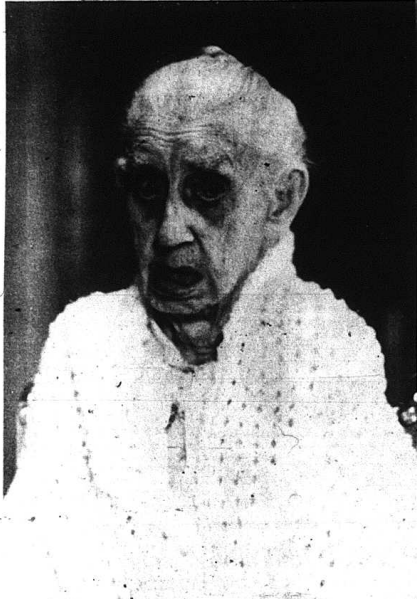
RADISHES 2 For **29¢**

COUPON WORTH 50 S&H Green Stamps
With the purchase of 1 Lb. or more Bananas, Fresh Beef Steaks, Meats or Picnics
mv cpn exp 4-13-77

COUPON WORTH 50 S&H Green Stamps
With the purchase of 1 Lb. or more Apples
mv cpn exp 4-13-77

Around Brodhead

By Marjorie Shivel



CELEBRATES BIRTHDAY- Mrs. Emma Frith celebrated her 99th birthday Saturday at the Sowder Nursing Home in Brodhead. Mrs. Frith is the widow of Ora Frith and they had one daughter, Mrs. Ruth Frith

Hendrickson, now deceased. Mrs. Frith has one grandchild, Dr. R.F. Hendrickson, Jr. of Mt. Vernon. A birthday party was held Sunday for Mrs. Frith at the nursing home with family and friends present.

Personals

Mr. and Mrs. Bobby Proctor, Doug. Paula and Elizabeth were in Covington Monday night and Tuesday visiting her parents, Mr. and Mrs. Carter Caudill and their son, Mr. and Mrs. Darrell Proctor.

Mrs. Johnny Newland and Mrs. George Brooks were in Lexington Friday night to visit Mr. William Painter who is a patient in St. Joseph Hospital there.

Mrs. Walter Baldwin and Mr. Lloyd Shuttles were in Louisville Saturday afternoon to visit their aunt Mrs. Lettie Saylor and to bring Mrs. Ellen Brown home after a several week visit with her sister.

Mrs. Maryland Meyer of Houston, Texas, Virginia Leach of Cucamonga, California, Mrs. Florida Munsie of Crab Orchard visited Mr. and Mrs. J.C. Newland Tuesday. They are in Kentucky due to the illness of their brother, William Painter.

Mrs. Richard Shivel, Jeff. Jenny and Robyn and Mrs. David Shivel and April were in Lexington Monday to consult a doctor for April.

Mr. and Mrs. Ray Johnson were in Corbin Monday to consult a doctor for Mr. Johnson.

Mr. and Mrs. David Shivel and April were in Cincinnati, Ohio Friday on business and visited his sister, Mrs. Barry Kirby and Blake while there.

Mrs. Kathy Shivel and Robyn, Mrs. Richard Shivel, and Jenny and Mrs. Willene Adams were in Richmond Sunday afternoon.

Mrs. Ruby Carter of Hamilton, Ohio visited her daughter and family, Mr. and Mrs. E.J. Taylor, Larry and Harold.

Master Jim Cash is able to be home from Lake Cumberland Medical Center in Somerset.

Mr. Ernest Robbins is home after a week in Central Baptist Hospital in Lexington.

Mrs. Ellen Brown is confined to her home with the flu.

Remember the Easter Sunrise Services Sunday morning at 6:30 at the Christian Assembly Camp on the hill.

Saturday night eighteen youth and six adults went to Mt. Vernon Christian Church to attend a program by a group of students from Kentucky Christian College at Grayson, Ky.

Little Carrie and Michael Hawkins of Crab Orchard visited their grandparents, Mr. and Mrs. Craig Holman Friday.

Week end visitors of Mrs. Fannie L. Albright were Mr. and Mrs. Bob Laws of West Liberty, and Mrs. Joyce Savage

and daughter, Jill of Indianapolis, Indiana. Saturday night visitors were Mr. and Mrs. Noel Hargis of Somerset, Mrs. June Latham, Alice and Bruce, Don Latham of Somerset and Linda Latham and girlfriend of Lexington.

BGS Honor Roll

FOURTH SIX WEEKS

Grade 4
Paula Ham, Melinda McKinney, Ben Riseling, Leslie Rose, Malissa Harper, Sandra Jones, Gail King, Jack Lovins, Sandra Lunsford, Patricia Miller, Dwayne Miller, Lori Chambers, Sandra Graves, Scott Brown, Burnett Albright, Scott Blevins, Shelly Cable, Troy Harris, Jill Rogers, Lianne Sayers, Phil Thompson, Melissa Whitaker, Rita Lewis, and Donna Barnes.

Grade 5
Stephen Burdine, Netza Cash, Regina Cash, Nicky Gentry, John Glovak, Kevin Hamm, Kristi Martin, Mickie Pruitt, Norman Smith, Rita Bishop, James Brock, Toby Mullins, Jeanna Payne, Terry Brown, Trevor Mink, Rodney Wright, Penny Bishop, Troy Bradley, Chad Brock, Pat Hampton, Harold Harper, Paula Howard, Kathy Mink, Wayne Overbay, Shelly Parkerson, Pat Rowe, Greg Long.

Grade 6
Jamie Payne, Stacy Norton, Dwight Pingleton, Cynthia Holbrook, Anthony Machal, Jeffrey Ham, Annette Bullock, Stephanie Bishop, Rene Wolfe, Lisa Rose, Byron Durham, Vicki McGuire.

Grade 7
Brian Holman, Donald Jones, Tracey Mink, Tony Cromer, Jennifer Hayes, Edward Whitaker, Frank Stewart, Karen Hamm, Phyllis McGuire, Steve McClure, Geneva Miller, Janice Long, Jonathan Riseling, Cindy Taylor, Connie Price, Keith Cable, Gerald Barnes, Loretta Bullock, Vicki King, Debbie Barron, Ronnie Cameron, Katherine Brown.

Grade 8
Nancy Cass, DeeAnn Sargent, Kimberly Bullock, Jesse Hayes, Robyn Arnold, Melba Mink, Sheila Morgan, Lisa Parsons.



Never leave a key under the doormat or hidden anywhere else outside.

RE-ELECT JUDGE THACKER



for
COUNTY JUDGE EXECUTIVE

to
Continue to bring jobs and services to the people.
He is a man who is friendly and courteous and you can talk to him.

(Rep. Primary May 24, 1977)
pd. for by candidate

ATTENTION

Coal Operators - Excavators - Highway Contractors

Genex/London, Inc. (Formerly London Diesel Service, Inc.) of London, Kentucky wishes to announce the following services:

I Complete Undercarriage Work

- A. Rebuilding Rollers
- B. Rebuilding Idlers
- C. Rebuilding Crawler Frames

- D. Rebuilding Pads
- E. Pin & Bush Tracks

II Engine Rebuilding & Repairs

- A. Caterpillar
- B. Detroit
- C. Cummings

- D. International
- E. Murphy

III Transmissions, Torque Converters & Differentials

- A. Caterpillar
- B. Allison
- C. Any Straight Shift

IV Radiator Repairs

- A. Complete repair facilities for any size radiator

V Miscellaneous Repairs

- A. Hydraulic Repairs
- B. 100 ton press available for any type work

VI A. Complete welding facilities and experienced personnel for both in-shop and field work.

VII Heavy Hauling

Genex/London, Inc., with over 20 years experience in Heavy Equipment Repairs, can give you the professional type work you need to keep today's high priced Equipment in production.

FOR MORE DETAILS & RATES CALL:

Eliga Lewis - Shop Superintendent
Earl Napier - Shop Foreman

Telephone: 606/864-7858

Terms: Net 10 days on approved credit. Cash on all others

Also Complete Sales and Service For
HOMELITE PUMPS, GENERATORS,
CHAIN SAWS, ETC.
Dale Dotson - Phone 864-6025

ABSOLUTE

AUCTION

Saturday, April 9, 1977 - 10:30 a.m.

Mr. and Mrs. Byron Russell's

73.30 ACRE FARM

(SUBDIVIDED INTO 5 TRACTS)

3134 lbs. of tobacco to be divided by the ASCS office

Paint Lick - Wallaceton Section, Garrard Co., Ky.

LOCATION: 4 miles west of Berea, 14 miles east of Lancaster, 5 miles Southeast of Paint Lick, Ky., on what is known as the old Wallaceton Rd. & Halcomb land. Watch for auction sign leading to farm 3 miles west of Berea & I-75 on Hwy. 21 in Wallaceton & Hwy. 1295 (Cartersville Rd.) leading to farm.

TRACT I
Containing 42.27 acres of good level to rolling land is improved with 5 room home and good stock barn with loft. This tract is all in grass and has 2 good ponds for water supply. This farm is bordered with good blacktop road on the east & southside of this farm.

TRACT II
Containing 5.69 acres fronting on Halcomb. Land all in grass, excellent building site on blacktop road. If you are looking for a baby farm look this tract over.

TRACT III
Containing 13.22 acres of good level fertile soil that will grow alfalfa, corn or any other crop that you may desire. If you need a place to farm to plow year in and year out, look no further than this place. Also has good building site on blacktop road.

TRACT IV
Contains 5.51 acres all level and is in good grass except a portion which was in tobacco last year. 1/2 of this tract is surrounded with blacktop road. Excellent building site. Only 4 miles from Berea, Ky. This tract is watered by a pond.

TRACT V
Contains 6.61 acres, all level and is improved with good barn, with shed for tobacco-stock barn, combination. All in grass and watered by a pond, good building site.

AUCTIONEER'S NOTE: Mr. and Mrs. Russell have purchased a larger farm in Rockcastle County and have employed our firm to sell at Auction their very desirable 73.30 acre farm on the above date and time. Please keep in mind that the farm is located only 4 miles west of Berea and Interstate I-75.

TERMS: 10 percent down, balance with deed on or before 30 days, possession will be announced day of sale.

For further information see or call owner at (606) 925-4261.

East London Bay

Arnold, Napier, & Hammonds

Auctioneers

792-4289

Lancaster, Ky. 40444

Let our auction team turn your property into the \$15

Personals

by Mrs. Geo. Burton

Miss Athelae Jones has returned home after spending a few days in the Rockcastle County Hospital.

Mr. and Mrs. George Burton were in Stanford Friday.

Mr. and Mrs. Egbert (Red) Owens of Morrow, Ohio visited Mr. and Mrs. Millard Owens, recently.

Mrs. Darrell Owens, Mrs. George Burton, Mrs. Robert Anglin and Nancy and Ashley Jasper were in Richmond and Lexington last Saturday.

Albert York, of Cincinnati spent the weekend with his parents, Mr. and Mrs. George York and Eliza Jane. He attended church at Brindle Ridge Sunday.

Mrs. Jimmy Sebree and children of Columbus, Ohio visited Mr. and Mrs. Bennett Burton and Sheila Saturday.

Mr. and Mrs. Harris Burton spent the week end in Nashville, Tennessee at Opryland.

Mrs. Darrell Owens, Mrs. Mark Denny and Christ visited Mrs. George Burton, Sunday afternoon.

Miss Sebree of Columbus, Ohio spent Saturday night with Sheila Burton.

Mr. and Mrs. Carol Blanton, Jr. and children, Mr. and Mrs. Bennett Burton and Sheila visited Mr. and Mrs. Carol Blanton, Sr., Sunday. Other visitors were Mr. and Mrs. Earl Blanton and children, Mr. and Mrs. David Blanton and children, Mrs. Jimmy Sebree of Columbus, Ohio, Mrs. Hershel Watson and children of Frankfort, Mr. and Mrs. Robert Helton and children of Ohio and Mr. and Mrs. Walter Cash and Jerry.

Mrs. Hazel Pullinger and Mrs. Becky Jones visited Mrs. Lona Logsdon Sunday afternoon. They also attended the Gospel Singing at Renfro Valley.

Mrs. Hazel Pullinger and Mrs. Becky Jones visited Mrs. Minnie Hansel last Wednesday.

Mr. and Mrs. George York visited Mr. and Mrs. Roy Pace last Friday afternoon.

Weekend visitors of Mr. and Mrs. George York and Eliza were Mr. and Mrs. Kenneth Renner and children of Cincinnati, Ohio, Mrs. Floyd McClure, Mr. and Mrs. Oscar McClure, and Kristi York of Mt. Vernon, Mrs. William Smith and children of Waynesburg and Charley York of Brindle Ridge.

Several of the Rockcastle County Saddle Club members attended a parade at Camp Nelson, Sunday afternoon and had a nice ride after the parade.

Mrs. Robert Anglin visited Mrs. Johnny Eaton and family one day last week.

Mrs. Wade Graves and children visited Mr. and Mrs. Honnie Reppert and new baby last Saturday.

Mrs. Gravelly Burton and Mrs. Noah Brock were in Berea Friday. They also visited Mr. and Mrs. Arthur Ponder, Mr. and Mrs. Seif Parkerson and Mr. and Mrs. Remmey McKinney on their way home.

Mrs. Gravelly Burton visited Mrs.

Maggie Druman at Brodhead Friday evening.

Mrs. Gravelly Burton visited Mrs. Mary Purcell and Johnny Saturday.

Mr. James V. Hayes has returned home after spending several days in the Central Baptist Hospital at Lexington. He is reported feeling better.

Mr. and Mrs. George Burton and Billie Lanford visited Mr. and Mrs. James V. Hayes and family awhile Sunday night.

Sympathy is extended to the families of James Anderson, Mrs. Kissie Cummins and Elmer Parker in the loss of their loved ones.

Mrs. Ruby Adams of Brodhead, Rt. 1, visited her grandmother, Mrs. Judy Thompson, Monday.

Word has been received that Mrs. Ollie Phillips, widow of Homer Phillips passed away Sunday at Berea. They were formerly of Rockcastle County. Sympathy is extended to the family in their sorrow.

Attorney Joseph E. Lambert and Miss Lora Lee Lambert flew to Pittsburg, Pennsylvania Sunday to drive Mr. and Mrs. James W. Lambert home.

Mrs. Lambert had undergone surgery there at the Presbyterian Hospital. She is at home recovering nicely.

Mr. and Mrs. Willie Nicely spent Wednesday, Thursday and Friday of last week with Mrs. Brenda Saylor and family Tennessee while Mr. Saylor was in Colorado for business training.

Mr. and Mrs. Robert (Bob) Taylor of Ohio spent Saturday night with her parents, Mr. and Mrs. Willie Nicely.



Miss Judy Hopkins

Miss Hopkins Named Outstanding Young Woman

Miss Judy Hopkins of Bardstown, daughter of Mr. and Mrs. Bert Hopkins of Mt. Vernon, was selected recently as an Outstanding Young Woman of America for 1976. Those who are selected to receive this recognition are nominated on the basis of their exceptional personal and professional achievements.

Birth Announced

Mr. and Mrs. Darrell Cash, Rt. 1, Brodhead, Ky., announce the arrival of a son, born Saturday, March 12, 1977 at the Pattie A. Clay Hospital in Richmond, Ky. He weighed 7 lbs. 1 oz. and has been named Charles Andrew Che.

He is welcomed home by one brother, Jason Darrell, 2 1/2 years old.

Son Born

Mr. and Mrs. Bennett Harris Hamm announce the arrival of a son, born at the Lake Cumberland Medical Center in Somerset, Tuesday, March 8. He weighed 9 lbs. 9 ozs. and has been named Steven Ray.

He is welcomed home by two brothers, Greg and John David and a sister, Linda Lea.

Local School District to Receive Career Education Funds

Two million dollars in state funding to implement career education programs is being allocated to local school districts as they prepare to meet the 1978 implementation deadline.

Dorothy Alexander, state career education coordinator in the Kentucky Department of Education, explained that Kentucky's legislature appropriates \$2 million to assist school districts in instituting career education programs.

"The actual implementation of the program is the responsibility of the local school boards," Ms. Alexander said. Application for funds under the provisions of the Career Education Act is the prerogative of local officials, she commented.

According to the guidelines set up when the state's career education program was implemented by the 1976 legislature, all school districts must include career education in their curriculum by the 1978 fall school term.

Schools applying for state funding must submit plans for their career

education program to the Department of Education by July 1, 1977.

Each school district will receive a grant based on \$3.15 per student according to the average daily attendance records.

A number of school districts have already submitted plans, Ms. Alexander said. The Department of Education is currently processing applications for funds.

Ms. Alexander explained that career education is designed to guide students through occupational exploration and orientation and prepares students for career decision making.

"Students are given an opportunity for exposure to different roles in a diversity of work opportunities through career education."

The Rockcastle County Board of Education has submitted their application to the State Department of Education for Career Education Funds to be used for this program in all the county schools, grades 1-12.

"To think is to live." Cicero

AUCTION

OF
Mr. and Mrs. J. W. Cosby's

8 ACRE FARM

and IN TRACTS
Personal Property

Sat., April 16, 1977-1:30 P.M.



Preachersville Section
of Lincoln County, Ky.

LOCATED: 4 1/2 MILES NORTH OF
CRAB ORCHARD ON HWY. 39
BETWEEN CRAB ORCHARD AND
LANCASTER.

Mr. and Mrs. Cosby have purchased a home in Harrodsburg and soon will be moving and have contracted our company to sell, for the high dollar, this desirable small farm. It will be offered in 5 tracts, reserving the right to group or combine in any manner to reflect the best returns for the owners.

TRACT #1 - Consists of .81 acres and fronts on Hwy. 39 and Rigby Lane. It is improved with the above-pictured modern home. The house has living room with fireplace, a paneled family room with bookshelves, large kitchen with built-in cabinets, 2 bedrooms and bath. It also has wall to wall carpet, washer and dryer hook-up, city water and full basement, with walk out entrance and it is heated by a gas furnace. There is a good garden spot and good storage buildings.

TRACT #2 - Fronts on Hwy. 39 approximately 250 ft., has city water, good small barn and a pond. This tract contains approximately 1.08 acres.

TRACT #3 - Has a road frontage of 190 ft. on Rigby Lane. This tract contains 2.14 acres, more or less, level land would make excellent home site with ample space for a garden and even space enough to pasture a cow or horse.

TRACT #4 - 2.03 acres, more or less, with 190 ft. of road frontage on Rigby Lane. This tract also would make an excellent home site with plenty of elbow room.

TRACT #5 - 2.04 acres and has 163 ft. of road frontage on Rigby Lane.

When all tracts are combined, there is a total of 8.10 acres, more or less, of all good laying land. An ideal small farm conveniently located between Crab Orchard and Lancaster.

PERSONAL PROPERTY - A Lawn Scout - 8 h.p. 36 inch riding lawn mower with electric start - almost new; power mower; portable sewing machine; Sessions mantel clock; fire screen and accessories; porch swing; bird bath; some depression glass; candle holders; lamps; 2 wheel barrows; telephone stand; ironing board; dishes of different descriptions; 2 rocking chairs; tables; pictures; fruit jars; small farm tools of all descriptions; plus many more miscellaneous items.

TERMS: Real Estate - 20% down day of sale - balance in 30 days upon delivery of deed. **PERSONAL PROPERTY** - Cash or good check day of sale.

FOR ADDITIONAL INFORMATION, CONTACT MR. AND MRS. COSBY AT 355-7292 OR:

FORD Realty & Auction Co., Inc. Mt. Vernon, Ky.

R REALTOR

Col. Sam Ford
Realtor - Auctioneer

Col. Bill Randolph
Auctioneer

Col. Roy Adams
Auctioneer

Col. Jerry Hann
Auctioneer

Col. Danny Ford
Realtor - Auctioneer

Office - Phone 236-1515 - Night 738-8100

VOTE FOR

Thurman "Jack" Raines

SHERIFF

Republican Primary May 24, 1977

Your Vote And Support Appreciated

pol. adv. pd. for by candidate

CLAYTON HAMMOND'S SUPERMARKET

Highway 461
The Somerset Road

"HOME OF BARGAINS"

Prices Good April 8 thru April 13th



Blue Grass Kentucky Border

Balogna

59¢ lb.

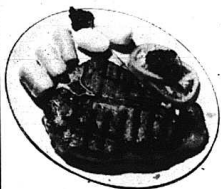
Swift's Proten

Sirloin Steak



First Cut **\$1⁰⁹** lb.
Center Cut **\$1³⁹** lb.
End Cut **99** lb.

T-Bone Steak

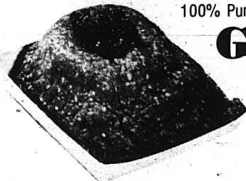


Swift's Proten

\$1⁷⁹ lb.

100% Pure

Ground Beef



79 lb. (3 lb. or more)

Swift's 3 lb.

Canned Ham

\$4⁷⁹



3 Cans

STOKELY'S APPLESAUCE

98¢

RICHTEX SHORTENING

(3 lb. can)

99¢



26 oz. Heinz

Tomato
Catsup

**Paramount
Sweet
Pickles**

20 oz. jar

79

Home Style or Fresh Baked
BREAD 4 loaves

2 roll pack Gala

Paper Towels **59¢**

Fireside Assorted

Cookies

69¢

Chef-Boy-Ar-Dee

2 cans

Spaghetti & Meatballs **98¢**



**Kraft
GRAPE
JELLY**

2 lb. jar

89¢

**Colgate
Toothpaste**

Reg. \$1.51 Sale Price

1 oz. **89¢**

3 Boxes **\$1**

**JFG
Salad
Dressing**

79¢
qt. jar



8 qt. Carnation

**DRY
MILK** **\$1⁸⁹**

4 lb. bag Cee-Lect

**PINTO
BEANS** **89¢**

Uncle Sam

**CORN
MEAL**

25 lb.

\$2⁶⁹

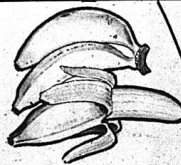
Self-Rising

Van-Camp

Pork 'N Beans

4 11 oz. cans

98¢



BANANAS

19¢ lb.



Grade A

**EXTRA
LARGE
EGGS**

69

doz.



LETTUCE

3 Heads

\$1

Fishing Report

Despite weekend rains, several headwaters have white bass activity and black bass fishing remains fair to good on many lakes. The lake-by-lake rundown, according to the Department of Fish and Wildlife:

Laurel: Black bass good on crank and spinner baits in timbered coves; crappie good around stick-ups; trout good off deep banks; in headwaters, white bass good, clear to murky, stable power pool and 58 degrees.

Cumberland: Black bass fair to good on the lower lake casting crank and spinner baits and jigging minnows in inlets and bays; crappie fair over submerged cover; in headwaters, white bass and crappie good on Laurel River; in tailwaters, trout fair to good, crappie, sauger and white bass slow; clear to murky to muddy, rising, 29 feet below the timberline and 53 degrees.

Barren: Black bass fair to good on crank and spinner baits off shallow and cover banks; crappie fair over submerged cover; in headwaters, white bass good, clear to murky to muddy, rising, 6 1/2 feet below summer pool and 58 degrees.

Dale Hollow: Black bass and white bass good casting crank and spinner baits and trolling medium to deep runners in the upper portions of creeks; crappie slow over submerged cover; clear to murky to muddy, stable, 18 feet below summer pool and 56 degrees.

Buckhorn: Crappie fair to good over submerged cover; black bass fair to good

jigging nightcrawlers; in headwaters, white bass fair; muddy, rising, 10 feet below summer pool and 56 degrees.

Rough River: Black bass good to excellent casting medium deep runners and jigging minnows off rocky points and around stick-ups; crappie slow to fair over submerged cover; clear to murky to muddy, rising, four feet below summer pool and 56 degrees.

Nolin: Black bass good on medium to deep runners off shallow banks; crappie fair around stick-ups; clear to murky to muddy, rising, five feet below summer pool and 58 degrees.

Herrington: Black bass fair casting crank and spinner baits and jigging nightcrawlers off deep points and banks; crappie slow in the mouths of creeks; in headwaters, white bass slow, clear to murky, rising, one foot below summer pool and 54 degrees.

Green: Black bass fair on crank and spinner baits off points and over drop-offs, in headwaters, white bass fair, in tailwaters, trout fair, murky to muddy, rising, three feet below summer pool and 55 degrees.

Cave Run: Black bass fair on the upper lake still fishing minnows and nightcrawlers over channel drop-offs and around stick-ups; musky fair on the lower lake casting and trolling deep runners over the main channel and in inlets and bays; in tailwaters, crappie slow, clear to murky to muddy, rising, 7 1/2 feet below summer pool and 53

degrees. **Grayson:** Crappie fair around stick-ups; black bass slow jigging nightcrawlers off muddy banks, in tailwaters, trout slow, murky stable, three feet below summer pool and 57 degrees.

Fishtrap: crappie fair around stick-ups; white bass slow on medium runners off shallow banks; in tailwaters, trout slow; murky to muddy, rising, 15 feet below summer pool and 50 degrees.

Barkley: Crappie good in small inlets and bays, in tailwaters, white bass good, crappie and catfish slow; clear to murky to muddy, stable, five feet below summer pool and 58 degrees.

Kentucky: Crappie slow over submerged cover; in tailwaters, catfish slow to fair, murky to muddy, stable, one foot above winter pool and 55 degrees.

Dewey: No activity; muddy, stable, four feet below summer pool and 56 degrees.

New Federal Probation Officer Has Begun Work

Jeanne D. Lewis has begun work as a Federal Probation Officer after having been sworn into office on March 14, 1977 in Lexington. She was appointed to this post by the Honorable Bernard T. Moynahan, Jr., Chief Judge of the U.S. District Court for the Eastern District of Kentucky. Mrs. Lewis will work out of the London office with Frank L. Cornett, who has been working since 1975. The counties covered by Mrs. Lewis in her duties include Laurel, Whitley, Clay, Jackson and Rockcastle while Mr. Cornett serves Knox, McCreary, Pulaski and Wayne Counties.

Mrs. Lewis is married to Kenneth B. Lewis of London and is the daughter of Mr. and Mrs. George F. Doyle of Nicholasville.

A native of Jessamine County, Mrs.

Roland Wierwille Basketball Camp June 20-24

The third annual Roland Wierwille Basketball Camp will be conducted in two one-week sessions, June 13-17 and June 20-24, at Seabury Gymnasium on the Berea College Campus. In its third year of operation, it is fast becoming one of the most popular camps in the central Kentucky area. This can be evidenced by the large number of youngsters attending the camp the past two years.

Roland Wierwille, a former basketball player at Eastern Kentucky University, is the camp director. He has coached on the elementary, high school and college level for sixteen years. A

former assistant to C.M. Newton (Alabama) and Lge. Ross (U.N.C. Charlotte), he has had excellent training both in the knowledge and fundamentals of the game.

He has led the Berea College Mountaineers to 19.9 and 19.8 records the past two years. They also participated in the N.A.I.A. district playoffs both years. In the 1975-76 season, Wierwille was conference and district Coach of the Year.

The main objectives of the camp are as follows: to provide individual instruction in all phases of basketball, with concentration on offensive and defensive fundamentals; to help young athletes develop the proper mental attitude; and a better understanding of the game of basketball; and to provide a wholesome atmosphere where youngsters can realize the importance of citizenship, good character and moral values.

For further information, contact Roland Wierwille Basketball Camp, CPO 2329, Berea College, Berea, Ky. 40404, or call (606) 986-9341, Ext. 423 or 519.

Call News Items To 256-2244

Bunton's SEED

WITH A GROWING REPUTATION

BEEF	PARSNIP
CABBAGE	PEPPER
CARRROT	PUMPKIN
CUCUMBER	RADISH
KALE	SALSIFY
LETTUCE	SPINACH
MUSKMELON	SQUASH
MUSTARD	TOMATO
OKRA	TURNIP
PARSLEY	WATERMELON

We have a complete line of Bunton Garden Seed "Bulk or by the Package."

Jim & Jack's Hardware and Appliance

Williams St. Ph. 256-4363 Mt. Vernon

VOTE FOR



ERNEST MASON

For 5th District Magistrate



Mrs. Jeanne P. Lewis

"I Would Appreciate Your Vote and Support"

pd. for by candidate

Mr. and Mrs. Bill Ponder of Route 1, Mt. Vernon, are the proud adoptive parents of a baby boy, born October 12, 1976. He has been named Ryan David.

APRIL SPECIALS

From Cherokee

3 Point Rear Mounted Manure Loader, complete w/valve and hose	\$495.00
6 Ton Wagon Gear less tires - choice of 14" orig. wheels	250.00
3 Point Concrete Mixer, complete	395.00
3 Point Heavy Duty Post Hole Digger	425.00
12' Chain Drag (English Type)	265.00
3 Point One Row Cultivator	85.00
8' Cherokee Lime & Fertilizer Spreader	650.00
Portable Air Tanks	25.95
3 Point Post Drivers with Valve & Hoses	495.00
1 Used Hawk Built Liquid Manure Spreader	1,450.00

Manure Spreader 225 Bu.-165 Bu.-140 Bu.-110 Bu.

At Reduced Prices

Sprayers, custom made to your needs, from 100-200-300-500 gallon 3 Point and Trailer Mounted

CHEROKEE SALES CORPORATION

Hwy. 27 N. Stanford, Ky.

WALL-TO-WALL SAVINGS!

When You Think of Carpet ... Think of Jerry's

Carpets by

Congoleum

Pier 66

Reg. \$12⁹⁵ per square yard

Sale

\$5⁹⁹

per square yard

Plus Pad and Installation

FOR FREE ESTIMATE PHONE 256-2122

Jerry's Carpet Center

RICHMOND STREET
MT. VERNON, KY 40456

NOW!
AT PIC-PAC
SUPERMARKETS

Play THE QUALITY GAME

WIN!



A MILLION QUALITY STAMPS OR
100,000; 10,000; 5,000; 1,200; 600; 300.
OVER 125 MILLION QUALITY STAMPS IN PRIZES!
REDEEMABLE FOR YOUR CHOICE OF MANY GLAMOROUS PRIZES!

NOW! IN THE 13th WEEK OF OUR EXCITING QUALITY GAME... AND YOU COULD WIN 1 MILLION QUALITY STAMPS (1st PRIZE) PLUS HUNDREDS OF OTHER PRIZES. THERE'S NO PURCHASE NECESSARY, SO GET YOUR FREE TICKET EACH TIME YOU COME IN PIC-PAC THE QUALITY GAME. A GREAT WAY TO GET ACQUAINTED WITH PIC-PAC'S LOW PRICES.

THIS IS HOW EFFECTIVE MARCH 23, 1972

PRIZE	QUANTITY	AMOUNT	PERCENT
1st PRIZE	1	\$1,000,000	1.00%
2nd PRIZE	1	\$100,000	1.00%
3rd PRIZE	1	\$10,000	1.00%
4th PRIZE	1	\$1,000	1.00%
5th PRIZE	1	\$100	1.00%
6th PRIZE	1	\$10	1.00%
7th PRIZE	1	\$1	1.00%
8th PRIZE	1	\$0.10	1.00%
9th PRIZE	1	\$0.01	1.00%
10th PRIZE	1	\$0.001	1.00%
11th PRIZE	1	\$0.0001	1.00%
12th PRIZE	1	\$0.00001	1.00%
13th PRIZE	1	\$0.000001	1.00%
14th PRIZE	1	\$0.0000001	1.00%
15th PRIZE	1	\$0.00000001	1.00%
16th PRIZE	1	\$0.000000001	1.00%
17th PRIZE	1	\$0.0000000001	1.00%
18th PRIZE	1	\$0.00000000001	1.00%
19th PRIZE	1	\$0.000000000001	1.00%
20th PRIZE	1	\$0.0000000000001	1.00%
TOTAL VALUE OF PRIZES	125,000,000	QUALITY STAMPS	

PRICES GOOD THRU APRIL 9, 1977

- ARMOUR BACON..... LB. PKG. **\$1.29**
- FRESH DAILY (3-Lbs. Or More) GROUND BEEF..... LB. **79¢**
- HYDE PARK SLICED BOLOGNA..... LB. PKG. **99¢**
- KAHN'S BIG RED SMOKEYS..... LB. PKG. **\$1.29**
- KAHN'S REG. OR BEEF WIENERS..... LB. PKG. **\$1.09**

U.S.D.A. CHOICE
RIB ROAST
1st THREE RIBS **\$1.49**
LB. **89¢**

- MORTON FROZEN CREAM PIES..... 5 Flavors 16 OZ. PKG. **59¢**
- BIRD'S EYE FROZEN COOL WHIP..... 9 OZ. BOWL **59¢**

HYDE PARK FROZEN
ORANGE JUICE
16 OZ. CAN **65¢**

STOKELY
GOLDEN CORN
Whole Kernel, Cream Style
4 \$1
16 OZ. CANS

- STOKELY APPLE SAUCE..... 3 16 OZ. CANS **\$1**
- HYDE PARK HEAVY DUTY ALUM. FOIL..... 25 FT. ROLL **59¢**
- PLAIN OR PEANUT M & M'S..... 16 OZ. PKG. **\$1.29**
- SMUCKER'S GRAPE JELLY..... 32 OZ. JAR. **89¢**
- VIVA NAPKINS..... 140 CT. PKG. **49¢**
- DOLE...IN HEAVY SYRUP PINEAPPLE..... 20 OZ. CAN **55¢**

WE REDEEM FEDERAL FOOD STAMPS
SHENANDOAH SELF BASTING
GRADE "A" TURKEY
SERVE TURKEY FOR EASTER
53¢
8 TO 12 LB. AVG. LB.

HYDE PARK
PURE CANE SUGAR
5 LB. BAG **59¢**
Limit 1 With Coupon & \$10 Addn. Order.

STOKELY YELLOW CLING
SLICED PEACHES
ALSO HALVES
27 OZ. CANS **2 89¢**

WAGNER'S LO CAL OR REG. ALSO 32 OZ. GRAPE BTL. **\$1**

HYDE PARK LARGE GRADE "A" EGGS..... Limit 4 With \$10 Addn. Order DOZ. **59¢**

ALL PURPOSE
WHITE POTATOES
10 LB. BAG **89¢**

- RED OR GOLDEN DELICIOUS APPLES..... 3 LB. BAG **79¢**
- CALIFORNIA NAVEL ORANGES..... 4 LB. BAG **99¢**
- FRESH LEMONS..... 12 FOR **89¢**
- FRESH CRISP CELERY..... STALK **39¢**
- LEAF LETTUCE..... LB. **59¢**
- SOLID HEAD CAULIFLOWER..... HEAD **99¢**
- FRESH GREEN BEANS..... LB. **49¢**

EASTER CANDY NOW AVAILABLE AT PIC-PAC!

LAUNDRY DETERGENT
BOLD
49 OZ. BOX **\$1.29**
LIMIT 1 WITH COUPON

VIVA
PAPER TOWELS
JUMBO ROLL **49¢**

NABISCO PREMIUM
SALTINES
LB. BOX **59¢**

- QUANTITY RIGHTS RESERVED
- CENTER CUT HAM SLICES..... LB. **\$1.59**
 - SHENANDOAH TURKEY BREAST..... LB. **\$1.19**
 - U.S.D.A. CHOICE CUBE STEAKS..... LB. **\$1.69**
 - KAHN'S HICKORY GROVE Whole, Boneless, Fully Cooked HAM..... LB. **\$1.69**
 - U.S.D.A. CHOICE RIB STEAK..... LB. **\$1.69**

WENNING'S SHANK HALF
SMOKED HAM
WHOLE OR BUTT PORTION **79¢**
LB. **89¢**

- KRAFT DELUXE SLICED CHEESE..... American, 12 OZ. PKG. **99¢**
- PILLSBURY BUTTERMILK, Country Style CANNED BISCUITS..... 10 CT. CANS **79¢**

KRAFT
PARKAY MARGARINE
QUARTERS LB. PKG. **39¢**

MONEY SAVER COUPON
MAXWELL HOUSE
INSTANT COFFEE
\$2.99
10 OZ. JAR
Limit 1 With This Coupon & \$10 Addn. Order
Valid At Pic-Pac Thru April 9, 1977 4-5

- HYDE PARK WHOLE SWEET PICKLES..... 16 OZ. JAR. **59¢**
- COOKING OIL..... 38 OZ. BTL. **\$1.29**
- CRISCO..... 38 OZ. BTL. **\$1.29**
- DUNCAN HINES MOIST & EASY Flavors..... 4 13 1/2 OZ. PKG. **69¢**
- STOKELY SLICED BEETS..... 3 17 OZ. CANS **79¢**
- STOKELY HONEY POD PEAS..... 3 16 OZ. CANS **\$1**
- STOKELY French Style, Cut Green, Shelle Green Beans..... 3 15 OZ. CANS **\$1**

KING'S PIC-PAC
MT. VERNON, KY.
U.S. 150 WEST

<p>QUALITY GAME SPECIAL 50 FREE QUALITY STAMPS WITH THIS COUPON AND PURCHASE OF 2 BAGS EASTER CANDY VALID AT PIC-PAC THRU 4-8-77</p>	<p>QUALITY GAME SPECIAL 50 FREE QUALITY STAMP WITH THIS COUPON AND PURCHASE OF 2 HEADS OF LETTUCE VALID AT PIC-PAC THRU 4-9-77</p>	<p>QUALITY GAME SPECIAL 50 FREE QUALITY STAMPS WITH THIS COUPON AND PURCHASE OF 2 PKGS. SMOKED HAM SLICES VALID AT PIC-PAC THRU 4-8-77</p>	<p>MONEY SAVER COUPON HYDE PARK SUGAR 5 LB. BAG 59¢ Limit 1 With This Coupon & \$10.00 Addn. Order. Valid At Pic-Pac Thru 4-9-77</p>	<p>MONEY SAVER COUPON DETERGENT BOLD 49 OZ. BOX \$1.29 Limit 1 With This Coupon Valid At Pic-Pac Thru 4-9-77</p>	<p>MONEY SAVER COUPON DISH DETERGENT LUX 22 OZ. BTL. 79¢ Limit 1 With This Coupon Valid At Pic-Pac Thru 4-8-77</p>	<p>MONEY SAVER COUPON FABRIC SORTENER CLING FREE 24 CT. BOX \$1.09 Limit 1 With This Coupon Valid At Pic-Pac Thru 4-8-77</p>	<p>MONEY SAVER COUPON SNACKS BUGLES 7 OZ. BOX 49¢ 13881600 4-12 7827 Limit 1 With This Coupon Valid At Pic-Pac Thru 4-8-77</p>	<p>MONEY SAVER COUPON BETTY CROCKER GINGERBREAD Mix 14 OZ. PKG. 59¢ 4-7 Limit 1 With This Coupon Valid At Pic-Pac Thru 4-8-77</p>
--	--	--	--	--	--	--	--	---



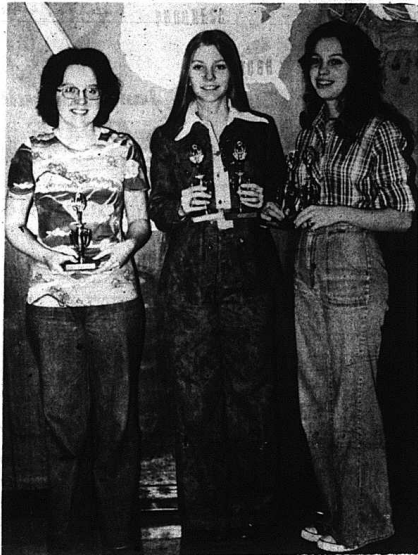
Members of the Harry Sparks Vocational School's FBLA Club recently attended the FBLA Regional Conference held at Eastern Kentucky University and came out well in the ratings.

In the above photo, Phyllis Bishop, Regina Ponder, Debbie Cable and Barbara Bullock are shown with their bulletin board which received second place.

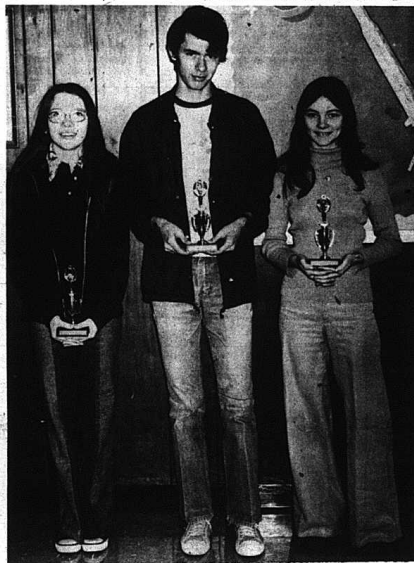


Members of the Parliamentary Procedure Team took first place during the competition. In the above photo are, seated: Carolyn Lamb and standing, from left: Linda Miller, Christine Marlowe and Teresa McKinney. Absent when photo was taken was Joanna Smith, who also was high scorer on the written

Parliamentary procedure test. Miss Lamb, who served as Regional vice president of Region 5 this year, was elected to Who's Who in FBLA and was also chosen alternate for the Plock Scholarship.



INDIVIDUAL WINNERS in Regional Competition are shown in the above photo. They are, from left: Becky Leger, first place for her chapter activities report; Becky Childress, first in Stenographer II Event and Shari Martin, third place in Clerk Typist I.



Judy Cain, Mike DeBorde and Vickie VanWinkle, members of the Business Math team, received first place honors at the FBLA Regional Conference.



Janice Ponder and Debbie Cable are shown with the Chapter Scrapbook which took first place honors. The Club also received first place for having the largest chapter membership which numbers 130 and represents 100% membership.



VICA REGIONAL COMPETITION was held recently for the 13th Region, which is composed of 8 schools, and the following VICA members from the Harry Sparks Vocational School received awards. Front row, from left: Mel Taylor, first place, radio and television and Laidis Harding, first

place, electricity. Back row, from left: Mark Smith, second place, electricity; Lester Taylor, third place, arc welding and Jimmy Saylor, third place, welding. Not present when picture was taken were: Teddy Roberts, second place, mig and tig welding and Jeff Shivel, second place, radio and television.

STRETCHING YOUR FOOD DOLLAR

Save money by saving on fuel. Overcooking food not only uses extra fuel, it causes more loss of food value. One of the best methods of cooking

vegetables to conserve maximum food value is to cook them only until tender in just enough water to prevent scorching. Use a saucepan with a tight-fitting lid. Cover the pan to prevent the escape of steam so that vegetables can be cooked quickly in a small amount of water.



THE ARMY RESERVE. PART OF WHAT YOU EARN IS PRIDE.

Our Massey-Ferguson

SPRING FEVER SALE is going on right NOW!



We've got special sale prices on most new Massey-Ferguson

- Agricultural Tractors
- Agricultural Implements
- Hay & Forage Equipment
- Backhoes, Loaders, Crawlers

No finance charges until September 1, 1977 on many farm tractors and implements.

Model	BUY NOW AND SAVE! NOW ONLY
MF 230 Farm Tractor	\$6395.
MF 245 Farm Tractor	\$8350.
MF 255 Farm Tractor	\$9650.
MF 25 Side Delivery/Rake	\$1050.
MF 124 Hay Baler	\$1950.
Above Prices are 10% less Than Current Prices	

To The Voters Of Rockcastle County

I am a candidate for Jailer of Rockcastle County, subject to the May 24th Republican Primary. I have never run for public office but have had a lot of encouragement to run for this important position. "Your Vote and Support Appreciated"

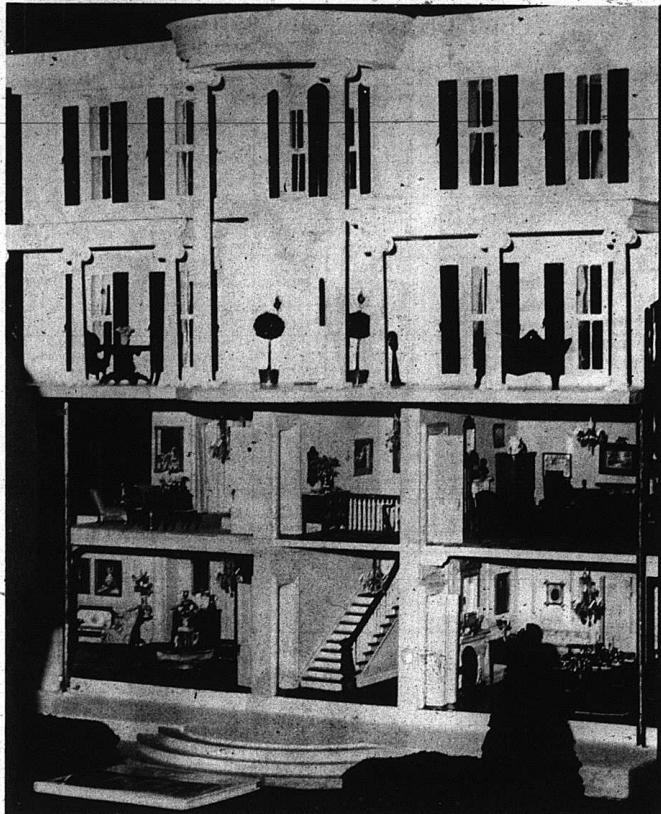
Carl Kirby
pd. for by candidate



Personalized MF financing, parts and service available.

DAVIDSON AND TAYLOR

SCIENCE HILL, KENTUCKY 42533 • PHONE 423-3421



The Cornelia Vanderbilt Whitney Dollhouse—The world's most famous dollhouse will visit Louisville during Derby Festival Week. The Cornelia Vanderbilt Whitney Dollhouse, a replica of the C.V. Whitney horse farm in Lexington, Kentucky will be exhibited at the First National Community Center from April 29 through May 8, from 10 a.m. to 5 p.m. daily, except April Derby Day, May 7, when it will be closed. All proceeds will go to the Filson Club and the Kentucky Derby Festival.

Whitney's Kentucky Doll House

The Cornelia Vanderbilt Whitney Doll House, a 4,000 pound replica of C.V. Whitney's 200-year old house on his Lexington, Kentucky horse farm, Maple Hill, will be on exhibit at the First National Community Center of Louisville during Derby Festival Week. The display is sponsored by First National Bank in association with the Filson Club.

As the owner of several doll houses, Cornelia Vanderbilt Whitney, at age 9, announced to her mother that she would like to add yet another to her properties. It was then decided that this house would be different. And so it is.

Mrs. Marvliou Whitney, who maintains seven life-size houses, five in the U.S. and two in Spain, searched out skilled craftsmen and enlisted the assistance of workmen on the Whitney farm to accomplish the project.

The result was a 13-room, 3 1/2 bathroom, southern mansion miniature, on a one inch equal one foot scale, which took 7 years to build and furnish. It contains such magnificent miniatures as a carved ivory abacus, sterling silver ming julep cups with ice and mint leaves, Mr. Whitney's racing binoculars, and an enameled box with a diamond ring tucked inside.

Construction didn't stop with the completion of the main house. Mrs. Whitney next turned her attention to the reproduction of the guest house, the former slave quarters, since the visit of Princess Margaret and Lord Snowdon, has been known as "Princess Margaret House."

The newest addition to the Cornelia

Vanderbilt Whitney Doll House will be shown for the first time during the Festival Week exhibit. It is a miniature atrium which is an exact copy of the atrium on the Whitney farm set up annually to host their Derby Eve Party. It has also been the scene of many gala parties given for the President of the United States, royalty, statesmen and dignitaries.

Mr. Whitney came up with an idea that gave the project a much broader dimension: Since this doll house was going to be worthy of a museum, why not trace the history of Maple Hill and provide it with a family tree? Thus, Mrs. Whitney wrote a book, "Cornelia Vanderbilt Whitney's Doll House." The book is meticulously researched and is a historical treatise as well as a documentation of the building of the doll house.

The Doll House, the atrium and Mrs. Whitney's book will be on exhibition at the Center at 421 West Market Street from April 29 through May 8, from 10 a.m. to 5 p.m. except Derby Day, May 7, when it will be closed.

"Highlands Assn."
(Cont. From Front)

Valley Barn.

The program is open to those interested in tourism.

Vernon, a former Corbin radio executive, heads the Kentucky depart-

ment responsible for spreading news and information about state government and for promoting tourism in the state. Under his direction the 150-member department has helped accomplish two firsts for the Commonwealth: The establishment of an international office, in Brussels, Belgium, to promote tourism and commerce in Kentucky, and the state's surpassing of the \$1 billion mark in annual tourism revenues during 1976).

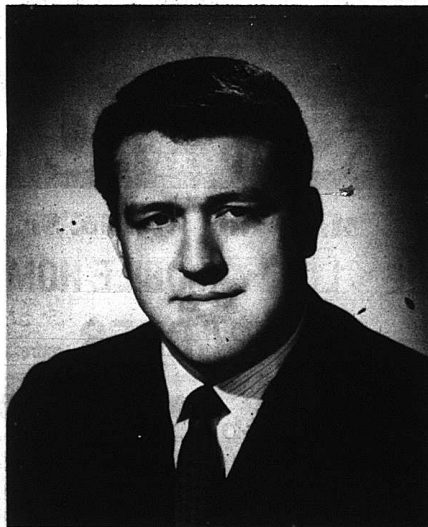
If you don't look out for your future, it won't look out for you.

Time waits for no man's budget. So right now's the time to look out for your future and buy U.S. Savings Bonds. You see Bonds always pay off. So they're one of the best ways to save for your future.

Just sign up for Bonds through the Payroll Savings Plan at work or through the Bond-a-Month Plan where you save. Either way you'll start saving automatically.

So look out for your future. Start buying U.S. Savings Bonds today. You'll have a lot to look forward to tomorrow.

An Open Letter To The Voters Of The 80th Legislative District



As most of you now know, I am asking to be your elected Representative to the General Assembly in Frankfort.

There are many reasons for my being a candidate and one of my main reasons is to make the people better represented.

To be better represented, it necessarily follows that the people must have access to the person they elect. As things presently are, the people of Rockcastle County have gone almost four years and have only rarely seen the present Representative from our district. The only time that stands out in my mind was when he was last opposed for public office and that was four years ago. Locally, we deserve better treatment than this since Rockcastle County has, by far, the largest number of Republicans to vote in the Republican Primary.

I pledge to the voters of the 80th Legislative District that, as your Representative, I will be present on a regular basis throughout the district to listen to what the people have to say regarding issues before the General Assembly. This will mean spending a more equal amount of time throughout the district - Rockcastle, Lincoln and the five precincts in Pulaski County. After all, a Representative is elected to reflect the interests and the will of all the people of his district.

If elected, I want to invite the newspapers, schools, churches and other groups or organizations to run polls to ask the people to express their views on major issues. This would be a tremendous public service on their part and, if a person wants his opinion known on different issues, he will have a place to voice his thoughts. By keeping you informed, you can keep your Representative informed as to what the people of his district want him to do.

Vote Gregory For Representative

pol. adv. pd. for by candidate



FDIC

GROWING STRONG DEPENDABLE

NO SPECIAL CHECKS REQUIRED

Just Open Your Account With Us and Enjoy Our Free Checking. Here Are Some Of Our Other Services:

- Savings Accounts
- Loans Tailored To Meet Your Many NEEDS
- Money Orders [25c Each]
- Certified Checks
- Drive In Window Service
- ..Night Depository [Open 24 Hrs. a Day]..
- Travelers Cheques

**FREE PARKING
OPEN SIX (6) DAYS A WEEK
8:30 A.M. To 3 P.M.**

Your Deposits INSURED UP TO \$40,000.00 by The Federal Deposit Insurance Corporation.

.....FRIENDLY BANKING SERVICE.....

"MRS. LEWIS"
(Cont. From 7)
Club, Cumberland Valley U.K. Alumni Club, London Karate Club and Laurel County Humane Society, in which she is currently serving as president.

Her principal duties as a Federal Probation Officer will be twofold - she will investigate those people who are before the Court for a violation of federal criminal laws. These investigations will

be used in preparing a pre-sentence report to be used by the Judge in determining sentence, only after a person has been convicted. Her second role will be as a helping person in supervising those people on probation or released to this area on parole from federal prisons.

"A wise man will make more opportunity than he finds."
Francis Bacon

"I CARRY CLOUT"
Clout gives you acceptance.

Clout is power.
Clout opens doors.
Clout is a Master Charge card.
It's your personal account at over 2 million places in all 50 states and over 100 countries around the world.
That's clout.
That's Master Charge. Relax.

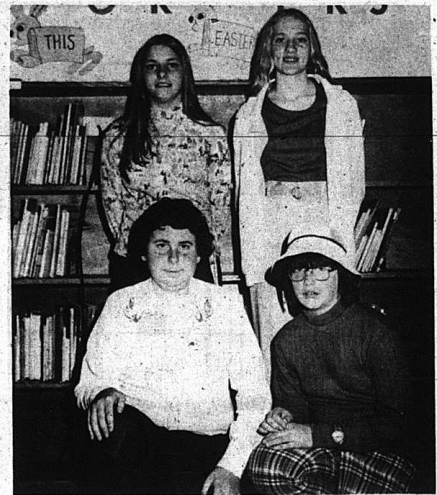
BMV THE BANK OF MT. VERNON
MT. VERNON, KENTUCKY 40456

FDIC

256-5141



Rockcastle County's best spellers met Tuesday afternoon, April 5th at Mt. Vernon Elementary School for a Spelling Bee in the Library. Two winners from each of the four schools competed. Pictured above are the 1-5 grade winners from each school. They are, kneeling, from left: Lisa Livesey, Roundstone 4th Grade and James Ballinger, Livingston, 5th Grade. Standing, from left: Lisa Lovell, Mt. Vernon, 6th Grade and Stacy Norton, Brodhead, 6th Grade.



The above photo shows the 7th and 8th grade winners from each school who competed in the county-wide spelling bee. They are, kneeling, from left: Stanley Cook, Mt. Vernon, 7th Grade and Donald Jones, Brodhead, 7th Grade. Standing, from left: Tammy Coffey, Roundstone, 8th Grade and Judy Davidson, Livingston, 8th Grade.

YOUR GARDEN

If you've had poor luck starting plants from cuttings, try some perlite. Pour perlite in a container, wet it and insert your cuttings. Cover the container with clear plastic wrap and wait for the roots to form—it's as simple as that. Perlite is a white, sterile, lightweight volcanic material readily available under various brand names at nurseries, supermarkets and hardware stores everywhere.



3RD BIRTHDAY-Lois Ann Cromer celebrated her 3rd birthday, April 4th with a party at the home of her parents, Mr. and Mrs. Bobby Cromer of Mt. Vernon. Maternal grandparents are Mrs. Eva Jones of Mt. Vernon and the late Floyd Jones. Paternal grandparents are Mr. and Mrs. Dewey Cromer of Brodhead.



The Final Winners in each division were both from Brodhead. They were, from left: Donald Jones and Stacy Norton.

Twilight AUCTION

Of **Mr. Willie Griffin, Sr.**

HOUSE and LOT and MOBILE HOME and LOT and 50 ACRES more or less

Fri., April 8, 1977 - 6:30 P.M.

GAULEY BRANCH SECTION OF ROCKCASTLE COUNTY

LOCATED: Turn across Livingston Bridge onto the Red Hill Road. Go approximately one mile - watch for auction signs at the property.

Mr. Griffin has contracted our firm to sell this desirable property at public auction.

TRACT NO. 1 - Consist of the above pictured five-room frame house. The house has 3 bedrooms, living room and kitchen. The lot measures approximately 85 ft. x 150 ft., having ample space for a garden.

TRACT NO. 2 - Measures approximately 86 ft. x 135 ft. having room for a garden. This tract is improved with the above pictured mobile home which has living room, kitchen and bedroom.

TRACT NO. 3 - Consists of approximately 50 acres, more or less. This tract is improved with a stock barn and has some timber and coal.

Each tract will be offered separately, then together, selling whichever way reflects the best returns for the seller. If you're interested in a home, rental property or rough acreage, be sure and Don't Miss This Sale!

TERMS - 20% DOWN DAY OF SALE AND BALANCE IN 30 DAYS WITH DELIVERY OF DEED.

For additional information, contact Mr. Griffin or:

FORD Realty & Auction Co., Inc.
Mt. Vernon, Ky.

REALTOR

Col. Sam Furl
Realtor - Auctioneer

Col. Bill Randolph
Auctioneer

Col. Roy Adams
Auctioneer

Col. Jerry Ham
Auctioneer

Col. Danny Ford
Realtor - Auctioneer

Office - Phone 256-1345 - Night 758-4400

VOTE FOR - Henry Lee ABNEY

SHERIFF

DEPUTIES:
Raymond "Jughead" Ballinger - Fred Abney

Your Vote & Support Appreciated

Ed. for by candidate



THE LIVINGSTON GIRLS BASKETBALL TEAM won the championship game in the Girls' Tournament held last week at Livingston Elementary School. Livingston advanced to the finals by defeating Brodhead and beat Mt. Vernon in the final game 24-17. Members of the squad, who are coached by John

Hale, are front row, from left: Nora King, Susan Mitchell, Tammy Nicely, Becky Griffin, Emmy Daughtery and Linda Shackelford. Back row, from left: Nancy Johnson, Donna Howard, Shelley Raines, Donna Faulkner, Judy Davidson, Connie Ballinger and Sylvia McHargue.



Members of the Mt. Vernon Girls' Team are, front row, from left: Donna Young, manager, Carolyn Robinson, Jeannie Boreing, Helen Payne, Debbie Reynolds, Tracy Mulberry and DeeDee Thompson, manager. Back row, from left: Sandy

French, Connie McClure, Penny Miller, Carolyn Browning, Judy Bullock (Coach), Sheila Miller, Kim Deatherage and Mary Henderson.



The Roundstone Girls beat Brodhead in the consolation game of the tournament. Members of the squad are, front row, from left: Harry Lee Holland, coach, Connie Adams, Becky Rowland, Marilyn Neely, Bendi Martin, Stephanie Wolfe, Donna Farthing

and Vonda Spillman. Back row, from left: Bessie Polly, Sandy Clark, Sonya Bullens, Bonnie Miller, Betty Smallwood and Sherry Witt.



The Brodhead Girls team is coached by Gary Scott. Members of the team are, front row, from left: Sheila Kirby, Robin Arnold,

from left: Cochrin Scott, Lisa Irvin, Nancy Cass, Micki Martin, Cindy Taylor, Sheila Morgan, Kim Bullock and Donna Janet Taylor, Dana Brown and DeeAnn Sargent. Back row, from left: Cochrin Scott, Lisa Irvin, Nancy Cass, Micki Martin, Cindy Taylor, Sheila Morgan, Kim Bullock and Donna McWhorter.

GOV. CARROLL APPROVES GRANT

Governor Julian Carroll has approved a grant totaling \$106,666 to the Department for Human Resources for juvenile programs.

"The award was made after the Kentucky Crime Commission gave favorable recommendation to the project at its March session.

The award will be used to fund four community-based treatment homes as an

alternative to the detention of juvenile public offenders. The homes will be based in Hopkinsville, Louisville, Middlesboro and Morehead. Eighty thousand dollars of the monies come from the Law Enforcement Assistance Administration (LEAA). The rest comes from state sources.

Bro. Jim Humphries To Show Slides of Israel Trip

Bro. Jim Humphries, pastor of the Sand Springs Baptist Church, will show slides of his recent trip to Israel Wednesday night, April 13 beginning at 8:30 p.m. The public is invited to attend.



Missing Smell

Like the Sherlock Holmes watching that didn't bark, natural gas that doesn't smell may be a telltale clue in case of trouble. For example:

A householder was killed by an explosion in his basement. Investigation showed that the explosion was caused by leaking gas. Yet, witnesses agreed there had been no odor in the basement before the blast.



A court later found this to be clear evidence of negligence on the part of the gas company, and awarded damages to the family of the victim.

Natural gas had no smell of its own. For that reason, legal standards of safety usually call for the addition of a malodorous chemical to give warning of trouble.

However, as with most legal standards, it is a matter of degree. In another case a woman injured in a gas explosion insisted that she had smelled nothing beforehand. Therefore, she argued in claiming damages, the company must have been negligent.

But it turned out that she had a weak sense of smell. Rejecting her suit, the court said:

"The duty to odorize natural gas was not necessarily to odorize it so (the plaintiff) could detect it but to odorize it so it could be detected by a person with a normal sense of smell."

Furthermore, the victim may be held at fault for not exercising elemental caution.

In a third case, a gas explosion was touched off when a man lit a match to check on a possible leak. Afterward, in a court hearing, he acknowledged that he had noticed a suspicious smell before leaving home several hours earlier. When he returned, the smell was still evident.

The court decided that under these circumstances the victim himself could be found guilty of negligence for failing to take sensible account of the danger.

A public service feature of the American Bar Association and the Kentucky Bar Association. © 1976 American Bar Association

NOW!

General Electric Refrigerator with Top Freezer dispenses

CRUSHED ICE OR CUBES

right into your glass



Model TBF-21R

20.7 cu. ft. No-Frost Refrigerator Only 30 1/2" wide

Power saver switch helps reduce operating cost

- Hugs 6.82 cu. ft. freezer helps save shopping trips
- Half-width adjustable shelves of tempered glass
- Rolls-out on wheels
- The "New Naturals" colors or white



\$598.00

BRYANT BROS.

Ph. 256-2911

Main St.

Mt. Vernon

VOTE FOR

Irene BALES For County Clerk

Republican Primary May 24, 1977



I want to take this opportunity to discuss with you, the voters of Rockcastle County, my candidacy for the office of County Clerk.

I worked as Deputy Clerk for 10 years and 7 months under my late husband, Clifford Bales. As most of you are aware, I became County Court Clerk July 19, 1976, following the death of my husband.

As you can no doubt understand, due to the heavy work load associated with this office, I will be unable to see each of you individually before the election. However, I do want to ask your support in the upcoming Primary.

Please let me stress at this time that I am actively engaged and connected with only one campaign in this primary, my own for County Clerk. I am not connected in any way with any other candidate for office.

My late husband, Clifford Bales, did enjoy being of service to the people of this county and I pledge myself to continue this effort on behalf of you all.

SINCERELY,

Irene Bales

pol. adv. pd. for by candidate



Several members of the Rockcastle County Rescue Squad and Civil Defense are shown leaving for Barbourville recently to help combat possible flooding there. In the photo are, front row, from left: Glenn Reed, Junior Sandusky,

Jerry Mullins and Wendell Renner. Back row, from left: Garry Hansel, Bill Phelps (in van), Clyde Burdette, Jackie Cash, Paul Hansel, Lanny Bell and David Ballinger.

Consumer Comments

By: Robert F. Stephens, Attorney General

Has your child ever received a notice from a collection agency stating that, unless an outstanding debt was paid immediately, a lawsuit would be filed to collect the money? This usually comes as a big surprise to most parents because they didn't even know the child had bought anything. They then call the Consumer Protection Division to find out if the contract and debt are valid.

Kentucky law provides that a person, under the age of 18 years, generally cannot enter into a valid contract. If only the child's name appears on or is involved in the contract, he or she cannot be held responsible for it. If an adult's name does not appear on the contract with the child's name, then, generally speaking, either the child nor the adult can be held responsible.

Children can get into these situations in various ways. The most frequent example of the problem, however, involves record, tape and book clubs, membership in which can often be merely sending in an application found in most popular magazines. Unfortunately, very few of these applications ask any questions about age, that is where the trouble begins.

When the company gets the application, it begins to send whatever was ordered and to bill accordingly. Many of these transactions undoubtedly proceed without any problems ever arising. However, companies sometimes make mistakes about sending what is ordered or in billing for the proper amount. Children also fail to pay on time or refuse to pay because they feel that unwanted or unneeded selections are being sent, when in fact, they simply do not realize that they can be billed for items sent under the company's negative option plan, which requires that a card, sent by the company, be returned each month if a particular selection is not wanted. For these, and many other reasons, business arrangements break down and result in claims that the child owes money to the company. Questions then arise about the child's responsibility to pay the bill.

When the company begins demanding its money, it generally does not know that it has been dealing with a minor. When this is determined, the company will often ask, or even demand, that the parent or responsible adult pay the bill. If the parents have not consigned with the child, they generally will have no responsibility for the debt. Many parents will want to be fair and to pay the bill, if there is an honest business deal involved, but there is no legal necessity that they do so. In such cases, the child and parents can simply demand that the contract and debt be cancelled and that the company assume the loss as part of the risk involved in not making sure of the age of the people with whom it does business.

If you have any questions about children who are involved in contract, contact the Office of the Attorney General, Division of Consumer Protection, Frankfort, Ky. 40601. The office has found that it can most effectively deal with written complaints and encourages you to write when you have a complaint. However, if you have an emergency situation, call the Consumer Hotline. The number is 1-800-372-2960.

"KENTUCKY"
(Cont. From Front)

Belgium by and for the State of Kentucky to introduce foreign countries to our state, plus a campaign nation-wide, "Kentucky: Let Us Show It To You" is already under way.

Ginilee Lair King from Renfro Valley (Rockcastle County) has been appointed and commissioned by Governor Carroll to be an advisor to The Governor's Economic Development Commission, working on the Task Force of Tourism/Travel. Besides getting a historical market into our county and working on Renfro Valley Founders Day (article elsewhere in this issue) she has helped form and is Chairman of the Board of a new tourism association, Southern Kentucky ETS Tourist Association consists of the following

tourist attractions: Dixie Belle Riverboat, located at Fort Boonesborough; Wilderness Road Drama, located in Berea; Renfro Valley Country Music Center, Renfro Valley; Renfro Valley Boat Dock and Camp Grounds, Lake Road, Renfro Valley; The Great Saltpetre Cave, Rt. 1004, Livingston; Fort Sequoyah, Livingston; Rockcastle Adventure, Rockcastle River; Holly Bay Marina, Laurel River Lake; The Book of Job, Fine Mountain State Park, Pineville; Tombetone Junction, Cumberland Falls State Park.

A new brochure and map has just been made to distribute to all rest areas, state parks, etc. The idea being to have more visitors coming to our area and staying longer. This would benefit everyone, and we hope that everyone will graciously welcome these tourists with Kentucky hospitality.

Anyone who would like to have some of these brochures to pass out or would like more information—please contact Ginilee Lair King, Renfro Valley, Kentucky.

Extension Homemakers Week Is May 1-7 In Kentucky

Gov. Julian M. Carroll has proclaimed May 1-7 Extension Homemakers Week in Kentucky.

With 30,000 members in more than 1,800 clubs throughout Kentucky, the extension homemakers work with the Cooperative Extension Service of the U.S. Department of Agriculture and the University of Kentucky to extend adult education in home economics.

April Is Cleanup And Beautification Month

Gov. Julian M. Carroll has proclaimed April Cleanup and Beautification Month in Kentucky.

Gov. Carroll urged all citizens to cooperate in the yearly "Commonwealth Cleanup Campaign."

April 17 Proclaimed ORT Day In Kentucky

Gov. Julian M. Carroll has proclaimed April 17 ORT Day in Kentucky in recognition of the

achievements of Women's American ORT.

ORT (Organization for Rehabilitation through Training) is the vocational education program of the Jewish people. The organization has dedicated itself to the creation of a worldwide network of around 700 vocational education and training schools, spanning five continents.

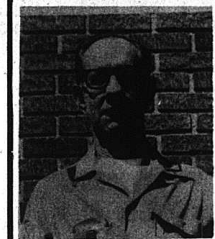
Women's American ORT is the largest group in the world supporting the ORT program.

On a French menu anything identified as *provencale* or *a la portugaise* is a dish made with tomatoes.

VOTE FOR

Robert KIRBY for JAILER

REP. PRIMARY MAY 24, 1977



Your Vote And Support Appreciated

pol. adv. pd. for by candidate

To The Voters Of Rockcastle County



Last week I discussed some matters that I am for. If elected as your County Judge Executive, I plan to make a quarterly check of our roads in the county. If then I see a problem, I will recommend to the Magistrate in that District that the problem be taken care of. If the County Judge is appropriated a road fund, then I will use this as I see fit. Our county government should not be run by just a few. It's everybody's county and I think the citizens should have a voice. I will be open to the suggestions on ways to improve our county.

It's Time For A Change!

ELECT
G. H. "Hobe" Griffin
County Judge Executive

pol. adv. pd. for by candidate

REP. PRIMARY MAY 24, 1977

CREDIT FOR FARMERS

Your Production Credit Association can supply all your credit needs, farm, home and educational.

We can help by advising you in your farm planning as to credit and other farm needs.

Come in, call or write your friendly PCA people. You'll be glad you did.

Let's Make PCA Your Farming Headquarters
PHONE 256-2153

Roy G. Brown
Assistant Vice President

Jewell Hansel
Assistant Office Manager



PRODUCTION CREDIT ASSOCIATION

Sharon Burton
Office Secretary

P. O. Box 388
Mt. Vernon, Ky.

Donna Dailey
Office Secretary

WATCH NEXT WEEK'S SIGNAL

For Details of Our Annual

Spring Sale

SALE DAYS
April 14 - May 7th

JIM & JACK'S HARDWARE & APPLIANCE, Inc.

Phone 256-4363 WILLIAMS ST. MT. VERNON

Mount Vernon Signal

SECTION TWO

AREA DEATHS

Kizzie M. Cummins

Mrs. Kizzie Margaret Cummins, age 89, of Mt. Vernon, passed away Friday April 1, at the St. Joseph Hospital in Lexington, Ky. She was born in Clay Co., Ky. on June 6, 1889, the daughter of the late Robert Ponder and Rachel Ward and was a member of the Northside Baptist Church. She was educated in Mt. Vernon and Berea, Ky., and taught school prior to her marriage to Mr. William Cummins, who preceded her in death.

She is survived by one son, Mr. Chester Cummins of Hamilton, Ohio; two daughters, Mrs. Mebel Kelly of Mt. Vernon and Mrs. Rachel Kenrick of Hamilton, Ohio, eight grandchildren and 17 great grandchildren.

Funeral services were conducted Monday, April 4 at 10:00 a.m. at the Dowell & Martin Funeral Home by the Rev. Harvey Pensol. Graveside services and interment were conducted by the Rev. Bobby Fields in Greenwood Cemetery in Hamilton, Ohio.

Dowell & Martin Funeral Home was in charge of all arrangements.

James H. Anderson

Mr. James Henderson Anderson, age 68, of Burlington, Ky. and formerly of Rockcastle County, passed away Tuesday, March 29 at the St. Elizabeth Hospital in Covington, Ky. He was born in Rockcastle Co. on September 6, 1908 the son of Mary Jennings Anderson and the late Isaiah Anderson and was a member of the Greensburg Baptist Church and a retired railroadman from the B&O Railroad.

Besides his mother, he is survived by his wife, Mrs. Beulah Anderson of Burlington, Ky. two sons, Tony and Dennis Anderson both of Burlington, two brothers, Orvil Anderson of Orlando Florida and Isiah Anderson, Jr. of Indianapolis, Indiana; two sisters, Mrs. Juanita Burch Bregokfield, Indiana and Mrs. Bertha Reinselman of Phoenix, Arizona and one grandchild.

Funeral services were conducted Friday, April 1, 1977 at 11:00 a.m. at the

Dowell and Martin Funeral Home with Bro. Albert Weaver officiating. Burial was in the Bales Cemetery at Livingston.

Elmer C. Parker

Mr. Elmer Clay Ponder, age 62 of Livingston, Ky., passed away Sunday evening April 3, 1977 in Livingston. He was born in Jackson Co. on May 29, 1914 the son of the late Green Parker and Ruth Wilson and was a retired Hotel and Restaurant Operator.

He is survived by two sisters, Mrs. Bertha Bingham of Livingston and Mrs. Pearl Berrighouse of Cincinnati, Ohio; one brother, Mr. James Parker of Richmond, Indiana.

Funeral services were conducted Tuesday, April 5, at 2 p.m. at the Dowell & Martin Funeral Home by the Rev. Raymond Roeden. Burial was in the Morning View Cemetery at Livingston.

'Clean-Up' In April

The Rockcastle County Rural Development Committee is asking your assistance in improving and cleaning up our county. Each citizen can become involved by sprucing up their yards, painting fences and buildings, cleaning up roadsides, removing litter and more.

April is being designated as "Clean-Up Month" in Rockcastle County in order to improve the quality of life for each citizen as well as to improve the attractiveness of the county to visitors and industrial prospects.

To motivate this project, the committee will award the community showing the most improvement a permanent roadside sign.

The criteria for judging will be: roadsides, 20 points; buildings, 20 points; yards, 20 points; fencing, 20 points and overall appearance, 20 points.

The county is divided into the following communities: 1. Ottawa and Quail; 2. Spiro and Willalla; 3. Wabd and Sand Springs; 4. Blue Springs and Pongo; 5. Pine Hill and Calloway; 6.

Copper Creek and Gum Sulpher; 7. Brodhead City; 8. Old Brodhead Road and Lake Livinia; 9. Mt. Vernon City; 10. Livingston City; 11. Boone and Snyder; 12. Conway and Wildie; 13. Orlando, and Mullins Station; 14. Lamerco and Red Hill; 15. Disputanta; 16. Cimarron and Johnata.

The judging will take place on April 30. You can start now! Help your community to be the best in the county. Get involved!

The following groups are assisting in this campaign: 4-H clubs (both school and community); Homemakers clubs; civic groups; Mt. Vernon, Brodhead, and Livingston Lions clubs; Woman's Club; Jaycees, Optimist club; church youth groups; scouts; FFA and FHA.

Committees of the Rural Development Committee working on the project are: Judging committee: Roy Brown, Tommy Harold Mink and Wallace Proctor. Planning committee: Cheryl Witt, Harold Ballinger, H. Lee Durham and Tommy Adams.

HOME LINE

BY CHERYL WITT COUNTY EXTENSION AGENT FOR HOME ECONOMICS

Old presentation drugs can be useless, or even dangerous. Throw them away!

Time to Clean Out Medicine Cabinet. Old prescription drugs can be useless, or even dangerous. Throw them away!

Spring cleaning chores should include an inventory of family medical supplies and drugs. Your doctor or pharmacist can tell you the proper way to store a prescription drug taken for a chronic illness. But it's a good rule to get rid of any prescription drugs left over from a previous sickness or condition. Chemical changes do sometimes take place and can make a drug harmful.

Discard any nonprescription for that a year old, as well as medicines that have changed color or consistency. A safe way to dispose of drugs is to flush them down the toilet.

If you're pretty sure a medicine is worth keeping around for possible future use, check it out with your doctor or pharmacist. It should have the name of the drug on the label, the name of the person it is for and clear instructions for its use. It also needs a childproof cap if

your household includes young children.

Unless you get permission from your doctor, don't ever let one member of your family take a prescription drug for someone else. Keep all medicines in a cool dry place, out of the reach and sight of children.

Wallpaper's Getting Better All The Time Wallpaper's been around since the late 16th century in Europe, but new processed and materials kept improving it for modern use. The do-it-yourself never had it so good, because wallcoverings are getting better all the time-easier to hang and take care of and often more durable, too.

Regardless of its width, each square roll will cover approximately 30 square feet of surface.

Following are descriptive terms and meanings: Washable you can spot-clean this wallpaper gently with lukewarm and mild suds, but don't scrub it.

Scrubable-you can do a more energetic cleaning and washing job on this paper, but stick to the products recommended by the manufacturer, and follow the directions carefully.

Stripable-you can easily take this paper off the wall again, without steaming, to change the wall treatment. To hang it, use the product recommended usually either liquid strippable paste or wheat paste.

Pre-trimmed-these wallcoverings are ready to apply without trimming and without overlapping, because the selvage has been removed and the pattern runs right to the edge.

Pre-pasted-you don't need wallpaper paste, just a special water tray for wetting the paper.

Varnish Natural Woods for A Durable Finish

Varnish seals wood and gives it a tough, transparent film that protects it and shows off its natural beauty. A varnish finish is much more resistant to use and wear than shellacked wood, and it's easier to apply than lacquers.

The new polyurethane and epoxy varnishes are noted for their increased durability and high resistance to hard use. Just follow the directions on the label for good results.

The one disadvantage is that when a piece of furniture is stained, scratched or otherwise damaged, it's difficult to conceal the flaw without re-doing the entire surface.

April is Clean-Up Month

Spring is a time for improving and cleaning our homes and grounds around the home. April is "Clean-Up Month" in Rockcastle County. Let's all pitch in to help. Improving our yards, painting fences, removing litter, etc. can be done by each of us to make our county a better place for our families to live. The Rural Development Committee, Rockcastle Improvement Association and 4-H Clubs are all joining in the efforts to beautify our county-but it will take help from each person in the county. A roadside sign will be placed in the community which has done the most to improve and "clean-up" during the month of April. Help our community to be the best!

APR 8 1977

University of Kentucky Lib

April Is "Alcohol Information Month"

For the seventh consecutive year, the Cumberland River Comprehensive Care Center is sponsoring April as "Alcoholic Information Month".

Mr. Alan Easley, Director of Alcoholism Services, stated: "There are many misconceptions about drinking in our society today. Myths and misconceptions are shared by both young and old alike. Because of this misinformation, we feel responsible to annually promote April as a month for renewed interest in truthful and factual information about alcohol use and abuse. It is our goal to provide any interested person or group with up-to-date information.

All national surveys and reports indicate that: alcohol use among teenagers is increasing, the incidence of alcoholism among females is increasing, and alcohol is the most used and abused drug in our society today. There is a direct correlation between drinking and the incidence of child abuse, between drinking and the divorce rate, and between drinking and crime. Local surveys indicate that alcohol is involved in the majority of juvenile arrests.

Judy Orwick, Alcoholism Educator, stated: "We must all share in the responsibility for providing today's youth with factual information about alcohol use. If we hope to have responsible adults, young people must be given truthful information on which to base their decisions."

All civic clubs, church groups, and community organizations interested in alcoholic information programs should contact the local comprehensive Care Center.

NOTICE:

The Crab Orchard Church of God will hold a three-day Revival April 14, 15 and 16 beginning at 7:30 p.m. each evening. The Evangelist is Dean Strong, Pastor, Edward McCowan cordially invites everyone to attend.

MEETING SET FOR DISTRICT #9, KENTUCKY NURSES ASSOCIATION

The second meeting of the year will be April 14, 1977, Thursday. The program is on "Interpretation of the C.B.C." Dr. Whitaker, Pathologist, Lexington, Kentucky will be the speaker.

District #9 is composed of Registered Nurses from Garrard, Lincoln, Rockcastle, Boyle, Mercer, Washington, Marion, Casey and Anderson counties and all registered nurses from the counties are invited to attend the Continuing Education Meeting.

Dinner will be served at 6:30 p.m., Briarpatch, Danville. The speaker will start at 7:30 p.m. A business meeting will follow. To make reservations for dinner, call Mary Immaculate Hospital, Lebanon, Ky. (502) 692-3161. Director of Nursing Office extension 210 by noon April 11.



Real Estate

By SAM FORD

REALTOR

Let House Cut Tax Bill

Your home should be, besides your nest of dreams, an income tax saver. From the moment you take title to the day you turn over the key to the next inhabitants, you are endowed with opportunities to minimize your tax bill.

While you own the home, your two major annual deductions are property taxes and the interest on the mortgage. These can be considerable deductions.

Keep in mind that it doesn't matter whether you pay property taxes directly or through an escrow account held by the bank. In either case, you deduct the sum actually

paid to the local taxing authority.

Also, using part of your home for business purposes constitutes a deduction for that portion of the home expenses used for the business. It is based on the square footage of space used for business. However, it must be used exclusively for business.

If there is anything we can do to help you in the field of real estate, please phone or drop in at Ford Realty & Auction Co., Inc., Mt. Vernon, Ph. 256-4545. We're here to help!

GET READY FOR EASTER WITH OUR SPECIALS!



One Rack Of Dresses

40% off

JUST ARRIVED!
New Shipment Of
Jeon Castle Sportswear



JUMPSUITS.

16*

SPECIAL Ladies' Slacks

10*

One Table Of Sportswear

5*



One Group Of Men's Summer Suits

30% Off

Table Of Men's Dress Slacks

1/2 Price

SPECIAL Gaucho with Vest \$22.00

SPECIAL 3 piece PANT SUITS \$25.00

Robinson's Style Shop

MT. VERNON
256-4106

We're here on your account

Call us on our new Telephone Number

256-5141

and let us help you.



FDIC

THE BANK OF MT. VERNON
MT. VERNON, KENTUCKY 40456





The above picture was taken November 11, 1934 at the old Church House at Taylor Griffin's in Singleton Valley. Shown in the photo are, first row, from left: Leslie Durham, Geneva Singleton, Mullins Sisters, Raymond and Dewey McGuire, Cledis Mullins, Olen and Earon McGuire and Andy Durham. Second

row, from left: Irene and Ruth Philbeck (down) the Bryant Sisters, (up) Miss Helton, (down) Adren McGuire, Aunt M. Mullins, Mary A. Loge McGuire, Walker Durham, Gertrude Philbeck, Boley Mullins, Christine Singleton, Evert Taylor Griffin, Jess Bryant. Third row, from left: Thelma Mullins, Mary Alice

McGuire, Nannie Bolles, Ethyle Bryant, Ethyle Mullins, Rosie Durham, Susan Singleton, Albert Mullins, Tommy Carpenter, Mose Childress, Ollie Durham, Sherman Jones, James Singleton, Tom Bolles, John Helton.

Winter Wheat Freeze Damage Surprisingly Small

Despite the severe cold temperatures this winter, there has apparently been a surprisingly small amount of winter freeze damage to the winter wheat crop, according to James Herbek, UK extension grain crops specialist.

He said a survey of the wheat crops in the warmer weather of the first days of spring indicate there was an adequate snow cover during the periods of extreme cold and a proper cold hardening of the plants to offset any anticipated damage.

"Without the snow cover, extensive winterkill would have probably occurred," Herbek said, explaining snow has a low heat conductivity—six to 10

times less than that of soil—and thus acts as good insulation against heat loss. He said some studies indicate as much as 25-30 degrees difference between temperature above the snow and soil temperature near the tillering nodes of winter wheat under a snow cover of six inches.

If there is no snow cover, but if the plants are properly winter hardened, the approximate temperature at which freeze damage and winterkill will start to occur is about zero degrees or slightly below, he said, with survival possible in some instances as low as 10 to 15 degrees below zero.

For oats, damage can start at about

20 degrees and for barley it is somewhere between wheat and oats, Herbek noted.

"Below normal temperatures throughout last fall, although limiting plant growth and development, properly conditioned—or cold hardened—the wheat crop for the very cold temperatures experienced this past winter," Herbek said. Cold hardening begins at temperatures below about 41 degrees, slowing down the vegetative growth, which is termed essential for proper conditioning to withstand the colder temperatures.

Herkbek pointed out that younger plants, the result of later plantings, will tend to be more resistant to freeze damage, if properly hardened, than the older plants from very early plantings. The very early planting dates were described as from mid-August to early September. He said winter temperature conditions are usually not severe in Kentucky and fall temperatures usually allow gradual winter hardening for most plantings, which is winter is usually from mid-September to mid-November.

"Under conditions of early planting and long, warm fall in which considerable growth is attained, one might consider mowing off the excessive growth to allow regrowth of younger plants that would be more winterhardy," Herbek recommended. "If cut early enough to allow proper hardening of the young growth before freezing temperatures occur, they will be more resistant to freezing temperatures than the older growth if left uncut."

Grazing wheat could have similar values as cutting, however, Herbek warned that livestock should be removed early enough to allow sufficient regrowth and hardening.

He noted also that the recent wagner weather should help determine if any cold damage has occurred. If there is no winterkill the new growth should be appearing in the replacement of any deadened plant tissue, he said.

Fortunately, because of the extreme cold, little or no winter heating occurred this year—having being caused by soil saturated with water swelling or heaving when frozen, the top soil layer expanding and lifting up the plants. In such conditions the soil settles after thaws, resulting in the plant roots standing higher than their previous level and exposing them to later low temperatures and not allowing good root attachment.

Herkbek noted, too, that vernalization conditions are extremely important this year. Exposure to low temperature requirements to induce or hasten flowering, is termed as vernalization. He said the physiological changes of winter wheat, which cause the plant to joint, head and produce grain, don't occur until the plants have been exposed to low temperatures.

He said the late planted wheat, although not emerged during the winter, was most likely germinated and thus probably vernalized sufficiently.

Generally the wheat crop is less advanced this year than in recent years

due to plant growth and development being delayed by cold weather conditions last fall and due to late plantings," Herbek said. "This delayed growth will probably result in a loss in yield, very similar to a late, delayed planting," the specialist observed. "Much of the tillering and vegetative growth remains to occur this spring. Under normal conditions, a winter wheat plant will have three to six tillers with most of the tillering occurring in the fall. "Very little tillering has occurred so far this year," Herbek continued. "Each tiller has the potential of producing a head—thus tillers mean fewer heads per acre. Unless rapid growth in the next few weeks produces more tillers or larger heads on fewer tillers, yields will probably be reduced." The number of tillers is determined by the seeding rate, soil moisture, fertility, temperature and variety, he explained.

He said the slow growth will probably delay maturity a few days so that wheat harvest and double-cropping may be delayed somewhat this year.

One factor in defense of the cold weather may be that it possibly reduced insect populations and disease problems, which have been problems in the past.

"Since tillering is important to what yields and since it has progressed very little this season, timely topdressing of nitrogen will be especially important to help stimulate the tillering and plant development," Herbek stated, advising that topdressing should be done as soon as it is certain the plants are alive and growing.

"But keep in mind there is always the risk that if nitrogen is applied earlier than usual and the weather turns extremely warm, there is a chance of winterkill occurring from over-stimulation of plant growth if temperatures drop," he warned. "Early application may also result in slightly greater leaching losses."

"This year, however, it may warrant taking these risks to stimulate tillering and plant development," he said.

Herkbek also warned that if nitrogen topdressing is delayed until time to spray herbicides, wheat yields may be "greatly because it would be too late to stimulate maximum tillering."

"Jealousy and love are sisters," Russian Proverb

Have You Filed 1976 Tax Returns Yet?

Nearly 200,000 Kentucky taxpayers have yet to file their 1976 Federal individual income tax returns, according to the Internal Revenue Service (IRS). The dead is Friday, April 15.

To assist those last-minute filers with their questions, the IRS reminds taxpayers that the toll-free telephone service is available weekdays from 8:00 a.m. to 4:30 p.m. EST. The phone numbers: Louisville 584-1361; Lexington, 255-2333, outside those local dialing areas, throughout Kentucky, 1-800-222-6570.

Walk-in assistance is also available for those final days of the filing period. Residents in the Somerset area can visit

the IRS office in the Security Bldg., 207 W. Mt. Vernon St., next Friday, April 15, from 8:45 to 4:15 p.m. IRS urges last-minute filers to double check their returns for errors. Those taxpayers who wait until the last minute to file usually tend to make the most errors, cautions IRS. **STRETCHING YOUR FOOD DOLLAR**

Convenience often costs you more money, but you can save by adding your own convenience touches. You can save if you grate your own cheese, make your own white sauces, casseroles, cookies, bread crumbs, seasoned rice and salad dressings. Freeze to use later.

Easter Special

SAVE SAVE SAVE

VALUABLE COUPON

"PHOTO PROCESSING"

12 EXPOSURES — \$1.89

COLOR

20 EXPOSURES — \$2.79

ROLL

NO FOREIGN FILM

WITH COUPON

OFFER EXPIRES 4-12-77

KENTUCKY DRUG STORES, INC.

Coupon Good At

Young's Pharmacy

ONLY

Main St.

Mt. Vernon

PRICES ARE GOOD



HOMES ARE AVAILABLE



MONEY IS AVAILABLE



TERMS ARE FAVORABLE



TALK TO US



Lincoln County Federal Savings & Loan Association of Stanford

111 Main Street

Phones: 365-2120 or 365-2129

Stanford, Kentucky 40484



EQUAL HOUSING LENDER

MAKE IT A GOOD OLD-FASHIONED EASTER

Send the FTD Easter Basket Bouquet

Fresh spring flowers, the sweetest and prettiest, an embroidered woven basket—that's the charm of FTD's old-fashioned Easter Basket Bouquet. Perfect to send your favorite people. And so easy, the FTD way, your Florist can send FTD gifts almost anywhere, by wire. It's flower-sending season, please order early. (Most FTD Florists accept major credit cards.)



Another Easter tradition! FTD Lily Plant in a lovely woven Cover Up.



Say FTD, and be sure...worldwide.

© 1977 Florist Transworld Delivery

Mt. Vernon Florist

Ruth Fain

Ph. 256-2091

Mt. Vernon, Ky.

VOTE FOR

Robert E. Robinson

FOR

COUNTY JUDGE EXECUTIVE

"A Vote For Me Is A Vote For A Progressive

County With Management."

pd. for by candidate

REP. PRIMARY MAY 24, 1977

