

FROZEN FOOD FAVORITES

SPRING

Values Are Pop

HYDE PARK
ICE CREAM
ASSORTED FLAVORS
HALF GALLON
89¢

CHEF BOY-AR-DEE
FROZEN PIZZA 4 KINDS
13 OZ. PKG.
79¢

BANQUET
FROZEN DINNERS 6 KINDS
11 OZ. PKG.
49¢

MARTHA WHITE
ENRICHED FLOUR
5 LB. BAG
59¢
PLAIN OR SELF-RISING

STOKELY
GREEN BEANS Cut, French, Shells
16 OZ. CANS
3 89¢

PARAMOUNT
HOT DOG SAUCE
10 OZ. CANS
4 \$1

DIET RITE,
R. C. COLA
16 OZ. BOTTLES
8 \$1.09
PLUS DEPOSIT

PURE VEGE
CRIS SHORT
3 LB. CAN
\$1
LIMIT 1 WITH COUPON

HYDE PARK LABELS
EARN EXTRA MONEY FOR YOUR CHURCH
LABELS ON HYDE PARK FOOD PRODUCTS,
START SAVING TODAY! AFTER ACCUMULATING
ORGANIZATION SHOULD MAIL THEM TO ...
OFFICE, 1451 UNION AVE., MEMPHIS, TENN.

"SPRING SAVINGS"



STOKELY
GOLDEN CORN
16 OZ. CANS
4 \$1
WHOLE KERNEL OR CREAM STYLE

VALUES



ing Up All Over!

DAIRY SPECIALS FROM PIC-PAC!

HYDE PARK GRADE "A"

LARGE
EGGS

DOZEN **59¢**

KRAFT PHILADELPHIA

CREAM
CHEESE

8 OZ.
CTN.

53¢

KRAFT PLAIN OR PIMENTO

CHEEZ
WHIZ

8 OZ.
JAR

79¢

HYDE PARK

ENRICHED
BREAD

4 **\$1**
16 OZ.
LOAVES

NABISCO

OREO
COOKIES

15 OZ.
PKG.

79¢

NABISCO

DOUBLE-STUFF
OREOS

15 OZ.
PKG.

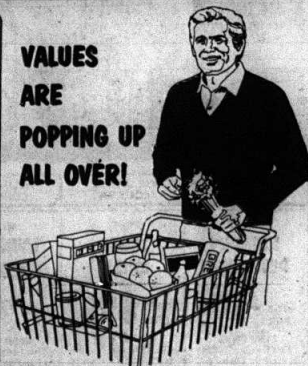
79¢

HYDE PARK DECORATED

PAPER
TOWELS

2 **69¢**
JUMBO
ROLLS

VALUES
ARE
POPPING UP
ALL OVER!



FOR YOUR LAUNDRY

CHEER
DETERGENT

49 OZ.
BOX **\$1 19**

LIMIT 1 WITH COUPON

TABLE

SCO
ENING

29

AND '10 ADDN. ORDER

EL REDEMPTION



OR CIVIC ORGANIZATION. SAVE THE
THEY'RE WORTH ONE HALF CENT EACH.

ON OF LABELS, YOUR CHURCH OR CIVIC

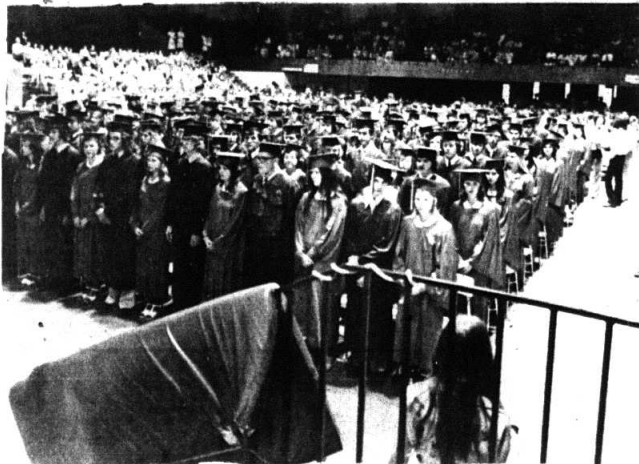
MALONE & HYDE, INC., EXECUTIVE

N. 38104.

The Mt. Vernon Signal, Mt. Vernon, Ky. 40456

VOLUME 90 - NUMBER 39

Thursday, June 2, 1977



Rockcastle County High School graduated a total of 168 seniors in its fifth class. Graduation was held Thursday, May 26 in the high school gymnasium. Guest speaker for the seniors was D.C. Anderson of the Kentucky Board of Education. Dr. Rudolph Burdette, Chairman of the Rockcastle County Board of Education presented diplomas.

Rockcastle County High School Graduates 168 Seniors in it's Fifth Class

A total of 168 seniors graduated from Rockcastle County High School on Thursday, May 26. The class marked the 5th time that seniors from all over Rockcastle County have graduated together.

D.C. Anderson of the State Board of Education was the guest speaker at commencement exercises. He was introduced by Charles B. Parsons, Superintendent of Rockcastle County Schools. The invocation was a musical rendition of the Lord's Prayer sung by senior Ernie Blevins. He was accompanied by Catina Cain at the piano. Miss Cain also graduated Thursday night.

The RCHS band, directed by Robert Pybas led off the special music and was followed by the vocal trio of Kim Cornelius, Jan Cummins, and Cheryl Vians. Diplomas were presented to the graduates by Dr. Rudolph Burdette, Chairman of the Board of Education of Rockcastle County Schools.

High School and Vocational Awards were presented by Lloyed Cain, Director of the Harry Sparks Vocation School and

Cleston Saylor, Principal of RCHS. Catina Cain, daughter of Mr. and Mrs. Lloyd Cain of Mt. Vernon, was named Valedictorian of her class with a grade average of 4.0 on a 4.0 scale. She never made any grade lower than an A during her four years of high school. Kim Cornelius, daughter of Mr. and Mrs. Kenneth Cornelius of Mt. Vernon, was named Salutatorian. Mr. Cornelius is assistant principal at RCHS.

Other award winners at the high school were: English, Catina Cain; Science, Donald Ramsey; Social Science, John Shivel; Mathematics, Donald Ramsey; Commerce, Sherri Burdette; Agriculture, Douglas Adams; Home Economics, Carolyn Lamb; Library, Frances McClure; Athletics (boy), Mark Cummins; Athletics (girl), Nancy French; Chorus, Ernie Blevins; Band, Catina Cain; Art, Walter Alsp; German, William Brown; Drama, Debbie Falin; Annual, Catina Cain; Newspaper, Bonnie Whitaker; Industrial Arts, David Bradley; Latin, Kimberly Cornelius.

Vocational School award winners were: Radio and T.V. Repair, Danny

Mink, Secretarial Award, Carolyn Lamb; Auto Mechanics, Raymond Burdette; Electricity, Roger Wallin; Welding, Jerry Hasty.

Secretarial certificates from the Harry Sparks Vocation School were presented to: Phyllis Bishop Deatherage, Sheila Brummett, Barbara Bullock, Debbie Cabbie, Judy Cain, Sandra Dailey Franklin, Pam Falin, Nancy French, Debbie Gambrell, Becky Hammond Childress, Sandra Hubbard, Joyce Isaacs, Dawn Stallworth, Patricia Kirby, Carolyn Lamb, Oma Leeger, Christine Marlow, Ruth Martin, Jo Ann Evans, Teresa McKinney, Pam McClure, Linda Miller, Sandra Miller, Debbie Moore, Joleen Moore, Priscilla Napier, Joy Norton, Janice Ponder, Brenda Renner, Anna Lee Rigby Smith, Donna Sears, Debbie Settles Parsons, Iris Singleton Parker, Jo Anna Smith, Vickie VanWinkle, Donna White, Leolla Wynn, Patricia Newton, Gail Benge. Jayne Warf and Regina Ponder.

SCHEDULED RIDES

Saddle Club rides scheduled for the month of June are: June 4, Andrew Cox, Sr. at Three Links, all day ride (bring your lunch); June 5, Wallace Marcum and Sue Cameron at Oscar Chasteen's; June 12, Dewey Thom at his farm; June 19, J.T. and Brenda Watts at Oscar Chasteen's; June 25-26, S-Tree Over-night ride-leave Renfro Valley at 9:30 a.m.

No meals will be served on this overnight ride. Bring food for you and your horse.

ASCS WILL REGISTER BEEF PRODUCERS JUNE 6-17

The Rockcastle County Agricultural Stabilization and Conservation Service (ASCS) office will register beef producers June 6-17 to vote on the beef research and information order," said Harold Ballinger. "Beef producers who fail to register cannot vote in the July referendum."

If over half of registered producers vote in the referendum and two-thirds of those voting approve the order, the Secretary of Agriculture will appoint a beef board, composed of not more than 66 beef producers, from names submitted by producer organizations. The board would collect assessments on sales of cattle and use the funds for beef research and information programs.

Registration may be in person or by mail. Those who wish to register by mail may request the ASCS county office to mail registration cards.

All persons who produce beef during calendar 1976 are eligible to register. This includes feedlot operators as well as dairymen. Each production entity—such as a family, partnership, or corporation—is entitled to one vote. A 4-H or FFA member may register provided he or she produces beef independent of the family operation.

From June 6-17, the ASCS county office will daily post a list of producers registered to vote in a conspicuous place. A final list will be posted June 22. Anyone who challenge the eligibility of any producer listed, Harold Ballinger, ASCS Rockcastle County Executive Director, will resolve challenges.

ARC Fund Drive Set

The Rockcastle County Jaycees wives are preparing themselves for their first project since their inception earlier this year.

The Kentucky Association for Retarded Citizens has a fund drive going at present and the wives have committed themselves to aid the ARC. ARC is an organization whose membership is not associated with any church or political party. It is entirely non-profit and exists in all 50 states.

There are 2500 chapters of ARC nationally with over 250,000 members. There are 35 chapters in Kentucky with a membership of almost 4000. Sixty percent of ARC members are parents of mentally retarded children. The other 40 percent is made up of relatives of the mentally retarded, professionals who work with retarded people, and many who themselves are victims of retardation.

Volunteers will be calling at homes in Rockcastle County on Saturday for support in the campaign to help the 675 developmentally disabled, the 400 mental retarded and the 275 with cerebral palsy, epilepsy and autistic disease in Rockcastle Co. Your help will be sincerely appreciated.

Dairy Day Set for Rockcastle County

Saturday, June 25, 1977 is festival time in Mt. Vernon for the seventeenth annual Dairy Day. The day will begin with the judging of Dairy Princess candidates, Dairy Dolls and Dairy Belles in the PCA office. Other activities include: song essays and crackers by 4-H members; luncheon for Dairy Princess candidates; State Dairy Princess, Dairy Dolls and Dairy Belles; parade starting at 1:00 p.m.; interview of Princess candidates on stage; talk by State Dairy Princess, Miss Sandra Stark; recognition of dairy leadership by Roy Brown, vice president of PCA; and drawing for a dairy heifer. Entertainment will be provided beginning (at 11:00 a.m.) by county music artists.

The Dairy Day Planning Committee set prizes for foats this year as follows: First - \$75, second \$50 and third \$25. A ten dollar prize will be awarded for the best decorated bicycle. No motorcycles will be allowed. Youth are encouraged to ride their bicycles and horses in the parade.

PLAYGROUND OPENS

The Mt. Vernon Playground will open Monday, June 6 for summer baseball, softball and basketball teams.

Boys and girls 7 & 8 years old and girls 9 & 10 years of age will have the field Monday, Thursday and Saturday at 5:30 p.m. Girls 11-15 on girls softball teams will play Tuesday and Friday at 5:30 p.m. and Saturday at 4:30. Children pay to 6 years of age will play Tee-ball Tuesday, Friday and Saturday at 6:30 p.m.

Little League and Pony League baseball teams will be scheduled according to the time, date and location of their games. Coaches for the men's basketball teams should contact Jerry Penzol at 256-4468 for their schedules.

The first week's schedule for Women's softball is as follows: Mon., June 6th, Stars vs. Hustlers, 6:30 and Sluggers vs. F. Troop at 7:30; Tuesday, the 7th, Sluggers vs. Jim's Girls, 7:30 Thursday, Raiders vs. F. Troop, 6:30 and Country Angels vs. Jim's Girls, 7:30; Friday, Country Angels vs. Stars, 7:30

(Cont.'d to P-4)

Beverly Hills Fire Strikes Local Couple's Family

Tammy Christa Kiner, 18, of Lebanon, Ohio and granddaughter of Mr. and Mrs. Wilbert Kiner of Mt. Vernon died in a fire that swept through the Beverly Hills Club in Southgate.

She was the daughter of Keith and Patricia Phillips Kiner, both natives of Rockcastle County. Mr. Kiner attended Livingston School and graduated from Mt. Vernon High School. Mrs. Kiner is a graduate of Livingston. She is the daughter of the late Mr. and Mrs. Lutha Phillips of Three Links.

By Tuesday morning, 160 bodies had been removed from the ruins of the exclusive club in northern Kentucky. Fire officials were speculating that all those who died had been removed to a temporary morgue set up at Southgate. 121 bodies had been definitely identified early Tuesday.

It was feared that as many as 400 people may have perished in the fire that started Friday night in the sprawling club.

Tammy Christa Kiner, like most of those whose bodies were discovered early, died of smoke inhalation. She had been accompanied to the club by Brent Crane of Waynesville, Ohio. Crane also died in the blaze.

Miss Kiner was to have graduated from Lebanon High School in Lebanon, Ohio on Sunday, May 29.

Besides her parents and grandparents, Miss Kiner is survived by two brothers, Craig and Kevin and one sister, Paulita, all at home.

Funeral services were held Wednesday at Oswald Funeral Home in Lebanon.

Mt Vernon Elementary Closes School With a Bang

Mt. Vernon Elementary School students closed their school year with a rush. The month of May was a series of events culminating with commencement for 8th graders May 24th.

The graduation took place at all four Rockcastle Co. Elementary Schools on May 24th at 7:00 p.m. This along with the primary election contributed to the reduction of crowds everywhere.

The Vernon Attorney Joseph E. Lambert was the guest speaker at Mt. Vernon's Commencement Exercise. The students were presented their diplomas by Dr. Rudolph Burdette, who was appointed Director of Pupil Personnel for Rockcastle County Schools. E.J. Smith, Mt. Vernon's assistant principal gave the invocation.

A reception was held in the school library after graduation in honor of the graduates and their parents.

Some of the eight grade girls were responsible for a 20-19 win in basketball, April 22. The girls, coached by Judy Alexander were: Sheila Pittman, Kim Deatherage, Jeany Baring, Pennie Miller, Mona Bivins, Jamie Anderkin, Pam Isaacs, Pam Mason, Kathy Carter and Kelli Cummins.

The teachers, coached by Judy Bullock were: Judy Bullock, Barbara Hattie, Patsy White, Kay Singleton, Dollie Roberts, Janet Hunt, Loretta Powell and Ann Stewart.

The Mt. Vernon Elementary School Junior Beta Club held their annual banquet May 6, 1977 at Boone Tavern in Hayes. Those attending were members, Martina Cromer, Kelli Cummins, Lesa Hayes, Mary Blanche Henderson, Helen Payne, Sheila Miller, Robbie Robinson, Vicki Spoonamore, Monica Taylor and Tracy Thompson. Special guests were Mr. and Mrs. Buford Parkerson, principal, Mr. and Mrs. Alfred Cummins, Mr. and Mrs. Jim Cox, Miss Mary Alice Hunt and Miss Virginia L. Hunt, sponsor.

The program was opened by an invocation given by Mr. Alfred Cummins and Mr. Jim Cox was the speaker. Each member was presented with a humorous moment. The highlight of the evening was the announcement of the Beta Club Sweetheart. Monica Taylor was the winner, who was chosen by a money vote. Everyone enjoyed a delicious meal.

The Junior Beta Club took a guided tour of Frankfort on May 10th. Their guide was a representative from the Frankfort Chapter of the DAR Historical Society. The points of interest visited were the new Governor's Mansion, Old Rockcastle Co. Courthouse, Floral Clock and the new Capitol. Many other historic sites were visited including Civil War homes.

The members of the club, sponsor and Mr. Junior Anglin, bus driver, enjoyed lunch at McDonald's and had a wonderful trip.

The faculty members met in the library at 10:00 a.m. on May 30th for a reception in honor of five teachers. Three retiring teachers, all first grade, Mrs. Marie Cox, Mrs. Reba Nee and Mrs. Hazel Linnell, were presented with silver trays. Also recognized and presented with a silver tray was Mrs. Martha Barnett, second grade teacher who retired last year. Mr. Buford Parkerson, principal, made the presentations. Mrs. Fannie Wallin, an expectant teacher, also was honored and presented with a baby gift by Mr. E.J. Smith, assistant principal.

The Mt. Vernon Elementary School Seventh and Eight Grade Buffet, with the theme, "You've Only Just Begun" was held in the gymnasium on May 19. Besides the Eighth Grade Graduating Class of 1977 as honored guests, special guests were Dr. and Mrs. Rudolph Burdette and Mrs. Isabel Math, members of the Board of Education; Mr. and Mrs. Buford Parkerson and Mr. and Mrs. E.J. Smith, principals; and member of the faculty, their husbands and wives.

Seventh grade sponsors are Miss Virginia Hunt, Mr. Keith Singleton and Mrs. Juanita Stanley. Eight grade sponsors are Mr. David Hansel, Mrs. Kathlene Hunt and Miss Christine Krueger.

The seventh and eighth graders who participate in the program were Robbie Robinson, Master of Ceremonies; Willie Lee Hiatt, Welcome; Jamie Anderkin, Response; Tracy Thompson, Blessing; Mary Henderson, Class Will; Roy Cummins, Class Prospect; and Kelli Cummins, Class Gifts.

For the first time, sports awards in football, basketball, both girls and boys, and outstanding cheerleader were

(Cont.'d to P-11)



Catina Cain



Kimberly Cornelius



Stephen C. Bullen of Mt. Vernon, right, was presented with a Certificate of Service by the Department for Natural Resources and Environmental Protection for "loyalty and devotion to duty" extending over a 10 year period of service as an employee of the Division of Forestry.



Mt. Vernon High School Class of 1961 held its 16 year class reunion on Saturday, May 28 at the Rockcastle

Steak House. Those who made it are pictured above. They are left to right, Kennon Lakes, Edna Lakes, Henry

Vannest, Mary Ponder, Norma Swallen, Dale Swallen.

Mount Vernon Signal

PUBLISHED EVERY THURSDAY
Main Street in Mt. Vernon, Kentucky 40456
Entered at Mt. Vernon Post Office
as Second Class Matter - Permit No. 1
In County - \$5 Out of County - \$6

James Anderkin, Jr., Publisher
Perlina M. Anderkin, Editor
Member Kentucky Press Association

Frankfort Watchline

By Ferrell Wellman

Some familiar names will be missing when the roll is called at the beginning of the 1978 Kentucky General Assembly. One name will be conspicuously absent; Rep. Norbert L. Blume, D-Louisville.

Blume, a former Speaker of the House, was elected to his first term from Louisville's 43rd District back in 1963. Over the years, his district became increasingly black. It finally caught up with him.

Blume was beaten by 54 votes by Carl Hines, a black. Hines was a member of the old Louisville School Board.

Although he is white, Blume has provided Louisville's West End with better representation than its two black representatives. Blume jammed civil rights legislation through a conservative House of Representatives. He was responsible for getting the measure approved which laid the ground work for the merger of the Louisville and Jefferson County school systems.

Blume's tenure as Speaker included some less than flattering moments. Blume's most notorious action came in the 72 General Assembly when he threw Rep. Hoover Dawahare, D Whitesburg, out of the House Chamber. Dawahare was charging that Blume had gone back on his word not to cut off debate on a sensitive issue for Eastern Kentucky when Blume gave him the heave-ho.

Also in 1972, Blume initiated an investigation into the release of a live turkey inside the House chambers. The turkey was supposed to be symbolic of a bad piece of legislation (called a turkey by lawmakers) that Governor Ford was supporting. The turkey died. So did the investigation.

Blume was a master at one of the legislators' favorite games: Beat The Press! He once banned photographers from the floor after a photograph has been taken of a sleeping lawmaker. Blume was also responsible for getting the press booted out of its third floor quarters in the Capitol Building.

Governor Julian Carroll stripped Blume of his Speaker's job at the Pre-legislative conference before the 1976 General Assembly. Blume was a little too independent of the governor's office for Carroll.

Blume had a way of evoking strong feelings among everyone who met him. In the legislature, he was a man who could easily be despised and appreciated in the same day.

When Blume stood to address his fellow lawmakers, they listened. His knowledge of parliamentary procedure was unsurpassed in this lower chamber. He could have easily made life miserable for Carroll's hand-picked Speaker, Rep. William Kenton, D-Lexington. He didn't.

In recent years, Blume spent much of his time in the legislature pressing for unions for public employees. That certainly didn't increase his popularity with business organizations.

As the May primary neared, Hines' campaign reached a fever pitch. Blume

worked in his yard. The old spark seemed to be gone. His concession speech was gracious.

Norbert Blume will be missed in Frankfort.

Blume was one of 13 incumbents who lost a primary. Thirteen representatives and four senators are not seeking re-election. At most, 74 incumbent representatives and 31 of the present 38 senators will return to Frankfort in January.

The ratio of Democrats to Republicans in both chambers is likely to remain about four-to-one.

James Gemin, 32, Lexington, Ky., salesman to Janice Higgins, 37, Lexington, Ky., nurse aide, May 26, 1977.

Bruce Faulkner, 24, Rt. 2, Mt. Vernon, carpenter, to Gwenda Layne Alcorn, Rt. 3, Mt. Vernon, student nurse, May 27, 1977.

Jerry Lane Doss, 26, Berea, Ky., steel worker, to Kathleen Denise Welsh, 22, Paint Lick, student, May 28, 1977.

James Gemin, 32, Lexington, Ky., salesman to Janice Higgins, 37, Lexington, Ky., nurse aide, May 26, 1977.

Bruce Faulkner, 24, Rt. 2, Mt. Vernon, carpenter, to Gwenda Layne Alcorn, Rt. 3, Mt. Vernon, student nurse, May 27, 1977.

Jerry Lane Doss, 26, Berea, Ky., steel worker, to Kathleen Denise Welsh, 22, Paint Lick, student, May 28, 1977.

Blume was one of 13 incumbents who lost a primary. Thirteen representatives and four senators are not seeking re-election. At most, 74 incumbent representatives and 31 of the present 38 senators will return to Frankfort in January.

The ratio of Democrats to Republicans in both chambers is likely to remain about four-to-one.

Blume was one of 13 incumbents who lost a primary. Thirteen representatives and four senators are not seeking re-election. At most, 74 incumbent representatives and 31 of the present 38 senators will return to Frankfort in January.

The ratio of Democrats to Republicans in both chambers is likely to remain about four-to-one.

Blume was one of 13 incumbents who lost a primary. Thirteen representatives and four senators are not seeking re-election. At most, 74 incumbent representatives and 31 of the present 38 senators will return to Frankfort in January.

The ratio of Democrats to Republicans in both chambers is likely to remain about four-to-one.

Blume was one of 13 incumbents who lost a primary. Thirteen representatives and four senators are not seeking re-election. At most, 74 incumbent representatives and 31 of the present 38 senators will return to Frankfort in January.

The ratio of Democrats to Republicans in both chambers is likely to remain about four-to-one.

Blume was one of 13 incumbents who lost a primary. Thirteen representatives and four senators are not seeking re-election. At most, 74 incumbent representatives and 31 of the present 38 senators will return to Frankfort in January.

The ratio of Democrats to Republicans in both chambers is likely to remain about four-to-one.

Blume was one of 13 incumbents who lost a primary. Thirteen representatives and four senators are not seeking re-election. At most, 74 incumbent representatives and 31 of the present 38 senators will return to Frankfort in January.

The ratio of Democrats to Republicans in both chambers is likely to remain about four-to-one.

Blume was one of 13 incumbents who lost a primary. Thirteen representatives and four senators are not seeking re-election. At most, 74 incumbent representatives and 31 of the present 38 senators will return to Frankfort in January.

The ratio of Democrats to Republicans in both chambers is likely to remain about four-to-one.

Blume was one of 13 incumbents who lost a primary. Thirteen representatives and four senators are not seeking re-election. At most, 74 incumbent representatives and 31 of the present 38 senators will return to Frankfort in January.

The ratio of Democrats to Republicans in both chambers is likely to remain about four-to-one.

Blume was one of 13 incumbents who lost a primary. Thirteen representatives and four senators are not seeking re-election. At most, 74 incumbent representatives and 31 of the present 38 senators will return to Frankfort in January.

The ratio of Democrats to Republicans in both chambers is likely to remain about four-to-one.

Blume was one of 13 incumbents who lost a primary. Thirteen representatives and four senators are not seeking re-election. At most, 74 incumbent representatives and 31 of the present 38 senators will return to Frankfort in January.

The ratio of Democrats to Republicans in both chambers is likely to remain about four-to-one.

Blume was one of 13 incumbents who lost a primary. Thirteen representatives and four senators are not seeking re-election. At most, 74 incumbent representatives and 31 of the present 38 senators will return to Frankfort in January.

The ratio of Democrats to Republicans in both chambers is likely to remain about four-to-one.

Blume was one of 13 incumbents who lost a primary. Thirteen representatives and four senators are not seeking re-election. At most, 74 incumbent representatives and 31 of the present 38 senators will return to Frankfort in January.

The ratio of Democrats to Republicans in both chambers is likely to remain about four-to-one.

Blume was one of 13 incumbents who lost a primary. Thirteen representatives and four senators are not seeking re-election. At most, 74 incumbent representatives and 31 of the present 38 senators will return to Frankfort in January.

The ratio of Democrats to Republicans in both chambers is likely to remain about four-to-one.

Blume was one of 13 incumbents who lost a primary. Thirteen representatives and four senators are not seeking re-election. At most, 74 incumbent representatives and 31 of the present 38 senators will return to Frankfort in January.

The ratio of Democrats to Republicans in both chambers is likely to remain about four-to-one.

Blume was one of 13 incumbents who lost a primary. Thirteen representatives and four senators are not seeking re-election. At most, 74 incumbent representatives and 31 of the present 38 senators will return to Frankfort in January.

The ratio of Democrats to Republicans in both chambers is likely to remain about four-to-one.

Blume was one of 13 incumbents who lost a primary. Thirteen representatives and four senators are not seeking re-election. At most, 74 incumbent representatives and 31 of the present 38 senators will return to Frankfort in January.

The ratio of Democrats to Republicans in both chambers is likely to remain about four-to-one.

Earl Kipeer, Rt. 1, Mt. Vernon; Casper Dewey McKinney, Rt. 1, Mt. Vernon; Connie Elliot Barnes, Rt. 2, Mt. Vernon; Deborah Joann Mize, Rt. 1, Mt. Vernon; Richard Harold Mize, Rt. 1, Brodhead.

Blume was one of 13 incumbents who lost a primary. Thirteen representatives and four senators are not seeking re-election. At most, 74 incumbent representatives and 31 of the present 38 senators will return to Frankfort in January.

The ratio of Democrats to Republicans in both chambers is likely to remain about four-to-one.

Blume was one of 13 incumbents who lost a primary. Thirteen representatives and four senators are not seeking re-election. At most, 74 incumbent representatives and 31 of the present 38 senators will return to Frankfort in January.

The ratio of Democrats to Republicans in both chambers is likely to remain about four-to-one.

Blume was one of 13 incumbents who lost a primary. Thirteen representatives and four senators are not seeking re-election. At most, 74 incumbent representatives and 31 of the present 38 senators will return to Frankfort in January.

The ratio of Democrats to Republicans in both chambers is likely to remain about four-to-one.

Blume was one of 13 incumbents who lost a primary. Thirteen representatives and four senators are not seeking re-election. At most, 74 incumbent representatives and 31 of the present 38 senators will return to Frankfort in January.

The ratio of Democrats to Republicans in both chambers is likely to remain about four-to-one.

Blume was one of 13 incumbents who lost a primary. Thirteen representatives and four senators are not seeking re-election. At most, 74 incumbent representatives and 31 of the present 38 senators will return to Frankfort in January.

The ratio of Democrats to Republicans in both chambers is likely to remain about four-to-one.

Blume was one of 13 incumbents who lost a primary. Thirteen representatives and four senators are not seeking re-election. At most, 74 incumbent representatives and 31 of the present 38 senators will return to Frankfort in January.

The ratio of Democrats to Republicans in both chambers is likely to remain about four-to-one.

Blume was one of 13 incumbents who lost a primary. Thirteen representatives and four senators are not seeking re-election. At most, 74 incumbent representatives and 31 of the present 38 senators will return to Frankfort in January.

The ratio of Democrats to Republicans in both chambers is likely to remain about four-to-one.

Blume was one of 13 incumbents who lost a primary. Thirteen representatives and four senators are not seeking re-election. At most, 74 incumbent representatives and 31 of the present 38 senators will return to Frankfort in January.

The ratio of Democrats to Republicans in both chambers is likely to remain about four-to-one.

Blume was one of 13 incumbents who lost a primary. Thirteen representatives and four senators are not seeking re-election. At most, 74 incumbent representatives and 31 of the present 38 senators will return to Frankfort in January.

The ratio of Democrats to Republicans in both chambers is likely to remain about four-to-one.

Blume was one of 13 incumbents who lost a primary. Thirteen representatives and four senators are not seeking re-election. At most, 74 incumbent representatives and 31 of the present 38 senators will return to Frankfort in January.

The ratio of Democrats to Republicans in both chambers is likely to remain about four-to-one.

Blume was one of 13 incumbents who lost a primary. Thirteen representatives and four senators are not seeking re-election. At most, 74 incumbent representatives and 31 of the present 38 senators will return to Frankfort in January.

The ratio of Democrats to Republicans in both chambers is likely to remain about four-to-one.

Blume was one of 13 incumbents who lost a primary. Thirteen representatives and four senators are not seeking re-election. At most, 74 incumbent representatives and 31 of the present 38 senators will return to Frankfort in January.

The ratio of Democrats to Republicans in both chambers is likely to remain about four-to-one.

Blume was one of 13 incumbents who lost a primary. Thirteen representatives and four senators are not seeking re-election. At most, 74 incumbent representatives and 31 of the present 38 senators will return to Frankfort in January.

The ratio of Democrats to Republicans in both chambers is likely to remain about four-to-one.

Blume was one of 13 incumbents who lost a primary. Thirteen representatives and four senators are not seeking re-election. At most, 74 incumbent representatives and 31 of the present 38 senators will return to Frankfort in January.

The ratio of Democrats to Republicans in both chambers is likely to remain about four-to-one.

Blume was one of 13 incumbents who lost a primary. Thirteen representatives and four senators are not seeking re-election. At most, 74 incumbent representatives and 31 of the present 38 senators will return to Frankfort in January.

The ratio of Democrats to Republicans in both chambers is likely to remain about four-to-one.

Blume was one of 13 incumbents who lost a primary. Thirteen representatives and four senators are not seeking re-election. At most, 74 incumbent representatives and 31 of the present 38 senators will return to Frankfort in January.

The ratio of Democrats to Republicans in both chambers is likely to remain about four-to-one.

Blume was one of 13 incumbents who lost a primary. Thirteen representatives and four senators are not seeking re-election. At most, 74 incumbent representatives and 31 of the present 38 senators will return to Frankfort in January.

The ratio of Democrats to Republicans in both chambers is likely to remain about four-to-one.

Blume was one of 13 incumbents who lost a primary. Thirteen representatives and four senators are not seeking re-election. At most, 74 incumbent representatives and 31 of the present 38 senators will return to Frankfort in January.

The ratio of Democrats to Republicans in both chambers is likely to remain about four-to-one.

Blume was one of 13 incumbents who lost a primary. Thirteen representatives and four senators are not seeking re-election. At most, 74 incumbent representatives and 31 of the present 38 senators will return to Frankfort in January.

Thank You

To the voters of the 5th District:

Thank you for the confidence you have placed in me to represent you and the 5th district for the next four years. A special thanks to the ones who worked so hard for me and also I would like to thank the ones who worked so hard against me.

Ernest Mason

REVIVAL

Central Baptist Church

Mt. Vernon, Ky.

Time: 7:30 P.M. June 6-12

Evangelist Bro. Melvin Nixon

Preach at the High Point Baptist Church, High Point, Ohio

Special Singing

Everyone Welcome

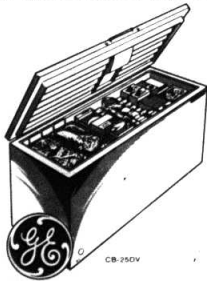


Anniversary SPECIALS

GENERAL ELECTRIC APPLIANCES & TELEVISION

HUGE FREEZER CAPACITY FOR THE BUDGET-MINDED!

TWO APPLIANCES IN ONE... DOUBLE CONVENIENCE!



- 2 sliding baskets, vertical divider.
- Temperature control.
- Automatic interior light.
- Self-adjusting inner lid.

- "Power-on" signal light.
- Built-in lock with self-ejecting key.
- Up-front defrost drain.
- 69 1/2" wide.

- 3.79 cu. ft. freezer.
- Two low 'n' Easy trays under protective package rack.
- Automatic defrosting in refrigerator section.
- Two vegetable bins.
- Cool-free back.
- Only 30 1/2" wide, 64" high.

Was \$469⁹⁵

Now \$389⁹⁵

Was \$399⁹⁵

Now \$299⁹⁵

Bryant Bros.

Main St.

Mt. Vernon, Ky.

County Statistics

Deeds Recorded

Russell and Rosealine Smith, real property located in Rockcastle County to Patricia Smith.

Lena and Charles Machal, Minnie Lee and Clyde Barnett, real property located in Rockcastle County to Conrad Parrett, tax \$17.00.

Hansford and Maudie Lunsford, Rosella Spencer, Opel Kelley, Geneva and Allen Short, Virgil and Leoda Lunsford, real property located in Rockcastle County to Virgil and Leoda Lunsford, tax \$5.00.

Robert and Bettie Sigmon, real property located in Rockcastle Co. to Virgil and Irene Sowder, tax \$25.00.

Ronald and Betty Jean Anglin, real property located in Rockcastle Co. to Hattie Anglin Long, no tax.

Terry and Cora Jane Wilson, real property located in Rockcastle Co. to Horace and Victoria Jean Johnson, tax \$1.50.

Owen and Helen McGuire Noel, real property located in Rockcastle Co. Paul D. and Helen Faye Owens, tax \$4.00.

Betty VanWinkle, James L. and Ida Mae VanWinkle, Mary Magdalene Kates, O.T. VanWinkle, real property located in Rockcastle Co. to W.M. and Nora Farthing, tax \$5.50.

Marriage License

Robert Ray Bullock, 18, Corbin, Ky. barber, to Penny DeNell Cromer, 15, Mt. Vernon, Ky., student, May 23, 1977.

Jeffrey Kermit Blair, 17, Mt. Vernon, Ky., student, to Etta Darlene Griffin, Mt. Vernon, student, May 25, 1977.

Quarterly Court

Speeding: Michael A. Cathers, Beverly Bikerson, Danny E. Brock, Joseph O. McAdams, Weldon Frederick Hatcher, Michael D. James, Debra S. Savor, Brian Marshall Ney, Pietro Joseph Miceli, Winston L. Grooner, Raymond Trockenbrod, Barney Lee, Walter G. Key, Jimmy W. Chestnut, 140 and cost.

No registration plate: Larry Douglas Hogg, \$10 and cost.

Unlawfully conduct: Glen Robinson, \$10 and cost.

Public Intoxication: William Clay Hayes, 10 days in jail (jail sentence probated).

The following persons were issued a driver license or learner permit on Friday, May 27th, 1977.

DRIVER LICENSE:
Melberta Cash Robbins, Brodhead; Betty Sue Sowder, Mt. Vernon; Boyd

License & Permits

The following persons were issued a driver license or learner permit on Friday, May 27th, 1977.

DRIVER LICENSE:
Melberta Cash Robbins, Brodhead; Betty Sue Sowder, Mt. Vernon; Boyd



Real Estate

By SAM FORD

REALTOR

Exclusive Right To Sell

When listing your home with a Realtor to sell, there are a variety of arrangements you can make. But if you are seriously intent on selling your home within a reasonable time and at the price you are asking, it would pay to consider making an "exclusive right to sell" agreement.

This gives the Realtor the actual right to his commission if he actually sells your home during the listing period, or if another Realtor sells it, or if you sell it yourself!

Under these conditions, the Realtor will have the added incentive and protection to go all-out in heavily

advertising your house and showing it to prospects. He will not be afraid of bringing it to the attention of other Realtors who may have qualified prospects. As a rule, Realtors are willing to cooperate and share the single commission. That give you the advantage of having several Realtors make a determined effort to sell your home.

If there is anything we can do to help you in the field of real estate, please phone me drop in at Ford Realty & Auction Co., Inc., Mt. Vernon Ph. 256-4545. We're here to help!

AUCTION

Of Mr. and Mrs. Glen Cromer's

MOBILE HOME & LOT

Sat., June 11, 1977-1:30 P.M.

Lake Linville,
Renfro Valley, Kentucky

LOCATED: Turn off U.S. 25 at Renfro Valley onto the Lake Linville Road and proceed to Boat Dock. Auctions signs will lead you to the sale.

Mr. and Mrs. Glen Cromer has authorized our company to offer for the high dollar this dandy investment property consisting of mobile home and lot.

Mobile home measures 10 x 51, it has living room and kitchen combination, 2 bedrooms and bath, and has electric heat. The mobile home is situated on a large wooded lot measuring approx. 130 x 116 x 97. The ideal home for the small family or an excellent weekend retreat, being able to utilize all the Lake Linville facilities.

If you're in the market for a good home or investment - be sure to mark your calendar to attend this important sale.

The owner reserves the right to sell the land and the mobile home separately and them combine to reflect the best returns for the owners.

TERMS: 20 percent down day of sale - balance due within 30 days upon delivery of deed.

For additional information contact Mr. and Mrs. Cromer at 256-4935 or:



Col. Sam Ford Realtor-Auctioneer
Col. Bill Randolph Auctioneer
Col. Roy Adams Realtor-Auctioneer
Col. Jerry Ham Auctioneer
Col. Danny Ford Realtor-Auctioneer

Office-Ph. 256-4545 Night 256-4588

Savings Multiply WITH THESE FOOD VALUES



FRESH GRADE A
WHOLE FRYERS

Limit 4

39¢

SALT BACON

59¢



PORK CHOP SALE

FIRST CUTS

95¢

CENTER CUT
RIB

1.15

CENTER CUT
LOIN

1.25



FRESH LEAN
GROUND BEEF
3 LB. OR MORE

79¢

GROUND
CHUCK

1.09



Oscar Mayer WEINERS
Full Pound

99¢

WHOLE
PICNICS

69¢

SLICED

79¢



12 Oz. Oscar Mayer
BOLOGNA

99¢

1 Lb. Pkg.
Oscar Mayer
HAM STEAKS

2.69

12 Oz. Lay's
BACON

99¢



250 S&H Stamps
With \$25.00 Or More
Order

100 S&H Stamps
With \$10.00 to \$24.99
Order

COUPON
WORTH 50
S&H Green Stamps
With the purchase of
1 Lb. or more
of Mazola Margarine
mv cpn exp 6-8-77

COUPON
WORTH 50
S&H Green Stamps
With the purchase of
2 5 lb. bags of
Pure Cane Sugar
mv cpn exp 6-8-77

COUPON
WORTH 50
S&H Green Stamps
With the purchase of
1 1/2 doz. or more
of Keebler Cookies
mv cpn exp 6-8-77

COUPON
WORTH 50
S&H Green Stamps
With the purchase of
1 1/2 doz. or more
of Robin Hood Flour
mv cpn exp 6-8-77

COUPON
WORTH 50
S&H Green Stamps
With the purchase of
1 1/2 doz. or more
of Skippy Peanut Butter
mv cpn exp 6-8-77

COUPON
WORTH 50
S&H Green Stamps
With the purchase of
1 1/2 doz. or more
of Mazola No-Stick
mv cpn exp 6-8-77

COUPON
WORTH 50
S&H Green Stamps
With the purchase of
1 1/2 doz. or more
of Maxwell House
Coffee
mv cpn exp 6-8-77

COUPON
WORTH 50
S&H Green Stamps
With the purchase of
1 1/2 gal. or more
of Ice Cream
mv cpn exp 6-8-77

COUPON
WORTH 50
S&H Green Stamps
With the purchase of
1 1/2 doz. or more
of DAWN Dish Soap
mv cpn exp 6-8-77

COUPON
WORTH 50
S&H Green Stamps
With the purchase of
2 Pkg. or more
of Heinz Ketchup
mv cpn exp 6-8-77

COUPON
WORTH 50
S&H Green Stamps
With the purchase of
2 Pkg. or more
of Heinz Ketchup
mv cpn exp 6-8-77

COUPON
WORTH 50
S&H Green Stamps
With the purchase of
2 Pkg. or more
of Heinz Ketchup
mv cpn exp 6-8-77



1 Lb.
Regular Mazola
MARGARINE

69¢

S&H Green Stamps
America's most
valuable stamps



PURE CANE SUGAR
5 LB. BAG

69¢

LIMIT (1) WITH '10" ORDER OR MORE



20¢ Off On
36 Oz. Golden Griddle
SYRUP

With This Coupon
mv cpn exp 6-8-77

79¢

C.C. BIGGS COOKIES OR
CREAM FILLED SANDWICH
COOKIES
From Keebler



ROBIN HOOD 25 LB. PLAIN OR SELF-RISING
FLOUR

\$ 2.99

LIMIT (1) WITH
'10" OR MORE
ORDER



Wishbone
Deluxe
French, Italian,
1000 Island,

2 For
99¢



18 Oz. Skippy
PEANUT
BUTTER

89¢

NEW FROM KEEBLER
TUC CRACKERS

67¢

303 SIZE CANS
ARGO PEAS

4 For
95¢



With This
Coupon

25¢ Off On
NO-STICK
From Best Foods
exp 6-8-77



4 LB. BAG
PEAK BRAND
MIXED
BEANS

79¢

Limit (1) With
'10" Or More Order



Food Fair Coupon
This Coupon Worth
\$1.00

On 3 Lb. Can Maxwell House
COFFEE
exp 6-8-77



FOOD FAIR
BREAD
16 OZ. LOAVES

4 FOR
\$1.00

DELMONICO
MACARONI OR SPAGHETTI

5 For
99¢

32 Oz. J.F.G.
SALAD DRESSING

69¢



Limit (1) With '10" Or More Order

SUNSHINE
CRACKERS
1 Lb. Box

2 For
99¢



FOOD FAIR 1/2 GALLON
ICE CREAM

95¢



10' OFF
DAWN

WE SAVE
YOU
MORE

87¢ Pepsi
Cola

8 pak
16 oz.

\$1.19

plus deposit

3 Lb. Bag
YELLOW ONIONS

69¢

VINE RIPE
TOMATOES
2 LBS.

55¢

U.S. NO. 1
FLORIDA
POTATOES
10 LB.
BAG

\$1.49

NEW
CABBAGE
2 LB.

35¢

New Florida
YELLOW
CORN

3 For
47¢

Around Brodhead

By Marjorie Shivel

Mr. and Mrs. Ernest Robbins were in Lexington Friday afternoon for Mr. Robbins' check-up.

Mr. Doug Proctor was able to return to his home after being a patient in Rockcastle County Hospital this week.

Mr. and Mrs. Lawson Whitt were in Lexington Friday for Mr. Whitt to consult a doctor.

Mr. Carter Caudill of Covington spent the week with his daughter, Mr. and Mrs. Bobby Proctor, Doug, Elizabeth and Paula.

Mr. and Mrs. Richard Shivel entertained with a potluck cookout Saturday night at their home. Those attending were Mr. and Mrs. Jerry Bocke and David of Lebanon, Virginia, Mr. and Mrs. Jerry Brooks, Mr. and Mrs. Hubby Machal, Anthony and Alecia, Bro.

and Mrs. Roger Carr, Cindy and Rodney, Mr. and Mrs. Richard L. Shivel and Robyn, Larry, Jenny and Jeff Shivel. Robyn Lynn Shivel and Sarah and Susan Whitt all celebrated their birthdays Friday, May 27th.

Mary E. Carson and her brother Deck B. Chandler, have been visiting with her children, E.G. John B. and Donna in San Pedro, California. While there they enjoyed trips to Marineland, Griffith Park, Disneyland, Universal Studios, and many other places of interest. On the last night of their visit she was treated to a surprise birthday dinner at the home of her niece Nina B. and Bill M. Cash. Present at the dinner were Mr. and Mrs. Bill Cash, Mr. and Mrs. Scott Wise, Scotty and Jennifer, Lynda Cash, Mr. and Mrs. John B. Carson and the guest of honor, Mrs. Mary E. Carson.

Mr. and Mrs. Walter Baldwin and Mr. and Mrs. Lloyd Shuts of Quail spent the weekend in the Smoky Mountains. Mrs. Ruth Baker was confined to her home over the weekend due to illness.

Jeff Shivel was confined to his home last week due to illness.

Mr. and Mrs. Keith Adams and sons visited her parents Mr. and Mrs. Albert Martin over the weekend enroute to their home in Mason, Ohio after a vacation in Myrtle Beach, South Carolina.

Mrs. Ruby Cater and Granddaughter, Debbie Wilson of Hamilton, Ohio visited Mr. and Mrs. E. J. Taylor, Larry and Harold over the weekend.

Mrs. Ruby Adams was in Lexington Saturday morning.

Mr. and Mrs. Jerry Brooks were in Lexington Monday on business.

Richard Shivel was in Frankfort on business.

Mr. Frank Watson's holiday visitors were Mr. and Mrs. Hugh McBea, Jr. of Pennsylvania, Mr. and Mrs. Jim McBea, Kim, Pam, Diana and family all of Louisville, Eugene McBea of Jacksonville, Florida, Miss Margaret Chaney, New Albany, Indiana, Mr. and Mrs. Earl Parsons of Louisville, Mr. and Mrs. Corky Kerns, Mary Beth and Lorie of Cincinnati, Mr. and Mrs. Johnny-Armstrong, Crab Orchard, Mr. and Mrs. Terrill Chandler and Mrs. Deborah Newland and Chris.

Mr. Cecil and Miss Annabelle Smith of Indianapolis, Indiana were here with relatives this weekend.

Holiday company of Mrs. Lula Russell were Mrs. Lucy Buffenbarger of Marion, Indiana, Mrs. Geraldine Hurley and three sons of Marion, Indiana, Mr. and Mrs. Jim Jarvis and three daughters of Hamilton, Ohio, Mr. and Mrs. Woody Thornton, Reading, Ohio, Mr. and Mrs. Everett Bray, Reading, Mr. and Mrs. Raymond McLemore, Lockland, Mr. and Mrs. Joe Russell and son of West Carrollton, Ohio.

Mrs. Elizabeth Haff's weekend guests were Mrs. Marie Gravelly and Douglas, Mr. and Mrs. Paul D. Gravelly, Pam and Dennis all of Jackson, Ky. Mrs. Jimmy Cass of Longon, Ky. Mr. and Mrs. Richard Gravelly of Sparta, Tenn., Mr. and Mrs. David Gravelly, Mr. and Mrs. Wade of Louisville, Mrs. Bill Cass and Susan Cass.

Mr. Vernon Moore remains seriously ill in the VA Hospital in Lexington.

Memorial weekend guests of Mr. Noah Messer were his children and grandchildren, Russell, Betty, Gene, Jerry and Marvin Messer of Michigan, Mike and Kathy Owens of Kettering, Ohio, Howard and Daphne Owens, Jeff Owens, and Gail Gilbert of Ohio, Billy Brown of Englewood, Ohio, Kathy Arnett, Greensville, Ohio, Pete and Billy Messer and three children of Artemus, Ohio, Dennis and Sharon Lawrence of Richmond, Arthur and Daisy Messer of Cumberland, Ky., Mr. and Mrs. Wendell Lawrence, Eddie, Kermit and Mary Ann Messer, Destie and Dana Harris, Rulie and Hester Lawrence, Denton, Kathy and Chris Owens.

Weekend guests of Mrs. Bertha Adams were Lucy Buffenbarger, two daughters and six grandchildren from Ohio and Indiana, Mr. and Mrs. Everett Bray, Mr. and Mrs. Buddy Adams and Rob all of Reading, Ohio, Mr. and Mrs. Jackie Adams and Sheila of Indiana, Mr. and Mrs. Frank Velasquez of Marion, Indiana, Mr. and Mrs. Charles Adams and niece of Lockland, Mr. and Mrs. Bobby Adams and children of Nicholasville, Mr. and Mrs. Billy McKinney, Tim and Jeff of Ottawa, Ronnie and Linda Adams, Mr. and Mrs. Jimmy Adams of Junction City. They all spent Saturday evening with Mr. and Mrs. John Browning.

Mr. and Mrs. Bill Honeehl and children of Green Hills, Ohio, Mr. and Mrs. Willis Joe Bussell and children of Cincinnati, Ohio, Mr. and Mrs. Carl Bullock and girls of Arlington Heights were here visiting their parents during the holiday.

Larry Taylor, Bryan Bussell, Ann Gentry and friend from Nicholasville attended the "Indy 500" during the weekend.

Theresa Glovak spent Monday night



Senior Student Librarians Honored—Pictured above are six members from Rockcastle County High School who have received special certificates for service as Student Media Assistants.

They are front row, from left: Marjorie Jill Stevens and Mary Diane Pingleton. Back row, Leola Wynn, Sadie Beth Mink, Priscilla Napier and Frances Irene McClure.

"PLAYGROUND"

(Cont.'d from front)

and Saturday, Hustlers vs. Suggers, 7:30.

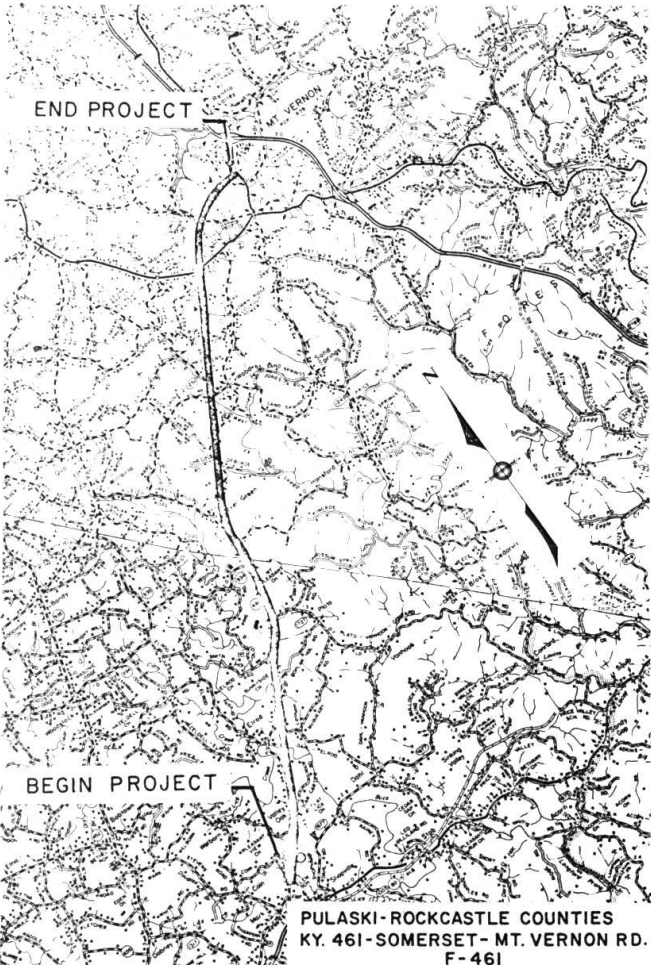
The Men's Softball Schedule for the first week is: Monday, Independent Business vs. Berea Auto Parts, 8:30; and Fain Furniture vs. Thunderbirds, 9:30; Tuesday, Bittersweet Shel vs. Pic Pac, 8:30 and Country Kitchen vs. Pioneer Coal, 9:30; Thursday, Rockcastle Jaycees vs. Independent Business, 8:30 and Pioneer Coal vs. Berea Auto Parts, 9:30; Friday, Bittersweet Shel vs. Thunderbirds, 8:30 and Fain Furniture vs. Rockcastle Jaycees, 9:30; Saturday, Pic Pac vs. Berea Auto Parts at 8:30 and Fain Furniture vs. Country Kitchen at 9:30.

with Jenny Shivel.

Mr. and Mrs. Steve Owens have returned from a two week tour of Europe.

Mr. and Mrs. Charles Stewart of Louisville, Mr. and Mrs. Carine Brooks of Anchorage, Ky., Mr. and Mrs. Walter Lightsey, Sun City Center, Florida visited Mr. and Mrs. Dan Gray, Mrs. F. Earl Mullins and Mr. and Mrs. George Brooks over the weekend.

Mrs. Lorene Hysinger of Louisville was here over the weekend with Mr. and Mrs. Billy B. Bussell and Mrs. Edra Hesterman.



PULASKI-ROCKCASTLE COUNTIES
KY. 461-SOMERSET- MT. VERNON RD.
F-461

NOTICE OF HIGHWAY CORRIDOR APPROVAL

The Department of Transportation is planning to proceed with the development of the proposed highway improvements on the KY 461 Somerset - Mount Vernon Road, F 461, beginning at the north end of the KY 80 - KY 461 Connector in Pulaski County, and ending at the junction of US 25 near the 175 Renoir Valley Interchange in Rockcastle County, a distance of 16.47 miles (See area map this page).

Since the Federal Highway Administration has approved the Corridor proposed for this project, the Department of Transportation will begin work on the next phase of engineering necessary for the development of this project.

The project will consist of a Class 2 facility for the portion beginning at the north end of the KY 80 - KY 461 Connector in Pulaski County, and ending just south of its junction with U. S. 150. A Class 2 facility consists of two 12 foot driving lanes and 12 foot shoulders. The other portion of the project beginning just south of US 150 and ending at the junction of US 25 near the 175 Renoir Valley Interchange in Rockcastle County, will be a Class 1 facility. A Class 1 facility, as it relates to this project, will consist of a 4-lane highway with a 50 foot depressed median.

The project exhibits, displays, Final Environmental Impact Statement, and all other data concerning the development of this project may be inspected and copied at the Department of Transportation District Office on South US 27 in Somerset, Ky.

J. H. Sturgill
District Engineer
Department of Transportation
Bureau of Highways
P. O. Box 780
Somerset, Kentucky 42501

AUCTION

Of Mr. and Mrs. Billy P. Cass' .
9 Acres & Mobile Home
MORE OR LESS
Sat., June 11, 1977-10:30 A.M.



Bowling Ridge Road,
Brodhead,
Rockcastle Co., Ky.

LOCATION: Turn off Hwy. 150 near Sewder Nursing Home onto West Street, proceed about 1 mile to the auction sale. Auction signs are posted.

Mr. and Mrs. Billy Cass are moving to their farm and have authorized our company to offer for the high dollar this highly desirable baby farm and spacious mobile home.

The mobile home consists of 3 bedrooms, living room with brick fireplace, built in kitchen, dining room and 2 baths. It is a total electric home with automatic washer and dryer hookup.

The farm consists of 9 acres more or less with 5 to 6 acres in grass, a dandy small pond, an excellent garden spot and a panoramic view. Even though the property has all these attractive features, the very best asset to the property is the privacy it affords.

The owner reserves the right to sell the land and the mobile home separately and then combine to reflect the best returns for the owner.

TERMS: 20 percent down at sale and the balance within 30 days upon delivery of deed.

For additional information contact Mr. and Mrs. Cass at 758-8647 or:

FORD
Realty & Auction Co., Inc.
Mt. Vernon, Ky.

R REALTOR
Col. Sam Ford Realtor-Auctioneer
Col. Bill Ruppel Realtor-Auctioneer
Col. Ray Adams Realtor-Auctioneer
Col. Jerry Hem Realtor-Auctioneer
Col. Danny Ford Realtor-Auctioneer

Office-Ph. 256-4545 Night 256-4588

Social and Women's News



MRS. CAUDILL CALLS MEETING

Mrs. Rose Caudill of Hazard, Ky., 1977 President of the Mt. Vernon High School Association, Classes 1914-1942 inclusive, called a meeting recently at the home of Mrs. Larry Travis, with the chairman of each committee, planning for the Annual Homecoming Dinner at the Rockcastle County High School Building for September 17th.

Mrs. Dees Donovan of Mt. Sterling the guest of her sister, Mrs. Travis and family, and a former class mate of Mrs. Caudill attended the meeting.

Others present were Mrs. Ruby Adams, Mrs. J.D. McFerron, Mrs. J.W. Griffin, Mrs. Edna Fain, Mrs. L.D. Bryant, Mrs. Hazel Owens, and Mrs. Leila Stokes.

Cake and punch were served by hostess, Mrs. Donovan and Mrs. Travis.

Personals

Mrs. Brenda Saylor of Johnson City, Tennessee, Heather and Heath are spending two weeks with her parents. Mr. and Mrs. Willie Nicely, Mrs. Saylor helped celebrated Mr. Nicely's birthday, Sunday, May 29. While her husband is on duty with the National Guard in Georgia.

By Mrs. Geo. Burton

Mrs. Gravelly Burton and Mrs. Noah Brock visited Mr. and Mrs. George Burton last Thursday evening.

Sympathy is extended to the Carpenter family in the loss of their infant son.

Mrs. Virgil Brock was dinner guest of her sister, Mrs. Lona Logsdon last Friday.

Mr. and Mrs. Stanley Burton and daughter Penny of Champaign, Illinois, spent the weekend with their parents, Mr. and Mrs. Harris Burton and Mr. and Mrs. Bobby Carter.

Mr. and Mrs. George Burton were in Richmond and Berea last Saturday. Robert Anglin was in London Saturday on business.

Mrs. Clara Bustle had the misfortune of falling and breaking her arm recently. We wish her a speedy recovery.

Mr. and Mrs. Robert Barron and children of Paris, Mr. and Mrs. Raymond Kirby and children of Mason, Ohio and Estil Kirby of Finely, Ohio spent the weekend with their parents, Mr. and Mrs. Robert Kirby.

Those visiting Mr. and Mrs. George York last Thursday were Mr. and Mrs. Clinton Graves, Mrs. Hazel Thompson Hazel Nobel, Mr. and Mrs. Edd McCracken, Charley York and Manuel Shepherd.

Weekend visitors of Mr. and Mrs. George York and Elizabeth Jane were Mr. and Mrs. James H. Robinson and daughter Lesia of Hamilton, Ohio. Mr. and Mrs. Kenny Renner and children, and Albert York of Cincinnati, Ohio. Mr. and Mrs. Floyd McClure and sons, Mark and Danny of Mt. Vernon and Mr. and Mrs. Vernon Mullins of Indiana.

Mr. and Mrs. Donnie Saylor and daughter, Mrs. Sylvia Bledsoe and daughter, Cynthia of Richmond visited Mrs. Hazel Cummins during the weekend.

Mrs. Kenny Burton visited Mr. and Mrs. Harris Burton during the weekend. Kathy Carter accompanied Mr. and Mrs. Stanley Burton to their home in Champaign, Illinois, Monday.

Sympathy is extended to the families of Mrs. Lillie Hysinger, Mrs. Nettie Henson, Chester Houk, and Raymond Brummett in the loss of their loved ones.

George Burton celebrated his birthday Sunday May 29th. Those visiting Mr. and Mrs. George Burton Sunday evening were Mr. and Mrs. Troy Roberts of Rutledge, Tennessee, Mr. and Mrs. Wayne Roberts and children of Jefferson City, Tennessee, Mr. and Mrs. Stanley Burton and daughter, Penny of Champaign, Illinois, Mr. and Mrs. Robert Anglin and Nancy, Mr. and Mrs. Bennett Burton and Sheila and Mr. and Mrs. Harris Burton.

Mr. and Mrs. Cecil Houk of South Carolina were called here due to the sudden death of his father, Mr. Chester Houk.

Mr. and Mrs. Earl Blanton and children visited Mr. and Mrs. Carrol Blanton, Jr. and family, Monday evening.

Sympathy is extended to the family of Mr. and Mrs. W. L. Kineer and family in the loss of their granddaughter, Miss Tammy Kineer of Ohio.

Mr. and Mrs. Howard Owens, Mr. and Mrs. Mike Owens, Jeff Owens and friend of Dayton, Ohio visited Mr. and Mrs. Millard Owens and Mr. Noah Messer during the weekend.

Mr. and Mrs. Casper Owens of Englewood, Ohio visited Mr. and Mrs. Millard Owens and other relatives here during the weekend.

Mr. and Mrs. Charles Milburn and Mrs. Mattie Mize and family of Dayton, Ohio visited Mr. and Mrs. Milard Owens and other relatives during the weekend.

Mr. and Mrs. Cecil Houk and baby visited her mother, Mrs. Sybil Souder during the weekend.

By Mrs. Leila Stokes

Mr. and Mrs. Wayne VanHook of Somerset visited their daughter, Mrs. Richard Mullins and family recently.

Mrs. W.E. Davis, daughter of Mrs. Emma Thompson flew from Nashville, Tennessee to Brownsville, Texas to be with the family of her uncle, Mr. C.L.

(Cont'd to P-7)



FORTHCOMING MARRIAGE-Mrs. Betty J. Oliver of Berea announces the engagement and forthcoming marriage of her daughter, Anita Susan to Edward Lewis Abney, son of Mr. and Mrs. John Gill also of Berea, and the late Herbert Abney. Miss Oliver is the daughter of the late Walter L. Oliver. She attended Berea Community High School. Mr. Abney attended Madison Central High School. The wedding will take place on June 11th at 2:00 p.m. at the Bethel Baptist Church. All friends and relatives are invited to attend.

TO MY FRIENDS:

I'd like to say that I rode no one's coat tail to victory as did some of the candidates in this election, but knowing the votes which you cast for me were in true friendship makes me a winner in many ways. I sincerely thank each of you for your support.

TO MY OPPONENTS:

To those of you with whom I've had the opportunity to become acquainted during this campaign, I'd like to say that your attitude toward me were those of true gentlemen. It's been a pleasure to have known you and may we all remain friends.

Sincerely,

Jack Raines

ENGAGEMENT ANNOUNCED-Mr. and Mrs. Mack Wark, Sr. of Mt. Vernon wish to announce the engagement of their daughter, Enla Jayne Wark, to James Edward Jones of Lamerco. Miss Wark is a 1977 graduate of Rockcastle County High School. Mr. Jones is a 1975 graduate of Rockcastle County High School and is employed by Chappel's Dairy of London. A July wedding is planned.

GRADUATES

Airman William A. Brock, Jr., son of Mr. and Mrs. William A. Brock of Brodhead, Ky. has graduated with honors at Lackland AFB, Texas, from the U.S. Air Force security police specialist course conducted by the Air Training Command.

Airman Brock, is being assigned to Lakenheath RAF station, England, for duty with a unit of the U.S. Air Forces in Europe. Completion of the course enables the airman to receive academic credits through the Community College of the Air Force.

The airman, a 1974 graduate of Rockcastle County High School, attended Berea College.

Congratulations IT'S A BOY!

Mr. and Mrs. Gary Ray Cromer of Mt. Vernon are the proud parents of a baby boy, born at 6:30 a.m., Sunday, May 29, 1977. He weighed 7 pounds, 13 ounces and has been named Zachary Owen and was welcomed home by a happy Michelle.

Grandparents are Mr. and Mrs. Hubert Hunt and Mrs. Louanna Cromer.

We're here on your account



Tracy Farmer



C.T. Huffines



Jess Bullock



Bill James



Mary Ponder



Bill Souder



Alice Faulkner



Elaine Hissel



'Sis' Machal



Donna McClure



Jenny Bray



Ina Jean Taylor



Cindy Herrin



Rose Brown



Janice Beaker



Gwen Abney



Pam Chaliff



Debbie Oliver



Judy Conley



Leslie Mullins



Joyce Machal



Bernice Harper

CAN WE HELP YOU?



**THE BANK OF
MT. VERNON**
MT. VERNON, KENTUCKY 40456

COMING SOON

BMV TELLER/24
THE ANYTIME BANK



256-5141



Area Deaths and Funerals

Raymond Brummett

Mr. Raymond Brummett, 66 of Rt. 1, Broadhead passed away Saturday, May 28, 1977 at the Garrard County Hospital. He was born in Rockcastle County May 4, 1912, the son of Mrs. Mary Helton Brummett of Rt. 1, Broadhead and the late Green Brummett.

Survivors besides his mother are two sisters, Mrs. Gladys Wilson of Lockland, Ohio and Mrs. Pearl Halcomb of Danville; one brother, Mr. E.L. Brummett of Lancaster.

Funeral services were conducted Tuesday morning, May 31, 1977 at the Watson Funeral Home Chapel with Bro. Merrill Campbell officiating. Burial was in the Negro Creek Cemetery.

Watson Funeral Home was in charge of arrangements.

Chester R. Houk

Mr. Chester Ray Houk, 60, of Rt. 3, Broadhead passed away Saturday, May 28, 1977 at his home. He was born in Rockcastle County on April 14, 1917 the son of the late John and Pearl Shaffer Houk. He was a member of the Pentecostal Church.

Survivors are his wife, Mrs. Iva Mae Lansford Houk of Rt. 3, Broadhead; seven sons, Russell, Terrell, Charles and Jimmy Houk all of Broadhead; Leroy of Indianapolis, Indiana; Earl of Lexington and Cecil Ray of South Carolina; three daughters Mrs. Lorene Baker of South Carolina, Mrs. Betty Adams of Rockville, Indiana and Mrs. Bonnie Winn of Rockville, Indiana; two brothers, Mr. Otis Houk of Wilmore, and Mr. Russell Houk of Fairfield, Ohio; two sisters, Mrs. Lydia Ivey of Ohio and Mrs. Mary Ball of Ohio; thirteen grandchildren and one step grandchild also survives. He was

preceded in death by one sister, Lettie Houk.

Funeral services were held Monday afternoon, May 30, 1977 at the Hickory Grove Holiness Church with Bro. Tinsley Reitor and Bro. Randall Adams officiating. Burial was in the Mareburg Cemetery.

Arrangements were by the Watson Funeral Home.

Samuel Whitaker

Mr. Samuel Lewis Whitaker, age 54, of Broadhead, Route 3, passed away suddenly Tuesday morning, May 24, in Middletown, Ohio. He was born in Rockcastle County on July 28, 1922 the son of the late Richard and Alice Iwan Whitaker and was a Veteran of World War II and attended the Pentecostal Church.

He is survived by his wife, Mrs. Hazel Roberts Whitaker, of Broadhead, Route 3, three sons, Sam L. Whitaker, Jr. of Broadhead, Bary Whitaker of Route 3, Richmond, Ky. and Larry Whitaker of Aurora, Illinois; two daughters, Mrs. Carolyn Evans of Mt. Vernon and Mrs. Louise Vaughn of Broadhead. Three brothers, James Whitaker of Lockland, Ohio, Arliss Whitaker of Middletown, Ohio and Arlie Whitaker of Loveland, Ohio. Two sisters, Mrs. Clella Bussell of Fairfield, Ohio and Mrs. Geneva Tubrumlien, Deer Park, Ohio. Four grandchildren also survive.

Funeral services were conducted Thursday, May 26 at 2 P.M. at the Gossett & Martin Funeral Home by the Rev. Charles Shivel. Interment was in the Oak Hill Cemetery.

Scottie Dale Carpenter

Scottie Dale Carpenter, two week

old son of Mr. and Mrs. Edin Dale Carpenter of Livingston, passed away Tuesday, May 23, at the University of Tennessee Memorial Hospital in Knoxville. He was born in Mt. Vernon on May 12, 1977.

Besides his parents he is survived by one brother, Robbie Dale Carpenter at home; his paternal grandparents, Mr. and Mrs. Walter Carpenter of Livingston; his maternal grandfather, Mr. Burgess King of Livingston, and has maternal great grandparents, Mr. and Mrs. Ed Tackett of Livingston.

Funeral services were conducted Friday afternoon May 27 at 2 P.M. at the Carpenter Cemetery in Jackson County by Bro. Harvey Pensol. Interment was in the Carpenter Cemetery. Dowell & Martin Funeral Home was in charge of all arrangements.

Joppie Lee Bussell

Mr. Joppie Lee Bussell, age 80, of Mt. Vernon, Route 4, passed away after an illness, Monday, May 30 at the Rockcastle County Hospital. He was born in Rockcastle County on November 25, 1896 the son of the late James and Rebecca Dean Bussell and was a retired railroader with the New York Central Railroad.

He is survived by his wife, Mrs. Alta Bussell of Mt. Vernon; one son, Mr. Bobby Bussell of Erlanger, Ky.; two daughters, Mrs. Lois Yerkes of Florence, Ky. and Mrs. Patsy Bunday of Bellevue, Ky.; two brothers, Tommy Bussell of Mt. Vernon and George Bussell of Newport, Ky. Seven grandchildren also survive.

Funeral services for Mr. Joppie Lee Bussell were conducted Wednesday afternoon at 2 P.M. at the Dowell & Martin Funeral Home by Rev. Harvey Pensol. Interment was in the Elmwood Cemetery.

Ottawa

By Della Mae Wilcott

Mr. and Mrs. Louis Holt of Chaplain, Ky. visited Mr. and Mrs. Bob Holt last weekend.

Mr. and Mrs. Michael Lee Haven of Dayton, Ohio, and their granddaughter who is a registered nurse at the Kettering Hospital in Dayton, spent part of past week with Della Mae Wilcott.

Mr. and Mrs. Edward Daugherty and Lori of Berea and Mr. and Mrs. Larry Daugherty of Lexington visited Mr. and Mrs. Jr. Daugherty last weekend.

Mrs. Dovie Cromer of Cincinnati, Ohio visited Mrs. Amos Wright and Bobby over the weekend.

Mrs. Irene Taylor and Tommy visited Mrs. Edith Lowery and family at Somerset Sunday.

Mr. and Mrs. Gene Bishop and Angela of Lexington, Mrs. Eva Brown and Mrs. Minnie Jones visited the gravesite of Mr. Oscar Jones at Whitesburg, Saturday and spent the night with Mrs. Dollie Polly at Maytang.

Mr. Phillip Davis of Mt. Vernon, Mr. and Mrs. Richard Lawrence and Mrs.

Christine Brown and Doris visited Mr. and Mrs. Bob Holt last weekend. Mrs. Faye Brown, Miss Karen Brown, Mr. and Mrs. Ernest Cash, Mr. and Mrs. Reed Cash and family, Mr. and Mrs. Robert Clontz visited Mrs. Sarah Cash last weekend.

Mrs. Virgil Lawrence is a patient in the Central Baptist Hospital in Lexington where she has had surgery. We wish her a speedy recovery.

Bro. and Mrs. Sam Sower and Mr. and Mrs. Wallace Proctor visited Mrs. Virgil Lawrence in the Central Baptist Church recently.

Mr. and Mrs. Denver Marcum of Cincinnati, Ohio visited Mr. Jim Blanton last weekend.

Bro. Lawrence Davis and daughter of Copper Creek and Mr. and Mrs. Casper Jones had dinner at Jerry's Sunday.

Mrs. Hope Jones and daughter Gail of Middletown, Ohio visited Mrs. Effie Jones and Frankie and Mrs. Della Mae Wilcott over the weekend.

Miss Ollie Sower of Paint Lick visited Bro. and Mrs. Sam Sower, Charlene and Canan Saturday night.

Mr. and Mrs. Natan Farris celebrated their 50th Wedding Anniversary Saturday, May 28th at their home at Crab Orchard with 68 friends and relatives. Attending were Mr. and Mrs. Harold Booth and family and 3 grandchildren and son of California; Mr. and Mrs. Joe Soakes of New York, Mr.

and Mrs. Jesse Soaks and family of Lexington, Mrs. Marie Joel of California, Mr. and Mrs. John Farris and Mr. and Mrs. Billy Farris and son of Lexington. Nathan gave his wife a golden wedding band and their children gave them a color TV.

TO THE VOTERS OF THE FOURTH DISTRICT

I would like to take this opportunity to thank each and every one for their vote and support.

I will try to the best of my ability to serve the people well.

Thank You,

Amos Burdette

DOUBLEHEADER

AUCTION

Of Mr. and Mrs. Bob Kidd's

17 ACRE FARM more or less

Sat., June 4, 1977-1:30 P.M.

Good Hope Section - Pulaski County, Ky.



LOCATION: Turn right off Hwy. 70, 1 1/2 miles West of Highway 39, and follow auction signs to the sale.

This good level farm is improved with a 4 room house. The house is a frame house with living room, 2 bedrooms, kitchen and bath. The house has aluminum siding, storm windows and is fully insulated. Water is provided by a well. The farm is also improved with a good 40x50 stock and tobacco barn with running water. Stock water is provided by a pond. The farm consists of 17 acres more or less which is all cropland. There is approximately 1178 lbs. tobacco.

TERMS: 20% down day of sale and balance in 30 days upon delivery of deed.

Here is your opportunity to buy a good small farm at your own price.

AUCTION

Of Mr. and Mrs. Bob Kidd's

10 ACRE FARM more or less

Sat., June 4, 1977-2:30 P.M.

Good Hope Section

Pulaski County, Ky.

LOCATION: Follow previous directions to the sale.

The farm consists of 10 acres more or less of which approximately 9 acres is cropland. The basic tobacco allotment is approximately 327 lbs. This farm is improved with a 32x72 stock and tobacco combination barn.

TERMS: 20% down day of sale and balance in 30 days upon delivery of deed.

If you're in the market for a good small farm with some good home sites - don't miss this sale.

For additional information contact:

FORD
Realty & Auction Co., Inc.
301 Vernon, Ky.

R
REALTY
Auctioneer

KENTUCKY
AUCTIONEERS
ASSOCIATION

Col. Sam Ford
Realty Auctioneer

Col. Bill Randolph
Auctioneer

Col. Roy Adams
Realty Auctioneer

Col. Jerry Ham
Auctioneer

Col. Danny Ford
Realty Auctioneer

Office-Ph. 256-4545 Night 256-4588

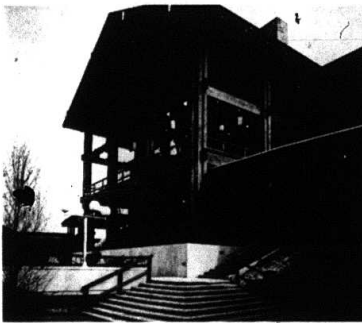
Thank You

I want to thank each of you who supported me in the May Primary.

For your kindness, I am most grateful.

Your Friend,

Jerry Warren Carter



Kentucky's state parks and resorts have it all... from the most luxurious lodging and modern recreational facilities to wilderness backpacking trails and primitive camping areas. We figure there's more natural beauty here per square mile than just about anywhere else in the world. And this beautiful land of ours is called home by the most genuinely friendly and helpful people we think you'll ever meet. There's a whole lot of beautiful America in Kentucky.

We'd like to show it to you.

Write: Travel, Dept. of Public Information, Capitol Annex, Frankfort, Kentucky 40601

Name _____

Street/P.O. Box _____

City/Town _____ State _____ Zip _____

KENTUCKY



Mr. and Mrs. Claude Gilliam of Lameco celebrated their 50th Wedding Anniversary on Sunday, May 29 with their children, grandchildren and great

grandchildren in Laurel County.

Mt. Vernon Personals
(Cont'd from P-5)

Davis during his funeral.
Mr. and Mrs. John Ponder and little daughter, Jennifer of Memphis, Tenn. and Mr. and Mrs. Caleb Ponder of Lexington spent last Thursday with Mrs. Mary Ann Ponder and Miss Virgie Riddle.
Mrs. David Boyer and son, David Ray of Louisville spent Memorial weekend with Dr. and Mrs. K.R. Burdette.
Mr. and Mrs. Willie Furman of Hamilton, Ohio attended the Memorial Services at Union Baptist Church Sunday and visited Mrs. Ella Ponder.
Mrs. Addie Cummins and daughter, Ann White, returning to Norwood, Ohio from a vacation in Florida spent Friday night with Mrs. Julia Burdette. They were also guests for dinner Friday evening of Mrs. Ann Green.
Mr. and Mrs. Jess Coffey of Richmond, Indiana spent Memorial weekend with her mother, Mrs. Louanna Cromer.
Mr. and Mrs. James Hughes of Chattanooga, Tennessee were accompanied to Mt. Vernon Saturday by her mother, Mrs. Zelma Bullock who spent two weeks with the Hughes.
Mrs. Donald Bradshaw of Frankfort spent Saturday with her parents, Mr.

versary on Sunday, May 29 with their children, grandchildren and great
and Mrs. Bentley Sparks.
Mr. and Mrs. Orin Marquis of Canoga Park, California were guests of Mr. and Mrs. Bentley Sparks, the first of the week.
Mrs. Clyde Gilbert of Atlanta, Georgia came by place to spend Memorial weekend with her parents, Mr. and Mrs. Carter Owens.
Visitors of Mrs. Vernon Cox while she was in the hospital were Mr. and Mrs. Charlie Brewer and Mrs. Wilma Brewer and daughters, Darline and Cindy of Wooten. Mrs. Cox is convalescing at her home on Williams St.
Mr. and Mrs. Ray King of Lexington prepared dinner Sunday at the Cox home here for her mother, Mrs. Amy Cox of the Sowder Nursing Home.
Mrs. Virginia Sutton Bray visited her mother, Mrs. Lula Sutton in Columbus, Indiana over the weekend.
Mr. and Mrs. Herman Peyton of Housatonic were Sunday visitors of Mrs. Vernon Cox.
Mr. and Mrs. Bob Lay and daughters, Rebecca and Trudi of Stanton, Ky. visited the Joseph R. Young family last week and attended the Rockcastle County High School graduation where their son Ricky was one of the graduates.
Friends of Mrs. Gertrude Lay regret to hear that she has been in a

grandchildren in Laurel County.

Cincinnati Hospital where she suffered an injured back caused from a recent fall.
Mrs. Sarah Machal and Miss Virginia Machal were in Harrodsburg Sunday to see her grandson, Steve, son of Mr. and Mrs. Johnny Machal, who had the misfortune of a broken leg in a fall.
Visitors of the Mt. Vernon Christian Church Sunday were Mrs. Orin Marquis of California and Mrs. Lanora Cummins and Kerry of Berea.
Mrs. Christine Phillips, Gary and Wilma, and Mrs. Dennis Owens and children, Terry, Tracey and Troy of Dayton, Ohio attended the Memorial Day Services at Red Hill Sunday while in Mt. Vernon. Mrs. Ella Ponder who has been on an extended visit in Ohio, accompanied them to her home here Saturday.
Mr. and Mrs. Edison Coldiron have returned to their home in Pennsylvania from a visit with their son, Mr. and Mrs. Roger Coldiron.
Mrs. Dorothy French, Mrs. Joyce Lakes and daughter Sherri of Berea attended the decoration services at Merrit Cemetery, Saturday.
Visitors of Mrs. Willis C. Johnson Saturday were, Mrs. Mary McKnight, Corbin, Mrs. Edith McNew and friend Marleen, Cincinnati; Mr. and Mrs. Joe Dooley of Dayton, Mrs. Ella Mae Johnson of Tipp City, Ohio, Mrs. Pleaz McJelly, Milchester, Mrs. Joyce Lakes and daughter, Sherri of Berea.
Mr. and Mrs. John Graves of Lancaster visited relatives in Mt. Vernon, Monday.
Mr. Bernard Purcell has returned home from Lexington hospital where he had surgery on an injured arm caused from a fall two years ago. His arm is improving slowly.
Mr. and Mrs. Ben Ramsey of Harrodsburg visited his mother, Mrs. Said Ramsey, Sunday.

Cancer can develop in anyone and in any part of the body. It appears most frequently, however, in men and women over 35. It occurs most frequently in the breast and uterus of women but since it is no respecter of persons, it also attacks young persons, even infants.

Each person is responsible for his or her own life and that life can be saved by a yearly physical examination to detect cancer as well as other diseases. As the

old saying goes, "An ounce of prevention is worth a pound of cure."
"Books are a finer world within the world."
Alexander Smith



Thank You

I would like to express my deep appreciation to the citizens of Rockcastle County for their vote of confidence on May 24th.

Since I will have no opposition in the fall, I would like to take this opportunity to tell you that I will make every attempt to run a clean, efficient jail.

Thank You
Billy Kirby

Pap Test Important
Each year Kentucky physicians report as many as 1,000 new cases of uterine cancer. When this kind of cancer is discovered early enough, treatment can be started and lives saved. A simple test, known as a pap test, can forestall the development of this kind of cancer even before obvious symptoms are noted by the woman or her physician. The test is painlessly taken by a physician or registered nurse. If all women have a yearly pap test, death from cancer of the uterus could be eliminated. Since the pap test checks cancer only in the uterine cervix, it is wise for all women to have a yearly pelvic examination by a physician to check other areas where cancer may occur. Anyone may get a pap test at the doctor's office or at the local County Health Department.

Cancer of the Breast
Among American Women, breast cancer occurs more often and causes more deaths than any other form of disease over 28,000 per year. Most cases are found in women over the age of 45. A woman is often the first to discover a lump in her breast. If she does, it is important for her to go to the doctor about it. Every woman's annual physical check up should include an examination of the breasts by the doctor. She should also examine her own breasts monthly. The possibility of saving lives grows each year as research develops means for detecting breast cancer in early stages and improves methods for the treatment of it.

Beware of Quack Treatments
No cancer is cured by diets, pills, or cure-all remedies. Salves and pastes

ABSOLUTE AUCTION
Sat., June 11, 1977-10:30 a.m.
Of Mr. and Mrs. Jimmy Gilbert's
146 ACRE FARM
SUBDIVIDED INTO 10 TRACTS NOT GROUPE
Stanford, Lincoln County, Ky.

LOCATED: 45 miles south of Lexington & 33 miles North of Somerset on Cut-off Pike, 1/10 mile off U.S. 27 just west of U.S. 150 (Watch for Auction Sign leading to farm on U.S. 27)

TRACT 1 This excellent farm contains 64.15 acres with frontage on Cut-off Pike. Lays well, part being in alfalfa, remaining in good grass. Plenty of stock water and attractive site unit.

TRACTS 2, 3 & 4 Tract 2 has 9.92 acres with 280 ft. frontage. Tract 3 has 9.92 acres with 280 ft. frontage. Tract 4 has 10.10 acres with 285 ft. frontage. Yearly stock barn & pond. All 3 of these tracts front on Cut-off Pike and will make excellent baby farms and afford excellent building sites.

TRACT 5 This baby farm contains 5.39 acres with 400 ft. road frontage on Cut-off Pike, has an excellent building site and all is in grass.

TRACT 6 Contains 2.96 acres with 200 feet of road frontage on Cut-off Pike, has good building site in grass.

TRACT 7 Contains 3.13 acres has 200 ft. of road frontage on Cut-off Pike and has a very attractive building site.

TRACT 8 This dandy farm has 36.73 acres fronting on Cut-off Pike and improved with small tenant house all in grass with access to the St. Asaph Creek.

TRACT 9 - Contains 1.73 acres with 100 ft. of road frontage. Has beautiful building site.

TRACT 10 Contains 1.77 acres with 100 ft. of road frontage on Cut-off Pike and has an attractive building site.

Now folks, if you are in the market for a farm or a nice building site ideally located overlooking the city of Stanford, off Stanford 4 land by pass, offering a pleasant and scenic view. All tracts have ample road frontage, and access to city water, city sewer and other utilities. Then don't miss this Absolute Auction sale, because the opportunity to own a unit of this nature seldom presents itself to the public.

TERMS & CONDITIONS 10 percent down day of sale, balance is due on or before 60 days. Tobacco poundage will be announced day of sale. Any announcement of day of sale has precedence over any written material.

For further information see or call Billy Gilbert at 355-2347 or the selling agents Colson Real Estate, Stanford, Ky.

COLSON REAL ESTATE
Jeffrey Colson Stanford, Ky.
Broker & Realtor Phone 365-9080
Cecil Lonnie Ray
Arnold, Napier, & Hammonds
Auctioneers 792-4289
Lancaster, Ky. 40444

To The Citizens Of Rockcastle County
I want to take this opportunity to thank each of you for your support in my candidacy for County Judge Executive. I appreciate your support and want you to know if I can ever be of service to you in any way, I want you to feel free to call on me. I want to thank the ones who worked at the polls for me on election day. I want to ask each citizen to back our county government with our prayers and support to make Rockcastle Co. a better place for each of us to live.
THANK YOU
G. H. "Hobe" Griffin

Plenty of energy saving cooling power. From Frigidaire.
14,500 Btu/hr*
Now Frigidaire helps you stay cool, efficiently, and make wise use of energy with this high efficiency Room Air Conditioner that is rated at 7.7 EER*. This means lower operating costs for you because a higher EER, for units with the same capacity, generally means lower energy consumption. And, thanks to the Electric-Saver control that automatically turns off the fan when the compressor shuts off, more energy can be saved because no electricity is used until more cooling is needed. What's more, an automatic thermostat control lets you select the level of cooling you want.
*Manufacturer certified to AHAM standards when operating on 230 volts; 14,200 Btu/hr and 7.7 EER at 208 volts. EER ratings shown are as listed in the Association of Home Appliance Manufacturers January, 1976 Directory of Certified Room Air Conditioners.
The Environment Makers from Frigidaire.
Appliance Service Center
Phone 256-2626 Mt. Vernon, Ky.

CLAYTON HAMMOND'S SUPERMARKET

Highway 461
The Somerset Road

"HOME OF BARGAINS"

Prices Good June 2 through June 8

**Make him a
cookout
champ with
Proten Beef**



WIN!

WIN a Free Swift Proten Beef Rib Loin, sliced into steaks. Drawing to be held Saturday, June 11 at 3:00 p.m. Register at Clayton's anytime between now and the drawing date. No purchase necessary and you need not be present to win.

Smoked Tenderized
Shank Portion **69^c** lb Ham
Butt End **79^c** lb
Center Slices **\$1²⁹** lb

1/4 Pork Loin **97^c** lb
(Sliced)

Kentucky Border Blue Grass
BOLOGNA **59^c** lb.

Blue Grass
Brand Bulk

BACON
67^c lb

MUSTARD
Squeeze
10 oz. Bottle **29^c**

DEL MONTE
TUNA
59^c can

Cabbage **12^c** lb
Bananas **19^c** lb
EGGS
Grade A Small 3 Dozen **\$1**
Whole Kernel
303 size **ARGO CORN** 4 **\$1**

Bush's Yellow or White
HOMINY
300 size **6** cans **1⁰⁰**

SPEDD'S
MARGARINE
1 lb. bowl **69**

Bake-Rite
SHORTENING **1¹⁹**
3 lb. can

Argo
PEAS
4 Cans **89^c**

Hunts
PEACHES
2 1/2 Size Can
Limit 4 **49^c**

Fleecy White
BLEACH
59^c Gal.

Coffee Mate 16 oz. Jar
COFFEE CREAMER **\$1¹⁹**



CRACKERS
1 lb. box **49^c**



Hi-Dri
Paper Towels
39^c
(Jumbo Roll)

\$1²⁹
DETERGENT
GIANT SIZE

JFG qt. size
Salad Dressing **79^c**



The Rockcastle County Bass Club held their third tournament the third weekend in May at Green River Lake. The tournament was sponsored by Dowell-Martin Funeral Home to whom the club is grateful. The club caught 70 bass which weighed 83 lbs. and 2 ounces. The winner of the tournament was Johnny Deborde, who caught 11 lbs. and 9 ozs.

Registration Begins For National Beef Referendum

Rockcastle County cattle producers can register to vote in the national beef referendum Monday, June 6th through Friday, June 17th at the Agricultural Stabilization and Conservation Service (ASCS) office in Mt. Vernon.

At stake is the beef research and information plan a producers self help plan to strengthen beef markets here and abroad, increase research to solve beef industry problems and improve communications throughout the cattle business.

The plan would be funded by a deduction of 30 cents per \$100 on all cattle sales. But any producer who does not want to participate can get a prompt refund.

The beef research and information plan will benefit every producer right here in Rockcastle County, according to Roy G. Brown, Mt. Vernon, "I urge all local producers to study up on the plan and vote for it."

Producers will return to their ASCS

office the first two full weeks of July to actually cast their ballots.

Any legitimate cattle producer is eligible to register and vote, including FFA and 4-H youths who own their own cattle. There is no age limit.

CEDAR RAPIDS MENU

Friday, June 3

Salmon Croquets and stuffed peppers, baked potatoes with sour cream, stewed tomatoes, macaroni and cheese, greens and boiled eggs, rolls and fried cornbread, choice of salads, banana pudding and fruit jello.

Sunday, June 5

Oven baked steak, baked ham, brown gravy, mashed potatoes, baby lima beans, deviled eggs, cabbage wedges, biscuits and muffins, choice of salads, strawberry shortcake, lemon fruit freeze.

Mental Health Matters

CHILDREN IN FAMILY CRISIS SITUATION

What happens to children when the family experiences a crisis situation? Usually the adults are so involved in the problem and its possible solutions that they have limited time for the children. Family living routines are temporarily altered. Children may abruptly be sent to live with relatives or friends, or these persons may arrive to "live in" until the crisis is over.

It is important that at these times the parenting persons answer their questions honestly! It is necessary to give the children a clearer picture of what the crisis is all about! Children don't need all the details, but they do need some explanations and coherent information given in small doses and in words they can understand.

When children feel abandoned or ignored, they may temporarily resort to regressive behaviors such as bedwetting, temper tantrums, or thumb sucking. Children should not be spanked or "yelled at" when these behaviors appear due to "internal stress" caused by unusual happenings. Honesty, patience and kindness should be the tools of caring adults who deal with and provide for children "in crisis".



3RD BIRTHDAY-Sonia Lee Morgan, daughter of Mr. and Mrs. David E. Morgan of Mt. Vernon celebrated her 3rd birthday, Friday, May 27th.



Christy Lynn Robinson, daughter of Glen Robinson of Livingston and Beatrice Ashley of Berea will celebrate her 3rd birthday, June 9th with a party at the home of her mother.

Thank You!

Thanks to the fine people of Rockcastle County for your vote and support in the May Primary. Since there were 5 other respectable candidates for this position, you, the voters had a tough decision to make. We are certainly grateful for your choice.

Henry Lee Abney

Fred Abney

Raymond "Jughead" Ballinger

AUCTION

Of Mr. and Mrs. Robert Wilson's
30 ACRE FARM more or less

Sat., June 4, 1977-10:30 A.M.

Bowling Ridge Section, Rockcastle County, Ky.

LOCATION: From Rockcastle County turnoff Highway 150 Sowder Nursing Home onto West St. (Brothead) and proceed approximately 2 1/2 miles - follow auction signs to the sale. From Lincoln County take Hwy. 39 South from Crab Orchard approximately 4 miles, turn east on Bowling Ridge Road and follow auction signs to the sale.

Mr. and Mrs. Wilson have purchased property in Waynesburg and have contracted our firm to sell this desirable farmland at public auction.

The farm consists of 30 acres more or less of which approximately 15 acres is cropland. Stock water is furnished by a spring. There is some young timber on the farm. The farm fronts on both the Bowling Ridge road and the Tark Hill Road. This is an ideal farm for the hobby farmer or investor. The farm could easily be divided into small tracts or lots.

TERMS: 20% down day of sale and balance in 30 days upon delivery of deed.

For additional information contact Mr. and Mrs. Robert Wilson at 578-8635 or:

FORD
Realty & Auction Co., Inc.
Mt. Vernon, Ky.



Col. Sam Ford
Realtor-Auctioneer

Col. Bill Randolph
Auctioneer

Col. Roy Adams
Realtor-Auctioneer

Col. Jerry Ham
Auctioneer

Col. Danny Ford
Realtor-Auctioneer

Office-Ph. 256-6545 Night 256-6588

Young's Pharmacy

JOHNSON'S DISPOSABLE DIAPERS



BOX OF 18
\$2.45



FLEX SHAMPOO
16 OZ. BOTTLE

\$1.49



DR. SCHOLLS EXERCISE SANDALS

\$11.95 PAIR

PRICES GOOD THRU TUES. JUNE 7.



OLD SPICE STICK DEODORANT • REG. • MUSK

99c

WE RESERVE THE RIGHT TO LIMIT QUANTITIES.

A.R.M.

ALLERGY RELIEF MEDICINE



BOX OF 10

69c



SCOT-TOWELS

2 ROLLS LIMIT TWO JUMBO ROLL

\$1.00

CHAP-STICK

cherry ChapStick

39c



CRUEX SPRAY

4 OZ. SIZE

\$1.79

WHITE RAIN HAIR SPRAY



11 OZ. SIZE

97c

OIL OF OLAY



4 OZ. BOTTLE

\$2.79

POLAROID PRONTO B CAMERA

\$39.00

PLUS \$10 Polaroid Instant Money

\$10 POLAROID INSTANT MONEY

PURCHASE ANY POLAROID SX-70 OR PRONTO CAMERA AND WE'LL GIVE YOU \$10.00 IN POLAROID INSTANT MONEY. USE IT TO SAVE ON SX-70 FILM, FLASH BARS, POLAROID SX-70 OR PRONTO ACCESSORIES, AND POLAROID COPY SERVICE ORDERS. OFFER GOOD UNTIL OCTOBER 31, 1977.



MASSENGILL DISPOSABLE DOUCHE

3 SINGLE FOR **\$1.00**

Visine



1 OZ. SIZE

\$1.79

Delinquent Tax Lists

The following 1976 tax bills, upon which there is a Real Estate Value...

These Tax Bills (claims) are subject to the addition of the approximate cost of advertising (\$2.50) and a detaining fee of 6 percent of the penalty.

The purchaser of the tax bill will be issued a certificate of delinquency which becomes a lien upon the tax bill and bears interest at the rate of 12 percent per annum from the date of issuance.

Manuel Shepherd Sheriff, Rockcastle Co.

REAL ESTATE

NAME AND BILL NO. AMOUNT

Table listing names and amounts for real estate taxes, including Clow Corporation, A & G Leasing Co., Adams, Bennett, etc.

Table listing names and amounts for real estate taxes, including Owens, Timon & Geraldine, Paris, Lewis, etc.

Table listing names and amounts for real estate taxes, including Owens, Timon & Geraldine, Paris, Lewis, etc.

Table listing names and amounts for real estate taxes, including Blair, Julius K., Raymond Twopenny, etc.

Table listing names and amounts for real estate taxes, including Golorth, Frank, Green, Hugh, etc.

Table listing names and amounts for real estate taxes, including Miracle, David, Monk, Donald, etc.

THE FOLLOWING NOTICE TAX BILLS FOR PERSONAL PROPERTY - INCLUDING CARS, TRUCKS, NOTES, ETC., ANY PERSONAL PROPERTY INCLUDING APPLIANCES...

Manuel Shepherd Sheriff, Rockcastle Co.

Table listing names and amounts for personal property taxes, including Name & Tax Bill No., Amount, etc.

Table listing names and amounts for personal property taxes, including Blair, Julius K., Raymond Twopenny, etc.

Table listing names and amounts for personal property taxes, including Golorth, Frank, Green, Hugh, etc.

Table listing names and amounts for personal property taxes, including Miracle, David, Monk, Donald, etc.

(Cont'd on Page 11)

Two Local Students Selected for European Concert Tour



Kim Cornelius, daughter of Mr. and Mrs. Kenneth Cornelius of Mt. Vernon, and Ernie Blevins, son of Mr. and Mrs. Paul Blevins of Rt. 1, Crab Orchard, have been selected to participate in the "America's Youth in Concert" 1977 program sponsored by the Universal Academy for Music, Princeton, New Jersey. The purpose of the program is to demonstrate internationally the high

quality and fine character of American Youth while enriching and expanding the musical and cultural horizons of the young musician.

Students are selected for America's Youth in Concert after participating in a nationwide audition. There will be a performance at New York City's prestigious Carnegie Hall prior to European departure. The students will

County Agent's Notes

BY H. LEE DURHAM
COUNTY EXTENSION AGENT
FOR AGRICULTURE

Dates Set For Beef Referendum

Dates have been announced for the national beef referendum - June 8-11 for registering and July 5-15 for voting. The referendum will allow Kentucky cattlemen voting in the

referendum to vote. Absentee forms will be available on request by cattlemen who prefer to register and vote by mail.

To vote in the referendum, producers must first register at the local ASCS office and certify that they have owned cattle at some time during the past 12 months. After a two-week waiting period, they should return to the ASCS office to vote. Absentee forms will be available on request by cattlemen who prefer to register and vote by mail. There will be an educational training meeting dealing with the beef referendum on Friday June 3, 1977 at 1:30 p.m. in the PCA building in Mt. Vernon. All cattlemen are invited to attend.

Various Crops-Oxidant Air Pollution Injury

A recent stagnation alerts in parts of Kentucky indicated that damaging levels of certain pollutants were present in the air for several days. These air pollutants, mainly photochemical oxidants such as ozone, may cause symptoms of damage on a number of plants. In sensitive plants, acute injury from ozone results in an upper-surface leaf fleck or stippling. These flecks are usually tan or yellow colored compared to surrounding leaf tissue although on some plants the flecks may be dark. These flecks can develop into necrotic lesions or complete collapse of plant tissues in injured leaf areas. Mature leaves are usually more sensitive to ozone injury than are younger leaves. Yellowing and premature leaf drop may finally result from injury due to air pollution.

Many plants are sensitive to ozone and may show symptoms of chlorotic flecking or stippling as the result of the recent air stagnation. Plants showing symptoms of injury following air stagnation alerts in past years include lettuce, garden beans, soybeans, white pine, maples, pecanias, and tobacco. Photochemical oxidants such as ozone may have effects on plants other than or in addition to the symptoms described here. Based on a report from a recent meeting of the American Association for the Advancement of Science, air pollution effects such as reduced root growth, mineral uptake, and nitrogen fixation may result from reduced photosynthesis within the plant. The report also stated that levels of photochemical oxidant air pollutants have increased significantly in several areas hundreds of miles from cities and industrial sites. I think that is the case here, since air pollutant injury symptoms are evident on plants in rural as well as urban areas.

"ELEMENTARY SCHOOL"

(Cont.'d from front)

presented by the coaches, Miss Judy Bullock and Mr. Charles Carter. Those receiving individual trophies were as follows: outstanding defense in football, Bobby Hammons; Outstanding Offense in Football, Larry Settles; and 110%, Dwayne Thomason; most valued girl player in basketball, Mary Henderson; outstanding defense in basketball, Kim Deatherage; 110% in basketball, Mona Bibins; leadership, Jeany Boring; most improved in basketball, Tracy Mulbury and Pennie Miller; most valued player on boys basketball team, Bobby Hammons; 110%, David Sower; leadership, Willie Hiatt; most improved player, Scott Henderson; and Outstanding cheerleader, Jamie Anderkin.

At the end of the presentation of the sports trophies, the girls presented a plaque to Miss Bullock, their basketball coach and the boys presented a trophy to Mr. Carter, their football and basketball coach in appreciation of their devotion to the athletes as well as the athletic program of the school.

Approximately 75 Mt. Vernon eighth graders made a trip to Constitution Square in Danville and National Cemetery and the Civil War Historical Museum at Perryville. The students had a picnic lunch at Perryville.

The students were then taken to Harrodsburg where they toured the old fort and Pioneer Cemetery and Historical Museum. They were also taken to the Tom Lincoln marriage temple.

The students were accompanied by Miss Christine Krueger, Mrs. Kathlene Hunt, Mr. David Hansel, Mr. Keith Singleton and Mr. E.J. Smith. Mr. Keith Singleton and Mr. Angin drove the buses, transporting the students.

referendum approve the order, three tenths of one percent of the price of all cattle sold will be assessed producers to fund the program. Estimates are that \$30 to \$40 million per year will be raised nationally. More than 80 state and national beef and dairy organizations along with a number of general farm organizations have endorsed the plan.

To vote in the referendum, producers must first register at the local ASCS office and certify that they have owned cattle at some time during the past 12 months. After a two-week waiting period, they should return to the ASCS office to vote. Absentee forms will be available on request by cattlemen who prefer to register and vote by mail.

There will be an educational training meeting dealing with the beef referendum on Friday June 3, 1977 at 1:30 p.m. in the PCA building in Mt. Vernon. All cattlemen are invited to attend.

Various Crops-Oxidant Air Pollution Injury

A recent stagnation alerts in parts of Kentucky indicated that damaging levels of certain pollutants were present in the air for several days. These air pollutants, mainly photochemical oxidants such as ozone, may cause symptoms of damage on a number of plants. In sensitive plants, acute injury from ozone results in an upper-surface leaf fleck or stippling. These flecks are usually tan or yellow colored compared to surrounding leaf tissue although on some plants the flecks may be dark. These flecks can develop into necrotic lesions or complete collapse of plant tissues in injured leaf areas. Mature leaves are usually more sensitive to ozone injury than are younger leaves. Yellowing and premature leaf drop may finally result from injury due to air pollution.

Many plants are sensitive to ozone and may show symptoms of chlorotic flecking or stippling as the result of the recent air stagnation. Plants showing symptoms of injury following air stagnation alerts in past years include lettuce, garden beans, soybeans, white pine, maples, pecanias, and tobacco. Photochemical oxidants such as ozone may have effects on plants other than or in addition to the symptoms described here. Based on a report from a recent meeting of the American Association for the Advancement of Science, air pollution effects such as reduced root growth, mineral uptake, and nitrogen fixation may result from reduced photosynthesis within the plant. The report also stated that levels of photochemical oxidant air pollutants have increased significantly in several areas hundreds of miles from cities and industrial sites. I think that is the case here, since air pollutant injury symptoms are evident on plants in rural as well as urban areas.

Delinquent Tax

(Cont.'d from P-10)

- | | |
|--|--------|
| — Mrs. Bonnie Jean, No. 5602 | 8.38 |
| Sparks, Herbert, No. 5605 | 4.19 |
| Sparks, Joseph, No. 5608 | 20.45 |
| Spires, Clarence Jr., No. 5614 | 16.75 |
| Spires, Martha Francis, No. 5618 | 9.22 |
| Spoonmore, Joe, No. 5626 | 8.38 |
| Spoonmore, Joey, No. 5627 | 8.38 |
| Spoonmore, Lorine, No. 5629 | 2.52 |
| Talbot, Charles, No. 5639 | 15.51 |
| Talbot, Samuel T., No. 5648 | 10.05 |
| Stamper, Wallace L., No. 5650 | 29.32 |
| State Siding and Roofing Co., No. 5659 | 73.21 |
| Stevens, Jerry L., No. 5679 | 21.27 |
| Stevens, Kenneth, No. 5682 | 1.61 |
| Stevens, Orville, No. 5684 | 12.14 |
| Stewart, Dewey Lee, No. 5697 | 1.67 |
| Stovall, Charles S., No. 5727 | 6.60 |
| Sturgill, Hardin, No. 5734 | 1.67 |
| Sufferidge, Vivian, No. 5741 | 2.52 |
| Sutton, Tony & Betty, No. 5752 | 43.98 |
| Swainner, Glen, No. 5758 | 1.67 |
| Taylor, Billy Ray, No. 5781 | 25.14 |
| Taylor, Bobby Lee, No. 5784 | 25.14 |
| Taylor, C.E., No. 5786 | 41.25 |
| Taylor, G.T., No. 5800 | 50.31 |
| Taylor, Kenneth, No. 5819 | 69.31 |
| Taylor, Malvina, No. 5823 | 23.45 |
| Thacker, Jesse W., No. 5847 | 8.38 |
| Thomas, Donnie, No. 5861 | 29.32 |
| Thomas, Ronnie, No. 5881 | 7.13 |
| Thompson, Georgia, No. 5899 | 16.75 |
| Thompson, Linda, No. 5909 | 16.13 |
| Thompson, Louis & Myrtle, No. 5910 | 33.09 |
| Thompson, Mable, No. 5911 | 11.10 |
| Toney, Phyllis, No. 5941 | 23.05 |
| Towery, A.L., No. 5942 | 38.63 |
| Towery, Gary, No. 5945 | 13.19 |
| Turner, Charles A., No. 5959 | 25.55 |
| Tucker, Lee, No. 5965 | 8.25 |
| Underwood, Richard D., No. 5973 | 2.52 |
| Vance, Barbara, No. 5985 | 12.67 |
| Vanhook, Barry, No. 5982 | 25.14 |
| Vanhook, Wilmer Gene, No. 5988 | 9.22 |
| Vanzant, Roger, No. 6031 | 1.67 |
| Vaught, Bertha, No. 6036 | 2.75 |
| Vaughn, Lillie Bell, No. 6048 | 1.67 |
| Vigant, Ronald M., No. 6048 | 177.17 |
| Ward, Lee, Jr., No. 6082 | 32.66 |
| Wesver, William B., No. 6095 | 7.74 |
| Whitaker, Keith, No. 6122 | 6.38 |
| Whitaker, Norman G., No. 6129 | 12.38 |
| White Auto Store, No. 6137 | 184.29 |
| Whittier, Elmer T., No. 6144 | 38.31 |
| Whittemore, David Lee, No. 6150 | 10.05 |
| Wilburn, Faye, No. 6154 | 2.10 |
| Wilcox, Frank, No. 6156 | 10.75 |
| Willmott, Elmer, No. 6178 | 46.75 |
| Wilson, Bob, No. 6184 | 8.38 |
| Wilson, Eddie Darwin, No. 6190 | 20.94 |
| Woodall, James, No. 6239 | 18.01 |
| Woodall, Jerry, No. 6240 | 35.18 |
| Woodall, Mary, No. 6242 | 1.67 |
| Woodall, Ray, No. 6246 | 5.08 |
| Wright, Michael, No. 6282 | 2.52 |
| York, George Jr., No. 6289 | 6.70 |

Check Corn and Soybeans for Disease

Observing corn and soybean fields for signs of early-season diseases can give Rockcastle County growers valuable tips on what to do differently if replanting is necessary or when planning for next year's crop, says H. Lee Durham, county extension agent for agriculture.

In soybeans, watch for damping off and seed decay that affects small seedlings. This disease may be caused by several fungi, bacteria and nematodes, says Durham. Mistakenly, wet soils and cool weather often get blamed for the problem. Soybean seed may fail to germinate or there may be pre or post emergency damping off. Roots may rot. Damage shows up as poor stands.

To prevent damping off and seed decay disease next autumn, Durham recommends the following: Plant high quality, crack-free seed that is capable of at least 85 percent germination. Use fungicide seed protectants to improve emergence. Plant in warm soil that is well-drained.

In corn fields, look for seed rots and seedling blight diseases that cause trouble during the first few weeks after planting. Severe infection by certain soil fungi may destroy the seed before germination or kill corn seedlings before or after emergence. Commonly confused with mecha-

cal or chemical injury, cold weather damage or insect damage, above-ground symptoms of these diseases are yellowing, wilting and dying leaves. Examine underground parts of the plants for a more accurate diagnosis. Corn seedling blight or seed rot are prevalent in poorly-drained wet and cold soils. Severity of the disease is affected by soil type, planting depth, age and quality of seed and the hybrid's genetic resistance to infection.

Tobacco Flea beetle activity is still low levels in most parts of Kentucky. However, due to the unusually dry conditions, we need to keep a close watch on our transplants. Unless we get rain soon, this could aggravate the damaging capability of the flea beetles. Remember, an average of 3 or more beetles on new transplants can produce economic damage. If Furadan was not used, and damaging levels are reached, you can spray with Orthene Tobacco Insect Spray, Lannate/NoDrin, Supracid, Diazinon, Sevin, or Thiodan combinations.

Notice

The Citizens Bank has elected to close Saturday, June 4 in observance of Confederate Memorial Day, instead of Friday, June 3. This is a legal Holiday.

Thank You!

I would like to thank the people who supported and voted for me in the 2nd district.

Jesse L. Baker

Real Estate For Sale

4 Bedroom House on the Old Somerset Road in Mt. Vernon. House has 2 bedrooms, dining room, living room, kitchen, utility room and bath downstairs and 2 bedrooms upstairs. House also has hardwood floors downstairs with wall to wall carpet upstairs, storm doors and windows, washer and dryer hook up, double fireplace, gas furnace, city water and is situated on a large lot measuring approximately 110x200. OVERCROWDED? THEN LET US SHOW YOU THIS HOUSE.

1974 Like New 14x70, HOLLY PARK MOBILE HOME on Poplar Street in Mt. Vernon. The home has 3 bedrooms, kitchen with built-in cabinets, dining room, large living room and bath. Home also has wall to wall carpet and hardwood floors throughout, is airconditioned with inter-com, fuel oil furnace, washer and dryer, city water and sewer and is situated on a lot measuring approximately 80x130. EXTRA NICE.

Good Business Opportunity in Mt. Vernon. Drapery, fabric, and upholstery shop in a building measuring 16x42 with 10x12 storage building. The building is insulated, air conditioned, heated by a fuel oil stove and is situated on a nice lot measuring approximately 50x100. Be Your Own Boss and Reap the Profit!

Almost New Brick House located approximately 3 miles southwest of Mt. Vernon. House has 3 bedrooms, sunken living room with fireplace, kitchen, formal dining room, den, bath and half basement. It also has wall to wall carpet and vinyl floors throughout, built-in cabinets, patio, sun deck, paneled walls, washer-dryer hook-up, insulated, total electric with city water and is situated on approximately 1 acre lot. **FRESH AIR AND ROOM TO ROAM!**

5 ROOM HOUSE—on silver drive in Berea. House has 3 bedrooms, eat-in kitchen, living room, bath and utility room. House also has wall to wall carpet, and vinyl floors throughout, with washer and dryer hook-up, city water and sewer. In addition to the house there are 2 out buildings, a small orchard, and is situated on an approximately 1 acre lot with ample space for a garden. WHY RENT?

4 Room house on Highway 150 in Mt. Vernon, 2 bedrooms, living room, eat-in kitchen and bath. House also has carpet and vinyl floors throughout, storm door, washer and dryer hook-up, city water and sewer, 2 out buildings with amp. space for a garden. In addition to the house, there are 2 small outbuildings. Heaven for two! Has city sewer and water.

New Subdivision—Beautiful lots and acreage of your size and choice in Quail Nest Estates, located in the Quail section of Rockcastle County. City water is available and partial financing to qualified prospects. Want in the country with plenty of privacy? Then look no further. Hurry while we have a large selection. Priced to Sell.

Two Acre Building Lot on Bowling Ridge in Lincoln County. Plenty of road frontage and a good buy.

WENDELL LAWRENCE C. N. SCOTT

Realtor & Auctioneer Realtor
Brodhead, Ky. Ph. 355-2204
Ph. 758-8115

REALTOR Stanford Office Phone 365-2832

FOUR SALE

Set of Four Atlas Cushionaire Tires \$19.65 PER SET (177-13)

SAVE \$20.00 off the regular season price on this set of 4x12 tires, a 60% off the most compact cars. And save \$20 on all other sets of Cushionaire polyester blackwalls in all other sizes or stock.

OR SAVE \$40.00 off the regular season price on a set of four on 16 size of Cushionaire 4 steel belted radials, you get radial construction for extra grip and tire mileage two rugged steel belts for strength and a section of 4 size 16 most cars.

Save on sets of four at participating Chevron Stations. Some per unit savings on single tires, too. And you can charge them on your Chevron National Travel Card.

Town & Country Service Station

G. H. Griffin & Son
Mt. Vernon, Ky. Phone 256-2979

TO THE CITIZENS OF OUR COUNTY:

I am very grateful that you have seen fit to have me continue as your County Judge Executive. I believe that I know what you expect of me and I'll do my best to be just that.

Also, I'd like to take this opportunity to compliment all the good men that opposed me for this office and I appreciate they way that their campaigns were conducted.

Again, thank you all for your splendid support.

ALWAYS YOUR FRIEND,

Hubert Thacker
Judge, Rockcastle County

WHAT'S HAPPENING IN THE...

CLASSIFIED SECTION

P-12 The Mt. Vernon Signal Thursday, June 2, 1977

Classified Rates

Local Rates - 5c per word, minimum \$1.00
 Card of Thanks - 3c per word, minimum 75c
 In Memory 3c word, minimum 75c
 Classifieds Paid in Advance, except to businesses
 Display Classifieds - \$1.50 per column inch

For Sale

FOR SALE: Three bedroom ranch style textured brick home with large living room, combination kitchen and dining area, built-in cabinets, electric water heater, washer and dryer included. Nice hall and bathroom. carpeted living room, tile floors in kitchen and bath, balance of floors are hardwood. Large carport, with utility and storage room at the end. Located on nice corner lot on 101 Cherry Road Court in Berea, Ky. This home is in excellent condition and in a fine neighborhood. Priced to sell at \$34,500 to settle the estate of Henry C. Anglin. If interested, please contact H.C. Anglin, Jr. at 758-8188 or Atty John Allen at 256-2252 (home) or 252-2185 (office). 39x2p

FOR SALE: Pigs. Ph. 256-2285 after 5 p.m. 39x1

GRAVE MARKERS AND MONUMENTS in stock at all times. McNew Monument Sales, U.S. 25, four miles north of Mt. Vernon. Ph 256-2232. ntf

FOR SALE: Silos, silo unloaders, feeders and wagons. Contact Charles Hackley. Ph. 355-7437 nights. 24x52p

FOR SALE: 14x70 Holly Park Mobile Home Lot 80x130, located in Mt. Vernon on Poplar Street. Will sell together or separately. Ph. 256-5212. 32xntf

FOR SALE: 5 Registered Horned Hereford Heifers. Also, some bulls, 10-18 months old. Harris and James Purrell, Plato, Ky. 274-4595 or 274-4619. 38x3

FOR SALE: 5 Steel Belted Radials, GR 78 15 tires, asking \$125 for all. Phone 256-4753. 39x1p

LOTS FOR SALE: 135x150. Call 758-86... after 6 p.m. 39x2p

FOR SALE: 1975 Ford van, custom paint, carpet, low mileage. Call 758-8890. \$6,500.00. 38x2p

FOR SALE: 6 room house, 12 acres land, city water at back door. Just outside city limits on US 25 South. Dee Ramsey Place. Ph. 256-2247. 38x3

FOR SALE: New Spinnet Piano (Famous Brand). Call or Write: Brent Ford, P.O. Box 658, Somerset, Ky. 42501. 606-678-4067. 38x2p

FOR SALE: Pitney Bowes 253 Copier. Used very little. Make offer. Ph. 256-2244. 38xntf

FOR SALE

COMMERCIAL BUILDING

Brick and block construction. Lot approximately 110' wide by 140' deep. Building measures 55x75 (4,125 sq. ft.). 3 Phase electricity, air compressor with air lines throughout. Drop ceiling with flush fluorescent lights in half of building, outside lights, indoor outdoor carpet in half of building. Heated by coal stoker furnace. Will sell below appraisal value. Ph. 256-2777. 35xntf

"Low rates are a big reason we're the largest home insurer. But there are more..."

Low rates wouldn't mean much without our first class service. Drop by or give me a call.

BILL BAILEY
 MT. VERNON
 PH. 256-2119

Like a good neighbor, State Farm is there.

STATE FARM FIRE AND CASUALTY COMPANY
 Home Office: Bloomington, Ill.

SPORTSWEAR FACTORY OUTLET. Rt. 6, Box 358, London, Ky. Ladies' Jeans, sizes thru 40, \$4.95 - \$5.95. Men's 5/6 thru 42 - \$5.95. Jumpuits - \$12.50 and up. Blouses, small thru triple. Men's Shirts, \$3.50. Directions: Turn U.S. 25 to Pittsburg, Ky., turn on 2041 at New Salem Baptist Church, turn right on Fisherman Cove Road. Open Monday 33xntf

FOR SALE: 1972 White Monte Carlo, automatic, air, power steering and brakes. Priced reasonable. Contact Ronnie Brown or call 758-8659. 39x3p

FOR SALE: 52 1/2 acre farm with barn, electric hook-up for trailer, water. Ph. 653-4421. 39x2p

FOR SALE: 4 Sears G-78-14 retreats and 5 Chevy Wheels, Tires Mounted, \$75.00. Call 758-8467 after 5 p.m. 38x2p

FOR SALE: 2 bedroom home with living room, kitchen (wooden cabinets), small utility room and bath. Located on the Hummel Grove Road, about 3 1/2 miles from Kenfro Valley with 4 acres, more or less. One acre is tentable and there is land cleared for 5 trailer lots. There are 2 sheds and a beautiful rolling yard. If interested, call 256-2337 or 256-2472 or contact Ray McGuire at Mt. Vernon Produce. Also included with house is an oil heater tank, TV antenna and uninstalled storm door. Reasonably priced. 38x2



The South American country of Brazil derives its name from the reddish iron ore the Spanish and Portuguese call Brazil, and which we call Brazilwood.

CUNDIFF'S PLYWOOD PLAZA CENTER

Spring Paneling Sale

Valley Elm	\$3.89
Korean Oak	5.50
Tudor Walnut	6.90

N. Main Street & 80 Bypass
 SOMERSET KY.

Hensley's Used Cars
 ROUTE 2
 ORLANDO, KY.
 PHONE 256-4777

DOZER WORK
 FIELD DIRT TOP SOIL
 Tommy Philbeck
 Ph. 256-4431

INTERNATIONAL AND GENERAL ELECTRIC
 Parts & Service at
Bryant Bros.
 Mt. Vernon

GARRARD COUNTY STOCKYARDS
 Sale For All Classes Of Livestock Every Friday

Phone 792-2118

J.J. Teater Hogan Teater William Kirby Teater

NOW OPEN
 New Business in Rockcastle Co.

HOBBY HAUS
 Arts and Crafts

JOSHUA COOLEY T-SHIRTS
 We are now taking orders for Bible School crafts.
 U.S. 25 South of Southern Dollar Store

Owner - Terry D. (Trooper) Cromer

Watch For Grand Opening

Watch next week's SIGNAL for details of

AUCTION

Of The Late Mr. Paul Baker's

HOUSE AND LOT

Located on Ferguson Street in the city limits of Mt. Vernon, Rockcastle County, Kentucky

June 18, 1977-10:30 a.m.

For additional information contact

Ford Realty & Auction Co., Inc.

256-4545 Mt. Vernon, Ky.

FOR SALE

Four bedroom home with living, room, kitchen, bath and city water.

The price is right at \$19,995.00. Call Bruce at 453-3715 or Steve 758-8801.

Total Electric or any type of heat you desire. Looks better inside. Located Between Livingston and Mt. Vernon on Hwy. 25 near some beautiful homes. Give the picture to a friend who is looking for a home.

Residential & Mobile Home
 Air Conditioning & Heat Pump Installation

Greg's Heating & Cooling

Reliable, School Trained, Experienced

SPEDDY HOME APPLIANCE REPAIR
 REFRIGERATION SERVICE

Greg Hargadon Owner 758-8339
 256-5373

Singleton-Ford Insurance Agency

Crop - Hail Insurance

Mt. Vernon, Ky.
 Phone: Office 256-2611
 Home 256-4476

YOUR Independent AGENT
 SERVES YOU FIRST

BUILDING 453-2161
 256-5361

New Homes - Remodeling
 Blows Insulation
 Aluminum Siding, Storm Windows and Doors.

FREE ESTIMATES

PRESTON COLLINS
 Route 2, Mt. Vernon, Ky.

TERMITES?
 Call Madison Termite Co., Berea, Ky.
 Free Inspection - Phone 896-3757

Local Calls
 Jack Parsons, Wildlife, 256-2288 or
 C.H. Webb, Livingston, 453-9831 25xntf

Septic TANKS

J&J CONCRETE TANKS

Jim & Jack's S&T Store
 Phone 256-4385
 After 5 p.m. 256-2580

SEPTIC TANKS
 Sales and Service
 750 Gal - 1,000 Gal.
 Distribution Boxes
 1,000 Gal. Water Distribution Tanks

IMPALA - CAPRICE - MONTE CARLO - CHEVELLE - NOVA - VEGA - CAMARO - MONZA - CORVETTE - CHEVY TRUCKS - IMPALA - CAPRICE - MONTE CARLO - NOVA

LEASING
 12 to 36 months

"America's No. 1 Car"

BRITTON CHEVROLET-OLDS, INC.

U.S. 25 NORTH 526-3169 BEREA

GMAC Financing
 MIC Insurance

CORVETTE - CAMARO - VEGA - CHEVELLE - MONZA - IMPALA - CHEVY TRUCKS - CORVETTE - NOVA - CAPRICE - IMPALA - CAPRICE - NOVA - MONTE CARLO

WHAT'S HAPPENING IN THE...

Notice

NOTICE: For electric wiring and plumbing, call a licensed plumber at 256-5250.

NOTICE: On Thursday, June 16 I will sell a 1968 Pontiac GT0 for storage and repair bills. Serial No. is 242378E 24141. Gregory's Shell Serv., Renfro Valley, Ky. 39x3

POSTED: No killing of groundhogs and foxes. Will not be responsible for anyone getting hurt on land belonging to Chester Baker at Boone. 39x17p

NOTICE: Custom made cabinets. Call 453-4991. Taylor's Workshop. Arnel C. Taylor, owner. 33xntf

NOTICE: Reduce safe and fast with GoBee Tablets & E.Vap "water pills." Young's Pharmacy. Main St., Mt. Vernon, Ky. 30x10p

ADMINISTRATRIX NOTICE

Notice is hereby given that Iva Mae Hook has been appointed Administratrix of the Estate of Chester Hook, deceased. All persons having claims against said Estate shall present them, verified according to law, to the said Iva Mae Hook, Rt. 3, Brookhead or to William D. Gregory, Mt. Vernon, Ky., attorney for said Estate, no later than September 3, 1977. 39x3

"The office makes the man."
Latin Proverb

GLENN PENNINGTON AUTOMOBILES

"On The Strip" U.S. 25 North

- 76 Chev. Monza Hatchback, auto, a/c, Im/Am, Tape, Silver
- 76 Ford LTD., 2 Dr., Landau Roof, A.C., Red/White V.R.
- 76 Chev. Monte Carlo, Cruise Control, A.C., Burgandy
- 76 Chev. Imp. Cust. Cpe., A.C., Silver Black V.R.
- 76 Chev. Monte Carlo, A.C., a.m./l.m., Stereo Tape, Burgandy/White V.R.
- 76 Ford Cust., 1/2 Ton P.U.p., Red/White
- 76 Ford Explorer P/up, 8, Auto, Blue/White Stripe
- 75 Buick Century, 4 Dr., A.C., Baby Blue
- 75 Buick Electra, 4 Dr., Fully Eq'd, Met. Brown/Beige V.R.
- 75 Cadillac Cpe. DeVille, Fully Eq'd, Blue/Dk. Blue V.R.
- 75 Chev. Monte Carlo Landau, Fully Eq'd, White/White V.R.
- 75 Chev. P/U.p., Silverado Custom, P.S., A.C., Glass Top, Beige/White
- 75 Chev. Imp. Cust. Cpe., A.C., Lt. Green/Black V.R.
- 75 Ford Elite, Auto, A.C., a.m./l.m., H. no sender, Red/Red V.R.
- 75 Ford Ranchero, 8, Auto, A.C., Lime Green/Black Stripe
- 75 Ford Elite, 2 Dr., a.m./l.m., Tape, Black/Black
- 75 Ford 1/2 Ton, Long, Wide bed, P/U.p., Explorer, St. Shift, Orange/White Stripe
- 74 Olds Cutlass Supreme, A.C., Stereo Tape, Black/Black
- 74 Ply Fury, 4 Dr., H.T., a/c, White
- 74 Ford LTD, H.T. Auto, Black/Black
- 74 Chev. Imp. Cust. Cpe., a/c, Burgandy/Black V.R.
- 74 Chev. Nova, 2 Dr., Custom, 8, Auto, A.C., Dk. Green/Green V.R.
- 74 Ford Pinto Wagon, A.C., Auto, Brown
- 73 Ford Torino, Auto, Brown
- 73 Ford Mustang March 1, 8, Auto, Blue/Black V.R.
- 73 Olds Cutlass Supreme, 8, Auto, a/c, Blue/Black V.R.
- 72 Ford LTD, 2 Dr., a/c, Green/Dk. Green V.R.
- 72 Pont. Gran Prix, 8, Auto, a/c, Red/Black V.R.
- 72 Pont. Lemona, 2 Dr., A.C., a.m./l.m., Tape, Silver

Plus Many More To Choose From... Financing to Suit Your Budget...

BEREA Phone 986-3117 Now in our 18th Year

NOTICE: Anyone wishing to make donations toward the upkeep of the Ward Cemetery at Livingston, send to Mrs. Eva Black, P.O. Box 106, Livingston. 36x4p

HAMMS WATER WELL DRILLING AND CONTRACTING. Call 256-2024 anytime. ntf

POSTED: Killing of groundhogs and foxes prohibited. Will not be responsible for anyone getting hurt on land belonging to Chester Baker at Boone. 32x12

NOTICE: Donations for the upkeep and mowing of the Maresburg Cemetery may be sent to Mrs. Vernon Hook, Route 1, Mt. Vernon or to Citizens Bank at Brookhead. 37x3p

NOTICE: No hunting or trespassing on land of Don Ambrose located at Conway. Not responsible for accidents on my farm.

POSTED: No trespassing on property located at Pine Hill, Ky. Located between old 25 and the old state road belonging to Bobby W. Fain. 35x12

POSTED: Delia Ketrone farm on the Wildie Road. Located at the foot of Sigmon Hill. No hunting or trespassing. Sally and Marcus Sigmon. 35x12p

HY-SINGER CARPETS located behind Hale's Furniture, across from Exxon Service Station. Shag from \$2.99 up. Commercial carpet of all kinds and Armstrong Vinyl. Pading and installation available. Call 256-5413. 31xntf

NOTICE
Concrete yard ornaments, Bird baths, all kinds of flower pots, windmills (large and small), picnic tables (round and square). Special on long flower pots, \$5 each. We make all of our products.
One Mile South of Mt. Vernon on U.S. 25 across from Hilltop Market. Ph. 256-4765. 36xntf

WANTED BACKHOE WORK

Gravel - Fill Dirt - Top Soil Hauled

Jim & Jack's S&T Store
Ph. 256-4363
After 5 p.m. 256-2580

When you think of termites,

think of me.
I can kill the termites in your house. And keep the rest of the termites in your neighborhood from taking their place. After treatment, Terminix can guarantee most homes up to \$150,000 against further termite damage.
I'm Ken Sams, the Mt. Vernon Terminix man. Call me at **THRIFTY LUMBER CO.** Phone 256-2521.

TERMINIX
All work done by Terminix of Lexington
Starts June 8 - "King Kong"

ADMINISTRATRIX NOTICE

Notice is hereby given that Alice Day, Brookhead, Ky. 40409, has been appointed Administratrix of the Estate of Oscar Day deceased. Any persons having claims against said estate shall present them, verified according to law, to the said Alice Day - or to James W. Lambert, Mt. Vernon, Ky. 40456, attorney for estate, on or before September 9, 1977. 38x3

CARD OF THANKS

The family of Samuel Lewis Whitaker would like to express our deepest thanks and appreciation to the friends and relatives who were so kind to us during the loss of our husband, father and brother.

We especially wish to thank the ones who brought food, set flowers, the pallbearers, and a very special thanks to Billy Dowell and Roy Martin of Dowell-Martin Funeral Home, Bro. Charles Shivel, and Ezeel Cromer, who sang, May God bless each and everyone who helped in our time of need.

Wife and Family

CARD OF THANKS

The family of Henry Anglin, Sr. would like to express our deepest thanks and appreciation to the friends and neighbors who were so kind to us during the loss of our loved one.

We especially want to thank those who sent flowers, food, the pallbearers of Berea, Bro. Laimhart, the Laimhart family who sang, Martha Moore and all his friends of Berea; also all friends of Mt. Vernon and Dowell-Martin Funeral Home. A special thanks to Dr. Arvin and Joyce Brown who was so kind during our sorrow.

May God bless each of you. Wife, Lillie C. Anglin & The Anglin Children

STRETCHING YOUR FOOD DOLLAR
When buying carrots select firm, fresh, well-shaped ones with good color. Avoid wilted, flabby, soft or shriveled carrots. Refrigerate in a plastic bag or in the hydrator until ready to use. Wash just before use and conserve nutritive value by scraping or peeling thinly. Leave them whole, slice, dice, shred or cut into strips and use cooked as well as raw. 38x2p

LET US BRIGHTEN YOUR DAY!

Super Steam Extraction Carpet Cleaning
Free Estimates - No Obligation 256-5375
If no answer, Call 754-8339
Gary Kerr Mt. Vernon, Ky.

RICHMOND DRIVE IN
4 Miles South on US 25
NOW SHOWING ENDS TUES.
The CB battle cry of The Great Trucker's War!
Breaker! Breaker!
starring CHUCK NORRIS
And **HEAP FUNNY MOVIE!**
Lois MAXWELL • Billie BEEB • Robert GULD
Black ANKLES • Bruce WALTER • John MILES
THE GREAT SCOUT AND CATHOUSE THURSDAY
AN AMERICAN INTERNATIONAL PRODUCTION
Starts June 8 - "King Kong"

Wanted

WANTED: Babysitting in my home, Call 758-8738. 39x2

BIDS WANTED: The Rockcastle County Board of Education will accept sealed bids until June 6, 1977, 7 p.m., for the following: High School classroom, High School yearbooks, Kindergarten furniture and remodeling work on Brodhead School. Agriculture Shop. Specifications and bid forms are available at the Office of the Superintendent, Mt. Vernon, Ky. The Board reserves the right to reject any or all bids. 38x2

WANTED: Hardwood logs, high prices paid, large quantities wanted. J&J Pallet Co., Eubank, Ky., Ph. 379-6101 days and 432-3596 nights. 37x12

WANTED: Odd jobs, carpenter work, painting, and roof repairing. See Frank Collins or call 256-5490. 30xntf

For Rent

FOR RENT: Two or three rooms, furnished or unfurnished apartments. Steam heated at Rockcastle Hotel. See Roy Winstead at Appliance Service Center. ntf

FOR RENT: Like new repossessed Spinnet Piano. Call or write: Brent Ford, P.O. Box 658, Somerset, Ky. 42501, 606-678-4067. 38x2p

FREE COOK BOOKLET



You can prepare good food fast with the help of a free book: **NO TIME FOR COOKING**. Box 355-VAP, Collingswood, N.J. 08108.

Zupancic Greenhouse
Willaila, Ky.
Hanging Baskets
Potted Plants
Plants for the Family
Room or Office
It's Worth The Drive

The Mt. Vernon Signal Thursday, June 2, 1977 P-13

Saylor's Used Cars

USED CAR SALE	
74 Nova, V8, Auto, P.S., P.B.	\$2100.
73 Ply. Duster, V8, Auto, P.S.	1425.
70 Camaro, V8, P.S., P.B., Mag Wheels	950.
69 Camaro Conv., V8; Stick, P.S., P.B.	825.
69 Chevelle, 6 Cyl., Auto, P.S.	525.
69 Ply., V8, P.S., 4 Dr., H.T.	625.
69 V.W., 4 Cyl., Auto.	100.
65 Chev., 2 Dr., V8, Auto, P.S.	125.
63 Dodge Dart, 6 Cyl., Auto.	

MORE TO CHOOSE FROM

Matt E. Saylor's Used Cars
Renfro Valley, Ky.

NOTICE

If you wish to donate to the upkeep of Providence Cemetery, please mail your contributions to:

PHILLIP DAVIS
P.O. Box 261
Mt. Vernon, Ky. 40456

Indoor Flea Market

Robbie's Antiques

3 miles south of Berea on US 25 at Boone's Gap

Each Sat. & Sun. Till 6 P.M.

Booths for Rent

REVIVAL Beginning Monday June 6

Climax Christian Church

7:30 Each Evening

Bro. Ernie Johnson, Evangelist Shannon Franklin, Pastor

Special Singing Each Evening EVERYONE INVITED!

Notice

Please Send Your 1977

Donations For Upkeep To:

Elmwood Cemetery

Association

Mrs. Bernie Cox

Mt. Vernon, Ky. 40456

Watch next week's SIGNAL for details of

AUCTION

Of Mr. Roman McFerron's
HOUSE AND 2 LOTS

LOCATED ON PAUL ST. IN THE CITY LIMITS OF MT. VERNON, ROCKCASTLE COUNTY, KENTUCKY

June 18, 1977 - 1:30 P.M.

For additional information contact

Ford Realty & Auction Co., Inc.

256-4545

Mt. Vernon, Ky.



Senior Citizen's News & Comments

By Charles Barr

Supplementary Medical Insurance?

The Medical Insurance part of Medicare is financed by monthly premiums paid by the federal government and the insured person. Each insured now pays \$6.70 per month. In the case of Social Security and Railroad Retirement beneficiaries, the amount of the premium is deducted from their monthly checks.

What Does Supplementary Medical Insurance Cover?

The Medical Insurance part of Medicare helps pay for the costs of physicians services and related medical items. Some of the items are also covered by Hospital Insurance Benefits and may be used after Hospital Insurance Benefits have run out. Supplementary Medical Insurance can pay the doctor directly or reimburse the patient. Some of the benefits are:

Medical and surgical services by physicians, inpatient X rays and lab tests, ambulance services, out-patient clinic services, emergency room care, physical therapy, prescribed home health care with or without prior hospitalization, rental or purchase of medical equipment like a hospital bed, wheelchair or oxygen tent, and artificial limbs or other aids.

How Much of the Bills Will Supplementary Medical Ins. Pay?

Supplementary Medical Insurance pays for 80 percent (\$4 out of every \$5) of reasonable medical charges, after the insured pays the first \$50 of covered expenses in each calendar year. It will pay for 100 percent of X-ray and laboratory services you receive in the hospital.

Supplementary Medical Insurance will also pay for 100 percent of the cost of covered home health care visits, up to 100 visits.

Where and How Do I Apply For Medicare?

Call or go to your nearest Social Security Office and ask for a Medicare application and a Medicare handbook, if you have not been notified of being covered automatically. If you are entitled to Hospital Insurance benefits, you will automatically be enrolled in the Part B program unless you indicated to

your Social Security Office that you do not want coverage. If you are entitled to Hospital Insurance Benefits but will see reach the age of 65, you should go to your Social Security Office before your birthday and apply for Supplementary Medical Insurance. You can apply from up to three months before and seven months after your 65th birthday. Otherwise, you can only apply during general enrollment periods, January 1 to March 31 of each year. Late enrollment in the program will result in increased monthly premiums.

What Do I Do If I Am Denied Medicare Coverage?

If your application is denied, you will be informed of your right to a reconsideration, and if necessary, how to represent you. After the decision by the Administrative Law Judge, you must request a reconsideration in writing within six months of the denial and you must request a hearing within six months after the reconsideration is made. You may authorize a friend, a relative, a private attorney, or someone from a free legal services program to assist or represent you. After the decision by the Administrative Law Judge, you have sixty days to request a review by the Appeals Council. The Social Security Department also has the opportunity to appeal. Within sixty days of the Appeal Council's decision, any dissatisfied party

may appeal to the Federal District Court.

Medicare Does Not Pay All the Bills What Can I Do?

It is very important to find out about Medicaid. Medicaid can pay part of what Medicare does not pay for people who are eligible for both programs. Medicaid will pay the \$104 deductible and any other deductibles incurred during the first twenty-one days of any hospital stay under Part A.

Medicaid will also pay the \$6.70 monthly premium for Part B plus the deductibles under Part B. Medicaid also covers some expenses not covered by Medicare like dental care, some prescription drugs and transportation to medical care. All figures given in this program description are subject to change.

Americans eat more bananas than any other fruit.

Supplementary Medical Insurance

Who is Eligible for Medical Insurance Benefits? People are eligible for enrollment in the Part B program if (1) they are entitled to Part A (Hospital Insurance) benefits, or if (2) they are 65 years of age.

How Much Does it Cost to Enroll For

REAL ESTATE FOR SALE

LAKE LOT located on Woods Creek Lake. The lot measures 102x170. Fish from your back porch on this lot for only \$2,500.

Nice Building or Mobile Home Lot located on Brummett Road. Lot measures approx. 2.58 acres, city water available. Can be yours for only \$2,500.

Lots located at Conway, Ky. Suitable for building or mobile home. City water and blacktop street. Only \$1,588 each.

LOTS located near Mt. Vernon in Country Club Estates.

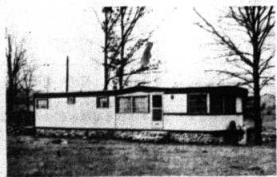
100 ACRES RAW LAND located only 5 miles south of Mt. Vernon. There is coal and timber. Truly a bargain bill priced at only \$150 per acre.



ALMOST NEW BRICK - Located on Shirley St. in Mt. Vernon. House has 3 bedrooms, living room, kitchen, 1/2 basement, formal dining room, garage and 2 full baths. There is city water and sewer, built-in cabinets, storm doors and windows, wall to wall carpet, total electric and blacktop drive. \$31,500.



HOW ABOUT THIS ONE! This fine home has 4 bedrooms, living room, kitchen, den, utility room and bath. There is also aluminum siding, oak cabinets, carpet, air conditioning, storm doors and windows and much more. The house is situated on a lot measuring approximately 100x200 and is located about 1 mile south of Mt. Vernon. All this can be yours for only \$31,500.



MOBILE HOME - 12x32 Standard Mobile Home located at Conway, Ky. Mobile home is situated on 1/2 acre measuring 126x150 and is heated by oil and furnace. There is a crystal rock foundation and a 10x12 outbuilding. In addition to the mobile home, there is an outside grill of crystal rock. This can be yours for only \$8,700.

LOT located near Mt. Vernon Elementary School in one of Mt. Vernon's finest subdivisions.

65 ACRES located in the Crooked Creek Section of Rockcastle County. Secluded - water by springs - some timber and coal. Only \$110 per acre.

REDUCED REDUCED REDUCED - Only \$120 per acre! Unbelievable isn't it! But the owner says to sell this 165 acre tract located only 5 miles south of Mt. Vernon.

ATTENTION COUNTRY GENTLEMEN - You will have to see this home yourself to believe and appreciate all the value that goes with it. This beautiful home is only 1 year old and has the features to compliment a life style of gracious living. With features undreamed of in the average home, you will appreciate the decorator's touch here. There is central heat and air conditioning, kitchen has all built-ins, 2 baths, formal dining room, plus 1-10 private acres. In the \$40's.

100 ACRES located in the Dry Fork Section near Jackson County line. Some timber, springs and creek. Only \$110 per acre.

94 ACRES RAW LAND located in the Saltpetre Cave Area. Some timber and coal, well and spring water. Priced at only \$125 per acre.

60 ACRES, more or less, in the Scaffold Cane area. 5 room house with extra large rooms, good small barn, 232 lbs. tobacco base, mail and school bus service available at the front door. All for \$15,500.

100 ACRES more or less, located approx. 5 miles south of Mt. Vernon in the Chestnut Ridge Area. Water is provided by a spring and there is some coal and timber. Priced at only \$16,500.

ACREAGE - 26 acres located 1 1/4 miles south of Crab Orchard on Hwy. 39. Approx. 15 acres cropland and balance in timber with approx. 1200 lbs. tobacco base. Water is provided by eastern pond and branch. This can be yours for only \$22,500.

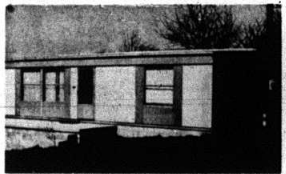
75 ACRES WOODED LAND located near Renfro Valley, Ky. Only \$120 per acre.



NEW HOUSE - Located in beautiful Country Club Estates. This home has 3 bedrooms, living room, kitchen, 2 baths, full basement and is heated and cooled by a heat pump. There is a washer and dryer hook-up, wall to wall carpet and city water. Only \$39,900.

Here is Your Opportunity to buy 100 Acres of Kentucky hill land. Located in the Lamoer Section of Rockcastle County - has some coal and timber. Owner will finance. \$18,000.

Large Spacious Building or Mobile Home Lots located on Lake Linville. Financing available with small down payment.



1973 DOUBLE WIDE MOBILE HOME located on Mill St. in Mt. Vernon within walking distance of churches, grocery store and Main St. The home has 3 bedrooms, kitchen with built-ins and is total electric. The lot measures 60x100. Priced at only \$11,900.



HOUSE AND LOT - Located in the Maple Grove Section of Rockcastle County. The house has been completely remodeled. There are 3 bedrooms, living room, kitchen and bath. It is heated by gas furnace with new built-in cabinets, carpet and vinyl floors throughout, city water, washer and dryer hook-up.



BRAND NEW AND JUST FOR YOU - This is a lovely 3 bedroom fieldstone home with large living room and nice built-in kitchen, garage and full bath. The home is total electric, wall to wall carpet, patio, with city water and sewer. Located in Valley Manor Subdivision. Only \$31,900.

5 1/2 ACRES more or less, located approx. 1 mile South of Livingston on Highway 490. The farm is improved with a 30x40 barn, with the attached 24x40 shed, the farm has some coal and timber and most of the farm is under a good fence. Water is furnished by a spring and a well. Approximately 5 acres cropland. Priced at only \$13,000.00.

Nice Building or Mobile Home Lot located fronting on Poplar Street. The lot measures approximately 101x135 with city water available. Only \$3,500.

LARGE LOT located on Lake Linville. The lot measures approx. 1 acre, water is provided by a well and there is a septic tank. This is without a doubt one of the best lake lots available. In addition to the lot, there is a one bedroom mobile home. \$7,500.

Come in and talk with one of our realtors today about a lot in Rockcastle's newest Subdivision - Happy Acres. The lots are large lots with city water, blacktop street and restricted for the buyers protection.



REDUCED REDUCED - That is what we've done on this 6 room home located on Hwy. 19 between Brohead and Crab Orchard.



NEW BRICK located in the Valley Manor Subdivision. 3 bedrooms - living room - kitchen and family room combined and 2 full baths. Carpet throughout, lots of cabinet space, total electric, within walking distance of town, stores and churches.



1972 12x30 MOBILE HOME has 3 bedrooms, living room, kitchen and bath, carpet and vinyl throughout, fuel oil furnace, washer and dryer hook-up. 5 miles south of Mt. Vernon only \$5,900.

By Each Owners Request - All property shown by appointment with realtor only. Call today for an appointment. We have F.H.A. Approved Homes available to Qualified Prospects - No Down Payment - Low Monthly Payments.

FORD
Realty & Auction Co., Inc.
Mt. Vernon, Ky.

R
REALTOR

ROCKCASTLE AUCTIONEERS ASSOCIATION

Col. Sam Ford Realtor-Auctioneer Home Ph. 256-4588
Col. Roy Adams Realtor-Auctioneer Home Ph. 256-4454
Col. Danny Ford Realtor-Auctioneer Home Ph. 256-4446

Office Phone 256-4545



SPRING VALUES

Values Are Popping Up All Over!

SUPPLEMENT TO:
MT. VERNON SIGNAL

WE GLADLY
REDEEM FEDERAL
FOOD STAMPS

PRICES GOOD THRU JUNE 4, 1977
QUANTITY RIGHTS RESERVED

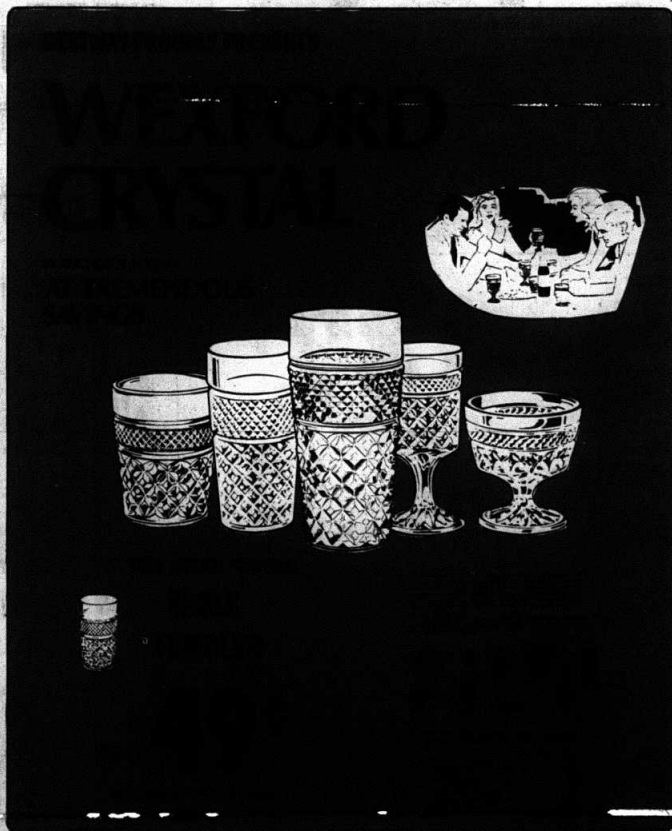
DIET RITE OR
R. C. COLA
8 16 OZ. BOTTLES **\$1.09**
PLUS DEPOSIT

STOKELY
GOLDEN CORN
4 16 OZ. CANS **\$1**
WHOLE KERNEL OR CREAM STYLE

HYDE PARK GRADE "A"
LARGE EGGS
DOZ. **59¢**

FULL OF FLAVOR
CANTALOUPE
EACH **69¢**

U.S.D.A. CHOICE
ROUND STEAK
\$1.17
LB.



PARKWAY
PIC-PAC SUPERMARKET
LEITCHFIELD, KY.

MONTICELLO
PIC-PAC SUPERMARKET
MONTICELLO, KY.

KING'S
PIC-PAC SUPERMARKET
MT. VERNON, KY.

BENGE'S
PIC-PAC SUPERMARKET
CORDIN, KY.