



At present, the Blevins' have to pour collected milk into the holding tank by hand. They plan to install a vacuum line this fall.



Paul and Janet have a 300 gallon collecting tank in their milking parlor.

They Left the City For the Farm

Paul and Janet Blevins operate a 72.5 acre dairy farm at Bee Lick barely in Rockcastle County.

After 17 years of working for Ford Motor company in Indiana, Paul decided he wanted to operate his own business so he returned to the family farm here in Rockcastle County.

Paul and Janet moved to their farm in 1972 and they now own a dairy herd of about 41 cows and are milking 32.6 new calves round out their present herd. They also have 14 acres of alfalfa and 30 acres in corn and silage in addition to 4,000 lbs. of tobacco (one-half of which is leased).

Paul and Janet have two sons and one daughter. Ernie, 18, is the oldest and he graduated from Rockcastle County High School this year and plans to attend Eastern Kentucky University in the fall. He has become deeply involved with music and sings at a large number of social events in the county annually. Ernie plays piano and banjo.

Paula, the Blevins' only daughter, is 14. She will be a sophomore at the high school this year. At present, she plays softball for the Country Angels in the county's women's softball league.

Rusty, 11, the Blevins' youngest, will be a 7th grader at Brodhead Elementary School this fall. He is a baseball player at Brodhead but says he also likes hayrides.

Paul and Janet are both deeply involved in their farm and are committed to the dairy industry. Paul plans to add improvements to his milking parlor this fall including a vacuum line from the stalls to his tank. At present they are collecting the milk in vacuum buckets and pouring it by hand into their holding tank.

The Blevins family have done something that very few have had the courage to do. They moved from the city to the farm and made a successful venture of it.

CUMBERLAND PRODUCTION CREDIT ASSOCIATION

EXTENDS

CONGRATULATIONS!

TO THE DAIRY FARMERS OF ROCK-CASTLE COUNTY for the excellent job they are doing. We in PCA know they work long hours to provide the most delicious food in the world.

We wish them better prices for their dairy products in the future because they deserve all they get and more.

Anytime we in PCA can be of service in any way feel welcome to visit, call or write your friendly partners in farming.

Roy G. Brown

Assistant Vice President

Jewell Hansel

Assistant Office Manager

Sharon Burton

Secretary

Donna Dailey

Secretary



JUNE IS CONGRATULATIONS TO OUR DAIRY MONTH DAIRY INDUSTRY

DAIRY MONTH IS A NATURAL TIME TO SAY THANK YOU.



The dairy farmers and their families who live and work around our community deserve a great deal of thanks. Their stability helps our community remain stable and healthy. Their insistence on offering only the highest quality milk and dairy products sets an example for us all, and improves the quality of our lives. We congratulate them now, during Dairy Month, and thank them for their contributions.



June is Dairy Month



This month is a good time for all of us to take a closer look at our Dairy Industry. One thing is certain, it has become big business and is getting bigger every day. And our dairy farmers have done an excellent job in increasing production to meet growing demands. They are using the most modern, up-to-date equipment in rigidly controlled modern plants. We salute them for a job well done!

This Page Sponsored By The Following Merchants

Young's Pharmacy

PHONE 254-4613
MAIN STREET MT. VERNON

Ford Realty & Auction Co.

PHONE 256-4545 or Home 759-6499
MT. VERNON, KY.

McBee Department Store

256-2751 Main St. Mt. Vernon

Robinson's

MAIN STREET MT. VERNON

Mt. Vernon Produce

256-2241 Mt. Vernon

Jim's Dollar Discount

Jasper Farm Supply

758-8513 WILLIAMS

Fain Furniture & Appliances

West Main Street 256-2201 Mt. Vernon

Appliance Service Center

Mr. and Mrs. Roy Winstead
Mr. and Mrs. Dale Winstead
256-2626 U.S. 25 Mt. Vernon

Cox Funeral Home

Mr. and Mrs. Buddy Cox
256-4444 or 256-2545 Mt. Vernon

**Jim & Jack's S&T
Hardware and Appliances**

256-4363 Williams St. Mt. Vernon

Food Fair Supermarket

"Friendly Service All The Way To Your Car"
Williams St. 256-2918 Mt. Vernon

Dowell-Martin Funeral Home

Ray Martin
256-2291 or 256-2297

Mary Dorell
West Main Street

Rockcastle Farm Service

256-2516 Mt. Vernon

Jerry's Tire Center

256-2123
Goodyear Three-Whiskered Appliances
Mt. Vernon

Rockcastle Auto Parts

256-2298 Main Street Mt. Vernon

Jean-Faye Fashions

PAT BAKER
MT. VERNON
MARY ANN BULLOCK
PHONE 256-2299

A Salute (Cont. From 3)

practices. That is why family operated dairies are more common as a rule. They are rather small herds, usually less than 100 cows because of the difficulty of maintaining efficiency with large herds. It takes close attention to many details to achieve maximum milk production. It is difficult to substitute for the tender loving care a Dairy Farmer and his family give a herd.

Think about it. Support the dairy families of Rockcastle County. Drink more Milk!!!

Brown Family (Cont. From 3)

Brown and his wife, Diane, live on their farm located in western Rockcastle County near the Lincoln line and they have one son, Mark.

They have a three-in-line Surge milking parlor and a 300-gallon holding tank.

Bulk Milk Hauler Is Important

By H. Lee Durham

The bulk milk hauler is a very important cog in Kentucky's dairy industry, says E.C. Troutman, milk coordinator for UK's Regulatory Services Department.

As a result, a program is in operation in Kentucky in the training and supervision of contract milk haulers. Troutman says the program instructs the milk haulers in the best methods of handling the milk hauled from the state's dairies to market centers and then maintains a vigil to see that the handling methods are carried out. He added that the procedure is not only a protection for the consumer, but also for the dairy industry—not only to assure a top quality product, but also to assure the producer top profits in current market ranges.

The success of the Kentucky program in placing the emphasis on the importance of milk haulers prompted a request for Troutman to speak at the annual Dairy Institute, to be held at the University of Tennessee in Knoxville, Feb. 28-March 1.

In a paper prepared by Troutman for presentation at the Institute, he points out that the program in Kentucky has been set up as a joint effort by the dairy industry and the regulatory service. He expresses his feeling that such a joint responsibility is the best means to carry out a sound program.

"The training of milk haulers should include instruction from regulatory, extension and industry-supervisory personnel," Troutman says, adding that information in sampling of milk from the stocks in the bulk tanks of the individual producer, judging milk quality, measuring, cleaning, sanitizing, sanitary equipment, quality and fat test and even truck operations should all be covered in the training.

"In Kentucky, we are attempting to strengthen our training program by giving a more complete course of all subjects needed by haulers and possibly using other agencies in

the training," Troutman said. All milk haulers in the state are licensed and are governed by the inspection procedures of the Regulatory Service.

"Kentucky has nine regulatory inspectors, across the state that work with state laws in feed, seed, fertilizer, and milk," Troutman stated, noting that two of the inspectors work with licensed milk-fat testers at the milk buyers and check buyers records. All inspectors examine and inspect haulers throughout the year. There are about 48 milk buyers in Kentucky, but only 24 points

test milk for producer payment on milk-fat.

He said the importance of milk haulers comes into play in a number of instances. For example the hauler is required to take a "load sample" immediately after the last bulk tank as the dairy is pumped into the truck and the hauler is thus responsible for the inauguration of the complete milk testing and the final grading of the milk from the producer. The hauler is also responsible for the cleanliness of his hauling equipment and the keeping of adequate records on the individual

pickups to insure quality of the product when it reaches the buyer.

Feeding The Dairy Cow

By Harold Ballinger
Director ASCS Office

Each dairy cow must be provided with a well balanced ration of grasses, legumes, and grain concentrates in order to produce nature's most perfect food. The cow eats these feeds

which are unfit for human consumption and converts them into meat and milk-sources of hamburger, steak and milk-shakes.

In order for the cow to maintain a high level of milk production the dairy farmer must feed the dairy cow large quantities of a properly balanced grain ration.

Most dairymen in Rockcastle County feed their cows good quality hay and corn silage as a roughage but this ration alone is not enough to keep the cow producing at an economical amount.

(Cont. to 9)



- for fresh and refreshing Dairy Foods
- for dedicated effort and enterprise
- for helping our community thrive

HERE'S WHERE WE COME IN...

To boost income and aid improvements, to help the Dairy Farmer as he helps our total local economy, this bank stands ready as a source of credit to meet every farm and farm family need.

With full appreciation of the vital contribution of our local dairy industry to the health, happiness and financial well-being of this community, we invite Dairy Farmers to take advantage of our Full Banking Services.

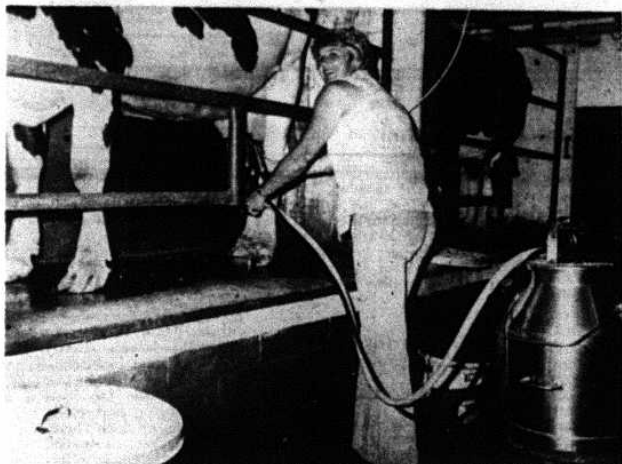
We salute the Dairy Farmer on this occasion — annually dedicated to honoring his services to the community and consumers.



Citizens Bank

BRODHEAD, KENTUCKY





Talk about Women's Lib! Janet works as hard at milking as Paul daily.



The Elevins Family consists of, from left: Paula, Ernie, Janet, Rasty and Paul.

Feeding the Dairy Cow

Cont. From 8

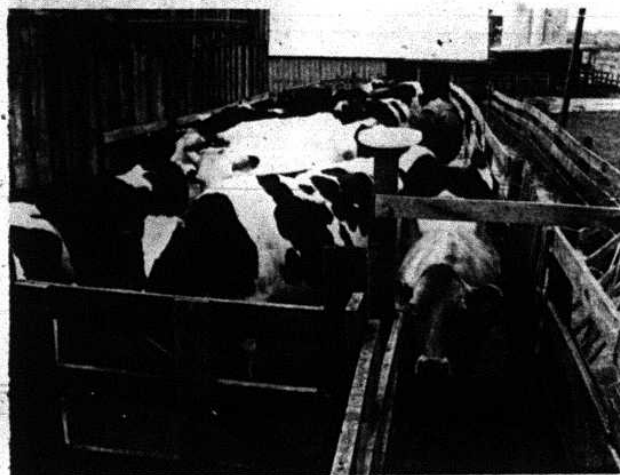
To supplement the hay and corn silage the dairy farmer provides the cow with 7 to 27 pounds of grain daily based on each individual cows level of production.

In addition to feeding grain based on level of production, milk price, butterfat test, and grain price is considered.

If 16 percent crude protein,

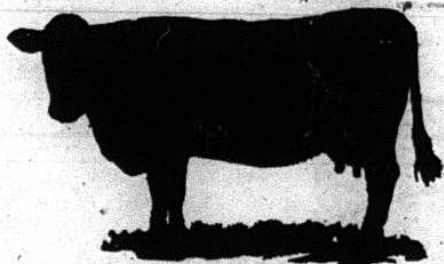
high energy grain, cost \$150. per ton and milk is \$9.00 per hundredweight and cows are producing 50 pounds of 4 percent milk daily each cow should receive 20 pounds of grain daily or an equivalent amount of pellets.

While overfeeding of cows is unprofitable, it is also uneconomical to underfeed cows. Feeding the individual cows at the optimum rate is one of the dairymen's toughest jobs.



The Elevins are now milking 38 cows. They have 12 heifers and 6 new calves.

WE SALUTE YOU
DAIRY FARMERS



Hiatt's 5 & 10

In Mt. Vernon wishes to congratulate the Dairy Farmers of Rockcastle County. The Dairymen have done an excellent job and are to be commended on the fine program now in operation. It is the store's wish that Dairying might continue to grow and establish our County as one of the finer Dairy Counties of the State. We welcome you to Mt. Vernon on Dairy Day and will cooperate fully to make the day a complete success. If the day is sunny and hot, we invite you in to enjoy our air conditioned store and to shop

Hiatt's 5 & 10

Mt. Vernon, Ky.

1977 Salute to Dairying

The employees of **Young's Pharmacy** in Mt. Vernon take this opportunity to congratulate the Dairy Farmers of Rockcastle County.

We feature a complete-line of
Health and Beauty Aids
Including Coty Cosmetics

Russell Stover Candies

Open 6 days a-week to serve you Call 256-4613

UDIA's Role In Dairy Industry

Dairying in America originated in 1611 when the first cows arrived in Jamestown. By 1915, dairy producers were beginning to create organizations to protect and broaden the market for dairy products. But it wasn't until July 1971 that they took the first major step toward building a truly unified industry by forming the United Dairy Industry Association (UDIA).

Dedicated to increasing the sales of U.S. dairy products, UDIA coordinates a total promotion program which includes the advertising and sales promotion campaigns of American Dairy Association (ADA), product and process R&D projects of Dairy Research Inc. (DRINC) and nutrition research and education work of National Dairy Council (NDC). At the same time, UDIA's communications, marketing and economic research, and program planning and support divisions are extending the efforts of these organizations and focusing them on common goals and objectives.

The national programs of ADA, DRINC and NDC are implemented at the local level by UDIA member units and NDC affiliated Dairy Council units (ADCU) throughout the country.

American Dairy Association

ADA's advertising and sales promotion campaigns use input from all UDIA divisions and operating organizations, such as survey data from marketing and economic research and findings from nutrition research. Advertising programs using TV, radio, outdoor billboards, newspapers and other publications follow basic themes developed to meet UDIA long- and short-range goals. Point-of-purchase (P-O-P) promotional materials support these goals at store level.

ADA's efforts are strengthened by its dairy department management workshop program in which nationwide day-long workshops, conducted by two-person ADA dairy marketing consultant teams, annually show thousands of food chain executives and retail food store personnel how to reap optimum sales and profit returns from their dairy cases.

Dairy Research Inc.

In 1976, DRINC received Internal Revenue Service (IRS) permission to establish Dairy Research Foundation, an independent, non-profit private research organization.

DRINC is also involved in product development projects with cooperatives and commercial companies to encourage them to use dairy rather than vegetable ingredients in their development of new products. Since being incorporated in 1969, it has supported 42 product development projects, 17 of which have reached the test market stage with 48 separate products. Of these, 19 have succeeded and are on the market today. One is

Fillsbury's Figurines, a calorie control meal replacement bar rated the number one product of its kind in the country.

DRINC's process development work is also important. A process savings of one dollar at, or prior to, the manufacturing stage is the equivalent of at least two dollars in added sales. So a new process development can add substantially to farmer/processor income.

National Dairy Council

NDC is the country's oldest food industry-supported organization devoted solely to nutrition research and education. One of its primary functions in UDIA's total promotion program is to make people aware of the nutritional value of dairy

foods. It does this by working directly with teachers, physicians, dentists, dietitians, government officials, scientists and representatives of the mass media who influence consumer eating habits.

UDIA Divisions

Marketing and economic research is involved in all aspects of ADA and DRINC programs, and in some NDC and communications division programming. It gathers the business information needed by UDIA and its organizations to help determine product priorities and appropriate markets and audiences.

Communications carries through ongoing food/trade publicity and consumer communications programs for major promotional periods and assigned priority products. It also tailors special publicity campaigns for the dairy and grocery industries.

Program support and affiliated unit services are the field service sections of

UDIA. They maintain close liaison with member units in planning, budgeting and program support, including counsel in local market extension programs. Affiliated unit services also coordinate business and program operations between NDC and its affiliated Dairy Council units.

Through UDIA and its operating organizations and divisions, America's dairy industry is able to adapt to changing times and grow with them. As a result, dairy products are available in the United States in greater quantity, and at less cost, than in most other parts of the world.

Dairy Farms Produced 2,904 Mile Milk River

How strong was America's dairy industry in 1976, in terms of milk produced?

A river comprised of last year's total milk output would measure 2,904 miles long, 41 feet wide and three-and-a-half feet deep. It

would stretch from Boston to San Francisco.

If put in gallon cartons and placed side by side, the 120 billion pounds of milk produced would form a band around the world 85 times at the equator.

Need For Good Records

Business records play an important role in the successful operation of a modern dairy farm. Many operators today participate in computerized business record programs.

Accurate dairy production records, in particular, are necessary for today's successful dairymen. Production tested herds consistently out-produce non-tested ones. Complete dairy production records provide the basis for developing and maintaining a top producing herd.

Without records to cull out low-profit cows effectively, the overall economic stability can be affected.

June Dairy Month

MILK MEASURES UP

PLAN NOW TO ENJOY THE BARGAINS AND FESTIVITIES OF

JUNE DAIRY MONTH



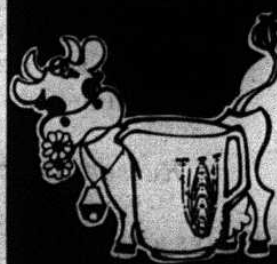
COM. TOM HARRIS



GLEN GOEBEL

Kentucky Dairy Princess SANDRA STARK, Calloway County, joins June Dairy Month Chairman Tom Harris, Kentucky's Commissioner of Agriculture, A. D. A. President Glen Goebel, and the dairy farmers and Adas of Kentucky in thanking the thousands of Kentuckians, the media, and organizations participating in

JUNE DAIRY MONTH



The Dairy Farmers of Rockcastle County and the American Dairy Association OF KENTUCKY

Serve A Dairy Classic Dessert, Spectacular Baked Alaska Pie

The Mt. Vernon Signal Thursday, June 23, 1977 P-A11

If you've got ice cream in mind for that special dessert, make it ice cream with excitement. Serve Baked Alaska Pie. Alaska, land of glaciers and volcanoes, inspired this fire-and-ice dessert. Although the idea of baking ice cream sounds difficult, even impossible, you'll find it's a breeze to make.

The trick is in insulating the ice cream from the heat, and baking it quickly at a very high temperature. A board serves as the baking sheet and provides insulation for the bottom of the Baked Alaska Pie. The crust, a delicious cookie-like mixture that includes chopped nuts, and the pie plate also help protect the bottom. On top goes a fluffy layer of meringue, carefully sealed around the edges to keep the heat out.

You can do this much ahead to save time. Bake the crust, fill it with layers of vanilla and cherry ice cream, and put it away in the freezer. It is best to have it well frozen so there will be no melting. Then just before serving time whip up the meringue, and use it to top off the ice cream making sure to seal it around the edges. Slip it all into a 500°F. oven for 1 to 3 minutes, just long enough to brown lightly. Bring your Baked Alaska Pie to the table immediately, and wait for the "oohs" and "ahhs!"

"Mealtime Mastery"

Over 400 easy-to-prepare, kitchen tested recipes using dairy products in everything from appetizers to desserts are available in "Mealtime Mastery," American Dairy Association's (ADA) first new cookbook in 10 years.

The 224-page illustrated book took over six months to prepare. Besides full color photographs of food dishes,



it contains hints on the care, storage and use of dairy products; metric information; definitions of preparation, mixing, cooking and utensil terms; ingredient substitutions and equivalents; a complete description of domestic cheeses; and other interesting and informative features.

A plasticized cover and special spiral binding enables "Mealtime Mastery" to be opened easily and lay flat for the homemaker's convenience.

Individual copies of ADA's new cookbook sell for \$2.75. This includes postage or shipping charges.

Send check and order to:

Mealtime Mastery
American Dairy Association
P.O. Box No. 721-JDM
Rosemont, Illinois 60018

Offer expires December 31, 1977.



Impress your guests with this spectacular Baked Alaska Pie. It's a breeze to make. A cookie crust filled with ice cream and topped with a fluffy cloud of warm meringue surely brings excitement to the end of the meal.

BAKED ALASKA PIE 6 to 8 servings

Crust:

- 1 cup all-purpose flour
- 3 tablespoons confectioners' sugar
- 1/2 cup (1 stick), butter, softened
- 1/3 cup finely chopped nuts

Filling:

- 2 pints cherry ice cream, softened
- 1 pint vanilla ice cream, softened

Meringue:

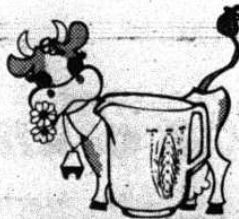
- 2 egg whites
- 1/8 teaspoon cream of tartar
- 1/4 cup sugar

For crust, beat together flour, sugar and butter until well blended. Stir in nuts. Press onto bottom and sides of a 9-inch pie plate building up edge; prick with fork. Bake in a preheated 350°F. oven 15 to 18 minutes or until lightly browned. Cool on wire rack; chill.

For filling, spoon 1 pint cherry ice cream into crust; pack down with back of spoon. Freeze. Repeat with vanilla ice cream and remaining 1 pint cherry ice cream. Cover with freezer wrap and freeze until firm.

Just before serving, prepare meringue. Beat egg whites until foamy. Add cream of tartar and beat until soft peaks form. Add sugar, 1 tablespoon at a time, and beat until stiff peaks form. Remove wrap from pie and spread meringue over ice cream, sealing edges to crust. Place pie plate on wooden board. Bake in a preheated 500°F. oven 1 to 3 minutes or until meringue is lightly browned. Serve immediately.

**The Southeastern Graded
Milk Producers Association
wishes to salute the
Dairy Farmers of
Rockcastle County
for their effort in producing
high-quality
milk products.**



Milk Measures Up!

Milk Measures Up!



Ann D. Allen Says:

Serve a Hearty Salad To Win All Votes

One of the classic salads which is always a winner is called a Chef's Salad. A big, hearty, handsome salad, it can be offered as a main course because it contains two or three kinds of cheese, ham and/or turkey, salami, greens and other vegetables.

Dressings for this salad may vary as much as the salad ingredients. One of the most interesting as well as easily made dressings uses yogurt as a base with simple seasonings. This may be varied, if and when desired, with crumbled Blue cheese.

CHEF'S SALAD
6 to 8 servings
(2 cups dressing)

DRESSING:

- 1 tablespoon chopped parsley
- 1 clove garlic, crushed
- 1 teaspoon salt
- Ground pepper
- 2 cartons (8-oz. each) plain yogurt

SALAD:

- 6 cups salad greens (combination of head lettuce, endive and escarole)
- 3 tablespoons wine vinegar
- 1 cup fresh sliced

- mushrooms
- 1 cup cucumber slices
- 1 cup green pepper slices
- 1/4 cup chopped green onion
- 1/4 cup sliced radishes
- Salt
- Ground pepper
- 1 cup (4 oz.) Swiss cheese
- 1 cup (4 oz.) Brick cheese
- 1 cup cooked ham OR turkey, cut in strips
- 8 slices salami
- Cherry tomatoes

For dressing, combine parsley, garlic, salt and pepper. Mix in 1/4 cup yogurt until smooth; fold in remaining yogurt. Cover and chill. For salad, tear greens into bite-size pieces; place in salad bowl. Sprinkle with vinegar; toss lightly. Add a portion of mushrooms, cucumber, green pepper, onion, radishes, salt and pepper. Toss again lightly. Cut cheeses and meat in julienne strips; arrange along with remainder of vegetables and tomatoes on top of greens. Serve salad dressing separately to spoon over salad. **BLUE CHEESE VARIATION:** Add 1/4 cup crumbled Blue cheese to dressing recipe. Omit vinegar from salad recipe.



Look to a chef for main dish salad inspiration, using greens that are available with an assortment of cheeses. Dairy sour cream and yogurt make an excellent base for the seasonings in dressing.



Mr. and Mrs. Robert L. "Bud" Cox and Staff take this opportunity to extend their Congratulations to the Dairy Farmers of Rockcastle County on a job well done.

Cox Funeral Home

Mt. Vernon, Kentucky

256-2345 256-4444



Irene Stewart, 38, was killed last Sunday evening about 7:30 p.m. when her car

overturned on the Brush Creek Road. Mrs. Stewart was alone in the car at the

time of the accident. (See story elsewhere on front page).

Mt. Vernon and Brodhead To Receive Road Funds

State Transportation Secretary Calvin G. Grayson has announced that two Rockcastle County cities will receive \$9.531 to support their 1977-78 municipal road improvements programs, which begin July 1.

According to Grayson, Mt. Vernon will use its \$6,705 to provide for ditching, shouldering, base repairs and blacktop

patching on the Davis Street extension, Lawrence Lane, Paul Street, Pencil Street and "T" Street; and Brodhead will use its \$3,146 share to provide blacktop patching on Maple Street and Silver Street and patching and shoulder widening on Tyree Street.

Similar allocations to other communities also are being announced locally.

The municipal road aid program was established in 1973 to assist incorporated communities and eligible unincorporated urban areas - meet the costs of maintaining and improving their city roads and streets.

It is financed under a formula which provides that one-half cent collected in tax on the sale of each gallon of motor fuels in Kentucky be set aside for allocation to support municipal road aid programs.

The allocations to eligible communities are announced each annually, on a fiscal year basis.

HOME REPAIR AND IMPROVEMENT SERVICES NOW AVAILABLE

The Rockcastle Co. Senior Citizens now have a program where they can do home repair and improvement for the Senior Citizens here in the county. We also have some workers for chore services. There are certain qualifications on these programs, so if you are interested and would like more information please call the Senior Citizen Office at 256-5182.

We will be glad to talk to you about the services that are now available and will give you any information you may need.

KHS Search for Family Cemeteries

Volunteers in Rockcastle County are working closely with the Kentucky Historical Society (KHS) to pinpoint the exact location of family cemeteries and burial sites. The United States Geological Survey team has advised the KHS that they will include the exact latitude and longitude of these sites on the newly revised topographical maps.

The effort is part of the cemetery records survey project, started by the KHS in 1976. The deadline for submitting names, dates, and other genealogical information found in the county cemeteries is July 1, 1978, according to Lewis Woods, director of the project.

After the information is compiled, it will be edited, indexed and published. The records will be placed in the KHS genealogical library and will be made available to anyone who needs them, at or near cost, said Woods. Each county will also receive a copy of the records of its cemeteries and burial sites.

"Group, other than history buffs, and genealogists, have contributed much to the success of the survey," Woods said. "In addition to the local historical societies and chapters of the Kentucky Junior Historical Society, other groups such as homemakers' clubs, 4-H groups, FFA chapters, women's organizations and are and county genealogical groups have supported the project."

Woods said the project is still open to any civic organization or individuals who would like to participate in the survey.

In Rockcastle County some work has been completed, but volunteers are still needed to complete the project by the deadline date. If you would like to contribute information or help in the project, contact the county chairman, Mrs. Elbert Eversole, Mt. Vernon, (606) 956-9714.

Dev. Authority To Meet June 28th

The Rockcastle County Industrial Development Authority will hold an open meeting on Tuesday, June 28, 1977, at 10:00 a.m. The meeting will be held at the Cumberland Production Credit Office on Main Street in Mt. Vernon, Kentucky.

All interested persons are invited to attend this meeting. The Industrial Authority will be discussing the applications for federal grant monies and will welcome questions and comments regarding the activities and efforts of the Authority.

Mental Health Board To Hold Meeting

The annual meeting of the Cumberland River Dist. Mental Health Mental Retardation Board Inc. will be held at 6:30 p.m., Monday, June 27, 1977 at the Corbin Comprehensive Care Center, American Greeting Road, Corbin.

New Board of Directors for the coming fiscal year will be selected for counties in which vacancies or expired terms occur.

Citizens interested in serving on the Board should contact the Cumberland River District Comprehensive Care Center in care of Nominating Committee Chairperson, American Greeting Road, Corbin, Kentucky 40701 prior to the annual meeting.

Crooked Creek Area School To Hold Reunion July 3

The Crooked Creek area school reunion is scheduled for Sunday, July 3rd, in the form of a picnic at the Salt Petre Cave shelter. We plan to eat around 12:30. All former students and teachers are cordially invited to come.

If further information is desired, you may contact Virginia Johnson, 256-3276 or Esther Fullerlove, 453-2541.

Girls Basketball Clinic

A free basketball clinic for girls, age nine and above, will be held at the high school June 27 July 1.

The clinic will begin daily at 9:30 and end at 12:00.

Registration will be held at the high school on Saturday, June 25 from 9:00 a.m. to 11:00 a.m. Anyone who cannot register on Saturday, please call Preston Parrett at 758-8448 and give your name and age.

The clinic will be conducted by Coach Preston Parrett and members of the girl's team.

Notice

Independent candidates for City Council must file their papers with the County Clerk not later than September 14th.

Bible School

The Pine Hill Missionary Baptist Church would like to invite everyone to attend Vacation Bible School June 27 - July 1, from 6:00 to 8:30 p.m. For more information, call 256-291.

Receive Degrees

Three Rockcastle County students have received degrees from Berea College. They are: Patricia Reese, of Mt. Vernon, Mark Murphey of Mt. Vernon and Patricia Renner also of Mt. Vernon.

Miss Reese is a member of Phi Kappa Phi and the Mortar Board, both national honor societies for scholarships and academic excellence in all fields of higher learning. She is a math major and a Dean's List student. Patricia is the daughter of Mr. and Mrs. Leonard D. Reese of Rt. 3, Mt. Vernon and a graduate of Rockcastle Co. High School.

Mark is expected to receive the Bachelor of Arts Degree in Agriculture upon completion of summer courses. He is the son of Mr. and Mrs. Milton Murphey of Rt. 1, Clef Rook.

Patricia Renner will receive her degree in elementary education upon completion of summer courses. She is the daughter of Mr. and Mrs. Earl Kirby of Rt. 4, Mt. Vernon. She is a Dean's List student and is married to Arlie Renner, of Mt. Vernon.

Mrs. Irene Stewart, 37, Killed Instantly in Auto Accident

Irene Stewart, 38, of Orlando, was killed Sunday evening when she lost control of her car and wrecked on the Brush Creek Road.

Mrs. Stewart died at approximately 7:30 p.m. Sunday from massive head injuries she received in the accident according to Coroner William Dowell. The accident occurred about 4 miles from the intersection of Highway 25 and the Brush Creek Road.

Witnesses told State Police that Mrs. Stewart was traveling south at a high rate of speed when she lost control of the auto and it overturned. Mrs. Stewart was thrown out of the car during the wreck. She was apparently alone at the time of the accident.

She was born in Rockcastle Co. on September 21, 1939 the daughter of Orbin and Pearl Chestnut Falin and was a member of the Flat Rock Baptist Church.

Besides her parents, Mr. and Mrs. Orbin Falin of Mt. Vernon, she is survived by her husband, Mr. Corey Stewart; one son, Garrett Dale Stewart at home; three daughters, Mrs. Sandra Jean Bishop of Orlando and Carmen Annette and Carmen Lee Stewart both at home; two brothers, Tommy Falin and Dallas Falin both of Mt. Vernon; five sisters, Mrs. Evelyn Miller, Miss Inas Gail Falin and Miss Martina Falin all of Mt. Vernon, Mrs. Ina Jean Smith and Mrs. Linda Stewart both of Pine Hill and one grandchild.

Funeral services were held Wednesday afternoon, June 22, at the Flat Rock Baptist Church by Bro. Lester Arnold and Bro. Olen McGuire. Interment was in the Briarfield Cemetery.

Arrangements were by the Dowell & Martin Funeral Home.

Mrs. Mollie A. Scoggins Appointed Livingston Postmaster

Appointment of Mollie A. Scoggins as Postmaster at Livingston, effective 18, 1977, was announced today by John P. Doran, Regional Postmaster General for the 13 state Central Region.

Postmasters are selected on merit, based on recommendations by a management selection board, and appointment by the Postmaster General. Appointments are not subject to Senate confirmation.

Mrs. Scoggins has previously served in this community as a post office clerk from April 7, 1956 until August 18, 1973 when she was reassigned to the Lexington post office due to reduction of hours in the Livingston office. She was detailed back to the Livingston office on

January 1, 1977 where she has been serving as Officer-in-Charge. Her husband was former Deputy District governor of the Lion's Club, and is also a past master of the Dave Jackson Lodge 731 at Livingston and a 32nd Degree Mason and a member of the Lexington Consistory of Scottish Rite.

Mrs. Scoggins has been active in the community projects and has participated in several fund raising drives. She has also served as an officer of Eastern Star and as secretary of her Sunday School class.

Mrs. Scoggins will be assisted in the operation of the post office by one part time clerk.



Arnel Taylor, right, has retired, as Postmaster of the Livingston Post Office after 21 1/2 years of service. On Friday, June 17th, Mrs. Mollie Scoggins was

officially sworn-in to replace Mr. Taylor as Postmaster. Mrs. Scoggins has been working for the U.S. Postal Service since April of 1956.



Harold Cain, 37, of Richmond is the new Service Manager for Kentucky Utilities in Rockcastle County. Mr. Cain, his wife,

Betha Faye and four children will be moving to Mt. Vernon in the near future.



APPOINTED - Kentucky Department of Agriculture Commissioner Tom Harris recently announced the appointment of David McCauley to the Egg Board. He was sworn in at the Board's last meeting. McCauley is in the egg wholesale business, as well as a trucking business in Rockcastle County.

The Egg Board is the advisory and enforcement arm provided by the Kentucky egg law, with administration and support supplied by the Kentucky Department of Agriculture. Mr. McCauley, far right, is shown being sworn-in in the above photo.

ATTEND DAIRY DAY IN MT. VERNON THIS SATURDAY

(See Special Dairy Section inside this week's Signal)

Mount Vernon Signal

PUBLISHED EVERY THURSDAY
 Main Street in Mt. Vernon, Kentucky 40456
 Entered at Mt. Vernon Post Office
 as Second Class Matter - Permit No. 1
 In County - \$5 Out of County - \$6

James Anderkin, Jr., Publisher
 Perlina M. Anderkin, Editor
 Member Kentucky Press Association

Frankfort

Watchline

By Ferrell Wellman

For the first time, the Kentucky Registry of Election Finance has flexed its muscles and an unlikely candidate caught the first punch.

For years, the registry was nothing more than a repository for campaign spending reports. It had a skeleton staff and no clout. In 1974, though, the General Assembly gave the registry what one employee calls "superman powers."

Warren Blades was appointed Woodford County Jailer in March, 1976. He had the credentials. Blades, 57, had served four years as Versailles police chief. More recently, he had operated a restaurant. The ideal jailer: Blades had law enforcement experience and could cook.

This spring, Blades sought election to a full four year term. It was his first countywide race. He won easily. Although he had not campaigned actively, Blades received almost as many votes as all five of his opponents. A Democrat, Blades drew no Republican opposition for the fall.

Blades, however, was 17 days late in filing a campaign expense report with the registry. Due May 17th, Blades' report didn't reach Frankfort until June 3rd. "A misunderstanding," said Blades.

In recent elections, late filing such as this hasn't raised an eyebrow, but times have apparently changed.

The registry decided to file suit in Woodford Circuit Court to void certification of Blades by the Woodford County Board of Elections. The registry wants to have the office declared vacant. Blades was stunned. He had filed his first campaign report for \$502. He hadn't spent any more money, so he didn't file another report.

"I didn't even ask for money," said Blades. "Some people offered donations."

but I didn't ask for it."

His first reaction was to hand in his resignation to the fiscal court and open another restaurant. "I work 24 hours a day. I made \$9,000 last year. I didn't have a day off. Who would want this job?"

Local attorneys quickly volunteered their services, and Blades will do battle with the registry in court. "They'll probably do it for nothing," said Blades about the lawyers who have jumped to his defense, "but I'll pay them. I don't want them to do it for free."

What could happen to Blades isn't clear. The registry had never taken this harsh an action before.

If the courts void certifications of Blades in the primary, it's up to the democratic party committee in Woodford County to appoint another candidate. It's unclear whether the Democrats could nominate Blades, although state law seems to indicate they couldn't.

The committee could refuse to nominate anyone, leaving the office vacant. The county judge would have to appoint a jailer, and Woodford County Judge Matt Blackard has said he would reappoint Blades.

Blades is well respected around Versailles, and could possibly retain this office as a write-in candidate if another man is nominated.

"This is the first time we've been through this," said registry executive director John Craig. "We've been reading the statutes, and we're just speculating on what can happen."

"Why have the law if it's not going to be enforced?" said Craig when asked why the registry had started to enforce the statute on campaign reporting. "The law is clear, and the registry is going to crack down on these candidates who delay in filing their reports until after election day."

Some people in Frankfort see

Blades as a victim of circumstances. Regardless of what happens to him, the registry has set a precedent.

"Foolishness" is now. Blades describes the turn of events. "They're doing it just to see what will happen. It won't amount to anything."

Attempting to elude police officer: David Chadwell, \$25 and cost.

Public Intoxication: Alvin J. Jackson, \$10 and cost.
 Transporting Alcoholic beverages in local option territory for resale: Ervel Youm, \$50 and cost and 30 days in jail (all sentence probated).

Gleanna Rose Renner, tax \$50.
 Tilford and Florence Reppert, real property located in Rockcastle Co. to Ronnie and Helen Reppert, no tax.

Floyd and Dorothy Miller, real property located in Rockcastle Co. to Gary L. and Janice Marie Taylor and Ivan Gary and Brenda Joyce Smith, tax \$28.50.
 Jerry and Carol Jean Hamm, real property located in Rockcastle Co. to Luke J. and Diane H. Dober, tax \$3.50.

John and Margaret Hgston, real property located in Rockcastle Co. to Boyd and Geraldine M. McGuire, tax \$10.00.

Eldon and Loretta Chasteen, real property located in Rockcastle Co. to Michael and Cora Callahan, no tax.
 Fannie Gill, Juanita Whitaker, George and Ruth Gill, Henry Curtis and Imogene Gill, Carl Ray and Etta Jane (Cont., to 7)

County Statistics

QUARTERLY COURT

Speeding: Harold R. Jones, M. Joseph McCune, Glenda F. Caparas, Jennifer K. Skillman, Wm. Harold Dickerson, Virginia Patts Lameolo, Walter Frank Watts, Linda F. Bailey, David Chadwell, William R. Johnson, Lloyd C. Gregory, Steve C. Laudermilk, Noah K. Phipps, Roger L. Fluharty, \$10 and cost.

No operators license: Gary Dean Vaughn, \$2.00 and cost.
 Operating a motor vehicle without the influence of intoxicants: David Chadwell, Doyle B. Hamilton, Winifred F. Graves, \$50. and cost.

MARRIAGE LICENSE

Charles Dean Carmack, 19. Mt. Vernon, laborer, to Justina Lear, 17, Rt. 3, Mt. Vernon, unemployed, June 18, 1977.
 Gary Lee Caldwell, 20. Rt. 1, Brodhead, factory worker, to Doris Ann Brown, 20, Rt. 1, Brodhead, surgical technician, June 18, 1977.

DEEDS

Robert and Shirley Wilson, real property located in Rockcastle Co. to D.A. Robbins, tax \$10.
 Kermit R. Bowling, real property located in Rockcastle Co. to Paul and

Flat Rock Baptist Church will conduct

VACATION BIBLE SCHOOL
 June 27 through July 1
 from 6:30 to 8:30 p.m. each evening

Bro. Dillard Bowman, Pastor

EVERYONE INVITED

REAL ESTATE FOR SALE

6 LOTS located in the Rainbow Valley Subdivision located in the Brindle Ridge Section of Rockcastle County. They are all large lots with ample space for a home, mobile home and garden; they have city water and are near a blacktop road. Ranging in price from \$1,750 to \$2,200.

30 ACRES, more or less, located approximately 3 miles from Brodhead city limits. There is approximately 15 acres of cropland and the balance in woods. Stock water is furnished by a spring. Some small timber on the farm. Owner will finance. Only \$18,000.

Three Bedrooms, 1 1/2 bath in kitchen, brick home. Approx. 4 miles south of Mt. Vernon. **SALE**

NICE LOT measuring approx. 100x200 located at Renfro Valley, Ky. on beautiful Lake Linville. In addition to the lot, there is a 1973 - 15 ft. fleetng travel trailer. All this for only \$7,500.

LOTS located near Mt. Vernon in Country Club Estates. Large lots with city water near the Country Club just off Hwy. 150. \$3,000.

100 ACRES, more or less, located approximately 5 miles south of Mt. Vernon in the Chestnut Ridge area. Water is furnished by a spring and there is some coal and timber. Priced at only \$16,500.

6 ROOM FRAME HOUSE located approx. 1 mile south of Livingston. Home has 4 bedrooms, living room, kitchen, full bath and full basement. Fuel oil heat, hardwood floors, storm doors and windows, washer/dryer hook-up, mail and school bus service available. Only \$11,500.

100 ACRES OF RAW LAND - Located only 5 miles south of Mt. Vernon. There is coal and timber. Truly a bargain bill ringer at only \$150 per acre.

125 ACRES, more or less, located on Hwy. 490 just outside Livingston, Ky. This farm has approx. 45 acres in cleared land - balance being in woods. There is approximately 1100 lbs. tobacco base. Water is furnished by spring at a pond. In addition to the farm, there is a 4 room house, 2 bedrooms, living room, kitchen and in need of minor repairs. All for \$36,900.

NICE BUILDING OR MOBILE HOME LOT located on Poplar Street. The lot measures approx. 101x135 with city water available. Only \$3,500.

COMMERCIAL LOT located on Main St. in Livingston, Ky. Lot has approx. 13,000 sq. ft. and has city water. Priced at only \$3,500.

BEY FARM - 24 Acres - 10 room frame house located in the Bee Lick Section of Pulaski County, Ky. The house has 5 rooms on the first floor and 5 rooms downstairs, 6 bedrooms, living room, kitchen and 2 baths. The house is heated by fuel oil downstairs and electric on 1st floor, carpet and linoleum throughout, washer and dryer hook-up, storm windows and built-in cabinets. In addition to the house, there is a small stock barn. Can be yours for only \$32,000.

LARGE LOT measuring approx. 2 acres located on the Tark Hill Rd. Ideal for a building or mobile home site. Lots of privacy. Only \$1,150.

75 ACRES WOODED LAND - Located near Renfro Valley, Ky. Only \$120 per acre.

SMALL LINCOLN COUNTY FARM - 141 acres by registered survey. Modern 4 bedroom mobile home, full electric, 2 barns, concrete block garage on Highway 490.

100 ACRES located at Ground Hog Sinks near Mt. Vernon. There is a 28-32 inch seam of coal opened. Financing available with sufficient collateral.

60 ACRES, more or less, in the Scaffold Cane Area. 5 room house with extra large rooms, good small barn, 225 lbs. tobacco base, mail and school bus service available at the front door. All for only \$15,500.

REDUCED REDUCED - Approx. 130 acres undeveloped land located on Blacktop road. Approx. 12 miles south of Mt. Vernon there is both coal and timber on the land. \$12,000.

JACKSON COUNTY COAL - Call for details.

BRAND NEW and just for you. This is a lovely 3 bedroom fieldstone home with large living room, and nice built-in kitchen, garage and full bath. The home is total electric, wall to wall carpet, patio with city water and sewer. Located in the Valley Manor Subdivision. Only \$31,900.

NEW BRICK located in the Valley Manor Subdivision, 3 bedrooms, living room, kitchen, and family room combination and 2 full baths. Carpet throughout, lots of cabinet space, total electric, within walking distance of town, store and churches.

NICE BUILDING OR MOBILE HOME LOT located on Brummett Rd. Lot measures approx. 50x100 with city water available.

HOW ABOUT THIS ONE! This fine home has 4 bedrooms, living room, kitchen, utility room, and bath. There is also aluminum siding, oak cabinets, air conditioning, storm doors and windows and much more. The house is situated on a lot measuring approximately 100 x 200 and is located about 1 mile s. of Mt. Vernon. All this can be yours for only \$31,500.

REDUCED REDUCED Here is a new opportunity to buy 100 acres of Kentucky hill land. Located in the Lammers Section of Rockcastle County has some coal and timber. Owner will finance. \$15,000.

NEW HOUSE located in beautiful Countryside Estates. This home has 3 bedrooms, living room, kitchen, 2 baths, full basement, and is heated and cooled by a heat pump. There is a washer and dryer hook-up, wall to wall carpet and city water. Only \$39,000.

52 1/2 ACRES more or less located approx. 1 mile s. of Livingston. The farm is improved with a 30 x 40 barn, with the attached 24 x 40 shed, the farm has some coal and timber and most of the farm is under good fence. Water is furnished by a spring and a well. Approx. 5 acres cropland. Priced at only \$13,000.

19 ACRES FARM located near Renfro Valley, Kentucky. There is approx. 170 ft. of road front along US 26. 435 lbs. basic tobacco allotment, stock water is furnished by a pond and area and city water is available. This property would be ideal for a farm or home development.

26 ACRES located about 1 1/4 miles S. of Grap Orchard on Hwy. 39 approx. 15 acres cropland and balance in timber with approx. 1200 lbs. tobacco base. Water is provided by a cistern, pond and branch. This can be yours for only \$22,500.

1973 DOUBLE WIDE MOBILE HOME located on Mill St. in Mt. Vernon within walking distance of churches, grocery stores, and Main St. The home has 3 bedrooms, kitchen with built-ins and is total electric. The lot measures 50 x 100. Priced to sell at only \$11,900.

REDUCED REDUCED! Only \$120 per acre. Unbelievable isn't it? But the owner says to sell this 165 acre tract located only 5 miles S. of Mt. Vernon.

NICE BUILDING LOT or mobile home lot, measuring approx. 400 x 200 located at Renfro Valley near Lake Linville Boat Dock, ideal home site for fishermen. Priced at only \$4,500.

165 ACRES located in the Crooked Creek Section of Rockcastle County - secluded - water by springs, some timber and coal. Only \$110 per acre.

100 ACRES located in the Dry Fork Section near Jackson County line. Some timber, springs and creek. Only \$110 per acre.

94 ACRES RAW LAND near the Petre Cave area. Some timber and coal, well and blacktop road. **SALE**

LAKE LOT located on Woods Creek Lake. The lot measures 162 x 170. Fish from your back porch on this lot for only \$2,500.

LOTS located at Conway, Ky. Suitable for building or mobile home lot, city water and black top street. Only \$1588.

LARGE LOT located on Lake Linville. The lot measures approx. 1 acre, water is provided by a well and there is a septic tank. This is without a doubt one of the best lake lots available. In addition to the lot there is a one bedroom mobile home. \$7,500.

ALMOST NEW BRICK located on Shirley St. in Mt. Vernon. House has 3 bedrooms, living room, kitchen, 1/2 basement, formal dining room, garage and 2 full baths. There is city water and sewer, built-in cabinets, storm doors, and windows, wall to wall carpet, total electric and blacktop drive. \$31,500.

LARGE SPACIOUS LOTS suitable for building or mobile home lots located on Lake Linville. Financing available with small down payment.

ATTENTION OWNERS AND GENERATORS! You will have to do this home yourself to be able and appreciate all the value that goes with this beautiful home. You will find it has the features to complement a life style of gracious living. With features undreamed of in the average home, you will appreciate the decorative touches here. There is central heat and air conditioning, 700 lbs. of all built-ins, 2 baths, formal dining room, plus 110 acres.

By Each Owners Request - All property shown by appointment with realtor only. Call today for an appointment. We have F.H.A. Approved Homes available to Qualified Prospects - No Down Payment - Low Monthly Payments.

FORD
 Realty & Auction Co., Inc.
 Mt. Vernon, Ky.



Col. Sam Ford Realtor-Auctioneer Home Ph. 256-4588
 Col. Roy Adams Realtor-Auctioneer Home Ph. 256-4454
 Col. Danny Ford Realtor-Auctioneer Home Ph. 256-4446

Office Phone 256-4545

"What's Happening in Hair"

By: C. Douglas Brock, Sr.

There has been a great deal of change in hair cuts and styles in the last nine years. I can personally vouch for this because I have been in business for nine years in Brodhead.

I have taken the good people from parts of Rockcastle, Lincoln, Pulaski, Garrard and Madison Counties through the flat top style into the long hair stage and now to the casual hair styles - shags, blow-out and regular.

The hair styles of today are shorter and better groomed. I have seen the new styles for 1977 from London, Paris, Detroit, California and South Carolina and the new look for men is with the ears partly covered. I can adjust this style to fit almost every gentleman, and of any age.

Also, another great change that has taken place in the Barber Shop is the presence of lady customers. It is not unusual to walk into SPORTSMAN'S BARBER SHOP and see two or three ladies waiting to get a hair cut.

I know this is hard for some men to understand because they think the Barber Shop is, or was, a place for men. But, equal rights and the Women's Liberation Movement have changed this.

I don't know if anyone knows what a Unisex Shop is, so I will tell you. The Shops are all over our cities and I think it's time for one in Rockcastle County - so mine will be the first. A Unisex Hair Styling Shop is a place where both male and female go to get their hair cut and styled.

Therefore, in order to keep up with modern times, I am going to change the name of SPORTSMAN'S BARBER SHOP to DOUG'S HAIR DESIGNS, and I am planning to keep up with the new styles. To the ladies, I hope the new name will make you feel less uncomfortable when you come in for your next hair cut. This does not mean that I have turned the Barber Shop over to the women, only that it will be shared by both men and women. I want to let the people know why they see so many ladies coming out of SPORTSMAN'S BARBER SHOP.

I would like to sum this up with a BIG THANK YOU to my customers, both male and female for a wonderful nine years. It has been a pleasure working with your hair and I am looking forward to many more years.

C. Douglas Brock, Sr.

OWNER AND MANAGER

Doug's Hair Designs

(Formerly Sportsman's Barber Shop)



FOR THE FIRST TIME...
SERVE **TOTAL TENDERNESS**

Yes... total tenderness. Making this all possible is **Proten** Beef. It's lean, juicy, delicious... a pleasure to the eye and the palate... a pleasure that makes superb cooking easier than ever before! It's yours as a result of many scientists working together... for many years.



ROLLED RUMP ROAST
\$1.59
1 Lb.
CUBE STEAKS
\$1.79
1 Lb.



ROUND STEAK
\$1.19
1 Lb.

SIRLOIN STEAK
\$1.79
1 Lb.

FRESH LEAN GROUND BEEF
3 LB. OR MORE
79¢
1 Lb.

Lay's 12 Oz. All Beef, All Meat WEINERS
69¢

PORK OR BEEF LIVER
39¢
1 Lb.

CHUCK ROAST
69¢
1 Lb.
CHUCK STEAK
79¢
1 Lb.
SHOULDER ROAST
89¢
1 Lb.

WHOLE PICNICS
69¢
SLICED

12 OZ. LAY'S BACON
95¢

SALT BACON
59¢
1 Lb.

4 Lb. COVER LEAF LARD
\$1.59

Lay's 12 Oz. BOLOGNA
89¢
1 Lb.

Mix or Match
12 1/2 Oz. **FUDGE STRIPES**
13 1/2 Oz. **DELUXE GRAHAMS**
79¢

Green Stamps
... the only nationwide stamp plan

TALL CANS CARNATION MILK
3 FOR 95¢



5 LB. COLONIAL PURE CANE SUGAR
79¢
LIMIT (1) WITH '\$10' ORDER OR MORE

2 1/2 LB. JAR GLOVE KID PEANUT BUTTER
\$1.39

FRIENDLY SERVICE
ALL THE WAY TO YOUR CAR.
WE WELCOME FOOD STAMP CUSTOMERS

14 OZ. SHOWBOAT PORK & BEANS
4 FOR 95¢

BUSH'S 300 SIZE
4 FOR 95¢

FRESH PRODUCE
BANANAS
2 Lbs.
47¢

10 1/2 Oz. P.D.Q. PARAMOUNT HOT DOG SAUCE
4 FOR 1.83

Swift Premium VIENNA SAUSAGE
3 FOR 1.99

Pinto Beans
4 FOR 95¢

Great Northern Beans
4 FOR 95¢

18 SIZE CANTALOUPE
59¢

MARtha White MUFFIN MIXES
Strawberry, Orange and Apple-Cinnamon
4 FOR 89¢

Swift Premium 12 Oz. PREM SPAGHETTI
5 FOR 1.99

Mixed Beans
4 FOR 95¢

SWANSON ENTREES
Fish 'n' Chips, Fried Chicken, Turkey & Chicken Nibbles
2 FOR 1.99

NECTARINES
2 Lbs.
89¢
30 SIZE CELERY
35¢

Solo Dog Food
20 Lb. Solo
\$3.99

Seal-Sweet GRAPEFRUIT JUICE
46 Oz. Can
59¢
Johnson's disposable diapers
TODDLER Size
75 Sheet **TERI TOWELS**
\$1.99
Keeps babies drier.

12 Oz. FREE
when you buy **48 Oz.**
\$1.99

YELLOW CORN
Ears For
89¢

250 S&H Stamps
With \$25.00 Or More Order

100 S&H Stamps
With \$10.00 to \$24.99 Order

COUPON WORTH 50 S&H Green Stamps
With the purchase of Lay's Beef or Pork Chunks (12.99 or more)
mv cpn exp 6-29-77

COUPON WORTH 50 S&H Green Stamps
With the purchase of Lay's Beef or Pork Chunks (12.99 or more)
mv cpn exp 6-29-77

COUPON WORTH 50 S&H Green Stamps
With the purchase of Lay's Beef or Pork Chunks (12.99 or more)
mv cpn exp 6-29-77

COUPON WORTH 50 S&H Green Stamps
With the purchase of Lay's Beef or Pork Chunks (12.99 or more)
mv cpn exp 6-29-77

COUPON WORTH 50 S&H Green Stamps
With the purchase of Lay's Beef or Pork Chunks (12.99 or more)
mv cpn exp 6-29-77

COUPON WORTH 50 S&H Green Stamps
With the purchase of Lay's Beef or Pork Chunks (12.99 or more)
mv cpn exp 6-29-77

COUPON WORTH 50 S&H Green Stamps
With the purchase of Lay's Beef or Pork Chunks (12.99 or more)
mv cpn exp 6-29-77

COUPON WORTH 50 S&H Green Stamps
With the purchase of Lay's Beef or Pork Chunks (12.99 or more)
mv cpn exp 6-29-77

COUPON WORTH 50 S&H Green Stamps
With the purchase of Lay's Beef or Pork Chunks (12.99 or more)
mv cpn exp 6-29-77

COUPON WORTH 50 S&H Green Stamps
With the purchase of Lay's Beef or Pork Chunks (12.99 or more)
mv cpn exp 6-29-77

COUPON WORTH 50 S&H Green Stamps
With the purchase of Lay's Beef or Pork Chunks (12.99 or more)
mv cpn exp 6-29-77

COUPON WORTH 50 S&H Green Stamps
With the purchase of Lay's Beef or Pork Chunks (12.99 or more)
mv cpn exp 6-29-77

Around Brodhead

By Marjorie Shivel



THE HARRISON REUNION was held May 30th at the home of Mrs. Ollie Harrison. Shown are ten of Mrs. Harrison's eleven children. All were present but one was absent when picture was taken. This is the first time in eighteen years all eleven children were together. Front row, from left are: Lorene Jones, Ruby Adams, Mrs. Marriason, and Dorothy Stevens. Back row: Melvin, Willard, Norman, Hobert, Everett, Ervin and Ronnie. Absent when picture was taken was Arthur, Jr.



Linda Gail Lewis, daughter of Glenn and Wanda Lewis of New Lebanon, Ohio received her Doctorate of Medicine degree from Ohio State University College of Medicine on June 8th, 1977. Linda graduated with honors from Dixie High School in 1970 and received her

B.S. Degree in pre-medicine in 1973 from University of Dayton. She will begin her three years residency June 27th at Methodist Hospital in Indianapolis, Indiana. Linda is the granddaughter of Mrs. Ellen Brown of Brodhead.



Mr. and Mrs. Raymond C. Winkler of 999 Fals Rd., New Lebanon, Ohio celebrated their 50th Wedding Anniversary June 19th at Trinity United Church of Christ, with open house for friends and relatives. Mrs. Winkler is the sister of Mrs. Ellen Brown and Mrs. Maggie Durman of Brodhead.

Personals

ANNOUNCING!

Mr. and Mrs. Billy Kirby are proud to announce the arrival of their first son born June 8th at Patty A. Clay Hospital. He has been named William Joseph and weighed 6 lbs. 15 oz. He is welcomed by two sisters.

Those taking part in Berea's Invitational Golf Tournament June 14th from Brodhead were: Barbara Owens, Anise Bray, Tiny Payne, Molly Hamm, Elizabeth Mullins and Frances Whitehead.

Mr. and Mrs. Dan H. Gray were in Danville shopping and on business Wednesday.

Brodhead Christian Church's VBS ended with a program Sunday night and craft display. The average number attending each night was fifty.

Mrs. Cam Holcomb has returned to

her home after surgery at Ephriam McDowell Hospital at Danville.

Mrs. Walter Baldwin is doing nicely at Central Baptist Hospital in Lexington after having surgery.

Mr. and Mrs. Woodrow Coffey left Friday for their home in Dayton, Ohio after spending the week with Mr. and Mrs. George Brooks.

Mrs. Betty Lou Adams and son, and Mrs. Lena Adams were in Somerset Friday on business.

Miss Melanie Baldwin spent Thursday night with Mr. and Mrs. Lloyd Shutts at Quail.

Mr. and Mrs. Gary Wilson and family and Mrs. Rose Wilson were in Louisville recently. Rose stayed for a visit this week.

Mr. and Mrs. Jerry Brooks, Mrs. Richard Shivel, Jenny and Robyn were in Lexington Friday afternoon to visit Mrs. Blanche Baldwin.

Mr. and Mrs. Millard Robbins were Saturday night supper guests of Mr. and Mrs. E.J. Taylor and family.

The Ladies aid Missionary Society met Tuesday night at the home of Mrs.

Richard Shivel with nine members and one guest present. Mrs. Emily Glouak presented a lesson on "People Rich, Not Money Rich". After business session, a social hour with refreshments followed.

Those attending were Mrs. Elizabeth Mullins, Mrs. Emily Glouak, Mrs. Barbara Watson, Mrs. Ella Mae Martin, Mrs. Lou Payne, Mrs. Ruth Shivel, Mrs. Lillie Brooks, Mrs. Glenna Brooks, and Mrs. Marjorie Shivel.

The Willing Workers Homemakers met Thursday, June 18th at the home of Mrs. Glenna Brooks. There were ten members present. Mrs. Albert Martin led with a devotional. Games were led by Betty Machal and the lesson "Kentucky Folk Medicine" was presented by Glenna Brooks and Marjorie Shivel. Delicious refreshments were served by the hostess during the social hour. Next month we will be at Glenna Brooks' with

Ella Mae Martin hostess. Those attending were Mrs. Raymond Flynn.

Mrs. Elnora Gray, Mrs. Gladys Bussell, Mrs. Betty Machal, Mrs. Loraine Newland, Mrs. Marjorie Shivel, Mrs. Glenna Brooks, Mrs. Ella Mae Martin, Jenny and Robyn Shivel.

Mr. Champ Crawford has been moved from VA Hospital in Lexington to the Extensicare wing of Berea Hospital. Teddy Roberts is improving after

being confined to his home due to illness.

Mr. and Mrs. Dale Bray and Mrs. Murphy Whitehead spent the weekend in Oak Ridge, Tennessee with relatives.

Mrs. Nellie Colson left Saturday for a visit with her sister in Goldsboro, North Carolina.

Mr. Edgar Howard is a patient in

(Cont. 'd to P-9)

We Salute The Dairy Farmers

YOUR HOME CENTER FOR

LUMBER

AND BUILDING MATERIALS

WALLBOARD

PLYWOOD

INSIDE DOORS
OUTSIDE DOORS

PANELING

WINDOWS

One Day Service On WALLPAPER
Come in and Check our Books

White Primed

MASONITE SIDING

9 or 12 inch \$27.00 per 100 sq. feet

THRIFTY LUMBER COMPANY

256-2521

Mt. Vernon, Ky.

READY-MIX... CONCRETE



...THE EASY WAY!

Save yourself time and hours of hard labor by having us pour your cement when you're ready for it.

ESTATE

AUCTION

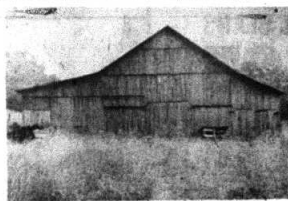
of The Late Mr. W. F. Hasty's

89 ACRE FARM

More or Less

Saturday, July 2, 1977 - 1:30 P.M.

Brindle Ridge Section of Rockcastle Co., Ky.



LOCATION: About 3 1/2 Miles North of Brodhead just off State road 1505 [The Conway Road]. Watch for auction signs on 1505 leading to the sale.

The heirs of the late Mr. W. F. Hasty have authorized our company to sell, for the high dollar, this good Brindle Ridge Farm.

The farm consists of 89 acres, more or less, of which approximately 60 acres is cropland. Basic tobacco allotment for the farm is 2,220 pounds. There is good stand of Poplar and White Oak timber on the farm and stock water is provided by a creek, springs and 2 ponds.

Improvements consists of the above-pictured 4 room house and combination stock and tobacco barn. In addition, there is also a garage.

If you are truly looking for a place with plenty of Privacy and a place that has a good cattle farm potential. Then look no further -- You have found it. This is it!

ANNOUNCEMENTS DAY OF SALE TAKE PRECEDENCE OVER PRINTED MATTER

TERMS: 20% down day of sale, balance in 30 days with delivery of deed.

For additional information, contact Mrs. Addie Hasty at 758-8465 or Gene Hasty at 256-2828 or:

F O R D E
Realty & Auction Co., Inc.
Mt. Vernon, Ky.



Col. Sam Ford Realtor-Auctioneer Col. Bill Randolph Auctioneer Col. Rowlandama Realtor-Auctioneer

Col. Jerry Ham Auctioneer Col. Danny Ford Realtor-Auctioneer

Office-Ph. 256-4545 Night 256-4586



WEDDING DATE TOLD—Miss Pamela Parrott, daughter of Rev. and Mrs. Henry Parrott and former resident of Mt. Vernon, will become the bride of Mr. James Samuel White August 12. The custom of open church will be observed for the ceremony, which will take place at 7:30 p.m. in the Walnut Street Baptist Church, Carbondale, Illinois. After a brief wedding trip, the couple will reside in Ft. Worth, Texas, where Mr. White is a student at Southeastern Baptist Theological Seminary.



ENGAGEMENT ANNOUNCED—Mr. and Mrs. Kenneth Mink of Mt. Vernon announce the engagement of their daughter, Jönnelva Gull, to Charles Williams, son of Mr. and Mrs. George Lake. A July wedding is planned.

BIRTH ANNOUNCEMENT

Mr. and Mrs. Billy Rice of East Bernstadt, wish and announce the birth of a baby boy, he weighed in at 8 lbs., 7 ozs. and has been named Billy Shane. He was welcomed home by his sister, Sheila Carol, 5.
Grandparents—Mr. and Mrs. Ada Pittman and Mrs. Gene Karne.

GOSPEL SINGING

There will be a Gospel Singing at the Pentecostal Church on Hwy. 150 near Crab Orchard, June 25 at 7:30 p.m. Singers will be the Gospel Singers, The Chappellaires, Singing Evangelists, The Eversole Brothers.
Everyone is welcome to attend.

New Homemakers Club Formed

On May 17, 1977, a group of Rockcastle County homemakers met at the home of Linda McClure in Mt. Vernon. The meeting was called to order by Cheryl Witt, County Extension Agent for Home Economics. Cheryl talked about the organization and purpose of a homemakers' club. The first order of business for the new homemakers was to elect officers and select club chairman as well as a name for the club. The following officers and club chairman were elected: Peggy Bray, President; Brenda Hayes, Vice President; Louise Graves, Sec. Treas.; Linda McClure, Clothing & Textile Chairman; Ann Cummins, Family Life Chairman; Jamie Crooner, Management Chairman; Marsha Whitaker, Food and Nutrition Chairman; Rena Jasper, Health Chairman; Darlene Mink, Home Furnishings Chairman; Patricia Miller, Cultural Arts Chairman; Williametta Crooner, Issues and Concerns Chairman; Katherine Mitchell, Public Information Chairman. After election of officers and club chairman the club decided to call themselves the "Contemporary Homemakers Club."
Cheryl Witt presented us with a short lesson "Easy Cooking Away From Home." Delicious refreshments were served by our hostess, Mrs. Linda McClure.
The Contemporary Homemakers Club held their second meeting June 13, 1977 at the home of Brenda Hayes. The meeting was called to order by Peggy Bray, President. Minutes of the last meeting were read by Louise Graves, Secretary. The following members were present: Peggy Bray, Brenda Hayes,

Louise Graves, Linda McClure, Patricia Miller, Marsha Whitaker, Rena Jasper, Katherine Mitchell and guest Mrs. Bobby Proctor.
After a short business meeting, the program was turned over to our guest, Mrs. Proctor who introduced the members to the art of Macrame and each member enjoyed making a macrame hanging planter.
Our hostess, Brenda Hayes, served everyone with delicious refreshments of carrot cake, blueberry delight, cakes and coffee.

Personals

Mr. and Mrs. Claude Chaney, formerly of Mt. Vernon, who are now retired and living in Naples, Florida has as guests recently, several of Mrs. Chaney's relatives. They were Mrs. Nellie Noland, of Richmond, Ky. and her daughter, Mrs. Homer Stokes and Mr. Stokes of Lockland, Ohio, Mr. and Mrs. Casey Hall and Sue of Simpsonville, Ky. Mr. and Mrs. Chaney accompanied Mr. and Mrs. Hall and Sue to Miami for a couple of days to visit with Mr. and Mrs. Gilbert Mink, formerly of Mt. Vernon and Mr. and Mrs. Charlie Cummins. Mrs. Ruth Chaney, Mrs. Nellie Noland and Mrs. Elsie Hall, Mrs. Sybil Mink and Mr. Charlie Cummins are brother and sisters and natives of Rockcastle County.

By Mrs. Geo. Burton

Mr. Ned Smith of Laurton, Oklahoma has been visiting his sister, Mrs. Clara Burton and Mr. Burton and other relatives. This is the first time Mr. Smith has been here in 30 years.
Mrs. Clara Burton and Ned Smith visited their cousin, Mrs. Mary Purcell and Johnny one day last week.
Kenny D. Burton has arrived in Myrtle Beach, South Carolina after being transferred from Holloman A.F.B. in New Mexico.
Mrs. Sybil Sowder and children have returned home after visiting her daughter, Mrs. Cecil Houk and family of South Carolina.
Mrs. Hazel Cummins, Mr. and Mrs. George Burton and Sheila Burton were in Stanford last Wednesday.
Mrs. Darrell Owens, Mr. and Mrs. Somerset visited Mr. and Mrs. George Burton and Mrs. Bennett Burton while last Thursday evening.
Bernard Purcell is in Michigan visiting his brother, Arvil Purcell, who is sick.
Mrs. Hazel Pullinger and Mrs. Becky Jones were in Berea one day last week.
Robert Henderson and daughter

Valerie of Somerset, visited his mother, Mrs. Lona Logsdon, Sunday evening.
Mr. and Mrs. Denton Owens and Chris and Mr. and Mrs. Darrell Owens were in Dayton, Ohio over the week end to attend the wedding of their cousin Billy Brown.

Mrs. Mary Purcell and Johnny and Mr. and Mrs. George Burton visited Mr. and Mrs. Gravelly Burton and Ned Smith, Sunday evening.

Recent visitors of Mr. and Mrs. George York and Eliza Jane were Mr. and Mrs. H.D. Bond, Kathleen Aborn and daughter, Lesia, Mrs. Joann Smith, and children of Wayneburg, and Mr. and Mrs. George Stevens and son, Amos.

Sympathy is extended to the family of Mrs. Irene Stewart, who was killed Sunday in an auto accident.

Mrs. Robert Anglin and Nancy and Mr. and Mrs. Cecil Dalley and great granddaughter and Ashley Jasper visited W.R. Coffey and Mrs. Lillian Anglin Monday afternoon. Mr. Coffey is on the sick list.
Lightning struck near the home of Mr. and Mrs. Gravelly Burton Saturday night, and burned out several telephone lines causing homes to be without telephone service until Monday.

Sympathy is extended to the families of Mrs. Elsie B. Taylor, Mrs. Myrtle Roe, Melvin Childers, Rev. Fred Proffitt and Herbert Lawrence in their sorrow.

Mrs. Rebecca Burdette spent Sunday night with Mr. and Mrs. Harris Burton.

We're sorry to report Mr. Fortner Mink on the sick list. We wish him a speedy recovery.

By Lella Stokes

Mr. and Mrs. Andrew Sowder and son, Bobby of Arlington, Ohio spent Sunday with her parents, Mr. and Mrs. Bill Manis and family.

Mrs. Sallie DeBorde and Mrs. Jewell Brown were in Somerset Wednesday to see Mrs. Zula Lane.

Mr. and Mrs. Clyde Owens, Renee and David have returned from a visit with Mrs. Owens' sister, Dasha Overbay in Dallas, Texas.

Mr. and Mrs. Michael Hunt and children of Wisconsin are visiting Mr. and Mrs. Shelle Mullins in Mt. Vernon.
Mrs. Robert Kusanoff, daughter and son of New York City, N.Y., are the guests of Mr. and Mrs. L.D. Bryant.

Mr. and Mrs. Herbert Childress who are moving from Clay City to a place they have purchased near Lake Okeechobee, Florida, stopped with her mother, Mrs. Mary Purcell and John Thursday. They also planned to stop with her sister, Mrs. Bonnie Entwistle, Ricky, Candi and Tracy in Atlanta, Ga. enroute to Florida.

Mr. Ned Smith of Lawton, Oklahoma has been in Rockcastle Co. visiting relatives he hadn't seen for the past 30 years.

Mr. and Mrs. Lonnie Brown were here from Richmond, Sunday visiting Mr. and Mrs. Ewell Cummins. Marsha and Mark stopped in Conway with their aunt, Mrs. Jean Towery.

Mrs. Harry Cummins of Beatysville visited her mother, Mrs. Hattie Mullins, Thursday.

Those visiting Mrs. Rosie Mullins during the weekend were Mr. and Mrs. Marion Abney, Mr. Johnnie Abney and Mr. Terry Abney and family of Indiana.
Mr. and Mrs. Jim Hughes of Chattanooga, Tenn., Mr. and Mrs. Chuck Childers and Dick Childers of Lebanon, Indiana visited their mother, Mrs. Zetama Bullock while here to attend the funeral of Mr. Melvin Childers, last Thursday.

Mr. and Mrs. Doug Ruppe and children of Brookville, Florida visited her grandmother, Mrs. Cora Hanes last week. Mrs. Ruppe will be remembered as the former Connie Ramsey. Their daughter, Stacy remained for an extended visit with her grandmother, Mrs. Cora Hanes.

Mr. and Mrs. Virgil J. Mullins of Englewood, Ohio spent the weekend with her mother, Mrs. Ella Ponder and his parents, Mr. and Mrs. Danny, Mullins.

Mr. and Mrs. Jim Houston of Morrow, Ohio spent the weekend with Mr. and Mrs. Frank Houston and Mrs. Arch Cash.

Mr. and Mrs. J.W. Brasher left Tuesday for their home in Clyde, Texas from a visit to her parents, Mr. and Mrs. Sim Brown and family. Their daughter, Miss Donna Brasher, who accompanied her parents here, left Saturday by plane to resume her duties as Director of City Parks Recreation in Austin, Texas. She recently received her Masters Degree from Texas Womens University.

Mrs. Robert Kusanoff and children, Adam and Amy returned to their home in New York City Saturday after a week's visit with her father, Mr. Logan Bryant and Mrs. Bryant.

Mr. and Mrs. James H. Cox, Jennifer and Jamie have returned home from touring the West on their vacation.

Mr. Stephen M. Proctor returned to his home in St. Petersburg, Florida from a visit to his sisters, Mrs. Joe B. Noe, Mr. Noe and Mrs. Amy Cox at the Sowder Nursing Home in Broadhead.

Mrs. Amy Cox enjoyed the day Sunday at her home here. Those present for dinner were Mrs. Cox, her brother, Mr. Stephen Proctor of St. Petersburg, Florida; Mr. and Mrs. Roy King of Lexington; Mrs. Mary Martin, Broadhead, Mr. and Mrs. Joe Noe, Jr., Mr. and Mrs. John Cox, Mrs. Laura McLaughlin, and Mr. and Mrs. Henry Cox.

(Cont'd to P-11)

Building Lots

FOR SALE

Chestnut Hills

Subdivision

MT. VERNON, KY.

Large, wooded lots . . . Dogwood, Redbud, Oak,
Poplar, Beech, Hickory Within City Limits

City Water - 6" Water Line

City Fire Protection Wide Roadways

Restricted Quiet

The Advantages of Country Living in the City

Prices Begin at \$1,500.00

Financing Available

CALL

256-5431 or 256-2244 Days

Nights 256-4449 or 256-4177

WEXFORD CRYSTAL SALE



YOUR CHOICE:

- ICED TEA GLASS
 - SHERBET
 - TABLE TUMBLER
 - WINE/JUICE
 - ON-THE-ROCKS
- EACH WITH EACH PURCHASE (LIMIT 6)

49¢

COMPLETE YOUR SET TODAY: HANDSOME COMPLETER PIECES.



	Special Price
14 Inch Serving Plate	1.69
2 1/2 Inch Candy Dish-Cover	1.69
2 Quart Pitcher	1.69
8 Inch Footed Centerpiece	1.69
11 Inch Relish Tray	1.69
1 Quart Wine Decanter	1.69
4 Pound Jar And Cover	1.69
Footed Goblet	.69
Cordial	.59

PRICES GOOD THRU JUNE 25, 1977

U.S.D.A. CHOICE SIRLOIN	LB.	\$1.59
TIP STEAK.....	Boneless LB.	\$1.49
U.S.D.A. CHOICE BONELESS ROLLED RUMP ROAST.....	LB.	\$1.59
KAHN'S HICKORY GROVE HAM.....	Whole Or Half LB.	\$1.49
ARMOUR SLICED BACON.....	LB. PKG.	\$1.49
ARMOUR SLIM JIM WIENERS.....	12 OZ. PKG.	69¢

PIC-PAC: WHERE YOU SAVE ON QUALITY MEATS!



TENDERIZED LB. \$1.19

U.S.D.A. CHOICE

ROUND STEAK

\$1.09

LB.

FRESH DAILY

GROUND BEEF

3 Lbs. Or More LB. **89¢**

PET RITZ FROZEN PIE SHELLS.....	2 CT. PKGS.	89¢
BOOTH FROZEN FISH STICKS.....	16 OZ. PKG.	99¢

CHEF BOY-AR-DEE

FROZEN PIZZA

Pepperoni, Sausage, Hamburger 13 OZ. PKG. **79¢**

GOLD MEDAL

ENRICHED FLOUR

5 LB. BAG **59¢**

Plain, Self-Rising

DUNCAN HINES

CAKE MIXES

18 OZ. BOXES **2.99¢**

Many Flavors

NORTHERN

BATHROOM TISSUE

Assorted, White 4 ROLL PKG. **69¢**

QUANTITY RIGHTS RESERVED

HYDE PARK VAC-PAC BOLOGNA.....	All Varieties 16 OZ. PKG.	99¢
HYDE PARK CHIPPED MEATS.....	3 OZ. PKG.	39¢
WENNING'S SMOKED JOWL BACON.....	By The Piece LB.	59¢
KAHN'S BIG RED SMOKEY'S.....	LB. PKG.	1.59
HILLSHIRE FARM'S SAUSAGE.....	Smoked Or Polish LB. PKG.	1.39

ARMOUR VERIBEST WHOLE

PORK LOIN

Sliced Or Whole LB. **\$1.19**

KRAFT AMERICAN SLICED CHEESE.....	16 OZ. PKG.	1.29
HYDE PARK CANNED BISCUITS.....	6 10 CT. CANS.	69¢

KRAFT

ORANGE JUICE

64 OZ. BOTTLE **89¢**



VINE RIPENED

CANTALOUPE

EACH **59¢**

Valuable Coupon

PURE VEGETABLE

CRISCO SHORTENING

3 LB. CAN **\$1.29**

Limit 1 With This Coupon And \$10.00 Addn. Order Valid At Pic-Pac Thru 6-25-77

GROCERY BUYS

ROYAL CHEESECAKE MIX.....	11 OZ. PKG.	79¢
PRINGLES POTATO CHIPS.....	9 OZ. TWIN	69¢
OLD VIRGINIA STRAWBERRY PRESERVES.....	16 OZ. JAR	79¢
THANK YOU APPLE PIE FILLING.....	20 OZ. CAN	59¢
RAGU' EXTRA THICK SPAGHETTI SAUCE.....	32 OZ. JAR	1.19
HYDE PARK THIN SPAGHETTI.....	7 OZ. PKG.	19¢

GOLDEN RIPE BANANAS.....	LB.	19¢
PLUMP JUICY NECTARINES.....	LB.	59¢
RED PLUMS.....	LB.	89¢

GOLDEN RIPE PEACHES.....	LB.	49¢
RED RIPE TOMATOES.....	LB.	39¢
FRESH TENDER BROCCOLI.....	BUNCH	49¢

DAWN

DISH DETERGENT

Limit 1 With Coupon 22 OZ. BOTTLE **69¢**

ARGO

SWEET PEAS

16 OZ. CANS **5¢**

PIC-PAC SPECIALS

HABISCO CHIPS AHOY.....	14 1/2 OZ. PKG.	79¢
LIBBY TOMATOES.....	2 17 OZ. CANS	89¢
BETTY CROCKER Hamburger Helper.....	7 OZ. PKG.	59¢
LUCK'S BEANS.....	Pinto, Mixed, Or Northern 3 17 OZ. CANS	1.19
HOUSEHOLD CLEANER	40 OZ. BOTTLE	1.49
PINE SOL.....	12 CT. PKG.	1.49
JOHNSON & JOHNSON DISPOSABLE DIAPERS.....	Toddler PKG.	1.89

KING'S PIC-PAC
Highway 150 West
Mt. Vernon, Ky.

Quality Stamp Coupon	Quality Stamp Coupon	Quality Stamp Coupon	Valuable Coupon	Valuable Coupon	Valuable Coupon	Valuable Coupon	Valuable Coupon
50 FREE QUALITY STAMPS With This Coupon And Purchase Of 24 Oz. Cans Hyde Park LEMONADE Valid At Pic-Pac Thru 6-25-77	50 FREE QUALITY STAMPS With This Coupon And Purchase Of 5 Lb. Bag YELLOW ONIONS Valid At Pic-Pac Thru 6-25-77	50 FREE QUALITY STAMPS With This Coupon And Purchase Of 2-8 Oz. Pkgs. Armour Knepper LUNCHEAT Valid At Pic-Pac Thru 6-25-77	Dawn Dish Detergent 22 OZ. BTL. 69¢ Limit 1 With This Coupon Valid At Pic-Pac Thru 6-25-77	Laundry Detergent DYNAMO GALLON BOTTLE \$4.19 Limit 1 With This Coupon Valid At Pic-Pac Thru 6-25-77	Automatic Dish ALL 25 OZ. PKG. 89¢ Limit 1 With This Coupon Valid At Pic-Pac Thru 6-25-77	WHEATIES CEREAL 18 OZ. BOX 79¢ Limit 1 With This Coupon Valid At Pic-Pac Thru 6-25-77	Maxwell House COFFEE 75¢ OFF Regular Price All Grinds 3 Lb. Can 6-75 Limit 1 With This Coupon Valid At Pic-Pac Thru 6-25-77



FNIC BEFORE THE GAMES - The Special Olympics provided smiles, hugs, laughter, lots of ribbons and plenty of good food for the students in the developmental disabilities programs at the Cumberland River Comprehensive Care Center. Participants from this area joined others from Bell, Harlan, Knox, Whitley, Laurel, Rockcastle, Jackson and Clay counties for the Regional and State Special Olympics held recently in Barbourville and Bowling Green.

Handicapped Persons From Here Participated in Special Olympics

Children and adults enrolled in the development disabilities program at the Cumberland River Comprehensive Care Center participated recently in the Regional Special Olympics conducted at Western Kentucky University in Bowling Green.

The meets included competition in the 50, 220, and 440 yards dashes, the standing long jump, and the softball throw. Competition divisions were arranged according to age, sex, and level of disability. This provides the participants an opportunity to compete equally.

Just competing though is the important thing. No one is concerned with speed, endurance or the final score. It was a time for participation and a chance to prove something to others they already knew themselves.

"COUNTY STATISTICS" (Cont. From 2)

Gill, Shelby J. Reynolds, Geraldine Gill, Danny and Sue Gill, George Farris and Ariene Gill, Cathy Gill and Bob Mackey, Sherman Hayes Hill, Johnny and Mary Gill, real property located in Rockcastle Co. to Waldon Brown, tax \$10.50.
 Danny R. and Sue Ford, Roy E. and Judy L. Adams, Clarence and Louise Carter, real property located in Rockcastle Co. to Jack W. and Theda Bright, tax \$7.00.
 Ray B. and Virginia R. Decker, real property located in Rockcastle Co. to Delmer and Alma Vanzant, tax \$4.00.
 Eva Graves, real property located in Rockcastle Co. to Fred and Irene McFerron, tax \$20.00.
 Earl and Bernice Fish, real property located in Rockcastle Co. to Eva Graves, tax \$18.50.
 Vina Whitaker, Ida and Orville Miller, real property located in Rockcastle Co. to John R. Bowling, tax \$3.00.

in the 9-19 age range. Fun and learning, along with a chance to enjoy the outdoors, are the main ingredients to make this year's camp exciting.

The more active sports, such as basketball, volleyball, and swimming are favorites of most campers, but many also find time for table tennis, shuffleboard and even an occasional game of checkers. Archers and hunters can improve their aims on camp target ranges, and those who like to fish will be able to improve their casting skills at 4-H camp this year. Young nature lovers can learn more about their environment and its resources, collect specimens and hike the many nature trails. And in craft classes, the 4-Hers will have a chance to be creative and make something useful or decorative.

Trained instructors will help with these and other activities, teaching beginners and helping the more skilled campers observe safety rules. In addition, special training in such subjects as nutrition and first aid are part of the 4-H camping program, and electricity classes, with instructors provided by Kentucky Utilities Co., are part of each week's camping experience.

Extension agents, adult and teen leaders also provide supervision for the young campers. And, coordinating the total camping program at J.M. Feltner Memorial Camp this summer will be camp manager Gary D. Dunlap. The Kentucky Association of Electric Coop. K.A.E.C. provides salaries for managers of all the Kentucky 4-H camps.

For many 4-H campers, staying in cabins with other young people and adults is their first experience in group living, and they learn a lot about getting along with others. Getting to know other people and sharing fun and learning with them are valuable lessons in interpersonal relations for the campers and informal training in citizenship and leadership is an added benefit of 4-H camping.

Sharing three meals a day with 200 other people is another first-time experience for many of the younger campers, and the appetite-arousing activities and nutritious food make meal-time at camp even more rewarding. Mrs. Witt adds that, this year, Kentucky 4-H camps will be participating in the federally funded Summer Food Service Program for Children, which operates under guidelines similar to those of public school food service programs. Taking part in this program will enable the camp staff to hold costs down so that most families can afford to send their child to camp.

Like all 4-H programs of the University of Kentucky Cooperative Extension Service, the 4-H camping program is open to any youngsters between the ages of 9 and 19, regardless of race, color, sex or national origin. For more information on Rockcastle County's participation in 4-H camping this summer, contact Cheryl Witt at 256-2403. Campers fee this year is \$25. Registration forms and fee are due July 1, 1977 in the Extension Office.

Come to 4-H Camp

What's Happening at Camp? Swimming and boating, archery, hiking, group sports, crafts, folk games, nature and conservation studies,

campfires-all this and more awaits you at J.M. Feltner Memorial 4-H Camp - July 18-22, 1977 for a fee of \$20.00.

New Friends, New Skills

There'll be new friends, new sports, and outdoor living to enjoy. You'll learn more about citizenship, leadership and getting along with other people. Your cabin-mates will be about your age - each cabin room has bunk beds for 12 to 14 campers. An advisor also will stay in each cabin and be on hand to help out with camp activities.

Don't Worry, Mom

Trained instructors will be on hand at all times. Doing things the safe way is part of 4-H camping. Life guards at the swimming pool and life jackets for all boaters help insure water safety. Qualified teachers will conduct classes on gun safety and supervise rifle target practice.

There'll be three good meals a day from noon Monday through noon Friday - and snacks to keep you going between times.

Parents are welcome at any time. If they plan to eat with you, just let the camp manager know ahead of time. Visitors are charged a small fee for meals.

Camp fee MUST either be brought or mailed to the County Extension Office (P.O. Box 297, Mt. Vernon, Ky. 40456) on or before July 1, 1977.

Virgil Hunt Family

Reunion Held June 19

The Virgil Hunt Family Reunion was held Sunday, June 19th at the home of Mr. and Mrs. Jones Oscar Hamm and Kevin.

Attending were Mr. and Mrs. James Jones, Eloise and Lynne of Fairfield, Ohio, Mr. and Mrs. Lloyd Payne, Maude, Ohio; Mr. and Mrs. Lamar Doutaz, Eaton, Ohio; Mr. and Mrs. Bob Taylor, Lockland, Ohio; Phillip Lovett, Williamsburg, Mr. and Mrs. Stephen Owens, Broodhead, Mr. and Mrs. Willie Nicely, Mr. and Mrs. Ed Hunt, Mary Alice and Virginia, Mr. and Mrs. Hubert Hunt, Mr. and Mrs. Roger Coldiron, and Mr. and Mrs. Gary R. Cromer, Michelle and Zachary, all of Mt. Vernon.

QUALITY USED CARS & TRUCKS

Shop Now and Save on a Fine Selection of Used Cars & Trucks - Many One Owner Local Cars and Many That Qualify for a 12 month or 12,000 miles insurance policy.

- 76 Monte Carlo, Red/Red, One Owner
- 75 Monte Carlo, Green/White, One Owner
- 74 Monte Carlo, White/Red
- 75 Dodge Dart, 4 Dr., Air/Power, Local Car
- 75 Omega, 2 Dr., Blue, One Owner, Low Mileage
- 75 Buick LeSabre, 4 Dr., One Owner, blue
- 74 Vega Hatchback, One Owner, Auto
- 74 Gremlin, 6 cyl., Auto, One Owner
- 73 Nova, 2 Dr., V8, Auto
- 73 Nova Custom, 2 Dr., Low Mileage, Air, Auto
- 73 Dodge Dart, 2 Dr., Air, Auto, Nice
- 72 Plymouth Sebring, 2 Dr., V8, Air, Blue/Blue'
- 71 Buick, 4 Dr., One Owner, Air, Auto
- 71 Cougar, XR7, Priced to save you

- 76 Ford F100 Ranger, V8, Auto, Power, Blue
- 76 Ford F150, Ranger, V8, Auto, Red
- 76 Chevy C10, V8, Power Steering
- 75 Chevy C10 6 Cyl., St. Shift
- 75 GMC Jimmy, 1/4 WD, 1/4 Sp. P.S.
- 73 Chevy C10, V8, Standard
- 69 Chevy C10, V8, Standard

Britton Chev-Olds

on the Strip in Berea

Phone 986-3169 or 986-3160

ACTION

OF

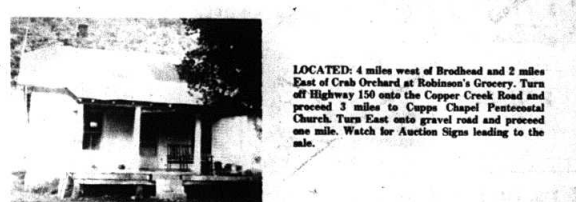
of Mr. and Mrs. Leon Harris'

50 ACRE FARM

and

PERSONAL PROPERTY

Saturday, July 2, 1977 - 10:30 A.M.



LOCATED: 4 miles west of Brodhead and 2 miles East of Crab Orchard at Robinson's Grocery, Turn off Highway 150 onto the Copper Creek Road and proceed 3 miles to Cupps Chapel Pentecostal Church. Turn East onto gravel road and proceed one mile. Watch for Auction Signs leading to the sale.

Mr. and Mrs. Harris are leaving the state and have authorized our firm to sell their farm for the high dollar.

The farm contains 50 acres (more or less) of which 18 acres is tenable. The balance is in timber of which some is marketable. The farm is improved with a tobacco barn and a stock barn and the above-pictured house. The house has 2 bedrooms, living room and kitchen downstairs and a large bedroom upstairs. Water for the house is furnished by a good well, while livestock water is furnished by a pond. Tobacco allotment for the year is 1362 lbs., however the basic quota is 1,188 lbs.

HOUSEHOLD ITEMS INCLUDE: 25" Admiral Color T.V., Zenith Console Stereo (both items almost new); Hotpoint Refrigerator, 16 cu. ft.; Hotpoint Electric Range; Norge Freezer, 21 cu. ft.; antique Regal Wood Cook Stove; Florence Gas Range; Metal Dish Cabinet; Old Wooden Kitchen Cabinet; Warm Morning heating stove; old oak dining room suite with china closet and buffet; 3 piece bedroom suite; 4 piece bedroom suite; living room suite and other items too numerous to mention.

FARM MACHINERY INCLUDES: 1953 Super C Farmall tractor with fast hitch; 1948 Ford Tractor 8N, fast hitch 2 bottom 12" plow; 1 bottom 16" 3 point disc; 2 row Burch corn planter with fertilizer attachment; 2 row cultivators for Super C Farmall; one row cultivator 3 point hitch; Homelite XL12 Chain Saw with 20" bar; Poulan Chain Saw 250A-17" bar; cut off saw, chainsaw, stump puller, numerous to mention.

TERMS: Real Estate - 20% down day of sale and balance in 30 days with delivery of deed. **PERSONAL PROPERTY - Cash or good check day of sale.**

FOR ADDITIONAL INFORMATION, CONTACT MR. AND MRS. LEON HARRIS AT THE FARM OR

C. N. Scott
REALTOR
 355-2204

Wendell E. Lawrence
REALTOR & AUCTIONEER
 758-8115

COL. J.T. GOVER AND COL. AUDE PRICE, AUCTIONEERS AND BENTON STOKES SALESMAN

GE

GENERAL ELECTRIC APPLIANCES & TELEVISION

HUGE FREEZER CAPACITY FOR THE BUDGET-MINDED!

23.3 CU. FT. CHEST FREEZER

- 2 sliding baskets, vertical divider.
- Temperature control.
- Automatic interior light.
- Self-adjusting inner lid.
- "Power-on" signal light.
- Built-in lock with self-ejecting key.
- Up-front defrost drain.
- 86% Wide.

Was \$469⁹⁵
Now \$389⁹⁵

TWO APPLIANCES IN ONE... DOUBLE CONVENIENCE!

13.6 CU. FT. REFRIGERATOR-FREEZER

- 3.70 cu. ft. freezer.
- Two top 1/2 Easy trays under protective package rack.
- Automatic defrosting in refrigerator section.
- Twin vegetable bins.
- Coil-free back.
- Only 30 1/2" wide, 64" High.

Was \$399⁹⁵
Now \$299⁹⁵

Bryant Bros.

Main St. Mt. Vernon, Ky.

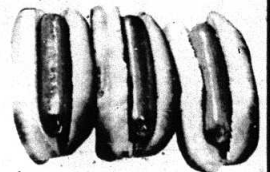
CLAYTON HAMMOND'S SUPERMARKET

Highway 461
The Somerset Road

"HOME OF BARGAINS"

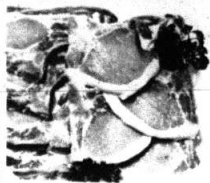
Prices Good June 23 thru June 29

BETTER *Food Buys* ON BEST *Food Brands*



Pro-Leaguer 12 oz. pkg.

Weiners
59¢



1/4 Sliced
PORK LOIN
\$1⁰⁹
lb.

Fresh Pork
NECK BONES
29¢
lb.

WORTHMORE
BACON
1⁸⁹
2 Lb.

12 oz. Pkg. Kraft's
Individually Sliced
American
Cheese
99


 twin-pak
Pringle's
POTATO CHIPS
79

 Kraft's
ARGO PEAS
303 Size
4 Cans
Macaroni & Cheese
Dinners
3 boxes
89¢



TOMATO
CATSUP
14 oz. bottle
Stokely's
Marshmallows
3 pkgs.
\$1

5 lb. bag DOMINO
 SUGAR
(Limit 1 with \$10. or more order)
79¢

 SHOWBOAT
PORK N' BEANS
4 Cans
\$1

Stokely's 18 oz
303 size 2 Cans
79¢

Bama
Peanut
Butter
18 oz. jar
79¢

Stokely's
CORN
3 Cans
89¢ (WK or Cream Style)

 Zesta Saltine
Crackers
1 lb. box
49¢

FRESH PRODUCE VALUES

25 lb. bag self-rising
FLOUR
\$2⁸⁹

 Robin Hood
enriched flour

18 to 20 lb. average
WATERMELONS
 each
89¢

Red-Ripe
TOMATOES
 Doz.
39¢

Bic Butane
DISPOSABLE LIGHTERS
Reg. Price \$1.19
SALE PRICE
69¢

LETTUCE
 **33¢**

New White
POTATOES
10 lb. No. 1
\$1¹⁹

Down on the Farm

BY ROY G. BROWN
ASSISTANT VICE PRESIDENT
CUMBERLAND PCA

This week being the week of our Dairy Day in Rockcastle County to celebrate our dairy farmers for the good job they have done and the progress they have brought to our county.

This week we are visiting on the farm of Paul and Janet Blevins, near Bee Lick.

Paul and Janet are natives of Rockcastle but like many other young people they had to move to Ohio to find jobs where they lived and worked for 19 years.

But during this time they bought their farm of 76 acres back here and began to plan on moving back here sometime. In 1972, their dream came true. They moved back and started their dairy operation. Today they are milking 42 cows and have 5 heifers. Their crops consists of 4000 lbs. of tobacco, 30 acres of corn for silage and 10 acres of alfalfa for hay. They built a new upright silo in 1976.

They are very active in community activities. They have 3 lovely children who are very active in Future Farmers of America and 4-H Club work.

Ernie finished high school at Rockcastle County High School this year and won a concert trip to London, Paris, Austria, Switzerland and Italy in July of this year. Paula will be a sophomore this year and Rusty will be in the 7th grade this fall.

We in PCA are proud to have a family like the Blevins' in our county and "Down on the Farm".

Letter to the Editor

Editor

Dear Editor:
We all have read or saw "Roots" on TV. We that inherit our forefathers or mothers names or bloodline from the surrounding counties are as proud of our bloodlines as Mr. Healy is of his. Which leads up to the announcement of our reunion. Hope you will run this in your paper up through July 16th.

CORNELIUS REUNION

The Cornelius Reunion will be held July 17, 1977 at the Nathan Cornelius Farm, East Bernstadt, Ky. at 10:30 a.m. with lunch at 12:00. Bring a covered dish and silverware and chairs.

This is how our bloodline looks to a genealogist:
Andy Cornelius, born Dec. 18, 1818 first married in 1838 in London, Ky. to Elizabeth Simpson. Children:

Zion married Debbie Parker
John married Lucy Freeman
Deborah married Green Parker
Martha Jane married William Taylor
Elizabeth married — Jackson,
William Harvey married Liddie Truett.

Sarah married George Anderson
Andy (little Andy) married Martha Braustetter.

Lafayette married Mary Belle Thompson.
Andy Cornelius second married: 1859 in London to Martha (Patsy) Parker Forbus. Children:

Preston married —,
Frances married Andrew Isaac,
Minerva married William G. Nicely (my bloodline),
Frank married Nan Edwards and Palestine never married.

Can you match or connect or find your grandmother or grandfather or your great grandmother or great grandfather in any of the above?

You and your family are cordially invited to the reunion.
Thank you for your consideration.
Sincerely,
Nell C. Nicely

"Broddhead Personals" (Cont. From 4)

VA Hospital in Lexington after having surgery. He is doing nicely.

Mr. and Mrs. David Shivel and Mrs. Callie Howard were in Lexington Saturday evening to visit Mr. Edgar Howard who is a patient in the VA Hospital.

Mr. and Mrs. Allen Helton and children of Mason, Ohio spent the weekend with Mr. and Mrs. E.P. Chandler.

Mrs. Melvin Hurst and children of Lexington spent Wednesday and Thursday with Mr. and Mrs. Roy Brown. Mr. and Mrs. Billy Roberts and daughters of Ashland, Ohio visited Mrs. Mae Roberts Thursday enroute to their home after a two week vacation in Texas.

Mrs. Mae Roberts has returned home after a visit with her children and grandchildren in northern Kentucky and Ohio.

Mr. and Mrs. Cecil Hampton and daughters of Cincinnati spent the weekend here with Mrs. Lauvise Monk. Mrs. Richard Shivel and Jenny. Mrs. Roger Carr, and Cindy, Theresa Glovak and Melanie Baldwin were in Somerset Sunday afternoon.

Bro. Roger Carr visited Mrs. Walter Baldwin in Central Baptist Hospital Sunday afternoon.

Mr. Walter Baldwin was in New Lebanon, Ohio, Sunday to bring home Mrs. Ellen Brown and Mrs. Maggie Durman where they had been for the past week with their sister, Mr. and Mrs. Raymond C. Winkler. They were there for the anniversary open house Sunday.

Mrs. Mattie Adams has moved back to this community.

Mrs. Bessie Whitman of Florida is a patient in the Rockcastle Co. Hospital. She is here visiting Mrs. Pauline Dees. Mrs. Johnny B. Carson returned to her home in San Pedro, California after a month's visit with her parents, Mr. and Mrs. V.C. DeBorje and Sue and Mrs. Mary Elizabeth Carson.

Weekend company of Mr. and Mrs. Arch Cash were Mr. and Mrs. Jim Houston of Morrow, Ohio, and Mr. and Mrs. Edd Shepherd of Mainville, Ohio, Miss Kirby Bradley of Cincinnati, Ohio.

Sunday dinner guests of Mr. and Mrs. Millard Allen, Sr. were Mr. and Mrs. Millard Allen, Jr. and Jennifer of Lexington, Mr. and Mrs. Johnny Allen and Margaret of Mt. Vernon and Mr. and Mrs. Dee Wright of Somerset.

Mr. and Mrs. Carl Bullock and girls of Arlington Heights, Ohio were weekend guests of her parents, Mr. and Mrs. J.T. McKinney.

Mrs. Ollie Harrison had as weekend guests her children and grandchildren and great grandchildren, recently. Those present were Mr. and Mrs. Arthur Harrison, Jr. of Dayton, Ohio, Mr. and Mrs. Robert Harrison, Neil and Scott, Providence, Rhode Island, Mr. and Mrs. Ronnie Harrison and Michelle and Bryan, Mr. and Mrs. Ervin Harrison, Ervin, Jr., Billy and David, Mr. and Mrs. Norman Harrison all of Lockland, Mr. and Mrs. Russell Jones, Gary and Patricia of Arlington Heights, Ohio, Mr. and Mrs. J.B. Stevens, Donnie and Danny of Mt. Vernon, Mr. and Mrs. Melvin Harrison, Timmy, Gayle, Mr. and Mrs. Everett Harrison, Wilber, Barbara, Charlotte and Pearl, Willard Harrison and Mrs. Ruby Adams all of Broddhead, Mrs. Cheryl Pascale and Tracy and Cynthia Harrison of Providence, Rhode Island, Mr. and Mrs. Wayne Harrison and Jennie of Hyden, Mrs. Joann Stewart and Rodney of Manchester, Mrs. Vicki Cromer and Andy of Lockland, Ohio.

Mrs. Linda Whitt's piano students presented a recital Friday night at the Broddhead Baptist Church. Thirteen young people took part in the recital. Refreshments were served after the recital in the Fellowship Hall of the church.

Mr. and Mrs. Joe Plummer and children of Louisa visited Mr. and Mrs. Lawson Whitt and children over the weekend.

Mr. and Mrs. Millard Allen, Sr. were in Louisville last Sunday for the wedding of their grandson, Steven Wright and Carol Gregg.

Mr. and Mrs. Millard Robbins and Mr. and Mrs. Dickey LaFavers of Dayton left Tuesday for California where Mrs. Robbins will enter the hospital for surgery.

Mr. Clarence Fletcher and daughter, Melissa from Vandalia, Ohio visited his parents, Mr. and Mrs. George

Fletcher and Audrey last week. They also visited Mr. and Mrs. Charles Fletcher and family and Mrs. Lillie Howard and Eva.

Mr. Clarence Fletcher and Mr. and Mrs. George Fletcher visited relatives in Pineville last Wednesday.

Mrs. Gienna Brooks, Mrs. Marjorie Shivel and Mrs. Thelma Fletcher of Mt. Vernon were in Danville Tuesday morning.

Mr. and Mrs. Raymond Flynn have had as a guest for the past week, Mrs. Flynn's mother from Ravenna.

Mental Health Matters

Parents, Teachers -

Are You Listening

Have you ever been talking to someone and get the feeling they are not really "listening" or "caring about what you are saying"? When that happens, we as adults experience a "let-down" - "sad" - "depressed" kind of feeling. How do children feel when this happens to them?

It is not uncommon for busy parents, teachers, or staff of day care centers and nursery schools to fail to listen to and notice the deserving child. When a child feels he or she has something important to say or to show and gets repeatedly "turned off" by an insensitive or "too busy" adult, the decision is usually made to do one of two things.

The child may "give up" and decide "not to try anymore", becoming an uncommunicative child. This will stifle his or her growth of mind, personality, and ability and prevent the development of self-confidence. On the other hand, the child may misbehave, to get the attention he cannot get in any other way, being noisy, fussy and whiny. This behavior will usually get the attention of the adult, but may cause the adult to punish the child as well. Neither course of action will be positively useful for child or parent!

A child, a person in his or her own right, deserves to be listened to by sensitive, caring adults.

When is money saved not a bargain? No food is a bargain unless it is eaten by your family. Make a collection of economical, nutritious recipes that your family likes. Serve them often.

The Mt. Vernon Signal Thursday, June 23, 1977 P-9

STRETCHING YOUR FOOD DOLLAR

The time you spend in planning menus for your family will result in stretching the food dollar. A grocery list of foods based on planned menus makes shopping easier. It includes all of the

foods you need for the meals except the food already on hand. Well-planned menus lead to nourishing meals at lower cost. You are less likely to buy haphazardly, and one trip to the store may be enough.

REPRODUCTION OF
ANTIQUE
SCHOOL HOUSE CLOCK

REPRODUCTION OF
ANTIQUE
SCHOOL HOUSE CLOCK

\$23.95 VALUE

Now Only

\$12⁹⁹

With Purchases

SAVE
50% OR MORE

PIC PAC SUPERMARKET

Highway 150

Mt. Vernon

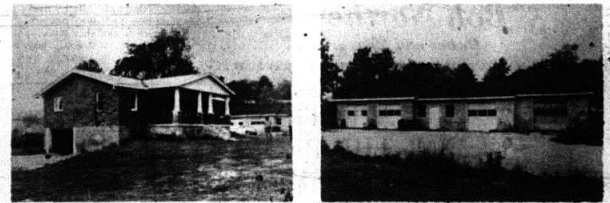
ABSOLUTE

AUCTION

of
Mr. and Mrs. Dennis Feltner's

HOUSE AND BODY SHOP

Saturday, July 2, 1977 - 10:30 a.m.



Haiti Road in Berea, Madison Co. Ky.

LOCATED: On the Old Haiti Road near Berea City Limits. Turn off U.S. 25 onto the Old Haiti Road and proceed approximately 1 mile to the sale. Watch for auction signs.

Mr. and Mrs. Feltner have purchased property on the river and have contracted our firm to dispose of their Madison County property at Absolute Auction.

HOUSE: This fine brick home has 3 bedrooms, living room, kitchen and dining room combination, large bath, front porch and full basement unfinished. There is also a large Bedford Stone fireplace, lots of kitchen cabinets, washer/dryer hook-up, wall to wall carpet, paneling, gas space heater, natural gas, city water and school bus and mail service.

The house is situated on a large lot measuring approximately .64 of an acre.

BODY SHOP - This is without a doubt an ideal building for a body shop, garage, wood working shop, machine shop or several other potential uses. The building measures approximately 28 ft. x 30 ft. and is of concrete block construction. The building is arranged to handle Evacars plus the office space and paint shop. It has a gas furnace, concrete floor, 200 amp. electric box and fluorescent lights.

If you are in the market for a good home or work shop in one of Kentucky's fastest growing communities and at your own price - be sure and don't miss this sale. Each parcel will be offered separately, then together, selling whichever way reflects the best return for the owner.

TERMS: 20% down day of sale, balance in 30 days with delivery of deed.

FOR ADDITIONAL INFORMATION, CONTACT:

FORD
Realty & Auction Co., Inc.
Mt. Vernon, Ky.

R REALTOR

Col. Sam Ford Realtor-Auctioneer Col. Bill Randolph Auctioneer Col. Ray Adams Realtor-Auctioneer
Col. Jerry Ham Auctioneer Col. Danny Ford Realtor-Auctioneer

Office-Ph. 256-4545 Night 256-4508

DAILY DAY SALE

SALE STARTS FRIDAY JUNE 24

Ladies' Aigner Bags Aigner Bags
Aigner Sandals Straw & Canvas
30% OFF **30% OFF**

Ladies' Straw Ladies' Straw
Bass Sandals B & F Handbags
30% OFF **30% OFF**

SPECIAL

Coach Converse Tennis Shoes

Reg. \$11.95 **SALE \$9.95**

Men's Aigner Sandals Men's Acme Western Texas Boots
30% OFF **10% to 25% OFF**

Many more brands too numerous to mention.

Smith's Shoe Shop

WEST MAIN STREET MT. VERNON

Cedar Rapids Corner



THE NEW HOBBY HAUS, located on U.S. 25 South of Mt. Vernon, held their Grand Opening last Saturday, June 18th. The Hobby Haus, an Arts and Crafts dealer, is owned and operated by

Terry "Trooper" Cromer and features glass crafts, hand crafted jewelry and other items. It will be open Monday Saturday from 9 a.m. to 6 p.m.

GOLF LESSONS

Larry Ray Travis will begin a golf course on Monday, June 27. The cost of the course will be \$10 for a series of eight lessons.

If interested, contact Larry Ray or the Cedar Rapids Country Club.

ATTENTION

Women Members of the Cedar Rapids Country Club, come out Wednesday at 12:00 noon for lunch and play or learn bridge from 1 to 4 p.m.

CEDAR RAPIDS MENU

Friday, June 24

Meat loaf, barbecued chicken, mashed potatoes, brussel sprouts, baked beans, wild rice, rolls and corn bread, choice of salads, apple pie and rhubarb pie.

Sunday, June 25

Pork roast with dressing and brown gravy, baked ham, mashed potatoes, peas with pearl onions, Spanish rice, green beans, baked sweet potatoes, biscuits and muffins, choice of salads, watermelon and cakes.

IRS SETS 1977 SPECIAL ENROLLMENT EXAM DATES

The Internal Revenue Service (IRS) has selected Oct. 6 and 7, 1977, as the dates for the 1977 Special Enrollment Examination.

The test is given annually to qualify persons who are neither CPA's nor attorneys to represent clients before the IRS. It will be conducted in Louisville for Kentucky applicants.

To be certified for the examination, applicants must submit Form 2587, "Application for the 1977 Special Enrollment Examination," to the IRS in Washington, D.C., no later than August 15, 1977. No extensions to file will be granted beyond that date.

The application must be accompanied by a recent photo of the applicant, which will be used for identification purposes only, and a check or money order for the examination fee, made payable to the Internal Revenue Service. The fee is not refundable, but a credit may be granted to apply on the next year's application fee as provided on the instructions on the back of Form 2587.

Anyone needing an application Form 2587; a copy of Publication 486, "Requirements for Internal Revenue Service Enrollment and Special Enrollment Examination"; and a copy of Publication 693, "Sample Booklet Special Enrollment Examination," which includes more detailed information about the examination, should write: Special Enrollment Examination, Public Affairs Office, Internal Revenue Service, P.O. Box 1785, Louisville, Ky. 40201 or phone the IRS at (502) 582-3378.

Fishing Report

Several of the state's major lakes are now reporting activity in the jumps for black bass and white bass. The lake-by-lake rundown, as compiled by the Kentucky Department of Fish and

Wildlife Resources:

Herrington: Black bass, catfish and white perch good still fishing soft crawfish off rocky points; clear, falling slowly, two feet below summer pool and

80 degrees.

Cumberland: White bass and crappie fair to good at night on the lower lake off points and deep banks; crappie fair on the upper lake over submerged cover; white bass and black bass slow to fair on the lower lake in jumps early and late on surface lures and plunker and fly combination; black bass slow on the upper lake on deep runners and artificial nightcrawlers off points and over drop-offs; in tailwaters, trout good; clear, falling, 35 feet below the timberline and 79 degrees.

Laurel: Trout good still and drift fishing minnows and nightcrawlers off rocky points and deep banks; crappie good around stick ups; clear, stable at power pool and 80 degrees.

Nolin: Bluegill good in inlets and bays; black bass fair to good early and late on surface lures in jumps; in tailwaters, trout excellent; clear, stable, one foot above summer pool and 79 degrees.

Green: Bluegill good off rock points and over drop-offs; white bass fair trolling medium runners over flats and top-offs; in tailwaters, trout fair; clear to murky, rising slowly at summer pool and 79 degrees.

Buckhorn: Bluegill good off deep banks, crappie fair early and late around stick ups; clear to murky to muddy, stable at summer pool and 74 degrees.

Kentucky: Sauger good still and drifting fishing minnows and trolling deep runners over ridge tops; white bass fair at night still fishing minnows and mayflies around bridge piers and rip rap; in tailwaters, catfish and sauger slow to fair; clear, stable at summer pool and 80 degrees.

Barkley: Black bass slow on artificial nightcrawlers in inlets and bays around buck brush; bluegill slow over old road beds; in tailwaters, catfish fair to good; clear, stable, six inches below summer pool and 80 degrees.

Cave Run: Bluegill fair to good off deep rocky banks; musky fair casting and trolling deep runners over main channel and drop-offs; clear, stable at summer pool and 78 degrees.

Dale Hollow: White bass fair with some black bass on surface lures and plunker and fly combination in the jumps; bluegill fair on fyrod poppers in inlets and bays; clear, rising slowly, two feet below summer pool and 80 degrees.

Barren: Black bass fair at night casting artificial nightcrawlers off points and over drop-offs; bluegill slow to fair off deep banks; clear to murky to muddy, rising, one foot above summer pool and 79 degrees.

Rough River: Bluegill fair off deep banks; white bass slowly early and late on plunker and fly combination in the jumps; in tailwaters, trout slow to fair; clear, stable at summer pool and 81 degrees.

Fishtrap: Crappie fair at night around stick ups; catfish slow on trotlines with minnows and crawfish; in tailwaters, trout slow; clear to murky, stable at summer pool and 81 degrees.

Dewey: Crappie fair over submerged cover and around stick ups; clear, stable at summer pool and 77 degrees.

Grayson: Crappie fair on medium and deep runners off muddy banks; bluegill slow in inlets and bays; in tailwaters, trout good; clear, stable, six inches below summer pool and 80 degrees.

South Central Automotive

On U.S. 150 2 Miles South of Brodhead
Next to Rockcastle Steel Corp.

Grand Opening Special

Lube, Oil & Filter **\$9.95**
(on American Autos)

Tune-Up Special

Plugs, Points, Condenser **\$21.95**
& Labor for American Made V-8
(6 & 4 cylinder engines are somewhat less)

Specialize in Automatic Transmission and
Most General Automobile Maintenance.

Can Also Do Cutting and Welding.

Bob Northeft

Owner and Manager

INSPECTION PERIOD FOR THE PROPERTY TAX ASSESSMENT ROLL

The Rockcastle County property tax roll will be opened for inspection from June 27 through July 1, 1977. Under the supervision of the property valuation administrator or one of his deputies, any property owner may inspect the tax roll to check the assessment of his property and compare it with the assessment of comparable property to determine whether it is equitably assessed. The tax roll may not be inspected for any other purpose.

This is the January 1, 1977 assessment on which state, county, and school taxes for 1977 will be due on September 15, 1977.

The tax roll is in the office of the property valuation administrator in the county courthouse and may be inspected between the hours 8:30 a.m. and 3:30 p.m.

/s/ Robert Cromer
Property Valuation Administrator

Rockcastle
County

Kentucky Afield

By Hope Carlton

Kentucky's big lakes can get rough in a hurry when the wind comes up, and sometimes fishermen are forced to stay off the water because of unfavorable weather. At other times, particularly on holidays or long weekends, it seems that there are just too many pleasure boats roaring around the lake to permit much productive fishing.

But there's no reason to just sit on the dock and wish you could be out fishing. Instead, try tailwaters where the streams just below the dams. Many of these tailwaters offer some good fishing either from the bank or from a boat, and fishing pressure is usually light.

Here is a brief rundown of the angling opportunities below the dams at 15 of Kentucky's major lakes and a description of some of the other facilities available.

So give tailwater fishing a try—you'll probably find it a most satisfying alternative to lake fishing.

Buckhorn: Trout, crappie, white bass, bluegill, and catfish harvested spring through fall. The first three miles are the most productive. Bank fishing only. Parking area, camping and picnic tables available. No launching ramp.

Green: Trout, white bass, crappie, bluegill and catfish the year around. Bank fishing best within two miles below dam. Parking area and rest rooms available. No launching ramp.

Grayson: Crappie and trout harvested spring through fall. First mile most productive. Parking area available. No launching ramp.

Cumberland: Trout, crappie, white bass and bluegill the year around. Good fishing for some 30 miles. Camping, parking and launching ramp (for johnboats and up to 20 hp outboards) available.

Rough River: Trout, white bass, crappie, bluegill, and catfish harvested spring through fall. Most productive area, first four miles. Parking area and camp sites available. No launching ramp.

Nolin: Trout, white bass, crappie the year around. Most productive area, first mile. Parking available, no launching ramp.

Barren: Trout, crappie, white bass, black bass and bluegill, best spring through fall. Parking, camping and launching off gravel ramp (best suited for johnboat and 5 hp outboards).

Cave Run: Crappie, black bass, bluegill, catfish and musky, best spring through fall. Most productive area, first mile. Parking but no launching ramp.

Laurel: Bluegill, crappie and catfish, best spring until fall. Most productive area, first mile. Parking but no launching ramp.

Dewey: Bluegill, crappie and catfish, best spring until fall. Most productive area, first three miles. Parking but no launching ramp.

Barkley: Crappie, sauger, white bass, bluegill and catfish the year around. Fishing good for some 30 miles. Parking and launching for small and large boats.

Kentucky: Crappie, sauger, black bass, white bass, bluegill and catfish the year around. Some 20 miles of suitable waters. Parking camping and launching for both small and large boats.

Dale Hollow: Tailwaters located in Tennessee.

Fishtrap: Crappie, trout and black bass, best in fall. First three miles most productive. Parking but no launching ramp.

Herrington: Not available for fishing due to lack of access and poor fishing conditions generally.

A trout stamp is needed by all trout anglers at a cost of \$2.25.

McGuire Family Reunion

The McGuire Family Reunion will be held Saturday, June 25th at the Great Saltpeper Cave. All friends and relatives of the family are invited to come, bring a basket lunch, and enjoy the day. The Reunion will begin at noon.

TWILIGHT AUCTION

Or Mr. and Mrs. E. J. Smith's
HOUSE & LOT

Fri., June 24, 1977-6:30 P.M.

Brodhead, Rockcastle County, Kentucky

Mr. and Mrs. Smith have purchased property in another county and have authorized our firm to sell this desirable home at public auction.

This lovely home is a 5 room frame house which has been completely remodeled throughout. It has 3 bedrooms, living room, kitchen with built in cabinets, bath and partial basement. The house has storm doors and windows, washer and dryer hook-up. It is heated by a fuel oil furnace and has carpet and linoleum throughout. It also has city water and sewer.

The house is situated on a large lot measuring approximately 105 x 190 and conveniently located in the city limits of Brodhead, Kentucky.

If you are in the market for a good home in Brodhead - BE SURE TO MARK YOUR CALENDAR AND DON'T MISS THIS SALE!!!!

TERMS: 20% down day of sale - balance in 30 days upon delivery of deed.

For additional information contact Mr. and Mrs. Smith at 758-8897 or:

Realty & Auction Co., Inc.
Mt. Vernon, Ky.

Col. Sam Ford
Realtor-Auctioneer

Col. Bill Randolph
Auctioneer

Col. Roy Adams
Realtor-Auctioneer

Col. Jerry Ham
Realtor-Auctioneer

Col. Danny Ford
Realtor-Auctioneer

Office-Ph. 256-4545 Night 256-4588

"PERSONALS"

(Cont. 'd from P-5)

Mrs. Vernon Cox who has been confined to her home for several weeks with plebitis, is slowly improving.

Mrs. Geneva Lunsford Bullock of Richmond, Indiana visited her brother, Mr. Johnny Lunsford at the Sower Nursing Home, Saturday.

Mr. and Mrs. C.A. (Bud) Davis of Brownville, Texas visited his aunts, Mrs. Emma Thompson, Mrs. Amanda Maggard, Mrs. Leila Stokes and Mrs. Cepha Kincer, Tuesday and Wednesday. Mrs. Kincer of Erlanger is visiting here this week.

Mrs. Albert Hampton and daughter, Vallerie of Florence, drove to Mt. Vernon Sunday to bring her mother, Mrs. John Kincer, Jr. who is spending the week here. Mrs. Hampton, on her return home, stopped at Richmond for her daughter Rhonda, who had been there in camp for a week.

There were 23 Senior Citizens of the county who enjoyed the trip to Ft. sequoyah last Thursday. The picnic

lunch was spread in the park behind the Caroltis' Gift Store and the cruise up the Rockcastle River. The captain as we called 'Buzzy' Caroltis was very interesting as he told the history and settlements along on the river.

50TH WEDDING ANNIVERSARY

Mr. and Mrs. Ewell Cummins, whose anniversary was Saturday, June 18th, celebrated on Sunday, June 19 by their children who had prepared a unique money tree of 50-\$1 bills as a center piece for their parents dining table, with a figure 50 at the top in gold. Many lovely gifts in gold color were displayed around the gold register book. This was a double treat for Mr. Cummins for it was Father's Day also.

Those present were, Mr. and Mrs. Alfred Cummins and Kelli, Mr. and Mrs. Ronnie Cash of Broadhead, Mr. and Mrs. Jimmy Cummins and family of Independence, Mr. and Mrs. Lonnie Brown and family of Richmond, Mrs. Jean Towery of Conway. Saturday, Mrs.

'Cummins' mother, Mrs. Amy Meadows and her sister, Mrs. Lester Baker of Lexington were over. Also several friends dropped in to congratulate this happy couple on Saturday and Sunday.

A TIME TO REMEMBER...

The Destiny Concert, featuring our own Alicia Dick, from Kentucky Christian College, was heard by a tremendous crowd last Saturday evening, June 18th at the First Christian Church.

This vibrant musical ensemble, composed of 20 singers and instrumentalists, was directed by Prof. Richard Hargrove. It is the largest regularly scheduled musical group from Kentucky Christian College.

Their music and witness combined was a real God-sent blessing to everyone.

SENIOR CITIZENS ENJOY PICNIC

The Rockcastle County Senior Citizens went to Ford Sequoyah on a picnic on Thursday of last week. Twenty two persons were on hand for the picnic and after lunch several of the group went on a boat ride up the river.

If you missed out on this picnic, plan to be with us for the next trip. Watch the paper for future details of coming events.

County Agent's Notes

BY H. LEE DURHAM COUNTY EXTENSION AGENT FOR AGRICULTURE

The Cow Reigns Supreme As a Supplier of Milk

In times gone by, milk for human consumption was and has been obtained from sheep, goats, buffalo, reindeer and felines. But for all animals whose milk has been utilized as food, the good old gentle cow is by far the most common and most favored. So great has been her

CARD OF THANKS

We, the family of Mary 'Mom' Reynolds wish to thank everyone who sent food and flowers. A special thanks to Sower Nursing Home, Dr. George W. Griffith, Dr. Jack D. Lewis and the Cox Funeral Home.

The Family

The Mt. Vernon Signal

Thursday, June 23, 1977 P-11

cally said the milk industry has come of age, with the cow much, more than as the used to be.

ROCKCASTLE CIRCUIT COURT

Civil Action File No. 3275

Leonard Abney, and his wife, Dorothea Abney Plaintiffs

V. Notice of Sale

Frank M. Abney and wife, Nazalee Abney Defendants

By virtue of a judgement and order of sale of the Rockcastle Circuit Court rendered on May 27th, 1977, in the above cause, a partition action, I shall proceed to offer for sale at the Court House door on Main Street, in Mount Vernon, Kentucky, to the highest bidder, at public auction on the 25th day of June, 1977, at Ten O'clock a.m., or thereabout, the following described property, to-wit:

On the waters of Brush Creek, and beginning at an X on a large rock, corner of Luther Vanzant; thence with his line North 1 degree East 69 poles to a stone in Leonard Abney's line; thence with Abney's line, North 85 degrees East 29 1/2 poles to a hickory; thence South 35 East 41 poles to a stake in the north right of way of Highway 1912; thence North 68 degrees East 56 1/2 poles to a stone; thence South 12 degrees West 3 1/2 poles to a stone in Frank Abney's corner; thence with his line, South 12 degrees West 37 1/2 poles to a stone; thence South 82 degrees West 12 poles to red oak at a cliff; thence South 50 degrees West 12 poles to a red oak at a cliff; thence with the cliff South 72 degrees West 28 1/2 poles to a horsebane, hickory pointers on top of the cliff; thence South 41 degrees East 56 1/2 poles to a gum Luther Vanzant's corner; thence with his line, North 55 degrees West 110 poles to the beginning, and containing thirty-five (35) acres.

This is a sale of the surface rights to said land. The coal and mineral rights are not included in the sale.

The property shall be sold to the highest bidder on terms of ten (10%) percent of the purchase price in cash at time of sale, the balance in six (6) months, with the purchaser being required to execute bond with surety thereon to be approved by the Commissioner, to secure the unpaid balance of the purchase price; said bond to bear interest at the rate of seven (7) percent per annum from date of sale until paid. The purchaser shall have the

privilege of paying all of the purchase price in cash, or paying said bond before maturity by paying the principal and interest accrued to the date of payment. The purchaser shall have possession of the premises after complying with the terms of sale.

Money E. Cummins
Master Commissioner
Rockcastle Circuit Court

Cloniz & Cox
Attorneys at Law
Mt. Vernon, Kentucky

Millionaire Cornelius Vanderbilt couldn't sleep unless the four legs of his bed were planted in dishes filled with salt to keep malevolent spirits from attacking him.

LET US

BRIGHTEN
YOUR
DAY!

**Super Steam Extraction
Carpet Cleaning**
Free Estimates - No Obligation
256-5375
If no answer,
Call 758-8359
Gary Kerr Mt. Vernon, Ky.

Weight Watchers
NEW CLASS OPENING
IN
BEREA
Starting Thursday, June 23
7 p.m.
American Legion Hall
119 Holly Street
Everyone Welcome

Real Estate
By SAM FORD
REALTOR

How Much Hot Water

One of the items frequently overlooked when remodeling or buying a new home, is the capacity of the hot water heater. First notice of this oversight normally is discovered while under the hot shower when it turns ice-cold prematurely. But, then it is too late. So, here a short course on the subject.

The capacity of storage water heaters is rated in two ways and is usually imprinted on the nameplate of the tank. One number tells you the capacity of the tank, and the other number gives you the number of gallons of hot water a tank can supply in one hour.

A tank of 50 gallons capacity with a recovery rate of 40 gallons will supply 90 gallons an hour which should be plenty for a family of five in a home with two baths and an automatic dishwasher and clothes-washer. A family of four without a dishwasher should be able to get by on a 30 or 40 gallon tank with 30 gallon recovery.

If there is anything we can do to help you in the field of real estate, please phone or drop in at Ford Realty & Auction Co., Inc., Mt. Vernon, Ph. 256-4545. We're here to help!

DAIRY DAY AT Nellie's

Big DISCOUNTS AND GIANT VALUES

Dresses 1/2 PRICE

Jean Tops 30% to 50% OFF

Jean Suits 30% to 50% OFF

Sportswear 30% to 50% OFF

Bathing Suits 30% OFF

SHORTS 30% OFF

Jump Suits 30% OFF

Nellie's Boutique & Dress Shop
MAIN STREET MT. VERNON

FANTASTIC SAVINGS IN EVERY DEPARTMENT!

HURRY! THIS GREAT SALE Starts Fri.

TWILIGHT AUCTION

of Mrs. Maude Martin's

HOUSE AND LOT

and **PERSONAL PROPERTY**

Friday, July 1, 1977 - 6:30 p.m.

Mt. Vernon, Ky.

LOCATION: CORNER OF FERGUSON AND LANGDON STREET, MT. VERNON, ROCKCASTLE CO., KY.

Since she now makes her home with her sister, Mrs. Martin has authorized our firm to offer, for the high dollar, this desirable house and lot.

This House has 3 rooms, living room, bedroom, kitchen, bath and storage room and both a front and back porch. It is situated on a beautiful, level lot measuring approximately 100x125 with an abundance of shade - both city water and sewer available.

PERSONAL PROPERTY: Kelvinator electric range, breakfast set, bedroom suite, kitchen cabinet, refrigerator, plus other miscellaneous items.

Here is an excellent opportunity to own a good small home in one of Mt. Vernon's best subdivisions.

TERMS: Real Estate - 20% down day of sale, balance in 30 days with delivery of deed. **PERSONAL PROPERTY - Cash day of sale.**

FOR ADDITIONAL INFORMATION, CONTACT MRS. MAUDE MARTIN, THE OWNER, OR:

FORD Realty & Auction Co., Inc.
Mt. Vernon, Ky.

Col. Sam Ford Realtor-Auctioneer
Col. Bill Randolph Auctioneer
Col. Roy Adams Realtor-Auctioneer
Col. Jerry Ham Auctioneer
Col. Danny Ford Realtor-Auctioneer

Office - Ph. 256-4545 Night 256-4588

WHAT'S HAPPENING IN THE...

CLASSIFIED SECTION

P-12 The Mt. Vernon Signal Thursday, June 23, 1977

Classified Rates

Local Rates - 5c per word, minimum \$1.00
 Card of Thanks - 3c per word, minimum 75c
 In Memory 3c word, minimum 75c
 Classifieds Paid in Advance, except to businesses
 Display Classifieds - \$1.50 per column inch

For Sale

FOR SALE: 1973 Grand Sport Buick, good condition. Call 256-2768 after 5 p.m. 41x1f

FOR SALE: 1972 Chevrolet Caprice, 2 Dr., H.T., a/c and 4 new tires, clean. 256-4234 after 5 p.m. 41x2

FOR SALE: One No. 1 Grade A Jersey Milk Cow, 4 years old. Call 453-4216, 41x3

FOR SALE: Yamaha trail and street bike. Call 256-2972. 41x2

FOR SALE: Monogram fuel oil stove with tank. Stove used 3 years. In good condition. Call 256-4478. 41x2

FOR SALE: 1968 4 door Ford Custom, 8255 Ricky Price, Brodhead. Ph. 758-8386. 42x2p

FOR SALE: House and lot on corner of Paul St. in Mt. Vernon. 6 room house with washer and dryer book up and bath. Ph. 256-5390. 42x2p

FOR SALE: 1974 Stardust Double Wide trailer. In the morning call 256-5441, after 1:30 p.m. call 379-2843. 42x1p

FOR SALE: 125 glow house seats, wooden boxes and two riding lawn mowers. See Bill Moore or call 256-2612. 42x1p

GRAVE MARKERS AND MONUMENTS in stock at all times. McNew Monument Sales, U.S. 25, four miles north of Mt. Vernon. Ph. 256-2232. nlf

FOR SALE: Silos, silo unloaders, feeders and wagons. Contact Charles Hackley, Ph. 355-7437 nights. 24x52p

FOR SALE: 1965 Chevrolet truck, 3,000 actual miles, 16 foot combination grain box and rack with hoist. Super 8 International tractor and 7 foot mower. C80 Brush Bull; Wheel Disc and unloading wagon and other machinery. Equipment is at Gilbert Webb's Garage on 27 at Waynesburg or call 379-6442 or 379-2077. Also 20-40 lb. Teeder pigs for sale. 42x2

FOR SALE: Tobacco sticks, registered Angus bulls, Coleman fuel oil tank and stove like new. Call 758-8682. 42x1

FOR SALE: Size 400 Ford motor and automatic transmission from an LTD station wagon. Extra good condition. Both for \$200. Call 453-4095 or contact Earl Baker at Livingston after 6 p.m. 42x1p

FOR SALE: Firewood, \$18 per rick. Cut to your specification. Free delivery. Buy your wood now while it's cheap. Call 453-9831. 42x1f

FOR SALE: Tennessee Walking Horse, well broken, 8 years old, extra good trail horse, call 256-4516 after 6 p.m. 42x1

FOR SALE: Pitney Bowes 253 Copier. Used very little. Make offer. Ph. 256-2244. 36x1f

FOR SALE: 1966 Pontiac, 4 speed, 400 with 4 new tires. In very good condition. Call 256-2191. 41x2p

FOR SALE: 23 channel J.C. Penney base station, D-104 Power mike, 50 feet of coax cable, ground plane. \$125. Call 256-4914 from 9 a.m. to 5 p.m. 41x2

FOR SALE: Good used vacuum cleaners. Call 758-8584. 41x1f

Reduce safe and fast with GoBee Tablets & E-Vap "water pills" Young's Pharmacy, Main St., Mt. Vernon 41x2p

COMMERCIAL BUILDING

Brick and block construction. Lot approximately 110 wide by 140 deep. Building measures 55x75 (4,125 sq. ft.). 3 Phase electricity, air-compressor with air lines throughout. Drop ceiling with flush fluorescent lights in half of building, outside lights, indoor outdoor carpet in half of building. Heated by coal stoker furnace. Will sell below appraisal value. Ph. 256-2777. 35x1f

"Low rates are a big reason we're the largest home insurer. But there are more..."

Low rates wouldn't mean much without our first class service. Drop by or give me a call.

BILL RILEY
 MT. VERNON
 PH. 256-2119

Like a good neighbor, State Farm is there.

STATE FARM FIRE AND CASUALTY COMPANY
 Home Office - Bloomington, Illinois

BUILDING: 453-2161 256-5361

New Homes - Remodeling
 Blows-In Insulation
 Aluminum Siding, Storm Windows and Doors.

FREE ESTIMATES
 PRESTON COLLINS
 Route 2, Mt. Vernon, Ky.

TERMITES?
 Call Madison Termite Co., Berea, Ky. Free Inspection - Phone 986-3757

Local Calls
 Jack Parsons, Wildie, 256-2288 or
 C.H. Webb, Livingston, 453-9831 25x1f

Septic TANKS

J&J CONCRETE TANKS
 Jim & Jack's S&T Store
 Phone 256-4363
 After 5 p.m. 256-2380

SEPTIC TANKS
 Sales and Service
 750 Gal., 1,000 Gal.,
 Distribution Boxes
 1,000 Gal. Water Distribution Tanks

FOR SALE: 375 amp industrial Lincoln welder, topper for long, wide pick-up bed, 14 foot Thundercraft fishing boat with accessories, 25 h.p. Evinrude motor and trailer. See or call James D. Harris. Ph. 758-8810, Brodhead. 42x3p

FOR SALE: 1967 Star Mobile Home, 12x60, on approximately 1 acre lot. Located across from Ottawa Baptist Church. Contact Guy Hamm at Ottawa. 42x4p

FOR SALE: 5 room house with 7 acres, more or less, 1/4 acre of strawberries and some fruit trees. At a reduced price of \$6,000. Contact Bentley Furman, 42x2p

FOR SALE: Modern 6 room log house, 2 1/2 acres land. Climax area of Rockcastle Co. \$12,000. Call 986-1247 or 256-4258. 40x3p

FOR SALE: International 1600 Tilt Cab, 2 ton, 15' bed, power winch, 38,000 actual miles. 256-2316 before 5 p.m. 40x1f

FOR SALE: 82 hundreds of a acre about two hundred feet off U.S. 25. City water available. See Walter Hurd at Pine Hill. 42x3p

Yard Sales

YARD SALE: June 24 and 25, Verner Ballinger's on Davis St. in Mt. Vernon. 42x1p

YARD SALE: At the home of Johnny Adams across from Hamm's Service Station on Hwy. 150. Friday and Saturday, June 24 and 25, 10 to 4. 42x1

YARD SALE: Friday and Saturday, 10-5. Families, at the home of Barbara Owens, Brodhead. 42x1

YARD SALE: Thursday and Friday, June 23 and 24. Starts at 11 a.m. at Earl and Fay Baker's approximately 1 mile north of the Livingston Post Office just off U.S. 25. Over 150 paperback books, clothes, Rubbermaid products, odds and ends - some new, some used. Postponed in case of rain. 42x1p

3 FAMILY YARD SALE: Thurs., Fri., Sat. at the home of Anna Mae Lovett on Sigmon St., Brodhead. Antique diamond rings - cheap; Levis; Depression Glass - all colors; bedspreads; sheets; what-nots. Everything Cheap. 42x1p

YARD SALE: Thursday and Friday at the home of Bill Moore on Negro Town Hill. 42x1p

YARD SALE: Thursday, Friday and Saturday at the home of Ronda Burton on Sigmon Street, Brodhead, 10-6 daily. Aigner shoes, little girls clothes, glassware. Ph. 758-8668. 42x1p

YARD SALE: At the home of Mrs. Phillip Bullock in Barnett Subdivision This Friday and Saturday, June 24 and 25, 9 to 4. 42x1

YARD SALE: at the home of Judy Phillips on Shirley St. behind Carters Mkt., Friday and Saturday, June 24 and 25, 9 to 5. 42x1p

CARD OF THANKS

The family of Shirley B. Caldwell wishes to thank those who were so nice during the loss of their loved one. Thanks to everyone for the food, flowers, cards, money and all kindness. The Mt. Vernon Hospital Staff and nurses, Dr. Arvin. A special thanks to Dowell & Martin Funeral Home for their wonderful service and all who took part in the funeral services and Bro. Austin Mobley. May God bless each and everyone in my prayer.
 Wife, Edna and Children

FOR SALE

1975 CJF JEEP
 304 V8 11,000 Miles

See or Call

ROY MARTIN

Dowell & Martin Funeral Home

256-2911

256-2997

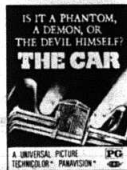
★ RICHMOND DRIVE IN ★

4 Miles South On US 25

NOW SHOWING

Ends Tuesday

Adm. \$2.00



Fireworks Display Monday, July 4th

Indoor & Outdoor Flea Market

Robbie's Antiques

3 miles south of Berea on U.S. 25 at Boone's Gap

Each Sat. & Sun. Till 6 p.m.

Booths for Rent

Residential & Mobile Home
 Air Conditioning & Heat Pump Installation

Greg's Heating & Cooling

Reliable, School Trained, Experienced!

Speedy Home Appliance Repair

Refrigeration Service

Greg Hargadon
 Owner

758-8339
 256-53



Donnie Singleton, Agent

Singleton-Ford
 Insurance
 Agency

Crop - Hail
 Insurance

Mt. Vernon, Ky.
 Phone:
 Office 256-2611
 Home 256-4476



Septic TANKS

J&J CONCRETE TANKS
 Jim & Jack's S&T Store
 Phone 256-4363
 After 5 p.m. 256-2380

SEPTIC TANKS
 Sales and Service
 750 Gal., 1,000 Gal.,
 Distribution Boxes
 1,000 Gal. Water Distribution Tanks

CUNDIFF'S PLYWOOD PLAZA CENTER

Spring Paneling Sale

Valley Elm	\$3.89
Korean Oak	3.50
Tudor Walnut	6.90

N. Main Street & 90 Bypass
 SOMERSET KY.

Hensley's Used Cars
 ROUTE 2
 ORLANDO, KY
 PHONE 256-4777

DOZER WORK

FIELD DIRT TOP SOIL

Tommy Philbeck
 Ph. 256-4311

INTERNATIONAL AND GENERAL ELECTRIC
 Parts & Service
 at
Bryant Bros.
 Mt. Vernon

GARRARD COUNTY STOCKYARDS
 Sale For All Classes Of Livestock Every Friday

Phone 792-2118

J.L. Teator

Hogan Teator

William Kirby Teator

Lancaster, Kentucky

IMPALA - CAPRICE - MONTE CARLO - CHEVELLE - NOVA - VEGA - CAMARO - MONZA - CORVETTE - CHEVY TRUCKS - IMPALA - CAPRICE - MONTE CARLO - NOVA - CHEVY TRUCKS - CORVETTE

LEASING
 12 to 36 MONTHS

"America's No. 1 Car"

BRITTON CHEVROLET - OLDS, INC.

U.S. 25 NORTH 986-3169 BERA

GMAC Financing
 MIC Insurance

CAMARO - VEGA - CHEVELLE - MONZA - IMPALA - CHEVY TRUCKS - CORVETTE - NOVA - CAPRICE - IMPALA - CAPRICE - NOVA - MONTE CARLO - CHEVELLE - NOVA - CAMARO - CHEVELLE

WHAT'S HAPPENING IN THE...

CLASSIFIED SECTION

Notice

NOTICE: For electric wiring and plumbing, call a licensed plumber at 256-5250.

POSTED: No killing of groundhogs and foxes. Will not be responsible for anyone getting hurt on land belonging to Chester Baker at Boone. 39x17p

NOTICE: Custom-made cabinets. Call 453-4991. Taylor's Workshop. Arnel C. Taylor, owner. 33xntf

NOTICE: Allen and Dye Building and Remodeling. Free Estimates. Call 453-4852. 41xntf

HAMM'S WATER WELL DRILLING AND CONTRACTING. Call 256-2924 anytime. ntf

HYNSINGER CARPETS located behind Hale's Furniture across from Exom Service Station. Shag from \$2.99 up. Commercial carpet of all kinds and Armstrong Vinyl Padding and installation available. Call 256-5413. 31xntf

POSTED: No trespassing on land located off 150 at Mareburg belonging to Cletus Gentry. 42x12p

NOTICE: I am responsible for debts made only by myself. Effective June 13, 1977. Larry E. Settles. 42x1p

Wanted

WANTED: Hardwood logs, high prices paid, large quantities wanted. J&J Pallet Co., Eshank, Ky., Ph. 378-4910 days and 432-3596 nights. 37x12

GLENN PENNINGTON AUTOMOBILES

"On The Strip" U.S. 25 North

- 77 Ford Explorer, P/U, Auto, P.S., Blue/White
- 76 Chev. Imp. Cust. Cpe., A.C., Silver/Black V.R.
- 76 Ford Elite, A.C., Red/White V.R.
- 76 Ford Cust. 1/2 ton P/U, St. Sht., 6 P.S., Red/White
- 76 Chev. Caprice, 2 Dr., Fully Eq'd, White/White V.R.
- 75 Buick Century, 4 Dr., S.A.C., Baby Blue
- 75 Buick Electra, 4 Dr., Fully Eq'd, Met. Brown/Beige
- 75 Chev. Monte Carlo Landau, Fully Eq'd, White/White, Burgandy Interior
- 75 Chev. Imp. Cust. Cpe., A.C., L.G., Green/Black V.R.
- 75 Dodge Carnot Custom Cpe., St. Wgn., Fully Eq'd, Gold
- 75 Dodge Dart Sport, 6 St. Sht. P.S., Maroon/White V.R.
- 75 Ford LTD Braught, 4 r., A.C., L.L. blue/DR. Blue V.R.
- 75 Ford Elite, 2 Dr., A.M./F.M., Tape Black/Black
- 75 Ford Ranchero, P.S., A.C., Light green
- 75 Ford 1/2 Ton Longwide Bed P/U, Explorer, St. Sht., Orange/White Stripe
- 75 Dodge Dart, 4 Dr., P.S., Auto, Light Blue
- 75 Mercury Cougar, A.C., am/im, Stereo Tape, Red/White 1/2 V.R.
- 75 Pont. Ventura, 4 Dr., 6 St. Sht., Silver
- 74 Ply. Fury, 4 Dr., H.T., A.C. White
- 74 Ply. Satellite Sebring, 2 dr., H.T., Auto., A.C., Green/Green V.R.
- 74 Pont. Grand AM, A.C. Auto, A.M. app, White
- 74 Ford LTD, 2 Dr., H.T., Auto, Black/Black V.R.
- 74 Ford XLT Ranger, 8 Auto, A.C., Mint Green/White
- 74 Chev. Nova Hatchback, 2 Dr., Gray
- 74 Ford Pinto, Auto, Green
- 74 Ford Torino, 2 Dr., Auto, P.S., Brown
- 73 Ford Mustang March 1.8, A.C., Black/Blue
- 73 Olds Cutlass Supreme, Auto, S.A.C., Met. Blue/Black V.R.
- 72 Ford LTD, 2 Dr., A.C., Green/DR. Green V.R.
- 72 Pont. Gran Prix, 8 Auto, A.C., Red/Black V.R.

Plus Many More To Choose From Financing To Suit Your Budget...

BEREA
Phone 986-3117
Now in our 19th Year

WANTED: Odd jobs, carpenter work, painting, and roof repairing. See Frank Collins or call 256-5490. 30xntf

HELP WANTED: Someone to help take care of elderly lady. Ph. 256-2379. 42x2p

AVON: Make top money selling world famous Avon Products. Flexible hours. Call Winchester, Ky. collect after 6 p.m. 745-1249. 42x1

Legal Notices

EXECUTRIX NOTICE

Notice is hereby given that Dorothy Edna Cliswell, Rt. 1, Brodhead, has been appointed Executrix of the Estate of Shirley B. Caldwell, deceased. Claims should be presented to the said Dorothy E. Caldwell or to James W. Lambert, Mt. Vernon, attorney for said estate, on or before October 7, 1977. 42x3

EXECUTOR NOTICE

Notice is hereby given that Willie Smith, Jr., has been appointed Executor of the Estate of W.T. Smith, deceased. All persons having claims against said Estate shall present them, verified according to law, to the said Willie Smith, Jr., 5627 Hamilton-Trenton Road, Trenton, Ohio 45067, or to William D. Gregory, Mt. Vernon, Kentucky, attorney for said estate, no later than September 23, 1977. 42x3

EXECUTOR NOTICE

Notice is hereby given that Ernest Willard Todd, Rt. 3, Mt. Vernon, Ky, has been appointed Executor of the Estate of Louise Todd, deceased. Anyone having claims should present them, verified according to law, to the said Ernest Willard Todd, or to James H. Lambert, Mt. Vernon, Ky., attorney for said estate, on or before September 30, 1977. 42x3

EXECUTOR NOTICE

Notice is hereby given that

WANTED BACKHOE WORK



Gravel-Fill/Dirt Top Soil Hauled.



Jim & Jack's S&T Store
Ph. 256-4363
After 5 p.m. 256-2580

When you think of termites,



think of me.

I can kill the termites in your house. And keep the rest of the termites in your neighborhood from taking their place. After treatment, Terminix can guarantee most homes up to \$150,000 against further termite damage.

I'm Ken Sams, the Mt. Vernon Terminix man. Come at **THIRTY LUMBER CO.** Phone 256-2521.



Harrison Mink, Rt. 3, Mt. Vernon has been appointed Executor of the Estate of Minnie Mink, deceased. Claims should be presented to the said Harrison Mink or James W. Lambert, Mt. Vernon, Ky., attorney for said Estate, on or before September 2, 1977. 40x3

EXECUTRIX NOTICE

Notice is hereby given that Joyce Russell, Brodhead, Ky. has been appointed Executrix of the Estate of Myrtle Miller, deceased. Anyone having claims against said estate should present them, verified according to law, to the said Joyce Russell, or to James W. Lambert, Mt. Vernon, Ky., attorney for said estate on or before September 30, 1977. 42x3

EXECUTRIX NOTICE

Notice is hereby given that Alta Russell has been appointed Executrix of the Estate of Jopp L. Russell, deceased. All persons having claims against said Estate shall present them, verified according to law, to the said Alta Russell, Mt. Vernon, Kentucky or to William D. Gregory, Mt. Vernon, Kentucky, attorney for said Estate no later than September 10, 1977. 40x3

For Rent

FOR RENT: Two or three rooms, furnished or unfurnished apartments. Steam heated at Rockcastle Hotel. See Bob Winstead at Appliance Service Co. 411

FOR RENT: Furnished three room apartment. Call Estle Bullock, 256-4215. 42x2

Take stock in America.

See The Winning Capital

REAL ESTATE FOR SALE

1 1/2 BROOM HOUSE on the Old Somerset Road in Mt. Vernon. House has 2 1/2 bedrooms, dining room, living room, kitchen, utility room and bath and 2 bedrooms upstairs. There are hardwood floors down stairs with a full wall carpet upstairs, storm doors and windows, washer and dryer hook up, double fireplace, gas furnace and city water. The house is situated on a large lot measuring approximately 100x200 OVERCROWDED? THEN LET US SHOW YOU THIS HOUSE.

1974 LIKE NEW HOLLY PARK MOBILE HOME on Poplar Street in Mt. Vernon. The home has 3 bedrooms, kitchen with built in cabinets, dining room, large living room and bath. There is also wall to wall carpet and vinyl floors throughout, air conditioning, intercom, fuel oil furnace, washer and dryer hook up, city water and sewer and is situated on a lot measuring approximately 80x130. EXTRA NICE.

Good Business Opportunity in Mt. Vernon. Drycleaning, fabric and upholstery shop in a building measuring 16x40 with a 10x12 storage building. The building is insulated, air conditioned, heated by a fuel oil stove and is situated on a nice lot measuring approximately 95x100 feet. **Be Your Own Boss and Reap the Profit!**

ALMOST NEW BRICK HOME located approximately 3 miles southwest of Mt. Vernon. House has 3 bedrooms, sunken living room with fireplace, kitchen, formal dining room, den, bath and half basement. It also has wall to wall carpet and vinyl floors throughout, built in cabinets, patio, sun deck, paneled walls, washer-dryer hook-up, is insulated, total electric with city water and is situated on approximately 1 1/2 acre lot. **Fresh Air and Room to Room!**

5 ROOM HOUSE on Silver Creek Drive in Berea. House has 3 bedrooms, eat-in kitchen and bath. House also has carpet and vinyl floors throughout, storm doors and windows, aluminum siding and is situated on a large lot with ample space for a garden. In addition to the house, there are 2 small e outbuildings. Heaven for two! Has city sewer and water.

4 ROOM HOUSE on Highway 150 in Mt. Vernon, 2 bedrooms, living room, eat-in kitchen and bath. House also has carpet and vinyl floors throughout, storm doors and windows, aluminum siding and is situated on a large lot with ample space for a garden. In addition to the house, there are 2 small e outbuildings. Heaven for two! Has city sewer and water.

'NEW SUBDIVISION - Beautiful lots and acres of your size and choice in Quail Nest Estates. Located in the Quail Section of Rockcastle County. City water is available and partial financing to qualified prospects. Want in the country with privacy? Then, look no further. Hurry while we have a large selection. **Priced to Sell.**

Two Acre Building Lot on Highway 150 in Lincoln County. Plenty of road frontage and a good buy. **SOLO**

WENDELL LAWRENCE C.N. SCOTT
Realtor & Auctioneer Brodhead, Ky. Ph. 758-8115
Realtor Ph. 355-2204

Stanford Office Phone 365-2532

CARD OF THANKS

We, the family of Elsie Taylor, would like to thank everyone for all the food and flowers they sent in our time of sorrow. A very special thanks to Dr. Swan and staff at Good Samaritan Hospital. Also a special thanks to Dowell & Martin and Watson Funeral Homes. A very special thanks to Bro. Lester Arnold and Mr. and Mrs. Jack Cromer for their services.

The Taylor Family

CARD OF THANKS

We wish to thank our kind friends, neighbors, and relations, for their expression of sympathy, for all the lovely flowers, and other courtesies extended at the passing of our beloved husband, son and brother, Brady Cameron.

We would like to extend a special thanks to Bro. O.V. Smith and Bro. Bill Cameron for conducting the services and to Mrs. Erel Cromer and Mrs. Shirley Cromer for the beautiful singing. Also the pallbearers and special thanks to the Dowell and Martin Funeral Home.

God only knows how wonderful it is to have friends, neighbors and relatives such as you.

Our hearts are empty for he is missed by Sue Cameron (wife), Mark Cameron (son), Mr. and Mrs. Dan Cameron (parents), brother and sisters. The Family

Zupancic Greenhouse
Willalla, Ky.
Hanging Baskets
Potted Plants
Plants for the Family
Room or Office
It's Worth The Drive

The Mt. Vernon Signal Thursday, June 23, 1977 P-13

ROCKCASTLE COUNTY CITY OF BRODHEAD PROJECTS DESIGNATED FOR IMPROVEMENT

The City of Brodhead will receive competitive bids on July 5 at 7:30 p.m. at the Brodhead Fire Department for the following:

Road Name	Beginning	Ending	L.A.T.H.	TYPE
Maple Street	Wallin Street N	Short Street	0.11	1st. Patching
Silver Street	West Street S	Church Street	0.45	1st. Patching
Tyree Street	Main Street SW	Silver Street	0.9	1st. Patching & Shoulder Widening
Tyree Street	Silver Street S	Dead End	0.15	1st. Patching
TOTAL MILE			1.00	

All material and the method of producing them must meet State specifications.
The City of Brodhead reserves the right to reject any and all bids and re-advertise.

Frances Whitehead, Clerk

AUCTION
COMMERCIAL BUILDING CONCORD ROAD
5 Miles East of Richmond
Saturday, June 25th 10:00 A.M.

40' x 105' concrete block building on one acre lot near Moberly. Presently used as a garage. This building has many possibilities. Also 1971 Chevrolet 540 Holmes Wrecker, 1960 Ford 1 1/2 ton truck with 1000 gal. water tank, office desk, large air compressor, electric welder, battery charger, tire changer, transmission jack, electric sander, gasoline water pump, small tools, 75 ft. of torch hose with cutting tip and gauges, etc. Call our office for more information.

GOLDEN EAGLE, INC.
Greene Isaacs, Auctioneer
623-9427

NOTICE

If you do not receive your Courier Journal, Call 256-4177 and it will be delivered.

AUCTION

3 ACRES

With mobile home hook-up, good small concrete block barn and go-cart track

TOOLS AND PERSONAL PROPERTY

Sat., July 2, 1977 10 a.m.

LOCATED: At Wren's Go Cart Track on Lambert Road, 5 miles south of Berea, 11 miles north of Mt. Vernon.

Black Hawk Floor Jack, Soux Valve Reseater, Pipe Dies, C Clamps, Welding Gauges, parts cabinets, snap-on air wrenches (1/2 & 3/4 in.), Black Hawk pocket set with ratchet, Remington Mighty-Mite Chain Saw, snap-on tool cabinet, wheel puller, axle puller, electrical disconnect boxes, new 3 h.p. Briggs & Stratton engine, 36 in. pipe wrench, large showcase, washer and dryer, lawn mower, two go carts, bicycles, vacuum cleaner, desk, cash register, Coke machine, pony and saddle, appliance dolly, carpet shampooer and many, many more items too numerous to mention.

TERMS: Cash on Personal Property. REAL ESTATE - 20% down and balance with deed.

JOHN W. GILLIAM
REAL ESTATE & AUCTION

327 Chestnut Street, Berea, Kentucky 40403

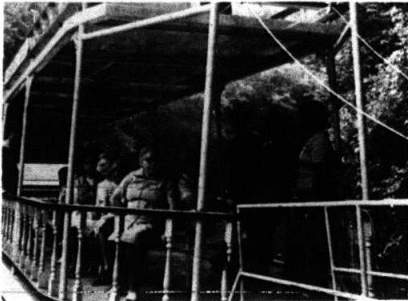
(606) 986-9797 Office (606) 986-8705 Residence

JOHN W. GILLIAM **TONY JENNINGS**
Broker - Auctioneer Apprentice Auctioneer

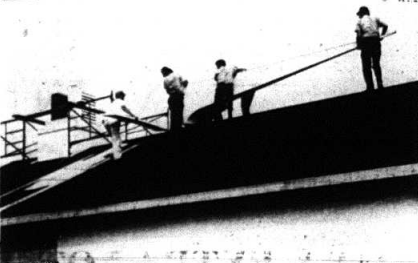


Senior Citizen's News & Comments

By Charles Barr



Several Rockcastle Senior Citizens enjoyed a picnic lunch at Ft. Sequoyah. Livingston in the bottom photo, some of the Senior Citizens are shown aboard the paddle boat which they rode up the river.



Wallace Proctor, far left, our featured Senior Citizen this week, is shown working at mounting the steeple of the Northside Baptist Church. Helping out are two of his sons, Roger and Arlos, and Carl Caldwell, Jr., Middleton, and Jackie Cash.

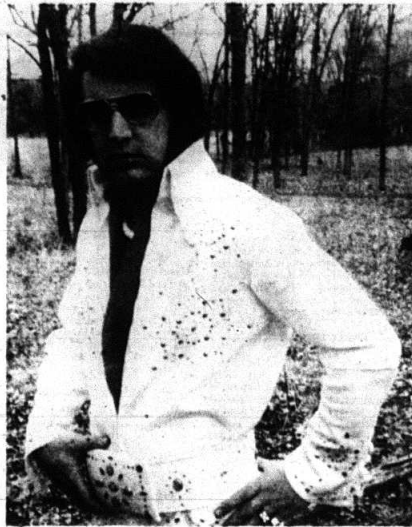
Live In Person! JUNE 26 Sunday

Ronnie Milsap

Showtimes: 1:00, 3:15, 5:30 p.m.
July 3, Billy "Crash" Craddock
July 10, Sonny James

TOMBSTONE JUNCTION
Open 7 Days A Week!

1 MILE WEST of CUMBERLAND
FALLS STATE PARK on KY. 90



JOHN WILSON RELATES TO ELVIS Will be coming to London July 1st at 8 p.m. The show is being sponsored by the London Lions Club and will be held at the Laurel County High School Football Field (Gilliam Field). Admission will be \$4 for adults and \$2 for children 12 and under.



Senior Citizens enjoying a picnic at Ft. Sequoyah.

Rockcastle Co. Senior Citizens enjoyed an outing and pitch-in dinner at Ft. Sequoyah Thursday, June 16th. It was a good day, the weatherman cooperated, we had food left over and no one seemed to be on a diet. Several took advantage of the paddle wheel boat ride up the river. The pilot gave us some history on the area and told us about the abundance of wild game which included deer, wildcats, and mountain lions.

Those attending the picnic were Ella Mullins, Georgia Alexander, Bessie Brock, Rebecca Creech, Sadie Ramsey, Rebecca Jones, Hazel Pullinger, Pearl VanWinkle, Elvira Davis, Mrs. Ed Payne, Charles Barr, Leila Stokes, Ella Ponder, Ernie Humphrey, Lona Logsdon, Clyde Anglin, Hazel Owens and Laddie Howard.

Lois Philbeck, in charge of the lunch program, was assisted by Evelyn Poynter and Joyce Baker, also workers with the Senior citizens lunch program. We wish to offer our appreciation to Willetta Owens who gladly volunteered her help and transportation and to her daughter, Renee, who by her presence brought youth and added joy to our day.

We welcome W.E. (Wallace) Proctor, 68 of Brodhead, to our most active Senior Citizens Club.

Last Thursday, I stopped at the Northside Baptist Church to look over the progress being made on their church building.

Mr. Proctor informed me that they were about to raise the steeple. Mr. Proctor not only gave advice, but was in all the way, from ground to roof and final erection.

Mr. Proctor works with his sons, A.E. and Roger, does framing, is President of the Rockcastle Farm Bureau, Director of Cumberland PCA, Deacon of Bethel Church of Christ, and teaches singing.

No doubt we could find other interests in his life. Hope to run a follow up on Mr. Proctor 10 years from now. Wallace, may God continue to bless you with good health and ability. You are an asset to this community.

Building For a Second Century
Think love, not hate.
Think success, not failure.
Think health, not disease.
Think good, not evil.
Think prosperity, not poverty.
Think safety, not danger.
Think life, not death.
Think friendship, not hostility.
Think joy, not sorrow.
Think hope, not despair.
Think tranquility, not tension.
Look forward, not backward.

Worry
Worry is a strange thing.
We begin worrying about a certain circumstance or decision,
And the worry grows and becomes diffused.
Until it takes over our whole conscious and subconscious mind.
The worry itself, can become so absorbing.
That one can forget what the issue was,
And begin to worry about feeling so worried.
And to fear what worry can do,
Until one becomes powerless.

How foolish!
If I can solve the problem,
Let me get to work and do something about it.
If it is beyond me,
Let me hand it over to God.

Oats will thrive in poorer soil and in colder climates than other grains.



Birds, proportionate to their size and weight, are 75 percent stronger than people.

Salute to Farmers of Rockcastle
Welcome "Dairy Day"

Sale!
FASHION FABRICS

SPECIAL
Sat., June 25th only
Double Knit Fabric
Reg. \$2.49 and \$2.00 yd.
25% OFF

McBee
Dept. Store
Mt. Vernon, Ky. Phone 256-2751

do you know...
direct dialing
saves on long
distance calls?

We have the right connection to save you money. Dialing direct station-to-station lowers your long distance phone costs. Dial 1; the area code (if different from yours), then your number. You eliminate the need for operator assistance and give yourself savings by using Continental's lowest long distance rate in effect. Telephone service continues to be a bargain. Helping you save... an important part of Continental's job.

...or the long distance access code, if it's used in your area.

Kentucky Telephone Company
A member of Continental Telephone System
An Equal Opportunity Employer

Dairy Day Specials
This Fri. and Sat.

Men's Polyester Pants
Reg. \$10.98 **SALE \$8.98**

All Ladies' Shorts **\$2.98**
\$1.00 OFF on all Ladies' Tops

MEN'S AND BOYS' CONVERSE TENNIS SHOES
Reg. \$6.98 to \$8.98 **\$4.98**

Large Selection of Ky. T-Shirts

Mt. Vernon Bargain Store
Main St. Mt. Vernon

National Forest Service To Expand Summer Employment

The Daniel Boone National Forest has announced an expansion of its Youth Conservation Corps summer employment program. The YCC this summer has been expanded to include 240 youth from throughout Kentucky.

This year the camp on the Beres Ranger District has been expanded to include both a non-residential and residential camp located at McKee and Annville Institute, respectively. While enrolled in the 8 week YCC program, each student will be paid \$69.00 per week for work done on conservation projects. The purpose of the YCC program is threefold: to first provide summer employment for youth during a tight job market, second to concern the youth with their environment through the conservation work projects and contact with nature, third to allow the student workers to accomplish needed work in the National Forest.

Beres District Ranger, Leo Thiel has an experienced staff returning for this year's camp with Gordon Cole as Camp Director for both the non-residential and residential camps. The non-residential staff consists of two work leaders: Bill Hilton and John Skeese. The residential camp staff is comprised of: Counselors: Richard Neevel, Becky Light, Recreation Directors: Henry Meeuwe, Elaine Burns, Work Leaders: Marvin McIntosh, Frances Barton, and Edith Williams.

This year's program will run from June 12 to August 5, 1977. Work projects will consist of pre-commercial thinning; construction and maintenance of foot trails; maintaining and planting wildlife openings; clearing understorey in recreational areas; refuse pick-up along Forest Service Roads, and release of planted pine seedlings.

The residential camp employs 27 youth from throughout Kentucky. The enrollees live at the camp continually for the duration of the program. The non-residential camp is comprised of 18 local youth from Madison, Jackson, Owsley, Lee and Rockcastle Counties. The youth commute to the McKee Work Center daily and return home each evening.

With the expanded YCC Camp, the Forest Service and Beres Ranger District are looking forward to a safe and successful summer. Remember, the Youth beginning work today will become the citizens of tomorrow. Through the YCC work, environmental awareness program they should become better informed citizens.

ASA SOFTBALL TOURNAMENT TO BE HELD IN LANCASTER

The 1977 ASA District SLOW Pitch Softball Tournament will be held in Lancaster, Kentucky and the final day to

enter is July 1st. The ASA Sanction Fee and entry fee is \$20.00. Player & Team Sanction Forms may be secured from Julian Moss or James Reeves, the 21st District Commissioners. The 21st District is composed of Lincoln and Rockcastle Counties. For further information regarding this Tournament, you can contact District Commissioner James Reeves at Lancaster, Kentucky, or by phone. Day no. is 792-3018 and night number is 792-2993.

Area Deaths and Funerals

Herbert Lawrence

Mr. Herbert Lawrence, 73 of Rt. 1, Brodhead, passed away Saturday, June 18, 1977 at the Lake Cumberland Medical Center in Somerset. He was born in Rockcastle Co. on Dec. 7, 1903 the son of Lawrence. He was member of the Ottawa Baptist Church.

Survivors are his wife: Mrs. May Brunnett Lawrence of Rt. 1, Brodhead; six sons, Herbert Ray, Eugene, Bobbie, Richard, Jackie, and Charles all of Brodhead; three daughters, Mrs. Margie Banton of Mt. Vernon; Mrs. Wanda Smith of Brodhead and Mrs. Evaline Reynolds of Eubank, Ky.; two brothers, Virgil and Rube Lawrence both of Brodhead. Four sisters, Mrs. Ruth Shivel of Brodhead, Mrs. Elizabeth Evans of Louisville, Mrs. Addie Hasty of Brodhead and Mrs. Margaret Cox of Louisville, 18 grandchildren and six great grandchildren.

Funeral services were held Monday afternoon, June 20, 1977 at the Ottawa Baptist Church with Rev. Sam Sower and Rev. R.C. Flynn officiating. Burial was in the Piney Grove Cemetery. Arrangements were by the Watson Funeral Home.

Consumer Comments

By Mindy Burdette

A local bank recently received a bill from California for a listing in a business directory. The invoice stated that a person in the bank authorized the listing. After close inspection of the invoice, the bank accountant noticed at the bottom of it there were the statements "This is not a bill, this is a solicitation. You are under no obligation to pay unless you accept this offer."

The Attorney General's Consumer Protection Office has recently been swamped with complaints about such deceptive solicitations, and the complaints

are coming from business all over Kentucky.

Another very similar problem involves merchandise invoices which are really just solicitations. Companies typically telephone local businesses asking if they can send a few samples of their merchandise. They assure these businesses that confirmation of the order will be made before shipping, but often these confirmations are not made with an authorized employee, or are not made at all.

The merchandise shipment usually includes several dozen times more than the value agreed upon, along with a bill for hundreds of dollars more than the normal retail price of the order. When local merchants attempt to return the merchandise, the company refuses to accept delivery and demands payment for the order.

Before paying a suspicious bill compare it to your purchase order for the merchandise, and check each business invoice for proper signature, type of product, number of units, price per unit, total cost and date of delivery. If the invoice does not contain the correct information or if it does not contain a disclaimer such as "This is no bill" or "this is a solicitation. You are under no obligation to pay unless you accept this offer," report the company to the Attorney General's Consumer Protection Division or to the Postal Inspection Service in Cincinnati, Ohio 45201 for investigation. Also, be sure you do not pay a bill before delivery of the merchandise is made. You may end up paying for something that you never receive.

Any mailed material that could be mistaken for a bill or invoice, but is actually a solicitation that states it has no obligation to pay unless you agree, or the Postmaster General or that it conforms to any postal law or regulation is nonmailable. These matters should be reported to either the Attorney General's Office or to the Postal Inspection Service.

Remember to always check bills carefully to be sure that the proper amount, price, personnel signature and dates are included and that you do not pay for merchandise that has not been delivered.

The Mt. Vernon Signal Thursday, June 23, 1977 P-15

Eternal Truth IN OUR CHANGING WORLD

By Austin Mobley, Minister
Providence Church of Christ
Rt. 1, Brodhead, Ky.

ARE YOU CONSISTENT?

Would you get upset if some atheist suggested that there is no God and that the Bible is a myth? Would you demand the resignation of a teacher or professor who taught your children that man evolved from nothing? Chances are, you would. But what is the difference between an atheist who denies the existence of God and one who claims to believe that the Bible came from God, yet does not know or care what it teaches? Such actions seem to me to be very inconsistent. If one does not believe what the Bible teaches, why should he be concerned when an atheist suggests that it should not be believed?

The popular idea among religious people is that it does not matter what one believes, so long as he is sincere. The Bible does not teach such a theory, and if it is true, then the Bible is unnecessary and each man is his own standard of authority in religion. But some who believe this theory really get disturbed when someone suggests that the Bible should not be believed.

If one truly believes that the Bible is from God and is able to furnish man unto every good work (2 Tim. 3:16-17); and if he believes that rejecting this "perfect law of liberty" will result in his not having God (2 John 9), then he will be willing to accept all, not just a part of it. If the Bible does not merit

complete commitment of man, then it should be rejected totally. It is most inconsistent to say we believe the Bible while, at the same time, rejecting any part of it.

Do you believe that Bible authority is essential in every religious practice? If not, part of the Bible is rejected (1 Thess. 5:21). Do you believe that faith, repentance and baptism are necessary for forgiveness of sins? (Acts 2:38; Mark 16:16); or do you believe in faith and repentance but reject baptism? What part of the plan of salvation can be committed with consistency? Could one be consistent by leaving out part of God's instructions for worship. Many who claim that they believe the Bible have not had Lord's Supper, or do not observe it every Lord's day (see Acts 20:7; 1 Cor. 11:23-24).

Let us not give lip service to God's word. We either believe and accept it, or we reject it. Which it is with you? (See John 12:48).

Time of Services

Lord's Day:
Bible Study 10:00 a.m.
Worship 10:30 a.m.
Worship 7:30 p.m.

Wednesday evening:
Bible Study 7:30 p.m.

Radio Program-WRVK-Sunday, 8:45

Dairy Day Special

2 gal bucket.

WHITE OUTSIDE PAINT

Reg. Price \$25.38

Dairy Day \$13.38

MONTGOMERY WARD

PHONE 256-2179

DAILY DAY SPECIALS

All Ladies' Summer Dresses

1/2 PRICE

Red I & Aileen
Summer Sportswear

40% OFF

Men's
Dress Suits
& Slacks

30% OFF

We Accept BankAmericard
and Master Charge (VISA)

Robinson's

Phone 256-4106

MT. VERNON

AUCTION

Of Mr. Herbert Hall's

HOUSE & LOT & EXTRA LOTS

PERSONAL PROPERTY

Sat., June 25, 1977-10:30 A.M.

Brodhead, Rockcastle

County, Kentucky

LOCATED: On the Corner of U.S.
Highway 150 and Wallin Street,
Brodhead, Ky.

Since he has moved to the nursing home, Mr. Herbert Hall has authorized our company to dispose of his excellent home and personal property.

REAL ESTATE: Consists of the above-pictured modern six room house. The house has a bedroom, living room, dining room, kitchen and built in back porch downstairs and two bedrooms, large hall and bath upstairs. It is heated by oil, has hardwood floors, large front porch and ample closet space. It has both city water and sewer.

The house is situated on a lot measuring approximately 150 ft. across the front and is approximately 110 ft. deep on one side and about 140 ft. deep on the other side.

LOT #2 Is directly behind the house and fronts approximately 109 ft. on Maple Street and is approximately 90 ft. deep. It has both water and sewer available and being level, makes an ideal building lot.

LOT #3 Fronts approximately 135 ft. on Highway 150 and 100 ft. on Maple Street. Having road frontage along US 150 makes it an ideal commercial lot.

*AUCTIONEER'S NOTE: Owner reserves the right to sell each tract separately then group, selling whichever way reflects the best return for the owner.

If you're in the market for a dandy home in the Brodhead area, be sure to attend this sale.

PERSONAL PROPERTY - 1959 Dodge car, 2 door hardtop with 29,000 actual miles, bought new by Mr. Hall, Speed Queen Automatic Washer and Dryer, like new; Dining room suite, 6 chairs, buffet; Fridgidaire electric range; Kelvinator refrigerator; small secretary; black and white Zenith TV; China Closet; G.E. refrigerator; 3 piece blond bedroom suite; 3 pc. solid wood, cherry, bedroom suite; Windsor sewing machine; round breakfast set, 4 chairs; gate leg table; Philco TV; modern dining room set; square kitchen cabinet; platform rocker; cedar chest, legged; half bed iron; book shelf; trunk; coffee table and 2 matching end tables; window fan, ironing board, plus many other miscellaneous items too numerous to mention.

DON'T FORGET - MARK YOUR CALENDAR TODAY TO ATTEND THIS IMPORTANT SALE!!!

TERMS: Real Estate, 20% day of sale, balance in 30 days upon delivery of deed. PERSONAL PROPERTY - Cash day of sale.

FOR ADDITIONAL INFORMATION, CONTACT:

FORD
Realty & Auction Co., Inc.
Mt. Vernon, Ky.

Col. Sam Feat. Realtor-Auctioneer
Col. Bill Randolph Auctioneer
Col. Roy Adams Realtor-Auctioneer
Col. Jerry Ham Auctioneer
Col. Danny Ford Realtor-Auctioneer

Office-Ph. 256-4545 Night 256-4549

WILMUNA

By Arvil Burton

Those sick in our community are Mr. Irvin Denney, Mrs. Lizzie Logsdon and Junior Denney.
Mr. and Mrs. Delbert Lond was Wednesday dinner guest of Mr. and Mrs. Russell Long.

Recent visitors of Mrs. Dovie McClure were Mr. and Mrs. Clayton Ray and family of Lexington, Mr. and Mrs. Jim Bullock and Andy and Mr. and Mrs. Charles Ray McClure and Chuck.
Arvil Burton visited Mr. and Mrs. Russell Long Saturday night.

Mr. and Mrs. Arlis Cash has moved to the Bryan Logsdon place.
Mary Jane Randolph visited Mrs. Dollie Stevens recently.

Mr. and Mrs. W.A. Owens spent the weekend with her parents, Mr. and Mrs. Grover Burton.
Sympathy is extended to the family of Herbert Lawrence.

Mrs. Hazel Gooch suffered a heart attack recently and has been in the Lake Cumberland Medical Center at Somerset.

Mr. and Mrs. Monroe Brown of Cincinnati spent the weekend with Mr. and Mrs. John Brown and his father, Mr. Chester Brown.

Mr. and Mrs. Richard Lawrence are operating the store at Quail.
Mr. and Mrs. Logue Reynolds are

operating a moving supply center.
Mrs. Martha Denney of Indianapolis, Indiana has been here visiting Mrs. Josie Reynolds and family.

Ricky Thompson and Mike Brown have returned to their home after being discharged from the Army, being stationed in Germany.

Randy Parsons spent the weekend with Mr. and Mrs. Doug Mullins and sons in Marion, Kentucky.

Tommy Gholson attended the motorcycle races in Bowling Green, Sunday.

Mr. and Mrs. Carl Lewis and family have moved in their new house which they have built.

Recent visitors of Mrs. Mary Jane Randolph and Arvil were Mrs. Ethel Thompson, Cella Thompson, Mrs. Carol Martin, Mrs. Roberta Duwall, Donnie Brown, Mr. and Mrs. Owen Burton, Janet Burton, Randy Parsons of Mt. Vernon, Jonas W. Brown, Jr. and J.W. Brown.

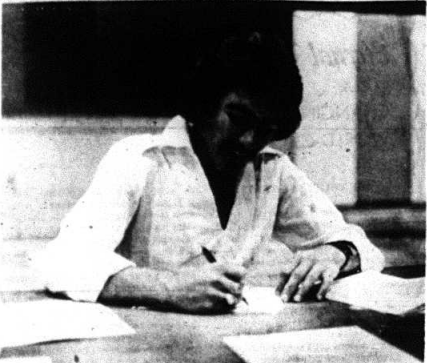
Gail Thompson of Cincinnati spent the weekend with her parents, Mr. and Mrs. Marshall Thompson.

Ricky Thompson visited Mr. and Mrs. Jimmy Brown of Harrodsburg, Saturday.

Ottawa

By Della Mae Willmott

Mrs. Clarice Payne of Dayton, Ohio



SIGNING UP AGAIN—Jeff Saylor, the son of Mrs. Ruby Saylor, is pictured registering for the first semester of summer classes at Cumberland College. A graduate of Rockcastle County High School, Saylor is a junior.

"We want to provide the best service available to all our customers."

C. T. HUFFINES, President



That's why we are remodeling our building to provide more tellers to accept your deposits and cash your checks. We have installed three drive-in windows to provide faster service.

Soon, we'll have the TELLER/24 installed so you can bank with us 24 hours a day, seven days a week - THE ANYTIME BANK. No other bank in this area gives you that much service.

If you need a service we are not providing, let us know. We want your business and want to provide the banking services you need.

We're here on your account

BMV THE BANK OF MT. VERNON
MT. VERNON, KENTUCKY 40456



spens Tuesday and Wednesday with Mr. and Mrs. Guy Hamm.

Mr. and Mrs. Tony Pauloski of Clear Water, Florida visited Mr. and Mrs. Earl Roberts and other relatives Sunday. Mr. Pauloski will be remembered as Miss Blanche Lewis.

Mrs. Margie Brock of Clarksville visited Mrs. Della Mae Willmott, Tuesday.

Mr. and Mrs. Marshall Laswell and family of Ohio visited relatives here over the weekend.

Mr. and Mrs. Dewey Barnett and son of Cincinnati, Ohio visited Mrs. Jim Bantam. Monday night and they were here for the funeral of Mr. Herbert Lawrence.

High sympathy is extended to the Lawrence families in the loss of their loved one, Herbert.

Mr. and Mrs. Ed Brown visited Mr. and Mrs. Bob Holt.

Mr. and Mrs. Ronald Laswell visited Mr. and Mrs. Speed Laswell over the weekend.

Mr. and Mrs. John Laswell of Brindley Ridge visited Mr. and Mrs. Virgil Lawrence and stopped to say hello to Della Mae Willmott.

I want to say thanks to Mr. and Mrs. Michael Lee Haven who visited Della Mae Willmott over the weekend and did some painting for her.

Mrs. Virgil Lawrence is still improving. Most of her neighbors have visited her during her illness.

There were eight girls who left for camp Monday at Oneida, Mr. and Mrs. Curtis Bradley, Mrs. Mary Sowder and Bro. Sam Sowder's niece drove the girls to camp. Attending camp are Charlene and Canaan Sowder, Annette and Teresa Burdine, Kathy and Lena Lawrence, Netta Cash, and Martha Jo Laswell.

We are sorry to report Edgar Laswell, uncle of Mrs. Della Mae Willmott, passed June 16th in California.

Quail

By Vivian Owens

Mrs. Kenneth Bullock and Tommie, Mrs. Ethel Barron and Mrs. Willie Todd were at Somerset Wednesday evening shopping.

Mrs. Ethel Barron spent Tuesday night with her son, Mr. and Mrs. Russell Barron and family.

Mrs. Benton Owens and Mrs. Delmus Bullock were at Somerset shopping Thursday.

Mrs. Pattie Baker visited Mrs. Edna Caldwell Saturday morning.

Mr. Charles Baker visited his mother Mrs. Pattie Baker, Sunday morning.

Saturday visitors of Mrs. Mary Scott were Mr. and Mrs. Earl Scott and Mrs. Robert Scott of Ohio, Mr. and Mrs. Maurice Brown and Mrs. Gladys Lander of Ohio.

Sunday afternoon visitors of Mr. and Mrs. Charlie B. Owens were Mr. and Mrs. John Bullock and Mrs. Jarve Noe and Mrs. Jay Chaney.

Mrs. Sella Scoggins and Gurvis visited Mrs. Pattie Baker recently.

Mrs. Willie Todd visited Mr. and Mrs. Ronald Rogers and Jill, Wednesday evening.

Mrs. Willie Todd spent Saturday night with Mr. and Mrs. Wayne Todd and Jessica.

Sunday visitors of Mrs. Willie Todd were Mr. and Mrs. Ronald Rogers and Jill, Mr. and Mrs. Dean Barron and

family and Mr. and Mrs. Wayne Todd and Jessica.

Mr. and Mrs. Bobby Brock and family of Lexington visited her parents, Mr. and Mrs. Robert Hayes and family and Chris remains for a week.

Mr. and Mrs. Earl J. Owens and family of Ohio was Sunday dinner guests of his parents, Mr. and Mrs. Benton Owens and Martha.

Mr. Chester Brown who has been in Ohio is at his home spending this week.

Mrs. Florence Brown is spending this week with Mrs. Della Brown.

Mrs. Roy Norton is a patient in the Rockcastle Co. Hospital. We wish her a speedy recovery.

Sunday visitors of Mr. and Mrs. Rolla Perry were Mrs. Vilas Eldridge, Mr. Ciri Riddle of Eubank, Mr. and Mrs. Ulyis Gibson, Gail and Donna of Danville.

Mr. and Mrs. Rolla Perry were at Ypsilanti, Michigan to attend the funeral of Mrs. Perry's brother last Tuesday and Wednesday. They also visited their daughter, Mr. and Mrs. Ed Scharp and sons.

Steve and Keith Scharp are spending their vacation with their grandparents, Mr. and Mrs. Rolla Perry.

The Family of Herbert Lawrence has our sympathy in the loss of their loved one.

"Delayed"

Mrs. Billy Owens, and Rusty recently visited Mr. and Mrs. J.C. Reynolds, Jamie and Rhonda.

Rusty celebrated his fourth birthday Tuesday, June 7 at the home of his grandparents, Mr. and Mrs. Elmer Ponder. Those to help him celebrate were his parents, Mr. and Mrs. Billy Owens, Mr. and Mrs. Jimmy Owens, Mrs. J.C. Reynolds, Roxanne, Jamie and Rhonda, Mr. and Mrs. Donald Bullock and Taha, Florence Albright, Mrs. Deborah Rogers and Jennifer, Danny Owens, Mr. and Mrs. Elmer Ponder and Linda. Cake and ice cream was served.

Mr. and Mrs. Elmer Ponder celebrated their birthdays Saturday, June 11 at the home of Mrs. Florence Albright with a surprised birthday dinner.

SON BORN

Pic and Mrs. Jeff Bradley announce the birth of their first child, a son, born June 12 at the Base Hospital at Ft. Riley, Kansas.

He weighed eight pounds, four ounces at birth and has been named Jonathan Lee.

Maternal grandparents are Mr. and Mrs. Bentley Durham and paternal grandparents are Mr. and Mrs. Thurnie Bradley, all of Route 1, Broodhead. Great grandparents are Mr. and Mrs. Walter Durham and Mr. and Mrs. Robert Willmott, all of Route 1, Mt. Vernon.

DAUGHTER BORN

Mr. and Mrs. Jerry Michael Smith announce the birth of their first child, a daughter, born Monday, June 13th at the Lake Cumberland Medical Center. She weighed seven pounds, five and one-half ounces at birth and has been named Amy Lynn.

Maternal grandparents are Mr. and Mrs. Billy Allen Bush and paternal grandparents are Mr. and Mrs. J.H. Smith of Crab Orchard.

AUCTION
of
Frank Nolan and Juanita Nolan's
PALLET MILL
LAND & EQUIPMENT
DATE: June 25, 1977 - 10 A.M.

LOCATION: East off U.S. 27 at Eubank on Ky. 70. Go 2 and 4/16 miles left on Goodtown Road, blacktop, go 3/10 miles turn left on gravel road. Go 1/2 mile - will be on left. Look for signs.

LAND: Offered in two tracts and then together. One tract contains the mill ready to be used. Each tract approx. 10 acres.

EQUIPMENT: Enterprise Mobile Home, 1973 model, 12x70; J.I. Case Crawler W/Loader, Model D350, 1973; J.I. Case Tractor W/Fork Lift, Model D580, 1968; 4 trailer flats; 1 van; Dorsey, 1959, 45 Flat; Trailmobile, 1969, 45 flat; Freshauf, 1963, 40 flat; Freshauf, 1971, 40 flat; Brown, 1973, trailer; G.M.C. Log Truck with log boosters, 1968, ready to go; 1968 Model Chev. Pick-up Truck; 2 ton with log boosters, ready to go; Air Bog Tandem, ready to be installed; 1968 White Tractor with sleep and air conditioner, approx. 35 thousand miles since overhaul, ready to go; 250 Cummins Engine and 1 White Tractor with sleeper, ready to go with 250 Cummins newly overhauled 4 to 5 thousand miles only since overhaul.

MILL: Folks, this mill is a good one mounted on cement. It has a diesel power unit and many other items such as edgers, cut-off saw, air compressor and etc. Everything necessary to operate a Pallet Mill, even a few logs.

SMALL ITEMS: Lots of booms and chains. Chains are 27 lengths 3/8" approx. 50 No. 72 Booms, electric fuel pump for fuel tank, drills, grinder and many other small items such as hand tools.

TERMS: 20% day of sale for Real Estate, Personal Property - Cash.

Announcements made day of sale will have precedence over printed matter.

Clarence Vaught Real Estate
Batesville Branch Auctioneer Phone 423-3311
PHONE 678-8129
Doleta Vaught Phone 423-2804
AUCTIONEERS

Mount Vernon Signal

SPECIAL DAIRY SECTION

MT. VERNON, KENTUCKY 40456

THURSDAY, JUNE 23, 1977

Come One - Come All To This Year's Scenes From the Dairy Day in Rockcastle County 1976 Dairy Day

Come one, come all to this year's Dairy Day activities scheduled for this Saturday in Mt. Vernon.

It will be a time of festivities for everyone, young and old. There will be a Dairy Doll and Dairy Princess contest, a Dairy Farm-Family for 1977 will be named, a dairy heifer will be given away and there will be musical entertainment. All this and other activities, will take place on Main Street beginning Saturday morning.

The day's activities will begin with the judging of the two beauty contests then 4-H

members will be serving cheese and crackers on Main Street, there will be a luncheon for the Dairy Princess and Dairy Doll candidates and the parade will begin at 1 p.m. The Princess candidates will be interviewed on stage and this will be followed by a talk by State Dairy Princess, Sandra Stark. The plaque in recognition of Dairy Leadership will then be presented by Roy Brown, vice president of PCA and the drawing for the dairy heifer to be given away will be held. And, of course, all this will be preceded with entertainment in the form of country music

beginning at approximately 11 a.m.

The first place float in the parade will receive a prize of \$75; second place will get \$50 and third place, \$25.

A \$10 prize for the best decorated bicycle in the parade will also be awarded and youths are encouraged to ride their bicycles and horses in the parade. No motorcycles will be allowed.

Bring the family and plan to spend the day because there will be something for everyone at this year's DAIRY DAY IN ROCKCASTLE COUNTY.



Greenwynn Harris, crowning Greenwade (State Dairy Princess), Marita Stewart, 1976 Rockcastle County Dairy Princess. Left to right are: Debbie Adams, Sheila Lillian Adams.

Congratulations Dairymen

By Roy G. Brown
Assistant Vice-President
Cumberland PCA

Congratulations to all dairy farmers and dairy related industries of this area not only June Dairy Month and Dairy Day, but every day in the year.

We in PCA know the long hours of hard work that goes into a successful dairy operation and also the expense of everything that you have to buy.

We all know that milk is one of the most healthful and enjoyable foods to serve in its many different ways to our families.

To produce this wholesome food the dairy farmer must plan a good feed program as cheap as possible. This means using our land to its best productive capability. Many dairy farmers are using the double crop system to utilize the acres of tillable land on the farm to get the most feed per acre. This system can be used in different ways but the most workable small grain followed by corn for silage.

Dairy farmers that don't have to many acres to use need to make most of what they have. This means making every acre produce its potential. This means we will need to plan a most excellent cropping system, using the most of necessary plant foods along with lime (a good soil test will help to determine this). Silage, corn and good hay along with excellent well managed pasture will cut down on feed cost which is the largest part of a

dairy operation. With an excellent feed program and high producing cows and the extra management they must have will. Let us continue in the dairy business at a profit for a standard of living you so richly deserve.

Again thanks to all you dairy farmers out there on the farm providing the world with such a delicious food.

Keep Cows Out of Ponds

By H. Lee Durham

Man-made ponds are a good answer to the dairy farmer's problems of needing more water than is available from wells and springs—if ponds are managed right.

Gordon Hess, UK Extension dairy specialist, points out that a large dependable supply of clean, cool water is necessary for top milk production. During the hot summer months in Kentucky, a cow in fully production will drink 30 gallons of water or more per day. In addition, a clean supply of water is needed for washing udders, flushing out the milking parlor and cleaning equipment.

Wells and springs are the best source of water but don't supply the large volume needed on some dairy farms. Hess says that ponds are a good supplemental source but only if constructed and managed so they won't become contaminated with surface water and manure runoff. This plus periodic maintenance will con-

trol algae growth which is another potential problem.

"Keep cows out of ponds," Hess advises dairy farmers. "If this isn't done, serious herd health problems can be expected, including costly digestive upsets, coliform mastitis outbreaks and sore, infected feet." Disease and infection spread easily and rapidly when cows stand in the water they drink.

If the pond is close enough to a source of electric power, Hess recommends pumping water from the pond and supplying it to cows in a float-controlled water or tank. Water will be cleaner and cooler if a floating holder is installed to the pump pipe to keep the intake valve off the bottom and two to four feet below the surface. A siphon system is recommended if a pump isn't practical.

In unusual situations where pumping or siphoning is impossible, the pond should be fenced off except for a small area form which cows can drink without standing in water. "This isn't desirable, but it beats shorting cows on water or letting them stand in the pond," says Hess.

June
Dairy
Month



Debbie Adams, Sheila Green-Lee Parsons and Greenwynn wade, Marita Stewart, Laura Harris.

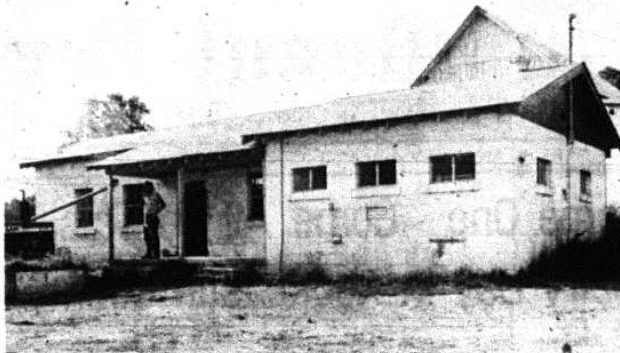


Cattle Judging during last year's Dairy Field Day by Wayne Stewart and Russell Parsons.

ATTEND DAIRY DAY THIS SATURDAY



3 Generations of the Blanton, his son, Jack, and Jack's son, Family operate their 273 acre Frank. They are, from left: Carter,



The Blantons have a 3-in-line gallon holding tank and vacuum Surge milking parlor (above). lines. The parlor is equipped with a 600

3 Generations of the Blanton Family Are in Dairying

Three generations of the Carter Blanton Family cooperate in running a 273 acre dairy farm located near the center of Rockcastle County. Carter, his son, Jack, and Jack's son, Frank, along with Jack's wife milk 62 head of cattle

twice a day. They also have 42 heifers.

The Blantons have smaller farms located in the same area as their large one with 130 acres in corn and silage and 48,000 lbs. of tobacco.

The Blantons have been in the dairy business since 1955 and their herd grows yearly.

Frank, the youngest member of the Blanton Family is a sophomore at Rockcastle County High School and expects to become a partner in the farm after he graduates.

go together, hire young men as "cowkeepers," and pasture the cattle on common grazing lands. At that time croplands were fenced in to keep the cattle out.

The cowkeepers trained the cows to obey the sound of a horn and to follow them to and from the grazing grounds each morning and night. A young cowkeep received 10 pounds for herding 100 cows for summer. However, for each time he failed to bring in all the cows at night for milking, he had to forfeit threepence from his salary.

These cows were not the prolific milk producers found on most farms today. Milk yields

were extremely low. As colonial farmer and writer, Israel Acrelius, once reported, "where the pasture is fair, a cow does not give less than two quarts of milk at a time that is, twice a day." Cows today commonly produce at least 25 quarts a day and it is not unusual for a cow to produce twice that amount. Some exceptional animals have produced 75 or more quarts of milk in a single day.

There was not much improvement in Colonial cows until after 1790, when farmers began to produce forage crops in more abundance. As the

(Cont. to 3)

America's bounty... dairy foods.



Thanks to you, the dairy farmer, Americans enjoy some of the most healthful, delicious foods — dairy products. We thank you, too, for helping to better our community life, business and economy. And we hope, in turn, you'll let us help you better your future through our full-banking services.

SAVINGS ACCOUNTS • CHECKING ACCOUNTS • FARM, PERSONAL AND IMPROVEMENT LOANS



Dairy Industry in America is More Than 350 Years Old

By Nevyle Shackleford
UK College of Agriculture

Along with being the month of roses and brides, June is also the month of the dairy cow, and for more than 350 years this gentle farm animal has contributed tremendously to the agricultural economy of North America.

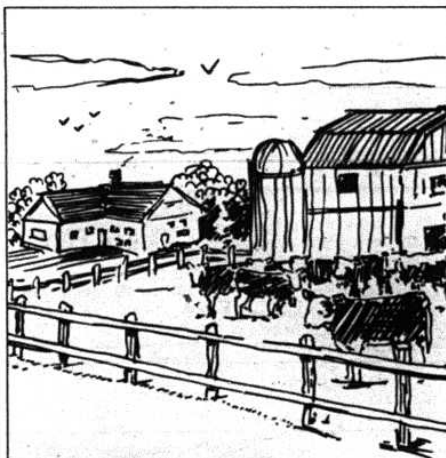
Historians say that the dairy industry had its beginnings in this country one cold blustery day in March 1624. This was when the good ship, "Charity," late of Devon, England sailed into the harbor of Plymouth Colony with a bull and three heifers on board the first of such animals to arrive in the Colonies.

These animals were imported by Edward Winslow, who later became governor of the Plymouth Colony. The existing governor, William Bradford, in taking note of the arrival of these animals, described them as "the first beginning of any cattle of that kind in the land."

With each arriving ship the cattle numbers grew and at the time were valued more for their hides and their worth as draft animals, than for their milk and butter. As the story continues, in a few years the Massachusetts Colony had its first oversupply of cattle.

By 1623, as an early history states, there was in New England not only a domestic, but also an export demand from the West Indies. This led to dairy breeding for sale, but the market was soon overstocked. The price of cattle went down from 20 to 5 pounds per animal and milk was peddled for four cents a gallon.

Cowkeeping in those early days of settlement was a far cry from dairy practices today. In this effort whole towns would



Thank you, dairy farmers, for your dedication and service to our community.

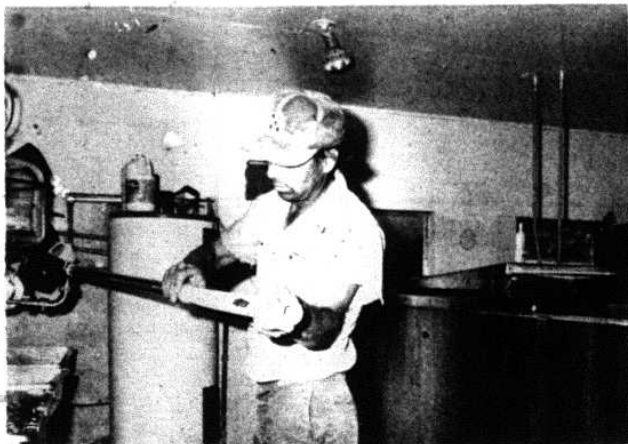
Your dairy products have provided us with good, healthful products. Your dairy dollars have helped our community grow.

We salute you during your month!

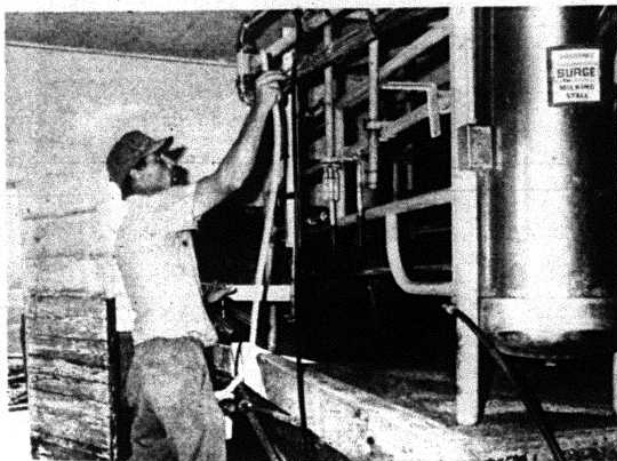
And when you need quality feeds and fertilizer supplies, we hope you'll give us a call. Ask us about our special on-the-farm services, too.



Mt. Vernon Produce
Mt. Vernon, Ky.
Jasper Farm Supply
Willalla, Ky.



Jack Blanton, above, prepares this line carries milk into the his vacuum line before milking. (far left).



Final preparation for milking is vacuum line. Jack holds the shown as Jack opens valves business end of the milker in his allowing milk to enter the main left hand.

"350 YEARS OLD"
(Cont. From 2)

half-starved animals ate better, the production of milk began to increase. Around 1800, more attention to the breeding and feeding of dairy cattle began to have a decided effect on milk production. Then as time went on, dairymen became more and more concerned about the

economics of their operation. By the mid-1800's, a top New York dairy farmer grossed \$62 in butter, cheese and milk from each of his 41 dairy cows. This was about three times the earnings per cow of the average dairy farmer at that time. It was from these early beginnings grew today's great modern dairy industry.

this food comes from. Too many people complain of high food prices and don't realize the work, expense, and pride that goes into its production. Well, its time to stop and think about where our milk and dairy products come from and the persons who make it happen, the Dairy Farmer!

Milk and its products make a very important contribution to our diet in the U.S. They provide about 22 1/2% of the

protein, 13 1/2% of the energy, 15 1/2% of the fat, 37 1/2% of the phosphorus, and 77 1/2% of the calcium. Milk is the main source of calcium in the human diet. Milk also supplies other vitamins, minerals, and high quality protein. This doesn't even consider the pleasure and satisfaction derived from eating dairy products.

All these benefits are made possible thanks to dedicated Dairymen who milk twice a

day, seven days a week, 52 weeks a year, year in and year out. Most dairy farms in our area are family operated involving every family member from the Father and Mother to the smallest child. A top-producing dairy herd is more than just a bunch of milk cows. It takes time, hard work, planning and the use of good business and management

(Cont. to 8)

Carefree Eating Begins With Dairy Foods

By Cheryl Witt
County Extension Agent
For Home Economics

Convenient dairy products make casual eating nutritious and enjoyable. You'll find these snacks have a lot to offer besides quenching those hunger pangs.

Fruit Snack Kabobs
Banana slices
Unpeeled pear chunks
Unpeeled red apple chunks
Lemon juice
Pineapple chunks
Cheddar cheese, cut in 1/2 inch squares
Swiss cheese, cut in 1/2 inch squares
Sprinkle banana slices, pear and apple chunks with lemon juice to prevent turning dark. Alternate fruit and cheese on wooder skewers. These kabobs are pretty speared into a large whole graefruit or a fresh pineapple.

Basic Milk Shake
1 cup milk
1/4 cup vanilla ice cream
flavoring
whipped cream sweetened
Combine milk, ice cream and flavoring; beat with mixer or in blender until foamy. Pour into chilled glass. Top with a dollop of whipped cream.
Vanilla Milk Shake: Use 1/2 teaspoon vanilla for flavoring.
Honey Peanut Shake: Use 1 tablespoon honey and 1 tablespoon smooth peanut butter for flavoring.
Banana Shakes: use 1/4 cup mashed bananas for flavoring.

PECAN PIE TARTS

Crust: 1 package (3 oz.) cream cheese, softened
1 stick butter, softened
1 cup all-purpose flour
Cream together cream cheese and butter; gradually add flour. Mix well. Chill - roll into 24 1 inch balls. Press

dough on bottom and sides of tiny ungreased muffin tins.

Filling:
1 egg
3/4 cup brown sugar
1 tablespoon butter, softened
1 teaspoon vanilla
1/8 teaspoon salt
1/4 cup finely chopped pecans
Beat egg; add sugar, butter, vanilla, and salt. Mix well. Fold in chopped pecans. Spoon filling into tart shells. Bake in preheated 350 degree oven for 20-24 minutes.

Crunchy Deviled Eggs
3 hard cooked eggs
1/2 teaspoon dry mustard
1/4 teaspoon instant minced onion
1/4 teaspoon salt
1/2 teaspoon vinegar
2 tablespoons sour cream
1/4 cup chopped peanuts
Minced parsley, as desired.
Slice eggs in half lengthwise; remove yolks and mash. Ad remaining ingredients and mix well. Heap mixture into egg whites.

Pear and Cheese Spread
1 can (8 oz.) Bartlett pears
1 cup creamed cottage cheese
1/4 cup crumbled blue cheese
1 tablespoon pear syrup
Drain pears, reserving 1 tablespoon syrup. Chop. Beat cottage cheese with mixer until smooth. Stir in chopped pears, blue cheese and pear syrup. Spread mixture between 2 slices of bread, for a sandwich or openfaced on slices or party rye bread.

A Salute To The Dairymen

In today's world, much of the food we eat is taken for granted. Rarely as people browse through grocery stores do they stop to think of where

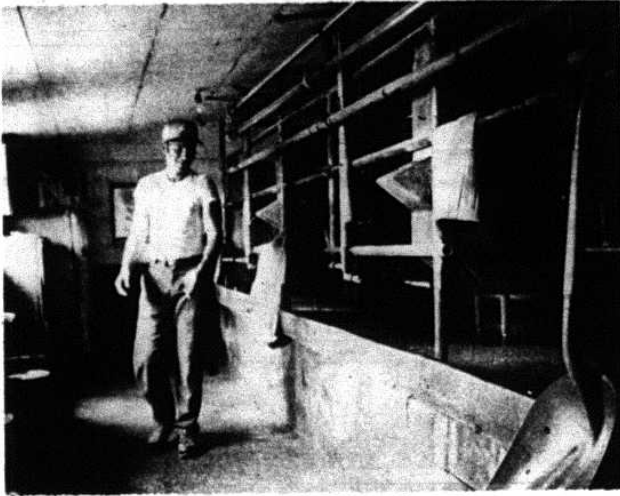
The dairy farmer... helping to make a stronger, healthier America.



We salute you, during June Dairy Month, for your contributions toward bettering the life of our community and our country. We're willing to help you with your Financial Needs.

LINCOLN COUNTY FEDERAL SAVINGS & LOAN ASSOC.
Stanford, Ky.





The photo above shows Raymond preparing his parlor for the day's milking.



Raymond has a 300 gallon holding tank which is emptied every other day.



Almost 8,500 lbs. of tobacco is raised on Raymond Brown's farm. 3,200 lbs. of that is his own.



Raymond and Roy Brown look over Raymond's herd in front of his barn and milking parlor.

The C. Raymond Brown Farm

Clarence Raymond Brown dairy farm for 3 years. He has been operating a 92-acre presently milking 35 cows and

has 8 heifers. Brown has 15 acres in corn and silage annually and also raises 3,200 lbs. of tobacco himself and leases another 5,000 lbs. Cont. to 8

**WE SALUTE YOU
MR. DAIRY FARMER**



Attend Dairy Day
and Stop at the

Snack Shack for one of our Delicious



**DAIRY
DELIGHTS**

or Phone 256-2212 for

**QUICK 'N EASY
FOODS
TO GO!**



SNACK SHACK

Richmond St. E. Mt. and Mrs. Herb Fisher, Mt. Vernon

**WE SALUTE THE
DAIRY FARMERS
OF
ROCKCASTLE COUNTY**

**AT C.C. COX & SON HARDWARE
In Mt. Vernon.**

*You will find housewares, storm windows,
door repair kits, hardware items, home and
farm needs and lawn and garden tools.*

"IF WE DON'T HAVE IT - WE'LL GET IT"