

Don't cram it,
ram it,
stuff it,
jam it...



INDIVIDUAL STORAGE

THE SPACE PLACE

JANUARY STREET, MAYSVILLE, KY. 41056

Fall And Winter
Boot Time



Dingos- For Boy
Or Girl,
8½-3

\$17 Reg. '21

Leather Foot

Fanfare-Aspen

\$21 Reg. '27

8" Side Zip-Low Heel
Fur-Lined-M&W
Black or Brown



Special Prices Good
Thru Saturday

Your Foot Comfort Is Our Business

Reliable Shoe Store

Second St. Maysville, Ky.

9 a.m. to 5 p.m.
Mon.-Sat.

Harvest Sale
20% OFF
Thursday, Friday, Saturday
On All China Patterns In Stock!

Noritake
Royal Doulton
Wedgewood

Royal Worcester
Spode
Pfaltzgraff

C.W. Traxel & Co.
9 W. 2nd St. Maysville, Ky.

SPECIAL
Thursday - Friday - Saturday

2 PC. SUITS **\$200**

Bowman's
Dry Cleaners

Murphy's

DOWNTOWN MAYSVILLE'S
Harvest of Values
SALE
DOWNTOWN STORE ONLY

<p>3-PC. STEREO PHONO</p> <p>MODEL R7600</p> <p>Features a full size record changer, two speakers, dust cover. Volume, tone, balance controls. Headphone jack.</p> <p>Walnut Look Finish!</p> <p>49⁹⁴ SAVE \$15</p>	<p>6 PAIR PKG. BOYS' OVER-THE-CALF TUBE SOCKS</p> <p>6 PC. PKG.</p> <p>3⁵⁷ SAVE \$1</p> <p>DuPont Orlon® acrylic/strach nylon. White with stripes. Fit sizes 8 to 11. SOBER, NO BAINCHECKS</p>	<p>20 GALLON GARBAGE CAN</p> <p>4⁹⁷ REGULAR \$6.47</p> <p>Galvanized STEEL</p> <p>Built to take abuse and weather. Snug lid. Sturdy handles.</p>		
<p>PAPERBACK NOVELS</p> <p>4 FOR 88¢</p> <p>Large selection of titles!</p>	<p>EXTRA SPECIAL HAIR CARE BOYS</p> <p>3 FOR \$1</p> <p>Brushes, combs, barrettes, pony-tail holders, clips, shower caps, hair nets, bob pins, plus more! SOBER - NO BAINCHECKS</p>	<p>SUPER BUY!</p> <p>ELASTIC ASSORTMENT</p> <p>¾", 1", 1½", 2" widths or ¾" non-roll waist-band elastic.</p> <p>4 FOR 77¢</p>	<p>Our Own Bargain Priced SEWING NOTIONS</p> <p>4 FOR 77¢</p> <p>Scam rippers, tape measures, thimbles, needles and more!</p>	<p>POTTING SOIL</p> <p>8 QUART POTTING SOIL</p> <p>78¢ REGULAR \$1.38</p> <p>Excellent for all plants. Ready to use. Sterilized.</p>
<p>100% POLYESTER BLANKET</p> <p>5⁴⁴ SAVE \$1.39</p>	<p>Electric Blanket</p> <p>Full Size</p> <p>Single Control</p> <p>22⁹⁹</p>	<p>Men's Sweat Shirts</p> <p>Reg. 4.77 3⁹⁷</p>	<p>MURPHY MART</p> <p>Paper Towels</p> <p>38¢</p>	<p>MURPHY LONG-LIFE</p> <p>Light Bulbs</p> <p>4 99¢ BULBS</p>

CHARGE IT USE YOUR VISA OR MASTER CHARGE

G.C. MURPHY CO. - THE FRIENDLY STORE!

DOWNTOWN STORE HOURS:
Mon.-Thurs. 9 a.m. to 5 p.m.
Fri. 9 a.m. to 8 p.m.
Sat. 9 a.m. to 5 p.m.

A Harvest Of Top Quality, Used Cars

77 and 78 Factory Executive Cars
Low Mileage-Still In Factory Warranty

BIG SAVINGS NOW

2-1978 Pary Salon, 4 dr. sed., V8, auto. trans., power steering, power disc brakes, radio, air cond., tinted glass, vinyl roof, still in factory warranty.	\$5095	1-1978 Chrysler LeBaron, 4 dr., 318-V8 engine, auto. trans., power steering, power disc brakes, AM-FM radio, vinyl roof, power windows, power seats, speed control, warranty good to 7-22-79. Only:	\$5995
1-1978 Dodge Aspen, 2 dr. cpe., 6 cyl., auto. trans., power steering, radio, power brakes, radio, vinyl roof, only 5,000, warranty to 5-16-79. Now:	\$4995	1-1978 Dodge Aspen, 4 dr. custom, 6 cyl., auto. trans., power steering, power brakes, air cond., radio, vinyl roof, vinyl seats.	\$4995
1-1978 Velara 4 dr. custom, 6 cyl., auto. trans., air cond., power steering, radio, tinted glass, vinyl roof, WSW tires.	\$4995	1-1978 Velara 2 dr. custom, 6 cyl., air cond., auto. trans., power steering, power brakes, radio, vinyl roof, WSW tires.	\$4995
1978 Cordoba, 2 dr., air cond., P.S. & P.B., power windows, speed control, AM-FM radio, vinyl roof, 5,000 miles, leather seats, full 12 mo. or 12,000 mile warranty. Original price, \$2295.95.	\$6695	2-1977 Velara Custom, 4 dr. sed., 6 cyl., auto. trans., power steering, air cond., tinted glass, radio, vinyl roof, WSW tires.	\$3995
1-1977 Dodge Aspen, 4 dr. sed., 6 cyl., auto. trans., air cond., tinted glass, power steering, radio, vinyl roof, WSW tires.	\$3995		

LATE MODEL USED CARS

1978 Cordoba, V8, auto. trans., speed control, air cond., P.S. & P.B., tinted glass, AM-FM radio, vinyl roof, leather seats, new radial tires. We sold this car new, one owner.	\$5795	1974 Velara Premier, 4 dr. sed., 318-V8 engine, auto. trans., P.S. & P.B., AM-FM radio, 60-60 split seats, speed control, vinyl roof, only:	\$3595
1974 Pontiac Gran Prix, 2 dr., AM-FM radio with 8 track, air cond., vinyl roof, vinyl seats, new radial tires, one local owner.	\$3695	1974 Velara custom, 4 dr., 6 cyl., auto. trans., power steering, air cond., tinted glass, radio, low mileage, one owner.	\$3295
1974 Cordoba, V8, auto. trans., power steering, power disc brakes, AM-FM radio, air cond., tinted glass, speed control, vinyl roof, like new only 23,000 miles.	\$4495	1973 Chrysler Newport custom, 4 dr. sed., air cond., tinted glass, AM-FM radio, speed control, 30-30 front seat all vinyl, vinyl roof, radial tires, one local owner.	\$3095
1973 Chev. Impala Wagon, 4 dr., 6 pass., power steering, air cond., tinted glass, radio, radial tires, vinyl seats.	\$2495	1973 Plymouth Gran Fury, 4 dr. sed., air cond., tinted glass, P.S. & P.B., radio, radial tires, one owner. We sold this car new.	\$2495
1974 Plymouth Satellite Wagon, sport station wagon, 9 pass., air cond., AM radio, tinted glass, P.S. & P.B., WSW tires. This is a sharp wagon.	\$1895	1974 Buick Apollo, 2 dr. cpe., V8, auto. trans., P.S. & P.B., air cond., radio, vinyl roof, extra clean.	\$1695
1974 Pontiac Ventura, 4 dr. sed., V8, auto., air cond., P.S. & P.B., tinted glass, radio, one owner.	\$1795	1973 Impala, 2 dr. H.T., V8, auto. trans., power steering, air cond., tinted glass, radio, only:	\$1095
1973 Chevrolet Camaro, 2 dr., V8, auto. trans., power steering, power brakes, radio, only:	\$1695	1973 Plymouth Satellite, 4 dr., air cond., V8, auto. trans., radio.	\$995
1973 Plymouth Duster, 6 cyl., stick shift, radio.	\$895	1973 Dodge Dart Swinger, 2 dr., H.T., 6 cyl., auto. trans., power steering, radio, white with black top.	\$1395

1973 Dodge Dart, 2 dr., split cpe., V8, auto. trans., sun roof, power steering, radio. **\$1195**

Used Trucks

77 Dodge 1/2 ton truck, auto. trans., power steering, radio. **\$3795**

Carpenter Motors, Inc.

"Your Downtown Chrysler-Plymouth,
Dodge Truck Dealer."

45 E. 2nd

Maysville, Ky.

Harvest Sale

15% OFF

Ladies & Men's Dress Jeans

Reg. \$11.99	NOW \$10.19
Reg. \$12.99	NOW \$11.04
Reg. \$13.99	NOW \$11.89

15% OFF

On All Children's Jeans

FRIDAY & SATURDAY ONLY

DISCOUNT JEANS

Corner Of Market & Third
Downtown Maysville
564-9390

For Your Inspection

We Offer

SHAWNEE HILLS Owner Anxious To sell

Four-bedroom tri-level situated on a large landscaped lot - Formal dining room - serving bar in kitchen - Wood burning fireplace in family room - Move in condition. Plenty of storage area. Call for an appointment today.

SHAWNEE HILLS SOUTH Newly Built

Cathedral ceiling in the living room, almond colored appliances in the kitchen, family room with energy saving fireplace, intercom throughout plus 2 1/2 car garage with garage door opener. Completely carpeted & draped. Immediate possession.

Due to our fast sales on our LISTINGS we need your home for sale. We have buyers, adequate financing and we are ready to work for you. Call Today.

Service Is What
Here For - Don't Make A
Move Without Us

McEuen Realty

R We're Just "Home Folks" **R**

Phone 564-5620

119 West Second Street
Maysville, Kentucky 41054

C.L. Mains & Son 69th Anniversary Sale

FREE DELIVERY

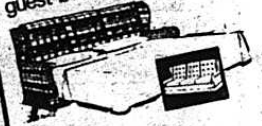


Win A *259 La-Z-boy Reclina Rocker! Drawing to be held Saturday, November 25th. No purchase necessary to register. Additional ticket with each \$5 purchase or paid on account.

Save 10% to 40%
Save On Sofas-Chairs-Love Seats And 3 Piece Groups
Early American-Traditional And Contemporary Styling
GREAT PRICES!

Hide-A-Beds

how to make any room a guest bedroom



Special 10% Anniversary Discount

On Lamps, Tables, Pictures And Mirrors

Chairs & Recliners



Famous LA-Z-BOY And Kroehler
Recliners-all sizes-all styles and all in top covers. Fabulous selection Starting at

\$159

Big Collection Of Great Chair Values
Many styles, many covers! You will have to see them to believe the quality. Many from which to choose. VALUES to \$299.

\$99



Double Pedestal Desk
Choice of finish and style. NOW ONLY:

\$99

Log racks - **Special \$5**

Terms Available-90 Days Same As Cash-Use Your VISA Card!

C.L. Mains and Son

42 W. Second St.

564-5092

Bedrooms

Beautiful All Wood Bedroom Group-

Double dresser, mirror, chest and headboard.

\$479

Great For Kids Room

3 pc. group-great value

\$339

French Provincial Group

Large triple dresser, handsome chest on chest, headboard and frame. Regular \$475.

\$588

Contemporary Group

By Armstrong Triple dresser and mirror with doors-door chest-full size or queen size headboard.

\$488

American Drew Oak Suit

Sturdy triple dresser-big chest-48-50 Headboard.

\$588

3 Piece Oak Finish Group

Double dresser-4 drawer chest and headboard a good value Compare at \$249.

\$199

Bedding

Repeat Of A Sell Out!

Simmons Golden Value I-II-and III

Mattresses and Box Springs

Save \$30 to \$70 a set

3/3 at \$65-\$75-\$85-

mattress or box spring

A great value- Our second truck load!

Odd Mattresses And Box Springs

\$49 & \$59

Twin or full size

3 pc. Corner Group

Walnut finish-record cabinet with bookshelf top and a corner chest. all 3 pieces for

\$29

Super Buy On 3 Piece Colonial Groups

Kroehler-Norwalk Brands-Soft-love seat and chair. Good selection of outstanding covers-brown, green, rust or gold.

\$588

Your Choice

2 pc. groups-Colonial or contemporary Hercules plaids:

\$249

Save \$141⁰⁰

High back Early American 2 pc. group-Kroehler brand Regular \$570.

\$429

Nylon Velvet Print

Kroehler traditional sofa with contrasting welts Regular \$450.

\$299

Traditional 86" Sofa And Love Seat

This is a very stylish and comfortable group in a beautiful reverse hsb nail velvet cover-Burgandy \$1198 value.

\$899

Early American Sofa

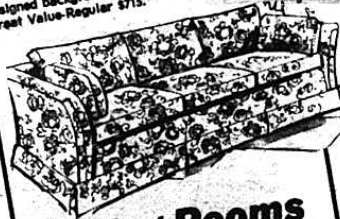
Wood trim-green plaid cover.

\$229

Kroehler Traditional

Sofa and chair in a soft beige with geometric designed background cover. Great Value-Regular \$715.

\$419



Dining Rooms

Table With Cane Back Chairs

5 piece group-Oval table with 4 chairs-cane backs and velvet seats.

\$249

Pedestal Table Group

Beautiful maple table with 6 commadore chairs This table has 2 fillers Regular-\$649.

\$499

Small 3 pc. Dinette

Table has drop leafs and chairs.

\$49⁹⁹

7 Piece Dining Room Groups

Maple or walnut These groups include china cabinets.

\$666

Discontinued Samsonite Luggage

starting at **\$19**

3 pc. Table Group-

Maple finish

\$44 and \$88

1 Group of Hassocks and Stools

1/2 off

Contemporary Sleeper

Stain resistant herculon plaid cover-good color

\$249

Queen Size Kroehler

Early American style in nylon cover Regular \$529

\$299

Matching chair for only

\$99

Norwalk Sleepers

Wood trim in nylon and herculon covers Great values. Regular \$479.95

\$379

Kroehler 5/0 Sleeper

Nylon cover-this sleeper has a high back for comfort. Save \$229

\$449

\$188 to \$225

\$188 to \$225

\$188 to \$225

\$188 to \$225

\$188 to \$225

\$188 to \$225

\$188 to \$225

\$188 to \$225

\$188 to \$225

\$188 to \$225

\$188 to \$225

\$188 to \$225

\$188 to \$225

\$188 to \$225

\$188 to \$225

\$188 to \$225

\$188 to \$225

\$188 to \$225

\$188 to \$225

\$188 to \$225

SAVE

Mount Vernon Signal

NEWSPAPER/MICROFORM

OCT 24 1978
University of Kentucky Library

MOUNT VERNON, KENTUCKY 40456

VOLUME 90 - NUMBER 6

THURSDAY, OCTOBER 19, 1978

State Sends Money For Police Dispatch

Rockcastle County is receiving \$32,093 from the state this week to set up a central dispatch system for police, County Judge Executive Hubert Thacker announced today.

The system will simplify calling the police, Judge Thacker said, because both the Sheriff and the city police will be at one telephone number, open 24 hours a day. The State Police are dispatched at the London post, but they will also be summoned from the new dispatch system, when necessary.

The award came through Gov. Julian Carroll's office after the project received favorable recommendations from the Kentucky Crime Commission at its September meeting in Owensboro.

Of the total award, \$28,884 will come from federal Law Enforcement Assistance Administration funds, and \$1,604 will come from the Kentucky Department of Justice. The remaining \$1,604 comes equally from the county Fiscal Court, the city of Mt. Vernon, and County Sheriff's Office.

Larry Williams, acting chief of the Mt. Vernon police, worked with the Cumberland Valley Area Development District to secure the grant. He said the money will be used to hire three full-time and two part-time dispatchers who will take 40 hours of training at Eastern Kentucky University. He said the system would be set up in the courthouse or at City Hall.

"All calls will be logged," he said, "so that our records will be much better."

However, Officer Williams said that the county and city is also applying for a grant of \$11,600 to pay for tape recording equipment.

Officer Williams said that there have been instances when people have tried to reach the police, only to find the telephone lines busy. It sometimes occurs when prisoners are talking on the jail's telephone he said.

According to Linda White, Criminal (Cont. to 9)

More Warrants Issued For Criminal Littering

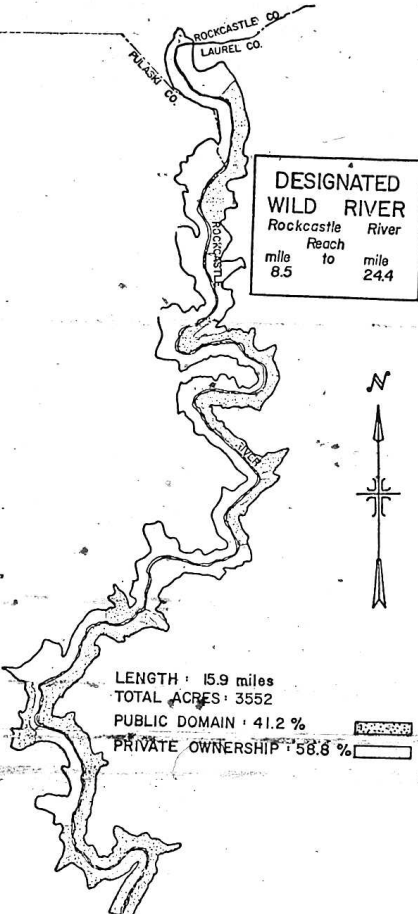
Eight more warrants for the arrests of people accused of criminal littering have been issued to Trial Commissioner Robert Robinson from county and state health officials. This brings the total to 16 warrants for littering in the past three weeks, and Steve Midkiff, county environmentalist, said there will be more.

Mr. Midkiff said the eight warrants issued this week all involved county residents. Of the eight served last week, only one of them lived in Rockcastle County.

Mr. Midkiff and John Winterberg, state inspector with the Department of Hazardous Substances, have collected evidence found in garbage dumped illegally throughout the county. County Attorney James Lambert said that he would prosecute the cases, which can bring a maximum fine of \$250 or ten days in jail.

Mr. Midkiff said that his office has received more reports from citizens regarding illegal dumping lately and that each report is being investigated.

All household trash in Rockcastle County must be bagged and placed in roadside dumpsters. Commercial trash must be hauled away by private collectors, Mr. Midkiff said. Large household items such as sofas can be disposed of for a fee at the county landfill, located between Mt. Vernon and Livingston on Hwy. 25.



This map shows the part of the Rockcastle River which has come under protective laws. The entry point is at Hwy. 80 and it ends at Bee Rock Camp at KY 192. Only about a mile lies in Rockcastle County.

Industrial Authority Needs More People To Answer Garment Factory's Questionnaires

A "fair" number of women have turned in questionnaires regarding factory work to the Rockcastle Multi-County Industrial Park Authority, but more questionnaires are needed, according to Bill James, chairman.

The Authority is determining whether the area around Mt. Vernon has 2500 women between the ages of 18 and 45 years, who are interested in working in a garment factory. If there are enough workers available, a garment factory based in Cincinnati will move into the industrial park, which is being built three miles west of Mt. Vernon.

The questionnaires are being distributed through the mail, in the newspaper, and in stores and offices.

Mr. James said that women who are not necessarily looking for immediate work should fill out a questionnaire, because the company involved is interested not only in the available workers, but in the potential number of workers in the area.

The questionnaires must be returned by October 23. Job areas include sewing, shipping, office, inspecting, supervising and cutting. The company involved rents uniforms, and wants to move into their manufacturing

Part of Rockcastle River To Be Protected As Recreational Area

By Jane Kumditz

The Kentucky Department of Natural Resources is now studying a stretch of the Rockcastle River and coming up with a plan to manage it for recreational purposes. Only a few miles of the river in Rockcastle County will come under this land management plan, but landowners in that area will be restricted in certain ways. They will have to ask the state government for permission to timber, or mine, or build roads or buildings within 2000 feet of the river.

The part of the river affected is from KY 80 bridge to the backwater of Lake Cumberland.

Roy Hogg, an officer with the Department of Natural Resources, said that the Rockcastle River is the first of eight that the Department will study for a land management plan. He said all plans must be completed by the end of 1979, but the Department will hold many public hearings about this subject before that time. The first such hearing should occur here in November, he said.

The land management plans are part of the requirements of the Wild Rivers System law, passed by the Kentucky legislature in 1972, and revised in 1976. This law "recognizes that certain streams in Kentucky possess outstanding and unique scenic, recreational, geological, fish and wildlife, botanical, historical, archaeological and other scientific aesthetic and cultural values." The idea is to preserve the wilderness area of the rivers for recreation such as fishing, hunting, canoeing, camping, hiking, horseback riding, exploring, archaeological and scientific investigation and scenic enjoyment," according to the law.

In order that outdoor enthusiasts can enjoy the wild rivers, landowners will be asked to give trespass rights to them by the Department of Natural Resources.

Elementary Schools Elect Parents' Advisory Councils

Five parents from each elementary school were elected to serve on the Parents' Advisory Councils for the 1978-79 Reading Program.

This is a federal program for remedial readers. The Council advises and evaluates the program each year, and its establishment is required by the Elementary and Secondary Education Act.

Parents who will be participating are: Mt. Vernon School-Harry Harmon, chairman; Billy Dowell, Carol Bryant, Luke Dober, and Joyce Baker; Brookside-Bruce Brooks, chairman; Mrs. Donald Bray, Betty Powell, Martha Hamm, Libby Gibbs, Sue Travillion; Livingston-Glenda Kirby, chairman; Jean Senter; Carolyn Doan, Ann Lopez, Helen Durham; and Roundstone-Bene Burdette, chairman; Gail Burdette, Joan Mason, Irene Huff and Sandy Thomas.

The Councils were elected at meetings open to all parents held at each school.

Health Department Announces New Fees

Effective August 25, 1978, the Secretary for the Department for Human Resources has authorized all local health departments participating in the Department's Family Planning Program to collect fees for family planning services. The full amount charged for the different family planning services will be determined by family size and income.

A copy of the fee schedule for services will be posted in the health department. If you have any questions about charges for the family planning services, please contact the Family Planning Program at the Health Department (256-2242).

Revival at First Baptist
Revival services will begin Monday, October 22nd at the First Baptist Church in Mt. Vernon and continue through October 29th, beginning at 7:00 each evening.

Guest evangelist will be Rev. W.D. Thomason of Smyrna, Tenn. There will be special singing each night and nursery and transportation will be provided. Don't miss this opportunity to hear one of God's most gifted servants. You are cordially invited to attend each service. And remember the time and dates.

Parents' Meeting Tonight

The administration and guidance departments at Rockcastle County high school invite the parents to attend a meeting at Rockcastle County High School Thursday, October 26th, 1978 at 7:00 p.m.

This meeting is for the purpose of explaining the purpose of the passage of the Educational Improvement Act.

Besides the river itself, the "horizon" of the river is also protected. As defined by the law, the horizon is the land 2000 feet from the center of the river to each of its sides. The use of the land in these areas is restricted. New roads, structures, buildings, utility lines may be constructed only as approved by the Department of Natural Resources.

There shall be no strip mining, select cutting of timber or other resources removal, and agricultural use may be allowed pursuant to regulations and upon the granting of a permit, according to the law.

"Travel upon the river shall be by foot, horseback, canoe, boat or other non-mechanical mode of transportation," the law reads. It also says that trespassing beyond the boundaries and into private lands can mean a \$5000 penalty.

Mr. Hogg said that the restrictions on private land are not as bad as they seem.

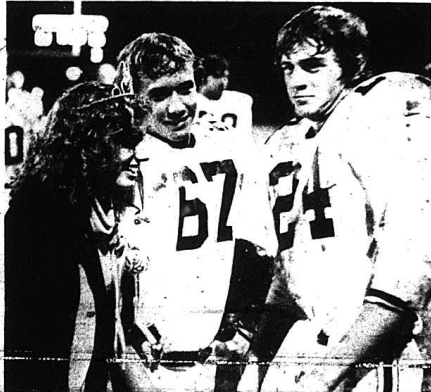
"Most people we have talked with have been very cooperative, and helpful," Mr. Hogg said. "They don't mind granting the permission. You must keep in mind that the land we are talking about is marginal at best. It's cliffy and not good for much besides timbering."

Much of the protected part of the Rockcastle River is in national forest. (Cont. to 9)

CHANGE IN CONTINUATION

For you football fans looking for the continuation of the story of the front page of this week's section section - it's not on page A2.

We forgot to put it there so it will be found on page 9 of the first section.



"BEEN FOR AN EVENING" - Jennifer Gentry was escorted to Rockcastle County Homecoming Queen Friday night during half-time of the first Blue-White football game, by Eddie Thompson, captain of the football team. Miss Gentry was escorted by Ricky Hickey. A photo of the queen and attendants is on page 5 of the first section.

75 Jurors Called For November Circuit Court

The following people are to report to jury duty on November 20th, 1978 in the Rockcastle Circuit Court.

Cletus Edward Peters, Eli H. Chasten, Richard C. Sweeney, Willie Ruth Fields, Faye Lovell, Joe Ann Davis, Beverly Jo Howard, Herbert Coffey, Aleda Bond, Naomi Thomas, Pike, May Brown, Ethel Abney, Tommy Mullins, Gaffer Clinton Cash, Monroe Turpin, Zell Caudill, Lucille P. Bullock, John Russell Bradley, Leonard Albert Alexander, Everett Shirrell Owens, Flora Marie Neal, Jennie M. Hansel, Landis Harding, Edith Anglin Lamb, Geraldine Thomas, Gene Noe, Shirley Clark Bullen, William Ray Scoggin, Eli Lewis Chasten, Joyce White Aker Brown, Frank Dario Gllovak, Ida May Tankersley, Vivian Overbay, Betty Margaret Offutt, Willie McGuire, Amanda Kincer LaPevers.

Luther Mink, Lonnie Wayne Angin, Phillip J. Argonbright, Elsie Brown Baldwin, Arvel C. Taylor, Edna Melargue Fain, John Clark, Mary Helton Hansel, Cecil Ray Smith, Henry I. Vanzant, Hazel Mae Marshall, Henry Robert Wynn, James Lee Winstead, Alicia L. Mason, James Tarence Wolfe, Thomas Estill Hodges, Charles Spaulon Lewis, Earl McNew Jones, Jasper Carpenter, Shirley Bowman, Mary Louise Sparks, Ethelene Caldwell Middleton, Kenneth Van Chattelle, Larry Wendell Doyle, Jonathan C. Kelley, Danny Joe McKinney, Fern Caldwell, Alfred I. Cummins, George Jones, Gary B. Hansel, Laney Poynter, Mary Elizabeth Cole, David Ray Blanton, Lorene Sigmon, Peggy M. Hurley, Joseph Dixon, Barbara Lake Bishop, Virginia Carol Machal, Donald Ingh Hopkins.



The Dollar General Store opened last Thursday on Main Street in Mt. Vernon. The staff includes, from left, Carolyn Bullock, manager, Jenny Bloomfield, Sandy Durham and Ann Britton. The local store is one of over 300 such stores in 24 states owned

by a corporation headquartered in Scottsville. The store features a variety of merchandise and is open 8 a.m. to 5 p.m., six days a week.



KENTUCKY STATE CHAMPS - The Rockcastle County Bass Club is the new American Bass Fisherman's State Champion. They defeated the closest club to them by more than 30 lbs. in a tournament held at Lake Cumberland on the Bottom Boat Deck. Members of the team were, front row, from left: Conley McClure, Johnny Hamm and C.K. Cornelius. Back row, from left: Johnny DeBorde, Charles Norris and John Mark Ray.

Mount Vernon Signal

PUBLISHED EVERY THURSDAY
 Main Street in Mt. Vernon, Kentucky 40456
 Entered at Mt. Vernon Post Office
 as Second Class Matter-Permit No. 1
 in County-46 Out of County 97.50
 James Anderson, Jr., Publisher
 Perline M. Anderson, Editor
 Member Kentucky Press Association

Legislative Report

By Harold DeMarcus

The Public Service Commission (PSC) was created by the 1934 General Assembly to regulate the intrastate operations of all public utilities in Kentucky with the exception of municipal utilities. It is responsible for regulation of the retail rates and service of natural gas, electric, telecommunication, investor-owner and rural water systems, and privately owned sewage treatment companies.

Generally, regulation utilities in Kentucky are required by law to provide adequate service within their respective areas and are entitled to charge reasonable rates for their services.

The PSC consists of five commissioners appointed by the Governor with the advice and consent of the Senate. Commissioners are appointed for four-year terms and the terms are staggered so that two terms expire annually for two successive years and one term expires the following year.

This arrangement was created by the 1976 General Assembly which also increased the number of commissioners from four to five, requiring that all commissioners not be of the same occupation or profession.

The agency exercises its regulatory authority over the activities of companies within their jurisdiction through both formal decision making and rule making proceedings in accordance with the Kentucky Revised Statutes.

Formal decision making proceedings result in administrative orders

based on public hearings relating to utility franchises, rates, construction, financial reporting, borrowings and issuance of securities, and all aspects of utility service to Kentucky retail customers by jurisdiction companies.

The agency exercises its rule making authority through the effect of provisions placed in the Kentucky Administrative Regulations.

In addition to five PSC commissioners, the agency consists of a Division of Engineering, a Division of Accounting, and general administration and support services. The chairman of the commission is the chief executive officer of the agency, and the executive director is the principal administrative officer.

As of June 1977, the PSC had general regulatory jurisdiction over 538 utility companies of all types. During the past decade the number of companies under agency jurisdiction has grown significantly. For example, there has been an increase of 213 utility companies since 1975.

Additionally, regulatory actions were initiated by the PSC or caused by the regulatory actions of federal agencies as expected to impose more responsibilities on the agency.

In March of this year, the PSC granted Kentucky Utilities a 116 mill rate increase. And on September 1st, the PSC granted Kentucky Utilities an additional \$12.5 million rate increase. This \$28.5 results in an increase of approximately \$1.88 for each KU customer per month.

The PSC rate increase decision said

that a serious decline in KU's earnings put its bond rating in imminent danger of being downgraded. If KU's bond rating was lowered, the PSC members said, it would cost the utility more to borrow money and KU's customers eventually would have to pay more for electricity.

Unless I am mistaken, KU's customers, due to the rate increases, will pay \$22.50 more each year for electricity. Many people have put forth an effort to conserve electricity and it appears that this additional \$22.50 is our unjust reward.

As most everyone knows, the new coal severance tax will produce an additional \$3 billion in tax revenue in the next two years. Undoubtedly, the utility companies will pass whatever financial burden they bear to the consumer. This action will have to pass through the PSC, whose commissioners are appointed. However, there are some states that elect their PSC commissioners.

The automatic Purchased Power Adjustment charge or as you use to see it on your utility bill, the Fuel Adjustment charge, allows utility companies to pass to their customers the higher cost of coal. This destroys any incentive to bargain for lower coal prices. Why should a utility company go to a little extra trouble to buy coal for eight million dollars when they can take an easy route and buy the coal for ten million dollars and pass the extra charge to the consumer. This problem is intensified due to the new regulation which allows utility companies to incorporate the fuel adjustment charge into the monthly bill.

The PSC could modify the fuel adjustment charge to provide definitive incentives to utility companies to question coal costs before they are automatically passed on to customers.

Michael Adams

Receives Promotion

Michael D. Adams, son of Mr. and Mrs. William J. Adams of Rt. 1, Brodhead, has been promoted to senior airman in the U.S. Air Force.

Airman Adams, an Inventory management specialist, is assigned to Bentwaters RAF Station, England, with a unit of the U.S. Air Force in Europe.

The airman is a 1974 graduate of Rockcastle County High School, Mount Vernon, Ky. His wife, Sandra, is the daughter of Mr. and Mrs. Roy E. Ashely of New Bloomfield, Mo.

County Statistics

Deeds

W.B. and Eliza Jane Adams, real property located in Rockcastle Co. to James Neal Langford, no tax.

Edna Banks, real property located in Rockcastle Co. to Arles E. and Sarah Dodson, tax \$1.60.

Kermit B. Bowling, real property located in Rockcastle Co. to Larry Smothers and Tom Antesty, tax \$18.00.

Ralph and Oshy Nery, real property located in Rockcastle Co. to Vernon and Barbara S. Lamb.

F.E. and Ruby Gentry, real property located in Rockcastle Co. to Kenneth D. and Regina Mae Burton, tax \$20.00.

Alice Smith, real property located in Rockcastle Co. to David R. Smith, no tax.

Ernie and Myrtle Mason, real property located in Rockcastle Co. to Ernie Eugene Mason, tax \$1.00.

Ada Noe, real property located in Rockcastle Co. to Jack Noe, tax \$20.00.

Lewis and Flaura Renner, real property located in Rockcastle Co. to Tommy H. Burdette, tax \$100.00.

Marriage Licenses

Lawrence Randall Parsons, 25, Mt. Vernon, computer programmer, to Janet Sue Burton, 22, Rt. 1, Brodhead, rehabilitation counselor, October 6, 1978.

Kenneth Lynn Weir, 28, Lexington, Ky., musician, to Sandra Gayle Robbins, 22, Lexington, Ky., substitute teacher, October 10, 1978.

Bowling Scores

ROCKCASTLE MIXED LEAGUE

Team Standings: Wildcats are in first place with 19-5; Clamplets are second with 18 and 0; and the Hi-Rollers in third with 17 and 1.

High Series: Wildcats, 2186; Hi Rollers, 2172; Streakers, 2160.

High Games: Clamplets, 802; Streakers, 771; Slow Poke, 767.

High Men Series: Jack Noe, 608; Robert Miller, 604; David Bales, 568.

High Women Series: Evelyn Mullins, 625; Alice Faulkner, 502; Louise Carter, 478.

High Men Game: Robert Miller, 230; Bill Reynolds, 229; Jack Noe, 214.

High Women Game: Fern Brown, 307; Evelyn Mullins, 287; Alice Faulkner, 267; Brenda Owens, 177.

High Men Average: Doc Brown, 178; David Eaton, 177; Jack Noe, 176.

High Women Average: Evelyn Mullins, 155; Alice Faulkner, 152; and Fern Brown, 148.

AARP Meets

The AARP (American Association of Retired Persons) met October 18th at the Rockcastle Co. Library with two guest speakers, Dyche Frazier of Corbin and Mr. Houshield of Berea.

Mr. and Mrs. William Nicely and Mr. Dyche Frazier were elected as club committee.

President of the club, Mrs. Pearl Whitaker, reported that 22 persons were present at the meeting, and stated that volunteers for transportation are

needed. Refreshments of cake and punch were served.

Mrs. Whitaker said the next meeting will be held Friday, November 10th at the Library. All visitors are invited to attend the meeting.

BOOKMOBILE SCHEDULE

Monday: 2:30 at Copper Creek and Brodhead.

Tuesday: Brindle Ridge.

Wednesday: Fairview and Lambert Road.

WANTED!

2500 WOMEN

No Experience Necessary

TO OPERATE A GARMENT FACTORY POWER SEWING MACHINE

Women interested should live within a 25-mile radius of Mt. Vernon and be between the ages of 18 and 45 with at least an eighth grade education.

PLEASE FILL OUT THE FORM BELOW

Name _____ Date _____

Address _____

Telephone No. _____ Date of Birth _____

Neighbor's Phone No. _____

Age _____ Distance from Mt. Vernon _____ miles

School Grade Completed 6 7 8 9 10 11 12

College 1 2 3 4 years. (Mark One)

JOB PREFERENCE

Anything _____

Factory Power Sewing (Learn) (Experienced)

Service _____

Cutting _____

Shipping _____

Office _____

Inspecting _____

Supervision _____

Please mail or bring or send this form by October

23, 1978 to the

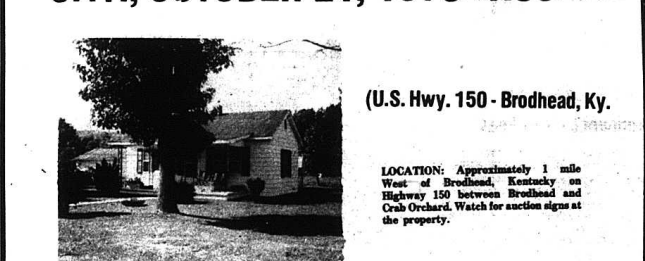
Rockcastle Co. Industrial Authority

P. O. Box No. 392

Mt. Vernon, Kentucky 40456

Auction

of
MR. AND MRS. JOE CROMER'S
House and Lot and Extra Lot
SAT., OCTOBER 21, 1978 1:30 p.m.



(U.S. Hwy. 150 - Brodhead, Ky.)

LOCATION: Approximately 1 mile West of Brodhead, Kentucky on Highway 150 between Brodhead and Oak Orchard. Watch for auction signs at the property.

HOUSE AND LOT: The house has been newly remodeled inside and out. It has 2 bedrooms, living room, kitchen with built-in birch cabinets, and electric range and bath. It is heated by a fuel oil space heater, has wall to wall carpet, washer and dryer hookup, storm doors and windows. A good well provides water for the house, however, city water is available. The house is situated on a lot measuring 100x168. In addition to the house, there is a 16x20 block storage building.

EXTRA LOT: This lot is located adjacent to the above house and lot. It measures approximately 100x168 and has city water. It would make a good building or mobile home lot.

The owners reserve the right to sell each lot separately, then together, selling whichever way reflects the best returns for sellers.

If you are in the market for a good, modern compact home just out of town be sure to attend this sale.

For additional information contact the selling agents:

Ford Realty & Auction Co.

Realtor - Auctioneer
 Col. Sam Ford
 Col. Roy Adams
 Col. Danny Ford

Auctioneers
 Col. Bill Haddock
 Col. Jerry Ham
 Col. Willard Butcher

Selling the Country

Mt. Vernon, Ky. Ph. 256-4545

7-1 Monday, October 24, 1977

Average U.S. Home May Soon Cost \$78,000

The average price of a typical American home cost \$78,000 within five years. This startling prediction was released in early March 1977 in a report by the Joint Center for Urban Studies of Harvard University and the Massachusetts Institute of Technology.

... all the facts about building or your property with separate new case offered.

YES WE CAN ... help you beat the high cost of building a new home.

For over three decades, Jim Walter has been building and financing homes that families of all walks of life can afford. NOTHING HAS CHANGED! If you own property, we can still extend help to you. YES WE CAN! Let us show you that, by doing some or all of your own inside thinking work, you can save more. Here's how: Jim Walter will custom build your new home to almost any shape... from the "shab" up to 20% complete. We'll finish the outside in every detail. On the inside, you tell us where to stop... then take over and finish the rest. Do as much as you like... but the more inside work you do for yourself, the more money you'll save.

YES WE CAN! Even though new home prices continue to spiral upward, Jim Walter can help you beat the high cost of building. Let us show you how today!

Homes built on your property to any stage of completion from the shell to 90% finished.

MORTGAGE FINANCING

We offer a complete line of SECOND HOME COTTAGES

Call or visit the Jim Walter Homes display park nearest you... or send the coupon for complete details. Get all the facts about building or your property with separate new case offered.

Jim Walter HOMES

Somerset, Kentucky 42501
 P.O. Box 367 Highway 27 South
 (Next to Scottie's Ham Burgers)
 Ph. 679-6383

the MADISON
 4 BEDROOMS - 2 BATHS

FREE FULL-COLOR CATALOG! Fill out and mail. No obligation.

We are interested in more information about Jim Walter Homes. Please send your name and address to the address below. I understand there is no obligation.

NAME _____
 ADDRESS _____
 CITY _____ STATE _____
 Telephone (no neighbors) _____
 If rural route please give directions _____
 I understand there is no obligation. _____



FOOD FAIR

OCTOBER

12 STORES TO SERVE YOU IN SOUTHEASTERN, KY. FRIENDLY SERVICE ALL THE WAY TO YOUR CAR. WE WELCOME FOOD STAMP CUSTOMERS

Food Spectacular

WE GIVE S&H GREEN STAMPS BECAUSE WE APPRECIATE YOUR BUSINESS



FRESH LEAN GROUND BEEF 3 LB. OR MORE

\$1.09 LB.



FRESH CHICKEN BREAST THIGHS & LEGS

99¢ LB.

SMOKED PICNICS WHOLE **89¢** LB.
Sliced **99¢** LB.
PORK LIVER **49¢** LB.
BEEF LIVER **59¢** LB.



10 OZ. JFG INSTANT COFFEE

\$3.19

LIMIT (1) WITH \$10.00 OR MORE ORDER

PORK CHOP SALE
FIRST CUTS **\$1.29** LB.
CENTER CUT RIB **\$1.49** LB.
CENTER CUT LOIN **\$1.59** LB.

LIMIT 2
12 OZ. LAY'S BACON

\$1.05

SALT BACK BACON **69¢** LB.

Lay's 2 Lb. Thrift WEINERS **1.99**



44 OZ. BOB WHITE SYRUP

99¢

FOOD FAIR COUPON With This Coupon You Get **20¢ OFF** 12 OZ. POST TOASTIES 16 OZ. Nabisco RITZ CRACKERS **79¢**



MEADOW GOLD ICE MILK 1/2 GALLON

79¢



3 LB. CRISCO

\$1.69

LIMIT (1) WITH \$10.00 OR MORE ORDER

STOKELY SALE

8 pak 16 OZ.

Coke **\$1.19** plus deposit

JUMBO PIES Pkg. Of 10 **59¢**

STOKELY 2 1/2 SIZE CAN PEACHES HALVES OR SLICED **59¢** LIMIT 2

FOOD FAIR COUPON With This Coupon You Get **30¢ OFF** 15 OZ. Nabisco OREOS OR DOUBLE STUFF **89¢**

FOOD FAIR COUPON With This Coupon You Get **30¢ OFF** 32 OZ. WISK Limit (1) Expires 10-15-78

FOOD FAIR COUPON With This Coupon You Get **30¢ OFF** 32 OZ. LUX LIQUID Limit (1) Expires 10-15-78

FOOD FAIR COUPON With This Coupon You Get **30¢ OFF** 33 OZ. DOWNY **89¢**

FOOD FAIR COUPON With This Coupon You Get **30¢ OFF** 32 OZ. LUX LIQUID Limit (1) Expires 10-15-78

303 Size Stokely APPLESAUCE **3 FOR \$1**

Stokely 303 Size PEARS **49¢** LIMIT 2

Stokely 303 Size SHELLIE OR GREEN BEANS **3 FOR \$1**

Cabbage 2 lb. **29¢**

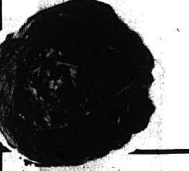
Idaho Potatoes

red or yellow **APPLES**

32 OZ. Stokely GATORADE, ORANGE OR LO-HI **49¢**

303 Stokely WK/ Yellow or Cream Style CORN **3 FOR \$1**

32 OZ. Stokely CATSUP **77¢**



3 lb. bag **79¢**

303 Size Stokely HONEY POD PEAS **2 FOR 69¢**

300 Size Van Camp PORK & BEANS **3 FOR 95¢**

Van Camp CHILI WEENIES OR BEANEE WEENIES **2 FOR 75¢**

Carrots 1 lb. **49¢** 2 for **49¢**

10 lb. **1.29**

1 GALLON RICH & READY ORANGE DRINK **99¢**

250 S&H Stamps With \$25.00 Or More Order

COUPON WORTH 50 S&H Green Stamps With the purchase of 1 Pkg. or more Fisher's Seedback Meats. mv cpn exp 10-25-78

COUPON WORTH 50 S&H Green Stamps With the purchase of 1 Lb. or more Best Dole. mv cpn exp 10-25-78

COUPON WORTH 50 S&H Green Stamps With the purchase of 1 Lb. or more Onions. mv cpn exp 10-25-78

COUPON WORTH 50 S&H Green Stamps With the purchase of 1 Pkg. or more Health & Beauty Aids. mv cpn exp 10-25-78

COUPON WORTH 50 S&H Green Stamps With the purchase of 2 Pkg. or more Leaves of Bread. mv cpn exp 10-25-78

COUPON WORTH 50 S&H Green Stamps With the purchase of 1 Pkg. or more Paper. mv cpn exp 10-25-78

100 S&H Stamps With \$10.00 to \$24.99 Order

COUPON WORTH 50 S&H Green Stamps With the purchase of 1 Pkg. or more Checkers or Checkers Parts. mv cpn exp 10-25-78

COUPON WORTH 50 S&H Green Stamps With the purchase of 1 Pkg. or more Dole's or Washed Fruit. mv cpn exp 10-25-78

COUPON WORTH 50 S&H Green Stamps With the purchase of 1 Pkg. or more Grapes or Plums. mv cpn exp 10-25-78

COUPON WORTH 50 S&H Green Stamps With the purchase of 1 Pkg. or more Grape or Plum. mv cpn exp 10-25-78

COUPON WORTH 50 S&H Green Stamps With the purchase of 1 Pkg. or more Paper. mv cpn exp 10-25-78

COUPON WORTH 50 S&H Green Stamps With the purchase of 1 Pkg. or more Paper. mv cpn exp 10-25-78

Twenty-Four Local Students Attend UK

Twenty-four people from Rockcastle County are currently enrolled at the University of Kentucky in Lexington, according to the Office of Admissions registrar.

- They are as follows:
- Freshmen: Margaret Allen, Mt. Vernon, Social Professions; David Colson, Brodhead, Agriculture; Casey Hines, Mt. Vernon, Arts and Sciences; Mark Holbrook, Brodhead, engineering; Comer Huffines, Mt. Vernon, Business and Economics; David Earl Noe, Mt. Vernon, agriculture; Mark Stitts, Mt. Vernon, Arts and Sciences.
- Sophomores: Shirley Ray Riddle,

- Mt. Vernon, Dentistry; Garland Eugene VanHook, Brodhead, Architectural.
- Juniors: Brian Egan, Mt. Vernon, engineering; Lisa Ellen Lewis, Mt. Vernon, pharmacy; Marita Stewart, Mt. Vernon, education.
- Seniors: Paula Faith Holbrook, Brodhead, engineering; Charles Mullins, Mt. Vernon, engineering; Lori Stewart Mullins, Mt. Vernon, education; John Taylor, Lexington, dentistry; Paul Travis, Mt. Vernon, engineering.
- Graduate Students: Elizabeth Allen, Mt. Vernon; Graduate I: Jerry Hopkins, Mt. Vernon; Graduate II: Patricia Miller, Mt. Vernon, Graduate I;

Carla Clontz Parsons, Mt. Vernon, home economics; Florence Winstead, Brodhead Graduate I.

Professors: Larry Daugherty, Brodhead, dentistry; John Parsons, Mt. Vernon, dentistry.

Quail

By Vivian Owens

Mrs. Florence Albright spent last week with her daughter, Mrs. Verla Casey of Valley Station.

Mrs. Josephine Bardette of Indiana is visiting her mother, Mrs. Bertie Taylor.

Mr. and Mrs. J.C. Reynolds and family, Mr. and Mrs. Billy Owens and sons, and Mr. and Mrs. Elmer Ponder and Linda visited Florence Albright Sunday evening.

Mr. and Mrs. Newman Reynolds and Bobby Lee of Ohio spent a few days last week with Mr. and Mrs. Clifton Reynolds and Harold.

Mrs. Arlie Taylor and daughter of Ohio recently visited his aunt, Mrs. Weltha Todd.

Mrs. Clara Bustle and Mrs. Mae Bono of Mt. Vernon visited Mrs. Weltha Todd last Monday.

Ottawa

By Della Mae Whitmet

Mr. and Mrs. Roscoe Cable, Mr. Curtis Bradley, and Alton Bradley all attended the funeral of Mrs. Sophia Hasty last week.

Mrs. Minnie Jones and Mrs. Eva Brown visited Mr. and Mrs. Gene Bishop

and Angela in Lexington last Wednesday.

Mr. Ronald Laswell, Kelley and Bonnie of Cincinnati, Ohio visited Mr. and Mrs. Speed Laswell, Saturday night.

We are glad to report that Mrs. Janie Mae Jones home after having eye surgery at the St. Joseph Hospital in Lexington, last week.

Much sympathy is extended to the Roberts family; Mr. and Mrs. Dewey Roberts and Mr. and Mrs. Earl Roberts in the loss of their sister, Iva Roberts Reynolds who passed away in Alabama and their uncle who died in North Carolina. They attended the funeral of their sister.

Mrs. Clarice Payne and Christine of Dayton, Ohio visited Mr. and Mrs. Guy Hamm.

The Revival at Ottawa with Bro. William Hall will be going on thru

Sunday. Be sure to come hear him. Bro. Marion Brock is the pastor.

Birth Announcement

Mr. and Mrs. Michael Chidress wish to announce the birth of their first child, Kyle Michael, born October 10th.

The mother will be remembered as Myra Lambert.

Grandparents are Mrs. Tessie Chidress and Mrs. Ila Wade Lambert. Great grandparents are Hallie Fryh and Lula Hansel.

STRETCHING YOUR FOOD DOLLAR

Low-cost cuts of beef are usually less tender and need to be braised, stewed, pot roasted or boiled, according to the leaflet from the Cooperative Extension Service of UK's College of Agriculture.

35 ACRES WITH MODERN HOME AND BARN Near the Rockcastle County High School and the Industrial Park. Definite development potential. Owner will sell the house and lot separate from the barn. The house has 2 bedrooms, living room, kitchen, gas furnace, hardwood floors and storm doors and windows. There is 2,000 lbs. of tobacco base and the barn is a god stock and tobacco barn with a concrete floor. Priced at only \$68,000. B-19.

COL. SAM FORD
Nights 256-4588

COL. DANNY FORD
Nights 256-4446

COL. BOY ADAMS
Nights 256-4035

ALMOST NEW BRICK Located in the Country-side Estates Subdivision. This 2 year old brick has 6 rooms: 3 bedrooms, living room, kitchen, dining room, 1 1/2 baths and carpet. It is well insulated, has a heat pump, front porch, washer and dryer hookups, city water, thermopane storm windows and is situated on a 17x170 lot. Priced at only \$39,900, or the owner will trade for a less expensive home. C-23



REALTOR

"Selling the Country"

MT. VERNON, KENTUCKY

DANDY SMALL FARM Near Brodhead, Ky. This 1/2 acre is partially wooded and city water is available and is located on a blacktop road. This is located in the Quail Section of Rockcastle Co. and is priced at only \$6,500. B-17.

MODERN 7 ROOM HOUSE Excellent work. Main living section Mt. Vernon, Ky. It is a corner lot. The house has been completely remodeled, built kitchen cabinets, range, oven, dishwasher, 3 bedrooms, living room, large utility room, garage and an abundance of shade. Also a good rental mobile home for extra income. All this for only \$39,500. C-26.

ALMOST NEW BRICK One mile out of Mt. Vernon. Three bedrooms, living room, and kitchen, with electric heat and air, wall to wall carpet, and a large patio-sundeck. It is also surrounded by trees. A nice setting for only \$37,900. B-14.

5 ACRES Located on Highway 150 between Mt. Vernon and Brodhead. This beautiful big farm would be ideal for most any type use and is improved with an older house and log barn. It has blacktop frontage, city water and all ways well. If you want commercial land, development land, or just a baby farm here it is. Priced at only \$41,900. B-2.

6 ACRES More or less and a 5 room house. Located on the Rockcastle River. The house has 2 bedrooms, living room, kitchen, large family room and a full bath. The house has carpet and linoleum throughout, washer and dryer hookup, and the house is situated on 6 acres which would be ideal for a retiree or someone wanting to keep a pony or cow. It can be yours for only \$15,900. B-12.

2 LARGE BUILDING LOTS Located in the all new Happy Acres Subdivision. City water and blacktop road and streets. Only \$9,000. D-54.

BE AT HOME WITH YOUR BUSINESS A 30 unit campground located near the Mt. Vernon-Vincenton Exit at 1-75. The campground has office space, recreation all room, and a garage down stairs, with a lovely, 5 room remodeling quarters upstairs. A good buy at only \$68,000. H-124.

AN EXCELLENT 10 ACRE FARM Located in the Ottawa Section of Rockcastle County. The farm is improved with a lovely frame house. The house contains 6 rooms: 4 bedrooms, living room and kitchen, bath, also a 1/2 basement. The house has total electric, and washer and dryer hookups. In addition to the house, there is an almost new 3 car garage and a combination stock and tobacco barn. Be a gentleman farmer for only \$44,000. H-138.

MODERN SIX ROOM HOUSE Just off Hwy. 70 approximately 8 miles out of Mt. Vernon. This house has 6 rooms, living room, dining room, kitchen, bathroom combination, a full bath, and a 2 car garage. It is heated by fuel oil, has city water and is situated on a 1.5 acre lot. Priced at only \$43,900. B-18.

5 ROOM HOUSE Located on Paul Street, Mt. Vernon. The house has 2 bedrooms, living room, kitchen, utility room, furnace, aluminum siding, storm doors and windows, washer and dryer hookups, city water, carpet and linoleum throughout, and much more. In addition to the house, there is a good storage building. All is located on a lot measuring approx. 100x148 with ample space for a garden. Priced at only \$14,900. B-11.

BUILDING LOTS City water available and city sewer will be available soon. Located in the Owens Subdivision and a good buy at only \$6,500. I-160.

ONE OF MT. VERNON'S FINEST Split level home in the Barnett Subdivision of Mt. Vernon, Ky. The house has 4 rooms: 2 car garage and is heavily landscaped with 2 baths and a large, cozy family room with fireplace, patio, 3 bedrooms, living room, large kitchen. A wonderful buy at only \$39,900.00. I-181.



THE KEY TO YOUR FUTURE IS A NEW HOME!

HOUSE AND LOT Located on Hwy. 150 near Brodhead, Ky. House has 2 bedrooms, living room, kitchen and full bath. The house is heated by a fuel oil space heater, has wall to wall carpet, and washer and dryer hookup. The house has been newly remodeled inside and out. In addition to the house, there is a 16x20 block building. The buildings are situated on a 20x168 lot. Priced at only \$22,500. G-106.

OLDER HOME Just north of Livingston, Ky. The house has 3 bedrooms, living room, kitchen, dining room, family room, utility room and bath. The home is partially carpeted and is heated by an oil furnace and has city water. A good buy at only \$19,900. H-132.

NEW LOTS Spacious building lots in Rockcastle County's newest subdivision. All lots have or will have city water and paved streets. Ranging in price from \$4,250 to \$6,000. G-120.

COUNTRY ESTATE Modern 8 room brick home. The house has a spacious living, dining room, combination kitchen and also a large kitchen downstairs and 3 bedrooms, and a bath upstairs. The house has a full basement, storm doors and windows, brick fireplace and a large front and back porch. In addition to the house there is a barn and crib combination and a large stock barn plus machinery shed and other miscellaneous buildings. Be a gentleman farmer for only \$47,500. I-155.

5 ROOM FRAME HOUSE: The house is only three years old. It has 3 bedrooms, living room, kitchen and full bath. The house is carpeted and paneled throughout and it has total electric, appliances and all with the house.

58 ACRE FARM On Lincoln and Rockcastle County Line, on Bryant Road, near Bowling Ridge. The farm has approx. 24 acres cropland and 1127 lbs. of tobacco base. This farm has a good stock and tobacco barn out, and an older house which is in need of some repairs. Be a farmer for only \$29,500. G-111.

BUSINESS OPPORTUNITY 28x60 Grocery Store Building With equipment near Rockcastle County High School. Excellent potential for someone willing to work and likes to make money. Lot measures 129x254. Priced reasonably at only \$37,500. C-25.

REDUCED TO SELL! 9 Acres bottomland on the Rockcastle River near the Jackson County Line. This tract has 1400 feet of road frontage and is priced at only \$4,200. G-115.

COUNTRY ESTATE Containing 2 1/2 acres, 4 miles South of Crab Orchard, Ky. Modern brick home with finished basement. The house is surrounded by trees. Large garage and workshop combination, city water and a bargain at only \$38,500. B-7.

NEW LISTING 4 ACRES Located on the Chapel Gap Road. Most of the farm is cropland and is improved with a 38x50 stock and tobacco barn, 438 lbs. tobacco-pond, 3 wells, and a creek furnish water for the property. Also, it is improved with a 3 room frame house. All this can be yours for only \$20,000. C-33.

NEW LISTING 35 Acres Unimproved land, young growing timber, possibility of coal, located in the Red Hill Section of Rockcastle County. Priced at only \$150. per acre. C-34.

LAKE LOT Woods Creek Lake, measuring approximately 162x170, only \$2,500. B-10.

ALL NEW SUBDIVISION Located on the Barnett Road, near Lake Louisville. The lots measure 1/2 acre and up and are restricted. Come in now and have first choice of these 26 fine buildings lots. Several of the lots front on a blacktop road and city water is available. Ranging from \$1500 to \$4,000. E-74.

DANDY SMALL FARM Located at Bee Lick Section of Pulaski County. The farm consists of 6 acres more or less and is improved with a lovely 6 room house, modern. The house has 2 bedrooms, living room, and large kitchen and dining room combination, bath and utility room. The house is carpeted and has carpet throughout and the exterior is of aluminum siding. In addition to the house, there is a good small barn and other miscellaneous buildings. The farm is practically all in grass, has a pond for stock water and has 310 lbs. of tobacco and can be yours for only \$36,000. I-152.

BRICK HOME-REDUCED TO SELL! Located on Hwy. 70. The house has 5 rooms, 3 bedrooms, living room, kitchen, utility room, bath and carport. It is total electric, and has washer and dryer hookups, city water and is situated on a large lot. Was priced at \$32,500, now priced at only \$30,900. I-153.

NEW LISTING-DANDY SMALL FARM Approximately 8 miles from Mt. Vernon on Highway 461. The property is improved with a 7 room two story frame house. The house has 4 rooms and a bath on the first floor and 3 rooms on the second floor. Water to the house is supplied by well but city water is available. In addition to the house, there is a 40x44 barn, store building, wash house and numerous buildings. The property has approximately 800 ft. of road frontage on Hwy. 461 and 1829 lbs. of tobacco. This can be yours for only \$31,900. C-31.


1974 BROOKWOOD MOBILE HOME Located in the Bowling Ridge Section of Rockcastle County. Situated on 4 acres land. The mobile home is total electric, has 2 bedrooms, living room, kitchen and bath. Also has a washer and dryer hookups. Water is provided to the house by a well and stock water is furnished by a pond. Priced for only \$8,900. H-134.

BUILDING LOTS Country Club Estates Subdivision. City water, Near Mt. Vernon, Ky. Only \$3,000 to \$3,500. B-9.

TRADE OR SELL! Approximately 3 year old home located in the city limits of Mt. Vernon. The five brick has 3 bedrooms, large living room, formal dining room, kitchen, 2 full baths, 1/2 basement and a one car garage. It is total electric, storm doors and windows, wall to wall carpet, city water and sewer. Owner is willing to trade or sell. B-15.

165 ACRES Undeveloped land, located approx. 5 miles Southeast of Mt. Vernon, Ky. The land has some young timber, and possibilities of coal. A bargain at only \$150 per acre. I-146.

6 LOTS: These building lots are in the Orlando Subdivision. The lots have city water available and are all good sized lots. Priced for only \$1,000 per lot. C-29.



GET NEW HOME FEVER?

LAKE LOT Woods Creek Lake, measuring approximately 162x170, only \$2,500. B-10.

MOBILE HOME AND LOT: Located at Conway, Ky. The mobile home has 3 bedrooms, living room, kitchen and this extra nice mobile home is situated on approximately 3/4 of an acre lot. It can be yours for only \$10,900.00. H-125.

LOT: A building lot in the prestigious Country-side Estates Subdivision. The lot measures approximately one acre and has city water available. Priced at only \$4,250.00. G-110.

LOT IN THE CITY LIMITS: The lot is located on Town Hill of Mt. Vernon. It would be ideal for a building or a mobile home. It also has city water and sewer available. Priced at only \$6,500. C-30.

LAKE LOTS: beautiful lots on Lake Louisville. These lots have a picnic area and the lots have electricity already supplied and would be ideal to place a mobile home. Priced at only \$7,900. I-150.

BEAUTIFUL BUILDING LOT Located in the all new Country-side Estates Subdivision. City water and trees and a real buy at only \$4,500. F-96.

A DANDY RESTRICTED LOT Located in the Happy Acres Subdivision at Maresburg, Ky. The lot has blacktop streets and city water. Priced at only \$4,250. C-24.

MOBILE HOME LOT Located on Cox Lane in Mt. Vernon, Ky. The lot measures approximately 98 x 222 has a septic tank and a mobile home hookup. Priced at only \$31,500. B-21.

PHOTO

PHONE 256-4545

WE CAN ARRANGE FINANCING FOR QUALIFIED PROSPECTS

BABY FARM 37 acre Deptwants Section of Rockcastle County. Excellent timber and lot frontage on a paved road. The net acre allotment is 100 lbs.



THE QUEEN AND HER COURT—Jennifer Gentry, bottom step, was named Homecoming Queen during half-time festivities at Friday night's Rockcastle-Estill football game. Other attendants were, from left: Joanna Hicks, Kelly Payne, Becky Telle, Addie Shackelford, Emmie Daugherty, Dee Ann Sargent, Tammy Nicely and Cindy Taylor.

Birthday Celebration

A birthday dinner was given for Mrs. Bea Bullock on October 1st. Mrs. Bullock was 74 years old. Approximately 31 people were present, including: Mr. and Mrs. Luster Bullock and Teresa of Walnut Grove, Mr. and Mrs. Walker Poynter and Vicki of Plato, Mr. and Mrs. Thurnie Bullock of Pongo, Mr. and Mrs. Jim Fletcher and Joann, Mr. and Mrs. Ellis McClure, Jeff, Tracy and John, Mr. and Mrs. Darrell Doan and Kim, Mrs. Lucy Bullock, Betty Bullock, Ricky, Tammy, Mike, Mark, Chris, Monroe Bullock, Wayne Bullock, Twilla Chaney, and Monica Taylor. Many nice gifts were received and everyone enjoyed a nice time.

Celebrate Anniversary

John and Bertha Todd Stephens, of Scaffold Camp, were honored with a picnic at the Indian Fort Theatre, Berea, on Sunday, September 24th in celebration of their 67th wedding anniversary. Several family members and friends joined with them in the celebration. Those in attendance were: Irene and

Clyde Stephens, Virgie and Ernest Cox, Gas City, Indiana, Alene and William Isaac, Bourbon County, Gertrude and Howard Stephens, Mt. Vernon; Shelby and Arthur Hawkins, Beaumont, Calif.; Donna and Tra Hicks, Battle Creek, Michigan; Kathryn, Butch and Rashel Sloan, Lexington, Cecilia Gasser, Margaret and Rose Marie Isaac, Paris; Ruby and Paul Rivers, Richmond; Alta and Johnny Anderson, Sadie and John Kuhlman, Paint Lick; Lewis, Effie, and Roger Linville, Violet and Maurie Stephens, Mary Casey, Daisy and Bill Fennell, Grace Cole Lamb, Charlie Hart, Marjorie Gadd and daughter, all of Berea, and Anne Lee and Hubert Chastain, Stephen, Joyce and Scott Bullen of Scaffold Camp. *****

NOTICE

The October meeting of the Woman's Club of Mt. Vernon will meet at the Bank of Mt. Vernon on October 24, at 7:30 p.m. The Education Committee is in charge of the program. Miss Debbie Wilson will present a program on Ky. Oral History Project and Mr. Bill James will also be present to discuss community projects. *****

You can be sure your aspiragus is fresh if it snaps when broken.

Social and Women's News
Personals

By Mrs. Geo. Burton

Mrs. Judy Thompson is a patient in the Rockcastle County Hospital. We wish her a speedy recovery.

Mr. Sherman Thompson visited his mother, Mrs. Judy Thompson in the Rockcastle County Hospital Sunday night.

Mrs. Brenda Joyce Brown and Mrs. David Brown of Eubank visited Mrs. Lona Logsdon awhile Thursday afternoon.

Floyd Stokes has been on the sick list for several days. We wish him a speedy recovery.

Mr. George York celebrated her birthday last Wednesday October 11th. We wish her many returns of the day.

Mrs. George York had the misfortune of falling and breaking her arm last Thursday. We wish her a speedy recovery.

Mr. and Mrs. George Burton visited Mr. and Mrs. Emory Martin awhile last Saturday night.

Mrs. Lula Alcorn has returned home after spending several days in the hospital.

Mrs. Shirley Cummins and children Bobby and Kristi and Mrs. Lona Logsdon were in Somerset Saturday shopping. They also visited Mr. and Mrs. John Red Bullock Saturday evening.

Mr. and Mrs. Raymond Kirby and children of Mason, Ohio spent the weekend with his parents, Mr. and Mrs. Rob Kirby.

Mr. Robert Abney had the misfortune of getting cut with a chain saw last week.

Mr. and Mrs. Robert Anglin and Nancy and Mrs. George Burton visited Mr. and Mrs. Paul K. Griffin and family awhile Sunday afternoon. Mr. Griffin is on the sick list.

Mr. and Mrs. Harrison Cook visited Mr. and Mrs. Paul K. Griffin and family awhile Saturday night.

George Burton was in Somerset Monday.

Mr. and Mrs. Robert Anglin and Nancy visited Mr. W.R. Coffey and Mrs. Lillian Anglin awhile Sunday night.

Sympathy is extended to the family of Bud Clark in their time of sorrow.

Mrs. Bennett Burton and Sheila visited Mr. and Mrs. Carol Blanton Sunday afternoon. Mrs. Blanton had the misfortune of falling recently and hurting her head. Other visitors Sunday were Mr. and Mrs. Hershel Watson and children of Frankfort, Mr. and Mrs. Walter Cash of Brodhead, and Mr. and Mrs. Earl Blanton and children of Brodhead.

Mrs. Mildred Hunt fell and hurt her

foot recently and has been off work for several days.

Mrs. Leila Stokes has been vacationing in Florida for several days. Sympathy is extended to the family of Mr. Ernest Wallen of Brodhead in their time of sorrow.

Mr. and Mrs. W.B. Newberry, Aiken, S.C. visited her parents Mr. and Mrs. John W. Griffin last week. The Newberry's and family also visited Mr. and Mrs. O.L. Oliver and Mr. and Mrs. Danny Coldan and Chris at Mt. Sterling and Mr. John Oliver in Lexington.

Mr. and Mrs. Willie Nicely spent the weekend in Tennessee with their daughter, Mr. and Mrs. Tony Saylor and family, and had a wonderful trip.

Mrs. Lloyd Cash and Peggy were in Monticello Saturday, on business.

Much sympathy is extended to the family of Mr. Wilkie Bradley.

Mrs. Katie Renner and children visited with her parents, Mr. and Mrs. Willie Nicely, recently.

Home Line

By Cheryl Witt

Smoke Detectors Can Save Your Life

Use smoke detectors to safeguard your home. They can save the death loss from residential fires by 50 percent. Most fatal residential fires occur at night, while the family is asleep. Placing your smoke detector in a strategic place will allow your sleeping family time to wake up and escape to safety.

There are two commonly used types of smoke detectors, the ionization type and the photoelectric. Ionization detectors sense small, invisible particles of smoke fastest.

They are most sensitive to flaming fires. Photoelectric detectors detect smoky, smoldering fires fastest. These fires produce large visible particles of smoke.

Since most fires produce both sizes of smoke, both detectors, if you install and maintain them properly, will provide adequate protection to you and your family.

Smoke detectors can be powered by battery or house current. The photoelectric detectors are usually connected to the house current while the ionization type normally is battery operated. If the power goes off at your house, the house current models will not provide protection.

A battery's protection is continuous, but you must replace the batteries periodically. Some detectors require special batteries, that may be hard to

find. Battery operated models usually cost a few dollars more than the house current models.

Only buy units that are Underwriter's Laboratory full approved. This assures you the unit has met quality, sensitivity and safety requirements, in tests conducted by "an independent laboratory."

Every smoke detector has a rating of its sensitivity to smoke; the lower the number the more sensitive.

Select a detector with a sensitivity rating of 2.0-2.5. Any detector with a rating below 2.0 will be prone to nuisance alarms. Any rating over 4.0 may react too slowly to warn your family in time.

Regular maintenance and testing of your smoke detector is essential. Follow the maintenance procedures outlined in your detector's manual. Keep the unit free of dust, dirt and insects. These can lead to false alarm or malfunctions of the detector. Test your detector at least once a month, and clean it twice a year.

Install a smoke detector on every level of your house or provide the best all-around detector in the hallway outside each sleeping area. Locate the detector close enough to the bedrooms so that the alarm can be heard with the bedroom door closed. When installing the detector, follow the manufacturer's instructions.

FREE
11 x 14 Family Group Portrait
in Living Color

- Highest of Quality
- Full Selection of Proofs
- LIMITS:
- One per family
- Family Groups

Pick up your FREE coupon Now

• Compliments of:

Sears Store
The House Cafe
Robinson Style Shop
Mt. Vernon Bargain Store
McBee Dept. Store

Shivel's Army Store
Jess Cummin's Groc.
Jim's Dollar Discount
Montgomery Ward

Studio Location
Mt. Villa Motel

Photo Date
Wed., Oct. 25th

Studio Hours
12 noon to 7 p.m.

Christmas LAYAWAY SALE

Men's Unlined Blue Jean Jackets ea. \$10

PILLOWS \$2 ea.

Washcloths and Dish Cloths 4/\$1.00

1 rack LADIES' & CHILDREN'S SHOES \$1.00

LADIES SLIPPERS \$7.00 pr.

Ladies' SWEATERS \$4.00

Sheet Blankets 2/\$7.00

One Table LADIES' SLACKS \$4.00

NOW IN PROGRESS at Jim's Dollar Discount

Thermal Socks 6 pr. \$5

Polyester Material yd.

Boys' Hi-Top Tennis Shoes \$3.99 pr.

6 ft. RUNNER \$4

Ladies' SHORT COATS \$10 ea.

Quilting Material \$1.00 yd.

AVOID THE CHRISTMAS RUSH LAYAWAY GIFTS NOW

HOUSE COATS, GOWNS & HOUSE SHOES

Rocket & Red Devil SWEAT SHIRTS

Girls' Dresses

BOOTS For The Entire Family

Winter Boots

Dishes Lamps Bedspreads

Caps & Gloves

Ladies' Pant Suits & Dresses

JACKETS For Men and Boys

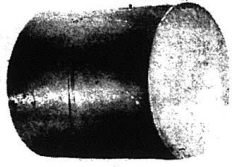
Main St. JIM'S DOLLAR DISCOUNT Mt. Vernon

CLAYTON HAMMOND'S SUPERMARKET

HIGHWAY 461
The Somerset Road

"HOME OF BARGAINS"

Prices Good June 1-7



1 lb. pkg.
Field's

Bologna

99¢



1 lb.
Armour Star
Sausage

89¢



1 lb. pkg.
Field's
Dinner
Franks

99¢

Fischer's
Braunschweiger

lb. 69¢

Armour Star
Smoked Jowl
in the piece

Fresh Pork Neck Bones
39¢ lb.
79¢ lb.

Fresh
Chicken
Livers 79¢ lb.

Fresh
Beef Stew
Chunks \$1.39 lb.

Wagon

Orange Drink
54 oz. jar

69¢



1 lb. ZESTA CRACKERS

59¢

Borden's

Country Store

28 oz. box

instant Potatoes

\$1.29

STOKELY BEANS 3/\$1.00

STOKELY APPLESAUCE 3/\$1.00

STOKELY GOLDEN CORN 3/\$1.00

Blue Bonnett
Margarine

1 lb. quarters 55¢

Pringles

Twin Pack

79¢

Jiffy
Cake Mixes or Jiffy Frostings

4 boxes \$1

Clean Scene

Paper

Towels

roll 49¢



Star Kist

Tuna

79¢

Swiftning

3 lb. can
Shortening

\$1.49

VAN CAMP PORK & BEANS 300 SIZE 3 FOR 98

Bonus

Soap Powder

Giant Size

\$1.59

Tray Pack

Tomatoes

49¢

PRODUCE

Grade A

Medium

EGGS

dozen

59¢

Carrots

2 pkg.

49¢

3 lb. Bag

Apples

all varieties

79¢



Miracle Whip Salad Dressing

quart

\$1.09

25 lb. bag
Martha White

Flour

\$3.98

25 lb. bag

Martha White

Meal

\$3.98

Duncan Hines
Oatmeal, Sugar,
Or Peanut Butter

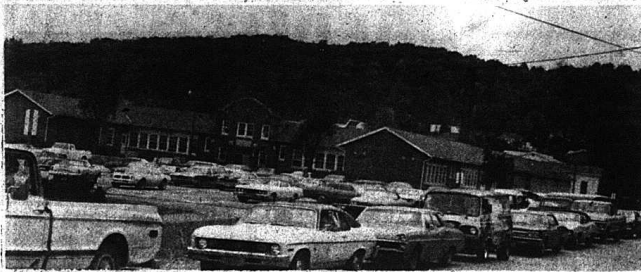
box

Cookie Mix 89¢

CLAYTON HAMMOND OIL CO.

FINEST QUALITY HEATING OILS - PROMPT EFFICIENT SERVICE

Call 256-4100 or 256-4145



It happens every day: a 3 o'clock traffic jam on School Street. It may be unnecessary, according to Mt. Vernon Elementary School officials, who are experimenting with some rules that may "un-jam" this traffic.

MVES Hoping To Alleviate Traffic Jams With New System

There is a traffic jam every day at Mt. Vernon Elementary School, as cars line up one by one to pick up each child individually at the door. School Street is bumper to bumper as the cars and buses make their way out of the crowded lot.

Buford Parkerson, principal of the school, wants to eliminate the confusion by asking parents to cooperate with these rules:

1. Parents should not come to school before 2:45 p.m. The children are not dismissed until 3 p.m., unless with special permission.
2. All drivers should follow the white arrows in the parking lot and park within the marked spaces.
3. Allow the children to meet you at your parking space in the lot.
4. If at any time a parent needs to leave his car and enter the building, please park in the marked spaces.
5. Watch out for children at all times.

Mr. Parkerson said that he thought following the arrows in the parking lot would, in itself, eliminate much of the

confusion. He said that he was grateful for cooperation for parents with this problem, and wanted to thank them for their help.

He said that he thought maybe a list could be saved by this kind of cooperation.



Randall McFerron, son of Gerassi and Lucille McFerron of Mt. Vernon, celebrated his 5th birthday, October 13th. Grandparents are Nona McFerron and Fannie Potts.

Parkerson and New Named To Coal Board

Buford Parkerson of Brodhead and Delbert New of Livingston have been appointed to the Coal Severance Economic Aid Board for terms that expire June 30, 1978.

The board makes recommendations to the state as to how Rockcastle County's share of coal severance tax money should be spent. Each county has such a board, whose members are appointed by Gov. Julian Carroll.

Dix River Board of Realtors Meet

The Dix River Board of Realtors met for their monthly meeting September 29th at Mt. Vernon. Members present were Roy Adams, Cecil Arnold, John Baughman, Shirley Huffman, Danny Ford, Judy Ford, Sammy Ford, Jim Gover, Lonnie Napier, C.N. Scott, Bill Napier, Holton Howard, Nancy Howard, Danny Ayres, Paul Napier and Jerry Shelton.

The Board members elected officers for 1978, and are as follows: president, John Baughman, Stanford; vice president, Roy Adams, Mt. Vernon; and secretary, Shirley Huffman, Stanford.

KSP Activity Report for September

During the month of September, the Kentucky State Police Post at London reported the following activity.

587 motorists were issued citations for moving hazardous violations.

395 motorists were issued citations for other traffic violations; 1,167 persons were issued warnings for faulty equipment and different traffic violations; 41 motorists were assisted with tourist information, breakdowns, etc.

A total of 246 traffic accidents were investigated. Of these, 177 were property damage only accidents; 67 were personal injury accidents; there were 2 fatal accidents, 114 persons were injured and 2 persons were killed.

77 motorists were arrested for driving while under the influence of intoxicants; 83 criminal investigations were made resulting in 278 criminal arrests; 28 stolen vehicles were recovered; 727 persons attended 25 safety programs conducted by the Kentucky State Police.

During the month of September the Kentucky State Police at London report the following activity for Rockcastle

County: 103 motorists were issued citations for moving hazardous violations; 45 motorists were issued citations for other traffic violations; 108 motorists were issued warnings for faulty equipment and different traffic violations; 41 motorists were assisted with tourist information, breakdowns, etc.

Nineteen total traffic accidents; were investigated, of these 13 were property damage only accidents; 6 were personal injury accidents; 11 persons were injured and none were killed.

Eleven motorists were arrested for driving while under the influence of intoxicants; 11 criminal investigations were made resulting in 57 criminal arrests; one stolen vehicle was recovered.

274 persons attended 8 safety programs conducted by the Kentucky State Police.

Gustave Eiffel, who built the Eiffel Tower, also designed the right arm of the Statue of Liberty.

APPOINTMENTS

Betty Ann Miller, Marguerite Harris, Elizabeth Venable and Ike Adams have been appointed to study groups of the Governor's Task Force on Welfare Reform, according to the office of Gov. Julian Carroll.

The appointments are as follows: Ms. Harris, Food Stamp committee; Ms. Miller, Juvenile and Youth Services; Ms. Venable, AFDC-COPE programs; and Mr. Adams, Employment.

GOODS FOR NEEDY

Mrs. Pansy McCay has announced that on Saturday, October 21st (this Saturday), at 10 a.m. a truck will arrive from Lohisville, at the Renfro Valley Barn.

The truck will be loaded with clothing, household items, some furniture, new shoes, toys, new blankets and other bed clothing, and many other items.

These items will be given to needy persons at that time under the direction of Mrs. McCay.

The Mt. Vernon Signal Thursday, October 19, 1978 P-7

Southern States

PARADE OF WINTER AUTOMOTIVE VALUES

on tires, batteries, accessories

Maintenance-Free "60" BATTERIES

Special \$42⁹⁵ plus exchange

MAINTENANCE FREE

CO-OP Cargo Carrier

for RV's, pick-ups, and vans

Special \$49⁹⁵ plus \$3.24 FET

SIZE	PRICE REDUCED TO	PLUS FET
H78-15 6-ply whitewall tubeless	\$51.95	\$3.49
L78-16 8-ply whitewall tubeless	59.95	4.24

78-series heavy service tires. Wide, deep tread. Excellent skid resistance.

CO-OP REDI-GRIP SNOW & MUD TIRES

Special AS \$27⁹⁵ plus \$1.82 FET

SIZE	PRICE REDUCED TO	PLUS FET
C78-13	\$29.95	\$2.07
C78-14	29.95	2.17
E78-14	32.95	2.30
F78-14	33.95	2.44
G78-14	35.95	2.62
H78-14	38.95	2.81

WHITEWALLS

CO-OP GRIP-SPUR FARM TRUCK TIRES

Special \$41⁹⁵ plus \$3.12 FET

SIZE	PRICE REDUCED TO	PLUS FET
750-16 8-ply tubed	\$53.95	\$3.92
900-16 8-ply tubed	68.95	5.27
12-15 LT 8-ply tubeless	69.95	5.47

Excellent off road traction. Good mileage, roadability on the highway. Free mounting.

CO-OP SPD POLY PASSENGER TIRES

Special AS \$25⁹⁵ plus \$1.69 FET

SIZE	PRICE REDUCED TO	PLUS FET
B78-13	\$26.95	\$1.77
C78-13	27.95	1.90
C78-14	27.95	1.93
E78-14	28.95	2.13
F78-14	30.95	2.26
G78-14	31.95	2.42
H78-14	33.95	2.60

Outstanding mileage, durability, road control. Rugged 4-ply construction. Luxuriously smooth-ride. Free mounting.

Extra Heavy Duty "48" BATTERIES

Special \$33⁹⁵ plus exchange

Start better, finish richer. These reliable performers have extra plates for extra power, longevity (EHD-1, EHD-22F, EHD-24, EHD-24F, EHD-27, EHD-74.)

ABSOLUTE AUCTION

of

Mr. and Mrs. Chester McFerron's

3 Bedroom House and Lot and Extra Lot

Sat., October 28, 1978 10:30 a.m.

TOTAL ACRES 30.4C

LOCATED: Just 3 miles from Mt. Vernon or 3 miles from Brodhead. Turn off Highway 126 (Brodhead-Mt. Vernon Road) onto the Rigby Road and go 1 mile to the Barnett Road. Turn onto the Barnett Road and proceed 3/10 mile. Follow auction signs leading to the sale.

Mr. and Mrs. McFerron are in the process of building a new house and have contracted our firm to sell their house at absolute auction.

The five room frame house has three bedrooms, spacious living room and kitchen. The house also has a half basement, wall to wall carpet throughout, paneling, masonite siding, city water, and wired for electric stove. The house is situated on a lot containing .44 acre with 215 feet frontage on the Barnett Road.

The extra building lot contains .46 acre, with 453 feet frontage on Barnett Road and has city water.

The house and lot will be sold separate from the extra lot and then combined, selling whichever reflects the highest returns for the sellers.

If you are in the market for a house, either as investment property or to live in, at your own price, then mark your calendar to attend this most important sale.

TERMS: 20% down day of sale, balance on or before 30 days upon delivery of deed.

For additional information contact, Mr. and Mrs. McFerron at the property or the selling agent.

LAWRENCE AUCTION & REALTY

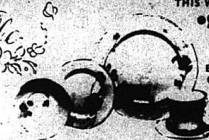
Col. Wendell Lawrence

REALTOR AND AUCTIONEER Phone 758-6115

PIC-PAC

Annabelle
FINE IMPORTED PORCELAIN CHINA DINNERWARE

THIS WEEK'S FEATURE:
SAUCER
EACH ONLY **89¢**
With a \$3.00 purchase START YOUR SET TODAY



QUALITY STAMPS
100 FREE
WITH THE PURCHASE OF 32 OZ. JOY
DISH LIQUID
32¢ OFF LABEL AT REG. COST
Limit 1 With This Coupon. Good Thru Oct. 21, 1978. Valid At Pic-Pac.

QUALITY STAMPS
100 FREE
WITH THE PURCHASE OF 4 OZ. LOTION
JERGEN'S
AT REG. COST
Limit 1 With This Coupon. Good Thru Oct. 21, 1978. Valid At Pic-Pac.

QUALITY STAMPS
100 FREE
WITH THE PURCHASE OF 1 GALL. OF APPLE CIDER
INDIAN SUMMER
AT REG. COST
Limit 1 With This Coupon. Good Thru Oct. 21, 1978. Valid At Pic-Pac.

QUALITY STAMPS
100 FREE
WITH THE PURCHASE OF 3 LB. OR MORE GROUND BEEF
AT REG. COST
Limit 1 With This Coupon. Good Thru Oct. 21, 1978. Valid At Pic-Pac.

meat:
CHUCK ROAST
U.S.D.A. CHOICE "THE BUTCHER'S PRIDE"
89¢ LB.



COUNTRY HAM
CLIFTY FARM WHOLE OR HANK HALF LB.
\$1.79

SLICED BACON
FISHER'S MELLWOOD 10 OZ. PKG.
\$1.49

PORK ROAST
ARMOUR VERIBEST BOSTON BUTT STYLE LB.
\$1.09

SHOULDER ROAST
U.S.D.A. CHOICE ALSO ENGLISH ROAST LB.
\$1.09

STRIP STEAK
U.S.D.A. CHOICE BONELESS LB.
\$3.19

CHUCK STEAK
U.S.D.A. CHOICE LB.
99¢

GROUND CHUCK
FRESH LEAN LB.
\$1.19

LUNCHEON MEAT
ARMOUR SPICED 2 LB. CAN
\$2.69

COUNTRY HAM
CLIFTY FARM BUTT HALF LB.
\$1.89


HAM SLICES
CLIFTY FARM COUNTRY 12 OZ. PKG.
\$2.39

CHIPPED MEATS
HYDE PARK ASSORTED 3 OZ. PKG.
45¢

PORK STEAK
FRESH LB.
\$1.29

WELCOME FOOD STAMPS

PAPER TOWELS
HYDE PARK
3 \$1
JUMBO ROLLS



SLICED PEACHES
SAV-SUM YELLOW CLING
2 \$1
19 OZ. CANS



MIRACLE WHIP
KRAFT SALAD DRESSING
79¢
32 OZ. JAR
LIMIT 1 WITH COUPON



LAUNDRY DETERGENT
CHEER
99¢
49 OZ. BOX
LIMIT 1 WITH COUPON



WAGNER'S FRUIT DRINKS
ORANGE, L.O.-CAL ORANGE, OR GRAPE
59¢
34 OZ. BTL.

FREZZER QUEEN MEAT ENTREES
ASST. VARIETIES
\$1.19
2 LB. PKG.

ZISTA SALTINE CRACKERS
2 \$1
1 LB. BOXES

grocery:
DRISSING
KRAFT ITALIAN 8 OZ. BTL. **59¢**

SALMON
PRELATE 16 OZ. CAN **\$1.59**

PINTO BEANS
HYDE PARK 2 LB. BAG **59¢**

CHICKEN NOODLE SOUP
CAMPBELL'S 16.7 OZ. CANS **4 89¢**

CHEESE WHIZ
KRAFT PLAIN 16 OZ. JAR **\$1.79**

POPCORN
POPSRITE WHITE 2 LB. PKG. **69¢**

POPCORN
POPSRITE YELLOW 2 LB. PKG. **69¢**

PEANUT BUTTER
JIF CREAMY OR CRUNCHY 18 OZ. JAR **\$1.03**

produce:
POTATOES
ROGER'S U.S. NO. 1 IDAHO 10 LB. BAG **\$1.29**

APPLES
RED OR GOLDEN DELICIOUS ALSO JONATHAN 3 LB. BAG **79¢**

GRAPES
RED EMPEROR LB. **59¢**

TOMATOES
FRESH RED LB. **49¢**

BROCCOLI
FRESH TENDER BUNCH **39¢**

CARROTS
FRESH CRISP 3 1 LB. PKGS. **\$1**

PEANUTS
FISHER'S SALTED ROASTED 12 OZ. PKG. **89¢**

dairy & frozen:
PIZZA
CHEF BOY-AR-DEE 14 OZ. 4 VARIETIES PKG. **98¢**



MARGARINE
KRAFT MIRACLE (6 STICK) 1 LB. PKG. **59¢**

BISCUITS
PILLSBURY COUNTRY STYLE OR BUTTERMILK 6 CT. 79¢

COLDY CHEESE
KRAFT HALF MOON SLICED 10 OZ. PKG. **\$1.29**

FROZEN ENTREES
SWANSON CHICKEN OR TURKEY 7 OZ. ALSO CHICKEN NIBBLES PKG. **69¢**

FISH STICKS
BOOTH FROZEN 16 OZ. PKG. **\$1.59**

FRENCH FRIES
HYDE PARK CRINKLE-CUT 5 LB. PKG. **\$1.69**

grocery:
FUDGE STRIPES
KEEBLER ALSO DELUXE 11 1/4 OZ. GRAHAMS PKG. **89¢**

MARSHMALLOWS
KRAFT JET-PUFFED 16 OZ. PKG. **59¢**

DOG FOOD
CHATHAM CHUNK OR REG. BAG 25 LB. **\$2.99**

KOTEX
REGULAR OR SUPER 30 CT. PKG. **\$2.19**

TRASH BAGS
GLAD 20 CT. PKG. **\$1.99**

PRE-WASH
SHOUT 12 OZ. CAN **\$1.09**

AIR FRESHENERS
GLADE SOLID ASSORTED 7 OZ. PKGS. **\$1.29**

POP TARTS
KELLOGG'S ALL VARIETIES 11 OZ. BOX **59¢**

COUPON 10-0
KRAFT
MIRACLE WHIP
32 OZ. JAR **79¢**
Limit 1 With This Coupon. Valid At Pic-Pac Thru Oct. 21, 1978.

COUPON 10-0
CHEER
LAUNDRY DETERGENT
49 OZ. BOX **99¢**
Limit 1 With This Coupon. Valid At Pic-Pac Thru Oct. 21, 1978.

PIC-PAC SUPERMARKETS
KING'S PIC-PAC MT. VERNON, KY.
PRICES GOOD THRU OCTOBER 21, 1978
Quantity Rights Reserved

"DISPATCH"
(Cont. From Front)

Justice Planner with the Kentucky Crime Council, central dispatch systems have improved police communications in many counties.

"It cuts down on duplication of

service," she said. Sometimes when people need a policeman, they call the city police, the Sheriff and the state troopers. Under the new system, the central dispatcher keeps track of where police are at all times, so that proper help can be dispatched immediately.

The city, county, and the Sheriff

first applied for the federal grant when the three entered an agreement August 1. Under this contract, a supervisory board consisting of Judge Thacker, Mt. Vernon Mayor Roland Mullins, Sheriff Anhey, and three members each of the Fiscal Court and City Council control the Central District's policies, and the hiring and firing of its operators. Each agrees to pay \$500 per year to maintain the system.

"ROCKETS"
(Cont. Front Page - 2nd Section)

defense for a measurement, ruled it a first down. Estill then recovered their own fumble on the next play and, on the next play, with 4:18 remaining in the fourth quarter, Anderkin fell on a Estill fumble and it was the Rockets' ball on their own 12 yard line. The Rockets then advanced all the way to the Engineers' twenty-yard line before running out of time.

"WILD RIVERS"
(Cont. From Front)

Mr. Hogg said.

"We will in no way try to acquire any lands," he said.

"The idea is to keep the area as wilderness so that people 100 years from now can see what the area was like 100 years ago," he said.

Mr. Hogg said he has a 45-minute program with slides showing boundaries, watersheds and scenic views of the rivers, and an explanation of the law. He said he would be happy to show it to Rockcastle County if a group of interested people contact him at (502) 564-3980, in Frankfort.

Other rivers protected under the law include Cumberland River, Red River, Little South Fork of the Cumberland, Martin's Fork, Big South Fork, Rock Creek, and the Green River.

There is also a federal law called the Wild and Scenic Rivers which protects nineteen rivers, including the Rio Grande, the Chattahoochee, and the Missouri. None are in Kentucky, but the Red River is being studied as a possible addition to the federal system.

"Breath of Life"
Campaign is Oct. 21

"Millions of lung-damaged children need your help to find a cure and control for Cystic Fibrosis, the most serious genetic disease of children," said Mrs. Sandy Dowell, Chairman of the "Breath of Life" Campaign in Mt. Vernon which will take place this Saturday, October 21st.

Presently there is no known cure for Cystic Fibrosis, a genetic disease which clogs the lungs causing breathing difficulty and other disorders. The average life expectancy of a Cystic Fibrosis victim is 14 years.

The Cystic Fibrosis Foundation funds more than 110 diagnostic and treatment centers nationwide. The Foundation also supports research through grants and fellowship made to scientists committing themselves to studies related to Cystic Fibrosis.

In the past, each year of research towards a cure of Cystic Fibrosis has increased the average life expectancy of Cystic Fibrosis victims by an additional year.

"The money raised from the "Breath of Life" Campaign will go towards funding more than 110 Cystic Fibrosis Centers and Cystic Fibrosis research," said Mrs. Dowell.

So when a volunteer comes to your door on Saturday, October 21st, for the "Breath of Life" campaign for Cystic Fibrosis, give your support or send your

contribution directly to the area office at the Cystic Fibrosis Foundation, Room 208, 1851 Bishop Lane, Louisville, Ky. 40218.

NOTE
All 1978 tax bills have been mailed out. If you have not received your tax bill, contact the Sheriff's office, at 256-2031.

The Mt. Vernon Signal Thursday, October 19, 1978 P-9

Subscribe
to the
Signal

Cut flowers are likely to last longer if you change their water daily.

Auxiliary Equipment:	Existing Rate	Proposed Rate
Colored phones	\$25	\$25
Data coupler	14.25	14.25
Switch on coupler	.50	.50
Alarm coupler	8.25	8.25
Data system (by contract)	147.00	147.00
Switch on phone	1.00	1.00
Automatic secretary	14.75	14.75
Conference equipment	14.75	14.75
Special control circuit	10.50	10.50
Radio circuit	10.50	10.50
Mileage for radio and special circuits	6.00	6.00
First 1/4 mile	1.70	1.70
Each additional 1/4 mile	2.25	2.2
Key equipped handsets:		
One key	3.00	3.00
Two keys	3.75	3.75
Twolines, two holding keys	4.00	4.00
Bells or horns, small	1.50	1.50
Bells or horns, large	4.50	4.50
Howler	3.00	3.00
Door Bell, buzzers	1.00	3.00
Amplified handsets	1.75	1.75
Foreign listing	1.80	1.80
Extra listing	.50	.50
Unpublished number	.50	.50
Zone Charges:		
Zone 1	1.50	Delete
Zone 2	3.00	Delete
Zone 3	4.50	Delete
Zone 4	6.00	Delete
Zone 5	7.50	Delete

Rate Category	Existing Rate	Proposed Rate
Residence:		
R-1	\$9.25	\$12.50
R-4	7.00	Delete
Extensions		
Regular	1.50	1.50
Off Premises	1.80	1.80
Business		
B-1	14.00	18.50
B-4	10.50	Delete
Paystations, guaranteed	14.00	18.50
Extensions:		
Regular	2.00	2.00
Off premises	2.30	2.30
PABX, PBX	4.00	4.00
Key systems-20 keys	8.60	8.60
Key systems-6 keys	4.00	4.00
PABX, PBX-Common Equipment		
Supplied on individual basis by contract		
PABX and PBX trunks	21.00	27.75
Key Systems:		
Common equipment (large)	67.50	84.00
Common equipment (small)	16.65	21.00
Each line	14.00	18.50

A public hearing on the foregoing matters will be held before the Public Service Commission of Kentucky, in the Commission's offices located at 730 Schenck Lane, Frankfort, Kentucky on November 10, 1978, at 1:30 p.m., Eastern Standard Time, or as soon thereafter as same may be held in the proceedings of the Commission.

Peoples Rural Telephone Cooperative Corporation
McKee, Ky.
By Charley Gray, General Manager

SEE US BEFORE YOU BUY A CAR!

or Truck

Cars

- 1978 Buick Regal Limited, V8, Auto, PS/PB, Air, Tilt, Cruise, Chrome Wheels, less than 7,000 mi.
- 1977 Chev. Nova, V8, Auto., PS/PB, Air, 19,000 miles
- 1977 Chevrolet Impala, V8, Auto, PS/PB, Air, V.R.
- 1977 Chev. Monte Carlo, V8, Auto, PS/PB, Air
- 1977 Chevrolet Monte Carlo, V8, Auto, PS/PB, Air, Tilt Wheel, Cruise, AM/FM, V.R.
- 1977 Chevrolet Camara, V8, Auto, PS/PB, Air, Rally Wheels, Bucket Seats, Red
- 1977 Cadillac Coupe DeVille, Fully Eq'd, Silver
- 1976 Pinto Wagon, V6, Auto, Air
- 1976 Chrysler Cordoba, V8, Auto, PS/PB, Air, Cruise, Full V.R.
- 1976 Plymouth Valiant, 4 Dr., Auto., V8, Air, P.S., Cruise, V.R.
- 1976 Buick Century, V6, Auto, PS/PB, Air, V.R.
- 1975 Ford Elite, V8, Auto, PS/PB, Air, AM/FM Stereo, V.R.
- 1974 Chevrolet Caprice Classic, V8, Auto, P.S./P.B., Air, Cruise, Tape Deck
- 1974 Olds Cutlass, V8, Auto, PS/PB, Air, V.R.
- 1974 Pontiac Gran Prix, Auto, PS/PB, Air, V.R.
- 1973 Plymouth Duster, V8, 3 Speed
- 1973 Plymouth Grand Fury
- 1972 Olds Cutlass, V8, Auto, P.S., Air
- 1972 Pontiac Catalina, V8, Auto, P.S., Air
- 1971 Subaru

Trucks

- 1979 Chevrolet C-10 Scottsdale, 4x4, V8, 400, Auto, PS/PB, Sliding rear window, positive Traction
- 1979 Chevrolet C-20, 4x4, V8, Auto, PS/PB
- 2-1979 Ford F-150, V8, 4x4, 351, PS/PB, Air, Postive Traction, Front and Rear lock-in, lock-out hubs
- 1978 Chev. C-10, 6 Cyl., PS/PB, 3 Speed
- 1976 Chev. C-10, 4 Wheel Drive, V8, Auto, PS/PB
- 1976 Chev. C-10, V8, Auto, PS/PB
- 1976 Chev. Scottsdale, C-10, 6 Cyl., Auto, Air, Short Bed, Very Nice
- 1974 Chev., C-10, V8, Auto, PS/PB
- 1972 GMC, V8, 3 Speed
- 1970 Chevrolet C-10, V8, 3 Speed

BURR HILL AUTO SALES

U.S. 25 South Mt. Vernon
Clayton Howard 256-2223 Charles Wyan



Energy Is Too Precious To Waste

Yet, it's being done all the time, in every neighborhood across the country. Saving energy can be easy with a little forethought.

ONE SIMPLE EXAMPLE: The next time you settle down in your easy chair to read the newspaper, think twice about switching on the television or stereo.

Reading about last night's council meeting while watching your favorite television program requires plenty of concentration, besides using a lot of precious energy.

Enjoy electricity throughout your home. But use it sensibly. You'll be saving yourself money, and all of us — electricity for tomorrow.

Jackson County Rural Electric Cooperative
MCKEE, KENTUCKY
Phone (606) 287-7181
Toll Free 800 (606) 282-7480

TOOL ACTION

October 24, 1978 - 7 p.m.

LOCATED ON US 25 IN THE BIG RED BARN, RENFRO VALLEY KY.

<ul style="list-style-type: none"> Air Impact Wrenches. 3/8-1/2/3/4" 1" Electric impact wrenches Hand power saws, 7 1/2-7 1/4" Saber saws Orbital sanders Belt type sanders Disk Grinders and Buffers Electric drills (all sizes) Air power chisel, drills & sanders Bench vises (large and small) Hydraulic jacks Large grinders Large assortment of socket sets Sizes - 1/4, 3/8, 1/2, 3/4 Extension cords Hedge trimming tools Plumbing tools Tap & Die sets Drill bit sets Tool boxes (all sizes) Air hoses Torch hoses Screwdriver sets 	<ul style="list-style-type: none"> Table saws Transistor radios Glassware Stereo Units Carpenter's Tools Metric socket set Metric wrenches Open end - Box end Tap and die sets, standard Flow jacks Router Reciprocating saws Adjustable wrench Channel lock wrenches Nutbreaker sets Knife sets Impact sockets, 1/2 - 3/4 Torque wrenches Pipe wrenches Fire extinguishers Easy outs Allen wrenches Small appliances Drop cords 	<ul style="list-style-type: none"> Cable power pulls Universal socket sets Chain saws Cookware Wheel goods Drill press Channellock tools Hand tools (hammer, pliers) Measurement tapes Hacksaws Hacksaw blades Creepers Trouble lights Yard lights Portable type air compressor Roll around tool boxes Open and boxed end wrenches Electric soldering kits Electrical tape Truck tarps Trailer hitches Battery chargers Sandpaper
--	--	--

Plus other items too numerous to mention. All items are new and guaranteed by factory warranty. They can be inspected after 5:30 p.m., day of sale.

TERMS: Cash or Good Check with Proper ID. Concessions Available.

ANNOUNCEMENTS DAY OF SALE TAKE PRECEDENCE OVER WRITTEN MATERIAL

NOT RESPONSIBLE FOR ACCIDENTS OR CHANGES DUE TO SHIPPING SCHEDULES.

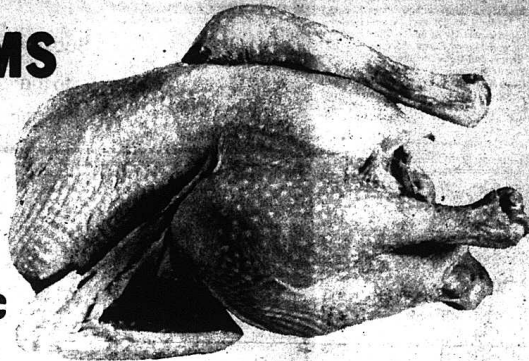
FOR ADDITIONAL INFORMATION, CONTACT:

LAWRENCE AUCTION & REALTY
Col. Wendell Lawrence
REALTOR AND AUCTIONEER
Brodhead, Ky. Phone 758-8115

ARMOUR CANNED HAMS



3 lb. Can **\$5.69**



FRESH WHOLE FRYERS

47¢

LIMIT FOUR WITH \$10.00 ORDER

SPACE AGE BACON ^{1 lb. pk.} **69¢**

Fields Pro-Leager

WEINERS ^{12 oz.} **99¢**

Cut-up Split Breast ^{LB.} **57¢** ^{LB.} **\$1.09**

WISK DETERGENT ^{32 oz. Bottle} **\$1.19**

PEBBLES ^{Cocoa, or Fruity 11 oz. Box} CEREAL **89¢**

HY TOP APPLESAUCE ^{303 Can} **3/1.00**

Prices Effective October 19 Through October 22

We Gladly Accept Food Stamps

HY TOP PEACHES ^{Sliced or Halves 303 Can} **2/89¢**

JEFFY CAKE MIX ^{9 oz. Box 4 Varieties} **4/1.00**

FINAL TOUCH FABRIC SOFTENER ^{64 oz. Bottle} **\$1.69**

MRS. BUTTERWORTH SYRUP ^{24 oz. Bottle} **99¢**

HY TOP SALTINE CRACKERS ^{1 lb. Box} **59¢**

JEFFY FROSTINGS ^{7 1/2 oz. Box 3 Varieties} **4/1.00**

HY TOP VEGETABLE BEEF SOUP ^{18 oz. Can} **2/61¢**

NABISCO OREO COOKIES ^{15 oz. Package} **99¢**

WHEATIES CEREAL ^{18 oz. Box} **99¢**

HY TOP BLEACH ^{1 gal. Jug} **59¢**

SANKA COFFEE ^{1 lb. Can} **\$3.19**

CHARMIN TOILET TISSUE ^{6 Roll Package} **\$1.19**

Produce Specials

Prices Effective October 19 Through October 25



We Gladly Accept Food Stamps

MICHIGAN CARROTS **2/49¢**

POTATOES ^{20 lb.} **\$1.29**

VINE RIPE TOMATOES ^{LB.} **39¢** GOLDEN RIPE BANANAS ^{5 lbs.} **\$1.00**

SANKA INSTANT COFFEE ^{4 oz. Jar} **\$2.59**

THICK & THIRSTY PAPER TOWELS ^{2 Roll Package} **69¢**

CHEF BOY AR DEE SPAGHETTI SAUCE ^{16 oz. Jar} **69¢**

PHIE-SOL CLEANER ^{16 oz. Bottle} **89¢**

DELMONICO ELBOW MACARONI ^{or Tube Spaghetti: 16 oz. Package} **2/89¢**

RITZ CRACKERS ^{16 oz. Box} **79¢**

CHARMIN TOILET TISSUE ^{8 Roll Package} **\$1.19**

VALLEYDALE BREAKFAST BACON ^{12 oz. Package} **99¢**

SANKA COFFEE ^{1 lb. Can} **\$3.19**

MICHIGAN CARROTS ^{1 lb.} **2/49¢**

KRAFT PARKAY MARGARINE ^{1 lb. Package} **59¢**

KRAFT AMERICAN CHEESE SINGLES ^{16 oz. Package} **\$1.59**

SEA PAK FISH STICKS ^{20 oz. Package} **\$1.49**

HY TOP BISCUITS ^{Regular or Butter Blend 6 oz. Can} **6/89¢**

CHEF BOY AR DEE LITTLE PIZZA ^{Sausage or Pepperoni 4 ct. Package} **99¢**

HY TOP BLEACH ^{1 gal. Jug} **59¢**

8 Pak Carton

COKE, SPRITE or TAB

\$1.19

plus bottles or deposit



SUPERIOR Food Markets

Symbol Of Quality

U.S. 25 South Mt. Vernon





Announcing a New Way to



Subscribe to

Mount Vernon Signal

Get S & H Green Stamps by Subscribing
or Renewing your Subscription Now!

300 FREE
S & H GREEN STAMPS

*With Each
NEW
Subscription*

(In County Only)

200 FREE
S & H GREEN STAMPS
With Each One Year Renewal

500 FREE
S & H GREEN STAMPS
*With Each 2 Year
Renewal or New*

(In County Only)

**SPECIAL BONUS
OFFER**

*When You Subscribe or
Renew For 3 Years You Get*

1000 FREE
S & H GREEN
STAMPS

(In County Only)

You must bring Coupon in to receive Free Stamps.



LIMITED TIME OFFER

Subscription Rates

\$6⁰⁰ per year in Rockcastle County

\$7⁵⁰ per year Outside County

(Includes Sales Tax & Handling)

COUPON

The Mt. Vernon Signal

P.O. Box 185 Mt. Vernon, Ky. 40456

Name _____

Address _____

City _____ State _____

Zip _____ Tele. No. _____

Please Check

New Renewal

_____ No. of Years \$ _____ Amount _____

FREE STAMP COUPON



GET THE FINEST GIFTS WITH THE FINEST STAMPS!



Area Deaths and Funerals

Bud Clark

Mr. Bud Clark, 86 of Cimox, passed away after an illness, Friday, October 13, at the Veterans Hospital in Lexington. He was born in Rockcastle Co. on November 3, 1891, the son of the late Thomas and Nettie McGuire Clark and was a retired farmer, a veteran of World War I and a member of the Primitive Baptist Church.

He is survived by: one brother, Dewey Clark of Cimox, and a host of nieces and nephews.

Funeral services were held Sunday, October 15, at 2:00 p.m. at the Dowell & Martin Funeral Home by Rev. Steve Castell. Burial was in the Clark Cemetery at Cimox.

Pallbearers were Tommy Clark, Dennis Clark, Marvin McWhorter, Elwood Johnson, Frank Richards, Ralph Clark, John Clark and Nathan Clark.

Charlie Roberts

Charlie Roberts, 69 of 1404 Broadrock Blvd., Richmond, Virginia died October 7, 1978. He is survived by his wife, Mrs. Nancy Roberts, one son, Charlie G. Roberts of Atlanta, Georgia; two daughters, Thelma F. Lewis of Powhatan, Virginia and Norma Ann Lewis of Chesterfield, Virginia; two brothers, Tom Roberts of Mt. Vernon and Jim, Roberts of Brodhead; two

sisters, Mrs. Kate Doyle of Brodhead and Mrs. Ella Roberts of Liberty; eight grandchildren.

Funeral services were held Monday, October 9, at the Joseph W. Biller Funeral Home in Richmond, Virginia. Burial was in Dale Memorial Park in Richmond, Virginia.

Ernest D. Wallin

Mr. Ernest D. Wallin, 51, of Brodhead died Sunday, October 15, 1978 at his home. He was born on November 17, 1926 in Rockcastle County, the son of the late Ernest "Pete" and Elizabeth Tharp Wallin. He was a veteran of World War II.

Survivors are: one brother, Richard Albright of Charlotston, Indiana; two aunts, Mrs. Thelma Wallin of Crab Orchard and Mrs. Christine Frith of Louisville.

Funeral services were held Tuesday, October 17, at the graveside with Rev. R.C. Flynn officiating. Burial was in the Piney Grove Cemetery.

Funeral arrangements were by the Watson Funeral Home.

Viola McKinney

Mrs. Viola McKinney, 85 of Mt. Vernon passed away Monday, October 16, 1978 at the Berus Hospital after

long illness. She was born on October 1, 1893 in Rockcastle County, the daughter of the late William and Elizabeth Hanks Sowers. She was a member of the Mt. Vernon Pentecostal Church.

Survivors are: two sons, Johnny McKinney of Loveland, Ohio and Morris McKinney of Crawfordsville, Indiana; five daughters, Mrs. Ruby Estrom of London, Mrs. Virginia Alton of Seymour, Ind., Mrs. Ruthelma Smith of Crab Orchard, Mrs. Margie Eilfish of Foster, and Mrs. Marguerite Childress of Kokomo, Ind.; three brothers, Orville Sowers of Hamilton, Ohio, Andrew Sowers of Lockland, Ohio and Foster Sowers of Crawfordsville, Ind.; two sisters, Mrs. Sallie Slaverson of Liberty, Ga., and Mrs. Shelby Decker of Mt. Vernon; 66 grandchildren, 64 great grandchildren and 5 great, great grandchildren.

She was preceded in death by her husband, John F. McKinney and by one son, Orville F. McKinney.

Funeral services were held Wednesday, October 18, 1978 at the Cox Funeral Home Chapel by Bro. Charles Shovel and Bro. Lester Arnold. Burial was in the Elmwood Cemetery.

Layton Hysinger

Mr. Layton Hysinger, 76, of Mt. Vernon, passed away Tuesday, October 17th at his home. He was born in Rockcastle Co. on October 2, 1902, the son of the late William George Hysinger and Ida Livesey Hysinger and was a member of the First Baptist Church of Mt. Vernon and a retired farmer.

He is survived by: one son, William L. Hysinger of Tipp City, Ohio; three daughters, Mrs. Wathalee Brunfield of Richmond, Mrs. Barbara Hayes of Troy, Ohio, and Mrs. Wavalena Kessler of Tipp City, Ohio; one brother, Hy Hysinger of Mt. Vernon; two sisters, Mrs. Lela Hammond of Mt. Vernon and Mrs. Hazel Biddle of Louisville; and nine grandchildren.

He was preceded in death by two sisters.

Funeral services will be held Thursday, October 19 (today), at 2:00 p.m. at the Dowell & Martin Funeral Home by Rev. Raymond Rodden. Burial will follow at the Rose Hill Cemetery. Arrangements are by the Dowell & Martin Funeral Home where friends may call.

Fishing Report

While generally slow to fair fishing prevails on most of the state's 15 major lakes, anglers at some lakes are being rewarded with limits. The lake-by-lake rundown, as compiled by the Kentucky Department of Fish and Wildlife Resources:

Green: Crappie good with some limits over submerged cover and around stick ups; black bass on spinner baits and crank baits off points and over drop-offs; clear, stable, two feet below summer pool and 69 degrees.

Cumberland: black bass fair to good casting surface lures and trolling deep runners off points and deep banks; crappie fair to good still fishing minnows over submerged cover and, on the lower lake, drifting minnows over creek channel; in tallwaters, trout fair, clear, falling, 38 feet below the timberline and 68 degrees.

Herrington: black bass good with some limits early and late and at night on surface lures and artificial nightcrawlers off rocky points and banks and in inlets and bays; crappie slow over submerged cover; clear to murky, falling slowly, seven feet below summer pool and 68 degrees.

Barren: crappie fair to good over submerged cover and drop-offs, black

Former White House Advisor Predicts Dire Shortage of Oil in 80's

By Jane Kundtz

In 1984, the United States will be in a depression. There will be 20% unemployment, and poor people will be marching in the streets of Washington, D.C., because the government cannot afford to pay them welfare.

The energy crisis would have come to its full conclusion. There is no electricity in our factories. You stand in line for gasoline at \$2 a gallon. You flick a lightswitch and nothing happens.

Dr. John McKetta, a former White House advisor, predicted this at an all-day conference on energy, sponsored by four Kentucky Utility companies and held in Lexington last week. But Dr. McKetta did not think people would take him very seriously—after all, they didn't listen to him and other scientists ten years ago when they warned that the United States would be importing \$50 billion in foreign oil today. We are actually importing \$47 billion.

Dr. McKetta, an international authority on energy, said that the United States has already gone over the cliff and the best it could do is soften its fall. He said Americans have been misled by politicians and national leaders who were told what to do year after year and did not do it.

Dr. McKetta showed where 10 years ago there might have been hope to avoid a crisis in the 1980's by building

more coal and nuclear power plants. He said the scientists told national leaders to clear the way for hundreds of such plants, but that they were not built because of environmentalists and government agencies like the Environmental Protection Agency, whose rules made it impossible for business to make profits on the plants.

"We have vast quantities of energy of all kinds. But, by your own laws, the laws that have been ramrodded through Congress, you're not allowed to drill for oil, in many areas, or bring out coal, or build nuclear power plants," Dr. McKetta said.

He said there was not one bright spot in the picture, and it was too late for the United States to recover because of the time it takes to build more power plants. He said the combined use of solar geothermal energy would supply only 2% of the country's energy needs.

He said President Carter's energy plan will mean 12% unemployment by 1984, a severe recession by 1985, more imported oil, more inflation, less energy production, and not enough conservation of energy.

Americans could conserve 9% million barrels of oil by the following means: eliminate home dryers, escalators, home air conditioning, car air conditioning, and weekend driving; adopt car pools, smaller cars, mass transportation, re-refined lube oils for

cars, more home insulation and putting windows-in all new buildings. Raise the legal age to drive to 18 years, and keep the speed limit at 55 mph.

"The government could help by encouraging nuclear breeders and coal production, getting rid of catalytic mufflers, unleaded gas and forced burnin and stopping all the unnecessary regulations on energy production."

But Dr. McKetta said that even if all that were done, it is still too late to avert a catastrophe.

The presidents of four Kentucky utility companies held a press conference after Dr. McKetta's speech. Among them was William Buchanan, president of the Kentucky Utilities Company which serves Rockcastle County.

Mr. Buchanan said the price of electricity will continue to rise because the cost of producing coal will not stabilize.

"Coal is 75% of our costs," he said.

He said utility companies will have to use both nuclear and coal plants to keep up with the demand for energy. He said that governmental regulations have added one third more to the costs of the new plants.

CHRISTMAS WORKSHOP

Get ready for Christmas at a special workshop, November 30 at the Rockcastle County Library.

The workshop will feature Christmas foods, crafts, gifts, gift-wrapping and decorations. It will be taught by Homemakers Extension Agent Cheryl Witt.

Mrs. Witt said the workshop will be in "open house style" and free to anyone. It will start at 7 p.m.

STRETCHING YOUR FOOD DOLLAR

Think twice before bypassing boneless meat because of its higher price. With no excess fat in boneless meat, every bit of meat adds up to more servings from each pound, so it may be a thrifter choice, even though it costs more per pound.

FANCY THAT!

THE LATEST FIGURES SHOW THAT COLLEGE GRADUATES EXPECT TO EARN \$19,000 MORE THAN HIGH SCHOOL GRADUATES DURING THEIR WORKING CAREERS!

ONE WAY TO ACCUMULATE MONEY FOR A COLLEGE EDUCATION IS AVAILABLE TO YOUNG PEOPLE WHO ENLIST IN THE ARMED FORCES. A 36-MONTH ENLISTMENT, THE COMMITMENT WILL ALLOW THEM TO ACCUMULATE EVERY DOLLAR SAVED FOR COLLEGE OR VOCATIONAL TRAINING, UP TO A TOTAL JOINT FUND OF \$3,100!

SPEAKING WHERE THE BIBLE SPEAKS

AN INSPIRED MESSAGE FOR TODAY

Is Jesus Your Lord?

The word "Lord" means "ruler" which, of course, means simply "one who rules."

Nearly everyone uses the name "Jesus" and the designation, Lord synonymously and few religious people would deliberately use either disrespectfully. Yet many do use "Lord" in vain and even blasphemously when they while calling Jesus Lord allow Satan to rule their lives.

Many times, and concerning many religious subjects, I have heard people say, "I know the Bible says this or that but I think..." A case in point is Jesus' statement "He that believeth and is baptized shall be saved." (Mark 16:16). Countless thousands who call Him, "Lord" know that statement was made by Him and is recorded in the Bible. Nonetheless they continue to say, "I don't believe one has to be baptized to be saved." But the Lord said "he that believeth (number 1) and is baptized (number 2) shall be saved." Men say, "the that believeth is saved and should be baptized." Be honest with yourself—that what the Lord said, or is it a doctrine of man-made origins? If it did not originate with Christ, it originated with Satan; those are the only two forces in the world!

We should all learn that, in order for Jesus to be our Savior, He must also be our Lord or ruler. He will save only those "who obey Him" (Heb. 5:9). Let us not attempt to formulate our own plan of salvation, but rather allow Him to rule in this area as well as in all others (See Jeremiah 10:23 and Titus 3:5).

The Father has exalted Jesus to be both "Lord and Christ" (Acts 2:36)

Lord's Day Bible Study 7:00 a.m. Worship 10:30 a.m. Worship 7 p.m.

Wednesday Evening Bible Study 7:30 p.m.

Radio Program, WRVK, Sunday, 8:45

1979 Chevrolets and Oldsmobiles are now ON DISPLAY

at Britton Chevrolet-Olds, Inc.

U.S. 25 North 986-3169 Berea, Ky.

Dowell & Martin FUNERAL HOME

MT. VERNON, KENTUCKY



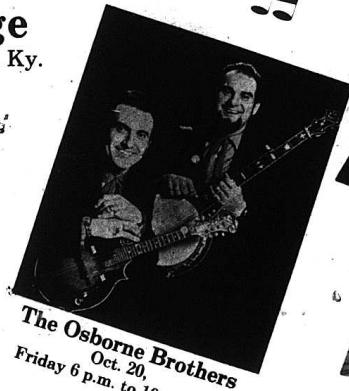
Ideal Chrysler's Stars presenting Country Jamboree

Friday & Saturday, October 20 & 21

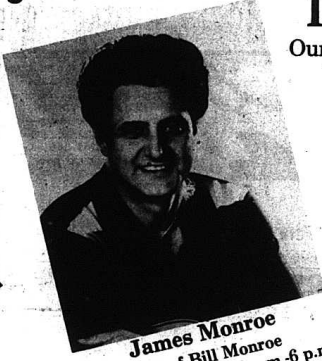
Live On Stage
Our Lot—U.S. 25—London, Ky.



Russell Brothers
Featured Both Days



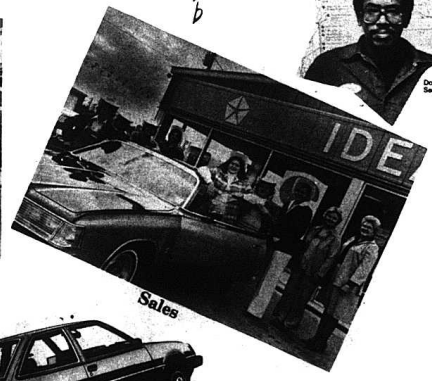
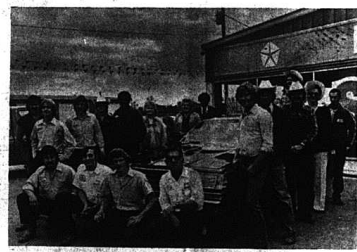
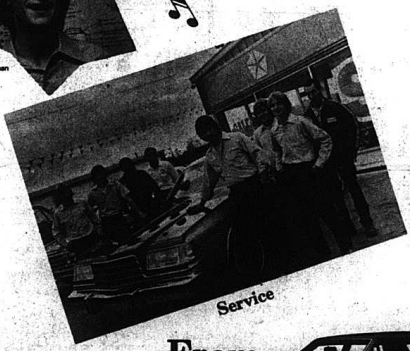
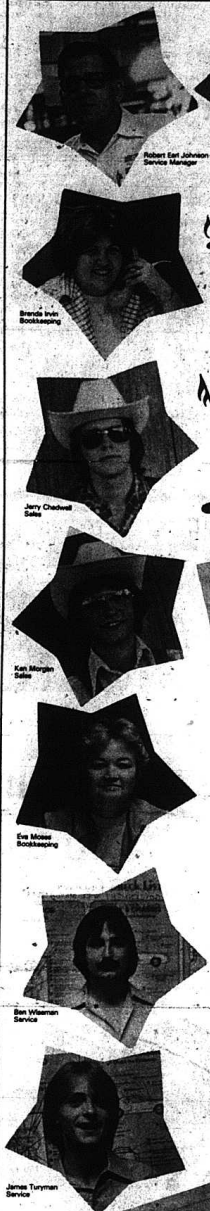
The Osborne Brothers
Oct. 20,
Friday 6 p.m. to 10 p.m.



James Monroe
Son of Bill Monroe
Oct. 21—Saturday 2 p.m.-6 p.m.

At No Charge

Your Chrysler dealer is providing entertainment galore.
In order to celebrate the 1979 model year—
Because This Year—
WE HAVE IT ALL!



The Fifth Ave.
The Most Fabulous
Chrysler of All



The Champ
Front Wheel Drive
And 45 Miles Per Gallon
Economy & More!

We Have The Car For You

We Have Service and Experience Too!
We Are Young, We Are Old, We Are One

So Join Us Cause The Best Deal Is—IDEAL

Ideal Chrysler Products, Inc.

U.S. 25 South

London, Ky.



Phone 864-4303 or 864-6115



REGISTER FOR FABULOUS DOOR PRIZES.
DRAWING HELD SATURDAY, OCTOBER 21, 5:00 p.m.



The witch that grew and lives at Mt. Vernon School. Standing next to the witch is 10-year-old Paula Eblevin. Second grade aide Juanita Davis wanted to make a witch for the bulletin board but when she projected the pattern onto the wall, it grew bigger and bigger and finally too big for the bulletin board.

County Agent's Notes

By H. Lee Durham

County Extension Agent For Agriculture

Soil Test and Treat Fields To Be Renovated Now!

Now is an excellent time to test soil and treat grass fields that you are planning to renovate this winter. Not only does heavy equipment move over fields easier now, but also applications made during fall and winter do just as well or better than those made in the spring.

So make a good soil test. Divide fields into 10-15 acre areas for sampling. Pull 10 or more samples from each of these areas, and mix these "pulls" together to make each composite sample.

Apply needed lime, phosphate and potash now. Nitrogen is not recommended in renovation this late, because grass is stimulated and crowds

the legumes in the new stand.

As soon as you get the liming and fertilizing done and the heavy top growth grazed, you are ready to tear up the sod. A disk, field tiller or cultivator are excellent tools to use.

You can renovate an old grass stand for about one third the cost of making a new seeding. You will also get top production of high quality feed from this field next year.

Beef Cattle Vitamin A Supplementation

All cattle need to receive Vitamin A during the winter feeding period; from Thanksgiving until the first day of pasture in the spring. Cows should receive approximately 30,000 I.U. per head per day. Stockers or feeders need 10,000 I.U. per head daily and cattle on a full feed fattening ration should receive 20,000 I.U. per head per day. These are minimum requirements.

If cattle are receiving additional feed, a vitamin premix can be mixed with the feed according to daily intake. If cows are on a dry roughage ration, mixing the vitamin premix in loose salt is the recommendation. Salt intake for a cow on a dry roughage ration is approximately 1/2 ounce per day. Adding Vitamin A at the rate of 60,000 I.U. per ounce of salt will suffice for the beef cow herd. Mix only what the cattle will clean up in a 7-10 day period so that intake may be checked and loss of Vitamin A will be held to a minimum.

What To Do Now

Mow the lawn and keep it leaf free to encourage bluegrass to fill in empty spots.

Plant broadleaf and needle evergreens.

Plant tulips and other spring flowering bulbs.

Plant deciduous plants when they start losing their leaves during the last part of October.

At the end of October cut roses back to 30 inches, and tie the tops to prevent wind damage.

Dig summer bulbs before the ground begins to freeze.

Check the bracing on weak-limbed trees such as Siberian Elm and Water Maple; tie and reinforce weak limbs.

Water deeply and moisten any plants likely to suffer from winds and drought. Wrap tree trunks to prevent sun scald.

Apply rodent control measures for fruits and ornamental plants.

Check Irish potatoes dug earlier in the summer, and discard any showing rot signs.

Work garden after harvest to help reduce weeds next season.

Harvest pumpkins and squash with a piece of the stem attached. Store in a shady, dry, frost-free place.

When liming, allow 10-12 pounds of ground limestone per 100 square feet for every point change needed (as 5.5 to 6.5 pH).

CAMPAIGN MEETING

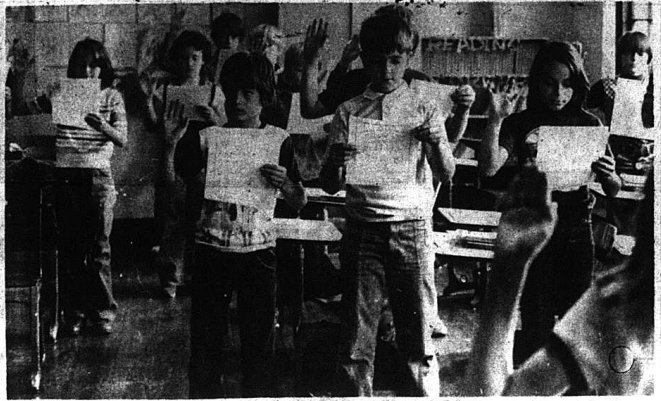
The committee to elect Congressman Tim Lee Carter and Representative Louie Guethner will meet October 23, at 10:00 a.m. in the circuit courtroom at the County Courthouse in Mt. Vernon. Harold Rogers, Fifth District Republican Campaign Chairman, said one theme of the meeting will be turning out the vote on election day, November 7.

Mr. Guethner is challenging Sen. Water Huddleston for the U.S. Senate seat for Kentucky. Rep. Carter is running for his seventh term as U.S. Representative from this district.

CORRECTION

Salaries for teachers should have read as follows: 1973 salaries: beginning teacher, no experience, \$6210; beginning teacher, no experience, Master's degree, \$6720; Master's degree with 10 years experience, \$8310. Current salaries: \$8300, \$11,000, and \$13,500. The Signal regrets the error.

When buying lamb chops remember that ribs chops are likely to be more tender than shoulder chops.



I do solemnly pledge to help prevent forest fires. Fifth grade classes at Brookfield School pledge to help Smokeley the Bear and forest ranger Steve Bullen in their fight against fires. Each child who passed a test devised by the Dept. of Forestry received a Junior Forest Ranger patch and certificate. This is Mrs. Norris's class.

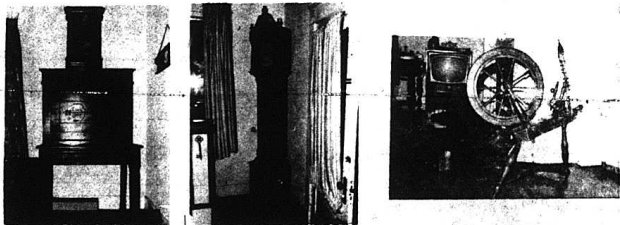
ABSOLUTE Auction

Former Estate of The Late Mr. and Mrs. Henry Davis'

Antiques, Collectibles, Personal Property

SATURDAY, OCTOBER 28, 1978, 10:30 a.m.

Near Davis Drive-In Theatre & State Hwy 78, Stanford, Ky.



LOCATION: 40 miles south of Lexington, 30 miles North of Somerset and 10 miles East of Danville. Take U.S. 170 to State Road 78 at Stanford, Kentucky and follow State Road 78 1 7/10 miles to the sale. Watch for auction signs at the property.

Mr. and Mrs. Douglas Brickey purchased the entire estate of the Late Mr. and Mrs. Henry Davis and have authorized our firm to sell for the high dollar this excellent collection of fine antiques and collectibles.

This is a partial list of the items to be sold:

Above pictured schoolmaster's desk (very unusual), Grandfather clock, and spinning wheel; 2 piece love seat set, fainting couch, walnut marble top dresser, 2 spool cabinets with legs, marble top coffee table (Garman and Fouchers), flat top piano, organ stool, round oak table, brass organ lamp, eridille churn, 3 piece bedroom suit with marble top dresser, carved Acorn design and high backboard bed, 4 legged corner chair - with lions heads, spindle back sewing rocker, American Bosch floor radio, walnut marble top lamp table, love seat, tier table, floor lamps, Queen Anne chair, wardrobe, oak rocker, large cedar chest, Seth Thomas clock, 3/4 Jenny Lynn bed, 3 piece walnut dining room suit, dinner bell, coffee grinder, wicker settee, 2 camel back trunks, walnut dresser, several pieces of cast iron, enamel, oak hall tree, old cloth picture album, wingback chair, Duncan Phis sofa, platform rocker, old Edison phonograph (good Condition), 2 - what not shelves, cedar churn, variety of old picture frames and mirrors, coal hod, 2 - walnut nit stands, Tiffany lamp (damaged), 3/4 spool bed, spindle back round chair, iron porch table with glass top, small spice cabinet, Audio harp, old yarn combs, best jacks, I. & N Railroad liver, several lanterns, stain glass windows, hand tools, old buggy parts and wagon wheels, and much more.

GLASS AND SMALLER ITEMS TO BE SOLD INCLUDES:

Hand painted Germany bowl, Flo - blue buttermilk pitcher, Nippon vase dragon with jewel eye (very rare), several pieces of bonnal opalesce, press glass relish dishes, 2 pressed stem glasses with green thumb print, old serving trays, old silverware, strawberry pattern syrup jug, old milk glass hen and nest, old pitcher applied handle - kiss me jars, old meat platters, cookie jars, variety of old bowls, ironstone items, several items of crystal, pink satin bowls, glass ice bucket, pink and green depression items, krape pattern carnival glass, small statue by Florentine Statuary, 2 red carnival candle stands, 2 sterling dresser sets, wicker baskets, and much more.

AUCTIONEER'S NOTE: This is one of the finest selections of antiques and collectibles to be offered in the Central Kentucky area, and this is only a small fraction of the ones to be sold. Mark your calendar now to attend this all important sale.

Plenty of Parking and Lunch will be Available.

For additional information contact Mr. and Mrs. Brickey at (606) 365-2547 or (606) 365-3858 or:

Ford Realty & Auction Co.

Banker - Auctioneer
Col. Sam Ford
Col. Roy Adams
Col. Danny Ford

Auctioneer
Col. Bill Randolph
Col. Jerry Ham
Col. Wilbur Butts



Mt. Vernon, Ky. Ph. 256-4545



(You promised her father you'd take good care of her.)

When you're ready for that second car, let us arrange a money-saving Auto Loan for you. Quickly. Easily. Without a lot of red tape. Stop by and see how we go one step further for you.

BMV THE BANK OF MT. VERNON
MT. VERNON, KENTUCKY 40456



256-5141

Mount Vernon Signal

MOUNT VERNON, KENTUCKY 40456

VOLUME 90 - NUMBER 7

THURSDAY, OCTOBER 19, 1978

Engineers Spoil Rockets Homecoming 6-0

The Estill Engineers spoiled the Rockets' Homecoming Friday night by sking out a 6-0 win over the Rockets. The Rockets really played very good ball, at least defensively, and that's what they were called on to play the most since four turnovers in the first half kept the Rockets backed up deep in their own territory.

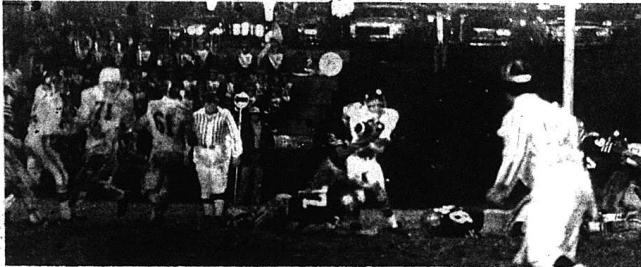
The only score of the game came on the first play of the second quarter after Estill had recovered a Rockets fumble on the Rockets' 25-yard-line. Three plays later, the Engineers completed a pass to

the Rockets three yard line and, two plays later, went over for the score. The try for the extra point was no good and that ended the scoring for the Rockets.

The Rockets only real offensive threat of the game came in the fourth quarter and was preceded by several bad breaks for the Rockets and at least once to poor officiating.

Early in the fourth quarter, Estill had to punt the ball away but a 12-men on the field penalty against the Rockets gave Estill the ball back on their own 39 yard line.

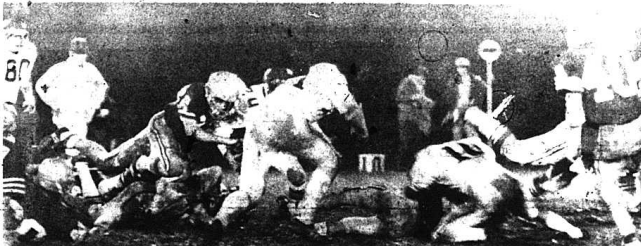
Mike Arnold later intercepted a pass in the end zone but, the Rockets had to punt the ball away four plays later. Bobby Hammons got off a good punt and the Rockets' defense held but a late hit-penalty against the Rockets gave Estill new life and the ball 1-10 on the 25 yard line. The Engineers then ground out six yards in three plays and, on a very controversial fourth down play, appeared to have come up somewhat short of the first down. However, officials, ignoring the request of the Rockets' (Cont. to A2)



This fumble by Mark Hopkins was recovered by the Engineers on the Rockets' 25 yard line and four plays later

they went in for the score. Hopkins made a good return on the kick-off by Estill but, two plays later, the Rockets were

again fighting defensively because of yet another fumble. (Photos by Kenneth Pillson)



Rick Anderlin, No. 10, stops an Estill runner deep in Rocket territory in Friday night's 6-0 loss to Estill. The

game was played in a drizzling rain which came down all day and turned the playing field into a muddy quagmire.

Other Rockets in the photo are Larry Bradley, No. 60; Steve Mitchell, No. 20 and Todd Fields, No. 71.

4-H VARIETY SHOW IS THURSDAY, NOVEMBER 2

The Rockcastle County 4-H Clubs are getting ready for their annual Variety show, to be held Thursday, November 2, at Roundstone School, according to Cheryl Witt, County Extension Agent.

The show will start at 7:00 p.m. and be free and open to the public. Specialty acts featuring one to four people will last about three minutes each. There are no restrictions on the kind of act that can be performed—musical, dramatic, comedy and so forth. Club acts can have large numbers of people on stage and last up to eight minutes.

4-H members who are judged the best acts will go on to compete at the Area Variety Show, which will be held Saturday, Dec. 2, in Whitley County. Winners in area competition perform at the statewide show. Last year Jamie and Jennifer Cox of Mt. Vernon were state winners.

Senior Citizens Music Program To Be Presented November 6

Rockcastle County Senior Citizens Program will host a Traditional Kentucky Music program to be presented at the Mt. Vernon Senior Center on Monday, November 6, beginning at 12:30 p.m. This music program is being sponsored by the "Accent on Elderly" program of the Department for Human Resources, Bureau for Social Services, and is being coordinated regionally by the Aging Planning staff on Cumberland Valley Area Development District.

The visiting musicians, Miss Nancy Johnson and Mr. Blake Barker, both of Bardstown, will play a number of folk instruments in addition to leading the audience in several traditional Appala-

chian songs. Some of the instruments to be performed include the dulcimer, guitar, dobro, mandolin, nose flute, harmonica, mouth bow and others.

This "traveling" music program is being given at various Senior Citizens Centers throughout the eight county Cumberland Valley region. All persons are welcome and encouraged to attend this one-hour program.

For additional information, please contact Lois Phibbeck, Rockcastle County Senior Citizens, 256-4316 or Henry Meeuwse, Supportive Service Coordinator, Cumberland Valley ADD, at 864-7391.

4-H BANQUET

The annual 4-H Recognition Banquet will be Friday at 6 p.m. at Broadhead School. Awards will be presented to 4-H members, leaders and sponsors, according to Cheryl Witt, County Extension Agent.

Thirty-five certificates will be presented to 4-H members who participated in 4-H projects like the dairy show, the poster contest, fashion and variety shows or as camp counselors.

Twenty-five project winners will receive pins for preparing record books on subjects such as clothing, woodcrafts, foods and many others. These records can compete on the area and state level. Ms. Witt said. State winners receive a free trip to Chicago to attend the National 4-H Conference.

The outstanding 4-H Club of the year will receive an engraved trophy at the banquet.

Many adults who have been leaders of clubs or judges in 4-H events will be honored with certificates and pins.



Bobby Hammons puts the whammy on an Estill runner in Friday night's game. The Engineers were not able to pick up ground yardage on the Rockets' defense

in the game. Their only score was set up by a Rocket fumble and their good passing game.



Super Value Pair

Quality Built Washer and Matching Dryer



WASHER DRYER

Save Save

BUY BOTH FOR \$600.



WASHER DRYER

SAVE ON THE PAIR

- GE QUALITY BUILT WASHER
- Standard Capacity, 2 in 1 washer with Mini-Basket™
- 3 Wash/Spin Speed Combinations
- Variable Water Levels

- GE QUALITY BUILT DRYER
- Standard Capacity
- 2 Cycles—Regular and Special Including Perm Press and Polyester Knits
- Removable Up-Front Lint Filter

SAVE

BRYANT BROS.

Main Street Ph. 256-2911 Mt. Vernon

REVIVAL SERVICES

Bible Baptist Church

Highway 25 at Burr

OCTOBER 23 - 29

7:30 p.m.

Evangelist Bro. Jim Oats

Pastor Bro. Paul Burton

Special Singing Each Evening

Everyone Invited to Attend



Dr. A.E. Thomsen, foreground, and Bill Bailey, president of the Rockcastle County Hospital Board, greeted guests as they arrived at a reception held last Thursday night at Cedar Rapids to officially welcome Dr. and Mrs. Thomsen to our community. Dr. Thomsen said that the kind way he had been treated here has been "heart-warming."

Willaila

By Arvill Burton

Those on the sick list are Hiram McKinney, Casper Owens, Grover Burton.

Mr. and Mrs. Mike Lunford and daughters of Richmond, and Mr. and Mrs. Randy Parsons of Somerset visited Mr. and Mrs. Owen Burton recently.

Lena Hurst of Louisville is visiting Mr. and Mrs. Grover Burton for a few days.

Mr. and Mrs. Jack Smith and family of Ohio, Jay Burton of Florence, visited Mr. and Mrs. Grover Burton, Saturday. Mr. and Mrs. W.A. Owens of Cincinnati visited Mr. and Mrs. Grover Burton recently.

Tuesday visitors of Grover Burton were Mr. and Mrs. Marshall Thompson, Edward Burton and Arvill Burton. Sunday visitors of Mr. and Mrs. Grover Burton were Mrs. Maggie Herrin, Mrs. Marie Burton, Mrs. Ola Burton and Mary Jane Randolph.

Sunday visitors of Mr. and Mrs. Marshall Thompson and Casper Owens were Mrs. Christine Brown, Billy Joe Brown and Mrs. Gail Hood of Somerset. Mr. and Mrs. Russell Newton of Cincinnati are visiting Mrs. Ethel Thompson and other relatives. Floyd and Gail Bineham of

Cincinnati, Ohio celebrated their birthdays a few days ago.

Kay Rader and son of Mt. Vernon visited Mr. and Mrs. Floyd Singham a few days ago.

"Delayed"

Sunday visitors of Dianne Adams and Kevin were Mr. and Mrs. Edward Burton of Connersville, Indiana, Mr. and Mrs. Willard Barker of Pennington Gap, Virginia, Mary Jane Randolph and Arvill Burton.

Grover Burton has returned home from U.K. Medical Center. He is reportedly feeling better.

Recent visitors of Grover Burton were Arvill Burton, Edward Burton, Willard Barker.

Mrs. Fannie L. Albright was Sunday dinner guest of Mrs. Maggie Herrin. Mrs. Okly Hammonds is ill at her home.

Recent visitors of Mary Jane Randolph, Linda and Arvill were Dulie Adams of Somerset, Mr. and Mrs. Willard Barker of Pennington Gap, Virginia, Mrs. Dollie Stevens, Mrs. Beva Goff, Mr. and Mrs. Owen Burton, Ma. Gail Lee Ledford and daughters of Richmond, Dorothy Duvall of Lexington, Betty Lou Vaughn of Frankfort and Mr. and Mrs. G.D. Burton.

Mr. and Mrs. Edward Burton of



Several of the guests who attended the reception Thursday night at the Cedar Rapids for Dr. and Mrs. A.E. Thomsen are shown in the above photo. In the background, to the left, is Mrs. Thomsen talking with guests and standing in the foreground is Mrs. Buddy Cox. Seated are, from back to front: County Judge

Executive and Mrs. Hubert Thacker, County Attorney and Mrs. James Lambert, Mrs. Gertrude Hilton, Mrs. Robert Croser, Mrs. Bill Bailey, Mrs. Tony Hopkins and Mrs. Andrew K. York.

Connersville, Indiana, Mr. and Mrs. Edward Burton are visiting here and at Brodhead.

Out-of-town guests who attended the wedding of Jane and Arvill Burton were: Mr. and Mrs. Edward Burton of Connersville, Indiana, Mr. and Mrs. Robert Duvall of Lebanon, Ohio, Miss Dorothy Duvall of Lexington, Mr. and Mrs. Willard Barker of Pennington Gap, Virginia, Mr. and Mrs. Midd Brauger, Jr. of Dale Hollow, Tennessee, Mrs. Betty Lou Vaughn, Mrs. Helen Wingate, Miss Jane Ann Wingate, Mrs. Charlotte Quarles of Frankfort, Mr. and Mrs. Michael Ledford and daughter, Miss Marsha Otten and Miss Lilea Danham of Richmond, Miss Stephanie Cawood of Harlan, Miss Cindy Dotson, Michael L. Kerr, Mrs. Diane Adams, Margaret Watson, Brenda Hayes and Mary Lou Roy of Somerset, Mr. and Mrs. Albert Mooney of Berea, Mrs. Lucille Carlolis and son of Livingston, Mrs. Myrtle Duvall and daughters, and Mrs. Flossie Smith of Stanford and other friends and relatives.

"An old man in a house is a good sign."
Benjamin Franklin

English contains more words than any other language—800,000—but it is doubtful that any individual uses more than 60,000!

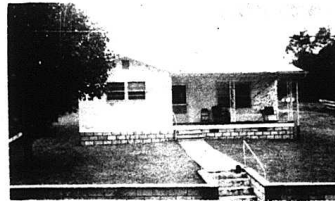
Auction

of
The Late Mr. Reuben Brown's

**HOUSE AND LOT
and PERSONAL PROPERTY**

Sat., October 28, 1978 3:30 p.m.

Church Street, Brodhead, Ky.



LOCATION: Just off Main Street in Brodhead, Ky., on Church Street. Watch for auction signs at the property.

In order to settle the estate of the late Mr. Brown, we have been commissioned to sell this highly desirable compact home and personal property for the high dollar.

The house has 2 bedrooms, living room, kitchen and bath. It also has city water and sewer, storm doors and windows, linoleum covered floors and is insulated overhead. This property is ideally located, being within one block of all the conveniences of Main Street and just across the street from the Baptist Church.

This is an excellent home for a small family so remember the date - October 28, 1978 at 3:30 p.m.

PERSONAL PROPERTY: Monogram oil heater, oil tank, living room suite, recliner chair, platform rocker, stand table, black and white TV, odd couch, G.E. refrigerator, 2 utility cabinets, breakfast set with 4 chairs, gas range, 3 iron skillets, 2 half beds, ironing board, bedroom suite, porch glider, hand tools of various description and many other miscellaneous items too numerous to mention.

TERMS: Real Estate - 20% down day of sale and balance within 30 days upon delivery of deed.

PERSONAL PROPERTY: Cash or good check day of sale.

FOR ADDITIONAL INFORMATION, CONTACT MRS. VERNA WEBB AT THE PROPERTY OR:

Ford Realty & Auction Co.

Auctioneer
Col. Sam Ford
Col. Roy Adams
Col. Danny Ford

Auctioneer
Col. Bill Randolph
Col. Jerry Han
Col. Willard Hutches



Mt. Vernon, Ky. Ph. 256-4545

**SAVE THIS
FALL**



on a great
Whirlpool LAUNDRY PAIR



WASHER ONLY
\$331.00

LFA 7600 WASHER
Get these additional quality features: 2 wash and 2 spin speeds • Energy-saving water temp selector with 4 pushbutton wash/rinse combinations • 3 level water-saving load-size selector • Bleach and fabric softener dispensers and more.

LFE 5700 DRYER
Also features Large, 5.9 cu. ft. drying drum • Non-iron care for Permanent Press fabrics • Extra-large lint screen • TUMBLE PRESS® Control to help smooth out wrinkles from Permanent Press fabrics and more.

DRYER ONLY
\$229.00

*If your washer drains into a laundry tub, periodically check the drain strainer, since lint accumulation could clog laundry tub drain.

Add \$5 for cover.
Other models available

Cromer's Tire & Appliance

Richmond St.

Mt. Vernon

BRODHEAD

By Mrs. Mary McWhorter

GOLDEN WEDDING ANNIVERSARY

Mr. and Mrs. Ambros Albright will celebrate their 50th wedding anniversary Sunday, October 22nd, 1978, with a reception at their home on Highway 70. Their daughters, Mrs. Jean Gentry, Mrs. Kathleen Stevens and Miss Patricia J. Albright, and Mr. and Mrs. Albright, invite their relatives and friends to share in this joyous occasion by attending the reception which will be between 2 and 6 o'clock in the afternoon.

Mr. and Mrs. Gordon Smith and daughters, Donna and Lynn were Sunday guests of Mr. and Mrs. Dan Gray. Mr. and Mrs. Tom Glass of Cincinnati, Ohio and Jamie and Randy were weekend guests of her mother, Mrs. Lula Bussell.

Mr. Joe Russell and Jerry of Springboro, Ohio visited Mrs. Lula Bussell Sunday enroute from a visit in Tennessee.

Mrs. Martha Helton visited Laveice Monk Friday evening.

Mr. and Mrs. Ed Lamb and Mrs. Katig Doyle visited Martha Helton Sunday. Mr. and Mrs. Charlie Workman, Mr. and Mrs. Bob Price, Donnie and Mary K. of Villa Grove, Illinois and Mrs. Martha Helton all had supper with Mr. and Mrs. Lewis Adams Saturday night.

Mr. and Mrs. Ronnie Adams, Mrs. Bertha Adams and Mrs. Mary Adams were in Somerset shopping Saturday night.

Miss Mickie Lea Pruitt was out of school three days last week due to a virus infection.

Weekend visitors of Mr. and Mrs. Bob Proctor, Elizabeth and Doug were Mr. and Mrs. Carter Caudill, Mr. and Mrs. Darrell Proctor and Stephen of Covington, Visiting Sunday were Mr. and Mrs. Fred Sanders of Eubank, Mr. and Mrs. Johnnie Allen, Mrs. Billy Graves.

Miss Elizabeth Proctor spent Friday night with Janice Long at Willilla.

Mrs. Mary Adams had dinner Sunday with Mrs. Elizabeth Mullins. They visited the Nursing Home patients at Broadhead.

Mrs. Mary Elizabeth Maupin of Ft. Wright visited Mrs. Elizabeth Mullins this week.

Mrs. Margaret Dyehouse and Mrs. Daisy Holman drove to Richmond, shopping last week. Veteran Mr. Tarter went along and enjoyed the trip very much.

Mrs. Novaria Goff of Somerset was the guest of her sister Mrs. Margaret Dyehouse on Wednesday, October 11.

Saturday night supper guests of Mr. and Mrs. George Fletcher and Audrey were Mr. and Mrs. Charles Fletcher, Kevin and Kim.

Kim Fletcher was from Eastern Kentucky University to visit her parents, Mr. and Mrs. Charles Fletcher, and attended the wedding of her cousin, Sandy Gail Robbians.

Kevin Fletcher and Aneta Herrin visited his grandparents, and aunt, Mr. and Mrs. George Fletcher and Audrey Friday night.

Mr. and Mrs. Charlie Workman of

"Your Family Tree" Program Begins Monday, November 6

If you have always wanted to find out about your ancestors, you can begin the search by attending the "Your Family Tree" program, Monday, November 6, at 7 p.m. at the PCA Building.

Conrad Feltner, Jr. who has written a book on genealogy, and Bell County Extension Agent Donna Cloor will be teaching the session. Mr. Feltner is from Middlesboro, but his mother was once an Extension Agent in Rockcastle County.

"Your Family Tree" is sponsored by the Rockcastle County HomeMaker Clubs program, but as the topic is of special interest, the lesson will be free and open to the public. Participants are encouraged to bring along old family records, Bibles and other materials.

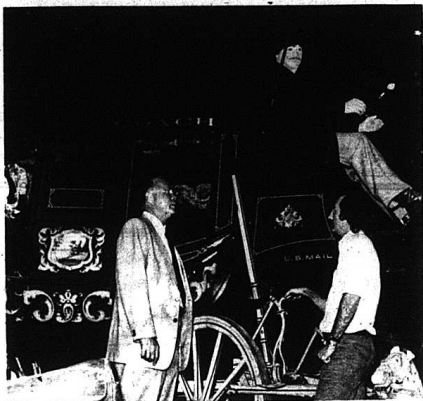
The tracing of family roots can be a creative hobby which you become more aware of history and geography, and even observe things like family crests, and the science of heredity, for

example. According to Ethel Williams, author of "Know Your Ancestors," a good genealogist is a "full-time detective, a confirmed diplomat, a keen observer, a skeptic, a biographer, a linguist, and a part-time lawyer."

The search will take you on visits to other relatives first, and then through the attic for copies of records, scrapbooks, old photographs and samplers. You may then search the local library and county courthouse for records of birthdays, deaths, marriages and property transfers. Your search might take you to Archives and even to the country of your great-great-grandfathers.

Mr. Feltner and Ms. Cloor will be discussing how to keep records and find accurate information. They will also show participants how to use The Rockcastle County Library's special Genealogy Department.

Please register by calling the County Extension Office at 256-2403.



ALLI, ABOARD—State Parks Commissioner Bruce Montgomery, left, and Bill Cooke, Horse Park Museum Director, pay no heed to the "driver", as they inspect a Concord Coach in the museum's "time line." The coach, part of a lifelike display, was built in New Hampshire in 1852.

State Horse Park Museum Will Open October 20

The Kentucky Horse Park's International Museum of the Horse will open October 20, according to state Parks Commissioner Bruce Montgomery.

The museum completes the attractions at the \$27 million park, which opened its gates Sept. 7. Montgomery said a dedication ceremony would be scheduled later.

"We consider the International Museum of the Horse the heart and soul of the Kentucky Horse Park," Montgomery said. "The museum is educational, but in a very entertaining way. This is one of those rare museums where you can have fun."

Montgomery said the "visitor participation" elements of the museum would provide much of the entertainment. The elements include 22 computer terminals and other devices that are activated when visitors press appropriate buttons.

The museum is designed to fill the needs of the serious student of equines as well as the casual observer. The largest building on the Kentucky Horse Park (54,000 square feet on three floors), the museum's major exhibits are a "time line" which take visitors through time to trace the history of the horse; a "breed wall" which offers photographs and computerized overview of equine competition and provides more computers for detailed information.

Among the notable artifacts in these exhibits are a Lusitan harness ring circa 1,000 B.C., a German chafron (facial armor for the horse) dated 156 and a Concord coach built in 1852, Montgomery said.

The museum building also houses a changing gallery for art exhibits, a library, a typical Kentucky horse farm in miniature, a gift shop and cases in which Kentucky horse farms will present displays on a temporary basis.

Montgomery added that while entrance to the park, including the Man of War memorial, picnic shelters, restaurant, training truck, changing gallery and gift shop, is free, there is an admission charge for the museum and other attractions.

With the opening of the museum, the price for a three-sectioned ticket to the park's exclusive film, its walking tour of a model farm and the museum shifts to \$3.25 for adults and \$2 for children. Previously the cost had been adults \$2, children \$1. A horse-drawn tour substituted for museum admission. The price for a more extended horse-drawn tour will now be adults \$2, children \$1.

Horseback riding is also available at the Kentucky Horse Park for \$6 per hour, \$3.75 per half-hour.

The Kentucky Horse Park, including campground, is open year-round. Daily operating hours are 9:7 through Oct. 31. Hours thereafter through Labor Day will be Nov. 1-March 31, April 1-May 27, Memorial Day-Labor Day.

The park will be closed Christmas Day.

The Kentucky Horse Park is located just north of Lexington at exit 120 of I-75.

Personals

Sunday dinner guests of Mr. and Mrs. Ed McWhorter were Mr. and Mrs. Jim Parsons and Elizabeth Ann of Lexington, Mr. and Mrs. Benny Craig and Corey and Stacy of Mt. Vernon, Mr. and Mrs. Stephen Owens, Mr. and Mrs. Mr. and Mrs. Stephen Owens, Mr. and Mrs. Raymond Nunn were Sunday evening visitors of Mr. and Mrs. Freddy Pruitt.



Elizabeth Jean Harper, daughter of Mr. and Mrs. everette Harper of Broadhead, celebrated her first birthday on Sunday October 8. Some who helped her celebrate were her grandparents, Mrs. Mary A. Harper, Mr. and Mrs. Robert Silcox, her great grandparents, Mrs. Mary E. Harper, Mr. and Mrs. Elmer Riddle, and many friends and relatives including, Cory Scott, Angie Brown and Kristi Bussell.



Kallia Danielle McClure celebrated her third birthday Saturday, October 14th at the home of her maternal grandparents, Mr. and Mrs. Floyd Carter. Kallia is the daughter of Gerald and Judy McClure of Nashville, Tennessee. Paternal grandparents are Mr. and Mrs. William McClure of Rt. 1, Mt. Vernon. Friends and relatives were present and many nice gifts were received.

YOUNG'S PHARMACY

Main St. Mt. Vernon
256-4613

VASELINE
INTENSIVE CARE LOTION
15 OZ
\$1.49

SELSUN BLUE SHAMPOO
4 OZ SIZE
\$1.39

BAYER ASPIRIN
BOX OF 200
\$1.88

BABY WASH CLOTHS
PKG OF 70
99c

RIGHT GUARD ROLL-ON
15 OZ
99c

PLAYTEX OR PLAYTEX PLUS TAMPONS
BOX OF 28
\$1.69

MIDOL TABLETS
BOX OF 30
\$1.25

CUTEX POLISH REMOVER
REG. • LEMON
4 OZ. SIZE
44c

VASELINE PETROLEUM JELLY
3 1/2 OZ
59c

FINAL NET
VALUABLE COUPON
12 OZ
\$1.59
WITH COUPON
LIMIT ONE PER CUSTOMER
KY DRUG STORES
EXPIRES 10-31-78

VASELINE INTENSIVE CARE BATH BEADS
15 OZ. SIZE
99c

ABSOLUTE Auction

of

THE LATE MR. JOHN SHELTON, SR.'S

6 ACRES more and BARN
Sat., Oct. 21, 1978 at Noon

AT Crab Orchard, Ky.

LOCATION: Located on Greenbriar Drive in the city limits of Crab Orchard, Ky. Watch for auction signs.

The heirs of the late Mr. Shelton have contracted our firm to sell this desirable property at Absolute Auction.

The farm consists of 6 acres more or less, of which all is good level productive land. This excellent piece of ground would be ideal for subdivision or most any type of development. The farm does have approximately 283 ft. of road frontage on Greenbriar Drive. There is city water available to the property. The basic tobacco allotment is 1587 lbs. It is improved with a combination stock and tobacco barn.

If you are in the market for a choice piece of land in the Lincoln County area for investment or personal use here is your opportunity to buy it at absolute auction.

TERMS: 20% down day of sale and the balance within 30 days with the delivery of the deed.

For additional information, contact:

Ford Realty & Auction Co.

WANTED ADS DO THE JOB FAST!

P-A4 The Mt. Vernon Signal Thursday, October 19, 1978

CLASSIFIED RATES

Local Rates- 6c per word, minimum \$1.50
Card Thanks - 5c per word, minimum \$1.00
In Memory - 5c per word, minimum \$1.00
Classifieds Paid in advance, except to businesses

For Sale

FOR SALE: Quality sample and factory Domogoi Shoes. Can fit all sizes, men's women's and children's. Located in the old Caleb Sowder Groc. Building, Hwy. 401. 4x10p 461.
FOR SALE: 12x50 mobile home with 16x29 room addition on 1 acre lot. Contact Jerry Woodall, 758-8990. 5x4
FOR SALE: Used G.E. electric range, used G.E. refrigerator with freezer compartment. Jenny Lind bed with inner spring mattress and springs-dresser, utility table with electrical outlet, boys 10 speed bike. May be seen at the home of Joe Hinsel on West Main Street by calling 256-2768. 4x2

FOR SALE: 7 room house located in Livingston, total electric, washer and dryer hookup, ph. 453-3471. 7x1
FOR SALE: mobile home, 10x53, like new, call 758-8837, Larry Shivel. 7x1p
LOTS FOR SALE: Located in Owens Subdivision, ph. 256-2659. 7x2
FOR SALE: Beef, corn fattened on our Brohead farm. By the whole, half or quarter, beef for your freezer. Sure to satisfy. 758-8363. 7x4p
BRUMMETTS APPLI HOUSE: has appliances for sale. Several different kinds. Open 7 days a week. 4 miles south of Crab Orchard on Hwy. 39. 7x4p

FOR SALE: Coleman oil heater, 270 gallon tank, \$100 for both. 256-4574. 7x3
FOR SALE: Kitchep cabinet, sewing machine, Homecomer stove, tables, chairs, iron washboard, bedspreads, antique dishes, bowling ball and shoes, electric blanket, new shoes, all clothing. ph. 758-8881. 7x1p
FOR SALE: 1974 Pontiac Ventura, 6 cyl., ph. 256-2809.
FOR SALE: Gibson guitar, fender amp and mike, \$375, also 14 and 16 ft. 2x6's. Ph. 758-8466. 7x1
FOR SALE: New 3 bedroom brick home with living room, kitchen and dining room combination, bath, utility room, washer-dryer hookup, total electric, wall to wall carpet, full basement, carpet, porch, storm doors and windows, city water, on 1/2 acre sided out backport road. Located 3 1/2 miles out of Mt. Vernon and Brohead on Furr Rigby to Brindle Ridge Road. Call 758-8493 after 4:30 p.m. 7x2p

FOR SALE: Three nice living room chairs in good condition. Green, floral or gold upholstery. See Mrs. Effie Perciful, Rt. 4, Greenway Dr., Mt. Vernon. 7x1
FOR SALE: Ward Chest type wood grain paneled freezer, also solid oak butch. ph. 256-4548, and other odds and ends. 8x2p

FOR SALE: new 1977 Chevrolet pickup, load wide bed, \$4100. See Doug Jonyou Owen Chevrolet, South Hwy. 27, Stanford, Ky. 3x1f

FOR SALE: New and Used Furniture, located in the old Caleb Sowder Groc. Building on Hwy. 461. Bargain Discount Furniture. 4x10p

COAL FOR SALE: 438 a ton, block coal. Wood, \$15 a pickup up load. Ph. 256-2020. 4x4

CAR FOR SALE: For a great deal on a new car, truck or an A-1 used car or truck, call Preston Nunnally at 1-865-2166 or 256-2841 after 6 p.m. 1x12

FOR SALE: 1971 Ford 1/2 ton truck, one owner, runs good, body in good condition, ph. 606-255-0065, Lexington. 6x2

FOR SALE: Fisher wood burning stove, See Floyd Stokes, next door to George York on High Street. 6x2p

FOR SALE: Fire wood, pickup load delivered to Rockcastle Co., \$25.00. 256-4794. 6x2p

FOR SALE: Warm Morning coal heater, ph. 256-2718. 6x2p

FOR SALE: 1973 Ford V8 Automatic, power steering, or a 1974 Nova, 8 cyl. power steering, ph. 256-2102 or 256-4802. 6x2f

FOR SALE: 1978 Ford Van, E-150, pe/pe, A/C, am/fm, captain's chairs, Deluxe Installation pkg., Speed Control, leaded and unleaded gas, call 453-3245 after 5:30. 6x2p

FOR SALE: Double Wide Trailer, 24x8, 256-4810. 7x2

Yard Sales

YARD SALE: at the home of "Doc" Brown, 3 families, Friday only, 10-4, cancelled in case of rain. 6x1
YARD SALE: Fri. and Sat., on side of road at Calloway, 9-4, lots of nice women's childrens and baby clothes, household items. Juanita Medley and Jessie Hibbitts. 7x1p

GARAGE SALE: at the home of Bobby Grator, we West St., Brohead, Sat., Oct. 21st, 9-5. Lots of clothes, dishes, antique bottles and jars, magazines, and many other items. 7x1

YARD SALE: 2 families, at the home of Mrs. Jean Hopkins, Dug Hill, at Ottawa, Fri. and Sat., 9-9 a.m. 7x1
YARD SALE: at the home of Effie Thomas in Livingston, Clothing, shoes, purses, large rocking horse and inch worm, both like new. Fri. and Sat., 10-5. 7x1

YARD SALE: at the home of Ruby Griffin, 1 miles South of Mt. Vernon on old U.S. 25, tables, metal cabinets, dishes, clothing, fruit jars, hall tree, etc. Fri. and Sat., Oct. 20 and 21, rain or shine. 7x1

For Rent

FOR RENT: Rinsie a Vac carpet cleaning equipment, 88 per day. Everything you need for a professional job. Call 256-2288 or come into Parasous Gas and Appliance Service, Inc. at Roundstone. 85x1f

FOR SALE: MOBILE HOME
MOBILE HOME
Site 10x53
CALL 758-8837 After 6 p.m.

FOR RENT: 3 bedroom brick home with basement, electric heat, located in Barnett Subd., ph. 256-5367. 7x2p

Wanted

HELP WANTED: Appliance Service Center. Someone experienced in small engine repair and appliance service, o/p/y in person. 62x1f

HELP WANTED: Laborers for cutting wood with chain saws. Ph. 256-2300 after 5 p.m. ntf

BIDS WANTED: The Rockcastle County Board of Education will accept sealed bids until 2:00 p.m. October 30, 1978 for food and other school food service supplies. Bid forms and specifications are available at the office of the Superintendent and School Food Service Director, Mt. Vernon, Ky. The Board reserves the right to reject any or all bids. 7x2

BIDS WANTED: The Rockcastle County Board of Education will accept sealed bids until 7:00 p.m. November 6, 1978 for furnishing and installing approximately 300 feet of chain link fence at the new school bus garage. Bid forms and specifications are available at the office of the Superintendent, Mt. Vernon, Ky. The Board reserves the right to reject any or all bids. 7x2

BIDS WANTED: The City of Mt. Vernon is now accepting bids for all needed insurance for the City of Mt. Vernon and the Water Works Department. Specifications may be obtained at City Hall, Monday-Friday, 3-4. Bids should be mailed to Mary Craig, City Clerk by Monday night, Nov. 13, 7:30 p.m. 6x2

WANTED: Truckload lots of Red Cedar logs or lumber, top cash prices paid. Call or write us for specifications and prices. Willis Lumber Co., Box 84, Washington City, Oh (614) 335-2901. 6x3

WANTED: Ambitious, dependable person with reliable transportation for daily and Sunday Courier Journal paper route. Route has good growth potential. If interested in working for yourself and making an extra \$260 every 4 weeks, call for more information call toll free 1-800-292-6588. Company policy requires cash security bond. 6x3

Notices

NOTICE: The City of Mt. Vernon is now accepting applications for the position of city policeman. Applicants must have high school diploma or equivalent and willing to take training at EKU. Applications may be picked up at City Hall, Monday thru Friday, 8-4. Applications should be mailed to Mary Craig, City Clerk. 6x2

NOTICE: a 1978 Plymouth Fury III, 4 dr., serial no. PH41K3F211918 will be sold Thurs., Oct. 26 at 10:00 a.m. for storage and repairs. Central Body Service. 6x3

HYUNDAI CARPET: Carpet direct from outlet in Georgia, Non-slip, Shag, \$2.00 and up. Commercial and kitchen carpet. Armstrong vinyl padding, installation available. Located behind Shivel's Army Store, Mt. Vernon, Ph. 256-5434. 12x1f

NOTICE: Johnny Wilcox is not a candidate for the Brohead Board of Trustees in the Nov. Gen. Election. 6x2

Reduce Sale and Fast with GoBee Tablets & E-Vap "water pills", Young's Pharmacy, Main St., Mt. Vernon. 6x3p

CUSTOMER-MADE CABINETS: Call Taylor's Workshop, 483-6911. Located 1/4 miles out of Livingston, Ky. Arnel C. Taylor, owner. 2x1f

NOTICE: Will do building and remodeling. Contact Jerry Woodall, 758-8990. 5x4

HAMMER WATER WELL DRILLING AND CONTRACTING. Call 256-2724 anytime. ntf

NOTICE: G&D Janitorial Services, all types, residential and commercial cleaning. Reasonable prices. Call 256-4946 anytime. 4x2f

PICTURE FRAMING AND PRINTS-Teresa's Antiques and Gallery, 2 miles from Boone Tavern Hotel Parking Lot, 986-6147, Berea, Ky. 5x1f

NOTICE: For electric wiring and plumbing, call a licensed plumber at 256-5250. ntf

GRAVE MARKERS AND MONUMENTS: in stock at all times. McNew Monument Sales, U.S. 25, four miles north of Mt. Vernon. Ph. 256-2232. ntf

NOTICE: Hasty's Radio and T.V. and concrete yard ornaments. Located 1 miles south of Mt. Vernon on U.S. 25. Also 1967 Mustang parts, 256-4765. 4x1nf

AVON: to become a representative, call collect, 606-745-1245. 6x3

SINGING: Our Rockcastle County Singing will be at the Watts Chapel Baptist Church, Sunday, Oct. 22 at 2:00 p.m. All singers and everyone welcome. 6x2

LOSE WEIGHT FAST-Revolutionary "Coffee Break" cubes turn coffee into powerful appetite suppressant, Young's Pharmacy. 6x3p

NOTICE: Grapefruit plan with Diad. eat satisfying meals and lose weight, now extra strength formula, Young's PO Pharmacy. 6x3p

POSTED: All land belonging to Homer Brown, Lonnie Brown and Juan Towery on Roundstone Creek. No Hunting. 7x12p

FREE PUPPIES: Call 256-4682. 7x3p

M&N REPAIR SERVICE
We repair furnaces
If your furnace won't light, call us
256-2019

NOTICE: The Rockcastle County Industrial Development Authority has postponed receiving and opening bids for Contracts One, Water and Sewer Facilities, Rockcastle Multi-County Industrial Park, originally scheduled for October 19, 1978 until Thursday, November 2, 1978, at the Community Room at the Bank of Mt. Vernon, 11:00 local time. 7x1

NOTICE OF INTENTION TO MINE Pursuant to Application No. 102-0007

In accordance with the provisions of KRS 350.055, notice is hereby given that Lynn Coal Company, Inc., 1. Box 220, Bowling Green, Ky. 40400, intends to file an application for the surface disturbance mining of approximately 20 acres located southeast of Cooksburg in Rockcastle County. The proposed operation is approximately 1.5 miles southeast of State Route 1055's junction with Daugherty and located East of White Oak Creek latitude 37 degrees 21' 58", longitude 84 degrees 02' 20". The surface of the area to be mined is owned by Carlos Carlotta. A brief description of the kind of mining activity proposed is surface strip mining. The application will be filed at the Bureau of Surface Mining Reclamation and Enforcement, London Area Office, P.O. Box 1111, London, Ky. 40301. Persons wishing to file written objections and/or request a formal administrative hearing in regard to the above described surface mine should notify the Department for Natural Resources and Environmental Protection within 30 days of the date of this notice. The written objection must have attached a copy of the newspaper clipping, and reference the above application number. Such objection to the proposed mine must be in accordance with KRS 224.081 (2) and must be forwarded to the Director of Permits, Bureau of Surface Mining Reclamation and Enforcement, Central Plaza Tower, Frankfort, Ky. 40601. 7x1

GLENN PENNINGTON AUTOMOBILES

"On The Strip"
U.S. 25 North, Berea

- 1977 Chev. Malibu Classic, Estate Wagon, Fully Eq'd. Green/White/Brown V.R.
- 1977 Cadillac Coupe de Ville, Fully Eq'd. Red/White V.R.
- 1977 Ford LTD Station Wagon, 10 Pass. PS, A/C, Dark Blue/Lt. Blue
- 1977 Ford Thunderbird, A/C, AM/FM Stereo, Electric Windows, Gold/Brown V.R.
- 1977 Ford Pick-up, 8 Auto, Red Super Custom
- 1977 Mercury Cougar XR7, AM/FM, White/Landau Ror
- 1977 Pontiac Firebird, Formula, White Formula Stripping
- 1977 Pontiac LeMans Sport, A/C, AM/FM, Red/Black Landau V.R.
- 1977 Pontiac Grand Prix, Silver/Burgundy V.R.
- 1976 Buick LeSabre Custom, 4 Dr., H/T, Blue/White V.R.
- 1976 Chev. Monza, AM/FM Stereo, Cruise, A/C, White/Burgundy V.R.
- 1976 Chev. Nova, 2 Dr., 6 Auto, Silver/Red Interior
- 1976 Ford Torino, 4 Dr., A/C, White/Brown V.R.
- 1976 Olds Cutlass, Fully Eq'd. Black/Brown Trim
- 1976 Chev. Caprice Classic, 1 Dr., H.T., Fully Eq'd. Dk. Brown/Beige V.R.
- 1976 Chev. Monza, 2 Dr., Coupe, 4 Speed, Maroon
- 1976 Ford Country Squire Station Wagon 9 Pass., A/C, Park Yellow/Woodgrain
- 1975 Plymouth, 4 Dr., Grand Fury, 2 W/V, Green
- 1974 Chev. 1/2 Ton Pick-up, 8 St. Shift, Med. Blue/White
- 1974 Ford Pinto Station Wagon, 4 Cyl., 2 Dr., A/C, St. Shift, Beige/Blue/Green V.R.
- 1974 Mercury Cougar XR-7, A/C, Triple Black
- 1974 Pk. Fury III, 4 Dr., H.T., A/C, White
- 1973 Dodge Pick-up, 6 Cyl., St. Shift, SWB, Blue [with camper]
- 1973 Ford Torino Sport, A/C, 8 Auto, 14, Blue/Dk. Blue V.R.
- 1973 Ford LTD, 2 Dr., Auto, A/C, White/Blue V.R.
- 1973 Subaru, 2 Dr., 4 Cyl. White/Red Torino, 4 Dr., A/C, Red/White V.R.

I'VE GOT THE SHIELD
For your Life•Health•Home Car•Farm•Business
LOOK TO THE SHIELD
Harry L. Harmon Agent
Gregory Bldg., Mt. Vernon
Ph. 256-4945
SHIELD OF SHELTER Nights 256-2454 79

REAL ESTATE FOR SALE
NEW LISTING - RICHMOND STREET BUSINESS operated as a grocery store with gas pumps and is doing an excellent business. Building measures approximately 44x40, has city water, restrooms and could be easily converted into any type of business. It is situated on a one-acre lot. The building is also air conditioned and is heated by fuel oil. All equipment and inventory is included. Financial records are available to qualified prospects. In addition, there is also a 1970 Statesman marlin boat, 12.50 ft. measuring approximately 10x20 and it is on a blacktop road. City water is available.
16 ACRES located on the Negro Creek Road. There is approximately 5 acres of cropland and pasture with balance in timber. Water is available in a good spring. In addition to the land, there is a two-room house and a small barn and plenty of privacy.
BEAUTIFUL BUILDING LOT - Located in the Conway Section of Rockcastle County. The lot contains 1/2 acre. Water is available and it is on a blacktop road. A Good Buy.
LOT-located in the Brindle Ridge Section of Rockcastle County. The lot measures approximately 10x20 and it is on a blacktop road. City water is available.
COMMERCIAL - In Mt. Vernon, Drapery, fabric and upholstery shop in a building measuring 16x40 with a 10x12 storage building. The building is insulated, air conditioned, heated by fuel oil stove and situated on a two lot measuring approximately 9x100. Be your own boss and reap the profits.
LAWRENCE AUCTION & REALTY
Wendell Lawrence
REALTOR Brodhead, Ky. 758-8115

Real Estate
By: Sam Ford
Buyers Are Not Naive
Your home represents an important financial asset. When the time comes to sell, put yourself in the buyer's shoes. He's in the same financial boat and will want the most house he can get for the money. Frankly, the stakes are too high to play the do-it-yourself game in this monetary arena. The best advice is-let an expert sell it.
But why a Realtor, when I can sell it myself and save the commission? you may ask. "Right".....WRONG!
The average buyer is far from naive. Before you even start serious negotiations, he'll expect you to deduct the Broker's commission for HIS benefit. Then you're on your own in the critical area of financing, mortgages, contracts and deeds, etc. Your home will be exposed to any and all unaccompanied strangers who knock.
A Realtor will save you these headaches and dangers. He'll protect your interest and sell your house at the best price. Statistics have proven this time and again.
If there is anything we can do to help you in the field of real estate, please phone or drop in at Ford Realty & Auction Co., Inc., Mt. Vernon, Ph. 256-4548. We're here to help!

Singleton - Ford
Automobile Insurance
Tonnix Singleton, Agent
MT. VERNON, KY.
Phone: Office 256-2611 Home 256-4476
YOUR INSURANCE COULD BE BETTER

READ and USE

CLASSIFIEDS

The Mt. Vernon Signal Thursday, October 19, 1978 P-A5

Legal Notices

NOTICE: It is hereby given that Bernard Hall, Brodhead, Kentucky, has been appointed Executor of the will and estate of Herbert A. Hall, deceased. All persons having claims against said estate shall present them, verified according to law, to the said Bernard Hall, or to Clontz & Cox, attorneys for said estate, no later than 1/15/79. 6x3

NOTICE: It is hereby given that a petition has been filed in the Rockcastle District Court dispensing with administration of the estate of Bud Clark, deceased. All persons having claims against said estate shall present them, verified according to law, to the said Mary Helen Albright, Brodhead, Ky. 40406, or to Clontz & Cox, Attorneys at Law, P.O. Box 578, Mount Vernon, Kentucky, attorneys for said estate, no later than February 1st, 1979. 7x3

NOTICE

Notice is hereby given that on October 12, 1978 W. Healer Gentry, the duly appointed, qualified and acting Administrator of the estate of Eugene F. Gentry, deceased, filed his final settlement of said estate and exceptions thereto shall be filed in writing with this Court on or before November 12, 1978. Money E. Cummins, Clerk, Rockcastle District Court. 7x1p

ADMINISTRATRIX NOTICE: Notice is hereby given that Mary Helen Albright has been appointed Administratrix of the Estate of Lloyd Albright, deceased. All persons having claims against said estate shall present them, verified according to law, to the said Mary Helen Albright, Brodhead, Kentucky, or to William D. Gregory, Mt. Vernon, Kentucky, attorney for said estate, no later than January 14, 1979. 6x3

Commonwealth of Kentucky
Rockcastle Circuit Court
Civil Action File No. 78-CJ-024

Delbert Neeley and wife, Mary Neeley Plaintiffs

VS.

NOTICE OF SALE

Ronald Swinford and wife, Esther Ann Swinford,
Luelle B. Bowman, a widow,
Eva Mullins, a widow,
Otis Leon and wife, Elizabeth Leon,
Swallow Leon and wife, Helen Leon

Margaret Jackson and husband, L.C. Jackson, and
Osa Abner and husband, Dow Abner Defendants

By virtue of judgement and order of sale of the Rockcastle Circuit Court entered on the 18th day of October, 1978, in the above styled action, a partition action, I shall offer for sale at the courthouse door, Main Street, Mt. Vernon, Ky., to the highest bidder, at public auction on the 9th day of November, 1978, at the hour of 10:00 a.m., EST, or thereabouts, the following described real property, to-wit:

Beginning at a white oak the beginning corner to the Golden Survey, thence S 42° W 18 poles to two black oak; thence S 64 1/2° E 32 poles to two hickories near the barn; thence S 63 1/2° E 60 poles to a red bud near the line fence and cliff; thence N 87° E 18 poles to the point of the cliff; thence S 48° E 16 to a black oak now down with points; thence northwrdly with the west side of road to

CARD OF THANKS
To the members of the Rockcastle Saddle Club, Rockcastle Co. Hospital, personnel of the Rockcastle Ambulance Service, and people of Mt. Vernon, I want to thank you and wish to express my appreciation for what you did for me on Sept. 23 at Salspetre Cave. I hope to someday be able to repay you for your kindness.
Kenneth Cox
Rt. 2, Eminence, Ky.

CARD OF THANKS
The family of Jeffrey Neal Baker, would like to thank everyone that was so kind to us in the loss of our wonderful

JUDGE JOHN D. WHITE



FOR SUPREME COURT
Nov. 7 General Election
PAID FOR BY CANDIDATE

PAPER HANGING
The Paper Works
P.O. Box 871
Mt. Vernon, Kentucky
Mary Singleton 256-4778
256-4778

We would like to thank each one who brought so much good food and all the beautiful flowers, Bro. Arnold Flington for his kind and consoling words, Fredia Nicely for the beautiful songs, Beasley, Rasey, Speaks and Martin Funeral Home. Thanks everyone.
Wife, Joanna Smith Baker
Parents, John and Lorene Baker
Brothers and Sister

USE OUR CLASSIFIEDS THEY GET RESULTS!

BEREA THEATRE
Ph. 986-3644 Berea, Ky.
Wed. thru Tues., Oct. 18-24



Coming "CONVOY"
2 continuous showings
7 and 9 p.m.


OLD HOMES REFINISHED
REFINISHED LIKE A NEW HOME
OLD-WORK-CHIP-PED-UGLY
HOMES REFINISHED LIKE NEW
WITHOUT REMOVING OLD WOOD
3 Year Warranty
CALL TODAY FOR FREE ESTIMATE.
1,000 Ft. Labor & Material, 1978
FULLY INSULATED
TRADEMARK ALUMINUM
Phone 678-5707 Somerset (collect)

Septic TANKS



J&J CONCRETE TANKS
Jim & Jack's S&T Store
Phone 256-4383
After 5 p.m., 256-2580
SEPTIC TANKS
Sales and Service
750 Gal., 1,000 Gal.
Distribution Boxes
1,000 Gal. Water Distribution Tanks

When you think of pests, think of me.



I can get the termites out of your house. And the ants, cockroaches, spiders or mice. And keep them out. I can get any pest out of your house (except maybe your 17-laws).
I'm Ken Sand, the Mt. Vernon Termite man.
Call me at **THRIFTY LUMBER CO.**
Phone 256-2521.
TERMINIX
Terminix of Lexington

CONSUMER COMMENT
By Robert F. Stephens
Attorney General

It is close to election time and everyone going into a voting booth has at least one thing in common, they are all consumers!

Probably the most effective vote the consumer has is in the marketplace, when he or she buys or doesn't buy a product, but that should not discourage consumers from letting their political voices be heard. Consumers as a group

FOR SALE FIREWOOD
Call 256-2244 OR 256-4440

GOT TERMITES?
Madison Termite Co. and Pest Control
Cecil Powell, Owner, Berea
Call Paul Burton
Mt. Vernon, Agent
for free inspection
256-2318

The Chinese poet Lu-Yu published the first book about tea in 780 A.D.



ALUMINUM SIDING INSTALLED
We will cover average size home up to 100 sq. ft. labor and materials for only \$788.00. Call collect for free estimates. Somerset, 678-5707 or 678-3807. 6x3p

HENSLEY'S USED CARS
Rt. 2, Orlando
Ph. 256-4777

REED'S TRANSMISSION
"One of the Largest in Southeastern Kentucky"
All Re-built transmissions Guaranteed
6 mos. or 6,000 miles.
3 ml. east of Corbin on 4 lane Hwy. 252
Open Mon.-Fri., 8-5
S-Saturday 8x4p
Ph. 523-0766

GARRARD COUNTY STOCKYARDS
Sales For All Classes of Livestock Every Friday
Phone 792-2118
Lancaster Kentucky
J.L. Teater Hogan Teater William Kirby Teater

have a lot at stake in the political arena and contrary to some thoughts, have a large impact in the world of politics. Each individual should familiarize themselves with their local, state and national lawmaking representatives. You should let your elected officials know your feelings on consumer matters. One well-written letter may make the difference in how a legislator or congress-person votes.

You should also know what laws effect your day-to-day consumption of goods. For example, do you know what agency regulates your utility company and your utility bills? Do you know what agency licenses the people who sell real estate, fix your plumbing, etc? Consumers should let their voices be heard either collectively (such as consumer groups and neighborhood petitions) or individually (for example letters or votes).

Complaining to consumer affairs agencies is encouraged but should not discourage consumers from voicing their complaints in political arenas as well. If you feel strongly on a matter write your representative, senator, mayor, governor or president. Be a politically active consumer!

COLLINS
Custom Hauling
Backhoe Work
Rathel (Lee) Collins
256-4870 Rt. 2, Mt. Vernon



How old is your Home?
If your home is less than 7 years old, you may save money. Call now and find out how much. **Save up to 14% on Homeowners insurance.**



BILL BAILEY
Agent
Church St., Mt. Vernon
Ph. 256-2119

BUILDING 453-2161
256-5361
New Homes-Remodeling
Blown-In Insulation,
Aluminum Siding,
Storm Windows and Doors
FREE ESTIMATES
PRESTON COLLINS
Rt. 2, Mt. Vernon, Ky.

Sowder Electric
Specializing In Residential Wiring
Electric Heat
Trailer Hook-ups
Ph. 256-2037, day or night 3x4p

FOR RENT
Scaffolding
Portable Generator
Trowling Machine
Aluminum Break

SHIVEL'S ARMY STORE
256-4243

BEREA NATIONAL BANK
Founded 1906
Our banking hours:
Mon.-Sat. 8a.m.-4 p.m.
Closed Wednesday afternoon
Drive-in open to 6 p.m. on Friday
Safe Deposit Boxes Member FDIC

WANTED
Backhoe and Buldozer Work
Gravel-Fill Dirt
Top Soil Hauled
GEORGE PITTMAN
Ph. 256-2402 Mt. Vernon





Fran's CARPET
During October
Save 10% on all carpet and Armstrong vinyl floor coverings in stock.
Save 30% on some carpeting and vinyl floor coverings
Located on US 150 half-way between Mt. Vernon and Brodhead Ph. 256-4603
Fran's CARPET



Grandpa Jones To Appear At

Music Celebration at Berea Oct. 26-29

Old-time traditional music will ring across Berea as fiddlers, guitarists, banjo players, and bluesmen gather for the 5th annual Traditional Music Celebration at Berea College October 26-29.

This year's festival features noted black musicians like Buddy Moss and early radio stars such as Bradley Kincaid and Grandpa Jones of the nationally televised "How Haw" program.

Buddy Moss will open the festival with a concert at 3 p.m. Thursday, October 26, in a Phelps Stokes Chapel. That evening, a street dance will be held on Main Street.

On Friday and Saturday evenings at 7:30 p.m., concerts will be given in Phelps Stokes Chapel. Most performers will appear each night and admission to the performances is \$2 for adults and \$1 for children.

Other scheduled events include folk dancing Friday and Saturday evening, informal music all day Saturday, instrumental workshops Saturday morning, a symposium Saturday afternoon, traditional religious music Sunday morning and a chapel service that night. All events are free and open to the public, except the Friday and Saturday night performances.

A guitarist and blues singer, Buddy Moss grew up playing guitar and harmonica, and singing blues and folk songs. During the 1930's in New York

City, he recorded for Columbia Records, and under the name of Jim Miller, recorded for Vocalion Records. Some of his most popular tunes are "When I'm Dead and Gone," "V-8 Ford," "Strange Woman," "How Haw," "Mean Me No Good," and "12 Gates to the City."

Grandpa Jones will perform Saturday at the Alumni Building and during the evening concert with his wife,



"Grandpa Jones"

Commonwealth of Kentucky
Rockcastle Circuit Court

JOSIE BLACKBURN, widow
ROSCOE BLACKBURN and wife,
CHRISTINE BLACKBURN,
RUSSELL BLACKBURN and wife,
CAROL BLACKBURN,
JAMES W. LAMBERT and wife,
RUTH H. LAMBERT

PLAINTIFFS

VS: NOTICE OF SALE

ROSA B. KIRBY, widow
OPAL B. FALLSTICK and husband,
EVERETT FALLSTICK,
PEARL FRENCH and husband,
ROBERT FRENCH,
GLEN BLACKBURN and wife,
JUANITA BLACKBURN,
BONNIE KIRBY and husband,
FLOYD KIRBY,
LONNIE DENNEY and husband,
THOMAS DENNEY,
THOMAS D. BLACKBURN and wife,
SHERLENA BLACKBURN,
FLORENCE BURKE and husband,
BILLY BURKE

JOANN BLACKBURN ROBBINS
and husband, JOHN ROBBINS,
JOHNNIE BLACKBURN, single,
JACK BLACKBURN, single,
ORVILLE BLACKBURN and wife,
MATTIE BLACKBURN,
DOYLE BLACKBURN, single,
DANIELS BLACKBURN and wife,
SHIRLEY BLACKBURN,
GENE BLACKBURN and wife,
LINDA BLACKBURN,
LORETTA BLACKBURN PRE-
WITT and husband,
ED PREWITT
JUANITA BLACKBURN INMAN
and husband, BOB INMAN,
ANN BLACKBURN, widow,
DARLENE BLACKBURN COTTON,
single,
RHONDA BLACKBURN, a minor,
age 13 years,
JOE OWENS, single,
WILBUR OWENS and wife,
JEAN OWENS,
CAROLYN OWENS and husband,
OWENS,
FAYE CROMER and husband,
HAROLD EDWARD CROMER,
ELIZA BULLOCK, widow,
DEFENDANTS

By virtue of a judgment and order of sale of the Rockcastle Circuit Court rendered on the 21st day of September, 1978, in the above styled cause, a partition action, I shall offer for sale pursuant to direction of the Rockcastle Circuit Court IN SEPARATE TRACTS NOT TO BE GROUPED at the Courthouse door on Main Street in Mt. Vernon, Rockcastle County, Kentucky, to the highest bidder, at public auction, on Wednesday, October 25th at the hour of ten o'clock a.m. or thereabout, the following described real property located in Rockcastle County, Kentucky and more particularly bounded and described as follows:

Tract No. 1 on the waters of Skeggs Creek and beginning on a stone by a large black oak stump in Rosa Mason's line, on the point of a ridge, thence North 4 1/2 West 172 poles to a stone on the ridge, Rash's corner, thence along the ridge, thence North 35 West 8 1/2 poles to a stone, thence with a straight line due north east to the beginning corner containing six (6) acres, more or less.

And being the same property conveyed to Joe Blackburn and Josie Blackburn by deed dated June 25, 1960, by Sarah Wilbur and husband, Forester Wilbur, which said deed is duly recorded in Deed Book 80, page 285.

thence up with the branch to the beginning, containing forty seven (47) acres, more or less.

And being the same property when Joe Blackburn and wife, Blackbourn obtained by deed dated November 17, 1953 from Jim Cromer and wife, Helen Cromer, recorded in Deed Book 73, page 48.

Tract No. 3 On the waters of Skeggs Creek and beginning at a poplar and maple corner S.E. to a poplar, thence N.W. to a beech, thence N. to a stone on top of ridge at an old road, thence with old road to Jack Hanson's line to Prewitt rock, thence to a sycamore near said checknut oak pointer; thence a straight line down hill to a stone on a point between two drains about 75 yards from hickory to a cliff fence, thence along dogwoods with cedar pointer; thence E. to the beginning, containing about 20 acres, more or less.

And being the same property which Joe Blackburn and Ruscoe Blackbourn obtained by deed dated February 21, 1967 from D.M. Sals and wife, Lola Margaret Saylor, recorded in Deed Book 66, page 335.

Tract No. 4 On the waters of Holmes Branch and beginning on J.M. Oliver's line, thence with said Oliver's line to a sycamore near said branch, thence leaving said branch to a sycamore near said branch, thence leaving said branch and running up the small branch to the heart of source of said branch to a sugar tree, a corner, thence a straight line by way of a white oak marked J.M. Oliver's line, thence with said Oliver's line in the direction of Holmes Branch to the top of Holmes Branch Ridge; thence with said ridge with R.W. Oliver's line to a bunch of chestnut sprouts, said R.W. Oliver's corner, thence with said Oliver's line crossing Holmes Branch to a beech corner, said R.W. Oliver's beginning corner, thence with J.M. Oliver's line and running straight to Rockcastle River, leaving the Holmes Branch field through two rods beyond the fence; thence up the said River to the beginning corner, containing forty (40) acres, more or less.

And being the same property which Joe Blackburn, E.E. Bullock and James W. Lambert obtained by deed dated February 27, 1957, from Pauline Taylor, et al, recorded in Deed Book 77, page 497.

Each tract of the property shall be sold to the highest bidder on the terms of ten per cent (10%) of the purchase price in cash at the time of sale, the balance in six months, with the purchaser being required to execute bond with surety thereon to be approved by the Master Commissioner to secure the unpaid balance of the purchase price, said bond to bear interest at the rate of eight (8%) per cent per annum from date of sale until paid. The purchaser shall have the privilege of paying all of the purchase price in cash or paying said bond before maturity by paying the principal and interest accrued to date of payment. The purchaser shall have possession of the premises after complying with the terms of sale. If the purchase price is not paid in full at the time of sale or upon delivery of deed, then will be obtained to secure the unpaid purchase price, plus interest.

/s/ William D. Gregory
Master Commissioner
Rockcastle Circuit Court
Joseph E. Lambert
Attorney at Law
P.O. Box 278
Mt. Vernon, Kentucky 40456
Attorney for Plaintiffs

Ramona and daughter, Alisa. Born Lewis-Marshall Jones in Niagra, Ky., Grandpa grew up playing the mandolin and fiddle. After winning a contest hosted by Wendell Hall, the old "red-headed music maker", he became a regular on WFJC and WJW radio stations in Akron, Ohio; Grandpa next worked with Bradley Kincaid in 1933, playing up and down the East Coast. He then had his own radio show "Grandpa Jones and the Grandchildren" in Wheeling, W.V. In 1946, he joined the Grand Ole Opry and still performs there today.

Bradley Kincaid received his high school diploma from the Berea Academy in 1922. He was made famous by his song, "Barbara Allen," with others such as "Sourwood Mountain," "Wonder When I Shall Marry" and "Methodist Pie."

Other performers will be Marion Sumner and Jack Wright of Letcher county, Ky.; Sheila Rice of Madison County, N.C.; Homer Walcott of Beckley, W.Va.; the Dutch Cove Old Time String Band of Canton, N.C.; David Morris of Lydell, W.V.; Cliff Carlisle of Lexington; The Coffredell Brothers of Stuart, Va.; Betty Smith of Marietta, Ga.; Berzilia Wallin and Dellie Norton of Madison County, N.C.; Mack Snoderly and Carroll Best of Haywood County, N.C.; John McCutcheon with Valerie Kinsey and Tom Blesdoss of Dunganston, Va.; Philip Kazez of Opaide, Tenn.; Lewis and Donna Lamb of Paint Lick, Ky.; and Elmer Bird of Hurricane, W.V.

Workshops between 9 a.m. and noon Saturday will include hammered dulcimer instruction led by John McCutcheon, plucked dulcimer: Betty Smith; guitar, Jim Gage and Donna Lamb; banjo, Sheila Rice; fiddle, Lewis Lamb and Marion Sumner, and shape-note singing, Quin Smathers.

Dr. Bill C. Malone, professor of history at Tulane University will lead a symposium on "Traditional Roots of Country Music" at 2 p.m. Saturday afternoon. He is the author of "Country Music USA" and editor of "Stars of Country Music."

Religious music and hymn singing will be led by Betty Smith and held at 9

RCHS Honor Roll

FIRST SIX WEEKS
10TH GRADE

9TH GRADE

Jane Anier, Mary Ann Baker, Melaine Baldwin, Jennifer Blanton, Kathrine Brown, Loretta Bullock, Ronald Cameron, Sherry Cash, Steve Childress, Patrick Craig, Karl Cromer, Tony Cromer, Ricky Evans, Valerie Fields, Gerald Scott Hansel, Jennifer Hayes, David Scott Henderson, Tina Herdin, Willie Lee Hiatt, Brian Holman, Donald Jones, Margaret Kirby, Jack Douglas Lewis, Janice Long, Connie McClure, Stephen McClure, Phyllis McCure, Therese Matthias, Mary Lynn Martin, Geneva Miller, Timothy Mink, Tracy Mink, Roland Dyeche Mullins, Tammy Nicely, Gary Pickle, Curtis Pingleton, Justin Prewitt, Connie Sue Price, Elizabeth Proctor, Donna Renner, Debbie Reynolds, Regina Russell, Lisa Sears, Elizabeth Shearer, Cynthia Taylor, Vickie Walden, and Edward Whitaker.

10TH GRADE

Jamie Anderkin, Robyn Arnold, Mona Bivins, Greta Bright, Kimberly Cordella, Dianna Caldwell, Tammy Coffey, Kelli Cummins, Emma Daugherty, Judith Davidson, Mary French, Teddy Garbutt, Billie Hayes, Valerie Isaacs, Vicki Lamb, Helen McGuire, Rose Marie Matthis, Sheila Mink, Melba Mink, Sheila Morgan, Lisa Parsons, Jo Ann Reese, Bobby Robinson, Kenneth Thacker, Rebecca White.

a.m. Sunday.

A Sunday evening service in Danforth Chapel closes the festival.

The Traditional Music Festival is sponsored by the Berea College Appalachian Center under the direction of Loyal Jones and is supported by a National Endowment for the Arts grant.

11TH GRADE

Calvin T. Anglin, Edwina Anglin, Vicki Benge, Donna Bishop, Lena Brummett, Melinda Bowman, Dalene Brown, Kathy Bullock, Vicki Bullock, Jeffrey Burdette, Regina Burdette, Lynne Burton, Lee Cain, Rhonda Carroll, Sharon Caudill, Carolyn Childress, Vonda Croucher, Rebecca Eldridge, Charlie Fain, Annette Faulker, Theresa Glovak, Donna Haarman, Marvin Hensley, Carolyn Himes, Ricky Hickey, Michael Hopkins, Marcus Hopkins, Paul Kidwell, Lucinda Lear, Iola Leger, Sheila Lovins, Tracy Lyons, Teresa Northern, Cheryl McClure, Mark McFerron, Ivy McNew, Brenda Miller, Mary Miller, Teressa Miller, Audrey Morgan, Lisa Mullins, Lena Phillips, Lena Pingleton, Lis Raines, Diane Renner, Tony Saylor, Donna Smith, Sonya Thomas, Patti Towery, Harold Woodall and Harold Whitaker.

12TH GRADE

Diane Sue Baldwin, Judy Brock, Connie Brown, Mary Jo Brown, Marilyn Brown, James Logan Brown, Brenda Bullen, Sandy Bullock, Stephen Center, Shanda Childress, Debra Coffey, Gina Cornelius, David Cummins, Barbara DeFord, Sherrie Durham, Connie Fletcher, Jennifer Greter, Grenda Graves, Sharon Hayes, Sherry Hansel, Aneta Herdin, Vanessa Hopkins, Kathy Huxley, Linda Jackson, Janice Jones, Sue Kendrick, Ricky Leger, Debra McClure, Pamela McClure, Tressia McGuire, Virginia McKinley, Theresa Manns, John Scott Masters, Nevada Miller, Rhonda Miller, Nancy Mowbray, Larry Mullins, Paula Napier, Barbara Newton, Kelli Payne, Marlen Phelps, Sherwood Pickle, Rebecca Pingleton, Randall Powell, Terry Rader, Jo Ann Rhode, Gloria Smallwood, Debra Taylor, Diana Thacker and Martin Thomas.

"Old friends are best."
John Seltzer

DES Director Hansel Gives

Precautions for Whtier

Winter storms can bring snow, ice or high winds, according to Paul Hansel, Disaster and Emergency Services director for Rockcastle County, and all can be hazardous. Kentuckians have suffered through two bad winters in a row and may be in for another one but, by taking a few precautions now, most major problems can be avoided.

Hansel urges all area residents to take forecasts of severe weather seriously and take necessary measures. For example, he said, Kentuckians every household should be able to exist for at least 24 hours without help from others and without utilities. That means having food, water and battery-powered equipment available and keeping some emergency food and water supplies on hand.

"Proper dress during bad weather can be crucial," he said. "Layers of protective clothing are more effective than single layers of thick clothing and mittens are warmer than gloves. If you must go outside, cover your mouth to keep extremely cold air out of the lungs."

Hansel noted that shoveling snow is a major cause of death during and after winter storms. "Snow shoveling is deceptive," he said, "because it often seems that you're not working too hard. In reality, it's extremely strenuous and often leads to heart attacks."

Auto travel can be especially dangerous in a winter storm, he stated, urging that everyone travel only when absolutely necessary.

"Always make sure your car is winterized and make sure you have enough equipment along to keep you warm and visible if you're trapped. And if you are trapped, stay inside the car, but keep it ventilated. Do some exercises to help your circulation, and keep your dome light on at night. If someone else is in the car with you, stand watches so someone will always be awake in case help is near."

FABULOUS
southern style
DISCOUNT STORES
U.S. 25 South, Mt. Vernon, Ky.

NEVER BEFORE
DOORBUSTER SALE
PLUSH SCUFF
\$133

Women's open-toe acrylic scuff with cushioned sock in assorted colors in sizes 6-10.
REG \$199

\$139
REG \$199
MON. ONLY!

'Rubbermaid'
SAFTI-GRIIP
BATH TUB
MAT

89¢
REG \$109
MON. ONLY!

Tucker
Plastic
DISH
DRAINER

\$159
REG \$219
MON. ONLY!

CAKE
PAN
Full size aluminum
cake pan with plastic
lid cover.

3 \$100
FOR

'Warco'
Automatic
TRANSMISSION
FLUID

REG 49¢
MON. ONLY!

LIMIT 3

\$299
REG \$399
MON. ONLY!

'Dowgard'
Radiator
ANTIFREEZE
Full gallon

Limit 2 gals.

44¢

'Hi-Dri'
PAPER TOWELS
Jumbo roll
Super quality.
REG 59¢ TUES. ONLY!

\$100
REG \$179
TUES. ONLY!

Corn
BROOM
Mexican imported

\$159
REG \$229
TUES. ONLY!

12 Qt.
Galvanized
WATER
PAIL

2 \$100
FOR

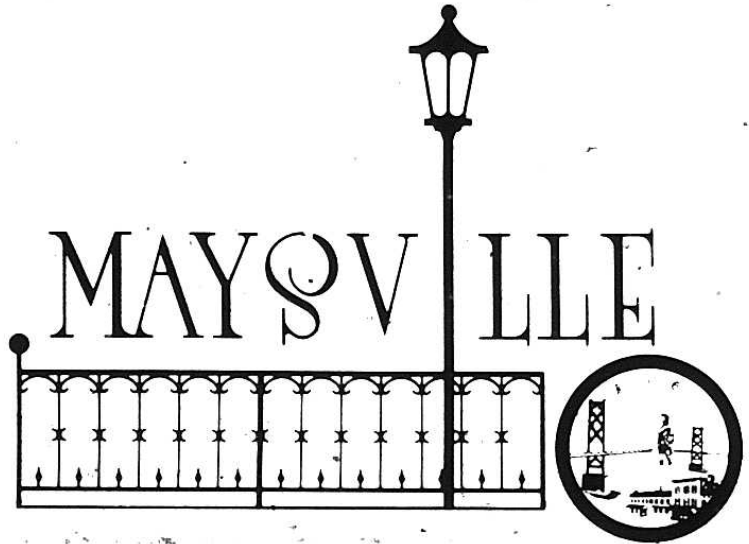
Box of 100
ENVELOPES
White in 3 5/8"
X 8 1/2" size
REG 64¢
TUES. ONLY!

39¢
REG 49¢
TUES. ONLY!

Plastic
CUTLERY
TRAY
5 compartments.

HARVEST TIME

At
Participating
Stores
In . . .





Levi's

At **Clothes Quarters**

All New, Fall Colors, Corduroys

— Straight and flare legs
Guys Sizes 29-42

Just Arrived Men's Sweaters

Crew and v-neck styles
Assorted Colors
Sizes S-M-L-XL

Winter Jackets For Guy's & Gals

Fully lined Assorted styles

Just For Gals!

Corduroys in new fall colors. Sizes 3-15.
Also matching vests.



Levi's

Clothes Quarters

Hours: Mon.-Sat. 10-7 P.M.
Open Sunday 1-6 P.M.
Across From Clydes On Forest Ave.

VISA
Master
Charge

Harvest Time is Value Time

LOOK INTO OUR WINDOW OF NAME BRAND STYLES
FEATURING



DIVISION OF L & K SPORTSWEAR
SEPARATES

Blazer	29.95 Now	\$24⁹⁵
Slacks	15.98 Now	\$12⁹⁸
Blouse	12.98 Now	\$9⁹⁸
Skirts	17.98 Now	\$13⁹⁸
Shell	11.98 Now	\$9⁹⁸
Hunter Green Dusty Brown		
8-18 Larger Sizes Ava.		

ELLISON'S
Formerly The New York Store
DOWNTOWN MAYSVILLE



Fall Harvest of Values

Try To Beat Our Prices We Have To Make Room

10 Lb.
Automatic Washer
Portable
Ideal For Trailers
\$219⁰⁰
Picked Up

Kitchen Aid
Dishwasher
Cutting Board Top
Portable
\$359⁰⁰

20 Year
Mattress &
Box Springs
Best You Can Buy
List \$389⁰⁰
Sale
\$249⁰⁰

19" Portable
TV's
\$379⁰⁰

Ben
Franklin
Wood Burning
Stoves
Cost Plus
Freight

Sloppy Joe

- 1-Couch
- 1-Love Seat
- 1-Rocker
- 1-Straight Chair
- 1-Ottman
- 2-Lamp Tables
- 1-Cocktail Table

\$399⁰⁰

10 Lb.
Push Button Auto.
Washer
Picked Up
\$229⁰⁰

1-Norge Dishwasher
Cutting Board Top
Portable
\$299⁰⁰

Good Odd
Box Springs
Your Choice
\$60⁰⁰

Mirrors
30% OFF

All Types
Of Desks
30% OFF

Admiral
Color TV's
While They Last
23" - 25"
Hugh
Discounts

Bedroom
Suites
These Are
Good Ones - Buy
At Cost And Pick
Them Up. First
Come.

Broyhill
Livingroom Suites
Early American & Traditional
40% OFF
Beautiful
Bedroom Suites
30% Off

Waldren Furniture

Hwy 10 East

Just Pass Maysville
Cemetery

20% off

Selected Boys Sweaters

Sale 6.80

Reg. 8.50. Big boys' hand embroidered ski-look sweater in solids and patterns of acrylic. S-M-L.

Small Boys

Sale 4.79

Reg. 5.99



Special

9.99

Men's sweaters.

Hand embroidered ski style sweaters of acrylic yarn. Great color combos. S-M-L-XL.



A Group Of Men's Sportshirts Are Now Reduced Up To

35% off

Orig. 5.99 To 13.00

Sale 4.00 To 9.88

Men's Short Sleeve Knit Sport Shirts Now Drastically Reduced.

Sale does not include entire stock Intermediate markdown may have been taken.



Special 6.99

Boys' jeans.

Big boys' pre-washed flared leg jeans of polyester-cotton. Regular and slim sizes 8-16 & varsity sizes.

4.99

Little boys' fashion jeans of pre-washed polyester/cotton. 3-7.

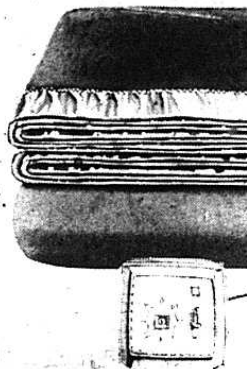
Special

21.99 Full

Electric blanket.

The coziest of blankets. Poly/acrylic in bright colors.

Special 21.99. Full, single control



20% off

Selected Girls Sweaters

Sale 8.80

Reg. \$11. Big girls' bulky knit zip-front hooded acrylic sweater for S-M-L.



Sale 7.19

Reg. 8.99. Little girls' sweater jacket with zip-front, hood in acrylic for S-M-L.



Special

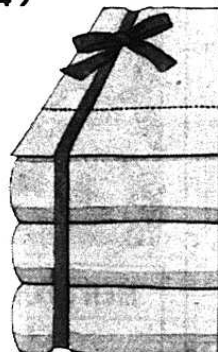
New Stripe Sheet

Twin Size	2.99
Full Size	3.49
Queen Size	5.99
King Size	7.99

Cases 2.49

No-iron muslin
Fitted or flat
Blue or brn. stripe

Similar To Illustration



This is JCPenney

MERZ BROS.

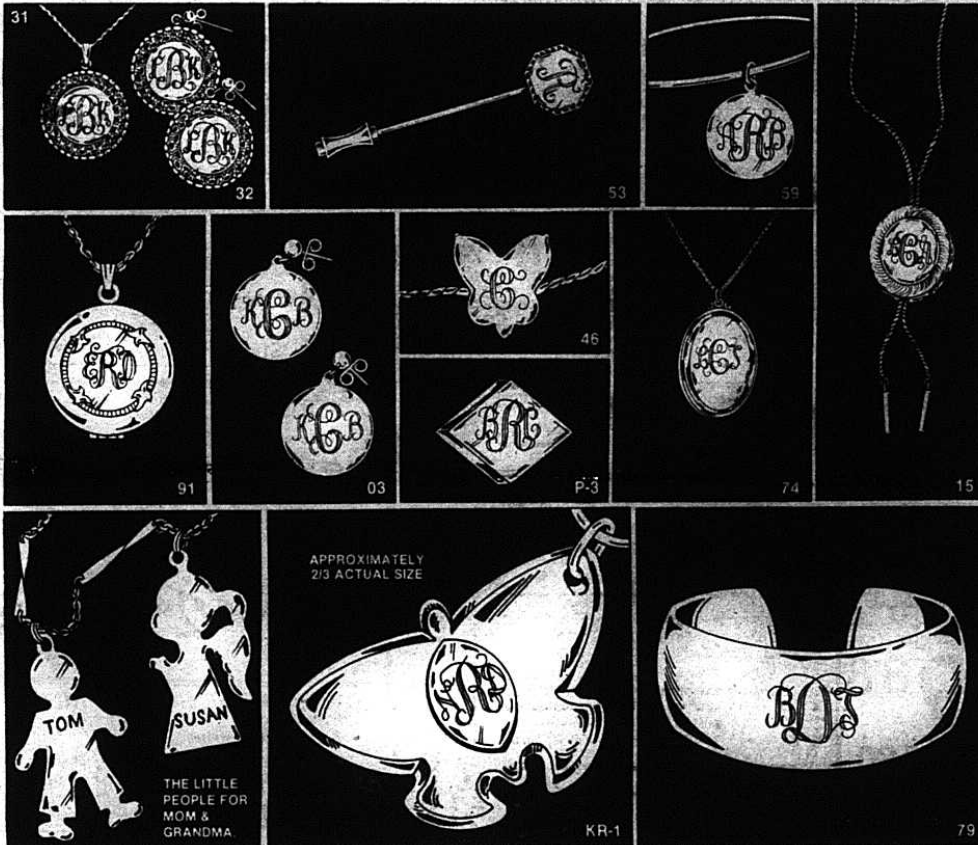
A KLINE'S STORE

HARVEST

REAP HEAPIN' BIG SAVINGS



Beautiful custom engraved gold and silver tone jewelry that is something special for someone special. Engraved free of charge while you shop. \$4 to \$12.50.



HAND TOWELS
 REG. 3.98 2 For **2⁰⁰**

WASHCLOTHS
 REG. 1.79 2 For **1⁰⁰**

ASSORTED FIELDCREST SHEETS

Twin	2 For	7.88
Full	2 For	10.88
Queen	2 For	14.88
Standard Cases	2 For	4.44

NICE ASSORTMENT LADIES GOWNS and PAJAMA

REG. TO 10.00 **5⁰⁰**

Beautiful 100 percent cotton flannel and brushed pajama and gowns in soft pastel solid and floral prints. Get ready now for those cold winter nights.

MEN'S POLYESTER 3 PC. SUITS

REG. TO 100.00 **39⁹⁰**

Great saving on 100 percent polyester 3pc. suit. The jacket has a center vent with flap pockets. Tailored vest, and modified flare leg pants. Plaids, checks, solids and stripes.

LARGE ASSORTMENT HAGGAR SLACKS

REG. TO 20.00 **12⁹⁰**

They feel as great as they look ... wonderfully washable polyester in a handsome assortment of solids, neat checks and plaids, in autumn tones.

MEN'S DOMESTIC MADE FLANNEL SHIRTS

REG. 8.00 **5⁹⁹**

Soft cotton flannel with two pockets and banded collar, little shrinkage and no ironing. All this and made in U.S.A.

MEN'S LONG SLEEVE DRESS SHIRTS

REG. 15.00 **7⁹⁰**

Our better quality dress shirt in a turtly care-free blend of polyester-cotton. Have it in solid, stripes and plaids, 14 1/2 to 17, average sleeve lengths.

ST SALE

NGS

TOWELS

2 For **2⁰⁰**

LOTHS

2 For **1⁰⁰**

T SHEETS

2 For **7.88**

2 For **10.88**

2 For **14.88**

2 For **4.44**

DIES

PAJAMA

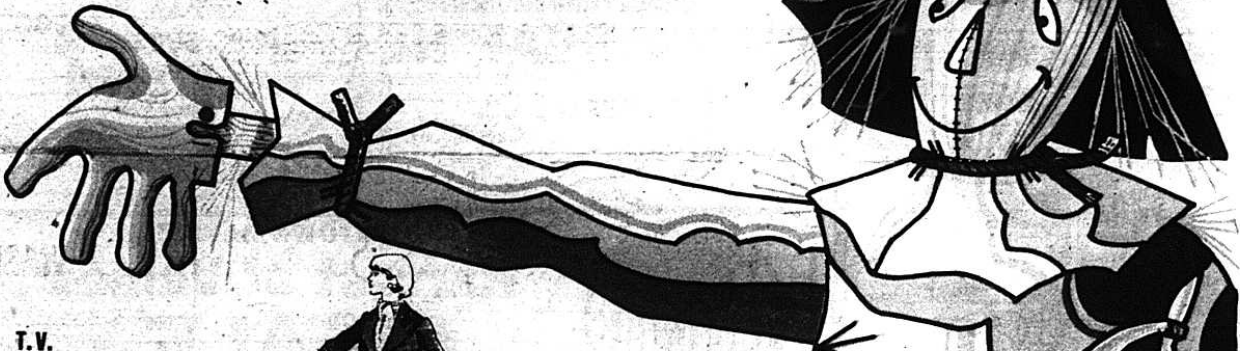
5⁰⁰

SUITS

39⁹⁰

SLACKS

12⁹⁰



T.V. **BLANKETS**
REG. 12.98

LADIES **KNEE HI**
REG. 69⁰⁰

LADIES **HANDBAGS**
REG. TO 9.90

KNEE HI **SOCKS**
REG. 99⁰⁰

MISSY **KNIT TOP**
REG. 7.00

JUNIOR PLAID **BLOUSES**
REG. 15.00

MEN'S **JOGGING SUIT**
REG. 25⁰⁰

MEN'S **SPORT COAT**
REG. TO 60.00

MEN GOLF **JACKETS**
REG. TO 18.00

9⁹⁰

LADIES 3 PC. **PANTSUIT**

REG. 32.00 **22⁹⁰**

Beautiful 3 pc. pant suit made of 100 percent polyester. Solid jacket and pant with stripe or plaid blouse, all are machine washable.



99^c

STAGE 7 SWEATER **KNIT DRESS**

REG. TO 40.00 **29⁹⁰**

Dress fever is going around catch it in this 2 pc. acrylic, polyester pointelle knit dress from Stage 7. 3 styles to choose from in white, coral, blue and green. Machine washable.



2 For **99^c**

3⁹⁰

PURITAN 3 PC. **PANTSUIT**

REG. 30.00 **22⁹⁰**

A great looking way to keep warm this winter. Solid blouse and slacks and a matching rib knit print v-neck sweater. All are machine wash and care-free.



9⁹⁰

14⁹⁰

NYLON **SKI SUIT**
REG. 46.00 **39⁹⁰**

Warming yet lightweight ... durable outer nylon shell with plump polyester fill. Solid, zip front jacket with matching pant in rust and blue.



6⁰⁰



JOGGING **SETS**

Top Reg. 18.00 **9⁹⁰**

Slack Reg. 15.00 **9⁹⁰**

This is a great way to keep in shape, and look good inside and out. All for less than 20.00 - good looking saving too.



OUR **ENTIRE STOCK**
ON **SALE**

20% OFF

ON ALL FOUNDATION

That's right!! Our entire stock of bras, girdles and support brief. Choose from many style and top maker - Warner's, Playtex, underscene and flexnit.