

Notice

Notice is hereby given that Continental Telephone Company of Kentucky has filed tariffs with the Utility Regulatory Commission of Kentucky increasing its rates for local exchange services in all exchanges served by the Company.

Table listing various services and their rates, including CPE Maintenance, Jacks and Plugs, and 50 Pin Jack.

Directory Listings

Table listing Regular Extra Listings, Business listings, and Alternate Call Number Listing.

Local Exchange Service

Table listing Group 1 - Mount Olivet services, including one-party, four-party, and semipublic lines.

Table listing Group 2 - Arlington, Bardwell, Columbus, Evans, Milburn services.

Table listing Group 3 - Augusta, Brooksville, Germantown, Johnsonville, Smithland, Mammoth Cave services.

Table listing Group 4 - Bee Spring, Brodhead, Brooksville, Irvine, Livingston, Manchester, Mt. Vernon, Oneida services.

Table listing Group 5 - Barboursville, Flatlick services.

Table listing Group 6 - Caneyville, Clarkson, Dover, Frensham, Lewisburg, Mays Lick, Washington services.

Table listing Group 7 - Calvert City, Jenkins services.

Table listing Group 8 - East Bernstadt, London services.

Table listing Group 9 - Eubank, Faubush, Park City, Science Hill, Shopville, White Lily services.

Table listing Group 10 - Smith's Grove services.

Table listing Special Rate Group - Cumberland services.

Table listing Activity services, including Service Order-Primary, Central Office, Premise Visit, Inside Wire, and Equipment Work.

Table listing Service Charges, including Business/Residence, Other Misc. Equipment, and Advance Wiring.

Table listing Foreign Listings, Unlisted Numbers, Nonpublished Numbers, and Public and Semipublic Service.

Table listing Exchange Line Mileage, Mileage on Lines between Subscriber Locations, and Foreign Exchange Service.

Table listing Intracompany Foreign Exchange, Mileage - per mileage unit, and Key Telephone System.

Table listing Station Set Rates, Common equipment, and K68 system.

Table listing Intercoms, Supplemental Equipment, and System K36.

Table listing Private Branch Exchange Service, PBX Systems, and C/S 30.

Table listing Extension Stations, PBX & PABX Extensions, and Directory Assistance Service.

Table listing Miscellaneous Service Arrangements and Auxiliary Equipment.

Table listing Class of Service, Automatic Answering and Recording Service, and Automatic Dialer.

Table listing Automatic Time and Temperature, Announcement Service, and Alarm-Alarm Chimes.

Table listing Alarm-Alarm Chimes, Alarm-Alarm Chimes (Cont'd), and Alarm-Alarm Chimes (Cont'd).

Table listing Alarm-Alarm Chimes (Cont'd), Alarm-Alarm Chimes (Cont'd), and Alarm-Alarm Chimes (Cont'd).

Table listing Alarm-Alarm Chimes (Cont'd), Alarm-Alarm Chimes (Cont'd), and Alarm-Alarm Chimes (Cont'd).

Table listing Alarm-Alarm Chimes (Cont'd), Alarm-Alarm Chimes (Cont'd), and Alarm-Alarm Chimes (Cont'd).

Table listing Burglar Alarm System, Emergency Call System, and Emergency Call System/Fire Reporting System.

Table listing Emergency Call System/Fire Reporting System, Emergency Call System/Fire Reporting System, and Emergency Call System/Fire Reporting System.

Table listing Emergency Call System/Fire Reporting System, Emergency Call System/Fire Reporting System, and Emergency Call System/Fire Reporting System.

Table listing Emergency Call System/Fire Reporting System, Emergency Call System/Fire Reporting System, and Emergency Call System/Fire Reporting System.

Table listing Emergency Call System/Fire Reporting System, Emergency Call System/Fire Reporting System, and Emergency Call System/Fire Reporting System.

Table listing Emergency Call System/Fire Reporting System, Emergency Call System/Fire Reporting System, and Emergency Call System/Fire Reporting System.

Table listing Emergency Call System/Fire Reporting System, Emergency Call System/Fire Reporting System, and Emergency Call System/Fire Reporting System.

Table listing Emergency Call System/Fire Reporting System, Emergency Call System/Fire Reporting System, and Emergency Call System/Fire Reporting System.

Table listing Emergency Call System/Fire Reporting System, Emergency Call System/Fire Reporting System, and Emergency Call System/Fire Reporting System.

Table listing Emergency Call System/Fire Reporting System, Emergency Call System/Fire Reporting System, and Emergency Call System/Fire Reporting System.

Table listing Emergency Call System/Fire Reporting System, Emergency Call System/Fire Reporting System, and Emergency Call System/Fire Reporting System.

Table listing Emergency Call System/Fire Reporting System, Emergency Call System/Fire Reporting System, and Emergency Call System/Fire Reporting System.

Table listing Emergency Call System/Fire Reporting System, Emergency Call System/Fire Reporting System, and Emergency Call System/Fire Reporting System.

Table listing Emergency Call System/Fire Reporting System, Emergency Call System/Fire Reporting System, and Emergency Call System/Fire Reporting System.

Table listing Emergency Call System/Fire Reporting System, Emergency Call System/Fire Reporting System, and Emergency Call System/Fire Reporting System.

Table listing Emergency Call System/Fire Reporting System, Emergency Call System/Fire Reporting System, and Emergency Call System/Fire Reporting System.

Table listing Emergency Call System/Fire Reporting System, Emergency Call System/Fire Reporting System, and Emergency Call System/Fire Reporting System.

Table listing Emergency Call System/Fire Reporting System, Emergency Call System/Fire Reporting System, and Emergency Call System/Fire Reporting System.

Table listing Emergency Call System/Fire Reporting System, Emergency Call System/Fire Reporting System, and Emergency Call System/Fire Reporting System.

Table listing Emergency Call System/Fire Reporting System, Emergency Call System/Fire Reporting System, and Emergency Call System/Fire Reporting System.

Table listing Emergency Call System/Fire Reporting System, Emergency Call System/Fire Reporting System, and Emergency Call System/Fire Reporting System.

Table listing Emergency Call System/Fire Reporting System, Emergency Call System/Fire Reporting System, and Emergency Call System/Fire Reporting System.

Table listing Emergency Call System/Fire Reporting System, Emergency Call System/Fire Reporting System, and Emergency Call System/Fire Reporting System.

Table listing Emergency Call System/Fire Reporting System, Emergency Call System/Fire Reporting System, and Emergency Call System/Fire Reporting System.

Table listing Emergency Call System/Fire Reporting System, Emergency Call System/Fire Reporting System, and Emergency Call System/Fire Reporting System.

Table listing Emergency Call System/Fire Reporting System, Emergency Call System/Fire Reporting System, and Emergency Call System/Fire Reporting System.

Table listing Emergency Call System/Fire Reporting System, Emergency Call System/Fire Reporting System, and Emergency Call System/Fire Reporting System.

Table listing Emergency Call System/Fire Reporting System, Emergency Call System/Fire Reporting System, and Emergency Call System/Fire Reporting System.

Table listing Emergency Call System/Fire Reporting System, Emergency Call System/Fire Reporting System, and Emergency Call System/Fire Reporting System.

Table listing Emergency Call System/Fire Reporting System, Emergency Call System/Fire Reporting System, and Emergency Call System/Fire Reporting System.

Table listing Emergency Call System/Fire Reporting System, Emergency Call System/Fire Reporting System, and Emergency Call System/Fire Reporting System.

Table listing Emergency Call System/Fire Reporting System, Emergency Call System/Fire Reporting System, and Emergency Call System/Fire Reporting System.

EXTENSION HOME ECONOMICS

By: Cheryl Witt
County Extension Agent for Home Economics

How to remove crayon stains
When a crayon spots a garment or creates a streak of color throughout the laundry load, removal of this unwanted color can be a problem. Here are some suggestions for removing it:

If there are a few spots on a washable garment, remove the surface crayon wax with a dull knife. Place the stained area between paper towels and press with a warm iron. Then place the garment with the stain face down on the paper towels and sponge the back of any remaining stain with dry cleaning solvent. After the area dries, launder the garment with detergent or soap. If traces of color remain, rewash using chlorine bleach, if it's safe for the fabric.

If crayon stains have spread throughout a load of clothes, try this: first, wash the items with the hottest water safe for the fabric, preferably hot, using a laundry soap and one cup baking soda. If the color remains, launder with detergent or soap using chlorine bleach, if it's safe for the fabric. Or use an oxygen bleach using the hottest water safe for the fabric, then launder.

Remove crayon stains from garments as soon as you discover them, that way, the problem will be easier to remedy.

Try these ideas
Add dried herbs to vegetables at the beginning of the cooking period. Lima beans with marjoram or sage, snap beans with basil or dill, broccoli with tarragon or cabbage with caraway seed are all good combinations.

Watching your weight?
Sprinkle lemon juice or herb vinegar for seasoning instead of butter or margarine.

To retain vitamin C while cooking cabbage, try "panning." For six servings add 1/4 quart of finely chopped cabbage to 1 1/2 x 2 tablespoons margarine in a heavy pan over moderate heat. Add 3 tablespoons water and cover pan tightly to hold in steam. Cook over low heat for 6-8 minutes or until cabbage is tender; stir occasionally. Chopped onion or bacon bits can be added for flavor. Add salt at the table if needed.

Got a job outside the home that keeps you busy all week? Make it part of your weeknight or weekend routine to prepare a big plastic bag of vegetable relishes for family snacks. Add zucchini slices or green pepper to the usual celery and carrot sticks. Do enough for several days. This makes vegetable snacking easy and keeps the family from eating too many sweet or salty snacks.

It's coffee break time. While everyone else has a sweet pastry or donut, why don't you eat an apple you've brought from home?

Instead of sweet, calorieladen syrups and sauces, serve sliced fresh fruit on ice milk or frozen yogurt. Or, top with canned, crushed pineapple packed in natural juices.

Cut up leftover poultry and meats into bite-sized pieces and use as a main dish salad with greens. Great for dieters - especially if you use a low-calorie dressing.

Want a nutritious, economical sandwich spread to perk up lunch time? Mix chunky peanut butter (1 cup), chopped raisins (1 cup) and shredded carrot (3/4 cup) for six snappy sandwiches.

Make a nutritious, easy-to-fix main dish with spinach leaves, torn in bite-sized pieces; add sliced green onion, crumbled bacon bits and chopped hard cooked eggs. Serve with your favorite dressing. Dieters may prefer just a sprinkling of lemon juice.

Bored with sandwich-bag lunches? Try packing cubed cheese and meat in a wide-thermos jar, along with cherry tomatoes and dill pickle chunks.

Tired of the usual salads? Try scooping out tomatoes and adding a combination of drained whole-kernel corn, chopped onion and green pepper and the salad dressing of your choice.

derably lower price. As a matter of fact, it is estimated 400 of this quality emerald could be purchased for \$10 or 2.5 cents each.

Fourth Grade 4-H Camp
Rockcastle County 4th graders will be among 4th graders from seven other counties in the Wilderness Trail Area 4th grade camp June 3rd through 6th.

Another suit against Gem Collectors, Scott won an agreement requiring the firm to buy back diamonds from 920 Illinois residents for 110 percent of the original selling price.

If you are considering purchasing an emerald and think you will realize a substantial savings by investing in this

offer, you may be disappointed. Ultimately, the value of a stone is merely what it will bring on the open market and its artistic merits are really a matter of opinion. As always, in matters such as these, be leery of offers that seem too good to be true. They probably are.

Quail
Mrs. Benton Owens and Mrs. Pattie Baker visited Mrs. Owen's aunt, Mrs. Mary Martin, and Mrs. Amy Cox, Sunday afternoon at Sowder Nursing Home.

Wednesday evening visitors of Mr. and Mrs. Ray Pope and family were Reverend and Mrs. Melvin Brock, Mr. and Mrs. Walter Cash and daughter, Mr. and Mrs. Paul Cash, Mr. and Mrs. Gordon Pope and family, Mr. and Mrs. T. G. Laswell and Mr. Bobby Wright.

offer, you may be disappointed. Ultimately, the value of a stone is merely what it will bring on the open market and its artistic merits are really a matter of opinion. As always, in matters such as these, be leery of offers that seem too good to be true. They probably are.

Quail
Mrs. Benton Owens and Mrs. Pattie Baker visited Mrs. Owen's aunt, Mrs. Mary Martin, and Mrs. Amy Cox, Sunday afternoon at Sowder Nursing Home.

Wednesday evening visitors of Mr. and Mrs. Ray Pope and family were Reverend and Mrs. Melvin Brock, Mr. and Mrs. Walter Cash and daughter, Mr. and Mrs. Paul Cash, Mr. and Mrs. Gordon Pope and family, Mr. and Mrs. T. G. Laswell and Mr. Bobby Wright.

offer, you may be disappointed. Ultimately, the value of a stone is merely what it will bring on the open market and its artistic merits are really a matter of opinion. As always, in matters such as these, be leery of offers that seem too good to be true. They probably are.

Quail
Mrs. Benton Owens and Mrs. Pattie Baker visited Mrs. Owen's aunt, Mrs. Mary Martin, and Mrs. Amy Cox, Sunday afternoon at Sowder Nursing Home.

Wednesday evening visitors of Mr. and Mrs. Ray Pope and family were Reverend and Mrs. Melvin Brock, Mr. and Mrs. Walter Cash and daughter, Mr. and Mrs. Paul Cash, Mr. and Mrs. Gordon Pope and family, Mr. and Mrs. T. G. Laswell and Mr. Bobby Wright.



To ripen fruits faster, place them in a perforated plastic bag.



4-H News

By: Tom Mills
County Extension Agent for 4-H

4-H FASHION REVUE
Four Rockcastle County 4-Hers modeled their 4-H clothing projects Thursday afternoon at the County 4-H Fashion Revue. Kathy Carter was chosen senior champion for her formal dress and Mary Sue Alsip re-

Consumer Comments

By: Steven Lee
Attorney L. Beshear
\$5 Emeralds

Many inquiries on a direct mail solicitation by the North American Mineral Co. Ltd. have been received by the Consumer Protection Division of the attorney general's office. According to the inquiries, an advertisement informs a consumer "your name has been selected by computer," and if you reply within a specified time period you can win a "genuine 1-carat emerald for the sum of exactly \$5."

The ad tells consumers to offer the "jeweler \$5 for a comparable one-carat emerald." If you offer more, the jeweler probably would refuse because he deals only in gems, and could buy a comparable stone at wholesale for a consi-

WHAT'S HE EVER DONE FOR ME?

You've probably noticed a lot of people running all through the Fifth District, asking for your vote on May 27th. But what have they ever done for you? Most have never been legislators. They know nothing about making laws and solving the "red tapè" of bureaucracy. In fact, about the only thing they've ever done is campaign.

John Rogers is different. He's a State Senator. He knows about government. And, he's never lost an election.

You can study John's record to see all of the things he's done for Kentucky. And why not? John's proud of the work he's done for Kentucky's miners, farmers, teachers and businessmen.

YOU CAN VOTE FOR JOHN ROGERS, HE'S VOTED FOR KENTUCKY



Paid For By: Senator John D. Rogers for Congress Committee
Ron Linkes, CPA, Treasurer
Oct. 1980, Somerset, Kentucky 42501

Robbins Muffler & Auto Service
Rt. 1 Highway 70 Brodhead, Ky.
Ph. 758-8169

4 Styles of Mufflers
Dual Change-Overs

1. Heavy Duty
2. Standard
3. High Performance
4. Glass Packs

Batteries
Headers Shocks
Chrome Tips
Side Pipes

We Do Custom Bending
Tune-ups - Brakes - Oil Changes - Tires

"NOTICE" (Cont. From P-A8)

Trim-Line Telephone (Cumberland).....	1.65	Connection with Audible Indicating Equipment	8.90
Externally Mounted Telephone Loudspeaker (Orator type).....	1.95	Unattended sta. equip.....	8.90
Telephone Pads		Key Systems Provided by Customer	6.80
12 Button Touch Tone Pad.....	3.25	CAC R-1-2 (RR)(Coupler).....	6.80
Touch Calling Service		Data Service	
Business on line.....	2.00	Class of Service	Proposed Monthly Rate
Residence, each line.....	1.50	Data Sets	
Each set.....	.35	100 Series.....	\$40.80
Vacation and Seasonal Service.....	12.00	T115A e/w 502 auxiliary set.....	22.30
(10/12) of Exchange Line Rate		200 Series	
Interconnection With Communications Equipment Provided by the Customer		200C.....	72.00
Proposed Monthly Rate		201A and 565 sub set.....	186.00
Class of Service		T208A.....	206.40
Credits for Customer-Provided Telephone Apparatus		202ET.....	26.10
Residence main.....	(11.50)	202S A/2.....	68.80
Residence extension.....	(1.50)	209A.....	277.20
Business main.....	(2.00)	208 e/w 565 sub set.....	152.40
Business extension.....	(2.00)	400 Series	
Data Access Argmt. for CPE Data Trans./Rec.	3.70	Sending.....	56.40
1000A Data Coupler.....	5.25	High Speed Teletypewriter Equipment	
1001B Data Coupler.....	5.25	8 Level magnetic tape term.....	162.00
1001A Data Coupler.....	3.20	Four-row Teletypewriter Station Equipment	
Data Access Argmt. for CPE Voice Trans./Rec.	2.10	33-Type Page Teletypewriter w/type wheel.....	56.40
30A Voice Coupler.....	8.80	Keyboard send/receive.....	72.00
2072L-1 Coupler.....	12.60	Automatic send/receive.....	3.60
2072L-2 Coupler.....	12.60	Card dialer.....	1.20
Auto Ans. and Rec. Eqpm. Provided by the Customer		Foot control switch.....	1.20
19645-L2 Coupler.....	7.90		
Jack for portable recording equipment.....	1.30		
Portable jack box.....	1.40		
19645-L1 Coupler.....	2.75		
Recorder connector term.....	2.45		
Alarm Detection and Reporting Equipment			
20445-L2 Coupler.....	8.90		

CONTINENTAL TELEPHONE COMPANY OF KENTUCKY

Have A Blast With Us

At The ALL NEW

ROCKCASTLE REVUE 1980



Full 2 Hours of
Dynamite Family Fun

THURSDAY, MAY 8th

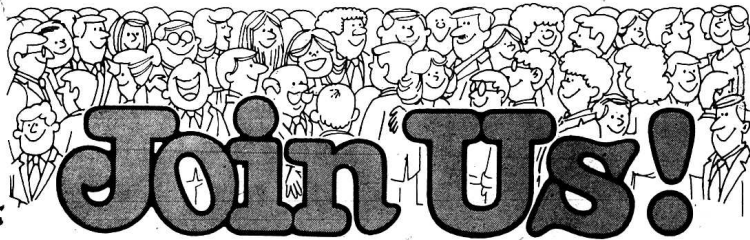
7:30 P.M.

Renfro Valley Barn

TICKETS at the door
\$2.00 Adults
\$1.00 Children under 12

A Community Project of
The Mt. Vernon Woman's Club

A Program With
Rockcastle's Own Stars



This Ad sponsored by these Civic Minded Merchants

Production Credit Association	Kentucky Utilities	M.L. Beeker Oil Co.	Saylor's Pharmacy
Young's Pharmacy	Young Designs	MFA Insurance	Ford Realty and Auction
Bank of Mt. Vernon	Mt. Vernon Florist	Citizens Bank	Pic Pac Supermarket
Lawrence Auction and Realty	Western Auto Store	Burger Queen Restaurant	Cookie's Flower Basket
Montgomery Ward Catalog Store	Mt. Vernon Automotive	Cromer's Tire and Farm Service	Craig-Harris Central Vending Co.
			Rockcastle Auto Parts

Mount Vernon Signal

Mount Vernon, Kentucky 40456

VOLUME 91 - NUMBER 35

Thursday May 1, 1980



Clean-Up Day in Rockcastle County was held Saturday and participation was good, according to Greg Stephens, chairman of the SCS office. In the above photo, three volunteers, John Holbrook, Mark

Smith and Anthony Holbrook, begin cleaning up debris from the Lake Road. Mr. Stephens reported that 20 bags of litter were gathered from U.S. 25 to the bridge on the Lake Road.

Stephens Says Clean-Up Day Was Success in Rockcastle Co.

Clean-up Day in Rockcastle County was a success, according to Greg Stephens, chairman of the Clean-Up Day Committee. Mr. Stephens reported that at least 50 persons took part in the county-wide clean-up effort and that six dump trucks were unloaded at the land-fill.

Students from Berea College's School of Nursing also participated in the clean-up project.

Mr. Stephens said a special CAR WASH SATURDAY

The RCHS Drama Club will sponsor a Car Wash Saturday, May 3 from 9 to 5 at Bentley's Exxon beside Citizens Bank in Brodhead.

You can have your car vacuumed, washed and waxed and every fifth car will receive a free vacuum.

Please support the Drama Club.

thanks was owed to Multi-County Services for the free use of their landfill at Pine Hill, to County Judge Executive Hubert Thacker and the Fiscal Court for providing trucks to haul roadside litter and to every individual and group who participated in the effort.

Groups participating included: Wilderness Road-Brownie Troop 242, M.L. Beeker Oil Co., Burger, Queen, Jaycees, 4-H Clubs, The Attic, WRVK Radio, Signal, Quail Homemakers, FBLA, Kiwanis Club, Wildlife Community Group, Rockcastle County Board of Education, Rural Development Committee and Rockcastle County Home Health Agency.

BIKE-A-THON

Bike-A-Thon for Cystic Fibrosis will be held this Saturday, May 3 beginning at 9 a.m. at MVES.

Lions Seeking Used Eyeglasses

Used eye glasses are wanted by the Mt. Vernon Lions Club to send to "Eyes For the Needy." This latest project of the local civic club is in response to the National Organization's plea to collect the glasses for the shipment to other countries, and in some of the poorer sections of the United States, to be used by people who are unable to purchase glasses.

Collected glasses will be

sent to the National Organization where they will be examined, labeled as to type, processed and then distributed. The purchase of eye glasses for the needy children of the Mt. Vernon area has been the main project of the Mt. Vernon Club for 24 years and this is the first time used glasses have been asked for by the local club.

(Cont. to 18)

PAPER DRIVE BEGINS MAY 1

M.L. Beeker, president of the Rockcastle County Kiwanis Club, announced Tuesday that the county-wide paper drive is now underway and you may bring your old papers to the Jasper Building, behind the Bank of Mt. Vernon, for the first time on Thursday, May 1 from 5 to 7 p.m.

After that, Mr. Beeker said, the unloading point will be open each Tuesday and Thursday from 5 to 7 p.m. until June 5th. The paper will be sold and the proceeds used by the Kiwanis Club for community projects.

Mt. Vernon Receives AKC Honorable Mention

Mt. Vernon received Honorable Mention in this year's judging for the "All Kentucky City" award. The winners were announced April 23 and ten Kentucky communities were honored for outstanding progress in community development.

The All-Kentucky City program, as it is called, requires that communities demonstrate through written and visual reports, the progress they have made during the reporting period of January 1 through December 31, 1979. Over thirty communities competed for the honor to be designated an "All-Kentucky City" and winners of the award were: Bardston, Beattyville, Bloomfield, Carlisle, Clinton, Elizabethtown, Manchester and Somerset.

Two communities won the Hall of Fame Award this year. They were, Columbia and Shelbyville.

Somerset was singled out to receive the Grand Award, the Presidential Citation. Somerset won its first designation as an All-Kentucky City in 1965 and has repeated as an award winner ten times. Only one other Kentucky city has won the annual award as many as ten times in the program's 18 year history. Somerset is only the second city to be honored with the Presidential Citation, an award that is not given every

A FLAG FOR THE COUNTY COURTHOUSE

We intended to show you a picture of the actual installation, but... the gremlins again you know. So, we will just have to be content with telling you about it.

If you haven't noticed, the courthouse is now sporting an American Flag which was installed on top of the courthouse by the combined efforts of Jailor Billy Kirby, John Cox and the Pepsi Cola Company.

The Pepsi Co. furnished, free of charge, a truck with a ladder long enough to install the pole on the pole and Mr. Kirby and Mr. Cox supplied the expertise from there on out.

The flag is one which has flown over the capital in Washington.

Rockcastle Revue Is Planned For May 8th at Renfro Big Barn

The Second Annual Rockcastle Revue, sponsored by the Mt. Vernon Woman's Club, will be held Thursday night, May 8th in the Big Barn at Renfro Valley with show hours from 7:00 p.m. to 11:00 p.m.

About 18 acts will be in the program for the two-hour show and will include such acts as: Bertha Cain, Roy Smith and Kathy Mink, all soloists; a mixed ensemble with a presentation of portions of "The Music Man"; the local class of the Cooper School of Dance, the Mt. Vernon Christian Church's Sunshine Choir, Keith Bussell and Becky Eldridge, with a duet act

and solos, MVES 8th graders performing "Take Me Back to Renfro Valley," Jennifer and Jamie Cox and others.

It promises to be a fun-filled evening of entertainment and well worth the admission price of \$2.00 for adults and \$1.00 for children under 12.

Don't forget the date, Thursday night, May 8th at 7:30 p.m. in the Big Barn at Renfro Valley.

Will Linder Discusses UDAG Program With Council

The Mt. Vernon City Council held a called meeting Tuesday night and heard Will Linder of Will Linder Associates explain the Urban Development Action Grant (UDAG) program which Mt. Vernon is now eligible for.

Mr. Linder told the council that Mt. Vernon was on the priority list for funds from the program because of their slow rate of growth, high unemployment, high poverty level and

low tax base. The program would provide the city with funds to use to encourage business and industrial expansion, housing starts, downtown renovation of business houses, etc., anything Mr. Linder stressed in which there is private money invested, usually at a ratio of 1 to 4. That is the government will provide \$1 for every \$4 put up private for a project qualifying under the program. The project must be located within the city limits or in an area which can be annexed by the city.

Mr. Linder said he would make more information on the program available within the next week to the Signal and this would give local businessmen an opportunity to know more about the project and to decide whether or not they might be interested.

year, but only to a community that has demonstrated continuous community progress. Elizabethtown won the award in 1977.

Besides Mt. Vernon, other cities receiving Honorable Mention were: Campbellsville, Carrolton, Covington, Earlington, Flemingsburg, Georgetown, Morgantfield, Paris, Pineville, Radcliff, Williamstown and Wilmore.

Dowell Martin Joins NSM

Dowell and Martin Funeral Home of Mt. Vernon recently accepted a distinctive invitation into membership in National Selected Morticians, an international association of leading, privately-owned and independently operated funeral homes and mortuaries.

The new NSM member in Rockcastle County, Dowell and Martin Funeral Home, has been serving the public since 1969. They have been recognized by National Selected Morticians as meeting its high standards of invitational membership and in providing responsible funeral service for those it is called upon to serve.

Membership in this international association is by invitation only. Dr. Frank W. Miller, Executive Director of NSM, said recently, Affiliation with NSM is considered an honor because of the high standards of funeral service which are required. Invitation to membership is extended only to a leading mortuary after a thorough investigation and evaluation of its standards.

(Cont. to 18)

REVIVAL AT MT. ZION

Revival services will begin May 4th at Mt. Zion Baptist Church and continue through the 10th with services at 7 p.m. each evening.

Bro. Jack Wren will be the evangelist. Rick Everett, pastor, and the congregation cordially invite everyone to attend.

The city is debating the issue since they are going to have to buy a new billing machine at a cost of approximately \$10,000 a year on the one-year contract.

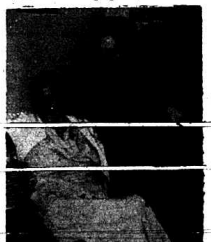
The city is debating the issue since they are going to have to buy a new billing machine at a cost of approximately \$10,000 a year on the one-year contract.

Mrs. Ethel Owens Dies Suddenly

Mrs. Ethel Owens, 61, of Brodhead, suffered an apparent heart attack last Thursday night at the Watson Funeral Home Chapel and died shortly thereafter at the Rockcastle County Hospital.

Mrs. Owens was at the funeral home due to the death of her mother, Mrs. Nervesta Riddle.

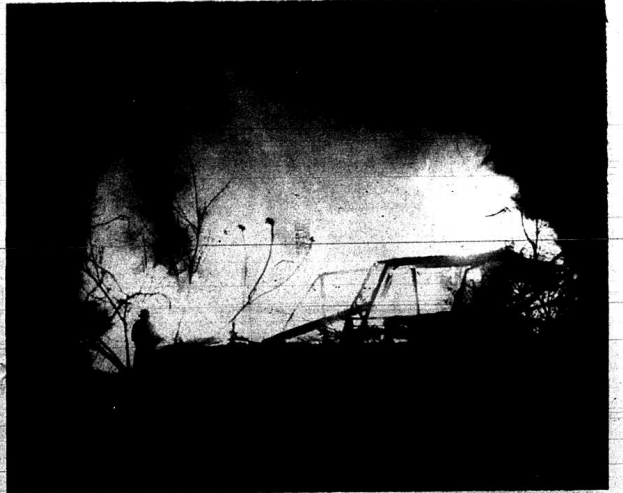
Joint funeral services for Mrs. Riddle and Mrs. Owens were held Saturday. (see obituary inside on page 15)



Mrs. Nervesta Riddle and her daughter, Mrs. Ethel Owens



Mrs. Rachel James, right, and Mrs. Bertha Cain are shown rehearsing Mrs. Cain's solo for the Rockcastle Revue, scheduled for next Thursday night, May 8th at the Big Barn in Renfro Valley. Mrs. Cain will sing a combination of "Goin' Out Of My Head" and "I Love You, Baby."



The home of Walden Brown at Burr was destroyed by fire about 1:30 a.m., Tuesday morning. The one-story frame home was engulfed in flames when the Mt. Vernon Fire Department arrived on

Mount Vernon Signal

Published Every Thursday

MAIN STREET IN MT. VERNON, KENTUCKY 40458
Entered at Mt. Vernon Post Office
as Second Class Matter, Post Office 1
In County \$6.75 per year. Out of County \$8.50
James Anderkin, Jr., Publisher
Ferlina M. Anderkin, Editor

Member Kentucky Press Association

County Statistics

Deeds Recorded

C.E. Frith and Thelma Frith, real property located in Rockcastle County, to Billy Allen and Joyce Bussell. Tax \$6.50. Tax \$6.00.

Wayne and Delphia Reid, real property located in Rockcastle County, to John Stephenson. Tax \$6.00.

David and Katreka Shivel, real property located in Rockcastle County, to Mt. Vernon Congregation of Jehovah Witnesses. Tax \$10.50.

H.R. and Diane Saufley, real property located in Rockcastle Co., to Charles B. and Amanda E. Bray. Tax \$7.00.

Russell and Audrey M. Hensley, real property located on the waters of Roundstone Creek, to Irene Cates. Tax \$3.50.

Robert L. and Bettie Baker, real property located in Rockcastle County to Charles and Patricia Allen. Tax \$1.00.

Albert Anderson, real property located in Rockcastle Co., to Charlene Goforth. Tax \$6.00.

Charlene Goforth, real property located in Rockcastle Co., to Johnny Lee Arnold. Tax \$1.00.

Marriage Licenses

Ronnie Wayne Thompson, Route 1, Brodhead, farmer, to Cheryl Cease Sowder, Route 1, Crab Orchard. April 18, 1980.

Hospital Report

Acute Care Admitted
Shirley Smith, Mt. Vernon; Nancy Mallicoat, Mt. Vernon; Ruth Dean, Mt. Vernon; Katherine Bullock, Livingston; Lloyd Hundley, McKee; Lyman Herin, Livingston; Angela Mink,

Mt. Vernon; Nervesta Ridle, Brodhead; Crystal Benge, Brodhead; Mandy Carpenter, Crab Orchard; Henry H. Baker, Mt. Vernon; Joann Ingie, Berea; Jamie Smith, Livingston; Timothy McFerron, Mt. Vernon; Kimberly Whitaker, Mt. Vernon; Isaac Deborde, Eubank; Mabel Harris, Mt. Vernon; Bertha Allene Brown, Brodhead; Ottie Rash, Mt. Vernon; Kenneth Harris, Livingston; Ernest Cromer, Mt. Vernon; George Owens, Mt. Vernon; Tempie Martin, Mt. Vernon; Pearle Lee Bowman, Mt. Vernon; Ernest Cotton, Mt. Vernon; Edith Baker, Crab Orchard.

Released

Larry Thompson, Laura Taylor, Shirley Newcomb, John Hedge, Vina Harmon, Edna Pittman, Roscoe Hysinger, Hazel Bullock, Anna Belle Mink, Angela Mink, Nancy Mallicoat, Shirley Smith, Crystal Benge, Leland Rice, Katherine Bullock, Edith Baker, Joann Ingie, Kimberly Whitaker, Orbie Barnes, Timothy McFerron, Isaac Deborde, Ernest Cromer, Mandy Carpenter.

Skilled Nursing

Admitted
Nancy Mallicoat, Mt. Vernon.
Newborns
Mink, Boy

Court News

District Court Judgements
Court costs are not included in the amount of fine. Names inserted herein may be the same as those of innocent parties. Charges dismissed are not reported. Charges continued are not reported until disposition.

Speeding: Troy Glenn Gumm, \$20 fine; Nelda C. Jackson, \$65 fine; Richard C. Shepherd, \$36 fine; William Howel Aitken, \$26 fine; Martha Luther Depew (amended to faultly equipment), \$10 fine.
Driving under influence: Troy Glenn Gumm, William L. Atkinson, Nelda C. Jackson, William ray Sandlin, Richard C. Shepherd, \$130 fine; Harold Edward Jones, \$100 fine; John W. Mink, warrant issued for failure to appear, warrant issued, bond forfeited.

Drunk in a public place: Darren L. Coon, Roy H. Howell, \$30 fine.
Permitting an unlicensed driver to operate motor vehicle: Joseph Eldon Deosta, \$50 fine.

No operators license: William Howel Aitken, Millard Smith, \$50 fine; Anita Louise Swain (for payment of fine), warrant issued failure to appear and non-payment.

Public intoxication: Farris L. Cameron, \$30 fine.

Theft by deception: Alice Cromer, \$10 fine; Jimmy Prewitt, (4 counts), (if not paid by 4-23-80, warrant to be issued and license suspended).

No registration plates: Jimmy Prewitt, if not paid by 4-23-80, issue warrant, suspend license; Ronald D. Bradley, if not paid on 4-23-80, issue warrant, suspend license; Charles E. Prickett, \$20 fine.

No insurance sticker: Ronald D. Bradley, if not paid on 4-23-80, issue warrant, suspend license; Thelma Miller Penix, \$50 fine (1/2 fine suspended); Charles E. Prickett, \$50 fine (1/2 suspended).

Failure to give right of way: Merle Dean Brewer, \$20 fine.

Criminal littering: Harold Edward Jones, \$50 fine.

No head gear: Leroy Edward Morris, \$20 fine.

No motorcycle operators license: Leroy Edward Morris, \$20 fine (suspended).

No Ky. U. License: Alfred Fields, \$20 fine.

Reckless driving: James Hasty, (amended to faulty equipment), \$50 fine.

Operating on expired license: Leonard Adams, \$50 fine.

CIVIL SUITS

Herbert Moore and wife Jessie Moore and Carrie Moore vs Ethel Moore Vurasalijev and husband, Vasa Vurasalijev; Arthur Moore and wife Josephine Moore, Louise Moore Rader and husband, Ambrose Rader and

Calvin Moore and wife, Mary Moore, Master Commissioner Sale asked for.

Stella Mink vs John Mink, petition for dissolution of marriage, 80-CI-071.

Ryder Truck Rental, Inc., vs E. Ray Trogen, administrator of estate of Elvin Franklin Trogen, deceased, Silas Trogen and State Automobile Insurance, monies claimed due as result of automobile accident, 80-CI-072.

Letter to the Editor

Dear Editor,

As a concerned member of the Livingston population, I'd like to take this opportunity to rectify and obvious, however un intentional, misrepresentation of the facts pertaining to the fire which destroyed the Webb Street building Thursday, April 17th.

First, please allow me to express a well-deserved thanks to the Livingston Fire Dept. for the speeded and extremely well-organized job of arriving at the scene promptly (approximately 3:45) and in both containing the blaze and keeping it under control until other help arrived.

Only a few of the Livingston Fire Dept. members answered the alarm call as several of them were still at work. However, most of these firemen had arrived by 4:30, coinciding with arrival of the Mt Vernon Fire Dept. at the same time.

A minimum amount of water was used to extinguish the blaze despite the fact several other fire department units arrived at the scene and one fire hydrant was reported to be faulty.

We citizens of Livingston are truly grateful and appreciative of the aid we received from our neighboring fire departments and their firemen.

We often need their help as they need ours in a time of emergency. However, I for one am grateful for the hardwork and dedicated men who formed the Livingston Volunteer Fire Dept. and who have made it a successful organization. I can be proud of their progress, and the continued thinking of these men.

April 17th, this was what I'd presented to me, much larger disaster than the burning of our building. I think we owe them both our praise and support.

My thanks to the Mt. Vernon Signal for printing this.

Carol Jones

Report

By: Rep. Harold DeMarcus

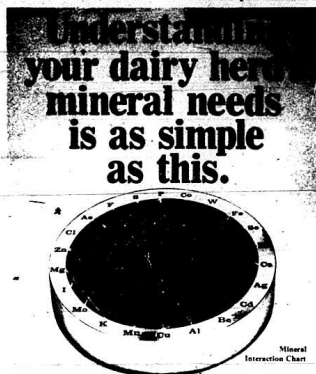
The 1980 General Assembly took steps to secure Kentucky's position as one of America's energy leaders. Several bills were enacted, dealing primarily with coal, which should lend themselves to this purpose.

House Bill 566, upon approval by the U.S. Office of

Surface Mining, will bring all state laws and regulations on surface mining into line with the 1977 federal strip-mine act.

By gaining primary, the state Department for Natural Resources rather than federal officials will have the active role in enforcing surface mining laws for the Commonwealth. Also, Kentucky will be eligible to receive millions of dollars which can be used to

(Cont. to 11)



One mineral depends on another.

Planning an effective dairy mineral program cannot be accomplished without a complete knowledge of mineral interactions. That's why more and more dairymen rely on their Wayne® dealer for all their mineral needs.

Plan your mineral program around your roughage program.

The people at Wayne's feeds can simplify mineral planning. Because they're experts in animal nutrition.

And your Wayne dealer will help balance your alfalfa, silage or other roughage with special minerals designed to meet your dairy herd's requirements with P, Ca, Mg, and P2O5 as calcium phosphorus sources.

Wayne's feeds is your mineral source.

Your Wayne dealer carries a full line of minerals... all fortified with additional vitamins and trace minerals. And compatible with Wayne Feeds full line of feed ingredients.

If you're a producer, you need the hard facts on minerals. Let your Wayne dealer make it simple with Wayne's farm minerals.

Wayne Mills, Inc.,
P.O. Box 1000,
Wayne, N.C. 28586

Only your Wayne dealer has it.

Brodhead Mills

Brodhead

Phone 758-8413

Rockcastle Farm Service

Williams St. Mt. Vernon

Service FROM OUR FAMILY FOR YOUR FAMILY



The Cox Funeral Home has served Rockcastle County families since 1907. We have grown along with the county. Yet, we have never lost our reputation for personal service. We believe that a Funeral Director's first duty is to those he serves. Our continued duty is to make our service flexible, and reasonable. In this way, we are able to consult and advise so that everything is done according to the wishes of the family. Help.....from one family to another.

Cox Funeral Home

MT. VERNON, KY. Ph. 256-2345



10 TO 1 YOUR DOLLAR'S WORTH MORE AT EVERY PURCHASE. EVERY TIME.



SOMERSET - GREENHILL - BURNSIDE
WHITLEY CITY - CORBIN - LONDON
MT. VERNON
STANFORD - HAZARD - JACKSON
HYDEN AND PINEVILLE



FRIENDLY SERVICE ALL THE
WAY TO YOUR CAR
WE WELCOME FOOD STAMP
CUSTOMERS

U.S.D.A. CHOICE BEEF SALE

ROUND STEAK **\$1.69** Lb.

BONELESS ROUND STEAK **\$1.79** Lb.

CUBE STEAK **\$1.99** Lb.

ROLLED RUMP ROAST **\$2.09** Lb.

SIRLOIN **\$2.59** Lb.

T-BONE **\$2.99** Lb.

PORTERHOUSE **\$3.09** Lb.

Lay's

12 Oz. Lay's **BACON** **75¢** Pkg.

WEINERS 12 Oz. **BOLOGNA** **89¢**

Limit 2

LAY'S 4 LB. CARTON **LARD** **\$1.59**

BEEF LIVER **85¢** Lb.

SALT BACON BELLIES **69¢** Lb.

Clearleaf BOLOGNA **89¢** Lb.

PORK LIVER **49¢** Lb.

1/4 PORK LOIN **89¢** Lb.

Dry Cured Whole or Half **HAMS** **\$1.09** Lb.

FRESH LEAN GROUND BEEF **3 LB. OR MORE** **\$1.29** Lb.

GROUND CHUCK **\$1.69** Lb.

Webber's SAUSAGE **2 LB. WEBBER'S SAUSAGE** **\$2.49** **1 LB.** **\$1.29**

GRADE A LARGE EGGS **59¢** Doz.

MEDIUM **55¢** Doz.

32 OZ. JFG SALAD DRESSING **79¢**

BREAD 16 OZ. **3 FOR 89¢**

FOOD FAIR ICE CREAM **1/2 GALLON** **\$1.09**

35% OFF **Tide** **2.59** KING SIZE 84 OZ.

Aurora Soft Prints **BATHROOM TISSUE** **4 Roll Pack** **95¢**

Job Aid **TOWELS** **69¢**

FROZEN PIZZA **1.09**

1 lb. Pkg. Kraft MIRACLE MARGARINE **1.09**

Stokely's SAV-O-RAMA

Kraft 8 Oz. **THOUSAND ISLAND OR ITALIAN DRESSING** **59¢**

16 Oz. Keebler CLUB CRACKERS **95¢**

2 1/2 SIZE CAN-STOKELY PEACHES SLICED OR HALVES **59¢**

Limit (3) With \$10.00 Or More Order

303 Size Stokely FRUIT COCKTAIL & PEAR HALVES **55¢**

STOKELY 303 SIZE CANS MIX OR MATCH W.K. CORN, GREEN BEANS, SHELLIE BEANS, BEETS, FRENCH STYLE BEANS & KRAUT **3 FOR 99¢**

PRODUCE VALUES

IDAHO POTATOES 10 LB. BAG **\$1.25**

300 SIZE STOKELY PORK & BEANS **3 FOR 95¢**

STOKELY 303 SIZE CAN APPLESAUCE **2 FOR 75¢**

46 OZ. STOKELY TOMATO JUICE **67¢**

303 SIZE STOKELY HONEY POD PEAS **2 FOR 79¢**

303 SIZE CAN STOKELY MIXED VEGETABLES **2 FOR 69¢**

CARROTS 1 Lb. Bags **33¢**

CABBAGE **19¢** Lb.

ORANGES 5 Lb. Bag **99¢**

Van Camp's PORK AND BEANS **3 FOR 95¢**

GOLDEN OR WHITE HOMINY 303 SIZE CAN **3 FOR 89¢**

8 Oz. Stokely BEANEE WEEENES OR CHILI WEEENES **2 FOR 85¢**

LEMONS 6 For **55¢**

GREEN ONIONS 2 FOR **49¢**

32 Oz. Tropicana ORANGE JUICE **69¢**

SPAM 12 Oz. Can **LUNCHEON MEAT** **\$1.25**

EXTRA S&H Green Stamps **50**

EXTRA S&H Green Stamps **50**

EXTRA S&H Green Stamps **500**

With This Coupon And \$40.00 or More Order

EXTRA S&H Green Stamps **300**

With This Coupon And Purchase Of \$30.00-\$40.00 Groceries

EXTRA S&H Green Stamps **100**

With This Coupon And \$10.00 In \$30.00 or more of Groceries

EXTRA S&H Green Stamps **50**

With This Coupon And Purchase Of 1 Pkg. Or More Four's Garden Fish

EXTRA S&H Green Stamps **50**

With This Coupon And Purchase Of 3 1/2 Or More Any Apples

EXTRA S&H Green Stamps **50**

With This Coupon And Purchase Of 2 Lb. Bonanza Beef Steak

EXTRA S&H Green Stamps **50**

With This Coupon And Purchase Of 1 Pkg. Or More Little Debbie Cakes

EXTRA S&H Green Stamps **50**

With This Coupon And Purchase Of \$2.00 or more health & beauty aids

EXTRA S&H Green Stamps **50**

With This Coupon And Purchase Of 2 Pkg. Or More Chickens Parts

Quail

By: Vivian Owens

Mrs. Delmus Bullock visited Mr. and Mrs. Fred Bullock and Mrs. Benton Owens was Thursday dinner guest of Mr.

and Mrs. Ambrose Albright and Toole.

Sunday Visitors of Mrs. Willie Todd were Mr. and Mrs. Ronald Rogers and Jill, Mrs. Wayne Todd and Jessica, and Mrs. Charlie Albright and Sons. Saturday supper guest of Mr. Toole were Mr. Mike and James were Mr. and Mrs. Steve

and Mrs. Donnie Whitaker and family, and Bonnie, Donnie, and Tommy Hayes.

Mr. and Mrs. Steve Tracy and Angie of Versailles spent Saturday night with her parents, Mr. and Mrs. Robert Hayes and family.

Mr. and Mrs. Benton Owens visited Mr. and Mrs. David Noe

Sunday evening.

Mrs. Delmus Bullock visited her parents Mr. and Mrs. Curt Bullock Sunday afternoon.

Mr. Mark Owens of Ohio, visited his grandparents Mr. and Mrs. Charlie B. Owens Sunday evening.

Miss Bertie Taylor spent last week with her daughter Mrs. Josephine Burdette of Indi-

ana and also visited Mr. and Mrs. Levi Burns while here.

Mr. and Mrs. Dave Martin of Illinois and Mrs. Josephine Burdette spent the weekend with their mother Mrs. Bertie Taylor.

CALL NEWS ITEMS

256-2244



Only three things in life are certain: death, taxes and uncertainty.

Commercial

Income Producing Property
Located on Main Street, Mt. Vernon known as the Rockcastle Hotel, presently housing five businesses with potential for two more, 11 apartment units (all rented), most being furnished, garage building, records available to qualified prospects, very reasonable rate of interest, you can have all this TODAY for \$85,000. N.6.

GOLDEN OPPORTUNITY
Located on Main Street, Mt. Vernon, restaurant and commercial rental building, two furnished apartments, one unfinished apartment, owner financing available at reasonable interest rate to qualified prospects. Priced at \$32,500. N.7.

WALK OUT DEAL
On this Exxon station located near Interstate 75, ideal for most any type retail outlet, equipment and the works at \$75,000. M.13.

PRIME ACREAGE
3 acres choice commercial property located at Junction US 150 and Hwy. 461. It has city water and is ideal for most any commercial use and priced at only \$24,500. O.1.

BUSINESS IN THE FOREHEAD
Main St. Road, Kentucky presently empty. There are also two apartments upstairs. M.1.

Homes

New Lovely Country Brick Home
Near Mareburg, Ky. This home has a living room, kitchen with built-in cabinets and dishwasher, 3 bedrooms and 2 baths. The basement is finished and has a large recreational room, bedroom, utility room and kitchen. The house is total electric and the owner is transferring. Priced at \$57,500. O.18.

NEWLY WED'S SPECIAL
This 4 room house is located on Floyd Street, in the city limits of Mt. Vernon, Ky. The house has 2 bedrooms, living room, kitchen and bath. It is situated on a large lot, has city water and sewer and is easy walking distance of downtown. Move in for only \$15,900. O.10.

IN TOWN PRIVACY
Brick, 3 bedrooms, living room, kitchen, dining room, 2 1/2 baths, 2 car garage, full basement with family room, central heat and air, 2 acres overlooking the city of Mt. Vernon. A lot of home for only \$62,900. M.4.

NEW LISTING NEAR ROUNDSTONE
14 acre farm with a modern 5-room house, 360 lbs. of tobacco, 2 bedrooms, living room, kitchen with plenty of cabinets and a family room. City water, 3 ponds, 2 barns. Ideal for the gentleman farmer. Priced at \$39,900. P.1.

WHAT WILLY \$33,900 BUY?
This lovely 3 bedroom Bedford stone home on the Lincoln-Rockcastle County line, total electric, well insulated and in A-1 condition. Call today. Possible FHA financing available. M.21.

NEAR WILLILLA
This 4 room house has 2 bedrooms, living room, kitchen and bath. It is situated on a one acre lot, has storm windows and the exterior is aluminum siding. Priced at \$14,900. O.9.

COMMERCIAL PROPERTY OF SOUTHERN MADISON LAND COMPANY, INC.
SATURDAY, MAY 3, 1980 10:30 a.m.

Mr. and Mrs. Ervin Duda's FARM, LOGGING EQUIP., TRUCKS, FARM MACHINERY, PERSONAL PROPERTY Saturday, May 10, 1980 10:30 a.m.

Mr. and Mrs. Bailey P. Thacker's 5 ACRE FARM AND HOME Saturday, May 17, 1980 10:30 a.m.

Lot of the Late Mr. Willie Buttry Saturday, May 17, 1980 1:30 p.m.

Prestigious 1 1/2 Story New Log Home

It is situated on 3 very private acres in Brodhead, Ky. It has 5 bedrooms, 1 1/2 baths, built-in kitchen, electric heat and wood burner, wall to wall carpet, 2 car garage. If you like privacy you will like this one for only \$77,500. O.6.

BEDFORD STONE

2 miles South of Mt. Vernon on US 25, 3 bedrooms, living room, kitchen, hardwood floors, one acre, total electric, an excellent buy at only \$39,500. N.13.

NEAT NEAT NEAT!

Brodhead city limits, 3 bedrooms, 2 1/2 baths, full basement, well insulated, central heat and air, all electric, an excellent buy at only \$39,500. N.13.

OWNER SAYS MAKE A DEAL

On this 3 bedroom brick, located on Bowling Ridge, lots of cabinet space, total electric, carport, call us today we will trade for anything. Priced at \$29,900. M.7.

PRETTY AS A PICTURE

That describes this home located only 3 miles from Brodhead, 3 bedrooms, large living room, well insulated, plenty of closet space, oil spase heater, lot measures 90x180. A deal for you at \$27,500. B.16.

ECONOMY IN THE COUNTRY

Located in the Willilla Section, 2 bedrooms, frame, electric and oil heat, bath, dining room, built-in oven, well insulated, outbuildings, and one acre. All only \$18,900. N.2.

A-1 SHAPE

Located on Tyree Street, Brodhead, Kentucky, 1 1/2 story house, 3 bedrooms, living room, kitchen with built-in cabinets, large lot, 67x420, electric heat, excellent condition. Only \$26,500. N.15.

7 Room Country Brick Charmer

Highway 70 Willilla, Kentucky, 3 bedrooms, living room, family room with corner fireplace, 2 baths, kitchen with oak cabinets, utility, 2 1/2 car garage, total electric, built-in appliances, lovely setting with spacious acres. Move in today! An exceptional buy at \$55,900. K.14.

HAPPINESS FOR SALE

Located 7 miles from Brodhead Street, Mt. Vernon offers year around happiness, with 4 bedrooms, dining room, 1/2 basement, city water and sewer, well insulated, large shaded lot within walking distance of downtown. Priced at \$34,500. K.2.

BRAND NEW-SPLIT Foyer

Walking distance of Main Street, Mt. Vernon, 3 bedrooms, 2 1/2 baths, large family room, living room, utility, and all city utilities. Betty hurry. Priced at \$42,900. L.18.

FAMILY HOME-

new listing
This 9 room frame house with three bedrooms, living room, kitchen located on Hamlin Street, Mt. Vernon, Ky. The first floor has a kitchen, living room, one bedroom, family room with fireplace, dining room, bath and closed in back porch. The second floor has 4 bedrooms and full bath. The house is heated by gas furnace, has storm doors and windows, and is situated on a good lot. In addition to the house, there is a garage, workshop and storage building. Priced at \$35,900. O.13.

A REAL DEAL

On this 5 room brick located just outside of the city limits of Mt. Vernon. It has 3 bedrooms, living room, kitchen, bath and full basement. It also has storm doors and windows, w/d hookup, wall to wall carpet, total electric, and is situated on a 10x200 lots, and priced at only \$26,900. O.8.

RUSTIC LUXURY

This luxurious home is located in the beautiful Chestnut Hill Subdivision near Mt. Vernon. It has approximately 2200 sq. ft. living area which includes 3 spacious bedrooms, formal dining room, compact kitchen, large family room with bar and fireplace, living room with fireplace, 3 baths, and utility room. The home is brick/wood siding combination, has wall to wall carpet, central heat and air and much more. In addition to the house, there is a 2-car garage with an unfinished apartment or could be used for a storage building. The large shaded and landscaped lot accents the beauty of this fine home. Priced at \$92,900. N.16.

REDUCED

Almost New and Mighty Tempting Too!-This split foyer is located in the city limits of Mt. Vernon. It has 3 bedrooms, living room, kitchen, family room, garage, utility room and 1 1/2 baths, wall to wall carpet, is total electric, flu, thermopane windows, drapes, appliances included and is only \$41,900. N.19.

STOP THE RENT

REDUCED TO SELL
With this 3 bedroom home, gas furnace, masonite siding, and a 2x10 storage building only 4 miles from Brodhead. You get more than rent receipts for \$13,500. L.21.

HAPPINESS FOR SALE

Lovely 7 room house on Owens Street, Mt. Vernon offers year around happiness, with 4 bedrooms, dining room, 1/2 basement, city utilities and is situated on a large shaded lot within walking distance of downtown. Priced at \$34,500. K.2. FHA Possibility.

TOWN CHARMER

5 room brick that is in walking distance of Main Street, Mt. Vernon, Ky. It has 3 bedrooms, living room, kitchen/dining room combination, utility room and 1 1/2 baths, central electric, heat and sewer, is total electric, has w/d hookup, is carpeted throughout, has a patio, on a nice lot and in an excellent neighborhood. Priced at \$39,900. O.15.

WILDIE KENTUCKY

Modern 5 room frame house with three bedrooms, living room, kitchen, utility room and bath. It is heated by gas furnace, has w/d hookup and dishwasher, hardwood and carpeted floors and priced at only \$40,000. O.16.

Loaded With Extras

NEW LISTING
This beautiful 14x75 mobile home has all built-in appliances, storm doors and windows, carpeted throughout, spacious master bedroom and bath, formal dining room and much more. It is situated on approximately 135x150 lot in the city limits of Mt. Vernon. In addition to the mobile home, there is a 10x13 storage building. You had better hurry at \$17,900. O.4.

Farms.

TOWN FARM
Only one mile South of Crab

Orchard, Ky., 57 acres more or less, most pasture land, 1200 ft. road frontage on Hwy. 39, dandy stock and tobacco barn, pond, machinery shed, 1200 lbs. of tobacco, 5 room house in need of repairs. A bargain at \$34,500. I.19.

10 1/2 ACRES FARMETTE

Near Lincoln and Rockcastle Line in Lincoln County just off US 150 on the Copper Creek Road. The farm is improved with a 5 room frame house, stock and tobacco barn, and also other outbuildings. The farm has a tobacco allotment of 853 lbs. pond and has new fence. Priced at \$38,000. N.22.

RING THE BARGAIN BELL

On this 6 1/2 acre farm, located on Gauley Dr., Lexington, Ky. has a 3 bedroom house, 1/2 car garage on blacktop, a good buy at \$21,500. M.14.

GO FISHING

9 acres bottom land on Rockcastle River near Jackson County line. Yours for \$4,500. B.11.

HAPPY DAYS

Ideally located on US 150 with 225 ft. of road frontage. Has potential for commercial, industrial or residential use. Improved with an older two story house and stock and tobacco barn. You & family have happy days with this one at \$38,900. J.7.

A BIG ONE

200 acres more or less 3 miles South of Mt. Vernon with approximately 100-acre pasture, 6,411 lbs. of tobacco, 3 barns, workshop, garage, 5 bedroom two story home, everlasting spring, 3 ponds, you get all this for \$97,500. K.12.

COUNTRY ACREAGE

9.84 acres located on the John Cash Road. The land is all level to rolling and has 700 lbs. of tobacco allotment. In addition, it has a 28x38 barn and all is priced at \$10,500. O.14.

Attention! Weekend Farmer-

REDUCED TO SELL

5 acres improved with a lovely 6 room ranch style bedford stone home. It consists of 3 bedrooms, living room, kitchen, dining room, 2 baths, full basement, and two car garage, total electric, heat and sewer and other extras. HURRY! \$32,900. M.9.

ELITE COUNTRY ESTATE

Located in the Wabed Section of Rockcastle County, 12 prime acres, 11 room completely restored two story home, 1 1/2 baths, hot water heat, oak floors, aluminum siding, 3 car garage, dandy big barn and priced at \$85,000. K.11.

29 ACRE FARM

Near Brodhead, Kentucky with approximately 21 acres cropland, front on blacktop, near the Brodhead city limits, 1200 plus lbs. of tobacco, creek, several good home sites, and priced at \$25,000. O.2.

100 Acres Farm More or Less

Located in the Red Hill Section, approximately 20 acres cleared land and the balance in woods, (1) 5 room frame house and (1) 7 room frame house both in need of some minor repairs, good spring, 2 ponds, young timber, and approximately 77 lbs. of basic tobacco base. Priced at \$39,500. N.10.

PRIVACY FOR SALE
3 acres of wooded land 3 miles Southeast of Willilla. Start building for \$7,500. J.2.

MULTI-USE

4.2 acres on US 150 near Brodhead, Ky., city water available, and has a tobacco base. All yours for \$8,400. M.1.

77 ACRE FARM

NEW LISTING
77 acre farm with 1 1/2 story modern home approximately 5 miles South of Mount Vernon. The house has 3 bedrooms, kitchen, living room and bath on the first floor and 2 bedrooms on the second floor. Full basement-1200 plus lbs. of tobacco base, springs, ponds and tobacco barn-all for only \$45,000. O.3.

EXCELLENT TERMS-

7 1/4 % Interest
his 40 acre farm is located on the Thompson School Road off Highway 39 in Pulaski County. All 40 acres is in grass. The farm is improved with a 6 room frame house and a 40x50 stock and tobacco barn and two chicken tractors. Call for the details. Priced at \$85,000. O.11.

97 Acres More or Less Rough

Land - New Listing
Located approximately 10 miles southeast of Mt. Vernon. It has some young timber and lots of firewood. Owner financing available at very reasonable rates. Priced at \$14,500. O.17.

Rental Properties

Three bedroom furnished mobile home located at Remfo Valley, Kentucky. It has a nice lawn and room for a garden space. Call for details.

Three bedroom brick located on Bowling Ridge. It is total electric and has lots of cabinet space. Call for details.

Lots

Four Dandy Building Lots
Located only three miles out of Mt. Vernon, Ky. on Highway 461. All the lots have city water and sewer lines. The lots when combined is approximately 3 acres and has 138 lbs. of tobacco base. Priced from \$5,000 to \$7,900. Owner Financing to Qualified Prospects!

TWO LOTS
These lots are located in the Brindle Ridge Section of Rockcastle County. They are approximately 2 1/2 miles from Mt. Vernon. These are large lots just off blacktop road, they have city water and they can be yours for only \$3,000 each. G.102.

START BUILDING

Valley Manor Subdivision, Mt. Vernon, dandy building lot, city water and sewer, priced at \$5,250. N.8.

NEW SUBDIVISION

Between Mount Vernon and Berea near Green Hill. Large,

spacious scenic lots, city water and privacy. Hurry for an early pick. Priced at \$2500 and up. K-23. Owner financing available - Easy Terms.

1 LOT

Located in the Rainbow Valley Subdivision of Jackson County. The lots has city water and room for a garden. It is non-restricted and offers country living at its best. Reduced to \$1750. H.180.

NEW LOTS

Spacious building lots in Rockcastle County's newest subdivision. All lots have or will have city water and paved streets. Ranging in price from \$42.50 to \$6,000. B.1. These lots are restricted for your protection.

ALL NEW SUBDIVISION

Located on the Barnett Road near Lake Linville. The lots measure 1/2 acre and up and are restricted. Come in now and have first choice of these 26 fine building lots. Several of the lots front on a blacktop road and city water is available. Ranging from \$1,500 to \$4,000. F.74.

2 Plus Acres

Located in the Quail section with city water, blacktop road, beautiful home sites and all could be divided into small tracts. Priced at \$3,900. O.7.

WOODED LOT

Located on Chestnut Ridge-250 ft. blacktop road frontage-city water. Priced to sell, \$3,750. N.18.

5 BUILDING LOTS

Located near the city limits of Mt. Vernon in the Cedar Heights Subdivision. These lots can be yours for \$1750 each or all five for \$8,000. J.18.

2 Dandy Building Lots

Located on Floyd Street in the city limits of Mt. Vernon. All lots have city water and sewer available and the price ranges from \$1750 to \$2500. B.19. Easy Owner Financing Available.

CORNER LOT

This dandy building lot is located at the Junction of Highway 150 and the Negro Creek. City water and blacktop road frontage on two roads. Start building at \$5,500. O.12.

LAKE LOT

Wood Creek Lake-measuring approximately 162x170. Only \$2,600. B.10.

WOODED BUILDING LOTS

Located on Lake Linville, only 3 miles from town. Priced to sell at \$2500 to \$4000. K.15.

NEW LISTING - Building or Mobile Home Lot

Located in the Brindle Ridge Section of Rockcastle County. It contains approximately 4 acres and has 129 ft. of blacktop frontage. Priced at \$3,000. F.20.

BUILDING LOTS

Country Club Estates Subdivision, City ater, near Mt. Vernon, Only \$3,000 to \$3,500. B.9.

Ford Realty & Auction Co.



256-4345

SAM FORD-GRI
Nights 256-4588



Mt. Vernon, Kentucky

DANNY FORD-GRI
Nights 256-4468



256-4545

ROY ADAMS - GRI
Nights 758-5400

America's greatest investment - Real Estate - buy your's today!

Are you a

Veteran? We can

arrange VA loans.



Mr. and Mrs. James Cromer of Rentro Valley announce the forthcoming marriage of their daughter, Kathi Lynn, to Aden Bryan Owens, son of Mr. and Mrs. A.B. Owens of Route 2, Mt. Vernon. The wedding will be an event of Saturday, May 3 at 5:30 p.m. at the home of Mr. and Mrs. Ronnie Owen at Burr. All friends and relatives of the couple are invited to attend.

Personals

By: Mrs. George Burton

We are glad Mrs. Leila Stokes has returned home after spending the winter in Florida. We missed her news while she was gone.

Mr. and Mrs. Hugh Coffey of Richmond, Indiana and Mrs. Grace Coffey of Berea visited W.R. Coffey and Mrs. Lillian Anglin last Tuesday.

Mrs. Rissie Wright and Mrs. Elsie Cress were in Corbin one day last week.

We are glad to report Mrs. Jean Henson Hasty able to be out after a long illness. Mrs. Nancy Burton recently visited her father, Noah Messer, of Broadhead and other relatives here a few days last week.

Mr. and Mrs. Howard C. Owens of Dayton, Ohio visited her father, Noah Messer, of Broadhead and other relatives here a few days last week.

Mr. and Mrs. Bennett Burton and Sheila visited Mr. and Mrs. Carroll Blanton, Sr. Sunday afternoon.



Mr. and Mrs. John T. Taylor, Route 1, Williamsburg will celebrate their 50th wedding anniversary with an Open House on May 4th from 2 to 5 p.m. at the home of their daughter, Mrs. Lucille Ward, Ora Pitts Road, Williamsburg. Mr. Taylor, and the former Winnie Winkler, were married May 3, 1930 in Mt. Vernon. Besides their daughter, Mrs. Ward, they are the parents of a son, Leroy Taylor of Centerville, Ind. and have six grandchildren and one great grandchild. Mr. Taylor is a retired employee of Earlham Cemetery and Mrs. Taylor is retired from the Belden Corp., both in Richmond, Ind. Friends and relatives of the couple are invited to celebrate with the family at the Open House.

Mrs. Vina Bengtson spent a few days with Mr. and Mrs. Junior Blanton and family recently.

Mrs. Lavada Sowder had the misfortune of being hurt in a fall at work recently. We wish her a speedy recovery.

Our deepest sympathy goes out to the family of Mrs. Bertha Chasteen of Copper Creek in their time of sorrow.

Mr. and Mrs. Howard C. Owens of Dayton, Ohio visited her father, Noah Messer, of Broadhead and other relatives here a few days last week.

Mr. and Mrs. Bennett Burton and Sheila visited Mr. and Mrs. Carroll Blanton, Sr. Sunday afternoon.

Mr. and Mrs. Arch Cash

were admitted to the Rockcastle County Hospital Sunday due to injuries received in an auto accident. We wish them a speedy recovery.

Mrs. Darrell Owens of Rt. 3, Somerset visited Mrs. George Burton a while Sunday afternoon.

Little Chad Silvers, son of Mr. and Mrs. Jimmy Silvers, has been sick a few days. We wish him a speedy recovery.

George Burton visited Arch Cash at the Rockcastle County Hospital a while Sunday night.

Sympathy is extended to the families of Bobby W. Brummett, Mrs. Nervesta Riddle, Mrs. Anna Carpenter, Mrs. Ethel Owens and Mrs. Catherine B. Alcorn in their time of sorrow.

Miss Karen Cecil and friend of Hamilton, Ohio were week end visitors of Mr. and Mrs. Wayne Creech and family.

Shannon Hasty of Lancaster spent Saturday night with



Mr. and Mrs. Estill E. McBece celebrated their Golden Wedding Anniversary Sunday, March 23, 1980 with dinner at Boone Tavern in Berea. Their daughters, Glens and Virginia, son-in-law, John Wayne Badida, and five of their seven grandchildren helped them celebrate at Boone Tavern and later served them punch and cake at their home in Mt. Vernon. Mr. and Mrs. McBece were married March 24, 1930 by the Rev. Green Fish at his home in Mt. Vernon. They have resided on Tevis Street for the past forty-six years. Mr. and Mrs. Albert Martini dropped in to help celebrate their Golden Wedding Anniversary just in time to share the cake and ice cream.

his parents, Mr. and Mrs. Jearl Hasty, and sister, Connie Earl and Ruby Nichols were in Cincinnati, Ohio recently due to the death of Mr. Nichols' brother, Chester Nichols. Mr. Nichols died at his home April 19th. Funeral and burial took place in Ohio. Sympathy is extended to his family and friends.

Mr. and Mrs. Bobby Sowder, and children, Gordon and Charity Ann, of Ellsworth Air Force Base, South Dakota, visited their parents, Mr. and Mrs. Lin Reynolds of Mt. Vernon and Mr. and Mrs. Virgil Sowder of Richmond, while on leave.

By: Mrs. Lella Stokes

Mrs. Hubert A. Stokes of Ypsilanti, Michigan, who recently underwent surgery at the University of Minnesota Hospital and Clinics in the Buchwall Clinic, Minneapolis, will be returning home this week.

Mrs. Fannie Thomas is a patient in the Berea Hospital.

Mrs. Pearl Bowman and George Owens are patients in the Rockcastle County Hospital.

John W. Griffin is reported in serious condition in a Lexington hospital.

Mrs. Retha Bray is with her sister-in-law, Mrs. Ernie Robbins, who is ill.

Curtis Miller, who has been a patient in the Rockcastle County Hospital, is now recuperating at home.

Kristy Graham spent Wednesday night with Mrs. Jeanne Davis.

Visitors of Mrs. Bradley Burdette last week were Mr. and Mrs. Rudy Burdette of Berea, Mr. and Mrs. Luke Mullins and sons, Kevin and Kent, of Fairview and Mrs. Oneida Witt.

Mrs. Roy Shatto and son, Dana, of Berea spent Saturday and Sunday with her mother, Mrs. Roy Hansel and Mr. Hansel Bro Shatto is holding a meeting in West Virginia this week.

Darrell Renner returned to Ft. Mitchell Monday after spending the week end with relatives here.

Mrs. Jo Howard has returned to the Masonic Home after spending the winter months with her daughter, Mrs. Genieve Larson in Lafayette, Ind. Mrs. Howard enjoyed visiting with her granddaughter from Montana and her son, Jim, from Florida while in Indiana.

Mrs. Bradley Burdette received a letter from Mrs. Bert

(Cont. to 11)

UNBELIEVABLE SALE PRICES

Croucher-Marcum Motor Co. Is Closing Out Their Inventory Of Used 4-Wheel Drive

TRUCKS, JIMMYS, JEeps & BLAZERS

Prices Will Never Again Be This Low On These Select Vehicles

TRADE-INS ACCEPTED. FINANCING AVAILABLE THRU GMAC

Look At These Prices and Hurry In!

<p>1978 CHEVY BLAZER One Owner, 22,000 Miles, Yellow & White, Air Cond., Automatic, Power Strg., Power Brakes, Radial Tires BOOK PRICE \$6475.00 Sale \$4880⁰⁰</p>	<p>1979 GMC 4WD ROYAL SIERRA PICKUP Grey and Black, Automatic, Power Strg., Power Brakes, One Owner, 14,200 Miles BOOK PRICE \$6050.00 Sale \$4940⁰⁰</p>	<p>1978 GMC JIMMY Silver and Maroon High Sierra, Automatic, Air Cond., Power Windows, Power Locks, Tilt Wheel, Cruise Control, AM/FM Tape Player, Western Wheels, One Owner, 4,500 Miles BOOK PRICE \$8425.00 Sale \$6460⁰⁰</p>
<p>1978 CHEVY 4WD PICKUP Bronze and Tan Silverado, Air Cond., Automatic, Power Steering, Power Brakes, 10:00 Wheels and Tires, One Owner, 17,000 Miles BOOK PRICE \$5375.00 Sale \$4410⁰⁰</p>	<p>1978 JEEP PICKUP Custom Cab, Automatic, Quadra Trac, Power Steering, Power Brakes, Air Conditioning, One Owner, 24,700 Miles BOOK PRICE \$5600.00 Sale \$4040⁰⁰</p>	<p>1978 CHEVY 4WD PICKUP One Owner, Bronze, Automatic, Power, 9,900 Miles BOOK PRICE \$4975.00 Sale \$3630⁰⁰</p>
<p>1979 JEEP WAGONER Automatic, Air Cond., Radial Tires, Quadra Trac, One Owner, Silver, 18,800 Miles BOOK PRICE \$7375.00 Sale \$6140⁰⁰</p>	<p>10 TO OTHERS</p> <p>To Choose From At Tremendous Savings!!</p>	<p>1976 GMC 4-WHEEL DRIVE PICKUP Automatic and Power BOOK PRICE \$3775.00 Sale \$2440⁰⁰</p>

Croucher-Marcum Motor Company

Big Hill Avenue Richmond, KY

IN RICHMOND PHONE 623-8131

OPEN TIL 7:00 P.M. TO SERVE YOU BETTER

Kastle Inn Restaurant

(U.S. 25 South - Mt. Vernon)

Invites

All Prom Goers To

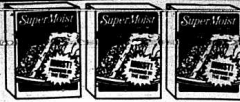
Dine With Us

Before or After Prom.

Prom Couples Will Receive a

10% Discount

**Pepsi
Cola**
16 oz. - 8pk.
\$1.19
Plus Deposit



BETTY CROCKER
**CAKE
MIXES**

19 OZ.
BOX

69¢
ASSORTED FLAVORS



GREEN GIANT
12 OZ. NIBLETS, WHOLE
KERNEL OR CREAM STYLE
**GOLDEN
CORN**
ALSO CUT, FR. STYLE OR KIT, SLICED
GREEN BEANS OR SWEET PEAS

17 OZ.
CANS

3 \$1



AURORA SOFT PRINTS
**BATH
TISSUE**

4 ROLL
PKG.

79¢

PIC-PAC
SUPERMARKETS

OUR THIRD ANNUAL
WINNER'S CIRCLE SALE!
YOUR NEARBY PIC-PAC HAS ALL THE-FIXIN'S FOR FESTIVE FAMILY
FEASTING OR SPECIAL ENTERTAINING. STOP BY!



TOMATO KETCHUP
HUNT'S
44 OZ.
BTL. **\$1.09**



DISH LIQUID
DOVE
32 OZ.
25¢ OFF LABEL BTL. **\$1.09**



POTATO CHIPS
FRITO-LAY
RUFFLES
7 OZ.
PKG. **69¢**



RITZ CRACKERS
NABISCO
12 OZ.
BOX **69¢**



DOG CHOW
PURINA
25 LB.
BAG **\$5.99**

STOREWIDE SAVINGS

FINAL NET
HAIR SPRAY 8 OZ. BTL. **\$1.65**
AGREE
SHAMPOO 8 OZ. BTL. **\$1.49**
HUNT'S
TOMATO SAUCE 2 15 OZ. CANS **89¢**
HUNT'S
MANWICH 15 1/2 OZ. CAN **69¢**
BETTY CROCKER (4 VARIETIES)
FROSTINGS READY TO SPREAD 14 OZ. CAN **\$1.09**
KEEBLER VANILLA
CREME COOKIES PKG. **79¢**
POLSKI WYROB
KOSHER DILLS 32 OZ. JAR **99¢**

FROZEN & DAIRY



ORANGE JUICE
HY-PARK
100% PURE
6 6 OZ. CANS **\$2.39**

ALLEN FRENCH
ONION DIP 16 OZ. PKG. **59¢**
BLUE BONNET
SPREAD 3 LB. BOWL **\$1.19**
MCKENZIE BROCCOLI SPEARS OR
CAULIFLOWER 2 8 OZ. PKGS. **\$1**
TOTINO'S (Cheese, Hamb. Saus. or Peppercorn)
FROZEN PIZZA 12 OZ. PKG. **\$1.29**



ROUND STEAK
\$1.89
U.S.D.A. CHOICE FULL CUT LB.

SMOKED HAM
SHANK HALF
69¢
LB.

SLICED BACON
HYDE PARK VAC-PACK
16 OZ. PKG. **99¢**

PURE LARD
FISCHER'S
8 LB. PAIL \$3.99
3 LB. PAIL **\$1.49**

U.S.D.A. CHOICE BONELESS
ROLLED RUMP ROAST \$2.29 LB.
WHOLE OR BUTT PORTION
SMOKED HAM 79¢ LB.
CENTER CUT
HAM STEAK \$1.69 LB.
U.S.D.A. CHOICE BONELESS
RIB-EYE STEAK \$4.29 LB.
WOODY'S
CORN DOGS \$1.29 LB.

HYDE PARK REG. OR BEEF
WIENERS 12 OZ. PKG. **89¢**
HYDE PARK
CHIPPED MEATS 3 OZ. PKG. **59¢**
FISCHER'S PICKLE & PIMENTO; BOLOGNA
DIXIE LOAF 6 OZ. PKG. **89¢**
HYDE PARK CHUNK
BOLOGNA LB. **\$1.09**
TASTE OF SEA BATTER DIP PERCH AND
COD WEDGES LB. **\$1.69**

"Pic-Pac Produce Is Always The Pick Of The Patch!"



WHITE POTATOES
U.S. NO. 1 ROUND
10 89¢
LB. BAG



STRAWBERRIES
CALIFORNIA
PINT **59¢**



CAULIFLOWER
CALIFORNIA
JUNBO HEAD **99¢**

FRESH
PINEAPPLES 99¢ EA.
TENDER
ASPARAGUS 99¢ LB.

CRISP (36 SIZE)
CELERY 39¢ STALK
CRISP
CARROTS 49¢ 2 LB. PKG.

KING'S

West Gate Center Mt. Vernon

PIC-PAC
SUPERMARKETS

We're cooking out with Top Value Stamps

"Thanks to Top Value Stamps, it's easy to be a great host. Take our new grill . . . we got it free for Top Value Stamps. We got it quickly, too — because Top Value Stamps really add up fast! Outdoors, indoors, all around the house, it's great to have the extra bonus of Top Value Stamps."



300 EXTRA Top Value Stamps

 with this coupon and the purchase of \$30.00 or more (excluding items prohibited by law)

 Superior Food Market

Coupon Good 5/1 thru 5/7 late!



200 EXTRA Top Value Stamps

 with this coupon and the purchase of \$20.00 or more (excluding items prohibited by law)

 Superior Food Market

Coupon good 5/1 thru 5/7



100 EXTRA Top Value Stamps

 with this coupon and the purchase of \$10.00 or more (excluding items prohibited by law)

 Superior Food Market

Coupon good 5/1 thru 5/7

SUPERIOR FOOD MARKET

U.S. 25 South - Mt. Vernon



Today's People Choose Top Value Stamps



3-6 P.M.
5/2/80

U.S. 25 South
Mt. Vernon

3-6 P.M.
5/2/80

SUPERIOR Food Market

Put a smile on
your face by shopping
at Superior, where **CRAZY**
PRICES make your dollar go farther.



Fields No 1
BACON **89¢**
Limit 2 1 lb. pkg.

No. 1 White
Potatoes
10 lb. bag
79¢
Limit 1

Hy-Top
BREAD
4/\$1
Limit 4

Generic
Trash
Bags
10 ct.
73¢
Limit 1

Pringles
Twin Pk.
9 oz. size
83¢
Limit 1 pk.

Grade "A" Small
EGGS
39¢
Limit 4 dozen
doz.

Field's Pro-Leager
WIENERS
Limit 2
12 oz. pkg.
69¢

PEPSI Mt. Dew
or Dr. Pepper
8 pk.
16 oz.
Limit 2
\$1.19
plus deposit or bottles

Big Savings
PLUS TOP VALUE STAMPS!

PRICES
EFFECTIVE

THREE BIG HOURS ONLY!!!
THIS FRIDAY, MAY 2, 1980 - 3 - 6 P.M.

Prices Effective May 1 - 7

FRESH WHOLE FRYERS

Limit 4 With *10⁰⁰ Order

45¢

LB.



Fields No. 1
BACON

1 lb. pkg.

\$ 1 19

Fields Pro - Leager
WIENERS

12 oz. pkg. 99¢

Fresh Cut-Up Fryers lb. 59¢
Split Breast lb. \$ 1 19

GOLD KIST BAKING HENS
4-6 lb. Avg.
LB. 69¢

FISCHER'S SMOKED PORK CHOPS
LB. \$ 1 79

GLAD TRASH BAGS
10 Count Package \$1.29

POST TOASTIES CEREAL
10 oz. Box 99¢

AURORA TOILET TISSUE
4 Roll Package 89¢

ROYAL GELATIN
10 oz. Package 4/\$1.00

SARAN WRAP
100 Foot Roll \$1.29

NABISCO CHIPS AHOY COOKIES
13 oz. Package 99¢

GOLDEN RIPE BANANAS
33¢ lb.

Fresh Green Cabbage lb. 19¢

No. 1 WHITE POTATOES 10 lb. Bag 99¢

SOUTHERN YAMS 4 lbs. \$ 1

BLUE BONNET WHIPPED MARGARINE
1 lb. Package 59¢

KRAFT VELVEETA CHEESE
2 lb. Box \$2.89

RITZ CRACKERS
12 oz. Package 69¢

RICHTEX SHORTENING
42 oz. Can \$1.39

DOWNY FABRIC SOFTENER
64 oz. Jug \$1.89

ARMOUR TREE TREET 12 oz. Can \$1.19

GREEN GIANT MUSHROOMS 4 1/2 oz. Can 99¢

HEINZ GENUINE DILL PICKLES 32 oz. Jar 89¢

AURORA TOILET TISSUE
4 Roll Package 89¢

ARGO PEAS
303 Can 3/\$1.00

TIDE DETERGENT
49 oz. Box \$1.59

JUPITER HOT DOG SAUCE 10 oz. Can 3/\$1.00

PRELATE PINK SALMON No. 1 Can \$1.89

GREEN GIANT NIBLET'S GOLDEN CORN Vacuum Pack 15 oz. Can 3/\$1.19

SMUCKER'S APPLE JELLY 18 oz. Jar 89¢

HY-TOP PEANUT BUTTER Smooth Or Crunchy 18 oz. Jar 99¢

THEY'RE FRESH FROM THE VALLEY!

Green Beans 303 Can 3/\$1.00

Sweet Peas 303 Can 3/\$1.00

GREEN GIANT GOLDEN CORN
Whole Kernel or Cream Style 303 Can 3/\$1.00

KRAFT VELVEETA CHEESE
2 lb. Box \$2.89

HY-TOP BLEACH
1 gal. Jug 69¢

GOLD KIST BAKING HENS
4-6 lb. Avg. LB. 69¢

ARGO PEAS
303 Can 3/\$1.00

GREEN GIANT CUT GREEN BEANS
303 Can 3/\$1.00

GREEN GIANT GOLDEN CORN
Whole Kernel or Cream Style 303 Can 3/\$1.00

PEPSI
Mt. Dew
or Dr. Pepper
8 pk. - 16 oz.
\$ 1 39



SUPERIOR

Food Markets

Symbol Of Quality




CLAYTON HAMMOND'S SUPERMARKET

Highway 461
The Somerset Road

"HOME OF BARGAINS" Prices good May 1st thru May 7th



Whole
FRYERS
39¢ lb.



Armour
Veri-Best
Whole
Pork Loin **95¢** lb.



Armour
Veri-Best
1/2
Pork Loin **99¢** lb.

Armour
Bologna, Pickle Loaf, 12 oz. Pkg.
Old Fashioned Loaf, Salami or
Spiced Luncheon Loaf **99¢**

Eckrich
Bologna \$ **1.49**
sliced lb.

USDA CHOICE
SIRLOIN
TIP
STEAK **\$2** lb.

Family Pak
Fryer Parts **45¢** lb.
Fryer Breasts **99¢** lb.
Fryer Thighs **69¢** lb.
Fryer Drumsticks **79¢** lb.

USDA CHOICE
SIRLOIN TIP ROAST **2.09** lb.



Swift's
PREMIUM BACON 1 lb. pkg. **99¢** lb.

WHOLE RIBEYES 12-14 lb. avg. **3.39** lb.

Swift's Boneless
SANDWICH HAM **\$1.79** lb.

Folger's
Instant
Coffee **4.29**
10 oz. jar

Cottonelle
Bathroom
Tissue **99**
4 roll



1 lb. quarters
Allsweet
Margarine **49¢**



Holland's
Ice
Cream **99¢**
1/2 gal. Limit 2



PUREX
Bleach **69¢**
gal. Limit 2



JFG
PEANUT
BUTTER **\$1.49**
2 lb. jar

PRODUCE SALE



Grade A Large
EGGS **59¢** doz.
3 lb. bag Red or Yellow
APPLES **89¢**
Tray Pack
Tomatoes 2 lb. **69**
20 lb. bag
Potatoes **\$1.29**



Star Kist
Tuna **89¢**
6 1/2 oz.



Argo
PEAS **89¢**
3 cans for



SCOT
PAPER
TOWELS **69¢** JUMBO ROLL

Van Camp's
Pork &
Beans **99¢**
3 cans for

Brach's
Chocolate Stars **\$1.49**
pkg. reg. \$1.99

Aunt Jemima
Corn
Meal 5 lb. bag **89¢**

Creamettes
Macaroni 2 lb. **99¢**
Gordon's
Potato chips **69¢**

"PERSONALS"

Griffin in Mt. Crab, Ohio this week. We are always glad to hear from Mrs. Griffin and family.

Robert Hubbard is at home after spending some time in the local hospital and a hospital in Lexington.

Guests of Mr. and Mrs. Bentley Sparks last week were their daughter, Mrs. Don Bradshaw and Mrs. Sparks' niece, Mrs. Stoner Beard and Mr. Beard of Frankfort.

From Sunday's bulletin of the Church of Christ, Revival - next week Bro. Ernie will be conducting revival services for the Dunlap Christian Church near Covington, Va. Dr. Charles Greenham of Kentucky Christian College will be guest speaker for next Sunday morning.

The Willing Workers' monthly meeting of the First Christian Church was held Wednesday, April 23 with excellent attendance. The covered dish dinner was at noon with Mrs. Jewell Brown and Mrs. Marie Cox as hostesses. Following lunch, the business session was opened by Mrs. Ruth McFerron, president, who also gave a beautiful devotion on "Palm Trees" taken from Psalm 92:12. Mrs. Ruth Johnson brought the secretary report before the old and new business was discussed. Next meeting will be May 28.

Mrs. Margaret Maupin of Shelbyville visited her father, Willie Hammonds, last week.

Mr. and Mrs. Bill Jones of Villa Grove, Illinois are the guests of her sister, Mrs. Mollie Bryant and her brother, Phillip Davis at home.

Guests of Mrs. Jewell Brown over the week end were Nell Broyles and Alma Shepherd of Stanford, Mrs. Bonnie Cox of London, Jack DeBorde of Lancaster, Mr. and Mrs. Dennis Criswell of Florida, Mr. and Mrs. Smith Latham of Pulaski Co. and Mrs. Sallie DeBorde of Route 1, Mt. Vernon.

Mrs. Mary Kirby, Mrs. Juanita Davis and son, Leonard, spent Sunday with Mrs. Kirby's brother, Jim Hansel and Mrs. Hansel in Harlan.

Mrs. Denver Robbins and daughter, Mrs. Jerry Walls of Fairfield, Ohio visited her mother, Mrs. Leanna Nicoley, at the home of Mrs. Dolly Krabenbuhl Friday and Saturday. They were also in to see Mrs. Evie Robbins who is in poor health.

On going to press, we were thrilled to receive the good news that Burch Stokes of Lockland, Ohio is much improved in health and has resumed his work at home making beautiful grandfather clocks.

Mrs. Sallie Cummins celebrated her 90th birthday this month. She is able to go to church. Congratulations dear friend and we wish you much happiness.

Mrs. Annie McKenzie has returned to the Ladies Retirement Building in Louisville from the winter home in Florida with her children, Mrs. Ruby McKenzie and Mrs. Beulah K. Beck of Pensacola and Mrs. Sallie and Lewis Bennett at Cape Coral, Fla.

Recent visitors of Mrs. Grace Lovell were Bro. and Mrs. Doug Gay, Bro. Joe Gay and

wife, Mr. and Mrs. James Calhoun, all of Indianapolis, Ind. and her grandson, Larry Calhoun of Indiana, Mr. and Mrs. Floyd Lovell and Mrs. Paul Calhoun and son, Slade.

Mrs. Louanna Cromer and Mr. and Mrs. Jack Cromer attended the ~~revival~~ ~~meeting~~ at Crab Orchard Monday evening. The evangelist is Bro. Satefield, who recently held a revival at Livingston Pentecostal Church, where the pastor is Bro. Miller.

The revival meeting at the Northside Baptist Church last week closed Sunday night after a good attendance which night an many decisions made in Christ name.

Mrs. John Kincer, Jr. of Erlanger accompanied her son-in-law, Albert Hampton of Florence on Tuesday to spend the day with her sisters, Mrs. Emma Thompson and Mrs. Leila Stokes. Albert was here and at Crab Orchard in the interest of the estate of his father, the late Pearl Hampton.

Gospel Singing Festival
There will be a Gospel Singing Festival at the Maple Grove Church May 2-4, featuring the John Burke and Layman Trio, the Bryant Family and the Singing, Friday night, May 2 at 7:30 and on Saturday, May 3, there will be two sessions, at 2 p.m. and again at 7:30 p.m. Then on Sunday, May 4th, there will be all day singing and dinner on the ground.
All gospel singers and the public are invited.

Microwave Demonstration

Fran Mauerhauser of Louisville will present a demonstration on using microwave ovens. There will also be new and proven recipes and tips. The program will be at 7 p.m., May 13 at the Rockcastle County Library Community Room. There will be no fee charged.

The program is sponsored by Jackson County RECC. To register for the program, call 256-2405. We must have a count of who is coming to have enough handouts and samples.

"Legislative Report"
(Cont. From 2)

reclaim abandoned strip-mines across the state.
House Bill 236 will require the state to inform the federal government that it will provide mine rescue teams within one-hour's drive of all mines that do not have such teams in residence.

House Bill 704 will establish a state-wide program for the collection and recycling of used oil. State agencies will be required to use recycled oil instead of new oil whenever possible.

House Bill 838 revises various laws to encourage the production and use of gasoline in Kentucky. Further, gasoline production facilities will be exempted from the corporate income tax.

House Bill 535 will establish new procedures by which small coal operators may obtain surface mining permits from the state.

Among other things, this bill allows permit fees to be paid in installments and simpli-

fies the permit-application process. It also stipulates that 20% of the money in the state's abandoned mine reclamation program be earmarked for small coal operators.

Also included in this bill is a mandate that coal trucks traveling ~~on~~ ~~highways~~ highways, such as interstates or parkways, be covered with tarpaulins.

In other legislative action, the state Department of Energy was given the authority to look into a plan for setting up coal warehouses to store coal that operators don't wish to sell immediately. This measure could help stabilize Kentucky's coal industry by allowing coal operators to delay sales until prices are more favorable.

An additional provision of the bill could mean a commodities exchange for trading coal futures in Kentucky. The exchange would include a contract market and the coal warehouse where coal subject to futures

contracts could be stored for delivery.

Also in the coal delivery area, the General Assembly asked police to try to avoid arresting the drivers of overweight trucks. The bill states that police may issue citations to the drivers, but also retaining the right of right of arrest if they feel it warranted for other reasons.

Births Announced

Rebecca Gail Hasty

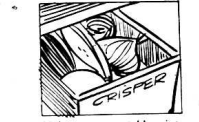
Mr. and Mrs. Mike Hasty of Lancaster have chosen the name of Rebecca Gail, for their 3 lb. 3 1/2 oz. daughter, born April 5th, in the University Hospital, Lexington. Grandparents are Mr. and Mrs. Paul Mobley of Lancaster, and Mr. and Mrs. Jearl Hasty, Route 1, Mt. Vernon. Rebecca Gail will be welcomed home by her 2 1/4 year old sister, Melissa.

MT. VERNON SIGNAL THURSDAY, MAY 1, 1980 P-11

Billy Gordon Hasty

Mr. and Mrs. Gordon Hasty of Lancaster announce the arrival of their first child, a son, Billy Gordon, April 10. He weighed ten pounds, seven ounces and was born at the UK Medical Center in Lexington. Mrs. Hasty was the former Kitty Graham of Jessamine Co. Grandparents are Mr. and Mrs. Jearl Hasty of Route 1, Mt. Vernon.

Lunch
Monday: Smoked sausage on bun, potato rounds, cole slaw, milk, oatmeal cake. Tuesday: chicken/dumplings, green beans, corn, rolls, milk, chocolate peanut butter square. Wednesday: meat loaf, sweet potatoes, peas and carrots, rolls, milk, fruit tart. Thursday: fried chicken, mashed potatoes, green beans, white bread, milk, jello. Friday: barbecue on bun, potato chips, baked beans, cole slaw, milk, chocolate peanut clusters.



Lining your vegetable crisp with paper can help keep vegetables fresher longer.

School Menu

May 5-9

Breakfast
Monday: cereal, toast/jelly, juice, milk. Tuesday: egg, toast/jelly, juice, milk. Wednesday: doughnut, juice, milk. Thursday: toasted cheese sandwich, juice, milk. Friday: Oatmeal, toast, juice, milk.

YOU
Are Invited To Attend A
GOSPEL MEETING
at
BETHEL CHURCH of CHRIST
With
Bro. Wayne Chappell
MAY 5th thru MAY 11th
7:30 P.M.
Located nine miles So of Crab Orchard on Hwy. 39

FABULOUS southern dollar DISCOUNT STORES

To Mother with Love **GIFTS SPECIALLY PRICED!**

SALE STARTS MAY 1 PRICES GOOD THRU MAY 4

TABLE CLOTH SALE YOUR CHOICE-

52 x 70 INCH FOAM BACK, \$1.99 EACH
REG. TO \$2.89

52 x 70 INCH FLANNEL BACK, 60 INCH ROUND, \$1.99 EACH
REG. TO \$2.89

JUMBO BATH TOWELS

\$2.33
24 x 24 inches, poly/cotton in solids and prints. Hemmed ends. REG. \$2.89

YOUR CHOICE- 8 PK. LENO-WEAVE DISH CLOTHS, 6 PK. WHITE WASH CLOTHS, 2 PK. PRINT KITCHEN TOWELS

\$99¢ **REG. TO \$1.39 PKG.**

BRA SALE! 2 FOR \$3.00

REG. \$1.99 EACH Many styles to choose from. Sizes 32 to 40, A to D cups.

LADIES FASHION TOPS \$4.88

REG. \$6.99 Large selection of styles and colors. Sizes S-M-L.

LADIES PANTIES BRIEFS OR BIKINIS 2 FOR \$1.50

REG. 99¢ PR. Choice of styles in solids and fancies.

LADIES FASHION PANTS \$3.30

REG. \$3.99 100% polyester in assorted colors. Sizes 8 to 18. Slight irreg.

LADIES NIGHT SHIRTS \$2.88

REG. \$3.99 Novelty screen prints. Sizes S-M-L. Slight irreg.

Mother's Day MAY 11th

Sports...

By: Richard Anderkin

Central Body Service Wins Rockcastle Mixed League



The Rockcastle Mixed Bowling League held their banquet this year at Hall's Restaurant on the Kentucky River. Following the meal, trophies were handed out to teams and individuals. Central

Body Service was the first place team winner this year. Members of the team are, from left: Mr. and Mrs. Doc Brown and Mr. and Mrs. David Eaton.



The Strakers came in second in the league this year. Members of this team are, from left: Mr. and

Mrs. Jim Winstead and Mr. and Mrs. Dale Winstead.



Winning third place in team competition were the Alleycats. They are, from left: Jim Anderkin,

Jamie Anderkin, Ferlina Anderkin and Rick Anderkin.

OFFICERS ELECTED

The Rockcastle Mixed Bowling League held an elec-

tion of officers for the 1980-81 league during their banquet meeting last Thursday night. Elected were: Donald

Clark, president; David Bales, vice president and Carol McGuire, secretary-treasurer.

Fishing Report

Anglers who braved the cool, unsettled weather this week and experienced generally fair fishing on Kentucky's 15 largest lakes.

The lake-by-lake report, as compiled by the Department of Fish and Wildlife Resources:

Kentucky: Crappie fair to good over drop offs and submerged cover (2-7 feet deep); black bass fair on spinner and crank baits off points; in tailwaters, catfish fair; clear to murky, stable at summer pool and 63 degrees.

Barkley: Crappie fair over submerged cover and drop offs (4-6 feet deep); clear to murky, stable at summer pool and 62 degrees.

Barren: Crappie fair over submerged cover (6-10 feet deep); black bass slow to fair on crank and spinner baits off points and in inlets and bays; in tailwaters, white bass fair; clear to murky, stable at summer pool and 62 degrees.

Nolin: Crappie fair over submerged cover (about 4 feet deep); bluegill fair off rocky banks and in inlets and bays; black bass slow on medium runners off points; clear, stable at summer pool and 63 degrees.

Rough River: Crappie fair to good around stick ups (1-5-5 feet deep); bluegill fair in coves; black bass slow on medium runners off points and deep banks; clear to murky, stable at summer pool and 68 degrees.

Herrington: Crappie good over submerged cover and around stick ups (3-4 feet deep); black bass slow on medium runners in inlets and bays; Dix River low and clear; white bass slow; clear to murky, stable at four feet below pool and 59 degrees.

Green: Crappie fair over submerged cover (6-8 feet deep); black bass fair on crank and spinner baits off points; clear, stable at summer pool and 59 degrees.

Cumberland: Crappie fair to good jigging minnows in coves and still fishing around willows-and-treetops (4-6 feet deep); black bass fair on crank and spinner baits in coves, white bass good in main Cumberland River, slow in South Fork; in tailwaters, trout fair to good, walleye fair; clear to murky, stable at one foot below timberline and 58 degrees.



Cawood Comments

©1980, Cawood Ledford Productions, Inc.
By the voice of the University of Kentucky Wildcats
Cawood Ledford

LEXINGTON—Who's going to win the Kentucky Derby? Well, that's what I'm here for. Let's take a look at the 106th running of this racing classic on Saturday, The Derby, of course, is a mile and a quarter and none of these three year olds have ever run that far. We've got to find us a horse that has the stamina to be running through "heartbreak lane," that long Churchill Downs stretch. At the same time, I like a horse that's not going to be too far behind in the early going. If he has to thread his way through and around a lot of horses he can run into all kinds of trouble. He can get trapped on the rail or he may have to go very wide to pass the tring animals.

That logic brings me to pick Rockhill Native as the winner of the Derby. He's a versatile little gelding that can be put right on the lead as he was in the Bluegrass Stakes at Keeneland or he can race just behind the leaders and make his move turning for home as he did in winning the Everglade Stakes in Florida.

"Rocky" is a gelding. A gelding means that he has been castrated and there hasn't been a gelding win the Derby since 1929. Only seven have ever won it. The colts with the best bloodlines usually aren't gelded so we have a lot more colts running in the Derby than we do geldings. I don't put much stock in the fact that Rockhill Native is a gelding. I know he loves the Churchill Downs racing strip. Trainer Herb Stevens raced him on it 3 times last year and he won all 3. "Rocky" went on from there to win the two year old championship.

I like Rockhill Native to win. I think he will go off the favorite so if you're looking for a bigger return on your 2 bucks you might want to take a chance with Super Moment. He'll be passing a lot of horses in the Churchill Downs stretch. I think he'll get second with Plugged Nickle third.

Cawood Comments Courtesy of The Bank of Mt. Vernon

Dale Hollow: Bluegill good over submerged cover and around willow bushes; white bass fair in tributaries on spinners and jigs; clear, stable at pool and 64 degrees.

Laurel: Trout fair trolling medium runners and by still fishing worms, cheese or corn off deep banks; crappie fair around stick ups (6-10 feet deep); clear, stable at one foot below power pool and 59 degrees.

Buckhorn: Crappie good over submerged cover (6-10 feet deep); black bass fair on medium runners off medium sloping banks; catfish fair bank fishing with minnows and worms; clear to murky to muddy, rising slowly, four feet below summer pool and 61 degrees.

Cave Run: Crappie fair around stick ups (3-4 feet deep); black bass slow jigging night crawlers around shoreline cover and casting spinner baits off

points and deep banks, musky slow trolling deep runners over channel drop offs; clear to murky, stable at one foot below pool and 56 degrees.

Grayson: Crappie fair over submerged cover (4-5 feet deep); black bass fair on spinner baits off muddy banks; in tailwaters, trout and bluegill slow; clear to murky, stable at summer pool and 60 degrees.

Dewey: Crappie slow over submerged cover (2-5 feet deep); bluegill slow in coves; murky to muddy, stable at summer pool and 60 degrees.

Fishtrap: Crappie slow over submerged cover (6-7 feet deep); black bass slow on medium runners off deep banks; clear to murky to muddy, falling three feet above summer pool and 60 degrees.

OPENING

MAY 1st



ADAMS OPTICAL OPTICIANS

Don & Judy Stewart - Shackleford
FNAO
Professional Filling of Eyeglass Prescriptions
Quality Eyewear

Reasonable Prices

LOCATED

Below Sears - Main St.



MT. VERNON
Phone 256-5664

Sports . . .



Winning the first place individual trophies for the ladies were, from left: Laura McHargue, high game, handicap; Sheila Miller, high series, handicap and Carol McGuire, high average and high series, scratch. Not present was Evelyn Mullins, high game, scratch and second high average.



Other ladies receiving individual trophies were, from left: Ailee Faulkner, third high series, scratch and third high average; Fern Brown, second high series, handicap; Helen Payne, third high game, handicap; Perlina Anderkin, second high series, scratch; Janice Miller, third high series, handicap and Mary Jackson, second high game, scratch. Not present were: Millie Reynolds, third high game, scratch and Dinah Moore and Joyce Houk (tie), second high game, handicap.



Other men winning individual trophies were, from left: Jim Anderkin, third high game, handicap; Jim Cromer, third high series, handicap; Jack Noe, third high series, scratch and David Eaton, second high average and second high series, scratch. Other not present were: James Bradley, third high game, scratch and third high average; Clarence Carter, second high series handicap and Ed Winstead, second high, handicap and James Noe, second high game, scratch.



First place in the individual events were taken by these five men bowlers. They are, from left: Doc Brown, high game and high series; Robbie Miller, high game, handicap; Larry Taylor, high series, handicap and Dale Winstead, high game, scratch.

Convenient Food Mart

When you're feeling lucky...

<p>Pringles 99¢ 3 pack 9 oz. All Flavors</p>	<p>Vegetable and Flower Seeds 10¢/100</p>
<p>Nabisco Chips Ahoy Cookies \$1.09 15 oz</p>	<p>Slush Puppy Drink Buy one get one FREE!</p>
<p>Frito Lay Ruffles 69¢ 9 1/2 oz. size</p>	<p>we're Convenient Prices effective April 28-May 11 1980 In Mt. Vernon Richmond St</p>
<p>Coca-Cola 16 oz. size 16 oz. returnables plus deposit</p>	<p>Kay's Ice Milk 99¢ 1/2 gallon</p>

MOST IMPROVED

Penny Mullins and Mike McFerron were the two most-improved bowlers in the Rockcastle Mixed League for the 1979-80 season.

Kentucky Afield

By: John Wilson

Fort Knox, one of Kentucky's most popular deer hunting areas, has announced major changes in the gun hunts which will be conducted this fall.

These changes include a reduction in the number of hunters per area, the elimination of close supervision of deer hunters in the field, an expanded season and an increase in fees for civilian hunters, according to Public Affairs Officer, Lt. Colonel Billy J. Cone.

These changes were brought about by the desire to cut the cost of administering the deer hunts and to improve both the quality and the safety of hunting on the post, Colonel Cone said.

In addition to four days of post-wide gun hunting, for which application well in advance is required, deer gun hunts will also be conducted December 1st - December 20th on selected areas of the 109,700-acre military reservation.

During December, hunters must apply on Monday or Tuesday to hunt the following weekend. For weekday hunts, applications should be made the day before hunting. Military personnel or civilian workers at Fort Knox will be given priority for these hunts.

Each hunting area, which previously accommodated up to 32 persons, will now have a limit of 16 hunters. No longer will there be a series of area leaders and assistants to conduct hunters to and from each hunting area and generally oversee the hunts.



CASH IS DANGEROUS

It's much safer to deposit your money in a checking account where it won't be lost, stolen or misplaced. Your account, in any amount, is welcome.



Open 8:30 to 3 p.m. - Monday thru Saturday



Serving This Community
SINCE 1804
Ph. 758-8212

State Senator
GENE HUFF
Candidate For
5th District Congressman



Will be in Mt. Vernon on Sat., May 3rd, at the Courthouse at 10 A.M.

Sen. Huff will be here to Discuss the issues of the campaign for 5th Dist. Congressman.

Entertainment (Gospel Singing) will be provided.

Rep. Harold DeMarcus will also speak

Pd. for by Rockcastle County Campaign Committee for Gene Huff
 C.W. Phillips, County Chairman



INTERTERM
CENTRAL HEATING AND COOLING EQUIPMENT
Sales and Service
Epperson Electric
 112 University Dr. Somerset
Ph 679-7476

Gospel Singing Festival
At The Maple Grove
Baptist Church May 2-4.
Featuring the John Burke and Layman Trio, The Bryant Family and the Singing Renners.

Friday Night May 2 - at 7:30
Saturday May 3 with two sessions 1st starting at 2 p.m. and the 2nd at 7:30 p.m.
Sunday May 4 - All day with Dinner on the ground.
All gospel singers and the public are invited.

Brothead

Weekend visitors of Mrs. Lula Reynolds of Cincinnati, Ohio, were her sisters, Mrs. Ruth Sargent and Mrs. Mattie Hasty of Brothead; also Miss Alberta Hasty, Mr. Jerry Hasty of Brothead, Mr. and Mrs. Donnie Collins of Brothead, Mrs. Anna Sponamore and Mrs. Dorothy Hasty of Mt. Vernon; Mrs. Wilbur Sponamore and granddaughter of Lockland, Ohio, and her son, Mr. and Mrs. Charles Reynolds and family of Florence. Mrs. Reynolds is reported improving.

Quail

Recent visitors of Mrs. Viola Albright were Terry, Jerry, Gary and Robert Brown, Mrs. Mary Harper and Scotty, Mr. and Mrs. Willard Nicely, Mr. Hershell Taylor and Dawn Brown, Mr. and Mrs. J. McClure of Lexington, Mr. Garner Brown and Mr. Charlie Albright.

Mrs. Albright reports her brother, Mr. Dallas Hamm is improving from a fall, but is still confined to his bed.

Mrs. Jewell Brown of Crab Orchard visited Mrs. Elva Mobley Sunday afternoon.

Friday and Saturday night guests of Mr. and Mrs. Wille Taylor were Mr. and Mrs. Walter Barker, Joanna and Mark of West Chester, Ohio and Mrs. Grace Smoot of Indianapolis, Indiana.

Mrs. Beulah Barker of West Chester, Ohio, spent Friday night with her sister, Mrs. Elva Mobley and Saturday night with Mrs. Maymie Long and Dalbert, also Saturday evening guests of Mrs. Barker were Mrs. Mary Moninger, Mrs. M. M. Helton, Mr. and Mrs. Willie Taylor, Mr. Ray Long, Mr. and Mrs. Johnnie Taylor, Mr. and Mrs. General Strunk, Mrs. Geomia Nicely, Mrs. Beverly Taylor, Mrs. Susie Todd, Mrs. Christine Brown.

Mr. and Mrs. Bennett Burton and Sheila visited her parents, Mr. and Mrs. Carsel Blanton.

Mr. and Mrs. Johnnie Neal of Florida are visiting Mrs. Little Howard.

Commonwealth of Kentucky
 Rockcastle Circuit Court
 Civil Action File No. 79-CF-190

Robert H. Allen, Et Al Plaintiffs
 V. Notice of Sale

Della Daugherty, Widow,
 Et Al, Defendant

By virtue of a judgment and order of sale of the Rockcastle Circuit Court entered on the 11th day of April, 1980, in the above cause, a partition action, I shall proceed to offer for sale at the Court House door on Main Street, in Mount Vernon, Kentucky, to the highest bidder, at public auction on the 5th day of May, 1980, at 10:00 o'clock A.M., or thereabouts, the following described real property, to-wit:

On the waters of Horse Lick and Crooked Cheeks and beginning at a dogwood, corner of Joe Daugherty and Ambrose Brockman at a large natural stone; thence southeasterly with Brockman land to H.B. Griffin line; thence due south leaving Griffin line to Chester Singleton line; thence with Chester Singleton line to U.S. Government corner, an oak; thence east with Government line to a double chestnut corner, Chester Mullins land; thence northerly with Mullins land to Government land, a stone on a cliff; thence with Government land to a stone corner on the cliff, Nathan Mullins corner; thence with Nathan Mullins land due West to a dogwood and stone corner, the beginning, and containing two hundred sixty-five (265) acres more or less.

There is excepted from the above described real property, two tracts which are being used as cemeteries, to-wit:

Tract No. 1 - Beginning at an 8 inch maple on the east side of Old State Road 0.1 mile south of Kentucky 1955; thence with said road, South 11 degrees East 148 feet to 8 inch cedar; thence South 5 3/4 degrees East 150 feet to a clump of sourwood sprouts; thence leaving the road and around the cemetery as follows: North 59 3/4 degrees East 322 feet to 18 inch chestnut oak; North 72 degrees East 128 feet to 12 inch black oak; North 13 1/2 degrees West 120 feet to double chestnut oak; South 85 1/4 degrees West 187 feet to 8 inch poplar; due West 217 feet to the beginning, containing 1.86 acres, more or less.

Tract No. 2 - Beginning at three inch white oak on north east side of old State Road, 0.6 miles south of Kentucky 1955; thence with said road, South 32 degrees East 180 feet to three inch dogwood; thence leaving road as follows: North 16 1/2 degrees East 232 feet to five inch maple sprouts; thence North 52 1/4 degrees West 78 feet to twelve inch oak; South 40 1/4 degrees West 157 feet to the beginning containing 0.52 acres, more or less.

Tract No. 3 - There is further excepted the coal rights, together with the privileges appertaining thereto on the following described portion of the 265 acre tract heretofore described:

All of that portion of the above described real property that lies south of the old William Daugherty house, containing one hundred (100) acres, more or less.

In addition to the foregoing, I shall offer for sale the coal rights and the right to mine said coal on the following described real property:

All of that portion of the above described real property that lies south of the old William Daugherty house, containing one hundred (100) acres, more or less.

This property shall be sold to the highest bidder on terms of ten (10%) per cent of the purchase price in cash at time of sale, the balance payable in six (6) months, with the purchaser being required to execute bond with surety thereon to be approved by the Commissioner, to secure the unpaid balance of the purchase price; said bond to bear interest at the rate of eight (8%) per cent per annum from date until paid. The purchaser shall have the privilege of paying all of the purchase price in cash, or paying said bond before maturity by paying the principal and interest accrued to date of payment. The purchaser shall have possession of the premises after complying with the terms of sale.

By William D. Gregory
 Master Commissioner
 Rockcastle Circuit Court

CLONTE & CO.
 Attorneys for the Plaintiffs
 Mount Vernon, Kentucky

BRODHEAD NEWS (Delayed)

Mrs. Wanda Lear and Michelle and Mrs. Cora Lear were in Lexington Saturday shopping.

Zen and Mrs. Wanda Lear and Michelle were in Danville Sunday shopping.

Mrs. Wanda Lear and Michelle were in Richmond Tuesday to see Michelle's dentist.

A Beautiful Gift
 Sterling Silver and Copper
JEWELRY
Handwrought by
 STUART NYE

For Graduation, Mother's Day
 Birthday

SOLD AT
"Westward, Ho!"
 In Renfro Valley

OPEN Thurs. & Fri. 9:30 - 4:00 till 7:00 on Sat.

HELP WANTED
We are now taking applications for experienced Truck Diesel & Gas Mechanics, Automobile Mechanics, and front office check in men.

This is a new garage located at I-75 and U.S. 25 South of a Burr. Garage will be named Mt. Vernon Truck Garage. We will be working three shifts of mechanics as garage will be open 24 hours and 7 days per week which will include 24-hour emergency road service. Salaries will be based upon ability and experience.

You can get application for a garage from Monroe Baker from 10 a.m. until 8 p.m.



of Mt. Vernon
Will be celebrating Derby Day and the Spring Square Dance Festival
Sat., May 3, 1980

BUY ONE FISH SANDWICH and Get One FISH SANDWICH FREE
All Day Sat. after 10:30 A.M.

There Will Also Be LIVE COUNTRY MUSIC
From 5 - 6:30 P.M.
Featuring Many Top Performers

SO COME ON OUT AND JOIN THE FUN SEE YOU THERE!

Area Deaths and Funerals

Mrs. Nervesta Riddle

Mrs. Nervesta Riddle, 80, of Brodhead died Tuesday, April 22, 1980 at the Central Baptist Hospital in Lexington after a short illness. She was born March 3, 1900 in Letcher County, the daughter of the late Casper Way and Katie Gilliam Holcomb and was a member of the Brodhead Baptist Church.

Survivors are three sons, Ish Riddle of Richmond, Indiana, Walter (Duke) Riddle of Route 1, Brodhead and Earl Riddle of Houston, Texas; four daughters, Mrs. Jeanette Mitchell of Brodhead, Mrs. Sally Lewis of Baltimore, Maryland, Mrs. Leta Jones of Tampa, Florida and Mrs. Rosie Malott of Amelia, Ohio; one half-sister, Mrs. Bernice Hunt of Mt. Vernon; 34 grandchildren and 12 great grandchildren.

She was preceded in death by her husband, John Gid Riddle and by two sons, J.L. and William R. Riddle.

Funeral services were held Saturday, April 26 at the Brodhead Christian Church with Bro. John Zupanic and Bro. R.C. Flynn officiating. Burial was in the Piney Grove Cemetery.

Mrs. Ethel Owens

Mrs. Ethel Owens, 61, of Brodhead died suddenly Thursday, April 24, 1980, the result of an apparent heart attack.

She was born January 22, 1919 in Harlan County, the daughter of the late John Gid and Nervesta Holcomb Riddle. She was a member of the Brodhead Christian Church.

Survivors are her husband, Paul Owens of Brodhead; two sons, Marvin and Earl Owens, both of Brodhead; three brothers, Ish Riddle of Richmond, Indiana, Walter (Duke) Riddle of Route 1, Brodhead and Earl Riddle of Houston, Texas; four sisters, Mrs. Jeanette Mitchell of Brodhead, Mrs. Sally Lewis of Baltimore, Maryland, Mrs. Dallis Jones of Tampa, Florida and Mrs. Rosie Malott of Amelia, Ohio; and two grandchildren.

Funeral services were held Saturday, April 26 at the Brodhead Christian Church with Bro. John Zupanic and Bro. R.C. Flynn officiating. Burial was in the Piney Grove Cemetery.

Mrs. Anna Carpenter

Mrs. Anna Carpenter, 73, of Mt. Vernon died Wednesday, April 23, 1980 at the Harrison Memorial Hospital in Cincinnati after an illness of several months. She was born June 8, 1906 in Rockcastle County, the daughter of the late Jerr and Nettie French Kirby and was a member of the Community Church of God.

Mrs. Carolyn G. Alcorn

Mrs. Carolyn Griffin Alcorn, 52, of Wyoming, Ohio, and formerly of Rockcastle County, died Sunday, April 27, 1980 at the Cincinnati General Hospital. She was born August 31, 1927 in Rockcastle County, the daughter of Mrs. Bertha Gentry Stephens of Brodhead and the late Samuel Stephens and was a member of the Ottawa Baptist Church.

Survivors besides her mother are two daughters, Mrs. Brenda Gallagher of Cincinnati, Ohio and Mrs. Judy Kenney of California; two sisters, Mrs. Bernice Adams of Brodhead and Mrs. Lillian Gall of Cincinnati, Ohio; and three grandchildren.

Funeral services were held Tuesday morning, April 29 at the Watson Funeral Home Chapel with Rev. R.C. Flynn officiating. Burial was in the Freedom Cemetery.

Around BRODHEAD

By: Mrs. Mary McWhorter

A gospel meeting is to begin at the Bethel Church of Christ May 1, through May 11th. Bro. Fred Stone, Chapel of Springfield, Ohio, is the evangelist. Everyone Welcome.

Mr. and Mrs. Bobby Hale visited her aunt, Mrs. Mildred Coffey and Kay. They also visited Mr. and Mrs. Homer Hale last week.

Mrs. Maggie Dermon has returned home from a visit with her sister, Mrs. Minnie Winkler in New Lebanon, Ohio. Mrs. Dermon and Mrs. Winkler spent the weeks in Pasadena, Texas, visiting Mrs. Dermon's daughter, Mrs. Homer Alexander and Mr. Alexander. They also visited Mrs. Dermon's daughter, Terry, and wife, Betty and her two granddaughters, Torie Lynn and Tiffany Lee. They also visited Mrs. Dermon's

granddaughter, Mrs. Ralph Swain and Mr. Swain and their daughter, Kayce Lynn of Houston, Texas. Mrs. Winkler enjoyed seeing her nephew and niece who she had not seen for four years. While there, Terry Lee took his grandmother, his mother and his aunt, Minnie, to see the Cincinnati Reds and the Houston Astros play baseball at the Houston Astrodome. Mrs. Dermon and Mrs. Winkler were met at the Cincinnati airport by their niece, Mrs. Glen Lewis of Swanton, Ohio and daughter, Dr. Linda Benson and husband, Dr. Thomas Benson of Indianapolis, Indiana. Dr. Benson and husband had just returned from a vacation in Paris, France. Dr. Benson is the granddaughter of Mrs. Ellen Brown.

Mr. Roy McWhorter of Valley Station spent Tuesday night with Mr. and Mrs. Bert McWhorter. Other guests for supper were Mrs. Martha Helton and Mrs. Mary McWhorter.

Mr. John Craig was in Lexington last Tuesday to consult his doctor.

Mr. and Mrs. Joseph Annan, editor from Cincinnati, Ohio and Mrs. Alma Cook from Bellevue visited Mr. and Mrs. Henry Reis and family Tuesday afternoon.

Mrs. Nannie Craig and Mrs. Cuba Croley and Corey Craig spent Tuesday with Mrs. Mary McWhorter.

Word has been received that uncle Ben Craig is much improved and would like to hear from folks back home. His address is Manor Care, Sunset Blvd., West, Columbia, S.C. 29189. We are very thankful to God to hear he is improved and hope to visit him in the near future.

Mr. and Mrs. Henry Barnett visited his daughter, Mrs. Christine Scott and Mr. Scott Sunday afternoon.

Mr. and Mrs. Glen Laswell of Richmond and Mr. and Mrs. Kenneth Hopkins of Danville

MT. VERNON SIGNAL THURSDAY, MAY 1, 1980 P.15

visited their mother, Mrs. Mary Iva Laswell, Sunday.

Mrs. Elizabeth Woodall has returned home after spending last week with her daughter and family in Ohio. Mr. and Mrs. Raymond Caldwell and sons, Kelly and Kevin.

Visitors of Mr. and Mrs. John Laswell were the weeknights Mrs. Becky Lou Hunt of Lancaster, Mr. and Mrs. Johnny Ray Laswell of Lancaster, Mr. and Mrs. Earl Bullock of Mt. Vernon, Mr. and Mrs. S.S. Purcell and Mr. and Mrs. Calvin Morgan and Warren Lee.

Mr. and Mrs. George Roberts of Erlanger visited Mrs. Roberts' father Mr. Henry Barnett and Mrs. Barnett Saturday.

Mrs. Grace Ann Cooper, Mrs. Mae Wallen of Cincinnati, Ohio spent Wednesday night with Mrs. Martha Helton.

Our deepest sympathy goes to the Brummett, Riddle, Griffin and Owens families in the loss of their loved ones.

Mr. and Mrs. Don Bray, Missie and Michael and Mrs. Hazel Bray visited with their relatives in Cincinnati, Ohio over the weekend. Among those they visited were Mr. and Mrs. Edward Bray and family, Mr. and Mrs. Raymond Bray and family. They also visited Mr. and Mrs. Charlie Tuggle and Mr. and Mrs. Bruce Wilcott at the nursing home in Hamilton, Ohio.

Mr. Billy Halcomb, son of Donnie and Carol Halcomb is home from the Epikam McDowell Hospital after having surgery. We wish him a speedy recovery.

Mrs. Bertha Adams, Mrs. and Mrs. Bill McKinney visited Mrs. Adams' daughter-in-law, Mrs. Teresa Adams at the Ephriam McDowell Hospital, Saturday.

Mr. and Mrs. Jack Waldon and Mr. Curtis Helton spent Wednesday and Thursday night

(Cont. to 16)

REAL ESTATE FOR SALE

BUILDING LOT Beautiful building lot located in the Country Club Estates Subdivision, located near Mt. Vernon. just off blacktop road. Measures 150x156. City water and restricted.

INVESTOR'S DELIGHT! 2 houses located just north of city limits of Mt. Vernon. One house has 2 bedrooms, living room, kitchen and bath. The other house has four bedrooms, kitchen, living room and bath. Both houses have a washer/dryer hookup, city water and are partially insulated. There are also two outbuildings and a garage.

TWO BEDROOM HOME conveniently located near city limits of Livingston, Ky. The house also has a living room, kitchen, 2 porches, bath, city water and a garden. Financing is available.

YOU WOULDN'T throw cash out the window but you do while renting. Get your money working, call today on this 16x50 mobile home situated on 1/2 acre lot just 2 1/2 miles from Mt. Vernon.

TWO LOTS IN HAPPY ACRES SUBDIVISION Each lot is 1/2 acre, more or less, front on a blacktop road and has city water available.

3 ACRES more or less, located on Barnett Road near Lake Lurline. This well kept property has city water available and more than 800 feet blacktop road frontage which provides excellent access for subdividing or it may be used successfully as a farm home. The choice is yours when you buy this property just a few minutes from Mt. Vernon.

COMMERCIAL LOT Located approximately 2 1/2 miles south of Mt. Vernon on U.S. 25 south. This handy lot measures 225x300 and contains 48 acres. This property is ideal for any type of business such as a restaurant, service station, garage, grocery etc. City water is available. This lot is easily accessible from U.S. 25 and has 30,000 gallons gas fill-upment per month!

CLOSE TO TOWN this house has 2 bedrooms, large living and dining areas, 2 porches, bath and city water and is situated on a large lot near city limits of Livingston.

LIKE LIVING IN THE COUNTRY? Then you will like this 2 bedroom home located near Mt. Vernon. This home also has kitchen, living room, w/ fireplace, bath, closed-in porch and partial basement. There are carpeted and vinyl floors throughout and city water. This home is situated on a lot with 100 feet frontage on a blacktop road.

ANNOUNCING THE BIRTH of a total electric, 3 bedroom brick home in a neighborhood of most attractive and top-quality homes. The house also has large living and dining rooms, lovely bath, beautiful kitchen and appliances, extra large utility room leading to the carport, energy-saving fluorescent lights and the economy and convenience of city water. Be the very first to enjoy this new home and its half acre surroundings.

1 ACRE LOT This peaceful wooded, gently sloping lots offers the convenience of blacktop road, city water and is only one mile from Mt. Vernon, Ky.

APARTMENT HOUSE on High Street in Livingston. Is ideal investment property. This 11 room building has several apartments, city water and sewer. To make a good bargain better--there's financing available.

LIKE LIVING IN THE COUNTRY? A beautiful lot with a quiet country feeling in Ottawa. Lot measures 120x200 and has city water. Call us today!

MAKE YOUR DOLLARS WORK with THIS 45 acre farm located in the Brush Creek area. This property has marketable timber and there is a possibility of coal. Ideal investment property.

BEAT THE HEAT OF GROCERY PRICES on this 18 acre mini-farm. You can produce your own meat, milk your own cow, gather your own eggs and grow your own vegetables and in your spare time, raise 895 lbs. of tobacco. This farm is located just outside the city limits of Mt. Vernon.

YOU GET STARTED HOME 3 room house located near Mt. Vernon. This home has 1 bedroom, living room, kitchen, 1/2 bath and partial basement. There is also carpet and vinyl floors throughout, it is insulated, has city water and fronts on a blacktop road.

HERE'S THAT BUSINESS OPPORTUNITY YOU'VE BEEN LOOKING FOR

It's presently a profitable grocery but the extra storeroom and huge parking area create added potential such as a cafe, bakery, appliances, etc. depending on your own creativity. This package includes a 5-room apartment with 3 bedrooms, bath, carpet, w/d hookup, fuel oil furnace and large storage area. Just a few minutes from Mt. Vernon.

18 1/2 Interest, Owner Wants To Help Finance up to 15 years on this beautiful 56 acre farm located in Walnut Grove Section of Pulaski County. Farm is improved with a 2-bedroom home, 2 barns, 2264 lbs. tobacco allotment, water is furnished by a spring and ponds and fronts on blacktop roads. Too good a deal to pass!

If You Need Space, We've Got The Place, huge 4 bedrooms, 2 baths, ranch with family room, kitchen and dining room, 2 car garage with two utility rooms and office. House also has vinyl floors throughout, city water, electric heat, insulated and washer/dryer hookup. This country estate is set up on 25 acres of open fields and woods with barn and other necessary buildings, tobacco allotment and ponds just two miles from town.

FHA POSSIBILITY This total electric home consists of 3 bedrooms, bath, living room, kitchen and dining combination, carpet and vinyl floors, w/d hookup, carport and garden space. Conveniently located in city limits of Mt. Vernon.

ACREAGE-COAL-TOBACCO This property consists of more than 100 acres, just 5 miles from Mt. Vernon. It has a tobacco base of approximately 1300 lbs. and core drilling has shown that there's several veins of coal available.

SPRINGTIME IS THE BEST TIME to move to this 24 ACRE FARM with a barn, 2 ponds, stripping or storage building and 1342 lbs. of tobacco allotment. In addition, there's a total electric, newly carpeted house with 6 rooms, bath and w/d hookup. There are many more enjoyable features including being just a few minutes from town to blacktop road.

WOULD YOU LIKE TO CHOOSE YOUR NEIGHBORS? If so, contact your friends and tell 'em about this huge, well-kept lot for sale in prestigious Hillview Subdivision. This lot measures approximately 100x200 and is in Mt. Vernon city limits. Financing is available.

NEW SUBDIVISION located in the Willalla section of Pulaski County. Lots are approximately 1/2 acre, city water available and fronts on blacktop road and are restricted. Call today for an appointment and have first choice on these dandy lots.

IN BRODHEAD Newly remodeled 2 bedroom home located on Oak Street in Brodhead. House also has living room, kitchen and bath in a situation offering the best investment available. Be the owner to qualified buyers.

Ideal Investment Property: this building has electric heat, air conditioning, tile floor, w/d hookup and much more including an upstairs, 2 bedroom apartment with living room, bath, carpet and is paneled throughout. This is perfect for a cafe, arts and crafts shop, bakery and various other interests. You can own this because the owner will finance--also. Livingston needs your business.

62 ACRES more or less all in timber and has approximately 5 acres of coal. In addition to these assets, there are numerous beautiful building sites and approximately 300 feet of blacktop road frontage for easy access. This property is reasonably priced and conveniently located approximately 3 1/2 miles from Livingston.

SPACE TO SPARE. This house has 6 rooms to do with as you please. It also has a bath, 2 porches and is situated on 2 large lots near the city limits of Livingston.

NEW, MODERN, 28-UNIT MOTEL and apartment overlooking I-75. This property is conveniently located on Exit 59 and I-75. Son of Mt. Vernon and is presently a prosperous business with records available to qualified buyers.

ALL NEW GULF SERVICE STATION Exit 59 and I-75 south of Mt. Vernon. Ample space for expansion.



"Conveying Values To Our Children"
By Larry Keaton, Associate Director, Family Life Center

Have you ever been asked to comment on someone's newborn baby? More than likely you responded as most of us have: "My, that sure is a cute baby!" Deep down inside though, you perhaps wanted to say just the opposite, but appropriate behavior dictated you to say "Why do we do things like that? Why do we lie to cover up an obvious truth? Why is being attractive more important than being unattractive? Perhaps we have allowed society to dictate to us such things as "You are more valuable when you are attractive, strong, or successful, than when you are unattractive, weak or mediocre." We yield to this social standard and teach our children to yield as well. Needless to say, it leads to heartache and pain that all of us understand. We have placed such a premium on these standards that many of us get lost in the shuffle and grow up feeling worthless. What is wrong in perpetuate this false concept by teaching it to our children?

When you tell your child a bedtime story don't tell him that the poor ugly duckling will grow up to become a beautiful swan someday. Instead, tell him that the ugly duckling may grow up to be an ugly duck and that being ugly is not bad. Perhaps through such dialogue with our children, they can break through to realize their fullest potential in spite of what society calls "inadequacies."

FAMILY LIFE CENTER CALENDAR OF EVENTS
May 9 - Youth Festival - recreation, teaching, movie, music
May 30 - June 1 - Marriage Enrichment Retreat
July 4 - "Family-A-Fair"

The Family Life Center of Appalachia warmly invites you to make use of its facilities, planned activities and counseling services.

Wendell Lawrence
Realtor and Auctioneer
Home: 758-8115

256-5516

Evelene Raines
Realtor
Home: 453-4891

LAWRENCE AUCTION AND REALTY

Main Street Gregory Building Mt. Vernon

All Properties Shown by Appointment with Realtor Only

"CITY COUNCIL"
(Cont. From Front)

mately \$8,000 plus the \$975 yearly maintenance contract.

The council did not take any action on the proposal but decided to put it on the May agenda for action.

Councilman Tom Welch presented the council with a proposal for refurbishing the city park located on the corner of Richmond and West Main Streets.

Mr. Welch said felt the city should put some concrete tables and benches in the park so that people would have a place to sit and enjoy themselves and that he had asked some of the members of the Woman's Club to look into the possibility of planting more flowers in the park to enhance it.

Mr. Welch also proposed to the council that a bulldozer be hired to clear up the site of the old Idea Cafe building, which the city had torn down recently, and then proceed with the spreading of asphalt and the installation of bumpers on the sides of adjoining buildings so the area could be used for parking.

Mr. Welch also said he felt it would be nice to allow parking at an angle on one side of the lot only and then perhaps to put a bench and table on the side of the lot adjacent to Dr. York's office.

This plan caused some discussion by a few councilmen who felt the lot might not be large enough to allow parking on it, under any plan.

It was finally decided to have Matt Powell, Jr. get some figures for a cost estimate and present them at May's meeting when the proposal will be discussed further.

"LIONS"

(Cont. From Front)

For those who have old eye glasses and care to donate them to the Lions Club, they are asked to bring them to the Lions Club booth at the May Festival on Main Street on May 17th.

In other actions of the club at the last meeting, the Lions voted to buy a pair of glasses for a needy boy in the Mt. Vernon area and to hold elections of officers at the next meeting on May 1st. Present officers include Robert Robinson, president; Rev. Marvin Hensley, vice-president; Floyd Owens, secretary and treasurer, Edd Hunt, eye glass chairman, Lee Durham, program chairman and Bob Witt, Tail Twister.

"DOWELL AND MARTIN"

(Cont. From Front)

dards of service, reputation and facilities have been made within the community.

As a member of National Selected Morticians, the Dowell and Martin Funeral Home has pledged itself to strict adherence to the NSM Code of Good Funeral Practice. This document is a clear statement of the obligations, responsibilities and high standards of professional conduct which must be observed by the members. Strict compliance by every NSM firm is a condition of member-

ship. Failure to observe the Code's ten provisions for funeral results in the public interest served in termination of membership.

NSM Headquarters is in Evanston, Illinois. Over 900 member mortuaries are located in key cities through the United States and Canada, as well as elected members in England, Scotland, Wales, France, Ireland, Belgium, Sweden, Mexico, New Zealand, Australia, Sri Lanka, Guam and the Philippines.

The Dowell and Martin Funeral Home was congratulated by the President of National Selected Morticians, Newman E. Draper of Ontario, California who said, "I am privileged to welcome Dowell and Martin Funeral Home into NSM, with every assurance that this reliable firm will continue to serve the people of Rockcastle Co. in complete accord with the Principles and Code of Good Funeral Practice of our association."

"BRODHEAD PERSONALS"

(Cont. From 15)

with Mr. and Mrs. D. Bussell and family.

Mrs. Lula Bussell and Mrs. Mary Adams had dinner with Mrs. Bertha Adams Sunday.

Mrs. Bernice Sowder and Tracy were in Jeffersonville, Indiana recently attending the wedding of Mrs. Sowder's brother, Lonnie Lovings' step son, David Coomer and Pamela Morris.

Mrs. Irene Adams and Johnny Adams and Mrs. Grace Blanton spent Friday night with Mr. and Mrs. Danny Price and children at Morehead.

Mrs. Virginia Taylor of Crab Orchard visited Mrs. Katie Doyle last week.

Mrs. Martha Owens Saturday night visitors were her son and wife, Mr. and Mrs. Harvey Paul Owens of High Point, Ohio, Mrs. Mary Ann Brown, Mr. and Mrs. Everett Albright, Tim, Shonna and Teresa.

Mr. and Mrs. Paul Doyle and daughter, Kim, recently visited his mother, Mrs. John Doyle and took her out for a steak dinner.

Mr. and Mrs. Everett Albright, Shonna, Teresa, Tim and Mrs. Martha Owens and Kenneth were Sunday dinner guests of Mr. and Mrs. Garner Brown, Connie and Jerry.

Sunday dinner guests of Mr. and Mrs. D. Bussell were Mr. and Mrs. Jim Bussell, Angie and J.D., Mr. and Mrs. John Helton of Crab Orchard and Mr. Rick Bussell of Somerset.

Mrs. Mabel Taylor, Mrs. Joyce Craig and Stacey, Mrs. Martha Helton, Mrs. Mary McWhorter visited Mr. and Mrs. Ray Long Monday night. Other visitors were Mr. and Mrs. Robert Gentry.

Mr. and Mrs. Arch Cash and Mrs. Ann Bengie are patients in the Rockcastle County Hospital due to an automobile accident. Our prayers are for them and their families.

Mrs. Myrna Childress and son, Kyle, Mrs. Mildred Coffey and daughter, Kaye, were in Somerset shopping.

Mrs. Myrtle Fox and husband, Frankie, of Corbin are visiting her sister, Mrs. Essie Napier this week.

Mrs. Joyce Leese and Mr. and Mrs. Everett Woodall were in Nicholasville Saturday attending the funeral of their sister-in-law, Mrs. O.T. Sanders.

Mrs. Essie Napier visited her sister-in-law, Mrs. Norman

Crank and family recently. Mr. and Mrs. Bob Proctor spent two days in Owensboro on business last week.

Miss Elizabeth Proctor spent a few days last week with her sister, Mrs. Louise Graves.

Wanted !!

Local artists and craftsmen to display art and crafts on Courthouse lawn May 17th during Mt. Vernon's May Festival.

Several artists have already registered to display their work but we are hoping to have a very large representation of Rockcastle County talent.

In order to display your art or craft during this festive occasion, it will be necessary to register with Mrs. Bernice Cox by calling 256-2345; Mrs. Martha Cox, 256-2595 or Mrs. Nancy Mullins, 256-4252 before May 14th.

THIS IS YOUR DAY!
Call Now and Be A Participant in Mt. Vernon's
BIG MAY FESTIVAL

A VALUED NATIONAL DISTINCTION COMES TO

DOWELL & MARTIN FUNERAL HOME

The Dowell and Martin Funeral Home recently accepted a distinctive invitation into membership in National Selected Morticians, an international association of leading, privately owned and independently operated funeral homes and mortuaries.

The Dowell and Martin Funeral Home has been recognized by National Selected Morticians as meeting its high standards of invitational membership, and in providing responsible funeral service for those it is called upon to serve.

Membership in NSM is by invitation only, after a thorough investigation and evaluation of its standard of service, reputation and facilities has been made within the community. Dowell and Martin Funeral Home is the only firm in this area to receive this distinction.

As an NSM member, we are pledged to strict adherence to the high standards of funeral service to which members of National Selected Morticians are dedicated. Our responsibilities to each family we serve will be in keeping with the NSM's code of good funeral practice.

In becoming affiliated with National Selected Morticians, we join leading funeral directors in more than 900 cities in a continuing effort to provide the finest funeral service possible.



National Selected Morticians is an international organization of leading, independent funeral directors dedicated to the highest standards of funeral service. Membership is by invitation only and is recognition of outstanding service, responsibility and facilities. Throughout this country, and abroad, members of National Selected Morticians are identified through the pyramid symbol shown above.



Billy Dowell



Roy Martin



Harvey Pensol



David Pensol

Dowell-Martin

FUNERAL HOME
MT. VERNON, KY.

MEMBER BY INVITATION NATIONAL SELECTED MORTICIANS

AN INTERNATIONAL ASSOCIATION OF INDEPENDENT FUNERAL DIRECTORS

Mount Vernon Signal

Thursday, May 1, 1980

Second Section



Mrs. Maggie Whitaker, left, and Mrs. Ruth Mink, both of Broadhead, were just two of the AARP Club members who boarded a chartered bus early last Saturday morning for a trip to Washington, D.C.

The group will sight-see in the area and will also visit offices of their congressmen. The group left from the Rockcastle County Library and are expected back Friday or Saturday of this week.

Marcum Announces

Ted R. Marcum of Richmond has announced that he is a candidate for the Democratic nomination for the U.S. Representative of the Fifth Congressional District of Kentucky, subject to the May 27th primary.

Marcum, a native of Clay County, has lived in Madison County for thirty years. Prior to that, he lived and worked on his own farm on Rough Creek in Laurel County. A man of varied government experience, he has served as County Judge of Clay County.

Veterans Appeal Board, member of Bituminous Coal Producers' Advisory Board, Kentucky Rural Highway Commissioner and Chief, Bureau of Governmental Affairs for Kentucky. He has been

Mr. Marcum further said, "Everyone in Washington has long agreed that we must escape from our reliance on foreign oil. We can do this by developing our coal resources. Everyone agrees but nothing happens."

Mr. Marcum said he would join Senator Ford's efforts to expand the use of coal, "Kentucky Coal," in electric power generation and conversion to gasoline. When these goals are achieved, there will be very little unemployment in the Fifth District.

NOTICE

Donations for the upkeep of Pine Hill Cemetery should be sent to Albert Mink, Route 2, Mt. Vernon.



Ted R. Marcum

congressional and departmental witness in Washington, assisting the coal and farming industries. In 1960, he initiated the cooperative program for county road aid in Kentucky. He helped draft legislation to correct the formula for the distribution of Rural and Secondary road funds, thereby giving more consideration to the individual area and road mileage of each county.

Marcum states that most people of the Fifth District feel as he, that the Federal Government needs to get back to its basic responsibilities: (1) Security of the Nation - Adequate defense budget and a foreign policy based on mutual interests of Allies? not "Federal Giveaways." (2) Work for a Sound Economy, reduce federal spending, balance federal budget and get inflation under control.

Rockcastle Countians Invited To Weight Control Camp

Fifty weight-conscious people from Bell, Clay, Knox, Laurel, Rockcastle and Whitley counties will have an opportunity to learn weight control techniques during a "New Weigh Week end" May 30 - June 1 at J.M. Feltner 4-H Camp in Laurel County.

County Extension Agent for Home Economics, the Weight control camp will include physical activities such as bicycling, skating, hiking, volleyball, swimming, tennis and jogging.

During the camp, sponsored by the Cooperative Extension Service of the University of Kentucky College of Agriculture, participants also will learn about low calorie cooking.



Dr. Darlene Forester

dressings to look thin, behavior modification, leisure time activities, diet facts and fallacies and "The Total You."

Conducting several of the program sessions will be Darlene Forester, an Extension specialist in foods and nutrition and an assistant professor in the UK College of Home Economics. She will talk about behavior modification, cutting calories using the basic four food groups and diet facts and myths.

Forester, who earned a doctorate in animal sciences - nutrition at UK, has taught academic courses on the topic of weight control. She has also talked to civic and professional groups on various aspects of weight control, such as behavior modification.

Registration for the camp may be made by sending a check or money order for \$20 to Rockcastle County Extension Service, P.O. Box 297, Mt. Vernon, Ky. 40456. The fee includes two nights lodging, five meals, snacks, activities, educational materials and insurance. Registration closes May 9.

The camp starts with check-in from 4 p.m. to 6 p.m., May 30 and ends at 10 a.m., June 1. Feltner 4-H Camp is located on Highway 229, 4 miles south of London.

Applying For A SS Number

Everyone who applies for a social security number must provide evidence of age, identity and U.S. citizenship or lawful admission status, including young children, Bob Anderson, social security manager in Richmond said recently.

Parents sometimes have difficulty finding the required evidence for their children, Anderson said. They especially have trouble with the idea of providing evidence of identity.

Proof of age is relatively easy - public or hospital record of birth recorded before age 6 or

Educational Improvement Act Hearing: A public hearing will be held at Livingston Elementary School on Monday, May 5 at 9:30 a.m. in the school library. The purpose of this hearing is to obtain input from parents and other interested persons concerning programs designed to improve performance in the basic skill areas. Everyone is invited to attend.

Robert J. Mink, Principal

religious record of birth or baptism recorded before age 5. One of these documents will also establish citizenship, Anderson said.

Documents which will establish a young child's identity and which are usually available to most families, include: report card, school identification card, baby's hospital wrist band, newspaper birth announcement, baby book, court order for name change, church membership or confirmation records or child's membership in Boy Scouts, Girl Scouts or other young organization.

This is not an exclusive list. Anderson said. Any document providing identifying data such as a physical description, photograph or signature may be used as evidence of identity.

Anderson said at least two documents must be presented - one to establish age or citizenship and one to establish identity. Only original or copies certified by the issuing agency can be used.

For more information, contact the Richmond social security office. The people there have a free leaflet, "Applying for a social security number." The office is located in the University Shopping Center in Richmond and the telephone number is 623-5856.

A one day consultative and diagnostic heart clinic for medically indigent patients will be held in the Whitley County Health Department, Williamsburg, on Tuesday, May 13.

Physicians from the departments of Medicine and Pediatrics at the University of Kentucky Medical School will conduct the clinic.

Co-sponsored by the Kentucky Heart Association, the Bureau of Health Services and the County Health Department, this clinic provides a diagnostic service for the patient along with recommendations for treatment and management of the case. It also provides an opportunity for the referring physician to consult with the clinician regarding his patient.

Necessary expenses of the clinic are being underwritten by the Kentucky Heart Association and the Bureau for Health Services. Clinic personnel, as well as space and equipment will be

provided by the Whitley County Health Department, the Bureau for Health Services and the Kentucky Heart Association.

Only those patients who have been referred by a physician and have a written referral will be admitted to the clinic. Counties in this clinic area are Clinton, Knox, Laurel, McCreary, Pulaski, Rockcastle, Wayne and Whitley.

BOOKMOBILE SCHEDULE

Monday, May 5 - Chestnut Grove Road and Barnett Road.
Tuesday, May 6 - Green Hill, Conway and Boone.

Wednesday, May 7 - Red Hill, Calloway and Burr.

LIONS WIN

The Livingston Lions were victorious over the Rockcastle County Jaycees in a basketball game played last Friday night at Livingston Elementary School.

The final score was 54-48.

Chasteen Construction Co.

General Contractor

Remodeling, New Additions, Framing.

Finish Work, Patios and etc.

Free Estimates

Ph. 986-4855

Berea, Ky.



"Personal Banking means telling our customers about our many banking services and explaining how our services can help them."

Joyce Machal is one of BMW'S

PERSONAL BANKERS

Does this sound like the kind of personal approach to banking that you want?

BMW THE BANK OF MT. VERNON
MT. VERNON, KENTUCKY 40456

LAY-AWAY MEMORIAL FLOWERS NOW

ONE OF THE LARGEST SELECTIONS TO BE FOUND ANYWHERE

WHILE SELECTION IS COMPLETE

THE MOST

HIATT'S 5&10

REASONABLE PRICES

Mt. Vernon, Ky.

Cash Awarded to Victims

Innocent, needy victims of crime in nine counties have been given cash awards totaling \$36,736.34 by the Kentucky Crime Victims Compensation board.

Crime victims can be reimbursed for medical expenses or two continuous weeks of lost earnings, minus a \$100 deductible. Within limits, the state can also reimburse an innocent victim's family or dependents.

An award cannot be made if payment is available from other sources, such as insurance, disability or from the criminal. The board does not pay for property damage.

In addition to the awards approved, the board denied a claim filed by Joseph E. Lambert, a Mt. Vernon attorney to obtain fees for his work on behalf of James B. Allen of Orlando, Allen was beaten on Thanksgiving Day last year.

In making it's judgement, the board noted it had previously awarded Allen \$1,757.81 for medical expenses and lost wages incurred as a result of the beating.

"There is no provision in the Crime Victims Act for an award for attorney fees. In the past, the board has stated in regulation, that an attorney's fee shall be allowed but for no more than 15 percent of the award and shall come out of the award and not in addition to the award," wrote board member Bruce Montgomery.

Crime victims compensation awards granted were: **BELL COUNTY**-Raymond R. Duncan of Middleboro was awarded \$547 for medical expenses not covered by insurance. Duncan was the innocent victim of a November 1978 shooting incident outside his home.

CAMPBELL COUNTY-Christopher Trimbur of Alexandria, victim of a July 1979 stabbing, was awarded an additional \$963.50 for medical expenses not covered by insurance. The previous \$1,475 award was for loss of wages.

CHRISTIAN COUNTY-Lawrence W. Lowe of Hopkinsville was awarded \$1,469 for medical bills not covered by insurance and for a week off from work. Lowe was the innocent victim of a barroom fight, according to the board report. He lost his left eye in the scuffle, and was away from work nine weeks.

CLAY COUNTY-Woodrow Baker of Oneida has been awarded an additional \$432 for lost wages. He had previously received an award for lost wages and still is unable to return to work. Baker was shot

during an altercation in Manchester in November 1978.

GRAVES COUNTY-Cletis Midyett of Wingo has been awarded \$4,523.14 for medical and funeral expenses following the shooting death of a son, Randall. The shooting occurred July 1979 just outside of Lynnville.

JEFFERSON COUNTY-Barbara W. Davis of Louisville was awarded \$2,138.50 for funeral expenses following the fatal stabbing of her son, Richard. Her son was stabbed in October 1979 while at a Louisville bar. He died three and a half hours later.

An elderly Louisville woman has been awarded \$197.55 for medical costs and other expenses. The woman was beaten and raped by an unknown assailant in her home last August. She has since been forced to move from her home into an apartment because she fears for her well-being, according to the claim form. Part of the award was for utility payments she made for her home for the three months before it was sold.

Robert B. Carter of Louisville has been awarded an additional \$200 by the board. Carter was beaten and robbed on a Louisville street in November 1979. He had previously been given a \$500 emergency award. The total \$700 is for lost wages following the attack by two unknown assailants.

Mamie Welches of Louisville has received \$428.90 for lost wages following a purse-snatching incident in November near her home. She suffered a fractured arm and three broken ribs when the assailant ran by, grabbing her shoulder-strap purse and knocking her down.

Patricia Riley of Louisville has been awarded \$161.90 for medical expenses on behalf of her 16-year-old son, Larry Mays. The youth was shot while watching a fight.

Jean Cook of Louisville has been awarded \$690.33 for medical expenses and other costs. The elderly woman sustained a broken shoulder and arm when an assailant grabbed her shoulder bag. She suffered a broken jaw and other additional injuries when he knocked her down. The incident took place while the victim and her husband were walking on the grounds of Dosker Manor.

Stephen D. Pierce of Louisville has received \$11,054.50 for medical expenses and lost income. He was shot at a Fourth Street apartment in Louisville last July.

Ronnie Welch of Louisville has been awarded \$1,381.36 for

hospital expenses. He was stabbed three times during an altercation in Louisville last August. Clarence R. Fields of Louisville has received \$385.17 for medical expenses. The elderly man said he was attacked by six people and robbed in Louisville last August.

Thalmadge D. Sneed of Louisville was awarded \$2,691.42 for medical expenses and lost wages. Sneed was injured during an attempted robbery last August in a restaurant parking lot.

KENTON COUNTY-Thomas Edward Wood of Covington has received \$331.27 for medical expenses, not covered by insurance, and lost income. He was assaulted, robbed and shot while walking home last December.

The board has also awarded \$3,071.45 in direct payments to medical vendors for treatment of Howard Bishop of Covington. In addition, \$1,000 was paid directly to Bishop for loss of wages. Bishop, a bartender, was assaulted and stabbed while leaving his place of employment last August.

MADISON COUNTY-The Crime Victims Compensation Board has awarded \$345 to cover expenses incurred following the beating death of a 20-month-old Dreyfus child, Kenneth Wayne Raider, son of Loretta Lynn Raider. A man and woman have been charged with murder in connection with the child's death. The woman pleaded guilty to reckless homicide, according to the board report. Of the total award, \$250 will be paid directly to a funeral home, \$50 to the county ambulance service.

TODD COUNTY-Nina Blake of Elkton has been awarded \$303 for funeral services

for her husband, Walton Blake. The body of Walton Blake was found October 25th near a house in Allegre. He had been beaten and his billfold was gone.

WARREN COUNTY-Raymond Dale Bates of Bowling Green was awarded an additional \$965.10 for continued hospital treatment. He was stabbed October 10th during an incident in his home.

HART COUNTY-Cathline Pedigo of Hardysville has received \$1,734.15 on behalf of her son, James. The youth suffered a broken jaw when he was attacked by four assailants following a Halloween hayride last year. The award was to compensate him for medical expenses not covered by insurance and for lost wages.

Roundstone

There will be a revival meeting at the Roundstone Baptist Church beginning May 5th. The Rev. J. R. Stone is the guest evangelist. Evangelist will be Charles God of Jamestown, Tennessee. Bro. God can also be heard every Sunday afternoon at 8:15 p.m. on WVKF.

The Burdette Family Singers attended Revival Services Friday night at the Maple Grove Baptist Church. Also attending were Mr. and Mrs. L. C. Burdette and Vernon and Debbie Kirby.

Mr. and Mrs. Hershel Callahan and family attended a gospel singing at the Scaffold Cane Baptist Church Saturday night. We are happy to report that Mrs. Edna Frewitt of Williamsburg, and formerly of this community, is improving in health after open-heart surgery two weeks ago.

Rev. and Mrs. Nelson Powers were Sunday dinner guests of Mr. and Mrs. Brinner Abney.

Mrs. Ada Coffey and Willis Gene and Steve Coffey were in Hodgenville Saturday visiting Mr. and Mrs. Tommy Coffey and daughters.

Mr. and Mrs. Bert Thacker celebrated their 33rd wedding anniversary Tuesday with a cook-out at the home of their daughter, Mrs. Don Chappell, Mr. Chappell and family. Also present were Mr. and Mrs. David Thacker and Stephanie, Mr. and Mrs. Jim Thacker, Mr. and Mrs. Hershel Callahan and family, Mr. and Mrs. Jesse Thacker and Mrs. and Mrs. Sally Sigmon.

AARP CLUB REPORT

The Rockcastle County AARP Club traveled to London Monday, April 21st for a national meeting at the AARP Association held at the Ramada Inn.

Attending from the Rockcastle County organization were: Mrs. Pearl Whiteaker, president; Mrs. Elsie Cress, vice president; Mrs. Marlow Ballinger, Director; Mrs. Edna Brown, treasurer and Mrs. Etta Mullins, recording secretary.

SOFTBALL TOURNAMENT AT CORBIN

The Pepsi Cola Bottling Co. of Kentucky is holding their 5th annual Varsity Brewer Memorial men's essay-pledge softball tournament Memorial weekend, May 23, 24, 25 and 26.

Games will be held on Rotary softball field and also on the new West Corbin field in Corbin.

Entry fee will be \$85 plus one new softball per game. Deadline for entry is May 15th. Send entries to: Amos Miller, Regional Director, P.O. Drawer 2, Corbin, Ky. 40701. Ph. (606) 528-6671.

NOTICE: There will be a public hearing concerning the proposed 1980 annual revenue sharing budget for the City of Brodhead on May 5, 1980 at 7:30 p.m. at the city council's regular council meeting. The meeting will be at the Brodhead Fire Department. Citizens are urged to make oral and written comments concerning the proposed budget at that time.

PUBLIC NOTICE

A public hearing will be held on Tuesday, May 20, 1980 at 10 a.m. (EDT) at the office of the Kentucky Energy Regulatory Commission, 730 Schenck Lane, Frankfort, Kentucky 40602 for an examination by the Kentucky Energy Regulatory Commission of the application by Jackson County Rural Electric Cooperative Corporation of the Uniform Fuel Adjustment Clause as prescribed in 907 KAR 50.075 for the period November 1, 1979 through April 30, 1980. Any interested parties shall have an opportunity to be heard at this hearing.

JACKSON COUNTY RURAL ELECTRIC COOPERATIVE CORPORATION
McKee, Kentucky 40447

COMMONWEALTH OF KENTUCKY ROCKCASTLE CIRCUIT COURT Civil Action File No. 79-C1-168

DELMER NEW and wife, DATHA NEW PLAINTIFFS

VS. NOTICE OF SALE

FRANK E. CONNOR and wife, RETAL CONNOR DEFENDANTS

By virtue of a judgment and order of sale of the Rockcastle Circuit Court rendered on April 23, 1980, in the above cause, I shall proceed to offer for sale at the to the highest bidder, at public auction on the 16th day of May, 1980 at 10 a.m., or thereabout, the following described real property belonging to Frank E. Connor and wife, Retal L. Connor, to-wit:

Located in Rockcastle County, Kentucky and more particularly bounded and described as follows:

TRACT NO. 1 - Lying on the west side of the U.S. Highway No. 25, beginning at the corner of H. Prows (stone); thence S 5 E 200 feet to a stone; thence N 350 feet to a double sycamore; thence with line of H. Prows, W 250 feet to the beginning and containing, by estimation, 3/4 or 1 acre be the same more or less. This boundary resembles a triangle and on same is situated a dwelling house.

TRACT NO. 2 - Beginning at the fifth corner of survey at black oak and iron wood on a cliff; thence along the cliff west 12 poles to two small chestnuts oak; thence S 30 W 53 poles to a chestnut oak and iron wood on a cliff; thence 7.2 to a walnut standing on top of the hill at the fence; thence bearing N 85 E down the hill east 116 feet to a small walnut standing in a drain where there has been a wash-out; thence a straight line running with Hellard's line to a beech a corner to Hellard's line running with line of Edm Smith to a white oak; thence N 38 W to a large white oak; N 10 W 54 poles to a birch tree on a rock in the branch; thence N 26 E 110 poles with that line to a poplar on the hill, near Bales road; thence a straight line to a black oak and iron wood the beginning. Boundary containing sixty-five acres more or less.

There is excepted from the above tract fifteen (15) acres conveyed to Henry Holt by deed dated August 12, 1949, of record in Deed Book 69, page 495 in the office of the clerk of the Rockcastle County Court, Mount Vernon, Kentucky.

TRACT NO. 3 - Situated in what is known as the A.C. Carpenter subdivision to the City of Livingston, Kentucky and in the boundary of George Tankersley lots No. 41, 42, 43, 44, 45, 46, 47. Beginning at Lot No. 40 at Mrs. Bettie McQueens and running adistance of 118 feet with the Dixie Highway to a stone; thence running N 217 1/2 feet with line of first parties to a stone in Sturgill's line; thence West 375 feet to a stone at branch; thence S to the beginning, a distance of 319 feet with line of H. Prows.

TRACT NO. 4 - Beginning at a stone in the second parties line; thence running N 217 1/2 feet to a stone; thence W 81 1/2 feet to a stone in Sturgill's line; thence N 146 feet to a stone; thence with Sturgill's line 152 feet to three black oaks and white oak; thence N.E. 217 feet to a stone; thence S 320 feet to a stone and white oak; thence W 544 feet running with Dixie Highway to the beginning corner and containing four acres, more or less.

TRACT NO. 5 - Situated in what is known as the A.C. Carpenter subdivision known and designated on the map or plat of said subdivision as Lots No. 47 & 48 Block "E." Said map or plat being in record in the clerk's office of Rockcastle County Court in Deed Book 42, page 369.

TRACT NO. 6 - Beginning at a stone in Mahaffey's line; thence S 45 1/2 E 18 poles to a stone; thence S 80 E 16 poles to a black oak; S 28 1/2 W 10 poles to a stone, 1 pole and 9 links small black oak to a ridge; thence N 33 E 23 poles to a from the corner of Dillon's lot; thence N 33 E 17 poles to a large stone on the top of ridge; thence N-15 W 16 1/2 poles to a point where a black oak is called for, a corner to Isiah Spivey and Horace Prows, and with the latter down the hollow S 68 1/2 W 21 poles to a dogwood and maple, by a drain; thence S 43 W 20 poles to two sycamores; thence S 49 1/2 W 18 poles and 12 links to a stone in Mahaffey's line; the

beginning corner and contains, by estimation, 10 acres, more or less.

There is excepted from Tract No. 6, a parcel of land measured 200 feet by 350 feet by 250 feet, where the dwelling house site is, to Emma Parrett, of record in Deed Book _____, page _____, executed by _____ in the office of the clerk of the Rockcastle County Court, Mount Vernon, Kentucky.

There is excepted from Tract No. 6 a parcel of land conveyed to Joyce N. Renner, et vir, by deed dated August 3, 1974, of record in Deed Book 96, page 427, in the office of the clerk of the Rockcastle County Court, Mount Vernon, Kentucky.

There is excepted from Tract No. 6 a parcel of land conveyed to Calvin Moore, et ux, by deed dated July 6, 1963, of record in Deed Book 83, page 116, in the office of the clerk of the Rockcastle County Court, Mount Vernon, Kentucky.

There is further excepted from Tract No. 6, a parcel of land conveyed to Joyce N. Renner, et vir., by deed dated February 20, 1979, of record in Deed Book 109, page 361, in the office of the clerk of the Rockcastle County Court, Mount Vernon, Kentucky.

TRACT NO. 7 - Beginning at corner 1, which is corner 6 of said tract 569a, common to said New and Stallard Travillan. A painted set stone at northeast corner of old field with beech and white oak bearing trees scribed ET-141M-09. Thence with said tract 569a, 81 degrees 15 minutes W., crossing a trail 1.10 chains to corner 2, which is corner 7 of said tract 569a and within said senior patent. Painted set stone on east bank of said branch witnessed by a 12" sycamore which bears N18 degrees E 22 chain distant. N 4 degrees 30 minutes W. crossing said branch and running within said deed 8.90 chains to corner 3, a painted set stone west of said branch witnessed by ash and elm. N 33 degrees 00 minutes W 7.90 chains to corner 4, by large rock with old paint marks about 1.00 chain distant. Set a stone witness by an elm. Corner 3 bears S 59 degrees W 0.61 chain distant. S 17 degrees 30 minutes E. 09 degrees 30 minutes W 1650 chains to corner 5, common to said New and said tract 569a, original corner of said senior Broughton 200 acre patent #37116 dated July 4, 1866. A large (bridge-like) rock in branch with the chiseled marks thereon witnessed by walnut and willow bearing trees. Thence four (4) lines through said tract 569a. S 10 degrees 30 minutes E crossing and re-crossing said branch 15.70 chains to corner 6 at end of patent call, "a fallen white oak with chestnut pointer", called for, set a stone alongside a dead chestnut pointer", called for, set a stone alongside a dead chestnut snag. Corner 4 bears S 02 degrees 15 minutes W 9.00 chain distant. S 33 degrees 15 minutes E 8.50 chains to corner 7, common to said patents where white oak on east bank of branch with elm, buckeye and dogwood pointers, are called for, a point. Set a stone witness by an elm. Corner 3 bears S 59 degrees W 0.61 chain distant. S 17 degrees 30 minutes E in part along east edge of old field, crossing and re-crossing said branch 8.81 chains to corner 8, a 30" beech with old marks. Set a stone alongside, hacked pointers. S 28 degrees 30 minutes E 25 chain to corner 1, the place of the beginning, containing 1.5 acres be the same more or less. Defendants obtained title to said real property by deed dated April 2nd, 1860, executed by Delmer New and wife, Datha New, and of record in Deed Book 110, pages 44-48 in the office of the clerk of the Rockcastle County Court, Mount Vernon, Kentucky.

The proerty shall be sold to the highest bidder on terms of twenty per cent (20%) of the purchase price in cash at time of sale, the balance in three (3) months, with the purchaser required to execute bond with surety hereon to be approved by the Commissioner to secure the unpaid balance of the purchase price; said bond to bear interest at the rate of eight per cent (8%) per annum from date of sale until paid. The purchaser shall have the privilege of paying all of the purchase price in cash, or paying said bond in full maturity by paying the principal and interest accrued to the date of payment. The purchaser shall have possession of the premises after complying with the terms of sale.

/s/ William D. Gregory

Master Commissioner, Rockcastle Circuit Court

CLONTZ & COX
Attorneys for Plaintiff
Mount Vernon, Kentucky

NOTICE

Sue's Hair Styling is now located on Newcomb Street in Trailer Park across from Dr. Arvin's Office.



OPEN Tues. - Sat.

Call 256-2423

FOR APPOINTMENT

Linda Mays, Doris Adams and Sue Taylor invite their many Friends and Customers to visit them in their new location.



DELINQUENT TAX LIST

The following 1979 tax bills for Personal Property including trucks, cars, notes, etc. Any personal property including appliances may be levied upon at any time hereafter.

These tax bills are subject to an addition of the cost of advertising and sheriff's fee (\$2.50) plus a wrecker bill if vehicle is towed in.

Henry Lee Abney, Sheriff Rockcastle County, Kentucky

Table with columns for name, address, and amount. Includes entries like Johnny F. Abney, Leroy Abney, Sandra Kay Abney, etc.

Table with columns for name, address, and amount. Includes entries like Linda Jo Ann Barton, Raymond Baugh, Floyd Bell, etc.

Table with columns for name, address, and amount. Includes entries like Bruce Brumley, Danny Douglas Brummett, Francis Brummett, etc.

Table with columns for name, address, and amount. Includes entries like Rebecca Collins, Nora Combs, Charles Conn, etc.

Table with columns for name, address, and amount. Includes entries like Dennis W. Dillingham, Donald Dillingham, Donnie Doan, etc.

Table with columns for name, address, and amount. Includes entries like George W. Davis, Thral and Sandra Davis, Teddy Lee Day, etc.

Table with columns for name, address, and amount. Includes entries like Homer B. Hensley, John Hensley, Linda Hensley, etc.

Table with columns for name, address, and amount. Includes entries like Garry Mays, Janet McClure, Douglas McClure, etc.

Table with columns for name, address, and amount. Includes entries like Oscar and Lucy McClure, Robert McClure, Lewell McCollum, etc.

Table with columns for name, address, and amount. Includes entries like Priscilla Nickles, James L. Kirby, James L. Kirby, etc.

Table with columns for name, address, and amount. Includes entries like Margie Price, Francis Prickett, Cecil Pruvis, etc.

Table with columns for name, address, and amount. Includes entries like Robert Lee Reed, Carter Renner, Jenny Renner, etc.

Speedline-Farm News Briefs

By: Gary Huddleston
Farm Bureau Seeks Energy-Saving Ideas

Farm Bureau is seeking out ideas for conserving and producing energy.

With a new program called "Farm Bureau Energy Idea Search," the farm organization hopes to surface innovative ideas and technology which save energy on the farm or produce energy needed for agriculture.

Farm Bureau members in Kentucky can compete with their counterparts across the nation for research grants, publication fees and symposium awards sponsored by the American Farm Bureau.

The program will culminate in November at an agricultural energy symposium in Chicago. Ten Farm Bureau members will be given an expense-paid trip to the symposium, plus a cash award of \$500, for their winning energy conservation ideas or projects. A number of research grants, worth up to \$5,000 each, will also be awarded.

Judges will be evaluating each entry to see if the invention, modification or idea has already saved or produced energy, or has the potential to save or produce energy, and could be used or adapted to some part of a farm's operation.

In addition, the rules state that any idea must be cost-effective. The energy idea search is a "perfect opportunity for innovative Kentuckians to receive recognition and possibly financial reward for their ideas on ways to make better use of scarce energy resources on the farm," says Paul Everman, executive vice president of Kentucky Farm Bureau.

"With the shortage of agricultural research funds and the thin margin of farm fuel supplies, there is a strong need for private individuals to assume leadership in developing innovative technology," Everman added.

Complete information on the idea search, as well as official entry forms, can be obtained from the Kentucky Farm Bureau, 120 South Hubbard Lane, Louisville, Kentucky 40207. Inquiries should be

directed to the "Energy Idea Search."
The program is open to Farm Bureau members only.

Congressional Candidates To Meet Farm Bureau Leaders

The 15 candidates vying to replace retiring Representative Tim Carter have been invited to a Farm Bureau "Meet the Candidates" meeting in Somerset May 1.

Farm Bureau leaders in the 29 Fifth District counties will join Kentucky Farm Bureau officers and directors to brief the four Democrats and 11 Republicans on the farm organization's positions regarding key issues.

Problems facing tobacco, dairy, livestock and grain farmers are sure to dominate much of the agenda, as well as general concerns affecting the economy, labor issues, national defense and federal spending.

Republicans seeking the House of Representatives post are Elmer Begley, Jr., Hyden; Phillip Conley, Barbourville; Tom Emberton, Edmont; Henry "Skyler" Garrison, Manchester; Thurman Jerome Hamlin, London; Gene Huff, London; Eddie C. Lovelace, Albany; Raymond Overstreet, Liberty; Elmer Patrick, Williamsburg; Harold "Hal" Rogers, Somerset and John D. Rogers, Somerset.

The four Democrats are Charles W. Harris, Wallins; Ted M. Marcum, Richmond; Jesse M. Ramey, Waynesburg and Lyle L. Willis, Corbin.

Well over 100 Farm Bureau leaders are expected to attend the meeting. It is set to begin at 7 p.m. EDT at the Somerset Holiday Inn.

Farm Price Declines Pull Food Tabs Lower

Food prices in Kentucky were slightly lower in April, a significant exception to almost every other sector of an inflation-wracked economy.

Kentucky Farm Bureau's monthly food price surveys found that 40 selected food items cost an average of \$51.75, down from the March figure of \$52.15. Lower farm prices for many raw agricultural products were responsible for the retail price declines, analysts said.

Volunteer surveyors in 26 Kentucky communities found that lower prices on most beef and pork products more than compensated for slight increases in the price of milk, butter, fresh vegetables and cooking oil. Chicken and eggs were also on the list of products which were down since the last survey.

In the 26 surveys since the Farm Bureau marketbasket survey was initiated, food prices have refused to show a consistent trend, according to survey coordinator, Marshall Hemdon. Not counting the first survey done last July, the statewide average figure has increased four times, decreased five times, and varied nearly 40 cents during the period.

For the second month in a row, Greensburg showed the lowest local marketbasket cost among the 26 survey locations at \$47.31. Frankfort's figure of \$54.93 was the highest.

Other local averages were Owensboro, 48.50; Muncieville, 49.20; Franklin, 49.67; Tompkinsville, 50.22; Salyersville, 50.39; Glasgow, 50.41; Morehead, 50.75; Cynthiaana, 50.98; Hopkinsville, 51.29; London and Sebree, 51.37.

Elizabethtown, 51.66; Hawesville, 51.87; Danville, 52.11; Georgetown, 52.40; Henderson, 52.66; Greenup, 52.70; Edgewood, 53.00; Paducah, 53.13; Mt. Vernon, 53.23; Crestwood, 53.75; Louisville/Jefferson County, 53.85; Shelbyville, 53.95 and Stanford, 54.72.

All but one of Kentucky's major farm commodities fell in price during the most recent reporting period, according to the Kentucky Crop and Livestock Reporting Service. Milk, the only exception, held steady at \$12.60 per hundred pounds.

Wheat dropped from \$3.77 to \$3.72 per bushel average; corn fell from \$2.72 to \$2.62; soybeans dropped from \$6.50 to \$6.17; hogs were down from \$37.20 per hundred to \$34.60 and cattle declined from \$57.70 to \$63.90.

Overall, farm prices across the nation had dropped 1.7 percent in a month, according to the April report. That figure was 5 percent lower than a year ago, even though farm production expenses were up to 12 percent during the period.

Brindle Ridge

Mr. and Mrs. Coleman Mink visited Mr. and Mrs. Arnold Mink and children of Lexington over the weekend. Mr. and Mrs. Charlie Cummins visited Mr. and Mrs. Gary Burton of Richmond, Sunday afternoon.

Angie and Julie Eaton of Mt. Vernon spent Friday night with their grandmother, Pat Holland. Saturday night guests of Mrs. Holland were Johnny and Mark Eaton.

Jenny Warren of Louisville who is attending school at Eastern, spent the weekend with her grandparents, Mr. and Mrs. U.S. Ramsey.

This community extends its deepest sympathy to the Chasteen family of Copper Creek.

Mr. and Mrs. U.S. Ramsey spent a few days recently with their daughter, Mrs. J.W. Kinney, Mr. McKinley and family of Talmouth.

We are glad to report Tommy Adams is able to be back home after spending several days in Danville Hospital. We wish him a speedy recovery.

Kenneth York spent last weekend with Mr. and Mrs. Coleman Mink and family.

Mr. and Mrs. Aden Ramsey, Bernard and Dorothy Purrell visited Mrs. Bertie Mink last Sunday evening.

Mr. and Mrs. Ernest Huff of

Ohio visited friends in this community last week. Shannon Parkerson visited Carlie Cameron Monday evening.

Nancy Coffey of Lebanon spent the weekend with her parents, Mr. and Mrs. W.L. Coffey and Tammy.

Willalla

By: Arvil Burton

Sympathy is extended the family of Mrs. Neresta and the families of Mrs. Ethel Owens and Mrs. Anna Deborde.

Mr. and Mrs. Robert Logd of Stanford visited Mr. and Mrs. Bill Brown Thursday and helped them plant their garden.

Recent visitors of Mr. and Mrs. Grover Burton were W.A. Owens, Mark Owens, Bobby Sevier of Mason, Ohio, Bobby Sevier of Charles Hurst of Hamilton, Ohio.

Mrs. Mattie Burton visited Mr. and Mrs. Robert Logdon Sunday evening.

Mrs. Burton also visited Mrs. Catherine Marcum and Glenn.

Mr. and Mrs. Walter Rowe of Ohio visited Mr. and Mrs. Robert Logdon Sunday.

Recent visitors of Mrs. Maggie Herrin were Mr. and Mrs. Walter Cromer of Ottawa and Mrs. Dovie Cromer of Ohio.

Mrs. Maggie Herrin was Sunday dinner guest of Mr. and Mrs. G.D. Burton.

Melissa and Jennifer Todd spent Friday night with the grandparents, Mr. and Mrs. Bill Brown.

Dorothy Duvall of Lexington spent the week end with Mr. and Mrs. Charles Burton.

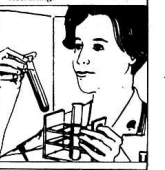
Mrs. Thelma Brown has moved to Mt. Vernon.

Herman Taylor and Mrs. Ophelia Reynolds were Sunday dinner guests of Mrs. Ozella Long and Laverne.

Recent visitors of Mary Jane Randolph and Lisa were Mrs. Ethel Thompson, Cella Thompson, Mr. and Mrs. Owen Burton, Mrs. Maggie Herrin and Berkley Bullock.

MAKE \$60 A WEEKEND EARNING A JOB SKILL DURING HIGH SCHOOL

You don't have to wait for graduation before learning a valuable job skill like Surveying, Medical Technology or Communications. If you're 17 or older and qualified, join your local Area Reserve Unit to start now, one weekend a month at nearly \$60 per fee. For details call your Area Representative or follow Pages under "Recruiting."



NOTICE TO PUBLIC

CONJUNCTION LIGHTING AND POWER SERVICE RATE (1979)

Maximum Load Charge
Secondary Service \$2 per kW. \$192.00 per year minimum
Primary Service \$2.24 per kW. \$170.20 per year minimum
Transmission Line Service \$2.18 per kW. \$176.20 per year minimum
Plus Energy Charge
1.25¢ per kWh for all in excess of 2,000 kWh used per month
2.72¢ per kWh for next 3,000 kWh
3.18¢ per kWh for next 3,000 kWh
3.64¢ per kWh for next 3,000 kWh
4.10¢ per kWh for next 3,000 kWh
4.56¢ per kWh for all in excess of 20,000 kWh used per month
1.5¢ per kWh for all in excess of 2,000 kWh and 50% load factor
2.5¢ per kWh for all in excess of 6,000 kWh and 50% load factor
2.0¢ per kWh for all in excess of 6,000 kWh and 50% load factor

RESIDENTIAL

RS and RS-5

\$1.73 per month minimum to include 18 kWh per month for the next 30 kWh
1.50¢ per kWh for the next 30 kWh
1.30¢ per kWh for the next 30 kWh
1.10¢ per kWh for the next 30 kWh
1.25¢ per kWh for all in excess of 400 kWh
2.81¢ per kWh for all on peak water heating when used in connection with approved electric water heating system
1.81¢ per kWh for Full Electric Residential Service
1.81¢ per kWh for Full Electric Residential Service
Rate schedule RS-10 for 1/2" x 1/2" water meter
Minimum charges on Residential Rates
RS-1 and RS-5
Single phase service - not less than \$3.00 per month
Three phase service - not less than \$5.00 per month
RS-1 and RS-5 - not less than \$3.31 per month

GENERAL SERVICE

GS-1 and GS-5

\$4.44 per month minimum to include 50 kWh per month
3.88¢ per kWh for next 100 kWh
3.22¢ per kWh for next 400 kWh
2.56¢ per kWh for next 1,000 kWh
1.90¢ per kWh for all in excess of 2,000 kWh

SERVICE RATES

The charges of \$1.00 per month to include the first 20 kWh or less of capacity, or \$3.00 for 40 kWh or less of capacity, or \$5.00 for 60 kWh or less of capacity, or \$7.00 for 80 kWh or less of capacity, or \$9.00 for 100 kWh or less of capacity, or \$11.00 for 120 kWh or less of capacity, or \$13.00 for 140 kWh or less of capacity, or \$15.00 for 160 kWh or less of capacity, or \$17.00 for 180 kWh or less of capacity, or \$19.00 for 200 kWh or less of capacity, or \$21.00 for 220 kWh or less of capacity, or \$23.00 for 240 kWh or less of capacity, or \$25.00 for 260 kWh or less of capacity, or \$27.00 for 280 kWh or less of capacity, or \$29.00 for 300 kWh or less of capacity, or \$31.00 for 320 kWh or less of capacity, or \$33.00 for 340 kWh or less of capacity, or \$35.00 for 360 kWh or less of capacity, or \$37.00 for 380 kWh or less of capacity, or \$39.00 for 400 kWh or less of capacity, or \$41.00 for 420 kWh or less of capacity, or \$43.00 for 440 kWh or less of capacity, or \$45.00 for 460 kWh or less of capacity, or \$47.00 for 480 kWh or less of capacity, or \$49.00 for 500 kWh or less of capacity, or \$51.00 for 520 kWh or less of capacity, or \$53.00 for 540 kWh or less of capacity, or \$55.00 for 560 kWh or less of capacity, or \$57.00 for 580 kWh or less of capacity, or \$59.00 for 600 kWh or less of capacity, or \$61.00 for 620 kWh or less of capacity, or \$63.00 for 640 kWh or less of capacity, or \$65.00 for 660 kWh or less of capacity, or \$67.00 for 680 kWh or less of capacity, or \$69.00 for 700 kWh or less of capacity, or \$71.00 for 720 kWh or less of capacity, or \$73.00 for 740 kWh or less of capacity, or \$75.00 for 760 kWh or less of capacity, or \$77.00 for 780 kWh or less of capacity, or \$79.00 for 800 kWh or less of capacity, or \$81.00 for 820 kWh or less of capacity, or \$83.00 for 840 kWh or less of capacity, or \$85.00 for 860 kWh or less of capacity, or \$87.00 for 880 kWh or less of capacity, or \$89.00 for 900 kWh or less of capacity, or \$91.00 for 920 kWh or less of capacity, or \$93.00 for 940 kWh or less of capacity, or \$95.00 for 960 kWh or less of capacity, or \$97.00 for 980 kWh or less of capacity, or \$99.00 for 1,000 kWh or less of capacity, or \$101.00 for 1,020 kWh or less of capacity, or \$103.00 for 1,040 kWh or less of capacity, or \$105.00 for 1,060 kWh or less of capacity, or \$107.00 for 1,080 kWh or less of capacity, or \$109.00 for 1,100 kWh or less of capacity, or \$111.00 for 1,120 kWh or less of capacity, or \$113.00 for 1,140 kWh or less of capacity, or \$115.00 for 1,160 kWh or less of capacity, or \$117.00 for 1,180 kWh or less of capacity, or \$119.00 for 1,200 kWh or less of capacity, or \$121.00 for 1,220 kWh or less of capacity, or \$123.00 for 1,240 kWh or less of capacity, or \$125.00 for 1,260 kWh or less of capacity, or \$127.00 for 1,280 kWh or less of capacity, or \$129.00 for 1,300 kWh or less of capacity, or \$131.00 for 1,320 kWh or less of capacity, or \$133.00 for 1,340 kWh or less of capacity, or \$135.00 for 1,360 kWh or less of capacity, or \$137.00 for 1,380 kWh or less of capacity, or \$139.00 for 1,400 kWh or less of capacity, or \$141.00 for 1,420 kWh or less of capacity, or \$143.00 for 1,440 kWh or less of capacity, or \$145.00 for 1,460 kWh or less of capacity, or \$147.00 for 1,480 kWh or less of capacity, or \$149.00 for 1,500 kWh or less of capacity, or \$151.00 for 1,520 kWh or less of capacity, or \$153.00 for 1,540 kWh or less of capacity, or \$155.00 for 1,560 kWh or less of capacity, or \$157.00 for 1,580 kWh or less of capacity, or \$159.00 for 1,600 kWh or less of capacity, or \$161.00 for 1,620 kWh or less of capacity, or \$163.00 for 1,640 kWh or less of capacity, or \$165.00 for 1,660 kWh or less of capacity, or \$167.00 for 1,680 kWh or less of capacity, or \$169.00 for 1,700 kWh or less of capacity, or \$171.00 for 1,720 kWh or less of capacity, or \$173.00 for 1,740 kWh or less of capacity, or \$175.00 for 1,760 kWh or less of capacity, or \$177.00 for 1,780 kWh or less of capacity, or \$179.00 for 1,800 kWh or less of capacity, or \$181.00 for 1,820 kWh or less of capacity, or \$183.00 for 1,840 kWh or less of capacity, or \$185.00 for 1,860 kWh or less of capacity, or \$187.00 for 1,880 kWh or less of capacity, or \$189.00 for 1,900 kWh or less of capacity, or \$191.00 for 1,920 kWh or less of capacity, or \$193.00 for 1,940 kWh or less of capacity, or \$195.00 for 1,960 kWh or less of capacity, or \$197.00 for 1,980 kWh or less of capacity, or \$199.00 for 2,000 kWh or less of capacity, or \$201.00 for 2,020 kWh or less of capacity, or \$203.00 for 2,040 kWh or less of capacity, or \$205.00 for 2,060 kWh or less of capacity, or \$207.00 for 2,080 kWh or less of capacity, or \$209.00 for 2,100 kWh or less of capacity, or \$211.00 for 2,120 kWh or less of capacity, or \$213.00 for 2,140 kWh or less of capacity, or \$215.00 for 2,160 kWh or less of capacity, or \$217.00 for 2,180 kWh or less of capacity, or \$219.00 for 2,200 kWh or less of capacity, or \$221.00 for 2,220 kWh or less of capacity, or \$223.00 for 2,240 kWh or less of capacity, or \$225.00 for 2,260 kWh or less of capacity, or \$227.00 for 2,280 kWh or less of capacity, or \$229.00 for 2,300 kWh or less of capacity, or \$231.00 for 2,320 kWh or less of capacity, or \$233.00 for 2,340 kWh or less of capacity, or \$235.00 for 2,360 kWh or less of capacity, or \$237.00 for 2,380 kWh or less of capacity, or \$239.00 for 2,400 kWh or less of capacity, or \$241.00 for 2,420 kWh or less of capacity, or \$243.00 for 2,440 kWh or less of capacity, or \$245.00 for 2,460 kWh or less of capacity, or \$247.00 for 2,480 kWh or less of capacity, or \$249.00 for 2,500 kWh or less of capacity, or \$251.00 for 2,520 kWh or less of capacity, or \$253.00 for 2,540 kWh or less of capacity, or \$255.00 for 2,560 kWh or less of capacity, or \$257.00 for 2,580 kWh or less of capacity, or \$259.00 for 2,600 kWh or less of capacity, or \$261.00 for 2,620 kWh or less of capacity, or \$263.00 for 2,640 kWh or less of capacity, or \$265.00 for 2,660 kWh or less of capacity, or \$267.00 for 2,680 kWh or less of capacity, or \$269.00 for 2,700 kWh or less of capacity, or \$271.00 for 2,720 kWh or less of capacity, or \$273.00 for 2,740 kWh or less of capacity, or \$275.00 for 2,760 kWh or less of capacity, or \$277.00 for 2,780 kWh or less of capacity, or \$279.00 for 2,800 kWh or less of capacity, or \$281.00 for 2,820 kWh or less of capacity, or \$283.00 for 2,840 kWh or less of capacity, or \$285.00 for 2,860 kWh or less of capacity, or \$287.00 for 2,880 kWh or less of capacity, or \$289.00 for 2,900 kWh or less of capacity, or \$291.00 for 2,920 kWh or less of capacity, or \$293.00 for 2,940 kWh or less of capacity, or \$295.00 for 2,960 kWh or less of capacity, or \$297.00 for 2,980 kWh or less of capacity, or \$299.00 for 3,000 kWh or less of capacity, or \$301.00 for 3,020 kWh or less of capacity, or \$303.00 for 3,040 kWh or less of capacity, or \$305.00 for 3,060 kWh or less of capacity, or \$307.00 for 3,080 kWh or less of capacity, or \$309.00 for 3,100 kWh or less of capacity, or \$311.00 for 3,120 kWh or less of capacity, or \$313.00 for 3,140 kWh or less of capacity, or \$315.00 for 3,160 kWh or less of capacity, or \$317.00 for 3,180 kWh or less of capacity, or \$319.00 for 3,200 kWh or less of capacity, or \$321.00 for 3,220 kWh or less of capacity, or \$323.00 for 3,240 kWh or less of capacity, or \$325.00 for 3,260 kWh or less of capacity, or \$327.00 for 3,280 kWh or less of capacity, or \$329.00 for 3,300 kWh or less of capacity, or \$331.00 for 3,320 kWh or less of capacity, or \$333.00 for 3,340 kWh or less of capacity, or \$335.00 for 3,360 kWh or less of capacity, or \$337.00 for 3,380 kWh or less of capacity, or \$339.00 for 3,400 kWh or less of capacity, or \$341.00 for 3,420 kWh or less of capacity, or \$343.00 for 3,440 kWh or less of capacity, or \$345.00 for 3,460 kWh or less of capacity, or \$347.00 for 3,480 kWh or less of capacity, or \$349.00 for 3,500 kWh or less of capacity, or \$351.00 for 3,520 kWh or less of capacity, or \$353.00 for 3,540 kWh or less of capacity, or \$355.00 for 3,560 kWh or less of capacity, or \$357.00 for 3,580 kWh or less of capacity, or \$359.00 for 3,600 kWh or less of capacity, or \$361.00 for 3,620 kWh or less of capacity, or \$363.00 for 3,640 kWh or less of capacity, or \$365.00 for 3,660 kWh or less of capacity, or \$367.00 for 3,680 kWh or less of capacity, or \$369.00 for 3,700 kWh or less of capacity, or \$371.00 for 3,720 kWh or less of capacity, or \$373.00 for 3,740 kWh or less of capacity, or \$375.00 for 3,760 kWh or less of capacity, or \$377.00 for 3,780 kWh or less of capacity, or \$379.00 for 3,800 kWh or less of capacity, or \$381.00 for 3,820 kWh or less of capacity, or \$383.00 for 3,840 kWh or less of capacity, or \$385.00 for 3,860 kWh or less of capacity, or \$387.00 for 3,880 kWh or less of capacity, or \$389.00 for 3,900 kWh or less of capacity, or \$391.00 for 3,920 kWh or less of capacity, or \$393.00 for 3,940 kWh or less of capacity, or \$395.00 for 3,960 kWh or less of capacity, or \$397.00 for 3,980 kWh or less of capacity, or \$399.00 for 4,000 kWh or less of capacity, or \$401.00 for 4,020 kWh or less of capacity, or \$403.00 for 4,040 kWh or less of capacity, or \$405.00 for 4,060 kWh or less of capacity, or \$407.00 for 4,080 kWh or less of capacity, or \$409.00 for 4,100 kWh or less of capacity, or \$411.00 for 4,120 kWh or less of capacity, or \$413.00 for 4,140 kWh or less of capacity, or \$415.00 for 4,160 kWh or less of capacity, or \$417.00 for 4,180 kWh or less of capacity, or \$419.00 for 4,200 kWh or less of capacity, or \$421.00 for 4,220 kWh or less of capacity, or \$423.00 for 4,240 kWh or less of capacity, or \$425.00 for 4,260 kWh or less of capacity, or \$427.00 for 4,280 kWh or less of capacity, or \$429.00 for 4,300 kWh or less of capacity, or \$431.00 for 4,320 kWh or less of capacity, or \$433.00 for 4,340 kWh or less of capacity, or \$435.00 for 4,360 kWh or less of capacity, or \$437.00 for 4,380 kWh or less of capacity, or \$439.00 for 4,400 kWh or less of capacity, or \$441.00 for 4,420 kWh or less of capacity, or \$443.00 for 4,440 kWh or less of capacity, or \$445.00 for 4,460 kWh or less of capacity, or \$447.00 for 4,480 kWh or less of capacity, or \$449.00 for 4,500 kWh or less of capacity, or \$451.00 for 4,520 kWh or less of capacity, or \$453.00 for 4,540 kWh or less of capacity, or \$455.00 for 4,560 kWh or less of capacity, or \$457.00 for 4,580 kWh or less of capacity, or \$459.00 for 4,600 kWh or less of capacity, or \$461.00 for 4,620 kWh or less of capacity, or \$463.00 for 4,640 kWh or less of capacity, or \$465.00 for 4,660 kWh or less of capacity, or \$467.00 for 4,680 kWh or less of capacity, or \$469.00 for 4,700 kWh or less of capacity, or \$471.00 for 4,720 kWh or less of capacity, or \$473.00 for 4,740 kWh or less of capacity, or \$475.00 for 4,760 kWh or less of capacity, or \$477.00 for 4,780 kWh or less of capacity, or \$479.00 for 4,800 kWh or less of capacity, or \$481.00 for 4,820 kWh or less of capacity, or \$483.00 for 4,840 kWh or less of capacity, or \$485.00 for 4,860 kWh or less of capacity, or \$487.00 for 4,880 kWh or less of capacity, or \$489.00 for 4,900 kWh or less of capacity, or \$491.00 for 4,920 kWh or less of capacity, or \$493.00 for 4,940 kWh or less of capacity, or \$495.00 for 4,960 kWh or less of capacity, or \$497.00 for 4,980 kWh or less of capacity, or \$499.00 for 5,000 kWh or less of capacity, or \$501.00 for 5,020 kWh or less of capacity, or \$503.00 for 5,040 kWh or less of capacity, or \$505.00 for 5,060 kWh or less of capacity, or \$507.00 for 5,080 kWh or less of capacity, or \$509.00 for 5,100 kWh or less of capacity, or \$511.00 for 5,120 kWh or less of capacity, or \$513.00 for 5,140 kWh or less of capacity, or \$515.00 for 5,160 kWh or less of capacity, or \$517.00 for 5,180 kWh or less of capacity, or \$519.00 for 5,200 kWh or less of capacity, or \$521.00 for 5,220 kWh or less of capacity, or \$523.00 for 5,240 kWh or less of capacity, or \$525.00 for 5,260 kWh or less of capacity, or \$527.00 for 5,280 kWh or less of capacity, or \$529.00 for 5,300 kWh or less of capacity, or \$531.00 for 5,320 kWh or less of capacity, or \$533.00 for 5,340 kWh or less of capacity, or \$535.00 for 5,360 kWh or less of capacity, or \$537.00 for 5,380 kWh or less of capacity, or \$539.00 for 5,400 kWh or less of capacity, or \$541.00 for 5,420 kWh or less of capacity, or \$543.00 for 5,440 kWh or less of capacity, or \$545.00 for 5,460 kWh or less of capacity, or \$547.00 for 5,480 kWh or less of capacity, or \$549.00 for 5,500 kWh or less of capacity, or \$551.00 for 5,520 kWh or less of capacity, or \$553.00 for 5,540 kWh or less of capacity, or \$555.00 for 5,560 kWh or less of capacity, or \$557.00 for 5,580 kWh or less of capacity, or \$559.00 for 5,600 kWh or less of capacity, or \$561.00 for 5,620 kWh or less of capacity, or \$563.00 for 5,640 kWh or less of capacity, or \$565.00 for 5,660 kWh or less of capacity, or \$567.00 for 5,680 kWh or less of capacity, or \$569.00 for 5,700 kWh or less of capacity, or \$571.00 for 5,720 kWh or less of capacity, or \$573.00 for 5,740 kWh or less of capacity, or \$575.00 for 5,760 kWh or less of capacity, or \$577.00 for 5,780 kWh or less of capacity, or \$579.00 for 5,800 kWh or less of capacity, or \$581.00 for 5,820 kWh or less of capacity, or \$583.00 for 5,840 kWh or less of capacity, or \$585.00 for 5,860 kWh or less of capacity, or \$587.00 for 5,880 kWh or less of capacity, or \$589.00 for 5,900 kWh or less of capacity, or \$591.00 for 5,920 kWh or less of capacity, or \$593.00 for 5,940 kWh or less of capacity, or \$595.00 for 5,960 kWh or less of capacity, or \$597.00 for 5,980 kWh or less of capacity, or \$599.00 for 6,000 kWh or less of capacity, or \$601.00 for 6,020 kWh or less of capacity, or \$603.00 for 6,040 kWh or less of capacity, or \$605.00 for 6,060 kWh or less of capacity, or \$607.00 for 6,080 kWh or less of capacity, or \$609.00 for 6,100 kWh or less of capacity, or \$611.00 for 6,120 kWh or less of capacity, or \$613.00 for 6,140 kWh or less of capacity, or \$615.00 for 6,160 kWh or less of capacity, or \$617.00 for 6,180 kWh or less of capacity, or \$619.00 for 6,200 kWh or less of capacity, or \$621.00 for 6,220 kWh or less of capacity, or \$623.00 for 6,240 kWh or less of capacity, or \$625.00 for 6,260 kWh or less of capacity, or \$627.00 for 6,280 kWh or less of capacity, or \$629.00 for 6,300 kWh or less of capacity, or \$631.00 for 6,320 kWh or less of capacity, or \$633.00 for 6,340 kWh or less of capacity, or \$635.00 for 6,360 kWh or less of capacity, or \$637.00 for 6,380 kWh or less of capacity, or \$639.00 for 6,400 kWh or less of capacity, or \$641.00 for 6,420 kWh or less of capacity, or \$643.00 for 6,440 kWh or less of capacity, or \$645.00 for 6,460 kWh or less of capacity, or \$647.00 for 6,480 kWh or less of capacity, or \$649.00 for 6,500 kWh or less of capacity, or \$651.00 for 6,520 kWh or less of capacity, or \$653.00 for 6,540 kWh or less of capacity, or \$655.00 for 6,560 kWh or less of capacity, or \$657.00 for 6,580 kWh or less of capacity, or \$659.00 for 6,600 kWh or less of capacity, or \$661.00 for 6,620 kWh or less of capacity, or \$663.00 for 6,640 kWh or less of capacity, or \$665.00 for 6,660 kWh or less of capacity, or \$667.00 for 6,680 kWh or less of capacity, or \$669.00 for 6,700 kWh or less of capacity, or \$671.00 for 6,720 kWh or less of capacity, or \$673.00 for 6,740 kWh or less of capacity, or \$675.00 for 6,760 kWh or less of capacity, or \$677.00 for 6,780 kWh or less of capacity, or \$679.00 for 6,800 kWh or less of capacity, or \$681.00 for 6,820 kWh or less of capacity, or \$683.00 for 6,840 kWh or less of capacity, or \$685.00 for 6,860 kWh or less of capacity, or \$687.00 for 6,880 kWh or less of capacity, or \$689.00 for 6,900 kWh or less of capacity, or \$691.00 for 6,920 kWh or less of capacity, or \$693.00 for 6,940 kWh or less of capacity, or \$695.00 for 6,960 kWh or less of capacity, or \$697.00 for 6,980 kWh or less of capacity, or \$699.00 for 7,000 kWh or less of capacity, or \$701.00 for 7,020 kWh or less of capacity, or \$703.00 for 7,040 kWh or less of capacity, or \$705.00 for 7,060 kWh or less of capacity, or \$707.00 for 7,080 kWh or less of capacity, or \$709.

Livingston News

By: Mrs. Eva Black

Week end visitors of Mrs. Anderson Bowles were her daughter, Mrs. Eva Schaller and son, Billy, of Carroll, Indiana, Mrs. Juanita Heller and son and daughter of Richmond, Indiana, Mr. and Mrs. Marvin Lewis and family of Shelbyville and Mrs. Bowles' daughter, Charlie were in Berea Monday and were accompanied home by Mr. Bowles who had been confined to Berea Hospital for the past several weeks.

Mr. and Mrs. Sonny Smith and Sandy of Louisville spent the week end with her parents, Mr. and Mrs. Archie Bales.

Week end visitors of Mr. and Mrs. W.O. Singleton were Mr. and Mrs. W.E. Singleton of Knoxville, Tenn. and Mr. and Mrs. Earl McNutt of Louisville.

Mr. and Mrs. Danny Sealf of Covington visited her uncles, Denver Mullins and Mrs. Mullins Saturday.

Mr. and Mrs. W.R. Mounts of Williamsburg spent last Sunday with his cousin, C.L. Mounts and Mrs. Mounts.

Mrs. Ed Ping of Tyler, Tex. spent the past week with her sister, Miss Beulah Black. She returned Tuesday to Louisville to be with her sister, Mrs. Smith while Mr. Smith recuperating from recent surgery.

Mr. and Mrs. Archie Moore of Hart visited his sister, Miss Carrie Moore, last Saturday.

Mrs. Carrie Loudermilk spent part of last week with her son, Bob Loudermilk and Mrs. Loudermilk of Mt. Vernon.

Mr. and Mrs. Omer of Salem, Indiana spent last Wednesday with his sister, Mrs. C.L. Mounts and Mr. Mounts.

Sunday dinner guests of Mrs. Carrie Loudermilk were Mrs. Eva Black and Mrs. Carrie

Sunday dinner guests of Mrs. Carrie Loudermilk were Mrs. Eva Black and Mrs. Carrie Moore.

Mrs. Guy Bullock has returned home from the Rockcastle County Hospital where she had been confined for the past week.

Mr. and Mrs. Jerry Mullins and David of Mt. Vernon visited his parents Thursday evening.

Mrs. Beulah Black and Mrs. Ed Ping were in Berea last Friday on business.

Mrs. Bertie Rice and Miss Beulah Black were in Mt. Vernon Monday to attend the retired teachers' meeting.

Ottawa

By: Della Mae Willmott

Mr. and Mrs. Bill Harper and Tammy of Somerset visited Mr. and Mrs. Virgil Lawrence and Mark Wednesday.

Mrs. Irene Taylor and Della Mae Willmott visited Mrs. Lindell Pearson and Mrs. Retz Holt last Sunday afternoon.

Mr. and Mrs. Wallace Proctor of Kentucky, Cumberland River Inc. visited the Ramadana RCD in London Monday evening.

Some of last week's visitors of Mr. and Mrs. Virgil Lawrence and Mark were Mr. and Mrs. Arvil Hunt, Mr. and Mrs. Wallace Proctor, Mr. and Mrs. Roscoe Cable, Mrs. Mamie Haman, Georgia Thompson, Lucille Purcell and Mrs. Carr.

Mrs. Virgil Lawrence was in Lexington Monday to consult her doctor.

Mr. E.J. Hamm and Alonzo Hamm Sunday. Mr. and Mrs. Guy Ham Sunday.

7286 Major Ray & Anna Woodruff 24.71
7280 Michael Wright 1.65
7292 Elijah Young 26.77
7322 Willie Yung 49.82
7324 Barbara Zapf 9.88

The following tax bills, upon which there is a Real Estate value, will be offered for sale at the courthouse door in Mt. Vernon, Rockcastle County, Kentucky, this Thursday, May 1, 1960 at 11 a.m.

These tax bills (claims) are subject to the addition of the approximate cost of advertising (25¢) and a distressing fee of 6% of the tax and penalty.

The purchaser of the tax bill will be issued a Certificate of Delinquency which becomes a lien upon the tax bill and bears interest at the rate of 12 percent per annum from the date of issuance.

Henry Lee Abney, Sheriff
Rockcastle County, Ky.

Tax Bill #	Name	Amnt.
60	Willie Abrams	95.30
76	Adams Heirs	19.06
81	Jimmie Lee and Wilene Adams	90.82
103	Willie L. Adams	20.33
128	Tom Albright	31.77
159	James E. Alexander	65.53
183	Richard W. Alexander and T. B. Alexander	9.98
184	Ray Alexander	101.64
219	William & Ruby Ambrose	216.44
226	Huey Anderkin	25.41
281	Otis Arnold	12.71
305	Lorene Bailey	44.47
315	Bobby Baker	15.54
329	Earl Baker	2.55
390	Eula Bales	58.44
383	Irene Ball	190.59
394	John Ball	190.59
407	Jerry Ballinger	6.36
428	Dorothy Barnes	18.06
434	Glenna Fay Barnes	44.47
447	B. H. Barnett	23.41
468	Farley Barnett	85.64
478	Jefferson Barnett	3.19
486	Clarence and Judy Barnett	9.55
537	Vience Benedict	526.63
548	Willie Proctor Bengel	15.90
554	Doll and F. W. Lunsford	5.08
575	Arthur & Irene Bishop	71.90
598	Roy L. Bishop	6.36
603	Marion Bittner	65.61
610	Ann L. Blackburn	65.65
612	Curtis Blackburn	137.71
660	Arthur Bond	111.675
660	Arthur Bond	111.65
737	Waltie & Geraldine Bowman	3.19
758	Frank Bradley	19.06
771	Myrtle Bradley	49.18
808	William David Brewer Jr. and Jackie Brewer	60.89

813	Ben Brock	47.68
830	Please Brock, Jr.	185.10
840	John F. & Edna Brockman	216.93
851	Lowell Broughton	100.58
944	Walden Brown	78.11
957	Broyles Land Co., Aspin Broyles Heirs	88.94
981	Rickie Brummett	14.59
984	John L. Bruner II	146.11
999	James & Christine Bryant	83.41
1035	Arnold Bullock	16.14
1073	Willie Bullock	34.96
1078	Terrell Bullock	5.08
1108	Larry & Magdalene Bullock	3.60
1138	Raymond & Argie Bullock	65.55
1200	Tom B. Burdette	6.36
1221	Charles D. & Connie Burke	106.58
1224	Dave Burke	132.68
1249	G.L. Burton	20.53
1306	Willie Buttrely	12.71
1321	James M. & Wattana Cain	9.55
1342	Dorothy Jean Calley	47.68
1343	James Cahoun	13.98
1368	Bonnie Cambell	57.18
1382	Daniel Ray & Mina Kay Carmack	96.46
1406	James & Edna Carpenter Heirs	34.96
1412	Katha Carpenter	30.35
1417	Lillie Carpenter	158.82
1418	Louell Carpenter	12.71
1424	Ray Carpenter	6.36
1435	Charles F. Carr	12.71
1438	Bill Carr	258.72
1440	Edward Carroll	6.36
1463	Robert L. & Thomas D. Mullins Case	71.53
1482	Joyce M. Cash	50.82
1508	Stanley & Carol Caudill	103.61
1524	Ted Chandler	73.73
1548	Eugene & Kay Chasten	159.64
1571	Omer Chestnut	55.06
1606	William Denver Childers	63.00
1611	Christian Appala-Chasten	1435.90
1637	J.W. Clark Heirs	1.61
1637	J.W. Clark Heirs	1.61
1638	James W. & Ingrid Clark	69.40
1650	Manuel D. & Jean Clark	31.58
1656	Robert L. & Wilma J. Clark	35.29
1668	clef/Kock, Inc.	297.39
1671	K. Clemmons	9.55
1686	Home Coats	34.96
1695	Claind Coffey Heirs	15.90
1698	Donnie Coffey	78.47
1718	Louise Coffey	6.36
1724	Robert & Neal Cosby	57.18
1763	Donnie & Carolyn Collins	76.85
1768	Preston Collins	266.81
1777	Larry R. Combs	25.41
1786	Frank E. & Retal Connor	285.91
1803	John & EdithCOPE	25.41
1816	Willa Frank & Stella (a Coppe)	31.77
1826	Kina Darlene Cotton	85.64
1901	Bill Crommer	16.56
1920	Jamies Carlos Cutton	7.87
2023	Della Cummins	15.30
2088	William Kenneth Cummins	51.46
2086	Raymond & Freda Dammrell	1.91
2087	Robert & Norma Dammrell	53.06
2088	Robert & Linda Dammrell	6.36
2140	James Dean	31.05
2168	Lyle Deborde	10.15
2178	Tom Deborde	41.88
2184	Martha Ellen Decker	38.37
2193	Donald L. Dees	17.71
2195	James L. Dees	6.36
2198	Tommy Dees	6.36
2210	Michael Denny	6.36
2214	Martha Ellen Denny	6.09
2216	Clayton, Cindy & Denny	6.36
2251	Bennie Doan	50.12
2285	Hennetta Doan Heirs	13.33
2286	J.F. Doan	7.82
2281	Paul Lee & Mary J. Doltinghouse	15.90
2288	Freddie Dooley	6.36
2291	James F. Dooley	55.77
2310	James Nelson Leonard & Helen Kodol Drees	143.20
2317	Donald Duffey, E.R. Williams & Cagnoni Duffey	66.72
2330	Boyd & Judy Durham	71.60
2333	Charles Durham, Sr.	40.59
2344	James M. & Virginia Duran	9.55
2352	Larry & Dorcas Durney	45.27
2355	Martha Ellen Durney	354.90
2370	Ted Durham	354.90
2397	William George Edwards	9.55
2402	Mrs. Carlos Elder	2.91
2403	C.H. Elder	7.82
2424	Darrell & Wanda Ellison	66.46
2445	H.C. Evans	15.90
2445	Mary Joann Evans	142.95
2456	John & Lida Eversole	3.19
2463	Rose Mullins Eversole	3.36
2469	Bobby Fain	245.91

2532	Lona Carr Fish	92.40
2539	Ed Fletcher Heirs	19.06
2540	Geneva Fletcher	3.19
2542	Edna Fletcher Heirs	100.13
2544	Kakus Fletcher	9.55
2562	Pearl Fortner	4.30
2620	G&G Const. Co.	103.71
2630	Bert & Sylvia Gable	64.30
2640	Kate Ray Gadd	54.93
2647	Billy Gadd Est.	50.14
2657	Gerald D. Gambrel	88.81
2680	Manie Gentry	50.58
2702	Elmer Gilbert	15.90
2702	Henry C. Gilbert	15.90
2728	Terry L. & Cathy Lee Gillispie	151.18
2734	Mynatt Dave & Shirley L. Godsey	64.68
2732	Ronnie Ray Goff	233.19
2742	Glen Goforth	49.41
2787	Tommie & Nancy Graves	3.19
2788	Vernon Graves	14.75
2825	Charles C. & Irene Graves	69.43
2837	Martha Griffin	33.09
2845	Willie Griffin, Jr.	8.04
2856	Tommy Gynn	6.36
2861	Douglas Hackworth	224.99
2864	Ellen Haggard	1.61
2890	Simon Hall	7.82
2914	Charles Hamilton	3.87
2917	E.B. & Brandon Hagey Ham	54.01
2946	Maud Hammock	48.92
2964	Fred & Eva Hampton	38.27
2965	John Hampton	88.11
2989	Larry Brenton Hansel	88.11
3001	Bernet & Polly Harling	65.07
3014	Jay Harmon	57.56
3023	Joseph & Betty Jean Harner	63.53
3052	Mary Elizabeth Harbert	139.76
3058	Alfred Harrison	15.90
3106	Rosella Hastv	63.18
3113	Jewell Hawk	95.66
3114	Bessie Hawkins	78.02
3145	Orlean Hays	8.91
3159	Mitchel & Richard Rehber Haymes	158.15
3174	Freda Hellard	5.08
3189	Charlie Helton Heirs	51.51
3199	Ollie Helton	38.12
3220	Bill Hensley	7.62
3231	Irvn Hensley	11.67
3274	Everett Higgins	40.37
3275	Kenneth Higgins	75.45
3282	Clara D. Hill	25.41
3307	William A. Hodge	65.55
3337	Harrison Holman, Jr.	17.78
3342	C.R. 'Toising	6.36
3351	Willie Holt	45.90
3358	Donald & Betty Hopkins	12.36
3364	John & Lola Hopkins	41.31
3390	John L. & Osa B. Hoskins	60.11
3407	A.W. Howard	46.37
3428	Oscar Howard	27.06
3433	Silas Howard Heirs	63.45
3441	Robert L. Hubbard	355.16
3449	Everett C. Hughes	17.79
3511	Henry Ingraham	18.72
3512	Charles Inge Isaac	62.47
3555	Leroy Isaacs	36.60
3551	Stacy Isaacs	36.60
3566	Kenneth Ray & Joann James	38.51
3605	Fred Johnson	9.27
3606	George Johnson	54.01
3620	William Johnson	50.82
3621	Alma Jones	5.26
3622	Edna Jones	1.91
3644	Gerald Jones	25.41
3649	Homer Jones	77.89
3656	Linda Jones	16.72
3666	Phillip Jones	26.91
3752	Delbert M. King	44.47
3753	Estil Ray & Patsy King	63.53
3757	James & Bessie King	75.96
3782	Robert King	15.90
3791	Jerry & Hazel Kirby	65.29
3794	Gary Kirby Heirs	12.71
3798	James O. and Patricia Kirby	212.10
3799	James O. & Patricia Kirby	209.64
3809	Kathy & Iva Jean Kirby	30.06
3829	Ricky Ray Kirby	138.78
3831	Robert William Kirby	97.91
3843	Kay Klotzback	3.19
3856	Gene Allen & Melvina Lee	181.71
3884	Irene Rowe Lank	25.41
3889	Charlie Lamb	6.36
3913	B.M. Lawwell	19.20
3916	David Lee & Wanda Lay Lawwell	53.54
3963	Charles G. & Wanda F. Lear	194.11
3968	Douglas Lear	135.85
3971	Robert F. & Judy Lear	44.54

MT. VERNON SIGNAL THURSDAY, MAY 1, 1960 P-AS		
3980	Virgil Lee	2.55
3981	Earl Leece Heirs	2.55
3988	Isaac Leeger Heirs	19.29
4014	Elmo Linger	79.65
4046	John Thomas Lovell	47.66
4047	J.T. Lovell	23.08
4059	Joy & Sharon Lovins	68.83
4063	W.N. Lovins	1.61
4086	Charles Lynch	26.40
4169	Bill & Carolyn Mason	24.72
4171	David Mason	90.87
4188	Kenneth Mason	157.77
4192	Manuel Mason	3.19
4197	Robert & Peggy Mason	109.49
4211	Ebbert R. & Barbara A. Mathias	48.83
4256	Fred & Irene McClure	135.29
4258	George McClure	11.20
4259	Jackie McClure	123.50
4265	James McClure	56.12
4272	Junia McClure	15.05
4276	Leonard McClure	31.08
4278	Louise A. Nora Jean McClure	108.00
4335	Bill Wayne McCerron	196.35
4349	Harbert Amos McCerron	26.00
4364	Roman McCerron	27.06
4372	Arnold McGuire	55.13
4411	Claude H. McHargue	37.46
4439	Charles S. & Bonnie McKinney	119.72
4577	M. Miller	15.14
4582	Oliver Casper & Evelyn Miller	53.88
4590	Richard Miller	3.19
4601	Walter Miller	25.41
4602	William K. & Cathy Miller	98.59
4605	Mrs. Laura Milton	27.32
4613	Birdie Mink	5.08
4651	Gilbert L. & Emma Mink	6.36
4655	Henry Mink	27.32
4678	Lucy Mink	39.96
4679	M. Mink	3.92
4685	Russell Mink	15.90
4716	Robert L. & Mary K. Mitchell	98.57
4747	Geraldine Monk	142.23
4753	Bill Moore	36.40
4795	Alonzo R. Carolyn Morgan	190.58
4799	Dolores Morgan	50.82
4800	Ezra Morgan	26.24
4816	Malcolm Jones	14.56
4820	Malissa Morris	14.56
4827	Willie Morris	8.78
4847	Bennett Mullins	97.02
4851	Clinton & Lucian Mullins	133.41
4872	Douglas Mullins	7.62
4877	Ernest & Linda Mullins	114.58
4894	Hardie Mullins	23.57
4906	John A. Mullins	1.91
4917	Lewis Mullins, Jr.	57.38
4924	Robert & Virginia Murphy	15.90
4964	Lela Murphy	41.92
4984	William & Edna Murphy	15.90
4980	James E. Neal	24.23
5000	Geneva Newcomb	95.29
5026	Jesse W. Nicely	9.88
5085	Robert & Ruby Noe	85.80
5089	Owen & Helen Noe	9.55
5104	Robert E. & Phyllis Northern	62.11
5105	R.F. Northern	44.47
5106	Robert H. Northern	6.36
5128	Sherrin Norton	68.86

for anything... for every thing... WANT ADS

P-46 MT. VERNON SIGNAL THURSDAY, MAY 1, 1980

CLASSIFIED RATES

LOCAL RATES - 6c PER WORD, MINIMUM \$2
CARD OF THANKS-5c PER WORD, MINIMUM \$1
IN MEMORY - 5c PER WORD, MINIMUM \$1

Classifieds Paid In Advance Except To Businesses

For Sale

FOR SALE: New 1980 Chevrolet Pick-up, long wide bed, #4650. Owens Chevrolet, Stanford, Ky. 953-9166 or 236-2027. 22x1ft

FOR SALE: 1970 Chevrolet truck, 2 ton, with flat and cattle racks. Can be seen at Robbins Muffler and Auto Service, Highway 70 near Broodhead or call 758-8169. After 6 p.m., call 758-8570. 33x1ft

FOR SALE: 14 ft. runabout with 40 h.p. Evinrude, #450. 236-2334. 31x1ft

FOR SALE: 3 piece living room suite, newly upholstered. In excellent condition. Call Edna Fain, 256-2578. 33x1ft

FOR SALE: 3 lots in Cedar Heights Subdivision, Mt. Vernon. 70x214. \$1500 each. Ph. 678-8738 (Somerset). 33x1ft

FOR SALE OR TRADE: 72 Ford Pickup with flat bed, will sell or trade for old Ford tractor or Club or good gardening tractor. Call after 5 p.m., 256-2087. 32x3p

FOR SALE: 1976 Pontiac Firebird, call 256-4203 after 4 p.m. 34x2p

FOR SALE: Garden tiller, in good shape. Call Curtis Bradley, 758-8584. 34x1ft

FOR SALE: 1973 Suzuki 380, in good condition. #650. 758-8277. 34x3

FOR SALE: 20 acres in Pine Hill area. #5900. 256-4084. 35x1p

FOR SALE: Saw mill, saws, ball bats, stock furniture and gun stocks. Ph. 606-744-3291, Winchester, Ky. 35x3p

FOR SALE: 35 acres of land on Gaudy Branch Road in Rockcastle County. Call 414-1554-1643, Jesse Smith, Racine, Wisc., collect. 35x1p

FOR SALE: Riding lawn mower, 10 h.p., less than one year old. Call J.C. Bowling at 256-2339. Can be seen at residence on 411. 35x2p

FOR SALE: 160 sq. ft. of Lees Carpet in beige tones. In perfect condition. Sell cheap. Call Effie Pireault, 256-2567. 35x1

FOR SALE: Large mobile home lot between Stanford and Danville. Only \$3,500. Call 965-2161. 35x1

MOBILE HOMES FOR SALE: 1969, 12x50 Star, with furniture total electric #4,050; 10x50 Detroit, furnished, \$3,100; 24x44, 1973 Fleetwood Doublewide, \$10,000. All in good shape. Mid-American Mobile Homes, U.S. 27 between Lancaster and Stanford, 368-2161. 35x1

FOR SALE: 14 ft. fiberglass fishing boat, 35 h.p. Sea King motor. #650. Ph. 256-4738 after 3 p.m. 35x1p

FOR SALE: Concrete yard ornaments, 1 mile south of Mt. Vernon on U.S. 25. Picnic tables, bird baths, All also good used televisions and Mustang and Volkswagen parts. 256-4765. 35x1ft

FOR SALE: Antiques: Large oak sideboard, large oak kitchen cabinet, six-legged walnut dining room table (inset), Mahogany library table, large round oak table (64 inches diam. extends to 84 inch), blond oak china cabinet. Ph. 256-4681. 35x1p

FOR SALE: The 77 acre estate of Johnny and Rhoda McHargue, 1,108 lbs. tobacco base, 50 acres of timber. Pine Hill, Ky. Ph. 986-8141. 35x4

FOR SALE: Electric guitar, Epiphone by Gibson, new controls, new strings, new 3rd. Now, only \$75. RCA B&W television, 21" in nice cabinet, UHF VHF, \$65. Small wood desk, cherry finish, excellent for student, \$75. Small metal typing desk, 2 box drawers, 1 file drawer, walnut grain finish, \$60. Small metal child's desk, 2 drawers, made like office desk, new finish, \$50. Royal portable, manual typewriter, gray finish, with carrying case, very good condition, \$50. Antique oak desk, 2x42, center drawer, 1 box drawer, 1 deep file drawer, dictation tray, needs refinishing, \$85. Antique floor model radio, rebuilt at cost of almost \$60. Excellent condition, \$75. New and used books and records, up to one-half off. Art glass and dishware at discount. Harmon's, Rockcastle Hotel Basement, Ph. 256-5522. 35x2

FOR SALE: Two 1971 Volkswagens. Ph. 256-4067. 35x1

FOR SALE: 17 acres and twelve (12) room mobile with 6 years old with 1 1/2 baths, barn, workshop, pump house with good well, 3 acres for garden, some pasture with creek, some wooded, 1/2 mile off U.S. 25, 5 miles south of Mt. Vernon. You could not build the home for our price of \$39,000 for all. ALSO FOR SALE 5 room mobile with 6 years, city water, garden, electric heat, insulated, paneled, large kitchen with nice cabinets, just off U.S. 25 at Conway and only \$25,000. 256-2315. 35x2

FOR SALE: Antique pull down bed with bevel mirror. 1902 Chevy II Nova, mags, headers, newly painted. 758-8913. 35x2

For Rent

FOR RENT: 2 room trailer. 758-9464. 35x1

HOUSE FOR RENT in Ottawa Section of Rockcastle County. Call 758-8782. 35x1

FOR RENT: Three room furnished apartment and bath. Call 256-2750. 35x1

FOR RENT: Rinse 'n Vac Carpet cleaning equipment, \$8 per day. Everything you need for a professional job. Call 256-2288 or come into Parsons Gas and Appliance Service, Inc. at Roundstone. ntf

FOR RENT: Garage building with air compressor located on Hwy. 461. Call 256-4445 after 5 p.m. 34x2

Notices

NOTICE: On Thursday, May 1 at 10 a.m. I will sell the following described automobile for storage and wrecker bill. 1965 Red Ford Convertible, serial #01U6X100 621, Arthur H. Bond, Fairground Hill, Mt. Vernon, Ky. 33x3p

NOTICE: On Thursday, May 1 at 10 a.m. I will sell the following described automobile, at my place of business, for storage bill. A 1975 Vega, Serial #IV18V290218, Mt. Vernon, Ky. 33x3p

NOTICE: Become a Beautician, enroll for class starting June 12. Applications taken at Eastern School of Hair Design, 112 So. Second St., Richmond, Ky. 1-806-623-5472. School approved for all Federal Grants. 35x4

NOTICE: On Saturday, May 17 at 10 a.m. I will sell the following described motorcycle for storage and repair bills: 1974 TX 650 Yamaha, serial #8560-218870, Dale Renner, Pine Hill, Ky. 35x3

HAMMERS WELL DRILLING Co., 256-2024. 42x1ft

NOTICE: For electric wiring and plumbing, call a licensed plumber at 256-5250. ntf

HYNSINGER CARPETS: Carpet direct from the mills. Shag, \$299 and up. Commercial-residential. Armstrong vinyl. For all your carpet needs, visit Hysinger Carpets, Mt. Vernon, Ph. 256-5413. 11x1ft

NOTICE: Pursuant to Section 995.620 of the Kentucky Revised Statutes, notice is hereby given that the following settlement of accounts has been filed in our office and exceptions, if any, must be filed before May 7, 1970. Estate of Bazle Shepherd, Sr., of Mt. Vernon, Kentucky, first and final settlement of Bazle Shepherd, Jr., of Bluffton, Indiana, successor administrator. 34x3

B & B SEAMLESS CUTTER. For all your guttering needs call 256-4924. 34x12

NOTICE: Work has now started on the Scaffold Care Cemetery. We want to thank everyone who helped in any way and we need your help again this year in work or donations. Help us keep it looking nice. Send to Bessie Brock, Route 3, Box 98, Mt. Vernon, Ky. 35x1

PAYE'S FABRICS, downtown Richmond. Best selection of Fabrics in this area. Complete Bridal Department. Open Mon/Sat 9 a.m. to 5:30 p.m. 28x7

NOTICE: No trespassing in or around the Smith Cemetery on Red Hill Road. Willie Smith and Smith Family. 35x1

NOTICE: On Thursday, May 1 at 10 a.m. I will sell the following described automobile, for parts and repair bill, at my place of business. A 1964 Chevrolet El Camino, Serial #45680K11315, John Bullock, d/b/a Cromer's Body Shop, Route 1, Mt. Vernon, Ky. 38x3

GRASS TETANY: Prevention. See us for mineral mix and Mag-8n block. Broodhead Mill, Broodhead, Ky. 34x2

ELECTRICAL WORK: No job too big or too small. 17 years experience. Fair prices. Call 256-3381, ask for Fred. 22x1ft

PRINTS AND FRAMING: Shop No. 1, 1/2 mile from Boone Tavern on Hwy. 21, East. Framing done here. Shop No. 2, 1/4 mile off I-75, Teresa's Antiques and Gallery, 986-8147, Berea, Ky. 33x1ft

NOTICE: There will be a Public Hearing at the Mt. Vernon Elementary School on May 13 at 9:30 a.m. for the purpose of discussing the Educational Improvement Act. 35x1

REMODELING AND REPAIR WORK done at reasonable rates with quality results. For free estimates, call Denzil R. Allen, 256-2881, after 5:00 p.m. 32x1ft

WANTED: Persons to mow Elmwood Cemetery. Must have lawnmower. Contact Harry Harmon, Billy Dwyer or Bud Cox. 35x1ft

HAMM BUILDERS A-J Carpenters Framing, Remodeling, Room Additions, Roofing, Siding, Block and Concrete work Free Estimates Ph. 758-8855 758-8001 31x4p

Doug Miller's Backhoe & Dozer Service Septic Tanks Fill Dirt Water Lines Top Soil Gravel Call 256-4966 256-4454

COLLINS Construction Co. P.O. Box 697 Mt. Vernon Ph. 453-2161 Custom Bulldozer & Backhoe Work - Dump Truck Service - Top Soil - Fill Dirt - Gravel

Why I can give you real value in homeowners insurance. Good Neighbor Service I know how to make your homeowners insurance more affordable. And I'll be there to give you prompt personal service when you need it.

Comprehensive Coverage That's homeowners insurance the State Farm way. Find out how much you may save. Call:

BILL BAILEY Church St. Mt. Vernon Phone 256-2119

State Farm Fire and Casualty Company Home Office, Bloomington, Illinois

POSITION AVAILABLE: The Cumberland Valley Dist. Health Dept. - Rockcastle County Home Health Agency - is now accepting applications for a Clerk Typist II position. Minimum qualifications: Graduation from high school including or supplemented by a course in typing and one year of experience in clerical work or an equivalent combination of related training and experience. Salary: \$2.95 per hour. Applications may be obtained at the Rockcastle County Home Health Agency, Mt. Vernon, Ky. Applications must be received in Frankfort no later than May 13, 1980. An equal opportunity employer. 34x3

CUSTOM WOOD PLANING & FURNITURE MAKING. Cedar Chest, \$75 or Hall Trees, \$25. Also bookcases, cabinets. Call Roy Beasley, 256-5270. 27x1ft

CUSTOM MADE CABINETS: Call Taylor's Workshop, 453-4991. Located 1 1/2 miles out of Livingston. Arnel C. Taylor, owner. 22x1ft

PLAN YOUR VACATION for the Broodhead Fair, July 28th thru August 2, 1980. 25x19

GRAVE MARKERS AND MONUMENTS: In stock at all times. McNew Monument Sales, U.S. 25, 4 miles north of Mt. Vernon. Ph. 256-5252. ntf

NOTICE: Anyone interested in the upkeep of the Roberts Cemetery and paying for a new marker, send donations to Millie Bullock, treasurer, Route 1, Box 875, Mt. Vernon. 35x2p

Wanted WANTED: Distributor assistant needed, must be clean-cut and aggressive. Guaranteed \$800 per month while in training. Call Monday only, 11 to 3. 561-5533. 35x2

WANTED: Painting, experienced painter. Interior and exterior painting done. Call 453-3261. 34x2p

WANTED: Someone to clean up 3.4 acres of ground on Broodhead-Conway Road. About one mile out of Broodhead. Edward Lee Hopkins, owner. Call Lexington (606) 299-9673. 34x2

WANTED: Retired gentlemen seriously looking for small secluded acreage in mountain southeast of Berea. Must have good water, fair access, with or without old house. Call C. Bartlett, 256-5457, 7 to 11 week nights. 34x2

WANTED: Building and remodeling of all types. Also, concrete work. Free estimates. Call Donnie Woodall at 758-4186. 35x4

Septic Tanks J & J Concrete Tanks

JIM & JACK'S S&T STORE Ph. 256-4363 After 5 p.m., 256-2580

SEPTIC TANKS Sales and Service 750 Gal.-1,000 Gal. Distribution Boxes 1000 Gal. Water Distribution Tanks

Lee Dog Company Free Pick-up Service for Fresh, Dead Farm Animals Harrodsburg, 734-2387 Collect toll free 1-800-442-0103

INSULATION Wood Cellulose 30 lb. bag \$5.25 BLOWER AVAILABLE FOR RENT

SCAFFOLDING FOR RENT

PORTABLE GENERATOR TROWLING MACHINE ALUMINUM BREAK

SHIVEL'S ARMY STORE 256-4243 MT. VERNON

GOT TERMITES?

Madison Termite Co. and Pest Control

Call Paul Burton Mt. Vernon, Agent for free inspection

VA & FHA inspections Call 256-2318

Up to 14% Discount for new Homeowners.

We've Got the Shield for You

Harry Harmon, Agent

GREGORY BUILDING Ph. 256-4945 or Nights 256-2454

the MFA Insurance of Shelter

When you think of termites, think of me.

I can kill the termites in your house. And keep the rest of the termites in your neighborhood from taking their place. After treatment, Terminix can guarantee most homes up to \$150,000 against further termite damage.

I'm Ken Sams, the Mt. Vernon Terminix man. THRIFTY LUMBER Co. Phone 256-2521.

TERMINIX All work done by Terminix of Lexington

Phone 792-2118

Lancaster Kentucky

J.L. Teater Hogan Teater William Kirby Teater

INSULATION Wood Cellulose 30 lb. bag \$5.25 BLOWER AVAILABLE FOR RENT

SCAFFOLDING FOR RENT

PORTABLE GENERATOR TROWLING MACHINE ALUMINUM BREAK

SHIVEL'S ARMY STORE 256-4243 MT. VERNON

CLASSIFIED ADS sure to get results

Yard Sales

YARD SALE: one-half mile off U.S. 25 on Brush Creek Road, Friday and Saturday, 10 to 5. 35x1

YARD SALE: Saturday, May 3 at the home of Robert Noe on Tyree Street in Brodhead. Cancelled in case of rain. 35x1p

YARD SALE: Friday and Saturday, by Linda Lewis, across from hospital from 9 to 4. 35x1p

YARD SALE: 4 family on Copper Creek at the home of Rick Everett. Ladies dresses, size 12, children clothes, girls, sizes 6 and 7, little boys, size 3 and 4, baby clothes, sizes 9 months to 2. 35x1p

YARD SALE: Friday and Saturday, 9 to 5, in Brodhead behind Citizens Bank. Women and MEN'S clothes, children clothes all sizes, dishes, toys, quilts, shoes, round oak table with claw feet, miscellaneous. Cancelled in case of rain. 35x1

YARD SALE: Thursday and Friday, 9 to 4, Rhonda Owens, Tyree Street, Brodhead. Rain or shine. 34x2p

YARD SALE: Saturday, May 3, across from Robo Car Wash, 9:30 to 7. Ladies and children's clothing, shoes, household items, toys, miscellaneous. Cancelled in case of rain. 35x1

YARD SALE: This Friday and Saturday, 9 to 5. Located down hill

from corner of Williams and School Sts. Postponed in case of rain. 35x1

YARD SALE: At the home of Kaye Rader, Barnett Subd., Saturday, May 3, 9 to 2. 35x1

GARAGE SALE: Home of Ernie Johnson, Williams St., Mt. Vernon, May 2 and 3, 9 to 4. Girls clothes, sizes 2 to 5, boys, 10-12, large adults, humidifier, pictures, books, records, air conditioner, bed spread, toys, rug and lots of odds and ends. 35x1

BASEMENT SALE: Two Family, May 2 - 10. Machine, shoes, slacks suits, gowns, pajamas, shirts, slips, little and big girls clothing of all kinds, books, fish and sea weed, toys, bird cage, lots of other stuff. Bert Gentry, Fairground Hill. 35x1

YARD SALE: Across from Fpod Fair, Thursday, Friday and Saturday, 10 to 6. Children and ladies clothing, oodware, baby bed, etc. 35x1p

YARD SALE: 7 Family, turn right at Denney's Grocery on Hwy. 461, 3rd house on left. Friday, May 7, 10 to 5. Men, women and children's clothing, books, ladies jeans, 5/6 and 12. 35x1p

YARD SALE: 4 Families. Jeans, all sizes, baby scales, Avon bottles, men, women, children and baby clothes, shoes, thimble and stamp collection, afghans, hand made quilt, quilt tops, glassware, curtains, records, 8 track tapes and lots more. Friday, May 2 and Saturday, May 3, 9 to 5 at Quail on Hwy. 70 behind Robbins Muffler

Shop, Cancelled in case of rain: 35x1p

YARD SALE: All day Friday, May 2 and Saturday, May 3, until noon. Home of Ray Pope, 2 miles east of Quail on Hwy. 618. Lots of ladies clothing, toys, shoes, baby items at reasonable prices. Cancelled if rain. 35x1p

YARD SALE: Friday and Saturday, May 2 and 3, U.S. 25 North, Trailer Park past Conway. Cancelled if rain. 35x1p

YARD SALE: Brick home behind Cox Funeral Home on Maple Street, Saturday, May 3rd, 9 a.m. to 5 p.m. 35x1

YARD SALE: 2 Family on West Main St., Mt. Vernon, Thursday, Friday, Saturday, May 1, 2, 3 from 9 to 5. 35x1p

5 FAMILY YARD SALE: At the home of C.S. McKinney on 461. Clothes, furniture, dishes, May 1, 2, 3. Thursday thru Saturday. Cancelled in case of rain. 1/2 mile from Clayton Hammond's Market on left. 35x1p

YARD SALE: 4 Families, home of Mary Ponder, next to high school. Antiques, clothes, bicycles, railings, braided rugs. Friday, May 2, 9 to 5 and Saturday, May 3, 9 to 4. 35x1p

BASEMENT SALE: At the home of Wade Hopkins, Highway 70 at Quail. Watch for signs. Saturday, May 3, 9

a.m. till dark. Ladies clothes, pant suits, blouses, Aigner shoes, handbags, men's clothes, curtains, bedspreads, dishes, lamps, paint, 4 new steel belted radial tires 175SR14. Many useful items. 35x1

2 Family Yard Sale - At the home of Mrs. Ollie Harrison on 1505, about 1 mile out of Brodhead. Cancelled in case of rain. 35x1

THREE FAMILY Garage and Yard Sale: Corner of Lovell and Williams Street, Friday and Saturday, 10 to 4. Lots of everything. Children's clothes, men's suits - size 40R, dishes, household items. 35x1

Legal Notices

BIDS WANTED: The Rockcastle County Board of Education will receive sealed bids until 1 p.m., May 2, 1980 for custodial supplies and materials. Bid forms and specifications are available at the office of the superintendent, Mt. Vernon, Kentucky. The board reserves the right to reject any or all bids. 34x2

BIDS WANTED: The City of Mt. Vernon will accept sealed bids for bituminous surfacing (blacktop) per ton until Monday night, May 12th at 7:30 p.m. Bids may be turned into Mary McClure, City Clerk. The city reserves the right to reject any or all bids. 34x2

BIDS WANTED: The Rockcastle County Board of Education will receive sealed bids for student lockers until 7 p.m., May 6, 1980. Bid forms and specifications are available at the office of the Superintendent, Mt. Vernon, Kentucky. The board reserves the right to reject any or all bids. 34x2

Executor Notice
Notice is hereby given that Calvin Robert Webb, Livingston, Ky.,

MT. VERNON SIGNAL THURSDAY, MAY 1, 1980 P-A 7

has been appointed Executor of the Estate of Calvin H. Webb, deceased. Any persons having claims against said estate shall present them, verified according to law, to the said Calvin Robert Webb or to Joseph E. Lambert, P.O. Box 278, Mt. Vernon, Kentucky, attorney for estate, on or before July 17, 1980. 33x3

Executor Notice
Notice is hereby given that Norma Crank, Route 1, Brodhead, Kentucky, has been appointed Executor of the will and estate of Ulysses Crank, deceased. All persons having claims against said estate shall present them, verified according to law, to the said Norma Crank, or to Clontz & Cox, Mount Vernon, Kentucky, attorneys for said estate no later than July 30, 1980. 33x3

Executor Notice
Notice is hereby given that Mildred J. Coffey has been appointed Executor of the Estate of Woodrow Morris, Johnetta, Kentucky or to William D. Gregory, Mount Vernon, Kentucky, attorney for said estate shall present them, verified by law, to the said Mildred J. Coffey, Box 24, Brodhead, Kentucky or to Clontz & Cox, P.O. Box 578, Mount Vernon, Kentucky, attorneys for said estate, no later than July 29, 1980. 33x3

TOO LATE TO CLASSIFY
WANTED: Trail horse or saddle mule. Bentley Sparks, 256-4516. 35x1

FOR SALE: 4 tires, 15x70, tubeless. Ph. 256-4516. 35x1

ADMINISTRATOR'S NOTICE
Notice is hereby given that Gladys Morris has been appointed Ancillary Executor of the Estate of George Dewey Scott, deceased. All persons having claims against said Estate shall present them, verified according to law, to the said Gladys Morris, Johnetta, Kentucky or to William D. Gregory, Mount Vernon, Kentucky, attorney for said estate no later than August 2, 1980. 33x3

COLLINS Construction Co.
P.O. Box 697 - Mt. Vernon Ph. 453-2161
Building - Remodeling
Aluminum Siding - Storm Windows and Doors - Blown-In Insulation

HENSLEY'S USED CARS
Rt. 2, Orlando
Ph. 256-4777

Blown-In Insulation For All Your Insulation Needs
Call Roger's Insulation
Mt. Vernon, Ky. 453-2101
Roger Lopez, Owner

Rocket Moped Sears Bldg.
E. Main St., Mt. Vernon
150 Miles Per Hour
COME SEE 3 MODELS Sales and Service

BEREA THEATRE
Berea 986-3644
Fri. thru Tues. MAY 2 - 6
James Coburn

They're on their way!
COMING "STAR TREK"

FOR RENT: Commercial lot, with or without building on Richmond Street. 256-2151. 35x2

VICE-PRESIDENT Development Investment Firm
Established nationally prominent economic development/investment firm operating in rural Kentuckys seeks Vice-President to manage its 15 employee venture capital investment and development activities. This is a position of substantial responsibility involving \$100,000-\$600,000 investment decisions in business and real estate ventures.

Applicants should have at least five years of business experience and a track record of successful management. Experience as an officer of a small manufacturing firm would be a plus. If you would enjoy a challenging, professional position in a rural setting, submit your resume with salary history in confidence to: Thomas F. Miller, Kentucky Highlands Investment Corporation P.O. Box 628, London, Ky. 40741 35x1

CARD OF THANKS
We would like to thank all our friends and relatives for all their kindness during our time of sorrow. Also, a special thanks for the food, flowers, prayers, the Singing Bryants, Bro Joe Mobley, Bro Lester Arnold and Dowell and Martin Funeral Home.

The Family of Johnny Ray Miller

Mt. Vernon May Festival May 17, 1980
Booth space for rent for flea market, yard sale items, arts and craft items, etc. for Festival to be on Main Street in Mt. Vernon.

Rentals:
10x10 - \$10, 10x20 - \$15. Reservations required by May 3, 1980.

Write to P.O. Box 157 for reservation form or call 256-2172.

NOTICE
Rose Hill Cemetery needs money for upkeep; also new fence. We are asking the ones who have relatives buried there to help us. Make checks to Rose Hill Cemetery, send or give to:
Mary Purcell
Route 4, Box 607
Mt. Vernon, Ky. 40456
Cem. Sec.

WANTED
Dead or Disabled Cattle & Horses
THE MINK FARM
Ph. 679-3496 Somerset, Ky.

Water Hauled
\$12⁰⁰ Per 1,000 Gal.
Call David Thompson
256-4606 anytime or
Mon. thru Fri., 9-5, 256-4421
Delivered Anytime

OPEN HOUSE LET'S TALK CHIROPRACTIC
Tuesday, May 6, 1980
6:30 p.m. to 8 p.m.
Refreshments
Dr. Hazel Noble, D.C.
256-2743

For Sale or Trade



8 room Bedford Stone home with 2 fireplaces, 1 1/2 baths fully carpeted, carpet. Immediate occupancy. \$39,500.

CORY STEWART

Route 1, Brodhead, Ky. 40409

Elmwood Cemetery

Please send donations for upkeep to:

ELMWOOD CEMETERY ASSOCIATION
c/o Kelly Reardon, Sec.
Mt. Vernon, Ky. 40456

Providence Cemetery

Please send donations for upkeep of Providence Cemetery to:

PHILLIP DAVIS
P.O. Box 261 - Mt. Vernon, Ky. 40456

RICHMOND DRIVE-IN

8 Miles North of Berea on U.S. 25 Ph. 623-1718
Now - Open Nightly - Starts 8:50 p.m.

STEVE MARTIN The JERK
A UNIVERSAL PICTURE
UNIVERSAL PICTURES PRESENTS

One good bite deserves another!

After the sensational return to the screen of JAWS - what could be more terrifying than

JAWS 2

coming soon "ROCKY I & 2"

ROCKCASTLE AUTO PARTS

New Store Hours
April 28 - October 26
8 a.m. to 6 p.m.
Monday thru Friday
Saturday
8 a.m. to 5 p.m.

HELP WANTED

We are now taking applications for Experienced Truck Diesel & Gas Mechanics, Automobile Mechanics, and front office check in men.

This is a new garage, located at I-75 and U.S. South at Burr. Garage will be named Mt. Vernon Truck Garage. We will be working three shifts of mechanics as garage will be open 24 hours, 7 days per week which will include 24-hour emergency road service. Salaries will be based upon ability and experience.

You can get application at garage from Monroe Baker from 10 a.m. until 3 p.m.

GLENN PENNINGTON AUTOMOBILES

US 25 NORTH, BEREA

FEATURED UNITS THIS WEEK:
1979 Chev. Impala, 2 Dr., Colanade, 305 eng. Auto, A/C, Maroon
1979 Chev. Caprice Classic, 4 Dr., 305 eng. Auto, A/C, AM/FM, Cruise, Silver, Blue
1979 Chev. Chevette, 4 Dr., 4 Cyl., Auto, Maroon
1979 Ford LTD, 2 Dr., Small eng. Auto, A/C, Light Blue
1979 Ford Pinto Sports Cruising Van with Portholes, 4 Cyl., 4 Speed White with red, orange and black striping
1978 AMC Jeep Renegade, 6 Auto, PS, HT, White Blue Levi Interior
1978 Chev. Blazer, 4x4, A/C, Blue and White
1978 Chev. Caprice Classic, 4 Dr., Fully Eq'd, 3 Tone Deluxe Gold
1978 Chev. Monte Carlo, A/C, Auto, Blue
1978 Chev. Malibu Classic, 2 Dr., Auto, A/C, Light Blue
1978 Chev. Nova, 4 Dr., 6 Cyl., Maroon
1978 Chev. Nova, 4 Dr., 6 Cyl., Auto, Blue
1978 GMC Jimmy High Sierra, Fully Eq'd, 4x4, Blue and White
1978 Mercury XLT, 2 Dr., 302 engine, A/C, AM/FM Stereo, Metallic Brown/Saddle
1978 Olds Omega, 2 Dr., Colanade, 6 Cyl., Auto, A/C, AM/FM Stereo Tilt, Silver/Silver VR
1977 Chev. Monte Carlo, A/C, Moon Roof, Red/White VR
1977 Chev. Monte Carlo, 8 Cyl., Auto, Stereo, Tilt, Mocha/Saddle VR
1977 Chev. Impala 4 Dr. Small Engine, Auto, A/C, Dark Metallic Green
1977 Olds Cutlass, 2 Dr., Colanade, 6 Cyl., Auto, A/C, AM/FM Stereo, Tilt, Brown/Beige VR
1977 Plymouth Valiant, 2 Dr., 6 Cyl., Auto, Green/Green VR
1977 Ford F100 Pickup, 8 Cyl., Auto, Chrome Wheels, Tan
1976 Chev. Impala, 4 Dr., Sta. Wagon, Auto, A/C, Brown
1976 Chev. Monte Carlo Landau, 8 Cyl., Auto, A/C, AM/FM Stereo, Tape, Triple Black VR
1976 Chrysler Cordoba, 2 Dr., Fully Eq'd, Red/White VR
1976 Plymouth Fury II, 4 Dr., A/C, Brown
1976 Buick Century, 4 Dr., Colanade, A/C, Silver/Burgundy VR
PLUS MANY MORE TO CHOOSE FROM!
FINANCING TO SUIT YOUR BUDGET
MON. - 9:30 - 6:30 MONDAY THRU FRIDAY
SAT. - 9:30 - 5:00 SATURDAY
OUR Reputation is our Recommendation Since 1971

256-2743