

1981 Headlines

Coal Truckers' Strike Closes Two County Tipples, Haulers Want More Arson Suspected in Numerous Fires in Broadhead Area

Lester Burns, Jr. Appointed Commonwealth Attorney

Architect to Survey Property Engineers Meet With

Beginner Shao Lin KARATE CLASSES

Given weekly - Any age

Register Thursday nights, Jan. 21 and Jan. 28

at 7:00 p.m. at the Catholic Church Recreation Room.



Instructors:

Danny Rose, 1st degree black belt
Troy Hensley, 1st degree black belt

Council to Discuss Possible Rate Increases

Bridges to be Built in County According to 5-Year Plan

Council Discusses Revised Ordinances

Garbage Collection Cost the County over 152,000 for 1980

Windmill Project Sought by Judge/Executive

Board Discusses Drug Policy with Guests and School Officials

Council Increases Services Charges, Discusses Water-Sewer Increases

Cincinnati Woman Kill in Accident on Interstate

Judge Assures That the County will Provide Ambulance Service if CETA Funds are Cut

Mt. Vernon Plastics to begin Production Soon

School Board Re-emphasizes Personnel with the exception of first year teachers

Clean-up week is April 20-24

Magistrate Asks to See List of Those Receiving Food and Fuel Vouchers From County

Report of Campaign Spending

May Festival Line Up of Activities

DeBorde Upsets Thacker by 28; Ford Wins

Board Names Transportation Director; Payne and VanWinkle Transferred

Persistent Heavy Rains Cause Damage

Rockcastle County May Be Declared Disaster Area as a Result of Flooding

Several Attend Public Hearings

Roads to Get half of \$901,964 County Budget; \$54,000 For Health Building Repairs

First Year Teachers Rehired; Other School Personnel Placed

Executive Session is Popular at Monday Meeting of City Council

Council Adopts Ordinance Limiting Swimming to Lake's Beach Area

Judge/Executive and Magistrates Class over Attorney General's Opinion

Council Discusses Need for Additional Police Protection

Unpaid Traffic Citations are Main Topic at Council Meeting

Grand Jury Reports on Courthouse Condition

School Board Approves Budget for 1981-82, Placements and Hirings

County Tax Rate Set by Court; Assessment Up; Rate Down

Monday Night Ended 22 Year Career of City Councilman Jasper

DHR Figures Show 382 Post as Commonwealth Attorney

Jasper Upsets DeBorde; Ford Wins Big

Council Hears Request for Sidewalks Leading to Main Community Center

Federal Program Focuses on Needs of Elderly, Handicapped

CAP Continues Program of Repairs to Older Area Homes

MVFD to Cease County Runs Unless Court Agrees to Help

State DOT Awards Contracts

Brodhead Receives \$30,000 Grant; Holds Meeting to Plan for Project

Arsons suspected in Thursday night fire of storage building at Stewart Fertilizer

Lee Steel becomes Leo Industries as it moves to Dockcastle

STATE LEGISLATURE

By Sen. John D. Rogers

The single most important responsibility of Kentucky's General Assembly is to put together and pass a biennial or two year state budget and it's never been an easy job.

MT. VERNON SIGNAL THURSDAY, JANUARY 21, 1982 P-15

A national economy in transition would make a one year budget haphazard, but a biennial budget is twice as hard to work, as we see in our present budget problems.

The Brown Administration is currently proposing a \$9.9 billion budget to fund state government in fiscal years 1982-83 and 1983-84. Kentucky's fiscal year begins on July the 1st of each year.

At this point, it seems important to mention that the 1980-82 state budget originally totaled \$9.8 billion. Also, that budget suffered a \$30 million shortfall.

That meant Kentucky had to reduce what it intended to spend by \$30 million over the past two years. And, that is the main reason our rights of way were mowed less often, older and smaller state cars were used, fewer state employees, teachers and other state workers got less pay than intended, some services trimmed or eliminated and some construction projects postponed, scaled down or cancelled.

In rough estimates, twenty-five percent of the almost \$10 billion budget proposed by the Brown Administration will come from User Fees and another twenty-five percent might come from the federal government.

User Fees are generated from such services as tolls, tuitions and license fees. As for the federal funds, no one in state government is sure how much revenue Kentucky will eventually receive from Washington over the biennium.

The big money pot where most agencies and bureaus come for money is called the General Fund and the General Fund receives nearly all the revenue from city taxes and makes up the remaining fifty percent of the state's budget money.

Primarily, the General Fund is made up of revenue generated by sales taxes, personal income taxes, corporate income taxes, the severance tax on coal and minerals and around 186 other types of taxes and fees we pay whether we know it or not.

The job is clear, the legislature must fund all necessary state services for the coming two years, and it must also be done without increasing taxes.

The 1982 General Assembly is the most professional, independent and knowledgeable in the Commonwealth's history.

However, a well-trained and talented athlete must first prove he has the

heart before he can ever become a champion. And, so it goes with the state legislature, we must prove our dedication, our commitment to purpose and the state budget will be the scoreboard.

IN THE WINTER
By Juanita Fordyce

Nothing's more beautiful Than the falling snow, So silently it covers, The earth below, Trees that were bare, Branches all brown, Are now robed in white, Like a beautiful gown.

If you find it enchanting, Look again, Around every bend, Icicles are sparkling, Like diamonds and gems, Sure they will melt, Don't some treasures end?

Keep making those wishes, In things that must be, And in every season, Just try to see, God's works and reasons, For his world below, Soon winter will be over, And before you know, Seeds will be planted, Flowers and gardens will grow.

SS FIGURES ANNOUNCED

The annual earnings base-the maximum amount of annual earnings that counts for Social Security-will increase to \$22,400 from \$23,700, the 1981 base, Bob Anderson, Social Security manager in Richmond, said recently.

The increase is based on the change in average earnings levels from 1980 to 1981.

Also scheduled to increase in 1982 is the Social Security tax rate, Anderson said. The 1982 tax rate will be 7.7 percent, an increase of 0.05 percent over the 1981 rate of 6.65 percent.

The increase will amount to just 50 cents a month for a person earning \$1,000 a month.

Other Social Security figures are schedule to increase in 1982 as well. The annual exempt amount used in the annual earnings test will increase. The annual earnings test is the measure used to determine whether a person will receive benefits during a year. A person whose earnings do not exceed the annual exempt amount will receive all benefits due for the year. A person's benefits are reduced \$1 for each \$2 of earnings above the exempt amount.

In 1982 the annual exempt amount for people 65-72 will be \$6,000. For people under 65 all of 1982, the exempt amount will be \$4,440.



I'm happy about all the ribbons and trophies, but the greatest satisfaction for me is having my childhood dream come true.

On top of Ole Smokey

It was cold and wet that night in Maryland. I was helping Mom with the dishes when my brother Dave came running into the house shouting, "The mare just threw a colt. Come see."

To me it was the most perfect colt I'd ever seen in my life. A beautiful animal the color of blue-grey smoke. My Dad said that'd be his name, Smokey.

I spent every spare hour I had with that colt. Then one morning at the breakfast table, Dad announced, "Sandburg Stables 'll be coming to fetch Smokey today."

"You're selling Smokey?" I cried. "Why can't we keep him? Can't I ever have a horse of my own?"

"Honey, we can't afford to raise horses for money, then keep 'em ground for pets. We need that money. Smokey's a fine young colt but we have to sell him."

"Maybe, Well, what with the cost of feed and labor, 'maybe' never came for my folks. Eventually, the ranch was sold and I went off."

As soon as I got a job, I joined the Payroll Savings Plan and started buying United States Savings Bonds.

I wasn't really sure what I was saving for. I guess I didn't ever want to find myself in a position where I'd have to sell something I loved just to get along.

I never knew what happened to Ole Smokey until a few years later. I was telling Linda, a friend at the office, how my car had broken down on the way to work. She offered to drive me home. "But I've got to stop and pick up my daughter at riding school," she said.

I was glad to find a way home. "Thanks, I don't mind the stop, and I love horses."

We pulled up next to the fence and watched her

daughter dismount. As she led the horse toward us I recognized Ole Smokey.

"The owner was talking to Linda, so I asked as casually as I could, 'Is that horse for sale?'"

He looked at Smokey, shrugged and said, "Anything's for sale if the price is right."

Right then I knew why I'd saved all those Bonds. The price was a bit stiff for a school horse, but the Bonds had grown over the years and I knew I had enough.

As it turned out, Ole Smokey had a lot of talent no one had ever asked him to use. A friend of mine, who trained jumpers, took him over the hurdles and was astounded. "This horse could be a great jumper. Where'd you find him?"

And a great jumper was what he became. He jumped in horse shows from here to Madison Square Garden.

I'm happy about all the ribbons and trophies, but the greatest satisfaction for me is having my childhood dream come true. Sitting up on top of Ole Smokey, riding across the green fields knowing he is my very own.

When you join the Payroll Savings Plan, those U.S. Savings Bonds stack up and bring you closer to your future dreams, and the dreams for your country's future.



January Clearance Sale

All Ladies' Aigner, Bass, Acme and Joy Steps

Shoes and Boots

30% Off

Mens Shoes & Boots

Bass, Nunn Bush, Shaw, Texas, Acme and Abilene Western Boots.

25% Off

20% Off Aigner Purses and small Accessories.

Smith's Shoe Store Main St. Mt. Vernon

Mount Vernon Signal

MOUNT VERNON, KENTUCKY 40454

VOLUME 95 - NUMBER 24

THURSDAY, JANUARY 21, 1982



BACK TO SCHOOL Students in the Rockcastle County school system went back to school Wednesday morning for the first time in 7 school days. The winter weather has caused students to miss 18 days thus far this year. Two in-service days were scheduled for this Thursday and Friday, but according to Superintendent Parsons, school will be in session, and the in-service days re-scheduled. In the above photo, Carolyn Brown, far left, is a teacher at Mt. Vernon Elementary. Mrs. Vernon Elementary watches students get off the bus.

Totals for services rendered in 1981

By Nancy Huffman

Some limited research into local agencies, offices and service providers, reports the following information concerning types and numbers of services provided here during 1981.

HEALTH SERVICES
Rockcastle County Hospital had 1719 admissions to the acute care and 184 persons to the skilled nursing facility. In the emergency room, 5738 persons were treated during 1981. Rockcastle County Hospital has approximately 125 employees.

Rockcastle Ambulance Service, which has 9 employees and operates under the direction of the Fiscal Court, made 840 trips from their base of operation near the hospital.

The Rockcastle County Health Department provides numerous services which relate to general health improvement and well being. They include immunization, family planning, women and infant nutrition program, hearing and vision screening, pap smears, PKU, hemoglobin, V.D., breast, pregnancy, diabetes and blood pressure testing and examination services plus environmental services. The department has 6 full time employees and 1 part time employee. Services provided a total of 18082 services in 1981.

Mental Health locally provided care to retarded

Louisville city activist dies in car crash on I-75

Louisville community activist Elaine Gifford Musselman was killed Saturday in an automobile accident on Interstate 75 near Mount Vernon. She was 71 and lived at 1811 Spring Drive.

Mrs. Musselman apparently lost control of her car which ran into a guardrail about noon.

She was one of the founders of the Volunteers Bureau of the Community Chest, which is now the United Way.

She served as executive

adults, chronically disabled and 1732 clients were served for a total of 10941 services for school children. In 1981.

Suit filed against county

By Rick Anderkin

A civil suit, no. 81-CI-207, asking for \$70,000.00 in damages, has been filed in the Circuit Court Clerk's office of Rockcastle County, against the Allen Company, Inc. and Rockcastle County, Kentucky.

The suit, filed by Myrtle Woodall and husband James, is in connection with a newly constructed bridge on the Cupps Chapel-Broadhead Road, and it alleges that the Allen Company and the county were engaged in blasting operations on land adjacent to their property. The suit also says that the blasting caused the alteration of water" beginning about June of 1980 and continuing until November of 1980.

The suit also alleges that the blasting operations by the defendants, the Allen Company and the County, were conducted in a negligent manner and that as a result of the negligence, the land owned by Mr. and Mrs. Woodall was damaged.

The civil suit, which was filed on December 30, 1981, states that, "as a result of the concussion and vibrations caused by the blastings," the difference in the fair market value of

1732 clients were served for a total of 10941 services for school children. In 1981.

the Woodall's residence "immediately before and immediately after the cessation of the blasting operations" was the sum of \$50,000.00.

The suit also asks for a judgment in the amount of \$10,000.00 for damage or destruction of personality in and around the Woodall's property.

The Woodall's suit against the county and Allen Company also alleges that they were damaged in the sum of \$10,000 because, according to the suit, the blasting operations and the alteration of water caused a nearby stream to change its course.

County Judge-executive, Bob Jasper hired attorney Carl Clontz to represent the county in the suit.

Clontz filed the county's answer to the suit on January 24, 1982 in the Circuit Clerk's office.

The answer, presented by Clontz on behalf of the county, stated that "Rock-

Drug Education

The Parent Drug Education Program began Tuesday, January 19 with Larry Roberts, Commonwealth Attorney, as the speaker.

Mr. Roberts gave practical facts about drugs and their usage. Twenty-six people attended and asked questions about various drugs and their effects.

The next program will be Monday night, January 25 at 7:00 in the Rockcastle County Library Community Room.

The speakers will be Maureen Tarpey, a counselor or who works with parents and youth involved in drug abuse and Mr. and Mrs. Paul Kissel and their son, Tom, will take about their family as they deal with drug abuse.

You are invited to come and share with others who are concerned about this problem in our area.

Court accepts Sheriff's settlement

The Fiscal Court met in special session Tuesday to accept the tax settlement for outgoing Sheriff Henry Abney and while in session requested raise in session matters.

After issuing a quietus absolving the former sheriff of any further responsibility in connection with the office, the court heard a request from Clyde Barnett asking for a raise from 20 to 30 dollars per work day for the county election commission. The court voted unanimously to give the commissioners, Clyde Barnett, Walker Norton, the sheriff and court clerk, the requested raise.

County road supervisor, Paul Hansel, came before the court to recommend that the County buy two truck motors needed for operable county trucks. He quoted the prices of two types of motors from a local merchant. Magistrate Alex Albright asked Hansel if that was the only price quoted he had gotten and Hansel said, "Yes". The court voted unanimously to buy the two motors at the quoted price of \$800 each.

Hansel also asked that one of the extra county-owned radios be installed in his truck. The court agreed.

In other business, the court voted to raise court-house maintenance supervisor Elmer Decker's salary from \$325 to \$400 per month and hire Delno McClure as a full-time employee to work as a part-time assistant mechanic and part-time assistant to Elmer Decker.

Charges dropped

Burglary charges have been dropped against Bill Taylor in connection with the alleged December 19 break-in at the Red Top Restaurant.

Witnesses, Henry and Janice Miller and Mt. Vernon City policeman, Joe Howard signed release forms Monday.

Charges reduced

Charges against Junior Kirby have been reduced from first degree burglary to receiving stolen property by District Judge Daniel J. Venters. The charge stems from the January 4 burglary of Edd Hubbard's residence.

Venters had reduced the bond for Kirby from \$10,000 to \$15,000 cash bond and Kirby had remained in jail until Venters further reduced bond Monday to \$15,000 property and Kirby was released.

Kirby was ordered held over to the March Grand Jury.

Correction

According to incorrect information given us from the Circuit Clerk's office last week we reported that three subjects, Donald J. Smith, Junior French and Charles French, who had been indicted for theft by unlawful taking, had, at that time, been brought before the court and filled \$5,000 bond.

This information was not correct at that time; however, last Friday, the three men went before the court and executed bond of \$5,000 each.

Burglary

Mr. and Mrs. Jesse Cummins, owners of Cummins Grocery on Main Street, came to their business Wednesday morning to find their store had been burglarized sometime between 5 p.m. Tuesday and 7 a.m. Wednesday, accord-

Decker. After some discussion the court voted to pay McClure \$400 per month.

In final action, the court voted to leave open as had been the case, the fairgrounds for community use with no restriction provided some responsible member proposing use of the grounds signs a release form absolving the county of any legal liability resulting from accident or injury.

A statement in last week's Signal, contained in the article concerning the magistrates' salaries may need some clearing up. The article stated, "Along with the salaries, the magistrates receive \$100 a month expense allowance from the state." The sentence should have read, "Included in the salary amount, is a separate \$100 check for expenses

from the county." The magistrates are not paid by the state in any way and receive a total of \$600 from the county coffers which includes a travel expense of \$100.

In the same story, Deputy County Judge/Executive Mark Jasper was quoted as saying that the \$500 a year duty to belong to the Kentucky Association of Counties would save the county an estimated \$25,000 a year by taking advantage of the association's workmen's compensation insurance. Jasper should have been quoted as saying that the county could save an estimated \$25,000 over the next four years from workmen's compensation and unemployment insurance program.

Work on county owned Health Department building at a standstill

According to sources in the Health Department and in the Judge/executive office, work on the county-owned building bought last year to house the local health department is at a standstill.

The building, which was purchased by the county for \$2,000 was to be renovated with county Educational Assistance Funds and money on reserve in

the health department, utilizing county CETA workers to do much of the labor.

Officials in the health department said, however, that they no longer have control over the spending of the money they had in

(Cont. to 9)

Ice blamed for two I-75 accidents

Icy roads were blamed for two separate early morning accidents Wednesday, January 13 on I-75, both involving tractor trailer rigs and both occurring at the same location.

The first occurred about 2 a.m., 8.8 miles south of Mt. Vernon. Ralph Ady, 44, of Gahanna, Ohio, driver of the truck, reported to investigating officer, Jack Lawless, that he was traveling south and started over a hill, tipped his truck and lost control on the icy roads.

The truck was reportedly carrying about 43,000 pounds when it hit a rock wall.

About 5 minutes later, according to state police records, a second tractor trailer driven by Barry Friedman, 34, of Sayville, N.Y., came over the hill and the driver lost control of his vehicle. The vehicle fishtailed and overturned in the median.

Both drivers were taken to the Rockcastle County Hospital for class 2 injuries and Friedman was transferred to Patten A. Clay Hospital in Richmond.

ly carrying about 43,000 pounds when it hit a rock wall.

About 5 minutes later, according to state police records, a second tractor trailer driven by Barry Friedman, 34, of Sayville, N.Y., came over the hill and the driver lost control of his vehicle. The vehicle fishtailed and overturned in the median.

Both drivers were taken to the Rockcastle County Hospital for class 2 injuries and Friedman was transferred to Patten A. Clay Hospital in Richmond.

Burglars caught inside store

City policeman, Frank DeBorde was making his nightly rounds, when he reportedly observed two subjects in the process of gaining entry into the Pic Pa-Foo Market on U.S. 150 about 2:30 S/Sunday morning.

He called for back-up from city policeman Dickie Collinsworth, who called the store owner to open the door. According to Collinsworth, he also radioed for more help and state policemen Jimmie Silvers and Elizabeth city policeman Wayne Denney re-

sponded. Officers found Bobby Ramsey, 18, and Jerry Rowe, 21, both of Mt. Vernon in the store.

The suspects were arrested, charged with 3rd degree burglary and lodged in the Rockcastle County Jail. They have been placed under \$10,000 bond each.

Rowe was treated at Rockcastle County Hospital for a cut on the hand apparently from the broken front window through which the two reportedly made entry.



This view of Williams Street and the rear of Mr. and Mrs. Estil Hodges home, shows the landscape still blasted in the 4th inch snow that fell last week. Following the snow, Saturday and Sunday's sub-zero temperatures continued to plague the area and caused among other things, Lake Llaville to freeze over. The lake thawed out in a hurry; however, when "balmy" temperatures in the mid and high thirties followed close on the heels of the Arctic blast.

Mount Vernon Signal

Published Every Thursday

Main Street in Mt. Vernon, Kentucky 40456
Entered at Mt. Vernon Post Office
As Second Class Matter - Permit No. 1
In County - \$6.75 per year Out of County - \$8.50

James Anderkin, Jr., Publisher
Perlina M. Anderkin, Editor

Member Kentucky Press Association

County Statistics

Marriage Licenses

Dennis Ray Brown, 17, unemployed, and Shayla Lisa Laswell, 17, Route 1, played.
William Boyd Baker, 28, Berea, laborer to Wanda Gail Jones, 20, Brodhead, factory.
William Joseph Shelton, 30, Mt. Vernon, farmer, to Verla Ann Bennett, 33, Mt. Vernon, unemployed.

Deeds Recorded

Matt, Sr. and Shelby Jasper Poynter, property located in Rockcastle County to Wendell and Linda Williams, tax \$3.00.
David R. Bales, property located in Rockcastle County to Shirley, non, tax \$5.00.
Lucille Stewart, property located in Rockcastle County to Sherry Decker, no tax.
Billy A. and Joyce Busell, property located in Rockcastle County to James Edward and Mary Neville Cash, tax \$25.00.
Joe Sturgill, property

located in Rockcastle County to Billy and Fionnie Burke, tax \$3.50.
Carolyn Walkins, property located in Rockcastle County to William R. Watkins, no tax.
James E. and Mary Neville Cash, property located in Rockcastle County to Billy Allen and Joyce Busell, no tax.
Clarence and Louise Carter, property located in Rockcastle County to Jerry and Vicki Cox, tax \$72.00.
Everett and Hattie Brock, property located in Rockcastle County to Albert and Nannie Thomas, tax \$4.00.
Effie May and Robert Smith, property located in Rockcastle County to Marvin and Dora Smith, no tax.
Cumberland Production Credit Association, property located in Rockcastle County to Shirley, tax \$15.00.
Hugh and Phyllis Hendricks, property located in Rockcastle County to Daniel and Barbara Scott Johnson, tax \$37.50.
Robert and Mary Holcomb, property located in Rockcastle County to Jimmy Miller, tax \$5.00.

Hospital Report

ACUTE CARE

Admitted: Jones Lee Allen, Mt. Vernon; John G. Blahop, Mt. Vernon; Gilbert Jennings, Mt. Vernon; Edna L. Kirby, Mt. Vernon; Tammy E. Randolph, Crab Orchard; Ralph Eugene Andy, Ohio; Barbara Sue Ann Mullins, Mt. Vernon; Dorothy Bernice Hunt, Crab Orchard; Melissa Gail Hensley, Orlando; Wanda Gail Benge, Brodhead; Dillard Brown, Brodhead.

Released: Thurnie Bullock, Willie Overbay, Wuzham Leger, Gilbert Jennings, John Bishop, Elmo Linville, Ralph A. Hensley, Edna Kirby, Lissa Hensley, Ralph A. Hensley, Edna Kirby, Tammy Randolph.

Newborns: Joshua David Benge.

SKILLED NURSING

Willie Overbay, Mr. Vernon; Albert W. Miller, East Bernstadt; Elmo Linville, Berea.

Letters to the Editor

Dear Editor:

Often times we are so busy that we fall to take the time to say thank you to our law enforcement officers. We will not let the time pass before we express our deepest appreciation involved in apprehending the man that broke into our store on early Sunday morning. The watchful eye of Frank DeBorde was the key factor in the arresting of the men, Dick Collinsworth, Wayne Denny and Jimmy Durham, all gave help and as

Jimmy Silvers, who had just gotten off duty but he came when he was needed. Anytime someone breaks into your home or place of business, you stand to lose so much but thanks to the above men our loss was nil. We are proud of our law officers for making their rounds and protecting businesses and our town; you should be too because next time it could happen to your family.

Our sincere thanks to Henry Lee and Carolyn Abney, of the Rockcastle County Jail, for their notification.

With appreciation,
D... and K...
King's Pic Pac

From our files....

28 Years Ago, 1943
Total assets for the Bank of Mt. Vernon as of December 31, 1942 were listed as \$732,332.60.

Cecil Purcell was appointed police judge of Mt. Vernon last week by Gov. Keen Johnson to succeed W. Griffin, who resigned after serving a short while. Mr. Purcell also conducts a barber shop here.

Pvt. and Mrs. Floyd Bingham of California and Mr. Delbert Bingham of Detroit, Michigan have been visiting their father, Mr. Cal Bingham and Mrs. Bingham.

bought a farm from Walter Hasty and moved to it Tuesday.

Misses Doris Smock, Jennie Morrow Brown, Nell Vernon, Nancy, Mrs. N.M. Smock, Jack L. Adams and Jack R. Craig spent Thursday in Cincinnati.

20 Years Ago, 1962

Seven members of the Board of Directors of the Bank of Mt. Vernon were chosen by stockholders at the bank's annual dinner meeting last week at Kelsey's Restaurant.

The Board of Directors includes: J.H. Wolfe of Mt. Vernon; chairman, N.M. Smock, president of the bank; Atty. James W. Lambert of Mt. Vernon; W.S. Stewart of Wildie; R.B. Shale, cashier of Mt. Vernon; Dr. John D. Henderson, Mt. Vernon, and Ralph Dean, Berea.

A year-end report of bank assets disclosed a total of \$1,858.57.

Officers and teachers of the Primary department of the First Baptist Church of Mt. Vernon met at the home of Mrs. Evelyn Gregory, Monday. Those attending were Mrs. Lucille Hy-singer, Miss Alma Pike, Mrs. Cola Grace Wilson, Mrs. Hazel Linville, Mrs. Estill McBea, Mrs. Harold C. Jones and Mrs. Virginia Fonder.

10 Years Ago, 1972

Bank of Mt. Vernon's total assets were listed at \$10,066,050.03 at the closing of business on December 31,

1971, according to their Report of Condition printed elsewhere in this week's issue of the Signal.

Three county winners of the DAR Good Citizen Award have been announced by the Rockcastle County Chapter of the D.A.R.

Chosen for the honor from Brodhead High School were Wilma Barnes, granddaughter of Mr. and Mrs. Dewey Whitaker, Route 1, Brodhead.

Yvonne Carmack, daughter of Mrs. Helen Carmack of Mt. Vernon was elected from Mt. Vernon High School and Brenda Sue Wynn, daughter of Mr. and Mrs. Virgil Wynn of Livingston was chosen from Livingston High School.

CARD OF THANKS

Our sincere thanks and appreciation to the hospital staff, Watson Funeral Home, Rev. Carl, friends and neighbors for all kindness and expressions of sympathy during the recent illness and death of Willis Coffey, Brodhead, Ky.

The family of Willis Coffey

GOSPEL SINGING

There will be a gospel singing at the Mareburg Baptist Church Saturday, January 23 at 7:00 p.m., featuring Bill Newman and Heidi Weatherford, on tour from New Jersey. Everyone is invited.

FOOD FAIR MARKETS

Bring the Beauty and Romance of Genuine European Cream To Your Table With **LADY VICTORIA** Outstanding Features

SAVE 40%

SAVE \$1.00 4 On The Breeze Cleaner

WISK LIQUID DETERGENT 22 oz. Bottle \$6.39

DOVE DISH LIQUID 22 oz. Bottle \$1.09

DOWNY FABRIC SOFTENER 64 oz. Jug \$2.29

INTENSIVE CARE LOTION 10 oz. Bottle \$1.39

VIVA PAPER TOWELS Single Roll 79¢

SEA PAK ONION RINGS 2 lb. Package \$1.89

SEA PAK PERCH FILLETS 1 lb. Package \$1.59

WEIGHT WATCHER'S MARGARINE 1 lb. Package 69¢

EARTH GRAIN FROZEN BREAD 16 oz. Package 99¢

FOOD FAIR ICE CREAM Half Gallon Carton \$1.19

YELLOW ONIONS 3 lb. Bag 69¢

CRISP CABBAGE 1 lb. 17¢

CRISPY CARROTS 1 lb. Bag 29¢

UTILITY POTATOES 20 lb. Bag \$2.09

RED GRAPES 1 lb. 79¢

Prices Good January 18 Through January 24

DON'T RUSH INTO AN IRA

A GREAT NUMBER OF FIRMS ARE ADVERTISING INDIVIDUAL RETIREMENT ACCOUNTS. BEFORE YOU OPEN SUCH AN ACCOUNT COME TALK TO US. WE THINK YOU SHOULD KNOW EVERYTHING THERE IS TO KNOW ABOUT THESE ACCOUNTS. WE'VE GOT THE ANSWERS.

Federal Regulations require a substantial interest and tax penalty for early withdrawal of Individual Retirement Accounts.



THE BANK OF MT. VERNON MT. VERNON, KY.



**ALL OUR EXTRAS
ADD UP TO A LOT!**

Prices Good
January 28
Through January 24

**FRESH
WHOLE
FRYERS
55¢**
LB.
Limit Three With \$10.00 Or More Order

SOMERSET North 27 & Downtown GREENHILL
WHITLEY CITY PUEVILLE HAZARD HYDEN
JACKSON STAMFORD MT. VERNON LONDON
CORBIN



**LAY'S
SMOKED
PICNICS**
89¢
LB. (Sliced 99¢ LB.)

**LAY'S
BACON**
12 oz. Package
\$1.09

**FRESH BEEF
CUBE STEAKS**
LB. **\$2.39**

**FRESH
GROUND
BEEF**
3 lb. Package Or More
\$1.19
LB. (Ground Chuck \$1.69 LB.)

**LAY'S PORK
LIVER** LB. **59¢**
(Beef 69¢ LB.)

**LAY'S CLOVER LEAF
BOLOGNA** LB. **99¢**

**LAY'S 3 LITTLE PIG
BOLOGNA** **99¢**
12 oz. Package

**LAY'S 3 LITTLE PIG
WIENERS** **99¢**
12 oz. Package All Meat

**ARMOUR
VERIBEST
PORK
LOIN**
Quarter Sliced
\$1.39
LB.

**COLONIAL
SUGAR**
5 lb. **\$1.29**
Bag
Limit 1 With \$10.00
Or More Order

**J.F.G.
SALAD
DRESSING**
32 oz. Jar
Limit One With \$10.00
Or More Order

**MARTHA
WHITE
FLOUR**
Plain Or Self-Rising
5 lb. Bag
99¢

**FOOD FAIR
BREAD**
16 oz. Loaves
3/\$1

Food Fair Coupon
**50 S&H GREEN
STAMPS**
With This Coupon And
Purchase Of 5 LBS. Or
More Oranges Or
Grapefruit
Exp. 1/24/82

**WELCH'S GRAPE
JELLY** **\$1.39**
32 oz. Jar

**SPRITE,
TAB OR
COCA
COLA**
8-16 oz. Bottles
\$1.39

**SCHOOLDAY
PEAS** **3/\$1.09**
303 Can

Food Fair Coupon
**50 S&H GREEN
STAMPS**
With This Coupon And
Purchase Of 2 LBS. or
More Boneless
Beef Stew
Exp. 1/24/82

**VAN CAMP PORK 'N
BEANS** **2/79¢**
300 Can

**POST TOASTIES
CEREAL** **\$1.15**
18 oz. Box

Food Fair Coupon
**50 S&H GREEN
STAMPS**
With This Coupon And
Purchase Of \$2.00 Or
More Health & Beauty
Exp. 1/24/82

**MINUTE
RICE** **\$1.39**
14 oz. Package

**KEEBLER
COOKIES** **\$1.09**
Deluxe Gramhs or Oatmeal Fudge

Food Fair Coupon
**50 S&H GREEN
STAMPS**
With This Coupon And
Purchase Of 20 Or More
Pkgs. Hamburger Or
Hot Dog Buns
Exp. 1/24/82

**KELLY'S POTTED
MEATS** 3oz. Can **3/89¢**

**LOG CABIN COUNTRY KITCHEN
SYRUP** 24 oz. Bottle **\$1.19**

Food Fair Coupon
**50 S&H GREEN
STAMPS**
With This Coupon And
Purchase Of 3 Lbs. or
More Apples
Exp. 1/24/82

**KELLY'S VIENNA
SAUSAGE** 5oz. Can **2/95¢**

**WHITE LILY MUFFIN
MIXES** 4 Varieties **3/\$1**

Food Fair Coupon
**50 S&H GREEN
STAMPS**
With This Coupon And
Purchase Of 1 Or More
Heads Of Lettuce
Exp. 1/24/82

**KELLY'S LUNCHEON
MEATS** 12 oz. Can **\$1.19**

**OLD VIRGINIA STRAWBERRY
PRESERVES** 16 oz. Jar **\$1.19**

Food Fair Coupon
**50 S&H GREEN
STAMPS**
With This Coupon And
Purchase Of 1 Pair Or
More Any Ladies Nylons
Or Panty Hose
Exp. 1/24/82

**KELLY'S
CHILI** 15 oz. Can
With Beans **69¢**

**KELLY'S
CHILI** 15 oz. Can
No Beans **99¢**

**WAGNER LO-CAL
DRINK** Orange Or Grape
54 oz. Jar **99¢**

**MRS. BUTTERWORTH'S
SYRUP** 24 oz. Bottle **\$1.39**

Food Fair Coupon
**50 S&H GREEN
STAMPS**
With This Coupon And
Purchase Of 1 Bag Of
Food Fair Chips
Exp. 1/24/82

Food Fair Coupon
**100 S&H GREEN
STAMPS**
With This Coupon And
Purchase Of \$10.00-
\$30.00 Of Groceries
Exp. 1/24/82

Food Fair Coupon
**500 S&H GREEN
STAMPS**
With This Coupon And
Purchase Of \$40.00 Or
More In Groceries
Exp. 1/24/82

**HEINZ KEG'O
KETCHUP** **99¢**
With Coupon
Exp. 1/24/82

Food Fair Coupon
**300 S&H GREEN
STAMPS**
With This Coupon And
Purchase Of \$30.00-
\$40.00 In Groceries
Exp. 1/24/82

Food Fair Coupon
**50 S&H GREEN
STAMPS**
With This Coupon And
Purchase Of 2 Pkgs. Or
More Any Candy
Exp. 1/24/82

The Week at Livingston

By Mrs. Eva Black

Mrs. Nannie Sparkman of London was dinner guest of Mrs. Bertie Rice and Mr. Robert Bales Sunday. The residents of High Street wish to express their thanks and appreciation to Mr. George Pridmore for cleaning the snow off their street so they can travel.

Mr. Robert Bales is in Knoxville on business, this week.

Mr. and Mrs. Wayne McNew and Mr. and Mrs.

Estil Alcorn of Mt. Vernon were Saturday dinner guests of their parents, Mr. and Mrs. Denver Howard.

Mr. Anderson Bowles has returned home after undergoing surgery at the Pattie A. Clay Hospital in Richmond. He is improving nicely.

Mr. and Mrs. Wayne McNew and Mrs. Ima Jean Wheeler of Mt. Vernon visited Mr. and Mrs. Elmer Spivey Sunday.

Mr. Jack Leach of East Bernstadt visited his mot-

her, Mrs. Mary Leach last Thursday.

Mrs. Billy Mason and B.J. spent Sunday night with her grandmother, Mrs. Letta Jones.

Frank Wilkerson of London spent the weekend with his grandparents, Mr. and Mrs. Bob Wilson.

Mr. and Mrs. Jim Ingrafina and Susan of London visited Mr. and Mrs. Denver Howard Monday.

Mr. and Mrs. C.F. Mullins were recent guests of Mrs. Della Oliver.

Several friends and neighbors gathered at the home of Mr. and Mrs. Jimmy Everole to help little Damon celebrate his first

birthday.

Mr. and Mrs. Hershell Nicely, Penny and Stephen have returned from a visit with Mr. and Mrs. Ray Barrier in Ft. Myers, Florida. On their return trip, they visited M/sgt. Jerry McClure and his family in Warner Robbins, Georgia.

Mrs. Juney Collins has undergone major surgery at the Pattie A. Clay Hospital in Richmond. Her parents, Mr. and Mrs. Bert Newcom of Livingston, her brothers Ed and Bert and her sister, Mrs. Lois Willis of Covington visited her Saturday.

Mr. and Mrs. C.F. Mullins were in Mt. Vernon on business Monday.

Bro. Billy Medley and Mrs. Medley were Sunday guests of Mr. and Mrs. Archie Bales.

Mrs. Jane Smith and Mr. and Mrs. Bennis Croemer visited Rev. S. Moore and Mrs. Moore in East Bernstadt Sunday afternoon. Mrs. Moore is improving nicely after undergoing major surgery.

"BURGLARY"
(Cont. From Front)
ing to city policeman, Dickie Collinsworth. Collinsworth was called to the store and reported that he observed the back door had been opened from the inside.

said that evidence pointed to the fact that someone was left in one of the back store rooms when owners left for the evening.

About 25-30 packages of bologna, 25-30 packages of hot dogs, 8-10 loaves of lunch meat and 8 or 10 dollars in pennies were reportedly stolen.



Mexico is estimated to have enough oil to supply all U.S. needs for the next 40 years.

REAL ESTATE FOR SALE

100x280 Excellent Lot-Richmond Street, Adaptable to many uses. Only \$39,500 R-16.

Reduced-Two lots, near Mt. Vernon on US 25, approximately 150x150 and in a fast growing area. \$19,900 each. R-17.

Commercial Potential-West Main Street, Mt. Vernon. Good possibilities. City water and sewer. Priced at \$33,500. Z-26.

Farms & Acreage

40 Acres or less-near Salspeter Cave, remodeled 5 room house, barn and several miscellaneous outbuildings, approximately 8 acres, cleared and the balance wooded, water is provided by a well and pond. \$23,900. Z-4.

Reduced! Reduced! 3.44 acres, located on Highway 70, has city water and all level land. Priced at \$6,400. X-12.

9.9 Acres more or less located in the Roundstone Section, city water and septic tank for sewerable level tillable land, pond, fenced, in grass. Priced at \$16,500. Z-20.

House and 4 Acres more or less. Roundstone Section, city water, 3 bedrooms, bath, storage buildings, fireplace. Priced at \$19,900. Z-20.

Reduced! Reduced! 25 Acres more or less located at Mareburg, Ky., 20 acres cleared and balance in woods, tobacco base of 531 lbs., 32x40 barn. Priced at \$25,000. Z-22.

19 Private Acres and 4 Bedroom Frame, Beak Lick Section, 2 baths, entrance foyer, family room with fireplace, kitchen, utility room, storm doors and windows w/d hookup, w/w carpet, heat pump, garage, tobacco base, very private. Priced at \$64,900. Z-19.

150 ACRES - near Rockcastle River. Land has been core drilled. Recreational possibility. \$395.00 per acre. B-4.

28 Acres-more or less located in Brush Creek Section, improved with a tobacco base. Ample stock water, provided by creek. Tobacco base allotment 1,102 lbs. Priced to sell at \$14,500. X-12.

15 Acres and Mobile Home. Located in the Red Hill Section. Priced at \$3,900. B-16.

4 Acres-on Hwy. 150 near Broadhead, Agriculture or commercial, tobacco base allotment of 210 lbs., city water available, pond. Priced at \$19,950. C-17.

Town Farm-Only 1 1/2 miles from Mt. Vernon. Offers a panoramic view of Rockcastle's beautiful countryside, 88 acres, approximately 20 acres cropland balance in woods, 2 ponds, 1,417 lbs. of tobacco, almost new 2,400 sq. ft. home, 3 bedrooms, living room, large family room, kitchen and dining room combination, full basement, 2 baths and much more. Can be yours for \$99,500. B-27.

5 Wooded Acres-Large Bedford Stone Home-4 years old, 5 bedrooms, finished basement, 1 1/2 baths, 2 fireplaces and flu. On the Flat Gap Road in the Boone Section, \$49,500. X-4.

Privacy For Sale-3 acres more or less on Chestnut Ridge approximately 1 1/4 miles from Hwy. 25, partially cleared and partially wooded. Priced at \$995. C-10

38 Acre Farm-Wald Section of Rockcastle County, 1,724 lbs. tobacco base, barn, and beautiful building sites. Only \$40,000. C-15.

15.89 Acres-Highway 461, 5 minutes from Mt. Vernon, city water available, privacy. Priced at \$12,000. A-3.

88 ACRES - has been drilled for coal also has timber - located 5 miles Southeast of Mt. Vernon. A good buy at only \$34,900. B-2.

47 Acre Farm-located approximately 1 mile from Livingston and contains approximately 47 acres with approximately 12 acres cleared land, 901 lbs. tobacco base. Farm is improved with 2 houses, barn, garage and other miscellaneous buildings. Priced \$23,500. A-10.

Secluded-10 Acres located at Cove Branch near the Rockcastle County Speedway. Property consists of approximately 10 acres with tobacco base. Improved with an A frame house, 2 bedrooms, living room, kitchen, utility room. All for \$12,900. A-23.

28 Acres-more or less located in Brush Creek Section, improved with a tobacco base. Ample stock water, provided by creek. Tobacco base allotment 1,102 lbs. Priced to sell at \$14,500. X-12.

15 Acres and Mobile Home. Located in the Red Hill Section. Priced at \$3,900. B-16.

4 Acres-on Hwy. 150 near Broadhead, Agriculture or commercial, tobacco base allotment of 210 lbs., city water available, pond. Priced at \$19,950. C-17.

Town Farm-Only 1 1/2 miles from Mt. Vernon. Offers a panoramic view of Rockcastle's beautiful countryside, 88 acres, approximately 20 acres cropland balance in woods, 2 ponds, 1,417 lbs. of tobacco, almost new 2,400 sq. ft. home, 3 bedrooms, living room, large family room, kitchen and dining room combination, full basement, 2 baths and much more. Can be yours for \$99,500. B-27.

5 Wooded Acres-Large Bedford Stone Home-4 years old, 5 bedrooms, finished basement, 1 1/2 baths, 2 fireplaces and flu. On the Flat Gap Road in the Boone Section, \$49,500. X-4.

Homes - \$50,000 & Up

Reduced! Prestigious Two Story Brick Home, West Main Street, Mt. Vernon, completely renovated, exquisitely decorate, large living room, dining room, kitchen, bath, sun deck, private carport, large lot. Only \$49,500. Y-3.

Happy Acres-Almost New 3 bedroom brick, oak cabinets, living room, bath, carport, heat pump, large lot. Only \$43,900. C-2.

- 1. WHAT IS FHA?**
FHA is an abbreviation for Farmers Home Administration which makes rural housing loans.
- 2. CAN I QUALIFY FOR AN FHA LOAN?**
Yes, you can qualify for a low-interest loan if your income is less than \$11,500 per year.
- 3. WHAT WILL MY PAYMENTS BE?**
Payments can vary but generally amount to \$120 to \$150 per month.
- 4. WHAT DO I NEED TO DO?**
Simply drop by the office of Ford Realty & Auction Company and any of the staff will be happy to assist you in filling out your application and get you started toward owning your own home. It is simple and only takes about 30 minutes of your time.
- 5. WHY PAY RENT?**
After paying rent all you have is your rent receipt whereas in your own FHA home you have something of your own for perhaps no more payment than your rent is costing you now. Any of the staff at Ford Realty & Auction will assist you in any way and answer any questions you may have regarding an FHA loan.

CALL US TODAY. WE WANT TO SERVE YOU.

ing room with fireplace, formal dining room, ultra modern kitchen, family room, 4 bedrooms, 2 baths. Owner will consider trading to smaller home. Priced at only \$59,900. B-12.

One of the Finest-Brick Home, near Mt. Vernon, 7 1/4 private acres, 3 bedrooms, 2 1/2 baths, family room, fire place, kitchen, dining room, utility, 2 car garage. Priced to sell at only \$63,900. B-20.

\$40,000 - \$50,000

New Listing-Quality Country Brick Home, 3 bedrooms, living room, kitchen, den, 1 1/2 bath, electric heat, situated on approximately 1 acre lot. All for \$49,500. A-22.

Lovely Field Stone Home-located in the Valley Manor-Subdivision, 3 bedrooms, living room, kitchen, bath, utility room, garage, w/w carpet, city water, walking distance of downtown. Priced at \$42,500. C-23.

Desirable Location-located at corner of West Main and Lovell Lane, 2 bedrooms, living room, with fireplace, kitchen, dining room, and bath on 1st floor, 1 bedroom on second floor, full basement, oil furnace with central air, beautiful corner lot. Only \$43,500. C-1.

\$30,000 - \$40,000

ATTENTION! FHA PROSPECT! We have a new 3 bedroom brick waiting for you. You pick the location, Brin-

Close To Town & School-Bedford Stone, 3 bedrooms, living room, kitchen, 2 baths, located corner of William Street and Lovell. Priced at \$42,900. A-6.

Conveniently Located-3 bedroom brick located on Floyd Street in Owens Sub-division, family room, large garage, enclosed front porch. Is total electric. Can be yours for \$44,900. B-5.

Reduced! Reduced! Owner Must Sell. Countryside Estates, 3 bedroom, brick, 2 baths, patio/sundeck, privacy, trees, 2 car garage and much more. Can be yours for \$49,500. Y-3.

New FHA Approved Brick Homes-1 Section, 3 1/2 living room, utility room, large lot, only \$30,000 each. A-14.

In Broadhead-Excellent Condition, aluminum siding, 3 bedrooms, living room, dining room, bath, utility room, kitchen, w/w carpet, w/d hookup, large lot, owner will divide, possible FHA. Priced at only \$31,500. B-6.

7 Room Frame House-located on West Third Street, Mt. Vernon. House has w/w carpet, built-in appliances, washer/dryer hookup, within walking distance of schools, churches and stores. Situated on a nice corner lot. Priced \$31,500. A-20.

Shirley Street, Mt. Vernon-Excellent 3 bedroom frame house with living room, kitchen, family room, bath, convenient, electric heat, possible FHA financing. Only \$32,500. A-8.

FHA Approved-New 3 bedroom brick in Broadhead. City water, carport, built in cabinets.

3 Bedroom Bedford Stone Home. Negro Creek Road - electric heat, w/w carpet, built-in cabinets, w/d hookup, carport. Priced at \$38,500. A-1.

Reduced! 3 1/2 acres with 3 bedroom, modern home, Highway 461, numerous outbuildings, close to town, city water and cistern. Priced at \$36,900. X-19.

New FHA Approved Brick Homes-1 Section, 3 1/2 living room, utility room, large lot, only \$30,000 each. A-14.

In Broadhead-Excellent Condition, aluminum siding, 3 bedrooms, living room, dining room, bath, utility room, kitchen, w/w carpet, w/d hookup, large lot, owner will divide, possible FHA. Priced at only \$31,500. B-6.

7 Room Frame House-located on West Third Street, Mt. Vernon. House has w/w carpet, built-in appliances, washer/dryer hookup, within walking distance of schools, churches and stores. Situated on a nice corner lot. Priced \$31,500. A-20.

Shirley Street, Mt. Vernon-Excellent 3 bedroom frame house with living room, kitchen, family room, bath, convenient, electric heat, possible FHA financing. Only \$32,500. A-8.

FHA Approved-New 3 bedroom brick in Broadhead. City water, carport, built in cabinets.

Modern Home and 3 Acres Located on Copper Creek. House has 3 bedrooms, living room, kitchen, large utility room, city water. Owner leaving state. Good buy at only \$25,000. C-19.

Convenience-Lair Street, Mt. Vernon, economy house with 2 bedrooms, living room, kitchen, bath, utility room. Priced at only \$16,900. B-15.

In Broadhead-Excellent frame house living room, dining room, kitchen, 4 bedrooms, den, bath, heated by fuel oil stoves, city water and sewer, storm doors and windows, hardwood floors. Owner will trade or sell. Priced at \$29,900. C-16.

Your Get Started Place-1970 Model Mobile Home. It has 2 bedrooms, living room, kitchen, gas furnace, carpet/linoleum, city water, w/d hookup. The living room and kitchen are furnished and there is room for an additional mobile home with septic tank and city water available. Located 1 1/4 miles West of Broadhead on US 150. Priced at \$9,200. C-5.

New Listing-Priced for quick sale, house on Williams Street. It has 3 bedrooms, living room, kitchen, bath, chain link fence. Only \$20,000. C-20.

Mobile Home-1972, 3 bedrooms, kitchen, living room, bath 12x54. Priced at \$3,350. C-14.

Reduced! Brick Home on Tyree Street in Broadhead, 3 bedrooms, living room, kitchen and dining room combination, bath, utility room, carport, dishwasher, built-in cabinets. Priced at \$36,900. B-19.

FHA Approved Brick Home-1 Section, 3 1/2 living room, utility room, large lot, w/w carpet, carport, built in cabinets.

Be a Winner-3 room brick home located in the Hillview Subdivision, Mt. Vernon. It has 3 bedrooms, living room, kitchen with built-in cabinets, 1 1/2 baths, carport with utility room, w/w carpet, city water and sewer, metal storage building, 100x200 lot. Priced at \$39,500. C-13.

FHA Approved Brick Home-1 Section, 3 1/2 living room, utility room, carport, large lot. W-13.

Reduced! Brick Home on Tyree Street in Broadhead, 3 bedrooms, living room, kitchen and dining room combination, bath, utility room, carport, dishwasher, built-in cabinets. Priced at \$36,900. B-19.

FHA Approved Brick Home-1 Section, 3 1/2 living room, utility room, carport, large lot. W-13.

LEASE PROPERTIES

Countryside Estates-3 bedroom brick, 2 baths, patio/sundeck, privacy, trees, \$300 per month. Y-3.

Valley Manor Subdivision-3 bedroom brick, \$200 per month. B-3.

Three Bedroom-Almost New Brick House, Valley Manor Subdivision, \$300 per month. B-28.

Ford Realty & Auction Co.

Ph. 256-4545

Ph. 256-4545



Mt. Vernon, Ky. 40456

SAM FORD, GRI
Nights 256-4588

DANNY FORD, GRP
Nights 256-4446

ROY ADAMS, GRI
Nights 758-8400

LOTS-LOTS-LOTS

What kind do you want? Small lot, Big lot, Restricted, Unrestricted, Lot, Wooded Lot, Level Lot, Hill Lot, Expensive Lot, Inexpensive Lot, Lots located on Evergreen Estates, Valley Manor Subdivision, Lake Linville, Woods Creek Lake, Country Club Estates, Rainbow Valley Subdivision, Hwy. 401, Quail Section, Mt. Vernon, VA or VA approved lot. We Have All Kinds. Make An Appointment to See Them Today!

LOTS-located on Lake Cumberland. A view of Lake C. SOLD. New development. Good deal.

Social and Women's News

Personals

By Geo. Burton

George Burton was in Somerset on business last Tuesday.

Mr. and Mrs. Glenn Faulkner and Annette visited Mr. and Mrs. Gravelly Burton last Thursday.

Vicki Taylor spent Monday night with Sheila Burton.

Mrs. Robb, who has been on the sick list for a speedy recovery.

Mr. Millard Owens celebrated his birthday January 17. We wish him many returns of the day.

Clod Glovak spent last Wednesday night with Sheila Burton.

Sympathy is extended to Mr. and Mrs. Teddy Woodall due to the death of their infant son, Jason.

Mr. and Mrs. Robert Henderson of Somerset visited his mother, Mrs. Lona Logsdon Friday afternoon.

Mr. and Mrs. Danny Ford are the proud parents of a daughter, born last Tuesday, January 12, at the Pattie A. Clay Hospital in Richmond.

Mr. and Mrs. Robert Barron and family of Paris visited her parents, Mr. and Mrs. Robert Kirby last Friday.

Mr. and Mrs. Darrell Owens of Route 3, Somerset and Harris Burton of Berea visited Mr. and Mrs. George Burton Sunday afternoon.

Sympathy is extended to the family of Mrs. Willis Coffey of Brodhead in their time of sorrow.

Mrs. Clyde Anglin celebrated her birthday January 17. We wish her many returns of the day.

Mr. and Mrs. Joe Martin visited Mr. and Mrs. George Burton awhile Sunday night.

Mr. Carol Blanton, Jr. underwent surgery Monday at the Pattie A. Clay Hospital in Richmond. We wish him a speedy recovery.

Mrs. Shirley Burton and Sheila and Mrs. Christine Cashe were in Richmond, Monday evening to visit Mr. Carol Blanton, Jr. at the Pattie A. Clay Hospital.

Sympathy is extended to the families of Mrs. Dollie Adams and Mr. Cecil W. Rimmel in their time of sorrow.

We're glad to see the Brodhead news in the Signal again.

NOTICE:

Due to the bad weather, Somerset Community College has extended registration through Thursday, January 21 (today). You may register between the hours of 8 a.m. and 4:30 p.m.

Club to Meet

The Mt. Vernon Women's Club will have a guest speaker Tuesday night circuit judge Phillip Wicker who will speak to club members and guests about the court system and answer questions and concerns.

The meeting will be in the Community Room of the Bank of Mt. Vernon at 7:30 p.m.

EXTENSION HOME ECONOMICS

By Cheryl Witt
County Extension Agent
For Home Economics

New Fad Diet

Diet-By Alan Howard, director of lipids lab at Cambridge University in England, Cambridge Plan operates out of California in a pyramid sales structure. Participants become counselors and recruit others. Products include nutrition supplements. The diet for weight loss supplies 330 calories per day. Claims to provide RDA for 11 essential vitamins and minerals. Has resulted in cardiac irregularities. Federal Drug Administration, American Dietetic Association, and American Medical Association are investigating.

Problems associated with fad reducing diets

New fads weight control diets are seemingly in endless supply. Promoted by TV talk show guests and national sensationalistic newspapers, these diets can result in:

1. Quick weight loss followed by quick weight gain (yo-yo syndrome).
2. Stress to the body if used repeatedly.
3. Deficiency in one or more nutrients due to omission food groups or classes of foods.
4. Overabundance of

cholesterol and saturated fat.

To evaluate a new fad diet, ask the following:

1. Who proposed the diet and what are his or her credentials?
2. Does it supply foods from all the basic groups in sufficient quantity?
3. Does it stress one or more "special" or "magic" foods such as grapefruit or eggs?

Does it over emphasize either fat or carbohydrate?

Does it seem monotonous?

Does it require a regimen "blindly" without establishing new eating habits?

Is it expensive?

Does it promise cures?

If the answers are "yes" the diet is a fad diet and should not be followed.

Food faddism

A food fad can be defined as an exaggerated belief in the benefits of nutrition in health and disease. Consumers of all ages are subjected frequently to claims that modern technology rob our food supply of all its nutrients, and, therefore, we must use supplements to put them back into our bodies.

Food faddists base their statements on the premise that today's Americans are sick because our food supply is "devalitized". Actually, Americans today are living longer than before.

Promoters of food fads often:

1. Claim they have a cure-all diet or product.
2. Say they belong to an organization with a name similar to a well-known one.
3. Play on emotions.
4. Make direct sales.
5. Make advertisements look like articles.
6. Make extravagant claims that a nutritious food such as papaya juice has miraculous health benefits.
7. Try to build distrust of scientific community.
8. Offer testimonials rather than scientific evidence.

How to distinguish good nutrition information from bad

With all the nutrition information published or promoted by mass media it is difficult to sort out reliable and unreliable sources. Here are some questions to ask:

1. Are statements substantiated?

2. Are scientific terms used properly?

3. Are opinions qualified by words such as "seems" or "may" which indicate need for more research?

4. Were studies conducted at reputable institutions?

5. What are the credentials of the writer?

To get help in answering these questions, seek a registered dietitian or contact the state or district dietetic association.

Disputanta

Hello from Clear Creek.

Since I couldn't get out last week due to you know what, various hardships of nature which you have had hammered at you from every paper and media in this region, I will fall back on news, given me from every source, out of state.

Another fellow, I am writing of "Homesick People from Rockcastle" and believe me, we've got a bunch of 'em. They are descendants of former Clear Creek residents so thus I record news of them.

Mary Lou Enville Craig of Abilene, Texas writes to her folks to tell me reading Disputanta news brought out the Abney blood (all the way back to Grandpa Taylor Abney of Davis Branch hollow) in her. Since she's so homesick, I give her consolation saying, "All Abney's come back to these great rocks, hills and hollows eventually, Mary Lou, so have hope, home."

Another fellow, Capt. Kenneth Parsons of the Air Force in Goldsboro, N.C., who is in line for promotion to the rank of Major, writes homefolks that he happily reads the Signal there. Kenneth, a descendant of O.M. Payne, my father, who was a 75 years resident of Clear Creek, who as a little three year old boy, rared back to sing, "Roly-poly, Daddy's little fatty boy, he's going to be a great big man some day," and by golly, he has made it. I just wish he would get up and sing it at one of their high level staff meetings. What say, Kenny?

It seems the yearning to come back to Rockcastle County has hit two fellows in Northern Kentucky who work at St. Elizabeth South Hospital, near Covington. Barry Croucher and Russell Cornett are so homesick for the clean air of these hills, they wear gravel in their shoes while reading the Disputanta newspaper which consoles

MT. VERNON SIGNAL THURSDAY JANUARY 21, 1982 P.5

the hearts of many lost people from our region. Barry tells the other fellows there of his past days and is happy to hear of home. Better be careful, Barry, or you'll have them all flocking down here and there won't be room for you when you return. And you will, for your dreams of the blackberry patches, sassafras tea and the swimming holes of Clear Creek such as Cecil Abney has at his back door.

Then I see word from the Buckeye State of Ohio of two descendants of Clear Creek who are becoming and working in the Princeton School system of Hamilton County, namely Billie June Wilson Burton and "kissing cousin" John Payne, Jr. I think now they are sorry they left our good state, after Kentucky educated and prepared them for the wonderful careers they pursued.

The young folks get together during that "precious time" when all teachers get a break, to breathe and they snicker over this Disputanta news. I'll bet they even wear gravel in their shoes to remind them of long ago sunny days back here when they were free of care, else why do they take and read the Signal? Why isn't it Better Homes and Gardens, Billie June, and J.B., you could read of Brooke Shields, but no, it's

the Signal to cure the blues!

"Featuring People"

My second woman to write about is indirectly associated with Clear Creek when she married Bill Anglin, who came from this valley. I stopped at the home of Clyde Anglin, who is an old and dear friend, Clyde seemed delighted to see Matilda Miller, who had accompanied me that day, and myself for she made us very welcome, and we discussed Bill and his career. He had a great love for this valley and a close friend of the Payne family, almost seeming like a brother, he was at our home so much when I was a child. During his career, Bill had been a Deputy Sheriff, then sheriff, jailer, and held other offices of this county, a record which his family could be proud of. He led a long and useful life in the service of Rockcastle's people. Being of pioneer stock, a mountain type of man, he faced danger and trouble many times in his career. There are many amusing stories told of Bill during these years in office. Once, as jailer, he was faced by a Federal officer who claimed even wear gravel in their shoes to remind them of long ago sunny days back here when they were free of care, else why do they take and read the Signal? Why isn't it Better Homes and Gardens, Billie June, and J.B., you could read of Brooke Shields, but no, it's

(Cont. to 8)

If you have a good well or spring
Now there's a more efficient way to heat your home.



The Bard Water Source Heat Pump.
It can save you as much as 70% of your operating costs compared to electric heat, 50% compared to oil, and 35% compared to natural gas. It can even save you up to 50% on your summer cooling bill. All by utilizing nature's most abundant and efficient source of energy collector - ground water.
For economical, year-round comfort, no energy system is more efficient than the Bard Water Source Heat Pump. See one today. And take the high cost out of heating and cooling your home this year.

Greg's Heating & Cooling

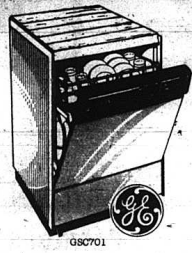
"Of Excellence is our trademark"

Call 256-5922 Emergency Phone - 758-8941

Basement of Rockcastle Hotel

Now at **BRYANT BROS.**

SALE PRICE!



A 7 quart convertible/portable Potscrubber dishwasher. 3-level washing action. No-heat energy saver drying option. Cutting board top Built-in soft food disposer.

Free delivery

BRYANT BROS.

Mt. Vernon 256-2911

URGENT!
CLEARING OUT TO BARE WALLS
Holly Tree In Berea Will Soon Be Closing Its Doors Forever!
Everything In The Store On Sale!
SAVE 10% - 20% - 30% - 40% - Up to 70% and MORE!

Nothing Held Back!
Never Before; Never Again!
Holly Tree FABRICS
Madison County's Complete Sewing Center
BEREA 986 9791

Ford sponsors legislation

State Representative Danny Ford of Mt. Vernon is co-sponsoring House Bill 26, for consideration by the 1982 General Assembly. House Bill 26 seeks to amend the Kentucky Revised Statutes to establish a penalty of one to five years in the penitentiary, or a fine of \$3,000, to \$5,000 or both for planting, harvesting or cultivating marijuana.

The bill also stipulates that a provision be established to create a presumption that the planting, cultivating or harvesting of 25 or more plants of marijuana was for purposes of sale.

This legislation, which was drawn-up by House Republican Caucus Chairman Herman Rattliff of Campbellsville has already garnered national attention from the Washington Bureau of NBC news.

Representative Ford remarked, "Not only is this bill timely and directed at a serious problem, but according to my information it will probably be a model for the other 49 states."

The bill has already been posted for consideration by House Judiciary Criminal Committee and

"DISPUTANTA" (Cont. From 5)

want to let the man go at that time. The Federal man flashed his badge. Bill glancing at the shiny metal said, "Why I wouldn't pay any more attention to that than I would an overcoat button" and the prison was not transferred.

Next week, I will continue this narrative on the Anglin's and their descendants.

Till then, Keep warm, watch your noses. Anytime the cold wind blows!

should be before the full House of Representatives before the end of January.

This was the initial bill Representative Ford sponsored during the General Assembly's first week of business. Further, Representative Ford stated, "I have some ideas of my own that I intend to turn into legislative proposals as soon as I finish my research."

For citizens who would like to monitor Kentucky's 1982 General Assembly, the Legislative Research Commission is providing two toll-free telephone numbers for the public to use to leave messages. Citizens are to check the status of pending legislation. To leave messages, call 1-800-372-7181 and to check bill status, call 1-800-372-7609.

And, the public can keep abreast of legislative schedules and activities by calling 1-800-372-7613.

Also, citizens can write to Representative Ford in the care of the Kentucky House of Representatives, Frankfort, Kentucky 40601.

3rd Annual Kentucky Solar Conference

The Kentucky Solar Coalition will sponsor the 3rd Annual Kentucky Solar Conference at the Carl Hill Student Center on the campus of Kentucky State University on Saturday, January 23rd.

Doug Kelbaugh, a solar architect from Princeton, New Jersey, who designed the first trombe wall building in the United States, will be the featured speaker and present a talk on "The Seven Principles of Solar Architecture." Mr. Kelbaugh will also conduct one of six technical workshops in the program, entitled "Multi-Family and Commercial Solar Design."

Additional workshops during the conference will be conducted by Kentucky solar professionals and the topics include:

- conservation and solar retrofitting;
- solar sunspaces and greenhouses.

principles and guidelines for residential solar; solar legislation and citizen action; and solar hot water systems.

This annual meeting has been planned around the 1982 General Session of the Kentucky legislature. In addition to Mr. Kelbaugh and the technical workshops, a separate session on the solar legislation which is pending in the state legislature will be conducted.

Exhibitors of solar equipment and other projects in Kentucky will have examples of their products and projects at the conference.

The conference is open to the public. Registration begins at 8:00 a.m. and is \$12.00 for non-members of the Coalition and \$7.00 for members of the Coalition. All registrations receive prior to January 18th include lunch. A \$2.50 fee will be charged to all registrants after January 18th and at the door. Any individuals joining the Coalition at this time will have the conference fee included in the annual membership dues.

For more information contact the Kentucky Solar Coalition, P.O. Box 526, Lexington, Kentucky 40565, or call Ralph Dennis at 606-254-6157 or 606-252-5535.

The Kentucky Solar Coalition is a non-profit organization which promotes the utilization of renewable energy technologies in Kentucky.

For more information on the conference, call 453-3115.

"If you watch a game, it's fun. If you play it, it's golf."
Bob Hope

KU customers set new electrical demand record

Customers of Kentucky Utilities Company set a new record for use of electricity on Monday, January 11, 1982, with an all-time peak demand of 2,330,000 kilowatts (KW).

The record occurred as everyone was coping with the second day of arctic-like temperatures and bitter cold winds.

W.B. Bechanan, President of Kentucky Utilities Company, said, "We are pleased that we had sufficient capacity to take care of our customers' energy needs. The cold weather was so severe and widespread that it was causing record demands for energy suppliers and additional power was not available from other utilities. KU's system capacity was increased last May with the addition of a 500,000 kw generating unit at the Company's Ghent Power Plant.

The new peak demand was about 4 1/2 percent greater than the forecast for this winter and 8.7 percent greater than last winter's peak of 2,145,000 kw recorded on Monday, January 12, 1981. The previous all-time peak demand was 2,185,000 kw, which occurred on Wednesday, July 16, 1980.

Local KU manager, Ron Cain, said Tuesday that a record was set locally also and that the only problem incurred was a tap line fuse out at Gum Sulphur. The fuse outage was due to heavy demand for kilowatts.

The severity of the bone-chilling weather was also demonstrated when customers set a new record for use of electricity during a weekend. The peak demand at 7:00 p.m. Sunday, January 10, 1982, was 2,115,000 kw. Heaviest demand for electricity normally occurs on weekdays

when factories, businesses and schools are operating.

While the frigid weather caused a heavy heating load on KU's system, it also resulted in some scattered outages in the Company's service area. Temperatures went as low as minus-eleven degrees Fahrenheit in some sections of the KU service area, causing furnaces to run almost constantly. Some circuits were so heavily loaded that service was disrupted for periods of up to several hours.

The wind and extreme cold attributed to some of the outage problems. KU's crews worked in the sub-zero weather to set new poles, string new lines, install new transformers and change fuses in order that service could be restored as quickly as possible. Many other Company employees spent long hours answering phones and taking trouble reports from customers.

Growing Christmas Trees

Growing Christmas Trees is an important history industry in the South as supplies are short.

Various estimates indicate that over 35 million Christmas trees are used in the United States each year. The long growing seasons and the favorable climate of the South offers an excellent site for those engaged in this business. Moreover, most Southern States are not importers of Christmas Trees. As a result, southern growers are in a favorable competitive position.

The production of quality Christmas Trees requires intensive management. During certain times of the year growers must devote time to their plantations for cultural operations such as weeding, grass and insect control, along with shaping

the trees. Time is also required for harvesting and marketing the final product. As with all businesses, prospective growers will be investing an appreciable amount of time in growing Christmas trees. It is subject to certain competitive risk as are all business ventures.

However, the financial returns from well-managed plantations can be very rewarding and offers the small investor a high rate of return. In addition, many individuals derive a certain satisfaction from working on the land and building up a business during their spare time.

If you own property and would like more information or technical advice on what and where to plant, contact the Kentucky Division of Forestry, P.O. Box 130, Pineville, Kentucky, 40377.

123456789012345678901234567

FACTS & FIGURES

123456789012345678901234567

One third of the world's population lives in poor health and abject poverty. More than one half billion people are constantly hungry or malnourished.



Here in America, many concerned people are helping those in need by contributing through a Christian, nondenominational humanitarian organization known as World Vision. It helps people learn to improve their own lives. For a free leaflet on how World Vision can help you help, write for "A Way of Caring," World Vision, Box 0, Pasadena, Calif. 91109.

<p>Doumak Marshmallows 1 lb. 69¢ each Limit 3</p>	<p>Stokley APPLESAUCE 303 size 2/89¢ Limit 4</p>	<p>Old Virginia Apple Butter 28 oz. 95¢ each Limit 2</p>	<p>Charmin TISSUE 4 roll 89¢ Limit 1 w/\$10 order</p>
<p>CRAZY, CRAZY PRICES!</p>			
<p>3 FULL DAYS Thurs., Fri. and Sat.</p>			
<p>Swiftling Shortening 42 oz. \$1.49 Limit 1</p>	<p>Generic Mac & Cheese 7 oz. 4/\$1.00 Limit 4</p>	<p>Sunrise BOLOGNA 69¢ lb. Limit 4 lbs.</p>	<p>Downy 136 oz. \$4.39 Limit 1</p>
<p>SUPERIOR FOOD MARKET U.S. 25 South Mt. Vernon</p>			

Choice Quality Meats!

ARMOUR VERIBEST PORK ROAST
 Boston Butt
\$1.09
 Lb.
 (Pork Steaks *1.29 Lb.)

HORNEL FRESH NECK BONES Lb. **49¢**
 Family Pack 4 1/2 Lb.

FISCHER'S HUNDO BOLOGNA Chunk Lb. **1.19**
 Sliced *1.29 Lb.

FISCHER'S BOLOGNA 1 lb. Package **1.59**
 Regular, Thick, German or Garlic

IVORY SOAP Personal Size **4/89¢**

U.S.D.A. CHOICE PLATTER PLEASING ROUND STEAKS
\$1.89
 Lb.

FISCHER'S ALL MEAT WIENERS
 12 oz. Package **99¢**

FISCHER'S MELLWOOD BACON
 1 lb. Package **\$1.79**

U.S.D.A. CHOICE PLATTER PLEASING SIRLOIN TIP
 Whole 16-12 lb. Average
\$1.99
 Cut To Your Specification

500 Extra TOP VALUE STAMPS
 With Coupon and *50 Order
 Superior Jan. 21-27

300 Extra TOP VALUE STAMPS
 With Coupon and *30.00 Order
 Superior Jan. 21-27

200 Extra TOP VALUE STAMPS
 With Coupon and *20.00 Order
 Superior Jan. 21-27

50 Extra TOP VALUE STAMPS
 With Coupon and Purchase of 5 lb. Bag French Fries
 Superior Jan. 21-27

50 Extra TOP VALUE STAMPS
 With Coupon and Purchase of 2 lb. Can Coffee
 Superior Jan. 21-27

50 Extra TOP VALUE STAMPS
 With Coupon and Purchase of 8-16 oz. Coke
 Superior Jan. 21-27

RED ROME APPLES 3 lb. Bag **99¢**

TEMPLE 1.25 Size ORANGES Dozen **89¢**

VINE RIPE TOMATOES Lb. **49¢**

YELLOW ONIONS 3 lb. Bag **69¢**

PASCAL Jumbo Stalk CELERY Each **59¢**

DAWN DISH LIQUID 22 oz. Bottle **\$1.29**

BETTY CROCKER CAKE MIX 18 oz. Box **79¢**

BETTY CROCKER FROSTING Ready-To-Spread 16 oz. Tub **\$1.09**

JIF PEANUT BUTTER Smooth or Crunchy 18 oz. Jar **\$1.69**

U.S. NO. 1 IDAHO POTATOES 10 lb. Bag **\$1.99**

J.F.G. INSTANT COFFEE 10 oz. Jar **3.69**

Lucks Beans 17 oz. **2/99¢**

SUNSHINE CHEEZ-ITS 16 oz. Box **1.19**

MIRACLE MAIZE CORNBREAD MIX 18 oz. Box **59¢**

WELCH'S GRAPE JELLY 32 oz. Jar **1.39**

NY-TOP PEACHES Sliced or Halves 16 oz. Can **2/\$1.19**

Stokley Pumpkin 16 oz. **55¢**

BLUE VALLEY ICE CREAM Galvan Carton **2.49**

SARA LEE POWDER CAKE 12 oz. Box **1.59**

PILLSBURY CINNAMON ROLLS 8 oz. Can **69¢**

J.F.G. SALAD DRESSING 32 oz. **99¢**

JUST RITE HOT DOG SAUCE 10 oz. Can **2/79¢**

HY-TOF FRUIT COCKTAIL 17 oz. Can **2/1.19**

ARGO PEAS 17 oz. Can **3/1.19**

VEG-ALL MIXED VEGETABLES 16 oz. Can **2/89¢**

SUPREME SUGAR 5 lb. Bag **\$1.39**

TIDE DETERGENT 48 oz. Box **\$1.69**
 Limit One With *10 Order

SWANSON'S CHICKEN DINNERS Dark Meat Or Breast 11 oz. Package **\$1.19**

HY-TOF CHEESE FOOD American or Plantino Individually Wrapped Sliced 12 oz. Package **\$1.39**

STAR KIST CHUNK LITE TUNA 6 1/2 oz. Can **89¢**

DEL MONICO THIN SPAGHETTI OR ELBOW MACARONI 16 oz. Box **69¢**

NY-TOP PEACHES Sliced or Halves 16 oz. Can **2/1.19**

STAR KIST CHUNK LITE TUNA 6 1/2 oz. Can **89¢**

U.S. NO. 1 IDAHO POTATOES 10 lb. Bag **1.99**

U.S.D.A. CHOICE PLATTER PLEASING ROUND STEAKS Lb. **1.89**

8 - 16 oz.
PEPSI
 Products
\$1.69
 plus deposit or bottles

SUPERIOR

Food Markets

Symbol Of Quality

CLAYTON HAMMONDS SUPERMARKET

Hwy. 461

The Somerset Road

"Home of the Bargains!"

Prices Good Jan. 21 - 27

Whole or Half
Bluegrass Boneless
HAM \$1.69



12 oz. Pkg. Field's
Pro-Leaguer
WIENERS 99¢



Field's Cornfield
BACON \$1.29 lb.



Fischer's Pickled Bologna 5 lb. jar **\$6.99**

Field's
SMOKED
PORKCHOPS **\$1.79** lb.

Fresh
PORK LIVER **39¢** lb.

Pol-Pak
Sandwich Bags
150-Ct.
69¢

Sale on Generic Products

Self-Rising FLOUR 89¢	5 lb. bag	Maple Syrup 69¢	24 oz.
48 oz. Cranberry-Apple Drink \$1.49			

Regular size
Dial Soap
3 Bars
89¢

Kal Kan
Cat Food
6 1/2 oz. can
4 for **99¢**

Jumbo Roll
BOLT PAPER TOWELS 89¢

Ranch Pride
Tomato Sauce
16 oz.
49¢

Daily Sun Pink
Grapefruit Juice
(Unsweetened)
73¢ 46 oz.

Demure
Facial Tissues
200 ct. **59¢**

Sweetheart Lime
Dish Detergent
22 oz. **59¢**

Italian
Spaghetti Sauce
32 oz.
99¢

Daily Sun
Grapefruit Sections
39¢ 16 oz.

7 oz.
Delmonico Macaroni or
Thin Spaghetti
3 for **89¢**

Red and White
FABRIC SOFTENER
\$1.49 1 Gal.

Townhouse
Whole Sour Pickles
69¢ 24 oz.

Van Camp Chili
Hot Beans
39¢ 300 size

Carpet Fresh
Rug Deodorizer
\$1.59 14 oz.



MAY-BOR-HOOD MARKET
BUDGET PRICES
QUALITY FOOD
MADISON GROCERY COMPANY

8 pk. 16 oz.
R.C. COLA
\$1.29 Plus Deposit



GARDEN FRESH
PRODUCE BUYS

RED GRAPES 69¢ lb.	20 lb. bag Potatoes \$1.79
BANANAS 29¢ lb.	



Thompson newborn still hospitalized

This past Christmas was both a happy and sad one for Ronnie and Cheryl Thompson of Route 1, Brodhead.

Mrs. Thompson gave birth to their first child on December 18th at the Patti A. Clay Hospital in Richmond.

Shauna Celeste Thompson was born at 11 a.m. on that Friday morning in December. Only minutes after her birth, doctors at Patti A. Clay detected severe respiratory ailments and transferred the baby to the U.K. Medical Center in Lexington.

After being transferred, Shauna developed acute pneumonia and doctors told her parents that she probably would not live through Christmas.

If the child's chances of survival were not bad enough after developing pneumonia, her lungs collapsed and she was unable to breathe for several minutes.

According to the baby's grandmother, Mrs. Georgia Thompson, doctors did a brain scan on the little girl and it was normal.

Although Shauna is still in intensive care and still hooked to a respirator to help her breathe, she is listed in stable condition and doctors at the Medical Center have told Mr. and Mrs. Thompson that they expect the child to live. However, the baby will have to remain in the hospital for three more weeks causing an extremely heavy financial burden on the Thompsons.

Mr. Thompson is 26 and works for Ed Sowder, a county farmer. Mrs. Thompson, 27, is unemployed.

The couple checked on the bill at the medical center after only eleven days and it was an astronomical \$17,000. Shauna has been in the hospital for 49 days at present.

The Thompsons have some insurance with Lincoln Income, but, according to Mrs. Georgia Thompson, it will pay very little of

the cost. Anyone who would like to help the Thompsons in their time of need may do

"HEALTH DEPT." (Cont. From Front)

reserve since Rockcastle County health department is now under the administrative control of a district or regional authority whose headquarters is in Manchester. Meanwhile, the building is empty but ready for occupancy and the Health Department which is in desperate need of more space.

"ACTIVIST" (Cont. From Front)

A. Russelman, four-time winner of the Kentucky State Amateur Golf Championships. Other survivors include her husband, Dave S. Musselman; Anne Lee Blair of Bethesda, Md.; (three other sons Thomas A., Robert G. and David S. Musselman, Jr.; a brother, Clarence H. Gifford, Jr., of Providence, R.I., and 10 grandchildren. The funeral services were held at the Highlands Funeral Home.

"CIVIL SUIT" (Cont. From Front)

Rockcastle County denies the allegations of the complaint filed by the Woodalls and it further states that "the County of Rockcastle demands the complaint be dismissed at the plaintiff's cost."

Clontz also filed a motion in the Circuit Clerk's office, on January 19th, in which he asked to go before the Circuit Judge on February 12 at 9 a.m., to move the court for a summary judgment dismissing the complaint against the county because, according to the motion filed, there is no genuine issue.

Clontz further states in his motion that the construction and blasting which gave rise to this complaint was performed by the Allen Company, Inc. and Subsidiary, to a con-

tract dates May 6, 1980 between the Commonwealth of Kentucky, Department of Transportation, Bureau of Highways and the Allen Company, Inc. and Subsidiary. The Cupps Chapel-Brodhead Road is a county road and except for that fact Rockcastle County had nothing to do with the contract between the state of Kentucky and the Allen Company, the motion stated.

The motion further alleges that Rockcastle County did not design the any phase of the work and had no control as to how the work was performed and who performed it. Clontz further states in his motion that the construction and blasting which gave rise to this complaint was performed by the Allen Company, Inc. and Subsidiary, to a contract date May 6, 1980 between the Commonwealth of Kentucky, Department of Transportation, Bureau of Highways and the Allen Company, Inc. and Subsidiary. The Cupps Chapel-Brodhead Road is a county road and except for that fact Rockcastle County had nothing to do with the contract between the State of Kentucky and the Allen Company, the motion stated.

The motion further alleges that Rockcastle County "did not design the bridge, had no control over any phase of the work and had no control as to how the work was performed and who performed it."

The motion to have the charges dropped against the Circuit Court on February 12, 1980.

"STATISTICS" (Cont. From Front)

rendered by the 7 full time and 5 part time persons. Both these figures include the KIPP program which is

administered by Cumberland River Comprehensive Care.

The Rockcastle Home Health office which is staffed by 10 employees, provides in-home nursing care, therapy and rehabilitation aid to those who are confined to bed or to their homes, but need frequent medical attention. In 1981 they made 5,089 home visits and listed 120 patients.

FIRE DEPARTMENTS

The Mt. Vernon Fire Department responded to 24 city fire calls in 1981 and made 52 runs to county fires. There are about 20 volunteers.

The Brodhead Fire Department is made up of 29 volunteers. Last year they made 137 runs and answered 8 city fire calls.

The Livingston Fire Department responded to 27 county fires and 4 fires inside the city limits. The department is made up of 18 volunteers.

SOCIAL SERVICES

The Bureau for Social Insurance has about 397 Aid to Families with Dependent Children clients and 1129 food stamp recipients (households). These clients are served by a staff of 10.

The Bureau for Social Services office employs 10 persons to provide its services which include services to the elderly and handicapped, foster care, juvenile services, adult and child protective services, adoption and special needs adoption all of which include a wide range of sub heads. In 1981, a total of 8,000 incidences of services were provided plus numerous investigations and studies which did not become active cases. The office averages about 130 clients per month.

The Family Life Center provided emergency shelter to 65 persons, spouse abuse shelter to 30 women and 65 children (many of this number are from surrounding counties), and has had the

capacity number of 8, at the group home for boys at all times during the year and 6 at the handicapped home. Other services provided by the center are enrichment to approximately 1500 through retreats. The center also serves the community with its facilities which is available for community use.

COURT HOUSE

The County Clerk's office is operated by 4 persons. Last year they issued 137 marriage licenses, 5348 car licenses, 3691 trucks, also records mortgages, deeds, mechanics' liens, encumbrances on real estate, federal tax liens, wills, delinquent taxes, veteran discharges, chattel mortgages, voter registration, notary bonds, ministers bonds, and keep the record of the Rockcastle Fiscal Court.

The Circuit Clerk's office processed 102 probate cases, 31 district traffic violations, 573 district misdemeanors, 101 district felonies, 72 circuit indictments, 21 circuit civil cases, 2 appeals from district court, 44 district civil and 163 small claims. The office is staffed by 4 persons besides the clerk.

LAW ENFORCEMENT

The Mt. Vernon City Police made 22 arrests and issued 196 traffic violations. Mt. Vernon has had 4 and 5 policemen on the payroll

THURSDAY, JANUARY 21, 1982 P-9

during 1981. The Livingston City Police issued 27 traffic violations. Brodhead City Police issued 36 traffic violations. Brodhead and Livingston police departments both have one policeman.

The Kentucky State Police issued 1072 traffic violations in Rockcastle County in 1981 and the Department of Transportation issued 507 citations. For most of 1981, there were 5 state policemen in Rockcastle assigned to the county.

The Fish and Game Warden cited 89 for violations.

LIBRARY

The Rockcastle County Library circulated 38,330 books from the main location and 32,791 from the Bookmobile during 1981. There are 4 employees at the library.

One fourth of the body's bones are in the feet.

It's The Law!

Surprisingly, there is a law on the books that allows Canadian and Mexican truckers to operate in the United States, while the laws in those countries make it harder for American trucking firms and drivers to operate in those countries. A number of people feel this is an unfair competitive disadvantage for U.S. carriers.

NOW IN RICHMOND

HOLLY TREE FABRICS

Killarney Square Shopping Center

Richmond, Ky. Off By-Pass

Near Holiday Inn

"Where Quality & Fashion Come First"

You won't find Convenient selection at a gas station that handles bread and milk!



We carry
• Over 4000 brand-name items
• An incredible variety of categories for the home
• Health and beauty aids
• Cards and magazines
• Instant home repair supplies
• Bakery goods
• Sample home repair supplies
• Stamps and money orders



we're Convenient

Participating Stores Only
Quantity Rights Reserved
© 1982
Prices effective
January 18-31, 1982.
In Mt. Vernon:
Richmond St.

Luck's Pinto Beans \$2.99¢
12 1/2 OZ. CAN
#303 CAN

Libby's Tomato Juice \$1.79¢
16 OZ. CAN

Trail Blazer Dog Food \$3.99
5 1/2 LB. BAG, REGULAR

Fischer's Bologna \$1.39
1 LB. PACKAGE, Regular, Thick, Garlic, or German

Ivory Bath Soap \$1.79¢
PERSONAL SIZE

Hi-Dri Paper Towels \$1.59¢
JUMBO ROLL

Zesta Saltines \$1.69¢
16 OZ. BOX

Tennessee Pride Sausage Links \$1.39
1 LB. ROLL, Or 12 OZ.



TC DINETTE
\$1.38
16 OZ. DEPOSIT
81 RETURNABLES



Convenient Food Mart

Don't let your utility dollars go up in smoke!

Money for energy saving home improvements is available. Stop by with your plans and estimates for a home improvement loan, that will assist you in making the improvements necessary, to keep home heating costs down.

Member F.D.I.C.

Citizens Bank

Box 127 Brodhead, Ky. 40409-0127

"growing for you" Since 1904

Drive Thru Open till 6 p.m. Fridays

Open 8:30 to 1 p.m. Saturdays

Open 8:30 to 3 p.m. Monday thru Friday

LENDER

PIC-PAC
SUPERMARKETS

**PIC-PAC...
FOR VALUE
& SAVINGS!!**



U.S. INSPECTED FRESH
**WHOLE
FRYERS**

49¢
LB.

ARMOUR VERIBEST
**PORK
CHOPS**
\$1.29
LB. FAMILY
PAK
ML-EO

*SHOP PIC-PAC
FOR OUR
VALUES.
YOU'LL COME
BACK FOR
THE
SMILES!



SMOKE
PICNIC
89¢ SLICED
LB. 99¢

**CHUCK
ROAST**
\$1.79
LB.

**SUPERMAN
PEANUT
BUTTER** 18 OZ. JAR **\$1.49**

**LIBBY PEAS GOLDEN
CORN OR
BEANS** 16 OZ. CANS **2 79¢**

**HYDE PARK
POTATO
CHIPS** 7 1/2 OZ. PKG. **69¢**

**DINTY MOORE
BEEF
STEW** 24 OZ. CAN **\$1.39**

**DAWN
DISH
LIQUID** 22 OZ. BTL. **\$1.19**

FRESH
**FRYER
LEGS**
\$1.09
LB.

HYDE PARK WHOLE HOG
**COUNTRY
SAUSAGE** **\$1.39**
LB. ROLL

U.S.D.A. CHOICE BONELESS
SWISS STEAKLB. **\$1.99**

ARMOUR
HOT DOGS12 OZ. PKG. **\$1.09**

ARMOUR
SLICED BACON16 OZ. PKG. **\$1.79**

ARMOUR
CHUNK BOLOGNALB. **\$1.29**

HYDE PARK
CHIPPED MEATS2 1/2 OZ. PKG. **49¢**

HYDE PARK
COOKED HAM4 OZ. PKG. **\$1.19**

FROZEN OCEAN
PERCH FILLETSLB. **\$1.69**

WOODY'S
CORN DOGSLB. **\$1.29**

CHARMIN
**BATH
TISSUE** LIMIT 1
WITH
PURCHASE 4-ROLL PKG. **88¢**

Star-Kist
**CHUNK LIGHT
STARKIST
TUNA** IN OIL
OR WATER 6 1/2 OZ. CAN **88¢**

TROPICANA
**ORANGE
JUICE** 64 OZ. CTN. **\$1.09**

BANQUET
**FRIED
CHICKEN** 32 OZ. PKG. **\$2.59**

Swiftning
**PURE, DEPENDABLE
SWIFTNING
SHORTENING** 42 OZ. CAN **\$1.39**

"Pic-Pac Produce Is The Pick Of The Patch"

JUICY FLORIDA
ORANGES **\$1.19**
5 LB. BAG

U.S. NO. 1 BRAND
POTATOES **\$1.99**
10 LB. BAG

CRISP
CARROTS **99¢**
3 LB. BAG

CALIFORNIA
**RED
GRAPES** LB. **99¢**

MICHIGAN RED
**DELICIOUS
APPLES** 3 LB. BAG **99¢**

FRESH
CAROLINA YAMSLB. **39¢**

MINNEOLA FLORIDA
TANGELOS5 FOR **99¢**

WELCH'S
GRAPE JELLY 32 OZ. JAR **\$1.39**

ORVILLE REDENBACHER
POPCORN 30 OZ. JAR **\$1.99**

RAGU
SPAGHETTI SAUCE 15 1/2 OZ. JAR **89¢**

LIQUID (1 1/2 OFF LABEL)
PUREX BLEACHGAL. **79¢**

HUNTS
PUDDINGS4 CT. PAK **\$1.19**

DELMONICO THIN SPAG. OR
ELBOW MACARONI 16 OZ. PKG. **69¢**

GLAD
TRASH BAGS10 CT. PKG. **\$1.49**

PLASTIC
GLAD WRAP200 FT. ROLL **\$1.19**

AQUA FRESH
TOOTHPASTE6.4 OZ. TUBE **\$1.39**

KRAFT DELUXE
**SLICED
CHEESE** 8 OZ. PKG. **99¢**

ROYAL SCOT
MARGARINE 16 OZ. PKG. **39¢**

PILLSBURY BUTTER, BUTTERMILK, OR
COUNTRY BISCUITS 6 PAK **\$1.39**

COLE
GARLIC BREAD 16 OZ. PKG. **99¢**

BANQUET
COOKIN' BAGS 2 5 OZ. PKGS. **79¢**

ONE IDA SHOESTRING
FRENCH FRIES 20 OZ. PKG. **99¢**

No Name Generic Values

NO NAME
MAYONNAISE 32 OZ. JAR **\$1.29**

NO NAME
TOMATO KETCHUP 32 OZ. BTL. **99¢**

NO NAME
PAPER TOWELS JUMBO ROLL **59¢**

NO NAME YELLOW, DEVILS FOOD, OR
WHITE CAKE MIX 16 1/2 OZ. PKG. **63¢**

NO NAME CHOCOLATE OR
WHITE FROSTING 13.2 OZ. PKG. **75¢**

NO NAME PIECES
MUSHROOMS 4 OZ. JAR **55¢**

PIC-PAC
SUPERMARKETS

**COCA
COLA**

16 oz. 8 pk.
\$1.49

**R.C.
COLA**

16 oz. 8 pk.
\$1.49

Super
**GROCERY
Giveaway**

PLAY & WIN

THOUSANDS OF VALUABLE PRODUCTS AND CENTS-OFF COUPONS. GET YOUR FREE GAME CARD TODAY!

**HYDE
PARK**

Church or Civic
Organization

SAVE THE LABELS ON
HYDE PARK FOOD
PRODUCTS!

Hyde Park Food Products Labels are worth one-half cent each to your church or civic organization. Start saving labels today! After accumulation of Labels, your church or civic organization should mail them to: Madame & Hyco, Inc., 191 Corporate Ave., Memphis, Tenn. 38132.

Compare Quality
Compare Price,
You'll Buy Hyde Park!

PRICES GOOD THRU JAN. 23, 1982

FEDERAL FOOD STAMPS WELCOME

WE RESERVE THE RIGHT TO LIMIT QUANTITIES, AND CORRECT PRINTING ERRORS

Around BROADHEAD

Personals

By Mrs. Mary McWhorter

Recent visitors of Mr. and Mrs. Walter Doan and Bill Bay, Guy Jr., reports his mother and father-in-law, Mr. Marion Smith and wife Dessie are doing well. We are glad to hear from them.

Dwight Mahaffey spent a week with Mr. Tim Harrison.

Walter Doan spent 10 days in Atlanta, Georgia, during the holidays with their daughter, Mrs. Vickie Lunford, Arnel and Sonya.

Mae Roberts had a few days last week with her granddaughter and family. Mrs. Gary Ping.

Mrs. Nancy Lewis and children. Mr. and Mrs. Johnny Taylor were recent guests of Mr. and Mrs. Delbert Long.

Mrs. Janet Blevins spent the weekend in Ohio with her mother and father, Mr. and Mrs. Clyde Thompson. Mrs. Thompson is confined to the Epp Memorial Hospital, Kenwood Road, Cincinnati, Ohio 45236.

Mr. and Mrs. Charles Lawrence were Saturday evening visitors of Mrs. Elva Mobley.

Mr. and Mrs. Benny Craig, Stacy and Corey, Mrs. Mabel Taylor and Mrs. Mary McWhorter were in Lexington Friday visiting John Craig.

Mr. Tim Harrison spent Sunday night with Mr. Dwight Mahaffey.

Mrs. Carrie Barnett reports her son-in-law, Mr. Junior Sowder is in Patti A. Clay Hospital in Richmond, suffering from a slipped disk and pinched nerve in his back. Also her neighbor, Mrs. Norma Nicely is in Patti A. Clay Hospital with the same ailment.

Mrs. Geneva Cromer fell and broke her wrist, recently.

Mrs. Mae Holbrook is back at home from a Louisville hospital recuperating from a broken hip. We wish for all these people mentioned a speedy recovery.

Miss Janice Long spent Tuesday with Miss Elizabeth Ann Proctor.

Mr. and Mrs. Ronnie Adams and Brandi, Mrs.

Bertha Adams were Sunday dinner guests of Mrs. Mary Adams.

Mrs. Bertha Adams has moved to her new home on Silver Street. We regret losing her on West Street. We also lost another neighbor, Mr. and Mrs. Eddy Cash, Caroline and Jim, but gained one, Mrs. Eddy Cash, Mr. and Mrs. Billy Allen Bussell and family.

Mr. Jim Bussell celebrated his birthday Sunday, January 17 at his home along with his wife, Nancy, his son, J.D. and daughter, Angie, also his parents, Mr. and Mrs. Desiva Bussell, his brothers, Barry, Ricky and wife, Jenny and daughters, Kristi and Ashley of Somerset, his sisters, Teresa and Mary Ann Bussell.

Recent visitors of Mr. and Mrs. Edna Bussell were Mr. and Mrs. Jack and Mrs. Curtis Helton, all of Lockland, Ohio.

Mr. and Mrs. E. H. Sell is on the sick list. He hopes she soon feels better.

Mr. Harve Stevens celebrated his birthday at his home along with his wife, Mrs. Edna Stevens. Others present were Mr. and Mrs. J.B. Stevens of Mt. Vernon, Mr. and Mrs. Lois Stevens and son, Jonas Paul, Mr. and Mrs. Homer Jones, Mr. and Mrs. Melvin Harrison, Gayle and Timmy, Mr. and Mrs. Eddy Elam and children, Mr. and Mrs. Ronnie Stevens, Shonna and Shannon, Mr. and Mrs. Darrell Stewart, Judy Ann and Ericka, Mr. Homer Jones, Jr., Mr. Edd Jones, Mr. Randall Stevens. We wish Mr. Stevens many more birthdays.

Our deepest sympathy goes to the Willis Coffey family. Several people from South Carolina, where Mr. Coffey's son, Bobby presided over the funeral, also Mrs. Belle Coffey's daughters, Stella and Hortense were here.

Mr. Dan Gray has been ill at his home the last two weeks.

Guests of the Dan Gray's this week were, Mr. and Mrs. C.E. Frith and son, Ted R. Frith, Louisville and Mr. and Mrs. Gordon Smith of Berea.

Mrs. Mabel Taylor and Mrs. Mary McWhorter were in Lexington Friday visiting John Craig.

Mr. Tim Harrison spent Sunday night with Mr. Dwight Mahaffey.

Mrs. Carrie Barnett reports her son-in-law, Mr. Junior Sowder is in Patti A. Clay Hospital in Richmond, suffering from a slipped disk and pinched nerve in his back. Also her neighbor, Mrs. Norma Nicely is in Patti A. Clay Hospital with the same ailment.

Mrs. Geneva Cromer fell and broke her wrist, recently.

Mrs. Mae Holbrook is back at home from a Louisville hospital recuperating from a broken hip. We wish for all these people mentioned a speedy recovery.

Miss Janice Long spent Tuesday with Miss Elizabeth Ann Proctor.

Mr. and Mrs. Ronnie Adams and Brandi, Mrs.



William Bentley Thomason, Jr. celebrated his first birthday, December 23, at the home of his parents, Mr. and Mrs. Bentley Thomason, in Cincinnati, Ohio. Those helping him to celebrate besides his parents, were Mrs. Jean Williams Elliott, her son and daughter, and Ella Elliott of West Chester, Ohio.

Mr. and Mrs. Rochelle Pyle and Kathy Gorman of West Chester, Ohio. He received many nice gifts. He is the grandson of Mrs. Maggie Thomason of Route 4, Mt. Vernon and the late Martin Thomason, Mrs. Samantha Brown of Cincinnati, Ohio and Mr. Denver Brown of Elkton, Md. Grandparents are Mr. and Mrs. James Smith of Route 1, Broadhead.

New housing regulations aimed at providing more home loans

Kendell L. Seaton, Federal Home Administration State Director, has announced the U.S. Department of Agriculture has changed its regulations to

make it possible for more people to receive home loans through the Farmers Home Administration (FmHA).

Seaton said the revised rules change the income eligibility criteria and make numerous changes to clarify and simplify operation of the agency's single-family housing programs.

The FmHA has a wide range of housing programs, including mortgage loans for single-family and multiple family housing.

One of the major changes in the regulations is the elimination of a single nationwide income eligibility level. Previously, only families with adjusted incomes below \$15,600 were eligible for FmHA housing loans.

Income ceilings now vary by economic areas and are based on a percentage of the median income of the area. Low-income is defined as 80 percent of the area median income.

Applicants who qualify for moderate-income loans will pay interest rates prevailing when the loan is closed. The current interest rate charged by the FmHA is 13.25 percent.

For low-income applicants, the agency provides "interest credits" which reduce the amount of interest the borrower pays, sometimes to as low as 1 percent.

Using data developed by the Department of Housing and Urban Development (HUD), the FmHA now sets income eligibility limits in more than 600 economic areas throughout the nation. There are 15 economic areas in Kentucky which are aligned with the Area Development Districts. Kentucky income eligibility ranges from \$17,000 to \$20,500. The low-income level at which applicants become eligible for "interest credits" ranges from \$11,500 to \$15,000. Adjusted income limits for Jackson and Rockcastle counties

MT. VERNON SIGNAL THURSDAY, JANUARY 21, 1982 P-11

range from \$5,400, very low, \$17,000, low, and \$17,000, moderate.

Interest rates charged on loans to moderate-income borrowers may be either FmHA's established rate or HUD's rate, depending on the borrower's ability to pay.

FmHA operates a nationwide program of housing, farm and community facility loans through 2,000 county offices, 300 district offices, 50 state offices and a national headquarters in Washington, D.C.

Kentucky operates the programs through 70 county offices, 7 district offices and a state office in Lexington, Ky.

For additional information, contact your local County Supervisor, Robert W. Hornsby, P.O. Box 122, McKeel, Ky., ph. 287-7126.

KIDWELL FIRE

Residence of Robert Kidwell on the Copper Creek Road caused considerable damage Sunday night, however, most of the contents were saved, said a spokesman for the MFPD, Monday.

The local fire department responded to the call, which came in about 9:15 p.m., along with the Broadhead Fire Department.

JANUARY

CLEARANCE

FALL-WINTER-HOLIDAY MDSE.

Reduced

25% 33 1/3%

50%

Register for \$100 and \$50 gift certificate to be given Saturday, Jan. 30th

MARLENE'S

117 Clay Dr. Berea

REAL ESTATE FOR SALE

NEW LISTING-3 bedroom brick home situated on a nice lot in the Brim Ridge section of Rockcastle County. This beautiful home has living room, kitchen with built-in range, bath, utility room with washer/dryer hookups, carpet and vinyl floors throughout and an attached 2 car garage. It is on city water and is FHA approved.

NEW LISTING-65 mobile home. This is a mobile home has 3 bedrooms, bath, living room, kitchen with built-in refrigerator, range, heater, electric furnace. Call us today for an appointment to see this lovely home.

4 Acre Baby Farm with a good house which has 3 bedrooms, living room, kitchen, bath and closed-in back porch. This farm fronts on a blacktop road and water is supplied by a cistern. This property is reasonably priced, so hurry. Call us today!

Reduced! Investor's Delight-2 houses located just north of city limits of Mt. Vernon. House has 2 bedrooms, living room, kitchen and bath. The other house has four bedrooms, kitchen, living room, and bath. Both houses have a washer/dryer hookup, city water and are partially insulated. There are also two outbuildings and a garage.

2 Adjacent Lots in the Country Club Estates. Each lot measures 100x200 and fronts on a blacktop road. City water is available. Call us today and get first choice on these nice lots.

Building Lots-Two adjoining lots located in the Cedar Heights Subdivision near Mt. Vernon city limits.

Beat the Heat of Grocery Prices on this 18 acre mini-farm. You can produce your own meat, milk your own cow, gather your own eggs and grow your own vegetables and in your spare time raise 895 lbs. of tobacco. The farm is located just outside city limits of Mt. Vernon.

BABY FARM-Approximately 4 1/2 acres about four miles northwest of Mt. Vernon. Good location. Ideal for small time farming or as a hobby or other uses. Build your own home or move a mobile home onto this nice farm. City water is available.

FHA Approved nice brick home with 3 bedrooms, kitchen/dining rooms separated by bar, living room, also large family room (12x20), bath, carpet and electric heat. The home has city water, blacktop road and is situated on a nice lot in the Willalla area.

Large Lakefront Lot-Approximately 1 1/2 acres overlooking beautiful Lake Linville. This lot offers privacy and is ideal for a mobile home, underground home or any other type also has a septic system, city water, well and electricity making it possible for immediate camping or mobile home occupancy. Lots of space for garden and pets.

FHA BARGAIN-this house has an assumable, 8 percent loan to qualified buyer, plus 3 bedrooms, kitchen/dining room combination, bath, new carpet and vinyl floors, w/d hookup, carport, city water, fruit trees, blacktop road and nice lot just a few minutes from Mt. Vernon in Orlando section. In addition to the 8% loan, the price has been reduced to bargain status.

NEW LISTING-Three bedroom home situated on a nice lot on Highway 461. This lovely home also has kitchen, dining room, family room, bath. Also partial basement with w/d hookup. This lovely home has insulated and has a 12x21 garage. Call today for an appointment to see this lovely home.

New Listing-Approximately 60 acre farm located in Broadhead on Hwy 150 and Negro Creek Road. This dandy farm has a good barn, corn crib and has a basic tobacco allotment of 2764 lbs. This farm can be bought as a whole or in partials. Call us today for an appointment to see this dandy farm.

Make Your Dollars Work with this 45 acre farm located in the Brush Creek area. This property has marketable timber and there is a possibility of coal. Ideal investment property.

Possible FHA Financing-2 bedroom home with living room, combination dining/kitchen with built-in cabinets, bath, fuel oil furnace, also flue for wood-burning stove, utility room, w/d hookup, carport, plus a front porch. This property has city water and is situated on a nice lot conveniently located just south of Mt. Vernon on US 25.

Two Adjoining Lots located approximately 3 miles from Broadhead. Each lot measures 100x228, city water is available. Priced to sell!

New Subdivision-Located in the Willalla section of Rockcastle County. Lots are approximately 1/2 acre, city water is available and fronted on blacktop road and are restricted. Call today for an appointment and have first choice on these dandy lots.

30 Acre Farm with a good barn, nice house which has 3 bedrooms, living room, large kitchen/dining area, bath, utility room with w/d hookup, carpet and vinyl floors, oil heat and concrete porch. There's also a cellar, storage building and lots of fruit trees. This farm offers total privacy and is located approximately 6 miles from Livingston off Red Hill Road.

2 Large Lots-Totaling approximately 1.5 acres located behind the Brush Creek Holiness Church in the Orlando Section of Rockcastle County. The lots are ideal for building homes or for mobile homes as city water is available and they are easily accessible. Reasonably priced.

JANUARY SPECIALS AT

BISHOP'S GROCERY

Main St. 758-8043 Broadhead

Open Mon. thru Sat. 8 a.m. to 8 p.m.

DIET 7-UP \$139 8 pk. 16 oz.	Betty Crocker Ready-to-spread FROSTING 2 cans for \$149 the price of 1
PEPSI \$179	Downy Fabric
R.C.COLA \$149	SOFTNER 33 oz. \$109
Plus tax and dep. or bottles	FLOUR Reg. \$122 \$152

Lawrence Auction and Realty

Main Street - Gregory Building - Mt. Vernon

Wendell Lawrence
Realtor and Auctioneer
Home: 758-8115

256-5516

Evelyn Raines
Realtor & Appraiser Auctioneer
Home: 256-4972

**BUY
SELL
AND
TRADE
WITH...**

CLASSIFIED RATES

Local Rates - 8c per word, minimum 22
Cards of Thanks - 5c per word - minimum 22
In Memoriam - 5c per word - minimum 22

Classifieds paid in advance, except to businessess

Houses For Sale

HOUSE FOR SALE: 5 room house includes eat-in kitchen with appliances, family room (26x18), living room and dining room with working fireplace, 2 bedrooms, bath, beautiful hardwood floors, full basement. House has 3 porches, carport, new garage (24x32), is heated by fuel oil furnace, blacktop driveway - all on one acre lot. Priced to Sell! Call 256-2091 or 256-4972. 21x1p

HOUSE FOR SALE: FHA approved, all-electric, w/w carpet, 3 bedrooms, large closets, bath, large living room, dining room, kitchen with built-in cabinets, appliances, w/d hook-up, half basement, detached garage with blacktop drive. Property is on a quiet street within walking distance of schools, churches, stores. For more information, call 256-2091 or 256-4972. 21x1p

FOR SALE: Large brick home and lot on U.S. 150, adjacent to Cedar Rapids Country Club at a real, real bargain. Don Foster and Associates, 988-8401 or 256-2687. 21x1p

FOR SALE: 1974 Holly Park 65' trailer and 3/4 acre lot. Located at Valley View Trailer Park in Conway. Partially furnished. Priced at \$12,000. For more information, call 256-2784. 22x4p

FOR SALE: 1975 Mobile Home, 12x60, all electric on 1/4 acre lot. Fully furnished, washer and dryer, air conditioned. Ph. 256-5954. 22x5p

FOR SALE: New house and lot; D-3 Dozer; dump truck; 3 axle trailer; Case backhoe; wheel chd.; 2 row cultivator and '73 Nova mower. 256-4454. 23x1p

FOR SALE: 1974 12x65 3 bedroom mobile home. Good condition. 256-5728 or 256-2819. 24x2p

FOR SALE: 5 room modern house, partly remodeled, has a good garden space or will trade to a good used mobile home. Call 256-4787. 24x4

VERY LARGE Double-Wide 1982 Model w/d over 7,300 sq. ft. of living space. Featuring: 3 bedrooms, 2 full baths, living room, den, kitchen and dining room. For only \$19,970. Clayton Mobile Homes, Richmond, Ky. (606) 256-9401. 23x2

LARGE SELECTION of late model used 14' wide homes, 2 & 3 bedrooms. Clayton Mobile Homes, Richmond, Ky. (606) 623-9404. 23x2

LARGE SELECTION of new and used 14 wide, 12 wide and double widths. New 2 or 3 bedroom. \$8,744.00. Clayton Mobile Homes, Richmond, Ky. (606) 623-9404. 23x2

Farms For Sale

FARM FOR SALE: In Bee Lick Section of Pulaski Co. 60 acres, more or less, with 1600 lb. tobacco lease, 6 room house, barn and other buildings. See Mrs. Senate Purcell or call 879-2390. 22x5p

Automobiles For Sale

FOR SALE: 1970 Monterey Mercury, 8 cyl., am/fm radio, power brakes and steering, air, brown with black interior, 4 door, 4 new 13" tires, car in excellent condition. \$11,900 or will consider trade. Ph. 758-8199 or see Ted Scott, Route 3, Crab Orchard. 23x2

NOTICE OF SALE: On Friday, January 29 at 10 a.m. I will sell the following described vehicle for storage and repair. 1964 Dodge Dart, serial no. L442610379. Cromer's Auto Parts, Route 1, Mt. Vernon. 23x3p

NOTICE OF SALE: On Thursday, January 28 at 10 a.m., I will sell the following described automobile for storage and repair. 1972 Pinto Station Wagon, Serial No. 2X12X23 0955, Carl Renner, Route 4, Mt. Vernon. 23x3

FOR SALE: 1974 Dodge Car, good condition, new tires, 360 cu. in. Also, 4 pc. sectional couch, 2 pc. living room suite, dinette set and 24 in. gas range. 758-8274. 24x1p

FOR SALE: 1973 Ford Pick-up, \$750. 256-4909. 23x2p

FOR TRADE: 1979 Mercury Brougham, 4100 miles, 4 door, 8 cyl. auto. PS/PB, A/C, tape, am/fm radio, 2 extra wheels and tires. Nice car, will trade for 1975 or 1976 pick-up truck has to be 8 cyl. auto. PS/PB, prefer Ford or Chevrolet. See Albert Thomas, Brodhead, Ky. 24x2p

FOR SALE: 1969 Ford Pick-up, 6 cyl., std., \$750. Call 256-5350 after 5 p.m. 21x2p

FOR SALE OR TRADE: 2 ton truck with good bed, sideboards and cattle racks. Call 256-2818 at night. 23x2

Miscellaneous

FIREWOOD FOR SALE: Long, wide pick-up truck load, 19 to 24 inches in length. One load, \$85. 2 loads or more ordered at same time, \$30 per load. All wood round, no splitting. Call Emmett Foster, 453-2021. ntf

FOR SALE: 500 bales of hay, \$1.50 per bale. Contact Oscar Sayor. 22x3p

ALUMINUM SIDING SALE: Installed aluminum siding, completely installed on average size home up to 1,000 square feet only \$788.00 labor and materials. We now have the world-famous window and door trim machine. Let us show you some of its work. Day here - day there monthly. We also have a yearly farmer's plan. Write or call collect for free estimates. Trademark Aluminum and Vinyl Sales, P.O. Box 672, Somerset, Ky. 42501. Ph. 606-678-5707 or 679-3807 after 5 p.m. We are dealers for United States Steel, Thermo-pane insulated and replacement windows. Established Since 1957. ntf

GOOD BUSINESS LOCATION: U.S. 25 North, 2,002-4 ft. floor space, 2 restrooms, nice office, insulated. Service station, furniture, storage, grocery, machine shop or whatever. Room for living quarters. Down payment and move in. Low interest rate. Don Foster and Associates. 1-988-8401, Beres, Ky. 16x1p

FOR SALE: Registered Collie. Black and white and tan. 8 months old. \$150. Call 256-2352. 24x2

For Rent

FOR RENT: Rinse 'n Vac Carpet cleaning equipment - \$8 per day. Everything you need for a professional job. Call 256-2288 or come into Parsons Gas & Appliance Service, Inc. at Roundstone. ntf

JANUARY SUPER SPECIAL: Move in before January 31 and get 1/2 month FREE rent. One and two-bedroom apartments available now. Heat and water paid. 10% discount to students and senior citizens. Call 989-9298 for details. BOONE SQUARE TOWN-HOUSES 23x2p

FOR RENT: Mobile home, adults preferred. 256-4628. 23x2

FOR RENT: Business building and furnished apartments. See Roy Winstead at Appliance Service Center. Ph. 256-2626 days or 256-2204 nights. ntf

FOR RENT: Rooms at Mt. Villa Motel, low weekly rates available - single or double. Call 256-2127, Richmond St., Mt. Vernon, Ky. 18x1p

HOUSE FOR RENT: 5 miles south of Berea near Snyder on U.S. 25. \$180 per month. Call 256-5110 between 8 and 4. 24x3p

FOR RENT: Modern four-room furnished apartment and bath with w/w carpet. Call 256-2730. 24x2

FOR RENT: 20x70 store building in Brodhead, Ph. 758-8048. 24x3p

FOR RENT: Nice big rooms for storage by month or year. See Mollie Bryant at Bryant Bros., Mt. Vernon, Ky. 40456. Ph. 256-2911. 24x1p

FOR RENT: 2 bedroom apartment, new. 256-4662. 24x2p

NEW HOUSES FOR RENT: Must be able to do farm work. Halfway between Brodhead and Crab Orchard. Call Lancaster, 792-4732. 23x2p

LAND POSTED: No hunting or trespassing on land belonging to Leonard Reese on 25 north at Roundstone. 23x2p

POSTED: No hunting or trespassing on land owned and leased by Bill Sigmon in the Brindle Ridge area. 22x3p

ing on land owned and leased by Bill Sigmon in the Brindle Ridge area. 22x3p

Beauty expert Helena Rubenstein wrote a book of memoirs in her nineties.

HENSLEY'S USED CARS

Route 2, Orlando

Phone 256-4444



Jack's Concrete Tanks

Ph. 256-4383 After 5 p.m. 256-2580

SEPTIC TANKS Sales and Service 750 Gal. - 1,000 Gal. Distribution Boxes 1,000 Gal. Water Distribution Tanks

POSTED No hunting or trespassing on land belonging to James Andorkin, Jr., in Chestnut Hills Subdivision

NOTICE Decorator Cakes Will Bake Any Kind, of Cake for You Margaret Owens 256-5533

Blown-In Insulation For All Your Insulation Needs Call Roger's Insulation Mt. Vernon, Ky. 453-2101 Roger Lopez, Owner

NOTICE TV, Stereo & Appliance Repair Western Auto Store Mt. Vernon 256-2616

ARE YOU LIVING IN A MOBILE HOME ON YOUR OWN LOT? Want a permanent home? I may be able to help you own a home of your own. Even if you don't have \$1,000, \$100 or even \$10 for a down payment. Call or Write Today! CHARLES DAMRON P.O. Box 57 Richmond, Ky. 40475 Ph. 606-623-0453

PUBLIC NOTICE

The Department of Fish and Wildlife Resources is inviting bids for the leasing of 106 acres of land for the production of grain or soybeans. The land is located on the Central Kentucky Wildlife Management Area, nine miles southeast of Richmond, Kentucky, in Madison County. Packets containing bid forms and additional information are available at the Central Kentucky Wildlife Management Area Clubhouse on Bear Walk Road off US 421. Sealed bids will be received at Department offices until 1 p.m. EST January 28, 1982. For further information, contact the Wildlife Division at 256-4106. 23x2

Professional Services

NOTICE: For electric, wiring and plumbing, call a licensed plumber at 256-5250. ntf

RICKELS

Heating & Cooling

24 HOUR SERVICE Ph. 256-5636

BUILDING, REMODELING AND REPAIR WORK done at reasonable rates with quality results. Free information, call 256-2864 after 5 p.m. or see Dennis R. Allen. ntf

NOTICE: I will do income tax work at my home on Langdon St., Mt. Vernon. Ph. 256-2803, Hazel Cummins. 22x6p

FOR PROFESSIONAL

-Heat Pump
-Electric Furnace
-Refrigeration SERVICES Call GREG'S HEATING & COOLING 256-5922

Emergency Ph. 758-8941

Larry Goff Construction Co.

Bulldozing, Backhoe Work, Water Lines, Septic Tank Systems, Road Grader Work, Rock Drilling & Blasting, Hauling, Etc. Call Larry Goff 758-8714 Owner - Operator

WINCHESTER TOBACCO WAREHOUSE

U.S. Hwy. 60 West Winchester, Ky. Clifton Sparks, Representative "Sell with Winchester Tobacco Warehouse and Mr. Sparks will haul your tobacco free." Call 925-2141 Collect Day or Night Selling Every Day

NOTICE Will be preparing income tax returns in my home after 4 p.m. and on week ends. Located on Owens St. Mt. Vernon. William Swinney Ph. 256-4969

GOOCH PLUMBING ★ Expert Repair Service & Remodeling ★ New Construction/Residential - Commercial LARRY GOOCH - OWNER Licensed Master Plumber Located in the Gregory Building Main St., Mt. Vernon Ph. 256-5813

WINCHESTER TOBACCO WAREHOUSE U.S. Hwy. 60 West Winchester, Ky. B.L. RAMSEY, Rep. "Sell with Winchester Tobacco Warehouse and Mr. Ramsey will haul your tobacco free." Call 256-4023 Selling Every Day

GARRARD COUNTY STOCKYARDS Sales For All Classes of Livestock Every Friday 792-2118 J.L. Teater Hogan Teater William Kirby Teater Lancaster Kentucky

CLASSIFIED ADS sure to get results

LEGAL NOTICES

Notice is hereby given that Fern Caldwell, Route 1, Brodhead, Ky. 40409 has been appointed Administratrix of the estate of Mary Scott with annexed. Any persons having claims against said estate shall present them, verified according to law, to the said Fern Caldwell or to Lambert & Lambert, P.O. Box 278, Mt. Vernon, Ky. 40456, attorneys for estate, on or before April 27, 1982. 23x3

Victor M. Todd, deceased. Any persons having claims against said estate shall present them, verified according to law, to the said Clarice Todd McKinney or to Joseph E. Lambert, P.O. Box 278, Mt. Vernon, Kentucky 40456, attorney for estate, on or before April 7, 23x3

Notice is hereby given that an order has been entered dispensing with administration of the estate of Ed J. Brown, deceased. All persons having claims against said estate shall present them, verified according to law, to Clontz & Co., attorneys for said estate, P.O. Box 578, Mt. Vernon, Kentucky, no later than April 27, 1982. 23x3

Notice is hereby given that Victoria Cromer has been appointed executrix of the estate of Harvey Mink, deceased. All persons having claims against said estate shall present them, verified according to law, to the said Victoria Cromer, at Route 1, Box 137, Mt. Vernon, Ky. 40456, or to William D. Gregory, Mt. Vernon, Kentucky 40456, attorney 23x3

for said estate, no later than April 16, 1982. 23x3

Notice is hereby given that Ora Wynn has been appointed Administratrix of the Estate of Ida M. Berry, deceased. All persons having claims against said Estate shall present them, verified according to law, to the said Ora Wynn at Conway, Kentucky, or to William D. Gregory, Mt. Vernon, Kentucky 40456, attorney for said estate, no later than April 16, 1982. 23x3

Notice is hereby given that Nancy Parkerson, Route 3, Brodhead, Kentucky, has been appointed Administratrix of the estate of Martha Southard, deceased. All persons having claims against said estate shall present them, verified according to law, to the said Nancy Parkerson on or before April 27, 1982. 23x3

DWAYNE'S CARS & TRUCKS
U.S. 25 North
"Next to Tostan Frazz"
986-8489

- CARS**
- 81 CHEV. CHEVETTE, 4 Dr., Auto, AC
 - 81 FORD ESCORT, 2 Dr., Auto, Power, AC, Crabs, Front Wheel Drive, Only \$1,995
 - 80 PONTIAC GRAND PRIZ, 4 Cyl., Auto, Power, AC, Extra Sharp
 - 80 FORD PINTO, 2 Dr.
 - 80 CHEV. BUICK, 2 Dr., Low Miles, White
 - 80 FORD PINTO SOURCE STATION WAGON, One Owner, Like New
 - 79 CHEV. IMPALA, 2 Dr., Auto, Power, AC, Small Engine, Only 23,000 Miles
 - 2 - 79 FORD THUNDERBOLTS, Auto, Power, AC
 - 79 CHEV. MONTE CARLO LANDAU, Extra Sharp
 - 79 MERCURY COUGAR XR-7, Loaded With Options, Extra Sharp!
 - 79 MERCURY MARINER, 4 Dr., Auto, PS, AC, Small V8
 - 79 CHEV. CAMARO, Auto, Power, AC, Only 13,000 Miles
 - 77 MERCURY COMET, 4 Dr., Auto
 - 77 CHEV. CAMARO, Small V8, Auto, PS, AC, Like New
 - 77 CHEV. VEGA HATCHBACK, 2 Dr., One Owner
 - 77 BUICK CENTURY LANDAU, 2 Dr., Auto, Power, AC
 - 78 CHEV. NOVA, 2 Dr., Small Engine, Auto
 - 75 PONTIAC TRANS AM, Auto, Power
 - 76 CHEV. IMPALA, 2 Dr., Auto, Power, AC
 - 75 FORD MUSTANG, 2 Dr., 6 Cyl.
 - 74 DODGE COLT, 4 Speed
 - 73 PLYMOUTH SCAMP, 2 Dr., Auto, AC

- TRUCKS**
- 75 5000 570 SCAMP
 - 79 WAGON, Auto, AC, Power, Extra Sharp
 - 79 MERCEDES 200 SE, 4 Dr., Extra Sharp, Gasoline Engine
 - 81 FORD FAIRLANE, 2 Dr. Hardtop, Collector's Item
- 4-WHEEL DRIVES**
- 78 AMC JEEP CJ-5 4x4, Hardtop, 6 Cyl., PS, Only 8,000 Miles, Like New
 - 78 AMC JEEP CJ-5 4x4, 6 Cyl., PS
 - 78 CHEV. LORRAINE REG. 4x4, Auto, Power, AC, Only 31,000 Miles

DWAYNE'S CARS & TRUCKS
U.S. 25 North
"Next to Tostan Frazz"
986-8489

Hours: M-F 8:30 a.m.-8 p.m.
S 8:30 a.m.-7 p.m.

"Dependable Transportation at Affordable Prices"

DWAYNE BRINEGAR, Owner
ERNEST BOWSER, Salesman & Sales Manager
ERNE HUNT, Salesman
IRA THOMAS, Salesman
LINDA ADAMS, Secretary

Notice is hereby given that Woodie Eversole has been appointed Administrator of the Estate of Rosa Eversole, deceased. All persons having claims against said estate shall present them, verified according to law, to the said Woodie Eversole at Orlando, Kentucky or to William D. Gregory, Mt. Vernon, Kentucky 40456, attorney for said estate, no later than January 30, 1982. 21x3

Lost and Found
LOST: 2 female Beagles in Line Creek area. Last seen running down creek. Ar. 696-679-4834 after 6 p.m. \$100 reward. 24x2p

Wanted
WANTED TO BUY aluminum cans, batteries and electronic Paul Davidson, 1 mile on Barnett road off Road Hill Road. Look for sign. 10x1f

BIDS WANTED
The Rockcastle County Fiscal Court is now accepting bids for garbage collection and disposal. Specifications may be picked up at the office of the County Judge, Executive on the second floor of the Rockcastle County Courthouse after January 18, 1982. 23x2

COMMONWEALTH OF KENTUCKY

ROCKCASTLE CIRCUIT COURT

Gilbert L. Cox, Plaintiff
V. Notice of Sale
Chester Cox, et al., Defendants.

By virtue of a judgment and order of sale of the Rockcastle Circuit Court rendered on January 8th, 1982, in the above cause, a partition action, I shall proceed to offer for sale at the Court House door on Main Street in Mount Vernon, Kentucky, to the highest bidder, at public auction on the 5th day of February, 1982, at 10:00 a.m., or thereabout, the following on the second floor of the Rockcastle County Courthouse, to-wit:

Beginning on a black walnut, the same being A.J. Cox's beginning corner of the east side of the State Road running thence with the Road a southeast course to a black oak sapling and service and white oak pointer; thence a northeast course to a northeast course to a double black walnut and hornbeam pointer; thence North to a white walnut and white oak pointer; thence to D.L. Hendricks and J.S. Griffin's line; thence with their line to a black oak and white oak corner of James Cox, J.S. Griffin and D.L. Hendricks in Wm Griffin's line; thence with William Griffin's line a southwest course to a beech and white oak pointers, the same being A.J. Cox's corner; thence a south course with A.J. Cox's line to the beginning, containing twelve (12) acres be the same more or less.

The property shall be sold to the highest bidder on terms of twenty-five (25%) percent of the purchase price in cash at time of sale, the balance in ninety (90) days, with the purchaser being required to execute bond with surety thence to be approved by the Master Commissioner to secure the unpaid balance of the purchase price; said bond to bear interest at the rate of eight (8%) percent per annum from date of sale until paid. The purchaser shall have the privilege of paying all of the purchase price in cash, or paying said bond before maturity by paying the principal and interest accrued to the date of payment. The purchaser shall have possession of the premises after complying with the terms of sale.

Carl R. Clontz
Master Commissioner,
Rockcastle Circuit Court
24x3

The Cumberland Valley District Health Department, Rockcastle County Home Health is accepting applications for the positions of a Registered Nurse and a Licensed Practical Nurse. Salary is commensurate with training and experience. Applications may be obtained at the Rockcastle County Health Department in the courthouse, Main Street, Mt. Vernon. An equal opportunity employer. 24x2

Immediate Opening for TriChem
Instructors in this area. Commission, awards, prizes, room for advancement. No experience necessary. Call 606-528-0137 for interview. 24x4

BIDS WANTED
The Rockcastle County Board of Education will receive sealed bids to construct a two (2) classroom addition to the Roundstone Elementary School. Bids are due in the office of the superintendent, Mt. Vernon, Kentucky by 7 p.m., February 2, 1982. Bid forms and specifications are available from Donald B. Shelton, Architect, 2891 Richmond Road, Lexington, Ky. The board reserves the right to reject any or all bids. 24x2

BIDS WANTED
The Rockcastle County Fiscal Court is now accepting sealed bids for a used backhoe. Bids should be

submitted to the office of the County Judge/Executive by 9:30 a.m., Tuesday, February 2, 1982. The court reserves the right to reject any or all bids. 24x2

WANTED: Odd jobs to do... clean up chimneys, yard work, etc. Call Ken Graham at 256-5530. 24x1p

SAVING WAYS
With **AUTOMATIC DRYERS**
Energy-conscious homemakers are looking at many ways to conserve energy... a new suggestion from Whirlpool home economists that can help you trim the cost of operating your automatic dryer.



- Avoid overdrying - overdrying wastes energy and can create static electricity and wrinkling as well as shrinkage of many cottons and knitted fabrics.
- Don't overload - clothes dry more quickly if they can tumble freely.

CHARLES W. CLARK
Custom Hauling and Backhoe Work
WATER LINES GRAVEL
FIELD DIRT
SEPTIC TANKS TOP SOIL
623-0767 or 256-4454

TRUCK MECHANICS WANTED


BE IN BUSINESS FOR YOURSELF

Garage located on I-75 - the most traveled highway in the nation. We will be partners and you can start work immediately. Come in and talk it over. This is a good opportunity. OPENINGS FOR 6 TO 8 MECHANICS.
Come to Exit 59 Restaurant and ask for R.A. Baker after 1:30 p.m. (No phone calls please)

Income Tax Service
Doris Durham
Individual Business Farm Partnership
Bookkeeping Payroll Sales Tax Quarterly
Located 1/2 Mile on Chestnut Ridge Road
OPEN MON-SAT., 9-5
Ph. 256-5819 or 256-4135
APPOINTMENTS AVAILABLE

NOTICE
Building & Remodeling Needs
(Kitchen, Family Rooms, Baths - New or Old)
JACK WREN
Free Estimates 256-5338

If you never considered life insurance as a gift for your children, read on.



With one premium payment of \$100, you can buy a \$3,000 Shelter Junior Life Insurance Policy for your children 18 or under. There are no more premium payments until they reach age 26, when the policy automatically increases to \$15,000 and regular premium payments begin. And there are a number of options they may exercise beginning at age 25 if they choose.

Great for grandchildren too. Other face amounts and premiums available. I'll be glad to explain the details to you.

Ask me about the Shelter Junior Life Policy
Shelter Life Insurance
HARRY HARMON, AGENT
Gregory Bldg. Mt. Vernon
Ph. 256-4945 Nights 256-2454

DWIGHT GRIFFIN
CERTIFIED PUBLIC ACCOUNTANT
Individual, Business and Farm Returns Prepared
Located on Richmond Street
In the Former Jess Bullock Residence
Phones: 256-2117
256-2105

BEREA THEATRE
Berea, Ky. 986-3644
Wednesday thru Tuesday
January 20 - 26
"I lost my job, my house, my Rolls Royce, my family left me... what else can possibly go wrong?"
Starring GEORGE SEGAL-SUSAN SAINT JAMES.
CARBON COPY
JAVCO EMBASSY PICTURES Presenting
DOLBY DIGITAL
PG PARENTS STRONGLY CAUTIONED

The best person to see about your HEALTH INSURANCE may be your car, home and life agent! See or call:
BILL BAILEY, AGENT
Mt. Vernon 256-2119
Like a good neighbor, State Farm is there.
STATE FARM AUTOMOBILE INSURANCE COMPANY
Home Office: Bloomington, Illinois

HELEN ABNEY
INCOME TAX SERVICE
Now preparing tax returns in my home (formerly with H&R Block)
Individual - Farm - Business Partnership
Ph. 256-5273

Sports . . .



Big Anthony Brock, the Rockets Junior center, is shown in the above photo as he attempts to get position for a pass during Tuesday night's action with Model. Rockcastle won 59-58.

Boys win two in a row

By Rick Anderkin

The RCHS boys basketball team got back on the winning track last week as they won two games in a row. They destroyed Barbourville on Thursday night by a score of 95 to 51 and pulled out a narrow one point victory over Richmond Model 59 to 58 on Tuesday night.

Rockcastle, now one game under .500 at 7 and 8, stayed in complete control of Barbourville Thursday night as they led at the end of the first quarter by 23 points at 27-4. At the intermission, the boys had increased their lead to 30 points at 47-17.

"We shot 50% from the field for the first time this season," said head coach Roscoe Denney. "However, we played better defense than offense against Barbourville," he said. Rockcastle did play excellent defense as they held Barbourville to 14 points in the third quarter while they scored 18 to lead Barbourville 65-31 at the end of the third quarter.

The Rockets scored an amazing 30 points in the fourth quarter while Barbourville managed only 20, as the Rockets came away with their biggest margin of victory this season at 44 points, 85-51.

Each player on the team saw action and almost every player scored. David Burdine and Willie Hiatt led the way with 17

points each; Craig McGuire added 12 points while Anthony Brock, Barry Proctor and Billy Reynolds each got 10. Sophomore Roger Isaacs got 7 and sophomore Mike Haaron had 6; Chris Cornelius got 2. Derrick Singleton had 2 and Shannon Bishop and Chad Brock each got 1.

On Tuesday night it was a little different story for the Rockets as they narrowly escaped with a one point victory over the Model Patriots.

The Patriots, who were riding a six game winning streak when they came to Rockcastle, played a little shaky at the beginning but seemed to settle down by the end of the first quarter. Model led the Rockets by one at 18 to 17. However by end of the first half the Rockets led 20 to 14. Behind the good shooting of senior forward Craig McGuire.

Things did not go so well for Rockcastle in the third quarter as they were outscored by the patriots 20 to 14. The patriots led by a score of 48 to 44.

The Rockets fought back hard in the fourt period and with some good play from sophomore Chad Brock and junior Anthony Brock, the Rockets stopped the Patriots six game win streak at 59 to 58.

Craig McGuire, who played probably his best

Girls lose to Monticello Trojans 58-44

By Coach Preston Parrett

The girls played Monticello away Monday night and we defeated 58 to 44. In the first quarter, we went up 12 to 10. In the second quarter, we were outscored 26 to 6 and Monticello had us down 36 to 18. Early in the third quarter, we cut their lead to 12 but at the end of the period they had outscored them 14 to 9 but it was too little and too late to help our cause.

Monticello was the cleanest team that we have played all season. In the first half, they committed only one foul and their

second foul came with four minutes to go in the fourth quarter. In foul shooting, we were 0 for 2. They hit 10 of 21. In field goals they hit 24 of 48 shots for fifty percent. We hit 22 of

55 for forty percent. They had 19 turnovers, we had 12. They demolished us on the boards as they outscored us 44 to 15.

In scoring, Reams got 4, Bowman 12, Holbrook 6,

Sturgill 8, Thomason 12, Wolfe 2.

Our next game is at home, Thursday night, against Williamsburg. On Monday, night, we play Clay County at home.

Bowling News

The Alley Cats hold first place with 52 1/2 wins and 19 1/2 losses; the Hot Shots are in second with 47 and 25 and the Gutter Dusters are in third with 45 and 27.

High Men's Series: Bill Reynolds, 603; Larry Carter, 595; Denny McGuire, 538.

High Women's Series: Carol McGuire 513; Evelyn Mullins, 505; Virginia Winstead, 479.

Women's High Game: Carol McGuire, 193; Evelyn Mullins, 184; Norma Houk, 179.

Women's Handicap Series: Norma Houk, 674; Women's Handicap Game: Norma Houk, 244.

Men's Handicap Series: Larry Carter, 671; Men's Handicap Game, Larry Carter, 251.

January 14

First place, the Alley Cats, 53 1/2 and 22 1/2; second, Hot Shots, 51 and 25; third, Gutter Dusters, 47 and 29.

High Men's Series: Doc Brown, 585; Dave Eaton, 570; Bill Reynolds, 560.

High Men's Game: Dave Eaton, 212; Bill Reynolds, 211; Doc Brown, 206.

High Women's Series: Evelyn Mullins, 523; Fern Brown, 510; Carol McGuire, 500.

High Women's Game: Evelyn Mullins, 219; Carol McGuire, 218; Jamie Anderkin, 197.

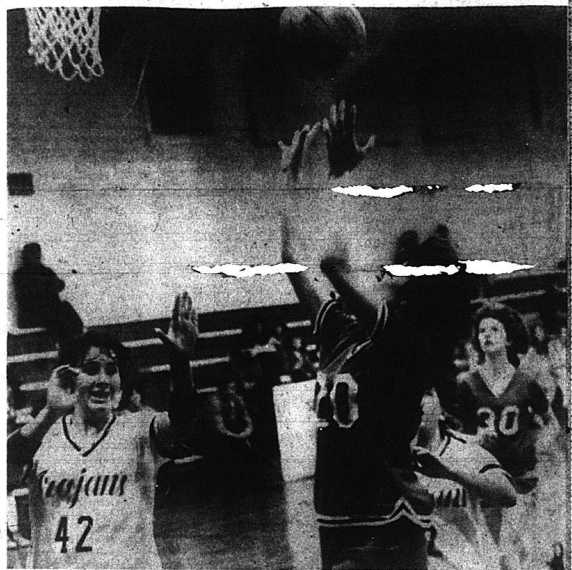
Handicap Men's Series: Doc Brown, 645; Handicap Men's Game: Dave Eaton, 234.

Women's Handicap Series: 633; Women's Handicap Game: Evelyn Mullins, 251.

Handicap Team Series: 2546; Handicap Team Game: 873.

all-around game of the season scored 21 points, while Anthony Brock had 11 and David Burdine 10. Billy Reynolds got 6 and Willie Hiatt and Barry Proctor scored 4 each. Sophomore Chad Brock scored 3.

The Rockets will try to make their record an even 500 Friday night with the Somerset Briarjumpsers come to town for an 8 o'clock meeting. Somerset is 4 and 8 on the season.



Kelli Thomason, no. 20, shown in the honors with Debbie Bowman, each having above photo as she attempts for two 15points. The girls lost 58 to 44. Also in points in the girls game at Monticello the photo is no. 36, Glenna Reams. Monday night. Kelli tied for high point

JANUARY CLEARANCE

In order to make room for 1982 furniture, we are slashing prices, some items up to

50% OFF

All first quality, name brand furniture.

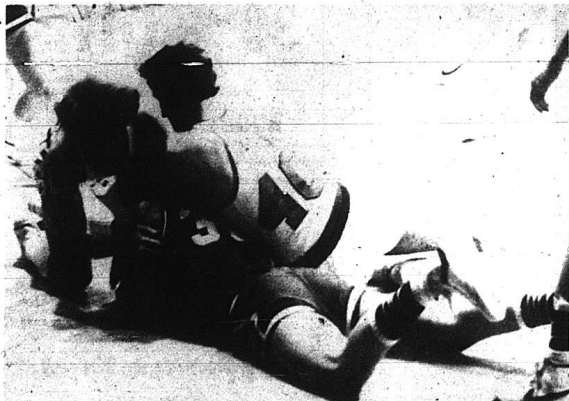
Come look, compare & Save Some items are limited

No rain checks please, at these prices

Free Delivery & Financing Available

C & G Furniture

Hwy. 39 at Woodstock



Anthony Brock, no. 40, and Craig with 21 points and Brock had 11, as McGuire, far left, are shown trying for a loose ball in the Rockets game with Mod-ge, 59-58. Tuesday night. McGuire was high man