

"FINANCIAL STATEMENT"							
(Cont. From A4)							
10699	State Treasurer	8,611.34		cont. hauling	127.00		Thursday, August 26, 1982 P-A5
10700	State Treasurer	17,488.34		10791 Robert Evans, cont.	97.00		11149 C.W. Saylor Enterprises, acct.
10356	AAA Foundation for Traffic Safety, acct.	85.00		10792 James Gibbons, cont. hauling	39.00		11150 Greg's Heating & Cooling, acct.
10357	Lowe's Sporting Goods, acct.	74.32		10793 Otis Howard, cont. hauling	26.00		11151 Rathel L. Collins, acct.
10358	Harcourt Brace Jovanovich, acct.	180.19		10794 Brenda Hulker, cont. hauling	7.50		11152 Simplex Time Recorder Co., acct.
10359	Institutional Distributors, acct.	14,996.51		10795 Christine Kirby, cont. hauling	55.00		11153 Rock Co. School Food Serv. transfer of funds
10360	Ky. School Boards Asscn., subscription	50.00		10796 Murphy Martin, cont. hauling	55.00		11154 ESEA 89-10 Title I, transfer of funds
10361	Ky. School Boards Asscn., insurances	648.00		10797 Bernice Marlor, cont. hauling	29.00		
10362	Hammonds & Stephens, acct.	74.58		10798 Bobby Mason, cont. hauling	43.00		11155 Basic Adult Education, transfer of funds
10363	Master Lock Co., acct.	307.00		10799 Janie McKinney, cont. hauling	45.00		11156 London Laundry, acct.
10364	Oakridge Roofing Co., Inc., acct.	275.00		10800 Joyce McKinney, cont. hauling	63.00		11157 Thompson's Sanitary Supply, acct.
10365	Irene Balés, clerk, acct.	(21.50)		10801 Raymond McKinney, cont. hauling	75.00		11158 Mt. Vernon Signal, acct.
10366	Heckman Bindery, Inc., acct.	79.40		10802 Carl Hulker, cont. hauling	110.00		11159 A.B. Dick Products of Lex., acct.
10367	Bank of Mt. Vernon, acct.	7.00		10803 Flossie Mink, cont. hauling	26.00		11160 A.B. Dick Products of Lex., acct.
10368	Box rent	294.00		10804 Lit. hauling	86.00		11161 International P. & M., acct.
10369	Box rent	294.00		10805 Jerry Mullins, cont. hauling	105.00		11162 Curriculum Associates, Inc., acct.
10370	Central School Supply, Inc., acct.	307.76		10806 Marvin Ponder, cont. hauling	107.00		11163 Hadden Films, Inc., acct.
10371	Shivel's Army Store, acct.	10.00		10807 Everett Renner, cont. hauling	24.00		11164 Hadden Films, Inc., acct.
10372	Hadden Films, Inc., acct.	54.19		10808 Tommy Renner, cont. hauling	185.00		11165 Wildie General Store, acct.
10373	Hadden Films, Inc., acct.	168.38		10809 Opal Robinson, cont. hauling	294.00		11166 Hiatt's 5 & 10, acct.
10374	Laidlaw Brothers, acct.	84.66		10810 Ray Rowe, cont. hauling	72.00		11167 Hiatt's 5 & 10, acct.
10375	The Economy Co., acct.	15.25		10811 King Rowland, cont. hauling	51.00		11168 Cumberland Welders Supply, acct.
10376	Cumberland Welders Supply, acct.	129.34		10812 A.L. Singleton, cont. hauling	49.00		11169 Dwight Griffin, audit
10377	Hiatt's 5 & 10, acct.	15.52		10813 Rebecca Singleton, cont. hauling	21.00		11170 Rockcastle Food Service, transfer of funds
10378	Cumberland Valley Office Suppliers, acct.	8.75		10814 Rovie Singleton, cont. hauling	101.00		11171 Mt. Vernon Water Works, acct.
10379	Cumberland Valley Office Suppliers, acct.	319.00		10815 Willie Vanzant, cont. hauling	241.00		11172 Mt. Vernon Water Works, acct.
10380	Stewart Fertilizer & Supply, acct.	504.20		10816 Juanita Wilson, cont. hauling	69.00		11173 Jackson County RECC, acct.
10381	Fayette School Servie, Inc., acct.	45.00		10817 Charles B. Parsons, travel	114.64		11174 Rebecca Singleton, dup. check
10382	National Educational Media, acct.	38,000.00		10818 Ruby Cornelius, travel	129.78		11175 Lisa Adams, cont. hauling
10383	Technical Publications Div., acct.	32,015.10		10819 Russell Parsons, travel	30.96		11176 Josephine Adams, cont. hauling
10384	Title I 89-10 ESEA, transfer of funds	3,215.10		10820 Bill Ponder, travel	87.57		11177 Russell Barron, cont. hauling
10385	The Bank of Mt. Vernon	119.00		10821 Robert N. Pybas, travel	254.52		11178 Reggie Bengé, acct.
10386	Lewis Adams, contract hauling	27.00		10822 Edna Cameron, bd. mtg. & exp.	24.32		11179 Gerald Bullock, cont. hauling
10387	Josephine Adams, contract hauling	27.00		10823 Bigge W. Towery, Jr., acct.	40.32		11180 Flossie Bullock, cont. hauling
10388	Russell Barron, contract hauling	98.00		10824 Melvin D. Hamm, travel	101.05		11181 Lewis Chaney, cont. hauling
10389	Reggie Bengé, contract hauling	42.00		10825 Mary A. Hunt, travel	27.00		11182 Karen Chasteen, cont. hauling
10390	Gerald Bullock, contract hauling	75.00		10826 Ruby Cornelius, travel	129.78		11183 Arvil Clark, cont. hauling
10391	Lillie Bullock, contract hauling	13.20		10827 Sue Hamm, travel	42.96		11184 Darlene Church, cont. hauling
10392	Lewis Chaney, contract hauling	163.00		10828 Garland M. Cummins, travel	103.14		11185 Frank Cope, cont. hauling
10393	Carolyn Chasteen, contract hauling	102.50		10829 Doris G. Towery, travel	36.00		11186 John Cromer, cont. hauling
10394	Arvil Clark, contract hauling	56.00		10830 M.L. Beeker Oil Co., Inc., acct.	12,817.86		11187 John Cromer, Jr., cont. hauling
10395	Darlene Church, contract hauling	96.00		10831 Chevron USA, Inc., acct.	1,897.94		11188 Robert Evans, cont. hauling
10396	Frank Cope, contract hauling	125.00		10832 Cromer's Tire & Farm Service, acct.	274.20		11189 James Gibbons, cont. hauling
10397	Glen Cromer, cont. hauling	37.00		10833 Southern Tire Distributors, acct.	445.00		11190 Otis Howard, cont. hauling
10398	John Cromer, Jr., contract hauling	127.00		10834 Kron International Trucks, acct.	29.70		11191 Brenda Hulker, cont. hauling
10399	Robert Evans, cont. hauling	97.00		10835 Marine-Myers Ford, Inc., acct.	128.46		11192 Christine Kirby, cont. hauling
10400	James Gibbons, cont. hauling	39.00		10836 Cumberland Welders Supply, acct.	12.10		11193 James Gibbons, cont. hauling
10401	Otis Howard, cont. hauling	26.00		10837 Auto-Electric, Inc., acct.	356.12		11194 Otis Howard, cont. hauling
10402	Christine Kirby, cont. hauling	55.00		10838 Lawson Products, Inc., acct.	282.41		11195 Brenda Hulker, cont. hauling
10403	Murphy Martin, cont. hauling	55.00		10839 Carrington Dist. Co., acct.	557.56		11196 Gerald Bullock, cont. hauling
10404	Bernice Marlor, cont. hauling	29.00		10840 Jennings Auto Parts, acct.	4.50		11197 Rebecca Singleton, cont. hauling
10405	Bobby Mason, cont. hauling	43.00		10841 Cook Bros. Auto Parts, acct.	25.00		11198 Robert Evans, cont. hauling
10406	Janie McKinney, cont. hauling	45.00		10842 Harrod-Early, Inc., acct.	193.08		11199 James Gibbons, cont. hauling
10407	Joyce McKinney, cont. hauling	63.00		10843 Mt. Vernon Automotive, Inc., acct.	347.68		11200 Otis Howard, cont. hauling
10408	Raymond McKinney, cont. hauling	75.00		10844 Rockcastle Auto Parts, acct.	77.94		11201 Simplex Time Recorder Co., acct.
10409	Carroll Miller, cont. hauling	110.00		10845 Buck's Auto Parts, acct.	216.05		11202 Joyce McKinney, cont. hauling
10410	Flossie Mink, cont. hauling	26.00		10846 Rental Uniform Service, acct.	51.60		11203 Raymond McKinney, cont. hauling
10411	Linda Montjoy, cont. hauling	86.00		10847 Ky. School Boards Ins. Trust, acct.	708.07		11204 Everett Renner, cont. hauling
10412	Terry Mullins, cont. hauling	105.00		10848 Thrifty Lumber Co., acct.	12.50		11205 Tommy Renner, cont. hauling
10413	Marvin Ponder, cont. hauling	107.00		10849 Jack's Hardware & Appliance, acct.	26.21		11206 Opal Robinson, cont. hauling
10414	Everett Renner, cont. hauling	24.00		10850 Shivel's Army Store, acct.	53.40		11207 Ray Rowe, cont. hauling
10415	Tommy Renner, cont. hauling	185.00		10851 C.C. Cox & Son, acct.	95.38		11208 King Rowland, cont. hauling
10416	Opal Robinson, cont. hauling	294.00		10852 Pow-Lite Electric Suppliers, acct.	241.45		11209 A.L. Singleton, cont. hauling
10417	Ray Rowe, cont. hauling	72.00		10853 Lexington Exterminating Sys., acct.	10.00		11210 Rebecca Singleton, cont. hauling
10418	King Rowland, cont. hauling	51.00		10854 Greg's Heating & Cooling, acct.	85.18		11211 Rovie Singleton, cont. hauling
10419	A.L. Singleton, cont. hauling	88.00		10855 Cundiff Supply & Lighting, acct.	37.08		11212 Willie Vanzant, cont. hauling
10420	Rebecca Singleton, cont. hauling	49.00		10856 Puritan/Churchill Chemical, acct.	78.80		11213 Juanita Wilson, cont. hauling
10421	Rovie Singleton, cont. hauling	101.00		10857 Broadview Acoustical Co., acct.	1,702.59		11214 Paul D. Owens, travel
10422	Willie Vanzant, cont. hauling	241.00		10858 Simplex Time Recorder Co., acct.	94.50		11215 M.L. Beeker Oil Co., acct.
10423	Juanita Wilson, cont. hauling	89.00		10859 Lewis Cable TV, acct.	78.00		11216 Chevron USA, Inc., acct.
10695	Blue Cross Hospital Plan, ins. prem.	7,831.68		10860 Hammond & Stephens, acct.	373.71		11217 Bill's Grocery, acct.
10696	Kentucky Education Asscn., dues	3,270.73		10861 Promaco, Inc., acct.	36.27		11218 Wayne Sales, Inc., acct.
10697	Citizens Security Life Ins., ins. prem.	635.56		10862 Central School Supply, acct.	66.99		11219 Vernon Automotive, Inc., acct.
10698	The Bank of Mt. Vernon	4,501.00		10863 Jerry Penol, contract coaching	300.00		11220 Rockcastle Auto Parts, acct.
				10864 Owen Hensley, 1976 Ford Van	2,900.00		11221 Buck's Auto Parts, acct.
				10865 Sears, tractor & mower	1,946.69		11222 Martin's Truck Parts, Inc., acct.
				10866 Thrifty Lumber Co., acct.	333.95		11223 Lawson Products, Inc., acct.
				10867 Cumberland Valley Supply, acct.	12.10		11224 Bob Mullins Ford, acct.
				10868 Cumberland Valley Office Sup., acct.	139.78		11225 Kron International Trucks, acct.
				10869 Cumberland Valley Office Sup., acct.	151.18		11226 Harrod-Early, Inc., acct.
				10870 C.C. Cox & Son, acct.	50.00		11227 Truck Supplies, Inc., acct.
				10871 Parks Woodworking Machine Co., acct.	410.67		11228 Rental Uniform Service, acct.
				10872 Standard Aarmature 9 Elec., acct.	134.00		11229 Central Body Service, acct.
				10873 NASCO, acct.	745.30		11230 Brodhead Hardware, acct.
				10874 NASCO, acct.	193.44		11231 C.C. Cox and son, acct.
				10875 Jackson Co. RECC, acct.	550.91		11232 Bolton Building Supply, acct.
				10876 Mt. Vernon Water Works, acct.	288.68		11233 J.A. Sexauers, Inc., acct.
				10877 Basic Adult Education, transfer of funds	179.17		11234 Pow-Lite Elec. Supply, acct.
				10878 Lewis Adams, cont. hauling	119.00		11235 Thrifty Lumber Co., acct.
				10879 Josephine Adams, cont. hauling	67.00		11236 Lexington Exterminating
				10880 Russell Barron, cont. hauling	98.00		
				10881 Reggie Bengé, cont. hauling	42.00		
				10882 Gerald Bullock, cont. hauling	75.00		
				10883 Lillie Bullock, cont. hauling	66.00		
				10884 Willie Chaney, cont. hauling	163.00		
				10885 Carolyn Chasteen, cont. hauling	97.00		
				10886 Arvil Clark, cont. hauling	56.00		
				10887 Darlene Church, cont. hauling	96.00		
				10888 Frank Cope, cont. hauling	125.00		
				10889 Glen Cromer, cont. hauling	37.00		
				10890 John Cromer, Jr., cont. hauling	10.00		
							JANUARY
							11490 The Bank of Mt. Vernon, C.D.
							11491 Kenneth Adams, bd. mtg. & exp.
							11492 Rudolph Burdette, bd. mtg. & exp.
							11493 Edna Cameron, bd. mtg. & exp.
							11494 George Poynter, bd. mtg. & exp.
							11495 Willie Taylor, bd. mtg. & exp.
							11496 Ky. Utilities Co., acct.
							11497 Continental Telephone of Ky., acct.
							11498 Brodhead Water Works, acct.
							11499 Livingston Water Works, acct.

P-A6 Mt. Vernon Signal		"FINANCIAL STATEMENT"		(Cont. From A5)	
11500	Mt. Vernon Water Works, acct.	266.67	11591	Bobby Mason, contr.	29.00
11501	John's Tipping, Inc., acct.	459.90	11592	Janie McKinney, contr.	43.00
11502	R.B.S., Inc., acct.	3,986.34	11593	Joyce McKinney, contr.	45.00
11503	Clarence Hasty, acct-coal haul	615.54	11594	Raymond McKinney, contr.	63.00
11504	Charles B. Parsons, travel exp.	170.26	11595	Carl Miller, contr.	75.00
11505	Birge W. Towery, Jr., travel exp.	48.66	11596	Flossie Mink, contr.	110.00
11506	Garlan M. Cummins, travel	114.00	11597	Linda Montjoy, contr.	26.00
11507	Russell Parsons, travel	43.44	11598	Terry Mullins, contr.	86.00
11508	Bill Ponder, travel	7.20	11599	Marvin Ponder, contr.	105.00
11509	Betty Cain, travel	71.68	11600	Everett Renner, contr.	107.00
11510	Melvin D. Hamm, travel	59.75	11601	Tommy Renner, Contr.	24.00
11511	Ruby Cornelius, travel	132.12	11602	Opal Robinson, contr.	185.00
11512	Mary Alice Hunt, travel	42.12	11603	Ray Rowe, contr.	294.00
11513	Robert N. Pybas, travel	80.28	11604	Janie McKinney, contr.	72.00
11514	Jamie L. Mullins, travel	16.40	11605	Rebecca Singleton, contr.	88.00
11515	Mary Saylor, travel	2.00	11606	Rovie Singleton, contr.	49.00
11516	Doris Towery, travel	28.44	11607	Willie Vanzant, contr.	101.00
11517	M.L. Beeker Oil Co., Inc.	29.94	11608	Juanita Wilson, contr.	241.00
11518	Marathon Oil Co., Inc.	1,355.67	11609	Henry Wynn, reimb.	89.76
11519	Cromer USA, Inc., acct.	1,209.77	11610	ESEA 89-10 Title I; transfer of funds	27,390.00
11520	Cromer's Tire & Farm Serv., acct.	1,209.77	11611	Blue Cross Hospital Plan, ins.	5,836.32
11521	Gulf Oil Corporation, acct.	44.40	11612	Kentucky Education Assocn., acct.	3,270.73
11522	Southern Tire Distributors, acct.	753.00	11613	Citizens Security Ins., ins.	635.56
11523	Central Body Service, acct.	95.00	11614	The Bank of Mt. Vernon, tax	36,601.60
11524	Rockcastle Auto Parts, acct.	472.54	11615	State Treasurer, stat. tax	8,621.53
11525	Auto-Electric, Inc., acct.	137.04	11616	State Treasurer, stat. tax	17,488.74
11526	Bob Mullins Ford, acct.	240.00	11617	Social Sec. Rev. Fund, acct. sec.	5,031.20
11527	Wayne Sales, Inc., acct.	158.22	11618	Ky. State Treasurer, acct. ret.	3,241.79
11528	Cook Bros. Auto Parts, acct.	179.11	TOTAL		364,385.04
11529	Carrington Dist. Co., acct.	185.06	FEBRUARY		
11530	Rental Uniform Service, Inc., acct.	64.50	11887	Food Service, transfer of funds	25,000.00
11531	Mt. Vernon Automotive, acct.	102.74	11888	ESEA 89-10 Title I, transfer of funds	9,000.00
11532	Buck's Auto Parts, acct.	106.67	11889	Part VI-Part B-EHA, transfer of funds	29,000.00
11533	Kron International Trucks, acct.	40.14	11890	Basic Adult Education, transfer of funds	134.44
11534	Jennings Auto Parts, Inc., acct.	100.00	11891	Kenneth Adams, bd. mtg. and exp.	22.88
11535	Basic Adult Education, acct-transfer of funds	67.22	11892	Rudolph Burdette, bd. mtg. and exp.	20.00
11536	School Food Service, acct-transfer of funds	21,911.00	11893	Edna Cameron, bd. mtg. and exp.	24.32
11537	Thompson's Sanitary Supply, acct.	186.06	11894	George Poynter, bd. mtg. and exp.	22.70
11538	Kenway Chemical Co. of Ky., acct.	110.00	11895	Willie Taylor, bd. mtg. and exp.	23.60
11539	Standard Armature & Elec., acct.	193.00	11896	Continental Telephone of Ky., acct.	271.91
11540	J.A. Sexauer, Inc., acct.	73.98	11897	Ky. Utilities Co., acct.	10,831.92
11541	Lexington Exterminating Inc., acct.	10.00	11898	Brodhead Municipal Water Works, acct.	247.80
11542	Appliance Service Center, acct.	7.55	11899	Livingston Water Works, acct.	87.29
11543	Jack's Hardware & Appl., Inc., acct.	76.13	11900	Mt. Vernon Water Works, acct.	147.24
11544	Thrifty Lumber Co., Inc., acct.	13.85	11901	Northern Rock. Water Dist., acct.	17.24
11545	P.L. Poynter, acct.	50.35	11902	R.B.S., Inc., acct.	4,552.72
11546	C.C. Cox and Son, acct.	78.57	11903	Clarence Hasty, Jr., acct.	876.96
11547	Power-Lite Electric Supplies, acct.	472.84	11904	Charles B. Parsons, travel	157.03
11548	Ky. State Treasurer, acct.	7.50	11905	Birge W. Towery, Jr., travel	46.90
11549	Farker-Publishing Co., acct.	18.19	11906	Melvin D. Hamm, travel	38.99
11550	Convention Record, acct.	7.50	11907	Russell Parsons, travel	25.20
11551	Hysinger Carpet, acct.	1,458.00	11908	Bill Ponder, travel	10.44
11552	Rickels Heating & Cooling, acct.	60.00	11909	Robert N. Pybas, travel	74.34
11553	Central School Supply Co., acct.	794.40	11910	Opal Robinson, travel	112.68
11554	CTB/McGraw Hill, acct.	2,105.46	11911	Mary A. Hunt, travel	33.84
11555	Lowe's Spinning Goods, acct.	517.00	11912	Phyllis Bullock, travel	14.80
11556	James Asa Mink, acct.	48.00	11913	Robert N. Pybas, travel	119.92
11557	Sears, acct.	36.36	11914	Chevron USA Inc., acct.	1,202.13
11558	Sears, acct.	41.88	11915	M.L. Beeker Oil Co., acct.	9,981.23
11559	Faxton Patterson, acct.	375.95	11916	Marathon Oil Co., acct.	137.16
11560	Mt. Vernon Automotive, Inc., acct.	82.24	11917	Cromer's Tire & Farm Serv., acct.	4.00
11561	Hobar Publications, acct.	127.62	11918	Central Body Service, acct.	50.00
11562	Graves-Humphreys, Inc., acct.	112.58	11919	Marine-Myers Ford, Inc., acct.	1,776.88
11563	Am Assocn. for Voc'l Mat'ls., acct.	5.75	11920	Mt. Vernon Automotive, acct.	328.36
11564	C.C. Cox & Son, acct.	34.00	11921	Auto-Electric, Inc., acct.	312.80
11565	The Lincoln Electric Co., acct.	131.63	11922	Rockcastle Auto Parts, acct.	23.74
11566	Jackson Co. RECC, acct.	749.53	11923	Buck's Auto Parts, acct.	9.44
11567	Postmaster, Mt. Vernon P.O., acct.	200.00	11924	Cook Bros. Auto Parts, acct.	165.63
11568	Computer Attendance Act., Ky. Dept. of Education, acct.	887.82	11925	Wheel & Axle Service, acct.	99.38
11569	Ky. School Boards Ins. Trust, unemployment comp.	1,421.05	11926	Truck Supplies, Inc., acct.	65.43
11570	Livingston Water Works, acct.	119.00	11927	Rental-Uniform Service, Inc., acct.	51.60
11571	Lewis Adams, contr.	27.00	11928	Cumberland Welders Supply, acct.	15.25
11572	Josephine Adams, contr.	58.80	11929	Brodhead Hardware, acct.	72.02
11573	Russell Barron, contr.	42.00	11930	Sherwin-Williams, acct.	137.88
11574	Reggie Benge, contr.	75.00	11931	Bolton Building Supply, acct.	189.36
11575	Lillie Bullock, contr.	68.00	11932	Lexington Extermination Sym., acct.	10.00
11576	Lewis Chaney, contr. hauling	163.00	11933	C.C. Cox & Son, acct.	104.03
11577	Carolyn Chasteen, contr. hauling	97.00	11934	Power-Lite Electric Supplies, acct.	18.20
11578	Arvil Clark, contr. hauling	56.00	11935	J.A. Sexauer, Inc., acct.	102.36
11579	Darlene Church, contr. hauling	96.00	11936	The Ky. Stone Co., acct.	86.48
11580	Frank Cope, contr. hauling	125.00	11937	C.W. Saylor Enterprises, acct.	22.50
11581	Glen Cromer, contr. hauling	37.00	11938	Kenway Chemical Co. of Ky., acct.	73.62
11582	John Cromer, Jr., contr. hauling	127.00	11939	Thompson's Sanitary Supply, acct.	104.05
11583	Robert Evans, contr. hauling	97.00	11940	Central School Supply, Inc., acct.	84.24
11584	James Gibbons, contr. hauling	39.00	11941	Carl R. Clontz, retainer	450.00
11585	Otis Howard, contr. hauling	28.00	11942	Hammon & Stephens, acct.	25.02
11586	Brenda Hulker, contr. hauling	30.00	11943	Mary Fensol, contract	300.00
11587	Christine Kirby, contr. hauling	56.00	11944	Eddie Thompson, contract coaching	600.00
11588	Murphy Martin, contr. hauling	55.00	11945	Ky. State Treas., acct.	4.00
11589	Bernice Marlor, contr. hauling	55.00	11946	Lester Bullock, school tax refund	16.10
			11947	Ruby Cornelius, acct-supplies	29.43
			11948	Don Wilson Music Co., acct.	432.00
			11949	Mt. Vernon Printing, acct.	118.85
			11950	Appalachian Computer Service, acct.	670.00
			11951	Food Fair, acct.	800.28
			11952	Overnite Transportation Co., acct.	32.54
			11953	Faxton/Patterson, acct.	54.81
			11954	Cumberland Valley Office Sup., acct.	30.78
			11955	Cumberland Valley Office Sup., acct.	38.25
			11956	The Bank of Mt. Vernon, CD	100,000.00
			11957	Jackson Co. RECC, acct.	521.20
			11958	Lewis Adams, contract	119.00
			11959	Josephine Adams, acct.	27.00
			11960	Reggie Benge, contract	42.00
			11961	Lillie Bullock, contract	66.00
			11962	Lewis Chaney, contract	163.00
			11963	Carolyn Chasteen, contract	97.00
			11964	Arvil Clark, contract	56.00
			11965	Darlene Church, contract	96.00
			11966	Frank Cope, contract	125.00
			11967	Glen Cromer, contract	37.00
			11968	John Cromer, Jr., contract	127.00
			11969	Robert Evans, contract	97.00
			11970	James Gibbons, contract	39.00
			11971	Otis Howard, contract	28.00
			11972	Brenda Hulker, contract	30.00
			11973	Christine Kirby, contract	55.00
			11974	Murphy Martin, contract	55.00
			11975	Bernice Marlor, contract	29.00
			11976	Bobby Mason, contract	43.00
			11977	Janie McKinney, contract	45.00
			11978	Joyce McKinney, contract	63.00
			11979	Leonard McKinney, contract	75.00
			11980	Carl Miller, contract	110.00
			11981	Flossie Mink, contract	26.00
			11982	Linda Montjoy, contract	86.00
			11983	Terry Mullins, contract	105.00
			11984	Marvin Ponder, contract	107.00
			11985	Everett Renner, contract	24.00
			11986	Tommy Renner, contract	185.00
			11987	Opal Robinson, contract	294.00
			11988	Ray Rowe, contract	72.00
			11989	King Rowland, contract	51.00
			11990	A.L. Singleton, contract	88.00
			11991	Rebecca Singleton, contract	49.00
			11992	Rovie Singleton, contract	110.00
			11993	Willie Vanzant, contract	241.00
			11994	Juanita Wilson, contract	89.00
			11995	Blue Cross Hospital Plan, acct.	5,836.32
			11996	Kentucky Education Association, acct.	3,270.73
			11997	Citizens Security Ins. Co., acct.	3,270.73
			11998	Bank of Mt. Vernon, acct.	36,601.60
			11999	State Treasurer, acct.	8,621.53
			12000	State Treasurer, acct.	17,488.74
			12001	Social Security Rev. Fund, acct.	5,031.20
			12002	Ky. State Treasurer, acct.	3,241.79
			TOTAL		185,241.23
			MARCH		
			12272	ESEA 89-10 Title I, transfer of funds	52,000.00
			12273	Food Service, transfer of funds	44,511.00
			12274	Basic Adult Education, transfer of funds	179.26
			12275	Kenneth Adams, bd. mtg. and exp.	22.88
			12276	Rudolph Burdette, bd. mtg. and exp.	20.00
			12277	Edna Cameron, bd. mtg. and exp.	24.32
			12278	George Poynter, bd. mtg. and exp.	22.70
			12279	Willie Taylor, bd. mtg. and exp.	23.60
			12280	Continental Telephone of Ky., acct.	338.43
			12281	Ky. Utilities Co., acct.	11,332.87
			12282	Brodhead Water Works, acct.	273.14
			12283	Livingston Water Works, acct.	125.38
			12284	Northern Ro. Water Dist., acct.	97.80
			12285	Clarence Hasty, Jr., acct.	309.54
			12286	R.B.S., Inc., acct.	3,194.27
			12287	Charles B. Parsons, travel	87.37
			12288	Garlan M. Cummins, travel	113.10
			12289	Big W. Towery, Jr., travel	37.98
			12290	Russell Parsons, travel	67.34
			12291	Bill Ponder, travel	110.04
			12292	Melvin D. Hamm, travel	59.94
			12293	Mary Alice Hunt, travel	59.94
			12294	Ruby Cornelius, travel	96.54
			12295	Robert N. Pybas, travel	156.96
			12296	Steve Hamm, travel	50.66
			12297	Margie Wilcox, travel	224.90
			12298	Doris Towery, travel	63.38
			12299	M.L. Beeker Oil Co., Inc., acct.	12,051.84
			12300	Marathon Oil Co., acct.	12.50
			12301	Chevron USA Inc., acct.	682.02
			12302	Cabel's Grocery, acct., gas	25.00
			12303	Cromer's Tire & Farm Service, acct.	8.00
			12304	Livingston Motor Co., acct.	82.45
			12305	Southern Tire Distributors, acct.	274.00

**"FINANCIAL STATEMENT"**  
(Cont. From A8)

12387 Ray Rowe, contract hauling	72.00	12749 Ky. School Boards Ins. Trust, employment comp	9,000.57
12388 King Rowland, contract hauling	51.00	12750 Gerald Alsip, stipend	120.00
12389 A.L. Singleton, contract hauling	88.00	12751 Elizabeth Baker, stipend	120.00
12390 Rebecca Singleton, contract hauling	49.00	12752 Phyllis Bullock, stipend	120.00
12391 Rovie Singleton, contract hauling	101.00	12753 Norma Eversole, stipend	120.00
12392 Willie Vanzant, contract hauling	241.00	12754 Sue Hamm, stipend	120.00
12393 Juanita Wilson, contract hauling	89.00	12755 Janet Rader, stipend	120.00
12645 Blue Cross Hospital Plan	5,656.80	12756 Ky. Stone Co., acct.	20.62
12646 Kentucky Education Assocn. prof. dues	3,270.73	12757 Cumberland Valley Office Supp.	30.00
12647 Citizens Security Ins.	626.26	12758 Cumberland Welders Supply, acct.	96.14
12648 The Bank of Mt. Vernon, federal tax	36,641.60	12759 Mt. Vernon Automotive, acct.	42.25
12649 Kentucky State Treas., state tax	8,621.53	12760 Mt. Vernon Signal, acct.	9.28
12650 Kentucky State Treas.	17,488.74	12761 Thrifty Lumber Co., Inc., acct.	104.52
12651 Social Security Rev. Fund, acct.	3,224.89	12762 Hadder Films, Inc. acct.	848.30
12652 Total	31,448.74	12763 Hobar Publications, acct.	1,029.07
<b>APRIL</b>			
12671 Kenneth Adams, bd. mtg. and exp.	22.88	12764 What's New In Home Economics, acct.	49.00
12672 Rudolph Burdette, bd. mtg. and exp.	24.32	12771 Glen Cromer, dupl for check #12368	37.00
12674 George Poynter, bd. mtg. and exp.	22.70	12772 Lewis Adams, contract haul.	119.00
12675 Willie Taylor, bd. mtg. and exp.	23.60	12773 Joseph Adams, contract hauling	27.00
12676 ESEA 89-10 Title I, transfer of funds	10,000.00	12774 Reggie Bengt, contract hauling	42.00
12677 Basic Adult Education, transfer of funds	663.53	12775 Gerald Bullock, contract hauling	75.00
12678 Rock Co., School Food Service, transfer of funds	28,596.00	12776 Lillie Bullock, contract hauling	66.00
12679 Continental Telephone of Ky., acct.	304.46	12777 Lewis Chaney, contract hauling	163.00
12680 Ky. Utilities Co., acct.	8,612.55	12778 Carolyn Chasteen, contract hauling	97.00
12681 Jackson Co. RECC, acct.	789.35	12779 Arvel Clark, contract hauling	56.00
12682 Clarence Hasty, Jr., hauling coal	424.50	12780 Darlene Church, contract hauling	96.00
12683 RBS, Inc., acct.	2,632.44	12781 Frank Cope, contract haul.	96.00
12684 Brodhead Water Works, acct.	259.84	12782 Glen Cromer, contract hauling	37.00
12685 Livingston Water Works, acct.	124.02	12783 John Cromer, Jr., contract hauling	127.00
12686 Mt. Vernon Water Works, acct.	289.74	12784 Robert Evans, contract hauling	97.00
12687 Northern Rock Water Dist., acct.	110.10	12785 James Gibbons, contract hauling	39.00
12688 Charles B. Parsons, travel	77.52	12786 Otis Howard, contract hauling	26.00
12689 Bige W. Towery, Jr., travel	38.88	12788 Christine Kirby, contract hauling	55.00
12690 Garland M. Cummins, travel	168.51	12789 Murphy Martin, contract hauling	55.00
12691 Melvin D. Hamm, travel	106.45	12790 Bernice Marlor, contract hauling	29.00
12692 Russell Parsons, travel	33.48	12791 Janie McKinney, contract hauling	45.00
12693 Bill Ponder, travel	40.68	12792 Joyce McKinney, contract hauling	63.00
12694 Loretta Dillingham, travel	48.60	12793 Raymond McKinney, contract hauling	75.00
12695 Ruby Cornelius, travel	128.78	12794 Carl Miller, contract hauling	110.00
12696 Mary Alice Hunt, travel	46.26	12795 Flossie Mink, contract hauling	26.00
12697 Olive Whittaker, travel	203.94	12796 Linda Montjoy, contract hauling	86.00
12698 Robert N. Pybas, travel	153.00	12797 Terry Mullins, contract hauling	105.00
12699 Sue Hamm, travel	103.40	12798 Marvin Ponder, contract hauling	107.00
12700 Charles T. Baker, travel	5.00	12799 Everett Renner, contract hauling	24.00
12701 Jamie L. Mullins, travel	25.54	12800 Tommy Renner, contract hauling	185.00
12702 Mary Saylor, travel	10.20	12801 Opal Robinson, contract hauling	294.00
12703 Doris Towery, travel	39.60	12802 Ray Rowe, contract hauling	72.00
12704 Chevron USA, acct.	1,227.86	12803 King Rowland, contract hauling	51.00
12705 M.L. Beeker Oil Co., acct.	15,283.47	12804 A.L. Singleton, contract hauling	125.00
12706 Marathon Oil Co., acct.	34.81	12805 Rebecca Singleton, contract hauling	49.00
12707 Exxon Co. USA, acct.	109.25	12806 Rovie Singleton, contract hauling	101.00
12708 H.B. Tire Inc., acct.	186.36	12807 Willie Vanzant, contract hauling	241.00
12709 South Tire Distrib., acct.	29.85	12808 Juanita Wilson, contract hauling	89.00
12710 Cromer's Tire & Farm Service, acct.	92.60	12809 Blue Cross Hospital Plan	5,656.80
12711 Paul Miller Ford, Inc., acct.	5,003.21	12810 Kentucky Education Assocn.	3,312.40
12712 CooBros. Auto Parts, acct.	58.71	12811 Citizens Security Ins.	626.26
12713 Rockcastle Auto Parts, acct.	228.91	12812 The Bank of Mt. Vernon	36,641.60
12714 Martin's Truck Parts, Inc., acct.	135.00	12813 Kentucky State Treasurer	3,062.53
12715 Rental Uniform Service, Inc., acct.	64.50	12814 Kentucky State Treasurer	17,488.74
12716 Mt. Vernon Automotive, Inc., acct.	218.62	12815 Social Security Revolving Fund	5,125.32
12717 Buck's Auto Parts, acct.	100.91	12816 Kentucky State Treasurer	3,224.89
12718 Marine-Myers Ford, Inc., acct.	239.33	12817 John Lamb, contract labor	125.00
12719 Kron International Trucks, acct.	101.75	TOTAL	197,330.86
12720 Auto-Electric, Inc., acct.	246.13	<b>MAY</b>	
12721 Payne's Auto Parts, acct.	125.00	13085 Capital Outlay Fund, transfer of funds	106,000.00
12722 Truck Supplies, Inc., acct.	11.50	13086 Kenneth Adams, bd. mtg. and exp.	22.88
12723 Ridgeway Dist., Inc., acct.	21.97	13087 Rudolph Burdette, bd. mtg. and exp.	24.32
12724 Jack's Hardware & Appliance, acct.	84.59	13088 Edna Cameron, bd. mtg. and exp.	24.32
12725 Thrifty Lumber Co., acct.	250.24	13089 George Poynter, bd. mtg. and exp.	22.70
12726 Madison Termitte & Pest Control, acct.	80.00	13090 Willie Taylor, bd. mtg. and exp.	23.60
12727 Lexington Exterminating Sys., acct.	80.00	13091 Continental Telephone of Ky., acct.	316.07
12728 Hardwick Buck & Tire Co., acct.	377.30	13092 Kentucky Utilities Co., acct.	8,736.03
12729 P.L. Poynter, acct.	63.59	13093 Mt. Vernon Water Works, acct.	252.51
12730 Pow-Lite Elec. Supplies, Inc., acct.	84.48	13094 Brodhead Water Works, acct.	295.30
12731 C.C. Cox & Son, acct.	197.18	13095 Livingston Water Works, acct.	143.55
12732 Wides Material Co., acct.	2,030.00	13096 R.B.S., Inc. acct.	1,307.25
12733 Keweenaw Chemical Co. of Ky., acct.	7,750.00	13097 Clarence Hasty, Jr., acct. hauling coal	118.80
12735 London Laundry, acct.	25.50	13098 Charles B. Parsons, travel	220.61
12736 Pennington-Maupin Ins. Co., acct.	713.00	13099 Bige W. Towery, Jr., travel	49.17
12737 David Hammons Const., acct.	600.00	13100 Garland M. Cummins, travel	85.10
12738 Cumberland Valley Office Supp., acct.	231.84	13101 Bill Ponder, travel	49.70
12739 Cumberland Valley Office Supp., acct.	15.99	13102 Loretta Dillingham, travel	23.40
12740 Hopkins County Schools, acct.	10.00	13103 June Stevens, travel	116.82
12741 Mt. Vernon Printing, acct.	197.00	13104 Robert N. Pybas, travel	138.24
12742 Lowe's Sporting Goods, acct.	30.67	13105 Ruby Cornelius, travel	87.58
12743 Central School Supply Co., acct.	1,035.00	13106 Melvin D. Hamm, travel	69.58
12744 Central School Supply Co., acct.	2,572.28	13107 Nancy A. Hunt, travel	99.54
12745 Central School Supply Co., acct.	133.70	13108 Olive Whittaker, travel	22.88
12746 Hammond & Stephens, acct.	95.47	13109 Ronald L. Carpenter, travel	42.12
12747 Simplex Time Recorder Co., acct.	2,327.50	13110 M.L. Beeker Oil Co., Inc., acct.	12,864.56
12748 Harvey Bond, contract hauling	185.00	13111 Chevron USA, Inc., acct.	1,522.41
		13112 Cromer's Tire & Farm Service, acct.	109.58
		13113 Central Body Service, acct.	155.07
		13114 Ridgeway Distributors, Inc., acct.	239.13
		13117 Wheel & Axle Service, acct.	41.25
		13118 Auto-Electric, Inc., acct.	311.50

12719 Buck's Auto Parts, acct.	117.91	13605 The Bank of Mt. Vernon, taxes	67,830.20
13120 Mt. Vernon Automotive, Inc., acct.	306.11	13606 Ky. State Treasurer, taxes	17,977.87
13121 Rockcastle Auto Parts, acct.	82.47	13607 Ky. State Treasurer, acct.	33,517.59
13122 Marine-Myers Ford, Inc., acct.	137.70	13608 Social Security Rev. Fund, acct.	5,095.28
13123 Rental Uniform Service, Inc., acct.	51.60	13609 Ky. State Treasurer, county retirement	3,182.79
13124 Cumberland Welders Supply Co., acct.	35.00	13610 ESEA 89-10 Title I, transfer of funds	89,000.00
13125 Cook Bros. Auto Parts, acct.	15.40	13611 ESEA 89-10 Title I, transfer of funds	96.00
13126 Thrifty Lumber Co., acct.	552.82	TOTAL	459,965.37
13127 Stewart Fertilizer & Farm Supply, acct.	197.00	<b>JUNE</b>	
13128 Cundiff Supply & Lighting, acct.	3,228.00	13703 Alpha-Hopkins Co. Schools, acct.	10.00
13129 Brodhead Hardware, acct.	21.43	13704 Kenneth Adams, bd. mtg. and exp.	22.88
13130 C.C. Cox & Son, acct.	74.94	13705 Rudolph Burdette, bd. mtg. and exp.	20.00
13131 Appliance Service Center, acct.	5.94	13706 Edna Cameron, bd. mtg. and exp.	24.32
13132 J.A. Saxauer, Inc., acct.	510.58	13707 George Poynter, bd. mtg. and exp.	22.70
13133 Lexington Exterminating Sys., acct.	10.00	13708 Brodhead Ele. School, reimp.	4,437.13
13134 Madison Termitte & Pest Control, acct.	60.00	13710 Livingston Ele. School, reimp.	2,469.50
13135 Pow-Lite Elec. Supplies, Inc., acct.	1,875.00	13711 Mt. Vernon Ele. School, reimp.	5,692.76
13136 Roy A. Lucas, acct.	120.00	13712 Broadhead Ele. School, reimp.	3,102.17
13137 Thompson's Sanitary Supply, acct.	280.01	13713 Rockcastle High School, reimp.	8,269.00
13138 Ky. School Boards Assocn., dues	1,875.00	13714 Continental Telephone of Ky., acct.	336.35
13139 H.C. Anglin, Jr., acct.	30.00	13715 Ky. Utilities Co., acct.	6,379.24
13140 Everett Albright, contr.	30.00	13716 Brodhead Water Works, acct.	319.52
13141 State Farm Fire & SCSafety Co., ins. prem.	5,996.00	13717 Livingston Water Works, acct.	145.57
13142 Curtis Office Supply Co., acct.	313.00	13718 Northern Rock Water Dist., acct.	191.70
13143 Carl R. Clontz, retainer	600.00	13719 Charles B. Parsons, travel	81.24
13144 National Learning Systems, acct.	289.90	13720 Garland M. Cummins, travel	97.57
13145 Harper & Row Publishers, acct.	48.22	13721 Russell Parsons, travel	59.96
13146 McKnight Publishing Co., acct.	40.70	13722 Bill Ponder, travel	29.70
13147 Prentice-Hall Media, acct.	171.72	13723 June Stevens, travel	23.74
13148 James E. Bowman, acct.	25.31	13724 Tom Payne, travel	60.48
13149 Hadden Films, Inc., acct.	1,800.00	13725 Robert J. Mink, travel	86.04
13150 Geo. W. Park Seed Co., Inc., acct.	119.00	13726 Glen VanWinkle, travel	54.36
13151 Geo. W. Park Seed Co., Inc., acct.	466.79	13727 Ruby Cornelius, travel	73.82
13152 Cumberland Welders Supply, acct.	174.77	13728 Olive Whittaker, travel	70.02
13153 Better Homes & Gardens Bks., acct.	236.53	13729 Robert N. Pybas, travel	101.16
13154 The Highsmith Co., Inc., acct.	305.14	13730 Pauline Mullins, travel	801.90
13155 Hiatt's S & A, acct.	52.00	13731 Blanche Baldwin, travel	40.32
13156 Thrifty Lumber Co., Inc., acct.	9.44	13732 Rene Burdette, travel	23.04
13157 Central School Supply, Inc., acct.	35.73	13733 Vonis Mink, travel	114.12
13158 ESEA 89-10 Title I, transfer of funds	42,000.00	13734 Doris Towery, travel	27.36
13159 Title VI Part B EHA, transfer of funds	10,000.00	13735 Mable Cash, travel	36.36
13160 School Food Service, transfer of funds	32,366.00	13736 Virginia Nieceley, travel	23.58
13161 Jackson County RECC, acct.	733.97	13737 Gustava Peters, travel	10.80
13162 Lewis Adams, contract hauling	148.75	13738 Kay Singleton, travel	37.62
13163 Josephine Adams, contract hauling	33.75	13739 Rock Co. School Food serv., transfer of funds	95,713.00
13164 Reggie Bengt, contract hauling	52.50	13740 Owen Chevrolet, Inc., acct.	90.00
13165 Gerald Bullock, contract hauling	93.75	13741 Paul Miller Ford, acct.	24,616.00
13166 Lewis Adams, contract hauling	82.50	13742 Blue Bird Midwest, bus	18,322.00
13167 Christine Kirby, contract hauling	203.75	13743 Chevron USA, Inc., acct.	1,366.75
13168 Otis Howard, contract hauling	32.50	13744 M.L. Beeker Oil Co., acct.	8,133.65
13169 Brenda Hulker, contract hauling	37.50	13745 Exxon Co. USA, acct.	43.52
13170 Christine Kirby, contract hauling	70.00	13746 Mt. Vernon Automotive, Inc., acct.	140.24
13171 Darlene Church, contract hauling	120.00	13747 Rockcastle Auto Parts, acct.	140.24
13172 Frank Cope, contract hauling	156.25	13748 Brock's Auto Parts, acct.	3.25
13173 John Cromer, Jr., contract hauling	158.75	13749 Rental Uniform Services, Inc., acct.	51.60
13174 Robert Evans, contract hauling	121.25	13750 Cook Bros. Auto Parts, acct.	37.74
13175 James Gibbons, contract hauling	48.75	13751 Marine-Myers Ford, Inc., acct.	51.00
13176 Otis Howard, contract hauling	32.50	13752 Bob Mullins Ford, acct.	378.56
13177 Brenda Hulker, contract hauling	37.50	13753 Truck Supplies, Inc., acct.	112.61
13178 Christine Kirby, contract hauling	68.75	13754 Auto-Electric, Inc., acct.	52.00
13179 Darlene Church, contract hauling	68.75	13755 Wheel & Axle Service, acct.	76.10
13180 Opal Robinson, contract hauling	36.25	13756 Carrington Dist. Co., acct.	139.25
13181 Janie McKinney, contract hauling	56.25	13757 Lawson Products, Inc., acct.	174.46
13182 Joyce McKinney, contract hauling	78.75	13758 Kron International Trucks, acct.	63.43
13183 Raymond McKinney, contract hauling	93.75	13759 Central Body Service, acct.	187.50
13184 Carl Miller, contract hauling	37.50	13760 Pow-Lite Elec. Supplies, Inc., acct.	357.12
13185 Flossie Mink, contract hauling	137.50	13761 Stewart Fertilizer & Farm Supply, acct.	24.79
13186 Linda Montjoy, contract hauling	107.50	13762 Rockcastle Farm Service, acct.	268.77
13187 Terry Mullins, contract hauling	32.50	13763 Lexington Exterminating System, acct.	10.00
13188 Marvin Ponder, contract hauling	133.75	13764 Jack's Hardware & Appl., acct.	21.99
13189 Everett Renner, contract hauling	30.00	13765 Greg's Heating & Cooling, acct.	33.00
13190 Tommy Renner, contract hauling	231.25	13766 Ruby Cornelius, reimp.	43.34
13191 Opal Robinson, contract hauling	367.50	13767 CTB/McGraw Hill, acct.	1,839.38
13192 King Rowe, contract hauling	90.00	13768 Food Fair, acct.	77.40
13193 King Rowe, contract hauling	63.75	13769 Kern's Baker, acct.	22.80
13194 A.L. Singleton, contract hauling	110.00	13770 Franklin's of Mt. Vernon, acct.	31.41
13195 Rebecca Singleton, contract hauling	61.25	13771 Dr. George W. Griffith, acct.-contractor	250.00
13200 Rovie Singleton, contract hauling	126.25	13772 Irene Bales, clerk, acct.	15.50
13201 Willie Vanzant, contract hauling	301.25	13773 Commonwealth Journal, class. ad.	14.00
13202 Juanita Wilson, contract hauling	111.25	13774 Norton Insurance Agency, treas. bond	98.00
13602 C.W. Taylor Enterprises, Dupl for check #1937	22.50	13775 Sun Television & Appliance, acct.	137.00
13603 Kentucky Education Assocn., dues	3,413.32	13776 Balfour, acct.	794.00
13604 Citizens Security Life Ins., ins. prem.	626.26	13777 Alpha-Hopkins Co. Schools, acct.	300.00
		13778 Ky. Assocn. of Elec. Co-op, acct.	18.00
		13779 Phi Delta Kappa, acct.	7.50
		13780 Whittaker General Medical, acct.	374.99
		13781 Benet Publishing Co., acct.	235.66
		13782 McGraw-Hill Book Co., acct.	657.34
		13783 Ginn and Co., acct.	134.11
		13784 Hiatt's S & A, acct.	48.61
		13785 Mt. Vernon Signal, acct.	84.90
		137	

**P-48 Mt. Vernon Signal**  
**"FINANCIAL STATEMENT"**  
 (Cont. From A7)

13789 Cumberland Valley Office Sup., acct.	24.14
13790 Cumberland Valley Office Sup., acct.	53.06
13791 Prentice-Hall Media, acct.	74.52
13792 Hadden Co., Inc., acct.	575.00
13793 Hadden Co., Inc., acct.	1,507.90
13802 Mt. Vernon Water Works, acct.	280.52
13803 Jackson County RECC, acct.	723.67
13804 ESEA 90-10 Title I, transfer of funds	545.00
14126 The Bank of Mt. Vernon, federal taxes	65,578.70
14127 Kentucky State Treasurer, state taxes	15,418.49
14128 Kentucky State Treasurer, ret.	32,974.42
14129 Soc. Security Revolving Fund,	2,721.02
14130 Kentucky State Treasurer, co. ret.	107.98
41431 Capital Outlay Fund, transfer of funds	128,207.00
TOTAL	440,812.00

**TITLE I**  
**FINANCIAL STATEMENT**  
**JUNE 30, 1982**

Balance July 1, 1981	4,926.74
RECEIPTS	379,031.00
Beginning Balance and Receipts	374,104.26
DISBURSEMENTS	
Wages	
Administrative	13,875.64
Instructional	211,910.18
Total Wages	225,785.82
Claims	152,720.14
Total Disbursements	378,505.96
Balance June 30, 1982	4,401.70
JULY	
17517 Shirley Mullins, travel	9.00
17518 Monroe, acct.	80.99
17519 McGraw Hill Book Co., acct.	147.11
17520 Sue Hamm, travel	7.83
17521 Carol Riddle, travel	45.63
17522 Dr. George Griffith, contract services	250.00
17527 The Bank of Mt. Vernon, federal taxes	392.00
17528 Ky. State Treasurer, state taxes	67.54
17529 Ky. State Treasurer, retirement	87.17
17530 Ky. State Treasurer, matching retirement	87.17
17531 Social Security Rev. Fund, soc. sec. taxes	85.12
17532 Ky. State Treasurer, county retirement	72.00
TOTAL	1,331.37
AUGUST	
17533 A.B. Dick Products of Lex., acct.	109.16
17534 Mt. Vernon Printing, acct.	150.85
17535 Monroe, acct.	119.00
17536 Central School Supply, acct.	8.21
17537 Food Fair	12.77
17540 The Bank of Mt. Vernon, federal taxes	392.00
17541 Kentucky State Treasurer, state taxes	67.54
17542 Kentucky State Treasurer, teacher retirement	87.17
17543 Kentucky State Treasurer, matching retirement	87.17
17544 Social Security Rev. Fund, soc. sec. taxes	85.12
17545 Kentucky State Treasurer, county retirement	72.00
TOTAL	1,190.99
SEPTEMBER	
17546 Mt. Vernon Signal, printing of financial statement	111.00
17547 Psychological Corporation	85.41
17548 Southern School Supply, acct.	36.57
17549 Sue Hamm, travel	22.45
17550 William McClure	3.80
17551 The Bank of Mt. Vernon	4,296.30
17552 Ky. State Treasurer, state tax withheld	942.52
17557 Ky. State Treasurer, ret.	2,012.47
17578 Ky. State Treasurer, matching retirement	2,012.47
17579 Social Security Rev. Fund, soc. sec. tax	90.71
17580 Blue Cross Hospital Plan, ins. prem.	388.80
17581 Ky. State Treasurer, county retirement	72.00
TOTAL	10,076.30
OCTOBER	
17583 Bige W. Towery, Jr., travel	20.34
17584 Cumberland Valley Office Sup., acct.	277.37
17585 The Psychological Corporation, acct.	10.01
17586 Ailyn and Bacon, Inc., acct.	19.75
17587 Steck-Vaughn Co., acct.	445.15
17588 Central School Supply, acct.	721.24
17589 Frank Schaffer Publications, acct.	28.91
17590 Xerox Educ. Publications, acct.	66.00
17591 Ginn and Company, acct.	5.09
17592 The Economy Company, acct.	53.94
17593 Southern School Supply, acct.	211.16
17594 Kentucky School Service, acct.	129.89
17595 Children's Press, acct.	30.04
17596 Laidlaw Brothers, acct.	5.47
17597 Silver Burdett Company, acct.	116.91
17623 Bank of Mt. Vernon, federal taxes	3,969.50
17624 Kentucky State Treasurer, state taxes	943.82
17625 Kentucky State Treasurer, ret.	2,012.47
17626 Kentucky State Treasurer, matching retirement	2,012.47
17627 Social Security Rev. Fund, soc. sec. taxes	113.05
17628 Kentucky Educ. Assoc., professional dues	377.95

17629 Blue Cross Hospital Plan, ins. prem.	688.32
17630 Citizens Security Ins. Co., acct.	60.07
17631 Kentucky State Treasurer, county retirement	72.00
TOTAL	12,390.92
NOVEMBER	
17633 Bige W. Towery, Jr., travel expense	17.85
17634 Fayette School Services, Inc., acct.	69.11
17635 Cumberland Valley Office Supply, acct.	38.20
17636 Southern School Supply, Inc., acct.	124.37
17637 J. Weston Walsh, Pub., acct.	46.12
17638 Modern Curriculum Press, acct.	60.82
17639 Kentucky School Service, acct.	46.88
17640 The Riverside Pub. Co., acct.	44.94
17641 Random House, acct.	125.52
17642 Scholastic Magazines, Inc., acct.	35.00
17643 Franklin's of Mt. Vernon, acct.	16.92
17644 Central School Supply, acct.	107.44
17645 Central School Supply, acct.	203.29
17646 IBM, acct.	42.96
17647 Bank of Mt. Vernon, acct.	3,969.50
17648 State Treasurer, state taxes	943.82
17675 Ky. State Treasurer, teacher retirement	2,012.47
17676 Ky. State Treasurer, matching retirement	2,012.47
17677 Soc. Sec. Rev. Fund, professional dues	113.05
17678 Ky. Education Assn., professional dues	377.95
17679 Blue Cross Hospital Plan, insurance premium	538.56
17680 Citizens Security Ins. Co., insurance premium	60.07
17681 Ky. State Treasurer, county retirement	72.00
17683 Rockcastle Co. Board of Educ., substitute teacher	380.00
TOTAL	\$11,439.71
DECEMBER	
17684 Dwight Griffin, CPA, audit	300.00
17685 Bige W. Towery, Jr., travel	27.90
17686 Mt. Vernon Printing, acct.	19.00
17687 IBM, acct.	99.00
17688 Cumberland Valley Office Sup., acct.	42.26
17689 Central School Supply, Inc., acct.	166.40
17690 Modern Curriculum Press, acct.	30.46
17691 Globe Book Co., Inc., acct.	34.18
17692 Steck-Vaughn Co., acct.	30.49
17693 Kentucky School Service, acct.	16.95
17694 Scholastic Magazines, Inc., acct.	59.00
17695 Scholastic Magazines, Inc., acct.	32.50
17696 C.C. Cox and Son, acct.	6.54
17721 The Bank of Mt. Vernon, federal taxes	3,969.50
17722 Ky. State Treasurer, state taxes	943.82
17723 Ky. State Treasurer, ret.	2,012.47
17724 Ky. State Treasurer, matching retirement	2,012.47
17725 Soc. Security Rev. Fund, soc. sec. taxes	113.05
17726 Ky. Education Assn., dues	377.95
17727 Blue Cross Hospital Plan, insurance premium	538.56
17728 Citizens Security Ins. Co., insurance premium	60.07
17729 Ky. State Treasurer, county retirement	72.00
TOTAL	\$10,964.57
JANUARY	
17731 Bige W. Towery, Jr., travel	11.70
17732 Cumberland Valley Office Supply, acct.	4.50
17733 Demco, acct.	32.34
17734 Franklin's of Mt. Vernon, acct.	8.45
17735 Central School Supply, acct.	103.73
17736 Ideal School Supply Co., acct.	33.80
17737 Southern School Supply, Inc., acct.	21.85
17738 Good Apple, Inc., acct.	48.40
17739 Developmental Learning Material, acct.	35.42
17765 The Bank of Mt. Vernon, federal taxes withheld	3,969.50
17766 Ky. State Treasurer, state taxes withheld	943.82
17767 Ky. State Treasurer, teacher retirement withheld	2,012.47
17768 Ky. State Treasurer, matching teacher retirement	2,012.47
17769 Social Security Rev. Fund, ins. prem.	113.90
17770 Ky. Education Association, acct.	377.95
17771 Blue Cross Hospital Plan, insurance premium	538.56
17772 Citizens Security Ins. Co., insurance premium	60.07
17773 Ky. State Treasurer, county retirement	72.00
17774 Rockcastle Co. Board of Educ., substitute teacher	450.00
17775 Rockcastle Co. Board of Educ., Education	1,631.20
17777 Donald B. Shelton, Architect acct.	5,537.00
TOTAL	\$18,019.13
FEBRUARY	
17778 Cumberland Valley Office Supply, acct.	81.75
17779 Rockcastle Co. Board of Educ., W-2 Forms	79.90
17780 Mt. Vernon Signal, acct.	11.04
17781 Southern School Supply, acct.	74.59
17782 Hiatt's & Co., acct.	48.59
17809 The Bank of Mt. Vernon, federal taxes	3,969.50
17810 Ky. State Treasurer, state taxes	943.82
17811 Ky. State Treas., ret.	2,012.47
17812 Ky. State Treas., acct.	2,012.47
17813 Soc. Sec. Rev. Fund, acct.	113.90
17814 Ky. Educ. Assn., prof. dues	377.95
17815 Blue Cross Hospital Plan, insurance premium	538.56
17816 Citizens Security Ins. Co., insurance premium	60.07
17817 Ky. State Treasurer, county retirement	72.00
TOTAL	\$10,396.41
MARCH	
17819 Bige W. Towery, Jr., travel	72.78
17820 Cumberland Valley Office Supply, acct.	14.20
17821 Psychological Corp., acct.	114.14
17822 Commercial Lighting Co., acct.	29.00
17823 Southern School Supply, acct.	46.00

17824 Steck-Vaughn Co., acct.	3.05
17825 Central School Supply, acct.	37.37
17826 Sue Hamm, travel	40.50
17855 Bank of Mt. Vernon, taxes	3,969.50
17856 Ky. State Treasurer, acct.	943.82
17857 Ky. State Treasurer, ret.	2,012.47
17858 Ky. State Treas., acct.	2,012.47
17859 Soc. Sec. Rev. Fund	113.90
17860 Ky. Educ. Association, professional dues	377.95
17861 Blue Cross Hospital Plan, insurance premium	538.56
17863 Ky. State Treasurer, co. ret.	72.00
FORMS	\$10,459.78
APRIL	
17865 Bige W. Towery, Jr., travel	42.42
17866 Cumberland Valley Office Sup., acct.	18.75
17867 Mt. Vernon Signal, acct.	10.72
17868 National Geographic Society, acct.	80.00
17869 Modern Curriculum Press, acct.	31.98
17870 Central School Supply, acct.	238.00
17871 Food Fair, acct.	9.43
17872 The Bank of Mt. Vernon, federal taxes	3,969.50
17879 Kentucky State Treasurer, taxes	943.82
17898 Kentucky State Treasurer, retirement	2,012.47
17899 Kentucky State Treasurer, matching retirement	2,012.47
17900 Social Sec. Rev. Fund	113.90
17901 Kentucky Education Assn., professional dues	377.95
17902 Blue Cross Hospital Plan, insurance premium	538.56
17903 Citizens Security Ins. Co., insurance premium	60.07
17904 Kentucky State Treasurer, co. ret.	95.63
TOTAL	\$10,555.69
MAY	
17906 Bige W. Towery, Jr., travel	36.21
17907 Cumberland Valley Office Supply, acct.	27.65
17953 The Bank of Mt. Vernon, taxes	7,573.00
17954 Ky. State Treasurer, taxes	1,818.80
17955 Ky. State Treasurer, ret.	3,937.77
17956 Ky. State Treasurer, matching retirement	3,937.77
17957 Social Security Rev. Fund	113.90
17958 Ky. Education Assn., professional dues	377.95
17959 Citizens Security Ins. Co., insurance premium	60.07
17960 Kentucky State Treas., county retirement	95.63
17961 Postmaster, Mt. Vernon PO postage stamps	200.00
TOTAL	\$18,178.75
JUNE	
17963 Cumberland Valley Office Supply, acct.	110.11
17964 A.B. Dick Products of Lex., acct.	119.11
17965 William McClure, acct.	14.40
17966 Glenda Kirby, acct.	8.64
18012 Pauline Mullins, contract	600.00
18013 Rockcastle Co. Board of Education	19,296.87
18015 The Bank of Mt. Vernon, federal taxes	7,595.50
18017 Ky. State Treasurer, state taxes	1,826.18
18018 Ky. State Treasurer, teacher retirement	3,987.50
18019 Ky. State Treasurer, matching retirement	3,987.50
18020 Soc. Sec. Rev. Fund	113.90
18021 Ky. State Treasurer, co. fet.	77.91
TOTAL	\$37,716.52

**FINANCIAL STATEMENT**

**TITLE I HANDICAPPED**

Balance July 1, 1981	4,647.00
Receipts	8,879.00
Disbursements:	
Wages (Instructional)	4,280.23
Claims	1,431.44
Total Disbursements	5,691.67
Balance June 30, 1982	1,459.67
JULY	
17523 Barnell Loft, Ltd., acct.	54.89
17524 Hadden Films, Inc., acct.	231.67
TOTAL	286.56
AUGUST	
None	
SEPTEMBER	
17582 Rockcastle County Board of education, reimb.	483.50
TOTAL	483.50
OCTOBER	
17598 Science Research Associates, acct.	7.11
17632 Rockcastle County Board of Education, reimb.	483.50
TOTAL	490.61
NOVEMBER	
17647 Curriculum Associates, acct.	347.60
17648 Central School Supply, acct.	172.59
17682 Rockcastle County Board of Education, reimb.	483.50
TOTAL	1,003.69
DECEMBER	
17730 Rockcastle County Board of Education, reimb.	483.50
TOTAL	483.50
JANUARY	
17740 Follett Publishing Co., acct.	75.61
17775 Rockcastle Co. Board of Educ., reimb.	483.71
TOTAL	559.32
FEBRUARY	
17783 Southern School Supply, acct.	115.90
17784 Central School Supply, acct.	91.79
17818 Rockcastle County Board of Education, reimb.	483.71
TOTAL	691.40
MARCH	
17827 Holcomb's, Acct.	22.01

17828 Southern School Supply, acct.	156.59
17829 Curriculum Associates, acct.	38.79
17830 Central School Supply, acct.	171.78
17864 Rockcastle Co. Board of Educ., reimb.	483.71
TOTAL	872.88
APRIL	
17905 Rockcastle County Board of Education	483.71
TOTAL	483.71
MAY	
17962 Rockcastle Co. Board of Educ., reimb.	391.39
TOTAL	391.39
TITLE 4, PART B	
Balance July 1, 1981	.00
Receipts	12,739.00
Disbursements	.00
Wages	12,739.00
Total Disbursements	12,739.00
Balance June 30, 1982	.00
OCTOBER	
180 Hadden Films, Inc., acct.	2,273.70
181 Garrett Book Co., acct.	248.54
184 East West Learning Corp., acct.	470.96
TOTAL	2,993.20
NOVEMBER	
183 Hadden Films, Inc., acct.	55.56
184 Encyclopaedia Britannica, acct.	873.00
185 Franklin Watts, Inc., acct.	226.08
186 Society for Visual Education, acct.	1,084.54
187 Garrett Book Company, acct.	538.00
188 East West Learning Corp., acct.	558.92
189 Crestwood House, acct.	227.64
190 Highsmith Co., Inc., acct.	85.51
191 The Baker and Taylor Co., acct.	1,875.91
TOTAL	5,525.16
DECEMBER	
192 Society for Visual Education, acct.	517.40
193 Children's Press, acct.	136.11
194 Harper & Row, Publishers, Inc., acct.	2,343.52
TOTAL	2,997.03
JANUARY	
195 Follett Publishing Company, acct.	148.72
196 Harper & Row Publishers, Inc., acct.	42.61
TOTAL	191.33
MARCH	
197 Harper Row Publishers, acct.	57.99
198 World Book Childcare, acct.	358.50
TOTAL	416.49
APRIL	
199 Bound to Stay Bound Books, Inc., acct.	268.41
TOTAL	268.41
MAY	
200 Harper Row Publishers, Inc., acct.	347.38
TOTAL	347.38
TITLE 4, PART C	
Balance July 1, 1981	3,506.00
Receipts	3,640.00
Disbursements:	
Wages	7,146.00
Claims	7,146.00
Total Disbursements	14,292.00
Balance June 30, 1982	.00
JULY	
111 National Learning Systems, acct.	3,506.00
TOTAL	3,506.00
OCTOBER	
112 National Learning Systems, acct.	184.80
TOTAL	184.80
DECEMBER	
113 National Learning Systems, Inc., acct.	50.83
TOTAL	50.83
MAY	
114 National Learning Systems, acct.	3,404.37
TOTAL	3,404.37
EHA PART B	
June 30, 1982	
Balance July 1, 1981	11,174.00
Receipts	44,337.00
Disbursements:	
Wages (Instructional)	3,764.70
Claims	28,764.81
Total	32,529.51
Balance June 30, 1981	633.44
JULY	
472 American Guidance Services	16.85
473 Peoples & Peoples, services	252.00
TOTAL	268.85
AUGUST	
None	
SEPTEMBER	
475 The Bank of Mt. Vernon, federal tax withheld	80.80
476 Ky. State Treasurer, state tax withheld	17.16
477 Ky. State Treasurer, teacher retirement	34.64
478 Ky. State Treasurer, matching retirement	34.64
TOTAL	167.24



# CLASSIFIED ADS sure to get results

## CLASSIFIED RATES

Local Rates - 8¢ per word, minimum 42  
 Cards of Thanks - 5¢ per word, minimum 32  
 In Memoriam - 5¢ per word, minimum 32

Classifieds paid in advance, except to businesses

### HOUSES FOR SALE

**FOR SALE:** At Disputanta, 3 bedrooms and bath on 1 acre. Heat, new gas heat. On brook. \$15,000. Don Foster and Associates. Ph. 986-8401 or 256-2657. 48xntf

**FOR SALE:** 4 room house and lot located 6 miles south of Mt. Vernon. \$5,500. Call 256-4837. 35xntf

**HOUSE FOR SALE:** 5 room house includes eat-in kitchen with appliances, family room (26x18), living room and dining room with working fireplace, 2 bedrooms, bath, beautiful hardwood floors, full basement. House has 3 porches, carport, new garage (24x32), is heated by fuel oil furnace, blacktop driveway - all on one acre lot. Priced to sell! Call 256-2091 or 453-2841. ntf

**FOR SALE:** Flat Gap area. Four rooms with bath. \$8,000. Don Foster and Associates, Ph. 986-8401 or 256-2657. 48xntf

**FOR SALE:** Orlando area. 3 bedrooms, 1 bath, eat-in kitchen, 2 acres, in-ground pool with level deck. All this for mid 20's. 15-6. Don Foster and Associates. 986-8401 or 986-1838. 2x4

**FOR SALE:** 5 room modern house with garden spot located in Pine Hill. 256-4787. 52x4p

**FOR SALE:** w/7x12 shed, living room, bath, built-in kitchen, air conditioned, paneled and carpeted throughout. On large lot with garden, tool shed and garage. \$25,000. Call 256-4831. 1xntf

**HOUSE FOR SALE:** 3 bedroom brick home, total electric, has wall to wall carpet, w/d hook-up. Located on Rose Hill Road overlooking Lake Linville. This home is FHA approved. Call 256-5269 or contact Dennis Robinson. 1x4p

### MOBILE HOMES

**FOR SALE:** In Rainbow Valley Subdivision. 2 large corner lots with Governor mobile home 14x70 with 3 concrete porches and sidewalks. Also, a 12x12 basement with nice room on top. For more information, call 758-8856. 2x3p

**MOBILE HOMES FOR SALE:** New, used, reposs. Call RON at 606-678-4134. Clayton Mobile Homes, U.S. 27S, Somerset. 3x1

### 45 ACRE FARM

Newly remodeled 6 room house with 3 bedrooms, living room, family room, utility room w/washer & dryer hook-ups, central heat, shaded yard, good pasture and cropland, pond, tobacco barn and other good outbuildings. Located approximately 7 miles from Mt. Vernon. Owners will help with financing to qualified buyer. \$58,700

**EAST KENTUCKY REALTY**  
 864-7592 REALTOR

Diane Mabry  
 Real Estate Broker  
 in Mt. Vernon, Call  
 256-5614 and ask for  
 Diane



For Sale or Trade Call 256-5502

### FOR SALE

1978 Colony Park Mercury Station Wagon,  
 New Tires, low mileage, excellent condition,

### CONTACT

**Dowell and Martin  
 Funeral Home**

256-2991 or 256-2997

The best person to see about  
 your HEALTH INSURANCE may  
 be your car, home and life agent!  
 See or call:

**BILL BAILEY, AGENT**  
 Mt. Vernon 256-2119

Like a good neighbor, State Farm is there.  
 PROVIDENT FARM MUTUAL  
 AUTOMOBILE INSURANCE COMPANY  
 One State Office Building, Chicago



**FOR SALE:** 1980 Mobile home and lot located in Rainbow Valley Subdivision. 14x70. Lot measures 100x195. 2 large bedrooms, large bath, redwood siding. Also a 10x20 shed, porch awning, 9x30 patio. For more information, call 58-4187. Interested parties only. 3x2

**FOR SALE:** 1974 12x55 Giles mobile home, 2 bedrooms, porch with sliding glass patio doors, \$4,800. Ph. 256-4062. 3x2

### REAL ESTATE

**FOR SALE:** Valley View Farm. 80 acres, 13 pasture and tillable acres, tobacco base, cedar posts and other timber. 30' coal vein (samples available). One room cabin, school bus service, 8 miles from Mt. Vernon. Call 986-8401 or 256-2657. 37xntf

**FOR SALE:** 5 acre baby farm with 3 bedroom house and barn located between Mt. Vernon and Berea on U.S. 25. Don Foster and Associates. Call 986-8401 or 256-2657. 49xntf

**FOR SALE:** 92 acres located off Sand Hill Road, adjoins national forest. Mostly woodland. Contact Virginia Holloran, 2020 Longwood Ln., Lynchburg, Virginia 24503. 1x4p

**FOR SALE:** 103 acre farm, 10 acre farm and 35 acre farm. All priced far from Conway. Noted right from Foster and Associates. 8401 or 256-2657. 49xntf

**FOR SALE:** 20 acres with 2, 3 room modern brick home, four bedrooms, 1 1/2 baths, 700 lb. tobacco base, den, fireplace. Near Brodhead. 4133. 48xntf

### MOTOR VEHICLES

**FOR SALE:** 1978 Colony Park Mercury Station Wagon, new tires, low mileage, excellent condition. Contact Dowell and Martin Funeral Home. 256-2991 or 256-2997. 3xntf

**FOR SALE:** 1974 750 Honda, loaded with extras. Priced reasonable. 256-5673. 43xntf

**FOR SALE:** 1978 Yamaha 350, \$500. Call 256-2685 or 256-4831. 2x2

**FOR SALE:** 1959 800 Ford Tractor, \$2,700. Call 256-5648. 3x1p

**FOR SALE:** 1973 Ford 260, 4 wheel drive, \$500 firm. See Doug Brock at Doug's Hair Designs. 3x1

**FOR SALE:** 1976 125 Elsinor. \$400. Call 256-5938. 3x1p

**FOR SALE:** 9 Honda, 6,800 miles. New paint, extras. \$850. Ph. 256-2849. 3x1p

**FOR SALE:** 1977 Pontiac Grand Prix L.I., V8, fully loaded, velour interior. Very clean. Book price over \$3,500, asking \$2,700. Call 256-5942 week days till 3 p.m. and on week ends. 1x1p

**FOR SALE:** 3/4 ton international. Pick-up with stock racks. Also, horse trailer. 256-4516. 3x1p

**FOR SALE:** 1969 Volkswagen. Very good condition. 8,000 miles on rebuilt engine. Call 758-8659 after 4:30 p.m. 3x1p

**FOR SALE:** 1978 Ford Bronco, good shape, 42,000 miles. Has V8 351 engine, automatic transmission, power steering and brakes, radio and heater (only one seat), good tires (all spudded mud grips), almost new spare and four extra mud grip tires in fair shape. Needs no body work. Want \$3,500 for it. Ph. 256-7272 or 598-3393. 1x3p

### Business Locations

Good Business Location: U.S. 25 north, 2,000 feet floor space, 2 restrooms, nice office, insulated. Service station, furniture shop or whatever. Room for living quarters. Down payment and move in. Low interest rate. Don Foster and Associates. 1-986-8401, Berea, Ky. or 256-2657. 16xntf

**FOR SALE:** Fran's Carpet Store. Large brick home

and farm on U.S. 150 adjacent to Cedar Rapids Country Club at a real, real bargain. Don Foster and Associates. 986-8401 or 256-2657. 4xntf

**FOR SALE:** Former Texaco Station, Convey, Racks, air compressor, 2-18,000 gal. tanks. \$15,000. Don Foster and Associates. Ph. 986-8401 or 256-2657. 48xntf

### MISCELLANEOUS

Pepperell, Queens, Urd 10-11-81. Downs, Lees and others. \$3.99 a square yard. All carpet 100% guaranteed. First class. 32 years of experience. See or call James Kincaid at S&K Carpets, Mt. Vernon. 256-4312. 3x1

**Aluminum Siding Sale:** Insulated aluminum siding, completely installed on average size home up to 1,000 sq. ft. only \$788.00, labor and materials. We now have the world-famous window and door trim made. Let us show you some of its work. Buy here pay here monthly. We also have a yearly farmer's plan. Write or call collect for free estimates. Trade-mark Aluminum and Vinyl Sales, P.O. Box 652, Somerset, Ky. 42501. Ph. 606-678-5700 or 678-3807, 9 a.m. to 5 p.m. We are dealers for United States Steel, Thermopane insulated and replacement windows. Established since 1957. ntf

**FOR SALE:** Rabbits, all colors and sizes. Ph. 256-4204 or 256-5610. 46xntf

**FOR SALE:** French horn, good condition. Call 256-4310 after 5 p.m. 3x2

### FARM ITEMS

**FOR SALE:** Cover crop wheat, \$3.50 per bushel. Ear corn, \$2.35 bushel. 256-4240. 3x3p

**FOR SALE:** Holland hay baler, model 68. Pick-up hay rack tractor wagon and hay conveyor 18', gas operated. William Weaver, 256-2496. 2x2p

### YARD SALES

**BASEMENT SALE:** Saturday, August 28, 9 a.m. to 5 p.m. at the home of Wanda Hopkins, Hwy. 70 at Quail. Watch for signs. Clothes, shoes, dishes, new curtains, drapes, books, bathroom curtains, bathroom space-saver, what-not shelves, pictures, bed ruffles, ladies handbags. Many items for everyone. First sale in two years. 3x1p

**BIG YARD SALE:** 3 family, 2 miles north of Ben's Valley. Home of Mrs. Francis Rimell at Green Hill. Watch for signs. Lots of goodies. Friday and Saturday, August 27 and 28. 3x1p

**YARD SALE:** 3 families. Friday, 5 miles north of Mt. Vernon on 25. T.V., small appliances and clothes. 3x1p

**YARD SALE:** 3 families. Saturday, September 4. Beng's Grocery on Hwy. 70. Sweeper, antique dishes, clothes, jeans, bedspreads, sewing machine, clock, iron. In case of rain, sale will be held Sept. 11. 3x1

**YARD SALE:** 5 family. Saturday, August 28, 9 to 5. Baby, children and adult clothing, small appliances, misc. household items. Located 5 miles from Mt. Vernon on Hwy. 150 near Brodhead. 3x1

**YARD SALE:** at Mt. Vernon florist, Saturday August 28, 9:00 to 3:00, Man's leather coat, size 42, Polaroid Camera, 4 Chevrolet tires and wheels. And lots of clothing, all sizes. 3x1

**YARD SALE:** at the home of Ronald Overbay, 3 miles west of Brodhead on Hwy. 150, at Gum Sulpher. Furniture, what-nots, dishes and tools. Friday and Saturday, August 27 and 29, 9-5. 3x1p

**YARD SALE:** Three family. Baby and children's clothing, uniforms, 410 8 1/2 size, w/2-3 everything. Home of Frank ... on ... Friday and Saturday, 9 a.m. 3x1

**YARD SALE:** 2 family. Saturday, 9 to 2, home of George Mason, clothes of all sizes, and lots of other items. 3x1p

### REUNIONS

**REUNION:** The Whitaker-Cromer Family Reunion will be held at the home of John D. Cromer Sunday, September 5. Bring a covered dish. 3x2

**OWENS REUNION:** Reunion of Howard and Martha Owens, descendants, Sunday, August 29th at Brodhead Fairgrounds. Bring a covered dish. 3x1

**HAMM REUNION:** The Hamm Family reunion will be held Sunday, September 5, 1982 at the Family Life Center. Friends and relatives all invited. 3x2p

**MULLINS REUNION:** At the Fairview Christian Church at Mullins Station. Sunday, September 5. Bring a picnic and spend the day. Everyone welcome. 3x2

**CASH REUNION:** September 4, beginning at 11 a.m. at the family home. Turn left up hill and then on right side of hill. There will be special music and singing and games will be

played. Bring a dish and a chair. Let us all get together once again. Your announcement, Lloyd Cash. 3x2

**ABNEY REUNION:** The Abney Family Reunion will be held Sunday, Sept. 5 at the Family Life Center at 11 a.m. 2x2

### NOTICES

**\$100 REWARD OFFERED** for return of lost black & white male Beagle dog. Lost in the Conway section. Ph. 256-4204. Vera Williams. 3x2

**NOTICE:** Dog owners are asked to please make certain their dogs are not running loose on the Mt. Vernon Elementary School grounds. These dogs pose a potential threat to the children and the dog warden will be called to pick up any dogs seen on the premises. 3x1

Leave the Fall Housecleaning to U.S. J and S Cleaning Service will clean your home for you and leave windows, walls, carpets, upholstery and floors sparkling. We are fast and efficient, use our own cleaning materials and are insured and bonded. Just call 758-4148. 3x1

**MISSING:** Miniature black Poodle with recent haircut. Answers to "Peppie" for Ottawa section. If anyone has any information, call 758-8484. 3x1

### Need Horseshoeing?

Shoes With or Without Borium  
 Call Bobby Cox  
 at 256-2596 or  
 Denzil Allen at  
 256-2881 for app't.

## GREG'S HEATING & COOLING



"Excellence is our Trademark"

256-5922

Greg Hargador 758-8941 Gary Kerr 256-5375

## NOTICE

Building & Remodeling Needs

Kitchen, Family Rooms, Baths-new or old

## JACK WREN

Free Estimates 256-5338

## Larry Goff Construction Co.

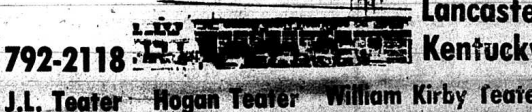
Bulldozer, Backhoe Work, Water Lines, Septic Tank Systems, Road Grader Work, Rock Drilling & Blasting, Hauling, Etc.

Call Larry Goff 758-8714

Owner - Operator

## GARRARD COUNTY STOCKYARDS

Sales For All Classes of Livestock Every Friday



J.L. Teater Hogan Teater William Kirby Teater

Lancaster  
 Kentucky

792-2118



# Clayton Hammonds' Supermarket

Hwy. 461  
The Somerset Road

"Home of the Bargains" coffeemaker to be given away Sat. Sept. 4

Prices good Aug. 26 - Sept. 1

Come in and register for a Mr. Coffee



Armour Veri-Best

**1/4 Pork Loin** \$1.59 lb.



Armour Columbia Bacon \$1.29 lb.

**Cube Steak** \$2.19 lb.

Tyson

**Fryer Breasts** \$1.19 lb.

USDA Choice

**RIBEYE STEAK** \$3.99 lb.

Fresh **Pork Liver** sliced 39¢ lb.

Extra Lean **STEW BEEF** \$1.89 lb.

Biz **Detergent Booster** Trial Size 49¢



8-pack 16 oz. **Pepsi Cola** plus dep. or bottles \$1.59

Betty Crocker **Cake Mix** 79¢

Minute Maid 12 oz. **Orange Juice** Frozen 99¢

Betty Crocker **Ready to Spread Frosting** \$1.19



Gordon's **Twin Pack**

Minute Maid **Lemonade Crystals** 30.7 oz. \$2.49

Spam **Luncheon Meat** 12 oz. \$1.29

**POTATO CHIPS** 89¢

Nestea **Instant Tea** 49¢ 1 oz.

V-8 **Vegetable Juice** 46 oz. 79¢

Sunshine **Krispy Crackers** 1 lb. box 49¢

Fresh Bake **Hamburger or Hot Dog BUNS** pkg. 59¢

Charmin **Toilet Tissue** \$1.19 4 roll pkg.



**Celery** 39¢ stalk

Hi-Dri **Paper Towels** 2 roll pkg. 79¢

Final Touch **FABRIC SOFTENER** 33 oz. \$1.09

**Carrots** 2 pkgs. 49¢

Showermate **Liquid Soap** \$1.59



JFG **Peanut Butter** 28 oz. \$1.99

20 lb. bag **POTATOES** \$1.79

**Red Grapes** 69¢ lb.



# Mount Vernon Signal

MOUNT VERNON, KENTUCKY 40456

VOLUME 96 - NUMBER 3

THURSDAY, AUGUST 26, 1982



Can you believe it's here? School started in Rockcastle County this week for some 3,154 students at the four elementary schools and the high school. In the above photo, Mrs. Paula Clark's kindergarten class at Mt. Vernon is hard at work during their second day of

school. The students sitting at the first table are, B.J. Bradley, Chad Mahaffey, Helen Grigsby, J.R. Hopkins and Mary Bullock. At the second table are, Sheri Robbins, Kim Robins, Jessie Mallilote and Estil McFerron.

## County schools open with enrollment slightly down

Total school enrollment for the 1982-83 school year shows a loss of about 46 students, however, enrollment figures from the high school will not be complete until Friday according to a spokesperson at the school. Last year's enrollment at the end of the first month of school was 3200, according to Charles E. Parsons, superintendent. The combined enrollment as of Tuesday of this week was 3,154. This year's figure does show, however, an increase over the enrollment at the end of the 9th month last year. The enrollment figure at that time was down from the earlier 3,200 to 3,136.

Principals at Livingston, Mt. Vernon and Brodhead report increase in enrollment at their schools. This year, Livingston has an enrollment of 330, Brodhead reports 615 and Mt. Vernon's number is 871. Roundstone, the only elementary school which did not show an increase, has 388 students. The tentative figure for the high school is 952. The only new personnel hired for the 1982-83 school year in Rockcastle County were Nelson Graves who will teach at Livingston and Mary Gregory who was hired as speech therapist. Lori Mullins was hired to assist her.

## Loan approved for rail spur

Final approval was granted by the Kentucky Development Finance Authority last Friday, August 20, for a \$100,000 loan made to the Rockcastle Industrial Authority to aid in the construction of a rail spur at the Industrial Park. According to Bill James, president of the Rockcastle Improvement Council, the money will supplement a \$182,400 Community Development Block Grant awarded to the county earlier. James said the exact cost of the spur is not known but hopefully the amounts received from the two sources will be enough for construction.

The loan from Kentucky Development Finance Authority will be paid back with funds generated from leasing the spur to the Western Pacific, according to James.

Those teachers retiring last year were Jess Tom Pike from Livingston, Geraldine French from Brodhead and Pauline Mullins as speech therapist. Barbara Rader, Title I teacher at Roundstone took a leave of absence from her position and Kevin McShane resigned his math teaching position at the high school to accept a teaching fellowship at the University of Kentucky.

## Local law officials make four raids last week

The Rockcastle County sheriff's department, aided by state troopers, conducted four raids last Thursday and Friday nights.

Arrested Thursday night and charged with selling alcoholic beverages in a local option territory were Karen Cash and Cynthia Alcorn. Ms. Cash was additionally charged with possession of alcoholic beverages for resale and Ms. Alcorn was charged with possession of marijuana.

Taken in the raid at Ms. Cash's residence on Highway 70 were 94 cans of beer and 7 fifths of wine.

Ms. Alcorn entered a plea of guilty to the charge of possession of marijuana Monday morning in District Court. However, Judge Ernie Woods reportedly recommended that she wait until Wednesday, August 25, to make her plea on the charge. Wednesday was the date set to hear the other charge and the two charges against Ms. Cash.

Later in the evening on the same date (August 19) Sheriff William Taylor, Deputies Willie Powell and Clarence "Jibb" Hasty and State Trooper Guy Blevins conducted simultaneous raids at the Negro Creek residence of Steve Bishop and Tom Sandlin.

Taken in the raid on the Bishop residence were 175 cans of beer. Bishop was charged with possession of alcoholic beverages for resale and selling in a local option area.

Bishop pled guilty to both charges Monday before District Judge Ernie Woods and was fined \$150 plus court costs. He also re-

ceived a probated sentence of 30 days in jail and was placed on probation for one year.

Charged in the raid on the Sandlin residence were Katie Sandlin and Tom Sandlin. Sandlin was charged with possession of alcoholic beverages for the purpose of resale and Mrs. Sandlin was charged with selling alcoholic beverages in a local option area.

Confiscated were 24 half pints of whiskey and 333 cans of beer. The charge brought against Sandlin was dropped, however, Mrs. Sandlin entered a plea of guilty Monday and was fined \$150 plus court costs and was given a 30 day jail sentence which was probated and was placed on probation for one year.

Friday night, State Trooper Jimmie Sliwinski entered members of the sheriff's department in a raid at the residence of David Fredericks at Chestnut Ridge.

Taken in the raid were 5 deacons of whiskey, 4 half pints whiskey, 7 pints whiskey, one half pint gin and 22 cans beer.

Fredericks was charged with possession of alcoholic beverages for the purpose of resale.

Also confiscated were a scanner and an illegal firearm.

After being released on 10% of a \$3,000 cash bond, Fredericks was scheduled to appear in court Wednesday, September 8.

The four raids came after a week long undercover investigation by the sheriff's department, according to deputy sheriff Hasty.

## Ballet School

On September 9, 1982, the School of the Lexington Ballet will open a new branch studio in Mt. Vernon. Classes will be conducted in the Senior Citizens' Room of the Public Library.

The School of the Lexington Ballet, under the direction of Ms. Jan Hurst, is the preparatory school for the Lexington Ballet Company. The School is dedicated to the goal of bringing the finest quality dance to all areas of Kentucky. Mr. Norman Shelburne, Artistic Director of the Lexington Ballet began the School in 1977.

The classes in Mt. Vernon will be taught by Lu Ann Pelle-Byrum. Ms. Pelle-Byrum began her training at the finest schools in Louisville and performed with two regional companies there. She joined the Lexington Ballet in 1975 and has been an integral part of the Company and faculty ever since. You may have seen her most recently as "Louise" in Lexington Musical Theatre's production of "Carousel".

Classes in Mt. Vernon will be offered for beginner, and advanced students ages pre-school through teenage. The curriculum includes ballet and jazz.

For further information, call Mrs. Betty Jo McKinney, 758-8846, weekdays after 5 p.m.

## Funds available for developing tourism business in area

Matching funds are available for developing Tourism Business in each city, and county in the Cumberland Valley area which includes Bell, Clay, Harlan, Knox, Laurel, Jackson, Rockcastle and Whitley counties. Applications need to be in by October 1, 1982.

A meeting to review and allocate the matching funds for tourism promotion will be conducted on Thursday, October 14, 1982 at the Haymarket Restaurant in London, Kentucky. Additional information is available at the office of the Cumberland Valley Area Development District in London, 606-864-7391

## Trial of two Rockcastle men results in guilty verdict

Two Rockcastle men were both found guilty last Thursday morning in Rockcastle Circuit Court of one robbery, kidnaping and rape after September 23th in Rockcastle County.

James Brown of Mt. Vernon was found guilty of aiding and abetting in first degree robbery of the Best Western Motel at Burr and aiding and abetting in the rape, kidnaping and sexual abuse of a Rockcastle woman. Brown was found not guilty of aiding and abetting in the murder of Milford Kemp, the night clerk at the Best Western. After listening to three complete days of testimony, the eight men and four women jury returned to the courtroom Thursday morning after only thirty minutes of deliberation.

The jury recommended a total of fifty years in the state penitentiary for Brown.

Duke Gibson, one of the other defendants on trial, was found guilty of aiding and abetting in first degree robbery and the jury recommended a sentence of ten years in prison.

Sentencing date for Brown and Gibson was set for September 10. On August 19th, Rockcastle Circuit Judge Phillip K. Wicker sentenced Paul Milburn to forty years in the penitentiary for the murder of Milford Kemp and sentenced Donald Newcomb to five years for aiding and abetting in the murder. These two men were also defendants in the same case.

## County received over two hundred thousand last year for job training

Dr. Grady Stumbo, Human Resources Secretary, announced that Rockcastle County received a total of \$224,287 in 1981 to provide training and work experience for 128 county residents.

The training and work experience programs are administered by the Cabinet's Department for Manpower Services to help unemployed people find meaningful jobs.

The funds in Rockcastle County were spent for the following programs:

-\$110,822 to provide classroom training for clerk sten.

\$21,445 to provide in-school career experience.

-\$66,149 to provide youth with summer work experience.

(Cont'd to P-14)

## County buys garage with grant

Approval of the purchase of the county garage building, presently being rented by the county, was the first order of business at the special meeting held Tuesday afternoon.

The building will be purchased, in part, with Area Development District Funds in the form of a \$22,000 grant.

The building is being sold to the county by Charles Bussell for a purchase price of \$25,000. The county presently pays Bussell, the county's head mechanic, \$200 per month rent on the property, formerly known as Armour Creamery.

In other business, the court voted to terminate the employment of Farmer York as county dog warden, effective September 1, 1982. No one was named as a replacement for York.

Doug Mullins reported to the court on two prospective land fill sites he had been asked to survey for the county. The magistrates decided to visit both sites Saturday morning.

The Cumberland River Comprehensive Care Center was granted \$2,000 to help defray costs of services to the county's mentally ill and retarded indigent persons.



John Lair of Renfro Valley was presented with the Everett Brown Award Monday night at the regular Rockcastle Improvement Council meeting. Gatilff Craig cited Mr. Lair's many contributions to country music and to the county. The Everett Brown Award is made each year to a Rockcastle citizen whose contributions to the area have been significant. Mr. Brown, who is now deceased, was a former resident of Rockcastle.

Mount Vernon Signal

PUBLISHED EVERY THURSDAY

Main Street in Mt. Vernon, Kentucky 40456

Entered at Mt. Vernon Post Office

As Second Class Matter - Permit No. 1

1<sup>st</sup> County - \$7.50 per year Ot of County - \$10.00

James Anderkin, Jr., Publisher
Perlina M. Anderkin, Editor

Member Kentucky Press Association

County Statistics

Deaths recorded

Donnie and Shirlene Evesole, property in Rockcastle County, to James and Kathy Faye Payne. Tax \$13.00.

From our files....

10 Years Ago, 1972: Rockcastle County High School cheerleaders attended a clinic recently at the University of Kentucky campus. The clinic was sponsored by the National Cheerleader Association Staff, who gave the instructions in new cheers, stunts and crowd psychology.

The crowd was so large at one time that many visitors to Open House were forced to wait outside the main entrance to the new high school during Open House Sunday afternoon. The response was overwhelming and gave parents, students and citizens in general a look at Rockcastle's newest and most long-awaited facility.

20 Years Ago, 1962: Mr. and Mrs. Jimmy Cromer announce the arrival of a daughter, born August 17 at the Rockcastle County Baptist Hospital. She weighed 7 lbs., 7 ozs. and has been named, Jamesa Gwenn. Mrs. Cromer is the former Shirley Hasty.

A new list of 22 teachers who will teach in county schools this year has been announced by Mrs. Neupeul Miracle.

Kenneth Coremluis, Barbara Owens and Helen Chandler Crabtree will teach at Livingston High School.

Teaching in rural schools, who have not previously been announced are: Billy June Burton, Alberta Winstead, Linda P. Williams, Leon Welting, Clint Phillips, Thelma Durham, Mary Neville Saylor, Joanna Allen, Geraldine Holbrook, James Mink, Paul Sears, Harold Ballinger, Lavada Berry, Bobbie Durham, Katherine Harris, Keith Singleton, Juanita

Hansel, Joyce Renner and Edna McGuire.

39 Years Ago, 1943: World has been received that Pfc. Russell Cromer has been in the hospital at Camp Livingston, Louisiana. Pfc. Cromer has recently been home. He is the son of Mr. and Mrs. S.R. Cromer of Brodhead.

Pvt. Ivan Cummins of Camp Rucker, Alabama is spending his furlough with his wife and baby and other relatives.

Jack Hiatt was rushed to the Ben Hospital Tuesday evening for an operation.

Letters to the editor

Dear Editor: For the first time in my life, I want to take this means to thank some, very special people for a job well done.

I would especially like to thank you the editor, and Mrs. Nancy Mullins, for the articles you carried about Elmwood Cemetery and the Perpetual Care Corporation. With your help and the work of the Directors and many interested individuals, we have passed the halfway mark in donations that we need, to make Perpetual Care a reality.

The response for donations has been most gratifying. To date we have received thirteen \$1000.00 donations and have pledges for four more.

Anyone has any doubt about the success of his program, I am sure that our progress will encourage them to do their part.

Again, I want to thank the Signal for its splendid articles, cooperation and assistance in promoting our program.

Henry H. Cox, president Elmwood Cemetery Perpetual Care Corporation

Sincerely,

Editor:

I am trying to locate descendants of Richard Bledsoe Stanley, or someone who knows a descendant, or has heard of him. He married first Luzanna Hall at Knoxville, Tennessee in 1858. He married Miss Emma A. Ashley at Mt. Vernon, Kentucky in 1874. There in 1881 she left

him with their four young children and came to Texas to live near her parents, who had come two years before. He was born in Knox County, Tennessee in 1840, the son of William and Frances Madren Stanley. If anyone can help me it will be greatly appreciated.

Wilma Stanley 1409-9th St. Levelland, Texas 79336

State Legislature

by Senator John Rogers

During its August meeting, the Personal Service Contract Review subcommittee reviewed 108 state contracts and amended 56 contracts. The 108 contracts represent over \$12 million in state spending that will span fiscal year 1982-83.

The purpose of the contracts, not the sources of contention, because they were programs mandated by the 1982 General Assembly. The contract expenditures were earmarked for domestic abuse shelters and the operation of state health-care facilities.

The committee rejected the contracts because they contained advance payment clauses.

State law prohibits the agencies of state government from making advance payments for contracted services.

In July, the committee had deferred action on the contracts in order to allow Human Resources time to omit the illegal clauses.

The Department for Human Resources, instead of making the clearly appropriate changes, appealed to

Breaking away - the first week is the worst, isn't it?

by Nancy Mullins

"Firsts" are without a doubt "mindstickers". I doubt there is a parent found who does not remember the emotion and joy of seeing the first-born child.

This begins a series of firsts: the first word, the first step, the first grade, the first date, the first car and the first grandchild. Firsts are great. They stimulate, they excite and they challenge.

But stuck in there somewhere is a first which is sometimes endured with less enthusiasm. It is the first week of the firstborn's departure from home.

The leaving home, all other stages of development and growth is natural and expected. But you expect it, like you expect to die. You know you will someday face it, but you don't know how much it is going to hurt and it never comes at an opportune time.

True, the parting could be worse depending upon a variety of factors. Yet trying to analyze the ambivalent feelings at the most natural of partings only serves to further confuse the issue.

My child is leaving...he is well and happy. My child is leaving...I'm excited for him. My child is leaving...will it be a success? My child is leaving...will he be happy?

Eventually, the advance payment clause will be removed and the purposes of the contracts will be carried forth. It is obvious that the administrators of the Human Resources Department have acted irresponsibly. And, the Finance Department helped to reinforce the old age that two wrongs do not make a right.

My child is leaving...is he ready to be responsible? My child is leaving...will we be happy? My child is leaving...to become an adult. My child is leaving...there is a void. I would not change it, for I hate change.

I vow that years from now when the others leave, I will be ready. I will have it figured out, how I am supposed to feel.



Illustration by Jimmie Lee of the printing press to be found at the Stanhope Press, invented by Charles, the third Earl of Stanhope in 1788.

ESTATE AUCTION of The Late Ed J. Brown SAT, AUGUST 28, 10 a.m. OTTAWA SECTION. Antiques and life-time accumulation of tools, furniture, household items and numerous miscellaneous items.

FOOD FAIR MARKETS advertisement featuring various food products like sausage, ham, beef, pork, and soups with prices and coupons.

KENTUCKY FOREST PRODUCTS INC. advertisement for lumber products like treated barn poles, metal gates, and pine posts.

**ARMOUR STAR  
GRADE "A"  
BAKING  
HENS  
69¢**



LB. Quantity Rights Reserved

Porcelain  
Fine China

**FINAL OFFER**



Check At Your Local Store For Details  
Prices Good August 23 Through August 29.



**ARMOUR BACON** 1 lb. Package **\$2.19**



**ARMOUR BOLOGNA** 1 lb. Package **\$1.59**

**ARMOUR TURKEY HOT DOGS** 12 oz. Package **79¢**



**ARMOUR PORK SAUSAGE** 1 lb. Package **\$1.39**



**ARMOUR MELLOW SWEET HAM** 1/2 Cut **\$2.19**



**ARMOUR HOT DOGS** 12 oz. Package **\$1.09**



**ARMOUR BACON** 12 oz. Package **\$1.69**

**ARMOUR JUMBO BOLOGNA** Chunked **\$1.19**

**ARMOUR MEAT PATTIES** 3 oz. Package **\$1.69**

**GOLDEN RIPE BANANAS** **27¢**



**CRISPY CABBAGE** **15¢**

**FRESH RED RADISHES** **2/39¢**

**NORFOLK RUSSETT POTATOES** 10 lb. Bag **\$1.89**

**YELLOW ONIONS** 3 lb. Bag **89¢**

**RED GRAPES** **69¢**



**EL PASO TACO DINNERS** 10 oz. Box **\$1.19**

**EL PASO NACHIPS** 7 1/2 oz. Box **99¢**

**EL PASO TACO SAUCE** 8 oz. Jar Mild or Hot **75¢**

**EL PASO TACO SHELLS** 5 oz. Box **79¢**

**PARAMOUNT "LITE" SWEET PICKLES** 16 oz. Jar **\$1.09**

**REESE'S PIECES** 8 oz. Package **99¢**



**WISK LIQUID DETERGENT** 64 oz. Bottle **\$3.29**

**KLEENEX BOUTIQUE FACIAL TISSUE** 125 Count Box **2/\$1.59**

**YELLOW CORN** **5/69¢**



**FRESH RIPE PLUMS** **79¢**

**DIAL SOAP** Bath Size **\$1.69**



**SCOTT PAPER TOWELS** **69¢**



**COTTONELLE TISSUE** 4 Roll Package **\$1.09**

**MT. DEW, DIET PEPSI, OR PEPSI** **\$1.49**

**GRAVY TRAIN DOG FOOD** 5 lb. Bag **\$2.19**



**STAYFREE MAXI PADS** Pak 12 30's **\$3.29**

**LITTLE FRISKIES CAT FOOD** 3 1/2 lb. Bag **\$2.19**

**TYLENOL SINUS TABLETS OR CAPSULES** **\$1.89**

**MISS BRECK Regular, Super or Unscented HAIR SPRAY** 9 oz. Can **\$1.49**



**500 S & H GREEN STAMPS**  
With This Coupon And The Purchase Of \$40.00 Or More Groceries.  
Exp. 8/29/82

**50 S & H GREEN STAMPS**  
With This Coupon And Purchase Of 2 Packages Of Cut-Up  
Exp. 8/29/82

**50 S & H GREEN STAMPS**  
With This Coupon And Purchase Of 2 lbs. Or More Tomatoes  
Exp. 8/29/82

**50 S & H GREEN STAMPS**  
With This Coupon And Purchase Of 2 Or More Packs Of Hot Dog Or Hamburger Buns  
Exp. 8/29/82

**50 S & H GREEN STAMPS**  
With This Coupon And Purchase Of 2 Pkgs. Or Or More Any Candy  
Exp. 8/29/82

**100 S & H GREEN STAMPS**  
With This Coupon And Purchase Of \$10.00 - \$30.00 Of Groceries  
Exp. 8/29/82

**300 S & H GREEN STAMPS**  
With This Coupon And Purchase Of \$30.00 - \$40.00 In Groceries  
Exp. 8/29/82

P-4 Mt. Vernon Signal Thursday, August 26, 1982

**Ellison - Cupp reunion**

The Ellison-Cupp reunion was held at the William Whitley Home on August 15, honoring Mr. and Mrs. Henry Ellison, residents of Route 3, Crab Orchard. They are the parents of 18 children, 37 grandchildren and 29 great grandchildren. Fifteen of the sixteen living children, as well as many other relatives and friends attended the reunion.

Among those in attendance were from Crab Orchard: G.D. and Hester Leece, Roger Leece, Tammy Simpson, Henry Jr. and Joyce Ellison, Greg and Jeff, Chris Faulkner, Larry and Joyce Leece, Detrina and Moway, Darrell and Nancy Smith, Angie and Rodney, Glen and Marsha Ellison, Dana, Bobby Ellison, Joe and Brenda Ellison, Dallas and Ruby Brock, Jim, Beverly, and Timmy,

Bradley Brock, Gary and Sue Kidwell, Kim, Christy and Michael Ray, Ray and Estline, From Rogers: Lois Miracle, Elaine Miracle, Clinton and Judy Harris, Scott and Rusty, Vicki Kelly, John David and Christopher. From Corbin: Joe Philpot, Sis Monroe, Opal Dixon, Delbert and Pauline Gibson, Bill and Mattie Ellison, Ray Fincher, Zetta Fincher, Lisa Fincher, Toni Helton, Maynard Gibbs, Chester and Elicea Chester. From Ohio: Herman and Shirley Ellison, Belinda, Steve and Pam Lipps, Shane and Michelle, Jean Fuson, Melinda and Rickie, Jamie Mineer, Dan and Lillian Cupp, Brenda Wieland, Teri Wieland, Brandon Wieland. From Morris: Bessie Lupp, Ronnie and Roger, Mr. and Mrs. Arthur James Cupp, From Brodeur: T.J. Cupp, Pat, Adams, Paula Chastain. From Indiana:

Richard and Opal Leece, Raymond and Lela Durham, Bruce From Adams: Linda and Mary Ann Barbers. From Somerset: Shirley Daughter, Deanna and Donna. From Lexington: Moses and Cora Cupp, Mosella Stump. From Louisville, Mike and Sondra Gisler, Emily and Andrew; From Danville: Roy and Reba Short, Ronnie and Shannon Short, Jimmy, John, Carolyn, Kelly and Shane. Everyone had a great time and hope to meet again next year.

**CAP SPONSORING CHRISTMAS BASKET PROGRAM**

The Christian Appalachian Project is now accepting applications for Christmas Basket Program. Applications are now available in the Attic located on Williams Street in Brodeur. The line for filling out applications is Saturday, September 18th, 1982.

Only families who fill out an application will be considered. Christmas Baskets this year are for families who received a Christmas Basket in previous years still must fill out an application this year.

If you have any questions, call David Daunauer at 256-4170 between 9 a.m. and 5 p.m.

**MVFD ROAD BLOCKS**

The Mt. Vernon Volunteer Fire Department will hold two road blocks on Saturday and Sunday, September 4th and 5th to help stamp out our muscular dystrophy. The road blocks will be at the intersection of Hwy. 150 and U.S. 25 and Exit 62 and 67.

The Robinson family will hold their annual reunion Sunday, September 5

at the Brodeur Fairgrounds. All members of the family are urged to attend and bring their dinner for a good time of fellowship together.

**DEMOCRATIC MEETING**

A Democratic meeting will be held Saturday, August 28th at 7:30 p.m. at the Community Room of the Bank of Mt. Vernon. All Democrats are invited.

Henry Brown, Chairman

"All that is human must retrograde if it does not advance."

**NOTICE**  
TV, Stereo & Appliance Repair  
**Western Auto Store**  
Mt. Vernon 256-2616

**STOP TERMITES**  
Madison Termite and Pest Control  
For Free Inspection & VA & FHA Inspections  
**PAUL BURTON**  
Mt. Vernon  
Call 256-2318  
Day or Night

**NOTICE**  
Decorator Cakes  
Will Bake Any Kind of Cake  
**Margaret Owens**  
256-5533

**REAL ESTATE FOR SALE**

**Commercial Properties**

100x280 Exec<sup>o</sup> at Lot Richmond<sup>o</sup> Adaptable es. Only \$39,500. **SOLD**

**WORLD'S FAIR SPECIAL**, Dandy 8 unit motel located on Richmond Street, Mt. Vernon. All necessary furnishings included. Owner financing available. Could be adapted to several other types of business. Priced at \$79,000. E-3

**Bargain Bell Ring** - Small commercial building located on West Main Street, Mt. Vernon. This building could be used for several types of small businesses or adapted for office space very easily. A bargain price at \$6,900. G-1.

**Excellent business location** and building located on US 25, South of Mt. Vernon. Building is presently occupied by Maloney's and has a good lease income. Property situated in one of the fastest growing business communities of Rockcastle County. Can be yours for \$97,500. F-20.

**Main Street Commercial** Lot-Mt. Vernon, Ky., near the Sears Building. All utilities available. Priced at only \$29,900. E-19.

**Farms and Acreage**

Reduced! 15 wooded acres, large Bedford Stone home 5 years old, 5 bedrooms, finished basement, 1 1/2 baths, 2 fireplaces and flu On the Flat Gap Road in the Boone Section \$47,500. D-24

**52 ACRE FARM** with Modern Country Home - Near Livingston. 3 bedrooms, living room, 1 1/2 baths, large family room, dining room, kitchen, utility room. Also barn plus 10x32 pool. Possible owner financing and owner will consider trading to smaller property. Priced at \$63,900. D-17.

**33 Acres** more or less - near Salspeter Cave. Remodeled 5 room house, barn and several miscellaneous buildings. Approximately 8 acres cleared and the balance woods. Water is provided by a well and pond. Priced at \$23,900. D-22

**8 Acres** located in the Wabd Section of Rock-

castle County. Offers lots of blacktop road frontage, approximately 1/2 acre is cleared the balance in woods.

**TOWN FARM** - Only 1 1/2 miles from Mt. Vernon. Offers a panoramic view of Rockcastle's beautiful countryside. 88 acres, approximately 20 acres cropland, balance in woods, 2 ponds, 1,417 lbs. of tobacco. Almost new 2,400 sq. ft. home with 3 bedrooms, living room, large family room, kitchen and dining room combination, full basement, 3 baths and much more. Can be yours for \$99,500. B-27.

**34 ACRES** More or less - 3 miles south of Livingston. Blacktop frontage, hill land, firewood. \$6,500. E-5

**130 Acre Affordable Farm** near Stanford, Ky. Pond, abundance of grass, approximately 50 acres row cropland. \$475 per acre. Call us today for additional details on this farm. F-9.

**83 ACRES** More or Less - Wood and woodland. Located just south of Mt. Vernon. Secluded. Priced at only \$7,900. F-1.

**14 ACRES** - Highway 150, near Brodeur. Agricultural or commercial land. Basic tobacco allotment is 213 lbs. pond, city water available. Priced at \$5,950. C-17.

**B A Small Farmer** - Highway 150 near Brodeur. Level land, city water available, barn. Yours for only \$12,900. F-2.

**10 Acre Farm** - Bedford Stone Home located just outside the city limits of Mt. Vernon, house has 4 bedrooms, living room, modern kitchen with fantastic view from one of the highest points in Rockcastle County. All this for only \$65,000. D-25.

**12 Acres**, of which most is hill land located in the Sand Springs area in Rockcastle County. It is improved with a 6 room house which includes living room, kitchen, 4 bedrooms. The house is in need of some repairs. In addition to the house, there is a tobacco barn and also a stock barn and 512 lbs. of tobacco. All for \$12,500. F-16.

**50 Acres** more or less on Wolf Creek. Coal has been uncovered and has had a deep mine permit. An opportunity for only \$31,500. F-12.

**Lovely Bedford Stone Home** - Only 2 miles out of Mt. Vernon on Highway 461. It has 3 bedrooms,

approximately 35 acres which is crop and pasture land and the balance in woods. It is improved with a 4 room house which has 2 bedrooms, living room, kitchen, utility room, and bath. It also has w/w carpet, fireplace, coal and wood burner. Well provides water to the house. In addition to the house, there is a 6x28 ft. wood and hay barn and a large pond with a concrete spillway. It offers plenty of privacy. Priced at \$39,500. F-15.

**82 Acres** more or less in the Flat Lick Section of Garrard County. Approximately 70 acres is crop and pasture land and balance in woods. A good pond and creek provides water for the farm, approximately 1200 lbs. of tobacco and is fenced. Purchaser will receive the 1982 corn crop if bought before corn is harvested. Priced at \$44,900. F-15.

**44 Acres** and two bedroom house located at Pine Hill, Kentucky. The house has a living room, kitchen with built-in cabinets, 2 bedrooms and bath. It also has wall to wall carpet, curtains, flu, kitchen hook-up, and a well provides the water to the house. In addition to the house, there is a barn, 2 ponds for stock water, and 780 lbs. tobacco base. Priced at \$25,000. F-21.

**52 Acres** more or less located near Brodeur at Possum Kingdom. 15 acres of cleared land, pond, some marketable timber. Yours for only \$25,000. F-13.

**80 Acres** more or less located at Pine Hill, Kentucky. This farm has approximately 15 acres cleared, 26 inch coal vein has been drilled, pond, 2099 lbs. basic tobacco allotment, some marketable timber. Priced at \$40,000. F-14.

**50 Acres** more or less on Wolf Creek. Coal has been uncovered and has had a deep mine permit. An opportunity for only \$31,500. F-12.

**Coal Properties**

**52 Acres** more or less located near Brodeur at Possum Kingdom. 15 acres of cleared land, pond, some marketable timber. Yours for only \$25,000. F-13.

**80 Acres** more or less located at Pine Hill, Kentucky. This farm has approximately 15 acres cleared, 26 inch coal vein has been drilled, pond, 2099 lbs. basic tobacco allotment, some marketable timber. Priced at \$40,000. F-14.

**50 Acres** more or less on Wolf Creek. Coal has been uncovered and has had a deep mine permit. An opportunity for only \$31,500. F-12.

**Homes**

**52 Acres** more or less located near Brodeur at Possum Kingdom. 15 acres of cleared land, pond, some marketable timber. Yours for only \$25,000. F-13.

**Lovely Bedford Stone Home** - Only 2 miles out of Mt. Vernon on Highway 461. It has 3 bedrooms,

kitchen, 1 1/2 baths, fireplace, family room, full basement. Priced at \$59,900. D-16.

**Four Bedroom Brick - Easy Terms** - Interest 2 b... finished basement, living room, w/w carpet, fireplace, city water and sewer. Priced at \$38,750. E-18.

**\$40,000 - \$50,000**  
New Listing - Almost new tri-level near Mt. Vernon. Large wooded lot, three bedrooms, two baths, living room, dining room, kitchen, fuel oil and wood furnace. Assumable loan, all for only \$49,900. G-2.

**Reduced to Sell - Lovely Field Stone Home** - located in the Valley Manor Subdivision - 3 bedrooms, living room, kitchen, bath, utility room, garage, w/w carpet, city water, dining room, fireplace, total electric, downtown. Ready to sell. Priced at only \$39,900. C-23.

**SPLIT FOYER BRICK** - Bob Ford Subdivision - Mt. Vernon, w/w carpet, electric heat, w/d hook-up and city water and sewer. The floor plan of the house consists of entrance hall, living room, dining room, kitchen, 3 bedrooms, family room, 1 1/2 baths, utility room and garage. Walk to town. Priced at \$43,900. F-8.

**Excellent Town Location** - West Main Street, Mt. Vernon. 3 bedrooms, living room, dining room, kitchen, family room, bath, utility room, garage and basement. The house has city water and sewer, storm doors and windows, heated by oil, w/w carpet, drapes, fireplace, pool. This brick home is situated on a 66x218 lot. Yours for only \$49,900. F-7.

**\$30,000 - \$40,000**  
Two FHA Houses to be built on Brindle Ridge. Each will have brick, 3 bedrooms, living room, kitchen, bath, electric heat. Priced for only \$36,000 each. C-28.

**Like New Brick** located in the Valley Manor Subdivision in Mt. Vernon. 3 bedrooms, living room, 1 1/2 baths, kitchen, garage. A good buy at only \$38,500. E-15.

**YOUR BRICK HOME**

close to town near the Rockcastle County Library has electric heat, city water and sewer, w/d hook-up, w/w carpet. The floor plan of the house is 3 bedrooms, living room, dining room and kitchen combination, 1 1/2 baths and one car garage. Priced at \$38,750. E-18.

**ATTENTION!** FHA PROSPECTORS! We have a new 3 bedroom brick waiting for you. You pick the location - Brindle Ridge, Scaffold Case, Willilla, Ottawa or South of Mt. Vernon. Priced at \$36,000. Z-5.

**REDUCED!** 3.1 acres with 3 bedroom modern home, Highway 461. Numerous outbuildings, close to town, city water and electric. Priced at \$36,900. E-7.

**NEAR THE LAKE** - New 3 bedroom brick, Rose Hill Road, full basement, fireplace, total electric. Move in only for \$36,900. F-10

**STONE RANCH HOME** located in the Ottawa Section of Rockcastle County. The house has 3 bedrooms, living room, dining room and bath. It has a newly remodeled kitchen and has oak built-in cabinets, w/d hook-up and is situated on approximately 1 1/4 acres. Priced at \$36,500. E-20.

**Excellent Location** - Corner of William Street and Lovell. Walk to town, 3 bedroom stone home with 2 car garage, gas/electric heat, 2 baths, fireplace, fence, carpet and much more at only \$37,500. F-4.

**12x60 2 bedroom mobile home** - located in a mobile home park. The purchaser may leave the trailer in the park or move it to your own lot. Priced at \$4,250. F-18.

**IN BRODEUR** - Excellent frame house with living room, dining room, kitchen, 4 bedrooms, den, bath, heated by fuel oil stoves, city water and sewer, storm doors and windows. Floors owner will trade or sell. Priced at \$29,900. C-16.

**REDUCED - ECONOMIC!** Willilla Section - 2 bedrooms, built-over-frame, dining room, electric and

oil heat, outbuildings, one acre. Priced at \$16,900. D-15.

**Close to Town** - House has just been completely remodeled. It has 2 bedrooms, bath, utility room, living room, kitchen, carpet, aluminum siding and is situated on 4 acres near Livingston. Priced at only \$19,900. E-13.

**JUST FOR YOU** - Located on Back Street, Livingston, Ky. The house

has 2 bedrooms, bath, hardwood and carpet on floors, stove and heating stove are included. Some remodeling has been done. Priced at \$8,900. E-12.

**HOUSE AND LOT** - Located on Sycamore Street, Crab Orchard, Kentucky. House has 4 bedrooms, living room, kitchen, utility room and bath. Also has aluminum siding, w/d hook-up, plus much more. In addition to the house, there is a 14x28 block storage building. Nice size lot. All for \$17,900. Owner willing to trade. E-14.

**MOBILE HOME AND LOT** - Located on Lake Linville. 1974 Alan, 2 bedrooms, living room, kitchen and bath, electric heat, oven, range, refrigerator, partially furnished, new porches and priced at \$7,900. E-16.

**HOUSE AND LOT** - Located on Quarry Street, Mt. Vernon, Ky. House has living room, dining room combination, kitchen 4 bedrooms, bath and basement. Exterior of the house is aluminum siding. House also has w/w carpet, storm doors and windows, is heated by fuel oil furnace. Priced at only \$28,500. E-17.

**COUNTRY HOME WITH 3 ACRES** - Located near Copper Creek, 1 1/2 story brick with 2 bedrooms, living room, kitchen, dining room and utility room combination, 2 baths and carpet, city water, heated by gas. Yours for only \$25,000. C-19.

**Rental & Lease Property**

**3 Bedroom brick** just outside the city limits of Mt. Vernon for lease \$200 per month and a security deposit required.

**Future Auctions**

Jim Austin and Violet Austin's 2 Farms and Farm Mach. Sat., Aug. 28, 1:30 p.m. Lincoln County, Ky.

**Ford Realty & Auction Co.**  
256-4545  
Selling the Country!  
Mt. Vernon Ky. 40456  
DANNE FORD, GR  
Nights 256-4548  
ROY ADAMS, GR  
Nights 718-8400

**All Kinds of Lots**

What kind do you want?  
Small Lot - Big Lot - Restricted Lot - Unrestricted Lot - Wooded Lot - Level Lot - Hill Lot - Expensive Lot - Inexpensive Lot - Lots located at Evergreen Estates - Valley Manor Subdivision - Lake Linville - Woods Creek Lake - Country Club Estates - Rainbow Valley Subdivision - Hwy. 461 - Quail Section - Mt. Vernon - FHA or VA approved Lots - WE HAVE ALL KINDS TO MAKE AN INVESTMENT TO SEE THEM TODAY!

by Lella Stokes

If anyone has not received their invitation to the Mt. Vernon High School Reunion Association and dinner on Saturday evening September 18th, please notify secretary, Mrs. Jean Brown Towery, Route 3, Box 303, Mt. Vernon, Ky. 40456, phone 256-2500. The new class of '49 is added this year, hopefully all will be present. Class of '32 will celebrate their 50th anniversary.

Mrs. Jim (Midge) Cummins of Corbin visited her parents, Mr. and Mrs. Bert Cromer and Mrs. Ina Cummins last Wednesday.

Mr. and Mrs. V.J. Mullins of Englewood, Ohio visited his mother, Mrs. other relatives here last week.

Mrs. Jean Towery, Patti and Steve have returned home from vacationing in Florida.

Mrs. Bertha Cornelius, when I was inquiring how her dear mother, Mrs. Martha Carpenter was doing, said that she was in very poor health and was at Sowerd Nursing Home in Broadhead.

Mr. and Mrs. Bobby Deborde, Bridget and Brandi and Mr. and Mrs. Ken Robinson were guests at Family Night, Ohio and Mrs. Ollie Grimes of Frankfort, Mrs. Anglin accompanied them to visit the brother, Mr. Tom Sigmon, who is at home from the hospital and continues very sick.

Cards and prayers are requested for Mrs. Clarence Fisher (Nellie). Her address is %Presbyterian Hospital, Room 1708, 1719 East 19th Avenue, Denver, Colorado 80218. Nellis is so very grateful for the many cards and letters she receives from friends and relatives in her hometown, Mt. Vernon and the Signal she accepts as a letter from home.

Mr. and Mrs. Johnny Kinser, Kathy and Amy of Nashville, Tennessee, Mr. and Mrs. Albert Hampton of Florence and Mrs. Cepha Kinser and Mrs. Emma Thompson of Erlanger, who enjoyed the Osborne Reunion at the William Whitley Home near Crab Orchard Sunday, on returning home in the afternoon visited Mrs. Amanda Maggard and Mrs. Lella Stokes in Mt. Vernon.

Mrs. Demmie Hammond was taken to Patti A. Clay Hospital last week where she underwent surgery. Her parents, Mr. and Mrs. Bill Cole visits her in the hospital every day and says she's improving. The Cole's also visited Mrs. Cole's aunt, Mrs. Nannie Morris, at the hospital here.

Mrs. Juanita Davis, Mrs. Betty Roach and Mr. and Mrs. Len Davis attended Beauty Pageant in London Friday evening. Mrs. Evelyn McMullin, who is recuperating at home from major surgery in Lexington is very grateful to her daughters, Mrs. Mary Coffey and family and Mrs. Bonnie Roberts, Cathy and Allen of Paducah for doing her laundry, housework, cooking and grocery shopping. Recent visitors and friends are: Mrs. Evelyn McMullin and Cathy Roberts at the home of Mrs. McMullin were Janie Bradley, Cathy Owens, Michal and Andrea of Berea, Mrs. Beulah Roberts and Billy Renner of Pine Hill.

Mr. and Mrs. Eddie Warren and son, Victor of Louisville are visiting Mr. and Mrs. U.G. Ramsey this week. They brought daughter Jennifer to E.K.U. in Richmond, Monday, where she is a senior this year. Karren Boyd, granddaughter of Mrs. Margaret Parrott and friend are vacationing in Washington, D.C., before their senior year starts at Berea College in Berea. Miss Boyd has been on the Dean's List the past two semesters.

A great shock! We were looking forward to seeing Charles Baker bringing Joyce with him to church just any Sunday now, as she was doing wonderfully well, as she and we all had great hopes of her getting well, when she suddenly took worse and we heard of her home-going. Our consoling words of comfort seems so weak and empty when we try to express our heartfelt sympathy to this dear bereaved family.



Mr. and Mrs. David Riddle

Rimell - Riddle Vows Said

The marriage of Miss Sandra Rimell, daughter of Mr. and Mrs. Stephen Bullen, and the late J.C. Riddle, son of Mr. and Mrs. William D. Riddle was solemnized on June 19, 1982 at the Scaffold Church Baptist Church. Rev. Michael W. Bryant performed the double-ring ceremony.

The bride, escorted in marriage and given by her step-father, wore an elegant gown with Chantilly type lace and a U-shaped neckline. The fitted bodice, with a slightly raised waistline, accented with a satin ribbon belt, was adorned with sequins and simulated pearls. The long, sheer sleeves were enhanced with ruffled lace cuffs. The bouffant skirt was of lace trim to create a panel effect with the chapel train edged in matching lace. She wore a fingertip veil of netting trimmed in lace, matching that of the gown, with simulated pearl trim. The bridal bouquet was of white silk roses with mint green satin streamers.

Miss Mary Rimell, sister of the bride, served as made of honor. She wore a floor length gown in mint green accented with a satin ribbon belt. She carried a small bouquet of white silk roses with white and mint green satin streamers. Mr. Billy Lee Cameron, friend of the groom, per-

formed the duties as best man. He was dressed in a white tuxedo with a ruffled shirt, trimmed in mint green. He wore a silk white rose boutonniere. Other ushers and groomsmen were John Benson, Keith Bussell and Pat Riley, all friends of the groom.

Angela Brown, niece of the groom, served as flower girl. She wore a mint green dress. Around her waist was a satin ribbon belt. She carried a white basket filled with flower petals.

Corey Scott, nephew of the groom, served as ring bearer. He wore a white suit with a silk white rose boutonniere and carried a white heart-shaped satin.

[Cont. to 14]

BIRTH ANNOUNCEMENT

Fred and Cary Lee Teater Wilson of Inverness, Florida would like to announce the birth of a daughter, Jessica Diane, on August 24 at Christ Memorial Hospital. The baby girl, the Wilson's first child, weighed 7 lbs. 14 oz.

Maternal grandmother is Mrs. Wayne King of Renfro Valley and maternal grandfather is Earl Teater, Jr. of Lexington. Maternal great grandfather is John Lair of Renfro Valley and maternal great grandmother is Mrs. Earl Teater, Sr. of Lexington.



Brian Holman of Crab Orchard is shown here rehearsing with other members of the cast of "Harvey". Tonda Leah Fields of Mt. Vernon is also featured in the cast.

Two local students among cast of "Harvey" at Berea College

When the Berea Community Theatre opens its production of "Harvey" with their aunt, Mrs. Ann Green.

Visitors of Mrs. Clyde Anglin last week were her sisters, Mrs. Cordia Cole and daughter, Carolyn Stummiller Hamilton, Ohio and Mrs. Ollie Grimes of Frankfort, Mrs. Anglin accompanied them to visit the brother, Mr. Tom Sigmon, who is at home from the hospital and continues very sick. Cards and prayers are requested for Mrs. Clarence Fisher (Nellie). Her address is %Presbyterian Hospital, Room 1708, 1719 East 19th Avenue, Denver, Colorado 80218. Nellis is so very grateful for the many cards and letters she receives from friends and relatives in her hometown, Mt. Vernon and the Signal she accepts as a letter from home.

Mr. and Mrs. Johnny Kinser, Kathy and Amy of Nashville, Tennessee, Mr. and Mrs. Albert Hampton of Florence and Mrs. Cepha Kinser and Mrs. Emma Thompson of Erlanger, who enjoyed the Osborne Reunion at the William Whitley Home near Crab Orchard Sunday, on returning home in the afternoon visited Mrs. Amanda Maggard and Mrs. Lella Stokes in Mt. Vernon.

Mrs. Demmie Hammond was taken to Patti A. Clay Hospital last week where she underwent surgery. Her parents, Mr. and Mrs. Bill Cole visits her in the hospital every day and says she's improving. The Cole's also visited Mrs. Cole's aunt, Mrs. Nannie Morris, at the hospital here.

Mrs. Juanita Davis, Mrs. Betty Roach and Mr. and Mrs. Len Davis attended Beauty Pageant in London Friday evening. Mrs. Evelyn McMullin, who is recuperating at home from major surgery in Lexington is very grateful to her daughters, Mrs. Mary Coffey and family and Mrs. Bonnie Roberts, Cathy and Allen of Paducah for doing her laundry, housework, cooking and grocery shopping. Recent visitors and friends are: Mrs. Evelyn McMullin and Cathy Roberts at the home of Mrs. McMullin were Janie Bradley, Cathy Owens, Michal and Andrea of Berea, Mrs. Beulah Roberts and Billy Renner of Pine Hill.

Mr. and Mrs. Eddie Warren and son, Victor of Louisville are visiting Mr. and Mrs. U.G. Ramsey this week. They brought daughter Jennifer to E.K.U. in Richmond, Monday, where she is a senior this year. Karren Boyd, granddaughter of Mrs. Margaret Parrott and friend are vacationing in Washington, D.C., before their senior year starts at Berea College in Berea. Miss Boyd has been on the Dean's List the past two semesters.

A great shock! We were looking forward to seeing Charles Baker bringing Joyce with him to church just any Sunday now, as she was doing wonderfully well, as she and we all had great hopes of her getting well, when she suddenly took worse and we heard of her home-going. Our consoling words of comfort seems so weak and empty when we try to express our heartfelt sympathy to this dear bereaved family.

August 25, two Rockcastle County residents, Brian Holman and Tonda Leah Fields, will be among the supporting cast.

"Harvey" is the familiar classic about Elwood P. Dowd and his invisible friend, a six-foot-tall rabbit named Harvey. When Elwood's sister, Veta, decides she has had enough of Elwood's constant companion, she seeks to have Elwood committed. Unfortunately, when she confides to Dr. Sanderson that she sometimes sees Harvey, too, Sanderson has her committed instead.

Brian Holman portrays Dr. Sanderson, the young psychiatrist who loses his job when his mistake is realized. Brian first appeared with the Community Theatre as a singing baseball player in last summer's musical, Damn Yankees. The spring production, "Little Mary Sunshine, featured him as a singing for-

Mr. and Mrs. David Creech and daughter, Melissa of Cincinnati, Ohio visited Mrs. Mattie Creech and family over the weekend and also visited Denver Miller. Mattie Creech and Denver Miller visited Mr. and Mrs. Billy Medley at Livingston, Monday night.

by Mrs. Geo. Burton

Mrs. G. Gravelly Burton and Mrs. Mae Barron were in Somerset last Tuesday shopping.

Mrs. Minnie Winkler of Ohio and Mrs. Ellen Brown and grandson, Tommy and Mrs. Mary Brock visited Mrs. Gravelly Burton recently.

Sympathy is extended to Mrs. Floyd Stokes due to the death of her brother, Mr. Oscar Owens of Ohio. Mr. Owens was formerly of Rockcastle County.

Mrs. Bonnie Hysinger visited Mrs. Gravelly Burton while last Thursday evening.

Mrs. Hazel Cummins and sister, Mrs. Ina Sears, attended the State Fair in Louisville, one day last week.

Mrs. Darrell Owens and Mrs. George Burton were

in Berea last Saturday afternoon. Sympathy is extended to the family of Mrs. Joyce Baker in their time of sorrow.

Mr. and Mrs. George Burton visited Mr. and Mrs. Emory Martin while Sunday evening. Sheila Burton and Steve Hensley were in Lexington last Friday. Sympathy is extended to the family of Mr. William D. Brewer in their time of sorrow.

Mrs. Mary O. Falin visited her brother, Mr. and Mrs. Swannie Price in Anderson, Indiana to attend the funeral of Mrs. Price's mother, Mrs. Electa Cunningham. Mrs. Florella Brown of Cincinnati, Ohio spent last week with her daughter and family, Mr. and Mrs. Preston Halcomb. She was visited Sunday by her sister, Mrs. Ed Falin and Mr. Falin.

Weekend visitors of Mr. and Mrs. George Duncan of Alcorn Street in Mt. Vernon were their granddaughter, Mrs. Darryl King, Mr. King and their son of Geneva, New York.

Prices effective Aug 23-Sept 5, 1982. Participating Stores Only. Quantity Rights Reserved. CFM 1982 in Mt. Vernon: Richmond St.

**"HELP US FIGHT MUSCULAR DYSTROPHY"**  
Make your contribution at Convenient Food Mart

**Kraft Parkay Margarine 59¢** 1 LB QUARTERS

**Tropicana 100% Pure Orange Juice 1.59** HALF GALLON

**Soft Ply Paper Towels 59¢** JUMBO ROLL

**Nabisco Snack Crackers 99¢** 9.5 OZ.

**Sunlight Dishwashing Liquid 55¢** 12 OZ.

**Lays or Ruffles Potato Chips 89¢** 8 OZ.

**Fischer's All Meat Wieners 1.09** 12 OZ PACKAGE

**PLUS DEPOSIT 16 OZ. RETURNABLES LIMIT ONE CARTON WITH A \$10.00 OR MORE ADDITIONAL PURCHASE. EXCLUDING TOBACCO AND GAS. Without additional Purchase 8/21/82 Plus Deposit**

**Convenient Food Mart**

**Southern Photo's** limited time offer...

**A Package of**

1-11 X 14  
2-8 X 10 1/2  
2-5 X 7 1/2  
10 wallets

Entire Package \$19.95  
Deposit at Signing \$3.00  
Bal. on Delivery \$16.95

**LIFE SIZE**  
16 x 20 \$9.95  
PURCHASE OF THE PACKAGE

**Free!** WITH EVERY PACKAGE 1-5 x 7-8  
PURCHASE MUST BE ACCOMPANIED WITH THIS AD FOR THIS SPECIAL BONUS

**COMING ONE DAY ONLY. THURSDAY, SEPTEMBER 2, 12 NOON-5 P.M. CARTER'S FOOD MARKET in Mt. Vernon**

# The Week at Mt. Vernon

by Eva Black

Mrs. Ruth Eversole of London spent Sunday night with her brother, Mr. and Mrs. P.L. Polyster and is spending the week with Mrs. Della Oliver.

Mrs. Bertie Rice and Mrs. Clara Bennett visited Mrs. Emma Robinson in Berea Hospital Sunday afternoon. Mrs. Nannie Morris and Mrs. C.L. Mounts in the Rockcastle County Hospital and Mrs. Myrtle Gilliam at her home in Lanesboro Sunday afternoon.

Mrs. Evelyn Parsons of Hamilton, Ohio visited Mrs. P.L. Foyster one last week.

Mr. and Mrs. Russell McHargue were in Lexington Tuesday, on business.

Mr. and Mrs. Gary McClure of Lancaster, Ohio spent the weekend with his parents, Mr. and Mrs. Charles McClure.

Mr. and Mrs. Charles McClure visited Mr. and

Mrs. Matt Graves, Mrs. Betty Mize and Mr. and Mrs. Clifford Baum near Buffalo last week.

Mr. and Mrs. Will Dickerson and children, Christine and Michael visited their aunts, Misses Frances and Josephine Dickerson last Friday.

Mrs. Leonar King of Michigan spent last week with her cousin, Mrs. Justina Fordyce. It has been 54 years since they had last seen each other. There was a lot of reminiscing and a lot of changes have taken place in their lives.

Mrs. Martha Mason and son of Louisville visited relatives last week. They were accompanied home by her sister, Mrs. Arthur Sprabright, who returned home Sunday with Mr. and Mrs. Chester Halcomb.

Mr. and Mrs. Earl McNutt of Louisville are spending the week with his sister, Mrs. Mary Leach.

Mr. Columbus Jones of Indianapolis, Indiana visited

Mrs. Carrie Loudermilk last Friday.

Mr. and Mrs. P... Mrs. Mize spent the weekend with her daughter, Mr. and Mrs. Marvin Vanzant in Lexington.

Mrs. Chester Halcomb is able to get out after being confined in St. Mary Elizabeth Hospital in Louisville. She and Mrs. Halcomb spent the weekend with their daughter, Mr. and Mrs. Don Finnix and her sister, Mrs. Grover Shelly.

Mr. James McClure was in Oneida, Tennessee last week. He was accompanied home by his wife, Mrs. McClure who had visited her mother, Mrs. Mattie King.

Martin Mullins of Indianapolis, Indiana, Henry Loudermilk of Erlanger, Jerry Mullins of Mt. Vernon and Ralph Allen are spending the week on the river.

Miss Josephine Dickerson dislocated her shoulder Sunday morning. She was taken to the Rockcastle County hospital where she was treated and released.

Mrs. C.L. Mounts is a patient in the Rockcastle County Hospital. She fell at her home Sunday morning, breaking both arms and receiving many cuts and bruises on her face.

Mr. and Mrs. Ray Scogins spent the weekend in independence with Mr. and Mrs. Wendell Wiser and attended graduation exercises of their granddaughter from nurses' training.

## Quail

by Vivian Owens

Mr. and Mrs. Ray Denny visited Mr. and Mrs. Benton Owens Tuesday evening.

Mr. and Mrs. Charlie N. Owens and family of Ohio is spending this week with their parents, Mr. and Mrs. Benton Owens and Mrs. Betty Lou Hodge and Mrs. Cora Hodge, Mrs. Owens' grandmother.

Mr. and Mrs. Benton Owens attended the Ky. State Fair Friday.

Mr. and Mrs. Sonny Robbins of Ohio spent part of last week with his aunt, Mrs. Charlie B. Owens and Mr. Owens.

Mr. and Mrs. Sonny Robbins, Mrs. Charlie B. Owens, and Mrs. Retha Bras visited Mr. Hugh Robbins, who is a patient in Central Baptist Hospital at Lexington Friday. Our prayers are with Mr. Robbins.

Sunday visitors of Mrs. Willie Todd were Mrs. Ronald Rogers and Jill, Miss Tracy Burdette and Mrs. Dean Barron and Stacy.

Mr. and Mrs. Bobby Wright and Mrs. Edna Pope visited Mr. and Mrs. Dwight Pope and family Saturday at Versailles.

Mr. and Mrs. Cletis Brown and family of London visited his mother, Mrs. Christine Brown over the weekend.

Mr. and Mrs. Robert Hayes and Jenny, Mr. and Mrs. Lowell, Mink and Kenny, Mr. and Mrs. Ronnie Hayes, Mr. and Mrs. Donnie Whitaker and family and Mrs. Arle Whitaker visited Mr. and Mrs. Bobby Brock and family at Erlanger. Then they all went to the Cincinnati Zoo in Ohio.

Mr. and Mrs. Tom Pinkerton of Bradenton, Florida are visiting her parents, Mr. and Mrs. Sherman Thompson. Mrs. Thompson returned home from the hospital recently and is now doing very well. We wish her a speedy recovery.

## Family Reunion

The Thompson family reunion was held Saturday, August 21st at the home of Mr. and Mrs. Edward Daugherty in Richmond. Those attending were Mr. and Mrs. Sherman Thompson, Mr. and Mrs. Chub Adams, Mr. and Mrs. J.W. Thompson and Jimmy of Broadhead, Mr. and Mrs. Tom Pinkerton of Bradenton, Florida, Mrs. Lavona Payne and son of Mt. Sterling, Mr. and Mrs. Ken Kidwell and Angela Arron of Mason, Ohio. Everyone had a nice time and was happy to be together again.

## Ottawa

by Della Mae Willmott

Mr. and Mrs. Theo Hayes spent two nights with Della Mae Willmott last week. They were en route to their home in Middleton, Ohio, from 2

weeks vacation in Myrtle Beach, the Smokies and other places of interest.

Mr. and Mrs. Marcum of Cincinnati, Ohio visited Mr. Jim Blanton last weekend.

Mr. Jack Singleton of Mississippi is here visiting Mrs. Cordia Cash and other relatives.

Miss Debbie Davidson, who is employed in Washington, D.C. is visiting her parents, Bro. and Mrs. Earl Davidson.

## BROCK REUNION

The annual Brock Reunion was held Sunday, August 22 at Perryville Battlefield. A picnic dinner was served, and everyone had a good time.

Attending were, Mr. Bradley Brock, Virgil Brock, Mr. and Mrs. Dallas Brock, James, Brock and Timmy, Mr. and Mrs. Proctor Brock and Judy, Mr. and Mrs. Tom Lechord, Douglas and Gary, Mrs. Darlene Brenda and Erin, Mr. and Mrs. Charles Petty, Christy, Ashla and Brian, Mr. and Mrs. Charles Ledford and daughters of Crab Orchard, Mr. and Mrs. Bill Sullridge, Cosum and Daniel of Richmond, Mr. and Mrs. James Hilton of Berea, Mr. and Mrs. Mose McKinley Brock and Derek of Camden, Ohio, Mrs. Lavona Gregory, Gabriel, Verlie and Lisa of Indianapolis, Indiana, Mr. and Mrs. Larry Payne and children of Broadhead.



Kenneth A. Parsons has recently been promoted to Major Parson's is stationed at Seymour Johnson AFB, Goldsboro, North Carolina. He is the son of Edwin Parsons of Lexington and Virginia Nunn of Route 2, Crab Orchard.

## REPORTS FOR DUTY

Sgt. Larry Baker, son of Bill and Grace Baker of Route 3, Mt. Vernon, has arrived for duty in Nuremberg, West Germany. Baker was previously assigned at Fort Stewart, Georgia. His wife, Victoria, is the daughter of Matt and Dorothy Seals of Route 3, Mt. Vernon.



Chip McNew, son of Mr. and Mrs. Charles McNew of Wendell, North Carolina, spent his summer vacation with his grandparents, Mr. and Mrs. Astor McNew of Wildie and Mr. and Mrs. Curtis Durham of Stanford.

## BOOK OF SCHEDULE

Thursday, August 26 - Chestnut Street, near Road, Negro Creek. Monday, 30th-Red Hill, Caloway, Burr. Tuesday, 31st-Disputanta, Anglin Falls. Wednesday, Sept. 1st - Fairview, and Lambert Road.



When using dried herbs, make sure to crumble them to release the flavor.

# TODAY'S SAVERS EXPECT A LOT MORE FOR THEIR MONEY

At BMV they get it.

What's the use of trying to save your hard-earned dollars if the interest rate you're getting isn't even keeping up with inflation? At BMV we offer a number of high-yield certificates of deposit designed especially for today's economy. Even if you only have a little to invest, we have a certificate that will help you stay ahead of inflation. Get the most for your money with a BMV Certificate of Deposit.

Interest Rates For August 24 through August 30.

**8.96%** per annum (Tax-Free)

1-Year All Saver Tax-Free Certificate: \$500 minimum deposit. Helps protect your investment two ways: by paying a high rate of interest, and by letting you deduct up to \$1,000 (\$2,000 for a married couple) from your taxable income.

**11.50%** per annum

2½-Year Consumer Savings Certificate: \$1,000 minimum deposit. Just because you're not a millionaire doesn't mean you have to settle for regular savings rates. This CD offers a maximum rate of return on a minimum investment. Also available to IRA customers.

**10.355%** per annum

6-Month Money Market Certificate: \$10,000 minimum deposit. An ideal certificate for short-term, high-yield investment. Also available to IRA customers.

**7.498%** per annum

90-Day High-Yield, Short-Term CD: \$7,500 minimum deposit. Our new 91-day CD features one of the highest rates ever offered on a short-term savings certificate. Also available to IRA customers.



**THE BANK OF MT. VERNON**  
MT. VERNON, KY. 40355

Federal regulations require substantial interest penalties for early withdrawals. Member F.D.I.C.

# Auction

of Mrs. Martha Carpenter's

**RESIDENTIAL - COMMERCIAL PROPERTY**  
**Saturday, August 28, 1982 10:30 a.m.**

Richmond Street, Mt. Vernon, Ky.



LOCATION: Richmond Street, MT. Vernon. Watch for the auction signs at property.

Since Mrs. Carpenter is no longer able to care for her property, our firm has been authorized to offer it for the high dollar.

**TRACT NO. 1:** Consists of the pictured well-constructed brick house. The house has three bedrooms, living room, kitchen, bath and full basement. In addition, there is also hardwood floors, oil furnace heat, storm doors and windows and city water.

In addition to this lovely home, there is also a frame rental house located directly behind brick dwelling.

The lot measures approximately 150x200 with an attractive circular drive and a cluster of mature shade trees. It is a great residential or commercial lot.

**Tract No. 2:** Located at the intersection of U.S. 25 and Negro Town Hill Road. This lot measures approximately 105x200 and has city water available. It is improved with a log house which is in need of some repair - Commercial Development Potential.

**Tract No. 3:** 1.62 acres located directly behind Tract No. 1. It has city water available. This tract would be ideal for development.

**Tract No. 4:** Located adjacent to Tract No. 3 and contains 1.96 acres, more or less. There is also city water available here. Tract No. 4 would also be ideal for residential or commercial development.

**AUCTIONEER'S NOTE:** This property offers a unique opportunity to both a residential or commercial investor in that the property is ideally suited for either. Seldom do you find any acreage in the city limits of this caliber at public auction. Remember the date and time - August 28, 1982 at 10:30 a.m.

**TERMS:** 20% down day of sale and balance in 30 days with delivery of the deed.

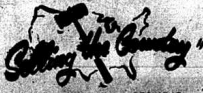
Owners reserve the right to sell each tract individually and group and combine in any manner to reflect the best returns. Any announcements day of sale will take precedence over printed matter.

For additional information, contact the auctioneers:

# Ford Realty & Auction Co.

Auctioneers  
Col. Jerry Hart  
Col. Ward Bubbok

Resident Auctioneers  
Col. Sam Ford  
Col. Roy Adams  
Col. Danny Ford



Mt. Vernon, Ky. - Phone 256-4545

U.S.D.A. CHOICE PLATTER PLEASING  
**SIRLOIN TIP ROAST**  
**\$1.99**  
LB.  
SIRLOIN TIP STEAK  
LB. **\$2.29**

**OSCAR MAYER CHEESE WIENERS**  
1 lb. Package  
**\$1.89**

U.S.D.A. CHOICE PLATTER PLEASING  
**T-BONE STEAK**  
**\$3.49**  
LB.

SWIFTNING  
**SHORTENING**  
42 oz. Can  
**\$1.19**



PURE CANE  
**SUGAR**  
5 lb. Bag  
**\$1.39**



**CARESS SOAP**  
Bath Size Bar  
**2/\$1.09**



**VANISH AUTOMATIC CLEANER**  
12 oz. Bottle  
**\$1.39**  
MARTHA WHITE

**FLOUR**  
5 lb. Bag  
**99¢**

**ARMOUR VERI-BEST PLATTER PLEASING QUARTER PORK LOIN**  
**\$1.69**  
LB.

FOX  
**PIZZA**  
11 oz. **79¢**

Lucks  
**Beans** 303 size **2/99¢**

GENERIC  
**Mac & Cheese** **3/79¢**

Sweepstakes  
**Mackerel** 15 oz. **59¢**

GENERIC  
**Peanut Butter** 18 oz. **99¢**

PUREX  
**Detergent** 42 oz. **\$1.49**

Value Pak  
**Trash Bags** 10 ct. **69¢**

Generic  
**Bleach** gal. **69¢**

Chicken of Sea  
**TUNA** 6 1/2 oz. each **79¢**

Generic  
**Paper Towels** jumbo **2/\$1.00**

**Post Toasties** 18 oz. **\$1.19**

U.S.D.A. CHOICE PLATTER PLEASING BONELESS  
**RIB EYE STEAK** LB. **\$4.69**

U.S.D.A. CHOICE PLATTER PLEASING  
**SIRLOIN STEAK** LB. **\$2.99**

U.S.D.A. CHOICE PLATTER PLEASING  
**RIB STEAK** Bone-In LB. **\$2.79**

SWIFT SIZZLEAN  
**BACON** 12 oz. Package **\$1.59**

ARMOUR 12 oz. Package  
**HOT DOGS** **\$1.19**

ARMOUR BEEF, PORK, CHICKEN  
**PATTIES** 3 oz. Package **\$1.69**

ARMOUR  
**BOLOGNA** 1 lb. Package **\$1.79**

J.F.G.  
**SALAD DRESSING** Quart Jar **99¢**

ARMOUR  
**HOT DOGS** 12 oz. Package **\$1.19**

HY-TOP GOLDEN  
**CORN**  
16 1/2 oz. Can  
**3/\$1.19**  
Whole Or Cream Style

LIBBY TOMATO  
**JUICE** 46 oz. Can **89¢**

CREAMETTE ELBOW 16 oz. Box  
**MACARONI** **59¢**

NABISCO 16 oz. Package  
**FIG NEWTONS** **\$1.29**

MICHIGAN RED  
**APPLES**  
3 lb. Bag  
**99¢**

**Bananas** lb. **25¢**

YELLOW  
**ONIONS** 3 lb. Bag **79¢**

FRESH  
**BROCCOLI** Bunch **79¢**

RUSSET  
**POTATOES** 10 lb. Bag **\$1.89**

Shedd's  
**SHEDD'S MARGARINE TUMBLERS** 3/\$1

FREEZER QUEEN 5 oz. Package  
**COOK'N BAGS** 3/\$1.09

COLE GARLIC  
**BREAD** 16 oz. Loaf **\$1.89**



SHOWBOAT 14 oz. Can  
**SPAGHETTI** 3/\$1.00  
In Tomato Sauce

BOUNTY  
**PAPER TOWELS**  
Jumbo Roll **79¢**

WINDEX 22 oz. Bottle  
**WINDOW CLEANER** **\$1.39**

BEHOLD 14 oz. Can  
**FURNITURE POLISH** **\$1.89**

GENERIC  
**CHARCOAL** 10 lb. Bag **\$1.69**

RINSO  
**DETERGENT** 42 oz. Box **\$1.29**

GRAVY TRAIN 5 lb. Bag  
**DOG FOOD** Beef, Liver, & Bacon **\$2.29**

J.F.G.  
**SALAD DRESSING**  
Quart Jar  
**99¢**

ARGO  
**PEAS**  
17 oz. Can  
**3/\$1.00**

OREO  
**COOKIES**  
19 oz. Package  
**\$1.69**

8 16 oz.  
**COKE**  
**\$1.49**



**SUPERIOR**  
*Food Markets*



Symbol Of Quality

plus deposit or bottles

# PIC-PAC SUPERMARKETS



**CHUCK ROAST** U.S.D.A. CHOICE **\$1.19** LB. COUNTDOWN PRICE  
**GROUND BEEF** FRESH LEAN **\$1.19** LB. COUNTDOWN PRICE  
**FRYER PARTS** U.S. INSP. FRESH MIXED **49c** LB. COUNTDOWN PRICE

U.S.D.A. CHOICE ENGLISH OR **SHOULDER ROAST** ..... LB. **\$1.39**  
 U.S.D.A. CHOICE **CHUCK STEAK** ..... LB. **\$1.39**  
 U.S.D.A. CHOICE BONELESS **CUBE STEAK** ..... LB. **\$2.79**  
 FISCHER **HAMLET HALVES** ..... **\$2.49**  
 PARTRIDGE **SLICED BACON** ..... 16 OZ. PKG. **\$1.99**  
 EDWARD'S WHOLE HOG **COUNTRY SAUSAGE** 1 LB. ROLL **\$1.99**  
 HYDE PARK **BONELESS TURKEY** ..... LB. **\$1.59**  
 MR. FRITTER BREADED **MEAT PATTIES** ..... 14 OZ. PKG. **\$1.19**

ARMOUR VERIBEST **PORK LOIN** WHOLE SIZED FREE **\$1.59** LB.  
 FISCHER'S WHOLE **FESTIVAL HAM** **\$2.19** LB.

PARTRIDGE **WIENERS** ..... 12 OZ. PKG. **99c**  
 HYDE PARK **PURE SHORTENING** 48 OZ. CAN **\$1.49**

SMUCKER'S GRAPE JAM OR **GRAPE JELLY** 32 OZ. JAR **\$1.29**

MAXWELL HOUSE **INSTANT COFFEE** 8 OZ. JAR **\$4.29**

DERMAGE (20% OFF LABEL) **DISH LIQUID** 22 OZ. BTL. **\$1.09**

FABRIC SOFTENER **FINAL TOUCH** 33 OZ. BTL. **99c**

TIDE'S IN-DIRT'S OUT **TIDE DETERGENT** 84 OZ. BOX **\$3.49**

KELLOGG'S SUGAR **FROSTED FLAKES** 20 OZ. PKG. **\$1.99**

SUNSHINE **CHEEZ-ITS** 10 OZ. PKG. **79c**

EL PASO **DINNER KIT** 10 OZ. PKG. **\$1.49**

STOKELY LEMON-LIME OR ORANGE **GATORADE** 32 OZ. BTL. **69c**

HYDE PARK **APPLE JUICE** 64 OZ. BTL. **\$1.69**

TODDLER SIZE EXTRA ABSOR. **PAMPERS** 24 CT. 12 CT. PKG. **\$3.69** **\$2.39**

GLAD **SANDWICH BAGS** 150 CT. PKG. **99c**

TRIGGER BOTTLE **WINDX SPRAY** 22 OZ. BTL. **\$1.49**

BACK TO SCHOOL SPECIAL **TYPING PAPER** 100 CT. PKG. **79c**

BACK TO SCHOOL SPECIAL - 100 PAGE **COMPOSITION BOOK** **79c**

KRAFT STACK-PAK AMER. **SLICED CHEESE** 16 OZ. PKG. **\$1.99**

MINUTE MAID **ORANGE JUICE** 16 OZ. CAN **\$1.39**

ORE IDA **FRENCH FRIES** 5 LB. BAG **\$2.99**

KRAFT MILD CHEDDAR **SHREDDED CHEESE** 8 OZ. PKG. **\$1.49**

BALLARD BUTTERMILK OR OVEN READY **BISCUITS** 10 CT. CANS **\$1.49**

LIGHT 'N LIVELY ASSORTED **YOGURT** 3 8 OZ. PKGS. **\$1**

PEPPERIDGE FARM RASP. MOCHA OR **PEACH MELBA** 12 1/2 OZ. PKG. **\$1.39**

PEPPERIDGE FARM WALNUT SUPREME **CAKE** 10 OZ. PKG. **\$1.39**

PATTIO BEEF-BEAN OR RED CHILI **BURRITOS** 5 OZ. PKG. **49c**



TAB, SPRITE OR **COCA COLA** 2 LIT. BTL. **68c** COUNTDOWN PRICE  
LIMIT 1 WITH COUPON BELOW AND \$7.50 ADDITIONAL ORDER



MORTON ASSORTED **FROZEN DINNERS** 11 OZ. PKG. **69c** COUNTDOWN PRICE



STOKELY CUT **GREEN BEANS** ALSO FR. STYLE 3 16 OZ. CANS **\$1.09** COUNTDOWN PRICE



OLD SOUTH **FROZEN LEMONADE** 6 OZ. CANS 4 **\$1** COUNTDOWN PRICE



BLUE BONNET **GOLDEN MARGARINE** 16 OZ. PKG. **47c** COUNTDOWN PRICE



LIQUID **CLOROX BLEACH** GAL. BTL. **79c** COUNTDOWN PRICE

**"Pic-Pac Produce Is The Pick Of The Patch"**



GOLDEN RIPE **BANANAS** LB. **27c** COUNTDOWN PRICE  
 SALAD FAVORITES! MARIE'S **BLUE CHEESE DRESSING** 12 OZ. JAR **\$1.39**  
 RED AND WHITE SEEDLESS **GRAPES** LB. **89c** COUNTDOWN PRICE

U.S. NO. 1 **WHITE POTATOES** 10 LB. BAG **\$1.17**

FRESH YELLOW **SWEET CORN** IN HUSK FAR **17c**  
 SNOW WHITE **CAULIFLOWER** HEAD **\$1.49**

SCHOOL LUNCH TREAT! RED DELICIOUS **CRISP APPLES** 5 FOR **99c**

**BONUS BUY COUPON**  
 TAB, SPRITE OR **COCA COLA** 2 LIT. BTL. **68c**  
LIMIT 1 WITH THIS COUPON AND \$7.50 ADD. ORDER. VALID AT PIC-PAC THROUGH AUG. 31, 1982.



# Farm and Home News



Angela McKinney, a fifth grade student at Brodhead Elementary School, won first place in the Ladies Lead Competition, division of the sheep show held at the Kentucky State Fair recently. This is the third year Angela has taken first prize. The sheep is a schlichter ewe, owned by Mike Hancock of Eubank. Shown in the picture with Angela is her father, Danny McKinney and brother, Eric.

## Lonnie Cash enrolls herd in Angus improvement program

Lonnie Gene Cash of Brodhead, an Angus cattle breeder, recently enrolled his herd in the Angus Herd Improvement Records program of the American Angus Association, reports Dick Spader, executive vice-president of the national organization with headquarters in St. Joseph, Missouri.

Angus Herd Improvement Records (AHIR) is a comprehensive within-herd evaluation program used by cattlemen to help them keep records of reproduction, and growth rate on individual animals. Each year hundreds of Angus breeders use AHIR records to produce more profitable, efficient Angus seedstock.

By weighing calves at

250 days of age and again at a year of age, breeders not only identify the cattle that grow the fastest and most efficiently, they also identify cows that regularly produce above average calves, and bulls that sire outstanding calves.

The American Angus Association in 1957 was the first beef breed organization to offer its members a production records program. Since that date the AHIR program has grown to the point that breeders report more than 125,000 weaning and yearling weights each year. This mountain of information is processed and stored in the Association's modern computerized data processing systems.

1/4 cup lemon juice or 4 tablespoons salt. Cool and drain. Package slices in layers separated by freezer wrap.

Q. Could I even cook the eggplant first?

A. Yes, French-fried eggplant freezes well, as do many eggplant casseroles. If you slightly undercook your casserole, you can complete the job when you reheat it before serving. Cool down the casserole as quickly as possible before freezing.

Freezing Onions and Potatoes

Q. Is freezing recommended for onions?

A. Because onions will keep well stored in a cool dry place, freezing is usually not recommended. If you do freeze onions, however, they tend to lose flavor after 3 to 6 months storage at 0 degrees. Blanch chopped onions 1-2 minutes.

Q. I'd like to freeze French fries. Do you have directions?

A. Peel and cut potatoes into thin strips. Fry in hot fat until they are a very light golden brown. Drain on paper towels. Cool. Package and freeze immediately. To serve, spread frozen potatoes on a cookie sheet or broiler pan. Place in 350 degree oven for about 10 minutes, or under broiler for 5 to 8 minutes. Salt to taste.

Freezing Peppers

Q. What can I do with extra sweet peppers from my garden?

A. Freeze them for use in cooked dishes later on. You can stuff frozen whole or halved peppers with your favorite filling. Chopped peppers frozen in small packages are handy when a recipe called for chopped peppers.

Cut out stem ends and remove seeds before freezing. Peppers need not be blanched; however, to make whole peppers package better, you can blanch them for 3 minutes. Chill in cold water and drain before packaging.

Q. Can tomatoes be put into the freezer?

A. Yes, you can freeze tomatoes. Just don't expect them to taste like either fresh or canned tomatoes when they thaw.

They're easy to freeze, they stay high in vitamin C content and other nutrients and they work fine in soups and casseroles. They'll be a bit mushy when thawed because of their high water content.

You can freeze small batches at a time, so you might choose this food preservation method when there's not enough for a canner load.

Freezing Directions

Blanch vine-ripened tomatoes in boiling water to loosen their skins, then dunk them in cold water to cool them quickly. Slip off the skins, cut them into quarters, wash, and pack them in moisture-vapor-proof containers—rigid plastic freezer containers are a good choice.

Press tomatoes down with a wooden spoon to make enough juice to cover. Leave 1-inch headspace, seal and freeze immediately.

Half Gallon Jars

Q. I bought some half-gallon canning jars at a yard sale. Now I can't find any processing times listed in my canning book for half-gallons. Why is this?

A. We don't recommend using jars larger than 1 quart. It takes too long for the food in the center of the jar to reach the correct temperature. If the food in the center were to be processed long enough to make it safe, the food towards the outside of the jar would be processed too long for the best taste and quality.

You shouldn't use half-gallon jars for freezing foods, either. It takes too long to get the food in the center of the jar to freeze.

These jars, however, are handy for storing dried foods, cereals, flour and other staples.

Preventing Ice Crystals

Q. How can I keep from getting a lot of ice

Mt. Vernon Signal Thursday, August 28, 1982 P-9

crystals in my frozen foods?

A. Drain any of your dry-pack vegetables or fruits well and blot them with a clean absorbent towel or paper toweling before freezing. This will give a better quality frozen product.

Ice crystals will sometimes form when you do not use moisture-vapor-proof

containers for frozen foods. So stick to the "wraps" especially meant for storing food in the freezer.



Onions will stay firm longer and keep from sprouting if you wrap them individually in aluminum foil.

## C & A Farm Equipment

Hwy. 150 Brodhead, Ky.

New and used farm equipment and tractors, major and minor repairs and a complete parts inventory.

### NEW EQUIPMENT

Potato Plow	\$ 95.00
Kory Gravity Beds	\$495.00
3 pt. Spreaders	\$310.00
5 ft. Cutters	\$475.00
6 ft. Cutters	\$650.00
Boom Poles	\$ 49.00
Balefeeders	\$ 95.00
Wagon gears 5 ton	\$425.00
Wagon gears 8 ton	\$450.00
Top Links and Draw bars	\$ 20.00

Open 6 days a week 8 a.m. to 5 p.m.

PHONE 758-4171

## Fuel savings are considerable with conservation tillage

by David Stipes  
Soil Conservation Service  
Rockcastle County

How much fuel can be saved by making the switch to conservation tillage from conventional tillage methods? A considerable amount according to some recent studies.

According to the University of Nebraska figures, the conventional moldboard plow tillage system has the highest fuel and labor requirements. By substituting a chisel plow, there is nearly a 23 percent reduction of fuel consumption. By using a disk for seedbed preparation, over 42 percent fuel savings has been found. The study went on to show that a 70 percent fuel savings can be realized by using no-till over conventional systems.

In a similar study conducted by Michigan State University and published in the July 1980 edition of NO-TILL FARMER, fuel savings were equated to money saved. That study showed a savings of 4.21

gallons of diesel fuel per acre with no-till farming over conventional. With a 400 acre operation, that means an annual savings of 1,684 gallons of fuel, and at a "conservative" \$1 plus per gallon, it's a big savings.



by Cheryl Witt  
county Extension Agent  
For Home Economics

### Food Preservation Questions and Answers

Freezing Eggplant

Q. Is it possible to freeze eggplant?

A. Yes. Harvest eggplant before the seeds become mature and when the color is uniformly dark. Wash, peel and slice 1/2" thick. Prepare quickly, just enough eggplant for one package at a time. Scald 4 minutes in 1 gallon of boiling water that contains

# MASSIVE SAVINGS!

Biggest Cash Rebates in Massey History.  
Plus Waiver of Finance Charges Until January 1983.



\$3,000 REBATE

\$3,000 Rebate on MF 285 Tractors. Hitt up your savings!



\$2,400 REBATE

\$2,400 Rebates on MF 255, 265 and 275 Utility Tractors. Put 'em right to work!



\$9,300 REBATE

\$9,300 Rebates on MF 2745, 2775 and 2805 Tractors. Get your check from Massey now!

### MF CASH REBATES

Now...buy the equipment you need at never-before-equalled savings, thanks to Massey's big cash rebates up to \$18,000. Get a check-back from Massey-Ferguson, or apply your rebate to the purchase price or down payment.

Plus...if you finance with MF, you'll pay no finance charges until January 1, 1983 with qualified credit and down payment.

So, save twice on the equipment you need. Check out the massive savings available on all eligible new models of MF combines, tractors, plus corn heads, hay tools...industrial equipment, too.

Hurry! Offers end October 31, 1982. See us today!



Agricultural Tractors:	
MF Compact Tractors*	\$ 300
MF 230, 245, 154-4	\$ 1,500
MF 255, 265, 275, 194-4	\$ 2,400
MF 285	\$ 3,000
MF 2675, 2705	\$ 6,300
MF 2745, 2775, 2805	\$ 9,300
MF 480, 495	\$14,600
MF 480, 490	\$18,200

\*EXCEPTIONS: MF 1010 Compact Tractor and MF 50F, Backhoe Loader

Corn Heads	\$300 per row
MF 35 PT Swather	\$ 700
MF 775 Swather	\$ 1,900
Rectangular Balers	\$ 800
Round Balers	\$ 1,200
Industrial Tractors:	
MF 24-50 Tractors	\$ 2,800
MF 20-50 Tractor Loaders	\$ 3,900
MF 30-50 Backhoe Loaders*	\$ 6,000
MF 60 Tractor Backhoe Loader	\$ 7,400



\$6,300 REBATE

\$6,300 Rebates on MF 2675 and 2705 Tractors...Plus Waiver of finance charges thru January!



\$300 REBATE

\$300 Rebates on all eligible MF Compact Tractors. Massive Savings from Massey!

## Kastle Inn Restaurant

1-75 Burr Exit

Mt. Vernon

### Sunday Special

Beef Tips & Noodles

Fried Chicken

Roast Beef

\$3.25

(Choice of 2 Vegetables)

Baked Beans

Cole Slaw

Cauliflower

Cream Corn

Corn Bread or Rolls

Noon Specials Mon. - Fri. \$2.50

CATFISH SPECIAL

\$2.95

Each Friday Night

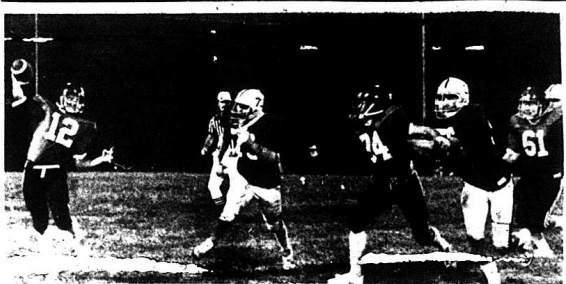
## The Jones Implement Company, Inc.

P.O. Box 236

Tyner, Ky. 40486

Phone 364-5131

# Sports In Review



Junior quarterback Chris Cornelius, No. 12, attempts a pass deep in Pulaski County territory Friday night in the Rockets season opener. In the third quarter, Cornelius hooked up with junior end Greg Long for a TD. Other Rockets identifiable in the picture are senior tackle Randy Dillingham, No. 74 and junior guard, James Foynter, No. 61.

## Rockets thump Pulaski Co. in season opener Friday night

Four different players scored touchdowns in Friday night's opening season 26-0 victory for the Rockcastle Rockets against the Pulaski County Maroons.

Senior linebacker Teddy Lawrence got the Rockets on the scoreboard with 10:34 remaining in the first quarter when he picked off a Maroon pass and ran it into the end zone from 25 yards out. The Rockets failed to convert on their extra point attempt.

After holding Pulaski County on their offensive series, the Rockets were once again in scoring position on the one-yard line when a fumble between the

center and quarterback gave the ball to the Maroons.

Pulaski County moved the ball out to their 13 yard line before having to punt and junior end Greg Long took the punt on Pulaski's 40 and returned it to the 23. Junior back Scottie Robinson and senior back Steve Holcomb combined to run the ball to the 16 where it was 4th and 5 for the Rockets. At that point, junior back James "Bozie" Kirby took the ball around left end for the touchdown. A pass from senior quarterback Jeff Lear to junior Chris Cornelius in the end zone was good for the two extra points and, at the end of the first quarter, the Rockets were ahead 14-0.

The Rockets' third score came on a 21-yard pass from quarterback Chris Cornelius to Greg Long, who made an excellent catch in the end zone, with 51 seconds left in the first half. Holcomb's kick was wide to the left and the first half ended with the Rockets ahead 20-0.

The Rockets again threatened near the end of the third quarter when some excellent running by Robinson and Holcomb and a 24-yard pass from Cornelius to Lawrence gave the Rockets 1-10 on Pulaski's 9. However, 2 plays later, an errant pass by Cornelius was picked off by Pulaski County on their 3-yard line.

In the fourth quarter, the Rockets were in scoring position when a Rockets' fumble was recovered by the Maroons on their own 8 yard line.

Pulaski County made a first down to their 21-yard

line; however, on the next play, Lawrence was again in the right place at the right time as he picked off his second pass of the game on Pulaski's 29-yard line; Robinson picked up 14 yards on the next play and three plays later, Holcomb went in from 10 yards out for the final score of the

game. Holcomb's kick was blocked by the Maroons but the scoring was over for the game and the Rockets were on top 26-0.

Defensively, the Rockets were led by Jeff Haman with 9 tackles while Scottie Robinson and Bozie Kirby were credited with 5 tackles each and Robinson also led in assists with 11.

The Rockets' line boasts five players ranging from 210 to 233 lbs. and they did an excellent job overall of containing the Maroons.

Offensively, the Rockets were led by Steve Holcomb with 120 rushing yards; Robinson was next with 91 rushing yards. The Rockets averaged over 30 yards on punt returns.

Coach Larry Woods commended several players including Greg Long as the most steady, dependable player on the team; Teddy Lawrence for his outstanding pass coverage and Steve Halcomb for his excellent game which Woods said was no surprise to anyone.

Woods also said the Rockets would have to play better defensively Friday night against Whitley County, who Woods expects to be much better than they were last year.

### Fifth Quarter

Bethany United Methodist Church will host the Fifth Quarter this Friday night, August 27, following the Rockets football game. Come and enjoy the Hot Dog Roast and fellowship.

### Fishing Report

Observant fishermen are beginning to see a slight change in fishing as the water temperature moderates somewhat. The lake-by-lake rundown, according



Front row, left to right: Jerry Hodges, Gary Aaber, Roger Lopez, David Baker and Doc Adams. Back row, left to right: Mike Norton, Mr. Nelson, Dale Winstead, David Nicoley, Don Nelson, Larry Cummins, John Eaton and Brent Larwell. [This photo was taken from the February 8 issue of the Rockcastle Scout and courtesy of Pauline Mulins.]

to fish and wildlife conservation officers:

**Kentucky:** catfish fair on cutbaits around rocky banks; murky, falling slowly at two feet below summer pool and 81 degrees.

**Barkley:** black bass slow casting plastic worms and crankbaits; white bass slow in jumps, early and late, catfish fair on cutbaits below dam; murky, rising slowly at 1 1/2 feet below summer pool and 82 degrees.

**Nolin:** black bass slow at night on plastic worms off points; crappie slow 15-20 feet deep around cover; clear, murky, rising slowly at 1 1/2 feet above summer pool and 84 degrees.

**Barren:** black bass slow but improving on plastic worms, spinner baits and topwater lures; bluegill fair off steep banks; catfish slow; clear to murky, stable at five feet above summer pool and 80 degrees.

**Rough River:** crappie slow around treposts and brushpiles 18-20 feet deep; clear, stable at summer pool and 80 degrees.

**Green River:** black bass fair at night casting spinner baits and artificial nightcrawlers off points; white bass fair trolling deep runners; clear, stable at summer pool and 84 degrees.

**Herrington:** black bass fair to good at night and late afternoon on artificial nightcrawlers; hybrid rockfish slow in scattered jumps of lower lake; clear, stable at summer pool and 80 degrees.

**Cumberland:** crappie fair to good drifting 20 feet deep around submerged cover in main coves; white bass slow in jumps of main creek embayments and in main lake; bass, walleye and rockfish showing up together off points by casting jig-and-rind; trout good below dam on worms, cheese, or corn; walleye fair below dam late in day using jigs; 8700 trout stocked last week; clear, falling at 25 feet below timberline, 80 degrees.

**Laurel:** trout fair on worms, cheese, or corn, fishing deep; bluegill fair fishing deep around stick-ups; black bass slow, clear, stable, five feet below power pool, 79 degrees.

## LL Board meets tonight

There will be a Little League Board meeting for members and managers Thursday, August 26 at the Senior Citizens building at Brodhead at 7:30 p.m.

The Awards Dinner will be held Thursday, September 2, at Brodhead School. Additional information will be given next week.

Rockcastle County Little League baseball is just completing a successful season. Now is the time to look ahead to next year. Within a few weeks, we will elect a president, vice president, secretary, treasurer, and player agent for the coming year.

If you would be interested in working with the program or if you know someone who would serve on the board, please submit your nominations to Sam Ford or June Coleman.

**Dale Hollow:** black bass fair at night fishing artificial nightcrawlers, in weed beds and off deep banks; bluegill fair fishing worms or crickets along deep banks; clear, stable at three feet above normal pool and 80 degrees.

"No pains, no gains." English proverb



Jason Edward Owens, was one of the Major Ball Tournament Champs at Bower Field in Seymour, Tennessee. Jason is originally from Brodhead and won two trophies for playing ball and a blue ribbon from efforts on the track team. He is the son of Eddie Ray and Sharon Owens. Congratulations Jason, from all your friends in Brodhead.



Denver Baker of Lexington, and formerly of Mt. Vernon, landed this 105 pound Salifish July 18th while fishing in Acapulco, Mexico.

## UNDER NEW MANAGEMENT

**BURR HILL MARATHON**  
is now under new management -- **BILL CROMER.**

Introductory Offer  
**FREE LUBE WITH OIL CHANGE & FILTER**  
at  
**BURR HILL MARATHON**  
Mt. Vernon, Ky.

**Southern States**  
**BLACKTOP DRIVEWAY SEALER**

Reg. \$9.10  
**\$760**  
5 gal. can

**Stewart Farm Supply**  
U.S. 25 South Mt. Vernon

**HOMECOMING**  
**FIRST BAPTIST CHURCH**  
W. Main St. Mt. Vernon  
**AUGUST 29, 1982**  
**Everyone Invited**  
Dr. Charles Hedrick, Pastor

**YOUNG DESIGNS' Model of the Week**

Fishing a bright smile for us while wearing a pretty Polly Flinder dress is cute Robin Stroth. The green long sleeve dress with smocking and red trim was a birthday present from Vicki Morgan, emergency room intake receptionist and one of her many friends at Rockcastle County Hospital. Little Robin, who is six years old, is a patient in the skilled nursing facility of the hospital. Robin's home is in Covington where her mother, Martha Carr, lives.

**YOUNG DESIGNS**  
Main St. Mt. Vernon

# Sports in Review continued



The first place winners in both the league and the tournament for the Mt. Vernon Women's Softball League were the Mid-Mink nighters. They finished the league with a 15-3 record and had no losses during the tournament. Members of the team are, bottom row, from left: Teresa Hansel Busell, Janet McClure, Nancy Busell, Debbie

Cash, Phyllis Deatherage and Mary Ann Bussell. Back row, from left: Donna Mink, Pat Smith, Carol Kirby, Teresa Bussell, Debbie Brown, Rose Smith, Pam Bishop, Terri Smith and Tommy Smith, coach. Not present when the picture was taken was Connie McClure Riddle.



The Phillies were the second place winners in both the League and the tournament for the Mt. Vernon Women's Softball league. Members of the team are, bottom row, from left: D.J. Jasper, Dimple Goff, Charlene Mullins, Kathy Mullins, and Vic-

kie New. Back row, Kathy Watson, Anita Todd, Tina Larkin, Sheila Cash, Peanut Watson, Jill Cummins and Arnold Larkin, coach. Those not present were, Lois Cummins, Gina Martin and Karen Deborde.

## Rockcastle Mixed Bowling League Begins September 2

The Rockcastle County Mixed Bowlers League is in the process of reorganizing for fall. The league bowls on Thursday night at 8:30. Anyone wishing to bowl in the league should be at Maroon Lanes in Richmond for the first night of bowling on Thursday night at 8:30. For more information, call Carol McGuire at 256-2289.



Tournament winners for the Mt. Vernon Men's Softball League was Ottawa. They went 4-0 in the tournament. The members of the team are, front row, from left: Randy Reynolds, Dennis Lawrence, Tommy Taylor, Ricky Lawrence, and Teddy Lawrence. Back row, from left: Dee Lowery, Dale Whitaker, Jeff Laswell, Dennis Harris, and Jim Brown. Absent from the picture were Bruce Blanton, Chuck Cash, Spencer Bengé and Kenny Thompson.



The second place winners in the Mt. Vernon Men's softball league were the Ridge Runners. The members of the team are from left: Ted Handley, Farlie Barnett, Benny McFerron, Jimmy Barron, Tim Reynolds, Dwight Isaacs, and Joe McFerron. Those not present are, Jessie Doan, Jerry Morgan, Billy Hackworth, Ronnie Arnold, Wesley Chasteen, Joe Howard and Darrell Rowe. The first place men's league winner was the Mt. Vernon Merchants.

**DON'T FORGET !!!**

# GIANT TRUCKLOAD PLANT SALE

AT

## MT. VERNON FLORIST

**SAT, AUGUST 28, 1982 9 a.m. to 3 p.m.**

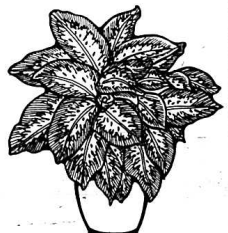
**All plants 50% to 75%**

**below our usual prices. Huge selection available.**

## MT. VERNON FLORIST

**256-2091**

**Maple Drive (Across from Cox Funeral Home) Mt. Vernon**



# Let's Go Scouting - It's Fun!

By: Ralph Mosley, Scoutmaster

Several activities have been on schedule for Troops in Rockcastle County during this summer and we would like to summarize them for you so that you can see that it pays to "Let's Go Scouting, It's Fun."

We had a Klondike Derby hosted by Mt. Vernon Troop 262 at Rentro Valley. We also attended another Klondike Derby and camp out at Bee Rock State Park at Somerset. Before the summer got started, we also participated in the Christmas Parade in Mt. Vernon as Flag Bearers.

A 25-mile hike on the Zollcoffer Trail outside Somerset was also on the agenda and numerous camping trips, including a week at McKee Boy Scout Reservation and a three-day Camporee at Levi Jackson.

We had fun at Expo 82 in Lexington with a booth and a large Martial Arts Demonstration with assistance from the Mt. Vernon and Richmond Shaolin Karate Clubs. A special thanks to Bob Green, Hank Gevedon and all who made the day a success.

### Upcoming Activities

Camporee at Burnside. Participation in the Christmas Parade in Mt. Vernon. Klondike Derby to be hosted again by Mt. Vernon Troop 263. Troop 263 and Pack 263 will host the Pinewood Derby and Winter Survival Camp-Out in January.



Troop 263 members are shown with Bob Green, 4th Degree Black Belt and Eagle Scout Bob Green during a recent Martial Arts at Expo 82. Scouts are, from left: Roger Wilson, Junior Owens, Andy McKinney and James Edward Mullins.



Eagle Scout Bob Green, far left, and Black Belt Steve Dooley (under blocks) demonstrate Martial Arts at Expo 82.



Other Scouts participating in the Martial Arts Demonstration at Expo 82 were, front row, from left: Greg Hamm, Andy McKinney, Eddie Mosley and Junior Owens. Second row: James Edward Mullins, Hank Gevedon (asst. troop leader), Roger Wilson, Mark McCoy (assistant troop leader) and Ralph Mosley, scoutmaster.



Participating in a 25-mile Zollcoffer Trail Hike from Burnside to Nancy were these scouts. First row, from left: Greg Hamm, Junior Owen and Andy McKinney. Second row: Ronald Robbins and Ralph Mosley, Scoutmaster. Not shown: Cub Scout Eddie Mosley, James E. Mullins and Shane Owens.



On the Rifle Range at summer camp at the McKee Boy Scout Reservation were, front row, from left: Micky Chasteen, Mike Pickle, William Buar and Chad Merritt. Second row: Greg Hamm, Andy McKinney, Roger Wilson, Junior Owens, John Blair and Steve Martin, instructor.



Entrance to Camp Bishop at Camp McKee. From left: Andy McKinney, Roger Wilson and Junior Owen.



Archery was another sport in which Scouts participated during their seven-day stay at the McKee Boy Scout Reservation. During the week at camp, all local scouts earned their first aid merit badge, first aid skill award and hiking skill award.



Non-swimmers who learned the skill during the camp were, front row, from left: Roger Wilson, Greg Hamm, the instructor, Mike Pickle, Micky Chasteen and another scout from a troop outside of Rockcastle County.

## USED CAR SPECIALS

- 1977 PONTIAC BONNEVILLE, 2 dr., 39,000 miles, 301 engine. Nice car.
- 1978 CHEVROLET CAPRICE, 4 dr., 305 engine
- 1978 OLDS REGAL, 4 door, 282 Engine
- 1978 MONTE CARLO, 282 Engine
- 1977 CAMARO, 6 cylinder, automatic
- 1978 CHEVETTE, 4 door with air, auto, blue
- 1978 CHEVETTE, 4 door, automatic, brown
- 1978 DODGE ASPEN, 2 door, V8, automatic, air
- 1978 DODGE ASPEN, 4 door, 6 cyl., automatic, air
- 1978 BUICK CENTURY, 4 door, V8, automatic
- 1974 MUSTANG, 4 cylinder, automatic
- 1975 FORD TORINO, 4 door, V8, automatic
- 1977 MERCURY COUGAR, 4 door, 351 engine
- 1973 FORD MAVERICK, 2 dr., V8, automatic
- 1977 AMC GREMLIN, 6 cylinder, stick shift
- 1974 GMC BLAZER, 4x4
- 1978 CHEVROLET PICK-UP, V8, Automatic
- 1979 CHEVROLET Pick-up, 6 cylinder, automatic
- 1975 INTERNATIONAL Pick-up, V8, Automatic
- 1973 FORD STATION WAGON, V8, Automatic
- 1978 CHEVROLET, 2 door, V8, automatic
- 1971 CHEVROLET, 2 door, V8, automatic
- 1975 PLYMOUTH DUSTER, V8, automatic

### HENSLEY'S USED CARS

Route 2, Orlando

256-4777

# Firestone

## Firestone's finest!

The gas-saving  
Steel Belted  
Radial Whitewall

# 721

Size	Price F.E.T. Included
P165/80R-13	48.67
P175/70R-13	55.89
P175/80R-13	55.89
P185/80R-13	56.59
P195/75R-14	63.16
P205/70R-14(RWL)	62.25
P205/70R-14(W.W.)	64.67
P215/75R-14	63.67
P215/75R-15	65.69
P225/75R-15	68.92

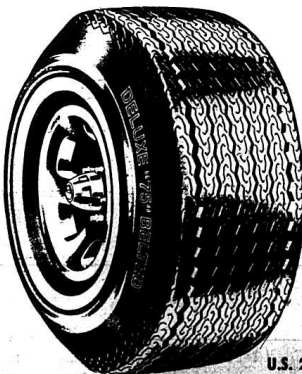
All prices plus tax. No trade-in needed!

- COOPER  
4 PLY BLACKWALL
- A-78-13 26.88
  - B-78-13 29.95
  - C-78-14 31.95
  - E-78-14 34.95
  - G-78-14 37.88
  - G-78-15 38.88
  - H-78-15 40.88
- Plus 1.59 to 2.84 F.E.T.



Cooper Discoverer M/S

**\$69.95**



## CAVALIER

Deluxe "75" Belted

### ROAD HAZARD WARRANTY

2 High-Tensile Fiberglass Belts (Helps hold tread firm on road for stability & mileage).

P175/80-13	37.88
P185/75-14	40.80
P205/75-14	42.46
P215/75-14	43.41
P215/75-15	44.96
P225/75-15	46.43

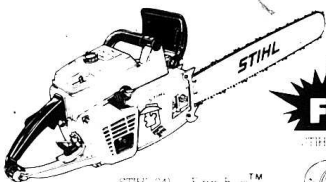
F.E.T. Included

## Rockcastle Auto Parts

U.S. 25 South Phone 256-2298 Mt. Vernon

# HATS OFF TO THE FARM BOSS

SAVE UP TO \$50.00 - LIMITED TIME OFFER



STIHL 041 3 1/2 hp. E-TM  
Specialty priced at  
\$439.95



FREE  
STIHL COMBI HAT

Our limited time special on STIHL 041 has been a big success under our hat. Now save \$45.00 on the saw and get the hat, too! It's farm tough. Save \$45.00 on the saw and get the hat, too! It's worth \$5.00. FREE.

The STIHL 041, Farm Boss is designed for the toughest jobs in the field, wood lot or farm yard. Act now, get the saw you need, the \$45.00 savings you deserve and a hat to show who's boss.

## Jack's Hardware & Appliance, Inc.

Williams St. Mt. Vernon

Phone 256-4363

# STIHL

THE WORLD'S LARGEST SELLING CHAIN SAW

# Around BRODHEAD

## Personals

by Mrs. Mary McWhorter

Mrs. Verla Brown honored her son-in-law, Mr. Bert McWhorter with a birthday dinner Sunday, August 22. Those present were Mr. and Mrs. Bert Bro. and Mrs. Aubrey Phelps and Mrs. Phillip Davis and Mr. Robert Snodgrass and Mrs. Ella Gentry and Mrs. Bro.

We were so happy to have Mr. and Mrs. Coy J. Brown, Chris and Alana of Salinas, California visit with us at the Providence Church of Christ. We also have Edd and Cindy Mink back after Edd's lengthy illness. He is doing real well.

Mr. Danny Joe Bussell of Springboro, Ohio spent the weekend with his grandmother, Mrs. Lula Bussell. His brother, Jerry, returned home with him.

Sunday visitors of Mr. and Mrs. Junior Sowder and Tracy were Mr. and Mrs. Bob Berry.

Miss Ruth Crank spent Saturday night with Miss Tracy Sowder.

Mrs. Bert and Mary Adams spent Sunday afternoon with Mrs. Lula Bussell.

Mrs. Verla Brown spent Monday with Mr. and Mrs. Bert McWhorter.

Recent visitors of Mr. John Laswell and Mrs. Emma Purcell and Paula were, Mr. and Mrs. E. Bullock of Mareburg, Mr. and Mrs. Dallas Morgan and Audrey, Mr. and Mrs. Calvin Morgan and Warren Lee, Mr. and Mrs. Irvin Hunt of Lexington, Mr. and Mrs. Billy Laswell and son, Gregg of Nicholasville, Mr. and Mrs. Morris McCallister of Danville, Mrs. Daisy Holman, Mrs. Anna Wright, Mrs. S.S. Purcell and son Ned, Mrs. Clelo Durham and daughter, Marie, Mr. Johnny E. Lantry of Lancaster, Mrs. Jack Fugate, Mrs. Daniel Kayser of Richmond, Mrs. Ray Scoggins of Livingston, Mrs. Lathel Dodd of Florida, Mrs. Terrell Chandler, and Bro. Don Jones.

Mr. and Mrs. Jerry Doan and girls, Jaime and Doney, visited with the visitors of his parents, Mr. and Mrs. Walter Doan.

Mary McWhorter visited Mrs. Cuba Croley Monday afternoon.

Recent visitors of Mr. and Mrs. George Fletcher and Audrey were Mrs. Judy Walker and Tracy of Springboro, Ohio, and this past week, Mr. William Walker, husband of Judy, spent the week with the Fetters to transport Mr. Fletcher to visit his doctor in Lexington, each day for treatment.

Mrs. Vicki Lunsford of Atlanta, Georgia spent a few days with her parents, Mr. and Mrs. Walter Doan and Mr. and Mrs. Jim Lunsford, enroute to Ohio to visit her brother, Larry Doan, who has been very ill for several weeks, and also visited another brother, Mr. and Mrs. Jerry Doan and girls in Ohio. Larry is now at home and improving some.

Mr. Robert "Bob" Adams has been transferred from the Rockcastle County Hospital to the Lake Cumberland Medical Center in Somerset for surgery Tuesday morning, August 24th. We wish him well. His visitors Sunday were his son, Mr. Kenneth Adams and children, Bobby Ray and Deanna of Fairdale, Mr. James Clark of Stanford, Bro. and Mrs. Wayne Harding, Mr. and Mrs. Russell Houk and children, Mr. and Mrs. Ray Lewis of Stanford.

Mr. and Mrs. Walter Doan spent several days in Atlanta, Georgia visiting Mr. and Mrs. Armel Lunsford and daughter, Sonya.

Mr. and Mrs. Danny Martin and Mrs. Ella Mae Martin spent the weekend at Lake Cumberland with Bob Hilton and Bonita and Grant and Chris Adams of Ohio.

Miss Beth Colson returned to her home in Phoenix, Arizona last Tuesday after a two month visit with her grandparents, Mr. and Mrs. Clay Colson, also another granddaughter, Miss Amanda Colson returned to her home in West Port, Connecticut, after a two weeks visit, the Col-

son's toured the World's Fair in Knoxville, Tennessee, the State Fair in Louisville and the Brodhead Fair. The girls liked the Brodhead Fair best of all.

Miss Elizabeth Proctor has entered Eastern Kentucky University in Richmond for the fall semester.

Mrs. Ella Mae Martin visited her eye doctor in Berea one day last week.

Mr. and Mrs. Paul Bowling and son, Michael Alan welcome their daughter from London, England, Mrs. Phyllis Henn and her husband, Tedd, and their children, Vicki and Ted, Jr. before arriving in the U.S.

Mr. and Mrs. Paul Bowling's son, Matt, from Louisville, his wife, Sharon and son, Brian visited the Henn's at the Bowling residence. Michael Alan accompanied the Henn's to the World's Fair in Knoxville, Tenn. Mr. Henn and Ted, Jr. have returned to England and Phyllis will remain with her parents until Vicki has resumed classes at Western Ky. University in Bowling Green.

Mr. and Mrs. Monroe Renner visited their child-

ren in Lexington, Sunday, Mr. and Mrs. Gary Renner, Mrs. J. Sargent and Leanne and Mrs. Jesse Holbrook.

Miss Mickie Pruitt celebrated her 16th birthday Monday, August 23 at her home with her mother, Pat Pruitt, Freddy and Freddy, Jr. and her grandmother, Mary McWhorter, all enjoyed Ky. fried chicken and a delicious cake.

Mr. and Mrs. Bobby Proctor and Elizabeth Ann returned home Saturday from a 12-day vacation in Florida visiting Mrs. Proctor's brother, Mr. and Mrs. Parter Caudill, Jr. in Melbourne, Florida. They also visited points of interest and had a very enjoyable trip.

Mr. and Mrs. J.C. Newland celebrated the 50th Wedding Anniversary at Florida Muncie and Lawrence, Muncie in Ohio. They also visited Mr. and Mrs. Roy Sawyers and family over the weekend.

Mr. and Mrs. Joe Hall of Michigan visited his sister, Mrs. Mary Belle Johnson and other relatives over the weekend.

Mr. and Mrs. C.B. Owens, Mr. and Mrs. Stevie Owens, Jeffrey and Angela were at Mr. and Mrs. Raymond Nunn's Sunday for a birthday picnic for Michael Parsons of North Carolina, son of Kenneth and Linda Parsons and Jimmy Parsons of Lexington. Also in attendance were Janice and Elizabeth Ann, and Kelly Parsons.

Mrs. Grude Renner received a phone call Monday evening from Mr. and Mrs. Morris Adams in Bradenton, Florida inquiring about his brother, Bob Adams, who is very sick.

Mr. and Mrs. Cecil Hampton of Lockland, Ohio and Mr. and Mrs. Tom Spotts of Shelbyville, were guests of their mother and grandmother, Mrs. Lauviece Monk and Mrs. Gladys Roberts from Wednesday to Friday. Mrs. Monk is not so well at this writing.

Visitors of Mrs. Mae Jones and Dora Cox were their brother, Mr. Ard Cox and wife, Margerite of Louisville and their son, Byron and wife of Florence, and Mr. and Mrs. Paul Cox, Paula, Paul, Jr. and Katie Gill of Frankfort, Ky.

Margaret Braeue and John Canosa and wife Sheila and daughter, Amy of Lakeland, Florida, Mrs. Irene Watkins and son, Mike of Lancaster, Mr. Everett F. Bradley, Mr. Charles Norris and Mrs. Carter Hoskins.

Recent visitors of Mrs. Elva Mobley and Lynn were Mrs. Jewel Brown of Crab Orchard, Mrs. Barbara Browning and daughter, Carolyn of Mt. Vernon, country Charlie and wife Carolyn and daughter, Amanda and son, Robbie of Gum Sulphur, Bro. Aubrey Phelps of Ola of Quail.

Mr. Jeffrey Shivel and Miss Lisa Irvin were married August 10th in Jellico, Tennessee. We wish them a long happy life together.

Mrs. Phyllis Hanna and son, Blake of Athens, Ohio spent last week with their parents and grandparents, Mr. and Mrs. Richard Shivel.

Mr. Roddy Carr left Sunday for Eastern Ky University in Richmond.

Miss Theresa Givok left Sunday for Ky Christian College in Grayson for the fall semester.

Mr. and Mrs. Paul Cox, Paula and Paul, Mr. and Miss Katie Gill all of Frankfort visited Mrs. Sue Cox over the weekend.

Mrs. Essie Napier and Mrs. Goldie Murphy, Mrs. Betty Mize, Charles Napier, Terry Lee and Dana Pace all visited Mr. and Mrs. Ronnie Lee and family in Tampa, Florida. They loved their trip very much. They also visited Disney Land. Margaret Bradley was in Danville Monday for a checkup with her doctor.

Sunday visitors of Mrs. Gladys Bussell were, Mr. and Mrs. Bruce Hickmott of Detroit, Michigan, Mr. and Mrs. Paul Parrott of Lexington, Mr. and Mrs. Wesley Sims of Stanford, Mrs. Ozella Crenshaw of Stanford.

Mr. and Mrs. Joe Flores and son, Joe, Jr. of Wauchula, Florida spent a week recently with her parents, Mr. and Mrs. Roy Hubbard and son, Stanley. Mr. and Mrs. Roy Hubbard and son, Stanley were in Wolfe County to attend

memorial services at the cemetery in Rogers, Ky. They had a nice time with friends and relatives. They hadn't seen for a long time.

Mr. Newt Hubbard of Arcadia, Florida spent the week visiting relatives in Rockcastle County and visited his brother, Mr. and Mrs. Roy Hubbard.

Over the weekend visitors of Mr. and Mrs. Delbert Lond were Mr. and Mrs. Ray Long of Willailla, Mr. and Mrs. Lois Long of Cincinnati, Ohio, Mr. and Mrs. Harrison Johnson and children and Mr. Johnson's sister and husband from Clay City, Mrs. Cella Todd of Lexington, Mr. General Strunk of Bee Lick, Mr. and Mrs. Ben Belcher of Ohio, Mr. Willie Taylor.

Visitors were Mr. and Mrs. Gentry, Mrs. Audrey Noe, Mrs. Pat Pruitt and Mickie.

[Cont. to 14]

## Miss Muncie to wed

Mrs. Simonetta Muncie Britton of Harrodsburg, announces the engagement and forthcoming marriage of her daughter, Tallalee Muncie to Wendall Brown, son of Mr. Lucille Brown of Route 1, Brodhead.

An Open Wedding is planned for 3 o'clock September 4, at the Poplar Grove Baptist Church at Willailla. A reception will follow the ceremony.



# WITH PRO-ADE

## ISOTONIC QUICK ENERGY

# PUNCH



\$.25 Off

### 25 Cents Off

Your Next Purchase of PRO-ADE PUNCH or PRO-ADE CITRUS

Mr. Grocer, please redeem to Pepsi-Cola Bottling Co. Corbin, Kentucky Offer Expires September 30, 1982

\$.25 Off

\$.25 Off

\$.25 Off

## Local couple's sons graduate from medical program

Two brothers, Dr. Charles Gary Hurst and Dr. Daniel Lee Hurst, sons of Mr. and Mrs. Charles C. Hurst of Route 1, Mt. Vernon and formerly of Hamilton, Ohio, recently completed the requirements for their certificates. Both were graduated from WRAMC Residency Program. Although the two are four-and-a-half years apart, they managed to graduate at the same time.

Capt. Daniel Hurst, the neurologist and younger of the two, has been practicing for two years. His specialty is pediatric neurology. He became interested in neurology at the end of his pediatric residency. After leaving WRAMC, he will be assigned to Fitzsimmons Army Medical Center in Aurora, Colorado.

He did his pre-med at Denison University in Granville, Ohio, completed medical school at Ohio State University in Columbus, Ohio and served one year of intern in pediatrics at one of the city hospitals in Kalamazoo, Michigan before going to Walter Reed. He is married to the former Mary Jane Gaines of Hamilton, Ohio and they have one daughter, Katherine Jane.

Dr. Charles Hurst, the dermatologist, has been at Walter Reed for three years and specialized in all areas of dermatology. "I became interested in dermatology because I felt that my life's work should be fun, and I enjoy what I do," said Hurst.

After leaving Walter Reed, Hurst will be assigned to Ft. Belvoir, Virginia.

He did his pre-med at the University of Louisville, Medical school at Ohio State University in Columbus, Ohio and one year intern and two years residency in internal medicine at William Beaumont Army Hospital in El Paso, Texas; three years as a doctor of internal medicine at Ft. Lee Army Hospital, Petersburg, Virginia, before going to Walter Reed. He is married to the former Marcia Cooper of

Columbus, Ohio and they have two sons, Adam and Peter.

## Fairview

by Mrs. Hubert Chasteen

Worship services were well attended at the Fairview Baptist Church over the weekend. Sunday School attendance was ninety-nine. We thank God for each and every one.

Well, all those hot humid days that we've had recently seems now to have cooled down a bit. We are so enjoying the cool weather for which we are so very thankful.

Mr. and Mrs. Earl Sorah of Elyria, Ohio are here visiting with relatives. They attended services at Fairview Saturday and Sunday nights. Mrs. Sorah is the former Mary Jane Reppert.

Mrs. Myrtle Wilson and grandson, Scott Laocock of Amherst, Ohio and Mrs. Gail Stoner and three daughters of Ashland, Ohio recently visited at the home of Mr. and Mrs. Hubert Chasteen and Mr. and Mrs. Tip Reppert.

Mrs. Stella Coyle of Muncie, Indiana is visiting her sister-in-law, Mrs. Edith Mullins of Snider and other relatives. She also has been attending church services at Fairview.

A cook-out was held at the home of Mr. and Mrs. Willie Cope last Friday night in honor of their daughter, Alice Shupe's and her son, Buddy's birthday. Others present for the celebration were Alice's bus band, John and her daughter, Nyoka Cember and son Matthew Cember. Mrs. Christine Barnett and Mrs. Helen Powell of Berea, Mr. and Mrs. Frankie Hayes and daughter, Brenda and Danny Hall of Winchester. They all enjoyed the evening very much. Many happy returns of the day are wished for Alice and Buddy. This community loves and respects the Cope family.

Mr. and Mrs. John Shupe and daughter, Mrs. Nyora Cember and son, Matthew visited her parents, Mr. and Mrs. Willie

Cope on Tuesday until Saturday of last week.

Recent guests of Mrs. Moneta Treon have been Mrs. Jewell Treon, Madison, Tennessee and daughter, Mrs. Elaine Treon Topping of Novato, California, Mr. and Mrs. Elwood Treon and son Bruce of Fairview and Mrs. Brenda Treon Hines of Lexington.

Mr. and Mrs. Garrett Peters of Orville, Alabama recently visited Mr. and Mrs. Bert Croucher in Berea and Mr. and Mrs. Cletus Peters of Fairview.

Sunday, August 8th, afternoon and dinner guests of Mr. and Mrs. Roy Lee Croucher and daughters of Conway were Mrs. Edith Mullins of Snider, Mrs. Stella Coyle of Indiana, and Mrs. Virgil Tinch and Beth, Mr. and Mrs. Mike Wilson and daughter, Shannon of Franklin, Ohio, Mr. and Mrs. Glen Ponder, Edith Rae- and Glennys, Mr. and Mrs. Doug Ponder and Scott, Mr. and Mrs. Mike Ponder, Beth and Chris, and Shawnerie Sexton.

Mr. Gerald Peters and son, Byron of New York visited Mr. and Mrs. Mike Peters and family recently.

Mr. and Mrs. Bert Croucher and Mr. and Mrs. Cletus Peters were recent guests of Mr. and Mrs. Johnny Hill, Kathy and Kenny of Lexington.

Mr. and Mrs. Willard Neeley and family and Mr. and Mrs. John Church and daughters spent the day at Cumberland Falls Friday, August 8th. They enjoyed a very pleasant day.

Recent guests of Mr. and Mrs. Elwood Treon were Mrs. Jewell Treon and daughter, Mrs. Elaine Top-



Little Miss Breanna Kay Bradley celebrated her first birthday with a party at her home in Berea. On hand to help her celebrate were her parents, Bill and Debbie, Katie Doyle, Eva Bullock, Larry and Judy Doyle, Paul, Ruth and Kim Doyle and Charles and Rose Bullock. Breanna received many nice gifts and a good time was had by all. Breanna, born May 20, 1981, is the daughter of Bill and Debbie Bradley of Berea. Paternal grandparents are Preda Shepherd of Mansville, Ohio and the late Kenneth Bradley. Paternal great grandparents were the late Arch and Artie Cash and the late Frank and Nellie Catherine Bradley. Maternal grandparents are Charles and Rose Bullock of Berea. Maternal great grandparents are Victor Doyle and Katie Doyle and Eva Bullock and the late Floyd Bullock.

## LIFE INSURANCE

### An Expression of Love

Since 1883 Modern Woodmen has helped millions of its members express love for their families.

You can, too. Let me show you how.

AGENTS NAME  
Street Address  
City & State

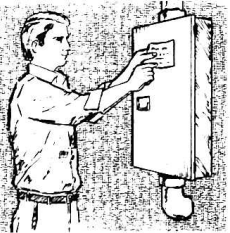
MODERN WOODMEN OF AMERICA  
Fraternal Life Insurance  
HOME OFFICE • ROCK ISLAND ILLINOIS



Agent's Telephone

## Notice to electric power customers

### Electrical inspection required



The Kentucky General Assembly enacted legislation creating a Uniform Building Code for Kentucky which requires new buildings to be inspected, including a requirement that such buildings must also have an electrical inspection. Electric utilities cannot supply permanent electric service unless a certified electrical inspector has granted a certificate of approval to new facilities which require inspection.

The Kentucky Building Code requiring electrical inspections became effective throughout the entire state as of August 15, 1982. The effective date for certain types of buildings was as early as February 15, 1980.

Local governments may designate which certified electrical inspector is authorized to conduct inspections subject to their authority. If no inspector has been designated, inspections will still be required and individuals may contact any certified electrical inspector to perform the required inspections or may request the Electrical Section of the Kentucky Division of Building Codes Enforcement to provide an inspector.

For further information about electrical inspection requirements in your area, contact your local electric power supplier, or the Kentucky Fire Marshal's Office at (502)564-3626.



## Brook Photographic Studio Opens

Brook's Photographic Studio is now open in Doug's Hair Design building. The business, being operated by Doug and Judy Brock, features automatic framing and photographic service for portraits and special occasions, including weddings. There is also a good selection of Rockcastle County scenery available which has been photographed by Mr. Brock (all in color).

Big 2 Family Yard Sale at the home of Mildred Hunt on Richmond Street next door to Gregory's Motel, August 28 and 27 from 9-3. Clothes, shoes, books, antique Seth Tombs' Clock and large Leveled edge tables, lots of other odds and ends.



Mr. Brock is shown here with one of his photographs - William McClure's workshop at Blue Springs. Mr. McClure has several wood carvings on display in Smithsonian Institution, Washington, D.C.



## New "Thank Goodness it Fits" by Playtex

lovely new lace trimmed bras designed with an exclusive fitting system that's so unique it has a patent pending! These pretty bras are proportioned especially for Nearly A, Perfect A, and Nearly B cup women.

Special Introductory Prices  
\$7.99\* soft cup styles in white or beige  
\$8.99\* lightly lined styles in white or beige  
plus Money Back Guarantee from Playtex\*

(Offer ends October 18, 1982. Money Back Guarantee offer ends December 25, 1982. See package flap for details.)

\*Suggested retail

## HIATT'S 5 & 10

Main St.

Mt. Vernon

## Limited Time Only



A BEAUTIFUL 8 x 10 COLOR PORTRAIT IS YOURS ABSOLUTELY

# FREE!

BABIES, CHILDREN, ADULTS PLUS FAMILY GROUPS  
Choose from different backgrounds & custom poses. Limit: one per subject, one per family. Additional portraits available in all sizes at reasonable prices. Persons under 18 must be accompanied by parent or guardian. Finished portraits delivered at store. Poses our selection.

**Maloneys**  
DISCOUNT DEPT. STORES

SAVE THIS AD!  
5 DAYS ONLY  
Wed., Thurs., Fri. & Sat.  
Sept. 1, 2, 3 and 4  
Daily 10-8, Sat. 10-5

pillow trimmed in lace.

Mr. Henry Ramey of Demmon, Illinois is visiting at the home of Mr. and Mrs. Willie Cope.

Mrs. Hubert Chasteen and members of her "Young Adult" Sunday School class met at the People's restaurant Tuesday evening for a delicious meal and a very pleasant evening. Attending were Mrs. Martha Fowler and children, Gwyn and William, "Mrs. Darleen Church, Tammy and Tonya, Mrs. Debbie McCollum, Roy and Marvin, Mr. and Mrs. Luther Isaacs, Mrs. Linda Dooley, William and Adam, Mr. and Mrs. Jimmy Cummins, Mr. and Mrs. Danny Dooley, David and Derrick, Mr. and Mrs. Bill Wren and Marie, and Miss Nettie Williams.

Little granddaughter, Kimberly Seals of Berea, We enjoyed the occasion very much. I thank God for the opportunity of being able to spend some time with these precious young people and their children. They are wonderful and I love them dearly.

Ira Reppert of Crossville, Tennessee was here last Friday visiting his relatives, Tip Reppert, Mr. and Mrs. Hubert Chasteen, Mr. and Mrs. Earl Sorah and the Wayne Chasteen family.

Mr. and Mrs. Willie Cope visited Mr. and Mrs. Benny Anglin of Berea on Sunday afternoon.

Monday night guests of Mr. and Mrs. Tip Reppert and Melody were his sister, Mrs. Hubert Chasteen and Mr. Chasteen.

Please remember church and Sunday School. God bless and keep you all.

## "JOB TRAINING" (Cont'd from front)

-\$17,454 to provide classroom training and on-the-job training in molding, production mechanics, and production supervision.

-\$8,417 to provide On-the-job Training.

"In addition to helping people find jobs, the Department also works with employers to develop jobs." Stumbo said.

## "AROUND BRODHEAD" (Cont. From 13)

Mr. and Mrs. Jim Parsons and Elizabeth Ann of Lexington.

Mr. and Mrs. Carl Taylor of West Chester, Ohio visited her mother, Mrs. Martha Owens over the weekend.

A cook-out was enjoyed by several of Mrs. Martha Owens' children Saturday evening. Those attending were, Mr. and Mrs. Carl Taylor, Mr. and Mrs. Garner Brown and granddaughter, Jessica Childers, Mr. Kenneth Owens, Mr. and Mrs. Everett Albright, Tim, Shonna and Teresa Albright and John Leslie Lafavers.

## "RIMELL-RIDDLE" (Cont. From 5)

For her daughter's wedding, Mrs. Bullen wore an emerald green dress with sheer sleeves and a high neckline, while Mrs. Riddle, mother of the groom, wore a green dress of crepe de chine.

Wedding music was performed by Carol Bryant, Keith Bussell, Tammy Coffey and Caroline Cash. Selections included, "If," "Open arms," "The Wedding Song," and "The Wedding March." Miss Songie Bullen, cousin of the bride, presided at the guest registry. Photographs were by Jim and Martha Cox. Assisting them was Miss Debbie Purcell of Victoria, Texas.

A reception was held following the ceremony at the Fellowship Hall of the church. Assisting with serving were Vickie Miller, Teresa Brusher, Judy Proctor and Debbie Abney.

Rings were presented by Jamie Dredden, Beth Harper and Scotty Bullen.

Following a wedding trip to Myrtle Beach, South Carolina, the couple resides in Mt. Vernon.

## Hospital News

### Rockcastle County Hospital Emergency Room is always prepared for trauma and routine

by Leigh Anne Hiatt

Whether you are a traumatic case or an outpatient, the Emergency Room at the Rockcastle County Hospital is always prepared to help you.

Who does one of the busiest departments at your local hospital have to offer? Through the week from Monday through Friday, we always have a doctor on call," said Norcetta Thompson, department head for patient accounting, admission clerks and switchboard operators. "The doctor on call is not always on duty, but he should be able to get to the hospital in a matter of 10 or 15 minutes."

And, since last July, the hospital has used a new system for week end doctors that works well for all concerned. "From Friday at 6 p.m. to Monday at 8 a.m., we always have a doctor in the hospital," added Mrs. Thompson. There are about 10 doctors from Lexington who take turns spending their week ends at RCH. There are two physicians who come each weekend. One stays from 6:00 on Friday evening to 6:00 on Saturday night until he is relieved by the second physician who stays until Monday morning. Most of the week-end doctors have practices before and are going back to school to specialize.

The Emergency Room doctor sees all patients who come there to be treated, but if the patient has to be admitted to the hospital he is admitted to his own doctor. If the patient does not specify a certain doctor, he will be admitted to

the one on call.

Besides the two Emergency Room doctors that stay on the premises, there is a local doctor on call every weekend. Dr. G.W. Griffith, Dr. O.L. Arvin, Dr. F.J. Motere and Dr. B.R. Bowers are rotating schedule.

The Emergency Room is staffed 24 hours a day. There is always an Emergency Room nurse and an admissions clerk from 8 a.m. until midnight. An orderly or an aide is then on duty from midnight until the next morning.

The hospital has two admissions clerks, Vicky Morgan and Millie Bailey, who have worked in the Emergency Room for almost two years. Sheila Kirby is a new admissions clerk and has been there for about two weeks.

Ms. Bailey explained what her job involves. "We do direct admissions, E.R. admissions and Skilled Nursing Facility admissions. In this hospital, the Emergency Room also takes care of the outpatients. There is no room for error in the E.R. For me, the Emergency Room is the main function of the hospital."

Ms. Bailey is confident about the staff that she daily sees in action. "The nurses here are extremely qualified. When they work in the Emergency Room as long they learn how to react in emergency situations." Two of the nurses at RCH that work mostly in the Emergency Room are Beverly Krawiecki from Somerset and Diane Taylor of Brodhead.

"We have one of the best equipped Emergency Rooms you'll probably find in the state of Kentucky,"

said Ms. Bailey. The Emergency Room was included in the recent remodeling of the hospital and has been expanded from one room to four. Five patients can be accommodated at one time since there are two beds in each of the rooms.

"We have a pelvic room for ob's, one for infections and one for suturing," she described. "Emergency Room Number One is set up for trauma and it is located right next to the Operating Room which is an asset in itself. Dr. A.E. Thomson (the surgeon at RCH) is on call seven days a week, 24 hours a day."

"We are equipped to handle any type of situation very efficiently and to the best of care for the patient. People think they'll go on to U.K. or Berea, but just stopping here to get a patient stabilized can save his life. More of the people in the community ought to use our Emergency Room and don't. The community ought to be proud of this hospital."

How does she feel about the necessity of the ambulance service? "The Emergency Room and the ambulance service work closely together," said Ms. Bailey. "They notify us when they're going out so we can prepare for the patient, and then call in with their vitals before they get here." All of the staff with the ambulance service know CPR. "They have saved lives and I've seen them do it."

She added emphatically, "I don't see how the community could even consider not having an ambulance service. They should consider their own family."

I remarked that the staff working in the Emergency Room sees the bleak side of the medical profes-

(Cont. to A2)

## Newly-opened "Aunt Polly Hiatt House" is a must stop on tour of Renfro Valley

by Nancy Mullins

Adding to the pleasure of a visit to Renfro Valley is the recent opening of historic "Aunt Polly's House."

The building itself is worth the trip even if it were not stocked with a unique assortment of items of quality hand construction for sale by area crafts persons.

Built sometime before 1812, the four room, two story poplar log house was moved to its present location in the edge of John Lair's home at an area near Lake Linville. Renfro Creek was dammed in 175 was constructed.

The first record of the house shows that in 1812 its occupants were Col. and Mrs. William Fish. Next it was owned by William Beasley Hiatt and his wife Polly. According to Mr. Lair, Polly was William Beasley's second wife and being much younger than her husband, she outlived him by several years and the house became known, even in her lifetime as the

"Aunt Polly Hiatt House"

Mr. Lair retells a story about the Hiatts' romance. Reportedly, sometime following the death of Hiatt's first wife, having been left with small children to care for, Hiatt headed to town to pick out a wife from among the town's young women. His main interest lay in spotting a woman who exhibited kindness toward children. After some observing, he settled upon young Polly French who had been seen by Hiatt to give a child a ride on her horse.

Polly was John Lair's mother's sister, so he has heard the story of how William Beasley was found, hanged between two logs in the barn. He says the family accepts the theory that he committed suicide, however, in Lair's mind there is some question.

"Aunt Polly, who was said to be a 'strong' woman, continued to manage the farm and the slaves, whose cabins were in a row behind the house. Lair remembers the slave cabins were torn down sometime

around 1917.

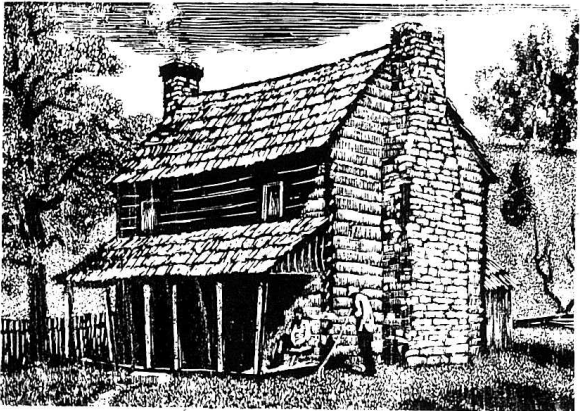
Mr. Lair was given the house, had it taken apart piece by piece and restored on its present site. The house has the original pegged floors and three fireplaces (two downstairs). The original house did not have a porch, so when Lair reconstructed the house, he left the porch off.

An interesting feature of the house is a "port-hole" upstairs in each end large enough to observe and shoot from.

The house has been designated a Kentucky Landmark by the State Heritage Commission. One room of the Aunt Polly House which is run by Mable Reppert, is filled with antiques including a "Rose" pattern quilt which is over 100 years old and reportedly took 40 spools of thread to make. The quilt is displayed on a cherry rope bed and feather mattress.

One room has recently been built onto the back of the house to contain some of the items for sale there.

(Cont. to A2)



A woodcut of Aunt Polly Hiatt's House house was recently opened as a craft shop shows the porch which was added to the two story, four room log house. The

# GRAND OPENING

of

## BROWN'S FOOD MARKET & SELF SERVICE GASOLINE

FRIDAY, AUGUST 27, 1982

5 to 8 p.m.

4 Great Drawings to be held and SPECIALS throughout the store

**Hot Dog and Coke**

only **25¢**

--SPECIAL ATTRACTION--

Live Entertainment featuring the COUNTRY SWINGERS BAND

Also, the Quail Homemakers will hold a bake sale and Southern Belle Milk Co. will have milk for the kids!

And, while all the fun going on Friday evening, a FREE 2 LITER OF COKE OR PEPSI will be given with each \$12.00 purchase of gas.

Come and get in on the fun Friday evening at

## BROWN'S FOOD MARKET & SELF SERVICE GASOLINE

Hwy. 150 Open 7 a.m. to 8 p.m.

## A checking account that puts you on cloud 9, is a NOW checking account!

### NOW Accounts earn interest as well as pay bills.

You never lose a dollar's worth of interest when paying bills with a NOW Account, as money on deposit earns the highest possible annual interest permitted for NOW Accounts, 5 1/4%. You receive a statement regularly, showing each deposit made, every check written and the current balance of your account. Interest earned, too, is shown on the statement.

**Member F.D.I.C.**

Open 8:30 to 3 p.m. Monday thru Friday

Drive Thru Open till 6 p.m. Fridays

Open 8:30 to 1 p.m. Saturdays

## Citizens Bank

"growing for you" Since 1904

Brodhead, Kentucky

**Births and Birthdays**



Mr. and Mrs. Wayne McNew of Mt. Vernon wish to announce the birth of their son, born August 12 at Lake Cumberland Medical Center. He weighed 6 lbs. 12 ozs. and has been named Bradley Scott. Grandparents are Mr. and Mrs. Denver Howard of Livingston and Mr. and Mrs. H.C. McNew of Route 3, Mt. Vernon. Great grandparents are Mr. and Mrs. Elmer Spivey and Mr. and Mrs. George Howard of Livingston.

Mr. and Mrs. Tom Pingleton of Berea are welcoming a daughter, born August 6 at Patten A. Clay Hospital. She weighed 7 pounds, 14 ounces and measured 20 1/2 inches. Her name is April LaDonna. Mrs. Pingleton is the former Donna Murphy, daughter of Mr. and Mrs. Bobby Murphy of Richmond. Paternal grandparents are Mr. and Mrs. Charlie Pingleton of Route 3, Berea. She is also being welcomed by aunts and uncles of Rockcastle County: Mr. and Mrs. Homer Jones, Jr. of Brodhead, great uncles, Alton and Edward McCollum of Mt. Vernon and great aunt, Mrs. Janie Durham of Roundstone.



Gordon Wayne Souder will celebrate his 7th birthday August 28th at his home in South Dakota. His sister, Charly Ann, will be three on October 31st. They are the children of Mr. and

Mrs. Bobby Souder, and the grandchildren of Mr. and Mrs. Lin Reynolds of Mt. Vernon and Mr. and Mrs. Virgil Souder of Richmond.

**ROCKCASTLE CIRCUIT COURT**  
Civil Action File No. 80-CI-208

**THE BANK OF MOUNT VERNON PLAINTIFF**  
**GARY L. TAYLOR AND WIFE, JANE M. TAYLOR DEFENDANTS**

By virtue of a judgment and order of sale of the Rockcastle Circuit Court entered in the above cause to produce the sum of eight thousand two hundred twenty-nine dollars and fifty-six (\$8,229.56) plus accrued interest and costs, I will offer for sale at public auction on the 10th day of September, 1982 at one o'clock P.M. to the highest bidder at the courthouse door (Main Street), in Mount Vernon, Kentucky, the following described real property, to-wit:

Beginning at a chestnut stump; thence South 49 degrees East to a spring, thence continuing on the same degree to the center of the County Road, a distance of 170 feet; thence with the meanders of said road, Southwest 450 feet to a stake in the center of said road; thence North 61 degrees East 318 feet to the beginning corner.

The grantee are to have water rights to a spring located on the property belonging to Arnel C. Taylor, et. ux, said spring being located about six hundred (600) feet southwest of the house.

And being the same real property which Gary L. Taylor and his wife, Jane M. Taylor obtained by deed dated April 14th, 1976, executed by Nimrod Killion, et. ux, of record in Deed Book 101, page 428, in the office of the clerk of the Rockcastle County Court, Mount Vernon, Kentucky.

This property shall be sold to the highest bidder on terms of twenty (20%) per cent of the purchase price in cash at time of sale and the balance payable in three (3) months with the purchaser being required to execute bond with surety to be approved by the Commissioner to secure the unpaid balance of the purchase price; said bond shall bear interest at the rate of eight (8%) per cent per annum until paid. The purchaser shall have the privilege of paying all of the purchase price in cash or paying said bond before maturity with interest to date of payment.

Unpaid taxes and liens of record at the time of entry of judgment shall be paid out of the proceeds of sale. Risk of loss of improvements shall be on the purchaser after the time of sale and the terms of sale. Purchaser shall pay the 1982 County, State and School taxes assessed against the property.

The purchaser will have possession of the premises after complying with the terms of sale.

CARL R. CLONIZ  
CLERK  
MISTER COMMISSIONER  
ROCKCASTLE CIRCUIT COURT

3x3

**Brodhead Willing Workers to sponsor Labor Day Telethon**

The Willing Workers Homemakers Club will sponsor the Jerry Lewis Labor Day Telethon for Muscular Dystrophy. For the second year the homemaker club members will be operating a pledge center. The pledge center will be located at Citizens' Bank in Brodhead.

Rockcastle Countians are urged to call the pledge center and make a pledge. The money contributed will go to the Muscular Dystrophy Association to fight muscle related disease. The Muscular Dystrophy Association is a voluntary health agency, and relies totally on the funds raised through telethons and other projects of the volunteers. Please call the pledge center on Labor Day

**"AUNT POLLY HOUSE"**  
(Cont. From Second Front)

The room also contains Mrs. Repper's quilting frames on which she keeps a quilt in progress all the time.

Mrs. Repper said Mr. LaR's was very reluctant to allow the house to be wired for electricity when it was opened to the public as became a shop, but she won out and the house is now wired for lights but no painting or any other changes were made in the house.

and make a pledge. The center will be waiting for your call.

**"HOSPITAL NEWS"**  
(Cont. From Second Front)

and Ms. Bailey quickly agreed. "By the time we're through with them, they're cleaned up and out on the floor (in acute care)." She added, "You are oriented to it. In a real emergency situation you don't have time to overreact, you just do it. I enjoy doing the work. It's a job."

Mrs. Morgan agreed with her about the satisfaction of doing their jobs. "I enjoy this," she said. "I've always wanted to be a nurse and haven't had the opportunity. This is the next best thing."

Although the Emergency Room was temporarily quiet when I talked to Ms. Bailey on her night shift, she assured me that the Emergency Room "is never routine, it's never calm. We're never actually busy. You're busy during the day because of outpatients, nights and weekends because of emergency patients."

"You can go for hours without a patient and then have 15 in half an hour. When you're not busy you catch up on work you didn't do while they were

here."

She said thoughtfully, "Everybody here in the Emergency Room is on a personal basis. Everybody here is like a family. It makes you closer to see others in pain and families lose members."

past Pic Pac on Hwy. 150. Services begin at 7 p.m. each evening with Devine. While as the speaker, or more than one, call 256-5894. Rev. Clyde Hodge is pastor of the church.

**-Revival Continued**

The Revival at the Tabernacle of Love has been continued through August 29. The church is located east on Fairground Hill, 1/4 mile

PTA Social The Brodhead PTA will hold a social Thursday night at 7 p.m. at the school cafeteria. All interested persons are urged to attend. Child care will be provided.

**FAMILY MUSIC NIGHT**  
Every 2nd Night at the  
**FAMILY LIFE CENTER**  
-Renfro Valley, Ky.  
Music from Gospel to Rock  
FEATURING THIS WEEK:  
Bluegrass Messengers Country Four  
Friday, August 27th on outdoor stage  
2 Hour Show Beginning at 8 p.m.  
NO ADMISSION  
**EVERYONE WELCOME**  
Bring lawn chairs and blankets

**Real Estate For Sale**

**NEW LISTING - Mobile Home, 12x65, 1973 Champi**  
This lovely mobile home has 3 bedrooms, living room, bath, kitchen w/built-in cabinets, snack bar, range, and refrigerator. It also has washer/dryer hook-up, electric furnace, wall-to-wall carpet and vinyl floors throughout. It can be yours. Call today for an appointment to see this lovely home!

**NEW LISTING - Mobile Home, 12x70, 1972 Daytona.**  
This cozy mobile home has 3 bedrooms, living room w/electric fireplace, bath, kitchen w/built-in cabinets, washer/dryer hook-up, is heated by wood, has wall to wall carpet and vinyl floors throughout. Call us today for an appointment to see this lovely home.

**REDUCED - LAKEFRONT PROPERTY** - Approximately 1/2 acres overlooking beautiful Lake Linville offers privacy and immediate occupancy for a mobile home or camping since it is already improved with septic system, city water, also a well and security light. Lots of space for garden, pets or for friends to join you. Located near the boat dock.

**FIVE ROOM HOUSE** - Living room, den, 2 bedrooms, large kitchen/dining combination, bath and 2 porches. The house has fuel oil heat, carpet and vinyl flooring. A car detached garage and is situated on a nice shady lot. Other amenities are city water and blacktop road. South of Mt. Vernon at Pine Hill.

**REDUCED - 147 Acre Farm, more or less, located near the Great Saltpeper Cave.** Farm has 1.3 miles blacktop road frontage, consisting of a 2 room house with 2 porches, 2 room store building, large cellar, one extra storage building, combination stock/tobacco barn and log barn. There's a basic tobacco allotment of 1,864 lbs. lots of timber and spring water. Just a few minutes from Mt. Vernon.

**NEW LISTING - 3 bedroom home** situated on an approximately 2 acre lot located in Livingston. This cozy home also has living room, kitchen, bath, utility room with washer hook-up, wall to wall carpet, insulated, heated by a fuel oil furnace, also has enclosed back porch. Exterior is covered with aluminum siding. There is also a large storage building. Call today for an appointment to see this lovely home. Partial financing is available to qualified buyer.

**NEW LISTING - 4 to 6 acres on Rockcastle River,** located across from Ward's Cemetery. Ideal investment property.

**Beat the Heat of Grocery Prices** on this 18 acre mini-farm. You can produce your own meat, milk your own cow, gather your own eggs and grow your own vegetables and - in your spare time - raise 895 lbs. of tobacco. Farm is located just outside city limits of Mt. Vernon.

**BUILDING LOTS** - Two adjoining lots located in the Cedar Heights Subdivision near Mt. Vernon city limits.

**BABY FARM** - Approximately 4 1/2 acres, about four miles northwest of Mt. Vernon. Good location. Ideal for short-time farming or for various other uses. Build your own home or move a mobile home onto this nice farm. City water is available.

**FARM** - 51.25 acre farm, located in Pine Hill. This farm has a pond 1500 lb. Weirco allotment, the 38" coal vein. Farm is improved with a 5-room house and water is supplied by a spring. City water is available.

**Commercial Property For Sale or Lease** - 1.25 acres, more or less, near Mt. Vernon, Ky. city limits on U.S. 25. Adaptable to various uses, has city water available and is in one of Rockcastle's fastest growing business areas.

**3 Bedroom Modular Home** located on West Street in Brodhead. This nice home has large living room, kitchen with built-in cabinets, range and refrigerator, 1 1/2 baths, utility room and is partially furnished. House also has carpet and vinyl floors throughout, storm doors and washer/dryer hook-up, city water and sewer and is heated by an electric furnace. House is situated on a beautiful lot measuring approximately 100x100 and has 2 outside storage buildings.

**REDUCED - Three bedroom home** situated on a nice lot on Hwy. 461. This lovely home has kitchen, dining room, family room, bath and partial basement with w/d hook-up. It is insulated and has a 12x21 garage. Call today for an appointment to see this lovely home. Partial financing is available to qualified buyer.

**60 ACRE FARM** - Located near Brodhead on Hwy. 150 and Negro Creek Road. This dandy farm has a good barn, corn crib and basic tobacco allotment of 2764 lbs. This farm can be bought as a whole or in parcels. Call us today for an appointment to see this dandy farm.

**Make Your Dollars Work** with this 45 acre farm located in the Brush Creek area. This property has marketable timber and there is a possibility of coal. Ideal investment property.

**Possible FHA Financing** - 2 bedroom home with living room, combination dining/kitchen with built-in cabinets, bath, fuel oil furnace, also flue for wood-burning stove, utility room, w/d hook-up, carport, plus a front porch. This property has city water and is situated on a nice lot conveniently located just south of Mt. Vernon on U.S. 25.

**TWO ADJOINING LOTS** located approximately 3 miles from Brodhead. Each lot measures 100x228, city water is available. Priced to sell.

**NEW SUBDIVISION** - Located in the Willailla section of Rockcastle County. Lots are approximately 1/2 acre, city water is available and fronts on blacktop road and are restricted. Call today for an appointment and have first choice on these dandy lots.

**2 LARGE LOTS** - Totaling approximately 1.5 acres located behind the Brush Creek Holiness Church in the Orlando Section of Rockcastle County. Lots are ideal for building homes or for mobile homes as city water is available and they are easily accessible. Reasonably priced.

**UNDER CONSTRUCTION** - 3 bedroom brick home situated on a nice lot near the Gum Sulphur Section of Rockcastle County. This nice brick home has living room, kitchen, bath and front on blacktop road, w/washer/dryer hook-up. All vinyl floors and vinyl floors throughout and is FHA approved.

**REDUCED INVESTOR'S DELIGHT** - 2 houses, located north of city limits of Mt. Vernon. House has 2 bedrooms, living room, kitchen and bath. The other house has four bedrooms, kitchen, living room and bath. Both houses have a washer/dryer hook-up, city water and are partially insulated. There are also two outbuildings and a garage.

**2 Adjacent Lots** in the Country Club Estates. Each lot measures 100x200 and fronts on a blacktop road. City water is available. Call us today and get first choice on these nice lots.

**Lawrence Auction and Realty**  
Main Street - Gregory Building - Mt. Vernon  
Wendell Lawrence  
Realtor and Auctioneer  
Home: 755-5115  
**256-5516**  
Evelyn Raines  
Realtor & Apprentice Auctioneer  
Home: 256-4972





Financial statement table with columns for account numbers, descriptions, and amounts. Includes sections for June, July, August, and September, and a recapitulation of bank and account balances.

(Cont. to A5)