

PIC-PAC SUPERMARKETS



HYDE PARK SALE!

Pepsi ^{16 oz.} _{8 pk.} \$1.59

PRICES GOOD THRU SAT., MAR. 19, 1983.

Chunk Tuna
HYDE PARK LIGHT 6 1/2 OZ. CAN
39¢
LIMIT 1 WITH COUPON BELOW & \$7.50 ADDN. CHARGE

38 OZ. HYDE PARK
Vegetable Oil \$1.39

Orange Juice
HYDE PARK HALF GAL. CTN.
99¢

HYDE PARK 15 OZ.
Chili with Beans 59¢

Frozen Pizzas
HYDE PARK 16 OZ. PKG. **69¢**
HYDE PARK 7 1/2 OZ. **Potato Chips** 69¢

HYDE PARK 46 OZ. FANCY
Tomato Juice 69¢

Hyde Park Vegetables
16 OZ. CANS. **3/89¢**
CORN, GREEN BEANS, PEAS, POTATOES & BEANS, ASST. BEANS

HYDE PARK 13 OZ.
Evap. Milk 2/89¢

Paper Towels
HYDE PARK JUMBO ROLLS **2/99¢**

HYDE PARK SALE!

- HYDE PARK 16 OZ. **Hamburger Dill Slices** 79¢
- HYDE PARK 18 OZ. SMOOTH OR CRUNCHY **Peanut Butter** \$1.29
- HYDE PARK 18 OZ. **Grape Jelly** 89¢
- MERIT 12 OZ. **Soup/Oyster Crackers** 69¢
- PILLSBURY HUNGRY JACK 16 OZ. **Instant Potatoes** \$1.29
- HONEY & NUT - 14 OZ. **Cherrios Cereal** \$1.69
- HYDE PARK 32 OZ. **Salad Dressing** 99¢
- HERSHEY'S 16 OZ. **Chocolate Syrup** 79¢
- HYDE PARK 16 OZ. PEELLED **Whole Tomatoes** 2/99¢
- HYDE PARK - BIG 50 OZ. JARI **Apple Sauce** \$1.49

PARTRIDGE
Sliced Bacon
16 OZ. PKG. **\$1.69**

U.S.D.A. CHOICE
Round Steak
LB. **\$1.89**

RATH'S WHOLE
Boneless Ham
LB. **\$1.89**
HALVES LB. \$1.99

Boneless Cube Steak
LB. **\$2.29**

Mixed Pork Chops
ARMOUR US RBST
LB. **\$1.39**
FAMILY PAK

U.S.D.A. CHOICE BONELESS
Round Steak TENDERIZED 32.09 LB. **\$2.19**

U.S.D.A. CHOICE
Boneless Rump Roast LB. **\$2.49**

U.S.D.A. CHOICE BONELESS
Sirloin Tin Steak LB. **\$2.59**

KNIEP
Corn Reef Bricklets LB. **\$1.89**

12 OZ. PKG. - FAMILY FAVORITE!
Partridge Hot Dogs LB. **99¢**

WEBBER'S 1 LB. ROLL COUNTRY
Whole Hog Sausage **\$1.99**

WEBBER'S 12 OZ.
Johnny Ribs **\$2.49**

FROZEN
Ocean Perch Fillets LB. **\$1.69**

KINGSFORD 14 OZ.
Meat Patties **\$1.99**

IMPORTED WHITE
Seedless Grapes LB. **99¢**

SWEET JUICY
Florida Oranges **12/99¢**

U.S. NO. 1 MICHIGAN
White Potatoes 20 LB. BAG **\$1.69**

JUICY FLORIDA
White Grapefruit
5 LB. BAG **\$1.39**

CRISP PASCAL
Jumbo Celery STALK **69¢**

NOW AT PIC-PAC!
LAWN & GARDEN SUPPLIES

A PRODUCT OF THE FLORIDA SUNSHINE

FLAVORFUL
California Avocados 3/99¢

MR. JUICY ASSORTED 8 OZ.
Fruit Drinks 5/99¢

SALAD FAVORITE! BUNCH
Green Onions 4/99¢

DAIRY FAVORITES!

HYDE PARK 12 OZ.
American Singles **\$1.39**

SEALTEST 12 OZ. SMALL OR LARGE CURD
Cottage Cheese 79¢

KRAFT 12 OZ. SHREDED
Mozzarella Cheese \$1.99

HYDE PARK 16 OZ.
Golden Margarine 2/79¢

8 OZ. ASSORTED
Light n' Lively Yogurt 2/79¢

Liquid Bleach
HYDE PARK GAL. **69¢**

FROZEN FOOD VALUES!

HYDE PARK CRINKLE CUT
2 Lb. French Fries **99¢**

HALF GALLON
Sealtest Ice Cream \$1.79

HYDE PARK 10 OZ.
Chopped Broccoli 2/99¢

HYDE PARK 10 OZ.
Mixed Vegetables 2/99¢

GORTON'S 8 OZ. POT. CRISP OR CRUNCHY
Fish Sticks \$1.29

HYDE PARK
1/2 Gal. Apple Juice \$1.69

HYDE PARK 22 1/2 OZ.
Brownie Mix \$1.19

3 OZ. BEEF, CHICKEN, MUSHROOM
Ramen Pride Noodles 3/69¢

ALL PURPOSE CLEANER - 28 OZ.
Liquid Pine-Sol \$2.19

8 OZ. BTL. FOR NORMAL DRY OR OILY HAIR
Wella Balsam Shampoo \$1.19

1 1/4 OZ. REGULAR OR UNSCENTED
Ban Roll-On Deodorant \$1.35

BONUS BUY COUPON

HYDE PARK 6 1/2 OZ. LIGHT
Chunk Tuna **39¢**

LIMIT 1 WITH THIS COUPON & ABOVE \$10 ORDER. VALID AT PIC-PAC THRU MAR. 19, 1983.

SAVE **PIC-PAC** SUPERMARKETS SAVE

*WE RESERVE THE RIGHT TO LIMIT QUANTITIES & CORRECT PRICING ERRORS. FEDERAL FOOD STAMPS WELCOME.

COMMONWEALTH OF KENTUCKY
ROCKCASTLE CIRCUIT COURT

Civil Action File No. 82-CI-413

The Bank of Mt. Vernon

Plaintiff

V. Notice of Sale

Mark A. Norton and Kathy Norton

Defendants

By virtue of a Judgement and Order of Sale of the Rockcastle Circuit Court entered in the above cause to produce the sum of thirteen thousand four hundred seventy-four dollars and forty-nine (\$13,474.49) cents, interest and costs, I will offer for sale at public auction on the day of April, 1983, at 1:00 p.m., to the highest bidder at the courthouse door (Main Street) in Mount Vernon, Kentucky, the following described real property of Mark A. Norton and Kathy Norton, to-wit: a one-half (1/2) interest in the following-described real property:

Located in Rockcastle County, Kentucky, on the waters of Dry Fork of Skaggs Creek, to-wit:

Beginning at a chestnut supposed to be in line of old plot (No. 20) between the lines of party of the first part and lands of Polly Southards; thence North 64 1/2 degrees E 3/10 poles to a spotted oak near the top of the ridge; thence with the ridge, North 144 West 37 3/10 poles to a stone on a point with pointers; thence North 52 East with a ridge 31 7/10 poles to a bunch of small maples with pointers, also a stone; thence South 77 1/2 East 1/10 poles to a small black oak near a cliff; pointers; thence N 67 1/2 E 28 1/4 poles to a small black oak on top of the cliff; thence S 45 E 24 poles to a small maple near the South end of the cliff; pointers; thence S 85 E 10 poles to a small maple in line of W.S. Robbins; thence N 16 E 14 to a double chestnut oak in old original line, between the lands of M.C. Sowder, Harrison Ramsey; thence with the old original line between the lands of the party of the first part and the lands of M.C. Sowder and Harrison Ramsey to a stone in line of lands of party of the second part and Andrew Robbins; thence S 9 E 89 7/10 poles to a beech in the old original line between the lands of John Logsdon and Polly Southards to the original corner, or place of beginning and being the same tracts of land surveyed by W.A.B. Davis on March 18, 1913, in the division of the land of the party of the first part, containing 250 acres, more or less.

Tract No. 2-Beginning at W.S. Robbins and W.H. Ramsey line on a black oak; thence east to a maple; thence south to a gum; thence east with the face of a cliff to a chestnut on top of a cliff; thence southeast to a poplar; thence south to a hickory; thence southeast to a chestnut; thence southeast to a stone with chestnut pointers; thence south to a little hickory; thence east to a double chestnut; thence west to a leaning black oak corner; thence south to a double chestnut oak corner, now down, in the old Robbins and Ramsey line, with a small mulberry and black oak as pointers; thence with old Robbins line to the beginning, containing 13 acres, more or less.

Tract No. 3-Beginning on a sourwood near the west end of a cliff; thence east with the cliff, north side of same, to a white alnut; thence east to a dogwood, a corner of W.H. Ramsey and O.J. Robbins; thence with the line between first and second parties to a white oak, now gone; thence southeast with old original line to a double chestnut oak, now gone, thence with the line of first and second parties back to the beginning, containing 8 acres, more or less.

Tract No. 4-Beginning at a beech on the east bank of Skaggs Creek; thence S 38 1/2 E 58 1/10 poles to elm formerly Joel Pitman's corner; thence S 75 W 18 poles to a stone; thence N 28 W 59 poles to a stake with a beech corner pointer; thence N 47 E 23 poles to a stake where a sourwood is called for; thence N 53 W 83 poles to a dogwood; thence N 87 E 19 1/2 poles to a beech about 3 poles to west of a drain; thence N 11 W 85 poles with an old fence row to a white oak at the angle of a fence; thence N 39 W 12 poles to a stone by the fence; thence S 59 E 76 poles to a stone near the top of a ridge; thence S 39 E 36 poles to a stone where once stood a white oak; thence S 56 1/2 E 22 1/2 poles to a stone by a locust stump; thence S 28 E 54 1/2 poles to a stone; thence N 87 1/2 E 21 2/10 poles to a stone; thence S 84 E 57 poles to a stone; thence S 42 E 63 poles to a stake; by an elm; thence S 4 W 13 poles to the beginning and containing 95 acres, more or less.

There is expected and not herein conveyed all of the above mentioned tract which lies on the northeast side of the county road which runs through said property.

Tract No. 5-Beginning on a stake in the branch with pointer in William Barnes' line; thence down the branch to the creek; thence up the creek to Arthur Robbins corner red elm; thence with said Robbins line to top of locust ridge to a white oak corner to Mary Southard land; thence west along the hill to the William Barnes' stone corner, thence with said Barnes' line a place of beginning, containing 100 acres more or less.

First parties also convey to the second parties an easement as reserved by Harvey McFerron, et al., in the deed to J.W. Griffin over tract herein described, said easement to be in the old branch or roadway as it now exists.

ALSO:

Located in Rockcastle County, Kentucky, on the waters of Skaggs Creek, to-wit: more particularly bounded and described as follows, to-wit:

Tract No. 1-Beginning at a stake with two white oaks, two dogwoods and a chestnut pointer in the Turrell and Walters line; thence with the line of party of the first part; thence with said line S 40 W 85 poles to a large hickory and chestnut oak; thence S 45 W 100 poles to a stake set in the root of a double black oak called for; thence with the line of party of the first part on a ridge; thence with the ridge to the northeast course to a stake in the line of Robert Norton and Jonas Pitman, thence to the beginning, containing 45 acres more or less.

Tract No. 2-Beginning at a white oak in Holbert Southard line where it crosses Buckners line; thence W with Buckner line S 44 E in all 13 poles passing a stake with two hickories and two white oak pointers, Holbert Southard's corner in old original line; thence with said line on top of ridge in a road with two spotted oak pointers; thence along the top of a leading ridge S 47 1/2 W 22 3/10 poles to a black oak; thence S 22 W 47 1/2 poles to a white oak; thence S 34 W 33 poles to a chestnut oak on a ridge with pointers, Southards inside line corner; thence their outside line S 42 1/2 W 26 2/10 poles to two black oaks on a point; thence N 28 1/2 W 26 poles to two chestnut oaks and a hickory corner of the ridge; thence S 40 E 48 1/2 poles to the same N 40 E 48 1/2 poles to the beginning, containing 14 1/4 acres more or less.

Tract No. 3-Beginning on a chestnut oak stump and two dogwood pointers; thence a straight line with the fence to a gum, James Renner's corner; thence a south east course with the fence to a white walnut pointer; thence down the hill with the fence to a double black oak; thence with W.S. Renner's line in the branch to James Doan's line; thence with his line to the beginning, containing 30 acres more or less, adjoining the first above described tracts.

ALSO:

Located in Rockcastle County, Kentucky, on the waters of Dry Fork of Skaggs Creek, to-wit:

Beginning at a spotted oak on top of the ridge near the edge of the road, one of Samuel Barron's corners; thence N 38 1/2 W 93 poles and 17 links to a hickory; thence S 49 E 10 poles to a stone pile with pointers; thence N 10 E 40 poles and 15 links to a double lynch; thence with one of Nesbitt lines to A. Towery's corner, with white oak and two dogwood pointers; thence S 85 E 36 poles to oak and sugar tree; thence S 85 E 37 poles to a stone, one of Towery's corner; thence with a Towery line to white oak, Marler's corner on a Towery line; thence with Marler's line to an ash, thence with two dogwood pointers, also a chestnut oak stump at the ridge road with pointers; thence with said road to the beginning, containing one hundred (100) acres, more or less.

ALSO:

Lying and being in Rockcastle County, Kentucky and more particularly bounded and described as follows:

Tract No. 1-Beginning at a red maple on a county road; thence with the east side of the road by what is known as the Bob Carpenter house including the house; thence with the east side of the road to a wire fence; thence with the wire fence on the east side of the road and with the road to the end of the fence near a hollow; thence from that point with the road on the east side of said road to a small new ground in the fork of the road; thence south on the east side of said new ground, and excluding the said new ground to small cluster of dead chestnuts to a corner; thence east with the original line to the county road near a small log cabin once stood; thence with the county road where the county road is now traveled back to the beginning, and containing about 25 acres to be the same, more or less.

Tract No. 2-Beginning at a white oak with four white oak pointers on top of a ridge, it being a corner made by Micajah Pitman to Elizabeth Robbins, and with the Moore and Terrell line, also Williams McQueen's line; thence with said line S 26 W 12 1/4 poles to two white oaks and hickory on top of a ridge, corner to Moore and Terrell's survey and corner to George Pitman's 100 acres, and M. Pitman and Waters' 300 acres and to Henry Rowe's 1004 acre survey; thence with Rowe's line, now McQueen's line, S 31 1/2 E 105 poles to a hickory, white oak and gum on a ridge; thence S 39 W 3 poles and 17 links to a stone with pointers, corner to T.J. McQueen 40 acres in Henry Rowe's line; thence with the line of said 40 acres aforesaid, S 79 W 90 poles to a stake on top of a cliff, on a narrow ridge in said Rowe's line.

Tract No. 3-Beginning on a chestnut oak stump and two dogwood pointers; thence a straight line with the fence to a gum, James Renner's corner; thence a southeast course with the fence to a white walnut pointer; thence down the hill with the fence to a branch; thence with W.S. Renner's line in the branch to James Doan's line; thence with his line to the beginning, containing 30 acres more or less, adjoining the first above described tracts.

ALSO:

Located in Rockcastle County, Kentucky, on the waters of Dry Fork of Skaggs Creek, to-wit:

Beginning at a spotted oak on top of the ridge near the edge of the road, one of Samuel Barron's corners; thence N 38 1/2 W 99 poles and 17 links to a hickory; thence N 49 E 10 poles to a stone pile with pointers; thence N 10 E 40 poles and 15 links to a double lynch; thence with one of Nesbitt lines to A. Towery's corner, with white oak and two dogwood pointers; thence S 85 E 36 poles to oak and sugar tree; thence S 85 E 37 poles to a stone, one of Towery's corner; thence with a Towery line to white oak, Marler's corner on a Towery line; thence with Marler's line to an ash, and two dogwoods; thence S 120 poles to two chestnut oaks stumps at the ridge road with pointers; thence with said road to the beginning, containing one hundred (100) acres, more or less.

ALSO:

Lying and being in Rockcastle County, Kentucky and more particularly bounded and described as follows:

Tract No. 1-Beginning at a red maple on a county road; thence with the east side of the road, what is known as the Bob Carpenter house including the house; thence with the east side of the road to a wire fence; thence with the wire fence on the east side of the road and with the road to the end of the fence near a hollow; thence from that point with the road on the east side of said road to a small new ground known as the Bob Carpenter new ground, also the forks of the road; thence south on the east side of said new ground, and excluding the said new ground to small cluster of dead chestnuts to a corner; thence east with the original line to the county road near where a small log cabin once stood; thence with the county road where the county road is now traveled back to the beginning, and containing about 25 acres to be the same more or less.

Tract No. 2-Beginning at a white oak with four white oak pointers, on top of a ridge, it being a corner made by Micajah Pitman to Elizabeth Robbins, and with the Moore and Terrell line, also Williams McQueen's line; thence with said line S 26 W 12 1/4 poles to two white oaks and hickory on top of a ridge, corner to Moore and Terrell's survey, and corner to George Pitman's 100 acres, and M. Pitman and Waters' 300 acres and to Henry Rowe's 1004 acre survey; thence with Rowe's line, now McQueen's line, S 31 1/2 E 105 poles to a hickory, white oak and gum on a ridge; thence S 39 W 3 poles and 17 links to a stake with pointers, corner to T.J. McQueen 40 acres in Henry Rowe's line; thence with the line of said 40 acres aforesaid, S 79 W 90 poles to a stake on top of a cliff, on a narrow ridge in said Rowe's line; thence a new division line made by M. Pitman and Solomon Rowe along the top of a leading ridge; N 18 E 37 1/2 poles to a gum, an old marked corner; thence N 10 E 27 poles to a white oak and chestnut oak on both sides of a path; N 41 1/2 W 10 poles to a small black oak; thence N 73 W 20 poles to a stake on a rock with pointers; thence N 73 W 20 poles to a stake on a rock with pointers; thence S 77 W 19 poles to 3 small black oaks; thence S 40 E 10 poles to a black pine and Spanish oak under a cliff; thence N 25 W 19 poles to a small black oak with pointers; thence N 20

W 15 2/10 poles, to a spotted oak with two spotted oak pointers; thence N 84 W 19 poles to a Spanish oak, with pointers; thence S 79 W 10 poles to a hickory, in said dividing ridge, with two white oak pointers; thence S 79 W 10 poles to a hickory, thence with McClure's line S 85 1/2 W 30 4/10 poles to a chestnut oak with pointers; thence N 81 W 18 1/2 poles to a stake with two spotted oak and hickory pointers; thence S 79 W 10 poles to 18 links to four Spanish oak pointers; thence N 81 W 18 1/2 poles to a stake with a chestnut and several saplings pointers; thence N 78 1/2 W 39 9/10 poles to a stake with two black oak, chestnut and hickory pointers, and two sources of water; thence a straight line in a northerly direction, probably bearing a little to the west, distance now known to a small chestnut oak corner, about 5 poles east of the ridge road, and about 20 poles from the black oak and double hickory corner in Brady's 100 acre survey; thence a straight line in a northerly direction probably bearing a little to the east, to a small black oak close to the east side of the ridge road, distance not known, it also being a line tree in Elizabeth Robbins; thence a line from the last corner mentioned in deed from Micajah Pitman to Elizabeth Robbins; thence two of her lines reversed, S 56 1/2 East about 208 poles to a point on a ridge, with a double dogwood and gum pointers; thence S 55 E 10 poles to the beginning, and containing 375 acres more or less.

Tract No. 3-Beginning on three dogwoods, thence a north course to a cliff, thence with John DeBord line to a point on the cliff, thence with John DeBord line a little west with the high ground to a chestnut; thence with Henderson Whitaker due south to a stone; thence with Jasper McGraw's line an east course to a stone; thence with the county road due east to a stone at the corner of Walker Owens' field; thence with said Owens fence a due north course to John DeBord line; thence with John DeBord line a west course to the beginning corner and containing 100 acres, more or less.

Tract No. 4-Lying on Eagle Creek and Skaggs Creek in Rockcastle County, Kentucky and beginning at the head of pond hollow on a white oak near old kiln; thence S 19 E 46 poles to a spotted oak at the Kincaid road near the pond; thence with said road, S 64 E 20 poles; thence S 32 E 30 poles, S 57 E 30 poles, S 77 E 10 poles, S 77 E 10 poles to a black oak; thence with the Kincaid road to a stone; thence with the cross fence a north course to a white walnut on the bank of Eagle Creek; thence up the creek to a maple standing at the mouth of a little branch; thence with the county road to James Mizel's line to a stone; thence with said Mizel's line southwesterly course to a hornbeam near the mouth of pond hollow on the bank of Eagle Creek; thence with the meanders of said hollow about 100 yards to a chestnut and white oak; thence with the meanders of said hollow by McClure and William Bullock to a black oak and pine on the ridge; thence a northwest course to a spotted oak and pine near the big road; thence with the road to the beginning, and containing 100 acres, more or less.

Tract No. 5-Beginning at the head of pond hollow near old tar kiln; thence S 19 E 46 poles to a spotted oak at the Kincaid road; thence with the road, S 64 E 20 poles to a stone; thence S 32 E 30 poles to a pond hollow; thence up the hollow about 30 yards to a black walnut on the east side of the hollow; thence northeast course to a chestnut on top of a ridge in Elisha Renner's line; thence his line northwest course to a stone; thence with the line of said stone to James Doan; thence with said road to the beginning and containing 25 acres, more or less.

ALSO:

Tract No. 1-Located on Eagle Creek in Rockcastle County, Kentucky, and beginning on a chestnut oak, a corner of Elisha Renner and Henry Jones; thence south course to a stone; thence southwesterly course, straight line to a pine on top of a hill; thence a southwest course to a stone in the hollow, a corner of J.C. Mizel's fence; thence a straight line west course to a stone, a corner of a hill in Henry Jones' line; thence with said Jones' line with the meanders of the ridge, to the beginning corner, containing thirty-five (35) acres, more or less.

Tract No. 2-Beginning on a hornbeam at the mouth of Pond Hollow; thence a straight line to a maple, a corner in Renner line; thence a west course including the garden thence with a lane to the Hibbard branch, north of the mouth of Eagle Creek on a sycamore oak; thence a west course with the branch to a spotted oak; thence a southwest course to the top of a ridge, to a white oak corner; thence with the dividing ridge to the end of said ridge to a pine corner; thence with the south side of the ridge to the beginning, containing forty acres, more or less.

Tract No. 3-Beginning on a maple a corner of this tract and the Mizel land; thence running south 83 W 21 poles to a stone in a branch at a gate; thence with the meanders of said branch to its junction with another branch; thence with the meanders of the branch by a sycamore direction with reduced to a straight line N 5 E 86 poles; thence due east to a black oak on county road; thence with the road S 55 E 82 poles to a pine stump; thence S 35 E 24 poles to a chestnut; thence S 25 W 104 poles to the beginning, containing fifty acres, more or less.

Tract No. 4-Beginning on a down chestnut with two black gum pointers, also a corner on Robert Mizel; thence nearly a south course running down the hill with said Mizel's line to a stone; thence with the County Road; thence back with the said Eagle Creek County Road to the Skaggs Creek and Pongo County Road; thence a west course to the beginning, containing ten acres, more or less.

Tract No. 5-Located on the waters of Roundstone Creek, and beginning on a poplar tree marked, and runs in an eastern direction to a white oak at the upper corner of the same of the corner of a black oak stump with hickory pointers, Grubbs and Nelson Owens corner; thence west with Owens line to a hickory corner, Meadows corner; thence with Meadows line to the beginning and containing 10 acres, more or less.

Tract No. 6 - Beginning on a large sand cliff east of Cluro and corner of Robert Parrett and J.C. Griffin; thence with said Parrett's line east about one-fourth mile to a point near Parrett's house; thence with said Parrett's line northwesterly about three hundred yards to a stone in said Owens' line; thence northwesterly with said Owens line about one-half mile to the top of large sand cliff, due west of J.C. Griffin's house; thence with the meanders with said sand cliff to the beginning, and containing about 75 acres, more or less.

Grantor hereby grants to grantee herein, the right of ingress and egress in and over said land and every part thereof, with right to use any and all timber on said land for mining purposes, to-wit: to erect, construct and build for the right to build tram-ways on and (Cont'd p. 15)

over any part of said lands is expressly granted here-
in. All tracks and easements for mining
purposes, consisting of wood, are included herein, but
all steel rails are not so included in this deed. The
grants herein, expressly guarantee a right of way
from the above lands to Highway No. 25.

Tract No. 7 - Located on the waters of Skaggs Creek
and beginning on three chestnuts on the north side of
Kincade road near James Southard's corner; thence
nearly a northwest with Southard's line to a black oak
on the edge of a steep bank, Southard's corner; thence
nearly west to a steeping maple on the edge of a
steep bank, Southard's corner; thence nearly north
the edge of a steep bank to a hickory and
steep bank, Southard's corner; thence nearly
line to a chestnut oak stump and stake in the north
or outside line of the Philz and Williams survey, sup-
posed to be in the Wickliff heirs' line, thence with
said line to the north end of a ridge near the
Skaggs Road, G.W. Pittman's corner; thence nearly
south with Pittman's line to a pine near the road;
thence southern course with the county road to a fal-
low sourwood near a large chestnut oak on the west
side of the road; thence with said road to the inter-
section of the Kincade Road; thence with Kincade
Road to the beginning-and-containing 110 acres to be
the same, more or less.

Tract No. 8 - Located near the old Chestnut Ridge
School House in Rockcastle County, Kentucky, and
bounded on the east by the land of S.B. Price; on the
north by the land of Rice Waverly; on the west by
the land of F.P. Kirby; and one the south by the
land of F.P. Kirby.

Tract No. 9 - Beginning at a stone at corner of Virgil
Bradley by a branch near a spruce spring, thence
down the branch to a stone, a corner said Bradley;
thence with the road to another said Bradley;
thence with said branch to a stone in the
forks of the branch; thence up said branch to a stone,
a corner to George Durham; thence up a drain east to
the county road; thence with the county road to a
stone in the Graves line; thence a straight line to a
cliff; thence with said cliff to the end of the point;
thence south down the hill to a stone in Graves' line;
thence west with Graves' line to a beginning corner
and containing forty (40) acres, more or less.

ALSO:

Tract No. 1 - On the waters of Skaggs Creek and
beginning at lynn tree; thence to a sycamore; thence
with the hollow to a beech in line of Neal McFerron;
thence to the top of hill to W.A. Mink's line; thence
down the branch to a stone, a corner said McFerron;
thence with the branch to the beginning corner. A right
of way through the school house property is shown
to the second parties. This tract contains the same
more or less.

Tract No. 2 - Beginning on top of a ridge at a chest-
nut; thence down the hill to a fallower in the drain;
thence back up the point to a cliff; thence to a chest-
nut John J. Mink's corner; thence back to the begin-
ning corner, containing 14 acres to be the same more
or less.

Tract No. 3 - Beginning corner in the Joel Woodall
line at a chestnut corner, a stone corner, a chestnut
and a rock; thence east with W.A. Mink's line to a
chestnut corner; thence west to the beginning corner,
containing one and one-half (1 1/2) acres more or less.

Tract No. 4 - On the waters of Long Branch of
Skaggs Creek, and beginning at the intersection of the
boundary lines of Roy Norton and the heirs of George
Pittman; thence a south-easterly direction with said
line to the line of Hance Renner; thence contin-
uing in the same direction with said Renner's line
to the line of Roscoe Adams; thence continuing in the
same direction with said Adams' line to the line of
Curtis Kirby; thence south with said Kirby line to
the line of George Whitaker; thence with said Whit-
aker's line, a general northward direction, to the line
of Fannie Rowe; thence with said Rowe line to the
line of Walker Owens; thence with said Owens' line to
the line of Roy Norton; thence with said Norton's line
to the point of beginning, and containing 300 acres,
more or less.

Tract No. 5 - On the waters of East Fork of Skaggs
Creek, and beginning at a stone corner on the west
side of the creek in W.A. Mink's line; thence up the
hill to a double mulberry; thence to a red bud with
oak pointers; thence to a hickory corner and two
sugar tree pointers; thence down the hill to a white
oak corner in line of Robb's line; thence with said
Robb's line to a chestnut oak with mulberry pointers; thence
with Otis Robbins' line to a black oak; thence with
said Robbins' line to an ash; thence down the hill
with Harrison Ramsey's line to a poplar corner; thence
down the hill with Florence Stokols line to a stone
corner; thence with W.A. Mink's line to the beginning
corner and containing about thirty-five (35) acres, more
or less. Also a right of way for road is conveyed to
the second parties where the same is now located.

Tract No. 6 - Beginning at a stone in Hope Well
School House property on west side of creek; thence
up the creek with its meanders to George Renner's
line; thence up the hollow with Renner's line to a
stone in Will Robbins' line; thence south up the hill
with Robbins' line to a chestnut oak; thence west
with Robbins' line to a stone corner; thence south
with Robbins' line to a double chestnut oak; thence
north to the beginning, containing one hundred (100)
acres more or less.

Tract No. 7 - Beginning at a dogwood in Sowerd's
line, thence to the line of Hance Renner; thence south
with Robbins' line to a stone corner; thence north
to a black oak on brink of ridge; thence north
to a stone corner in Joe Ramsey's line; thence south
with Ramsey's line to a poplar corner in the Eugene
Stokols line; thence with Stokols line to the begin-
ning, containing twenty-five (25) acres, more or less.

Tract No. 8 - On the waters of Skaggs Creek and
beginning on the north by the lands of Andy Ren-
ner; bounded on the east by the lands of Andy Ren-
ner and Polly Southards; bounded on the south by
the lands of Charles Doan; and on the west by the
lands of Polly Southard and containing 40 acres, more
or less.

Tract No. 9 - Being that portion of the first tract
land conveyed to Thurman Mink and wife, Violet
in deed dated January 6, 1943, from Charlie
Robbins and wife, Viola, in the office of the clerk of
Deed Book 41, page 618, in the office of the clerk of
the Rockcastle County Court, Mount Vernon, Kentucky,
said portion being that which lies on the west side of
the Skaggs Creek and the north by the lands of
Andy Robbins; bounded on the east by Skaggs
Creek; bounded on the south by the lands of Jimmie
Renner and Lola French; and on the west by the
lands of Roy Norton, and containing one hundred
acres, more or less.

Tract No. 10 - Beginning on a white oak, Rowe,

Payne's corner in Owens' line, thence west to the
road; thence north with the road to a white oak
east course to Owens' line; thence a south
direction with Owens' line to the beginning and
containing approximately two acres, more or less, lying on
the east side of the road.

Tract No. 11 - Beginning in the branch at Sam Rowe
line or corner; thence up the branch with meanders
of the branch to a cliff; thence with the left
prong of the branch to a drain; thence up the drain
westward to a maple at the end of a cliff; thence
southward with the cliff to the end of cliff; thence
direction to a stone at the county road; thence
with same to a hickory being the boundary line of
Rowe's corner; thence with Sam Rowe's line to the
beginning and containing 30 acres, more or less.

Tract No. 12 - Bounded on the north by the lands of
Dock Southard and J.W. Marler heirs; bounded on the
east by the lands of John Graves, Ernest and John
Bullock; bounded on the south by the lands of Harvey
Mink, George Durham and Sam Rowe, bounded on the
west by the lands of Fannie Rowe, Roy Rowe heirs
and Dock Southard; same being the lands and descrip-
tion contained in a certain deed conveying same to
Eugene Bradley and Minnie Bradley by C.C. Williams,
recorder in the County Clerk's office in
Deed Book 57, page 230, same containing 240 1/2
acres, more or less.

This is excluded from Tract No. 12 above, approx-
imately 20 acres heretofore conveyed by Walker
Owens to Eugene Bradley, same appearing of record in Deed
Book 57, page 230.

Tract No. 13 Bounded on the north by the lands of
A.C. Sowers, now claimed and owned by Nathan
Arnold and McKinley Arnold; on the east, by the
lands of Rachel Price; bounded on the south by the
lands of Jerry Rash and on the west by the lands of
Serafino Marlow or W. Marlow, containing
about forty acres, more or less.

Tract No. 14 - Beginning at a white oak near the
county road, now up the hill and east-
wardly direction with a cliff; thence with his line
nearly same direction to a maple
on a cliff; thence with Will Kirby's and George Doan's
line to a hickory; thence with Will Kirby's line to a
corner; thence south to a stone in the
line to a fallen pine in a field on top of a ridge near
a large dead chestnut; thence with line of Fannie
Rowe to a hollow; thence with the hollow to the
county road; thence with county road to the beginning,
and containing about 50 acres, more or less.

Tract No. 15 - All right, title and interest the first
parties have in and to all the coal and mineral rights
under, on or above the following described land pro-
perty, to-wit: Beginning on the west
Mink, Rockcastle River, Langford's corner; thence
with his line North 81 W 820 feet to a stake
with a ridge with black oak, sourwood and beech
pointers; thence N 8 W 3445 feet to a beech on the east
side of Long Branch, corner to Link Niceley; thence
down the branch to a stone in the
line of the county road; thence S 15 1/2 E 570 feet
to two elms at the mouth of Long Branch on the bank
of the river; thence with the river to the beginning
corner; containing 50 acres, more or less.

Tract No. 16 - All right, title and interest first parties
have in and to all the coal and mineral rights under,
on or above the following described real property, to-
wit: Beginning on the north by the line of Polly Southard
line on a point thence a northerly course to the forks
of the drain; thence east down the drain to Bill Barner's
branch; thence 150 yards up said branch to the third
drain; thence with said drain an east course to Andy
Robbins' line; thence with said Robbins line to
Polly Southard line; thence west with said Southard
line to beginning, containing forty acres, more or less.

Tract No. 17 - Located on the waters of Skaggs Creek,
and bounded on the north by the lands of W. Rash
and M. Sowerd; bounded on the east by the lands of
M. Sowerd; bounded on the south by the lands of M.
Sowerd and Jane Cromer; and the west by the lands
of George Mailer and J. Rash, and containing 101 1/2
acres, more or less.

Tract No. 18 - On the waters of Long Branch, and
beginning on a double ash tree at forks of branch
near a maple; thence north to a stone supposed
to be in the W.H. Rowe line; thence with the
Rowe line to a white oak near the ridge road; thence
with the ridge road to a stone at or near a gate;
thence down the hill to a stone on top of a cliff;
thence with the ridge road to the top of the hill;
thence a straight line to the head of a
drain at a stone; thence up the hill to a double chest-
nut on top of the ridge; thence to a stone corner by a
hickory; thence with the line of forks of drain;
thence with the branch to the beginning corner,
containing thirty-five (35) acres, more or less.

Tract No. 19 - Located in Rockcastle County, Kentuck-
y, and beginning at a stone by a sugar tree on the side of the hill above
a branch at A on plat; thence with an old marked
line S 28 E 750 feet to a stone by a black oak stump
top of a knob at B on plat; thence with an old
marked line N 80 E 100 feet to a stone at C on plat;
thence S 24 W 200 feet to a stake at D on plat; thence with an old marked
line S 52 W 200 feet to a stake in old fence row at E
on plat; thence with an old marked line S 78 W 250
feet to a stake at F on plat; thence with said marked
line N 82 1/2 W 350 feet to a stake in the old line on
G on plat; thence S 62 W 150 feet to a stake at H on
plat; thence with the marked line S 40 W 300 feet to
a stake at I on plat; thence with the marked line S 16
E 200 feet to a stake at J on plat; thence with said
marked line S 25 E 300 feet to a stake at K on
plat; S 32 W 125 feet, to a gum at L on plat; thence
S 42 W 50 feet to a stake at M on plat; thence east 75
feet to a stone on O plat; thence S 45 E 100 feet
marked line 150 feet to a maple by a drain; thence
with an old fence row S 42 E 50 feet, S 77 E 50 to
a poplar and bunch of dogwoods; thence with the old
fence row approximately S 35 E 450 feet to a stake
on top of a knob at N on plat; thence S 45 W 102
feet to a black oak on top of a knob at O on plat,
sourwood and other pointers; thence S 45 W 100 feet
to a maple at P on plat; S 1/2 W 50 feet to a
stake at Q on plat; thence with the old marked line
approximately S 35 W as shown by dots on plat 1350
feet to a small white oak at R on plat; thence S 65
W 100 feet to a white oak with sourwood pointers at
S on plat; thence approximately S 60 W 800 feet to
a stone on a flat rock in a drain at 12 on plat; thence
down the branch S 47 W 200 feet crossing over a road
where once was a culvert to a walnut by a branch
known as Possum Hollow at 10 on plat; thence up the
hill to a black oak at 9 on plat; thence S 45 W 50
feet, N 41 W 100 feet, N 44 1/2 W 100 feet, N 53 W
50 feet, N 49 W 50 feet, N 42 1/2 W 150 feet, N 38 W
50 feet, N 30 W 150 feet, N 19 W 100 feet, N 17 1/2 W
50 feet, N 15 W 100 feet, N 12 W 100 feet, N 8 W
50 feet, N 4 E 100 feet, N 5 E 250 feet, N 1 1/2 E 150
feet, N 22 1/2 E 100 feet, N 10 1/2 E 100 feet, N 13
1/2 E 150 feet, N 26 E 50 feet to a stake in the road

MI. Vernon Signal Thursday, March 17, 1933 P.15
- 25 on plat; thence leaving Possum Hollow, N 44 W
594 feet to a stone in the old fence row at 16 on plat
thence with the old fence row N 70 W 50 feet; N 58
W 150 feet, N 67 W 100 feet, N 67 W 150 feet on top
of the ridge at 17 on plat; thence N 1/2 E 150 feet to
a stake at 18 on plat; thence N 36 1/2 E 100 feet; N
24 1/2 E 100 feet, N 10 E 100 feet, N 8 1/2 E 100
feet, N 19 W 200 feet, N 50 W 200 feet, N 67 W 200
feet to a maple at 20 on plat; thence N 69 W 70 feet
to a stone at 21 on plat; thence N 5 E 100 feet to a
stone at 22 on plat; thence N 5 E 110 feet to the
lower side of a cliff at 23 on plat; thence with old
marked lines S 79 E 100 feet, east 50 feet to a stake
at 27 on plat, N 87 E 100 feet, N 72 E 31 on plat, N
85 E 300 feet to a stake at 28 on plat; thence S 85 E 50
feet to a stake, S 84 E 200 feet, N 82 E 300 feet to
a stake at 35 on plat, N 80 E 300 feet to a stake at 36
on plat; N 70 W 400 feet to a gum at 37 on plat,
Rowe's corner; thence with ar old marked line ap-
proximately N 12 W 750 feet as shown on plat; to
a stake at 40 on plat; thence with old marked line
approximately N 45 W 750 feet to a stone at 44 on plat;
thence with an old marked line approximately S 55 E
1150 feet to the beginning and contains 265.9 acres.

ALSO:

The following described real property located on the
east fork of Skaggs Creek, in Rockcastle County, Ken-
tucky, to-wit:

Tract No. 1 - Beginning on a chestnut oak on the
point of a ridge; thence a corner of a 48 acre tract
of the ridge with said chestnut oak; thence N 79 W 56
spotted oak, now down, corner of same, thence N 51
1/2 W 70 1/4 poles to a stone in said line in a fence
row, it being a corner of Charity Renner to J.W. Kir-
by; thence including the same S 64 1/4 W 14.34 poles
to a stake at an angle of said fence; thence N 57 W
5.68 poles to a stake in her outside line and in line
of SoPRowe to said Kirby; thence by said deed in-
cluding the same S 12 1/2 W 15 poles and 7 links to
a cut down pine with pointers; thence S 79 W 56
poles to a maple and chestnut oak on a cliff; second
corner to Rowe's deed aforesaid; thence N 30 W 25
4/10 poles to a stake with pointers, corner of said 48
acres; thence S 79 W 56 poles to a stake with pointers,
including the land sold off of said tract to G.W. Barner,
N 83 1/2 E 40 poles to a chestnut; thence N 46 1/2 E 25
7/100 poles to a chestnut oak below a spring; thence
N 10 W 12 9/10 poles to a spotted oak; thence N 78
E 18 poles to a stone on top of a flat rock on
the ridge in the first line of said 48 acre tract; thence S
39 W 46.72 poles to the beginning, containing 45 acres
more or less.

Tract No. 2 - Beginning on a hickory in said Renner
line and running a west course with a cross fence to
said Renner's line with said line to said
Dickson line, with his line around to the begin-
ning, containing three (3) acres, be the same more
or less.

Tract No. 3 - Beginning at a stake on a cliff; thence
to a spotted oak; thence to a chestnut oak below a
spring; thence with a fence to a chestnut on top
of the hill, one of the corners of W.H. Graves and Thomas
Rowe's line; thence with Thomas Rowe's line to the
beginning and containing two (2) acres, more or less.

ALSO:

Lying and being in Rockcastle County, Kentucky, on
the east side of Eagle Creek, known as Lot No. 6
of the land known as the Nichols land, and more par-
ticularly bounded and described as follows:

Tract No. 1 Beginning at a gum, a corner of Lot
No. 1, corner to Taylor and corner to the line of
line of Wattern, N 34 1/4 E 87 poles to a white
oak stump with dogwood and gum pointers; thence
N 2 1/4 E 45 7/10 poles to a black oak stump on the
Kincade Road, corner of Ingram Renner; thence
with the Kincade Road N 85 W 25 poles to a
stone with dogwood pointers and a corner of Lot No.
5, south 37 1/2 W 111 4/10 poles to a stone on south
side of branch in line of Lot No. 1; thence with said
stone S 90 3/4 E 31 poles to the beginning corner,
containing in all thirty-two (32) acres, more or less.

Also, all the right, title and interest of the first
parties, said interest being all mineral rights to said tract
of land, to-wit:

Tract No. 2 - Beginning on a buckeye near a branch
and near a corner to Craig Mink's land; thence south-
easterly with the line of the poles to the side of a hill
thence 157 poles to a hickory on the hillside; above
John Mink's house; thence 40 poles to a walnut near
Eagle Creek; thence 20 poles by a sycamore to a stake
in the Fredric line; thence about 148 poles to two
white oaks; thence 40 poles to the beginning corner,
containing forty-six (46) acres, more or less.

ALSO:

Located in Rockcastle County, Kentucky, on the wa-
ters of Long Branch, and more particularly bounded
and described as follows:

Beginning on a large poplar on a bank of Long
Branch; thence up the branch to a stone at the forks
of branch; thence a right turn up another branch to
a stone; thence a right turn with the drain to Owens
line; thence with Owens line to a white oak in Sam
Rowe's line; thence with Rowe's line to the beginning,
containing six (6) acres, more or less.

This is excepted from the above described boundary
now conveyed or to be conveyed, a portion of twenty-one
acres, more or less, of the land known as Lot No. 6,
scribed real property which has been heretofore con-
veyed to Walker Owens by deed of record in Deed
Book 74, page 10, in the office of the clerk of the
Rockcastle County Court, Mount Vernon, Kentucky.

This is excepted from the above described real prop-
erty and not now conveyed a portion of the above
described real property which has been heretofore con-
veyed to Joe Burton, court, Mount Vernon, Kentucky,
Deed Book 107, page 10, in the office of the clerk of
the Rockcastle County Court, Mount Vernon, Kentucky.

And being the same real property which Mark A.
Nolan and Kathy Nolen obtained by deed dated Sep-
tember 18, 1931, executed by Skaggs Creek Land Com-
pany, Inc., of record in Deed Book 116, page 52-53, in
the office of the clerk of the Rockcastle County Court,
Mount Vernon, Kentucky.

The terms of the sale shall be as follows: The prop-
erty shall be sold as one (1) unit. It shall be sold for
cash or upon a credit of three months with the pur-
chaser required to pay a minimum of twenty-one (21)
per cent of the purchase price in cash on the date of
sale and to secure the balance with a bond bearing
interest at twelve (12%) per cent per annum with a
surety approved by the Commissioner. The bond shall
be in the full amount of the purchase price. The buy-
er or shall have the right to pay said bond before ma-
turity with interest to the date of payment. Buyer



Winning Tigers

The Brodhead Tigers 7th and 8th grade boys' basketball team won the recent Brodhead Invitational Tournament. Brodhead defeated Bernstadt, Crab Orchard and Mt. Vernon to capture the championship. The Tigers defeated the Red Devils by two points in the championship game. The team is pictured here with their coach Gary Scott.

Batter-Up Little Leaguers

The Little League pledge is:

I trust in God.
I love my country, and I will play fair.
I will play fair.
And strive to win.
But win or lose,
I will always do my best.
The goal is that each player will make this pledge for his or her conduct in every game and follow it. It is an example for them to follow.

Rockcastle County Little League needs more people who are dedicated to this purpose so that it may be accomplished.

Rockcastle County Little League needs more people to be examples. There are many vacancies that need to be filled by people in this organization. If you would like to be an example, please attend the Board of Directors meeting Thursday, March 17 at 7 p.m. at the Senior Citizens Building in Brodhead.

Johnny Kirby, an eighth grader at Mt. Vernon Elementary, was chosen Most Valuable Player of the second annual Brodhead Invitational Basketball Tournament held recently. Shown presenting the award is Brodhead Principal Tom Payne.

Youth revival Northside Baptist Church will hold a Youth Revival this weekend beginning Friday at 7 p.m. and running thru Sunday night services. Special speakers will be Jimmy Whitaker and Frankie Rader. Also on Saturday night, the Rockcastle Baptist Association Youth Meeting will be incorporated into the Revival Service. There will be special music each night and everyone is invited.



Members of the Brodhead Invitational all-tournament team are pictured above. They are, from left: Derek Shadon and Todd Handford, Pulaski County; Jimmy Byrre, Shopville; David Day, Crab Orchard; Dwight Johnson, East Bernstadt; Scott Adams, Brodhead; Tim Hodges, Mt. Vernon; Kevin Bussell and Doug Cox, Brodhead and Johnny Kirby, Mt. Vernon. [Tournament photos by Doug Brock].



Senior Kelli Thomason, No. 20, scored for nerp on an offensive play last Thursday afternoon at Knox Central in regional action. Ready to receive the ball is junior Teresa Sturgill, No. 22. Other Lady Rockets in the photo are Cynthia Holbrook, No. 40 and Debbie Bowman, No. 24. The Rockets had a chance to take game into overtime as senior-guard Donna Farthing was fouled in the act of shooting as time ran out. But, Farthing was unable to connect on either free throw. Thomason played probably the best defensive game of her career against Cawood.

Playtex SUPER SALE

20% OFF
ENTIRE STOCK OF
PLAYTEX BRAS
\$7.20 - \$10.80
(Reg. \$9 - \$13.50)

All your favorite styles - basic and fashion.
Good size and color selection.

Mt. Vernon **HIATT'S 5 & 10** 256-2691



By Austin Mobley, Minister
Providence Church of Christ

"Steal No More"

"Let him that stole steal no more; but rather let him labor, working with his hands the thing that is good, that he may have whereof to give to him that hath need" (Eph. 4:28).

Notice that God not only forbids stealing in the above Scripture, but He also elevates the converted thief to a higher plane of thinking and instructs him to work so as to be able to help those less fortunate than he. We don't need to discuss stealing as much as we need to DEFINE it. This is so because many know it is wrong but refuse to admit that stealing a dime is as bad in principle as stealing a thousand dollars; the stealing on hour of labor is not less than stealing an hour's wages, and that to steal a man's wife is even worse than stealing his fortune (Matt. 19:9).

Cheating, fraud, the false balance, chronic laziness, gambling, something-for-nothing, schemes and avarice all have the same sire and are of the same family. Their family name is "thievery." He who wears the name Christian cannot partake of these, evil deeds. Let no man go beyond and defraud his brother in any matter; because the Lord is avenger of all such, and we also have forewarned you and testified" (1 Thes. 4:9).

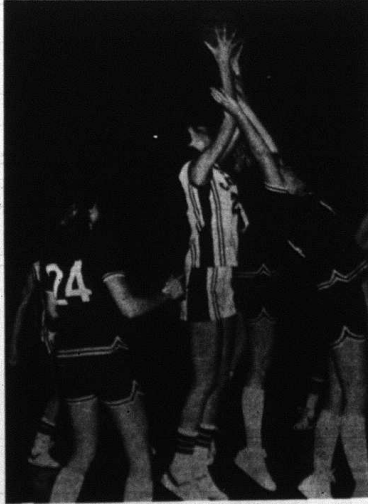
Theft originated in a mistaken idea about material things. Who has not thought of all that he could do with money; only to find it as dust in his hands when obtained? The rich soon learn that they cannot buy love, friendship and devotion. Rob the world, and first to feel the sting of want will be yourself! Christ did not content Himself with simply cutting down the tree of greed. He tore out the roots. Consider to what degree the New Testament condemns all forms of stealing, and how far it goes toward riding us of the temptation to steal: (1 Tim. 6:9-10; 1 Thes. 3:10; James 5:4; 2 Cor. 7:2; 2 Thes. 3:7-8; Col. 3:22-23; 1 Tim. 6:6-7).

The Christian will not steal because his affections are on things above. He who steals will need a stronger house than the one he robbed for we must abide by the laws we make for others in this life, and unforgiven thieves must have the wrath of God at the judgement (2 Cor. 5:10).

Let him that stole steal no more.
SERVICES
Sunday 10 a.m.
9 a.m. Worship
Wednesday 7:30 p.m.
Bible Study
Radio WYVK
Sunday 8 a.m.



Brodhead Cheerleaders received the first place trophy in cheerleading competition at the Beres Invitational Tournament held recently. The squad also won the "Most Spirited Squad" award at the Brodhead Invitational Tournament held last week. Squad members are: Tonya Cromer, Regina Bengel, Amy Hamm, Tracey Bullock, Charlene Holbrook, Sandy Roberts, Celena Lear and Holly Hopkins. The "Tiger" is David Sowder.



The action was fast. It was furious and, in the end, it was heartbreaking for the Rockcastle County girls' team who were eliminated from regional tournament action last Thursday afternoon by Cawood, 48-43. Cawood went on to play Clay County in the championship game Tuesday night and to have the tables turned this time-losing to the Tigerettes, 44-42 in overtime. In the above photo, senior Stephanie Wolfe fights for a rebound during the game. Other ECBS players in the picture are Debbie Bowman, no. 24 and Cynthia Holbrook, no. 40.

Real Estate For Sale

COMMERCIAL PROPERTY-1.25 acres, more or less, near Mt. Vernon city limits, south on U.S. 25. City water is available. Ideal location, businessmen. Asking \$50,000.

28 ACRE FARM with remodeled home in excellent condition. The house has 2 bedrooms, living room, dining room, large family room, kitchen w/cabinets and large snack bar, bath, w/d hookup, nice carpet, total electric. Tobacco-1,422 lbs. Near Livingston. Priced at \$45,000.

3 BEDROOM BRICK with 2 acres plus. There's also a large kitchen/dining room with cabinets and range, living room, bath, full basement, 1 car attached garage, also 1 car detached garage, cellar and 2 other storage buildings. Hardwood and carpet floors, city water and cistern. South of Mt. Vernon on U.S. 25. Listed at \$44,800.

TWO ADJOINING LOTS of more than 1 acre each located in Happy Acres Subdivision at Moreburg, just off U.S. 150. These are restricted lots in a prestigious neighborhood. Blacktop road, city water. Both for \$10,500.

FARM-31 acres more or less with more than 700 ft. frontage on Hwy. 461, has wooded area, city water and small tobacco allotment for \$29,500.

LOTS-2 adjoining lots of 5 acre each in Happy Acres Subdivision. Restricted, level, paved road, city water. Both for \$7,500.

FHA APPROVED BRICK HOUSE with 3 bedrooms, living room, kitchen/dining room, bath, w/d hookup, nice carpet and vinyl floors, carport, electric heat, city water on large landscaped lot in Maple Grove area for \$44,500.

6 Acres With Mobile Home and Barn - The home is a 14x70 Monaco with 3 bedrooms, 2 baths, living room, kitchen/dining room, mud room and large deck. Other amenities include 8 ft. ceilings instead of the usual 7 ft., house-type windows, electric heat, W/D hook-up, city water and beautiful landscaping. The barn is 24x24 with a 10x24 shed. Here's everything you need in a small farm near Greenhill for \$35,000.

Evelene Raines Properties

U.S. 25 South, Across From Superior, In former Hobby Haus Building.
256-5811 Mt. Vernon, Ky 256-5811
Evelene Raines Broker-Auctioneer

4-H News

By Martha Brown
County Extension Agent
For 4-H

4-H Fashion Review/ Variety Show

The 4-H Fashion Review and Variety Show will be held April 12th at the Broadhead Elementary School. Now is the time for 4-H'ers to begin their preparation for this event.

The Fashion Review will give 4-H'ers involved in a clothing project a chance to show what they have accomplished.

Junior 4-H'ers will be divided into 5 units with one champion being chosen from each unit. Also, an overall Junior Champion will be selected.

"Two Senior 4-H'ers will be awarded champion and will be able to compete in the State Fashion Review in May."

Participants in the Fashion Review will be judged at 6 p.m. and at 7 p.m. the Variety Acts will begin.

Rules For Variety Act

1. Only one person other than 4-H participants, such as a pianist, may accompany the act.
2. Only 4-H participants may appear on the stage during the act.

CHARLES WILLIAMS AUTO CITY, INC.

986-3279

U.S. 25 North Berea
Next to Tastee Freeze

Berea, Ky.

- 1982 Chevrolet 6900LE, 2 dr., V8 cyl. Auto, PS/PB, Tilt, AM/FM, Tape, Windows, Air, Window Sticker. Price, \$11,200. Our Price \$7,500.
- 1981 Datsun 280SX Hatchback, 4 cyl., 3 speed, AM/FM, Black.
- 1981 VW Pickup, L.X., 4 cyl., 5 spd., AM/FM, Tape, Extra Sharp, Black.
- 1980 Lincoln Continental, 2 dr., V8, Auto, Full Power and air, 21,000 miles.
- 1980 GMC, 1 ton truck, V8, 4 spd., power steering & brakes, AM/FM, 1500 Wheel Base, Factory Stake Bed, \$8,000.
- 1980 Olds Delta 88, 4 dr., V8, Auto, PS/PB, Air, Silver w/Red Int.
- 1980 Buick Century Limited, 4 dr., 4 cyl., Auto, PS/PB, Power Windows, Cruise, AM/FM, Air, Sunroof.
- 1979 Buick Park Ave, 4 dr., V8, Auto, Full Power & Air, White/Red Int.
- 1978 Camaro, 6 cyl., Auto, PS/PB, Air, 2 to choose from, Blue.
- 1978 Lincoln Mark V, V8, Auto, Full Power and Air, Maroon/White Van.
- 1978 Dodge Leisure Van w/Windows, 118 cu. Eng., Auto, PS/PB, Air, caplains chairs, convertible coach, Blue.
- 1978 Camaro Z-28, V8, Auto, PS/PB, Air, AM/FM, T. Top, White.
- 1977 Lincoln Continental, 2 dr., V8, Full Power and Air, Yellow, Sharp!
- 1977 Datsun Pick-up, 4 cyl., 3 speed, white.
- 1974 Cadillac, 4 dr., V8, Auto, Full Power & Air, Blue.
- 1977 Pontiac Astra, 2 dr., Hatchback, 4 cyl., 5 speed, AM/FM, Top, Low Mileage, Orange.
- 1977 Pontiac Trans Am, V8 Auto, PS/PB, T-Top, Red.
- 1976 Cadillac Sedan DeVille, DF Elegance, V8, Full Power and Air, Yellow.
- 1977 Dodge Max Van w/Windows & Seats, 15 pass., V8, Auto, PS/PB, Air, Sunroof.
- 1977 Chev. Van, V8, Auto, PS/PB, AM/FM, Short.
- 1977 VW Rabbit, 4 dr., 4 cyl., 4 speed, Air, Brown.
- 1977 Volvo Station Wagon, 4 cyl., 4 speed, Air, White.

IN OUR 15TH YEAR

We Trade to
Trade Again

OVER 90 CHOICE UNITS
TO CHOOSE FROM

"COMMISSIONER'S SALE"
(Cont'd from front)

shall have possession upon complying with the terms of sale and shall pay the 1982 County, State and School taxes on the property.

In the event The Bank of Mount Vernon is the successful bidder on the property, it shall not be required to make a cash deposit and it shall be required to post bond only to the extent the sale price exceeds the judgment, interest and costs.

1/4 Carl R. Clontz
Master Commissioner, Rockcastle Circuit Court

- 3. Time limits are four minutes for specialty acts and eight minutes for club acts.
- 4. an act exceeding the time limit should be permitted to finish. However, it should not be considered by the judges in the selection of a champion act for the show.
- 5. Specialty acts shall consist of four 4-H participants or fewer and have a time limit of four minutes.
- 6. There is not upper limit on the number of 4-H'ers from a club who can participate in the club act.
- 7. Minimum requirements for club acts state that twenty percent of the club participants or five participants, whichever is greater, must be involved.
- 8. Since participation is of utmost importance, the combination of clubs for the purpose of presenting a club act is not permitted.
- 9. Dramatic readings can be entered as Variety Show competition.
- 10. All acts must use the same P.A. system at Broadhead Elementary. No act will be allowed to provide their own sound system.
- 11. A 4-H club may have one club act and up to two specialty acts.

DWAYNE'S Cars & Trucks

U.S. 25 North Berea
Next to Tastee Freeze
986-8489

CARS

- 1982 Chev. Chevette, 2 dr., Auto, White
- 1982 Pontiac Gran Prix, V6, Auto, Silver
- 1981 Chev. Chevette, 4 dr., Auto, AC, Red
- 1981 Chev. Malibu Classic, 4 dr., V6, Auto, AC, Green
- 1981 Ford Fairmont, 4 dr., V8, Auto, AC, Green
- 1981 Chevrolet Monte Carlo, 4 dr., Auto, AC, Brown
- 1981 Chev. Caprice, 4 dr., 6 cyl., Auto, AC, White
- 1981 Chev. Grey Top, Auto, Orange
- 1980 Ford Fairmont, 2 dr., Auto, AC, 6 Cyl., Green
- 1981 Chev. Chevy Sport, AC, Auto, Silver
- 1980 Olds Cutlass LS, 4 dr., AC, White-Blue VR
- 1980 Chev. Impala, 4 dr., AC, Grey
- 1980 Pontiac Lemans, 4 dr., V8, Auto, AC, Gold
- 1980 Olds Cutlass, 4 dr., V8, AC, Rally Wheels, White
- 1980 Olds Omega, 2 dr., V8 Auto, AC, White
- 1979 Ford LTD, S/W, AC
- 1979 Lincoln Mark IV, 4 dr., V8, Auto, Full Power, White, White VR
- 1978 Chev. Nova, 2 dr., 4 speed, AC, Bronze
- 1978 Plymouth Horizon, 4 dr., V8, Auto, 4 Cyl., Green
- 1978 Chevrolet Camaro, 2 dr., Red
- 1978 Chev. Caprice, 4 dr., Green
- 1977 Olds Starfire, 2 dr., 6 Cyl., Black
- 1977 Plymouth Volare Custom, 6 cyl., Auto, AC, CD, Brown VR
- 1977 Monte Carlo, Auto, PS AC
- 1976 Chevette, 2 dr., 4 Spd, Black
- 1975 Chev. Camaro, 2 dr., 4 Speed, AC, Beige
- 1976 Ford, Elite, 2 dr., Green
- 1974 Chev. Caprice, V8, AC, Brown-Beige VR
- 1974 Buick Skyhawk, 2 dr., AC, Blue/White

TRUCKS

- 1982 Ford Explorer Package, Blue, Only 10,000 miles
- 1980 Chev. Pick-up, L/W Bed, 6 cyl., Sl. Sh., PS
- 1980 Chev. LUV Pick-up, 4 cyl., 4 speed, camper top, White/Red
- 1980 Plymouth Arrow PU, 4 Cyl., Auto, White/red
- 1980 Chev. Utility Truck, V8, Auto, AC, White
- 1978 Ford, 1/2 Ton, Pick-up, L/W Bed, 6 Cyl., Auto, L4, Blue
- 1974 Ford, 1/2 Ton, Long Bed, 6 cyl.
- 1983 GMC 1 ton truck, 12 ft. flat bed

4 WHEEL DRIVE

- 1981 Chev. LUV Pick-up, 4 cyl., 4 speed, Yellow
- 1981 Ford Bronco, 302, V8, Auto, PS, AC, Extra Sharp
- 1979 Jeep CJ-7, Hard Top, Black
- 1979 Chev. Blazer Cheyenne Fully Loaded, Black
- 1976 Ford Pick-up, L/W Bed, White, 4 Ton, Auto

Dwayne Bringiers Owner
Ernest Sewder Salesman
Fred Laker-Salesman

HOURS:
Mon. - Fri., 8:30-5:30
Sat. 8:30-5:00

5. Since participation is of utmost importance, the combination of clubs for the purpose of presenting a club act is not permitted.

"BRODHEAD"

(Cont'd from P.8)

Mr. and Mrs. Monroe Renner, were in Lexington Monday for Mr. Renner's appointment with a skin doctor.

Mrs. Mae Roberts has returned home from a visit with her sons, John and family in Dayton, Ohio, George and family in Erlanger and Guy, Jr. and family in Covington.

Mrs. Jean Ennis spent several days with her daughter Mrs. Lisa Lunsford James and Darin in Lockland, Ohio.

Misses Janie Long, Melanie Long and Dana Craig are spending a few days of their spring vacation at Lake Barkley in Western Kentucky.

Quail

By Vivian Owens

Sunday afternoon visitors of Mrs. Pattie Baker were Mrs. Christine Brown, Mrs. Richard Lawrence, and Miss Shanda Middleton.

Mrs. Gracie Elder is a patient in an Ohio hospital.

Mr. Edgar Cash is a patient at Ephraim McDowell Hospital in Danville. We wish him a speedy recovery.

Mrs. Nellie Dyehouse of Crab Orchard visited her brother, Mr. and Mrs. Foster Brown, Saturday.

Mrs. Edna Caldwell is on the sick list. We wish her a speedy recovery.

Mr. and Mrs. Johnny Todd and daughter and Mr. Artie Todd and grandson of Ohio visited Mrs. Willie Todd one day last week. Others who visited her were Mr. and Mrs. Charlie Todd of Eubank, Mr. and Mrs. Willard Todd of Ohio and his sister, Irene of Indiana and Mr. Terry Hamm of Indiana.

Sunday visitors of Mrs. Willie Todd were Mrs. Ronald Rogers, Mrs. Wayne Todd and Jessica, Mrs. Deed Barron and Stacy and Tracy Burdette.

Those who visited Mr. and Mrs. Benton Owens the past week were Mr. and Mrs. David F. Noe, Mr. and Mrs. Jack Rowe, Mrs. Noel Dodson, Mrs. Kenneth Thompson and Robin, Mr. Floyd Bingham, Mr. Lewis Whitaker, Mr. Chester Whitaker and Mrs. Bernice Blankenship.

Mr. Estil J. Owens of Ohio was Sunday dinner guest of his parents, Mr. and Mrs. Benton Owens.

Mr. Estill Gentry was able to attend church Sunday.

The families of Robert Cromer, Harris Hamm and Lloyd McClure, have our sympathy in the loss of their loved ones.

Mr. and Mrs. Don Stevens of Louisville spent the weekend with Mrs. Stevens' parents, Mr. and Mrs. Ambrose Albright.

Mrs. Jack Whitaker, Mrs. Maggie Whitaker, Ruth Mink and Mrs. Lillian Brooks visited Mrs. Ruby Ball in London Sunday afternoon.

Mr. and Mrs. Don Stevens and Mr. and Mrs. Ambrose Albright and Tootie were Saturday supper guests of Mr. and Mrs. Billy Gentry.

Mr. Terry Hamm of Indiana spent a few days last week with Mr. and Mrs. Shirley Ray Cable and daughter, Shelby.

Mr. and Mrs. Lester Taylor was Sunday dinner guest of his parents, Mr. and Mrs. Jessie Taylor and family.

Mr. and Mrs. Jessie Taylor visited Mr. and Mrs. Charlie Hasty, Sunday evening.

Mrs. Deborah Philbeck visited her grandmother, Mrs. Florence Albright, one day last week.

Mt. Vernon Signal Thursday,
March 17, 1983 P-17

REAL ESTATE FOR SALE

"FHA Houses"

FINANCING POSSIBLE

Brod. 3 BR. LR. K. KH. CW, \$29,900 - 1.15.

Brod. 3 BR. LR. K. DR. UT, BA, WDH, WWS, EH, \$22,900 - 1.15.

Mt. V. 3 BR. LR. K. CW. CH, SDW, WDH, \$36,900. E-7.

Reduced-Mt. V-3 BR. LR. K. DR. UT, GAR, WWC, CW, CS, \$36,900. C-23.

Willalaia 3 BR. LR. K. BA, FR, EX Con., \$36,000. H-11.

Mt. V-3 BR, Brick with LR, DR, and K Comb., EH, CW, CS, 1/4 BA, 4 car GAR, \$38,750. E-18.

South of Mt. V. 2 BR. K and DR Comb, LR, BA UT, HP, Basement; \$33,900. J-1.

Mr.-Frame, 3 BR, LR, K, FR, B, EH, \$31,900 - J-12.

Numerous lots available in various locations throughout Rockcastle County for FHA Homes.

Home by Ford Realty to help you fill out your application.

Future Auctions

Mr. and Mrs. Roy Brown & Mrs. Ollie Sowders 127 ACRES Saturday, March 19, 1983 10:30 a.m. Highway 461, Mt. Vernon

Commercial Properties

- Comm.-SS, RC, BS, junction, 461-50, Modern living quarters, \$48,000. J-2.
- Orlando-60 A m/l, 8 A crop, 1401 lb. tob., Tob. barn, 2 ponds and well, \$23,900. I-13.
- Homes: \$50,000 and up
- Mt. V-Brick 3 BR, LR, K, FR, PS, EX Cond. \$36,500. Sale Pending.
- Fantastic Lake Home - Private, LR, K, BR, 2 BA, FR, 2 car Gar, Priced at only \$76,500. J-9.
- 2 Story Brick - Near Broadway - 20 A - 4 BR, 2 BA, K - fireplace, toilet electric. Only \$59,500. J10.

opd land in or near Rockcastle County. Call us today to turn yours into cash!!!

Farms and Acreage

Fine Hill-17A-10 room house with SW, 2240 barn-14 shed, 29x32 shop, \$29,900. G-19.

Salt Pete Cave-97 A m/l timber and firewood, \$18,900. G-21.

Near Johnetta-Secluded-Creek-60 A, Excel Barn, Old Log House, \$16,500. J-13.

Lin Co-132 A-pond, 100 A pasture and cropland \$475 per acre. F-9.

A -unimproved land, Sand Hill, some timber, spring water, 1500 ft. road frontage, \$3,900. J-5.

8 A m/l, hill and woodland, south of Mt. V. Secluded, \$7,900. F-1.

80 A Hillside Farm-14 A cleared pasture, land and balance in woods. Panoramic view, tob. allotment is 1040 lbs. \$31,900. B-27.

13A-recreation land near Blue Springs Ideal for retreat, log home or simple investment, \$6,500. G-15.

3. Time limits are four minutes for specialty acts and eight minutes for club acts.

4. an act exceeding the time limit should be permitted to finish. However, it should not be considered by the judges in the selection of a champion act for the show.

5. Specialty acts shall consist of four 4-H participants or fewer and have a time limit of four minutes.

6. There is not upper limit on the number of 4-H'ers from a club who can participate in the club act.

7. Minimum requirements for club acts state that twenty percent of the club participants or five participants, whichever is greater, must be involved.

8. Since participation is of utmost importance, the combination of clubs for the purpose of presenting a club act is not permitted.

9. Dramatic readings can be entered as Variety Show competition.

10. All acts must use the same P.A. system at Broadhead Elementary. No act will be allowed to provide their own sound system.

11. A 4-H club may have one club act and up to two specialty acts.

Real Estate

Town Hill-M, 3 BR, LR, K, V.D., \$19,500. I-15.

Red-Main St.-Excel Location - Sold L.R. K, DR, B, FR, RR, UT, 2 good gardens, \$14,900. -J-11.

Sweet Water - mobile home-12x60-3 BR, LR, K, DR, BA, fuel oil heat and wood burner, Approx. 1A-\$7,900. I-7.

Callaway-Mt., V-mobile home with room addition, 1 Acre lot, \$7,500. I-19.

LOTS - LOTS - LOTS? What kind do you want? Small lot-Big-1st-Restricted lot-Unrestricted lot-Wooded Lot-Level Lot-Hill Lot-Expansive Lot-Inexpensive Lot-Lots located at Evergreen Estates-Valley Calloway-Mt., 461-7000 Section 4, Vernore, FHA or VA Approved. WE HAVE ALL KINDS MAKE AN APPOINTMENT TO SEE THEM TODAY!

West Main-Mt, 1 1/2 stories, 3 BR, K, GAR, \$34,500. I-12.

Bandy-Pulaski Co-2 BR, LR, K, on second floor, 1 BR, DEN, UT, first floor, EH, WWC, Many extras, 16x30 barn, \$37,900. H-13.

Spiro-3A, 3 DR, K, FR, PS, EX Cond. 1.3 Sale Pending, \$39,500. I-13.

Homes under \$30,000

Brod. LR, DR, K, 4 BR, DEN, BA, OH, CW, CW, SDW, \$29,900. C-16.

Calloway-3 BR, LR, K, BA, WDH, CW, \$9,800 G6

Willalaia-3 BR, LR, K, Economical, Fully Furnished, \$20,000. D-15.

Champion-1973, mobile home, 3 BR, LR, K, EH, \$6,250. H 17

Quail-1 BR, LR, K, BA, aluminum siding, insulated, \$16,250. J-7.

Pine Hill-3 BR, LR, K and a room for BA, 4 yrs. old, FP on 1/4 A. Bar and concrete block cellar, \$10,900. I-6.

Mt. V. Mt. Vernon Liv. Livingston Brod-Headhead BR-Bedroom CW-City water CS-City sewer SDH-Storm doors and windows EH-Electric heat GH-Gas heat OH-Oil heat A-Acres PB-Bathroom LR-Living Room K-Kitchen DR-Dining room GAR-Garage TB-Tenace base UT/Utility room RR-Recreation room WRD-Washer/dryer hookup PS-Split foyer CB-Commercial building EX-Cond.-Excellent condition FA-Fair condition Gd-good CP-Carpport AP-Applications FF-Fireplace PO-Patio w/ wall carpet RB-Recreation center BS-Bat shon

Ford Realty & Auction Co.

256-4545 256-4545

REALTOR

Selling the Country

Mt. Vernon Ky. 40456

SAM FORD, GRI 256-4588 NIGHTS 256-4588

DANNY FORD, GRI NIGHTS 733-9496

ROY ADAMS, GRI NIGHTS 733-9496

CLASSIFIED ADS sure to get results

Mt. Vernon Signal Thursday, March 17, 1983 P.18

CLASSIFIED RATES

Local Rates - 5¢ per word, minimum 25
Cards of Thanks - 5¢ per word, minimum 25
In Memoriam - 5¢ per word, minimum 25

Classified paid in advance, except to businesses

Homes For Sale

FOR SALE: 4 bedroom house, family room with fireplace, 2 full baths, living room, dining room, 2 tubbed units, plus garage. Assumable mortgage. Two blocks from Mt. Vernon Elementary. Call 256-2187. 18ntf

FOR SALE: Homes: at Scaffold Cane, Conway, Boone Gap and Flat Gap; Farms: Disputanta-5 acres, Clear Creek-80 acres, Fairview-35, 12, 102, Scaffold Cane-300 acres, U.S. 1504-1.13 acres, Commercial Property: Renfro Valley and Conway; Lots: Disputanta, 3 acres. For more information, call Don Foster and Associates: 986-8401, 256-2657, 986-1250. 19ntf

FOR SALE: House and lot in Livingston, located behind the school. Call 256-2178. 29x6p

FOR SALE: 7 room house and garage on 1 acre lot, or will sell with 14 acres. Call 986-1492, evenings or contact Leonard Abney, Orlando, Ky, 40469. 32x2p

FOR SALE: 3 bedrooms, located on Negro Creek Road, Brodhead, \$4,300. Contact Corey Stewart. 31x1p

FOR SALE: 12x40 mobile home, \$2,500, 1 bedroom. Ph. 256-2259 or 256-4884. 31x1p

FOR SALE: 2 bedroom frame house, with aluminum siding, garage and storage room. Lot measures 60x232. Call 256-4962 or 256-2773. 32x2p

SOMERSET - BURNSIDE GARAGE DOOR CO. INC.
Sales-Service-Installation
Overhead Garage Doors
107 W. Market Street
Somerset, Ky. 42501
Freddie Kisse, Manager

(806) 871-7306 [Res.]
871-7660
679-8478 Bus.


HENSLEY'S USED CARS

Route 2, Orlando
Phone 256-4777

NELLIE'S Flower Shop

Main St. Mt. Vernon
Ph. 256-4392
Ada Coffey, Designer

MEET A GOOD NEIGHBOR OF YOURS



BILL BAILEY
AGENT
Ph. 256-2119

State Farm Insurance Companies
Home Office, Bloomington, Illinois

Taylor's Workshop, 453-4991, 31x2p

FOR SALE: Camper top for 4 ton pickup, \$150. Also two white gold wedding ring sets (one 3 point diamond and one seven diamond cluster) size 8. Also baby items: bassinet, swing, carseat and walker. 32x2p

FOR SALE: 14 ft aluminum, semi-U fishing boat with trailer and trolling motor. \$200. Call 256-4536. 32x1p

Wanted

WANTED: tobacco to lease for 1983 growing season. Call Tom Coffey, 256-5976 or 256-2654. 29x4p

WANTED TO LEASE: 3 bedroom house for 1 year. Call 256-3324. 29x4p

WANTED: Lot in Elmwood Cemetery. Pay premium, Reply, Subscriber, P.O. Box 532, Berea, Ky, 40403. 31x2p

WANTED: Yards to mow. Ph. 256-2890. 32ntf

HELP WANTED: Disabled person wants help call time, \$200 and hour. Call Monday only, 1-3 pm, 256-4854. 32x1p

WANTED: Family needs to rent, or lease with option to buy, 3 bedroom house, washer-dryer hookup, to Roundstone School District. Call 256-4961. 32x4p

WANTED: Someone to stay with elderly lady in her home. Call 256-2654. 32x1p

For Rent

FOR RENT: 4 room apt., partly furnished, in Livingston, downstairs. Call 453-4783. 29ntf

FOR RENT: Furnished apartments, Business buildings. References required. See Roy Winstead at Appliance Service Center. Ph. 256-2626 days or 256-2204 nights. 32ntf

FOR RENT: trailer, references required, couple preferred. See Roy Winstead. 256-2626 or 256-2204. 31ntf

FOR RENT: mobile home in city. Adults preferred. Call 256-4628. 31x1p

FOR RENT: 3 bedroom house with bath, modern kitchen, washer & dryer, at Roundstone. Call Homer or Chris Brown, Dixie Kitchen Restaurant, Berea, 986-8594. 32x2

Income Tax Service Doris Durham

located on Chestnut Ridge Rd.
1 mile South of Mt. Vernon

For appointment call 256-5819
Open 9-5, Mon.-Sat.
All types returns prepared

For Blown-In Insulation, see Shivel Builders or buy insulation

by the bag for the do-it-yourselfers
Shivel's Army Store
Ph. 256-4243

GOOCH PLUMBING

★ Expert Repair Service & Remodeling
★ New Construction/Residential

Commercial
LARRY GOOCH - OWNER
Licensed Master Plumber
Contact Larry At Home 379-2899
Route 1, Box 202, Crbb Orchard, Ky. 40419

FOR RENT: Commercial building, West Main Street, Ph. 256-2890. 32ntf

FOR RENT: 4 bedroom house, family room with fireplace, 2 full baths, living room, dining room, 2 out buildings, plus garage. Two blocks from Mt. Vernon Elementary. Call 256-2187. 32ntf

FOR RENT: 4 room house in Mt. Vernon. Call 256-5341. 32x1p

Notices

POSTED: No trespassing on property located on Wolfe Creek about 1 mile above Wolfe Creek bridge and owned by heirs of Lorenzo Craig and Laura Edith Wilcox Hecker. 20x16p

FOR INCOME TAX WORK: See David Gregory or Carolyn Brown at Gregory's Motel, Mt. Vernon, Ky. Ph. 256-2929. 25x1p-ntf

NOTICE: On Friday, March 25th, I will sell the following auto for storage, labor and repairs. 1969 Plymouth, Serial #RM23H96303565, Bullock's Garage, Mt. Vernon, Ky. 30x3p

BECOME A HAIRDRESSER enroll now for classes or attend April 7th. Visit or call EASTERN SCHOOL OF HAIR DESIGN, 112 South Second St., Richmond, Ky. 40475, 606-623-5472. 31x

Brodhead School Alumni Banquet-Saturday night, April 2, 7 p.m. All graduates and spouses are invited. Special honor to classes of 1923, 1933, 1943, 1953 and 1963. For reservations, write Brodhead School, Box 98, Brodhead, Ky. 40490, or ph. 758-8512. \$5.00 per person. 32x2p

POSTED: no trespassing or hunting on property of Robert and Linda Ray located on Scaffold Cane Hill. 31x3p

POSTED: No hunting or trespassing on Glenn Mullins' property on Piney Branch, also Sally and Carl Mullins heirs' land. 31x3p

NOTICE: I will not be responsible for debts other than my own. Billy C. Creech, Goshen, Ohio. 31x2p

NOTICE: Anyone interested in graves at the Merit Cemetery, call Walk Reynolds, Julia Burdette or Cecil Dailey. 31x2p

ATTENTION! Auction Dealers flea market, merchants, Burton Distributor Wholesale is now open in Somerset. Tools, furniture, jewelry, housewares, electronics, and much more. Prices you will not believe. Bring you tax

Free Estimates 256-5338

SEWING MACHINE REPAIR

All Makes and Models
20 Years Experience
3 Day Service
Work Guaranteed
Leroy Davis Lancaster
792-3149 30x4

NOTICE

For monuments, markers, gravestones, please see Money Ed Cummins who is now associated with Stanford Monument Works.
Call 758-8935

number and come on in Burton Distributors, 2600 South 27, Somerset, 606-679-8678. 30x4

CARPET KLEEN!! The best in steam carpet cleaning. Free estimates. Call Lloyd Graham, 256-5536. 30x4

NOTICE: Will do interior/exterior painting and wallpapering, 18 years experience. For free estimate in Rockcastle County, call 758-8916 anytime. 32x4p

Yard Sales

YARD SALE: across from dowell and Martin Funeral Home. Records, large throw rugs, Polaroid camera, lots of boys clothes, 5-6, mens 34 W and 15-15 1/2, ladies all sizes. Electric appliances, lamps, ladies watch and much more. Rain cancel. Call 256-5732. 32x1p

GARAGE SALE: Saturday, 2 family, 9.5, Frith Subdivision, Brodhead. 32x1p

YARD SALE: Friday and Saturday, 9.5 across from Citizens Bank in Brodhead, given by Woodall, Dussler, Deborah Woodall and Donna Bussell. Men, women and children's clothes, all sizes, shoes and coats, curtains, 2 electric skillets, steam iron, blow dryer and curling iron, portable fan, what you see is what you take. 32x1p

BASEMENT SALE: shoes, clothes, like new Oster blender, new Creek Pot, Electrolux shampooer-used. 32x1p

once, some Tupperware. Call 256-4197. 32x1p

YARD SALE: 3 families, Friday, Saturday, Sunday, 9-5, across from Stevens Cycle Shop on Fairground Hill. Baby items, jeans, shoes, ladies dress pants, and miscellaneous items. Canceled in case of rain.

YARD SALE: home of Homer Jones on Silver St., Brodhead, Saturday, March 19th, 9-dark. Canceled in case of rain. Can buy by the bag, box or piece. 32x1p

CARD OF THANKS

To all that was so kind and thoughtful to us during the death of our loved one, for the beautiful flowers, the beautiful songs that Jack and Erel Cromer sang, the ones that opened their homes to us and the food that was prepared. Also the Dowell and Martin Funeral Home and Bro. Chester Schell. God bless all of you and again, thanks.

The family of Esther Clark

CARD OF THANKS

We, the family of Harris Hamm, would like to express our appreciation to Dad's friends and our many friends for the show of love in the loss of our precious Daddy and husband. During a time like this, we learn how much our friends really mean to us. Your love will always be a treasured memory.

Ruby, Marie, Mary, Frances, Oscar, Bennett, Betty Lou and Molly

ATTENTION!

Custom Hauling



Crushed Stone
Creek Gravel Fill Dirt Top Soil

Backhoe & Grader Work

J.C. Newland & Son

758-8473

The House Mechanic

Building the New
Remodeling the Old
Repairing the Broken

Kitchen, family rooms, bath, additions, etc.

JACK WREN

Free Estimates 256-5338

What are these signs trying to tell you?



These are three of the new international warning signs for motorists. Characterized by symbols instead of words is one sign warns of a DIVIDED HIGHWAY, another that a DIVIDED HIGHWAY ENDS, and another of MEGROW TRAFFIC.

The actual color of these signs is the traditional white with black characters.

Presented as a public service to motorists from Motorists Insurance Companies


Motorists Insurance Companies

Donnie Singleton, Mt. Vernon Ph. 256-2611

GARRARD COUNTY STOCKYARDS

Sales For All Classes of Livestock Every Friday

792-2118



Lancaster
Kentucky

J.L. Teater Hogan Teater William Kirby Teater



Dean Stetson

A new day

15th Senatorial District

Elect
A New Working
State Senator
Who Will Be Available And Dedicated to serve all.

"A Life Long Republican"

(Paid Pol. Adv. by Candidate)

Professional Services

ALCORN'S CUSTOM WELDING
We go anywhere, anytime
Call 256-5928

NOTICE: Haley's Singer Sewing Center is now stocking fabrics and sewing notions for your Easter sewing needs at our new location - Southern Hills Plaza, Richmond, Kentucky. Ph. 623-4796. 32x3

WE HAVE MOVED!
HALEY'S SINGER SEWING CENTER - Sales - Sewing. All makes domestic and commercial sewing machines and Singer vacuum cleaners. Free estimates. Scissors sharpened. 38 years experience. Southern Hills Plaza, Richmond, 623-4796. 15ntf

BROWN'S PROFESSIONAL CLEANING SERVICE For home and businesses. For more information, write A.J. Brown, P.O. Box 640, Mt. Vernon, Ky. 40456. 28x4

NOTICE: For electric wiring and plumbing, call a licensed plumber at 256-5250.

Building, Remodeling and Repair Work done at reasonable rates with quality results. For free information, call 256-2881 after 5 p.m. or see Dennis R. Allen. 4xntf

Grave Markers and Monuments in stock at all times. New York Monument Sales, U.S. 25, 4 miles north of Mt. Vernon, Ph. 256-2232. ntf

Hysinger Carpets: Carpet direct from the mills. Shag, commercial-residential, Atmstrong vinyl. For all your carpet needs, visit Hysinger Carpets, Mt. Vernon, Ky. Ph. 256-5412. ntf

Septic TANKS

Jack's Concrete Tanks

PH. 256-4263
After 5 p.m. - 256-2580

SEPTIC TANKS
Sales and Services
750 Gal., 1,000 Gal.
Distribution Boxes
1,000 Gal. Water
Distribution Tanks

STOP TERMITES
Madison Termite and Pest Control
For Free Inspection & VA & FHA Inspections
Call Paul Burton
Mt. Vernon
Call 256-2318
Day or Night

Jim's Body Shop
U.S. 25 S.
next to Superior
James M. Miller
256-5510
Free insurance estimates

Legal Notices

NOTICE
Notice is hereby given that Elnora S. Burke of Route 3, Box 126, Crab Orchard, has been appointed Executrix of the estate of Pete Burke, Jr., deceased. All claims against said estate shall be presented to said Elnora S. Burke, on or before June 11, 1983. 32x3p

NOTICE
Notice is hereby given that Clara Mae Jones, committee for Dewey Souder, filed an annual settlement of her accounts for his estate with the Rockcastle District Court on March 8, 1983. Any exceptions to said settlement should be presented in writing to said Court on or before March 29, 1983. 32x1p

NOTICE
Notice is hereby given that Sue Cromer, P.O. Box 262, Mt. Vernon, Ky., and Gary Croeger, P.O. Box 391, Mt. Vernon, Ky., have been appointed co-administrators with will annexed, of the estate of Robert Cromer, deceased. Claims shall be presented to the said Sue Cromer or Gary Cromer or Lambert and Lambert, P.O. Box 736, Mt. Vernon, Ky. 40456, on or before July 1, 1983. 32x3

NOTICE
Notice is hereby given that Aster McNew, P.O. Box 124, Wildie, Ky., has been appointed executor of

the estate of Stella French, deceased. Claims against estate shall be presented to said Aster McNew or to Lambert and Lambert, P.O. Box 736, Mt. Vernon, Ky. 40456 on or before July 1, 1983. 32x3

NOTICE
Notice is hereby given that George W. Griffith has filed a final settlement of his accounts as Executor of the Estate of Rachel M. Griffith, deceased. A hearing on said settlement will be heard on the 28th day of March, 1983. Any exceptions to said settlement must be filed by said date. 32x1

NOTICE
Notice is hereby given that Inez Collins, P.O. Box 697, Mt. Vernon, Ky., has been appointed Administratrix of the estate of Preston S. Collins, deceased. All persons having claims against the estate of the said Preston S. Collins shall present them verified according to law to the said Inez Collins, or to Clontz & Cox, Post Office Box 749, Mount Vernon, Kentucky, attorneys for said estate no later than June 29, 1983. 32x3

NOTICE OF INTENTION TO MINE
Pursuant to Application Number 502-0009
In accordance with the provisions of KRS 350.055, notice is hereby given that Iker-Bandy Co., Inc., P.O. Box 246, Ferguson, Ky. 42533, has filed an applica-

tion for a permit for a surface coal mining and reclamation operation of approximately 8.0 acres located 1 mile South of Pongo in Rockcastle County.

The proposed operation is approximately 1 1/4 miles South from Ky. 1249's junction with Buffalo Branch Road and located 3 miles West of Rockcastle River. The latitude is 37 degrees 12' 00". The longitude is 84 degrees 18' 52". The surface area is owned by Lula, Conley and Calvin Mize and Ruth Pearce.

The proposed operation is located on the Billows U.S.G.S. 7 1/2 minute quadrangle map. The operation will use the contour method of contour, mountaintop removal, area or combination mining. The application also includes a proposed land use change from undeveloped to mini-

ing land use to a pasture with permanent improvements post-mining land use.

The application has been filed for public inspection at the Department for Surface Mining Reclamation and Enforcement's London Regional Office, P.O. Box 611, London, Ky. 40741. Written comments, objection or requests for a permit conference must be filed with the Director of the Division of Permits, 6th Floor, Capital Plaza Tower, Frankfort, Ky. 40601. 30x4

NOTICE
Notice is hereby given that Loretta Hasty of Route 1, Brodhead, Ky. has been appointed Administratrix of the estate of Fred Hasty. Claims shall be presented to said Loretta Hasty, or to Lambert and

Lambert, P.O. Box 736, Mt. Vernon, Ky. on or before July 1, 1983. 31x3

TOO LATE TO CLASSIFY
YARD SALE: 3 family at Cookie Mason's at Orlando. Friday and Saturday from 5 to 5:30. Men's, women's and children's, glassware, pictures and odds and ends. 41x1

SALE: 1977 Ford Pickup, 4x4, 3/4 ton, new engine, w/camper. Ph. 256-3990 after 6:30 p.m. 32x1p

FOR SALE: 12x55 Alan 2 bedroom trailer, excellent condition with lots of extras. Call 256-5354. 32x1p

FARM AND HOME NEWS
By Tom Mills
County Extension Agent
For Agriculture

Tobacco Beds
With the warm weather we had in early March, many tobacco beds were gassed and sowing should be completed by the first of April. Fumigation treatments essentially eliminate soil insects within the bed area, however, plant damage can result from pests that wander in from outside the bed.

Two pests, slugs and cutworms, can occur at favorable sites near the bed and they may feed on small plants early in the season. A cleanup of trash piles or weedy fence rows along bed margins will eliminate sites that may serve as sources for these pests.

Slugs overwinter in a variety of life stages and thrive under cool, damp conditions. They feed at night, tearing ragged holes in the leaves with their rasp-like mouthparts. Feeding damage and silvery slime trails on the leaf may be the only clues to their presence because they usually remain hidden during the day. Elimination of spraying boards and piles of rocks or trash near beds helps to reduce slug problems. Metaldehyde bait will generally provide good slug control.

Some species of cutworms overwinter as partly grown worms in grassy areas. These may be found feeding in the beds soon after plant emergence. Those such as the black cutworm develop from spring laid eggs. Removal of dense, low growing weeds along bed margins will help to reduce cutworm problems later in the bed season. Sevin or Dyltox bait or Orthene spray may be used to control cutworms in tobacco beds. Treat in the early evening just before cutworm activity begins.

Diazinon 14G (cutworms and wireworms) or Disyston 15G (flea beetles) may be applied as preventive treatments prior to seeding. In the case of very early seeding, the effectiveness of these treatments may be greatly reduced by the time that pest activity peaks. Watch beds carefully and apply rescue treatments if feeding damage is seen.

Since Blue Mold has been a continuing threat over the past 4-5 years, the application of Ridomil to plant beds is good insurance against early Blue Mold before transplanting time. Ridomil should be applied at seeding as a spray onto the soil using enough water for complete coverage.

Martin Productions
Spring Portraits
Taken with live Bunny Rabbit

20 Portrait Package
2-8x10
3-5x7
15-Wallets
PAY \$5.00 when photographed
PAY \$8.95 when you pick up your package

11x14 AVAILABLE \$5.00 EXTRA

GROUPS-\$1.00 Per Subject

Thursday, March 17
SEARS 11:00 a.m.-5:00 p.m.

Income Tax Service
Helen Abney
in my home, formerly with H&R Block

Individual, Business, Farm, Partnership Ph. 256-5273

Used Car Sale!

1974 Window Van, V8, Auto	\$2,195.
1978 Dodge 4x4, Ram Charger	2,495.
1976 Ford Pickup, V8, Auto	1,795.
1978 Ford Courier, 5 Speed	2,795.
1973 Chevrolet, V8, Auto, 4	3,495.
1977 Chevrolet Pickup, V8, Auto	2,795.
1976 Chevrolet Pickup, V8, Auto	2,495.
1972 Chevrolet Pickup, V8, Stick	295.
1970 Ford Pickup, V8, Stick	495.
1968 Ford Pickup, V8, 4, Stick	395.
1973 Ford Pickup, V8, Stick	395.
1976 Ford LTD II, 305 Engine	1,995.
1977 Plymouth Volare S/W, Auto, V8	2,395.
1976 Dodge Aspen, 4 Dr, 318 Engine	1,595.
1977 Olds Cutlass, 2 Dr, 305 Engine	1,995.
1974 Chevrolet Malibu, 4 Cyl, Auto	1,295.
1975 Chrysler Cordoba, 318 Engine	695.
1973 Plymouth Fury, 2 Dr, V8, Auto	695.
1975 Mustang, 4 Cyl, 4 Speed	995.
1975 Datsun, 4 Speed, 4 Dr.	1,195.
1976 Plymouth, 2 Dr, V8, Auto	1,295.
1968 Rambler, 6 Cyl, Auto	195.
1969 Plymouth Satellite, 4 Dr, V8, Auto	295.

Hensley's Used Cars
Rt. 2 256-4777 Orlando
256-4777

Blown-In Insulation
For all Your Insulation Needs
Call JIM'S INSULATION
Mt. Vernon, Ky.
256-4001
James E. Nicely, Owner

NOTICE
Decorator Cakes
Will Bake Any Kind of Cake For You.
Margaret Owens
256-5533

RICHMOND DRIVE-IN
8 mi. north Berea on US 25
Showing Fri., Sat., Sun.
Starts 7:30 p.m., Adm. \$2.50 ea.

RICHARD PRYOR
JACKIE GLEASON
THE #1 COMEDY TEAM IN AMERICA.

THE TOY
PG RASTAR

Gene Wilder **Gilda Radner**
Hanky Panky
SOMETHING FUNNY'S GOING ON HERE

PG

Mount Vernon Signal

MOUNT VERNON, KENTUCKY 40458

VOLUME 96 - NUMBER 32

THURSDAY, MARCH 17, 1983

Logo signs to replace billboards

Representative Danny Ford recently appeared before the Transportation subcommittee on Vehicle Regulation to voice his concerns about House Bill 315, a 1982 enactment.

Basically, House Bill 315 directed the commissioner of highways to prescribe by regulation a state policy for logo signs on limited access highways for four lanes or more.

Representative Ford took opposition to the administrative regulations prescribed by transportation officials, by stating three major areas of concern.

First, the requirement that billboards be removed to display a logo. The Transportation Department is requiring businesses to remove their billboards that do not conform to federal regulations in order to participate in the logo program.

Ford stated, "While it may be desirable to have some billboards taken down, the legislature did not intend for the logo bill to be used as leverage to enforce federal billboard regulations. Further, if billboards are such an eyesore, then why does the state spend millions each year for billboard advertising."

Second, the high cost of participating in the program. The initial cost to a gas station, restaurant or motel to take advantage of the logo program could be well over \$1,500. The fees necessary to stay in the program would cost at least \$1,200 annually.

County officials donate to Arts Council

Monday, a request was made at the Fiscal Court called meeting for a small donation from the county to go to the newly formed local Council for the Arts to help match a state grant.

Magistrate Bill Wren promptly suggested that he would be willing to make a personal donation of \$10 to the Council rather than use tax money. Magistrates Donald Rowe, Joe Clark, Alex Albright, Tom Denney and Judge-executive Jasper all joined Wren in his donation and a total of \$60 was given to the council.

The magistrates also said they want to make it known that they challenge all other elected officials to donate \$10 each to the council.

Private donations are also sought from those in the community who want to support the council's efforts to encourage the further development and appreciation of talented persons in the community.

The major project of the council this year will be a summer community theater production.

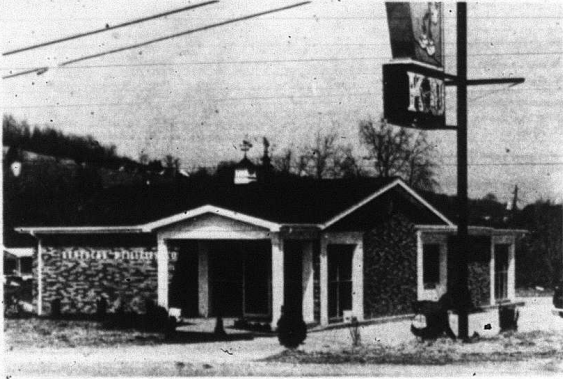
Donations can be made to Martha Cox, council treasurer or any member of the council.

Use of creek rock

It was brought to our attention by Magistrate Tom Denney that our wording in the last order of business of the February 1st meeting of the Fiscal Court was misleading and, after re-reading it, we agree.

The matter to which reference is made, was the voting to continue to use creek gravel on county roads, an issue raised by Magistrate Donald Rowe.

In order to clarify the positions taken by the magistrates on the matter, the minutes show Tom Denney and Donald Rowe voted against using creek gravel on county roads. Magistrates Joe Clark, Alex Albright and Bill Wren voted to continue the practice.



Officials at the downtown Kentucky Utilities office announced this week that their new office building, located on School Street across from Mt. Vernon Elementary, is complete and the office will be open at the new location on March 24.

Matters concerning streets, sidewalks, lights and personnel take up council meeting

The Mt. Vernon City Council and mayor took up several items of importance Monday night including the purchase of some used parking meters, street lighting and personnel matters.

Water superintendent Matt Powell, Jr. told the council he had located some used parking meters from the city of Georgetown for \$25 each. Powell was asked to go ahead and purchase 20 of the meters. About 12 meters in Mt. Vernon are currently out of order. The others will be held as spares, according to the directive given Powell.

The overall street lighting update put together by officials at K.U. was placed on "hold" for another month. Councilman Ernie Tolle, one of the members of the street committee to review the plan, said he felt like \$4,300 was too much to spend at this time. Mayor Roland Mullins said that the committee might want to take another look at the plan and accept the most needed lighting changes.

Later in the meeting, requests for a light on Shirley Street and one on Joyce Street were referred to the committee studying lighting.

In attendance at the meeting were Jimmy Rickels and Dennis McClure, two city employees who were hired several months ago. The two were hired on a 90 day trial basis because council members at the time were in a contract very over which one to hire. At the end of the 90 day period council again put off making a decision on the matter after two on the work force from month to month.

Rickels and McClure were there to complain that because of the continued "temporary" status of their jobs, they had not been issued uniforms and two six days or other benefits, no insurance and were still making the \$3.35 per hour. Rickels said they had been promised a raise after the 90 day period.

The council met in executive session on the matter after which they voted to keep both men on for 30 more days, issue them uniforms and raise their hourly wages to \$4.00.

Re-issuance of a television cable franchise was also a subject on the agenda Monday night.

City attorney Carl Clontz said that the current franchise held by Rockcastle T.V. Cable owned by Wayne Stewart lapsed in 1975. Everyone, he said, was of the opinion the franchise was for 20 years, however, when investigated, it was found to have been approved for

only 10 years. Clontz is to draw up a ordinance of sale for the April meeting.

Clontz was also asked to prepare an ordinance for the proposed annex of two lots at the Lake owned by the city.

Several streets and sidewalks matters were taken up including possibly making the street between the post office and the bank a one-way street. Postmaster James Smith is to be asked to attend the next meeting to discuss the change.

Councilman Tom Welch brought up the problem of cars parking on the sidewalk near the school and

loitering late at night on Main Street. Mayor Roland Mullins asked Mayor Hurd to continue to check with Proctor-Davis Ray, the consulting engineer firm helping with downtown revitalization for direction with placement.

The council also voted to ask merchants to keep the sidewalks in front of their business clean. Councilman Welch said there is trash, cans and cigarette butts in front of many businesses.

Public hearing

Prior to the regular March city council meeting, a public hearing was held at city hall concerning the Community Development Block Grant Proposal being submitted on behalf of the City of Mt. Vernon.

Will Linder and Associates of Berea, a grants

(Cont'd to P-18)

Court approves county contender for federal home bank loans

At a called Fiscal Court meeting Monday, March 14, magistrates voted to approve a resolution which would allow Rockcastle County to be part of an effort to obtain long term, fixed interest rates on residential loans for persons living in the 49 counties considered the Appalachian Region of Kentucky. (Rockcastle is one of the 49.)

Bill James, vice president of the Bank of Mt. Vernon, was present and explained the proposal and the county's role in the plan. James said both the Citizen's Bank at Brodhead and the Bank of Mt. Vernon belong to a group of banks throughout the Appalachian Region who are seeking a way to make low interest, long term federal funds available to potential home owners.

James said one proposal is a multi-county bond issue program in which bonds would be issued by the state with the county bearing no obligation either financial or legal.

Each of the 49 counties must indicate at this point, according to James, a willingness to participate or they cannot be part of the program when finalized.

James said similar plans are still in the beginning stages, it is impossible to tell how much and when the low interest, long term home loans will actually be made available.

Robert Cromer found dead early last Thursday morning in truck on Pine Hill farm

By: Rick Anderkin

A prominent Rockcastle County man was found dead last Thursday morning around 8 o'clock on a farm in the Pine Hill section of the county.

Rockcastle County Hospital Administrator Robert Cromer's body was found in his pick-up truck, which was parked in an equipment shed on his farm on old U.S. 25 about two miles south of Mt. Vernon. Cromer's brother, Gary, and his brother-in-law, Henry Coffey, found the former Rockcastle Property Valuation Administrator. After his wife Sue, became suspicious when he did not return home after work on Wednesday.

According to Rockcastle County Deputy Coroner Roy Martin, Cromer died from a single 38 caliber bullet wound to the head. The gunshot wound was apparently self-inflicted and a note was found at the scene.

Cromer, who was 51, had served as Tax Commissioner in Rockcastle from 1967 thru 1981. He had been a member of the Rockcastle County Hospital board since 1976 and had served as full-time administrator for approximately one year.

Mr. Cromer was born in Rockcastle County on September 4, 1931, the son of the late Joe and Louann Stokes Cromer.

He was a farmer, a veteran of the Korean War, having served in the United States Air Force, a member of the First Baptist Church of Mt. Vernon, Ashland Lodge #640 F&AM, Order of the Eastern Star, Oleika Shrine Temple in Lexington, was a 32nd degree Mason and a member of the Lexington Consistory and a Kentucky Colonel.

Besides his wife, he is survived by two brothers, Jack and Gary Cromer, both of Mt. Vernon and two sisters, Mrs. Margaret Coffey of Mt. Vernon and Mrs. Christine Coffey of Richmond, Indiana.



Robert Cromer
Funeral services were conducted Sunday, March 13 at the First Baptist Church in Mt. Vernon by Dr. Charles Hedrick, Dr. Mike Bryant and the Rev. Har-

(Cont'd to P-18)

Batter up! Busy season in sight for boys and girls in Little League

It's almost time to bring out the bats and batters for another season of Little League baseball in Rockcastle County.

More and more Rockcastle County boys and girls participate in this favorite summertime sport each year and preparations are being made for a record number of ball players for the 1983 season with some thrilling opportunities for learning more about the sport "pitched in".

This year the county Little League program is planning more growth with girls' softball, tee ball and/or possibly a minor league added if necessary.

"It is the goal of the program to provide a place for every young person who wants to participate," says Alfred Tagliaboschi, the Little League's board president. "I do not want to put any away, as we have had to do in the past, because we didn't have room for them" says Mr. Tag.

The addition of these leagues will depend upon the number of persons who register for them, so anyone interested in participating must register.

Watch the Signal for details of registration dates and schedules.

Boys and girls who enjoy the fun and benefits of playing in Rockcastle County Little League do so because of organization, planning and financial support in its boundaries, and this is done by people. People who want to see the program successful so that Rockcastle County youth can have it.

These people are parents, business and professional people who are dedicated to the cause because they know its purposes: "to assist youth in developing qualities of citizenship, discipline, teamwork, and physical well-being with proper guidance and exemplary leadership."

(Cont'd to P-16)

Brodhead man relates story of how river and creek were named by early pioneers

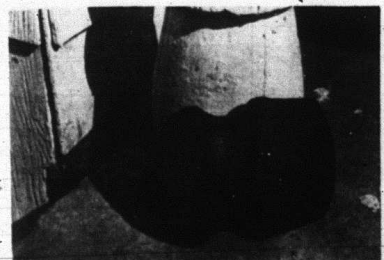
By Nancy Mullins

Back before Brodhead was more than a wilderness, some of Mr. Millard Allen's forerunners by the name of Johnson were in the area working salt.

Allen said that the following legend which accounts for the naming of Dix River and Negro Creek was passed down from the Johnsons.

A group of settlers, said to be on their way to Fort Harrod, a white settlement west of Brodhead, stopped for the night and set up camp at the confluence of Dix River and Negro Creek.

A black slave among the settlers sent to gather firewood, was allegedly killed 150 feet of the camp-



This tomahawk was purchased by Millard Allen of Brodhead from Jake Johnson who was 90 years old at the time and was the grandson of the man who picked it up near Brodhead.

Mount Vernon Signal

PUBLISHED EVERY THURSDAY

Main Street in Mt. Vernon, Kentucky 40456

Entered at Mt. Vernon Post Office
As Second Class Matter - Permit No. 1
In County - \$7.50 per year. Out of County - \$10.00

James Anderkin, Jr., Publisher
Perlina M. Aderckin, Editor

Member Kentucky Press Association

County Statistics and

Deeds Court News

Mary Evelyn and Seals, property located in Rockcastle County to Mary Evelyn and Lafie Seals.
Renfro Valley, Inc., a Tennessee Corporation, property located in Rockcastle County to James and Margie Cromer, tax \$1.00.
Ceil and Carolyn King, property located in Rockcastle County to Leslie and Maudie King, no tax.
Douglas Glenn and Patricia Bullock, property located in Rockcastle County to Douglas Glenn Bullock, Jr., tax \$30.

Edna and Douglas Glenn Bullock, Jr., property located in Rockcastle County to Douglas Glenn and Patricia Bullock, tax \$30.
Ulysses Fletcher, property located in Rockcastle County to Carl Clontz, Jerry Cox and Jess Bullock, tax \$30.

Roy and Flora Mae Brown, property located in Rockcastle County to Stephen and Helen Henley, tax \$3.50.
Eugene and Gertrude Combs, property located in Rockcastle County to Ruby and Eugene Sparkman, no tax.

Robert Eugene and Rosalind Philbeck, property located in Rockcastle County to Larry Wayne and Doris Jean Niceley, tax \$36.00.
Roger and Angela Combs, property located in Rockcastle County to Dona-

id and Brenda Dees, tax \$7.00.
Benton and Theresa Bullock, property located in Rockcastle County to Kentucky Department of Transportation, tax \$4.00.

William Payne, property located in Rockcastle County to Kentucky Department of Transportation, tax \$16.00.
Charles Denver and Sharon Burton, property located in Rockcastle County to Marvin and Martha Henley, tax \$4.50.

Charles Denver and Sharon Burton, property located in Rockcastle County to Marvin and Martha Henley, tax \$4.50.

Charles Denver and Sharon Burton, property located in Rockcastle County to Marvin and Martha Henley, tax \$4.50.

Marriage Licenses

Cecil Stamper, 31, Jackson County, farmer, to Kathy Allen, 35, Route 3, Berea, unemployed.

Charles Patrick Philbeck, 19, Mt. Vernon, Blue Grass Depot, to Joyce Sue Owens, 19, Mt. Vernon, unemployed.

Gary Wilmer Robinson, 25, Lamer, hospital employee, to Katherine Gray Childress, 38, Mt. Vernon, nurse.

Danny Ray Sower, 29, Mt. Vernon, self-employed, to Tina Denise Doan, 20, Livingston, unemployed.

Small Claims

Continental Telephone of Kentucky vs. Russell Ramsey, money claimed due, \$395.00.

Continental Telephone of Kentucky vs. Ernest Mason, money claimed due, \$949.60.

J&L Equipment Company vs. Mr. and Mrs. Jackie Goff, money claimed due, \$204.82.

Furniture Fair vs. Denise McClure, money claimed due, \$83.74.

Circuit Civil Suits

General Electric Credit Corporation vs. Paul and Barbara Webb, failure to honor contract, money claimed due \$4862.03.

Maxine Bryant Primer vs. Billy Raymond Bryant, child support.

Monroe Baker vs. Fayette Meats, damages, compensatory and punitive, \$100.000.

District Civil Suits

State Automobile Mutual Ins. Co. vs. R.A. Baker, d/b/a Exit 59 Steak House, money claimed due, \$260.00.

Laake Cumberland Medical Center vs. Lonnie and Dianna Philbeck, money claimed due, \$671.05.

District Court

(As presided over by Judge Daniel J. Venters.)

James F. Crowe, speeding, 79/55, failed to appear, suspend license.

Harvey L. Mink, D.U.I., pled guilty, fined \$250 and cost; no insurance sticker, pled guilty, fined \$50 and cost.

Elmo J. Henson, overweight on tandem axle, 9,000 lbs., no cover on load, pled guilty, fined \$500 and cost, \$475 suspended.

Richard Dean York, drunk in a public place, pled guilty, fined \$30 and cost.

Shafar, drunk in a public place, pled guilty, fined \$30 and cost.

Richard Dean York, drunk in a public place, pled guilty, fined \$30 and cost.

Jeffrey Sturgill, drunk in a public place, pled guilty, fined \$30 and cost.

John McFerron, drunk in a public place, pled guilty, fined one day in county jail plus court costs.

Judy A. Corman, ran through a stop sign, pled guilty, fined \$25 and court costs; Attempting to elude an officer, dismissed for lack of evidence, D.U.I., no B.A. test, amended to reckless driving on motion of Commonwealth, pled guilty, fined \$100 and cost.

Joyce Hampton, criminal mischief in the third degree, criminal littering, failed to appear, bench warrant issued.

Frankie Lee Woodall, no liability insurance on vehicle, pled guilty, fined \$50 and cost; operating on a suspended license, fined \$20 and cost.

William Henry Burdine, d.u.i., pled guilty, fined \$150 and cost.

Jack Garrard Hobbs, Jr., no insurance sticker, pled guilty, fined \$50 and cost, suspended \$30 and cost.

Robert W. Drummonds, drunk in a public place, pled guilty, fined \$30 and cost.

Ellie E. Mink, drunk in a public place, fined \$30 and costs.

Vincent L. Pittman, D.U.I., pled guilty, fined \$150 and costs.

CLARIFICATION

Mike R. Abney of Disputanta wishes to state that he is not the Mike Abney sued by Leroy's Jewelers, as appeared in last week's Signal.

From Our Files...

20 Years Ago, 1963

Miss Patsy Ann Cummins, daughter of Mr. and Mrs. Jesse D. Cummins, was recently initiated into Alpha Theta Chapter of Delta Zeta Social Sorority at the University of Kentucky in Lexington.

Patsy is a sophomore

majoring in Pharmacy. Her activities on campus include BSU, YWCA and Alpha.

Bonita Yvonne Norton, daughter of Mr. and Mrs. Bill Norton, celebrated her ninth birthday March 19.

Mrs. Norton took Bonita, Rudy and Kay Burdette, Bill F. Stewart, Jimmy Mullins and Judy Carter to Berea skating.

29 Years Ago, 1954

Students at Anglin Falls School now have running water piped into their school room from a mountain spring reservoir above the school.

The school board agreed to pay for the cost of the pipes and the parents agreed to donate their labor and time to putting in the gravity flow water system.

Students at the school include Ola Abrams, Opal Abrams, Lloyd Clark, Cecil Clark, Jimmie Clark, Kay Clark, Phyllis Ann Cobb, Anita Wilds, Annie Miller and Owen Miller. Teacher is Mrs. Bert Mullins.

Mr. J.J. Anglin donated the right-of-way for the water system for the Anglin Falls School.

Rock-a-thon for Cancer

The Rockcastle County Unit of the American Cancer Society is sponsoring a Rock-A-Thon on Friday night, March 18 at the Community Hall of the Catholic Church. The Rock-A-Thon will begin at 6 p.m. on Friday and continue until 6 a.m. on Saturday.

Participants are asked to secure sponsors who will pledge money for each hour that they plan to rock in rocking chairs. The youth of the community are especially encouraged to attend this Rock-A-Thon, although all participants, any ages, are invited. There will be free refreshments and entertainment throughout the night. Adult chaperones will be present at all times. Youth are encouraged to bring records, 8 track tapes, or cassettes to provide music of their choice.

Please clip the sponsor sheet from the Signal or secure a sponsor sheet by calling Judy Stewart-Shackelford at 256-5664.

Before you buy your new place, stop by our place.

Think about buying a farm? Then a good place to start is your Land Bank. We have specialists in long-term agricultural credit. Your Land Bank offers competitive interest rates, flexible terms and affordable payments to fit your long term plans. Call or stop by today. Your new place may be more affordable than you thought.

Don Coffey, Branch Manager
Box 286-U.S. Hwy. 27
Stanford, Ky. 40484
Close to the land and the people who work it.

Ph. 385-9118

The Land Bank

The Fishin' is Great!

So make your escape!

DROTHER'S RESTAURANT

MORE of what you want

<p>Imperial Burger With Coupon Large French Fries, and Medium Drink. \$1.99</p> <p><small>Good at participating Drotcher's Restaurants. Limit one coupon per person. Not good with other discounts. Offer good through March 31, 1983.</small></p>	<p>Breakfast on a Bun With Coupon Two Fried Eggs, American Cheese, and Your Choice of Sausage, Ham, or Bacon on a Bun. 79¢</p> <p><small>Good at participating Drotcher's Restaurants. Limit one coupon per person. Not good with other discounts. Offer good through March 31, 1983.</small></p>
<p>Fish Sandwich With Coupon Large French Fries, and Medium Drink. \$1.79</p> <p><small>Good at participating Drotcher's Restaurants. Limit one coupon per person. Not good with other discounts. Offer good through March 31, 1983.</small></p>	<p>Fish Dinner With Coupon With French Fries, Hush Puppies, Cole Slaw, and Medium Drink. \$2.39</p> <p><small>Good at participating Drotcher's Restaurants. Limit one coupon per person. Not good with other discounts. Offer good through March 31, 1983.</small></p>

ABSOLUTE Auction

of Mrs. Ollie Sowder's and Mr. and Mrs. Roy M. Brown's **117 ACRE FARM** In 3 Tracts

Sat. March, 19th, 1983 - 10:30 a.m.

Near Mt. Vernon, Rockcastle Co. Ky.

LOCATION: Approximately 2 1/2 miles Southwest of Mt. Vernon on Hwy. 461 near Clayton Hammond's Supermarket. Watch for Auction Sign.

Not being able to look after their farm, as they'd like, Mrs. Ollie Sowder and Mr. and Mrs. Roy M. Brown have contracted our firm to sell the absolute high dollar.

TRACT #1-contains 8.10 acres more or less mostly all tillable. This tract offers several good building sites and has development or agricultural potential. Ideal for individual wanting a few acres close to town.

TRACT # 2-contains 2.02 acres and is excellent building or mobile home site.

TRACT #3-contains 106.5 acres more or less, is improved with 2 barns. Approximately 35 acres of this tract is cleared and some is suitable both for cropping and pasture. Since there is no house, you may build to suit your self.

The owners reserve the right to sell each tract separately then combined in any manner to reflect the most positive returns.

When combined there's a total of approximately 117 acres with a basic tobacco allotment of 1950 lbs. However, the effective 1983 crop is 1776 lbs.

TERMS: 20% down day of sale, balance in 30 days upon delivery of deed.

AUCTIONEERS NOTE: Remember, Land is still your best investment. Attend this auction. Bid last and buy at your own price.

For additional information on plat of property, call the auctioneers:

Ford Realty & Auction Co.

Selling the Country

Auctioneers
Col. Jerry Ham
Col. Ward Buford

Mt. Vernon, Ky. Phone 256-4848

ROBINSON ONE WEEK ONLY HOT PRICES

**MARCH
SPECTACULAR
SALE**

SEALY

1/2 OFF



**COUNTRY COMFORT
AND IT'S A GENUINE**



Reclina-Rocker
\$199⁹⁵
only WT

SOUND SLEEP-
SOUND VALUE

Chiropractor Bedding Namco

QUANTITIES LIMITED ON SOME ITEMS

MAPLE Dining Room Set
Drop Leaf Table
Complete with Chairs
Reg. '389
\$148 WT
SALE

EARLY AMERICAN Bedroom Suite
Solid Oak
Triple Dresser, Shadow Box Mirror, Chest & Headboard
Forest Furniture Industries, Inc.
*Not Exactly As Shown
\$588 WT

Bassett Contemporary Style Glass Top TABLES
End Tables
Hexagon Table
Coffee Table
\$99 WT
Your Choice

PRICES SLASHED!
4 Piece Colonial Living Room Suit
Sofa, Chair and a Half, Loveseat and Ottoman
Antron/Nylon Cover, Solid Oak Frame
Reg. '1488
\$688 WT
SALE

MAGNAVOX
25" Color TV
Wood Console
Reg. '788
\$488 WT
SALE

JENNY OF THOMASVILLE
6 Piece Living Room Suite
Loveseat and Ottoman Not Included
Reg. 1888
\$488 WT
SALE
*Not Exactly As Shown

TRADE IN SPECIALS
18 Sofas and Chairs '48 & Up
2--3 Piece Living Room Suites (Like New)
TV's, Washers, & Dryers
Dinnette Sets
Many Odds & Ends
NO DEALERS PLEASE

NO INTEREST CHARGES
NO DOWN PAYMENT
til June 1983
Up To 36 Months to Pay

ROBINSONS Furniture & Appliances
986-1906
Mon.-Fri. 9-6
Sat. 9-6
CLOSED SUNDAY

The Week at Livingston

By Mrs. Eva Black and **Clyde Fordyce** were in Berea Friday on business.

Mr. and Mrs. Terry Waddle and son, Kevin spent several days with Mr. and Mrs. Arthur Waddle last week. While here, they visited Mr. Fortner Mink in the hospital.

Mrs. Lee Mullins and **Mrs. Agnes Benson** visited Mrs. Sammy Radford in the nursing home in Corbin last Thursday.

Mr. and Mrs. C.F. Mullins, **Mrs. Eva Black** and **Misses Frances** and **Josephine Dickerson** visited Mr. and Mrs. C.L. Mounts, Mrs. Maxine Kincer and Mrs. Pauline Kincer Saturday afternoon.

Mr. Earl Hurley of Clover Bottom visited Mrs. Pearl Rice, Tuesday.

Mrs. Nettie Mullins returned home Thursday after spending several weeks in the Good Samaritan Hospital in Lexington.

Mrs. Nell Nicely recently visited friends in Livingston.

Mrs. Fern Salhi of East Bernstadt visited her parents, Mr. and Mrs. Oscar Mullins.

Mr. and Mrs. Ed Wilkerson visited her parents, Mr. and Mrs. Bob Wilson, Saturday.

Mr. and Mrs. C.F. Mullins, Sr. are visiting Mr. and Mrs. C.F. Mullins, Jr. in Louisville.

Mr. Money Ed Cummins and **Jerry Mullins** visited Mr. and Mrs. Oscar Mullins Friday evening.

Mr. and Mrs. Clifford "Lawwood" of Louisville visited his parents, Mr. and Mrs. Clyde Fordyce.

Mr. Charles McClure

fering from pneumonia. But he is much improved. We wish him a speedy recovery.

Mrs. Della Lambert hasn't been feeling well for the past few days. We do wish her a quick recovery.

Mrs. Dorothy Blair remains a patient in the U.K. Medical Center in Lexington.

Mrs. Garnett Williams of Berea, who has been ill for the past few months, is now able to attend church services again. It is so good to have her back.

Mrs. Williams is not a daughter of Mr. and Mrs. Willie Cope as was stated in the Signal two weeks ago.

Mrs. Etta Jean Kelly and daughter, Tena and her son and daughter-in-law, Mr. and Mrs. David Kelly, all of Richmond were recent guests of Mr. and Mrs. Cletus Peters.

Those attending the hymn sing at Pine Hill February 22nd from Fairview were Mr. and Mrs. Cletus Peters, Mr. and Mrs. Walter Malone, Mrs. Emily Penzol, Mr. and Mrs. Preston Anderkin, Mr. and Mrs. David Poynter and son, Vince and Sherwood Pickle. They enjoyed the singing very much.

Mrs. Irene Blair visited Mrs. Louise Phillips in Mt. Vernon recently.

Mr. Delbert Alexander of Macedonia has returned home from the Berea Hospital where he spent a few days. We are glad to know he is feeling better.

Mrs. Loretta Anderkin Smith and children of Berea attended Sunday School and church services at Fairview last Sunday and later visited relatives, Mr. and Mrs. Walter Malone, Tim and Famesy and Mr. and Mrs. Preston Anderkin.

Mrs. Eli Bargett of Mt. Vernon are enjoying their home there more and more. Some of their recent guests have been Mr. and Mrs. Jim Miller and Kenton of Fairview and Mrs. Rose Mullins, Mr. and Mrs. Herbert Coffey, Mr. and Mrs. Verner Ballinger, Mr. Joe Swinney and Mrs. Tommy Philbeck and grandson, Anthony, all of in or around Mt. Vernon.

Miss Dorothy Lambert left Sunday morning for her Augusta, Georgia home following a weeks visit here with her family, Mrs. Della Lambert, Wesley, J.T. and other relatives.

Visiting at the home of Mr. and Mrs. John Adams of Newby, near Richmond, last Monday were Mrs. Janet Ridgell and daughter, Sherry, Mrs. Darleen Chasteen and Mrs. Hubert Chasteen.

Mrs. Irene Alexander spent the weekend in Louisville with her sister, and brother-in-law, Mr. and Mrs. John Thomas.

Mrs. Eugene Alexander and son, Gerald Alexander, attended worship services at the Central Baptist Church in Mt. Vernon, Sunday morning.

Fairview

By Mrs. Hubert Chasteen

Sunday School attendance at the Fairview Baptist Church March 6 was 105. More came in for worship services. We also had some visitors.

Several folks in our community have had the flu, but most of them are now better.

Everett Reppert of Paxton, Illinois was hospitalized last Wednesday suffering from pneumonia. But he is much improved. We wish him a speedy recovery.

bulletin board.....

Gospel Singing

The West Main Street Church of God will host a Gospel Singing at the church on Saturday night, March 19 at 7 p.m.

Beginning at 5:30, there will be a spaghetti supper. A three dollar donation is asked. Also a film of the last month's Gospel Singing will be shown from 2 p.m. to 7 p.m. by Junior Asher of Louisville.

Everyone is invited to attend. Bro. Bobby Owens is pastor.

Prayer Luncheon

The Women's Community Prayer luncheon will be held at the First Baptist Church this Thursday, March 17 from 12 noon to 1 p.m.

Each woman should bring a sack lunch for herself and any children.

Next Thursday, March 24th, the luncheon will be held at Bethany United Methodist Church.

BOOKMOBILE SCHEDULE

Monday, March 21st-Scaffold Cane and Hammond Fork

Tuesday, 22nd-Disputanta and Anglin Falls.

Wednesday, 23rd-Fairview, Lambert Road and Family Life Center.

Monday, 28th-Red Hill, Calloway and Burr.

Tuesday, 29th-Chestnut Grove Road and Barnett Road.

Wednesday, 30th-Green Hill, Conway and Boone.

Thursday, 31st-Negro Creek.

Sunday is Dedication Day at Ottawa Baptist

There will be a dedication service Sunday at Freedom Baptist Church, for the new addition.

Lunch will be served at noon. The public is invited to attend.

Guest speaker will be George Fletcher, former pastor, who is now architectural consultant for the Southern Baptist Sunday School Board, Nashville, Tennessee.

PRAYER BREAKFAST

The Men's Prayer Breakfast will be held Friday morning at the Bank of Mt. Vernon. Breakfast will be served at 7 a.m., followed by fellowship.

School Menu

March 21-25

BREAKFAST:
Monday: cereal, toast and jelly, juice and milk.
Tuesday: bacon and

eggs, toast and honey, juice and milk.
Wednesday: pancakes, syrup with butter, juice and milk.
Thursday: poptart, juice and milk.
Friday: sausage, biscuit, juice and milk.
LUNCH:
Monday: barbecue on bun, tater tots, pork and beans, pickles, milk, apple sauce cake.
Tuesday: pizza, cole slaw, corn, milk, mixed fruit.
Wednesday: spaghetti with meat sauce, tossed salad, peas and carrots, rolls, honey, milk, fruit.
Thursday: fried chicken, whipped potatoes, green beans, white bread, milk, jello.
Friday: hamburger on bun, cheese slice, tater tots, cole slaw, milk, frosty creme.

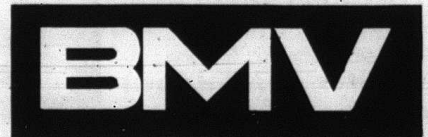
Entry forms due

April 22 for Revue

The deadline for entry forms for the annual Rockcastle Revue sponsored by the Mt. Vernon Woman's Club, is April 22. Entry forms will be available from the Signal next week. Theme of the 1983 revue will be entitled "Strolling Along Memory Lane". The theme will be carried throughout the program, featuring dancing, singing, etc. for the year 1920 all the way to the 1980's. The show will feature talent from the area.

DON'T RUSH INTO AN IRA

A GREAT NUMBER OF FIRMS ARE ADVERTISING INDIVIDUAL RETIREMENT ACCOUNTS. BEFORE YOU OPEN SUCH AN ACCOUNT COME TALK TO US. WE THINK YOU SHOULD KNOW EVERYTHING THERE IS TO KNOW ABOUT THESE ACCOUNTS. WE'VE GOT THE ANSWERS.



THE BANK OF MT. VERNON
MT. VERNON, KENTUCKY 40456.

Welcome

Friends and Neighbors

of Rockcastle and surrounding counties to:

Jim's Body Shop

U.S. 25 South
Mt. Vernon, Ky.

Next to Superior Market.

23 Years Experience of

Auto Body Repair and Refinishing.

For the Past 11 Years

Employed by Henry Walden

Chev. and Olds. in London, Ky.

Also Do

Glass Installation, Buff and Wax.

Insurance Estimates Welcome

Phone: 606 256-5510

James (Jimmy) Miller

Livingston, Ky.

Owner and Operator

Special

Once again, Spring is just around the corner.

Bring your lawnmower in for our

Tune up Special.

We will replace the points & condenser and plug, change the oil, replace diaphragm and clean carburetor and sharpen

blade for one low price of **\$19.95** including tax.



This offer is good thru April 15th.

Appliance Service Center

U.S. 25 (Behind Court House)

Mt. Vernon, Ky. 256-2626

Personals

By Mrs. Geo. Burton

Mr. and Mrs. Carl Leigh and Mrs. Fannie Mullins of Louisville were in Mt. Vernon recently on business. Mrs. Mullins spent some time with Mrs. Ethel Baker.

Mrs. Ethel Baker has been ill with the flu but is reported feeling better.

Mr. W.R. Coffey was very surprised and delighted to receive a birthday card from Gov. John Y. Brown and President Reagan, on his 98th birthday.

Mattie Owens of Somerset visited her parents, Mr. and Mrs. George Burton Saturday. Mrs. Burton and Mattie visited Mr. and Mrs. Charles Lewis Saturday afternoon. Mrs. Marie Alcorn also visited the Lewis. Mr. Lewis is improving from recent surgery on his hip. We wish him a speedy recovery.

Mattie Owens and Mrs. George Burton also visited Mr. and Mrs. Bill Meicher Saturday afternoon.

Mrs. Emory Martin celebrated her birthday March 19th. We wish her many returns of the day.

Mr. and Mrs. George Burton visited Mr. and Mrs. Bobby Anglin and Nancy awhile Saturday night.

Robert Henderson of Somerset visited his mother, Mrs. Lona Logsdon Sunday afternoon.

Mrs. U.G. Ramsey has been transferred from the Berea Hospital to a Lexington Hospital, where she remains very ill. We wish her a speedy recovery.

Mr. and Mrs. Jess Coffey of Richmond, Indiana were here a few days due to the death of her brother, Robert Cromer. Our sympathy goes out to the family.

Mr. and Mrs. Gravelly Burton were in Berea, Monday.

Mr. and Mrs. Everett Burdette visited Mr. W.R. Coffey and Mrs. Lillian Anglin awhile Monday afternoon.

Sympathy is extended to the families of Mr. David L. Mullins, Mrs. Stella French, Mr. Harris Hamm, Mr. Lloyd McClure, in their time of sorrow.

Rev. and Mrs. Gary Giarratano and son were Sunday dinner guests of Mr. and Mrs. John Hopkins.

Sunday visitors of Mrs. Billy Ray Sowder and son

were Mrs. Sadie Sowder and son, Wayne, Mr. and Mrs. Ervin Barron and Mr. and Mrs. George Burton.

Mr. and Mrs. George Burton visited Mr. and Mrs. Doug Owens and Mr. O.V. Smith at Brodhead, awhile Sunday afternoon.

Sympathy is extended to the family of Mrs. Lucy Isaacs of Berea. Mrs. Denner was formerly of Rockcastle County.

Mr. and Mrs. Emory Martin visited Mr. and Mrs. George Burton awhile Sunday evening.

Mrs. Betsy Hensley was admitted to the Rockcastle County Hospital after suffering a stroke. We hope she's soon feeling better.

Rev. George Fletcher of McDonald, Tennessee will hold services at the home of Nellie and Earl Bullock Saturday night. Everyone is welcome to come and worship.

Mr. and Mrs. Willie Nicely were accompanied to Knoxville, Tennessee by their daughter, Mrs. Richard Bradshaw and had dinner with her husband at Darryles.

Mr. and Mrs. Willie Nicoley were at Cox Funeral Home Saturday night to see Mr. Harris Hamm who passed away Friday evening, the result of a heart attack. They also paid their respects to Robert Cromer, at the Dowell and Martin Funeral Home.

Mr. and Mrs. Willie Nicoley visited Mr. Nicoley's sister, Geneva, who is in the Stanford Hospital, Saturday evening. She has been seriously ill but is some better now.

Mr. and Mrs. Lamar Douzay of Eaton, Ohio, Mr. and Mrs. James Jones of Fairfield, Ohio, Mr. and Mrs. Johnny Masters of Fairfield, Ohio, Mr. Betty Payne of Maude, Ohio attended the funeral of Mr. Harris Hamm.

Mr. and Mrs. Robert Willmott are improving from an illness.

Mrs. Frances Thompson fell and broke her arm and has also had the flu. We hope she will soon be well again.

Mr. and Mrs. C.S. McKinney visited Mr. and Mrs. Willie Nicely last Wednesday night.

Ricke's baby

Mr. and Mrs. Jim Rickels wish to announce the birth of their daughter, Jessica Nichole Rickels. Jessica was born February 15, 1983 at the Patti A. Clay Hospital. She weighed 6 lbs. 14 oz. and was 19 1/2 inches long. She is welcomed home by a brother, Joshua Shane. She is the granddaughter of Mr. and Mrs. Raymond Rickels and Mrs. Dorothy Lovell, all of Mt. Vernon.

Mrs. Eversole in honor society at EKU

Forty three seniors at Eastern Kentucky University were initiated into Phi Kappa Phi, a national honor society which recognizes scholastic excellence in all fields of study.

To be eligible, members must exhibit good character and achieve a grade point average of 3.7 on a scale of 4.0.

Martha S. Eversole of Livingston was among the members initiated into Phi Kappa Phi.

COMPLETES BASIC

Army Pvt. Earns R. Bowling, daughter of Raymond and Aldene Harris



Mr. and Mrs. Thomas W. Coffey of Conway wish to announce the birth of a son named Thomas Lloyd. He was born January 21 and weighed 8 lb. 3 oz. at Patti A. Clay Hospital in Richmond. He was joined

completed basic training at Fort Jackson, South Carolina.

During the training, students received instruction in drill and ceremonies, weapons, map reading, tactics, military courtesy, military justice, first aid and Army history and traditions.

Bowling is a 1977 graduate of Rockcastle County High School or Mt. Vernon.

Hospital Report

Acute Care

Admitted:

Vicki Graves, Mt. Vernon; Faye Holbrook, Mt. Vernon; Gary Herbert, Orlando; James Mize, Ohio; Lee Earl Hysinger, Mt. Vernon; David Coffman, Mt. Vernon; Mabel Robinson, Lamer; Mildred Mullins, Mt. Vernon; Bentley Allen, Orlando; Ovie Jones, Livingston; Melissa Moore, Mt. Vernon; Raymond Blackburn, Mt. Vernon; Johnathan Blackburn, Mt. Vernon; Charles Bullock, Brodhead; Charles Bullock, Mt. Vernon; Ruth Bullock, Mt. Vernon; Elizabeth Buewer, Mt. Vernon; Pearl Gray, Mt. Vernon; Judy Boswell, Mt. Vernon; Neek Brock, Brodhead; Henry Baker, Mt. Vernon; Lee Allen, Mt. Vernon; Angela Rash, Mt. Vernon; Betsy Hensley, Mt. Vernon; Mari- on Evans, Mt. Vernon.

Released: Floonie Cornett, Kathy Mosley, Brenda Coffey, Vaughn, Lisa Wise, Bertie Chestnut, Marion Armstrong, Evelyn Hamblin, William Hasty, Benton Owens, Faye Holbrook, Vickie Graves, Lee Earl Hysinger, Johnathan Blackburn, Raymond Blackburn, Patricia Gray, Hedley Marsberry, Bentley Allen, Eimer Lunsford, Gary Herbert, Melissa Moore, James Mize, Lester Barron, Ovie Jones, Elizabeth Brewer, Charles Bullock, Amy Brown, Myrtle Woodall, Ruth Bullock, Mabel Robinson, Tammy Smith, Mary Gadd, Granville Graves, Aster Durham, Angela Rash.

Ottawa

By Della Mae Willmott

Much sympathy is extended to the Hamm family in the loss of Mr. Harris Hamm, who passed away last Friday.

Mrs. Noia Dillingham of Ohio was called her due to the death of Mr. Harris Hamm.

Mr. and Mrs. Casper Jones and Gene and Mr. Dean Jones, Janice and Michael had supper with Mr. and Mrs. Urban Hamm Sunday night.

The Bethel Baptist Church in Berea is coming to Ottawa next Sunday night March 20 to a hymn service. Everyone is invited.

Dr. Larry Daugherty and Emily Morgan of Lexington visited Mr. and Mrs.

Junior Daugherty over- weekend. Mrs. Clarice Payne of Dayton, Ohio visited Mr. and Mrs. Guy Hamm last week.

CARD OF THANKS

When walking through our saddest, lowest valleys, we find we must lean upon others for their love, comfort and support. It is only then that we stop to realize just what it means to have a precious family and special friends to see us through our darkest hours. Truly, words cannot express our sincere gratitude and thanks to all of the wonderful people who helped so much during this time of sorrow. We would like to especially thank all who brought or sent food and those who sent the many beautiful plants and flowers. A special thanks to Dr. Charles Hedrick, Dr. Mike Bryant, and Bro. Harvey Percol for their special prayers and their kind words of comfort and wisdom. We also greatly appreciate Sonny Oliver for his fine singing and Tina Cain for her lovely music. Last, but certainly not least, we extend a special thanks to Billy Dowell and Roy Martin for their friendship and excellent services. May the Lord richly bless you all.

The Robert Cromer Family Sue Cromer, Wife Gary and Jack Cromer

Christine and Margaret Coffey, Sisters

Mt. Vernon Signal Thursday, March 17, 1983 P-5

Griffin, Greer & Company P.S.C.
Certified Public Accountants

• Income Tax Returns: Individuals, corporations, partnerships.

• Accounting Services

• Small Business Services: Financial, accounting, and tax assistance.

DWIGHT GRIFFIN, C.P.A.
SCHOOL STREET, P.O. BOX 40
MT. VERNON, KENTUCKY 40359

JEROME L. GREER, C.P.A.
115 MAIN STREET
STANFORD, KENTUCKY 40484

Are you still paying bills and making major purchases with cash? Chasing around to pay bills, rather than mailing a check, plus the absence of a good record keeping system, costs money. Money you could be using to better advantage. Too, your cancelled checks are a welcome proof of payment, especially at tax time.

The wide range of checking accounts include regular checking, checking for senior citizens, club accounts that offer additional services of insurance, travel discounts and financial benefits; interest earning checking and the new SUPER NOW account.

We have a checking account geared to your financial needs and it takes but a moment to open one. Stop by, a Community Banker will be happy to assist you.

A quick double checking of payment is easy with one of our checking accounts! We have a wide selection!

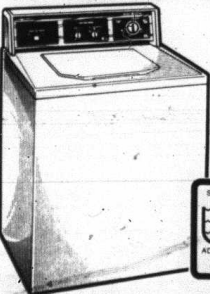
Open 8:30 to 3 p.m. Monday thru Friday
Drive Thru Open till 6 p.m. Fridays
Open 8:30 to 1 p.m. Saturdays

Citizens Bank
"growing for you" Since 1904
Brodhead, Kentucky Member F.D.I.C.



HEAVY-DUTY 3-CYCLE WASHER

with Permanent Press Cycle



Model WWA7050B

- Two wash/spin speeds—regular and gentle
- Three wash/rinse temperature combinations
- Soak cycle

Reg. **\$459.95** NOW **\$414**
Less 10% **\$45.95**

GENERAL ELECTRIC

Bryant Bros.

Main St. 256-2911

SUPER FOOD FAIR MARKETS

1710 NORTH 31 & DOWNTOWN GREENWAY
 1710 NORTH 31 & DOWNTOWN GREENWAY
 1710 NORTH 31 & DOWNTOWN GREENWAY
 1710 NORTH 31 & DOWNTOWN GREENWAY

MARTHA WHITE FLOUR
 Plain or Self-Rising
 25 lb. Bag
\$3.99
 Limit 1
 With *10 Or More Additional Food Order

J.F.G. MAYONNAISE
 32 oz. Jar
79¢
 Limit 1
 With *10 Or More Additional Food Order

GENERIC PINTO BEANS
 4 lb. Bag
89¢
 Limit 1
 With *10 Or More Additional Food Order

STOKELY PEACH HALVES
 No 2 1/2 Can
79¢
 Limit 6
 With *10 Or More Additional Food Order

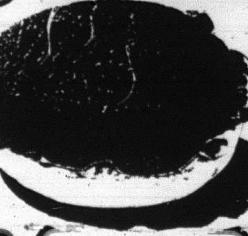
WE GIVE S&H GREEN STAMPS

Prices Good March 14 Through March 20

LAY'S PORK LIVER
 BEEF 69¢ lb.
49¢ lb.

FIELD'S OLD FASHION 5 lb. Roll SAUSAGE
\$5.99

FIELD'S WHOLE HOG 1 lb. Roll SAUSAGE
\$1.79



LAY'S PICNICS
99¢
 Sliced \$1.09 lb.

ARMOUR VERIBEST CENTER CUT RIB CHOPS
\$1.79 lb.

ARMOUR VERIBEST FIRST CUT PORK CHOPS
\$1.59 lb.

ARMOUR VERIBEST CENTER CUT LOIN CHOPS
\$1.89 lb.

FRESH, LEAN GROUND BEEF
\$1.18 lb.

NEWPORT PEAS
 16 oz. Can
3/89¢

GLAD SHEER STRENGTH TRASH CAN LINERS
 15 Count Box
\$1.49

FOOD FAIR POTATO CHIPS
 8 oz. Bag
79¢

GLAD SHEER STRENGTH TALL KITCHEN LINERS
 20 Count Box
\$1.19

FOOD FAIR BUNS
 Hamburger or Hot Dog
2/89¢

IVORY DISH LIQUID
 22 oz. Bottle
\$1.29

VIVA NAPKINS
 140 Count Package
69¢

Johnson Wax's it's Springtime
 SAVE UP TO **\$2.50**
 CASH REFUND OFFER AVAILABLE IN STORE

FABERGE WHEAT HONEY & ALOE VERA CONDITIONER
 15 oz. Bottle
\$1

FAYGO SOFT DRINKS
 All Flavors
 16 oz.
4/99¢

KEN-L-RATION KIBBLES 'N BITS
 5 lb. Bag
\$2.39

THE GREAT \$200 KEN-L-RATION CASH-IN!
 Safe tear pad in store for details.
KEN-L-RATION TENDER CHUNK DOG FOOD
 5 lb. Bag
\$2.39

GLADE AIR FRESHENER
 7 oz. Aerosol
99¢

PLEDGE FURNITURE POLISH
 14 oz. Can
\$1.99

STEP SAVER FLOOR CLEANER
 32 oz. Bottle
\$2.49

SHOUT STAIN REMOVER
 22 oz. With Bonus Pack
\$1.69

CLEAN & CLEAR FLOOR CLEANER
 28 oz. Bottle
\$1.69

TOTAL CEREAL
 12 oz. Box
\$1.59

KEN-L-RATION DOG FOOD
 15 or 16 oz. Can
 8 Flavors
3/99¢

SCOTTIES FACIAL TISSUES
 200 Count Box
69¢

CHEF-BOY-AR-DEE FROZEN PIZZA
 12 oz. Box
\$1.09

KEEBLER VANILLA WAFERS
 12 oz. Box
\$1.09

HUNGRY JACK BISCUITS
 3 Varieties
 5 Count Can
3/\$1.09

<p>Food Fair Coupon</p> <p>50 S&H</p> <p>GREEN STAMPS</p> <p>With This Coupon And Purchase Of 3 or More Loaves Of Bread</p> <p>Exp. 3/20/83</p>	<p>Food Fair Coupon</p> <p>50 S&H</p> <p>GREEN STAMPS</p> <p>With This Coupon And Purchase Of 2 Or More Pkgs. Of Little Debbie Snack Cakes</p> <p>Exp. 3/20/83</p>	<p>Food Fair Coupon</p> <p>50 S&H</p> <p>GREEN STAMPS</p> <p>With This Coupon And Purchase Of 2 or More Pkgs. Of G.E. Light Bulbs</p> <p>Exp. 3/20/83</p>	<p>Food Fair Coupon</p> <p>50 S&H</p> <p>GREEN STAMPS</p> <p>With This Coupon And Purchase Of 2 or more LBS. of Popcorn</p> <p>Exp. 3/20/83</p>	<p>Food Fair Coupon</p> <p>50 S&H</p> <p>GREEN STAMPS</p> <p>With This Coupon And Purchase Of 2 or More Packs of Candy</p> <p>Exp. 3/20/83</p>	<p>Food Fair Coupon</p> <p>50 S&H</p> <p>GREEN STAMPS</p> <p>With This Coupon And Purchase Of \$2.00 Or More Health & Beauty Aids</p> <p>Exp. 3/20/83</p>
---	--	---	---	--	---

**U.S. GRADE A
WHOLE
FRYERS
45¢**
LB.
Limit 3 With \$10 Or More
Additional Food Order

**J.F.G.
COFFEE**

1 lb. Can
\$2.19

Limit 1
With '10 Or More Additional Food Order



**JOB SQUAD
DECORATOR
PAPER
TOWELS**

Jumbo Roll
69¢

Limit 1
With '10 Or More Additional Food Order



**WALDORF
BATHROOM
TISSUE**

4 Roll Pack
79¢

Limit 1
With '10 Or More Additional Food Order



**FOOD
FAIR
MARKETS**

SOMERSET NORTH ST & DOWNTOWN GREEN HILL
MT VERNON WHITLEY CITY CORNELL LONDON
STAMFORD WELAND JACKSON
HYDEN AND PINEVILLE

Prices Good March 14
Through March 20

**ALL OUR EXTRAS
ADD UP TO A LOT!**



**FIELD'S PICKLED
BOLOGNA** \$2.49
24 oz. Jar

**FIELD'S SMOKED PORK
LOIN** LB. \$2.19

Field

**FIELD'S Regular or Beef
WIENERS** 99¢
12 oz. Pack

**FIELD'S CHESTNUT
BOLOGNA** LB. 89¢

**FIELD'S 8 lb. Pail
LARD** \$3.49

**EDWARD'S
SAUSAGE**

12 oz. Roll
\$1.39

**FIELD'S
BACON**

12 oz. Package
\$1.39

**FIELD'S
CHEESE
WIENERS**

1 lb. Package
\$1.59

**FIELD'S
BOLOGNA**

1 lb. Package
\$1.29

**FIELD'S
FAST-CUT
HAM**

5-8 lb. Avg.
\$1.99
LB.

**OXYDOL
DETERGENT**

49 oz. Box
\$1.99

**MARTHA WHITE
MUFFIN
MIX**

7 oz.
3 Varieties
3/99¢

**U.S. NO. 1
WHITE
POTATOES**

20 lb. Bag
\$1.99

**STALK 24 Size
CELERY** Each 49¢

**CRISPY
CABBAGE** 15¢ lb.

**SUNSHINE
KRISPY
CRACKERS**

1 lb. Box
79¢

**FABERGE WHEAT HONEY
& ALGAE VERA
SHAMPOO** \$1
15 oz. Bottle

**GREEN
ONIONS** 3/89¢

Limit 1
With '10 Or More Additional Food Order



**SPRITE, TAB OR
COCA COLA**

8-16 oz. Bottles
\$1.59
Plus Deposit

**MINUTE MAID
ORANGE JUICE**

6 oz. Can
2/\$1.09

**FRESH 8 oz. Pack
MUSHROOMS** 99¢

**KEEBLER CLUB
CRACKERS** \$1.19
16 oz. Box

**RED, GOLDEN,
STAYMAN OR ROME
APPLES**

3 lb. Bag
99¢

**GOLDEN RIPE
BANANAS**

LB.
29¢

**FRANCO-AMERICAN
SPAGHETTI** 59¢
26 oz. Can

Free! Chicken Offer! Get A Coupon By Mail
Worth '2 On Your Next Chicken Purchase Details Below.

We Gladly Accept Food Stamps



**GREEN GIANT
NIBLETS**

**CORN-ON-
THE-COB**

6 Ear Pack
\$1.19

MAIL-IN CERTIFICATE
FOR FREE CHICKEN

To get your coupon worth \$2.00 toward your next purchase of chicken mail in this certificate with 1. The \$1.00 label from one 44-oz. Heinz® Ketchup; 2. The proof of purchase (tear from one 2-lb. bag of Ore-Ida Golden Fries® or Golden Crinkles®); 3. The nutritional panel from one package of Green Giant® Frozen Corn, On-The-Cob or Frozen Niblets®; 4. A cash register tape with the price of chicken (any amount) circled.

**ORE-IDA
GOLDEN
CRINKLES**

2 lb. Bag
\$1.29

**HONEY NUT
CHEERIOS** \$1.69
14 oz. Box

**HERSHEY CHOCOLATE
SYRUP** 16 oz. Can 79¢

**KRAFT
AMERICAN
SINGLES**

12 oz. Package
\$1.89

**FREE PITCHER!
TANG INSTANT
DRINK** 40 oz. \$3.79

Food Fair Coupon

**HEINZ
KETCHUP**

44 oz. Bottle
\$1.59

Exp. 3/20/83
Limit 1 with coupon and purchase of '10 or more additional food order



NAME _____
ADDRESS _____
CITY _____ STATE _____ ZIP _____
NAME OF STORE WHERE PURCHASED _____
Mail to: HEINZ-GREEN GIANT-ORE-IDA CHICKEN COUPON OFFER P.O. BOX 5860 MAPLE PLAIN, MINNESOTA 55448

**TYSON
FRIED
CHICKEN**

2 lb. Package
\$2.79



Food Fair Coupon

500

S & H GREEN STAMPS

With This Coupon And The Purchase Of '40.00 Or More Groceries.
Exp. 3/20/83

Food Fair Coupon

**50
S & H
GREEN STAMPS**

With This Coupon And Purchase Of 5 lb. Or More Of Grapefruit
Exp. 3/20/83

Food Fair Coupon

**50
S & H
GREEN STAMPS**

With This Coupon And Purchase Of 2 lbs. Or More Tomatoes
Exp. 3/20/83

Food Fair Coupon

**50
S & H
GREEN STAMPS**

With This Coupon And Purchase Of 1 or More Package Of Boneless Beef Stew Meat
Exp. 3/20/83

Food Fair Coupon

**100
S & H
GREEN STAMPS**

With This Coupon And Purchase Of '10.00-'30.00 Of Groceries
Exp. 3/20/83

Food Fair Coupon

**300
S & H
GREEN STAMPS**

With This Coupon And Purchase Of '30.00-'40.00 In Groceries
Exp. 3/20/83

Around BRODHEAD.

Sunday afternoon visitors of Mary McWhorter and John Craig were Mr. and Mrs. Willard Brown of Sharonville, Ohio and Mrs. Irene Brown Moore of Violetoville, California. They also visited their aunt, Viola Albright and daughter, Mary Harper Sunday.

Mr. Stanley Blanton, 67, of Monroe, Michigan and brother of Carsei Blanton, died recently due to an apparent heart attack and was buried in Michigan. Those attending the funeral were Mr. and Mrs. Carsei Blanton, Mrs. Shirley Blanton, Mrs. Mildred Hunt, Mr. and Mrs. Walter Lee Cash, Paul Blanton, Earl Blanton and Junior Blanton and Mrs. Lena Griffin of West Chester, Ohio.

Mrs. Sally Ann Brummett underwent surgery in the Rockcastle County Hospital, Monday, March 14 and is doing quite well. Mr. Harvey Paul Owens of High Point, Ohio is visiting his mother, Mrs. Martha Owens this week.

Over the weekend visitors of Mr. and Mrs. Bobby Proctor were Mr. and Mrs. Darrell Proctor, Steph-

son, Kyle and Adam of Covington. Mrs. Mahala Weaver and daughter, Rita of Crab Orchard, Mr. and Mrs. Bill Graves and Billy Ray II of Mt. Vernon, Mr. and Mrs. Johnny Ilen, Mr. and Mrs. Douglas Proctor, Mark and Jason, Miss Elizabeth Ann Proctor of Eastern Ky. University.

Mrs. Barbara Watson, Mrs. Emily Glovak and Mrs. Elizabeth Mullins visited at the Morgan and Fox Funeral Home in Stanford where Mr. Welby Burgin's body lay in state, Friday evening. He is the father of Mrs. Betsy Smith, a former resident of Brodhead. Mrs. Burgin and the E.J. Smith family have our sympathy and prayers.

Recent visitors of Mr. and Mrs. Carsei Blanton, Mrs. Virgie Spoonamore and Mrs. Irene Bengue and family were Mr. and Mrs. Lewis Bowling of Blue Ash, Ohio, Mrs. Betty Harlike and son, Roger and Mr. and Mrs. Denver Brock all of Blue Ash, Ohio. Tuesday's guests of the Blanton's were Jeffrey Friday and Scarlet, Mrs. Connie Lewis of Illinois and Mrs. Mildred Hunt and friend,

Levis. Mr. and Mrs. Gary Renner were last weekend visitors of his parents, Mr. and Mrs. Monroe Renner.

Mrs. Marie Robbins and Mrs. Georgia McWhorter were Sunday afternoon guests of Mr. and Mrs. Monroe Renner.

The family of Mr. Pete Burke, Jr. have our deepest sympathy. Among the friends who attended the funeral were Mrs. Shirley Smith of Broughtontown, Mrs. Dorothy Bartley of Greenville, South Carolina; Mrs. Jewell Maxine Murphy, Richmond, Virginia, Mrs. Rosa Lee Nickels of Mt. Vernon, Mrs. Eliza Mae Lanham of Berea, Bobby Burke and sons of Pensacola, Florida, Paris Burke of Crab Orchard, John Williams of Broughtontown, Burke and Edward Burke, Johnny Burke, Jr. of Louisville, Jerry Burke of Mt. Vernon, Mrs. Joan Hammon of Broughtontown, Mrs. Karen Durham of Louisville and Mrs. Pamela Childress of London.

Mrs. Dorothy Bartley of Greenville, South Carolina, Mrs. Jewell Maxine Murphy of Richmond, Virginia and Mrs. Shirley Smith of Broughtontown, all visited their brother, Edward Burke and Mrs. Martha Helton, Thursday. Sunday visitors of Mr. and Mrs. Carsei Blanton were Mr. and Mrs. Earl Blanton, Lisa and Michelle, and Mr. and Mrs. David Blanton, Rebecca, Regina and Renita.

Mr. and Mrs. Douglas Proctor, Mark and Jason were Monday afternoon guests of Mary McWhorter.

Saturday dinner guests of Mrs. Elva Mobley were Mr. and Mrs. Herman Taylor and Mrs. Ophis Reynolds. Afternoon guests were Mrs. Marie Alcorn and Mrs. Geraldine Brown. Thursday evening guests were Mr. and Mrs. Charles Lawrence and Irene Taylor.

Saturday visitors of Mrs. Florence Elder and Casper were her sister, Lucille, their daughters, Mrs. Sylvia Bradley and Mr. and Mrs. Glen Elder.

Mrs. Verna Elder was Sunday visitor of Mr. and Mrs. Foster Brown and Mrs. Nellie Dyehouse of Crab Orchard.

Recent visitors of Mr. and Mrs. Delbert Long were Ray Long, Irene Taylor, Marie Alcorn and Geraldine Brown.

Sunday visitors of Mr. and Mrs. Jack Fletcher were Mr. and Mrs. Bob May of Lancaster, Mrs. Jimmy Bussell, Kristi and Ashley of Somerset. Mrs. Mary Iva Laswell was Sunday visitors of her son and family, Mr. and Mrs. Glenn Laswell in Richmond.

Mrs. Velma Pingleton of Cincinnati, Ohio brought her mother, Mrs. Cuba Croley home Saturday after an extended visit at the Pingleton home and with her other children in Ohio and Indiana.

Mr. and Mrs. Elmer Renner and family have moved to the Richard Owens property in Brodhead. We welcome them to our community.

Mrs. Lillian Collette is confined to her home with the flu.

Mrs. Sue Cox and Mrs. Betty Lou Hodge were in Somerset Sunday afternoon.

Mrs. Mae Jones, Mrs. Sue Cox, Doris Cox and Mrs. Gladys Roberts all visited Mrs. Mildred Coffey at the Sowder Nursing Home Sunday night.

Mrs. Barbara Watson, Mrs. Deborah Newland and Chris were at the Ruppe Arena Saturday night to see the Harlem Globe Trotters play ball.

Mrs. Bernice Sowder and daughter, Tracy visited Mr. and Mrs. Henry Barnett Sunday night. Mr. Mark Johnson and friend Scott of Nashville, Tennessee were weekend guests of Mark's grandparents, Mr. and Mrs. Craig Holman, also Mrs. Clara Fay Hawkins and daughter, Carrie were Sunday dinner guests of their parents and grandparents, the Holmans.

Mrs. Louise Sargent of Lexington was Saturday visitor of her parents, Mr. and Mrs. Monroe Renner. The family of Robert Cromer has our deepest sympathy. Also the families of Mr. Harry Haman, Mr. Lloyd McClure. Our prayers are for all of you.

Miss Dana Craig of Eastern Ky. University, Patrick Craig and a friend, Mike Powers of Cumber-

land College his home is in Pacific, California, are spending their spring vacation with their parents, Mr. and Mrs. Gattliff Craig and Chris and their grandmother, Mrs. Jewell Parsons. A surprise birthday supper for Mrs. Bertha Adams was given by her children at the home of Mr. and Mrs. Billy McKinney, Tim and Jeff. Others present were Mrs. Juanita Browning and son, Randy, Mr. and Mrs. Grover, Aaron and Jacob, all of Waynesburg, Mr. and Mrs. Jimmy Adams, Troy and Chad of Junction City, Mr. and Mrs. Bobby Adams of Nicholasville, Mr. and Mrs. Ronnie Adams and Brandi. The big surprise was that Mrs. Adams had already eaten supper earlier. They all had a nice time and enjoyed the supper anyway.

Bradley and her brother, Jackie Bradley of Louisville visited Mr. and Mrs. Monroe Turpin and Mr. and Mrs. Monroe Renner, recently.

Mr. and Mrs. Clay Colson visited his brother, Mr. Barkley Colson and wife, Betty in Somerset, Sunday afternoon.

Bro. Roger Carr is in Hillsboro, Ohio for a few days this week for a minister's retreat.

Mr. Roddy Carr is home on spring break from EKV in Richmond.

Mrs. Viola Albright has returned home from the Lake Cumberland Medical Center in Somerset and is slowly improving from gall bladder surgery. Her recent visitors were Mr. and Mrs. Willard Brown of Clay and Mrs. Irene Brown Moore of Victoria, California, Mr. and Mrs. Bill White of Ohio, Mrs. Leon McClure and family, Mr. and Mrs. Tommy Todd, Mr. and Mrs. William McQueen, Mrs. Mary Harper and Scottie Mr. P.D. Albright of Paris, J.G. Albright of Ohio and Mrs. Dawn Taylor, Mrs.

Avis Bengue. We wish Mrs. Albright a speedy recovery.

Mrs. Elizabeth Mullins was called to Williamsburg due to the death of her 94 year old cousin, Mrs. Ola Gattliff, Saturday, March 3. The funeral was conducted by Hon. Eugene Siler at the Ellison Funeral Home Chapel.

LADIES AID MEETS

Mrs. Lou Payne was hostess at her home for ten members of the Ladies Aide Missionary Society of the Brodhead Christian Church, Thursday, March 10. Elizabeth Mullins suggested that the group buy Nave's Topical Bible for use in preparing lessons presented at their meeting. Kaye Carr gave a report of the Women's Retreat

Meeting. Our group decided to donate \$15 for expenses to Ladies Retreat to be May 27 and 28 at the Christian Assembly Camp in Brodhead.

Betty Machal chose "Easter" as her subject for the night's lesson as this religious holiday comes before our next meeting. She gave the history of crosses used for crucifixions until Constantine banished deaths on crosses. Scripture was read of Jesus' crucifixion and resurrection. She opened the lesson with the poem, "The Road that Jesus Trod" by Alvin Finkelstein. Pecan pie and cake were served by Mrs. Payne before adjournment. April's hostess will be Elizabeth Mullins and Cindy Colson will give the lesson. (Cont'd to P-17)

Farm Machinery Consignment Auction

Saturday, March 26th

Bond Memorial Park

McKee

Anyone interested in consignment of machinery, contact Jackson Co. Extension Office at 287-7693. Commission will be 5% and proceeds will go to Jackson Co. 4-H Clubs.

★ No Sale - \$5 Under \$1,000 \$10 Over \$1,000

PHILLIP AKEMON, AUCTIONEER

TERMS: Cash or local check. Items must be moved day of sale. Items for sale received on March 25th until sale time.

SPONSOR SHEET			
ROCK-A-THON, sponsored by Rockcastle County Unit, The American Cancer Society			
Participant's Name _____			
Address _____			
Pledge			Per Hour
Sponsor's Name	Address	Telephone Number	
This participant rocked for _____ hours.			
(ACS Unit Member)			
(Name) _____			

C & A Farm Equipment

Hwy. 150 Brodhead, Ky.

New and used farm equipment and tractors, all types of major and minor repairs done, Rockcastle County's most complete tractor and equipment parts inventory.

Spring Special - 5 Ft. Rotary Cutters \$425

New Equipment

New Mechanical Transplanters	\$545.00
New one (1) Row Cultivators	\$95.00
Kory 6 Ton Wagons	\$450.00
Kory Gravity Beds	\$445.00
3 Pt. Spreaders	\$310.00
Boom Poles	\$45.00
6 Ft. Rotary Cutters	\$625.00

A good selection of disc, mowers, balers, rakes manure spreaders, and grinder mixer and plows "If we don't have it we'll get it."

ph. 758-4177 Open 6 days a week 8-5.

\$50 CASH REBATE!

When You Buy Any 4 of These Uniroyal Tires Offer Good Now Through March 19, 1983

STEELER® \$37.45*

Steel-Belted Radial Whitewalls 165/80R13 F.E.T. \$1.67

Size	Mfg. Sugg. Price	Our Price	AFTER REBATE*	F.E.T.
185/80R13	\$61.14	\$55.95	\$43.45	\$1.92
185/75R14	66.21	58.95	46.45	2.04
185/75R14	70.25	61.95	49.45	2.26
205/75R14	73.20	63.95	51.45	2.34
215/75R15	77.50	67.95	55.45	2.48
225/75R15	80.00	68.95	57.45	2.58
235/75R15	85.59	72.95	60.45	3.01

\$41.45*

165/80R13 F.E.T. \$1.51

TIGER PAW PLUS

ALL SEASONS STEEL BEATED RADIAL WHITEWALL

Size	Mfg. Sugg. Price	Our Price	AFTER REBATE*	F.E.T.
185/80R13	\$73.38	\$59.95	\$47.45	\$1.95
185/75R14	80.30	62.95	50.45	2.01
185/75R14	84.30	66.95	54.45	2.23
205/75R15	93.17	69.95	57.45	2.46
215/75R15	93.00	71.95	58.45	2.62
225/75R15	96.00	73.95	61.45	2.79
235/75R15	102.71	78.95	66.45	2.95

LAREDO® \$65.45*

LT TRUCK RADIALS 235/75R15 BLK F.E.T. \$3.19

Size	Mfg. Sugg. Price	Our Price	AFTER REBATE*	F.E.T.
235/75R15 RWL	\$100.03	\$82.95	\$70.45	\$3.19
10-15 RWL	136.88	120.95	90.45	4.28
12R-15 RWL	165.00	138.95	114.45	5.35
235/75R15 BLK	136.88	96.95	82.45	4.39
90R16.5 BLK	155.24	128.95	91.45	4.90
70R16 TB	107.50	89.95	77.45	4.36

STEELER \$35.45*

Blackwall 205/75R15 F.E.T. \$2.50

Sugg. Price \$69 Our Price \$47.95

\$62.45*

225/70R15 F.E.T. \$2.88

Raised White Letters. Sugg. Price \$81 Our Price \$74.95

SUPER SPECIALS!

*Based on a 4-tire purchase \$15 rebate on the purchase of 2

Rockcastle Auto Parts

Dealer Name & Address

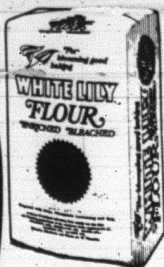
U.S. 23 S. Mt. Vernon

WHITE LILY FLOUR

Plain Or Self-Rising

89¢

5 lb. Bag

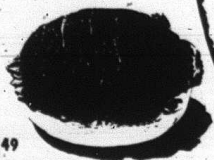


FRESH, LEAN, GROUND BEEF

3 lb. Package Or More

99¢

LB.



U.S.D.A. CHOICE PLATTER PLEASING SEMI-BONELESS CHUCK

\$1.49

Prices Effective March 17 - 23

PLATTER PLEASING BOLOGNA

Regular Or Thick

\$1.49

1 lb.



U.S.D.A. CHOICE PLATTER PLEASING BLADE CUT

CHUCK \$1.29

Center Cut Chuck \$1.39/LB.

U.S.D.A. CHOICE PLATTER PLEASING ROUND BONE SHOULDER

ROAST \$1.59

LB.

ARMOUR STAR WIENERS

12 oz. Package

\$1.19

ARMOUR TURKEY HOT DOGS

12 oz. Package

79¢

TASTE-O-SEA WHITTING 5 lb. Package \$3.39

ARMOUR STAR WIENERS 12 oz. Package \$1.19

ARMOUR TURKEY HOT DOGS 12 oz. Package 79¢

ARMOUR VERI-BEST PLATTER PLEASING BOSTON BUTT PORK ROAST

\$1.19

LB.

U.S.D.A. CHOICE PLATTER PLEASING CHUCK STEAK

\$1.59

PLATTER PLEASING BACON 1 lb. Package \$1.79

PLATTER PLEASING WIENERS 12 oz. Package \$1.09

ARMOUR STAR BACON 12 oz. Package \$1.59

ARMOUR BOLOGNA 1 lb. Package \$1.59

ARMOUR VERI-BEST PLATTER PLEASING BOSTON BUTT PORK STEAK 1 lb. \$1.39

ARMOUR VERI-BEST PLATTER PLEASING QUARTER

PORK LOINS \$1.59

LB.

JFG SALAD DRESSING

32 oz. Jar

99¢

HY-TOP PEAS OR GOLDEN CORN

Whole Kernel Or Cream Style

3/\$1.19

MRS. BUTTERWORTH'S SYRUP

24 oz. Bottle

\$1.69

DOVE DISH LIQUID

22 oz. Bottle

\$1.19

KEELER VANILLA WAFERS 12 oz. Box \$1.09

KEELER CLUB CRACKERS 16 oz. Box \$1.19

MRS. BUTTERWORTH'S COMPLETE PANCAKE MIX 32 oz. Box \$1.19

DOWNBOAT 48 oz. Can PORK & BEANS 89¢

HY-TOP BISCUITS 8 oz. Can 6/\$1.19

GREEN GIANT HIBBLETS CORN ON THE COB 6 Ear \$1.19

KRAFT ORANGE JUICE 64 oz. \$1.59

ONE-IDA CRINKLE CUT POTATOES 2 lb. Bag \$1.19



THIS WEEK'S SPECIAL
HYDROX COOKIES
 12 oz. Package
29¢

THIS WEEK'S SPECIAL
JUST RITE HOT DOG SAUCE
 10 oz. Can
1¢

THIS WEEK'S SPECIAL
WHITE GOLD SUGAR
 5 lb. Bag
69¢
 With 2 Filled

platter-pleasing THIS WEEK'S SPECIAL
PLATTER PLEASING WIENER
 12 oz. Jar
59¢
 with one filled

THIS WEEK'S SPECIAL
KELLOGG'S POP TARTS
 11 oz. Box
29¢



THREE RIVERS MEAL
 Self-Rising
 5 lb. Bag
89¢

U.S. NO. 1 IDAHO POTATOES

\$1.69

10 lb. Bag

GOLDEN RIPE BANANAS

3 lbs. / \$1

Lettuce jumbo head 39¢

WHITE ONIONS 2 lb. Bag 69¢

WHITE SEEDLESS GRAPES 1 lb. \$1.19

FRESH GREEN CABBAGE 1 lb. 12¢

HY-TOP GREEN BEANS 16 oz. Can 3/99¢

HEinz KETCHUP 64 oz. Bottle \$1.89

HY-TOP TOMATO JUICE 46 oz. Can 89¢

PRESERVE PINK SALMON 16 oz. Can \$1.69

KELLOGG'S RICE KRISPIES
 12 oz. Box
\$1.19

CRISCO OIL
 46 oz. Bottle
\$1.99
 Limit 1 Per Customer

JELL-O GELATIN
 3 oz. Box
3/\$1.00

NESCAFE INSTANT COFFEE
 10 oz. Jar
\$3.99

WHITE CLOUD BATHROOM TISSUE
 4 Roll Package
89¢
 Limit 1 With \$10 Order

RINSO DETERGENT
 46 oz. Box
\$1.79

8 - 16 Oz. **PEPSI PRODUCTS**
\$1.69



SUPERIOR Food Markets

Symbol Of Quality



Stokley Applesauce
 16 oz.
3/\$1.19

Plus Deposit or bottles

Area Deaths and Funerals

Harris Hamm

Mr. Harris Hamm, 77, of Route 1, Mt. Vernon, died suddenly Friday, March 11, 1983 at the Rockcastle County Hospital, the result of an apparent heart attack.

He was born in Rockcastle County on June 2, 1905, the son of the late Oscar and Molly Sayers Hamm and was a retired farmer and a welder. He was a member of the Mareburg Baptist Church where he served as a deacon for several years.

Survivors are his wife, Mrs. Ruby Hiatt Hamm of Route 1, Mt. Vernon; three sons, Eddie Ray Hamm of Versailles, James Oscar and Bennett Harris Hamm both of Route 1, Mt. Vernon; two daughters, Mrs. Betty Lou Adams and Miss Myrtle Hamm both of Route 1, Mt. Vernon; one brother, Urban Hamm of Route 1, Mt. Vernon; two sisters, Mrs. Nola Dillingham of Arlington Heights, Ohio and Mrs. Janie Mae Jones of Route 1, Brohead six grandsons, Shawn Hamm, Kevin Hamm, Greg Hamm, John David Hamm, Courtney Adams and Steven Ray Hamm.

He was preceded in death by three brothers, Mode, Ray and Sam Hamm.

Funeral services were held Sunday, March 13, at the Cox Funeral Home Chapel by Rev. Don Cummins and Rev. John Zupancic. Burial was in the Sayers Cemetery.

Active pallbearers were, Don Hamm, Ed Hamm, Dean Jones, Bill Belcher, James Burdette Brown and Jones Conn Hiatt. Honorary pallbearers were, Mike Turpin, John E. Harris, William J. Harris, Ernest Lakes, Charles Bunch, Ray Hayes, Robert Whitent, and Jones Bennett Hiatt.

Lloyd McClure

Mr. Lloyd McClure, 55, of Route 1, Mt. Vernon, died suddenly Saturday, March 12, at his home.

He was born in Rockcastle County on September 14, 1927, the son of the late Lee and Maggie Bradley McClure and was a veteran of the Korean War and a member of the Freedom Baptist Church.

He is survived by his wife, Mrs. Nola Gooch McClure; two sons, Danny Bullock of Livingston and Dana McClure of Mt. Vernon; one daughter, Mrs. Carolyn Mercer of Route 3, Eubank; two brothers, Groves McClure of Route 1, Mt. Vernon and Jesse McClure of Louisville; two sisters, Mrs. Edith Broles and Mrs. Evelyn Hunley, both of Somerset; three grandchildren.

Funeral services were held Tuesday, March 15 at Freedom Baptist Church by Bro. Noel Dudson and Bro. Jeffery Wheldon. Burial was in the Freedom Cemetery.

Arrangements were by the Dowell and Martin Funeral Home.

Sarah French

Mrs. Sarah Stella French, 80, of Wildie, died Thursday, March 10, at the Lake Cumberland Medical Center in Somerset.

She was born in Rockcastle County on March 1, 1903, the daughter of the late Frank and Myrtle Farthing Adams and was a member of the Wildie Christian Church.

Survivors are her three daughters, Mrs. Ruth Smith of Somerset, Mrs. Beatrice McNew of Wildie and Mrs. Louise Hill of Richmond; Indiana; two brothers, Earl Adams of Wildie and Willie Adams of Chicago, Illinois; one son, Mr. Rose Goughly of Richmond; five grandchildren, ten great grandchildren and two great grandchildren.

Funeral services were held Saturday, March 12, at the Wildie Christian Church by Rev. Kenton Parkey and Rev. Sam Alder. Burial was in the Maret Cemetery.

Arrangements were by the Dowell and Martin Funeral Home.

Milton Proctor

Mr. Milton Proctor, 83, of 1102 Hugh St., Middletown, Ohio and formerly of Rockcastle County, died Sunday, March 13 in Middletown.

He was born in Mt. Vernon, Ohio, October 1, 1899, the son of the late William Lee and Martha Rector Proctor.

Survivors are his wife, Hester Proctor; two daughters, Mrs. Ruth Brosh of Newport, Arkansas and Mrs. Martha Carter of Flagson, Arizona; seven sons, Milton B. Proctor of Hayward, California, William David of Albuquerque, N. Mex., Ronald Edward of Cincinnati, Ohio, Donald Wayne and Danny both of Los Angeles, California and Allen, with the U.S. Air Force, Loring, Maine; two sisters, Mrs. Della Oldfield of Covington, Ohio, and Mrs. Della Morgan, 22 grandchildren and nine great grandchildren.

He was preceded in death by his first wife, Gladys G. Proctor; one daughter, Thelma Carter; and three sons, Douglas Logan, Stephen Terry and James Clay.

Funeral services were held Wednesday, March 16, at the Riggs Funeral Home in Middletown, Ohio by Rev. Clair E. Beatty. Burial was in the Woodside Cemetery in Middletown.

Lucy Danner

Mrs. Lucy Isaacs Danner, 93, of Berea and formerly of Rockcastle County, died Monday, March 14, at the Berea Hospital after a long illness.

She was born in Rockcastle County on June 21, 1889; the daughter of the late Susie and Fiedl Mullins.

Survivors are, three sons: Willie and Elmer Isaacs and Gilbert Danner, all of Berea; five daughters, Annie Abney of Berea, Julie Morgan, Crittenden, Margaret Davidson of Louisville, Gladys Miner of Dry Ridge and Ora Lee Rogers of Cave City; two brothers, Bill and Jim Mullins; five sisters, Minnie Barnett, Maggie Todd, Nannie Isaacs, Leta McCollum and Eddie Peters; and 60 grandchildren.

She was preceded in death by her first husband, Mack Isaacs, her second husband, Newt Danner, one daughter, Mary Mason.

Funeral services were held Wednesday, March 16 at Williams Funeral Home and Chapel in Berea by Bro. Levi Lainer and Bro. Lloyd Anglin. Burial was in the Oak Grove Cemetery in Rockcastle County.

Nannie Mullins

Mrs. Nannie Burnett Mullins, 97, of Danville and formerly of Rockcastle County, died Wednesday, March 16, at the Danville Hospital.

She was born in Rockcastle County on May 7, 1885, the daughter of the late Boone and Rhod Chastene Burnette and was a member of the Wildie Christian Church. She was the widow of the late Ciel Mullins.

She is survived by one daughter, Mrs. Daville; one grandson; four great grandchildren and five great, great granddaughters. Burial will be held Thursday, March 17 at 1 p.m. in Elmwood Cemetery by Bro. Ernest Martin.

Local arrangements are by the Dowell and Martin Funeral Home.

Hewie Carpenter

Mr. Hewie D. Carpenter, 72, of Livingston, died Tuesday, March 15 at the St. Joseph Hospital in Lexington.

He was born in Jackson County on March 28, 1910, the son of the late David Carpenter and Lela Phillips. Carpenter and was a member of the Livingston Pentecostal Church.

He is survived by his wife, Mrs. Ollie Carpenter of Livingston; one son, Jirchel Carpenter of Hebron; three daughters, Mrs. Virginia Peaslee of Covington, Mrs. Alberta Pierce of London and Mrs. Yvonne Griffith of Covington; two brothers, Carpenter and Fieldon Carpenter, both of Livingston; one sister, Mrs. Mandy Morris of McKee; 11 grandchildren and four great grandchildren.

Funeral services will be held Thursday, March 17 at 1 p.m. at the Livingston

Pentecostal Church, by Bro. Jimmy Miller and Bro. Rolla Coulter. Burial will follow in the Carpenter Cemetery in Jackson County.

Arrangements are by the Dowell and Martin Funeral Home.

"Handling Home Emergencies"

"Handling Home Emergencies" will be offered at the Rockcastle County High School Home Economics Department to interested adults. The course will cover such things as what to do to save a choking child or helping your spouse in the event of a heart attack. Much of the class will involve CPR training taught by David Collins, CPR instructor. The class is part of the Home Economics Adult Education Program.

There is no fee, but enrollment will need to be limited due to the nature of the class. The 12 hour class will run 3 or 4 sessions depending upon the desires of the class members. The first session begins Monday, March 21 at 6 p.m. in the Home Economics Department.

If you are interested, please reserve your space by calling 256-2818 or 256-4816 and ask for a Home Ec. teacher.

NOTICE

The following people have signed up their land to be posted with the Northeast Rockcastle Security Group:

Name	Address	Acres
Shirley Smith, Wildie		380
William Smith, Wildie		50
Blanche Powell, Route 3, Mt. Vernon		242
Henry Smith, Route 3, Mt. Vernon		100
Jim Smith, Route 3, Mt. Vernon		375
Herman Smith, Route 3, Mt. Vernon		200
William Lewis Coffey, Route 3, Mt. Vernon		400
Mossie Cope, Route 3, Mt. Vernon		345
Stephen C. Bullen, Route 3, Mt. Vernon		240
Hugh Ramsey, Route 3, Mt. Vernon		100
Flossie Stephens, Route 3, Mt. Vernon		35
Bobby Thacker, Route 3, Berea		80
Glen M. Coffey, Route 3, Mt. Vernon		184
Bronco Abbey, Route 3, Mt. Vernon		250
Roy L. Croucher, Route 3, Mt. Vernon		60
Donnie Stephens, Route 3, Mt. Vernon		7
Tommy H. Mink, Route 3, Mt. Vernon		500
R.T. Stephens, Route 3, Mt. Vernon		88
W.R. Wolfe, Route 3, Mt. Vernon		55
Johnny Cope, Route 3, Mt. Vernon		150
Wayne Berry, Wildie		213
Virgil Mullins, Climax		300
Ruth Parsons, Wildie		135
Brook, Wildie		100
William K. Bullen, Route 3, Mt. Vernon		1000
Wendell Williams, Route 3, Mt. Vernon		250
Adams Brothers, Route 3, Mt. Vernon		800
Tommie Burdette, Route 3, Mt. Vernon		200
Sallie Parsons, Wildie		100
Mable Repert, Route 3, Mt. Vernon		100
James Taylor, Route 3, Mt. Vernon		30
Reece Gadd, Route 3, Mt. Vernon		80
Borral Ramsey, Route 3, Mt. Vernon		150
Carl Mobray, Route 3, Mt. Vernon		49
Gary Marks, Route 3, Mt. Vernon		10

Mason's Excavating

Bulldozer and Backhoe work, Basements, septic tanks, Pond building, water lines, Topsoil and Fill-dirt, Road building, Rock drilling and blasting, Foundation Footer digging, Hauling, etc.

Free estimates **256-4233** Mt. Vernon, Ky.

REAL ESTATE FOR SALE

REDUCED - LAKEFRONT PROPERTY - Approximately 1 1/4 acres - overlooking beautiful Lake Linville offers privacy and immediate occupancy for a mobile home or camping since it is already improved with septic system, city water, also a well and security light. Lots of space for garden, pets or for friends to join you. Located near the boat dock.

FIVE ROOM HOUSE - Living room, den, 2 bedrooms, large kitchen/dining combination, bath and 2 porches. The house has fuel oil heat, carpet and vinyl floors, detached 1 car garage and is situated on a nice shady lot. Other amenities are city water and blacktop road. South of Mt. Vernon at Pine Hill.

REDUCED - 147 Acre Farm, more or less, located near Great Saltport Cave, Farm has 3 miles blacktop road frontage, 4 room house with 2 porches, 2 room store building, large cellar, one extra storage building, combination stock/tobacco barn and log barn. There's a basic tobacco allotment of 1,864 lbs., lots of timber and spring water. Just a few minutes from Mt. Vernon.

NEW LISTING - 3 bedroom house situated on a nice lot on Hwy. 461 in Livingston. This cozy home also has living room, kitchen, bath, utility room with washer hook-up, wall to wall carpet, insulated, heated by a fuel oil furnace, also has enclosed back porch. Exterior covered with city water and siding. There is also a large storage building. Call today for an appointment to see this lovely home. Partial financing is available to qualified buyer.

NEW LISTING - 4 to 6 acres on Rockcastle River, located across from Ward's Cemetery. Ideal investment property.

BUILDING LOTS - Two adjoining lots located in the Cedar Heights Subdivision near Mt. Vernon city limits.

BABY FARM - Approximately 4 1/2 acres, about four miles northwest of Mt. Vernon. Good location. Ideal for short-time farming or for various other uses. Build your own home or move a mobile home onto this nice farm. City water is available.

Commercial Property For Sale or Lease - 1.25 acres, more or less, near Mt. Vernon city limits on U.S. 25. Adaptable to various uses, has city water available and is in one of Rockcastle's fastest growing business areas.

36 ACRES More or Less with Coal and nice 2 bedroom home. The house also has a living room, large kitchen/dining area, bath, utility room with w/d hook-up, fuel oil heat and concrete porch. In addition, there's a cellar, storage building, nice barn, lots of fruit trees and land has been nice-dredged with proof of coal. If you're looking for privacy, a home, farm and income, this is it. Located in Red Hill area.

UNDER CONSTRUCTION - 3 bedroom brick house situated on a nice lot in the Quail Section of Rockcastle County. This nice brick home has living room, kitchen with built-in cabinets, bath, washer/dryer hook-up, wall to wall carpet, and vinyl floors throughout and city water. Also has a one car attached garage. FHA approved.

2 ADJACENT LOTS near Brohead. Each lot contains approximately 1/4 acre and fronts on a blacktop road. City water is available. Call today for your choice of these nice lots.

REDUCED TO SELL - Go Country With Possible FHA Financing! Move from the traffic and noise of town into the quiet atmosphere of country living. This lovely home that will be just what you are looking for. Downstairs consist of one bedroom, living room, dining room, kitchen w/built-in cabinets, utility room, w/washer and dryer hook-up, bath and 3 bedrooms upstairs. It also has a partial basement and an unattached garage. Other features include wall-to-wall carpet and vinyl floors, storm doors and windows, electric heat, is insulated and has city or cistern water. All of this is situated on approximately 6/10 of an acre. This lot located approximately 8 miles from Mt. Vernon and 4 miles from Brohead in the Ottawa Section of Rockcastle County.

REDUCED - Three bedroom home situated on a nice lot on Hwy. 461. This lovely home has kitchen, dining room, family room, bath and partial basement w/d hook-up. It is insulated and has a 1/2x21 garage. Call today for an appointment to see this lovely home. Partial financing available to qualified buyer.

Make Your Dollars Work with this 45 acre farm, located in the Brush Creek area. This property has marketable timber and there is a possibility of coal. Ideal investment property.

Possible FHA Financing - 2 bedroom home with living room, combination dining/kitchen with built-in cabinets, bath, fuel oil furnace, also flue for wood-burning stove, utility room, w/d hook-up, carpet, plus a front porch. This property has city water and is situated on a nice lot conveniently located just south of Mt. Vernon on U.S. 25.

TWO ADJACENT LOTS located approximately 3 miles from Brohead. Each lot measures 100x228, city water is available. Priced to sell.

NEW SUBDIVISION - Located in the Willalla section of Rockcastle County. There are approximately 1/4 acre city water is available and fronts on blacktop road and are restricted. Call today for an appointment and have first choice on these dandy lots.

Beat the Heat of Grocery Prices on this 18 acre milk-farm. You can produce your own meat, milk your own cow, gather your own eggs and grow your own vegetables and - in your spare time raise 885 lbs. of tobacco. Farm is located just outside city limits of Mt. Vernon.

NOW
Satellite TV for as low as
\$1,995.00!

Call the people who know! And, stock satellite TV systems.

2-Way Radio Communications & Engineering, Inc.

Ph. (606) 549-2250

Highland Park - Williamsburg, Ky. 40769

Laurence Auction and Realty

100 Main Street - Gregory Building - Mt. Vernon

Wendell Lawrence
 Realtor and Auctioneer
 Home 758-5115

Clayton Hammond's Supermarket

Hwy. 461

The Somerset Road

"Home of the Bargains"

Prices Good March 17 - 23



Fresh Ground Beef
3 lb. or more **96¢** lb.

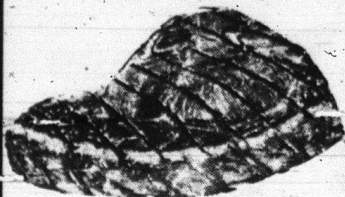


ARMOUR

12 oz. pkg.

BACON

\$1.39



Boneless Rib-Eye Steak
\$3.19 lb.



Armour HOT DOGS
99¢

USDA Choice

Chuck Roast **\$1.17** lb.

Smoked Picnics sliced free

87¢ lb.

U.S.D.A. Choice **ARM ROAST** **\$1.39** lb.



Biscuits
6 pk. carton **\$1.19**

Nunn Better Self Rising

Cornmeal
5 lb. **99¢**



Stokely Catsup
32 oz. btl. **89¢**

Lay's **Potato Chips**
1/2 lb. (Reg. \$1.39) **99¢**

Armour Whipped **Margarine**
1 lb. bowl **49¢**

School Day **PEAS** 3/ **99¢**
303 size



Jeno's **Frozen Pizza** **99¢**

Strawberry Preserves
KRAFT 18 oz. **\$1.19**

Fresh **Produce**



Duncan Hines **Cake Mix** Box **79¢**

Mayonnaise
Hellman's qt. **\$1.69**

Carrots
2 (1 lb.) pkgs. **49¢**

Macaroni
Delmonico 16 oz. **59¢**

10 lb. No. 1 Idaho **Potatoes** **\$1.39**



Paper Towels Jumbo Roll **79¢**

Mr. Coffee **FILTERS**
100 ct. **79¢**

Grade A Large doz. **EGGS** **69¢**

BATH TISSUE
White Cloud 4 roll **\$1.09**

Head **Lettuce** **39¢**

Hurry! Sale Prices Good Through March 19th

Western Auto

BIG SPRING VALUES

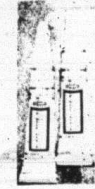
Sale

Contractor's Style Wheelbarrow

34⁸⁸
Sale Price

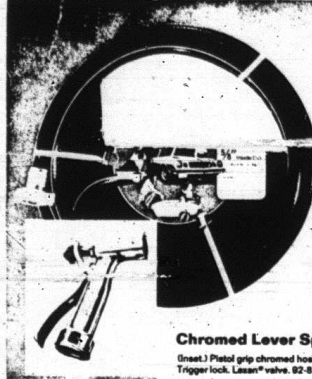
- Generous 4 cu. ft., 350 lb. load capacity
- Heavy-gauge seamless steel tray measures 36" x 27" x 2 1/2" in.
- Rust-resistant baked-on enamel finish
- 1 pc. steel undercarriage and continuous wood handles for maximum strength
- 8x4 in. wheel has oil-lub bearings
- 14x4 in. easy-roll pneumatic tire
- Seamless tray has safety rolled edges

Contractor's style wheelbarrow has 350 lb. load limit. Allows you to haul dirt, gravel, rocks, bricks, debris—all types of heavy loads—with confidence and ease. Rust-resistant baked-on enamel finish. Front steel bumper. Continuous hardwood handles bolt securely to front wheel. 92-1410-7



Super Glue-3

For **99**
Sale Price



50 Ft. Reinforced Vinyl Garden Hose

6⁹⁹
Sale Price

- Reinforced tire cord core
 - Durable solid brass couplings resist corrosion
 - 325 lbs. burst strength
 - 1/2 in. inside diameter
- Select a garden hose you can depend on! 50 Ft. long nylon reinforced hose has been tested to 325 lbs. burst strength for long life. Solid brass couplings resist corrosion. Constructed to last through years of rugged use.

50 Ft. Reinforced Vinyl Hose... 4.99
52-8444-8
75 Ft. Reinforced Vinyl Hose, 1/2 in. inside dia. 12-8453-9 10.99

Chromed Lever Spray Gun

1³⁹
Sale Price

(Inset) Pistol grip chromed hose and spray gun. Trigger lock. Lesan® valve. 92-8128-8

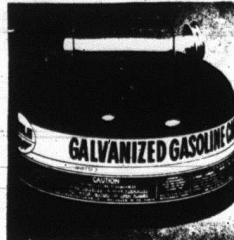
Pre-Summer Special

Prolong the life of your home air conditioner.

Let us Acid Clean, Oil and install a New Filter

For only \$15.00 in Shop

Call Western Auto Appliance Repair
Mt. Vernon 256-2616



2 1/2 Gallon Heavy-Duty Galvanized Gasoline Can

Sale Price **4⁹⁹**

- 26 gauge galvanized steel gas can with reinforced construction
- Dome-shaped with vent cap
- Flexible 1 1/2 in. neoprene spout

Dome-shaped 26 ga. galvanized steel gas can will not rust. Seamless top, bottom is double seamed to body. 95-1420-9



Your Choice—Hand Tools

69^c
Each
Sale Price

Cultivator, Hardwood handle. 92-1435-4
Weed Digger, Steel blade. 92-1438-8
Trowel, Hardwood handle. 92-1437-0
Trowel/leveler, Steel blade. 92-1436-2



Foot Operated Air Pump

3⁶⁶
Sale Price

Foot operated air pump for lightweight, portable pumping needs. 100 lb. pressure gauge. 24 in. air hose with reliable thumb-lock connector for tight pressure. Non-slip pads for safe, accurate pumping. Foot pedal for easier operation. Keep handy in trunk of car or garage. 15-6415-2

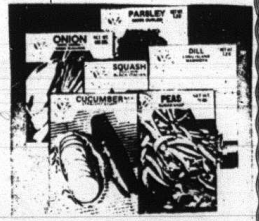


WD-40 Spray Lubricant

1⁷⁷

Sale Price

WD-40 lubricant dries out wet ignitions, stops squeaks, forms an invisible barrier that protects against corrosive elements. Loosens rusted parts and frees sticky mechanisms. Keeps controls and linkages working freely. WD-40 leaves no gummy residue. 12 oz. 78-1377-7



Flower & Vegetable Seeds

8 For 1⁰⁰

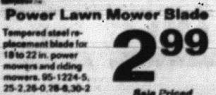
Assorted packets. 92-1114-18



Power Lawn Mower Spark Plug

89^c
Sale Price

1/2 in. hex. Replacement Spark plug for Autolite A-7, Champion J-171M, C-J-8, AC-1, 1M58. 14mm thread. 95-1271-5



Power Lawn Mower Blade

2⁹⁹
Sale Price

Tempered steel replacement blade for 18 to 22 in. power mowers and riding mowers. 95-1224-5, 25-2, 26-0, 18-4, 36-2



Fix-a-Flat Tire Sealant

88^c
Sale Price

Don't be caught stranded on the road without a can of Fix-a-Flat! Sealant tires quickly and easily in emergency situations. Allows you time to get your car to the nearest auto repair station. Keep a can in your glove compartment or in your trunk at all times. Convenient 12 oz. spray can. 15-4937-8



Spin Cast Rod and Reel

6⁹⁹
Sale Price

1 pc. solid glass rod. Daise reel has 4:1 high-speed gear ratio for quick response & on/off anti-reverse switch to prevent reel from back winding. 79-1597-8 w/1205



4-Wheel Hand Truck and Dolly

Heavy-duty welded steel frame. 500 lb. horizontal capacity. 300 lb. vertical. 45-6143-7 **16⁸⁸**