



Members of the 1983 Rockcastle County High School Baseball Team that finished with a 10 and 8 record are shown above at the Annual Athletic Banquet. Front row, from left to right are: Gary Fain, James Bradley, Rex Oliver and Spencer

Benge. Second row: Jeff Lear, James Hamilton, Jeff Albright, Alan Hammond, Tim Albright and Teddy Lawrence. Back row, from left: Johnny Poynter, Louis Tagliaboschi, Tim Smith, Bruce Blanton, Steve Halcomb and Jeff Hamm.



Members of the 1983 Rockcastle Rockets football team that finished 9 and 3 on the season are shown above at the athletic banquet last week at the high school. front row, left to right: Teddy Lawrence, Mike Bryant, Troy Williams,

Tim Albright and Rodney Brummett. Second row, from left: Jeff Lear, Greg Long, Randy Dillingham, James Poynter, Boyd Alexander and Scott Robinson. Third row: Steve Halcomb, Burley Burkhardt, Jeff Hamm, Gary Fain and Tim Roberts.

Stacy Craig, Shane Faulkner, Tena Halcomb, Kandi

Hamm, Alan Purcell, Alison Sowder, Melissa VanHoose.

7TH GRADE
Shannon Parkerson, Leslie Norton, Andy McKinney, Randall Hayes, Ivan

Hayes, Any Hamm, Darren Cole, Dana Cash, Traci Burdette, Sonya Bullock, Charlie Cameron, Lisa McKinney, Jeff Smitherm, Roger Wilson, Cindy Irvin, Pam Miller, Tracy Sowder.

8TH GRADE
Jerry Singleton, Teresa Brown, Johnny Harris, Bruce Mink, Saica Morgan, Greg Rowe, Stephanie Reynolds, Tina Simpson.

If your plans call for more acres, call a specialist.

If you're planning to add acres to your operation, talk to a long-term agricultural credit specialist...your Land Bank loan officer. We've helped a lot of farmers expand their operations. Your Land Bank specializes in agricultural finance, offering competitive interest rates, flexible terms and affordable payments. Call or stop by your local office soon.

South East Ky. FLBA
Don Coffey, Branch Manager
U.S. Highway 27
Stanford, Ky. 365-9118

The Land Bank

Close to the land and the people who work it.



Rockcastle Co. Speedway

2 mi. off I-75 Exit 59

Mt. Vernon, Ky.

40 Lap Memorial Day Race Monday, May 30

\$1,200 to win (Late model)

\$200 Semi Latc

\$150 Street Stock

\$75 Street Stock Semi

Gata open 5:00 Races 7:30

Track Phone 256-4213

For Information 758-4123

ON JUNE 4, 1983 ROCKCASTLE SPEEDWAY CHANGES TO SATURDAY NIGHT

Gates Open 5:00 p.m. Races 7:30

Brodhead Honor Roll

4TH GRADE

Rebecca Albright, Anthony French, Michelle Hamm, Dana Harris, Larissa Hayes, Shanna Kidwell, Sheila Phillips, Teresa Azbill, Becky Birney, Lisa Blanton, Lisa Bullock, Kevin Goff, Robin Mullins, John Payne, David Sargent, Dana Durham, Patrick Elkins, Janis Hayes, Mark Houk, Anita Sowder, Chris Thompson.

5TH GRADE

John Adams, Stacy

Barron, Angie Bussell, Dane Cox, Timothy Dillingham, Doug Durham, Donna Harper, Wanda Hayes, Stacy Moore, Kevin Rowe, Mindy Sargent, Patricia Stanfield, Angie Travillian, Robin Elkins, James Hopkins, Detrina Leece, Angela McKinney, Vickie Petrey, Scott Price, Aaron Purcell, Cynthia Wolfe.

6TH GRADE

John Ford, Leigh Ann Rowe, Scott Thompson, Bobby Powell, Denise Tyree, Lisa Wilson, Angie Taylor, Greg Reynolds, Stephanie Morris, Melinda Irvin, Casey Hargadon, Scott Chattelle, Angie Albright, Tammy Bullock,

BIBLE BAPTIST CHURCH

(U.S. 25 South)

ANNOUNCES

VACATION BIBLE SCHOOL

(Every morning)

AND

REVIVAL

(Every night)

THE SAME WEEK

MAY 30 - JUNE 5

TIME: 9:00 a.m. - 12:00 noon

AGE: K-6th grades

ACTIVITIES:

Arts & Crafts, Bible Stories, Puppets, Refreshments, Singing and a VBS Choir.

REGISTRATION:

On Friday, May 27 and Saturday, May 28,

you can register your child at Pic-Pac or the

Bank of Mt. Vernon from 9:00 a.m. to

3:00 p.m. or call 256-5862 or 256-4477.

TIME: 7:00 p.m. each evening and

11:00 a.m. Sunday morning

EVANGELIST:

Bro. Sherman Smith, Associate pastor, Northside Baptist Church, Lexington, Ky.

SPECIAL MUSIC:

Sherman & Sharon Smith and on Friday & Saturday night, "The Singing Teens" from Northside Baptist Church in Lexington, Ky. (30 young people singing for the Glory of the Lord.)

JOIN US!!!

Don Stayton, Pastor

SERVICES
Sunday 10 a.m.
6 p.m. Worship
Wednesday 7:30 p.m.
Radio WBVK
Sunday 8 a.m.



Why I Don't Go To Church

Christians are commanded: "Not forsaking the assembling of ourselves together, as the manner of some is; but exhorting one another, and so much the more, as ye see the day approaching" (Heb. 10:25). This verse commands that Christians assemble, but the TIME is not specified. The Bible teaches by approved examples as well as direct command (Phil. 4:9). We find an approved example of the Lord's Day assembly in Acts 20:7, 1 Cor. 16:2. Therefore, the Lord appointed that we meet on the first day of the week. A willful failure to meet at this time would be a transgression of God's law (1 John 3:4). Some years ago a news reporter invited people to send in their response to the statement, "Why I don't go to church." After he had received a number of replies, he decided to show the weakness of their alibis by inserting the word "movies" wherever "church" appeared in their letters. Here is a sampling of his column. One said, "I am out of the habit of going to the movies, that's why I no longer attend." Another

her wrote, "I know a man who has gone to the movies for years, and he is no better than I am." Still another remarked, "There are as many good people outside the movies as inside." Some commented, "I stay away from the movies because I went when I was a child." A number of other excuses were given which proved equally absurd when "movies" was substituted for the word "church". The reasons given were not valid. They were attempts to conceal a declining interest in their spiritual life, a refusal to walk in the footsteps of Jesus, or a lack of love for God's people. The Providence church of Christ stands for the truth. Discard your threadbare excuses and start attending our services. Attending services doesn't depend on how FAR you live from the building, but how CLOSE you live to God!

SERVICES
Sunday 10 a.m.
6 p.m. Worship
Wednesday 7:30 p.m.
Radio WBVK
Sunday 8 a.m.

Farm & Home News



We Are What We Eat

By Cheryl Witt
County Extension Agent
For Home Economics

Are you trying to lose weight? These are the foods to avoid: sugar, candy, honey, jam, jelly, cranberry juice, maple syrup, pie, most cakes, cookies, pastries, condensed milk, regular soft drinks, candy coated nuts, fried, scalloped or creamed foods, beer, wine or other alcoholic beverages.

Cool Refreshing Drink
1 orange
1/2 cup cranberry juice
4 small ice cubes

Peel orange and remove seeds; place in blender with 1/2 cup cranberry juice. Blend. Makes a cool refreshing drink. You could substitute any fruit or juice other than the ones mentioned. Makes 1 serving.

Low Calorie Tips
Watch the way you prepare foods:
boiled egg - 75 calories
fried egg - 105 calories
boiled chicken - 95 calories
fried fish - 305 calories
baked chicken - 90 calories
fried chicken - 155 calories
boiled beef - 105 calories
fried w/cream and sugar - 65 calories.

...Instead of seasoning with margarine, sugar or fats, use: bouillon cubes - 5 calories; vinegar - 2 calories per Tbsp.; lemon juice - 5 calories per Tbsp.; parsley, spices, herbs.

...To save calories and money, replace catch meals with crunchy cereals.

...Measure your servings or use smaller plates, bowls for eating.
...Forget second helpings!
...Try using less fat in your recipes; you'll like it better than those bulges and rolls: baked - 1/2 cup; shortening in your cake recipe. Better results with butter or margarine than with solid-type shortenings.
B) Make muffins with 1/2 usual fat.
C) Make biscuits with 1/2 usual fat.

Monogramming
A monogram adds distinction and individuality to personal clothing and these special gifts. Make a personal statement with a monogram.
By: *[Signature]*
P.O. Box 375
Mt. Vernon, Ky 40456
Ph: 606-256-2394
The Hills of Home Shop
offer monogramming in many styles, sizes and colors. For additional information, please call Springs.

(RSK) ABC
Style CF N15A
A2B <M15>
Style 31 Style 1
RGH SDE
Style 4 style 512
chris
ROCKCASTLE COUNTY CLUBS 1983
Style LCB style 5
Betsy DBF
Style C6A-C6B style 40
Clare Paul GKL
Style 10111 style 9

D) Make pastry with 1/4 usual fat.
E) Although taste panels note a reduction in tenderness and flavor, they are still "highly acceptable".
...Throw it out! You're not a human garbage disposal. Better you throw the left-over out or use creativity the next day or freeze it for the future. Better learn to cook just enough for the meal.

Did you know that:
Hershey's Milk Chocolate Bar has 220 calories.
Mr. Goodbar has 250 calories.
Reese's Peanut Butter Cup has 240 calories.
Fruit Yogurt has 231 calories per 8 oz.
Apple has 80 calories.
Vanilla ice cream has 130 calories in 1/4 cup.
-10 pretzel sticks have 25 calories.



Farm & Home News

Storing Hay Outside
By Tom Mills
County Extension Agent
for Agriculture

Losses in large round down

bales stored outside depend upon a combination of factors. These factors are: moisture content of the hay at baling time, amount of rain or snow during the storage period, internal drainage of the soil on which bales are stored, amount of space between stored bales, forage type (grass or legume), and the shape and density of the bale.

The key to keeping dry matter losses to a minimum are (1) bale at 20-22 percent moisture, and (2) prevent the infiltration of moisture into the hay after it is baled. With the threat of barn fires removed by stored bales, forage type operators of large round bales try to bale hay with too much moisture. But excessive heating and molding can cause the loss of as much as one-third of the feeding value of hay baled at 28 percent moisture. Every effort should be made to reduce moisture infiltration into hay stored outside. The movement of moisture into the hay can be reduced by storing on crushed stone, old tires or poles. An Indiana study showed that 57 percent of the weather deterioration can be prevented by storing bales on rock with a well-drained storage site. Every year, losses run in the millions of dollars.

Bale row alignment and spacing is an easy way to reduce storage losses. Always run bale rows up and down the slope. Always

leave a minimum of three feet between bale rows for air circulation. If bales are stored side by side, leave at least 24 inches between bales. Never store bales under trees or in the shade of buildings.
Weather deterioration has generally been more severe with legume or mixed grass-legume hay than with grass hay. In a Missouri study, uncovered bales of alfalfa had 41 percent greater loss than baled stored bales. They concluded that savings from lost hay would more than offset the cost of barn or covered storage for alfalfa.

Skilled operators can roll uniform, firm bales that will match when placed end to end and will not flatten out. When cone-shaped bales are laid end to end more area is exposed to weathering. Also, loose bales will flatten out and more moisture will move from the ground into the bale.



4-H Horse Camp

By Martha W. Brown
Special Extension Agent
For 4-H

A special weekend horse camp will be held Friday, Saturday and Sunday on June 10-12, at the J.M. Felner Camp for youth age 9-18. The camp schedule includes riding and

showing classes, trail rides, a program on leather and equipment care and training in horse health, maintenance and safety. Those who will be able to take their own horses with them to camp and show them at the 4-H Horse Show on Sunday, June 12, in time is at 1:30 p.m. Friday, June 10 at the camp and the cost is \$20.00. Applications are available at the Extension office through June 3.

Regular 4-H Camp Deadline Extended

The number of Rockcastle County youth camping at J.M. Felner 4-H Camp this summer is expected to be the largest ever. Applications are still being turned in. The Extension office for regular camp (July 4-8). Providing space is available, applications will continue to be accepted through June 17th. 4-H youth should make plans now not to miss out on this fun filled week at 4-H Camp.

Blood Pressure Check

The Rockcastle County Hospital will be offering free blood pressure tests and blood typing to the public on Saturday, May 28 in front of the Bank of Mt. Vernon. The tests will be performed by hospital personnel in recognition of May as National High Blood Pressure Month. The booth was canceled May 27 because of rain.

Special Program

Dr. Sam Quick, Family Life Specialist with the University of Kentucky will be presenting the training program on "Those Rich in Experience" on Tuesday, May 31st at 7:00 p.m. at the PCA Building in Mt. Vernon. All interested persons, especially those working with older persons, to attend. The program will include dealing with attitudes of society toward growing older, how older persons can contribute to society and how each of us, old and young or in-between can deal with the aging process.



Neal Cornett of Route 4, Mt. Vernon caught this 5 1/2 lb. catfish in early May. Neal Cornett and the catch was made from Rentfro Creek.

<p>19' Cemetery Arrangements Open 9 a.m. to 9 p.m. Six Days Weekly</p> <p>\$1.19</p> <p>14" Styro Heart w/Roses \$6.97 22" Styro Cross w/Roses \$6.97 18" Bible w/Rose Buds \$6.97</p>		<p>Discount John's Store London Mt. Vernon U.S. 25 & Airport Road U.S. 25 South</p> <p>WED. THRU MON.</p>	
<p>Flag Set \$6.97 Limit 1 Set consists of 3 ft. x 5 ft. flag, heavy duty bracket, 6 ft. 2 pc. metal pole, 12 ft. of cord & golden eagle for top.</p>		<p>BIG 2 LITER \$1.11 Limit 6</p>	
<p>FAMILY CAMPING PRODUCTS</p> <p>SINGLE BURN PROPANE LANTERN \$14.97 DOUBLE BURN PROPANE LANTERN \$19.97 DOUBLE BURN PROPANE STOVE \$26.97 LIMITED SUPPLY AT EACH STORE</p>		<p>SLUMBER BAGS FULL SIZE DUKES, G.I. JOE HOLLY HOBBY \$15.97 Limit 2</p>	
<p>turtle wax BUG & TAR REMOVER \$1.27 Each 16 Oz. Lig. 12 Oz. Spray</p>		<p>TRUCK BED MATS London Store Only \$79.97 Limited Supply Made of heavy duty Nyracord Available in Black Only</p>	
<p>FM/AM Portable \$13.00 TWO WAY POWER</p>		<p>Proctor Silex 10 Cup Coffee Maker \$15.97 Limit 1</p>	
<p>Beach Thong \$1.39 4 layer sole, color, mens, ladies & child</p>		<p>Stainless Steel Thermos w/handle \$15.97 Limit 2 1 Liter</p>	
<p>KENTUCKY JERSEY \$4.57 Adult-Youth</p>		<p>Twill Jeans Boys \$7.00 4 Pocket Denim Navy, Khaki Slim and Reg. 8-18</p>	
<p>Darwa REEL \$29.97 MILLIONAIRE HEAVY DUTY Limited Supply Limit 1 Strong unitized frame. Smooth six-disc drag system. Power handle. High speed retrieve.</p>		<p>Pick a Pair and Save on Ace Oil and Air Filters! Oil Filters..... Sale Price \$1.97 Air Filters..... Sale Price \$2.77 Filters To Fit Most American Cars & Trucks</p>	
<p>TOP SOIL BIG 40 LB. \$1.27 BAG Limit 6</p>		<p>TROUBLE-LIGHT Assorted 10 & 15 Foot Cords \$2.99 Ea. Limit 2 BULB NOT INCLUDED</p>	
<p>ALBUM SPECIAL: COMPLETE STOCK BOB SEGER JOURNEY \$5.66 EACH (REG. \$9.95 LIST) Give the gift of music.</p>		<p>Summer Sportswear 25%-30% off Ladies and Jr. Wrangler, Runner-Up, Land and Sea and Many More Brand, Names</p>	

Professional Services

CARPET KLEEN! The best in Steam carpet cleaning. Free estimates. Call Lloyd Graham, 256-5536. 40xnt

Building, Remodeling and Repair Work done at reasonable rates with quality results. For free information, call 256-5861 after 5 p.m. or see Dengil R. Allen. 4xntf

Grave Markers and Monuments: In stock at all times. McNew Monument Sales, U.S. 25, 4 miles north of Mt. Vernon. Ph. 256-2232. ntf

Hysinger Carpets: Carpet direct from the mills. Shag, commercial-residential, Armstrong vinyl. For all your carpet needs, visit Hysinger Carpets, Mt. Vernon, Ky. Ph. 256-5413. ntf

NOTICE: For electric wiring and plumbing, call a licensed plumber at 256-6250. 38ntf

BUY A HELDOR POOL
16x32x3x8"
\$495
Completely Installed
Many sizes and shapes available.
Call (606) 274-4890 after 5 p.m.

WANTED: To do baby-sitting in my home. Edna Singleton, 256-2267. 42x1

STOP TERMITES
Madison Termite and Pest Control
For Free Inspection & VA & FHA Inspections
Call Paul Burton
Mt. Vernon
Call 256-2318
Day or Night

Bulldozing Work
Ponds, Yard Work, Grubbing, etc.
"Free Estimates"
James Carpenter 256-5370

Jim's Body Shop
U.S. 2. S.
next to Sup. or
James M. Motter
256-5510
Free insurance estimates.

PAINTING
Interior or Exterior
Commercial-Residential
Call "Job Wizards"
David Sawyer 256-5383
Stan Harris -256-2679

SIDING SALE
Vinyl or aluminum insulated siding.
1000 sq. feet installed on average size house only \$688.00.
Labor & material. Call collect, free estimates or write for free catalog—Trademark Builders, P. O. Box 652, Somerset, Ky. 42501—Phone Collect 636-679-5707, full time representative now in London. Buy here, pay here. We sell all name brands, Reynolds, Mastic, Certain-Tied, Alcoa, Etc. Dozens and dozens of local jobs, ask to see some. We row have the world famous window and door trim machine. Let us show you some of its work.

Operations and hospital rooms cost more than you think...
Check with State Farm for hospital-surgical insurance.
BILL BAILEY
AGENT
Ph. 256-2119
Personal Health Insurance
The State Farm Way
Like a good neighbor, State Farm is there.
State Farm Mutual Automobile Insurance Company, Home Office Bloomington, Illinois

PAINTING AND CONCRETE WORK
Free Estimates
Call 256-4910, 256-5851
40x3p

Wanted
WANTED TO BUY: junk car bodies, used cars and scrap metal. Also seizing used auto parts. Call 256-4805. 40x4p

WANTED: sales learners, drivers license, free to travel, Rush resume to Box 441, Somerset, Ky. 42x3p

WANTED: goat, suitable to butcher. Call 758-4179. 42x1p

BIDS WANTED
The Rockcastle County Board of Education will receive sealed bid proposals to audit the general fund and other accounts until 7 p.m., June 7, 1983. Bid forms and specifications are available at the Superintendent's Office, Mt. Vernon, Kentucky. The board reserves the right to reject any or all bids. 42x2
"Childhood knows the human heart." Edgar Allen Poe

Painting Interior & Exterior
25 years experience
Free estimates
453-2751

NOTICE
Decorator Cakes
Will Bake Any Kind of Cake For You.
Margaret Owens
256-5533

Blown-In Insulation
For all Your Insulation Needs
Call JIM'S INSULATION
Mt. Vernon, Ky.
256-4001
James E. Nicely, Owner

PAINTING
Interior or Exterior
Commercial-Residential
Call "Job Wizards"
David Sawyer 256-5383
Stan Harris -256-2679

BIDS WANTED: The Housing Authority of Mt. Vernon will accept sealed bids until 9 a.m. June 20, 1983, for Fire and Extended Coverage Insurance for low-income housing units on Town Hill and elderly housing on Lovell Lane, both located in city of Mt. Vernon, Ky. Specifications may be obtained by contacting Floyd L. Owens, executive director, Housing Authority, Mt. Vernon, Ky. The Housing Authority reserves the right to reject any or all bids. 41x2

BIDS WANTED
The City of Mt. Vernon will accept sealed bids for audit of the City's Water and Sewer Fund, General Fund, Municipal Aid, Rev. and Sharing and Economic Assistance Fund, until 7 p.m. June 13, at which time bids will be opened publicly. 42x3

BIDS WANTED
Sealed bids will be accepted by the City of Mt. Vernon for audit of Urban Development Action Grant, until 7 p.m. June 13, at which time bids will be opened. Bids must be in accordance with HUD guidelines for this grant. 42x3
FOR SALE: for storage and repair, 1976 MG Mid. get, Serial No. GAN60G1743 93C. The lowest bidder on Friday, June 3, at 11 a.m. 41x3p

FISHING REPORT
Water levels at several of Kentucky's largest lakes are at or near maximum, and activity is light statewide. The lake-by-lake rundown, as reported by fish and wildlife conservation officers:
Kentucky: very little activity; in tailwaters, high water; no activity; muddy, rising, 10 feet above summer pool and 65 degrees.
Barkley: crappie slow over submerged cover; catfish slow off rocky points and banks; in tailwaters, no activity; murky, falling

slowly, 10 feet above summer pool and 65 degrees.
Barren: black bass slow casting surface lures and spinner baits around flooded brush; crappie slow over submerged cover; clear to murky to muddy, rising, 29 feet above summer pool and 69 degrees.
Nolin: black bass fair on surface lures and spinner baits around flooded brush; crappie slow along tree line (6-8 feet deep); murky to muddy, rising, 34 feet above summer pool and 70 degrees.
Rough River: crappie slow over submerged cover, bluegill slow off shallow banks; clear to murky to muddy, stable at 27 feet above summer pool and 68 degrees.
Herrington: very little activity; clear to murky to muddy, stable at 19 feet above summer pool and 67 degrees.
Green: crappie slow over submerged cover; bluegill slow off shallow banks; black bass slow casting spinner baits off

Rummage Sale
Saturday, May 28
beginning at 9:00 a.m.
Scaffold Cane Cemetery
For more information, call Bessie Brock
All proceeds go for the upkeep of the cemetery.

For Newer Homes
A DISCOUNT ON YOUR HOMEOWNERS INSURANCE
If your home is seven years old or less, we can save you up to 14% on your Homeowners Insurance. That's how much we'll discount the basic policy premium on a home built within the last year. If your home is two years old, you'll save 12%. Three years, 10%. And so on.
So if you own a newer home, find out from us how much you can save in premium dollars with a call. You'll find we're friends you can depend on.

Age of Dwelling	You Save
0-1	12%
2	12%
3	10%
4	8%
5	6%
6	4%
7	2%

Donnie Singleton
Mt. Vernon
Ph. 256-2611
Representing
State Auto Insurance
A friend you can depend on

slowly, 10 feet above summer pool and 65 degrees.
Barren: black bass slow casting surface lures and spinner baits around flooded brush; crappie slow over submerged cover; clear to murky to muddy, rising, 29 feet above summer pool and 69 degrees.
Nolin: black bass fair on surface lures and spinner baits around flooded brush; crappie slow along tree line (6-8 feet deep); murky to muddy, rising, 34 feet above summer pool and 70 degrees.
Rough River: crappie slow over submerged cover, bluegill slow off shallow banks; clear to murky to muddy, stable at 27 feet above summer pool and 68 degrees.
Herrington: very little activity; clear to murky to muddy, stable at 19 feet above summer pool and 67 degrees.
Green: crappie slow over submerged cover; bluegill slow off shallow banks; black bass slow casting spinner baits off

Hill Top Auto Sales
1980 Ford Pickup, 1 owner, low miles, loaded
1979 Mercury Marquis, loaded
1980 Ford Fairmont, low miles, 6 cyl., auto, PS/PB
1978 Ford Granada, low miles, 6 cyl., auto, air
1976 Chevy Monte Carlo, V8, Auto, Air
1977 Chevy Monte Carlo, V8, Auto, Loaded
1977 Buick Regal, 6 Cyl., Auto, Air
1976 Olds Delta 88, V8, Auto, Air
1976 Buick Centra, V8, Auto, Air
1975 Buick Skylark
1973 Chevy Impala, V8, Auto, air
1972 Toyota Landcruiser, 4x4, 6 Cyl., Std.
1 Mile South on 25
CLEAN USED CARS
RT. 5 Box 229
Mt. Vernon

Rummage Sale
Saturday, May 28
beginning at 9:00 a.m.
Scaffold Cane Cemetery
For more information, call Bessie Brock
All proceeds go for the upkeep of the cemetery.

For Newer Homes
A DISCOUNT ON YOUR HOMEOWNERS INSURANCE
If your home is seven years old or less, we can save you up to 14% on your Homeowners Insurance. That's how much we'll discount the basic policy premium on a home built within the last year. If your home is two years old, you'll save 12%. Three years, 10%. And so on.
So if you own a newer home, find out from us how much you can save in premium dollars with a call. You'll find we're friends you can depend on.

Age of Dwelling	You Save
0-1	12%
2	12%
3	10%
4	8%
5	6%
6	4%
7	2%

Donnie Singleton
Mt. Vernon
Ph. 256-2611
Representing
State Auto Insurance
A friend you can depend on

Mt. Vernon Signal Thursday, May 26, 1983 P-19
points; in tailwaters, bluegill, crappie and catfish fair; murky to muddy, rising, 30 feet above summer pool and 68 degrees.
Cumberland: crappie slow along shoreline brush banks; bluegill fair in lower lake; black bass slow on surface lures falling around flooded brush; in summer pool and 65 de-tailwaters, trout good; clear to

ORDINANCE
AN ORDINANCE Relating to the Annual Budget and Amendment Thereof.
Whereas the County of Rockcastle has received unanticipated revenues in the amount of \$29,897.94 from Wallick Construction Company, for the construction of a road to Castle Village Housing Project in Brodhead, Ky. and the balance to be used for other County Road Fund purposes.
It is ordained by the Fiscal Court of Rockcastle County that:
SECTION ONE: The annual budget for Fiscal Year 1982-83 is amended to:
(a) Increase receipts of the County Road Fund Bu-

(a) Increase receipts of the County Road Fund Budget, by \$29,897.94 to include revenues from Wallick Construction Company, for the construction of a road to Castle Village Housing Project in Brodhead, Ky.
SECTION TWO: The sum added to budget expenditures in Section One is appropriated for general governmental purposes.
Temporarily approved by the Fiscal Court this the 11 day of May, 1983.

Approved as to form and classification this the 12th day of May, 1983.
Robert L. Purdom,
State Local Finance Officer
This amendment to the Budget Ordinance and Appropriation was adopted by the Fiscal Court on the 16th day of May, 1983.

ORDINANCE
AN ORDINANCE Relating to the Annual Budget and Amendment Thereof.
Whereas the County of Rockcastle has received unanticipated revenues in the amount of \$12,635.84 in the County Road Fund Budget beyond the estimated receipts for the 1982-83 Fiscal Year.
It is ordained by the Fiscal Court of Rockcastle County that:
Section One: The annual Road Fund Budget for FY 1982-83 is amended to:
(a) Increase receipts of the County Road Fund by \$12,635.84 to include revenues beyond the estimated receipts of the 1982-83 County Road Fund Budget.
(b) Increase Budget expenditures account no.

110-A-5 Road Maintenance wages by \$4,000.00
110-B-3A Road Maintenance materials by \$8,635.84
Section Two: The sum added to budget expenditures account in Section One is appropriated for general governmental purposes.
Temporarily approved by the Fiscal Court this the 3rd day of May, 1983.
Bob Jasper, County Judge/Executive

Approved as to form and classification this the 11th day of May, 1983.
Robert L. Purdom,
State Local Finance Officer
This amendment to the budget ordinance and appropriation was adopted by the Fiscal Court on the 16th day of May, 1983.

ORDINANCE
AN ORDINANCE Relating to the Annual Budget and Amendment Thereof.
Whereas the County of Rockcastle has received unanticipated revenues in the amount of \$22,851.49 in the General Fund Budget beyond the estimated receipts for the 1982-83 Fiscal Year.
It is ordained by the Fiscal Court of Rockcastle County that:
SECTION ONE: The annual General Fund Budget for FY 82-83 is amended to:
(a) Increase receipts of the General Fund by \$22,851.49 to include revenues beyond the estimated receipts for the 1982-83 General Fund Budget.
(b) Increase Budget expenditures account no.

70-C-7B reserve for emergencies-for transfers only-\$22,851.49
SECTION TWO: The sum added to budget expenditures Account in Section One is appropriated for general government purposes.
Temporarily approved by the Fiscal Court this the 3rd day of May, 1983.
Bob Jasper, County Judge/Executive

Approved as to form and classification this the 11th day of May, 1983
Robert L. Purdom,
State Local Finance Officer
This amendment to the budget ordinance and appropriation was adopted by the Fiscal Court on the 16th day of May, 1983.

Temporarily approved by the Fiscal Court this the 3rd day of May, 1983.
Bob Jasper, County Judge/Executive
Approved as to form and classification this the 11th day of May, 1983
Robert L. Purdom,
State Local Finance Officer
This amendment to the budget ordinance and appropriation was adopted by the Fiscal Court on the 16th day of May, 1983.

Area Deaths & Funerals

Bradley Powell

Mr. Bradley Powell, 82, of Cox, died Tuesday, May 17, at his home, after an illness.

He was born in Jackson County on November 19, 1900, the son of the late John and Jose Smith Powell and was a retired farmer and member and deacon of the Conway Baptist Church.

He is survived by his wife, Mrs. Floy Powell; seven sons, John Powell of Berea, James Powell of Corbin, Willie Powell of Route 3, Mt. Vernon, Albert Powell of Lexington, and Jesse Powell both of Route 3, Berea, George Powell of Route 1, Mt. Vernon and Frank Powell of Berea, one sister, Mrs. Mamie Kretton of Richmond, Indiana; 18 grandchildren.

He was preceded in death by one daughter, Virginia Lee Powell and one grandson, James Bradley Clark.

Funeral services were held Friday, May 20 at the Conway Baptist Church by Bro. Bill Hamilton and Bro. Denton Sears. Burial was in the Powell Cemetery.

Arrangements were by the Dowell and Martin Funeral Home.

Fannie Bullock

Mrs. Fannie Bullock, 72, of Route 4, Mt. Vernon, died Sunday, May 22, 1983 at the Rockcastle County hospital, after an illness of several weeks.

She was born on October 2, 1910, in Rockcastle County, the daughter of the late George and Orpha Barnes McClure. She was a member of the Freedom Baptist Church.

Survivors are her husband, Fred Bullock of Route 4, Mt. Vernon; three sons,

Lester Bullock of Lockland, Ohio; Dalmas and Ray Bullock, both of Route 1, Mt. Vernon; three daughters, Mrs. Janie McClure, route 1, Mt. Vernon, Mrs. Irene McKinney of Route 4, Mt. Vernon and Mrs. Ely Burge of Somerset; three sisters, Mrs. Mary Walden of Franklin, Indiana, Mrs. Maggie Hasty of Lebanon, Indiana and Mrs. Zorie Miller of Danville; and 14 grandchildren.

She was preceded in death by two brothers and four sisters.

Funeral services were held Tuesday, May 24 at the Freedom Baptist Church by Rev. Noel Dodson and Rev. Jeffery Wheelodon. Burial was in the Skazes Creek Cemetery.

Funeral arrangements were by the Cox Funeral Home.

Aubert Ponder

Mr. Aubert B. Ponder, 58, of Covington and formerly of Livingston, died Wednesday, May 18th, at St. Elizabeth Medical Center by south in Covington.

He was born in Livingston on September 1, 1924, the son of the late W.H. and Flora Carpenter Ponder.

He was a World War II Marine veteran, a retired worker at Rockcastle Brewing Company in Newport, a member of Covington Lodge 109 and the Free and Accepted Order of Masons.

Survivors are, his wife, Eula Hensley Ponder of Covington and formerly of Livingston; one son, David Ponder of Covington; two brothers, Clayton Ponder of Mt. Vernon; Truman Ponder of Hamilton, Ohio; one sister, Mrs. Anne Rhodes of Florence, and two grandchildren.

He was preceded in death by two sisters and three brothers.

Funeral services, with a Marines honor guard, were held Saturday, May 21st at the Allison and Rose Funeral Home in Covington by Bro. Owen Edwards of Winchester and formerly of Livingston. A flag cere-

mony and burial were held at the Floral Hills Memorial Gardens in Covington.

"Tragic accident"

(Cont'd from front)

Besides their father, they are survived by their paternal grandparents, Edwin Burke of Broodhead and Evelyn Rowlett of Berea; their maternal grandparents, Mr. and Mrs. Lewis Mullins and one great grandmother, Mrs. Mamie Halcomb of Broodhead.

Funeral services for the three will be held (today) Thursday, May 26, 1983, at 2:00 p.m. at the Cox Funeral Home with Bro. Lester Caldwell officiating. Burial will follow in the Elmwood Cemetery.

Funeral services for the Cox Funeral Home after 4 p.m. Wednesday.

"McClure"

(Cont'd from front)

shops as he once was, but he does take orders for some items such as his buckeye oval trays. He gets invitations from everywhere to attend fairs, but Berea is the only fair he attends.

Another item he gets lots of calls for is the crooked handle walking cane. In order to find the right kind of sapling, he goes to a steep bank where the root grows out and then up.

He likes to make unique items, too, such as working pliers out of one piece of wood, a cane with a snake chasing a frog, interlocking chain, pocket knife, and false teeth, just to name a few.

Included in the McClure's busy life is a twice-a-year visit and training session for a wood-working class at Union College. Rena cooks dinner for all and William gives them all a "hands on" experience in hand carving. Berea College students have, for years, frequently visited the McClure's.

William has also taken the time to build cabinets for his wife. The cabinets number more than twice those in most kitchens and they are made of solid black walnut.

The McClure's oldest child is 38 and the youngest is 17. William said

he has told him that "the Bureau... storm, the quicker it's over with" (referring to their large family). But he says, "there's nothing to it. The harder the storm, the more of it there is."

Rena says she has gone to get the cows many times carrying two babies. The two youngest ones were 14 months apart. None were more than two years apart.

Eleven of their fifteen babies (2 died) were born in the log house behind their present home. The oldest child was a few months old when they bought the farm in 1943 and the last 3 were born in a hospital.

He had plans to tear the old log house down after he built the new one, but his grandpa talked him out of it, saying it was a better house than the new one ever would be.

Even though he has been offered \$20,000 for the house, his children, he says, don't want him to sell it. According to what uncle Joe Renner told William years ago, the house is probably at least 183 years old. It has a square lookout hole upstairs (apparently to watch for Indians).

William is missing his left forefinger, a permanent memento to his wood-working craft.

He says the accident was the "dumbest thing I ever did."

He said he was trying to get a couple of orders out to a gift shop one morning and without his knowledge someone had cranked the blades on his jointer as high as they would go causing the stump he had started to work on to slip and catch his finger.

He said he didn't know why, but he got to wanting

Compton certified "Tree Farmer"

Dr. Richard A. Compton has recently been certified as Rockcastle County's latest "Tree Farmer." Dr. Compton owns approximately 250 acres of farm- and woodland.

Dyer Branch in the southwest section of Rockcastle County. As a "Tree Farmer," Dr. Compton has shown a deep interest in managing his farm's woodland according to good forest management practices. Approximately 15 acres of abandoned field lands have been planted in black walnut and another 7 acres in yellow poplar. Dr. Compton also plants to improve some of his existing timber land by participating in some of the Forestry Incentives Programs (FIP) and Agricultural Conservation Program (ACP) for forest management improvement work. These are cost share programs designed to help farmers and landowners pay some of the cost of improving their woodland.

Dr. Compton and his wife Carla are deeply interested and very much concerned about improving their woodland for the benefit of their children

and a cigarette really bad and asked Rena to roll one for him. "She was about to roll one, but I said, cut that out, I ain't done a thing but cut my finger off."

He went to the doctor, came back home and got his orders out the same day.

William and Rena are tough, hard strong Appalachians who value tradition yet they are eager to embrace the changes and transitions that mean a better and easier life than they have known.

and for the benefit of future generations. "If we could get more landowners interested in improving their woodlands such as Dr. Compton and his wife, we'll have to worry about a shortage of forestry resources for the next generation to come," comments Ken McCauley of the Kentucky Division of Forestry.

The Tree Farm Program, sponsored by the American Forest Institute, a Forestry Industry Association, recognizes landowners who show outstanding in-



Dr. Richard [Andy] Compton and wife Carla became certified Tree Farmers of Rockcastle County.

terest in forest management. Its primary goal is to help assure that there will be a continuous supply of forest products such as lumber, pulpwood, wildlife, clean air, water and outdoor recreation.

Any landowners interested in this program, or in any other area of forest management assistance, should contact the Kentucky Division of Forestry, P.O. Box 130, Pineville, Kentucky 40977 or Steve Bullen, County Ranger, Route 3, Mt. Vernon, Ky. 40456.

Choose your Memorial Flowers

from
the

large selection available at

FRANKLIN'S

West Gate Center Mt. Vernon 256-5614

(Artificial and
silk arrangements)

Prices range from

\$5⁹⁹ to \$11⁹⁹



Absolute

Auction

of
Edward and Mallie Taylor's
45 Acre Farm
Friday, May 27, 1983, 6:30 p.m.
Quail Section of Rockcastle County

LOCATION: Approximately 7 miles southwest of Mt. Vernon and 8 miles southeast of Broodhead. Turn east off Ky. 70 at Bell's Grocery and proceed approximately 1 mile to the property. Auction signs will be posted.

Due to the dissolution of marriage, the sellers no longer need this desirable farm and have authorized our firm to sell it for the absolute high dollar.

This well-located farm consists of approximately 45.23 acres and is improved with the above-pictured, remodeled country home. The house has 6 rooms with 3 bedrooms, living room, kitchen TV room, bath and utility room with a washer/dryer hookup. It also has storm windows, wall to wall carpet and central heat provided by a fuel oil furnace. It is surrounded by lovely shade trees and some woodland which enhances the privacy of this farm. Water is provided by a good spring. Of the 45 acres, approximately 38 to 40 acres is cropland and pasture. Stock water is provided by a pond. The basic tobacco allotment is 1102 lbs.

Other improvements include the above-pictured combination stock and tobacco barn with 24 ft. shed. There is also a corn crib, chicken house and other necessary out-buildings.

AUCTIONEER'S NOTE: If you're in the market for a dandy farm with a modern house, be sure to attend this absolute auction Friday, May 27 at 6:30 p.m.

TERMS: 20% down day of sale, balance within 30 days with delivery of deed.

For Additional Information, Contact:

Ford Realty & Auction Co.

Auctioneers
Col. Jerry Ham
Col. Willard Bullock

"Selling the Country"

Mt. Vernon, Ky. Ph. 256-4545

Tragic accident claims the lives of three members of Rockcastle family

By Rick Anderkin

One of the most bizarre and tragic accidents ever to happen on Interstate 75, claimed the lives of three members of a Rockcastle County family Sunday afternoon around 5:30.

Jerry Burke and his wife, Pamela and their two children, Cindy and David, were traveling home from Berea, where they had been attending his family reunion, when the Datsun station wagon they were driving was struck head on by a stolen Kentucky State Police cruiser, according to Kentucky State Police public affairs officer Stanley Hale.

Killed in the accident were Pamela Mullins Burke, of Route 1, Mt. Vernon and her three year old daughter, Cindy. Five year old David Burke died on the way to Berea Hospital. Jerry, 34, was taken to the Berea Hospital and later transferred to the Albert B. Chandler Medical Center in Lexington where he was listed in fair condition at press time.

The driver of the stolen police cruiser, Denver Earl Holly, 37, of London was taken to the Rockcastle County Hospital, where he was treated and released into the custody of state troopers. Holly, who is also known as Earl Burdette, was taken before District Judge Dan Venters for arraignment Monday morning. Holly's bond was set at over a million dollars cash. Venters said that in view of the charges which had been filed against Holly, he did not think the bond was outrageous. Holly has been charged with three counts of murder, and one count each of theft by unlawful taking, first-degree assault and escape, drinking blood on a public highway, driving on the wrong side of the roadway and resisting arrest. Holly was already in custody on a bond in Laurel County, where he had been arrested in connection with an auto theft ring, according to KSP officer Stanley Hagood.

The accident has touched the lives of many people in Rockcastle County. "You just couldn't find a more perfect family," said Nancy Mullins, who attended church with the Burkes at Northside Baptist Church in Mt. Vernon. "Just a good Christian family, nice as they could be,"

she said. "Jerry and Pam would do anything for anybody," said Pam's brother-in-law Jeff Taylor. "Jerry and Pam's neighbor lived in Ohio most of the time and Jerry would mow his yard for him just about every week for nothing. You just couldn't find a more perfect family anywhere. It has devastated us all," Taylor added.

The chain of events that led to the tragic accident are as follows: State Trooper Marcus Daly was called to answer a report of a fight along I-75, approximately 6 3/10 miles north of Mt. Vernon, around 5:30 Sunday afternoon. When Daly arrived at the scene, the fist fight was over but Holly was highly intoxicated. Daly arrested Holly, handcuffed him behind his back and placed him in the rear seat of the cruiser. Daly then drove back to the car to arrest Reed P. Mills, 39, of Barbourville, also for public intoxication.

While Daly was arresting Mills, Holly managed to lower his hand-cuffed hands beneath his legs and pulled them up in front of his body. Holly then crawled over the front seat of the cruiser and drove away with the handcuffs still on. Holly drove approximately 3/10 of a mile before he crossed from the northbound lane into the southbound lane and continued to travel north approximately 2.6 miles until it collided with the Burke's station wagon. The traffic accident occurred around 3:40 p.m., according to Hale.

Mrs. Pam Burke, 32, was a data review technician for the Social Security Administration office in Richmond. Jerry is an employee at IBM in Lexington. David graduated from Kindergarten at Mt. Vernon Elementary this year.

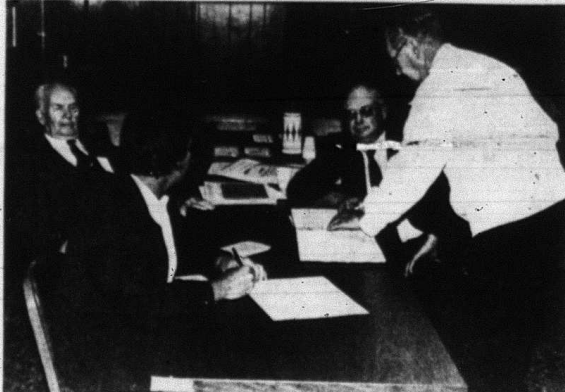
Pam was born on April 13, 1951 in Madison County, the daughter of Lewis and Louise Anderkin Mullins of Route 2, Mt. Vernon and was a member of Northside Baptist Church.

Besides her parents, she is survived by her husband, Jerry, two brothers, Larry and Lewis Mullins, Jr., both of Mt. Vernon; four sisters, Mrs. Nell Dixon, Mrs. Virginia Vanzant, Mrs.

Helen Whitaker and Mrs. Lisa Taylor, all of Mt. Vernon.

David Lee Burke was born on April 8, 1977 in Virginia and Cindy Joanna Burke was born on July 28, 1979 in Pulaski County.

(Cont'd to P-20)



The voter turnout was very light in Tuesday's primary, according to election workers across the county. In the North Mt. Vernon precinct, for instance, only a few more than 200 of over 600 registered vot-

ers showed up to vote. Above workers Vernon Griffin, Perry Sams and Henry Coffey verify voter Owen Dillingham (standing).

Bunning wins nomination; Collins apparent winner for Democrats; Rogers wins easily

It may be over and it may not.

Election '83 will go down in the record books as one of the closest ever in the Democratic primary for the nomination for Governor. Around 1 a.m. Wednesday morning, with only about a 2,000 vote lead and about 85 percent of the votes in, Lt. Governor Martha Layne Collins declared victory over her nearest opponent, Louisville Mayor Harvey Sloane.

In the Republican races, State Senator Jim Bunning was the easy winner over Lexington businessman Don Wiggins, and incumbent 15th District State Senator John D. Rogers of Somerset was the overwhelming winner over Dean Stewart, of Somerset.

Rogers defeated Stewart almost two to one in Rockcastle County, getting 649 votes to Stewart's 246. Here is how the vote went throughout the rest of the 15th District, Lincoln County: Rogers 280, Stewart 239; Garrard County: Rogers 515, Stewart 50; Jackson

OFFICE CLOSING

The Circuit Clerk's office will be closed Saturday, May 28 and Monday, May 30, 1983 in observance of Memorial Day weekend.

County Rogers 277, Stewart 121 and Pulaski County, Rogers 2725 and Stewart 1936.

The balloting for Governor in the Democratic race follows in the Democratic race: Collins, 643; Sloan, 204; Stumbo, 180.

In the Republican side, Bunning got an overwhelming 778 votes to his nearest opponent, Don Wiggins' 71.

In the Lt. Governor's race as far as the Democrats were concerned: Steve Beshear, 240; George Atky, 225; Alben Barkley,

195 and Todd Hollenback, 108.

The Republican vote for Lt. Governor in the state went as follows: Eugene Stuart, 490; Tomny Klein, 93; and Nicholas McObbin, 91.

In the race for Commissioner for Agriculture for the Democrats Tom Harris got 207 votes while Dave Boswell got 200 votes.

For the Republicans, Richard Turner got 338 votes to Kenneth Carpen-

(Cont'd to P-14)

Limited number of long-term, low interest loans are now available

Housing loans with locked-in interest rates are now available through the Bank of Mt. Vernon to qualified applicants, according to bank President C.T. Huffines.

The money, made available from the Kentucky Housing Corporation, applies to loan for either existing single family dwellings or new construction.

The stable 25-year interest rate is 9 5/8%. The loan ceiling is \$52,000. To be eligible, applicants must have a com-

bined gross income which does not exceed \$25,000.

The Bank of Mt. Vernon bid on one-half million dollars of the available money and was allocated \$400,000 to be loaned out over the next 18 months.

Huffines said persons can apply at the bank to be determined eligible after which qualified applicants will be referred to Baldwin United Mortgage Co. in Lexington for loan processing.

Approval requires 6 to 8 weeks.

McClure: a living enigma of change and tradition

by Nancy Mullins

Some people's might think of William McClure as an enigma.

He is a man who sticks closely to tradition, wearing his most enduring bib overalls everywhere even to the White House once to talk to Lady Bird Johnson and sit in the President's chair. He still artfully rolls his smokes from Prince Albert tobacco in a can.

Who you have known William for a long time would probably say that he has changed very little over the years.

Yet, William, one of the first and most enduring soldiers in the "War on Poverty" which began in the 1960's, seeks change, betterment for those who will do better.

About 20 years ago, "we was all trying to farm," William says, "and a woman from Ohio came up and down the road all one summer asking everybody if they could get more money doing something other than farming, would they do it?"

William thought the answer should be obvious.

The woman was an A.V. (Apprentice)

teer) a federally funded organization which later became known as VISTA (Volunteers in Service to America), which later evolved into Job Start and still later, into the present Kentucky Highlands, a federal lending agency whose purpose is to spur economic growth in the area.

The first A.V.'s who made the McClure's acquaintance spied the big old log house in their back yard and proposed starting a summer school for elementary age children there.

William and his wife, Rena, who have 13 living children said they certainly couldn't oppose more education, so for two summers about 30 children from the area attended classes in McClure's back yard.

William said he "went up one day to watch" at working college students taught the classes. He said they were pointing to charts and the board with a tree limb. So he went down to the barn and whittled them out a pointer stick and his career as one of the most acclaimed wood working artists in Kentucky began.

Others from Berea College saw the stick and requested other items whittled.

Soon after that, as the Berea Guild of Artists and craftsmen was being organized, William was asked to submit 5 articles for inspection. He passed the standard and has been a member of the Guild ever since.

At one of the early Berea Arts and Crafts Fair, Ralph Rencher, of the Smithsonian Institute was so impressed with William's big black walnut bowl, doll chairs, and wooden pocket knives that he bought them to take back and put on display at the famous Washington Museum.

William was on the first Job Start board and worked building the wood-ens barn-sheds at Burr. Later he began serving and still serves on the Kentucky Highlands' board which considers loan applications and makes determinations about the feasibility of proposed money-making projects. He is also a member of the Rockcastle Improvement Council.

William feels strongly about education. He says "we've had it pretty rough, but we always had plenty to eat. We raised our own meat and raised a big garden. All the children had to work, but we sent them to school every day."

"I've got no education

and that's one reason I've tried so hard to get my children to go to school. I tell students not to be a drop-out. If they knew the hard work I've had to do, they probably wouldn't consider dropping out."

William still farms. He raises corn, tobacco and a garden "bigger than most people's tobacco patch," his wife says.

Last year, for instance, he raised and sold most of 85 bushels of sweet potatoes and 85 bushels of Irish potatoes.

"Everybody wants to know why I still hold to farming." It is because, he says, he always felt that as sure as he quit farming and went completely into woodworking, there wouldn't have been a good enough market for it. As long as he can do both, he feels more secure.

In the last six years, William has concentrated on making shingles. He makes about 50,000 a year for people from Ohio, Tennessee, Virginia and all over Kentucky.

He is paid by the Berea Guild to demonstrate at the annual fair and takes orders there. He is not able to supply gift

(Cont'd to P-20)



Pamela Mullins Burke



David Lee Burke



Cindy Joanna Burke



William McClure rolls his own smokes with Prince Albert tobacco and cigarette paper. He says college students have tried to learn his technique, but few of them master the art of spreading the tobacco evenly, rolling the cigarette tightly and properly licking and twisting.

Mount Vernon Signal

PUBLISHED EVERY THURSDAY

Main Street in Mt. Vernon, Kentucky 40456
Entered at Mt. Vernon Post Office
As Second Class Matter - Permit No. 1
1- County - \$7.50 per year Ot of County - \$10.00

James Anderkin, Jr., Publisher
Perlina M. Anderkin, Editor

Member Kentucky Press Association

County Statistics

Deeds recorded

Milton Mink, Charlie and Roxie Mink, Lewis and Pansey Mink, Arthur Mink, Hazel Mink, Edward and Jean Mink, Shirley and David Greer, Glen and Patricia Mink, property located in Rockcastle County to Charlie Mink, no tax.

Marion Owens and Brenda Sue Owens, property located in Rockcastle County to Brenda Sue Owens, tax \$15.00.
Jesse Childress, property located in Rockcastle County to Rosee and Jean Sower, tax \$12.00.

DEED CORRECTION

A deed recorded which appeared in last week's Signal was misread from the county files. The deed should have read: Charles S. and Carolyn McKinney, property located in Rockcastle County to Kentucky Department of Transportation, tax \$10.00.

Marriage licenses

Albert Hicks, 52, Livingston, carpenter, to Mary Elizabeth Mullins, 57, Livingston, housewife.
Paul Steve Milburn, 23, Mt. Vernon, welder, to Terri Newcomb, 17, Livingston, student.
Scott Leslie Stewart, 19, Mt. Vernon, U.S. Air Force, to Jennifer Denise Hayes, 18, Route 1, Brodhead, student.
Robert Hopkins, 17, Route 4, Mt. Vernon, unemployed, to Famey Marlene Anderkin, 16, Route 3, Mt. Vernon, unemployed.
Richard Leon Spoonamore, 18, Route 5, Mt. Vernon, U.S. Army to Sabrina

Shay Nicely, Route 2, Mt. Vernon, unemployed.

Ella Faye Oliver Rader vs. Mitchell Rader, joint petition for dissolution of marriage.
Charlotte Jones Anderson vs. Arthur Woodrow Jones, child support.

Small Claims

Mark Parsons vs. Billy Lawrence, money claimed due, \$725.00.

District Civil

Floyd and Bernice Lovell vs. Karen Cash and Anita Swain, eviction.
Kentucky Finance Company vs. Gary and Edna Kirby, default payment on promissory note, \$1,910.
Ivah Listerman vs. Polly Matthew, property damage, \$700.00.

Circuit Civil

Cumberland Production Credit Association vs. Marion A. Northern, failure to honor contract, \$9,210.00.
Kylie Roger Thompson vs. Anna Faye Thompson, petition for dissolution of marriage.

District Court

[As presided over by Daniel J. Venters.]
William G. Plummer, speeding 71/55, pleaded guilty, fined \$69.50.
Franklin D. Boinnot, speeding 72/55, pleaded guilty, fined \$71.50.
Arthur Weisz, speeding 75/55, pleaded guilty, amended to 65/55, fined \$20 and court costs.
Hunter Mathew Hixon, violation of international registration plan, pleaded guilty, fined \$20 and costs.

prepaid.
Vernon, Dwain Hazen, violation of international registration, no Ky. motor fuel users license, pleaded guilty, fined \$20 and cost on each charge, prepaid.
Angela Campbell, speeding 80/55, pleaded guilty, fined \$65.00 and court cost.
Charles Nighbert, speeding 79/55, amended to 69/55, fined \$28 and costs.
Brady Michael, no insurance, pleaded guilty, fined \$50 and costs (1/2 of fine suspended).
Ronnie Johnson, drunk in a public place, pleaded guilty, fined \$30 and costs.
Walter Green, drunk in a public place, drinking beer on highway, pleaded guilty, fined 30 days in jail.
Alvin R. Abisp, no for hire authority to haul exempt commodity, pleaded guilty, fined \$20 (fine suspended); escaping contents, fined \$25.00 plus court cost.

[As presided over by trail commissioner]
Robert E. Lee, Sr., D.U.I., fined \$150 plus costs.
Robert E. Lee, Jr., public intoxication, pleaded guilty, fined \$30 and cost.

Thanks again, The Brodhead PTA

Dear Editor:
The Brodhead PTA would like to take this opportunity to thank every one who helped chaperone the Brodhead 7th and 8th grade skating party in addition on Tuesday night. A special thanks to Mr. Benny Craig and Mr. Danny Sargent who volunteered to drive the buses. Also to Arvil and Barbra Smith, Cheryl Brown, Carolyn Blaney, Sandra Bullock, ZoAnn Fletcher, Sue Hamm and Lisa Hunt for serving as adult chaperones. We would also like to thank all the students for their commendable behavior. The trip was enjoyed by all who attended.

From Our Files....

20 Years Ago, 1963
Honored at Commencement exercises at the three county schools were seven students from Rockcastle County. At MVES, Linda Parsons and Phyllis Houston were co-valetictorians and Jeanette Parsons was salutatorian; at Brodhead, Rita Sutton was named valetictorian and Steve Albright, salutatorian and at Livingston, Kathleen Hale was valetictorian and Rena Kaye Allen was salutatorian.

Hospital Report

ACUTE CARE
Admitted:
Lucille Barron, Brodhead; Roland Carpenter, Lameroy; Willie Young, Mt. Vernon; John Smith, Brodhead; Tommy Cromer, Mt. Vernon; Anna Elliott, Paint Lick; Edna Newcomb, Mt. Vernon; Hanson Ball, Mt. Vernon; Margaret Parrett, Mt. Vernon; James Hayes, Jr., Mt. Vernon; Lesta Littrell, Crab Orchard; Maggie Ledford, Brodhead; James V. Hayes, Mt. Vernon; Liza Shoemaker, Crab Orchard; Billy Rash, Mt. Vernon; Bum Potter, Mt. Vernon; Willie Hiatt, Wildie; Tennessee Northern, Orlando; Alice Bryant, Brodhead; Lou Anna Fain, Mt. Vernon; Charles Collins, Brodhead; Jennifer Benge, Brodhead; Tonya Taylor, Crab Orchard; Brandy Duncan, Mt. Vernon; Shawn Reese, Conway; Chester Singleton, Livingston; Lydia Willey, Mt. Vernon; Carrie Stallsworth, Livingston; Katherine Bryant, Livingston; Shelly Mullins, Jr. Climax; William Kirby, Mt. Vernon; Clintie Wilson, Crab Orchard; Janie Turner, Livingston; Cynthia Lewis, Mt. Vernon; George Griffin, Mt. Vernon.

29 Years Ago, 1954
In order to encourage an interest in art among the grade school groups, the Mt. Arts Department of the Mt. Vernon Woman's Club sponsored an exhibit Wednesday, May 12.
Due to different media and subject matter, judges gave consideration to artistic ability as best employed by the children in each group. Results were: first grade: Billy Joe Bradley, first place and Jenny Lee Bray, second; and Hope Hagg, third; second grade: Jerry Mason, first; Wanda Cummins, second and Shan non Hellard, third. Third

prepaid.
Grade: Randall Clark, first; Fourth Grade: David Joe Griffin, first; Gayle Stokes, second and Suella Lakes, third. Fifth Grade: Nancy Hiatt, first; Frances Cameron, second and Alice Childress, third. Sixth Grade: Lawrence Bales, first; Barbara White, second and Patsy Cummins, third. Seventh Grade: Billy Cameron, first; Nanette Wilson, second and Linda Ramsey, third.

EDITORIAL

Something Has To Be Done

Until late Sunday afternoon, the Burke family, Pam, Jerry and children, David and Cindy, made up one of the most classic examples of the American middle class family.

Three members of the family, the mother and the two children died and the father was injured as a result of a car crash involving a drunken driver as they drove toward home on I-75.

The Burke family seemed perfect in every respect. They attended church and Sunday School at Northside Baptist Church, worked, he at IBM and she for the Social Security office in Richmond. They had a home and car.

Pam and Jerry, modest, mild-mannered and unassuming, epitomized the loving parents all children need. Their beautiful children reflected this love and care.

In essence, this neat, innocent, beautiful "together" family group lived by the rules.

The driver of the stolen police car does not.

The Burkes have suffered. Their friends and family have suffered. Nothing can bring back Jerry Burke's family.

What about the one who caused the suffering? The one who broke the rules? Will he receive significant punishment?

What is punishment enough for his savagery?

How long will it be, at the current rate of lenient, if any, punishment handed out through the courts and with the past and current lax attitude on the part of Kentucky's lawmakers, before the ones who break the rules, and go, outnumber those who live by society's rules?

Gospel entertainment

A Gospel Sing-a-Thon will be held Sunday, May 29th at the Old Barn in Renfro Valley beginning at 1 p.m. Performing will be the Smokey Mountain Echoes from Knoxville, Tennessee, the New Antiochs from Berea, The Mountain Spirit Band from Berea, The Chordmen from Somerset, The Melody Makers from Knoxville, Tennessee and the Messengers from Middlesboro.

All proceeds will go to the Kentucky Chapter Arthritis Foundation.

Payne, Anna Elliott, Edna Newcomb, Hanson Ball, Margaret Parrett, James V. Hayes, Billy Rash, Willie Hiatt, Tennessee Northern, Brandy Duncan, Shawn Reese, Chester Singleton, Shelly Mullins, Jr., Betty Jones.
Newborns:
Josie Michele Benge.
Skilled Nursing
Admitted:
Nellie Bullock, Mt. Vernon; Eddie Kirby, Richmond.
Released:
Maggie Herrin.

SHOP ROCKCASTLE FIRST

All your optical needs may be fulfilled
00 right here at home at
ADAMS OPTICAL for your glasses

Doctor next door for your eye examination

256-5664

Main St. Mt. Vernon

ABSOLUTE Auction

of More

1/4 Interest in 25 Acres or Less

Former Lizzie Todd Estate
Friday May 27th, 1983 1:30 p.m.

Quail Section of Rockcastle County

LOCATION: Turn off Highway 78 at Bell's Grocery onto 618 and 328. Proceed approximately 3/4 miles to auction site. Auction signs are posted to lead you to the sale.

In order to settle the estate of the late Mrs. Lizzie Todd, we have been authorized to sell, at Absolute Auction, this 1/4 interest in this property.

THIS SMALL FARM consists of 25 acres, more or less, of which 15 acres is cleared and approximately 10 acres is in woods. The basic tobacco allotment for the entire farm is 734 lbs. However, the effective allotment for 1983 is 996 lbs.

TERMS: 20% down day of sale, balance in 30 days with delivery of deed.

For additional information, contact:

TERMS: 20% down day of sale, balance within 30 days.

Ford Realty & Auction Co.

Realtor Auctioneer
Col Sam Ford
Col Roy Adams
Col Danny Ford

Auctioneers
Col Jerry Mann
Col Willard Shuman

Call us Today
Selling the Country

Mt. Vernon, Ky. Ph. 256-4645

TAX DEDUCTIBLE NOTICE

THE ELWOOD CEMETERY CORP.'S PERPETUAL CARE FUND HAS A TOTAL OF \$43,000. WE'RE STILL IN NEED OF \$17,000 TO REACH OUR 1983 GOAL. WON'T YOU PLEASE HELP BY MAILING US YOUR DONATION. LARGE OR SMALL - YOUR DONATION WILL BE APPRECIATED.

MAIL DONATIONS TO:

ELWOOD CEMETERY
P.O. Box 153
MT. VERNON, KY. 40456

ROBINSON'S FURNITURE SHOWROOMS

NO FANCY FRILLS-QUALITY NAME BRAND MERCHANDISE
LOW OVERHEAD-ONE BIG WAREHOUSE (NOT FOUR)
WE DISCOUNT THE DISCOUNTERS!!



Everything is on sale!

6 Days ONLY

Lowest Prices Of The Year

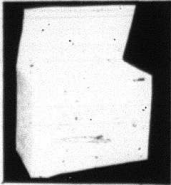
6 DAYS ONLY

THIS AD DOES NOT APPLY TO PREVIOUS SALES

QUANTITIES LIMITED ON SOME ITEMS

FRIGIDAIRE

16 CU. FT. CHEST FREEZER



ALL WITH 1-10 YEAR OLD TRADE

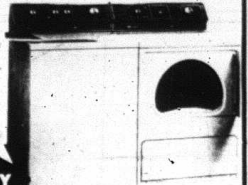
SALE **\$369** WT

- *FOAMED IN PLACE INSULATION
- *DEFROST DRAIN
- *SELF CLOSING LID
- *MAGNETIC GASKET
- *ADJUSTABLE TEMPERATURE CONTROL

FRIGIDAIRE HEAVY DUTY WASHER AND DRYER

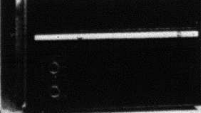
WITH THE INDUSTRY'S STRONGEST WARRANTY!

\$588 WITH TRADE IN



FULL 5 YR. WARRANTY

EARLY BIRD SPECIALS

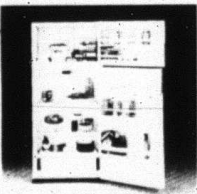


AIR CONDITIONER 5,000 BTU **\$199**

HOT DEAL!

FRIGIDAIRE

NO FROST REFRIGERATOR



DIRECT FACTORY TO YOU

\$477 WT

WITH A 1 TO 15 YEAR TRADE IN

- *GIANT DOUBLE DOOR
- *ADJUSTABLE MEAT DRAWER
- *OPTIONAL AUTOMATIC ICE MAKER
- *POWER SAVING HEATER CONTROL SWITCH

FRIGIDAIRE RANGE



R-30H

\$277 W.T.

WHILE THEY LAST!

- *30 INCH RANGE
- *CONVENIENT LIFT UP TOP
- *FACTORY SERVICE AND HOOK-UP

SELLATHON

La-Z-Boy

THE CHAIR PEOPLE GET 2 RECLINERS AT 1 GREAT PRICE

2 FOR 1 SALE

\$377 WT

LIFE TIME WARRANTY

SOUTHERN COMFORT
SOFA-LOVESEAT AND CHAIR

REVERSIBLE FOAM RUBBER CUSHIONS, SOLID OAK FRAME, NYLON COVERS

SPECIAL PURCHASE SALE **\$344** WT

CONTEMPORARY STYLE
BEDROOM SUITE

TRIPLE DRESSER, SHADOW BOX MIRROR, 5 DRAWER CHEST, POSTER BED WITH FOOT BOARD

PRICED TO SELL **\$329** WT

SEALY POSTUREPEDIC

YOUR CHOICE - ROYAL OR LIMITED EDITION

Regular \$599

NOW UNDER **1/2 PRICE**

\$288 FULL SIZE

CONTRACT BEDDING
BOX SPRINGS & MATTRESS REG. \$299 PER TWIN SET

\$159 PER SET

MAGNAVOX

COLOR TV

25" SCREEN WOOD CONSOLE

SALE PRICE **\$466** WT

USED FURNITURE

LOW PRICES WAREHOUSE OVERLOAD GOOD WASHERS & DRYERS BEDROOM-LIVING ROOM SUITE END TABLES-ODD & ENDS TV'S, RANGES, REFRIGERATORS, FREEZERS, AIR CONDITIONERS

COME BROWSE & BUY! SUPER TRADE INS

ROBINSONS
furniture & Appliances

HOURS
9 AM to 6 PM
Mon.-Sat.

NO INTEREST CHARGES
NO DOWN PAYMENTS
till August 1983
Up To
36 Months To Pay

Located Across From Hecks Next to I-75

We Welcome New Credit Customers!

986-1906
Berea, Kentucky

ROBINSONS
furniture & Appliances

U.S. GRADE A
WHOLE FRESH
FRYERS

47¢

Limit 3 With *10 Or More
Additional Food Order



TIDE
DETERGENT

171 oz. Box
\$6.99

Limit 1 With *10 Or More
Additional Food Order



BOLT PAPER
TOWELS

Single Roll
59¢

Limit 1 With *10 Or More
Additional Food Order



NORTHERN
BATHROOM
TISSUE

4 Roll Pack
89¢

Limit 1 With *10 Or More
Additional Food Order



Prices Good May 23
Through May 29.

Memorial Day Savings !!

FISCHER'S Meat or Jumbo
WIENERS 1 lb. Pack **\$1.39**

FISCHER'S CHEESE
FRANKS 1 lb. Pack **\$1.39**

FISCHER'S PICKLED RING
BOLOGNA **\$7.99**
1 Gallon



FISCHER'S Whole
HAMLETS **\$2.59**
LB.
Half **\$2.69** LB.

FISCHER'S
BOLOGNA

1 lb. Package
\$1.49

FISCHER'S
WIENERS

Meat or All Beef
12 oz. Package
99¢

FISCHER'S
MELLWOOD
BACON

12 oz. Package
\$1.39

FISCHER'S
BOLOGNA

Chunk
Regular or Jumbo
LB.
\$1.19

FISCHER'S
FESTIVAL
HAM

11-15 lb. Avg.
\$1.79
5-8 lb. Avg. **\$1.89** LB.

BLUE BONNET
MARGARINE

1 lb. Package
2/99¢

BANQUET FRIED 2 lb. Package
CHICKEN **\$2.49**

PET RITZ PIE
SHELLS 10 oz. **75¢**

MERICO BUTTER-ME-NOT
BISCUITS **2/89¢**
9 oz.

U.S. NO. 1 IDAHO 10 lb. Bag
POTATOES **\$1.59**

YELLOW
CORN 5 Ears / **89¢**

YELLOW
ONIONS 3 lb. Bag **79¢**

FRESH, JUICY
STRAWBERRIES
89¢

BANQUET 8 oz.
POT PIES **2/79¢**
Beef, Chicken or Turkey

JELL-O PUDDING
POPS 12 Count
Package **\$1.99**

JUICY 18 Size
CANTALOPE **\$1.19**

DAWN DISH
LIQUID **\$1.29**
22 oz. Bottle

FOOD FAIR
ICE CREAM **\$1.19**
One Half Gallon

FLORIDA GOLD ORANGE
JUICE 64 oz. Carton **99¢**

HALF RUNNER GREEN
BEANS **LB. 69¢**

"AIR & REPAIR"
TIRE INFLATOR &
SEALER **\$1.99**

ST. JOSEPH For Children
ASPIRIN **3/\$1**
36 Count Bottle

HEINZ ANNUAL
GREEN ONIONS **2/45¢**

Get up to
\$4.00
in hamburger
FREE!

GOLD EAGLE BRAKE
FLUID 12 oz. **89¢**

BUFFERIN 100 Count Bottle
TABLETS **\$2.67**

Mail-In Certificate

Sweepstakes Entry

Please enter my name into the "Free Hamburger for a Year" Sweepstakes. No purchase is required to enter sweepstakes only. (See official rules below.)

Refund Offer

Mail in this certificate, the meat weight label from hamburger, two neck labels from 20-oz. Heinz Ketchup and one label from each of the Heinz products listed below to receive the designated hamburger coupon. Only one proof-of-purchase per each of the following Heinz products is allowed: Pickles, Gravy, 57 Sauce, Relish or Barbecue Sauce.

CHECK ONE:

1) HAMBURGER COUPON - Enclosed are two 20-oz. Heinz Ketchup labels and one other Heinz label listed above.

2) HAMBURGER COUPON - Enclosed are two 20-oz. Heinz Ketchup labels and two other Heinz labels listed above.

3) HAMBURGER COUPON - Enclosed are two 20-oz. Heinz Ketchup labels and three other Heinz labels listed above.

4) HAMBURGER COUPON - Enclosed are two 20-oz. Heinz Ketchup labels and four other Heinz labels listed above.

My Name _____

Address _____

City _____

State _____ Zip _____

NAME OF STORE (where purchased) _____

*This certificate must accompany request. (The receipt is not required.)

POSTMARKED BY JULY 1, 1983.

MAIL TO: GREAT SWEEPSTAKES, P.O. BOX 501, 1000 N. 10TH ST., LINCOLN, NE 68501.

Allow 4-6 weeks for mailing and handling. Void where prohibited, taxed or restricted. 1/3¢ per 100 words to reproduce letters.

©Heinz 1983 - J. Heinz Co.

FREE BURGER GIVEAWAY

HEINZ SWEET
RELISH

10 oz. Jar
69¢

Quantity
Rights
Reserved

HEINZ
BAR-B-QUE
SAUCE

1.59 26 oz. Bottle



FRESH, LEAN
GROUND
BEEF

\$1.18

LB. **\$1.89**

Food Fair Coupon

HEINZ HOMESTYLE
GRAVY

12 oz. Jar
69¢



Exp. 5/30/83 With Coupon
Limit 1 Coupon Per Customer

Food Fair Coupon

500
S & H
GREEN STAMPS

With This Coupon
And The Purchase Of
*40.00 Or More Groceries.
Exp. 5/29/83



Food Fair Coupon

HEINZ
KETCHUP

32 oz. Bottle
99¢



Exp. 5/30/83 With Coupon
Limit 1 Coupon Per Customer

Food Fair Coupon

HEINZ
57 SAUCE

10 oz. Bottle
\$1.89



Exp. 5/30/83 With Coupon
Limit 1 Coupon Per Customer

Food Fair Coupon

50
S & H
GREEN STAMPS

With This Coupon and
Purchase Of 3 lb. or
More Of Tomatoes
Exp. 5/29/83

Food Fair Coupon

50
S & H
GREEN STAMPS

With This Coupon And
Purchase Of 3 lb. or
More Of Apples
Exp. 5/29/83

Food Fair Coupon

50
S & H
GREEN STAMPS

With This Coupon And
Purchase Of 1 or More
Package Of Boneless
Beef Stew Meat
Exp. 5/29/83

Food Fair Coupon

100
S & H
GREEN STAMPS

With This Coupon And
Purchase Of *10.00 -
*30.00 Of Groceries
Exp. 5/29/83

Food Fair Coupon

300
S & H
GREEN STAMPS

With This Coupon And
Purchase Of *30.00 -
*40.00 In Groceries
Exp. 5/29/83

Food Fair Coupon

300
S & H
GREEN STAMPS

With This Coupon And
Purchase Of *30.00 -
*40.00 In Groceries
Exp. 5/29/83



SUPER FOOD FAIR MARKETS

100 MARKET NORTH ST. & DOWNTOWN GREENHILL
 107 WENONAH WHISKEY CITY - GREENSBORO
 1000 W. HARRIS - JACKSONVILLE
 1000 W. HARRIS - JACKSONVILLE

SWIFTING SHORTENING
 42 oz. Can
\$1.19
 Limit 1 With 10 Or More Additional Food Order

J.F.G. VACUUM PACKED COFFEE
 1 lb. Bag
\$1.89
 Limit 1 With 10 Or More Additional Food Order
 Prices Good May 23 Through May 29.

SAVE OVER 40% Fine Stainless Tableware and Cutlery

SAVE \$1.00
 Embassy Classic
 2 Table Serving Spoons
 Exp. 5/29/83

SAVE \$1.00
 Embassy Classic
 4 Load Beverage Spoons
 Exp. 5/29/83

SAVE \$1.00
 Embassy Classic
 4 Load Beverage Spoons
 Exp. 5/29/83

SAVE \$1.00
 Embassy Classic
 4 Load Beverage Spoons
 Exp. 5/29/83

SAVE \$1.00
 Embassy Classic
 2 Table Serving Spoons
 Exp. 5/29/83

SWIFT'S CANNED HAM 3 lb. Can **\$5.89**

PLATTER PLEASING BOLOGNA 1 lb. **\$1.39**

ARMOUR VERI BEST LOIN CHOPS Center Cut **\$1.69** LB.

ARMOUR VERI BEST LOIN CHOPS Center Cut **\$1.69** LB.

PLATTER PLEASING BACON 1 lb. Package **\$1.59**

PURNELL'S OLD FOLKS SAUSAGE 1 lb. Roll Mild or Hot **\$1.69**
 2 lb. Roll \$3.37
 or 12 oz. Patties

ARMOUR VERI BEST PLATTER PLEASING FIRST CUT PORK CHOPS **\$1.39** LB.

ARMOUR VERI BEST PLATTER PLEASING CENTER CUT RIB CHOPS **\$1.59** LB.

LAY'S SMOKED PICNICS **89¢**
 Sliced 99¢ lb.

PARAMOUNT 32 oz. Jar **99¢**
SLICES Hamburger or Kosher Hamburger

JUST-RITE HOT DOG SAUCE 10 oz. Can **3/\$1**

NABISCO 19 oz. Pack **\$1.19**
COOKIES Cookie Break Mix Sandwich

MILKY WAY, SNICKERS, 3 MUSKETEERS, OR MARS BARS 6 Pack **\$1.39**

POST Strawberry Honey Combs CEREAL 19 oz. **\$1.49**

POST SUPER SUGAR CRISP CEREAL 12 oz. **\$1.29**

LOCHMAN'S SQUEEZE BARREL MUSTARD 10 1/2 oz. **49¢**

PILLSBURY PLUS CAKE MIX 18 oz. **79¢**

SPRITE, TAB OR COCA COLA **\$1.69**
 8-16 oz. Bottles
 Plus Deposit

BRIM DECAFFINATED COFFEE 1 lb. Can **\$3.89**

DREAM WHIP 5.6 oz. Box **\$1.09**
TOPPING

JELL-O 3 oz. Box **5/\$1.49**
GELATIN

ROBIN HOOD Self-Rising MEAL 5 lb. Bag **89¢**

J.F.G. PEANUT BUTTER 3 lb. Jar **\$3.39**

PILLSBURY 16 oz. Tub FROSTING **\$1.09**
 Ready-To-Spread

STAYFREE MINI-PADS 30 Count **\$2.69**

NEW BREED 4 lb. Bag DOG FOOD **\$2.39**
 8 lb. \$4.49

FOOD FAIR 8 Pack BUNS Hamburger or Hot Dog **2/89¢**

FOOD FAIR POTATO CHIPS 8 oz. Twin Pack **69¢**

STAR-KIST CHUNK LITE TUNA In Oil or Water 6 1/2 oz. Can **79¢**

CAMPBELL'S PORK & BEANS 16 oz. Can **2/75¢**

NEW BREED DOG FOOD 4 lb. Bag **\$2.39**
 8 lb. \$4.49

IVORY Bath Size SOAP 6/\$1.39
 Buy 5 Get 1 FREE

4K314 Food Fair Coupon

SUGAR-SWEETENED KOOL-AID 8 Varieties **\$2.39** Makes 10 Quarts
 Exp. 5/29/83 With Coupon Limit 1 Coupon Per Customer

SOLO 12 Count Pack BOWLS **49¢** SOLO

SOLO 10 Inch PLATES \$1.29 Regular or Compartment

SOLO 9 Inch PLATES **89¢**

REYNOLDS WRAP GIANT FOIL 12 x 200 **\$3.79**

GALA 140 Count Pack NAPKINS **69¢**

GLAD HANDLE-TIE BAGS 10 Count Box **89¢**

GLAD DEODORANT LARGE BAGS 20 Count Box **\$1.59**

GLAD TRASH BAGS 10 Count Box **\$1.09**

4R184 Food Fair Coupon

COUNTRY TIME SUGAR-SWEETENED LEMONADE Makes 2 Quarts **2/99¢**
 Exp. 5/29/83 With Coupon Limit 1 Coupon Per Customer

4R244 Food Fair Coupon

COUNTRY TIME SUGAR-SWEETENED LEMONADE Regular, Pink or Lemon-Lime Makes 10 Quarts **\$2.59**
 Exp. 5/29/83 With Coupon Limit 1 Coupon Per Customer

4K264 Food Fair Coupon

SUGAR-SWEETENED KOOL-AID 9 Varieties **2/89¢** Makes 2 Quarts
 Exp. 5/29/83 With Coupon Limit 1 Coupon Per Customer

KINGSFORD 10 lb. Bag CHARCOAL **\$2.79**

SARAN WRAP 24/50 Ft. WRAP **\$1.09**

4R184 Food Fair Coupon

COUNTRY TIME SUGAR-SWEETENED LEMONADE Regular, Pink or Lemon-Lime Makes 10 Quarts **\$2.59**
 Exp. 5/29/83 With Coupon Limit 1 Coupon Per Customer

4R244 Food Fair Coupon

COUNTRY TIME SUGAR-SWEETENED LEMONADE Regular, Pink or Lemon-Lime Makes 10 Quarts **\$2.59**
 Exp. 5/29/83 With Coupon Limit 1 Coupon Per Customer

4R244 Food Fair Coupon

COUNTRY TIME SUGAR-SWEETENED LEMONADE Regular, Pink or Lemon-Lime Makes 10 Quarts **\$2.59**
 Exp. 5/29/83 With Coupon Limit 1 Coupon Per Customer

Food Fair Coupon

50 S & H GREEN STAMPS With This Coupon And Purchase of 3 or More Loaves Of Bread
 Exp. 5/29/83

Food Fair Coupon

50 S & H GREEN STAMPS With This Coupon And Purchase Of 2 Or More Pkgs. Of Little Debbie Snack Cakes
 Exp. 5/29/83

Food Fair Coupon

50 S & H GREEN STAMPS With This Coupon And Purchase Of 2 or More Packs of G.E. Light Bulbs
 Exp. 5/29/83

Food Fair Coupon

50 S & H GREEN STAMPS With This Coupon And Purchase Of 2 or More Packs of Cut-Up Chicken Parts
 Exp. 5/29/83

Food Fair Coupon

50 S & H GREEN STAMPS With This Coupon And Purchase Of 2 or More Packs of Field's Lunchmeat
 Exp. 5/29/83

Food Fair Coupon

50 S & H GREEN STAMPS With This Coupon And Purchase Of \$2.00 Or More Health & Beauty Aids
 Exp. 5/29/83

P-6 Mt. Vernon Signal Thursday, May 26, 1983



Behind the counter at Druther's Restaurant early morning were members of the Rockcastle County Kiwanis Club who served pancakes to hungry locals. Pan-

cake customers at 7:15 a.m. were Pattie Clark, Martha Brown and Gloria Robbins. Kiwanians are Harold Ballinger, David Stipes and Mike Bryant.

VBS kickoff for Brodhead Christian

Vacation Bible School Kickoff will be held Thursday, May 26th at 8:30 p.m. at the Brodhead Christian Church. Featured in the kickoff will be a parade, hot dogs, and games.

An all-new and exciting program has been prepared by Brodhead Christian Church for Vacation Bible School to be held May 30 through June 3. Jesus, Lord of Promises is the theme for the theme for, the

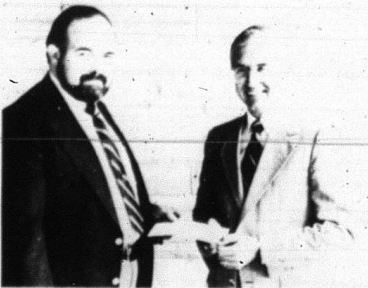
school, to be held each evening from 7-9 p.m. Classes will be offered for all ages from Nursery (ages 2-3) through college age and adult.

A back-to-basics approach to Christian living is offered in VBS Bible-based lessons will be taught with excitement and variety through the use of many advanced teaching methods. Students will be challenged and involved through such activities as

these: song time, Bible study, interesting visual demonstrations, classroom interaction, craft making, and many other innovative methods in keeping with the theme, Jesus, Lord of Promises.

The challenging lessons are centered on the Jesus promises and the ways in which they transformed the lives of ordinary persons. Workers in the school are needed and welcome. For information regarding attending and/or assisting, call 758-8721.

Bring the family, friends and neighbors. There is help (and fun) and spiritual growth for all at Vacation Bible School!



Jack Morris, left, is shown presenting Mayor Roland Mullins with a check for \$500, a matching grant from Christian Appalachian Project to be used for a daytime supervised recreation program at the Mt. Vernon Elementary School playground.



A check for \$125 from the Rockcastle Kiwanis Club was presented to Mayor Roland Mullins Monday night, by Dr. David Coleman, right. The money will go toward matching a \$650 Recreational Grant from CAP for the playground supervisor.

AUCTION

of
Mr. and Mrs. Eugene Sparkman's
Partially constructed House and Lot

Sat., June 4, 1983 - 10:30 a.m.



LOCATION: Turn off Hwy. 461 at Denny's Grocery and proceed 4 miles, turn left onto the Level Green Road and proceed 4/10 miles. Auction signs are posted.

Mr. and Mrs. Sparkman are operating a business in another county and have authorized our firm to sell this beautiful lot and partially constructed house for the high dollar.

The lot is beautifully landscaped with evergreens, shrubs and maple trees in the front (and fruit trees in the back). This beautiful lot has city water, septic system, is well fenced and has 127 frontage on the Level Green Road, and contains approximately .61 acres, more or less.

The partially constructed house measures 14x70 and is designed for two bedrooms, living room, bath and kitchen, however, since it is not partitioned, you may make changes to meet your needs.

Auctioneers Note: If you are in the market for a beautiful landscaped lot in a quiet country setting, be sure to mark your calendar and attend this sale!

TERMS: 20% down day of sale, balance in 7 days upon delivery of deed.

For additional information contact:

LAWRENCE AUCTION and REALTY

Main Street Gregory Building Mt. Vernon
Wendell E. Lawrence Realtor and Auctioneer 256-5516
Mary A. Lawrence Realtor Ph. 758-8115

REAL ESTATE FOR SALE

FIVE ROOM HOUSE-Living room, den, 2 bedrooms, large kitchen/dining combination, bath and 2 porches. The house has fuel oil heat, carpet and vinyl floors, detached 1 car garage and is situated on a nice shady lot. Other amenities are city water and blacktop road. South of Mt. Vernon at Pine Hill.

REDUCED-147 Acre Farm more or less, located near Great Saltpetre Cave. Farm has 1.3 miles blacktop road frontage, 4 room house with 2 porches, 2 room store building, large cellar, one extra storage building, combination stock/tobacco barn and log barn. There's a basic tobacco allotment of 1,864 lbs., lots of timber and spring water. Just a few minutes from Mt. Vernon.

BUILDING LOTS-Two adjoining lots located in the Cedar Heights Subdivision near Mt. Vernon city limits.

36 ACRES more or less with Coal and nice 3 bedroom home. The house also has a living room, large kitchen/dining area, bath, utility room, with w/d hookup, fuel oil heat, and concrete porch. In addition, there's a cellar, storage building, nice barn; lots of fruit trees and land has been core-drilled with proof of coal. If you're looking for privacy, a home, farm, and income, this is it! Located in Red Hill area.

TWO ADJOINING LOTS located approximately 2.3 miles from Brodhead. Each lot measures 100x228, city water is available. Priced to sell.

4 to 6 ACRES on Rockcastle River, located across from Ward's Cemetery. Ideal investment property.

UNDER CONSTRUCTION-3 bedroom brick house situated on a nice lot in the Quall Section of Rockcastle County. This nice brick home has living room, kitchen with built-in cabinets, bath, washer/dryer hookup, wall to wall carpet, and vinyl floors throughout and city water. Also has a one car attached garage. FHA approved.

2 ADJACENT LOTS near Brodhead. Each lot contains approximately 2 acre and fronts on a blacktop road. City water is available. Call today for your choice of these nice lots.

REDUCED-Three bedroom home situated on a nice lot on Hwy. 461. This lovely home has kitchen, dining room, family room, bath and partial basement with w/d hookup. It is insulated and has a 12x21 garage. Call today for an appointment to see this lovely home. Partial financing available to qualified buyer.

NEW SUBDIVISION-located in the Willilla section of Rockcastle County. Lots are approximately 1/4 acre, city water is available and fronts on blacktop road and are restricted. Call today for an appointment and have first choice on these dandy lots.

BABY FARM-Approximately 4 1/2 acres, about four miles northwest of Mt. Vernon. Good location. Ideal for small-time farming or for various other uses. Build your own home or move a mobile home onto this nice farm. City water is available.

Lawrence Auction and Realty

Main Street - Gregory Building - Mt. Vernon



wendell Lawrence
Realtor and Auctioneer
Home 256-5515

256-5516

Mary Lawrence
Realtor
Home 758-8115



SELECTO SMOKED PICNICS
79¢
LB.
Sliced 89¢ LB.

STAR-KIST CHUNK LITE TUNA
8 1/2 oz. Can
79¢



FRESH, LEAN, GROUND BEEF
3 lb. Package Or More
\$1.19
LB.

U.S.D.A. CHOICE PLATTER PLEASING SHOULDER BLADE CUT CHUCK ROAST
\$1.39
LB.

platter pleasing



See Details At The Store.

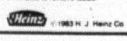
Mail-In Certificate

Sweepstakes Entry
Please enter my name into the "Five Hamburger for a Year" Sweepstakes. No purchase is required to enter sweepstakes only. (See official rules below.)

Refund Offer
Mail in this certificate, the meat weight label from hamburger, two meat labels from 30-oz. Heinz Ketchup and one label from each of the Heinz products listed below to receive the desired hamburger coupon. Only one proof-of-purchase from each of the following items is allowed: Pickles, Gravy, 57 Sauce, Ranch or Barbecue Sauce.
CHECK ONE:
 \$1 HAMBURGER COUPON—Enclosed are two 32-oz. Heinz Ketchup labels and one other Heinz label listed above.
 \$2 HAMBURGER COUPON—Enclosed are two 32-oz. Heinz Ketchup labels and two other Heinz labels listed above.
 \$4 HAMBURGER COUPON—Enclosed are two 32-oz. Heinz Ketchup labels and four other Heinz labels listed above.

My Name _____
Address _____
City _____
State _____ Zip _____

NAME OF STORE (where purchased) _____
This certificate must accompany request. One refund per family or household. MUST BE POSTMARKED BY JULY 1, 1983.
Mail to: MEAT REFUND OFFER
P.O. BOX 2091
MAPLE PLAZA, MN 55363
Allow 6-8 weeks for mailing and handling. Void where prohibited, taxed or restricted. Good 6 months to remove labels.



SHOWBOAT PORK & BEANS
1 1/2 lb. Can
3/99¢

WE WILL BE OPEN MEMORIAL DAY

NESTEA INSTANT TEA
3 oz. Jar
\$2.19



- NY-TOP PEAS 17 oz. Can **3/109¢**
- PARAMOUNT HAMBURGER DILL SLICED REGULAR OR BUCKEYE PICKLES 32 oz. Jar **77¢**
- PARAMOUNT RELISH 18 oz. Jar **69¢**
- KEEHLER PECAN SANDIES OR CHIP DELUXE COOKIES 13 oz. Package **\$1.39**
- NY-TOP BUNS 7 Pack **2/89¢**
- NY-TOP GOLDEN CORN 17 oz. Can Whole Kernel Or Cream Style **3/109¢**
- HEINZ BAR-B-QUE SAUCES All Varieties 16 oz. Bottle **69¢**
- ARMOUR POTTED MEAT 3 oz. Can **4/109¢**
- ARMOUR VIENNA SAUSAGE 5 oz. Can **2/99¢**
- ARMOUR TREET 12 oz. Can **\$1.19**
- NY-TOP PEACHES 16 oz. Sliced Or Halves **2/119¢**

U.S.D.A. CHOICE PLATTER PLEASING CHUCK STEAK LB. **\$1.59**

U.S.D.A. CHOICE PLATTER PLEASING RIB STEAK LB. **\$2.99**

U.S.D.A. CHOICE PLATTER PLEASING SHOULDER ROAST LB. **\$1.59**

PLATTER PLEASING WIENERS 12 oz. Package **99¢**

PLATTER PLEASING BACON 1 lb. Package **\$1.69**

PLATTER PLEASING Regular Or Thick BOLOGNA 1 lb. Package **\$1.49**

KRAFT ORANGE JUICE
64 oz.
\$1.59



TYSON'S FRIED CHICKEN 2 lb. Box **\$2.49**

MINUTE MAID FROZEN LEMONADE 12 oz. Can **69¢**

REYNOLD'S ALUMINUM FOIL WRAP 200 FT. **\$1.89**

CALIFORNIA STRAWBERRIES
Pint
69¢



YELLOW CORN 5 cans **99¢**

YELLOW ONIONS 3 lb. Bag **89¢**

FRESH BROCCOLI Bush **89¢**

SELECT POTATOES 10 lb. **\$1.89**

SELECT CUCUMBERS 4/100

FINAL TOUCH FABRIC SOFTENER
32 oz. Jug
\$1.39



LUX DISH LIQUID 32 oz. Bottle **\$1.69**

DOVE DISH LIQUID 32 oz. Bottle **\$1.69**

TREND DETERGENT 42 oz. Box **\$1.29**

NY-TOP BISCUITS 6/119¢

GREEN CORN ON THE COB 4 ears **\$1.39**

VALVOLINE 10W-40 MOTOR OIL Quart **99¢**

CRISCO SHORTENING 3 lb. Can

MIRACLE WHIP SALAD DRESSING Quart Jar

PILLSBURY CAKE MIX 18 oz. Box

PILLSBURY RTS FROSTING 16 oz. Tub

PRICE SMASHERS THIS WEEK'S SPECIAL

PRINGLES POTATO CHIPS
9 oz. Can
69¢
with one filled. Price Smashers certificate

PRICE SMASHERS THIS WEEK'S SPECIAL

NY-TOP MARGARINE
LB. Quarters
9¢
with one filled. Price Smashers certificate

PRICE SMASHERS THIS WEEK'S SPECIAL

SOFT-PLY PAPER TOWELS
Jumbo Roll
19¢
with one filled. Price Smashers certificate

PRICE SMASHERS THIS WEEK'S SPECIAL

JUST RITE HOT DOG SAUCE
10 oz.
2¢
with one filled. Price Smashers certificate

PRICE SMASHERS THIS WEEK'S SPECIAL

Mellow Yellow
89¢
plus deposit or bottles

PRICE SMASHERS THIS WEEK'S SPECIAL

DEL MONTE TOMATO CATSUP
32 oz.
69¢
with one filled. Price Smashers certificate

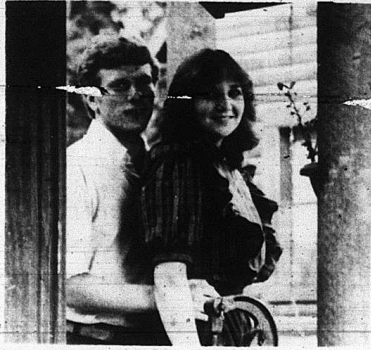
8 SUPERIOR Food Markets 8

Symbol Of Quality

Prices Effective May 26 June 1

8 - 16 oz. PEPSI \$1.89
plus deposit or bottles

Social & Women's News



Mr. and Mrs. Don Stewart-Shackelford request the honor of your presence at the marriage of their daughter, Lori Lynne Stewart to William Keith Russell, son of Mr. and Mrs. Jack Russell of Brodhead, on Saturday, the twenty-eighth of May, nineteen hundred and eighty-three, at seven-thirty in the evening, officiated by Reverend K. Richard Holladay, at Our Lady of Mt. Vernon Catholic Church, Mt. Vernon, Kentucky. All relatives and friends are invited. Reception following in the Parish Hall.

Personals

By Mrs. Geo. Burton

Mr. Gravelly Burton has returned home after spending several days in the Berea Hospital suffering from pneumonia.

Mr. Gordon and Modie Dillingham of Cincinnati, Ohio visited their parents, Mr. and Mrs. Lance Dillingham last week.

Mrs. Carrie Smith visited Mr. and Mrs. J.B. Sexton last week.

Mr. and Mrs. Edd Berry of Cincinnati, Ohio visited their parents, Mr. and Mrs. Burdette Brown, Saturday night.

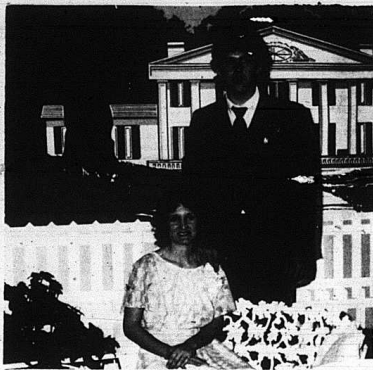
Mrs. Jewell Albright visited her sister, Mrs. Lance Dillingham last week.

Mrs. Steve Hansel celebrated her birthday, May 17th. We wish her many returns of the day.

Mr. and Mrs. Larry Stokes, Rev. and Mrs. Bob Stokes, Mattie Owens and Rev. Lloyd Fredrick enjoyed Friday evening in Lexington and attended the Bob Barker Show at Ruppe Arena.

Mrs. Minnie Hansel visited her daughter, Mrs. Barbara Browning and family over the weekend.

Recent visitors of Mr. and Mrs. Gravelly Burton were Mrs. Mary Purcell and son, John, Clinie Clark, Mr. and Mrs. Cecil Sargent, Mr. and Mrs. Roscoe Webb, Mrs. Mary McKinney, Mrs. Edith Lunsford, Mr. and Mrs. Erwin Barron, Mr. and Mrs. Billy Ray Sowder and David, Mr. and Mrs. Eddie Faulk-



Mr. Harlin Farthing and Thelma Mullins both of Mt. Vernon wish to announce the forthcoming marriage of their daughter, Donna Faye to Mark Anthony Blanton, son of Mr. and Mrs. Junior Blanton of Mt. Vernon. The wedding will take place May 28, at 4:00 o'clock at the home of Vernon Cummins, Crab Orchard. All friends and relatives are invited to attend.

to the families of Mr. Bradley Powell and Mrs. Fannie Bullock in their time of sorrow.

Recent visitors of Mr. and Mrs. George Burton were Mrs. Gravelly Burton, Mrs. Mae Barron, Bennie McFerron, Mrs. Steve Hansel, Margie Elliott, Rev. Gary Giarratano and son, J.C. King, Mrs. Bobby Ann and Nancy Harris Burton of Berea, Mrs. Dorothy Chasteen, Mattie Owens of Somerset, Mr. and Mrs. Troy Roberts of Rutledge, Tennessee.

Mrs. Lillian Anglin visited Mrs. Grace Coffey at Berea Hospital Monday who is very ill. We wish her a speedy recovery.

Mrs. Mae Barron visited Mrs. Bobby Anglin and Nancy Tuesday morning,

who earn at least a 3.0 on a 4.0 scale. The student who made the Honor Roll is Melanie Baldwin.

CARD OF THANKS

Mrs. Maggie Herrin would like to thank every one who was so nice to her while in the Rockcastle County Hospital with a broken hip. Everything was greatly appreciated. The ones who sent flowers, all the pretty cards, those who visited her, the doctors and nurses.

Thanks again, Maggie Herrin

ON DEAN'S LIST

Sarah Frances Hiatt, formerly of Mt. Vernon, was placed on the Dean's List as an outstanding student at Kentucky Business College, Richmond, Ky. Sarah is the daughter of Mr. and Mrs. Bennett Hiatt of Lexington.

DEAN'S LIST AT SUE BENNETT

According to Dean Joan Stivers, Academic Dean at Sue Bennett College, three students from Rockcastle County made the Dean's List. One student made the Honor Roll.

The Dean's List is comprised of full-time students who earn a 3.5 or above on a 4.0 scale.

Those students on the Dean's List are: Barbara Davis, Jennifer Hayes and Tracy Mink.

The Honor Roll is comprised of full-time students

Sympathy is extended

Rockcastle Saddle Club

By Sue Thompson



The ground was pretty soggy, but for the 28 riders who attended Barry Bumgardner's ride this past Sunday, the weather was a vast improvement over that of the previous couple of weeks. We're all hoping the pleasant weather holds for the ride next Sunday, May 29th, sponsored by Bobby Taylor and Elsie Brock, which will begin at Bobby Taylor's farm off Hwy. 70 at 1:30 p.m.

The horse show activity was pretty sluggish for saddle club members this past weekend. Several of us tried to attend the show in Liberty Saturday night, but when we arrived at the showgrounds we were informed the show had been called off due to the rain. We could have saved ourselves a lot of trouble if we had called first—next time we'll let our fingers do the walking. More's the pity, though, because we all decided we'd have won the show if only they'd have held one! Cecil and Jeff King went to the show in Winchester, got rained on, but Jeff won a sixth place in the Walking Pony class riding Delight's Sewanee, and Cecil tied sixth in the Amateur Class on his best horse, Mr. Roan's Chance. We want to congratulate Cecil and Jeff on their ribbons.

I want to remind everyone that the Rockcastle County Saddle Club Horse Show is coming up (Cont'd to P.9)

UNIROYAL'S FREE \$100 U.S. SAVINGS BOND

WHEN YOU BUY 4 ELIGIBLE UNIROYAL TIRES.

Here's a great deal for you, and America. Too. Just buy 4 eligible Uniroyal tires at any participating Uniroyal dealer. Then send proof of purchase, the special certificate, and your Social Security number to Uniroyal within 30 days. You will receive your \$100 bond in the mail directly from Uniroyal. Or buy 4 Uniroyal steel-belted radials and get a \$50 bond back. But hurry. This is a limited-time offer.

STEELER® \$39.25*				1650R13 F.E.T. 5167			
Steel-Belted Radial Whitewalls							
SIZE	OUR PRICE	AFTER \$100 BOND	F.E.T.	SIZE	OUR PRICE	AFTER \$100 BOND	F.E.T.
1650R13	\$57.25	\$44.75	\$1.90	205/75R14	67.25	54.75	2.49
195/70R13	59.75	47.25	1.95	215/75R14	68.75	56.25	2.34
205/70R13	63.25	50.75	2.01	235/75R14	69.25	56.75	2.44
175/75R14	59.25	46.75	1.87	215/75R15	70.75	58.25	2.59
185/75R14	59.75	47.25	2.00	225/75R15	72.25	59.75	2.74
195/75R14	65.25	52.75	2.13	235/75R15	75.25	63.75	2.96
205/70R14	66.25	53.75	2.23	GRTX15	71.75	59.25	2.94

\$42.75*				TIGER PAW PLUS			
1550R13 F.E.T. 5151				ALL SEASONS STEEL BELTED RADIAL WHITEWALL			
SIZE	OUR PRICE	AFTER \$100 BOND	F.E.T.	SIZE	OUR PRICE	AFTER \$100 BOND	F.E.T.
1550R13	\$62.75	\$50.25	\$1.88	205/75R15	72.25	59.75	2.39
185/75R14	65.25	52.75	1.99	215/75R15	74.75	62.25	2.51
195/75R14	69.25	56.75	2.14	225/75R15	76.75	64.25	2.71
205/75R14	71.25	58.75	2.29	235/75R15	81.25	68.75	2.90

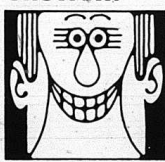
\$65.25*				LAREDO			
LT TRUCK RADIALS				235/75R15 RAD LUG F.E.T. \$3.04			
SIZE	OUR PRICE	AFTER \$100 BOND	F.E.T.	SIZE	OUR PRICE	AFTER \$100 BOND	F.E.T.
235/75R15 RadLug RWL	\$80.75	\$68.25	\$3.04	8.75R16.5 Rib Bk	101.25	88.75	4.11
10R16 Lug Bk	100.25	87.75	4.24	9.50R16.5 Rib Bk	109.25	96.75	4.70
10R16 Lug RWL	108.75	96.25	4.24	7.50R16 Rib Bk	98.25	85.75	4.21
12R 29 RWL	133.25	120.75	5.03	10-15 4ply	79.25	66.75	3.99
8.75 5 Lug Bk	107.25	94.75	4.36	11-15 4ply	89.25	76.75	4.49
9.5 5 Lug Bk	117.25	104.75	4.82	11-15 6ply	93.25	80.75	4.54
7.50R16 TB Bk	102.25	89.75	4.36	12-15 6ply	99.25	86.75	4.19

\$36.75*				STEELER			
205/75R15 BLK. F.T. \$2.44				SUPER SPECIALS			
SIZE	OUR PRICE	AFTER \$100 BOND	F.E.T.	SIZE	OUR PRICE	AFTER \$100 BOND	F.E.T.
235/75R15 E1 Bk	\$63.25	\$50.75	\$2.99				
225/70R15 RWL	75.25	62.75	2.74				

*All prices based on a 4-tire purchase and the \$100 bond value of \$50 after six months. The bond matures after eight years to the full value of \$100.

Lubrication Problems?

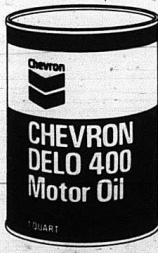
Call Chevron!



We can help you with any lubrication problem. Chevron features a complete line of Industrial and Automotive Lubricants.

Try famous CHEVRON DELO 400 Motor Oil 15W-40

Call us at... 256-2114



J&L Inc.

Williams St. Mt. Vernon, Ky.

Rockcastle Auto Parts

Dealer Name & Address

Hwy. 25 S.

256-2298

Mt. Vernon, Ky.

"Saddle Club"

(Cont'd from P-8)

soon and this year it promises to be better than ever. It's always been a popular show, and we've added some classes this time that should make it even more fun than in the past. Since last year's show was so successful, we're going to make it a two-day show again, with Pleasure and Western classes on Friday night and Walking and Rocking Horse classes on Saturday night. We're all very excited about it and we know everyone's going to have a good time.

Our monthly meeting will be held on Monday, June 6 at 7:30 p.m. at the Rockcastle County Court House. We'd like to urge all members to attend because we're interested in everyone's ideas and suggestions. Each member has a voice in how his or her saddle club is run but our officers and directors can't hear you if you don't speak out, so let's all join in and be a part of the action. Besides, we have a lot of fun!

Our saddle club members have really been doing



Shown in the above photo are William Bullens and Krystal Reed, prince and princess of the Roundstone E.T. Festival. They were elected from Mrs. Midkiff's third grade class.



Daniel George Morgan celebrated his first birthday April 8th. Daniel is the son of Terry and Karen Morgan of Mt. Vernon. Grandparents are George and Gladys Mason of Orlando and Kathy Morgan of Berea and Terrence Morgan of Wapakoneta, Ohio.



Amy Rae Nicely, daughter of Mr. and Mrs. Carlis Nicely of Berea, celebrated her third birthday this week with a party at her home. She received many nice gifts. Several people attended including her grandparents; Mr. and Mrs. Preston Smith of Berea and Mr. and Mrs. Carl Nicely of Brodhead, Doris Moore and Kristy, Wayne Nicely and Dorothy Conway.



On May 2, 1983, Stephen Wayne Bird celebrated his first birthday. A party was given by his mother, Marcie Bullen Bird, at the Williamsburg City Park. Many friends and several family members attended the occasion. Stephen Wayne is the grandson of Mr. and Mrs. Ben Shelly of Dayton, Ohio and Stephen C. Bullen and Shirley Bullen of Mt. Vernon. Stephen is also the great-grandson of Mr. and Mrs. Nathan Clark and Mr. and Mrs. Willie Bullen and the late Minerva Bullen.



Melinda Sue McKinney, daughter of Cecil and Joyce McKinney, has been named a national award winner in Mathematics. She is a student at BCHS and was nominated for the award by Paul Holbrook, BCHS algebra teacher. She is the granddaughter of the late Lawrence and Margaret Whitaker and the late Sam and Audrey McKinney.

Silk & Plastic Bunch Flowers

Reg. 1.99 ea.
Now **3/5.00**
Open Until 8 p.m.
Thru May 30
Hiatt's 5 & 10

Billy Shawn Brown, son of Billy Joe and Donna Brown celebrated his first birthday, May 4, 1983 at his home. He received nice gifts and cards. Grandparents are Mr. and Mrs. Virgil Martin of Crab Orchard and Mrs. Christine Brown of Brodhead.

APPEARING....
The White Lightning Band

CECIL LANES
May 27 & 28 8 p.m. to 12 p.m. US 27 Stanford

some serious horse tradin' this Spring. Sherman Thompson has a new yearling filly in his barn that everyone says is really a dandy. Cecil King has a new Amateur horse to show, while Jeff King is showing Cecil's Amateur horse from last year in the Pony classes. Jay and Sue Thompson are very excited about their new Plantation horse and Dana McClure has a new bay yearling colt. James Reppert has put his trail horse, Slick, in training with Junior Gordon and plans to show him in the Show Pleasure classes later this year. Sherry Asher has her roan horse show now and is showing him in the Plantation classes. And I have it on good authority that Adrian Henson is having a riding suit made, so I guess we can look for some competition from her on the show circuit later on this season. Good luck to all our members with their horses this year.

That's all the news for now-see you next week.



Mustache comes from the Greek word "mystax" which referred to either the upper lip or adornments growing there.



Shown above is Mr. Larry Travis, left, receiving a plaque from new head football coach at BCHS, David Hanel, for his many years of service in the Rockcastle School system. The presentation was made during last week's Athletic Banquet. Travis was the first football coach at Mt. Vernon High School and also an assistant at BCHS for several years. He retired at the close of this school year.

PLAY THE PEPSI-COLA DAILY WINNERS GAME!

This week's winning numbers!

180 441 667
258 345 660
338
667

Winning numbers to date!

All numbers below 10000 through the date of game.

180	258
338	345
441	667
660	

Just match numbers under star-topped caps of Pepsi-Cola products to winning numbers announced in Pepsi-Cola ads like this. You could win one of hundreds of prizes. You can even win a quarter of a million dollars! Instant winners too!
So keep collecting those caps and keep checking these ads! There's a new chance win every day!



just what you want

for your Memorial Day picnic

Rainbo Old Time Bread 3.98⁰⁰ 16 OZ LOAF

Gulf Lite Charcoal Starter \$1.49 QUART

Valu Trash Bags 69⁰⁰ 10 COUNT

RC 8/148 Plus Deposit 16 OZ RETURNABLES

Lay's Brand Potato Chips 99⁰⁰ 8 OZ

Kay's Ice Cream \$1.89 HALF GALLON

Fischer's Wieners 89⁰⁰ 12 OZ PACKAGE

convenient Food Mart

Participating Stores Only. Quantity Rights Reserved. © 1983.

HATT'S 5 & 10

Main St.

Mt. Vernon, Ky.

OFFERS YOU
KENTUCKY'S LARGEST SELECTION
OF
PLASTIC AND SILK MEMORIAL FLOWERS
AT THE
MOST REASONABLE PRICES

Open until 6 p.m. thru May 30th

P-10 Mt. Vernon Signal Thursday, May 26, 1983

New Emmaus Christian Life Center open

In July of 1982 things were looking very bleak for Waldo Mullins, a resident of Rockcastle County. He had fallen from a ladder while working on his Brush Creek home, was paralyzed from the waist down and had no guarantee of ever walking again. Nothing in all of his 62 years, including some rough times in the Pacific during World War II, threatened

his way of life more than this.

"I'll never forget that time," recalls Mr. Mullins. "They didn't think I'd walk at all. For over two months I laid in the hospital and couldn't even move a toe."

The doctors wanted to operate but Mr. Mullins held out against the surgery. Slowly feeling and movement began to return to his legs.

A man who has been able to fish and hunt and grow a garden all his life was not about to lay down and give up easily. He decided to leave the hospital and return to his home on Brush Creek.

"I got to where I could get from the bed to wheel chair, just barely. So I came home and got around in a wheel chair for awhile and did my own cooking. But we had high steps and I'd have to cruise out to even get to my truck." Gradually and reluctantly the truth became apparent to Mr. Mullins. A new place to live would have to be found. But where?

In that same July of 1982 things were looking very bright for one of the new ventures of the Christian Appalachian Project (CAP), a Christian service organization whose central offices were located in Lancaster. After over a year of planning and construction CAP opened the Emmaus Christian Life Center in

senior citizens.

The Emmaus Center was the culmination of a long held dream of CAP, to provide a warm, homey residence for the elderly men-and-women of the area, that is within the financial means of any person," according to Jack Morris of the CAP staff.

All fees at the Emmaus Center are on a sliding scale based on income. In June of 1981 CAP was able to purchase the Moore's Motel on Estill Street in Berea; just one block from the shops around Boone Tavern and directly across from Berea Hospital. The location was nearly perfect. Residents would have immediate access to medical care and be within walking distance of shops. It also made available a facility with individual rooms and all residents and resident couples could have private living quarters.

In the year between June of 1981 and July 1982 CAP redecorated all the individual rooms in the former motel, added a central dining and living room area, secured a director and staff and welcomed the Emmaus Center's first resident.

When Mr. Mullins fell from that ladder in July of 1982, a solution to his future living problem already existed. When he concluded, in the early winter months of 1982, that he could not continue to live alone, his new living situation was ready. A person with a need and a way to meet that need, existed, side by side. But it took another alert Rockcastle County resident, and the support of her agency, to bring the two together.

Mr. Mullins remembers the story this way: "While I was trying to get by at home I was declared home bound and Betty Lewis from Home Health came to see me. A fine lady. She gave me the blue book about the Emmaus Center and I told her I'd go up and check it out."

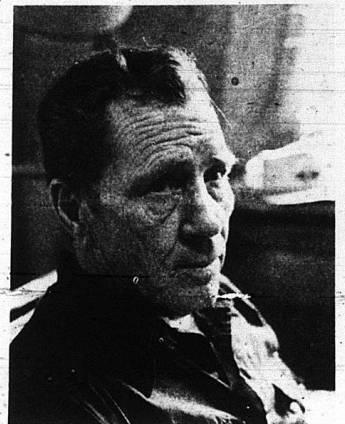
Mr. Mullins did check it out and liked what he saw. In January of 1983 he became a resident of the Emmaus Christian Life Center.

Recovery isn't complete for Waldo Mullins but he now walks with only the aid of a cane. And most important his new home is a safe, comfortable place where he can be with friends and family.

During the recent school spring break Brian Lewis, Mr. Mullins' 3rd grade grandson stayed overnight at Emmaus. After playing with the Center's pet dog "Joseph" and having some special time with his grandfather, Brian summed it up pretty well: "Papa couldn't beat this place."

The story of Mr. Mullins' determination and the way local agencies have cooperated to help him meet his need could be repeated many times. The Emmaus Christian Life Center presently has 8 residents including persons from Garrard, Madison, Rockcastle and Jackson Counties. The Center has a capacity of 16 persons.

The Emmaus Center is not a nursing home and does not provide medical and nursing care. Residents must be physically and mentally able to care for their own personal needs and maintain the activities of normal daily living. But meals are provided for all residents in the Center's dining room and they have available to them a community of other residents and staff. A part of this surrounding community are the children of the Berea



Waldo Mullins, of Rockcastle County found his new home at the Emmaus Center thanks to the efforts of Betty Lewis of Home Health.

Child Care Center right next door who eat their lunch each week day in the Emmaus Dining Room. Another part of this community are the Christian Appalachian Project volunteers who live in quarters adjacent to Emmaus. Emmaus is, therefore, a lively alternative for elderly men and women who are able to live without extensive nursing care and enjoy having people with which to share.

Peggy Patrick, the Director of Emmaus, and her husband Guy have led the project since before its opening. They see the principal advantages of this type of living arrangement for the elderly as companionship, good nutrition, safety, ready availability of medical care and the stimu-

lation to be found in the next-door who eat their lunch each week day in the Emmaus Dining Room. Another part of this community are the Christian Appalachian Project volunteers who live in quarters adjacent to Emmaus. Emmaus is, therefore, a lively alternative for elderly men and women who are able to live without extensive nursing care and enjoy having people with which to share.

(Editor's Note: Information about the services of the Cumberland Valley District Home Health Program, for home bound persons in Rockcastle County, can be obtained by calling 256-4916. For information about the Emmaus Christian Life Center call Peggy Patrick, at 986-3373.

TODAY'S SAVERS EXPECT A LOT MORE FOR THEIR MONEY

At BMW they get it.

What's the use of trying to save your hard-earned dollars if the interest rate you're getting isn't even keeping up with inflation? At BMW, we offer a number of high-yield certificates of deposit designed especially for today's economy. Even if you only have a little to invest, we have a certificate that will help you stay ahead of inflation. Get the most for your money with a BMW Certificate of Deposit.

Effective May 3 til further notice

9.50% PER ANNUM

24-Year Consumer Savings Certificate: \$1,000 minimum deposit. Just because you're not a millionaire doesn't mean you have to settle for a regular savings rate. This CD offers a maximum rate of return on a minimum investment. Also available to IRA customers.

Effective May 24- May 30

8.720% PER ANNUM

6-Month Money Market Certificate: \$10,000 minimum deposit. An ideal certificate for short-term, high-yield investment. Also available to IRA customers.

Effective May 24- May 30

8.460% PER ANNUM

91-Day High-Yield, Short-Term CD: \$7,500 minimum deposit. Our new 91-day CD features one of the highest rates ever offered on a short-term savings certificate. Also available to IRA customers.

BMW

THE BANK OF
MT. VERNON
MT. VERNON, KENTUCKY 40456

Federal regulations require substantial interest penalties for early withdrawals. Member: F.D.I.C.

DWAYNE'S Cars & Trucks

Complete Car & Truck Clean-Up/Service
U.S. 25 North Berea
Next to Tastee Freeze
986-8489

CARS

- 1982 Chev. Citation, 4 Dr.
- 1982 Olds Cutlass Supreme
- 1982 Chev. Monte Carlo
- V6, Loaded, Ginger
- 1982 Chev. Chevette, 2 dr.
- Auto, White
- 1981 Ford Fairmont, 4 Dr.
- 6 Cyl., AC, Red/Maroon VR
- 1981 Ford Granada, 2 Dr.
- 4 cyl., AC, White/Maroon VR
- 1981 Chev. Impala, 2 Dr.
- AC, White
- 1981 Dodge Colt, 2 dr.
- 4 cyl., Auto, Silver
- 1981 Pontiac Grand LeMans, 4 dr.
- V6, AC, Gold/Beige
- 1980 Olds Cutlass LS, 4 dr.
- V6, AC, Beige
- 1980 Chev. Chevette, 4 dr.
- 4 cyl., Auto, Silver
- 1980 Chev. Malibu Classic, 4 dr.
- 6 AC, Yellow
- 1980 Pontiac LeMans, 4 dr.
- V8, Auto, AC, Gold
- 1979 Ford T-Bird, V8, auto, AC, Brown/Beige
- where 1979 Pontiac Bonneville, V8, loaded, LT, Green/V6 Green VR
- 1979 Lincoln Town Car, 4 dr.
- Fully Equip. Coach Roof, Yellow
- 1978 Chrysler New Yorker Brougham, 2 dr., Fully Equip. Black/Dove Gray
- 1977 Ford LTD, 4 dr.
- V8, Blue/Blue VR
- 1978 Pontiac Bonneville, 4 dr.
- 8 Cyl., Maroon
- 1975 Chev. Camaro, 2 dr.
- auto, Red
- 1974 Pontiac Bonneville, 2 dr., Blue
- 1973 Chev. Malibu, 2 dr.
- 8 Cyl., Silver
- 1970 Olds Cutlass, Maroon

TRUCKS

- 1981 Datsun PU, 4x4, St. Sht., White
- 1982 Chev. Pickup, s-10, 4 dr., Bed, V6, auto, PS, Black
- 1981 Chev. Pick-up, Soottsdale, SW, Bed, 8 Cyl., Auto, AC, White
- 1978 Chev. C20 Van, 6 Cyl., St. Sh., PS, White
- 1975 Ford Pickup, L-W Bed Red
- 1973 Chev. Pickup 1/2 ton, auto, PS, L-W Bed, Like New
- 1974 Ford 1/2 ton, Black, V8 Std.

Dwayne Brinsgar, Owner
Ernest Snyder, Salesman & Sales Manager

HOUSES:
Mon.-Fri. 8:30-6:30
Sat. 8:30-5:00
*Dependable Transportation at Affordable Prices

THE AUNT POLLY HOUSE

Now open for the season

We have a new line of miniature furniture, miniature farm machinery (collector's items) plus quilts, pillows, baskets.

WILL SELL FOR LOCAL ARTIST ON CONSIGNMENT
RENFRO VALLEY, KY. OPEN 10 - 5

Chapin Henley, M. D.

ANNOUNCES THE OPENING OF

Laurel Obstetrics & Gynecology, P.S.C.

AT

MEDICAL ARTS BUILDING

London, Kentucky 40741-1799

Practice Limited To

Gynecology, Obstetrics, Infertility

Office Hours By Appointment

Telephone (606) 864-2233

Around BRODHEAD



Mr. and Mrs. Dale Brummett of Brodhead wish to announce the engagement and forthcoming marriage of their daughter, Rhonda to James Brummett, son of Mrs. Lucille Brummett and the late Homer Brummett of Route 1, Brodhead. The wedding will be an event of June 11, 1983 at 2:30 p.m. at the Negro Creek Church of God.

Personals

By Mary McWhorter

Mr. Lizzie Halcomb and grandson, Mr. and Mrs. Darrell Halcomb and his sister from Jamestown, all visited in Berea with Mr. Holman and all of his children and grandchildren

and family last week. Mrs. Laura Ross of New Albany, Indiana was last week guest of her daughter, Mrs. Charles Day, Mr. Day and children, Mr. Gary and Shirley. Sunday dinner guests of Mr. and Mrs. Craig Holman were Mr. and Mrs. Tom Holman and all of his children and grandchildren

and a friend of Lebanon Junction and Louisville, Mr. and Mrs. Buddy Hawkins, Carrie and Michael of Crab Orchard, Mr. and Mrs. Doug Barnett of Lexington, Mrs. Daisy Holmon, Ted and son, Teddy Ray.

Mrs. Anna Ceudill of Covington suffered a brain hemorrhage last week and is slowly recovering in the ICU in St. Elizabeth Hospital in Covington. We hope the best for her.

Our deepest sympathy and prayers goes to the Burke and Mullins families in their time of sorrow in the loss of their loved ones. Also the Bullock family and others.

Mrs. Velma Pingleton of Cincinnati, Ohio spent last Sunday afternoon and night with her mother, Mrs. Cuba Croley.

Mr. and Mrs. Jeffrey Shivel are the proud parents of a baby boy born May 7th at the Humana Lake Cumberland Medical Center. He weighed in at 7 lbs. 8 ozs. and has been named Jeffrey Alan II. His grandparents are Mr. and Mrs. Richard Shivel and Mr. and Mrs. Jimmy Hacker, all of Brodhead.

Mr. Roy Hubbard had as his visitors last week his oldest daughter, Mrs. Nora Perry of Lexington and two of his granddaughters, Mrs. Hope Deering of Lexington and Mrs. Saullba Pittman of Richmond, also four of his grandchildren, Rodney and Mark Deering of Lexington and Russell and Georgia Pittman of Richmond.

Mrs. Bertha Adams spent last Tuesday night in Lake Cumberland Medical Center in Somerset for minor arm surgery and came home Wednesday and has been confined to her home with a cold. Her visitors were Mrs. Ruth Bussell, Mrs. Billy Lear and Mrs. Mary Adams.

Mr. and Mrs. Monroe Renner spent Friday in Nicholasville with their daughter and family. Mr. and Mrs. Jesse Holbrook and sons, Scott and Jeff also their daughter, Mr. and Mrs. Kevin Cobb of Charlotte, North Carolina were there and they all at-

tended Scott's graduation. Mrs. Elsie Helton of Crab Orchard was Thursday visitor of her brother, Mr. Roy Hubbard and Mrs. Hubbard.

Mr. and Mrs. Lester Peters of Lebanon, Ohio were Saturday visitors of Mr. and Mrs. Roy Hubbard, also Mr. and Mrs. Dwight Hubbard of Crab Orchard visited with them as both Mrs. Hubbard's worked with Mrs. Peters in Ohio. Mr. and Mrs. Peters attended the Renfro Valley Barn Dance Saturday night.

Mr. and Mrs. Warren Adams of Trenton, Ohio and Mrs. Ruby Kalkle of Hamilton, Ohio were Tuesday visitors of Bob and Mary Adams and Mr. Tom Mays and son, Melvin and Mrs. Errell Halcomb and family, and Mrs. Mary Adams and also decorated Warren's father's grave. Mr. Gilbert Adams and Mary's husband's grave, Mr. Ray Adams.

Mrs. Errell Halcomb is slowly improving after an illness.

Mr. Jeff Holbrook of Centre College in Danville spent Sunday night with his grandparents, Mr. and Mrs. Monroe Renner.

Mr. and Mrs. Edwin Shultz of Madison, Indiana spent the last weekend with Mrs. Belle Coffey and they all visited Mr. and Mrs. Bob Lear and daughter, Patricia and Robin on Brindle Ridge.

Mr. and Mrs. Greg Lear and Michelle visited his grandmother, Mrs. Belle Coffey one day last week.

Sunday visitors of Mr. and Mrs. Henry Barnett were George Roberts and wife, Irene of Ellettsburg, Dewey Barnett and wife, Lucille of Carlisle, Ohio, Matt Martin and wife, Dorothy of Jeffersonville, Indiana, Garvin and Christine Scott of Mt. Vernon, Gary and Charlene Scott and son, Kevin of Mt. Vernon.

Mrs. Maggie Kidwell attended the 56th wedding

anniversary party of her brother, Mr. Frank Martin and wife at Stanford. There were around 150 family and friends and all enjoyed the occasion very much. We wish them many more years together.

Mrs. Elizabeth Mullins spent five days in Lexington visiting her niece, Dr. and Mrs. Byron Young and sons, John and Alex also visited Mrs. Sally Brooks Morgan.

Mr. and Mrs. Charles Stewart of Louisville are visiting the Gray's, Dan and Elnora and took them to Lexington for a visit with their doctors Monday. We wish for both of them better health.

Mrs. Elva Mobley celebrated her birthday Monday, May 23. Those present were, Mrs. Ruth Holmon and daughter, Tonya of Crab Orchard, Mrs. Susie Holmon and granddaughter, of Florida. Other recent visitors were Mr. and Mrs. Charles Lawrence, Mr. and Mrs. Beverly and David Taylor and Mrs. Wallace Brown, Mrs. Irene Taylor and Mrs. Willetta Owens.

Mr. and Mrs. Wallace Brown, Mrs. Irene Taylor and Mrs. Willetta Owens. Mrs. Beverly and David Taylor and Mrs. Wallace Brown, Mrs. Irene Taylor and Mrs. Willetta Owens.

Mr. and Mrs. Wallace Brown, Mrs. Irene Taylor and Mrs. Willetta Owens. Mrs. Beverly and David Taylor and Mrs. Wallace Brown, Mrs. Irene Taylor and Mrs. Willetta Owens.

Mr. and Mrs. Wallace Brown, Mrs. Irene Taylor and Mrs. Willetta Owens. Mrs. Beverly and David Taylor and Mrs. Wallace Brown, Mrs. Irene Taylor and Mrs. Willetta Owens.

Mr. and Mrs. Wallace Brown, Mrs. Irene Taylor and Mrs. Willetta Owens. Mrs. Beverly and David Taylor and Mrs. Wallace Brown, Mrs. Irene Taylor and Mrs. Willetta Owens.

T-Ball meeting

All children who signed up to play Little League T-Ball should be at the Mt. Vernon playground Saturday morning, May 28th at 10:00.

This is to include players from both Mt. Vernon and Roundstone. At this time, teams will be chosen and the rules will be explained. If there is enough time, the players will have a chance to play a game.

All parents are encouraged to attend this meeting. Lots of help will be needed during the summer.

Singing and Dinner

An all-day singing and dinner will be held at the Sand Hill Baptist Church, Sunday, May 29, beginning at 9 a.m. Everyone welcome.

Donations will be accepted for the upkeep of Sand Hill Cemetery.

Polysilk Stem Flowers



Reg.	Special
29¢	4/1.00
39¢	3/1.00
69¢	2/1.00

Hiatt's 5 & 10 open until 6 p.m. thru May 30

Real Estate For Sale

COMMERCIAL PROPERTY - 1.25 acres, more or less, near Mt. Vernon city limits, south on U.S. 25. City water is available. Ideal location, businessmen. Asking \$50,000.

COMMERCIAL LOT - 1/2 acre, more or less, with approximately 150 ft. frontage on U.S. 25 south of Mt. Vernon. The level lot has city water available and is located near I-75 and Exit 59 for only \$10,000.

3 BEDROOM COUNTRY HOME with living room, kitchen/dining room, bath, 2 porches, flue for oil or wood stove, well-insulated, clean and ready for immediate occupancy. Included is a large cellar and storage building, all situated on a nice lot which offers privacy. yet has the convenience of a blacktop road. Located approximately 8 miles from Livingston on Red Hill Road. For \$15,500.

6 Room House with bath, fuel oil furnace, flue, new vinyl floor covering in dining room and in kitchen, newly-painted interior, nice lot with a cabin and large garden in back. Numerous other amenities in addition to being conveniently located on West Main St. in Mt. Vernon. \$25,000.

3 BEDROOM HOME with living room, large family room, dining/kitchen with beautiful cabinets, bath, w/d hook-up, nice carpet, total electric, large lot for \$28,000.

3 BEDROOM BRICK with living room, kitchen/dining room, bath, w/d hook-up, nice carpet and vinyl floors, carport, electric, also flue for stove, city water, landscaped lot in Maple Grove area for \$34,500.

6 ROOM HOUSE with 3 bedrooms, fireplace, 2 flues, carpet and vinyl floors, insulated, total electric, cable TV, city water, cellar, w/d hook-up, small barn, numerous outbuildings and fencing on approx. 3 acres at Livingston for \$25,000.

LARGE LOT, approximately 100'x230', conveniently located near Rockcastle Hospital in Hillview Subdivision for only \$6500.

LOTS-2 adjoining lots of 5 acres each in Happy Acres Subdivision. Restricted, level, paved road, city water. Both for \$7,500.

TWO ADJOINING LOTS of more than 1 acre each located in Happy Acres Subdivision at Mareburg, just off U.S. 150. These are restricted lots in a prestigious neighborhood. Blacktop road, city water. Both for \$10,500.

LOT-Approx. 1/4 acre with paved road front and back of lot. Clean, perfect for mobile home. City water is available, nice neighborhood near Scaffold Cane Church for \$1,400.

LARGE LOT-Approx. 1/4 acre just off Hwy. 150 near Hwy. 461. This corner lot is ideal for building or for mobile home. Privacy and convenience for \$5,000.

122 ACRE FARM, more or less, with 3,255 lbs. tobacco allotment, 1 tobacco barn, 1 combination stock/tobacco barn, 5 bedroom house with bath and fireplace, several outbuildings, including garage, storage, etc., fruit trees, numerous creeks and spring for everlasting water supply. Complete privacy on Scaffold Cane Branch for \$65,000.

5-7 ACRE FARM with 300 lbs. tobacco allotment and 2 bedroom house with living room, kitchen/dining room, fireplace, bath, utility room, w/d hookup, carport, nice yard. This partial brick home offers an abundance of privacy in the country for \$25,000.

29 ACRE FARM with remodeled home in excellent condition. The house has 2 bedrooms, living room, dining room, large family room, kitchen, w/cabinets and large snack bar, bath, w/d hookup, nice carpet, total electric. Tobacco-1,442 lbs. Near Livingston. Priced at \$45,000.

Two Story 4 Bedroom Home with 2 fireplaces, bath, utility room, w/d hookup, kitchen w/ brick cabinets, front porch, 1 car detached garage and city water. Approximately 1 1/4 acres at Pine Hill for \$15,900.

Evelene Raines Properties

256-5811 Across From Superior 256-5811

Mt. Vernon, Ky
Evelene Raines
Broker-Auctioneer

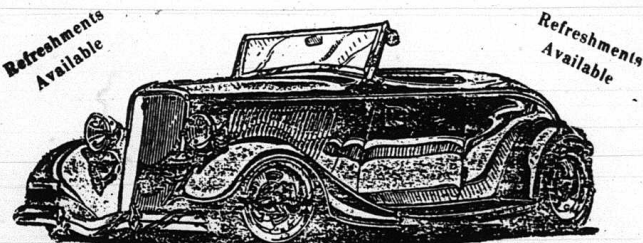
Third Annual Rockcastle Region Street Rod and Antique

CAR SHOW

Sunday, June 5, 1983

Held at Beautiful Renfro Valley, Kentucky

(Exit No. 62 From I-75, Go North 1 mile on U.S. 25)



ENTRY FEE \$10 VENDORS WELCOME SPACES \$10.00
\$10.00 Donation From Spectators-Under 12 Free

AUTO REGISTRATION 10 A.M. to 1 P.M.
Judging Will Begin at 1 P.M.

PLAQUES WILL BE GIVEN TO ALL ENTRIES

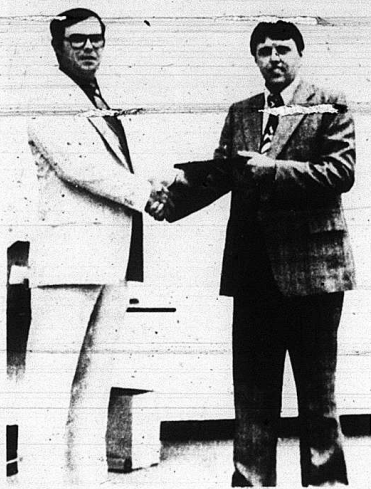
11 Classes of Street Rods, 3 Classes of Restored Antique Cars, 3 Classes of Original Unrestored Cars, 2 Classes of Open Classes (convertibles), 3 Corvette Classes, 4 Wheel Drive Class, plus Hardship, Best Paint, Best Interior, Best Engine Compartment, Longest Distance, People's Choice and Hodder's Back.

LIST OF CLASSES ON BACK
For Further Information:

Dale Winstead
P.O. Box 448
Mt. Vernon, Ky.
(606) 256-4300

Mike Mink
Rt. 1, Box 140E
Mt. Vernon, Ky.
(606) 453-4751

EVERYONE BE SURE TO ATTEND



Going to Garrard-Former Rockcastle football coach Larry Woods is shown receiving a plaque from David Hansel during the banquet. Woods is going home to Garrard County to take over the reins as their new head football coach. Woods is leaving after 5 years at the helm at Rockcastle.



Members of the 1983 Rockets Basketball team who received awards were, Mike Haarmon, Anthony Brock and Derek Kirby.



Out of respect for our loved ones who gave their lives fighting bravely for our country, we will not transact business on Monday, May 30th Memorial Day.

Citizens Bank
"growing for you" Since 1904
Brodhead, Kentucky Member F.D.I.C.

Open 9:00 to 4:00 p.m.
Drive Thru Open All 4 p.m. Fridays.
Open 8:30 to 1 p.m. Saturdays.

**CHARLES WILLIAMS
AUTO CITY, INC.**

U.S. 25 South, Berea

986-3279

**We Trade
to Trade Again
Luxury Cars**

- 1981 Olds Cutlaim Brougham, 4 Dr. Auto, P/PB, P. windows-seats-locks, Moon Roof, Brown
- 1983 Pontiac 6000, 2 Dr. Auto, Air, PS, PB, P. windows, AM/FM cassette Rose Wood
- 1981 Buick Regal Limited, 2 Dr. Cyl. Auto, Air, PS, PB, AM/FM, White
- 1980 Lincoln, 2 Dr. Coupe, Full Power and Air, Low Mileage, Brown/Half White VR, Nice Car
- 1979 Lincoln, 4 Dr. Town Car, Full power and air, loaded all the way, dark brown, brown leather interior
- 1980 Buick Century Limited 4 Dr. Cyl. PS/PB, P. windows, Maroon/Maroon Velour Int.
- 1979 Olds Toronado, 2 Dr. Coupe, Full power and air, White/half White VR, Red Leather Int.
- 1979 Buick Park Avenue, 4 Dr. Auto, Air, PS/PB, P. windows-seats-locks-trunk, White VR, Red Velour Int.
- 1977 Lincoln, 2 Dr. Auto, Air, PS, PB, P. windows-seats-locks, Yellow/Yellow VR Int.
- 1977 Olds Regency '80, Auto, 4 Dr., P. Windows-locks-seats, Cruise, AM/FM, Yellow/Tan, four int.

Trucks

- 1981 Chevrolet Pick-up, 305 Engine, Auto, PS, PB, Long Wheel Base, Yellow
- 1981 Volkswagon Pickup, 4 Cyl., Gas Engine, 4 Speed, LX Model, Gold
- 1980 Ford Pickup, 302 Engine Auto, PS, PB, Air, Short Step Side, Maroon
- 1980 Chevrolet LUV Pickup, 4 Cyl., 4 Speed, Blue/Sport Stripe
- 1979 Dodge Pickup, 6 Cyl., 3 speed, Red, 19,000 Miles
- 1971 GMC 1/2 Ton F1500, Auto, PS/PB, Gold/White

Small Cars

- 1981 Datsun 280 SX, 5 Speed, Air, AM/FM, Dark Blue
- 1981 Olds Omega, 4 Dr. 4 Cyl., Auto, Air, PS, PB, Beige
- 1981 Buick Skylark, 4 Cyl. Auto, Air, PS/PB, 4 Dr.
- 1979 Toyota Celica GT, 2 Dr., 6 Cyl., 5 Speed, AM/FM, Sun Roof, Maroon
- 1975 Ford Maverick 2 Dr., 6 Cyl., Auto, PS/PB, Blue

Family Cars

- 1981 Buick LeSabre, 4 Dr. 6 Cyl., Auto, PS/PB, Air, Blue/Silver
- 1980 Olds Delta 88, 4 Dr. V8, Auto, PS, PB, Cruise, AM/FM, Air, Silver/Silver VR, Red Int.
- 1980 Chrysler LeBaron, 2 Dr. 6 Cyl., Auto, PS/PB, AM/FM Tape, Green
- 1980 Buick LeSabre, 4 Dr. V8, Auto, PS, PB, Cruise, AM/FM, Air, Blue/Blue VR, Blue Velour Int.

Sporty Cars

- 1980 Chrysler LeBaron Sport, 2 Dr. 6 Cyl., Auto, PS/PB, AM/FM, Cruise, Air, 2 Tone, Blue/Silver
- 1980 Chevrolet Monte Carlo, 6 Cyl., Auto, PS/PB, Air, Sport Wheels, Gold
- 1980 Pontiac Grand Prix, 2 Dr., 6 Cyl., Auto, PS/PB, Air, 2 Tons Maroon
- 1978 Pontiac Firebird, 2 Dr. V8, Auto, p/SPB, Air, Sport Wheels, White/Sport Stripe
- 1978 Chevrolet Camaro, 2 Dr., 6 Cyl., Auto, PS, PB, Air, Sport Wheels, Dark Blue, White Int.
- 1978 Dodge Magnum, 2 Dr. V8, Auto, PS/PB, Air, Tilt, Cruise, P. Windows-Seats, AM/FM, CB, T-Tops, Sharp, White
- 1978 Chevrolet Camaro Z-28, V8, Auto, PS/PB, Air, Tilt, AM/FM, Sport Wheels, T-Tops, White

Others

- 1975 Honda Motor Cycle 450 Chopper, Custom Bike (Must See)
- Pickup Camper, 10 foot over-cab, Stove, Refrigerator, Bath, Water Tank with Pressure and Heater, AM/FM Tape, Nice

ALL UNITS REDUCED IN PRICE
New Hours Thru May Monday-Friday, 8:00 to 8:00 Saturday, 8:00 to 4:00. Closed Sundays

UNBELIEVABLE PRICE REDUCTIONS
PEOPLE ARE FINDING OUT! We're in Business No Reasonable Offer Refused
Come Look Us Over!
Bank Financing Available
SALE IN PROGRESS NOW THROUGH MAY In our 15th Year in the Same Location



Members of the RCHS girls basketball team that received awards at the Athletic Banquet Monday night are shown above, front row from left: Melissa Parlin, Debbie Bowman, Paige Anderkin, Denise Bowser, Linda Kirby and Donna Farthing. Back row, left to right: Coach Preston Parrett, Kristi Martin, Stephanie Wolfe, Teresa Sturgill, Cynthia Holbrook and Assistant Coach Judy Bullock. Not present was Kelli Thonday.

ASCS asks producers to certify acreages

Rockcastle County Agriculture Stabilization and Conservation Service has asked producers to certify their farm program acreage. Billy Lawrence, County Committee Chairman, explained the reason for the acreage report and reviewed the certification process. "Certification is the opportunity we give the farmers to report the acreages of crops planted on their farms to determine whether they are eligible to receive the different benefits under the programs we offer." When the farmer reports to the county ASCS office, (he/she) can review the aerial photograph of (his/her) farm and pin-point the fields in which the crops are grown. This information is then recorded and the report serves as documentation for crop acreage bases and program compliance. Mr. Lawrence said certification is particularly important to producers of quota crops such as tobacco in this area. In addition to these crops, all other crop acreages must be reported. These crops include corn,

wheat, barley, grain sorghum, oats and soybeans. "Certification is also very important to farmers who are participating in the acreage reduction, paid land diversion and payment in-kind programs because without an acreage report, they really are not participating," Mr. Lawrence said. "They must give an acreage report in order for us to determine the level at which they will be eligible for the various program benefits." Mr. Lawrence said the acreage reports needs to be as accurate as possible.

"We do have a spot check program to check on the accuracy of these reports, so the more accurate the report, the less trouble the farmer has to qualify for the benefits." In Rockcastle County, the final certification dates for program crops are: Wheat-May 25 and Corn-July 15, 1983. Mr. Lawrence said that growers not participating in the 1983 programs should also report (his/her) acreages since these acreage reports can affect eligibility for future programs.

Car Wash Bake Sale
Sponsored by the Country Angels Softball Team
WHEN Saturday, May 28
TIME 10 a.m. to 5 p.m.
WHERE Robbins Service Station, at Quail on Hwy. 70
Proceeds will go for entry fee, equipment & uniforms

C & A
Farm Equipment
Highway 150 Brodhead, Ky.
New and used tractors and farm equipment in stock, major and minor repairs, and a large parts inventory.

NEW EQUIPMENT

- 5 ft. Rotary Cutters \$425.00
- 6 ft. Rotary Cutters \$625.00
- Mechanical Transplanter-Tobacco Setter \$545.00
- 1 Row Cultivators \$95.00
- 3 pt. Spreaders \$310.00
- Boom Poles \$45.00
- 2 Axle Trailers \$1,150.00
- Hay Teters \$1,375.00
- 6 Ton Wagons \$425.00

Good selection of used hay equipment in stock.
Open 6 days a week 8-5 ph. 758-4171

Disputanta

By E. J. ...

Hello from Clear Creek Memorial Day is with us this weekend bringing memories of those who are no longer with us. But there will also be gladness in seeing family and friends who come to take part in the day of respect for the dead. Once it had great meaning for folks in the hills but with so many of a family scattered far away and their finding it hard to return, there seems to be less gathering in the large crowds as in the past.

Raymond and Lorene Hurley were pleasantly surprised by their children with a 25th wedding anniversary celebration at Berea Park for May 24th. Nearly 75 friends and relatives gathered there with lots of food and a lovely wedding cake. They received some gifts also. But I would think the nicest gift was in having each other after these long years of working and raising a family.

Some out-of-county guests were Raymond's sister, Nettie Crutcher and husband Charley, nephew Charley Hurley and wife, Bee, all from Hamilton, Ohio. There were relatives of Lorene's from McKee (sorry I did not get names).

Clear Creek also congratulates their firm couple on their anniversary. Raymond had been in the Berea Home for a minor operation but is doing well. I believe he knew green onions and lettuce would be about right to bathe in red gravy so out he comes home.

Linda Gadd of Hammond's Fork Road has also been in the Richmond Hospital for an operation but was brought home Sunday. We hope she enjoys her rest in bed while watching Don, her husband, wash the dishes for a change.

Ray and Maggie Hurley Campbell of Covington were here to visit her mother, Mary Hurley on Davis Branch Road, also to attend the Hurley Wedding Anniversary of her Uncle

Raymond and Lorene. Lorena Baker, son Gregory and her mother, Mary Hurley were in Berea shopping one day.

Alta Berry and son, Kenneth took a nice drive to Corbin last Sunday to visit her daughter, Wanda Faye Campbell and family.

The Berry families are planning a reunion at the Berea Park for Memorial Day weekend to renew family ties again.

The Rockcastle Hospital Board, is to be commended for giving an award now to Brother Bill Hiatt while he can enjoy and appreciate it. He deserves the recognition for his long time endeavor in laboring for the Lord by visiting the sick and troubled in the hospitals. We congratulate Brother Bill for this honor given him.

Rockcastle "People in Places" visiting Poncie Alexander and Sarah Chasteen Bullen in the Berea Nursing Home. Talking to Kathleen Seal Still at Glades Church. Earl Thomas catching a ride back to Clear Creek from corner of Main St. in Berea.

Seeing Lewis and Effie Linville enjoying a meal at a restaurant in Berea. Hearing Ernest Gadd say he was born into a large family of boys on Clear Creek.

Cleve Payne making a driving trip to Berea for chewing tobacco.

Verda Shearer talking long ago Davis Branch school days-Ronald Swinford saying, "There's always been a John in every Swinford generation."

I will hold a silent reunion at the graveside of my parents, O.M. and Janie Payne in their memory and also in the memory of the seven, silent, beloved brothers and sisters who have crossed over into the valley of death.

Till then, If you have a need, God has the answer!

Quail

By Vivian Owens

Tuesday visitors of Mr.

and Mrs. Ambrose Albright and Tootie were Mr. Don Stevens, Elizabeth Tunks of Louisville and Mr. and Mrs. Casper Jones and Gene Edward.

Mrs. Everett Cash and Mrs. Lee Elovins and son visited Mrs. Pattie Baker Saturday afternoon.

Mr. and Mrs. Don Cummins and family, Mr. Lewis Whitaker and Mr. and Mrs. Benton Owens visited Mr. and Mrs. Rayme Cummins Wednesday afternoon.

Mrs. Gaffer Cash visited Mrs. Sella Scoggins Sunday.

Sunday visitors of Mrs. Christine Brown were Mr. and Mrs. Cletus Brown and sons, Mr. and Mrs. Ronnie Brown and daughter, Mr. and Mrs. Billy Joe and son, Mrs. Richard Lawrence and Mrs. Gary Caldwell.

Mr. and Mrs. Clevis Baker visited his mother, Mrs. Pattie Baker Sunday afternoon.

Mr. and Mrs. David F. Noe and Mr. Arthur Bullock visited Mr. and Mrs. Benton Owens Wednesday evening.

Miss Shanda Middleton of Berea spent the weekend with her grandmother, Mrs. Edna Caldwell.

Those who visited Mr. and Mrs. Benton Owens over the weekend were Mr. and Mrs. Thomas Deborde of Ohio, Mrs. Ted Scott of Crab Orchard, Mr. and Mrs. Albert Long and Mr. and Mrs. Holla Perry.

The family of Fannie Bullock has our sympathy in the loss of their love one. God bless everyone.

Sunday visitors of Mrs. Willie Todd were Mrs. Ronald Rogers and Jill and her boyfriend, Mrs. Wayne Todd and Jessica, Mrs. Kenneth Bullock and Chuckie and Miss Tracy Burdette.

Mr. and Mrs. Chester Doan and son of East Bernstadt visited Miss Ruth Mink Saturday afternoon.

Mr. and Mrs. Benton Owens visited his cousins, Mrs. Cartelle Shelly at Mt Vernon Sunday afternoon.

Mr. and Mrs. Butch Carl and family and Mr. and Mrs. Steve Tracy and Angie of Versailles visited

their parents, Mr. and Mrs. Robert Hayes and Mrs. Saturday and attended the wedding of their sister, Miss Jennifer Hayes Saturday evening at Skaggs Creek Church.

Mrs. Bobby Brock and Lesly Joy of Erlanger spent Saturday night with her parents, Mr. and Mrs. Robert Hayes and family, and attended the wedding of her sister, Miss Jennifer Hayes.

People's Saddle

Club News

By Norma Treen

The scheduled trail ride was to meet at Reno Valley with Kermit Bowling as host. The Sunday morning cloud burst looked like a repeat of the rainy Sunday we had been having. Kermit called off the ride, but by afternoon the sky cleared and trail riders met at Oscar Chasteen's and had a nice dry trail ride.

Next Sunday, riders will meet at 2 p.m. at Evans' barn, Blue Lick. Carl Anglin will be trail boss. Bring the whole family for a Sunday afternoon ride. Carl has a nice scenic ride planned.

People's Saddle Club members were well represented at Winchester horse show last Saturday night. Dewey Thomas and Linda Miller brought home ribbons.

The monthly meeting and pot luck dinner will be Friday night, May 27. We have a club house on Oscar Chasteen's farm with ample space and facilities for our pot luck dinner. Bring a dish or two and the family for a nice meal together. Our business meeting will follow as we finalize plans for our horse show to be held June 18.

Membership chairman is Susan Coffey, 256-4883. We encourage you to call if you have questions concerning membership into our Saddle Club.

Warf Reunion

The Warf Family Association will have their national, annual reunion the second Sunday in June this

year. That will be the 12th of June. The place is Pierce Elementary School at Pierce in Green County, Kentucky.

For more information and to get on the mailing list, send a self-addressed, stamped envelope and write to The Warf Family Association, Route 2, Box 399, Greensburg, Kentucky 42743.

State legislature

By Senator John Rogers

The 1982 General Assembly created a special subcommittee to study the problems of Vietnam veterans living in Kentucky.

The subcommittee was assembled, and has been conducting meetings and public hearings across the state for the past twelve months.

The subcommittee has already raised several important issues relative to Kentucky's Vietnam era veterans.

For instance, should Kentucky offer educational benefits to Vietnam veterans?

Should the Commonwealth offer counseling and psychological assistance to its Vietnam veterans?

What can Kentucky do to help Vietnam veterans find jobs? Should there be state employment centers or outreach programs? How can the legislature insure preference and being informed when state jobs become available?

Did Agent Orange and other chemical defoliants harm Vietnam veterans? Should Kentucky offer medical and social assistance to veterans who may have been exposed to these toxins?

What are the Advisory Board for Veterans' Affairs and the Kentucky Center for Veterans' Affairs doing to help Vietnam veterans? Should Kentucky's programs for veterans' assistance be restructured?

Also, should Kentucky award a financial bonus to Vietnam veterans similar to the one already received by veterans of other wars? If so, how would such a program be financed?

The subcommittee will continue its work until

P-14 Mt. Vernon Signal Thursday, May 28, 1983

December 1, 1983. At that time, legislation aired at addressing many of the aforementioned issues will be presented for consideration by the 1984 General Assembly.

BIRTH ANNOUNCEMENT

Mr. and Mrs. Douglas Drew of Sunland, California are the proud parents of a 10 pound, 4 oz. son. His name is Daniel Wayne Douglas is the son of Mrs. Zula Drew of Sunland, California and the nephew of Mrs. Pansy McCoy of Mt. Vernon.

"ELECTION"

(Cont'd from front)

ter's 255. With only two candidates filing for Circuit Judge, Dan Venters and John Mandt, there will be no election until this fall.

Gospel Singing

There will be a Gospel Singing Saturday, May 28 at the West Brohead Church of God, featuring the Cash Quartet and other locals. Singing will begin at 7 p.m.

Dream

I need support of your love To live in this lonely world. We will work together, And make our lives better, In a street of love. We will build our sweet home.

Good time or bad time, We will share it together, Some day a tiny angel, Will come to our home, With his innocent smile, And a treasure of happiness.

We will play a lot with him, And will remind us, our childhood, He will bring a new spring in our beautiful life, He will give us happiness, And we will be proud of him.

Ramesh M. Patel (Editor's note: Ramesh M. Patel is a native of India, who now manages Mt. Vernon Motel.)

Vacation Bible School

First Baptist Church

Main at Craig Street

Mt. Vernon, Kentucky

May 30 - June 3

6:30- 9:00 p.m.

Bible Study - Worship - Missions

Activities Refreshments

For all Children - Age 3 through Grade 6

More Information or Need a ride

Call 256-2922

Dr. Charles Hedrick - Pastor

Auction

of Billy A and Joyce Bussell's HOUSE AND LOT

Saturday, May 28, 1983, 3:30 p.m.



LOCATION: Main St., Brodhead, Ky. Auction signs are posted on the property.

Due to the dissolution of marriage, Billy A. Bussell and Joyce Bussell have authorized our firm to offer this fine brick home at public auction.

The floor plan consists of 1 bedroom, living room, dining room, kitchen, 1/2 bath and two closed in porches downstairs; 2 bedrooms, parlor and full bath upstairs and full basement.

The house has been carpeted recently and has a new roof. It has both city water and sewer, storm doors and windows and much more.

The home is situated on a nice lot measuring approximately 1/4 acres within walking distance of town, churches and school.

If you're in the market for a nice home in town to retire to or to raise a family, be sure and mark your calendar to attend this sale Saturday, May 28th at 3:30 p.m.

TERMS: 20% down day of sale, balance in 30 days with delivery of deed.

FOR ADDITIONAL INFORMATION, CONTACT:

Ford Realty & Auction Co.

Realtor - Auctioneer
Ct. Hwy. Adams
Ct. Liberty Park



Selling for the Community

Auctioneer
Ct. Jerry Hill
Ct. Walnut Bottom



Mt. Vernon, Ky. Phone 256-4848

Clayton Hammond's Supermarket

Hwy. 461

The Somerset Road "Home of the Bargains" Prices good May 26 - June 1

Fresh
WHOLE
FRYERS **45¢** lb.
Limit 4 with \$10

Fresh

GROUND
BEEF **\$1.19** lb.

 Bluegrass
PLATTER
BACON
\$1.29 lb.

 Fischer's
Jumbo
Bologna
\$1.29 lb.

Boneless
RIB
EYES **\$3.49** lb.

Corn King
Wieners
89¢ pkg.

CHICKEN
LIVERS lb. **49¢**

 **JUST-RITE**
HOT DOG
SAUCE **99¢**
3 for

Maxwell House
INSTANT COFFEE
10 oz. **\$3.99**

Big Chief
PEANUT BUTTER
18 oz. **\$1.49**

 **Spam**
12 oz. can
Luncheon
Meat **\$1.49**

 **Glade**
Springfresh
BATHROOM
AIR
FRESHNER
99¢


2-liter
Coca-Cola 6 w/
\$10 order **89¢**

HAWAIIAN Grape or Orange
PUNCH 46 oz. **69¢**

JELLO assorted flavors
GELATIN 6 oz. **59¢**


Banquet Frozen
T.V. Dinners **79¢**

FRESH PRODUCE

 Grade A Large
Eggs
doz. **69¢**

 Fresh
Yellow
Corn **99¢**
5 ears

5 lb. ORANGES **\$1.29**

 Martha White
MACARONI &
CHEESE **89¢**
3 for

Banquet Frozen
Crepe
Pies 14 oz. **89¢**

Chicken 'n Ribs
18 oz. **69¢**
BBQ Sauce

Fresh **GREEN**
PEPPERS or
CUCUMBERS
2/29¢

Fresh White 1/2
Runner **GREEN**
BEANS **69¢** lb.