

## Four local women graduate from nursing school

Three Rockcastle residents graduated December 9 from Eastern Kentucky University with an associate degree in nursing. And, a fourth, graduated in May.

Graduating in December were: Jana Cromer, of Mt. Vernon, wife of Gary L. Cromer; Margie Shivel of

Brodhead, wife of Richard E. Shivel and Kay Mullins of Mt. Vernon, wife of Luke Mullins. Mrs. Jenny Roberts, wife of Teddy Roberts and daughter of Mr. and Mrs. Richard E. Shivel, graduated in May and she is employed at Berea Hospital.



Jana Cromer



Jenny Roberts

Mrs. Cromer, who has two children, has been employed at Rockcastle County Hospital and Mrs. Shivel, the mother of 6 children is

employed at Berea Hospital. Mrs. Mullins, who has 3 children, has not yet accepted employment



Margie Shivel



Kay Mullins

## Tree seedlings available from state forestry division

The Kentucky Division of Forestry will again be selling seedlings to the public this fall. The purpose for making the seedlings available is for reforestation, erosion control, windbreaks where needed, and for wildlife habitat improvement.

It is estimated that there are 1 million acres in Kentucky in need of reforestation. These are lands abandoned from farming, overstocked, and existing stands containing defective or undesirable trees. The Division of Forestry makes seedlings available to landowners at a nominal cost to help get these lands back into production of timber.

Besides the desired benefit of timber production, trees also provide erosion control, noise abatement, air filtration, and improvement of water quality.

Another very important reason for planting trees near homes is for energy savings. Deciduous trees (trees that lose their leaves in the fall) planted along the south exposure of a house will make it considerably cooler during the hot summer. In the fall, after the leaves fall off, warm winter sunlight on sunny days will be permitted to radiate through exterior home walls helping to reduce inside heating costs.

Coniferous trees (pine trees) planted along the northwestern side of a house will serve as a wind break reducing the cold air wind velocity from penetrating exterior and interior walls and windows. This will reduce the amount of air velocity at which cold air can infiltrate the house.

So this fall do your self, your family, your neighbor and your country's energy supply a favor and plant some trees.

Seedlings available include loblolly pine, short leaf pine, white pine, Virginia pine, Scotch pine, black locust, white ash, cottonwood, sycamore, yellow poplar, Chinese chestnut, black alder, autumn olive and bicolor lespedeza will be for the amount in bundles of 100, 500 or 1,000. For more information contact the Kentucky Division of Forestry through Stephen C. Bullen, ranger for Rockcastle County at 256-2957 or 256-5794, or call the London Ranger Station at 864-9396.

New State Conservationist Named For SCS in Ky.

Randall W. Giesler has been selected to fill the position of State Conservationist for the U.S. Soil Conservation Service (SCS) in Kentucky, effective December 4, 1983. He replaces Eddie L. Wood, who retired

on that date. Mr. Giesler is a native of Van Wert County, Northwest Ohio where he started his SCS career in 1952 as a conservation aid. He served in nine other locations in Ohio as an engineering technician, a soil conservationist. He was the assistant director of the Employee Development Staff in Upper Merion, Pennsylvania Area Conservatism in Staunton, N.C. and Assistant State Conservationist in East Lansing, Michigan. He has been the Deputy State Conservationist in Kentucky since January 1981.

He is a 1959 graduate of Ohio State University with a B.S. degree in agricultural engineering. Mr. Giesler is married to the former Martha Lee Aysman. They have two children: Randall Kurt and Kathryn Jo Hovey of Columbus, Ohio.



The time required for the north to orbit the sun is 365 days by about 24 hours each century.

## PUT A SINGER UNDER THE TREE AND GET A FREE GIFT

Reg. \$449.99  
Now \$329.99

Plus free gift of a Sunbeam  
Total Clean Can Opener with Ice  
Crusher (\$37.95 value) or  
Sunbeam Hot Beverage Maker  
(\$31.95 value), 3 other selected  
models with free gifts

**SUPER SPECIAL**

Mfg. Suggested Price \$199.99  
Now \$99.99

Better Hurry, Limited Supply.

20% off all  
new vacuums in stock

Big selection used Machines from  
\$49.95 and up

Now stocking fabrics and notions.  
38 years experience

**Haley's Sewing Center**

Southern Hills Plaza Eastern By-Pass  
SINGER APPROVED DEALER  
Richmond, Ky. Ph. 623-4796

## 20% OFF Lorus Quartz Watches

By Seiko Watchmakers



HIATT'S 5 & 10  
Mt. Vernon, Ky.

## BROKERAGE SERVICES



C. T. Huffines

Through a special arrangement with Citizens Fidelity Bank and Trust Company, The Bank of Mt. Vernon can now provide its customers with an important new discount brokerage program. If you make your own investment decisions, you can enjoy the money saving advantages of this new service. Orders to buy or sell stock, corporate bonds and options can now all be handled by opening your brokerage account at The Bank of Mt. Vernon. For more details call or stop in and see Mr. C.T. Huffines, President.

**BMV THE BANK OF MT. VERNON**  
MT. VERNON, KY. 800-266-8141

## Holiday Food Mart

**PEPSICOLA** Coke - Pepsi or Mt. Dew \$1.19  
8 pak 16 oz. with dep. or botl.

Fischer's All-Meat  
**Wieners** 12 oz. pkg. 89¢  
Fischer's All-Meat  
**BOLOGNA** \$1.49

Banquet  
**Pot Pies** 3/\$1  
ALL FLAVORS

Banquet TV Dinners  
Turkey, Chicken, Salisbury Steak  
or Meat Loaf **79¢** ea.

SALTINE  
**CRACKERS** 49¢  
1 lb. box

HUSMAN TWIN PACK  
**Potato Chips** 79¢

Onions 3 lb. bag 69¢  
3 lb. 79¢

Oranges or Grapefruits Florida 5 lb. \$1.19

Potatoes 20 lb. \$1.69  
Golden Ripe Banannas 1/2 lb. 19¢

OPEN 24 hrs. a day 7 days a week

1 mile south of Mt. Vernon at Burr U.S. 25

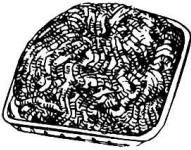
Reuben Hammond, owner

# Hammond's Supermarket

Hwy. 461

"Home of Bargains"

Prices good Dec. 15 - 21



FRESH

## Ground

### Beef 99¢ lb.



## USDA Choice Chuck

### Roast 99¢ lb.

## Bluegrass Jubilee Boneless Ham

Whole

### \$1.59 lb.

Half - \$1.69

USDA Choice  
Arm Roast

### \$1.19 lb.

## Field Fresh Ham Sausage

### \$1.69 lb.

Field 12 oz.

### Bacon \$1.19

## Generic 42 oz. SHORTENING

### \$1.39

32 oz.

Birdseye 8 oz.

## Cool Whip Topping

### 79¢

## Wick's (2 - 9") Frozen Pie Shells

### 89¢ box

Smucker's  
in Apothecary  
Jar Strawberry  
Jam \$1.99

## Generic 32 oz. Salad Dressing 89¢



8 pk. 16 oz.

## PEPSI or COCA-COLA 99¢

## Nunn-Better 5 lb. Self-Rising Flour 89¢

## ARGO 303 size PEAS 2/ 79¢

## Generic Lim. 2 LAUNDRY BLEACH 69¢ gal.

## Carnation Tall Can EVAPORATED MILK

### 2 for 99¢

## Dixie Belle 1 lb. box SALTINE CRACKERS 59¢

## FRESH PRODUCE

## Carolina's Best 4 lb. Golden Popcorn \$1.19

## Generic 5 for Macaroni & Cheese Dinner \$1

## 20 lb. bag POTATOES \$1.79

## Martha White 10 lb. Self-Rising Corn Meal

### \$2.39



## JFG INSTANT COFFEE 10 oz. tin \$3.59



303 size

## Luck's Beans 2/ 89¢

## Bananas 4 lb. / \$1

## Oranges 79¢ doz.

## 5 lb. bag Tangeloes \$1.19

## Tangerines 59¢ doz.

# End-of-season stats released; Robinson and Burkhart led

Statistics for the 1983 football season were released recently by Coach David Hanzel.

Defensively, the Rockets were led in solo tackles by Burley Burkhart with 59.

Following close behind was senior end, Jeff Hanzel, with 57; Tim Roberts and Elmer Robbins each had 48; David Gllovak, 35; Greg Long, 28; Garry Fain and Eugene Crutcher (Crutcher only played in 9 games), 24 each; James Poynter, 20; Chris Cornelius, 16; James Kirby (4 games), 12; Mike Bryant and Charlie Bryant, 11 each and Johnny Poynter, 6.

Defensive end Jeff Hanzel led the team with 10 fumble recoveries and Greg Long was the leader in interceptions.

Offensively, the Rockets were led by senior Scotty Robinson who carried the ball 292 times for a total yardage of 1,622 (5.8 average), scored 27 touchdowns and converted 4 points after touchdown. Robinson averaged 160.1 yards per game.

Next was junior Garry Fain with 66 carries for 433 yards (6.6 average), three touchdowns and 3 points after touchdowns.

Quarterback Chris Cornelius carried the ball 42 times for 204 yards and

scored five of the points after touchdown.

Fullback Jeff Hanzel gained 137 yards in 37 carries and scored 1 point after touchdown; senior James Kirby carried the ball 23 times for 76 yards and Jeff Bullock and Rodney Brummett each carried the ball twice, gaining 7 and 8 yards, respectively. Johnny Poynter carried the ball once for three yards.

In the passing department, Cornelius was 20 for 38 and 235 yards, was intercepted 4 times and scored 1 touchdown on a pass and 4 point after touchdowns.

Back-up quarterback sophomore was 0 for 2 in the passing department.

Greg Long led all receivers with 10 catches for 153 yards, 1 touchdown and 2 points after touchdown.

James Kirby was next with 3 receptions for 63 yards. Mike Bryant, Scotty Robinson and Garry Fain each caught the ball twice with Robinson and Fain each scoring a point after touchdown on a reception.

Sophomore Greg Mink caught the ball once for 40 yards.

Mr. Hanzel also asked us to express the coaching staff's sincere thanks to the following people and businesses who helped make

their football season a success.

Pizza Hut, Young's Pharmacy, Cox Funeral Home, PCA, Mt. Vernon Signal, Dr. John Parsons, Sears, Wards, Fain Furniture, Singleton & Associates, Ronnie and Pam Cash, Central Office (Mr. Parsons), Dowell and Martin, Western Auto, DeBoard Oil, The Gallery, WRVK Radio, Hiatt's 5 & 10, Mt. Vernon Printing, Bank of Mt. Vernon, Ford Realty, David Gregory, Jerry Cox, Citizens Bank, Smith-Built Homes, James Lambert, Appliance Service Center, Hammons Oil Co., Thrifty Lumber Co., Sparks Flower Shop, Kearney's Restaurant, Superior Market, T&M Market, Renfro Valley Shell, Saylor Pharmacy, Cleston Saylor, Ronnie Cash, Charles T. Baker, Mike Appleman, Tony Saylor, John Saylor, Howard Saylor, John Clontz, Paul Travis, Larry Travis, Mr. and Mrs. Jim Winstead, Mr. and Mrs. Larry Mullins, Mike Bryant, Robert Robinson, Wendell Williams, Dale Whitaker, Kenny Johnson, Todd Fields, Charlie Fain, Kevin Isaacs, Donna Young, Connie Riddle, the cheerleaders, football managers, David Brock, James Mullins, Jerry Pensol, Dusty

Carlottis, Mr. Crutcher and the staff and faculty of RCHS

## CHRISTMAS SPECIAL

A Cantata will be performed by the Ottawa Baptist Church, Sunday, December 18th at 7 p.m. The cantata is entitled "Come To The Manger." Everyone is welcome.

## "FAIRVIEW"

(Cont'd from P-14)

We certainly enjoyed the teaching of Rev. Charles Hedrick in our Bible Study Course held at Fairview last week in the pastors the First Baptist Church in Mt. Vernon and is truly a great servant of the Lord.

Hubert, hasty, members of her Sunday School class and their families met recently and enjoyed a good supper and a very pleasant evening together. It's always a joy to spend time with people you love. We also enjoyed the visitors who attended Altogether we had 27 present.

Mrs. Gladys Rose of Snider has been on the sick list for some time now. We do hope and pray she will be feeling better soon and able to attend church. She is one of our most faithful and devoted members and we all love her and miss her very much.

Mrs. Georgia Blair, who hasn't been able to attend church for some time is now back and we are so glad to have her with us again. She is a wonderful lady.

Mr. Ira Reppert of Crossville, Tenn. visited relatives here over the weekend and spent Saturday night with Hubert and me. We always enjoy having him in our home, he is a wonderful brother and I love him dearly as I do all my brothers and sisters.

Our Christmas Program is scheduled to be presented at the Fairview Baptist Church on Sunday evening, December 18th at 7:00.

Everyone is invited to come and be with us.

Please try to attend church and Sunday School some where. We extend to all a warm welcome to worship with us anytime at Fairview. We would be glad to have you. God bless you all.

## REMINDER

The Circuit Clerk's office would like to remind everyone whose birthday is this month to check their license to see if they are due to be renewed.

Frankfort is not sending out the reminders again this month, so anyone who has a license that expires this month, needs to come by the office and get them renewed.

"Strong beliefs win strong men, and then make them stronger." Walter Bagshot

The Mt. Vernon Signal Thursday, December 15, 1983 P-17

## Cancer Radio Auction

### to be held December 17

The Cancer Radio Auction will be held December 17, from 9 a.m. to 12 noon over WRVK radio station.

The Rockcastle County Unit of the American Cancer Society will be having their annual radio auction. The following merchants and businesses have donated the listed items:

Thrifty Lumber Company, arrow stapler gun, Hamm's Automotive, 3 quarts oil and filter, Jack's S&T Hardware, rain suit, Bentley's Marathon, 5

quarts oil and filter, Built Wel and Kentucky Stone-8 ton No. 8 rock delivered, donated by Ky Stone and delivered by Built Wel, Bradley's Chevron Station, oil change filter and lube, Brown's Grocery, \$15 in groceries, Brodhead S&T Hardware, hot pot, Ernie's T&M Market, 1 jar pickle bologna,

Stewart Farm Supply, Old Hickory knife set, Nos. One Stop, \$10 groceries, Taylor's Produce, 2 bushels

(Cont'd to P-20)

## An Old Fashion Christmas at M.V.E.S. December 20

### Chili Supper

start serving at 5:00, kitchen closes at 6:30

Christmas program, 7:30

STARRING-Kindergarten through Jr. high in a variety of acts

### Tickets

Advance -\$2.00 Adults, \$1.00 Children  
At Door-\$2.50 Adults and \$1.50 Children

HAVE YOUR PICTURE TAKEN WITH SANTA

Meet the Himalayan Snow Monster, presented by the MVES sixth grade

Visit our Old Fashion Country Store for some last minute Christmas shopping

DOOR PRIZE \$50 Savings Bond

Sponsored by the MVES P.T.A.



Three RCHS football players received Honorable Mention on the All-State team in the 1983 coaches poll. The

three players honored were, from left: Scotty Robinson, senior running back; Burley

Burkhart, senior, a line-backer and junior Elmer Robbins, offensive tackle.



## C & A Farm Equipment

Highway 150 Brodhead, Ky.

New and Used farm equipment and tractors, all types of major and minor repairs done, and Rockcastle County's most complete tractor and equipment parts inventory.

### NEW EQUIPMENT

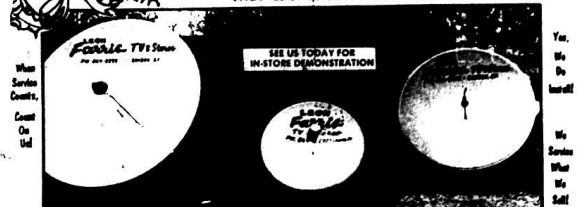
- Rotary Cutters - 5 ft. \$425
- Rotary Cutters - 6 ft. 625
- Wagon Gears - 6 ton 425
- 20 Blade Disc 425
- 16 Blade Disc 350
- Boom Poles 45
- Bale Feeders 75

Franchised Dealer for Golden Leaf Tobacco Strippers. Priced below dealers cost at \$995.

Open 6 days a week: 8-5

758-4171

## GET THE WHOLE FAMILY SOMETHING FOR CHRISTMAS THEY CAN ENJOY YEAR AFTER YEAR!!



**SATELLITE VIEWING!!** See Us For The Satellite Earth Station System. COME TO WHERE THE SELECTION IS, THE PRICE IS, AND THE SERVICE IS! WHY GO ANYPLACE ELSE?—Leon Farris TV & Stereo of London, Ky. has used their buying power to buy in large quantities at lower prices and they're passing the savings onto you with new low, low prices!!

**INSTALLED** Only \$1949.00\* \*\$100.00 includes Normal Installation Up To 50 Miles From Our Studio In London, Ky.

16' ROUND 1 PICE FIBERGLAS BUSH WITH 61850 TUBES, DOWN CONVERTER, DOWNMAN POLARIZER MODULATOR, LMA, NECESSARY WIRE & CABLE, CONCRETE FOR POLE MOUNT (Many Other Models In Stock)

COMPLETE REMOTE SYSTEMS IN STOCK  
STEREO RECEIVERS IN STOCK

Get Top Quality TV Viewing from the Sky! See All Your Favorite Music Shows, Rock & Country, Gospel Programs Sports Weather, Movies, Living Channels, Nashville Network And The 5 Major Networks! Channel After Channel Selection...All This And More on Your Present TV Set!

**LEON Farris**  
TV & Stereo  
SALES AND SERVICE  
South Main Street London, Ky.  
STORE HOURS: MON-FRI 9-5 SAT 9-1

BANK FINANCING AVAILABLE TO QUALIFIED BUYERS



**Professional Services**

**PAUL'S MEAT MARKET**, formerly Nicley's meat market, is now taking appointments for this fall's killing season. Appointments must be made 1 week in advance. Services offered: 1) custom meat packaging for home freezer; 2) hogs butcher blocked for home curing; 3) hogs scalded and hand scraped the old fashion way; 4) slice and/or wrap cured hams, shoulders and bacon. Also taking interviews for freezer meat wrappers and hog scrapers. For more information, call (business) 256-2693 or (home) 256-5256. Paul's Meat Market, owned and operator by Paul Kirby. 9ntf

**Hamm's Well Drilling**, Call 256-2024. 4ntf

**CARPET KLEEN!** The best in steam carpet cleaning. Free estimates. Call Lloyd Graham, 256-5536. ntf

**Building, Remodeling and Repair** Work done at reasonable rates with quality results. For free information, call 256-2881 after 5 p.m. or see Deniz R. Allen. 4ntf

**HYSINGER CARPETS:** Carpet direct from the mills. Shaw, commercial-residential, Armstrong vinyl. For all your carpet needs, visit Hysinger Carpets, Mt. Vernon, Ky. Ph. 256-5413. ntf

**NOTICE:** For electric wiring and plumbing, call a licensed plumber, at 256-5250. ntf

**Grave Markers and Monuments:** In stock at all times. McNew Monument Sales, U.S. 25, 4 miles north of Mt. Vernon. Ph. 256-2232. ntf

**Haley's Sewing Center** now in Southern Hills Plaza, Richmond, Ky. New Singer sewing machines, vacuum cleaners. Also used sewing machines. Sales, repair service and parts. 38 years experience in repairs. Now stocking fabrics and full line of sewing notions. Approved Singer dealer. 9ntf

**NOTICE:** I would like to do housecleaning in Mt. Vernon and Livingston. Call after 5 p.m., 453-3555. 18x1

**NOTICE:** Painting, paneling and interior carpenter finish work. Call Larry, 256-5356. 18x1p

**NEED A CARPENTER** or handy man with 15 years experience? Call Rathael "Lee" Collins at 256-4870. 18x4

**Home for Elderly** or disabled, excellent nursing care, 18 years experience, reasonable monthly rates. For information, call (606) 965-3227. 18x13p

**ATTENTION! ATTENTION!** Special weekly rates. Commercial rates available. Compare cable TV, quality experience? Call Rathael "Lee" Collins at 256-4870. 15x7

**Notices**

**POSTED:** No hunting or trespassing on land belonging to J.D. Cottonigam at Pine Hill. 5ntf

**POSTED:** No trespassing on property located on Wolfe Creek about 1 mile above Wolfe Creek Bridge and owned by heirs of Lorenzo Craig and Laura Edith Wilhoit Hickey. 4p

**MORE \$\$\$:** For White Oak Stave Bolts and Logs. Haul to Independent Stave Company, Eubank, Ky. 13x26

**NOTICE:** Free shipping anywhere in U.S. with print purchase of \$25.00 or more until Christmas. Teresa's Antiques and Gallery, 1/4 mile from Boone Tavern toward Meade, 866-9147. 17x3

**APPLE STAND** on 150, 2 miles S/E of Brodhead, top of Hall's Hill. Different varieties, also nuts, oranges, syrup and honey. Open 9-5, Thursday thru Tuesday. **Brook's Apples.** 17x2p

**CREEK GRAVEL HAULING** Contact Clinton Allen. 758-4192. 17ntf

**NOTICE**

Notice is hereby given that Marvin Hensley, Rt. 2, Box 665 has been appointed executor of the estate of Floyd Clevenger. Claims shall be presented to Mr. Hensley or Lambert and Lambert, P.O. Box 736, Mt. Vernon, Ky. 40456 on or before February 11, 1984. 17x3

**NOTICE:** Rockcastle County Raceway 1984 Street Stock Rules are Now Available. Call 878-8218. 19x3

**NOTICE**

Notice is hereby given that on the 8th day of December, 1983, Lou D. Stowell, the duly appointed, qualified and acting executrix of the estate of Roscoe Hysinger, deceased, filed her final settlement of said estate and exceptions thereto shall be filed in writing with this court on or before December 28, 1984. Denver Miller, Clerk, Rockcastle District Court, By Teresa Vanzant, D.C. 19x3

**BRUMMETT'S APPLE HOUSE** located 4 miles south of Crab Orchard on Hwy. 39. Apples, \$5 and \$6 bu. (several varieties). All kinds of citrus fruits, loose mixed candy and nuts. We fill church orders and make fruit baskets to order. Open 7 days a week. We accept federal food stamps. 19x2

**NOTICE**

Notice is hereby given that Richard D. Cheatham, Brodhead, Ky. 40409, has been appointed executor of the estate of Dorothy Riddie Cheatham. Claims shall be presented to Mr. Cheatham or to Lambert and Lambert, P.O. Box 736, Mt. Vernon, Ky. 40456 on or before February 1, 1984. 17x3

**NOTICE:** A two-year reunion for the members of the 1982 graduating class of RCHS is presently being discussed. At this time, no plans are definite, although it would take place some time in May. Anyone who is interested should call or leave a message at 453-3525 as soon as possible so that we can organize a good reunion. 19x2p

**NOTICE:** Dewey Gilbert has posted all his property in Jackson and Rockcastle counties. Anyone seen on this property will be prosecuted. 19x2p

**NOTICE OF ISSUED SURFACE MINE PERMIT** Pursuant to Permit Number 502-0034

In accordance with the provisions of KAR 8010 Section 16.5, notice is hereby given to city and county authorities that Ikerd Bandy Co., Inc., P.O. Box 246, Fergusson, KY 42533 has been issued a surface coal mining and reclamation permit from the Natural Resources and Environmental Protection Cabinet, Dept. of Surface Mining Reclamation and Enforcement for a surface mining operation of approximately 44 acres in Rockcastle County.

The operation is approximately 1/10 of a miles East from Ky. 1955's junction with Trace Branch Road and located 1/4 mile West of Trace Branch. The latitude is 37 degrees 19' 32" longitude is 84 degrees 11' 15". The surface area is owned by William Fonder, Leonard Hammond and William Carter.

Any further inquiries may be addressed to the Department for Surface Mining Division of Permits, London Regional Office, Regional State Office Building, London, Kentucky 40741. 19x1

**CARD OF THANKS**

The family of George Douglas Mink wants to thank all the people who were so kind during the illness and death of their father. A special thanks to Rev. Hubert Roark, Juanita and Billy Medley, to all who sent flowers and food.

staff at Rockcastle Hospital and Dowell Martin Funeral Home



Children  
Modern postage stamps came into use in 1840  
On the average, twelve generations of households are produced in one year.

**This Christmas, Give a Gift that lasts all year - a subscription to the Mt. Vernon Signal**

We will enclose a notice of the subscription in a Christmas Card

**Rates:**  
In County: \$7<sup>00</sup> for one year  
Out-of-County: \$10 for one year.

Please enter a one year's subscription to the Mt. Vernon Signal for  
Name \_\_\_\_\_  
Address \_\_\_\_\_  
Enclosed find my check or money order for \$ \_\_\_\_\_

Mail to:  
**Mt. Vernon Signal**  
P.O. Box 185  
Mt. Vernon, Ky. 40456

**FOR SALE**

M F 235 diesel tractor with loader, only 700 hours. Excellent condition. Ford 532 hay baler used very little. Ford 631 farm tractor, good shape (New) Ford 2 plus 3 bottom plows. Also used Ford, Massey and IH plows.

PHONE 256-5800 or 256-4014

**Looking for the perfect Christmas gift**

Consider a beautiful print  
**by Mark McFerron.**

Livingston Depot	\$30
Mt. Vernon Depot	60
Courthouse	35
Berea Depot	25
Coal Print	25
Barn	15

Prices will increase after Christmas

**Now available at The Gallery**

Main St. 256-2815 Mt. Vernon

**Woodall Const. Co.**

Building, Remodeling, Alum. Siding,  
Painting-Interior or exterior

**FREE ESTIMATES**

**758-4185**

**CHRISTMAS SALE**

starting December 7. Handmade gifts and decorations at Lawrence Grocery near Ottawa Baptist Church.

Open every day, Sunday, 1-6.

**Mechanic Work Done**  
All Types  
Farm Equipment or Automobiles.

Contact: Alfred Carpenter or Darrell Allen, Orlando, Ky. at 256-5783 or 256-2807, anytime.

**USED CAR SALE**

- 1978 CHEVROLET PICKUP, 4x4, V8, Auto. \$2,895.
- 1976 DODGE PICKUP, 6 Cyl., Stick 1,185.
- 1974 DODGE PICKUP, V8, Auto. 895.
- 1976 FORD PICKUP, Club Cab, V8, Auto. 995.
- 1976 FORD T-BIRD, V8, Auto. 1,495.
- 1976 FORD Elite, 2 Dr., V8, Auto. 995.
- 1977 FORD GRANADA, 4 Dr., 6 Cyl., Auto. 1,295.
- 1975 DODGE CORONET, 2 Dr., 318 Engine 795.
- 1977 CHEVELLE, 4 Dr., 305 Engine 1,595.
- 1974 CHEVROLET IMPALA, 2 Dr., V8, Auto. 1,295.
- 1973 CHEVROLET IMPALA, 4 Dr., V8, Auto. 795.
- 1966 CHEVELLE, 2 Dr., V8, Stick 1,895.
- 1963 BUICK, 4 Dr., V8, Auto. 895.
- 1975 TOYOTA CELICA, 5 Speed 1,795.
- 10 1/2 Foot Truck Camper, Self Cont. 595.

**Hensley's Used Cars**  
Rt. 2 Orlando (Salt Petro Cave Rd.)  
256-4777

**For all your heating needs:**

Stove Pipes, Mats & accessories  
Wood and Coal Stoves  
Aladdin Kerosene Heaters  
We're open all day Saturdays

**Jack's S & T**  
Trustworthy Hdwe. Store  
Williams St. 256-4363

Concrete, Brick, Block Work Done  
Plumbing & Electrical Service and Chimneys and Flues Built  
Free Estimates  
Ph. 256-4032

**Philbeck's Used Cars & Trucks**  
BUY, SELL OR TRADE  
Chestnut Ridge Road  
256-2972

**Thomason's Scrap Yard**  
Mt. Vernon, Ky. 256-2381

NOW BUYING ALUMINUM CANS  
All Day Friday and 8 to 12 Saturday  
Also buying junk cars and scrap metal "anytime."

Sheet Alum.; cast alum.; radiators; No. 1 copper; No. 2 Copper; Batteries.

Open Monday - Friday 8 to 4  
Saturday 8 to 12

Please Call 256-2381 if you have any questions

**Chimney Sweep**  
Gary L. Cromer  
256-5559

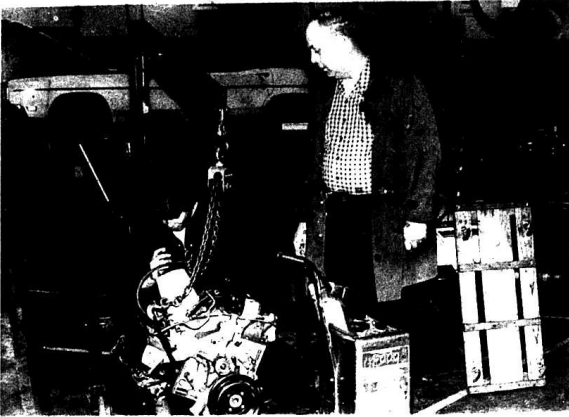
Larry W. VanHook  
Buyer of Grade Logs and Standing Timber. Ph. 878-8327  
Day or Evenings 14ntf



**MAY THIS CHRISTMAS BRING YOU** warm thoughts tender moments fond memories and a bright tomorrow

**Donnie Singleton**  
Mt. Vernon  
256-2611

Representing  
**State Auto Insurance**  
A brand you can depend on.



Senior auto mechanic student Tim McKinney looks over the 1983 Cadillac motor recently donated to Harry Sparks Vocational School by General Motors. Lloyd Cain, director, said the school re-

quested the motor from GM several months ago and, after submitting a course plan, the motor was delivered just last week. Warren Burton, right, instructor, said the motor would

be used to expose students to the newer type engines and how they are constructed with the various computer controls. James Rhodus is the other auto mechanic instructor at the school.

Call news items to 256-2244

## REGISTER FOR World's Largest Stocking



Hope says come into Jack's S & T Trustworthy Hdwe. and sign up for the World's Largest Christmas Stocking.

Drawing To Be Held  
Dec. 21 at 2:00 P.M.  
(No purchase Necessary)

Jack's S & T  
Trustworthy Hdwe. Store

Williams St. • 256-4261

## Peoples Saddle Club rides in Berea Parade

The below picture is of the 1983 Berea Parade held November 19. Saddle Clubs represented were Madison County Saddle Club, Rockcastle County Saddle Club and People's Saddle Club.

We would like to thank Gene Gray for his hospitality that day. All clubs met at Mr. Gray's home that morning for a breakfast at 9:30 a.m. We were off to the parade at 11 a.m. After the parade, we were back to Mr. Gray's home for lunch. There were 39 people riding in the parade.

The People's Saddle Club December meeting will be a pot luck Christmas party, December 16, beginning at 7 p.m. at the home of Cookie Mason on the Brush Creek Road. Anyone interested in joining our club is invited to attend.

For information about the club, contact Susan Coffey, 256-4883.

Cookie Mason, reporter



Peoples Saddle Club  
in Berea Parade

### "RADIO AUCTION" (Cont'd from P-17)

apples; Menge's Grocery, \$10 groceries; Citizens Bank, \$10 savings accounts; Simpson Feed Company, 50 lb. dog food; Hlati's 5x10 mixer; Montgomery Ward, 2 microwave dishes; King's Pic Pac, turkey; Red Top Restaurant, 2 rib eye steak dinners; Castle Inn Restaurant, 2 chicken dinners.

Parson's Gas and Appliance, tank of bottle gas; Rockcastle Auto Parts, (2) 12 pigs of Quakers (10W, 40); Sears, \$25 gift certificate; Tag's Antiques, bowl and pitcher set; Renfro Valley Store, 2 records, tapes or cassettes of your choice; Robert's Trading Post, stompers cycle stunt set; Dix Point Restaurant, 2 dinners of your choice; Brodhead Cafe, dinner of your choice; Dairy Delite, large pizza; Mt. Vernon Dairy Freeze, large pizza;

Mt. Vernon Produce, 50 lb. horse feed; Snack Shack, 2 chicken dinners of your choice; McKinney Tire, Oil change and filter; Jean's Restaurant, 4 country ham dinners; 2 UK basketball tickets; DeBorde's Discount, bedspread; Young Designs, \$15 gift certificates; Bank of Mt. Vernon, (2) \$10 passbook saving accounts; Adams Optical and Dr. David Coleman, eyeglass and eye exam; Young's Pharmacy, box of candy;

Johnny Sams Music Store, guitar; Beeker Oil, case of oil; Wester Auto, juicer; Saylor Pharmacy, Dog 'n' Biscuits; Druke's, 12 salad bars, Beauty Salon - Phillips 31 hairbrush; Appliance Service Center, 1 gallon interior paint; Young's Hair Design, styling brush and 2 bottles conditioner; Rockcastle Farm Service, 4x4 FM Zenith clock radio; Cox's Hardware, sharpening device; Carter's Market, bushel of apples; Convenient Mt. Vernon and Brodhead, 100 oranges; DeBoard Oil, canning of greens; Fain Furniture, print; Superior Food Mart, case of Stokely Apple-sauce; 2 Alabama vs. Kentucky basketball game tickets for Jan. 9 (lower seats); 2 UK basketballs, autographed by the team and 6 months of post-examination for your home by Central Vermils and Pest Control.

This would be a good opportunity for you to do your Christmas shopping and help a worthwhile organization.

**Brummett's  
Orchard & Apple House**  
Located 4 mi. south of Crab Orchard on Hwy. 39  
**APPLES \$5 and \$6 Bu.** (several varieties),  
**All kinds of citrus fruits, loose mixed  
candy and nuts. We fill church orders  
and make fruit baskets to order**  
Open 7 days a week. accept federal food stamps

**Beauty In Wood**  
Main St. Mt. Vernon

**25% OFF**  
**All Silk Flowers &  
Wood Arrangements**

Thru Dec. 24th

Merry  
Christmas  
from  
Jewel & Carrie

256-5311

**PRE-CHRISTMAS SALE!**  
December 2 thru December 17

**10%-50% OFF**  
Everything in the Store!

We Will Not Be Undersold! Come In and Compare Prices!  
We Carry Name Brands Such As:

- American Drew • Tell City • Bassett • La-Z-Boy • Warm Morning Stoves
- People Loungers • Green Brothers • Serta Bedding • Carlton McLendon
- Fenton Glass • Temple Stuart • Baldwin Brass • Chiro-Practic Bedding

**FAIN FURNITURE**  
West Main Street • Mt. Vernon • Phone 256-2201  
HOURS: 9-5, Closed Sunday • FREE DELIVERY • FINANCING AVAILABLE

# Mount Vernon Signal

Mount Vernon, Kentucky 40456

VOLUME 97 - NUMBER 19

Thursday, December 15, 1983

## Jaycees' annual Christmas Party is December 18

The annual Jaycees' Christmas Party will be held Sunday, December 18th at 1 p.m. at the Big Barn in Renfro Valley.

Santa Claus will be on hand to distribute candy, fruit and toys.

School buses will pick up the children at the normal pick-up points.

Children riding buses will receive gifts first, with those coming in cars being last.

This is necessary in order to keep track of all the children.

### DAV REP TO BE HERE

Mike Gibbons, DAV state Service Officer, will be at the Department of Human Resources office on Hwy. 150 Monday, December 19th to help veterans and their dependents in filling out their claims.



Rep. Danny Ford of Mt. Vernon greets resident Raymond Link at the Rockcastle County Hospital's Skilled Nursing Facility.

Ford was given a tour of the facility by Zella Miller, director of nursing. The tour was in honor of Legislators Workday, which is held to

acquaint government officials with the purpose and function of long term care facilities.

## Low tobacco prices are result of surplus and quality

Tobacco companies have a 2 7/10 years supply of tobacco on hand, in addition to this year's crop, and this factor, combined with a low quality crop this year, is causing trouble for tobacco farmers, Harold Ballinger, ASCS director, said Tuesday.

Ballinger said the highest price he knew of for tobacco thus far has been \$1.92 per pound with some baskets going for 50 cents a pound.

The pool is the recipient of more tobacco than usual, Ballinger added, with about 80% of the crop going into the pool.

Imported tobacco is also causing problems, Ballinger said, with secrecy surrounding the total amount being imported.

Ballinger said that Congress is expected to put some restrictions on the influx and a recent bill passed by Congress requires that the amount imported and grade be reported.

Imported tobacco can reportedly be bought for \$1.00 a pound at the tobacco companies' docks, Ballinger said.

But, with all these difficulties, Eastern Kentucky farmers are some better off than those in the Bluegrass area where crops were almost totally demolished by the drought.

Ballinger said this was a contributing factor in the averages being higher at the markets in Richmond and London.

The market closed Wednesday for the Christmas holidays and will reopen in early January.

### No road test will be given Christmas and New Year's weeks

The Circuit Clerk's office will be closed Friday, December 23rd, Saturday, 24th and Monday, 26th for the Christmas holiday. The permit test and the road test will not be given on that Friday and Monday.

The office will also be closed Friday, December 30th, Saturday, 31st and Monday, January 2nd, for the New Year's holiday. The permit test and road test will not be given on that Friday or Monday, either.

## Council tables most items until January

With a new council coming in in January, the Mt. Vernon City Council took a wait and see attitude to many of the fourteen items on their December agenda, during their regular monthly meeting Monday night.

New council members, Jack Renner, Buddy Mullins and Joe Martin will take office in January and Tom Welch, Roger McClure and Conrad Parrett will step down. The three former council members all declined to run for re-election this Fall.

The three councilmen-to-be were at the meeting Monday night to get some idea as to the problems they will be facing when they take the office for real next month. The old council did not disappoint the new members any as they tabled several projects on this month's agenda.

What business the council did conduct consisted of voting to start the procedure to place a caution light on Fairground Hill. Some council members expressed concern that traffic would be too fast at the top of the hill where visibility is at a minimum. The council gave Mayor Roland Mullins authority to write a resolution which is the first step in getting a caution light, and submit it to the board at the next meeting.

Although the council agreed among themselves during the meeting that the alley between Tevis and Bethrum Streets needed to be widened and repaired, they took no action. The general feeling among the council was to wait until someone who lived on the road came to the council and asked for the work to be done.

In other action the council voted to place bigger bulbs in the city's street lights because, according to one councilman, they are just not bright enough. At first it seemed that the council might have some new street lights put up, but after some discussion the council voted to put the different bulbs in.

It seems that there are several issues around the city's water tower on Town Hill that are suitable for firewood. The council voted Monday night to allow any one that wanted to, to cut the trees for the firewood, with the stipulation that they also clean up the brush. The next are in the city's way.

Johnny Crosson of Mt. Vernon, who lives on Blue Hill Road, was at the council meeting to ask what could be done about getting cable television on Ross Hill Road, which is in the city limits.

The council told Cromer that they felt like he had the right to the cable, which is supplied to the rest of the city by Mt. Vernon T.V. Cable, and that they would talk to Wayne Stewart, who owns the cable company, about extending his service to the residents in that area.

With winter fast approaching, the council voted to terminate the employment of four men hired to work on the new sidewalks in Mt. Vernon. The four men, Joe Hansel, Steve Pittman, Mickey Alcorn and Eddie Falin will be laid off indefinitely, with the possibility of being put back to

work in the Spring. The council also authorized Water superintendent Matt Powell to figure out the cost of renting out the city's concrete saw. Guy C. Martin and David Stival had requested the use of the saw and since no more work will be done on the sidewalks for the time being the council gave their approval.

The new council members will be sworn in January 3rd and will join incumbents, Joel Gentry, Pete Hurd and Ernie Tolle. This will also be when the new council decides to meet for the coming two years.

## USDA to resume economic emergency loan program

The Farmers Home Administration will resume making economic emergency loans no later than December 22, Secretary of Agriculture John R. Block announced today.

The loan program, first authorized in 1978, expired in September 1981. Farmers Home, in accordance with a court order, is preparing to reopen the program for both insured and guaranteed loans up to a total of \$400 million. The agency, as USDA's rural credit arm, makes loans to rural residents and communities unable to obtain adequate credit from private, commercial lenders.

The economic emergency loan program should not be confused with the disaster emergency loan program, which is limited to helping farmers continue their operations after suffering production or physical losses as a result of a natural disaster.

Economic emergency loans are authorized for farmers and ranchers who are primarily and directly engaged in and expect to continue in agricultural production, are unable to get sufficient credit from their regular lenders, and have a need for credit to maintain viable farming operations. The total principal balance outstanding at any time on an economic emergency loan(s) to any one borrower cannot exceed \$400,000.

Those loan funds can be used primarily to finance 1983 crop production, purchase essential livestock, lease family living and farm production debts that cannot be extended, and pay delinquent installments owed on chattel and farm and home real estate debts when

it is determined that the lender is demanding payment of such installments. One nondelinquent installment may be refinanced on farm chattel and real estate debts to give the borrower a better cash flow.

(Cont. to 13)

### Citizens Bank Will Close

Citizens Bank of Brodhead will be closed for the Christmas holidays Saturday, December 24th and Monday, December 26.



Mitten Tree-As one of their Christmas projects, Bethany United Methodist Church annually sponsors a Mitten Tree. On this tree are hung mittens donated for under-

privileged children and distributed by church members. Mittens are still being brought to Norton Insurance

Agency where the tree is located. In the photo are, from left: Mrs. Arletta Norton and employee, Beverly Holman.



The RCHS Chorus will be presenting a musical entitled "Bercoze," written by James Leber and based on

Charles Dickens "A Christmas Carol," on Sunday, December 18 at 2:30 in the RCHS cafeteria. Admission

will be \$1. Everyone is invited to please come and share in the Christmas Spirit with us.

# Mt. Vernon Signal

PUBLISHED EVERY THURSDAY

Main Street in Mt. Vernon, Kentucky 40456  
 Entered at Mt. Vernon Post Office  
 As Second Class Matter - Permit No. 1  
 In County - \$7.50 per year Out of County - \$10.00

JAMES ANDERKIN, JR., Publisher  
 PERLINA M. ANDERKIN, Editor

MEMBER KENTUCKY PRESS ASSOCIATION

## County Statistics

### Deeds Recorded

Wilmar Gene and Julian J. VanHook, real property located in Rockcastle County, to Dennis R. and Chhina L. Brummett, tax \$36.00.  
 Edward Keith and Jerri Lynn Smith, real property located in Rockcastle County, to Judith R. Smith, tax \$36.50.  
 Lena and Green Berry Toler, real property located on the waters of Negro Creek, to Starla Sky Rose, tax \$2.00.  
 The Bank of Mt. Vernon, real property located in Rockcastle County to Earl Benton and Wanda Cromer and Kenneth and Norma K. Cromer, tax \$26.50.  
 Barry and Kathleen Todd, real property located on the Brodhead-Conway

Road., to Herbert McQueen, tax \$13.00.  
 Shirley Ray and Alma Jean Cable, real property located in Rockcastle County, to Alma Jean Cable, tax \$3.00.  
 Shirley Ray and Alma Jean Cable, real property located in Rockcastle County to Alma Jean Cable, no tax.  
 Steven I. and Priscilla L. Rosnagle, real property located in Renfro Valley, to J. Hal and Velma E. Smith, no tax.  
 William Kenneth and Lena Vanzant, real property located in Rockcastle County to Hubert and Mandy Vanzant, no tax.  
 Wayne R. and Virginia Lee King, real property located in Rockcastle on the waters of Crooked Creek, to John M. Scott, tax \$35.00.

George B. and Pearl E. Proffitt, real property located in Rockcastle County on the waters of Negro Creek, to James Alfred Proffitt, tax \$6.00.

Geneva Rice, real property located in Rockcastle County, to Alvin Rice, tax \$1.00.  
 Vadd Co., real property located in Mt. Vernon, to Janet B. Hendrickson, tax \$1.50.  
 Vadd Co., real property located in Mt. Vernon, to Ora York, tax \$1.50.  
 Vadd Co., real property located in Mt. Vernon, to Emmer and Minnie Harrison, tax \$5.00.

Danny C. and Pam Martin, real property located in Rockcastle County, to Danny C. Martin and Albert B. Martin, no tax.  
 Built-Wel Development Corp., real property located in Rockcastle County, to Robin Lee and Sharon Rae Bishop, tax \$30.50.

Lessie M. and Maudie King, real property located in Rockcastle County, to Dee Alva and Mary Bussell, tax \$36.00.

### Marriage Licenses

Paul Ray Rowe, 17, Route 5, Mt. Vernon, unemployed, to Edna Pearl Edwards, 16, Rt. 3, Mt. Vernon, December 8, 1983.  
 Bennett Terrell Rowen, 24, Route 1, Mt. Vernon, laborer, to Carolyn Sue Evans, 22, Route 1, Mt. Vernon, December 9, 1983.  
 James Henry Hoskins,

22, Brodhead, welder, to Mary Edith Hutcheron, 20, Brodhead, December 10, 1983.

### Circuit Civil Suits

Rommell Moses vs. T&W Equipment, et al., motion and affidavit for temporary injunction, 83-CI-205.  
 Mary Louise Combs Rominger vs. Herbert Ellis on Rominger, decree of invalidity of marriage, 83-CI-206.

### District Court

No insurance sticker: James Napoleon Barnett, George Clayton Dooley, \$50 fine.  
 Speeding: Wayne Hanks (83/55 amended to 70/55), Carlos P. Saxton, \$30 fine.  
 No operators license: Carlos P. Saxton, \$44.50 fine.

Drunk in a public place: Robert Paul Griffin, \$20 fine; Lewis Calvin Denney, \$25 fine; Delmer Messer, \$20 fine.

Illegal possession of alcoholic beverages for resale: Mattie J. Griffin, \$100 fine and cost and 30 days (suspended).

Driving under influence: George Clayton Dooley, Ricky Winkler, \$100 and cost; Donald Hellard, \$100 and cost, 3 days (suspended).

Reckless driving: Clayton Ivan Frith, \$100 fine and cost.

Permitting unlicensed driver to operate vehicle: Delmer Messer, \$50 fine.

Balance due on fine: Wilbert Eugene Parker, 10 days in jail in lieu of fine and costs.

### Hospital Report

#### Acute Care

Admitted: Aubrey Phelps, David Stewart, Oakley Mullins, Helen Lamb, Barbara Whitte, John Northern, Ruby Adams, John Bullock, Raymond Miller, Luevernia Hurley.

Released: Fannie Baker, Elva Cable, Ruby Bostic, Aubrey Phelps, Gerald Hart, Barbara Mullins, John Graves, Oakley Mullins.

Admitted: Skilled Nursing: John Graves, Myrtle Franks.

Tonda Fields appointed to college student foundation

Tonda Leah Fields, a freshman at Georgetown College, is one of the thirty-one undergraduates appointed by the college to the Georgetown College Student Foundation.  
 Organized as an arm of the college, the Georgetown

## An Old Fashion Christmas is Tuesday night at MVES

The Mt. Vernon PTA is sponsoring "An Old Fashion Christmas" at the school Tuesday, December 20. The program will begin with a chili supper served from 5 to 6:30 p.m. The Old Fashion Country Store will be open for last minute Christmas shopping. The variety show will begin at 7:30, featuring Kindergarten through junior high classes. Santa Claus will be there for pictures. The MVES sixth grade will feature a Himalayan Snow Monster.

businesses: Montgomery Ward, Sears, Western Auto, Costley, Clinard-Blevins office, DeBorde's Discount, Bradley's Barber Shop, Young Designs, Saylor's Pharmacy, Koula's, Rockcastle Steak House, Appliance Service Center, Bank of Mt. Vernon, Wanda's Beauty Shop, Jean's Restaurant, Sue's Beauty Shop, Young's Pharmacy, York, Parsons, Nance office, Renfro Valley Country Store.

Tickets are \$2.00 for adults and \$1.00 for children if purchased in advance and \$2.50 and \$1.50 at the door. Tickets may be purchased at the following Mt. Vernon College Student Foundation is made up of dedicated sophomores, juniors and seniors who plan and implement the foundation's work of public relations, promotion of a weekend of activities in the spring, and fund raising for scholarships for local students.

In existence for four years, the foundation has raised \$80,000 in the form of 140 \$500 scholarships.

Tonda is the daughter of Clara Ann Fields of Mt. Vernon.

## Letter to the Editor

Dear Mr. Anderkin,

Safe transportation, a comfortable bed, warm clothes and wholesome food are amenities most of us take for granted. Individuals with mental illness, developmental disabilities or substance addiction sometimes lack these basics.

The Cumberland River Comprehensive Care Center, serving eight Southeastern Kentucky counties, needs your help in providing for the primary necessities of many people.

(Cont'd to P-8)



of

The Late Mr. Robert Cromer's

32 ACRES more or less In 6 Tracts

Saturday, Dec. 17, 1983 3:30 p.m.

Near Industrial Park Mt. Vernon, Ky.



House On Tract #6

LOCATION: Turn off Highway 159 approximately 1/4 mile west of city limits of Mt. Vernon on to the property. Auction signs will be posted.

In order to help settle the estate of the late Mr. Cromer, our firm has been authorized to offer this property for the high dollar.

TRACT # 1-contains 5.97 acres more or less and fronts on county road and has city water available.

TRACT # 2-contains 2.71 acres more or less, all tillable land, fronts on the old county road and has city water available.

TRACT #3-contains 2.71 acres more or less, all tillable land and city water is available.

TRACT #4-contains 5.05 acres more or less, tillable land and city water available.

TRACT #5-contains 4.34 acres more or less, tillable land and city water available.

TRACT #6-contains 10.84 acres more or less and has city water available.

Improvements on this tract include the above pictured 9 room, 2 story frame house. The house has living room, kitchen, family room, 2 bedrooms, and a bath downstairs and 4 bedrooms upstairs. In addition, there is a half-basement and the house is heated by a gas furnace.

TOBACCO BASE-1781 lbs.-basic. If sold in tracts tobacco base will be divided by ASCS.

Being so strategically located near Mt. Vernon Industrial Park, this property offers great development potential for residential or commercial purposes. Also, it's an ideal opportunity for the family wanting a small farm near town.

Owners reserve the right to sell each tract separately then combined in any manner to reflect the best returns.

TERMS: 20% down day of sale, balance within 30 days with delivery of deed.

For additional information contact:

Ford Realty & Auction Co.

Member-Auctioneer  
 Col. Ray Adams  
 Col. Henry Ford

Auctioneer  
 Col. Henry Ford  
 Col. William Bullock



MT. VERNON, KY. PHONE 294-4444



**Help!**  
 That's right. We need your help to reach our 1983 goal for the Perpetual Care fund for the Elmwood Cemetery. Your contribution will be tax deductible for 1983. Our perpetual care fund has done well and soon as we reach our final goal we'll no longer have to ask for your support. Won't you please help us now?

Elmwood Cemetery Association

P.O. Box 709

Mt. Vernon, Ky. 40456

Notice of  
 Elmwood Cemetery Annual Meeting

Public invited.

Saturday, January 7, 1984, 1:00 p.m.

County Courthouse, Courthouse

# PENNIES FOR YOUR THOUGHTS.

Let's Talk Long Distance.

A long distance call can be richly rewarding. It can make you and the person you called feel like a million dollars. And it can do that—for pennies.

You can save up to 50% off regular daytime rates when you dial direct anywhere in the continental U.S.—without operator assistance—on weekends or weekdays after 5:00 p.m.

Call a friend. Sure, you'll spend a few pennies. But, for what it's worth, what you'll buy is priceless.



CONTEL Continental Telephone System



# Robinson's GIGANTIC CHRISTMAS SALE

OVER 100 LIVINGROOM SUITES IN STOCK

Whirlpool

Frigidaire

LITTON

Magic Chef

TV

NAME BRAND MICRO-WAVE OVENS

From \$199 Up

BEST Swivel Rocker

OVER 50 IN STOCK TO CHOOSE FROM

\$138 WT While They Last!

12" Black & White \$68

NAUGAHYDE RECLINER

Choice of Colors

SALE \$129 WT

**NO FINANCE CHARGE FOR 18 FULL MONTHS OR FIRST PAYMENT IN MARCH 1984**

PILOT

22 AUDIO SYSTEMS

Catalog No. SKD 8001/737

Plus Four-Way Integrated Vertical Rack System with Large Roll Around Casters

\$499 WT

OAK BEDROOM SUITE

4 Pieces-Triple Dresser, Hutch Mirrors Full or Queen Size Bed, 5 Drawer Chest

Reg. \$799.95

NOW \$499 WT

WATERBED SHOWCASE

Early American With Built-In Lighting, Mirrors, Liner, Pedestal and Decking

\$499

**TRADE-IN SPECIALS**

36 Livingroom Suites

6 Recliners

End Tables, Coffee Tables

4 Bedroom Suites

10 Dinettes

Washers, Dryers, Refrigerators & Ranges

Freezers-Chest & Upright

PRICED TO SELL

Contemporary Loose Pillow Back Solid Oak Frame

PRICED FROM \$199

Sofa & Loveseat Reg. 1499 SALE \$788 WT

Sofa & Chair Reg. 1299 SALE \$688 WT

Gannoy of Thomasville, Inc.

Solid Pine Table, 4 Chairs, Buffet & Hutch

\$688 WT

**SHOP ROBINSON'S**

furniture & appliances

BEREA

Quantities Limited on Some Items

986-1906



**COLONIAL SUGAR** 16oz. Jar **\$1.39**  
 Limit 1 With \$10.00 More Additional Order

**OCEAN SPRAY CRANBERRY SAUCE** 16oz. Can Whole Or Part **2/99¢**  
 Limit 2 With \$10.00 More Additional Order

**CRISCO SHORTENING** 1lb. Can Regular Or Butter **\$2.29**  
 Limit 1 With \$10.00 More Additional Order

**FREE**  
 12 Carat Cubic Zirconia Stone...  
 with 14k Gold Designer Mountings \$12.88

SAVE \$45.00  
 SAVE \$35.00  
 SAVE \$27.00

START SAVING OUR REGISTER TAPES TODAY!

**Merry Christmas!!**  
 Prices Good December 12 Through December 18

**OSCAR MAYER Regular Or Beef BOLOGNA** 12 oz. Package **\$1.29**

**CLAUSSEN WHOLE OR HALF OR BREAD & BUTTER PICKLES** **\$1.49**  
 clausсен

**FISHER'S FESTIVAL HAM** 11.5lb. Avg. **\$1.69**

**FIELD'S FRESH HAM SAUSAGE** 1lb. Pkg. **\$1.69**

**FIELD'S BACON** 12oz. Package **99¢**

**LAY'S SMOKED PICNICS** 1lb. Box **79¢**

**LAY'S PRESTIGE HAM HALVES** 1lb. **\$2.39**

**JFG SALAD DRESSING** 32oz. Jar **89¢**  
 Limit 1 With \$10.00 More Additional Order

**PARAMOUNT POLSKI WYROB KOSHER DILLS** 20 oz. Jar **\$1.09**

**PARAMOUNT SWEET PICKLES** 16 oz. Jar **\$1.19**

**DOLE In Juice Or Syrup PINEAPPLE** 20 oz. Can **79¢**

**NABISCO NILLA WAFERS** 12 oz. Package **\$1.09**

**DOMINO CONFECTIONER OR LIGHT OR DARK BROWN SUGAR** 1 lb. **2/\$1.19**

**ORLEANS WHOLE OYSTERS** 8 oz. Can **\$1.09**

**RITZ CRACKERS** 1 lb. Box **\$1.29**

**RED CROSS THIN SPAGHETTI OR ELBO MACARONI** 7 oz. Box **3/89¢**

**THREE RIVERS MEAL** 5lb. Box **\$1.09**  
 Limit 4 With \$10.00 More Additional Order

**GREEN GIANT PEAS OR WHOLE KERNEL OR CREAM CORN** 303 Size Can **3/\$1.19**

**GREEN GIANT Cut Or French GREEN BEANS** 16 oz. **3/\$1.19**

**GREEN GIANT NIBLETS CORN** 12 oz. Can **3/\$1.19**

**GREEN GIANT CAULIFLOWER OR BROCCOLI With Cheese** 10 oz. **99¢**

**GREEN GIANT BROCCOLI SPEARS With Cheese** 10 oz. **99¢**

**VAN CAMP'S No. 2 Can PORK & BEANS** **2/\$1**

**CARNATION EVAPORATED MILK** 12oz. Can **2/95¢**  
 Limit 4 With \$10.00 More Additional Order

**FOOD FAIR BROWN & SERVE ROLLS** **2/99¢**

**PILLSBURY CAKE MIX** **69¢**

**PILLSBURY READY TO SPREAD FROSTING** 16 oz. Tub **\$1.29**

**SHIRLEY JEAN FRUIT CAKES** 3lb. **\$2.79**

**RALSTON WHEAT OR CORN CHEX** 12 or 15 oz. Box **\$1.39**

**RALSTON RICE CHEX** 16 oz. Box **\$1.99**

**MAXWELL HOUSE COFFEE** **\$1.99**

**BIRDS EYE Regular Or Extra Creamy COOL WHIP** 8 oz. Container **69¢**

**JELL-O GELATIN** 3 oz. Box **4/\$1.19**

**DREAM WHIP TOPPING** 5.6 oz. **\$1.19**

**STOVE TOP STUFFING** 6 oz. Box **89¢**

**BAKER'S CHOCOLATE CHIPS** 12 oz. Package **\$1.09**

**BAKER'S COCONUT** 14 oz. Package **\$1.09**

**BUSH'S WHOLE YAMS** No. 3 Squat Can **69¢**  
 SHOWBUST SWEET POTATOES 1.5oz. Can

**ORTEGA TACO SHELLS** 4 oz. Package 10 Count **79¢**

**ORTEGA TACO Hot Or Mild SAUCE** 8 oz. Bottle **79¢**

**STAR KIST In Oil Or Water TUNA** 6 1/2 oz. Can **79¢**

**TROPICANA ORANGE JUICE** 1 Gallon **\$1.19**

**BLUE BONNET MARGARINE** 1lb. Quart **2/89¢**  
 Limit 1 With \$10.00 More Additional Order

**FOOD FAIR ICE CREAM** 1/2 Gallon **\$1.19**

**KRAFT MINI MARSH MALLOW** 10 1/2 oz. Bag **2/99¢**

**Food Fair Coupon 50**

**S & N GREEN STAMPS** With This Coupon and Purchase of 2 or More Of Hamburger Or Hot Dog Buns  
 Exp. 12/18/83

**Food Fair Coupon 50**

**S & N GREEN STAMPS** With This Coupon and Purchase of 4lb. Or More Pops-Rite Popcorn  
 Exp. 12/18/83

**Food Fair Coupon 50**

**S & N GREEN STAMPS** With This Coupon and Purchase of 2 or More Pkgs. Of Any Candy  
 Exp. 12/18/83

**Food Fair Coupon 50**

**S & N GREEN STAMPS** With This Coupon and Purchase of 2 or More Packs Of Fischer's Or Field's Lunchmeat  
 Exp. 12/18/83

**Food Fair Coupon 50**

**S & N GREEN STAMPS** With This Coupon and Purchase of A Butterball Turkey  
 Exp. 12/18/83

**Food Fair Coupon 50**

**S & N GREEN STAMPS** With This Coupon and Purchase of \$2.00 or More Health & Beauty Aids  
 Exp. 12/18/83

# INDIAN MAID TURKEY

16 lb. & Up Avg.

# 59¢

Limit 1 With \$10 Or More Additional Order

Prices Good December 12 Through December 18

U.S.D.A. CHOICE PLATTER PLEASING BONELESS

# CHUCK ROAST

# \$1.59

### JFG INSTANT COFFEE

# \$3.49

### WHITE LILY FLOUR

# 89¢

### TIDE DETERGENT

# \$1.79



INDIAN MAID 8/14 lb. Avg. **69¢**

REYNOLD'S WRAP 200' **\$3.89**

FRESH, GROUND CHUCK **\$1.69**

SWIFT'S LIL' BUTTERBALL TURKEY 4/9 lb. Avg. **\$1.09**

HARPER'S COUNTRY HAM **\$1.79**

LAY'S PORK LIVER **49¢**  
Beef Liver 69¢ LB.

### SWIFT'S BUTTERBALL TURKEY

# 89¢

### FRESH, GROUND BEEF

# 99¢

### SWIFT'S CANNED HAM

# \$5.49

### SELECTO WIENERS

# 99¢

### WEBBER'S SAUSAGE

# \$1.59

### BANQUET APPLE OR PEACH PIE

# 99¢

BANQUET FRIED CHICKEN 2 lb. Box **\$2.69**

BANQUET CHERRY PIE 20 oz. Box **\$1.09**

BANQUET PUMPKIN PIE 20 oz. Box **79¢**

AUNT JEMIMA COMPLETE PANCAKE MIX 2 lb. Box **99¢**

SARA LEE POUND CAKE 12 oz. Package **\$1.49**

MRS. GOODCOOKE CHOCOLATE CHIP COOKIES 1 lb. **\$1.19**

PET RITZ 10 oz. Package PIE SHELLS **69¢**

AUNT JEMIMA REGULAR SYRUP 12 oz. Bottle **\$1.19**

### NO. 1 NORTHWESTERN RUSSET POTATOES

# \$1.49

KAL-KAN CAT FOOD 6 1/2 oz. Can **3/\$1.00**

SCOTCH TAPE **3/\$1.00**

HOLIDAY CRANBERRIES 12 oz. Package **99¢**

G.E. WATT MISER BULBS **\$2.88**

### PEPSI & PEPSI PRODUCTS

# \$1.09

### JENO'S PIZZA ROLLS

# 99¢

RED GRAPES **69¢**

YELLOW ONIONS **3 lb. 69¢**

SWEET POTATOES **3 lbs. \$1.00**

GOLDEN RIPE BANANAS **4 lbs. \$1.00**

IVORY BAR SOAP 4 Pack **89¢**

DOWNY FABRIC SOFTENER 33 oz. Bottle **99¢**

SARAN WRAP 50' **99¢**

LOG ROLL WRAPPING PAPER **99¢**

CRISP CELERY **59¢**

CHOW ORANGES **\$1.29**

DURACELL BATTERIES **\$1.89**

SALAD DELIGHT LETTUCE **59¢**

### CORONET BATHROOM TISSUE

# \$1.69

KLEENEX FACIAL TISSUES 250 Count **\$1.09**

NEW FREEDOM REGULAR MAXI PADS 12 Count **\$1.49**

NEW FREEDOM MINI PADS 12 Count **\$1.09**

DURACELL BATTERIES **\$1.89**

C2 Pack, D 2 Pack 9 Volt 1 Pack AA 4 Pack \$2.69

CORONET NAPKINS 160 Count **79¢**

### BOLT PAPER TOWELS

# 69¢

### CLING FREE SHEETS

# \$1.29

### SUNLIGHT DISH LIQUID

# \$1.19

MEN'S JERSEY GLOVES **79¢**

CREST TOOTH PASTE **\$1 Back**

with 2 Proof of Purchase Seals and Mail in Refund Offer

**50** S & H GREEN STAMPS  
With This Coupon And Purchase Of 2 LBS. Of Mixed Nuts Or Walnuts  
Exp. 12/18/83

**50** S & H GREEN STAMPS  
With This Coupon And Purchase Of 1 Bag Or More Of Pink Or White Grapefruit  
Exp. 12/18/83

**100** S & H GREEN STAMPS  
With This Coupon And Purchase Of 2 Or More Packs Of Cut Up Chicken Parts  
Exp. 12/18/83

**100** S & H GREEN STAMPS  
With This Coupon And Purchase Of \$10.00 - \$30.00 Of Groceries  
Exp. 12/18/83

**300** S & H GREEN STAMPS  
With This Coupon And Purchase Of \$30.00 - \$40.00  
Exp. 12/18/83

Food Fair Coupon  
**500** S & H GREEN STAMPS  
With This Coupon And The Purchase Of \$40.00 Or More Of Groceries.  
Exp. 12/18/83

U.S.D.A. CHOICE  
PLATTER PLEASING  
**CHUCK ROAST**  
**\$ 1<sup>19</sup>**  
LB.

SWIFT'S  
CANNED  
**HAMS**  
3 lb. Can  
**\$ 5<sup>99</sup>**

FRESH, LEAN  
**GROUND BEEF**  
3 lb. Or More  
**\$ 1<sup>09</sup>**  
LB.

**BUTTERBALL TURKEYS**  
10 lb. & Up  
**89¢**  
LB.  
20 lb. Potatoes  
**\$ 1<sup>75</sup>**

Prices good  
December 15 - 21

ARMOUR VERI-BEST PLATTER PLEASING  
QUARTER PORK  
**LOINS** **\$ 1<sup>39</sup>**  
LB.  
U.S.D.A. CHOICE PLATTER PLEASING  
SEMI-BONELESS CHUCK  
**ROAST** **\$ 1<sup>39</sup>**  
LB.  
U.S.D.A. CHOICE PLATTER PLEASING ROUND BONE  
SHOULDER  
**ROAST** **\$ 1<sup>49</sup>**  
LB.  
PLUMP & TENDER TURKEY  
**BREAST** **\$ 1<sup>39</sup>**  
2-5 lb. Average LB

INDIAN MAID 10-14 lb. Average  
**TURKEYS** LB. **69¢**  
TENNESSEE PRIDE  
**SAUSAGE** **\$ 1<sup>49</sup>**  
Hot or Mild 1 lb. Roll  
2 lb. ROLL **\$ 2.95**  
FISCHER'S 12 oz. Package  
**WIENERS** **99¢**  
FISCHER'S  
**BACON** **\$ 1<sup>29</sup>**  
12 oz. Package

Bananas 4 lb. / **\$ 1**  
VINE RIPE  
**TOMATOES** **59¢** LB.  
JUICY  
**TANGELOS** **\$ 1<sup>69</sup>**  
5 lb. Bag  
SELECT CUCUMBERS OR  
RADISHES  
GREEN  
**PEPPERS** **4/1**

16 oz. Ret. plus dep. <b>PEPSI or COKE</b> <b>\$ 1<sup>19</sup></b>	<b>VAN CAMP'S BEANEE WEENEES</b> 8 oz. Can <b>2/99¢</b>	<b>HY-TOP SMOOTH PEANUT BUTTER</b> 18 oz. Jar <b>\$ 1<sup>29</sup></b>	<b>WISHBONE ITALIAN DRESSINGS</b> 16 oz. Bottle <b>\$ 1<sup>39</sup></b>	300 size Bush Red <b>Kidney Beans</b> <b>3/99¢</b> 300 size Bush Chili <b>Hot Beans</b> <b>3/99¢</b>
Stokely 300 <b>Tomato Sauce</b> <b>2/89¢</b>	Delmonico 1 lb. <b>Elbow Macaroni</b> <b>59¢</b>	Taster's Choice 8 oz. <b>Instant Coffee</b> <b>\$ 4<sup>99</sup></b>	MARTHA WHITE 5 lb. <b>FLOUR</b> <b>89¢</b>	Jello 12 oz. <b>Cheesecake</b> <b>\$ 1<sup>59</sup></b>
Meow Mix 3 1/2 lb. <b>Cat Food</b> <b>\$ 2<sup>69</sup></b>	Chef-Boy-ar-dee 15 oz. <b>Spaghetti &amp; Meatballs</b> <b>79¢</b>	Just Rite 10 oz. <b>Hot Dog Sauce</b> <b>2/79¢</b>	FAB 49 oz. <b>DETERGENT</b> <b>\$ 1<sup>79</sup></b>	Bounce 60 ct. <b>Fabric Sheets</b> <b>\$ 2<sup>99</sup></b>
Northern 250 ct. <b>NAPKINS</b> <b>\$ 1<sup>29</sup></b>	Bolt Jumbo <b>TOWELS</b> <b>2/\$ 1<sup>49</sup></b>	Light & Lively 24 oz. <b>Cottage Cheese</b> <b>\$ 1<sup>39</sup></b>	JENO'S 10 oz. <b>PIZZAS</b> <b>99¢</b>	Swanson 28 oz. <b>Chicken Nibbles</b> <b>\$ 2<sup>89</sup></b>
Freezer Queen 32 oz. <b>Entrees</b> <b>\$ 1<sup>69</sup></b>	JFG Vac. Bag 1 lb. Lim. 1 w/\$10 or more order <b>COFFEE</b> <b>\$ 1<sup>89</sup></b>	Volveeta 2 lb. Lim. 1 w/\$10 order <b>CHEESE</b> <b>\$ 2<sup>99</sup></b>	Yellow Bags 10 ct. <b>Trash Bags</b> <b>\$ 1<sup>19</sup></b>	Post 11 oz. <b>Smurfberry Cereal</b> <b>\$ 1<sup>39</sup></b>

**PRICE SMASHERS**  
**THIS WEEK'S SPECIAL**  
With one filled Price Smashers Certificate  
**COLONIAL LIGHT BROWN OR 10X SUGAR**  
1 lb. Box  
**9¢**

**PRICE SMASHERS**  
**THIS WEEK'S SPECIAL**  
With one filled Price Smashers Certificate  
**HY-TOP HAMBURGER OR HOT DOG BUNS**  
8 Pack  
**9¢**

**PRICE SMASHERS**  
**THIS WEEK'S SPECIAL**  
With one filled Price Smashers Certificate  
**DOWNY FABRIC SOFTENER**  
33 oz. Bottle  
**69¢**

**PRICE SMASHERS**  
**THIS WEEK'S SPECIAL**  
With one filled Price Smashers Certificate  
**NORTHERN TISSUE**  
4 Roll Package  
**69¢**

**PRICE SMASHERS**  
**THIS WEEK'S SPECIAL**  
With one filled Price Smashers Certificate  
**PLATTER PLEASING BOLOGNA**  
Regular or Thick  
1 lb. Package  
**79¢**

**PRICE SMASHERS**  
**THIS WEEK'S SPECIAL**  
With one filled Price Smashers Certificate  
**HY TOP ORANGE JUICE**  
12 oz. Can  
**59¢**

**SUPERIOR Food Markets**  
Symbol of Quality  
We gladly accept  
USDA Food Stamps

# Area deaths & funerals

## Christine S. Sparks

Mrs. Christine Shelton Sparks, 83, of Mt. Vernon, died Thursday, December 8, at the Kings Daughters Hospital in Frankfort after a short illness.

She was born in Mt. Vernon, on October 12, 1900, the daughter of the late Charles C. Davis and Aliza Logan Brown and was a member of the First Christian Church of Mt. Vernon.

She is survived by: her husband of 63 years, Mr. Alfred Bentley Sparks, Sr. of Mt. Vernon, two daughters, Mrs. Ann Logan Bradshaw of Frankfort and Mrs. Jane Sparks Doty of Chatsworth, California, her stepmother, Mrs. Ann Lowe of Danville; eight grandchildren and seven great grandchildren.

She was preceded in death by two sons, Mr. Alfred B. Sparks, Jr. and an infant son.

Funeral services were held Sunday, December 11 at the Dowell and Martin Funeral Home Chapel by the Rev. Craig Johnson and Rev. Harvey Pensol. Burial was in the Elmwood Cemetery.

Palbearers were: Bentley Bradshaw, William Pennington, Robert Pennington, David Craig, Douglas Mullins and Gregory Mullins.

## Elmer Spivey

Mr. Elmer Spivey, Sr., 71, of Livingston, died Friday, December 9 at the Jewish Hospital in Louisville, after an illness.

He was born in Rockcastle County on January 30, 1912, the son of the late Samuel Spivey and Clista Mahaffey and was a member of the Morning View Holiness Church.

He is survived by his wife, Mrs. Vivian Waddie Spivey; two sons, Elmer Spivey, Jr. of Milborne, Florida and Jerald Spivey of Plainfield, Indiana; one daughter, Mrs. Beverly Jo Howard of Livingston; one

brother, Mr. Casper Spivey of Livingston and two sisters, Mrs. Bertha Terry of Cincinnati, Ohio and Mrs. Tesaleen Carpenter of Livingston. 10 grandchildren, Alesha McLaughlin, Melanie Spivey, Brian Spivey, Mary Ann McNew, Karen Alcorn, Kimberly Howard, Tammi Howard, Tina Smith, Angela Spivey and Jerry Spivey; four great grandchildren, Jessica McLaughlin, Bradley McNew, Ashlee Alcorn and Jennifer Smith.

He was preceded in death by seven sisters and five brothers.

Funeral services were held Monday, December 12 at the Dowell and Martin Funeral Home Chapel by Bro. Bill Medley. Burial was in the Bales Cemetery at Livingston.

Palbearers were: Farmer Waddie, Jack Leach, Holt Carpenter, Jerry Mink, Billy Gambrel and Ellis McNew.

## Hazel R. Elliott

Mrs. Hazel Riddle Elliott of Lexington, Kentucky and formerly of Mt. Vernon died Sunday, December 11, 1983 at the Good Samaritan Hospital in Lexington after a long illness.

She was born in Mt. Vernon, the daughter of the late James W. and Mary Ellen Hayes Riddle. She was a retired Fayette County School Teacher and Librarian for 30 years, received her Masters Degree in Library Science from the University of Kentucky, was a member of the North Lexington Church of Christ, Fayette County Librarian's Association, and was a Kentucky Colonel.

Survivors are her husband, Alvin W. Elliott of Lexington; two brothers, Dr. John James Riddle of Los Angeles, California and William W. Riddle of Fulton, Alabama; two sisters, Mrs. Caleb (Ruby) Ponder of Lexington and Miss Virgie Riddle of Mt. Vernon; a host of nieces, nephews, cousins and friends also survive.

Funeral services were held Wednesday, December 14, 1983 at 11:30 a.m. at the W.R. Milward Mortuary in Lexington. Committal services and burial were held at 2:00 p.m. Wednesday in Elmwood Cemetery in Mt. Vernon.

Local arrangements were by Cox Funeral Home.

## Lee Owens

Lee M. Owens, 68, died Thursday afternoon, December 1, at his home in Lebanon, Indiana, following a four-month battle against cancer.

He had resided in Indiana 44 years, moving there from Kentucky and was employed at the former U.S. Machine Corp. (Stewart Warner Corp.), retiring March 11, 1977 after 36 years service.

He was a dedicated and active member of the First Assembly of God Church of Lebanon.

A native of Rockcastle County, Kentucky, he was born in Johnetta April 12, 1915, a son of Andrew Ballard and Sallie Belle (McGuire) Owens. He was married July 22, 1950 to Oletha Faye Wilson, who survives. Other survivors include his stepmother, Nola Owens of Mt. Vernon; children, Patricia Ann Padgett and Michael Lee Owens of Lebanon and James Owens of Russell, a brother, Willie E. Owens of Richmond, Indiana; sisters, Annabelle Drew, of Florence, Dealie Barnett and Shirley Carpenter of Mt. Vernon; five grandchildren and one great grandchild.

Preceding him in death were two brothers and two sisters.

Funeral services were held Monday, December 5, at the Russell-Hitch Funeral Home in Lebanon, with Rev. Larry Galloway officiating. Burial was in Oak Hill Cemetery in Lebanon.

## Oma Kirby

Mrs. Oma M. (Nee Rowe) Kirby, 71, of Cincinnati, Ohio and formerly of Rockcastle County, died November 26, 1983 in Cincinnati.

She was born in Rockcastle County on September 24, 1912.

Survivors are, her husband, Robert Lee Kirby; three daughters, Wilma

Castle, Glenna Faye Kohus, Norma R. Haggett, two sons, Kenneth Kirby and Lloyd Kirby; two sisters, Beatie Bower, Ella B. Waddie, one brother, George Rowe.

She was preceded in death by one sister, Rhoda Thomas.

## IN MEMORY

In loving memory of Delia Frances Allen, who passed away December 21, 1977.

Grandma, we all miss you. It's been 6 years now. The memory of you still goes on. We know God needed you. To fill a vacant spot in Heaven.

Greatly missed  
Your Granddaughter  
Kathie Pratt and Children

## CHRISTMAS ACTIVITIES AT WILDIE CHRISTIAN CHURCH

### Christmas Play

A small cast of talented local actors and actresses will be performing a very special one-act Christmas play entitled *A Certain Star* at the Wildie Christian Church on December 18th at 6:30 p.m. and December 19th at 7 p.m.

Anyone wishing for a unique Christmas experience is cordially invited to attend.

### Children's Choir to Perform

You are invited to join with us in the celebration of Christ's birth as the Wildie Children's Choir presents *A Sunshine Christmas Medley* at the Wildie Christian church on Wednesday, December 21 at 7 p.m.

### Christmas Cantata

On Sunday morning, December 18th, the adults of Wildie Christian Church will be presenting a Christmas Cantata entitled "Christ is Coming to the Earth This Night" under the direction of the minister, Kenton Parkey.

In addition to the cantata, there will be special music of interest to everyone, including a solo and quartet.

Call news items to 256-2244



**Rejoice**

Christmas time greetings and wishes for you for happiness now and the coming year. Two may your season be merry, jolly and bright and your new year the kind that will turn out just right.

Merry Christmas Happy New Year

Amy Meadows  
232 Burke Rd  
Lexington, Ky



**COUNTRY MUSIC! COUNTRY MUSIC!**

**The Pure Grain Country Band**

will be appearing at the Sonic Spectrum Country Music Palace in Somerset, Ky. on:

**Dec. 14, Wed. night    Dec. 16, Fri. night**  
**Dec. 17, Sat. night**

Appearing from 8 p.m. to 12 o'clock nightly.

**HOLIDAY SALE**

NOV. 25 - DEC. 24  
GIFTS GALORE AT BIG SAVINGS



**OVER \$72 OFF!**  
**30,000 BTU Farm Furnace**

No. C30A

Provides instant forced air heat. Convenient handle for easy moving. Ideal for heating sheds, garages, etc. Limited supply. No rainchecks.

#059-01100

**\$999**      Reg. sug. pr. \$172.00



**Duct Tape**

2 in. x 60 yd.  
No. B-600  
#07-10082

**\$395**  
Reg. sug. pr. \$9.80



**12-foot Booster Cable**

Tangle free. 6 gauge. All copper. Thermo rubber for sub-zero flexibility. Shock-proof clamps.

No. 47512  
#061-25042

**\$1395**  
Reg. sug. pr. \$19.50

**Stewart Farm Supply**  
U.S. 25 South Mt. Vernon      256-2147

**Certificates of Deposit?**

A variety of maturity spans, minimum deposit requirements and high interest yield make our CDs attractive for investment of excess or non-emergency funds.


**Super NOW Account?**

If you'd like to earn the high interest dollar and you already keep a large checking balance... then, get the details on the Super NOW Checking Account

**Money Market Account?**

Competitive high interest earning capacity, no penalties for withdrawal, FDIC insured protection, easy accessibility... who could ask for anything more!

**Whichever direction you choose for investment dollars . . . you can count on us for the service you need!**



**Citizens Bank**

"growing for you" Since 1904  
Brookland, Kentucky

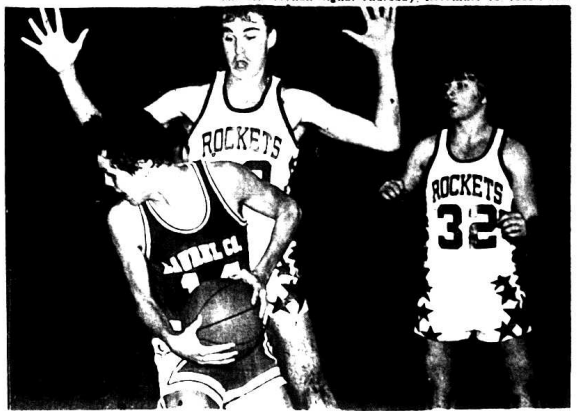
Open 8:30 to 3 p.m. Monday thru Friday  
Drive Thru Open till 6 p.m. Fridays  
Open 8:30 to 1 p.m. Saturdays  
Member F.D.I.C.

A substantial interest penalty is charged for early withdrawal of all certificates of deposit.





Senior center Chad Brock tries to block a shot by Darrin Hale, Laurel County's big 6'8" center, during action Friday night at RCHS. Brock scored 8 points in the game but made his biggest contribution by grab-



A Laurel County Cardinal looks for help during the Rocket Cardinals game last Friday night which the Rockets finally lost 65-58. The Cardinals found themselves ahead by only 1 point with less than a minute to go at the game and won it at the foul line in the closing seconds. Defending for the Rockets is sophomore forward Harold Graves. Also in the photo is senior guard Roger Isaacs, who tied for scoring honors with Shannon Bishop, with 20 points. 7 of Isaacs' field goals came in the last half when the Rockets made their move which fell just short.

## Rockets almost pull off upset over much bigger Cardinals

By Perlina Anderkin

The crowd kept waiting for the blow-out Friday night by the Laurel County Cardinals when they met the Rockets at RCHS. But, it never materialized and the Cardinals no doubt count themselves fortunate to have escaped with the 65-58 win.

The win came at the free throw line for the Cardinals in the closing minutes of the game after a hustling Rockets team had managed to erase a 17 point third quarter deficit and move to within one point of the Cardinals with one minute left in the fourth quarter.

The Cardinals breezed through the first half by going to their big man 6'8" center, Darrin Hale. Hale scored 21 of his 30 game points during the first half—almost all of them under the goal.

But, it was a different story the second half as Rockets' coach Mike Appleman changed to a combined zone-man-to-man defense which effectively shut down Hale.

Senior Center Chad Brock acquitted himself well on the boards, pulling down 16 rebounds against the bigger Hale but it was forward Shannon Bishop and guard Roger Isaacs, with their excellent outside shooting, who combined to almost give the Rockets their upset win.

Bishop, who has had his problems lately getting his shots to fall, got the hot

hand the second half and poured 6 field goals through the hoop 4 of them in a row.

Isaacs, who has been the Rockets' most consistent player to date, scored 7 field goals the second half three of them in a row. Brock contributed the other 2 second half field goals.

Bishop and Isaacs tied for high point honors for the Rockets with 20 each. Brock, who got a crucial goal late in the game taken away on a charge foul, only got 8 points in the game but put forth his best defensive effort thus far. Chris Cornelius and Bruce Blanton

each scored four points and sophomore Jackie Woodall got 2.

Tuesday night, the Rockets journeyed to Jellico, Tennessee, and came away with an 80-62 win and a free-throw record for that school.

The Rockets hit 38 of 43 attempts at the line with Brock getting the most points for the Rockets at 17.

Isaacs and Cornelius each scored 15 points. Graves got 10, Bishop 9, Mink, 8 and Blanton, 2.

The B team also won their game.

# Auction

of  
**Mr. and Mrs. Don Thompson's**

**6 ACRES** more or less **In 4 Tracts**  
& Personal Property

**Saturday, Dec. 17, 1983 1:30 P.M.**

Willalla Section of Rockcastle Co.



TRACT #1



Tract #2

**LOCATION:** 7 miles southeast of Brodhead and 10 miles southwest of Mt. Vernon. Turn off Highway 78 near Goff's Grocery onto the Poplar Grove Road. Follow Poplar Grove Road about 1/4 of a mile to auction site. Signs are posted to lead you to the sale.

**TRACT #1—contains .167 acres more or less with 280.8 feet frontage on the Poplar Grove Road. The land is all level, has ample space for garden and there is an orchard.**

This tract is improved with the pictured 2 story frame house. The first floor has a living room, family room, 2 bedrooms, kitchen with built-in cabinets, utility room and bath. The second floor has 3 bedrooms and ample closet space with walk-in closets. Other features of the house include a washer/dryer hookup, fuel oil furnace, storm doors and windows, city water, fully insulated and has recently been painted.

If you're in the market for a good country home with plenty of space for a garden and not be crowded then mark your calendar to attend this auction.

**TRACT #2—contains 1.49 acres and fronts on Poplar Grove Road a distance of 217.7 feet. This tract is improved with the pictured 36x40 combination barn and city water is available. This tract is all tillable land.**

**TRACT #3—contains 1.23 acres which is all tillable and fronts on the Poplar Grove 173 feet. City-water is also available.**

**TRACT #4—1.24 acres all of which is tillable and fronts on the Poplar Grove 173 feet. City water is also available. The owners reserve the right to sell individually, then group in any manner to reflect the most positive returns. If you're in the market for some good land in an excellent location in which to build your new home or place a mobile home then seriously consider this property.**

**PERSONAL PROPERTY** includes: Philco chest-type deep freeze; Hotpoint electric range; metal kitchen utility cabinet; Philco black and white TV; iron bedstead, 1 wooden bed; glider and 2 chairs; 1 chiffonade and portable washing machine.

**TERMS:** 20% down day of sale, balance within 30 days with delivery of deed on real estate. Cash or good check day of sale on personal property.

For additional information, contact the owners at 758-6377 or:

**Ford Realty & Auction Co.**

Real Estate Auctioneer  
Col. Sam Ford  
Col. Ray Adams  
Col. Deany Ford

Auctioneer  
Col. Jerry Shan  
Col. Willard Bullock



MT. VERNON, KY. PHONE 234-6444

## Playtex Bra Sale

### 20% Off

Reg. \$9.50 . \$15.00  
Sale \$7.60 . \$12.00

Your Favorite Styles  
Good Size Selection  
Limited Time Only

**HIATT'S 5 & 10**  
Mt. Vernon, Ky. 256-2691

## Featuring: SELF-SERVICE GASOLINE

**Fresh Meats Cut To Your Order**

**DOUBLE YOUR COUPON on purchased product only**

	<b>MAXWELL HOUSE</b> \$5.99 <b>COFFEE</b> 14 oz.	<b>GROUND</b> 3 lb. <b>BEEF</b> 99¢ or more
Del-Monte crushed or sliced	Meadow Gold <b>ICE</b> 8-16 oz.	<b>VALVOLINE</b> Anti-Freeze 2 <sup>97</sup> 1 gal.
<b>Pineapple</b> 63¢	<b>CREAM</b> Returnables 99¢ w/dep.	<b>Carnation</b> Cream 2/99¢ 12 oz.
<b>Pillsbury</b> Cake Mix 79¢	1/2 Gal. 1.69	<b>Charmin</b> Bathroom Tissue 4 roll pkg. 1.09
<b>Kraft</b> Marshmallow Creme 95¢ 13 oz.	<b>Prelate</b> Pink Salmon 1.79 303 size	

Prices good December 13 - 17

## Brown's Food Market

Where Friendly Service is a Tradition

Open: Mon. - Sat., 7 a.m. - 8 p.m.

Located Jct. Hwy. 150 & 70

WE RESERVE THE RIGHT TO  
LIMIT QUANTITIES & TO  
REFUSE FURTHER SERVICE.  
CUSTOMERS WELCOME.

# PIC-PAC SUPERMARKETS

# Coupons Sale

PRICES GOOD  
THRU SAT.,  
DEC. 17, 1983.

**CLIP THESE SPECIAL COUPONS AND SAVE EVEN MORE AT PIC-PAC!**

**COUPON-COUPON-COUPON**

**49 oz. Box Tide \$1.39**

LIMIT 1 WITH THIS COUPON & \$12.00 ADDN. PURCHASE. VALID AT PIC-PAC THRU DEC. 17, 1983.

**PIC-PAC SUPERMARKETS**

**U.S.D.A. CHOICE**

**Chuck Roast 99¢**

LB. BLADE CUT

**FRESH LEAN**

**Ground Chuck \$1.49**

LB.

**PIC-PAC COUPON**

**Kellogg's Corn Flakes 99¢**

18 OZ. PKG.

**PIC-PAC COUPON**

**Zesta Saltines 79¢**

1 LB. BOX

**PIC-PAC COUPON**

**Heinz Ketchup \$1.69**

48 OZ. BTL.

**PIC-PAC COUPON**

**Smucker's Grape Jelly or Jam \$1.09**

32 OZ. JAR

**PIC-PAC COUPON**

**Chocolate Chips 99¢**

12 OZ. PKG.

**PIC-PAC COUPON**

**Orange Tang 2.19**

27 OZ. JAR

**PIC-PAC COUPON**

**Planter's Snacks 89¢**

11 OZ. PKG.

**PIC-PAC COUPON**

**Armour Chili 89¢**

15 OZ. CAN

**PIC-PAC COUPON**

**Betty Crocker Pie Crust Mix 69¢**

11 OZ. PKG.

**PIC-PAC COUPON**

**Pine Sol Cleaner \$2.69**

40 OZ. BTL.

**ARMOUR VERIBEST MIXED**

**Pork Chops \$1.39**

FAMILY PAK 5 LB.

**Country Sausage \$1.39**

1 LB. ROLL

**Bottom Round \$1.79**

5 LB.

**Chuck Steak \$1.09**

U.S.D.A. CHOICE 1 LB.

**English Roast \$1.29**

U.S.D.A. CHOICE 1 LB.

**Shoulder Roast \$1.29**

U.S.D.A. CHOICE BONELESS 1 LB.

**Cube Steak \$2.39**

1 LB.

**WHOLE**

**Smoked Picnic \$6.69**

5 LB.

**Sliced Bacon \$1.69**

FIELD'S 16 OZ. PKG.

**Sliced Bologna \$1.09**

FIELD'S 16 OZ. PKG.

**Fryer Thighs \$1.19**

HOLLY FARMS GRADE 'A' FRESH 1 LB.

**FANCY MADE Fruit Baskets & Bows NOW AVAILABLE!**

100% PRODUCT OF THE U.S.A.

**FLORIDA IS CITRUS! PINK & WHITE**

**Grapefruit 6/89¢**

U.S. NO. 1 RUSSET 10 LB. BAG

**Potatoes \$1.59**

FLORIDA IS CITRUS! 5 LB. BAG - SWEET & JUICY

**Tangelos \$1.29**

LARGE STUFFING SIZE **Green Peppers 4/99¢**

FRESH NUTRITIOUS **Broccoli Bunch 99¢**

SWEET JUICY FLORIDA **Navel Oranges 25¢ EA**

FLORIDA **Avocados 3/99¢**

RED & GOLD, DELICIOUS **Apples 69¢**

HOLIDAY FAVORITE! **Coconuts 69¢**

**Banquet Dinners 69¢**

11 OZ. PKG.

**Bolt Towels 69¢**

JUMBO ROLL

**PETER PAN 18 OZ. Peanut Butter \$1.29**

**SHEDD'S 3 Lb. Spread \$1.69**

**LIBBY'S 46 OZ. Tomato Juice 79¢**

**KRAFT 16 OZ. Velveeta Singles \$1.99**

**HYDE PARK 12 OZ. 10 CT. Texas Style Biscuits 2/89¢**

ASST. SIZES & VARIETIES

**Pillsbury \$1.49**

**Cookies 79¢**

**CHEF BOY-AR-DEE 15 OZ. SPAG. & MEATBALLS, BEEFARONI OR CHILI 79¢**

**Macaroni or Spag. 3/1**

**HUNT'S 29 OZ. Tomato Sauce 99¢**

**GREEN GIANT 2 1/2 OZ. Mush-Rooms 2/1.29**

**TYSON 12 OZ. CHICKEN Breast Fillets \$3.29**

**POLSKI WYROB 20 OZ. KOSHER Dill Pickles \$1.19**

**PARMAHOT 16 OZ. Sweet Pickles \$1.19**

**10' OFF LABEL - ANGEL FLAKE Baker's Coconut 69¢**

**12 FT. ROLL - REGULAR Reynolds Wrap 59¢**

**AUNT JEMIMA 32 OZ. Pancake Mix 99¢**

**AUNT JEMIMA 24 OZ. Lite Syrup \$1.89**

**COLGATE Tooth-Brushes EA 39¢**

**10 CT. CONTACT Cold Capsules \$1.99**

**\$1.20 OFF - VALVOLINE 10-W-40 Motor Oil .12 QT. \$10.99**

**Fruit Baskets**

We have a large selection of Fruit Baskets or we will make them to order

**Cakes Cakes**

All Kinds of Decorator Cakes

Strawberry Shortcake Wreath

Santa Wedding Cake (any size)

Football Helmet Sheet Cake (Any Size) (24 hr. notice required)

and many more to choose from. Fresh from the Bakery at **King's Pic Pac Supermarket**

PHONE 256-2514

**Maxwell House \$3.99**

INSTANT 10 OZ. JAR

**JENO'S 6 OZ. ASST. Pizza Rolls 89¢**

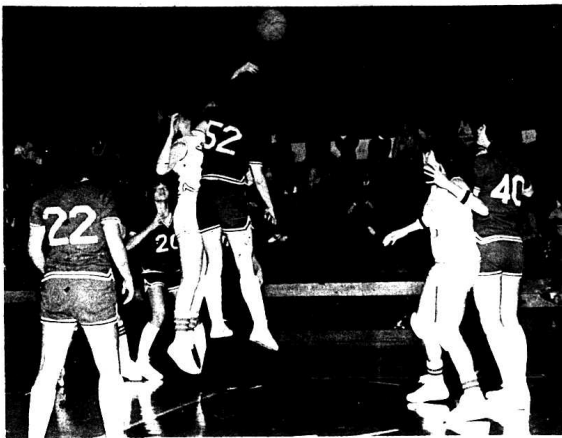
**16 OZ. BACON/TOMATO Kraft Dressings \$1.39**

**Armour Treet 99¢**

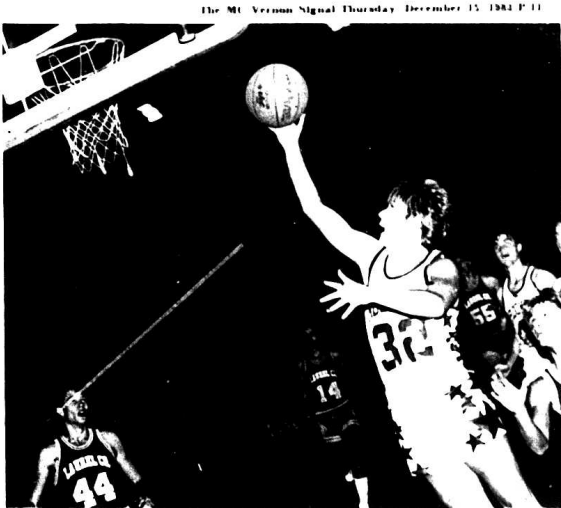
**Crisco Oil \$2.39**

16 OZ. BOTTLE





Sophomore forward Diane Mason, No. 52, jumps the ball for the Lady Rockets during action Monday night at Estill Co. The Lady Rockets lost their second game of the season.



Senior guard aided the Rockets' cause great Friday night with this lay up following a steal from the Cardinals. The Rockets had upset on their mind as they rallied in the fourth quarter to cut a 17-point deficit to just one point with a minute to go in the game. Isaacs and Bishop combined for 26 second half points. Tuesday night at Jellico, Tennessee, Isaacs and Chris Cornelius both scored 15 points in the Rockets 80-62 win.

## Lady Rockets lose to Estill

The Lady Rockets are 2 and 1 after Monday night's game at Estill Co. where they were defeated 46-37.

The girls were flat throughout the game with only brief periods of sparked play by senior Theresa Sturgill, the leading scorer for the Rockets with 14 and junior Betty Milburn, who got 10 points. Milburn was also the leading rebounder with 7.

The girls were outscored 10-4 the first quarter; down by 12 at half-time; 24-12 and by 34-25 at the third quarter.

Offensively the Lady Rockets shot 37 times, hitting on 16, but most of the time they only got one shot at the goal as the Lady Engineers hit the boards much better than the Rockets.

Besides Sturgill and Milburn, other players scoring were: Kristi Martin, Sandy Hunter Paige Anderson, with 4 each and Melissa Partin got 1.

This Thursday night, the girls host McCreary Co. and next Monday night they will Jackson County at home.

The first white woman to become an Indian chief was Harriet Maxwell Converse, who was made a chief of the Six Nations Tribe in 1891 in Tonawanda, N.Y.

## County Soil Conservation District has special meeting

The Rockcastle Conservation District held a special dinner meeting Monday.

Several students participate in essay contest

Several students from Rockcastle County High School recently entered an essay contest entitled "The Day The Lights Came On". The contest was sponsored by the Rural, Kentuckian, and students in the humanities classes entered it as a class assignment. Seven of these students have their names and an excerpt from their essay published in an article in the December issue of Rural Kentuckian. The article, like the essay, is on the "The Day The Lights Came On." The students recognized in the article are:

Tammy Church, 14, of Mt. Vernon; Steve Johnson, 15, of Mt. Vernon; Anthony Lawrence, 15, Brodhead; Tammy Napier, 14, Brodhead; Stacy Brewer, 15, Brodhead; Tracie Johnson, 14, Mt. Vernon; Monte Stewart, 15, Orlando. Tammy Napier won a Kodak disc camera in the contest. Congratulations to all of these!

### NOTICE OF INTENTION TO MINE Pursuant to Application No. 592-5618

In accordance with the provisions of KRS 350.065, notice is hereby given that Ikerd-Bandy Co., Inc. has filed an application for a permit for a surface coal mining and reclamation operation of approximately 51 acres located 0.9 miles South East of Sand Springs in Rockcastle County.

The proposed operation is approximately 1.3 miles North East from State Route 1249's junction with the Price Branch Road and located 0.5 miles West of Skeese Creek. The latitude is 37 degrees 17' 17". The longitude is 84 degrees 17' 17". The surface area is owned by Donald and David Purcell.

The proposed operation is located on the Mt. Vernon U.S.G.S 7 1/2 minute quadrangle map. The operation will use the contour stripping method of mining. The application does not constitute a change from pre-mining land use to post-mining land use. The operation will not involve the relocation of a public road.

The application has been filed for public inspection at the Department for Surface Mining Reclamation and Enforcement's Eastern Regional Office, State Office Building, London, Ky. Written comments, objection or requests for a permit modification should be filed with the Director of the Division of Permits, 6th Floor Central Plaza Tower, 200 East Main Street, London, KY 40301.

night at the Exit 59 Steak house Roy Brown, chairman, called the group together at 6:00 p.m. Board members present were Ray Scoggins, Lloyd Cain, Wallace Proctor, Jack Dailey, D.A. Robbins and Roy Brown. The wives were invited to attend also.

Following an enjoyable meal several items were discussed. It was mentioned that the Poster and Essay Contest is drawing to a close and arrangements were made for the Judges to meet. The district board also renewed the lease agreement for the Pasture Test Plots at Quail. Following the treasurers report all bills were paid and other district business was completed. Immediately following the meeting David Stipes of SCS gave an informative slide presentation about the Conservation District activities over the past year. The meeting adjourned at 7:30 p.m. The next monthly meeting will be January 18 at 3:30 p.m. at the courthouse in Mt. Vernon.

"For the lonely one even noise is a comfort."  
Friedrich Nietzsche

## EATON ELECTRONICS

(Behind the Bank of Mt. Vernon)

RCA 25" Color Console  
\$599<sup>95</sup> w/1

RCA 19" Color Portable  
\$349<sup>95</sup> w/1

Factory trained service on all major brands - 12 years experience.



High Quality Satellite Earth Station and Repair

256-4314

### MASTER COMMISSIONER SALE

The Bank of Mt. Vernon Plaintiff In Execution

#### V. NOTICE OF SALE

Jackie Goff, Jack Goff and Marie Goff Defendants In Execution

By virtue of a Judgment and Order of Sale rendered 11/17/83 by Civil Action No. 83-CI-094, I shall proceed to offer for sale at public auction to the highest and best bidder for CASH or UPON CREDIT OF NINETY DAYS provided the purchaser pays TWENTY FIVE PERCENT OF THE PURCHASE PRICE DOWN upon the date of sale, on TUESDAY, the 20th day of DECEMBER, 1983, at or near the hour of 10:00 a.m., local time, at or near the front door of the Rockcastle County Courthouse, Mt. Vernon, Kentucky, the following described property, to-wit:

**TRACT NO. 1:** Beginning at a stone at N.W. corner of Poplar Grove School grounds running Westward with county road to a stone by the S. side of said road; thence a Southwardly direction about 70 yards to a stone about 20 yards above the spring; thence W. course to a stone near a branch; thence N. to a stone on N. side of aforesaid county road about 80 yards from said road; thence a Westerly course to a stone in the county line where the Nancy Brown line intersects; thence with said county line about 75 rods to a stone, William Cummins corner; thence in an Easterly direction about 50 rods to a stone in J.H. Hurst's corner; thence an Easterly course to a poplar and wild cherry tree, J.H. Hurst's corner; thence N. course with County road to the S.W. corner of school house grounds; thence W. course to the S.W. corner of school house grounds; thence a No. course to the beginning, containing 40 acres, more or less.

**TRACT NO. II:** Beginning at a stone near the crossing of the Quail and Brodhead Road with the Mt. Vernon and Casey County Road; thence with said Casey Road 8 rods to a stone; thence N.W. 25 rods to a stone in the Brodhead Road; thence South with said road 25 rods to the beginning, containing 5/8 of an acre, more or less.

Jack Goff and Marie Goff obtained title to Tract No. I by deed dated 5/24/50 executed by Emma Stevens et vir of record in Deed Book 70, Page 303. Jack Goff obtained title to Tract No. II by deed dated 3/10/70 executed by the Rockcastle County Board of Education or record in Deed Book 90, Page 150, all in the office of the Clerk of the Rockcastle County Court, Mount Vernon, Kentucky.

The amounts to be raised are as follows, to-wit:

The sum of \$3864.21 plus interest at the rate of 11.46 per cent per day from 5/11/83 until date of Judgment and thereafter at the legal rate of interest.

The sum of \$589.27.

The foregoing described property shall be sold subject to all existing liens, encumbrances and unpaid taxes of record.

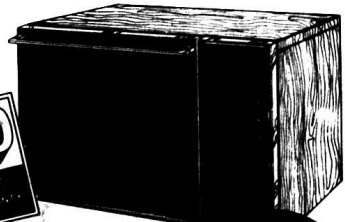
The purchaser shall assume risk of loss upon the date of sale.

If sold on credit of ninety days, purchaser shall be required to pay TWENTY FIVE PER CENT of the purchase price down upon the date of sale and shall be further required to execute bond with an approved surety for the payment of the purchase price to be due and payable on or before ninety days from the date of sale and to bear interest at the rate of twelve per cent per annum and shall have the force and effect of a judgment and shall be and remain a lien upon the property sold as additional security for the payment of the purchase price.

Bidders shall be prepared to promptly comply with the aforesaid terms and conditions.

## Amana. CASH REBATE!

Now get cash back from Amana when you make your best deal on your choice of any Touchmatic Model Radarange®.



Special Amana Radaranges Features:

- Exclusive Rotisserie cooking system makes turkeys redundant.
- 700 to 1000 watts of cooking power for America's fastest cooking microwave.
- Large stainless steel interior.
- Easy to use touch panel controls.

Now is the perfect time to lay away for Christmas.

Offer Expires Dec. 31, 1983

Limit on a genuine Radarange® by Amana and cash in on this exciting Rebate offer.

## Rockcastle Farm Service

Williams St. / 256-2516 Mt. vernon

# Around BRODHEAD

By Mary McWhorter

Dannie Bruce and Dennis Sargent spent Saturday night with their grandparents, Mr. and Mrs. George Adams.

Mr. and Mrs. George Adams and Bertie Steward were in Richmond Thursday to see Mrs. Stevens' eye doctor.

Doug Adams visited his brother, George Adams and Bernice Sunday.

Mr. Hamp Hensley hasn't been as well this past week.

Mrs. Viola Hensley and Mae Doan were in Mt. Vernon last week shopping.

Mr. Larry Taylor had surgery December 2 at Bethesda North Hospital in Cincinnati, Ohio. His parents, Mr. and Mrs. Walter Doan, were there for the surgery and stayed a few days with the family. He is better at this writing.

Mr. and Mrs. Walter Doan were in Somerset shopping, Saturday.

Mrs. Fannie Albright visited her sister, Mrs. Cleo Hasty and Mr. Hasty, Sunday after church. Mrs. Hasty is very sick.

Mr. and Mrs. Monroe Renner were Sunday evening guests of Mae and Walter Doan.

All of Mrs. Viola Albright's children, except one, spent from Wednesday to Sunday during Thanksgiving with her. They were, Mrs. Hazel and daughter, Debbie of Virginia, Mrs. Leon McClure and children, Grover, Jr., Elaine Miller, and Josh, Bill, and Fay White of Ohio, P.D. and Mary Ann of Paris, Everett Albright and family, Charlie Albright and wife, Dawn and Hershel Taylor, Terry and Jerry Brown, Jay Albright and wife, Maxine Brown Albright, Mrs. Byron Morris Owens and Scotty Harper, Edith and Willard Nicely. They all enjoyed being together.

Recent visitors of Delbert and Maynie Long were Mr. and Mrs. Jimmy Blevins, Mr. and Mrs. Johnnie Taylor and Mrs. Dawn and Mr. and Mrs. Wallace Brown.

Recent visitors of Elva Mobley and Diana Bond were Mr. and Mrs. Charles Lawrence and Mrs. Ina Reynolds, Mrs. Ella Fay Helard and Mrs. Edna Caldwell and Cola Stephens.

Dr. Byron Morris Owens and son, Patrick of Somerset were visitors of his parents, Mr. and Mrs. C.B. Owens, Jr.

Mr. and Mrs. Charles Stewart of Louisville spent last week with her sister, Mrs. Dan Gray and Mr. Gray.

Mrs. Bob Wright and Mr. Willard Nicely were in Lexington Monday to see their tobacco seed.

We regret to hear of Mr. Guy Hamm being ill and taken to the Rockcastle Co. Hospital Monday.

Last week's visitors of Mrs. Grace Brown and daughter, Evon were, Mr. and Mrs. Gaffin Cash of Mt. Vernon, Mrs. Donna Jean Brown and son, Billy Shawn, Mrs. Dorothy Brown, Mrs. Patsy Cable, Mrs. Jewell Deane, Mrs. Georgia Thompson, Mrs.

Randy Thompson, Mrs. Alma Jean Cable of Misses Shelley Cable and friend, Stephanie Reynolds, Mrs. Nannie Marie Alcorn, Mrs. Mary E. Carson, Mr. and Mrs. Vernon Brown of Crab Orchard, Mr. Phillip Davis of Mt. Vernon and Mr. Hubert Brown.

Mrs. and Mrs. Gannor Brown, Mr. and Mrs. Jerry Childress and Jessica, Mr. and Mrs. Everett Albright, Shonna, Larry and Kerry Owens all enjoyed a birthday dinner in honor of Mrs. Martha Owens at the home of Mr. and Mrs. Brown and dinner was prepared by Mrs. Brown.

A turtle dinner was given at the home of Willard and Edith Nicely in honor of her grandson, Mr. Teddy Lawrence who is leaving Wednesday, 14th for the air force in Texas. Others attending the dinner were James E. Brown, Bill

and Lillie Brown, Clinton Brown, Raymond, Mark and Amelia Brown, Joe and Mildred Brown, Maggie Herrin, Aubrey Hamm of Connersville, Indiana, Missy, Jennifer and Jamie Todd, Diana Brown, Edd Brown.

Mr. and Mrs. Willard Nicely spent Sunday with Mrs. Oakley Cromer near Somerset.

Bro. Danny Grider of Somerset will begin full-time preaching at the Fairview Church of Christ in January. He is a fine man and a good speaker.

Mr. Herman Taylor has returned home from the Rockcastle County Hospital. We wish him well.

Mr. Willard Nicely is greatly improved from early surgery.

Thanksgiving dinner guests of Mr. and Mrs. C.B. Owens were, Mr. and Mrs. Byron Morris Owens and Patrick of Somerset, Mr. and Mrs. Phillip Owens, Thomas and Daniel of Stanton, Mr. and Mrs. Stephen Owens, Jeffrey and Angela, Mr. and Mrs. James T. Parsons and Elizabeth Ann of Lexington, Mr. and Mrs. Raymond Nunn of Crab Orchard, Mr. Frankie Nunn of Danville and Mrs. Lou Pope.

Thanksgiving dinner guests of Mrs. Martha Owens and family were, Mr. and Mrs. Harvey Owens and

grandchildren, Tim and Paul of Cincinnati, Ohio, Mr. and Mrs. Bob Richie and Robin, Mr. and Mrs. Frank T. Simpson, Jr., Jimmy, Sarah, Jennifer and Andrea Simpson and their families, Lisa Ferguson and Joyce Simpson, all of Cincinnati, Ohio.

Mr. and Mrs. Frank T. Simpson, Sr. of Amelia, Ohio, Mr. and Mrs. Roy Taylor and Tony of West Chester, Ohio, Mrs. Janet Taylor and son, Dean of West Chester, Ohio, Mr. and Mrs. Everett Albright, Teresa, Larry, Tim and Shonna, Mrs. Mary Ann Brown, Mrs. Marie Burton and Rhonda, Mr. and Mrs. Jerry Childress and daughter, Jessica, Mrs. Judy Abney and Robbie, Mr. and Mrs. Randy Cable, Cheryl, Nathan and Mirranda of Ohio, also Mrs. Owens' grandson, Mr. Wayne Taylor of Arizona called while they were having dinner.

Mrs. Bertha Adams and Mrs. Carolyn McKinney went shopping in Mt. Vernon, Saturday.

Mr. and Mrs. Henry Barnett are still on the sick list. Mr. Barnett's son and wife, Mr. Jerry Childress Barnett of New Carlisle spent a few days with Mr. and Mrs. Barnett.

Recent visitors of Mr. and Mrs. George Fletcher and Audrey were, Mr. and Mrs. Will Walker and Traci of Springboro, Ohio, Mrs. Alcorn and Tricia of Berea, Mrs. Patsy Fletcher, Mrs. Virginia Fletcher, Mrs. Georgetta May and granddaughter, Kandus of Lancaster, Mr. Kevin Fletcher of Mt. Vernon, Mrs.

Mabel Payne King of Cocoa, Florida, Mr. and Mrs. John William Payne of Cincinnati, Ohio, The Payne's and Mrs. King also visited relatives in Danville and other friends in Brodhead.

Mary McWhorter and Mary Adams were in Lexington Wednesday at Dr. Parr's and Dr. Perrine's office for treatment for Mrs. McWhorter and also visited Janice and Elizabeth Ann Parsons for a short time.

Mrs. Peggy Delaney from Germany visited her daughter, Mrs. Joyce Craig, Benny, Stacy and Corey and is planning to visit her daughter, Claudia and family in Oregon. She has two grandchildren she hasn't seen as yet.

Mr. and Mrs. Bob Proctor visited Mrs. Proctor's father, Mr. Carter Caudill in Covington and they all spent Friday night with Mrs. Harry Shelley in Cincinnati, Ohio then visited Mr. and Mrs. Sam Deard and Ricky, Mr. and Mrs. Harold Simpson and grandson, little Andrew Cahill, then Sunday they all gathered at the home of Mr. Carter Caudill to help him celebrate his birthday. Also they visited their son and family, Monday before returning home, Mr. and Mrs. Darrell Proctor, Stephen, Kyle and Adam.

Mary McWhorter visited Mr. and Mrs. Leonard Burdette who are both patients at the Sowder Nursing Home. They are much improved. Their daughter, Hazel was visiting them also. They are very dear friends.

of mine. The weather was fine for the December 8, 1983 Christmas Dinner at Louisa Newland's home. Fourteen members of the Ladies Aid Missionary Society attended and one guest, Edith Allen from Covington.

After partaking of the delicious food, Ella Mae Martin read the story of "The Tree" written by Nellie Colson for her grandchildren. It told about what is put on a Christmas Tree that represented many of God's gifts including the Holy Spirit.

1983 Secret Sisters were revealed when the Christmas gifts were unwrapped that lay under the Newland's potted palm tree.

1984 hostesses, lessons, and Secret Sisters were "drawn" before and adjournment. The group will meet at Katherine Carr's in January, 1984 and Elizabeth Mullins will present the lesson.

The bazaar that this Merry Christmas and a Happy New Year

group sponsored netted \$140 to add to the new parsonage fund.

## SCHOOL MENU

December 18-21

**Breakfast:** Monday: Pancakes, syrup with butter, juice, milk. Tuesday: pork loaf, egg, toast with jelly, juice and milk. Wednesday: sweet roll, juice and milk.

**LUNCH:** Monday: chicken nuggets, whipped potatoes, peas white bread, milk, pudding.

Tuesday: Beefaroni, green beans, cole slaw, rolls, milk, castle cookie.

Wednesday: pizza, tossed salad, buttered corn, milk, butter balls.

Merry Christmas and a Happy New Year

## Neal's Fruit Market

on US 255 across from Druther's

- Several varieties of Apples, Oranges, Tangerines, & Nuts
  - Sorghum
  - Fruit Baskets made to order
  - Honey
- 7 days a week  
OPEN: 9am to 8pm now until Xmas

Open 9 a.m. to 9 p.m. Six Days Weekly

## Discount John's Store

Phone 864-6314 Phone 256-4525

Open Sunday After Church 12 to 6 p.m.

U.S. 25 & Airport Road U.S. 25 South

PRICES GOOD WED. THRU SUN.

<p style="text-align: center; font-weight: bold; font-size: large;">WATCH PEN</p> <p style="text-align: center;">Your Choice <b>\$2.99</b> EACH</p> <p style="text-align: center; font-size: x-small;">Great Stuffing</p>	<p style="text-align: center; font-weight: bold; font-size: large;">FOLDING SUNGLASSES</p> <p style="text-align: center;">Great Stuffing</p>	<p style="text-align: center; font-weight: bold; font-size: large;">KUNNAN RODS</p> <p style="font-size: x-small;">100% Graphite Pistol Grip Ceramic Guides Ass't. sizes</p> <p style="text-align: center; font-weight: bold; font-size: large;">\$19.97</p> <p style="font-size: x-small;">Compare \$29.97 WE HAVE SHAD RAPS</p>	
<p style="text-align: center; font-weight: bold; font-size: large;">Louisville Slugger</p> <p style="text-align: center;">Youth Size</p> <p style="text-align: center; font-weight: bold; font-size: large;">\$10.99</p> <p style="font-size: x-small;">Compare \$16.99</p> <p style="font-size: x-small;">Baseball Gloves Right or Left Hand Models</p>	<p style="text-align: center; font-weight: bold; font-size: large;">STANDARD SIZE</p> <p style="text-align: center;">Baseball Glove</p> <p style="text-align: center; font-weight: bold; font-size: large;">\$16.97</p> <p style="font-size: x-small;">Right or left hand models.</p>	<p style="text-align: center; font-weight: bold; font-size: large;">25 CAL. AUTO</p> <p style="text-align: center; font-weight: bold; font-size: large;">\$39.97</p> <p style="font-size: x-small;">Blue Limit 1 6 Shot Clip</p>	
<p style="text-align: center; font-weight: bold; font-size: large;">DRIVING LITES</p> <p style="font-size: x-small;">Twin Pack Amber or Clear.</p> <p style="text-align: center; font-weight: bold; font-size: large;">\$15.97</p> <p style="font-size: x-small;">Limit 1 Set Switch Wiring Included</p>		<p style="text-align: center; font-weight: bold; font-size: large;">STAINLESS STEEL</p> <p style="text-align: center;">Weather Proof CARPET CAR MATS</p> <p style="text-align: center; font-weight: bold; font-size: large;">\$6.88</p> <p style="font-size: x-small;">Limit 1 Set 4 piece Set Fine Plush Carpet front &amp; rear Variety of Colors</p>	
<p style="text-align: center; font-weight: bold; font-size: large;">Steering Wheel Cover</p> <p style="font-size: x-small;">Ideal for a Steering Stuffer</p> <p style="text-align: center; font-weight: bold; font-size: large;">\$1.57</p> <p style="font-size: x-small;">Each Compare 4.99 Keeps wheel warm in winter Tan or black</p>		<p style="text-align: center; font-weight: bold; font-size: large;">Pyroil GAS LINE</p> <p style="text-align: center;">ANTI-FREEZE</p> <p style="text-align: center; font-weight: bold; font-size: large;">37¢</p> <p style="font-size: x-small;">Each Avoid gas Line Freeze Ups</p>	
<p style="text-align: center; font-weight: bold; font-size: large;">KNEE SOCKS</p> <p style="text-align: center; font-weight: bold; font-size: large;">\$1.00</p> <p style="font-size: x-small;">Missy Classic Argyle and Hi-Tops STUFF A SOCKING</p>		<p style="text-align: center; font-weight: bold; font-size: large;">STANDARD DESK PHONE</p> <p style="text-align: center; font-weight: bold; font-size: large;">\$19.93</p> <p style="font-size: x-small;">LIMIT 1 WALL MODELS ALSO AVAILABLE JUST PLUG-IT</p>	
<p style="text-align: center; font-weight: bold; font-size: large;">FASHION BLOUSES</p> <p style="text-align: center; font-weight: bold; font-size: large;">\$5.00</p> <p style="font-size: x-small;">Reg. \$7.00 to \$12.00 Large assortment of styles Jrs., S, M, L</p>		<p style="text-align: center; font-weight: bold; font-size: large;">Slimline Phone</p> <p style="text-align: center; font-weight: bold; font-size: large;">\$10.97</p> <p style="font-size: x-small;">LIMIT 2 FCC APPROVED, MUTE, RING OFF WORKS ON ANY SYSTEM!!</p>	
<p style="text-align: center; font-weight: bold; font-size: large;">Corduroy Slacks</p> <p style="text-align: center; font-weight: bold; font-size: large;">\$13.97</p> <p style="font-size: x-small;">REG. \$19.97 Jrs. 3-13, 2 Styles Great Colors, Wrangler and Red 1 Brand</p>		<p style="text-align: center; font-weight: bold; font-size: large;">Denim Jeans</p> <p style="text-align: center; font-weight: bold; font-size: large;">\$8.77</p> <p style="font-size: x-small;">Reg. 12.97 Mens 29-40 Pre-Wash Denim 100% Cotton 5 Pocket Styling Boys 9-18 \$3.99</p>	
<p style="text-align: center; font-weight: bold; font-size: large;">10 Wheel Drive 18 Wheeler</p> <p style="text-align: center; font-weight: bold; font-size: large;">\$9.97</p> <p style="font-size: x-small;">Limit 1 Auto Carrier With Action Head Lights and Side Out Ramp</p>		<p style="text-align: center; font-weight: bold; font-size: large;">ZIP-OFF SLEEVE JACKETS</p> <p style="text-align: center; font-weight: bold; font-size: large;">\$17.00</p> <p style="font-size: x-small;">Reg. \$22.97 MENS S, M, L, XL Boys, S, M, L, XL 100% Poly-Filled \$15.77</p>	
<p style="text-align: center; font-weight: bold; font-size: large;">6 Qt. Pressure Cooker</p> <p style="text-align: center; font-weight: bold; font-size: large;">\$31.88</p> <p style="font-size: x-small;">Limit 1</p>		<p style="text-align: center; font-weight: bold; font-size: large;">Wrapping Paper</p> <p style="text-align: center; font-weight: bold; font-size: large;">99¢</p> <p style="font-size: x-small;">Roll 25 Square Ft.</p>	
<p style="text-align: center; font-weight: bold; font-size: large;">Quilted Ruffled Placemats</p> <p style="text-align: center; font-weight: bold; font-size: large;">\$1.49</p> <p style="font-size: x-small;">Each New! Stainproof Ass't. colors &amp; patterns</p>		<p style="text-align: center; font-weight: bold; font-size: large;">Soft Seat PADDED TOILET SEAT</p> <p style="text-align: center; font-weight: bold; font-size: large;">\$9.44</p> <p style="font-size: x-small;">LIMIT 1 Beautiful Chrome Grill Finish</p>	

# The Week at Livingston

By Eva Black

Mr. Ed Morris of Route 2, Livingston, has returned home from Bethesda North Hospital in Cincinnati, Ohio where he underwent surgery and suffered a heart attack. He returned home November 15 and is recuperating nicely at his home.

Recent visitors of Mrs. Bertie Rice was her cousin, Mrs. Elizabeth Southard from Alabama. This was their first visit in the past 40 years.

Mr. Robert Bales is a patient in the Rockcastle County Hospital.

Mr. and Mrs. C.F. Mullins, Jr. of Louisville spent Sunday with his parents, Mr. and Mrs. C.F. Mullins, Sr.

Mrs. Nell Nicely of Springboro, Ohio spent the weekend with Mrs. C.L. Mounts.

Bertie Rice and Beulah Black were hostesses at the Retired Teachers Meeting Monday afternoon. There was a large number present. They enjoyed the meeting.

Thanksgiving Bake Sale and Christmas Bazaar sponsored by the Ladies Class of Livingston Christian Church was a great success. Thanks to everyone.

Mrs. Bertie Rice visited Mrs. Nettie R. Griffin at her home near Lancaster, Saturday and visited Mrs. Anna Pike in Mt. Vernon, Sunday afternoon.

Mr. and Mrs. Herman Mize and Mrs. Elizabeth Cole and son, Byron spent the weekend in Lexington. They visited their daughter, Mrs. Martin Vanzant and son and did Christmas shopping.

Mr. and Mrs. Clyde Fordyce were Thanksgiving dinner guests of his sister, Mrs.

## "EMERGENCY LOANS"

[Cont'd from front]

In order to reopen the program, Farmers Home must revise, publish and disseminate regulations to replace those that expired in 1981 to its 2,200 field offices.

Interest rates charged for guaranteed, economic emergency loans are negotiated by the borrower and lender. For insured loans, the rate is tied to the cost to the government of borrowing money in the financial markets plus up to 1 percent for servicing and administration.

Benny Hopper in Corbin. Other guests were Barbara Adams and daughter, Kelly and Cheryl Ann Nichols and others from Louisville.

Mrs. Lee Faulkner and daughter, Louise Renfro of Richmond spent Thanksgiving in Cincinnati, Ohio.

Mrs. Oscar Mullins who has been on the sick list the past month is slowly improving.

Deepest sympathy is extended to the family of Elmer Spivey.

Mrs. Carey Loudermilk had all her family home for the Thanksgiving holidays.

Mrs. Eva Black would like to thank all her friends for the beautiful cards, calls and flowers she received while she was a patient in the Marymount Hospital in London.

Michael McClure of Lancaster, Ohio spent Thanksgiving with his parents, Mr. and Mrs. Charles McClure, Mr. and Mrs. Dale McClure and son, Travis.

Mrs. C.F. Mullins, Sr. underwent surgery at St. Joseph Hospital in Lexington, November 28, and is recuperating at her home.

## Quail

By Vivian Owens

Mrs. Josephine Burdette of Indiana spent the weekend with her mother, Mrs. Bertie Taylor.

Florence Albright was dinner guest of Mr. and Mrs. Billy Owens and sons, Sunday.

Jamie Reynolds spent Friday night and Saturday with Florence Albright.

Jennifer Rogers spent Friday night and Saturday with her girlfriend, Toni Jones.

Mr. and Mrs. J.C. Reynolds and family were weekend guests of Mr. and Mrs. Thomas Philbeck and family.

Rusty and Jeremy Owens spent Friday night and Saturday with their grandparents, Mr. and Mrs. Timon Owens.

Mrs. Edna Caldwell visited Mrs. Pattie Baker Monday afternoon.

Mrs. Walter "Duke" Riddle was Thursday dinner guest of Mr. and Mrs. Ambrose Albright and Tootie.

Mrs. Ambrose Albright visited Mrs. S.S. "Bub" Purcell Thursday afternoon.

Mrs. Carl Caldwell and Mrs. Edna Caldwell visited

Mr. and Mrs. Benton Owens Thursday afternoon.  
Mr. Ronald Owens of Ohio spent the weekend with his parents, Mr. and Mrs. Charlie B. Owens.  
Mr. Aubrey Hamm, of

Indiana is spending some time with his sister, Mrs. Willie Todd and other relatives.  
Mrs. Edna Pope and Mrs. Alma Jean Cable visited their father, Mr. Jack

The Mt. Vernon Signal Thursday, December 15, 1983 P-13  
Cash, Sunday afternoon  
Sunday dinner guest of Mrs. Willie Todd were Mr. and Mrs. Wayne Todd and Mrs. Dean Bar ron and Stacy  
Mr. and Mrs. Charlie H (Cont'd to P.14)

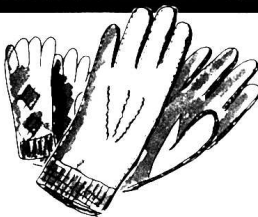
EVERYDAY IS DOLLAR DAY AT DOLLAR GENERAL STORES

# DOLLAR GENERAL STORES

Satisfaction Guaranteed

## BIG SAVINGS FOR THE HOLIDAYS!

SALE BEGINS DECEMBER 14TH!



SPECIAL VALUES LADIES' AND GIRLS' KNIT GLOVES \$1.00 PR.

MEN'S VINYL GLOVES \$1.50 PR.



## HOLIDAY CLEARANCE

OF LADIES' DRESSES & PANT SUITS REG. AND X-SIZES

ENTIRE STOCK

50% OFF

Reg. '10 to '12

NOW ONLY \$5 to \$6

5 DAYS ONLY



EXTRA SPECIAL PURCHASE

LADIES' KNIT TOPS AND FASHION BLOUSES

\$6.50 EA.

YOUR CHOICE



BIG SAVINGS ON LADIES' SLEEPWEAR NYLON LONG GOWNS \$3.75

GREAT GIFT IDEA FOR MOM



BLANKET SLEEPERS

TODDLERS' AND INFANTS' YOUR CHOICE

\$3.75

Sizes 8 mo.-24 mo. And 27-41

SUPER SAVINGS ON FLANNEL SHIRTS

MEN'S S, M, L, XL

\$5.00

BOYS' 8-18 \$3.75

Choose From a Large Selection of Assorted Plaids



MAIN STREET MT. VERNON

EVERYDAY IS DOLLAR DAY AT DOLLAR GENERAL STORES

## COMMONWEALTH OF KENTUCKY ROCKCASTLE CIRCUIT COURT

Civil Action File No. 82-CI-218

Cumberland Production Credit Association Plaintiff

Plaintiff

### V. NOTICE OF SALE

Charles Marlow and wife, Lucette Marlow

Defendants

By virtue of a judgment and order of sale of the Rockcastle Circuit Court entered in the above cause to produce the sum of fifty-five thousand nine hundred ninety-five dollars and sixty-three (\$55,995.63) cents, plus interest accruing thereon after May 28th, 1983 and the costs of this action, I will offer for sale at public auction on the 20th day of December, 1983, at 10:15 a.m., to the highest bidder at the courthouse door (Main Street), in Mount Vernon, Kentucky, the following described real property, to-wit:

Beginning at an iron stake in the west right of way of the Chestnut Ridge Road, corner of Leonard Hammond; thence with said right of way as follows: South 6 West 200 feet; South 11 1/2 West 100 feet to a stake; thence leaving said right of way, due West 950 feet to a stake in Randall Durham's line; thence with Durham's line, North 66 West 45 feet to a double spotted oak in John D. Henderson's line; thence with Henderson's line, North 17 West 293 1/2 feet to a stake, corner of Leonard Hammond; thence with Hammond's line, due East 1,132 feet to the beginning, and containing 7.17 acres.

And being the same real property which Charles Marlow and wife, Lucette Marlow, obtained by deed dated September 3rd, 1981, executed by Billy Kirby, et al., of record in Deed Book 115, page 866, in the office of the clerk of the Rockcastle County Court, Mount Vernon, Kentucky.

This property shall be sold to the highest bidder on terms of twenty-five (25%) of the purchase price in cash at time of sale and the balance payable in three (3) months with the purchaser being required to execute bond with surety approved by the Commissioner to secure the unpaid balance of the purchase price; said bond shall be in the amount of the rate of twelve (12%) per cent per annum until paid. The purchaser shall have the privilege of paying said bond before maturity with interest to date of payment. The bond shall have the force and effect of a judgment.

The purchaser will have possession of the premises after complying with the terms of sale. The property will be sold as one unit.

Unpaid taxes and liens of record at the time of entry of judgment shall be paid out of the proceeds of sale. Risk or loss of improvements shall be on the purchaser after compliance with the terms of sale.

A Federal right of redemption shall exist if any Federal agency has a lien or interest against said real property.

LESLIE C. GAY  
Special Commissioner  
Rockcastle Circuit Court

