

SHEPHERD'S

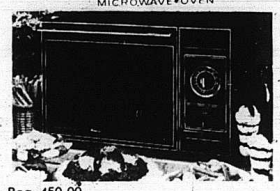


*Ad Does Not Apply To Previous Sales or Layaways.

Amana Radarange

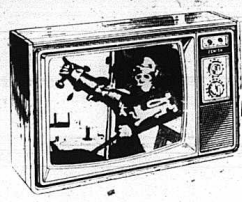
MICROWAVE OVEN

NOW \$299



Reg. 450.00

Simple operation featuring three Cookmatic® cooking speeds, 700 watts of cooking power, and stainless steel interior.



ZENITH

19" Diagonal Custom Series Color TV
Reg. 570.00

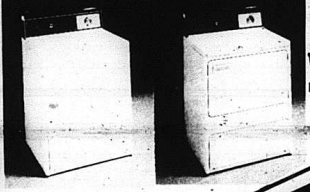
\$299

With Trade

- Zenith ChromaSharp 90 Pic-In Tube for superb picture sharpness and highlight detail.
- Dependable 6000+ Hour 7-1 Chassis for long life reliability.
- Super Video Range™ Tuning with Perma Set Fine Tuning.
- 2 Lock-Inner Power Stability protects chassis, controls, energy usage.
- Auto Control Color System.
- Simulated American Walnut finish.

SWEETHEART OF A SALE

Kelvinator



\$599 With Trade
Washer and Dryer
Reg. 890.00

- Multi-speed washer
- Timed-dry, three temperature dryer

HELD OVER!

Now Thru Tuesday,
February 14, 1984

12 MONTHS TO PAY WITH NO INTEREST



Solid Oak Quilt Rack

\$19⁹⁵



Add a touch of yesterday with this charming solid oak blanket quilt rack. This unique piece has lifetime knothead construction which is easy to assemble with a screwdriver. Its Early American design combined with sturdy construction makes it a value you'll be proud of. From Casard.



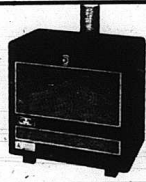
KNIGHT Wood Stove

Reg. 500.00

NOW \$299

Blower Extra

Featuring cast iron firebox liners to allow for even heat transfer. Longer burn periods are possible due to the fireproof fiberglass gasket sealed doors and thermostatically controlled air damper.



PONDEROSA Wood Stove

Reg. 500.00

NOW \$299

Constructed of tough 1/2" MIG welded steel that will produce large amounts of radiant heat. A unique baffling system makes this heater very efficient. The combustion chamber is lined with heavy firebrick.



SWEETHEART OF A SALE

FURNITURE & APPLIANCES YOU'LL REALLY LIKE - AT PRICES YOU'LL REALLY LOVE!



LANCER Sofa, Love Seat

Queen Sleeper **\$388** With Trade

\$588

With Trade



Bedroom Suite

Includes bed, dresser, mirror and chest.
Reg. 750.00

NOW \$499

With Trade

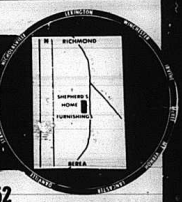
LAMPS Buy One Lamp - Get Matching Lamp FREE

Acres of FREE PARKING
OPEN
9 to 6 Monday thru Saturday
Closed Sunday



"Always A Friendly Welcome!"

- FREE DELIVERY
- FREE SET-UP
- BETTER QUALITY
- BETTER SELECTION
- BETTER SERVICE



MIDWAY BETWEEN RICHMOND & BERA ON U.S. 25 624-0852

Finance Charge Included In The Price of Merchandise

SWEETHEART OF A SALE



IGA Coupon

IGA Coupon



Decorator, Designer or Asst. Colors
Viva Towels
Single Roll
69¢
Red Hot Special!



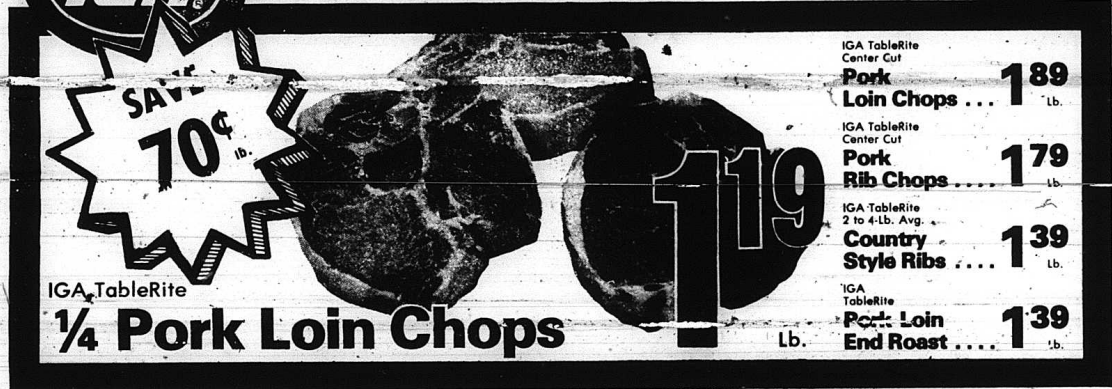
BULK RATE
U.S. POSTAGE
PAID
PERMIT No. 1
LEXINGTON, KY
POSTAL PATRON LOCAL
CARRIER ROUTE
PRE-SORT
5-Lb. Bag
IGA Sugar
99¢
Limit 1 with additional \$5 purchase and this coupon.
Red Hot Special!
Coupons good at Conn's IGA, Berea, through February 12th 1984. Limit one coupon per family.
NR



8 - 16-oz. Bottles
Coca-Cola Products and
Coca-Cola
\$1.19
Limit 1 with additional \$10 purchase and this coupon. Additional quantities are \$1.59.
Plus Deposit
Red Hot Special!
Coupons good at Conn's IGA, Berea, through February 12th, 1984. Limit one coupon per family.
NR

We Reserve the Right to Limit Quantities and Correct Printing Errors.

think FREE \$100.00 WORTH OF GROCERIES!
Register at the store. No purchase necessary. Drawing 5:00 PM on Saturday, February 11th, 1984. You do not have to be present to win!
Prices effective Mon., Feb. 6, 1984 through Sun., Feb. 12, 1984.
IGA



SAVE 70¢ lb.
IGA TableRite
1/4 Pork Loin Chops **1.19** lb.
IGA TableRite Center Cut
Pork Loin Chops ... 1.89 lb.
IGA TableRite Center Cut
Pork Rib Chops ... 1.79 lb.
IGA TableRite 2 to 4-Lb. Avg.
Country Style Ribs ... 1.39 lb.
IGA TableRite
Pork Loin End Roast ... 1.39 lb.

Conn's 6th Anniversary Sale
Thanks, Berea, and Rockcastle for 6 Great Years



SAVE 80¢ lb.
IGA TableRite — Boston Butt Whole
Pork Roast ... 99¢ lb.
4 to 8-Lb. Average Sliced Free!
IGA TableRite Fresh
Pork Steaks ... 1.19 lb.
IGA TableRite Fresh
Pork Roast ... 1.09 lb.
IGA TableRite Fresh
Pork Cutlets ... 1.59 lb.
IGA TableRite Whole, Fresh
Pork Shoulder Picnics ... 89¢ lb.

MORE ANNIVERSARY SPECIALS INSIDE

Tyson — Grade A
Fryer Leg Quarters ... 59¢ lb.
Breast Quarters ... lb. \$1.19

USDA Choice TableRite Boneless
Rib Eye Steaks ... \$3.99 lb.
*Based on 1-16-84 IGA Authorized Price List

Round White Potatoes 50 lb. bag \$4.59	Field's Finest 1-Lb. Pkg. Bacon \$1.79	Semi-Boneless Whole Hams . lb. \$1.19
Field's Old Fashioned Approximately 5-Lb. Roll Pork Sausage \$1.29 lb.	Loy's Ole Timer 1-Lb. Roll Pork Sausage \$1.49	Kahn's Little Hickory Grove 6 to 9-Lb. Average Boneless Hams \$2.29 lb.

Mount Vernon Signal

MOUNT VERNON, KENTUCKY 40456

VOLUME 97 - NUMBER 27

THURSDAY, FEBRUARY 9, 1984

Jones arrested in shooting death

An arrest has been made in connection with the shooting death last week of Johnny Keith Falin.

Arrested Tuesday was Lisa Lopez Jones. Ms. Jones has been charged with the murder on a warrant taken by State Police Detective Doyle Stogdill.

Ms. Jones was arrested on the University of Kentucky campus, where she is a nursing student, by campus police.

She has been lodged in Rockcastle County Jail under no bond, pending a preliminary hearing.

The shooting occurred Monday night, January 30 on Hwy. 1004 (the Brush Creek Road) around 9 p.m. Ms. Jones told police that Falin had been shot after getting out of her car, by someone in a pick-up truck who had stopped them from passing by flashing their lights.

Turn-out light for ambulance meeting

By Leigh Anne Hiatt

Only two interested citizens showed up for the meeting of the Rockcastle County Ambulance Service Board held for the community Tuesday night at The Bank of Mt. Vernon.

Mike Barr, director of the ambulance service, commented on the attendance. "We were entirely disappointed at the turnout. We had sent personal invitations to the service organizations in the county as well as to area ministers and community leaders."

Barr conducted the meeting along with the three ambulance service board members. David King is the vice-chairman, Tom Welch is the treasurer, and Ernest Stracy is the secretary. The Rockcastle County Ambulance Service Board was formed last August after the county court turned the management of the service over to the board members of the Rockcastle County Hospital.

Barr led the meeting in a discussion about the financial condition of the ambulance service. He reported that a new ambulance is being purchased to replace one of the old ones which has 175,000 miles on it. The new ambulance is being purchased to replace one of the old ones which has 175,000 miles on it. The new ambulance is being purchased to replace one of the old ones which has 175,000 miles on it.

The board also discussed long range plans for the ambulance service which included ideas about a fund drive to raise money for the new ambulance.

Barr said, "The reason we are considering the fund drive is to avoid having to put the ambulance tax back on the ballot in the fall election."

He added, "The fund drive arrangements will be announced in the near future. The board is leaning toward having a radiothon and anyone that could give us suggestions about it should contact Leigh Anne Hiatt or me at the Rockcastle County Hospital."

(Cont'd to P-12)



Young Republican Award... The Rockcastle County Young Republican Club recently presented honorary member awards and an award to the Outstanding member of 1983. Shown in the above photo are, from left: Don Girdler, field representative for Cong. Harold Rogers who made the presentations;

Lisa Owens, club president, who accepted the honorary membership award for her mother, Betty Owens; Ora York, another recipient of the honorary membership award and Albert York, named the outstanding member for 1983.

Venters grants change of venue to Pulaski Co. in Holley murder case

The trial of Denver Earl Holley, charged with murder in the May 22, 1983 deaths of three members of one family in a wreck on I-75, will be heard in Pulaski Circuit Court, according to an Order entered by Circuit Judge Dan Venters on February 3rd.

The change of venue or hearing in which Warren Scoville, of London, Holley's attorney, made several motions in the case, including a request for bond reduction which was also granted.

In granting the change of venue, Venters said in his order: "The Court finds that the nature and particular circumstances of the crime charged, the tender ages of the victims and the good will felt by the community for the victims and their family, have combined to form an understandable sense of community outrage. This sense of outrage, the attendant news coverage and general 'talk' among the outraged and concerned citizens have combined to render it exceedingly difficult, if not impossible, for the Court to draw an impartial jury from among the citizens of the community. This fact is irrefutably borne out by the opinion survey filed with the record herein. It is argued by the Commonwealth that the lapse of time since May 22, 1983, has done much to dissipate the sentiment in the community which may have existed earlier. That may well be the case, but the evidence establishes that the sense of anger and outrage persists in sufficient degree so as to affect the ability of the Court to obtain an impartial jury..."

Window, Taylor reported, and a sum of cash, two rifles and a shotgun were taken while the Minks were visiting at the home of his son, Tommy Harold Mink.

Last Friday morning, about 2:15, 1977 Chevrolet pick-up truck, belonging to Sheriff William Taylor, and parked in the driveway of his home was destroyed after vandals poured a flammable liquid on the truck and set it afire.

Sheriff Taylor reported that he was at home at the time of the incident, but was unable to extinguish the fire before the truck was destroyed.

REPUBLICANS TO MEET

There will be a meeting of the Rockcastle County Republican Club on Monday night, February 13 at 7:30 p.m. at the courthouse. All precinct workers and anyone else interested is urged to attend.

NOTICE OF CLOSING

The Circuit Clerk's office will be closed Saturday, February 10 and Monday, February 20, in observance of President's Day.

The road test and the permit test will not be given on Monday, February 20th.

Stolen truck used in grocery store break-in

A truck stolen in Mt. Vernon late Saturday night or early Sunday morning was later used in a break-in at Denney's Grocery on Hwy. 461.

Sheriff William Taylor said truck, belonging to Jim Cox of Mt. Vernon, was taken from Cox's driveway sometime after midnight Saturday night. It was found early Sunday morning, Taylor said, on the Sand Springs Road with boxes from Denney's Grocery in it and with a communications radio and tools missing.

The thieves had also apparently attempted to burn the truck since newspapers had been placed on the floorboard and set on fire but the fire had gone out before igniting the truck.

In the break-in at Denney's Grocery, about 130 dozens of cigarettes were taken, along with 8 to 10 cases of chewing tobacco, gloves, paper towels and other items.

Entry to the store was gained by breaking out the glass in the front door, Taylor said.

A residence on Brindle Ridge was also burglarized Saturday night between 7 and 11 p.m.

The home of Mr. and Mrs. Coleman Mink was entered through a basement

Pence resigns as hospital administrator

Roger Pence, administrator of the Rockcastle County Hospital, has announced his resignation which was effective, February 8.

Pence said, "I resigned giving a 90-day notice to the board and they decided to accept it immediately to avoid any confusion. I have resigned for personal reasons and have plans for several alternatives I'm looking at right now. These plans were part of the reason for my resignation."

"I have enjoyed working with the employees, physicians and the hospital board members, but due to personal interests I feel a need to make a change."

He added, "I wish the board and the hospital success in the future, and I hope my resignation will not cause any inconvenience."

Wayne Stewart, chairman of the hospital board, is presently acting administrator. The board has organized a search committee and is reviewing applications for the position. An announcement will be made when the board makes a final decision.

Stewart said, "The board regrets that Roger Pence has resigned as administrator of the Rockcastle County Hospital. We very much appreciated the community work he was able to do for us in the different organizations in the county, and we are sure the hospital and community are going to miss his services. We wish him every success in his new endeavors."

Pence came to the Rockcastle County Hospital from Gratton, West Virginia in May, 1983.

Meeting called to protest closing of railroad line

A preliminary meeting, to decide the most effective way to protest the closing of a 70-mile stretch of track between Livingston and a point just east of Lebanon in Marion County by the Seaboard System, has been called for Monday, February 13 from 6 to 7 p.m.

The meeting will be held in the Conference Room of the Kentucky Utilities Building on School St. in Mt. Vernon.

The Rockcastle Improvement Council has designated a committee to host the meeting and direct discussion and preparation. Members of the committee are: Wayne Stwart, Roland Mullins, Bige Towery and Gatliff Craig.

This meeting will precede a major meeting scheduled for February 16 in Stanford which will be hosted by Senators Huddleston and Ford, Congressman Rogers and Hopkins and the administration of Governor Martha Layne Collins.

If the Seaboard System prevails in their announced plans to abandon the stretch of track, it is feared the economic impact in Rockcastle County would be disastrous, particularly to the Rockcastle Industrial Park.

In a recent interview with the Courier Journal, Jack Touratsos, one of the owners of Mt. Vernon plastics, explained that his factory may have to move just as it is beginning to show a profit. "We came here at more or less their (the railroad's) initiative," Touratsos said in the interview. "It's a fairly high-handed (of the railroad), I think."

The rail also runs through two other Central Kentucky counties - Lincoln and Boyle - and, in the same Courier Journal story, Stanford Mayor Jim Harris said, "It would kind of paralyze our town."

The county just developed a \$1 million industrial park near the railroad and added a \$100,000 spur for access, Harris said.

And, bids were opened Wednesday in Mt. Vernon for a spur to the Industrial Park.

There is help available to the counties in their fight to prevent the closing, since both Rogers and Huddleston are trying to get the railroad to reconsider.

No formal action has been taken to close the line, other than a required legal notice printed in last week's Signal and shipping has been notified of the possibility, according to Charles B. Castner, regional manager of corporate communications for Seaboard.

The first step would be

to indicate the line as a candidate for shutdown on a system map sent each year to the Interstate Commerce Commission, Castner said. That is expected to happen some time this month although spokesmen in Rogers' and Huddleston's offices said Seaboard officials have agreed not to send that map until after the February 10 meeting in Stanford.

Tim Dugden, special assistant to Huddleston said the senator hopes the delay will turn into a "constant freeze" after railroad officials hear from businessmen and officials in the communities that would be affected.

Even after the map is filed, it would take at least five months to file the formal petition for abandonment of the line, Castner said. The ICC would still have to make a decision and would hold public hearings, he said.

Castner said that if the stretch is closed, it would not affect traffic on other lines. The line is used as a connector for major Seaboard routes and the traffic could be diverted to alternate routes, he said. The reason the railroad is considering the line for abandonment is simple - money.

"It generates little or no traffic and that's a financial drain on the company," Castner said. Since 1980, he said, 500 or fewer rail cars a year have been picked up or dropped off along that stretch of line.

That would work out to about seven cars per mile of track. The ICC considers less than 34 cars per mile an indication that the line is under used, Castner said.

Some people, such as Touratsos, suspect the railroad has diverted traffic to other lines so it could make a case for abandonment.

Castner said there has been some diversion, but only after the Seaboard and Chessie rail systems were united under the CSX holding company in 1981 and new routes were developed.

L&N Railroad officials (L&N is a part of the Seaboard System) showed businesses such as Touratsos' sites in the Rockcastle County Industrial Park before the CSX study that led to such changes, Castner said.

If Seaboard abandons the track, the ties may be taken up for good.

"I think the people need to realize that the railroads are not the monopoly... carrier that they once were," Castner said. "Today, we're (Cont'd to P-12)



Jane Anderkin, center, was named Basketball Homecoming Queen during ceremonies held at the Rockets-Pirates game at high school Friday night. Jane, a senior at ROCKES, is the daughter of Mrs. James Anderkin, Jr. of Mt. Vernon. Mem-

bers of her court were, from left: Paige Anderkin, third runner-up; Anita Dillingham, first runner-up; Angie Winstead, second runner-up and Penny Mullins, last year's queen.

Mt. Vernon Signal

PUBLISHED EVERY THURSDAY

Main Street in Mt. Vernon, Kentucky 40456
 Entered at Mt. Vernon Post Office
 As Second Class Matter - Permit No. 1
 In County - \$7.50 per year Out of County - \$10.00

JAMES ANDERKIN, JR., PUBLISHER
 PERLINA M. ANDERKIN, EDITOR

MEMBER KENTUCKY PRESS ASSOCIATION

County Statistics

Deeds recorded

Cumberland Production Credit Association, plaintiff against Charles Marlow, et ux., master commissioner's deed, to PCA, tax \$50.00.
 Donald Wayne and Pamela Jean King, real property located in Rockcastle County and Lincoln County, to Donald Wayne and Pamela Jean King, no tax.
 Fred Smith, quit claim deed for real property located in Rockcastle County, to Gary Davis.
 Sarah Holt, et al., real property located in Livingston, to Arthur and Candace Waddle, tax \$1.50.
 Loyd and Loretta Stewart, real property located on the Brush Creek Road, to Eddie and Sherry Decker, tax \$1.00.
 Bonnie Eden, et al., real property located in Rockcastle County to William and Ramona Jones, tax \$2.00.

Circuit Civil Suits
 Commonwealth of Kentucky ex rel. Phyllis Newcomb vs. Terry Allen Argenbright, petition for support, 84-CI-018.
 Jimmy Houk vs. Kathy Winkler Houk, petition for dissolution of marriage, 84-CI-019.
 Ehtylene Cash Bradley

vs. Chester Bradley, petition for dissolution of marriage, 84-GI-020.

Small claims

J & L Equipment Co. vs. VanWinkle Saw Mill, 84-S-008.
 Mt. Vernon Florist vs. Judy Fuson, 84-S-009.
 Mt. Vernon Florist vs. David Osborne, 84-S-010.
 Mt. Vernon Florist vs. Marilyn Kates, 84-S-011.
 Mt. Vernon Florist vs. Gary Kirby, 84-S-012.
 Donald Warren vs. Frances Napier, 84-S-013.

District court

Disregarding stop sign: Benny Ray Day, \$20 and cost.
 No insurance sticker: Clennie Napier, failed to appear, warrant issued.
 No registration plates: Clennie Napier, Ernest Mark Mason, failed to appear, warrant issued.
 Driving under influence: Gary Dale Southwood, failed to appear, bond forfeited, warrant issued; Douglas McGuire, amended to reckless driving, \$100 and cost; George Stinnett, failed to appear, license suspended; Kenneth Bowling, amended to reckless driving, \$50 and cost.

Illegal transportation of alcoholic beverages for resale: Gary Dale Southwood, failed to appear, bond forfeited, warrant issued.

Drunk in a public place: John D. Eblevin, failed to appear, bond forfeited, warrant issued; Chester McFerron, Paul Monk, \$30 and cost; Chester McFerron, 10 days in jail (suspended); Public intoxication: Barry Tyrone Walker, 10 days in jail.
 Balance due on fines: Billy E. Barron (2 counts), Mike McFerron, Kenny Shaffer, warrant issued for non-appearance.
 Speeding: Mary D. Johnson, Danny McKinney, Charles E. Hasty, \$30 and cost; Vida Druscilla Elza, drivers school and cost; Robert John Dae, \$62.50, total fine and cost.
 No operators license: Marvin Rigby, \$12 and cost.
 Fishing without a license: Shirley Mae Roark, warrant issued for failure to appear.

Hospital report

Acute Care

Admitted:
 Bonnie Riley, Mt. Vernon; Lillie Whitaker, Mt. Vernon; Jean Jones, Mt. Vernon; Cynthia Mink, Livingston; Charles Shepherd, Mt. Vernon; Edith Banker, Crab Orchard; Pansy Robinson, Mt. Vernon; Jennifer Powell, Livingston; Dorothy Hunt, Brodhead; Crockett Hall, Mt. Vernon; Arlene Irving, Brodhead; Dora Brown, Brodhead; A.C. Howard, Brodhead.
Discharged:
 Pearl Roger, Jennifer Powell, Lillian Brooks, Pansy Robinson, Lillie Whitaker, Vernon Houk, Patsy Robinson; Lillie Whitaker, Vernon Houk, Patsy Hensley, Frank Mobsy, Patricia Smith, George Fletcher, Joyce Bussell, Arlene Irvin, Vicky McNew, Dorothy

Hunt, Dora Brown, Bertha Harper, Garrett Taylor, Dora Pike, Elbert McNew, Wanda Hensley.

Skilled Nursing Admitted:
 Dora Pike, Mt. Vernon; Ricky Fuson, Florence.

Newborns
 Powell Baby Girl.

Letters to the Editor

Dear Editor,

The information under the small headline "MVES PTA Meets" (next to the large "Saddle Club News" on page 47 of last week's Signal might give a small hint about the large problem concerning Rockcastle's lower test scores. It is pathetic that considering all of the money the county school system earns on interest on money saved (not spent) that considering all of the money that has not been put into a set of encyclopedias (something pretty basic to learning) for each classroom.

What can you expect in the way of performance from students who continue to be denied the benefits of power equalization money after it has been legislated and distributed to poorer counties?

Miss Grace Boggs
 A retired school teacher
 Route 2, Livingston

To The Editor,

I look forward to receiving my copy of the Signal. It arrives on Monday, sometimes on Saturday. I have nostalgic memories of Rockcastle County, and the good people that lived there in the early years of this century, and now their descendants. I am sure as good and kind. I grew up there through the formative years of my life, going to school at Climax in the little one room schoolhouse.

In my early teens, I remember certain people who impressed me very much and no doubt affected my life in general. There was Dave Clark, sheriff of Rockcastle County. His deputy was Jack Abney, who always had a smile and handshake.

Hardin Moore was merchant and postmaster at Climax. O.M. Payne was merchant and postmaster at Disputanta. John Todd, postmaster at Rockford (in Scaffold Cane), James Lambert was postmaster at Boones Gap. I could go on but will refrain from doing so.

I would like to address a few comments to Hilda Payne Gabbard, who writes the Hello's from Clear Creek. Yes, Hilda, Elbert

Cook is receiving the Signal. Mrs. Arthur Walker is relieved from handing her copy across the road. I wish to tell you, the first thing I look for when the paper arrives, is your Hello, from Clear Creek. You folks visit with your neighbors whose names are so familiar, bring back pleasant memories of their ancestors, and you write of some who are not in the past tense, they are my contemporaries. Charley King, his wife, Sarah, we attended school at the same time. Tom Legear, I knew all of his family (they would be member me as Clell Cook). Give them my best regards.

For your information, the subscribers to the Signal is growing here in Butler County. Stanley and Ora Coffey are now receiving the paper, thanks to Aster and Geneva Anglin of Berea. You wrote about the passing away and interment of Mollie Owens Coffey (Stanley's mother), her burial at Berea. I will end this up. I will keep up the good work.

AARP CLUB TO MEET

The American Association of Retired Persons

(AARP) Club will meet Friday night, February 10 at 6 p.m. in the Rockcastle County Library.

Special singing and refreshments will be served. All members are urged to attend.

Any members needing transportation, call 256-2353 or 256-4565.

On Dean's List

Dr. Gary H. Hall, Academic Dean of Kentucky Christian College, recently announced the Dean's List for the fall semester 1983. Theresa Glovak was included on that list.

Theresa is the daughter of Mr. and Mrs. John H. Glovak, Jr. of Brodhead, Kentucky. She attended Rockcastle County High School and is a member of Brodhead Christian Church. At KCC she is majoring in Bible and Elementary Education.

Kentucky Christian College, located in Grayson, is a four-year Bible college affiliated with the Christian Church/Churches of Christ. She is sponsored by the American Association of Bible Colleges and holds candidate status with the Southern Association of Schools and Colleges.

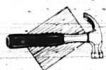
Going-out-of-Business

SALE

Everything in our store

reduced 25%

Camping Equipment



Tools

Boots · Shoes



Cover-alls

Jeans

Army Goods

Shivel's Army Store

Main St.

"Make your love blossom."

Merlin Olsen



The Loving Reflections™ Bouquet from your FTD® Florist.

Valentine's Day is Tuesday, February 14.

Valentine's Week is February 8-14.

Mt. Vernon Florist

256-5524

256-2091

Send your thoughts with special care™

®Registered trademark of Florists' Transworld Delivery Association.



Frozen Fruit & Vegetable CASE LOT SALE

Satisfaction Guaranteed

Buy in bulk and you can enjoy "Farm Fresh" fruits and vegetables at inflation-fighting prices. All products are top quality, fresh picked and quick frozen for natural taste.

We Must Have Your Order By March 7, 1984

Qty.	Product Description	Unit Price	Total Amt.
	Sliced Apples 5#*	5.60	
	Blackberries, 5#** IOF	6.15	
	Black Raspberries 5#** IOF	9.30	
	Cultivated Blueberries 20#**	28.35	
	Wild Blueberries 15#**	22.30	
	Dark Sweet Cherries 30#*	27.15	
	Dark Sweet Cherries 5#** IOF	5.20	
	Red Tart Cherries 30#*	32.40	
	Red Tart Cherries 5#** IOF	8.10	
	Mixed Fruit 20#** IOF	19.20	
	L.W. Fruit Medley 12/18** IOF	19.20	
	Sliced Peaches 30#*	20.10	
	Sliced Peaches 5#** IOF	5.20	
	Strawberries Chunks 2#** IOF	2.75	
	Red Raspberries 5#**	5.85	
	Large Whole Strawberries 20#** IOF	24.30	
	Calif. St. Strawberries 30#*	27.65	
	Calif. St. Strawberries 6#**	7.25	
	Apple Juice 24/12 oz.**	18.50	
	Cranberry Juice 24/12 oz.**	20.20	
	Grapefruit Juice 24/12 oz.**	14.95	
	Grape Juice 24/12 oz.**	16.70	
	Lemonade 24/12 oz.**	12.35	
	Orange Juice 24/12 oz.**	12.35	
	Orange Juice 24/12 oz.**	21.60	
	Asparagus Cuts & Tips 10# IOF	17.65	
	Cut Green Beans 12/2#	16.95	
	Baby Lima Beans 12/2#	22.55	
	Footlock Lima Beans 12/2#	27.50	
	Broccoli Cuts 12/2#	14.70	
	Broccoli Spears 12/2#	19.00	
	Brussel Sprouts 12/2#	18.00	
	Sliced Carrots 12/2#	10.30	
	Cauliflower 12/2#	19.00	
	Cob. Corn 12/4 ct.	13.00	
	Whole Kernel Corn 12/2#	20.20	
	Breaded Mushrooms 2/5#	14.45	
	Fancy St. Mushrooms 2/5#	13.50	
	Garden Peas 12/2#	20.70	
	Whole Leaf Spinach 12/3#	19.30	
	Mixed Vegetables 12/2#	19.35	
	Lenders Bagels 24/6	15.60	
	Straight Line Pound Cake 12/12 oz.	13.85	
	French Fries, 12/2#	13.10	
	Shoestring French Fries 12/20 oz.	16.45	
	Potato Puffs, 12/2#	14.05	
	Thomas English Muffins, 12/12	18.20	
	Breaded Onion Rings, 8/2#	15.50	
	Pizza Slices, Cheese 60/30	14.85	
	French Bread Pizza, 24/3 oz.	19.90	
	Soft Pretzels, 100/7# oz.	11.35	
	Regular Waffles 12/19 oz.	13.25	

*Sugar Added

**No Sugar

IOF Means Individually Quick Frozen

Advanced orders only - Payment with order.

NAME

ADDRESS

CITY

PHONE

ORDER MUST BE PICKED UP ON

March 29

1984

AFTER

1984

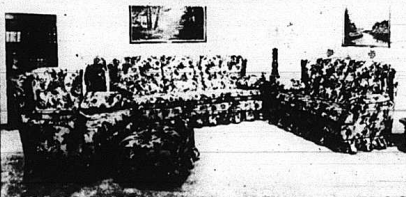
STEWART FARM SUPPLY

Ph. 256-2167

Mt. Vernon, Ky.

ROBINSON'S

EARLY AMERICAN PILLOW ARM SOFA & CHAIR

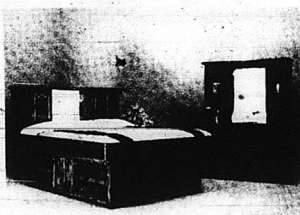


- *Solid Oak Frames
- *Antron Nylon
- *Several Colors

Reg. 1199.95

\$588 WT

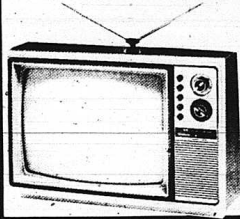
WATERBEDS



WE HAVE ALL WATERBED ACCESSORIES

\$249 & up

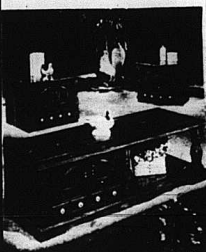
19" COLOR TV



Reg. 399.95

\$288 WT

ASHLEY TABLES



YOUR CHOICE NOW **\$99** EA. WT.

Reg. 149.95 EA.

Hilltop OAK WALL UNITS



Beautiful Oak Finish Brass Trim

35% OFF SUGG. RET.



ALL LAMPS - MIRRORS PICTURES - AND ACCESSORIES!

HOME BRIGHTENERS FOR EVERY ROOM IN YOUR HOME

1/2 OFF LIST PRICE

ALL FLOWER ARRANGEMENTS

Huntington Pine BEDROOM SUITE

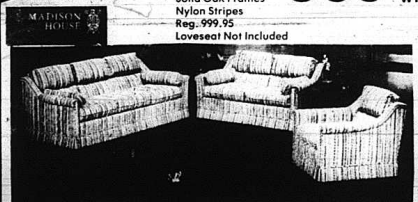


NOW Reg. 1199.95 **\$599** WT

Headboard 5 Drawer Chest Triple Dresser Hutch Mirror

12 MONTHS - NO INTEREST
NO PAYMENT OR TILL MAY

MADISON HOUSE SOFA & CHAIR



\$588 WT

Pub Back Solid Oak Frames Nylon Stripes Reg. 999.95 Loveseat Not Included

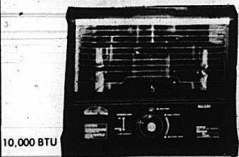
AM/FM RADIO/CASSETTE PLAYER RECORDER



\$295

\$395

RADIANT KING KEROSENE HEATERS



10,000 BTU

12,500 BTU

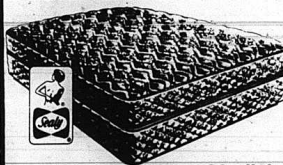
15,500 BTU

\$99

\$129

\$199

SEALY



Twin

\$79 EA. PC.

Full

\$99 EA. PC.

...a whole new way of feelin' good - asleep and awake!

OAK DININGROOM SUITE

Table & 6 Chairs Buffet & Hutch Reg. 1299.95

TROGDON **\$788** WT

First Furniture Since 1902 There is a Difference



MAGIC CHEF Gas or Electric 30" RANGE

Reg. 399.95

\$349 WT

Frigidaire FREEZERS 16 Cu. Ft.



\$388 WT

QUANTITIES LIMITED ON SOME ITEMS

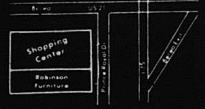
THIS AD DOES NOT APPLY TO PREVIOUS SALES

SHOP

ROBINSON'S
furniture & appliances

986-1906
BEREA

OPEN Mon.-Sat. 9-6 Closed Sunday





TIDE
DETERGENT
49 oz. Box 25 Off
\$1.69
Limit 1 With \$10 or More Order
50 OH IVORY DISH LIQUID \$1.49
32 oz. Bottle

COTTONELLE
BATHROOM
TISSUE
4 Roll Package
89¢
Limit 1 With \$10 Or More Order

JFG BONUS BLEND
COFFEE
13 oz. Bag
\$1.79
Limit 1 With \$10 Or More Order



Specials Good Monday Through Sunday !!

We Reserve The Right To Limit Quantities & To Correct Typographical Errors.

Prices Good February 6 Through February 12

PEPSI COLA
DIET PEPSI, MT. DEW
OR PEPSI FREE
8/16 oz. Bottles Plus Deposit
\$1.49
FRIT-O-LAY'S O'GRADY'S
REGULAR OR AU GRATIN
POTATO CHIPS 99¢
8 oz.

SCOTT PAPER
TOWELS
Jumbo Roll
59¢
Limit 2 With \$10 Or More Order

STAR-KIST
STAR KIST
TUNA
In Oil Or Water
6 1/2 oz.
69¢
Limit 3 With \$10 Or More Order

WILSON'S
MILK
Tall Can
1.89
Limit 6 With \$10 Or More Order

DEL MONICO ELBOW
MACARONI OR SPAGHETTI
OR SHELL MACARONI
OR THIN
SPAGHETTI
7 oz. Box
4/\$1
Limit 8 With \$10 Or More Order

PARAMOUNT BEEF
TAMALES 15 oz. Can **69¢**
PARAMOUNT WITH BEANS
CHILI Reg. Or Hot 15 oz. Can **79¢**
7-UP, DIET 7-UP
DR. PEPPER Plus Deposit **\$1.49**
8/16 oz. Bottles
Food Fair Coupon

PARAMOUNT
BEEF
TAMALES
CHILI
Plus Deposit

NABISCO RITZ
CRACKERS 1 lb. Box **1.39**
NABISCO CHIPS AHOY
COOKIES 21 oz. Bag **1.99**

HUNGRY JACK
INSTANT
POTATOES 16 oz. Box **Buy 1 Get 1 Free !!!**
WELCH'S GRAPE JELLY OR
JAM 32 oz. Jar **\$1.29**

JELL-O 3oz. Box **3/\$1.19**
INSTANT PUDDINGS
KELLOGG'S 18 oz. Box **\$1.19**
CORN FLAKES
KELLOGG'S SUGAR FROSTED
MINI WHEATS 16 oz. Box **\$1.59**

HEINZ
KETCHUP 32 oz. Bottle **99¢**
Exp. 2/12/84 Limit 1 With Coupon

PILLSBURY FUDGE
JUMBLES 22 oz. Box **\$1.69**
PILLSBURY FAMILY FUDGE
BROWNIE MIX 22 oz. Box **\$1.29**

DEL MONTE
CANNED
FOODS SALE!
WHOLE OR CREAM CORN
OR PEAS
Regular Or No-Salt 17 oz. Can **2/99**

VIVA
ICE MILK
Half Gallon **\$1.09**
MEADOW GOLD PUSH-UPS OR
HEALTH BARS 6 Pack \$1.09

Happy Chinese New Year
LA CHOY

FOOD FAIR
BUNS 8 Pack Hamburger Or Hot Dog **2/99**
JUST RITE HOT DOG SAUCE
10 oz. Can 3/99

MARTHA WHITE
FLOUR 5 lb. Plain Or Self-Rising **99¢**
MEAL Plain Or Self-Rising 99¢
5 lb. Bag

DEL MONTE
TOMATO SAUCE 15 oz. Can **2/89¢**
GREEN BEANS 16 oz. Can **2/89¢**
Regular Or No-Salt Cut Or French

VIVA
ICE MILK
Half Gallon **\$1.09**
MEADOW GOLD PUSH-UPS OR
HEALTH BARS 6 Pack \$1.09

Happy Chinese New Year
LA CHOY

PARAMOUNT POLSKI WYROB KOSHER
OR NO-GARLIC
SPEARS 24 oz. Jar **\$1.19**
PARAMOUNT DELI
SPEARS 24 oz. Jar **\$1.19**
FLAVORTREE
FRUIT SNACKS 1 oz. **3/89¢**
HEINZ 57
SAUCE 5 oz. Bottle **99¢**

DEL MONTE
TOMATO SAUCE 15 oz. Can **2/89¢**
DEL MONTE In Juice
PINEAPPLE 15 1/2 oz. **59¢**
DEL MONTE Sliced Or Halves
PEARS 16 oz. Can **69¢**
DEL MONTE SLICED
PEACHES 16 oz. Can **69¢**

TRAIL BLAZER 25 lb. Bag **\$3.99**
Chunk Or Ration
KAL KAN 6 1/2 oz. Can **3/99¢**
CAT FOOD

LA CHOY beef chow mein **2/39**
chow mein noodles
chicken chow mein
LA CHOY BEEF OR CHICKEN
CHOW MEIN 42 oz. Can **\$2.39**
LA CHOY SOY
SAUCE 10 oz. Bottle **79¢**
LA CHOY CHOW MEIN
NOODLES 5 oz. **69¢**
LA CHOY
FRIED RICE 11 oz. **79¢**

LA CHOY beef chow mein **2/39**
chow mein noodles
chicken chow mein
LA CHOY BEEF OR CHICKEN
CHOW MEIN 42 oz. Can **\$2.39**
LA CHOY SOY
SAUCE 10 oz. Bottle **79¢**
LA CHOY CHOW MEIN
NOODLES 5 oz. **69¢**
LA CHOY
FRIED RICE 11 oz. **79¢**

HEINZ STRAINED
BABY FOOD 24's **10/\$1.99**
Limit 10 With Coupon Exp. 2/11/84

HEINZ
STRAINED
FOODS

TRAIL BLAZER 25 lb. Bag **\$3.99**
Chunk Or Ration
KAL KAN 6 1/2 oz. Can **3/99¢**
CAT FOOD

LA CHOY beef chow mein **2/39**
chow mein noodles
chicken chow mein
LA CHOY BEEF OR CHICKEN
CHOW MEIN 42 oz. Can **\$2.39**
LA CHOY SOY
SAUCE 10 oz. Bottle **79¢**
LA CHOY CHOW MEIN
NOODLES 5 oz. **69¢**
LA CHOY
FRIED RICE 11 oz. **79¢**

LA CHOY beef chow mein **2/39**
chow mein noodles
chicken chow mein
LA CHOY BEEF OR CHICKEN
CHOW MEIN 42 oz. Can **\$2.39**
LA CHOY SOY
SAUCE 10 oz. Bottle **79¢**
LA CHOY CHOW MEIN
NOODLES 5 oz. **69¢**
LA CHOY
FRIED RICE 11 oz. **79¢**

Food Fair Coupon **50**
S & H GREEN STAMPS
With This Coupon and
Purchase of 3 or more
loaves of Bread
Exp. 2/12/84

Food Fair Coupon **50**
S & H GREEN STAMPS
With This Coupon and
Purchase of 4 lb. Or
More Pops-Rite Or Popcye
Popcorn
Exp. 2/12/84

Food Fair Coupon **50**
S & H GREEN STAMPS
With This Coupon and
Purchase of 2 or More
Pkgs. Of Any Candy
Exp. 2/12/84

Food Fair Coupon **50**
S & H GREEN STAMPS
With This Coupon and
Purchase of 2 or More
Packs Of Lay's
Lunchmeat
Exp. 2/12/84

Food Fair Coupon **50**
S & H GREEN STAMPS
With This Coupon and
Purchase of \$2.00 or
More Health &
Beauty Aids
Exp. 2/12/84

S&H GREEN STAMPS

FIELD'S BACON
12 oz. Package
\$1.19

FRESH MIXED FRYER PARTS
LB.
49¢

GROUND BEEF
3 lb. Package Or More
LB.
\$1.09

SUPER FOOD FAIR MARKETS

Friendly Service All The Way To The Car !!!

U.S.A. CHOICE PLATTER PLEASING ROUND STEAK
LB.
\$1.79
Boneless \$1.89 LB.

FIELD'S PRO-LEAGUER WIENERS
12 oz. Package
99¢

FIELD'S WHOLE HOG SAUSAGE
1 lb. Roll
\$1.59

U.S.D.A. CHOICE PLATTER PLEASING BONELESS CHUCK ROAST
LB.
\$1.69

U.S.D.A. CHOICE PLATTER PLEASING BONELESS RUMP ROAST
LB.
\$2.49

GROUND CHUCK
LB.
\$1.89

LAY'S SMOKED PICNICS
Sliced 99' LB.
LB.
89¢

LAY'S BEEF LIVER
Pork Liver 49' LB.
LB.
69¢

FIELD'S LARD
8 lb. Pail
\$3.89

FIELD'S OLD FASHIONED SAUSAGE
5 lb. Roll
\$5.99

U.S.D.A. CHOICE CUBE STEAK
LB.
\$2.59

U.S.D.A. CHOICE PLATTER PLEASING BONELESS BEEF STEW
LB.
\$1.99

LAY'S OLE TIMER Mild Or Hot SAUSAGE
1 lb. Roll
\$1.39
20c OFF ON LAY'S PORK SAUSAGE

FIELD'S CHESTNUT BOLOGNA
LB.
99¢

FIELD'S BOLOGNA
1 lb. Package
\$1.39

FIELD'S SMOKED PORK LOINS
LB.
\$1.99

FIELD'S PIZZA DOGS
16 oz. Package
\$1.59

FIELD'S KENTUCKIAN HAM
4/6 lb. Avg.
LB.
\$1.89

U.S.D.A. CHOICE PLATTER PLEASING BONELESS BEEF STEW
LB.
\$1.99

LAY'S OLE TIMER Mild Or Hot SAUSAGE
1 lb. Roll
\$1.39
20c OFF ON LAY'S PORK SAUSAGE

SHEDD'S SPREAD
1 lb. Quarters
\$2.89

JENO'S PIZZA
4.0 oz. Box
99¢

SHEDD'S SPREAD
2 lb. Bowl
\$1.19

FIELD'S CHESTNUT BOLOGNA
LB.
99¢

FIELD'S BOLOGNA
1 lb. Package
\$1.39

FIELD'S SMOKED PORK LOINS
LB.
\$1.99

FIELD'S PIZZA DOGS
16 oz. Package
\$1.59

FIELD'S KENTUCKIAN HAM
4/6 lb. Avg.
LB.
\$1.89

FIELD'S CHESTNUT BOLOGNA
LB.
99¢

FIELD'S BOLOGNA
1 lb. Package
\$1.39

FIELD'S SMOKED PORK LOINS
LB.
\$1.99

FIELD'S PIZZA DOGS
16 oz. Package
\$1.59

FIELD'S KENTUCKIAN HAM
4/6 lb. Avg.
LB.
\$1.89

IDAHO POTATOES
10 lb.
\$1.99
4 lb. Bag Navel Oranges \$1.49

GOLDEN RIPE BANANAS
3 lbs.
99¢
Red Or Yellow Delicious Staymen Apples 79' 3 lb. Bag

SHEDD'S SPREAD
1 lb. Quarters
\$2.89
SHEDD'S SPREAD \$1.19 2 lb. Bowl

JENO'S PIZZA
4.0 oz. Box
99¢

DISHWASHER ALL 65 oz. Box
Buy 1 Get 1 Free

SNOW WHITE MUSHROOM OR PT. CHERRY TOMATOES
99¢

YELLOW ONIONS
3 lb.
79¢

GREEN ONIONS
3 Bunches.
89¢

WISHBONE DRESSINGS
8 oz. Bottle
79¢

TROPICANA ORANGE JUICE
64 oz.
\$1.29

TYSON FRIED CHICKEN
2 lb. Box
\$2.89

GORTON'S CRUNCHY FISH OR CRUNCHY FISH FILLETS
20 oz.
3.29
Buy 1 Get 1 Free !!

WELCH'S FROZEN GRAPE JUICE
1.2 oz. Can
89¢

BANQUET FROZEN FAMILY FAVORITES
9 oz. Box
69¢

ASSURE BREATHABLE PANTY LINERS
14 Count
Regular Or Unscented
\$1.35

Q-TIPS SWABS
300 Count
170 Count
\$1.79

VASELINE INTENSIVE CARE LOTION
10 oz. Bottle
Regular Or Aloe & Herbal
\$1.69

CUTEX NAIL POLISH REMOVER
4 oz. Bottle
Reg. Lemon, & Conditioning
79¢

500 S&H GREEN STAMPS
With This Coupon And The Purchase Of \$40.00 Or More Of Groceries.
Exp 2/12/84

Food Fair Coupon 50
S&H GREEN STAMPS
With This Coupon And Purchase Of 2 or more packages of Panty Hose
Exp 2/12/84

Food Fair Coupon 50
S&H GREEN STAMPS
With This Coupon And Purchase Of 5 lbs. Or More Grapefruit
Exp 2/12/84

Food Fair Coupon 50
S&H GREEN STAMPS
With This Coupon & The Purchase Of 1 Turkey Breast
Exp. 2/12/84

Food Fair Coupon 100
S&H GREEN STAMPS
With This Coupon And Purchase Of \$10.00 - \$30.00 Of Groceries
Exp 2/12/84

Food Fair Coupon 300
S&H GREEN STAMPS
With This Coupon And Purchase Of \$30.00 - \$40.00
Exp. 2/12/84

FRESH, LEAN GROUND BEEF
3 lb. Package or More

119

LB.

ARMOUR VERI - BEST PLATTER PLEASING
¼ PORK
LOINS
\$149

U.S.D.A. CHOICE PLATTER PLEASING
BEEF RIB
STEAKS
\$259

SELECTO BACON
12 oz. Package

129

LB.

LB.
SELECTO SAUSAGE 1 LB. Roll \$109
SELECTO SUNRISE BOLOGNA In Piece LB. 79¢
SELECTO WIENERS Sliced .89 99¢

CENTER CUT PORK CHOPS
LB. \$179

School Days 303 size

White Potatoes 20 lb. \$2.69
CALIFORNIA CELERY 36 Size 69¢
FIRM CABBAGE LB. 49¢
FLORIDA WHITE GRAPEFRUIT 5 lb. Bag \$149
FINAL TOUCH FABRIC SOFTENER 33 oz. Jug \$119

FIELD'S LARD 25 lb. Can \$10.99

Corn 3/\$119

PURINA HI PRO DOG FOOD 5 lb. Bag \$2.37

LUVS DIAPERS 48 Count Medium \$7.99
32 Count Large \$7.99

SUGAR 5 lb. Lim. 1 w/\$10 order \$129
Kellogg's - 18 oz. Corn Flakes \$119

Uncle Sam 5 lb. CORN MEAL \$109
Martha White 5 lb. FLOUR \$109

Kelly 3 oz. POTTED MEAT 4/\$1
G & W 10 oz. Pizza 69¢

Kelly 5 oz. VIENNA SAUSAGE 2/99¢
Stokely 32 oz. Tomato Catsup 99¢

ARGO SWEET PEAS
Stokely POLSKI WYROB APPLE SAUCE
POLSKI WYROB KOSHER DILL SPEARS 24 oz. Jar \$139
HY - TOP CHICKEN NOODLE SOUP 10 oz. Can 3/99¢
MIRACLE MAIZE CORNBREAD MIX 18 oz. 69¢
STOKELY APPLESAUCE 303 Size Can 3/\$119
ARGO PEAS 17 oz. Can 3/\$119

Prices good Feb. 9 - 15
SEALTEST SOUR CREAM 8 oz. Container 69¢

COLE GARLIC BREAD 16 oz. Loaf \$119

VELVEETA CHEESE FOOD 2 lb. Box \$289

BIZ BLEACH 30 oz. \$239

PARAMOUNT CHILI WITH BEANS Hot or Regular 15 oz. Can 69¢

PARAMOUNT WELCH'S GRAPE JELLY 32 oz. Jar \$139

SOFT - PLY TOWELS Jumoo Roll 2/\$1

TIDE DETERGENT 49 oz. Box \$159

EL PASO TACO SHELLS 5 oz. Box 99¢

PARAMOUNT BANQUET FROZEN PIES 20 oz. Apple, Peach, or Cherry \$119

LUX DISH LIQUID 32 oz. Bottle \$139

PRICE SMASHERS THIS WEEK'S SPECIAL
With one filled Price Smasher Certificate

PRICE SMASHERS THIS WEEK'S SPECIAL
With one filled Price Smasher Certificate
STOKELY TOMATO JUICE 46 oz. Can 39¢

PRICE SMASHERS THIS WEEK'S SPECIAL
With one filled Price Smasher Certificate
THREE RIVERS SELF - RISING MEAL 5 lb. Bag 69¢

PRICE SMASHERS THIS WEEK'S SPECIAL
With one filled Price Smasher Certificate
HY - TOP HAMBURGER OR HOT DOG BUNS 8-Pack 9¢

PRICE SMASHERS THIS WEEK'S SPECIAL
With one filled Price Smasher Certificate
PLATTER PLEASING BOLOGNA Regular or Thick LB. 79¢

PRICE SMASHERS THIS WEEK'S SPECIAL
With one filled Price Smasher Certificate
STAR KIST CHUNK LITE TUNA In Oil or Water 6½ oz. Can 39¢

PRICE SMASHERS THIS WEEK'S SPECIAL
With one filled Price Smasher Certificate
DIXIE BELLE CRACKERS 16 oz. Box 19¢

SUPERIOR Food Markets
Symbol Of Quality

16 oz. Ret. plus dep.
Pepsi or Coke \$179

Honor Rolls

Livingston

4TH GRADE

Cheryl Clark, Curtis Cotton, Janet Durham, Tanya Hammond, Sheila Hodge,

Anita Gail Harley, Kimberly Kirby, Andy Martin, Deborah Miller, Angela Stallsworth.

5TH GRADE

Jennifer Clark, Anita

Durham, Lori Hodge, Kathy Howard, Shane Johnson, Anna Otterson.

6TH GRADE

Stacyann Fisher, Brian Griffin, Jerry Hubbard, Brad Hurd, Melissa Hurley, Angie Langford, Tawanna Miller, Christy Lee Ann Pridemore, Angie Senters, Earline Sparks.

7TH GRADE

Heather Jones, Audrey Youdel.

8TH GRADE

Darren Allen, Lisa Burdine, Sandra Burkhart, Traci Clark, Judy Fields, Jeane Griffin, Gary Langford, Sabrina McGuire, Yolanda Mills, Lori Mink, Tonya Parrett, Jennie Shepherd, Vicki Sturgill, Elizabeth Waddle, Deborah Wagers.

RCHS

9TH GRADE

Scott Adams, Teresa Brown, Tracey Bullock, Rebecca Burdette, Barry Bussell, Roger Cottogim, Christopher Craig, Gale Cromer, Trina Cummins, Teresa Gilbert, Michael Hamilton, Johnny Harris, Sandra Hunter, Tracie Johnson, Stephen Martin, Rodney Mullins, Marty New, Stephen O'Neal, Bobby Payne, Michael Pickle, Jennifer Rowe, Judy Rowe, Tameia Russell, Bill Towery, Darren Wynn.

10TH GRADE

Paige Anderkin, Jackie Arnold, Paula Blevins, Dana Bradley, Janet Broughton, Teresa Burke, Jamie Cox, Bobby Cummins, Kevin Durham, Stacie Ferguson, Devin Ford, Bill Gregory, Rebecca Hedrick, Stacy Henderson, Kimberly Hensley, Tammy Hinton, Don Howard, Brenda Hurd, John Johnson, Steve Johnson, Linda Kirby, Anthony Lawrence, Cecil McKinney, Caroline Machal, Melissa Mandi, Jennifer Mason, Gregory Mink, Tammy Napier, Thomas Payne, Paula Phillips, Tammy Thour, Jeff VanHook, Kelly Wilson.

11TH GRADE

Stella Aker, William Scott, Brown, Shelly Cable, Cynthia Cash, Valerie Collins, Michelle Cromer, Mike Gray, Paula Ham, James Hamilton, Melissa Harper, Tammy Hayes, Willie Hines, Marlene Hobbrook, Howard, Daniel Hosier, Tracy Kirby, Sandra Lunsford, Melinda McKinney, Beth Miller, Kathy Miller, Patricia Miller, Eleshia Mink, Melanie Owens, Jill Rogers, Leslie Rose, Dana Singleton, Lesha Singleton, Scott Staton, Phillip Thompson, Kimberly Tolle, Kimberly Vance, Melissa Whitaker, Terrell Wilson, Angela Winstead.

12TH GRADE

Jane Anderkin, Mary Baker, Crystal Blackburn,

Sheila Brown, Karen Bullock, Natalie Carroll, Netza Cash, Loretta Dillingham, Rebecca Fain, Jennifer Gentry, Pat Hampton, Harold Harper, Julie Hunt, Jeryl Isaacs, Ricky Kirby, Greg Lond, Tammara Lunsford, Kristie Martin, Trevor Mink, Patricia Parker, Michelle Parkerson, Melissa Parin, Jeanna Payne, Teresa Renner, Jennifer Riddle, Kathy Robinson, Rodney Wright, Karen Bullock, Cassandra McCauley, Treana McWhorter, Susan Tallant and Stephen Burdine.

BOWLING NEWS

February 2, 1984

Standings: 1st place, NAPA, 53-35; 2nd place, Jets, 52-36; 3rd Alley Cats, 46-42.

High Team Seals: Alley Cats, 1951; NAPA, 1898; Jets, 1878.

High Team Game: Alley Cats, 744; NAPA, 726; Born Losers, 686.

High Men Series: Jack Noe, 560; James Noe, 549; Denny McGuire, 538.

High Men Game: James Night, 213; Jack Noe, 213; Clarence Carter, 203.

High Women Series: Linda Carter, 524; Millie Reynolds, 491; Carol McGuire, 462.

High Women Game: Linda Carter, 214; Carol McGuire, 191; Millie Rey-

nolds, 179.

High Men Average: Denny McGuire, 178; High Women Average, Evelyn Mullins, 168.

ROUNDTONE PTO

The Roundstone PTO will meet Tuesday, February 14 at the Roundstone Elementary School. The meeting will begin at 7 p.m. in the school library. The guests speaker will be Mrs. Sue Hamm, Testing Coordinator of Rockcastle County. Mrs. Hamm will be discussing the end-of-year Achievement Test. If you have any questions concerning the achievement test, we urge you to attend this meeting. Everyone is welcome!

LIVINGSTON

Mrs. Kathy Pratt and girls and Mrs. Edna Hiter and son Willie spent last week in Dayton, Ohio with James E. Brooks and Belinda Kelley.

Mrs. Edna Hiter is please to announce the entering of her son, Willie to computer programming school in Danville. Willie is to enter the school February 10, 1984.

Mrs. Edna Hiter was in Frankfort last week on business.

Mrs. Kathy Pratt has been ill for some time. We wish her a speedy recovery. Mr. Willie Brooks has received a Chevy car from his mother as a gift for his 16th birthday.

GIFT CART READY

Mrs. Patricia Owens wishes to clarify that she is no longer president of the AARP chapter #3215 of Mt. Vernon but has a hospital visitation committee, which is under the National Club in Washington, D.C. Other members of the committee are Etta Mullins, Mrs. Beulah Roberts and Mrs. Elhora Shaferly.

Mrs. Patricia Owens is ready but is under the supervision of Mrs. Serena Stevens of the Rockcastle County Hospital. Those making donations so far are, Judge/Executive Bob Jasper, the Bank of Mt. Vernon, Ersie McKinney and Mabel Zainel.

Quail

By Vivian Owens

Saturday supper guests of Mr. and Mrs. Jack Rowe and family were Mr. and Mrs. Tim Rowe, Mrs. Glenda Frady and sons of Indiana, and Mr. and Mrs. Millard Rowe.

Saturday afternoon visitors of Mrs. Pattie Baker were Mr. and Mrs. Billy Baker and son and Mrs. Christine Brown.

Mr. and Mrs. Don Stevens of Louisville spent the weekend with her parents, Mr. and Mrs. Ambrose Albright and Tootie and other relatives.

Mrs. Ray Bullock visited Mr. and Mrs. Benton Owens Monday morning.

Mrs. Billy Lawrence, Lana and Curtis visited Mr. and Mrs. Benton Owens Friday afternoon.

Mrs. Jesse Taylor and Tracy visited Mrs. Pattie Baker Friday afternoon.

Mr. and Mrs. Everett Gentry of Ohio spent Tuesday night with her parents, Mr. and Mrs. Charlie B. Owens.

Mrs. Benton Owens visited her great aunt, Mrs. Mary Martin.

Mr. Charles Baker was Sunday dinner guest of his mother, Mrs. Pattie Baker. Mrs. Austin Taylor visited Mrs. Baker in the afternoon.

Mr. and Mrs. Rayme Cummins visited their son, Mr. and Mrs. Don Cummins, Saturday.

Sunday dinner guests of Mrs. Willie Todd were Mr. and Mrs. Artie Todd and Brandy, Mrs. Shanda Iren and Butch, Mrs. Fanny Barker, Mr. Timmy Todd and girlfriend, Sheila all of Ohio, Mr. and Mrs. Ronald Rogers and Jill, Mr. Todd Cromer, Mr. and Mrs. Bobby Barron, Mrs. Dean Barron and Stacy, Tracy Burdette and Mr. Wayne Todd and Jessica.

Mr. and Mrs. Jesse Taylor visited Mr. and Mrs. Benton Owens Sunday evening.

Mr. and Mrs. Benton Bullock and Lisa visited Mr.

(Cont'd to P-9)



4-H REFLECTIONS FROM THE PAST—"State Champion of corn club work-1923. John Bullen, Rockford." (Excerpt from County Achievement Contest August 1, 1922 to June 30, 1924, by Robert Spence)

CLEARANCE SALE

February 3 thru 11

"SAVE"
Solid Cherry
Dining Room Suite
\$500 off reg. price

3 pc.
Bedroom Suite
\$189⁹⁵
Recliners
\$89⁹⁵

"SAVE"
American Drew
Cherry
Bedroom Suites
10% off

Serta Bedding
10% off
Greene Brothers
Living Room Suites
20% off

Tell City
Dining Room
10% off
La-Z-Boy Recliners
10% off
All Prints
20% off

3 pc. end tables
20% off
Warm Morning
Stoves
10% off

"SAVE"

"Free Delivery"
"Financing Available"

"SAVE"

Fain Furniture & Appl.

Mt. Vernon

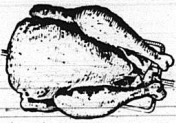
256-2201

Hammond's Supermarket

Hwy. 461

"Home of Bargains"

Prices good Feb. 9 - 15



Fresh
Grade A



1/4 Pork Loin \$1.29 lb.

FRYERS

Lim: 3 w/\$10 order

59¢ lb.



1/2 Pork Loin Sliced Free \$1.19 lb.



Armour 12 oz. pkg.
Hot Dogs \$1.09

Webber's Sausage \$1.69 lb.
2 lb. \$3.39

Center Cut Loin & Rib Chops \$1.69 lb.



JFG 10 oz. jar
INSTANT COFFEE \$3.59

Borden's 1/2 gal. ICE CREAM \$1.79

Berry Cracker Cake Mix 89¢



8 pack 16 oz.
Crackers R.C. Cola \$1.19



Martha White SELF-RISING Flour 10 lb. \$1.89

Zesta 1 lb. box 79¢

Generic 32 oz. bottle Catsup 79¢

FRESH PRODUCE

Luck's 303 size 2 for BEANS 99¢

Cricket 2 for Disposable Lighters 99¢

Grade A Med. EGGS doz. 97¢

20 lb. bag Potatoes \$2.19

Miracle Whip SALAD DRESSING \$1.69 qt.

Prelate Tall Can PINK SALMON \$1.69

Lettuce 49¢ Head

5 lb. bag White or Pink Grapefruit \$1.29

Banquet Frozen Boxed FRIED CHICKEN 32 oz. \$2.89

Downy 64 qz. FABRIC SOFTNER \$2.19

5 lb. bag Oranges \$1.49

Blue Bonnet 1 lb. qtrs. Margarine 59¢

Puff's 175 ct. FACIAL TISSUE 79¢

3 lb. bag Red or Yellow Apples 79¢



Mr. and Mrs. Murphy Martin, Jr. of Route 2, Livingston, wish to announce the marriage of their daughter, Diana Fay, to Curtis Carpenter, son of Mr. and Mrs. Jasper Carpenter of Route 2, Livingston. The wedding was performed Saturday, January 14, 1984 at 1:00 p.m. by Bro. Jasper Carpenter at the Morning View Pentecostal Church. A reception followed at the home of the bride's parents. The groom is employed by Winn Dixie in London and the bride is employed by Appalachian Computer Service in London. The couple are residing at Route 2, Livingston.



Mr. and Mrs. Raymond Kirby of Pine Hill would like to announce the marriage of their daughter, Terina Darlene, to Parlie Barnett, on February 1st. Mr. Barnett is the son of the late Tom and Delphia Barnett. Terina is the granddaughter of Mr. and Mrs. Robert T. Kirby of Mt. Vernon and Mr. and Mrs. Warren M. Clark of Loveland, Ohio and Mrs. Evelyn Smith Clark of South Lebanon, Ohio.

Personals

By Mrs. Geo. Burton

Mrs. Lance Dillingham has returned home after spending several days in the St. Joseph Hospital at Lexington where she underwent open heart surgery. She is reported feeling better.

Mr. and Mrs. Modie Dillingham of Reading, Ohio and Mr. and Mrs. Gorman Dillingham of West Chester, Ohio have returned home after spending several days here due to the illness of their mother, Mrs. Lance Dillingham.

Mrs. Lillian Anglin visited Mr. and Mrs. U.G. Baker awhile last Wednesday. Mildred Hunt is able to be out after a few days' illness.

Mr. and Mrs. Cecil Dailley celebrated their birthdays last week. We wish them many returns of the day.

Mrs. Mae Barron visited Mr. and Mrs. George Burton awhile last Thursday.

Mr. Robert L. Coffey of Richmond, Indiana visited Mr. W.R. Coffey, Mrs. Lillian Anglin and Mr. and Mrs. Robert Anglin during the weekend.

Sympathy is extended to the family of Mrs. Margaret Parrett in their time of sorrow.

Mr. and Mrs. Herbert Stokes and Melinda visited Mr. and Mrs. McKinley Kirby during the weekend.

Recent visitors of Mr. and Mrs. Gravelly Burton were Mrs. Dorothy Stevens, Mrs. Edith Lunsford and Mr. and Mrs. Erwin Barron.

Mrs. Alta McFerron is still very ill in the U.K. Medical Center at Lexington. We wish her a speedy recovery.

Recent visitors of Mr. and Mrs. George Burton were Mattie Owens of Somerset, Mrs. Edna Harper of Brodhead, Mr. and Mrs. Kenny Burton of Brodhead and Mr. and Mrs. Harris Burton of Berea.

Sympathy is extended to the families of Johnny K. Falin, Mrs. Mary M. McClure, Mattie Griffin and Oscar Larney Durham in their time of sorrow.

Mrs. Bessie Clark has returned home from the Rockcastle County Hospital.

Sympathy is extended to the family of Mr. Bill Adams of Berea. He was formerly of Rockcastle County.

Mr. and Mrs. Bobby Anglin visited Mr. W.R. Coffey and Mrs. Lillian Anglin Sunday afternoon.

Mr. and Mrs. Stephen Hansel of Jacksonville, North Carolina are visiting Mrs. Shirley Burton a few days.

Mr. and Mrs. Robert Barron and family of Paris

National Forest Timber For Sale

Sealed bids will be received by the Forest Supervisor, 100 Vaught Road, Winchester, Ky. 40391, up to 10:00 a.m. local time at the place of bid opening of March 12, 1984, and opened immediately thereafter. All timber marked or designated for cutting is located on an area of about 641 acres of which 198 acres have been designated for cutting within the Daniel Boone National Forest, on Hughes Fork and War Fork drainages, Compartment Nos. 3076 and 3078, Berea Ranger District, Jackson County, Ky. estimated to be 933 Mbf of saw-timber, an estimated 9 CCF of pine roundwood and an estimated 391 CCF of hardwood roundwood.

Minimum acceptable bid by species including sale-area-betterment is:

- Mixed Hardwood, Sawtimber, \$19.26; So. Yellow Pine, Sawtimber, \$20.38; Yellow Poplar, Sawtimber, \$33.28; Mixed Oak, Sawtimber, \$24.48; White Oak, Sawtimber, \$20.52; N. Red Oak, Sawtimber, \$43.55; Pine, Small Roundwood, \$0.60; Hardwood, Small Roundwood, \$0.60.

A certified check, bank draft, cashier's check or money order, cash, irrevocable letter of credit or bid bond in the amount of \$1100.00 payable to Forest Service, USDA, must be deposited with each bid. The high bidder whose bid is accepted must within 30 days from receipt of written notification furnish a cash deposit or provide effective purchaser credit, in the amount of 10 percent of total bid value rounded up to the next \$100. Applicable purchaser road credits are \$8441. The right to reject any and all bids is reserved. Before bids are submitted, full information concerning the timber, the sample contract, the conditions of sale and submission of bids should be obtained from the Forest Supervisor, Winchester, Ky. or the District Ranger, Berea, Ky. 27x1

and Mr. and Mrs. Edward Stephens and family of Lexington spent Sunday with Mr. and Mrs. Robert

Kirby. They all visited Mr. and Mrs. Raymond Kirby by Sunday afternoon.



4-H News 75 years!

...AS A LEADER OF KENTUCKY'S YOUTH

1909-1984

By Martha Brown
County Extension Agent
For 4-H

Clothing Project Meetings
4-H'ers interested in learning to sew or increasing their sewing skills will want to attend the clothing project meetings beginning this month.

Meetings will be held at each elementary school according to the following schedule:

Brodhead: Mondays, February 13, 20, 27, March 5, 12, 19.

Mt. Vernon, Tuesdays, February 14, 21, 28, March 6, 13, 20.
Brodhead: Wednesdays, February 15, 22, 29; March 7, 14, 21.

Livingston, Thursdays, February 16, 23; March 1, 8, 15, 22.

Permission slips will be passed out the week of February 6th and must be turned back in with parent's signature in order to participate.

4-H'ers are asked to wait until after the first meeting before purchasing patterns or fabric.

Hosting International Visitors

Last summer, our county was host to five international Ambassadors from Luxembourg. These young people visited our county through the International For-H Youth Exchange (IFYE) program. This program offers families the unique opportunity to have an international experience without ever leaving home. IFYE Ambassadors may come from Europe, Latin America or Caribbean countries.

Another type of exchange program is available



Angel Hatton was awarded a home computer and a 4-H camp scholarship being the top salesman in the 4-H candy/cookie sale. Angel is a member of Mrs. Roberts' 5th grade 4-H Club at Mt. Vernon.

through the 4-H LABA program. LABO is a Japanese youth organization very similar to IFYE—except that the youth come from Japan.

To be a host family, applicants need to have a sincere desire to participate, but they must alter their family life style. They must be a good representative of 4-H and family life in the community and must assume the cost of room and board for the exchange while hosting.

Any family interested in hosting an exchange this summer, should contact the Extension office by February 17 for an application.

"QUAL"
(Cont'd from P-7)

and Mrs. Delmas Bullock and family.

Mr. and Mrs. Casper Jones and son-visited Mr. and Mrs. Ambrose Albright and Tootie, Saturday morning.

Sunday afternoon visitors of Mr. and Mrs. Charlie B. Owens were Mr. and Mrs. W.A. Owens and Mrs. Joyce Lipton.

Mrs. Russell Barron and family visited Mrs. Ethel Barron, Sunday.

Mrs. Lillian Brook is spending a few days with her brother, Mr. and Mrs. Rufus Mink.

Mr. Lowell Mink underwent surgery recently at Lettie A. Clay Hospital in Richmond. We wish him a speedy recovery.

Mrs. Ambrose Albright visited her sister, Mr. and Mrs. Lance Dillingham recently.

Miss Josephine "Tootie" Albright celebrated her birthday Saturday evening at her home with her parents, Mr. and Mrs. Ambrose Albright. Others to help her celebrate were Mr. and Mrs. Don Stevens, Mr. and Mrs. Billy Gentry, Mr. and Mrs. Larry Taylor and Mr. and Mrs. Gary Gentry and Zackory. We wish her many more.

Mr. Kenneth Phelps of Ohio spent Monday night with his mother, Mrs. Oia Phelps and they visited his father, Mr. Aubrey Phelps at the Sowder Nursing Home, Tuesday.

Mrs. Ricky Pittman visited Florence Albright while Thursday afternoon.

Mrs. Elmer Ponder is numbered with the sick.

Mr. and Mrs. Donald Bullock, Tana and Donna were dinner guests of Florence Albright Saturday. Mrs. Alma Jetter-Cable is a patient in Central Baptist Hospital in Lexington where she underwent surgery.

Style Jewelers
Shoppers Village
On Eastern By-Pass Richmond, Ky. ph. 624-0277

Ear Piercing Watch Repair Jewelry Repair

50% off
Large Selection of 14 Kt. Gold Earrings


20% off
quality engagement
Rings & Diamond Heart Jewelry

coupon coupon coupon coupon coupon coupon
14 Kt. Gold Chain Repair
1/2 Price With This Coupon
Regular \$6.00 Now \$3.00
All Repairs Estimated Before Repair
Expires 3-15-84
coupon coupon coupon coupon coupon coupon

"Make your love blossom."
Merlin Olsen

The Heart-to-Heart™ Bouquet from your FTD® Florist.
Valentine's Day is Tuesday, February 14.
Valentine's Week is February 8-14.

Mt. Vernon Florist
256-5524 256-2091

Send your thoughts with special  care.™
®Registered trademark of Florists' Transworld Delivery Association.

ATTENTION!
Monticello Outlet
in Berea
is having a
Going-Out-Of-Business SALE
Everything will be marked
down to our cost.
Sale starts at 12 noon,
Thursday. We will be open
until 7 p.m., nightly.
First 20 customers receive
an additional 10% discount.

PIC-PAC SUPERMARKETS

PRICES GOOD THRU SATURDAY, FEBRUARY 11, 1984.
WE RESERVE THE RIGHT TO LIMIT QUANTITIES & TO CORRECT ANY PRINTING ERRORS. FEDERAL FOOD STAMPS WELCOME.

Warm up your Budget with these great....

Mid-Winter Values!

4 Roll Charmin 48¢

MINUTE MAID Orange Juice **\$1.19**

17 OZ. REG. OR LITE Del Monte Fruit **69¢**

WHOLE PARTRIDGE FRONTIER **Boneless Ham \$1.69**

LB.

FIRST-CUT **Pork Chops \$1.19**

ARMOUR VERIBEST LB.

PORK CHOPS Family Pak **\$1.29** (MIXED)

Cake Mixes 69¢

16 OZ. ASST. Frostings **\$1.29**

BETTY CROCKER 18 OZ. PKG.

18 OZ. PACKAGE Wheaties Cereal **\$1.69**

16 OZ. QTRS. Mrs. Filbert's Margarine **2/\$1**

U.S.D.A. CHOICE BONELESS

Chuck Roast \$1.79 (FIELD'S - 16 OZ.)

Sliced Bacon \$1.79 (1 LB. ROLL HYDE PARK WHOLE HOG)

Country Sausage \$1.59 (ARMOUR VERIBEST)

Rib Chops \$1.79 (ARMOUR VERIBEST)

Loin Chops \$1.89

U.S.D.A. CHOICE **Sirloin Steak \$2.69**

LB.

U.S.D.A. CHOICE BONELESS **Sirloin Tip Roast \$2.69**

12 OZ. PROLEAGUER **Field's Wieners \$1.19**

16 OZ. FIELD'S **Sliced Bologna \$1.59**

HOLLY FARMS FRYER **Drumsticks \$1.29**

Peanut Butter \$1.19

PETER PAN 18 OZ. JAR

JUMBO "FLORIDA IS CITRUS" INDIAN RIVER **Grapefruit 3/99¢**

U.S. NO. 1 Fresh Yams **49¢**

SALAD FIXIN' Green Onions **3/99¢**

ONE OUNCE BOXES 10 Ct. Bag Raisins **\$1.59**

FIRM & CRISP CALIFORNIA **Iceberg Lettuce 49¢**

CRISP EASTERN GROWN RED **3 Lb. Delicious Apples 89¢**

SWEET & JUICY **Fresh Pineapple 99¢** (EACH)

10 OZ. GREEN GIANT Niblets Corn **89¢**

32 OZ. DISH LIQUID Twin-Pack Ivory Butter **\$2.89**

Banquet Pot Pies 3/\$1

8 OZ. PKG.

NUTRITIOUS **Fresh Broccoli 99¢** (BUNCH)

FLORIDA IS CITRUS! **Temple Oranges 8/99¢**

8 OZ. HYDE PARK Crescent Rolls **89¢**

8 OZ. SLICED AMERICAN, PIMENTO OR SWISS Kraft Deluxe Cheese **\$1.29**

PENNY SALE!

JUST LOOK WHAT I CAN BUY!

- BUY ONE 1/2 PKG. NESTLE CRACKERS GET ONE HYDE PARK 187 OZ. CAN **Chicken Noodle Soup 1¢**
- BUY ONE 16 OZ. JAR HYDE PARK WING SAUCE GET ONE 1/2 OZ. BELLINI SHELLS ON THIS **Delmonico Spag. or Mac. 1¢**
- BUY ONE 14 OZ. PKG. HEART SOFT PARKAY GET ONE 1 OZ. JIFFY MIX **Blueberry Muffin 1¢**
- BUY ONE 7.7 OZ. PKG. ORTEGA TACO SHELLS GET ONE 1/4 OZ. BELLINI TACO **Seasoning Mix 1¢**
- BUY ONE 14 OZ. TABLE TREAT STEAK-UMM GET ONE 3 OZ. JAR B B **Sliced Mushrooms 1¢**
- BUY ONE 1 LB. JAR WELCHES GRAPE JELLY GET ONE 11 OZ. PKG. HYDE PARK **English Muffins 1¢**
- BUY ONE 16 OZ. JAR COFFEE MATE CREAMER **Mr. Coffee Filters 1¢**
- BUY ONE 22 OZ. FILLERY COFFEE PANCAKE MIX GET ONE 18 OZ. HYDE PARK WAFFLE OR **Pancake Syrup 1¢**
- BUY ONE 24 OZ. LIGHT N LVELLY COTTAGE CHEESE GET ONE 18 OZ. HYDE PARK **Sour Cream 1¢**
- BUY ONE 12 OZ. PKG. HYDE PARK WIENERS GET ONE 18 OZ. HYDE PARK **Hot Dog Sauce 1¢**

140 COUNT PACKAGE NORTHERN **Paper Napkins 79¢**

15 OZ. BOTTLE FRESH SCENTED **Pine Sol Cleaner \$1.29**

5 Lb. Bag Corn Meal 99¢

MARTHA WHITE

Folger's Coffee \$3.49

INSTANT 8 OZ. JAR

9 OZ. GREEN GIANT DINNER **Frozen Lasagna \$1.39**

30 OZ. ORE IDA REGULAR OR WITH ONIONS **Crispy Crowns Potatoes \$1.49**

8 OZ. GORTON **Crunchy Fish Fillets \$1.29**

HALF GALLON **Neatest Ice Cream \$1.99**

16 OZ. VAN CAMP'S **Pork & Beans 2/79¢**

18 OZ. REGULAR OR QUICK **Quaker Oats Cereal 89¢**

147 OZ. BOX - 50¢ OFF LABEL **Purex Detergent \$3.99**

10 COUNT PKG. DRIKORAL **Cold Tablets \$2.49**

100 COUNT PKG. - FOR FAST RELIEF **Bufferin \$2.99**

48 CT. PKG. MEDIUM OR 32 CT. PKG. LARGE **Luv's Diapers \$8.59**

PURINA - 5 LBS. FREE! **30 Lb. Dog Chow \$7.49**

From Our Deli

Deli Made Fresh **Ambrosia Salad lb. \$1.59**

Swiss Cheese lb. \$2.29

Fischer's Flame Browned Ham \$3.29

BONUS BUY COUPON

4 ROLL PKG. BATH TISSUE **Charmin 48¢**

VALID AT PIC-PAC THRU SATURDAY, FEBRUARY 11, 1984.

PIC-PAC SUPERMARKETS

PEPSI COLA 16 oz. - 8 pk. \$1.69

plus deposit or bottles

Med. EGGS 99¢ dozen

Around BRODHEAD

HOMEMAKER'S COUNCIL

Attention All County Homemaker Club Members Come to the Rockcastle County Library's dining room on Feb. 24th with a foreign food dish at 6:30 for the International Day Dinner. Everyone bring items from other countries to display. Joyce Craig will present the program on her recent trip to Germany. Each club will be asked to do certain jobs to make this event a success!

Norietta Thompson, as area president, hopes that Rockcastle Homemakers will attend the state meeting April 18 at Corbin. Let's help Norietta by supporting her with our presence.

4-H Club needs sewing help, especially at Roundstone School. Parents help this need and volunteer, please.

Who would like to model a garment made by yourself at the National Homemakers' Conference in Louisville? Let Cheryl Witt know if you are interested.

Remember CPR classes Feb. 13 and 20 and Crafts - Mounting Lace, March 5.

Stenciling, March 12, braided rugs, Mar. 19 and basket-making, March 26, 27.

Homemakers don't throw your monthly letters from Cheryl Witt away because you read them. They will keep you well informed of happenings that will be interesting enough to get you out of the house to join other homemakers who are taking advantage of these learning experiences.

Elizabeth Mullins, reporter

Who would like to model a garment made by yourself at the National Homemakers' Conference in Louisville? Let Cheryl Witt know if you are interested.

Remember CPR classes Feb. 13 and 20 and Crafts - Mounting Lace, March 5.

Stenciling, March 12, braided rugs, Mar. 19 and basket-making, March 26, 27.

Homemakers don't throw your monthly letters from Cheryl Witt away because you read them. They will keep you well informed of happenings that will be interesting enough to get you out of the house to join other homemakers who are taking advantage of these learning experiences.

Elizabeth Mullins, reporter

Who would like to model a garment made by yourself at the National Homemakers' Conference in Louisville? Let Cheryl Witt know if you are interested.

Remember CPR classes Feb. 13 and 20 and Crafts - Mounting Lace, March 5.

Stenciling, March 12, braided rugs, Mar. 19 and basket-making, March 26, 27.

Homemakers don't throw your monthly letters from Cheryl Witt away because you read them. They will keep you well informed of happenings that will be interesting enough to get you out of the house to join other homemakers who are taking advantage of these learning experiences.

Elizabeth Mullins, reporter

Who would like to model a garment made by yourself at the National Homemakers' Conference in Louisville? Let Cheryl Witt know if you are interested.

Remember CPR classes Feb. 13 and 20 and Crafts - Mounting Lace, March 5.

Stenciling, March 12, braided rugs, Mar. 19 and basket-making, March 26, 27.

Homemakers don't throw your monthly letters from Cheryl Witt away because you read them. They will keep you well informed of happenings that will be interesting enough to get you out of the house to join other homemakers who are taking advantage of these learning experiences.

Elizabeth Mullins, reporter

Who would like to model a garment made by yourself at the National Homemakers' Conference in Louisville? Let Cheryl Witt know if you are interested.

Remember CPR classes Feb. 13 and 20 and Crafts - Mounting Lace, March 5.

Stenciling, March 12, braided rugs, Mar. 19 and basket-making, March 26, 27.

Homemakers don't throw your monthly letters from Cheryl Witt away because you read them. They will keep you well informed of happenings that will be interesting enough to get you out of the house to join other homemakers who are taking advantage of these learning experiences.

Elizabeth Mullins, reporter

Who would like to model a garment made by yourself at the National Homemakers' Conference in Louisville? Let Cheryl Witt know if you are interested.

Remember CPR classes Feb. 13 and 20 and Crafts - Mounting Lace, March 5.

Stenciling, March 12, braided rugs, Mar. 19 and basket-making, March 26, 27.

Homemakers don't throw your monthly letters from Cheryl Witt away because you read them. They will keep you well informed of happenings that will be interesting enough to get you out of the house to join other homemakers who are taking advantage of these learning experiences.

Elizabeth Mullins, reporter

Who would like to model a garment made by yourself at the National Homemakers' Conference in Louisville? Let Cheryl Witt know if you are interested.

Remember CPR classes Feb. 13 and 20 and Crafts - Mounting Lace, March 5.

Stenciling, March 12, braided rugs, Mar. 19 and basket-making, March 26, 27.

Homemakers don't throw your monthly letters from Cheryl Witt away because you read them. They will keep you well informed of happenings that will be interesting enough to get you out of the house to join other homemakers who are taking advantage of these learning experiences.

Elizabeth Mullins, reporter

Who would like to model a garment made by yourself at the National Homemakers' Conference in Louisville? Let Cheryl Witt know if you are interested.

Remember CPR classes Feb. 13 and 20 and Crafts - Mounting Lace, March 5.

Stenciling, March 12, braided rugs, Mar. 19 and basket-making, March 26, 27.

Homemakers don't throw your monthly letters from Cheryl Witt away because you read them. They will keep you well informed of happenings that will be interesting enough to get you out of the house to join other homemakers who are taking advantage of these learning experiences.

Elizabeth Mullins, reporter

Who would like to model a garment made by yourself at the National Homemakers' Conference in Louisville? Let Cheryl Witt know if you are interested.

Remember CPR classes Feb. 13 and 20 and Crafts - Mounting Lace, March 5.

Stenciling, March 12, braided rugs, Mar. 19 and basket-making, March 26, 27.

Homemakers don't throw your monthly letters from Cheryl Witt away because you read them. They will keep you well informed of happenings that will be interesting enough to get you out of the house to join other homemakers who are taking advantage of these learning experiences.

Elizabeth Mullins, reporter

Who would like to model a garment made by yourself at the National Homemakers' Conference in Louisville? Let Cheryl Witt know if you are interested.

Remember CPR classes Feb. 13 and 20 and Crafts - Mounting Lace, March 5.

Stenciling, March 12, braided rugs, Mar. 19 and basket-making, March 26, 27.

Homemakers don't throw your monthly letters from Cheryl Witt away because you read them. They will keep you well informed of happenings that will be interesting enough to get you out of the house to join other homemakers who are taking advantage of these learning experiences.

Elizabeth Mullins, reporter

Who would like to model a garment made by yourself at the National Homemakers' Conference in Louisville? Let Cheryl Witt know if you are interested.

Remember CPR classes Feb. 13 and 20 and Crafts - Mounting Lace, March 5.

Stenciling, March 12, braided rugs, Mar. 19 and basket-making, March 26, 27.

Homemakers don't throw your monthly letters from Cheryl Witt away because you read them. They will keep you well informed of happenings that will be interesting enough to get you out of the house to join other homemakers who are taking advantage of these learning experiences.

Elizabeth Mullins, reporter

Who would like to model a garment made by yourself at the National Homemakers' Conference in Louisville? Let Cheryl Witt know if you are interested.

Remember CPR classes Feb. 13 and 20 and Crafts - Mounting Lace, March 5.

Stenciling, March 12, braided rugs, Mar. 19 and basket-making, March 26, 27.

Homemakers don't throw your monthly letters from Cheryl Witt away because you read them. They will keep you well informed of happenings that will be interesting enough to get you out of the house to join other homemakers who are taking advantage of these learning experiences.

Elizabeth Mullins, reporter

tal in Madison, Indiana to Clifty Falls Convalescent Center, 950 Crest St., Madison, Ind. 47250. Anyone wishing to send cards, she appreciates hearing from home and is up and around some in the nursing home. We miss her and Mrs. Cuba Croley, who are away during the winter months. Hope they both do well. Sam Antle and wife, Clara Sutton Antle of Lancaster were recent visitors of Mrs. Julia Adams, Henry Ritz and family and Mrs. Minnie Sutton.

Mr. and Mrs. Bert McWhorter spent last Friday night in Louisville visiting their son, Larry McWhorter, Mrs. McWhorter and family.

Mrs. Verla Brown was Wednesday dinner guest of Mr. and Mrs. Bert McWhorter and they visited Mr. and Mrs. Monroe Renner in the afternoon.

Saturday dinner guests of Mr. and Mrs. Ray Long were Mr. and Mrs. Harold Long and Lisa of Louisville, Mrs. Mike New and son, Scotty, and Mrs. Edna Hastly.

Mr. and Mrs. Bert McWhorter were Sunday dinner guests of Mrs. Verla Brown.

Mrs. Julia Adams recently underwent eye surgery and is recuperating well at her home. Also her sister, Mrs. Minnie Sutton, is doing very well at her home.

Dwain Bradley and wife, Vickie, and son, Derek, of Fort Knox spent the week end with her mother, Mrs. Alta Sponamore in Mt. Vernon and his father, Junior Bradley and grandparents, Mr. and Mrs. Morris Adams at Castle Village Apartments.

Mr. and Mrs. James Clark of Stanford visited his sister, Mrs. Bob Adams and Mr. Adams Friday and Saturday enroute to Corbin to visit Mrs. Clark's stepmother who is in the hospital there.

Mrs. Bertha Adams, Mrs. Mrs. Bertha Adams and Mrs. Lula Bussell visited at the Sowder Nursing Home Sunday afternoon. Jack Bussell and Jenny Smith entertained the patients by singing several beautiful songs.

Gervis Craig Singleton of London visited Saturday in Brodhead with Mrs. Mary McWhorter, Pat, Mickie and Freddy. J. Pruitt also visited.

(Cont. to 16)



O'Shanna Nicole Owens celebrated her 3rd birthday November 22 in Henderson, Ky. with her brother, Ben, 1 and her parents, Ronnie Lee and Barbara Owens. Maternal grandparents are Mrs. Annie Newton of Route 2, Mt. Vernon and the late Raymond Newton. Paternal grandparents are Mr. and Mrs. A.B. Owens, Alex of Route 2, Mt. Vernon. Great grandparents are Mr. and Mrs. Lester Arnold of Route 5, Mt. Vernon and Mr. and Mrs. Albert Owens of Route 2, Mt. Vernon.



Tabitha Renee Durham, daughter of Mr. and Mrs. Jeffrey Durham of Mt. Vernon celebrated her first birthday Saturday, February 4 at the home of her grandparents, Mr. and Mrs. Willard Durham of Orlando. She is also the granddaughter of Mr. and Mrs. William Smith of Wildie.

Kevin and Cindy Robbins wish to announce the birth of their son, Joshua Glenn Robbins, born November 20, 1983 at Ephriam McDowell Hospital in Danville. He weighed 7 pounds, 10½ ounces. His grandparents are Mr. and Mrs. Abel of Tennessee and Mr. and Mrs. Verl Robbins of Brodhead. His great grandparents are Mrs. Ella Gallagher of Brodhead and Mrs. Ollie Rainey of Tennessee. (Great grandfather is Hugh Robbins of Brodhead.

REAL ESTATE FOR SALE

COMMERCIAL PROPERTIES

Small Commercial Building-Small commercial building located on West Main Street, Mt. Vernon. This building could be used for several types of small business or adapted for office space very easily. A bargain, priced at \$6,900. G-1.

Commercial Lot-Located on Main Street, Mt. Vernon. Measures approximately 55x100. City water and sewer available. Priced at only \$15,000. K-10.

Commercial Building-Main Street, Brodhead, Kentucky-income producing, good investment. Reduced to \$16,900. N-3.

LEASE PROPERTY

Commercial Building-West Main St. adjacent to Fain Furniture Co. could be adapted for most any type business or could easily be used for office space. N-10.

Brick Home-Near Renfro Valley-Home has 3 bedrooms, living room, kitchen, dining room, bath and basement. \$250 per month plus \$250 security deposit.

BUSINESSES

Established County Store Business-Excellent opportunity-Ottawa, Ky. Building with living quarters-all equipment-owners received \$39,000 plus inventory. N-14.

Beauty Shop-Includes 9 dryers, 6 chairs, 2 shampoo bowls, all necessary equipment and supplies needed for this type business. Call for details. Lost Lease-REDUCED TO \$6,900.

FARMS AND HOUSAGE

60 Acres-more or less-south of Mt. Vernon in the Maple Creek section of Rockcastle County. Some timber and coal possibilities. \$175 per acre. K-9.

74 Acres-of which approximately 30 acres in bottom-land. Located on Dug Hill road near Brodhead. Has tobacco base and some timber. Only \$37,500. L-8.

180 Acres-Poplar Gap section of Rockcastle County. Abundance of timber-Only \$279 per acre. N-5.

12½ Acres-Copper Creek section of Rockcastle County. Good building site-mostly hill land with lots of firewood. Priced at \$5,900. N-15.

15 Acres-Excellent Small Farm-15 Acres more or less which is most available. Quail section of Rockcastle County. City water available and black-top road frontage. Also has 500 lb. tobacco base. All for \$21,500. O-5.

3.8 Acres-more or less located in Brodhead, Ky. Behind Martin's Garage. For only \$1,950. O-10.

Brick Home and 30 Acres-5 acres in grass and the balance in woods. The farm has 601 lb. tobacco base, small orchard and 18x24 barn. Located approximately 3 miles southeast of Brodhead. This beautiful home offers 3 bedrooms, living room, kitchen, 2 baths, utility room and a 2 car garage. It has total electric, wall to wall carpet, fireplace with insert, built-in appliances and much more. All for \$52,900. O-14.

85 Acres-undeveloped land located in the Pine Hill section of Rockcastle County. Has possibilities of some coal and marketable timber. Some of the land could be put into pasture and cropland. Priced at \$14,000. O-16.

and wood furance. Assume loan all for only \$49,900. G-2.

30 Acres-located near Brodhead on Bowling Ridge. Has a new 24x36 barn, approximately 12 acres in grass. Priced at \$17,900. P-2.

40 Acre Farm-located southwest of Mt. Vernon just off Highway 461. It is improved with two combination barns and an older house-approximately 1200 lb. tobacco base-water provided by creek and 2 springs. Priced at \$25,000. P-3.

51 Acre Farm - Negro Creek Road - approximately 15 acres cleared land - 1400 lb. tobacco base and improved with a 5 room house and 68x40 combination barn. Priced at \$28,000. P-6.

12 Acres-Sand Springs section of Rockcastle County. Improved with a 6 room frame house with storm windows and new porch and a barn. Basic tobacco allotment of 586 lbs. Priced at \$12,500. Will take \$5,000 down and assume payment. P-5.

New Listing-House-8 Acres next door to West Brodhead Church of God-The house has living room, dining room, kitchen, family room, 3 bedrooms and 1½ baths. All for \$22,900. P-13.

New Listing-Nearly 1 Acre Lot-Williams Street, Mt. Vernon, city water, city sewer, restricted for city protection. Only \$12,900. P-16.

23 Acre Farm-located on Highway 150 near Stanford. Has 2 ponds, 580 lb. tobacco base, an excellent building site. Only \$22,900. P-14.

HOMES \$50,000 AND UP

Near Hospital-Lovely 1½ story home. Home has 4 bedrooms, 2 baths, dining room, kitchen, with built-in cabinets, family room and music/or office room. Approximately 1 acre, with fruit trees. Priced to sell quick. \$59,500. K-14.

3 Bedroom White Brick-located in the Robert Ford subdivision-walking room distance to downtown and to library. House also has family room, living room, kitchen, 1½ baths, heat pump, fireplace, built-in appliances, washer/dryer hookup, and attached garage with opener. Priced at \$51,900. M-17.

One of Rockcastle's Finest Homes-Frith Subdivision-Brodhead, Ky. This 2 story home offers 4 bedrooms, living room, formal dining room, kitchen, family room, 2½ baths, 2 car garage and basement. This home has built-in intercom, built-in appliances, fireplace, total electric, thermopane windows and much more. This well located home is situated on a 145x195 lot. It can be yours for \$64,900. O-13.

\$40,000-\$50,000

Split Foyer Brick-Robert Ford Subdivision-wall to wall carpet, electric heat, washer/dryer hookup, city water and sewer. The floor plan of the house consists of: entrance hall, living room, dining room, kitchen, 3 bedrooms, family room, 1½ baths, utility room and garage. Walk to town. Priced at \$42,900. F-8.

Tri-Level-Near Mt. Vernon-House has 3 bedrooms, living room, dining room, kitchen with oak cabinets and situated on a large wooded lot. Also fuel oil

and wood furance. Assume loan all for only \$49,900. G-2.

Northern Rockcastle County-3 bedroom brick with living room, dining room, kitchen, 2 baths and utility room on a dandy 1 acre lot. House also has total electric, carpet, storm windows, and there is a 20x20 block storage building and a 12x16 frame building. Reduced to \$47,900. M-5.

Excellent Location-corner of School and Williams Street, Mt. Vernon. This dandy brick offers living room, dining room, kitchen, den and utility room downstairs and 4 bedrooms and bath upstairs. It also has wall to wall carpet, fireplace, storm windows, city water and sewer and much more. One of Rockcastle's finest neighborhoods. Priced at \$44,900. L-5.

One of Brodhead's Finest-The home offers 3 bedrooms, 1½ baths, living room, kitchen, dining room, and garage. Has built-in dishwasher, built-in range and oven, washer/dryer hookup, city water and sewer. Priced at only \$47,900. P-8.

New Listing-Brick Home-5 Acres-City Limits-House has 3 bedrooms, family room, kitchen-dining room combination, living room, 1½ baths, electric heat, fltu for wood burner, oak cabinets. Also has 2 car garage and carpet. Only \$44,900. P-12.

\$30,000-\$40,000

BRICK HOME - House with 2 bedrooms, living room, kitchen, 1½ baths, and utility room. Hillview Subdivision, near hospital. Electric heat, wall to wall carpet, washer/dryer hookup plus much more. Possible FHA financing. Reduced to \$36,500. N-17.

West Main Street-1½ story frame house-The floor plan consists of living room, dining room, kitchen, 2 bedrooms, and bath downstairs, with 3 bedrooms upstairs. Has wall to wall carpet, paneled city water and sewer, aluminum siding, storm doors and windows, and is total electric. Priced at \$32,900. O-2.

Country Atmosphere-1 mile from town-3 acre-House offers 3 bedrooms, living room, kitchen, family room and bath. Has coal furnace, hardwood floors, storm windows, combination basement, city water and cistern. Owner will trade to mobile home and lot. \$39,500. O-3.

3 Bedroom Brick-Mareburg, 2 acres, living room, kitchen, dining room, utility room and bath. 1½ baths and electric heat. Has electric heat, storm doors and windows. Also a carport.

2½ Acres-City limits-Modern remodeled house and new garage. House has living room, kitchen with built-in cabinets, 2 bedrooms, and bath. Also has washer/dryer hookup, storm doors and windows. Very private! All for \$31,500.

Modern Home and 3/4 Acre-Bea Lick section of Pulaski County. Home has living room, dining room, kitchen, 3 bedrooms, 2 baths. Also has garage, storage building, barn and 427 lb. tobacco base. Excellent location. \$39,500. P-10.

House and Lot-East of Mt. Vernon-3 Bedroom Bedford Stone-The house has living room, kitchen, dining room, family room, wall

to wall carpet and is situated on a 1 acre lot. Priced at \$32,500. P-15.

IN BRODHEAD-Excellent frame house with living room, dining room, kitchen, 4 bedrooms, den, bath, heated by fuel oil stove, city water and sewer, storm floors and windows, hardwood floors. Owner will trade or sell. Priced at \$29,900. C-16.

House and One Acre-Highway 461-one mile from Mt. Vernon. House has living room, dining room, den, kitchen, 3 bedrooms, bath and ½ basement. The house also has gas heat. Priced to sell quickly. \$29,900. L-18.

Ottawa - Field Stone Home - It has 3 bedrooms, living room, kitchen and bath. Also has wall to wall carpet, fireplace and washer/dryer hook-up. It has been newly remodeled and is all situated on 1½ acres. Can be yours for \$29,900.

Country Special-House has 3 living room, kitchen, 2 bedrooms, bath and utility room. Also has been recently remodeled inside and out, all new oak cabinets, and wall to wall carpet. Located just off 450. \$16,500. N-7.

6 Miles South of Mt. Vernon-Excellent 3 bedroom house with living room, kitchen, bath, and utility room. Also has wall to wall carpet, washer/dryer hookup, top notch condition. Owner moving. Priced to sell quick at \$26,900. O-8.

Compact Home-Chestnut Ridge Section-4 miles south of Mt. Vernon. House has 2 bedrooms, living room and kitchen and is situated on a 1/2 acre lot. Priced at only \$4,900. O-9.

Field Stone Home-Tyree Section, Brodhead, Ky. The house has 2 bedrooms, living room, kitchen, dining room, den and bath. It has wall to wall carpet, washer/dryer hookup, gas furnace, and garage. All situated on a 75x175 lot. Priced at \$15,500. O-11.

Livingston - Home is completely remodeled with 3 bedrooms, living room, kitchen and bath. Wall to wall carpet, city water and sewer, aluminum siding. Call for details. \$22,900. P 9

Mobile Home and Lot - 1974 12x65 mobile home with 2 bedrooms, living room, kitchen, 1½ bathroom, combination basement, city water and cistern. Owner will trade to mobile home and lot. \$39,500. O-3.

3 Bedroom Brick-Mareburg, 2 acres, living room, kitchen, dining room, utility room and bath. 1½ baths and electric heat. Has electric heat, storm doors and windows. Also a carport.

Modular Home - Brodhead 1 Acre Lot. Home has living room, kitchen, family room, 3 bedrooms, bath and attached garage. Central air plus other extras. All for \$27,900. P 7

Mobile Home and Lot-Located on the corner of Ferguson and Logan Streets. This 1983 14x52 mobile home has 2 bedrooms, living room, kitchen and bath. Has total electric, underplines, city water, city sewer, ideal location, near town, school and churches. All for \$17,900. P-1.

FUTURE AUCTIONS

Two Farm Machinery Consignment Auctions
Third Annual Auction Sat., Feb. 25, 9:30 a.m. London Tobacco Mkt. London, Ky.

Ninth Annual Auction Sat., March 3, 9:30 a.m. Brodhead, Fairgrounds, Brodhead, Ky.

Ford Realty & Auction Co.
256-6454
ROY ADAMS, GRI
NIGHTS 758-8400

Boys almost avenge earlier loss to Pirates but lose in OT

The Rockets came close to avenging their earlier season loss to the Berea Pirates last Friday night as the Pirates had to win the contest in overtime 58-56.

Center Chad Brock scored six first quarter points to help the Rockets to a 10-6 lead at the quarter stop. Then, in the second quarter, Chris Cornelius pumped through six points for the Rockets (6 in a row)

in the second quarter and the Rockets were still ahead at half-time, 24-19.

But, the third quarter proved disastrous for the Rockets as the Pirates put together four three-point trips and 8 points total at the free throw line to take a seven point, 41-34 bludge at the third quarter stop.

The Rockets fought back valiantly, however, on the strength of some fancy

"Ambulance Board" (Cont'd from front) castle County Hospital.

The Rockcastle County Ambulance Service Board set their next meeting for Thursday, March 1, at 7:30 p. in The Bank of Mt. Ver-

non Community Room.

Barr ended the meeting by stressing that anyone interested in the welfare of the ambulance service is welcome to come to the board meetings which are open to the public.

ROCKCASTLE COUNTY AMBULANCE SERVICE
 Z ROCKCASTLE COUNTY HOSPITAL
 MT. VERNON, KY. 40376

SUMMARY AND REVENUE EXPENSES
 STARTING JULY 1 TO DECEMBER 31, 1983

ROUTINE AMBULANCE COLLECTIONS:

County Supplement	\$10,500.00
Medicare	9,284.32
Medical Assistance	3,990.84
Insurance	3,970.23
Individual Payment	7,364.74
Total Revenue	\$34,610.13

ROUTINE AMBULANCE BILLING:

Medicare	\$20,797.00
Medical Assistance	12,868.28
Insurance	9,332.90
Individual	34,167.48
Total Billing	\$77,165.66

EXPENSES:

Medical & Inhalation Supplies	\$ 173.82
Ambulance Repairs	3,283.80
Gasoline	3,596.01
Electricity	284.36
Water	42.54
Purchased Laundry	128.00
Office Supplies	375.78
Telephone	356.25
FICA Tax Employer (Social Security)	1,364.21
Insurance-Liability	424.27
Insurance-Business Ambulance	1,301.23
Insurance Workmen's Comp.	1,134.00
Salaries-Gross	17,797.19
Radio Repair	35.00
Total Expenses	\$30,276.46

REVENUE OVER EXPENSES \$ 4,333.67

ball-stripping by Cornelius and Roger Isaacs and a clutch free-throw by Shannon Bishop which tied the game at 50 all with 47 seconds showing on the clock.

The Rockets had time to make a winning basket but Cornelius took the ball away from the Pirates and Brock used the basket for what would have been the winning bucket. However, Brock uncharacteristically missed the lay-up and it was into overtime for the two teams.

In the overtime, the Pirates drew first blood with Brock's nice feed from Cornelius, knotting the score at 52 all. Broke then got another bucket and Bishop answered for the Rockets. Broke came right back and scored, took the rebound from a missed Rocket's shot and then hit two free throws-on an awfully picky call by the referee.

A last second shot by Cornelius brought the hoop as time ran off the clock but it was the proverbial too little too late as the Pirates held on for the win.

Saturday night, the Rockets journeyed to McCreary Central where they were also defeated.

The boys will host Monticello Friday night and then will play Lynn Camp next Tuesday.

GIRLS LOSE TO SOMERSET CLAY CO. AND WHITLEY COUNTY

It was a rough week for the girls' basketball team.

Last Thursday night, they traveled to Somerset where they met the Lady Briar Jumpers 16-2, and were soundly defeated 60-29.

"RAILROAD LINE" (Cont'd from front)

competing with trucks, barges, airlines.

It is now cheaper to haul short distances by truck, he said, and railroads are pulling back to core lines.

"The way railroad and trucks move traffic - the trend is concentrating more and more of the rail traffic to the main corridors" and "using piggyback cars to transfer the product easily to trucks for the last leg of the journey, Casner said.

"I've seen new Jack Kentucky. That's all the railroads," Casner said.

It is highly important that the preliminary meeting in Mt. Vernon and the February 16th meeting in Stanford be well-attended by all interested citizens and businessmen, since the closing of the line would, no doubt, economically affect everyone in the county.

Saturday they had a make-up game against the Clay County free-throw by Shannon Bishop which tied the game at 50 all with 47 seconds showing on the clock.

The Rockets had time to make a winning basket but Cornelius took the ball away from the Pirates and Brock used the basket for what would have been the winning bucket. However, Brock uncharacteristically missed the lay-up and it was into overtime for the two teams.

In the overtime, the Pirates drew first blood with Brock's nice feed from Cornelius, knotting the score at 52 all. Broke then got another bucket and Bishop answered for the Rockets. Broke came right back and scored, took the rebound from a missed Rocket's shot and then hit two free throws-on an awfully picky call by the referee.

A last second shot by Cornelius brought the hoop as time ran off the clock but it was the proverbial too little too late as the Pirates held on for the win.

Saturday night, the Rockets journeyed to McCreary Central where they were also defeated.

GIRLS LOSE TO SOMERSET CLAY CO. AND WHITLEY COUNTY

It was a rough week for the girls' basketball team.

Last Thursday night, they traveled to Somerset where they met the Lady Briar Jumpers 16-2, and were soundly defeated 60-29.

"RAILROAD LINE" (Cont'd from front)

competing with trucks, barges, airlines.

It is now cheaper to haul short distances by truck, he said, and railroads are pulling back to core lines.

"The way railroad and trucks move traffic - the trend is concentrating more and more of the rail traffic to the main corridors" and "using piggyback cars to transfer the product easily to trucks for the last leg of the journey, Casner said.

"I've seen new Jack Kentucky. That's all the railroads," Casner said.

It is highly important that the preliminary meeting in Mt. Vernon and the February 16th meeting in Stanford be well-attended by all interested citizens and businessmen, since the closing of the line would, no doubt, economically affect everyone in the county.

of them from the outside.

It took the Rockets until 3 minutes into the game to get going but Sturgill canned the first bucket for the Rockets and then put in four more field goals during the quarter. Kristi Martin got one free throw during the period to make the Rockets' 9 first quarter while the Lady Tigers were hitting for 15, a third of them from the charity stripe.

Again, the second quarter proved disastrous as the Rockets were able to get only two field goals, both by Sturgill and five free throws during the period for their 15 points at half-time while the Lady Tigers pushed 21 points through the goal for a 20 points, 36-16 half-time lead.

Sturgill got 3 of the Rockets' 7 third quarter points and added 7 more extra points in the fourth quarter. But, despite outscoring the Lady Tigers, the fourth quarter, the Rockets lost badly, 64-36.

Then Monday night, the girls again were too aggressive and gave up 23 points at the free-throw line to the sharpshooting ladies of Whitley County.

The girls were down 22-8 at the end of the first quarter with 10 of Whitley's points coming at the charity stripe.

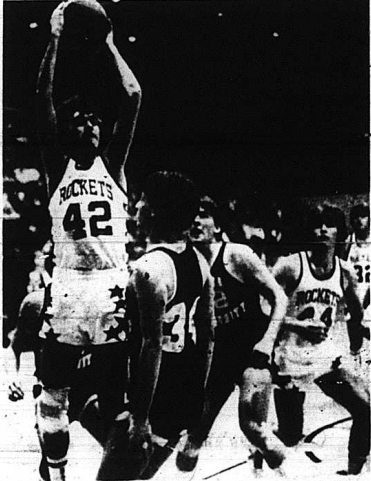
Then, they couldn't get their shots to fall at all in the second quarter and Whitley added to their lead for a half-time score of 34-11.

During the quarter, Coach Preston Parrett was tagged with his first technical of the season, in a difference of opinion with the referee over a blocking-charging call.

Then, in the second half, the Rockets picked up speed and outscored Whitley County 19 and although the game was never that close, the Whitley County coach didn't feel safe putting his subs in until there was less than a minute to play.

Betty Milburn led the scoring for the Rockets with 11; Sturgill got 8; Martin, Partin and Faulkner, 4 each; Hunter 3 and Brown and Anderkin 2.

This Thursday night, the girls travel to Jackson County and will meet Lynn Camp next Tuesday night in a double header with the boys varsity at home.



Sophomore forward Harold Graves, No. 42, goes for a shot against the Berea Pirates Friday night in an exciting game that went into OT before the Pirates finally managed to subdue the Rockets 58-56. Tuesday night, the Rockets won over Williamsburg. Both the boys and girls will face Clay County in the opening round of 49th district tournaments scheduled for Jackson Co.

NEW OFFICE HOURS

Dr. Peter Powers Dr. Patricia Fogie
 Dr. Philip Curd

wish to announce new office hours for White House Clinic beginning JANUARY 30th, 1984

Mon. - Fri. 10:00 a.m. - 4:00 p.m.

By appointment 986-2719

109 Clay Drive Berea, Ky.

Geraldine W. Spurlin, P.S.C.
Geraldine W. Spurlin, M.D.

Obstetrician & Gynecologist

ANNOUNCES THE RELOCATION OF HER OFFICE

Partie A. Clay Medical Office Building

Suite No. 1

Richmond, Ky.

Phone: 606-623-1404

Pizza Hut is newest addition to restaurants in county

By: Leigh Ann Hiatt

The familiar red roof of a Pizza Hut Restaurant is a new sight at the Burr Interchange. Perched on a hill below Kastle Inn, the restaurant caters to those craving a pizza or something Italian.

The interior is inviting. There's forest green carpet and rust print curtains that coordinate with the booths' red covers and the tablecloths. Framed reproduction prints decorate the wall and there's the usual salad bar and jukebox.

The menu, of course, offers pizza. You can order thin and crispy or deep dish, both with a variety of toppings. There's also the personal pan pizza served at lunch (11:30 a.m. to 1:30 p.m. on Monday through Saturday) with guarantee of being ready in five minutes or you get your next one free.

If you don't want pizza, you can choose from such selections as spaghetti and cavatini dinners, or a list of sandwiches that includes the Pizza Hut Supreme.

Mike Fink, Pizza Hut's manager, explained they opened for business on Nov. 14, following two days of bake-off parties. One was for the high school football team and one was open to the community by invitation only.

Fink said, "This gave us a chance to introduce ourselves to the community and let them get a sample of our products, as well as to help train the employees." Fink is originally from northern Ohio and moved, Rockcastle out of Somerset.

He added, "The number of employees ranges from seven to 15. Right now we have about 10."

The Rockcastle County Pizza Hut is owned by Fugate Enterprises and is their 40th store. Larry Fugate has built five Pizza Huts in the last year and half in Kentucky. "This is a franchise store," said Fink. "It's totally owned by Fugate." By franchising, he means that Larry Fugate owns the store and the land, and rents the privilege to use the name and procedures.

Why did Fugate choose Rockcastle for a Pizza Hut restaurant? "He came into Mt. Vernon and checked

out locations," said Fink. "And he had his area general managers do research on traffic in this area. All of his stores are in small areas and in key locations."

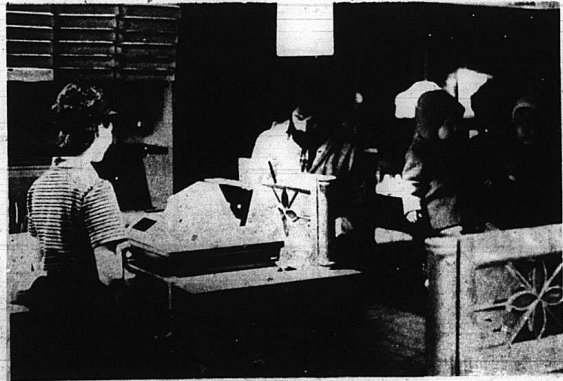
Fink explained that Fugate located the business at the Burr interchange because of the interstate traffic, which will be one of the key factors for them this summer.

Fink thinks Rockcastle County is ready for a Pizza Hut. "We've been really well received with the community. It will meet a need and will draw in more business like it on this

and in the community.

"This restaurant alone is going to bring in almost half a million dollars per year in new money spent for labor. Not to mention the extra trade it will bring from the interstate which is going to increase the value of everything in this area."

Fink said a lot of families patronize the restaurant. "We're geared to the family. And at lunch we're geared to the business people, and, of course, to travelers. 60 percent of our business is based on family business and our supper business from 4 p.m. on."



Shown patronizing the local Pizza Hut are Mr. and Mrs. Gary Faulkner and their twins, Brandt Lane and Brandon Lee. Annette Faulkner, a Pizza Hut employee, is also in the photo.



HOLIDAY FOOD MARKET

Open 24 hrs. a day - 7 days a week

1 mile south of Mt. Vernon at Burr on U.S. 25

START THE YEAR RIGHT...

Wise Food Buys

CHECK OUT THIS WEEK'S SPECIALS

SWIFT'S PROTEN
T-BONE STEAK
\$2⁹⁹ lb.



BOLOGNA
(by the chunk)

89¢ lb.

SWIFT'S PROTEN
CUBE STEAK
\$1⁹⁹ lb.

Boston Butt
PORK ROAST
98¢ lb.

SWIFT'S PROTEN
RIB-EYE STEAKS **\$3²⁹** lb.

Fischer's All-Meat
BOLOGNA **\$1¹⁹** lb.

Fischer's
12 oz.

FRESH WHOLE
FRYERS

59¢ lb.

Fischer's 12 oz. All-Meat

WIENERS
89¢

Fresh: Homemade
SAUSAGE **99¢** lb.

Mellwood

BACON

Lmt. 3 w/\$10 food order

Fresh: Pork
NECKBONES lb. **39¢**

\$1²⁹



Deli Brand
BOILED HAM
\$1⁶⁹ lb.

Fresh
PORK RIBS **59¢** lb.

1 lb. can
CRISCO SHORTENING
89¢

3 lb. can
SHORTENING **\$1³⁹**

7 oz. box
Spaghetti or
Macaroni **4/\$1**

GENERIC
SOFT DRINKS
All Flavors
5 Cans **89¢**

40 oz. jar Jif
Peanut
Butter **\$2⁹⁸**

BANQUET
POT PIES
3/\$1⁰⁰

16 oz. size Campbell's
PORK 'N BEANS
2/79¢

46 oz. can
Red Gold
Tomato Juice
69¢

GENERIC
SOFT DRINKS
2 liter btl.
(All Flavors)
79¢

10 oz. jar INSTANT
COFFEE **\$2⁹⁸**

BANQUET
TV DINNERS
(Except Ham)
79¢

5 lb. bag Self-Rising
FLOUR **89¢**

32 oz. jar
TOMATO KETCHUP
79¢

Saltine
Crackers

Peas or
Corn
Mix or Match

JUMBO
PAPER TOWELS
2/98¢

FRESH PRODUCE

Red or Yellow Delicious
APPLES **79¢** 3 lb. bag

BANANAS
29¢ LB

JUMBO HEAD
LETTUCE **49¢**

4 roll pk.
TOILET TISSUE **69¢**

20 lb. bag
POTATOES **\$2¹⁹**

3 lb. bag Yellow
ONIONS **79¢**

STRAWBERRY PRESERVES 2 lb. jar **98¢**

GRAPE JELLY 2 lb. jar **89¢**

We gladly accept USDA Food Stamps

for anything...for everything...WANT ADS

CLASSIFIED RATES

Local Rates - 8¢ per word, minimum \$2
 Cards of Thanks - 5¢ per word, minimum \$2
 In Memory - 5¢ per word, minimum \$2

Classifieds paid in advance, except to businesses.
 Deadline for classified is Monday's at 4 p.m.

FOR SALE

FOR SALE: 4 bedroom house, family room with fireplace, 2 full baths, living room, dining room, 2 outbuildings, plus garage. Assumable mortgage. Two blocks from Mt. Vernon Elementary. Call 256-2187. 18ntf

Top Quality Homes to suit every need. New 1000 sq. ft. homes, 2 1/2 baths, \$8,995. Repo's as low as \$6,990 down. Many more to choose from. 12 widens, 14 widens and double widens. You save money when you deal with the man with the white whiskers. Clayton Mobile Homes 8 Hwy 27, Somerset, Ky. ph. 678-8134. 15ntf

CONWAY, NEW AREA: 13 acre farm, barn, tobacco base, 103 Acre Farm, lots of timber, 1 Acre house, one bath, \$8,000. Lot at Conway on U.S. 25 with septic system, water and electric for house or trailer, \$4500. A nice trailer priced reasonable. Buy both and have a home. 10 Acres Farm, 1 mile from Mt. Vernon, beautiful home with panoramic view, tobacco base and barn. Nice trailer and lot, Conway, \$9,800. Near Roundstone, 1 acre, on blacktop, city water available, \$2,500. Don Foster and Associates, Ph. 986-9481 or 256-2857. 18ntf

FOR SALE: 3 bedroom modern home and 21 acres with w/d hookup, Cathedral kitchen, wall to wall carpet, storm doors and windows, electric/wood heat, concrete driveway and walkway, above swimming pool, 500 lb. tobacco base, \$40,000. 6 1/2 miles off I-75 on 1004 (Salt Petre Cave Rd.). May see anytime or write to P.O. Box 922, Mt. Vernon, Ky. 40456. 26 x4p

FOR SALE: 12x60 mobile home, 2 bedrooms, 1 1/2 baths in good condition. Call 256-4454. 22ntf

HOUSE FOR SALE: On West Main St., Less than a 5 minute walk from town, grocery and church. Built-in kitchen cabinets, washer/dryer hookup, 2 car garage. Call 256-5535. 23x2

New '84 Double-wide Mobile Home with house-type shingles and siding, 3 bedrooms, 1 1/2 baths. During Feb. Only \$14,900. Free delivery and set-up. Clayton Mobile Homes, London, Ky. Open daily till 6 p.m., Sunday 10 to 6 p.m. 27x1

FOR SALE: 14' wide, 2 bedroom fully electric mobile home. Monthly payments only \$160. For more information, call Blakely at 878-7056. 27x1

Brick Home For Sale: On Richmond St. (next to Conventry) - 11 rooms and 2 baths on 1 acre lot. Call 256-2552. 27xntf

FOR SALE: 5 acres and brick home, located 5 miles north of Mt. Vernon just off Hwy. 25, with electric heat, 2 bedrooms, living room, kitchen with built-in cabinets, bath, full basement with living quarters with flue for wood stove. Tobacco and stock barn, tobacco allotment of 706 lbs. fenced. Also, For Sale: 1/4 acre, 5 miles north of Mt. Vernon just off Hwy. 25, with 3 bedroom home, kitchen with built-in cabinets, living room, den, bath and utility room, electric heat, flue room, Call 256-2980 after 5 p.m. 27x1p

Must See To Appreciate: Norris mobile home, 12x65, kitchen, dining room, living room, 2 bedrooms and bath. Fully furnished (washer and dryer included), central air, humidifier, underpinning and steps. Ph. 758-8052 after 5 p.m. 27x2p

FOR SALE: 9 room house and approximately 1/2 acre, located at Calloway, 2 porches, paneled and painted carpet and vinyl floors. Call 453-4805, anytime. 27x4

Motor Vehicles

FOR SALE: 1976 Chevrolet Pickup, custom deluxe, automatic, air cond., AM/FM radio, excellent condition. Call 256-4100, days or 256-5805, nights. 27x1

FOR SALE: 1968 Pontiac Firebird, auto, in good shape. Call 256-5791. 26 x1

Miscellaneous

FOR SALE: Wood and coal stove with Magic Heat. Also, 2 kitchen cabinets. Ph. 256-2437. 27x2

FOR SALE: 12,000 BTU gas heater, same as new, only \$200. Also, electric weed eater, large size, \$35. See Albert Thomas, U.S. 150, 3/4 miles west of Brodhead or call 758-4139. 27x2

FOR SALE: Registered female Walker Dog, 8 months old. Ph. 256-4324. 27x1

FOR SALE: Firewood, pickup and save. Ph. 256-4628, C.A. Thomason. 27x1p

FOR SALE: Used lumber, door and windows. About 52' 2"x8", 10' to 18' long, 50' 2"x4" and about 3000' 1" boarding. Call Roman McFerron at 256-4404. 27x1p

FOR SALE: Top quality alfalfa, orchard grass and clover. Call Edward Soudler, Jr. at 256-2039 or Bill Randall, Jr. at 256-2058. 27x4p

WOOD FOR SALE: \$25 a load. No personal checks. 256-5403 or 453-3385. 24x4

At Furniture Town on Hwy. 30, 1 mile from East Bernstadt, Ky., Ph. 844-7858, Free Delivery and Quality Merchandise at low low prices. LOOK! What Deals! Extra nice living room suites, \$195, reg. \$495; queen size wood front living room suites, \$380, reg. \$995; oak and maple dining room chairs, \$100, reg. \$200. Your Choice of 3 pc. coffee table sets, solid wood, only \$100; 27x1

Philbeck's Used Cars & Trucks
 BUY, SELL OR TRADE
 Chestnut Ridge Road
 256-2972

For health insurance to help pay soaring hospital and surgical bills, check with State Farm.

Bill Bailey, Agent
 Ph. 256-2119

Collins Construction
 Barns Built & Remodeled
 256-5582

State Farm Like a good neighbor, State Farm is there.

State Farm Mutual Automobile Insurance Company
 Member Office: Birmingham, Ala.

Septic Tanks

Parking Blocks-6'
 Jack's Concrete Tanks
 Ph. 256-4363
 After 5 p.m., 256-2580

SEPTIC TANKS
 Sales and Service
 750 Gal.-1,000 Gal. Distribution Boxes
 1,000 Gal. Water Distribution Tanks

real nice bedroom suites, \$275; box springs and mattress, complete, \$125; orthopedic box springs and mattress, \$155. We have lots of pedestal feet dining room suites of many kinds with kitchen cabinets and curio cabinets to choose from. Wall hugger recliners, \$158, reg. \$295. We have some used furniture. *Folks come from miles around to save the most at Furniture Town.* 26x3

FOR SALE: 1982 model Fridgidaire refrigerator (white). Ph. 256-4773. 24x4

FOR SALE: Firewood, most oak. Seasoned or nearby so. 758-4179. 24x4p

FOR SALE: sawmill slab wood, cut stove length, 20 per pick upload, you pick up, delivered. Contact Noah Poynter, Hwy. 461, Brodhead, Ky. 256-2440. 26x3

FOR SALE: Three artificial Holstein heifers, artificially bred. Fresh in February. Call 758-8782. 26x2p

FOR SALE: AKC registered German Shepherd puppies, 8 weeks old. \$100. Call 758-8470. 23x3

FOR SALE: Hay, \$2.50 bale (clover and timothy) and straw, \$2 bale. Call J.C. Bowling, 256-2339. 26ntf

GARAGE SALE: At Brodhead on Bowling Ridge Road. Thru Saturday. Elmer Burdette. 27x1

POLE BUILDINGS: 24'x40', completely erected, \$3,550, 12x8' end slider and entrance door included. Other sizes available. Financing available. BLITZ BUILDERS, INC., 1-800-428-4009. 21x5p

Blown-In Insulation For All Your Insulation Needs
 Call JIM'S INSULATION
 Mt. Vernon, Ky.
 256-4001
 James E. Nicely, owner

Jim's Body Shop
 next to Superior
 256-5510
 James M. Miller
 Free insurance estimates

Collins Construction
 Barns Built & Remodeled
 256-5582

For a New Car or Truck Or Good Used Car See:
 RONALD STOKES
 at CUMMINS CHRYSLER
 Berea, Ky.
 or call 256-5283

Larry W. VanHook
 Buyer of Grade Logs and Standing Timber. Ph. 678-8327
 Day or Evenings
 14ntf

Chimney Sweep
 Gary L. Cromer
 256-5559

COAL FOR SALE: Block and stoker. P. 256-5101 or 256-4312. Blackfire Coal Co., Burr Road, Mt. Vernon. 18ntf

TIMBERWOOD: New Ownership and Management. Secluded country townhomes from \$227. 2 bedroom town homes; 2 private entrances, private patios, laundry facilities, children welcome, cable hook-up available, pool, picnic area. Free TV with each new lease. Rush Road, Berea, Kentucky. 986-9298. 26x14

For Rent

FOR RENT: Nice large store building on Main St. in Brodhead. Call 758-8043. 24x4

HOUSE FOR RENT: With 2 bedrooms on Route 2, Crab Orchard with large cistern, 758-8549. 27x2

Notices

POSTED: No hunting or trespassing on land belonging to J.D. Cottongim at Pine Hill. 5ntf

POSTED: No trespassing on property located on Wolfe Creek about 1 mile above Wolfe Creek Bridge and owned by heirs of Lorenzo Craig and Laura Edith Wilhoit Hickey. 7xP

POSTED: No hunting or trespassing on the property of William "Buddy" Smith in Rockcastle, former Burgess Robbins farm, on Copper Creek Road. 26 x3p

NOTICE: Shaklee products for sale. Dealer, Mattie Howard. Anyone interested, please contact me at 256-4315. 26x4p

POSTED: No hunting or trespassing on land belonging to J.M. and Rosa Prewitt. Also, not responsible for accidents on same property. 26x3p

NOTICE: I want to keep elderly people in my home. Ph. 256-5934. 27x2p

CLERICAL POSITION: A secretary-receptionist position will soon be opening at Mt. Vernon Plastics. Requirements are: typing (40 wpm or better), shorthand for dictaphone skills, answering telephone, mail handling, general computer input, general accounting skills would be helpful. Will also be working with personnel. Send resume to Loretta Bullock, Mt. Vernon Plastics, Rt. 4, Box 203, Mt. Vernon. 27x1

Notice is hereby given that an order has been entered dispensing with the administration of the estate of Orville P. Miller, deceased. All persons having claims against said estate shall present them, verified according to law, to Ida Miller, Route 4, Mt. Vernon, Ky. 40456, no later than May 18, 1984. 27x3

Decorator Cakes Will Bake Any Kind of Cake For You
 Margaret Owens
 256-5533

Truck Car

 MOUNTING BALANCING
Check Our Prices
 Free mounting and balancing on all new tires (large trucks not included)
 New, Used and Retreads
 Hwy. or Snow Tread

Truck Tires Fixed
 24 Hr. Wrecker Service
BATTERIES
 Starting at \$23
David's Tire Center
 Hwy. 150, Brodhead, Ky.
 David Thompson
 Business, 758-8521
 Home 256-4696

HENSLEY'S USED CARS
 Route 2, Orlando
 Ph. 256-4777

Got Termites? Got Roaches?
Madison Termite & Pest Control
 For Free Inspection & VA & FHA Inspections, call Paul Burton
 256-2318, Mt. Vernon, Day or Night

The House Mechanic
 Building the New
 Remodeling the Old
 Repairing the Broken
 Kitchen, family rooms, baths, additions, etc.

JACK WREN
 Free Estimates 256-5338

For all your heating needs:
 Stove Pipes, Mats & accessories
 Wood and Coal Stoves

Wood and Coal Stoves
 Alladin Kerosene Heaters
 We're open all day Saturdays
Jack's S & T
 Trustworthy Hdwe. Store
 Williams St. 256-4363

NOTICE TO MOBILE HOME OWNERS
 Anyone who has recently bought or sold a mobile home should report this transaction to Elmer Hale, Property Valuation Administrator.
 If you have sold a mobile home and have not reported it, you may receive a tax bill for 1984.

UNDER NEW MANAGEMENT
Bussell's Thrift Store
 Formerly Connie's Clothing Store
 LOCATED ON QUARRY ST., MT. VERNON
 Open for business Monday thru Saturday, 10 to 5, starting February 10th.

Notice to Farm Bureau Members
 Chemical orders are now being taken at the Farm Bureau office.
 Deadline is February 25.

Income Tax Service
 Doris Durham
 located on Chestnut Ridge Rd.
 1 mile South of Mt. Vernon
 For appointment, call 256-5819
 Open 9-5, Mon.-Sat.
 All type returns prepared.

Professional Services

CARPET KLEEN! The best in steam carpet cleaning. Free estimates. Call Lloyd Graham, 256-5536. ntf

Building, Remodeling and Repair Work done at reasonable rates with quality results. For free information, call 256-2881 after 5 p.m. or see Deniz R. Allen. ntf

CREEK GRAVEL HAULING Contact Clinton Allen, 758-4192. 17xntf

NOTICE: For electric wiring and plumbing, call a licensed plumber, at 256-5250. ntf

Grave Markers and Monuments. In stock at all times. McNow Monument Sales, U.S. 25, 4 miles north of Mt. Vernon, Ph. 256-2332. ntf

NOTICE: For electrical work, old or new, call William C. (Bill) Baker, 256-2652. 20xpb

Home for Elderly or disabled, excellent nursing care, 18 years experience, reasonable monthly rates. For information, call (606) 322-3227. 18x13p

Hamm's Well Drilling: Call 256-2024. 46ntf

Haley's Sewing Center now in Southern Hills Plaza, Richmond, Ky. New Singer sewing machines, vacuum cleaners. Also used sewing machines. Sales, repairs, alterations, repairs. Now stocking fabrics and full line of sewing notions. Approved Singer dealer. 9ntf

MORE \$\$\$: For White Oak/Slave Bolts and Logs. Haul to Independent Stave Company, Eubank, Ky. 13x26

HYSGINGER CARPETS: Carpet direct from the mills. Shag, commercial-residential, Armstrong vinyl. For all your carpet needs, visit Hysinger Carpets, Mt. Vernon, Ky. Ph. 256-5413. ntf

Become a Hairdresser. Enroll now for classes starting second Thursday of each month. Eastern School of Hair Design, 112 South Second St., Richmond, Ky. 40475. 623-5472. Government grants are available. 27x3

NOTICE: We discount new and reproduction lamps, crystal, Campbellsville Cherry, Victorian and Oak furniture. We also specialize

prints and framing. Theresa's Antiques and Art Gallery, Prospect St., Berea, Ph. 606-986-9147. 24x6

NOTICES

Notice is hereby given that Elmer Burdette, Rt. 1, Box 116, Brodhead, Ky, has been appointed administrator of the estate of Martha Elizabeth Browning, deceased. All claims against said estate shall be presented according to law to the said Elmer Burdette, on or before April 26, 1984. 23x3

NOTICE

Notice is hereby given that Lacie Pruitt, Route 5, Box 25, Mt. Vernon, Kentucky, has been appointed executrix of the estate of Gilmer Pruitt, deceased. All persons having claims against said estate shall present them verified according to law to the said Lacie Pruitt or to Clontz & Cox, P.O. Box 749, Mt. Vernon, Kentucky, attorneys for said estate, no later than May 8, 1984. 23x3

NOTICE

Notice is hereby given that Marie Burton, Route 1, Brodhead, Kentucky, has been appointed administrator of the estate of Hettie Rigby Duvall, deceased. All claims against said estate shall be presented verified according to law to Marie Burton or to Clontz and Cox, P.O. Box 749, Mt. Vernon, Ky., attorneys for said estate, no later than May 8, 1984. 23x3

NOTICE

Notice is hereby given that James Everett Taylor has been appointed Administrator of the estate of Fred H. Taylor, deceased. All persons having claims against said Estate shall present them verified according to law to the said James Everett Taylor at Route 31, Crab Orchard, Ky. 40419, or to William D. Gregory, Mt. Vernon, Kentucky 40456, attorney for said estate, no later than April 28, 1984. 23x3

NOTICE OF INTENTION TO MINE
Pursuant to Application Number 502-0021

In accordance with the provisions of KRS 350.055, notice is hereby given that Ikerd-Bandy Co., Inc. has filed an application for a permit for a surface coal mining and reclamation operation of approximately 218.0 acres located 0.4 miles northeast of Blue Springs in Rockcastle County.

Plaza Tower, Frankfort, Kentucky 40601.

This is the final advertisement of the application. All comments, objections and/or requests for a permit conference must be received within thirty (30) days of this date.

In memory of our beautiful mother, Liddie Depert, who passed away Feb. 6, 1975.

One is the face we loved so dear, Silent is the voice we loved to hear, Too far away for sighs or speech, But not too far for thought to reach.

Sadly Missed By Your Loving Children

Plaza Tower, Frankfort, Kentucky 40601.

This is the final advertisement of the application. All comments, objections and/or requests for a permit conference must be received within thirty (30) days of this date.

In memory of our beautiful mother, Liddie Depert, who passed away Feb. 6, 1975.

One is the face we loved so dear, Silent is the voice we loved to hear, Too far away for sighs or speech, But not too far for thought to reach.

Sadly Missed By Your Loving Children

VFW SERVICE OFFICER TO BE HERE FEB. 9

A VFE Service Officer will be at the Mt. Vernon City Courthouse, in the office of the County Judge Executive, on February 9 from 9 a.m. to 2:30 p.m. to assist veterans and widows with their claims.

assist veterans and widows with their claims.

Store foods of the same type (such as cheese) together in the refrigerator for leftovers. That way, you'll be sure to use them before they spoil.

TAX SERVICE
At Roberts Trading Post
Mon. - Sat.
See Jeletta Roberts

ROBBINS MUFFLER AND AUTO SERVICE
Rt. 1, Hwy. 70
PH. 758-8169
Brodhead, Ky.
Experienced muffler work, pipe bending and custom welding.
See us for all your auto repairs, large and small, shocks, brakes and tune-ups.
Open 8 Days a Week 7:45-5:30

CARD OF THANKS

In memory of Mary E. Pease The family would like to thank each and everyone who were so kind to us at the time of our tragic loss. The friends and neighbors for the food and flowers, the girls from Home Health, Bro. Don Jones, the ladies for the beautiful songs, Dowell and Martin Funeral Home for their love and kindness.

The family of Mary E. Pease

CARD OF THANKS

We, the family of Carlos Lynch, would like to thank everyone for the kindness shown us during the loss of one we love greatly. Special appreciation for all who sent flowers, food and helped in other ways. Also thanks to the pallbearers, singers and Rev. Carl Gilbert.

Everyone's thoughtfulness and expressions of sympathy will always be remembered by us forever.

Family of Carlos Lynch

CARD OF THANKS

We wish to thank everyone who was so kind and thoughtful during our recent loss.

A special thanks to those who sent flowers, brought food or expressed their concern in any way.

Jerry and Dorothy Ham and Family

Buy 1 PIZZA
Get next smaller size FREE (with same toppings)
Brodhead Dari Delite
and
Mt. Vernon Dairy Freeze
Thursday, Feb. 9-Sunday, Feb. 12

INCOME TAX SERVICE
Individual-Partnership-Farm-Corporate
Dwight Griffin, CPA
Griffin, Greer and Company CPAs
School St. 256-2117 Mt. Vernon

INCOME TAX
See Malen Abney
Office in my home
Individual, farm, business, partnership, W-2, Quarterly Reports.
Phone 256-5273

Take the used car out of buying a used car or truck -

12 mos. Unlimited Mileage now available

Over 50 Units of all sizes, makes and models to choose from. For details, see:

DWAYNE'S Cars & Trucks
U.S. 25 N. Berea

986-8489

Cars

- 83 Chev. Monte Carlo 'V8, AC, Silver Blue
- 82 Mercury Zephyr, 4 Dr. 6 Cyl. AC, Blue
- 82 Chev. Malibu, 4 Dr. V6, AC, Dark Green/Tan VR
- 81 Ford Escort Wagon, 4 dr., 4 cyl. Silver
- 80 Mercury Bobcat, 3 dr., 4 cyl. Auto, Red
- 80 Pontiac Gran Prix, fully eq'd. V6, Maroon/Saddle Landau VR
- 80 Ford T-Bird, Loaded, Grey/Grey VR
- 80 Mercury Cougar XR-7, 2 Dr., Brown
- 79 Chev. Impala, 2 dr., Green
- 79 Chev. Imp. 4 dr. Beige
- 79 Chev. Imp. 2 dr. Brown
- 79 Lincoln Mark V, Loaded, Beige/Beige Coach Roof
- 77 Chev. Monte Carlo, Green
- 77 Chev. Camaro, Silver
- 77 Chev. Camaro, Brown
- 77 Ford Pinto, 4 Speed, 4 Cyl. Blue
- 77 Ford T-Bird, Black
- 77 Plymouth Volare S/W, 2 dr. Green
- 76 Ford Granada, 4 dr., V8, Gold
- 76 Ford Mustang, 4 cyl., Black
- 75 Buick Skyhawk, 2 dr., Red
- 74 Dodge Monaco, 4 Dr., Gold
- 74 Chev. Nova, 2 dr., Beige
- 73 Ford LTD, 4 dr., Green

TRUCKS

- 81 Chev. PU, L/W Bed, V8, Auto, White
- 79 Chev. PU, 1/2 Ton, L/W Bed, 6 Cyl., St. Sh., Blue
- 80 Toyota 3/4 Ton w/utility Bed
- 82 Ford Pickup, L/W Bed, Loaded, Maroon/Silver
- 81 Chev. PU, L/W Bed, V6, Auto, White
- 81 Chev. Pickup, 1/2 Ton, L/W Bed, 6 Cyl., St. Sh., Blue
- 80 Toyota, 3/4 Ton w/utility bed
- 78 Chev. 3/4 Ton Truck, 3x3
- 4 Dr., V8, Auto, Red
- 68 GM Pickup, S/W Bed, Yellow

WHEEL DRIVES

- 82 Jeep 4x10, PU, 5 Speed, Bronze
- 80 Chev. LUV PU, 4 Cyl., Red
- 78 Suzuki Motorcycle, Black VANS
- 79 Chev. Window Van, C-20 Silver/White
- 79 Ford Van F-250, V8, AC, Brown

NEW HOURS
Monday-Friday
8:30 am. to 6:30 p.m.
Sat. 8:30-5:00

DWAYNE BRINEGAR OWNER

Salesmen: Ernie Sower Fred Laker

\$100 REWARD

For information leading to the arrest and conviction of person or persons breaking into my home Thurs., Feb. 2, 1984 and taking Marlin 22 magnum rifle and 20 gauge Winchester shotgun.

Dale Carpenter

P.O. Box 654 Mt. Vernon, Ky.

USED CAR SALE

1978 OLDS CUTLASS, V8, Automatic	\$3,495.
1974 OLDS DELTA, 4 Dr.	1,195.
1979 CHEV. CAPRICE, 4 Dr., 305 Engine	3,995.
1974 CHEV., 2 Dr., V8, Auto	1,195.
1973 CHEV. IMPALA, 4 Dr., V8, Auto	695.
1977 CHEV. MALIBU, 4 Dr., 305 Engine	1,595.
1979 CHEV. MALIBU, S/W, 305 Engine	3,295.
1966 CHEV. CHEVELLE, 2 Dr., V8, Stick	1,695.
1978 DODGE ARROW, 4 Cyl., 4 Speed	1,595.
1979 FORD LTD, 4 Dr., V8, Auto	2,395.
1976 FORD T-BIRD, 2 Dr.	1,295.
1976 DODGE STATION WAGON, V8, Auto	895.
1979 DODGE ASPEN Station Wagon, 6 Cyl., Auto, 2,295.	
1975 FORD GRANADA, V8, Auto	895.
1977 BUICK REGAL, V8, Auto	1,595.
1975 TOYOTA, 4 Cyl., 5 Speed	1,695.
1974 FORD LTD, 2 Dr., V8, Auto	495.
1975 DODGE, V8, Auto	795.
1976 Ford Van, V8, Automatic	2,995.
1976 FORD CLUB CAB, V8	1,895.
1976 FORD Pick-up, V8, Auto	1,895.
1978 DODGE Pick-up, V8, Auto	1,895.
1978 CHEVROLET, 4x4, V8, Auto	2,895.
1972 CHEVROLET, 2 Ton, V8	1,195.

Hensley's Used Cars

Rt. 2, Orlando

256-4777

ABSOLUTE Auction
Mr. and Mrs. Clarence "Jib" Hasty's HOUSE and LOT
Sat., February 11, 1984, 10:30 a.m.
Mt. Vernon, Ky.
LOCATION: Paul Street, Mt. Vernon, Kentucky
The above pictured house consists of 3 bedrooms, living room, dining room, kitchen with built-in cabinets, family room with a place for a woodstove, large utility room and large bath. It has electric baseboard heat, partially carpeted and has been newly remodeled. The exterior is of mansite siding. It is situated on an approximately 1 acre lot with city water and sewer.
If you're in the market for a good convenient home in town, don't miss this auction. Buy it your own price.
TERMS: 20% down day of sale, balance within 30 days with delivery of deed.
For additional information, contact:
Ford Realty & Auction Co.
Realtor-Auctioneer
Col. Sam Ford
Col. Roy Adams
Col. Dan Ford
Auctioneers
Col. Jerry Ham
Col. Willard Bullock
MT. VERNON, KY. PHONE 256-4446

Rockcastle Saddle Club News

The Rockcastle County Saddle Club held its Annual Banquet on Feb. 3, 1984 at the Broadhead Elementary School.

The meal was delicious, hooray for the cooks. After the meal, there was an awards ceremony. Presenting the trophies was Paul Gentry.

The Directors Award (award for riders who made all director rides and 1 overnight ride) went to James Reppert, Sally Adams, Everett and Evelyn Adams and Adrienne Henson.

Trail Boss Awards (most rides) on a trail, went to 1st place, Darrell Gray; 2nd place, Riddell Owens and Evert Owens; 3rd place, Gary and Sherry Ashe.

Trail Rider Awards (most rides completed) went to 18 and over, Bobby Reppert, Sally Adams, Everett and Evelyn Adams; 17 and under, Gary Bumgardner and Adrienne Henson.

For outstanding club work the top member went to Clay Colson. Voted on by the club as Rider of the Year is Bobby Durham.

The Club Queen is Adrienne Henson and the Club Prince is Jimmie Sparks.

Bentley Heikes is the oldest rider at age 84. It was reported that the 1984 Cancer Ride will be September 1 at Salt Petre Cave. Last year, the club raised \$1,600. For the McDowell Cancer Research Center in Lexington.

Mr. Hershel Tye, president of the Whitley County Saddle Club, invited everyone to come along on their wagon train. The wagon trail leaves the Whitley County Clubhouse on Tuesday morning at 6:00 a.m. on June 19 and arrives at Rock Creek on Tuesday, June 20 at 6:00 p.m. Then there are 2 more days riding into Tennessee. It is truly an exciting experience and a wonderful trip.

If you don't have a wagon, bring your horse and ride along.

1984 memberships are now available. We are looking forward to seeing everyone and their horses in April.

a bout with pneumonia and is much improved. We hope he will soon be well.

Mr. and Mrs. Willie Taylor were Saturday guests of Mr. and Mrs. Delbert Long and Mrs. Elva Mobley and Mrs. Florence Albright. Mrs. Mary Adams, Mrs. Maebel Taylor and Mrs. Julia Hunt were in Mt. Vernon last Tuesday attending the funeral of Mr. Haskell Gentry. Our sympathy goes to all the family. Also all others who have lost loved ones.

Mr. Connie Taylor and Mr. Coy Taylor have taken over the Jack Goff store at Willailla, formerly the Clarence and Maggie Herrin store which used to be the trading place for people miles around. We hope they do well. When I told a young woman in Brohead I used to ride a horse from Quail to Willailla with a 25 pound bag of walnut kernels which I had cracked out and cracked my fingers, too and bought a lot of Christmas present with them, so this young lady said, "Why, Mary, you are ancient!" but

I really ain't that old, just got a lot of miles on me.

Thursday visitors of Mr. and Mrs. Monroe Renner were Walter and Irene Adams and Elvira Fuggett. Visitors of Delbert and Mayne Long were Jimmy Blevins, Bob and Loraine Davidson of Eubank, Johnny and Beverly Taylor and son, David, Wallace and Artie Brown.

Mr. Elva Mobley reports her good friends and helpers who have been with her since September 11, Mr. and Mrs. Bob Bond and daughter, Diana, were called back to Ohio, to his job. It's good for him to get his job back, but we are sorry to lose them. They are very fine people.

Mr. Louise Sargent and daughter, Lea Ann of Lexington were Friday night guests of their parents and grandparents, Mr. and Mrs. Monroe Renner and they all visited Mr. Renner's mother, Mrs. Dora Taylor at the Laurel Heights Nursing Home in London, who is suffering from an injured knee she received from a fall.

Mrs. Judy Walker of Springboro, Ohio is spending this week with her parents, Mr. and Mrs. George Fletcher and Audrey, due to the sickness of Mr. Fletcher. Also Mr. Charles Fletcher took his mother to Danville, Monday to visit her doctor as Mrs. Fletcher is very poorly too. Our prayers are for this family, whom we love so dearly.

SCHOOL MENU February 13-17

Elementary
Breakfast:
Monday: cereal, toast and jelly, juice and milk.
Tuesday: sausage and biscuits, juice and milk.
Wednesday: sweet roll, juice and milk.
Thursday: pork loaf, eggs, toast with jelly, juice and milk.
Friday: French toast, syrup and butter, juice and milk.
Lunch:
Monday: fish, macaroni with cheese, green beans, buttered carrots, cornbread, milk, chesecake.
Tuesday: cheeseburger on bun, potato rounds,

pickles, milk, mixed fruit.

Wednesday: meatloaf, whipped potatoes, peas, rolls, milk, jello/fruit.

Thursday: barbecue on bun, French fries, cole slaw, milk, castle cookie.

Friday: fried chicken, whipped potatoes, green beans, white bread, milk, tingle.

High School
Monday: Chef's Salad or chicken patty on bun, French fries, butter corn, milk, choice of offered desserts.
Tuesday: chef's salad or submarine sandwich, potato rounds, pickles, cole slaw, milk, choice of offered desserts.
Wednesday: chef's salad or spiced beans with pork, whipped potatoes, relish, carrot sticks, cornbread, milk, choice of offered desserts.
Thursday: chef's salad or hamburger or cheeseburger on bun, potato rounds, pickles, lettuce leaf, milk, choice of offered desserts.
Friday: chef's salad or spaghetti with meat sauce, green beans, cole slaw, rolls, choice of offered desserts.

A PUBLIC SERVICE ANNOUNCEMENT

TO: The Citizens of Rockcastle County

FROM: James H. Lambert, Rockcastle County Attorney

Ladies and Gentlemen

Due to the large number of calls I have received from you, the citizens of Rockcastle County, concerning your increased telephone bill, and the statement of many asking, "Where will it all end," I wrote the Attorney General on your behalf urging him to do everything in his power to hold the line against higher telephone costs. I wanted to share that letter with you.

As bigger telephone bills affect so many of us in our County, I have had the letter I wrote to the Attorney General printed below. Thank you for calling me and sharing your concerns with me.

With kindest personal regards,

James H. Lambert
James H. Lambert



COMMONWEALTH OF KENTUCKY
OFFICE OF COUNTY ATTORNEY
ROCKCASTLE COUNTY, KENTUCKY

JAMES H. LAMBERT
ROCKCASTLE COUNTY ATTORNEY
(606) 256-5127

P. O. Box 736
CHURCH STREET
MT. VERNON, KENTUCKY 40456

February 6, 1984

Honorable David L. Armstrong
Attorney General of Kentucky
Capitol Building
Frankfort, Kentucky 40601

Dear Mr. Armstrong:

I have received a large number of calls from the citizens of Rockcastle County expressing their alarm and opposition to any additional rate increase by Continental Telephone Company. I share their alarm and opposition.

Research indicates that Continental Telephone has sought rate increases frequently over the last few years, and that their rates for basic exchange service increased by about 33 to 36 percent between 1972 and 1983. As you know, Continental was granted a 1.9 million increase in its last rate case.

Research also shows that at the present time Continental has four appellate cases pending. If the phone company is successful in these, phone rates will increase by over a million dollars. On behalf of the citizens of Rockcastle County, I urge you to vigorously fight to prevent this from happening.

Mr. Armstrong, while a rate increase may present a hardship to many people, it is especially devastating to older citizens, and citizens on a fixed income. If medical attention is needed during the night, a phone may literally be a matter of life or death. If Continental is granted the rate increase it seeks, many people in our county will simply have to have their phones taken out. Please use your best efforts to prevent this from happening.

Yours very truly

James H. Lambert
JAMES H. LAMBERT
ROCKCASTLE COUNTY ATTORNEY

BE A VOLUNTEER

We need you. We need your energy and time. We know you have a lot to give. How can I get involved as a Volunteer?

The Rockcastle County Health Center in Mt. Vernon is looking for Volunteer Teacher's Aides.

-Opportunity to teach basic health concepts to little children while they are waiting to be seen in the clinic.

-Volunteers will receive training in this program.

In return for dedicated service to the children, volunteers will receive certificates of achievement recognizing their hours of participation. This background of experience is ideal documentation for resumes in job hunting.

For further information and to apply, call at the Rockcastle County Health Center, (606) 256-2242.

Grace Hackett, Health Educator

KAGE/RAGE program provides educational activities for children

By Leigh Anne Hiatt

"I really enjoyed the planetarium the most," said Satica Morgan, 15, of Brodhead. "I had never been to one before."

Her sister, "Sonia, 9, agreed. "I enjoyed looking at the animals at the zoo and I liked the planetarium when he showed us the stars."

Aaron Purrell, 11, of Brodhead, gave a male opinion. "Well, I mostly enjoyed going to a city where you could have fun."

What are these three talking about? All the excitement is over a trip to Louisville last summer that included a visit to the planetarium and the zoo. They were among about 40 other children from preschool through high school that were able to go because of a program in Rockcastle County that provides enriching and educational experiences for children during the summer months.

The program is called the Kentucky Association for Gifted Education (KAGE) on the state level and the Rockcastle Association for Gifted Education (RAGE) on the local level. It's a nonprofit, volunteer organization affiliated with the National Association for

Gifted Children.

And the benefits of KAGE/RAGE are available to any child in the county whose parent(s) take an active part in the program and pay their annual dues of \$5.

KAGE was officially organized in December 1979, and is an organization of parents, educators and all other Kentucky citizens who are interested in the education of gifted and talented children and youth.

The purposes of the program are stated in a KAGE brochure. The association seeks to "support programs for gifted and talented students, inform the general public of the needs of gifted and talented students, and assist parents, educators and public officials in identifying the resources to meet the needs of these students."

KAGE also tries to "secure permanent state funding and legislation that will provide for appropriate education for the gifted and talented in every school district in Kentucky, and encourage the improvement of educational services to all students."

Sue Hamm is the president of KAGE/RAGE, the guidance counselor for the county's elementary schools and the coordinator of the

Gifted Education program in the county's school system." She explained how KAGE got started on the local level, resulting in the Rockcastle Association for Gifted Education.

"Getting KAGE into the county was Betty Jo McKinney's idea," she said. "She was in contact with Doris Mills, the former president of KAGE, who helps counties get their programs started."

Mrs. Hamm added, "A group of parents got together and said we want something for the gifted children. In November 1981 we had the initial meeting and got 13 members the first night. Every county can have a gifted program, but it's not mandatory yet. One of the things we felt proud of was that at the time we got our charter membership in March 1983 there were only 15 counties out of 120 with membership. We were one of the first."

Since then officers have been elected. Joining President Sue Hamm is vice president Judy Stewart-Shackelford, secretary Connie Hamm, treasurer Renee Burdett, and advisor Betty Jo McKinney.

Mrs. Hamm stressed that KAGE/RAGE is separate.
(Cont'd to P.A3)

ARCHERY CLUB TO HOLD SHOOT

The Rockcastle County Archery Club will hold a shoot Sunday, February 12, beginning at 2 p.m. The shoot will be held at the range at the end of the road past Sparks Quarry.

The regular monthly meeting of the club will be held at 1 p.m., prior to the shoot.

GOSPEL GROUP TO BE AT SKEGGS CREEK

The Gospel H's from Brodhead will be singing at the Skeggs Creek Baptist Church, Saturday night, February 11 at 7 p.m.

Everyone is welcome.

To all residents of Mt. Vernon:

It is to my understanding that certain children (or child) have been soliciting money from residents of Mt. Vernon in the name of the school. Any student calling on you concerning a school related project will have identification from the school explaining the purpose of the child's visit. Please do not give money to anyone without checking for this identification.

Buford Parkerson, principal
Mt. Vernon Elementary

The first representative assembly in America convened at Jamestown, Virginia, July 30, 1619.

YOUTH REVIVAL AT NORTHSIDE BAPTIST

Friday, February 10 through Sunday evening, February 12 will be the Youth Weekend Revival at the Northside Baptist Church. The evangelist will be Wendell Carmack, a student at Clear Creek Baptist School, Pineville, Ky. Wendell also pastors the new Prospect Baptist Church near Manchester.

There will be special music each service. Everyone is welcome to come.

Time is 7 p.m. each evening and 11 a.m. Sunday. The Rockcastle Baptist Youth Association meeting will be at Northside on Saturday evening, February 11. It will be a part of the revival service.



These RCHS students were homecoming queen candidates and took part in between-games ceremonies at the high school Friday night. Candidates were, front row, from left: Traci McKinney, Angela Winstead, Samantha Shafer, Becky Burdette. Second

row: Cindy Fain, Sherry Creech, last year's queen Penny Mullins, Tracy Kirby, Paige Anderkin. Third row: Sonva Phillips, Paula Phillips, Regina O'Neal and Jill Rogers. Back row: Carrie Bennett, Jane Anderkin and Lonetta Dillingham.



Officers of the local KAGE/RAGE organization are, from left: Betty Jo McKinney, advisor; Sue Hamm, president; Connie Hamm, secretary and Renee Burdette, treasurer. Not present when picture was taken was Judy Stewart-Shackelford, vice president.

LOVE ISN'T LIMITED TO HOLIDAYS.

Let's Talk Long Distance. Any Day.



You don't turn off your love with the tree lights. And birthdays aren't the only days to show affection. There are 365 days in the year to love with. And to share with.

Love isn't limited to holidays. And neither is long distance.



CONTEL Continental Telephone System

HOME MORTGAGE LOANS ALL FORMS AND SIZES



We have one just right for you!

Ideas of style and comfort for a home are truly individual. Whether you've decided to choose an older home or build a new home, be assured of individualized home mortgage financing with us.

Home ownership pride can be yours. Financing tailored to your individual ability to repay, plus personalized service is yours, when you choose us for your home mortgage lender. Come in and talk to our home lending specialists, today!

Member F.D.I.C.

Open 8:30 to 3 p.m.
Monday thru Friday

Drive Thru Open till 6 p.m. Fridays

Open 8:30 to 1 p.m. Saturdays



Citizens Bank

"growing for you" Since 1904

Brodhead, Kentucky

City of Mt. Vernon, Kentucky

Audited Financial Statements and other information

For Fiscal Year Ended June 30, 1983

CITY OF MT. VERNON, KENTUCKY
COMBINED BALANCE SHEET - ALL FUND TYPES AND ACCOUNT GROUPS
JUNE 30, 1983

	General Fund	Enterprise Fund	Special Revenue Funds	UDAG Grant Fund	General Fixed Assets	Totals (Memorandum Only)
ASSETS						
Cash and Cash Equivalents (Note 1)	\$ 24,985	\$ 113,850	\$ 39,850	\$ 21,788		\$ 200,082
Receivables (net allowances for uncollectibles):						
Water and sewer customers		41,360				41,360
Accrued interest	994	2,338				3,332
State Justice Dept. - KLEFP	2,089					2,089
Property tax	929					929
Due from other funds	2,001					2,001
Prepaid expenses	2,678	1,642				4,320
Restricted assets:						
Bond interest and redemption		190,966				190,966
Depreciation fund		49,995			173,404	2,895,293
Property, plant and equipment		(1,017,636)				(1,017,636)
Accumulated depreciation		1,201				1,201
Construction Fund						
TOTAL ASSETS	\$ 33,176	\$ 2,109,064	\$ 39,850	\$ 21,788	\$ 173,404	\$ 2,377,282

See notes to financial statements

CITY OF MT. VERNON, KENTUCKY
COMBINED BALANCE SHEET - ALL FUND TYPES AND ACCOUNT GROUPS
JUNE 30, 1983

	General Fund	Enterprise Fund	Special Revenue Funds	UDAG Grant Fund	General Fixed Assets	Totals (Memorandum Only)
LIABILITIES AND FUND EQUITY						
Liabilities:						
Accounts payable	\$ 4,169	\$ 8,988				\$ 13,157
Payroll taxes payable	1,194	2,452				3,646
Customer deposits payable		17,664				17,664
Due to other funds		2,001				2,001
Revenue bonds payable - current		27,000				27,000
Revenue bonds payable - long term		744,000				744,000
Reserve for bond interest and redemption		190,966				190,966
Reserve for depreciation		49,995				49,995
Notes payable	7,500					7,500
Total Liabilities	12,863	1,083,066				1,055,929
Fund Equity:						
Retained earnings:						
Contributions from grants and customers		1,098,794				1,098,794
Contributions from general fund		10,280				10,280
Unreserved		(83,076)				(83,076)
Fund balances:						
Reserved			39,850	21,788		61,638
Undesignated	16,825					16,825
Investment in general fixed assets					173,404	173,404
Grant contribution	3,888					3,888
Total Fund Equity	20,313	1,065,998	39,850	21,788	\$ 173,404	1,321,353
TOTAL LIABILITIES AND FUND EQUITY	\$ 33,176	\$ 2,109,064	\$ 39,850	\$ 21,788	\$ 173,404	\$ 2,377,282

See notes to financial statements.

CITY OF MT. VERNON, KENTUCKY
COMBINED STATEMENT OF REVENUES, EXPENDITURES
AND CHANGES IN FUND BALANCES
ALL GOVERNMENTAL FUNDS
FOR THE YEAR ENDED JUNE 30, 1983

	General Fund	Special Revenue Funds	UDAG Grant Fund	Total (Memorandum Only)
Revenues:				
Taxes	\$45,807			\$45,807
Licenses and permits	30,317	57,776		\$88,093
Intergovernmental Rev.	17,659		21,788	39,447
Other revenues	36,620			36,620
Total revenues	130,383	57,776	21,788	209,947
Expenditures				
General government	34,253	160		34,413
Police	63,054			63,054
Fire	3,025			3,025
Public works	22,271	10,788		33,059
Investment in General fixed assets	38,610			38,610
Health and Welfare		512		512
Total expenditures	161,213	11,460	-0-	172,673
Excess revenues (Expenditures) before operating transfers	(30,830)	46,316	21,788	37,274
Operating transfers in (out)	37,030	(37,030)		-0-
Excess revenues (expenditures) and operating transfers	6,200	9,286	21,788	37,274
Fund balance (deficit)	10,625	30,564	-0-	41,189
July 1, 1982				
Fund balance (deficit) June 30, 1983	16,825	39,850	21,788	78,463

The accompanying notes are an integral part of the financial statements.

CITY OF MT. VERNON, KENTUCKY
WATER AND SEWER ENTERPRISE FUND
STATEMENT OF CONTRIBUTIONS AND RETAINED EARNINGS

	Contributions	Retained Earnings
Balance, beginning of year	\$1,077,079	\$(34,428)
Contributions in aid of construction	31,995	
Net Income (loss)		20,177
Decrease (increase) in reserves		(28,825)
Balance, end of year	1,109,074	43,076

NOTE A-Summary of Significant Accounting Policies
The City of Mt. Vernon, Kentucky operates under a Council-Mayor form of government and provides the following services: public safety (police and fire), highways and streets, water and sewer service, health, culture recreation, public improvements and general administrative services.

The accounting policies of the City of Mt. Vernon Kentucky conform to generally accepted accounting principles as applicable to governments. The following is a summary of the more significant policies:

Fund Accounting
The accounts of the City are organized on the basis of funds and account groups, each of which is considered a separate accounting entity. The operations of each fund are accounted for with a separate set of self-balancing accounts that comprise its assets, liabilities, fund equity, revenues and expenditures, or expenses, as appropriate. Government resources are allocated to and accounted for in individual funds based upon the purposes for which they are to be spent and the means by which spending activities are controlled. The various funds are grouped in the financial statements in this report, into five fund types as follows:

GOVERNMENTAL FUNDS

General Fund-The General Fund is the general operating fund of the City. It is used to account for all financial resources except those required to be accounted for another fund.

Special Revenue Funds-Special Revenue Funds are used to account for the proceeds of specific revenue sources that are legally restricted to expenditures for specific purposes. The Special Revenue Funds are Federal Revenue Sharing, Municipal Road, and Local Government Economic Assistance.

UDAG Fund-This fund is set up to account for the repayment of the loan to Mt. Vernon Plastics. The source of the loan proceeds was an Urban Development Action Grant, from U.S. Department of Housing and Urban Development.

PROPRIETARY FUNDS

Enterprise Funds-Enterprise Funds are used to account for operations (a) that are financed and operated in a manner similar to private business enterprises-where the intent of the governing body is that the costs (expenses, including depreciation) of providing goods or services to the general public on a continuing basis be financed or recovered primarily through user charges, or (b) where the governing body has decided that periodic determination of revenues earned, expenses incurred, and/or net income is appropriate for capital maintenance, public policy, management control, accountability, or other purposes.

NOTE B-FIXED ASSETS

The accounting and reporting treatment applied to the fixed assets associated with a fund are determined by its measurement focus. All governmental funds are accounted for on a spending or "financial flow" measurement focus. This means that current and current liabilities are generally included on their balance sheets. Their reported fund balance (net current assets) is considered a measure of "available spendable resources". Governmental fund operating statements present increases (revenues and other financing sources) and decrease (expenditures and other financing uses) in net current assets. Accordingly, they are said to present a summary of the sources and uses of "available spendable resources" during a period.

Fixed assets used in governmental fund type operations (general fixed assets) are accounted for in the General Fixed Assets Account Group, rather than in governmental funds. No depreciation has been provided on general fixed assets.

CITY OF MT. VERNON, KENTUCKY
WATER AND SEWER DEPARTMENT
STATEMENT OF CHANGES IN FINANCIAL POSITION
FOR FISCAL YEAR ENDED JUNE 30, 1983

Source of Funds:		
Operations:		
Net Income (Loss)		\$20,177
Noncash expenses-depreciation		75,758
Funds provided from operations		95,935
EPA grant		11,995
State Sewer Construction Grant		20,000
Total Source of Funds		127,930
Application of Funds:		
Increase in reserves		28,825
Increase in property, plant and equipment		36,593
Decrease in revenue bonds payable		24,000
Increase in working capital		38,512
Total application of funds		127,930
Increase (decrease) in Working Capital Components:		
Cash		\$25,001
Accounts receivable		7,494
Prepaid expenses		183
Accrued interest		502
Accounts payable		(860)
Accrued payroll and other taxes		(14)
Meter deposits		(3,009)
Unearned Sewer Grant		20,000
Miscellaneous Accounts Receivable		(10,815)
Net Increase (decrease) in Working Capital		38,512

STATEMENT OF REVENUES AND EXPENSES-
WATER AND SEWER ENTERPRISE FUND
FOR THE FISCAL YEAR ENDED JUNE 30, 1983

Operating Revenues:		Audit and legal fees	
Water service	\$221,249	Bank services	2,876
Sewer service	40,656	Office supplies	75
Water and sewer connect fees	9,155	Sales tax	5,351
Miscellaneous	2,191	Fuel	2,786
Penalties for late payment	2,677	Laboratory work	941
Truck water service	512	Miscellaneous	2,743
Lease income	2,186	Service agreements	911
Total revenues	\$274,606	Depreciation	1,298
		Employee benefits	6,391
Operating Expenses:		Total	252,147
Salaries	24,678	Operating Income	22,455
Utilities and phone	34,424	Non-operating Revenues (expenses):	
Insurance	3,631	Interest income	28,882
Maintenance supplies	25,127	Interest expense	31,164
Maintenance labor	36,825		2,282
Vehicle maintenance	1,727	Net income	20,177
Vehicle gas and oil	5,276		
Payroll taxes	21,331		

"KAGE/RAGE"
(Cont'd from front)

ate from the Gifted Education program in the school system, which is in its first year. In the fourth through eighth grades the gifted program is called Challenge in the fourth through eighth grades the program goes by the name of Humanities classes.

Edna Dawson teaches all the elementary school's Challenge classes except Brohead's seventh and eighth grades, which are taught by Mrs. McKinney. Mrs. McKinney also teaches all of the high school's Humanities classes.

In the school system the children are selected anonymously for the gifted committee by a steering committee which bases its choices on multiple criteria. Some of the things considered are achievement and intelligence test scores, grade point average, and teacher and peer nominations. After all the data is compiled, it is anonymously and the top five chosen in the county are present.

All children who are in Challenge and Humanities should have their parents in KAGE/RAGE," said Mrs. Hamm. "But it's not limited to those children. Any child is welcome if their parents are a member of the program. I'm convinced that many members of KAGE/RAGE didn't reinjoin after their children didn't get into the

school's gifted program. I'd like to see these parents reinvent their membership."

Mrs. Hamm also noted that grandparents and interested citizens are invited to get involved in the summer education program. We need numbers for lobbying purposes as well as financial support."

The lobbying that came out of the KAGE program resulted in increased funds for Gifted Education in the school and was also indirectly responsible for the new Governor's Scholar Program.

Betty Jo McKinney commented, "One of the primary purposes of KAGE is to lobby for these funds. As of last year every county was given funds from the state to implement Gifted Education programs. There was a group of parents that got together and went to the state KAGE conference in Lexington last week. Afternoon. The former Governor Brown came in and was terribly impressed at the almost 700 people there. If you want more programs to continue and grow, KAGE/RAGE will help that too."

Mrs. McKinney went on, "We originally wrote and applied for a grant for the community theatre we had here last summer. We organized an arts council and got a grant from the Art Council of Kentucky, but we've turned it over to community theatre. Now it has become the Rockcastle County Arts Council."

"KAGE is important, too, because the school programs can't be extended into the summer and it gives the children something to do then."

KAGE/RAGE got off to a good start the summer of 1982 when the volunteers organized a weekend series of activities for children whose ages ranged from age school on up through high school.

Over 30 children toured the courthouse, observed circuit court, watched and participated in ballet, toured the county's clothing and plastics factories, and visited Berea's Appalachian Museum, among other events. In 1983 the group took a field trip to the planetarium and the zoo in Louisville. They also visited a shaker and attended a one-day workshop in clay taught by Lawrence Bullock, a teacher at the Rockcastle County High School.

"Although each child assumes their own expenses, the trips are reasonable since a school bus is rented for transportation and most places offer group rates. The KAGE officers ask that parents accompany children aged 10 and under on the trips, but parents of older children are welcome to go also."

Why does Sue Hamm think the program is important? "First of all," she said, "KAGE/RAGE is beneficial because it helped us get the Gifted Education programs in the schools, and

it also helps us enrich children's lives by giving them opportunities they might not otherwise have. It broadens their horizons."

She went on, "I'm very optimistic. I feel like gifted education is not a fad. It's something that's here and will continue to grow. People are realizing that gifted children have needs that aren't being met in the classroom. These are our future leaders. Some day I'd like to see letters given for academics as well as athletics so these children can feel proud and good about being intelligent."

Parents who have participated in the summer have been pleased with the results. Jerry and Judy Makin of Mt. Vernon have three children that enjoyed the clay workshop last summer. Missy, 5, Chris, 7 and Jerry, 8. Mrs. Makin said, "Last summer they had a very educational program with Lawrence Bullock and they wouldn't have had an opportunity to do that without KAGE."

Ronnie and Renee Budett from Mt. Vernon have two sons in KAGE. They are 13 and Timmy is 12. "I think they've really enjoyed it and learned a lot," said Mrs. Burdett, who is the organization's treasurer. "It keeps them from getting bored."

Judy Stewart-Shackelford of Mt. Vernon is the vice president of KAGE/RAGE and has worked with the program for two years. She said, "There are

Know when to contact Social Security

It is important for people in the Rockcastle County area to know when to contact a Social Security office, Bob Anderson, Social Security manager in Richmond, said recently.

A person should contact Social Security:

- Before getting his or her first job, because a Social Security number is needed to get proper Social Security programs for handicapped children and slow learners, but if the gifted child isn't challenged in the classroom sometimes lose them before graduation. By having gifted programs we'll keep them until graduation and give them new opportunities to explore and grow.

One would encourage parents to join KAGE whether their child is gifted or not."

Mrs. Hamm concluded, "The next meeting for KAGE/RAGE is scheduled for February 20. We meet the third Monday of each month at the Rockcastle County High School's library at 7 p.m. This month's meeting is the last time parents can get in for the 1984 summer activities. That night we'll be planning and we want parents to tell us what they want and give us some ideas. We'll also need to know the number of children that will be involved so we'll know what to plan on."

curity credit for earnings. This should be done at least 6 weeks before the number will be needed.

After a death in the family, to see if survivor benefits can be paid.

-When someone in the family is disabled, to find out if disability benefits can be paid.

-At retirement age-at 65 for full rate cash benefits, or as early as 62 for reduced benefits. Sign up for Medicare 2 or 3 months before 65, even if there are no retirement plans.

-Any time there is a question about Social Security. When a person calls a Social Security office, people there can tell:

-How much work credit is needed to be insured for benefits.

-Who can get benefits.

-How to replace a lost Social Security or Medicare card.

-How to get a free statement of the earnings recorded to a person's Social Security record.

-What documents a person needs when applying for benefits.

For more information about Social Security, get in touch with the Richmond Social Security office. The telephone number is 256-5109.

CITY OF MT. VERNON, KENTUCKY
NOTES TO FINANCIAL STATEMENTS (Continued)
JUNE 30, 1983

All fixed assets are valued at historical cost or estimated historical cost if actual historical cost is not available. The fixed assets were estimated for the years ending before June 30, 1982.

All proprietary funds are accounted for on a cost of services or "capital maintenance" measurement focus. This means that all assets and all liabilities (whether current or noncurrent) associated with their activity are included on their balance sheets. Their reported fund equity (net-total assets) is segregated into contributed capital and retained earnings components. Proprietary fund operating statements (revenues, expenses, and decreases) are reported on a cost of services basis.

NOTE C - BASIS OF ACCOUNTING

Basis of accounting refers to when revenues and expenditures or expenses are recognized in the accounts and reported in the financial statements. Basis of accounting relates to the timing of the measurements made, regardless of the measurement focus applied.

All governmental funds are accounted for using the modified accrual basis of accounting. Their revenues are recognized when they become measurable and available as net current assets. Taxpayer assessed income, gross receipts, and sales taxes are considered "measurable" when in the hands of intermediary collecting governments and are recognized as revenue at that time. Anticipated revenue of such taxes are recorded as liabilities and reductions of revenue when they are measurable and their validity seems certain.

Expenditures are generally recognized under the modified accrual basis of accounting when the related fund liability is incurred. Exceptions to this general rule include: (1) accumulated unpaid vacation, sick pay, and other employee amounts which are not accrued, and (2) principal and interest on general long-term debt which is recognized when due.

All proprietary funds are accounted for using the accrual basis of accounting. Their revenues are recognized when they are earned, and their expenses are recognized when they are incurred. Unbilled Water and Sewer Utility service receivables are recorded at year end.

NOTE D - TOTAL COLUMNS ON COMBINED STATEMENTS - OVERVIEW

Total columns on the Combined Statements-Overview are captioned Memorandum Only and indicate that they are presented only to facilitate financial analysis. Data in these columns do not present financial position, results of operations, or changes in financial position in conformity with generally accepted accounting principles. Neither is such data comparable to a consolidation. Interfund eliminations have not been made in the aggregation of this data.

NOTE E - SUBSEQUENT EVENT

The City Council was officially notified that its application for construction grant from Environmental Protection Agency was approved. Under the grant the City is to improve its sewer treatment plant at a total cost of approximately \$1,201,780.00. EPA will finance 75% of the total cost, approximately \$901,335.00, with the City financing the balance of approximately \$300,445.00.

NOTE F - BONDS PAYABLE

Series of 1965:		
3 3/8% of bonds due annual installments of \$10,000.00 to \$20,000.00 plus interest to January 1, 1998	\$251,000	
Series of 1969-A:		
4 1/4% bonds due in annual installments of \$7,000.00 to \$24,000.00 plus interest to January 1, 2009	393,000	
Series of 1969-B:		
4 3/4% bonds due in annual installments of \$2,000.00 to \$8,000.00 plus interest to January 2, 2009	127,000	

Less portion due within one year	27,000
Long-term portion	744,000

The bonds are callable on various dates in the inverse order of maturity at various premiums.

The bonds do not constitute a general indebtedness of the Department but are payable as to principal, interest and premium, if any, solely from the gross revenue generated by the operation of the water and sewer department. The bonds are secured by a pledge of and constitute a lien on the gross revenue.

Ordinance 210 or the City of Mt. Vernon, Kentucky, provided for the authorization, issuance, and sale of \$410,000.00 City of Mt. Vernon, Kentucky, Water Works and Sewer Improvement Revenue Bonds dated January 1, 1965, and Ordinance 300 provided for the authorization, issuance and sale of \$624,000.00, City of Mt. Vernon, Kentucky, Water Works and Sewer Revenue Bonds dated January 1, 1969, subject to vested rights and priorities in favor of holders of outstanding bonds of January 1, 1965.

Among other requirements of the ordinances are provisions for the disposition of all revenues received from operations of the utility. All revenues received from operations are to be deposited in the City of Mt. Vernon Water Works and Sewer System Revenue Fund and transfers are to be made from such fund as follows:

REVENUE BOND AND INTEREST SINKING FUND

(1) After construction period interest last paid, a sum equal to one-fifth (1/5) of the next succeeding interest payment to become due on all outstanding bonds and a sum equal to one-tenth (1/10) of the principal of any bonds maturing on the next succeeding January 1.

(2) There is to be accumulated and maintained an additional amount equal to following year principal and interest requirements plus a debt service reserve in the sum of \$81,000.00.

The above requirement would result in \$66,545 being transferred to the Revenue Bond and Interest Redemption Fund for the current year. The Department transferred \$69,288 from the Revenue Fund to the Bond and Interest Redemption Fund during the current year. The Department complied with the provision of the ordinance with respect to the Revenue Bond and Interest Redemption Fund.

The required reserve at June 30, 1983, would be \$138,805. The actual reserve is \$190,966 or \$52,161 in excess of the necessary requirements.

NOTE G - DEPRECIATION FUND

(1) Each month a sum equal to not less than ten percent (10%) of remaining funds in Revenue Fund until there is accumulated and maintained a sum of at least \$180,000.00.

(2) Proceeds from sale of equipment.

(3) Fees of charges from potential customers to aid in cost of extensions or improvements.

(4) Insurance proceeds resulting from property damages.

The above requirements would result in \$21,806 being transferred to the Depreciation Fund for the current year. The Department transferred \$14,700 from the Revenue Fund. The Department did not comply with the provision of the ordinance with respect to transfers to the Depreciation Fund.

Disbursements from the Depreciation Fund are limited to:

- (1) Preventing a default in the payment of bond principal and interest.
- (2) Paying for the cost of unusual repairs, renewals, or replacements.
- (3) Paying the cost of construction on extensions, additions and improvements to the utility system not provided for from other sources.

NOTE H - ACCOUNTS RECEIVABLE - CUSTOMERS

Accounts receivable-customers, includes the following:	
Dues from water and sewer customers, June 15, 1983	\$27,283
Estimated billing for water and sewer from June 15, 1983 to June 30, 1983 (50% of July 15, 1983 billing)	14,077
Total Accounts Receivable-June 30, 1983	41,360

NOTE I - EXPANSION PROGRAM

In order to comply with the minimum discharge permit requirements of the Environmental Protection Agency, the Water and Sewer Department will eventually be ordered to improve the sewer plant operations or stop discharging effluence.

NOTE J - ENVIRONMENTAL PROTECTION AGENCY GRANT

The City of Mt. Vernon has entered an agreement with engineers to perform a Phase I and II, Sewer System Evaluation Survey as of October 5, 1979. A federal grant has been obtained to defray seventy-five percent of the \$23,000 cost of \$17,250. The balance or twenty-five percent will be paid by the water and sewer department.

NOTE K - SEWER SYSTEM EVALUATION SURVEY

For the year ended June 30, 1983, management elected to capitalize engineer fees of \$15,993 in connection with expansion of the existing sewer system. Once completed these fees will be expenses over the useful life of the sewer system. The Environmental Protection Agency has reimbursed the water and sewer department 75% of \$15,993 or \$11,995 which has been reported as a construction contribution.

NOTE L - ENTERPRISE CASH

The Water and Sewer Enterprise Fund cash total consists of the following:	
Revenue Fund	\$103,606
Operation and maintenance fund	9,853
	\$113,459

NOTE M - MATURITIES AND SINKING FUND REQUIREMENTS

Maturities of long-term debt and sinking fund requirements on long-term debt for each of the five years succeeding June 30, 1983, are as follows:

Year	Long-Term Debt and Sinking Fund Requirements	
1984		\$57,805.00
1985		56,755.00
1986		55,706.00
1987		56,656.00
1988		55,560.00

NOTE N - UDAG FUND

The UDAG cash total includes the following:	
UDAG Program Account	\$21,688
Revolving Loan Fund	100
	21,788

The above accounts represent loan repayments from Mt. Vernon Plastics. The balance of the loan due the City from Mt. Vernon Plastics as of June 30, 1983 is \$197,402.07. The money received in this fund is restricted for expenditures specified by the Department of Housing and Urban Development. The only expenditure made from the fund was to set up a Revolving Loan Fund for merchants to borrow money to renovate their buildings. The renovation of buildings is in connection with the Downtown Revitalization Program of the City of Mt. Vernon. As of June 30, 1983, no money had been borrowed from the fund.

Mt. Vernon Plastics has ceased making their loan repayments to the City. No payments have been made since the July payment and at this date there is uncertainty as to whether the City will be able to collect its unpaid balance at July 31 of \$196,132.72.

Because their eyes are on the sides of their heads, most birds have excellent fields of vision.

Real Estate For Sale

35 Acres-2,148 lb. tobacco allotment-5 Room House w/ bath, 2 fireplaces, 2 flues, porches, cellar, 2 barns, separate mobile home hook-up, privacy. Red Hill area. \$28,500.

Quiet, Rustic Home on Approx. 1/4 Wooded Acres in City Limits-Features include 3 bdrms., 2 full baths, nice carpet, kitchen w/ oak cabinets, range, oven and dishwasher, dining rm. w/ fireplace, beautiful living rm. with fireplace and vaulted ceiling, family rm. in basement w/ Ben Franklin stove and w/d hookup, double carport, heat pump, central air conditioning, front and back decks, city water, Brick and Western cedar exterior. Privacy and convenience for \$74,900.

3 BEDROOM HOME - 3 ACRES - There's also a large kitchen/dining area, living room with a fireplace and a flu for a stove, fuel-oil furnace, partial basement with utility room, w/d hook-up, hardwood floors with carpet and vinyl, 1-car detached garage (needs some repair), storage bldg., city water, near US 25 on 1004, very attractive for \$29,000.

New, Attractive, Fully-Equipped Restaurant-Dairy Freeze - Here's a super opportunity in Rockcastle's fastest growing business area. Ample space for parking and expansion. Approx. 300 ft. frontage on U.S. 25 south of Mt. Vernon. Total electric, central air conditioning. Records available to qualified buyer.

12x20 Furnished Mobile Home and Lot - Features include large 22 ft. living room, dining area, kitchen with built-in cabinet, range & refrigerator, 2 bedrooms, bath, utility area with auto. washer and dryer included, carpet, city water. On Lake Linville. Immediate possession. \$14,000.

Lake Lot-approximately 1/2 acre, improved with well, septic system, electricity*ideal for mobile home with nice view of lake. \$5,500.

Commercial Property-1.25 acres more or less near Mt. Vernon city limits south on U.S. 25. City water is available. Ideal location, businessmen. Asking \$50,000.

122 Acres Farm-3,225 lb. tobacco allotment-5 Room House w/ bath, fireplace, 1 tobacco barn, 1 stock/tobacco barn, numerous outbuildings, fruit trees, timber, total privacy in Scaffold Cane area for \$65,000.

REDUCED Lake Front Two Story Home with 3 bedrooms, 2 baths, kitchen/dining area, living room, family room w/ fireplace, large utility room, upper and lower decks, heat pump, central/air conditioning, pelling fans, carpet, also a 2 1/2 car detached garage with lower 24x26 workshop. This pkg. includes an abundance of closets, approx. 1 1/2 acres of landscaped, landscaped over 500' frontage on Lake Linville and steps to your own private boat dock for \$73,900.

Double-Decker Mobile Home-This home has 3 bedrooms, large walk-in closets, 2 baths, 25 ft. living room, kitchen/dining room, deck, large patio, storage buildings, cellar, city water, near Mt. Vernon city limits for \$22,500.

Baby Farm-5 Room House w/ bath, 2 porches, fireplace, flue, fuel oil heat, storage bldg., barn, 227 lbs. tobacco allotment, 2 room cottage (needs repairs), approx. 8 acres, near Mt. Vernon city limits, \$39,000.

3 Bedroom Brick w/ living room, kitchen/dining rm., bath, w/d hookup, nice carpet and vinyl floors, carport, electric, also fits for city water, landscaped lot in Maple Grove area for \$30,500.

Large Lot approximately 100x300 conveniently located near Rockcastle Hospital in Hillview Subdivision for only \$6,500.

FHA Approved 3 Bedroom Home w/ living rm., dining/kitchen, w/ fireplace, range, oven, bath, utility room w/ w/d hookup, carpet & vinyl covered hardwood floors, electric heat, sewer and water, in Mt. Vernon for \$29,900.

Two Adjoining Lots of more than 1 acre each located in Happy Acres Subdivision at Marebuck just off U.S. 150. These are restricted lots in a prestigious neighborhood. Blacktop road, city water. Both for \$10,500.

Five Room House with bath, carpet and vinyl floors, two porches, flues for oil and woodstove, w/d hookup, city water and sewer, partial basement, 1 car detached garage, Livingston. Reduced to \$12,000.

25 Acres-4 Bedroom Home with entrance foyer, large living room with vaulted ceiling, family size dining/kitchen with oak cabinets and pantry, screened-in patio, 2 1/2 baths, 2 car garage, electric heat, fireplace, flue for stove, cellar, well, city water. Additional assets: an 800 sq. ft. unfinished bldg., landscaping rustic setting. Brindle Ridge area near Berea and Mt. Vernon. \$74,900.

Age-29 Acres, more or less, with 2 barns, garage, outbuildings, 5 ponds, cistern, well, 891 lb. tobacco allotment, coal, fenced, septic system. Located at Pine Hill, \$24,500.

29 Acres, more or less, with 1442 lb. basic tobacco allotment, septic system, well on blacktop road, 4 miles from Livingston on Red Hill Rd. for \$20,000.

100 Acre Farm-4 Bedroom Home w/ living rm., dining/kitchen w/ beautiful birch cabinets, w/d hookup, bath, lots of closets, nice level yard, 1 car detached garage, center, other bldgs., including a 36x24 stock/tobacco barn, 1400 lbs. tobacco, 2 ponds, large orchard, good fences, blacktop road, privacy and convenience. Near Livingston for \$78,900.

Reduced! Nice 2 Bedroom Home w/ living rm., large eat-in kitchen, utility rm., washer hookup, bath, city water, fuel oil furnace, carport, front porch, approx. 1/2 acre lot at Calloway for \$22,500.

Area Deaths & Funerals

Larney Durhan

Mr. Oscar Lawrence "Larney" Durhan, 60, of Mt. Vernon, died Saturday, February 4, at the Veterans Hospital in Lexington, after a short illness.

He was born in Medora, Indiana on November 8, 1923, the son of the late Elbert Durhan and Lala Pike and was a member of the Mt. Vernon First Christian Church. He was a former Mt. Vernon City Police Judge from 1956 thru 1964, a Rockcastle County Deputy Jailor in 1976 and 1977, a member of Ashland Masonic Lodge #640 F&AM of Mt. Vernon and a Veteran of World War II having served in the Marine Corp.

He is survived by: his wife, Mrs. Beatrice Durhan; three sons, Michael Durhan of Mt. Vernon, Dennis Durhan of Berea and Jim Durhan of Route 3, Mt. Vernon; two daughters, Mrs. Lerna Burdette of Berea and Miss Celia Durhan of Richmond; one brother, Robert R. Durhan of Bakersfield, California; three sisters, Mrs. Ada Maiden of Nelsonville, Ohio, Mrs. Elizabeth Perrin of Nicholasville, and Mrs. Marietta Thompson of Elizabethtown; four grandchildren.



Funeral services were held Monday, February 6, at the Dowell and Martin Funeral Home Chapel by Bro. Charles Hurst and Bro. Ernest Johnson. Burial was in the Camp Nelson National Cemetery.

Active pallbearers were: Craven Durhan, Rex Maiden, Bill Henderson, Barry Whitehouse, Jim Maiden, Danny Perrin, Robert Blythe and Jerry Perrin.

Margaret Parrett

Mrs. Margaret Parrett, 27, of Mt. Vernon, died Monday, February 6, 1984 at the Good Samaritan Hospital in Lexington after an illness of several weeks.

She was born in Rockcastle County on July 19, 1920, the daughter of the late Charles and Rhoda Owens McHargue. She was a nurse at the Rockcastle County Hospital for twenty-five years and was a member of the Northside Baptist Church.

Survivors are: three daughters, Mrs. Shirley Boyd of San Antonio, Texas, Mrs. Kay Singleton of Mt. Vernon and Mrs. Alice Faye Harrison of Xenia, Ohio; three sisters, Mrs. Cleda Napier of Clarksville, Tennessee, Mrs. Geneva Bradford of Orlando and Mrs. Rissie Barnes of Calloway; and eight grandchildren.

She was preceded in death by her husband, Hobart Parrett and by one son, Hobart Parrett, Jr.

Funeral services were held Wednesday, February 8, 1984 at the Northside Baptist Church by Bro. John Justice and Bro. Lester Arnold. Burial was in the Elmwood Cemetery. Arrangements were by the Cox Funeral Home.

Mary McClure

Mrs. Mary M. McClure, 45, of Route 4, Mt. Vernon, died Wednesday, February 1 at the Berea Hospital after an illness.

She was born in Rockcastle County on March 11, 1938, the daughter of the late Lewis Baker and Bessie Clark Baker and was a member of the Mt. Vernon Pentecostal Church.

She is survived by one daughter, Mrs. Gary Miller of Route 4, Mt. Vernon; two brothers, Earl Baker of Livingston and Donald Baker of Williamsburg, Indiana; six sisters, Mrs. Daisy Abney of Centerville, Indiana, Mrs. Lillie Rawlings and Mrs. Sarah Cox both of Richmond, Indiana, Mrs. Pearl Howard, Mrs. Opal VanWinkle and Mrs. Mandy Howerton, all of Mt. Vernon; and one granddaughter, Tabitha Miller.

Funeral services were held Saturday, February 4, at the Dowell and Martin Funeral Home Chapel by Bro. Charles Shivel. Burial was in the Johnetta Cemetery.

Pallbearers were Billy Joe Howard, Steve Blair, Steve Howerton, Jeffrey Allen, Mike McClure, Otis Abney and Tim VanWinkle.

Mattie Griffin

Mrs. Mattie Johnson Griffin, 50, of Livingston, died Thursday, February 2 at her home.

She was born in Rockcastle County on October 7, 1933, the daughter of the late Henry Griffin and Rosie Bond.

She is survived by one son, Gary Griffin of Livingston and one daughter, Donna Sue Denney of Mt. Vernon. Active pallbearers: Rosie Griffin of Livingston; seven brothers, James Russell Griffin of Manchester, Charles John and Jackie Griffin of Dayton, Ohio, Earl Griffin of London and Ambros and Raymond Griffin both of Livingston; one sister, Mrs. Maude Gibbons of Dayton, Ohio.

Funeral services were held Sunday, February 5, at the Morning View Holiness Church by Bro. Billy Medley. Burial was in the Red Hill Cemetery.

Arrangements were by the Dowell and Martin Funeral Home.

John Howard

Mr. John J. Howard, 71, of Cincinnati, Ohio died Saturday, February 4, 1984 at the Good Samaritan Hospital in Cincinnati, after a long illness.

He was born on March 2, 1912 in Harlan, the son of the late Robert and Ellen Howard. He was retired from Edgcomb Metals.

Survivors are: his wife, Mrs. Myrtle Deborah Howard of Cincinnati, Ohio; one daughter, Mrs. Deborah Thompson of Goshen, Ohio; two brothers, Cecil Howard of Mansburg, Ohio and Brown Lee Howard of South Gate, California; four sisters, Mrs. Elsie Osborne of Danville, Mrs. Geneva Lear of Burgin, Mrs. Bobbie Lawrence of Whittier, California and Mrs. Mildred Stevens of Route 2, Oak Orchard; one grandson, John Nickolas Thompson.

He was preceded in death by one sister, Grace Belcher and by three brothers, Benjamin, Jess and Carl Howard.

Funeral services were held Tuesday, February 7 at the Watson Funeral Home by Bro. Tinsley Rector. Burial was in the Buffalo Springs Cemetery in Stanford.

Bill Adams

Mr. Bill Adams, 87, of Berea, and formerly of Rockcastle County, died Thursday, February 2, 1984 at the Sowder Nursing Home in Brodhead after a long illness.

He was born in Rockcastle County on October 4, 1896, the son of the late Frank and Myrtle Farthing Adams. He was a retired brakeman for the L&N Railroad, having worked for 36 years.

Survivors are: nine sons, Wilburn and James Adams both of Berea, Arvel Adams of Skokie, Illinois, Walter Adams of Chicago, Robert Joseph Adams of Michigan, Lloyd Adams of Patton, California, Kenneth and Paul Adams, all of Covington; two daughters, Mrs. Evelyn Bryzek of Salem, Wisconsin and Mrs. Dorothy Mason of Berea; one sister, Mrs. Rose Gollygity of Richmond; one brother, Earl Adams of Wildie; 44 grandchildren and several great grandchildren.

He was preceded in death by his wife, Mrs. Ollie Abney Adams and by two daughters, Mrs. Sylvia Harris and Mrs. Delma Giarlando.

Funeral services were held Tuesday, February 5, at the Cox Funeral Home Chapel by Rev. H.C. McNew. Burial was in the Maret Cemetery.

C & A Farm Equipment

Highway 150 Brodhead, Ky.

New and Used farm equipment and tractors, all types of major and minor repairs done, and Rockcastle County's most complete tractor and equipment parts inventory.

NEW EQUIPMENT

Rotary Cutters - 5 ft.	\$ 425.00
Rotary Cutters - 6 ft.	625.00
Wagon Gears - 6 ton	725.00
20 Blade Disc	425.00
16 Blade Disc	350.00
3 pt. Spreaders	\$275.00 & 310.00
Boom Poles	45.00
Bale Feeders	75.00

USED EQUIPMENT

2 John Deere 2 Row Planters (Sharp)	\$ 550.00 - Choice
Several Sets of 2 & 3 bottom Ford Plows	\$ 400.00 and up

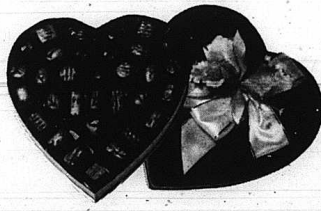
Open 6 days a week: 8 - 5

Phone 758-4171

VALENTINE'S DAY

Gifts & Cards

VALENTINE CHOCOLATES



Russell Stover Candies

14 K Jewelry

Colognes

YOUNG'S PHARMACY

Main St.

Ph. 256-4613

Evelene Raines Properties

MT. VERNON, KY.

EVELENE RAINES, PRA
BROKER-AUCTIONEER CERTIFIED APPRAISER

256-5811

256-5811

