

Upcoming KET Features

Currency trading documented in "The Billion Dollar Day"

Each day in international markets hundreds of billions of pounds, dollars, marks, and yen are changed from one currency to another—the vast majority of which is "hot" money, searching for the best return. At the center of this activity are the world's top currency traders, a few men spread around the globe who can win or lose fortunes for their banks by guessing which currency is going to rise on a given day.

The Billion Dollar Day: An Enterprise Special! To be aired on KET Wednesday, Feb. 19, at 8:30 p.m. (ET). 7:30 p.m. (CT). follows three such money-makers as they compete with each other during the course of the day. Three "Enterprise" camera crews in London, Hong Kong, and New York focus on Richard Hill, who turns pounds into dollars and back again for Barclays Bank London. Hill can buy and sell up to a billion pounds a day in an attempt to make hundreds of thousands of profit for his aggressive, competitive bank.

Also profiled are William Wong, who deals pounds for Chemical Bank of New York's Hong Kong office, and Rony Schapiro, a private speculator working out of New York. Each of these high-powered men is a player on the non-stop merry-go-round of high finance that circles the world each day.

"Enterprise" is produced by WGBH Boston.

"Wonderworks" To Present "Anne of Green Gables" on KET

When Matthew Cuthbert, an elderly bachelor farmer, and his spinster sister, Marilla, decide to adopt an orphan, they hope for a sturdy boy to help with the farm chores. The orphanage mistakenly sends a girl who is mischievous, talkative and simply must go back. "Anne of Green Gables," the internationally acclaimed Canadian novel, comes to "Wonderworks" in a four-hour presentation, beginning on KET Saturday, Feb. 22, at 7 p.m. (ET), 6 p.m. (CT). Each series offer on-airing on the following Sunday at 11 a.m. (ET), 10 a.m. (CT).

Anne Shirley (Megan Follows), a red-haired, freckled-faced homely looking child arrives at Green Gables, the Cuthberts' farm on Prince Edward Island, desperate to be loved. Her adoptive parents her new family in every way. The head-strong, high spirited Anne insults the town patriarch in a dispute over her looks, and then Gilbert Blythe's head when he calls her "carrots."

"A shocked and dismayed Marilla Cuthbert (Colleen Dewhurst) simply doesn't know how to handle the child. Marilla's shy, gentle brother Matthew (Richard Farnsworth), always comes to Anne's defense. Anne moves from one mishap to another but eventually finds her niche in the academic world where she finds herself in competition with Gilbert Blythe. Their fierce rivalry soon turns to affection.

"Wonderworks" is presented by the PBS Children's and Family Consortium.

"To Itemize or Not" (Cont.) the sales tax table amount. Personal property taxes assessed by some states, especially on cars, may be deductible if they are on the value of the personal property and are imposed annually.

Generally, no federal taxes are deductible on your federal income tax return.

Miscellaneous Deductions

These deductions include such items as union dues; the cost of safety equipment, tools, and supplies used in your job including professional and trade journals; and, expenses incurred in seeking new employment in the same trade or business. Job hunting expenses are not deductible if you're seeking employment in a new field of work.

You can also deduct the rent on your safety deposit box if you keep income-producing items in it, such as stocks and bonds. Taxpayers who hire someone to prepare their tax returns can deduct the fee paid to the preparer.

If you legally adopt a child with special needs, you may be able to deduct up to \$1,500 of qualified adoption expenses as a miscellaneous deduction. A child with special needs is one whose state determines is described in the Social Security Act adoption assistance program. This is a child who the state determines cannot or should not be placed in a successful placement effort.

Qualified adoption expenses include reasonable and necessary adoption fees, court costs, attorney fees, and other expenses that are directly related to the adoption of the child. Adoption expenses do not include any expenses for which you may receive a credit or that you may otherwise deduct. In addition, you may not deduct any expenses for which you received payments from a federal, state, or local program to pay for your adoption expenses.

Support asked for KET/GED project

Governor Martha Layne Collins and county singer Tom T. Hall addressed the Kentucky Press Association last week, asking for their continued help in creating awareness and increasing enrollment in the KET/GED Study-at-Home Project.

The KET/GED project, of which Hall is honorary chairman, enables adults to prepare at home for their General Educational Development (GED) test by watching a series of lessons broadcast on KET.

Governor Collins said to raise the educational level in the state we must reach out beyond our school children to adults who "don't have the skills that would let them live up to their potential."

"KET has a very ambitious program under way," said Collins, "with the goal of reaching 50,000 Kentuckians over the next five years."

"We've got to carry a compelling message to the people that they can succeed in their program," Collins added.

The governor emphasized the important role of businesses, civic groups, churches, and local government to the success of the project. She asked them to lend their support by offering pay incentives, providing study materials, and spreading the word that the assistance is available.

A brochure will be mailed asking for help from businesses and organizations, which will be used to

document their involvement so that they may be recognized.

Hall, a native Kentuckian who earned his GED while in the Army, urged Kentucky journalists to help by publicizing the project. Kentucky has the least educated adult population in the nation. Only an estimated 56 percent of Kentuckians 18 and over have a high school diploma.

For a \$15 fee, students receive workbooks to accompany the broadcasts, tutorial assistance through a toll-free number, pre- and post-testing services, and a \$10 voucher to cover the cost of taking the GED exam at a state testing center when the student is ready.

Registration for the April start date is now being taken by calling 1-800-KET-GED.

'Foster Story' auditions set

Prospective performers will have two opportunities to audition for the 1986 cast of "The Stephen Foster Story."

Representatives from several outdoor musicals, including the "Foster Story," will be screening singers, actors, and dancers at the Institute of Outdoor Drama's regional auditions at 9 a.m. on Saturday, Feb. 15, at the Youth Performing Arts School, 1517 South Second Street, Louisville.

On Saturday, Feb. 22, at 9 a.m. "The Stephen Foster Story" will hold its own auditions in Bardonia at Nelson County Senior High School, located on U.S. 62 East.

Applications for the auditions can be obtained by writing General Manager, The Stephen Foster Story, P.O. Box 546, Bardonia, Ky. 40001.

Singers should prepare classical and show tunes and be prepared to sight-read melodies

and rhythms. They may also be asked to take a movement audition and to read a portion of a script. An accompanist will be provided.

Actors should prepare a two-minute cutting from a contemporary play and be prepared to sing and take a movement audition. Dancers will be taught combinations derived from ballet and folk dance and should be prepared to sing and read.

Rehearsals for the 1986 season of "The Stephen Foster Story" will begin May 24. The season opens Saturday, June 7, and will run through Aug. 31. "The Stephen Foster Story," which premiered in 1959, is one of America's longest-running outdoor shows. It played to its largest outdoor patron in 1984, and last fall made a two-week tour of Japan, where it sold-out performances it played to over 20,000 patrons.

Avoid Common Errors on Form 1040

Each year there are some predictable trouble spots on income tax forms, according to the Internal Revenue Service. These are areas where large numbers of taxpayers make correct entries and thereby slow the processing of tax forms.

These trouble spots fall into two broad categories: problems that occur each year, such as taxpayers selecting the incorrect figure from the tax tables; and problems that stem from changes in the tax laws and forms from year to year to the next, such as the addition of a new line to a form or the shift of an existing line to a new position on the form.

Not surprisingly, the largest percentage of errors is made on Form 1040, the so-called long form. To assist filers of this form, IRS has compiled the following list of problem areas to double-check:

1. **Medical Deductions.** This item is not entered on Form 1040, but on a related Schedule A. Because Schedule A was redesigned last year, this item will probably be one of the leaders on the list of last year's most common errors. Due to rule changes on medical deductions, IRS expects problems again this year. Be sure to check the limitation on medical expenses.
2. **Figure from Tax Table.** Because of the number of pages and figures involved, this item is always high on the list of most common errors for all tax forms. Double check the figure from the tax table for your filing status and enter on line 38. Check the box for Tax Table.
3. **Unemployment compensation.** Double-check your figures on the worksheet in the tax instruction booklet (page 10), and make appropriate entries on lines 20a and 20b.
4. **Child Care Credit.** Read instructions carefully and double-check your computations on Form 2441, Credit for Child and Disabled Dependent Care Expenses. Enter the figure on line 41 and attach Form 2441 to your return.
5. **Balance Due/Refund.** This impor-

tant item usually makes the list of most common errors on income tax forms. Line 56 is larger than your total payments made (line 64), enter the difference on line 68.

Amount You Owe. Follow the instructions for remitting payment. If the reverse is true, enter the difference on line 65, Overpaid. Enter on line 66, Refunded to You, the portion of the line 65 overpayment that you want refunded to you.

6. **Earned Income Credit (EIC) Not Claimed.** If you are a working parent and have at least one child living with you, and if your adjusted gross income (line 32) is less than \$11,000, you probably qualify. See page 16 of the instructions. 7. **EIC Error or Not Qualified.** Make sure you are qualified. Certain expectations must be met, and you must have a dependent child living with you and you must have worked during the year. Follow the instruction carefully and enter on line 59.

8. **Dividends.** You must complete and attach Schedule B if you have over \$400 in dividend income. Enter your total dividends on line 9a; your exclusion AIG to \$100 for individual filers, up to \$200 for married filing jointly) on line 9b; and enter the difference (subtract line 9b from 9a) on line 9c.

9. **Income Computation.** This is an outgrowth of item 8, since the taxpayers who miscalculate their dividend income will have an error on line 23, total income. Double-check these figures.

10. **Income Averaging.** Schedule G, Income Averaging, is one of the most difficult forms for individual filers, because of the number of tax-years covered. You should have copies of your returns for the preceding three years in order to accurately complete this form. Read and follow instructions carefully and double-check all figures.



You can use the Form 1040A even if you claim the child and disabled dependent care credit. You may not deduct any expenses for which you received payments from a federal, state, or local program to pay for your adoption expenses.



With the help of Tom T. Hall (center) and KET Executive Director O. Leonard Press, Governor Collins asked for community support of the KET/GED Study At Home Project during the KPA convention last week in Louisville. The project, of which Hall serves as honorary chairman, designed to help adults earn their General Educational Development (GED) certificates by receiving instruction on television.

WIN A 224 IN THE DRIVE AWAY SWEEPSTAKES

ENTER AS YOU SAVE

TEN WILL BE AWARDED
NO PURCHASE NECESSARY
OFFICIAL RULES

HERE'S HOW TO ENTER: No purchase necessary. You can enter the Pepsi-Cola Drive Away Sweepstakes by completing the coupon entry form in this ad and returning the coupon according to the terms at the bottom of this ad and the address and telephone number listed below. The sweepstakes will run from 12:01 a.m. Eastern Standard Time (EST) on February 15, 1986, to 11:59 p.m. EST on March 31, 1986. Entries will be accepted on a first-come, first-served basis until the supply of coupons is exhausted. Void where prohibited. Sweepstakes ends when the supply of coupons is exhausted. Void where prohibited. Sweepstakes ends when the supply of coupons is exhausted. Void where prohibited. Sweepstakes ends when the supply of coupons is exhausted.

Prizes are non-transferable and cash substitutes. Prizes won by minors will be awarded in name of parent or legal guardian.

GENERAL CONDITIONS: Offer open to residents of the U.S. except employees and their families of Pepsi-Cola Company and its subsidiaries, retailers, distributors, advertising and promotion agencies, suppliers and licensees participating in this offer by entering, participating, purchasing, or agreeing to board the facilities of AMA, Inc. Void where prohibited or restricted by law. All federal, state and local regulations apply for the winner's names, send stamped, self-addressed envelope before 3:00 p.m. EST to Pepsi-Cola Drive Away Sweepstakes, P.O. Box 9932, Westport, CT 06898. (Do not send sweepstakes entry to this address.)

We Now Have the Famous

DOLL

AS SEEN ON THE NASHVILLE NETWORK! GET YOURS TODAY!

2125 S. Main Street
London, Ky.
PHONE 864-2292
HRS. 9-5 MON-FRI.
SATURDAY 9-3

50¢ MANUFACTURER'S COUPON EXPIRES MAY 31, 1986 50¢

50¢ OFF
TWO MULTI-PACK OR TWO LITER OR TWO 2-LITER BOTTLES OF ANY PEPSI-COLA PRODUCT

Please enter me in the Drive Away Sweepstakes.

Name _____
Address _____
City _____
State _____ Zip _____

50¢ Telephone number _____ 50¢

Pepsi and Pepsi-Cola are registered trademarks of PepsiCo, Inc.

Report to Kentucky

SENATOR WENDELL FORD

U.S. Senate, Washington, D.C. 20510



STATE OF UNION STILL GOOD

The U.S. Constitution directs that the President "shall from time to time give Congress information of the state of the union, and recommend to their consideration such measures as he shall judge necessary and expedient."

Until television became a popular medium, our Presidents complied with this constitutional requirement by sending a letter to the Senate and House of Representatives. Lawmakers, citizens and the press would read the document and reflect on it.

While listening to President Reagan deliver the most recent State of the Union message, it is clear how wise our founding fathers were in requiring this report. It forces Administration advisors to examine the "state" of the nation while under their watch, both where it has been and where it is going. Of course, the address is followed by the President's budget proposal which outlines plans for the year ahead.

Budget issues will dominate the agendas of Congress and the President this year. The federal debt is now knocking on the door of the \$2 trillion mark, which is twice what it was when President Reagan took office.

Congress took steps in December, through the Gramm-Rudman Amendment, to force deficit reduction. The new budget law sets limits on the allowable deficit, and is designed to force spending reductions to lead to a balanced budget by Fiscal Year 1991.

Although care was taken to exempt certain programs, such as Social Security, most citizens will feel the effects of the Gramm-Rudman Amendment. Across-the-board cuts will be made in government services. This law has passed because Congress believed our economy was endangered without drastic action.

Life in Washington is now in a quandary because the new budget law's being challenged in the courts. When we returned to the Senate Chamber in January, the mood was one of frustration: Everyone was indignant about what we should do while waiting for court action.

Well, the Constitution tells us what we should do. It is our duty to push ahead, operating under the new budget law. If the courts say later that we must start the budget process over, we will do that. But no one was by standing still, while the federal debt explodes with interest.

Despite our budget dilemmas, about where to cut and how to ensure that budget reduction is fair, I still share the President's optimism about our nation. I believe our economy can continue to flourish as we tighten the federal purse strings.

While the year in Washington will be a tough one, 1986 should be a good year for Kentucky and the nation.



English muffins freeze well but separate the halves before freezing for easier toasting.

DAV warns cuts will punish VA for efficiency

The VA's ability to continue providing minimally acceptable levels of health care and services for disabled veterans are in jeopardy as a result of budget cuts mandated by the Gramm-Rudman-Hollings balanced budget law," warned Albert H. Linden, National Commander of the Disabled American Veterans (DAV).

"As a result of the sequestering provisions of that law, recently implemented by President Reagan, the Veterans Administration (VA) will lose more than \$234 million in budget authority funding and over \$196 million in budget outlays during fiscal year 1986.

"Major cuts in such areas as hospital construction and reorganization benefits for veterans jeopardize programs that have already been pared to the bare bones. And, in the case of the VA's construction program, the cuts mean gaily deteriorating facilities—that have already gone too long without replacement or modernization—will have to wait that much longer."

Linden, who leads the organization of more than one million war-time disabled veterans, said the cuts fly in the face of Congressional promises to maintain quality health care for America's disabled veterans.

"Almost \$40 million in budget cuts for readjustment benefits will mean men and women who served during our nation's wars—primarily Vietnam vets—may not get all the assistance they need to return to society as working, productive members. Certain educational benefits may be in jeopardy as well, and the DAV questions how severely hurt may be young veterans who've counted on continuing their education after service. In addition, the VA's administrative systems, the processing of disability claims, program applications and services—are all threatened by cuts such as a \$32 million reduction in general operating expenses, a \$2.3 million cut in medical administration costs

and a \$5.8 million cut in burial benefits and miscellaneous operating expenses."

Linden, who is a single leg amputee veteran of the Vietnam War, said the DAV is particularly concerned about the plan to cut more than \$8.1 million in medical and prosthetic research funds. Veterans today wear prosthetic devices that restrict their mobility because of research's failure to come up with something better. Congress is now telling them they'll wait that much longer before they can lead lives of full mobility and accommodation because cuts in research are mandatory.

The cuts average 4.3 percent across-the-board for the VA, except for direct medical care, which was limited by law to a 1 percent reduction. That's almost \$85 million taken from a system that is already turning away more than 25,000 veterans a month from their doors—veterans who need help and can't get it elsewhere."

Linden said. The former Army helicopter pilot emphasized that disabled veterans, in particular, are committed to making whatever sacrifices are necessary to fairly and equitably reduce the nation's growing federal deficit. But it's not a fair and equitable solution when you jeopardize programs that are badly needed by men and women who've already paid a far greater price for all of us in America.

Mystery and Intrigue At Cumberland Falls Park

Mystery Ink, in conjunction with Kentucky State Parks and Transylvania University Community Education, invites you to "Falls Apart," a weekend excursion to mystery and intrigue.

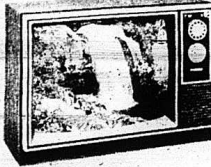
The scene is Cumberland Falls State Resort Park on Feb. 28, Mar. 1 and Mar. 2. You are the detective during three days and two nights of make-believe murder and mystery at the Dupont Lodge

overlooking the Cumberland River. Don't miss this opportunity to test your sleuthing skills and explore the natural beauty surrounding Cumberland Falls.

Cost per person, based on double occupancy, is \$120. Includes lodging, social hour Friday evening, and banquet Saturday evening.

For further information contact the Office of Community Education at (606) 233-8124 or Kentucky State Parks, (502) 564-5410.

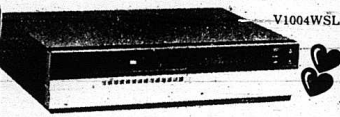
Don't Forget Valentine's Day Feb. 14th PHILCO famous for quality the world over



19 INCH DIAGONAL Model C3901WVA

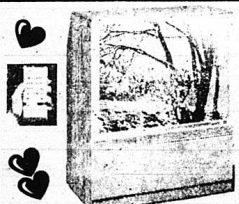
C3901WVA One-Link Click-Stop VHF/UHF Tuning System with 82-Channel Capability Efficiency 301 Solid-State Chassis Black Screen 52 Picture Tube • 16" W, 23" H, D-18 1/2" D-11 1/2" (approximate) Contemporary cabinet of Walnut grain finish on high-impact plastic.

ONLY \$2888



V1004WSL • 14 position electronic tuner • 14 day/2 event program • Search/Aspect effects • One touch record • 4 hour standby • 5-function wired remote control • Auto TV/CR switching • Tracking/Slow Tracking controls • 14" W, 17" D, D-11 1/2" (approximate)

ONLY \$2988



Why Rent? When You Can Own For Less!!

VIVID-SCREEN III 37" COLOR TV PB137WPE

• Built-in Stereo TV/Separate Audio Program Decoder for LED Broadcast Indicators • Expanded Audio • 18 Push-Button Infrared Remote Control • Digital Computer Tuning • 152 Channel Capability • Special Jacks to Add Accessories • High Performance VividScreen III Chassis with CCD Digital Color Filter • Advanced New VividScreen III Liquid Coated Picture Tube • Compact Cabinet • 100% Larger Viewing Area than 25" diagonal screen • 14" W, 17" D, D-20" Contemporary cabinet of Pecan solids and Pecan grain finish on hardboard. Concealed casters. Takes up less floor space than most 25" consoles.

VHS MOVIE VIDEO CAMERA / RECORDER

• VHS Movie Video Camera/Recorder • 11.2 lens • 6x zoom with macro • 10 lux • Auto focus • White balance • Wired remote • D-date generator • 4 digit counter with memory display on • EYE-LEVEL 2-hour battery pack (included) • 4 1/2" W, 6" D, D-13 1/2" (approximate)



LEON Ferris TV & Stereo SATellite Sales

"The Friendliest Store in Town And All Around!" 3 LOCATIONS TO SERVE YOU BETTER! 1234 S. Main Street London, Ky. Phone 864-2292 Hrs. 9-5 Mon.-Fri. Saturday 9-3

"Where You Always Get Service After The Sale!" 306 Sallee St. Somerset, Ky. Phone 679-3224 Hrs. 9-5 Mon.-Fri. Saturday 9-3

Main & Richmond St. Mt. Vernon, Ky. Phone 236-2282 Hrs. 9-5 Mon.-Fri. Saturday 9-3

PUBLICATION COPY CONSOLIDATED REPORT OF CONDITION (Including Domestic and Foreign Subsidiaries)

STATE BANK NO. 04210446 FEDERAL RESERVE DISTRICT NO. 403 CLOSE OF BUSINESS DATE 12/31/85

ASSETS	DOLLAR AMOUNTS IN THOUSANDS	DOLLAR AMOUNTS IN THOUSANDS		
		BI	MI	TRU
1. Cash and balances due from depository institutions			539	1 a
2. Government securities			117	1 b
3. Federal funds sold and securities purchased under agreements to resell in domestic offices of the bank and of its Edge and Agreement subsidiaries, and in IBFs			1,525	3
4. Loans and lease financing receivables				
5. Loans and leases, net of unearned income	16.18			4 a
6. LESS: Allowance for loan and lease losses				4 b
7. LESS: Allowance for transfer risk reserve				
8. Loans and leases, net of unearned income, allowance, and reserve (Items 4, 5, 6 and 7)		16,084		4 c
9. Assets held in trading accounts			331	5
10. Other real estate owned			None	6
11. Investments in unconsolidated subsidiaries and associated companies			None	7
12. Customers' liability to this bank on acceptances outstanding			None	8
13. Intangible assets			766	11
14. Other assets			75,537	12
15. Total assets (sum of items 1 through 14)			77,800	13 a
LIABILITIES				
16. Deposits				
a. In domestic offices				
(1) Noninterest-bearing			3,456	13 a (1)
(2) Interest-bearing			19,150	13 a (2)
b. In foreign offices, Edge and Agreement subsidiaries, and IBFs			None	13 b
(1) Noninterest-bearing			None	13 b (1)
(2) Interest-bearing			None	13 b (2)
17. Federal funds purchased and securities sold under agreement to repurchase in domestic offices of the bank and of its Edge and Agreement subsidiaries, and in IBFs			None	14
18. Demand notes issued to the U.S. Treasury			None	15
19. Other borrowed money			None	16
20. Mortgage indebtedness and obligations under capitalized leases			None	17
21. Bank's liability on acceptances executed and outstanding			None	18
22. Notes and debentures subordinated to deposits			None	19
23. Other liabilities			393	20
24. Total liabilities (sum of items 13 through 23)			23,199	21
25. Limited-life preferred stock			40	22
EQUITY CAPITAL				
26. Perpetual preferred stock (No. of shares outstanding 24,000 Common stock (No. of shares 4,000)	None		None	23
27. Surplus	1,130		150	24
28. Undivided profits and capital reserves	1,500		600	25
29. Cumulative foreign currency translation adjustments			1,608	26
30. Total equity capital (sum of items 23 through 27)			2,238	27
31. Total liabilities, limited-life preferred stock, and equity capital (sum of items 21, 22, and 28)			25,537	29
MEMORANDA				
1. A Standby letters of credit			None	1 a
2. Amount of Standby letters of credit in memo 1 conveyed to others through participations			None	1 b

NOTE: This report must be signed by an authorized officer and attested by not less than three directors other than the officer(s) signing the report. If the undersigned officer(s) do hereby declare that this Report of Condition has been prepared in conformity with official instructions and is true to the best of his knowledge and belief.

SIGNATURE OF OFFICER(S) AUTHORIZED TO SIGN REPORT: [Signature]

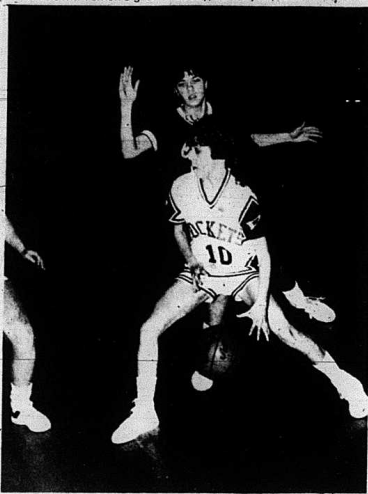
DATE SIGNED: January 23, 1986

SIGNATURE OF DIRECTOR: [Signature]

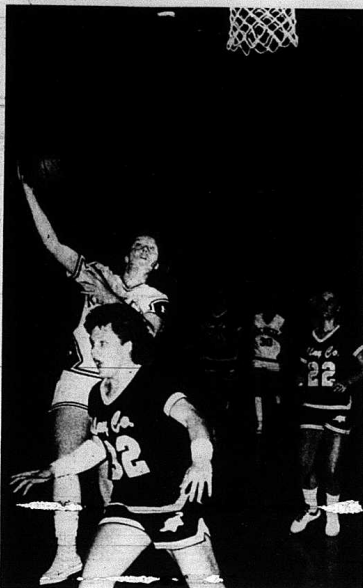
DATE SIGNED: [Signature]

STATE OF KENTUCKY, County of Boone, to-wit: 23rd day of January, 1986.

I, [Signature], Notary Public, do hereby certify that I am not an officer or director of this bank. My commission expires [Signature] 1987.



The girls gave their best last Thursday night when they hosted district rival Clay Co. The girls were within 6 points in the third quarter but the Tigerettes came back strong to win the contest by 18 points. In the above photo, junior guard Cindy Fain, drives for the basket and went on to lay the ball in with three Clay County girls around her.



Forward Lori Mink stole the ball and went in for this lay-up in the Clay Co. - Rockcastle game. Mink was high point scorer for the Rockets with 16.

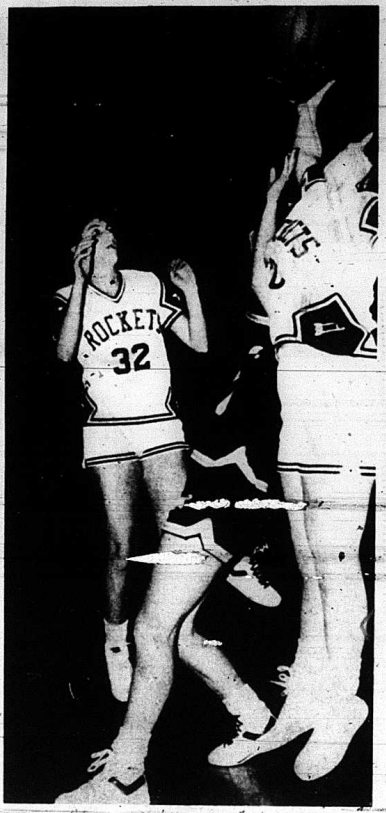
Kegler's Corner

The Wildcats hold an apparently insurmountable 13 game lead in the Rockcastle League at Maroon Lanes in Richmond with a 58 and 22 record. NAFA is second with 45 wins and 35 losses and the High Rollers are close behind at 44 and 36.

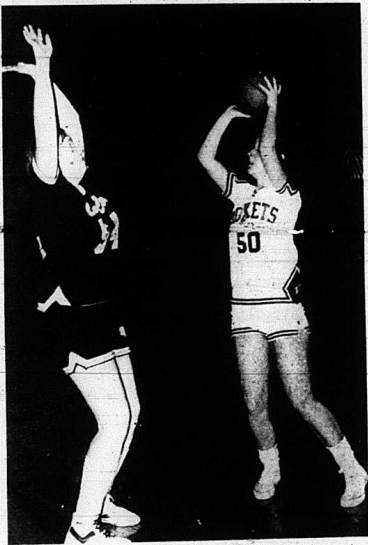
The Born Losers took High Team Series for the week with a 2420. The Wildcats rolled a 2419 for second place and the Low Rollers were in third with a 2404. The Jets took High Team Game with an 87% the Gutter Dusters had an 849, and the Wildcats an 847.

High Men's Series was taken by Rick Anderkin with a 566. James now had a 564 and Jack Now a 557. James Now took High Men's Game with a 221. Steve Martin was second with a 207, and Rick Anderkin took third High Game with a 201.

Evelyn Mullins took High Women's Series with a 577. Alice Salsberger was second with a 542, and Wavelene Mullins had third with a 493. Wavelene Mullins had High Women's Game with a 219. Evelyn Mullins was second with a 215, and Alice Faulkner was third with a 208.



Mink fights for a rebound with teammate Rhonda Cobb also in the fray. Besides Mink's 16 points, Sandy Hunter got 7, Tonya Parrett, 4 and Paige Anderkin, 2. The girls are scheduled to play Jackson Co. tonight (Thursday) at Jackson Co. and will host defending state champions Whitley Co. next Monday night.



Senior forward Caroline Machal goes for two of her five points in last Thursday night's contest.

Boys defeat Oneida

Senior guard Benny Blanton This Friday night, the boys pumped in 28 points in the will host Whitley Co., on Rockets win last Saturday over Saturday, they will travel to Oneida, 89-78. The boys played Jackson Co. for a return match Middleboro a good game with the Generals and on Friday night at home but Tuesday night will travel to wound up losing the game. Williamsburg.

REAL ESTATE FOR SALE

Commercial opportunities - businesses

Grocery store - 3 Bedroom Apt. Established business, inventory at wholesale. Apt. has kitchen, dining, bath, W/D hook up, storage, A/C, wood burning stove, gas furnace, 150 ft. frontage on US 25 south of Mt. Vernon. \$25,000.

Reduced! 10 acres near The Franklin Store - This property is ideal for small farm, sub. div., mobile home park, any type business. Conveniently located in city limits of Mt. Vernon. \$40,000.

Great Opportunity for Creative People - Flower business serving the ever-increasing demand for weddings, funerals, hospitals, parties, holding parties and all special occasions. Excellent location. Priced to sell. Serious inquiries please.

Fully Equipped Restaurant - 3 Bedroom Home - Great business location between new Mt. Vernon by pass and I 75 on approx. 1 acre. Owner financing to qualified buyer.

3 Bedroom Brick, 1 1/2 Baths, Garage, Front & Rear Driveways. This immaculate home has liv. rm., dining/kitchen w/cabinets, utility rm., nice carpet, paved drive, city water, shade trees, near high school, 1 yr. old. \$48,000.

3 Bdrm. Brick w/Family room: liv. rm., dining/kitchen with cabinets & dishwasher; bath, utility rm., deck, storage barn, electric heat, (also fuel), city water, garden area, near town. \$38,000.

Reduced! Lakeside Homesites - 1.60 acres overlooking Lake Linville. Offers convenient fishing, boating, also city water, beautiful setting, numerous possibilities. Approx. 3 mi. from town. \$8,900.

Reduced! 4-Bdrm. Home - Lake Linville Estates - Other amenities include a 2 1/2 car garage, 2 baths, workshop, dining kitchen w/cabinets, range and dishwasher, liv. rm., family rm., fireplace and insert, utility rm., deck, patio, porch, heat pump, central A/C, 4 ceiling fans, 11 closets, private boat dock, City water, approx. 1 1/2 acres beautifully landscaped w/500' lake frontage. \$73,900.00

2 Bedroom Home - Garden - Property has living rm., kitchen w/bracket & fridge, utility rm. with W/D hook up, city water, sewer, large garden, fruit trees, shrubs. Home of vinyl siding has 2 porches and utility bldg. on Tevis St. near hospital for \$26,500.

For Sale or Trade: 7 1/2 Acres - 2 Bedroom Brick Home with basement, living room w/fireplace, kitchen/dining, bath, 2 porches, nice carpet over hardwood floors, washer/dryer, storm doors/windows, well-insulated, new roof, barn, fruit trees, fuel oil heat, city water. Pine Hill, \$30,000.

Farm - 115 Acres - 2,424 lbs. Tobacco - 2 Baths - An old house, cellar, outbuildings, beautiful fields (in grass), lots of woodland. Solitude broken only by the sound of running water, which is abundantly supplied by 2 creeks and 3 springs. A real haven on a good, dead-end road, just a few minutes from Mt. Vernon. \$49,900.

10 Percent Down - Owner Financing - 14x70 Mobile Home - The home has two bedrooms, 2 1/2 baths, large living room, kitchen w/fridge, refrigerator, wood stove, dryer, huge closets, deck overlooking private boat dock. Approx. 1 acre lot bordered by Lake Linville. Privacy on Barnett Road. \$18,000.

2 Bedroom, Furnished Cottage - Has living room with stone fireplace and cathedral ceiling, kitchen, snack bar, bath, spiral

stairway, balcony, wrap a round deck w/concrete floor, wooden shutters, fenced yard, large lot, city water, total electric, near lake on Barnett Road. \$29,900.

Lots - Owner Financing Available - Frontage on Hwy. 461, city water, phone, electricity available.

House, Pool, Garage, Approx. 2 Acres, Owner Financing - There's also a nice kitchen/dining w/cabinets, range liv. rm., 2 bdrms (one 22' long), bath, utility rm. with w/d hook up, nice carpet & hardwood floors, electric heat, also a wood burner, blacktop rd., 7 mi. from Mt. Vernon. \$22,000.

For Sale or Trade - 5 Bedroom Home, Approx. 2 Acres - Included in this split level home of brick and aluminum siding are 3 baths, entrance foyer, formal living and dining rm., fully equipped kitchen, family rm. with fireplace/insert, custom made draperies, matching spreads, washer/dryer, heat pump, central AC, patios, balcony, walk-in, circle drive, garage, numerous other assets. Country Estate Estates. Asking \$79,900.

Mobile Home - 1984, 14x60, 2 Bedrooms, 1 1/2 Baths, Furnished with range, refrigerator, microwave and oven, cabinet w/stereo, T.V., VCR, solid oak dining table w/6 chairs, nice living rm., suite w/closets, new water bed, 2 other beds and washer and dryer. Total electric like new. Brindle Ridge, \$16,000.

Reduced - 3 Bedrooms - 2 Car Garage - Stone Exterior - Basement w/wood furnace, also total electric, 1 1/2 baths, living room, family rm., w/fridge, dining/kitchen w/cabinets, range, dishwasher. Numerous other assets including small tobacco base; approx. 3 acres located across from Hammond's Mt. on Hwy. 461. \$59,000.

4 Bedroom Home - 100 Acres w/living rm., dining/kitchen w/beautiful birch cabinets, w/d hook up, bath, lots of closets, nice level yard, 1 car detached garage, cellar; other bldgs., including a 38x70 stock tobacco barn, 1400 lbs. tobacco, 2 ponds, large orchard, good fences, blacktop road, privacy and convenience. Near Livingston for \$75,000.

12 Acres, more or less, Near Mt. Vernon, Home sites for various type homes, city water available, U.S. 25 and Chestnut Ridge Rd. South of Mt. Vernon. \$20,000.

Reduced! Sm. Dn. Payment - Owner Financing, 8 wooded acres approx. 4 mi. south of Mt. Vernon/Mullins Station Rd., city water available. \$50,000.

Furnished - 2 Bdrm. Home - Small Dn. Payment - Owner Financing - Has nice kitchen w/look cabinets, range, fridge, cherry drop leaf table, bath, utility r., with W/D hook up, fuel oil stove, nice carpet, A/C, porch storage bldg., 3 acres, Lamerco. \$24,900.

6 Room House w/basement, T.V. Satellite, 2 Rental House. The house has bath in kitchen w/fridge, refrigerator, bath, fuel oil furnace, washer and dryer. Current rental income is \$275/mo. Good home with monthly income. Approx. 1 acre on Hwy. 490 from Livingston. \$28,500.

EVELENE RAINES PROPERTIES

Main St. Mt. Vernon, Kentucky



Broker-Auctioneer 258-5811 Certified Appraiser 258-5811

Just Arrived!

ATARI TAPES

FOR THE ATARI 2600

\$12.88 EACH

YOUR CHOICE

- PAC-MAN • CENTIPEDE • BATTLE ZONE
- GALAXIAN • JUNGLE HUNT • MOON PATROL • WAR LORDS

MS. PAC-MAN At Only \$18.88

Also In Stock:

- JOY STICKS AND PADDLES for 2600
- CONTROLLERS for 5200

LEON Farris TV & Stereo SATELLITE SALES

Main & Richmond St. Mt. Vernon Ph. 256-2292

Open 9-5 Mon.-Fri. Sat. 9-3

Complete Liquidation

Evans

of

Evans Excavating and London Machine Shop

Real Estate - Restaurant - Construction Equipment - Trucks - Lathes - Machine Shop Tools

Friday, January 31, 1986

10:30 a.m.

London, Ky.



LOCATION: Via I-75 approximately 75 miles south of Lexington, Kentucky on East Highway 80 in the city limits of London, Kentucky. Due to wanting to devote more time to other business interests and wanting to slow down, Mr. and Mrs. Evans have authorized our firm to sell this desirable real estate and complete excavating business and machine shop.

TRACT NO. 1 measures 109 1/4 ft. along East Highway 80 and has 195.25 ft. on the west, 115.45 ft. on the east and 94.30 ft. across the rear with a 12' foot easement on the east having a total of 275 acres. It is improved with the above pictured 37 x 47' concrete block building with a 14' x 40' addition which is presently rented for a beauty shop. The main building has been used recently to house the machine shop but could be easily adapted to many other uses.

In addition to this building there is an apartment which has living room, 1 bedroom, kitchen and bath. It has electric heat, city water and sewer.

TRACT NO. 2 measures 0.659 acres and is directly behind tract no. 1. It is improved with the above pictured dandy 40 x 80 concrete block building. It has 3 bays, office area, and 2 rest rooms. This building has gas heat. While this building is excellent for use as a garage, it could also be easily adapted to several other uses.

TRACT NO. 3 since the printing of our brochures, Mr. and Mrs. Evans have decided to offer their restaurant and machine property in addition to tracts 1 & 2. This tract measures approximately 90' along East Highway 80 and has a depth of 205'. It is improved with the above pictured restaurant building known as the Silver Drive. The restaurant has a front dining area which seats 38 and a 2nd dining area that seats 60. The building has a combination of gas and electric heat. The main dining area has split wall carpeting and is paneled. In addition to the dining rooms, there is ample storage and 2 rest rooms.

AUCTIONEER'S NOTE: Each of the tracts will be offered separately then together selling in the manner most desirable to the seller. The real estate will be sold subject to the confirmation of the buyers. All other equipment, trucks and tools will be sold at absolute auction to the highest bidder. If you are interested in this property for some excellent commercial property with a lot of potential mark your calendar now to attend this auction.

HEAVY EQUIPMENT: 1976 Fiat Allis 108 dozer with tilt blade, 1976 Fiat Allis 168 dozer with tilt blade, 1978 Case 850 dozer with 6 way blade, 1978 Case 450 dozer with 2 way blade, 1970 Caterpillar 920 loader, rubber tired, 1 1/2 yard bucket, 1978 Case 580 backhoe, Yale forklifts, 2,000 lb. capacity, Wabco 12 yard cable pan, poor condition; No. 12 Caterpillar gear, working condition.

ROAD TRACTORS: 1970 International 4070A Cummins engine, 10 speed transmission; 1971 International 4070A 250 Cummins engine, 13 speed transmission, tandem axle, 1969 Mack 250 Cummins engine, 10 speed transmission, 1974 International cab over model 1770, 10 speed transmission; 1972 International model 2710, salvage.

TRAILERS: 1974 Foton All Luvoy 25 ton cap., tandem axle, 1967 Benihuman 20 ton cap., single axle Luvoy, 2 1/2 ton, Trailmobile 40 ft. flatbed trailer, 1969 Trailmobile 40 ft. flatbed trailer, 1975 Summit 24 ft. dump trailer, 1972 Dunham 19 yd. cap. dirt & sand dump trailer, 1969 Trailmobile dump trailer.

TANDEM: 1976 International 2010 18 ft. dump bed, V 8 gas single telecopic hose, 1969 Man 237 mm, 14 ft. dump, 10 speed transmission, single telecopic hand, 1969 Dodge Car 12 ft. dump bed, 318 Detroit engine, 13 speed transmission, 1972 International model 1910A V 8 gas 18 ft. dump bed, 10 speed transmission, single telecopic hose.

DUMP TRACTORS: 89 ft. beds, single axle, 1969 GMC V 8 10 speed transmission; 1968 International V 8 10 speed transmission; 1971 Ford 7700 V 8 10 speed transmission; 1969 International V 8 10 speed transmission, needs repair; 1972 Ford 7700 V 8 10 speed transmission; 1969 Chevrolet C 65 10 speed transmission, needs repair; 1968 Ford V 8 10 speed transmission; 1974 Chevrolet C 65 10 speed transmission, needs repair.

TRUCKS AND PASSENGER VEHICLES: 1982 Ford 444 1/2 ton, 302 V 8, p.s., p.b., am fm, A.C. auto, 1978 Ford F100 pickup, auto, p.s., p.b., 1976 Ford pickup, new engine, auto, p.s., p.b., 1976 Dodge Club cab V 8, 1 ton, p.s., p.b., auto, dm, 1971 Ford utility truck, auto, needs repair; 1971 Ford LTD V 8, p.s., p.b., a.c.

TRACTOR: 1981 John Deere 2940, 80 HP, diesel, P.S., 1100 hrs.

LATHES & MACHINE SHOP TOOLS: 1978 Tarrow Gap belt engine lathe, 20" with gap bed, 4 jaw independent chuck, 30" without gap, tool post, metric threading 120" cam lock spindle, 220 V, 15x40 LeBlond engine lathe, 15" swing, taper lock, 3 jaw chuck, steady rest, tool post, taper attachment, lathe gear drive, 1963 14"x60 Southbend belt drive engine lathe, 3 jaw chuck tool post, steady rest and follower; Bigfoot vertical mill, power feed; Powermatic, model 1200 drill press, 20x22 table variable speed; 2000 Lincoln Arc welder, force model R35 400; 2 phase; Hobart Welder, model no. DCC35P, mig attachment; Pottery diesel engine; Hobart welder, McGa Car 400; R.C. 300 Hobart welder with mig attachment; Rust Drill; American tool works, approximately 6 ft. am. Dake model 50 ton hydraulic press; Johnson Band cut off saw, Marel (R) Red No. 2A 6x18 surface grinder; Hydraulic press with power unit capacity unknown; Baldor 1/2 HP tool grinder; buffer, 2 phase; Delta Rockwell metal on wood cutting band saw 20"; Welding table with vice; 2 steel racks, 600 lbs.; Columbus Jable live use; 1 Bigridport mill vice, 6"; Drill press vice 8 1/2"; Stanley dial press vice; Electro Magic gear lighter stem press; pressure washer, Dewalt stem press; all kinds of hand tools; used heavy machinery and truck gear parts of all descriptions; assorted welding rods, assorted key way brackets and guides; miscellaneous drill press chucks; assorted lathe tooling, various drill bits, all kinds of clamps, miscellaneous nutmers, all kinds of milling cutters; 3,000 gallon liquid tank; plus much more.

OFFICE EQUIPMENT: metal office desk, calculators, odd office chairs, manual typewriter, filing cabinets.

AUCTION INFORMATION

ORDER OF SALE: 10:30 a.m. heavy equipment and all trucks; 11:30 a.m. machine shop equipment; 12:30 p.m. real estate; 1:00 p.m. conclusion of all items.

The times of the order of sale are approximate.

TERMS: 20% down day of sale, balance in 30 days with delivery of deed on real estate and cash, cashiers check or personal check with guaranteed bank of credit on all purchases day of sale. All sales are subject to state sales tax law.

LUNCH WILL BE AVAILABLE ON THE GROUNDS

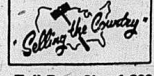
WARRANTY: The descriptions in this advertisement have been honestly and conscientiously set forth by the owner and auctioneer. All descriptions are believed to be true and accurate, however, every item will sell "AS IS, WHERE IS" and "No Guarantee or Warranty is intended or implied by the owner or auctioneer."

For additional information contact John or Johnny Evans at

606/864-6271 or 606/878-9674 or:

Ford Realty & Auction, Co.

REALTOR-AUCTIONEER
Sam Ford
Roy Adams
Danny Ford



AUCTIONEERS
Jerry Ham
Willard Bullock

Kentucky Toll Free No. 1-800-435-5454

Mt. Vernon, Ky. Phone 256-4545

Bob Watkins

Zif-boom-bah (and hump!) has gone out of UK-Tennessee series

Orange and white, but not much dynamite.

Kentucky had its 74 1/2 victory over Tennessee wrapped up last Saturday in Rupp Arena when a fan in the front row erupted. "Hey, where's the unicorns?"

The "Zif-Boom-Iah (and hump!)" seems to have gone out of the Kentucky-Tennessee series.

Once again, it seems that Tennessee coach (and Adolph Rupp chief tormentor) Ray Mears

Oranges rained out of the UK student section as the kid rode by, at the same time juggling three orange and white baseballs. Of all the guile! But looking back, it was wonderfully entertaining.

These days everyone cleans up his (and her) act because the game's on TV.

Some of us remember the Ernie and Bernie Show too. In the mid-1970s, Ernie Grunfeld and Bernard King beat the stuffing out of UK (five out of six) and rubbed it in.

UK fans loved to hate 'em. But when UK's 16th victory of this season was in the bank last Saturday, Eddie Sutton and Dave Dawson faced reporters as if they were fraternity brothers, passing along compliments about each other's teams. No verbal jabs or sassy irreverence. No charges of foul play, defense, stab ball or any of the other delightful Kentucky tricks that have colored the UK UT series. No spice.

Was this Kentucky and Tennessee what?

Wasn't somebody out there trying to get even with somebody? Naw, just another TV date.

About the only sidelight excitement in this Kentucky-Tennessee game was a "nose-buster" placard that rose up out of the UK student section with a sizzle that subtle yelled at UT quarterback Tom Robinson's arrest for an alleged cocaine sale three weeks ago. The security people had that one down in a hurry.

Time to change.

But some of us remember when Mears got people fired up, talked about what crooks the officials were when they worked a game in Lexington.

When the Vols won, Mears would verbally tuck Uncle Adolph's head and chide UK fans unmercifully. He was thinking ahead, remembering there were tickets to be sold for the next game at Stokes Center.

Good clean fun, right?

Saturday's Kentucky victory was expected. The Wildcats got in front early, never let the Vols get in the hunt-and, well, somebody wanted to know about the announcer.

But something was missing from this game in Rupp Arena for the UK fan who remembers Tom Boerwinkle, Bill Justus, Jimmy England, Howard Bayne, Robert Woods.

UK's blow-out victory over Alabama-Jop 11 had more gusto than this date with Tennessee. In part, the reason why have to do with Dave being a gentleman, Sutton likewise. And, the antagonists (loves). Woods all have gone. Grunfeld used to wave at UK students. King wowed some elite.

Last Saturday UK beat the Vols at the foul line, making 28 of 37 while Tennessee was 9 of 13, but had a 24-23 advantage on the field goal.

But not a voice was raised in protest. In the old days Mears would have bawled all the way to the bus, his assistant Stu Aberdon would have been there writing, having already been ejected from the game. The Vols would have been booted off the floor with maybe an orange or two flung from section 301.

Mears would have bristled about intimidation. And Uncle Adolph would have wondered what the fuss was about and twanged something folksy about "good man-t-man defense, Kay-wed."

Then he would have told a funny story insinuating that Mears was a 2-legged horse's patsot.

Kentucky fans everywhere would have gone off to a riotous party chanting about "sticking it to the Big Orange" one more time.

Times change.

Sutton says that in the 10 months he's been in Kentucky he has come to understand what the Kentucky-Tennessee series means here. Maybe.

Can't help wondering though; whatever happened to that wretched

UK SHOPS JUCO MARKET?			
Kentucky coach Eddie Sutton has the assistants checking over the junior college talent these days. What follows is a list of some of the so-called "blue chip" JUCO prospects			
Name	Home	HS	JUCO
Sean Alvarado	Hutchinson, Kan.	C-10	Hutchinson Jr. Col.
Charlie Blodgett	Waycross, Ga.	F-67	Moberly, Mo.
David Cones	Wayco, Tex.	C-11	Waco
Tommy Boyd	Fulton, Miss.	F-48	Itawamba, Miss.
Kevin Gray	Winnemuccia, Nev.	F-54	Winnemuccia, Nev.
James Davis	Alexand, Tex.	C-69	Henderson Co.
Dean Gottlieb	San Francisco	C-69	City College
Ben Glesley	Hutchinson, Kan.	C-69	Independence
Henry Gorton	Independence, Kan.	C-69	Independence
David Harrison	Hutchinson, Kan.	F-64	Hutchinson, Kan.
Lyrene Jones	Great Bend, Kan.	F-67	Great Bend
Anthony Hurd	St. Louis, Mo.	C-67	St. Louis
Carl Longford	Memphis, Tenn.	F-68	Shelby State
Kevin Nelson	Shelby, Tenn.	F-68	Shelby State
Wallyanna	Shelby, Tenn.	F-68	Shelby State
Gregory Ford	Seminole, Ok.	F-67	Seminole Ok.
Tim Richardson	Coleville, Kan.	F-69	Coleville
Kenzie Scott	Irreton, N.J.	F-69	Mercer Co. N.J.
Bobby Worthington	Dodge City, Kan.	F-67	Dodge City

Bad week for Hamilton

A couple of curious sidelights grew out of last week's Mike Scott is hoisted to UK's story.

When Eddie Sutton said on Tuesday that he had been contacted by the mother of the 6-10 freshman star at Greer County High School it had to be one more embarrassment for assistant coach Leonard Hamilton.

Sutton told Scott's mother that not only would UK be interested in her son, but had been the UK coach last year, Hamilton would have worked harder to sign him.

It was no secret that Scott wanted to attend UK.

Scott's mother reminded me of a conversation I had with Hamilton last July. UK's chief recruiter was angry because former UK assistant Jim Hatfield had told a Lexington reporter the week before that he (Hatfield) had wanted to offer Scott a scholarship, but that Hamilton vetoed the idea, convincing coach Joe B. Hall that Scott could not play in the SEC.

At the time Hamilton was where? "I was the only one on the coaching staff who wanted to sign the kid. The only one."

According to Hamilton, Hatfield and, before he left UK for Birmingham, Southern, Joe Dean.

Hatfield said that Scott was not a prospect for Kentucky.

Intriguing and a bit hard to swallow that Hamilton, titled "associate coach" and in charge of recruiting, would be overruled on a recruiting decision.

Scott signed with Wake Forest after transferring and will apparently "become a Wildcat" after signing out a year.

Next, the statement Sutton made about Hamilton to Larry Dowd, publisher of "Basketball Times" in a cover story, Jan. 30 issue.

One of my toughest jobs is convincing Leonard that we don't have to have every McDonald's All American player to be successful."

Sutton said, "Leonard thinks he's summing it up. He talks to a whole lot of other top 500."

The UK coach added, "I want to put a great deal of emphasis on Kentucky kids. There are some

good players in this state and they've allowed them to escape. In fact, they really don't try to recruit them. We will."

UK fans must hope so considering what has happened in recent years. To his credit, Hamilton has helped bring some first rate players to Kentucky, but too many good in-state players have been ignored.

Can Scott help UK? Yes.

He started in games for Wake Forest this season, averaging almost nine points, and six rebounds per game. Scott lacked stamina in high school, but didn't mind rough play inside, exhibited

12-foot-in shooting range, and did not try to do the things he could do.

JUCO prospects

Sutton's staff has been taking a hard look at talent available in the junior college ranks this year for some possible "immediate help" next season. For a glimpse of who some of the prospects are, where they are and how big, see

in fact, when UK had records of 23.3 and 20.6 in 1955 and 1956, the leading was junior college transfer Bob Burrow.

Brett

Vanderbilt coach C. M. Newton is complaining last week that his team has not been getting the basketball into the hands of 6-10 center Bret Burrow. Although Burrow is Vandy's leading scorer this season (11.4), the North

Hawks' freshman graduate has scored only 39 points in those five games.

Burrow has 596 career points at Vanderbilt and, unless injuries stop him, the senior center will become the 20th player in Vandy history to score 1,000 or more points.

Family ties. While 44 more points will make Brett Burrow a member of Vandy's 1,000 Point Club, the magic (family) number is 68 points. That's how many he needs (after 17 games) to eclipse his father's total at the University of Kentucky (1955-56). 1,023.

At his current pace young (Cont. to 20)

BENT TREE ENERGY CO., INC.
Kentucky's Largest Stove Dealer
6.5 Miles South of Richmond, 3 Miles North of Berea.
LOOK FOR OUR LOG CABIN ON THE HILL

STOVE SALE

Now In Progress

SAVE 10 - 50% OFF

986-2206 US 25 NORTH, BEREA
986-1148

We Carry
Howkeys
Spots

Mon.-Fri. 9-6 Sat. 9-4

There will be a

Benefit Singing

Friday Night Jan. 31st

For Janice & Roger Vanzant

Featuring the Singing Renners

At The Maple Grove Baptist Church

EVERYONE IS INVITED

There will also be a

household shower

At The Community Room at the

Bank of Mt. Vernon

Sat., Feb. 1st at 2 p.m.

Your Love & Support Will Be Appreciated

**Congress
okays burley quota**

See Page 3

**Jurors called for
Circuit Court**

See Page 3

**For Your Information--
Wind Chill Index**

See Page 3

Mount Vernon Signal

"Rockcastle County's Newspaper"

35¢

Mount Vernon, Kentucky 40456

VOLUME 99-NUMBER 26

Thursday January 30, 1986

Flu continues unabated in Rockcastle area

Rockcastle Countians are still suffering from the influenza and it is affecting all age groups, according to a nurse in one local doctor's office. However,

last week's patients with the illness was in the high school age group.

Diane Napier, R.N., of the local health department, said Tuesday that Dr. Reginald Finger, communicable-disease branch manager for the Kentucky Cabinet for Human Resources, had expressed an interest in coming to the county and doing some studies if the absenteeism in the school system reached as high as 20%. The local department was supposed to have contacted Dr. Finger Monday with the absenteeism figures but, since school was out because of the weather, the project is on hold for right now. Ms. Napier said that she felt that if school hadn't been cancelled because of the weather, school officials would have closed for a few days anyway. This would have served two purposes, possibly halting the spread of the disease and avoiding the heavy money losses because of the much lower-than-average daily attendance.

Doris Towery, R.N. and school nurse for the county system, said that the disease now appears to be moving into Roundstone School, in addition to Brodhead and the high school, where the toll has been heavy for some time. There were 70 absent from Roundstone Elementary Friday, Ms. Towery said. Mt. Vernon and Livingston have been relatively free of the sickness to date.

Ms. Napier said that Dr. Finger did clear up one question on an illness which affected this community a couple of months ago. The local health department drew blood samples from several of those affected and sent them to (Cont. to 3)

Services held for Mrs. Azbill, 103

Malissa Hunt Azbill, 103, believed to be Rockcastle County's oldest resident, died Jan. 21, 1986 at the Rockcastle County Hospital after a long illness.

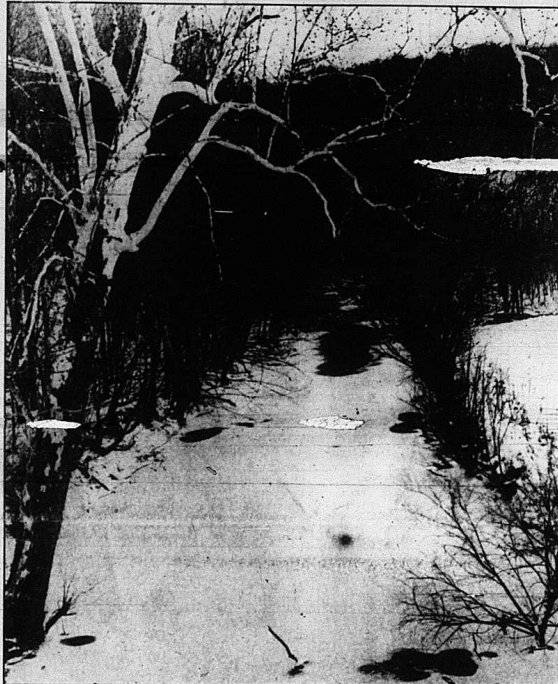
Mrs. Azbill, of the Morrill area of the county, was born in Central Kentucky Sept. 2, 1882, the daughter of Joe and Cassie Hunt.

She was a homemaker who spent most of her life in the Clover Bottom area of Jackson County, but she lived in Ohio and Illinois as a young woman.

(Cont. to 3)



Someone ran a car or truck into a billboard located at the railroad crossing on Richmond Street in Mt. Vernon early last Thursday. There has been no report on who did the damage. The sign has now been removed, probably permanently.



The area became a winter wonderland this week as snow and zero temperatures arrived. The scene above was taken from the U.S. 25 bridge over Renfro Creek.

Winter puts area in deep freeze

By: Ray McClure

The coldest weather of the season dropped in on Rockcastle County this week with thermometers early Tuesday plunging to five below zero.

Combined with a wind speed of five miles an hour, the wind chill factor was 10 below. Monday night's low was "only" zero, but with a wind speed of 15 miles an hour, the wind chill was 31 below.

The cold temperatures were accompanied by snow, but not much. Only about an inch was on the ground. The remainder melted and froze, making highways slippery, especially rural roads.

Schools in Rockcastle, and most of central and eastern Kentucky, were not in session Monday and Tuesday because of the slippery roads and cold temperatures.

There is some hope, if the National Weather Service is right. The weather is expected to **In the nick of time**

Ford's quick maneuver saves choking state clerk

State Rep. Danny Ford, this week his successful effort to revive a legislative employee who was choking was something any one would do who could.

Rep. Ford, R-Mt. Vernon, saved a legislative employee from strangulation, using the Heimlich Maneuver to dislodge a tablet from the woman's throat. Minority Floor Leader Richard Turner said, "She was gone, no doubt about it," before Ford's heroics in Turner's Capitol office. Turner reported.

"I was on the phone with a reporter discussing the budget," Ford said, when someone yelled "help her quick...this lady is choking!"

"I immediately put the phone down," Ford said, "and then it took two or three tries to get it unlogged."

Ford said he saw the legislative employee, Millie Dickinson of Somerset, on Friday and "she's doing fine."

The woman was limp and ashen on Thursday when Ford grabbed her from behind and gave a jolting squeeze to dislodge the tablet, said Turner. R-Tompkinsville.

Ford was honored Friday on the House floor with a round of applause and a special citation introduced by Turner.

"I thought that was a nice gesture," Ford said, "but the main thing was the lady was all

moderate gradually. It could be in the low 50s by Saturday, approximately. (Cont. to 3)

City gets more money for sewer plant work

By: Ray McClure

The possibility of losing a grant to upgrade and expand the sewer system apparently increased this week when the Environmental Protection Agency in Washington announced it would award an additional \$541,990 to help with the project.

Mayor Roland Mullins called the additional money "that will make the total grant for the project \$1,237,500," "good news."

The city's share of the \$1.6 million project is \$412,500. The city has \$220,000 local money available, but will need about \$484,000.

"There will be some pain associated with the good news in that a sewer rate increase will be necessary to reach the \$484,000," the mayor said. "We are to claw the \$1,237,500 grant," the mayor said.

He related that a citizens committee is reviewing the various ways to raise the money, and recommendations are being solicited from the entire community.

The committee held its first meeting with the council Jan. 6, heard various suggestions, discussed alternatives, then "most agreed a rate increase would be necessary. Whether it will be a set amount per household/business, or an amount-used scale remains

to be worked out. The mayor is the starting date for construction at the plant is Mar. 15 with a completion date of May 15.

Construction in Dayton, Ohio is the contractor.

The sewer project has been on the drawing board since 1976. The project calls for, among several items, an increase in sewage processing from 200,000 gallons a day to 600,000 gallons.

"It will allow us to develop the plant to serve the projected needs of the city for the next 20 years," Mayor Mullins said. "Without the funds, it would have been impossible to complete the project."

The plant project is not the only sewer work being done in the city. This "started installing sewer line extensions in a section of Owens Subdivision, and later on, on Fairground Hill and Cox Lane. The Karish contract is for \$497,000.

The council has been plagued over the years since the project was initiated by rising costs, but Mt. Vernon is not alone in its sewer overruns. So has Lexington, Monticello and Berea, among others, where the Berea project has escalated by \$2 million.

Rockcastle gets money from federal forest land

Rockcastle County will receive \$8,035 as its share of federal money returned to counties in Kentucky which have land in the Daniel Boone National Forest.

Rockcastle County has 12,688 acres in the forest.

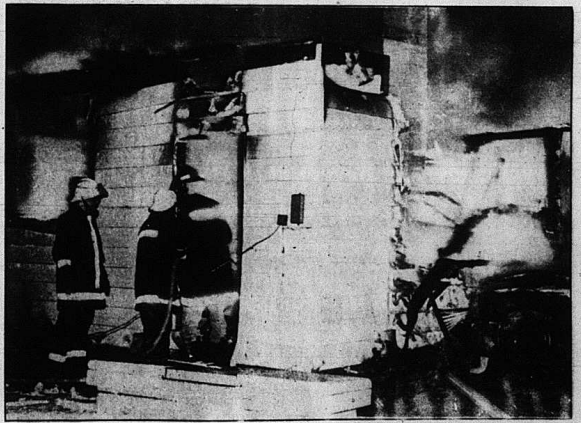
The amounts returned range from a high of \$98,690 in McCreary County to a low of \$46.87 in Knox County. In all, 21 counties benefit from the allocation of \$430,302.97.

The amount is an increase of \$109,299.96 over the payment for fiscal year 1984 which totaled \$321,003.01. These funds represent 25 percent of the total receipts collected by the Forest Service.

By law, 25 percent of total National Forest receipts are returned annually to these counties. These funds are paid in lieu of property taxes and must be used for public schools and roads.

National Forest receipts are derived from timber sales, recreation fees, mineral rights and production, grazing fees and land use charges on the 679,449 acres of the Daniel Boone National Forest.

The amount each county receives is determined by the number of National Forest acres within the county and the total (Cont. to 3)



It was too late to save the home of Danny and Kay Carmack in McGuire Subdivision in Mt. Vernon when firemen arrived at the burning house about 2:30 a.m. Wednesday. A car also burned. The house was engulfed in flames when firemen arrived. No one was home at the time. Firemen managed to save a nearby residence. A fire destroyed several bales of hay on a farm at Conway belonging to Tom Coffey Saturday morning. Mt. Vernon Volunteer Fire Department answered both calls.

Mt. Vernon Signal

Published Every Thursday

Main Street in Mt. Vernon, Kentucky 40456
Entered at Mt. Vernon Post Office
As Second Class Matter - Permit No. 1

James Anderkin, Jr., Publisher
Perlina Anderkin, Editor
Member Kentucky Press Association

County Statistics

DEEDS RECORDED

Viola Parker, real property located in Rockcastle County, to Aletha Bryant and Billy Wayne Bryant. No Tax.
James Gibbons and Pauline Gibbons, real property located on the waters of Crooked Creek, to Cecil Northern and Becky Northern. Tax \$18.00.
Harvey McFerron and Nona McFerron, real property located on Old Brothead Road, to Harvey McFerron and Nona McFerron. No Tax.

Durham, real property located west of Livingston, to Wayne Durham and Helen Durham. No Tax.

Cuma Abney, real property located in Rockcastle County, to William W. Powell and Christal H. Powell. Tax \$52.00.
Kermit Bowling and Lisa Bowling, Dearl Brock and Macie Brock, Debra Brock Maggard and Sherman Curtis Maggard, Judy Gail Bowling, Linda Brock Woods and Ricky Woods, Robin Bowling Sparks and Linnville Sparks, Barbara Brock Shirden and Phillip M. Shirden, real property located on the waters of River Fork, to V. Brock.

Arnie (Whittaker) Burce and Barbara Zapp, real property located in Rockcastle County, to Ed Burke and Arnie Burke. No Tax.
Theard Douglas Proctor and Linda J. Proctor, warranty deed, for real property located in

Rockcastle County, to United States of America, acting through the Farmers Home Administration. No Tax.
Everett Jennings, real property located on the waters of Brush Creek, to Fred Mullins and Nancy Mullins. No Tax.

Benton Bullock and Thresa Bullock, option to purchase real estate, and Jess F. Bullock and Jerry Ikard.
Roscoe E. Gustafson and Evelyn V. Gustafson, real property located in Rockcastle County, to Benton Bullock and Thresa Bullock.

Ernie Smith and Fannie Smith, quit claim deed for real property located in Rockcastle County, to Cumberland Production Credit Association. No Tax.
Walter Renner, real property

Kenneth W. Bullock and Beverly Bullock. No Tax.

MARRIAGE LICENSES

Chris Laney Mackey, 28, Chattanooga, Tenn., wedding supervisor, to Lisa Michelle Falin, 20, Mt. Vernon, housewife. Jan. 25, 1986.
Andy Martin, 83, Mt. Vernon, retired, to Stella Mink, 62, Mt. Vernon, housewife. Jan. 25, 1986.

CIRCUIT CIVIL SUITS

Devey Lake vs. Reacie Lake, petition for dissolution, No. 86-CI-012.
Commonwealth of Kentucky, Ex Rel. Lanna R. Adams vs. Thomas J. Conner, complaint, No. 86-CI-013.

Shelby E. McClure vs. Carlouse D. McClure, petition for dissolution of marriage, No. 86-CI-014.
David Singleton vs. Lucy

Mae Sparks and Roy Sparks, John Henry Ballard, Hettie Jane Ballard, Jewell Dean Parsons and Ronnie Parsons, Regina Ballard, and Larry Pingleton, complaint, No. 86-CI-015.

Nancy J. Noe and David Noe, joint petition for dissolution of marriage, No. 86-CI-016.
Cumberland Production Credit Association vs. Isabelle Maddison, Commonwealth of Kentucky, United States of America, complaint, No. 86-CI-017.

DISTRICT CIVIL SUITS

The Bank of Mt. Vernon vs. Dalewood Brewer, Elizabeth Brewer and Jackie Brewer, money claimed due, No. 86-C-004.

Financial Recovery Service, Inc. vs. Charles Hasty and Terri Hasty, money claimed due, No. 86-C-005.

The Bank of Mt. Vernon vs. Frances Todd and Thomas Todd, money claimed due, No. 86-C-006.

Peoples Bank of Paint Lick, Ky. vs. Linda Carl, money claimed due, No. 86-C-007.

SMALL CLAIMS

Concrete Materials Corp. vs. Ormer Chestnut, money claimed due, No. 86-S-003.

DISTRICT COURT

No operators license - Benny D. Hodge, warrant issued, license suspended.
No Ky. motor fuel users license - Edward Lee Miller, David M. Keller, \$20 and cost; Todd P. Scott (also "no operators license"), warrant issued, license suspended; James Stewart Dow (also "no interstate exempted commodity authority"), warrant issued; Kevin A. Bartlett (also "no interstate authorized authority"), warrant issued, license suspended; Charles Warren Brown, warrant issued, license suspended; Douglas W. Weaver (also "improper use of farm plates"), warrant issued, license suspended.

Failure to display a Ky. vehicle ID card - Dennis Lee Radford (also "violation of international registration"), \$10 and cost; Maurice Movawad, warrant issued, license suspended; Roy Wil-

(Cont. to 4)

New year brings new challenges

Congressman Hal Rogers

Now that Congress has resumed its work for 1986, we are looking at a full year of challenges, with much work left to do on some key issues affecting every Kentuckian.

Perhaps the biggest issue of all is how Congress and the President will grapple with the new Gramm-Rudman balanced-budget law, which we passed late last year. This law requires that we balance our budget over a five-year period, either by working a budget on our own or through automatic cuts which take effect if an agreement cannot be reached.

This new law will put even more pressure on Washington to once and for all solve the problem of our federal budget deficits. Had we not acted, this cycle of higher and higher deficits would have eventually ruined our nation's economy permanently. This new law is strong medicine, but it was our only hope of dealing with this crisis.

My main goal is to make sure that any budget cuts are dealt out as fairly as possible. If we can make the pain be felt equitably, but we will have acted responsibly. I will have more to say about this

Reagan unveils his recommended budget cuts under the new law on Feb. 1.

But other issues will occupy our time this year. We need to get the long-term solution to our tobacco program approved. You may remember that the tobacco plan was bottled up at the end of the 1985 session because of a controversy over other parts of the bill it was attached to. But I am confident that we can revive this legislation and get it passed, or that we can take the tobacco plan and attach it to another bill which will pass. We need to sell off our tobacco surplus, get our cost fees down and keep tobacco imports out. This plan will go a long way in that direction, and I will continue to work for its passage - one way or the other.

The new session ahead will also be dealing with such issues as illegal immigrants, trade policy, banking laws, funding for toxic waste cleanup, defense, and aid for freedom fighters in Nicaragua, Africa and Afghanistan.

Each of these issues will have to be looked at with our new budget restrictions in mind. But each problem is one we must resolve, and each will require much work. My chief priority, as always, is to continue the work we have begun in the Fifth District. We still need water districts, better roads and improved health care. We need more jobs for our people. These issues will not go away, despite our budget crunch. I intend to do all I can to keep us moving in the right direction.

1986 promises to be a year of great challenges for our government. The decisions we will make will have an enormous impact on

each and every one of us. But I believe we can make the tough decisions fairly, and that America will prosper and grow in the years ahead because of those decisions.

Jeffrey Lyons
appointed Sergeant

Jeffrey K. Lyons, son of Norma J. Lyons of Rt. 5, Mt. Vernon, has been appointed a sergeant in the U. S. Air Force.

The new, non-commissioned officer completed training in management, leadership, human relations and NCO responsibilities, before being awarded this status.

Lyons is a Morse systems operator at Wheeler Air Force Base.

(Cont. to 4)

Special Meeting

Are you concerned about the Library Science program at Mt. Vernon High School? If

please attend a meeting to be held Fri., Jan. 31st at 6:30 p.m. in the Community Room of the Bank of Mt. Vernon. If you have any questions call 256-2653 or 256-2617.

Concerned Parents Committee

Cancelled in case of inclement weather

SHEPHERD'S Home furnishings

CENTRAL KENTUCKY'S VALUE LEADER

Financing To Suit Every Need

90 DAYS SAME AS CASH
6 MONTHS SAME AS CASH

12 MONTHS TO PAY
NO INTEREST
OR
NO PAYMENT TILL APRIL

Dozens and Dozens of In Store Specials
Our Everyday Low Prices
On Entire Inventory

Now Thru Sat. Feb. 8, 1986

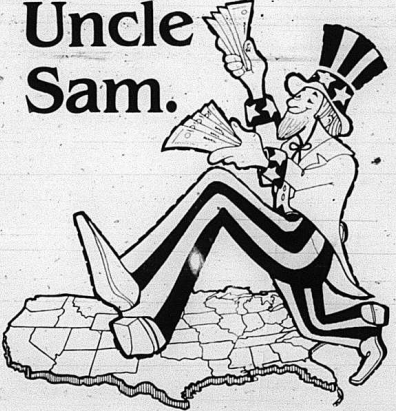
In Store Financing Arrangements

FREE DELIVERY
On U.S. 25
Midway Between
Richmond and Berea

SHEPHERD'S Home furnishings
624-0852

FREE SET-UP
Monday thru Saturday
9:30 to 6
Friday Night till 9PM
624-0852

Easy does it with Uncle Sam.



No need to wait for the mail. No more worries that your Social Security check has been lost or stolen. And no more special trips to the bank.

With our Direct Deposit service, you can sit back and relax. Your check will be deposited directly to your savings or checking account. And that deposit is guaranteed by the 3rd of every

month. To sign up for Direct Deposit, just come in and fill out a simple form. We'll take care of everything. And while you're here, we'll tell you how you can arrange for Direct Deposit of other recurring pension, Armed Forces or government retirement checks.

Step in and step ahead with Direct Deposit.

Member FDIC



The Bank of Mt. Vernon

110 called for jury duty for February Circuit Court

One hundred and ten prospective jurors have been called for Rockcastle Circuit Court which is scheduled to convene on Wednesday, Feb. 5, with Circuit Judge Dan Venters presiding.

Called for jury duty are: Gladys Bussell, Leander Paul Napier, Eldon Baldwin, Albert Franklin Banks, Edgar Overhauser, Jr., Donnie Lee Cromer, James Willard Whitaker, Ruby Webb Savers, Freda Powell Clark, Herbert Chastain, Dayton Childress, Bill Moore, Billy Whitaker, Arlene Anderton, Billy Lee Cameron, Jr., Roger Smith, Dean Carpenter, Bobby Joe Swimney, Marjorie Bill Jones, Nancy Denny, Genie Ray Burdine, Freda Abbey, Donald Junior Clark, Arthur J. McKinney, Wallace Everett Proc-

"WEATHER" (Cont. From Front)

panied by rain. The weather has been on a "roller coaster" this month. The previous low was four degrees on Jan. 8. But on Jan. 21 it was a balmy 63 degrees. From Dec. 1, 1985 to Jan. 18, 1986, less than two inches of precipitation was recorded, presenting problems for tobacco growers whose tobacco was too dry.

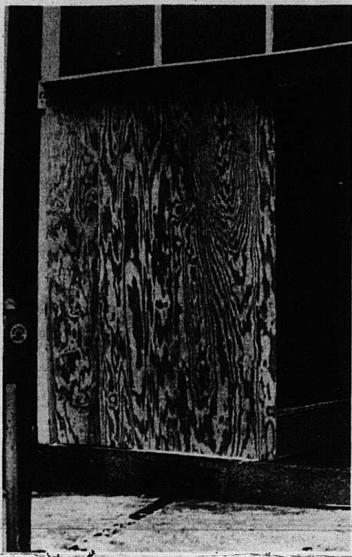
If you thought it was cold this winter, it has been nothing compared to last January and February.

A year ago in January, the low for the month was 18 degrees below zero on Jan. 19 and 20, according to records kept by Bud Cox at Cox Funeral Home. During the month seven inches of snow fell.

It was February last year when the "sky fell in." A total of 2 1/2 inches of snow fell during the month, plus 2 1/2 inches of rain and/or melted snow. The big snowfall was on Jan. 12 when about nine inches fell. Over a foot fell in other areas of central and eastern Kentucky.

That snowfall made roads impassable with eight-foot drifts on some country roads. Two of the worst were Chestnut Grove Road and Brindle Ridge Road. Even a road grader got stuck in a snow drift on Chestnut Grove Road.

The state helped during the emergency with an additional \$3,500 allocated to 59 counties to help with snow removal, including Rockcastle. That snowfall was described by highway officials as the worst of the decade.



Once again, a large display window in the Department Store in Mt. Vernon. Reportedly, the window was broken during a fight, but no report of an arrest was available. Another window was broken last summer when someone shot into the store. A storm door was also broken during the fight at Donald Rowe's barber shop.

Congress okays burley quota, referendum delay

Fifth District Congressman Harold Rogers said both the U.S. House and Senate have approved legislation to delay, by one month, the announcement of the 1986 burley quotas and the growers referendum.

Rogers said both houses approved the bill, which had been requested by the burley growers' cooperative and the Kentucky Farm Bureau. Without this change, the burley quota would have been announced Feb. 3, with the growers' referendum to be held later that month. "With the long term tobacco buoyant plan still in limbo here in Congress, we needed to get our growers some breathing space before they vote on the referendum," said Rogers. "This bill, when signed by the President, pushes back the quota announce-

ment by 30 days, with the referendum taking place in late March. Hopefully by then, we will have taken action on the longterm solution to the problems our tobacco program is facing."

The bill is currently attached to a budget bill, which is tied up in a House Senate conference. Rogers said the plan is vital to the future of tobacco in Kentucky. "By delaying the quota announcement and referendum, we will give Congress more time to act on the budget bill, which has the tobacco plan in it," Rogers said. "We want our growers to know what the future of the program will be. And by giving them the delay they have requested, we will be giving them that information."

JANUARY 28, 1986

NEWS RELEASE For Immediate Release

For further information, contact: Leon Farris, Leon Farris TV Stereo and Satellite Sales 864-2292, London 256-2292, Mt. Vernon 679-5224, Somerset

HOME SATELLITE TV IS ALIVE AND WELL, SAYS A LOCAL DEALER

Despite a flurry of negative publicity by cable TV interests, home satellite television continues to boom, according to Leon Farris, owner of Leon Farris TV, Stereo and Satellite Sales.

"There's absolutely no truth to the allegations that home satellite TV is 'piracy,' or that scrambling will put an end to the variety of programs dishowners can receive," asserts Leon.

In fact, home satellite TV reception is perfectly legal. In October 1984, President Reagan signed the Satellite Television Viewing Rights Act, which stated that anyone may receive unscrambled satellite-transmitted programming without obligation to the programmer.

The act also entitles satellite TV viewers to receive scrambled, or encrypted, satellite-transmitted programming for a reasonable fee and under competitive conditions.

The scrambling issue hardly means that satellite TV owners will lose access to free programming. On the contrary, the vast majority of programmers have no intention of scrambling their signals. The handful who do, like Home Box Office (HBO), will become premium options for dish owners to choose from.

Indeed, Leon points out that only home satellite TV gives a person complete control of his viewing options. "With cable TV, it's your local cable company that chooses what service you will be offered," he says.

Leon is not alone in his optimism. According to David Wolford, publisher of Satellite ORBIT magazine, the industry's leading program guide, "Many people who already have cable would prefer the variety you get with home satellite TV. And then there's the 31 million rural Americans who live outside cable-wired areas. For them, home satellite TV is essentially their ONLY option."

Currently, home satellite TV viewers can receive more than 100 unscrambled domestic channels, plus several dozen additional audio services. As the number of satellites increases in the future (six new satellites are expected to begin operating this year), so will the number of programs. Thus dish owners will likely be able to enjoy an even greater selection of programming in the years ahead.

For more information about home satellite TV, how it works, and the programming it offers, see the folks at Leon Farris TV, Stereo and Satellite Sales, London, Somerset or Mt. Vernon.

Wind chill index	
Wind	Air temperature
Spd.	35 30 25 20 15 10 5 0 -5 -10 -15 -20 -25
5	35 30 27 22 16 11 6 0 -5 -10 -15 -20 -25
10	32 27 22 16 11 6 0 -5 -10 -15 -21 -26 -31
15	28 22 16 11 6 0 -5 -10 -15 -22 -27 -34 -40 -46
20	25 19 13 8 3 -1 -4 -9 -14 -19 -25 -31 -38 -45 -51 -58 -65
25	22 16 11 6 1 -1 -6 -11 -17 -24 -31 -39 -46 -53 -60 -67 -74
30	19 13 8 3 -1 -4 -9 -14 -20 -27 -34 -41 -49 -56 -64 -71 -78
35	16 10 5 0 -4 -9 -14 -20 -26 -33 -40 -48 -55 -62 -69 -76 -83
40	13 7 2 -3 -8 -13 -19 -25 -31 -38 -45 -52 -59 -66 -73 -80
45	10 4 -1 -4 -9 -14 -20 -26 -32 -39 -46 -53 -60 -67 -74 -81
50	7 1 -4 -9 -14 -20 -26 -32 -38 -45 -52 -59 -66 -73 -80 -87

The chart above can help you figure the wind chill factor yourself! The top row of numbers is air temperatures. The column on the left is wind speed. Trace down from the temperature and across from the wind speed to compute the wind chill factor.

"Rockcastle Gets Money" (Cont. From Front)

amount of receipts on the Forest. The total 1985 payment to the 21 Eastern Kentucky counties in which the Forest is located averaged 63 cents per acre.

In 1937, when the Cumberland National Forest, now the Daniel Boone National Forest, was established, the total returned to Kentucky counties was \$38,994. During 48 years of management of the Forest \$4,377,828.30 has been returned to the counties for public benefit.

The payment to counties is only one of many benefits derived from National Forest lands. Additional benefits include: recreation

"FLU" (Cont. From Front)

the state health department where it was confirmed that it was Fifth Disease. The disease was primarily in the Livingston area and its symptoms were headache, fever and a rash over the body. Ninety-nine cases were reported locally.

So, what do you do if you become a statistic and get the flu. You should be good to yourself and this includes plenty of rest, liquids and not getting out too soon once you think you're well. Also, a prescribed antibiotic might help relieve the symptoms.

"MRS. AZBILL" (Cont. From Front)

She was the widow of Fleming Azbill, who died in the 1950s. A brother and half-brother died before Mrs. Azbill. The couple had two sons and a daughter.

She was a member of Cave Spring Christian Church in Jackson County.

Surviving are two sons, Carlos Azbill of Rockcastle County and Dallas Azbill of Eaton, Ohio. Several grandchildren, a great grandchild and great great grandchildren.

Services were held Jan. 23 at Williams Funeral Home Chapel in Berea.

A newborn blue whale weighs two tons and then gains about 200 pounds a day.

"MRS. ARZBILL" (Cont. From Front)

She was the widow of Fleming Azbill, who died in the 1950s. A brother and half-brother died before Mrs. Azbill. The couple had two sons and a daughter.

FOR THE MONTH OF FEBRUARY THE SUN CAPSULE 10 Visits - \$29.95

Use Anytime - Stronger Bulbs TOUCH OF CLASS HAIR DESIGNS 258-4031

"MRS. ARZBILL" (Cont. From Front)

She was the widow of Fleming Azbill, who died in the 1950s. A brother and half-brother died before Mrs. Azbill. The couple had two sons and a daughter.

Britton Chev. - Olds
U.S. 25N. 986-3169 Berea

We're Easy
We sell for less
Just minutes from Rockcastle

Hiatt's 5 & 10 Mt. Vernon

Mid-Winter SALE

<p>Long Stem Silk Flowers 3 \$1.00</p>	<p>Elmer's Glue-A-Li, Large 8 oz. Size 99¢</p>	
<p>Two Pound Construction Paper \$1.59</p>	<p>Elmer's Glue-A-Li, Large 8 oz. Size 99¢</p>	
<p>Large-Size Bandanas 68¢</p>	<p>Page Paper Towels 2 reams 88¢</p>	
<p>7" Stoneware Bowls 77¢</p>	<p>Index Cards 3 \$1.00 2 reams 88¢</p>	
<p>1,000 Pc. Puzzle \$1.47</p>	<p>Large Foam Cups 2 \$1.00</p>	
<p>Jumbo Polyester Fiberglass, 24 oz. \$2.47</p>	<p>Hand Baskets 2 \$1</p>	
<p>Clasp Envelopes \$1.37</p>	<p>Hand Baskets 77¢</p>	
<p>"Be Frag" Ladies' Panties \$1.00</p>	<p>Pillow Forms \$2.37</p>	
<p>Duracell Batteries \$1.67</p>	<p>Buttlers 10 \$1.00</p>	
<p>File Folders 69¢</p>	<p>Woven Dress Weight Panties \$1.29</p>	
<p>Foam Basketball Set \$1.79</p>	<p>Woolen Dress Weight Panties \$1.29</p>	
<p>Accuracy Pits \$1.17</p>	<p>Plant Food Spikes 59¢</p>	
<p>Adding Machine Tape 37¢</p>	<p>Lab and Trims \$3.00</p>	
<p>Hand Brushes 99¢</p>	<td></td>	

"DISTRICT COURT"
(Cont. From 2)

ward Thompson, \$20 and cost.

Overwidth: Stanford L. Hamilton, warrant issued; license suspended.

Violation of time restriction of special permit for movement of over dimension load: Roger Edward Perrin, warrant issued, license suspended.

Speeding: Stephen Michael Gordon, \$38 and cost; Edward C. Lucas, warrant issued, license suspended; Todd A. Martin, Gary Fred McNeven, \$30 and cost.

Improper passing: Raymond

E. Cook, \$20 and cost; Bobby D. Caldwell, \$10 and cost.

Operating on cancelled motor fuel user license: Roger Nixon Douglas, warrant issued, license suspended.

Leaking or sifting contents: Lawrence W. Sandlin, warrant issued, license suspended.

Theft by unlawful taking: Marvin Cunningham (also "carrying a concealed weapon" and "possession of marijuana"), 10 days each count, to serve consecutively; Charles Sparks, \$100 and cost, 60 days.

Public intoxication: Robert L. Jasper, Ricky Eugene Cummins, \$20 and cost.

Program in December 1985, will undergo 12 weeks of training, to include first aid, general military subjects, physical fitness and weapons familiarization.

Hood, whose parents, William and Altha Hood, live in Mt. Vernon, will also undergo rigorous mental testing.

Upon successful completion of recruit training, Hood will enjoy 10 days of recruit leave at home before traveling to an assigned duty station for formal schooling.

Attend Judicial College

District Judges Bill Cain and Walt Maguire of the 28th Judicial District attended the District Judges' Judicial College held at Lexington's Radisson Plaza Hotel, Jan. 15-16.

Scholarship deadline is March 15

Junior and senior class high school students who are interested in applying for \$1,000 college scholarships should request applications by March 15 from Educational Communications Scholarship Foundation, 721 N. McKinley Road, Lake Forest, Illinois 60045.

To receive an application, students should send a note stating their name, address, city, state and a grade point average and year of graduation. Fifty award winners will be selected on the basis of academic performance, involvement in extracurricular activities and need for financial aid.

Briefly ...
Garbage problem

Rockcastle isn't the only area that has a garbage problem. Pulaski County has set up a Solid Waste Advisory Committee to ask residents to discuss how to make garbage collection available. About 9,000 homes have no garbage collection services.

Doctor cited

Kentucky Board of Medical Licensing has authorized issuance of a complaint against Dr. William Battles of London. The board alleges that between September 1984 and November 1984, Dr. Battles' care of three patients "constituted under the circumstances, gross negligence, gross incompetence, gross neglect and/or malpractice."

Birdland

The City of Mt. Vernon has its share of starlings and blackbirds, some estimate over 200,000, and most of the birds make their home during the summer near Mt. Vernon Elementary School. Mt. Vernon is not alone, areas of Somerset live near the city. On Jan. 17, Somerset took matters in hand and sprayed, killing a counted 515,000. The person, or persons, who did the counting, was not named.

Drunk in public place: Herbert Maurice Oliver, summons; Frank Maples, Paul McFerron, William Ping, William R. Hayes, \$20 and cost; Robert Jasper, \$50, Dewey Lake, warrant issued.

Disorderly conduct: Robert Jasper, \$20, 30 days (probated); Walter K. Swinney, Marvin Cunningham, 10 days.

Minor in possession of alcoholic beverage: Kimmy T. Estep, \$20 and cost.

Theft by deception: Billy R. Hayes, William R. Hayes, \$10 and cost, restitution, 10 days (probated).

D.U.I.: Tillman Daugherty, \$200, \$150 service fee, \$10 crime victim fee, cost, 2 days; Gary McNeven, \$200, \$150 service fee, \$10 crime victim fee, cost.

Illegal possession of alcohol: Howard Robbins, \$100 and cost, 30 days (probated).

Balance due: Charles E. Hopkins, warrant issued.

"LYONS"
(Cont. From 2)

Base: Hawaii with the 6924th Electronic Security Squadron.

The sergeant received an associate degree in 1982 from Eastern Kentucky University. His wife, Melonie, is the daughter of Chief Master Sgt. Kenneth and Carolyn F. Combs of Hazard.

Hood to Undergo Marine Recruit Training

David Bryan Hood recently left for Marine Corps Recruit Depot, Parris Island, S.C. to undergo Marine recruit training.

Hood, who joined the Marine Corps through the Delayed Entry

IN MEMORY

In loving memory of our mother, Liddie Reppert, who passed away Feb. 6, 1975, and other members of our family who have gone to be with her and Daddy.

We do not need a special day to bring you to mind. The days we do not think of you are hard to find.

You have left a beautiful memory and a sorrow too great to be told.

But to those who loved and lost you, your memory will never grow old.

Since you're gone, it's not the same.

Tears fill our eyes just to hear your name.

We miss all the things you used to say and do.

But most of all, Mom, we miss you.

What a joyous reunion it must have been.

When Everett and Gustava came to join you.

Deeply loved and sadly missed
Your Children
26x1p

MENU
Rockcastle County Elementary Schools
February 3-7, 1986

BREAKFAST
Monday: Pancakes, syrup/butter, juice, milk.
Tuesday: Sweetened rice, toast/jelly, juice, milk.
Wednesday: Toasted cheese sandwich, juice, milk.
Thursday: Oatmeal, toast/jelly, juice, milk.
Friday: Scrambled egg, toast/jelly, juice, milk.

LUNCH
Monday: Chicken nuggets, whipped potatoes, buttered peas, roll, milk, cookie.
Tuesday: Breaded fish, macaroni/cheese, peas & carrots, cornbread, milk, fruit.
Wednesday: Chipped ham on bun, baked potato, green beans, milk, peanut butter cookie.
Thursday: Pork barbecue on bun, potato rounds, cole slaw, milk, apple crisp.
Friday: Pizza, buttered corn, green beans, milk, fruit.

Rockcastle County High School
February 3-7, 1986

Monday: Chef's salad or roast beef with gravy, baked potato, green beans, roll, choice of offered desserts.

Tuesday: Chef's salad or pizza, buttered corn, garden salad, milk, choice of offered desserts.

Wednesday: Chef's salad or chipped ham on bun, potato rounds, cole slaw, milk, choice of offered desserts.

Thursday: Chef's salad or chicken nuggets, whipped potatoes, green beans, roll, milk, choice of offered desserts.

Friday: Chef's salad or sloppy ine on bun, french fries, cole slaw, milk, choice of offered desserts.

Rockcastle County High School
February 3-7, 1986

Monday: Chef's salad or roast beef with gravy, baked potato, green beans, roll, choice of offered desserts.

Tuesday: Chef's salad or pizza, buttered corn, garden salad, milk, choice of offered desserts.

Wednesday: Chef's salad or chipped ham on bun, potato rounds, cole slaw, milk, choice of offered desserts.

Thursday: Chef's salad or chicken nuggets, whipped potatoes, green beans, roll, milk, choice of offered desserts.

Friday: Chef's salad or sloppy ine on bun, french fries, cole slaw, milk, choice of offered desserts.

Rockcastle County High School
February 3-7, 1986

Monday: Chef's salad or roast beef with gravy, baked potato, green beans, roll, choice of offered desserts.

Tuesday: Chef's salad or pizza, buttered corn, garden salad, milk, choice of offered desserts.

Wednesday: Chef's salad or chipped ham on bun, potato rounds, cole slaw, milk, choice of offered desserts.

Thursday: Chef's salad or chicken nuggets, whipped potatoes, green beans, roll, milk, choice of offered desserts.

Friday: Chef's salad or sloppy ine on bun, french fries, cole slaw, milk, choice of offered desserts.

Rockcastle County High School
February 3-7, 1986

Monday: Chef's salad or roast beef with gravy, baked potato, green beans, roll, choice of offered desserts.

Tuesday: Chef's salad or pizza, buttered corn, garden salad, milk, choice of offered desserts.

Wednesday: Chef's salad or chipped ham on bun, potato rounds, cole slaw, milk, choice of offered desserts.

Thursday: Chef's salad or chicken nuggets, whipped potatoes, green beans, roll, milk, choice of offered desserts.

Friday: Chef's salad or sloppy ine on bun, french fries, cole slaw, milk, choice of offered desserts.

Monday: Chef's salad or roast beef with gravy, baked potato, green beans, roll, choice of offered desserts.

Tuesday: Chef's salad or pizza, buttered corn, garden salad, milk, choice of offered desserts.

Wednesday: Chef's salad or chipped ham on bun, potato rounds, cole slaw, milk, choice of offered desserts.

Thursday: Chef's salad or chicken nuggets, whipped potatoes, green beans, roll, milk, choice of offered desserts.

Friday: Chef's salad or sloppy ine on bun, french fries, cole slaw, milk, choice of offered desserts.

Monday: Chef's salad or roast beef with gravy, baked potato, green beans, roll, choice of offered desserts.

Tuesday: Chef's salad or pizza, buttered corn, garden salad, milk, choice of offered desserts.

Wednesday: Chef's salad or chipped ham on bun, potato rounds, cole slaw, milk, choice of offered desserts.

Thursday: Chef's salad or chicken nuggets, whipped potatoes, green beans, roll, milk, choice of offered desserts.

Friday: Chef's salad or sloppy ine on bun, french fries, cole slaw, milk, choice of offered desserts.

Celebrate National Meat Week At Food Fair

Food Fair, The Store That Cares About You And Your Community!

Fast Friendly Service All The Way To Your Car!

We Gladly Accept Food Stamps

Prices Effective January 20 Through January 26.

U.S.D.A. CHOICE WHOLE **Rib Eye** Sliced Free!!
70-12 lb. Avg. Lb. **2.79**
Limit 1 Please



FOOD FAIR SANDWICH Bread
70 oz. Loaf **2.99**

FIELD'S Bacon
12 oz. Pack **1.19**

Crisco Oil
48 oz. Bottle **2.19**

Leays Potato Chips
7 oz. **.99**

GROUND FRESH DAILY Ground Beef
.89

FRESH MIXED Fryer Parts
8-16 oz. Bths **.43**

Coca Cola Plus Tax & Dep **1.59**

HY-TOP Corn
HY-TOP PEAS OR CUT **Green Beans 3/99**

FLAV-O-RICH Orange Juice
Half Gallon **1.29**

Northern BATHROOM TISSUE
1.39

U.S. No. 1 WISCONSIN RUSSET Potatoes
15 lb. Bag **1.59**

THIN SPAGHETTI
CREAMETTE
DELMONICO ELBO MACARONI, SHELLS, REGULAR OR THIN Spaghetti 4/1.00
7 oz.
Look for our 2 Page Handbill at Food Fair for more Specials

FOOD FAIR COUPON
MARTHA WHITE Flour
5 lb., Plain or Self-Rising **.59**
Limit 1 With Coupon and \$70 or More Order Exp. 2-2-86

FOOD FAIR COUPON
CHICKEN OF THE SEA Tuna
6.5 oz. Can Oil or Water **.49**
Limit 2 With Coupon and \$10 Or More Order Exp. 2-2-86

Look For Our Other Valuable S-H Green Stamp Coupons In Our Ad At The Store Plus More Specials.

<p>Food Fair Coupon</p> <p>100</p> <p>With Coupon And \$10-\$30 Groceries</p>	<p>Food Fair Coupon</p> <p>300</p> <p>With Coupon And \$30-\$40 Groceries</p>	<p>Food Fair Coupon</p> <p>500</p> <p>With Coupon And \$40 or More Groceries</p>
--	--	---

February Specials
(All Appliances in Stock ON SALE)

Admiral
WASHER **\$385**
DRYER **\$319.99**
Model 11224 **\$331.99**
Model 1470 **\$69.95**
Eureka Upright

PANASONIC
\$575
\$499
UHF ANTENNAS
4 Bow 21.59
8 Bow 41.95
10' Pole 7.95 ea.
Lead in wire 100' 8.75 or 12' per ft.
UHF Boosters 48.95

Sale Ends 2-8-86

All Toys 50% off

Tek's APPLIANCE
Main St. Mt. Vernon Ph. 256-5864

Photographic exhibit to open at County Library

"Kentucky's Ancient Past," a photographic exhibit on prehistoric archaeology in the Commonwealth, will open at the Rockcastle County Library in Mt. Vernon Feb. 11. The exhibit can be viewed from 1 to 5 p.m. through the week and all day on Saturday. Attendance is free. Complimentary literature with additional information on prehistoric archa-

eology in Kentucky will be available. This exhibit will be available for two weeks. It presents pictorial highlights of prehistoric archaeological research in Kentucky over the last 300 years. Funds for this compilation were provided in part by the Kentucky Humanities Council and the National Endowment of the Humanities. Matching

funds were provided by the University of Kentucky Research Foundation, the Kentucky Historical Society and the Kentucky Department of Libraries and Archives.

"We welcome any teacher who wishes to bring their class to visit the Library. Just call for a convenient time to bring the children to visit our exhibit."

Alleyn Davis
Librarian

"All doors are open to courtesy."
Thomas Fuller

FMHA will use private contractors

Future emphasis on funding in the Farmers Home Administration seems to be moving to quarantined funds. Monies would be provided by the lending company which would carry a guarantee from Farmers Home. There would be less money appropriated which is referred to as "insured" money provided by the Agency. Because of this change in emphasis and a move toward greater participation by lenders, FMHA will be utilizing the services of private contractors to service its farm portfolio of

approximately 22,000 of \$7.2 million in some 30 of its 69 county offices throughout Kentucky.

Farmers Home made 6,214 loans in the amount of \$240,850,400 in 1982. 5,790 loans at \$248,201,570 in 1983. 9,036 loans at \$306,232,620 in 1984, and 4,589 loans at \$226,023,025 in 1985. In order to do adequate servicing for its present portfolio

(Cont. to 12)

Real Estate For Sale

Commercial Properties

Small Commercial Building located on West Main Street - Mt. Vernon. This building could be used for several types of small businesses or adapted for office space very easily. A bargain priced at \$6,900. G1

Lease Property

For Lease - Brick Home - House has 3 bedrooms, living room, kitchen and bath. \$200 per month. \$300 security deposit. Make your references.

Businesses

Excellent Opportunity - Grocery Business - US 25 north of Mt. Vernon. Owner is retiring. This excellent location has been operated as a going business for several years. In addition to the grocery business, there is a bait shop and a small living quarters. This can all be purchased for \$64,900 including grocery building and fixtures or it can be purchased with a lovely 9 room modular home and addition. It has 5 bedrooms, living room, dining room, kitchen, family room, utility room, and 1 1/2 baths. It has gas furnace, carpet and linoleum throughout, stove, refrigerator, washer and dryer hookup, plus much more. Total price for grocery and home, \$95,000. F9

Established Grocery Business - City limits of Mt. Vernon. Doing a good business - confidential records available to qualified prospects - including all equipment and inventory. \$150,000.

In Cab Orchard - 32x60 store building - fixtures and contents - city water and sewer - newly remodeled building - large lot - plenty of parking area. Selling for health reasons - \$26,500. H17

Farms and Acreage

164 Acres - Cove Branch section of Rockcastle County. 1,800 lb. tobacco base, combination stock and tobacco barn. House with 3 bedrooms, living room and kitchen - garage. Priced at \$55,000. G25

Lovely Home and 25 Acres - near Livingston. The home offers 3 bedrooms, living room, kitchen, dining room, utility room, and 2 baths. It has electric heat, wall to wall carpet throughout, garage patio, storm doors, and windows, and washer/dryer hookup. It is all situated on 25 acres giving you privacy galore. Priced at \$64,900. G11

15 Acres - Renfro Valley. Suitable for development - city water - priced at \$31,900. A10

41 Acre Farm - conveniently located - approximately 2,000 ft. of road frontage on highway 461 - approximately 25 acres crop and grass land - 535 lb. tobacco base - modern house - 2 excellent barns - priced at \$64,900. Y6

190 Acres - more or less - undeveloped land in the Chestnut Ridge/Sand Hill section of Rockcastle County. Priced at \$28,500. F4

100 Acres - 1 mile off of US 25 on the Orlando Road - 900 lb. tobacco base - frame house with 3 bedrooms, living room, kitchen and bath. Also has washer/dryer hookup, electric heat. All for \$34,900. D4

Modular Home - 3 1/2 Acres - Home has 3 bedrooms, living room, kitchen, dining room, family room, and 2 baths. It has electric heat, carpet, washer/dryer hookup. Reduced to \$30,500. W8

240 Acres - Skaggs Creek Road - approximately 2,700 lb. tobacco base - 2 barns - 4 room house in need of repairs - garage - water provided by 2 springs and creek lots of firewood. Reduced to \$59,000. F5

Brindle Ridge Farm - 161 Acres - more or less. The farm has a good home with 3 bedrooms, 2 baths, living room, dining room, kitchen, family room, and sun room. Also 4 barns, shop, storage building, creek, and 3 ponds. Approximately 130 acres crop and pasture land. Tobacco base approximately 2,530 lbs. Owner retiring. Priced for quick sale at \$161,500. H13

70 Acre Farm - located at Kings Mountain. Approximately 50 acres tillable - 1,400 lb. tobacco allotment. Improved with a 5 room modern frame house - 28x32 barn with 3 stanchion milking parlor with a 12x40 attached shed - 32x70 tobacco barn and several other miscellaneous buildings. The farm has a good fence and plenty of water. \$54,900. H4

30 Acres - located in the Elrod section of Pulaski County. 1,700 lb. tobacco base - combination stock and tobacco barn - 2 ponds for stock water. Priced at \$39,500. H6

90 Acres - located in the Copper Creek section of Rockcastle County. Approximately 35 acres cleared crop and pasture land and the balance in woods. Approximately 630 lb. tobacco base - small unfinished barn - pond and creek for stock water. \$27,500. H5

120 Acre Farm - near Wabed Community - good cattle farm - house - barn - ample water supply - owner will trade to any kind of property. \$69,500. X3

125 Acre Farm - South of Livingston. It is improved with an older frame house, almost new 14x70 Richmond mobile home, barn, and other buildings. Has approximately 60 acres of cleared land and 1,100 lb. tobacco base. Also included with the farm is 26 head of Angus cattle. \$74,500. F10

44 Acre Farm - Sand Springs Road. Improved with a 3 bedroom frame house with gas furnace, washer/dryer hookup, storm doors and windows. Water is furnished by a spring. There is also a barn and several other buildings. Approximately 900 lb. tobacco base. Reduced to \$52,900. G8

80 Acres - located in the Drog Fork section of Jackson County. The property has been core drilled and has a 40 inch plus vein of coal. Priced at \$80,000. G22

Modern Log Home - 9 Acres - Home has 1,800 sq. ft. of living space. It has large 2nd room, kitchen with built-in cabinets, 3 bedrooms, and 1 1/2 baths. Approximately 9 acres of hill land surrounded - lots of privacy - 1 mile from city limits of Mt. Vernon. Priced at \$49,500. G24

534 Acres - located near Millins Station - possibility of coal - some timber. Only \$225 per acre. G14

Frame House - Chestnut Ridge Area - House has 3 bedrooms, living room, kitchen, den, utility room, and bath. Also has oil heat, storm doors and windows, washer/dryer hookup, and is situated on 14 acres. Reduced to \$24,900. G27

Small Farm - 38 Acres - Deep Well Woods Road - Lincoln County. Mostly wooded with some marketable timber. Improved with almost new modern brick home. Water is furnished by a cistern. Move in for \$89,900. G32

Farmers Farm - 140 Acres - Ottenheim section of Lincoln County. Approximately 80 acres of tillable land - 1,868 lb. tobacco. Improved with a 60x36 tobacco barn, almost new - a 60x48 combination barn, crib, an older 2 story home and several other miscellaneous buildings. Stock water is furnished by 4 ponds. Priced at \$115,000. H3

Lee County - 119 Acres by survey - undeveloped land - some timber - possibility of coal and oil - priced at \$150 per acre. H12

Baby Farm - on Highway 150 near Brodhed - 4.2 acres with 200+ lb. basic tobacco allotment. Priced at \$6,500. H10

4 Acres - Barn - Dug Hill Road - Ottawa - good building or mobile home site - city water - priced at \$13,000. H19

55 Acres - Red Hill section of Rockcastle County - approximately 15 acres cleared grass pond - fence - \$17,500. H21

New Listing - 14 1/2 Acres - Unfinished house - Bowling Ridge - Living room, dining room, kitchen, 3 bedrooms, and 1 1/2 baths - partial basement - \$27,900. H22

Homes - \$50,000 and Up

Near Hospital - Lovely 1 1/2 Story - Home has 4 bedrooms, 2 baths, dining room, kitchen with built-in cabinets, family room, and music/office room. Approximately 1 acre with fruit trees. Reduced to \$54,900. K14

Ranch Style Home - Brick and Cedar Exterior - Chestnut Hills Subdivision - The house has 3 bedrooms, living room, kitchen,

dining room and 2 baths. Also has heat pump, wall to wall carpet, and situated on 13/4 acre lot. Priced at \$64,900. E11

New Brick - In Town - Home has 4 large bedrooms, large kitchen with an abundance of built-in cabinets, large living room, wall to wall carpet, electric heat, air. All for \$59,900. G28

English - 3,000 sq. ft. of living space. House has 3 bedrooms, 2 1/2 baths, kitchen-dining room combination, living room, utility room, and 2 car garage. This fine house also has wall to wall carpet, jet air range, built-in oven, washer/dryer hookup, dishwasher, central heating and air conditioning, city water, plus much more. Near Renfro Valley. Priced to sell at \$69,000. G31

Lovely Brick Home - School Street - Mt. Vernon - House has 3 bedrooms, 1 1/2 baths, living room, dining room, kitchen, den and full basement. Also has electric heat and fireplace. Lowest lot all this for only \$52,900. Assumable 9 5/8% loan. H16

\$40,000-\$50,000 Range

Bedford Stone Home - Highway 461 - Home has 3 bedrooms, living room, dining room-kitchen combination with lots of cabinets, bath, full basement, and attached garage. Also has 2 fireplaces, plus much more. Priced at \$48,900. D15

Countryside Estates - Lovely 3 bedroom brick home with family room, living room, kitchen-dining room combination, utility room, and 1 1/2 baths. Privacy and fantastic view. One of Rockcastle's finest subdivisions. Reduced to \$47,500. F8

Bedford Stone Home - Bethurum Street - Mt. Vernon - House has large living room with fireplace and insert, kitchen, dining room, bedroom and bath on first floor with 3 bedrooms and bath on second floor. Partial basement with washer/dryer hookup. Also 2 car garage with storage building. House is finished inside with wormy chestnut. Priced at \$49,900.

3 Bedroom Brick - Valley Manor Subdivision. Easy walking distance to town. Home has 3 bedrooms, living room, kitchen-dining room, sanitation, garage, utility room, and bath. Also has wall to wall carpet, city water and sewer, total electric, fenced in back yard - beautifully landscaped. All for \$42,900. H2

Under Construction - 3 Bedroom, 2 Bath. Family room. Brick Evergreen Estates Subdivision - Heat pump - garage - you pick cabinets and carpet - \$47,900. H19

\$30,000-\$40,000 Range

Somerset - House and lot - just off Pump House Road. House has 3 bedrooms, living room, kitchen and bath. Also has electric

celling heat, storm doors and windows, carpet, and washer/dryer hookup. \$39,900. A17

Brick Home - 2 Acres - Sand Springs Road - Home has 3 bedrooms, living room, kitchen with built-in cabinets, and bath. Also has partial basement. Reduced to \$34,500. G15

2 Story House - House has 4 bedrooms, 2 baths, living room, kitchen, family room with fireplace, and is situated on a large level lot in Mt. Vernon. Only \$33,900. S21

Brick Home and Lot - Negro Creek. Home has 3 bedrooms, living room, kitchen-dining room combination, utility room, and 2 baths. Also has electric heat, storm doors, washer/dryer hookup and a 2 car garage. Priced at \$36,900. G30

Lovell Court - 2 Story Frame House - House has living room, dining room, kitchen, family room, 1 bedroom and bath on first floor with 3 bedrooms. Also has wall to wall carpet, a fuel oil furnace, storm doors and windows, aluminum siding. This house is within walking distance of Main Street, churches, and schools. Priced at \$32,500. H1

Poplar Street - Mt. Vernon - Ranch style 2 bedroom house with kitchen, living room, bath, built-in cabinets, city water and sewer - level lot measuring 100x100 - central air - a good buy at only \$32,900. H15

Homes Under \$30,000

House and Lot - School Street - Brodhed - House has 2 bedrooms, living room, kitchen, utility room, and bath. Also has storm doors and windows, gas heat, wall to wall carpet, fireplace and attached garage. Reduced to \$25,900. A19

Frame House - Red Hill. House has 2 bedrooms, kitchen, dining room, living room, and bath. Also has hardwood floors, washer/dryer hookup, oil furnace provides heat, and also has a carport. In addition to the house there is a 28x20 shop and cellar. It is situated on approximately 3 acres. Priced at \$29,500. F15

In Mt. Vernon - Paul Street. Excellent 4 bedroom house with living room, kitchen-dining room combination, bath, electric heat, washer/dryer hookup. Priced to sell quick at only \$29,900. G16

1983 Mobile Home - 14x55. Home has living room, kitchen, 2 bedrooms, and bath. Also has electric heat, appliances included, microwave, carpet, drapes, and built-in stereo. Reduced to \$11,000. G26

1982 Clayton Mobile Home - 14x55. Home has living room, kitchen, 2 bedrooms, cathedral ceiling. Priced at \$6,900.

1970 Markee Mobile Home - Situated on a large lot - Tyree Street - Brodhed - City water

and sewer - oil heat. Priced at \$11,500. H9

4 Bedroom House - Quarry Street - Mt. Vernon. House has 4 bedrooms, living room, kitchen, dining room, bath and utility room. Also has gas furnace heat, washer/dryer hookup, aluminum siding, city water and sewer. \$21,900. H8

2 Story House - Crab Orchard - 2 1/2 acres - located on the Chapel Gap Road - House has 4 bedrooms, living room, kitchen, bath, and large all purpose room - electric heat, also storage building. All for \$29,800.

New Listing - House and Lot - Maple Street - Brodhed. House has 4 bedrooms, living room, dining room, kitchen and bath. Also 2 car garage and large front porch. Priced at \$27,500. H23

ALL KINDS OF LOTS

What kind do you want? Small lot - Big lot - Restricted lot - Unrestricted lot - Wooded lot - Level lot - Hill lot - Expensive lot - Cheap lot - Lots of acreage - Evergreen Estates - Valley Manor Subdivision - Lake Linville - Woods Creek Lake - Country Club Estates - Rainbow Valley Subdivision - Highway 461 - Quick section - Mt. Vernon - FHA or VA approved lot. We have all kinds. Make an appointment to see them today!

LOTS

All New Subdivision - located on the Barnett Road near Lake Linville. The lots measure 1/2 acre and up and are restricted. Come in now and have first choice of these 26 fine building lots. Several of the lots front on a blacktop road and city water is available. Ranging from \$1,500 to \$4,000. E74

New Lots - spacious building lots in Rockcastle County's newest subdivisions. All lots have or will have city water and paved streets. Ranging in price from \$4,500 to \$6,000. These lots are restricted for your protection. B1

Building Lots - Country Club Estates Subdivision - city water - near Mt. Vernon - only \$3,000 to \$4,000. B9

2 Lots - just out of Mt. Vernon - ideal for mobile home. Priced at \$2,850 each. E6

Dandy Building Lot - Rose Hill Road - overlooking Lake Linville - city water available. Priced at \$5,000. H7

Building Lot - overlooking Lake Linville - city water - improved with a storage building. \$4,500. H11

3 Lots - Orlando - city water - ideal for building or mobile home site. Only \$2,995. Y8

Ottawa - Dug Hill Road - large lot - suitable for building or mobile home site - \$4,950. H19

Ford Realty & Auction Co.

256-4545

Sam Ford, GRI
Nights 256-4588

Roy Adams, GRI
Nights 758-8400

Danny Ford, GRI
Nights 256-4446

Social and Women's News

EXTENSION HOME ECONOMICS

By: Cheryl Witt
County Extension Agent
For Home Economics

DRINK MORE MILK

Milk may not be the "perfect" food many of us were taught years ago, but it still is one of the most nutritious foods around. In addition, more and more studies indicate that many people, especially adult women, need to drink more of it. Adult women need to try to include three to four servings of milk to increase their calcium intake.

One quarter of all white females over 65 in the United States have osteoporosis, a condition where the bones lose calcium and become porous. This leads to numerous health problems including bones which break very easily.

One of the major factors in preventing osteoporosis is calcium. Although the current Recommended Dietary Allowance (RDA) for adult females is 800 milligrams of calcium, many experts believe a higher intake of 1,000 to 1,200 milligrams would be better.

Two cups of milk or its equivalent provides 575 milligrams. That's why it is recommended that adult women increase the amount of milk they consume to three or four servings daily.

Milk and milk products such as cheese also provide a high quality protein and many necessary vitamins. Fortified milk is the major dietary source of Vitamin D.

Whole milk need not be purchased to get these needed nutrients. In fact, low-fat milk is preferable for those who have a weight problem, and since 30 to 40 percent of all Americans are overweight, this is a major concern.

Studies indicate that consumers are interested in using more low-fat milk products. Production of more and better low-fat products could benefit buyers and sellers alike.

Of the total dairy food market, skin and low-fat milk now make up 35 percent of the market. Sixty percent of the yogurt purchased is low-fat and 23 percent of the cottage cheese.

Even whole milk, however, is a better choice than empty-calorie products such as sugar-sweetened soft drinks.



Mr. and Mrs. G. D. Leese of the Copper Creek area celebrated their 40th wedding anniversary Sunday, Jan. 19. They were married Jan. 19, 1946 in Boyle County. They have four children, Pat, Larry, Judy and Roger, three granddaughters and one grandson. They celebrated their special day with lunch at a local restaurant. After lunch they were surprised with a reception and a nice gift from the children.

MT. VERNON

By: Mrs. George Burton

Mrs. Raymond Kirby underwent surgery at Patten A. Clay Hospital in Richmond last Wednesday. We wish her a speedy recovery.

Mr. and Mrs. Junior Blanton visited Mr. and Mrs. Carrol Blanton, Sr. Sunday afternoon.

Visitors of Mr. and Mrs. Gravelly Burton were Mr. and Mrs. George Burton, Mr. and Mrs. Roscoe Webb and Mrs. Mary McKinney.

Mrs. Kermit Bowling and Mrs. David McCauley were in Lexington Saturday.

Mr. and Mrs. Tommy Falin and Jason and Mrs. Hazel Stemp have returned home after visiting Mr. and Mrs. Ben Ponder and

Roseland in Florida a few days. Mrs. Lillian Anglin has been confined to her home for a few days with a cold.

Mrs. Gary Barnett and new baby have returned home after spending a few days with Mr. and Mrs. Junior Blanton and Rodney. Mr. and Mrs. Gorman Dillingham of Milford, Ohio visited his parents, Mr. and Mrs. Lance Dillingham last week.

Mrs. Lance Dillingham visited her brother, R. H. Hamm, one day last week.

Mrs. Opal Leese of Cincinnati visited her mother, Mrs. Carrie Smith, last week.

Bentley Hansel of Mason, Ohio visited his mother, Mrs. Minnie Hansel, recently.

We extend our sympathy to all, who have lost loved ones recently.

Your child's health

By: Dr. John Payne

Here we are just getting past the peak of a ferocious strep throat and scarlet fever or scarlatina epidemic in our schools and along comes another couple of "bugs". One is the obvious flu bug that is affecting so many adults as well as children. It looks like this is going to be quite a year for flu.

Another virus that is cropping up in our schools and confusing the picture with the rash of scarlet fever is Fifth Disease or erythema infectiosum if you want to be fancy or the "slapped cheek disease" if you want plain words. This odd little illness is probably viral, doesn't make children sick especially, but produces marked red cheeks, almost to the point of being confused with a severe slapping or child abuse. It also produces a fine-lacy pink rash on the body which gets worse with exercise, warm baths, rubbing the skin or tantrums (really, crying makes it worse). The rash has a long incubation period from time of exposure, from 7 to 28 days, and the rash may last from 2 to 39 days (average 11 days). Unlike most viral rashes, the child may itch.

This illness is almost always harmless, and the child should not be kept out of school since the rash lasts so long and is harmless.

Fifth disease is confusing with the scarlet fever going around. They do resemble each other superficially, though a doctor can tell them apart. Fifth

Mr. Vernon Science Club Visits Berea Planetarium

Thirty-three members of the Mt. Vernon Science Club visited the Berea Planetarium at Berea College last Friday, Jan. 17. They were shown pictures about Halley's Comet and were told how people in earlier times feared the coming of comets. They were also told what the comet was composed of and many interesting facts about it. They, especially enjoyed seeing the stars on the domed ceiling.

They also went to McDonald's and had a tour through it, which they really enjoyed. Mr. Hale, Mt. Vernon Elementary School principal, and his wife and two sons, Mr. and Mrs. Henderson and Larry Travis went with them on the trip.

The Science Club would like to thank Mr. Travis for driving the bus for them.

Angie Dowell
Recording Secretary, Science Club



Lettuce or celery will crisp up more quickly if you place them in a pan of cold water along with a few slices of raw potato.

Bullock Anniversary

Mr. and Mrs. Taft Bullock of Rt. 1, Mt. Vernon will celebrate their 50th wedding anniversary with a reception hosted by their children Feb. 2 at 2 p.m. at the Family Life Retreat Center.

All friends and relatives are invited. The gift of your presence is the only gift requested for this occasion.

BRAND NEW

The Singer Co. has introduced a new 1986 sewing machine with special features for the home sewer. These heavy duty FREE ARM machines sew on all fabrics: denim, canvas, upholstery and even sews on leather! Makes buttonholes, darns, hems, and more. We have selected this TEST PERIOD to release these machines to the public at a low price. It comes in a sealed carton with a 10 year warranty. Lay-a-ways and payment plans available.

Reg. \$379.99

YOUR PRICE WITH AD ONLY \$199.99
BRING THIS AD - 4 DAYS ONLY

Jan. 30 & 31, Feb. 1 & 3

SINGER
APPROVED DEALER

Margaret's Sewing Center
Southern Hills Plaza, Richmond Ky.
673-4704

Old-Fashioned Quilting Bargains

	Reg.	Sale
Set of six 18" Quilting Blocks	5.99	4.99
Set of six 18" Quilting Blocks	4.99	3.99
Set of Twelve 14" Quilting Blocks	5.99	4.99
Quilt King-Batting 81" x 96"	5.99	4.99
Quilt King Batting 90" x 108"	7.49	6.49
Fairfield Batting 81" x 96"	5.49	4.59
Fairfield Batting 90" x 108"	6.49	5.49
Quilting Prints	1.19 ⁸⁹	1.44
90" Bleached Muslin	4.99	3.99
45" Bleached Muslin	2.19	1.79
Unbleached Muslin	1.99	1.69
Pillow Cases to Embroider	4.99	4.29
Pillow Cases to Embroider	5.49	4.59
Pillow Cases to Embroider	6.49	5.49
Crochet Cotton	1.69	1.44
Quilting Thread	1.19	.88

Hiatt's 5 & 10

Mt. Vernon, Ky.

This Week's Specials at

Brown's Food Market

Open 8 to 6 Located Jct. Hwy. 150 and 70 Prices Eff. Jan. 30 Feb. 4

Where the only thing you save is money!!

Come and Compare Our Everyday LOW PRICES

Center Cut Pork Chops 1.59 lb.	END CUT PORK CHOPS .99¢ Lb.	
Eversweet 1 lb. Bacon \$1.19	Sealtest 12 oz. Large or Small Curd Cottage Cheese 69¢	Tropicana 64 oz. ctn. Orange Juice \$1.69
Red Gold 15 oz. Chili Hot or Red	Red. Gold 46 oz. Tomato Juice 69¢	
8 oz. Can Tomato Sauce 2.49¢	Del Monte WK or CS 17 oz. Corn 2.89¢	Kellogg's 18 oz. Corn Flakes \$1.39
Stokely 303 Size Fruit Cocktail 75¢	Bush's 16 oz. Chopped Kraut 45¢	CAULIFLOWER \$1.19
8 pk. - 16 oz. Plus Deposit Pepsi & Pepsi Products \$1.59	Crisco 3 lb. Shortening \$2.53	BANANAS 5 Lb. \$1.00
	Nunn Better 25 lb. Hi Protein Dog Food \$4.99	LETTUCE 49¢ Head
		Family Size 250 Ct. Puffs Tissue \$1.09
Rinso Powder Detergent Giant Size 40% off \$1.09		

WHEN YOU HAVE TO GET THROUGH TO HOME, CALL WAITING WON'T LET A BUSY SIGNAL GET IN THE WAY.

WITH OUR SPEED CALLING FEATURE, YOU'RE TALKING INSTEAD OF LOOKING.

WITH THREE-WAY CALLING, A SIMPLE PHONE CALL CAN BE FAMILY REUNION.

WITH CALL FORWARDING, YOU DON'T HAVE TO STAY HOME WHEN YOU'RE EXPECTED TO GO AWAY.

NOW YOU CAN CALL ON YOUR TELEPHONE TO DO MORE THAN EVER BEFORE.

With Contel's custom calling features, your phone can be faster, more convenient, and more accessible than it's ever been.

Best of all, these features can be added for only pennies a day.

Call your Contel service office for details. These days when you need more from your telephone, we've come up with the answers.

CONTEL Continental Telephone System

Rockcastle Land Trust receives grant for work

The Rockcastle River Community Land Trust has received a \$9,000 grant from the Commission on Religion in Appalachia for its economic development work in Livingston. According to the director, Don Martin, the money will be used to establish a sorghum cooperative in the community. The program is meant to provide an alternative crop for tobacco farmers looking to diversify.

Much of the preliminary work has already been completed. This year the Land Trust produced 150 gallons of sorghum and began marketing it to stores under the "Golden Kentucky" label. This grant will allow us to secure additional markets and develop other product lines," Martin said. Golden Kentucky sorghum is already selling in gift and gourmet stores throughout Kentucky, but outlets in Lexington and Louisville have been particularly interested in the product because of its attractive packaging. Martin hopes to continue to build markets and is planning to expand the market into nearby states next year. This month the group launched its mail-order campaign, selling sorghum and honey gift baskets through the mail.

Benefits of the program have been felt by Hancock farmers who received \$5 per gallon for sorghum grown in 1985. In addition, four residents were employed by the product to help with production and packaging. The program will be expanded next year when the Land Trust will contract with ten farmers to produce the sorghum. "By 1988, not only do we hope to be providing additional income for farmers but we are also hoping to be employing several community residents full-time," Martin said.

The Commission on Religion in Appalachia is a church-related coalition based in Knoxville, Tenn. It consists of 17 church leaders seeking to address community needs in Appalachia by providing

both financial and technical training for groups throughout Appalachia.

To Itemize or Not—That Is the Question

While the Internal Revenue Service encourages many taxpayers as possible to use the simpler standard and 1040-Z forms, there will be millions of taxpayers who will find it to their advantage to itemize deductions on the 1040s.

Generally, you will benefit from itemizing deductions if you paid interest and taxes on a home mortgage, had unusually large uninsured medical and dental expenses during the year, made large contributions to qualified charitable organizations, or had major uninsured casualty losses. What this means is that you will probably have itemized deductions exceeding more than the zero bracket amount for your filing status.

Typically, the itemized deductions which you can deduct are: interest on your home mortgage; donations. Example: itemized deductions in the amount of \$1,000, which total itemized deductions exceed the zero bracket amount. For example, if you have a mortgage with a \$1,000 interest deduction, your zero bracket amount would be \$1,000.

The amount of your income is reduced by the amount of the deduction over the zero bracket amount. This amount is then incorporated into the tax tables and the tax rate schedules.

Itemized deductions are non-business deductions. If you itemize, your deductions are based on Form 1040 and 1040-Z Schedule A of Form 1040. Schedule A provides space for listing deductible medical and dental expenses, charitable contributions, taxes, interest and casualty or theft losses, and other expenses, such as union dues, travel expenses, and so on.

Itemized deductions should keep a record of all deductible items, including receipts and receipts. This will help you keep track of expenses should the IRS question your return. It will also help you determine whether your

itemized deductions are greater than your zero bracket amount.

Taxpayers who itemize can take advantage of many deductible expenses. Here is a brief explanation of some types of deductions available.

Charitable Contributions

Generally, you may deduct contributions given to any qualified organization established and operated exclusively for charitable, religious, educational, scientific, or literary purposes, or for the prevention of cruelty to children or animals; to certain organizations that foster national or international amateur sports competition; to fraternal organizations if the contributions are used for charitable purposes; to veterans' organizations; or to governmental agencies that will use the gifts exclusively for public purposes.

This means you may deduct contributions to most religious organizations, community funds, Boy and Girl Scouts, the YMCA, the Red Cross, the American Cancer Society, CARE, Veterans of Foreign Wars, etc. You may not deduct contributions to civic leagues or chambers of commerce.

If you donate property other than money, you must base your deduction on the fair market value of the property, that is, the amount you could reasonably charge if you were selling the property.

Bear in mind a contribution is only a contribution at the time of its delivery. Pledges are not contributions until you make payment. Also, if a contribution is for a personal benefit, all or part of it may not be deductible. For example, if you buy a \$50 ticket for a church benefit and receive a meal at the function worth \$15, you can only claim \$35 as a charitable contribution.

Medical Expenses

You may deduct the medical expenses you paid during 1985 to the extent that they exceed five percent of your adjusted gross income. If you were reimbursed by insurance or otherwise, that amount must be subtracted from your medical expenses.

Payments for the diagnosis, cure, prevention, or treatment of a physical or mental illness are deductible as are payments for the purpose of affecting any structure or function of the body.

Deductible medical expenses include your payments to doctors, dentists, psychiatrists, etc.; payments to hospitals for service, laboratory fees, x-rays, etc.; and payments for eyeglasses, hearing aids and parts, dentures, crutches, etc.

Things not allowed are trips taken to "get away from it all," even if advised by a doctor, health club dues, maternity clothes, and diaper services.

Expenses for transportation essential to medical care—such as getting to and from a doctor's office—may be included in medical expenses. This includes taxi, bus, train, or plane fares.

If you use your car, you may deduct the actual out-of-pocket expenses, such as gas and oil, or nine cents for each mile you use your car for this purpose. In addition, you may deduct parking fees and tolls. Be sure to keep track of your expenses and mileage.

As of 1984, the one percent limit for drugs no longer applies, and deductible drugs will include only insulin and drugs that are obtainable with a prescription.

Interest

Interest paid during the year on a debt which you are legally responsible is deductible.

This includes such debts as a car loan, a bank loan, an educational loan, or a mortgage of your home. However, if in 1985 you prepaid interest allocable to any period after 1985, you can only deduct the amount of interest allocable to 1985 on your 1985 return.

If you buy such things as clothing, a radio or TV set, furniture, or household appliances on an installment plan, budget charge account or credit card that lists a finance charge, you may treat the finance charge payment as interest.

In general, interest deductions must meet the following tests: the interest must result from an actual debtor-creditor relationship; the interest must be based on a valid obligation to pay a sum of money; and, the debt must be one for which you are legal.

Taxes

The following state or local taxes you paid during the year are deductible: state or local income tax (including tax withheld or paid as estimated tax during the year); real property tax; personal property tax; general sales tax and contributions to certain state disability benefit funds; The 1985 Optional State Sales Tax Tables are a convenient reference for determining the amount you may be able to deduct for sales taxes.

Remember, the sales tax on certain major purchases—a car, motorcycle, motor home, truck, boat, plane, home (including mobile or prefabricated), materials purchased to build a new home—can be deducted in addition to (Cont. to 16)

Laurel Tack & Treasures

Riding Equipment & Antique Furniture

WE CARRY:

<p>Marbletop Tables Roseback Chairs</p>	<p>Tearcut Hutches And Many Other Unusual Antiques</p>	<p>Saddlery English & Western Tack by famous names like Blue Ribbon, Double R & Simco</p>
---	--	---

COMPETITIVE PRICES

U.S. 25 North - East Bernstadt
(Across From East Bernstadt Clinic)

OPEN Tuesday - Friday 10:30 & Sat. 10-1
Closed Sunday & Monday

DINNER BELL RESTAURANT

and NEW COUNTRY STORE

I-75 Plaza • Berea, Kentucky

WITH COUPON
20% OFF
ANY PURCHASE IN OUR
RESTAURANT OR NEW COUNTRY STORE

In Our Restaurant, We Feature Delicious Kentucky-Style Cooking at Family Prices. Fresh Meats Cooked to Order, and Fresh Vegetables Steamed to Perfection—Plus Soup Beans, Kentucky Corn Bread, Shoyu—Made from Fresh—Sausage, and Freshly-Made Cobblers.

Our New Country Store Features Items That You Will Not Expect to Find. We Think You'll Enjoy drooling. Private Dining Rooms Available for Private Parties, Receptions, Luncheons, Civic Meetings, Etc.

Present this Coupon to Cashier

20% OFF ANY and ALL ITEMS

One Coupon Covers Your Entire Party.

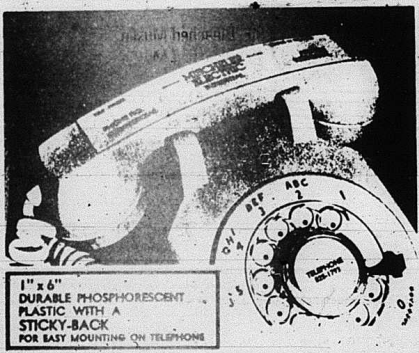
OFFER VALID THROUGH JANUARY 31, 1986. NOT GOOD WITH ANY OTHER SPECIAL OR DISCOUNT.

DINNER BELL RESTAURANT

and NEW COUNTRY STORE

I-75 Plaza • Berea • 986-2777

7 a.m. - 9 p.m. Sunday-Thursday; Till 10 p.m. Friday and Saturday



YOUR ALL NEW "GLOW-IN-THE-DARK" TELEPHONE RECEIVER DECALS WITH YOUR EMERGENCY TELEPHONE NUMBERS

AMBULANCE 256-4923 FIRE DEPT. 256-2121	DOWELL & MARTIN FUNERAL HOME MT. VERNON 256-2991 KENTUCKY	SHERIFF 256-2031 POLICE 256-2178
---	---	---

- LITES IN TOTAL DARKNESS
- WILL STAY LIT SEVERAL HOURS WHEN COMPLETELY CHARGED
- RECHARGED WHEN EXPOSED TO ARTIFICIAL OR NATURAL LIGHT

FREE FREE FREE FREE FREE

Additional EMERGENCY PHONE NUMBERS

for your extension phones, FREE....

RETURN THIS REQUEST CARD.

Name _____

Address _____ Phone _____

City _____ State _____ Zip _____

Dowell-Martin

FUNERAL HOME

MT. VERNON, KENTUCKY



Around BRODHEAD

Personals

By: Mary McWhorter

Mr. and Mrs. Bob Proctor spent the weekend in Covington with Mrs. Proctor's father, Carter Caudill and also visited their son, Darrell Proctor, and wife, Darlene, and sons: Stephen, Kyle Joe and Adam.

Mrs. Margaret Brock and son, John, were in Berea Tuesday and visited Mrs. Brenda Kidwell.

Mr. and Mrs. Carl Brock were in Paini Lick recently visiting Mr. and Mrs. Bill Brummett and family.

Our deepest sympathy goes to the Club Adams family, the Dolie Abney family and all others who have lost their loved ones.

Everett Woodall and wife, Lorena, and Harold Woodall and wife, Mary, recently visited Mrs. Woodall's brother, Thomas Sanders, and wife and children, Mrs. Cindy Bowen and family, Tommy and Melina Sanders, Jr. in Pennington Gap, Va.

Mr. and Mrs. John and wife, Joyce, have moved from Ft. Knox to Ft. Lee, Va.

Friday visitors of Mary McWhorter: Harris of Corbin and friends, John Dierker of Stanford, Mrs. Brenda Bradley and Stephanie and Mrs. Mattie Reed.

Mr. and Mrs. Gary Renner of Lexington visited Gary's parents, Mr. and Mrs. Monroe Renner Saturday and took them to the Manumott Hospital in London where Monroe's mother, Mrs. Doris Taylor, remains in very critical condition.

A surprise birthday party was given to Debbie Bussell Gregory at her home Thursday night. Those attending were Wayne Price and daughter, Barbara; his sister, Brenda Price, and her daughter, Becki; his mother, Mrs. Alta Price; Debbie's brother, Jerry Bussell; and her sons, Jamie, Christina, and JaDawn, close friends, Larry Allen, Hamon and David New and his wife, Vickie New. Debbie thanks everyone for a wonderful surprise.

Miss JaDawn Gregory celebrated her 11th birthday Saturday, Jan. 25, at her home with her mother, Mrs. Deborah Gregory; her friends, Anna Stephens, Renee Deborde, Becki Price, Brenda Price and JaDawn; and her James Gregory. We wish JaDawn many more happy birthdays. She is a very sweet girl.

Bro. Ballard Rader and wife, Edith, of Berea, were Sunday afternoon guests of Mrs. Ruth Bussell.

Mr. and Mrs. Walter Doan and Mary McWhorter were in Crab Orchard Sunday afternoon visiting Mrs. Florence Owens who was ill and not able to be in church Sunday. We hope she is better Sunday. We also had dinner at the Brodhead Cafe and visited with Billy Alan Bussell and wife, Juanita.

Mrs. Elizabeth Woodall visited Mrs. Mattie Reed recently.

Visitors of Bob and Mary Adams were James Clark of Stanford, Frank Mays and son, Melvin, of Brindle Ridge, Mrs. Georgia Mullins and son, Gilbert Ray, and daughter, Rachel, of Mt. Vernon, and Mrs. C. Mullins' daughter, Naomi Finley, of Cincinnati, Ohio.

Mrs. Bernita Adams and Mrs. Carolyn McKinney had dinner and a visit with Ruth Bassell at the Brodhead Cafe Friday.

Mrs. Betty Hodge, Mrs. Irene Adams and Mrs. Grace Blanton were in Soners' Friday shopping.

Last Wednesday visitors of Mr. and Mrs. George Adams were Doug Adams, Mr. and Mrs. Charles Proctor of Hamilton, Ohio, Mr. and Mrs. James Maynus, also of Hamilton, Ohio.

Mrs. Bernice Adams has been confined to her home this past week suffering from the flu. Her granddaughter, Miss Donna Lynn Cash, has recuperated from the flu.

Sunday guests of Mr. and Mrs. Caryl Blanton were Mr. and Mrs. Earl Blanton and girls, Lisa and Michelle, Mr. and Mrs. David Blanton and girls, Rebecca, Regina and Renita, Mr. and Mrs. Junior Blanton and Rodney of Mt. Vernon, Mrs. Shilley Burton, Mr. and Mrs. Walter Lee Cash and Mrs. Victor Spoonamore.

Visitors of Mrs. Fannie B. Albright were Mrs. Elizabeth Houston and Lloyd and Emma Shurts.

Visitors of Ennyu Laws Al Owens, Mrs. Maggie Herrin, Mr. and Mrs. Henry Brown, Mrs. June Lathan and son, Bruce, and Mr. and Mrs. Clyde McWilliams.

Miss Melba Lea Pruitt spent Sunday night with her mother, Mrs. Pat Pruitt, and Freddy Pruitt, Jr. and filled her dental appointment in Mt. Vernon.

Miss Shonna Albright has been confined to her home very sick with the flu. We wish her a speedy recovery. Shonna celebrated her 13th birthday Sunday, Jan. 26, and her dad's birthday Jan. 27. They enjoyed cake and ice cream together with the rest of the family.

Mr. and Mrs. Harley McFerrin and Mrs. Mae Dea, visited Mrs. Mattie Tuesday for Mr. McFerrin's doctor appointment.

Mrs. Judy Walker and daughter, Tracy, of Springfield, Ohio, visited Mr. and Mrs. Walter Doan Saturday.

The 1986 officer's team of Kappa Delta Tau, a service organization from Eastern Kentucky University, held their semester retreat at the home of Bobby and Clara Proctor last weekend. Officers attending were Lisa Cubbage, Theresa Smith, Cathi Reardon, Michele Douglas, Debbie Wilkins, James Sasser, Carol Lee Gray, Jill Blair, Beth Swinger, Jackie Dyer, Carol Ann Leedy, and Elizabeth Proctor.

Visitors of Mr. and Mrs. Delbert Long were Jimmy Blevins and son, Darrell, Mrs. Irene Taylor, Don Hopkins, Diana Owens, Loreta Mink, John and Mabel Taylor, John, Beverly and David Taylor, and Paul Blevins.

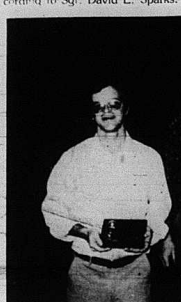
Mrs. Corine Brooks of An, charge spent the past week with her sister Mrs. Eleanor Gray.



For a masculine-looking gift package, use sporty paper and tie the four corners with heavy yarn.

Thompson enlists in U.S. Air Force

Christi Lee Thompson, daughter of Mr. and Mrs. James Thompson of Brodhead, enlisted in the U.S. Air Force. Delayed Enlistment Program recently, according to Sgt. David E. Sparks.



The above photo are Carl Sargent, left and Harold Adams who volunteered to coach the Brodhead Elementary School 4th and 5th grade basketball team. The two youngsters with plaques of appreciation by the team the night of the county tournament.

Air Force recruiter, 108 College St. Somerset.

Christi, a 1984 graduate of Rockcastle County High School, is scheduled to begin active duty in the regular Air Force on Feb. 24. Upon graduation from the Air Force's six-week basic training course, she is scheduled to receive technical training in the general field. She will be earning credits toward an associate degree in applied sciences through the community college of the Air Force while attending basic and other Air Force training schools.

Four named to Honor List at Berea College

Four Rockcastle County High School graduates have been named to the Dean's Honor List at Berea College for the term just completed.



The Brodhead Elementary School 4th and 5th grade team, who finished the season with a 7 and 3 record, recently placed second in the Livingston Lions Club County Tournament held at Livingston Elementary School. Members of the team are Nicholas Jones, Jason Kirk, Corey Craig, Michael Albright, Curtis Cash, Eric Buske, Charles Delph, Shannon Day, Michael Shaffer, Chris Newland, Micah Pfalkerson, Toby Jobley, Eric Brock, John Hamm, Jamie Alcorn, Coach Randall Adams, and Angie Russell, Robia Mullins, Michelle Hamm, Becki Birney, Detrina Leece, Stacy Moore, Sonya Morgan, and Coach Carl Sargent. Not present were Chris Brummett, Sherry Jones, and Mindy Sargent.

These students are Ruth Ann Bivins, daughter of Lee and Sarah Bivins, Rt. 1, Mt. Vernon; Mark Lowell, son of Dorothy Lowell, Rt. 2, Mt. Vernon; Lisa Payne, daughter of George and Ruth Payne, Rt. 5, Mt. Vernon; and Barba Phillips, grandson of Burton and Ruth Beard, Rt. 3, Mt. Vernon.

To be eligible a student must receive a grade of B or better in all of four or more courses.

SQUARE DEAL

AUTO SALES, INC.

U.S. 25 North of State Police Post
LONDON, KY. 864-2886

1985 CJ-7, Like New, Only 7700 miles, 4 Spd., 6 Cyl., Red/Orange w/Black Vinyl Top, **\$8,995**

CARS

- 1983 Ford Escort L - 2 door, 4 spd., 4 cyl., 2000 miles. BUY IT! **NOW ONLY \$4,985**
- 1983 IROC Z-36 5 spd., H.O., V-8, lots of extras. Black w/charcoal interior. **SALE PRICE \$13,950**
- 1984 Chevrolet Cavalier Station Wagon - 4 door, auto., 4 cyl., P.S., A/C, AM-FM Cassette, roof rack, 15,000 miles, blue. **SAVE \$4,978**
- 1983 Chevy Citation - 2 to choose from blue and gray, auto., A/C, 4 cyl. **SALE PRICE \$7,950**
- 1983 Chevy Celebrity 4 door, auto., V-6, P.S., P.B., A/C, Gray w/charcoal interior. **COMPARE \$5,946**
- 1983 Chevy Cavalier Classic - 4 door, auto., V-8, AM-FM stereo, PDL tilt cruise, A/C, light brown w/brown cloth interior. **ONLY \$5,900**
- 1983 5th Ave. Chrysler - 4 door, loaded w/extras, charcoal w/lt. gray vinyl int. **SALE PRICE \$7,930**
- 1983 Ford T-Bird Heritage - Auto., V-8, P.S., P.B., P.W., PDL, Power Stere., Rear Defrost, AM/FM stereo, low mileage, super nice brown. **SALE PRICE \$11,982**
- 1982 Plymouth Ballant 5/1W - 4 door, 2 to choose from Brown & Blue, Auto., 4 cyl., A/C, P.S. **SALE PRICE \$3,650**
- 1982 Cavalier 4 door, auto., 4 cyl., A/C, P.S., P.B., white. **SALE PRICE \$7,950**
- 1982 Buick LeSabre LTD - 4 door, auto./overdrive, 11000 miles, A/C, AM-FM Stereo, Cruise, Wire Wheel Covers, Lt. Green. **SALE PRICE \$7,780**
- 1982 Buick Regal - 2 door, AT, V-6, Stereo, A/C, console, brown-ton, cloth beige int. **SALE PRICE \$5,900**
- 1982 Dodge Atlas - 4 door, 4 cyl., A/C, P.S., Cruise, Light Green. **ONLY \$7,982**
- 1981 Subaru 5/1W GL - 4 door, 4 spd., silver. **SALE PRICE \$7,190**
- 1981 Pontiac Grand Prix - 2 door, coupe, auto., V-6, A/C, tilt, AM-FM stereo, sun roof, rear defrost, brown w/lt. tan leather top. **SALE PRICE \$14,950**
- 1980 Ford Fairmont Squire SW - 4 door, auto., 6 cyl., A/C, P.S., P.B., AM/FM Stereo, brown w/vinyl interior, vinyl interior, nice family wagon. **SALE PRICE \$7,650**
- 1980 Olds Cutless - 2 door, coupe, auto., V-6, A/C, P.S., P.B., Stereo, Rear Defrost, Dove Gray. **SALE PRICE \$3,900**
- 1980 Dodge Diplomat - 4 door, auto., slant 6 cyl., AM-FM stereo, A/C, rear def., rear wiper, roof rack, moonroof w/lt. tan top. **SALE PRICE \$7,990**
- 1980 Impala - 4 door, AT, V-8, A/C, P.S., P.B., cruise, white w/lt. VR & Blue V. Int. **SALE PRICE \$8,850**
- 1980 Chev. Malibu SW - 4 door, AT, V-6, A/C, P.S., AM-FM Stereo, Silver. **SALE PRICE \$4,900**
- 1980 Chev. Corvette - 2 door, 4 spd., 4 cyl., A/C, brown. **ONLY \$11,900**
- '71 VW Beetle - 1979
- 1980 Nissan 4 x 4 3 spd., AM/FM stereo, tilt wheel, sliding back glass, sunroof, chrome Sport wheels like new, 2,200 miles, blue. **ONLY \$6,500**
- 1980 Datsun 280ZX 3-2-3 5 spd., AM-FM, A/C, Cruise, rear louvers, 10000 wheels, low miles. **\$9,900**
- 1980 Ford Mustang - 4 cyl., AT, P.S., AM/FM w/cassette, blue. **NOW ONLY \$1,836**
- 1980 Ford Pinto 5/1W - 2 door, 4 spd., 4 cyl., dark brown. **SALE PRICE \$1,150**
- 1979 Chev. Nova - 4 door, AT, 6 cyl., A/C, AM-FM Stereo, Cassette, AT, vinyl, int., little cr. white. **SALE PRICE \$2,190**
- 1979 Camaro - AT, A/C, P.S., P.B., Radio, Blue, Must go. **\$2,900**
- 1979 Cadillac Deville - 4 door, lots of extras brown. **MUST GO \$2,900**
- 1979 Pontiac Bonneville - 4 door, auto., V-8, A/C, and more, white w/red vinyl roof and red interior. **SALE PRICE \$2,950**
- 1979 Ford T-Bird - AM/FM Stereo, **SALE PRICE \$1,950**
- 1979 AMC Spirit GT - 4 Spd., Small V-6, AM-FM Radio, **NOW \$2,190**
- 1979 Olds Delta 88 Royale - 2 door, auto., V-8, tilt, AM-FM, 8 Track, A/C, Green w/VAlUE PRICE \$7,743
- 1979 Mercury Cougar XBT - Auto., V-8, AM-FM Stereo tilt cruise, 60 P.S., P.B., Power Windows (Seats, Aluminum, Filled/Maroon top, maroon velour int.) a real nice car. **NOW \$2,950**
- 1978 Lincoln Mark V - Fully loaded, 66,000 miles. **SALE PRICE \$4,250**
- 1978 Pontiac T.A.R. - 400 V-8, Tilt, Cruise, T-Top. **MUST GO \$2,450**
- 1978 Pontiac Bonneville Brm. 4 door, AT, V-8, A/C, AM-FM, cruise, dark blue. **MUST GO \$2,900**
- 1977 Plymouth Valiant LTD - auto., 6 cyl., **\$430**
- 1977 Datsun 280Z - Auto., A/C, AM/FM, cruise, rear defrost, nice tires, one owner, bronze, tan. **\$2,800**
- 1977 Pontiac Firebird - V-8, P.S., P.B. **SALE PRICE ONLY \$1,700**
- 1977 Olds Cutless 5/1W - 4 door, auto., V-8, P.S., A/C, AM-FM, cruise, dark blue. **ONLY \$4,949**
- 1973 Ford Maverick - 2 door, 6 cyl., w/floor shift shift. **TAKE IT AWAY AT \$83**
- 1973 Plymouth Grand Fury 5/1W - 4 door, Auto., V-8. **\$685**
- 1974 Buick Regal - 2 door, V-8, Auto. **\$290**
- 1969 Firebird - V-8, 4 spd., white, blue. **\$850**
- 1968 Camaro - 350, V-8, Auto., trans., dark blue w/white stripes. **\$3,900**
- 1959 T-BIRD - Auto., V-8, good body, collectors item, white. **\$1,600**
- '83 AMC Alliance LD 2000, Auto., A/C, Power Steering 20 Dr. Mt., Bronze. **\$1,900**

TRUCKS

- 1981 Ford Van long wheel base, standard shift, cargo, and work van, white. **\$1,480**
- 1978 GMC Van - P.S., V-8, Solid Black. **\$2,250**
- 1977 Dodge Rally Sportsman Auto., V-8, Front end and rear heat and Air, AM/FM, 2 rear seats, brown/ton. **\$2,950**
- 1977 Chevy 1 Ton Van standard shift, 350 V-8, long wheel base, brown/tan, good work van. **\$1,175**

VANS

- 1981 Jeep Laredo - Jeep - 6 cyl., 4 spd., hardtop, western wheels, gold bronze, hardtop. **\$3,795**
- 1978 CJ-7 - V-8, 3 spd., hardtop, mahogany, w/black hardtop. **\$3,900**
- 1981 Jeep Scrambler 4spd. 6 Cyl., 4 spd., rock, brown and white. **\$4,995**

JEeps

- 1981 Ford Van long wheel base, standard shift, cargo, and work van, white. **\$1,480**
- 1978 GMC Van - P.S., V-8, Solid Black. **\$2,250**
- 1977 Dodge Rally Sportsman Auto., V-8, Front end and rear heat and Air, AM/FM, 2 rear seats, brown/ton. **\$2,950**
- 1977 Chevy 1 Ton Van standard shift, 350 V-8, long wheel base, brown/tan, good work van. **\$1,175**

Furniture Town's Rock Bottom Sale

1 mile from East Bernstadt on Hwy. 30

FREE DELIVERY

Beautiful Coffee Table Sets, Reg. \$595, for \$268 Solid Oak China Cabinets, Reg. \$695, for \$245 (glass fac'd); Lots of lamps, priced unreasonably low.

Chest of drawers \$59.00; bedroom suites \$299.00; living room suites \$99.00, \$290.00 and \$390.00; Recliner \$99.00; Sewing Rockers \$65.00; Hide-a-bed \$235.00; Orthopedic box springs and mattress \$158.00 set; Reg. \$419.00; Woodburning Stove \$150.00; Dining Room Sets \$99.00; Big oak dining room suite with 6 chairs and pedestal top table, reg. \$995.00, now \$450.00; Other oak and maple dining room suites \$185.00.

Lots and lots of other good deals. To many to advertise. Also some good furniture.

Coal and wood stoves going at \$20.00 above cost

Folks come from miles around to save the most at

Open 6 days a week, 8 a.m. to 7 p.m.

Furniture Town

24 Months or 24,000 Mile Warranty available on Qualified Units.

ON THE SPOT BANK FINANCING WITH APPROVED CREDIT

"PRICES ARE BORN HERE AND RAISED ELSEWHERE"

Shop Square Deal Because

PIC-PAC SUPERMARKETS

PRICES GOOD THRU SATURDAY, FEB. 1, 1986 ONLY AT PARTICIPATING STORES.

Hyde Park Medium EGGS GRADE 'A' DOZEN

2 Doz. \$1.00 (With Add'l. \$10 Purchase)



16 OZ. CAMPBELL'S Pork & Beans **3/1**

CAMPBELL'S CHICKEN NOODLE Soup 10.7 OZ. CAN **3/1.99**



32 OZ. KRAFT Mayonnaise **1.69**

20% OFF Crisco REG. OR BUTTER FLAVOR 3 LB. CAN **2.29**



9.5 OZ. HYDE PARK Cinnamon Rolls **.79**

PARKAY Margarine 16 OZ. QUARTERS **2/1**

LIMIT TWO WITH \$10.00 ADDITIONAL PURCHASE



4 PAK BALLARD Biscuits OVEN READY OR BUTTERMILK **.79**

PEPSI-COLA 16 oz. 8 Pack Plus Tax and Deposit **\$1.69**

BOUNTY Paper Towels Single Roll **79¢**

CORONET WHITE Bath Tissue 4 ROLL PKG. **.99**



LAUNDRY DETERGENT 42 OZ. 40¢ OFF **1.99**

Oxydol

Save With PIC-PAC'S BUDGET BOOSTER SPECIALS!

BRIGHTEN YOUR BREAKFAST WITH FANTASTIC SAVINGS. SEE INSIDE FOR DETAILS!

THE Meat Market.

FISCHER'S CHUNK BOLOGNA \$1.29 Lb.

Budget Booster SPECIAL! FRESH 'N' LEAN Ground Beef **.89** Lb. 3 LBS. OR MORE

Family Pack Frver Leg QUARTERS **39¢** Lb.

LEAN 'N' FRESH COUNTRY STYLE Spare Ribs **1.29** Lb. LESS THAN 3 LBS. Lb. **.99**

WILEY FARMS Pick of the Chix **.89** Lb.

Mr. Turkey HAM 8 oz. pkg. **1.29**

Mixed Pork Loin Chops **1.49** Lb.

OR CUB CHICKEN Fried Steak **1.49** Lb.

SHORT SHANK Smoked Picnics **.75** Lb.

FISCHER'S Half Hamlets **.279** Lb.

Bologna 8 oz. pkg. **.69**

Mr. Turkey Ham Chubs **1.59** Lb.

Mr. Turkey FRANKS **.79¢**

Workout with the Armour Stars.

12 OZ. PKG. ALL HEAT Armour Star Wieners **1.09**

ARMOUR STAR SLICED Bacon **1.89** 16 OZ. PKG.

ARMOUR STAR Cooked Ham **2.79** 12 OZ. PKG.

FRESHEST BY A Country Mile.

FRESH Green Cabbage **.29** Lb. 1/2

IMPORTED Seedless Grapes **1.99** Lb.

CRISP California Carrots **.39** 1/2 Lb. PKG.



SNOW WHITE California Cauliflower **1.69** HEAD

JUMBO IDIHO Russet Bakers **4/99**

10 OZ. ROASTED & SALTED Gary's Peanuts **.99**

FRESH Cello Slaw 8 OZ. PKG. **.69**

GOLDEN Ripe Bananas **3/1.99** LBS.

DIETER'S DELIGHT INDIAN RIVER White or Pink Grapefruit **1.79** 5 Lb. BAG

RIPE Red Tomatoes **.59** Lb.

SWEET, JUICY CALIFORNIA Minneola Tangerines **1.69** 3 Lb. BAG

32 OZ. FREEZER QUEEN Entrees ASSORTED **1.69**

16 OZ. HYDE PARK Bread **3/99¢**

16 OZ. HALF MOON CHEDDAR CHEESE SLICES **1.79**

6 PAK. 5 OZ. LIGHT 'N' LIVELY Assorted Yogurt **1.69**

24 OZ. HEART Squeeze Ketchup **1.59**

12-18 OZ. QUAKER ASSORTED Instant Oatmeal **1.99**

18 OZ. CAMPBELL'S NEW ENGLAND Clam Chowder **1.09**

4.4 OZ. 2PK OFF Colgate Toothpaste REG. OR 139¢

14 OZ. INTENSIVE CARE Vaseline Lotion REG. OR 199¢

11 OZ. PILGRIMY Toaster Strudels ASSORTED **1.29**

11-12 OZ. GABA LITE BUTTER STICKS REG. **2.49**

18 OZ. CAN Pecan Coffee Cake **2.49**

18 OZ. CAN School Days Peas **2/79**

22 OZ. KRAFT Grape Jelly **1.29**

18 OZ. CAMPBELL'S Chunk Beef Soup **1.29**

14 OZ. 8PK OFF Comet Cleanser **2/99**

2PK OFF FABRIC SOFTENER Vaseline Bounce REG. OR 179¢

Bakery-deli. ONLY WHEN AVAILABLE

Blimar Roast Beef **3.99** 2 OZ. Cherry Crumb Cake **3/1**

OR TURKEY Turkey Breast **3.99** 20 OZ. Cherry Pie **2.99**

American Cheese **2.49** 16 OZ. Cherry Fritters **2/89**

WHOLE BBQ Chickens EA **2.99** 3 OZ. Cherry Turnovers **2/99**

Chili Dogs **2/99** Iced Brownies **5/1**

COUPON-COUPON-COUPON

HYDE PARK GRADE 'A' Medium Eggs **\$1.00** 2 Doz.

(With additional \$10 purchase)

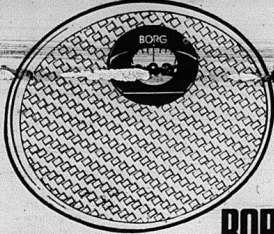
PIC-PAC SUPERMARKETS

True Value

HARDWARE STORES®

True Value
HARDWARE STORES®

BARGAIN OF THE MONTH



9.99

While Supplies Last

BORG

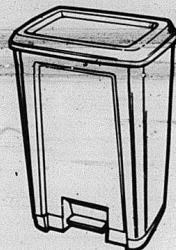
Oval Bath Scale helps you keep a close watch on gains or losses with easy-to-read numerals. Its large lens gives you a clear look at the analog dial. Basket-weave vinyl mat is easy to clean. In a variety of decorator colors.

QUANTITIES LIMITED

True Value
HARDWARE STORES®

BARGAIN OF THE MONTH

Rubbermaid



While Supplies Last

12.99

15 1/2 x 19 x 26 1/2 In.

Step-On Clothes Hamper features a lid that opens with the touch of a foot, freeing both your hands for laundry disposal. Its tough plastic won't rust like metal hampers and the lid removes for easy emptying on washday. Assorted colors.

Quantities Limited

True Value
HARDWARE STORES®

10W-40 VALVOLINE MOTOR OIL



79¢

True Value
HARDWARE STORES®

REGULAR RETAIL \$189.99

SAVE \$90.00

NOW ONLY! \$99.99

SHARP

HOT!



HOTTEST COMPACT STEREO YET!!

Compact Stereo Music System

- Front-controlled 3-in-1 compact music system lets you enjoy high-quality performance of AM/FM 2-band stereo receiver, cassette deck and record player with easy front control operation
- Attractive design with slide controls
- 6-1/2" (16cm) full range speaker system

True Value
HARDWARE STORES®

TOYOKUNI

HOT!



REGULAR RETAIL \$89.99

SAVE \$10.00

NOW ONLY \$79.99

MODEL #E-U 18,000 BTU/HR. This new heating heavyweight is perfect for emergency backup heating. Convective design allows warmth to circulate freely. Heavy-duty construction for safe, dependable service.

Complete line of Electrical, Plumbing Supplies, Hand Tools, Paint and Hardware Items.

True Value

HARDWARE STORES®
PORCELAIN LAMP HOLDERS

SUPER VALUE



Pull Chain with Side Outlet (non-grounding) \$1.99



1624DC



Keyless \$0.99

1625



Pull Chain \$1.49



1629DT



Pull Chain with Grounded Side Outlet \$2.39



1628DT

All items topwired and UL Listed.



\$7.88

M5K

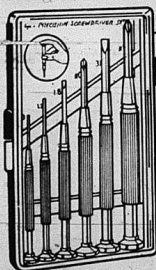
Complete with test leads, battery and instruction book in blister pack showing lesser applications.

- FEATURES:
- Three color coded scale plate, and front panel
 - Large easy to read numbers
 - Diode protected movement
 - Compact pocket size
 - One Year Limited Warranty
 - 12 Ranges

DC Volts: 0-10, 50, 250, 500; checks power supplies and logic circuits
AC Volts: 0-10, 50, 250, 500; measures line and control voltages
Ohms: 0-RM, R x 10, R x K; test diodes, transistors and resistors.

True Value
HARDWARE STORES®

True Value OF THE MONTH



While Supplies Last

1.99

6-PC Precision Screwdriver Set designed with swivel handles and strong steel blades for easy fingertip control when tightening or loosening small screws. With 4 slotted, 2 Phillips tips for delicate repairs on jewelry, watches, eyeglasses, etc. Incl. storage case. 85-1006

QUANTITIES LIMITED

True Value

HARDWARE STORES®



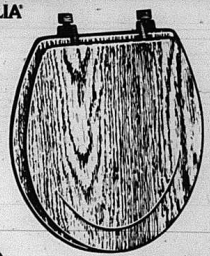
30 Gallon Trash Container

Only \$5.99

TUCKER HOUSEWARES

No. 332 30 Gallon Trash Container with Metal Lock-Lid Handles. Brown Bottom with Brown Cover

MAGNOLIA



9.88

While Supplies Last

Oak-Lock Toilet Seat accents popular bathroom fixtures and accessories and features non-corrosive top-mount hinges for easy installation. This attractive printed oak-finish seat is reinforced for extra strength and cleans up with just a damp cloth.

QUANTITIES LIMITED


Franklin's

West Gate Center Mt. Vernon
PHONE 256-5614

SALE

Open Monday thru Saturday 9 to 8 Sundays 1 to 6

Franklin's
Good Stuff Stuffing
100% Polyester
12 Oz.
\$1
Reg. 1.69 Ea.



Franklin's
Marcal Facial Tissues
100 Ct.
3 \$1
For



Franklin's
MADE IN USA
CANNON
Floral Print
1st Quality
22x42 **Bath Towel \$2**
Reg. 2.99 Ea.
12x12 **Wash Cloth \$1**
Reg. 1.49 Ea.



Franklin's
BANNER
NEW!
TOILET & GROOMING
Banner Toilet Tissue
4 Roll
\$1



Franklin's
Woodtone Metal
Photo Frame
8x10-5x7 Set
Reg. 7.99
\$4
Set



Franklin's
LOMA
32 Gallon
All Weather
Refuse Container
Reg. 12.99
\$8
Ea.



Franklin's
Wicker Ware
Your Choice
Reg. 1.50
\$1
Ea.



Franklin's
Terry Print
Kitchen Towel
Your Choice
Reg. 1.50
\$1
Ea.



Franklin's
LOMA
Plastic Waste Basket
For Any Room Or Office
Reg. 2.09
\$1
Ea.



Franklin's
TRUSEW
100% Spun Polyester
Sewing Thread
200 Yd. Spool
Your Choice
Any
8 \$1
For



Franklin's
LOMA
12 Qt. Plastic
Dish Pan
Fits Standard Twin Sink
Reg. 1.99
\$1
Ea.



Franklin's
"Smiles" Disposable Diapers
With Elastic Leg Contoured Fit With Tape
Medium-18 Ct.
Large-12 Ct.
Your Choice
\$3
Bag





4-H News

By: Martha Wesley
County Extension Agent
For 4-H

4-H COUNCIL: LEADERS MAKING A DIFFERENCE

The successful 4-H program in Rockcastle County cannot be attributed to any certain person. Many leaders and parents working together have helped build the program into what it is today. One way to become more involved in the overall 4-H program is through joining the 4-H Council.

The 4-H Council plays a very important part in the 4-H program. They help in planning and promoting 4-H programs for our county and assisting in carrying out these plans and evaluating their success. Their help is essential in having a successful 4-H program

that can meet the needs and interests of the youth in Rockcastle County.

Members of the 4-H Council are volunteer leaders of various occupation and teenagers who have a special interest in 4-H. It is the council's goal to have representatives from each school or area. There is a special need for parents from Mt. Vernon, Roundstone and Livingston schools. If you would be interested in serving on the 4-H Council, contact Martha Wesley at 256-2403 or Michael Robbins at 453-3981, or come to our next meeting.

The 4-H Council will meet on Monday, Feb. 3, at 7 p.m. at the Harry Sparks Vocational School. Come out and show your support of the largest youth organization in Rockcastle County.

GI insurance 1986 dividend payment will set record

More than 31,700 Kentucky veterans who kept their GI life insurance in force will share record \$8.6 million in dividends in 1986. The Veterans Administration announced today.

No application for the annual dividend is necessary, according to Lee Caudill, director of the VA Regional Office in Louisville. He said each policyholder will receive the dividend automatically in the month of the anniversary date of the policy.

Caudill said the higher dividend is due to high interest earnings on the insurance funds' investments and lower death rates among policyholders. Nationally the amount to be paid out is \$905 million, which is \$106.2 million more than in 1985.

In Kentucky 472 veteran holders of U.S. Government Life Insurance (USGLI) will share \$113,000 in 1986 dividends. The national average payment is \$260. Most of the policies were issued during World War I.

Some 27,000 World War II veterans in Kentucky who kept their National Service Life Insurance (NSLI) in force will receive, total dividends of \$7.6 million and an average payout of \$283.

Korean Conflict policyholders—3,000 in Kentucky—will receive a total of \$604,000 in dividends, for an average payout of \$205, from Veterans Special Life Insurance (VSLI).

The Veterans Reopened Insurance (VRI) program will pay 1,284 Kentucky policyholders \$340,000 in total, averaging \$264. Vietnam-era and post-Vietnam era veterans, who have different insurance programs, do not receive dividends.

The only VA-administered insurance now being issued is Service Disabled Veterans Insurance (SDVI). It is available, without dividends, to veterans with service on or after April 25, 1951, who have a service-connected disability.

IRS Will Compute Tax for Some Filers

Form 1040EZ and Form 1040A filers and certain taxpayers filing Form 1040 may request that the Internal Revenue Service figure their taxes for Form 2555, "Foreign Earned Income."

The proposed operation is located on the Billows U.S.G.S. 7½ minute quadrangle map. This revision will not affect the original contour method of mining. This revision will not change the proposed land-use affect from the forest land pre-mining land use to a pasture land with permanent impoundments post-mining land use. The purpose of this revision is to leave impoundment 'A' as a permanent structure.

The application has been filed for public inspection at the Department for Surface Mining Reclamation and Enforcement's London Regional Office, Third Floor, Regional State Office Building, London, Kentucky 40741. Written comments, objections or request for a permit conference must be filed with the Director of Permits, Sixth Floor, Capital Plaza Tower, Frankfort, Kentucky 40601.

This is the final advertisement of this application. All comments, objections or request for a permit conference must be received within forty-five (45) days of today's date.

"FMHA" (Cont. From 5)

of \$1.661 loans at \$1.7 billion, outside assistance must be sought.

Interested contractors should have the following qualifications: Responses are solicited only from prospective suppliers who have had at least five (5) years of recent experience in the packing and servicing of farm loans, including farm real estate property, and farm production loans. Appraisal experience in both real and personal property is also required. Appraisers must be fully accredited rural appraisers as sanctioned by one of the recognized appraisal societies or organizations or have had FMHA or Federal Land Bank appraisal training at least five (5) years' recent experience in conducting farm real estate and chad-ched property appraisals. The qualification requirements of a prospective supplier shall extend to all members of the supplier's organization who are proposed in a professional capacity but do not apply to persons employed in an adequate or learning capacity by the supplier, but would be applicable to those supplier employees designated as fully trained and experienced.

Auto recordkeeping

New rules go into effect Jan. 1 concerning the recordkeeping

required for the business use of automobiles, computers, airplanes, boats, etc. All the publicity about the existing of the rules should not lead you to think that you do not have to keep records. The fact is that the new rules are very much like the 1984 Tax Act rules, with the exception that your recordkeeping no longer has to be done "contemporaneously"; that is, as the usage occurs.

You are still required to keep "adequate records" or "sufficient evidence" to substantiate—any deductions or credits that you take for the business use of equipment. For automobiles you must keep a record of the date, the distance,

the destination, and the business purpose of each trip. Though daily logbook entries made at or near the time of the trip will still be the best documentation should there be any challenge to your deductions. Receipts, cancelled checks, and other documentary evidence may also be used to support deductions.

The "sampling method" can be used in some circumstances. You keep thorough records for a portion of the year and demonstrate that this portion of the year accurately reflects the usage during the rest of the year.

If you use a vehicle or other listed equipment in your business, be sure you understand the recordkeeping requirements for your particular situation. Do what is necessary to maintain adequate records throughout the year. A lax approach could cause you to lose deductions to which you are rightfully entitled.

NOTICE OF INTENTION TO MINE Pursuant to Application Number 102-0035

In accordance to the provision of KRS 350.055, notice is hereby given that Ikerd-Bandy Co., Inc. P.O. Box 246, Ferguson, Kentucky 42533, has filed a revision to an application for a permit for a surface mining and reclamation operation of approximately 646.0 acres located 1.0 miles southwest of Pongo in Rockcastle County.

The proposed operation is approximately 0.5 miles west from Elkhorn Branch Road's junction with Line Creek Road and located 0.2 miles west of Elkhorn Branch. The Latitude is: 37 degrees 13'00". The Longitude is: 84 degrees 20'00". The surface area is owned by Frank H. Ikerd, III. Frank H. Ikerd, Jr., Gene Che-shire, John Bullock Heirs, Kenneth Bullock and Jerrell Bullock.

Those desiring this assistance must fill in certain items on the return, attach Forms W-2, sign the return; and send it in before the April 15 deadline, according to the IRS.

To qualify for this service, taxpayers must have an income of \$30,000 or less, not itemize deductions and not use Schedule G, "Income Averaging," or Revenue Service figure their taxes for Form 2555, "Foreign Earned Income."

LEGAL NOTICES

NOTICE

Notice is hereby given that Ruby Adams, Rt. 1, Box 433, Brodhead, Ky. 40409, has been appointed executrix of the estate of William J. Adams. Any persons having claims against said estate shall present them according to law to the said Ruby Adams or to William D. Gregory, P.O. Drawer 220, Mt. Vernon, Ky. on or before May 5, 1986. 26x3

NOTICE

Notice is hereby given that Harold Lunsford, Rt. 3, Box 79, Mt. Vernon, Ky., has been appointed administrator of the estate of Elmer Lunsford. Any persons having claims against said estate shall present them according to law to the said Harold Lunsford or to William D. Gregory, P.O. Drawer 220, Mt. Vernon, Ky. on or before May 5, 1986. 26x3

NOTICE

Notice is hereby given that Delphia M. Cox, Rt. 4, Box 599, Mt. Vernon, Ky., has been appointed executrix of the estate of Andrew Cox, Jr. Any persons having claims against said estate shall present them according to law to the said Delphia M. Cox or to Clontz & Cox, P.O. Box 749, Mt. Vernon, Ky. on or before May 5, 1986. 26x3

NOTICE

Notice is hereby given that Leonard Northen has filed a final settlement of his accounts as administrator of the estate of James Allen Northen. A hearing on said settlement will be held on Feb. 17, 1986. Any exceptions to said settlement must be filed before said date. 26x2

There will be a Household Shower For Mr. & Mrs. Gary Frith Jan. 31st at the Rockcastle Co. Library Everyone Invited

Ole Kentucky Kitchen

Located on US 25 (At Burr Hill) Mt. Vernon - Exit 59 off I-75

presents a Get Acquainted Special

Bring In This Coupon
Diners & Breakfasts must be of comparable price
BUY ONE DINNER OR BREAKFAST AT REGULAR PRICE AND YOUR PARTNER CAN DINE FREE
Valid thru Feb. 28, 1986

We offer a full menu of dinners for your dining pleasure.

- Homemade Biscuits & Sausage Gravy
- Ole fashioned Apple Stack Cake
- Beans & Cornbread
- Pork Chops
- Seafood
- Country Ham
- Chicken
- Roast Beef
- liver
- Country Size Hamburgers
- Country Fried Steak
- Homemade Vegetable Soup

UNDER NEW MANAGEMENT
Owner: Liz Jones
Manager: Pam Shepherd Asst. Mgr.: Rose Proffitt
Waitresses: Gail Kirby, Jonna Gunter, Annetta Conley
"We are all formerly from the Log House Restaurant from 1975 to 1985"

efficient, portable heat for just pennies per hour!

Aladdin
KEROSENE HEATERS
...a 35-year reputation for state-of-the-art quality

10% Off
All Models

WICKS FOR ALL KEROSENE HEATERS

JACK'S S&T TRUSTWORTHY HDW.
Williams St. 256-4363 Mt. Vernon

COME TO THE STORE THAT HAS THE LARGEST DISPLAY OF WORKING SATELLITE EQUIPMENT IN THIS AREA. SEE FOR YOURSELF THE QUALITY OF OUR PICTURE BEFORE YOU BUY!

DON'T BE MISLED! THERE'S ONLY ONE LEON FARRIS TV & STEREO SATELLITE SALES!

"The Friendliest Store in Town and All Around!"

WE GIVE YOU 3 EASY WAYS TO BUY:

- NO DAY INTEREST-FREE FINANCING. Qualified Buyers See Us For Details!
- FINANCING-Take Up To 36 Months To Pay With Low Down Payment (With Approved Credit!)
- CASH-See Us About Our INSTANT CASH DISCOUNT On The Satellite System of Your Choice Just For Paying Cash At The Time of Purchase!!

6 Ft. Systems Available. See Us For Details!

We Feature Famous Brand Names That Are Known For Quality!

Electric Free
DISH MOVER
JACK
Make your Satellite System work for you.
\$168.88
Plus Accessories & Installation

ANTO TECH
DRAKE
MABLE
JANIEL
UNIDEN
B-SOUND
AVANTER
TECH

See Us About Multi-Set Hook-Up!

Bank Rate Financing Available For Qualified Buyers!

NEAR A SERVICE MAN DURING OUR WARRANTY PERIOD (Excluding Proven Abuse or Act of God)

THREE LOCATIONS TO SERVE YOU BETTER!

1554 S. Main Street
Mt. Vernon, Ky.
PHONE: 844-2292
HRS: 9:30 AM-7:30 PM
SATURDAY 9-3

306 Saffer St.
Spartan, Ky.
PHONE: 679-5274
Hrs: 10:00 AM-6:00 PM
HRS: 10:30 AM-7:30 PM
SATURDAY 10-3

WE HAVE BLACK ALUMINUM MESH SATELLITE DISHES -
The Ones That Will Not Rust Like The Cheaper Steel Dishes

now you have a choice in selling real estate at

AUCTION

Gene Evans Land Auction Co. announces the expanding of our services to the people of Mt. Vernon, Rockcastle and surrounding counties.

Let our experienced team work for you!

Bruce Evans
Auctioneer & Sales Associate
6 Years Experience

Gene Evans
Auctioneer & Broker
30 Years Experience

Vernon Holt
Sales Associate
3 Years Experience

*Estate Sales *Farms *Homes *Farm Equipment *Cattle *Corn

30 Years Experience in Auction Selling *Professional and Friendly Personal Service *Excellent Advertising Program *The Best Auction Equipment

"We try to make you money, not cost you money."

Gene Evans Land Auction Co.

401 S. Main St., London, Ky. Ph. 864-9751 Office or 843-6995 Nights

Charmin
BATHROOM TISSUE
4 Roll Package

.99

Limit 1 With \$10 Order

One-Quarter
PORK LOIN Lb. **1.39**

PORK ROAST Lb. **1.09**

Corn King BACON Lb. **1.29**

CORN KING HOT DOGS
12 oz. **69¢**

CORN KING BOLOGNA
1 Lb. **99¢**

FRESH, LEAN
Ground Beef
3 lb. Package or More

89 LB.

PEPSI-COLA 16 oz. 8 Pack \$1.69	Trail Blazer Chunk Dog Food 2.99	Campbell's Pork 'n' Beans 3/1.19	Hy-Top Cake Mixes .79
LIPTON TEA BAGS 100 Ct. 2.69	GALA Paper Towels59	Red Gold Chili Hot Beans 3/1.00	Hy-Top R.T.S. Frosting 1.19
Hy-Top PEAS 3/\$1.00	AJAX Liquid Cleaner 28 oz. 1.69	Stokely Mixed Veggies 3/1.19	White Lily MEAL89
Hy-Top CORN 3/\$1.00	DELMONTE PINEAPPLE 15 1/2 oz. .69	Generic Grape Jelly79	White Lily FLOUR89
Hy-Top GREEN BEANS 3/\$1.00			



RED GOLD Tomato Juice
46 oz. Can

69

Palmolive
DISH LIQUID
22 oz. Bottle

1.39

AUNT JEMIMA BUTTERMILK COMPLETE Pancake Mix
2 lb. Box

99

Cabbage Lb. **25¢**

Tomatoes Lb. **69¢**

AUNT JEMIMA LITE Syrup
24 oz. Bottle

1.99



RED GOLD Tomatoes 16 oz. **.39**

Jumbo Pies
10 Ct. **79¢**

DELMONICO Elbow Macaroni
7 oz. **3/89¢**

PINK OR WHITE Grapefruit
5 lb. Bag **1.59**

RED FLAME SEEDLESS Grapes Lb. **1.29**

Lettuce **2/1.00**

Potatoes 20 Lb. **1.39**

Oranges 5 Lb. **1.59**

Valu-Checked Evaporated Milk
2/89¢

TIDE
42 oz. - Limit 1 w/10 Order **1.99**

Shedd Spread FAMILY CROCK
3 Lb. **1.79**

Mr. P Pizza
69¢

Swiftening Shortening
\$1.49

CALIFORNIA Carrots
2 lb. Bag

69

Martha White FLOUR 25 Lb. **4.59**

Dixie Belle CRACKERS **.59**

SUPERIOR Food Markets

U.S. 25 South Mt. Vernon

Symbol Of Quality

for anything... for everything... WANT ADS

CLASSIFIED RATES

Local Rates - 8c per word, minimum \$2
Card of Thanks - 5c per word, minimum \$2
In Memorials - 5c per word, minimum \$2
Display Classifieds - \$2 per inch, minimum \$3
 Classifieds paid in advance, except to businesses
 Deadline for classifieds is Monday at 4 p.m.

For Sale

FOR SALE: 39+ acres, 40 x 52 tobacco barn, with tobacco base. Fronts 618. Adequate water, choice land. Call 758-8449 10xntf

FOR SALE: 110 Acres, coal and timber land, also game refuge for hunting. Near Blue Springs in Rockcastle Co. Call 606-758-8581. 46xntf

FOR SALE: Large house, wall to wall carpet, frame rooms, 3 bed-

rooms, 2 full baths, partial basement, garage, blacktop drive. Good location, electric heat, garden space. Shown by appointment. Call 256-4736 or contact Jack or Judy Lawless 21xntf

FOR SALE: House on West Main Street, Kenneth Mink. Ph. 256-4225 25x2

COAL PROPERTIES: 34 acre parcel with 22 acres coal, \$30,000. 67 acre parcel with 30 acres coal, \$40,000. Good properties, both properties. Call Luther, 606-986-

9489 or 606-986-3162. 25x2

FOR SALE: 2-bedroom trailer. Good condition, newly carpeted, washer and dryer, bed, refrigerator and stove, porch that can be taken down and moved, \$4,000. See Alvin or Donald Hayes or call 256-4138 26x1

FOR SALE: 58 acre farm on Ottawa Road. Approximately 1,400 lb. tobacco base, \$31,500. Larry Allen, 758-8784. 26x2

FOR SALE: Mobile home, 12,600, 2 bedrooms, 1 1/2 bath, storm windows and doors, gas heat, air condition, electric stove, refrigerator, washer, drapes and carpet included. Must see. \$5,000. Ph. 758-8567 anytime. 26x1p

FOR SALE: 3-bedroom frame house, wall to wall carpet, new oak cabinets, located in Livingston, 5 1/2% interest. Ph. 453-3555. 26x2

For Rent

SENIOR CITIZENS HOUSING CASTLE VILLAGE. Comfortable 1-bedroom apartments designed for the special needs of Senior Citizens and couples without children available for immediate occupancy. Adjacent to shopping and Senior Citizens Center. HUD Section 8 assistance makes these apartments affordable for everyone. Some units designed especially for the handicapped or disabled. 100 Castle Village Rd., Brodhead, Ky. 758-4111. Equal Housing Opportunity. 25xntf

FOR RENT: Corn and tobacco base at Hugumel, Ky. Ph. 256-2187. 26x1

FOR RENT: Large trailer, furnished, all electric. Ph. 256-2187. 26x1

HOUSE FOR RENT: On Brindle Ridge. Older house, 2 bedrooms, living room, dining room, kitchen, upstairs, fuel oil stove furnished, 12/25. Ph. 758-8252. 26x1p

FOR RENT: Building space, approximately 25'x50' on *Main Street. Brodhead. For more information, call 758-8003 or 758-8558 after 5 p.m. 26x2

Motor Vehicles

FOR SALE: 1977 Firebird, \$1,800. Ph. 256-2801. 12xntf

FOR SALE: 1978 Pontiac Phoenix, \$1,300. Call 256-2664, 9-12. 8xntf

FOR SALE: 1975 Plymouth 4-door, slant 6 motor. J. C. Bowling, Ph. 256-2339. 19xntf

FOR SALE OR TRADE: 1982 Mercury Lynx, P.S., P.B., air condition, cruise control. Sell or trade. Call Delmer Vanzant, 256-4662. 25x2

FOR SALE: 1977 Buick Wildcat. Body good, new tires, motor needs work. \$400. Ph. 453-3911. 25x2

FOR SALE: 1982 Plymouth Reliant, 4 speed. AM/FM. Ph. 758-8850. 26x2

FOR SALE: 1978 Camaro Berlinetta, PS/PB, 305 V8 engine, stereo, sport wheels, 79,000 miles. Asking \$2,550. Must sell. Ph. 758-8955 or 355-2356. 26x1

FOR SALE: 1979 Volkswagen Rabbit G.L., air condition, stereo, reclining seats, new battery, looks and runs good. Asking \$1,500. Ph. 355-2356 or 758-8955. 26x1p

Miscellaneous

FOR SALE: Propane bottle gas heaters. One Magic Chef BTU over 1,000, one 20,000 J. D. Rice, Livingston. 14xntf

FOR SALE: King wood and coal burner, used one winter, \$350. Ph. 256-2187. 26x1

256-4787. 25xntf

POLE BUILDINGS - 24'x40' completely erected, \$3,650. 12'x8' end slider and entrance door included. Other sizes available. Financing available. BLITZ BUILDERS, INC. 1-800-428-4009. 22x5

FOR SALE: Meat market, slaughter and processing plant. Fully equipped on 1 1/2 acre lot. Other serious inquiries please. Ph. 256-5256 after 4 p.m. 1xntf

FOR SALE: Good mixed hay, \$1.50 per bale. Call 256-5537 23x4p

FOR SALE: Topsoil, fill dirt, creek gravel. Custom haulage. Newland Construction, Ph. 758-8473. 24x6

FOR SALE: Wood Split oak Pickup load delivered, \$25. Ph. 758-8547 or see Jerry Smith at Brodhead. 24x5

FOR SALE: Hay, Ph. 758-8784. 26x2

FOR SALE: 9.8 cu. ft. chest freezer; rotary garden tiller, good condition. Can be seen anytime on Hwy. 1205 in Brodhead, brick house just past Old Mt. Vernon Road. 26x2

FOR SALE: Good used Hotpoint washer, \$50. Call 256-9065 after 4 p.m., except weekends. 26x1

FOR SALE: Timothy and clover hay, \$1.50 a bale. Ph. 758-8784. 26x2

SIDING SALE, REPLACEMENT WINDOW SALE: Vinyl siding, aluminum insulated sheetrock. We now have all the new rustic wood

grain earth colors to choose from. We custom make our thermo-pane replacement windows to fit your openings. No inside nor outside damage, even in brick homes. Call now before spring rush. Save money and get faster service. Dozens of local finished jobs in your neighborhood, ask to see some. Full time London rep now servicing McKee and surrounding area. Trademark Window and Siding Sales, P.O. Box, 652, Somerset, Ky. 42501. Quality craftsmanship since 1957. Call collect 606-678-5707. We do nice work. Buy here, pay here monthly, yearly. 26xntf

FOR SALE: 5 white leghorn laying hens and 5 Rhode Island Reds, \$1.50 each. Also pure bred Border Collies, approximately 9 months to 1 year old to give away to good home. Call 453-3785 from 9 a.m. to 8 p.m. 26x1p

FOR SALE: Wheat straw and hay, Ph. 758-8955. 25x2p

FOR SALE: G.E. washer and dryer. Ph. 256-4666 after 6 p.m. 25x2

SURPLUS USED EQUIPMENT

FOR SALE: 20 used gas meters with cubic feet dial (AL-195 G.S. at 1/2 Diff. 5 PSI, W.P. Singer) at \$15 each. Also 3 used refrigerators at \$15 each. Also group of 9 used aluminum screen doors with odd lot of screens at \$25 for group. Can be seen at Housing Authority Office on Lovell Lane, Mt. Vernon, on Monday or Wednesday or Saturday mornings from 9 to 11. 25x2

HAY FOR SALE: Alfalfa and some timothy. Delivery available. Call 256-2058. 25xntf

NEED TAX HELP?

The IRS will hold a free tax seminar Feb. 11, 7 p.m. at the FAMILY LIFE CENTER SCHOOL, 1 mile north of Renfro Valley, U.S. 25. For information, call 256-5307. Please bring materials needed to do your taxes.

Reward Offered

\$25 Reward offered for the return of a red Cocker Spaniel lost in the Chestnut Hills Subdivision area. The dog answers to "Smoochie". Contact David or Karen King or call 256-2514 or 256-5404.

INCOME TAX SERVICE

Will prepare income tax forms. Short forms & Reg Long Forms. Small Fee. Call Karen Noe 256-2146 or 256-2449

HELEN ABNEY INCOME TAX SERVICE

Farm, Business, Partnership
Ph. 256-5273

Madison Termite & Pest Control

For VA & FHA Inspections, Call Paul Burton 256-2318 Mt. Vernon Day or Night WATER BUGS, ROACHES & SILVER FISH

Karen K. King Income Tax Service

11 yrs. experience Short and Long forms
256-2514 office at store
256-5402 Home

All Short Forms \$15

Dr. Harvey A. Schleter Optometrist

Office will be open at 8 a.m., February 4, 1986 on the corner of Main and Richmond Streets. (Behind Dollar General Store).
Complete Professional Vision Care
Contact lenses & Fashion Eye Wear
Medical Cards Accepted
Tues. 9 - 5 Wed. 9 - 12
for Appointment Call
256-3122
On days out of office calls forwarded to Somerset Vision Center at no charge

The House Mechanic

Building the New--
Remodeling the Old--
Repairing the Broken--
Kitchen, Family Rooms, Baths, Additions, Etc.
JACK WREN
Free Estimates 256-5338

"Good service, good coverage, good price- That's State Farm insurance."

STATE FARM
Auto Life Fire INSURANCE

Bill Bailey
Agent
Church St.
Mt. Vernon, Ky.
256-2119

Like a good neighbor, State Farm insures you.

Don's Plumbing Repairs
Quality Work - Reasonable Rates
(Experienced Plumber)
ALL WORK GUARANTEED
All Your Plumbing Repair Needs

Pipes Insulated
Leaky Faucets
Water Heaters

Call Don at
256-5629
Clogged Drains
Shut Off Valves
Frozen Pipes

24 hr. Emergency Service

Dwayne's Cars & Trucks
U.S. 25N 986-8489 Berea
Hours: Monday-Friday 8 a.m. to 6 p.m. Sat. 8 a.m. to 5 p.m.
DWAYNE BRINEGAR, OWNER

Ernest Sowder, Salesman Luther Little, Salesman

CARS

- 85 Camaro, T-tops, V8, AC
- 87 Cruise, Blue, Like New
- 84 Olds Cutlass Supreme, 4 Dr., Auto, PS, AC, Maroon
- 84 Chev. Celebrity Sta. Wgn., Auto, AC, Only '995
- 84 Mercury Marquis Sta. Wgn., Auto, PS/IPB, AC, Tilt, Cruise, AM/FM Tape, Only '6,995
- 84 Buick Regal, 2 Dr., Ltd., Loaded, Auto, AC, Only '6,995
- 84 Olds Cutlass, 2 Dr., Loaded White, Only '8,995
- 83 Ford Fairmont Futura, 4 Dr., 6 Cyl., AC, White
- 83 Olds Toronado, 2 Dr., V8, Loaded, Blue, Only '8,995
- 83 Mercury Marquis, 4 Dr., Auto, PS, AC, Only '4,995
- 82 Olds Royale, 4 Dr., V8, AC, White, Loaded, Like New
- 81 Buick Skylark, 6 Cyl., Auto, PS, AC, Brown, Only '2,995
- 79 Plymouth Horizon, 4 Dr., 4 Cyl., Brown, Auto
- 79 Ford Fairmont, 2 Dr., 4 Cyl., White/Blue, Only '1,995
- 79 Lincoln Cont., 4 Dr., Gold, Loaded, Low Miles, Sharp!
- 79 Lincoln Cont., 4 Dr., Loaded, White, Red Interior, Only '2,995
- 79 Olds Cutlass Supreme Wgn., Loaded, Brown
- 78 Chev. Impala, 4 Dr., Blue
- 78 Dodge Monaco, 4 Dr., Yellow, Only '1,495
- 77 Impala, 4 Dr., '1,495
- 77 Chev. Caprice Wgn., 4 Dr., Brown, 9 pass., only '1,495

TRUCKS

- 85 Chev. Silverado, LWB, Loaded, Black
- 85 S-10, Long Bed, 5 Spd., PS, Only 17,000 miles!
- 84 Ford F-150, PS, AC, Like new, Only 14,000 miles
- 82 Ford F-100, SWB, 8 Cyl., Green
- 82 Ford F-100 PU, 6 Cyl., SWB White, Low Miles, Sharp!
- 80 GMC Diesel PU, White
- 87 Ford Chinook Camper, Beige
- 76 Ford Courier, 4 Cyl., 4 Spd.
- 76 Chev. PU C-10, LWB, Green, '1,495
- 72 Ford, 1 Ton, 10' Flat
- 72 Ford Ranger, LWB, V8, Auto, Only '1,495
- 64 Ford, 1/2 Ton, '495

4X4

- 86 Chev. Silverado PU, LWB, Loaded, 8 Cyl., Black, Only 2,000 miles.
- 86 Nissan King Cab PU, PS, Loaded, Black, Only 3,000 miles, factory warranty
- 84 CJ-7 Laredo Jeep, HT, Loaded, Auto, PS/IPB, AC, Only 1,000 miles
- 83 Jeep Wagoneer Sta. Wgn., Limited Series, Loaded, All options.

