



Shown above are the Senior Citizens who participated in the Prettiest Easter Bonnet contest held at the Mt. Vernon Senior Citizens Center last Friday.

Those who participated are from left, Mrs. Pearl Newton, winner of the contest, Minnie Abney, Rosie Mullins and Rebecca Creech.

## Red Man bass tournaments set new attendance marks in 1986

Operation Bass, Inc., the sports promotion company that conducts the Red Man bass fishing tournaments nationally, has reported major increases in 1986 tournament participation.

Charles Evans, vice president of operations for Operation Bass said, "After completing several tournaments, a number of our divisions are trending upward by as much as '33 percent." An overall increase in the popularity of competitive tournament bass angling, and the format of the Red Man tournaments are reasons singled by Evans for the increased attendance.

The Red Man bass circuit is designed for the "working-man," weekend fisherman who has neither the time nor money necessary to participate in other bass contests that have high entry fees and cater to full time fishermen.

Operation Bass conducts more tournaments, in more easily accessible locations, than almost all other fishing organizations combined. There will be 120 Red Man qualifying events during the 1986 season.

While other tournament organizations have few events, high entry fees, and involve traveling long distances to participate, Operation Bass maintains low entry fees, and conducts close-to-home, weekend tournaments with

good cash paybacks. Approximately 105 percent of all entry fees are paid back to fishermen in cash and prizes during the tournament year, according to Evans.

"While I can see it happening, I still can't believe it's real!" said Operation Bass Founder and President, Mike Whitaker, regarding the phenomenal growth of the sport. "I remember when a guy was lucky to net \$100 for winning a bass tournament," said Whitaker. "Today anglers are collecting \$25,000, \$50,000, even \$100,000 for winning a single event." Operation Bass awards \$100,000 to the winner of the Red Man All-American.

To dramatize the growth of the sport, Whitaker points out that in the state of Texas alone, Department of Parks and Wildlife figures reveal that over the past ten years, the number of bass anglers has increased from 300,000 in 1976 to two million in 1986. According to Parks and Wildlife officials, figures used for the study were conservative.

Close to 30,000 fishermen will enter Red Man fishing contests during 1986 and compete for up to \$2 million in cash and prizes. Whitaker believes the numbers will continue to grow at a fast pace. "Already there are over 25 million bass enthusiasts in this country. That's greater participation than that found in either golf or tennis," he said.

A newly hatched alligator is just eight inches long. It will grow about a foot a year until it reaches the average adult length of six to eight feet.

## Sr. Citizens celebrate Easter

Rockcastle County Senior Citizens celebrated Easter on Friday, March 28 at their respective centers.

The Boardhead Center celebrated with an egg hunt and enjoyed refreshments served. David Brock, a guest, won

the prize for finding the "special" egg.

Livingston Senior Citizens served cake and punch for this special occasion at the center. The center was decorated with a beautiful "egg tree" from site manager Juanita Mesley. The Mt. Verno Center held a

contest for the prettiest Easter hat or bonnet and Mrs. Pearl Newton won the prize. Eggs and candy were hidden at the center for the senior citizens and cake with punch was served.

## Stewart joins marine corp

Larry L. Stewart recently joined the United States Marine Corps through the Delayed Entry Program.

Stewart, who is a senior at Rockcastle County High School, will report to active duty at Marine Corps Recruit Depot Parris Island, S. C. in December 1986. Stewart, whose parents, Charles and Mary Stewart, live in Mt. Vernon, joined the Security Forces program.



Larry L. Stewart

Stewart will undergo 11 weeks of recruit training to include instruction in drill, first aid, general military skills, physical fitness and weapons familiarization.

Upon successful completion of recruit training, Stewart will enjoy 10 days of recruit leave at home and then travel to an assigned duty station for formal training.

"A wise man will make more opportunities than he finds."

Francis Bacon

## Richland Boots



## Judy's Shoe Store

On the new 461 By-Pass Mt. Vernon  
Open Monday thru Sat. 8 to 7-Sundays 10 to 6

## Gene Evans Land Auction Co.

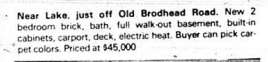
401 S. Main St. London 804 9731  
Bruce Evans Vernon Holt Sonja Bratcher  
Broker Auctioneer 843-6995 Home 355-7000 Home

We're Listing More Because We're Selling More **GO #1 Seller's**



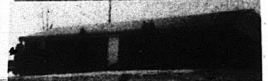
120 Acres - In New Hope Section of Rockcastle Co. Coal and timber land, 11 miles from I 75 on Ky. 1912. Priced at \$35,000.

Don't miss this nice 3 bedroom home on .29+ acres 3 miles out on Old Salem Rd. Living room, kitchen, built in cabinets, 1st floor covered, central heat. New plumbing, new kitchen, new floor coverings. Only \$28,500. **SOLD**



175 & Highway 80 5 Acres Prime Commercial tract, Suitable for any type business. Located in London.

North Main St. Commercial Property 165 ft. frontage, block bldg with apartment. Excellent location in London.



How about a unique home just inside the city limits on a double lot A Frame construction, 2 baths, living room, family room, completely built in kitchen, full basement, built in private balcony, large deck on front and rear. \$50,500. **SOLD**

Lovery 3 Bedroom Brick Home - Located in the Scalp Fold Care Section. House also has dining room, kitchen, bath, living room, utility room with washer/dryer hook-up, carpet and city water. Lot size is approx. 5 acres.

House and Lot - 3 Bedrooms, kitchen, living room, good well. Located at Morrill. Priced to sell quick at \$7,500.

New Grocery on 363 and Philpot Road. Nice growing business, 24x50 building, grocery equipment and stocked. Owner has other interests and says sell. Located in London.

360 Acres - 6 Room House - Also has tobacco barn, 3 ponds, acre lake, 1,000 lb tobacco base. Approx. 50 acres of tillable land, balance coal and timber land. 11 miles from I 75 on Brush Creek Road. Priced at \$110,000.

Don't miss this... **SOLD** Pick from the Post Office with bath, eat in dining room, detached garage! \$34,500.

**Gene Evans Auction Calendar**

Sat. April 5th at 1 p.m. Just off 229. 58 acre Brewer Farm to be sold in tracts.

Sat. April 12th at 1 p.m. Scoville Property, 6.7 acres 1 block off Main St.

Sat. April 19th at 1 p.m. W.H. Gross 77 acres farm & 3 bedroom home.

# Thank You

For making KET's 1986 TeleFund the most successful ever!

KET is committed to serving the special needs and interests of Kentuckians across the Commonwealth. In addition to our public television programming, your generous support allows KET to produce and air local, informative programs such as:

- Comment on Kentucky
- "N.K.Y."
- The People's Business
- Kentucky Afield
- Scholastic Challenge
- Kentucky General Assembly coverage

And a "special" thank you to these groups and individuals who helped to make KET's TeleFund '86 a success...

Bessie St. Clair  
Jean Allen  
Betsy Lewis

Emily Glover  
Barbara Watson  
Mt. Vernon Signal

Rockcastle County Board of Education Office



Your Kentucky Network

- Ashland 25 • Bowling Green 53 • Covington 54 Elizabethtown 23
- Hazard 35 • Lexington-Richmond 46 • Louisville 68 • Madisonville 35
- Morehead 38 • Murray-Mayfield 31 • Owensboro-Henderson 31
- Owenton 52 • Paducah 29 • Pikeville 22 • Somerset 29

Your full-service professional real estate firm.

## Auction or Private Sales Homes - Farms - Cattle - Commercial Property

30 years experience in Auction & Private Selling.  
Our Business Built on Honesty and Integrity.  
We have an excellent Advertising Program.

**We need homes and farms listed to sell - Call or stop by our office.**

If an auction sale is in your plans, see us first, you will be glad you did.



Pam Pensol, center, an employee of the Bank of Mt. Vernon, is shown presenting the bank's donation to Alma Kendrick, left, and Elizabeth Baker, right, for the Special Olympics. The money will go to the Comprehensive Care Center for Special Olympics. The children will compete in the olympics at Barbourville on April 26th.

**Special Stains**

**Ball point pen, ink, transfer marks**-Sponge with dry cleaning solution until bleeding stops, then sponge with alcohol and/or glycerine. Let stand overnight. Apply fabric prewash and launder.

**Crayon** (melted in dryer)-Scrape off excess crayon. Dry clean in coin operated dry cleaner's machine or take to dry cleaners.

**Deodorant or antiperspirant**-Sponge with ammonia (new stain) or vinegar (old stain).

**Fabric softener spotting** (looks like greasy spots)-Rub stain with bar of soap and launder.

**Fingernail polish**-Use non-oily fingernail polish remover (except on acetate, triacetate or modacrylic fabrics).

**Mildew**-Brush off mildew outdoors. Launder. If stain remains, soak for 15 minutes in a solution of 1/2 cup chlorine bleach in 24 cup water, or use oxygen bleach if chlorine bleach is not safe for fabric. Rinse well.

**Rust**-Use rust remover available at hardware store and follow directions.

For more information, we have a new publication HE 2-824 Stain Removal for Washable Fabrics. Call the Extension Office at 256-2403 for your free copy.

**"LICENSED A & H" AND LIFE AGENTS**

1. A+ Excellent rated Company.
  2. High percentage vested renewals.
  3. Complete training program.
  4. Health and Life Benefit Plan (must qualify).
  5. Excellent marketing techniques.
  6. \$1,000 Major Medical.
  7. Excellent Medicare Supplement.
  8. Nursing Home (1500 day coverage on all levels).
  9. Excellent Life with portable coverage.
- CALL FOR AN APPOINTMENT:  
David R. Kerperling  
American Republic Insurance Co.  
Tel: 606-233-4440  
Monday thru Friday  
8:30 A.M. - 11:30 A.M.

**Bowling news**

With a 78 and 38 record the Wildcats are still in first place in the Mixed League at Maroon Lanes in Richmond. For second there is a tie between High Rollers and Rebels with 65 and 51, and NAPA is third with a 58 and 58.

Rebels took High Team Series with a 2457, followed by 4H's with 2378 and Carter Dusters with 2370.

Born Losers had High Team Series with a 865. Rebels had an 862 and NAPA had an 824.

High Women's Series was taken by Bill Reynolds with a 557, Henry Vanzant had a 542, and James Noe a 538.

Rick Bryant had High Men's Game with a 210, followed by Sam Mullins with a 206 and Jim Cromer with a 199.

High Women's Single was taken by Evelyn Mullins with a 526. In second was Kim Mullins with a 516, and Joyce Houk was third with a 492.

Evelyn Mullins also had High Women's Game with a 213, with

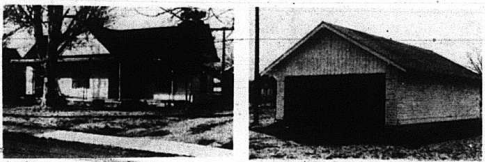
Jamie Bryant following closely with a 212. Kim Mullins had a 183. Bill Reynolds holds High Men's Average with a 180. James Noe has a 179, and Jack Noe a 176. Evelyn Mullins has High Women's Average with a 166. Alice Faulkner is second with a 161, and Jeannine Parsons is third with a 148.

**"HOME ECONOMICS"**

- [Cont. From 17]
1. stains, i.e., watercolor paints, juices, urine, perspiration.
  2. Soak in solution of 1 quart water, 1/2 teaspoon detergent and 1 tablespoon white vinegar for 30 minutes and launder (coffee, tea, fruits, berries, grass, perfume, soft drinks, wine, mud).
  3. Sponge with dry cleaning solvent (available at drug store) or waterless hand cleaner, rinse with water and launder with hot water and chlorine bleach (asphalt, tar, candle wax, oil base paint, wax shoe polish).
  4. Sponge with dry cleaning solution or waterless hand cleaner, rinse with water and air dry (carbon paper, catsup, gum, cosmetics, gravy, grease, oil, salad dressing).

# Auction

of  
**Mr. and Mrs. Leslie King's**  
**House & Lot & Personal Property**  
**Saturday, April 5, 1986 1:30 p.m.**  
Brodhead, Ky.



Maple Street, Brodhead, Ky.

Mr. and Mrs. King have purchased a mobile home and are in the process of moving to Crab Orchard and have commissioned our firm to offer this well-maintained lovely older home for the high dollar.

The house is situated on a nice level lot with an abundance of shade trees. The house has living room, dining room, large kitchen with built-in cabinets, 4 bedrooms and bath. In addition, it has aluminum siding, washer/dryer hook-up, oil furnace heat, hardwood floors in a portion of the house and carpet in part of the house. It also has a flu for a wood burning stove. In addition to the house, there is also an excellent 3 car garage which could easily be adapted into a workshop, etc.

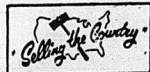
**Personal Property to be sold includes:** Dixie gas cook stove; Whirlpool no-frost refrigerator; breakfast set; Bentwood oil stove; old round table; coffee table and 2 end tables; Zenith black and white T.V.; breakfast set with 4 chairs; 2 metal cabinets; kitchen cabinet; electric heater; roll-a-way bed; chest of drawers; lamps; fan; what-not shelf; odd chairs; old dresser; cedar chest; 2 beds; old rocking chair; sofa; sheet metal stove; 1 small bed; stand table; oak wardrobe; pictures and frames; 275 gallon fuel tank; log chains; self-propelled push mower, 22" cut; odd hand tools; plus other miscellaneous items.

**TERMS:** 20% down day of sale, balance in 30 days upon delivery of deed on real estate and cash or good check day of sale on personal property.

For additional information, contact:

## Ford Realty & Auction Co.

**REALTOR-AUCTIONEER**  
Sam Ford  
Roy Adams  
Danny Ford



**AUCTIONEERS**  
Jerry Ham  
Willard Bullock

Kentucky Toll Free No. 1-800-435-5454  
Mt. Vernon, Ky. Phone 256-4545

WE GLADLY ACCEPT FOOD STAMPS

# IT'S SPRING AGAIN!

**For More Food Fair Specials**  
**Pick Up An 8-Page Circular**  
**At the Nearest Food Fair Location**

London, Corbin, Hyden, Hazard, Jackson, Stanford, Whitley City, Mt. Vernon, Pineville, And 3 Somerset Locations:  
Highway 27 N., Highway 27 S., and East Mt. Vernon St.

Prices Effective March 31 Through April 13

**FOOD FAIR Bread**  
1 lb.  
**3/99**

**FRESH WHOLE Fryers**  
**.49**  
lb.  
Limit 3 With \$10 Add'l. Order

**Pepsi & Pepsi Products**  
**\$1.59**  
(Plus Tax and Deposit)

**FOOD FAIR Ice Cream**  
Half Gallon  
**1.29**

**MARTHA WHITE Flour**  
25 lb.  
**3.99**  
Limit 1 With \$10 Add'l. Order

**FRESHLIKE Vegetables**  
14 oz.  
**3/1.09**  
Gift of French Green Beans, White Corn or Cream Style Corn, or Garden Sweet Peas

**CLOROX LIQUID Bleach**  
Gallon  
**.69**  
Limit 1 With \$10 Add'l. Order

**JENO'S Pizza**  
10 oz.  
**.99**

**TIDE LAUNDRY Detergent**  
Regular or Unscented  
72 oz.  
**2.89**  
Limit 1 With \$10 Add'l. Order

**FOOD FAIR COUPON**  
DAWN  
**Dish Liquid**  
22 oz. 35 OFF LABEL!  
**.69**  
Limit 1 With Coupon & \$10 Add'l. Order Exp. 4-13-86

**FOOD FAIR COUPON**  
KEEBLER ZESTA  
**Crackers**  
Regular or Unsalted  
1 lb.  
**.59**  
Limit 2 With Coupon & \$10 Add'l. Order Exp. 4-13-86

**Look For Our Other Valuable S-H Green Stamp Coupons in Our Ad At The Store.**

<p><b>100</b></p> <p>With Coupon And \$10 Grocery Exp. 4-13-86</p>	<p><b>300</b></p> <p>With Coupon And \$30 Grocery Exp. 4-13-86</p>	<p><b>500</b></p> <p>With Coupon And \$40 or More Grocery Exp. 4-13-86</p>
--	--	--

# Bob Hazelwood remembers "Old Jake Simpson" place at Morrill Ky.

By Lois Kieffman

On the way to Madison County on 421 just across the Rockcastle County line there is a Kentucky historical marker in front of the home of Robert Chasteen.

The marker was erected there in 1968 by the Kentucky Highway Department and Chasteen has set out flowers and shrubbery around it. The marker commemorates the "Big Hill Skirmish" that started August 23, 1862, when 650 cavalry of Gen. E. Kerby Smith's invading Confederate Army routed a small federal force under Colonel Leonidas Metcalf.

This U.S. regiment under Metcalf was organized at Paris, Kentucky earlier in August and before the men were thoroughly equipped or disciplined, they were ordered into active duty and engaged in the battle of Big Hill where they lost officers and soldiers.

Owing to the enemy having possession of nearly the entire state, the organization of the regiment was belated. In October, 1862 the regiment under command of Col. Faulkner (Metcalf having resigned) was assigned to the Cumberland Mountains in southern Kentucky and Tennessee.

Although the confederate troops captured central Kentucky, plans to take Cincinnati and Louisville failed and the CSA retired from Kentucky after the Battle of Perryville October 6, 1862.

Oldtimers in the Morrill area of Jackson County have told Chasteen that the old "Jake Simpson Place" now owned by Alice Abney, located on the Old State Road where it intersects 421, served as a hospital during the battle. The home is an old log house that was a stage coach stop for wagons and pony express riders who were traveling the Old State Road for Boone's Trail or Old Wilderness Trail as it was called which was the main road from the south. The family of Lamina Walker and John S. Adams were living in the house at the time. The Adams had seven children and owned several slaves.

One of the "oldtimers" in Morrill who remembers his daddy talking about the battle that took place on Big Hill is Bob Hazelwood. If Hazelwood lives until August 10th of this year, he will celebrate his 100th birthday. Hazelwood was born in Madison County in Red Lick, but has lived in Jackson County for more than half his life. Hazelwood said that before the battle, his daddy Jim Hazelwood gathered "pepp" near a teakettle full of old musket balls.

Hazelwood would like to live until his 100th birthday but hasn't been feeling too well. He lives alone in his house in Morrill. His stepdaughter Clea Chasteen lives nearby however Hazelwood maintains his independence. He's not sure what accounts for his longevity. He has been a smoker for 60

years and averages about a pack a day. He eats bacon and eggs almost every morning for breakfast, but doesn't "take much sweetening."

He doesn't know why the Lord has allowed him to live so long. "I wonder what the Lord has for me to do yet. I'm here and I don't know what for," he commented.

Chasteen uses his hand-carved Dogwood cane to help him get to Hazelwood's store a few doors from his house where he spends part of each day visiting with friends and neighbors.

Last January 25, he and his daughter, Gracie Lamb, 78, of Waynesville, Ohio had a reunion with several members of his family. Six generations were together in Morrill: Hazelwood, his

daughter, Gracie, her daughter, Stella Lamb, 60, her daughter, Beverly Freeze, 38, her daughter, Sheila Asher, 21, and Sheila's son, Robert William Asher.

Hazelwood has been married three times and has one daughter and one son. His sister Mary Leger, 95, is also a resident of Morrill.

Hazelwood thinks, "the world's in a fix and it'll never be any better. If you got enough money, you can hire someone to do anything, murder or anything.

There's people doing things a brute beast wouldn't do, now."

According to Hazelwood, the greatest inventions that he has seen are the modern day farm implements. "People have got to eat." For all his 99 years, Hazelwood gets around well and talks with a smile in his eyes that have "failed" him of late.

## Quail

By Vivian Owens

Visitors of Mr. and Mrs. Junior Mullins were Mr. and Mrs. Fay Johnson, Jr. and son, Scott, of Ill. Mr. and Mrs. Donald Harold Bullock and daughter, Mr. and Mrs. Tommy Mullins and Robin

and Mr. and Mrs. Bob Evans and sons.

Fred Bullock and Ray visited his son, Delmas Bullock, Mrs. Bullock and family Saturday evening.

Mrs. Ada Bullock was Saturday dinner guest of her daughter, Mrs. Delmas Bullock, and Kristy. Mr. and Mrs. Everett Gentry of Ohio spent Saturday night with her mother, Mrs. Mattie Owens. Mr. and Mrs. Albert Hamm and family of Gahanna, Ohio visited his aunt, Mrs. Willie Todd, Friday afternoon.

Artie Todd visited his mother for a few hours, Wednesday afternoon.

Sunday visitors of Mrs. Willie Todd were Mrs. Donnie Phelps

and Amanda, Mr. and Mrs. Ronald Rogers, Mrs. Dean Barron and Stacy and Mrs. Bobby Barron.

W. A. Owens and son, Mark, and Miss Nancy Long of Somerset visited his mother, Mrs. Mattie Owens, Sunday evening.

Mr. and Mrs. Ronnie Brown and daughter and Billy Joe Brown and son, Shawn, visited their mother, Mrs. Christine Brown, Sunday afternoon.

Easter dinner guests of Mrs. Edna Pope were Mr. and Mrs. Dwight Pope and family, Mr. and Mrs. Bobby Wright, Mr. and Mrs. Paul Cash, Mr. and Mrs. Gordon Pope and family, Bro. and Mrs. Shelby Reynolds and Brian, Mrs. Anna Wright and Mrs.

Continued to Page 21

## Percussion concert, clarinet, voice recital planned

Clarinet and voice recitals and a concert by the Eastern Kentucky University Percussion Ensemble are planned at EKU in early April, university officials announced this week.

The clarinet recital will be at 4 p.m. Sunday, April 6, in Posey Auditorium of the Stratton Building, EKU.

The Percussion Ensemble concert will be at 7:30 p.m. Monday, April 7, in Brock Auditorium of the Coates Administration Building.

And the voice recital will be at 7:30 p.m. Tuesday, April 8, in Gifford Theater of the Jane F. Campbell Building.

All concerts and recitals are free and open to the public.

Carolyn Rogers' clarinet recital will include the works of Von Weber, Krenek, and Johannes Brahms. She is the daughter of Mr. and Mrs. Clarence Rogers of Glendale, Ky., and a senior music major at EKU.

Her accompanist will be Nancy Ludwig, organ instructor and staff accompanist at EKU.

The Percussion Ensemble's concert will include works by Berlin, Grieg, Monteverdi, Saint-Saens, and Sousa.

The featured performer for this concert is Douglas Lloyd, a junior music merchandising major from Cold Spring, Ky. He will be vibraphone soloist in the Sigfried Fink work, "Vibracussion."

Alison Squires' voice recital will include two arias, one from "Romeo and Juliet," and one from "The Maid-Mistress." The program will also include French and German selections by Duparc and Wolf, three 20th century art songs, Samuel Barber's Hermit songs and two spirituals.

Also on the program will be a "Suite for Flute and Jazz Piano" featuring Jenny Gauthorn, flute; Peter Sour, piano, Church Davis, string bass, and Tom Mueller, drums.

Squires is a junior music major at EKU and is the daughter of Mr. and Mrs. James E. Squires of Springfield, Ohio.

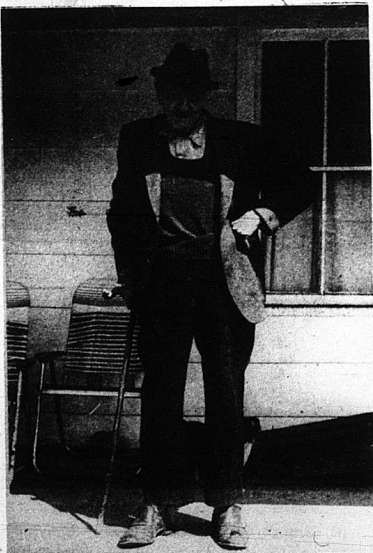
# PREVENT FIRES



## HELP PREVENT FIRES BE FIRE AWARE!

### Do your part... Be extra careful with fire during this dry, dangerous time.

Help save our precious wildlife!



Bob Hazelwood

## Ten Colorado Blue Spruces available

The National Arbor Day Foundation is giving ten Colorado Blue Spruce trees to people who become Foundation members during April 1986.

"These trees are part of the nonprofit Foundation's effort to encourage tree planting for conservation and beautification throughout America."

"Colorado Blue Spruces" were selected for this campaign because of their many uses in the home landscape. John Rosenow, the Foundation's executive director, said, "They lend beauty to their surroundings with their silver blue-green color and compact

conical shape. They can be used as individual ornaments, an energy-saving windbreak, a privacy screen, or as living Christmas trees."

The ten Colorado Blue Spruces will be shipped postpaid in April or May with enclosed planting instructions. The six to twelve inch trees are guaranteed to grow, or they will be replaced free of charge. The Foundation will give the ten trees to members contributing \$10 during April.

To become a member of the Foundation and to receive the ten trees, a \$10 membership contribution should be sent to Ten Blue

Spruces, National Arbor Day Foundation, 100 Arbor Avenue, Nebraska City, NE 68410, by April 30.



## Farm & Home.

### News

By: Tom Mills  
County Extension Agent  
For Agriculture

#### ALFALFA WEEVILS COULD BE OFF TO EARLY START

Unusually warm weather before Christmas was no gift for alfalfa producers in the state.

The high temperatures at the end of last year mean higher than usual populations of alfalfa weevils earlier than usual this year.

The failure of the mercury to get down where it normally does during the overwintering period is one of the top of that there probably were more eggs laid during the winter than usual. Whenever the temperature is above 48 degrees F., alfalfa weevils will produce eggs already laid will develop meaning they are closer to hatching.

With the warm weather we're experiencing, farmers are urged to be on the lookout for alfalfa weevils. Feeding damage will first show up as little pinholes in the leaves. Eventually the leaves will become ragged, and the entire field will take on a frosted look.

Farmers should begin scouting their fields when 190 degree days have accumulated. The latest degree day totals for regions within the state can be gotten periodically on AgTest, the UK televised information system, or from County Agricultural Extension Agents.

More detailed information about how to scout field effectively and what control measures are warranted under what conditions, can be found in Extension publication ENT-17, available from the County Extension Office (256-2403).

#### "QUAIL" (Cont. From 20)

Juanita Scott  
Mrs. Jack Whitaker and Mrs. Maggie Whitaker visited Ruth Mink Saturday afternoon.

Easter weekend visitors of Mr. and Mrs. Robert Hayes and family were Mr. and Mrs. Bobby Brock and family, Mr. and Mrs. Roland Gabbard and family of Erlanger, Mr. and Mrs. Butch Carl and family, Mr. and Mrs. Steve Tracy of Versailles, Bro. and Mrs. Ed Gibbs of London, Mr. and Mrs. Don Whitaker and family, Mr. and Mrs. Lowell Mink and Kenny, Mr. and Mrs. Ronnie Hayes, Mr. and Mrs. Dornie Hayes and son, Thomas Hayes, Sr., Mrs. Grace Whitaker and Lewis Whitaker.

Mrs. Lillian Gall and Mrs. Brenda Gallagher of Ohio visited Benton Owens at the Swender Nursing Home Saturday evening.

Mrs. Ada Bullock is a patient in the St. Joseph Hospital at Lexington. We wish her a speedy recovery.

Starlin Stevens of Illinois visited Benton Owens at the Swender Nursing Home Sunday afternoon.

Ronald Owens and girlfriend, Jan Hughes of Ohio, visited his mother, Mrs. Mattie Owens.

#### Rockcastle Council for the Arts, Inc. presents

#### The Arkansas Bear



By Aurand Harris

Dates: Fri. & Sat., Apr. 4 & 5, 1986  
Time: 7:00 p.m.  
Location: Roundstone Elementary School

recently  
Mr. and Mrs. Jack Rowe and Penny visited Mrs. Mattie Owens Friday afternoon.

#### Conservation practice may help small game population

Dwindling small game populations throughout the midwest and other areas that use intensive crop tillage may be reversed as the adoption of conservation tillage continues to spread. Conservation tillage and in particular, the no-till practice, is the planting of crops in the residue of the previous crop.

Conservation tillage is rapidly gaining acceptance, says Michael Gildewell of the U.S. Department of Agriculture's Soil Conservation Service. Thirty percent of America's row crops are now planted under some form of conservation tillage.

The U.S.D.A. predicts that by the year 2000, more than 80 percent of the America's farmers will have adopted some type of conservation tillage system. The Corn Belt and Great Lakes States lead the nation in total acreage.

Research on the benefits of conservation tillage and its relation to wildlife are ongoing throughout the country. In Indiana, a cooperative study between the Indiana Department of Natural Resources and the USDA's Soil Conservation Service are examining the effects of no-till farming on the wildlife population in that state.

A three-year field study is gathering information on the technical aspects of conservation tillage, effects of no-till farming on small bird and mammal populations, and the influence of nitrogen-fixing cover crops. Biologists are concentrating their efforts on such species as bobwhite quail, ring-necked pheasants, rabbits, and song birds.

Most Indiana wildlife experts believe that the im-

proved wildlife habitat produced by winter cover crops and residue from no-till may hold and produce wildlife in areas where intensive farming had removed suitable habitat and discharge wildlife.

The first year's work showed thirty-three different kinds of birds in the twenty-one fields being studied. No-till fields had the largest variety and number of birds.

Field data gathered indicate that fall chisel tillage significantly reduces the number of desirable wildlife species about as much as

fall moldboard plowing. No-till corn shows the highest winter use by wildlife. Ground nesting species favor no-till fields with cover crops for spring nesting.

Farming methods affect wildlife habitat in many ways. Growing the crop year after year reduces the diversity of plant cover and the variety of wildlife. Moldboard plowing, the practice which is falling from favor throughout many parts of the county, buries grain and residues that can provide food or cover for wildlife.

**COMING SOON!**

**MATTRESS & BOXSPRINGS**

Starting **\$88.88** TWIN SET  
As Low As

Starting **\$98.88** FULL SIZE SET  
As Low As (Mattress & Matching Boxsprings - not a foam foundation)

Also Coming Soon! Stoves, Refrigerators, Freezers with Low! Low, Low Prices! - Now Available! - Snow Availability! - Speed Queen Washers, Dryers & Wringer Washers.

CALL FOR AFTER HOURS APPOINTMENTS!

**LEON Farris TV & Stereo SALES**

1714 S. Main Street, London, KY 40301  
MON. - FRI. 9:00 AM - 6:00 PM  
SAT. 9:00 AM - 5:00 PM

Financed by Mt. Vernon Mt. Vernon KY  
HET. #13 WOHM #1  
HET. #13 WOHM #1  
SATURDAY 9-5

90 DAY INTEREST FREE FINANCING

ON QUALIFYING PURCHASES WITH APPROVED CREDIT

**Flower and Garden SEED**

Now available at

**Jack's S&T Trustworthy Hardware & Appliance**

Williams St. Mt. Vernon  
Phone 256-4383

**Todd & Wilson Automobiles**

U.S. 25 South Ph. 986-1100 Berea, Ky.

**CARS**

1984 OLDS CUTLASS CIERRA, 4 Dr., 4 Cyl., Auto, Air, AM/FM, Beige.....\$6,995

1984 FORD LTD, 4 Dr., 4 Cyl., Auto, Air, AM/FM, Tilt, Cruise, Ton.....\$6,495

1983 MALIBU CLASSIC, V6, Auto, Air, AM/FM, Tilt, Cruise, Maroon.....\$5,495

1983 CHEVROLET CELEBRITY, 4 Dr., 4 Cyl., Auto, Air, AM/FM, Sport Wheels, White.....\$5,495

1982 DATSUN B-210 Station Wagon, 4 Cyl., 5 Speed, AM/FM, One Owner, Beige.....\$2,995

1981 BUICK REGAL, 2 Dr., V6, Auto, Air, AM/FM Cassette, Tilt, Cruise, 2 Tone Blue.....\$4,995

1981 MERCURY CAPRI, 6 Cyl., 4 Spd., Air, AM/FM, Red, Sharp.....\$3,695

1981 PLYMOUTH RELIANT, 4 Dr., 4 Cyl., Air, Auto, AM/FM.....\$2,995

1981 FORD FAIRMONT, 2 Dr., 4 Cyl., 4 Speed, AM/FM, Blue, Low Miles.....\$3,295

1980 OLDSMOBILE CUTLASS SUPREME, 2 Dr., V8, Auto, Air, Tilt, AM/FM, Rally Wheels, Silver/Black.....\$3,995

1980 OLDS CUTLASS WAGON, Brougham, V6, Auto, Air, Tilt, Cruise.....\$2,995

1978 CADILLAC COUPE deVILLE, V8, Auto, Air, AM/FM, Blue/White Vinyl Roof.....\$3,495

**TRUCKS & VANS**

1984 DATSUN KING CAB Pick-up, 4 Cyl., 5 Spd., Air, AM/FM Cassette, One Owner, Beige.....\$5,495

1982 CHEVROLET S-10 Pick-up, 4 Cyl., 4 Spd., Durango Equipment.....\$4,695

1981 CHEVROLET C-10 Pick-up, 6 Cyl., Auto, Power Steering, Long Wide Bed, Brown.....\$4,495

1978 FORD F-250, V8, Auto, White.....\$1,995

**CLIFF HAGAN'S**

"STEAK FOR TWO" CHOICE RIBEYE \*13.75  
Large 12 oz. steak, potatoes (2), gourmet salad bar (for 2), single dinner price.

MONDAY NIGHT SPECIAL  
1/5 • BERA EXIT • 986-3639

**CLIFF HAGAN'S**

"SENIOR CITIZEN'S" RIBEYE \*5.95  
4 oz. ribeye dinner, potato, "All you can eat" gourmet salad bar.

TUESDAY NIGHT SPECIAL  
1/5 • BERA EXIT • 986-3639

**Now...The Best Is Affordable!**

\$7.95 w/tossed salad

\$9.95 w/salad bar

**CLIFF HAGAN'S**

BBQ RIBS \*6.95  
Spicy BBQ ribs, baked potato, "All you can eat" gourmet salad bar.

WEDNESDAY NIGHT SPECIAL  
1/5 • BERA EXIT • 986-3639

**CLIFF HAGAN'S**

"STEAK FOR TWO" TOP SIRLOIN \*12.95  
Large 12 oz. steak, potatoes (2), gourmet salad bar (for 2), single dinner price.

THURSDAY NIGHT SPECIAL  
1/5 • BERA EXIT • 986-3639

**Homesteading is just as important now as in the days of our ancestors.**

Choosing the right home mortgage takes time and planning.

If you're not quite ready to purchase a home, we suggest you increase your down payment funds, in one of our high interest savings programs, until you are.

When you're ready to purchase or have a home built, you can count on our lending experts to design a home mortgage loan within your budget. We've helped area folks for years with home financing.

Come in and discuss home mortgage details with us, today.

**See us for your Home Mortgage Loan.**

Open: Mon. thru Fri. 8:30 to 3:00  
Friday Drive-Thru till 6:00  
Saturday 8:30 to 12:00  
MEMBER FDIC

**Citizens Bank**

"growing for you" Since 1904  
Brodhead, Kentucky

# for anything... for everything... WANTED ADS

## CLASSIFIED RATES

Local Rates - 8c per word, minimum \$2  
 Card of Thanks - 5c per word, minimum \$2  
 In Memoriams - 5c per word, minimum \$2  
 Display Classifieds - \$2 per inch, minimum \$3  
 Classifieds paid in advance, except to businesses  
 Deadline for classifieds is Monday at 4 p.m.

### For Sale

**FOR SALE OR TRADE:** Double wide mobile home and large lot on Floyd Street in Mt. Vernon, Ph. 256-5902. 34x2p

**HOUSE FOR SALE:** 3 bedroom brick located in Mareburg section of the county. Must see to appreciate. Call 256-5928 after 6 p.m. 35x1

**FOR SALE:** 11 acres in Copper Creek area, new road, 24x22 foundation, water tank, septic tank, lots of timber. Ph. 758-8531. 35xntf

frame house, 7 rooms: big living room, kitchen, 4 bedrooms, and bath. 1/2 basement, wall to wall carpet, city water, washer/hookup, cable TV, garden space. 2 acres of land located in Livingston. \$22,500. Call 453-9245 or 453-3221. 34x2p

**FOR SALE:** 16 acres, tobacco base, barn, pond, several out-buildings, 4 bedroom house, 1 1/4 miles up the Scaffold Cane Road from Roundstone. Ph. 256-3725. 34x2

**LOT FOR SALE:** 3.4 acre, all level, located just off Old Broadhead Road on Purr Riggsby Road. Ph. 256-4270 or see Mr. or Mrs. Lynne Smith. 34x2

bedrooms, 2 kitchens, 2 full baths, 2 living rooms, full basement, with barn and garage. House is brick and aluminum siding. At Quail on Hwy. 70, See Delta Brown or call 758-8548. Selling due to bad health, moving to town. 35x1p

**FOR SALE:** 12x55 trailer, furnished or carpeted. Trailer is in extra good condition. Ph. 758-8561 after 4:30 p.m. 35x2

**FOR SALE:** 1974 12x60 mobile home, 2 bedrooms, full bathroom, stove and refrigerator, washer and dryer, hook up, carpet and drapes, storm doors and windows, tie downs and underpinning. \$4,900. Ph. 758-8567. 35x1p

**FOR SALE:** 1975 12x60 mobile home, 2 bedrooms, all electric, bay window, good condition. \$4,200 unfurnished; \$5,200 furnished. Call 453-9667 between 9 and 10 a.m. and 4 and 8 p.m. 35x1p

**FOR SALE:** 29 1/2 acre farm with tobacco base. Owner will finance. Ph. 256-5403. 35x2

**FOR SALE:** 10-year-old white

**FOR SALE:** 1977 Pinto, good condition, auto, power steering, power brakes, air. Ph. 256-4785. 35x2p

**FOR SALE:** 1981 Chrysler Cordoba, 6 cyl. auto, P5/PB, AC, power windows and lock, AM/FM, reclining seats, blue and silver. \$2,795 or best offer. Call 256-4639 or 256-9943. 35x1p

**FOR SALE:** Dune buggy, fair condition, \$800, 3 h.p. rotary filler, \$35 McCulloch chain saw, 12" bar, \$50 Pony saddle and bridle. \$35 Call 256-5275 after 5 p.m. 35x2p

**FOR SALE:** 1966 Ford Falcon, needs work, 1973 Triumph Spitfire, needs work, also 1973 Toyota pickup. Call 256-4074. 35x2

**FOR SALE:** 1979 Mercury Cougar XR-7, black with gray top and interior, lots of options, 58,000 miles. \$14,400. Ph. 758-8685. 35x1

**FOR SALE:** 234" International tractor, 3 cylinder diesel 3 p.t. hitch, PTO, 14" bottom plow, 48" belly mower, 1 year old. \$6,700. Invested, original, \$5,500. 34x2

**Cadillac Coupe DeVille,** excellent condition, low miles, red with white landou roof, white leather interior, all power, new Vector radial tires, \$6,995. Also 1978 Continental Mark V, good condition, low miles, burgundy with white landou roof, white leather interior. All power, \$5,995. Call 256-9172. 35x1p

**FOR SALE:** 1966 Ford camper, \$2,300 14 fishing boat, motor and trailer, \$800. Ph. 256-4225. 35x1

**FOR SALE:** 1977 Pontiac Grand Prix, good condition, \$1,800 or will trade for heavy duty 1 1/2 ton or 3 1/4 ton pickup truck of equal value. Call 758-9261. 35x4

speed boat, 427 L-88 Chevy powered engine and trailer, \$3,800, Call 256-5993 or see Coy Bradley. 34x2p

**FOR SALE:** Prom dress, like new, worn one time, size 7-8, fuchsia color. Ph. 256-2282. 34x2

**HAY FOR SALE:** \$1 a bale. Ph. 758-8744 after 7 p.m. 34x2

**FOR SALE:** Clothes, several items such as men's suits, pants, shirts, dresses and shoes, all for \$25. Also windows. At Dale Bray's residence. 34x2p

**STRAW FOR SALE:** \$2 a bale. J. C. Bowling Ph. 256-2339. 34xntf

**FOR SALE:** Storm door and frame, 6'5" x 36", \$30 At Barbara Owens' residence. 34x2p

**FOR SALE:** We have full stock Charolais bulls, Ph. 256-2666 or see Clyde Payne. 34x2p

**FOR SALE:** 7 ft. x 39 John Deere mower, Good condition, with two extra blades. \$650. Ph. 758-8199. 34x2

**FOR SALE:** Antique coffee table, oak kitchen cabinet, drop leaf maple dinette table, maple work table, antique oak chest, cherry candle holders, chairs, twin beds, old tables, nice cloths. Ph. 1-606-986-4541. 34x4p

**FOR SALE:** Two registered Black Angus bulls. For more information call 256-2268. 35x2

**FOR SALE:** Formal dresses, blue wear skirt, size 11, \$80. Yellow bustle back, size 9, \$30. Blue w. lace, size 13. \$25. Will bargain. Call Sharon Ponder, 256-9065. 1x

**FOR SALE:** 2 tires, G-60 15 Remington X,T-120, less than 200 miles on tires. \$100. Ph. 256-4557. 35x1

**FOR SALE:** Clothes, several items

### Wanted

**WANTED:** Tobacco to lease for 1986 growing season, Ph. 256-5976. 34x3

**WANTED:** To purchase 2 acres, preferably on U.S. 25 in or around Conway, Ph. 986-7188 after 5 p.m. or 623-9602 and ask for Linda. 34x2

**WANTED:** To rent or buy, on land contract or owner fiancee, a house with 2 or more acres of land and city limits of Broadhead. Ph. 925-2137. 35x1p

**WANTED:** Experienced trim carpenter with own tools. Call 256-4655 between 7 and 10 p.m. 35x1p

**WANTED:** House to rent. Young couple, no pets, no children. Willing to pay \$200 to \$350. Ph. 623-6083. 35x4

**WANTED:** Mechanical, plumbing tools. Percent of business negotiable. Ph. 758-9261. 35x4

### CARD OF THANKS

I wish to thank everyone from Seaford Baptist Church and also Brindley Ridge Baptist Church for their kindness at the time of my husband's death.

A special thanks to the Rev. Paul Pearson. I love you all.

Mary S. Rogers

### For Rent

**FOR RENT:** Trailer lot at Ottawa, \$35 per month, \$50 deposit. Ph. Begley's Grocery, 758-9553. 34x2

**FOR RENT:** Efficiency apartments at Dixie Boone Motel. 35x2

**FOR RENT:** 1-bedroom apartments in Mt. Vernon, Ph. (606) 337-2058. 35x2p

**FOR RENT:** Unfurnished 2 bedroom house on Conway. Artie fan, washer/dryer, hook up, many closets. Ph. 256-2657. 35xntf

**FOR RENT:** At Conway, Nicely furnished efficiency apartment, electric heat, very private and economical. Ph. 256-2657. 35xntf

### Motor Vehicles

**FOR SALE:** Lime truck, good condition. Glen Ponder Ph. 256-5785. 34x2p

**FOR SALE:** 1972 Ford pickup. Must sell, cheap. Call 256-5945 after 5 p.m. 34x3

### Miscellaneous

**FOR SALE:** Guaranteed weight loss. Grapefruit diet, all natural safe and effective, appetite suppressant and fat reducer. Happy Meadow, Berea, 986 3456. 30x6

McMahon Campbellsville Cherry and Oak Furniture. Have lots of merchandise 20% off at all times. Teresa's Antiques & Art Gallery, Berea, Ky. Prospect Street, 986-9147. 31xntf

**HAY FOR SALE:** Alfalfa and some timothy, Delivery available. Call 256-2058. 20xntf

**POLE BUILDINGS -** 30'x36'x10' eave height, service door and 15'x9' and stider included; completely erected - \$3,850. Other sizes available. BLITZ BUILDERS, INC. 1-800-428-4009. 34x4p

**FOR SALE:** 16 ft. Sidewinder

### FOR INCOME TAX WORK

See David Gregory at Gregory's Motel Mt. Vernon, Ky. Ph. 256-2929

Assisted by Mike Brown & Karen King 8 a.m. to 5 p.m. or by appointment

### JIM'S

Body Shop Used Cars  
 U.S. 28 South Mt. Vernon

### 24 HOUR WRECKER SERVICE

Phone 256-6510  
 After 5 p.m. Ph. 256-9766  
 Insurance Est. Welcome

### DAVID'S TIRE CENTER

HWY 150 BRODHEAD, KY

Truck Car

TIRES

MOUNTING BALANCING

Free Mounting and Balancing on all new tires (large trucks not included).

24 Hr. Wrecker Service Batteries Starting at \$23  
 David Thompson, Owner - Operator  
 Bus. 758-8521 Home 256-4606

### REAL ESTATE FOR SALE

Timber & Coal on 57 acres. \$18,000.

Large Farmhouse on 41 acres. 2 ponds, lots of timber. Lot on a lake.

Four Bedrooms, two acres, nice workshop, swimming pool. Near Berea. \$39,900.

Renfro Valley, 11 1/2 acres, \$20,000. 27 1/2 acres, \$100,000.

Brindley Ridge, 100 Acre Farm, 2 barns, tobacco base, nice home. Call for info.

New Fairview Area, 5 acres, 22x28 house w/porch, well insulated, city water, good flue and heating stove, electric range, young orchard, lots of timber, double wide trailer hook-up w/patio. \$16,000.

South of Berea, 6 miles, blacktop road, 12.60 good cond., 2 BR mobile home, range, refrigerator, AC, fuel oil furnace, 30x18 workshop w/2nd floor, city water, also well, orchard, barn, smokehouse, over 1 acre. Make offer soon.

### Don Foster & Associates

986-8401 or 256-2657

**EATON ELECTRONICS**  
 [Behind the Bank] 256-414  
**RCA, Zenith, Quasar**  
**Channel Master and Drake**  
 TV, VCR and Satellite Sales & Service  
 SATELLITE TV GUIDE #1  
**We Deliver and Set-Up VCR's**



**The House Mechanic**  
 Building the New--  
 Remodeling the Old--  
 Repairing the Broken--  
 Kitchen, Family Rooms, Baths, Additions, Etc.  
**JACK WREN**  
 Free Estimates 256-5338

Got Termites? Got Roaches?  
**Madison Termite & Pest Control**  
 For VA & FHA Inspections. Call Paul Burton  
 256-2318 Mt. Vernon Day or Night  
 WAITER BUGS, ROACHES & SILVER FISH

**Virginia McKinney Income Tax Service**  
 Former owner of H&R Block with 7 years experience.  
 Call 256-4804

**Karen K. King Income Tax Service**  
 11 yrs. experience  
 Short and Long forms  
 Call 256-5402  
**All Short Forms \$15**

*"Good service, good coverage, good price."*  
**That's State Farm insurance.**



**Bill Bailey**  
 Agent  
 Church St.  
 Mt. Vernon, Ky  
 256-2119

Like a good neighbor, State Farm insures you.

**Doris Durham Tax Service**  
 Open Mon. - Fri. 9-5 Sat. 9-1  
 For Appointments Call 256-5819

**INCOME TAX SERVICE**  
**Griffin, Greer & Co.**  
 Certified Public Accountants  
 Dwight Griffin, CPA  
 SCHOOL STREET MT. VERNON, KY.

- \*Tax Services
- Corporate
- Partnership
- Individual & Estate
- \*Affordable Small Business Service
- BOOKKEEPING
- ACCOUNTS RECEIVABLE
- ACCOUNTS PAYABLE
- PAYROLL CHECK WRITING
- \*Personal Financial Planning
- \*Estate Planning
- \*BUSINESS SERVICES
- FINANCIAL PLANNING
- FINANCIAL STATEMENTS & REPORTS
- MANAGEMENT ADVISORY SERVICES

Open: Monday - Friday 9 a.m. to 7 p.m. Sat. 9 a.m. to 3 p.m.  
 Call 256-2117

# CLASSIFIED ADS sure to get results

## Yard Sales

**YARD SALE:** At Cookie Mason's on Maple Grove Rd. Sat. 9-1 p.m. Moving Sale, something for everyone. **35x1**

**YARD SALE:** Saturday from 9 to 11 at home of Lynn Parsons at Green Hill. Men's, women's and boys' clothes and shoes, and other odds and ends. **35x1**

**YARD SALE:** Thursday, Friday and Saturday, April 3, 4 and 5, from 9 a.m. to 5 p.m., at Brad Proctor's at Green Hill. Turn beside the Northern Rockcastle Water office. Signs posted. Riding mower, self-pulling mower, 10-speed bike, chain saw, floor model stereo, whatnots, new and used jeans, boys' clothes, sizes 10 and 12. Ph. 256-5429. **35x1p**

**BIG YARD SALE:** Three families, Friday and Saturday, at the home of Mrs. Alonzo Hamann and Mrs. Benny Hamann on Hwy. 70 behind Dave's Auto. Cancelled in case of rain. **35x1**

**YARD SALE:** Two families, Friday and Saturday, at the home of Bonnie Campbell on Pike Street. There will be clothes of all kinds and sizes, baby clothes, boys' and girls' clothes, dishes, glassware, breakfast set and lots more items. **35x1p**

**YARD SALE:** Thursday and Friday on Purr Rigby Road. Quilts, bedspreads, pillow shams, etc. **35x1p**

**3 FAMILY GARAGE SALE:** Thursday and Friday, at the home of Mrs. Mary Ann Hamann on Pine Street. Subdivision, first house on right. Rain or shine. **35x1p**

**YARD SALE:** Friday and Saturday, 9 to 2. Several families at Valley View Apartments. Cancelled in case of rain. **35x1p**

**BIG YARD SALE:** April 3, 4 and 5 at Brummett's Grocery on Negro Creek Road, 3 miles from Brodhead. Lots of new clothes, household items, curtains and a fishing boat. Rain or shine. **35x1**

**TWO FAMILY YARD SALE:** Saturday only! 8:30 to 3:30. On

### KEY PUNCH OPERATORS

Immediate openings for 2nd & 3rd shift Key Punch Operators. After training classes have been completed, requirements will be typing proficiency of 45 wpm with no more than 5 errors (5 minute test). If interested, please call: (606) 986-2366 or 986-2367. eoe/mlf **35x2**

### Need... Money!!

**B & G Can Help!**  
B & G Sportsman Shop now makes loans (pawn loans) on anything of value!  
Let B & G Help You!

**B & G Sportsman Shop**  
Located on Old Highway 461  
(Beside Hammon's Market)

## HENSLEY'S USED CARS

Salt Peter Cave Road  
Hwy. 1004 Rt.2  
Orlando, Ky. 256-4777

## Gail's Florist & Gifts

West Main St. Mt. Vernon  
Flowers for all Occasions  
Call 256-GAIL  
(606 256-4245)

**Richmond Street.** across from Mt. Vernon Dairy Freeze. Given by Judy Rademeyer and Linda Lewis. Lots of ladies', men's and children's clothes of all sizes, good used girl's bike, whatnots, and many more items. **35x1p**

**YARD SALE:** 3 families, Friday and Saturday, on Albright Street, next to Taylor's Produce. Furniture, clothes, dishes, tools, misc. **35x1p**

**YARD SALE:** At Dixie Boone Motel, Friday and Saturday, 35x1p

**YARD SALE:** 3 families, Friday and Saturday, 9 to 4, on West Main Street near the high school. Little bit of everything. **35x1p**

**HUGE YARD SALE:** Saturday, April 5, from 10 to 4, at the home of Billy Joe and Debbie Shafer on Albright Street in Brodhead. Items include baby bed with new mattress, car seat, high chair, bean bag, E.T. twin bedspreads with one pair matching drapes, E.T. twin sheet set, red velvet drapes, place mats, rugs, boys' toddler clothes, sizes 2T to 4T, toddler boys' 3 pc suits, 20 boys' shoes, socks, undershorts, 2 prom dresses, men's jeans, dress pants, and more... women's blouses, shirts, jeans, dress pants, shirts, sweaters, short sets, little girls' jeans, shorts, dresses, shirts, and sweaters. Many items too numerous to mention. Rain or shine. **35x1p**

**GARAGE SALE:** Saturday, April 5, Barnett Subdivision, given by Charlene Eaton and Darlene Mink. 8:30 to 3:30. Rain or shine. **35x1p**

**YARD SALE:** Friday and Saturday, April 4 and 5, at home of Callie Howard, West Street, Brodhead. Several families. **35x1p**

**6 FAMILY YARD SALE:** Saturday, April 5, at Glen Ellison's on Copper Creek Road. Furniture, antiques, big size women's clothes, hand crafted items, silk flower arrangements, boys' clothes, 10-14 jewelry, refrigerator, memorial flowers, bedspreads and curtains, glassware lots more. Held rain or shine in garage. **35x1p**

**YARD SALE:** Saturday, April 5, at the home of Jerry and Betty Carter on Shirley Street. Owens Subdivision. Lots of good clothes and toys. Cancelled in case of rain. 9 to 3. **35x1**

**Up to \$36 rebate on Armstrong seamless vinyl do-it yourself floors.**  
11 sq. ft. heavy rubber bonded \$4.99 Plus \$25 sq. ft. labor (includes on-floor adhesive)  
\$5 sq. ft. of labor (includes on-floor adhesive)  
Hurry - offer ends April 6, 1986.  
Some restrictions may be required.

**Hysinger Carpets**  
Mt. Vernon, Ky.  
Ph. 256-5413

**Blown-In Insulation For All Your Drywall & Insulation Needs**  
Both residential & commercial  
Ph. 758-9886  
Gary Nicely, Owner

## Professional Services

**CARPET KLEEN!** The best in steam carpet cleaning. Free estimates. Call Lloyd Graham, 256-5536. nlf

**Grave Markers and Monuments:** In stock at all times. McNew Monument Sales, U.S. 25, 4 miles north of Mt. Vernon. Ph. 256-2232. nlf

**Building, Remodeling and Repair Work** done at reasonable rates with quality finishes. For information, call 256-2281 after 5 p.m. or see Bill R. Allen. nlf

**WANTED:** Dozer work. Ponds, yards, etc. See Raymond Bullock on Nigger Creek or call 256-4454. 18xntf

**Hamm's Well Drilling:** Call 256-2024. nlf

**PIANO TUNING AND REPAIR.** Call Gerald Stamps, 256-2551. 34x2p

**PAINTING.** Interior, exterior. Free estimates. All work guaranteed. Stephen Childress, Ph. 256-4079. 34x4

**Spring is here, and that means spring cleaning time.** If the old sofa and chair appears to have been there for many winters, call Kirby's Upholstery for the best priced, first quality. For all your upholstery requirements, call 256-4130. 33x3p

**QUILTING DONE BY WADE** and Evelyn Mullins by professional quilting machine. \$20 per quilt. Fabric, 40 cents per yard. Ph. 256-5068. 35x5p

**WINDOW CLEANING.** Free estimates for home, office, or business. Discounts for senior citizens. Ph. 758-8022. 35x2

## Notices

**LOST:** Black and white, half Pitt Bull on Hamilton Valley Road. If found, please call 925-2137. 35x1p

**NOTICE:** I will not be responsible for any debts other than my own. Robert E. Graves. 35x2p

### DECORATOR CAKES

Will Bake Any Kind of Cake For You  
Margaret Owens  
256-5533

### Rockcastle Satellite Sales & Service

Complete satellite systems installed. Service and update existing systems.

**CHARLES MILLER**  
256-5322

**AUTHORIZED ELECTROLUX Vacuums & Shampooers Sales and Service ALL MAKES & MODELS Call**

**Curtis Bradley**  
758-8584  
30x5p

### Sepetic Tanks

Parking Blocks-6'  
JACK'S Concrete Tanks  
Ph. 256-4363  
256-2580 after 5 p.m.

**SEPTIC TANKS**  
Sales and Service  
750 Gal., 1,000 Gal. Distribution Boxes  
1,000 Gal. Water Distribution Tanks

**STUFF A BAG** on Wednesday and Thursday. 25 cents. Coats, shoes and sweaters are free. New bale opening Friday, Saturday and Sunday, 12 a.m. each day. Ph. 758-4191 after 7 p.m. Cable's Grocery, Hwy. 70. 32xntf

### SIDING SALE - REPLACEMENT WINDOW SALE

Free on residential siding. We have the lowest prices and best quality. Call to choose from 10 different materials. We guarantee our work. No time limit on this sale. See us at the home of Mrs. Mary Ann Hamann on Pine Street. Ph. 256-5429. nlf

**POSTED:** No hunting and trespassing on property belonging to Charles W. Clark at Orlando. 35x2p

**POSTED:** No hunting or trespassing on property at Roundstone belonging to Vester Maples. 33x3

**NOTICE:** No trespassing on property belonging to Willard and Olive Whittaker at Rt. 5, Livingston. Violators will be prosecuted. 34x2p

**NOTICE:** No trespassing on property belonging to James and Dorothy Rash. Violators will be prosecuted. 32x5p

**LOST:** Light brown female Chihuahua dog. Was lost Sunday, March 16. Last seen on Trace Branch Road; Lamerio Children's park. Reward offered! Please call 453-9867. 34x2p

**NOTICE:** I would like to keep elderly people in my home. Ph. 453-4501. 33x4p

**NOTICE:** DUI school will be held April 7 from 6 to 9 p.m. For more information regarding enrollment, contact David Henderson or Vickie Tyler at the Comprehensive Care Center weekdays between 8 a.m. and 4:30 p.m. Ph. 256-2129. 34x2

**NOTICE:** I will not be responsible for any debts other than my own. Ernie Wendell McFerron. 34x2p

**NOTICE:** On Thursday, April 10, at 10 a.m. I will sell the following described vehicle for storage and repair bill: 1977 Olds, 4 dr., VIN: 3E7274W2012. Central Body Service, Mt. Vernon. 34x3

### RICHMOND DRIVE-IN

4 Miles South On U.S. 11 623-1718!

Fri.-Sat.-Sun. \$2.50 ea.  
Starts 7:35 p.m.

### ROCKY W

And

### WEDNESDAY

VALUABLE COUPON  
This coupon will admit the driver of any car when accompanied by one paid admission absolutely...  
**FREE!**  
Good thru Sunday, April 20th

**NOTICE:** On April 9, 1986 I will sell the following described vehicle for storage and repair bill: 1968 Buick, serial number 484398H32363. Neal Payne, Rt. 4, Mt. Vernon. 34x3p

**NOTICE:** On April 9, 1986 I will sell the following described vehicle for storage and wrecker bill: 1974 Ford, serial number F4W541114985. Thomason's Scrap Yard, Mt. Vernon. 34x3p

**NOTICE:** On April 10, 1986 I will sell the following described vehicle for wrecker and storage bill: 1974 Chevrolet, serial number E3H359H9909. Ronnie Bond Ph. 256-5539. 34x3p

**NOTICE:** I will sell for storage and repair on Fri., April 17 at 1974 Mustang. Ph. 4F052443707. 3x

**NOTICE:** The deadline for application for insuring your 1986 tobacco, corn and soybean crops is Apr. 15, 1986. Dabney Crop Insurance, 4028 Hwy. 39, Somerset, Ky. 42501. Ph. 423-3092 or 423-3179. 35x2

**NOTICE:** D.A.R., Inc. is in the process of finalizing the Western Rockcastle Waterline construction project. If anyone has a justifiable complaint or is dissatisfied with any of the construction work, please call the Western Rockcastle Water office at 256-5331 or give written notice to P.O. Box 627, Mt. Vernon, Ky. 40456, before April 14, 1986. 35x2

### TOOL SHARPENING SERVICE

3 miles west of  
Vernon on 1326  
See Lafayette Seals  
or call 256-3877

### Custom Dozer Work

Estimates  
Ponds, Yard Grading, Clearing  
Farm Work

Garner Turner Rex Davidson  
(606) 328-4121 (606) 256-4174

### For Land's Sake, Lime

## Ramsey's Lime Service

### Custom Spreading

Phone 256-2859

### HELEN ABNEY INCOME TAX SERVICE

Farm, Business, Partnership  
Ph. 256-5273

### FOR SALE

3 bedroom brick, 1 1/2 baths, 1 car garage, utility room, Valley Manor Subdivision (next to Library). Owner will consider letting rent for one year be applied to purchase price for qualified buyer. Call 256-4933 after 4 p.m. Monday thru Friday - week-ends anytime.

### USED CAR SALE

1983 CHEV. CAVALIER, 4 Cyl., 4 Dr., Auto., 44,500 mi.,	\$4,495.
1981 CHEV. CITATION, 4 Cyl., 4 Dr., Auto.,	1,195.
1978 CHEV. IMPALA, 6 Cyl., 4 Dr., Auto.,	1,795.
1979 OLDS CUTLASS, V8, Auto.,	2,495.
1978 PONTIAC GRAN PRIZ, V8, Automatic,	3,495.
1978 FORD GRANADA, 2 Dr., 6 Cyl., Auto.,	1,495.
1978 MERCURY MARQUIS, 4 Dr.,	755.
1975 BUICK, 4 Dr., V8, Automatic,	495.
1980 DODGE COLT, 4 Cyl., Automatic,	895.
1978 DATSUN, 4 Dr., 4 Speed,	695.
1976 FORD TORINO, 2 Dr., V8,	495.
1976 FORD T-BIRD, V8, Automatic,	795.
1974 FORD T-BIRD, V8, Automatic,	295.
1975 MONTE CARLO, V8, Automatic,	295.
1962 AMC RAMBLER, 6 Cyl., Automatic,	295.
1973 PLYMOUTH, 4 Dr., V8, Automatic,	195.
1973 PONTIAC CATALINA, 2 Dr., V8, Automatic,	295.
1976 VOLKSWAGEN BUNA, 4 Cyl.,	895.
1980 FORD PU RANGER, 6 Cyl., Sharp	44,295.
1971 FORD PU RANGER, 8, Stick,	495.
1977 DODGE PU, V8, Automatic,	1,395.
1983 FORD PU, 4 Cyl., Stick,	4,495.
1978 JEEP WAGONEER, V8, Automatic, 4x4,	1,995.
1977 CHEVROLET VAN, V8, Automatic,	1,995.
1978 CHEVROLET VAN, V8, Automatic,	2,495.

**Hensley's Used Cars**  
Salt Peter Cave Rd, Hwy. 1004 256-4777 Rt. 2, Orlando



Wally Graham, a photographer for the Department of Natural Resources, shoots television footage Monday afternoon of a forest fire at Mullins Station. A special unit of firefighters, made up of Apache Indians, was brought in to fight fire in the Daniel Boone National Forest.

Rev. Cooper stressed the need for a denominational and is interested in helping all pastors and churches in their ministry.

In the 1985 story, Rev. Cooper said CAP operated in eight counties in the Rockcastle area. The total income of CAP was \$8,300,000 in 1984. CAP is non profit and operates with contributions and from sales at Attie stores.

At that time, he said the center took spillover from Rentfro Valley on weekends and stressed the center is not in competition with local motels.

He added the center aids families who are traveling and who have very little or no money for expenses.

Some of the programs and events at the center, and operated by CAP, as described by Rev. Cooper, include:

- banquets, wedding receptions, club and business meetings, by reservation;
- two foster homes for severely and multiple handicapped children whose only other alternative is an institution;

- three family life abuse centers;
- two boy's homes for youths in need of special help, and a few delinquent boys committed by the state;
- a school for boys which also serves community people and those working on a general education degree (GED);
- recreation and youth programs such as ball leagues;
- five child development programs;

- free seed and fertilizer for qualified families;
- an elderly visitation program operated by volunteers;
- home repair program for those qualified for aid;
- a Christmas wreath program at Turner where 48,000 wreaths were made and shipped last season;
- a tree farm in Jackson County;

- a sheltered workshop for handicapped adults in Stanford and Somerset;
- CAP was founded in 1978 by the Monsignor Ralph Beiting, who at last report is still president of

the board of directors. He lives in Prestonsburg.

"Those who are at war with others are not at peace with themselves." William Hazlitt

## EKU to charter chapter of Nursing Honorary Society

Eastern Kentucky University will charter an official chapter of Sigma Theta Tau, the national honor society of nursing at 7 p.m. Thursday, April 10.

"We are all just thrilled with the whole thing," said Carol Baugh, associate professor of nursing at EKU. "This is a culmination of a lot of hard work and effort by everyone in Eastern's nursing program."

EKU has had an honor society in nursing since November 1982. It was chartered to Sigma Theta Tau in September 1984, and underwent an evaluation visit by the national society.

EKU's Theta Nu chapter was approved at Sigma Theta Tau's biennial meeting Nov. 15, 1985, Baugh said.

Dr. Doris Edwards, associate professor of nursing at the University of Cincinnati College of Nursing will conduct the installation ceremony in Brick Auditorium of the Coates Administration Building, EKU.

Larry Kelly and Harriet Pfingst, both associate professors of nursing at EKU, will serve as co-advisors. The chapter at EKU will have approximately 150 stu-

dents, faculty and community members, Baugh said.

Sigma Theta Tau has more than 75,000 members in 220 chapters nationwide.

The organization's goals include the promotion of excellence, Baugh said. The chapter is also dedicated to nursing scholarship, leadership and research.

In short, Baugh said, "We are committed to improving the health care of the public."

Membership in the society is by invitation and is extended to undergraduate and graduate students, faculty, and professional nurses who have demonstrated superior scholastic, leadership, and nursing achievements, she said.

EKU offers both associate and baccalaureate degree nursing programs. Both programs are accredited by the American League for Nursing.

The flamingo's neck is so flexible that it turns some 180 degrees to stick its head into the water upside down.

"Ignorance is not innocence but sin." R. Browning

Rockcastle County is certainly not the only county being plagued by forest fires. This photo of a helicopter "water drop" was taken in southern Laurel Co. near the Knox Co. line. (Photo courtesy of Sentinel-Echo)

### "SHERIFF MAD" (Cont. From Front)

In a Signal story May 2, 1985, Rev. Gerald Cooper, a Presbyterian minister who directs the local Family Life Center which is part of CAP, said the center is dedicated to family life education, enrichment and treatment—a place that is trying to do things to strengthen family life and to make family life



## GOOD NEWS AMERICA, GOD LOVES YOU.

The good news is that God cares about you and He's concerned about what happens to you. We care, too.

You can learn more about the good news when you attend a special series of meetings designed especially for you.

You will enjoy being a part of each session. The music will lift your spirits and put a smile on your face.

The friendly people will make you feel welcome. The message will give you a sense of hope in this troubled world.

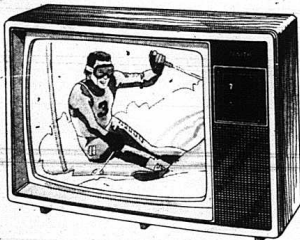
The schedule of meetings and location of the church are shown on the back of the brochure. Mark your calendar and plan to attend.

YOU'LL HEAR GOOD NEWS!

FIRST BAPTIST CHURCH, MT. VERNON  
Main at Craig Street

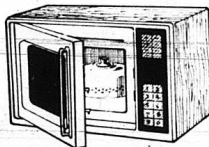
7:00 P. M.  
April 20 - 25

## ZENITH TV's



## Gibson Washers, Dryers, Refrigerators and Stoves

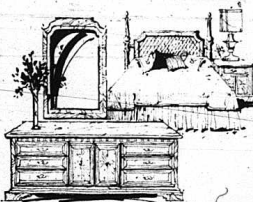
Frigidaire Appliances  
Maytag Appliances  
Microwaves



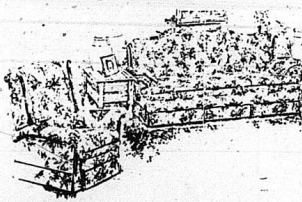
## Appliance Sale!

## Gibson, Frigidaire and Tappan Stoves on SALE!!

### Bedroom Suites



### Living Room Suites



### Coffee & End Table Sets



### Dinette Sets



Free Delivery & Set-Up

## Lakes Furniture & Appliances

NEW AND USED FURNITURE & APPLIANCES  
2 Miles South of Berea on U. S. 25 South at Appalachian Village

PHONE 666-4320

We Service What We Sell

Crop insurance deadline  
nears...

See Page 4

"The Arkansaw Bear" to  
be presented Apr. 4 & 5...

Governor signs 57 bills  
into law...

See Page 10

# Mount Vernon Signal

Serving Rockcastle County Since 1887

Mount Vernon, Kentucky 40456

VOLUME 99 - NUMBER 35

THURSDAY, APRIL 3, 1988



FIREFIGHTERS FACED 30-FOOT FLAMES IN PINE CAVE.

## Forest fires in county now out

"It looks like the whole county is on fire," a Brush Creek resident said Monday, one of several spectators who watched a forest fire sweep across the area, burning hundreds of acres of forest land.

A pall of smoke lay over Pine Hill, Mullins Station and Brush

Creek areas attesting to the extent of burning timber.

So intense were the fires Monday that Gov. Martha Layne Collins declared a fire emergency in 40 eastern Kentucky counties, including Rockcastle, which meant no burning of any kind until rain relieves the tinderbox forests.

## Tobacco measure approved

Burley tobacco growers have overwhelmingly approved a measure to continue the federal support price program for the next three years, the Agricultural Stabilization and Conservation Service reported Tuesday.

About 96 percent of the burley growers in seven states approved the measure. Two thirds of the growers had to approve before the

program could continue, well over the required number.

The new legislation provides for a buy-out of most of the surplus tobacco plus a reduced program assessment to farmers.

Without the program, farmers would have had no price guarantees at the auction markets and production would be unlimited.

"Don't even go into the woods at all," one official said. "It could cost you a fire."

The Rockcastle fires—at least four—were in the eastern section of the county. One began in Pine Hill, burned toward Mullins Station and into the Brush Creek area. Estimates ranged from 500 to 1,000 acres consumed.

Another fire was in the Brush Creek/Cove Branch area. A third was in the Poplar Gap/New Hope area.

Even in downtown Mt. Vernon firemen were busy Monday night extinguishing a fire near the Farm Bureau Insurance office across from Elmwood Cemetery believed started by burning trash. Once again, the garbage dumpster at Pine Hill caught fire.

About 15 members of the Mt. Vernon Fire Department fought the Pine Hill/Mullins Station fire until midnight Monday.

In the Daniel Boone National Forest, about 300 acres burned near Saltpetre Cave. It was fought by crews from Arizona and New Mexico, including one crew of Apache Indians.

Seven other fires were reported in the national forest Tuesday. Most, if not all, were being

Continued to Page 3

## State reports I-75 road work

The state has authorized design funds for three pavement and bridge rehabilitation projects on I-75, an 8.2 mile section of Rockcastle County from U.S. 25 to the beginning of the existing concrete pavement; and a 22 mile section in Rockcastle and Madison Counties from the beginning of the existing pavement of Ky. 87. The total estimated cost of the projects is \$17.5 million, and funds from the federal Interstate 4R Program are being used to finance them.

A construction contract for the 8.2 mile section located in Rockcastle County is tentatively scheduled for a contract in fiscal year 1987. The projects are part of the state's six-year construction plan for Rockcastle and Madison Counties.

## Sheriff Hasty berates CAP for failure to pay taxes

By: Ray McClure

An angry Sheriff Clarence "Jib" Hasty told a surprised Rockcastle Fiscal Court Tuesday he'd be glad to sell property owned by the Christian Appalachian Project (CAP) "at auction at the courthouse door" if CAP refuses to pay its property taxes.

The CAP property is the Family Life Center of Appalachia, located on U. S. 25 north of Renfro Valley. It has long been considered a religious retreat, therefore exempt from taxes.

"That's not so," the sheriff said. "They have all kinds of businesses including motel and restaurant facilities. I don't think they should get away with not paying taxes. Everybody else has to pay."

H. E. "Elmer" Hale, county property valuation administrator, told the court he agreed that the center should pay taxes, and added "the people at the center know my feelings about it."

Hale said he did not think the center was a religious organization. "It's just an organization

now and doing a lot of business."

He related that by law, a church, a church parish and two acres of land can be exempt from taxes. But noted there is no church or parish at the center, but many acres and many buildings.

"Even churches in this county pay taxes if they own property other than the church and parish," he continued. "So I think the center should also pay taxes."

The center contains various homes used by groups for seminars, retreats and informational meetings. At last report there was a home for delinquent youths committed by the state, and a spouse abuse center.

There was no exact amount of how much in back taxes are owed by CAP, but estimates at the meeting ranged from \$40,000 to \$70,000, including the interest on unpaid taxes. This year's taxes are set at a definite \$6,672, plus a 10 percent late fee.

County Judge/Executive Hubert Thacker instructed County Attorney James H. Lambert to look into the tax problem and report his findings at the next meeting.

Attorney Lambert advised the court that he would discuss the matter with the Office of the Attorney General and other state officials and report back to the court.

"It's up to the county attorney to tell me what to do," Sheriff Hasty said. "I've tried everything. But I want to collect those taxes. That's a business up there, and businesses pay taxes. Just ask any businessman. I'll collect the taxes, and if I don't, I'll sell the property to the highest bidder on the courthouse steps. Just let me know."

Continued to Page 24

## Court OK's jail budget; opens courthouse job bids

A budget estimated at \$132,315 to operate the county jail during the 1986-87 fiscal year was approved by the Rockcastle Fiscal Court Tuesday.

Estimated income and expenses were the same total of \$132,315. Receipts showed \$77,400 in state allocations (bed allotment); State medical allotment, \$5,100; court costs (\$5 per case), circuit clerk, \$7,500; state prisoner reimbursement, \$18,000; driver's license influence fees from the state, \$2,200 and \$500 for the work release program. The county's contribution totals \$21,615.

Expenses include: personnel, \$76,491; operating expenses, \$43,824; maintenance, \$1,000; equipment, \$1,000 and other, \$10,000.

During the meeting bids were opened on handicap improvements required by the state at the

courthouse, including a ramp at the rear of the building to the second floor; parking lot changes and remodeling of second floor restrooms.

Three bids were opened. Newland Construction of Broadhead bid \$12,950; Carter Johnson of Mt. Vernon, \$12,500 and B & B Floor Co. of Mt. Vernon (Ronald Bradly), \$12,300.

The bids will be checked to see if bidders were bidding on the same items. The court will accept the "lowest" and "best" bid.

The court approved \$250 to change the location of the breathalyzer in the county jail at the request of Jailer Billy Kirby.

Hired by the court was Kathy Denney to serve as homebound service aide for the Broadhead senior citizens center at a wage of \$3.35 an hour for six hours a day.

## Clontz named to council

Fifth District Congressman Harold Rogers has announced that John Clontz of Mt. Vernon will be the representative for the Southern Kentucky Economic Development Council.

The Council was recently formed by Rogers and nine others to help recruit new jobs and new industry to the Fifth District region. The Council has now formed a non-profit corporation to begin recruiting industrial prospects on a regional basis.

"I am extremely pleased that the Council has chosen John as its Rockcastle County representative," said Rogers. "His background and experience will be a great help in our effort to bring economic development to our region. With representatives of 27 counties now on board, we are

ready to begin our work."

Rogers said the new members will be responsible for gathering information on their counties, so that the Council has a complete inventory of sites and background for every county in the region.

In addition, Rogers said local elected officials will be called upon for their advice, leadership and assistance in making S.K.E.D. a successful enterprise.

"The work of the Southern Kentucky Economic Development Council can only be successful if it is truly a regional approach," Rogers added. "That is why we have added representatives of each county to the Council. Whatever Business and jobs we can bring in any of our counties will benefit all of us."

[see picture page 3]

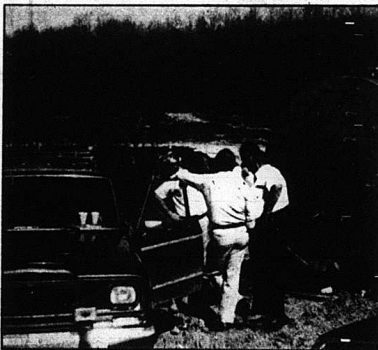
## William James new bank boss

William W. James, a former vice president and cashier at the Bank of Mt. Vernon, has been named president and chief executive officer at the New Farmers National Bank of Glasgow.

James was also named a director of the bank.

James joined New Farmers National Bank in 1983 and had been serving as senior vice president and cashier.

He is a graduate of the University of Cincinnati and the School of Banking of the South at Louisiana State University.



Huddling Monday at the site of the Ky 461 by-pass at Mt. Vernon were Elmo Greer, contractor, left, and members of the Pikeville local of the United Steel Workers. The union struck the project for four days.

## Workers back on road job

Workers for Pikeville local of the United Steel Workers returned to work Monday on the KY 461 by-pass at Mt. Vernon, four work days after they struck the project.

Union workers walked off the job Mar. 26 after contractor Elmo Greer & Son of East Bernstadt brought a mechanic, Eddie Parker of London, from a West Virginia project to the KY 461 site. Parker is a permanent employee of Greer.

The union said no to Parker, and the steward on the site shut down the entire project.

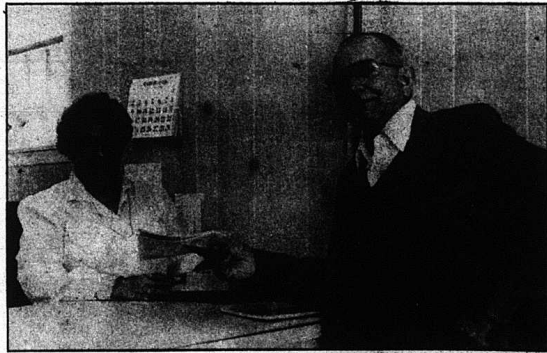
Several local men were at the site Monday hoping to go to work if the strike continued. Sheriff

Clarence "Jib" Hasty and deputies were also there Monday in case of trouble. There was none.

Reportedly, Greer had planned to hire union workers Monday and fire local workers if work was not resumed.

Other than one Rockcastle man, Herb Alcorn, right-of-way foreman for Greer, there are no county men employed on the project. Most are assigned jobs through the Pikeville office of the union.

Work was continuing through the week with workers taking advantage of the warm, dry weather on Monday and Tuesday.



Mrs. Molly Scoggin, a thirty-year employee of the United States Postal Service is shown with her husband, Ray Scoggin, on her last day at the Livingston Post Office last Friday. Mrs. Scoggin, a

native of Laurel County, spent most of her 30 years in the Livingston Post Office and became postmistress in 1978. Mrs. Scoggin said she planned to just rest and fish in her newly acquired spare time.



# Mt. Vernon Signal

Published Every Thursday

Main Street in Mt. Vernon, Kentucky 40456  
Entered at Mt. Vernon Post Office  
As Second Class Matter - Permit No. 1

James Anderkin, Jr., Publisher  
Perlina Anderkin, Editor  
Member Kentucky Press Association

## Letters

### WLEX thanks Rockcastle countians

Dear Editor:  
This is just a modest expression of our appreciation for your assistance and cooperation in making "Kentucky Life in Rockcastle County" the success that we feel it was.

The sole purpose of "Kentucky Life" is to paint an honest television portrait of the various communities and the people that are on WLEX-TV has served for more than 30 years.

We're particularly proud of our program in March 1986 which focused on Rockcastle County.

The program was the direct result of the openness, the friendliness and the outstanding cooperation that you and many others showed our production staff while they were working there.

We hope that you, too, were satisfied with our efforts and feel as positive about "Kentucky Life in Rockcastle County" as we do.

For program producer Kamille Brookbank, and for all of us at WLEX-TV, I can only say, "Thank you very much!"

Sincerely,  
William D. Crawford, Manager  
Promotion & Special Projects

### Big trucks need better control.....

Dear Editor:  
I would like to say something about last week's wreck and ask the question-why, if we have any

law, that there's no speed limit when it comes to those big trucks. They come through the cut on U.S. 25 so fast that if they had good brakes, they could not slow down on that hill without wrecking with a load.

There should be a slow moving zone through there, and when there is a wreck, they should have someone who could 'b' would write it up like it happened. I was the one driving the car Monday, Mar. 24, that the big truck hit, and I want to say I was on my right side of the road and did not pull out at the courthouse like the paper said. I came on U.S. 25 at 1004 and was headed west to Mt. Vernon.

If there's not something done, there will be many lives lost, for it's getting worse all the time.

Pearl Newton

## County Statistics

### DEEDS RECORDED

Jarvis Martin and Linda Martin, real property located in Livingston, to Welkie Ballinger and Mary Lou Ballinger. Tax \$5.00.

The Lincoln County National Bank and Trust Company, trustee for Adrian Edwards and Mary Edwards, real property located in Rockcastle County, to The Casey County Bank, trustee for Adrian Edwards and Mary Edwards. No Tax.

Edmond S. Samons and Betty Joyce Samons, real property located in Rockcastle County, to John Dallas Anderkin and Catherine A.

### ANDERKIN, Tax \$56.50.

The Casey County Bank, trustee for Adrian Edwards and Mary Edwards, real property located in Rockcastle County, to Jimmy Ray Cromer and Shirley Faye Cromer. Tax \$7.50.  
Sammy Ford and Judy Ford, real property located in Rockcastle County, to James C. Phillips. Tax \$6.00.

Thomas E. Denny and Lonnie Denny, real property located on the waters of Skeggs Creek, to James Denny, Sue Ann Denny and Darlene Denny. No Tax.

Thomas E. Denny and Lonnie Denny, real property located in Rockcastle County, to Thomas E. Denny and Stevie Denny. No Tax.  
Delbert McFerron and Dorothy McFerron, real property located on the waters of Skeggs Creek, to Jesse Rotherford and Frances Rotherford. Tax \$19.50.

### MARRIAGE LICENSES

Edward Rhodes, 62, London, salesman, to Margie Rhodes, 51, London, housewife. March 25, 1986.

Howard B. Wall, 51, Findlay, Ohio, salesman, to Vicki L. Beard, 30, Findlay, Ohio, secretary. March 27, 1986.

Jack Hurd, 77, Mt. Vernon, retired, to Ida Faye Miller, 69, Mt. Vernon, housewife. March 31, 1986.

Billy Bryant, 25, Brodhead, mechanic, to Christine Bolin, 34, Pipa, Ohio, seamstress. March 28, 1986.

Adam Wayne Bailey, 21, Orlando, driver, to Connie Sue Adams, 16, Orlando, student. March 29, 1986.

### CIRCUIT CIVIL SUITS

Lonnie Louise Denny and Thomas Edward Denny, joint petition for dissolution of marriage. 86-CI-051.

Sandra M. Thompson vs. Warren C. Thompson, petition for dissolution of marriage. 86-CI-052.

### DISTRICT CIVIL SUITS

Financial Recovery Service vs. Owen Mink, complaint. 86-C-020.

James Carpenter vs. Bill Joe Miller, money claimed due. 86-C-021.

### DISTRICT COURT

Public intoxication: Michael D. Doan, \$50 and cost, 10 days (probated).

Operating on a suspended license: Jonathan Bond, \$100, 10 days.

Speeding: Bum-Jae Lee, license suspended.

Failure to display a Ky. vehicle ID card: Tracy J. Berken, license suspended.

Violation of safety requirements, no house trailer plates: Harlen Gilbert, license suspended, warrant issued.

Overweight: Robert E. Rice, Steven Koch, license suspended.

Reckless driving: Kenneth Padgett, \$100 and cost.

Carrying a concealed weapon: Gary Denny, \$50.

Possession of marijuana: Gary Denny, \$50.

No registration plates: Danny Mason, \$20 and cost (suspend fine).

Possession of alcoholic beverage by a minor: Michael A.

Webster, James F. Mattingly, warrant issued; Charles D. Griffin, Martin C. Bryant, \$30 and cost (suspend fine).

Improper registration: Donald A. Gadd, \$50 and cost.

Balance due: Robert Hasson, Jarvis Cromer, Billy Jude, Jim Milburn, warrant issued for failure to appear; Billy Mason, 90 days (suspend); Deliah Adams, warrant issued; John Chamberlain, Vincent Burdette, license suspended; warrant issued; Donald K. Teegarden, license suspended, warrant issued for failure to answer.

D.U.I.: Gary Denny, Rant Saylor, Bruce W. Fields, Ralph Johnson, Earl Brent Kirby, \$200 and cost, \$150 service fee, \$10 VCF, 2 days; Jonathan Bond, Estill Philip, \$350 and cost, \$150 service fee, \$10 VCF, 7 days; Victor Robinson, (amended to "reckless driving"), \$100 and cost.

No operators license: Rant Saylor, \$30 and cost; Doyle Couch (also "no motor vehicle insurance"), license suspended.

Drink in a public place: James William Brooks, 5 days; Lonnie Lee Miller, \$20 and cost; James Bradley, \$30 and cost; 10 days (probated); Donald J. Brown, Jeffery L. Johnson, \$20 and cost, 10 days (probated).

## \$3 million REA loan for South Kentucky Rural Electric Co-op

U.S. Sen. Mitch McConnell (R-KY) and Congressman Harold Rogers (R-Somerset) today announced a \$3,088,000 REA loan to South Kentucky Rural Electric Co-op in Somerset.

These funds will finance service for 2,700 additional customers, 115 miles of distribution lines and system improvements in Pulaski, Adair, Casey, Clinton, Cumberland, Laurel, Lincoln, McCreary, Rockcastle, Russell and Wayne counties.

# Absolute Auction

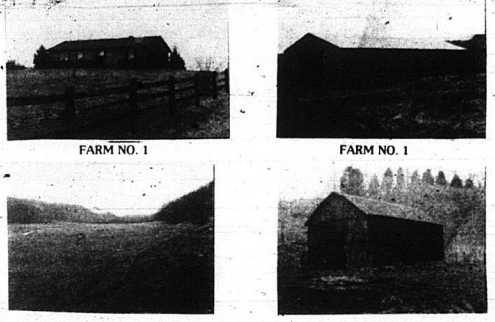
Mr. and Mrs. Larry M. Brown's

## 2 Farms - 145 Acres, more or less

### Farm Machinery and Personal Property

Sat., April 5, 1986 10:30 a.m.

Attention Section - Lincoln County, Ky.



LOCATION: Turn off U.S. 27 at Hall's Gap onto 643 and proceed approximately 6 miles to Simpson's Grocery and turn onto 1948 and proceed approximately 1.7 miles to sale site. From Crab Orchard, turn off U.S. 150 and onto 643 (Oatenheim Road) and proceed approximately 9 miles to sale site.

FARM NO. 1 - Contains 65 acres, more or less, of which approximately 46 acres is cleared tillable land. It is improved with the above-pictured fieldstone home. The house has 3 bedrooms, living room, kitchen and dining room combination and 1 bath. It also has carpet, total electric, built-in cabinets and full basement with utility room. Water is currently provided by a well, however, city water is available. Other improvements consists of an older house suitable for storage, 30x72 metal building, 22-64 barn and a 12-34 crib. Stock water is provided by a pond and a spring. The basic tobacco allotment is approximately 1,042 lbs.

FARM NO. 2 - Contains 80 acres, more or less, of which approximately 50 acres is cleared fertile bottom land. Basic tobacco allotment is 1,082 lbs. It is improved with a 32x50 combination barn. Struck water is provided by a creek.

The farms will sell separately and not be offered together. Farm No. 1 is now being surveyed and the exact acreage will be announced sale day, however, Farm No. 2 sells by the boundary. Both farms will sell at Farm No. 1.

FARM MACHINERY: 4430 John Deere tractor, cab and air, quadrange; 275 Massey Ferguson tractor, 600 hrs., roll guard and canopy, dual hydraulic; 4400 John Deere diesel combine, 13 ft. platform; 45 John Deere combine, 10 ft. platform; John Deere 2 bottom 14 in. plows; John Deere 4 bottom 14 in. plows; John Deere wheel disc, 10 ft.; John Deere wheel disc, 8 ft.; 2 John Deere Grain drills; John Deere 4 row corn planter; Vermeer 605 F roll baler; 2 New Holland choppers, super 717; New Holland 455 trail type mower, 9 ft.; International 155 manure spreader, PTO; Bradford 8 ton wagon 16 ft. flat; 2-30 ft. elevators; New Holland 256 hay rake; new 3 pt. spreader; Holland tobacco seeder; International 1 bottom plow, quick-titch; International drag disc; John Deere 8 hp. riding mower plus other miscellaneous items.

PERSONAL PROPERTY: 3 piece living room suite; 2-2 piece living room suites; recliner; end tables; 2 kitchen tables each with 4 chairs; 2 odd chairs; TV and miscellaneous items. LUNCH AVAILABLE ON GROUNDS. ANNOUNCEMENTS MADE DAY OF SALE TAKE PRECEDENCE OVER WRITTEN MATERIAL.

Auctioneer's Note: If you're in the market for some well-maintained farmland with some marketable timber, farm machinery or personal property, be sure to attend this absolute auction Saturday, April 5, 1986 at 10:30 a.m.

TERMS: 20% down day of sale, balance in 30 days with delivery of deed on real estate and cash or good check day of sale on farm machinery and personal property.

For additional information, contact Mr. and Mrs. Brown at 365-7238 or:

## Ford Realty & Auction Co.

REALTOR-AUCTIONEER  
Sam Ford  
Roy Adams  
Danny Ford

AUCTIONEERS  
Jerry Ham  
Willard Bullock

Kentucky Toll Free No. 1-900-435-5454  
Mt. Vernon, Ky. Phone 258-4545

# Eye-Opener...

Let Convenient "Perk" you up  
Stop in and get "Movin'" with  
our piping hot, fresh coffee

We have a pot brewing  
just for you

Remember, we are  
Convenient

**We are Convenient**

In Mt. Vernon:  
Richmond St.  
In Broodhead:  
U.S. Hwy. #150  
Prices Effective  
March 31 - April 13, 1986

Participating Stores Only. Quantity Rights Reserve. CFM 1986	Lay's Potato Chips \$1.58 Plus Deposit 16 OZ. RETURNABLES	Lay's Potato Chips \$1.09 1.39 SIZE	Tropicana Orange Juice \$1.79 HALF GALLON
Sandwiches Fudgesicles \$1.09 6 PACK	Fischer's Wieners \$1.99 12 OZ.	Webbers 1 LB. Roll Sausage \$1.59 or 12 OZ. Links	Biscuit 9.5 OZ. \$1.59 Johnny Rib 16 OZ. \$1.99

# Convenient Food Mart



Fifth District Congressman Hal Rogers joins in announcing that John Clontz will represent Rockcastle County on the Southern Kentucky Economic Development Council. Pictured are, from left: Ray Moncrief, SKED president; Congressman Rogers; Mt. Vernon Mayor Roland Mullins; Clontz and Kentucky Commerce Secretary Carroll Knicely.

# Something Special Body Boutique GRAND OPENING

Monday and Tuesday  
April 7th and 8th

Refreshments Free Demonstrations  
FOR WOMEN ONLY

Introducing the



**SHAPE UP LOSE BULGES**  
EFFORTLESSLY EASILY  
**FIRM & TONE SHED INCHES**  
EFFECTIVELY ECONOMICALLY

California Concept exercise equipment can be utilized and enjoyed by everyone, as well as by many senior citizens, by those with minor back injury, and by people who don't like, or who don't have time for traditional exercise programs like Nautilus, Universal or Aerobics. This contemporary, anti-gravity concept with high repetitions also can be used by body-builders for cooling down or warming up or to relieve sore, aching muscles. The equipment requires NO strenuous effort, strain, fatigue or hours of exhausting exercise.

## California Concept

- (1) No rollers, belts, weight lifting or strenuous floor exercises.
- (2) Tones and strengthens muscles for a trim, more feminine look.
- (3) The machines help break-up cellulite and flush it out of your system.
- (4) Since this type of exercise does not cause you to sweat:
  - (A) Regular street clothes can be worn.
  - (B) No need to shower after exercising.
  - (C) Saves time and reduces commotion.
- (5) Only 2 sessions a week are necessary. This works well for women with children and families.
- (6) Weekly payments are available as well as a discount if you should choose to pay in full.
- (7) Results are seen quickly.

### RATES

40 Minute Session \$6.00	Pkg. 8 Sessions - \$38.00 Pkg. 16 Sessions - \$76.00
-----------------------------	---

also  
Wolff System Tanning Bed with air conditioning,  
AM/FM Stereo Cassette.

Open Monday thru Saturday 8 a.m. to 8 p.m.  
Phone 256-9112 Ask for Connie or Mary  
Located beside Evans Realty, across from  
The Bank of Mt. Vernon

## April 15th is deadline for crop insurance thru FCIC

April 15 is the last day to apply for crop insurance for corn, grain sorghum and tobacco in Rockcastle County, according to Richard Derringer, a representative of the Federal Crop Insurance Corporation (FCIC).

Crop insurance covers unavoidable loss of production resulting from adverse weather conditions, wildlife, earthquake, or fire.

Three coverage levels (50, 65 or 75 percent) are available for insurance protection. Additionally, FCIC offers three optional price elections for valuing grain production lost or damaged, says Derringer.

A new crop insurance plan, called Actual Production History

(APH), is available this year to growers of soybeans, high barley, oats and rye in addition to corn, grain sorghum, peanuts, cotton, rice and other crops. Producers of these crops may now qualify for higher yield guarantees by proving their yield history. Rates have been developed to offer reduced premium for producers with above average yields. "With the increased cost of producing a crop, it makes good sense to take a look at this new concept."

To find out more about the APH plan, producers should contact a local agent. To select an agent, producers may check the list of agents at their local ASCS office.

### "FOREST FIRES OUT" (Cont. From Front)

continued by Wednesday morning, including the Saltpetre Cave fire. All fires in Rockcastle are out.

In addition to calling a fire emergency, the governor also placed National Guardsmen on standby alert.

A major fire was also out of control in southwestern Laurel County Monday consuming about 350 acres. It did not get into Rockcastle.

More than 1,500 fires in 1986 in the state have burned nearly 35,000 acres of woodland. The average for the state in the first three months of any year is 796 fires destroying about 18,000 acres.

In her emergency order, the governor said that as a result of said emergency, it shall be unlawful in the forest lands, brushlands, and fields contained in the above-mentioned counties for any person -- except the owner, tenant, or owner's authorized agent, persons regularly engaged in cutting, processing or moving forest products, persons engaged in constructing, maintaining and operating utility or pipeline right-of-ways, or persons on official duty -- to enter or travel

in any state, county, municipal, or private forest lands, brushlands, fields or idel or abandoned lands contained in the counties so affected, except on public highways or well-defined private roads.

Besides Rockcastle, other counties affected by the order include: Bath, Bell, Boyd, Breathitt, Carter, Clark, Clay, Elliott, Estill, Fleming, Floyd, Greenup, Harlan, Jackson, Johnson, Knott, Knox, Laurel, Lawrence, Lee, Leslie, Letcher, Lewis, McCreary, Mifflin, Martin, Mason, Menifee, Montgomery, Morgan, Nicholas, Owsley, Perry, Pike, Powell, Robertson, Rowan, Whitley, and Wolfe.

**MVES  
Spring  
Festival  
is  
Friday  
April 25th**

### financial planning

by Dwight Griffin CPA

#### Family Business Transactions

What happens when you hire your children as employees? What tax treatment are you allowed on business transactions with related parties? Since transactions between related parties can be an area of abuse in terms of shifting income to reduce taxes, the tax code provides special treatment in certain family and related party transactions.

The tax law prohibits a taxpayer from deducting interest or expenses which are owed but not yet paid to certain related parties. At the time the payment is actually includable in the recipient's income, it is deductible by the paying party.

The law prohibits a deduction for a loss on sales if the buyer is a family member of the taxpayer. Generally speaking, a family member is a son, daughter, brother, sister, spouse, an ancestor or a lineal descendant. For tax purposes, you can file a "related person" to individuals, corporations, trusts, exempt organizations, etc.

One spouse working for another and children under the age of 21 working for their parents are exempt from Social Security (FICA) contributions and from Federal Unemployment (FUTA) tax. This is not optional, if you have made FICA or FUTA contributions under these circumstances, you should apply for a refund since these family members are not entitled to benefits when it is time to draw them.

One spouse working for another is entitled to make contributions to his or her own individual retirement account (IRA). Example: If a wife working for her husband makes at least \$2,000 for the year, she is entitled to make a full \$2,000 contribution to her IRA account.

Many small businesses have family members as employees. Make sure you're getting the tax treatment most beneficial to you and that the tax return treatment of your financial transactions will hold up under audit. Consult your accountant for assistance in specific application of these rules.

- Call us, we understand business and financial concerns.
- \*Personal & Corporate Tax Returns
- \*Tax Planning
- \*Financial Statements
- \*Business & Farm Recordkeeping
- \*Computer Systems
- \*Estate and Gift Counseling
- \*Business & Real Estate Sales and Acquisitions
- \*Financial Planning



Introducing  
**Sue's Fashions**  
Old Main St.  
Renfro Valley

## OPENING SALE

JEANS \$6 to \$10 All Brands

Good Prices on Fashion Clothing      Material - All Prices

"Greatest buys in town"

**RACKS & RACKS OF CLOTHING \$2 TO \$10**

Open Wednesday thru Saturday 10 to 5

# OBITUARIES

## Grover Norton

Grover "Dick" Norton, 76, of Broadhead died April 1, 1986 at the Humana Hospital in Somerset after a long illness. He was born August 26, 1909 in Rockcastle County, the son of the late Buddy and Julie Major Norton and was a retired farmer.

Survivors are four brothers, Russell Norton of Cincinnati, Ohio; Dick Norton of Somerset; William Norton of Phoenix, Arizona and Morris Norton of Somerset; fifteen nieces and nephews and several great nieces and nephews also survive. He was preceded in death by a sister, Mrs. E. H. Thompson.

Funeral services will be held Friday, April 4 at 2 p.m. at the Fairview Church of Christ with burial in the Fairview Cemetery.

Cox Funeral Home is in charge of arrangements.

## Effie Kirby

Mrs. Effie Kirby, 78, of Chestnut Ridge, died Mar. 26, 1986 at her home after a long illness.

She was born on September 30, 1907 in Rockcastle County, the daughter of the late Ollie and Mary Ellen Fletcher Kirby. She was a member of the Hopewell Baptist Church.

Survivors are two sons, Sylvester and Troy Kirby, both of Chestnut Ridge, two daughters, Mrs. Opha Marler of Cincinnati, Ohio and Mrs. Margreite Grody of Springfield, Ohio; a brother, Walker Lee Kirby of Dayton, Ohio; three sisters, Mrs. Mollie Ballinger and Mrs. Margaret Smith, both of Dayton, Ohio and Mrs. Rosada Inlow of Florida. 20 grandchildren, 22 great grandchildren, and a great, great grandchild also survives. She was preceded in death by her husband, Bert Kirby, and by a son and two daughters.

Services were held Mar. 28 at

the Cox Funeral Home Chapel with Bro. Lester Arnold officiating. Burial was in the Kirby Family Cemetery.

## Dess H. Donovan

Mrs. Dess H. Donovan of Mt. Sterling, died March 29, 1986 at the Rockcastle County Hospital after an illness of several weeks. She was born in Rockcastle County the daughter of the late J.T. and Lucy Caron Nicely. She was a former teacher in Mt. Vernon and Rockcastle County schools and was member of the First Christian Church of Mt. Vernon.

Survivors are a brother, Lewis D. Nicely of Mt. Vernon; two sisters, Mrs. Nell Wanda Travis of Mt. Vernon and Mrs. Bonnie Cox of London and several nieces and nephews.

She was preceded in death by her husband, Clarence E. Donovan and by two brothers and a sister.

Services were held March 31, at the Cox Funeral Home Chapel with Rev. Ernie Johnson officiating. Burial was in Elmwood Cemetery.

## Ira Noland Reppert

Ira Noland Reppert, 57, of Crossville, Tenn., died at the Cumberland Medical Center in Crossville on Wednesday, March 5, 1986.

He was born on May 14, 1928 near Boone, the son of the late Eugene and Liddie Catherine Mullins Reppert.

He was a member of the Plateau Methodist Baptist Church and a resident of Cumberland County for 26 years. He and the former Cora Grant of the Taylor's Chapel community had been married for 33 years and the parents of five children. He was a former city commissioner and owner and operator of the Plateau Car Company in the Dorton

Community. Mr. Reppert was also a Republican candidate for sheriff in the May 6 countywide primary and collapsed of an apparent heart attack while attending a GOP rally at the annual Lincoln Day dinner at the state park.

Survivors include his wife, Cora; two daughters, Sharon Jackson and Lydia Reppert; both of Crossville; three sons, Ira (Bud) Reppert, Jr., serving in the U. S. Air Force, North Carolina, Jeffrey Reppert of Crossville and Gregory Reppert, also serving with the U. S. Air Force, South Carolina; five sisters, Mrs. Hubert (Anna Lee) Chasteen of Rt. 3, Mt. Vernon, Mrs. Phillip (Ruth) Galtiff of Rochester, Ind.; Mrs. Earl (Mary Jane) Sorah of Elyria, Ohio; Mrs. Gerald (Myrtle) Wilson of Amherst, Ohio, and Mrs. Robert (Dorothy) Poores of New London, Ohio; two brothers-in-law (Tip) Reppert of Rt. 3, Mt. Vernon and James Reppert of Rt. 3, Eubank, and eight grandchildren.

Services were conducted Mar. 7 at the chapel of Burris Funeral Home by the Rev. Don Polly of Vandalia, Ohio. Burial followed in the Oaklawn Cemetery at Pomona.

Pallobers were his nephews, Everett Grant, Matt Grant, Matt Grant, Lyle Grant, J. M. Odell and Jerry Swafford.

WLEX-TV to air "The Mystery of Al Capone's Vaults"

WTVQ-TV (Channel 36, Lexington) will air the opening of the

IN MEMORY (In memory of my husband, Oscar Lee Hopkins, who passed away one year ago.)

Dear God, help me to see that yesterday is gone and that ocean is gone forever. Let me now be aware of my children's need for comfort and my friends' desire for comfort from me. Help me to accept his going to live with Jesus and accept whatever comes and to do and give and help someone else the best I can. When I can comfort an aching heart or ease someone's broken heart, or ease their pain, I know I am living as Oscar, and Jesus wants me to. Help me live each day and know that all the yesterdays and Oscars are gone forever to prepare a place for me. I know Oscar and Jesus are always with me and watching over me.

Sadly missed by his wife, Wanda

CARD OF THANKS Thank you so very much for all of the support you gave me and my family during my recent illness. The cards, visits and prayers really kept my spirits high.

Most of all, thank you for the prayers offered in my behalf. The true meaning of Christian love can be seen in times like these. May God bless each of you. Dorothy Kirby

newly discovered vaults of Al Capone on Monday, April 21, during a two hour special at 9 p.m. Discovered in 1981, the vaults are located beneath Michigan Avenue at the Lexington Hotel in Chicago. Interest in the vaults increased in April 1985 when the Sunbow Corporation began renovating the hotel. One vault measures 125 feet long, 8 feet high and 8 feet wide. It appears to have been wired for light and is sealed with cement determined by experts to have been poured in the 1930's.

"In addition to the exploration of the vaults, which many feel may be Chicago's equivalent to King Tutankhamun's Tomb, this special broadcast will tell the story of Capone's rise to power, his reign and his downfall; and death," said Douglas Llewellyn of the Westgate Group. "Viewers will be taken to the sight of the St. Valentine's Day Massacre; his cell in Alcatraz, and his sumptuous estate at Palm Island, Fla.," he added.

Throughout the broadcast, as the main vault is being opened, the legendary secret tunnels and staircases in the Lexington Hotel will be explored. Although the contents of the vaults are unknown, the Internal Revenue Service has already laid claim to them by placing an \$800,000 lien on their contents to satisfy a tax payment, plus interest, owed by Capone's estate since his death in 1947.

"This historic television event is the most exciting project we have ever undertaken," said Sheldon Cooper, president, Tribune Entertainment

### Menu

Rockcastle County Elementary Schools April 7-9, 1986

**BREAKFAST**  
Monday: Sausage & biscuit, juice, milk.  
Tuesday: Pancakes, syrup/butter, juice, milk.  
Wednesday: Pork loaf, apple sauce, toast, juice, milk.

**LUNCH**  
Monday: Spaghetti/meat sauce, green beans, peas & carrots, roll, milk, butter balls.  
Tuesday: Tuna salad sandwich, potato salad, garden salad, milk, apple crisp.  
Wednesday: Cheeseburger on bun, french fries, lettuce & tomato, milk, cheese cake.  
Thursday: Chef's salad or meatloaf, whipped potatoes, green beans, roll, milk, choice of offered desserts.  
Friday: Chef's salad or chipped ham on bun, french fries, pickles, baked beans, milk, choice of offered desserts.  
Saturday: Chef's salad or chili and sandwich, crackers, vegetable sticks, milk, choice of offered desserts.

## Mt. Vernon Florist and Balloons

Come see us now for all your prom flowers - Corsages, Bouquets, Boutonnieres - in every style to compliment every outfit. Order early for best selection!!

Across from Dowell-Martin Funeral Home on West Main Street

Owners: Jack and Evelene Raines  
Phone 256-2091 Anytime

## ENTRY FORM

### Mt. Vernon Woman's Club TALENT SHOWCASE

Name or Group Name: \_\_\_\_\_  
Members in Group: \_\_\_\_\_

Program Title: \_\_\_\_\_  
Brief Description of Program: \_\_\_\_\_

All performances are limited to 3 minutes performing time. All persons are limited to 1 act. Deadline to register is April 10th. Entries will be received no later than this date. Please send entry form to:

**KAREN NOE**  
P.O. Box 386  
Mt. Vernon, Ky. 40456  
(Rehearsal Date Will Be Announced Later)

## ROCKCASTLE COMMUNITY Bulletin Board

**ASCS Office Closed**  
The Rockcastle County ASCS office will be closed Monday and Tuesday, April 7 and 8, for a training meeting in Lexington. Regular office hours will resume April 9.

**Softball Tournament**  
A softball tournament will be at Roundstone School April 18, 19 and 20, sponsored by P.T.O. Entry fee is \$70. Team uniforms are blue and softball. Call 256-5791 after 5 p.m.

**Office Closed**  
Northern Water District office will be closed Friday, April 4.

**Revival**  
Bro. Elthur Hale from Richmond, Ind. will be in revival at the Pentecostal Church on Hwy. 150 near Crab Orchard beginning April 13. Services will be at 7 p.m. Everyone is invited to attend.

**V.F.W. service Officer**  
The V.F.W. Service Officer will be at the courthouse Thursday, April 13, 2:30 to assist veterans, widows and dependents with claims.

**Shotgun Shoot**  
V.F.W. Post 7101 of Stanford will hold a special shotgun shoot for 12 gauge guns, sleeve and special, Saturday, April 5, from 10:30 to 4: Sunday, April 6, 12 to 5. Located 1 1/2 mile east of Stanford on Rice Lane in Rowland. Also 16 and 20 gauge guns. First and second prize.

**"The Arkansas Band"**  
The Rockcastle Council for the Arts presents "The Arkansas Band"

## REAL ESTATE FOR SALE

### Commercial opportunities - businesses

**Gracery Store - 3 Bedroom Apt.** Established business, inventory at wholesale. Also has kitchening, bath, W/D hook-up, storage, A/C, wood burning stove, gas furnace, 150 ft. frontage on US 25 South of Mt. Vernon. \$25,000.

**Reduced 20 Acres near The Franklin Store.** This property is ideal for small farm, sub. div., mobile home park, any type business. Conveniently located in city limits of Mt. Vernon. \$50,000.

**Fully-Equipped Restaurant - 3 Bedroom Home.** Great business location between new Mt. Vernon by-pass and I-75 approx. 1 acre. Owner financing to qualified buyer.

**NEW LISTING - 3 Bedroom Brick, w/Basement, Heat Pump, Central A/C.** Nice dining/living room, 2 baths, carpet, woodburning stove, large lot in Countryside Estates, near town/industrial park. Price negotiable.

**Double Wide w/4 Bedrooms, 2 Baths, Basement.** Home also has large liv. rm., kitchen, dining rm., deck, porch, electric heat, wood burner, washer and dryer, garage. Approx. 1 mi. south of Mt. Vernon. \$31,900.

**Reduced - 5 Bedroom Home, Approx. 2 Acres.** Included in this split-level home of brick and aluminum siding are 3 baths, entrance foyer, formal living and dining rms., fully equipped kitchen, family rm. with fireplace/inset, custom-made draperies, matching spreads, washer/dryer, heat pump, central A/C, patio, balcony, walk, circle drive, garage, numerous other assets. Countryside Estates. \$68,500.

**14x52 - 3 Bedroom Mobile Home** with electric heat, central air conditioning, bath, home-type doors, mini-blinds, new carpet. \$19,900.

**3 Bedroom Brick, 1 1/2 Baths, Garage, front or rear Driveways.** This immaculate home has liv. rm., dining/living w/cabinets, utility rm., nice carpet, paved drive, city water, shade trees, near high school. 1 yr. old. \$48,000.

**3 Bedroom Brick w/family room.** Partial owner financing. Liv. rm., dining/kitchen with cabinets and dishwasher, bath, utility rm., deck, storage barn, electric heat (also fuel, city water, garden area. Near town. \$32,000.

**Reduced! Lakeside Homesites - 1.60 acres** overlooking Lake Linville. Offers convenient fishing, boating, also city water, beautiful setting, numerous possibilities. Approx. 3 mi. from town. \$8,900.

**Reduced! 4 Bedroom Home - Lake Linville Estates.** Other amenities include a 2 1/2 car garage, 2 bathrooms, carpeting, w/cabinets, range and dishwasher, liv. rm., family rm., fireplace and inset, utility rm., deck, patio, central heat pump, central A/C, ceiling fans, 11 closets, private boat dock, city water, approx. 1 1/2 acres beautifully landscaped w/500' lake frontage. \$73,900.

**2 Bedroom Home - Garden.** Property has living rm., kitchen w/range & refrigerator, utility rm. w/W/D hook-up, city water, sewer, large garden, fruit trees, shrubs. House of vinyl siding has 2 porches and utility bldg. on Tevis St. near hospital for \$26,500.

**For Sale or Trade - 7 1/2 acres, 2 bedroom brick home** with basement, living room w/fireplace, kitchening, bath, 2 porches, nice carpet over hardwood floor, washer/dryer, storm doors/windows, well-insulated, new roof, barn, fruit trees, fuel oil heat, city water. Pine Hill. \$30,000.

**Form - 116 Acres - 2,424 lbs. Tobacco - 2 Barns.** An old house, cellar, out-buildings, beautiful fields in Soluta. Soluta taken only by owner. Form of vinyl siding has is abundantly supplied w/2 creeks and 3 ponds. A real haven on a good dead road, just a few minutes from Mt. Vernon. \$49,900.

**2 Bedroom Furnished Cottage.** Has living room with stone fireplace and cathedral ceiling, kitchen, snack bar, bath, spiral stairway, balcony, wrap-around deck w-concrete floor, wooden shutters, fenced yard, large lot, city water, total electric, near lake on Barnett Road. \$29,900.

**Lots - Owner Financing Available.** Frontage on Hwy. 461, city water, phone, electricity available.

**House, Pool, Garage, Approx. 2 Acres.** Owner Financing. There's also a nice kitchening w/cabinets, range, liv. rm., 2 bdrms. - one 22' long, bath, utility rm. with w/d hook-up, nice carpet & hardwood floors, electric heat, also a woodburner, blacktop rd., 7 mi. from Mt. Vernon. \$22,000.

**Reduced - 3 Bedrooms - 2 Car Garage - Stone Exterior - Basement w/wood furnace.** Also total electric, 1 1/2 baths, living rm., family rm., w/fireplace, dining/kitchen w/cabinets, range, dishwasher. Numerous other assets including small tobacco base. Approx. 3 acres. Located across from Hammond's Mkt. on Hwy. 461. \$59,000.

**4 Bedroom Home - 100 Acres** w/living rm., dining/living w/beautiful birch cabinets, w/d hook-up, bath, lots of closets, nice level yard, 1 car detached garage, cellar, other bldgs., including a 36x70 stock/tobacco barn, 1400 lbs tobacco, 2 ponds, large orchard, good fences, blacktop road, privacy and convenience. Near Livingston for \$75,000.

**12 Acres - more or less - Near Mt. Vernon.** Home sites for various type homes, city water available, U.S. 25 and Chestnut Ridge Rd. south of Mt. Vernon. \$20,000.

**Reduced! Sm. Down Payment - Owner Financing.** 8 woodceded acres, approx. 4 mi. south of Mt. Vernon/Mullins Station Rd., city water available. \$50,000.

**Furnished - 2 Bedroom Home - Small Dn. Payment - Owner Financing.** Has nice kitchen w/oak cabinets, range, refer., cherry drop leaf table, bath, utility rm. with w/d hook-up, fuel oil stove, nice carpet, A/C, porch, storage bldg., 3 acres. Lanes. \$24,900.

**6 Room Home w/basement, T.V. Satellite, 2 Rental Houses.** The house has built in kitchen wiring, refrigerator, bath, fuel oil furnace, washer and dryer. Current rental income is \$275/mo. Good home with monthly income. Approx. 1 acre on Hwy. 490 from Livingston. \$28,500.


## EVELENE RAINES PROPERTIES

Main St. Mt. Vernon, Ky.

**REALTOR**

**EVELENE RAINES, PREA**  
Broker-Auctioneer 256-5811 Certified Appraiser 256-5811

## Bulletin Board is Sponsored by



### Cox Funeral Home

MT. VERNON, KY. - 256-2345

Fain Furniture

# a real bonanza!

**YAHOO**  
 Little Darlin'...  
 HERE IT IS,  
 THE BIGGEST  
 SALE IN TOWN!



## A REAL 12-HOUR SALE! FRIDAY ONLY 9 AM 'til 9 PM

**This is our Best Sale Ever!!**

Be Here When  
 Doors Open  
 at 9 a.m.

**FANTASTIC BUYS!**

- ★ One-Day-Only Specials!
- ★ First Come, First Served!
- ★ Our Biggest Stock Ever!

You Won't Be  
 Disappointed!  
 Best Prices  
 in Town!

### DOORBUSTERS!

**Recliners \$79<sup>95</sup>**

2 Pc. Living Room Suites **\$199**

7 Pc. Wood Dinette **\$250**

19" Color Magnavox TV **\$299**

3 Pc. Cocktail & End Table **\$199**

Broyhill Cherry Curio **\$199**

Occasional Chair **\$99**

Sofa Table **\$99**

Cabbage Patch Lamp **29<sup>95</sup>**

2 Pc. Greene Bros. Living Room Suite **\$599**

Kentucky Basketball Print **\$15**

Tell City Maple Mirror **\$75**



Big Scaloped Table 7-Pc. Dinette Set, 2 Tone Chairs  
 Reg. '319 **\$249**



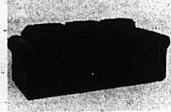
The Largest Selection of Action Recliners All On Sale Tomorrow  
 AS LOW AS **\$79<sup>95</sup>**  
 America's best made, best-selling recliners...  
**ALL ON SALE for 12 HOURS TOMORROW!**



8-Pc. Pine Harbor Dining Room, Solid American Styling  
 Reg. '1,349 **\$1,100**  
 12 HOURS ONLY!



Colony Rose Bedroom with Double-Mirrored Dresser  
 Reg. '1,199 **\$1,099**



Wood-Trimmed Plush Loose Cushioned Sofa by Posture Bull  
 Reg. '599 **\$499**



Triple Dresser Hutch Mirror Brook Valley Bedroom  
 Reg. '649\*\* **\$549<sup>95</sup>**



All Lady Americana Mattress Sets On Sale  
 Reg. '169\*\* **\$150**



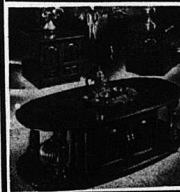
2 Pc. Early American Suite  
 Reg. '799\*\* **\$699<sup>95</sup>**



Waterbeds  
 Reg. '349\*\* **\$250**



The Classics Collection by Ashley Tables  
**TRADITIONAL QUEEN ANNE IN CHERRY VENEERS**  
 Your Choice **\$499**  
 Reg. '599\*\*  
 One of the most popular table groups we have ever sold.



Heritage Oak-Finished Ashley Coventry Tables  
 COUNTRY/TRADITIONAL WITH MICARTA TOPS  
 Your Choice **\$499<sup>95</sup>**  
 Reg. '599\*\*  
 Embossed raised panel doors, oak leaf design motif.  
**12 HOURS ONLY.**



Prints  
**1/2 off**



Wing-Backed Sofa, Love Seat, Chair & Ottoman Group  
 Reg. '699\*\* **\$599<sup>95</sup>**

# Fain Furniture

## Volunteers raise funds for KET

Rockcastle County volunteers raised \$847 during the Friends of KET County Call-Out, helping KET to raise more than \$550,000 for TeleFund '86a With 95 Kentucky counties organized, more than 1,500 Kentuckians assisted in the County Call-Outs.

Under the leadership of KET County Coordinator Mrs. Joe Henderson, volunteers telephoned residents of Rockcastle to become members of the Friends of KET. The local telephone campaign was part of KET's TeleFund '86, the network's annual fund-raising campaign. Monies raised during the TeleFund are used for the acquisition and production of

weekend and evening programming.

In addition to the funds raised by the volunteers, an additional matching community service grant for volunteer time will be awarded to KET by the Corporation for Public Broadcasting.

KET Executive O. Leonard

Press said that "we are extremely pleased with the efforts of our volunteers statewide, and with the record results of this year's most successful fund-raising drive. It is particularly gratifying to us when local volunteers give their time and energy to help us in this effort."

## Family Reunion

The Quinn-Hayes family reunion will be held August 2 and 3. This is the descendants of Edward and Susan Burton Quinn and James Breckinridge and Mary

Elizabeth Preston Hayes. For additional information please contact Mrs. E. W. Ford, 828 Vannah Ave., Louisville, Ky. 40223

## Robbins inducted into music fraternity

William Robert Robbins, son of Mr. and Mrs. Terry Robbins of Davidson, N. C., pledged and was recently inducted as a member of Mu Beta Psi, National Honorary Music Fraternity, at North Carolina State University at Raleigh, N. C. He was also elected to serve as national editor of "The Clef," a national newsletter for Mu Beta Psi.

William is the grandson of Mr. and Mrs. Junior Anglin of Rt. 4, Mt. Vernon and Mr. and Mrs. Viri Robbins of Rt. 1, Brodhead. He is the great grandson of Ella Gentry of Rt. 1, Brodhead and Hugh Robbins of Brodhead.

## Berea College summer program

Berea College's Appalachian Center has scheduled a summer program in Appalachian literature, resource materials and music, featuring three of the region's most knowledgeable teachers and writers.

The course, designed primarily for teachers who would like to introduce Appalachian Studies courses or units into their schools, begins June 9 and will continue through June 27 on the Berea campus. Three hours of graduate or undergraduate credit will be available through the University of Kentucky's Off-Campus Programs and Office of Education.

Noted author and teacher Wilma Dykeman will lecture on the works of the best and most influential writers who have used

the Appalachians as a setting. Dr. Gerald F. Roberts, head of the Weatherford-Hammond Mountain Collection and Southern Appalachian Archives at Berea College, will discuss sources for the study of Appalachian holdings in the region's libraries.

Folk artist Jean Ritchie will emphasize the main musical traditions of the region — ballads, folk songs and instrumental music — and will discuss their use and meaning.

Cost for attending the program is \$150 which includes room, board, tuition and some books.

Applications and additional information can be obtained from the Appalachian Center, CPO 2336, Berea College, Berea, Ky., 40404.

# True Value

## HARDWARE STORES®

Open Mon. - Sat.  
9 to 8  
Sun. 12 - 6

West Gate Center  
Next to Franklin's

Keep Cool-Beat the Heat With a



**Fan**

12" x 2" Speed Oscillating

20" x 3" Speed Breeze Box

Your Choice **1888** Es.

True Value HARDWARE STORES®

**Manager's Special**

Fully Adjustable Nozzle! SOLID BRASS




Sherman 2041-C Mignon

**1.19**

This rustproof, solid brass nozzle gives you control—from full stream to fine mist to positive shut off!

True Value HARDWARE STORES®

Coleman Fuel 5103A253



Propane fuel appliances are chosen for convenience. Propane, a liquefied gas, is sold in disposable 14.1 and 16.4 ounce pressurized containers. There's no pouring and pumping...no refilling necessary.

Coleman Propane Fuel

- Disposable
- 16.4 oz. Bottle.


REGULAR 3.99

5103-164

**NOW ONLY \$2.69**

True Value HARDWARE STORES®

Coleman Fuel 5103A253



Coleman fuel — there's no better fuel made for gasoline camping appliances.

REGULAR 3.99

**NOW ONLY \$3.69**

True Value HARDWARE STORES®

**Manager's Special**

Solid Brass POWER SWEEPER!



by Sherman

**99c**

Get a real BLAST of water pressure from the 144-C Power Sweeper

True Value HARDWARE STORES®

**Manager's Special**

**SPECIAL SR \$5.99**



ELECTRIC FENCE WIRE

#51741

17 GA. 1/4 MILE

True Value HARDWARE STORES®

**CREATE YOUR OWN CONVENIENT APPLIANCE CENTER**



GREAT KITCHEN ITEM

UL

C1146

**NOW \$1.99**

Converts any duplex grounding outlet into six grounding outlets. May be either plugged in directly over existing wall plate or installed permanently (with screw provided) in place of wall plate. Available in brown, ivory, white 15A-125V



True Value HARDWARE STORES®

**52" CEILING FAN**



Model 2057AB CROSLEY BY EMERSON

'SNUGGER'-mounts 7 1/2" from ceiling

- Antique Brass with triple coated lacquer finish
- Reversible, stenciled real wood blades
- 3 speed reversible motor - metal housed UL listed
- Blades angled for maximum air movement-whisper quiet
- 5 year Limited Warranty on motor
- Emerson Light-Kit adaptable

**ONLY \$49.99**

True Value HARDWARE STORES®

Dept. Manager's Special

**Carbide Tipped 7 1/4" Saw Blade**

- Large Carbide Tips
- 40 Teeth
- Lasts 10 times longer than Alloy Steel Blades
- Polished Finish

UNICUT Super Life TUNGSTEN CARBIDE TIPPED



7 1/4" - 40 TEETH CARBIDE TIPPED SAW BLADE

**\$7.99**

SPECIAL OFFER!

True Value HARDWARE STORES®

**WHAT A BUY**



**GOTT For the good times**

**NOW ONLY 2.29**

REGULAR RETAIL 3.49

GOTT HALF GALLON. The Perfect Size for One Person, Resists Stains and odors Fully Insulated, Anti-Seal, Molded Snap-cap, Wide Mouth, Vent-Spout and a 3 Year Warranty.

True Value HARDWARE STORES®

**Manager's Special**

FREE 1/2 Gallon Cooler

REGULAR RETAIL **\$23.88**



**NOW ONLY \$15.88**

Holds 18-12 oz. cans. Push-button lid retracts. Locks in place for carrying. Snap-down lid opens to either side. Sun-ropes molded in handle. High impact plastic exterior. Stain and odor-resistant ABS plastic interior. Polyethylene foam insulation.



## Happy Birthday, Joe

Local pharmacist Joe Young got quite a surprise Tuesday — a bouquet of flowers for his birthday sitting in one of his favorite "fishing tennis shoes" he thought he had misplaced. We don't know which birthday was Joe's, probably another "39th." What we do know, but aren't telling, is the identity of the person who paid for this birthday wish. Again, Happy Birthday, Joe!!!

## Dr. Gary King

Optometrist  
Monday & Thursday  
10 a.m. - 6 p.m.  
Sears Building 256-3314

## Commonwealth of Kentucky 28th Judicial Circuit Rockcastle Circuit Court Civil Action No. 86-CI-021

The Bank of Mt.

Vernon

PLAINTIFF

VS: NOTICE OF SALE

B.C. Allen, Carl E. Ramsey,  
and wife, Mary A. Ramsey,  
Rockcastle County,  
Kentucky

DEFENDANTS

Pursuant to judgment and order of sale entered in this action on March 14th, 1986, and for enforcement of liens in the amount of \$5,863.26 and \$54,738.66 plus interest and costs, I will offer for sale at public auction the hereinafter described real property, in Mt. Vernon, Rockcastle County, Kentucky.

AT THE COURTHOUSE DOOR Friday, the 11th day of April 1986 Beginning at 11:00 A.M.

and said property being more particularly bounded and described as follows:  
Beginning at a stone West Highway 25 running west along Carter's line 200 feet to a stone, thence northwesterly 400 feet to concrete post at Goforth's fence, thence south 47 feet to two dogwoods, thence South 143 feet to a pine, thence southeast 114 feet to a pine; thence east along Brewer's line 291 feet to a post, thence South 50 feet; thence East 110 feet to Highway no. 25, thence North along Highway no. 25, 248 feet to the point of beginning.

Carl E. Ramsey obtained title to said real property by deed dated November 5, 1979, executed by Q. S. Harris, et ux., of record in Deed Book 111, page 511, in the office of the clerk of the Rockcastle County Court, Mt. Vernon, Kentucky.

THE PROPERTY WILL BE SOLD UPON THE FOLLOWING TERMS AND CONDITIONS:

1. The property shall be sold to the highest bidder(s) for cash or for a deposit of twenty-five percent (25%) of the purchase price in cash on the date of sale, with the balance on a credit of sixty (60) days, with the purchaser(s) being required to execute bond with surety thereon, to be approved by the Master Commissioner, to secure the purchase price. The bond shall bear interest at the rate of twelve percent (12%) per annum from date until paid and to remain in and be a lien on said property until fully paid.

2. The purchaser(s) shall have the privilege of paying all of the purchase price in cash or paying the bond before maturity by paying the principal amount thereof together with all interest accrued thereon to the date of said payment.

3. The purchaser(s) shall pay 1986 county, state and school taxes.

4. The purchaser(s) shall have possession of the premises upon complying with the terms of sale and risk of loss of improvements shall thereafter be on the purchaser(s).

5. This sale shall be made subject to all easements, set back lines, restrictions or covenants of record or otherwise.

JOSEPH E. LAMBERT  
MASTER COMMISSIONER  
ROCKCASTLE CIRCUIT COURT 34x3

# APRIL BestBets '86 KET

Your Kentucky Network  
Lexington, Kentucky 40502

**KET SCHOLASTIC CHALLENGE.** The field has been narrowed to 27 high school academic teams as quarterfinals begin on "KET Scholastic Challenge," Sunday, April 6, at 1 p.m. (ET), 12 noon (CT). The winning team in the championship will win \$500, and the two runner-up teams will each receive \$250. The money is donated by the Friends of KET, and goes to the libraries of the winning schools Bill Myers hosts.

**THE VICTORY GARDEN.** Television's foremost horticultural magazine, "The Victory Garden," begins a new season on KET beginning Sunday, April 6, at 6 p.m. (ET), 5 p.m. (CT). Bob Thomson returns as host, overseeing activities in the Northeast, and

welcomes back Jim Wilson, host of Victory Garden South. And on the Pacific Coast, viewers will meet a new host at Victory Garden West. In keeping with past seasons, "The Victory Garden" offers the latest information on fall planting, indoor gardening, for the winter months, and unique field trips for the armchair gardener. Also, viewers will see glimpses of national and international garden treasures, including the Fairchild Tropical Garden in Miami, Fla., and the Edinburgh Botanical Garden in Scotland.

### NATIONAL GEOGRAPHIC SPECIALS: REALM OF THE ALLIGATOR

This new "national Geographic Special" takes viewers to the Okefenokee Swamp where one creature reigns supreme—the alligator. A creature of ancient ancestry, the alligator is the undisputed star of "Realm of the Alligator," airing Wednesday, April 16, at 8 p.m. (ET), 7 p.m. (CT). This program tells the story of the Okefenokee, its alligators, and the other animals and vegetation that have adapted to survive in the swamp.

**MARK RUSSELL COMEDY SPECIAL.** Mark Russell's comic genius lies in his ability to see absurdity in the day's news. Performing before a packed

house, Russell launches satirical jabs at the nation's newsmasters, and dedicates irreverent tunes to the country's famous personalities. This special airs on Wednesday, April 16, at 9:30 p.m. (ET), 8:30 (CT), on KET. Russell will appear in Lexington on May 24, as part of the Friends of KET Annual Meeting.

### VISIONS OF "STAR WARS": A NOVA FRONTLINE SPECIAL REPORT.

For the first time, NOVA and "Frontline," public television's two major documentary series, combine efforts to explore the Strategic Defense Initiative better known as "Star Wars." This two-hour special report contains interviews with Russian and American scientists, arms control experts, and politicians on the scientific and political implications of what could become the world's most sophisticated military technology. This "NOVA/Frontline" special airs Thursday, April 24, at 8 p.m. (ET), 7 p.m. (CT).

### A PRAIRIE HOME COMPANION TELEVISION SPECIAL.

Humorist Garrison Keillor brings his award-winning radio show to public television in this two-hour special, to air Saturday, April 26, at 9 p.m. (ET), 8 p.m. (CT). Celebrating the grand opening of the newly restored World Theater, the per-

manent home of "A Prairie Home Companion," the special will feature all of the favorite elements of the country's favorite radio show, including stories about Lake Wobegon, Minnesota, appearances by guest artists, and music by pianist Butch Thompson.

### DINING IN FRANCE.

This new series comes to KET on Sunday, April 27, at 6:30 p.m. (ET), 5:30 (CT). Host Pierre Salinger takes viewers on a gourmet's travelogue, journeying from the coast of Normandy to the Cote d'Azur visiting some of France's most famous restaurants, vineyards, chateaux, farms and forests.

### Homemakers Council Meeting

In the absence of Rockcastle County's president and secretary Cheryl Witt called the meeting to order and took charge of discussions on old and new business. The Sunshine Club volunteered to piece and quilt the five squares for Area Quilt by Apr. 1.

In Lexington Apr. 17, six from the county will go to Holiday Inn-North for State Leadership Conference. Quilt and Craft Show will be May 16 and 17. Bring items Friday between 10 a.m. and 1 p.m. to Community Room at the Bank of

Continued to 2

Take the worry out of buying a used vehicle  
with our 12 Mos. Warranty, now available  
**Dwayne's Cars & Trucks**  
U.S. 25N 986-8489 Berea.  
Hours: Monday-Friday 8 a.m. to 6 p.m. Sat. 8 a.m. - 5 p.m.  
DWAYNE BRINEGAR, OWNER.  
Ernest Sowder, Salesman Luther Little, Salesman

**12.5% APR**  
Financing for Qualified Buyers

We are also a Franchised Dealer for  
**U-Save Auto Rental**  
\*18\*\* per day plus mileage



83 Chev. Celebrity, 4 Dr., AC, Blue, Extra Clean!!! Only \$5,995.



84 AMC C.J.-7, Hard Top, 6 Cyl., Maroon, Auto, PS, AC, AM/FM Tape, Only 5,230 miles



Mazda PU SR-5, Silver, 5 Speed, Camper Top, 1 owner, Only 29,000 mi.



85 Chev. S-10, Long Bed, one owner, only 16,000 miles. Save

✓ 85 Ford Escort, 4 Dr., Wgn, St. Sh., Blue, AC, \$5,995.

✓ 84 Buick Regal, 4 Dr., V6, AC, Tilt, Cruise, \$7,995

✓ 84 Merc. Marquis, 4 Dr., V6, White, \$6,995

✓ 84 Olds Cutlass, 4 Dr., AC, Auto, Black, \$6,995

✓ 84 Buick Regal, 2 Dr., Ltd., Loaded, Auto, AC, \$6,995

✓ 83 Pont. Phoenix, 4 Dr., 4 Cyl., Auto, AC, Maroon, \$4,995

✓ 83 Pont. Bonneville, 4 Dr., 6 Cyl., Blue, Auto, AC, \$6,995

✓ 82 Dodge Diplomat, 4 Dr., Air, Auto, Black, \$3,995

✓ 82 Pont. Trans-Am, loaded Black, Sharp!!! \$7,995

✓ 82 Ford Fairmont, 4 Cyl., 2 Dr., White, Auto, AC, \$3,995

✓ 81 Toyota Tercel, 4 Dr., AC 5 Speed, Yellow, \$1,995

✓ 81 Ford T-Bird, Gray, \$3,995

✓ 81 Ford Fairmont Sta. Wgn., Auto, PS, AC, Sharp Only \$2,995

✓ 80 Merc. Cougar XR-7, AC Auto, Gray \$3,995

✓ 80 Pont. Bonneville, AC, V8, 2 Dr., Black

✓ 79 Chevette, 2 Dr., 4 Spd., \$995

✓ 78 Chev. Camaro, 2 Dr., Red, Auto, AC, \$2,995

✓ 76 Cadillac Eldorado, 2 Dr., Red, \$1,695

✓ 73 Plymouth, 4 Dr., Auto, \$295

72 Cadillac Sedan DeVille, 4 Dr., Only 32,000 miles!!!

### TRUCKS

86 Mazda PU, Red, 5 Spd., 1 owner, Only 13,000 mil.

85 S-10, Long Bed, 5 Spd., PS, Only 17,000 miles!

83 Ford Ranger PU, Blue, 6 Cyl., 1 owner, Auto, PS

82 Ford F-100 PU, 6 Cyl., SWB, White, Low Miles

79 Ford Chinook Camper, Beige

✓ 73 Ford, 1/2 Ton, Auto, PS, Long Bed 1995

✓ 70 GMC PU, Brown, Only \$495

4X4

79 Ford Bronco, V8, Auto, Nicell!

### MISC.

22 ft. Bay Liner Boat, 350, V8 Engine, Priced to sell!!!

# HAMMOND'S

## FOOD MARKET

"Home of the Bargains"

Flwy 461 - Mt. Vernon  
CLOSED SUNDAYS

## Ground Beef

1 lb. **.89**

## 1/4 Chicken Leg

39¢ lb.

## Cat Fish

1 79 lb.

## Platter Bacon

89¢ lb.

## 3 lb. Swift Ham

\$5.99

## Chubby Buddies Wieners

89¢ lb.

## Bush Pinto Beans

3/.99

## Stokely's White Lily FLOUR

5 Lb. Self-Rising  
2 for 89¢

## Bush Hominy

White or Golden  
3/.99

## Fireside Fig Bars

2 lb. \$1.49

## Crisco

3 lb. can \$1.89

## Parkay Margarine

1 lb. Qtrs. .59

## Uncle Sam Meal

5 lb. Self-Rising .99

## 5 oz. Crunch 'n' Munch

.69

## Frito Lay Potato Chips

.99

## R.C. Cola

8 Pk. Plus Dep. \$1.49

## Dawn Dishwashing Liquid

.99

Complete line of Garden seed, Fertilizer, Seed Potatoes

1 lb. Carrots.....2 for .49  
20 Lb. Potatoes 1.19  
3 lb. Apples... .89  
Celery.....stlk. .49

# Around BROADHEAD

## Personals

By: Mary McWhorter

Those relatives who visited Mrs. Eva Mobley and Mrs. Maymie Long, who were here due to the death of their sister, were Louella Owens, Mr. and Mrs. Edward Shepherd, Mrs. Norma Woodridge, Mrs. Vera Miller and son, Robbie Miller, and wife, Lynn, all of Louisville; Mrs. Blanche Herrin and daughter, Ruby Devoe, and her three daughters, Nita, Jani and Alice of Xenia, Ohio; Vernon Taylor and wife, Mae, and daughters, Dana and Shelly, and children, Mrs. Eva Arney, Mr. and Mrs. Randy Taylor, all of Lockland, Ohio; Theo Nantz and wife, Hazel, of Lexington; Mr. and Mrs. Willie Taylor, Mrs. Zola Wenger of Lebanon, Ohio, Mr. and Mrs. Walter Barker and son, Mark, of West Chester, Ohio; Miss Joanna Barker of Florida; Neal Craig of West Chester, Ohio; Wayne Reynolds of Louisville; Mrs. Sybil Hurt of Edmonton, and Mrs. Grace Portabugh of Indiana.

Florida Bullock of Ohio and Mrs. Pat Lay of Lexington spent a few days at Mrs. Payne's Broadhead home. Also Mrs. Carter Hoskins had dinner with them.

Tommy Anglin was Thursday evening guest of Mr. and Mrs. Willie Taylor. Also, Mr. and Mrs. Walter Barker and son, Mark, of Ohio, and daughter, Joanna, of Tampa, Fla., and Neal Craig of West Chester, Ohio and Mrs. Grace Portabugh of Indiana were visitors of the Taylors.

Bob Lear is slowly improving in the intensive care unit at the V.A. Medical Center on Cooper Drive in Lexington. Anyone wishing to send cards may do so at this address. Our prayers are for Bob's continued improvement as he has been in the unit since Dec. 26.

Mr. and Mrs. Johnny Newland and Chris, Mr. and Mrs. Lester Parsons and daughter, Annie, of Georgia; Mrs. Barbara Watson and Mrs. Ina Chandler Parsons of Louisville had dinner at Ruth's Broadhead Cafe Sunday.

Mrs. Bo Lafuze and grandson, Brohaman, of Mason, Ohio spent the weekend with Joe and Ruth Bussell. They also visited other relatives at Orlando.

Weekend visitors of Mr. and Mrs. Monroe Renner were Gary and Brenda Renner of Lexington; They attended the class reunion at Broadhead School. Other visitors of the Renners were Russell and Doris Robbins of Mt. Vernon, Mr. and Mrs. Charles Bullock and granddaughter, Mr. and Mrs. Dwan Bradley and sons, Derek and Mike, of Ft. Knox, Cindy Carpenter and daughter, Emily, of Danville, Junior Bradley and granddaughter, Amy, and grandson, Michael Canosa, of Lutz, Fla.

Visitors of Mrs. Fanny L. Albright were Mrs. Eva Arney of Ohio; Mrs. Rinda Brown; Mrs.

June Latham; Mrs. Lillie Brown; Mrs. Alice Latham; Mrs. Maggie Herrin; Bruce Latham; Davin Roberts of Somerset; Mrs. Joy Reynolds and Jeremy and Torre, of Cincinnati; and Mrs. Egbert Wallin of Cincinnati, Ohio were Thursday evening guests of Mr. and Mrs. Joe Bussell.

Mr. and Mrs. Joe Bussell were in Mt. Vernon at the Cox Funeral Home for the visitation of their friend, Dan McCowan.

Mary McWhorter had lunch and enjoyed a nice visit with Mrs. Edna Caldwell Wednesday. Easter Sunday guests of Mr. and Mrs. George Adams were Mr. and Mrs. Jerry Adams and son, Jerry Wayne, of Springdale, Ohio, Mr. and Mrs. Don Cash and Donna Lynn, Mr. and Mrs. Bruce Sargent, Danny Bruce and Dennis of Berea; Mrs. Lillian Gall of Reading, Ohio; Mrs. Brenda Gallagher of Wyoming, Ohio; Mrs. Bertha Stephens and Doug Adams.

Mrs. Lillian Gall and Mrs. Brenda Gallagher spent the weekend with their mother and grand-mother, Mrs. Bertha Stephens.

Buddy Adams and wife, Pat, of Reading, Ohio spent the weekend with his mother, Mrs. Bertha Adams. They had supper Saturday night at the Broadhead Cafe and attended church Sunday. Ronnie and Linda Adams and Carolyn McKinney had dinner with Bertha Sunday.

Visitors of Viola Hensley were Ronnie and Libby Tyra and daughters, Teresa and Diane, of Winchester; Mrs. Juanita Estridge and daughters, Toni, of London; Mrs. Kandi Shott of London; Johnnie Tyra and wife, Patsy and children, Sharon, John, Jr. and Steve of Winchester.

Mrs. Mae Doan is a patient in the Rockcastle County Hospital. We wish her a speedy recovery.

Mrs. Bertha Adams and Mrs. Juanita Browning of Waynesburg spent Tuesday in Danville shopping.

Saturday visitors of Mr. and Mrs. James Bradley, Stephanie and James Allen were Mr. and Mrs. Charles Sanders of West Chester, Ohio.

Visitors of Mr. and Mrs. Delbert Long who were here due to the death of his sister, Mrs. Clara Belcher, were Lois and Beulah Long and son, Dennis, and wife, Freda, and her sister, all of Ohio; Wallace Brown and wife, Artie, and Mrs. Bernice Wilson of Mt. Vernon; Beverly Taylor, Zola Wenger, Paul and Janet Blawins. Mrs. Long says thanks to everyone who helped in any way.

Rev. Bobby Coffey and wife, Nell, of South Carolina, visited her mother, Mrs. Alice Bussell, over the weekend and her brother, Billy Allen; Bussell, and wife, Juanita, in Harrodsburg. Billy seems to be doing well. He drove to London and took his mother and aunt Delia Taylor and daughter, Lela, of Indiana to visit their brother, George Allen, who has been very

Continued to 14

## Easter celebration at Castle Village apartments

All the residents were remembered in a special way at Castle Village Apartments in Broadhead.

Our senior citizens were all given a colorful Easter fruit basket containing a yellow and red apple, an orange, banana, bunch of white grapes, a small chocolate Easter bunny and brightly colored Easter egg placed in reusable plastic baskets wrapped in yellow Easter paper, topped with Easter bows and ribbons. Twenty six senior citizens received fruit baskets for Easter. These baskets brought

beautiful smiles to the faces of our senior citizens.

An Easter egg hunt was held Friday evening for the children. The eggs were hidden before the older children arrived home from school. Twenty five dozen eggs were hidden for the children's egg hunt. The children were divided into three groups with a prize egg hidden in each group. Prizes were provided by Castle Village Apartments. Groups were divided: toddlers to four years; five years to eight years; nine and up. The prize for group one was a soft cuddle

Easter bunny. Prize for second group was an Easter basket packed with Easter candies and games. Third group prize was a large chocolate Easter bunny. We had 30 children to participate in the egg hunt. Everyone enjoyed the event.

The prize egg winners were: group one—May-May Hayes; group two—Emily Gibson; group

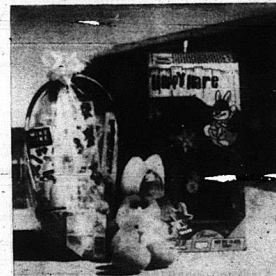
three—Tim Argenbiter. The most eggs found was by Jessica Lohr, 37 eggs. The least amount of eggs found was by Linda Owens, two eggs; and Rusty Owens, also with two eggs.

We wish to express our special thanks to our local businesses who donated items to make our special Easter event, a big

Continued to 10



Easter baskets distributed to senior citizens.



Prizes awarded in different categories.

**LEON FARRIS T.V. STEREO & SATELLITE SAYS: "COME SAVE BIG BUCKS DURING OUR O'Keefe & Merritt MICROWAVE OVEN SAVINGS SPECTACULAR"**

**O'Keefe & Merritt Microwave Oven Features Handy Browning Element**

- 1,000 watt browning element to brown and crisp foods.
- Automatic temperature probe
- Power selector provides ten cooking speeds
- Special defrost cycle with automatic hold
- Convenient digital readout
- Easy-to-use moisture protection
- Get moisture lock
- New Even Cook - distribution of microwave energy
- Reliable solid state touch controls
- Handy Browning and Moist Cook

Model 56-8884

**COMPARE \$408.88 NOW ONLY \$288.88**

**Anyone can cook with an O'Keefe & Merritt SureCook™**

- Just tell it what you're having the quantity, and how you'd like it done
- Cooks 30 foods and beverages automatically
- Built-in Browning Element
- Automatic Temperature Probe
- Big 1 1/2 cu. ft. oven capacity

Model 56-8994

**COMPARE \$478.88 NOW ONLY \$358.88**

**DON'T FORGET MOM ON MOTHER'S DAY, MAY 11**

THE FRIENDLIEST STORE IN TOWN WE'VE GOT 16 MODELS OF MICROWAVES TO CHOOSE FROM

**LEON Farris TV & Stereo SATELLITE SALES**

1254 S. Main Street London, Ky. PHONE 854-2292 HRS. 9-5 MON-FRI SATURDAY 9-3

Main & Richmond St. Mt. Vernon, Ky. PHONE 256-7922 HRS. 9-5 MON-FRI SATURDAY 9-3

**ALWAYS SERVICE AFTER THE SALE**

NO CHARGE LAYAWAYS 90 DAY INTEREST FREE FINANCING

WITH APPROVED CREDIT

**RESUME PACKAGE**

- 1 Page Resume Typeset
- 25 Copies onto Resume Stock
- 25 Matching Blank Sheets (for cover letters)
- 25 Matching Envelopes

**THE ENTIRE PACKAGE FOR \$19.95**

**kinko's**

The One Stop Copy Shop for all your copy needs.

University Shopping Center Eastern By Pass, Richmond (606) 624-0237

OUR HOURS Monday-Thursday 8:30-7:00 Friday 8:30-6:00 Saturday 10:00-5:00

**Croutcher-Marcum Motor Co., Inc.**

Big Hill Avenue Richmond, Ky. 40475 **623-8131** AMC 73 Jeep

Open Mon. - Fri. 8:30 a.m. - 7 p.m. Sat. 9 a.m. - 4 p.m. On-The-Lot Financing Payment until May 20, 1986

**CARS**

1985 GRAND PRIX, 2 Dr., one owner, Loaded with Accessories, 16,000 miles Factory Warranty... **\$9,950**  
 1985 PONTIAC GRAND AM, 2 Dr., 1 owner, AC, 10,000 miles Factory Warranty... **\$8,950**  
 1984 PONTIAC GRAND PRIX LE, 1 owner, All Accessories, A/C, White/White Vinyl Roof... **\$8,150**  
 1982 DATSUN MAXIMA WAGON, Auto, AC, Full Power, White/Blue Interior... **\$5,650**  
 1983 RENAULT ALLIANCE, 4 Dr., Maroon, Auto, AC, Nice Car... **\$4,150**  
 1982 CHEVY MONTE CARLO, 2 Dr., White/Red Top, Automatic, AC... **\$5,250**  
 1981 CHEVETTE, 4 Dr., Auto, AC... **\$2,950**  
 1981 FORD ESCORT, 2 Dr., 4 Speed... **\$2,150**  
 1981 BUICK CENTURY, 2 Dr... **\$3,750**  
 1981 BUICK SKYLARK, 4 Dr... **\$2,450**  
 1981 CAMARO, 6 Cyl., Auto, AC, White/Red Interior, 30,000 miles... **\$5,350**  
 1978 HONDA CIVIC, Automatic... **\$1,750**  
 1979 CADILLAC COUPE deVILLE... **\$3,950**  
 1981 CHEVY CITATION, 4 Dr... **\$3,250**  
 1976 MERCURY GRAND MARQUIS, one owner, Yellow... **\$1,650**  
 1980 IMPALA, 4 Dr., Auto, AC... **\$2,950**  
 1977 ELDORADO CADILLAC... **\$1,750**

**TRUCKS**

1985 GMC, Short Bed, Sierra Classic, 1 owner, Low Mileage, power windows, AC, factory war... **\$9,450**  
 1985 GMC, 1 Ton, 4X4 Pickup, 454 Engine, 1 owner, AC, Lo Miles; Factory Warranty... **\$12,250**  
 1984 CHEVY S-10 PICK-UP, Black, 1 owner, V6, Auto, Power Steering/Brakes... **\$5,850**  
 1983 JEEP J-10 Pick-up, V8, Automatic, AC, 1 owner Short Bed, Gold... **\$5,950**  
 1983 GMC S-15, 4X4, Jimmy, V6, Automatic, AC, Silver/Red Interior... **\$8,650**  
 1982 VW PICK-UP, 4 SpEd... **\$3,650**  
 1980 FORD Pick-up, 6 Cyl., Automatic... **\$3,450**  
 1979 FORD Pick-up, V8, Std. Shift... **\$3,250**  
 1976 CHEVY Pick-up, V8, Automatic... **\$1,950**  
 1981 CHEVY Pick-up, Long Bed, 6 Cyl., Std. Shift... **\$3,150**  
 1978 CHEVY BLAZER, HT... **\$1,250**  
 1952 CHEVY Pick-up... **\$650**  
 1974 DODGE Pick-up, 3/4 Ton... **\$850**

**Before you buy a new car, consider this: Conrad Chevrolet is Kentucky's largest Chevrolet dealer. Right now, we have over 800 new cars and trucks to choose from and, more importantly, Conrad always has and always will offer the best new car deals in the state.**

Personally, I can't think of a better time to buy a new car and I know the best place to get that car is from Kentucky's best - Conrad Chevrolet.

At Conrad Chevrolet, we have a slogan, "Nobody works harder for you." It's our guarantee. So, if you're looking for a new car, look me up at Conrad Chevrolet!

**David R. Bales**  
 Phones: 269-4321 (Conrad)  
 256-4072 (Home)

# Save up to 50% on Quality Groceries.

Cabbage	Lb.	.19
Lettuce	Head	.59
20 Lb. Potatoes		1.19
50 Lb. Potatoes		2.99
Yellow Onions	3 Lb.	.59
Strawberries	1/2 Tray Pack	.99
Tomatoes	Lb.	.49
Celery	Bunch	.49
Tropicana O.J.	1/2 Gal. Ctn.	1.49
Seedless Grapes	Lb.	.99

### Juices, Fruits

Everyday Low Price	Nature's Pick 48 oz. can Grade 'A' fancy Vegetable Juice	.79
Everyday Low Price	Fruit Valley 48 oz. can Pink Grapefruit Juice	.99
Everyday Low Price	54 oz. bottle WAGNER ORANGE or Wagner Grape Drink	.99
Everyday Low Price	Fruit Valley 18 oz. can Grade 'A' fancy Applesauce	.33
Everyday Low Price	Fruit Valley 18 oz. can Grade 'A' FANCY SLICES OR Peach Halves	.59
Everyday Low Price	Fruit Valley 18 oz. can Grade 'A' fancy Grapefruit Sections	.69

### Vegetables

**HARVEST FARE • 15 1/2 oz. can CUT GREEN BEANS .25**

Everyday Low Price	Nature's Pick 14.5 oz. can Grade 'A' fancy GREEN Cnt Asparagus	.89
Everyday Low Price	Thirty Farms 18 oz. can Grade 'A' fancy Short Cut Green Beans	.23
Everyday Low Price	Harvest Fare 18 1/2 oz. can Grade 'A' fancy CREAM/WHOLE Kernel Corn	.25
Everyday Low Price	Quick Time 18 oz. can Grade 'A' fancy Pork 'n' Beans	.31
Everyday Low Price	Harvest Fare 18 oz. can Grade 'A' fancy Sliced Carrots	.31
Everyday Low Price	Harvest Fare 15 oz. can Grade 'A' fancy White Potatoes	.31
Everyday Low Price	Harvest Fare 18 oz. can Grade 'A' fancy Sweet Peas	.25
Everyday Low Price	Nature's Pick 8 oz. can Grade 'A' fancy Tomato Paste	.29
Everyday Low Price	Libman 18 oz. can Instant Potatoes	.89

### Rice, Beans, Pasta

Ramen Noodles Chicken or Beef 5/100

**7.25 oz. box GOLDEN WHEAT Macaroni & Cheese 5/100**

Everyday Low Price	Golden Acres 28 oz. box Instant Rice	1.59
Everyday Low Price	Mrs. Grass 8 7/8 oz. box CHICKEN NOODLE or Buttery Noodle Dinner	.89
Everyday Low Price	Appan Way 12.5 oz. box REGULAR OR Crisp Crust Pizza Mix	.89

### Condiments

Everyday Low Price	Marion 32 oz. jar Salad Dressing	.99
Everyday Low Price	3 1/2 oz. jar Dill Hamburger Slices or Whole Dill Pickles	.89
Everyday Low Price	Poehman's 19 oz. Squeezed Mustard	.79
Everyday Low Price	Tabasco 32 oz. bottle TOMATO Ketchup	.79
Everyday Low Price	Chicken 'n' Ribz gallon jug Bar-B-Q SAUCE	4.29
Everyday Low Price	Bama 32 oz. jar GRAPE JAM OR Grape Jelly	.99

**MARZETTI • 16 oz. bottle SALAD DRESSING 109**

### Pet Food & Supplies

Everyday Low Price	Special Blend 6 oz. can Cat Food	.25
Everyday Low Price	18 oz. can Beef Chunks Dog Food	.31

### Cereals

Everyday Low Price	Sunshine 10 oz. box Shredded Wheat	.99
Everyday Low Price	BREAKFAST BOWL • 18 oz. box CORN FLAKES	.99

### Crackers, Cookies

Everyday Low Price	Barbara Dee 20 oz. pkg Assorted Cookies	.99
Everyday Low Price	Vista 2 oz. pkg ASSORTED CREME Sandwich Cookies	1.29
Everyday Low Price	Sunshine 17.5 oz. pkg Chip-A-Roos	1.59
Everyday Low Price	Friendie 12 oz. pkg Vanilla Wafers	.79

**One pound RALSTON Regular or Unsalted Saltine Crackers 49¢**

### Canned Meats, Soups

Everyday Low Price	Buioni 15 oz. jar meat sauce, SPAGHETTI RINGS or Spaghetti Twists	.59
Everyday Low Price	Ranch House Large 24 oz. can Beef Stew	1.29
Everyday Low Price	American Beauty 8 oz. can Beans & Franks	.45
Everyday Low Price	Quick Time 10 oz. can MUSHROOM OR Chicken Noodle Soup	.29
Everyday Low Price	San Harbor 10 oz. can CONDENSED Clam Chowder	.79
Everyday Low Price	Sea Meats 8.5 oz. can in water or oil Chunk Light Tuna	.56

### Baking Needs

Everyday Low Price	Baker's Supreme 10.5 oz. box Cheesecake Mix	.99
Everyday Low Price	Oven Best 18.5 oz. box Cake Mix	.59
Everyday Low Price	Oven Best 13.5 oz. box Frosting Mix	.79
Everyday Low Price	Mazie Ridge 8 oz. bottle Pancake Syrup	.79
Everyday Low Price	Cook 'n Fry 48 oz. bottle Corn Oil	1.59
Everyday Low Price	Vital 32 oz. bottle Sunflower Oil	1.39
Everyday Low Price	Cook 'n Fry 3 lb. can 100% PURE Vegetable Shortening	1.29

**2 lb. bag • BROWN OR POWDERED SUGAR .89**

### Household, Laundry

Everyday Low Price	Sun Brite gallon jug Liquid Bleach	.59
Everyday Low Price	Mason's 18 oz. can Oven Cleaner	1.69

**42 oz. box Powdered Laundry WHIRL Detergent 99¢**

### Beverages

**All Flavors Diet & Regular 12 oz. cans SODA 17¢**

Everyday Low Price	3 oz. jar Instant Tea	1.69
Everyday Low Price	Ticket 2 oz. bottle DIET OR REGULAR Soda Pop	.69
Everyday Low Price	100% box Tea Bags	1.49
Everyday Low Price	Santitas 1 lb. can Pouch Coffee	3.09
Everyday Low Price	8 1/2 oz. can ASSORTED Bama Drinks	.19

### Snacks

Everyday Low Price	Colony 16 oz. jar Dry Roasted Peanuts	1.49
Everyday Low Price	Sunshine 18 oz. box Crispyzits	1.49
Everyday Low Price	Dante 7.5 oz. bag ALL VARIETIES Potato Chips	.59

**8 oz. pkg. STIX or 9 oz. pkg. PRETZEL TWISTS .55**

### Non-Foods

**20 lb. bag OLD SALEM Charcoal Briquets 2.29**

### Paper Products

Everyday Low Price	Kleen-Kex 20 ct. pkg. Trash Bags	1.39
Everyday Low Price	Quail Ranch 140 ct. pkg. Paper Napkins	.59
Everyday Low Price	100 ct. pkg. Paper Plates	.89
Everyday Low Price	Strong Boy 75 ct. pkg. Food Storage Bags	1.19
Everyday Low Price	Mark IV 25 sq. feet Aluminum Foil	.49
Everyday Low Price	Kleen Kan 15 ct. pkg. Tall Kitchen Bags	.69
Everyday Low Price	Mr. Jumbo roll Paper Towels	.39
Everyday Low Price	8-roll Bath Tissue	1.69

### Frozen Items

**HOLTEN X-TRA VALUE 1/4 lb. BEEF PATTIES 4.49**

### Cooler Items

**HOLSUM • 3 lb. tub 'old fashioned' KROCK SPREAD 1.29**

Everyday Low Price	Insulation 12 oz. pkg. Cheese Singles	.79
Everyday Low Price	Messob Fresh 8 oz. pkg. Cream Cheese	.69
Everyday Low Price	8 oz. pkg. CRESCENT ROLLS OR 8.5 oz. Cinnamon Rolls	.99
Everyday Low Price	1 lb. pkg. Vegetable Quarters	.39
Everyday Low Price	2 lb. tub Imitation Marg. Spread	.69

**1 lb. pkg. Spread Quarters 29¢**

**LITE FLUFF • 8 oz. tube Buttermilk BISCUITS .15**

### Meats

Everyday Low Price	2 1/2 oz. pkg. ASSORTED Buddig Sliced Meats	.45
Everyday Low Price	One pound pkg. BLUE RIDGE Pork Sausage	.79
Everyday Low Price	Carolina Fresh one pound pkg. Sliced Bacon	.89
Everyday Low Price	Wendell 12 ct. pkg. Turkey Franks	.59
Everyday Low Price	one pound OLD FASHIONED Chunk Bologna	.99
Everyday Low Price	One pound pkg. BLUE RIDGE Salami	1.19
Everyday Low Price	12 oz. pkg. Assorted Luncheon Meat	1.19
Everyday Low Price	One pound pkg. SEITZ Variety Pack	1.39

**WILSON • 1 lb. pkg. SAVORY BACON .75**

### Frozen Items

Everyday Low Price	Mr. Pitt's 9 oz. each ALL VARIETIES Pizza	.59
Everyday Low Price	12 oz. can 100% FLORIDA Pure Orange Juice	.75

**2 lb. bag WEST PAC Crinkle Cut French Fries 89¢**

Everyday Low Price	5-1 lb. Loaves DAKOTA Bread Dough	1.39
Everyday Low Price	Holtan X-tra Value 5 lb. box of 20 1/4 lb. Beef Patties	4.49
Everyday Low Price	1 lb. box T-BONE OR Rib Eye Steaks	6.79
Everyday Low Price	8-ounce 12 oz. pkg. CHICKEN PATTIES OR Chicken Nuggets	2.69
Everyday Low Price	10 oz. assorted T.V. Dinners	.89

WE ACCEPT PERSONAL CHECKS FOR AMOUNT OF PURCHASE ONLY

12 Pk. - 12 Oz. Can Coca-Cola 2.99

WE GLADLY ACCEPT FOOD STAMPS & MANUFACTURER COUPONS

# SAVE A LOT

U.S. 25 South FOOD STORES Mt. Vernon

100% MONEY-BACK GUARANTEE!





The following Extension Homemakers and guests visited Frankfort on a Kentucky Citizenship Tour, Tuesday, March 18th: Irene Winstead, Bessie St. Clair, Alta Bullock, Pearl Burdette, Barbara Wilson, Clara Proctor, Roberta Taylor, Elizabeth Mullins, Emily Glavak, Wanda Poff, Sarah Poff, Loraine Newland, Gladys Bussell, Edna Adams, Mary Halcomb, Faye McCauley, Dolly Parker, Nell

McQueen, Martha Parker, Verna Graves, Glenna Brooks, Ruth Bussell, Carolyn Chastain, Louise Nixon, Peggy Bowling, Bee Henaley, Connie Childress, Rosa Day, Bettie Baker, Betty Lewis, Alice Hunt, Cheryl Witt, Patsy Hopkins, Zi Graves, Pauline Kincer, Eddie McQueen and A.D. Ponder, bus driver. A special thanks to Danny Ford, who helped with tour arrangements.



## 4-H News

By: Martha Wesley  
County Extension Agent for 4-H

### UPCOMING EVENTS

**American Heritage Conference**  
April 5 - 12 Four Rockcastle County teens will be traveling to Washington, D.C. for a week to gain a greater understanding and appreciation of our American Heritage and how our democracy works. Highlights of the week will include a trip to George Washington's home at Mt. Vernon, an evening at the "Heatre," a "City in a Capitol Hill" and visits with Kentucky congressmen. Those participating are: Cindy Witt, Amy In Julie Shepherd and Jennifer Parsons.

**4-H Teen Week-End**  
April 18-20 A focus on peer

relationships and creativity will make this year's Spring Teen Camp an exciting one. Registration will begin at J.M. Felner 4-H Camp in London at 6 p.m. Friday evening. Camp activities include a trip to the movies Friday evening, workshops at camp on Saturday, a "Spring Break" dance, Saturday evening followed by a traditional midnight hike. After a Sunday morning devotion service, we will depart for home at 11 a.m. This camp is open to youth who will graduate the eighth grade this year through 12th grade. Applications are available in the County Extension Office. Applications and the \$18 fee must be returned by Wednesday, April 9th.

**Fashion Revue - Sunday, April 20th** "A Garden Party: Fashion in Bloom" will be the theme for this

see what fine fashion 4-H'ers have been making.

4-H'ers who are planning to be in the revue must have their garments and fashion revue forms turned in by Friday, April 4th.

A rehearsal will be held on Tuesday, April 15th at 7 p.m. at the High School. All those who plan to participate in the revue need to be sure and attend the rehearsal.

**Variety Show - Friday, April 8th**  
The 4-H Variety Show will be held on Friday, April 18th at 7 p.m. at Broadhead Elementary School. Admission will be \$1 for adults and 75c for children. 4-H participants will have free admission tickets.

Any club that is planning an act for the show must register by calling the Extension Office (256-2403) by April 8th. A rehearsal will be held on May 17th at Broadhead Elementary. Clubs may schedule a time to practice when they call to register their acts.

The top club act and specialty act will perform at the Area Variety Show on Saturday, April 26th in London.

The top three specialty acts will tape T.V. Showcase on Wednesday, May 7th in Lexington. The show will air on Sunday, May 11th at 1 p.m. on Channel 18.

### "EASTER CELEBRATION"

(Cont. From B)

success.

Special thanks to Foodland of Broadhead for donating fruits for

## Governor signs new laws; 57 General Assembly bills

Gov. Martha Layne Collins has signed a total of 57 bills passed by the Kentucky General Assembly. They are:

- to permit sheriffs to have unpaid deputies;
- to allow extended employment for vocational-agriculture teachers;

- to specify members of the news media who may attend executions;
- to require psychiatric evaluations of criminal defendants to be done at state expense unless not possible;

- our fruit baskets. Also to Taylor's Produce in Broadhead for donating the grapes, and Hiatt's 5 & 10 of Mt. Vernon for donating plastic reusable baskets. The prizes and all other items used were provided by Castle Village Apartments. The manager is Bob Machal.

- to permit self-insurance for housing authorities;
- to legalize extended warranties on automobiles;
- to place volunteer firefighters in the county employee retirement system;
- to bar retribution against employees who file safety complaints;
- regarding membership in the Kentucky urban affairs council;
- to permit the Finance Cabinet to offer prepaial dental programs to state employees;
- to allow retirement system participants to buy credit for military service on installment;
- regarding bonding of landfills;

- to prohibit nursing homes from discharging a patient who goes on Medicaid;
- to require 30 days' written notice to employees of changes in group health-insurance plans;
- to create a special privilege for communications between counselors and victims of sexual assault;
- to require supporting documentation for cities seeking a reclassification;
- to make uniform the definition of public records;
- to exempt from public records the contract for the state executive; -to impose a two-year moratorium on most new coal-mining regulations;

- to permit self-insurance for housing authorities;
- to legalize extended warranties on automobiles;
- to place volunteer firefighters in the county employee retirement system;
- to bar retribution against employees who file safety complaints;
- regarding membership in the Kentucky urban affairs council;
- to permit the Finance Cabinet to offer prepaial dental programs to state employees;
- to allow retirement system participants to buy credit for military service on installment;
- regarding bonding of landfills;

- to prohibit nursing homes from discharging a patient who goes on Medicaid;
- to require 30 days' written notice to employees of changes in group health-insurance plans;
- to create a special privilege for communications between counselors and victims of sexual assault;
- to require supporting documentation for cities seeking a reclassification;
- to make uniform the definition of public records;
- to exempt from public records the contract for the state executive; -to impose a two-year moratorium on most new coal-mining regulations;

- to permit self-insurance for housing authorities;
- to legalize extended warranties on automobiles;
- to place volunteer firefighters in the county employee retirement system;
- to bar retribution against employees who file safety complaints;
- regarding membership in the Kentucky urban affairs council;
- to permit the Finance Cabinet to offer prepaial dental programs to state employees;
- to allow retirement system participants to buy credit for military service on installment;
- regarding bonding of landfills;

Anna Faye Thompson

Continued to 12

## SHEPHERD'S Home Furnishings

On U.S. 25 Midway Between Richmond and Berea

Our Patio Shop Is Now Open

25% TO 45% OFF And More!



Meadowcroft Casual Furniture

### SPECIAL-SPECIAL

\$299  
Reg 641.00

Meadowcroft Casual Furniture

KELVINATOR Washer & Dryer Set \$599  
Heavy duty washer and dryer

Dinette Set \$299  
Glass top table with 4 brass and oyster chairs Reg 600.00

7 Piece Dinette \$249  
Oval table and 6 matching chairs Reg 500.00

When The Weather Gets Hot KEEP YOUR COOL

### KELVINATOR

Room Air Conditioners 4,500 to 28,000 BTU In Stock Now

3 Piece Sectional \$599  
Sofa, love seat and corner table Reg. 1000.00

SOLID CHERRY \$1099  
A traditional style of craftsmanship and enduring value  
Now

Warehouse MATTRESS SALE Savings Up To 70% Come Browse! TWIN & FULL SETS \$99 Starting At

Sofa, Matching Recliner \$499

GRAVELY Solid Oak Curio \$469.95  
Reg. 1200.00  
GRAVELY Solid Cherry Curio \$469.95  
Reg. 1200.00

GRAVELY Solid Oak Hall Console & Mirror \$399  
Reg. 920.00  
ATHENS Solid Oak Bedroom Suite \$790  
Reg. 1580.00  
Includes dresser, mirror, chest, headboard and night stand

CLOSE-OUT MODELS Lane & Flexsteel Recliners 1/2 PRICE 10 To Sell

FREE

DELIVERY SET-UP

RICHMOND SHEPHERD'S Home Furnishings

624-0852

\*Ad Does Not Apply To Previous Sales or Layaways

Monday thru Saturday 9:30 to 6

Friday Night till 8PM

624-0852

## Commonwealth of Kentucky 28th Judicial Circuit Rockcastle Circuit Court

Civil Action File No. 83-CI-080

WILLIAM D. GREGORY and wife, PLAINTIFFS  
MARY T. GREGORY

VS: NOTICE OF SALE

WAYNE MASON GREGORY DEFENDANT

Pursuant to judgment and order of sale entered in this action on January 22, 1986, and for the partition of real property, I will offer for sale at public auction the hereinafter described real property in Mt. Vernon, Rockcastle County, Kentucky.

AT THE COURTHOUSE DOOR

WEDNESDAY, the 23rd day of APRIL, 1986

BEGINNING AT 10:00 A.M.

and said property being more particularly bounded and described, as follows:

Located about one mile north of Mt. Vernon, and BEGINNING at a stake at the county road, corner to Allen and Carter; thence running up the hill a straight line west with Allen and Carter's line a distance of 135 feet to a white oak; thence in a northerly direction 74 feet to a small white oak and the end of a stone wall; thence continuing in a northeast direction with stone fence a distance of 266 feet to Northern's line; thence down the hill in an eastern direction with Northern's line about 85 feet to the county road; thence with county road 233 feet back to the beginning corner.

And being property which William D. Gregory and Wayne Mason Gregory obtained by deed dated November 5, 1970, from George B. Gentry and wife, Marie Gentry, recorded in the office of the clerk of the Rockcastle County Court in Deed Book 90, page 484.

THE PROPERTY WILL BE SOLD UPON THE FOLLOWING TERMS AND CONDITIONS:

1. The property shall be sold to the highest bidder(s) for cash or for a deposit of twenty-five (25%) of the purchase price in cash on the date of sale, with the balance on a credit of thirty (30) days with purchaser(s) being required to execute bond with surety thereon, to be approved by the Master Commissioner, to secure the purchase price. The bond shall bear interest at the rate of twelve (12%) percent per annum from date until paid and to remain and be a lien on said property until fully paid.
2. The purchaser(s) shall have the privilege of paying all of the purchase price in cash or paying the bond before maturity by paying the principal amount thereon together with all interest accrued thereon to the date of payment.
3. The purchaser(s) shall pay 1986 county, state and school taxes.
4. The purchaser(s) shall have possession of the premises upon complying with the terms of sale and risk of loss of improvements shall thereafter be on the purchaser(s).
5. This sale shall be made subject to all easements, set back lines, restrictions or covenants of record or otherwise.

JOSEPH E. LAMBERT  
MASTER COMMISSIONER  
ROCKCASTLE CIRCUIT COURT

# Everything's coming up Savings!!

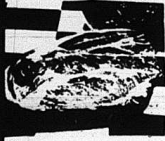
## MT. VERNON

U.S. 150 West  
Westgate Shopping Center

OPEN  
8 a.m. - 10 p.m.  
7 days a week

# FOODTOWN

Formerly  
King's  
Pic Pac



**Beef Chuck Roast**  
US Choice

**99¢**  
lb.



**Holly Farms Whole Fryers**

Limit 3, please, with additional \$5 or more order

Cut-up Fryers: lb. .59

**47¢**  
lb.

**Armour Veribest Boston Butt Pork Roast** lb. **1.09**

H & G Frozen Whitefish 3 lb. pkg. **2.99**

Field-Platter-style Sliced Bacon lb. **1.29**

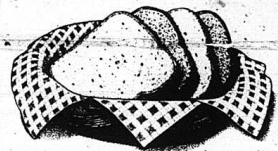
25 Lb. Bucket Sliced Bacon **8.99**  
8 Lb. Bucket 3.79

**Armour Veribest Pork Steak** lb. **1.39**

Fresh Pork Neck Bones Or Pig Feet lb. **.49**

Carnation Evaporated Milk 12 oz can **.49**

**Armour Sliced Bacon** 1 lb. pkg.



**Foodtown White Bread**

16 oz. loaves  
Limit 4 with \$5 or more order

**Eckrich Franks** 12 pack **\$1.39**



Jumbo roll, assorted colors and prints

**\$1.69**

**Coke, Tab, Sprite, diet Coke, or cherry Coke** 8 pack carton, 16 oz. bottles. Limit 2 with \$5\* or more order

**\$1.49**

**Brawny Paper Towels**

**59¢**

**4 / \$100**

**25 Lb. Bag Martha White Flour**  
Plain or Self-Rising

**3.99**



**Zesta Crackers**  
1 lb. box, Saltines or Unsalted

**.69**

Luck's Beans 12 oz. can **2/89¢**



**Trail Blazer Dog Food** 12 pack **2.99**



**Tropicana Orange Juice** 1 gallon carton, 16 oz. or more/size **\$1.29**

**Morton Pot Pies** 8 oz. size, Beef, Chicken, Turkey or Spaghetti & Meatballs **3 for 1.00**

**3 for 1.00**

**Hunt's Tomato Sauce** 15 oz. cans **2 for .89**

**Prelate Pink Salmon** 15.5 oz. jar **\$1.49**

**\$1.49**

**Cottonelle Bathroom Tissue**

**.99**



**Foodtown Ice Cream** 1/2 gallon carton, 10 varieties, 10 varieties or larger/size

**1.29**



-Ah..hh! Garden Freshness!

**Fresh Green Broccoli** bunch **.89**  
**20 Lb. Bag White Potatoes** **1.69**

**Fresh, Crisp Head Lettuce** head **.59**  
**Red, Ripe Tomatoes** lb. **.69**  
**Crisp, Green Celery** stalk **.49**

**Interstate French Fries** 1/2 lb. bag

**.99**



**Lay's Potato Chips**

**.99**



**Florida White or Pink Grapefruit** 3 for **1.00**  
**D'Anjou Pears** lb. **.79**  
**3 Lb. Bag Rome or Jonathan Apples** **.99**

"BILLS INTO LAW"

Cont. From 10
- to establish a 4 p.m. filing deadline for candidates
- setting interest rates that can be charged by pawnbrokers
- to allow school districts to transfer funds from capital accounts to general accounts without approval from the state board of education;

to establish My Old Kentucky Home Commission;
- regarding zoning regulations for Lexington;
- regarding release of liens;
- to prohibit labor mediators from disclosing information received during hearings;
- to prohibit release of information from examinations of credit unions;
- to prohibit the filling or tampering of LP gas containers without the owner's permission;
- to allow water fee departments to operate ambulances;
- regarding membership on airport boards;
- House Concurrent Resolution

ion 5, requesting Congress to investigate coal imports;
- authorizing the continuation of the Tobacco Task Force;
- Senate Concurrent Resolution 59 legislative study of the medically underserved;
- to establish an effort date for maximum size of kindergarten classes;
- regulation of open dumps;
- to allow liens against hazardous waste dumps;
- to require hearings within 21 days on temporary custody orders;
- to make district court responsible for hearing cases involv-

ing transfers of mineral rights;
- to prohibit statewide officeholders from soliciting campaign contributions to retire debts while in office;
- to exempt from sales tax items sold under contract with non-profit or school-sponsored clubs;
- regarding regulation of podiatrists;
- to require each county Farm Bureau to have at least two voting delegates at the state Farm Bureau convention;
- to define projects eligible for industrial revenue bonds;
- to permit engineers to self-

insure;
- to create the Kentucky Public Transportation Development Fund;
- regarding conversion of group health-insurance coverage to individual coverage;
- regarding regulation of insurance administrators;
- regarding school transportation;
- regarding mass-transit authorities;
Collins also allowed the following bills to become law without her signature:
- to allow fourth-class cities to exact restaurant taxes;
- to raise fees charged by the secretary of state;

- to require supporting documentation for cities seeking a reclassification;
The Olympic champion and actor (Tarzan) Johnny Weissmuller, was the first member of the Swimming Hall of Fame.
Ron Hunt, an infielder who played with various National League teams holds the record for getting hit by pitched balls.



REAL ESTATE FOR SALE

Commercial Property

Small Commercial Building - Located on West Main Street - Mt. Vernon. This building could be used for several types of small business or adapted for office space very easily. A bargain priced at \$6,900 G1

NEW LISTING - Large Commercial Building - Main St., Brodhead. A portion of the building is presently being utilized as a furniture store. It has approximately 4,500 sq. ft., city water and new roof. Priced at \$21,500. K4

FOR LEASE - Apartments and Commercial Building - Main Street - Call for details.

Farms And Acreage
164 Acres - Cove Branch section of Rockcastle County - 1,800 lb. tobacco base - combination stock and tobacco barn - House with 3 bedrooms, living room and kitchen - garage - priced at \$55,000. G2B

Lovely Home and 25 Acres - near Livingston - The home offers 3 bedrooms; living room; kitchen, dining room, utility room, and 2 baths. It has electric heat, wall to wall carpet throughout, garage, patio, storm doors, and windows, and washer/dryer hookup. It is all situated on 25 acres giving you privacy galore. Priced at \$64,900. G11

110 Acres - Renfro Valley - Suitable for development - city water - priced at \$31,500. A10

190 Acres - more or less - undeveloped land in the Chestnut Ridge/Sand Hill section of Rockcastle County. Priced at \$28,500. F4

100 Acres - 1 mile off of U.S. 25 on the Orlando Road - 900 lb. tobacco base - frame house with 3 bedrooms, living room, kitchen and bath. Also has washer/dryer hookup, electric heat - all for \$34,900. D4

Modular Home - 3 1/2 Acres - Home has 3 bedrooms, living room, kitchen, dining room, family room, and 2 baths. It has electric heat, carpet, washer/dryer hookup. Reduced to \$30,500. W8

240 Acres - Shaggs Creek Road - approximately 2700 lb. tobacco base - 2 barns - 4 room house in need of repairs - water provided by 2 springs and creek - lots of firewood - Reduced to \$59,000. F5

Brindle Ridge Farm - 161 Acres - more or less. The farm has a good home with 3 bedrooms, 2 baths, living room, dining room, kitchen, family room, and sun room. Also 4 barns, shop, storage building, creek, and 3 springs. Approximately 150 acres crop and pasture land. Tobacco base approximately 2,530 lb. Owner retiring - priced for quick sale at \$161,500. H13

70 Acres Farm - located at Kings Mountain. Approximately 50 acres tillable - 1400 lb. tobacco allotment - Improved with a 5 room modern farm home - 26x32 barn with 3 stanchion milking parlor with a 1'x40' attached shed - 32x70 tobacco barn and other miscellaneous buildings. The farm has a good fence and plenty of water. \$54,900. H4

30 Acres - located in the Eldrod section of Pulaski County - 1700 lb. tobacco base - combination stock and tobacco barn - 2 ponds for stock water. Priced at \$39,500. H6

90 Acres - located in the Copper Creek section of Rockcastle County - approximately 35 acres cleared crop and pasture land and the balance in woods - approximately 630 lb. tobacco base - small unfinished barn - pond and creek for stock water. \$27,500. H5

80 Acres - located in the Dry Fork section of Boone County. The property has been core drilled and has a 40 inch plus vein of coal. Priced at \$80,000. G22

Modern Log Home - 9 Acres - Home has 1,800 sq. ft. of living space. It has large great room, kitchen with built-in cabinets, 3 bedrooms, and 1 1/2 baths. Approximately 9 acres of hill land - secluded - lots of privacy - 1 mile from city limits of Mt. Vernon. Priced at \$49,500. G24

534 Acres - located near Mullins station - possibility of coal - some timber - only \$225 per acre. G14

Small Farm - 38 Acres - Deep Well Woods Road - Lincoln County - Mostly wooded with some marketable timber - improved with almost new modern brick home and a 2 car detached garage - water is furnished by a "stream" - move in for \$89,900. G32

Levy County - 119 Acres by survey - new developed land - some timber - possibility of coal and oil - priced at \$150 per acre. H12

Baby Farm - Highway 150 near Brodhead - 42 Acres - 1000 lb. tobacco allotment - priced at \$28,500. H10

4 Acres - Dug Hill Road - Ottawa - Barn - good building - large site - city water - priced at \$12,500. H19

55 Acres - Red Hill section of Rockcastle - approximately 15 acres cleared grass - pond - fence - \$17,500. H19

14 1/2 Acres - Unfinished House - Living room, dining room, kitchen, 3 bedrooms, and 1 1/2 baths - partial basement - \$27,900. H22

Secluded Farm - 40 Acres - near Calloway - Improved with a 7 room house, 2 barns, and 2 car garage. Approximately 15 acres cleared land and 577 tobacco base - priced at \$34,900. J13

One of Rockcastle's Premier Farms - 413 Acres - old Brodhead Road - house - silo - grain bins - new equipment building - barns - priced at \$400,000. J5

120 Acres Farm - near Wabed Community - good cattle farm - horse - barn - ample water supply - owner will trade out of town. Priced at \$59,000. X3

Bedford Stone Home with 10 Acres - Approx. 1 mile out of town! Fantastic view. The house has living room, kitchen, 4 bedrooms, bath, washer/dryer hookup, gas heat, built-in cabinets, plus much more. In addition, it also has a barn and 730 lb. tobacco base. Owners moving out of town. Priced at \$59,500. K1

NEW LISTING - 24 Acres more or less - Located in the Copper Creek section of Rockcastle County. Approx. 8 acres cleared land and some young timber. Watered by a creek. Priced at \$6,900. K3

Homes \$50,000 And Up

Near Hospital - Lovely 11 1/2 Story Home has 4 bedrooms, 2 baths, dining room, kitchen with built-in cabinets, family room, and music office room. Approximately 2 1/2 acres with fruit trees. Reduced to \$54,900. K14

New Brick - In Town - Home has a 4 bedroom, large kitchen with an abundance of built-in cabinets, large living room, wall to wall carpet, electric hot air. All for \$59,900. G28

Lovely Brick Home - School Street - Mt. Vernon - Home has 3 bedrooms, 1 1/2 baths, living room, dining room, kitchen, den and full basement. Also has electric

heat and fireplace. Level lot - all this for only \$52,900. Assumable 9 5/8 percent. Logo H16

Brick Home - 2 Acres - Mareburg - The lovely brick home has 3 bedrooms, living room, kitchen, 1 1/2 and utility room. It also has electric heat, carpet and garage. Also has well and city water. All for \$52,500. J11

Between Brodhead and Mt. Vernon - Beautiful split-level home, very private, immaculately landscaped. Home has 4 bedrooms, living room, dining room, kitchen with built-in cabinets, family room, 3 baths, recreation room, utility room, office and basement, 2 1/2 acres. Priced at \$89,500. J10

3 Bedroom Brick - 1 1/2 miles south of Mt. Vernon just off Hwy. 2 - 2 baths, 2 car garage. Also contains living room, dining room, utility room, and full basement - washer/dryer hookup, wall to wall carpet, total electric. \$19,900. J17

\$40,000 - \$50,000 Range
Bedford Stone Home - Highway 461 - Home has 3 bedrooms, living room, dining room, kitchen, combination with lots of cabinets, bath, full basement, and attached garage. Also has 2 fireplaces, plus much more. Priced at \$48,900. J15

Countryside Estate - 1 1/2 Miles - Home has brick home with family room, living room, kitchen, dining room, combination, utility room, and 1 1/2 baths. Private and fantastic view - one of Rockcastle's best subdivisions - Reduced to \$47,500. F8.

Bedford Stone Home - Bethum Street - Mt. Vernon - Home has large living room with fireplace and insert, kitchen, dining room, bedroom and bath on first floor with 3 bedrooms and bath on second floor. Partial basement with washer/dryer hookup. Also 2 car garage with storage building. Home is finished inside with wormy chestnut. Priced at \$49,900.

Under Construction - 3 Bedroom, 2 Bath, Family Room, Brick - Evergreen Estates Subdivision - Heat Pump - garage - you pick cabinets and carpet - \$47,900. H19 -

3 Bedroom Brick - Valley Manor Subdivision - Home also has 1 1/2 baths, heat pump, concrete drive, washer/dryer hookup, good location. Priced at \$44,900. J 19

\$30,000 - \$40,000 Range
Somerset - House and lot - just off Pump House Road - Home has 3 bedrooms, living room, kitchen and bath. Also has electric ceiling heat, storm doors and windows, carpet, and washer/dryer hookup. Reduced to \$38,500. A17.

Brick Home - 2 Acres - Sand Springs Road - Home has 3 bedrooms, living room, kitchen with built-in cabinets, and bath. Also has partial basement. Reduced to \$34,500. G15

Brick Home and Lot - Negro Creek - Home has 3 bedrooms, living room, kitchen, dining room combination, utility room, and 2 baths. Also has electric heat, storm doors, washer/dryer hookup, and a 2 car garage. Priced at \$36,900. G30

Lovell Court - 2 Story Frame Home - Home has living room, dining room, kitchen, family room, 1 bedroom and bath on first floor with 3 bedrooms upstairs. Also has wall to wall carpet, a fuel oil furnace, six doors and windows, aluminum siding. The house is within walking distance of Main Street, churches and schools. Priced at \$32,500. J16

Brodhead - Near Frith Subdivision - Lovely stone home with 3 bedrooms, living room, dining room, kitchen, den

and carport. Fireplace with heatilator, electric heat, washer/dryer, hookup, nearly acre wooded lot - privacy. Only \$39,900. J4.

Bedford Stone - 3 miles southeast of Mt. Vernon. Home has 3 bedrooms, living room, kitchen, bath and full basement. Also has oil heat, hardwood floors, washer/dryer hookup and city water, 1 acre. All for \$39,900. J14

Lovell Lane - Mt. Vernon - This conveniently located home has 3 bedrooms, living room, dining room, kitchen, bath and electric heat - level lot - priced reasonably at \$36,900. J18

Libe Neat - Split Foyer Home - Home has living room, kitchen, 2 1/2 baths, 2 carport on the upper level and lower level has family room, bedroom and utility room. Nice lot adjoining woods. All this for \$33,900. J17

Homes Under \$30,000
House and Lot - School Street - Brodhead - Home has 2 bedrooms, living room, kitchen, utility room, and bath. Also has storm doors and windows, gas heat, wall to wall carpet, fireplace, and attached garage. Reduced to \$25,900. A19

2 Bedroom - 1 1/2 Miles - Home has 2 bedrooms, kitchen, dining room, living room, and bath. Also has hardwood floors, washer/dryer hookup, oil furnace provides heat, and also has a carport. In addition to the house is a 28x20 shop and cedar. It is situated on approximately 3 acres. \$29,500. E15

In Mt. Vernon - Paul Street - Excellent 4 bedroom house with living room, kitchen, dining room combination, bath, electric heat, washer/dryer hookup. Priced to sell for only \$29,900. G16

1983 Mobile Home - 14x55 - Home has living room, kitchen, 2 bedrooms, and bath. Also has electric heat, appliances included, microwave, carpet, drops, and built-in stereo. Reduced to \$11,000. G26

4 Bedroom House - Quarry Street - Mt. Vernon - Home has 4 bedrooms, living room, kitchen, dining room, bath, and washer/dryer hookup, aluminum siding, city water and sewer. \$21,900. H8

2 Story House - Crab Orchard - 2 1/2 Acres - Located on the Chapel Gap Road - Home has 4 bedrooms, living room, kitchen, bath and large all purpose room - electric heat, also storage building - all for \$29,800.

House and Lot - Maple Street - Brodhead - Home has 4 bedrooms, living room, dining room, kitchen and bath. Also has washer/dryer hookup, city water - priced at \$27,500. H23

Mobile Home and Lot - Fairview section of Rockcastle County - Home has 2 bedrooms, living room, kitchen-dining room combination, and bath with addition - city water - washer/dryer hookup - situated on 1/2 acre lot. \$9,500. J3

House and Lot - Livingston - The house has large living room, kitchen, 2 bedrooms, bath and utility room - large lot with garden space - additional water hookup - only \$12,500. J21

3 Mobile Homes With Lot - All - rented potential income of \$385 - Can be bought for \$11,900. J20

1 1/2 Story House - West Main Street - Home has 3 bedrooms, living room, dining room, kitchen, and bath on first floor, with 1 1/2 baths upstairs. It also has washer/dryer hookup, tile - stone cellar. Priced at \$23,900. J6

House and Lot - Brodhead - Wallin Street - The house has 3 bedrooms, living room, dining room, kitchen, and bath. Also has electric heat, washer/dryer hookup, city water - priced at \$29,900. J1

room, dining room, kitchen, and bath - oil furnace heat - hardwood floors. The exterior of the house has new vinyl siding - large lot - garden space - a good buy at only \$29,900.

South of Mt. Vernon Just off Hwy. 25 - 2 bedroom aluminum sided frame house, total electric, storm doors and windows. Also has a barn situated on 2 acres, more or less. Priced at \$20,900. K2

Just Off Old Brodhead Road - 3 Bedroom frame house with den, kitchen, dining room, living room and bath. Home has total electric, washer/dryer hookup, city water and sewer and situated on a 12x150 lot. Large garden space. \$18,500. J1

House - 1 Acre Lot - Brindle Ridge - Home has 3 bedrooms, living room, kitchen, dining room and bath. Also built in back porch, city water, level lot. All for \$19,500. J15

West Main St. - 1 1/2 Story Home - Home has living room, dining room, kitchen, 2 bedrooms, bath and utility room, downstairs and 1 bedroom upstairs. Also washer/dryer hookup, 103x108 lot, city water and sewer. Only \$21,900. J12

3 Bedroom Frame Home - Fairground Hill - Mt. Vernon Home also has living room, dining room and bath. In addition, it has a carport, a cedar and a storage building. \$16,500. J10

3 Bedroom Frame House - Coway - Home also has living room, kitchen and bath, almost new roof, storm doors and windows, situated on a 1 acre lot. Priced at \$16,900. J7

Mobile Home - 12x68 - Home has 2 bedrooms, living room, dining room, kitchen combination, bath and utility room - washer/dryer hookup - priced at \$5,900. J9

All Kinds of Lots
What kind of you want? Small lot - Big lot - Restricted lot - Unrestricted lot - Wooded lot - Level lot - Hill lot - Expensive lot - Inexpensive lot - Lots located at Evergreen Estates, Valley Manor, Subdivision - Lake Linnville, Woods Creek, Lake - Country Club Estates, Rainbow, Valley Subdivision - Highway 461 - Quail section. Mt. Vernon - FHA or VA approved lot. We have all kinds. Make an appointment to see them today.

LOTS
All New Subdivision - Located on the Barnett Road near Lake Linnville. The lots measure 1/2 acre and up and are restricted. Come in now and have first choice of these 26 fine building lots. Several of the lots front on a backloop road and city water is available. Ranging from \$1,500 to \$4,000. E74

New Lots - spacious building lots in Rockcastle County's newest subdivisions. All lots have or will have city water and paved streets. Ranging in price, from \$4,500 to \$5,000. These lots are restricted for your protection. #1

Building Lots - Country Club Estates Subdivision - city water - near Mt. Vernon - only \$3,000 to \$3,500. B9

2 Lots - Just out of Mt. Vernon. Ideal for mobile home. Priced at \$2,850. #6

Dandy Building Lot - Rose Hill Road - Overlook Lake Linnville. City water is available. Priced at \$5,000. #7

Building Lot - Overlooks Lake Linnville. City water, improved with storage building. \$4,500. H11

3 Lots - Orlando - City water, ideal for building or mobile home site. Only \$2,995. H6

Ottawa - Dug Hill Road - Large lot, suitable for building or mobile home site. \$4,950. H19



Ford Realty & Auction Co.



Sam Ford, GRI 256-4588

Danny Ford, GRI 256-4446

Roy Adams, GRI 758-8400

Mt. Vernon, Ky. 256-4545 KENTUCKY TOLL FREE 1-800-435-5454

FRESH, LEAN  
**Ground Beef**  
5 lb. Package or More  
**.79**

U.S.D.A. CHOICE  
PLATTER PLEASING  
WHOLE OR HALF  
BONELESS  
**Chuck Roast**  
**1.19**  
25 lb. Average  
LB

U.S.D.A. CHOICE  
PLATTER PLEASING  
BONELESS  
**Chuck Steak**  
**1.49**  
LB

Fischer's  
**Wieners**  
12 oz. Package  
**.99**

  
FISCHER'S MELLWOOD  
**Bacon**  
Regular of Thick  
**1.89**

**Bologna**  
1 lb. Regular of Thick  
**1.59**

U.S.D.A. CHOICE  
PLATTER PLEASING  
**Beef Stew**  
**1.89**  
LB

PLATTER PLEASING  
**Lard**  
25 lb. Pail  
**7.69**

ARMOUR VERI-BEST  
CUBAN  
BOSTON BUTT  
**Pork Roast**  
**1.09**  
LB  
Pork Steak 1.19.

MRS. PAUL'S  
CRUNCHY  
**Fish Fillets**  
**2.99**

BANQUET CHICKEN  
1.19

NORTHERN  
**Tissue**  
8 Pack  
**1.59**

NORTHERN  
**Napkins**  
200  
**1.39**  
PURINA  
**Meow Mix**  
20 lb. 2.99  
**Comet**  
REGULAR 4/1.00  
**Sunlight**  
DISH DETERGENT  
27 1/2 oz. .99

**Bolt**  
PAPER TOWELS  
7 1/2" x 7 1/2" Jumbo Roll  
**99**  
Lined with 100% Recycled Paper

MARTHA WHITE  
**Flour**  
Self Rising  
25 lb.  
**2.99**  
Equal 1 With #10 Add'l Charge

HY TOP  
**Biscuits** .99  
Borden's  
**Cheese Food** 1.99  
FLAV' RICH  
**Cottage Cheese** 1.19  
WHEATSTONE  
**Cream Cheese** .89  
WHEATSTONE  
**Cream Cheese** .99

TROPICANA  
GRAPEFRUIT OR  
**Orange Juice**  
64 oz. Glass Pack  
**1.99**

PINE  
**Spice-Span**  
28 oz. 1.99

TRAIL BLAZER  
**Dog Food**  
20 lb.  
**2.99**

Final  
**Touch**  
FABRIC SOFTENER  
16 1/2 oz. 1.99

**Snuggle**  
Liquid Fabric Softener  
W.C. 80 OZ. 2.59  
**Snuggle**  
DYEING SHEETS  
60 Count 1.99

MR. CLEAN  
**Cleanser** .99  
MR. CLEAN  
**Cleanser** 1.99  
MR. CLEAN  
**Cleanser** 1.89

**Wisk**  
Detergent  
128 oz. 5.99  
**Rinso**  
LAUNDRY DETERGENT  
17 1/2 oz. Family Size 3.99

CREAMETTES  
MACARONI, SPAGHETTI, &  
**Vermizelli**  
1 lb.  
**.59**

HUNGRY JACK INSTANT  
**Potatoes** .99  
HUNGRY JACK  
BUTTER ENOUGH COMPLETE  
**Pancake Mix** 1.09

PET RITZ  
**Pie Shells**  
**.89**

RUSSET  
**Potatoes**  
15 lb.  
**1.39**

  
SEEDLESS  
**Navel Oranges** 1.49  
SNOW WHITE  
**Mushrooms** .99

Red or  
Yellow  
**Apples**  
3 lb.  
**.99**

PARAMOUNT  
**Pickles** .99  
PARAMOUNT SWEET  
**Relish** .99  
PARAMOUNT POLSKI WYROB  
**Kosher Dills** 1.29  
PARAMOUNT POLSKI WYROB  
**Kosher Spices** .99

Green Giant 4.5 oz.  
**Mushrooms** whole or sliced 1.19

LIPTON  
**Tea Bags**  
100 ct.  
**2.99**

HUNGRY JACK  
EXTRA LIGHT  
**Pancake Mi**  
7 1/2  
**1.09**



**Cabbage**  
**.19**  
lb.

**Tomatoes**  
20 oz.  
**.99**






Hy Top  
Green Beans,  
Corn & Peas  
**3/\$1.09**

Green Giant 8 oz.  
**Mushrooms** Stems & Pieces 1.09

Folgers Coffee 1 1/2 lb. 2.99

**SUPERIOR**  
Food Markets  
U.S. 25 South Mt. Vernon  
Symbol of Quality

    
   
**Pepsi**  
8 pk. - 16 oz.  
**\$1.69**

# Company says GenTel copied its directory

General Telephone of the South's new directory isn't really new at all, says the publisher of the Bluegrass Metro Guide, Dallas Shewmaker says he has seen it all

before-in his own director. Shewmaker's company, Security Publishing Group, filed a multimillion dollar lawsuit yesterday in federal court in Lexington, contending that its copyright had been infringed by GenTel.

The Bluegrass Metro Guide, published by Security Publishing, is a private telephone directory serving Fayette, Jessamine, Woodford and Scott counties. In his suit, Shewmaker contends that GenTel copied his book's design and, in some cases, copied entire pages from his book. GenTel even printed some of the same errors that were in the Metro Guide, he says.

Replication of a substantial number of errors is "classic, irrefutable proof of copying, which clearly violates the copyright of Security Publishing Group," Shewmaker said.

"Nearly every new feature that GTE put in their book this year we put in our book last year," Shewmaker said yesterday, adding that he was "outraged" when he first saw GenTel's new directory, which came out last month.

Shewmaker said the suit was filed after it was determined that several of the original designs and compilations of editing and copy-righting by the independent publisher in its 1985-86 directory were reproduced in the 1986-87 GenTel Lexington directory.

Shewmaker accused GenTel of copying from the cover to the yellow pages. GenTel even used blue paper, as did the Metro Guide, for a 40-page civic section that includes maps of Lexington, seating charts of Rupp Arena and Commonwealth Stadium, and other information. GenTel's civic section appears almost identical to the Metro Guide's, he said.

Lexington attorney Robert Houlihan, Sr., who represents GenTel, said last night that he had not seen a copy of the suit and could not comment on it. However, Houlihan said he and GenTel officials met last week with Shewmaker and Lexington attorney Robert Newcomer, who represents Security Publishing, in hopes of ironing out the dispute but were unsuccessful.

"This isn't the first time Security Publishing Group and GenTel have butted heads in court. GenTel sued Security Publishing last year, contending that it had violated GenTel's copyright in certain Yellow Pages ads. After the two sides resolved their differences out of court, GenTel

dropped the suit in November. "There was never a determination that we infringed their copyright," Newcomer said. "What we haven't done is didn't violate their copyright. That's the law of the case."

But he said there was no question that GenTel violated Security Publishing Group's copyright.

Shewmaker pointed to the zip-code section of GenTel's new directory as the greatest evidence that the company copied entire pages from his book. Street names that are misspelled in the Metro Guide are also misspelled in GenTel's directory.

In his suit, Shewmaker seeks a preliminary injunction barring GenTel from distributing any more of its books containing the allegedly copied material.

Shewmaker says GenTel printed 250,000 of the books, about 100,000 of which have been distributed. Newcomer said he could ask that all the books be recalled.

Security Publishing published and distributed 140,000 copies of its directories in 1985.

### "PERSONALS" (Cont. From 8)

Lela Burley of Indiana spent the weekend with her cousin, Billy Allen Bussell, and Juanita of Harrodsburg, Billy's children, David, Johnnie, Jenny, Patsy and families and Mary all visited Billy Sunday. Mrs. Marie Trisler of Lexington City and daughter, Elizabeth, visited Billy Allen Sunday afternoon.

Bro. Paul Carmichael and wife, Millie, of Somerset, Bro. Preston Griffiths of Ohio were lunch guests of Mrs. Ruth Bussell at the Broadhead Cafe Wednesday.

Mrs. Ruth Bussell and granddaughter, Jo-Dawn Gregory, were in Mason, Ohio Monday night and returned home Tuesday afternoon. They were visiting Ruth's mother, Mrs. Winnie Bryant. They also visited Jo-Dawn's grandmother, Mrs. Evelyn Gregory, in Sharonville, Ohio.

Mr. and Mrs. Paul Croy and son, Blaine, of Dayton, Ohio, Mr. and Mrs. Dwan McMillin and son, Scott, of Alken, S. C. Mr. and Mrs. Jim Parsons and wife, Barbara Ann of Lexington, Geris Singleton and son, Craig, of London, Mickie Pruitt of Richmond and friend, Tony, visited with Mary McWhorter and Pat Pruitt and Freddie, Jr. and also Bennett, Joyce, Stacey and Corey Craz.

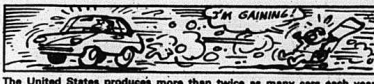
Charlie Carmack celebrated his 86th birthday March 22 with a supper at his home given by his children, grandchildren and great grandchildren. Those present were Mrs. Nora Cramer of Fairfield, Ohio, Mrs. Emma Wyatt of Hamilton, Ohio, Mrs. Nancy Denney of Rt. 1, Crab Orchard, Yvonne Carmack of Mt. Vernon, Diane Denney of Paintsville, Rhonda and Jim Vaughn and son, Ernest Wyatt and wife of Hamilton, Ohio, Louanne, Lavada, Eddie Wyatt and friend of Ohio, Dean Carmack of Mt. Vernon, Hope and Jennifer Carmack, Barmie Vaughn and Jason Denney, Helen Carmack Renner and Ellie Baldwin.

Rhonda and Jamie Vaughn spent Sunday night with their mother and grandmother, Mrs. Nancy Denney. Mrs. Lula Bussell, Jack Bussell, Mrs. Martha Messer of Broadhead and Mr. and Mrs. Luther Ltkins were in Cincinnati, Ohio over the weekend due to Mrs. Geraldine (Bussell) Glass having serious heart surgery. So far she is recovering well.

Mrs. Brenda Bradley visited Mr. and Mrs. Isaac Blankenship Monday afternoon.



**ATTENTION**  
Harris Burton & Bill Tillery would be proud to serve you in purchasing a new vehicle from **Britton Chev-Olds in Berea**. You may reach them during the day at 986-3169 or in the evenings, Mr. Burton may be reached at 758-4146 and Mr. Tillery at 986-2545.



The United States produces more than twice as many cars each year as babies.

**SPG LUCKY NUMBERS #81**  
**CUMBERLAND VALLEY**  
PHONE DIRECTORY & GUIDE  
This week's winning numbers:  
102989 135303 126665  
15272 103249  
**SECURITY PUBLISHING GROUP**  
800 SECOND NATIONAL PLAZA  
LEXINGTON, KY 40507  
(606) 251-0422

## Spring Special

### Tune-Up Special on Briggs & Stratton Lawnmowers

Install New Points & Condenser  
Install New Spark Plug  
Install New Diaphragm  
Clean Carburetor  
Sharpen Blade  
Oil Change

Only **\$17.95**

## Appliance Service Center

Mt. Vernon, Kentucky  
**256-2626**

### Commonwealth of Kentucky 28th Judicial Circuit Rockcastle Circuit Court

PEARL FALLIN, widow, ED CHESTNUT, single, MAXINE FALLIN and husband, TOMMY FALLIN, VELMA STEWART, widow, ELMER CHESTNUT, single, FLOYD CHESTNUT and wife, GLADYS CHESTNUT, JUANITA DEATHERAGE and husband, COLEMAN DEATHERAGE, CHARLES RADER and wife, DOROTHY RADER, BRONCO RADER and wife, SUE RADER, GLENN SMITH and husband, BILL SMITH, MARIE JENNINGS and husband, RANDY JENNINGS. PLAINTIFFS

VS: NOTICE OF SALE

VERNON CHESTNUT and wife, MARY CHESTNUT, BRENDA BAILEY and husband, BUFORD BAILEY, CAROL WARD and husband, PAUL WARD. DEFENDANTS

Pursuant to judgment and order of sale entered in this action on February 20th, 1986, and for the partition of real property, I will offer for sale at public auction the hereinafter described real property in Mt. Vernon, Rockcastle County, Kentucky.

**AT THE COURTHOUSE DOOR**  
Friday, the 4th day of April, 1986.  
Beginning at 10:00 A.M.

and said property being particularly bounded and described as follows:

Tract No. 1  
Beginning at a post at Lee Chestnut Family grave yard lot; thence a westerly direction 93 feet with the line of Hattie Chestnut to an iron stake and stone; thence a southerly direction 373 feet to a stone in Jack Allen's line; thence a southeasterly direction 154 feet to an iron stake, corner to Jack Allen and Wendell Renner; thence northerly direction with Wendell Renner's line 350 feet to a double white oak at Lee Chestnut Family grave lot; thence a westerly direction 51 feet with the grave yard lot line to a stone; thence northerly with the grave yard lot line a northerly direction 69 feet to the post, the beginning corner.

There is excepted from the above a 12 foot right of way beginning with Maple Grove County Road and running south with line fence, leaving line fence and running east to the grave lot.

Tract No. 2  
Beginning on a chestnut oak, corner to Jack Allen and Henry Stewart; thence southeasterly direction 504 feet to a stone; thence a northerly direction 340 feet to a stake; thence northeasterly direction 154 feet to a stake; thence northerly 200 feet to a stone in the right of way of the Maple Grove Road; thence westerly with the Maple Grove Road 360 feet to a black gum; thence southeasterly direction 200 feet to the chestnut oak, the beginning corner.

Tract No. 3  
Beginning on a chestnut oak, corner to Jack Allen and Henry Stewart; thence southeasterly direction 504 feet to a stone; thence a northerly direction 340 feet to a stake; thence northeasterly direction 154 feet to a stake; thence northerly 200 feet to a stone in the right of way of the Maple Grove Road; thence westerly with the Maple Grove Road 360 feet to a black gum; thence southeasterly direction 200 feet to the chestnut oak, the beginning corner.

Tract No. 4  
Beginning on a chestnut oak, corner to Jack Allen and Henry Stewart; thence southeasterly direction 504 feet to a stone; thence a northerly direction 340 feet to a stake; thence northeasterly direction 154 feet to a stake; thence northerly 200 feet to a stone in the right of way of the Maple Grove Road; thence westerly with the Maple Grove Road 360 feet to a black gum; thence southeasterly direction 200 feet to the chestnut oak, the beginning corner.

Tract No. 5  
Beginning on a chestnut oak, corner to Jack Allen and Henry Stewart; thence southeasterly direction 504 feet to a stone; thence a northerly direction 340 feet to a stake; thence northeasterly direction 154 feet to a stake; thence northerly 200 feet to a stone in the right of way of the Maple Grove Road; thence westerly with the Maple Grove Road 360 feet to a black gum; thence southeasterly direction 200 feet to the chestnut oak, the beginning corner.

Tract No. 6  
Beginning on a chestnut oak, corner to Jack Allen and Henry Stewart; thence southeasterly direction 504 feet to a stone; thence a northerly direction 340 feet to a stake; thence northeasterly direction 154 feet to a stake; thence northerly 200 feet to a stone in the right of way of the Maple Grove Road; thence westerly with the Maple Grove Road 360 feet to a black gum; thence southeasterly direction 200 feet to the chestnut oak, the beginning corner.

The parties obtained title to the

JOSEPH E. LAMBERT  
MASTER COMMISSIONER  
ROCKCASTLE CIRCUIT COURT



## Are You A Thief?

Most people in our society object to burglars, armed robbers and other kinds of professional thieves. But when it comes to less visible forms of theft, how many "average citizens" are guilty themselves?

For example, most large stores annually lose thousands of dollars worth of merchandise to shoplifters. The news media frequently report looters stealing everything in sight when they believe they can get away with it. I know of a businessman who has a number of gum machines which people steal from, break and try to cheat. He often has to take one apart to remove "slugs" that have been used instead of coins.

When making one such repair he found the machine had been cheated with a religious medalion inscribed: "Thou shalt not steal." Are these thieves any less guilty simply because small amounts are stolen?

Again, it is a fact that business firms suffer some of their greatest losses to their own employees who carry off supplies, equipment, and merchandise, or simply "steal time" by loafing on the job. But then businessmen themselves in turn often steal from the public by deliberately overcharging, misrepresenting their product, or measuring out less product than the customer paid for. Two men went into the retail meat business and did very well. One of the men became very religious

By: Austin Mobley, Minister  
Providence church of Christ

then started trying to convert the other. "Look, if I become religious too, who is going to weigh the meat?" his partner asked. "Are these people any more innocent than the armed robber?"

And then what about the supposedly "decent citizen" who cheats on his income taxes or tries to "beat" his debtors? Are these not simply different forms of stealing? Remember that stealing is defined as taking without permission something which legally belongs to another.

The most shocking example of stealing that I ever heard of was when a member of a church who had been assigned to take up the contribution was actually caught stealing from the collection. That folks is stealing from God!

What advice should the thief be given? Paul wrote: "Let him that stole steal no more: but rather let him labor, working with his hands the thing which is good, that he may have to give to him that needeth" (Eph. 4:28). And finally, I Cor. 6:10 teaches that thieves shall not inherit the kingdom of God. Are you guilty of stealing?

**Services:**  
Sunday: 10 a.m. Bible Study  
10:35 Worship  
6:00 p.m. Worship  
Wednesday: 7 p.m.

Radio: WRVK Sunday 8 a.m.



# Is Uncle Sam calling you? Is he asking you to pay him tax on your 1985 earnings?

If so, you still have until April 15, 1986 to purchase an IRA from **The Bank of Mt. Vernon** and deduct it from your 1985 taxable income.

Call today for information on an IRA and save those tax dollars for yourself.



**MEMBER FDIC**  
**THE BANK OF MT. VERNON**  
MT. VERNON, KENTUCKY 40456

Substantial interest penalty for early withdrawal.

## Your Child's Health

by  
**Dr. John Payne**



In this basketball crazy state it is probably the dream of every father to have a son who will be six feet eight by the time he is 15 and who can slam dunk his way to glory and fame without straining a muscle. However, in reality most boys don't even make six feet and some parents have daughters. The point is, we put too much emphasis upon pushing kids into molds of what we want them to do in sports rather than what is realistic and fun for them.

Choosing the "right" sports for a child is a very complex issue given different rates of maturation, body types, abilities and what sports are available in your town. A thin, late maturing boy who has never had an ancestor over five feet nine is wasting his time trying to become a great basketball player. He might become a great soccer player, swimmer, or distance runner. The obese, slow-moving 13-year-old who gets put on the junior high

football team as a defensive lineman because he doesn't fit anywhere else would be better advised to work on a weight loss and conditioning program and avoid the great potential for heat exhaustion and injury.

Late maturing youth usually do not have the body chemistry and physique to benefit from body building and conditioning programs which may help an early maturing youth. A tall, "gaudy" girl, on the other hand, may have her body image helped and her self confidence enhanced by playing basketball or volleyball.

In summary, let sports fit the individual child, and let's remember, it isn't fun for the child, it's not right.



There are about 64 Americans per square mile.

## Hospital report

Rockcastle County Hospital

Admitted: Förster Hale, Mt. Vernon; Wallace Mullins, Mt. Vernon; Tom Sigmom, Mt. Vernon; Millard Rowe, Mt. Vernon; Rebecca Northern, Mt. Vernon; Ruth Goforth, Mt. Vernon; Donald Jones, Livingston; Denver Sandidin, Brodhead; Raymond Miller, Mt. Vernon; Ollie Souder, Mt. Vernon; Patricia Gray, Mt. Vernon; Ina Cummins, Mt. Vernon; Ethel Durham, Orlando; Bertie Brown, Mt. Vernon; Chandra McGuire, Mt. Vernon; Wanda Hopkins, Brodhead; Irene Roark, Livingston; Dorothy McClure, Somerset; Judy Cotton, Mt. Vernon; Gary Sturgill, Livingston.

Discharged: Jeffrey Ozaris, Donald Jones, Bruce Davis, Patricia Albright, Millard Rowe, Arvil Branstetter, Wallace Mullins, Amy Renner, Nettie Mullins, Siella Livesay, Rebecca Northern, Fannie West, Ruth Goforth, Ina Cummins, Forster Hale.

## The Medicine Chest

By: Tina

The medicine cabinet, despite its name, is probably the last place you should store your medicines. This is because bathrooms are often hot and steamy. Some medicines should be refrigerated, and your pharmacist will instruct you to do so.

If you have any questions about storage of your medications, ask your pharmacist.

MVES

Spring Festival  
Friday  
April 25th

## "HOMEMAKERS"

(Cont. from 7)

Mt. Vernon: Pick up Saturday between noon and 1 p.m.

Bring one item per category made in the last 18 months for members for prizes. Display only for non-members. There will be a table also with crafts, etc. to be displayed only made two or more years ago.

The 10 homemakers present were checked to find out that their budgets would be cut drastically at federal level. The majority of those present agreed that we should write our congressmen, etc. to help us keep our present budget.

The State Homemaker meeting will be May 7, 8 and 9 in the Hyatt Regency Hotel in Lexington. Voting delegates' expenses will be paid.

Since this is 50th year for national homemakers clubs, they will honor Quail's club for 50 continuous years of homemakers club work in Blackburg. Va. July 19-25 at N.E.H.C.'s Anniversary Conference.

Anyone wanting to attend this conference can get information at office.

The Area's Cultural Art Camp Class will be at 4-H Camp in London July 31.

Corbin's Quilt Show contest's top 35 quilts will be displayed in the Medical Center's lobby Aug. 9-30. Quilts have to be entered during the month of July, 1986.

The announcements: Apr. 1, lesson "Time Management. Lead-

The Mt. Vernon Signal Thursday, 1986 P.15

er Training, Mon., Mar. 31; Clearing Products, Mon., Apr. 7.

at 10 a.m. at PCA; May lesson, "Creativity" Leader Training

Mon., May 5, at 1 p.m. at PCA; June Lesson "Mastering Family Streets" Leader Training, Tues.

June 3, at 1 p.m. at PCA.

Elizabeth F. Mullins, reporter  
Rockcastle County Homemakers

A "watch" of nightingales is how you refer to a big bunch of those birds.

### Furniture Town's Rock Bottom Sale

1 mile from East Barnhart on Hwy. 30  
Phone 843-7858

**FREE DELIVERY**

One large room of LR Suites, values to \$1100, now on sale at \$380; chest of drawers, \$63; bedroom suites, \$290; living room suites, \$99, \$280 and \$380; Recliner, \$99; Swivel Rockers, \$65; Hide-a-beds, \$235; Orthopedic box springs and mattress, \$158 set, reg. \$415; Dining Room set, \$99; Big oak dining room suite with 6 chairs and pedestal foot table, reg. \$995, now \$450; Java oak and maple dining room suites, \$185; stoves, refrigerators, washers, dryers and deep freezers, on sale; oak rockers and loungers. Just received, large load of coffee table sets and lamps. Going at unreasonably low prices.

**Folks come from miles around to save the most at  
Furniture Town**

Open 6 days a week, 9 a.m. to 7 p.m.

## WALLPAPER

Over 20,000 Rolls in Stock  
SAVE 50% & MORE  
40% OFF ON BLINDS  
Wallpaper Installation Available  
Special FALL SALE on Carpet  
Anderson's

1257 S. Main Ph. 864-5412 London, Ky.

## THE IDEAL SAVINGS SITUATION: AN INDIVIDUAL RETIREMENT ACCOUNT!

You Still Have Time to Deposit Up to \$2,000 in an Individual Retirement Account (IRA) and deduct it from last year's gross income on your tax forms.

Until April 15th of This Year, You Can Have the Ideal Savings Situation: Shelter Up to \$2,000 in an IRA Account. Accrue Interest on this Amount—Interest that is also Tax Deferred. Eligible Husbands and Wives Can Establish Separate IRA Savings Plans. Or, if Your Spouse Is Not Employed, You May Invest an Additional \$250 in your IRA for a Total Tax-Deferred Savings of \$2,250 Per Year.

There's No Better Way to Save than with an IRA!



**LOUISE GOLDEN**  
Assistant Vice President  
In Charge of  
IRAs

## Remember the Hometown Convenience of PEOPLES BANK & TRUST COMPANY

"The People's Choice"

BEREA, KENTUCKY

986-3175

MAIN BANK  
OFFICES  
CHESTNUT STREET

EQUAL HOUSING  
LENDER  
MEMBER  
FDIC

BRANCH BANK -  
U.S. 25 North at  
Boone Square Center

## Big April Sale

100 choice units - All units reduced in price  
at **CHARLES WILLIAMS  
AUTO CITY, INC.**

U.S. 25 South Ph. 986-3279 Berea, Ky.

### Partial Listing - Cars

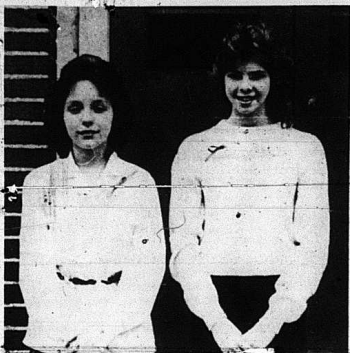
- \*84 Chev. Celebrity, 4 Dr., Auto, Air
- \*84 Ford Tempo, 4 Dr., 4 Cyl., Auto, Air
- \*84 Mercury Topaz, 4 Dr., 4 Cyl., Auto
- \*84 Camaro, 6 Cyl., auto, air, T-Tops
- \*84 Chevette, 4 Cyl., 4 Spd., Air
- \*83 Toyota Corolla, 2 Dr., 5 speed, air
- \*83 Toyota Celica GT, 5 Speed, Air
- \*83 Mazda 626, 2 Dr., 4 Cyl., 5 Spd., Air
- \*Buick Skyhawk, 2 Dr., 4 Cyl., Auto, Air
- \*83 Cadillac Fleetwood, 4 Dr., Full Power & Air
- \*82 Buick Regal, 2 Dr., 6 Cyl., Auto, Air
- \*82 Lincoln Town Car, 4 Dr., Full Power & Air
- \*82 Ford Explorer, Sports Car, 4 Cyl. Auto, Air
- \*81 Toyota Corolla St. Wgn., Auto, Air
- \*81 Cadillac Seville, 4 Dr., Full Air & Power
- \*81 Buick Electra Limited, 2 Dr., Auto, Air
- \*81 Ford Escort, 2 Dr., Air
- \*81 Chevette 4 Dr., Auto, Air
- \*81 Ford St. Wgn., 10 Pass., Auto, Air
- \*81 Pontiac Grand Prix, Auto, Air
- \*81 Olds Cutlass Supreme, 2 Dr., Auto, Air
- \*81 Dodge Diplomat, 4 Dr., Auto, Air
- \*80 Camaro RS, 2 Dr., Auto, Air
- \*80 Grand Prix LJ, Auto, Air
- \*80 Grand Prix, 6 Cyl., Auto, Air
- \*80 Buick Electra Limited, 4 Dr., Auto, Air
- \*80 Ford Pinto, Auto, Air
- \*80 VW Rabbit, 4 Dr., Air
- \*80 Olds Cutlass Brn., 4 Dr., Auto, Air
- \*79 Cadillac, 4 Dr., V8, Auto, Air
- \*79 Buick Regal, 2 Dr., V8, Auto, Air
- \*79 Grand Prix, V8, Auto, Air
- \*79 Buick Regal Limited, 2 Dr., Air
- \*79 Mustang, V8, 4 Speed
- \*79 Olds 98 Regency, 4 Dr., Auto, Air
- \*78 Firebird, V8, Auto, Air
- \*78 Plymouth Suppuro, 4 Cyl., 5 Speed, Air
- \*77 Pontiac Catalina, 2 Dr., V8, Air Auto
- \*77 Olds 88, 2 Dr., V8, Auto, Air
- \*73 Nova, 2 Dr., 6 Cyl., 3 Speed, Low Mileage
- \*68 Chrysler, 4 Dr., V8, Auto, Air

### TRUCKS

- \*84 Dodge Pick-up, V8, Auto, Air, Blue
- \*84 Chev. Van with full conversion
- \*84 Dodge Pick-up, V8, Auto, Air, Black
- \*84 Ford Ranger XL Pick-up, 4 Spd. Air
- \*84 Dodge Pick-up Royale SE, Auto Air, Red
- \*83 Dodge D-50 Pick-up, 4X4, 5 Spd Air
- \*82 Ford Pick-up, 6 Cyl., 3 Speed
- \*82 Chev. Pick-up, 6 Cyl., Auto, Air
- \*81 Toyota Pick-up, 4 Cyl., 5 Speed
- \*81 Ford Bronco, 4X4, Blue
- \*81 Ford Bronco, 4X4, Brown
- \*81 Chev. Pick-up, 6 Cyl., Auto, PS
- \*78 Ford Van with Conversion
- \*78 GMC Van, V8, Auto, PS
- \*78 Chev. LUV Pick-up, 4 Cyl., Auto
- \*78 Dodge Maxi Van, V8, Auto
- \*76 Ford Pick-up Super Cab, V8, 3 Speed
- \*72 International Pick-up, 6 Cyl., 3 Speed

## -Sale in Progress through April-

Our Large Inventory Must Be Reduced - Come Look Us Over  
Family owned and operated - In our 18th Year  
Our Reputation is our Recommendation - Ask Your Neighbor  
**12.5% APR Bank Financing**  
Open 8 to 7 Weekdays 8 to 4 Saturday



Shown in the above photo are the two seventh graders from Livingston Elementary who recently took the STA test at Berea College. Jennifer Clark, left and Anita Durham, were chosen to take the test because of their scores on the KEST (Ky. Essential Skills Test) taken last year. Below, these three seventh graders from Roundstone Elementary School were chosen to take the SAT test. They were, front row, Teresa Burdette, left and Dawn Lewis. Back row, Mark Carl.



Shown above are the seventh grade students from Mt. Vernon Elementary School who took the SAT test at Berea College recently. Those eligible to take the test are students who scored in the 97 percentile on the Ky. Essential Skills Test the year before. The students from Mt. Vernon chosen were, front row, from left: Haley Swinney, Tiffany Carter and Charles Mink. Back row, from left: Jennifer Renner,

Cindy Gregory, and Erica Kirby. Below, the students from Brodhead Elementary who qualified and took the test were, front row, from left; Shonna Albright, Janie Lear, Dana Durham and Juan Nicely. Back row, front left; John Payne, Janis Hayes, Rebecca Albright, Larissa Hayes and Roger Hastv.



"Life must be lived forwards; but can only be understood backwards." Soren Kierkegaard

**NOTICE**

Notice is hereby given that Bonnie Holcomb Rt. 1, Brodhead, Ky. has been appointed administratrix of the estate of Clyde H. Holcomb. Any persons having claims against said estate shall present them according to law to the said Bonnie Holcomb or to Lambert & Lambert, P. O. Box 736, Mt. Vernon, Ky., on or before June 30, 1986. 35x3

**NOTICE**

Notice is hereby given that Mary Buffin and Judy Coffee have filed a final settlement of their accounts as co-administratrix of the estate of John Hoskins, deceased. A hearing on said settlement will be held on April 21, 1986. Any exceptions to said settlement must be filed before said date. 35x2

**NOTICE**

Notice is hereby given that Lon R. Saylor, 67 Mt. View Estates, Berea, Ky., has been appointed administrator of the estate of John Hoskins, deceased. Any persons having claims against said estate shall present them according to law to the said Lon R. Saylor, or to Steven Connelly, 208 Short St., Berea, Ky., on or before June 30, 1986. 35x3

**CARD OF THANKS**

The family of Mrs. Beulah Barker wants to thank everyone for their kindness, love and prayers, and also for the food, flowers, cards, and sympathy for their dear mother and sister.

Thanks to Watson Funeral Home, the ministers and for the beautiful singing by the congregation.

Taylor and Barker Families

"Nature never breaks her own laws." Leonardo Da Vinci

**12.5%**

APR\* FINANCING

**PEOPLES BANK & TRUST COMPANY**

JOINS WITH

\*Ace Motors

\*Britton Chevrolet-Olds

\*Cummins Chrysler

\*Dwayne's Cars & Trucks

\*Powell Auto Sales

\*Reid's Used Cars

\*Todd & Wilson Auto Sales

\*Wallace-Arnett Ford

\*Charles Williams' Auto City

In Offering the Berea Community and surrounding area

TRUE **12.5%** APR\* FINANCING

On Any New or Used Car Purchased from One of the above Dealers during the Month of April, 1986. This is the time to Purchase the Automobile! You've Been Waiting for, but Could Not Afford because of High Interest Rates. Existing Credit Criteria Will Apply.

**BUY IN BEREAA!!**

\*Annual Percentage Rate.

**Peoples Bank & Trust Company**

Chestnut Street and U.S. 25 North Berea, Kentucky 986-3175  
 \*Your Full Service Bank \*Equal Housing Lender \*Member FDIC

**ESTATE**

**Auction**

of The Late **Mrs. Frenchie Lovins'**  
**83 Acres (more or less)**  
**and Personal Property**

**Saturday, April 12, 1986—10:30 a.m.**

**Level Green section of Rockcastle Co.**



**LOCATION:** Approximately 10 miles southwest of Mt. Vernon and 15 miles north of Somerset. Turn east off Highway 461 near Ponderosa Body Shop onto state road 1152. Follow 1152 approximately 1 1/2 miles to the auction site. Auction signs are posted.

In order to settle the state of the late Mrs. Frenchie Lovins, her heirs have authorized our firm to sell this highly desirable farm for the absolute high dollar.

The Farm consists of 83 acres, more or less, with approx. 64 acres crop and pasture land. The tobacco allotment for the farm is 1,905 lbs. An everlasting spring provides water for both the house and stock.

The Farm is improved with the above-pictured house. The house has living room, kitchen, 3 bedrooms, dining room and bath downstairs and 1 bedroom upstairs. It is heated by a fuel oil stove, has aluminum siding and storm doors and windows. Besides the house, there is also a 36x70 barn.

**Personal Property:** Hotpoint chest-type freezer; GE refrigerator; Frigidaire refrigerator; like-new Millmaster wood cook stove; Maytag wringer washer; breakfast set; GE electric range, like new; Kitchen cabinet with flour bin; gold kitchen safe; 2 iron beds; cedar chest; living room suite; early American chair; recliner; china closet; dining room table and 4 chairs; old basket; tools of various descriptions and 16" single plow.

Also: 1975 Ford F700 truck with 16 ft. bed with hoist belonging to Mrs. Lovins' son, James, will also be offered at this auction.

**Auctioneer's Note:** If you're in the market for a good farm in a good agricultural section of the county, be sure to attend this important auction Saturday, April 12th, 1986 at 10:30 a.m.

**TERMS:** 20% down day of sale, balance in 30 days upon delivery of deed on real estate and cash or good check day of sale on personal property.

For additional information, contact:

**Ford Realty & Auction Co.**

REALTOR/AUCTIONEER  
 SAM FORD  
 DANNY FORD  
 ROY ADAMS



AUCTIONEERS  
 JERRY HAM  
 WILLARD BULLOCK



606/256-4545

MT. VERNON, KY., P.O. BOX 445

# Social & Women's News



Mr. and Mrs. Grover C. Thacker of Mt. Vernon would like to announce the forthcoming marriage of their daughter, Anita Pauline, to George Gregory Coleman of Mt. Vernon. George is the son of Mrs. Juanita Coleman of Pleville, Ky. and George Coleman Sr. of New Castle, Delaware. The wedding will be an event of Saturday, April 5 at 2 p.m. at the Skaggs Creek Baptist Church. All friends and relatives of the couple are invited to attend.

## Personals

By: Mrs. George Burton

Due to illness in our family, I didn't get my column in last week, as some of my items may be delayed.

David L. Henderson of Lexington visited his mother, Mrs. Lena Lewis last Wednesday.

Mr. and Mrs. Jerry L. Stokes and son of Jacksonville, Fla., Mrs. Robin Hunt and Andy of Somerset and Mrs. Linda Newby and daughter of Lexington visited Mr. and Mrs. Floyd Stokes recently.

Mrs. Clara Burton is still a patient in the Berea Hospital and

is very ill at this writing.

Shirley Burton, Mildred Hunt, Mr. and Mrs. J. B. Dailey and Scharlet, Mr. and Mrs. Junior Blanton and Rodney, Mr. and Mrs. Steve Lewis of Mt. Vernon, Ill visited Mr. and Mrs. Carlol Blanton, Sr. Sunday.

Robert Henderson of Somerset visited his mother, Mrs. Lona Logsdan, Sunday afternoon.

Mr. and Mrs. Arvin Purcell of Michigan visited relatives here a few days this week.

Mr. and Mrs. Steve Lewis of Mt. Vernon, Ill. visited their mother, Mildred Hunt, and other relatives.

Sympathy is extended to all the families that have lost loved



Rockcastle County Judge Executive Hubert Thacker is shown signing a proclamation declaring April as Arts Month. Members of the Arts Council looking on, from left, Chica Thomsen, Debbie Brown, Ray Patel and Patti Towery. Other board

members not present are, Vicki Cox, Norma Ewe, Lisa Clontz, Pat Baker and Danny McKinney. Anyone interested in contributing to the Arts Council can contact any of the above members or mail it to Box 338, Mt. Vernon, Ky.

ones recently. May the Lord comfort each one.

Mr. and Mrs. Charles Milbern of Union, Ohio visited Mr. and Mrs. George Burton recently.

Mr. and Mrs. Robert Barron and family of Paris visited her parents, Mr. and Mrs. Robert Kirby, recently.

Mr. and Mrs. Virgil Brock visited Mr. and Mrs. Robert Kirby Sunday afternoon.

Mrs. Hettie Coon is on the road.

Mr. and Mrs. Tom Dillman recovery Mr. and Mrs. Robert Henderson visited Mrs. Coon Sunday.

Mrs. Adon Ramsey has been moved from the hospital to the Sowder Nursing Home at Brodhead.

and Mrs. Ben Fisher and Heath Saylor and Mrs. Bessie Pennington.

Mrs. Ada Bullock of Somerset and Mrs. William Fitzpatrick visited Mrs. Willie Nicely recently.

--Read care label in garment for precautions.

--If label states "Dry Clean Only," the professional dry cleaner can obtain better and safer removal of stain. Be sure to inform them of location and nature of

--Always test the stain remover on an inconspicuous part of garment and note color change or damage.

--Remove stain by blotting from wrong side of garment: Push stain out of fabric, not in.

--Thoroughly rinse out any stain remover before laundering to avoid undesirable chemical reactions.

--Do not use chlorine bleach on fabrics containing silk, wool, spandex, urethane fabrics or polyurethane foam.

--Some stains are impossible to remove.

**Stain Removal Guide**  
1. Soak in cool water, apply liquid detergent to stain area, rinse and launder. (Water based

Continued to Page 19.

## Birth announced

Mr. and Mrs. Gary Giarratano of Mt. Vernon would like to announce the birth of their daughter, Megan Renae, born Feb. 27 at Humana Hospital Lake Cumberland. She weighed 6 lbs. 9 1/2 oz. and was 19 inches long. Her brother, Nathan, wishes to welcome her home.



Cheryl Witt  
County Extension Agent  
For Home Economics

## STAIN REMOVAL FOR WASHABLE FABRICS

Stain removal is a common and troublesome problem in the care of clothing. Often, garments are discarded because of stains or the damage done while attempting to remove a stain. Today it is especially important to extend the clothing budget, and one way to do this is to learn, and follow, correct stain removal procedures.

Rules for removal of stains from fabric, whether clothing or home furnishings:

- Treat immediately. Most stains set as they remain in the garment.
- Do not put item in dryer until stain is removed since heat will set most stains.

**LOOK AT THESE SUPER DEALS**  
ONLY FROM "THE SUPER SATELLITE DEALER"  
**LEON FARRIS TV, STEREO & SATELLITE SALES**

**BUY PURCHASE** TO BLACK ALUMINUM MESH 9' FIBERGLASS SATELLITE SYSTEM WITH \$20 DISCOUNT RECEIPT! BRAND NEW, POLYPROPYLENE & LINA COVER. ONLY \$988.00. ONLY \$1188.00 WITH DIGITAL DISH MOUNT. ONLY \$1188.00 INSTALLED.

**MANY, MANY MORE SYSTEMS TO CHOOSE FROM! SEE OUR LARGE DISPLAY TODAY!**  
**ALWAYS FAST PROFESSIONAL SERVICE AFTER THE SALE. WE HAVE A PAYMENT PLAN\* TO SUIT YOUR BUDGET - TAKE MONTHS TO PAY.**

**CALL FOR AFTER HOURS APPOINTMENTS!**

1234 S. Main Street  
London, KY 40301  
HOURS: MON-FRI 10:00-6:00  
SATURDAY 9-5

Mt. Vernon, KY  
PHONE 258-1234  
SATURDAY 9-5

\*30 DAY INTEREST FREE FINANCING

LEON FARRIS TV & Stereo SATELLITE SALES

TO QUALIFY PURCHASES WITH APPROVED CREDIT

25 Years of Fine Photography

**Spring Specials at Brunner Studio**

<b>Color Special</b> 1-8x10 & 2-5x7 or 4x6 Wallet with photo album <b>\$29.95</b>	<b>Family Reunion</b> 1-8x10 Includes 16 photos of your family reunion with professional printing. <b>\$15.95</b>
<b>Friendship Folio</b> 2-4x5's in folio <b>\$14.95</b>	<b>Copy Special</b> 1-5x7 or 4x6 Wallet Black & white color <b>\$9.95</b>
<b>Wedding Albums</b> The easiest way to preserve the beautiful memories of your wedding day is with professional printing. 10-4x5's candidly with album <b>\$134.50</b>	<b>Cap &amp; Gown Special</b> 5-4x5's 11x14 matt Choice of quality, bring a change of colors. Bring yours a brand, get it printed to include in photo. <b>\$19.95</b>

**Brunner Studio**  
909 South St. Berea, Ohio 44011

Call for an appointment

GUARANTEED SATISFACTION

**Thanks Again AMERICA**

YOU GAVE US ANOTHER GREAT SALES YEAR. SO WE'RE HELPING YOU.

**SAVE UP TO \$1339 ON PLYMOUTH HORIZON!**



- **SAVE UP TO \$835\* WITH LOW 7.5% ANNUAL PERCENTAGE RATE FINANCING\*\* OR GET \$500 CASH BACK!**  
Now you can get all the quality and dependability you want in a small car, at savings you could never get before. Over the period of a loan, 7.5% financing can actually save you up to \$835 on a typically equipped car. Or, if you prefer, get \$500 cash back when you buy, to keep or apply to your down payment. Just take delivery from dealer stock.
- **SAVE \$504 MORE ON THE AUTOMATIC TRANSMISSION DISCOUNT PACKAGE!**  
Besides automatic transmission, you get: 2.2 liter engine, power steering, AM/FM stereo, 13" rally wheels, dual remote mirrors, front storage console, and center armrest.
- **AND GET CHRYSLER'S 5/50 PROTECTION PLAN AT NO EXTRA COST!††**  
Every Plymouth Horizon comes with protection on the engine and power train, and against outer body rust-through... for 5 years or 50,000 miles, whichever comes first.



**SANDMA WATERBEDS**

**\$299**  
King or Queen  
SAVE \$100

**COMPLETE**

90 DAYS SAME AS CASH

OVER 60 BEDS TO CHOOSE

Delivery and Installation Available

<b>RICHMOND</b> Southern Hills Plaza Suite 16, Phone (606) 624-1295 10-7 Weekdays, 10-7 Saturday 1-5 Sunday	<b>WINCHESTER</b> Town & Country Shopping Center K-Mart Plaza, Phone (606) 744-0529 10-9 Monday-Saturday, 1-5 Sunday "You Just Won't Rest 'Til You See Us!"
---	---

**IT'S OUR WAY OF SAYING "THANK YOU VERY MUCH"**

**Cummins Chrysler**

U.S. 25 North Berea, Ky.

CHRYSLER  
Plymouth

LIBERTY  
1986-1991