

U.S.D.A Choice Platter
Pleasing Blade Cut

Chuck Roast

89

Fresh Lean
3 lbs. or More

Ground Beef

89

U.S.D.A. Choice Platter
Pleasing Semi-Boneless

Chuck Roast

1.09 lb.

U.S.D.A Choice Platter
Pleasing Blade Cut

Chuck Steak 1.39 lb.

U.S.D.A. Choice Platter
Pleasing Boneless

Stew Beef 1.59 lb.

Armour Veri-Best Platter
Pleasing Center

Loin Chops 2.39 lb.

U.S.D.A Choice Platter
Pleasing Round Bone

Shoulder Roast

1.09 lb.

Armour Veri-Best
Platter Pleasing Quarter

Pork Loin

1.79 lb.

3 lb. Crock Margarine

Shedd's Spread

1.69

Sliced Beef, Chicken w/Veg, Lasagne, Beef Stew
Freezer Queen Delux Dinners 2.49
Colonial Farms
Buttermilk 1/2 Gal. .89

64 oz. Liquid Laundry Detergent

Tide
3.49



Single Roll Gala
Paper Towels

79



1/4 oz. Green Giant

Mushrooms 1.19

24 oz. Paramount No Garlic or

Kosher Spears 1.29

20 oz. Paramount

Bread & Butter Slices 1.19

1.19



12 oz. **Special K** 1.99

9.25 oz. Armour Vienna Sausage .99

18 oz. Jar Jif Crunchy Creamy Peanut Butter 1.79



64 oz. Welch's Grape Juice 2.49

2.49

6 oz. Hunt's **Tomato Paste** 3/89

32 oz. Hunt's **Ketchup** 1.39

8 oz. Hunt's **Tomato Sauce** 3/.89

15 oz. Hunt's Regular or Mexican **Manwich** .99

25 ft. Standard **Reynolds Wrap** 2/99

1 lb. Tin Maxwell House Reg., Drip, A.D.C., or Electra Perk **Coffee** 2.99

8oz. Maxwell House Instant Coffee 4.99

4 oz. Regular or Butter Pam **Cooking Spray** 1.79

100 ct. Low Calorie Sweetener **Equal** 2.99

22 oz. .35 Off Label Dish Liquid **Joy**

48 ct. Medium or 33 ct. Large Convenience Pack Kleenex **Huggies** 9.79

50 oz. Dishwasher **All** Pre Priced 1.99 1.99

100 ft. Reynolds's **Plastic Wrap** 1.79

5 lb. Bonus Bag Dog Food **Come'N Get It** 2.89

9 lb. Bonus Bag Dry Cat Food Fish Flavor **Friskies** 4.99

36 oz. Dog Food With Cheese or Beef Flavor **Gainesburgers** 1.99

33 oz. Fabric Softener **Sta-Puf** .99

13 oz. Tub and Tile Cleaner **Soft Scrub** .99

42 oz. .40 Off Detergent **Gain** 1.99

Single Roll Wax Paper **Waxtex** .99

42 oz. .35 Off Label Heavy Duty Dry Detergent **Purex** 1.19

12 oz. Tall Can Carnation **Evaporated Milk** 2/100

5 lb. 2 Varieties White Lily **Corn Meal** 99

100 ct. Lipton **Tea Bags** 289

4 Roll Assorted, Print, or White Northern **Bathroom Tissue** 99

5 oz. 8 Varieties Freezer Queen **Cook'n Bags** 2.79

Produce

Lettuce 2/\$1

Yellow Corn 5/\$1

Green Onions 3/\$1

White Potatoes 10 Lb. 1.69

Cooking Apples 3 Lb. .99

Lemons 5/.99c

Bananas 3 Lb. .99

Large Cantaloupes99

Watermelons 2.99

SUPERIOR Food Markets **S**

U.S. 25 South Mt. Vernon

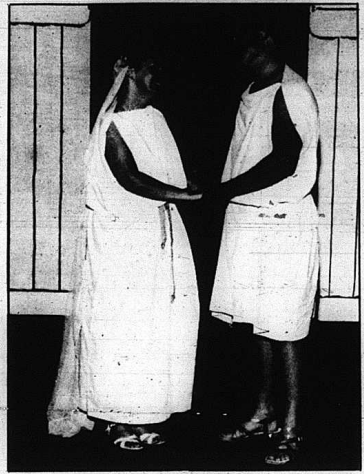
Symbol of Quality

Pepsi Cola DIET PEPSI FREE, PEPSI FREE, DIET PEPSI FREE, & MT. DEW! **1.69**

"A Funny Thing Happened on the Way to the Forum"



Hysterium (Louis Tagliaboschi), Erronius (Craig White) and Pseudolus (Jack Lewis) in a scene from the play in which Pseudolus performs as a "soothsayer."



Hero (Greg Bullock) declares his love for Phylia (Carolyn Birney).

Photos
by
Jim
Cox



Members of the play cast pictured above are, front row, from left: Stacey Moore, Sherry Cash, Shelly Raines, Antonya Isaacs and Ruth Holman. Kneeling on second row, from left: Kevin Rowe and Tracey Burdett; Back row, from left: Craig White, Kevin Isaacs, Jennifer Witt, David Phillips, Greg Bullock, Carolyn Birney, Jack Lewis, Dyche Mullins, Louis Tagliaboschi, Ethan Eversole, Patti Towery and Judy Woods. The play was directed by Allen Pensol.



K... and Pseudolus singing "Lovely."

A "Tip of our Hat" to Miss Rockcastle contestants



JENNIFER LEE MASTERS
Sponsored by:
Brock Studio



DAWNA CROUCHER
Sponsored by:
Griffin, Greer & Co. PSC

"Hot City Nights" is the theme of this year's beauty pageant.



WHEN:
Aug. 16 7 p.m.

WHERE:
RCHS

Admission:
*3 Adults - \$2 Children

Sponsored annually by the Rockcastle Co. Chamber of Commerce



SUSAN RENEE HOSKINS
Sponsored by:
Parsons Gas & Appliance



MELISSA CAROL BENSON
Sponsored by:
Franklin's



SHERRY LYNN CREECH
Sponsored by:
Brodhead Dair Delite



ELIZABETH A. MILLER
Sponsored by:
Dowell & Martin Funeral Home



LISA SHELTON
Sponsored by:
Miller's Red Top Restaurant



NATALIE NEAL PYBAS
Sponsored by:
Saylor Pharmacy



ANGELA GAIL WINSTEAD
Sponsored by:
Farm Credit Services



PAMELA JEAN HALE
Sponsored by:
Cox Funeral Home



SANDRA LEE ROBERTS
Sponsored by:
Gail's Florist & Gifts

Miss Rockcastle County - 1985



Kim Cromer



TRACEY BULLOCK
Sponsored by:
Kentucky Utilities



SONYA M. PHILLIPS
Sponsored by:
Mt. Vernon Printing

Rockcastle group tours Washington

The 40 member Rockcastle Agri-Business Tour left Mt. Vernon with a destination of Washington D.C. Monday, July 14. On Tuesday the group visited Monticello, the home of Thomas Jefferson, before traveling on to the capital.

The tour guide directed the group first to Ford Theater where Lincoln was assassinated and then on to Arlington National Cemetery where they went to see the changing

of the guards at the tomb of the unknown soldier.

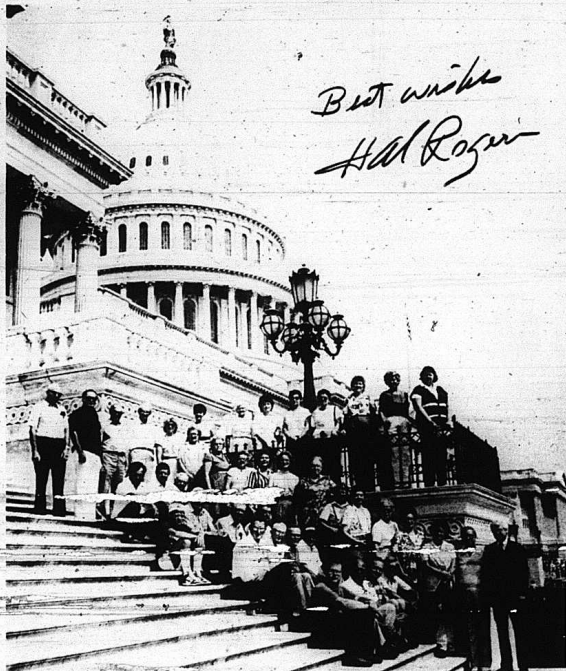
Later that evening the Rockcastle Countians entertained Senator Wendell Ford and Congressman Harold Rogers with dinner and informal meeting.

On Wednesday, the group stopped by Hal Rogers' office and he took them on a tour of the Capitol. They later left Washington for a night in Winchester, Virginia before returning to Mt.

Vernon on Thursday.

Members of the tour group reported that they enjoyed the tour very much, but were very much aware that the farmers in the states through which they passed needed rain badly.

On August 16, the group plans a meeting at the Quall Community Park to talk further about the tour for 1987. Tentative plans are to tour the north eastern states.



*Best wishes
Hal Rogers*

Those on the tour and in the picture are, seated, bottom row, from left: William J. Parsons, Floyd Gabbard, Vernon Price and Dorman Wilson. 2nd row: Kenneth Norton, Hugh Thomas, Harold Carter and W.L. Coffey. 3rd row: Chris Newland, Irvin Buis, Albert Long and Cam Halcomb. 4th row: Amos Burdette, Tommy H. Mink and Brad Reynolds. Standing, first row, bottom to top: Congressman Harold Rogers, Roy G. Brown, Barbara Carter, Mildred Buis, Mary Bishop, Kathleen Wilson, Lora Mink, Ivice Thomas, Arletta Norton, Pearl Burdette, Mary Holcomb, Ethel Coffey, Sylvia Long, Jean Price, Bill Norton, Charles Bishop, Gatliff Craig, Raymond Stull. Back row, from left: Nell Craig, Flora Mae Brown, Dottie Parsons, Burnette Norton, Barbara Watson, Ruby Gabbard, Marguerite Robinson and Debbie Newland.

LOOK AT THESE DRAKE SUPER SPECIALS!

WE HAVE A DRAKE SATELLITE SYSTEM TO SUIT YOUR BUDGET!*

So Come On In To...
Leon Farris TV, Across
From The Dairy Dart &
The Stockyards in
South London,
Where You Save Big
And Still Get Service
After The Sale Always!

6' FIBERGLASS SATELLITE SYSTEM WITH ESR 324 DRAKE RECEIVER ON POLE MOUNT WITH HAND CRANK
DRAKE 60" LNA
Only \$716.00 INSTALLED

8' FIBERGLASS SATELLITE SYSTEM WITH ESR 324 DRAKE RECEIVER ON POLE MOUNT WITH HAND CRANK
DRAKE 60" LNA
Only \$766.00 INSTALLED

10' FIBERGLASS OR 10' BLACK MESH SATELLITE SYSTEM WITH ESR 324 DRAKE RECEIVER WITH HAND CRANK
DRAKE 60" LNA
Only \$896.00 INSTALLED

OTHER 10' FIBERGLASS SYSTEMS STARTING AT
Only \$686.00 INSTALLED

**1254 SOUTH MAIN
LONDON, KY.**
Across From Dairy Dart Drive In & Stock Yard

PHONE 864-2292
Hrs: 9-5 Mon.-Fri.; Sat. 9-3
(CALL FOR AFTER HOURS APPOINTMENTS.)

BACK TO SCHOOL Bell Ringers

Prices Effective August 11 Through August 17, 1986

These are just a few of the many Specials at FOOD FAIR. For the rest of our Bargains-- Pick Up a copy of our 2 Page Ad in our Store.

We Reserve The Right To Limit Quantities And To Correct Typographical Errors.

3 SOMESET LOCATIONS:
HWY 27N, HWY 27S,
& EAST MT. VERNON ST.
LONDON, CORBIN, HYDEN, HAZARD,
JACKSON, STAMFORD, PINEVILLE,
WHITLEY CITY, MT. VERNON,
& BARBOURVILLE

The Store That Cares About You And Your Community

Fast Friendly Service All The Way To Your Car

FOOD FAIR COUPON
CLOROX
Bleach
.05 OFF! Gallon
.69
Limit 1 With Coupon & \$10 Addt. Order
EXP. 8-17-86

FOOD FAIR COUPON
CHICKEN OF THE SEA
Tuna
In Oil or Water
6.5 oz.
2/99
Limit 2 With Coupon & \$10 Addt. Order
EXP. 8-17-86

U.S.D.A. CHOICE WHOLE BONELESS
Ribeye
11-15 lb. avg.; Sliced Free
Limit 1 Please
2.99 lb.

U.S.D.A. CHOICE PORTERHOUSE OR
T-Bone Steak
2.99 lb.

U.S.D.A. CHOICE
Round Steak
1.39 lb.

GROUND FRESH DAILY
Ground Beef
3 lbs. or More **.99** lb.

SWIFT'S
Canned Ham
3 lb. **5.99**

FOOD FAIR
Sandwich Bread
20 oz. Loaf
2/99

TUBE ROSE
Flour or Meal
5 lb.
.59
Limit 2 With \$10 Addt. Order

OXYDOL
Laundry Detergent
.75 OFF! 72 oz.
2.99

CANNED
Soft Drinks
12 oz. Cans **10/1.89**

HEAD
Lettuce **.49**

CRISCO
Shortening
Regular or Butter 3 lb.
Limit 1 With \$10 Addt. Order
1.99

BOUNTY
Paper Towels
Jumbo Roll
.59
Limit 2 With \$10 Addt. Order

WHITE CLOUD
Bathroom Tissue
4 Roll Package
.99

8-16 oz. ret.
Coca-Cola Plus Tax and Dep. **1.69**

Look For Our Other Valuable S&H Green Stamp Coupons in Our Ad At The Store.

100 Extra S&H Green Stamps WITH THIS COUPON & THE PURCHASE OF \$10-\$30 GROCERY ORDER
EXP. 8-17-86

300 Extra S&H Green Stamps WITH THIS COUPON & THE PURCHASE OF \$30-\$80 GROCERY ORDER
EXP. 8-17-86

500 Extra S&H Green Stamps WITH THIS COUPON & THE PURCHASE OF \$80 OR MORE GROCERY ORDER
EXP. 8-17-86



The Cedar Rapids Swim Team were guests at a potluck dinner held in their honor Monday night. Team members were presented with shirts and plaques and the team gave coach Linda Clontz a personalized "Dolphin" beach towel as a token of their appreciation. Team members are, front row, from left: Ronna Dee McClure, Cassie Mullins, Callie Mullins and Lindsey Dowell. Second row: Heather Burton, Suzanne Brown, Heather Bray, Michael Parsons, Jessica Albright, Angie Lawless and Blake Calhoun. Third row: Rebecca Albright, Angela McKinney, Jonathan Cox, Beth Harper, Trent Clark, Aaron Cox and Cliff Mullins. Fourth row: Mindy Sargent, Gina Martin, Anthony Mipk, Angie Bussell, Michelle Hamm, Christy Sargent and Amy Hamm. Back row: Carrie Mullins, Robbie Palmer, Lefe Owens, Tobee Harris, Clark Mullins and Angie Dowell. Absent from the photo were Dane Cox, Doug Cox, Stade Calhoun, Cindy McCauley and Jon Moberly.

Hospital Report

ADMITTED: Tom Sigmon, Mt. Vernon; Betty Hensley, Orlando; Fred Hansel, Mt. Vernon; Denver Sandlin, Brodhead; Timothy Bullock, Mt. Vernon; George Griffin, Mt. Vernon; Myrtle Humphrey, Mt. Vernon; Denver Hines, Mt. Vernon; Perry Mason, Mt. Vernon.

DISCHARGED: Kashena Bullock, Carrie Denson, Ransom Wolfe, Betty Hensley, Sherman Reynolds, Eva Farnon, Lillie Brown, G.H. Griffin, Timothy Bullock and Deith Baker.

Homecoming

Livingston Pentecostal Church will have their homecoming, Sunday, August 17. Service starts at 11 a.m. Rev. J.C. Parrott preaching. Dinner served after service. Rev. Parrott will preach Sat. night, Aug. 16th. Service starts at 7:30 p.m. Rev. James Miller, pastor. Everyone welcome.

Brodhead PTA meets

The BES Parent and Teachers Association has been very busy the past few weeks. A board meeting was held in

July at the home of Dolores Albright. Items discussed were: projects for 1986-87; sending delegates to the state PTA leadership conference and having a PTA member attend each monthly school board meeting.

Rita Hayes, Peggy French, and Phyllis Holbrook attended the leadership conference in Frankfort on July 25th. The workshops were informative and the fellowship enjoyable. "Catch the PTA Spirit" is this year's state PTA's theme. Governor Martha Layne Collins spoke briefly to promote the passage of an amendment to appoint rather than elect the State Superintendent of Public Instruction.

EXTENDED CAMPUS CLASSES IN MT. VERNON EASTERN KENTUCKY UNIVERSITY

1986 Fall Semester

Eastern Kentucky University invites you to register as a student in our extended campus college classes at Mt. Vernon. The following classes will be offered subject to sufficient enrollment and availability of instructor:

ENG 211 - Survey of World Literature I

ORGANIZATIONAL MEETING: August 25, 6 p.m.
606-622-2001 Rockcastle Co. Hospital

Eastern Kentucky University is an Equal Opportunity/Affirmative Action education institution.

ROCKCASTLE COMMUNITY

Bulletin Board

Seminar for Parents

Seminar for parents of kindergarten at Livingston school on Wednesday, August 20 at 9 a.m. Brodhead parents will meet at 1 p.m. on this date.

Attn: 19 Middle Ridge, Wednesday, August 20, Ottawa and Bee Lick and Thursday, August 21. Blue Springs and

Football Draft

Any student at Mt. Vernon Elementary wishing to play football this season should report to the ball field August 19th at 6 p.m.

Norma Houk, County Clerk, announces that the deadline for candidates filing for county school board is Aug. 28 at 4 p.m.

Bookmobile Schedule

Monday, August 18, Livingston and Lamerco; Tuesday,

Women Club to Meet

Rockcastle County Republican Women's Club will meet August 19, at 7:30 at Jean's Rest.

Bulletin Board is Sponsored by



Cox Funeral Home
MT. VERNON, KY. — 256-2345

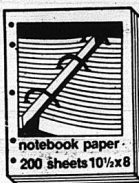
Homecoming

Hickory Grove Pentecostal Church will have their annual homecoming service Sunday, Aug. 24, beginning at 10:30 a.m.

Hamp and Darlene Wooten of Burgin will be providing special singing. Special speaker will be Bro. James Suits of Hodgenville. Dinner will be provided following the service.

The pastor, Bro. Randal Adams, and congregation invite everyone to attend this special service.

BACK TO SCHOOL SALE



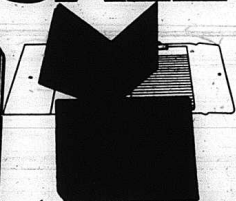
200 Count Filler Paper Reg. 99¢

Your Choice

3 For \$



70 Ct. Composition Book Reg. 69¢



Portafolio-Notebook Note Pad Your Choice Reg. 6.99

3.88 Ea.



30 Ct. Fine Line Markers Washable Ink Non Toxic Reg. 2.99

also

1.97

West Gate Center Mt. Vernon, Ky. Ph. 256-5614

Ladies Panty Hose

Reg. 99¢

68¢



True Value HARDWARE STORES®

True Value OF THE MONTH



Our Price **3.99**
Less Mfr.'s Rebate **-3.00**
Your Final Cost **99¢**

While Supplies Last

16-Oz. Clear Guard® Protectant is the fast and easy way to beautify vinyl, leather or rubber, because it sprays on clear and stays clear to let natural color shine through. Plus its deep penetrating formula works hard to protect surfaces against drying out. 1-103

QUANTITIES LIMITED



100% Dupont-Acrylic Knitting Yarn 3 Oz. Skein Reg. 89¢ Your Choice **68¢** Ea.



10 Ct. #2 Pencils Reg. 79¢ **44¢** Pk.



Swingline Stapler Kit Incl. 1,000 Staples You Pay **1.00** Mfg. Rebate = **1.00** Reg. 2.19 Your Final Cost **0.00**



Floral Bush Life Like Silk Look Your Choice **\$1** Ea. Reg. 1.99



Summit Paper Towels Jumbo Roll **2 \$1** For



Ingram Electric Alarm Clock **3.99** Ea.

Franklin's True Value Hdw.
West Gate Center Mt. Vernon

FRANKLIN'S



Using Squash From the Garden

Zucchini squash has a tendency to grow large overnight. Here are some ideas for oversized zucchini (or other summer squash). If your squash are longer than a foot, it may be just as well to toss them in the compost heap.

"Too-Big-to-Cook" Stuffed Squash

Cut large squash in half and

parboil until just tender. Scoop out and discard stringy part and seeds. Fill cavity with any of the following stuffings and bake at 350 degrees F. until thoroughly heated.

Spaghetti Stuffing: Cooked ground beef and spaghetti sauce with a slice of cheese broiled on top.
Ham Stuffing: Minced, cooked ham, bread crumbs, dry mustard, and minced onion, moistened with broth.

Hamburger Rice Stuffing: Cooked ground beef and cooked brown rice moistened with a little water, green onions, topped with broiled Parmesan cheese.
Spinach and Sausage Stuffing: Cooked sausage and seasoned bread crumbs, eggs, green pep-

per, onions and cooked spinach.
Pizza Stuffing: Chopped salami or Bologna, grated cheese, onions, bread crumbs and tomato sauce.

Chinese Pork Stuffing: Cooked pork, cooked white rice, soy sauce and chopped onions.
Spanish Rice Stuffing: Spanish rice mix, cooked ground beef and tomatoes.

Greek Stuffing: Cooked ground beef, cooked brown rice, minced garlic and a squeeze of lemon.

Spaghetti Squash Casserole

To prepare: pierce with a fork. Immerse in boiling water, cover and simmer 30-45 minutes or until surface gives to pressure. Turn occasionally for even cooking or pierce, place on a cookie sheet and bake at 350 degrees for 1 1/2 hours. Split squash lengthwise. Scoop out seeds and discard. Pull spaghetti-like strands free with a fork.

Mix hot squash with 2 cups shredded swiss cheese, 2 T. margarine and salt and pepper to taste. Place mixture in a greased 1 1/2 quart casserole. Bake at 350 degrees for 15 minutes, or until heated through. May be prepared in skillet using low heat to heat thoroughly, add cheese when ready to serve.

No Coconut Pie

1 baked 9" pie shell
3/4 C. half and half or whipping cream
2 eggs, well beaten
1/2 tsp. coconut flavoring
1/2 C. sugar
1/2 tsp. salt
2 C. cooked spaghetti squash, strands cut into short pieces

In a 4 cup glass measure or batter bowl, measure milk, stir in cream, eggs, salt and well. Pour into prepared pie shell. Sprinkle with grated nutmeg, if desired. Elevate on microwave roasting rack or overturned saucer. Microwave at 50% until knife inserted halfway between center and outside edge comes out clean, about 15-18 minutes, rotating as needed. Turn oven off. Cover with foil and let stand until cooled. Conventional Oven Baking: Prick the bottom of pie crusts and bake in a 450 degree oven for 10 minutes. Pour filling in crust. Bake at 350 degrees for 35 to 40 minutes.

Low Calorie version: Substitute skim milk for cream and 1/2 cup egg substitute for eggs. Omit pie shell and pour into lightly sprayed glass pie plate. Proceed as directed above.

Mt. Vernon Drive-Thru Pharmacy BACK-TO-SCHOOL SALE

CARPET KLEEN! The best in stain and carpet cleaning. Free Estimates. Call Lloyd Graham, 256-5536. ntf

WANTED: Dozer work. Ponds, yards, etc. See Raymond Bullock on Nigger Creek or call 256-4454. 16xmf

Thomason Scrap Yard: Now buying aluminum cans, copper, radiators, sheet aluminum, cast aluminum, scrap metal and junk cars. Also selling rebuilt batteries, starters and alternators. Call for prices. Ph. 256-2381. 45xmf

Building, Remodeling and Repair Work done at reasonable rates with quality results. For free information, call 256-2381 after 5 p.m. or see Deniz R. Allen. ntf

Notice: Lawnmower Repair. Also, buy, trade and sell used lawn mowers. Edgar Bryant, Red Hill Road, 453-9213. 50x8

NOTICE: B.S. Ceramics Shop will

crete work, etc. Free estimates. Call 606-864-9030. 1x4

Kirby's Upholstery is offering 25% discount on all fabrics and vinyls plus 10% more discount to senior citizens. Call 256-4130. 1x2p

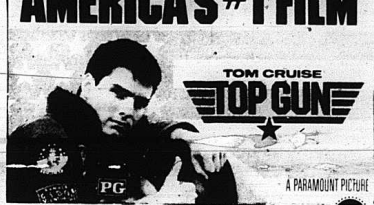
Bullock's Shoes and Thrift Store. We have service station uniforms, good clothes and shoes at prices you couldn't believe. 1x2p

Carpentry Work, Remodeling, roofing, wallpaper, painting, con-

Concrete Work, all types - sidewalks, patios, driveways, old concrete repaired and replaced. Free estimates. 256-3384 or 986-1222 after 6 a.m. 1x4p

Richmond Drive-In 4 Miles South On U.S. 25 623-1718

Adm. \$2.50 each-Kids FREE - Starts at Dusk Friday



and "April Fool's Day" R

Hensley's Used Cars

- 1979 Oldsmobile Cutlass, V8, Automatic, 1,995.
- 1979 Pontiac Bonneville, V8, Auto, 4 Dr., 2,085.
- 1979 Chevrolet Malibu, 4 Dr., V8, Auto, 1,495.
- 1978 Mercury Monarch, 2 Dr., 6 Cyl., Auto, 1,195.
- 1977 Chev. Malibu, 2 Dr., V8, Auto, 1,195.
- 1976 AMC Gremlin, 6 Cyl., Auto, 795.
- 1974 Ford T-Bird, V8, Automatic, 495.
- 1977 Plymouth Volare SW, V8, Automatic, 595.
- 1974 Chev. Malibu, V8, Auto, 2 Dr., 595.
- 1976 Ford Granada, V8, Auto, 4 Dr., 595.
- 1978 Pontiac Bonneville, V8, Auto, 2 Dr., 2,395.
- 1983 Chevrolet Cavalier, 4 Cyl., Auto, 4 Dr., 4,295.
- 1974 Dodge Van, V8, Automatic, 1,295.
- 1977 Chevrolet Van, V8, Automatic, 1,895.
- 1978 Jeep Wagoneer, V8, Automatic, 4 Dr., 1,895.
- 1977 Dodge Pick-up, V8, Automatic, 1,495.
- 1977 Chevrolet Malibu, V8, Automatic, 4 Dr., 595.
- 1972 Jeep Commando, V8, Automatic, 495.
- 1977 Chev. Pick-up, V8, Automatic, 395.
- 1983 Ford Pick-up F150, V8, Automatic, 5,495.
- 1978 Mercury Marquis, V8, Automatic, 4 Dr., 795.
- 1974 Ford T-Bird, V8, Automatic, 295.
- 1962 Rambler, 6 Cyl., 4 Dr., 195.

Hensley's Used Cars

Rt. 2 Saltpetre Cave Rd. Orlando 256-4777

Judy's Shoe Store

New Hwy. 461 By-Pass

SALE IN PROGRESS UNTIL AUGUST 15TH

All Ladies' Dress Heels and Sandals

20% off reg. price

Boys' Low-Top Nike To size 8 \$21 pr.

Little Boys' Converse Reg. \$39 NOW \$29

Men's High-Top Converse Reg. 59 NOW \$47

Men's Low-Top Converse Reg. 46 NOW \$38

Converse Cheerleading Shoes

Reg. \$52 NOW \$35

[With special price for ballplayers and cheerleaders]

Ladies' Tennis Shoes Pr. \$5

Happy 50th Birthday

William K.

From Your

Loving Family

REAL ESTATE FOR SALE

Mint Condition, 3 Bdrm. Brick w/Double Garage - In addition to a lovely decor, other amenities include liv. rm., dining rm., kitchen w/brk cabinets, range, refrigerator, dishwasher, breakfast area, utility rm., laundry rm., w/washer & Dryer, 1 1/2 baths, radiant heat, central A/C, partial basement, 2 porches, beautiful lawn w/mature shade trees, shrubs, double paved drive, ideal for retirees or growing family. Near Mt. Vernon Elementary School in nice neighborhood. \$76,500.

62 Acre Farm - Home w/3 Bdrms., 1 1/2 Baths, Basement. Other amenities include family rm., living rm., dining kitchen, electric heat, also woodburning stove, 2 good barns, silo, 2800 lbs. tobacco base, privacy, city water. Would consider land contract. Bardin Ridge, \$100,000.00.

3 Bedroom Brick w/Basement, Heat Pump, Central A/C - Nice dining/kitchen, living room, 2 baths, carpet, woodburning stove, large lot in Countryside Estates, near town/in industrial park. Price negotiable.

2 Bedroom Colonial - 32 Acres - Large living room, w/complete ceiling, kitchen area, 4 built-in bunks w/mattresses, large Franklin stove, w/cabernet, brick Hill Road. \$22,500.

One of Mt. Vernon's Nicest Homes - Beautifully decorated with formal living room w/wireplace and dining room, den, kitchen w/wherry cabinets and breakfast area on first floor. 3 bedrooms, den and more on second floor. 1 1/2 baths, electric heat, garage, fenced backyard. Walk to school, churches, grocery, \$74,500.

House, Pool, Garage, Approx. 2 Acres. Owner Financing - There's also a nice kitchen w/brk cabinets, range, liv. rm., 2 bdrms. - one 22' long, bath, utility rm. with w/d hook-up, nice carpet & hardwood floors, electric heat, also a woodburner, blacktop rd., 7 miles from Mt. Vernon. \$22,000.

Reduced - 3 Bedrooms - 2 Car Garage - Stone Exterior - Basement w/wood furnace, also total electric, 1 1/2 baths, living rm., family rm., wireplace, dining/kitchen w/cabinets, range, dishwasher. Numerous other assets including small tobacco base. Approx. 3 acres. Located across from Hammond's Mkt. on Hwy. 461. \$69,000.

Furnished - 2 Bedroom Home - Small Dn. Payment - Owner Financing. Has new kitchen w/wk cabinets, range, refig, cherry drop-leaf table, bath, utility rm. with w/d hook-up, fuel oil stove, nice carpet, A/C, porch, storage bldg., 3 acres, Lamero \$24,900.

3 Bedroom Brick, Double Garage w/owner. Approx. 5 Acres - Other amenities include 1 1/2 baths, dining/kitchen w/brk cabinets, dishwasher, living room, den, utility rm., patio, paved drive, landscaped, electric heat, also wood furnace, city water. U.S. 25 South of Mt. Vernon. \$49,900.

EVELENE RAINES PROPERTIES

West Main St. Mt. Vernon, Ky.

REALTOR **EVELENE RAINES, PREA**
Broker-Auctioneer Certified Appraiser
256-5811 256-5811

Clearance SALE HAMMOND'S FOOD MARKET

"Home of the Bargains" Prices Eff. Aug. 14-22 Hwy 461 - Mt. Vernon CLOSED SUNDAYS

Ground Beef Lb. **.86**

WHOLE SIRLOIN TIP Lb. **1.59**

Williams Sausage 2 Lb. Roll **2.89**

Sirloin Tip Roast Lb. **1.89**

HAM SHANKS 15 oz. Dubuque **1.89**

Shedd's Margarine Lb. **.39**

Mouthwash **1.29**

5 Lb. Martha White SR CORN MEAL **.99**

Paper Towels Page **2 / 99¢**

16 oz. R.C. Plus Bits. or Dep. **1.49**

Russet Potatoes 20 Lb. **1.99**
Bananas Lb. **.29** **Cabbage** Lb. **1.19**
Tropicana Orange Juice 1/2 Gal. **1.39**
Seedless Grapes Red or White Lb. **.79**

WE GLADLY ACCEPT USDA FOOD STAMPS

CLASSIFIED ADS

SURE TO GET RESULTS

CLASSIFIED RATES

Local Rates - 8¢ per word, minimum \$2
 Card of Thanks - 5¢ per word, minimum \$2
 In Memoriam - 5¢ per word, minimum \$2
 Display Classifieds - \$2 per inch, minimum \$3
 CLASSIFIEDS PAID IN ADVANCE
 Deadline for Classifieds is Monday at 4 p.m.

For Sale

FOR SALE: Farm, 16 acres, more or less. Some cleared. Plenty young timber and coal. No buildings. In Blue Springs near Hill Dr Cemetery. Call 256-4659 or 758-8458. 524p

FOR SALE: House on 2 acre level lot in Broadhead city limits. City water and sewer, w/d hook-up, 2 bedrooms, kitchen, bath, utility room, living room. Walk to town or church. Heats for \$350 per winter. Good starter or retirement home. Room for expansion. 2 outbuildings. Call 758-8932 after 6:30 p.m. or see Larry LaFavers. 52xmf

FOR SALE: Good building lots near Mt. Vernon Elementary School. Contact Jack or Judy Lawless. 256-4796. 33xmf

FOR SALE: 20 acres, m/l, excellent water supply, house needs repair, good timber, possibility of coal. Located on Rt. 1004, Orlando. Call 1-513-885-5827. 50x4

FOR SALE: 3 bedroom brick house with 2-car port, fully carpeted, large living room, washer/dryer hookup, located on 1 1/2 acre lot. Also has 24x32 foot concrete block garage, wired for 220. Approx. 1/2 mile to Rt. Broadhead. Fine city limits on Rt. 1326. Has city water and cable. Ph. 256-2831. After 4:30 p.m., call 758-8401. Russell Houk. 51xmf

FOR SALE: Mobile home and lot on Floyd St. Home is 12x50 with concrete front porch and chimney. Lot 60x150. \$10,000. 14xP

FOR SALE: 16 acres on St. Rd. 1004, 1/2 mile from US 25, city water available, convenient to everything. Call 256-4540. 1xmf

FOR SALE: 10x60 trailer with tip-up roof and tip-up living room. Also 18x6 ft porch. In Mt. Vernon. Ph. 256-5354. 1x2p

FOR SALE: To Settle Estate:

12x60 two bedroom. SERIOUS CALLS ONLY. \$2700 Firm. 1-986-3566. Located at Lot 64, Phillips Trailer Court, Berea. Or call 256-5993 no (no collect calls, please). 14xP

Motor Vehicles

FOR SALE: 1974 Peterbilt cab-over, 350 Cummins engine, \$9,500. Also, 1969 Chevrolet Pickup, \$450. Don Hopkins, 758-8391. 52xmf

FOR SALE: 1983 Datsun, gold, 280Z, 5 speed, T-Top. Loaded. Ph. 256-3156 after 5 p.m. Asking \$10,900. 2x1p

FOR SALE: 1984 Olds Cutlass Supreme, 25,000 miles. Clean. Call 256-2059 after 6 p.m. 2x1

FOR SALE: 1964 1/2 ton pickup, white, spoke wheels, good tires. 1975 motor and transmission. \$900 or best offer. Can be seen at old Smith farm on Brindlee Ridge near lake. 2x1p

FOR SALE: M-54 John Deere tractor with plow, \$1000. 55-gallon drums, 8-inch concrete blocks, small Warm Morning stove. Call 256-5467 before 9 p.m. 2x1p

FOR SALE: 1980 R.M. 400 dirt bike with motor, just rebuilt, \$650. 1973 Chevelle, runs good, \$450. 256-5737. 2x1p

Miscellaneous

BIG DISCOUNTS on Ashley Wood-Heaters and Inserts at Wildlife General Store through August. Ph. 256-2349. 48x8

McMahon Campbellville Cheese and Oak Furniture. Have lots of merchandise 20% off all times. Teresa's Antiques & Art Gallery, Berea, Ky., Prospect Street. 601-2777. 33xmf

Grave Markers and Monuments. In stock at all times. McNew

Monument Sales, U.S. 25, 4 miles north of Mt. Vernon. Ph. 256-2322.

FOR SALE: Hay and straw, also riding hoas - western and walking. Ph. 758-8363. Stephen Trebilo. 1x2

POLE BUILDINGS: 30'x40' or save, one 10'x6" end slider on one walk door, painted steel roof and sides, completely erected, tax included, \$4,995. Other sizes available. Blutz Builders, Inc. 1-800-428-4039. 14xP

FOR SALE: Real good boat trailer. Call 256-5791 evenings or 256-2318. 2x1

FOR SALE: A 12 grave burial plot in Piney Grove Cemetery. \$600. Ph. 606-854-6552. 2x1p

FOR SALE: 7 pc. living room furniture. Priced at \$350. Can be reached at 256-5928 after 6:30 p.m. 2x1

FOR SALE: Like new 26" girls' 3-speed bike, \$60. Girls 26" regular bike, \$30. Call 758-8695 or 758-8466. 2x1

FOR SALE: Tobacco presses, \$95. Lloyd Cain, 256-2789. 2x2

Yard Sales

YARD SALE: Aug. 15 and 16, Fri. and Sat., 9 a.m. - 1 p.m. 3 mi. on Hwy. 1250, home of Terri Sower, lots of toddler fall and winter clothes, coats [24 mos.], shoes, toys, lots of other things. Cancelled in case of rain. 2x1

YARD SALE: Aug. 15 and 16 at Willalla at the home of Jolen Sowers. Lots of toddler fall and winter clothes, coats [24 mos.], shoes, toys, lots of other things. Cancelled in case of rain. 2x1

YARD SALE: In Brodhead at the home of Patsy Fletcher. Sat., Aug. 16, 10 to 7 Books, baby clothes. 1x1

YARD SALE: Mt. Vernon Elementary School. Sat., Aug. 15. Lots of everything. Priced cheap to sell. 9 to 4. 2x1p

YARD SALE: At the home of Hettie Coon on Fairground Hill. Friday, Aug. 15 and Sat., Aug. 16. 2x1p

YARD SALE: On Crawford Lane and Wood Sts., behind the Elementary School. Lots of dishes and clothes and odds and ends. Thurs. and Fri. 2x1

YARD SALE: Friday and Saturday, 3 family at the home of Ralph McClure off Hwy. 70 on Willalla. In Green Rd. Lots of kids' clothes, boys sizes 2 and 3, girls' sizes 6, 7 and 8, toys and furniture. 2x1

Doug Owens
 Backhoe & Bulldozer Service
 Septic Systems
 Water Lines
 Dump Truck Hauling
256-5701
 1x4

FOR SALE
 Reconditioned Used Appliances
 Washers, Dryers, Etc.
 Richmond
 623-2701
 50x4p

Don's Plumbing Repair
 QUALITY WORK
 REASONABLE RATES
256-3159

Got Termites? Got Roaches?
Madison Termite & Pest Control
 For VA & FHA Inspections, Call Paul Burton
 256 2318 Mt. Vernon Day or Night
 WATER BUGS, ROACHES & SILVER FISH

TOO LATE TO CLASSIFY
FOR SALE: Insulated camper top, priced cheap. Call 256-5297 after 5 p.m. 2x1

kinko's®
The One Stop Copy Shop for all your copy needs.

WE DO:

Resolves Flyers
 News Letters
 Passport Photos
 Binding

Type Setting
 Typing
 Rubber Stamps
 Business Cards
 Laminating

AND MUCH MORE!!!

University Shopping Center
 Eastern By Pass, Richmond
 (606) 624-0237

OUR HOURS:
 M-Thursday 8:30-7:00
 Friday 8:30-6:00
 Saturday 10:00-5:00

Take the worry out of buying a used vehicle with our 24 Mos. Warranty now available.

Dwayne's Cars & Trucks
 U.S. 25N 986-8489 Berea
 Hours: Monday-Friday 8 a.m. to 6 p.m. Sat. 8 a.m. - 5 p.m.
 Sunday 1 to 5
DWAYNE BRINEGAR, OWNER
 Ernest Soward, Salesman

11.9% APR
 Financing for Qualified Buyers

We are also a franchised dealer for
U-Save Auto Rental
 \$18.95 per day plus mileage

86 Camaro IROC Z-28
 T-Tops, Super Sharp!!
 Only 9,800 miles.
 Save

84 Olds Cutlass Supreme, 2 Dr., Auto, AC, Tilt, Cruise, Only \$6,995 Sharp!

82 Chev. Silverado PU, LWB, Fiberglass Camper Top, Auto, PS, AC, Tilt, AM/FM Stereo, Rally Wheels, Extra Sharp!!

84 Ford Ranger Explorer, Auto, PS, bed liner, low miles!!

85 Ford, 15 pass, window van, auto, PS/PB, Dual A/C, Tilt, Cruise, Like New!!

CARS

1986 Chev. Camaro IROC-2, 2 Dr., V8, Auto, A/C, T-Top, AM/FM Stereo Cassette, Red, Super Sharp!!
 1985 Chev. Chevette, 4 Cyl., Auto, AC, AM/FM, Tilt, Cloth Int., Brown, low miles, Only \$4,995.
 85 Chev. Chevette CS, 2 Dr., Auto, PS, Tilt, Rear Def., Stereo, Cassette, Cl. Int., Gold, \$4,995.
 1986 Pontiac Bonneville, 4 Dr., V6, Auto, AC, Cruise, AM/FM Stereo Tape, Dk. Grey
 1985 Chev. Monte Carlo, V6, AC, Tilt, Cruise, White, Like New!!
 1984 Chev. Celebrity, 4 Dr., V6, AC, White, Like New, Only \$5,995.
 1984 Olds Cutlass Supreme, 2 Dr., V6, Sable, Sharp, Only \$6,995.
 1984 Olds Cutlass, 2 Dr., Loaded, White, Like New!! Only \$7,995.
 1984 Pontiac Bonneville, 4 Dr., V6, Auto, AC, Tilt, Cruise, Maroon
 1984 Pontiac Phoenix, 5 Dr., HB, 4 Cyl., Auto, AC, Tilt, Stereo Tape, Blue
 1983 Chev. Camaro Z-28, V8, T-Top, Loaded, Black, Sharp!!
 1983 Chev. Malibu Wagon CL, 6 Cyl., Air, PW, Black, Only \$4,995.
 1982 Pontiac Trans AM, V8, Loaded, Black, Sharp, Low Miles!
 1982 Chev. Impala, 6 pass, wgn, 8 Cyl., Blue, Auto, PS/PB, AC, save
 1982 Pontiac LJ Gran Prix, V6, AC, Black T-Tops, Sharp!!
 1981 Plymouth Horizon TC3, AC, 4 Cyl., Stereo, Green, Auto, \$2,495.
 1979 Ford LTD Landau SW, 8 Cyl., Gray
 1980 Chev. Monza, 2 Dr., 4 Cyl., Silver, AC, \$1,995.
 1980 Ford Fairmont, 2 Dr., Auto, PS, AC, Only \$2,995.
 1980 Ford T-Bird, V8, Fully Loaded, Bronze/White, Extra Clean!!
 1979 Dodge Magnum, 8 Cyl., AC, Auto, Blue/White, Nice Car!! \$1,995.
 1978 Toyota Celica, 2 Dr., 4 Cyl., AC, AM/FM, sunroof, white
 1978 Chev. Monte Carlo, V8, Silver/Maroon, Auto, AC, \$1,295.
 1978 Chev. Camaro, Customized, Auto, AC, 2 Four Barrels, FAST!!
 1972 Cadillac Sedan DeVille, 4 Dr., Only 32,000 miles

TRUCKS

1984 Ford Ranger, LWB, 4 Cyl., Auto, PS, Stereo, Bed Liner, Rally Wheels, Moon Roof, Red, Like New!!
 1984 Dodge, 1/2 Ton PU, 6 Cyl., Auto, Beige/Brown, Only \$5,995.
 1982 Chev. Silverado, Loaded, Camper Top, Red/White
 1980 Ford F150, LWB, 6 Cyl., Red, Auto, Nice!!

VANS

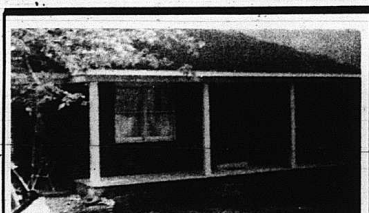
1985 Ford E250XL, 15 pass, window van, hv, dual ac, tilt, cruise, white, low mileage
 1980 Chev. Panel Van, V8, PS, White, Only \$2,495.

4X4

1984 GMC S-15 Sierra, Air, AM/FM, Tape, Sport Wheels, 27,000 miles, Silver

Cheap Cars & Trucks

1980 Chev. Chevette, 2 Dr. \$995
 1978 Ford, 2 door \$995
 1976 Pont. Sunbird, 2 Dr., Auto, AC \$695
 1978 Chev. Monza, Auto, 2 Dr. \$695
 1974 Triumph Spitfire Convertible \$1,495
 1974 Dodge Sport, 2 Dr., V8, Auto \$995



Mini-Farm: Nearly 10 acres with 3 year old brick, 4 or 5 bdrm., 10,10x5 mobile home with full hook-up, barn, tobacco base, blacktop at Copper Creek.

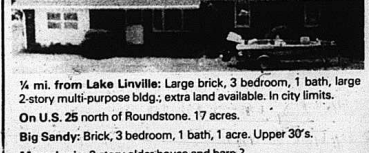
Farm on Scaffold Cane Rd. 1 mile from Roundstone School, approx. 40 acres, exceptionally large barn, 80x96 with 1 3/4x36 concrete floor garage area, tobacco base, well lighted and equipped stripping room, large pond, everlasting spring, flat and rolling with most beautiful view.

Live Cheaply with your own water system and plenty of firewood for the stove. A big cool carport for your swing and your car. Three acres to roam over. Privacy! Privacy! For about what you would pay for a new car. Can't be true.

Fairview - 41 Acre Farm with large farm house, two ponds, timber, very private. In 40's.

One More Lot available on Lake Linville.

Near Conway a two **SOLD** with central heat, city water and bath, plus over 6 **SOLD** for less than \$12,000.



1/2 mi. from Lake Linville: Large brick, 3 bedroom, 1 bath, large 2-story multi-purpose bldg.; extra land available. In city limits.
 On U.S. 25 north of Roundstone, 17 acres.
 Big Sandy: Brick, 3 bedroom, 1 bath, 1 acre, Upper 30's.
 Macedonia: 2 story older house and barn.

Don Foster & Associates
 Better Homes and Gardens
 256-2657 or 986-8401

Notices

NOTICE OF INTENTION TO MINE WITHIN 100' OF A PUBLIC ROAD
Pursuant to application number 902-6000

In accordance with the provisions of KRS 350.055, notice is hereby given that BenLe Coal Corporation, P.O. Box 41, Middleboro, Kentucky 40965, has filed an application for a permit for a lower coal processing facility affecting 4.95 acres located within the city limits of Livingston in Rockcastle County. The proposed facility is approximately 0.2 miles south from KY 490's junction with US 25 and located 0.1 miles west of Roundstone Creek. The latitude is N37 degrees 17'41". The longitude is W84 degrees 12'51".

The surface area is owned by Seaboard Coasting. The proposed facility is located on the Livingston U.S.G.S. 7 1/2 minute quadrangle map. The operation will affect an area within 100 feet of public road US 25. The operation will not involve relocation of the public road N/A.

The application has been filed for public inspection at the Department for Surface Mining Reclamation and Enforcement, London Regional Office, Regional State Office Building, London, Kentucky 40741.

Written comments, objections or requests for a permit conference must be filed with the Director of the Division of Permits, 6th Floor, Capitol Plaza Tower, Frankfort, Ky. 40601. 2x4

Rockcastle Satellite Sales & Service
Complete satellite systems installed. Service and update existing systems.
CHARLES MILLER
256-5322

FLOWERS For All Occasions
from the **Hobby Shop**
Conway, Ky.
Hours: After 3 p.m. Weekdays All Day Saturday & Sunday
Call 256-4023
Mrs. Billy Ramsey

Hopkins Garage
Hwy. 70 606-758-9261
Owned by Dee Hopkins
Operated by Frankie Ashcraft
Oil Change \$12.95
Front Pads Installed \$23.95
Generator 4-Sale
100% Disc. to Senior Citizens & Church Buses
MECHANIC ON DUTY
1x1p

Now Hiring House of Lloyd
Toy Party Demonstrators
Free Training & Samples to Show
No investment, collecting or delivery. Details with no obligation.
Call Janette
606-758-8578
5x4

Dr. Gary E. King
Optometrist
Complete professional eye examinations
Sears Building 256-3314
Monday and Thursday
Glasses & Contact Lenses Medical Cards Accepted

The House Mechanic
Building the New--
Remodeling the Old--
Repairing the Broken--
Kitchen, Family Rooms, Bath, Additions, Etc.
JACK WREN
Free Estimates 256-5338

HENSLEY'S USED CARS
Salt Peter Cave Road
Hwy. 1004 Rt. 2
Orlando, Ky. 256-4777

WE BUY ALUMINUM CANS

Central Metal Co.
Hwy. 421, Berea - 1/2 mi. west of I-75
We also buy copper, brass & Radiators
Call us at 606-986-1185
Open Monday thru Friday 8 a.m. to 4:30
Closed Saturday and Sunday

Classifieds get results

GOSPEL MEETING at Chestnut Ridge Church of Christ, 2 miles south of Mt. Vernon beginning Aug. 18-24 at 7:30 each evening. 10 a.m. Sunday. Bro. Dennis E. Smith will be preaching 2x1p

NOTICE IS HEREBY GIVEN THAT Mary S. Rogers has filed a Final Settlement of her accounts as Executrix of the Estate of Alfred B. Rogers, deceased. A hearing on said settlement will be held on August 11, 1986. Any exceptions to said settlement must be filed before said date. 5x2c

NOTICE: I would like to do housecleaning and carpet cleaning. Have references. 256-3136. 2x2

POSTED: No hunting or trespassing (especially at night) on the property belonging to Ruth Helton, located at Pine Hill. 2x4p

NOTICE: EKU's extension class 211 World Literature will hold their 1st session on Aug. 25th at 6 p.m. at the hospital. 4x1

NOTICE: The Johnson-McNew-Doolery reunion will be held at the old homeplace on Cove Branch on August 17th.

NOTICE: Irene's Fabric Shop will be opening a bundle of material outside Saturday, Aug. 16th at 12 noon if weather permits. In case of rain, we will postpone until the next Saturday. So, come on down and enjoy your self. Also, I do quilting by commercial quilting machine. Ph. 256-5279. 2x1p

REWARD OFFERED: Any information leading to the whereabouts, either dead or alive, of a black and brown bulldog and St. Bernard answering to the name of Pooch, belonging to Clinton Thompson. He is believed to have been shot because a shot was fired at Clinton and Pooch while jogging. Please call any information to 758-4160. 2x1p

Notice is hereby given that Rita Chasteen has filed a final settlement of her accounts as administratrix of the estate of Timothy D. Chasteen, deceased. A hearing on said settlement will be held August 18, 1986. Any exceptions to said settlement must be filed before said date. 1x2

Notice is hereby given that Doris Hooker has filed a final settlement of her accounts as Executrix of the estate of Woodson Hooker, deceased. A hearing on said settlement will be held on August 18, 1986. Any exceptions to said settlement must be filed before said date. 1x2

NOTICE: The City of Livingston will hold its monthly meeting Thursday, August 14 at 7 p.m. Discussion will be about the disbursing of money to repair in the city. Public urged to attend. x1

NOTICE: Is hereby given that Donald Gatliff, Rose Court, Lot 3, Berea, Kentucky, has been appointed Administrator of the estate of Ollie Gatliff. Any persons having claims against said estate shall present them, verified according to law, to the said Virginia Johnson or to Clontz & Cox, P.O. Box 749, Mt. Vernon, Ky. on or before December 29, 1986. 51x3

NOTICE: Is hereby given that Virginia Johnson, Rt. 2, Box 445, Mt. Vernon, Ky. 40456, has been appointed Administratrix of the estate of James Boyd Johnson. Any persons having claims against said estate shall present them, verified according to law, to the said Virginia Johnson or to Clontz & Cox, P.O. Box 749, Mt. Vernon, Ky. on or before December 29, 1986. 52x3

NOTICE: Is hereby given that James Arnold, Jr., Rt. 4, Mt. Vernon, Ky. 40456, has been appointed Executor of the estate of James Bradley Arnold. Any persons having claims against said estate shall present them, verified according to law, to the said James Arnold, Jr. or to Lambert & Lambert, P.O. Box 736, Mt. Vernon, Ky. 40456 on or before October 27, 1986. 52x3

POSTED: No trespassing on land belonging to Calvin Barnett on Dug Hill Road. Violators will be prosecuted to the full extent of the law 52x3

PUBLIC NOTICE
On July 3, 1986, Virginia M. Daugherty, III, filed with the Federal Communications Commission an application for construction permit for a new commercial FM station to be licensed to Mt. Vernon, Kentucky. The station will operate on channel 275A with 3 kw ERP at 100 meters above average terrain. The transmitter site is located 1/2 mile south of Quail, Ky., off Hwy. 70. The main studio will be located within the city limits of Mt. Vernon. The applicant is a sole proprietor. A copy of the application and related materials are available for public inspection during normal business hours at the Mt. Vernon Public Library. 52x3

POSTED: No hunting or trespassing on land belonging to Leonard Reese on 25 at Roundstone. Not responsible for any accidents. 50x10p

NOTICE: I will not be responsible for debts made by anyone other than myself. Lester M. Carpenter. 1x3p

EMPLOYMENT NOTICE: The Rockcastle County Fiscal Court is receiving written applications for mechanic until 1 p.m., August 21, 1986. Must have experience in mechanical labor and furnish own tools. Hourly rate of pay will be \$4.75. Effective date of hiring will be Sept. 2, 1986 at the regular meeting of the fiscal court. 1x2

PUBLIC NOTICE
On July 7, 1986, an application was filed with the Federal Communications Commission in Washington, D.C. by George L. Hunt and Pauline C. Hunt d/b/a Rockcastle Broadcasting, seeking a construction permit for an FM station on Channel 275A at Mt. Vernon, Kentucky. The applicant proposes a transmitter location at Bowling Ridge, 2 miles west of Brodhead, Kentucky, a transmitter power of 3 kilowatts, an antenna height above average terrain of 328 feet and a studio location within the city limits of Mt. Vernon. A copy of the application, amendments and related materials are on file for public inspection at William D. Gregory's law office, Main Street, Mt. Vernon, Kentucky. 2x3

Dowell & Martin
OBITUARY LINE
256-2997
Recorded Obituary Information

DAVID'S TIRE CENTER
HWY 150 BRODHEAD, KY.
Truck Tires Car
CHECK OUR PRICES.
New, Used and Retreads
Hwy. or Snow Tread
TRUCK TIRES FIXED
Farm Tractor Tire Repairs at shop or on farm.
Free Mounting and Balancing on all new tires (large trucks not included).
24 Hr. Wrecker Service Batteries Starting at \$23
David Thompson, Owner - Operator
Bus. 758-8521 Home 256-4608

Gail's Florist & Gifts
West Main St. Mt. Vernon
Flowers for all Occasions
Call 256-GAIL
(606 256-4245)

WILSON'S FURNITURE
679-7000
"Name Brand Products for Less"
Catalog Merchandise Friday Night AUCTIONS
Open 9 to 5 Monday - Friday 9 to Noon - Saturday
North Highway 27 Somersett, Ky.

Save Money!
If you want to save money and get a quality home in great condition, then don't miss this one! Priced to sell, this house features large living room with hardwood floors, 3 bedrooms and is sitting on a large fenced-in lot. Located close to Berea. Priced at \$38,000.
Call Phil Mallicoate 986-1250
or Neureul Miracle 256-2657
Don Foster & Associates/Better Homes & Gardens

NEW - Appliance Repair
SONNY'S REPAIR SHOP
Church Str. Phone 256-5022
[NEXT DOOR TO STATE FARM INS.]
WASHERS DRYERS
SMALL APPLIANCES
"Will Make House Calls"

DEE HOPKINS CONSTRUCTION
The Total House Doctor Special!!
50% Discount on Seamless gutters, Downspouts & Shutters on Re-Roof or Siding Work.
Remodeling work of all kinds
*Room Additions
*Baths & Kitchens
*Garages
*Masonry Work
*Siding - Aluminum, Vinyl (colors available)
*Storm Windows & Doors
*Downspouts & Gutters
LIFETIME WARRANTY ON VINYL SIDING
Attention: Senior Citizens & Churches
1% Discount on all work Year Around
Try our prices before buying. For free estimates, call
Dee at 606-758-9261
Route 1, Box 224, Brodhead, Ky.
20 YEARS EXPERIENCE

DECORATOR CAKES
Will Bake Any Kind of Cake For You
Margaret Owens
256-5533

Septic TANKS
Parking Blocks-6'
JACK'S Concrete Tanks
Ph. 256-4363
256-2580 after 5 p.m.
SEPTIC TANKS
Sales and Service
750 Gal. - 1,000 Gal.
Distribution Boxes
1,000 Gal. Water
Distribution Tanks

"See me for all your family insurance needs."
STATE FARM INSURANCE
Bill Bailey
Agent
Church St.
Mt. Vernon, Ky.
256-2119
Like a good neighbor, State Farm is there.
State Farm Insurance Companies • Home Offices, Bloomington, Illinois

Results of 4-H Division at Fair

Sixty project entries were submitted by 4-H'ers at the Brodhead Little World's Fair. Many of the items will be shown at the Kentucky State Fair August 14-23.

Entries in the Brodhead Fair were as follows: (Those marked with an asterisk will be sent to the State Fair.)

Peanut Butter Cookies: Willy Witt, Blue C; Tracy Todd, Blue C; and Dreama Cummins, Blue C.

Plain Muffins: Maria Coffey, Red; and April Kendrick, Blue C.

Orange or Cheese Biscuits: Anita Souder, Red; and April Kendrick, Blue C.

Cornmeal Muffins: Jerry Makin, Blue C; and April Kendrick, Red.

Biscuits: Jerry Makin, Blue; Kathy Howard, Red; Alison Souder, Blue; April Kendrick, Blue C; and Dreama Cummins, Blue C.

Quick Bread: Cindy Witt, Blue C.

Yeast Rolls: Marilyn Coffey, Blue C.

Yeast Bread: Willy Witt, Blue C.

Photography (4 divisions): April Kendrick, (all blue C).

Crewel, Needlepoint or Embroidery: Kathy Howard, Blue; and Alison Souder, Red.

Cross Stitch: Robyn Shivel, Blue C.

Weaving: Cindy Witt, Blue; Painting: Beverly McClure, Blue.

Ceramics, stained: Anita Souder, Blue; and Carla Whitaker, Blue C.

Ceramics, glazed: Alison Souder, Blue; and Carla Whitaker, Blue C.

Lamp Kit: Jerry Makin, Blue; Curtis Makin, Blue; Willy Witt, Red; Regina Collins, Blue; Tracy Todd, Blue C; April Kendrick, Red; and Adam Vanzant, Red.

Woodcraft Kit: Willy Witt, Red; Jerry Makin, Red; Regina Collins, Blue; and Janet Collins, Blue.

Adornment (Iron Hill): Alison Souder, Blue C; Regina Collins, Red; and Janet Collins, Blue.

Sweet Corn: Alison Souder, Blue; and Bonnie Sigmon, Blue C.

Beans: Jerry Makin, Red; Kathy Howard, Blue; Alison Souder, Red; Anita Souder, Blue; Janet Collins, White; and Carla Whitaker, Blue C.

Tomatoes: Willy Witt, Red; Cindy Witt, Blue C; Jerry Makin, Blue; Alison Souder, Red; April Kendrick, Red; Bonnie Sigmon, Red; Adam Vanzant, Red; Dreama Cummins, Red; and Charlie Cameron, Red.

Peppers: Kathy Howard, Blue; Marilyn Coffey, Red; Carla Whitaker, Blue; Adam Vanzant, Red; Dreama Cummins, Blue; and Charlie Cameron, Blue C.

Largest Cabbage: Jerry Makin, Red; Shana Donovan, Blue C; Alison Souder, Blue; Dreama Cummins, Blue; and Charlie Cameron, Blue.

Largest Tomato: Jerry Makin, Blue; Marilyn Coffey, Red; Carla Whitaker, White; Adam Vanzant, Red; and Charlie Cameron, Blue.

Largest Pumpkin: Bonnie Sigmon, Blue C; Charlie Cameron, Blue C; Jerry Makin, Blue C; and April Kendrick, Red.

House Plants: Jerry Makin, Blue; Regina Collins, Blue; Janet Collins, Blue; Dreama Cummins, Blue C; and April Kendrick, Red.

Entomology: Jennifer Clark, Blue C; and April Kendrick, Blue.

Geology 1: Willy Witt, Blue C.

Clothing 1: Marilyn Coffey, Red.

Clothing 2: Tracy Todd, Blue C.

Clothing 3: Regina Collins, Blue C.

Clothing 4: Kathy Howard, Red; Jennifer Clark, Red; and Tom Connor, Blue.

Clothing 5: Larissa Hayes, White; Jerry Makin, Red; and April Kendrick, Blue.

Casual Wear: Shana Donovan, Blue; and Beverly McClure, Red.

Coordinates: Cindy Witt, Blue C.

Dress Up: Beverly McClure, Blue.

Junior Crochet: Kathy Howard, Blue; and Larissa Hayes, Blue C.

Throw Pillows, Placemats, or Wall Hanging: Shana Donovan, Blue C; Alison Souder, Red; Anita Souder, Red; Larissa Hayes, Red; Regina Collins, Blue; Janet Collins, Blue; and April Kendrick, Red.

Home Accessory: Cindy Witt, Blue C; Shana Donovan, Blue.

Regina Collins, Red; and Janet Collins, Red.

Canned Fruit: Regina Collins, Blue C; and Janet Collins, Blue.

Canned Vegetables: Dreama Cummins, Blue C.

Pickles or Relish: Kathy Howard, Red; Regina Collins, Blue; Janet Collins, Blue C; and Dreama Cummins, Red.

Jelly or Preserves: Kathy Howard, Blue; Shana Donovan, Blue; Adam Vanzant, Blue; and Dreama Cummins, Blue C.

Tobacco: Dreama Cummins, Blue; Carla Whitaker, Red; and Marilyn Coffey, White.

Alfalfa Hay: Dreama Cummins, Blue; Carla Whitaker, Red; and Bonnie Sigmon, White.

Mixed Hay: Dreama Cummins, Blue; Carla Whitaker, Red; and Bonnie Sigmon, White.

Alfalfa/Grass Hay: Bonnie Sigmon, Red; and Carla Whitaker, Blue C.

Field Corn: Carla Whitaker, Blue C.

"STATE FAIR"

[Cont. From 5]

about 200 fair employees. Collins thanked them for their work and asked for their support in making this year's fair a success.

"You are an ambassador for Kentucky," Collins told the workers. "You are going to create an image for Kentucky, and you are going to make this a tremendous year for the Kentucky State Fair."

The fair, which runs through Aug. 23, will offer an extensive entertainment schedule, much of it free. Several new features have been added this year, including nightly fireworks shows and a high-tech center where Kentucky companies will display new advances in science and technology.

Although the opening-day ceremonies are in the evening, many of the fair's attractions will open at 10 a.m.

"We're encouraging everyone to come out to the Kentucky State Fair," Collins said. "Anyone who doesn't will miss a lot of fun and excitement."

"BRODHEAD"

[Cont. From 6]

Weekend visitors of Mae and Walter Doan were Judy Walker of Springboro; Ohio; and Miss Sonya Lunsford and their granddaughter of Lawrenceville, Ga. and Mr. and Mrs. Paul Lunsford.

In last week's Brodhead news of the Doan family who visited me and attended the reunion, there were three names omitted, Eddie Quinn and son Michael of Louisville and Glen Douglas Quinn Brown and family of Mt. Vernon, sorry about the error.

Walter and Mae Doan and Judy Walker were in the Pongo and Buffalo Community Saturday viewing the beautiful scenery.

Viola Hensley, Walter and Mae Doan were in Somerset Saturday shopping.

Mrs. Judy Walker, of Springboro, Ohio, visited her mother Maggie Fletcher, Audrey, Charles and Patsy a few days last week. She also visited Mae and Walter Doan.

Mrs. Judy Walker and Maggie Fletcher visited Mrs. Mary Francis Roberts Friday afternoon. Clarence Fletcher of Vandalia, Ohio and Will Walker of Springboro, Ohio also were weekend visitors of the Fletchers. Enroute on their way home Sunday they attended the Hammonds reunion at Cumberland Gap, Tenn. which is the family of Maggie Hammonds Fletcher.

"CITY COUNCIL"

[Cont. From Front]

King had hoped to have an extension run from the Line G to his developing subdivision, but a \$60,000 grant to extend the line was not forthcoming from the Kentucky Housing Corporation. The corporation did approve \$30,000 if King would agree to sell a third of the house he constructs in the subdivision for less than \$58,000. King declined to accept the guidelines at the meeting.

A representative of Will Linder and Associates of Berea, consultants on the city project, said the council it appeared the city had three options for King to accept the guidelines and the \$30,000 grant and complete the line to his subdivision; or, for the city to borrow about \$50,000 estimated it will take to complete the line or let King "sue" we'll see you around" and let the courts settle it.

The council then voted to have King complete the basic contract not including the line to the subdivision.

speeding near the emergency entrance to the hospital will be installed by the city. The bumps will be to the west of the entrance ramp.

"GARBAGE PLAN"

[Cont. From Front]

As mentioned under the plan, the county greenboxes will be taken away since collection will be under another arrangement, one set to be finally approved, but probably door-to-door where practical.

Once again, when the state noted that "voluntary collecting systems are usually not effective, however, with strong enforcement and education programs the system may be successful," the county responded: "Rockcastle County hopefully will be the exception, not the rule."

"SCHOOL BOARD"

[Cont. From Front]

begin for teachers this year on Aug. 18 (Monday), and for students on August 19, (Tuesday) and that students will not return to school on Aug. 20, but will go back on Aug. 21, (Thursday).

With the opening of school only a few days away the board had several items of business to go over and approve. Those items included:

employing substitute teachers, cooks, aides, bus drivers, contract haulers, and substitute bus drivers. Substitute teachers will be paid the

same as last year. A teacher who has retired from teaching and is now substituting will be paid \$40 per day. Cooks make \$4.16 an hour as do aides, while bus drivers with a full route made a base pay of \$465 a month. Lunchroom managers will be paid an extra \$2.50 a day at each school.

In other business the board voted to:

employ Doris Towery as school nurse and health coordinator at a salary of \$15,769.

approve school lunch police statement with the prices of the lunches staying the same as last year, 80 cents a meal in the grade school and 85 cents a meal at the high school.

approve Verla Scott as adult education program teacher at a salary of \$2,650 a year, Bige Towery as her supervisor and Barbara Fair as clerk.

employ school secretaries for this year, Vonnie Mink, Livingston; Jerry Nunneley, Mt. Vernon; Carol Riddle, Brodhead; Renee Burdette, Roundstone; Rebecca Perkins, high school and Retha Alcorn, special education secretary for Phyllis Bullock. Rebecca Perkins is replacing Brenda Merritt at the high school.

approve G.E.D. certificates for Donnie E. Carpenter, Danny L. Bullock, Cynthia L. Bradley, Jacqueline A. Bullock, Effie M. Linville, Darlene Lottor, Anna M. Daniel, Lottie M. Clark, Bernadette E. Still, Jennie A. Dees, Beverly Fowl,

August electric bills may show effects of July's heat

Many Kentuckians may be noticing the effects of last month's heat and humidity when they open their electric bills. Cooling needs were 27 percent greater than normal, according to unofficial

weather data for the Lexington area, and 13 percent of the 31 days of the month had high temperatures of 90 degrees F. or above.

The month of July also saw record electricity use by customers of Kentucky Utilities Company. A new summer peak of 2,406,000 kilowatts (kw) was set at 3 p.m. on July 18, according to preliminary figures. The previous summer peak was 2,399,000 kw, set on August 22, 1983.

The KU system's all-time peak remains at 2,453,000 kw, recorded on January 21, 1985.

"July 18 was a Friday," noted KU President W.B. Bechman, "and that typically isn't a peak-use day. But that was during one of the hottest periods of the month, and air conditioners were hard at work."

Bechman said that KU's system carried the heavy load without major problems other than damage from summer electrical storms. "Customers should, however, continue using electricity wisely," he added, "because of the effect increased usage has on their electric bills."

"We're always glad to help our customers make their homes more energy efficient," Bechman said. "For tips on weatherization and the wise use of electricity, interested customers should call or stop by their local KU office."

SHEPHERD'S

Home Furnishings

On U.S. 25 Midway Between Richmond and Berea

10 DAY

SELL ABRATION!

"1500 INSTANT CREDIT"

NO Money Down*

COLONIAL CHARM

with 'Today' Comfort

\$788 W.T.

FREE Matching Recliner when you purchase This Quality Sofa and Loveseat at one LOW SALE PRICE

\$788 W.T.

Living Room Suite

*Sofa *Love Seat *Matching Chair

ALL 3 PIECES \$399 W.T.

Living Room Suite

*Sofa *Love Seat *Matching Chair

ALL 3 PIECES \$599 W.T.

"BEANS" WHITE NIGHTS

\$199 W.T.

BEAT THE HEAT CLOSE-OUT

Now and Next Summer! On All Remaining Air Conditioners

KELVINATOR

Washer & Dryer BOTH PIECES \$588 W.T.

"CITY COUNCIL"

[Cont. From Front]

King had hoped to have an extension run from the Line G to his developing subdivision, but a \$60,000 grant to extend the line was not forthcoming from the Kentucky Housing Corporation. The corporation did approve \$30,000 if King would agree to sell a third of the house he constructs in the subdivision for less than \$58,000. King declined to accept the guidelines at the meeting.

A representative of Will Linder and Associates of Berea, consultants on the city project, said the council it appeared the city had three options for King to accept the guidelines and the \$30,000 grant and complete the line to his subdivision; or, for the city to borrow about \$50,000 estimated it will take to complete the line or let King "sue" we'll see you around" and let the courts settle it.

The council then voted to have King complete the basic contract not including the line to the subdivision.

"WOW! 19" Diagonal Color Television

\$299 W.T.

SHARP Orthopedic Posture

Made in Kentucky by Kentucky People!

Twin \$179.50 Set

Full \$194.99 Set

Queen \$234.99 Set

King \$364.99 Set

Bedroom Suite

Includes dresser, mirror, chair and bed. Country pine finish. Reg. 1125.00

\$688 W.T.

"Always A Friendly Welcome"

FREE DELIVERY

FREE SET UP

BETTER QUALITY

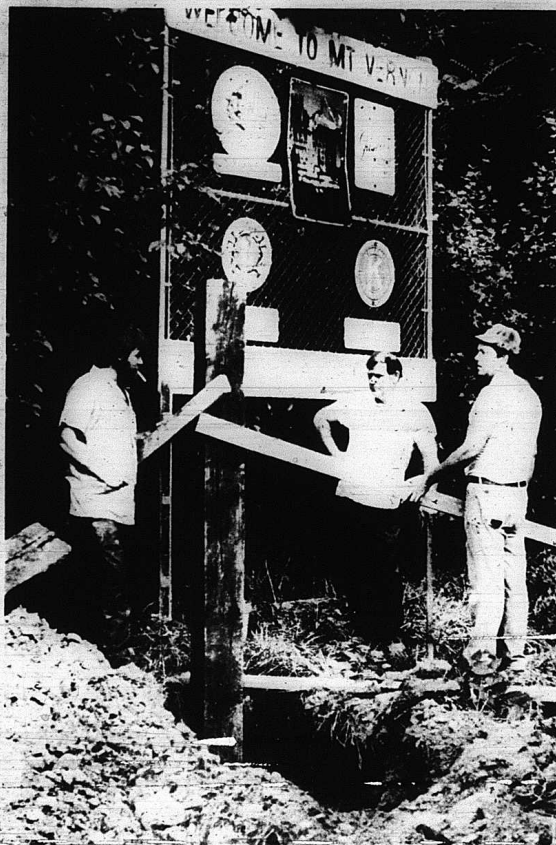
BETTER SELECTION

BETTER SERVICE

MIDWAY BETWEEN RICHMOND & BEREA ON U.S. 25, 624 6857

Across of Free Parking 9.6 Monday Saturday Closed Sunday

*Minimum Purchase and Approved Credit Required



Three volunteers begin preparations to erect a new "Welcome-to-Mt. Vernon" sign on U.S. 150 at the south city limits. Working on the sign are Jim Rickels, William "Red" Swinney and Gary Reppert. Also helping on the three signs to be built by the city Parks and Recreation Committee are Billy Ray Doan, John Hedge and Calvin Rader.

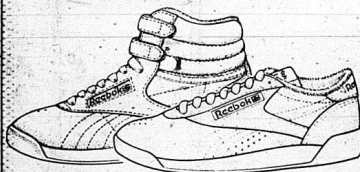
NOTICE

Due to the City of Mt. Vernon raising our water rates 42¢ per 1000 gallon, Northern Rockcastle Water District is forced to raise their rates accordingly - 42¢ per 1000 gallons. Listed below is our present rates and our changed rates. These rates will become effective on August 31st billing.

Rates Now:	
1st 2000 gallons	\$7.50
Next 3000 gallons	2.50 per 1000
Next 5000 gallons	2.00 per 1000
Next 15,000 gallons	1.50 per 1000
Next 25,000 gallons	1.20 per 1000
Next 50,000 gallons	1.00 per 1000
All over 100,000 gallons	.80 per 1000

Changed Rates:	
1st 2000 gallons	8.34
Next 3000 gallons	2.92 per 1000
Next 5000 gallons	2.42 per 1000
Next 15,000 gallons	1.92 per 1000
Next 25,000 gallons	1.62 per 1000
Next 50,000 gallons	1.42 per 1000
All over 100,000 gallons	1.22 per 1000

Reebok 
Because life is not a spectator sport.



Reebok is Aerobics.

You'll get more out of your aerobic workouts when you've got performance footwear working for you. Reebok aerobic shoes are designed with care to give you the support and stability you need, plus all the comfort you want.

Soft Shoe, Inc.

By-Pass Next to Holiday Inn
Richmond, Ky.

Some rain fell

Some rain has fallen during the first 10 days of August, but not enough to make a lot of difference in the dry conditions.

Only a total of .70 of an inch has fallen this month, according to records at Cox Funeral Home weather station.

follows:

August 25, 10 a.m. at BES: Organizational meeting for our fall fund raiser. Jim Calvert, Success sales representative will be there. All those who can help are asked to attend.

August 28, 7 p.m. at BES: regular PTA meeting and also to prepare for September 11th open house.

September 11, 7 p.m. Open house at BES. Parents may visit participating rooms and see what their children are doing. Interested persons may join PTA and learn more about our organization. Success Sales will provide free cheese, sausage and crackers to those present. Drinks will also be provided. Success Sales will also provide a Boom Box to be given away. You may register as you come in the door and you must be present to win. This will be the kick-off for our fall fund raising project.

Mark your calendars and join us!

Phyllis Holbrook
President

Your Child's Health

By Dr. John Payne

If you hear a doctor talk about a "referred pain," he is not talking, publically at least, about a self-referred pain; he is referring to another doctor. He is talking about pain that starts at one part of the body, but shows up as pain in another part due to nervous fibers that cross over from one part to another. One of the best known examples is that gall bladder disease may irritate the diaphragm and since nerves from the diaphragm cross over in the spinal cord with nerves that go to the right shoulder, right shoulder

Continued To Page 22

"BRODHEAD PTA" [Cont. From 16]

BES-PTA had two projects at the Little World's Fair held August 4-9. We had the dunking machine to raise funds and a PTA tent to promote membership and display materials on the new reading program which will be implemented in the Rockcastle County schools this year. The PTA tent was shared with the MVES PTA. The tent was provided by Cox Funeral Home and sponsored by the Bank of Mt. Vernon. Several new members joined. Joyce Dalph won the \$50 cash given away in our drawing.

Our membership drive continues. Any parent, teacher or interested persons are cordially invited to join us as we work together for the benefit of our children. Let's all pitch in and do our part and it won't be too much work on any individual. It is rewarding to bring joy to the students and to provide benefits which they might not otherwise receive. Parents, teacher, and friends of BES, we need and want you.

I would like to thank this opportunity to thank the following for their assistance with the dunking machine and PTA booth at the fair:

MVES PTA, Alicia Mobley, Isabelle Mason, Bank of Mt. Vernon, Cox Funeral Home, Tom Payne, Bige Towery, Bill Melcher, Jackie Lawrence, Shirley Martin, Brodhead Fire Department, Cheryl and Curtis Brown, Cindy and Terry Burton, Dolores Albright, David Brock, Vicki Cox, Nancy Parkerson, Rita Shaffer, Vicki Scott, Nancy Bussell, Sue Rowe, Deborah Nowland, Mae Arnold, Lorella and Becky DeBorde, Rita Hayes, Benny Craig, Linda Mason, Mirzi Calhoun, Jean Albright, Sue Hamm, Barbara Russell, John Holbrook, Sherry Bussell, Matthew Shepperd, Julie Shepperd, Marlene and Charlene Holbrook, Ann Whitt, Donna Masters, Peggy French, Joyce Craig and Howell Holbrook.

J.C. Newland and Sons Construction Company has completed our covered walkway at BES. Principal Tom Payne had a road made to reroute the buses and is attending the finishing touches. The Rockcastle County Board of Education has agreed to contribute \$1600 of the \$5600 costs of building the walkway. Some upcoming events are as

Cox Florist



Maple Drive Mt. Vernon
[Across from Cox Funeral Home]
Ph. 256-3333

Shirley Cox Ada Coffey

A NEW SINGER ARRIVES (AGAIN)

Several weeks ago Margaret's Sewing Center introduced a new Singer Miracle Machine - the Model 6217. Within the first week we were completely sold out! With our new shipment we are again offering the Model 6217 at its introductory price. This machine has 10 popular stitches, built-in buttonholer, drop-in bobbin, and much more. Stop by today for a free demonstration.



Suggested Retail \$199.99
Introductory Offer
\$239.99
Limited time at this price!

SINGER Margaret's Sewing Center, Inc.
APPROVED DEALER
A Trademark of the Singer Company
Northern Hills Plaza
Richmond, Ky. 623-4796

Back to School Savings

50% off

Spring & Summer Merchandise
NEW FALL MERCHANDISE
ARRIVING DAILY

Girls' Jordache Jeans
\$15.99

We Specialize in Pageant Attire



Dog Patch Center - London
Open Mon. - Sat. 9 to 7 & Sun. 1 to 6
864-8155

Clayton HOMES

1987 Models Arriving Daily

All Homes Drastically Reduced!!

Back To School Special!!!

1987 14x70 Clayton - 3 Bedroom

\$11,995

NO MIDDLE MAN!

Remember our children are back in school.

See Tom, John or Larry at



Hwy. 80 & I-75
London, Ky.

878-7055
878-7056

MADE IN KENTUCKY



Flanked by several Kentucky craftspeople, Gov. Martha Layne Collins announces her four-point plan to strengthen and expand crafts sales both within the state and nationwide. Collins' plan includes a low-interest loan program for small crafts businesses and a new seven-member council to oversee state arts programs.

Governor announces four-point plan to expand and strengthen craft sales

Citing the importance of the Kentucky crafts industry to the state's overall economy, Gov. Martha Layne Collins announced a four-point plan to strengthen and expand crafts sales both within the state and nationwide.

In her announcement, Collins said a recent Appalachian Regional Commission study concluded that while Kentucky craft sales now total more than \$20 million annually, strong government support could double that figure.

A low interest loan program for small crafts businesses and a new council to oversee all state arts programs will help accomplish this goal, the governor added.

"Kentucky crafts are an integral part of our state's unique culture," Collins said. "They also make a significant and rapidly increasing contribution to economic development. Crafts-making is a valuable tradition in Kentucky. We intend to build that tradition into a strong and broad-based industry through a crafts action plan."

At a Capitol press conference, Collins said the seven-member Governor's Crafts Council will coordinate the crafts-related activities of all state agencies and will plan and implement the crafts action program. An arts craft manager would be hired to work with the council in overseeing the program.

Kentucky craftspeople will be eligible for low-interest loans and a crafts business specialist will provide them with other financial counseling.

A Crafts Business Development Program will be administered through the Commerce Cabinet and Collins is asking the Kentucky Development Finance Authority to set aside \$500,000 for loans during 1986-87.

Arts Commissioner Grit Luallen said the money would help craftspeople who have difficulty obtaining loans because com-

mercial banks are often reluctant to help finance such ventures.

This \$500,000 will help us help many craftspeople, especially those just beginning to get their business off the ground," Luallen said.

Also on the drawing board are plans for brochure advertising Kentucky's crafts, giving the locations of craft shops and promoting their state attractions.

All state park gift shops will set up a showcase section for Kentucky crafts. Special displays of Bluegrass handicraft will be installed at all the renovated Welcome Centers throughout the

state. "But the overall marketing effort won't be confined to Kentucky's borders," Collins noted.

"Last year the Kentucky crafts marketing program took on a new direction when we entered the national wholesale market," she said. "Kentucky was the largest single exhibitor at the New York Gift Show, and in August we will attend that show for the fourth time. Also in August, we will enter the West Coast market for the first time when we attend a major show in San Francisco."

"Dr. John Payne"
(Cont. From P. 21)

Pain may indicate a serious condition. Pain from a heart attack or angina may be felt down the left arm and at the angle of the jaw.

More important for children, this illness is the common crossover of nerves from the jaw to the ear. Sometimes dental pain can be felt as an earache or even vice-versa. It is also common for children to pull at their ear when they are teething. Mothers often think they may have an ear infection when the problem is really in the mouth. Of course, ear pulling can also be from wax blockage in the ears, habit, or other things.

Infants may also have primarily gastrointestinal disturbances such as vomiting or diarrhea when they really have an ear infection as the cause of their trouble.

A chronic hacking cough can sometimes be caused by irritation of a branch of the nerve to the voice box that crosses with the nerve fibers from the ear canal. A foreign body in the ear can produce such a cough. Life isn't always as simple as it seems.

With just a couple of weeks until the beginning of school, it is time to think of some of the fears and anxieties of youngsters just

starting into the school system. For those just entering kindergarten, the day may seem a very very long time away from home.

The teacher, with 20 or 30 others to look after may seem a very distant person, though of course she is trying to learn all the names as well as possible. The huge yellow school bus that they have dreamed of riding from the first time they saw the big brother get all sorts of "nervous" disorders in the first weeks of school. They may get stomach aches that seem to get better after school when the owner of the tummy is sitting on a parent's lap. They may get a nervous, non-productive cough or develop a habit of clearing the throat or any of a dozen other symptoms that are related to relieving stress.

All of this is normal, of course. Take time to listen to your child's tales of joy and of troubles during the first days of school. Don't be afraid to ask for a conference with the teacher if

get all sorts of "nervous" disorders in the first weeks of school. They may get stomach aches that seem to get better after school when the owner of the tummy is sitting on a parent's lap. They may get a nervous, non-productive cough or develop a habit of clearing the throat or any of a dozen other symptoms that are related to relieving stress.

All of this is normal, of course. Take time to listen to your child's tales of joy and of troubles during the first days of school. Don't be afraid to ask for a conference with the teacher if

New Dental Film Reduces X-Ray Exposure Time

Your next dental exam may be a safer one, thanks to a new, high-speed x-ray film that cuts your exposure by up to fifty percent.



High-speed film for dental X-rays is helping patients have something to smile about.

The new film for dental x-ray use works like the film in your camera. The faster the film, the less light required to take the picture. And the faster the film, the less likely the picture will be blurred if the patient, particularly a child, moves as the picture is taken.

The American Dental Association says that patients should be exposed to radiation only when the dentist has determined it to be necessary. When x-rays do become necessary, this safer x-ray film provides your dentist with images of excellent quality, experts say, to give your teeth the care they need. The new Kodak Ektaspeed dental film from Kodak is available for x-ray examinations and is in use by a growing number of dentists.



Cabbage is rich in vitamin C.

Black Bear inquires at all-time high

Inquiries about black bears are at an all-time high in Eastern Kentucky, according to Larry Short and Rich Pais, Wildlife Biologists with the Kentucky Department of Fish and Wildlife Resources.

Awakened interest in bears has come about because sightings of this species have risen dramatically in recent years, the biologists say. Already this year, bears have been reported in mountain counties from Harlan in the south to Lawrence in the north.

The Department of Fish and Wildlife Resources is not stocking bears anywhere in Kentucky. Biologists suspect bears currently in the state are native to Virginia or West Virginia, two states with comprehensive bear management programs and expanding bear populations.

Most of the bears sighted in Kentucky prove to be young adult males who are wandering in search of permanent home ranges. However, unconfirmed reports of female bears with cubs have come from Harlan, Letcher, Pike, and Martin counties, indicating a resident bear population could possibly be developing in the Commonwealth.

If left alone, black bears are not dangerous, say biologists. Unprovoked attacks on humans by wild bears are almost non-existent in the eastern United States.

Most bears will flee the sight of a human, unless they have become accustomed to being fed. Such bears can lose this natural fear of people and may become a threat to life and property. For this reason, bears should not be fed nor encouraged to remain in an area by furnishing them food.

A bear sighted in the wilds should be left alone. It is illegal to kill, capture or otherwise molest bears in Kentucky unless the animal is posing a real and immediate threat to life, safety or property.

The current policy of the Department of Fish and Wildlife

things don't seem to be right after the first week or so. Finally, don't let your own misgivings about the animal "leaving the nest" get to your child. The well known syndrome of "school phobia" comes from the child internalizing the mother's sadness at the child leaving home.

Resources is to do nothing about bears occurring naturally in the wild. Yet, should a bear become a nuisance, the department will attempt to capture and relocate the animal in a more remote area.

The bear that made a brief visit to Western Kentucky in June represented an isolated and unusual incident. It had wandered into the state from Arkansas.

NEW DRUG EASES ALLERGIES

If you're one of the 40 million Americans who suffer with hay fever, you may be lucky. You may be able to avoid the symptoms and the sleepy side effects normally associated with antihistamines.

Seasonal allergic rhinitis, or allergies, are caused by inhaling one of the many types of pollen species that inhabit the earth. When these microscopic pollen grains meet the human nose, they land on the mucous membrane of the respiratory tract where certain cells, called mast cells, are abundant. Antihistamines, or H₁ blockers, block these cells and cause an allergic reaction.

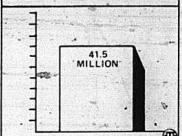
Antihistamines, first introduced in 1946, were an effective way to relieve allergic symptoms but they had a major drawback—they can sedate their users into a dangerous sleepiness, or drowsiness, while driving and other activities difficult or even dangerous.

Fourteen years of research has resulted in a new antihistamine

turned back south and was, at last report, somewhere in northern Alabama.

For more information about black bears in Kentucky, call District Wildlife Biologist Larry Short (606) 886-9608, Assistant District Biologist Rich Pais at (606) 886-1869 or the Division of Wildlife in Frank-

AMERICANS SUFFER FROM UPPER RESPIRATORY ALLERGIES



There could be good news for the more than 40 million Americans who suffer from upper respiratory allergies (URA).

which can alleviate allergic symptoms without producing the sleepy side effects. Sedation is available by prescription only. In tests, people were about as likely to feel sleepy when they took a placebo as when they took this new drug. You can ask your doctor about this drug that may ease your pollen troubles forever.

Mount Vernon Florist & Balloons
WEST MAIN STREET
Across from Dowell-Martin Funeral Home
Flowers, Balloons & Gifts for Everyone
Call 256-2091 Anytime

Ray's Small Engine Repair
1/10 mile w. of Hwy. 70 on U.S. 150
PHONE 758-4711
2 CYCLE AND 4 CYCLE REPAIR
CUSTOM WELDING
Mon.-Fri. 8 a.m. to 5 p.m. Sat. 8 a.m. - 1 p.m.

Cummins finds "good spot" for garden

[Ed's Note: Mr. Cummins paid for this story to be re-run because he felt we did not make it clear as to how he prepared the ground for planting. In the third paragraph of the story, we said "Then, he spaded the area by hand." Mr. Cummins felt this would make readers think he spaded up the entire 20x350 ft. plot when all he actually did was to spade a hole or spade and make deep holes for each plant. He also wanted us to add that if you did not have a garden spray, an ordinary sprinkler would suffice to keep weeds down.]

Don't ever tell Graydon Cummins of Pine Hill that you don't have space for a garden—he will probably quickly point out a spot you never thought of. In such a spot is Mr. Cummins' garden this year—it's the state right-of-way across from his home.

In the 20x350 plot, Mr. Cummins has a bountiful sup-

ply of corn, green beans, canteloupes, watermelons, cucumbers, onions, etc. and, according to him, it was all accomplished with a lot of forethought and not much hard work.

Cummins sprayed the area with Round-Up [used for no-till corn]. This killed the weeds and he then sprayed with Dakthol which stopped the germination process. He said this took care of almost all the weeds although a few milkweeds and ironweed were still hardy enough to make it through the soil. Then, he spaded the area by hand. Of course, using Dakthol presented a problem with his garden seeds germinating [except corn, of course] so his solution was to plant his green beans, canteloupes, watermelon, etc. seeds in small containers with potting soil and, when two or three leaves appeared, he transplanted

them into his garden spot. Dakthol does not bother plants such as tomatoes, cabbage, etc. Cummins said one of his reasons for selecting the unusual location for his garden this year was to prove to people that "just about no matter where you live, you can find a garden spot." We asked if he had obtained permission from the state highway dept. before using the land and he quickly retorted, "They don't care. Why wouldn't they (rather have their right-of-way looking like this [gesturing at his garden] then like [pointing out the weeds, thistles, etc. further up the right of way]."

It was an interesting afternoon, at Mr. Cummins' residence at Pine Hill and, if you're still not sure whom we are talking about, maybe you will recognize him by his most well-known nickname, "The Bird Man."



Above, Mr. Cummins stands in his garden across from his home at Pine Hill. Cummins' garden is on state right-of-way but he said he has also allowed himself the railroad right-of-way behind his home in years past to grow garden produce.

Your Public Schools

by Mary Hatwood Futrell, president National Education Association

Let's Declare War On The Dropout Problem

A quarter of the students who enter America's high schools leave before they graduate. We lose them to drug use, to alcoholism, to hunger, to poverty, to suicide. One million every year. They become lost causes. We say they "failed."

I would suggest that it is we who have failed. We have, for far too long, taken refuge in the assumption that this tragic waste of youthful potential is just part of "the way things are"—and the way things will be. This fatalism goes against the American grain; runs counter to our heritage of hope. I think we need to reclaim that heritage. And I'm convinced we can.

My conviction springs from my knowledge that the elected representatives of our NEA Annual Meeting this past summer launched a campaign against illiteracy and promised an unremitting assault on the dropout syndrome. At that meeting, more than 7,500 delegates—representing their education colleagues all across this nation—spoke as one. And with one voice, they pledged their support for a program that promises to help cut the student dropout rate in half by 1990.

That initiative will earmark \$1.7 million—one dollar from each of our 1.7 million members—to begin building a permanent war chest against scholastic failure. We will devote \$700,000 of this war chest to Operation Rescue, our new grant program to combat the dropout and illiteracy problems. Operation Rescue will fund projects that have been designed and developed

at the local level by local classroom teachers.

The remaining \$1 million in NEA's war chest against failure will begin an endowment that will make educational excellence grants available to teachers for years to come. All these grants will be administered by NEA's National Foundation for the Improvement of Education (NFIE).

This is not a program for NEA. This is a program for America. That is why I am publicly asking for the support of all our nation's citizens. I would like to see all of America's communities seriously address the tragedy of the dropout problem. I'd like to see new coalitions formed that can help kids stay in school—and return to school if they're left.

I'd like all Americans to press upon their communities the economic, social, and political implications of the dropout problem.

I'd like us all to meet us halfway, to give teachers the assistance they need to cut America's dropout rate in half by 1990.

Is this goal ambitious? It certainly is. Lofy? Yes. But realistic. Necessary. Imperative. Because, fundamentally, what's at stake is America's children—their learning, their growing, their lives.

405

Local family hosts
Japanese visitor...

See Page 5

Kim Cromer is named
"Miss Photogenic"...

See Page 10

Scenes from "A funny
thing happened"...

See Page 14

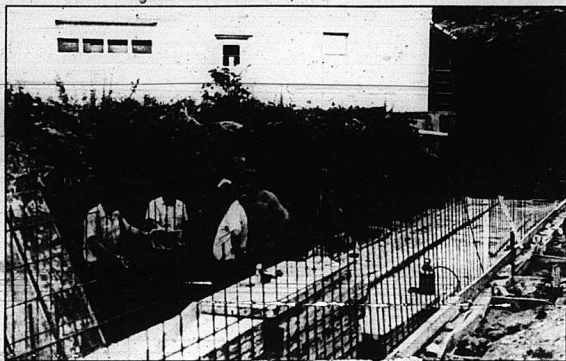
Mount Vernon Signal

Serving Rockcastle County Since 1887

Mount Vernon, Kentucky 40456

VOLUME 99 - NUMBER 41

THURSDAY, AUGUST 14, 1986



Culvert work is in progress by city employees on east Main Street in Mt. Vernon. The culvert, which will connect to one under U.S. 25 that leads from Owens Subdivision, will be covered and a new fire station built on the site. Working are Burgess Mullins, John Rickels, John York and Allen Hedrick.

Garbage plan counsels city to make collection mandatory soon

By Ray McClure

A suggestion that the City of Mt. Vernon adopt a mandatory collection garbage ordinance using the private hauler arrangement, is part of a county garbage plan that is expected to go to the Kentucky Department of Water Management (DWM) by the end of the week.

Making garbage collection mandatory means all households in the city pay a monthly rate, a rate to be determined later.

The section of the plan concerning Mt. Vernon states: "The 950 households have available collection via the franchise agreement. However, the franchisee (William K. Bullen) indicates that his collection rate is only 50%. The low collection rate is due to the currently free county green-box system. When the plan is implemented, the free county system will no longer be available. It is, therefore, presumed that the city franchise holder's collection rate will increase (now 50 cents a bag). The City of Mt. Vernon is encouraged to adopt a mandatory collection ordinance utilizing the private hauler collection agreement."

Under the plan as now written, the remainder of the county would be under a voluntary system, but most officials believe the county will eventually have to make the collection mandatory countywide before it will be effective.

The final plan is expected to go to the state by the end of this week. It is scheduled to go to the court for approval today (Thursday).

The city cannot be included in the county system for at least until 1988 when the franchise held by Bullen expires.

"After the agreement period expires," the plan states, "the county will have the option to incorporate the city into the county franchise system or permit the city to relet the collection and disposal system to a separate private concern." An attorney general's ruling indicated the county has that choice under state statutes.

Most officials believe the exclusion of the city in a franchise arrangement would make a franchise considerably less lucrative, because of the larger population in Mt. Vernon.

Last week at a court session, the magistrates delayed a decision on 16 changes and clarifications asked by the state through the Cumberland Valley Area Develop-

ment District (CVADD) which represents the county in garbage planning.

Frank Groschelle, representing the CVADD, handed the court a bundle of papers containing 26 sheets answering questions and making clarifications in the plan and asking the court to approve them.

However, Magistrate Arnes Burdette said he would like to study the changes before making a decision. The other magistrates agreed.

Groschelle said the plan is on a schedule dictated by the DWM, and that a final draft should be at the state department as soon as possible.

Another point clarified by CVADD the court, that of a budget for the garbage plan showed.

The solid waste coordinator has a suggested salary of \$18,500 the first year, rising through the years to \$22,476 in 1991. A clerical/administrative person has a suggested salary of \$13,200 the first year, rising through the years to \$16,600 in 1991. The Clean Community Program (a mandatory program)

begins with a capital cost of \$1,725 then begins at \$1,500 in 1987, then rises to \$2,000 annually through 1991. Miscellaneous items are listed by \$500 annually.

Under the plan, the sale of the franchise to a private concern should take care of the cost of administering the program.

With a private hauler, the county does not have to provide a landfill for the garbage. That will be left to the hauler, who would also absorb the expense of using the landfill. The plan mentions free available landfills, including Madison County, near Richmond; Jackson County, southeast of McKee; E.R. Hooper Sanitary Landfill near Lily, and Tr. County Landfill in Whitley County, southwest of Corbin.

Continued To Page 20

Home entered

Someone reportedly entered the home of Miss E. C. Mearns in Livingston recently and placed a can of gasoline in the kitchen and turned on the gas stove.

Relative Luke discovered the gasoline before the house exploded.

Some folks didn't enjoy fair

Attending a fair can be hazardous to your health, at least several persons discovered this past week at the Little World's Fair at Brodhead.

A worker with the rodeo suffered a crushed jaw when he was kicked by a bull. He was treated at the Rockcastle County Hospital and insisted he be released to drive to Oklahoma in spite of the pain. He was wished good luck!

A bronco rider with the rodeo got hung in his saddle, thrown about, and ended up with a broken arm.

An unidentified man fell on the merry-go-round while watching over his children and had his ear almost severed. Doctors at the hospital sewed it back together. It took countless stitches.

A carnival worker suffered a crushed foot when it was caught in the gears of one of the rides. He'll be hobbling for several weeks.

One woman turned her ankle, lost her balance, and fell into two other women who were with her. Result: one turned ankle, one sprained wrist and one injured leg.

Reportedly, a small child got lost from his parents, but was found two hours later in Crab Orchard. He had joined a group of

children and had decided to go home with them. No one seemed to notice there was a new kid in the crowd.

A fair official pointed out there were only a few more accidents at this year's fair than in other years.

"You have these little problems at all fairs," he said. "Ours were only a little more unusual this year."

Thieves take household items

An estimated \$3,000 in household and other items were taken from the home of Jack D. Morris on Ky. 490 near the Rockcastle-Laurel county line sometime Friday or early Saturday.

The Morris family was away for the weekend. The thieves backed a truck up to the house, broke a back window and opened the doors.

Among items taken were furniture, a television, radios, guns, two new saddles from a barn, two wheels with tires and a motorcycle. They ripped out four ceiling fans.

The theft remains under investigation by Kentucky State Police.

Council denies road ownership

By Ray McClure

An old controversial road, that caused tempers to flare and hard feelings a few years ago, is back in the news.

At a meeting of the Mt. Vernon City Council Monday night, Mayor Roland Mullins disputed a recent decision by the Somerset District of the Kentucky Department of Highways that Oak Hill Road, commonly known as Lake Loville Road, belongs to the city and not the county, and as such, could not be turned over to the state for maintenance.

"It does not belong to the city," the mayor said. "It never has belonged to the city. It has always been a county road as long as I can remember. Someone has blacktopped the road from Benfro Valley past the boat dock. The city didn't do it. And for decades people have traveled that road and during that time it was maintained by the county or state, not by Mt. Vernon."

The council then instructed Attorney John Cloutz, who attended the meeting for his father, Carl, who is city attorney, to research the road ownership and straighten it all out.

The road in question is from Ky. 1245 to U.S. 25 at Benfro Valley, a distance of 3.8 miles.

County magistrates were told at a meeting with state highway officials earlier not to touch the road because it belonged to the city and the city has money allocated to repair its roads.

The well-traveled road is

bumpy, uneven and deteriorating. The county said it needed widened and resturfaced.

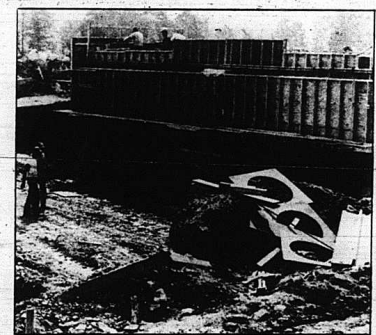
At the council meeting, the council voted to give its 15 permanent and part-time employees a five percent raise in salary. The increase will add about \$7,500 to the city budget.

In another action, the council voted for the city's sewer line extension work, to complete Line G in Owens Subdivision according to the basic contract the city has

with Karish. Construction on Line G had been halted after a problem with money for construction surfaced.

David King, an owner of Karish, told the council that he just about \$14,000 in equipment rental fees waiting for the approval to go ahead with the line. Engineers and consultants for the city denied they had halted the project.

Continued To Page 20



A second bridge on U.S. 150 near Brodhead is well along on construction by contractors Rankin and Gaffney of Lancaster. Another bridge near Ky. 70 is nearing completion. The bridges are part of a \$690,000 contract through the Kentucky Department of Transportation.

School days nearing

Board says financial condition is good

By Richard Anderkin

Although a bleak picture had been painted for the past several months about the financial situation in the Rockcastle County school system, local school superintendent Charles Parsons told the board members during their regular monthly meeting last week that the school system ended the 1985-86 school year with approximately \$400,000 in the bank.

"For the first time in several years we actually spent less than we took in," Parsons said.

The superintendent said that at the beginning of the 1985-86 fiscal year, the school system had an approximate

balance of \$287,000.

Parsons said that being

School starts for students August 19

very careful about expenditures throughout the year helped the school system to come out with the extra money.

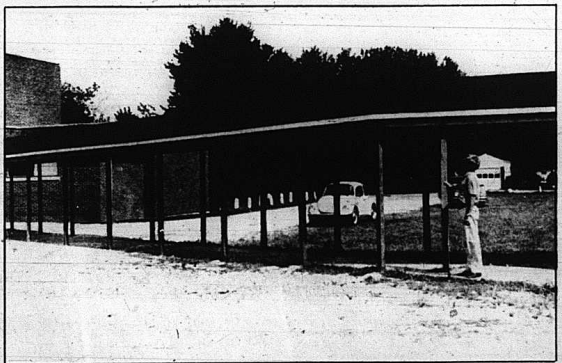
After the superintendent told board members the good news about the finances, board member Willie Taylor made a motion to pay the final payment of \$1,600 on the covered walkway that was built this

summer at Brodhead school. The walkway connects the main building with the old agriculture buildings at the school.

The Brodhead PTA which bore the rest of the costs for the walkway had made several requests of the board to help with the final payment to J.C. Newland Construction company which built the walkway. According to Brodhead principal Tom Payne, the total cost of the project was approximately \$6,000. Also Payne said that buses at the school would be rerouted when school starts so they they will not have to go under the walkway.

Superintendent Parsons said last week that school will

Continued To Page 20



Brodhead School principal Tom Payne inspects the new covered walkway at the school.

OBITUARIES

Stanley McClure

Stanley McClure, 71, of Mt. Vernon died Monday, August 11, 1986 at his home.

He was born in Rockcastle County June 1, 1915, the son of the late Elbert and Nannie Harper McClure and he was a retired Kentucky Stone Company employee.

Survivors are: his wife, Mrs. Mazie Reynolds McClure, one son, Theodore McClure of West Chester, Ohio; one daughter, Mrs. Teddy McClure of Mt. Vernon; two sisters, Mrs. Maud Gentry of Mt. Vernon and Mrs. Alma Cloud of Richmond, Indiana; three grandchildren and one great-grandchild.

Funeral services were conducted Wednesday afternoon August 13, at Dowell and Martin Funeral Home by Bro. Pete Hurd. Burial was in Elmwood Cemetery.

Eliza Burdette

Mrs. Eliza Burdette, 82, of Hamilton, Ohio, and formerly of Green Hill, died Friday, August 8, 1986 at the home of her son, Earl McQueen in Hamilton.

She was born in Garrard Co. on March 22, 1904, the daughter of the late Alexander and Isabelle Day Nantz and was a member of the Baptist Church.

Besides her son, she is survived by two granddaughters, Faye Rose of Hamilton, Ohio and Betty Land of Cincinnati, Ohio; one grandson, Ray, McQueen of Hamilton, Ohio and four great-grandchildren.

Funeral services were conducted Monday, August 11, at the Dean and Mills Funeral Home in Richmond, Ind. by Bro. Tinsley Rector. Burial was in the Earlbarb Cemetery in Richmond.

This obituary courtesy of the Dowell and Martin Funeral Home.

Dorothy Mize

Mrs. Dorothy Mize, 76, of Reading, Ohio, and formerly of Rockcastle Co. died Sunday, August 3, 1986 in Reading. She was the widow of Leonard

Mize and the daughter of the late Logan and Nora Renner McKinley. She is survived by three daughters, Geneva Whitaker of Sharonville, Ohio, Wilma Eversole of Reading, Ohio and Darlene Evans of Knoxville, Tennessee; three sisters, Edna Norton of Crab Orchard, Beulah Nicely of Lockwood, Ohio and Margie Whitaker of Lexington; nine grandchildren; nine great-grandchildren, and three great-great-grandchildren.

Funeral services were conducted Wednesday, August 6, in Reading with burial in the Rest-Away Memorial Park in Blue Ash, Ohio.

This obituary courtesy of the Dowell and Martin Funeral Home.

Beulah Wilson

Mrs. Beulah Wilson, 79, of Barnett Rd., Mt. Vernon, died Aug. 8, 1986 at the Berea Hospital after a long illness.

She was born on November 14, 1906 in Rockcastle County, the daughter of the late George and Ellen Beseing Roberts. She was a member of the First Baptist Church in Mt. Vernon.

Survivors are, a daughter, Mrs. Mary Owens of Barnett Rd.; a sister, Mrs. Bessie Clark of Mt. Vernon, a grandson, a great granddaughter and several nieces and nephews. She was preceded in death by her husband, Warren Wilson and a daughter.

Services were held Aug. 11 at the Cox Funeral Home Chapel with burial in Roberts Family Cemetery.

Mattie Reed

Mrs. Mattie Reed, 55, of Louisville, Ky., died Sunday, August 10, 1986 at the Rockcastle County Hospital.

She was born May 10, 1931 in Rockcastle County, the daughter of the late Tom Mink of Sand Hill and the late Harvey Mink. She was a member of the Sand Hill Baptist Church.

Survivors in addition to her mother are, two daughters, Mrs. Dora Sturgill of Livingston and Mrs. Wanda Buckley of Beaver Creek, Ohio; two sisters, Mrs. Victoria Cromer of Buffalo and

Mrs. Pauline Johnson of Middletown, Ohio and two grandchildren. She was preceded in death by two brothers and three sisters.

Services were held Aug. 9 at the Cox Funeral Home Chapel with Bro. Jimmy Williams officiating. Burial was in Alec Mink Cemetery.

CARD OF THANKS

I wish to express my thanks and appreciation for the many kindnesses and deeds shown at the death of my husband, John B. McCullah. Special thanks to Wayne Harding, minister, residents of Mt. Vernon Manor, Saylor Pharmacy, Jean's Restaurant and employees, Sparks Florist, Cox Florist, Mt. Zion Baptist Church, Burley Tobacco Warehouse of Danville, officers, directors and employees of Citizens Bank and especially Rockcastle Co. Hospital, nurses, nurses aides, Dr. Gutierrez and staff and Cox

Funeral Home. May God bless each and everyone.

Gratefully,
Mrs. Mary McCullah

In Loving Memory of Bentley "Mutt" Furmon who passes away August 10, 1983
You are greatly missed by
Wife, Children and Grandchildren

CARD OF THANKS

We want to thank everyone who helped in time of our trouble and sorrow.

Thanks for the lovely flowers and the food. We would like to thank everyone personally but don't have everyone's address so with all my heart I thank you all, especially Bro. Homer McNew for his words of comfort as they touched all of us.
Tom's mother and brothers

The Mt. Vernon Signal Thursday, August 14, 1986 P-3
and sister
Again, we thank you all.

CARD OF THANKS

The family of Hettie Coon would like to thank everyone for the help they gave at the time of the loss of our mother. A special thanks for the flowers, food, prayers, Dr. Gutierrez, the hospital staff and Cox Funeral Home. The Cummins, The Bullocks The Hendersons, The Renners

NOTICE: On Friday, August 29, 1986, I will sell the following described vehicle for storage and mechanic bill: 1973 Blazer, Serial No. CKY183F168673. If interested, call Fry's Garage, Hwy. 150, 3 miles west of Mt. Vernon. 256-3067. 2:30p

POSTED: No hunting or trespassing on land belonging to Leonard Reese on 25 at Roundstone. Not responsible for accidents. 5x10p

1. A plus excellent rated company.

2. High percentage vested renewals.
3. Complete training program.
4. Health and Life Benefits Plan (must qualify).
5. Excellent marketing techniques.
6. \$1,000,000 Major Medical.
7. Excellent Medicare Supplement.
8. Nursing Home (1500 day coverage on all levels).
9. Excellent life with portable computer.

Call for an appointment:

David R. Kepperling
American Republic
Insurance Co.
Te: 606/277-2245
Monday thru Friday
8:30 a.m. - 11:30 a.m.

Call News Items
to 256-2244

ABSOLUTE DOUBLEHEADER

Auction

Mr. and Mrs. Carlos Lawrence's Properties - Farm Machinery Saturday, August 23, 1986

SALE NO. 1 - 12:00 NOON
246 ACRE FARM, more or less
3 1/2 miles south of Mt. Vernon on Ky. 1249



Mr. and Mrs. Lawrence both work away and, due to other business interests, have contracted our firm to sell their properties for their high bid. No minimum - No reserve. It's an Absolute Auction.

Direction To Auction: Turn off US 25 and 150 at the caution light in Mt. Vernon and proceed about 3 1/2 miles on Kentucky 1249 to auction site. Signs are posted.

This well-improved farm is further improved with the above-pictured lovely two-story frame house. The house has living room, dining room, kitchen, bedroom, family room, bath and utility room on the first floor with 4 bedrooms on the second floor. In addition, it also has storm doors and windows, washer/dryer hook-up, gas furnace heat, spring water, aluminum siding, insulation overhead and privacy.

Besides the house, there are three barns, one is a 55x60 tobacco barn, a 38x48 tobacco barn and a 58x60 combination stock and tobacco barn. Also there is a 3 car garage and workshop.

The farm contains 246 acres, more or less, by boundary with most of the farm being in grass. With a spring and three ponds, this farm is one of the better cattle farms around. The farm does have some timber and a possibility of coal. Basic tobacco allotment for the farm is 5,078 lbs.

If you're in the market for a good cattle farm with a lovely two-story home in a convenient location, be sure to attend this sale Saturday, August 23rd at 12 noon.

TERMS: 20% down day of sale, balance in 30 days with delivery of deed.

Financing may be obtained by contacting selling agents prior to the sale date.

SALE NO. 2 - 1:30 p.m Saturday, August 23, 1986 19 ACRE FARM, more or less

LOCATION: 9 miles southwest of Mt. Vernon and 6 miles southeast of Brodhead. Turn off Highway 150 at Albright's Feed & Supply onto Route 70. Follow Route 70 approximately 4 miles to auction site. Signs will be posted.

The farm tract contains 19 acre, more or less, and fronts on a gravel road. Most of all this land is tillable tractor land. This tract will join the below mentioned lots on the rear. The tobacco allotment on this tract is approximately 800 lbs. City water is available to the tract. Since there are no buildings, this tract would be ideal to build to suit yourself or maybe you just need additional land. Look It Over!!

Building Lots - 3 building lots each measuring approximately 105 x 100 x 220 with city water available. Each of the lots would be ideal for your home or mobile home and would have ample space for garden.

Farm Machinery: Hahn Hy-Boy sprayer; International Farmall 140 tractor; 2 farm wagons; cultipacker; disc harrow; hand post hole digger; lawn mower; set of store scales; 3 wheel bicycle; large jack, plus other miscellaneous items.

TERMS: 20% down day of sale, balance in 30 days with delivery of deed on real estate and cash or good check day of sale on farm machinery.

For additional information, contact:

Ford Realty & Auction Co.

REALTOR/AUCTIONEER
SAM FORD
DANNY FORD
ROY ADAMS



AUCTIONEERS
JERRY HAM
WILLARD BULLOCK

APP AUCTIONEER
BOE TODD



Kentucky Toll Free No. 1-800-435-5484
Mt. Vernon, Ky. Phone 256-4545
Somerset, Ky. Phone 679-2712



By: Austin Mobley, Minister
Previdence church of Christ

Angels

The Bible speaks often of angels and their activities. There are about 300 different references to angels in the word of God. They were created (Gen. 1:16); they are sexless (Matt. 22:30); and immortal creatures (Lk. 20:36). Their activities in relationship to man, began with the fall of Adam Gen. 3:24, and will conclude at the judgment (Matt. 13:39).

Angels are the executors of the Divine will. Among many other exploits in the Old Testament, they guarded the gates of Paradise (Gen. 3); foretold the birth of Isaac (Gen. 18); warned Lot (Gen. 19); mediated the Old Testament (Zech. 7:38; 53; Gal. 3:19); and defeated the armies of Syria (2 Kings 6). In the New Testament, they announced the birth of Jesus (Matt. 1); ministered to Jesus after His temptations (Matt. 4) and in the Garden of Getsemane (Lk. 22). They appeared to the surviving women at the tomb (Mk. 16:28); released Peter and John from prison (Acts 5; Acts 12); instructed an evangelist to go where he would meet one to teach (Acts 8), and instructed a sinner to send for a preacher (Acts 10). Men are forbidden to worship angels (Rev. 22:8), or to listen to anything they may say that differs from that which the gospel already revealed (Ga. 1:8).

Concerning the present activity of angels, we may be assured that in heaven they continue to do the Father's will (Matt. 6:10). Their relationship to men is perhaps best understood from Heb. 1:14: "Are they not all ministering spirits, sent forth to minister for them who shall be heirs of salvation?" They serve God, but FOR the saints of God. Whether angels make visible appearances today is unproved. We should not be glibly willing to entertain strangers, for some have entertained angels unwares" (Heb. 13:2). They may be present, but unseen. Elisha's servant could not see them until the prophet prayed that his eyes be opened (2 Kings 6).

Angels are concerned about the welfare and salvation of men, for they "rejoice over one sinner that repents" (Lk. 15:10). Some think that each individual has his personal "Guardian angel" to look after him, but this conclusion is unwarranted from Matt. 18:10 and Acts 12:15.

Angels are the executors of the Divine will in the area we call "providence." God is still in control of this universe, and causes all things to work together for the good of those who love Him (Rom. 8:28). Angels are the spirits of dead saints to Paradise in Hades just as they bore Lazarus up to Abraham's bosom as recorded in Luke 16:22.

Angels will accompany the Lord at His second coming (Matt. 25:31; 2 Thess. 1:7). They will execute the Divine will in separating the wheat from the chaff (Matt. 13:39).

Don't wait for an angel to tell you what to do to be saved. The Lord has already revealed that in His word. Believe in the Lord (John 8:34); repent of sins (Acts 2:38); confess faith in Christ (Rom. 10:9-10); and be baptized (Mk. 16:16; 1 Pet. 3:21). Then live faithfully for the Lord and go to heaven (Rev. 2:10; 1 Cor. 15:58).

SERVICES:

Sunday: 10 a.m., Bible Study 10:35 Worship 7 p.m. Worship
Wednesday: 7 p.m. Radio: WRVK Sunday 8 a.m.

Social and Women's News



ENGAGEMENT ANNOUNCED- Mr. and Mrs. Jerrv Morgan of Mt. Vernon wish to announce the forthcoming marriage of their daughter, Tracy Jill, to Dennis Durham, son of Beatrice Durham and the late Larney Durham of Mt. Vernon. The wedding will be an event of this Saturday. A reception will be held at the church immediately following the ceremony. All friends and relatives are invited to attend.

Personals

By Mrs. George Burton

Confection' in last week's column should have been Mrs. Samuel Newton of Lexington visited her parents, Mr. and Mrs. George Burton.

Lillian Anglin enroute home from a visit to the Smokey Mountains. Mr. and Mrs. David L. Henderson of Lexington visited his mother Mrs. Lona Logsdon a while last Wednesday. Mr. and Mrs. Elbert Smith of Dayton, Ohio visited his mother, Mrs. Carrie Smith last Monday. Mr. and Mrs. Lance Dillingham were in Corbin last Tuesday shopping. Mrs. Minnie Hansel and

TO BE WED- Mr. and Mrs. Dee Bond of Orlando are proud to announce the forthcoming marriage of their daughter, Terelia Diane, to Randall Wallin, son of Mr. and Mrs. Roy Wallin, also of Orlando. The wedding will be an event of Sat., Sept. 6 at 1 p.m. at the Brush Creek Holiness Church. A reception will follow at the library. All friends and relatives are invited.

David visited Mr. and Mrs. Lance Dillingham and Mrs. Carrie Smith Saturday. Mrs. Barbara Browning was in Lexington Saturday shopping. She is now making her home with her mother, Mrs. Minnie Hansel. Welcome back Barbara.

Mr. and Mrs. Lance Dillingham visited Mrs. Rebecca Singleton of Bandy last Sunday. Jerry Dillingham of West Chester, Ohio, visited his grandparents Mr. and Mrs. Lance Dillingham last week.

Bentley Hansel of West Chester, Ohio visited Mrs. Minnie Hansel and Barbara Browning over the weekend.

Sympathy is extended to the family of Mrs. Eliza Burdette of Hamilton, Ohio in this time of sorrow. Mrs. Burdette was formerly of Beckcastle. Burial was in Richmond, Ind.

Elmer Half visited Gravelly Burton a while Friday evening. Mr. and Mrs. Stanley Burton and children are visiting their parents Mr. and Mrs. Harris Burton and Mrs. Betty Carter and other relatives. Mr. and Mrs. Samuel G. Newton of Lexington visited their parents awhile Friday night on their way to Columbus, Ga. to visit his brother Dan Newton, who is in the hospital there. We wish him a speedy recovery.

Mr. and Mrs. Robert L. Henderson of Somerset Sunday afternoon.

Mr. and Mrs. Bobby Anglin and Nancy and friend Danny were at Somerset Sunday.

Mrs. Sue French has returned home after visiting her son David Hunt and family of Cherry Point, North Carolina.

Sympathy is extended to the families of Mrs. Mattie Reed and Mrs. Beulah Wilson in their time of sorrow.

Mr. and Mrs. Harris Burton and grandson Travis Burton visited Mr. and Mrs. George Burton awhile Saturday night.

Lee Kirby of Lexington spent the weekend with Mr. and Mrs. Robert Kirby and Mr. and Mrs. Raymond Kirby and David.

Mr. and Mrs. Robert Barron and family of Paris were supper guests of Mr. and Mrs. Robert Kirby enroute home after a vacation in the Smokey Mountains.

Sunday dinner guests of Mr. and Mrs. W.C. Houston were: Eugene Houston and daughter Gina of Ohio; Charles Houston of Ohio; Mr. and Mrs. James Hous-

ton and son David of Ohio; Mrs. Phyllis Huddleston and children Darren and Renee of Tucson, Ariz.; Mr. and Mrs. Edward Houston and Mr. and Mrs. Bill Houston and family of Dayton, Ky. Sympathy is extended to the family of Stanley McClure in their time of sorrow.

Mr. and Mrs. Charlie Todd will be celebrating their 50th wedding anniversary Sunday, August 24 at their home. Everyone is invited to an open house from 2 to 5 p.m. to help Mr. and Mrs. Todd celebrate their anniversary.

Burton were in Lexington Friday having dental work done.

Birthday celebrations



Holly Lynn Weaver, daughter of Mr. and Mrs. Jack Weaver celebrated her 6th birthday August 8. She is the granddaughter of Mr. and Mrs. Douglas Lovell and Mr. and Mrs. Lin Reynolds, all of Mt. Vernon.



Zachary Allan Hensley will celebrate his 1st birthday August 17. He is the son of Mr. and Mrs. Marty Hensley of London and the grandson of Rev. and Mrs. Marvin Hensley of Mt. Vernon and Rev. and Mrs. Joseph R. Harot of Louisville.



Anthony Lee McFerron celebrated his 1st birthday July 18. Anthony is the son of Connie and Michael Lee McFerron of Broadhead and grandparents are Ruby and Ronald McFerron of Mt. Vernon and Faye and Denver Carey of Ohio.

Furniture Town
ROCK BOTTOM SALE
On-The-Spot Financing

1 mi. from East Bernstadt on Hwy. 30
Ph. 843-7858 Free Delivery
Open 6 Days a Week 9 - 7

7 pc. Sectional, Reg. 11,495. Now only \$644. 6 pc. Living Room Suite w/wood trim, Reg. 1895. Now \$377. One big room, full of furniture but living room suites, values to \$1195, your choice \$380. 5 yr. written guarantee on all living room suites. Large load of beautiful coffee table sets and lamps, going at unbelievably low prices. Solid oak china cabinets. 240. Bedroom Suites, \$290. Living Room Suites, \$59. \$280. Extra nice swivel rockers, reg. \$266. Now \$86. Hide-A-Beds, \$235. Orthopedic box springs and mattress, reg. \$399. Now \$158 set. Dining Room Sets, solid wood, from \$185. Big oak dining room suites w/chairs and pedestal foot table, reg. \$955. Now \$450. Other oak, maple and pine dining room suites with matching hutches. Also, lots of ott. beds, full and half size and bunk beds, special good deals. Chest of drawers, \$59. Stoves, refrigerators, washers and dryers and deep freezers at a special low price. Also, some good used furniture. We accept trade-ins.

SPECIAL DISCOUNTS FOR SENIOR CITIZENS
Folks come from miles around to take the most at
FURNITURE TOWN



Bill Dowell




Roy Martin

Dowell & Martin

24-HOUR OBITUARY LINE
256-2997

Dowell & Martin

FUNERAL HOME
MT. VERNON, KY
256-2991 PHONES 256-2997
"ROCKCASTLE'S MOST PREFERRED"



Welcome to the

RENRO VALLEY

ALWAYS

Your Favorite

FOODS

SEAFOOD HOUSE

Exit 62 at Renfro Valley

OWNERS:
Chris and Homer Brown

Come in and meet our staff for excellent service and quality food. Enjoy a pleasant atmosphere and private dining. Call us for parties or meetings. Phone 256-9021.

<p>Winter</p> <p>Monday through Saturday 11 a.m. - 8 p.m. Sunday 11 a.m. - 2 p.m.</p>	<p>Summer</p> <p>Monday through Saturday 11 a.m. - 10 p.m. Sunday 11 a.m. - 2 p.m.</p>
--	---

Children's Menu

Our dinners are served with Potato or Long Grain Rice. Homemade Hush Puppies or Garlic Bread, and Salad Bar. We also have a good variety of Sandwiches.

Menu

All kinds of Sea Food, 6 different kinds of Fish, Fried or Boiled, Chicken, Char-Broiled Steaks, Pork Chops, Bar-B-Que'd Ribs, Country Hams, 15 Side Dishes.

Call Us For Your Picnics

We have Broasted Chicken, Baked Beans, Rolls with any Salads. We fix your order after you call. It takes only 15 minutes.

We Have Complete Carry-Out Service

256-9021

Free Birthday And Anniversary Cakes

Try our Dessert.

Pies, Cakes, Cobblers, Sundaes, ect.

We Have A 37 Item Salad Bar

Homemade Salads, no additives.

Home Cooked Meals

Monday through Friday and Sunday
11 a.m. - 2 p.m.
Plus a Seafood Special.

Summer visitor to local family is a long way from homeland

By Nancy Mullins

Can you imagine a twelve year old who doesn't like Big Macs and Chicken McNuggets? Well, then imagine Yukari (pronounced Yu ka dee) Kusachi. She is from Japan and she prefers vegetables, according to the Bill Gregory

family who is serving as LABO State 4-H foreign exchange host family. Actually McDonald's food is the only obvious food dislike they have observed since Yukari arrived at their home in Brodhead July 26th to spend 3 1/2 weeks. She came with suitcases stocked with Japanese snack foods or survival

foods in case she could not eat American food.

According to Cindy, the Gregory's twelve year old daughter, Yukari understands a little bit of English if it is spoken slowly. She has only studied English in school (mostly written) for about 6 months which makes communications difficult. Much of their communication is written, much is gesture and, when all else fails, they refer to their English-Japanese dictionaries. Both Yukari and the Gregorys have learned some "survival terms" and Mary even bought a book subtitled "Learn Japanese in 10 Minutes a Day," but, she says, it is a "little harder than it sounds."

Even though she spent some time listening to cassette tapes about the American culture and what to expect here, Yukari has been understandably confused at times. For instance, the Gregorys took her to Fort Boonesborough for an outing and after seeing all the displays and demonstrations, once home Yukari asked, "What's a Daniel Boone?"

Because the mother of the household, Mary Gregory, realizes that Yukari is seeing, hearing and doing things she does not fully understand right now, they are recording on video film many of the things they are doing and places they are taking their quest. Mary says Yukari can take the films home and view and re-view and absorb more of her trip as she learns more about the language and our country. "She is getting a big amount of information and she will learn a lot more," the mother says.

One of the family's initial concerns was that their young guest would become homesick. Their antidote is to keep active. Yukari has already been to Frankfort and trips are scheduled to the state fair, the beach and Washington D.C.

Mary says they do not mention her home, but watch to see that she is eating and sleeping

well, signs that she is adjusting. From all indications, Mary says, Yukari comes from a family whose standard of living is similar to theirs. Her father owns a shop which sells mainly small electrical appliances in the city of Sizuoka, about 100 miles below Tokyo on the coast of Japan. She plays the piano, does calligraphy, draws and likes to snow ski.

August 20th Yukari will leave Kentucky and the Gregorys and take home a "big dose" of American culture and good will perhaps equal to that which she brought through this 4-H cultural exchange program.

State Fair begins Aug. 14

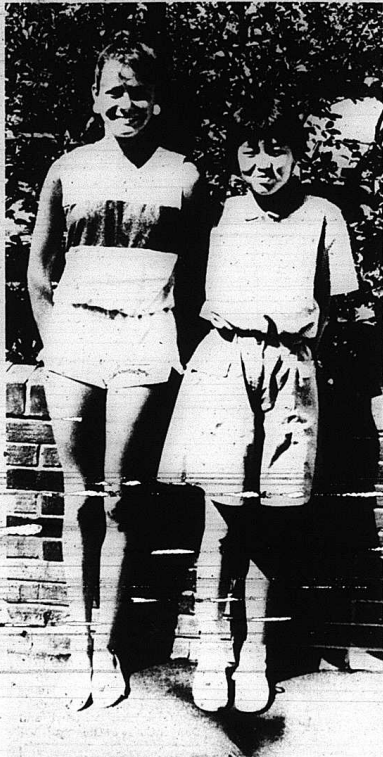
The 1986 Kentucky State Fair begins Aug. 14 and Gov. Martha Layne Collins will officially open the 10-day seminar event at 5:45 p.m. in front of Louisville's Freedom Hall Coliseum.

Collins said the opening festivities have been moved from the usual morning time so more people can attend.

Collins said that she is especially excited about this year's fair. "This year's fair promises to be bigger and better than ever," she said. "An all-out effort has been made to promote the fair statewide."

Joining Collins in the ceremonies will be several fair officials and many state and local officials including Clarence Duggins, president of the Kentucky State Fair Board; Wendell Combs, state secretary of Tourism and Carol Miller, president of County Fairs Association.

On Aug. 7 Collins visited with
Continued To Page 20



Cindy Gregory and Yukari Kusachi

Dr. Harvey A. Schleiter
Optometrist

Complete Vision Care
Eye Examinations Fashion Eyewear
Contact Lenses Medical Cards Accepted
256-3122

Corner Main and Richmond St. [Behind Dollar General Store] Mt. Vernon
Hours: Tuesday 9 to 5, Wednesday 9 to 12, Friday 9 to 12.

50% off

Homecoming Specials!!

At Bob's

Ladies Sportsweater <small>(Halter, Boat, Blouse, Casual)</small>	Children's Summer Wear	Men's Suits and Sportcoats
Ladies Swimwear <small>(Tankini)</small>	Ladies and Junior Dresses <small>(Full, 3/4, 5/8, 3/4, 5/8, 3/4, 5/8)</small>	Men's Slacks <small>(Santoni, Jockey, Robert Bruce)</small>
Ladies Summer Shoes <small>(Blouse, Naturalizer)</small>	Men's Swimtrunks	Men's Shorts and Shirts <small>(Halter, Jockey, Robert Bruce)</small>

One Group of Converse Tennis Shoes 1/2 Price

Ladies Slacks \$5.00
Ladies Sweater 75% off

Pre-Washed Jeans 20% off
Ready-To-Wear 25%-50% off

Bob's
Downtown London
Mon.-Sat. 9-5

New Items Arriving Daily • Big Savings Daily

<p>SQUIRREL SEASON OPENS SATURDAY AUGUST 16</p> <p>STAINLESS STEEL 3 PC. SET MIXING BOWLS \$1.99 SET <small>Reg. \$3.99</small></p>	<p>ADULT & JR. HUNTING LICENSE</p>
<p>ANGLE HEAD BROOM \$1.66 Compare \$3.95</p>	<p>HUNTING VEST "MESH" 20% OFF 2 Styles</p>
<p>DRIVEWAY DRESSING 5 Gal. \$6.88 Compare \$12.95</p>	<p>AUTO STEREO ALL SPARKOMATIC KRACO HIPPO SONA 20% OFF</p>
<p>RECOIL PADS \$2.99 EA. Rubber Slip On Or Screw On</p>	<p>WASH CLOTHS & TOWELS 1/2 OFF White</p>
<p>SALE TERMS: • Cash • Check VISA</p>	<p>ALL LAWN GAMES JARTS BADMINTON CROQUET HORSESHOES 40% OFF</p>
<p>Discount John's Store</p> <p>US 23 South London, Ky.</p>	<p>US 23 South Mt. Vernon, Ky.</p>
<p>PRICES GOOD WED. THRU SUN.</p> <h1>SALE — SALE — SALE</h1>	

Shoes Galore

Now Open in London, Ky.
I-75 and 80 in Dog Patch Center
Opening Specials!

Selected Group
Fredrico Skimmers & Bootie

Were \$19.99
NOW **\$12.99**
[Thru August 22nd]

Back-To-School Headquarters for Kangaroos
15% off

All Styles Leather High-Tops, Aerobics & Children's Velcro Court Shoes

Stop by and get acquainted with the area's newest and most exciting selection of name-brand footwear.

OPEN 9 - 6 Mon. - Sat. Sun. 1 - 5

Around BROADHEAD

Personals

By Mary McWhorter

Summer visitors of Billy and Carol Riddle have been:

Mr. and Mrs. Jim Purcell, Mr. and Mrs. Fred Combs, Josh Everett, Freddie Anthony and Lauren Combs of Kettering, Ohio. Mr. and Mrs. James Dreaden, Judy Purcell, Amanda, Jamie and friend Melanie, Mr. and Mrs. Jeff Kelly, Mr. and Mrs. Darren Dews, and baby daughter Sarah Mae of Centerville, Indiana. Leigh Ann Purcell, Debbie (Purcell) Young of Fort Meyers, Florida.

Tom Purcell and son Steven of Victoria, Texas. Mr. and Mrs. Eugene Pryor and grandson Ron of Mexico, Mo.

Mrs. Carol Riddle, Mrs. Vicki Scott and Corey, Mr. and Mrs. Curtis Brown and Angie, Mr. and Mrs. James Dreaden, Jamie and Amanda and Melanie recently spent a week in Florida visiting Disney World, Daytona Beach and St. Augustine.

Surprise Birthday Party

A surprise birthday party was given Saturday night, July 26 at Pete Stricklin's Inn in Indianapolis, Ind. in honor of Mrs. Mae Taylor, who recently moved from Broadhead. The party was given by Mrs. Taylor's family, those present who helped her celebrate were:

Mr. and Mrs. Robert Lawrence, Mr. and Mrs. Clarence Winters, Mr. and Mrs. Glyn Gardner and children, Mrs. Mark Sell and daughter, Mr. and Mrs. Roy Bonham, Mr. and Mrs. Mike Bonham, Mr. and Mrs. Jeff Lawrence, Mrs. Jerry Davis, Mr. and Mrs. Laren Bayliff, Miss Lisa Davis, David Brangard, Dan Brangard, Mr. and Mrs. Don Bradley, and son and Miss Dana Brangard all from Mt. Vernon.

Mrs. Taylor received a lot of nice gifts and every one had a nice time. We hope Mrs. Taylor will have a lot more happy birthdays.

Her children
in Indianapolis

Sunday, July 27th, several of the McBee's gathered at the home of Barbara and Frank Watson for a dinner in honor of Evans and Ava McBee of San Marcos, California, who have been visiting here. Those present were: Hugh and Rebecca McBee, her daughter; Betty and granddaughter Lisa and niece of Somerset; Dr. and Mrs. George Griffith of Mt. Vernon; Mr. and Mrs. John Armstrong of Crab Orchard; Mrs. Mary McCord of Richmond; Mr. and Mrs. Jim McBee of Louisville; Mr. and Mrs. Edri Parson of Louisville; Mr. and Mrs. John Newland and Chris and Mr. and Mrs. Terry Chandler.

Mrs. Napier of Calumet, Ill. and son Andrew of Sary Antonio, Texas are visiting their parents and grandparents. Mr. and Mrs. Paul Napier. A cook-out was held in honor of them, those attending were: Mr. and Mrs. Jess Profit; Mrs. Essie Napier; Mr. and Mrs. Charles Bray of Ohio; Mrs. Betty Mize of Ohio, Mr. and Mrs. Bill Napier of Copper Creek, Mrs. Rose Day and son's Doug, Shannon and Brandon; Mr. and Mrs. Chester Day and daughter Angela, Mr. and Mrs. Ray Taylor, Mr. and Mrs. Randall Lumsford and daughter Stacey and Mrs. Jean Barnett and son Dale.

Mr. and Mrs. John Disney of Corbin were Saturday visitors of Mary McWhorter.

Emery Powers spent a few days with his daughter, Mrs. Annett Bussell and family, later in the week, he spent a few days with his other daughter Mrs. Lydia Rogers also spent a few days Stanford visiting her daughter, Mrs. Clarice Brown and family.

Mrs. Mary Adams who is spending some time with her sister, Mrs. Ruth White, remains about the same.

Mrs. Julia Hunt and Mrs. Lynette Barr and daughter Bobby Joe were in Somerset shopping Thursday, they also attended the Broadhead Fair Thursday evening and Mrs. Hunt spent the night with them.

Mrs. Viola Hensley recently visited her son Ralph Tyra and family at Yellow Rock in Lee County.

Douglas Tyra and family of

Hamilton, Ohio was recent visitors of his mother, Mrs. Viola Hensley. Other recent visitors were Johnnie and Pat Tyra and children of Clark County, the children spent a week with their grandmother and Mrs. Hensley returned home with them a few days.

Ronnie Tyra and wife Elizabeth and children were last Sunday visitors of his mother, Mrs. Hensley.

Don Hensley and wife Janice and children of Harlan were last week visitors of Mrs. Hensley, Sunday visitors were Golden and Faye Hensley of Indiana.

Week-end visitors of Mr. and Mrs. Everett Woodall and Jackie were: Mr. and Mrs. Kenneth Leece and son Mike, of Ft. Lee, Va.; Mr. and Mrs. Leroy Sanders of Kettering, Ohio; Mr. and Mrs. Charles Sanders and Mr. and Mrs. Harold Jackson of West Chester, Ohio; Mr. and Mrs. Jim Leece

of Anniston, Alabama; J.B. Sanders of Dayton, Ohio; Mr. and Mrs. James Bradley and Stephanie; Mr. and Mrs. Harold Woodall of Mt. Vernon; Mr. and Mrs. Larry Ballen; Jennifer and Kevin of Wildie and Tressa Hopkins and Mike.

Mrs. Cleo Cass of Falmouth, Ky. and Mr. and Mrs. Lamar Doutaz of Eaton, Ohio spent the weekend with Mrs. Bertha Stephens and Mr. and Mrs. George Adams.

Mr. and Mrs. George Adams and granddaughter Donna Lynn Cash spent one day last week in Berea, with Mr. and Mrs. Bruce Sargent, Danny Bruce and Dennis. Mr. and Mrs. George Adams were in Somerset shopping Saturday evening.

Mr. and Mrs. Harold Wilson and son Leslie of Lockland, Ohio; Mr. and Mrs. Mrs. Robert Manning and his two sisters all of

Middletown, Ohio spent the week-end with Mr. and Mrs. Homer Jones.

Mr. and Mrs. Floyd Issacs of Berea were Friday night guests of Mr. and Mrs. Homer Jones.

Miss Mickie Lea Pruitt of EKU in Richmond spent the weekend with her mother and brother, Mrs. Pat Pruitt and Freddie Pruitt, Jr.

Willie Taylor and Arvil Burton were in Somerset shopping at the mall recently.

Kenneth Adams and daughter Deanna of Rossville, Ga. and

Kenneth's girlfriend Sue, Vincent and her daughter Mitz of Red Bank, Ga. were weekend guests of Kenneth's parents; Mr. and Mrs. Bob Adams. Other guests were James and Leona Clark of Stanford, Mrs. Mary McCullah of Mt. Vernon, Eustace Norton was last week visitor.

Mr. and Mrs. Bob Adams and Mary McWhorter were in Mt. Vernon for a doctor's appointment and visited Mr. and Mrs. Charlie Clark.

Continued To Page 20

Births and Birthdays



Nelson and LaJoy Graves of Broadhead proudly announce the birth of their second child, a son, born July 22, 1986 at Patie A. Clay Hospital in Richmond. He has been named DeJon Courtney and weighed 10 pounds, 12 ounces at birth and was 22 1/2 inches long. DeJon was welcomed home by his brothers Devin Preston. Maternal grandparents are Aimee and Preston Parrett, Jr. of Broadhead. Paternal grandparents are Mary and Charles Graves of Route 3, Broadhead.



Natalee Lynn Taylor celebrated her first birthday Wednesday, July 30, 1986 at her home. Natalee is the daughter of Harold and Kathy Taylor of Broadhead. She is the granddaughter of E.J. and Roberta Taylor and Paul and Martha Hamm, all of Broadhead.

NOW RENTING

LIVINGSTON MANOR APARTMENTS

For Rental Assistance

Call 453-4311

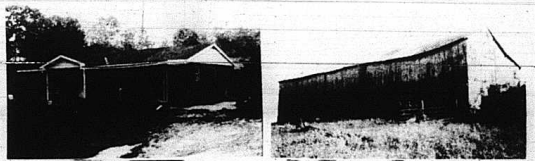
For Applications

Auction

Mr. and Mrs. Ralph Johnson's
25 Acre Farm, more or less

and
Farm Machinery

Sat., Aug. 23, 1986 10:30 a.m.
Scaffold Cane Section of Rockcastle Co.



LOCATION: Turn off US 25 approximately 6 miles north of Mt. Vernon and 8 miles south of Berea at Parsons Gas & Appliance and follow auction signs approximately 3 miles to the farm

Mr. and Mrs. Johnson are cutting down their farming operation and have authorized our firm to market this good small farm with brick house and farm machinery at absolute auction.

The farm contains approximately 25 acres, more or less, of level to gently rolling land with approximately 14 1/2 acres cropland, and a basic tobacco allotment of 1,698 lbs. Stock water is provided by a pond. The farm is improved with the above-pictured brick home having 4 bedrooms, kitchen, living room, bath, hardwood and carpet floors and city water. It also has cabinets and washer/dryer hook-up. Other buildings include a 32x84 tobacco barn with a 16 ft. shed, a 36x24 multi-use barn, 20x48 machine shed, 12x72 hay shed and other miscellaneous buildings.

Acres is approximately, however, the farm is presently being surveyed and the exact acreage will be announced day of sale.

Farm Equipment: 135 Massey Ferguson diesel tractor; Super A Farmall tractor with cultivators and side dresser; No. 10 Massey Ferguson hay baler; Massey Ferguson mowing machine, 7 ft.; fertilizer spreader; hay mover; 300 gallon fuel tank; wagon; water tank and pump; layoff plow; cultivator; approximately 500 tobacco sticks and several other miscellaneous items.

Auctioneer's Note: If you're looking for a good small farm and brick home, or farm equipment to buy at your own price, be sure to attend this absolute auction Saturday, August 23, 1986 at 10:30 a.m.

Terms: 20% down day of sale, balance in 30 days with delivery of deed on real estate and cash or good check day of sale on farm machinery.

For additional information, contact:

Ford Realty & Auction Co.

REALTOR/AUCTIONEER
SAM FORD
DANNY FORD
ROY ADAMS



AUCTIONEERS
JERRY HAM
WILLARD BULLOCK
APP. AUCTIONEER
BOB TODD



Kentucky Toll Free No. 1-800-435-6454
Mt. Vernon, Ky. Phone 256-4545
Somerset, Ky. Phone 679-2212

Old Kentucky Kitchen
HOT WEATHER SPECIALS!
"Give Your Wife A Break"

Coupon

Breakfast - \$1.75

[Breakfast Coupon Expires Aug. 30, 1986]

Eggs [any style], sausage or bacon, fried taters, homemade biscuits, gravy and butter and jelly.

Coupon

Daily Luncheon Specials - \$3.50

"All Lunch Specials consist of a Full Course Meal."

Coupon

Coupon

All Dinners Buy one and get one FREE

[Must Be of Comparable Price]
[Dinner Coupon Expires Aug. 30, 1986]

Coupon

Bring in Your Coupons and Save!
All Phone Orders - 10⁰/₀ off
Ph. 256-3822 Mgr. Pam Shepherd

REAL ESTATE

Commercial Properties

Small Commercial Building - Located on West Main Street. This building could be used for several types of small businesses or adapted for office space very easily. A bargain priced at \$6,900. G1

Large Commercial Building - Broadhead, Main Street. A portion of the building is presently being utilized as a furniture store. It has approximately 4,500 sq. ft. city water and new roof. Priced at \$21,500. K4

Commercial Building - On U.S. 25 near Barr. Formerly used as a service station but could be adapted to other businesses. Building has 2 baths, city water and the lot measures 142' along U.S. 25 and 120' deep. Priced for quick sale at \$10,500. M8

Main Street - Crab Orchard - Commercial Building - formerly Ray Settles Drug Store. Suitable for most any type retail operation. Measures 42x75. Priced at \$11,900. M13

Commercial Building and Lot - Located just south of Mt. Vernon on U.S. 25. Building and business - walk-out deal. Operating as Rockcastle Roller rink. Although the building is being utilized as a skating rink, it could be adapted to most any type business. It measures 70x125. Records available to qualified prospectors. \$5,000. M15

2 Acres - near Druther's Restaurant and the intersection of 25 and the new 461 Bypass. Best location for food or station around. Priced at \$119,000. N6

Mobile Home Park - Located on Poplar Street in Mt. Vernon. 16 spaces. \$600 per month income. Priced at \$45,000. N8

Businesses

Established Business - 1 mile out of Mt. Vernon. 50x80 garage building with front end alignment, radiator shop, computer wheel balancer, rotor and drum lathe, air compressor, floor hoist jacks, battery charger, stands, work benches, office furniture. Priced at \$24,900. M16

Grocery Business and Living Quarters - known as the Callaway Market. Owners want to move - say sale! The living quarters has living room, kitchen, dining room combination, 3 bedrooms and bath. The store is complete with fixtures and equipment and an additional storage room. Ideal for the individual wanting an extra income. Priced at \$24,900. M16

Business Opportunity - Inventory and equipment of a going craft and antique business, located in Benfro Valley, Kentucky. Excellent income potential. Books available to qualified prospectors. **Reduced to \$11,900. L6**

In Mt. Vernon - Service Station and Repair Shop. Going business in an excellent location. Can be bought for only \$15,000. L10

Farms and Acreage

Modern Log Home - 9 Acres - Home has 1800 sq. ft. of living space. It has huge great room, kitchen with built-in cabinets, 3 bedrooms and 1 1/2 baths. Approx. 9 acres of hill land sectioned into 3 lots. 1 mile from city limits of Mt. Vernon. Priced at \$49,500. G24

671 Acres - with over a mile of frontage on the Kentucky River in Madison County. 8,000 sq. ft. tobacco base, 3 barns, 4 bedroom house, approx. 200 acres river bottom land and approx. 400 acres total of crop and pasture land. Could be developed. Owners will assist in financing. Reasonably priced at \$250,000. N14

140 Acre Farm - more or less - Allen Road in Ottenheim section of Lincoln County. Approx. 180 acres open, 13 acres marketable timber. 1 1/2 baths, tobacco allotment, older home, 2 barns, crop and miscellaneous buildings. Priced at \$115,000. N19

New Listing - 75 Acres - undeveloped land, Near the Jackson County line, possibility of coal, some marketable timber. Only \$200 per acre. N20

New Listing - 100 Acres - If you want privacy then look this one over! Near Crooked Creek, Singleton Valley, 3 bedroom house, log barn, good spring, timber. All this for only \$22,500. P1

FUTURE AUCTION OF
Estate Auction of the late Mr. and Mrs. Curd Ballou's Farm - Just off Hwy. 461, 3 Acres at Freedom and House and Lot on U.S. 151.
Sat., Aug. 30, 1986 10:30 a.m.

TWILIGHT AUCTION OF
"Ets Taylor's" Home - 6 Acres
Friday, Aug. 15, 1986 6:30 p.m.
Whitley County, Kentucky

24 Acres - Located in the Copper Creek section of Rockcastle County. Approx. 8 acres cleared land and some young timber. Watered by a creek. Reduced to \$6,500. K3

15 Acres - Reduced for quick sale. Priced at \$13,900. Sale Pending

190 Acres - undeveloped land in the Chestnut Ridge/Sand Hill section of Rockcastle County. Priced at \$29,500. F4

240 Acres - Sloughs Creek. Priced at approximately 2700 lb. tobacco base, 2 barns, 4 room house in need of repairs, garage, water provided by two springs and creek, lots of firewood. Reduced to \$59,000. F5

One of Rockcastle's Premier Farms - 413 acres - old Broadhead Road. House, silos, grain bins, new equipment building, barns. Priced at \$400,000. J5

15 Acres - Merions - Hill cleared, presently in soybeans, city water available. Excellent building site with mature shade trees. All this for only \$15,000. M19

120 Acres - Highland section of Lincoln County. 80 acres crop and pasture land and balance in woods. 2200 sq. ft. basic tobacco allotment, abundance of water, good cattle farm. Priced at \$56,900. N10

17 Acre Farm - near Sandy, Pulaski County. Home has 3 bedrooms, living room, kitchen, 1 1/2 baths and utility room and tobacco barn, all tillable land, good well. All for only \$23,900. M6

35 Acres - Located in the Bindle Ridge section of Rockcastle County. Good tobacco land. Priced at \$43,000. L9

95 Acres - more or less - Red Hill section of Rockcastle County. Priced to sell quickly at \$15,900. N7

Live on the Lake - 3 Acres - Lake Linville. Good building sites. Priced at \$8,900. N9

71 Acres - 2 miles south of Mt. Vernon near Burr with access to highway 25. Good sound investment, coal potential. All this for only \$21,500. M12

House and 3 Acres - Ottawa section of Rockcastle County. The house has living room, dining room, kitchen, 2 bedrooms, 2 baths and utility room. 3 bedrooms upstairs. It also has washer/dryer hook-up, storm doors and windows, large country porch and ample shade. There is also a combination stock and tobacco barn. Priced at \$29,900.

Rustic Modest - 30 Acres - Woodstock section of Pulaski County. The house has 4 bedrooms, 3 baths, 2 kitchens, 2 fireplaces. Be for wood burner, approx. 3,000 sq. ft., Pella windows, manure extra. Priced at \$64,900. A17

100 Acres - 1 mile off US 25 on the Orlando Road. 900 lb. tobacco base, frame house with 3 bedrooms, living room, kitchen and bath. Also has washer/dryer hook-up, electric heat. All for \$34,900. D4

Built in the Country - 5 Acres, more or less - located just off Purry Rigby Road. Level to rolling, city water available. Reduced to \$8,900. N2

10 Acres on the edge of Mt. Vernon near Industrial Park and new 461 - development potential. Priced at \$22,900. M21

8 Acres - with Brick Home - Pine Hill. This modern home has living room, kitchen, 2 bedrooms, bath and full basement. Also has front porch and back porch. Owner would consider dividing. Priced at \$21,900. N4

16 Acres - Located near Poplar Gap. Plenty of privacy, good home site. Only \$5,900. K5

Bedford Stone Home - 10 Acres - Approximately 1 mile out of town. Fantastic view. The house has living room, kitchen, 4 bedrooms, bath, washer/dryer hook-up, gas heat, built-in cabinets, plus much more. In addition, it also has a barn and 730 lb. tobacco base. Owners moving out of town. Priced at \$57,500. L1

115 Acre Farm - Boughlinton section Lincoln County. Approximately 50 acres crop and pasture land, balance in woods. Abundance of water. Property is improved with a 5 bedroom frame house, 2 car garage and a combination barn. Priced at \$69,900. N1

Homes \$50,000 and Up

Overlooking Lake Linville - This fine home has 1688 sq. ft. and has 3 bedrooms, 2 baths, kitchen/dining room combination, living room, family room, den/bedroom and utility room. Also has

central heat and air, built-in oven, range and dishwasher, excellent 26x26 workshop and garage, 2 decks, porch, very private, wooded. Priced at \$69,500. N15

New Listing - Ranch Colonial Style Brick - Mareburg. Home has living room, kitchen, family room, 3 bedrooms, utility room and 2 baths. Also has electric heat, wall to wall carpet, built-in cabinets, full insulated, 1 car garage and full basement with outside entrance. Priced at \$59,900. P3

Near Home - 3 Bedrooms - Home has 4 bedrooms, cabinets, family room and master or office room, 1 acre with fruit trees. Reduced to \$54,900. K145

Brick Home - 2 Acres - Mareburg - This lovely brick home has 3 bedrooms, living room, kitchen, 1 1/2 baths and utility room. It also has electric heat, carpet and garage. A/C's as well and city water. All for \$52,500. M11

Newly Remodeled Home - 5 minutes from Mt. Vernon. This fine home has 4 bedrooms, living room, family room, kitchen, dining room, 2 1/2 baths, storm doors, automatic dishwasher, washer/dryer hook-up, approx. 2 1/2 car garage, 2 car garage, built-in cabinets and is situated on an excellent country lot measuring approx. 1 acre. This is only \$59,900. M1

Home Sale Pending

Home - 3 Bedrooms - Mt. Vernon Road. Home has 3 bedrooms, large family room with fireplace, dining room, kitchen with built-in appliances and 2 baths. Also has washer/dryer hook-up, wall to wall carpet, electric heat and is situated on approx. 2 acres. All for \$89,000. N2

Excellent Home - Home has 3 bedrooms, living room, dining room, kitchen, family room, 2 1/2 baths and utility room. Has 1 1/2 car garage, pool, formal dining room, kitchen, living room and utility room. Covered by home warranty. Priced at \$89,500. N16

New Listing - New 3 Story Contemporary Style Home - Chestnut Hills Subdivision. This beautiful home has all built-in appliances, central heat and air, approx. 2,400 sq. ft., 4 bedrooms, 3 baths, family room, formal dining room, kitchen, living room and utility room. Covered by home warranty. Priced at \$119,000. N17

New Listing - New 3 Story English Tudor Home - Located in the Chestnut Hills Subdivision. This fine home has 3 bedrooms, 2 1/2 baths, formal dining room, living room, kitchen and den. Also has all built-in appliances, approx. 2,100 sq. ft. and 2 car garage. This home has builders warranty. Priced at \$79,000. N17

\$40,000-\$50,000 Range

Bedford Stone Home - Highway 461 - Home has 3 bedrooms, living room, dining room-kitchen combination with lots of cabinets, bath, full basement and attached garage. Priced at \$48,900. D15

New - 3 Bedrooms Brick - Ready To Move In - Home also living room, dining room-kitchen combination, family room, utility room and 2 baths. Evergreen Estates Subdivision. Heat pump, garage, built-in cabinets, wall to wall carpet. \$47,900. H19

3 Bedroom Brick - Valley Manor Subdivision - House also has living room, kitchen, central air, washer/dryer hook-up and carpet. All for just \$44,900. K15

Country Living Near Town - This excellent brick home has living room, kitchen-dining room combination, 3 bedrooms, 1 1/2 baths, utility room, large foyer and garage. Situated on 1.3 acres in the Wabd section of Rockcastle County. It has total electric, storm doors and windows. It also has wall carpet, washer/dryer hook-up, plus much more. Priced at \$49,900. L4

Excellent Location - West Main Street - Mt. Vernon - This home offers a high living room, formal dining room, kitchen, 2 bedrooms, bath and den on the first floor and 2 bedrooms and bath on the second floor. It also has built-in fireplace, storm doors and windows, city water and sewer, built-in cabinets, aluminum siding and a 2

car detached garage - The interior of the house has been professionally decorated. Only \$49,900. M7

\$30,000 - \$40,000 Range

Lowell Court - 2 Story Frame Home - Home has living room, dining room, kitchen, family room, 1 bedroom and bath on first floor with bedrooms upstairs. Also has wall to wall carpet, a full oil furnace, storm doors and windows, aluminum siding. The house is within walking distance of main street, churches and schools. Reduced to \$29,500. H1

Bedford Stone - 3 miles southeast of Mt. Vernon - Home has 3 bedrooms, living room, kitchen, bath and full basement. Also has oil heat, hardwood floors, washer/dryer hook-up and city water. 1 acre. All for \$39,900. J14

House and Lot - Crawford Road - near Mt. Vernon Elementary. House has 3 bedrooms, living room, kitchen with built-in cabinets and 2 baths. Also has built-in washer/dryer, electric heat, wall to wall carpet, basement, built-in back porch and garage. Priced at \$37,900. K20

Brick Home - For Sale or Trade - 8/10 of 1/2 acre - Highway 461 on the Jones Creek Road. Home has 3 bedrooms, living room, kitchen with built-in cabinets and 2 baths. Also has partial basement, built-in washer/dryer, electric heat, wall to wall carpet, Priced at \$37,900. K20

FHA Assumable Loan - on this 3 bedroom brick home. The house also has built-in appliances, living room and bath. Located on Hwy. 70 near Quail. Priced at \$29,900. M10

Newly Remodeled - 3 bedroom brick located on Chestnut Grove Road out of Broadhead. Home also has living room, kitchen with built-in appliances, bath, built-in cabinets, in addition, a natural electric, washer/dryer hook-up and garage. Priced at \$28,900. M10

Lovely Immaculately Kept Split Foyer Home - Located 3 miles east of Mt. Vernon. The house is situated on an approximately 1 acre lot overlooking the woods. The floor plan consists of a family room, bedroom and utility room on the lower level and living room, kitchen, 2 bedrooms and bath on the upper level with a deck to enjoy the surroundings. This one is ready to move into. Priced at \$33,900. H17

Near Lake Linville - Just off Rose Hill Road - 2 Acres - Home has large living room, kitchen-dining room combination, 2 bedrooms, 1 1/2 baths, heat pump/central air, built-in cabinets, fireplace, 2 car garage. A good buy at \$32,900. M20

Double Wide Mobile Home - 12 Acres - Near Mt. Vernon City Limits. Full basement, living room, entrance, total electric, 4 bedrooms, large living room, spacious kitchen, dining room and 2 full baths, large front porch. Also a small barn. All for \$37,900. N12

Homes Under \$30,000
South of Mt. Vernon - Just off Highway 25 - 2 bedroom aluminum sided frame house, total electric, storm doors and windows, also a barn. Situated on 2 acres, more or less. Priced at \$20,900. K2

New Listing - Near Mt. Vernon - Large lot with 3 bedroom Holly-Fair-wood home. Mobile also has 1 1/2 baths, living room with extension, kitchen, gas heat, good well, septic tank. \$16,900. P2

Bedford Stone Home - McGuire Subdivision - South of Mt. Vernon. Home has 2 bedrooms, living room, dining room, kitchen combination, utility room and bath. Also has furnace heat, wall to wall carpet, washer/dryer hook-up. Priced at \$29,900. K19

1983 Mobile Home and Lot - near Lake. Home has 2 bedrooms, living room, kitchen, utility room and 2 baths. Also has beam ceilings, lots of cabinet space, electric heat, washer/dryer hook-up, over-range and refrigerator, and house-type roof. Reduced to \$19,900. L5

1982 1470 Mobile - Be Moved - 4 bedrooms, living room, utility room, 2 1/2 baths. Priced at \$8,900. Sale Pending

Livingston - Good compact home with 2 bedrooms, living room, kitchen, bath and basement. Also has gas furnace and wood stove, city water and sewer. Priced at \$19,900. M9

Excellent Small Home - for newlyweds or retiree. Approx. 5 miles south of Mt. Vernon. Home has 2 bedrooms, living room, kitchen and bath. Also has carpet and brookstone tile, built-in cabinets in addition to the kitchen. Priced at \$19,900. M9

a new 24x30 garage building. All situated on a lot measuring approx. 1 1/4 acres. Priced at \$17,900. M11

Cozy Compact Country Home - with living room, kitchen with built-in cabinets, bedroom, well city water available, large garden. Located just off Dug Hill Road. \$9,900. M14

Perchill Street - Mt. Vernon. Home - large lot measuring approximately 90x165. Home has 3 bedrooms, kitchen, dining room, family room, bath and utility room. Also has storm doors and windows, city water, sewer, washer/dryer hook-up, fireplace - near hospital. Priced at \$25,000. M17

West Main Street - Newly remodeled 2 bedroom home with living room, kitchen, and bath. Also has electric heat, wall to wall carpet, storm doors and windows - usual siding and - street front for measuring approximately \$24,150. All for only \$29,900. M18

Frame Home - West Street in Crab Orchard. 4 room house consists of 2 bedrooms, living room, kitchen, bath and carpet. City water and sewer. Priced at \$19,000. N2

1977 Echo Mobile Home - Located on Poplar Street in Mt. Vernon. It has total electric, living room, kitchen-dining room combination, bath, utility room, 2 bedrooms, living room, kitchen, bath and washer/dryer hook-up. Excellent condition. Priced at only \$6,000. N3

Reduced - Near Livingston - Just off US 25 - 4 bedroom frame home with living room, kitchen, bath and partial basement, full furnace, almost two acres. All for \$23,000. K11

Just Listed - Highway 490 - Hazel Green Area - Home has one acre with additional rental house and store building. Main house has 3 bedrooms, living room, kitchen, bath and full basement and carpet. Other features include hardwood floors, full oil furnace, built-in cabinets and city water. Live in this home and rent the other. All for \$29,500. N15

2 Bedrooms - Street in Broadhead. New siding, new carpet, central heat, situated on a large level lot. Garage. Priced at \$28,900. M10

New Listing - 1973 Mobile Home - Mobile home has 2 bedrooms, large living room, kitchen, bath and full toilet. To be moved on your lot. Only \$3,500. P2

LOTS

Subdivision Near Lake - Located on the Barnett Road. 26 lots measuring 1.2 acre and up and restricted. Several of the lots from a blacktop road and city water available. Ranging from \$11,500 to \$4,000. E74

Evergreen Estates Subdivision - Spacious building lots in Rockcastle County's newest subdivision. All lots have or will have city water and paved streets. Ranging in price from \$4,500 to \$6,000. These lots are restricted for your protection. B1

Building Lots - Country Club Estates Subdivision. City water, near Mt. Vernon. Only \$3,000 to \$3,500. B9

2 Lots - Just out of Mt. Vernon. Ideal for water/heating lots in Rockcastle County. Dandy Building Lot - Rose Hill Road. Overlooking Lake Linville. City water available. Reduced to \$4,250. H7

Building Lot - Overlooking Lake Linville. 1/2 acre. Improved with a storage building. \$4,500. H11

Utah - Dug Hill Road - Large lot, suitable for building or mobile home site. \$4,950. H19

2 Mobile Home Lots - Located just off Main Street - with new garage - city water and sewer. All for \$6,500. K8

4 Building Lots - Located on Hwy. 461 near Hammond's Market. City water. \$2,500 each. K16

3 Building Lots - each measuring approx. 1 1/2 acres. Both have city water and blacktop road frontage. If you want a small place in the country - buy them both. \$3,900 each. L3

3 Building Lots - Orlando section of Rockcastle County. The lots range in size from 1.52 acres to 2.39 acres. These are wooded lots. Priced in price from \$1,500 to \$2,500. M4

Building Lot - Highway 70 - 10 of an acre - city water. 160 feet of road frontage. Priced at \$3,000. M10

Building Lot - near the Cunniff section of city water. **REDUCED TO \$1,500. SOLD**

Looking for a Lot? Mt. Vernon's newest subdivision - Chestnut Hills Subdivision. Restricted, city water, playground, wooded lots. Priced from \$2,000 to \$6,000. N18

New Listing - 1.6 acres total - City water. **REDUCED TO \$113. Sale Pending**

Ford Realty & Auction Co.

"Selling with Confidence"

Danny Ford, GRI 256-4446
Roy Adams, GRI 758-8400
Sam Ford, GRI 256-4588

Mt. Vernon, Ky. 256-4545
KENTUCKY TOLL FREE 1-800-436-5454

REALTOR

SERVICE THAT YOU CAN TRUST - CALL TODAY
IF YOU WANT TO LIST YOUR PROPERTY
OR IF YOU WANT TO BUY!

The "new" Home Economics program; it's for everyone

Will your child be prepared to handle the problems associated with finances, parenting, health, legal matters, relationships, choosing careers, etc. The home economics program is the one that can offer this type of knowledge to each student, both male and female.

Home economics is a profession, and the purpose of a profession is to serve society. The focus is on each individual, and if that individual can grow and be more knowledgeable in the above areas, he or she will make a strong and contributing member of a family and society, which will in turn, improve our community and world.

Over and over, professionals in the field of home economics are faced with such questions as, "Do you have boys in your classes?" or "What do you teach, cooking or sewing?" Drastic changes have been made in order to take care of a changing society's needs. Home economists in education today are teaching equality for both sexes. Our profession is built upon fostering the emotional, physical, and social well-being of individuals and families. This achievement can only occur when both men and women have optimum opportunities for self actualization.

Following is a brief description of courses offered in the local program at the high school.

1. One year courses: Compre-

hensive Home Ec. One, all areas of home economics are included. This course is recommended for those who will pursue the home economics curriculum: Adult Living. This class also covers all areas. It is designed for the older student who has had no previous home economics; Commercial Foods. This course is designed for the students who choose food service as a career.

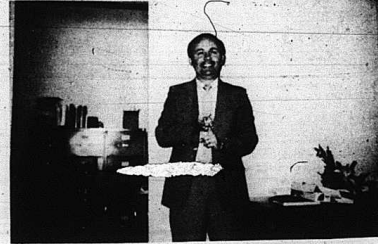
2. One Semester. Special Interest Courses: Parenthood Education; Marriage and Family Relationships; Food Preparation and Management; Child Care and Guidance; Housing and Home Furnishings; Consumer Education; Clothing Construction and Foods for Special Occasions.

Every means have been made to keep the total program up-dated. Modern technology is utilized in each class. Students have hands-on experience with computers, video equipment, etc. Quality speakers, on the subjects of child abuse, genetic counseling, consumer problems, parent-teen relationships, drug and alcohol abuse, family legal responsibilities, etc. are sought. Pictures of some of the resource people who were utilized in recent classes, accompany this article.

In short, home economics is much more than "stitching and sewing," although that is also included. All students, both sexes, the bright and not-so-intellectually able, are offered courses that will



Batty Purcell, R.N. speaks to the Parenthood Education Classes on the subject of first aid for the infant.



Sam Ford, local realtor, speaks to the Adult Education Classes concerning consumer problems related to housing facilities.



Judy Harrison, director of the Home for the Handicapped at the Family Life Center, speaks to the Adult Education and Parenthood Education Classes concerning drugs and alcohol dangers to the unborn child.



William D. Gregory, local attorney, speaks to the Adult Education Classes on the topic of the family and its legal responsibilities.

prepare them for decisions that are ahead. Each individual is given reasons to think, problems to solve, judgements to make, and understandings to master. In other words, the individual should be more able to cope with day to day problems that must be dealt with. Look for future articles which will give a description of each class, and some of the strategies used to teach that particular class.

TAMMY HANSEL HOPKINS
OWNER & OPERATOR

TELEPHONE
606-256-9810

TAMMY'S BARBER SHOP

HAIRSTYLES FOR MEN & WOMEN

MON. TUES. WED. FRI. 9-5
SATURDAY 9-4

WEST MAIN STREET
MT. VERNON, KY 40456

Back To School Specials

Permanents - \$25 (Includes Shampoo, Cut & Style)

Ear Piercing - \$5.00

August 21 - 28

Headquarters for Hair Design.

Mt. Vernon, Ky.

Ph. 256-3868 for Appt. Tues. - Sat.

Myrna Childress

Koula Carloftis

Rockcastle County Public Library District

Mount Vernon, Kentucky 40456

Mrs. Phillip Davis, Librarian

Financial statement for the Library July 1986 to June, 1987.

RECEIPTS:

Taxing District	\$18,408.42
Donations	849.20
Interest	643.43
KLA	3,824.00
TOTAL	\$23,725.14

DISBURSEMENTS:

Personnel	\$16,931.45
Library Books & Materials	1,765.61
Operating	8,963.29
TOTAL	\$27,811.41
Excess of expenditures over receipts	4,664.29
Beginning fund balance July 1, 1985	9,810.38
Ending fund balance June 30, 1986	5,726.81

Kentucky Housing Corporation

You May Now Qualify For A 9³/₈% Residential Mortgage Loan.

Fixed Rate/25-Year Term

The 1986 General Assembly made changes in the maximum income which you may have and still be able to get a low-rate mortgage loan. This law was effective July 15, 1986.

Maximum gross annual household income:

Single person \$25,000

PLUS: \$1,500 for each dependent living in household

PLUS: \$1,500 for head of household status, if applicable

PLUS: \$2,500 if the residence is in designated Kentucky counties*

* Bell, Breathitt, Carter, Clay, Clinton, Cumberland, Elliott, Estill, Floyd, Harlan, Jackson, Johnson, Knott, Knox, Laurel, Lawrence, Lee, Leslie, Letcher, Magoffin, Martin, McCreary, Menifee, Morgan, Owsley, Perry, Pike, Powell, Pulaski, Rockcastle, Wayne, Whitley and Wolfe.

The guidelines translate to the following (in each case, add \$2,500 if the residence is in a county designated above):

Single individual	\$25,000
Married couple	\$26,500
Single individual or married couple—one child	\$28,000

Single individual or married couple—two children	\$29,500
Single individual or married couple—three children	\$31,000

As a result of this legislation, Kentucky Housing Corporation has revised its schedule for maximum eligible purchase prices. The new maximum purchase prices are: Existing residence (previously occupied) state wide \$53,000

New residence located in counties designated above or in Fayette County	\$58,000
New residence located in balance of state	\$56,000

For More Information, Contact your Local Lending Institution or Call Kentucky Housing Corporation Toll-Free at 1-800-633-8896

KENTUCKY HOUSING CORP.

APR 9.949%

This advertisement purchased without the use of State tax dollars.

Save up to 50% on Quality Groceries.

OPEN
7 DAYS
A WEEK

Juices, Fruits

20 oz. can • GRADE 'A' FANCY
LIBBY Pineapple .59

Everyday Low Price!	Fruit Valley 48 oz. can FLORIDA 100% Pure Orange Juice	1.09
Everyday Low Price!	Tropicana 64 oz. bottle Orange Juice	1.79
Everyday Low Price!	Fruit Valley 22 oz. bottle GRADE 'A' FANCY Lemon Juice	.79
Everyday Low Price!	Fruit Valley 40 oz. bottle Grape Juice	.99
Everyday Low Price!	Fruit Valley 16 oz. can GRADE 'A' FANCY HALVES OR Peach Slices	.59
Everyday Low Price!	Fruit Valley 16 oz. can Grade 'A' fancy Pear Halves	.69

Vegetables

Everyday Low Price!	Nature's Pick 14.5 oz. can Grade 'A' fancy GREEN Cut Asparagus	.89
Everyday Low Price!	Harvest Fare 15 1/2 oz. can Grade 'A' fancy French Cut Gc.	.31
Everyday Low Price!	Harvest Fare 18 1/2 oz. can Grade 'A' fancy WHOLE Kernel Corn	.25
Everyday Low Price!	Nature's Pick 15 1/2 oz. can Grade 'A' fancy No-Salt whole Corn	.25
Everyday Low Price!	Harvest Fare 16 oz. can Grade 'A' fancy Sliced Carrots	.31
Everyday Low Price!	Harvest Fare 18 oz. can Grade 'A' fancy Sweet Peas	.25
Everyday Low Price!	Nature's Pick 8 oz. can GRADE 'A' FANCY Tomato Paste	.29

Rice, Beans, Pasta

Everyday Low Price!	Golden Acres 28 oz. box Instant Rice	1.59
Everyday Low Price!	Hospitality 8 oz. pkg. Stuffing Mix	.59
Everyday Low Price!	Perfecto 16 oz. pkg. MOSTACCOLO or Spaghetti	.49
Everyday Low Price!	Golden Wheat 7.25 oz. box Macaroni & Cheese	.23

Condiments

Everyday Low Price!	Marzani 16 oz. bottle POURABLE Salad Dressings etc. Blue Cheese	1.09
Everyday Low Price!	Marzani 16 oz. bottle Blue Cheese Dressing	1.39
Everyday Low Price!	Marzani 32 oz. jar Real Mayonnaise	1.29
Everyday Low Price!	Marzani 32 oz. jar Salad Dressing	.99

Crackers, Cookies

Everyday Low Price!	Fresada 32 oz. pkg. Fig Bars	1.69
Everyday Low Price!	Sunshine 17 oz. pkg. Hydrox Cookies	1.59
Everyday Low Price!	Sunshine 17 oz. pkg. Vienna Fingers	1.59
Everyday Low Price!	Sunshine 17.5 oz. pkg. Chip-A-Roos	1.59
Everyday Low Price!	Fresada 12 oz. pkg. Vanilla Wafers	.79
Everyday Low Price!	11 oz. pkg. Almond Windmill Cookies	.69
Everyday Low Price!	12 oz. pkg. Oyster Crackers	.69
Everyday Low Price!	One pound pkg. Graham Crackers	.89
Everyday Low Price!	18 oz. box RALSTON Saltines	.49
Everyday Low Price!	Sunshine 7 lb. box Hi Ho's	1.59

Canned Meats, Soups

Everyday Low Price!	Quick Time 10 oz. can MUSHROOM OR Chicken Noodle Soup	.29
Everyday Low Price!	Genhe 15 oz. can Mackerel	.59
Everyday Low Price!	SeaMeat 6.5 oz. can IN WATER OR OIL Chunk Light Tuna	.56
Everyday Low Price!	Ranch House 15 oz. can Chili w/ Beans	.59
Everyday Low Price!	Calorby 12 oz. can Roast Beef & Gravy	1.19
Everyday Low Price!	Ranch House 3 oz. can Potted Meat	.25
Everyday Low Price!	Chunk Chicken	.89
Everyday Low Price!	American Beauty 8 oz. can Beans & Franks	.45

CHEF BOY AR DEE • 15 oz. can
BEEF-A-RONI .79

Household, Laundry

Everyday Low Price!	Born Bar Dial Soap	.55
Everyday Low Price!	Adora 14 oz. can Furniture Polish	1.29
Everyday Low Price!	64 oz. bottle WRENQ Liq. Lndry. Detergent	1.99
Everyday Low Price!	Sun Brite gallon jug Liquid Bleach	.59

Paper Products

Everyday Low Price!	Guest Ranch 140 ct. pkg. Paper Napkins	.59
Everyday Low Price!	24 count pkg. Assorted Plastic Cutlery	.39
Everyday Low Price!	18 inch roll Freezer Wrap	1.19
Everyday Low Price!	Vonken Ken 15 ct. pkg. Tall Kitchen Bags	.69
Everyday Low Price!	M. Jumbo Paper Towels	.39

Baking Needs

All Varieties 18.5 oz. box
Oven Best Cake Mixes 59¢
Hospitality 18.5 oz. can Ready to Spread Frosting 99¢

Everyday Low Price!	17 oz. box Pound Cake Mix	.69
Everyday Low Price!	Cook 'n Fry 48 oz. bottle Corn Oil	1.59
Everyday Low Price!	42 oz. can Creamed-Shortening	.99
Everyday Low Price!	13.5 oz. can Evaporated Milk	.39
Everyday Low Price!	Royal 16 oz. can PITTED Red Sour Cherries	.79

ARE • 3 oz. box
ASSORTED GELATIN .19

Beverages

Everyday Low Price!	12 oz. Soda	.17
Everyday Low Price!	All varieties Diet or Regular 2 liter Soda	.69
Everyday Low Price!	3 pb. box Assorted Wylor Drinks	.59
Everyday Low Price!	24 ct. box Freezer Bars Fla Vor Ice	.99
Everyday Low Price!	100 ct. box TAGLESS Tea Bags	.99

1 lb. Bag Reg./Elec. or Drip
Safari Lite COFFEE 309

Snacks

Everyday Low Price!	7 oz. pkg. Fiddle Faddle	.65
Everyday Low Price!	Sunshine 16 oz. box Cheez-Its	1.49
Everyday Low Price!	5 oz. bag Cheez Popcorn	.49
Everyday Low Price!	Della 7.5 oz. bag ALL VARIETIES Potato Chips	.59

Cereals

18 oz. box Breakfast Bowl
Corn Flakes 99¢

Everyday Low Price!	Sunshine 10 oz. box Shredded Wheat	.99
Everyday Low Price!	Breakfast Bowl 15 oz. box Fruit Rings	1.69
Everyday Low Price!	General Mills 14 oz. box Lucky Charms	1.89

Cooler Items

Everyday Low Price!	Schreiber 6 oz. pkg. Sliced Swiss Cheese	1.19
Everyday Low Price!	Meadow Fresh 8 oz. pkg. Cream Cheese	.69
Everyday Low Price!	Honum 3 lb. tub Taster Spread	1.29
Everyday Low Price!	12 oz. pkg. Cheese Flavored Singles	.79
Everyday Low Price!	Schreiber's 8 oz. pkg. 1/2 Moon Cheddar or Half Moon Colby Cheese	1.19
Everyday Low Price!	Schreiber's 8 oz. pkg. Sliced Mozzarella	1.19
Everyday Low Price!	Line Fryn 8 oz. tub RICE, OR Buttermilk Biscuits	1.19

Meats

per lb.
Chunk Bologna 1.39

Everyday Low Price!	Blue Ridge 1 lb. pkg. Pork Sausage	.89
Everyday Low Price!	1 1/2 lb. pkg. Old Virginia 'A' Bacon	1.49
Everyday Low Price!	4 1/2 lb. pkg. BEEF Hillshire Farm Sausage	1.99
Everyday Low Price!	3 lbs. 10. pkg. Jumbo Franks	1.19

SMOKED OR POLISH 1 lb. pkg.
HILLSHIRE SAUSAGE 1.89

Fresh Leg Quarters Lb. .49

3 Lb. or more
GROUND BEEF .89

Frozen Items

Everyday Low Price!	Citrus Berle 12 oz. can Frozen Lemonade	.39
Everyday Low Price!	WRENQ 20 oz. pkg. CHOCOLATE French Fries	.89
Everyday Low Price!	ASSORTED VARIETIES 10 1/2 oz. Jen's Pizza	.89
Everyday Low Price!	Von De Kam's 13.5 oz. FISH STICKS or 14 oz. Fish Fillets	1.99
Everyday Low Price!	5 lb. box 4-TRA VALUE Beef Patties	4.49

14 oz. box • Banana or Chocolate
PET RITZ Cream Pies .79

WE ACCEPT PERSONAL CHECKS FOR AMOUNT OF PURCHASE ONLY
WE GLADLY ACCEPT FOOD STAMPS & MANUFACTURER COUPONS

SAVE A LOT

FOOD STORES

U.S. 25
(Across from old Pepper Station)

100% MONEY-BACK GUARANTEE!

Miss Rockcastle wins "Miss Photogenic" at pageant

Miss Rockcastle, pretty brown-eyed Kim Cromer, was named "Miss Photogenic" at Miss Kentucky-USA pageant ceremonies at the Executive Inn in Paducah last Saturday night.

The award was voted by the five or six photographers covering the event which began with

rehearsal on Friday night prior to the pageant.

Of 29 girls franchised by the Paducah Jaycees, only Miss Cromer and two other contestants, Miss Laurel County and Miss Murray State University had won titles and were sponsored by a pageant. The

other contestants paid the \$350 entry fee to become contestants. Winner of the pageant was Beth Ann Clark of Mayfield who will represent Kentucky in June in the Miss USA Pageant in Miami. Winner of this contest advances to the Miss Universe Pageant.

Miss Cromer, 18, who won

the Miss Rockcastle title over 29 other local beauties last September will attend Cumberland College this fall on a chemistry scholarship. After finishing a degree in chemistry, she has long-range plans of entering medical school.

Home Ec teachers attend state meeting

Betty Glovak, June Stevens, Loretta Dillingham and Betty Cain, vocational home economics teachers at Rockcastle Co. High School attended the Kentucky Home Economics Teachers Conference, August 5-7, in Lexington. Meetings on the theme "Focus on the Future of Home Economics" were held during the three day conference. Dr. Peggy Meszaros, Dean of the University of Ky. College of Home Economics, gave the keynote address at the opening session.

Concurrent sessions on the following topics, were offered, in order to update the teachers in the areas of which they will be teaching this school year.

Computer Workshop, Commercial Foods Workshop, Teaching the Prevention of Family Violence, Teaching Gifted Students in Home Economics, Avoiding Stress and Teacher Burnout, Sexual Development and Behavior of Teens, Assessment of Disadvantaged and Handicapped Students, Strategies for Building Self-Esteem, Update in Clothing and Textiles, Teaching Nutrition, Teaching Basic Skills in Home Economics, Solo Parenting and Trends in Home Furnishings.

Dr. Eugene Moulton, Chairman of the Department of Counselor Education at the University of Dayton, closed the annual conference with a humorous, but timely topic "Master Teacher plus Super Mom = Mission Impossible."

"The youth gets together materials for a bridge to the moon, and at length the middle-aged man decides to make a wood shed with them."

Henry David Thoreau



Somerset Beauty College
ENROLL NOW
FOR SEPT. 2ND CLASSES
 Financial Aid for Those Who Qualify
 Write - Visit - Phone
 Limited Enrollment
SOMERSET BEAUTY COLLEGE
 212 East Mt. Vernon
 Somerset, Ky. 42501

Beauty-ful Training
 Ph. 679-3397



1985 Miss Rockcastle County - Kim Cromer

ABSOLUTE Auction
 of
Mr. and Mrs. Leon Griffin's 27 ACRES
Sat., Aug. 16, 1986 10:30 a.m.
 Near Dogwalk Section of Lincoln County
 Ottawa Section of Rockcastle County
LOCATION: Approximately 7 miles south of Crab Orchard, turn off Highway 39 onto state road 618. Go approximately 1 mile to auction site. Auction signs are posted.
 Mr. and Mrs. Leon Griffin have authorized our firm to sell, for the absolute high dollar, this desirable 27 acre farm.
 The farm is mostly level and most of it could be cropped. Basic tobacco allotment for the farm is approximately 700 lbs. Citywater is available. Since this farm has no buildings, you could build to suit your vision. It would be ideal for a part-time farmer or someone in the area wanting additional land. Mark your calendar now to attend this auction, Saturday, August 16 at 10:30 a.m.
Terms: 20% down day of sale, balance in 30 days with delivery of deed.
 For additional information, contact:
Ford Realty & Auction Co.
 REALTOR/AUCTIONEER
 BERNARD JERRY HAN
 DANIEL WELLS BALDICK
 ROY ADAMS
 AFS AUCTIONEER
 808 1000
 Kentucky Toll Free No. 1-800-435-5454
 Mt. Vernon, Ky. Phone 258-4545
 Somerset, Ky. Phone 679-2212

BMV THE BANK OF MT. VERNON
 P.O. Box 157 MT. VERNON, KY. 40458 606-258-5141



Thank you for banking with us.

Dollars spent out of our area... are gone forever!

They won't be around to help pay taxes, support churches... create jobs that hold our young people.

That's why it's so important to buy and bank at home. We're counting on you!



Index Cards 3x5 Ruled 100 Ct. 2/85¢	Crayola Crayons 16's .99 24's 1.49
Typing Paper 100 Ct. .98	El Marco Markers .79 ea.
5 SUBJECT NOTEBOOK wirebound notebook 1.25 ea.	BIG VALUE PACK 2/99¢
Legal Pads 8 1/2 x 11 1/4 .59 ea.	Paper Mate Roller .89 ea.
Legal Pads 8 1/2 x 14 .75 ea.	School Set (all-in-one) Dictionary, Index Dividers, Notebook, 50 Sheets Paper 5.99 ea.
Legal Pads [2" a] 5x8 .85 pkg.	FILLER PAPER
notebook paper 200 sheets 10 1/2 x 8	200 Ct.99 ea. 200 Ct. College Rule 1.15 ea. 300 Ct. 1.49 ea. 100 Ct.75 ea.

YOUNG'S PHARMACY
 Main St. 258-4613 Mt. Vernon

Area teachers attend conference

Last week's Signal published a picture of teachers: Melissa Hicks, TMH teacher at Mt. Vernon Elementary; Debbie Bugg, EMH teacher at Mt. Vernon Elementary and Lisa Reams, L and BD teacher at Roundstone Elementary. This team of special education teachers attended a conference entitled "Partnerships For Excellence" at Berea College. They were one of forty-some statewide teams selected by the state department to participate in the week long session. There will be two follow-up weekend sessions for them to attend, one in October and the other in March.

"Partnerships For Excellence" means the involvement of community businesses and resource people in the schools to better the education of our young people. Since one of the main goals of all schools is to prepare children for productive participa-

tion and involvement in their communities, this workshop prepared the team from Rockcastle County to be leaders in beginning more partnerships within our area.

Miss Reams, Ms. Bugg and Miss Hicks were sponsored by the Bank of Mt. Vernon's president, Danny McKinney, who agreed to work with the team in developing a partnership. Mr. McKinney has for several years been a leader in supporting our schools.

The team from our area has developed a plan to improve the attendance of the class with the lowest percentage of attendance last year. With the help of Mr. McKinney and the Bank, this "pilot program" will not only help improve attendance but it will also develop saving habits, bank usage skills, and it is hoped that KEST stores of the selected class will improve because of their improved attending.

Mr. Charles Parsons, Superintendent of Rockcastle Schools, and Mr. Hale, Principal of the Mt. Vernon Elementary School where this program will begin, have agreed the program is viable and it will begin with the start of school August 19. The title of this pilot program is "Attendance Pays". It will involve the opening of savings accounts at the bank for those students in the class who have perfect attendance each month. If it is successful, there are plans for broadening the program for coming years. This program is just one of the many partnerships that can develop when teachers and community businesses working together to better our young people's education.

Partially filled boxes of dried fruits (raisins, prunes, apricots) keep their freshness longer if stored in the freezer.



KET Utilization Specialist, Nancy Edwards (left), meets with Charles Parsons, superintendent of the Rockcastle County Schools, at the Kentucky Association of School Administrators Conference in Louisville on July 22.

Master Commissioner

Auction

of

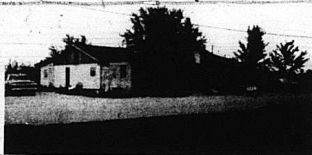
Store Building - Living Quarters

1 Acre - Backhoe - Trucks

Equipment & Building Lots

Friday, August 22, 1986 1:30 p.m.

Orlando, Ky.



LOCATION: Highway 1004 (Salt Petre Cave Road) in Rockcastle County. Turn off US 25 at Burr and proceed to the auction site. Auction signs are posted.

By virtue of judgment and order of sale rendered by the Rockcastle Circuit Court in Civil Auction No. 85-CI-038 on December 13, 1985, the Master Commissioner, with the services of Ford Realty and Auction Company, shall proceed to offer for sale at public auction, the following described real property.

Tract No. 1 - Lots No. 17, 18, 19, 20 and 21 in the Orlando Subdivision and being more particularly described in a plat of said subdivision of record in Plat Book 1, page 64, in the office of the clerk of the Rockcastle County Court.

And being the same property which Frank Mason and Wanda Mason obtained by deed dated August 8, 1973, from Ernest Mason, et ux, recorded in the office of the clerk of the Rockcastle County Court in deed book 106, page 166.

Each of the lots have city water and measure approximately 1/2 acre. Actual measurements will be available day of sale.

Tract No. 2 - Store building with 3,600 sq. ft. with store and living quarters plus basement. The living quarters has 3 bedrooms, living room, kitchen and bath. The building is heated by oil furnace and wood burning furnace.

Beginning at a set stone at the edge of Kentucky Highway 1004 at a gate post in barn road; thence easterly with the barn road 210 feet; thence northerly 210 feet parallel with Kentucky highway 1004; thence westerly parallel with barn road 210 feet to the right of way of Kentucky highway 1004; thence south 210 feet with Kentucky highway 1004 to the beginning and containing one (1) acre, more or less.

And being the same property which Frank Mason and Wanda Mason obtained by deed dated January 6, 1978, from Wendell Renner, et ux, recorded in deed book 107, page 87.

Equipment: 1976 580D Case backhoe; 1975 Ford pick-up truck, F101; 1970 Ford dump truck; 4'x8' dual jet meat box; USBERKEL store scales; store fixtures; remaining inventory; accounts receivable.

TERMS OF SALE: This property shall be sold to the highest bidder on terms of twenty-five (25%) percent of the purchase price in cash at the time of the sale and the balance payable in thirty (30) days with the purchaser being required to execute bond with surety approved by the Commissioner to secure the unpaid balance of the purchase price; the said bond shall bear interest at the rate of twelve (12%) percent per annum until paid.

To bond shall have the force and effect of judgement and shall be and remain a lien upon the property sold as additional surety for the payment of the purchase price.

A federal right of redemption shall exist if any federal agency has a lien or interest in said real or personal property.

Risk and loss of improvements shall be on the purchaser from the date of sale.

The 1986 property taxes shall be paid by the purchaser.

Bidders shall be prepared to promptly comply with the aforesaid terms and conditions.

WILLIAM D. GREGORY
SPECIAL COMMISSIONER

For additional information, contact:

Ford Realty & Auction Co.

REALTOR/AUCTIONEER
SAM FORD
DANNY FORD
ROY ADAMS



AUCTIONEERS
JERRY HAM
WILLARD BULLOCK

APP. AUCTIONEER
BOB TODD



Kentucky Toll Free No. 1-800-435-5454
Mt. Vernon, Ky. Phone 258-4545
Somerset, Ky. Phone 679-2212



Teacher Attends Physics Workshop at EKU - Clarence W. Vanzant, a teacher at Rockcastle County High School, at left, recently took part in a workshop on physics teaching held at Eastern Kentucky University. With him is Dr. Jerry Faughn, a professor in the EKU Department of Physics and Astronomy. They are examining a ripple tank, a device that demonstrates the properties of wave motion. Nearly 30 teachers from across Kentucky took part in the July workshop, which was designed to improve the quality of physics teaching in Kentucky.

Start the day off right at Druther's

Breakfast Menu:

- Sausage & Biscuit
- Sausage & Egg Biscuit
- Ham & Egg Biscuit
- Bacon & Egg Biscuit
- Gravy & Biscuit

or complete breakfast plate which includes:
2 eggs, sausage, ham or bacon, hash browns and 2 biscuits.



All this and more can be purchased at Druther's convenient drive-thru window.

Druther's of Mt. Vernon
I-75 and U.S. 25 Interchange

The Week at Livingston

By Eva Black

Mr. and Mrs. Robert Oliver of London spent Sunday with his mother, Mrs. Della Oliver.

Mrs. Gertrude Mounts who suffered a stroke is in Berea Nursing Home.

Visitors of Mr. and Mrs. P.L. Poyner were Mr. and Mrs. Harold Bynner of Louisville, Mr. and Mrs. Elmer Leddingham of Richmond, Mr. and Mrs. Ralph Allen of Livingston and Mr. and Mrs. Bibby Hunt of London.

Mrs. Ed Hunt and daughter Mary Alice of Mt. Vernon visited Mrs. Eva Black last Wednesday.

James McClure was in Lexington last week on business.

Mrs. Hilda Carpenter and Mrs. Carrie London and London last week on business.

Mr. and Mrs. Jimmy Fordyce of Louisville visited his parents Mr. and Mrs. Clyde Fordyce Saturday.

Mr. and Mrs. Dale McClure of Mt. Vernon were Sunday dinner guests of his parents, Mr. and Mrs. Charles McClure.

Mrs. Etta Chitwood of Winfield, Tenn. is spending a week with her sister and family, Mr. and Mrs. James McClure.

Rev. Clyde Coffey of Berea, pastor of Livingston Baptist

Church filled his regular appointment Sunday.

The Kelley reunion was held Sunday, August 3rd at Boonesboro Beach with 42 present. Lots of good food and all enjoyed the day.

Mrs. Maude Mullins, Mrs. Irene McHargue and Mrs. Denise Waddle and 3 children, Coma, Jason and James, Mrs. Dianne Childress and son Brent and daughter Britney were in Gallatinburg and Dollywood, Tenn. recently.

Mr. and Mrs. Joe W. Dickerson of Dayton, and son John and two sons Phillip and Joseph of Diabln. Ca visited Miss Josephine and Frances Dickerson last Wednesday.

Sunday visitors of Mrs. Herman Mize were her daughter, Mr. and Mrs. Martin Vanant of Lexington and Mr. and Mrs. Homer Mize and family of Mt. Vernon.

Mrs. Sara Ramsey of Frankfort and Mrs. Floyd Coffey of Cincinnati visited their sister, Mrs. Denver Mullins and Mr. Mullins last week.

Johnnie "Buddy" Mullins of Mt. Vernon was Sunday dinner guests of his mother, Mrs. Maude Mullins.

Mrs. Marguerite Perkins and daughter Tina and two children of Covington were here to attend

the funeral of Mrs. Ruth Mullins McFerron and visitor her brother Mr. and Mrs. Denver Mullins. Mrs. Eva Black and Ron and Mrs. Beulah Black picnicked at Levi-Jackson Sunday.

Quail

By Vivian Owens

Mrs. Mossie Ponder, Mrs. Irene Adams and Mrs. Delores Johnson visited Mr. and Mrs. Elmer Ponder Monday afternoon.

J.C. Reynolds and daughter Roxanne spent a few days last week in Ohio visiting Mr. and Mrs. Newman Reynolds.

Mrs. Florence Albright spent a few days last week with Mr. and Mrs. Elmer Ponder.

Janie Reynolds spent Monday night with Mark Pal.

Mr. and Mrs. Jeremy Owens spent a few days last week with their grandparents Mr. and Mrs. Elmer Ponder, Mr. and Mrs. Billy Owens also visited them Saturday.

Mrs. Cleo Hasty remains ill at her home.

Mrs. Frankie Brown of Ohio visited Mrs. Jesse Taylor one day last week.

Mr. and Mrs. Shelby Brown and Mrs. Mabbie Capps visited Mr. and Mrs. Junior Mullins Tuesday evening.

Mrs. Hugh Robbins visited her sister-in-law afternoon.

Weekend visitors of Mrs. Willie Todd were, Mr. and Mrs. Fred Rogers, Mrs. Dean Barron and Stacy, Mr. and Mrs. Wayne Todd and family and Mrs. Bobby Barron.

Mrs. Ronald Rogers, Mrs. Jimmy Kersey visited Mrs. Willie Todd Tuesday afternoon.

Mr. and Mrs. Harold Bullock and Karla visited Mr. and Mrs. Delmas Bullock and Kristy Sunday evening.

Mr. and Mrs. Christine Brown and sons of London visited his mother, Mrs. Christine Brown.

Mr. and Mrs. Marshall Thompson Friday at home.

Mr. and Mrs. Jesse Taylor visited Mr. and Mrs. Charlie Hasty Saturday evening.

Billy M. Cash of Long Beach California and Mr. and Mrs. Chester Jones of Nashville, Tenn. visited Mr. and Mrs. Ambrose

Albright and over a few days last week.

Mrs. Larry Taylor and son had Sunday lunch with her grand parents Mr. and Mrs. Ambrose Albright.

Reunions

Hines-Kirby Reunion

The Hines-Kirby reunion will be held for Mary Lee Hines on August 30th at the home of Mr. and Mrs. Lester Kirby of Pine Hill.

Stevens Reunion

The Stevens reunion will be held Aug. 16th, Sat. Meals will be served at 6 p.m. at the home of Jack Goff. Everyone invited. Bring covered dish and a lawn chair. Family pictures will be taken.

Cash Reunion

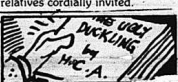
Cash reunion at Quail Community Park on Ky. 70, Aug. 30 at 11:30 a.m. Come and bring a covered dish.

Todd Reunion

The Todd reunion will be held at the Quail Community Park, Sunday, August 17. Everyone is invited to attend and bring a covered dish and meet relatives and friends and have a good time.

Barnett-Morris Picnic

Barnett-Morris family picnic will be held Sunday, August 24, at the Family Life Center, Shelter #2-Reno Valley. Will plan to eat around 12:30. All friends and relatives cordially invited.



Hans Christian Andersen wrote 168 fairy tales during his lifetime.

Announces Candidacy

I would like to announce that I have filed and am a candidate for School Board Member (1st School District). I would appreciate your vote and consideration - General Election Nov. 4, 1986.

George M. Poyner

Pol. Adv. Pd. for by Candidate

FRESHMEN ORIENTATION --- WELCOME TO R.C.H.S.

August 14, 1986

- 8:30- 9:00 Registration
- 9:00- 9:30 Information Sessions for Students and Parents
- Introductions --- Mr. Cash Books and Fees --- Mr. Baker Counseling Services --- Mrs. Worley Lockers & Lunches --- Mr. Cash
- 9:30-10:00 Parent and Student Groups
- Parents --- Meet in Library
- Mr. Towery --- Curriculum Mr. Parkerson --- Attendance Mr. Bray --- Transportation
- Students --- Remain in lunchroom
- Clubs/Organizations

10:15-10:30 BREAK (Lunchroom Area)

10:30-11:30 Tour of Building

Gene Evans Land Auction Co.

Main St., Mt. Vernon

256-9312

401 S. Main St., London 864-9751

Gene Evans Broker-Auctioneer 843-6995 Home Bruce Evans Sales Associate Auctioneer Vernon Holt Sales Associate Sonja Bullen Bratcher Sales Associate 355-7000

Wanted: Good homes in and around Mt. Vernon. Buyers waiting!!

80 Acres mt., 7 miles from Mt. Vernon on Chestnut Ridge Road. 700 to 800 ft. tobacco base, some timber, possibility of coal, spring. Priced at \$25,000.

3 Bedroom Home, 1 mile from Livingston on KY 1955. In addition, this immaculate home has 2 baths, approx. 25 acres, large family room with cathedral ceiling, electric heat and wood burner, blacktop drive, patio, 2 car garage, spring, 18x32 underground pool needs repair, large barn. Reduced to \$49,900.

Brush Creek - 3 Bedroom house and 20 acres of land with some marketable timber. Home also has bath, kitchen, living room, well, several storage buildings. House hasn't been lived in for a couple of years (needs repair). Priced at \$12,000.

Lots for Sale - Scaffold Creek Area. No restrictions, city water. Can be purchased on land contract. Approx. 1/2 acre.

New Listing - Brindle Ridge Rd. - 1980 Windsor Mobile Home, 1/2 acre lot. Mobile home has 3 bedrooms, kitchen with built-in cabinets, microwave, dishwasher, stove, also built-in stereo throughout the trailer, electric heat, septic tank, city water, storage bldg., garden spot. This mobile home would be a beautiful place for anyone. Priced at \$19,500. Assumable loan.

Clear Creek Road - Approx. 162 acre farm, creek, springs, approx. 40 acres tillable, tobacco barn, tobacco base, remaining acreage in timberland, abundance of freewood. Priced at \$45,000.

2 Nice Building Lots just past Scaffold Creek Baptist Church, 5 acres. Priced at \$5,000.

62 Acre Farm m/l, located off Scaffold Creek Road. Home, spring, garden, several outbuildings, tobacco base, good fence. Reduced to \$25,000.

Lincoln Co. - On Ky. 643 - 100 acre farm, 40 ft. silo with unloader and feeder, approx. 1600 lbs. tobacco base, 48x50 tobacco barn, 2 ponds, spring, 1600 lbs. tobacco base, 60 acres tillable mt. Priced at \$65,000.

Rustic Mountain 2 Room Cabin with 2 baths, approx. 4 acres of land, 30x50 swimming pool, large lake soon to be finished, volleyball court. All this makes a great recreational facility. Can be purchased on land contract. Call for more information.

40 Acre Farm m/l just off Hwy. 25 at Conway. Also has large equipment shed, barn, 2 ponds, good fence, approx. 20 to 25 acres in grass, spring, 2,165 lb. tobacco base. Priced at \$35,000.

Farm located approx. 5 miles from Mt. Vernon on 461. Farm has approx. 50 acres tillable land with a large acreage of timberland, some marketable timber, barn, tobacco base approx. 1700 lbs, 32 acre corn base, several springs, city water available. Priced at \$55,000.

Lincoln Co. on 618, approx. 1 mile from Rockcastle line, 45 acres m/l, 28 on U.S. 25 near historic Trento Valley settlement. Has abundance of frontage on Hwy. 25. Also 11/2 acre tract on opposite side of Hwy. 25 at same location. Call us today.

2 Bedroom Frame House just across bridge at Livingston on KY 1955. On approx. 1 acre. Large storage building, bath, good well. Priced at \$12,000.

27 1/2 Acres - Suitable for Commercial Development. 11/2 mile off 78 on U.S. 25 near historic Trento Valley settlement. Has abundance of frontage on Hwy. 25. Also 11/2 acre tract on opposite side of Hwy. 25 at same location. Call us today.

2 Bedroom Frame House just across bridge at Livingston on KY 1955. On approx. 1 acre. Large storage building, bath, good well. Priced at \$12,000.

Auction Calendar

Friday, August 29, 6 p.m. Phillip Lewis 4 Unit Apartment Bldg. Roosevelt St., London

Commonwealth of Kentucky
28th Judicial Circuit
Rockcastle Circuit Court
Civil Action File No. 86-CI-017
Cumberland Production Credit Assn. Plaintiff
VS
ISABELLE MASON, Defendant
VS
ISABELLE MASON, Commonwealth of Kentucky United States of America Defendants

Presented to judgment and order of sale entered in this action on March 14, 1986, and for enforcement of liens in the amount of \$104,195.14 plus interest and costs, I will offer for sale by public auction the hereinafter described real property in Mt. Vernon, Rockcastle County, Kentucky.

AT THE COURTHOUSE DOOR
FRIDAY, the 22nd day of AUGUST, 1986.
BEGINNING AT 11:00 A.M.
and said property being more particularly bounded and described as follows:

Located in the Orlando section of Rockcastle County, Kentucky and lying on the south side of Kentucky Highway 1040 and being that property designated as Tracts No. 1, No. 1-A and No. 2 as shown in part of record in Plate Book --- page --- and more particularly bounded and described as follows.

Beginning at a point located on the east side of a gravel drive and 175 feet south of the intersection of said drive and the Maple Grove Road; thence S 75 degrees E 115 feet to a post, thence S 462 feet to a point; thence S 70 degrees E 406 feet to a white oak and maple; thence S 12 1/2 degrees W 96 feet; thence S 71 feet; thence S 49 degrees W 40 feet; thence S 8 degrees W 90 feet; thence S 13 degrees W 155 feet; thence S 5 degrees E 100 feet to a white oak, corner to Jack Allen Heirs; thence N 68 degrees 34 minutes 26 seconds W 187.33 feet to twin black oaks, in fence line, corner to Thacker and Ford; thence with the fence N 33 1/2 degrees W 150 feet; thence N 12 degrees W 122 feet; thence N 4 1/2 degrees E 85 feet; thence N 14 1/2 degrees E 277 feet; thence N 12 1/2 degrees E 217 feet; thence leaving said fence N 28 degrees E 121 feet to a post, corner to Ford and Maple Grove Subdivisions; thence N 28 degrees E 298 feet to a point; thence S 79 degrees E 140 feet to a point; thence N 4 degrees E 165 feet to the point of beginning, containing 21.72 acres, more or less.

There is excepted from the above described real property approximately 12 acre conveyed to Alicia Mobley, et vir., by deed dated February 3, 1984, and of record in Deed Book 121, page 662.

Isabelle Mason obtained title to the above real property by Master Commissioner's Deed dated May 13, 1983, executed by Carl R. Clontz, Master Commissioner of the Rockcastle Circuit Court, recorded in Deed Book 120, page 55, in the office of the clerk of the Rockcastle County Court, Mt. Vernon, Kentucky.

The property will be sold upon the following terms and conditions:

1. The property shall be sold to the highest bidder[s] for cash or for a deposit of twenty-five percent (25%) of the purchase price in cash on the date of sale, with the balance on a credit of sixty (60) days, with the purchaser[s] being required to execute bond with surety thereon, to be approved by the Master Commissioner, to secure the purchase price. The bond shall bear interest at the rate of twelve percent (12%) per annum from date until paid and to remain and be a lien on said property until fully paid.
2. The purchaser[s] shall have the privilege of paying all of the purchase price in cash or paying the bond before maturity by paying the principal amount thereof together with all interest accrued thereon to the date of said payment.
3. The purchaser[s] shall pay 1986 county, state and school taxes.
4. The purchaser[s] shall have possession of the premises upon complying with the terms of sale and risk of loss of improvements shall thereafter be on the purchaser[s].
5. A right of redemption may exist in favor of the United States of America.
6. This sale shall be made subject to all easements, set back lines, restrictions or covenants of record or otherwise.

Joseph E. Lambert
Master Commissioner
Rockcastle Circuit Court

Mt. Vernon
Drive-Thru Pharmacy
SUMMER JEWELRY
CLEARANCE
256-3512

The Livingston Homecoming Queen must live in Livingston area, be between 14 and 21 years old, be unmarried, Register during regular business hours at the Livingston Dairy Freeze. Registration closes Aug. 24th.

Charlies
Auto Sales
London 256-6222

- 1985 Olds Calats. 2 Dr. Supreme, White w/Red Buckets
- 1985 Pontiac Gran Am
- 1985 Chev. Cavalier, 4 Dr. 2 To Choose From
- 1985 Mercury Cougar XR7, Black w/Red Int., Power Windows
- 1983 Olds 98 Regency Brgm., 4 Dr., 34,000 miles. Loaded
- 1985 Ford Tempo, 4 Dr., 4 Cyl., Automatic
- 1985 Chev. Chevette, 2 Dr., Blue, Automatic, Air, 13,000 miles
- 1983 Olds Cutlass Brgm., 3 Dr., All Power
- 1981 Dodge Aries, 4 Dr., Custom, 43,000 miles, Air, Automatic (Very Clean)
- 1982 Chev. Camaro 228, 53,000 miles, Silver (Sharp)
- 1985 Ford Ranger Pick-up, 4 Cyl., S Speed, 17,000 mi.
- 1985 Dodge Ram Sport, PU 1982 Chev. Scottsdale, 4x4, Long Bed, Auto, Air, 47,000 miles
- 1981 Ford, 1/2 Ton, 6 Cyl., Sid. 3,450.
- 1976 Chev. Custom V-8, Auto 2,450
- 1979 Ford Custom V-8, Auto 2,750
- 20 OLDER MODEL CARS & TRUCKS (TRADE-INS) REDUCED FOR IMMEDIATE SALE