

# Clontz, Smith and Burton finish in top three in Beef pre-conditioning

By: Tom Mills  
County Extension Agent  
for Agriculture

Rockcastle County Beef Association members conducted a Preconditioning Derby recently. February and March calves just off the cow were entered by 13 producers. On Oct. 8, 29 steer calves were weighed, implanted, treated for worms, grubs, lice, given vaccinations for Black leg, IBR, BVD and PI 3 by local Vet., Joe Korn. This along with the weaning, learning to eat from a bunk and watering from a trough made the cattle meet standards for the certified preconditioned herd (CPH) program.

Cattle were grouped and fed at Keith Smith's farm near Brodhead. Following working calves received grass hay the first day, then were given free choice Purina Chow Preconditioning ration for 26 days. Albright Feed and Supply worked with the group by donating half the preconditioning ration used in the demonstration.

On Nov. 4, calves were re-weighed and sold. Cattle average weight going on test was 454 pounds per head, off test weight averaged 534 pounds per head for an average gain of 80<sup>+</sup> per head

just over 3 pounds per head per day gain while on feed.

Top calves were Carl Clontz's calf #14 which gained 124 pounds. Keith Smith's calf #23 which gained 119 pounds. Kenny Burton's calf #25 which gained 118 pounds. Rolla Perry's calf #18 which gained 118 pounds and Tim Mink's calf #26 which gained 117 pounds.

On the percent weight gained, top calves belonged to Kenny Burton. Carl Clontz, Jim Clontz

and Tim Mink.

Calves sold at the Bluegrass Stockyards and brought approximately 3.5 cents more per pound than other cattle of their same size. Other information farbes may find interesting is that the calves had a 4<sup>1</sup>/<sub>2</sub> shrink from Brodhead to Lexington.

Special thanks to Benton Bullock for hauling the cattle. Citizen's Bank, Albright Feed & Supply, MSD ag. Vet and Elanco Inc. for sponsoring the banquet.

# Garrard Co. Stockyards sold to four businessmen

The Garrard County Stockyards will reopen Dec. 5 under new management after having been closed for about four months.

A group of Harrodsburg businessmen have assumed operation of the stockyards from owners Martin and Grace Hambel of Florida under a lease-purchase agreement. Edwin Freeman, John "Skeeter" Reed, William Dedman and Kenneth Kirkland, all of Harrodsburg, will be equal partners in the business. Freeman said Saturday.

"We're in the process of

assuming control, and it looks like everything is about finalized," he said. "We have already taken over, and our first sale will be Friday the 5th of December."

Kirkland will manage the stockyard, but each of the men will be active in the business. "We'll all be working there some and on sale days," Freeman said.

Friday will continue to be the regular sale day, and the yard will also have a horse sale about once a month as well as feeder calf sales in the spring and fall. The stockyards employs about 20 people, most of whom will remain on the payroll, he said.

"It'll be about the same operation ... a lot of the old help and some new help, too," said



Keith Smith's calf gained 119 pounds, Kenny Burton's gained 118 pounds and Carl Clontz's calf gained a top weight of 124 in the local Beef Association's pre-conditioning derby. The calves were February and March calves just off the cow.

Freeman. "Of course, there may be some changes as we go along."

The building and grounds are currently being cleaned up and painted and minor repair work is being done, he said.

Freeman, 64, operates Freeman Auction Co. and Freeman's

Tobacco Warehouse in Harrodsburg; Kirkland, about 50, is a farmer and cattle dealer; and Dedman, 45, and Reed, 52, are partners in farms and own the Gateway supermarket and the Mr. Kwik Food Mart in Harrodsburg as well as some apartments.

Freeman said.

The stockyard has changed hands twice since being sold by the Teater family of Lancaster in 1983, but Freeman said he and his partners feel the business will be a

Cont. to B 6

# Wallace-Arnett Ford, Inc.



# LEMON FREE!

- 1985 Mustang GT, Auto, Tilt, Cruise, AM/FM Cass., AC, Grey on Grey. Reduced for immediate sale!
- 1985 Mercury LX, Blue on Blue, 4 Spd., AC, AM/FM Cass., Cruise, Power Door Locks, Luggage Rack
- 1985 Mercury Grand Marquis LS, Black & Red, Loaded. Reduced for Quick Sale!
- 1985 Mercury Marquis Power, AC, Blue on Blue, Auto, Tilt, Cruise, All Power, AM/FM, Luggage Rack, Rear Defrost. Nice family car.
- 1984 Mercury Cougar, Red on Red, AC, AM/FM Stereo, 37,000 miles, Wire Wheels. Very sharp car!
- 1983 Renault Alliance DL, 5 Spd., White & Brown, AM/FM Stereo, 12,000<sup>+</sup>
- 1985 Ford Ranger, Silver & Blue, Short Wheel Base, Auto overdrive, Power Steering, 4 Cyl., Wire Wheels
- 1983 Ford Ranger, 5 Spd., Red on Red, 4 Cyl., Radio, Short Wheel Base, Wire Wheels
- 1981 Mustang, Red on Red, Auto, AM/FM Stereo, Luggage Rack, Wire Wheels. Very sharp car!
- 1981 Chevy Chevette, 4 Spd., Black and Red, 2 Dr., Hatchback. Price Reduced to +1,895.
- 1981 Datsun 280ZX, 2 plus 2, silver and blue, 5 Spd., AC, T-Tops, AM/FM Cass., Cruise, P. Windows

## 795 Specials

- 1980 Subaru GL 1800 Wagon, Blue & Gray, Auto, AM/FM, Luggage Rack
- 1979 Chevy Chevette, Silver & Blue, Radio, 2 Dr. Hatchback, New Clutch, 4 Spd.
- 1977 Ford LTD, 4 Dr., Auto, AC, New Tires, Wire Wheels, Run Good.

### Your Choice \$795.00

- 1980 Chevy Citations, One Red, One Two-Tone, 4 Spd., AM/FM
- 1979 Ford Mustang, White/Black, 4 Spd., AM/FM Cass., PS, AC, Bucket Seats, Spoiler, Factory Tact, Flip-up Roof
- 1979 Chevy Monza, White, Auto, AC, AM/FM Cass., 47,000 miles, 2 Dr. Hatchback
- 1970 GMC 1500 Pick-up, Orange/White, Auto, V8, PS, Factory Air, Radio, White Spoke Wheels. Runs Great. Must see to appreciate!
- 1969 Chevrolet C-10 Pick-up, Red/Black, Auto, V8, Diamond Pleated Seats, Carpeting, 4 new radials, Chev. Sport Wheels, Tool Box, Chrome Rails, Chrome Tail Gate Guard. Runs great. To appreciate!!

U.S. 21W & I-75  
Berea, Ky.

[606] 986-2393

Open 8:30 a.m. to 7:30 p.m. Monday thru Friday Sat. 9 to 5

# SHEPHERD'S Home Furnishings

On U.S. 25 Midway Between Richmond and Berea

YOUR CHRISTMAS GIFT HEADQUARTERS FOR A GIFT THAT LASTS

**American Dining Room**  
Solid Cherry  
Dining Room Suite  
Includes table, chairs and matching hutch. Reg. \$775.00  
**1/2 PRICE**  
**\$288.75**  
w.t.  
2 To Sell

Give her the gift she'll be opening the rest of her life!  
**Table Lamps**  
Buy One - Get Matching FREE  
Chest by Lane  
Free shipping by postcard  
**\$299**

SHARP 19" Diagonal Color TV  
**\$249**

**NO Down Payment**  
**NO Payment**  
**NO Interest**

Until **February 1987**  
In-Store Financing Arrangements  
Take Up To 36 Months To Pay  
Buy The Pair And SAVE!  
**Washer & Dryer \$588** w.t.  
Kohlman's A Trade of Savings  
**Thanksgiving SALE FREE!**  
With Purchase of New KOLMANN Refrigerator  
Automatic Ice Maker  
No more filling and spilling - of trays

**ENGLEWOOD Recliners \$149** w.t.  
Other models at similar savings. 2 wire and 2 cupola to choose from.

**Recliners \$299** w.t.  
Other models at similar savings. 40 styles and colors to choose from.

**La-Z-Boy Recliners \$299** w.t.  
Other models at similar savings. 35 styles and colors to choose from.

**Your Choice \$199** w.t.  
3 Piece Drop Leaf Table -OR-  
Table, 4 Side Chairs  
Solid wood with Formica top and nappie finish.

**Bassett Cherry Finish Bedroom Suite \$899** w.t.  
Reg. 1370.00  
Includes: bed and mirror, dresser, chest and mirror.

**5 Piece Modular \$1499** w.t.  
Reg. 2125.00  
2 3 Inchers  
1 Armless  
1 Full Size Sleeper  
1 Corner

## BEDDING - STARTING AT \$49 Ea. Pc. Twin Size.

"Always A Friendly Welcome"



FREE DELIVERY  
FREE SET-UP  
BETTER QUALITY  
BETTER SELECTION  
BETTER SERVICE



MIDWAY BETWEEN RICHMOND & BERA ON U.S. 25 624-8852  
Across of Free Parking 9-6 Monday Saturday Closed Sunday

# Master Conservation Award . . .



Rolla and Mary Perry of Quail received this year's Master Conservation award at the Farmers - Businessmen's banquet Friday night. District Commissioner David Stipes presented the Perrys with their award for their conservation practices on their 150 acre farm.

## Forestry Service News

Combining walnut and wildlife plantings can bring a profit and pleasure to landowners. Wildlife food plants and cover are scarce in many areas. This is a major reason for decreasing numbers of deer, grouse, and rabbit for the hunter's game bag, and a frustration for those who enjoy the presence of wildlife. Our black walnut supply for gunstocks and fine furniture is also rapidly dwindling. Black walnut is by far

the most valuable of our native trees. Good quality walnut trees are used in producing forest products - bringing more money every year to Kentucky landowners. Some landowners will not be interested in merely growing a crop of black walnut sawlogs from seedlings, because they know it will tie up their land for 50 or 60 years. But with a little advanced planning, why not space the trees

far enough apart and grow strips of game food or cover between the rows? The walnut trees need space anyway to develop and grow rapidly. The trees also need freedom from competition from brush and tall weeds. Annual plantings of food plots between tree rows will help achieve this. As the walnut trees get larger, the game plots will be getting narrower. By this time, the walnuts will be producing nuts for squirrels from nearby woods. With proper care, the wildlife-walnut area will also be developing into the most

valuable piece of woodland in the community.

Large areas are not needed for this venture into game and walnut farming, although they are quite acceptable. Having several game food plots scattered over a tract of land will produce more quail or rabbit than one large planting, and the walnut trees wouldn't care. It would be desirable, though, to have at least one half acre in each walnut plantation. Walnut trees do care about the type of land; they grow into good timber trees only on good deep soil - so put them on the equivalent of good corn land if good timber is expected.

The trees surrounding your house can reduce your fuel consumption by 10 to 25%. Wind influences the energy budget of buildings by insulating cold and heat to the exterior walls.

Air enters buildings through cracks around windows and doors and through pores in the materials of walls. Generally the greater the wind the more air enters and the greater the heat loss.

### "Stockyards Sale" Cont. from B-5

good investment.

"We're all busy, and somebody came up with the idea that as many cattle as we all handle, that there's an opportunity to do a good business over there," he said. "The Teaters were always successful, and we feel with some work and some good management, we'll do all right."

The stockyard closed in early July after the Hambls' son-in-law, Gary Wardrip of the Perryville area, who managed the business, decided that it was demanding too much of his time. The Hambls own most of the interest in the business.

The stockyard is located on a 12-acre site on U.S. 27 in Lancaster and has a modern computerized weigh-out system that lets buyers know the weight of cattle at the time of the sale.

Freeman said he and his partners have no plans to sell any of the stockyard property.

By planting trees along the north and west sides of your house, you may form a windbreak of trees in a few years and cut down your home's energy loss. Trees should be planted 200 to 500 feet from the house, and 8 to 12 feet apart to form a good windbreak. This will result in an energy saving of up to 13%, and can be increased even further by a fence or hedge between the trees.

In addition to reducing heating cost by reducing the amount of cold air that enters a house, trees can provide shade to reduce cooling cost as well. A study in Alabama showed that mobile homes located in tree shade had summer cooling cost that were \$45 to \$100 per year less than mobile homes without shade. In the study, trailers with shade only 20% of the day had significantly lower air conditioning cost. It follows that only a few trees can be very worthwhile. Good shade trees will improve property values, too.

For further information on this subject and where you can obtain trees, contact the Kentucky Division of Forestry through Steve Bullen, Ranger for Rockcastle County, at 256-2957, or 256-5794.



Henry Ellison shows off the 4 lb. acorns he grew on his farm on the Copper Creek Road.

## Local Farm News

Sell your tobacco with Golden Burley Tobacco Whse.

316 Virginia Avenue

Lexington, Ky.

Ph. 606-255-7877

For the highest price and best service, sell with Golden Burley. Contact

Rockcastle Representative

Charles Denver Burton 758-8171

or City de Burberry, Mgr.

Home: 606-276-2358

Bus: 606-255-7877

## MARY ANN TOBIN AUDITOR OF PUBLIC ACCOUNTS COMMONWEALTH OF KENTUCKY

Capitol Annex  
Suite 158  
Frankfort, KY 40601  
502-564-4226  
800-372-5263  
502-564-4333 (Res.)



July 31, 1986

To the People of Kentucky  
Honorable Martha Layne Collins, Governor  
Honorable Hubert Thacker, County Judge/Executive  
Members of the Rockcastle County Fiscal Court

We have examined the statement of assets, liabilities, and fund balances arising from cash transactions of Rockcastle County as of June 30, 1985, and the related statement of cash receipts, cash disbursements, and changes in cash balances for the year then ended. We also examined the Sheriff's settlement - 1984 taxes for the fiscal year ended June 30, 1985. Our examination was in accordance with generally accepted government auditing standards and, accordingly, included such tests of the accounting records and such other auditing procedures as we considered necessary in the circumstances.

The county does not maintain a general fixed asset group of accounts. Therefore, our examination could not include this group of accounts.

We did not conduct a study and evaluation of internal accounting control as we concluded that the audit could be performed more efficiently by expanding substantive audit tests. Therefore, we placed very little reliance on the internal accounting control system.

As recommended by the State Local Finance Officer, pursuant to Kentucky Revised Statute (KRS) 68.110, the accompanying financial statements are prepared on a cash basis. Consequently, certain revenues and the related assets are recognized when received rather than when earned, and certain expenses are recognized when paid rather than when a liability is incurred. Accordingly, the accompanying financial statements are not intended to present financial position and results of operations in conformity with generally accepted accounting principles.

In our opinion, except for the exclusion of the general fixed asset account group, the accompanying financial statements present fairly the assets, liabilities, and fund balances arising from cash transactions of Rockcastle County at June 30, 1985, and its cash receipts and disbursements, and the Sheriff's 1984 taxes charged, collected, and distributed during the year then ended, in conformity with the accounting system described above, applied on a basis consistent with that of the preceding year.

The accompanying additional information, provided on Schedules A through C, is not necessary for a fair presentation of the financial statements, but is presented as additional analytical data. This information has been subjected to the tests and other auditing procedures applied in the examination of the financial statements mentioned above and, in our opinion, is fairly stated in all material respects in relation to the financial statements taken as a whole.

We also conducted tests of compliance with state and federal laws and regulations including federal revenue sharing requirements enumerated in the Commentary on the Audit Requirements of the 1980 Amendments to the State and Local Fiscal Assistance Act issued by the Office of Revenue Sharing. Unless otherwise noted below, the tested items were in compliance with applicable state and federal laws and regulations. During our examination, nothing came to our attention to cause us to believe that the untested items were not in compliance.

### FINDINGS AND RECOMMENDATIONS

Our comments are intended to be constructive. The purpose of each is to point out areas for improvement. Accordingly, we offer the accompanying comments and recommendations.

#### Prior Year

In the prior year audit report, we reported several areas of noncompliance. Those that have not been corrected, are commented on in the current year audit findings. The noncorrected findings are as follows:

- 1) The former Sheriff owes the county for past years' tax collections.
- 2) There was a deficit balance in several funds.

- 3) Fund budgets were overspent.
- 4) An administrative code has not been adopted.

The General Fund budget was overspent, and the county owed the schools \$265 interest earned on the 1983 tax collections. These noncompliances have been corrected and are not commented on in the current year audit findings.

#### Current Year

- 1) The Former Sheriff Should Pay Taxes Due Taxing Districts  
In the prior year audit report, we reported the former Sheriff owing 1982 and 1983 taxes to taxing districts and being due refunds from taxing districts. Several of these underpayments and overpayments have not been settled. These are listed in the recapitulation below. Also, as reflected in the former Sheriff's 1984 tax settlement in this report, the former Sheriff owes additional taxes to taxing districts. These underpayments are also listed in the recapitulation below.

Taxing District	1982			Total
	Taxes	Taxes	Taxes	
County	\$ 397	\$ 752	\$ 1,113	\$ 2,262
School			992	992
Health	(16)	285		44
Library	(623)	100	127	(396)
Agriculture	608	159	33	800
Soil Conservation	2		3	5
Total	\$ 362	\$ 1,299	\$ 2,312	\$ 3,976

- 2) County Funds Should Not Have A Deficit Balance  
At June 30, 1985, the Road and Bridge Fund, the Jail Fund, and the Jail Renovation Fund had deficit balances of \$175, \$350, and \$5,000 respectively. To expend more money than is collected in a year is a violation of KRS 68.110. We recommend the fiscal court comply with this statute.

- 3) The County Should Not Overspend the Budget  
The General Fund budget was overspent by \$4,124. KRS 68.220 prohibits expenditures in excess of the budget. We recommend compliance with this statute.

- 4) An Administrative Code Should Be Adopted  
We noted again during our current examination the fiscal court has not adopted an administrative code. KRS 68.005 requires each county to adopt an administrative code. We recommend the court contact the State Local Finance Officer concerning information relevant to implementing this code.

- 5) The Former Sheriff Should Pay Advertising Costs To County  
The former Sheriff had collected but failed to report and pay to Rockcastle County \$450 of advertising costs. We refer the former Sheriff and fiscal court to KRS 134.440(2) which states, in part, that:

"... Any expenses incurred that must be paid before the filing of a tax claim or the settlement of an action by the state, county or taxing district shall be paid by the county, and this sum shall be a preferred claim of the county on any proceeds eventually recovered.

- 6) The Former Sheriff Should Pay Interest To School Board  
The Sheriff received \$1,772 in interest from tax deposits for all taxing districts. Under the provisions of KRS 134.440(3)(b), the Sheriff is required to remit interest earned on deposits of school funds, less a commission not to exceed 4 percent, to the school board. On a prorated basis, we have calculated the amount due the county school board to be \$475. We recommend this amount be paid to the school board.

- 7) The County Coroner Should Be Bonded  
When reviewing the bonds for county officials, we could find no evidence that the county Coroner is bonded. KRS 72.010 requires a bond for every county Coroner. We recommend compliance with this statute.

We are confident the above findings and recommendations will be useful to you in managing the operations of the county in a manner consistent with effective accounting and compliance controls.

Yours for a better Kentucky,

Mary Ann Tobin  
Mary Ann Tobin  
State Auditor of Public Accounts

The above transmittal letter accompanied the audit report presented to fiscal court and is published pursuant to KRS 42.090(2). Copies of the report are available upon request by contacting the State Auditor of Public Accounts, Suite 158, Capitol Annex, Frankfort, Kentucky 40601.

## Brodhead P.T.A. News

Last month grades K-2 were fingerprinted for identification purposes. Thanks to the following for assisting with this project: Trooper Gilbert Acciaro, Jr., Gary Lane, and James Vanhook, Pam Bradley, Peggy French, Cathy Thompson, Sandra DeBorde, Lisa Jones, Wanda Trebalo, Gail DeLeon, Deborah Newland, Rita Hayes, Retha Bustle.

Thanks to the following who helped work in the fund raiser: all the parents and children who sold items, Rita Hayes, Peggy French, Jeanette Butler, Deborah Newland, Neal Butler, Wanda Trebalo, Sandra DeBorde, Retha Bustle, Becky Russell, Nancy Parkerson, Shirley Martin, Brenda Bradley, Jim Calvert of Success Sales. We made \$2800 which will be used to improve and expand the playground. The top sellers and their prizes were: 1st Jonathan Butler, VCR, 2nd Jeffrey French, 13 inch color TV, 3rd Beth Harper-Combination AM-FM radio and 5 inch TV, Class - Shirley Martins' 1st grade popcorn and cake party for class and dinner for two for teacher.

Thanks to the following for helping with the Halloween Party: Peggy French, Deborah Newland, Gladys Kirby, Lorene Bullock, Rebecca Kirby, Mitzi Calhoun, Rita Shaffer, Brenda Bradley, Gail DeLeon, Cathy Thompson, Shirley Martin, DeLoes Albright, Pam Bradley, Rita Hayes, Cheryl Brown, Cindy Burton, Beverly Potter, Dairy Delite, Pizza Hut, Snack Shack, Druthers, all the parents and children who participated, those who donated candy, Mt. Vernon Florist, Jill Martin, Brownie Martin, Magician Doug Doolin of Nicholasville who gave an entertaining show. Over 300 people attended. A costume judging contest was held with winners in three categories: cutest, most original, and ugliest. The winners were

as follows: Richard, Suzanne Brown, Shannon Stevens, Janice Bradshaw, Leslie Hunt, Dewayne Simpson, Chad Robinson, Kesha McClure, Billy Graves, Robert Moore, Bonnie Burton, Judy Stewart, Jason Woodall, Angela Brown, Melissa Hayes, Jody Kirby, Eric McKinney, Chris Robbins, Jamie Lovins, Jason Scoggins, Jenise Master, Beulah Denny, Michael Albright, Nicky Baker, Keith Carpenter, Chris Creech.

Thanks to the following who helped with the Book Fair: Nancy Parkerson, Linda Pittman, Jenny Brummett, Brenda Bradley, Peggy French, Gail DeLeon, Jeanette Butler, Retha Bustle, Mitzi Calhoun, Delores Albright. We made \$300. This is not a big moneymaker. We do it as a service to the children because they enjoy it a great deal.

Thanks to the following for their overall cooperation and assistance in various P.T.A. projects: Tom Payne, Carol Riddle, Bill Melcher, and Jackie Lawrence.

The November unit meeting will not be held due to the Fall Festival which is scheduled for Tuesday, Nov. 18. There will be a chili supper from 4:30 p.m. - 6:30 p.m. At 7 p.m. there will be a program with the "Months of the Year" theme. Students in K-8 will participate. The Fall Festival is scheduled to coincide with National Education Week. The teachers and students are working on the program. Please join us for the food, fellowship, and entertainment. There will be no admission charge. Donations of spaghetti, crackers, ketchup, kidney beans, money, or bake sale items will be appreciated. Please call 758-8719 or 758-8523 for more information. Phyllis Holbrook, P.T.A. President



### Fashion Eyewear Sale



Select Fashion Frames 25% off  
Soft Contacts Start at \$59  
Tinted Soft Lenses Only \$89  
(Eye Examination and Fitting Not Included)  
You don't need to travel far to get first rate quality vision services. We have a large selection of eyewear, reasonable prices and quick service.

**Dr. Harvey A. Schleiter**  
Corner of Main & Richmond 256-3122 Mt. Vernon.  
Open Tuesday 9 to 5; Wed. 9-12 and Fri. 9-12

200 attend

## Sigmon Pig Roast a big hit with family - friends


On Sept. 27th Bill and Nancy Sigmon of Green Hill held their annual Pig Roast.

Bill started having his pig roast a few years back with only about 20 to 30 family members and close friends attending. It grew in attendance each year. This year there were over 200 present.

There was live music by "Page One" of Berea, Ky. and

some folks tried their hand at dancing especially the small tots. Everyone had a good time and there was plenty to eat.


We hope Bill and Nancy continue this event as we look forward to it each year. I'm sure this says it for all who attended. "Thanks Bill and Nancy for a very enjoyable evening."




Livingston High School REUNION Thanksgiving Week End Nov. 29, 1986

**RAMADA INN**  
1-75 - 192 South of London - Exit 38  
6:30 p.m. till 7 - \$9.00 each

If you wish to stay at the Ramada Inn, the toll free number is 1 800-228-2828. The annual Oct. reunion has been postponed till Nov. 29.



## Did You Know




**FIERO** \$169<sup>00</sup> per month

**Sunbird Sedan** \$199<sup>00</sup> per month

You can lease a new Pontiac for as low as \$169<sup>00</sup> a month for 48 months?  
Come to **CROUTCHER - MARCUM** for complete details. [offer expires 12/31/86]


**Crutcher-Marcum Motor Co., Inc.**  
Big Hill Avenue 623-8131 Richmond, Ky.  
Open Monday through Thursday 8:30 - 7:00 p.m. Friday 8:30 to 6:00 p.m.  
Saturday 9:00 - 4:00



**Firebird**  
\$199<sup>00</sup> per month



**Grand Am Coupe**  
\$189<sup>00</sup> per month



**6000 Sedan**  
\$199<sup>00</sup> per month

**PONTIAC WE LEASE EXCITEMENT**

## County now served by wage and hour officer

Rockcastle County is now served by a new Somerset-based Wage and Hour Division compliance officer. The U.S. Labor Department announced today.

According to John Traczewski, the department's wage and hour area director in Louisville, Compliance Officer Bobby W. Scott now serves Rockcastle and 15 other southeastern Ky. counties (Adair, Bell, Casey, Clay, Clinton, Cumberland, Knox, Laurel, Lincoln, Pulaski, McCreary, Russell, Taylor, Wayne and Whitley).

As part of the Labor Department's Employment Standards Administration, the Wage and Hour Division is responsible for enforcing the Fair Labor Standards Act (FLSA).

The FLSA sets the current federal minimum wage at \$3.35 an hour, generally calls for overtime pay for hours worked over 40 in any workweek, and requires employers to keep specified time and payroll records.

Federal child labor regulations

## Higgins attends Levi workshop

Charlie Higgins, Jr., son of Mr. and Mrs. Charles Higgins, Sr., of Locust, N.C. and grandson of Mrs. Mildred Higgins and the late Earl Higgins of Orlando, was among 16 Cumberland College students who attended the Campus Activity Board Workshop recently at Levi Jackson State Park.

Higgins is a member of the boards' film and concerts committees.

The Campus Activity Board, sponsored by the office of Student Activities, plans and provides activities which are enjoyable and educational for the students, faculty, and staff of Cumberland College. Programs of emphasis included Welcome Week, Spring Fever Week, a film series, and a concert series.

The dual purpose of the workshops, according to Campus Activity Board sponsor and director of student activities, Debbie Harp, was to strengthen campus awareness among the members and to plan activities for the current school year.

Members took part in sessions concerning the philosophy and goals of the Campus Activity Board, publicity, communication skills, human relationships skills, and creative workshop.

ions are also included in the FLSA. These regulations are designed to protect young workers and set out, by age groups, the types of jobs minors may hold and the hours during which they may work.

In addition to enforcing the FLSA, the division is responsible for administering the Davis-Bacon and related Acts and the Service Contract Act. These laws require payment of prevailing wages and set other standards for work paid for by the federal government.

Other laws enforced by the division include the Migrant and Seasonal Agricultural Worker Protection Act, designed to protect farm workers, and the Federal Wage Garnishment Law, which limits the garnishment of workers' wages.

The address for the newly-based compliance officer is U.S. Department of Labor, Wage and Hour Division, P. O. Box 3110, W. Somerset, Ky. 42564; telephone (606) 678-4120.

# SAVE 50¢ ON THESE GREAT TASTES.



Pick up savings you can taste when you use the coupon at right. Save 50¢ on Coca-Cola® classic, Coke® or any of the other delicious products shown.

## SAVE 50¢

on a 2-liter bottle of the products shown below.






49000 268240

# Obituaries

## John Craig

John W. Craig, 68, of Ottawa died unexpectedly Nov. 14, 1986 at the Rockcastle County Hospital.

He was born in Lincoln County, Dec. 2, 1917, the son of the late Joe Sam and Nancy Susan Elder Craig. He was a retired minister and a member of the Providence Church of Christ.

Survivors are five brothers, J.S. Craig, Jr. and Benny C. Craig, both of Ottawa; Jennings Craig of Abilene, Texas; William Craig of West Chester, Ohio; and Gatliff Craig of near Brodhead; four sisters, Mrs. Lillie Mabel Taylor of Ottawa, Mrs. Julia Hunt of Mareburg, Mrs. Martha Cope of Douglasville, Ga., and Mrs. Mary McWhorter of Brodhead.

Services were held Nov. 16, at the Providence Church of Christ with Bro's. Hugh Thomas, Charles Brown, and Austin Mobley officiating. Burial followed in Providence Cemetery.

Arrangements were by the Watson Funeral Home.

Army Fourth ROTC Region, University of Iowa, Iowa City, Iowa where he served as Chief Administrator of ROTC. He retired in 1975 after 30 years of service.

He was currently employed by Sun Life Insurance Co. of America with headquarters in Atlanta, Ga.

Survivors are his wife Kazuko Mikami Livesay of Vincennes, N.J. and formerly of Fukuoka, Japan; one son Robert Wayne Livesay; one brother, Casper Livesay of Lockland, Ohio; three sisters, Sallie Livesay Coffey and Edna Livesay Cummins of Mt. Vernon; and Mary Livesay Taylor of Lexington. He was preceded in death by four brothers, Willis, Leonard, Floyd, and William Edward.

He was buried with full military honor Nov. 12, 1986 in New Jersey Veterans Cemetery, Arnetstown, N.J.

Memorial contributions can be made to Medford Farm Emergency Squad, U.S. Hwy 206 and Hawkins Rd. Vincennes, N.J.

## "Garbage" Cont. from First Front

The trial date had been set for Thursday, Nov. 20, but that was before Bee filed a motion to dismiss the suit against the firm.

Following that motion to dismiss, the judge ordered Bullen to file a written response, which was, in turn, filed on Nov. 13.

The judge then ordered a continuance.

Bullen, who holds a franchise in the City of Mt. Vernon to collect garbage until 1988, complains that Bee garbage is infringing on his "exclusive franchise" and that he is suffering "irreparable injury" as a result of Bee's collection.

The case has been on the court agenda since Sept. 10 when Bullen filed his first court action against Bee and defendants, Johnny and David Eaton, David Ballinger and the City of Mt. Vernon. The judge ruled in the complaint against the city Oct. 14.

## "Essay" Cont. from B-4

Cave", extends about 600 yards through a spur of a mountain called "Big Hill". It was discovered by John Bask, who, in company with his wife, commenced exploring the cave with a torchlight. At the distance of about nine hundred feet, their light went out, and they were forced to crawl around in total darkness, for 40 hours before they found the place at which they entered. The spelunker mined here was used in the making of the powder. Over 70 persons were employed at the Big Cave.

During the 1800's, thousands of people passed through Rockcastle County on the Wilderness Road, some people remained in Rockcastle to farm, mine coal or

limestone or cut timber. In 1888, there were 4 doctors and 5 lawyers practicing in Mt. Vernon.

Even though Rockcastle County at first tried to remain neutral during the Civil War, Mt. Vernon and other small communities played an important role during the war. The county was the center of "military trails for the armies of both the North and the South. After the Battle of Perryville, Confederates led by General Braxton Bragg, retreated through Mt. Vernon eastward through the Cumberland Gap, in order to escape the pursuing Union detachments.

On Oct. 21, 1861, General Zollicoffer led 7500 Confederates in an attack on an entrenched camp of 5000 men under General Schoepf. The Confederate troops were repelled by the Union's natural defense advantage on Rockcastle Hill. The Southern troops retreated to Tennessee suffering 21 dead and 42 wounded. The Union casualties came to 4 dead and 20 wounded. This could have been the first clear cut victory for the North in the Civil War.

One particularly interesting community in Rockcastle County is Scaffold Cave. There are two theories as to how Scaffold Cave got its name. The first one has to do with Indians. It says that the

Indians named Scaffold Cave. When an Indian died, the other Indians built a tall scaffold and placed the body on it. Sometimes they would set fire to the scaffold before leaving. The second theory also has to do with Indians. According to this theory, Scaffold Cave was at first named Scaffold Cave because of all the skirmishes that took place between Indians and white men there. The name was later changed to the present-day name of Scaffold Cave.

Scaffold Cave has been called many things throughout its history, including Danlap and Rockford.

The first post on Scaffold Cave was called the Scaffold Cave Post Office. The first postmaster was George Rowlie, the post office was later discontinued.

One of the early settlers of Scaffold Cave was John Linville. At one time, he owned the majority of Scaffold Cave by himself.

The Thacker Place on Scaffold Cave originally belonged to William Linville. He later divided between two of his daughters, Bessie Anglin and Sarah Bullins.

Another interesting place in Rockcastle County is Renfro Valley. Renfro Valley is a nationally-known broadcast center. The broadcasts were begun in 1939 by John Lair and continued for more than 18 years. Well-known country

stars such as Red Foley and the Coon Creek Girls got their start at Renfro Valley.

Discovered in 1798, the Salt Petre Cave provided much of the gun powder during the War of 1812, the Mexican War, and the Civil War. The size of the cave is suggested in its claim to be able to seat 2,500 people.

Negro Creek received its name due to a massacre in which a black slave was killed by Indians. Pine knots and limbs which were high in tar content were used

in the tar kilns at Tar Kiln Branch to make tar.

One of the oldest original log cabins still in usable condition in America. Of when or by whom it was first built or occupied, there is no record, but it is known that at the beginning of the War of 1812 it was being lived in by Colonel William Fish and his wife. The house was dismantled and reconstructed at its present site in Renfro Valley because it would have been destroyed in the making of Lake Linville.

## "Sincere Personal Service"



Billy Dowell

## PROFESSIONAL GUIDANCE

**BECAUSE WE CARE...**  
CONSULT US FOR PRE-ARRANGED FUNERAL SERVICE - IT RELIEVES YOUR FAMILY OF DETAILS AND INSURES SERVICE IN KEEPING WITH YOUR PERSONAL DESIRES



Roy Martin

## Dowell & Martin FUNERAL HOME

Mt. Vernon, Kentucky 40456 Telephone 256-2991

24 Hr. Obituary Line - Phone 256-2997

## Wade Livesay

Sergeant Major Wade Livesay, 63, of Vincennes, N.J., and formerly of Mt. Vernon, died Nov. 8, 1986 at Burlington Memorial Hospital, Mt. Holly, N.J. after a short illness.

He was born in Rockcastle County Aug. 22, 1923, the son of the late Wade Hampton and Delana Bell Hilton Livesay.

He was a veteran of World War II, the Korean War, and the



Vietnam War. He received the Silver Star Award for gallantry in action against hostile forces, the Bronze Star Award in ground operations, and two Purple Hearts. He served as Chief Instructor of ROTC, University of Roanoke, Roanoke, Va. from 1970-1972. He graduated from the University of Nebraska at Omaha in 1972 with a Bachelor of General Studies degree. He received the Meritorious Service Medal for outstanding meritorious service culminating as Sergeant Major, United States

# Lay-Away for Christmas

## Fain Furniture

West Main Street 256-2201 Thursday - Friday only

Free Delivery



Cedar Chest \$145



La-Z-Boy Starting at \$199

Financing Available



Dinette Sets \$149 and up



Living Room Suites Starting at \$199



Dining Room Suites

20% OFF Reg. Price



Cherry Bedroom Suite \$200 off reg. price



End Tables \$100 off reg. price

A Charming Reflection of Style



Lamps Buy 1 2nd is 1/2 Price



Brass Baker's Rack \$39.95



Charming Day Bed \$249.95



Hall Tree \$19.95

CONSOLE TABLES



\$99.95

# Two-Piece Chicken Dinner



# 1.99

Offer Good 11/24 - 30

Open 7 Days A Week

U.S. 25 North Mt. Vernon



We're Cookin' the food you're lookin' for!

©1986, Druher's International, Inc.

Misc 405

35¢ per single copy

2 Sections - 22 pages



**Perrys receive Master Conservation award at local banquet . . . .**

See B-6



**Beef Association has derby . . . .**

See B-5

# Mount Vernon Signal

Serving Rockcastle County Since 1887

Mount Vernon, Kentucky 40456

Volume 100 - Number 2

Thursday November 20, 1986

## West Main crash kills local man

A Mt. Vernon man was killed and a 13-year-old boy injured in a one-car accident, Saturday morning in the city limits of Mt. Vernon.

Rockcastle County Coroner Bill Dowell said that Danny Ray Coffey, 21, of Mt. Vernon was dead on arrival at the Rockcastle County Hospital, as the results of massive head injuries.

According to Mt. Vernon policeman, Bill Mink, Coffey was driving on West Main Street about 1 p.m. when he lost control of his 1984 Renault and struck a utility pole, in front of the home of Jamie Allen.

His passenger, Troy Bullock, also of Mt. Vernon, was treated at the Rockcastle County Hospital and later transferred to the UK Medical Center. Bullock has since been released.

According to police neither Coffey nor Bullock were wearing a seat belt. This was the fourth fatality this year, recorded on Rockcastle highways.

Coffey was born on Feb. 15, 1965 in Rockcastle County, the son of Carl Coffey of Mt. Vernon and Judy Gail Childress Coffey of Middleboro. He was a member of the Army Reserves and the Livingston Pentecostal Church.

Survivors besides his parents are step mother, Mrs. Mary McMullin Coffey of Mt. Vernon; a sister, Miss Carol Ann Coffey of Mt. Vernon; three step brothers, Edward Rice, Danny and David Bustle, all of Mt. Vernon; two step sisters, Mrs. Brenda Mullins and Miss Barbara Bustle, both of Mt. Vernon and his paternal grandmother, Mrs. Lucille Coffey of Mt. Vernon.

Services were held Nov. 17, 1986 at the Cox Funeral Home Chapel, with Brenda J. Miller officiating. Burial was in Elmwood Cemetery.

## I-75 work delayed

A restoration project on I-75 between the Laurel County line and Mt. Vernon is among 101 state road projects that have been delayed.

The county project totaled \$4.5 million and would have called for the general restoration of the highway both north and south-bound.

I-75 has had considerable restoration work between the Laurel County line and the south Corbin interchange in the past two years causing one-lane traffic from time to time.

Congress failed to pass a highway spending bill which caused the delay on bidding of the projects totaling \$15.7 million.

Included are 23 bridge replacements, but none in Rockcastle. Construction on Ky. 461 will not be affected by the cut-off of funds. Money for that project had already been allocated for work now under construction.

In addition to the state projects, 70 other projects that have not reached the bidding stage will be delayed.

## Decorations

There'll be new Christmas street decorations in Mt. Vernon this season.

Floyd Owens told the city council recently that the present Christmas decorations are worn out and asked for a contribution.

The council voted to contribute \$20 for new decorations, matching \$165 contributed by the Lion's Club.



Accident scene . . . . .

Danny Ray Coffey, 21, of Mt. Vernon died in the above auto accident late Friday night in the city limits of Mt. Vernon when his 1984 Renault hit a utility pole. Photo by Kevin Ralcher.

## County begins process to sort details of its solid waste plan

By: Ray McClure

The county hopes to get its solid waste management plan under way Friday when the Rockcastle Fiscal Court meets to begin the process of sorting out the details.

The public is invited to the 1 p.m. meeting in the courthouse. Magistrates will meet with representatives of the Cumberland Valley Area Development District (CVADD), which devised the plan, to discuss the many details of the county-wide garbage collection plan.

The state approved the plan several days ago, giving the county the green light to proceed. And, the county is ready to get something started. It is costing taxpayers about \$10,000 a month for garbage removal from dumpsters. The dumpsters will be removed when the program goes into effect.

"I doubt if anything will be finalized at the workshop," one county official said. "But we can begin the process, and try to get some idea of how to proceed in the next few weeks. There will be a lot of decisions to make."

Among the decisions are a solid waste coordinator to run the

program, a franchise agreement, a franchisee's budget, a Clean Community Program, cost for residential and commercial customers, and method of collecting garbage.

The program will be voluntary on the part of the public, at least for a trial period. If the voluntary system does not work to the satisfaction of the Kentucky Department of Natural Resources, changes will have to be made. That change could make the voluntary system mandatory.

Mt. Vernon will not be a part of the county-wide plan because of its present franchise with William K. Bullen which is in effect until 1988. At that time, the county could bring Mt. Vernon into the county plan unless other arrangement is made. But likely, the county franchise, whenever it may be, would want the city under its franchise because of the fees involved.

Speaking of William K. Bullen and his suit against Bee Garbage Transfer system, that suit has been continued in Rockcastle Circuit Court by Judge Daniel Venters, pending a reply to

previous motion to dismiss the use by Bullen.

The judge has not set a new trial date.

Cont. to B-8

## Santa Claus

Santa Claus will be coming to town at 10:30 a.m. Dec. 6 along with the annual Christmas parade down Main Street in Mt. Vernon.

Sponsored by the Rockcastle County Chamber of Commerce, this year's theme will be "The True Meaning of Christmas." Amateurs, organization, business group, or individuals who wish to participate are welcome to do so, there is no entry fee. Prizes of \$100 for first place, \$50 for second place and \$25 for third place will be awarded by the chamber for the best entries.

No entries will be accepted after Dec. 3. For those participating the line-up will be at the Mt. Vernon Elementary School at 9:30 a.m. Those who would like to participate contact Bobby McClure at 256-3859 or 758-8321 before Dec. 3.

## Mayor Mullins lists qualities for city's next mayor

By: Ray McClure

"If you're unselfish, honest, hard working and reliable, you may qualify as the next Mayor of Mt. Vernon."

Those were some of the qualities that Mayor Roland Mullins outlined Friday to the city council that the next mayor should possess.

The council will choose a mayor to succeed Mayor Mullins at its next regular meeting Dec. 8, the last regular meeting for the mayor before leaving office.

The new mayor will serve until the next general election Nov. 3, 1987 at which time a new mayor will be elected to serve the next year.

In a written statement, Mayor Mullins said the next mayor should be a "caring, honest, hard working and reliable."

"In other words one who would 'love mercy, do justice and walk humbly in the presence of their God (Micah) is sought,'" he wrote.

He noted, if the council asks, he will recommend "someone who fills this description."

"When questioned, the mayor would not even hint on his choice, but he obviously has one."

The councilmen took the statement the mayor handed out in silence. When asked if the council would abide by the mayor's

choice, one councilman replied "probably."

In stepping down, Mayor Mullins ends 14 years as Mayor of Mt. Vernon. He said leaving office "elicits feelings similar to those experienced on having a family member take a job in a far city."

He did not indicate if he will try for public office again, but speculation in recent weeks has been that he will at some future date. He is currently, and has been, executive director of the Mental Health/Mental Retardation Center at Corbin since 1969.

The mayor said he was going to his home on Sand Springs Road to "tend my garden."

The complete text of the mayor's statement is as follows: "In December 1973, when Mayor Ed Winstead resigned and recommended that I become Mayor of Mt. Vernon, Nixon was President. Ford was Governor of Kentucky, my son Darbe was 22 years old, was in the fourth grade, daughter Carrie, now 14 was a baby, daughter, Callie, a sixth grader was not born, and Nancy was under 30. People started addressing me as Mayor since that time and I began to respond. Likely just as many things have happened in the life of each citizen in Mt. Vernon during this period."

"Leaving the Office elicits feelings similar to those experienced on having a family member take a job in a far city, seeing one

Cont. to A-2

## New truck plaza to open

Grand opening is scheduled Monday for the newly constructed Derby City South Truck Plaza on the Renfro Valley interchange.

Owned by Mrs. Evelyn Reynolds of Louisville, the new truck plaza was purchased by Mrs. Reynolds from Ron Jones, formerly of Williamsburg. Reportedly, Jones gave up the truck plaza because of health reasons.

The plaza will be managed by Powell and Venessa Utley. Mrs. Utley is Mrs. Reynolds' daughter. Mrs. Utley said the plaza will be open 24 hours. There will be eight lanes for diesel fuel, and later, fuel oil. There will be no

gasoline. Merchandise, appealing to truck drivers will be sold. Showers will be available, and later, a lounge for truckers.

The restaurant will feature a full menu with a daily steam table special, catering to local customers as well as truckers. Local residents are invited to attend the grand opening. There will be door prizes.

Mrs. Reynolds also owns a truck plaza on I-71 at Campbellsville in Henry County.

Mrs. Utley said only a skeleton crew will be employed for the first few weeks, mostly from the community.

## Escapee captured

Six of seven escapees from the Madison County Jail on Nov. 9, including a Mt. Vernon man, are back in custody.

Charles Bryant, 21, of Mt. Vernon, was apprehended about an hour after the escape at a Richmond Motel.

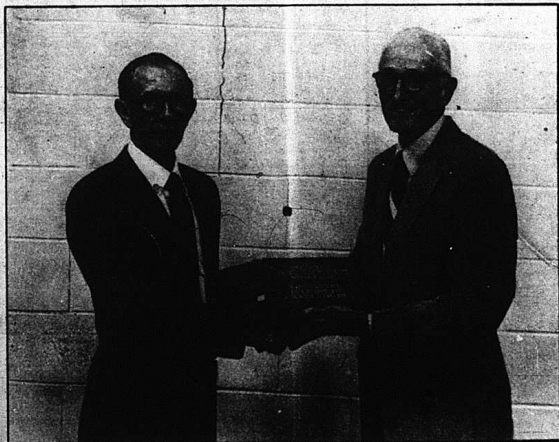
Dale Clemons, 33, of Richmond, was apprehended Monday by State Police at his sister's home in Brodhead, without incident, police reported.

Only one escapee remains at large. He is James Kates of Dallas, Texas. Two others were recaptured Tuesday in Florida.

All have been charged with escape.

The men escaped from the jail by pulling off a rusted iron plate and leaving through a boiler room.

Others back in custody are Johnny McQueen, 23, Joe McIntosh, 24, and Orville Lee Hall, 32, all of Richmond, and James Bicknell, 21, of Berea.



**Dr. Burdette honored by local farmers Friday night**

Local veterinarian Rudolph Burdette, who has retired recently was honored Friday night by local farmers at the Farmers Businessmen's banquet. Dr. Burdette was presented a plaque and a 12 gauge Browning shotgun. At left, Clay Colson presents Dr. Burdette with the plaque.



### Honor rolls

#### LIVINGSTON ELEMENTARY SCHOOL

Fourth: Peggy Daugherty, Monnie Hinton, Eddie Mullins, Amy Wilson  
 Fifth: Tanya Barons, Jenny Begley, Tony Gilliam, James Hammond, Mitzy Howard, Virginia Simpson  
 Sixth: Michelle Collins, Malginia Johnson, Judith Taylor  
 Seventh: Kim Kirby, Amanda Langford, Sherrie Bullock, Angela Stallsworth, Anthony French, Janel Durham, Anita Hurley, Sheila Hodge, Andrew Martin, Cheryl Clark, Janet Collins, Vicky Payne  
 Eighth: Jennifer Clark, Anita Durham, Lori Hodge, Shane Johnson, Tina Robinson

#### MT. VERNON ELEMENTARY

Fourth: Scott Anglin, Jason Cromer, Kelli Cromer, Barbara Hayes, Lee Hysinger, Jr., Chris Makin, Lisa Mullins, James Amux, Kenneth Ballinger, Angela Daugherty, Chris Golden, Jessica Helton, Willie Mason, Estel McFerron Selena Mink, Tim Philbeck, Emily Reppert, Jessica Roberts, Dianna Thomas, Tomina Wallin, Scott Sheppard, Joey Chavis, Zachary Cromer, Kimberly Dean, Lindsay Dowell, Eddie Gentry, Amber Hodges, Ken Hopkins, Cliff Mullins, Rebecca Osborne, Angela Parsons, Melinda Smith  
 Fifth: Courtney Adams, Brian Carter, Doug Cromer, Angela

Eaton, Nikki Helton, Teresa Kidwell, Kim Kirby, Dale Shelton, Rebecca Boone, John McHargue, Ercela Cromer, Melissa Caldwell, Chris Dillingham, David Gardiner, Jason Fletcher, Jason Vanzant, Stacy Wilder, Sandra Coning, Angela Artley, Tabatha Bell, Melissa Bradley, Kristie Doan, Charles Graves, Kevin Hodge, Sally Hoskins, Mickey McClure, Janetta McLemore, Jessica Taylor  
 Sixth: Kelle Allen, Franklin Artley, Trent Clark, Kimberly Decker, Lonnie Graham, Summer Hodges, Jeremy Jones, Matthew Kerr, Angela Kirby, Michael Lay, Missy Livesay, Jerry Makin, Geoffrey McGuire, Callie Mullins, Christy Napier, Chad Neal, Circe Owens, Sherri Prewitt, Kyle Radler, Crystal Smith, Doug Smith, Charles Souder, Chris Tackett, Jason VanWinkle, Jessica Chestnut, Melissa Cook, Jamie Cromer, Angela Hopkins, Jason Kirby, Donnie Lunsford, Melissa Mink, Kelli Nixley, Leslie Smith, Rhonda Lawhorn, Margaret Gibbons, Ashley Jasper, Jeff Navarre, Stacy Smith, Robbie Waterman, Scott Winstead, Sean Mullins  
 Seventh: Matthew Bryan, Glenna Bullock, Scott Mullins, Crystal Rowland, Rebecca Denny, Franklin Mason, Anthony Mink  
 Eighth: Tiffany Carter, Sherman Cook, Clarence DeWitt, David Eaton, Melinda Ely, James Graham, Cynthia Gregory, April Kendrick, Amy McClure, Angie McClure, Lisa McClure, Crystal McWhorter, Charles E. Mink, Jennifer Noe, Jennifer Renner, Stephanie Singleton, Michael, Smith, Haley Sunnney, Angela McClure, Lisa McClure

### November is national diabetes month

November is National Diabetes Month. Complications from diabetes accounts for about 60 percent of our hospital admissions. The ideal way to reduce this percent is to find the condition early before high blood glucose enters the blood vessels.

Most diabetics are classified in two types. Type I is insulin dependent where the pancreas fails to produce insulin to metabolize carbohydrates, protein, and fats. In Type II, the primary defects involve abnormalities in the binding of or response to insulin by target cells. Other types of diabetes are caused by certain drugs, diseases of the pancreas, pregnancy (1 out of 100 women) and people with impaired glucose tolerance.

The most common symptom of diabetes is extreme, thirst, blurred vision or dizziness, and frequent urination. Sometimes in Type II you will feel no symptoms, other times the symptoms may develop gradually. Other symptoms may be fatigue, itching or frequent infections.

We would like to find diabetics before complications occur. We would like to see people control their diabetes and not let diabetes control them. Diabetics need to learn how to balance their food, exercise, and medication (if any) which is a key to a healthy life.

The Rockcastle County Health Center is urging individuals who have any of the above symptoms or there is a history of diabetes in the family to get checked this month. In most instances, diabetes is the result of a genetic disorder. We will be doing blood sugars with a finger stick at the health center. This is a free service.

For diabetics and their families we have group counseling at the Senior Citizens' Building at Mt. Vernon. The next session is Tuesday, Dec. 1, at 4:30 p.m. The topics will be Footcare and Complications of Diabetes.

Join our  
**CHRISTMAS CLUB**  
now!



Deposit \$2, \$5, \$10 or \$20 weekly and we will deposit the last week's payment for you!!

Just think how nice it will be to have a check waiting for you in Nov. '87.

Call Pam Pensol or Donna McClure for information.



**THE BANK OF MT. VERNON**  
P.O. Box 157 MT. VERNON, KY. 40456 606-256-5141

MEMBER FDIC

## Holiday sale

### FOR THE BEGINNER

#### SINGER

**\$199<sup>50</sup>** Reg. \$199.99

Popular stitches • Built-in bobbin • Drop-in bobbin • Adjusts to various fabric thicknesses • Free arm for Sewing Slopes

Debutante Model 6215

### FOR THE PROFESSIONAL

#### SINGER

**\$1,099<sup>99</sup>** Reg. \$1,550.00

Unlimited stitches from construction to stretch to decorative • Push-button panel for easy stitch selection • Embroiders and monograms automatically • Built-in buttonholer sews in 3 different styles • Fabric folder-creaser for patching and mending

Ultra Model 6268

**UNDECIDED? Gift Certificates Available!**

**SINGER** Approved Dealer  
 Margaret's Sewing Center, Inc.  
 Southern Hills Plaza  
 Richmond, KY 42376  
 623-4796

### Senior Citizen Discount Furniture Town

#### CLEARANCE SALE

On Hwy. 30, E. Bernstadt, Ky.  
 We take trade-ins  
**Phone 843-7858**  
 FREE DELIVERY  
**On-The-Spot Financing**  
 Get Ready For Winter

All living room suites have 5 yr. written guarantee. Get ready for winter. Wood and coal stoves - you buy at almost cost. Recliners, starting at \$150. Reg. \$395. All electric recliners, for people who need one or just want one. Lots and lots of different kinds to choose from. Chest of drawers, \$59. Night Stands, \$47. Brass Beds, White Bedroom Suites - oak, maple, pine, cedar and cherry. Baby furniture. Stoves, refrigerators, washers and dryers. \$150. Desks, \$85. Also, roll top desks and rolling chairs. Heavy duty bunk beds, only \$150 a set. Full size box springs and mattress, \$158 set. Reg. \$368. New load of swivel rockers. Reg. \$269. Now Just \$85. Your choice. Lots of nice deals - too many to mention. Some good used furniture.

"Folks come from miles around to save the most at Furniture Town."  
 Senior Citizens Discount - We Take Trade-ins

## EVERY ITEM IN THE STORE IS ON SALE

**22 CAL. LITTLE RANGER**

**\$49<sup>88</sup>**

6 Shot, 3 1/2" Blue

**6 VOLT BATTERIES**

**\$1<sup>69</sup>** EA.

AVAILABLE IN ALKALINE

**ALADDIN STEEL THERMOS**

**\$14<sup>88</sup>** 1 QT.

GRIP HANDLE STEEL CUP

**ANTI-FREEZE**

**\$2<sup>79</sup>** GAL.

**DIGITAL ALARM CLOCK**

**\$6<sup>88</sup>** Reg. \$11.99

LIGHTED DIAL WALNUT FINISH

**Thermal Underwear**

**\$4<sup>00</sup>** TOP OR BOTTOM

MENS S-M-L-XL

**CAULKING GUN**

**\$1<sup>00</sup>**

FOR ALL TYPE CAULKING

**2 PIECE JOGGING SUIT**

**\$5<sup>25</sup>**

BOYS & GIRLS 4 STYLES  
 100% ACRYLIC/FLEECE  
 TODDLER 1-4

**COME IN AND REGISTER TO WIN GREAT PRIZES!**

- It's Easy • It's Fun
- No Obligation To Make A Purchase
- Prizes Displayed In Each Store

**Discount John's Store**

US 25 South London, Ky.      US 25 South Mt. Vernon, Ky.

PRICES GOOD WEDNESDAY THRU SUNDAY

**Sale Terms:**  
 • Cash • Check

**Sale Hours:**  
 London Store  
 9-8 MON.-SAT.  
 SUNDAY 12-4  
 Mt. Vernon Store  
 9-8 MON.-THURS.  
 9-8 FR.-SAT.; SUN 12-4

Sale Sale Sale



9-24 lb. Average Butterball  
**Turkeys**  
**1.09** lb.

Gold Crest or Indian Maid  
16-22 Lb. Average - Self Basting  
**Turkeys**  
**.89** lb.

3 lbs. or More Fresh, Lean  
**Ground Beef**  
**.89** lb.

Armour Veri-Best Platter Pleasing Quarter  
**Pork Loin**  
**1.59** lb.

Fischer's All-Meat Wieners ..... 12 oz. **.99**  
Fischer's Dixie, HAM & Cheese Loaf ..... 12 oz. **1.99**  
Fischer's Mellwood Bacon ..... 12 oz. **1.29**

Platter Pleasing Roll Bologna ..... lb. **.69**  
U.S.D.A. Choice Platter Pleasing Boneless Chuck Roast ..... lb. **1.19**  
U.S.D.A. Choice Platter Pleasing Stewing Beef ..... lb. **1.99**

**FREE DRAWING FOR BUTTERBALL TURKEY**  
THIS SATURDAY, NOVEMBER 22

**FISCHER'S BOLOGNA**  
**1.79**

8 Lb. Fischer's Lard ..... **3.99**  
Webber's Sausage - Mild or Hot ..... 1 lb. pkg. **2.19**  
Webber's Sausage - Mild ..... 2 lb. pkg. **4.29**

Armour Beef Stew ..... **1.39**  
Armour Hash ..... **1.09**  
Charmin Tissue ..... 6 Roll L1 w/10 Order **1.59**  
Lipton Noodle Soup Mix ..... **.99**

Lipton Cup of Soup ..... **.99**  
Martha White Meal ..... 5 Lb. **.99**  
Harris Pecan Pie ..... **2.69**  
Sealtest Sour Cream ..... **.69**  
Merico Texas-Style Biscuits ..... **.45**  
Colonial Farm Homo Milk ..... **1.79**  
Valu-Checked Tomato Juice ..... **.79**  
7 Farms Pork 'n Beans ..... **3/89**

Folger's **COFFEE**  
**2.99** L1 w/10 Order  
**J.F.G. Instant**  
**3.99**  
Reynolds Oven Cooking Bags  
**1.39**

Duncan Hines Cake Mixes ..... L1 w/10 Order **.89**  
Duncan Hines R.T.S. Frosting ..... **1.69**  
Crisco Shortening ..... L1 w/10 Order **1.99**  
Creamettes Egg Dumplings ..... **.89**  
Creamettes Noodles ..... **.89**  
Borden's Realemon ..... **1.79**

Pillsbury Brownie Mixes  
**1.89**  
DUNCAN HINES QUICK BREADS  
**1.49**

14 oz. Pillsbury Hot Roll Mix ..... **1.29**  
2 lb. Henry's & Butter Milk Pancake Mix ..... **1.29**  
1 lb. Pillsbury's Bread Cake Mix ..... **2.59**

12-17 oz. Cans Green Giant® **Vegetables**  
**3.99**  
Limit 6, Please  
16 oz. Cut Green Beans, 12 oz. Nitrite-Free Corn Cakes, 12 oz. Mushrooms **1.29**

1 lb. Quarters or Blue Bonnet Margarine ..... **2.99**  
1 lb. Whipped Stick

24 oz. Flav-O-Rich Cottage Cheese ..... **1.29**  
24 oz. Single Pumpkin ..... **.69**  
12 oz. Single Applesauce ..... **2.79**  
12 oz. Single Fruit Cocktail, or Fruit Flavors ..... **.69**  
15 oz. Slightly Sliced or Halves Peaches **.59**

24 oz. Single Spiced Sausage Slices **1.19**

12 oz. Pet Evaporated Milk ..... **.59**

22 oz. Hellmann's Mayonnaise ..... **1.89**  
16 oz. Ocean Spray Sliced or Whole Cranberry Sauce ..... **.79**

22 oz. Picinon Sweet Pickles ..... **1.99**  
16 oz. Picinon Sweet Pickles ..... **1.39**

12 oz. Picinon With Beans Chili ..... **.89**  
6.7 oz. Snow Top Vanilla Stuffing ..... **.99**

8 oz. Regular Extra Creamy Cool Whip ..... **.89**

46 oz. Can Dole Pineapple Juice ..... **1.49**

2 x 6.7 oz. Cans Crushed or Sliced Pineapple ..... **.79**

Folger's Decaf Instant ..... **5.89**

37.5 Foot Roll Heavy Duty Reynolds Wrap ..... **.99**

24 oz. 25 OFF Log Cabin Regular Syrup ..... **2.19**

6.5 oz. Can Oil or Water Star-Kist Tuna ..... **.79**  
L1 w/10 Order

15 oz. Balance Wheat Chex ..... **1.79**  
17 oz. Balance Rice Chex ..... **2.49**  
17 oz. Balance Corn Chex ..... **2.19**

Single Roll 3 Varieties Paper Towels **Bounty**  
**.79**  
L1 w/10 Order

**Produce**  
Bananas ..... 3 Lb. **.99**  
Red Grapes ..... Lb. **.79**  
Yellow Onions ..... 5 Lb. **.99**  
Large Celery ..... **.69**  
Tangerines ..... **12/1.29**  
Red or Gold Apples ..... 5 lb. **1.29**  
Cauliflower ..... Lb. **1.39**

5 lb. Bag Plain or Self Rising White Lily Flour ..... **.99**  
Limit 1 With \$10 Add'l Order, Please

**Pepsi Cola**  
DIET PEPSI, PEPSI FREE, DIET PEPSI FREE, & MT. DEW  
8 16 oz. Bottles  
**1.59**



**SUPERIOR**  
Food Markets  
U.S. 25 South Mt. Vernon  
Symbol of Quality







Mrs. Alta Bullock of Mt. Vernon, a member of the Rise and Shine Homemakers Club, did her part at the Christmas Bazaar last Thursday by taking donations for a "Puppy" and a beautiful afghan. The annual Homemakers' Christmas Bazaar and Chili Supper was well-attended with the different homemakers clubs in the county providing a wide array of craft articles for Christmas and all year long.

**County Homemakers' Bazaar**

By: Elizabeth F. Mullins, Homemakers Reporter

When you entered the Extension Service's downstairs room, Nov. 14, you knew Christmas was just around the corner!

Almost every table of the county's homemakers' clubs, had a Christmas Tree to show off the many Christmas Tree hangers as well as for a decoration. There were crocheted, needlepoint, and classwork animals to name a few of the barriers.

The pastry table was loaded with numerous desserts!

When we ate our chili and sandwiches had for our meal, it was hard to choose just what dessert we wanted.

The Rise and Shine Club had a larger display of crafts with the Quail Club's close second.

Already had a table just for a gift. That is, if I'd won

which I didn't!

The reason for the Rise and Shine Club have a large bank account, is that they raffle off things such as afghans and Teddy Bears! Take notice of this, homemakers!

I'm sure that I couldn't stay until closing time so I could have brought some pastries to freeze for one-half price. Other items were cheaper, too, just before adjournment.

The Cookbooks, made up of county's recipes, were not completed but will be soon. Then everyone's orders can be filled. They would be a good Christmas gift!

**Ladies' Aid-meets**

By: Elizabeth F. Mullins

Eight ladies braved our first cold weather to meet at Ella Mae Martin's home for the Ladies Aid Missionary Society Meeting, Nov.

11, 1986 at 7 p.m.

The lesson about the "23rd Psalm" was given by Elizabeth F. Mullins. She said: "With the Lord as your shepherd you have all you need. He can guard and guide and keep you in His loving care."

Lou Payne led the group in prayer at the end of the lesson.

Again, the Brodhead Christian Church's Nov. 17-21 revival was announced, so they wouldn't forget to invite everyone and to pray for the revival's success.

They discussed the officers that were to be elected soon in their church and were told to hand their selections to the committee, no later than Sunday.

Reports were made on visitations to our homebound folk.

Dec. 6th Bazaar was planned to help them with pledges to missions. Also, pecans will be in next week! They help with pledges as a small profit is made from the 1986 crop from Troy, Alabama.

The hostess served cherry cobbler with ice cream and drinks.

Their Christmas dinner will be at Margie Shovel's home. She will present the lesson, also.

**Absolute Auction**

of  
**Dr. and Mrs. William Adams' and Mr. and Mrs. Jack Adams' TIMBER**

**Tuesday, Nov. 25, 1986**  
**1:30 p.m.**  
 Hwy. 416 - Mt. Vernon

LOCATION: On Hwy. 461, 5 miles southwest of Mt. Vernon across the road from Adams Veterinary Clinic.

Realizing that the auction method of selling is the fairest and quickest way to sell, the owners have contracted our firm to sell their timber for the absolute high dollar.

The timber will be sold in three separate tracts then combined, selling whichever way reflects the best returns. Keep in mind that the timber only is selling and not the land.

**Tract No. 1** - contains 30 acres consisting primarily of poplar, hickory, oak, pine and ash. This tract lies on the south side of the branch and is marked for your inspection. Any trees larger than ten inches may be cut.

**Tract No. 2** - Contains 2 acres, more or less, and consists of poplar trees exclusively. This tract is located between the two larger tracts. Any trees larger than ten inches may be cut.

**Tract No. 3** - contains 25 acres more or less. This tract contains primarily maple, oak, hickory and ash. It is located on the north portion of the farm. Again, all the timber above ten inches may be cut.

**Auctioneer's Note:** Each tract will be marked with signs, and ribbons in order that you may raise the timber prior to the auction.

**Terms:** Timber is to be paid for in full the day of the auction and purchasers will have one year to remove timber.

Announcements made day of sale take precedence over printed matter.

For additional information, contact Dr. William Adams at 256-2277 or:

**Ford Realty & Auction Co.**

REALTOR/AUCTIONEER  
 SAM FORD  
 DANNY FORD  
 ROY ADAMS

AUCTIONEERS  
 JERRY HAM  
 WILLARD BULLOCK

APP AUCTIONEERS  
 Bob Todd  
 Dee Stewart

Kentucky Toll Free No. 1-800-435-5454  
 Mt. Vernon, Ky. Phone 256-4545  
 Somerset, Ky. Phone 679-2212

**Cromer's Auto Sales**

<p><b>1980 Ford Fairmont</b>                  Auto. Trans., Air Cond.                  Nice Car  <b>\$1,995<sup>00</sup></b></p>	<p><b>1980 PLYMOUTH VOLARE</b>                  4 Dr., Slant 6 Engine, Auto,                  Air Cond.  <b>\$2,595<sup>00</sup></b></p>
<p><b>1983 Toronado</b>                  White, Loaded</p>	<p><b>1985 Pontiac 6000</b>                  Loaded</p>

**Buy now before Jan. 1, 1987 and save on your 1986 income taxes!!**

Come in and browse around - No High Pressure Sale.

Glen Cromer Ph. 256-3221 Barry Solomon

**U.S. 25 and 150**  
 [Next to Appliance Service Center - Mt. Vernon]

**Don't let your plans for the future crumble**

When you begin planning for your future, start with a firm financial foundation.

A savings account at the Citizen's Bank of Brodhead will provide the foundation to build the kind of future you deserve. Come in and talk to one of our tellers about opening a savings account.

Open Mon. thru Fri. 8:30 to 3:00  
 Friday Drive Thru 11:00 to 1:00  
 Saturday 8:30 to 12:00

MEMBER FDIC

**Citizens Bank**  
 "growing for you" Since 1904  
 Brodhead, Kentucky

# Happy Thanksgiving from Save-A-Lot



"Fresh" Whole Fryers  
L4 w#10 Order L.6 **.59**

"Fresh" Baking Hens  
Lb. **.99**

Whole Rib-Eye Loin  
12-15 Lb. Average  
Lb. **2.99**

Choice T-Bone Steak  
Lb. **2.99**

We have a full line of Hams, Turkeys and Fixings for your Thanksgiving Dinner!!

Vanilla or Chocolate  
**CANDI QUIK**  
16 oz. pkg. **1.79**

Juices, Fruits	
Everyday Low Price	3.5L 1/2 Pint 4.00 can Grade A Fancy Tomato Juice .69
Everyday Low Price	Topical 64 oz. bottle DRINKS OR Grapefruit Juice 1.79
Everyday Low Price	Fruit Valley 17 oz. can Grade A Fancy Fruit Cocktail .59
Everyday Low Price	Fruit Valley 15 oz. can Grade A Fancy Apricot Halves .69
Everyday Low Price	1.5L 20 oz. Grade A Fancy Chunk Canned Sliced Pineapple .59
Everyday Low Price	Fruit Valley 16 oz. can Grade A Fancy Cranberry Sauce .49

**Baking Needs**

48 oz. Cook N Fry Corn Oil **\$1.59**

Everyday Low Price!

46 oz. Fruit Valley Orange Juice **99¢**

Everyday Low Price!

Vegetables	
Everyday Low Price	Harvest Fare 16 oz. can Cheddar or Whole Kernel Corn .29
Everyday Low Price	Nature's Pick 15 oz. can Grade A Fancy Blackeye Peas .31
Everyday Low Price	Harvest Fare 15 oz. can Grade A Fancy French Green Beans .31
Everyday Low Price	Quick Time 16 oz. can Grade A Fancy Chili Beans .31
Everyday Low Price	Nature's Pick 15 oz. can Grade A Fancy Tomato Sauce .39
Everyday Low Price	Nature's Pick 15 oz. can Grade A Fancy Cut Sweet Potatoes .39
Everyday Low Price	Instant Potatoes .89

Harvest Fare 16 oz. can Sweet Peas **.29**

Rice, Beans, Pasta	
Everyday Low Price	Golden Acres 28 oz. box Instant Rice 1.59
Everyday Low Price	Household 6 oz. box Stuffing Mix .59
Everyday Low Price	Harvest 16 oz. pkg Spaghetti .49
Everyday Low Price	Prima 32 oz. jar MEAT OR MUSHROOM Spaghetti Sauce 1.39
Everyday Low Price	Appan May 17 oz. box Pizza Mix .89

7.25 oz. box Golden Wheat Macaroni & Cheese **23¢**

Everyday Low Price!

Everyday Low Price	Oven Best 32 oz. box Pancake Mix .79
Everyday Low Price	Colum Farms 12 oz. can Canned Filled Milk .35
Everyday Low Price	Country of Switz Whipped Topping .99
Everyday Low Price	Arm & Hammer 16 oz. box Baking Soda .39
Everyday Low Price	Whitman 75 oz. Brown Gravy Mix .35
Everyday Low Price	Good Day 21 oz. can BLUEBERRY OR CHERRY Pie-Filling .99
Everyday Low Price	Royal 16 oz. can Pumpkin .39
Everyday Low Price	Bonnie 15 oz. pkg Raisins .99
Everyday Low Price	Camille 8 oz. bag Pecan Halves 1.49
Everyday Low Price	16 oz. pkg VANILLA OR CHOCOLATE Candi Quik 1.69

Canned Meats, Soups	
Everyday Low Price	Quick Time 10 oz. can Tomato Soup .25
Everyday Low Price	Quick Time 10 oz. can MUSHROOM OR CHICKEN Noodle Soup .29
Everyday Low Price	Meaty 28 oz. can WOODLIE OR Onion Soup Mix .59
Everyday Low Price	Char Boy 16 oz. 15 oz. can Mini Bites Ravioli .79
Everyday Low Price	Meat House 16 oz. can Chili with Beans .59
Everyday Low Price	Meat House 24 oz. can Beef Stew 1.29
Everyday Low Price	Osborn 12 oz. can Roast Beef & Gravy 1.19

6.5 oz. can in oil or water Sea Maid Chunk Tuna **55¢**

Everyday Low Price!

Pet Food & Supplies	
Everyday Low Price	4 lb. bag Dry Cat Food 1.39
Everyday Low Price	18 oz. can Beef Chunks Dog Food .31
Everyday Low Price	Chow 5 lb. bag Dog Food 1.09
Everyday Low Price	25 lb. bag Ration Dog Food 3.99

Cereals	
Everyday Low Price	Harvest 42 oz. pkg Old Fashioned or Quick Oats 1.09
Everyday Low Price	28 oz. box Malt-O-Meal 1.29
Everyday Low Price	Briggs 16 oz. box Raisin Bran 1.69
Everyday Low Price	Harvest 32 oz. (200g) OR Rice Chex 1.59
Everyday Low Price	General Mills 14 oz. Lucky Charms 1.99
Everyday Low Price	General Mills 18 oz. Wheaties 1.99

Paper Products	
Everyday Low Price	Marcal 100% Roll Waxed Paper .89
Everyday Low Price	Paper Maid 18 inch Roll Freezer Wrap 1.19
Everyday Low Price	Scott Paper 2 Ply Paper Towels .55
Everyday Low Price	6-Roll Bath Tissue 1.09

Guest Ranch 175 ct. pkg. Facial Tissue **.49**

Crackers, Cookies	
Everyday Low Price	Sugarbites 2.00 pkg. Sugar Waters 1.59
Everyday Low Price	Sunshine 16 oz. pkg Hydrox Cookies 1.59
Everyday Low Price	Assorted Cookies .89
Everyday Low Price	Ballston 1 lb. box REGULAR OR UNSALTED Saltine Crackers .49

Condiments	
Everyday Low Price	Meach 32 oz. jar Real Mayonnaise 1.29
Everyday Low Price	Meach 32 oz. jar Salad Dressing .99
Everyday Low Price	10.5 oz. jar Whole Dill Pickles .89
Everyday Low Price	Early California 8-oz. can Ripe Olives .89
Everyday Low Price	10 oz. jar Maraschino Cherries .69
Everyday Low Price	Table Made 32 oz. bottle Fancy Ketchup .79
Everyday Low Price	Barna 32 oz. jar STRAWBERRY JAM OR PEACH PRESERVES 1.29
Everyday Low Price	Paper 16 oz. jar CREAMY OR PEANUT Butter .99
Everyday Low Price	Robinson 32 oz. jar Honey 1.89

Beverages	
Everyday Low Price	All Varieties Regular or Diet 12 oz. Soda <b>.17</b>
Everyday Low Price	Park 100 count box Tappess Tea Bags .99
Everyday Low Price	Saco 12 oz. Hot Cocoa Mix .99
Everyday Low Price	All Varieties Diet or Regular 2 Liter Soda .69
Everyday Low Price	SUN-CHERRY FRUIT PUNCH OR Orange Capri Sun 1.99
Everyday Low Price	Sales 8 oz. jar Instant Coffee 3.89

Household, Laundry

14 oz. can Star Cleanser **.25**

Snacks	
Everyday Low Price	30 Count 8 1/2 oz. bag Cheese Puffs .55
Everyday Low Price	Assorted 30 ct. bag Fruit Peaches or 8 oz. Pretzel Stix .55
Everyday Low Price	8 1/2 oz. 12 oz. bag Nachos .99

7 1/2 oz. bag Delite Potato Chips **59¢**

Everyday Low Price!

Cooler Items	
Everyday Low Price	Savlon Fresh 1 lb. tub Soft Margarine .49
Everyday Low Price	Whitman 8 oz. tub Taste Spread 1.29
Everyday Low Price	Whitman 10 oz. tub American Singles 1.39
Everyday Low Price	Whitman 3 oz. pkg. Swiss CHEESE OR Mozzarella Cheese 1.19
Everyday Low Price	10.5 oz. 8 oz. tube Regular or Butter Milk Biscuits .19
Everyday Low Price	10.5 oz. 8 oz. tube Cinnamon Rolls .75

Sweet and Fresh 1 lb. Vegetable Quarters **.33**

Frozen Items	
Everyday Low Price	Prima 8 oz. tub Whipped Topping .59
Everyday Low Price	Prima 8 oz. tub Pumpkin Pie 1.39
Everyday Low Price	Harvest 16 oz. pkg. 16 oz. Mixed Vegetables .69
Everyday Low Price	West Pac 16 oz. pkg. Peas .79
Everyday Low Price	Manly 2 lb. box Fried Chicken 2.89
Everyday Low Price	James O 2 lb. box Turkey Roast 2.79

10 oz. Jeno's All Flavors Frozen Pizza **89¢**

Everyday Low Price!

Jimmy Dean Sage, Hot or Mild Pork Sausage **1.89**

1 lb. pkg.

Everyday Low Price	Ann 1 lb. pkg. Cocktail Smokies 2.59
Everyday Low Price	1 lb. Avg. Smoked or Polish (per lb.) Hillshire Sausage 1.99
Everyday Low Price	1 lb. Avg. (per lb.) Hillshire Beef Sausage 2.09
Everyday Low Price	16 pkg. All-purpose Seitz Bologna 1.39

# SAVE-A-LOT FOOD STORES

100% MONEY-BACK GUARANTEE!

Prices guaranteed through November 22, 1986. We reserve the right to limit all quantities.



# PEOPLE

## Golden anniversary . . .



Mr. and Mrs. Phillip Davis will be celebrating their 50th wedding anniversary with an Open House at the Rockcastle Co. Library [Senior Citizens Room] on November 30, 1986 from 2 to 5 p.m. All relatives and friends are invited. Mr. and Mrs. Davis request no gifts.

## Personals

By Mrs. George Burton

Robert Henderson of Somerset visited his mother Mrs. Lana Lasson Sunday afternoon.

Mrs. Bobby Anglin and Mrs. George Burton were in Somerset last Wednesday.

Loe Kirby of Lexington visited Mr. and Mrs. Robert Kirby and Mrs. and Miss Raymond Kirby during the weekend.

Mrs. Raymond Kirby and son Donald visited Mr. and Mrs. Robert Kirby while Sunday.

Weekend visitors of Mr. and Mrs. George Burton were Mr. and Mrs. Kenny Burton and son Travis of Breathwood, Harris Burton of Bendle Ridge and Mr. and Mrs. Troy Roberts of Rutledge, Tegan.

Aracely Burton and Owen Hunt were in Berea Monday.

Sympathy is extended to the families of Roscoe Cable, John W. Craig and Danny Ray Coffey in their time of sorrow.

Mrs. Nadine Creech, received word of the recent death of Robert Griffin, of Cin., Ohio. Burial was

in Ohio. Robert was a grandson of the late Will and Lizzie Creech and formerly of Mt. Vernon.

Mrs. Joarl Hasty, Mrs. Boyd Kinser and son Chris and Mrs. Nadine Creech were visitors of Mrs. Carol Collins and son Kenneth last Wednesday at West Liberty.

Mr. and Mrs. Eddie Hasty and Dennis of Lechaster, Mrs. Carol Collins and Kenny of West Liberty, were recent guests of their parents Mr. and Mrs. Jean Hasty of Rt. 1, Mt. Vernon.

Rev. Denzil Krahnbulh of Cumberland, visited his step-mother, Mrs. Dolly Krahnbulh and Jearl and Louise Hasty Tuesday of last week.

**Deadline for  
next week's  
News and Ads  
is  
Monday  
at noon.**

## Homecoming Queen . . .



MELISSA ANNE BRYANT was crowned recently as the 1986 Cumberland College Homecoming Queen. Melissa is a 1983 graduate of Rockcastle County High School and is majoring in history and english at Cumberland. She plans to enter law school next fall. Melissa was elected president of the Student Government Association earlier this year. As president of SGA, she is the official liaison between the student body and the college administration. In winning the SGA election, three records were established: [1] it was the largest voter turnout in the history of Cumberland College [2] Melissa received 76% of the votes, which is more than any previous candidate and [3] it was the first time two women were elected to the two highest offices. Melissa is the daughter of Dr. and Mrs. Mike Bryant of Mt. Vernon and the granddaughter of Mr. and Mrs. Lonnie Bryant.

## Five chapter DAR luncheon

On Nov. 15 five DAR Chapters of the area: Berea Laurel Ridges, Governor James Garrard, Berea, Rockcastle and Three Forks entertained with a luncheon at Boonie Tavern honoring Mrs. Martin Thompson of Harrodsburg. Regent of the Kentucky Society DAR, members of her Executive Board and the Fourth District Director.

Members of the State Executive Board present were Vice Regent Mrs. Paul Howard of New Castle, State Chaplain Mrs. Thomas E. Ross of Ashland, Recording Secretary Mrs. Robert L. Klaren of Lexington. Corresponding Secretary Mrs. Edward Reid of Lexington. Organizing

Secretary Mrs. James Gebbe of Prestonsburg. Treasurer Mrs. Floyd F. Amman of Somerset. Regent Mrs. James R. Watts of Brandenburg. Historian Mrs. Denzil Coleman of Morgantown. Librarian Mrs. C. Davis Gaines of Burlington. and Events District Director Mrs. W. Vance Smith of Harrodsburg.

Mrs. John Ramsay, Regent of the Berea Laurel Ridges Chapter, presided. The National Anthem was led by Mrs. Paul Todd of Berea with Mrs. Roscoe Adams of Rockcastle at the piano. Mrs. John Little, Regent of the Governor James Garrard Chapter, led the Pledge of Allegiance to the Flag of [Cont. to 9]

## Mt. Vernon Woman's Club news

President Joan Allen called the October meeting of the Mt. Vernon Woman's Club to order Oct. 28 at 7:30 p.m.

The normal order of business was observed. After the Pledge of Allegiance, Mrs. Aletta Narten gave a devotional, Mrs. Brenda Lambert read the minutes, which were approved.

Mrs. Karen Noe gave the treasurer's report, with a \$96 receipt from membership dues, the current balance is \$148.17.

Under older business, President Allen explained the budget, anticipating \$254.97 in the treasury after all dues are received. Mrs. Allen moved that the budget be accepted. Mrs. Karen Noe seconded and the motion carried.

Mrs. Allen then distributed material to the appropriate chair persons of committees, asking them to collect the number of volunteer hours that members had given to club business in school, church, or home.

Reporting on the Pineville District Meeting, Mrs. Allen discussed the agenda and the fact that a Rockcastle student had submitted a pen-and-ink art exhibit for the contest.

To introduce the program for the evening, Mrs. Cheryl Witt explained the club objectives in the education area: sponsoring of scholarships, ambassador of goodwill with school projects, work with KET, leadership development, and progress with continuing education and the literacy program.

Mrs. Betty Lewis, chairman of the Rockcastle Literacy Council, was the guest speaker. She explained that volunteers are trained as tutors for illiterate adults, but often these adults are embarrassed to seek help. She emphasized the enormity of the problem with statistics: 400,000 adults in Kentucky are illiterate and Kentucky ranks in last place in the nation in literacy. Rockcastle [Cont. to 9]

*Give them Music!*

**What's For Xmas?**

That's a big question when it comes to buying something for our loved ones, but it's easy when you shop at



**Johnny's Music**

Main Street  
Mt. Vernon  
256-5075

We have in stock: Keyboards, Banjos, Guitars, Violins, Mandolins, Dulcimers, Synthetones, omnichords - anything that **music** music accessories.

We are also now carrying the **Randell AMP - Best on the Market. So, make this a merry Christmas. Say it with music.**

You can save a lot when you buy at **JOHNNY'S MUSIC!**

Use our lay away plan - A down payment and we'll hold until Xmas

## SPECIAL PUBLIC NOTICE

### Truckload Furniture SALE Foodtown - Mt. Vernon

Parking Lot - US 150 West  
Saturday and Sunday only

November 22 and 23, 1986

**FREE - FREE - FREE**



**20 Lb. Turkey with the purchase of any Recliner or Living Room Suite**  
**WALLHUGGER RECLINERS Reg. \$498**

OFF THE TRUCK PRICE **\$179.00**

**2 Pc. Living Sets - Solid Oak Frames**  
**Coil Spring Seats - Reg. \$1,369**

**JUST \$489.00**

Bring your pick-up or van and carry home a bargain!!!

We Accept Cash - Check - VISA - Mastercard

## ABSOLUTE

# Auction

of  
**Mr. and Mrs. Jack L. Adams'**  
**45 ACRES**

**Sat., Nov. 29, 1986 1:30 p.m.**

Quail - Wabd Section of Rockcastle County

LOCATION: Approximately 7 miles southwest of Mt. Vernon, Kentucky. Turn west off Hwy. 461 at Denny's Grocery onto the Wabd-Jones road. Follow the Wabd-Jones road approximately 2 miles to the auction site. Auction signs will lead you to the sale site.

Mr. and Mrs. Jack Adams live in Connecticut and have decided to sell this productive land for the absolute high dollar.

The land consists of approximately 45 acres, more or less, by surveyed description of some of Rockcastle County's most productive soil most of it being Frederick siltloam and Glider silt loam which will strongly support alfalfa hay. The terrain of the property is level to moderately rolling. Stock water is provided by a pond and, since there are no buildings on the land, you can build to suit your own personal taste and needs.

The basic tobacco allotment is 1,353 lbs.

Auctioneer's Note: If you're looking for top quality land in a good farming community, then look no further. Mark your calendar now to attend this auction Saturday, November 29th at 1:30 p.m. Owners: Mr. and Mrs. Jack Adams.

Terms: 20% down day of sale, balance in 30 days with delivery of deed.

For additional information, contact:

## Ford Realty & Auction Co.

REALTOR/AUCTIONEER  
SAM FORD  
DANNY FORD  
ROY ADAMS



AUCTIONEERS  
HERRY WEA  
WILLARD BULLOCK

APP. AUCTIONEERS  
Bob Todd  
Dae Stewart



Kentucky Toll Free No. 1-800-435-5454  
Mt. Vernon, Ky. Phone 256-4545  
Somerset, Ky. Phone 679-2212





Jane Beshar, standing, chair of the Kentucky Literacy Commission, talks with leaders of local literacy programs during the first Kentucky Conference on Literacy held recently. The programs focused on ways to develop and expand literacy programs in Kentucky. Seated from left are: Gladys Brewer, London; Betty Lewis, Rockcastle County; Susan Nimmersheim, Northern Kentucky Adult Literacy program literacy coordinator and Linda Zimmerman, Northern Kentucky Adult Literacy Coordinator serving Boone, Kenton and Campbell counties.

**"WOMAN'S CLUB"**  
[Cont. From 8]

County has approximately a 25% illiteracy problem.

After Mrs. Lewis' presentation the group read the Collect and Mrs. Allen adjourned the meeting. Refreshments were served by Mrs. Vickie Farthing and Mrs. Karen Noy and Mrs. Jean Allen.

The November meeting of the Mt. Vernon Woman's Club will be Tuesday Nov. 25 at 7:30 p.m. at the Production Credit Association Building.

The program for the evening entitled "Passing Through" will be presented by Dr. Raymond Betts, professor of history at the University of Kentucky. The talk to be presented by Dr. Betts is an entertaining and unique review of Kentucky History.

Dr. Betts pursues a keen

amateur interest in various aspects of Kentucky's past even though his specialty is Modern European history. The professor is author of several books and many scholarly journals, director of the Honors Program at U.K., a feature columnist for the Lexington Herald Leader and the producer of a number of television programs for KET.

Dr. Betts currently serves on the National Humanities Faculty and is former chair of the Kentucky Humanities Council. In 1984 he was named Distinguished Professor at the U.K. College of Arts and Sciences.

The series of programs from which Tuesday night's program was chosen is entitled "Reflections of the Past" and is funded by a grant from the National Endowment for the Humanities to the Kentucky Department of Libraries

and Archives and is jointly administered by the Kentucky Historical Society.

**"DAR LUNCHEON"**  
[Cont. From 8]

The United States of America, Mrs. John Cornelius, Regent of the Jemima Boone Chapter led the American's Creed and Mrs. King Justice, Regent of Three Forks Chapter gave the devotion and grace. Mrs. Stephen Owens, Rockcastle Regent, gave the benediction.

Following the luncheon Mrs. Thompson, the State Regent, spoke. She told of the service given by her great grandfather in

the Civil War, by her grandfather in World War I, by her father in World War II. Each of them, though they were not in favor of war, went into service to protect their families, their freedoms and their way of life. She told how she as a young girl was drawn to the DAR as an organization which worked to preserve the records of the past, to preserve the freedoms of their country and to educate the youth teaching them to appreciate the blessings of America.

Following Mrs. Thompson's remarks the regents of treasurer's of the five chapters presented Mrs. Thompson with donations for her State Regent's Project. Two thirds of this amount is designated for DuCan Tavern, the DAR State Headquarters in Paris and one third for Hindman Settlement School.

Mrs. Laura Brumley, of Manchester, and Miss Aileen Benge, of Lexington, who are working to organize a DAR chapter at Manchester were guests.

*News and Advertising deadline for next week is noon Monday!*



Lemon juice and ground lemon peel help to tenderize chicken. Before cooking, rub the juice onto inside and outside and disperse the peels throughout the cavity.

**ANNOUNCING!**  
**Grand Opening of**  
**Derby City South**  
**Truck Plaza**

U.S. 25 North Mt. Vernon

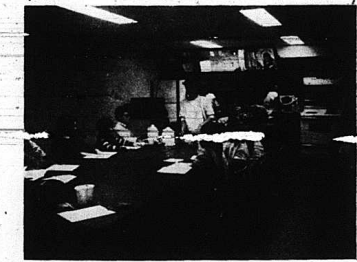
**Monday, Nov. 24th**

We, at Derby City South Truck Plaza, are proud to be opening our doors to the truck drivers, to the community of Mt. Vernon, Renfro Valley and surrounding areas and we look forward to serving all our customers with good down home cooking, a comfortable atmosphere and friendly service.

*Steam Table Special*

We offer a full line menu as well as our daily Steam Table Special which is composed of a choice of 2 meats, 2 vegetables, salad and bread for 13<sup>99</sup>. We also feature a variety of homemade desserts.

**Door Prizes Give Away During our Grand Opening!!**



**FOOD PROJECT GRADUATES:** Judy Makin, shown here as a food project leader for 4-1-1's, is helping teach the first unit of the food project. Several other leaders have volunteered their time to help teach the food project at all the schools.



By: Austin Mobley, Minister  
Providence church of Christ

**Thanksgiving**

Thanksgiving was begun when the Pilgrims sought to give God thanks for an abundant harvest, knowing they were recipients of His benevolence and mercy. These God-fearing and God-loving people manifested openly a faith and trust in Almighty God and gave thanks. So what, then, would be more fitting than to set aside a special day of "thanksgiving" at the end of a bountiful harvest? This they did. They had gaiety and merriment, with a sumptuous feast of wild turkey, deer, duck, choice vegetables and other such food as their early culture could provide. However, the accent was not on fleshly appetites and carnal desires. There was an over-riding consciousness that they were still under God's care, and there was no flagrant attempt to ignore it!

"Thanksgiving" has lost much of its significance to that day set apart by our Pilgrim fathers. It has been polluted by unholly desires, carnal appetites and selfish gratification in festivities, fun and frolic. The "spirit of thanksgiving" is epitomized by turkey and dressing, pumpkin pies and football games. It is a day of gluttonous delight, and where is God truly thanked? Even the practice of "thanksgiving" before meals is becoming rare.

"Thanksgiving" to God's children is still a way of life. Saints of God have the proper conception of all that God has done for them, and will say with Paul, "We are bound to give thanks unto God" [2 Thess. 2:13]. True expressions of thanksgiving to our Father are offered daily from the heart. To us every day is truly Thanksgiving Day. For every morsel of food, every thread of clothing, our friends, families, jobs, homes and country, we are thankful to God. And even more so for the abundant spiritual benefits enjoyed in Christ [Eph. 1:3]. We know that "every good gift and every perfect gift is from above, coming from the Father of lights." [James 1:17].

"Thanksgiving" is still a reminder to God's children to be more fervent in their devotions. If illnesses have been overcome, give thanks to God; but be even more thankful if illness has not been encountered. If you have been hungry and then fed, give thanks to God; but be even more thankful if you have not known real want.

May we fully evaluate all blessings which God has regularly supplied. "Giving thanks always for all things unto God and the Father in the name of our Lord Jesus Christ" [Eph. 5:20].

**ABSOLUTE**  
**Auction**

of **Dr. and Mrs. John Parsons'**  
**House and Lot**



**Saturday,**  
**Nov. 29th, 1986**  
**10:30 A.M.**

**Happy Acres**  
**Subdivision**  
**Mt. Vernon, Kentucky**

**L**ocation: 3 miles west of Mt. Vernon, 3 miles east of Brodhead. Turn west off U.S. 150 at the Mareburg Baptist Church onto the Spiro Road. Follow the Spiro Road approximately 1 mile to the subdivision. Auction signs will be posted.

**D**r. and Mrs. John Parsons have decided to move into town and have authorized our firm to sell this property for the absolute high dollar.

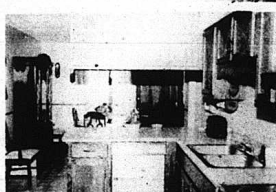
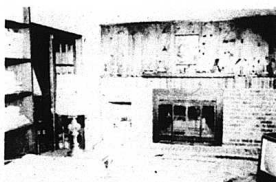
**This lovely home is only 8 years old and has:**

- 3 Bedrooms • 1 1/2 Baths • Utility Room • Kitchen and Dining area combination • Family Room with fireplace • Built-in Oak Cabinets • Automatic Dishwasher • Oven and Range • Washer / Dryer hookup • Thermopane Windows, • Electric Heat Pump with Air Conditioning • Wall to Wall Carpet.

In addition to the house there is also a 2 car garage with automatic garage door openers and a chain link fence enclosed dog kennel. This lovely home sits on a large, well landscaped lot measuring approximately 100 x 250. There is also a satellite dish for TV reception.

**AUCTIONEER'S NOTE:** If you're looking for a well constructed home in one of the county's finest subdivisions, then look no further. It's going to sell for the high dollar. The last bid will buy. Take advantage of this unique opportunity.

**TERMS:** 20% down day of sale, balance in 30 days with delivery of deed.



**Ford Realty & Auction Co.**

REALTOR/AUCTIONEER  
SAM FORD  
DANNY FORD  
ROY ADAMS

AUCTIONEERS  
JERRY HAM  
WILLARD BULLOCK  
APP. AUCTIONEERS  
DEE STEWART  
BOB TODD



Kentucky Toll Free No. 1-800-435-5454  
Mt. Vernon, Ky. Phone 256-4545



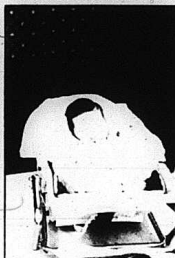
## Births and Birthdays



Jason Lee Leger, son of Mike and Sheila Leger, celebrated his 1st birthday October 7 with a "Pound Puppy" party. To help him celebrate was his big brother, Nicholas Ray. They are the grandchildren of Mr. and Mrs. Arlie Lee Renner, Sr. and Mr. and Mrs. Delbert Leger, all of Mt. Vernon. They are the great grandchildren of Stella Morris of Mt. Vernon and the late Walter Morris and the late Mr. and Mrs. Robert Leger.



Sabrina Nicole Hensley, daughter of Jack and Betty Hensley of Orlando, celebrated her 2nd birthday Nov. 18th. Grandparents are Henry and Velma Stewart and Oscar and Wanda Hensley.



JACKSON TYLER BRAY

Mr. and Mrs. Dennis Bray of Route 1 Brodhead are the proud parents of their first child, a son. He has been named Jackson Tyler and was born Oct. 17, 1986 at Humana Hospital in Somerset with a weight of 9 lbs 2 1/2 ozs and 22 1/2 inches in length. Grandparents are Mr. and Mrs. Vall Roy Wright and Mr. and Mrs. Don Bray of Route 1 Brodhead. Great grandparents are Mrs. Anna Wright and Mrs. Pearl Owens of Route 1 Brodhead.



David and Dicie Allen are proud to announce the birth of their first child, Matthew David, born October 5th at Patten A. Clay Hospital in Richmond. He weighed 10 lbs., 6 ozs. and was 22 1/2 inches long at birth. Grandparents are Mr. and Mrs. Joe Allen of Orlando and Mr. and Mrs. Chan Hayes of Sand Springs.



In Loving Memory of My Brother, ERNEST LEE GRIFFIN

Who passed away twenty years ago, November 4, 1966.

This month comes with deep regret. It brings a day we'll never forget.

His call was sudden, the shock severe, with never a thought that death was so near.

You were taken away without goodbye, and only God knows why.

Our love for you will never die.

Sadly missed by Rev. Willie Griffin, Sr.

# HAMMOND'S FOOD MARKET

"Home of the Bargains"  
Prices Eff. Nov. 6-12  
Hwy. 461 - Mt. Vernon  
CLOSED SUNDAYS

Ground Beef ..... Lb. **.89**



Cent. Cut Pork Chops  
Lb. **1.59**

5 Lb. SR White Lily FLOUR  
Lb. **.99**

**20% off**

All canned meats and vegetables

8 Pk. - 16 oz. PEPSI  
Plus Dep. **1.49**

Duncan Hines & Betty Crocker CAKE MIX  
**.89**

Purex Bleach Gal. **.89**

Molasses Gal. **2.99**

Brown & Serve Rolls **2/99**

Martha White MEAL 5 Lb. SR **.99**

Bounty Paper Towels ea. **.79**

Summit Toilet Tissue ..... ea. **.79**

We Gladly Accept USDA Food Stamps

Celery ..... 49  
Florida Oranges ..... Doz. **.99**  
Bananas ..... Lb. **.29**  
10 Lb. Idaho Potatoes ..... **1.69**  
5 Lb. Apples ..... **1.39**

cousin Benton Owens at the Sowder Nursing Home Sunday afternoon.

Mr. and Mrs. Jimmy Kersey of Houstonville were Sunday supper guests of her parents Mr. and Mrs. Ronald Rogers.

Mrs. Debra Philbeck and Florenee Albright spent last Thursday with Mr. and Mrs. Elmer

Ponder Mrs. Fanny L. Albright, Mrs. Judy Owens and Jeremy, Mr. and Mrs. Elmer Ponder and Jamie Reynolds were dinner guests of Florence Albright Sunday.

Vickie Stevens spent Saturday night with Angie Pittman.

Advertising and news deadline for next week is Monday at noon.

## Discover the Dramatic Difference of Matrix Hair Essentials



Let us prescribe the perfect Matrix at-home hair care action plan for your hairstyle and your lifestyle. It's our way to express how much we care about you and your hair.

we want your hair to be just as healthy, manageable and bouncy as it can be. This is why we use and recommend Matrix Hair Essentials for your at-home hair care. Every Matrix product contains the highest quality, purest ingredients. All are enriched with the exclusive Matrix Alpine Complex, a reservoir of strength, resilience and protection. It assures you the fullest, shiniest, healthiest hair ever! Matrix Hair Essentials is the only hair care system utilizing the principle of "synergy." Every Matrix product reinforces and enhances the others for even more shine, body and manageability.

## Open Thanksgiving Day 6 a.m. to 2 p.m.

Thanksgiving Dinner Menu  
Turkey, Ham and all the trimmings and fresh pumpkin pie

Kastle Inn Restaurant  
Exit 59 at Burr Mt. Vernon

## HOME TOBACCO WAREHOUSE

Office Phones:  
623-5146 (No. 4 Warehouse)  
624-0416 (No. 2 Warehouse)

We have 3 warehouse locations in Richmond  
No. 1 Warehouse - Turn onto Walnut St. off Third St.  
No. 2 Warehouse - Corner of 2nd & Walnut - Turn left on Walnut  
No. 4 Warehouse - On Big Hill Ave. Enter from Race St.

REPRESENTATIVES:  
William Taylor Ph. 758-8278 Tommy Harold Mink Ph. 256-2570  
Sales Manager: Edwin Luxon  
SELLING CHARGES: 4%  
NO HANDLING CHARGES

23x5

## REAL ESTATE FOR SALE

60 Acre Farm - 3 Bedroom home with living room, dining and kitchen w/cabinets, bath, utility room, w/d hook up, front porch, cable TV, also a log barn on blacktop road near Livingston. \$36,000.

REDUCED - 3 Bdrm. Brick w/Double Garage. In addition to a lovely decor, other amenities include: liv. rm., dining rm., kitchen w/brk cabinets, range, refrigerator, dishwasher, breakfast area, utility rm., laundry rm., w/washer & dryer, w/mature shade trees, shrubs, double paved drive, ideal for retirees or growing family near Mt. Vernon Elementary School in nice neighborhood. Reduced to \$67,500.

62 Acre Farm - Home w/3 Bdrms., 1 1/2 Baths, Basement. Other amenities include family rm., living rm., dining kitchen, electric heat, also woodburning stove, 2 good barns, silo, 2800 lbs. tobacco base, privacy, city water. Would consider land contract. Brindle Ridge. \$100,000.00.

3 Bdrms. Brick, 1 1/2 Baths, 1 1/2 Car Garage, 1.310 Acres. Large living, living rm., den, large dining and kitchen with snack bar, range and refrig., w/d hook-up, patio, front porch, blacktop drive. Exceptionally nice. 3 miles from Mt. Vernon on Hwy. 461. Just asking \$49,900.

3 Bedroom Brick w/Basement, Heat Pump, Central A/C. Nice dining/kitchen, living room, 2 baths, carpet, woodburning stove, large lot in Countryside Estates, near town/industrial park. \$45,000.

2 Bedroom Cabin - 32 Acres - Large living room w/cathedral ceiling, kitchen area, 4 built-in banks w/mattress, large Franklin stove, complete privacy. Red Hill Road. \$22,500.

3 Bedroom Stone Home w/Basement, 2 Car Garage, All New Kitchen Cabinets w/oven range, dishwasher & microwave, living room, family room, bath, central air, electric heat, also wood furnace, covered patio w/built-in Bar. Co. 16x20 bldg. w/life, 15 fruit trees, other shrubs, paved drive, access from B&G Sporting Goods on Hwy. 461. \$48,000.

Two 5 Acre Tracts - 2 1/2 miles from Mt. Vernon. This all wooded area has nice home or mobile home sites, city water available, some good timber, privacy. Asking price for each tract \$7,000.

Approx. 42 Acres Woodland - Nice Bldg. Site - Has septic tank, water tank, road frontage. Located in Sand Hill section for \$12,000.

New 2 Story, 3 Bdrm., A Frame Overlooking Lake Linville. Be the first owner. Enjoy the plush, new carpet, the cozy kitchen w/cabinets, w/d hook up, 1 1/2 baths, large living room, front back decks, balcony, electric heat, steel doors, city water, well-insulated, situated on approx. 1/2 acre and adorned with huge oaks. \$31,500.

Farm - 15 Acres - 3 Bdrm. Brick Home - Barn - City Limits. House also has large foyer, 1 1/2 tile baths, lots of cabinets, closets, storage, electric heat, fireplace w/wisnet, hwy. carport, front porch. Barn has 4 stalls, tack room with concrete floor, water, pasture, also has watering facility, partially wooded, dead end privacy. Ideal farm location or for subdiv. near Lake Linville and new liv. pass. \$75,000.

One of Mt. Vernon's Nicest Homes - Beautifully decorated with formal living room w/fireplace and dining room, den, kitchen w/ceramic cabinets and breakfast area on first floor, 3 bedrooms, den and more on second floor, 1 1/2 baths, electric heat, garage, fenced backyard. Walk to school. \$75,000.

Furnished - 2 Bedroom Home - Small Den - Payment - Owner Financing - Plus, new kitchen w/oak cabinets, range, refrig., cherry door leaf table, bath, utility room, w/d hook up, fuel oil stove, nice carpet, A/C, porch, storage, 3 acres. Lamero. \$24,900.

Business Opportunity - Grocery Store - Restaurant/Apartment - First Floor approx. 3500 sq. ft. It has groceries, restaurant, hardware, living room, large, 2 bdrm. apt. w/living room, dining kitchen, bath, utility room, etc., new carpet, oil furnace, wood furnace and central air. Main St., Livingston near Senior Citizens Complex. \$60,000.00.

Approx. 97 Acres - Woodland - Located approximately 8 miles from Mt. Vernon near Salt Peter Cave. \$15,000.

2 Bedroom Home - Pool - Garage - Dining Kitchen w/cabinets, liv. rm., bath, utility room, w/d hook up, new carpet, electric heat, wood burner. In Ground pool with filter system and deck. Approx. 7 miles from Mt. Vernon. \$26,000.00

## EVELENE RAINES PROPERTIES

West Main St. Mt. Vernon, Ky.



REALTOR®  
EVELENE RAINES, PREA  
Broker-Evaluator Certified Appraiser  
256-5811 256-5811

# CLASSIFIED ADS SURE TO GET RESULTS

## CLASSIFIED RATES

Local Rates - 8¢ per word, minimum \$2  
 Card of Thanks - 5¢ per word, minimum \$2  
 In Memoriam - 5¢ per word, minimum \$2  
 Display Classifieds \$2 per inch, minimum \$3  
 CLASSIFIEDS PAID IN ADVANCE  
 Deadline for Classifieds is Monday at 4 p.m.

### FOR SALE

For Sale or Trade: New house with 3 bedrooms, 1 1/2 bath.

Newcomb St., Mt. Vernon, Ky. Contact Robert E. Philbeck, builder, 256-4641. 2x2p



**Let's Talk Turkey!**

Purchase a new home and we will help you fill that new refrigerator for your Holiday. Enjoyment!

14 WIDES FROM ONLY \$9,995 UNDER \$114 mo.  
 14x70 3 BEDROOM FROM \$13,995 UNDER \$159 mo.  
 14x70 3 BEDROOM FROM \$13,995 UNDER \$159 mo.

**DOUBLE WIDE SALE**  
 23x44 From \$18,295 2x6 Sidelways, vinyl siding, shingle roof, cathedral ceiling, plus more UNDER \$202 mo.  
 24x44 From \$19,995 Durable hardwood siding, shingle roof, ceiling fan, cathedral ceiling, 4-12 pitch roof plus more UNDER \$221 mo.  
 28x60 Only \$29,995 Total electric, super insulation, ceiling fan, 17 refrigerator plus more UNDER \$332 mo.

**SALE USED HOMES FROM \$3,000**  
 More than 600 to choose from

**the affordable housing mart**

RICHMOND: 1933 E. Irvine Rd. 606-624-1962  
 NO. OF RICHMOND: 175 East 97 606-624-0000  
 LONDON: 175 S. US 80 606-878-0013

### APPLIANCE OUTLET

Reconditioned used electric stoves - Washers & Dryers - Refrigerators - TV's. All guaranteed to work.

Located on Main St. across street from The Bank of Mt. Vernon.

### Tri-County Sanitation

\*Septic Tank Cleaning \*Grease Traps  
 \*Cess Pools \*All Types of Pumping Needs

Commercial or Residential - You can count on Fast, Dependable Service

48xntft **453-2144**

## Town & Country CHEVRON

U.S. 25 South in Mt. Vernon

Check out our **NEW TIRES**

**FREE Mounting & Computer Balancing on all new tires. Full friendly service!!**

**FOR SALE:** 19 1/2 acres, mostly woodland, located in the Scafield Cane area with 2 or 3 buildings. Fronts on Stephens Road with electric, telephone, mail route, school bus and city water available. Very quiet. 256-2963. 3x4

**FOR SALE:** 2 bedroom mobile home with washer, dryer, oil heat stove, refrigerator. Also, lot in city limits of Mt. Vernon. Call 256-5266. 3xntf

**FOR SALE:** House and 1/2 acre lot in Broadhead city limits on Water tank Hill. House and front and back porches, two bedrooms, kitchen with built-in cabinets, washer/dryer hook-up, living room and bath. There's also a storage building and woodshed. Plenty of privacy for \$12,000 or reasonable offer. Call 758-8158 from 9 a.m. to 4 p.m. or see Paula at Chester Day home. Moving out of county, need to sell soon. 3x1p

### Miscellaneous

**McMahon Campbellsville Cherry and Oak Furniture.** Lots of merchandise 20% off at all times. Teresa's Antiques & Art Gallery, Berea, Ky., Prospect Street, 986-9147. 3x1ntf

**Grave Markers & Monuments:** In stock at all times. McNew Monument Sales, U.S. 25. 4 miles north of Mt. Vernon. Ph. 256-2232. ntf

**FOR SALE:** Sorghum molasses, fresh made and good. Gatlin Craig, [Broadhead] Negro Creek Road. Call 758-8344. 50xntf

**FOR SALE:** Small portable television, played in car or by electric or battery, has earphones. \$125. Like new. Would make nice gift. 256-5336. 3x1

**FOR SALE:** GE 3-way power cassette recorder, has automatic stop, electronic battery. Has carrying handle. \$30. 256-5336. 3x1

**FOR SALE:** Wood, No. 1, 3 pt. hitch on tractor (auger type). Overnight work trailer. Pick-up truck cattle racks. Metal sp. tubing for full size pickup. Call 256-4221. 3x1p

**FOR SALE OR TRADE:** 23 ft. Pontoon boat with canopy, galvanized tubes, heavy duty trailer, 40 h.p. Johnson motor. \$3,500 or trade for 4 WD pick-up. 1-355-7334. 3x4p

**FOR SALE:** 3 beautiful AKC registered Airedale pups, 3 months old, shots and wormed. Extremely affectionate. Excellent with children. Make great watch dogs and hunters. Call 864-7815 after 4 p.m. 3x

### DOUBLEWIDE SPECIAL SAVE \$3900.00

New, 1987, 984 Sq. Ft., 3 Bed, 2 Bath, House Doors & Windows, Wood Siding, Total Electric, Carpet, All Appliances, Cathedral Ceilings, Garden Bath, Entry with Skylights. A beautiful home at a special introductory price.  
**ONLY \$17,895.00**  
 Price includes delivery and set up. Pay only \$1800.00 down and less than \$200.00 per month.



### ROBO

UNDER NEW MANAGEMENT JUNIOR GRAY  
 Get your car professionally hand waxed and cleaned - inside and out while you work. Pick-up and delivery.  
**Call 256-4301**

47xntf

**FOR SALE:** Eskimo [White] Spitz pups \$25 ea. 256-2293 or 256-4524. 3x2p

**FOR SALE:** 23 inch used Quasar Motorola T.V., walnut floor model cabinet, \$175. Call 758-8710 after 5 p.m. 3x1p

**FOR SALE:** Toys, docks, gloves, socks, perfumes, tapestries, brass items, hair dryer, variety of gift items. Compare the price. Lay-away available. Mt. Villa Motel, 256-2127. 3x2p

**FOR SALE:** Racking Sorrel gelding, 14 hands. Also 16 mo. old pony, broke to stand tied or lead. Call 758-4149. 3x1

**FOR SALE:** Electric stove, 40" with griddle and 2 ovens. \$45. 3x1

**FOR SALE:** 10 ft. satellite, complete, \$700. Call 256-5230. 3x1

**FOR SALE:** Cash and carry Christmas gifts from Home Interior. Everyone invited to Home Interior Open House Sat., Nov. 22, 9 a.m. to 4 p.m. at the home of Betty Carter, Shirley Street, Owens Subdivision. 3x1p

**FOR SALE:** Orchard grass and clover hay, \$1.50 per bale. Large round bales of oats, \$20 per bale. Call 256-5643. 1x3p

**POLE BUILDINGS:** 30x40x9 eave, one 10x8 end slider and one walk door, painted steel roof and sides, completely erected, tax included, \$4,995. Other sizes available. Blitz Buildings, Inc., 1-800-428-4009. 2x4p

### Motor Vehicles

**FOR SALE:** 1964 Ford Bronco, newly overhauled motor, new battery and good tires. \$1,000. 256-4787. 2x2p

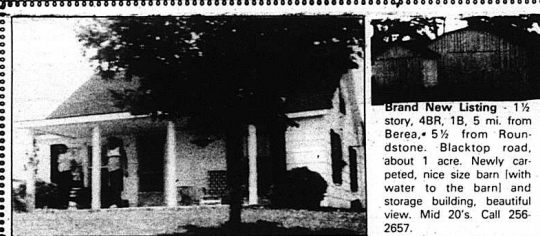
**FOR SALE:** 1971 Chevrolet pickup. 1970 VW Bug. Call 758-8971 after 2 p.m. 3x2p

### William Kirby

\*Backhoe Services  
 \*Dump Truck Hauling  
 \*Fill Dirt

**Call 256-5660**

2xntf



Cute Little 2 Bedroom House: On nice, big, fenced-in lot, right on Drutcher's back door. You will love it. A hop and a jump to town and a hop and a skip to Renfro.

**FOR QUICK SALE:** Neat two story brick, 4 years old, 5BR, 2B, 3 acres. Only \$30,000.

**Newlywed Special:** 3BR, extra neat, nice big storage bldg. Reduced to \$22,500.  
**Builder's Delight:** 17 acres with long frontage on U.S. 25.  
**LOT on a beautiful lake.**

**All In One Package:** A business, farm and a beautiful home. Call soon.

**Practically New 3BR brick with one acre, really good condition.** Reduced to \$35,000.  
**57 Acres with lots of timber, entrance on South U.S. 25.** \$18,000.

**24 Acres:** Woods and pasture, big spring, city water available. Buy it and sell six 4-acre tracts for mobile home locations. Enjoy the profit!

**Priced To Sell!!** Near Berea. Brick ranch, 3BR, fenced-in lot, large living room. A real bargain. \$39,000.

**Beauty in the Woods:** On Rd. 1505. Extremely modern home w/acres of woodlands. Many amenities. Just 7 miles from Berea on blacktop road. See to believe.

**Investors Haven:** Right on Main St. in Mt. Vernon. Lucrative business - bringing in the bucks. Excellent location. Call Neureut Miracle, 256-2657 or Dottie Thacker, 624-2113.

**Tiny Lot for a Tiny Shop:** With 175 ft. road frontage on U.S. 25, just south of Mt. Vernon. Make us an offer and start your little business. Perhaps a beauty shop or shoe repair shop - hair care is a must and everyone wears shoes.

## Don Foster & Associates

Better Homes and Gardens  
**256-2657 or 986-8401**

The Mt. Vernon Signal Thursday, November 20, 1986 P.11  
**FOR SALE:** 1978 Granada, 2 door, very good condition. If interested, call 256-5247 after 4:30 p.m. 3x1p

**FOR SALE:** 1976 Chrysler New Yorker. All power, including windows and seats. AM/FM radio. Call 758-4165. 1x4

**NOTICE:** On Nov. 21 at 10:30 a.m., I will sell a 1981 Dodge, No. JB9EP2458B Y106630 for wrecker bill and all storage. Central Body Service. 1x3

**FOR SALE:** 1980 Yamaha Maxim, 7400 ml., silhouette fairing and rack, \$5000. Excellent condition. 256-4600. 2x2p

**FOR SALE:** 1979 Olds Cutlass Supreme, A-1 shape. Call 758-4029 after 3:30 p.m. 2x3p

**FOR SALE:** 1978 Chevrolet custom van, blue and white, good condition. \$3,500. Call 256-4134. Call 256-3159. 3x1

**FOR SALE:** 1977 Cadillac Sedan DeVille, brown, loaded, full power, great condition. Priced to sell. Will sell below book price. Interested inquiries only. Also, 1980 Buick Riviera S type, V6, turbo engine, loaded, full power, nice

*Due to the Thanksgiving holiday next week, the advertising and news deadline will be noon Monday.*

**Tri-County Welding Portable - Shop Custom 453-2144**

**Dr. Gary E. King**  
 Complete professional eye examinations.  
**Sears Building 256-3314**  
 Monday and Thursday  
 Glasses & Contact Lenses 52x4 Medical Cards Accepted

**20% off**  
**Entire Stock PLAYTEX BRAS**  
 Reg. Price 12.00 to 18.00  
 Sale Price 9.60 to 14.40  
 Sho Early for Good Size Selection  
**Hiatt's 5 & 10**  
 Mt. Vernon 256-2691

Hazen's Well Drilling: Call 256-2024. ntf

**For Rent**

**FOR RENT:** Apartments and mobile homes in Brodhead, Stanford, Lancaster and Richmond. Also, mobile home lots in Brodhead. For Brodhead, Stanford, Lancaster, Ph. 365-2812. For Richmond, Ph. 674-1855. Speaks Rental Agency, Richmond, Ky. 40475. 51nrt

**CARPET KLEEN!** The best in steam carpet cleaning. Free estimates. Call Lloyd Graham, 256-5536. nrt

**Don's Plumbing Repair.** Quality work. Reasonable rates. 256-3169. 51nrt

**WANTED:** Dozer work. Ponds, yards, etc. See Raymond Bulcock on Negro Creek or call 256-4454. 18nrt

**Roy Cromer, Bulldozer work.** Brodhead, Ky. 758-8677 after 5 p.m. 2nrt

**Thompson Scrap Yard:** Now buying aluminum cans, copper, radiators, sheet aluminum, cast aluminum, scrap metal and junk cars. Also selling rebuilt batteries, starters and alternators. Call 256-2381 for prices. 45nrt

**Professional Machine Quilting:** Wavelene and Evelyn Mullins. We also do binding. Fast service. Quilts for sale. For information, call 256-5977 or 256-5068. 49x4p

**NOTICE:** Will repair, service and clean IBM Selectric, model typewriters. Reasonable rates, quality guaranteed. Call 758-4051. 2x2

**WOOD STOVES FOR SALE:** Stoves - Inserts - Furnaces. Wildlife General Store, Wildlife, Ky. 256-2349. 48x8

**Office Space for Rent:** Rockcastle Co. Agriculture Center. For more information, call 256-2765 or see Harold Ballinger. 3x4

**LOT FOR RENT:** Lot located in Cox's Trailer Park. Call 502-448-3666. 3x1p

**FOR RENT:** Newly painted 4 room house on Locust St. See Daniel Childress. 3x1

**Wanted**

**WANTED:** To sew in my home and also do alterations. 758-8745.

**WANTED TO DO:** Carpenter work, painting, concrete. No job too small. Reasonable rates. Call Ted Amyx, 256-4477. 3x6p

**WANTED:** Babysitter to come to my home, in town, approx. 3-4 hours a day. References required. Call 256-3159. 3x1

**Professional Services**

**Building, Remodeling and Repair Work** done at reasonable rates with quality results. For free information, call 256-2881 after 5 p.m. or see Denzil R. Allen. nrt

**Doug Miller's Backhoe and Bulldozer Service**  
 \*Septic Systems  
 \*Water Lines  
 \*Dump Truck Hauling  
 \*Fill Dirt  
 \*Top Soil  
 20 Years Experience  
**Certified Plumber**  
**256-4906**  
 1x4

**HENSLEY'S USED CARS**  
 Salt Peter Cave Road  
 Hwy. 1004 Rt. 2  
 Orlando, Ky. 256-4777

**Gail's Florist & Gifts**  
 West Main St. Mt. Vernon  
 Flowers for all Occasions  
 Call 256-GAIL  
 (606 256-4245)

**NOTICE**  
 The Harry Sparks Area Vocational Education Center is now accepting applications, during the day, in the following program areas:  
 Auto Mechanics, Electricity, Radio & TV Repair, and Welding  
 Financial assistance is available to those who qualify in the form of JTPA, Pell Grant and the G.I. Bill for veterans.  
 For more information, call 256-4346 between 8 a.m. and 4 p.m. Monday through Friday.

**DAVID'S TIRE CENTER**  
 HWY 150 BRODHEAD, KY.  
  
**Truck Car**  
**CHECK OUR PRICES**  
 New, Used and Retreads  
 Hwy. or Snow Tread  
**TRUCK TIRES FIXED**  
 Farm Tractor Tire Repairs at shop or on farm  
 \*Free Mounting and Balancing on all new tires (large trucks not included).  
**24 Hr. Wrecker Service Batteries Starting at \$23**  
 David Thompson, Owner - Operator  
 Bus. 758-8521 Home 256-4608

**Notices**

**POSTED:** No hunting or trespassing on properties belonging to Noah Brock located on Parr Rigsby Rd. and the Lake road. 1x4p

**POSTED:** No trespassing or hunting on properties belonging to Ambrose Griffin farm used to be known as Henry and Rosie Griffin property, now known as Willie Robinson property located on Red Hill. 51x8p

**REWARD:** For reddish-brown white female fox hound, lost during the Ky. State Trials. Slipper, belt, collar, was seen in Brodhead. REWARD. Call Otis Noe at 812-534-3034 or Dave McCauley in Mt. Vernon. 2x2

**Classifieds get results**

**NOTICE:** Formerly Ann's Trading Post, across from Druther's in Mt. Vernon, under new management. Open Fri. and Sat. Have lots of what-nums, clothes, toys and other items. 3x1p

**NOTICE:** On December 10, 1986 at 10 a.m., I will sell a 1978 Subaru station wagon, 4x4, serial no. A67L041596, for storage and repair bill. Robert Mullins. 3x3p

**NOTICE:** Anyone interested in Mark Ferron's prints: The Mt. Vernon Courthouse, the Mt. Vernon Depot, Livingston Depot and the coal miner's print can call 256-3250. 3x3

**POSTED:** No hunting or trespassing on land belonging to Roy Crawford located in the Brindle Ridge area and also property in Crab Orchard, 2 miles out north on Hwy. 39. 3x4

**NOTICE:** The Brodhead City Council is accepting bids for the sale of a 1979 Chrysler Diplomat car. The car may be seen at the home of Mayor Billy B. Bussell. Bids may be sent to LaJoy Graves, Rt. 1, Box 98, Brodhead, Ky. 40409. Bids will be opened at the Brodhead City council meeting on Monday, Dec. 1, 1986 at 7 p.m. at the Brodhead Fire Dept. 3x2

**Notice of Intention to Release Bond:** The Department for Surface Mining Reclamation and Enforcement has made a decision to release bond on Ikerd-Bandy Company, Inc., P.O. Box 246, Ferguson, Ky. 42533, permit number 502-0047. The reason for the decision is as follows: All work required for a Phase One release has been completed and does meet Departmental standards. Objections to this decision must be filed within 30 days of this notice in order to request a public hearing. Requests must be filed with the Director of the Division of Field Services, 12th Floor, Capital Plaza Tower, Frankfort, Ky. 40601.

**GRAY Construction Co.**  
 Backhoe Service  
 Septic Tanks Installed & Repaired  
 Excavating for Water & Sewer Lines  
 Top Soil & Fill Dirt  
 Dump Truck Service  
**junior gray, OWNER**  
 [Permit 202-3]  
 Mt. Vernon, Ky.  
 ph. 256-4301

**Notice of Intention To Release Bond:** The Department for Surface Mining Reclamation and Enforcement has made a decision to release bond on Ikerd-Bandy Company, Inc., P.O. Box 246, Ferguson, Kentucky 42533, permit number 902-0012. The reason for the decision is as follows: All work required for a Phase One release has been completed and does meet Departmental standards.

**Rockcastle Satellite Sales & Service**  
 Complete satellite systems installed. Service, and update existing systems.  
**CHARLES MILLER**  
 256-5322

**DEE HOPKINS CONSTRUCTION**  
 The Total House Doctor Special!!  
 50% Discount on Seamless gutters, Downspouts & Shutters on Re-Roof or Siding Work  
 Remodeling work of all kinds  
 \*Room Additions  
 \*Baths & Kitchens  
 \*Garages  
 \*Masonry Work  
 \*Siding Aluminum, Vinyl (colors available)  
 \*Storm Windows & Doors  
 \*Downspouts & Gutters  
 LIFETIME GUARANTEE ON VINYL SIDING  
 Attention:  
 Senior Citizens & Churches  
 10% Discount on all work Year Around  
 Try our prices before buying for free estimates, call  
 Dee at 606 758 9261  
 Route 1, Box 224, Brodhead, Ky.  
 20 YEARS EXPERIENCE

Objections to this decision must be filed within 30 days of this notice in order to request a public hearing. Requests must be filed with the Director of the Division of Field Services, 12th Floor, Capital Plaza Tower, Frankfort, Ky. 40601.

Notice is hereby given that an order has been entered dispensing with administration of the estate of Floyd Chestnut, deceased. All persons having claims against said estate shall present them, verified according to law, to Gladys Chestnut, Rt. 1, Orlando, Ky. 40460 or to Lambert & Lambert, P.O. Box 736, attorneys for said estate, no later than Dec. 1, 1986.

Notice is hereby given that Ruby Rice, Rt. 5, Box 217, Mt. Vernon, Ky. has been appointed administratrix of the estate of Eddie B. Rice. Any persons having claims against said estate shall present them, verified according to law, to the said Ruby Rice or to Clontz & Cox, P.O. Box 749, Mt. Vernon, Ky. on or before May 11, 1987. 3x3

Notice is hereby given that on the 10th day of November, 1986, Bessie Singleton, the duly appointed, qualified and acting administrator of the estate of Richard Singleton, deceased, filed with the Rockcastle District Court a final settlement. Exceptions thereto shall be filed in writing with the Rockcastle District Court on or before December 1, 1986. 3x2

Notice is given that Elizabeth Roberts has filed a final settlement of her accounts as executrix of the estate of Earl Roberts, deceased. A hearing on said settlement will be held on Dec. 1, 1986. Any exceptions to said settlement must be filed before said date. 3x2

**CARD OF THANKS**  
 We want to express our sincere thanks to each and every one who was so kind and thoughtful during

the illness and death of our loved one, Eddie B. Rice. Especially the singlets, Bro. Jim Miller for his consoling message, the pallbearers, all who set with us at the hospital, those who brought food and sent flowers and all other means of support, the Berea Hospital and doctors there. It meant so much to all of us. A special thanks to Cox Funeral Home for a job so well done. Our love and prayers to all.  
 Wife, Son and Daughters

**FOR SALE:** Reconditioned used washers and dryers, electric stoves, TV's, refrigerators. Guaranteed. Located on Main Street, across street from The

Bank of Mt. Vernon. Appliance Outlet Store. 50x1p

**Call Classified to 256-2244**  
**FOR SALE**  
 2x4's 75' ea.  
 2x8's 1250' ea.  
 Windows & Doors  
 Angle Iron - 5' thru 18'  
 2500 to approx. 3,000  
 \*1" running foot"  
**256-2031 or 258-4155**  
 Ask for Roman McFerron  
 2x1p  
 Call Classified to 256-2244

**"See me for all your family insurance needs."**  
  
**Bill Bailey**  
 Agent  
 Church St.  
 Mt. Vernon, Ky.  
 256-2119  
 Like a good neighbor, State Farm is there.  
 State Farm Insurance Companies • Home Offices: Bloomington, Illinois

**Got Termites? Got Roaches?**  
**Madison Termite & Pest Control**  
 For VA & FHA Inspections, Call Paul Burton  
 256-2316 Mt. Vernon Day or Night  
 WATER BUGS, ROACHES & SILVER FISH

**For All Your Insurance Needs**  
  
**A SINGLE INDEPENDENT AGENT CAN SERVE YOU BEST.**  
 Entrusting your total insurance program to us as an independent State Auto agency can have many rewards.  
 You have a single reliable source to contact for your insurance questions.  
 We'll work with you to plan a sound program for the lowest possible premium to provide the best in protection for your car, your home, your business and your family. And at time of loss, we'll be at your side to help arrange a prompt and fair claim settlement.  
**Singleton & Associates Insurance**  
**Donnie Singleton, Agent**  
 Mt. Vernon, Ky.  
 256-2611  
 Representing  
  
 A friend you can depend on



## Notices

POSTED: No fishing or trespassing on property belonging to Paul and Essie Napier, located on Dug Hill Road. 4x23p

**NEW BALE & Huff a Bag at Cable's Grocery on Hwy. 70, 12 to 4, Monday thru Friday. Tennis shoes, work boots, any clothes, some shoes free, sweaters and coats free. Effective Sept. 1, open 7 days a week from 12 to 4. Call 758-4191 after 7 p.m. 4x23mf**

Notice is hereby given that Annie Parsons, Rt. 2, Mt. Vernon, Ky. 40456, has been appointed Administratrix of the estate of William D. Parson. Any persons having claims against said estate

shall present them, according to law, to the said Annie Parson on or before May 4, 1986. 1x3

Notice is hereby given that Glenn McGuire, Rt. 4, Box 543, Mt. Vernon, Ky., has been appointed executor of the estate of William A. McGuire. Any persons having claims against said estate shall present them, verified according to law, to the said Glenn McGuire. 1x3

**Don's Plumbing Repair**  
QUALITY WORK  
REASONABLE RATES  
**256-3159**

McGuire or to John W. Morgan, Attorney at Law, 156 Market Street, Lexington, Ky. 40507, on or before June 3, 1987. 1x3

**Start Your Own Business.** Spaces available for rent, \$75 per month. Call 986-1719. Inside Flra Market, Boone Square, Berea, Ky.

**NOTICE:** Cumberland Valley District Health Department is now accepting applications for Community Health Worker I or II to work primarily out of Rockcastle County. Starting salary for CHW I is \$3.76 per hour; CHW II is \$3.95. Requirements for CHW I is high school diploma or equivalent with no health related experience. CHW II must have high school diploma or equivalent and 1 year of health related experience. Applications may be received in Frankfort no later than Nov. 26, 1986. Applications may be obtained at the Rockcastle County Health Center. For more information, call 256-2242. Equal Opportunity Employer. 2x2

**NOTICE:** It is hereby given that on the 4th day of November, 1986, Ruby Ponder, the duly appointed, qualified and acting administrator of the estate of Virgie Riddle, deceased, filed with the Rockcastle District Court a final settlement. Exceptions thereto shall be filed in writing with the Rockcastle District Court on or before November 24, 1986. 2x2

**LAND FOR LAND EXCHANGE**  
Notice is hereby given that the Forest Service, United States Department of Agriculture, is considering an exchange of land under the authority of the Acts of March 1, 1911, as amended (16 U.S.C. 516) and October 21, 1976 (43 U.S.C. 1716, 1717). The lands under the jurisdiction of the Forest Service that are being considered for exchange are described as Tract 1027 containing about 500 acres and being part of U.S. Tract 2 and all of U.S. Tracts 3 and 31 located on Rolling Fork and McCammon Branch—in Jackson County, Kentucky. Said tract 1027 contains 13.3 acres on Brush Creek about 0.6 mile west of Johnetta Cemetery in Jackson County, aggregating about 513 acres in the Daniel Boone National Forest, Jackson and Rockcastle Counties, Kentucky. The nonfederal lands are described as Tract 1026 containing about 409 acres on Sinking Creek (formerly Dorothy Smith land) in Laurel County; Also Tract 1026a containing about 37.5 acres located one mile south of U.S. Wind Cave in Jackson County (formerly owned by James Lee and Edward McCowan); aggregating about 506 acres in the Daniel Boone National Forest, Laurel and Jackson Counties, Kentucky. Any or all of the above described lands may be exchanged provided the values are equal. In the event the values are not equal, either party may equalize the values by the payment of cash. The amount cash payment may not exceed 25 percent of the value of the lands transferred out of Federal ownership. Persons claiming such properties or having valid objections to this proposed exchange must file their claims or objections with the Regional Forester, Forest Service, U.S. Department of Agriculture, 1720 Peachtree Road, N.W., Atlanta, Georgia, 30367, within 15 days after date of the last publication of this notice. [Publication dates: October 30, November 6, November 13, November 20, 1986]. 5x4

**TOO LATE TO CLASSIFY**  
**FOR SALE:** 12x65 mobile home, 2 bedrooms, has wall to wall carpet in living room and bedrooms, linoleum in kitchen and bath. Includes electric furnace, stove, refrigerator. Call 256-4691. 3x2p

**REWARD OFFERED:** \$500 reward offered for anyone having any information leading to the arrest and conviction of the person or persons who broke into the home of Danny Bowman at Red Hill Rd. Wednesday afternoon, Nov. 18. Some of the items taken were 2 chain saws, several guns and a tool chest. 3x1p

**FOR SALE:** 1980 Datsun, approx. AC, 71,000 actual miles. Approx. 23 m.p.g. Call 364-3115 after 4 p.m. 3x1

**Notice:** Experienced mother would like to do babysitting for infant or small child in her home. Home is on highway 25 four mile south of Berea. Reasonable rates.

I can give references. Call 256-2431. I am also a Tupperware dealer. 3x1p

**Fat and Tired of It?** Need people to try weight loss program. No drugs! No exercise! Guaranteed! 986-1185 days or 986-2756 nights. 3x3

**Broke? Tired of It? Earn good money, part time or full-time, selling weight loss and nutritional products.** Call 986-1185 days or 986-2756 nights. 3x3

**Mike's Lime Service**  
Serving Rockcastle Co. & surrounding counties  
Phone 256-5966 or 256-5977  
day or night  
Owners: Michael J. McFerron and Sam Mulline  
[Formerly owned by the late Junior Ramsey]

**Sonny O.**  
For all types of repairs.  
Call 256-3234

**Septic TANKS**  
Parking Blocks-6'  
**JACK'S Concrete Tanks**  
Ph. 256-4363  
256-2580 after 5 p.m.  
**SEPTIC TANKS Sales and Service**  
750 Gal. - 1,060 Gal. Distribution Boxes 1,000 Gal. Water Distribution Tanks

**APPLIANCE OUTLET**  
Reconditioned used electric stoves - Washers & Dryers - Refrigerators - TV's. All guaranteed to work.  
Located on Main St. across street from The Bank of Mt. Vernon.

**The Mt. Vernon Signal Thursday, November 20, 1986 P-13**  
prior to contemplated solicitation closing date of December 15, 1986, after which proposals will not be accepted. 3x3

**FOR SALE:** 1977 Corvette, black buckskin interior, 350 4 Spd., original wheels. Call 256-5547 before 10 p.m. 3x1

**For Sale or Rent:** 2 bedroom house, 2 baths, Rec. room, 6 3/10 acres Private, close to town. Call 256-5547 before 10 p.m. 3x1

**Exclusive Brokers Services for Single Family Dwellings.** Farmers Home Administration [FHA] State Office, 333 Waller Avenue, Lexington, Kentucky 40504. Phone 606-233-2733 seeks real estate broker, licensed in the State of Kentucky, to act as exclusive agent in Jackson and Rockcastle Counties for the sale of FHA inventory properties during the calendar year 1987. This solicitation is setaside for small business. If interested, make written request for solicitation packet.

**DECORATOR CAKES**  
Will Bake Any Kind of Cake For You  
**Margaret Owens 256-5533**

**ELECTROLUX VACUUM CLEANERS**  
For Sales & Service  
Call Curtis Bradley  
Ph. 758-8584  
Brodhead, Ky.

**JACK HUFF**  
Carpet & Vinyl Installation  
Route 3, Brodhead, Kentucky 40409  
Phone 606-758-4261

---

**kinko's**  
The One Stop Copy Shop for all your copy needs.

**WE DO:** Type Setting, Typing, Rubber Stamps, Greeting Cards, Laminating

Resumes, Flyers, News Letters, Passport Photos, Binding

**AND MUCH MORE!!!**

**University Shopping Center Eastern By Pass, Richmond**  
(606) 624-0237

OUR HOURS:  
M Monday-Thursday 8:30-7:00  
Friday 8:30-3:00  
Saturday 10:00-5:00

# DWAYNE'S USED CARS & TRUCKS

**1984 Pontiac Fiero, Loaded, Sunroof, Red Only 17,995<sup>00</sup>**

**1981 Chev. Corvette, T-Tops, Tilt Cruise, PW, only 48,000 miles, Extra Sharp!!!**

**84 Ford Window Van auto, ps/tpb, AC, Priced thousands cheaper than new!**

**83 Chev. Beauville Window Van, Auto Dual AC, PS/TPB, Save! Priced thousands cheaper than a new one!!!**

**FOR SALE OR TRADE!!**  
Complete sound and light system for band or disco. USED VERY LITTLE!! Will trade for farm tractor, car or truck.

**1983 GMC, 1/2 Ton, Long Bed, Air, Low Miles!!!**

**UNBELIEVABLE SAVINGS**  
Low interest rates have allowed us to buy extra nice, like new cars & trucks at a very good price.

**NOW!! is the time to take advantage of tremendous Savings on 84 & 85 models.** Huge selections. Call Ernest or Dwayne and make your purchase today.

**"OUR REPUTATION IS OUR RECOMMENDATION"**  
Why pay TWICE the price for a new one?  
Others selection, great buys, Save Save

**Others at BIG SAVINGS**

- |                                                        |                                                                |
|--------------------------------------------------------|----------------------------------------------------------------|
| <b>CARS</b>                                            | <b>TRUCKS</b>                                                  |
| 86 Olds Cutlass Calais, Auto, Air, Only \$8,995        | 84 Chev. Suburban, 4x4, V8, Auto, AC, Tilt, Cruise, Bump Steer |
| 86 Pontiac Grand Am, Auto, AC, Only \$8,995            | 84 Ford Ranger, 4x95, Extra Sharp!                             |
| 85 Olds Cutlass Corja Cruiser, V6, Loaded, Maroon Wood | 79 GMC, 1/2 Ton, 6 Cyl. V8 Long Bed, Only \$11,995             |
| 85 Olds Cutlass Supreme Auto, AC, Only \$7,995         | 74 Ford Super Cab, V8                                          |
| 84 Chev. Celebrity CL, 4 Dr., 4 Cyl., Auto, AC, Sable  | 75 Chev. 1 1/2 Ton, Flat Bed one owner, only 22,000 mi.        |
| 84 Pont 6000 LE, 4 Dr., 4 Cyl., Loaded, White          | 80 Chev. Chevette, 2 Dr., 1-435                                |
| 84 Chev. Chevette, Blue, Nice!! \$3,495                | 78 Chrysler SW, 1995                                           |
| 84 Pont. Paratiene V8, 4 Dr., Auto, AC, Extra Sharp    | 78 Ford Pinto, 3 Dr., 595                                      |
| 84 Olds Cutlass Supreme \$5,995                        | 78 Ford Grand, 1995                                            |
| 84 Chev. Citation, 4 Dr., 4 Cyl., Auto, AC, Blue       | 77 Ford Prio., 1995                                            |
| 84 Chev. Chevette, 2 Dr., 4 Cyl., Silver, Only \$3,895 | 77 Vega SW, 1995                                               |
| 83 Toyota GTS, 5 Spd., Loaded, Black                   | 76 Dodge SW, 4 Dr., 1795                                       |
| 83 Olds Toronado, diesel, Loaded, Brown                | 76 Monarch, 2 Dr., 655                                         |
| 83 Chev. Citation, 4 Dr., V6, Auto, AC, Blue           | 75 Ford Granada, 2 Dr., 495                                    |
| 82 Buick Skylark, 4 Dr., 4 Cyl., Blue, \$3,495         | 73 Chev. Impala, 4 Dr., 795                                    |
| 82 Chev. Carlo, T-Top, V6, Auto, AC, Blue              | <b>VANS</b>                                                    |
| 82 Olds Omega, 2 Dr., 4 Cyl., AC, Auto, PS, White      | 82 Chev. Beauville Window Van, V8, Auto, Dual AC, Red          |
| 81 Pont. T1000, 2 Dr., 4 Cyl. Loaded, AC, Brown        | 84 Ford Club Wgn. Window Van, 6 Cyl. Cam. AC, Red Silver       |
| 81 Olds Cutlass Eta Wgn. Loaded, V8, Super Clean!!     |                                                                |

**OPEN**  
Monday thru Friday 8:00 - 6:00  
Saturday 8:00 - 5:00 Sunday 1:00 - 5:00

**U.S. 25 North Berea, Ky. TEL: 986-8489**

## Gene Evans Land Auction Co.

Main St., Mt. Vernon  
**256-9312**  
401 S. Main St., London 864-9751

<b>Gene Evans</b> Broker-Auctioneer 843-6995 Home	<b>Bruce Evans</b> Sales Associate Auctioneer	<b>Vernon Holt</b> Sales Associate	<b>Sonja Bullen Bratcher</b> Sales Associate 355-7000
---------------------------------------------------------	-----------------------------------------------------	---------------------------------------	-------------------------------------------------------------

**Wanted: Good homes in and around Mt. Vernon. Buyers waiting!!**

<p>Lincoln Co. On Ky. 643 100 acre farm, 40 ft. silo with unloader and feeder, approx. 1600 lbs. tobacco base, 48x50 tobacco barn, 2 ponds, spring, well, old house, 60 acre timber m. Priced at \$65,000.</p> <p>Rustic Mountain 2 Room Cabin with 2 baths, approx. 4 acres of land, 30x50 swimming pool, large lake soon to be finished, vaulted beam roof. All this makes a great recreational facility. Priced at \$30,000.</p> <p>40 Acre Farm mil, just off Hwy. 25 in Conway. Also has large equipment shed, barn, 2 ponds, good fence, approx. 20 to 25 acres of grass, spring, 2 ponds, tobacco base. Priced at \$25,000.</p> <p>Baby Farm - Approx. 25 acres, 4 room house, 310 lb. tobacco base on Sand Hill Road. Approx. 3 1/2 miles from Livingston. Reduced to \$8,000.</p> <p>Sand Springs. Farm with 3 bedroom house. Farm consists of approx. 10 acres of land, 2 barns, 1 pond, approx. 50 acres tillable, approx. 1100 lbs. tobacco base. House also has living room, kitchen, dining room, bath (not finished). Located 1/2 mile off 1152. Reduced to \$28,500.</p> <p>Lincoln Co. On 618 approx. 1 mile from Rockcastle line. 45 acres mil springs, approx. 30 acres tillable, 900 lb tobacco base, good fence. Priced at \$30,000.</p> <p>New Living Stone home has 3 bedrooms with blk w/lin in closets, living room, dining room, kitchen with blk w/lin cabinets and dishwasher, bath. Full basement with sun kitchen, bath, woodburner, hot hook-up. Home also has central air, carpeting, 2 car garage. All situated on approx. 1/2 acre lot. Priced at \$73,000. More land available if desired.</p> <p>Madison Co. At Big Mill. New Brick Home, 3 bedrooms, 2 baths, city water, fuel oil furnace, kitchen with built in cabinets, stove, refrigerator, full basement partially finished approx. 1/2 acre lot. Reduced to \$45,000.</p> <p>Just off Hwy. 421 at Morrill 1 room house on lot, city water available. Reduced to \$18,000.</p> <p>Jackson Co. 60 Acres off Hwy. 421. Approx. 40 in grass. Tobacco barn, 3 ponds, 2 room house, 2200 lb. tobacco base. Priced at \$42,000 - 0.</p>	<p>Brush Creek 3 Bedroom Home - 30 acres of land with some marketable timber. 1 1/2 miles from Hwy. 25, near the 4000, well, sun room, 1000 lbs tobacco base, approx 1000 lbs tobacco base. Priced at \$25,000.</p> <p>60 Acres just off Scaffold Cane Rd. 2 barns, tobacco base, spring. Approx. 20 acres tillable. Priced at \$25,000.</p> <p>Excellent Lot - Owens Subdivision. Lot measures approx 16,000 sq. ft. Priced at \$5,000.</p> <p>Brush Creek - 25 Acre Farm with 3 bedroom house with bath, kitchen, dining room and living room. Farm also has barn, 16x40 building and old school house converted into a home. Approx. 1100 lbs. tobacco base. Priced at \$17,000.</p> <p>Richmond Street - Excellent commercial building and land. Approx. 1 acre lot near the new ByPass. Building has 3 rooms and bath. Many possibilities. Priced at \$38,900.</p> <p>2 Nice Building Lots just past Scaffold Cane Baptist Church. Approx. 5 acres. Priced at \$5,500.</p> <p>62 Acre Farm mil, located off Scaffold Cane Road. Home, spring, garden, several outbuildings, tobacco base, good fence. Reduced to \$25,000.</p> <p>2 1/2 Acres - Suitable for Commercial Development. 1/2 mile off 175 on US 25 near historic Rescho Valley settlement. Has abundance of frontage on Hwy. 25. Also 1 1/2 acre tract on opposite side of Hwy. 25 at same location. Call us today.</p> <p>On 461 147 Acre Farm. Farm consists of approx. 50 acres tillable, 1700 lb tobacco base, bath, dust basement, several springs, city water available, remainder of acreage in timber stand with some marketable timber. Reduced to \$50,000.</p> <p>Owens Subdivision - 3 Bedroom Brick Home. Home also has eat in kitchen with built in cabinets, 1 1/2 baths, well, central air with hook-up, living room, central air, attached 1 car garage. Lot size approx. 1/2 acre. Priced at \$43,500.</p>
------------------------------------------------------------------------------------------------------------------------------------------------------------------------------------------------------------------------------------------------------------------------------------------------------------------------------------------------------------------------------------------------------------------------------------------------------------------------------------------------------------------------------------------------------------------------------------------------------------------------------------------------------------------------------------------------------------------------------------------------------------------------------------------------------------------------------------------------------------------------------------------------------------------------------------------------------------------------------------------------------------------------------------------------------------------------------------------------------------------------------------------------------------------------------------------------------------------------------------------------------------------------------------------------------------------------------------------------------------------------------------------------------------------------------------------------------------------------------------------------------------------------------------------------------------------------------------------------------------------------------------------------------------------------------------------------------------------------------------------------------------------------------------------------------------------------------------------------------------------------------------------------------------------------------------------------------------------------------------------------------------------------------------------------------------------------------------------------------------------------------	-----------------------------------------------------------------------------------------------------------------------------------------------------------------------------------------------------------------------------------------------------------------------------------------------------------------------------------------------------------------------------------------------------------------------------------------------------------------------------------------------------------------------------------------------------------------------------------------------------------------------------------------------------------------------------------------------------------------------------------------------------------------------------------------------------------------------------------------------------------------------------------------------------------------------------------------------------------------------------------------------------------------------------------------------------------------------------------------------------------------------------------------------------------------------------------------------------------------------------------------------------------------------------------------------------------------------------------------------------------------------------------------------------------------------------------------------------------------------------------------------------------------------------------------------------------------------------------------------------------------------------------------------------------------------------------------------------------------------------------------------------------------------------------------------------------------------------------------------------------------------------------------------

**Auction or Private Sales**  
Homes - Farms - Personal Property - Commercial Property



If you like handmade crafts, homemade bread, fabulous chili and fantastic desserts of every variety, and you didn't attend last Thursday's Homemakers' Bazaar in Mt. Vernon, you missed out on a treat. Attendance was excellent. In the above photo, Yada Graves, seated, was on hand to display her ever-popular corn shuck dolls, and Irene Baker, standing left, and Zi Graves visited her table to admire her work.

key on a rack in the pan and rub with melted or liquid shortening. Roast at 325 F. according to the directions below, basting several times with pan drippings.

Chicken, ready to cook: 1 1/2 to 2 1/2 pound cook 1 to 2 hours. 2 1/2 to 4 1/2 pounds cook 2 to 3 1/2 hours.

Turkey, ready to cook: 8 to 12 pounds cook 3 to 4 hours if unstuffed, if stuffed cook 4 to 5 hours. 12 to 16 pounds, if unstuffed, cook 3 1/2 to 5 hours, if stuffed, 4 1/2 to 6 hours. 16 to 20 pounds, unstuffed, cook 4 1/2 to 6 hours, if stuffed, 5 1/2 to 7 hours. 20 to 24 pounds, unstuffed, 5 1/2 to 6 1/2 hours, stuffed cook 6 1/2 to 7 1/2 hours.

Turkey is done when the thickest part of the drumstick feels very soft when pressed between fingers.

Food Safety:  
Prevent germs from spreading.

Wash your hands and kitchen utensils with soap and hot water after handling poultry.

Never use the same cutting board for cooked meats that you used for raw meats, unless you wash it first with hot, soapy water.

When preparing a hot dish to serve later, cool it rapidly by setting the pan in cold water. Change the water several times. Refrigerate and reheat thoroughly just before serving.

Refrigerate leftovers immediately after a meal and use within one to two days.



During the Middle Ages, hand-written newsletters kept groups of nobles and business firms informed of recent events.

### EXTENSION HOME ECONOMICS

**YOUR HOLIDAY MEAL**  
By Cheryl Witt  
County Extension Agent  
for Home Economics

Turkey is the traditional main course of holiday meals, but any form of fowl can make a festive meal if you can't afford or don't want to cook a turkey. If poultry is on your menu for the holidays, follow these rules for wise buying.

Younger, tender birds are labeled: Rock Cornish, game hen, capon, broiler, fryer or roaster. They are suited for barbecuing, broiling and roasting.

Mature, less tender birds are labeled: Hen fowl or stewing chickens. They may even be labeled "mature" or "old." They are best used for stewing, steaming or pressure cooking.

#### Turkey Tip

If you decide to serve turkey, here is a rule of thumb. Allow one pound per serving when buying a turkey weighing less than twelve pounds or one-half to three-fourths pound per serving for one over 12 pounds. Giblets and neck are included in the weight of each wrapped bird, so consider this when you figure the size you will need.

#### Thawing a Turkey

The easiest way to defrost a

turkey is the refrigerator. Follow this guide:

- Size of turkey: 8 to 12 pounds thaw time 1 to 2 days
- 12 to 16 pounds thaw time 2 to 3 days
- 16 to 20 pounds thaw time 3 to 4 days
- 20 to 24 pounds thaw time 4 to 5 days

Large pieces of frozen turkey—a half, quarter or breast—take from one to two days to thaw in the refrigerator.

A faster method for thawing frozen turkey is immersing the bird in cold water. Be sure the wrapping is intact. If not, wrap it in a plastic bag. Immerse in cold water in the sink or in a large tub. Refresh with cold water frequently, about every 30 minutes. Follow this guide:

- Size of turkey: 8 to 12 pounds thaw time 4 to 6 hours, 12 to 16 pounds thaw time 6 to 8 hours, 16 to 20 pounds thaw time 9 to 11 hours, 20 to 24 pounds thaw time 11 to 12 hours.

Warning: Never defrost a turkey on the counter or table top. In the hours it takes the turkey to thaw, bacteria on the surface of the turkey could grow to a dangerous level. It is also dangerous to begin cooking a turkey that is still frozen.

#### To Roast a Turkey or Chicken

When ready to prepare, rinse the bird inside and out with cold water, drain and pat dry. Rub skin and cavity lightly with salt. Line a shallow roasting pan with foil to avoid messy clean-up. Place tur-

## EATON ELECTRONICS

(Mt. Vernon - Behind the Bank)  
256-4314

## EATON ELECTRONICS

(Mt. Vernon - Behind the Bank)  
256-4314

 LIST \$649.95 Now <b>\$489.95</b>	 LIST \$1,100 Now <b>\$1188.00</b>	 LIST \$599.95 Now <b>\$399.95</b>
 LIST \$499 Now <b>\$299.00</b>	 LIST \$549.95 Now <b>\$399.95</b>	 LIST \$489.95 Now <b>\$329.95</b>
 LIST \$499.95 Now <b>\$319.95</b>	<p><b>Stop in and check out the great buys on many other items</b></p>	 LIST \$459.95 Now only <b>\$359.95</b>
 LIST \$1195 Now <b>\$863</b>	 LIST \$1495 Now <b>\$1188</b>	 LIST \$749.95 Now <b>\$589.95</b>
 LIST \$469.95 Save - Save Now <b>\$327.00</b>	 LIST \$989.95 Now <b>\$749.95</b>	 LIST \$989.95 Now <b>\$749.95</b>

### Christmas Gift Certificates Now Available!

**Slender You**  
Figure Salon  
Boone Square Shopping Center  
Suite 6-B  
Berea, Kentucky 40403  
Telephone (606) 986-8835

**Madison Tractor, Inc**  
Your new John Deere Dealer in Madison Co.  
**Will Give A**

## 10% Discount

on cleaning & painting your tractor.

We will pick up & return in a 20-mile radius for a flat rate of \$25.

Come by or call for an appt. at  
2099 Berea Rd., Richmond, Ky.  
624-1300

Madison Tractor. Your John Deere Dealer!  
Offer expires Dec. 31, 1986



## J.D. McFerron scholarship awarded to four

Berea College has awarded J.D. McFerron Scholarships to four Rockcastle County residents.

The McFerron Student Assistance Fund at Berea was established upon Mr. McFerron's death in 1978. Annual income from the fund is used to provide financial assistance for Berea students from Rockcastle County where Mr. McFerron worked as a school teacher, principal and superintendent.

The 1986-87 McFerron Scholarship recipients are:

James Edward Mullins, Renfro Valley, a chemistry major and the son of Mrs. Norma Mullins; Tammy Michelle Napier, Mt. Vernon Route 3, an English major and the daughter of Charles Napier and Helen Greer; Bennie Lee Stephens, Mt. Vernon Route 3, an industrial technology major and son of Donald and Joyce Stephens; David Clinton Taylor, Crab Orchard Route 1, elementary education major and the son of Johnny and Beverly Taylor.

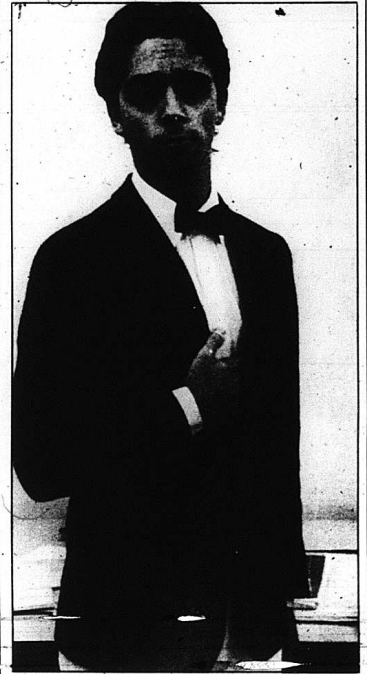
The four recipients are freshmen at Berea College.

## Cecil Linville writes third place Essay for Challenge class

The Rockcastle County Historical Society recently presented awards to Mrs. Carrie Hedrick's Challenge Class, for the best written history of Rockcastle County. The third place winner was by Cecil Linville.

By: Cecil Linville

## The Real Inspector Hound . . .



Louis Tagliaboschi will play Major Magnus Muldoon in the local Arts Council's latest production which opens Thursday night an runs through Saturday at the Cedar Rapids Country Club.

In 1810, Rockcastle County was formed from parts of Lincoln, Pulaski, Knox, and Madison Counties. It was the 52nd county to be established in Kentucky.

In 1767, a pioneer hunter named Isaac Lindsey observed, resembled an ancient cat, the raccoon by river was then named Rockcastle River by Lindsey, and in later years the new county was named Rockcastle. Dr. Thomas

Walker also saw the rock in 1750. Daniel Boone first traveled in Rockcastle County in the mid 1700's on his way from North Carolina to Boonesboro.

The oldest church in Rockcastle County is the Scaffold Cane Baptist Church. It was established in 1792.

The house on the John Linville place was built in 1793, which would make it 193 years old.

The Mt. Vernon lime kiln was operated to manufacture burnt lime. It was established in 1712. It was concluded in 1916.

In 1810, the population of Rockcastle County was 1,731.

Cont to B-4

Historical Society  
News

True Value  
HARDWARE STORES

BARGAIN  
OF THE MONTH

EKCO



5.99 While Supplies Last

Baker's Secret™ Quik-Clean™ Nonstick Broiler Pan is broiler tough for no scouring. 14x10x2 in. #4270.

QUANTITIES LIMITED  
Franklins True - Value  
West Gate Center  
Mt. Vernon 256-5614

## New electric pole

Leon Smith and Bob Rankin work to replace a utility pole that was struck Saturday morning in front of the residence of Janie Dowell on West Main in Mt. Vernon. Danny Ray Coffey of MT. Vernon was killed in the accident.

## Support Prices for 1986 tobacco crop about same

Loan rates, or support prices for 1986 burley tobacco crop grades, will average the same -- \$146.80 a hundredweight -- as last year, but the top price has been lowered \$2 a hundred pounds from the 1985 rates, according to U.S. Department of Agriculture officials.

A number of the rates also have been increased or decreased up to \$1 and \$10 a hundredweight, respectively, and the number of grades have increased from 103 to 107 this season to reflect current market demand the officials said.

New rates for the different burley grades this season range from a top of \$1.62 a pound, or \$162 a hundredweight, down to 99 cents a pound, or \$99 a hundredweight. Rates for the 1985 crop ranged from a high of \$164 a

hundredweight, down to \$100 a hundredweight.

The 1986 grade loan rates are based on a five-year production history, said Milton Hertz, administrator of USDA's Agricultural Stabilization and Conservation Service.

"Many grade loan rates have been adjusted to bring them more in line with current market demand, which should be beneficial to burley producers and the tobacco industry, by lowering no-net cost assessments and increasing domestic and export market sales," Hertz said.

The top emphasis on support price increases was affixed to mixed grades, where grade M3F was increased from \$137 a hundredweight in 1985, to \$148 a

Cont. to B-4

## Shoe's Galore

**Factory Outlet**  
1-75 and 80  
London, Ky.

### Thanksgiving Specials

**Huge Selection of Fashion Pumps**  
in Navy, Teal, Taupe, Black, Red, Hot Pink, Mustard, Grey, Winter White  
**\$12.99**

**Men's Pigskin BOOTS**  
By Wolverine  
**\$29.88**

**Ladies' Saddle Oxfords**  
**\$7.88**

**Foul Weather BOOTS**  
By Naturalizer - Were \$38.99  
Brown/Black  
**\$24.99**

Now Open

## Jan's Flowers and Custom Framing

Located on Main Street in Brodhead beside Fletcher's Grocery  
Open Monday thru Saturday 9 to 5

# Flowers

for all occasions.

\*Weddings  
\*Funerals

\*House  
Plants

Prints Matted and Framed

**758-4222 day or night**

James and Janice Wheat, owners



**Larkey leads offense - Harrison best on defense**

The 1986 edition of the Rockcastle County Rockets ended their season on Oct. 31, when they defeated Whitley County and upped their record to 6 and 4, a much improved team of 4 and 6 a year ago.

Rockcastle's starting fullback, Junior Chad Williams ended the season as the Rockets top rusher. Williams carried the ball 142 times, more than anyone else and he had a total of 563 yards, for an average of 3.9 yards per carry.

Sophomore Leslie Scalf, who was called on to play tailback much of the time this season after Rodney Kirby went down with a knee injury, led the team in yards per carry with a 4.2 average. Scalf gained 114 yards on only 27 carries.

Probably the most versatile offensive player for Coach Tom Larkey this season was his son Chris. Chris Larkey, when not playing quarterback, ran the ball from the tailback position where he gained most of his 494 yards. Larkey averaged 4.1 yards per carry on 120 carries. He also completed 26 passes for a total of 376 yards and 3 touchdowns. He threw only 5 interceptions in 79 attempts.

Freshman Kevin Rowe rushed for 137 yards on 46 carries for an average 2.9. Pete Harrison gained 42 yards on 18 carries while

Cont. to B-3

Diane Sparks, 31, shoots for two in the Livingston, Mt. Vernon Championship game of the girl's 5th and 6th grade county tournament. The Red Devils won the game and the tourney 25-14. Brodhead defeated Roundstone in the consolation game. Others in the photo are 21 Kim Decker, 14 Janice Alcorn, 34 Patty Clark, 54 Tina McClure, Leslie Smith and Tammy Kidwell.

**MASTER COMMISSIONER SALE**

James H. Singleton, ET AL PLAINTIFFS

VS:

EMILY ESCOBIO, ET AL DEFENDANTS

By virtue of Judgment and Order of Sale rendered by the Rockcastle Circuit Court in Civil Action No. 286-CI-110 on September 26, 1986, I shall proceed to offer for sale at public auction, the following described real property:

Date of Sale: Monday, Dec. 1, 1986 at the hour of 10:30 a.m.

Place of Sale: At or near the front door of the Rockcastle County Courthouse Mt. Vernon, Kentucky

Parcel No. 1: In Singleton Valley near the waters of Crooked Creek and BEGINNING at County Road and C.A. Mullins line; thence with said road, North course to Mat Singleton's line; thence up the hill west course with Mat Singleton's line to J.C. Childress line; thence with said Childress line, S.E. course to cedar in C.A. Mullins' line to the beginning, said tract to contain seven 7/1 acres, more or less.

And being the same property which Mat Singleton and Susan Singleton obtained by deed dated September 2, 1948, from Willie Singleton and wife, Hazel Singleton, recorded in Deed Book 69, Page 577.

Parcel No. 2: In Singleton Valley near the waters of Crooked Creek, and BEGINNING at a cedar tree in C.A. Mullins line; thence north to a wild cherry tree; thence same course to Mat Singleton line; thence up the hill with said Singleton line to public road; thence east course with said road to C.A. Mullins line against; thence N.W. course with said C.A. Mullins line to the beginning. Above said tract containing seven 7/1 acres more or less.

And being the same property which Mat Singleton and Susan Singleton obtained by deed dated April 18, 1933, from Neal Head and wife, Mima Head, recorded in Deed Book 87, Page 342.

Parcel No. 3: On the waters of Crooked Creek in Sinking Valley and BEGINNING at big pine corner; thence east to White Oak with Mat Singleton's line; thence North to County Road with Mat Singleton's line; thence with County Road East to cross fence, and stone corner; thence South straight up hill to gate-post, or stone corner; thence west running with rattlesnake road to Emmly Mullins line; thence with same line to beginning corner, containing fifty (50) acres, more or less.

And being the same property which Matt Singleton obtained by deed dated January 7, 1928, from D.J. Childress and Bertha Childress, recorded in Deed Book 49, Page 461.

Parcel No. 4: On the waters of Crooked Creek and BEGINNING on a large pine, northeast corner of John Cummings; thence with said line to a hickory in Susan Allen's line a westward course; thence south with line to a hickory and fence; the hickory being just on the outside of fence; thence with the fence east course to a poplar; thence north-down the hill to the gate; thence with the gate to a conditional corner marked by a white oak stump; thence with C. E. Allen and F. M. Morris, sugar tree corner oak stump; thence with conditional line north to said Morris spring corner with oak; thence to ash corner; thence with Willis Allen's and F.M. Morris' line to a stake corner; thence to meanders of ridge to a stake corner; thence Mary S. Allen's corner, a hickory; thence with her line to the beginning, containing 50 acres excluding about 1/2 acre sold off to Dick Thomas and is not conveyed in this conveyance.

And being the same property which Matt Singleton obtained by deed from Mattie Owens, et al, recorded in Deed Book 40, page 226. See PLAINTIFFS' EXHIBIT E.

Parcel No. 5: In the Singleton Valley on the waters of Crooked Creek and BEGINNING AT Margaret J. Black's hickory corner, now in possession of Matt Singleton; thence N 58 W 60 poles to a stone on a bluff near a branch, a corner of W.M. Alcorn's; thence S 30 W 117 poles to a beech with a large white oak stump for pointers, a corner of W.M. Alcorn's tract; thence back with line reversed S 58 E 52 poles to Margaret J. Black's gum corner, now in Jess Childress field here at this point about one acre, more or less, has been sold off from the main tract of land; thence N 30 E 114 poles to the beginning, containing forty-five (45) acres, more or less.

And being the same property which Matt Singleton obtained by deed dated December 10, 1932, from Matt Singleton and husband, P. P. Singleton, recorded in Deed Book 41, Pages 601.

The above described parcels of real property shall be sold as hereinafter set forth:

Parcel No. 1 and Parcel No. 2 shall be offered for sale separate and apart from Parcel No. 3, Parcel No. 4 and Parcel No. 5 and immediately after the sale as set forth above, the property will be offered for sale as a whole and shall finally be sold to such bidder or bidders as will deliver the greatest aggregate sum for the real property. The sale shall be at public auction, after due advertisement, at the Courthouse door, in Mt. Vernon, Kentucky. Said property shall be sold so as to derive the greatest aggregate amount on the terms of twenty-five (25%) percent of the purchase price in cash at the time of sale, the balance in sixty (60) days, with the purchaser or purchasers being required to execute bond with surety thereon to be approved by the Master Commissioner to secure the unpaid balance of the purchase price; said bond to bear interest at the rate of twelve (12%) per cent per annum from date of sale until paid. The purchaser shall have possession of the premises after complying with the terms of sale, EXCEPT for any of the 1986 crops which have not been harvested or removed from the premises. If the purchase price is not paid in full at the time of sale or upon delivery of deed, a lien will be retained to secure the unpaid balance of the purchase price plus interest. The purchaser or purchasers shall be privileged to pay the purchase price in full upon the date of sale or at anytime prior to the maturity date of the bond. In which event, the purchaser or purchasers shall pay interest only to and including the date of such payment in full.

The bond shall have the force and effect of Judgment and shall be and remain a lien upon the property sold as additional surety for the payment of the purchase price.

A federal right of redemption shall exist if any federal agency has a lien or interest in said real property.

After making said sale, the Special Master Commissioner shall pay the cost of the sale, court costs, delinquent property taxes, attorney fees, and thereafter, the balance to be divided among the plaintiffs and defendants as their interest shall appear.

Risk and loss of improvements shall be on the purchaser or purchasers from the date of sale.

Bidders shall be prepared to promptly comply with the aforesaid terms and conditions.

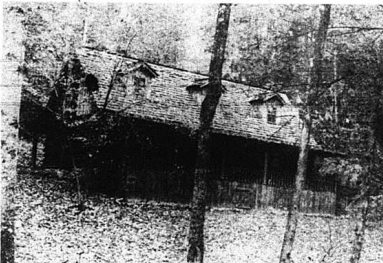
**WILLIAM D. GREGORY**  
Attorney at Law  
P.O. Drawer 220  
Mt. Vernon, Kentucky 40456  
Special Master Commissioner

# Auction

Mrs. Juanita Cromer's

Log House  
and  
12 Wooded Acres  
Saturday,  
Nov. 22nd, 1986  
10:30 A.M.

Approximately 1 mile south  
of Mt. Vernon, Kentucky



Location: Turn off U.S. 25 at the Chestnut Ridge Road near Superior Food Market. Follow auction signs into the property.

Mrs. Cromer is moving into town into a smaller property and has authorized our firm to sell this for the high dollar.

**THIS RUSTIC CLASSIC EUREKA HOME CONTAINS APPROXIMATELY 1,800 SQ. FT. OF LIVING AREA WITH:**

- 3 Bedrooms • Large Living Room-Kitchen • 1 1/2 Baths • Cedar Shake Roof • Thermopane Windows • Insulated Walls and Doors • Large Front and Rear Porch • Oak Cabinets • Built-in Kitchen • Electric Reproduction Wood Cook Stove • Fisher Wood Burning Stove, plus electric heat • Air Conditioning • City Water • Large Earth Station Satellite Receiver

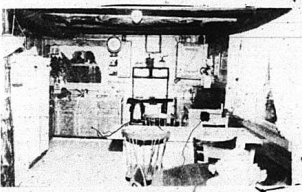
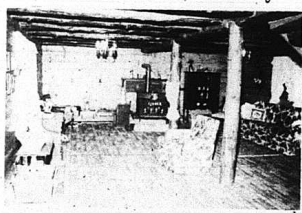
It is situated on 12 very private acres consisting mostly of woodland. There is however, a garden and large yard area.

**AUCTIONEER'S NOTE:** If you want privacy, yet convenience, and also a quality log home, then look no further. This home has been used in different magazines as a model log home. Attend this important auction on Saturday, November 22nd at 10:30 a.m.

**PERSONAL PROPERTY:** piece love-seat; 4 odd chairs, antique odd table; 1 dash churn; small pot belly stove; plus other miscellaneous items.

**TERMS:** 20% down day of sale, balance in 30 days with delivery of deed on real estate and cash or good check day of sale on personal property.

For additional information contact Mrs. Cromer, the owner, at 256-5623, or:



## Ford Realty & Auction Co.

REALTOR/AUCTIONEER  
SAM FORD  
DANNY FORD  
ROY ADAMS

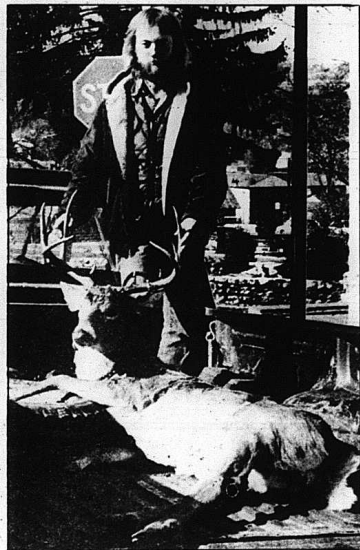
AUCTIONEERS  
JERRY HAM  
WILLARD BULLOCK  
APP. AUCTIONEERS  
DEE STEWART  
BOB TODD



Kentucky Toll Free No. 1-800-435-5454  
Mt. Vernon, Ky. Phone 256-4545



## Booster's Club Tournament Starts Friday at M.V.E.S. Admission \$1.00 for everyone



Fred Alcorn of Quail killed this 8 point Buck in Casey County last Thursday with an 8 millimeter rifle.

## Christmas Sale

at the  
**Keepsake Shoppe**  
in Renfro Valley

# 20% off

## Everything in store

[Except Quilts]

Sale Dates: Nov. 23 - Dec. 23

Don't Wait Too Long -- we have a good selection of handmade crafts, ceramics, etc

## Debbie Bowman is All Conference

Berea College Senior Debbie Bowman has been named to the WIAC (Women's Intercollegiate Athletic Conference) Field Hockey All-Conference Tournament team. Debbie Bowman is a Rockcastle County High School graduate and the daughter of James and Imogene Bowman of Route 3, Mt. Vernon.

In a rebuilding season, this year, the Berea College Women's Field Hockey team compiled a 1-15-4 record, ending the season with a positive note by claiming their first victory in overtime against Astbury College in the WIAC Tournament. The team is coached by Women's Physical Education Department Chair, Joy Hager.

Debbie is a Physical Education major and a student worker at Woods Pennington gymnasium in the Berea College on campus labor program.

## Rockets end season 6 and 4

Cont. from B-2

Adam Coleman had 32 yards on 13 carries.

Larkey led the team with seven touchdowns while Williams scored 4.

On the other side of the ball, junior linebacker Pete Harrison led the team in both tackles and assists. Harrison piled-up 67 solos while assisting on 38 other tackles.

Larkey also played well on defense. He was the team's second leading tackler with 55 solos and 30 assists. Larkey also had a total of 4 interceptions.

Defensive lineman Gerald Rowe had 46 solo tackles while assisting on 23 others. He also had one fumble recovery and one quarterback sack.

Senior linebacker Doug Cox had 37 tackles and 27 assists. He had 3 quarterback sacks while recovering 2 fumbles and knocking down 4 passes.

Senior defensive lineman and tackler Mike Hamilton had 35 tackles, 23 assists, 3 quarterback sacks and 3 fumble recoveries.

Freshman linebacker Kevin Rowe had 30 tackles and 20 assists while sacking opponent quarterbacks 3 times.

Senior Mike Whitehead had 29 tackles, 27 assists and 2 interceptions, sophomore Chuck Shields had 21 tackles, 11 assists, one interception and he knocked down 5 passes, tops on the team.

Leslie Scalf had 25 tackles, 17 assists and one interception, while sophomore Adam Coleman had 23 tackles, 14 assists and two interceptions.

Ralph Hines got 10 tackles and 4 assists while Bobby Hayes had 8 tackles and 10 assists.

Rockcastle's team statistician Sam Hamilton compiled the facts for this article.



SOMERSET LOCATIONS  
HWY 57N HWY 57E  
& EAST MT. VERNON ST.  
LONDON CORN HYPER HAZARD  
JACKSON, STANFORD, PINEVILLE  
WHITLEY CITY, MT. VERNON,  
& BARBOURVILLE

We Reserve The Right To Limit Quantities And To Correct Typographical Errors



Look For Many More Specials In Our 2 Page Ad At The Nearest Food Fair Supermarket



Prices Effective November 17 Through November 30, 1986

## Thanksgiving Specials

CLOSED Thanksgiving Day

**BUTTERBALL Turkeys**  
14 lbs. & Up  
**1.19** lb.



**GOLDCREST Turkeys**  
18 lbs. & Up  
**.59** Limit 1 please

**FISCHER'S Mellow Bacon**  
12 oz.  
**1.29**

**GROUND FRESH DAILY Ground Beef**  
3 lb. or More  
**.99** lb.

**GOLDCREST Turkeys**  
9-16 lb. Average  
**.79** Limit 1 please

**J.F.G. VAGDAN Coffee**  
3 Varieties 1 lb.  
**2.59** Limit 1 With \$10 Addl. Order



**KRAFT Parkay Margarine**  
1 lb. Quarters  
**2.99** Limit 1 With \$10 Addl. Order

**U.S. NO. 1 Idaho Potatoes**  
10 lb.  
**1.89**

**MARTHA WHITE Flour**  
Plain or Self-Rising 5 lb.  
**.79** Limit 1 With \$10 Addl. Order

**Pepsi Cola** 8 1/2 oz. **1.49**  
**OCEAN SPRAY Cranberry Sauce**  
Whole or Jellied 16 oz.  
**.59** Limit 2 With \$10 Addl. Order

**GREEN GIANT Vegetables**  
17 oz.  
**3.99** Limit 5 Please Niblets, Whole Kernel, or Cream Style Corn Cut Green Beans or Sweet Peas

**Food Fair Brown & Serve Rolls** 2/99

**TIDE Laundry Detergent**  
72 oz. 75 Off  
**2.99** Limit 1 Please

# No Fuelin'!



Create a cozy spot in your home — and save.

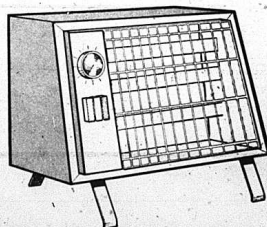
Close off the room where you spend the most time, turn down the thermostat for the rest of the house, and plug in a portable electric heater.

With electric heaters, there's no messy, flammable fuel to handle or store. The energy is as convenient as the nearest wall outlet.

Electric heaters are odor-free and don't use up oxygen from the room or produce fumes or soot.

A portable electric heater costs only pennies per hour to operate, and costs less to buy than other types of heaters. You'll start saving right away. It makes an excellent gift, too.

And that's no fuelin'.



**KENTUCKY UTILITIES COMPANY**

Where bright ideas are always electric.

FOOD FAIR COUPON

FOOD FAIR COUPON

**CRISCO Shortening**  
Regular or Butter Flavor 3 lb. Can  
**1.79** Limit 1 With Coupon & \$10 Addl. Order EXP. 11-30-86

**BIRDSEYE Cool Whip**  
8 oz.  
**.49** Limit 1 Coupon Per Person EXP. 11-30-86

For More S & H Green Stamp Specials Look In Our Handbill!!

**100 S & H Green Stamps**  
WITH THIS COUPON & THE PURCHASE OF \$10.00 GROCERY ORDER  
EXP. 11-30-86

**300 S & H Green Stamps**  
WITH THIS COUPON & THE PURCHASE OF \$30.00 GROCERY ORDER  
EXP. 11-30-86

**500 S & H Green Stamps**  
WITH THIS COUPON & THE PURCHASE OF \$40.00 OR MORE GROCERY ORDER  
EXP. 11-30-86



Oscar Gibbons of Level Green killed this 12 point Buck near Horse Lick on November 9 with a 30-06 rifle. The deer weighed 200 pounds.

**The House Mechanic**  
 Building the New--  
 Remodeling the Old--  
 Repairing the Broken--  
 Kitchen, Family Rooms, Bath, Additions, Etc.  
**JACK WREN**  
 Free Estimates 256-5338

**PAUL'S MEAT**  
 Process & Slaughter House  
**IS NOW OPEN**  
**FOR BUSINESS**  
 We slaughter, slice and freezer wrap anything.  
**Call 256-2693**  
**or 256-5256**  
 We slice country hams and bacon. We also make and grind sausage.  
 Located on Hwy. 150 between Mt. Vernon and Brodhead

**"Tobacco support - Cont."**

Grade M4F also was increased from \$133 in 1985, to \$145, or up \$10 in 1986. M5F also was raised \$7 a hundredweight, from \$133 to \$140 for this season.  
 Several grades have been deleted and added to the loan rates this season. Two grades --M1F and M2F -- have been, dropped from the grading chart for the 1986 crop. They had been supported at \$139 and \$18 a hundredweight, respectively, last season.  
 New grades for the 1986 crop include B2FL, B3FL and B4FL. They are supported at \$155, \$153 and \$147, a hundredweight, respectively. Grades B2M, M4K and M5K also have been added to this list this year. They are supported

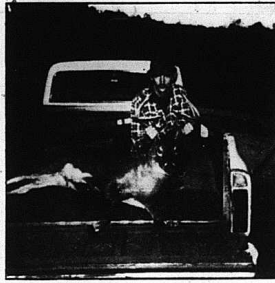
**"Cecil Linville - Cont."**

1840, the population was 4,238; in 1846, the number of white males in the county over 21 years of age was 812 and the number of children between the ages of 5 and 16 years was 1,176.  
 Jimmy Dobbs was the original owner of the Dobb's Place. The house, built by slaves before the Civil War, originally had 6 rooms. The roof was shingled with homemade shingles. Homemade nails were used to build the house. William H. Linville, who later owned the Dobb's Place, sold it to Clyde Linville for \$800.  
 The original deed to Scaffold Cane was a Virginia Land patent. The patent was probably issued while Rockcastle County was a part of Finn County, Virginia.  
 In 1846, the value of taxable property in Rockcastle County was \$518,876. The number of acres of land in Rockcastle County in 1846 was 124,214. The average value of land per acre was \$2.19.  
 Mt. Vernon, the county seat, was established in 1818 and originally called "The Mount". The name was later lengthened to Mount Vernon in honor of George Washington's home on the Potomac River.  
 James Maret was the first editor of the Mt. Vernon Signal. The newspaper was established in 1887.  
 Among the hills of Rockcastle County there numerous saltpetre caves, at which large amounts of saltpetre were mined during the War of 1812 and the Civil War. One of these, called the "Big

at \$154, \$129 and \$123, respectively.  
 The largest decreases in grade loan rates came in the "lugs" and "leaf" grades. Grade C4M was reduced \$10 a hundredweight, from \$156 a hundredweight, respectively.  
 Leaf Grades B3VE and B5VF also were each reduced a total of \$5 a hundredweight, from \$154 to \$149 and \$142 to \$137 a hundredweight, respectively.

A total of 68 grades were lowered an average of \$2.78 a hundredweight, and 23 grades were raised an average price of \$4.04 a hundredweight. Ten grades remained the same.  
 Again this season, the Commodity Credit Corporation will not provide loans on tobacco graded N2L, N2R, N2G, "U" (unsound), "W" (wet), "no-G" (no grade) or

scraps.  
 Burley tobacco may be officially weighed beginning Nov. 14, and sales begin Nov. 24. Sales will continue the first week on Nov. 25 and 26, and resume Monday through Thursday on Dec. 1 for three continuous weeks. Sales will reless on Dec. 18 for Christmas, and are scheduled to resume on Jan. 5, 1987 and remain open until all burley is sold.



Gary Barnett killed this 8 pt. deer with a shotgun in Hopkinsville. It weighed 151 lbs.



A 12-point buck, killed in Rockcastle Co. field dressed out at 185 lbs. The deer was taken by Homer Sims of Rt. 3, Somerset. Home is the father of Mrs. Beverly McClure of Mt. Vernon.

**Get a great Armstrong rebate**  
**on great do-it-yourself Armstrong floors!**  
 Up to \$36 rebate on Sundial® Solarian®  
 Now, easy-to-install Armstrong seamless vinyl no-wax floors come with a great factory rebate. Hurry, offer good October 19 to November 22, 1986.  
 Maximum rebate is 36 square yards per name or address.  
**Armstrong**  
 Miralab® M No Wax Sundial Solarian With No Wax Rebate **10<sup>75</sup>**  
 Mini No Wax Imperial® Accotone® With No Wax Rebate **\$5<sup>25</sup>**  
**HYSINGER CARPET**  
 U.S. 25 in Mt. Vernon 256-5413

**Attention Farmers!**  
**GARRARD COUNTY STOCKYARDS**  
**Now Under New Ownership**  
 We are pleased to announce that The Garrard County Stockyards in Lancaster, Ky. has been purchased by Edwin Freeman, Skeeter Reed, Kenneth Kirkland and Will Dedman and will be re-opened with the first sale being Friday, Dec. 5th at 9:30 a.m.  
 The Weigh Cattle Sale will begin at this time using the MODERN WEIGH-OUT METHOD. Head Cattle will be sold beginning at 1:00 p.m.  
**OPENING SALE**  
**Friday, December 5th**  
**9:30 a.m.**  
**And Every Friday Thereafter**  
 We will appreciate your help and will make every effort to be fair to both the buyer and the seller. See you Dec. 5th.  
 Earl Smith 792-2807 Stockyards  
 Dickie Arnold 792-2118  
**Kenneth Kirkland**  
**Stockyards Manager**  
 All Major Buyers Will Be At Our Sales.

**Thank You for Your Trust in me . . . .**  
 Dear Rockcastle County Friends,  
 On Election Day, you gave me a wonderful victory. More than I can express, I am grateful for your friendship, trust, and support. Throughout the campaign, it was you, the people of Rockcastle County, who provided the inspiration to continue the struggle against overwhelming odds.  
 For generations Rockcastle County has been overlooked because we were a small county surrounded by larger, more powerful counties. In this election, however, we proved that we could work together and accomplish a very significant goal -- electing one of our own Justice of the Kentucky Supreme Court.  
 My victory on Election Day was a victory for Rockcastle County. We can all take pride in this accomplishment.  
 Again, please know that I deeply appreciate your encouragement and support and will do my best to earn the trust you have given.  
 Very truly yours,  
 Joseph E. Lambert  
 Joe, Debby and Joseph - 1986  
 Paid for by Lambert Supreme Court Committee  
 Debra Hembree Lambert, Treasurer