

"FINANCIAL STATEMENT" (Cont. From B-3)

Table with columns: DC #, NAME OF PAYEE, CODE, PURPOSE, AMOUNT. Includes entries for 5649 Joe Glen Crosser, 5670 James Gibbons, 5671 Everett Renner, etc.

Table with columns: DC #, NAME OF PAYEE, CODE, PURPOSE, AMOUNT. Includes entries for 5815 Carol Vroman, 5816 James Wilson, 5817 Paul Keenan, etc.

Table with columns: DC #, NAME OF PAYEE, CODE, PURPOSE, AMOUNT. Includes entries for 5947 Payroll Account, 5948 Payroll Account, 5949 Payroll Account, etc.

Table with columns: DC #, NAME OF PAYEE, CODE, PURPOSE, AMOUNT. Includes entries for 5958 Kenneth Adams, 5959 Kenneth Adams, 5960 Kenneth Adams, etc.

Table with columns: DC #, NAME OF PAYEE, CODE, PURPOSE, AMOUNT. Includes entries for 5648 Food Service Account, 5649 Milcop Cable TV, 5650 Connie Monda, etc.

Table with columns: DC #, NAME OF PAYEE, CODE, PURPOSE, AMOUNT. Includes entries for 5823 Charles B. Parsons, 5824 A.R. Dick, Inc., 5825 Central Trust Co., etc.

Table with columns: DC #, NAME OF PAYEE, CODE, PURPOSE, AMOUNT. Includes entries for 5958 Kenneth Adams, 5959 Kenneth Adams, 5960 Kenneth Adams, etc.

Table with columns: DC #, NAME OF PAYEE, CODE, PURPOSE, AMOUNT. Includes entries for 5961 Ky. School Dnead Asson., 5962 High School, 5963 Rock Co. High School, etc.

Table with columns: DC #, NAME OF PAYEE, CODE, PURPOSE, AMOUNT. Includes entries for 5648 Charles B. Parsons, 5649 A.R. Dick, Inc., 5650 Central Trust Co., etc.

Table with columns: DC #, NAME OF PAYEE, CODE, PURPOSE, AMOUNT. Includes entries for 5823 Charles B. Parsons, 5824 A.R. Dick, Inc., 5825 Central Trust Co., etc.

Table with columns: DC #, NAME OF PAYEE, CODE, PURPOSE, AMOUNT. Includes entries for 5958 Kenneth Adams, 5959 Kenneth Adams, 5960 Kenneth Adams, etc.

Table with columns: DC #, NAME OF PAYEE, CODE, PURPOSE, AMOUNT. Includes entries for 5961 Ky. School Dnead Asson., 5962 High School, 5963 Rock Co. High School, etc.

Table with columns: DC #, NAME OF PAYEE, CODE, PURPOSE, AMOUNT. Includes entries for 5648 Charles B. Parsons, 5649 A.R. Dick, Inc., 5650 Central Trust Co., etc.

Table with columns: DC #, NAME OF PAYEE, CODE, PURPOSE, AMOUNT. Includes entries for 5823 Charles B. Parsons, 5824 A.R. Dick, Inc., 5825 Central Trust Co., etc.

Table with columns: DC #, NAME OF PAYEE, CODE, PURPOSE, AMOUNT. Includes entries for 5958 Kenneth Adams, 5959 Kenneth Adams, 5960 Kenneth Adams, etc.

Table with columns: DC #, NAME OF PAYEE, CODE, PURPOSE, AMOUNT. Includes entries for 5961 Ky. School Dnead Asson., 5962 High School, 5963 Rock Co. High School, etc.

"FINANCIAL STATEMENT" (Cont. From B4)

Table with columns: CODE, NAME OF PAYEE, PURPOSE, AMOUNT. Includes entries for 4084 Payroll Account, 4085 Payroll Account, 4086 Payroll Account, etc.

Table with columns: CODE, NAME OF PAYEE, PURPOSE, AMOUNT. Includes entries for 4112 salary, 4113 salary, 4114 salary, etc.

General Fund April 1987

Main financial statement table for General Fund April 1987. Columns: CR #, NAME OF PAYEE, CODE, PURPOSE, AMOUNT. Lists numerous payees and their respective amounts.

General Fund June 1987

Main financial statement table for General Fund June 1987. Columns: CR #, NAME OF PAYEE, CODE, PURPOSE, AMOUNT. Lists numerous payees and their respective amounts.

"FINANCIAL STATEMENT" (Cont. From B6)

Table with columns: CODE, NAME OF PAYEE, CODE, PURPOSE, AMOUNT. Includes entries for Rainbo Baking Co., Taylor Produce Co., etc.

TOTAL ALL FORM F-40-C's \$7,008.57

CHAIRMAN SECRETARY

Table with columns: CODE & PURPOSES, AMOUNT. Includes entries for Madison Grocery Co., Inc., Rainbo Baking Co., etc.

TOTAL ALL FORM F-40-C's 63,237.71

CHAIRMAN SECRETARY

Table with columns: CODE & PURPOSES, AMOUNT. Includes entries for Southern Belle Dairy Co., Madison Grocery Co., etc.

TOTAL ALL FORM F-40-C's 44,364.90

CHAIRMAN SECRETARY

Table with columns: CODE & PURPOSES, AMOUNT. Includes entries for Somerset Foods, Inc., Institutional Distributors, Inc., etc.

TOTAL ALL FORM F-40-C's 58,379.05

CHAIRMAN SECRETARY

Table with columns: CODE & PURPOSES, AMOUNT. Includes entries for Rainbo Baking Co., Taylor Produce Co., etc.

TOTAL 145,337.74

CHAIRMAN SECRETARY

Rockcastle County Board of Education

Financial Statement

Chapter 1 and Chapter 1 Handicapped

June 30, 1987

Balance July 1, 1986

Chapter 1-A 24,586.87

Chapter 1-H (1,677.00)

22,909.87

Receipts

Chapter 1-A 387,408.

Chapter 1-H 1,677.

389,085.00

Expenditures

Chapter 1-A 409,126.48

Chapter 1-H 3,107.00

412,233.48

Balance June 30, 1987 2,668.39

Chapter 1-A (3,107.00)

Chapter 1-H (238.61)

(388.61)

ORDERS OF THE TREASURER

Rockcastle County Board of Education

Table with columns: Chapter, CODE, NAME OF PAYEE, CODE, PURPOSE, AMOUNT. Includes entries for 18112 Rockcastle County Schools Payroll Account.

TOTAL 2,408.87

August 1986

Table with columns: Chapter, CODE, NAME OF PAYEE, CODE, PURPOSE, AMOUNT. Includes entries for 18113 Rockcastle County Schools Payroll Account.

TOTAL 2,493.11

September 1

Table with columns: Chapter, CODE, NAME OF PAYEE, CODE, PURPOSE, AMOUNT. Includes entries for 18014 Danville Office Supply, 18015 Mt. Vernon Signal, etc.

TOTAL 21,462.00

October 1986

Table with columns: Chapter, CODE, NAME OF PAYEE, CODE, PURPOSE, AMOUNT. Includes entries for 18021 Rige M. Towery, Jr., 18022 Southern Business Systems, etc.

TOTAL 36,531.30

November 1986

Table with columns: Chapter, CODE, NAME OF PAYEE, CODE, PURPOSE, AMOUNT. Includes entries for 18038 Central School Supply, 18040 Duill Corporation, etc.

TOTAL 36,012.04

December 1986

Table with columns: Chapter, CODE, NAME OF PAYEE, CODE, PURPOSE, AMOUNT. Includes entries for 18033 The Parent Teacher Store, 18035 Harcourt Brace Jovanovich, etc.

TOTAL 36,012.04

January 1987

Table with columns: Chapter, CODE, NAME OF PAYEE, CODE, PURPOSE, AMOUNT. Includes entries for 18043 Rockcastle County Schools Payroll Account, 18044 Rockcastle County Schools Payroll Account, etc.

TOTAL 32,834.45

February 1987

Table with columns: Chapter, CODE, NAME OF PAYEE, CODE, PURPOSE, AMOUNT. Includes entries for 18075 Bissell's, 18076 Danville Office Supply, etc.

TOTAL 40,742.17

March 1987

Table with columns: Chapter, CODE, NAME OF PAYEE, CODE, PURPOSE, AMOUNT. Includes entries for 18082 Rige M. Towery, Jr., 18083 Shirley A. Mullins, etc.

TOTAL 32,258.88

April 1987

Table with columns: Chapter, CODE, NAME OF PAYEE, CODE, PURPOSE, AMOUNT. Includes entries for 18081 Rige M. Towery, Jr., 18082 Shirley A. Mullins, etc.

TOTAL 32,258.88

May 1987

Table with columns: Chapter, CODE, NAME OF PAYEE, CODE, PURPOSE, AMOUNT. Includes entries for 18081 Rige M. Towery, Jr., 18082 Shirley A. Mullins, etc.

TOTAL 32,258.88

Table with columns: CODE, NAME OF PAYEE, CODE, PURPOSE, AMOUNT. Includes entries for 18090 Shelby J. Poynter, 18092 Charlotte Griffin, etc.

TOTAL 32,095.05

April 1987

Table with columns: Chapter, CODE, NAME OF PAYEE, CODE, PURPOSE, AMOUNT. Includes entries for 18099 Danville Office Equipment, 19000 Southern Business Systems, etc.

TOTAL 32,095.05

May 1987

Table with columns: Chapter, CODE, NAME OF PAYEE, CODE, PURPOSE, AMOUNT. Includes entries for 18018 Rige M. Towery, Jr., 18019 Computer Land of Richmond, etc.

TOTAL 31,598.11

June 1987

Table with columns: Chapter, CODE, NAME OF PAYEE, CODE, PURPOSE, AMOUNT. Includes entries for 18018 Rige M. Towery, Jr., 18019 Danville Office Supplies, etc.

TOTAL 11,007.84

July 1986

Table with columns: CODE, NAME OF PAYEE, CODE, PURPOSE, AMOUNT. Includes entries for 18018 Rige M. Towery, Jr., 18019 Danville Office Supplies, etc.

TOTAL 2,414.32

Receipts

76,376.00

Disbursements

76,766.45

Balance June 30, 1987 2,023.87

ORDERS OF THE TREASURER

Rockcastle County Board of Education

EMH-PART B

Financial Statement

October 1986

Table with columns: Chapter, CODE, NAME OF PAYEE, CODE, PURPOSE, AMOUNT. Includes entries for 1041 Janet R. Burke, 1042 Dorcas, Inc., etc.

TOTAL 6,944.41

November 1986

Table with columns: Chapter, CODE, NAME OF PAYEE, CODE, PURPOSE, AMOUNT. Includes entries for 1041 Janet R. Burke, 1042 Rockcastle County Hospital, etc.

TOTAL 1,470.00

"FINANCIAL STATEMENT" (Cont. From B7)

Table with columns: Description, Amount. Includes 1054 Payroll Account, 1058 Payroll Account, etc. Total: 6,707.33

Table for December 1986. Columns: Description, Amount. Includes 1097 Janet R. Burke, 1098 Rockcastle Hospital, etc. Total: 7,075.10

Table for January 1987. Columns: Description, Amount. Includes 1046 Rockcastle County Hospital, 1082 Lingui Systems, Inc., etc. Total: 7,202.52

Table for February 1987. Columns: Description, Amount. Includes 1076 Janet R. Burke, 1077 Duall Corporation, etc. Total: 6,271.20

Table for March 1987. Columns: Description, Amount. Includes 1081 Rockcastle County Hospital, 1082 Lingui Systems, Inc., etc. Total: 7,999.60

Table for April 1987. Columns: Description, Amount. Includes 1086 Rockcastle Hospital, Inc., 1087 Janet R. Burke, etc. Total: 7,445.79

Table for May 1987. Columns: Description, Amount. Includes 1091 Janet R. Burke, 1092 The Education Center, etc. Total: 6,170.77

Table for June 1987. Columns: Description, Amount. Includes 1097 Janet R. Burke, 1098 Rockcastle Hospital, Inc., etc. Total: 6,170.77

Table for July 1987. Columns: Description, Amount. Includes 1097 Janet R. Burke, 1098 Rockcastle Hospital, Inc., etc. Total: 6,170.77

Table for August 1987. Columns: Description, Amount. Includes 1097 Janet R. Burke, 1098 Rockcastle Hospital, Inc., etc. Total: 6,170.77

Table with columns: Description, Amount. Includes 304 Area Publishers, 305 Merrill Public Schools, etc. Total: 278.00

Table with columns: Description, Amount. Includes 310 Kentucky Medical Services, 311 University Medical, etc. Total: 133.43

Table with columns: Description, Amount. Includes 315 Thrifty Lumber Company, 317 Pass-Teacher Stores, etc. Total: 146.81

Table with columns: Description, Amount. Includes 319 Phillip G. Bullock, 320 Mt. Vernon Signal, etc. Total: 149.00

Table with columns: Description, Amount. Includes 326 Science Research Assoc., 327 The Continental Press, Inc., etc. Total: 166.21

Table with columns: Description, Amount. Includes 328 Rock Co. Board of Educ., 329 American Gas & Electric Service, etc. Total: 107.40

Table with columns: Description, Amount. Includes 336 Phillip G. Bullock, 337 Merrill Public Schools, etc. Total: 100.44

Table with columns: Description, Amount. Includes 342 Rock Co. Board of Educ., 343 Science Research Associates, etc. Total: 120.05

Table with columns: Description, Amount. Includes 346 Charles G. Yonts, 347 Marcourt Bruce Jovanovich, etc. Total: 39.20

Table with columns: Description, Amount. Includes 348 Rock Co. Board of Educ., 349 Opportunities for Learning, etc. Total: 15.90

"Judge's ruling" Cont. from B-1 makes that recommendation, pursuant to Kentucky law to the Rockcastle County Board of Education. The Board has been turned down one of Parsons' recommendations.

4. Plaintiff's Pre-1985 Appointments Hamm maintains that in March 1977, he communicated to Parsons in a private conversation, his desire to become a principal and that Parsons responded that neither he nor Rockcastle County were ready for a woman principal.

From 1977 to 1981, Hamm did not apply for a principal position until he was certified. Starting in 1981, Hamm applied for an Assistant Elementary Principality position at a Rockcastle County school.

October 1986 October 1986 October 1986 October 1986 October 1986 October 1986 October 1986 October 1986 October 1986 October 1986

November 1986 November 1986 November 1986 November 1986 November 1986 November 1986 November 1986 November 1986 November 1986 November 1986

December 1986 December 1986 December 1986 December 1986 December 1986 December 1986 December 1986 December 1986 December 1986 December 1986

January 1987 January 1987 January 1987 January 1987 January 1987 January 1987 January 1987 January 1987 January 1987 January 1987

February 1987 February 1987 February 1987 February 1987 February 1987 February 1987 February 1987 February 1987 February 1987 February 1987

March 1987 March 1987 March 1987 March 1987 March 1987 March 1987 March 1987 March 1987 March 1987 March 1987

April 1987 April 1987 April 1987 April 1987 April 1987 April 1987 April 1987 April 1987 April 1987 April 1987

OFFER COUNSELORS SPECIAL LEGAL COUNSELORS TO THE TREASURER OF THE ROCKCASTLE COUNTY BOARD OF EDUCATION

Table with columns: Name of Payee, Code, Purpose, Amount. Lists various individuals and their compensation.

UPPER CUMBERLAND SPECIAL LEGAL COUNSELORS TO THE TREASURER OF THE BOARD OF EDUCATION

Table with columns: Name of Payee, Code, Purpose, Amount. Lists various individuals and their compensation.

inferred professionalism and had problems with schedules. Parkerson was not clear as to whether he knew that she was being considered. He did testify that he would not be the one to recommend if he felt she was qualified. Parsons also consulted with Jerry Mink, principal at Livingston, who recommended Hale because he had a better chance of observing Hale in a leadership position. Mink did not know Hamm was applying.

Superintendent Parsons recommended John Hale to the Board of Education. In the course of the meeting he mentioned the pending EEOC charges filed by Hamm because he wanted the Board to be aware of the charges. However, if he felt she was qualified, Parsons also consulted with Jerry Mink, principal at Livingston, who recommended Hale because he had a better chance of observing Hale in a leadership position. Mink did not know Hamm was applying.

Parsons testified that there were a number of reasons why he did not recommend Hamm. She had no prospect record of discipline. She was controversial in that she disagreed frequently and would not work with him. She was a poor teacher and did not have a good reputation. She had a different educational philosophy than did Parsons. Finally, assuming she was qualified, Hale was certified first.

Though Parsons testified that he would recommend a woman to be principal of a school, he testified that he did not recommend Hamm. He testified that he did not recommend Hamm because he had a better chance of observing Hale in a leadership position. Mink did not know Hamm was applying.

Hamm's claim also contains an allegation that she was retaliated against for filing the January 1983 charges with the EEOC and the KCHR. On March 2, 1985, Parsons advised Hamm that planning for gifted children would be moved from the school to the county office. This was done in retaliation for her filing the charges.

About Rockcastle Countians

American Inc. (PP of A). Nearly 6,000 professional photographers attended the five-day event, held Aug. 1-5, at the O'Hare Exposition Center.

For three consecutive years photographs by Doug Brock have been selected to hang in the collection of the Professional Photographers of America.

This year "Summer Fun," a portrait of Jenny Smith and her daughter Amy, was judged to hang in the General Collection of Professional Photographers of America at the exhibition in



Doug Brock



Chicago this August. This exhibition recognizes the talents of top photographers from each state and numerous nations. The show presented educational programs taught by more than 150 speakers, showcased several thousand award-winning photographs, and featured a three-day trade show at which in-

dustry suppliers exhibited the latest in photographic equipment, supplies, and services. PP of A, founded in 1880, is the world's oldest and largest association of professional photographers with more than 15,000 individual members and nearly 250 international affiliate organizations.

ROGER COLDIRON RECEIVES AWARD

Coldiron gets award for excellence

United States Navy Lieutenant Roger Coldiron, son of Mr. and Mrs. Edison Coldiron, was presented the Arleigh Burke Award for Excellence during graduation ceremonies at the Surface Warfare Officers School in Newport, Rhode Island recently.

The award is presented to the one member of each class who best demonstrates the qualities of leadership, industry and resourcefulness—exemplified by Admiral Burke when he was Chief of Naval Operations during the early 1960's, the award has been presented to 96 other officers in the intervening years.

The Surface Warfare Officers School prepares the officers for various tours of duty in Navy surface ships at all levels of responsibility. The course attended by Lt. Coldiron is required for all officers who will assume duties as one of three shipboard department heads, the principal assistants to the commanding of-

fer. The school also qualifies graduates as Tactical Action Officers. The TAO is the officer in the ship's Combat Information Center who controls the weapons system during combat operations.

Lt. Coldiron is currently under orders to USS Dahlgren, a guided missile destroyer homeported in Norfolk, Virginia as the Operations Officer. Dahlgren carries the SM-2 (Extended Range) surface to air missile, the most capable SAM in the Navy's inventory. In addition, the ship carries the Harpoon anti-ship missile, and a five inch gun. Other systems include Electronic Warfare equipment and long range air and surface surveillance radars. The ship is 512 feet long and displaces some 6000 tons.

Brock honored once again at convention

Doug Brock of Brock Studio in Brodhead recently returned from Rossmore, Ill. after attending the 1987 international convention of Professional Photographers of

Thomas selected for Who's Who publication for second straight year

James R. Thomas, Jr., has been accepted for a second consecutive year to have his biography published in Who's Who Among American High School Seniors.

While only 5 percent of our nation's high school students are included in Who's Who each year, less than one-half of 1 percent are honored for two years. James is to be commended for his consistently exceptional record.

James has been accepted and will attend Aiken Technical College, Aiken, S.C. He will major in computer engineering technology.

He is the son of J. Richard and Sandra Stearns Thomas of Mt. Vernon. The grandson of Mrs. Florence Stearns of Plattsburgh, N.Y. and Mr. and Mrs. Everett Thomas of Mt. Vernon.



JAMES R. THOMAS JR.

Victoria Johnson named to 'Court'

Victoria J. Johnson, Brodhead, was named to the Queen's Court of Recruiting today at Mary Kay Cosmetics' 24th annual national seminar. Ms. Johnson, who joined the 140,000-member sales organization in August 1985, received the prestigious award for outstanding achievement as a professional businesswoman. "Victoria has helped scores of women achieve their career potential. She is a shining example of entrepreneurial leadership," said Mary Kay Ash, company founder and chairman of the board.

Mary Kay Ash, presented Ms. Johnson as a member of the Queen's Court of Recruiting with a small 14-carat gold and diamond be pin with emerald eyes. Ms. Johnson was honored during the gala awards ceremony attended by 6,000 Mary Kay beauty consultants and sales directors. The seminar's 1987 theme, Success Express, celebrates the

ABSOLUTE Auction

of Mr. and Mrs. Tommy Graves'
96 Acres, more or less
(In 2 Tracts)
Sat., Aug. 29, 1987 10:30 a.m.
Near Mt. Vernon, Ky.



LOCATION: Approximately 7 miles southwest of Mt. Vernon. Turn west off Highway 461 at Danney's Grocery and proceed about 1.8 miles to the Low Gap Road. Turn on the Low Gap Road and go approximately 1.2 miles to the sale site. Signs are posted.

TRACT NO. 1. Contains 45.64 acres and is improved with the pictured 45 x 60 tobacco barn. This tract has about 6 acres of cropland and the balance in woodland with a lot of young timber. The basic tobacco allotment on this tract is 735 lbs. There is over 700 ft. of frontage along the Low Gap Road. There are many choice sites to build.

TRACT NO. 2. Contains 50.33 acres and fronts on the Low Gap Road over 600 ft. This tract is all wooded with a good stand of young timber. With a little work, there would be several good building or mobile home sites on this property.

The property will be offered in individual tracts, then combined, selling whichever way reflects the best returns.

AUCTIONEER'S NOTE: If you're in the market for good land, then mark your calendar now to attend this auction Saturday, August 29, 1987 at 10:30 a.m.

TERMS: 20% down day of sale, balance in 30 days with delivery of deed.

For additional information, contact Mr. and Mrs. Graves at the property or:

Ford Realty & Auction Co.

REALTOR/AUCTIONEER
SAM FORD
DANNY FORD
ROY ADAMS

AUCTIONEERS
JERRY HAM
WILLARD BULLOCK
DEE STEWART
APP. AUCTIONEERS
BOB TODD

1810
Mt. Vernon, Ky. Phone 256-4545
Kentucky Toll Free No. 1-800-435-5484

Somerset, Ky. Phone 678-2212



By: Austin Nobley, Minister
Providence church of Christ

Free Love

The title of this article is a misnomer. There is no such thing as "free" love! Some in our permissive society place a "free love" label on the gratifying of unrestricted and unrestrained lust. However, what they call free love is not remotely akin to real love. Lust and love are as far apart in meaning as heaven and earth!

Love has never been nor will it ever be FREE. It cost God His Son; it cost Jesus His life; it made martyrs; it excludes one of the apostles of Christ as well as an innumerable company of first century Christians. It costs us a lifetime of dedicated service.

The greatest commandment, said Jesus, is to love God with all our being and the second is "thou shalt love thy neighbor as thyself." (Matt. 22:35-39). Men are commanded to love their wives as Christ loved the church (Eph. 5:25). Likewise wives are to love their husbands (Titus 2:4). The "badge of discipleship" is that Christians love one another (John 13:35). "Love worketh ill to his neighbor" (Rom. 13:10).

What is involved in loving the Father and the Son. "If a man love me, he will keep my words" (John 14:23). The one who says he loves God and walks in darkness is a liar (I John 1:6). We must "walk in the light, as he is in the light..." (I John 1:7). This means a continual dedication to follow Christ one must deny self; not an easy task!

Love for our wives, husbands and children is the power that motivates us to work and sacrifice that they may have the best we have to offer.

Love for our neighbor will prompt us to help and serve him to the best of our ability. This involves our time, work and resources.

When we love the brethren, we "esteem them better than self" (Phil. 2:3). Thus we never take advantage of them, pick quarrels with them, gossip about them, burden them with undue criticism or with our petty peevess. Contrariwise, we serve them in whatever capacity they might need us.

We sing the beautiful hymn, "Jesus Paid It All" and He did just that. That does not mean, however, that you and I sin in our stead making it possible for us to escape eternal ruin. But to reap the benefits of His death wherein He becomes the author of our salvation, we must obey Him (Heb. 5:8-9). Unless He is the author of YOUR salvation, you have no salvation, and His having "paid it all" is of no profit to you at all. He died in vain so far as YOU are concerned.

Once more let us say that LOVE IS NOT FREE. It is very expensive indeed! All the money in the world cannot buy an act of love, but one act of love can buy all the souls in the world. (John 3:16).

SERVICES:
Sunday: 10 a.m. & 7 p.m. Wednesday 7:30 p.m.
Radio Sunday 8:00 A.M.

"Judge's ruling" Cont. from B-8



Faye Baker, a member of Livingston Economic Alternatives in PROGRESS IS SHOWN ABOVE PRESENTING Christine Kaufman with a certificate for a case of Praeline Topping which Leap has been making and selling in Eastern Kentucky. The topping is made in Livingston. Kaufman is a volunteer that helped LEAP throughout the summer. In the bottom photo, Mrs. Baker presents INA Taylor with a gift certificate for her daughter LEAD, who made the sign for the topping. The presentations were made during recent open house at LEAP.



COMMONWEALTH OF KENTUCKY
28TH JUDICIAL CIRCUIT
ROCKCASTLE CIRCUIT COURT
Civil Action File No. 87-CI-054
Peoples Bank & Trust Company PLAINTIFF

VS: NOTICE OF SALE

Elmer Saylor and Mildred Saylor DEFENDANTS

Pursuant to judgment and order of sale entered in this action on May 8, 1987, and for the purpose of enforcement of a mortgage lien in the amount of \$19,972.88, plus interest, I will offer for sale at public auction the hereinafter described real property in Mt. Vernon, Rockcastle County, Kentucky,

ON THE PREMISES ON KENTUCKY 1505
on FRIDAY, SEPTEMBER 4, 1987
BEGINNING AT THE HOUR OF 10:30 A.M.

and the property being more particularly bounded and described as follows:

Beginning at a set stone in the west right of way of Kentucky 1505, corner to Jack Stallworth; thence southerly with right of way of Kentucky 1505, 110 feet to a set stone; thence westerly 218 feet to a set stone; thence northerly 78 feet to a set stone; thence easterly with Stallworth 239 feet to the point of beginning, containing one-half (1/2) acre more or less.

And being the same property which Elmer Saylor and wife, Mildred Saylor, obtained by deed of conveyance dated May 7, 1984, from Cinda Mink and husband, Ed J. Mink, which said deed is duly recorded in the office of the clerk of the Rockcastle County Court in Deed Book 122, page 514.

AND
A 1980 Wind Mobile Home, serial no. ZW1701411590

DIRECTIONS TO PROPERTY: Follow U.S. Highway 25 north from Mt. Vernon approximately eight miles to Kentucky Highway 1505; turn left on Highway 1505 [Bridle Ridge section of Rockcastle County] follow Highway 1505 approximately seven miles. Property located on west side of Highway 1505.

THE PROPERTY WILL BE SOLD UNDER THE FOLLOWING TERMS AND CONDITIONS:

1. The property shall be sold to the highest bidder(s) for cash or for a deposit of TWENTY (20%) PER CENT of the purchase price in cash at the time of sale and balance payable in THIRTY (30) DAYS. The purchaser shall be required to execute bond with surety thereon, to be approved by the Master Commissioner, for the balance of the purchase price. The bond shall bear interest at the rate of twelve percent (12%) per annum from date until paid, and to remain and be a lien on said property until fully paid.
2. The purchaser(s) shall have the privilege of paying all of the purchase price in cash or paying the bond before maturity by paying the principal amount thereof together with all interest accrued thereon to the date of said payment.
3. Purchaser(s) shall be responsible for the 1987 property taxes.
4. Purchaser(s) shall have possession of the premises upon complying with the terms of sale and risk of loss of improvements shall therefor be on the purchaser(s).
5. This sale shall be made subject to all easements, set back lines, restrictions or covenants of record or otherwise.

ROBERT E. ROBINSON
Master Commissioner
Rockcastle Circuit Court

discriminatory intent which Hamm offered was her testimony of the March, 1977 conversation between herself and Superintendent Parsons in which the old Parsons said that he wanted a position as a principal to which Parsons is alleged to have responded, "Rockcastle County is not ready for a woman principal." Hamm claims that she replied, "You mean you're not ready for a woman principal," to which defendant Parsons is to have responded, "That's right, and I never will be as long as I am superintendent of the Rockcastle County School System." Parsons denies that he made this statement and suggests that it was a recent fabrication. There was no witness to this conversation.

As Hamm acknowledged in closing arguments, credibility is the determining factor. As Hamm has the burden in this case, she must give some reason why she should be believed rather than Parsons. If she fails to do so, she fails to meet her burden. On rebuttal, Hamm produced three witnesses to establish that her version of the 1977 conversation with Parsons was not a recent fabrication. However, this is not substantive evidence of the conversation nor does it preclude the possibility that it is a past fabrication. It does destroy completely Parsons' claim of recent fabrication and is explained only as being true or a recent fabrication, the latter explanation being so unlikely as to require rejection.

The trial also had Mark McKinney, assistant principal at Mt. Vernon, testify on rebuttal as to a statement Parsons allegedly made to Buford Parkerson (which Parkerson later relayed to McKinney) at a staff meeting. Parsons allegedly said that he did not think that Rockcastle County was ready for a woman principal. This statement was apparently made about the time that Parsons was considering whom to place at Mt. Vernon as principal. It can only go to what Parkerson testified, not to what Parsons actually said. In other words, it is received only as a possible prior inconsistent statement of witness Parkerson. It would be hearsay if offered to establish that Parsons so stated. Therefore, it is not considered as bearing on what Parsons said.

Next, Hamm contends that Parsons' actions are consistent with her testimony of the March, 1977 conversation. Parsons acknowledged that he never hired a woman as principal in his 19 years as Superintendent. This is of probative value as Hamm did not introduce any evidence of what principalships were open and whether any woman applied, or was qualified, for these positions. Moreover, Hamm witness, Claudia Cash, testified that in 1981, Parsons encouraged her to apply for principal openings but that he never brought back the application because she was not sure whether she wanted such a position.

Finally, Hamm introduced the March 1, 1977 letter which was supposedly a follow up to the conversation. The letter, however, does not mention that she was interested in a principalship nor does it mention the conversation which was supposed to have followed. Hamm contends, however, that Parsons' testimony as to when he first saw the letter detracts from his credibility, for it is ambiguous at best. Even assuming that he did change his story, Hamm offers no reason why this should detract from his credibility as to the alleged April, 1977 conversation?

McDonnell-Douglas
The Court finds that Hamm has satisfied the McDonnell-Douglas prima facie case for at least the 1985 position. Hamm belongs to a protected Title VII classification; she was qualified for the position for which she applied; and she was not given that position. As to the fourth element, Parsons' maintains that he was ready to do so on a permanent basis. However, Parsons' maintains that he was not intended to be rigid, mechanistic or ritualistic. Although it is necessary that some additional evidence be produced to establish the inference of discrimination in cases where there is no proof that the employer continued to solicit applications, it is sufficient if plaintiffs can "point to other individuals who were favorably treated."
In this case, Hamm satisfied the last prong by showing that a male received the promotion in that she has shown that she was treated differently from an "other-wise" similarly situated individual who [was] within the plaintiff's protected group." Thus, plaintiff has established a prima facie case as to the 1985 opening.

"Johnson named to Mary Kay Queen' Court"
Cont. from B-9

company's tradition of recognizing women for their business achievements. The Mary Kay seminar consists of four consecutive one-day meetings at the Dallas Convention Center attended by 24,000 independent businesswomen from throughout the United States, who receive intense product, business and sales training.

Mary Kay Cosmetics, Inc. is an international manufacturer and distributor of premium skin, hair and body care products, cosmetics, toiletries and fragrances.

AND ELECTRIC IRONS, TOO.
Along with supplying Kentucky KU also wired houses to replace gas and coal oil lamps and sold and serviced appliances (refrigerated beds, Salermans would frequently use an electric iron

to recommend Hamm. However, he sought a recommendation and not an evaluation of the various candidates. This is unlike the situation in Crano where the plaintiff was specifically evaluated by individuals who knew plaintiff's qualifications and had "information with which they could make a decision between" candidates. In fact, it is doubtful that the recommenders here knew Hamm was applying and thus could not even consider her.

With this in mind, the pretest issue is now addressed. Defendants maintain that one of the reasons Hamm was not promoted was because she had no proven record of discipline. One of the difficulties with this is that witnesses for both parties gave a variety of definitions for "discipline." To some it meant order and control, and a number of witnesses testified that Hamm maintained perfect control in group sessions and on field trips. To others, it meant punishment, and defendants readily agreed that this was not part of Hamm's job as Guidance Counselor. Defendant Parsons himself was rather vague when he referred to the fact that Hamm was a "high-directive" person.

More importantly, there is no evidence that Parsons viewed her this way.

the fact that Hamm was a "high-directive" person. More importantly, there is no evidence that Parsons viewed her this way.

With this in mind, the pretest issue is now addressed. Defendants maintain that one of the reasons Hamm was not promoted was because she had no proven record of discipline. One of the difficulties with this is that witnesses for both parties gave a variety of definitions for "discipline." To some it meant order and control, and a number of witnesses testified that Hamm maintained perfect control in group sessions and on field trips. To others, it meant punishment, and defendants readily agreed that this was not part of Hamm's job as Guidance Counselor. Defendant Parsons himself was rather vague when he referred to the fact that Hamm was a "high-directive" person.

More importantly, there is no evidence that Parsons viewed her this way.

LIVINGSTON HOMECOMING '87
Pretty Baby Contest
Register at Livingston Dairy Freeze

Absolute Auction
Sat., August 22, 1987
1 p.m.
Jess Bullens' Property
HOUSE & LOT
Neely Street

This two-bedroom frame house, set on a deep lot, provides quiet and privacy while being very convenient to city facilities.

A shaded front porch extends across front of house and carport at an end is accessible to the circular drive.

The many trees and shrubs add to the attractiveness of the property.

Floor plan includes living room, kitchen with built-in cabinets and snack bar, two bedrooms, bath and den across entire back of house with outside entrance from carport.

Storm doors and windows, carport and other features make this a desirable piece of property. Zoned-R3.

MILLER-PATTON AUCTION CO.
Real Estate Brokers and Auctioneers
Richmond, Ky. 623-5668

Helping Kentucky grow for 75 years.

for the lady of the house to try and returning the next Tuesday (ironing days) in the form of a new electric iron on the coal stove next to the old flatirons!

THE NEW FRONTIER
Building power lines has never been easy, particularly in those early days. Line crews working in remote areas camped out in tents for weeks at a time, moving from one job to another. Like pioneers on the frontier, they often carried guns.

Until the 1940s, the company's list of services to many areas in part to acquisitions-included city buses and trolleys, water works gas properties, and so plans. For a time, KU also had a large share of the stock of the South-eastern Greyhound bus system.

The expansion of KU's electric utility service area required a gradual disposal of these other properties. Attention was needed in the growing facilities for electricity generation, transmission and distribution to keep ahead of the demand of an increasing number of customers.

THE BOOM BEGINS
With postwar prosperity came the demand for more power and more power plants. During most of the '40s and '60s the average residential customer's electricity usage doubled every 10-12 years.

TODAY AND TOMORROW
The 1980s promise to be a significant decade in KU's history. The fourth unit of the Great Generating Station, the company's largest-on the Ohio River in Carroll County went into service in 1984 bringing KU's total generating capacity to 3,175 megawatts.

In 1985, Toyota Motor Corporation announced a new \$800 million manufacturing facility in Scott County. When fully operational, it will employ 3,000 and be KU's largest customer.

SYMBOL OF SERVICE
Through all our 75 years, KU has remained steadfastly committed to a mission best described by the words of our former presidents:

"Bringing the best possible electric service at the lowest possible cost to the people in our operating territory."

Whatever the years may hold in store our mission and our commitment will never change.

KENTUCKY UTILITIES COMPANY

New study indicates that Appalachia falling behind rest of state

A new study that uses Kentucky Commerce Cabinet industrial development figures suggests that large parts of the Appalachian region, including Rockcastle County, are falling farther behind the rest of the state.

The study, conducted for Appalachia - Science in the Public Interest (ASPI), which is based near Livingston, also pinpoints concentration of economic wealth in certain parts of the state, especially the so-called "Golden Triangle" of Louisville, Lexington and Covington-Newport.

"It is truly sad that the government continues to concentrate its efforts of building the fortunes of the rich, while neglecting the poor of the mountain counties," Albert Fritsch, ASPI director, said. "Such policies go against the idea of a state united, which the early leaders worked so hard to forge. As the study title, which is based on the state seal, says: 'Divided we fall.'"

Timothy Collins, author of the study, said there were certain trends that appeared constantly in the state data. "Counties in the eastern extreme of the state are in deep trouble when it comes to industrial development," he said. Coupled with the loss of coal employment, the results are devastating."

Major findings of the study include:

From 1980 to 1986, fewer new plants located in Kentucky's 49 Appalachian counties, compared with the rest of the state. The last plant to locate in Rockcastle County was Mt. Vernon Plastics. As expected, most new jobs were created in the three Metropolitan Statistical Areas of Louisville, Lexington, and Covington-Newport, which are tied to the Cincinnati, Ohio area. Appalachia's new and expanded plants tended to be smaller and employed fewer workers than those located elsewhere.

No new manufacturing plants were located in 23 Kentucky counties during the seven-year period. Of these counties, 11 were in Appalachia. Eleven Appalachian counties received between one and 50 jobs from new plants. Only one county, Russell, ended up with more than 1,000 jobs, and the vast majority of those came from one plant, opened in 1980.

Most new plants were located along the western edge of the region, which received about 21 percent of jobs created by new plants. Appalachia holds more than 29 percent of the state's population.

The bulk of new manufac-

ing jobs in the Appalachian region came from plant expansions. These helped brighten the picture substantially.

Twenty-one mountain counties suffered from decreases in the civilian labor force. Most of these losses appeared to be a result of changes in mining/quarrying operations. Seventeen Appalachian counties showed

"Judge rules on discrimination case"

Cont. from B-10

Another reason Parsons gave was that Hamm did not follow her schedule and did not follow up on projects. This too is unworthy of belief. Although a number of letters were made to Parsons in the early 1980s, Parsons was very supportive of Hamm, and, in fact, he told Bige that he shouldn't criticize Hamm when he didn't know all of her duties. Parsons also gave Hamm additional responsibilities during this time so that it is hard to believe that he considered her schedule or work a problem. Moreover, the complaints, about which he testified were made prior to a second Guidance-Counselor was appointed. Thishelp alleviated significant H

Parsons also claimed that Hamm was controversial among the other staff and didn't get along with him (i.e., that she was not a team player). There are significant problems with these reasons. First, they are inherently vague, and as such, subject to abuse. Although Parsons testified that in 1980-81, he received some complaints from teachers and principals about Hamm's schedule and, apparently, about her lack of follow-up, these relate primarily to her schedule. Moreover, the fact that he would use these complaints, which he had rejected and thus couldn't have taken very seriously, almost four years later to deny Hamm a principalship, defies logic.

There were witnesses on both sides that testified as to how Hamm interacted with other staff, but there was no evidence that Hamm was more time to spend in each school. Moreover, the teachers who gave negative testimony about Hamm's relations with teachers may well have been influenced by what appeared to be bruised egos caused by what one witness described as Hamm's "grabbing-the-limelight," or by scheduling problems for which she had no responsibility.

As to whether Hamm was a team player, or failed to get along with Parsons, such reasons could be used in almost any case and is particularly useful in maintaining an "old-boy" system. The only testimony from Parsons as to conflicts with Hamm was his testimony as to her reaction to his criticism directed at her. His excuse in this regard is contradicted as a whole by the fact that Parsons continued to give Hamm new responsibilities that required her to work with others and ultimately himself.

Finally, Parsons stated that Hamm and he had different educational philosophies, and that Hamm's programs or proposed programs took away from the basics. However, Parsons did not point to any of Hamm's programs that took away from "basics" or that cost the school money. Moreover, he testified that he wanted his administrators to be in-

"It is truly sad that the government continues to concentrate its efforts of building the fortunes of the rich, while neglecting the poor of the mountain counties"

ASPI Director, Albert Fritsch

declines in mining/quarrying employment; four showed slight gains between 1980 and 1983. Declines generally offset gains in

novative, which Hamm surely was. More importantly, this appears to be an excuse or reason raised after the fact. As Hamm points out, Parsons never raised this point in his deposition when asked why he didn't promote her. Hamm's philosophy, if it differed from the Superintendent's, was nevertheless subject to the complete control of the Superintendent and the Board.

This, having found that Hamm has proven by a preponderance of the evidence that Parsons's reasons are pretextual, it is now held that disparate treatment did occur in this case. Hamm was the victim of sexual discrimination in relation to the 1985 appointment to the position of principal for Mt. Vernon Elementary, and thus defendants are liable for the Title VII disparate treatment.

re. Retaliation

As noted above, Hamm also maintains that she was a victim of retaliation for filing the January, 1985 complaint with the EEOC. Claims involving retaliation because an individual exercised his or her Title VII rights are a form of disparate treatment and are governed by McDonnell-Douglas and its progeny and to establish a prima facie case.

In this case, the Court concludes that Hamm has not established the necessary elements for a prima facie case of retaliation. Primarily, she has not satisfied the fourth element, that is, plaintiff has not established that there was a causal connection between the protected activity and the adverse employment action. The mere fact that Superintendent Parsons changed the location of planning from the central office to the individual school four months after plaintiff filed a claim is insufficient to support an inference of retaliatory motive. Moreover, the fact that both Hamm and the other Guidance Counselor were treated in the same manner negates any inference of retaliation. The EEOC complaint was filed in January, 1985 and the seminars were in August, 1985 and May, 1986. Thus, plaintiff's retaliation claim must be denied.

III Conclusion

For the reasons stated in the foregoing opinion, the Court hereby renders the following rulings:

Defendants are liable to plaintiff for a violation of Title VII of the 1964 Civil Rights Act for failing to promote her because she is a female.

Defendants are not liable for a violation of Title VII for retaliating against her because she filed the EEOC charges.

IT IS SO ORDERED

Dated: 8/11/87 Stewart A. Newbatt
United States District Judge



Timothy Collins conducted the study for Appalachia - Science in the Public Interest, which is based near Livingston.

Updated ginseng regulations will set new harvest and selling seasons

Updated ginseng regulations went into effect Aug. 4, 1987, which establish new harvest and selling seasons and change dealer record-keeping requirements.

Beginning Sept. 1, 1988, and every year thereafter, wild ginseng may be dug only between Sept. 1 - rather than Aug. 1 - and Dec. 1 of each year. The selling season will still end March 31 of the following year.

The change in harvest and selling seasons is primarily to satisfy the federal government, according to Agriculture Commis-

sioner David E. Boswell. Because ginseng is an endangered species, the Environmental Protection Agency controls its export from the United States.

These dates also will bring us in line with other states so that now we'll all have the same seasons," Boswell said.

Boswell said the changes in record-keeping procedures were made in order to better document the ginseng harvest.

"An important addition to the regulations is that no registration shall be renewed until the ginseng

employment resulting from new and expanded plants.

Thirty-two Appalachian counties exceeded the state's average population increase of 1.9 percent during the 1980-1986 period; 13 counties grew by more than 4 percent. The greatest increases were concentrated in the Lake Cumberland area.

Fritsch called for meetings across the state to deal with local economic problems. "The state needs to become involved in systematic brainstorming that allows local input into finding solutions," he said. "We would have the equivalent of New England town meetings in every county across the state. These meetings should be structured to encourage participation of people who normally wouldn't be involved -- the poor and unemployed, women and minorities."

Fritsch also recommended that the two candidates for governor, address these issues during the fall campaign and that the winner of the campaign devote more energy toward working with the effected areas.

dealer has met all requirements of record keeping and reporting as required by the Kentucky Department of Agriculture," Boswell said.

The certificates of registration will now expire on April 30 of each year rather than on June 30.



A kangaroo cannot jump if its tail is lifted off the ground. It needs its tail for pushing off.

ABSOLUTE

Auction

of

Mrs. Lavernia Hurley's

7 1/4 Acre Farm & House



and

Personal Property

Saturday, Aug. 22, 1987

1:30 p.m.

Red Hill Section of Rockcastle Co., Ky.

LOCATION: Turn left at the new railroad bridge in Livingston onto highway 1955 and proceed 7 1/2 miles to the sale site. Auction signs are posted.

There is a total of 7 1/4 acres, by boundary, of this property of which approximately 2 acres is cleared and the balance in woods with some marketable timber. Basic tobacco allotment for the farm is 323 lbs. and the effective allotment is 646 lbs.

The property is improved with the above-pictured frame house. The house has living room, kitchen and 2 bedrooms downstairs and 2 bedrooms upstairs. The house is paneled throughout, has storm doors and windows and water is furnished by a well.

It is also improved with the above-pictured 30 x 30 combination barn.

Auctioneer's Note: If you're in the market for a nice small farm in the country, mark your calendar now to attend this absolute auction.

PERSONAL PROPERTY (to be sold includes: 1,000 gallon oil tank; nice kitchen cabinet with four bin; 3 piece glider set; 2 piece living room suite; end tables; 7 piece breakfast set; Shlegler oil stove; cast iron skillets; odd tables; bed; fan; cane chairs; telephone; pots and pans; TV (needs repair); quilts; G.E. refrigerator; odd dishes and much more.

TERMS: 20% down day of sale, balance in 30 days with delivery of deed on real estate and cash or good check day of sale on personal property.

For additional information contact:

Ford Realty & Auction Co.

REALTOR/AUCTIONEER
SAM FORD
DANNY FORD
ROY ADAMS
REALTOR
SONJA BRATCHER

515
REALTOR

Calling the Country

AUCTIONEERS
JERRY HAM
WILLARD BULLOCK

APP. AUCTIONEERS
BOB TODD
Somerset, Ky. Phone 679-2212

Mt. Vernon, Ky. Phone 256-4545
Kentucky Toll Free No. 1-800-435-5454

REAR

for inside

Baptist Church

August 30 - September 5

7:30 Each Evening

Evangelists:

Jay Brown
Director Evangelism
Ky. Baptist Convention

and

Noel Dodson
Pastor, McKee Baptist Church

Nursery Provided

Special Music Each Evening

Everyone Welcome

Come Worship With Us

Pastor: Lester Caldwell

LONDON MOTORS Continues.... War On High Car Prices!

We Want You To Win With Special Discounts That
SAVE YOU MONEY

On Over 100 New Cars
And Trucks Now In Stock



Choose Financing
As Low As **1.9%** Annual Percentage Rate



<p>1987 PLYMOUTH DUSTER</p> <p>List Price \$9,583 London Motors Discount \$900 Chrysler Rebate \$300 You Pay Only</p> <p>\$8,383</p> <p>Red with console, remote mirror, fuel injection. Stock No. C-1203. 7 additional to choose from. You Pay Only</p>	<p>1987 PLYMOUTH RELIANT LE</p> <p>List Price \$11,627 London Motors Discount \$1,200 Chrysler Rebate \$600 You Pay Only</p> <p>\$9,927</p> <p>Blue with bucket seats and recliner, tinted glass, side molding, EFI engine. Stock No. C-1258. 4 to choose from. You Pay Only</p>	<p>1987 CHRYSLER NEW YORKER</p> <p>List Price \$17,066 London Motors Discount \$2,000 Chrysler Rebate \$750 You Pay Only</p> <p>\$14,316</p> <p>50/50 cloth seats with recliner, 2.5 liter fuel-injected engine, temperature control, wire wheel covers, black. Stock No. C-1204. 6 additional vehicles to choose from. You Pay Only</p>	<p>1987 PLYMOUTH CARAVELLE</p> <p>List Price \$11,817 London Motors Discount \$1,200 Chrysler Rebate \$600 You Pay Only</p> <p>\$10,117</p> <p>Cloth seats, deluxe wheel covers. Stock No. C-1213. 4 to choose from. You Pay Only</p>
<p>CHRYSLER LeBARON GTS</p> <p>List Price \$11,524 London Motors Discount \$1,200 Chrysler Rebate \$750 You Pay Only</p> <p>\$9,574</p> <p>Bucket seats with recliner, rear window defroster, deluxe wheel covers. Stock No. C-1124. 5 to choose from. You Pay Only</p>	<p>1987 PLYMOUTH SUNDANCE</p> <p>List Price \$10,152 London Motors Discount \$1,100 Chrysler Rebate \$500 You Pay Only</p> <p>\$9,632</p> <p>60-40 cloth seats, 2.2 liter EFI engine, tinted windows, deluxe wheel covers, blue with body side molding. Stock No. C-1073. 7 to choose from. You Pay Only</p>	<p>1987 CHRYSLER LeBARON</p> <p>List Price \$14,815 London Motors Discount \$2,100 Chrysler Rebate \$800 You Pay Only</p> <p>\$11,965</p> <p>Cardovan, bucket seats with dual recliner, rear window defroster, power mirrors, heavy duty battery, 81 engine, power door locks, like new. Stock No. C-1286.</p>	<p>1987 CHRYSLER FIFTH AVE.</p> <p>List Price \$18,900 London Motors Discount \$2,275 Chrysler Rebate \$1,150 You Pay Only</p> <p>\$15,884</p> <p>Charcoal with many options. Stock No. C-1340. 8 to choose from. You Pay Only</p>
<p>1987 DODGE DAKOTA</p> <p>List Price \$9,845 London Motors Discount \$2,000 Chrysler Rebate \$1,000 You Pay Only</p> <p>\$6,845</p> <p>Fulsize truck with bench seats, 5 speed and overdrive, 2.2 liter engine, charcoal. Stock No. T-1064.</p>	<p>1987 DODGE D-50</p> <p>List Price \$8,900 London Motor Discount \$1,300 Factory Chrysler Rebate \$600 You Pay Only</p> <p>\$6,800</p> <p>Special value package, chrome wheels, paint strip, mirrors, factory trip bumper, sport steering wheel, body side molding. Stock No. T-1299.</p>	<p>1987 DODGE D-150</p> <p>List Price \$11,804 London Motors Discount \$2,000 Chrysler Rebate \$800 You Pay Only</p> <p>\$9,354</p> <p>218 engine with mirrors, step bumper, paint strip. Stock No. T-1013. 16 to choose from. You Pay Only</p>	<p>1987 DODGE W-100 4WD</p> <p>List Price \$13,873 London Motors Discount \$1,400 Chrysler Rebate \$1,400 You Pay Only</p> <p>\$11,023</p> <p>Longbed truck with 318 engine, 1.235 liter. Stock No. T-1223. 8 to choose from. You Pay Only</p>

Save Today On These & Over 60 Quality Used Vehicles

<p>1987 FORD TAURUS 4-door, like new, power steering, power brakes, air conditioning, am/fm stereo, only 9,000 miles. \$192.91 payment* Sale Price \$9,900 1900 Down</p>	<p>1985 CHEVROLET CAMARO IROC Z-28 Tilt steering, cruise control, am/fm stereo, power steering, power brakes, air conditioning, 1-100 power door locks and power windows. Only \$10,990</p>	<p>1987 CHRYSLER LeBARON COUPE Power steering, power brakes, tilt steering, air conditioning, cruise control, like new, 12,000 miles. \$212.22 payment* Sale Price \$15,900 1900 Down</p>	<p>1984 OLDS DELTA 88 ROYALE 4-door, power steering, power brakes, air conditioning, tilt steering, cruise control, power windows, power door locks, like new. \$197.67 payment* Sale Price \$8,450 1700 Down</p>	<p>1987 TEMPO Power steering, power brakes, am/fm stereo, 12,000 miles, like new. \$199.28 payment* Sale Price \$9,900 1900 Down</p>	<p>1987 TEMPO Power steering, power brakes, am/fm stereo, automatic. \$139.64 payment* Sale Price \$6,305 1500 Down</p>
<p>1985 BUICK GRAND NATIONAL Black with every button on it. Only \$10,900</p>	<p>1984 CHEVROLET CELEBRITY 4-door, blue and silver, power steering, power brakes, air conditioning, am/fm stereo. \$149.46 payment* Sale Price \$8,290 1900 Down</p>	<p>1985 FORD LTD 4-door, dark blue, power steering, power brakes, air conditioning, am/fm stereo. \$147.37 payment* Sale Price \$8,580 1900 Down</p>	<p>1985 PLYMOUTH TURISMO 2 PLUS 2 Power steering, power brakes, air conditioning, am roof, am/fm stereo/cassette, automatic. \$160.71 payment*</p>	<p>1985 BUICK CENTURY LIMITED Power steering, power brakes, air conditioning, power door locks, am/fm stereo. \$194.99 payment*</p>	<p>1985 FORD BRONCO II Tilt steering, cruise control, am/fm stereo, air conditioning, am/fm cassette, real sharp. \$178.32 payment* Sale Price \$7,990 1900 Down</p>
<p>1985 JEEP CJ-7 Hardtop, power steering, power brakes, automatic, real sharp. \$166.42 payment* Sale Price \$7,490 1900 Down</p>	<p>1983 FORD RANGER PICKUP Power steering, power brakes, air conditioning, automatic, am/fm stereo, black. \$92.06 payment* Sale Price \$3,950 1900 Down</p>	<p>1984 CHEVROLET BLAZER S-10 Power steering, power brakes, air conditioning, V-6 engine, sport wheels, tilt steering, cruise control. \$202.74 payment* Sale Price \$8,990 11,000 Down</p>	<p>1986 CHEVROLET C-10 PICKUP Custom duster, power steering, power brakes, air conditioning, am/fm stereo, Jeters and seat. \$189.18 payment* Sale Price \$8,990 1900 Down</p>	<p>1986 DODGE D-50 10,000 miles, like brand new. \$111.42 payment* Sale Price \$5,750 1900 Down</p>	<p>1986 TOYOTA PICKUP Automatic, power steering, am/fm, 25,000 miles, like new. \$105.90 payment* Sale Price \$6,490 1900 Down</p>
<p>1985 DODGE D-150 Power steering, power brakes, air conditioning, tilt steering, cruise control, Prospector 3, 14,000 miles. \$189.28 payment* Sale Price \$8,990 1,100 Down</p>	<p>1985 CHEVROLET BLAZER S-10 Red with power steering, power brakes, tilt steering, air conditioning, power door locks, power windows. Tahoe package. \$240.46 payment* Sale Price \$7,900 1900 Down</p>	<p>1984 FORD ESCORT Tan with sport stripe, am/fm, real nice car. \$78.41 payment* Sale Price \$3,990 1900 Down</p>	<p>1986 LINCOLN TOWN CAR Charcoal with all the buttons, real nice car. Only \$15,900</p>	<p>1984 JEEP CJ-7 Blue with power steering, power brakes, automatic, 8-cylinder engine, am/fm stereo, hardtop. \$113.93 payment* Sale Price \$4,990 1900 Down</p>	<p>1984 OLDS CUTLASS SUPREME Slate blue with power steering, power brakes, air conditioning, tilt steering, cruise control, power door locks, sharp. \$177.37 payment* Sale Price \$7,990 11,000 Down</p>
<p>1984 MECURY COUGAR V-8 engine, white with am/fm cassette, air conditioning, tilt steering, cruise control, power windows, power door locks, power steering and brakes. \$164.68 payment* Sale Price \$8,990 1900 Down</p>	<p>1983 CHEVROLET C-20 CUSTOMIZED VAN High roof, beige and brown, rear air conditioning, 1 owner, television, am/fm cassette, tilt steering, power brakes and steering. \$257.23 payment* Sale Price \$10,500 11,000 Down</p>	<p>1984 CHEVROLET S-10 KING CAB Black with camper top, real sharp truck, air conditioning, power steering and brakes. \$139.31 payment* Sale Price \$5,990 1900 Down</p>	<p>1985 PONTIAC GRAND PRIX Power steering, power brakes, air conditioning, tilt steering, cruise control, dark blue. \$121.18 payment* Sale Price \$5,990 1900 Down</p>	<p>1985 DODGE CHARGER 2.2 All the goodies, black with automatic, air conditioning, power steering and brakes. \$130.71 payment* Sale Price \$5,990 1900 Down</p>	<p>1981 FORD ECONOLINE VAN 8 passenger, with air conditioning, power steering, power brakes. \$96.25 payment* Sale Price \$2,690 1100 Down</p>
<p>1981 CHEVROLET MALIBU STATION WAGON Burgundy with power steering, power brakes, am/fm stereo, air conditioning. \$47.94 payment* Sale Price \$1,390 1100 Down</p>	<p>1983 PLYMOUTH HORIZON Gold with power steering, power brakes, 5 speed. \$48.47 payment* Sale Price \$1,990 1100 Down</p>	<p>1982 PLYMOUTH RELIANT STATION WAGON Red with power steering and power brakes. \$32.40 payment* Sale Price \$1,990 1100 Down</p>	<p>1982 PLYMOUTH HORIZON Smokey blue. \$29.19 payment* Sale Price 1990 1100 Down</p>	<p>1984 FORD PINTO Looks good, fun to drive. \$600</p>	<p>1981 MERCURY LYNX Power steering, power brakes, am/fm, automatic. \$40.51 payment* Sale Price \$1,290 1200 Down</p>
<p>SAVE TODAY</p>	<p>1982 PONTIAC J-2000 STATION WAGON Automatic, power steering, power brakes, air conditioning, real nice car. \$54.12 payment* Sale Price \$1,990 1200 Down</p>	<p>*All payments range from 36- to 60-months based on year model. Annual percentage rate financing from 9.95% to 15.0%. Up to 24-month warranty available. Customer must pay Kentucky sales tax and license. Please check with our credit manager for details.</p>	<p>1984 PLYMOUTH HORIZON 4-door, power steering, power brakes, automatic. \$63.18 payment* Sale Price \$2,995 1900 Down</p>	<p>1981 CADILLAC COUPE DeVille Silver, power seats, power steering, power brakes, air conditioning. \$114.84 payment* Sale Price \$3,990 1900 Down</p>	



SALES - PARTS - SERVICE - WARRANTY - LEASING
SEE CUTWORM TINCER, RAY HUNDLEY, BUSTER BUNDY, TERRY FULLZ, MIKE WYATT, ROBBY BAKER

LONDON MOTORS

Chrysler - Plymouth - Dodge

OPEN MON SAT 8 TILL 7

U. S. 25 South at Airport Exit - Ph. 864-4303 or 864-7515 - London, Ky.

App. Inflation falling behind
Page B-1

In sports
Rockets kick-off season
Page A-12

Locally
41 people donate blood
Page B-1

Mount Vernon Signal

Serving Rockcastle County Since 1887

Volume 100 - Number 42

Thursday August 20, 1987

Mount Vernon Kentucky 40456

No net cost contribution for tobacco

Once again tobacco marketing season is just around the corner and with this in mind, Benton Bullock, chairman of the Rockcastle County ASC Committee, reminds producers of the no net tobacco program act of 1982.

The act requires that as a condition for price support eligibility, tobacco producers must agree to contribute to a no net cost tobacco account or fund for each pound of tobacco marketed. Beginning with the 1986 crop year, the price support loan association switched to a no net cost tobacco fund.

Failure to agree to contribute to the fund will result in loss of price support and assessment of a marketing quota penalty for each pound of tobacco marketed. The penalty is 75 percent of the average market price for the prior marketing year (the penalty rate is \$1.17 per pound for the 1987 marketing crop year).

The no net cost tobacco program act of 1982 requires that when a fund is established by the burley associations, producers must agree to contribute to the fund by signing a form known as the "MQ-38," which certifies to contribute to the no net cost

[Cont. to A-14]

Fire victim dies Tuesday

A Rockcastle County man, who was set on fire by his brother July 15 near Sand Springs, died at the University of Kentucky Medical Center Tuesday.

According to a complaint filed by his sister, Wilburn "Hoss" Cox was set on fire by his brother, George Robert Cox, 34, also of Sand Springs by pouring gasoline over his body and igniting it.

In a July 1 preliminary hearing, George Robert Cox was released on his own recognizance and the case was waived to the Rockcastle County Grand Jury.

The grand jury has not listened to the evidence in the case as of yet.

Changes suggested

But tourists can still find lots to do in Fifth District

By: Ray McClure

A report urging tourism initiatives for Renfro Valley/Mt. Vernon, and other areas of the Fifth District, has been released by U.S. Rep. Harold Rogers.

The 93-page report surfaced at a meeting of the Southern Kentucky Tourism Development Association (SKTDA) at Cumberland Falls State Park.

Compiled by the Midwest Research Institute, the report suggests Renfro Valley expand its bandstand shows from weekend only to six or seven days a week similar to the shows that operate through the week at Branson, Mo.

"Renfro Valley already has an established reputation," the report pointed out. "A tourist connection is already established on old U.S. 25 between Berea and Mt. Vernon that passes through Renfro Valley. We observed a number of antique shops that have been developed along this strip. The strip could probably be developed further if Renfro Valley underwent major expansion.

"Mt. Vernon is a mountain

Factory fire...



Mt. Vernon fireman Gary Harrell helps Bob Lawson, Maintenance Director at the Plastics Factory with a breathing apparatus Wednesday morning. No one was injured in the fire.

Explosion at Plastics

A fire in a stamping machine sent firemen to Mt. Vernon Plastics about 10 a.m. Wednesday.

No one was injured, but most of the employees were evacuated from the plant.

The fire began when a hydraulic fluid hose broke on the machine and ignited sending flames toward the ceiling where the automatic sprinkling system was set off pouring water into the plant area. Electric service also was disrupted while the fire was being extinguished.

Firemen had to use masks to enter the building because of the smoke from the fire. Firemen set up fans to take the smoke out.

"We just couldn't see very well for awhile," one fireman said. "You couldn't see your hand before your face," an employee stated. "All I heard was a yell and then saw the flames."

The machine is one of several in the area. None of the other machines were reported damaged. However, light fixtures above the burned machine were destroyed.

The factory is expected to be closed for the remainder of the day, at least, but back in operation by early today. Company officials were not available for questions. There was no damage estimated from the company.

County road to get blacktop

The state will resurface 1.6 miles of Ky. 1912, the Richmond - London Road in Rockcastle County, Gov. Martha Layne Collins has announced.

Collins said effective repairing and upgrading will ensure a strong transportation network for all Kentuckians.

According to state Transportation Secretary C. Leslie Dawson, the project is estimated to cost \$39,518 and is being financed with Rural Secondary funds. Dawson noted that the project is expected to be accomplished by contract and advertised for bids as soon as possible.

The area through which Ky. 1912 runs includes Orlando, Bruner and Climax.

Discrimination suit against school board won by Sue Hamm

By: Richard Anderkin

The Rockcastle County School Board and former Superintendent Charles B. Parsons sexually discriminated against local guidance counselor Sue Hamm when they did not hire her for the principalship at Mt. Vernon Elementary School in 1985.

So wrote Federal Judge Stewart A. Newblatt in a 30 page ruling handed down last Friday.

In his ruling, Judge Newblatt said the school board and Parsons were liable to Mrs. Hamm for a violation of Title VII of the 1964 Civil Rights Act for failing to promote her because she is a female.

But, Newblatt ruled that the board and Parsons were not liable for a violation of Title VII for retaliating against her because she filed charges with the Equal Employment Opportunities Commission.

Title VII lists federal laws governing employer's actions. It simply states that it is unlawful for employers to fail or refuse to hire or discharge any individual, or to discriminate against any individual with respect to his or her compensation, terms, conditions or privileges of employment, because of such individual's race, color, religion, sex or national origin.

Any damages will be left up to Newblatt, if a settlement cannot be reached between the board and Mrs. Hamm.

The ruling came three and one half months after the federal trial was held in Frankfort. Following three strenuous days of testimony,

Judge Newblatt told both parties involved that he would have a ruling for them within three weeks.

The possibility of getting what Hamm's attorney, Jennifer Coffman, said is obvious. "Mrs. Coffman said 'Monday.' "The judge has ruled that the school board and Parsons are liable for their actions against Sue."

The five things that Mrs. Coffman asked Judge Newblatt for during her closing arguments were that hiring policies be set up by the local board, a personnel committee to screen applicants and that jobs be advertised any posted and all qualified persons be notified.

It should be noted that in the last two administrative hirings by the board, the jobs were advertised and interviews conducted.

Mrs. Coffman asked that there be a finding of discrimination for Mrs. Hamm and also a finding of retaliation for her after the suit was filed. The judge ruled for Mrs. Hamm on the discrimination.

[Cont. to A-14]

Break-in

Cold drinks and candy were taken in a break-in last weekend at the VFW Post at Lake Linville.

Entrance was gained by breaking down a rear door with an ax, police reported.

The burglary was discovered when The Post was opened Monday.

Marijuana plants found

If growers haven't already harvested this year's marijuana crop, the state police may do it for them.

As a part of a statewide search for the illegal weed, Kentucky State Police narcotics officers

and local troopers located and destroyed 2,050 plants in the Sand Hill section of Rockcastle County, Monday.

Twelve narcotics officers and troopers on the ground were assisted by the state's recently acquired Bell Long Ranger helicopter.

Officers in the copter located 18 different plots, according to State Police Affairs officer Steve Gilbert Accardio Jr.

Accardio said the chopper will be used year around in drug enforcement.

community where the central business district is still fairly intact," the report continued. "It offers the potential for antique shops, gift shops, and other attractions that relate directly to Renfro Valley. Of course, Berea and the various craft establishments, the college, and other attractions there should be directly tied into development at Renfro Valley and Mt. Vernon.

The report emphasized that a closely related recreational facility to Renfro Valley bandnades would be a country music museum.

"The owners of Renfro Valley acknowledge the availability of both memorabilia and space to fill such a museum," the report states.

"It is interesting that the state of Kentucky funded a study of such a concept for development in the state of Tennessee," the report related. "Kentucky is the origin of bluegrass music and other original country music style, and with other museums and halls of fame located on interstates, Renfro Valley would seem to be an appropriate location for such a museum."

John Lair established and operated a Pioneer museum at Renfro Valley for several years, but sold most of the antiques and other items at public auction.

The report also calls for an expanded tourist center along I-75 near Berea or Renfro Valley to point visitors to attractions in the area.

The report calls the Berea-Mt. Vernon area the focal point of attracting visitors to southern Kentucky because of I-75, and at Mt. Vernon/Renfro Valley, because of Ky. 461 to Lake Cumberland.

The report also urges establishing bed-and-breakfast homes in which travelers could stay in private homes or small inns.

Incidentally, Berea College has indicated it plans to construct a visitor's center, craft demonstration areas and a hotel with conference accommodations on a 100-acre tract adjacent to Berea's new I-75 interchange.

The report also suggests: Middleboro become a major retirement community with a

[Cont. to A-14]



Fifth District Congressman Harold Rogers was joined by Ann Henderson of Renfro Valley at the announcement of the new Southern Kentucky Tourism Development Association. Pictured are, from left: new president Tony Sloan, of Clinton County; Henderson; Re. Rogers; state Tourism Secretary Wendell Combs and Bob Roark, new executive director for the district-wide organization.

Kiddie Korner



Myranda Brooke, 8 months old, daughter of Dale and Shirley McClure, Rt. 4, Mt. Vernon.



Brittany Renee, 6 months, daughter of Danny and Cyndie Offutt of Mt. Vernon



Brian Kent, 3 months, son of Biron and Angie Mullins, Mt. Vernon.



Robert Wayne, 4½ and Amanda Rae, 2 months, children of Sue and Wayne Cameron of Berea.



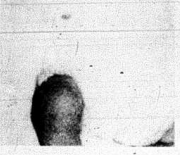
Lindsay, 2 and Tricia, 4, daughters of Edd and Kimberly Fletcher Alcorn of Berea.



Allie, 5 months, daughter of Keith and Paula Mink of Mt. Vernon.



Nathan Andrew, 18 mos., son of Dennis and Peggy Kirby of Rt. 1, Mt. Vernon.



Michael Lewis, 7 months, son of Betty and Dan Frederick of Harold.



Leigh Ann, 4 months, daughter of Gary and Doris Caldwell of Rt. 1, Brodhead.



Nathaniel, 6 and Mindy, 4, children of Lawrence and Phyllis Bullock, Rt. 4, Mt. Vernon.



Brittany Rachelle, 1½, daughter of Terry and Jeryl Cromer.



Quincey, 2 months, son of Mr. and Mrs. Jerry Allen, Rt. 1, Brodhead.



Russell, 13 and Jeremy, 9, children of Mr. and Mrs. Billy Owens of Rt. 1, Brodhead.



A brick wall and a plate glass window are made from the same principle ingredient—silicon.



Come Clog With Us!

WHERE: Family Life Center - Right Shelter
 WHEN: Friday, August 28th
 TIME: 7:30 - 10:30 p.m.
 CALLER: Charlie Burns
 Team Exhibitions
 Door Prizes

Cake Walks
 Pie Walk

EVERYONE IS WELCOME!!
 Admission: Adults \$2.00 Children \$1.00

For more info, contact Liz Phelps at 256-5612.
 BRING A LAWN CHAIR!!

Absolute

Auction

U.S. 25 Midway Between Berea and Mount Vernon



HOUSE & BARN & 1.70 ACRES
 1½ ACRE LOT
 1.03 ACRES w/STORE BUILDING

Located approximately six miles south of Berea and six miles north of Mt. Vernon on U.S. 25.

Surrounded by 1.70 acres in a country atmosphere, this two story house is conveniently situated for comfortable living.

Entire house has been newly decorated. The talents of the present owner have been used in decorating to define and enrich the rooms.

Living room and first floor bedroom have working fireplaces. Living room has built-in bookcases. Two full baths - one with shower. Large modern family kitchen. Two upstairs bedrooms with carpet, closets and attic storage.

A modern new den or sunroom with two walls of wide windows adds to the living environment of this residence. This high sunny room has been decorated with color coordinated carpet, window shades and wallpaper. Ceiling fan adds to comfort. Conveniently located laundry room. Custom cornices and draperies throughout house.

Barn has electricity, 3 stalls, new roof, driveway and large new workshop with concrete floor.

1½ Acre Unimproved Lot Facing U.S. 25



1.03 Acres w/Gift Shop

Log veneered store building as gift shop on U.S. 25. Equipped with glass shelved windows, wide verandah facing highway. Ready to be occupied as a business opportunity.

Open House 1:00 to 5:00 p.m. Daily

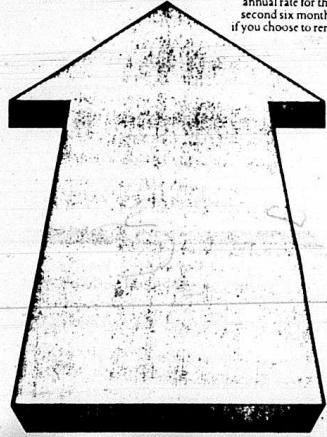
Allen VanWinkle, Owner

MILLER-PATTON AUCTION CO.

Hershel Miller 623-5668 John Patton
 Auctioneers & Real Estate Brokers
 Richmond, Ky.

8.0%

annual rate for the second six months if you choose to renew



6.5%

annual rate for the first six months

Make money now.
 Make more money in six months.
 Citizens Bank's Escalator C.D.

Good things don't last - they only get better at Citizens Bank! Introducing the new Citizens Bank Escalator Certificate of Deposit. You earn a high 6.5%* annual rate for the first six months. Then you can earn a guaranteed 8% for the next six months, unless you decide not to renew. There are absolutely no up front fees like some banks charge, and the minimum is just \$1,000. Drop by our office for details, or call 758-8212. Your future could get a lot brighter!

NO FEES!

*Rates offered are subject to change.
 A substantial interest penalty is required by law for early withdrawal.

Member FDIC

MEMBER FDIC

Open 8:30 to 3 p.m.
 Monday thru Friday

Drive Thru Open till 6 p.m. Fridays

Open 8:30 to 12 p.m. Saturdays



Citizens Bank

"growing for you" Since 1904

Brodhead, Kentucky

Obituaries

Cox

Wilburn "Hoss" Cox, 47, of Sand Springs passed away Tuesday, Aug. 18, 1987 at the University of Kentucky Medical Center in Lexington, after an illness of several weeks.

He was born on May 16, 1940 in Rockcastle County the son of Luther and Clercie Marler Cox of Sand Springs.

Survivors besides his parents are: Five brothers, James, Milton, Boyd, George and Shirley Cox, all of Sand Springs; two sisters, Mrs. Emmie Renner of Mt. Vernon and Mrs. Gertrude Mullins of Sand Springs. Three nephews and one niece also survive. He was preceded in death by two brothers, Andrew and Charlie Cox.

Funeral services for Wilburn "Hoss" Cox will be held Friday, Aug. 21, at 2 p.m. at the Sand Springs Baptist Church with Bro. Eugene Centy officiating. Burial will follow in the Marler Cemetery.

Friends may call at the Sand Springs Baptist Church after 6 p.m. Thursday. Arrangements are by the Cox Funeral Home in Mt. Vernon.

Lawrence

Grover C. Lawrence, 64, of Loveland, Ohio passed away Thursday, Aug. 13, 1987 at the Bethesda North Hospital in Hamilton, Ohio.

He was born on September 28, 1922 in Fayette County the son of the late Grover and Mattie Evans Lawrence. He was a lift truck operator for the Nivision Weiskopf Co.

Survivors are: his wife, Mrs. Roberta DeBorde Lawrence of Loveland, Ohio; two sons, Marvin Lawrence of Fairfield, Ohio and Bob Lawrence of Goshen, Ohio; one daughter, Mrs. Edith Anderson of Goshen, Ohio; two brothers, George Lawrence of Stanford and Donald Lawrence of Nicholasville; four sisters, Mrs. Taryn Lewis and Mrs. Refa Cooch both of Stanford and Mrs. Omega Smith and Mrs. Ruby Lane both of Indianapolis, Indiana. Five grandchildren also survive.

Graveside services were held Monday, Aug. 17, at Piney Grove Cemetery with Bro. Lloyd Masters officiating.

Watson Funeral Home was in charge of arrangements.

Lawless

Marlin Lawless, 75, of Indianapolis, Ind., and formerly of Jamestown, died Aug. 15, 1987 in Indianapolis.

He was born in Jamestown on Aug. 10, 1912, the son of Robert and Tina Grider Lawless. He was a retired carpenter and a veteran of World War I.

He is survived by a son, Jack B. Lawless of Mt. Vernon; two brothers, Deward Lawless of Lyndon and Ernest Lawless of Indianapolis; four sisters, Pearl Holt of Jamestown, Ovalee Glover of Russel Springs, Maggie Landrum of Nashville, Tenn. and Oda Prezemicki of Lawrence, Mich. A granddaughter Angie Lawless of Mt. Vernon.

Services were conducted Aug. 19 in Jamestown. Burial was in the Lawless Cemetery.

Local arrangements were by the Dowell and Martin Funeral Home.

Huff

David Clinton Huff, 44, of Roundstone, died Aug. 13, 1987 at his residence. He was born in Rockcastle County Oct. 15, 1942, the son of the late Willie Henry and Ranie Lambert Huff.

He was a machinist for the Okonite Cable Company in Richmond, a member of the Grace Baptist Church and a veteran of the Vietnam conflict.

He is survived by his wife, Irene Pingleton Huff and a son, Irene Huff, both of Roundstone; three brothers, Jackie Huff of Brodhead, Earl Huff and Raymond Huff both of Dayton, Ohio; three sisters, Mrs. Ruby Dooley of Roundstone, Mrs. Judy Jones of Cincinnati, Ohio and Mrs. Mabel Reed of Covington. He was preceded in death by two brothers.

Services were conducted Aug. 15 at the Grace Baptist Church by Bro. Raymond Offutt. Burial was in the Berea Cemetery. Arrangements were by the Dowell and Martin Funeral Home.

Pallbearers were Robert Combs, Bobby Thacker, Bill Alt, Bill Sweeney, Donald Coffey and Phillip Smith.

Reunions

HURD-BURKE REUNION

The Hurd-Burke Family Reunion will be held September 6th at Lake Linville in Renfro Valley. We only have a few addresses for our out-of-town relatives so help pass the word along.

LEWIS RENNER REUNION

The Lewis Renner Family Reunion will be at the William Whitley House Saturday, Sept. 12 in the new shelter. All relatives and friends are invited. Bring a covered dish.

BARNETT-MORRIS FAMILY PICNIC

The Barnett-Morris family picnic will be held Sunday, August 30, at the Family Life Center, Renfro Valley. We will have shelter No. 2, on top of the hill, on the right. All friends and relatives are cordially invited to come and spend the day with us. Plans are made to eat around 12:30.

Quail

By: Vivian Owens

Mrs. Ambrose Albright and Tooter, Mrs. Jesse Taylor, Miss Cathy Baker and Mrs. Everett Cash visited Mrs. Pattie Baker this past week.

Mr. and Mrs. Cleis Brown and family of London, Robbie Brown of Berea and Mr. and Mrs. Ronnie Brown and family, visited Mrs. Christine Brown over the weekend.

Mr. and Mrs. Robert Hayes and Mrs. Donnie Hayes and Josh spent Saturday night with their daughter and sister, Mrs. Rolan Gabbard and Mr. Gabbard and family at Independence and their other daughter and sister Mrs. Bobby Brock and Mr. Brock and family Sunday Morning.

Mr. and Mrs. Ronnie Payne and family visited her parents Mr. and Mrs. Jesse Taylor Sunday.

Saturday visitors of Mr. and Mrs. Dale Mink of Ohio and Mr. and Mrs. Casper Jones and son.

Mrs. Vivian Owens were Sunday dinner guest of Mrs. Mattie Owens.

Mr. and Mrs. Delmas Bullock and Kristy visited Mr. and Mrs. Junior Wolfe Sunday evening.

Mr. and Mrs. Jesse Taylor visited Mrs. Archie French and Mrs. Cleo Hasty in the Berea Skilled Nursing Facility Saturday evening.

Mrs. Vivian Owens visited Mr.

and Mrs. Rayne Cummins Saturday afternoon. "Money is time." George Gleasing

MARIE'S DISCOUNT

Latest Fashions for Men, Women & Children

Duckhead Overalls for Men and Walker Work Boots

Latest name brand jeans for the whole family and a new shipment of ladies winter sweaters!!

Marie's Discount

Main St. Brodhead

Owners: Estill and Marie Kirby

Open Mon. - Sat. 8 to 5

758-8722

CHRISTIAN APPALACHIAN PROJECT, INC.

PROGRAM MANAGER

FAMILY LIFE CHILD DEVELOPMENT CENTER
Mt. Vernon, Ky.

Reporting to the assistant director from Human Development, the program manager will have primary responsibility for managing the Family-Life Child-Development Center for young children between the ages of 3 and 6. Specific duties will include giving leadership to the staff and directly to the child development program, helping the parents of the children and the children grow in confidence, gaining insight and knowledge, operating the program in compliance with CAP human development policies and procedures and developing program according to approved quarterly goal.

Education and experience requirements are a B.S. in early childhood or elementary education or related field plus two years teaching or program management experience with young children/parents.

Send confidential resume by Aug. 28, 1987 to:

Director of Personnel

Christian Appalachian Project, Inc.

322 Crab Orchard Road
Lancaster, Ky. 40446

EQUAL OPPORTUNITY EMPLOYER

"I won't get a second chance to plan my funeral."



So I chose ForethoughtSM funeral planning

I think planning my own funeral in advance makes good sense. By planning it and paying for it myself my family won't have to make all those decisions when the time comes. Plus, I know it will be the way I want it.

Forethought is funeral planning... before the need arises

I know it's not an easy thing to talk about. But, it's a lot easier to talk about it now. After the fact, everything happens so fast. There's so little time and so many decisions, everyone could really feel uncomfortable. I know my family won't have that problem. They already know how my funeral is going to be and they know what it's going to cost. Because I took the time to plan what I want... ahead of time. I even paid the bill with the Forethought life insurance policy designed and approved specifically for Forethought funeral planning. And, because I'm between 40 and 90 years old, I couldn't be turned down for any reason.

Call or write for details today while you're thinking about it.

Dowell & Martin
Funeral Home

256-2991

Box 810 West Main St. - Mt. Vernon, Kentucky 40456 Phone (606) 256-2991

ESTATE

Auction

of the late

Mr. Oscar Saylor's

18 ACRE FARM

Saturday, Aug. 22, 1987

10:30 a.m.

Brindale Ridge Section of Rockcastle County



LOCATION: From Brodhead, take Kentucky 1505 [the Brindale Ridge Road] approximately 4 miles to auction site. Signs are posted.

The heirs of the late Mr. Oscar Saylor have authorized our firm to sell for the absolute high dollar, this good small Brindale Ridge farm.

The farm will be offered in 2 tracts, reserving the right to combine the tracts to reflect the best returns for the sellers.

Tract No. 1 - contains approximately 11 acres, fronts on the Brindale Ridge Road [Ky. 1505] and is under fence.

Improvements on this tract include the pictured house which has living room, kitchen, 2 bedrooms and bath on the first floor and 2 bedrooms on the second floor. It also has built-in kitchen cabinets, washer/dryer hook-up, storm doors and windows, coal furnace, built-in back porch, chain link fence in front and ample shade trees.

In addition to the house, there is also a 40 x 58 combination barn, 22 x 32 two car garage, plus 4 other outbuildings. There is also 2 ponds on this tract and city water is available. All of this portion of the farm is in grass.

TRACT NO. 2 - is located directly across the road from tract no. 1 and contains 7.3 acres with about 2 or 3 acres in grass and the balance woodland. With over 500 ft. of road frontage, this tract could be divided into smaller parcels. City water is also available.

When the two tracts are combined, there is a total of 18.37 acres with 484 lbs. basic tobacco allotment.

Auctioneer's Note: Brindale Ridge land has a reputation of being some of the best in the state. If you're in the market for a good small productive farm, then look no further. This is an absolute auction, the last bid will buy. There is no minimum, no reserve.

TERMS: 20% down day of sale, balance in 30 days upon delivery of deed.

For additional information, contact:

Ford Realty & Auction Co.

REALTOR/AUCTIONEER
SAM FORD
DANNY FORD
ROY ADAMS
REALTOR
SOCIAL MANAGER
Mt. Vernon, Ky. Phone 256-4545

"Selling the Country"

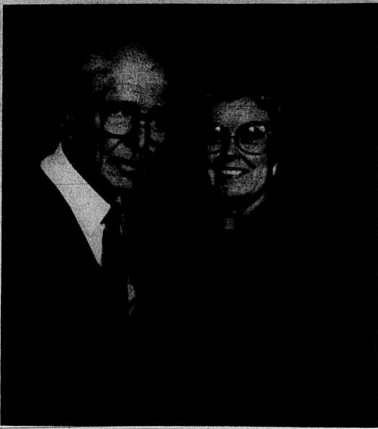
AUCTIONEERS
JERRY HAM
WILLARD BULLOCK
DEE STEWART
APP. AUCTIONEERS



SOMERSKY, Ky. Phone 679-2212

Kentucky Toll Free No. 1-800-435-5454

Social and Women's News



50TH WEDDING ANNIVERSARY—Mr. and Mrs. Walter Doan will be celebrating their 50th wedding anniversary with an Open House at the Rockcastle Co. Library (Senior Citizens Center) on August 30, 1987 from 2 to 4 p.m. All relatives and friends are invited. Mr. and Mrs. Doan request no gifts. Their children and grandchildren request the pleasure of your company at the reception.

Personals

By: Mrs. George Burton

Mrs. Bertha Burdette spent a few days in the Rockcastle County Hospital where she underwent surgery. We hope she is soon feeling better.

Mrs. Lillian Anglin was in Berea last Tuesday to consult her doctor.

Cecil Dailey was released from the Rockcastle County Hospital last Wednesday.

Mr. and Mrs. George Burton were in Somerset last Friday to consult their doctor.

Mr. and Mrs. Stephen Hansel of Elsmere, visited Shirley Burton and his mother, Mrs. Josh King and family at London, during the weekend.

Mr. and Mrs. Samuel Newton of Lexington visited Mr. and Mrs. George Burton Sunday. Mr. and Mrs. Newton and Mrs. Burton attended the homecoming at the New Hope First Church of God.

Russell McFerron visited Mr. and Mrs. Robert Kirby Sunday afternoon.

Harris Burton of Brindle Ridge was in Richmond last week to consult his doctor.

Shirley Burton was in Berea

Saturday afternoon at a Union meeting.

Mr. and Mrs. Bobby Anglin and Mr. and Mrs. Danny Hurley visited Mrs. Lillian Anglin while Sunday afternoon.

Sympathy is extended to Jack Lawless and family due to the death of his father.

Mr. and Mrs. Millard Owens celebrated their 50th Wedding Anniversary recently. We wish them many returns of the day.

Sympathy is extended to the family of David C. Huff and Grover Lawrence in their time of sorrow.

I still miss my neighbor Mrs. Lona Logsdon very much, who passed away June 20th.

Mrs. Diane McGuire of Winchester attended the funeral of her aunt Mrs. Clarice Dillingham and visited her mother Elaine Davidson.

Mrs. Yvonne Griffin of Louisville attended the funeral of Mrs. Clarice Dillingham and spent the night with Mr. and Mrs. Owen Dillingham.

Anyone that has any news items can call me at 256-2452.

Our Classifieds get results!! Call 256-2244



SURPRISE 80TH—Mae Sandusky, had as a big surprise on her 80th birthday, a very enjoyable gathering, by her family and friends, at Red Top Restaurant Aug. 5th. She received lots of lovely cards and gifts. So, stay well and have lots more. We all love you.

Your Family and Friends

Call news items to 256-2244 by noon Tuesday

Rockcastle County Literacy Program



256-2388

Tutors Needed
Students
Needed



FORTHCOMING MARRIAGE—Mr. and Mrs. Victor Bond of Rt. 1, Orlando, would like to announce the forthcoming marriage of their daughter, Michele Renee, to Larry Strunk of Mt. Vernon. Larry is the son of Raymond Strunk of Mt. Vernon and Geraldine Strunk of Dayton, Ohio. The wedding will take place Aug. 29 at 6 p.m. at the home of the bride's parents. All friends and relatives of the couple are welcome to attend. There will be a reception immediately following the ceremony.



FALL SCHEDULE OF EXTENSION HOME ECONOMICS CLASSES
By: Cheryl Witt
County Extension Agent
for Home Economics

Creative Snacking - Foods Demonstration - Oct. 1 - 10 a.m. & 7 p.m.

Rag Baskets Workshop - Instructor: Carolyn Chasteen - Oct. 12 - 10 a.m. & 6:30 p.m. - Cost: \$4.50

Folk Art Painting Workshop

Instructor: Darlene L. Martin - Oct. 19 - 10 a.m. & 6:30 p.m. - Cost: \$10 (all materials supplied)
Update on Tax Laws in Estate Planning - Instructor: County Attorney & C.P.A. - Oct. 26 - 7 p.m.

Celebrate the Holidays with Special Foods - Demonstration by Cheryl Witt - Nov. 7 - 10 a.m. & 7 p.m.

Low Cost Holiday Decorations Workshop - Instructor: Cheryl Witt - Nov. 10 - 10 a.m. & 7 p.m.
Beginning Quilting Workshop - Instructor: Cheryl Witt - Nov. 2 - 16 - 30th - 10 a.m. & 6:30 p.m.

All classes are open to the

The Mt. Vernon Signal Thursday, August 20, 1987 P.A.5

public and will be held in the Agricultural Service Center Meeting room. In some cases, the class sizes are limited so you must register by calling the Extension Office at 256-2403. If less than five register, the class will be held one day or cancelled.

More classes scheduled for winter and spring are:

January 12 - Heritage Crafts: Stars & Stripes (piecing with striped fabric)

January 26 - Heritage Crafts: Gathering Basket

February 8 - Low Calorie Microwave Cooking

February 22 - Light & Easy Salads

February 28 - Food Choices to Lower Cancer Risks

February 29 - Using Herbs & Spices

March - Exercise for Good Health (4 weeks)

(Cont. to A6)

Happy 25th Anniversary



Happy Birthdays!
S & B
Love R-S-J-L

NEW LARGE french fries .89

No place else feels like

Ruthers RESTAURANT

U.S. 25 North Mt. Vernon

REAL ESTATE FOR SALE

2 Acres in City Limits of Mt. Vernon - City water, blacktop road. Ideal for business or residential. U.S. 25 near Super Test Station. \$15,000/acre.

Brick - 3 Bdrms. - 1 1/2 Baths, Heat Pump, Central Air, 1 Car Garage: Living room, dining kitchen w/brick cabinets, large utility room adjoining kitchen, ample garden space, paved drive, city utilities. Library area. \$39,900.

Nice Building Lot with city water and sewer. Located on paved, quiet dead end street. Library area. \$4,500.

Mobile Home - One Acre 1 1/2 Bath: Garage: Home has 3 bdrms, 2 baths, living room wireplace, kitchen w/appliances, intercom system and more. \$25,900.

5 Acres, 3 Bedroom Brick Home: 2 car attached garage w/opener, 1 1/2 baths, living room, den, dining kitchen w/cabinets, microwave, refrigerator, patio walks, landscaped, paved drive, city water. U.S. 25 South of Mt. Vernon. \$49,900.

Farm - 115 Acres, 2400 lb. tobacco base, low down payment, owner financing: Farm is improved w/2 barns, cellar and outbuildings, 2 creeks, 3 springs. Will consider selling in two tracts. \$48,000.

4 Bdrm. Home - 100 Acre Farm w/38x70 Barn. Also has 1,022 lb. tobacco base, 1 car detached garage, workshop, blacksmith shop, cellar, orchard, 2 ponds. House also has nice kitchen w/brick cabinets, dining area, living room w/wood stove, also fuel oil furnace, bath, level yard. Owner will consider trading to a smaller place. \$65,000.

REDUCED FOR QUICK SALE: 3 Bdrm. Brick, 1 1/2 Baths, 1 Car Garage, 1 2 1/2 Acres: Large foyer, living rm., den., large dining and kitchen with snack bar, range and refrig., w/d hook-up, patio, front porch, blacktop drive. Exceptionally nice. 3 miles from Mt. Vernon on Hwy. 461. \$46,500.

29 Acre Farm w/Barn, 830 lb. Tobacco Base: The property also has a good well and septic system and nice building sites. Also is ideal for mobile home. Near Rockcastle Speedway. \$12,500.

For Sale or Lease - Commercial Bldg., 8,040 sq. ft., 1 1/2 Acre Paved Lot: Central heat and air cond. Ideal for car dealership, mobile home sales, etc. Formerly Hammond's Market on Hwy. 461.

80 Acres, more or less, with frontage on blacktop road. The land has coal and timber. 2 ponds, has been surveyed, has nice building sites offering privacy and easy accessibility. Red Hill area. \$22,500.

FHA APPROVED 3 Bedroom Brick w/basement and 1 car garage: Also 1 car detached garage, carport and deck. Dining room/kitchen, bath, garden, a/c, city utilities, 2 driveways, walking distance to Livingston Elementary School. \$22,500.

6 Room House, Bath, Large Lot with front and back porches, large storage building, fuel oil furnace, flue for stove, garden. West Main St. - Mt. Vernon. All for just \$21,500.

Furnished 2 Bdrm. Home - Small Down Payment - Owner Financing: Has new kitchen w/brick cabinets, range, refrig., cherry drop leaf table, bath, utility rm. with w/d hook up, fuel oil stove, nice carpet, A/C, porch, storage bldg., 3 acres. Lamero \$24,900.

Commercial Property - Approx. 2 Acres - Prime Location - New Hwy. 461 By Pass: Well established business, extra vacant lot, also large lot with new 3 bedroom home, 2 baths, 2 car garage, living room, dining kitchen with all appliances built in, breezeway, unfinished basement. Will sell separately or as one lot. Ample space to build and expand.

Nice Lake Lot: Improved with septic system, well, also city water available. Perfect for mobile home or camper. Near boat dock at Lake Lovell. \$55,000.

EVELENE RAINES PROPERTIES

West Main St. Mt. Vernon

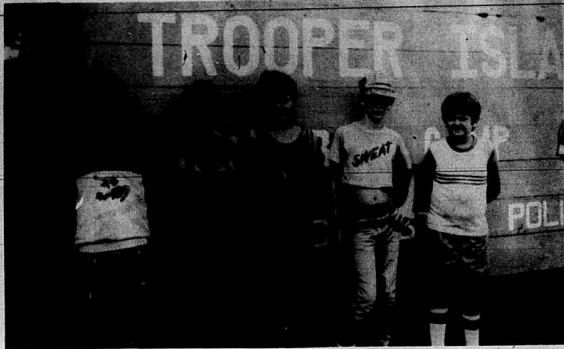


Broker-Auctioneer
256-5811

EVELENE RAINES, PREA
Certified Appraiser
256-5811

BY PASS
AUTO PARTS
PH. 256-2666

NEW OWNERS: Charles/Gary Reppert
[Formerly Payne's Auto Parts - New and Used Auto Parts]



AT TROOPER ISLAND- These five area boys spent the week of Aug. 17 at Trooper Island. They were, from left: Michael Collinsworth, 11, Renfro Valley; Luther Vernon Lovell, 11, Eric Lee Hayes, 11 and Jeffrey Shannon Hayes, 12, all of Mt. Vernon and Jonathan Scott Butler, 10, Brodhead.

Andy McKinney to head up RCHS band for 1987-88

Andy McKinney, son of Mr. and Mrs. Mark McKinney of Brodhead has been chosen to be drum major and field commander of the Rockcastle County High School Band for 1987-88.

To prepare himself for this position, Andy attended an intensive training camp held at the University of Kentucky in June.

The field commander's duties consist of conducting

and leading the band during field maneuvers at ballgames and parades. He was also training in concert conducting and will help the band director, Bob Pybas, in any capacity Mr. Pybas sees fit to assign him.

Andy has been a band student of Mr. Pybas for seven years and will play the trombone when not performing as drum major or field commander.

The band hopes to perform at many of our ballgames this year.



4TH BIRTHDAY- John McClure, son of Sheila Rowe and Carlouise McClure, celebrated his 4th birthday June 28th at the home of his grandmother, Mrs. Eva Sparks.

FIRST BIRTHDAY- Nikilona Shay Brock, daughter of Doug and Debbie Brock, celebrated her first birthday Fri., July 3 at her home with family and friends for a clown birthday party. She received many nice gifts.



2ND BIRTHDAY- Cody Lee Cromer will celebrate his 2nd birthday Aug. 23. He is the son of Bernette Cromer of Berea.

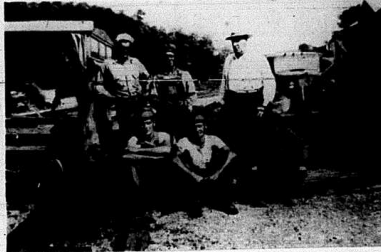
"Home Economics"

- March 29 - Energy Saving Window Treatments
- April 4 - Fitting Pans for Women
- April 11 - Time Saving Sewing Tips
- April 18 - Sewing with Sergers
- April 29 - Have Bag Will Travel (packing and planning for trips)
- June 2 - Emergencies & First Aid

FREE INFORMATION FOR THE ASKING!!

Quarterly newsletters are available from your Extension Home Economics Office. They include "Food Focus" with up-recipes, and a microwave page; and "Clothing & Craft News" with consumer tips, sewing ideas for clothing and home, and craft ideas for selling or gift giving.

Call the Extension Office at 256-2403 to be put on the mailing list.



DO YOU REMEMBER? The above photo is of the L&N track gang at Orlando in 1950. They were, front row, from left: Shirley Ball, Sam Sturgill and Robert Leiger. Back row: Louis Halcumb, John Halcumb and Harrison Clark.

Money Matters

A Series Of Informative "Plain Talk" Thoughts Regarding Your Money Matters

Auto Loans Borrow, Then Buy

First you get an idea of how much you would like to finance on a car purchase. Then you come in and see us and line up your money. Now you're ready to "kick tires," "kick salesmen," or do whatever you have to do in order to get the best deal on a car. It's much easier to bargain when financing is already handled.

Some of the car companies offer low interest financing in order to move their cars but when you stop to think about it — if they are that anxious to sell the cars by lowering their interest rates, they are probably just as anxious to make a deal with a cash buyer.

See us about an auto loan.

We Think Money Matters!



THE BANK OF MT. VERNON
P.O. Box 157 MT. VERNON, KY. 40456 800-256-5141

MEMBER FDIC

COMMONWEALTH OF KENTUCKY 28TH JUDICIAL CIRCUIT ROCKCASTLE CIRCUIT COURT

Civil Action File No. 87-CI-089

CITIZENS BANK

PLAINTIFF

VS: NOTICE OF SALE

**CARL E. RAMSEY and wife,
MARY A. RAMSEY** DEFENDANTS

Pursuant to judgment and order of sale entered in this action on June 23, 1987, and amended default judgment entered on June 26, 1987, and for the purpose of enforcement of a mortgage lien in the amount of \$18,000.00, plus interest from October 15, 1985, at the rate of 11.50% and attorney's fees, I will offer for sale at public auction the hereinafter described real property in Mt. Vernon, Rockcastle County, Kentucky.

**AT THE COURTHOUSE DOOR
on FRIDAY, SEPTEMBER 4, 1987,
BEGINNING AT THE HOUR OF 2:00 P.M.**

said property being more particularly bounded and described as follows:

Located in the C.L. "Lafe" Owens Subdivision to the town of Mount Vernon, Kentucky, and being LOTS NO. 197 and 198 as recorded on the plat of said subdivision of record in Plat Book 1, page 1, office of the clerk of the Rockcastle County Court, Mt. Vernon, Kentucky. Said lots front on Paul Street and reference is made to the aforesaid plat for a more complete description of said lots.

Being property which Carl E. Ramsey and Mary A. Ramsey obtained by deed dated May 25, 1983, from Wise Renner, et ux, of record in Deed Book 120, page 113, in the office of the clerk of the Rockcastle County Court, Mt. Vernon, Kentucky.

THE PROPERTY WILL BE SOLD UPON THE FOLLOWING TERMS AND CONDITIONS:

1. The property shall be sold to the highest bidder(s) for cash for a deposit of twenty-five (25%) per cent of the purchase price in cash at the time of sale and balance payable in sixty (60) days. The purchaser shall be required to execute bond with surety thereon, to be approved by the Master Commissioner, for the balance of the purchase price. The purchaser shall bear interest at the rate of twelve percent (12%) per annum from date until paid, and to remain and be a lien on said property until fully paid.
 2. The purchaser(s) shall have the privilege of paying all of the purchase price in cash or paying the bond before maturity by paying the principal amount thereof together with all interest accrued thereon to the date of said payment.
 3. Purchaser(s) shall be responsible for the 1987 property taxes.
 4. Purchaser(s) shall have possession of the premises upon complying with the terms of sale and risk of loss of improvements shall thereafter be on the purchaser(s).
- This sale shall be made subject to all easements, set back lines, restrictions or covenants of record or otherwise.

ROBERT E. ROBINSON
Master Commissioner
Rockcastle Circuit Court

43x3

COMMONWEALTH OF KENTUCKY 28TH JUDICIAL CIRCUIT ROCKCASTLE CIRCUIT COURT

Civil Action File No. 87-CI-005

THE BANK OF MT. VERNON

PLAINTIFF

VS: NOTICE OF SALE

**FLETCHER ROWE and
BENTLEY ROWE** DEFENDANTS

Pursuant to judgment and order of sale entered in this action on July 24, 1987, and for the purpose of enforcing a mortgage lien in the amount of \$3,016.17, attorney's fees, costs and interest, I will offer at public auction the hereinafter described real property, in Mt. Vernon, Rockcastle County, Kentucky.

**AT THE COURTHOUSE DOOR
on FRIDAY, SEPTEMBER 4, 1987,
BEGINNING AT THE HOUR OF 2:30 P.M.**

said property being more particularly bounded and described as follows:

Beginning at a steel pin on south side of Pike Street, 73.2 feet, west of Elmer Riddle corner (also corner of another lot owned by Sayers); thence with said Pike Street, N 60 degrees West, 64.2 feet to a fence corner; thence with fence, South 35 degrees West, 246 feet to fence corner (City of Brodhead corner); thence with City of Brodhead property, South 64 3/4 degrees East 65 feet to a steel pin (corner of another lot owned by Sayers); thence with Sayers line, North 34 1/2 degrees East 251.2 feet to the point of beginning, containing 0.36 acres, more or less.

Being property Fletcher Rowe and Bentley Rowe obtained by the intestate death of Cora M. Rowe, and by the laws of the Commonwealth of Kentucky as pertains to descent and distribution, Affidavit of Descent being of record in the office of the clerk of the Rockcastle County Court in Deed Book 119, page 181. Cora M. Rowe obtained title to said real property by deed dated July 17, 1979, executed by S.C. Sayers, et ux, and of record in the office of the Clerk of the Rockcastle County Court in Deed Book 110, pages 590-591.

THE PROPERTY WILL BE SOLD UPON THE FOLLOWING TERMS AND CONDITIONS

1. The property shall be sold to the highest bidder(s) for cash or for a deposit of twenty-five (25%) per cent of the purchase price in cash at the time of sale and balance payable in sixty (60) days. The purchaser shall be required to execute bond with surety thereon, to be approved by the Master Commissioner, for the balance of the purchase price. The bond shall bear interest at the rate of twelve (12%) per cent per annum from date until paid, and to remain and be a lien on said property until fully paid.
2. The purchaser(s) shall have the privilege of paying all of the purchase price in cash or paying the bond before maturity by paying the principal amount thereof, together with all interest accrued thereon to the date of said payment.
3. Purchaser(s) shall be responsible for the 1987 property taxes.
4. Purchaser(s) shall have possession of the premises upon complying with the terms of sale and risk of loss of improvements shall thereafter be on the purchaser(s).
5. This sale shall be made subject to all easements, set back lines, restrictions or covenants of record or otherwise.

ROBERT E. ROBINSON
Master Commissioner
Rockcastle Circuit Court

43x3



Commercial Property

Two Bedroom Apartments Located at Waynesburg in Lincoln Co. 1 year lease. Starting at \$200 per month. P4 Commercial Building - Main Street in Brodhead. Has approximately 4,500 sq. ft., city water, new roof, being utilized as furniture store. \$21,500. K4 Going Business - Florist. Walk-out deal including all inventory and equipment and van. A real opportunity for someone wanting to work and be their own boss. Only \$21,900. W2 A Going Grocery Business - Crab Orchard, Ky. Inventory, equipment, walk-out deal! Long established business - Be Your Own Boss! Priced at only \$31,900. T16 BE YOUR OWN BOSS - Own Your Own Business - Excellent new block building including all equipment and inventory to operate this dandy dairy freeze near Brodhead. Priced to sell at \$44,900. V9 Boone Trail Diner Restaurant Located just south of Mt. Vernon, great potential for the individual who likes to work and be his/her own boss. All equipment and fixtures. Owner in ill health. Priced at \$49,900. V26 THIRIVING BUSINESS - with living quarters. Living quarters consists of 2 bedrooms, bath, utility room, kitchen, dining room and living room. Partial basement. There is approx. 2 1/2 acres of land with mobile home hook-up. Approx. 1500 ft. of retail area with stock and fixtures. Priced at \$52,000. W19 COMMERCIAL BUILDING - 6,000 sq. ft. Located at the junction of highway 70 and 150. Has been a grocery but suitable for most any type retail business. Excellent location. Priced at only \$74,900. All grocery equipment available at additional price. C5 OWN YOUR OWN BUSINESS - Crab Orchard. Laundromat complete with 30x60 building. 24 GE washers, 12 Cissell dryers, worktables, storage room, city water and sewer. Almost new. Well kept. Great opportunity for an individual. Reduced to \$75,000. V2 ESTABLISHED BUSINESS - 1 mile out of Mt. Vernon - 40 x 80 garage building with front end alignment - repair shop, computer wheel balancer - rotor and drum lathes - air compressor - floor hoist - jacks - battery charger - stands - work benches and office furniture. \$92,000. L10 BRODHEAD FEED MILL - Main Street. Property includes mill building, store building, warehouse with crib and equipment. Call for more information. W3 COMMERCIAL BUILDING AND LOT - South of Mt. Vernon on US 25. Building and business. Walk-out deal. Rockcastle Roller Mill. Although the building is being utilized as a skating rink, it could be adapted to most any type business. All records available to qualified prospects. \$185,000. M15 Commercial Building - Williams Street - Mt. Vernon. Store building with 22 x 24 office space and a warehouse. Priced at \$65,000. W4 FARMS & ACREAGE 15 ACRES - near Quail on 618, city water, all tileable, blacktop road frontage, approx. 500 lb. tobacco base. Approx. 300 ft. of frontage. Dandy small farm! Build to suit yourself. Priced at \$21,500. W14 91 ACRES - Just off Hwy. 25 at Pine Hill. 25 acres pasture and balance wooded. Improved with a small barn. Approx. 800 lb. tobacco base. Priced at \$26,500. C1 200 ACRES - Located between Brodhead and Crab Orchard. Approx. 100 acres is pasture land and 100 acres hill land. REDUCED TO \$26,900. 58 186 ACRES - Located on East Fork Skaggs Creek. Ideal investment or recreation. Some timber - only \$150 per acre. C5 190 ACRES - Chestnut Ridge/Sand Hill section of Rockcastle County. Undeveloped land. \$28,500. F4 60 ACRES - Green Pond Ridge. 450 lb. tobacco, pond, orchard, young timber, some cleared tillable land. All for \$11,300. C14 120 ACRES - near Blue Springs. Lots of young timber, 2 springs, excellent investment or recreational land. Perfect hide-away. \$12,900. C13

146 ACRES - more or less. Copper Creek section of Rockcastle County. Approx. 15 acres cleared and the balance wooded timber. Priced at \$29,900. V7 7 ACRES in Brodhead - with 156y farm house. Home has 3 1/2 bms, living room, dining room, kitchen, bath, washer/dryer, city water and sewer, has 2 floors, storm windows, plus 2 outbuildings. Priced at only \$49,900. W1 4 ACRES - Between Brodhead and Crab Orchard - Brick home with 3 bedrooms, living room, kitchen and dining room combination, bath, full basement and electric heat. Also has barn, storage buildings, city water, blacktop drive and good fences. Only \$32,900. Additional land can be purchased with this one. V19 10 ACRE FARM - near town - 1 mile out of Mt. Vernon. Bedford stone home, 4 bedrooms, living room, kitchen, bath, washer/dryer hook-up, and insulation. Also barn and 700 lb. tobacco. Only \$24,900. V9 Dandy Small Farm - 1 1/2 miles off Hwy. 150. 25 acres, improved with 4 bedrooms, 2 baths, brick home, 40 x 36 barn, 16 x 20 shop building, other misc. buildings. Approx. 15 acres cleared and balance in woods. 200 lb. tobacco allotment. REDUCED TO \$63,900. T11 Waynesburg - 3 bedroom brick home on a 42 acre farm. Home also has bath, utility room with washer/dryer hook-up, dining room, kitchen combination with appliances and a large living room. Farm has approx. 22 acres tillable with milk parlor, barn, storage building and 1 1/2 lb. tobacco allotment. Priced at \$79,900. W9 413 Acres - Old Brodhead/Mt. Vernon Road. Includes house, barn, new equipment building, grain bins and silos. \$400,000. F5 House and 6 Acres - Located near Livingston on Hwy. 195. Home has 3 bedrooms, living room, kitchen, 3 1/2 baths, utility room and 1 1/2 baths. Also has storm doors and windows. Carpet and washer/dryer hook-up and carpet. Also dandy 2 car garage. Priced at \$43,900. C8

Improved with a 4 room unfinished brick house, an 81 model 14 x 70 mobile home and a barn. Also has fruit trees and pond. Priced at \$44,900. V10 7 ACRES in Brodhead - with 156y farm house. Home has 3 1/2 bms, living room, dining room, kitchen, bath, washer/dryer, city water and sewer, has 2 floors, storm windows, plus 2 outbuildings. Priced at only \$49,900. W1 4 ACRES - Between Brodhead and Crab Orchard - Brick home with 3 bedrooms, living room, kitchen and dining room combination, bath, full basement and electric heat. Also has barn, storage buildings, city water, blacktop drive and good fences. Only \$32,900. Additional land can be purchased with this one. V19 10 ACRE FARM - near town - 1 mile out of Mt. Vernon. Bedford stone home, 4 bedrooms, living room, kitchen, bath, washer/dryer hook-up, and insulation. Also barn and 700 lb. tobacco. Only \$24,900. V9 Dandy Small Farm - 1 1/2 miles off Hwy. 150. 25 acres, improved with 4 bedrooms, 2 baths, brick home, 40 x 36 barn, 16 x 20 shop building, other misc. buildings. Approx. 15 acres cleared and balance in woods. 200 lb. tobacco allotment. REDUCED TO \$63,900. T11 Waynesburg - 3 bedroom brick home on a 42 acre farm. Home also has bath, utility room with washer/dryer hook-up, dining room, kitchen combination with appliances and a large living room. Farm has approx. 22 acres tillable with milk parlor, barn, storage building and 1 1/2 lb. tobacco allotment. Priced at \$79,900. W9 413 Acres - Old Brodhead/Mt. Vernon Road. Includes house, barn, new equipment building, grain bins and silos. \$400,000. F5 House and 6 Acres - Located near Livingston on Hwy. 195. Home has 3 bedrooms, living room, kitchen, 3 1/2 baths, utility room and 1 1/2 baths. Also has storm doors and windows. Carpet and washer/dryer hook-up and carpet. Also dandy 2 car garage. Priced at \$43,900. C8

Happy Acres Subdivision - Brick house has 3 bedrooms, dining room, kitchen, utility room and 2 1/2 baths. Also 1/2 basement. Home is well decorated inside and has beautiful landscaping. Priced at \$84,900. M17 REDUCED!!! Beautiful 4 Bedroom Brick and 3 Acres - Home also has 3 baths, large family room with fireplace, 2 car garage and full basement. Also a pool. Home only 6 years old. 1 1/4 miles from city limits of London. \$110,000. P17 Quality Brick Home - Near Library in Mt. Vernon. Home has 3 bedrooms, kitchen/dining room combination, living room, family room, utility room and bath. Full basement with 5 rooms. Large patio, washer/dryer hook-up and hardwood floors. Large lot with garden space. Just built last August at only \$54,900. T3 Excellent Location - Williams Street - Mt. Vernon. 1 1/2 story solid brick house. Home has living room, kitchen, 2 bedrooms, bath and utility room on the first floor and 2 bedrooms and bath on the second floor plus a full basement. Block garage building, several shade trees - both fuel oil and wood furnace and fireplace. \$59,900. P12 Home and 5 1/2 Acres and Barn - Approx. 3 miles east of Mt. Vernon. Beautiful 2,268 sq. ft. house with 3 bedrooms, 2 baths, family room, den, utility room, living room, large kitchen, cathedral ceilings, central vac, heat pump, appliances, oak cabinets, granite fixtures and 2 car garage. All finished basement. All for \$64,900. T9 CHESTNUT HILLS - Lovely traditional brick home with family room, exercise room, bath and utility room on the first floor and living room, dining room, kitchen, 3 bedrooms and 2 baths on the ground level. Wooded undeveloped lot - 2 car garage with apartment - 20 x 40 pool - gazebo with grill. A fun place to live - \$84,900. T7 Contemporary Tri-Level Western Cedar Home - Fantastic Wooded Lot over 2,500 sq-ft. Home has 3 or 4 bedrooms, utility room, hobby room,

has 3 bedrooms - kitchen and bath, wall to wall carpet, utility room hook-up. **SOLD** Homes Under \$30,000 Rustle 2 Room Cabin - 4 Acres. Cabin has 2 bedrooms, city water and fenced in swimming pool. Priced at \$24,500. W12 Live on the Lake - House has 2 bedrooms, living room, kitchen, bath and total electric. Situated on a 175 x 125 lot. Owner Financing Available. Priced at \$24,900. C3 House and Lot Orlando - House has aluminum siding, 3 bedrooms, living room, kitchen, dining room, utility room, bath and washer/dryer hook-up. Large garden, fruit trees and storage building. Priced at \$25,900. C4 FRAME HOUSE - Located on Lawrence Lane in Mt. Vernon. Home has 2 bedrooms, living room, kitchen, bath and utility room. Also has wall to wall carpet, city water and gas heat. Situated on a 16 x 175 lot. Priced at \$27,500. C2 Nearly 1 Acre in Mt. Vernon - 3 bedroom brick has family room, dining room, kitchen with built-in cabinets, bath, carpet and hardwood floors and oil furnace. Also has workshop and orchard. Owner moving to the country. All for only \$28,900. V20 1971 12 x 70 Mobile Home - Home has 2 bedrooms, living room, kitchen and bath. Priced at \$4,900. C10 Like New 1984 14 x 50 Mobile Home with 8 x 50 porch, electric meter box and double doors. Home has living room, kitchen, 2 bedrooms, bath and utility room. Must be moved! It won't last long on nearby one acre lot. Priced at \$10,500. M11 1974 - 12x65 Mobile Home located in Orlando. Has tot electric, living room, kitchen, 2 bedrooms and bath. Has wood burning stove. Is situated on nearly one acre of land. Priced at \$10,500. M11 House and 7 Acres - 4 miles south of Mt. Vernon near Sand Springs. Home has 2 bedrooms, living room, kitchen and bath. The property also has 600 acres, 600 lb. plus tobacco. Priced reasonably at \$12,900. You better believe it!

REDCED!!! West Main Street - 1 1/2 story, corner lot, 3 bedrooms, living room, dining room, kitchen, bath, basement, washer/dryer hook-up, hardwood floors and level lot. Great opportunity. REDUCED TO \$43,900. V16 Bedford Stone Home and 5 Acres - Disputanta section. Home has 2 bedrooms, living room, dining room, kitchen, utility room and 1 1/2 baths. Also has storm doors and windows. Excellent location - West Main St., Mt. Vernon. This fine home offers a large living room, formal dining room, kitchen, utility room, bath and utility room on the first floor with 2 bedrooms upstairs. 6 miles from Herea. Additional acreage available at extra cost. Priced at \$49,000. V16 Excellent Location - West Main St., Mt. Vernon. This fine home offers a large living room, formal dining room, kitchen, utility room, bath and utility room on the first floor and 2 bedrooms and bath on the second floor. It also has fuel oil furnace, storm doors and windows, built-in cabinets, aluminum siding and a 2 car detached garage. \$49,900. R20 Tri-Level Home - South of Mt. Vernon. Home has 4 bedrooms, kitchen/dining room combination, living room, family room and 1 1/2 baths. Also has thermopane windows and wall to wall carpet. 1 acre wooded lot. Priced at \$43,900. C5 MARETURG - Brick Home and 2 Acres - Home has 3 bedrooms, living room, kitchen and 1 1/2 baths. It also has storm doors and windows, electric heat and wall to wall carpet and washer/dryer hook-up and carpet. Also dandy 2 car garage. Priced at \$43,900. C8

McGuire Subdivision - Brick home has 3 bedrooms, living room, kitchen, bath and full basement. Also has wall to wall carpet, washer/dryer hook-up, electric heat and garage in basement. Priced at \$32,900. V17 Orlando - Split Foyer Brick Home. Home has family room, utility room and 1 bedroom on the first floor and 2 bedrooms, living room, kitchen and bath on the second floor. Also has electric heat, wall to wall carpet and washer/dryer hook-up. Priced at \$33,900. T11 Brick House - Split Foyer - Paul Street, Mt. Vernon. Home has 2 bedrooms, living room, kitchen, utility room and 1 1/2 baths. Also has wall to wall carpet and sewer, gas, electric heat and garage. Priced at \$35,900. F19 3 Bedroom Frame House - Near Bear Lick. Home also has family room, kitchen/dining room combination, living room, utility room, bath, washer/dryer hook-up and city water. The property also has a detached 2 car garage. All situated on 1 1/4 acres. REDUCED!!! \$39,500. P16 JOYCE STREET - Mt. Vernon. 3 Bedroom Brick on large lot. Home also has living room, kitchen, bath, utility room, garage, washer/dryer hook-up, storm doors and windows. Priced at only \$35,900. C12 BRICK HOUSE - Mt. Vernon. Home has 3 bedrooms, living room, kitchen and bath. Also has wall to wall carpet, electric heat and carpet. BRICK HOUSE - Highway 70. House

Doublewide. To Be Moved! 1983 Clayton doublewide home, 24x40, 3 bedrooms, 2 baths, kitchen/dining room combination, living room, utility room, washer/dryer hook-up, window air conditioner and wall to wall carpet. It won't last long at \$15,900. W15 NEAR HOSPITAL? House and large lot measuring approx. 90x165. Home has 3 bedrooms, kitchen, dining room, family room, bath and utility room. Also has storm doors and windows, city water, washer/dryer hook-up and fireplace. Perciful Street. \$22,000. M17 LOTS 2 LOTS - Located in the Cedar Heights Subdivision just out of Mt. Vernon. \$2,850 each. R12 BUILDING LOTS - Country Club Estates Subdivision. City water, near Mt. Vernon. Only \$3,000 to \$3,500. B9 BUILDING LOT - Highway 70 - 610 of an acre, city water, 150 feet of road frontage. \$3,000. M10 BUILDING LOT - Overlooking Lake Linville. City water, improved with a storage building. \$4,500. H11 EVERGREEN ESTATES - Spacious building lots in Rockcastle County's newest subdivision. All lots have or will have utility water and paved streets. Range in price from \$4,500 to \$6,000. These lots have been restricted for your protection. B1 CHOICE BUILDING LOT - Happy Acres Subdivision. Restricted. Only \$5,500. W18 SCAFFOLD CANE AREA - 12 acre to 1 acre lots, city water, priced from \$700 to \$1,250. W10 Subdivision Near Lake - Located on the Barnett Road - 26 lots measuring 1/2 acre and restricted. Several of the lots front on a blacktop road and city water is available. Ranging from \$1,500 to \$4,000. E74 4 BUILDING LOTS - Old Highway 401 near Hammonds Market. City water. \$2,500 each. K16 BUILDING LOT - Conway, Kentucky. Water furnished by a well. Priced at \$2,500. C11

Sale Pending

Homes \$50,000 & Up

Homes - \$30,000-\$40,000

Sale Pending

Long Term - Small Down Payment - Low Interest Loan - Available to Qualified Prospects

Ford Realty & Auction Co. REALTOR. SERVICE THAT YOU CAN TRUST - CALL TODAY IF YOU WANT TO LIST YOUR PROPERTY OR IF YOU WANT TO BUY! Mt. Vernon, Ky. 258-4545 KENTUCKY TOLL FREE 1-800-435-6454

For Rent

Wanted

Professional Services

FOR RENT: Apartments and mobile homes in Brodhead, Stan-ford, Lancaster and Richmond. Also, mobile home lots in Brodhead, Brodhead, Stan-ford, Lancaster, Ph. 365-2812. For Richmond, Ph. 624-1855. Speaks Rental Agency, Richmond, Ky. 51xn1f

WANTED: L.P.N. position open. Sowder Nursing Home, Brodhead, Ky. 42x2

Professional Machine Quilting: Wavelene and Evelyn Mullins. We also do binding. Fast service. Quilts for sale. For information, call 256-5068 or 256-5977. 9xntf

HELP WANTED: Asst. production supervisor for area ladies garment manufacturer. Daily line supervision, responsibilities to include production flow, product quality and skill training at machinist level. Experience in clothing manufacture required. Mail work experience history, including earnings to: Applicants, P.O. Box 697, McKea, Ky. 40447.

Grave Markers & Monuments: In stock at all times. McNew Monument Sales, U.S. 25, 4 miles north of Mt. Vernon. Ph. 256-2232. ntf

FOR RENT: City limits of Mt. Vernon, Stove, Brodhead, dryer, fully furnished 256-5266. 42xn1f

WANTED: Dozer work. Ponds, Yards, etc. See Raymond Bullock on Negro Creek or call 256-4444. 18xntf

FOR RENT: Mobile home in city. 256-4628. C.A. Thomason. 43x1p

Ray Cromer, Bulldozer Work, Brodhead, Ky. 758-8677 after 5 p.m. 2xn1f

FOR RENT: 4 bedroom house, two blocks from Mt. Vernon Elementary. 4250. Call 256-5812 or 256-2187. 43xntf

WANTED TO DO: Carpenter work, painting, concrete. No job too small. Reasonable rates. Call Tax Amxy. 256-4477. 43x6p

WANTED: Cedar barn posts. Call 758-8587. Please leave message if no one there. 43x1

Thomson Scrap Yard: Now buying aluminum cans, copper, radiators, sheet aluminum, cast aluminum, scrap metal and junk cars. Also, selling rebuilt batteries, starters and alternators. Call 256-2381 for prices. 45xn1f

FOR RENT: Nice 2 bedroom mobile home, in country, front and back porch. Total electric. Call 758-8522. 43x1

WANTED: Responsible party to assume small monthly payments on piano. See locally. Call Manager at 618-234-1306 anytime. 43x3

NOTICE: For that electric job on roof, porches, windows or doors repairs or replaced. Call Jr. Overbay, 256-9512. 33xn1f

HOUSE FOR RENT: 3 bedroom, large bath, living, dining and family rooms, large complete kitchen with built-in microwave and dishwasher, double garage, full basement, nice yard. \$350 a month plus deposit. Call 256-3508. 43x2p

WANTED: Babysitter for 8-year-old girl. Requirements: Christian, reliable and preferably living in Brodhead area. Call 256-3220 after 5:30 p.m. for interview. 43x1

Monuments - Grave Markers. Quality stones at reasonable prices. Down! and Martin Funeral Home, 256-2391. 37xn1f

NOTICES

Notice is hereby given that Patricia A. Stringer, Rt. 1, Box 393, Brodhead, Ky. has been appointed executrix of the estate of Lillie Brown. Any persons having claims against said estate shall present them, according to law, to the said Patricia A. Stringer or to Clark & Cox, P.O. Box 749, Mt. Vernon, Ky. 40456 on or before Feb. 15, 1988. 41x3

each project to be turned in separately. Specifications for each project may be picked up at the office of the County Judge/Executive in the courthouse at regular business hours. The Rockcastle County Fiscal Court reserves the right to reject any or all bids. 42x2

NOTICE: Will do babysitting afternoons in my home. 1 1/2 mile north of Family Life Center. Debbie Tyler Moore, 256-2411. 43x1

POSTED: No trespassing on property of Byron and Jeanna Johnson without permission from them. 43x1p

Earn Extra Money Selling Ex-ciding Product. Company guarantee. Part-time or full-time. Good earnings. Call 864-2581. 43x2p

NOTICE: Interviewing for Rockcastle Co. Electroflux representatives. Flexible hours, will train. 43x1p

McFerron's Used Store
Located on Fairground Hill

Will start unloading a new truckload of bedding, curtains, clothes, furniture and other items on Thurs. at 9 o'clock. Will also be unloading Fri. & Sat. We have new, used using room suites, end tables, bedroom suites, dining room suites, refrigerators, electric cook stoves, heating stoves, washers, TV's and other merchandise.
Store Hours are Thurs., Fri. & Sat., 9 to 5 and Sun. 12 to 4. 43x1p

Dwayne's Cars & Trucks

U.S. 25 North Berea, Ky.
PHONE 866-8408

CARS - TRUCKS - ETC.
\$295⁰⁰ and up

1. Great Selection
2. Up to 24 mos. warranty
3. On-the-Lot Financing
4. On-the-Lot Insurance

Call or see Ernest Sowder or Dwayne. We might have what you are looking for.

LIVINGSTON HOMECOMING QUEEN '87
Must be from Livingston area - between 14:19 years old
Unmarried - No Children. Register at the
LIVINGSTON DAIRY FREEZE
[During Regular Business Hours]



FOR WHEN LIFE BRINGS YOU A SHOCK OR TWO!

Our Classifieds will give you a wide selection of professional service people who advertise there. You can compare and choose from among them in the Professional Services offerings and be ready for anything shocking ahead!

MT. VERNON SIGNAL
Classified: 256-2244

Livingston Homecoming '87 - Sept. 5-6
Parade - Dunking Booth - Barbecue - Outstanding Citizen - Entertainment
Come and enjoy yourselves during our 2 days of Family Fun.

APPENDIX A TO AN ORDER OF THE KENTUCKY PUBLIC SERVICE COMMISSION IN CASE NO. 1985 DATED AUGUST 12, 1987.

The following rates and charges are prescribed for the customers in the area served by Northern Rockcastle County Water District. All other rates and charges not specifically mentioned herein shall remain the same as those in effect under authority of this Commission prior to the effective date of this Order.

USAGE BLOCKS	RATE
First 2,000 gallons	\$8.88 Minimum
Next 1,000 gallons	3.19 per 1,000 gallons
Next 5,000 gallons	2.89 per 1,000 gallons
Next 15,000 gallons	2.19 per 1,000 gallons
Next 25,000 gallons	1.89 per 1,000 gallons
Next 50,000 gallons	1.49 per 1,000 gallons
Over 100,000 gallons	1.49 per 1,000 gallons

Meter Size	Minimum Bill	Minimum Bill
5/8" x 3/4"	2,000 gallons	\$ 8.85
1"	5,000 gallons	18.45
1 1/2"	10,000 gallons	24.75

Operations and hospital rooms cost more than you think...

see me for hospital-surgical insurance.

Call: **Bill Bailey**
Church St., Mt. Vernon
256-2119

Personal Health Insurance
to State Farm*

State Farm Mutual Automobile Insurance Company Home Office Bloomington, Indiana

LEARN TO DRIVE RIGHT

Will provide local private lessons.
For information, contact STATE CERTIFIED INSTRUCTOR
220 High Street
Irvine, Ky. 40336
43x2p

Thank You!!

The Ladies Auxiliary of the Livingston Fire Dept. would like to thank the many people who helped in raising money for the much needed fire hydrants for three locations in Livingston.
Just to mention a few: those who attended our fund-raising projects, the people who made the trips to find the best prices and the individual donations.
We plan to purchase more hydrants in the future and need the help of all.
Again,
Thanks Everyone!!

DECORATOR CAKES

Will Bake Any Kind of Cake For You
MARGARET OWENS
256-5533

State Auto offers something special

It's the Medalist Auto Program for adults with safe driving records. Featuring a broad package of coverages... competitive rates... no surcharge for the first accident.

Singleton & Assoc
Donnie Singleton
Ph. 256-2611



House For Sale!
Reasonably Priced!
or will take good trailer trade-in

2 Bedrooms, large living room, large bath, eat-in kitchen, w/d hook-up, heated with fuel oil, stove and tank stays, large lot with plenty shade trees, driveway from back street, small garden, large front porch and small back porch, within city limits. The reason Mr. and Mrs. Poynter are selling their home is because they are not able to keep it up. It is located in a convenient location next door to Westgate Shopping Center on Hwy. 150.
Call 256-4692

Attn: Tobacco Farmers

WANTED: Tobacco to house by the acre or by the stick. I have A-1 references in Madison and Garrard Counties. I have 15 years experience in contracting tobacco curing and housing. I would like to have 100 acres again this year. No crop too large or too small. I will travel anywhere within 50 miles of Berea.
CALL BILL INGRAM
43x3

Homecoming August 30

Roundstone Baptist Church
Starts 10 a.m. ???
3 Singing Groups:
The Eversole Bros.
Joyful Noise
Chapel Tones
Plenty of food and good preaching. Everyone welcome.

TV, VCR

Satellite Repair
Eaton Electronics
256-4314

NANTZ'S POOL SUPPLIES

503 East Main St.
Stanford
Next Door to Post Office
Open Mon, Tues, Thurs & Fri. 9 to 4 Sat. 9 to 12
Closed Wed & Sat.
We have pools of all sizes, equipment and chemicals. We also service pools and sell tanning beds.
365-7818

Got Termites? Got Roaches? Madison Termite & Pest Control

For VA & FHA Inspections, Call Paul Burton
256-2318 Mt. Vernon Day or Night
WATER BUGS, ROACHES & SILVER FISH

Tri-County Sanitation

- *Septic Tank Cleaning
- *Certified Installer
- *Grease Trap
- *On-Site Sewage Systems
- *Treatment Plants
- *Plumbing Repair
- *Portable Toilet Rental
- *Licensed and Bonded

453-9002
Permit No. 202-7
License No. KBHS 24948

HENSLEY'S USED CARS

Salt Peter Cave Road
Hwy. 1004 Rt. 2
Orlando, Ky. 256-4777

LIME
DELIVERED & SPREAD

WILDIE, KY. 40482

Notice is hereby given that Helen Phearis, Rt. 2, Box 413, Mt. Vernon, Ky., has been appointed executrix of the estate of Robert Smith. Any persons having claims against said estate shall present them, according to law, to the said Helen Phearis or to Clontz & Cox, P.O. Box 749, Mt. Vernon, Ky. 40456 on or before Feb. 15, 1988. 42x3

NOTICE: Need important papers notarized? How about help to make your will. Call 453-9301 anytime. Donald Rice. 43x1

NOTICE: No hunting and fishing on Moore place on Brindlie Ridge. Reason: Shooting fish and hogs. Stay out. Owners: D.A. Robbins, Millard Robbins. 42x4

Johnson-McNew and Dooley Reunion: The Johnson-McNew and Dooley reunion will be Sunday, August 30 at the old homeplace on Cove Branch. Bring covered dish or picnic lunch. Bring guitar and join in the gospel singing. 42x3p

Notice is hereby given that the 14th day of August, 1987, Neal Cox, the duly appointed, qualified and acting administrator of the estate of Ben Cox, deceased, filed with the Rockcastle District Court a final settlement. Exceptions thereto shall be filed in writing with the Rockcastle District Court on or before Sept. 9, 1987. 43x1

Ladies: Show toys and gifts. No investment, collecting or delivering. Call 256-2660 after 2 p.m. 42x2

Notice is hereby given that Polly VanWinkle, Orlando, Ky. 40460, has been appointed executrix of the estate of Shind VanWinkle. Any persons having claims against said estate shall present them, according to law, to the said Polly VanWinkle or to Lambert, Lambert and Duncan, P.O. Box 736, Mt. Vernon, Ky. on or before Feb. 15, 1988. 43x3

POSTED: No trespassing or hunting on property of Thelma Thacker or LeRoy Griffin, Rt. 3, Mt. Vernon, KY. Violators will be prosecuted. 42x4p

Notice is hereby given that an order has been entered dispensing

NOTICE: Need that extra phone installed off your existing one, call 453-9301 anytime. 43x1

with administration of the estate of Foster Brown, deceased. All persons having claims against said estate shall present them, verified according to law, to Grace H. Brown, Rt. 1, Box 399, Brodhead, Ky. or to Clontz & Cox, P.O. Box 749, Mt. Vernon, Ky., attorneys for said estate, no later than Sept. 7, 1987. 43x2

J.L. Used Furniture Store is now open at former Judy's Shoe Store on Hwy. 150. Uniforms, dishes, furniture, used clothing. Open Wednesday through Sunday, 10 to 5. 24xntf

DBL New and Used Furniture: 1/4 mile north of Renfro Valley. Good used clothes of all sizes. Lots of maternity clothes, heating stoves, fuel oil stoves, wood stoves and coal stoves. Now's the time to buy a heating stove or you might be left out in the cold. Wood for stoves also available. Wringer washers, beds, lamps and black and white or color TV's. Open 7 days a week. Monday-Saturday, 10 a.m. to 6 p.m., Sunday 1-6 p.m. 42x2p

our beloved one Oliver (Mal) Smith, to brothers, George Fenton, R.A. Dailey and James Head. Thanks to J.D. and Judy Miller for their beautiful singing and to all the pallbearers. Also, thanks to the Dwell and Martin Funeral Home for their kind and friendly service.



The Smith Family

CARD OF THANKS

We wish to thank everyone who was so kind and helpful to us during the illness and death of our loved one, Clarice Dillingham. A special thanks to Dr. Griffith and the Rockcastle Hospital staff, the staff of St. Joseph Hospital, St. Francis Home, Bro. Lester Caldwell and Bro. Harvey Pensel. Also to Northside Church and Sand Springs Church, all those who provided food, sent flowers and cards and remembered us in your prayers. You have helped us to be able to rejoice in a time of great sorrow and sadness. The thoughtfulness and generosity of our family, neighbors and friends will never be forgotten.

In Loving Memory of Alice Cress who passed away 2 years ago today, August 21, 1985

Mom, I am remembering the time we spent together before you were taken away. This seems to set apart to remind our loved ones that they are always close to our hearts. Your memory will always live on.

In Memory of my Dear Mother, whom we loved and lost. Sadly missed by her 2 daughters, Lula Cromer and Marie Baker

Too Late To Classify FOR SALE: 1981 Delta 88 Royale, V8 engine, 4 dr., all extras, loaded, good tires, excellent cond., 77,000 miles. Asking \$3,850. Trades considered. Call 256-5511 after 6 p.m.

Lance Dillingham Gorman Dillingham & Family Modie Dillingham & Family

PUBLIC NOTICE
Byron and Jeanna Johnson, Climax, Alcoholics Anonymous Open Meetings. Sunday from 7 p.m. to 8 p.m. Registered out of New York.

24-HOUR OBITUARY LINE 256-2997!

FOR SALE: 1979 Malibu Classic Wagon, several new parts, good tires, no rust, AM/FM cassette, 12,000 miles on rebuilt engine. \$1450. Call 758-8166 after 5 p.m.

Back to School SPECIALS: \$20 to \$200 off new Singer machines. 10% off all fabrics. Kinnard's Sewing Center, Southern Hills Plaza, Richmond, Ky. 623-3531.

Jan's Flowers & Custom Framing
Main St. Brodhead 758-4222

Rockcastle Veterinary Clinic Joseph L. Korn, D.V.M.
Mon. - Fri. 8:30 a.m. to 5 p.m.
Saturday 8:30 a.m. to 1 p.m.
Richmond St. Mt. Vernon 256-2801

The Rockcastle Hospital, Inc. announces that the services of the facility are available to anyone without regard to race, color, national origin, age, sex or handicap. This agency is a recipient of USDA donated food and assures that no discrimination in services occurs. If anyone believes that discrimination has occurred, write to:
ADMINISTRATOR
Food and Nutrition Services
3101 Park Center Drive
Alexandria, Va. 22302
If anyone has any questions about the services provided, please call: Wayne Stewart (606) 256-2195

Thompson's Guitar Shop
Fine Fretted Instrument Work
REPAIRS, CUSTOM WORK, RESTORATIONS
Guitars - Banjos - Mandolins
For Estimates Call:
Glenn M. Thompson Ph. 606-256-3819 West Main Street
Rt. 4, Box 625 Mt. Vernon, Ky. 40456

For your Building Contractor- see Robert E. Philbeck Builder
Commercial or Residential Remodeling Additions
Call 256-4641
40xntf

Clayton HOMES
Richmond's Oldest Dealer
Big Hill Ave. Richmond, Ky.
1987 Model Close-Out Sale!
ONLY 5% Down Payment On Selected Models
SAVE \$1000s Buy From A Solid Dealer With Over 20 Years Of Experience!
ONLY \$99 Down Payment On Selected Pre-Owned Homes
1987 14' Wide 2 bedroom, all electric **ONLY \$9,950.00**
70'x14' 3 bedroom, carpet, all electric **ONLY \$12,400.00**
Super Large Selection Of 14' Wides, Doubles, & Pre-Owned Homes
Eastern Ky's Largest Dealer With 8 Factories & 90 Sales Centers To Service Customers
1988 Model 80'x14', 3 bedroom, all electric, ceiling fan, 2 baths, garden tub, carpet **Only \$15,870**
Norris's Top Quality Home **NORRIS** 2 bedroom, all electric, fully furnished, 70'x14', heavy metal - **Top Quality For Only \$18,895**
\$100 And Deed Is All You Need To Buy At Clayton's Homes
Double Wide **ON-THE-LOT Financing F.H.A. V.A. Conventional** **\$16,980**
See Ky's Finest And Best Quality NORRIS Double Wides Now On Display
Clayton HOMES
We Build Dreams
U.S. 25 South Big Hill Ave. Richmond (606) 623-9404

LIVINGSTON HOMECOMING ARTS & CRAFTS - FLEA MARKET SEPT. 5-6
Register at Livingston Dairy Freeze - \$15
Must provide own table

SUMMER SIZZLER: MOBILE HOME SALE
New Redman Home, Northern Built, 2 or 3 Bedrooms, 1 1/2 bath, house doors and windows, carpet, garden tub, upgrade insulation, cathedral ceilings, ceiling fan, electric, linen cabinets, frost free refrigerator, deluxe stove, ceiling beams, you choose the colors!
ONLY \$14,995.00
Delivered and set-up anywhere in Kentucky. Pay only \$1500.00 down and less than \$171.00 per month.
SPECIAL HOMEOWNERS OPTION PACKAGE NOW AVAILABLE!
For less than \$44.00 per month First American will install all of these options on any new single wide in stock or on sale!
★ Central Air Conditioning
★ "Sears" Washer & Dryer
★ Vinyl Underpinning
★ Anchors
★ 6' x 8' Front Porch
★ 8' x 10' Awning Over Porch
★ Front Canopy Awning
Don't Miss This Special Sale!

FIRST AMERICAN HOMES
The Leader in Mobile Homes
240 Eastern By-Pass Richmond, KY 40475 (606) 623-1590
155 New Circle Rd., N E Lexington, KY 40505 (606) 293-2637
1-64 - Van Meter Exit Winchester, KY 40391 (606) 745-2220

REAL ESTATE FOR SALE
1. New 3 Bedroom Brick, family room, electric heat, bath, garden, good location Brodhead, F.H.A. financed after down payment.
2. All Wooded Lot, 2 minutes walk Lake Linville. 204 ft. front x 137 ft. deep at \$4,900.
3. Brindlie Ridge Farm of 161 acres with excellent home and barns plus Renfro Creek
4. 300 Acres of all wooded land, saleable timber on Crooked Creek \$54,500.
5. 4 Room Home on lot 325 ft. long at Burr at only \$11,500.
6. 4 Room Home on lot 118 ft. long at Burr at only \$6,900.
7. Two Lots at Burr—one is 133 ft. long at \$1,800 and other is 348 ft. long at \$1,500, city water available.
8. A Frame Home 3 bedrooms, bath, garage, edge of Mt. Vernon city limits. \$22,500.
9. Two Story 30x50 concrete block building on 1 1/2 acres. Excellent for auto repair business or what have you. At Pine Hill and only \$25,000.
10. 7 Acres and a 4 Acre Tract on Beech Grove Road on Rockcastle River at \$4,500 each tract.
11. 5 Acre Tract, all wooded, Sand Hill at \$2,000.
12. Lot 200 x 25 with building 50 x 10 on old 25 near Roundstone. Cheat at \$3,950.
See, write, call for more information.
FLYCE OWENS REAL ESTATE AGENCY
Benton Stokes 256-2588 Floyd Owens 256-2203
Mt. Vernon after 4 p.m.

TODD & WILSON AUTOMOBILES
U.S. 25 South, Berea - 986-1100
CARS
87 PONTIAC FIRE, 2 Dr., 4 Cyl., Red
1985 CHEVROLET MONTE CARLO, V6, Auto, Air, AM/FM, Tilt, Cruise, Black
1985 FORD ESCORT, 2 Dr., 4 Cyl., Auto, Air, White
1984 CHEVROLET MONTE CARLO SUPER SPORT, V8, Auto, Air, Fully Equipped, White (Extra Nice)
1984 MERCURY MARQUIS, 4 Dr., 6 Cyl., Auto, Air, Fully Equipped, Beige
1984 CHEVROLET MONTE CARLO, V8, Auto, Air, AM/FM Cassette, Fully Equipped, Tan/Brown Vinyl Roof
1983 OLDS CUTLASS Ciera Brougham, 4 Dr., 4 Cyl., Auto, Air, AM/FM Cassette, Power Windows, Cruise, Tilt, Blue
1983 CHEVROLET CHEVETTE, 4 Cyl., Auto, Air, AM/FM, Red
1982 PONTIAC 6000, 2 Dr., 4 Cyl., Auto, Air, Bronze
1981 BUICK REGAL, 2 Dr., V6, Auto, Air, AM/FM, Blue/Dk. Blue Vinyl Roof
82 CHEV. MONTE CARLO, 2 Dr., 6 Cyl., Maroon
1981 OLDSMOBILE CUTLASS SUPREME, V67, Auto, Air, AM/FM, White/Maroon Vinyl Roof (Sharp)
1980 CHEVROLET CHEVETTE, 4 Dr., 4 Cyl., Auto, Air, Blue
TRUCKS
1984 FORD RANGER, 4 Cyl., 4 Spd., AM/FM, White
1980 DATSUN PICK-UP, 4 Cyl., 4 Spd., AM/FM, Red (One Owner)
79 FORD F-150, Pick-up, Green
1978 GMC SIERRA CLASSIC, V8, Auto, Air, Orange/Tan
On-the-Lot Financing
Warranty Available Up to 2 Years or 24,000 Miles on Most Cars.

Rockets open '87 season Friday at home against Everts

Dolphins finish 3 in conference

The Cedar Rapids Dolphins Swim Team finished their season July 29th at the Bluegrass Conference Championships at Woodford Hills Country Club in Versailles.

The Dolphins finished the regular season with 3 wins and 2 losses going to the conference championship, losing only to Woodford Hills and Dix River County Clubs, both by close margins.

At the conference championships, the Dolphins finished 3rd place behind Woodford Hills Country Club and Danville Aquatic Swim Team. The 3rd place finish was impressive as both Woodford Hills and Danville, as well as some of the other teams in the conference, have a lot of swimmers who compete year round.

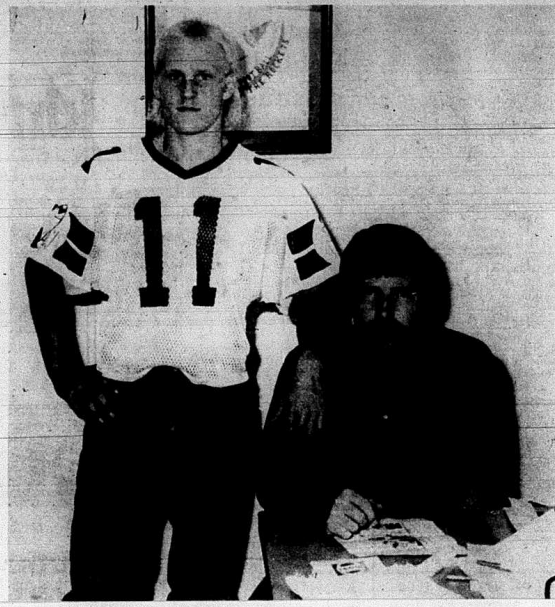
Individually, Cedar Rapids had two swimmers who were awarded as being the best in the conference championships in their age groups. Cassie Mullins was co-winner in the 8-under girls division and Michelle Hamm was awarded as being the best in the 13-14 girls division.

Those receiving gold medals were: Cassie Mullins - Freestyle and Butterfly; Heather Burton - Freestyle; Michelle Hamm - Freestyle and Butterfly.

Those receiving silver medals were: Cassie Mullins - Medley Relay team, Freestyle Relay team, Freestyle and Butterfly.

Those receiving bronze medals were: Eric McKinney - Medley Relay; Aaron Cox - Medley Relay, Freestyle Relay; Clark Mullins - Medley Relay; Lane Owens - Medley Relay; Josh Broadus - Freestyle and Freestyle Relay; Cliff Mullins - Backstroke; Clark Mullins - Freestyle Relay; Lane Owens - Freestyle Relay.

Those receiving silver medals were: Eric McKinney - Medley Relay; Aaron Cox - Medley Relay, Freestyle Relay; Clark Mullins - Medley Relay; Lane Owens - Medley Relay; Josh Broadus - Medley Relay; Butterfly; Michelle Hamm - Medley Relay; Angie Brown - Freestyle Relay; Lindsay Dowell - Freestyle Relay; Cliff Mullins - Freestyle Relay; Slade Calhoun - Freestyle



Head Coach Tom Larkey and son, quarterback Chris Larkey lead Rockets into '87 campaign, Friday night

& Breaststroke. Others who qualified for the finals were: Chad Allen-4th in Freestyle; Blake Calhoun-6th in Freestyle; Angie Owens - 6th Freestyle; Dana Reynolds- 6th Freestyle; 6th Backstroke; 6th Butterfly; Cliff Mullins - 4th Freestyle; 5th Butterfly; Aaron Cox - 5th Freestyle; 6th Breaststroke; Josh Broadus-4th Backstroke; Clark Mullins-4th Freestyle; Lane Owens-5th freestyle; Michelle Hamm-6th Backstroke; 5th Breaststroke; Kristy Sargent-4th Freestyle; 4th Butterfly; 4th Breaststroke; Angie Bussell-6th Freestyle, 4th Backstroke, 6th Butterfly; Cassie Mullins - 6th Freestyle, 6th Backstroke; Cindy McCauley - 6th Backstroke, 6th

Breaststroke; Gina Mastin -5th Breaststroke; Dane Cox -4th Breaststroke. Coach David Craig said he was

very pleased with his team's finish in the conference finals and is looking forward to next season.



Cliff Mullins got a Silver Medal in Freestyle

The Rockcastle County Rockets will open their 1987 campaign this Friday night at home against highly-touted Everts.

The 87 edition of the Rockets is led by three year starter senior quarterback Chris Larkey.

Larkey returns to his dad's, Coach Tom Larkey's backfield as do-all-of-last-year's-starts-from-a-team that finished 6 and 4.

Head Coach Larkey and his assistant coaches, Tony Saylor, David Riddle and Jerry Pensol are optimistic about the Rocket's chances in 1987.

Last Friday night the Rockets downed the Hazard Bulldogs 13-0 in a scrimmage game at Pulaski County High School.

But, all of the coaches wish they could open their season with a little lesser of an opponent.

"Everts is going to be tough this year, they are talking about them being the best team in the mountains this time around," Larkey said.

Coaches Everts and Pensol scouted Saylor when they played a scrimmage game with Middleboro, Everts and Middleboro battled to a 0-0 tie.

But Saylor said Tuesday that Middleboro gained only one first down against Everts and was just 14 plays to Evert's 34.

"They are big, strong and fast," Saylor said. "But they didn't throw the ball much so that can help us, we are a much better team against the run."

The Rockets return 13 starters from a year ago, but Everts has 16 coming back.

On this year's 11 game schedule are 6 home games, Everts-Friday, McCreary Central September 4, Lynn Camp September 18, Jellico, Tennessee, September 25, Wayne County October 9 and Knox Central October 23.

The away games include trips to Columbia to play Adair County

on August 28, Berea September 11, Bell County - October 2, Cawood - October 16 and Whitley County - October 30.

Bell County, which was ranked seventh in the state by high school coaches is picked to win Rockcastle's district which includes Bell Co., Whitley Co., Cawood, Knox Central and McCreary Central.

Rockets beat Dogs 13-0 at Somerset

By: Perlina Anderin

The Rockcastle Rockets are small, quick and are going to be a fun team to watch.

They out-bulldogged the Hazard Bulldogs Friday night in the Panorama at Pulaski County High School, 13-0, by limiting Hazard to two first downs. They kept the ball by moving well on the ground against the much-bigger Bulldogs and with their passing game (two long passes from quarterback Chris Larkey to Pete Harrison).

Harrison also exhibited good running ability in the backfield, along with Leslie Scalf and Chad Burdette. Scalf's running game is reminiscent of the Scotty Robinson era with his quick changes of direction and his ability to get just a few more yards.

The amazing part of the game was the Rockets' linemen who were much smaller than the Bulldogs but who were able to hold the Doog time and again, forcing punts and a fumble or two.

The Rockets will no doubt lose some games if and when they come up against a bigger team which also has speed. But they exhibited the mark of excellent coaching and the desire to move the football and this should make for an interesting and rewarding season for the team and fans.

ROCKCASTLE CO. LITTLE LEAGUE PICNIC

WHEN: Sunday, August 23, 1987
WHERE: Brodhead Fairgrounds
TIME: 2:00 P.M.
FOR: Players, Parents & Invited Guests
**Parents are to bring a dessert
**This includes T-Ball, Little & Senior League

Racoons bring a lot of pleasure to sportsmen throughout the state



Your Outdoors Edited by Roy House

Hunting and fishing along with most outdoor activities fall into the category of recreation but even though recreation is the soul of the outdoors, these activities can also be classified as big business.

A recent survey showed that 141 million Americans age 16 and over participate in wildlife-associated recreation, spending more than 55 billion pursuing those activities.

Monthly, 46 million Americans (one in four) are fishermen and 16.7 million (one in ten) are hunters.

Among the hunters, deer hunters, water fowl hunters rank so on pop into mind first but there is a somewhat less visible group, who call themselves coon hunters, that are pouring some big bucks into the economy.

The study concluded that 7410 housemen take part in the 247 U.K.C. events and spend a total of \$28,128,360 in pursuing their sport.

The following is a breakdown of money spent in conjunction with the U.K.C. events:

Entry Fee.....	\$74,100
Meals.....	\$37,050
Gasoline.....	\$148,200
Motels.....	\$44,460
Hunting Equip.....	\$37,050
Trophies.....	\$49,400
Dog Food.....	\$2,223,000
Vet Bills.....	\$741,000

According to an economic impact study done by the United Kennel Club, coon hunting in Kentucky are paying their way. The study was based on the 247 United Kennel Club licensed coonhound events conducted annually by the 60 U.K.C. approved clubs in the state of Kentucky.



cheeks, and with five to eight black bands on the tail. They have long, buff colored guard hairs, tipped in black, and a creamy white underfur. Their fur is prized for coats, and the raccoon is hunted both for pel and for sport.

A fully developed adult raccoon living in an area of ideal conditions, and with an abundance of food, can weigh as much as a medium-sized dog, as much as 45 pounds, although less than 30 pounds is a more normal maximum male weight.

Most sightings of raccoons are made from dusk to dawn, since they usually forage for food during hours of darkness. For this reason, they are rarely spotted during daylight hours.

The den is usually a hollow log or hollow tree, when trees are abundant, and in rocky clefts and crevices in treeless areas.

They are expert climbers. They use their non-webbed, elongated, spindly toes with great dexterity when climbing and when examining objects.

In captivity, when water is available, they have an unexplained habit of "washing" their food, even if they have just caught the item in that same water. In the wild, however, they seldom wash their food, usually swallowing their food with no particular preparation.

Raccoons are usually found living near water, since they eat many foods growing in or near water. They are omnivorous, and consume

crab, fish and snakes, as well as fruits such as grapes and persimmons, and they eat acorns, nuts and corn. They will also eat birds, insects, and larval and adult wasps.

They severance in rubbish and garbage pails, and many homeowners, investigating strange noises in the night, have surprised a family of raccoons gobbling up pet food left overnight.

Although raccoons do not reach adulthood until their second year, female raccoons are sexually mature at 9 to 10 months, and in their southern range, more than half conceive during their first year. Males reach sexual maturity after their second year.

The breeding season begins in February, with the young being born in April or May. A litter of from one to seven are born after a gestation period of from 60 to 73 days, with an average of 63 days. They are small at birth, about 2.5 ounces, well-furred, and with dark skins.

The eyes and ears are closed, with the eyes opening about the 18th day. The female cares for the young, with no help from male.

After weaning, at about seven weeks, the young will follow the female around, seeking shelter in tangles of roots and vines, crevices, and under rocks.

They begin following their parents around on hunting forays about a month later.

The raccoon is considered intelligent by many, although he is more ingenious and persistent than smart. His manual dexterity enables him to perform feats which make him appear superior to other mammals in brain power.

Raccoons are often trained as pets. This not a safe practice. As the raccoon reaches adulthood, his insatiable curiosity and stubbornness make him destructive and untrustworthy. His temperament also changes, and pet raccoons are known to have caused serious biting and clawing injuries when formerly safe activities were repeated.

Although recent studies have indicated that the raccoon has been destroying nests of game birds and wild turkeys, this destruction has not been intense. He is, in many parts of Kentucky, considered a pest. Pest or not, this remarkable, adaptable creature, able to live in varied circumstances and habitats seems destined to prosper and prevail in the age of modern adversity.

physiological changes of hibernation; that of reduced temperature, reduced rate of respiration and heart-beat, and the insensibility to pain, that characterize true hibernation.

Raccoons are of the family Procyonidae (animals which come before dogs) which includes coatis, kinkajous, and pandas; the order Carnivora (eaters of meat) and class Mammalia (mammal).

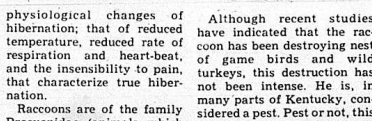
After weaning, at about seven weeks, the young will follow the female around, seeking shelter in tangles of roots and vines, crevices, and under rocks.

They begin following their parents around on hunting forays about a month later.

The raccoon is considered intelligent by many, although he is more ingenious and persistent than smart. His manual dexterity enables him to perform feats which make him appear superior to other mammals in brain power.

Raccoons are often trained as pets. This not a safe practice. As the raccoon reaches adulthood, his insatiable curiosity and stubbornness make him destructive and untrustworthy. His temperament also changes, and pet raccoons are known to have caused serious biting and clawing injuries when formerly safe activities were repeated.

Although raccoons are sometimes said to hibernate, they do not. They, in colder parts of their range, hole up and sleep for long periods, living on stored body fat until about February.



Laurel County Coon Hunter Chris Robinson watches as his coon hound "iget on the wood". Robinson, as well as thousands of other Kentucky sportsmen, enjoy the night sport of chasing and treeling raccoons.



Laurel County Coon Hunter Chris Robinson watches as his coon hound "iget on the wood". Robinson, as well as thousands of other Kentucky sportsmen, enjoy the night sport of chasing and treeling raccoons.

Around BRODHEAD

By: Mrs. Mary McWhorter

Maggie Fletcher has returned home from Ephraim McDowell Hospital in Danville after suffering from a fall and is now getting along nicely. Recent visitor's were Mr. and Mrs. Bobby Proctor and granddaughter Suzanne, Mr. and Mrs. Preston Parrett and Audrey, Tonya, La-Joy Graves and De Jon, Kim Alcorn and Tricia of Berea. Mary McWhorter, Mae Doan, Viola Hensley, Virginia Fletcher and Georgetta May of Lancaster, Mr. and Mrs. Will Walker of Middletown, Ohio, Mary Dowdle and daughter's Judy, Freddie, and Martha of Candler, North Carolina. Also her sister Ruby and son Jimmie of Cincinnati, Ohio, James Alexander of Anderson, Indiana. Mrs. Fletcher says thanks to everyone for the food, visits, cards, flowers and prayers, especially her family and good neighbors.

Recent visitors of Viola Hensley were Douglas Tyra and wife Patsy and children of Hamilton, Ohio, Ronnie, Libby Tyra, Teresa and Diane spent Sunday week with Viola. Johnny Tyra and wife Pat and children, Shanda Mae, Golden and Faye Hensley of Richmond, Ind., Mrs. Juanita Estridge of Ohio, Mrs. Gayle Hensley and children, Rhonda, Tommie and Gayle's mother, Mrs. Viola Davis of Ind., Ind.

Danny Wells of Danville dropped by for a short visit with me on his way home from National Guard Camp in South Carolina. John and Elizabeth Disney of Corbin visited me Friday of last week.

Yolanda Ramsey and Mary E. Carson were in Lexington Thursday for Mary's doctor appointment.

Avery and Ruby Wilson of Ind., and Rhonda and Roger Wilson spent a weekend recently with Mary E. Carson.

Mr. and Mrs. Larry Wilson and children, Kathy, Missy and Buddy of Richmond, Ind., was last Friday guest of Mrs. Mary E. Carson.

Mrs. Irene Adams and son Johnny were in Bowling Green visiting Danny and Jo Ann Price and children, Shannon, Susan and Angela last week.

I really enjoyed Sunday Aug. 16th with Don White, his mother, Mrs. Ruth White, his aunt, and Mary Adams, who is living in

Louisville with her sister Ruth. They attended church services at the Brodhead Baptist Church and visited with everyone there. They then went on to Dairy Delight for dinner, then on to Bertha Adams home for a visit. Irene Adams, myself, Mrs. Linda Adams and daughters Brandi and Vanessa all joined them, then I, Don, Ruth and Mary all went on to the Dee and Mary Bussell home for a visit with them and Dee's mother Lula Bussell and daughter Martha Messer. After visiting we drove around Chestnut Ridge viewing the old home place of Ray and Mary then on around Brindley Ridge and to the cemetery at Oak Hill, where Ray and Mary's husband and all the Adam's are buried. The Oak Hill Cemetery is beautifully kept. Whoever is in charge should be commended.

We are blessed with good people to mow our cemetery at Providence, the Clinton Thompson Family. Hope they don't get old too quick as it is a problem to get people who take interest and mow so well around the stones, also Phillip Davis is to be commended for the good job he does collecting donations to pay for the mowing. He calls it begging, he stays around all afternoon on Memorial Day to be available to folks out of town who wish to donate.

Miss Rhonda Pingleton of Lexington was Monday visitor of her grandmother, Mrs. Cuba Croley and also visited me for awhile.

Annette Bussell and her sisters, Lydia Rogers of Spiro, Lurline Petrey of Crab Orchard and Clarice Brown of Stanford, spent a few days in Ohio, visiting their other sisters, Dorothy Rome of Sabina, Ohio, Nellie Brown of Goshen, Ohio and Juanita Godby of Reading, Ohio. They also visited their brother, J. B. Powers of Lockland, Ohio. They also visited with several nieces and nephews. Juanita returned home with us for two weeks vacation and the Powers Reunion at the William Whitley House, August 9th, 10th of the 13 children of Emery Powers attended and several grandchildren and great-grandchildren.

Ruth Bussell attended the Powers Reunion and the Osborne Reunion.

Ruth Bussell went to Mason, Ohio to visit her mother Winnie Bryant and also visited her son, Danny Bussell and family of West Chester. She attended church at Sociaville's Baptist

Church in Mason.

Emery Powers stayed a few days with his daughter, Annette Bussell and family.

Mr. and Mrs. Don Klaas of Mason, Ohio spent a few days with her sister, Ruth Bussell and family.

Bertha Adams and Carolyn McKinley had lunch at Ruth's Brodhead Cafe recently.

Mrs. Halaweis Hughes of Connersville, Ind. has returned home after visiting with her aunts Dessie Taylor and Mrs. Viola Albright and also visited Mr. and Mrs. Ronald Rogers and others.

Edward Burton of Connersville, Ind. is visiting relatives and friends.

Mr. and Mrs. Willie Taylor were in Somerset Monday.

Visitors of Mrs. Elva Moberly were Mrs. Oakley Collins, Robert Collins, Doug Scoggins, Norma and Ruth Ann Crank, Mr. and Mrs. Bobby Thompson were Sunday visitors and brought her mother, Mrs. Collins, a beautiful bouquet of cut flowers for her birthday.

Thursday afternoon visitors of Mrs. Fannie B. Albright were Clarence and Lucille Majors and their daughter Violet Cain of Burbank, California.

James and Leona Clark of Stanford were Sunday visitors of Bob and Mary Adams also Duke Gooch was a recent visitor.

Jim, Janice and Elizabeth Ann Parson's of Lexington were Saturday afternoon visitors of me and Pat Pruitt. We also visited Ona K. Owens and children Jeffrey and Angela then back to Aunt Lou Payne's.

Sunday dinner guests of Florence Albright were, Mr. and Mrs. Elmer Ponder, Tana and Donna Bullock and Mrs. Deborah Phibeck and granddaughter Little Danielle Lamb of Berea.

Mr. and Mrs. Bobby Proctor visited Carter Caudill in Covington over the weekend.

Louise Graves, Billy Ray and Suzanne, Kyle and Adam Proctor and Mr. and Mrs. Bobby Proctor picniced at Cumberland Falls Thursday.

Mrs. Mamie Halcomb, Hully Bishop and wife Vivian visited Bertha Adams at the Somerset Hospital.

Recent visitors of Bertha Adams at her home were, Clesion and Mary Saylor, Ronnie Adams, Carolyn McKinney, Mabel Chandler, Mrs. Sylvia Whit and Mrs. Esther Hubbard.

The largest eyes of all land animals are those of the horse and ostrich—about one and a half times the size of the human eyes.

LADIES AID MISSIONARY SOCIETY

By: Elizabeth F. Mullins

Ella Mae Martin was hostess for the missionary group who are members of the Christian Church of Brodhead, Aug. 11th.

The lesson's scripture reading was Philippians 2:1-11 and the subject was "How Christians Can Keep Friends". Elizabeth Mullins chose this lesson because she thought all women could relate to this subject. She told the group, "Like it or not, it is with people we find both happiness and misery. In our encounters with people, our character is tested. We need to maintain excellent relations with our brothers and sisters and to have loving relations with our neighbors. We also have to concern ourselves with our relationship to God—to worship, sing hymns of praise and have prayers. In other words—act like Christians."

Lou Payne closed the lesson with prayer, "Amendments should be studied well, before voting on it, to add to our churches by laws", the group decided. Also a decision to not undertake the job of church's planters next year, of planting flowers and taking care of them. This would be a good project for the Youth Group.

Thanks to J.C. Newland for taking most of the members to Mrs. Martin's home as Emily Glovak wasn't able to do so, as usual. She was missed!

The hostess prepared pimento cheese sandwiches, salads and ice cold drinks, that were enjoyed before they adjourned.

August hostess is Barbara Watson with the lesson being taught by Marjorie Shivel.



BIRTH ANNOUNCED—Mr. and Mrs. Troy E. Bradley announce the arrival of their daughter, Ashlee Brooke, born July 16th at Pattie A. Clay Hospital in Richmond. She weighed 5 lbs., 11 ozs. Grandparents are Mr. and Mrs. Coy Bradley and Katherine Moore. Grand grandparents are Mr. and Mrs. Jones B. Hiatt and Liz Sowder.



FIND THE STAR

each week at
John's Appliance
and win \$5!!

COUPON

10% off

Any item not on sale or reduced
In Stock Items Only Must Have Coupon
Coupon good up to \$500 in Merchandise



Western Auto

Sales Center

256-5864

Main St. Mt. Vernon




3RD BIRTHDAY—Jennifer Michelle Wallin, daughter of Roger and Carmen Wallin of Orlando, celebrated her 3rd birthday August 1, 1987 with a "Rainbow Brite Party" at her home. Helping her celebrate were her brother, Joseph Lee Wallin; cousins, Chad Francisco, David Smith and Bridgette Lear and Tenya Robinson, Kelly and Kenny Allen, Alicia and Jessica Helton. Many other relatives and friends also attended. She received lots of nice gifts and would like to thank everyone. Jennifer's grandparents are Mr. and Mrs. Roy Wallin of Orlando and Mr. and Mrs. Clifford Fry of Hudson, Florida.



SECOND BIRTHDAY—Glenn Eric Baker, son of Mr. and Mrs. Glenn Baker, Rt. 1, Orlando, celebrated his second birthday Saturday, July 25 at his home with a party in his honor. Those attending were: Annette Millicent, Mildred Ballard, Carol McGuire, Edith and Chris Baker, Sylvia and Dana Mason, Lacosta and Willie Mason, Tracy Ballard, Diana Susan, Robert and Bill Robinson, Kim Bond, David Smith, Sally Mason, Wanda and Steven Anderson, Ada Robinson, Olen Robinson and Hesper Baker. We would like to thank everyone for their gifts.

Your Senior Portrait

A Once-in-a-lifetime occasion...



So, it only makes sense to have your portrait done by the very best. Only a professional can capture the mood, feeling and expression that you as an individual convey.

Offering a wide variety of props and backgrounds to enhance your portrait. Backed by a great deal of experience.

Make your appointment soon and get your name imprinted on your wallet-size at no extra charge.

*Saturday and Evening
Appointments Available*

BROCK STUDIO

Main St. Brodhead
758-8621



WE'VE MOVED

To serve our customers better

Video Attractions

Located:

Richmond St., Mt. Vernon

256-9712

Open 12 to 9 Monday thru Saturday
Sunday 2 to 7 p.m.

COUPON

99¢

24 Hour Rental
No Limit
Coupon Good Aug. 24-27
Must Have Coupon

COUPON

6.99

VCR - 2 Movies
Coupon Good Aug. 24 - 27
Must Have Coupon

"TOURISM"

[Cont. From Front]

self-guided tour through its historic district;

Somerset have an entertainment mall with movie theaters, skating rink and dinner playhouses similar to The Cascades in Ocala, Fla.;

A ski-chair lift to take visitors to the top of Pine Mountain State Park and Pineville.

The London-Corbin area would develop Wilderness Road Village that would feature food cooked over an open fire.

The report divides the Fifth District into six tourism regions: Berea-Mt. Vernon; London-Corbin; Somerset; The Lakes area including Lake Cumberland, Burnside, Dale Hollow and Green River; Big South Fork of the Cumberland River; Middleboro and Cumberland Gap.

Rogers told the group, "We're being blown off the map by Tennessee," adding that Kentucky should be more aggressive in budgeting money for tourism.

Technically, the SKTDA is a group of business leaders and elected officials who will push tourism as a key to new jobs in the counties along and near the Tennessee border.

Recently, the Southern Kentucky Economic Development Corporation was formed to encourage the formation of small business and entrepreneurship.

Later, Forward in the Fifth was formed to address the region's problems in education.

In a final note, the report states it is not suggesting the elimination of any of the tourism groups that are currently active in the area.

CORRECTIONS

Harold and Myrtle Durham, real property located on the waters of Horse Lick and white Oak Branch, to Veryl and Bobbie Durham. Tax \$9.00.

Walter and Mae Doan, real property located on the waters of Rockcastle River and Skeggs Creek, to Gary Mason. Tax \$15.00.

"FROM OUR FILES"

[Cont. From Front]

Michael Flaherty, son of Mr. and Mrs. Thomas A. Flaherty of Louisville.

15 years ago, 1972—Fred Mullins killed two copperhead snakes on his farm in Orlando. One measured 40½ inches and the smaller one 36 inches.

Lloyd Jones, pastor of the Broadhead Christian Church, killed a 39 inch rattlesnake on the highway near Roundstone School.

New officers of the recently organized Rockcastle County Athletic Boosters Club are Jim Earl Hammons, president, Keith Singleton, vice president and Preston Parrett, secretary-treasurer.

20 years ago, 1967—The Shriners sponsored a circus trip to Lexington for 160 county youngsters.

Mr. and Mrs. Olney James Sutton of Brodhead announce the engagement of their daughter, Rita Ann, to Robert Brown Denhardt, son of Mr. and Mrs. Jesse Grider Denhardt, Jr. of Bowling Green.

Mr. and Mrs. Nash Brummett celebrated their Golden Wedding Anniversary at their home in Brodhead with all their 11 surviving children attending.

25 years ago, 1962—Around 600 people or more crowded around the depot when the old Civil War locomotive, the General, steamed into the Livingston L. & N station.

Miss Janette Brown, of Stanford, was crowned queen of the Brodhead Fair by Mrs. Barbara Faulkner of Mt. Vernon, former queen at the fair.

About 50 persons attended a road meeting at the courthouse where they watched a film, narrated by Henry Ward, commissioner of highways.

Billy George Griffith, of Mt. Vernon, had a good catch while fishing at Daytona Beach, Fla., with his parents, Dr. and Mrs. George Griffith.

"TOBACCO"

[Cont. From Front]

tobacco account; not deliver to the tobacco warehouse nested tobacco; use pesticides products approved by the Environmental Protection Agency in the production of tobacco; list all producers receiving a share of the crop.

In the 1987 crop year, producers are also required to file an AD-1026 in the county office. This form is used to certify to the use of highly erodible lands used in the cultivation of a row crop. Producers who are growing tobacco or receive a check at the tobacco warehouse are required to sign this form in order to be eligible to receive price support on tobacco.

Failure to sign the MQ-38 form and the AD-1026 in the county office by Oct. 30, will result in loss of price support on burley tobacco and each pound marketed from the farm will be subject to a marketing quota penalty.

Due to the workload of the program, farmers are urged to make appointments with the local ASCS office to comply by signing the AD-1026 form. Producers who have already completed the AD-1026 may come to the ASCS office at their convenience to sign the MQ-38 before Oct. 30.

Growers who have questions on this matter, should contact the Rockcastle County ASCS Office at 256-2525.

Big Ben is the 13½ ton bell in the clock tower of the Houses of Parliament, London—the name is often incorrectly applied to the clock itself.

"Mrs. Hamm wins case"

[Cont. From Front]

tion issue, but against her on her request for a finding of retaliation.

That she receive about \$3,000 in back pay from the 1984 hiring of Bill Jack Parsons at Rockcastle County Schools. That she receive about \$7,000 a year for the two years since John Hale was hired as principal at Mt. Vernon, and that she be appointed to the next administrative job in Rockcastle County Schools.

However, Mrs. Coffman said that Mrs. Hamm only wanted Hale's job at Mt. Vernon Elementary as a last resort.

Coffman also asked that Mrs. Hamm receive protection in any position she might be placed so that the power of the superintendent and the board could not be misused again. And, that the defendants pay attorney fees in a reasonable amount. That amount now exceeds \$40,000.

Judge Newblatt ruled that Mrs. Hamm was discriminated against in the Mt. Vernon Elementary hiring only and not the 1984 hiring of Bill Jack Parsons at Roundstone because she did not have principalship listed on her application. She did have principal listed on her application when Hale was hired.



DONATION—Clark Brown, secretary-treasurer of REAP (Rockcastle Economic Assistance Program) and his grandson, Steve Smith, show off a quantity of jams and jellies donated to the organization by Booneway Farms in Berea.

8 a.m. to 10 p.m.—7 days a week

MT. VERNON

U.S. 150 West
Westgate Shopping Center
Mt. Vernon, Kentucky
256-2514

FOODTOWN

THE ABC'S OF SAVINGS!



12-PACK, 12 OZ. CANS
PEPSI, DIET PEPSI, PEPSI FREE, DIET PEPSI FREE OR MOUNTAIN DEW

2.79
8 pack carton, 16 oz. bottles plus deposit 1.79



HOLLY FARMS MIXED FRYER PARTS

.37 lb.

Limit two packages, please, with additional \$5 or more order



SURF LAUNDRY DETERGENT
147 oz. box

2 for \$1

Limit one, please, with additional \$5 or more order



KRAFT MAYONNAISE
Quart jar

1.29

Limit one, please, with additional \$5 or more order



FOLGERS COFFEE
1 lb. can, all grinds

1.99

Limit one, please, with additional \$5 or more order



FRESHLIKE CANNED VEGETABLES
12-14 oz. cans, French Style or Cut Green Beans, or Whole Kernel or Cream Style Golden Corn

3 for \$1

Limit one, please, with additional \$5 or more order



CRISCO SHORTENING
3 lb. can, Reg. or Butter Flavor

1.99

Limit one, please, with additional \$5 or more order

5.99

FOLGERS CRYSTALL DECAFFEINATED INSTANT COFFEE
8 oz. jar

Limit one, please, with additional \$5 or more order

Coming
Soon

Video Alley

West Main St.
Mt. Vernon
256-3456

Next to Fain Furniture

We're Moving!!

LAWRENCE ELECTRONICS

is moving to the former J&D Family Video Building as of Sept. 1, 1987.

[Across from Appliance Service Center on U.S. 25 in Mt. Vernon]



Dependable Repair of:

TVs, Stereos, VCRs,
Microwaves, Etc.

Berea: 986-3868

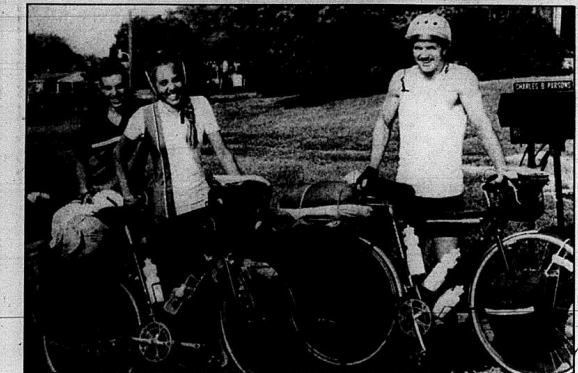
Mt. Vernon: 256-4903

Eddie Lawrence, Owner

P.O. Box 1043 Mt. Vernon

Signal

Thursday August 20, 1987



Michael Dombrowski, left, his sister, Angela, and Ron Duffield, prepare to leave on their bicycle trip to their home in North Carolina. They had breakfast with Mr. and Mrs. Charles B. Parsons.

Travelers from afar find food, friends and lodging

By: Ray McClure

Three young bicyclists whizzing along on a 3,000 mile trip from Oregon to North Carolina found needed (re) lodging and breakfast when they stopped at Mt. Vernon last Wednesday.

The lodging wasn't exactly like home — a pallet in the Catholic rectory carport in Mt. Vernon — but the breakfast was just what the customers ordered when Mrs. Bonnie Parsons prepared it.

Providing breakfast for the three young people was a pleasure for Mrs. Parsons related. She was happy to help the three who have been on the road since June 27.

Mrs. Parsons said there was a knock on their door late Tuesday night and when she arrived the three—Michael Dombrowski of Winston Salem, N. Car., his sister, Angela of Raleigh, N. Car. and Ron Duffield of Gaston, Ore., asked if they could stay somewhere in the area. "They said our house had the only light on; that they had no place to stay, she said. "So we made a call and they were told they could stay over at the rectory."

The next morning, the Parsons invited them to eat breakfast, with her and her husband, Charlie B. The Parsons live across the street from the rectory. Michael, a freshman at Wake Forest University; Angela, a high school teacher in Raleigh, and Ron, a respiratory therapist on leave from an Oregon hospital, began their bicycle journey on the Oregon coast. They had gone to Oregon by Greyhound.

They traveled the backroads through Southern Idaho, Yellowstone National Park, through the Tetons, across Wyoming to Denver and on to St. Louis.

There was only one accident on the trip, Mike lost control on a steep hill and flipped his bicycle. He was taken to the hospital by a

Methodist minister where he was checked.

Angela said people were always nice to them on the trip, and they

were all amazed at the size of the nation.

"You see it all when you're on a bicycle," she stated. "People were always very nice to us during the trip. My mother once rode from New York to New Orleans on a bike, but we have gone nearly twice as far."

The trio expects to be in North Carolina this week since Angela must start teaching and Mike must start college. They traveled via U.S. 25E.

"We'll never forget this trip," Mike said. "It's wonderful to travel across the country by bike. There was so much to see that we had not seen."

Rockcastle moves close to affiliation

Rockcastle Forward in the Fifth has moved a step closer to becoming a full fledged local affiliate of Forward in the Fifth. Forward in the Fifth, comprised of 27 southern Kentucky counties, is dedicated to the betterment of the educational environment in the Fifth Congressional District.

To become an affiliate, local organizations must qualify by presenting to the local affiliates coordinator an application including by-laws, a plan of action, fund raising plans, a description of staffing arrangements, and an indication of support from the local school system and business community.

Meeting for the first time in May, the local organization has made rapid strides to meet these requirements. On August 12, the Rockcastle Forward in the Fifth Board of Directors met to approve the application. This application has now been presented to the local affiliates coordinator. If accepted, this special school activities planned by Forward in the Fifth this year.

Also at this meeting the board approved a mini-grant application form submitted by David Henderson and Gary Eldridge, co-chairman of the Mini-Grant Committee. This program provides small grants up to \$300 to qualifying elementary and second-

ary classroom teachers of the Rockcastle County Schools. The purpose of these small grants is to stimulate creativity, develop innovative classroom projects, and add vitality to the student-teacher relationship. These applications now are being made available to the teachers.

A shadow cast across these 27 counties in southern Kentucky by the 1980 census is beginning to lift. Enthusiastic support is being received throughout the business communities and local school systems. Promise of better days is surfacing for the 110,000 school children in the Fifth Congressional District.

By: Stuart

Judge hands down 30 page order for Hamm

Editors Note: These are some excerpts from the actual 30 page order handed down last week by Federal Judge Stewart Newblatt concerning the sex discrimination trial of Sue Hamm vs. Rockcastle County Board of Education. Due to the length of the story some typographical errors may appear.

EMPLOYMENT DISCRIMINATION

II FINDINGS OF FACT

a. Background

Plaintiff in this case is Sue D. Hamm, a white female, who has been employed by the Rockcastle County Board of Education since 1969. She is presently a Guidance Counselor, and is in charge of the gifted education program for the Rockcastle County School System. She also has responsibilities in the special education program. She is certified by the Kentucky Department of Education under Kentucky law as a teacher, guidance counselor, elementary and secondary principal, and supervisor. She is involved in various professional associations including the National Education Association (NEA) and the Kentucky Educational Association (KEA). Moreover, she has been active in establishing Parents Teachers Associations (PTA) in various elementary schools in Rockcastle County, sponsoring the BETA club at Mt. Vernon Elementary School, and writing articles concerning students in the local newspaper.

Rockcastle County is a largely rural county south of Lexington, Kentucky. It has approximately 2,900 students attending one high school and four elementary schools which are spread out in various ways to serve the four corners of the county. The Rockcastle school system was characterized as small, poor and rural. For example, 65 percent of its students are involved in the free lunch program and a high percentage of its students are considered educationally disadvantaged.

The educational approach in Rockcastle County has been shaped by Charles B. Parsons, who, at the time of the trial, had been Superintendent for the last 19 years. Parsons stresses a traditional or basic educational approach. Parsons testified that he attempts to provide the education that the public both desires and needs.

Parsons testified with Parsons since she began working in Rockcastle County as a substitute teacher in the 1969-70 school year. In the 1972-73 school year, Hamm became a Guidance Counselor, and until 1984, she was the only Counselor for the four elementary schools in Rockcastle County: Roundstone, Broadhead, Mt. Vernon and Livingston. Until 1984, Hamm would spend one day at each of these schools with the fifth day in the Central office doing paperwork generated by her Counselor position as well as work assigned to her by Parsons and work relating to her other programs. Hamm testified that she stayed on schedule unless there were problems or a meeting. There is no dispute that she would advise the principals at the relevant schools as to necessary variances in her schedule and as to her whereabouts.

In addition to her work as Guidance Counselor, which work occupied 75 percent of her time, Hamm had various duties in the Special Education Program. Additionally, in 1981, Hamm was placed in charge of the Gifted Education Program, a program which she was instrumental in obtaining the funding. Parsons testified that he named Hamm to this post because she had expressed an interest

in it and because he felt she would do a good job. Moreover, he testified that she has done a good job as the Gifted Program coordinator. Hamm testified that she spends approximately 25 percent of her time on this program.

In 1984, a second Guidance Counselor was hired so that plaintiff could spend two days a week at Broadhead and Livingston Elementary Schools. Also in 1984, Parsons asked Hamm to compile and look on the Gifted and Special Education Programs for a statewide Accreditation Review. When Hamm indicated that such work might cause problems with her schedule, Parsons responded that she should let him worry about any schedule problems that might arise.

b. Evaluation of Plaintiff

Although there has been no formal evaluation of Hamm by her tenure, she has worked closely with the principals in each of the schools she has worked. Each of them testified that they never had any complaints about the quality of her work, but that there was a concern that the children were not receiving enough counseling because of plaintiff's schedule. Essentially, one day a week at each of the four elementary schools was not enough and on the days that she was supposed to be at a particular school, there were often other duties which compelled her absence.

As a result of her schedule problems, in the 1980-81 school year, a group of principals approached Alice Towery, then principal at Broadhead Elementary, to complain to Parsons about Hamm's schedule. Although the testimony varied as to Parsons' response, this Court understands that Parsons responded that Hamm had a lot of work and that, Towery, should not be so critical unless he was aware of all her duties. After the second Guidance Counselor was hired, Hamm's work improved. For example, Jerry Mink, principal at Livingston, testified that since the second Counselor was hired in 1984, Hamm has become more reliable and that she had more time to relate to the teachers. Mink also testified that he has seen an improvement in Hamm's work since she filed this suit.

Several teachers with whom Hamm has worked characterized her as competent, dedicated, cooperative, responsive and helpful. For example, Jan Burke who has worked in the Rockcastle School system for 17 years as both teacher and psychologist, indicated that Hamm followed through on referrals, related well to parents and was extremely competent. Geraldine Holbrook testified that for the last three years she has referred both gifted and troubled students to Hamm and that she has always been responsive.

Teachers called by the board and Parsons were not so complimentary. They testified that Hamm had problems with follow-up or that she told them that the

classroom teacher was in better position to handle certain problems. Because of these perceived problems, these teachers testified that they stopped referring students to Hamm well before the second Guidance Counselor was hired in 1984. Thus, they have no way of knowing how Hamm performs when she is in a school two days a week instead of one. Moreover, the negative feelings about Hamm may well have been influenced by the feelings stated by a teacher that Hamm was "grabbing the limelight."

The most important person testifying as to Hamm's abilities, as he made the ultimate decision whether to promote her, was defendant Charles Parsons. Parsons testified that he had no complaints about the quality of Hamm's work. In fact, Parsons demonstrated his pleasure with Hamm's work by consistently giving her more responsibilities such as in the Special Education and Gifted Student Programs. Parsons testified that he did have complaints from principals (specifically Towery complaint in 1980-81) and several complaints from teachers regarding lack of follow up on referrals. He testified that he mentioned these complaints to Hamm in passing in 1980-81, but that he never reprimanded her either in writing or orally. Of course, Parsons must not have credited those complaints because, as has indicated above, he was supportive of Hamm when Towery, and others, made their complaints and he thereafter gave her added responsibilities. Moreover, the last time he mentioned the complaints to her was in 1980-81.

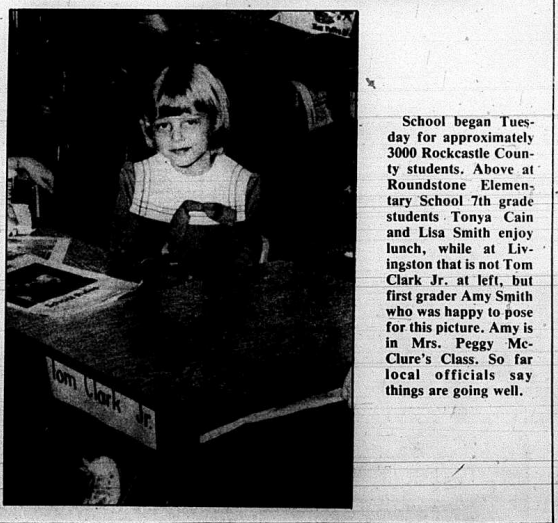
Superintendent Parsons and Hamm, who have worked together since she started working in Rockcastle County, have significantly different educational philosophies. As noted above, Parsons believes in a traditional or conservative approach to education. Hamm is a progressive, favoring computers, languages and enrichment programs such as reading workshop called "Reading Workshop" and a self-esteem program called "C.A.S.E." Though Parsons testified that he believes that she favored programs which he characterized as "fills," would take away from the basics, he did not point to even one program which takes time away from the basics.

c. Application Process

In the Spring of each year, teachers and administrators in the Rockcastle County School System, are required to fill out a form indicating in which positions they have an interest (this includes the one they currently hold). There need not be an opening at that time and once an opening is available, Parsons goes through the forms to determine who has expressed an interest in that position. Vacancies are not announced in advance nor are persons who are certified for vacant positions notified. Once Parsons decides on who he thinks should fill a vacant position, he

Continued on B 8

School days



School began Tuesday for approximately 3000 Rockcastle County students. Above at Roundstone Elementary School 7th grade students Tonya Cain and Lisa Smith enjoy lunch, while at Livingston that is not Tom Clark Jr. at left, but first grader Amy Smith who was happy to pose for this picture. Amy is in Mrs. Peggy McClure's Class. So far local officials say things are going well.

Rockcastle County Board of Education
Financial Statement
Foundation Program Capital Outlay Fund
Balance July 1, 1986 141,803.00
Foundation Program Capital Outlay Allowment 267,402.00
Interest 6,562.32

RECEIPTS
273,964.32
Total Balance and Receipts 415,768.12

DISBURSEMENTS
201,958.03
Balance June 30, 1987 213,810.09

Table with 2 columns: Description and Amount. Rows include Recapitulation A, Balance at beginning of year, Total Receipts for the Year, Total Balance and Receipts, Total Disbursed during the Year, Balance at close of year (Book Balance), Balance in bank at close of year (Total), Checks outstanding at close of year, and Actual Balance (Cash).

Name of Depository Bank - The Bank of Mt. Vernon, Ky.
Date: June 30, 1987

Signed: Garlen B. Cummins, Treasurer
Rockcastle County Board of Education

This is to certify that the balance to the credit of the Rockcastle County Board of Education account on June 30, 1987 was \$768,240.72.

Signed: Joyce MacHall (Bookkeeper)
Sworn to and subscribed before me this 30th day of June, 1987.

Gwen Abney Planner, Notary Public, State of Kentucky
My commission expires 8-24-87

Table with 2 columns: Description and Amount. Rows include Wages of School Employees, Administration, Instruction, Attendance, Health, Transportation, Operation, Maintenance, and TOTAL.

Table with 3 columns: Code No., Item, and Total Received for Year. Rows include REVENUE FROM LOCAL SOURCES (Taxation: General Property Tax, General Property Delinquent Tax, Revenue in lieu of Taxes, Public Service Companies Tax, District Service Tax, PERMISSIVE TAXES, TUITION, RENTAL OF SCHOOL FACILITIES).

Table with 3 columns: Code No., Item, and Total Received for Year. Rows include NON-REVENUE RECEIPTS (SALE OF PROPERTY, INSURANCE RECOVERY, REIMBURSEMENTS) and CLEARING ACCOUNTS AND TRANSFERS.

Table with 2 columns: Description and Amount. Rows include BELOW LINE RECEIPTS and CLEARING ACCOUNTS AND TRANSFERS.

Table with 3 columns: Code No., Description, and Amount. Rows include TRANSFERS FROM LOCAL FUNDS, TRANSFERS FROM FEDERAL FUNDS, OTHER TRANSFERS, and Recapitulation A.

Table with 2 columns: Description and Amount. Rows include Recapitulation A, Balance on hand beginning of year, Total cash, receipts, and receipts in lieu of item, Total expenditures for year, and Ledger balance close of year.

Table with 2 columns: Description and Amount. Rows include Recapitulation B, Balance on hand close of year, Assets, Liabilities, and Total amount expended for instructional salaries during the fiscal year.

Table with 2 columns: Description and Amount. Rows include Recapitulation C, Assets, Liabilities, and Total amount expended for instructional salaries during the fiscal year.

Table with 2 columns: Description and Amount. Rows include ORDERS OF THE TREASURER, General Fund, and July 1986.

Table with 5 columns: Code No., Name of Payee, Code Purpose, Amount, and September. Rows include General Fund payments for July 1986 and September.

Table with 2 columns: Description and Amount. Rows include Recapitulation A, Balance on hand close of year, Assets, Liabilities, and Total amount expended for instructional salaries during the fiscal year.

Table with 3 columns: Code No., Description, and Amount. Rows include TRANSFERS FROM LOCAL FUNDS, TRANSFERS FROM FEDERAL FUNDS, OTHER TRANSFERS, and Recapitulation A.

Table with 2 columns: Description and Amount. Rows include Recapitulation A, Balance on hand beginning of year, Total cash, receipts, and receipts in lieu of item, Total expenditures for year, and Ledger balance close of year.

Table with 2 columns: Description and Amount. Rows include Recapitulation B, Balance on hand close of year, Assets, Liabilities, and Total amount expended for instructional salaries during the fiscal year.

Table with 2 columns: Description and Amount. Rows include Recapitulation C, Assets, Liabilities, and Total amount expended for instructional salaries during the fiscal year.

Table with 2 columns: Description and Amount. Rows include ORDERS OF THE TREASURER, General Fund, and July 1986.

Table with 5 columns: Code No., Name of Payee, Code Purpose, Amount, and September. Rows include General Fund payments for July 1986 and September.

Table with 2 columns: Description and Amount. Rows include Recapitulation A, Balance on hand close of year, Assets, Liabilities, and Total amount expended for instructional salaries during the fiscal year.

"FINANCIAL STATEMENT" (Cont. From B-2)

Table with columns for account numbers (e.g., 5233 Haden Co., 5234 Brock McVey) and amounts. Includes sub-sections for 'General Fund' and 'October 1986'.

Table with columns for account numbers (e.g., 3374 Mag's Repair Shop, 3375 Industrial Motor Repair) and amounts. Includes sub-sections for 'General Fund' and 'October 1986'.

Table with columns for account numbers (e.g., 752 acct, 752 acct) and amounts. Includes sub-sections for 'General Fund' and 'November 1986'.

Table with columns for account numbers (e.g., 5523 John Cross Jr, 5523 Edsel Glass) and amounts. Includes sub-sections for 'General Fund' and 'December 1986'.

Table with columns for account numbers (e.g., 5531 cont. haul, 5531 cont. haul) and amounts. Includes sub-sections for 'General Fund' and 'December 1986'.

Table with columns for account numbers (e.g., 5201 George Poynter, 5202 Kenneth Adams) and amounts. Includes sub-sections for 'General Fund' and 'October 1986'.

Table with columns for account numbers (e.g., 5400 Millie Taylor, 5401 Millie Taylor) and amounts. Includes sub-sections for 'General Fund' and 'November 1986'.

Table with columns for account numbers (e.g., 5538 Charles B. Parsons, 5539 Ronald McFerron) and amounts. Includes sub-sections for 'General Fund' and 'December 1986'.

Table with columns for account numbers (e.g., 5540 Food Service Account, 5541 Central Trust Company) and amounts. Includes sub-sections for 'General Fund' and 'December 1986'.

Table with columns for account numbers (e.g., 5542 Central Trust Company, 5543 Vanal Office Equipment) and amounts. Includes sub-sections for 'General Fund' and 'December 1986'.