



### Farm Bureau meeting . . .

Mr. and Mrs. Bailey Thacker and grandchildren were among some 400 who attended the annual Farm Bureau supper and meeting Friday night at Roundstone School.

Shelly L. Mullins of Climax was re-elected to a third term as president of Rockcastle County Farm Bureau at the bureau's annual meeting Friday night at Roundstone Elementary School.

Elected vice president was William McClure. Wise Noe was chosen secretary-treasurer.

Elected to the board of directors were Roland Tankersley, Blaine McHargue, Carl Miller, Cloyd Bowling, Steve Bullen, Neal Rigsby, Tommy Harold Mink, Wayne Adams and Henry Brown.

About 400 attended the meeting with entertainment by the Jubilee Echos from the Ottawa Baptist Church and the Hilltop Cloggers.

A car battery from McKinney Tire was won by Angela Trebello of Broadhead. Two memberships in the bureau worth \$20 were won by Troy Cromer and Ginger Mink.

The bureau has about 2,300 members.



### Farm & Home News

By: Tom Mills  
County Extension Agent  
for Agriculture

#### BEEF PRECONDITIONING DERBY

The Rockcastle County Beef Association will be conducting their preconditioning demonstration starting Monday, Sept. 28, and running through Oct. 26. Any beef producer may enter spring born steer calves just off the cow. Preferably February and March calves in the 400-525 pound range. Entry fees are \$5 dollars per head and registration should be made with Keith Smith 758-8212 or Tom Mills 256-2403.

Calves will be weighed and tagged, as well as given necessary herd health practices by Dr. Joe Korn. Producers wishing to see the weigh-in and health demonstration should be at Keith Smith's farm on Highway 150 at 2 p.m. on the 28th.

Following the weigh-in, calves will be placed on a preconditioning ration from Purina Chow. Albright Feed and Supply will be donating half the feed with farmers picking up the remaining cost.

On Tuesday, Oct. 27, calves will be reweighed and the winners announced at an association banquet. Premium money will be awarded to first and second place for the most weight gained as well as the first place for percent weight gained.

Last year's results show that half the calves gained over three pounds per day with the winning angus calf gaining 4.4 pounds per day. This is an excellent way to see how well your calves gain on feed.

#### TOBACCO PRICE SUPPORT

Tobacco marketing season is just around the corner. Once again you will be completing a form in order to receive Price Support on your tobacco. You will need to complete this form (MQ-38) before this office can issue your tobacco marketing card. On this form you will be required to certify to:

- A. Contribute to the No Net Cost Tobacco Account
- B. Not deliver nested tobacco.

C. Use pesticide products in the production of the tobacco that are approved by the Environmental Protection Agency.

The certification can be completed beginning Sept. 1. This certification should be completed and filed in county office by Oct. 1, 1987. Producers are encouraged to file the form in the county office to assure that it is filed correctly. If you can not file in county office, you may request that the form be mailed to you. This request can be in writing or by phone. Remember to complete all questions and provide all the information asked for. If the form is not properly completed, the marketing card can not be issued. List the acreage of burley grown on the farm and whether any other kind of tobacco was grown. Be sure to list each person who is receiving a share of the proceeds and list the amount of their share.

The person listed as the operator of the farm should file the certification. However, anyone who has an ownership interest in the farm or who is properly authorized (has power of attorney) can complete the certification.

All persons sharing in the crop

are also required to file a certification on the use of highly erodible lands and wetlands (AD-1026) in the county office.

All producers should assure that these forms are completed in order to timely receive their marketing card. If you have any questions concerning the completing of these certifications, please feel free to stop by the

county office so that one of our employees can assist you.



### Kastle Inn Restaurant's

#### Sunday Special

CHICKEN 'n DUMPLINGS  
COUNTRY FRIED STEAK

or  
ROAST BEEF

CHOICE OF 2 VEGETABLES, SALAD, ROLLS OR CORNBREAD

**\$3.95**

Open 6 to 10 Monday thru Sunday  
LOCATED EXIT 59 OF I-75 SOUTH OF MT. VERNON

Of all the health insurance plans being offered today, OPTION 2000 has risen to the head of the class for quality. And no wonder.

From the very beginning, we've been committed to the idea that to be the best you have to give your best. And that's just what we do.

For example, we offer the largest network of quality, cost-effective hospitals of any alternate system in Kentucky. And we have no restrictions on what physician or specialist you can choose.

What's more, our simplified

paperwork makes OPTION 2000 easy to use.

Best of all, OPTION 2000 is backed by the commitment and resources of Blue Cross and Blue Shield of Kentucky, the one you've always trusted for dependable coverage and expert claims service. As a Kentucky based company with a network of district offices, we can provide localized customer service and claims processing.

If it's time for you to choose a group health plan, choose the one that's committed to offering the best in services, benefits, and quality. Choose OPTION 2000.

# It takes real commitment to be the best.

**OPTION 2000**  
A PREFERRED PRODUCT  
offered by

SOUTHEASTERN UNITED MEDIGROUP, INC.



\*\* Reg. Mark Blue Cross and Blue Shield of Kentucky, Inc. a Mutual Insurance Company • OPTION 2000 coverage is offered by Southeastern United Medigroup, Inc. a subsidiary of Blue Cross and Blue Shield of Kentucky, Inc. a Mutual Insurance Company • \*\* Reg. Marks Blue Cross and Blue Shield Association, • Delta Dental Plan of Kentucky, Inc. • \*\*\* Reg. Mark Delta Dental Plans Association. SOW/ES54

FUTURE AUCTIONS

Estate Auction of the late Mr. W.H. Wells... Estate Auction of the late Oakley Wade's 15 1/2 Acres... Estate Auction of the late Mrs. M. Pleasant Buppitt's

Auction of Mr. Pleasant Buppitt's Parsonage and 3 Acres... Located on Ohio Road in District Co. Friday, Oct. 2, 1987 6:30 p.m.

Auction of City of Broadhead's Building Lot... Sat. October 10, 1987 1:30 p.m. Located in Broadhead, Ky.

FUTURE AUCTIONS

Auction of Mrs. Bonnie Bruce's Prestigious Estate - House & 4 Acres... Auction of the late James Brummett's Farm in Trece... Auction of Hwy. 150 near Broadhead



REAL ESTATE

Commercial Property

Two Bedroom Apartments... Commercial Building - Main Street in Broadhead... Going Business - Florist... BE YOUR OWN BOSS - Own Your Own Business

186 ACRES - Located on East Fork Skaggs Creek... 190 ACRES - 1 mile off US 25 on the Orlando Road... 146 ACRES - more or less... 100 ACRES - more or less

SALE PENDING... 146 ACRES - more or less... 100 ACRES - more or less

mobile home and a barn... 4 Acres - Between Broadhead and Crab Hill... 28 Acre Farm - Located near Salt Ponds... 240 ACRES - Skaggs Creek Road... 186 ACRES - Located on East Fork Skaggs Creek

MAPLE STREET - Near hospital... 2000 Sq. Ft. Richmond Mt. Vernon... 28 Acre Farm - Located near Salt Ponds

2000 Sq. Ft. Richmond Mt. Vernon... 28 Acre Farm - Located near Salt Ponds... 240 ACRES - Skaggs Creek Road

also has living room, kitchen, bath... EXCELLENCE HOME - 5 miles south of Mt. Vernon... 3 Bedroom Frame Home - Near Beech

Homes - \$40,000-\$50,000

REDUCED - West Main Street... Rustic 2 Room Cabin - 4 Acres... LIVE ON THE LAKE HOME has 2 bedrooms... Excellent Location - West Main St.

Homes Under \$30,000

Frame House - Near Orlando Home... Like New 1984 1 1/2 x 50 Mobile Home... House and 7 Acres - 4 miles south of Mt. Vernon

Homes \$50,000 & Up

White Brick and 5 Acres - Quil section of Rockcastle Co... Quality Brick Home - Near Library in Mt. Vernon... Excellent Location - Williams Street

Homes \$30,000-\$40,000

McGuire Subdivision - Brick home with 3 bedrooms... Hillview Subdivision - Near P. Campbell... Hillside Subdivision - Near P. Campbell

COMMERCIAL BUILDING AND LOT

100 ACRES - more or less... 118 ACRES - Ch... 34 ACRES - Near Johnetta... 41 1/2 ACRES - Near Livingston

COMMERCIAL BUILDING AND LOT

100 ACRES - more or less... 118 ACRES - Ch... 34 ACRES - Near Johnetta... 41 1/2 ACRES - Near Livingston

COMMERCIAL BUILDING AND LOT

100 ACRES - more or less... 118 ACRES - Ch... 34 ACRES - Near Johnetta... 41 1/2 ACRES - Near Livingston

COMMERCIAL BUILDING AND LOT

100 ACRES - more or less... 118 ACRES - Ch... 34 ACRES - Near Johnetta... 41 1/2 ACRES - Near Livingston

COMMERCIAL BUILDING AND LOT

100 ACRES - more or less... 118 ACRES - Ch... 34 ACRES - Near Johnetta... 41 1/2 ACRES - Near Livingston

COMMERCIAL BUILDING AND LOT

100 ACRES - more or less... 118 ACRES - Ch... 34 ACRES - Near Johnetta... 41 1/2 ACRES - Near Livingston

COMMERCIAL BUILDING AND LOT

100 ACRES - more or less... 118 ACRES - Ch... 34 ACRES - Near Johnetta... 41 1/2 ACRES - Near Livingston

COMMERCIAL BUILDING AND LOT

100 ACRES - more or less... 118 ACRES - Ch... 34 ACRES - Near Johnetta... 41 1/2 ACRES - Near Livingston

COMMERCIAL BUILDING AND LOT

100 ACRES - more or less... 118 ACRES - Ch... 34 ACRES - Near Johnetta... 41 1/2 ACRES - Near Livingston

COMMERCIAL BUILDING AND LOT

100 ACRES - more or less... 118 ACRES - Ch... 34 ACRES - Near Johnetta... 41 1/2 ACRES - Near Livingston

FARMS & ACREAGE

15 ACRES - near Quil on 618, city water... 91 ACRES - Just off Hwy. 25 at Pine Hill... 200 ACRES - Located between Broadhead and Crab Orchard

FARMS & ACREAGE

15 ACRES - near Quil on 618, city water... 91 ACRES - Just off Hwy. 25 at Pine Hill... 200 ACRES - Located between Broadhead and Crab Orchard

FARMS & ACREAGE

15 ACRES - near Quil on 618, city water... 91 ACRES - Just off Hwy. 25 at Pine Hill... 200 ACRES - Located between Broadhead and Crab Orchard

FARMS & ACREAGE

15 ACRES - near Quil on 618, city water... 91 ACRES - Just off Hwy. 25 at Pine Hill... 200 ACRES - Located between Broadhead and Crab Orchard

FARMS & ACREAGE

15 ACRES - near Quil on 618, city water... 91 ACRES - Just off Hwy. 25 at Pine Hill... 200 ACRES - Located between Broadhead and Crab Orchard

Long Term - Small Down Payment - Low Interest Loan - Available to Qualified Prospects

Ford Real Estate & Auction Co.

REALTOR

SERVICE THAT YOU CAN TRUST - CALL TODAY IF YOU WANT TO LIST YOUR PROPERTY OR IF YOU WANT TO BUY!

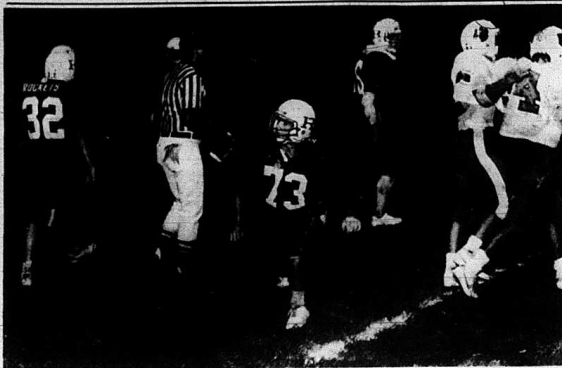
Mt. Vernon, KY 40359-4545 KENTUCKY TOLL FREE 1-800-436-6445

Seam Ford, GM 256-4588

Edited by Richard Anderkin

## Rockets take Lynn Camp 14-6 for 5th straight win

Homecoming is this Friday night . . .



Middlelinebacker Chad Hodges, No. 73, gets up after making a stop during action Friday night. The Rockets defeated visiting Lynn Camp 14-6.

By: Cindy Witt and Leslie Norton

Although numerous turnovers plagued the R.C.H.S. Rockets Friday they managed to hold on for their fifth straight win 14-6 over visiting Lynn Camp.

Entering the Lynn Camp game with a 4-0 start and a school record for the state of a season at Rockcastle Co., added pressure to the Rockets.

According to Rocket Coach Tom Larkey, Lynn Camp has always played their best against Rockcastle. Coach Larkey had the feeling that the Rocket supporters expected a sure win that night, but he had other thoughts all week. "I knew the game was not a sure win," said Larkey. According to Larkey, Rockcastle had to be a much better team to win against Lynn Camp.

"Last year at Lynn Camp, the game was stolen from us on some bad calls by the officials and I will never feel any differently about it," said Larkey. The Rockets will have the same officials at the Jellico game "I hope we can play extra well this week to overcome any obstacles already created that happened in the closing two minutes of the Lynn Camp game. Quarterback Chris Larkey broke a bone in his left hand and is now wearing a cast. Although Coach Larkey has not lost a homecoming game in his two seasons at Rockcastle, he says, "These homecoming games scare me to death, because of all of the extra activities that go on before, during, and after the game. It's hard to keep the boys' minds on the game."

So the homecoming, according

to Larkey, could be an obstacle not only at Rockcastle, but at all schools. "You must have them, and I don't object, but you have to be extra prepared mentally for the game."

Rockcastle lost the toss Friday night and had to kick to Lynn Camp. Lynn Camp fumbled the ball and the Rockets recovered but the officials declared it Lynn Camp's ball. "I thought the ball belonged to us at the time and after watching the replay on film, I knew the ball should have gone to us," he said.

Rockcastle didn't seem to get any breaks the entire game except for a bad snap on an attempted field goal in the third quarter.

Rockcastle's defense held the Wildcats on their first possession

and forced a punt. The Rockets ran three plays and then punted to Lynn Camp. These turned out to be the only three plays the Rockets ran the entire first quarter.

Rockcastle held on third down again, but roughed the punter and this gave Lynn Camp a first down and good field position.

"After a first down and the ball on the 20 yard line, the quarter came to an end.

The Wildcats picked up another first down and had the ball on the nine yard line with 10 minutes remaining in the second quarter when Willie Asher took the ball in for the score, but Kevin Rowe made the stop on the two-point conversion.

(Cont. to B5)

## kinko's

The One Stop Copy Shop for all your copy needs.

Resumes  
Flyers  
News Letters  
Passport Photos  
Binding

We now make oversized copies  
24x38 or longer  
1b 20 lb. Bond or  
20 lb. Vellum

Type Setting  
Rubber Stamps  
Business Cards  
Laminating

AND MUCH MORE!!!

University Shopping Center  
Eastern By Pass, Richmond  
[606] 624-0237

Our Hours:  
Monday-Thursday 8:30-7:00  
Friday 8:30-6:00  
Saturday 10:00-5:00.

**NEED A PART??**  
Come See Charles of Gary Reppert

**BY PASS AUTO PARTS** Ph. 256-2666

**ESTATE Auction**  
of the late  
*Mr. Claude Shackelford's*  
**BRICK HOUSE - 2 ACRES**  
**Vehicles & Personal Property**  
**Sat., Sept. 26, 1987 12 Noon**  
Hwy. 39 - Lincoln Co.

**LOCATION:**  
4 miles south of Crab Orchard on Hwy. 39 in Lincoln County.

In order to settle the estate of the late Mr. Claude Shackelford, his heirs have commissioned our firm to sell, at absolute auction, this desirable property and personality.

**REAL ESTATE:** This ranch style brick home has: 3 bedrooms \* living room \* kitchen \* bath \* hardwood floors with carpet \* storm doors and windows \* total electric basement with outside entrance \* carpet \* flu for wood burner \* city water \* cistern. Situated on a 2 acre level lot, this property gives you ample space for a garden and additional buildings. It fronts both on Hwy. 39 and the Negro Creek Road.

**Vehicles and Personal Property -** 1979 Ford F150 pick-up \* 1974 Cadillac Sedan \* Whirlpool Refrigerator \* 19" black and white TV \* cattle racks for pick-up.

**Auctioneer's Note:** If country living is what you like, then you should look this excellent property over and be prepared to buy. Remember, it's an absolute auction, the last bid will buy!

**TERMS:** 20% down day of sale, balance in 30 days upon delivery of deed on real estate and cash or good check day of sale on personal property.

For additional information, contact Jonathan "Bud" Shackelford, executor of the estate or the selling agents:

**Ford Realty & Auction Co.**  
REALTOR/AUCTIONEER  
SAM FORD  
DANNY FORD  
ROY ADAMS

AUCTIONEERS  
JERRY HAM  
WILLARD BULLOCK

APP. AUCTIONEER  
BOB TODD

Kentucky Toll Free No. 1-800-435-5454  
Mt. Vernon, Ky. Phone 256-4545  
Somerset, Ky. Phone 679-2212

# SALE HALLOWEEN

<b>FIBRE TRIM</b> 100 Ct. <b>449</b>	<b>DRIXORAL</b> 20 Ct. <b>499</b>	<b>Colgate TOOTHPASTE</b> <b>119</b> 5 oz. Regular, or 4.6 oz. Gull, Tartar Control, or Tartar Control Gel	<b>TUMS</b> 3-Roll <b>99c</b> Peppermint, Assorted or EX
<b>AFRIN</b> 15 ml. <b>274</b>	<b>VICKS FORMULA 44 OR 44D</b> 4 oz. <b>239</b>	<b>VICKS FORMULA 44M</b> 4 oz. <b>259</b>	<b>BAYER OR MAXIMUM BAYER</b> 100 Ct. Regular or 60 Ct. Maximum Tablets or Caplets <b>289</b>
<b>NYQUIL</b> 6 oz. Original or Cherry <b>299</b>	<b>OIL OF OLAY</b> 4 oz. <b>469</b>	<b>EX-LAX UNFLAVORED PILLS</b> 30 Ct. <b>229</b>	<b>SUNBEAM DIGITAL THERMOMETER</b> #7811 <b>559</b>
<b>RIGHT GUARD</b> 1.99 -1.00 Mail-In Rebate <b>99c</b> FINAL COST 4 oz. Anti-Perspirant or 3 oz. Deodorant	<b>ALKA SELTZER PLUS OR TRAC II</b> 3.99 -1.00 Mail-In Rebate <b>299</b> FINAL COST 10 Ct.	<b>HALSA SHAMPOO OR CONDITIONER</b> 1.50 -1.50 Mail-In Rebate <b>000</b> FINAL COST 15 oz. Assorted	<b>ALKA SELTZER PLUS</b> 3.50 -1.00 Mail-In Rebate <b>250</b> FINAL COST 36 Ct.

These Are Associated Druggists Prices Optional With Participating Stores. We Reserve The Right To Limit Quantities At Sale Prices.

**YOUNG'S PHARMACY**  
Main St. Mt. Vernon 256-4613  
SALE STARTS TODAY



**Defensive back Chuck Shields** almost had **Wildcat** pass in the photo at left.



Rodney Jones, mgr. of Save-A-Lot Food Mkt. in Mt. Vernon deserves a great big thank you and our show of gratitude. They sponsored our Little League Reds team this year. Besides buying jerseys for the team, they bought other needed equipment. At the end of the season, they helped us to take the team to Cincinnati to see the Reds play. Thanks, Save-A-Lot! You're a business that's a credit to our community! Land the Little League organization. From Mgr. Paul Kirby and wife, C. Carver and Herman Smith and wife, Connie and all the parents of the Reds L. I. Absent when picture was taken was Brian L. I.

**"ROCKETS"**  
(Cont. From B4)

Halfway through the second quarter, Chris Larkey, from the tailback position (he plays quarterback too), took off on a 58-yard touchdown run for the Rockets and Adam Coleman kicked the extra point to make the score 7-6 at halftime.

The third quarter saw the two teams punt to each other and neither team threatened to score until Rockcastle fumbled the ball on the Lynn Camp 25-yard line and put them in good field position.

Lynn Camp had to settle for a field goal attempt on the fourth and goal on their 5 yard line. The snap went over the kickers head and the Rockets recovered.

During the fourth quarter, Lynn Camp punted to Rockcastle, which took the ball to the 10 yard line. 90 yards away from paydirt.

The Rocket offense hadn't been grinding much yardage previous to this, but the offense finally took command, according to Larkey.

A 30 yard run by Chris Larkey took the ball to the 50 yard line. Three plays later, **Fox Hunters at Fairgrounds**

The 76th Annual Bench Show and Field Trial of the Kentucky State Foxhunters Association Inc., will be held at the Broadhead Fairgrounds Oct. 12 through 15. Registration will be from 10 a.m. to 3 p.m., Oct. 12, along with a Bar-B-Q supper at 6 p.m. and a bench show at 7:30 p.m. at the fairgrounds.

A banquet and business meeting will be Tuesday night (13th), at Rockcastle Steak House, and a square dance Wednesday, (14th) at the Renfro Valley Barn.

Bench show judge will be Edmond Stone of Lexington. Master of the Hounds will be LeRoy Roeder of Mishawaka, Ind.

Reservations may be made by telephoning 256-5156.

High men series was Bill Reynolds with 602 and Henry Vanzant with 557.

High Men's Game was Clifton Daugherty with 226 and Bill Reynolds with 212.

High Women Series was Debbie Bugg with 594 and Jeannine Parsons with 468.

High Women Game was Debbie Bugg with 222 and 216 and Pennie Mullins with a 190.

High Average Men was Bill Reynolds with 200, Henry Vanzant with 185 and James Noe with a 184.

High Average Women was Debbie Bugg was 198.

**Bowling news**

The Rockcastle-Mixed League started it's fall season Thursday, Sept. 10, with 11 teams. The standings for that week are:

First Place - Rebels II, Low Rollers and Pin Crushers with 4-0.

Second Place - Rockers, and NAPA with 3-1. High Team Game was Rebels II with 838 and second high was Low Rollers with 808. High Team series was Low Rollers with 2361, and second high was 2348. The man with high game was James Noe with 219, and second was Jack Noe with 215.

High Mens Series was James Noe with 598 and second high was Henry Vanzant with 553.

Perlina Anderkin led the women with high series of 468 and Jeannine Parsons was second with 457. Perlina also had high game with 177 and Annette Faulkner second high with 173.

Averages for the first week of bowling were: James Noe - 199, Henry Vanzant - 185 and Jamie Noe - 179. Women were: Jeannine Parsons - 154, Perlina Anderkin - 149 and Virginia Winstead - 148.

The second week of bowling brought 12 teams and lots of different scores.

First place is Rockers and Rebels II both with 7-1 and NAPA in second place with a 6-2 record.

Two team scores could not be counted as this day.

High team series was DJ's with 2483 and Rockers with 2350.

High team game was DJ's with 965 and Rebels II with 849.

**Tammy's Barber Shop**  
will be closed for vacation  
Fri. & Sat., Sept. 25 & 26  
Mon. & Tue., Sept. 28 & 29  
will reopen as usual on Fri., October 2.

**Senior Specials**  
**16x20 PACKAGE**

- 1 - 16x20
  - 2 - 8x10
  - 2 - 5x7
  - 32 Wallet
- \$80**

**11x14 PACKAGE**

- 1 - 11x14
  - 2 - 8x10
  - 2 - 5x7
  - 32 Wallet
- \$65**

**-Other Packages Available-**  
**REFLECTION PHOTOGRAPHY**

Bob Bailey Mt. Vernon  
256-3603

**Plan to Attend one of the Best Shows in the State**  
**BEREA CHARITY HORSE SHOW**

**AAA Bobsdown Showgrounds**

HWY. 1016 Berea, KY

**SEPTEMBER 26, 1987 5:00 P.M.**

1. Lead Line	Entry Fee	17. 3 Year Old Mare	Entry Fee
Rebels to all	\$12.00	Silver & \$40, \$20, \$10, \$5, Ribbon	\$15.00
Rebels Class - (Wagging) - White (Must have paces)	\$12.00	Silver & \$40, \$20, \$10, \$5, Ribbon	\$15.00
Silver & \$20, \$10, \$5, \$10, \$5, Ribbon	\$12.00	Class - (Wagging) - White (Must have paces)	\$15.00
3. Pleasure Pleasure - Open A.C. (Wagging)	\$12.00	Silver & \$40, \$20, \$10, \$5, Ribbon	\$15.00
Silver & \$20, \$10, \$5, \$10, \$5, Ribbon	\$12.00	Class - (Wagging) - White (Must have paces)	\$15.00
4. First Year Yearling	\$12.00	Silver & \$40, \$20, \$10, \$5, Ribbon	\$15.00
5. Heifer Class - (Wagging) - White (Must have paces)	\$12.00	Class - (Wagging) - White (Must have paces)	\$15.00
Silver & \$20, \$10, \$5, \$10, \$5, Ribbon	\$12.00	Silver & \$40, \$20, \$10, \$5, Ribbon	\$15.00
6. 2 Year Old Filly	\$12.00	Class - (Wagging) - White (Must have paces)	\$15.00
Silver & \$40, \$20, \$10, \$5, Ribbon	\$12.00	Silver & \$40, \$20, \$10, \$5, Ribbon	\$15.00
7. Juvenile 11 & Under - as of 1/1/87	\$12.00	Class - (Wagging) - White (Must have paces)	\$15.00
8. 1 Year Old Yearling	\$12.00	Silver & \$40, \$20, \$10, \$5, Ribbon	\$15.00
Silver & \$40, \$20, \$10, \$5, Ribbon	\$12.00	Class - (Wagging) - White (Must have paces)	\$15.00
9. 2 Year Old Yearling	\$12.00	Silver & \$40, \$20, \$10, \$5, Ribbon	\$15.00
Silver & \$40, \$20, \$10, \$5, Ribbon	\$12.00	Class - (Wagging) - White (Must have paces)	\$15.00
10. 3 Year Old Yearling	\$12.00	Silver & \$40, \$20, \$10, \$5, Ribbon	\$15.00
Silver & \$40, \$20, \$10, \$5, Ribbon	\$12.00	Class - (Wagging) - White (Must have paces)	\$15.00
11. Junior Yearling	\$12.00	Silver & \$40, \$20, \$10, \$5, Ribbon	\$15.00
Silver & \$40, \$20, \$10, \$5, Ribbon	\$12.00	Class - (Wagging) - White (Must have paces)	\$15.00
12. 2 Year Old Stallion & Gelding	\$15.00	Silver & \$40, \$20, \$10, \$5, Ribbon	\$15.00
Silver & \$40, \$20, \$10, \$5, Ribbon	\$15.00	Class - (Wagging) - White (Must have paces)	\$15.00
13. 3 Year Old Stallion & Gelding	\$15.00	Silver & \$40, \$20, \$10, \$5, Ribbon	\$15.00
Silver & \$40, \$20, \$10, \$5, Ribbon	\$15.00	Class - (Wagging) - White (Must have paces)	\$15.00
14. 4 Year Old Stallion & Gelding	\$15.00	Silver & \$40, \$20, \$10, \$5, Ribbon	\$15.00
Silver & \$40, \$20, \$10, \$5, Ribbon	\$15.00	Class - (Wagging) - White (Must have paces)	\$15.00
15. 5 Year Old Stallion & Gelding	\$15.00	Silver & \$40, \$20, \$10, \$5, Ribbon	\$15.00
Silver & \$40, \$20, \$10, \$5, Ribbon	\$15.00	Class - (Wagging) - White (Must have paces)	\$15.00
16. 6 Year Old Stallion & Gelding	\$15.00	Silver & \$40, \$20, \$10, \$5, Ribbon	\$15.00
Silver & \$40, \$20, \$10, \$5, Ribbon	\$15.00	Class - (Wagging) - White (Must have paces)	\$15.00
17. 7 Year Old Stallion & Gelding	\$15.00	Silver & \$40, \$20, \$10, \$5, Ribbon	\$15.00
Silver & \$40, \$20, \$10, \$5, Ribbon	\$15.00	Class - (Wagging) - White (Must have paces)	\$15.00
18. 8 Year Old Stallion & Gelding	\$15.00	Silver & \$40, \$20, \$10, \$5, Ribbon	\$15.00
Silver & \$40, \$20, \$10, \$5, Ribbon	\$15.00	Class - (Wagging) - White (Must have paces)	\$15.00
19. 9 Year Old Stallion & Gelding	\$15.00	Silver & \$40, \$20, \$10, \$5, Ribbon	\$15.00
Silver & \$40, \$20, \$10, \$5, Ribbon	\$15.00	Class - (Wagging) - White (Must have paces)	\$15.00
20. 10 Year Old Stallion & Gelding	\$15.00	Silver & \$40, \$20, \$10, \$5, Ribbon	\$15.00
Silver & \$40, \$20, \$10, \$5, Ribbon	\$15.00	Class - (Wagging) - White (Must have paces)	\$15.00
21. 11 Year Old Stallion & Gelding	\$15.00	Silver & \$40, \$20, \$10, \$5, Ribbon	\$15.00
Silver & \$40, \$20, \$10, \$5, Ribbon	\$15.00	Class - (Wagging) - White (Must have paces)	\$15.00
22. 12 Year Old Stallion & Gelding	\$15.00	Silver & \$40, \$20, \$10, \$5, Ribbon	\$15.00
Silver & \$40, \$20, \$10, \$5, Ribbon	\$15.00	Class - (Wagging) - White (Must have paces)	\$15.00
23. 13 Year Old Stallion & Gelding	\$15.00	Silver & \$40, \$20, \$10, \$5, Ribbon	\$15.00
Silver & \$40, \$20, \$10, \$5, Ribbon	\$15.00	Class - (Wagging) - White (Must have paces)	\$15.00
24. 14 Year Old Stallion & Gelding	\$15.00	Silver & \$40, \$20, \$10, \$5, Ribbon	\$15.00
Silver & \$40, \$20, \$10, \$5, Ribbon	\$15.00	Class - (Wagging) - White (Must have paces)	\$15.00
25. 15 Year Old Stallion & Gelding	\$15.00	Silver & \$40, \$20, \$10, \$5, Ribbon	\$15.00
Silver & \$40, \$20, \$10, \$5, Ribbon	\$15.00	Class - (Wagging) - White (Must have paces)	\$15.00
26. 16 Year Old Stallion & Gelding	\$15.00	Silver & \$40, \$20, \$10, \$5, Ribbon	\$15.00
Silver & \$40, \$20, \$10, \$5, Ribbon	\$15.00	Class - (Wagging) - White (Must have paces)	\$15.00

**OVER \$4,000 IN PREMIUMS**

Silver & 6 Ribbons (Stake Class - \$1,125.00)

Berea Rotary Club

Show Map, Daytime Program 606-986-8489 Show Grounds, 956-2606, Nap 1-1-1 Show  
CO. Larry Harrison 986-3176 or 916-8776

Larkey took off on a sweep around his right side for a 35 yard gain.

With the ball on the 5 yard line, Dane Cox powered his way in to the end zone. Adam Coleman's kick was good to put Rockcastle on top to stay 14-6.

After a good run or two and a couple of penalties, the Wildcats had the ball on the Rocket 15 yard line. With 1st down and 5 minutes remaining, the Rocket defense held them.

With a minute and a half left in the game, Lynn Camp won on the 8 yard line with four downs as the result of a fumble.

"I was already thinking of over-time play to run," said Larkey, "in case it came down to that." The Rockets knocked down three passes, the last of those by Chuck Shields which turned the ball over to the Rockets again.

Coach Saylor, defensive coach for the Rockets, said, "I was extremely pleased with the way our defense played, especially in the closing minutes of the game."

Chris Larkey led the offense with 149 yards on 13 carries. Gerald Rowe led the defense with 8 solo tackles and 8 assists. Also on defense were Chad Williams, 3 solos and 10 assists.

Chad Hodges 5 solos, 7 assists, and Ralph Hines 7 solos, 3 assists.

Chuck Shields and Pete Harrison each had an interception.

This Friday is Rockcastle's Homecoming game against Jellico, Tenn. Game time is 8 p.m.

**My goodness sakes alive**  
**Look who's now**

**85!!**

**Happy Birthday Mom,**  
**We Love You,**  
**Clarence, Audrey,**  
**Charles and Judy**

**Twilight**  
**Auction**

of Mr. and Mrs. Jack Legere's

**27 ACRE FARM, more or less**

**Friday, September 25, 1987 6 p.m.**

Near Salt Petre Cave

**LOCATION:** Turn off Hwy. 25 onto 1004 near Exit 59 of I-75. Proceed 6.2 miles to the property. Auction signs will be posted.

Mr. and Mrs. Legere have contacted our firm to offer this property at public auction.

The property consists of 27 acres of which approximately 8 acres is cleared and fenced. Water to the property is provided by a spring. It has 319 lbs. basic tobacco allotment.

It has a crib, a shed, concrete drive and some young timber.

If you're in the market for a place in the country on blacktop road with a little room to roam, mark your calendar now to attend this auction Friday, Sept. 25 at 6 p.m.

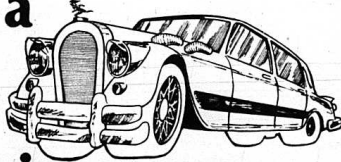
**TERMS:** 20% down day of sale, balance in 30 days upon delivery of deed.

For additional information, contact the selling agents:

**Ford Realty & Auction Co.**

REALTORS/APPRAISERS  
SAR FORD  
BOB ADAMS  
Kentucky Toll Free No. 1-800-425-6454

**Buying a house is a lot like buying a car.**



There are efficient ones, and there are "guzzlers." And it pays to know the difference.

An efficient, all-electric Wise Choice Home is clean and comfortable. And it's a good value, because it can save you money on your utility bills over the years — thanks to features like...

- Clean, efficient, reliable electric heating
- Lots of insulation
- Energy-saving windows
- Weather stripping and other energy conservation measures.

KU's rates are among the lowest in the nation, and they've increased in more than four years. In fact, our rates have actually gone down, because we've passed along savings on fuel costs and taxes. That, coupled with the efficiency of an all-electric Wise Choice Home, makes a highly economical combination.

Whether you're looking to build, buy or rent a new home, the bright yellow Wise Choice Home sign points the way to comfort, economy and value — now, and for the future.

**Bright ideas are always electric!**



**KENTUCKY UTILITIES COMPANY**

# Around BRODHEAD

## Personals

By: Mary McWhorter

Gosp. Austin Moble is in a Broel meeting at Mill Street Church of Christ in London this week 7:30 p.m. each evening.

Those visiting Grace and Evon Brown recently were Mrs. Verla Brown, Mrs. Ola Laswell, Mrs. Betty Lou Lawrence, Mildred Thompson, Marie Alcorn, Reba Cash, Jewell Arberry, Mary Wallace, David Newman, Roger Evans, Eleanor West, Mr. and Mrs. Walter Bullock. Mrs. Bullock isn't very well at this writing.

Mrs. Eleanor West celebrated her 75th birthday recently. Daniel Craig Croley of Dayton, Ohio was Monday evening guest of his grandmother, Mary McWhorter and Cuba Croley, also visited Pat an Freddie J. Jr. Danny is Auditor of Merchant Data Services based in Dayton, Ohio and they were working in Richmond, Lexington, Bardston Elizabethton and Owensboro on this trip. It sure was good to come over from Richmond for a visit with us even though it was short. He also took us to Brodhead Cafe for supper.

Coy Croley and wife Irene. Coy Croley and wife Irene came last week with his mother, Cuba Croley and also visited me and Everett Willmott and Louise for a short time.

Sunday visitors of mine were Bruce Craig and J.S. Craig Jr. and Dwight McMillan of Lexington.

Mrs. Pat Pruitt and Freddie Jr. had dinner with Mickie Lee Pruitt in Richmond Sunday Evening.

It was sure good to have Bro. Marvin Cogshell and wife visit with us in the services Sunday at Providence. They are from Norwood Church of Christ in Dayton, Ohio. Bro. Phillip Davis was back with us after being out a short time due to an auto accident. We hope he continues to improve. We had other visitors but I can't recall their names.

Harmon Hubbard and wife Alene of Berea were Sunday guests of Roy and Esther Hubbard.

Weekend visitors of Maggie Fletcher and Audrey were Mr. and Mrs. Will Walker and Traci Lei of Middletown, Ohio, Clarence Fletcher of Tipp City, Ohio and visiting his mother by phone was Mr. and Mrs. Charles Fletcher. Other recent visitors were Jean Albright and granddaughter Jamie Lynn Lawrence, Alene Parrott and daughter Tonya, Mae Doan, Clara Proctor and granddaughter Suzanne Graves.

Mr. and Mrs. George Adams spent Wednesday with Mr. and Mrs. Bruce Sargent, Danny Bruce and Dennis in Berea.

Mrs. Mrs. James Maynus of Hamilton, Ohio spent Friday night with Mr. and Mrs. George Adams. Sunday visitors of George and Bernice were Mr. and Mrs. Johnnie Adams and son Courtney and Doug Adams.

Melissa Hayes spent Friday night with Donna Lynn Cash and they visited Mr. and Mrs. George Adams Saturday.

Mrs. Anita Browning and son Sunday and his daughter April of Waynesburg, Mrs. Carolyn McKinney of Ottawa, Ronnie, Linda, Brandi and Vanessa Adams were all Saturday visitors of Mrs. Bertha Adams. Mrs. Anita Browning and Bertha Adams were in Danville Friday. Mrs. Bertha Adams was Monday visitor of her sister Mrs. Lela Bussell. Howard and Evelyn Rowlett of Berea were Monday guest of Mrs. Mamie Halcomb. The Charlie Doan family reunion will be held at the Quail Community Park Sunday Sept. 27th. Everyone is invited. Will, Judy Walker and Tracy of Middletown, Ohio were Sunday guests of Walter and Mae Doan. Weekend guest of Mamie Halcomb were Evelyn Rowlett of Berea, Gene, Sue and Tena Halcomb. Evelyn Rowlett and Mamie Halcomb visited Lela Bussell Saturday afternoon, also had supper Saturday evening with Jerry, Janet and Audrey Burke at

Mr. Vernon then came the apple peddling after supper. Mr. and Mrs. James Grant of Michigan spent Saturday night with Walter, Irene and Johnny Adams enroute to Florida for the winter. Mr. Corinne Brook's of Louisville and Pompano Beach, Fla. is visiting her sister, Eleanor Gray. She is enjoying some daily visits with her brother-in-law, George Brooks and wife Matilda as well as friends in Brodhead. Betty Hodge and Lillian Collivett were in Stanford and Danville shopping last Tuesday.

Mrs. Fanny L. Albright was visiting afternoon visitor of her daughter June Latham and family. Her recent visitors were Mrs. Ruby McWilliams, Henry and Rinda Brown and June and Bruce Latham.

Mrs. Irene Adams and her sister, Elsie Dixon of Crab Orchard, Grace Blanton of Stanford, Mr. and Mrs. Jim Frazier of Stanford, Mr. and Mrs. James H. Grant of Detroit, Mich., all were recent visitors.

Mr. and Mrs. Richard E. Frazier and family, one day last week. Dee and Mary Bussell were in Ohio over the weekend visiting her brother Virgil Helton, who has been very ill for some time. They visited their other relatives while there and came back by Lexington and took their son Barry out for dinner.

Mrs. Mary Payne who resides in Ohio with her children, was on her way to her Brodhead home with Florida her daughter and became gravely ill in Lexington. She was taken to Humana Hospital on Richmond Road where she is being treated for a blockage in the liver duct. She was low on blood too and gave her blood and made another test. The blockage was gone so evidently a stone was passed. We are all thankful she is better.

After two days with her daughter, Patsy Lynn in Lexington, she was taken back to Ohio by her son James Maynus Ladies Aid meets By: Elizabeth F. Mullins

The women's missionary group met at Barbara Watson's home, Tuesday at 7:30 p.m. with nine present.

The lesson was presented by Marjorie Shivel. It really was more like a sermon! She read many scriptures, beginning with Matthew 16:13-19. "Christians are associated with the spiritual body, the church. It is more than a social organization. The church is Christ's Bride. It should be fruitful to Him." was part of Mrs. Shivel's lesson.

Mrs. Shivel passed out song books for all of the group to sing "The Church's Foundation" as she accompanied the ladies on the piano. When she passed out the books, "Make Your Day Bright by Thinking Right" for each one to take home to frame or hang on their refrigerator to get this message daily.

Mrs. Payne ended this excellent spiritual program with one of her sweet prayers.

Business was discussed when the president, Ella Mae Martin asked "What will we do for the Sower Nursing Home?"

Mrs. Martin suggested that each of us visit and send cards to occupants of the home instead of making tray cards, etc.

"We all agreed that a visit and cards would be more welcome and cause more happiness to the patients."

We voted to "report" on this project next month!

Emily Gllovak suggested asking the church board if a foyer with a restroom on each side could be made out of the porch. The present restrooms are in the front of the church.

The group decided to consider meeting in the afternoons instead of evenings. Open suggestions met for ladies Aid during the day. We could follow in their footsteps!

After Ella Mae Martin gave the blessing the ladies partook of green vegetables and crackers to dip in tasty "Dip", and yum-yum sauce. Each was given a pie and plus our choice of a drink! Delicious!

To end this delightful and spiritual occasion, the group joined hands to form a circle in the spacious room, to offer sententious prayers for our upcoming revival, etc., before we adjourned. In October the missionary group will meet at Loraine McWilliams' home on Maple Street. Barbara Watson will give the lesson. And we hope she will give to Brodhead later on. We all

love her. Mr. and Mrs. Charlie Cupp of Ohio are visiting her mother, Mrs. Florence Albright this week. John Byrne and Ma Bank, wife Lena Mobley of Texas were recent visitors of her sister Mrs. Ola Phelps. There were several members of the Murphy Clark Family gathered at the Holiness Church building in Mt. Vernon where the late George Murphy and Matt Clark, a few years. They had a candle lighting ceremony, lighting a candle for each member of the family that was deceased. Those visiting Bob and Mary Clark Adams during the weekend were James and Leona Clark and daughter Brenda, Mr. and Mrs. Ray Lewis and son Danny John, all of Stanford, Kenneth Adams and daughter Deanna and son Bobby Ray and girlfriend and two of their friends, all of Rossville Ga., and Gail Adams of Covington. They all attended the Murphy-Clark reunion including Bob and Mary Adams. Mrs. Carrie Barnett spent several days in Indiana visiting her children Dorothy and Matt Martin and family, Owen J. and Pauline Lower and family and Lonnie Lovings and family, all of Jeffersonville, Ind. Sorry to hear of Mr. Willis Green being in the hospital at the U.K. Medical Center. We hope he will be able to be home soon.

Micky and Rita Shafer and son Michael were in Gallatinburg, Tenn. over the weekend watching the Car Show in celebration of Michael's birthday. Mrs. Ruth Bussell and granddaughter Jadawn Gregory were in Ohio over the weekend visiting Ruth's mother Mrs. Winnie Bryant in Mason, Ohio and Jadawn visited her father Jim Gregory and brother Jamie in Lockland. "GED" (Cont From Front) she helped get their G.E.D. certificate." Eldridge said, "It was sorta like a snowball effect when Anita Isaac, the teacher, helped the first student, then they all became interested," he said. A lot of the students at the school work at their own pace, such as Mrs. Betty Adams, who at 49 has decided to go to college to continue her education. Mrs. Adams of Conway, graduated from high school in 1956 and she is presently getting tutoring at the center for the ACT test, or American College Test, which a student must take when they enter college. Mrs. Adams is brushing up on her skills as are many other students at the school. The best part about the school is that there are no fees connected with the service. Anyone wanting more information about the school should contact Eldridge at 256-5307.

## REAL ESTATE FOR SALE

**SOLD**

**2 Acres in City Limits of Mt. Vernon**—City water, blacktop road. Ideal for business or residential. U.S. 29 near Super Test Station. \$15,000.00 acre.

**Brick - 3 Bdrms. 1 1/2 Baths, Heat Pump, Central Air, 1 Car Garage.** Living room, dining kitchen w/white cabinets, large utility room adjoining kitchen, ample garden space, paved drive, city utilities. Lot area \$39,900.

**Nice Building Lot** with city water and sewer. Located on paved, quiet dead-end street. Living area. \$4,500.

**5 Acres, 3 Bedroom Brick** w/2 car garage w/panor. 1 1/2 baths, living room, den, dining kitchen w/white cabinets, refrigerator, patio walkways, landscaped, paved drive, city utilities. Lot area \$1,000. \$49,900.

**4 Bdrms. Home - 100 Acres Farm** w/2676 Bn. Also has 1,022 lb. tobacco base. 1 car detached garage, workshop, blacktop drive, cellar, orchard. 2 ponds. House also has nice kitchen w/white cabinets, dining area, living room w/wood stove, also full of furnace, bath, level yard. Owner will consider trading to a smaller place \$65,000.

**Nice Lake Lot.** Improved with septic system, well, also city water available. Perfect for mobile home or camper. Near boat dock at Lake Linville. \$5,500.

**3 Bedroom Bedford Stone, Full Basement - 1 1/2 Baths - 1 Acre.** House has dining kitchen w/white cabinets, large living room, closets in bedrooms, hall and kitchen, hardwood floors, storm doors/windows, oil heat, w/d hook-up, 2 perches, shade trees, blacktop road, 1/4 miles from U.S. 29 on Chestnut Ridge Rd. \$36,900.

**29 Acres Farm w/ Barn, 830 lb. Tobacco Base.** The property also has a good well and septic system and nice building sites. Also is ideal for mobile home. Near Rockcastle. \$125,000.

**80 Acres, more or less, with frontage on blacktop road.** The land has coal and timber, 2 ponds, has been surveyed, nice building sites offering privacy and easy accessibility. Red Hill area. \$22,500.

### COMMONWEALTH OF KENTUCKY

#### 28th JUDICIAL CIRCUIT ROCKCASTLE CIRCUIT COURT

Civil Action File No. 87-CI-074

The Bank of Mt. Vernon Plaintiff

VS: NOTICE OF SALE

Frank H. Ikerd, Jr.; Credit Alliance Corporation; Travis and Knight, Attorneys at Law; Kenneth E. Wilson; Jim Hill, Sheriff of Wayne County, Kentucky; and Clarence Hasty, Jr., Sheriff of Rockcastle County, Kentucky Defendants

Pursuant to Judgment and order of sale entered in this action on August 14, 1987, and for the purpose of enforcement of mortgage liens in the amount of \$106,704.80, plus interest, I will offer at public auction the hereinafter described real property in Mt. Vernon, Rockcastle County, Kentucky.

AT THE COURTHOUSE DOOR  
on Friday the 9th day of October, 1987  
beginning at the hour of 11:00 A.M.

A said property being more particularly bounded and described as follows:

ONE HALF (1/2) UNDIVIDED INTEREST in and to the following described property:

Tract No. 1:

A certain tract of land, lying and being in Rockcastle County, Kentucky, and described as follows:

BEGINNING at a set stone corner 78 feet from the centerline of Kentucky 1249 near a 4 inch pipe; thence South 17 degrees 00 minutes East 206.3 feet; thence South 29 degrees 30 minutes East, 935.5 feet to a double stump; thence South 02 degrees 30 minutes West, 2,508.0 feet to a stake corner; thence North 49 degrees 00 minutes East, 709.5 feet to a stake corner 5 feet from a 4 inch sourwood; thence South 02 degrees 00 minutes East, 242.1 feet to a stake between a post oak and white oak; thence South 66 degrees 55 minutes West, 104.4 feet to a stake in the edge of the tobacco field; thence South 59 degrees 38 minutes West 323.7 feet to a stake in the edge of the tobacco field; thence South 88 degrees 24 minutes West, 274.0 feet to a stake near a 4 inch sourwood; thence North 84 degrees 36 minutes West, 116.3 feet to a stake in the fence; thence North 78 degrees 36 minutes West, 230.3 feet to a stake in the woods near a 5 inch white oak; thence South 69 degrees 51 minutes West, 118.1 feet to a stake in the field at the woods (old county road); thence South 65 degrees 34 minutes West, 739.5 feet to a stake in the field; thence South 80 degrees 11 minutes West, 1,506.5 feet to a stake in the fence; thence North 81 degrees 33 minutes West, 72.8 feet to a stake in the fence; thence South 61 degrees 15 minutes West, 93.3 feet to a stake in the field; thence North 80 degrees 15 minutes West 192.9 feet to a stake by a black oak; thence North 07 degrees 39 minutes West, 1,307.8 feet to a corner; thence North 94 degrees 48 minutes East, 924.4 feet to a stake at a 4 inch dogwood at the intersection of two drains; thence North 76 degrees 48 minutes East, 1,156.3 feet to twin maples; thence North 25 degrees 18 minutes West, 94.5 feet to a stake; thence North 20 degrees 59 minutes West, 559.3 feet along the ridge line to a stake 5 feet from a 10 inch hickory; thence North 13 degrees 31 minutes West, 670.1 feet; thence North 49 degrees 48 minutes East, 663.1 feet to a stake at two streams; thence North 04 degrees 48 minutes West, 372.4 feet to a stake in a drain; thence North 12 degrees 59 minutes West, 867.2 feet to a stake in a drain, thence North 04 degrees 51 minutes West, 627.6 feet to a stake in a drain; thence North 07 degrees 35 minutes West, 273.4 feet to a set stone in a branch; thence North 40 degrees 18 minutes East, 247.8 feet to a stake 10 feet from the centerline of Kentucky 1249; thence South 41 degrees 35 minutes East, 470.4 feet to an iron pin 10 feet from the centerline of Kentucky 1249; thence South 59 degrees 35 minutes East, 548.9 feet to a stake 10 feet from the centerline of Kentucky 1249; thence South 22 degrees 30 minutes West, 77.9 feet to a stake corner; thence South 67 degrees 30 minutes East, 330.0 feet to a corner, beginning, containing two hundred twenty-four (224) acres, more or less.

There is excepted from the above described boundary and not conveyed, the following described portion: BEGINNING at a set stone, the beginning corner of the above described tract; thence North 62 degrees 30 minutes West, 330.0 feet to a stake; thence North 22 degrees 30 minutes East, 77.9 feet to a point near the edge of Kentucky Highway No. 1249; thence along the south side of said highway,

## EVELENE RAINES PROPERTIES

West Main St. Mt. Vernon





**EVELENE RAINES, PREA**  
Broker-Auctioneer 256-5811 Certified Appraiser 256-5811

North 59 degrees 35 minutes West, 286.9 feet to a point in the center of an old road; thence leaving Kentucky Highway No. 1249 and along the old road, South 30 degrees 51 minutes East, 97.2 feet; South 31 degrees 12 minutes East, 247.4 feet; South 21 degrees 47 minutes East, 196.6 feet; South 21 degrees 35 minutes East, 124.8 feet to a point in the center of said road; thence leaving said road, South 53 degrees 22 minutes 30 seconds East, 431.7 feet to a point; thence North 60 degrees 30 minutes East, 100.0 feet to a point; thence North 29 degrees 30 minutes West, 300 feet to a point; thence North 17 degrees West, 206.3 feet to the beginning, containing four (4) acres, including the Dyer Garage yard.

Both grantors and grantees shall have an easement for the benefit of their respective lands of ingress and egress over that portion of the old road which is described in the above exception, as well as the right to upgrade and improve and maintain said portion of the road, said right of ingress and egress shall include, but not be limited to, the use of said road for commercial purposes.

Tract No. 2:

A certain tract of land lying and being in Rockcastle County, Kentucky, and described as follows:

On the waters of Horse Lick and Crooked Creeks, and beginning at a dogwood corner of Joe Daughtery and Ambrose Brockman at a large natural stone; thence southeasterly with Brockman land to H.B. Griffin line; thence due South 167 feet to Chester Singleton line; thence with Chester Singleton line to U.S. Government corner; an oak thence east with Government line to a double chestnut corner, Chester Mullins land; thence northerly with Mullins land; thence northerly with Mullins land to Government land, a stone on a cliff; thence with Government land to a stone corner on the cliff, Nathan Mullins corner; thence with Nathan Mullins land due West to a dogwood and stake corner, beginning, and containing two hundred sixty-five (265) acres, more or less.

There is excepted from Tract No. 2, two acres which are being used as cemeteries, to-wit: BEGINNING at an 8 inch maple on the east side of old State Road 0.1 mile south of Kentucky 1955; thence with said road, South 11 degrees East 148 feet to 8 inch cedar; thence South 5 3/4 degrees East 150 feet to a clump of sourwood sprouts; thence leaving the road and around the cemetery as follows: to Tract Singleton line; North 59 3/4 degrees East, 322 feet to 18 inch Chestnut oak; North 72 degrees East, 128 feet to 12 inch black oak; North 13 1/2 degrees West, 120 feet to double chestnut oak; South 83 1/4 degrees West, 187 feet to 8 inch poplar; due West 217 feet to the beginning, containing 1.86 acres, more or less.

BEGINNING at three inch white oak on northeast side of old state road, 0.6 miles south of Kentucky 1955; thence with said road, South 32 degrees East 180 feet to three inch dogwood; thence leaving road and around the cemetery as follows: North 16 1/2 degrees East 232 feet to five inch maple sprouts; thence North 52 1/4 degrees West 78 feet to twelve inch oak; South 40 1/4 degrees West, 157 feet to the beginning, containing 0.52 acres, more or less.

The mortgagors obligated title to tract number one by deed dated April 19th, 1985, executed by Robert W. Fields, et al., of record in Deed Book 124, page 705, and mortgagors obligated title to tract number two by deed dated June 12th, 1981, executed by Carl Glantz, Master Commissioner of Rockcastle County, of record in Deed Book 115, page 651, both in the office of the clerk of the Rockcastle County Clerk, Mount Vernon, Kentucky.

**THE PROPERTY WILL BE SOLD UPON THE FOLLOWING TERMS AND CONDITIONS:**

- The property shall be sold to the highest bidder(s) for cash or for a deposit of twenty (20%) per cent of the purchase price in cash at the time of sale and balance payable in six (6) months. The purchaser shall be required to execute bond with surety hereon, to be approved by the Master Commissioner, for the balance of the purchase price. The bond shall bear interest at the rate of twelve (12%) per cent per annum from date until paid, and to remain and be a lien on said property until fully paid.
- The purchaser(s) shall have the privilege of paying all of the purchase price in cash or part thereof before maturity by paying the principal amount thereof, together with all interest accrued thereon to the date of said payment.
- Purchaser(s) shall possession of the premises upon complying with the terms of sale and risk of loss of improvements shall thereafter be on the purchaser(s).

This sale shall be made subject to all assessments, set back lines, restrictions or covenants of record or otherwise.

**ROBERT E. ROBINSON**  
Master Commissioner  
Rockcastle Circuit Court  
48x3

## Births and Birthdays



**SECOND BIRTHDAY--** Victor Chad Francisco, son of Victor and Deborah Francisco of Livingston, celebrated his 2nd birthday September 7 with a "Big Bird" party at his home. Helping him celebrate were his cousins, Jennifer and Joseph Wallin, David Smith, Jonathan Cromer and friend, Beth Durham. Adults attending were his parents, his grandparents, Roy and Shirley Wallin and Geraldine (June) Francisco; his aunts, Carmen Wallin and Phyllis Francisco; great aunts, Lillie Hensley and Linda Smith and second cousin, Kim Bond. Chad would like to thank everyone who attended and for the many nice gifts received.

**SECOND BIRTHDAY--** Timothy Shane Lynch celebrated his 2nd birthday July 15 at his home with a party in Lexington. Shane is the son of Tim and Sarah Lynch of Lexington. Grandparents are James B. and Reva Hatt of Lexington and Flossie Lynch of Richmond.



**FOURTH BIRTHDAY--** Melissa Lynne Baker celebrated her 4th birthday September 12. Attending her party were her brother, John Nathan, sister Kristin Nichole, Tiffany Turner, Vicky Turner, Kim Baker and Ken Smith. Maternal grandparents are Homer and Christine Shelton of Crab Orchard and paternal grandparents are John and Lorene Baker of Rt. 3, Crab Orchard.

**FOURTH BIRTHDAY--** Ladonya Brittany Mink, daughter of Lonny and Darlene Mink of Livingston, celebrated her 4th birthday Sept. 8 at her home with her family. She is the granddaughter of Mr. and Mrs. Joe Mink of Calloway and Mr. and Mrs. Curtis McHargue of Livingston.



**FOURTH BIRTHDAY--** Heather Lenae Cole celebrated her first birthday June 2, 1987. She is the daughter of Joe and Susan Cole of Hamilton, Ohio and the granddaughter of Mr. and Mrs. Maeford Cole of Rt. 2, Livingston.



**Happy 25th Birthday**  
Love, Mom, Dad and Husband

Deadline for pictures is noon Tuesday

## Annual Performance Report Fiscal Year 1987 Rockcastle Co. Board of Education Mt. Vernon, Kentucky

TABLE 1 - Percent of Students Mastering Essential Skills - DISTRICT

GRADE	SKILL AREA						NO. & % OF ENROLLMENT TAKING TESTS	
	READING	MATH	SPELLING	WRITING	REFERENCE	N	%	
1	98.5	97.1	98.1	—	97.1	205	100.0	
2	93.2	96.0	97.2	92.0	96.4	249	99.6	
3	76.8	89.5	81.4	81.9	84.8	237	98.4	
4	85.2	89.5	85.6	80.9	78.6	220	95.9	
5	87.3	89.5	86.2	86.7	87.1	209	97.3	
6	77.3	93.1	89.7	88.2	80.3	203	98.6	
7	81.0	94.2	93.0	88.4	82.0	189	96.7	
8	68.0	86.1	84.5	84.0	85.1	194	95.5	
9	78.6	82.4	83.3	83.3	82.4	210	97.0	
10	71.6	81.4	81.4	79.8	80.2	242	99.2	
11	71.2	86.3	88.1	88.1	85.4	219	100.0	
12	80.3	88.2	81.6	78.9	78.9	228	99.6	
	79.3	84.1	80.7	—	66.2	145	99.3	

TABLE 2 - District Mean NCE Scores on Basic Skills - KEST

GRADE	READING	MATH	SPELLING	WRITING	REFERENCE	OUT-OF-STATE BATTERY
3	60.2	52.6	56.4	54.3	—	57.1
5	49.9	59.7	56.1	54.4	51.3	52.9
7	53.2	54.7	51.2	60.0	53.6	56.5
10	44.0	51.0	51.9	54.9	46.4	50.8

TABLE 3 - SAT and ACT Scores

GRADE	SCHOLASTIC APTITUDE TEST - SAT		NO. & % OF GRADUATES TAKING TEST	
	MATH	VERBAL	N	%
District			0	0
State - 1986	519	483	3,791	9.2

GRADE	AMERICAN COLLEGE BOARD TEST - ACT			NO. & % OF GRADUATES TAKING TEST	
	MATH	ENGLISH	COMPOSITE	N	%
District	10.6	17.7	15.0	69	35
State - 1986	16.0	18.3	18.1	21,594	52.2

TABLE 4 - Percent of Students Retained in Each Grade

SCHOOLS	GRADE												
	K	1	2	3	4	5	6	7	8	9	10	11	12
Broadhead	0.0	6.2	0.0	1.6	3.1	0.0	5.1	0.0	0.0				
Livingston	0.0	6.5	2.7	0.0	0.0	3.7	0.0	0.0	0.0				
Mt. Vernon	0.0	1.9	2.9	0.7	1.2	1.1	0.0	6.4	6.7				
Roundstone	2.7	10.9	9.4	6.2	1.9	0.0	2.5	0.0	0.0				
Rockcastle High	5.3	3.3	3.4	1.8	1.9	3.3	3.6	2.4	11.6	9.8	8.0	1.4	
DISTRICT	—	5.3	3.3	3.4	1.8	1.9	3.3	3.6	2.4	11.6	9.8	8.0	1.4

TABLE 5 - DROPOUT RATE - Students Quitting School as a Percent of Enrollment by Grades

GRADE	1985		1986		1987	
	NO.	%	NO.	%	NO.	%
7	3	1.1	1	.44	0	0
8	3	1.1	5	1.85	1	.43
9	10	4.1	3	1.23	12	4.53
10	18	9.5	14	5.53	13	5.43
11	15	8.5	12	6.56	14	5.57
12	10	5.6	12	5.85	9	5.76
District	59	4.3	47	3.4	49	3.51
State	12,921	4.36	10,863	3.75		

TABLE 6 - Percent Attendance - Students

SCHOOLS	1985		1986		1987	
	NO.	%	NO.	%	NO.	%
Broadhead	95.7	96.3	94.3	95.3	95.3	95.7
Livingston	96.4	96.1	95.1	96.7	96.7	96.7
Mt. Vernon	95.1	94.0	94.0	95.3	95.3	95.3
Roundstone	95.1	93.2	93.2	94.7	94.7	94.7
RCHS	91.8	91.9	91.9	92.2	92.2	92.2
District	94.4	94.3	93.5	94.4	94.4	94.4
State	94.44	94.30				

TABLE 7 - Graduates Going to College or Other Postsecondary Training

GRADE	COLLEGE					
	NO.	1984	1985	1986	%	
District	42	20.2	42	23.6	45	23.0
State	17,351	43.8	17,463	45.3	17,539	46.4

GRADE	OTHER POSTSECONDARY TRAINING					
	NO.	1984	1985	1986	%	
District	11	5.3	24	13.5	11	5.0
State	3,191	8.0	3,216	8.4	3,171	8.4

TABLE 8 - Special Education Enrollment as a Percent of Total Enrollment

GRADE	STUDENTS ENROLLED IN SPECIAL EDUCATION					
	NO.	1985	NO.	1986	NO.	1987
District	Not Available		301	10.1	291	10
State	75,355	11.7	77,465	12.0	70,304	10.9

GRADE	SPECIAL ED STUDENTS RETURNED TO REGULAR CLASSROOM STATUS AS A % OF SPECIAL EDUCATION ENROLLMENT					
	NO.	1985	NO.	1986	NO.	1987
District	Not Available		7	2.3	8	3
State	75,355	11.7	77,465	12.0	70,304	10.9

TABLE 9 - Number and Percent of Enrollment Classified as Economically Deprived

GRADE	1985		1986		1987	
	NO.	%	NO.	%	NO.	%
District	1675	56.3	1650	55.3	1634	59.2
State	223,188	34.6	224,251	34.4	N/A	

TABLE 10 - District Secondary Vocational Education Enrollment

SCHOOLS	1985		1986		1987	
	NO.	%	NO.	%	NO.	%
Number and % of secondary students enrolled in vocational education: • Occupational prep. programs • Exploratory programs	307	42.2	205	29.2	190	29.5
431	57.8	497	70.8	435	70.5	
Number and % of secondary students completing vocational occupational preparatory programs	104	77.4	115	91.3	77	88.3

NOTE: % based on eligible completers

TABLE 11 - Percent Attendance - Professional Staff

TITLE	PERCENT
Teachers	95.1
Administrators and other professional staff	95.0
District	95.3

TABLE 12 - District Pupil/Teacher Ratio

SCHOOLS	RATIO	NO. CLASSES OVER MAX. SIZE	% STUDENTS IN CLASSES OVER MAX.
Broadhead	18.3:1	0	0
Livingston	15.0:1	0	0
Mt. Vernon	19.7:1	3	0
Roundstone	19.3:1	0	0
RCHS	19.9:1	0	0
District	18.9:1	3	2.8

TABLE 13 - Teacher/Administrator Ratio and Salary Data

RANK	TEACHER / ADMINISTRATOR RATIO		SALARY DATA - Teachers	
	Percent of Teachers	SALARY RANGE	Minimum	Maximum
Rank 1	38	19,625.	26,560.	42,854.
Rank 11	36	17,395.	28,755.	31,829.
Rank 111	26	15,555.	24,055.	

TABLE 14 - Classes Taught by Teacher Out of Field of Specialty

SCHOOLS	NUMBER TEACHING OUT OF FIELD OF SPECIALTY	NUMBER OF CLASSES OUT OF FIELD
Broadhead	0	0
Livingston	0	0
Mt. Vernon	0	0
Roundstone	0	0
RCHS	4	13
District	4	13

TABLE 15 - Cost of Professional Staff Development

	1985	1986	1987
Average cost per professional staff member for inservice activities	40.05	62.90	65.24

TABLE 16 - Courses Exceeding State Program of Studies

List courses offered which exceed the state required program of studies:

- Advanced Placement English - Honors Classes - RCHS
- Dropout Prevention Programs - Elementary and Secondary
- 

TABLE 17 - District Per Pupil Expenditures in ADA

FACTOR	DISTRICT	1986 STATE
Cost per Pupil for instruction	1,293.	\$1,526
Cost per Pupil for Administration	38	64
Cost per Pupil for Curriculum and Instruction	1,200.	2,139
Cost per Pupil for Transportation	168.	188

TABLE 18 - Local School District Revenue

	DOLLARS \$	PERCENT OF TOTAL	STATE AVERAGE 1986
INCOME			
Revenue from local sources	536,757.	8.0	24.0
Tax Receipts	443,673.		
Income from investments (w/ 6.22 average return)	92,646.		
Other	438.		
Revenue from State Sources	5,212,258.	77.0	64.0
Revenue from Federal Sources	1,044,646.	15.0	12.0
GENERAL FUND BALANCE (June 30, as a % of total General Fund Money)	876,128.	16.0	

TABLE 19 - Revenue and Assessed Property Value Per Child

	DISTRICT	1986 STATE
Local revenue per child in average daily attendance	151.	\$616.00
Assessed property value per child in average daily attendance	52,176.	\$121,892

### Master Educational Improvement Plan

In the fall of 1985 a committee of citizens, parents, students, teachers, and administrators was formed to develop a Master Educational Improvement Plan for Rockcastle County. The Committee addressed the needs/concerns and formulated a plan for the time period 1985 to 1988. The only need defined in the academic performance areas was the Total Battery NCE in the CTBS at the 10th grade level. This Total Battery NCE was 49.2 and an academic improvement plan was written.

In the fall of 1986 the Committee again met to review the Master Educational Improvement Plan. The 10th grade NCE at this time was 57.5. In the fall of 1986 additional needs of improvement were identified in the component areas of Reading and Library/Research/Reference. The 3 of mastery on essential skills in these two (2) areas was below 80% in three (3) or more grades. In addition a narrative program improvement plan was submitted for student attendance.

### Progress Report

- The 1987 KEST data indicates that an average gain of .5% was obtained in the area of reading for those grades having a mastery level below 80% on the 1986 KEST. The goal had been to raise the mastery level by 2.5%.
- The 1987 KEST data indicates that an average gain of .3% was obtained in the areas of library/research/reference for those grades having a mastery level below 80% on the 1986 KEST. The goal had been to raise the mastery level by 2.5%.
- The district attendance figures were increased from 93.4 in 1985-86 to 93.5 in 1986-87.

# MT. VERNON

8 a.m. to 10 p.m. - 7 days a week

U.S. 150 West  
Westgate Shopping Center  
Mt. Vernon, Kentucky  
258-2514

# FOODTOWN

Prices effective Wednesday, September 23 through Tuesday, September 29, 1987. We reserve the right to limit quantities and to correct printing errors.



**FRESH, 73% LEAN  
GROUND BEEF**  
3 lb. pkg. or larger

# .99

lb.

**Fresh  
Chicken  
Leg  
Quarters**

# .39

lb.

\*Limit two packages, please, with SS or more order



**CHICKEN  
BREASTS**

# 1.39

Lb.

Columbia  
**BACON**  
12 oz. **.89**

**COTTONELLE  
BATHROOM  
TISSUE**  
4 roll pkg., assorted colors

# .99



**FRESHLIKE  
CANNED  
VEGETABLES**

12-14 1/2 oz. cans, French Style or  
Cut Green Beans, Whole Kernel or  
Cream Style Corn, or Garden  
Sweet Peas

**SOFT DRINKS**

6 for

# .99

Borden's  
Glacier Club  
**ICE CREAM**

# .99

# 3 for \$1

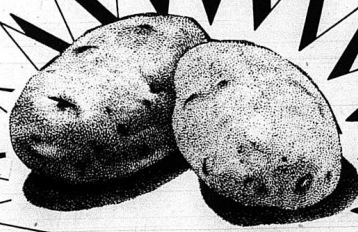


**FOODTOWN  
BROWN'N SERVE  
ROLLS**  
12 ct. pkg.

# .59

BROWN 'N SERVE

**ARMOUR  
LARD**  
25 lb. pail  
**8<sup>99</sup>**



**10 LB. BAG  
U.S. #1 ALL PURPOSE  
WHITE POTATOES**

# .99

Tube Rose  
Meal/Flour  
25 Lb. SR  
**2<sup>99</sup>**

**BLUE BONNET  
MARGARINE**  
1 lb. quarters

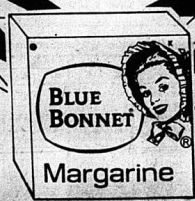
# 2.89

for



Blue Bonnet  
Spread  
Big 3 lb. bowl **1.59**

Blue Bonnet  
Butter Blend  
1 lb. bowl **1.29**



**BLUE  
BONNET**  
Margarine

Next Week

Schools and constitution

In sports

Rockets win fifth straight

Page B-4

And Inside

Farm Bureau Meeting

Page B-2

# Mount Vernon Signal

Serving Rockcastle County Since 1887

Mount Vernon Kentucky 40456

Volume 100 - Number 47

Thursday September 24, 1987

## City keeps policeman Jim Rhodus

City Policeman Jim Rhodus will remain a policeman for at least 30 more days.

That was the decision of the Mt. Vernon City Council at a called meeting Friday, called to discuss the status of Rhodus, and to discuss a new policeman to replace Tyree Gray Jr., who transferred from the police to the city sewer plant.

At a previous meeting, Police Chief Joe Howard recommended Jamie Fortner, 24, be hired to replace Tyree.

Rhodus, who has been city patrolman for the Lake Linville area this summer, had asked to replace Tyree, but Chief Howard declined to recommend him.

That brought a rebuff from Councilman Tom Welch who called Rhodus the best policeman Mt. Vernon has had in a long time, and a man deserving of continued employment as a policeman.

Rhodus was hired as a part-time, temporary officer for late

(Cont. to A4)

## Post office site unchanged

Postal Service officials reaffirmed this week that the property chosen earlier for a new post office at Mt. Vernon will be purchased.

The service said in a news release that it will purchase the Henderson property at the intersection of Richmond and Lewis Streets for the new post office.

Reportedly, the purchase is not closed, but the Postal Service is obligated to exercise its option. Rumors have persisted locally that the post office will be located at another site.

The site contains 22,900 square feet and was chosen over several other sites in the city by a committee representing the postal service.

## Miss Rockcastle...



Miss Julie Dowell, daughter of Mr. and Mrs. Billy Dowell of Mt. Vernon, was crowned Miss Rockcastle USA 1987 at the annual pageant Saturday night at the high school. Miss Dowell, a senior at RCHS, was also named Miss Photogenic. (See other pageant pictures on second front)

## Car hits house



Terry Goff of Pine Hill talks with ambulance attendant Wayne Sowder following a one-car accident Tuesday at Pine Hill. Goff was one of four in the car that went over an embankment and crashed into a house. Goff was later hospitalized in fair condition.

## Four hurt in Pine Hill wreck

The Pine Hill curve that has a history of serious accidents, was the scene of another one Tuesday afternoon.

Four persons were injured, one seriously, when a car driven by Geraldine Allen rounded the curve southbound on U.S. 25 went out of control, plunged over an embankment and slammed into a house.

Passengers in the car included Terry Goff of Pine Hill who was

admitted to Rockcastle County Hospital for injuries. His condition Wednesday was described as fair.

James Lewis Mink was taken to the hospital where he was treated and released. James Singleton of Red Hill received a scratch on his arm and declined treatment.

Mrs. Allen was taken to Rockcastle County Hospital treated and sent to the University

of Kentucky Medical Center where her condition Wednesday was described as serious.

The front of the auto was crushed under the floor of the house. The windshield was pushed back into Mrs. Allen's face. It took ambulance attendants nearly 45 minutes to free her. A wrecker was used to pull the car from under the house.

No one in the house was reported injured.

## Dry weather effecting crops

There hasn't been enough rain during September to get your big toe wet, someone remarked the other day.

They were right. There's only been 1.46 inches of rain between Sept. 1 and 20.

If discounting .43 of an inch that fell on Aug. 31 but recorded at Cox Funeral Home Weather Station as is the normal procedure, on Sept. 1, then only 1.30 has fallen, well below last year, when there was 2.20 inches on Sept. 25 that brought the month's total to well over five inches.

September to date (as of Tuesday) has had about average temperatures. The high this month was 88 on Sept. 11. The

low was 44 on Sept. 2.

Incidentally, Sunday night's low was 50 and Monday night's low was 47. A few more showers were expected but they were predicted to be very light, if at all.

Some areas of the state were feeling the results of very little rain. Close-by Madison County has had a near rain free month.

In Rockcastle, late or fall pastures are beginning to be ef-

(Cont. to A-10)

## Report county AIDS free

By: Richard Anderkin

Is Acquired Immune Deficiency Syndrome or AIDS, as it is more commonly known, a problem in Rockcastle County?

According to Dr. Reginald Finger of the state's sexually transmitted diseases (STD) program office, there has been only two cases of the disease diagnosed and reported to his office from the several county Cumberland Valley Area Health District, of which Rockcastle is a part.

Other counties included in the district are Jackson, Clay, Bell and Harlan counties.

Dr. Finger said Monday that his office would not give out information about AIDS victims in counties where only one or two cases had been reported because of the fear that the people might jump to conclusions about who the person is, or may go into a panic about catching the disease.

According to Dr. Finger of the infectious disease program, one of the cases was reported in 1985 and the other in 1986.

Stewart said.

Stewart did say that the AIDS test had been given to a patient at the hospital, but that it was inconclusive. "The patient did not come back for further testing," Stewart said.

The STD office reported that

(Cont. to A4)

## Skills tests scores in county schools show marked drop

By: Richard Anderkin

Rockcastle's school system isn't the best school district in the state, nor the worst either, just 147th.

The statewide essential skills test rankings were released last week by the Lexington Herald-Leader, which showed Rockcastle County declining from 122 a year ago.

Rockcastle County School Superintendent Bige Towery Jr., said Monday that while he definitely was not trying to make excuses for the low ranking, he wanted to point out the fact that students in Rockcastle County scored only less than one percentage point lower than they did a year ago.

This year's composite score for the local district was 54.3 down from 55.4 a year ago.

Towery also pointed out that student's test scores on the Kentucky Essential Skills Test fell in all of the grades that the state uses for their rankings.

Third graders this year scored 57.1 down an amazing 8.3 from 1986. The fifth grade had a composite score of 52.9 down 2.6 points. Seventh graders had a score of 56.5 down from 57.8 and tenth grade students at R.C.H.S. had a score of 50.8 down a drastic 6.7 points from 1986. Overall the only other class that declined is scores was the ninth grade. Grades one, two, four, six, eight, eleven and twelve all showed an increase from a year ago.

This year's ranking was the worst ranking for Rockcastle County since the state started ranking school districts in 1983. In '83 the local district was 161 out of 178 school districts.

Test data consistently revealed that students in the richer independent school districts scored higher.

All 178 school districts in Kentucky have scored above the national average the last two years. Two years ago, 16 districts scored below the norm.

Several urban districts were among the highest-ranked, while districts in rural southeastern and south-central Kentucky were among the lowest-ranked.

Independent districts tended to score higher than countywide districts.

All six counties surrounding Rockcastle out scored the local district with the exception of Jackson County.

Neighboring Berea Independent school system earned seventh in the state, while Somerset was 30, Pulaski County, 100; Laurel, 140; Lincoln, 133; Madison, 87; Science Hill, 59; Garrard County, 106, and East Bernstadt, 14.

The Kentucky Essential Skills Test measured students' proficiency in reading, writing, Math, spelling and library skills. The rankings are based on students' scores in reading, writing and math.

The scores are based on a scale in which 50 is the national norm and 100 is the highest possible.

## County illiteracy pinpointed

By: Ray McClure

Rockcastle has been listed among 23 counties in Kentucky where between 50 and 60 percent of the adults 25 years and older have not completed the eighth grade and are considered functionally illiterate.

Only two counties—Jackson and Cumberland have higher illiteracy rates. Jackson, the highest with 62 percent and Cumberland with 61 percent. Clay, Owsley and Wayne were close to the edge with 59 percent. Rockcastle's exact figure was not reported.

Counties with the lowest illiteracy are Fayette, Oldham, Boone and Jefferson.

The figures on literacy come from the 1980 U.S. Census.

The survey shows those who are included to be functionally illiterate, or those unable to read well enough to be functional. They cannot fill out a job application, read labels on prescription bottles, on grocery items, a letter and most written words.

Illiteracy is believed to be one of America's gravest problems. It is estimated that one in five adults in the U.S. is illiterate, which is about 27 million people. One publication says 60 million. At the same time, the Census Bureau contends that 99.5 percent of Americans are literate.

In legal terminology, literate means the ability to write one's name.

In its findings, the bureau reported:

(Cont. to A-10)



Norman Harrison of Cincinnati, Ohio, lies on the yard at the home of Tilman Daugherty on U.S. 25 south of Mt. Vernon Tuesday after he swerved his pick-up truck to miss another car and overturned in the driveway. He was treated at Rockcastle County Hospital and released. Harrison was visiting relatives at Brodhead.



# Opinions

**Dear Editor,**  
We, the Livingston Homecoming Committee, would like to thank the following groups, businesses and individuals for their contributions that helped make Homecoming '87 a great success.

Let us start first with the people that provided our entertainment, they are: The Christian Hairs, Hale Family, Holland Family, Eversole Brothers, Gessess, Glenda Kirby and Renfro Valley Rockers, Ricky Rice and Juanita Robbins, David Bryant and Michael Carpenter, Veryl Durham, James King, Kitty Pridmore, Lucille Carlolfts, Sue McClure, Glessie Hubbard, Joe McClure, Bobby Carpenter, Juanita and Billy Medley, Brent Boone, Courtney Charlie, Dan Bond, Roger McClure, Andrew McFerron, Mike VanWinkle and the South 40 Express. Thanks to each of you and a special thank you to Ralph Hamilton for finding some of our entertainers.

We also say thank you to the following businesses and individuals from Brodhead, Livingston, Mt. Vernon and Renfro Valley for the merchandise they donated: Pizza Hut, Sparks Flower Shop, Appliance Service Center, Fain Furniture, Doug Hamm, Deboard's Oil, Touch of Class, A Cut Above, Cox Florist, Tags Gallery, Rockcastle Auto Parts, Livingston Motor Co., Agnes Beauty Shop, True Value Hardware, Foodown, Thrifty Lumber, Hiatt's, S & I, McBees, Johnny Sams Music Store, Bryant Brothers, Mt. Vernon Automotive, McKenney's Tire Service, Mt. Vernon Pharmacy, Saylor's Pharmacy, Livingston Economic Alternatives in Progress, Sue's Hair Styling, Earl Baker, Becky Singleton, Jean's Restaurant, Headquarters for Hair Design, Mt. Vernon Florist, Snack Shack, Kathy's Klip & Kurl, Save-A-Lot, Bradley's, Food Fair, General Dollar Store, Young's Pharmacy, Red Top Restaurant, Carter's Market, Mt. Vernon Dairy Freeze, Pridmore's Grocery, Burdine's White Star, Video Attractions. A special thank you to Jan's Flowers for providing the roses for the homecoming queen and the other contestants.

Last but certainly not least we thank those that gave cash and bonds, Dowell and Martin Funeral Home, Sear's Catalog Store, Cox's Hardware, Lewis Cable TV, Bank of Mt. Vernon

and Citizens Bank of Brodhead. To each of you who gave your time, talent, merchandise and money we give a very special thank you for without your help Homecoming '87 could not have been such a huge success.

Livingston Homecoming Committee  
Faye Baker, Coordinator

**Dear Editor,**  
I'm appalled to think, with the tax payer should have to pay for the lawyer's for the Hamman-Parson case. They went to court not our children. I'm glad she won her case, but I don't feel we should pay for their lawyer. Parsons did wrong not us.

If our tax money pays for their lawyers what do we the people get out of it? Mt. Vernon needs a new school, all our teachers could use a pay increase. Oh yes, our tax money didn't pay for the lawyer the Mason family had to get to keep their son in school, when Saylor said no. That money they will be using is as much the Mason family tax as is mine. We the tax payer should put a stop to the crazy way they oversee our money and let us pick up the tab. Let the school board and Mr. Parsons dig down in their pockets and pay for a change, I didn't do wrong, they did. As for my school tax, give it over to the school and the teachers and the children.

Thank you,  
Linda Pittman

**Dear Editor,**  
As a parting gesture, I would like to offer a general "Thank You" to everyone in Rockcastle County for their support during the past three months. This Friday, Sept. 25, will be my last day as morning man and Program Director at WRVK.

I am leaving to accept an on-air position at WFMI in Winchester. I sincerely believe that I will be able to look back at my Mt. Vernon days as a beneficial segment in my career as a broadcaster.

I hope the people of this area continue to realize they have a great traditional radio station of which they can be proud, something that is becoming more and more a rarity.

Sincerely,  
Jim Murray  
Richmond, Ky.

**Dear Editor,**  
I am a 29 year old white male. I am an inmate here at the Kentucky State prison. I never get any mail and it sure gets lonely in here. It would make me very happy if I could make some friends through your newspaper.

If anyone wishes to write me, I will answer all letters.

Respectfully,  
Glenn Summit - 19865  
K.S.P., P.O. Box 128  
Eddyville, Ky. 42038-0128

## County Statistics

### DEEDS RECORDED

Melvin and Lela Mae Harrison, real property located in Rockcastle County, to Russell and Norma Lois Houk. Tax \$5.50.

Ed and Maudie McCollum, real property located in Rockcastle County, to William R. and Carolyn G. Thompson. Tax \$4.00.

Elzie and Janie Robinson, real property located in Rockcastle County, to Alvin and Debbie Carpenter. Tax \$4.00.

Melanie Gray and Michael Gray, real property located in Rockcastle County, to Edgar and Gladys Adams. Tax \$8.00.

Mary Watts Poynter, real property located in Rockcastle County, to Carl and Mary Coffey. Tax \$60.00.

Tillman and Alma Rebecca Daugherty, real property located in Rockcastle County, to Roy and Telvis Daugherty. Tax \$13.50.

Billy Joe Clark and Ray Mullins, real property located in Rockcastle County, to Charles D. Marcum. Tax Affidavit.

Lovell and Sadie Clontz, real property located in Rockcastle County, to Lynn and Carla Parsons. No tax.

C.L. and Minnie Brock, real property located in Rockcastle County, to Clarence Brock, Elmer Brock, Belle Huff, Nannie Lou Linville and Jean McGuire. No tax.

Bernard Hall, and Margie and Johnny Wilcop, real property

located in Rockcastle County, to Larry and Judy Doyle and Billy and Vicky Hopper. Tax \$6.00.

Benny L. and Beverly A. Phillips, real property located in the Red Hill section of Rockcastle County, to Larry Ponder. Tax \$2.00.

Maggie Evelyn and Delno Mink, real property located in Rockcastle County, to Jesse C. Renner. Tax \$7.00.

Carl Campbell, real property located in Rockcastle County, to Pearl Campbell. No tax.

Elden and Loretta Chasteen, real property located on the waters of Copper Creek, to Nick and Edna Chasteen. No tax.

Gertrude Holt, real property located in Rockcastle County, to Jack Holt. No tax.

Myrtle L. and John Williams,

real property located in Rockcastle County, to Donald and Ann Adams. Tax Affidavit.

**MARRIAGE LICENSES**  
Tammy Michelle Robinson,  
(Cont. to 141)

**ROCKCASTLE ROLLER RINK**  
*Bring the family and dance to the great country band*  
**South 40 Express**  
**Fri., Sept. 25 8-12 p.m.**  
Something for Everyone  
Pool Table, Video Games & Snack Bar  
U.S. 25 South Mt. Vernon  
**FOR MORE INFO, CALL 256-9401 or 758-4501**

# DO NOT PAINT YOUR HOUSE AGAIN

INSTALL SOLID VINYL SIDING

EXAMPLE  
1,000 Sq. Ft.  
**WOLVERINE BLDG. PANEL SOLID VINYL SIDING**  
Completely Installed from  
**\$899<sup>00</sup>**

Trademark Window & Siding Sales  
P.O. Box 652 Somerset, Ky.  
Since 1957  
Buy here - Pay here  
CHURCHES - FREE INTEREST

Call Collect 606-678-5707

**Mount Vernon Signal**

Published every Thursday, since November of 1887. Offices in the Mt. Vernon Signal Building on Main Street in Mt. Vernon Ky. Postmaster send address changes to P.O. Box 185 Mt. Vernon, Ky. 40456.

James Anderkin, Jr. Publisher  
Perlina M. Anderkin, Editor  
Richard F. Anderkin, Advertising Manager

Member of Ky. Press Association  
Entered as 2nd Class Matter under Permit 1 at Mt. Vernon Post Office

**SHEPHERD'S Home furnishings**  
On U.S. 25 Midway between Richmond and Berea

Your Home Is Your Castle  
Furnish It Now From The Largest Inventory and Best Selection In Our History

**CHOOSE YOUR ORDER**  
**CHOOSE YOUR TERMS**  
One Piece or Whole House

**18 MONTHS TO PAY NO INTEREST**  
On Orders of \$1001.00 or More

**12 MONTHS TO PAY NO INTEREST**  
On Orders of \$501.00 to \$1000.00

**6 MONTHS TO PAY NO INTEREST**  
On Orders of \$300.00 to \$500.00

**624-0852**

**SHEPHERD'S Home furnishings**  
BEREA

\*Ad Does Not Apply To Previous Sales or Layaways

U.S. 25 MIDWAY BETWEEN RICHMOND AND BEREA  
OPER: 9:30 AM to 6:00 PM MONDAY THRU SATURDAY

**SOUTHERN PHOTO'S**

58  
COLOR PORTRAITS

BACKGROUNDS - Your Choice  
Scenic \* Old Master  
CHRISTMAS

Deposit \$3.00  
When Photographed

Balance \$21.<sup>95</sup>  
Upon Delivery

negatives FREE

TOTAL PORTRAIT COLLECTION INCLUDES:

2 - 11 x 14s 4 - 8 x 10s  
4 - 5 x 7s 32 - WALLETs

16 - GIANT WALLETs

Reserve Photo With Purchase Of Portrait  
800000 Collection Photo With Purchase Of Portrait

Coming One Day Only! Give the gift that gives all year...  
**THURSDAY, OCT. 1, 2 to 7 P.M.**  
**Franklin's of Mt. Vernon, Inc.**  
Westgate Center Hwy. 150 in Mt. Vernon  
DELIVERED: Sunday, October 25, 2 p.m. till 3 p.m.

# REAP GREAT FOOD SAVINGS



**Fresh Ground Beef**  
**1.09**  
Lb.




**ROUND STEAK**  
**1.49** Lb.  
Fresh


**Fischer's Bologna**..... 1 lb. pkg. **1.49**

**Corn King BACON**..... 12 oz. pkg. **1.29**

**Fischer's Hot Dogs**  
12 oz. pkg. **.99**



**PEPSI PRODUCTS** **1.79**  
8-16 oz. ret. Plus Btls. or Dep.



**Laurel Farm WHOLE MILK** **1.79**  
Gal.



**HUNT'S Manwich Sandwich**  
27 oz. **1.59**

**SHEDD'S QUARTERS**  
1 lb. **2/79**

**HY-TOP RTS Frosting**  
16 oz. **.99**

**CARNATION EVAPORATED MILK**  
12 oz. **2/1.00**

**HY-TOP CAKE MIXES**  
18 oz. **.59**




**TROPICANA Orange Juice**  
1/2 Gal. Ctn. **1.39**  
Hy-Top Tuna 6 1/2 oz. Limit 2 w/\$10 or more order  
Seven Farms French Fries 5 lb. **.49**  
**1.49**


**SUPERIOR FOOD MARKET**  
U.S. 25 South Mt. Vernon  
"Locally Owned and Operated"  
Prices Effective Sept. 24 - 30




**New Coke & Mello Yello**  
2 Liter **.89**



**LOG CABIN SYRUP** **1.69**  
24 oz.



**Hunt's Tomato Paste** **.39**  
6 oz.



**Folger's Coffee**  
Lmt. 1 w/\$10 or more order **1.99**  
1 lb.

**Swiftning Shortening**  
Limit 1 w/\$10 Order **.99**  
42 oz.

**We Gladly Accept USDA Food Stamps**

**Head Lettuce** **.79**


- Heilman's Mayonnaisse 32 oz. Limit 1 w/\$10 or more order **1.39**
- Hunt's Squeeze Ketchup 32 oz. **1.29**
- Wesson Oil 38 oz. **1.89**
- Peter Pan Peanut Butter 28 oz. **2.79**
- Paramount Chili 15 oz. **.89**
- Paramount Tamales 15 oz. **.79**
- Martha White Muffin Mixes single pouch **.39**
- Quaker Instant Oats All Varieties **1.99**
- Captain Crunch 16 oz. **2.19**
- Double Decker Moon Pies 5 for **1.00**
- Life Cereal 20 oz. **2.29**
- Van Camp Pork & Beans 16 oz. 2 for **.69**
- Ken L Ration Dog Food 15 oz. **.40**
- White Cloud Tissue 4 Roll Limit 1 w/\$10 or more order **.89**
- Bounty Towels Jumbo Roll Limit 1 w/\$10 or more order **.69**
- Luvs Diapers Economy Box Limit 1 **8.99**
- Short Stain Remover 32 oz. **2.49**
- Cheer Detergent 42 oz. **1.99**
- Magic Sizing 20 oz. **.99**
- Shedd's Mini Crock Butter 2 pak **.79**
- Kraft Velveta Cheese 2 lb. **3.49**
- Seven Farms Green Beans 303 size 4 for **1.00**
- Hy-top Corn 303 size 3 for **1.00**
- J.F.G. Mayonnaisse 32 oz. **.99**

**CASTLEBERRY BEEF STEW** **.99**  
24 oz.

**Red or White GRAPES** **.89** Lb.

**CASTLEBERRY CHILI WITH BEANS** **.49**  
15 oz.

**Bananas** **.99**  
3 Lb.



**Idaho Potatoes** **1.39**  
lb. bag

**Tube Rose MEAL** **.69**  
5 Lb.

**Tube Rose Flour** **.69**  
5 Lb.

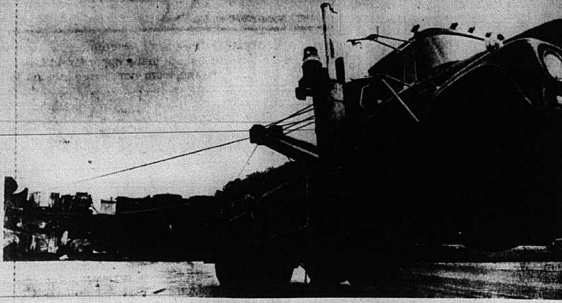
**TRAY PACK Tomatoes** **.99**



**Yellow Onions** **.89**  
3 Lb. Bag



**Kraft Macaroni & Cheese** **45**  
8 1/2 oz.



James Poynter's tow truck proved no match for this sewage-sludge truck which overturned on Ky. 80 at Barnesburg intersection recently. Two more trucks were called in before it was righted. The driver, Lionel Knight, 24, of Indiana was not injured. Poynter's is located on Hwy. 461 in Rockcastle County.

## No AIDS cases in county

(Cont. From Front)

to date 95 cases of the deadly disease have been diagnosed in Kentucky, with 32 cases being reported in Jefferson County and 15 cases in Fayette. Of those diagnosed as having the disease, 64 have died.

AIDS is a condition which causes the body's immune system

to shut down, making the victim susceptible to serious illnesses which might not be a threat to anyone whose immune system is functioning normally.

Investigators have discovered that the disease is caused by a virus.

There is no cure for the disease.

AIDS was first noticed, but not

identified, in 1981, by the Centers for Disease Control (CDC). About 15,000 cases nationwide were reported by the spring of 1986.

The disease is spread by sexual contact—with an exchange of blood or semen, needle sharing or through blood or its components. The American Hospital Association (AHA), in a publication about AIDS intended for its member hospitals, says AIDS is not easy to contract.

It quotes a USA Today report on December 10, 1985, that said,

"JIM RHODUS"  
(Cont. From Front)

patrol after Wayne Denny became ill. The lake patrol runs from May to September, daily from 2 to 10 p.m.

Mayor Elizabeth Baker was inclined to follow the chief's recommendation, and could have, but she asked the councilmen for their opinion, and seeing a possible split in the council, took the advice of Councilman Joe Martin to continue Rhodus' employment for 30 more days under close supervision by the chief. At that time his performance will be re-evaluated.

"If you are heterosexual, if you don't shoot illicit drugs into your veins or have sex with people who do, if you aren't a hemophiliac who requires blood transfusions, then you have less than one chance in a million of contacting AIDS. That's 40 percent less than your chance of being struck by lightning, 100 times less than your chance of being murdered and still less than your chance of dying in a car accident."

The report of the AHA says, "Thus far, no cases of AIDS have been traced to exposure to perspiration, saliva or tears of infected people. Close casual contact with AIDS patients has resulted in no reported transmission of the virus."

Even though the disease is difficult to contract, local persons are concerned about it.

There are legal precedents which require hospitals to treat all patients, including those with AIDS, the AHA's report says.

It says that no health care worker has developed AIDS through casual contact while caring for an AIDS patient.

The report continually stresses that AIDS is not an airborne virus and that hospital workers cannot contract AIDS from being in the same room with AIDS patients or touching objects touched by AIDS patients.

Normal disinfection procedures for dishes, drinking glasses or eating utensils are adequate; linens should be treated as any other linens from isolation, the report says.

To prevent the spread of the virus, the report suggests, hospital personnel should perform adequate hand washing before and after patient contact and wear gloves for direct contact with mucous membranes or non-intact skin of all patients.

The AHA report says:

As of June 1986, more than 50 percent of AIDS cases have resulted in death.

About 70 percent of the victims are expected to die within two years of diagnosis.

Eighty-nine percent of AIDS victims are between the ages of 20 and 49.

Homosexual and bisexual men account for 73 percent of reported AIDS cases. Intravenous drug abusers represent 17 percent of reported cases.

Hemophiliacs make up one percent of reported cases and persons who received blood transfusions represent two percent of AIDS cases. Those figures are expected to drop as a result of the

AIDS antibody tests made on the nation's blood supply.

Heterosexuals whose sexual partners have AIDS account for seven percent of AIDS victims.

Sixty percent of the reported AIDS victims are white; 25 percent are black and 14 percent are Hispanic.

According to the CDC, of the 21,517 cases reported as of June 9, 1986, 11,713 resulted in death, a case-fatality rate of 54 percent.

The total estimated hospital bill of an AIDS patient is \$140,000, the AHA document quotes a report by the CDC.

That cost is based on an initial hospital stay of 31 days and repeat hospitalization.



The average adult has about 3,500 square inches of skin. The skin has roughly a billion pores.

## COX FLORIST

Owners: Keith and Susan Coffey  
256-3333

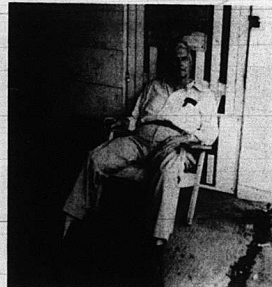
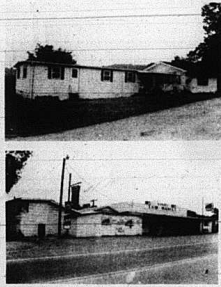
\*Fresh Cut or Silk Funeral Arrangements

\*Balloons \*Weddings  
WE HAVE CALL FORWARDING

Ada Coffey and Patsy Falin, Designers

# Auction

of  
*Ernie's T & M Market's*  
**BUILDING - INVENTORY - EQUIPMENT**  
and  
**Double-Wide Modular Home with Addition**  
**Sat., Oct. 3, 1987 1:30 p.m.**  
Mt. Vernon, Ky.



Location: US Highway 25 north, city limits of Mt. Vernon, Kentucky.

Mr. and Mrs. Tolle have operated a successful grocery and bait business in this location for the past 17 years. They have now decided to retire and move south. Therefore, they have authorized our firm to offer their business and home at public auction.

The store building measures a total of approximately 20 x 92. It features the main store area with attached 2 room living quarters, stock room and several additional attached storage rooms, bait shop, walk-in cooler and 3 car attached shed. The building has maroonite siding, paneled throughout, city water, built-in cabinets in living quarters and much more.

In addition to the store building, there is a dandy 24x60 double wide modular home with a 24x24 addition. Mr. and Mrs. Tolle had the modular home special built with 2x4 walls and copper plumbing. The floor plan offers living room, kitchen/dining area, 5 bedrooms, 2 baths and family room. It has gas heat, central air, washer/dryer hook-up, storm doors and windows, paneled throughout, built-in cabinets, wall to wall carpet and much more.

Other improvements include an almost new 20x20 combination barn with a concrete block basement.

This is all situated on US 25, has backdrop parking area and consists of approximately 3 acres.

**Inventory & Equipment:** The inventory and equipment include all those items you would expect to find in a store this size along with the bait shop inventory. The inventory and equipment will be offered separately from the real estate, then with the real estate selling in whatever manner reflects the best returns for the owners. The equipment will not be offered by individual piece.

**Auctioneer's Note:** Here is the opportunity to be your own boss in a business that has proven to be successful to the Tolle family and you have the opportunity to buy it at your own price.

In addition to the store, you will get a nice modular home to live in or use as investment property, so mark your calendar now to attend this auction, Saturday, October 3, 1987 at 1:30 p.m.

**TERMS:** Real Estate - 20% down day of sale, balance in 30 days with delivery of deed and inventory and equipment - cash or good check day of sale.

For additional information, contact the selling agents:

## Ford Realty & Auction Co.

REALTOR/AUCTIONEER

SAAM FORD

DANNY FORD

ROY ADAMS

REALTOR

SONJA BRATTON

Mt. Vernon, Ky. Phone 256-4545

Somerset, Ky. Phone 679-2212



AUCTIONEERS

JERRY HARR

WILLARD BULLOCK

APP. AUCTIONEERS

BOB TODD

Kentucky Toll Free No. 1-800-435-5454

## SQUARE DEAL

auto sales

864-2880

Located on Hwy. 25, 1 mile north of State Police Post, London, KY



85 Ford-150 XLT Lariat: auto, PS, PB, AC, AM/FM, tilt, cruise, fuel injection, V-8, charcoal and silver with red cloth interior



14' Camper Trailer: Heater, stove, refrigerator, sink, sleeps up to 6 Only \$1,695



85 Dodge 1/2 ton Pickup: 318 CI, V-8, PS, PB, auto, LWB, step bumper, custom wheels with new tires, AM/FM cassette, blue on blue vinyl



84 Ford Club Wagon XLT Passenger Van: 6 cyl., auto, PS, PB, AM/FM, tilt, cruise, 2 rear benches, front and rear AC, good tires, two-tone brown with cloth interior



77 Ford F-150 Super Cab: Full rear seat, topper, sliding rear glass, V-8, auto, PS, PB, AC, AM/FM cassette, brown with cloth interior



76 Ford Cargo Van: auto, PS, PB, 302, V-8, white



82 Ford Club Wagon: V-8, 302, auto, PS, PB, AC, 2 rear benches, white with blue interior



Mrs. Sharon Palmer and Mrs. Alecia Mobley, representing the Mt. Vernon PTA, present Superintendent Bige Towery with a sign for his office door from the organization.

## From Our Files . . .

5 years ago, 1982--John Houston, one of the originating supervisors of the Rockcastle Soil Conservation District, retired after 38 years of service.

The annual Miss Rockcastle Pageant was cancelled due to the lack of participants.

Mr. and Mrs. Jack Weaver of Mt. Vernon became the proud parents of a baby girl, born Sept.

11 at the Rockcastle County Hospital. She weighed 8 lbs. 12 1/2 ozs. and was named Heather Nicole.

10 years ago, 1977--Brilliant running by Bill Hackworth and an extra effort defensively by Kyle Miller enabled the Rockets to win their second game of the season by defeating Clay County 20-7.

# Revival

## Maple Grove Baptist Church

### Sept. 27th - ??

7 o'clock each evening

**Evangelist: Ronnie Eversole**

Pastor: Lester Arnold

Homecoming and Dinner on Grounds Sunday, Sept. 27 with the Bishops Singing.

*Special Singing Nightly.*

**ABSOLUTE**

# Auction

**BY ORDER OF U.S. BANKRUPTCY COURT OF**  
*Mr. David C. Graves'*

## INDIAN LAKES FARM

### 330 ACRES, more or less

### 4,670 lbs. Tobacco

### Sat., Sept. 26, 1987 10:30 a.m.

Between Brodhead and Crab Orchard

LOCATION: Turn off U.S. 150 between Brodhead and Crab Orchard onto the Slaty Branch Road. Proceed about 6/10 mile to the property. Auction signs will lead you to the property.

The U.S. Bankruptcy Court for Eastern District of Kentucky has appointed our firm to sell this property for the absolute high dollar with no reserve.

The property contains 330 acres, more or less, by the boundary. A survey is being done to mark the boundaries and determine the exact number of acres and the result of the survey will be made available the day of the auction. By ASCS records, there is approximately 86 acres cropland. With some clearing, much more could be added as pasture or cropland. Water is provided by ponds and a branch.

If you're looking for land that would make a wise investment and has potential, be sure to look this over prior to the auction.

**BASIC TOBACCO BASE IS 4,670 LBS.**

TERMS: 20% down day of auction, balance in 30 days. The timber on this farm is presently being harvested and is under contract to Wayne Lumber Company, Monticello, Kentucky.

TRUSTEE - Honorable J. James Rogan

For additional information, contact the selling agents:

## Ford Realty & Auction Co.

**REALTOR/AUCTIONEER**  
SAM FORD  
DANNY FORD  
ROY ADAMS

**AUCTIONEERS**  
JERRY HAM  
WILLARD BULLOCK  
DEE STEWART

**APP. AUCTIONEERS**  
BOB TODD

*"Selling the Country"*

Mt. Vernon, Ky. Phone 256-4545      Somerset, Ky. Phone 679-2212

Kentucky Toll Free No. 1-800-435-5454

25 years ago, 1962--Wayne Vanhook was named president of the Rockcastle County 4-H Council at a meeting this week at the county Extension office.

Dr. Russell Teague, state health commissioner, said Kentucky will abide by the recommendation of the U.S. Public Health Service and discontinue temporarily the use of Type III oral polio vaccine for adults.

Jack Reed Craig, of Mt. Vernon, was hired superintendent of the Mt. Vernon Water Works at a meeting of the Mt. Vernon City Council.

A total of 3,234 students were enrolled in Rockcastle County Schools this year, slightly less than last year, according to an announcement by Mrs. Neureul Miracle, superintendent.

### LOGSDON FAMILY REUNION

The Logsdon reunion was held Sept. 6 at the family cemetery at Will Hope, those attending:

Mr. and Mrs. Charles Wm. Logsdon and children, Anna, Christopher, Zachary and Sarah of Barbourville; Fred Logsdon from Dayton, Tenn.; Mr. and Mrs. William Logsdon from Oak Ridge, Tenn.; Mr. and Mrs. Star Powley and sons, George and Mark from Carlisle, Ohio; Mrs. Sinnie Nicely from Mt. Vernon; Ruth McFeron from Cinli, Ohio; Gary Mullins of Mt. Vernon; Joe Mullins of Cinli, Ohio; Susan Anderson from Cinli, Ohio; Mrs. Lois Elliott from Batavia, Ohio; Mrs. Naomi Howard from Greenup, Ky.; Mr. and Mrs. Glen Lorrin from West Chester, Ohio; Mr. and Mrs. Walter Renner of Mt. Vernon; Mr. and Mrs. Bobby Adkins and son B.J. from Wurtland, Ky.; Becki Hall and son Chad from Ashland; Larry Howard and daughter Zandra from Greenup; Mr. and Mrs. Edgar Gillum and children, Travis, Johnny and Erica from Wurtland; Mr. and Mrs. Lee Duncan from Somerset and Charles Nicely from Louisville.

The Logsdon Family

### NORTHERN JOINS DELAYED ENTRY PROGRAM

Brian P. Northern joined the United States Marine Corps through the Delayed Entry Program.

Northern, who is a senior at Rockcastle County High School, will report to active duty at Marine Corps Recruit depot Parris Island, S.C. in May 88. Northern, whose parents, Jerry and Evonda Northern, live in Mt. Vernon, joined for the Electronics Quality Enlistment program.

Northern will undergo 11 weeks of recruit training, to include instruction in drill, first aid, general military skills, physical fitness and weapons familiarization.

**COMMONWEALTH OF KENTUCKY**  
**28th JUDICIAL CIRCUIT**  
**ROCKCASTLE CIRCUIT COURT**  
Civil Action File No. 87-CI-130

**Production Credit Association of the Fourth District**      **Plaintiff**

**VS: NOTICE OF SALE**

**Thomas G. Emily and Jeannette Emily, husband and wife, and Rockcastle County, Kentucky**      **Defendants**

Pursuant to judgment and order of sale entered in this action on August 29, 1987, and for the purpose of enforcement of a mortgage lien in the amount of \$17,526.71 plus interest, I will offer at public auction the hereinafter described real property in Mt. Vernon, Rockcastle County, Kentucky.

**AT THE COURTHOUSE DOOR**  
on Friday, the 9th day of October, 1987  
beginning at the hour of 10:30 A.M.

said property being more particularly bounded and described as follows:

A certain tract or parcel of land lying in and being in Rockcastle County and which is more particularly described as follows, to-wit:

A certain tract or parcel of land lying in and being in Rockcastle County and which is more particularly described as follows, to-wit:

BEGINNING at the mouth of Little Rockcastle River, and where same opens into Big Rockcastle River and on the east bank thereof, thence running down Big Rockcastle River and with its meanders westerwardly to a sycamore standing on the east bank of Big Rockcastle River; thence running with Cox's line northwardly to the painted line of the United States Government Survey; thence running with the United States Government Survey; thence in an easterly direction to Big Rockcastle River and its meanders to the mouth of Little Rockcastle River to the beginning corner.

Being the same land in which a one-half undivided interest was conveyed to Thomas G. Emily from Ollie M. Emily, a widow, by deed dated March 19, 1980, recorded in Deed Book 116, page 46-47, Rockcastle County Clerk's office, Mt. Vernon, Kentucky.

Also, being the same land in which a one-half undivided interest was conveyed to Thomas G. Emily and Jeannette Emily, his wife, from William K. Emily and his wife, Alice Emily, by deed dated August 13, 1983, recorded in Deed Book 125, page 95-96, Rockcastle County Clerk's office, Mt. Vernon, Kentucky.

There is excepted from the above described property that portion conveyed to Carlos Carlottis and wife, Lucille Carlottis by deed dated November 23, 1954, recorded in Deed Book 74, page 371, Rockcastle County Clerk's office, Mt. Vernon, Kentucky, said to contain twenty-five (25) acres, more or less.

**THE PROPERTY WILL BE SOLD UPON THE FOLLOWING TERMS AND CONDITIONS:**

1. The property shall be sold to the highest bidder(s) for cash or for a deposit of TWENTY (20%) per cent of the purchase price in cash at the time of sale and balance payable in NINETY (90) DAYS. The purchaser shall be required to execute bond with surety thereon, to be approved by the Master Commissioner. For the balance of the purchase price, the bond shall bear interest at the rate of twelve (12%) per cent per annum from date until paid; and to remain and be a lien on said property until fully paid.
2. The purchaser(s) shall have the privilege of paying all of the purchase price in cash or paying the bond before maturity by paying the principal amount thereof, together with all interest accrued thereon to the date of said payment.
3. Purchaser(s) shall have possession of the premises upon complying with the terms of sale and risk of loss of improvements shall thereafter be on the purchaser(s).
4. This sale shall be made subject to all easements, set back lines, restrictions or covenants of record or otherwise.

**ROBERT E. ROBINSON**  
Master Commissioner  
Rockcastle Circuit Court

## TAX NOTICE

The 1987 County and School taxes are now payable at the sheriff's office.

2% Discount until	<b>November 1st</b>
Face Value	<b>November 2nd - December 31st</b>
2% Penalty Added	<b>January 1 - January 31</b>
10% Penalty Added	<b>after January 31</b>

All taxing authorities have a lien against all real and personal property of each delinquent taxpayer pursuant to KRS 134.420(1), which is effective on May 1, 1988 when the unpaid tax liability becomes delinquent.

**PLEASE BE SURE TO BRING OR MAIL YOUR TAX BILL WHEN MAKING PAYMENT. THE TAX BILL NUMBER IS NEEDED TO GIVE YOU FASTER SERVICE.**

**NOTE:** When paying by mail, please enclose a self-addressed STAMPED envelope if you wish a receipted copy of the tax bill.

**Clarence Hasty, Jr.**  
**Rockcastle**  
Sheriff, **Rockcastle** County

## Social and Women's News



### Forthcoming Marriage

Mr. and Mrs. Eddie Carpenter of Lamerio announce the forthcoming marriage of their daughter, Jeannie, to Ricky Wilson, son of Mr. and Mrs. Bob Wilson of Mt. Vernon. The wedding will take place Oct. 10 at 3 p.m. at Pleasant Run Baptist Church. All friends and relatives are welcome to attend.



Chester and Ada Robinson celebrated their 49th wedding anniversary on September 20th.

### Mrs. Parsons accepted for ADA...

Marsha Brown Parsons, Wilde, has been accepted into membership in the American Dietetic Association (ADA). Parsons is employed by the Rockcastle Hospital, Inc., and she is working under the supervision of Mrs. Phyllis (Jill) Stevens, Registered Dietitian.

Mrs. Parsons received her Masters Degree from Eastern Kentucky University and is the wife of David Parsons of Parsons Gas and Appliance, Inc.

The professional association of nutrition experts, ADA currently has a membership of 55,000. ADA promoted health and nutritional status for Americans and provides direction and leadership for quality dietetic practice, education and research.



### PERSONALS

By: Mrs. George Burton

Glenna Tinch visited her sister Clea Cromer recently and attended the class reunion at the R.C.H.S.

Mrs. Lillian Anglin visited her aunt Mrs. Lou Moore last Thursday at the Berea Nursing Home. Shirley Burton spent the weekend with her daughter Mrs. Sheila Hansel and husband Steve at Elmer.

Sympathy is extended to the family of Mrs. Gladys Ponder of Deland, Florida in their time of sorrow. Mrs. Ponder was formerly of Rockcastle County. Kermit Bowling and George Burton attended a parade at Lancaster Saturday.

Juanita Davis, Rodney and Debbie Wright, Treña Barnett and Janet visited Mr. and Mrs. Robert Kirby last Wednesday.

Sunday dinner guests of Mr. and Mrs. Robert Kirby were Mr. and Mrs. Edward Stephens and family at Lexington and Mrs. Raymond Kirby and son David.

Sympathy is extended to the families of Mrs. Daisy Wagner,

George Duncan and Bob Bryant in their time of sorrow.

Sd. Class Todd Cromer has returned to Myrtle Beach, S.C. after spending two weeks with his mother Mrs. Erceel Cromer and sister Hope.

Harris Burton was in Richmond Monday to consult his doctor.

There were Memorial Services held Saturday night for the late George and Sarah Clark Murphy and Charles Clark at the Pentecostal Church in Mt. Vernon, also a Murphy and Clark reunion was held Sunday at the Family Life Center.

Mamie Durham of Richmond, Ind., Juanita Laswell from Webster, Ind., Pearl Middleton of Florence and Lorene Hensley of Gold Beach, Oregon visited Mrs. Virgie Sowder Sunday.

### GRAVES - HAYES REUNION

The fourth annual Graves-Hayes reunion was held Sunday Sept. 13, 1987 at the Blue Springs schoolhouse.

Eighty three family members, relatives and friends attended. They were:

## Local DAR begins new year with Constitution celebration

The Rockcastle Chapter, DAR, met Tuesday night, Sept. 8 at the Rockcastle County Library Community Room to begin its new Program Year and to celebrate the 200th Anniversary of the signing of the Constitution of the United States of America. The Regent, Mrs. Stephen Owens, conducted the opening ritual and resided over the business meeting.

As the members began their celebration, they were surprised when a large, bustling figure in long, billowing dress and an old-fashioned mob-cap suddenly descended upon them. Waving a nationally-circulated magazine in each hand, she declared to no-one-in-particular, "How dare they print pictures of General George and that runt, Madison, and barely mention my Ben!" She seemed especially agitated over a full-page picture of Dolly Madison "in that scandalous dress!" After throwing the magazines aside, she seated herself and donned one of "Ben's tricky-little-inventions, somewhat improved upon by someone with the name, Tinder-Kraus", and began leafing through a scrapbook.

As she mused, she enlightened the listeners as to why she thought "her Ben" should have prominence in being remembered by the people and the press two hundred years later. She remembered his early life and his many inventions and ideas, among which was our current daylight saving time; which she thought came as a direct result of "Ben's need for only a couple of hours' sleep."

She appeared to be well acquainted with the male population of history, calling them "General George; that runt Madison; reckless, red-headed Tom Jefferson; that stuffed-shirt Patrick Henry.

She counted on her fingers all the famous documents that Ben was privileged to sign: the

C. J. McKinney, Mr. and Mrs. Roy Graves and Charles and Shawn Stamper, Richmond, Lavada Graves, Rochelle Graves, Shelby Graves, Mary Graves, Hasty, Sammy Ford, Mr. and Mrs. Wade Thomas, Alma Griffin, Joyce, Melinda, Junior and Lissa McKinney, Sandra Graves, Clinton Anderson Graves, Katrina Stewart, Joyce Kirby, Zi Graves, Keith, Caroline and Ben Graves, Tracy Kirby, Thomas D. Graves, Raymond Graves, Lula Graves, Henry and Thressel Owens, James Owens, Dianna Haines, Elizabeth Owens, Zade and Rekel McClure, John and Verna Graves, all of Mt. Vernon.

Mr. and Mrs. Junior Mullins, Mr. and Mrs. Fred McFerron, Jack, Dawn, Aaron and Suprise Stallworth, Brodhead, Jesse, Loretta, Katy and Adam Powell, Berea, Lena Graves Gibson, Middletown, N.Y., Laswell Lou Mauda and April Stephens, Cincinnati, Ohio, Boyd and Vickie Gray, Amelia, Ohio, Clinton Graves, Wichita, Ks., Mr. and Mrs. Chester Noe, Thelma Hayes Herrin, Melva Anne Herrin, Somerset, Stanley and Mary Graves, Peru, Ind., Lillian, Randall and Lori Denney, Somerset, Lola Winchester, Berl Graves, Cincinnati, Ohio, Tom, Linda and Traci Graves, Burnside, Louis and Ann O'Donoghue, from Ireland, Ollie Kitson, New Paris, Ohio, Herbert C. Fletcher, Richmond, Ind., Cordia Fletcher, Lockland, Ohio, Mamie and Bill Fletcher, Franklin, Ohio, Mr. and Mrs. Wilbur Hammock, Dayton, Ohio, Mr. and Mrs. Earl Fletcher, Shelby, N.C.

The first of the 1988 Reunion is Sunday, Sept. 11, 12 o'clock noon.

The Graves-Hayes Family

Declaration of Independence in 1776; the Alliance for Liberty with France in 1778; the Treaty of Paris, officially ending the Revolutionary War in 1783; and the Constitution in 1787. She recalled that no other person could claim this feat.

As she reached the end of her scrapbook, the 18th Century matron continued to recount the ways the Constitution has weathered the years: forty changes in the presidency; four presidential assassinations; two presidents dying in office; one impeachment, failing by only one vote in the Senate; one presidential resignation from office; twenty-six amendments, creating more freedoms and responsibilities for more people.

Just before fading from the room, this visitor from the past wearily voiced her convictions that "the Constitution will continue to speak to the worth and dignity and freedom of humankind."

During the refreshment period, members voiced their appreciation to Norma Eversole for her solicitude.

### HAMM REUNION HELD

The Hamm Reunion held September 6, at the Quail Community Park was well attended again this year. Plans are being made for next year.

Paul Denny and Elizabeth Hamm Florence Lee and daughter and baby; Mollie Viola Albright; Edith and Willard

Nicely; Baker and Ruth Brown; Garner and Mary Ann Brown; Connie and Jerry Childers and children; Doris Jean and Keith Virgin; Loraine and Bobby Lawrence; Lisa and Doug Hopkins and Doug; Evelyn Lawrence and son Christopher; Leon McClure; Pearl Smith; Jewell and Larry Kidwell and Lori and Andy; Elaine Murphy and Vicki Miller; Grover McClure Jr.; Frances Todd and Joshua and Dallas; John G. and Maxine Albright; Arlene Watts and Steve and girlfriend; Billy Keith Albright and friend; Charlie and Sheila Albright; Toby Mullins and Jane and son; Kathy Coffey and Amber and Thomas; Faye and Bill White; Sue Ella Harrison and Paula; D.G. and Helen Albright; Lynn Albright and daughters; Joy and Ron Todd and Michael and Kevin; Mary Harper; Scott and Shelley Harper; Hazel and Bob

Smiley; Lois and Charlie Lighter; Paul David Albright; Jimmy and Royce Ann Albright and son; Everett and Jean Albright and family; Teresa and Frankie Lawrence and daughter; Timmy Albright and Jenny and baby; Dawn and Dan Brock; Robert Brown Jr.; Lillie and Gorman Reynolds; Leo and Wilma Reynolds; Chester and Ivas Reynolds; daughters and two children; Johnny Reynolds; Hollowize and Charles Hughes; Willard and Nina Brown and daughter Sue and husband; Irene Moore; Carl Brown; Dallas Hamm; Modie and Augustine Dillingham; Joyce and Ron Rogers; Jill Kersey and friend; Lillie Mae Barron and family and Carolyn and family; Tracey Burdette; Artie and Nellie Todd; Jessica Todd and brother; Bonnie Sue Barron; Martha Owens; Jack Gentry; Edward Burton; Starling

(Cont. to 7)



In Loving Memory of my Mother and Father who lived in Rockcastle Co. in 1895 to 1948. Flossie

Bible Baptist Church and Pastor Don Stayton invite you to our 1987 Homecoming Sunday, Sept. 27

SERVICES: Sunday School - 10 a.m. Morning Worship - 11 a.m. Afternoon Service - 2:30 (Replaces Evening Service)

Speaker: Dr. Tom Fehrman [Pastor of New Testament Baptist Church of Penntown, Indiana]

Special Singing Testimonies Nurseries Slides of past years' events in afternoon services.

For transportation or information, call 256-5862 or 256-5913

NEXUS NUCLEA

## Announcing

Linda Mays and Nancy Woods, formerly with Touch of Class Hair Design, are now employed at **Headquarters for Hair Design, Myrna, Linda and Nancy would like to invite everyone to call or drop by.**

**WOLFF TANNING BED**

Richmond St. 256-3868

MATRIX Tuesdays - Saturday REDKEN

## Congratulations! Julie



Julie Dowell Miss Rockcastle USA 1987

Dowell & Martin Funeral Home

256-2991

Box 810 West Main St. - Mt. Vernon, Kentucky 40456 - Phone (606) 256-2991

**McCLURE REUNION**

The families of the late Mr. and Mrs. Bob McClure held their annual family reunion at Ft. Boonesborough State Park Sunday Sept. 20.

Those in attendance were Mrs. Beulah Peters, Ft. Myers, Fla., Mr. and Mrs. Jerry Leighly, Debbie, Joy and friend Darrin Denby, Mrs. Anna Lee Spivey, Mr. and Mrs. Brad Goffena, Clint, Joanna and Steven, all of Dayton, Ohio. Mr. and Mrs. Danny Spivey, Justin and Brandon of Tipp City, Ohio, Mrs. Marie Barrier of Mt. Vernon,

Mr. and Mrs. Dale McClure and Miranda of Route 1, Brodhead, Mike McClure and friend Ron of Lancaster, Ohio, Mr. and Mrs. Jerry McClure and Lyn of Warner Robins, Ga., Mr. and Mrs. James McClure, Mr. and Mrs. Jackie McClure, Angela, Anita, Lacy and Brandy, Mrs. Jenny Nicely, Tammy and Jamison Cody, all of Livingston.

An enjoyable day was had by all and we would all like to thank "Aunt Marie" for organizing this each year and trying to see to it that we all get together. We all love you.

The McClure Family



**WINGS OF GOLD**—L.L.(jg) Claude McNew was awarded the Navy Wings of Gold in a ceremony at Naval Air Station, Kingsville, Tx. on August 21. L.L.(jg) McNew completed 22 months of intensive training and has been selected to fly the F-14 Tomcat at Mirimar, Ca. McNew is a 1979 graduate of Beres Community High and a 1984 graduate of EKV. He is the son of Mr. and Mrs. James McNew of Beres and the grandson of Cynthia McNew of Conway.

**Homecoming at Brush Creek . . .**

A great crowd attended the Homecoming Service at Brush Creek Holiness Church Sunday, Sept. 6. Everyone was welcomed by the pastor, Rev. Olen McGuire. The twelve ministers present were invited to speak. The main speaker for the day was Herbert Gibson, pastor of the Lily church near London. Lonnie McGuire was ordained for the ministry by all the visiting ministers on this day. He is the son of Rev. and Mrs. Olen McGuire.



Pictured are the ministers who attended Brush Creek Church on their homecoming day. They are, from left: John Hoskins, Earl Hodge, Gary Parker, Lonnie McGuire, Olen McGuire (pastor), Oliver Abney and John Pugh. Back row: Edd Smith, Rolla Cornelius, Herbert Gibson, Allen Hensley and Wayne Creech.

year. The hostess for September was Mrs. Zl Graves, our club president for last year. She was assisted by Mrs. Verna Graves. A nice lunch was served buffet style to the 18 members and two guest present.

Reporter

**CROMER - WHITTAKER REUNION HELD**

Everyone had a good time at the Cromer-Whittaker Reunion Sunday, Sept. 6, held at the home of John D. and Rissie Cromer at Brodhead.

Plenty of good food was served. Prizes were awarded to these special people: oldest lady present; Maude Hensley, 82, London; oldest man, Clyde Austin, 81, Brodhead; largest family, Cletia Bussell, 82, 11 children, all living; largest family present, Everett and Mary Cromer, East Bernstadt, 29 present; youngest grandma, Geraldine Cash; the longest drive, Margie Fogal, Indianapolis, Ind.; youngest, little Miss Megan Cromer, age 1 month, parents Johnny and Rhonda Cromer of Cinti., Ohio; newest married couple, Mark and Ann Cromer of Springdale, Ohio.

Also present: Tom, Linda and Traci Graves, Burnside; Roger, Tami, Kristi, David and Jessica Hasting, Independence; David and Wanda Blair, Blue Ash, Ohio; Vernon and Ona Mae Cromer, Richmond, Ind.; Clyde

and Zella Austin, Brodhead; Laura Cromer, Burnside; Jilly and Ruby May Avair, Millersburg; Everett and Geraldine Cash, Brodhead; Dillard and Margie Whittaker, Lexington; John and Verna Graves, Mt. Vernon; Edna Noyton, Mt. Vernon; Bill and Gladys Grover, Cinti., Ohio; Rhonda and Natalie Bullock, Berea; Alene Parrett, Brodhead; Rissie Ballard, Indianapolis, Ind.; Joseph and Mrs. Kessler, Ill, London; Darla Stuckey, East Bernstadt; Sonora Reed, Lexington; Wilma Heindly and Derrick, Hamilton, Ohio; Hiram and Audrey Reed, East Bernstadt; Lowell and Pat Cromer, Batavia, Ohio; Tom and Northa Carpenter, East Bernstadt; Alan and Debra Lewis, Travis and Amanda, East Bernstadt; Mike and Lisa Carpenter, Cathy and Jeremy, East Bernstadt; Jennifer Gilbert, East Bernstadt; Ken and Judy Cromer, Andy, Amber and Stephanie, Cold Springs; Bob and Marie Cromer, Somerset; Walter and Mae Doan, Brodhead; Lewis Whittaker, Mr. Vernon; Retta Hasty, Brodhead. Missed were Golden and Fay Hensley; who were vacationing in Mexico. Also Woodrow Cromer in Veterans Hospital in Lexington.

Everyone was glad that Zella Austin could be home from the hospital for the day and spend a few hours with us.

Thanks everyone for sharing the day with us and we hope to see each and everyone next year.

**Gymnastic Classes  
Registration & Exhibition**

When: Saturday, September 26

Time: 11 a.m.

Place: FAMILY LIFE RECREATION CENTER

(1 mile N. Renfro Valley)

Instructor: Missy's Dance Studio of Somerset

All persons interested in these classes, please attend. A representative from Missy's Dance Studio will be available for class registration and exhibition. If you need additional information, call 256-5612. Classes will begin Saturday, October 3 at 10 a.m.

**STORAGE  
RENTAL  
Mini-Warehouse**

U.S. Hwy 150  
Mt. Vernon, Ky.

3 Sizes of Storage Bays  
Available

758-8846

**Try Our  
Hot 'n Hearty,  
Beefy Chili.**

A hot 'n hearty helping of thick, beefy chili is guaranteed to chase away the chilliest winter chills.

And now at Druther's, you can dig into a big, brawny bowl of our chili and crackers for lunch or dinner. All for very little cash.

Pure beef, plump red beans, zesty tomato sauce . . . all blended with just the right touch of spices to tickle your tastebuds.

But you'd better come hungry, because our chili is a hefty, satisfying serving.

So next time you feel a winter chill coming on, come to Druther's Restaurant and get our hot 'n tasty chili.

**Chili  
Only 1.29  
per bowl**



**REVIVAL**

at  
**Fairview Baptist Church**

SUN., SEPT. 27 - FRI., OCT. 2

7:30 each evening

SAMMIE ADKINS, EVANGELIST

Pastor of High St. Baptist Church, Somerset

PASTOR: HARVEY PENSOLO

**EVERYONE WELCOME!!**

**Senior Special**

1988



**A. 16x20 Package \$139<sup>95</sup>**

1-16x20      2-8x10      2-5x7  
48 Wallets

**B. 11x14 Package \$99<sup>95</sup>**

1-8x10      2-5x7      48 Wallets

**c. 8x10 Package \$61<sup>95</sup>**

1-8x10      2-5x7      48 Wallets

**HANG UP OR LOCKER PRINTS 8x16**

Regular Price \$30.00

With Above Package \$21<sup>95</sup>

No extra charge for putting your name on wallets!  
"Brock Studio Portraits are guaranteed for a lifetime!"

CALL FOR AN APPOINTMENT!

**BROCK STUDIO**

Main Street Brodhead  
[606] 758-8621



Rev. Oliver Abney and wife celebrated his 74th birthday Sept. 21 with a big dinner and cake at their home in Renfro Valley. Those present were his son, Ray and Pat from Somerset, also Kenny, Tammy, Sheila and Beverly from Lexington.

**"HAMM REUNION"**  
[Cont. from 6]

Stephens; Christine Frazier; Beth Albright; Reed Cash; Ernst Cash; Kathryn Claunch; Myrtle Hasty; Beulah and husband; George and Bernice Adams; Lillian Gall; Bertha Stephens; Mildred Brown; Avis Bengel; Roy and Flora Mae Brown; Fannie Albright; Dessie Taylor; Clyde and Irene Hasty. Glen Hamm, Alma Cash and Willie Todd were unable to be there. Some have passed on -- sure do miss them.

The Hamm Family

**RISE AND SHINE  
HOMEMAKERS MEET**

The September Homemakers meeting was held in the club room which is located in the basement of the Agriculture Center.

The program was Club Organization and election of officers. With the help of our County Extension Agent, Cheryl Witt, we elected new officers and planned our club programs for the coming year.

Cheryl also gave a talk on the order of club meetings. She had special tips for the speaker to be more effective and stressed the importance of everyone listening.

There was a lot of excitement among the members as each one revealed their secret pal for the past year and drew names for a new secret pal for the coming

## EXTENSION HOME ECONOMICS

By: Cheryl Witt  
County Extension Agent  
for Home Economics



### HATS OFF TO EXTENSION HOMEMAKERS!

By: Cheryl Witt  
County Extension Agent  
for Home Economics

September is the beginning of a new year for Extension Homemakers Clubs in Rockcastle County. The county annual Homemakers meeting held a week ago ends the year recognition of its members and clubs.

During the past year, four clubs were recognized for outstanding achievements. They were the Quail Homemakers, Rise & Shine Homemakers, Sunshine Homemakers, and Brodhead Willing Workers. Elizabeth Mullins received a certificate recognizing her efforts as county public information chairman. Perfect club attendance awards were presented to nine members. As a result of a "Hats Off to Homemakers" Contest, Patricia Fletcher of Brodhead Willing Workers, Kathy McCauley of Town & Country Homemakers, and Brenda Powell of Sunshine Homemakers received cookbooks.

The Homemakers clubs shared in planning this meeting, as they do in all county wide activities. Thanks to the Brodhead Willing Workers for making arrangements for the meeting place and menu; Sunshine Homemakers for table decorations and favors; Rise & Shine Homemakers for the name tags and registration at the door, and to Quail Homemakers for the recreation and prizes.

A special thank you to the club and county officers who made the past year so successful for the Rockcastle County Homemakers. Outgoing club officers were: Brodhead Willing Workers President, Carol Riddle; Vice President, Jean Albright; Secretary-Treasurer, Patricia Fletcher and Reporter, Elizabeth

Mullins. Town and Country Homemakers: President, Kathy McCauley; Vice President, Jenny Mullins; Secretary, Susanne Thomas; Treasurer, Donna Roberts; Reporter, Debbie Reynolds; Quail Homemakers: President, Judy Ford; Vice President, Joyce Craig; Secretary-Treasurer, Cindy Robbins; and Reporter, Cindy Underhill; Rise & Shine: President, Zi Graves; Vice President, Juanita Davis; Secretary-Treasurer, Alta Bullock; and Reporter, Pat Stokes. Sunshine Homemakers: President, Sandi Thomas; Vice President, Brenda Powell; Secretary-Treasurer, Debra McQueen and Reporter, Jean Toney.

The county officers who served during the past year and will continue throughout the coming year are: Virginia Hansel, President; Faye McCauley, Vice President; Debra McQueen, Secretary; Clara Proctor, Treasurer; and Elizabeth Mullins, Reporter.

During the past year the Extension Homemakers Clubs have been active in several projects. They published their first cookbook, with profits going to furnish a kitchen for the meeting room of the Agricultural Service Center. Cookbook sales profits also helped Rockcastle County reach their funding goal for the Kentucky 4-H Leadership Center at Lake Cumberland. Homemakers supported the Ovarian Cancer Research Project at the UK Medical Center, sponsored two community blood drives, held a Quilt & Craft Show and Christmas Bazaar. Clubs held Christmas activities in their communities, participated in the Health Fair, maintain a community park, donated clothing and food to organizations such as REAP and the Health Department.

Homemakers have recently completed a quilt. Chances are being sold on the quilt by club members with the drawing held on December 5th. Profits will be used to support the Homemakers activities.

Extension Homemakers clubs are welcoming new members during their October meetings.

Two types of membership are available. To become an active club member, contact an officer or member of the club in your community. For those who are unable to attend club meetings, a county-wide membership is available; contact me at the County Extension Office at 256-2403 for more information.

### SOWER NURSING HOME PRESENTS THERAPY WORKSHOP

Sower Nursing Home is presenting a "Validation Therapy" workshop with Naomi Fell's video: My First Hundred Years, Thursday evening at 7 p.m., Sept. 24, in the Blue Lounge (West Wing) at the Nursing Home.

Employees, families of residents and others interested in learning how to grow old gracefully, stay mentally aware and how to help confused relatives and friends, are invited to attend.

We learn how to understand the wisdom, poetry, and meaning that comes with old-old age. The workshop is free and there will be a drawing for a door prize.



A pencil equipped with an eraser, the first of its kind, was patented by Hyman L. Lipman of Philadelphia in 1958.

## JOHNSON FARM SUPPLY

Big Hill, Rd.

Berea, Ky.

606-986-9587



OMARK INDUSTRIES

## Saw Chain Sale

Sept. 19 thru 26

Buy one chain at regular price and get the second chain for only

# \$5.00

Ongoing extension homemaker club presidents for 1987: These ladies have worked very hard during the past year to serve their club and communities. They are, from left: Kathy McCauley, Town & Country; Judy Ford, Quail; Carol Riddle, Brodhead Willing Workers; Zi Graves, Rise & Shine and, now shown, Sandi Thomas, Sunshine. A new year is starting for homemaker clubs. The groups are welcoming new members and invite you to join them.



Winners of the "Hats off to Homemakers" contest at the county extension homemakers annual meeting last week are shown above. They are: Patsy Fletcher, Brodhead Willing Workers; Brenda Powell, Sunshine and Kathy McCauley, Town & Country. All clubs and county members were present at the meeting.

# Auction

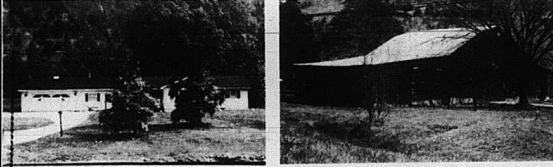
of Mr. Glen Hunter's

## 24 ACRES - 2 TRACTS

### Modern Country Home and Barn

### Sat., Sept. 26, 1987 1:30 p.m.

Livingston, Ky.



**LOCATION:** Turn off US 25 in front of the Livingston School onto state road 1955. Follow 1955 approximately one mile to the property. Auction signs are posted.

Since Mr. Glen Hunter works in Richmond and wants to move closer to his work, he has contracted us to offer this lovely home and acreage for the high dollar.

**TRACT NO. 1** - Contains approximately 17 acres and has about 720 ft of road frontage on state road 1955.

This tract is improved with the pictured lovely ranch style home. The home has 3 bedrooms, living room, kitchen with built-in cabinets, dining area, large family room and 2 baths. It also has 2 car attached garage, washer/dryer hook-up, cellar, flu for woodburning stove, wall to wall carpet, electric heat, plus much more.

Besides the house, there is also a combination barn and a swimming pool, however, the pool does need some repair. In addition, there is also a mobile home hook-up.

**tract no. 2** - Contains approximately 7.04 acres with 320 ft. of frontage on 1955. This tract has several good building sites and since there are no buildings, you can build to suit yourself.

**AUCTIONEER'S NOTE:** If you're in the market for a country home and want to run a few cattle or horses, then you'll enjoy what this country estate has to offer.

Each tract will be offered separately, then together, selling whichever way reflects the best returns.

**TERMS:** 20% down day of sale, balance in 30 days with delivery of deed.

For additional information, contact Mr. Glen Hunter, the owner, or:

## Ford Realty & Auction Co.

REALTOR/AUCTIONEER

SAM FORD

DANNY FORD

ROY ADAMS

REALTOR

SONJA BRATCHER

AUCTIONEERS

JERRY HAM

WILLARD BULLOCK

APP. AUCTIONEERS

808 TODD



Mt. Vernon, Ky. Phone 256-4545

Somerset, Ky. Phone 679-2212

Kentucky Toll Free No. 1-800-435 5454



How can you prepare for the future, when you can't predict the future? We'll help!

Are interest rates going to rise? Will the cost of living increase? Will inflation take a turn for the worse?

It seems that no two economists agree on anything anymore.

One thing is certain, however, consistent interest will be paid on our certificates of deposit regardless of what happens to the economy.

If you believe interest rates will again rise, use shorter term certificates. Ninety day or six month certificates. If you believe interest rates may further drop, then hedge your savings with longer term, higher interest bearing certificates.

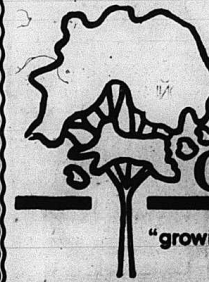
Sounds complicated? It really isn't. A few minutes spent with one of our people and it all becomes very clear. Stop in for a chat, we'll gladly guide you through the maze of certificate saving.

### MEMBER FDIC

Open 8:30 to 3 p.m.  
Monday thru Friday

Drive Thru Open till 6 p.m. Fridays

Open 8:30 to 12 p.m. Saturdays



## Citizens Bank

"growing for you" Since 1904

Brodhead, Kentucky

**COLLINS PROMOTED**

Steven P. Collins, serving with the U.S. Army, has received a promotion to the rank of Staff Sergeant. He is presently attending an advanced electronics calibration course at Lowry Air Force Base, in Denver, Colorado. Upon completion of the course, he will be stationed at Fort Campbell. Steven and his wife Ruth are both 1983 graduates of Rockcastle County High School. They have two children, Aaron and Amanda.

**College orientation for R.C.H.S. students**

The guidance department of R.C.H.S. will be presenting a program to the parents of students in the 12th grade who plan to go to college. This program will provide information on such topics as college admission, college entrance exams, and financial aid. The program will be sometime around the middle of October, depending on the arrival of materials from the Kentucky Higher Education Association.

Authority. Watch the Signal for dates and time.

**Local students are in Duke's T.I.P. program**

The Talent Identification Program was started at Duke University on the premise that the future of this country depends greatly upon the fullest development of our best intellectual resources. Therefore, the objectives of the program, stated simply, are to identify the brightest of our young students; to assist in developing and nurturing their abilities at the present and in the future; and to develop a research effort to better understand those bright individuals.

To qualify for the TIP, which involves only seventh graders in 16 states, a student must score 97 percent or higher on the math, reading, and/or total battery of the KEST (our yearly achievement tests). The following students are eligible to take the SAT or ACT in December:

- Broedhard - April Abney, James Alcorn, Crystal Bradley, George Craig, Shanda Durham, Melissa Kidwell, Jenise Masters, Shawn Robinson, Adam Treholo, Tiffany Turner, Sarah Whitt, Mike Steve Albright, Eugene Durham, Scott Everett, Jason Kirk, and Melissa Owens.
- Livingston - Malehgia Johnson
- Mt. Vernon - Frankie Arley, Trent Clark, Kim Decker, Melinda Dykes, Lonnie Graham, Jeremy Jones, Matthew Kerr, Angela Kirby, Michael Lay, Geoffrey McGuire, Callie Mullins, Chad Neal, Chris Owens, Crystal Smith, Herman D. Smith, Charles Sowder, Chris Tackett and Jennifer Bowman.
- Roundstone - Jackie Burdette, Anthony Carpenter, Marilyn Coffey, Amy Croucher, Scarlet Dallow, Darla Martin, April Powell, Amy Sears, Bonnie

Signon, Michelle Stevens and Jerry Makin.

**ROCKCASTLE COUNTY ELEMENTARY**

**MENU**  
September 28 - Oct. 1

- Breakfast: Monday: Cereal, toast/jelly, juice, milk
- Tuesday: Sausage & biscuit, juice, milk
- Wednesday: Doughnut, juice, milk
- Thursday: Peanut butter/honey sandwich, juice, milk
- Friday: C.K.E.A.
- Lunch: Monday: Lasagna, green beans, applesauce, roll, milk, chocolate peanutbutter square
- Tuesday: "N" blanket, potato chips, baked beans, milk, fruit cup
- Wednesday: Cheeseburger on bun, french fries, lettuce & tomato, milk, frosty creme
- Thursday: Pizza, garden salad, buttered corn, milk, fruit
- Friday: C.K.E.A.

**ROCKCASTLE COUNTY HIGH SCHOOL**

**MENU**  
Sept. 28 - Oct. 1

- Monday: Chef's salad or chicken nuggets, whipped potatoes, green beans, roll, milk, choice of offered desserts
- Tuesday: Chef's salad or pizza, garden salad, buttered corn, milk, choice of offered desserts
- Wednesday: Chef's salad or beef barbecue on bun, french fries, cole slaw, milk, choice of offered desserts
- Thursday: Chef's salad or chipped ham & cheese on bun, baked beans, potato chips, milk, choice of offered desserts
- Friday: C.K.E.A.

**ROCKCASTLE COMMUNITY**

**Bulletin Board**

**Gospel Singing**

There will be a gospel singing at Maple Grove Baptist Church Saturday night, Sept. 26 at 7 p.m. The Singing Renners will be the singing. Everyone welcome.

Scout meeting: pt. 26 from 1 to 3 at the Library Community Room. All girls, age 55 or in kindergarten, are welcome.

**Circuit Clerk notice**

The Circuit Clerk's office will not be open Thursday night, Sept. 24 or Thursday night, Oct. 1, 1987.

**Last day to register to vote**

Norma Houk, county clerk, announces that the last day to register to vote in the general election will be October 5, 1987. Anyone needing to register or change to married-name, precincts or party must do so by this date.

**Coon Club hunt**

Rockcastle Co. Coon Club will have a hunt Saturday night, Sept. 26. First place winner will receive a \$95 Browler hunting light. Second place, 50 lb. of dog food and third place, 25 lb. Entry fee, \$10. Entries close 8:30 p.m. Bill Hasty, Mt. Vernon, 256-4104.

**Gymnastic Classes**

The Family Life Recreation Center is sponsoring gymnastic classes. Open registration will be Sat., Sept. 26 at 11 a.m. See ad elsewhere in this week's Signal or call 256-5612 for more information.

**Bookmobile Schedule**

Mon., Sept. 28: Red Hill, Calloway, Burr. Tues., Sept. 29 - Disputanta, Anglin Falls. Weds., Sept. 30: Castle Village Apts., Negro Creek.

**Homecoming at Three Links**

The annual homecoming will be held at Three Links Christian Church Sun., Sept. 27. Dinner will be served after services and singing will begin at 2 p.m. Everyone welcome. Bro. Homer McNew is pastor.

**Pot-Luck at Dave Jackson**

The annual pot-luck dinner will be held Sat., Sept. 26 at 7 p.m. at Dave Jackson Lodge No. 731 at the lodge hall. All masons, wives and families invited.

**Historical Society meet**

The Rockcastle Co. Historical Society will meet at 7 p.m., Thurs., Sept. 24 at the Library Community Room.

**Revival services**

Bro. Lester Carpenter and Bro. Thomas Bishop will be starting a revival Monday, Sept. 28 at the Pentecostal Liberty Tabernacle, South 25 in London. Services will be at 7 o'clock each evening. Everyone is invited to attend. Bro. Lester Carpenter is pastor.

**Daisy Girl Scout meeting**

There will be a Daisy Girl

**Gospel Singing**

There will be a gospel singing at the Levi Jackson Park amphitheater Sat., Sept. 26 at 7:30 p.m. Featured will be the Chapel Tones and their special guests, the Harbingers and Psalm. Bro. Jeff Lewis will be master of ceremonies. In case of rain, singing will be at Faith Assembly of God gym, located behind Bonanza Steak House at the intersection of West 80 and 175. Bring lawn chairs. Free admission.

**Gospel meeting**

A gospel meeting is in progress through Sept. 26 at the Southside Church of Christ at 7:30 each evening. Jerry Parks from Expressway Church of Christ in Louisville will be the speaker. Southside is located 1 mile south of the mall on 1247.

**Bulletin Board is Sponsored by**

**Car Funeral Home**  
MT. VERNON, KY. — 256-2345

**OAKWOOD HOMES**  
995 Eastern By-Pass  
Richmond, Ky 40475

**out to BREAK all sales records!**

LARGEST SELECTION OF OAKWOOD'S IN KENTUCKY	PAYMENTS TO FIT YOUR BUDGET!	REBATES UP TO \$1,000
THE BEST DEAL GOING - GUARANTEED	DOWN PAYMENTS AS LOW AS \$399	SPECIAL FIXED RATE FINANCING

\* Brand new 14 wide as low as \$795 Down / \$118 Mo. (See Price \$8,996, 180 Mos., 13.25 APR)  
\* Our BIGGEST Home - for only \$995 Down / \$154 Mo. (See Price \$12,996, 180 Mos., 13.25 APR)

We have just finished the best month ever in our 41 year history and The Best Deal Going, Just Got Better!

Across from Southern Hills Plaza  
Richmond, KY  
(606) 623-1121  
Call collect

HURRY! OFFER ENDS SEPTEMBER 26

**It's New Way Boot Shop's 3rd Anniversary!**

**SAVE BIG \$\$\$!**

**dingo**  
Dingo Snakeskin White & Chocolate Grey or Taupe \$159

**Justin**  
Justin Lizards Grey, Black, Brown & Peacock \$199

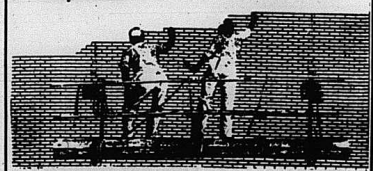
**Dusters Save \$20!**

**Western Sport Coats 1/2 off!**

Register for a pair of Dingos, a pair of Zodiacs, & a Duster

**4 Days Only Thursday thru Sunday!**  
Bluegrass Village off Exit 90, I-75  
Richmond 623-7938  
Thurs. - Sat. 9 to 8, Sunday 1:30 to 5

**Wallace Ford Coachmen's Building A Reputation As A Value Dealer!**



**Wallace Ford Coachmen, Berea's Value Leader!**

**Many 88's Arriving**  
**4x4 Special**  
1982 Jeep J-10, 4x4, P-Up, blue, auto, PS, New tires, Sliding rear window, 38,000 miles. . . . . \$2,995.  
1979 Jeep J-10, 4x4, P-Up, white, auto, PS, sliding rear window, roll bar, fog lights, white sport wheels & tires, brush guard. . . . . \$2,995.  
1978 Ford Bronco, Green and White, V8, auto, White Spoke Wheels

**TRUCKS**  
1987 Ranger, White, 5 spd., Step Bumper, 17,000 mi.  
1983 F-100 XLT, Brown/Tan, Auto with overdrive, V8, AM/FM, AC, PS/PB, Cruise, Sliding Rear Window, 41,000 miles

U.S. 21W & I-75  
Berea, Ky.  
**[606] 986-2393**  
Open Monday - Friday 8:30 - 8:00 Sat. 9 to 5

**A ROCKCASTLE CO. HIGH SCHOOL MINUTE**

By: Sonya Bullock

R.C.H.S. luncheon.  
No More Hunger Pains!!!! The students may now buy snacks between classes from the two new vending machines, recently installed.

**BUSY!BUSY!BUSY!!** Yearbook photographs are to be taken Tuesday 22nd through Friday 25th. The schedule for pictures is as follows: Tuesday is senior photos; Wednesday and Thursday are group and club pictures; Friday is individual photos for the junior, sophomore and freshmen classes.

College Bound Seniors get a treat this year. Now seniors may choose to visit with 25 different colleges within Kentucky. The first college visit is Friday, Sept. 25th, to Sue Bennett College in London.

**ATTENTION: ACT deadline is Friday Sept. 25th.**  
3 p.m. Friday will end a hectic week at R.C.H.S. but in only a few short hours the homecoming celebrations will begin. **BLAST'EM AWAY ROCKETS!!!**

Spirit and enthusiasm are filling the halls this week at R.C.H.S. The fans and players are all anxiously awaiting the homecoming game and dance. The Rockets of course are UNBEATEN this season with a great record of 5-0.

The game against Jellico starts at 8 p.m. Friday 25th with homecoming activities at half-time. The queen and her court will be chosen from the following:

- Seniors: Julie Dowell, Missy Lear, Leslie Norton
- Juniors: Stephanie Dooley, Allison Sowder
- Sophomores: Gina Martin, Brandi DeBorde
- Freshmen: Teresa Burdette, Michele Hamm

Tradition is being broken at R.C.H.S., the 94 1/2 Music Machine will provide the Rock-n-Roll at the dance. All of you rock fans are welcome to come and jam with the Rockets. The dance will follow the game in the

**COLONIAL CLASSIC COLLECTION**

CREATE A BEAUTIFUL ROOM FROM OUR

● Solid Construction for years of Dependable Comfort  
● Foam Seat Cushions  
● Pillow Back  
● Heavy Grade Decorator Cover

**Sofa Club Chair Rocker Parry Ottoman**

**NOW ONLY! 49900**

**HAYS Furniture & Appliances**  
591 West Chestnut Street • Berea, Kentucky  
986-4144 986-8004

**FAMILY OWNED AND OPERATED**  
Furniture, Appliances, Floor Covering, Wall Covering, TV's, VCR's, Waterbeds, and More!

● Nothing Priced w/ Trade-ins  
● Reasonable Offer for Trade-ins  
● We Service What We Sell!



# Obituaries

## WAGNER

Mrs. Daisy R. Wagner, 67, of Livingston, died Sept. 17, 1987 at the University of Kentucky Medical Center in Lexington.

She was born in Knox County May 14, 1920, the daughter of the late Richard and Mandy Hodge Hensley. She was a member of the Morning View Holiness Church.

She is survived by four sons, Sam Brown of Pineville, Thomas Wagner of Broadhead, Delbert Wagner of Bond and Everett Wagner of Livingston; seven daughters, Fannie Taylor and Nadine Clark, both of Livingston; Beatrice Pearson of Franklin, Ohio; Mandy Carpenter and Centena Carpenter, both of Broadhead; Gladys Carpenter of Lamero; and Edna Herbert of Amelia, Ohio; a sister, Dixie Sizemore of Four Mile. Also surviving are 19 grandchildren and five great-grandchildren. She was preceded in death by her husband, Everett Wagner, and two infant sons.

Services were conducted Sept. 19 at the Dowell and Martin Funeral Home by Bros. Jasper Carpenter and Billy Medley. Burial was in the Pilgrims Rest Cemetery at East Bernstadt.

Pallbearers were Ray Carpenter, William Herbert, Johnny Carpenter, Randall Pearson, Lester Carpenter and Tom Clark.

## BRYANT

Bob Bryant, 69, of Mt. Vernon, died Sept. 18, 1987 at his home the result of an apparent heart attack.

He was born on April 19, 1918 in Rockcastle County, the son of the late Bill Ace and Fannie Pruitt Bryant.

Survivors are his wife, Mae Bullock Bryant of Mt. Vernon; four sons, Bill and Willie Bryant, both of Clinton, Tenn.; Charles Bryant of Only, Tenn.; and Larry Dale Bryant of Pikeville, Tenn.; two daughters, Mrs. Fannie Howard of Richmond, Ind. and Mrs. Mary Durham of Cincinnati, Ohio; a brother, Willie Bryant of Lynchburg, Ohio; 15 grandchildren and six great-grandchildren. He was preceded in

death by two daughters. Services were held Sept. 22 at the Cox Funeral Home Chapel, with Bro. Chris Jasper officiating. Burial was in Bryant Family Cemetery.

## TAYLOR

Mrs. Celia Taylor, 84, of Cincinnati, Ohio and formerly of Quail, died Sept. 22, 1987 in Cincinnati.

She was born in Harlan County April 16, 1903, the daughter of the late Nathan T. and Isabelle Fee Gibbons. She was a member of the Providence Church of Christ.

She is survived by a son, Toy Taylor, and a daughter, Belle Godby, both of Cincinnati, Ohio, 10 grandchildren and eight great-grandchildren. She was preceded in death by her husband, Clarence Taylor, two sons and two daughters.

Services were conducted Sept. 24 at the Providence Church of Christ by Elder Lassare Bradley.

Burial was in the Providence Cemetery. Arrangements were by the Dowell and Martin Funeral Home.

## "Illiteracy pinpointed" Cont. from Front

More than one million Kentuckians over the age of 25, or 46.9 percent, lack a high school diploma, according to the 1980 census. The national figure is 33.5 percent.

Many of these adults need literacy instruction. About 650,000 adult Kentuckians, or 31.3 percent, have not completed the eighth grade, according to the census. The national figure is 18.3 percent.

About 400,000 adult Kentuckians are functionally illiterate, meaning they read below a fourth or fifth-grade level. Ten percent of the adults in the state did not go beyond the fifth grade.

These numbers do not reveal the personal tragedies or wasted potential of illiterate adults.

Although illiterates come from every class and race, the majority are poor.

Most often, illiterates are found in low-paying jobs,

unemployment lines, soup kitchens and prisons. Low self-esteem and dependency are common traits.

High dropout rates also add thousands of undereducated people to the pool of functional illiterates. More than a third of Kentucky students who start ninth grade drop out before they finish high school.

Unless dramatic measures are taken to reduce dropout rates and educate adults, Kentucky is likely to rank last again in high school diplomas in the 1990 census, educators say.

In the last two years, literacy councils have formed in almost every county in Kentucky. They exist on shoestring budgets, receiving \$4,000 to \$9,000 annually from the Kentucky Literacy Commission. Private fund raising supplements their budgets.

But many illiterates are too ashamed to admit that they cannot read. They do not seek out literacy programs.

Illiterates also have problems participating in a democracy.

An illiterate person cannot write a congressman or analyze a candidate's platform.

In Kentucky during 1986-87, more than 5,000 volunteers donated \$1 million worth of free time as tutors and literacy helpers. That same year there were 4,874 adult reading students. According to Kenneth Johnstone, the executive director of the Kentucky Association of School Administrators, "Just about every part of our society has some blame. And it's going to take all of us to correct it."

Schools must stop promoting unqualified students, overemphasizing athletics and assigning teachers to classes outside their fields, Johnstone and others said.

Kentucky also has been hampered by unskilled governors, destructive regionalism, isolation, lack of a two-party system, low voter participation and weak legislators, noted Robert Sexton, executive director of the Prichard Committee for Academic Excellence.

## "Crops" Cont. from Front

feeted by the dry weather. Harold Ballinger, ASCS director, said Rockcastle is not as dry as Madison, Garrard and Lincoln counties, but the weather is affecting late pastures and alfalfa.

"Wells, springs and ponds that are used for cattle water are getting low," Ballinger said. "Some

farmers are beginning to haul water regularly and to ship their livestock to market. Some also are feeding hay to their cattle."

Most of the garden vegetables are gone. Some mustard and turnips could be effected by the dry weather since they need water to germinate.

The bell pepper yield has been reduced somewhat by the dry conditions. Ballinger reported the continued dry conditions could cause tobacco to cure too fast causing an undesirable color. He said tobacco needs to come in case and that calls for dampness alternating with dryness every 24 hours.

Ballinger added the late set tobacco would be more effected than the early planted tobacco.

## FARM SAFETY

### MAKES SENSE

It is no secret that these are difficult times for farmers, and it is no secret that farm accidents and work-related illnesses cause a great financial burden and immeasurable suffering, according to Martha Layne Collins, who has proclaimed Sept. 20 to 26, as Farm Safety Week in the Commonwealth.

An average of 70 Kentuckians lose their lives each year to farming accidents and many more are seriously injured or disabled. The following safety tips are offered by the Council in conjunction with National Farm Safety Week.

Read operator manuals and manufacturers' labels on agricultural chemicals. Make it a habit and make sure employees do so also.

Install rollover protection systems (ROPS) and safety belts on tractors that do not have them.

Inspect all equipment and facilities to remove hazards and make repairs. Do this periodically throughout the year.

Take precautions before starting any job.



# 4-H NEWS

## FALL 4-H TEEN CAMP

By: John McQueary  
County Extension Agent  
for 4-H

Teens - Let's get ready to go to 4-H Teen Camp which will be Oct. 17 & 18 at J.M. Felner 4-H Camp in London. The theme this year will be "Around the World of 4-H". The cost is \$15.

Young persons who have graduated from the eighth grade, or is in high school will be eligible

to attend. Your registration is due in the Extension Office by October 7th.

Some activities will be doing this year will be an International Clothing Costume Contest; Global Village which is a set of activities used to increase awareness of the world's people, standard of living and relationships. We will also learn how to prepare different foods from different countries.

Don't forget to come by the Extension Office by October 7th to fill out your camp form and register.

## QUAIL HOMEMAKERS!

By: Ora Lee Hurst  
Reporter

We met at the home of Joyce Craig on Monday night to make club plans and organize for the coming year. Everyone seemed excited as we anticipate another year of fun and fellowship.

Newly elected officers, and chairman are: President-Gail Scoggins; Vice-president-Joyce Craig; Secretary/treasurer-Noreita Thompson; Blood Drive Chairman-Christine Taylor; 4-H Chairman-Carol Brown;

Cultural Arts Chairman-Judy Ford; Clothing Chairman-Julia Taylor; Foods & Nutrition Chairman-Tammy Hopkins; Health Chairman-Rose Taylor; Housing Chairman-Cindy Anderkin; International Chairman-Virginia Hansel; Devotional Chairman-Joyce Taylor.

First order of business was to make final plans to cater the Annual Farm Bureau picnic.

We planned our calendar for

1987-88 in assigning where we will meet each month and who is responsible for the lesson.

Judy Ford taught us a refresher course on Parliamentary Procedure.

Virginia Hansel reminded everyone to get busy and sell chances on the Rockcastle County Homemakers Quilt. The drawing will be held Dec. 5th.

The Quail Park has been used frequently this summer and we would like to thank everyone for their generous donations. They will be used to help keep it in good condition for the community to enjoy.

We played a game to see who the best housekeeper of the day was. It was won by Gail Scoggins.

Our hostess had prepared a unique but delicious dish - Vegetable Pizza. Also, she had made a rich creamy Milky Way cake and other scrumptious goodies.

Next month we meet at the home of Christine Taylor on Oct. 26 at 7 p.m. Everyone come dressed for Halloween!

## Forethought Funeral Planning . . . an idea that makes sense for today



Not long ago, the subject of death and funerals was never discussed. But the time has come that they should be talked about.

The price of funerals has more than doubled in the last 15 years and the inflation rate is the highest it has been since 1980. Now the interest rates have started to go back up.

Doesn't it make sense to pre-plan your funeral at TODAY'S PRICES and be GUARANTEED that you will receive the same merchandise and services at the price you pay today, years later when needed. Your FORETHOUGHT FUNERAL PLAN grows as the inflation rate grows and GUARANTEES that you will never have to pay any more.

For more information on a FORETHOUGHT funeral plan, call the Dowell & Martin Funeral Home today, while you are thinking about it. DON'T put this important step off any longer.



FORE  
THOUGHT.  
Funeral Planning...  
Before the Need Arises

256-2991

Box 810 West Main St. - Mt. Vernon, Kentucky 40456 - Phone (606) 256-2991

# NOW OPEN

UNIROYAL



## Mt. Vernon Tire & Oil

Hwy. 150 Mt. Vernon  
256-9411  
(Formerly Mink Oil Co.)

HOME HEATING  
FUEL OIL  
No. 1 and 2



Uniroyal Tires  
Home Delivery  
Farm Greases & Oils

Doug Hamm  
Gene Halcomb - Ray Bullock

# CLASSIFIED ADS

# SURE TO GET RESULTS

## CLASSIFIED RATES

Local Rates - 10¢ per word, minimum \*2<sup>90</sup>  
 Cards of Thanks - 5¢ per word, minimum \*2  
 In Memoriams - 5¢ per word, minimum \*2  
 Display Classifieds, \*2<sup>90</sup> per inch, minimum \*4  
 CLASSIFIEDS PAID IN ADVANCE  
 Deadline for Classifieds is Monday at 4 p.m.

### FOR SALE

**FARM FOR SALE:** Brodhead area. Call 758-9003 (Inights). 47xmf

**For Sale or Rent:** 10x55 one bedroom trailer. Underpinning, refrigerator and stove included. Already set up, water and electric turned on. 256-4688. 47x1p

**For Sale:** House and 1 Acre Lot, Located Calloway section of

Rockcastle Co. House has 2 bedrooms, kitchen, living room and bath. House has aluminum siding, storm doors and windows, built-in oak cabinets, snack barn, full basement, city water, washer/dryer hook-up, cable, wall to wall carpet and is heated by a gas furnace. If interested, call 453-2951 after 10 a.m. or 453-3372. 47x3p

**FOR SALE:** 4 acres, more or less, located 1/4 mile below Livingston on old U.S. 25. Call Kenneth Sturgill, 453-9265. Outlet for big, or trailer, part bottom land and part hill. Ideal for fishing or building home. 46x3p

**FOR SALE:** Good building lots near Mt. Vernon Elementary School. Contact Jack or Judy Lawless, 256-4796. 39xmf

**For Sale or Trade:** 1986 double wheel trailer, single roof, 3 bedrooms, 2 full baths, 10x16 deck, rear, front porch, underpinning with block, 16x20 building on 1/2 acre lot. City water and cable TV. Ph. 256-3176. 48x2

**FOR SALE:** 120 acres of grass and wooded land, 30 years of timber growth, northeastern Rockcastle Co. 606-986-3600. 48x2

**HOUSE FOR SALE:** 4 bedrooms, 1 1/2 story house with full basement, large 90x300 lot, vinyl siding, gas heat, fireplace. Owner has moved out of county, \$29,900. Located on Ferguson St. Call 256-2241 days or 256-3156 nights. 48x1

**POLE BUILDING - 30'x40'x9', one 10'x8' end slider, one walk door, many colors, completely erected. \$4,995. Other sizes available. BLITZ BUILDERS, INC. 1-800-428-4009. 45x5p**

**HOUSE FOR SALE:** Located 1 mile on Negro Creek Road, 3 bedrooms, large kitchen-dining room, living room, bath, washer/dryer hook-up, 28x30

**FOR SALE**  
**4 ACRES 6 ROOM HOUSE**  
 with three bedrooms, living room, kitchen and dining room both, family room, washer/dryer hook-up, spring water, city water available. Near Renfro Valley. Call **256-5250**  
 (If no answer, call again!)

garage separate from house on 3/4 acre lot. 758-4870. 46x4

**FOR SALE:** 1981 Governor mobile home, 3 bedrooms, 14x70, excellent condition. Includes appliances, dishwasher, central air, large deck and 10x14 storage building. 758-8379. 48x2p

**FOR SALE:** 3 bedroom brick with living room, family room, kitchen dining room, 2 1/2 baths, utility room, carpet and wood floors. Off Lovell lane. Must see to appreciate. Serious inquiries only to 256-4013 or 256-4855 after 5 p.m.

**HOUSE FOR SALE:** 5 rooms and bath, washer-dryer hook-up, fuel oil heat by stove, 100x200 lot, \$25,000. West Main St. Ph. 256-5515. Available Nov. 1. 48x1p

**For Sale or Trade:** Furnished 10x54 mobile home in New Port Richey, Fla. senior citizen park. 2 bedrooms, 1 1/2 baths with screen room. Call 813-845-3158. 48x1p

### Miscellaneous

**Bob's Wholesale Tires:** Remington All-Season Radials. All 13" Radials, \$29.95. All 14" Radials, \$36.95. All 15" Radials, \$39.95. Across from P.O. on Chestnut St., Berea. 986-2448-986-3741. 14xmf

**FOR SALE:** Parakeets and Cockatiels. Call Lloyd, 256-5536. 47x2p

**Hi-Tech Computerized 4 wheel alignment for today's modern cars. Bob's Wholesale Tires, across from Post Office in Berea, 986-2448-986-3741. 21xmf**

**FOR SALE:** Baldwin console organ. For more information, call 256-5068. 14xmf

**FALL SPECIAL:** New 1987 close-out special only 7,995, with free 25" color TV. Payments as low as \$105 per month. Clayton Homes of London. 878-7055. 48x1

**Chance of a Lifetime:** \$99 down on all preowned homes. Payments as low as \$129 per month. Clayton Homes at London, Ky. 878-7056. 48x1

**FOR SALE:** Almost new Ashley wood stove with electric blower. \$400. Call 256-2991 or see Roy Martin. 48x1

**FOR SALE:** Used appliances. Save hundreds of dollars. All leading brands, guaranteed, washers, dryers, refrigerators, electric ranges. Appliance Outlet Store, located across street from the Bank of Mt. Vernon on Main Street. 48x1p

**Wood For Sale:** Will deliver. 256-5403. 48x4p

**FOR SALE:** Pair of 2 and 3 year old Sorrel horses. Will broke for anything - work and ride. Also, 2 wagons, good condition. Ph. 256-2972. Ray Philbeck. 48x2

**FOR SALE:** Metal rack for pick-up truck. Also, tandem trailer for hauling cars etc. Ph. 758-8570.

**WILLIAM KIRBY Backhoe Services**  
 \*Dump Truck Hauling  
 \*Fill Dirt  
 \*Creek Gravel  
 \*White Rock  
 \*Excavating for Water Lines  
 \*Septic Tanks Installed & Repaired - Permit No. 202-11  
**Mt. Vernon, Ky.**  
**Ph. 256-5660**

### SALESMAN

For Electrolux Vacuum Cleaners. For new cleaners, supplies and service, call

**Curtis Bradley**  
**606-758-8584**  
**Brodhead, Ky. 40409**

**JIM'S**  
 BODY SHOP USED CAR WASH  
 U.S. 25 South Mt. Vernon  
**24 HOUR WRECKER SERVICE**  
**Phone 256-5510**  
**Mon 5 p.m. Ph. 256-5539**  
 Insurance Est., Wrecking

**Denzil R. Allen**  
**Builder, Contractor**  
**256-2881**  
 Quality building and remodeling done at competitive prices.  
**Call after 5 p.m. for Free Estimates**

**T. Daugherty Construction**  
 Septic Tank Installation  
 Septic Tank Repair  
 Permit No. 202-10  
**General Hauling**  
 \*Top Soil \*Fill Dirt  
 \*Creek Rock \*White Rock  
**DOZER WORK**  
 \*Water Lines \*Basements Dug  
**General Construction Work**  
**Ph. 256-5432**

**GRAY Construction Co.**  
 Backhoe Service  
 Septic Tanks Installed & Repaired  
 Excavating for Water & Sewer Lines  
 Top Soil & Fill Dirt  
 Dump Truck Service  
**Junior Gray, OWNER**  
 [Permit 202-3]  
 Mt. Vernon, Ky.  
**ph. 256-4301**

**Jan's Flowers & Custom Framing**  
 Main St. Brodhead  
**758-4222**

**355-7327 758-8052**  
**Hammons & Owens Const. Co.**  
 Septic Systems - Certified Installation  
 Water Lines Digging Backhoe & Dump Truck Services  
 D6C Cat Dozers Trencher Work Top Soil  
**FREE ESTIMATES**  
 15 Years Experience

**For your Building Contractor- see Robert E. Philbeck**  
**Builder**  
 Commercial or Residential Remodeling Additions  
**Call 256-4641**

**Thompson's Guitar Shop**  
 Fine Fretted Instrument Work  
 REPAIRS, CUSTOM WORK, RESTORATIONS  
 Guitars - Banjos - Mandolins  
 For Estimates Call:  
 Glenn M. Thompson  
 Ph. 606-256-3819  
 West Main Street  
 Rt. 4, Box 625  
 Mt. Vernon, Ky.  
 40456

**Septic TANKS**  
**Parking Blocks-6' JACK'S Concrete Tanks**  
 Ph. 256-4363  
**256-2580 after 5 p.m.**  
**SEPTIC TANKS Sales and Service**  
**750 Gal. - 1,000 Gal. Distribution Boxes**  
**1,000 Gal. Water Distribution Tanks**

**Farley Robinson's Roofing & Repair**  
**Flat, Built-Up and Shingle Roofs**  
 Free Estimates  
**256-3504**

**Becky's Ceramics**  
 TOM & BECKY ANGLIN  
**Now Open**  
 Rt. 1, Box 276, Hwy. 70, Brodhead, Ky.  
 Ph. 606-758-4183  
 Located off Hwy. 150, 4 miles out on Hwy. 70, Quail Community turn right on gravel road next to Dave's Auto Service.  
**FULL LINE DEALER WHOLESALE/RETAIL OFFERING:**  
 greenware paints  
 decals molds  
 tools brushes  
 All supplies needed to complete your own personal ceramic items and gifts!!!  
 Fall Hours: Monday and Wednesday 10 a.m. to 7 p.m.  
 Tues. & Thurs. 2 p.m. to 11 p.m. Sat 1 p.m. to 4 p.m.  
 Closed Friday and Sunday  
**BUY OUT SPECIAL:**  
**25% off discontinued Duncan Paints till Oct. 15**  
 Call for further information!!


**FOR SALE:** Yorkshire and Hampshire cross hog, mother and father are registered, 135 lbs. Also, 1965 International 404 truck, 3 pt. hitch, excellent condition. Call 453-3785. 48x1

**OVERBAY ELECTRIC**  
 For homes or trailers, call **256-9512**

**Windows**  
 Aside Replacement Thermopane Windows 30% Discount. Custom made to fit any opening. Free est. Buy here - Pay here.  
**TRADEMARK WINDOWS & SIDING SALES**  
 Call Collect 606-678-5707  
 48x10

**MORGAN'S ELECTRIC**  
 Mt. Vernon, Ky. Residential and Commercial Wiring  
**Business 256-2400 Home 785-8640**

**White Phantom Square Dance**  
**An American Tail**  
**Raising Arizona Police Academy IV**  
**Red Headed Stranger**  
 Now available at **VIDEO ALLEY**  
 [Next to Fain Furniture]  
**99¢ Special**  
 [Thursday only]  
**Ph. 256-3456**  
 Good Wife Heat Hoosiers  
 Blind Date Mannequin Operation Nam  
 Sweet Dreams Volunteers  
 Some Kind of Wonderful Sweet Dreams

**REAL ESTATE FOR SALE**  
  
 APPROX. 2 1/2 Miles From Green Hill- 3BR, TB, Brick. About 9 acres with new barn and tobacco base. Call 256-2657.  
**Big Beautiful Brick on Brindle Ridge:** 4 BR, 1 1/2 B, over 2000 sq. ft., over one acre. Great room, modern kitchen, carpet, 2 utility rooms, good, good neighborhood. Don't miss this one. Reasonably priced.  
**Move Right in with 20% Down:** 30x50 building with nice office, garage and 2 restrooms. 4.49 level acres sufficient for most any kind of business, flea market, antiques, car sales, trucking business, farm machinery, trailer sales or beautiful home site. Or, move a trailer in and live there with your business. Very convenient on U.S. 25 about 1 mile south of Berea. Call soon 256-2657.  
**Houston Point Estates on 150:** Two nice lots, just ready for a home to be built on them. Real reasonable. Call 256-2657.  
**OVER 4 ACRES** of commercial property near Mt. Vernon on 461.  
**19 1/2 ACRES** with privacy. Available are city water, electric, mail route. Also a big spring. Could put in dam and make 8 or 9 acre fishing lake. Call for appointment.  
**BUY A HOUSE WITH A RENTAL UNIT ON PREMISES TO HELP MAKE PAYMENTS.**  
**HANDYMAN SPECIAL** on 421 at Morrill for \$8,500.  
**MAKE OFFER!** Large country home on over 40 acres, 2 baths, city water, private phone, good garden space, 2 ponds, storm shelter, fruit trees, pasture land and lots of timber. Beautiful view.  
**OVER TWO ACRES** with 5 BR, 2 bath home. Two story brick, city water, private phone, good garden space, approx. 4 miles from Roundstone School. REDUCED.  
**TRAILER & 2 LOTS FOR SALE** at Conway.  
**MORRILL:** Bath in, ready to be connected. City water available. Approx. 1000 sq. ft., lot size 80x200, coal or wood heat. Madison County. 2 BR, kitchen, living room, \$20,000.  
**AT MORRILL:** Approximately 60 acres, 36x48 barn, five ponds, approx. 2800 lb. tobacco base, fruit trees, 2500 tobacco sticks, practically all pasture land with fence for cattle, good grass. A foundation for houses started. Small 2 room house, bedroom and kitchen for tenant. Reduced to upper 40's.  
**MADISON COUNTY:** Approx. 9 miles from Berea. New brick home, 2 story, central heat, nice lot, 2 baths, lower floor not finished. Reduced to upper 40's. Neighbor to Windswept.  
**NICE BUILDING LOT** near Bobtown Road. Over 2 acres. Berea city water. Also 8 acres available.  
**24 WOODED ACRES** near Conway. Make offer.  
**A LOT ON LAKE LINVILLE.**  
**BEAUTY IN THE WOODS.** A beautiful setting over 20 acres to roam over. Just come and look. On Conway/Brodhead Road.

**Don Foster & Associates**  
**986-9401 256-2657**

**Motor Vehicles**

**FOR SALE:** 1980 Yamaha cycle, very good condition, \$450. Also, large wood office desk with matching roller chair and file cabinet, \$250. Call 758-8478. 39xntf

**FOR SALE:** 1968 2 ton Chev. truck, in good condition, \$1500. Call 256-4727. 47x3p

**FOR SALE:** 1979 Chevette, 4 dr., Auto, AC, Rear Defrost, \$950 firm. Also, 1976 Caprice Classic, 2 dr., 350, V8, auto, AC, silver w/maroon VR and maroon vinyl interior, \$1,350. Ph. 758-9695. 47x2

**FOR SALE:** 14 ft. bass boat, 50 h.p. Evinrude motor, \$1750. Call Edd Baker, 256-3480. 47x2p

**FOR SALE:** 1975 Ford Torino. Also, coal stove. Call 256-9512. 48xntf

**FOR SALE:** 1987 S-10 Chev. Durango pick-up, long bed, 1978 Mercury Zephyr station wagon, 4700 miles, PS/PB, air. Call 256-1596. 48x1

**FOR SALE:** 1980 Ford Mustang, 4 new tires, auto transmission, \$1200. Call 758-8758. 48x1

**FOR SALE:** 1981 Buick Skylark, 4 cyl., 4 dr., Auto, AC, AM/FM. Nice car and priced right, \$2195. Call 256-5928. 48x1

**FOR SALE:** 1983 Chevy Caprice Classic, 4 dr., V8, PS/PB, Cold Air, Cruise, AM/FM, Stereo, Power Locks, Rear Defrost, excellent condition in and out. Asking \$4,250, negotiable. Trades considered. 758-8166 or 256-5511. 48x1

**FOR SALE:** 1982 Chevy Chevette, 61,200 miles, perfect inside and out, no rust. Asking \$1,950. Call 758-8166. 48x1

**FOR SALE:** 1983 Mercury Zephyr, 4 dr., 6 cyl., PS/PB, air, automatic, excellent running condition, no rust, no dents, interior perfect. Must see. Asking \$2,450. books for over \$3,000. 256-5511. 48x1

**FOR SALE:** 1980 Oldsmobile Cutlass, clean, good cond. Call 758-8047 evenings after 5 p.m. 48x1

**FOR SALE:** 1977 AMC Hornet, wagon, good condition. Call 256-5620. 48x1

**FOR SALE:** 1974 Chevrolet Malibu, 8 new tires, new shocks, extra set of-slow tires, ET wheels, air, runs good, \$450. Call 256-5336. 48x1

**FOR SALE:** 1975 Ford Maverick, 4 dr., 302, automatic, PS, AC, runs good. \$750. 256-2919. 48x2p

**For Rent**

**FOR RENT:** Apartments and mobile homes in Brodhead, Stanford, Lancaster and Richmond. Also, mobile home lots in Brodhead. For Brodhead, Stanford, Lancaster, Ph. 365-2812. For Richmond, Ph. 624-1855. Speaks Rental Agency, Richmond, Ky. 40475. 51xntf

**HOUSE FOR RENT:** 3 bedroom large bath, living, dining and family rooms, large complete with built-in microwave and dishwasher, double garage, full basement, nice yard, central air, electric heat but has wood furnace, \$300 month plus deposit. Call 256-3508. 48x1

**FOR RENT:** Office rooms in the basement of Agricultural Services Bldg. (formerly Western Auto). Contact Tommy Hodges, 256-2765. 45xntf

**FOR RENT:** Nice mobile home, 2 bedrooms, total electric, nice big yard, 2 porches, beautiful country setting near Brodhead. 758-4501. 48x1

**HOUSE FOR RENT:** In the country, 256-5341. 48x1

**FOR RENT:** Trailer. 256-3221. 48x1

**FOR RENT:** Trailer in Mt. Vernon. 256-4533. 49x1p

**Wanted**

**WANTED TO DO:** Carpenter work; painting, concrete. No job too small. Reasonable rates. Call Tex Amxy. 256-4477. 43x6p

**Wanted To Buy:** Trade or Sell baseball cards and other sports collectable. Call 256-2328. 48x4

**WANTED:** Now receiving antiques for 1st of month antique sale. D & D Equipment and Auction. Call 606-843-6780. 47x2p

**HELP WANTED:** Need extra money for Christmas? Let Avoon help you get a head start. Call 606-287-8066 for more information. 47x4

**Professional Services**

**NOTICE:** If you need drilling or blasting done, call 256-4501. Licensed blaster. 47x2p

**SEAMSTRESS:** Will make dresses, skirts, blouses and more. Put in zippers and make alterations. If you work and need pick-up and delivery, just call 256-9534. Also do extra sizes. 47xntf

**Professional Machine Quilting:** Wavelene and Evelyn Mullins. We also do binding, Fast service. Quilts for sale. (For information, call 256-5088 or 256-5977. 5xntf

**Grave Markers & Monuments:** In stock at all times. McNew Monument Sales, U.S. 25, 4 miles north of Mt. Vernon. Ph. 256-2232. 48x1

**WANTED:** Dozer work. Ponds, Yards, etc. See Raymond Bullock on Negro Creek or call 256-4454. 18xntf

**Ray Cromer, Bulldozer Work, Brodhead, Ky. 758-8677 after 5 p.m. 2xntf**

**Monuments - Grave Markers:** Quality stones at reasonable prices. Dowell and Martin Funeral Home, 256-2991. 37xntf

**NOTICE:** For that electric job on roof, porches, windows or doors repairs or replaced. Call Jr. Overberg, 256-9512. 33xntf

**CARPET KLEEN!** The best in steam carpet cleaning. Free estimates. Call Lloyd Graham, 256-5536. ntf

**Hamm's Well Drilling:** Call 256-2024. ntf

**NOTICE:** Absolute no trespassing on any property belonging to Emmett and Linda Foster. 45x6p

**Apples**  
Pick your own only  
**\$5 Bushel**  
**Haney's**  
**Appledale Farm**  
7 mi. west of Somerset  
on Ky. 80  
**636-6148**  
47x3

**New Local Business Directory**  
Get results year round.  
List your business or services.  
*Hurry beat deadline!!*  
**Call 758-8022**  
Between 9 a.m. - 2 p.m.

**THE BULLOCK FAMILY REUNION**  
will be held Sept. 27, 1987 at the Family Life Center. Same shelter as last year. Bring a covered dish - join us. We will be glad to see you. Alma B. Fry, P.S. Eat at 1:15. 46x3p

**Thomason Scrap Yard:** Now buying aluminum cans, copper, radiators, sheet aluminum, cast aluminum, scrap metal and junk

**cars.** Also, selling rebuilt batteries, starters and alternators. Call 256-2381 for prices. 45xntf

**Boarding Dogs and Cats:** Rockcastle Veterinary Clinic, Joseph W. Korn D.V.M. Mon. - Fri. 8:30 a.m. to 5 p.m. Sat. 8:30 a.m. to 1 p.m. Agricultural Service Center, Richmond St., Mt. Vernon, 256-2801. 43x6

**NOTICES**

**B&W Monument Sales & Service:** Located 1 1/2 miles west of Brodhead on U.S. 150. We can fill all your monument needs. Letting, last dates, cleaning, resetting, also all kinds of sandblasting. 20 years experience in stonework. Call 606-758-8384 or 606-379-2440. 36xntf

**Absolutely no Hunting** on Shery or Elizabeth Mahaffey property at Livingston. 47x2p

**Notice is hereby given** that an order has been entered dispensing with administration of the estate of Benjamin Sturgill, deceased. All persons having claims against said estate shall present them, verified according to law, to Pearl Sturgill, Livingston, Ky. no later than Sept. 28, 1987. Any exceptions to said settlement must be filed before said date. 47x2

**Notice is hereby given** that Sue Hamm has filed a final settlement of her accounts as administratrix of the estate of Della Mae Wilmot, deceased. A hearing on said settlement will be held on Sept. 28, 1987. Any exceptions to said settlement must be filed before said date. 47x2

**Rudder Gas**

**DEALER FOR FERRELL PROPANE**  
Now serving Rockcastle Co.  
We set and exchange heating tanks.  
**878-9393**  
Rt. 6, Box 68, London, Ky.

**Cajun Treats SnoBalls**

30 Flavors/Sn, Med. Lg.  
West Main St., Mt. Vernon  
"Little Blue Stand by the RR Tracks"  
Weekdays - Noon to 5:30  
Week ends - 2 p.m. to 7 p.m.  
"Try it - You'll Like It!"

**State Auto offers something special**

**It's the Medalist Auto Program** for adults with safe driving records. Featuring a broad package of coverages... competitive rates... no surcharge for the first accident.

**Singleton & Assoc**  
Donnie Singleton  
Ph. 256-2611



**EATON ELECTRONICS IS OPEN**  
**RCR**  
While our building is under repair, we are located on U.S. 25 South across from Stewart's and next to Rockcastle Auto Parts.  
**ZENITH Quasar**  
Factory Authorized Sales and Service  
**256-4314**

**HENSLEY'S USED CARS**  
Salt Peter Cave Road  
Hwy, 1004 Rt. 2  
Orlando, Ky. **256-4777**

**Kinnard's Sewing Center**  
Southern Hills Plaza  
Richmond, KY  
623-3531  
Sewing machine sales and service.

**DECORATOR CAKES**  
Will Bake Any Kind of Cake For You  
**MARGARET OWENS**  
**256-5533**

**"I back the family insurance I sell with good neighbor service. Call me."**

**STATE FARM INSURANCE**  
Auto, Life, Fire  
State Farm Insurance Companies • Home Offices, Bloomington, Illinois

**Call: Bill Bailey**  
Church St., Mt. Vernon  
256-2119  
Like a good neighbor, State Farm is there.

**9.90 APR Financing**

87 Chev. Cavalier Z24, only 8,500 miles.....	221 <sup>st</sup> mo.*
87 Chev. Cavalier RS, only 8,000 miles.....	155 <sup>th</sup> mo.*
86 Pontiac Trans Am.....	236 <sup>th</sup> mo.*
86 LTD Crown Victoria, 4 Dr.....	260 <sup>th</sup> mo.*
85 Chev. Citation, 2 Dr.....	129 <sup>th</sup> mo.*
85 Dodge D-50 P-up.....	129 <sup>th</sup> mo.*
84 Chev. Citation, 4 Dr.....	119 <sup>th</sup> mo.*
84 Chev. Chevette, 4 Dr.....	72 <sup>nd</sup> mo.*
84 Olds Cutlass, 4 Dr.....	144 <sup>th</sup> mo.*
82 Olds Regency 98.....	193 <sup>rd</sup> mo.*

Others at Similar Payments  
CARS

85 Chev. Impala, 4 Dr., V6, Auto, AC, Maroon.....	\$6,995.
82 Dodge Diplomat, 4 Dr., 6 Cyl., AC, Black.....	\$2,995.
80 Chevette, 2 Dr.....	\$995.
82 Ford EXP, Auto, AC.....	\$1,995.
79 Honda Prelude, 2 Dr.....	\$1,995.
79 LTD Station Wagon.....	\$1,995.
78 Camaro, V8, Auto.....	\$995.
75 Ford T Bird, Low Miles!!!.....	Sharp!!
78 Chev. Impala, 2 Dr., 8 Cyl., White.....	\$1,995.
80 Ford Mustang, AC.....	\$1,495.
76 Chev. Impala, 4 Dr.....	\$995.
78 Chev. Impala, 4 Dr., 8 Cyl., Brown.....	\$695.
73 Olds Toronado, 2 Dr.....	\$695.
72 Nova, 4 Dr., Auto, Low Miles, Ohe Owner.....	\$495.
67 Chrysler, 4 Dr.....	\$295.

**TRUCKS**

85 Dodge Royal SE Prospector, Auto, PS, AC, Tilt, AM/FM Stereo, Low Miles, Black.....	
85 Nissan Dump Truck, 5 Speed, White.....	
84 Ford Bronco, V8, PS, AM/FM Tape, AC, 4x4, Blue/White, Nicell.....	
84 Ford Ranger, Auto, Nicel.....	
80 Ford, 1 ton wrecker, low miles!!!.....	
75 Ford Pick-up, Auto, AC, Camper Top.....	\$1,295.
71 Chev., 1 Ton, Long Bed.....	\$995.
66 Ford Pick-Up, 66,000 miles.....	\$995.

**Lowest Rates Ever!!**  
(All Above With Approved Credit)  
(Plus Tax & License)  
**\*\*1,000 Down - Cash or Trade**

**Dwayne's Cars & Trucks**  
U.S. 25 North Berea  
**986-8489**  
Open till 8 p.m. Wed., Thurs., Fri.

Got Termites? Got Roaches?  
**Madison Termite & Pest Control**  
For VA & FHA Inspections, Call Paul Burton  
256-2318 Mt. Vernon Day or Night  
WATER BUGS, ROACHES & SILVER FISH

**Tri-County Sewer & Sanitation**  
\*Septic Tank Cleaning \*Certified Installer  
\*Grease Trap \*On-Site Sewage Systems  
\*Treatment Plants \*Plumbing Repair  
\*Portable Toilet Rental \*Licensed and Bonded  
**453-9002**  
Permit No. 202-7  
License No. KBHS 24948

**CARD OF THANKS**  
The family of Gilbert Ballinger would like to thank all our friends and neighbors for their kindness, food and flowers and prayers given during our recent loss. The Rockcastle Hospital and staff, Dr. Griffith, Dowell and Martin Funeral Home and Bro. VanWinkle, the singers and pallbearers. We were truly blessed by you all.  
The Family

**CARD OF THANKS**  
The family of Casper Mullins wishes to thank the Home Health Care, Young's Pharmacy staff and those who were so gracious with visits, prayers and food during a long illness.  
A special thanks to the ambulance service, Rockcastle Co. Hospital staff, Dr. Griffith, Sowder Nursing Home and those who sent flowers, food and cards in the passing of our dad and husband. Most of all, we thank God for His comfort and guidance through it all.

**THANK YOU NOTE**  
I want to thank each and every one who was so nice and good to me during my 10 day stay in the Rockcastle Co. Hospital. Thanks to all the nurses, Dr. Gutierrez and Dr. Monteyne and the nurses in I.C.U. and S.C.U. I thank the visitors, those who sent cards and letters and flowers. I say thanks again. I love you all.  
Sudie Proffitt  
Rt. 1, Box 156  
Brodhead, Ky. 40409

**Farm For Sale**  
Approx. 48 acres at  
Tyner on Mildred Road.  
Has trailer hook-up  
with concrete pad, also  
1120 lbs. tobacco base,  
\$20,000. Call 864-7219  
for 9 p.m.

**Public Auction: Ky. Auto Exchange, Inc., Hwy. 1006 at 175, exit 38, London, Ky. 606-878-7815. Sale every Sat. nights at 7 p.m. Cars, trucks, vans, campers and boats. 31xntf**

**Attention: Satellite Dish Owners:** Are you worried about excessive repair costs or undependable service? You may qualify for our four year parts and labor warranty offered exclusively by Somerset Electronics. We have the best qualified technicians anywhere. Call Somerset Electronics, 606-679-7962. 30xntf

**J.L. Used Furniture Store** is now open at former Judy's Shoe Store on Hwy. 150. Uniforms, dishes, furniture, used clothing. Open Wednesday through Sun. 10 to 5.

**NOTICE:** Anyone concerned with the Maple Grove Cemetery can make donations to Andrew Miller, Rt. 1, Box 207, Orlando, Ky. 40460 for putting up a chain link fence. Ph. 606-256-2320. 46x3p

**BIDS WANTED:** The Rockcastle Co. ASCS office will receive sealed bids until 4 p.m., Friday, Sept. 25, 1987, for janitorial service for the ASCS, FmHA and SCS offices located in the Agricultural Service Center, Richmond St., Mt. Vernon, Ky. Bid/contract forms with specifications are available at the ASCS office. The offices reserve the right to reject any and all bids.

**Blue! Blue! Blue Jean Day 9/25/87 at your Dollar General Store. \$1 off any jeans purchase - one day only. 46x3**

**Vinyl Insulated Siding** Completely installed up to 1,000 sq. ft. Only \$899. 30% Discount on Alside Replacement Thermo-Pane Windows. Buy here - Pay here. Free est. Trademark Windows & Siding Sales Call Collect 606-678-5707 48x10

**Timber Wanted** Standing timber top, price paid. Ph. Dean Hibbard 864-5230 or 256-4165 48x8p

**Rockcastle Veterinary Clinic**  
Joseph L. Korn, D.V.M.  
Mon. - Fri. 8:30 a.m. to 5 p.m.  
Saturday 8:30 a.m. to 1 p.m.  
Richmond St. Mt. Vernon  
256-2801

**10.75%**  
The lowest interest rate around!

**FALL CLEARANCE SALE**  
Save up to \$3,000\* on doublewides  
Save up to \$1,500\* on singlewides

Featuring Redman Dream Home, 14 x 70, set up and delivered, 2 or 3 bedrooms, 1 1/2 baths, LOADED with extras, total electric, garden tub, ceiling fan, frost free refrigerator, deluxe stove, and more!

Less than **\$158.90** per mo.  
Limited time offer!  
HURRY! They'll go fast!

★ FIRST **AMERICAN HOMES**  
240 Eastern By-Pass  
Richmond, KY 40475  
(606) 623-1505  
1-64 Van Meter Exit  
Winchester, KY 40391  
(606) 745-2220  
155 New Circle Rd., N.E.  
Lexington, KY 40505  
(606) 293-2637

**NOTICE:** It is hereby given that Maggie McKinney, Brodhead, Ky. 40409 has been appointed executrix of the estate of Lloyd McKinney. Any persons having claims against said estate shall present them, according to law, to the said Maggie McKinney or to William D. Gregory, P.O. Drawer 220, Mt. Vernon, Ky. 40456 on or before March 7, 1988. 46x3

**NOTICE:** It is hereby given that Hoover Bullock, Rt. 1, Somerset, Ky., Ernest Bullock, Jr., Mt. Vernon, Ky. and Jess F. Bullock, Mt. Vernon, Ky., have been appointed co-executors of the estate of Eliza Bullock. Any persons having claims against said estate shall present them, according to law, to the said Hoover Bullock, Ernest Bullock and Jess Bullock or to Clontz & Cox, P.O. Box 749, Mt. Vernon, Ky. on or before February 8, 1988. 46x3

**NOTICE:** It is hereby given that Kathleen McCracken has filed a final settlement of her accounts as executrix of the estate of Doyle Hale, deceased. A hearing on said settlement will be held on Sept. 28, 1987. Any exceptions to said settlement must be filed before said date. 47x2

**NOTICE:** It is hereby given that Ronda Ann Cardwell, 12505 Davis Ct., Louisville, Ky., has been appointed ancillary administratrix of the estate of Margaret Singleton, deceased. Any persons having claims against said estate shall present them, according to law, to the said Ronda Ann Cardwell or to David Bruce Reynolds, 501 Main St., Shelbyville, Ky. 40065, on or before March 14, 1988. 47x3

**Exclusive Broker - Single Family Dwellings, FmHA, 333 Waller Avenue, Lexington, Kentucky 40504, Phone 606-233-2735 seeks Ky. licensed real estate broker as exclusive agent in Jackson and Rockcastle Counties for inventory properties for 1988. Solicitation is small business setting. Make written request prior to solicitation closing date of October 21, 1987.**

**BIDS WANTED:** The Rockcastle County ASCS office will receive sealed bids until 4 p.m., Friday, Sept. 25, 1987, for janitorial service for the ASCS, FmHA and SCS offices located in the Agricultural Service Center, Richmond St., Mt. Vernon, Ky. Bid/contract forms with specifications are available at the ASCS office. The offices reserve the right to reject any and all bids. All bids will be opened to the public on Monday, Sept. 28 at 10 a.m. 48x1

**FOR SALE:** Used appliances, save hundreds of dollars, all leading brands, guaranteed. Washers, dryers, refrigerators, electric ranges. Appliance Outlet Store, located across street from the Bank of Mt. Vernon on Main St. 48x1p

**NOTICE:** An October birthday supper at the sorghum mill on Copper Creek at the farm of Charles Brooks Sat., Oct. 3, 5:30. Bring a covered dish, we'll cook the hamburger and hot dog. Everyone welcome. Mr. and Mrs. Charles Brooks. 48x2

**FOUND:** A coon hound. Quail section. To claim, 758-8748 48xntf

**NOTICE:** Sorghum making time on Copper Creek at the farms of Charles and Bessie Brooks and Dallas and Ruby Brock. Come on out and watch. Call 758-8907.

**NOTICE:** Experienced mother will babysit in my home in Mt. Vernon. References: 256-9103. 48x1

**Hay!! Did you forget?** Friday, Sept. 25th is Jean's Day at Roger General Store. \$1 off any priced jeans Friday only! Hurry! Hurry! Hurry! Hurry! 48x1

**NOTICE:** Not responsible for debts made by anyone other than myself as of Sept. 1st. Roger Shaffer. 48x1

**FOR SALE:** Used appliances. Save hundreds of dollars. All leading brands, guaranteed. Washers, dryers, refrigerators, electric ranges. Appliance Outlet Store, located across street from the Bank of Mt. Vernon on Main St. 48x1p

**NOTICE:** The City of Mt. Vernon is accepting sealed bids for a new 1988 police cruiser. Specifications for cruiser can be checked on at City Hall during normal working hours. Bids will be opened at 10:05/87 at 7 p.m. The city reserves the right to reject any or all bids.

**NOTICE OF SALE:** On October 1, 1987 at 10 a.m. on the premises of South Kentucky Mack Trucks, Inc., Somerset, Kentucky, the Bank of Mt. Vernon will sell at public auction to the highest bidder the following repossessed vehicles: 1 1977 Mack Model No. DM8685 3594, 1 1974 Peterbilt Model No. 352ST-6 Ser. No. 588698N, 1 1974 Trailmobile Ser. No. K37522, 1 1972 International Model No. 4070A-8 Ser. No. 2594716473531. 48x2

**Notice:** It is hereby given that an order has been entered dispensing with administration of the estate of Etta Proctor, deceased. All persons having claims against said estate shall present them, verified according to law, to Bernard Proctor, 404 Boone St., Berea, Ky. 40403 or to Lambert and Lambert, P.O. Box 736, Mt. Vernon, Ky., attorneys for said estate, no later than Oct. 12, 1987. 48x3

**Notice:** It is hereby given that on the 17th day of September, 1987, Gladys Adams, the duly appointed, qualified and acting administrator of the estate of

**McFerron's Used Store**  
Fairground Hill  
will be bringing in a big trailer load of bedding, curtains, furniture, shoes and other merchandise Saturday morning at 9 o'clock. We will be unloading at Mt. Vernon and Main St., Brodhead store also Saturday. We have washers, dryers, new and used living room suites, dining room tables, refrigerators, heating stoves, cook stoves, old rocking chairs, kitchen cabinets and other items.  
Store hours are: Thurs., Fri. & Sat. 9 to 5 and Sun. 12 to 4

**Posted**  
No Trespassing, No Hunting or Fishing  
Property belonging to Bill Russell that adjoins Eugene Senter and George Davis and Fannie Davis, the property of George Davis and Fannie Davis that adjoins Eugene Senter and Bill Russell and the property of Eugene Senter that adjoins Fannie Davis, Murrell Senter and Bill Russell have been posted. No trespassing, no hunting or fishing. This also includes the private service road from Hwy. 25 that gives access to these properties. Violators will be prosecuted. 48x2p

Dorothy Jean Harper, deceased, filed with the Rockcastle District Court a final settlement. Exceptions thereto shall be filed in writing with the Rockcastle District Court on or before October 12, 1987. 49x2

**NOTICE:** It is hereby given that Tina Raleigh, Rt. 1, Brodhead, Ky. 40409 has been appointed executrix of the estate of Raleigh Raleigh. Any persons having claims against said estate shall present them, according to law, to the said Tina Raleigh or to Clontz & Cox, P.O. Box 749, Mt. Vernon, Ky. 40456 on or before March 21, 1988. 49x3

**NOTICE:** It is hereby given that Sally Brown, Rt. 1, Box 341, Brodhead, Ky. has been appointed executrix of the estate of Clarence J. Brown. Any persons having claims against said estate shall present them, according to law, to the said Sally Brown or to John G. Prather, P.O. Box 106, Somerset, Ky. 42501 on or before March 21, 1988. 48x3

**NOTICE:** It is hereby given that an order has been entered dispensing with administration of the estate of Nonieal Anderson, deceased. All persons having claims against said estate shall present them, verified according to law, to Dorothy Sams, 122 W. 6th St., Covington, Ky. or to Clontz & Cox, P.O. Box 749, Mt. Vernon, Ky., attorneys for said estate, no later than October 5, 1987. 48x2

**NOTICE:** It is hereby given that Robert C. Berry, Jr., 3934 Kensington Place, Owensboro, Ky. 42301 has been appointed executrix of the estate of Robert C. Berry. Any persons having claims against said estate shall present

**BERRY'S CLEANERS**  
**DRAPERY SPECIAL**  
55¢ per pleat with drapery fold  
100% off all Dry Cleaning orders of \$10 or more.  
150% off all Dry Cleaning Orders of \$20 or more.  
206 Short St. Berea, Ky.  
Behind Boone Tavern

them, according to law, to the said Robert C. Berry, Jr. or to Craig and Owen, P.S.C., P.O. Box 703, Owensboro, Ky. 42302 on or before March 21, 1988. 48x3

**YARD SALES**

**YARD SALE:** Sat., Sept. 26, 9 to 5, located on Maple Grove Rd. near Brushy Creek Holiness Church. Ladies clothing, shoes and jewelry. Cancelled in case of rain.

**YARD SALE:** In the home of Virginia Desjardins at 328 and 39 at Bea Lack. Friday and Saturday, 8 to 5. 48x1p

**YARD SALE:** Sat., Sept. 26 from 9 to 7 at the home of Jennifer Brock, 1 mile off Hwy. 461, turn at Denney's Grocery. Clothes, stuffed animals and much more.

**YARD SALE:** Sat., 8 to 7, West Main St. Women's clothes, all sizes, little girl's clothes, all sizes, dishes, bedspreads, wallpaper and many other items. 48x1p

**YARD SALE:** 3 family at the home of Mrs. Edna Cummins on Lovell Lane. Sat., 9:30 to 3:30. Cancelled in case of rain. 48x1p

**YARD SALE:** Big 3 families at the home of Joyce Kirby. Turn off Hwy. 150 onto gravel road, 2 1/2 miles south of Brodhead. Follow signs Thurs. and Fri. Little furniture, clothes, what-nots. 48x1

**YARD SALE:** 6 families at the

home of Kathy Wright, Hwy. 70, Sat., 9 to 4. Rain or shine. Mr. Coffee, new microwave, rabbit coat, dishes, handmade hair bows, toaster oven and clothes, 7 to 8 and 18 20, shoes. Little bit of everything. 48x1

**YARD SALE:** At the home of Joe Cromer, Sat. 9 to 5. Lots of little boys and girls clothes, dresses, men's clothes. 48x1

**YARD AND CRAFT SALE:** Sat., Oct. 3, 8:30 to 4:30, Hyster Co. parking lot. Live country music, antique auto show, sale spaces for rent. For more info, call 986-9304, ext. 205. 48x2

**YARD SALE:** At the home of China Brummett on Bowling Ridge Rd. about 2 1/2 miles. New what-nots, some Home Interior, clothing. Everything priced to sell.

**YARD SALE:** Sat., Sept. 26, 10-3 at the home of Ray Long at Willalla. Cancelled in case of rain - will be held following Sat. 49x1

**FOR SALE:** 1985 Redman mobile home, 14x70, 3 bedrooms, 1 bath. Call 256-4573. 47x3

**FOR SALE:** 1930 Model A Ford pickup truck. 1978 Jeep 4x4 pickup. Call 758-4165 for more info. 47x2

Call Classified to 256-2244

**INSULATION SAVES MONEY**  
**Winters & Summers To Cornell**  
CALL DEE HOPKINS CONST. at 758-9261

Get your homes ready for cold weather by getting blown-in insulation in your attics and outer walls. We feature

BUILDING IDEAS THAT LAST. LIFETIME WARRANTY.

**Mastic™ Vinyl Siding**

& BRADFORD, Vinyl, Double Hung, Replacement thermal windows. Both leaders in their field of products.

CALL DEE AT (606) 758-9261 for these needs and more, such as roofing, seamless gutters, room additions, garages.

**WE BUILD THE NEW AND MAKE THE OLD LOOK GOOD!!**

Attention **SENIOR CITIZENS & CHURCHES!!**  
100% Disc. on all work year-round!!

Try our prices before buying. For free estimates, call DEE COLLECT AT (606) 758-9261  
Rt. 1, Box 224, Brodhead, Ky.  
Over 26 Years Experience

**Clayton HOMES**  
"We Build Dreams"  
Big Hill Ave., Richmond, Ky.

At Clayton's We Invite Our Customers To Shop & Then Come To Clayton's And Save A Bunch Of Dollars!

<b>\$700</b> And Dead Is All You Need To Buy At Clayton's Homes	<b>ONLY 5%</b> Down Payment On Selected Models.	<b>ONLY \$99</b> Down Payment On Selected Pre-Owned Homes.
--	--	---

<b>1988 14' Wide</b> 2 bedroom all electric	<b>ONLY \$9,950<sup>00</sup></b>
<b>Large - 1988 70' x 14'</b> 3 bedroom, carpet, all electric	<b>ONLY \$12,400<sup>00</sup></b>

<b>1988 Model</b> 80' x 14' 3 bedroom, all electric, ceiling fan, 2 baths, garden tub, carpet.	<b>Only \$15,870</b>
<b>1988 Double Wide</b> 3 bedroom, 2 full baths, wood siding.	<b>Only \$16,980<sup>00</sup></b>
<b>Nation's Top Quality Home</b> NORRIS 2 bedroom, all electric, fully furnished, 70' x 14', heavy metal Quality For Only	<b>\$18,895</b>

Eastern Ky.'s Largest Dealer With 8 Franchises And 14 Sales Centers To Service Customers

**SAVE \$1000s**

**Clayton HOMES**  
"We Build Dreams"  
U.S. 26 South  
Big Hill Ave. Richmond  
(606) 623-9404  
(606) 623-9406

**"MARRIAGE LICENSES"**

[Cont. From A2]  
18. Bush, Ky., unemployed, to James Clifford Smith, 20, Rt. 10, London, warehouse, September 19, 1987.

Charlotte Rae Raleigh, 35, Rt. 6, Murphysboro, Ill., student, to Joseph Ronald Shirk, 45, Rt. 6, Murphysboro, Ill., electrician, September 19, 1987.

Billie Jo Byrd, 17, Rt. 2, Orlando, student, to Thomas Lee Cromer, 21, Mt. Vernon, construction, September 19, 1987.

Sheila Lynn Brown, 21, Mt. Vernon, factory, to James Michael Flannery, 20, Mt. Vernon, lineman, September 18, 1987.

Lisa Ann Owens, 27, Rt. 4, Mt. Vernon, factory, to William Harrison Cook, 30, Mt. Vernon, factory, September 18, 1987.

Ravin Nora Edith Renner, 23, Rt. 4, Berea, cook, to Roger Dale Alcorn, 20, Rt. 4, Berea, unemployed, September 17, 1987.

Angela Kurtrina Isaacs, 16, Berea, student to Danny Edmond Hurst, 20, Berea, student, September 15, 1987.

**CIRCUIT CIVIL SUITS**

First Federal Savings and Loan Assoc. of Richmond vs. Kathy Shaeel and Willene Adams, \$5,043.50 plus interest claimed due on note, 87-CI-167.

Nerna Gail Carpenter and Johnny Ray Carpenter, joint petition for dissolution of marriage, 87-CI-168.

The National Bank of Lancaster vs. James Irvin and Mary Ann Irvin, \$33,475.88 plus interest claimed due, 87-CI-169.

**DISTRICT CIVIL SUITS**

Lexington Clinic vs. Truman Reams, \$756.95 plus interest claimed due for services, 87-S-042.

Ricky Woodall vs. Fletcher Rowe, complaint for forcible detainer, 87-C-043.

**Small Claims Court**

Lehoma Laswell, vs. James Bowling, \$700 claimed due for car, 87-S-063.

Bentley's Service Station vs. Brenda Dixon Jones, \$50 claimed due, 87-S-064.

Bentley's Service Station, vs. Terry Bullock, \$65 claimed due, 87-S-065.

Bentley's Service Station vs. Dalmus McFerron, \$37.65 claimed due, 87-S-066.

B's S.S. vs. David York, \$35 claimed due, 87-S-067.

Shelia Weaver vs. James Brown's Wrecking, \$500 claimed due for defective motor, 87-S-068.

Jesse Ray Smith vs. Leroy Smith, \$575 claimed due for items, 87-S-069.

**Girl Scouts spent fun summer...**

The Girl Scouts have really enjoyed being in the out-of-doors this summer. These photo show a few of their activities.



They toured Indian Fort Theatre in Berea. In the photo are, front row, from left: Janet Collins, Shelia Hodge, Wanda Howard, Jessica Chesnut, Ronda Johnson with Eric Hodge, Stephanie Brewer, Tina Miller, Crystal Jones, Teresa Brewer, Shannon Brewer, Alice Hodge. Back row: Peggy Robinson, Regina Collins and Lori Hodge.



Day Camp was held at the Family Life Center in June. Shown are: Peggy Robinson, Lori Hodge, Eric Hodge, Shelia Hodge, Regina Collins, Amanda Collins, Koula Collinsworth, Teresa Brewer and Angie Cox as they returned from a hike.



A trip to Dollywood and the Smokies was also enjoyed by, front row: Wanda Howard, Darrell Collins (not girl scout), Regina Collins, Middle row: Shannon Brewer, Sharon Hensley, Teresa Brewer, Stephanie Brewer, Back row: Jessica Chesnut, Tina Miller and Janet Collins.

You Are Invited to Attend  
**A MEETING**  
at the  
**Chestnut Ridge Church of Christ**  
**Oct. 3 - 11, 1987**  
7 p.m.  
Speaker will be:  
**BRO. DENNIS SMITH**  
Morning Worship - Lord Day - 10 a.m.  
**EVERYONE WELCOME!!!**

**BMV THE BANK OF MT. VERNON**  
P.O. Box 157 MT. VERNON, KY. 40456 606-258-5141

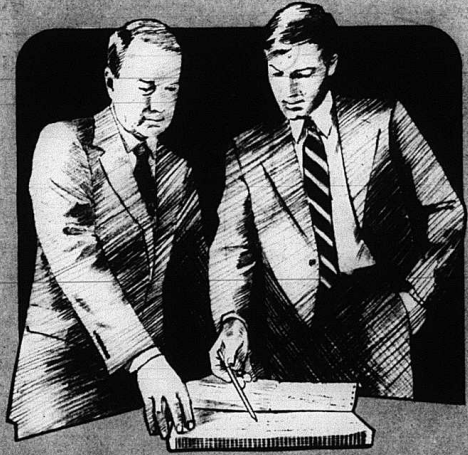
**We don't worry about our competitors,**

**Our concern is for our customers!!**

*Offering you the best in services and products.*

- Certificates of Deposits**  
8.00%<sup>0</sup> Protection Now CD's  
Adjustable Rate C.D.'s
- Checking Accounts**  
Super NOW Account  
NOW Accounts  
I.M.M.A. Accounts

- Loans:**  
Consumer Loans  
Home Loans  
Farm Loans  
Lines of Credit  
Letters of Credit  
Student Loans



Our commitment is to this community. Our concern is not just beating our competition, our concern is to provide the services and products you, the customer, deserve. The above list of products is only a sample of those available at the Bank of Mt. Vernon. We can structure a loan to fit your need. We have certificates of deposit to maximize the yield on your money.

**Bank of Mt. Vernon is a customer's bank. We welcome comments from you. If there is a product or service we can provide, come in and see us. Our pride is in our customers.**

**Income you want -  
the stability you need**

\*Rates offered are subject to change. A substantial interest penalty required by law for early withdrawal.



# Mount Vernon Signal

Mount Vernon Kentucky 40456

Second Section

Thursday, September 24, 1987

## Want to get your GED, Family Life Center School can help

By: Richard Anderkin

They have ranged in age from 16 to 74, and they have received from everyone involved.

They are graduates of the Family Life Center School and there have been 266 of them since the school opened some two years ago.

Program Coordinator Gary

According to Eldridge, the school is there to help local students who need help with their regular school work, classes that they may be falling behind in, or simply because students want to improve the skills they already have in math, reading, typing, science or whatever the field may be.

"Presently about 200 students are either enrolled in the school's

is unable to because her husband works during the day and she has no one to watch her children," Eldridge said. "These are the kind of people we are trying to reach with the school on wheels program," Eldridge said.

As far as the tutoring goes many students are referred to Eldridge by counselors, teachers, or even principals, but Eldridge explained that it is not necessary

to be referred to receive help in a subject. All a student has to do is let someone at the school know they want help.

Presently the school has eight teachers, four volunteers and four who are paid by CAP. Eldridge said that most of the teachers come to the school each day about 8 a.m. and spend the first hour or so getting their lesson plans together for the day.

Eldridge said that the school has very flexible schedules for those individuals who work, have small children to take care of, or have transportation problems. It usually takes a student about 3 to 6 months to get their G.E.D. Certificate.

"The Family Life Center school and the Rockcastle County Literacy Council work very close together," Eldridge said.

"Many times we will get a student who wants to get his or her G.E.D., but simply cannot read well enough to get started here," he said. "We refer them to the Literacy Council for tutoring before they try to get their G.E.D.," Eldridge said.

"One teacher here at the school has had as many as 10 people from the same family that



Members of the Family Life Center School staff, which was recently honored by the Ky. Juvenile Justice Cabinet for their outstanding work, are pictured above, front row, from left: Wendy French, Lisa Foerster, Anita Isaacs and Gary Eldridge, program manager. Back row: Mark Boyd, Linda Argentati, Jim Burns, Carol Cannon and Kaye Cameron. The school is open to the public and no fee is charged.



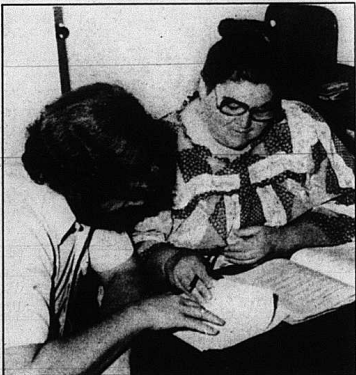
Members of the most recent graduating class of the Family Life Center School are pictured above, from left: Loretta Barnett, Helen Doan, Bernice Carpenter, Catherine Sue McClure, Jody Patterson and Hazel Roberts. Second row: Eleschia Renner, Alice Anglin, Shirley Faulkner, Terri Wynn and Jean Pearce. Back row: Wilfred Banks, Billy Thomas, Lloyd Kirk, Matt Tittle, Jimmy Hardison and Tom McCracken. Not shown, but participating in the ceremonies, were: Shelby Durham, Sheila Hayes and Debbie Sell. Other graduates were: Connie Baldwin, Terry Bardette, Robert Busle, Bobby Cromer, Linda Dykes, Betty Gilbert, Michael Harris, Brenda Martin, Michelle McClure, Terry B. McKinney, Anna J. Prewitt, Kaye Sargent, Linda Smith, Shirley J. Wallin and Larry Thompson.

Eldridge has high hopes for the schools continued progress. "We must be doing something right, because the Christian Appalachian Project (CAP), of which the school is a branch, continues to fund us and have even expanded our budget somewhat," Eldridge said. The school, which is located at Rentro Valley, graduated 35 students on Aug. 27, but the school does much more than just help those who did not graduate from high school earn their G.E.D.

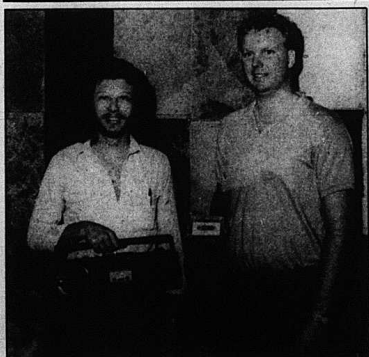
regular G.E.D. classes, or are receiving tutoring in other fields, or a part of the school's "school on wheels program," Eldridge explained.

The school on wheels program is where teachers go into individuals homes who cannot get to the school because of babysitting or whatever it may be. Eldridge said that the school offers that option to persons living within approximately 10 miles of the school.

"Many times a mother wants to be able to get to the school, but



Betty Adams studies for her upcoming ACT exam with help from teacher, Jim Burns.



Wayne Hensley of Richmond won the 7th Annual Ky. Fried Chicken song writing contest held by local radio station WRVK recently. Hensley received an AM/FM cassette player from program director, Jim Murray, at right.



### Miss Rockcastle USA 1987

Julie Dowell, a senior at Rockcastle County High School, was crowned Miss Rockcastle County USA 1987 Saturday night during the annual beauty pageant. In the above photo are, from left: Jennifer Masters, fourth runner-up; Sonya Bullock, second runner-up; Miss Dowell; Amy Hamm, first runner-up and Cindy Witt, third runner-up. In the photo at left is Celena Lear, who was chosen Miss Congeniality by the other contestants.

(Photos by Richard Anderkin)