

Fall is time to take samples for soil tests

Gardeners and farmers should not "fall" down on the best time to take samples for soil tests.

"Fall is an excellent time to take soil test samples," said Vernon Case, a soil testing specialist with the University of Kentucky College of Agriculture. "The soil is usually in good condition, making it easy for people to take samples properly and giving them enough time to carry out recommendations."

It also is easier to spot problem

growth areas in the field or yard during the fall, Case added. Soil samples can be taken from problem areas and, for comparison, from "good" areas to determine if infertility is the cause of the growth problems.

"Soil test results indicate when soil fertility is inadequate to meet plant needs," he said. "They also provide recommendations to assure that plant requirements for phosphorus, potassium and the correct soil

The Mount Vernon Signal, Thursday, August 30, 1990 P-B3

pH will be met, but not exceeded. If lime is needed, fall soil sampling gives people time to apply it early enough to benefit the next crop."

"The results give people information to make decisions on how to spend fertilizer dollars for the greatest economic return," added Ken Wells, a UK Extension agronomist.

Wells gave examples of two corn growers who did not have their soil tested.

"One farmer spent about \$15 an acre applying potassium and phosphorus to a field that didn't need them," he said. "On a 100-acre field, this would be an unnecessary expenditure of \$1,500."

The second farmer's corn field

was insufficient in phosphorus and potassium. As a result he lost the equivalent of \$50 to \$100 an acre in lower yields. For an investment of about \$15 an acre in phosphorus and potassium fertilizer, he could have increased income as much as \$50 to \$100 per acre."

The accuracy of a soil test is only as good as the samples taken for it, Case said. The procedure for taking soil samples, along with soil sample bags and boxes, is available at County Extension offices. "Taking a Soil Sample," a video tape by Wells, is available for use in Extension offices.

Whether for a 20-acre field or a (Cont. to B-7)

Win Tournament

Players for the Grace Softball Team and Rockcastle Merchants joined together to win the NSA State Tournament at Roney Park in Somerset recently. By winning the state tournament, the team earned an invitation to play in St. Louis, Missouri and represent this region. Players are, from front row, from left: Mark Bishop, Jeff Bullock, Danny Offutt, Bruce Blanton, Jessie Mahaffey. Second row: Gerald Martin, Scott Parritt, Bobby Dale Robinson, Steve Phelps, Darrell Denn, Bruce Stranger and Gary Vanhook.

North American wolf plight to be aired on KET September 2

Once their howls could be heard across North America, but they were considered the enemy of livestock and were virtually eliminated by early settlers. Today the wolf barely exists in the lower 48 states.

National Audubon Society Spreti continues its commitment to examining how humanity and wildlife attempt to share this planet when "Wolves" airs on KET at 7 p.m. Sunday, September 2. Actor Robert Redford narrates this new 60-minute

special that examines the fight for survival by several wolf species.

The red wolf, pushed to the edge of extinction, was taken into captivity for a breeding program in the 1970s. In 1986, a group of red wolves was released to run wild again. Despite broad support for this and other re-population programs, the politically powerful livestock and hunting industries oppose them, fearing the wolves again will attack livestock and game animals.

"Rocket's JV"

(Cont. from B-2)

to end the first quarter.

And, after a scoreless second quarter, the Rockets came right back with two more touchdowns and a two-point conversion in the third quarter. William Bullens got one while Jeff Navarre grabbed the other. Navarre was also credited with the conversion.

The last score of the game came in the final period when the Rockets'

defense converged on the Wildcat quarterback in his own end-zone to get the sack and the safety to finalize the score at 32-0.

The scheduled game between the Rockets JV and the Beres JV, last Thursday, was rescheduled to October 30.

The Rockets JV will now host Powell County Thursday, September 6, at 7:00.

"Rockets"

(Cont. from B-2)

four yards. But after a delay of game was called against the Rockets, they were faced with a third and 11 situation.

The very next play was crucial and it was successful. What looked to be a J.D. Harris run turned into a 45 yard quick-kick which caught the visiting Russell County Lakers by complete surprise. The Lakers had no chance to return the kick and the ball rested on the Russell 20 yard line.

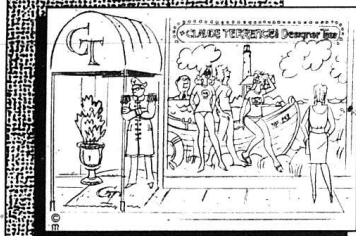
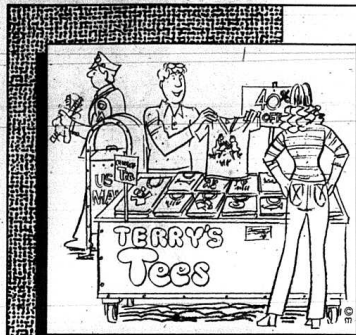
After gaining one first down with just over a minute to go, the Lakers went pulverized by Rockets' senior tackle, Scotty Hines. Hines broke through the Lakers' offensive line and sacked the quarterback for a five yard loss to force the Lakers to a

second down and 15 yards to go. The Lakers only managed two yards during their next two plays and were forced into a fourth down with 13 yards to go.

But once again the Lakers' quarterback found himself in the grasp of big Scotty Hines and the sack with only 46 seconds left in the game, allowed the Rockets to re-gain possession and the win.

The Rockets will now get back on the road and travel to McCreary County Friday night to take on McCreary Central at 8:00.

The report for McCreary's team that likes to put the ball in the air to their tight end, who has some of the best hands, if not the best, in high school football.



WE STAND BEHIND SMALL BUSINESSES

The economic success of our community relies on a strong commitment to our independent businessmen and women.

That's why we make a special effort to understand and support your small business in every way possible.

For everything from start-up loans to long-range financial planning, our small business experts are behind you every step of the way!

Stop By and See
Bobby Proctor or
Keith Smith
for All Your Loan Needs!

Open Monday through Thursday
8:30 to 3 p.m.
Friday 8:30 to 6 p.m.
Saturday 8:30 to 12 Noon

OUTDOORS

FISHIN' TIPS
FROM THE TRACKER®
PROS



Steve King

Filet knives—every serious fisherman owns one, or two, or ten.

They come in assorted sizes, lengths and degrees of quality. The secret of a good filet knife is how sharp it is kept.

Any good, sharp filet knife will work when there are a few fish to clean. But what about those rare days when a lot of fish are there for cleaning?

The best solution to this problem is an electric filet knife. It's easier to operate than a conventional knife, and does the job in half the time, and when mastered, actually does a better job than a manual filet knife.

Several electric knives are designed especially for filleting fish. They can be purchased for under \$25.00 and make excellent gifts for that favorite fisherman. Remember to keep only those fish you intend to eat.

OUTDOORS

FISHIN' TIPS
FROM THE TRACKER®
PROS



Larry Clinton

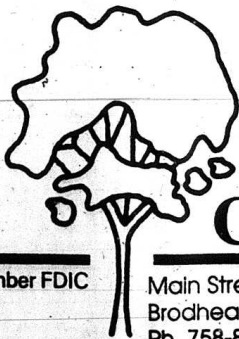
When selecting a new bait casting reel, pick one that feels good and fits comfortably.

If you are a true right hander, you might take a serious look at the left hand retrieve models. These are, in reality, the true right handers reel.

With a left hand retrieve, the rod never leaves your right hand. You have more control over the fish, more hook setting power and probably better feel, if you are a right handed person.

Because left handed retrieve reels are not big volume sales items, you might find a much wider selection of models to choose from in the conventional, right hand retrieve bait casters.

High speed models, Flippin' reels and Crankin' reels are all available in the conventional models.



Member FDIC

Main Street
Brodhead Ky. 40409
Ph. 758-8212

Highway 150 West
Mt. Vernon, KY 40456
(PHONE) 256-2500

Citizens Bank

Business Briefs



Joe Clontz will open his new office September 1.

Joe Clontz will open accounting firm

Local Certified Public Accountant Joseph Clontz will open a new accounting firm in Mt. Vernon September 1. Clontz, 52, of Mt. Vernon will open his new office on Main Street in Mt. Vernon in the former Norton Insurance Agency Building across from the Bank of Mt. Vernon. Clontz announced this week that he will no longer be associated with

the accounting firm of Garska, Lawton and Clontz. Since 1984 Clontz has worked in public accounting and in 1987 he received his certification as a certified public accountant. Clontz is a graduate of Centre College in Danville. All types of general accounting will be handled by Clontz at his new office. He can be reached at 256-3623.

Mama's has new manager

Manuel Shepherd Jr., has taken over Mama's Country Cooking. Located on Main Street in Mt. Vernon, Mama's Country Cooking features delicious down home cook-

ing with daily lunch specials. Carry-out is available by calling 256-9972. Mama's is open Monday through Friday 6:30 a.m. to 2:30 p.m. for breakfast and lunch.



Faye Donahue and Manuel Shepherd Jr., work at Mama's Country Cooking in Mt. Vernon.

Benny Ham sued by Philbecks

A second suit alleging violation of civil rights and misconduct against Benny Ham of Somerset, the Commonwealth's attorney for Putnam and Rockcastle Counties, has been filed in U.S. District Court in London. Estill and Theresa Philbeck of Brodhead charge that they sought protection from Ham after criminal acts were committed against their family on two occasions in April and that he "prejudicially, arbitrarily, intentionally and without cause" refused them protection and denied them access to the grand jury.

should be grounds for his removal from office." Ham, in a response to the civil suit, calls the complaint a "clone" to another one filed July 2 by Variety Rental, a Somerset store, and its owner J.E. Foley, who claimed he sought protection from Ham after customers had defrauded and stolen merchandise from him.

The Philbecks claim his failure to protect them is a violation of his oath of office and "renders him incompetent as a public official and

Ham has denied the allegations and filed motions asking that the suits be dismissed. "Obviously, prosecutors will be chilled in performing functions if they are required to be answerable for cases such as this which can most charitably be described as bizarre," Ham said in his latest response.

"What Saith the Scriptures"

We continue our study of the church that Jesus built, Mt. 16:18, by looking at another of the 5 acts of worship that are commanded in the New Testament, "breaking of bread."

As we look at Ac. 2:42 concerning this phrase, "breaking of bread" the question is raised of what is this talking about? Some say, it just simply means, the eating of a common meal to satisfy hunger. Others suggest that it refers to the Lord's Supper. It's true that breaking of bread could refer to a common meal as in Ac. 2:46, "breaking bread from house to house, did eat their meat with gladness and singleness of heart." But a very important rule to remember in studying the Bible (in fact, in life in general - such as conversation, reading magazines, etc.) is that the context determines how a word or phrase is used. Ac. 2:42 is dealing with spiritual activities, apostles' doctrine, fellowship and prayers. Also, Paul taught that the Lord's Supper is a spiritual memorial of the Lord's death, and that the eating of a common meal to satisfy the physical hunger of man is to be done at home. "What! have ye not houses to eat and drink in?" And if any man hunger, let him eat at home; that ye come not together unto condemnation. 1 Cor. 11:22a, 34. It's amazing how many churches of men are engaged in the sinful practice of having "church suppers" in "church dining rooms!"

The Lord's Supper is to be partaken-of, on the first day of the week, as we read in Ac. 20:7, "And upon the first day of the week, when the disciples came together to break bread, Paul preached unto them, ready to depart on the morrow." How often does the first day of the week occur? Once a week, of course! Thus, if we are going to be a New Testament church, we shall observe the Lord's Supper every first day of the week. Paul gave the order to the Corinthians (and to us) of how to properly partake of the Lord's Supper in 1 Cor. 11:17-34. But someone may ask that if we have the Lord's Supper every Sunday, it will become an old and empty ritual. Let me ask, if the Lord's Supper is a memorial of Jesus' death on the cross, when does the death of the Saviour ever become "old hat," to a true church of God?

Providence church of Christ

Dan McKibben - 758-9316

Sunday - Bible Study 10 a.m.; Worship 10:35 a.m. & 7 p.m.; Wednesday, 7:30 p.m.; Radio Programs - Saturday 12 noon a call-in program, Sunday 8 a.m. WRVK 1460 AM

ABSOLUTE Auction

Property of Iron and Sue Isaacs - Hwy. 421 Gray Hawk, Ky. Includes items collected by Sue's father, the late Bob Farmer. Antiques, Collectibles, Old Clocks, Glassware, Old Lamps, Old and Modern Hand Tools, Blacksmith Shop Tools, Auto Body Repair Tools, Misc. Farm Items, Commercial Machines and Lots and Lots More.

SAT. SEPT. 8th 10:00 A.M.

App. 5 Miles South of McKee, KY on Hwy. 421 at Gray Hawk, Ky. Mr. and Mrs. Isaacs have contracted our firm to sell, at Absolute Auction, the following merchandise. This is only a partial listing. Old brass bed, oak side board, oak washstand, oak dresser, oak bookcase, oak chairs, wine cabinet w/marble top, cedar lined chest, large modern china cabinet, old lamps, old clocks, chams, large old iron kettle, lots of smaller iron kettles and pots different shapes and sizes, iron tea pot w/star on lid, misc. glassware, old cream can, large wooden whiskey barrel, nail keg, large assortment of hand tools both old and modern, Blacksmith tools 1-large anvil, 3 blowers, tongs, etc., Bee smoker, bee handlers hood, misc. fishing tackle, old corn sheller, horse drawn cultivator, 3 point hitch, 20 H.P. lift disc harrow, 500 gal. fuel tank w/pump, acetylene torch set tanks and dolly included, Lincoln electric welder, 5 H.P. air compressor, misc. air tools, auto body repair tools - dent puller, sander, buffer, spray guns, etc., large metal tool box on wheels, battery charger, commercial floor buffer, 8 H.P. parking lot sweeper advance brand, commercial battery chargers, metal office file, cabinet, paper lots and lots more just too numerous to mention.

Terms: Cash or good check with positive 1.D. day of sale. For more info or brochure, phone: Brummett & Associates Auction Co. Hwy. 421 Gray Hawk, Ky. "Give Us A Call" 606-287-8400 • Jim Brummett "Auctioneer" 606-287-7700 Home Phone

FACTS YOU SHOULD KNOW ABOUT HEAD LICE

Head lice cannot jump or fly but are spread from one person to another by personal contact or the sharing of such items as brushes, combs, hats, scarves, and coats. At one time or another, many adults and children may have to cope with this problem. School children especially may become infested with lice because of their close contact in classrooms and at play.

Head lice are no larger than a head of a pin. In fact, if you could examine a louse under a magnifying glass, it would look somewhat like a tiny ant.

Head lice are usually found on the hairs of the head, behind the ears and back of the neck. They lay oval white eggs—not to be confused with dandruff, which is flaky, or droplets of hair spray. The eggs are attached to the base of a stand of hair close to the scalp.

In order to live, head lice derive nourishment from human blood which they suck from their hosts. Lice can live, however, upwards to two or three days off the human body.

The first sign of lice is usually intense itching. The lice and/or eggs may be seen. Bite marks often appear. Skin irritation and/or infection may occur as a result of repeated scratching. If this happens, you should see your physician.

Lice infestation can be easily treated at home. Prompt action is required to rid yourself of this tormenting pest.

WHAT TO DO ABOUT LICE

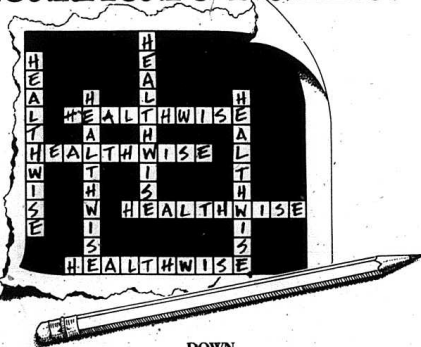
At the first sign, seek assistance from your county health department, family physician, or go directly to a drug store. Follow all directions carefully. Every member of the household should be checked for lice and their eggs. If either is found, treatment should be given to them also. Unless every member is free from lice and nits (eggs), the infestation will continue to exist and grow.

All clothing and bedding in contact with lice should be washed in very hot water or dry cleaned as appropriate. Other materials such as combs and brushes should be boiled or thrown away. The backs of upholstered furniture, car seats, and mattresses should be thoroughly vacuumed and disinfected where possible.

Children found with evidence of head lice cannot return to school without proper treatment. Screening is conducted periodically throughout the school year. Additional screenings are conducted as the need arises. If you have any questions, please contact your school.

Rockcastle County Schools Student Health Services

The Plan That Solves The Healthcare Puzzle.



ACROSS

- Name of plan that has 22 participating hospitals in Central Kentucky.
- Offers nearly 200 participating primary-care physicians.
- Covers routine check-ups and "wellness visits."
- Which plan offers to State and Board of Education employees separate rates for individual coverage, employee plus children coverage AND family coverage?

DOWN

- The healthcare plan that offers over 350 participating specialists.
- Plan that has no deductibles or claim forms.
- Which plan is offered in 28 Central Kentucky counties?
- Another word for quality health care coverage.

HealthWise

The Choices You Want. The Care You Deserve.



Charles Denver Burton of Mt. Vernon talks with Kentucky State Auditor Bob Babbage during the recent meeting of the Kentucky Rural Water Association. Babbage was the featured speaker at the organization's awards luncheon. Burton is associated with the Western Rockcastle Water Association.



Jon Adams of Brodhead, son of Randall and Thelma Adams, shows off his 3-year-old Gurnsey 4-H Grand Champion, at the district dairy show. With Jon is the state dairy princess.

"Preconditioning" feeder calves helps fight fescue toxicity

Farmers are just now beginning to recognize a new benefit to "preconditioning" their feeder calves before sending them to market -- a reduction in the effects of fescue toxicity.

"Calves sent directly from fescue pastures to the feedlot are especially vulnerable to heat stress," said Duane Miksch, Extension veterinarian with the University of Kentucky at the Research and Education Center in Princeton.

"Other veterinarians at feedlots in the high plains states have diagnosed fescue toxicosis as a contributor to heat stress when cattle arrive in hot weather," Miksch said. "As a result buyers have discounted the price they will pay for cattle that look like they have come off fescue pastures."

Some farmers have already begun preconditioning their cattle as a way to reduce respiratory disease or "shipping fever" in commingled calves going into feedlots.

Miksch said that that has already been proven successful, as corn belt cattle feeders have paid a premium of \$4 to \$6 per hundredweight for preconditioned Kentucky calves.

Producers who participate in the Kentucky Certified Preconditioned for Health (CPH) feeder calf program have noticed other benefits, Miksch said. Their calves have weighed more when sold further

increasing the income per cow.

"By participating in the CPH program, many producers have learned to wean calves without health problems," Miksch said. "By watching their calves sell with similar calves in graded and group lots they have come to appreciate the value of genetic improvement. They are encouraged to keep better heifers for herd replacements to improve productivity."

CPH calves are weaned and removed from pasture at least 30 days before they are sold, Miksch said. They are dewormed and bunk-fed a balanced ration, buyers are assured that the calves are not suffering from fescue toxicity, and they also know the calves should be free of internal parasites and not nutritionally deficient.

Preconditioning certificates document that cattle have not been shipped directly from fescue pasture, he said. Preconditioning not only allows calves sufficient time to overcome the effects of fescue toxicity, it enables them to make some very efficient weight gains.

"Kentucky cattlemen who sell preconditioned feeder calves help themselves while also helping to improve the reputation of Kentucky cattle in the feedlot," Miksch said.

(Cont. to B7)

Report to Kentucky

SENATOR WENDELL FORD

U.S. Senate, Washington, D.C. 20510



ADVANCING OUR EFFORTS TO PROTECT KENTUCKY RIVER WATER SUPPLY

I recently had the pleasure of joining with a number of Kentuckians to celebrate the reopening of Locks and Dams 5 through 14 on the Kentucky River for the remainder of this year's boating season.

This event was attended by many of those who hold a special affection for the Kentucky River and recognize its importance not only for recreation, but more importantly as the water supply for over 600,000 Central Kentuckians, who have depended on these structures for over one hundred years.

Unfortunately, the very existence of these important locks and dams are now in peril due to their deteriorating condition and state of disrepair.

The structures are in such a condition that over \$3.5 million of immediate repairs need to be done -- just to keep the structures from falling in the water. If any of the pools are lost, the consequences for the water supply would be immediate and dire.

Responsibility for the maintenance of these vital structures was addressed in a memorandum of understanding between the Commonwealth and the U.S. Army Corps of Engineers. Under the agreement, the orderly transition of operation and maintenance responsibility of the locks and dams to Kentucky was to occur in October of 1989.

The understanding clearly committed the Corps to perform major maintenance on the structures before the transfer took place. However, it is clear even to the casual observer that this maintenance has not been performed.

That is why the Commonwealth has been forced to file suit in federal court to see that the proper maintenance is completed. And it is also why I included legislative language in the 1990 Water Resources Development Act, which has passed the U.S. Senate, to authorize the Corps to perform this agreed-upon maintenance.

In the House of Representatives, Congressman Larry Hopkins has also introduced legislation, which recently passed the House Public Works Committee, authorizing this maintenance.

Our efforts in the United States Congress represent just one aspect of the continuing battle for the water supply on the Kentucky River. Governor Wilkinson and many other state, local and federal officials are helping to lead our fight to have these repairs made.

I believe this is the very least that should be done for the citizens of Central Kentucky. For over a century they have depended upon these structures for their water, only to find out that the rug is about to be pulled out from under them.

We have entrusted great responsibility and authority to our Federal government. If it cannot be relied upon to keep its word, we are in serious trouble.

And that is why I will continue to work with other members of the Congressional delegation in our effort to have the necessary funds appropriated for these much needed repairs.

Happy LABOR DAY

Come Celebrate Our Weekend of Savings!

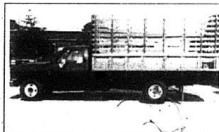
SPECIAL! SAVE THOUSANDS!



1990 OLDS CALAIS
Auto, Air, Tilt, Cruise,
2 Door and 4 Door,
Low Miles.
8 to Choose From.
ONLY **\$8995⁰⁰**



•1988 PONTIAC GRAND PRIX SE,
Low Miles, Loaded!



•1983 CHEVROLET 1-TON TRUCK
With Cattle Racks, One Owner,
50,000 Miles



•1989 CADILLAC SEDAN DEVILLE.
GM Car, Loaded, 13,500 Miles



•1990 OLDS DELTA 88, 2 to Choose
From. Auto, Air, Tilt, Cruise, Power
Windows and Locks, Low Miles



•1990 CHEVROLET EURA LUMINA,
Factory Car, Loaded, 2 to Choose
From



•1989 NISSAN PULSAR, T-Tops, 5
Speed, Red



•1990 CHEVROLET CAPRICE CLAS-
SIC BROUGHAM, GM Factory Car,
Auto, Air, Power Windows and Locks,
Tilt, Cruise



•1986 PONTIAC STATION WAGON
PARISIENNE, Loaded, Full Size

•75 Used Cars
and Trucks
to Choose From!

•Good Selection of
Used S-10s and
Full Size Trucks.

SEE ONE OF OUR PROFESSIONAL SALESMEN TODAY!



U.S. 25 North • Berea • 986-3169

Follow the search for extraterrestrial life in special on KET Sept. 4

Is there life beyond Earth? This question has captivated mankind's interest for centuries. Scientists will introduce viewers to some fascinating possibilities when *Life on Ice: Antarctica and Mars* airs on KET at 8 p.m. Tuesday, September 4.

Based on research conducted in Antarctica, scientists have found startling similarities in geography and climate between Antarctica and Mars. On each, life once had a chance to flourish; yet, until recently, it seemed that no trace of life remained.

Life on Ice follows scientists as they explore the dry valleys of Antarctica. The documentary features breathtaking photography of this harsh but beautiful land, including the first pictures ever taken underneath the continent's icy lakes.

Within these ice-capped lakes, thriving communities of micro-

organisms have been discovered. These communities are the remnants of ancient pre-Cambrian organisms that covered the Earth for billions of years, radically altered the atmosphere and chemistry of the entire planet, and then all but vanished.

Could these micro-organisms have evolved in other parts of the universe? *Life on Ice* focuses on our closest planetary neighbor, Mars, to examine its topography, geology, and environment to determine the possibility that life could exist there - or once did. Mars is brought to life by newly created animation that simulates a flight through the Vallis Marineris Canyon System.

Life on Ice: Antarctica and Mars is a coproduction of WROC/Norfolk and the Innerspace Foundation of Richmond, Va.

Two Labor Day specials focus on former Ky. Gov. Bert T. Combs

Two programs of interest to Kentuckians, *Bert Combs: Governor from the Mountains* and *Education Reform: A Salute to Bert Combs*, air Monday, September 3 on KET.

At 10 p.m., *Bert Combs: Governor from the Mountains* traces the political and personal lives of Combs, the first governor in modern history from Eastern Kentucky. Through the use of archival footage, photographs, and interviews, the special shows how Combs -- a World War II veteran, an attorney, and an appellate judge -- lost his first race for governor, but was elected eight years later in his second bid. During his administration, Combs spearheaded government reforms that led many to dub him the first "modern" governor of Kentucky. Following his term of office, Combs returned to the practice of law.

At 10:30 p.m., Judge Ray Corns, columnist John Ed Pearce, Dayton Independent schools superintendent Jack Marsland, and former Gov. Martha Layne Collins pay tribute to Combs in *Education Reform: A Salute to Bert Combs*. Taped August 10 at the Marriott Hotel in Lexington, Combs is honored for his lifelong dedication to education reform in Kentucky.

Bert Combs: Governor from the Mountains, a 1989 production of Eastern Kentucky University, was written by Richard Freed, associate professor of English at EKU, and produced by Jack McDowell, division of Radio and TV at EKU.

Education Reform: A Salute to Bert Combs was produced for KET by Arthur Rouse, Video Editing Services, Lexington.

Learning in America focuses on schools that overcame odds

It's back to the basics in the back-to-school special *Learning in America: schools that Work*, a follow-up to last spring's look at the problems plaguing elementary education nationwide.

The two-hour program, airing on KET at 9 p.m. Wednesday, September 5, focuses on four public schools with diverse student bodies that have overcome their educational and cultural problems by creating effective partnerships among teachers, parents, and students.

None of the featured schools -- in Kansas, Maryland, Massachusetts, and Texas -- are located in affluent areas populated by children of college-educated parents.

Veteran newsmen Roger Mudd, who hosts the show, says the key to their success "has less to do with budgets than with building a certain

(Cont. to B-14)

"Soil Tests"

(Cont. from B-3)

small garden plot, each soil sample should have at least 10 randomly taken "cores". Case said. "A separate sample should be taken for each area where different crops or plants will be grown. Soil samples for moneys crops should be from a depth of six to eight inches, with the exception of no-till fields and established pastures or lawns, where a four-inch depth is sufficient."

For more information, contact the county Extension office.

"Pre-Conditioning Calves"

(Cont. From B7)

Preconditioning reduces respiratory disease, increases calves' weight, raises the selling price and encourages genetic improvement of the herd.

He added, "Now, we can add that it helps offset losses to endophyte-infected fescue through prevention of heat stress."

ROCKCASTLE COUNTY BOARD OF EDUCATION GENERAL FUND FINANCIAL STATEMENT Year Ending June 30, 1990

A. LEDGER BALANCE BEGINNING OF YEAR \$ 987,532.36

Summary of Revenue Receipts

General Property Tax	\$ 402,091.75
Gen. Prop. Delinquent Tax	11,943.88
Public Service Companies Tax	54,244.99
Motor Vehicle Tax	34,255.44
Earnings from Investments	169,221.95
Rental of School Facilities, etc.	9,634.33
Other - Attendance Incentive Grant, etc.	2,322.05
State Foundation Program	4,727,836.62
State Power Equalization, Vocational, Remediation, etc., Programs	920,993.57
Federal Chapter 2 Grant	27,084.00
Federal Title 2, Drug & Alcohol Grants	11,823.00
National Forest Service Grant	3,672.80

B. TOTAL REVENUE RECEIPTS \$6,375,124.38

Summary of Non-Revenue Receipts

Sale of Equipment	10,648.97
Insurance Recovery	2,334.28
Other Reimbursements & Refunds (Includes JTPA Program & all other non-federal special grants, etc.)	213,494.00

C. TOTAL NON-REVENUE RECEIPTS \$ 226,477.25

D. TOTAL ABOVE-LINE RECEIPTS \$6,601,601.63

Summary of Below-Line Receipts

State Capital Outlay Program	252,720.00
Federal School Food Service Program	496,198.00
Federal Chapter 1 Program	585,795.00
Federal Other (Special Ed. Programs)	256,909.00

E. TOTAL BELOW-LINE RECEIPTS \$1,591,623.00

F. TOTAL OF ALL RECEIPTS (B + C + D) \$8,193,224.63

G. GRAND TOTAL RECEIPTS & BEGINNING BALANCE (A + F) \$9,180,756.99

Summary of Above-Line Expenditures

Code		
100 Administration	\$ 136,110.88	
200 Instructional Services	4,739,782.55	
300 Instructional Services	48,408.59	
400 Health Services	43,765.34	
500 Pupil Transportation	596,263.15	
600 Operation of Plant	365,912.53	
700 Maintenance of Plant	102,399.07	
800 Fixed Charges (Insurances, etc.)	189,671.14	
1200 Capital Outlay (Bldg. & Equipment)	386,991.93	

H. TOTAL ABOVE-LINE EXPENDITURES \$6,609,305.18

Summary of Below-Line Expenditures

1400 State Capital Outlay Program	377,640.00
1400 School Food Service Program	452,509.00
1400 Chapter 1 Program	512,578.00
1400 Other Federal Programs (Special Ed.)	274,794.00

J. TOTAL BELOW-LINE EXPENDITURES \$1,614,521.00

K. GRAND TOTAL EXPENDITURES (H + J) \$8,223,826.18

L. BANK BALANCE CLOSE OF YEAR \$ 758,546.59

Less Outstanding Checks	\$ 1,615.78
Plus Certificates of Deposit	200,000.00

M. LEDGER BALANCE CLOSE OF YEAR (G - K) \$ 956,930.81

Plus Account Receivables	\$ 32,932.05
Less Account Payables	177,885.86

N. ACTUAL BALANCE CLOSE OF YEAR \$ 811,977.00

ROCKCASTLE COUNTY BOARD OF EDUCATION CAPITAL OUTLAY FUND FINANCIAL STATEMENT Year Ending June 30, 1990

1. Ledger Balance Beginning of Year	\$ 100,831.86
2. Total Receipts	391,752.91
3. Total Expenditures	400,116.40
4. Bank Balance Close of Year	92,468.37
5. Outstanding Checks	0 - -
6. Ledger Balance Close of Year	92,468.37
7. Account Receivables	0 - -
8. Account Payables	92,500.00
9. Actual Balance Close of Year	(\$ 31.63)

ROCKCASTLE COUNTY BOARD OF EDUCATION SCHOOL FACILITY CONSTRUCTION ESCROW 1987 FUND FINANCIAL STATEMENT Year Ending June 30, 1990

1. Ledger Balance Beginning of Year	\$ 52,746.32
2. Total Receipts	4,625.54
3. Total Expenditures	0 - -
4. Bank Balance Close of Year	57,371.86
5. Outstanding Checks	0 - -
6. Ledger Balance Close of Year	57,371.86
7. Account Receivables	0 - -
8. Account Payables	0 - -
9. Actual Balance Close of Year	\$ 57,371.86

ROCKCASTLE COUNTY BOARD OF EDUCATION MT. VERNON ELEMENTARY CONSTRUCTION FUND FINANCIAL STATEMENT Year Ending June 30, 1990

1. Ledger Balance Beginning of Year	\$1,220,547.93
2. Total Receipts	2,814,182.50
3. Total Expenditures	2,897,252.41
4. Bank Balance Close of Year	1,139,617.82
5. Outstanding Checks	2,139.80
6. Ledger Balance Close of Year	1,137,478.02
7. Account Receivables	0 - -
8. Account Payables	0 - -
9. Actual Balance Close of Year	\$1,137,478.02

(Cont. to B-8)

ABSOLUTE

Auction

of
Mr. and Mrs. Edward Carroll's
HOUSE and LOT
and
PERSONAL PROPERTY / ANTIQUES

Saturday, September 1st, 1990 - 10:30a.m.

Crab Orchard, Kentucky

LOCATION
Main Street
Crab Orchard
Kentucky

Mr. and Mrs. Carroll are moving to an apartment on Lakeshire and have authorized our firm to sell their property for the absolute High bid.

The well located beautiful 1 1/2 bed room, 2 1/2 bath home, a large East In Kitchen, Family Room that could be used for a bedroom, and Bath. It also has Automatic Water Hookup, A fireplace, Built In Kitchen Cabinets, 2 Stove, Dish and Sink, etc. Home in excellent condition, the work and overall. It is also on City Water and Sewer.

The house is situated on a large spacious lot fronting on U.S. 150 in the jurisdiction of Kentucky 29 miles from approximately 110-400. It has a nice concrete driveway of 810 ft.

PERSONAL PROPERTY: Whirlpool console piano, Dunbar Puffy Couch, Spanish Couch, coffee table, with ottoman, gold table, cherry table, large dining table, "Seavels" bed, brand new refrigerator, excellent condition. 1 floor, central heating Electric Range, the new, very unusual cabinet with built in microwave and two drop in. Dining Room table with chairs, brand new "Solid Shans" oak table with ball and claw feet and orange legs, small round table, "bed table" 2 dining chairs, very unusual oak and mahogany medicine cabinet, and picture frames, wash stand with bowl and pitcher, Montgomery Ward floor model color TV, Old gas chair, World Court chair, 1000 BTU air conditioner, 2 floor drains, floor lamp, rug and blanket, "dining chair" and other miscellaneous items.

INTERESTERS NOTE: If you are in the market for a well located piece of property in the heart of Crab Orchard, be sure to attend this auction. Remember, it is an absolute auction, the bid will buy!

TERMS: 20% down day of sale, balance in 30 days with delivery of deed on real estate and cash or good check, day of sale on personal property.

For additional information contact: REF. # FA03190

Ford Realty & Auction Co.

Heated exchange over cable T.V. at Crab Orchard council meeting

Crab Orchard Police Chief Clarence Brown had to step in at the August city commission meeting to calm what was becoming a heated exchange.

This time the issue was cable television.

Roger Pitman, representing Green River Cable, was asking the city to grant his firm a franchise to serve Crab Orchard homes.

Johnny Wilcox of Broadhead, whose cable firm has had the city to itself for 11 years, objected, saying that service deteriorates when two firms try to serve the same area.

Millard Harris, a city commissioner, and Pitman got into a verbal

fight over the wisdom of having two cable franchises and Pitman accused Harris of "having his cups sugared" by Wilcox.

"I'll bust your damn mouth," Harris told Pitman.

Upon that statement, the police chief decided to step in and break up the discussion.

Pitman, who operates Green River Cable Company in Rockcastle County, left with the assurance that the city will check with Wilcox, Eddie May, to see whether it can award two franchises for cable television.

A U.S. Supreme Court case has declared illegal the practice of awarding two franchises but Wilcox told the commission on Monday night that his exclusive contract was still binding.

The cable issue supplanted junk as

the hot topic at the Crab Orchard City Commission this month. In July, a heated exchange between residents and the commission over a proposed law to clean up unsightly yards prompted Police Chief Brown to calm the crowd.

The junk law debate was more sedate this month.

Mayor Marjorie Bunch said that the city had attorney May review several ordinances concerning public nuisances and his advice was that while such laws are within the city's power, they are hard to enforce.

She said that May outlined several potential problems with nuisance ordinances like the one passed in Stanford in July.

Among May's worries about such a law are defining a nuisance, enforcement of any law that prohibits nuisances and deciding who pays the bill if the city corrects a nuisance.

Mrs. Bunch said the city will take a look at its existing laws governing high weeds and other nuisances to see if it might be improved.

Alvina Baker, who has pushed the commission to adopt a law similar to Stanford's, chastised the commissioners and mayor for not attempting to clean up and improve the city.

"You have to want to do something or nothing will get done," she told the commissioners.

Mrs. Bunch said the city commission would be working on improving its existing weed law in the coming weeks and months.

Financial Report (Cont.)

ROCKCASTLE COUNTY BOARD OF EDUCATION EARLY CHILDHOOD AND EHA PART B GRANT FUND FINANCIAL STATEMENT Year Ending June 30, 1990

1. Ledger Balance Beginning of Year			
Early Childhood	\$ 2,552.92	(\$ 399.15)	
EHA Part B	(2,952.07)		
2. Total Receipts			122,604.00
Early Childhood	33,740.00		
EHA Part B	88,864.00		
3. Total Expenditures			126,988.82
Early Childhood	36,317.83		
EHA Part B	90,670.99		
4. Bank Balance Close of Year			1,062.80
5. Outstanding Checks			5,846.77
6. Ledger Balance Close of Year			(4,783.97)
Early Childhood	(24.91)		
EHA Part B	(4,759.06)		
7. Account Receivables			- 0 -
8. Account Payables			- 0 -
9. Actual Balance Close of Year			(\$ 4,783.97)
Early Childhood	(\$ 24.91)		
EHA Part B	(\$ 4,759.06)		

ROCKCASTLE COUNTY BOARD OF EDUCATION UPPER CUMBERLAND SPECIAL EDUCATION COOPERATIVE GENERAL GRANT PROGRAM FINANCIAL STATEMENT Year Ending June 30, 1990

1. Ledger Balance Beginning of Year	\$ 28,578.08	
2. Total Receipts	74,502.00	
3. Total Expenditures	101,980.08	
4. Bank Balance Close of Year	1,100.00	
5. Ledger Balance Close of Year	1,100.00	
6. Account Receivables	- 0 -	
7. Account Payables	1,100.00	
8. Actual Balance Close of Year	\$ - 0 -	

ROCKCASTLE COUNTY BOARD OF EDUCATION UPPER CUMBERLAND SPECIAL EDUCATION COOPERATIVE AREA PROGRAM CONSULTANTS FINANCIAL STATEMENT Year Ending June 30, 1990

1. Ledger Balance Beginning of Year	\$ - 0 -
2. Total Receipts	74,688.00
3. Total Expenditures	72,161.48
4. Bank Balance Close of Year	2,526.52
5. Ledger Balance Close of Year	2,526.52
6. Account Receivables	- 0 -
7. Account Payables	2,526.52
8. Actual Balance Close of Year	\$ - 0 -

ROCKCASTLE COUNTY BOARD OF EDUCATION EARLY CHILDHOOD AND EHA PART B GRANT FUND FINANCIAL STATEMENT Year Ending June 30, 1990

1. Ledger Balance Beginning of Year			
Early Childhood	\$ 2,552.92	(\$ 399.15)	
EHA Part B	(2,952.07)		
2. Total Receipts			122,604.00
Early Childhood	33,740.00		
EHA Part B	88,864.00		
3. Total Expenditures			126,988.82
Early Childhood	36,317.83		
EHA Part B	90,670.99		
4. Bank Balance Close of Year			1,062.80
5. Outstanding Checks			5,846.77
6. Ledger Balance Close of Year			(4,783.97)
Early Childhood	(24.91)		
EHA Part B	(4,759.06)		
7. Account Receivables			- 0 -
8. Account Payables			- 0 -
9. Actual Balance Close of Year			(\$ 4,783.97)
Early Childhood	(\$ 24.91)		
EHA Part B	(\$ 4,759.06)		

ROCKCASTLE COUNTY BOARD OF EDUCATION UPPER CUMBERLAND SPECIAL EDUCATION COOPERATIVE GENERAL GRANT PROGRAM FINANCIAL STATEMENT Year Ending June 30, 1990

1. Ledger Balance Beginning of Year	\$ 28,578.08
2. Total Receipts	74,502.00
3. Total Expenditures	101,980.08
4. Bank Balance Close of Year	1,100.00
5. Ledger Balance Close of Year	1,100.00
6. Account Receivables	- 0 -
7. Account Payables	1,100.00
8. Actual Balance Close of Year	\$ - 0 -

ROCKCASTLE COUNTY BOARD OF EDUCATION UPPER CUMBERLAND SPECIAL EDUCATION COOPERATIVE AREA PROGRAM CONSULTANTS FINANCIAL STATEMENT Year Ending June 30, 1990

1. Ledger Balance Beginning of Year	\$ - 0 -
2. Total Receipts	74,688.00
3. Total Expenditures	72,161.48
4. Bank Balance Close of Year	2,526.52
5. Ledger Balance Close of Year	2,526.52
6. Account Receivables	- 0 -
7. Account Payables	2,526.52
8. Actual Balance Close of Year	\$ - 0 -

Cont. to Pg. B-9

864-2218 864-2218 864-2218 864-2218 864-2218 864-2218

Starting at \$15.95 per day

U-SAVE AUTO RENTAL

- Fast Service
- Clean Cars
- Bargain Rates
- 12 Passenger Vans
- Conversion Vans
- Luxury Cars

50 FREE MILES PER DAY

located at **BANNER** BUICK-PONTIAC-GMC-JEEP-EAGLE

2001 N. Main-St. • London, KY

864-2218 864-2218 864-2218 864-2218 864-2218 864-2218

Traveling Southern Kentucky
SEPTEMBER, 1990
Rick Bates
EXECUTIVE DIRECTOR
Southern Kentucky Tourism Development Association
A public service from SKTDA/UK Cooperative Extension Service

FALL FESTIVAL TIME
September is the time of year that kicks off the festival season. In Southern Kentucky, we celebrate everything from Woolly Worms to Chickens! The following is a list of September festivals with more to come in next month's October article. Festivals offer a lot of fun and excitement for the entire family.

- SEPTEMBER 1 -
Looking Back Reunion - Cooperative Mining Camp/McCreary County.
The reunion of area coal miners and families offers crafts, photo displays, and gospel and bluegrass music. Call Jan Cuyler: 606-376-2466.

- SEPTEMBER 1 -
Monroe County Watermelon Festival - Tompkinsville.
Includes a 5K run, antique car show, crafts, greased melon carry and other watermelon contests, square dancing and the "Holley-Hole" Marble Tourney, an old-fashioned game unique to this area of Kentucky-Tennessee. Call Myra Herten: 502-487-5504.

- SEPTEMBER 1 - 3
Adair County Bell Pepper Festival - Columbia.
Includes a car show, flea market, arts and crafts, quilt shows, pepper exhibits, antique tractor show, parade, bed race and horse show. Call: 502-384-6020.

- SEPTEMBER 3 -
Fall Arts & Crafts Festival - Monticello/Wayne County.
In Memorial Park (8 - 5). Includes a 10K run, crafts, car show and entertainment. Call: 606-348-8473.

- SEPTEMBER 6 - 8 -
Old-Fashioned Trading Days - Williamsburg/Whitley County.
Offers fine Appalachian arts and crafts, antique and custom car show, 8K run, gospel music and bean supper. Call Theresa Estes: 606-549-2285.

- SEPTEMBER 7 - 8 -
Garrard County Tobacco Festival - Lancaster/Garrard County.
Features a crafts and antique fair. Call Phillip Stump: 606-792-3491.

- SEPTEMBER 9 -
Original Kentucky Fried Chicken Restaurant - Corbin/Laurel County.
Join in the Grand Opening of the newly-restored restaurant and museum. Colonel Harland Sanders would have been 100 years old on this date. Open to the public after 11:00 a.m. Call Ken Harvey: 606-878-6900.

- SEPTEMBER 22 - 29 -
Casey County Apple Festival - Liberty/Casey County.
See the World's Largest Apple Pie (3,000 pounds). Numerous contests, parades and many other non-apple events. Call George Wolford: 606-787-6747 or 606-787-6541.

- SEPTEMBER 27 - 30 -
World Chicken Festival - London/Laurel County.
Inaugural festival in the home of Kentucky Fried Chicken. Celebration includes parades, rides, contests, crafts, flea market and entertainment. Call: 606-878-6900.

- SEPTEMBER 29 - OCTOBER 8 -
McCreary Festival - Whitley City/McCreary County.
Features quilt show, lumberjack competitions, crafts, entertainment, talent fest, parade and charity auction. Call: 606-376-5004.

Most information taken with permission from the Kentucky Department of Travel Development's 1990 Calendar of Events. All information is subject to change. Contact phone numbers can confirm dates and provide additional information. Be sure to verify information before traveling.

For your free Kentucky Calendar of Events, call 1-800-225-TRIP

Miller receives good audit from state office

The office of Rockcastle Circuit Court Clerk Denver Miller had receipts of \$404,095 and disbursements of \$441,939 for the fiscal year ending June 30, 1989, according to an audit reported from the office of State Auditor Bob Babbage.

The audit shows that Miller invested funds to earn \$6,326 in interest income.

The Babbage report recommends that outstanding checks over six months old be written off in accordance with the Circuit Court Clerk Accounting Manual.

The report further recommends that cash receipt tickets and checks include the appropriate case number.

The audit shows that Miller collected \$27,511 in licenses and fees including \$24,791 for drivers licenses and \$2,116 for civil filing fees.

In the area of court costs, fines and court costs and other, the audit shows \$105,037 was collected for criminal, traffic fines and costs; \$17,425 for the state jail fund; \$7,390 for DUI service fees, and \$3,500 from alcohol intoxication fines.

A total of \$186,018 was collected by the office for third parties such as bail bonds, alimony, support and county jail fees.

The clerk's office had a balance at the end of the year of \$111,207.

The report explains that since the implementation of the Judicial Amendment in 1978, the fiscal responsibility of the circuit court clerk

has been to account for assets received by the clerk for and disbursed to individuals, private organizations and other government units.

"The loss of Federal Revenue Sharing programs has forced many units of local government to look for alternate ways to meet their budgets and to continue to provide established services," Babbage said.

Investing all possible funds into interest earning accounts is one option many counties are using to enhance their revenues, he noted.

"The public demands accountability from their elected officials and for the use of their tax dollars. One of the major assignments of the Auditor's office is to review the use of public funds and do all we can to ensure that Kentucky taxpayers' dollars are used wisely and honestly," Babbage said.

Noting that many county governments in the state use the state auditor's report as a planning and budgeting guide, Babbage said that up-to-date information is essential.

"Our office is at current status with all county audits for the first time in years," Babbage said.

Babbage created a new division in the Auditor's office, the Public Integrity Unit, in keeping with his program theme of "Erase Waste".

In over two years of operation, the unit investigated several allegations of fraud and mismanagement, several of which have been brought to trial.

Financial Statement (Cont.)

ROCKCASTLE COUNTY BOARD OF EDUCATION ECIA CHAPTER 1 & CHAPTER 1 HANDICAPPED GRANT FINANCIAL STATEMENT Year Ending June 30, 1990

1. Ledger Balance Beginning of Year		\$ 2,713.92
Chapter 1	\$ 4,635.64	
Chapter 1 Handicapped	(1,921.72)	
2. Total Receipts		512,623.00
Chapter 1	512,623.00	
Chapter 1 Handicapped	- 0 -	
3. Total Expenditures		532,032.00
Chapter 1	529,611.22	
Chapter 1 Handicapped	2,421.28	
4. Bank Balance Close of Year		5,000.00
5. Outstanding Checks		21,695.98
6. Ledger Balance Close of Year		(18,695.58)
Chapter 1	(12,352.58)	
Chapter 1 Handicapped	(4,343.00)	
7. Account Receivables		17,218.00
Chapter 1	15,000.00	
Chapter 1 Handicapped	2,218.00	
8. Account Payables		- 0 -
9. Actual Balance Close of Year		\$ 522.42
Chapter 1	\$ 2,647.42	
Chapter 1 Handicapped	(2,125.00)	

ROCKCASTLE COUNTY BOARD OF EDUCATION SCHOOL FOOD SERVICES PROGRAM FUND FINANCIAL STATEMENT Year Ending June 30, 1990

1. Ledger Balance Beginning of Year		\$ 330,884.05
2. Total Receipts		638,252.34
3. Total Expenditures		709,844.38
4. Bank Balance Close of Year		109,457.51
5. Outstanding Checks		165.50
6. Plus Certificates of Deposit		150,000.00
7. Ledger Balance Close of Year		259,292.01
8. Account Receivables		86,852.00
9. Account Payables		100,000.00
10. Actual Balance Close of Year		\$ 246,144.01

I CERTIFY THAT ALL LISTED FINANCIAL STATEMENTS IN THE NAME OF THE ROCKCASTLE COUNTY BOARD OF EDUCATION ARE TRUE AND ACCURATE.

August 15, 1990
Date

Richard L. Bray
Richard L. Bray, Treasurer
Rockcastle County Board of Education

Name of Depository: The Bank of Mt. Vernon
Mt. Vernon, KY 40456

This is to certify that the balance to the credit of the Rockcastle County Board of Education for the following accounts on June 30, 1990 are as listed:

General Fund Account	\$ 758,546.59
Capital Outlay Fund Account	\$ 92,468.37
School Facility Construction Escrow 1987 Fund Account	\$ 57,371.86
Mt. Vernon Elementary Construction Fund Account	\$1,139,617.82
Early Childhood & EHA Part B Grant Account	\$ 1,052.80
Upper Cumberland Sp. Ed. Coop. General Grant Program Acct.	\$ 1,100.00
Upper Cumberland Sp. Ed. Coop. A.P.C. Account	\$ 2,526.52

8/23/90
Date

Murrell James
Signature & Title of Depository Official

Sworn to and subscribed before me this 23rd day of August 1990.

Janice J. Yelton
Notary Public, State of Kentucky

My commission expires: 5-3-92

Name of Depository: Citizens Bank
Brodhead, KY 40409

This is to certify that the balance to the credit of the Rockcastle County Board of Education for the following accounts on June 30, 1990 are as listed:

ECIA Chapter 1 & Chapter 1 Handicapped Grant Account	\$ 5,000.40
School Food Services Program Fund Account	\$ 109,457.51

Aug 23 1990
Date

Walter Cook Assistant Vice President
Signature & Title of Depository Official

Sworn to and subscribed before me this the 23rd day of August 1990.

Walter Marie Hacker
Notary Public, State of Kentucky

My commission expires: 5-18-92

TREMENDOUS MARK DOWNS

Hiatt's 5 & 10

CLASSIFIEDS

CLASSIFIED RATES
 Local Rates - 10c per word, minimum \$2.50
 Cards of Thanks - 5c per word, minimum \$2
 In Memorials - 5c per word, minimum \$2
 Display Classifieds - \$2.80 per inch, min. \$4
 (Deadline for classifieds is noon Tuesday)
 Classifieds paid in advance, if classifieds are billed, there is a .50 cent billing charge

Property FOR SALE

For Sale: 56 acres near Broadhead at Fossum Kingdom. Approximately 20 acres in pasture land with pond and creek. 600 pound tobacco base, ideal for private lake. Call 758-8800. 18xmf

For Sale: By owner, Dixie Boone Motel and apartments. Will accept home trade in. Located 1 1/2 mile south of Renfro Valley. Call 256-2444. 20xmf

For Sale: 150 acre farm on Crooked Creek. 35 acre bottom tractor land, 1100 plus tobacco base, balance heavy timber, coal, possible oil, water by creek. Great for development. Has historic log house and six room stuccoed house, tobacco barn, utility barn and other out buildings. Call 256-5594 or 513-236-7164 evenings or weekends. 43x4p

For Sale: House and outbuilding, situated on 18.093 acres. Located on Red Hill Rd. or State Rd. 1955, 3 miles from Livingston. Call weekdays, 689-7096 or weekends, 453-4621. 42x4p

CHECK IT OUT IN THE CLASSIFIEDS!

CENTRAL SCRAP OF Berea • 986-1185
 High Prices... Fast Unloading... Honestly!

RECYCLE FOR CASH

Aluminum Cans35—40
Copper72—.82 & Up
Brass & Radiators41 & Up

HOURS: Monday-Friday 9:5-3:30; Saturday 9-1:00
 (Just 1/2 Miles West of Exit 76 (I-75) on Highway 21, Berea)

Mahaffey's Sporting Goods
 U.S. 25 North of Mt. Vernon • 256-9699

- Carrying a Whole NEW Line of Zoom and Spoiler Bait
- All Live Bait • Boating Supplies • Life Jackets
- Black Powder Supplies • Ammo
- We Are Now Carrying Hawkin CVA's
- Complete Line of Archery Supplies
- We Have Hunting and Fishing Licenses

Hensley's Used Cars
 Salt Petre Cave Road
 Hwy. 1004, Rt. 2
 Orlando, Ky.
 Evenings 256-9481 Days 256-4777

CHECK OUT THESE GREAT CAR BUYS!

- 88 PONTIAC 6000, 4 Dr., Auto, Air, Nice! Only \$5995
- 87 BUICK SKYHAWK WAGON, Loaded, 40,000 Miles, Like New!
- 86 OLDS CIERA STATION WAGON, Auto, Air, 6 Cylinder, Nice!
- 86 FORD TEMPO, 4 Dr., Auto, Air, Stereo, Tilt, \$3995
- 86 CHEVY MONTE CARLO, V8, Auto, Loaded, 48,000 Miles!
- 85 FORD MUSTANG GT, T-Tops, V8, Loaded, Sharp!
- 84 PONTIAC SUNBIRD, Auto, Air, AM/FM Tape, \$2495
- 83 BUICK REGAL LIMITED, 2 Dr., Loaded, Like New!
- 83 CHEVY CITATION, 4 Dr., Auto, Air, \$1495

AND OUR TRUCKS, TOO!

- 88 FORD RANGER XLT 4X4, Air, Tape Deck, Low Miles, \$6995
- 89 GMC S15, Auto, Air, Low Miles, \$6995
- 87 CHEVY S10 TAHOE, Auto, Air, Like New, \$5995
- 86 CHEVY 1/2 TON, Auto, V8, Sharp, \$6995
- 86 CHEVY BLAZER S10 4X4, V6, Auto, Air, \$7995
- 84 FORD BRONCO, Auto, Air, Sharp!
- 83 FORD RANGER XLT 4X4, V6, Only 39,000 Miles

Dwayne's Cars & Trucks
 U.S. 25 North on the Strip in Berea
 (Across from Delta Gas) • 986-8489
 OPEN SUNDAY 1 to 5, DAILY 8:30 to 6:00

For Sale: 3 acres with a 12x60 ft. mobile home, accompanied with a large storage house and add on room (12x14), home is heated by wood and gas. Call 758-9841 or 758-4915.

Miscellaneous FOR SALE

The Old Country Shop: Od kitchen cabinets, trunks, small work tables, oak and maple rocker, drop-leaf table, country dishes, good used clothes. US 25 north, Conway, Ky. 23xmf

For Sale: Half-blood limousine cattle. 758-8181. 18xmf

For Sale: Good used refrigerators, ranges, washer and dryers. 256-2626. 28xmf

For Sale: Self-contained camper with stove, refrigerator and bath, sleeps 5. Asking \$950. 355-7364. 44x2

For Sale: Red brick home located on Joyce St., near library. 3 bedrooms, living room, kitchen and bath. Large end room can be used as extra bedroom, dining room or family room. Utility room, washer/dryer hook-up and fuel oil heat. 1 1/2 x 12 storage building. Large spacious lot. \$40,000. 256-3341. 43x4

For Sale: Peavy PA, with covers, 2 Shure mics, 2 mic stands, 2 speaker stands. Call 758-8903, 758-9433 or 256-3006. 43x4p

For Sale: Two wedding gowns, size 13 and 16, 5 bridesmaids dresses, royal blue. 256-4539.

For Sale: Hay. Mostly Fescue. Large square bales. Very few weeds. \$1.25 per bale or \$1.00 if you take it all. 1000 bales available. Call (606) 865-2235. J.R. Thompson, Salvisa, Ky.

For Sale: White twin canopy bed with springs and mattress. \$100. Call 256-4796. 45x2

For Sale: 20 gallon aquarium and light. \$20. Call 256-4796. 45x2

For Sale: Large metal office desk. \$35; two ton flat bed GMC truck. \$800. Call 256-3675.

For Sale: New Holland 718 one row Silage chopper. Two farm hand silage wagons (rear unloading) forty ft. Kewanee Hay and grain Elevator all in good condition.

Mobile Homes FOR SALE

Unbelievable Deal - \$12.75
 Deluxe 1456 sq. ft. home with a 5 year warranty, spacious morning room, cozy fireplace, warm Northern Insulation, master bedroom suite and 2 additional large bedrooms, convenient large kitchen with lots of cabinets. That's right, less than \$12.75 per day. The Affordable Housing Mart 1-75 and Hwy. 80 London 878-0013 or 0014. 44x2

What - \$33.5!!
 That's right! 14' wide, 2 bedroom, Northern Insulation, total electric plus free delivery and set-up - less than \$33.95 per day! The Affordable Housing Mart 1-75 and Hwy. 80 London. 878-0013 or 0014. 44x2

For Sale: 14-70 mobile home, new carpet, all under pinning, all electric hook-ups and plumbing, nice front porch. Plus outbuilding. If interested call Ricky Pittman at 758-9224. There is a place for a wood burner. Trailer has to be moved. 45x2

Only One Left!!
 Super deluxe 28x52 with over 1300 sq. ft. of glamour, skylight, fireplace, plush carpet, all drywall and much, much, more. Was \$33,900 now only \$29,995 while this home lasts. See or call the Affordable Housing Mart of Richmond 1-75 at Exit 90 located between Western Sizzlin and Best Western Motel 624-0200.

Summer Clearance
 All 1990 single wide reduced till there gone. Must make room for fall inventory. No reasonable offer refused. Free gifts with home purchased. See or call the Affordable Housing Mart of Richmond 1-75 at Exit 90 located between Western Sizzlin and Best Western Motel 624-0200.

Call Classifieds to 256-2444 by noon Tuesday

WOULD YOU?

1. Like to earn \$20,000 to \$60,000 per year?
2. Like to work for a 60-year-old company?
3. Like to have some established accounts and sell within a 30-mile radius of your home?
4. Like free major medical benefits provided for you and your family and other fringe benefits? (must qualify)
5. Like to talk about joining me and others who are enjoying all of the above?

Call:
 (502) 781-7270 from 8:30 a.m. to 12 Noon or from 12 Noon to 6 p.m.
 Call (502) 749-5404.
 Ask for Ronnie Taylor, Agency Assistant Vice President.
 Must Have A&H and Life License.

HELP WANTED

*Manual Labor for Special Task Force
 *Possibly lasting 1-3 Days
 *Will commence when Special Task Force is sufficiently established.
 *Compensation Negotiable
 *For information, contact the undersigned:

WAYNE CLARK
 216 Collins Ct.
 Louisville, Ky. 40214
 (502) 361-4255

\$400 REWARD

Reward of \$200 for information leading to the arrest and conviction of person or persons that desecrated venerated objects (tombstones) in a cemetery on Brush Creek near Climax, Ky. Additionally, a \$400 Reward will be paid immediately to person or persons upon being finding/recovery of the original tombstone containing William Abney's name and military inscription. Contact:

WAYNE CLARK
 216 Collins Ct.
 Louisville, Ky. 40214

Motor Vehicles FOR SALE

For Sale: 1986 Pontiac Grand Am, one owner (lady), fully equipped, excellent condition. Priced to sell. 256-2058. 45x2

For Sale: 1976 Chevrolet pickup truck, automatic, power steering, good condition, runs good, priced at \$1,000, also a 1974 Nova, automatic, runs good, \$500. 758-8534 or 758-8863.

For Sale: 1987 Chrysler Lebaron, AC, power windows, power door locks, AM/FM cassette, sun roof, 44,000 miles, new tires, great looking, great driving car, \$6,500. Call 256-9326 or 758-8545.

For Sale: 1987 Chevrolet Celebrity Europort, 61,000 miles. Blue Book \$5,300, only \$3,800. Call 256-5476. 44x2

For Sale: Dump truck, 1975 International. Call 256-5402 or 256-3976. 19xmf

FOR RENT

For Rent: Furnished apartments at Dixie Boone Motel. 256-2444. 27xmf

For Rent: Trailer lot in town. Good location. Call 256-2318 after 5 p.m.

For Rent: Moore house on Bringle Ridge. \$100 per month in advance. No dogs, no cats, no chickens. DA Robbins. 45x3

Classified Advertising Deadline is Noon Tuesday

HELP WANTED
SPECIAL EDUCATION TEACHER
 Immediate opening for special education teacher serving southern Madison, Rockcastle and part of Lincoln Co.

Responsible for planning and conducting educational programs and intervention strategies for parents and children enrolled in the parents or teachers program. Individual will enhance the growth potential of the client by planning programs that meet their needs. Qualifications: BS degree in special education, occupational or physical therapy or equivalent combination of education and experience, plus 2 years working with special needs children. Able to work as a team member - self-motivated and able to work with daily minimum supervision. If qualified and interested, submit a resume by Sept. 6, 1990 to
Director of Personnel, 2996
Christian Appalachian Project
 322 Crab Orchard Rd.
 Lancaster, Ky. 40446

EOE M/F/H/V

HELP WANTED

THE ROCKCASTLE AMBULANCE SERVICE
 WILL BE ACCEPTING APPLICATIONS FOR A FULL-TIME EMERGENCY MEDICAL TECHNICIAN (EMT) UNTIL SEPT. 7

Ideal candidate will have pleasant personality, good character, be able to work well with people, be able to work in stressful situations, be in good health, have ability to lift heavy loads, be willing to work as needed with some nights, response time of 5 minutes or less on first outing, high school graduate or have GED, must have Ky. driver's license and safe driving record, have current Ky. EMT Certification or be willing to obtain within 6 months of date of hire, preferably have thorough knowledge of all sections of Rockcastle Co., preferably be over age 21. Salary arranged will be \$4 to \$5 hour.

Applications are available at ambulance building between 7 a.m. and 3 p.m. M-F.

No Down Payment
We Build On Your Lot

New 3 bedroom ranch, energy efficient, brick home w/2 full baths. Fireplace, central heat and air, vaulted ceiling, Dish-washer, RANGER V8/W carpeting, skylight, conventionally built on crawl space w/22' porch. Over 1500 sq. ft. for only \$44,900. Basements and garage available.

You do only the painting.

SO YOU AREN'T BELIEVING THIS ABOUT THE QUALITY AND PRICE-THERE'S MORE

Thermopane windows, Marble vanity tops, Oak cabinets, Colonial doors, Walk-in closets - Two in the 13'x17' Master bedroom, textured ceilings, maintenance free vinyl gable and overhang with a 50 year factory warranty, All quality construction grade lumber. Full 1/2" pad under high quality carpet.

Thirty-one years of reliable construction and experience has delivered in excess of 4200 housing units for thousands of satisfied customers. Call today to discover more about superb quality at an affordable price.

Just Call Us At
TAYLOR BUILDING CORP.
 606-238-0642 or 502-582-1800 or 502-228-1973

WANTED
Wanted: Will do housecleaning or babysitting. Have references. Trustworthy and dependable. 758-9843 anytime. 45x2

HELP WANTED
Help Wanted: Would like to have someone stay with elderly lady in my home, willing to pay \$400 a month. Call 758-8596 after 6 p.m. 43xmf

Help Wanted: Rockcastle County Senior Citizens will accept applications for a site manager position at Mt. Vernon until September 6 at 3:00 p.m. Applications can be obtained at the Mt. Vernon Senior Center. Wage, minimum for 6 hours per day.


Help Wanted: Experienced four-handed expanded duties dental assistant for Richmond Office. Phone 623-1700 ask for Glenda. 45x2

Check out the yard sales in the Classifieds!



For Sale: 1984 Buick Century Ltd., AM/FM/AC, tilt wheel, re-built motor and transmission, good car. \$1995. Call 758-8545 or 256-9526.

"Let me analyze your insurance needs with a free Family Insurance Checkup."


Bill Bailey, Agent
Church St. - Mt. Vernon
256-2119

State Farm Insurance Companies
Home Offices: Bloomington, Illinois
CALL ME.
Like a good neighbor, State Farm is there.

Federal-State Market News
Garrard County Stockyards
Lancaster, Ky.
Aug. 24, 1990

Cattle 1157 Compared to Last Week: Slaughter cows steady 1.00 lower; Slaughter Bulls steady 1.00 higher; Feeder Steers Fully 3.00 lower; Feeder Heifers 2.00 lower; Slaughter Calves and Vealers unlisted.
Slaughter Cows: Breaking Utility and Commercial #3-5 50-55.25; High Cutter and Boning Utility #1-3 53.50-59; Cutter #1-2 47-53.25; Canners 42.50-49.50.
Slaughter Bulls: Yield Grade #1-2 1475-1830 lbs. indicating 79-80 carcass boning percent 68.75-73.50; Yield Grade #1-2 960-1690 lbs. indicating 77-78 carcass boning percent 57.75-67.75.
Feeder Steers: Medium and Large Frame #1 300-400 lbs. 101-110; 400-500 lbs. 96-105.50; 500-600 lbs. 91.75-98; 600-700 lbs. 85-89; 700-800 lbs. 81-83.50; 800-900 lbs. 77-81.80; 62 head 813 lbs. 81.80; Small Frame #1 300-500 lbs. 85-94; 500-700 lbs. 77-83; Large Frame #2 (Holsteins) 250-400 lbs. 96-103; 400-550 lbs. 85-92.50; 500-700 lbs. 72-80.25.
Feeder Heifers: Medium and Large Frame #1 300-400 lbs. 93-97 few 102; 400-500 lbs. 84-91; 500-600 lbs. 81-89; 600-700 lbs. 77.50-86; 700-800 lbs. 76-79; Small Frame #1 300-500 lbs. 80-87; 500-700 lbs. 75-81.
Per Head: Medium and Large Frame #1-2 Stock Cows 2-6 yrs. old with 102 lb. calves by side 790-860; Medium and Small Frame #1-2 Stock Cows 4-10 yrs. old with 100-200 lb. calves by side 500-700.
Medium and Large Frame #1-2 Stock Cows 3-10 yrs. old 410-640.
Baby Calves: 80-200, Few Weaned 210-310.
PHONE 792-2118
Owners: R.C. Freeman, 734-7460, Manager
Edwin Freeman, Miller Horn III and Don Horn
Asst Mgrs. Earl Smith - 792-2607 Dickie Arnold-925-3471

JC Newland and Son - Paving Contractor (asphalt and concrete) "Blacktop specialist" Phone 758-8473 - free estimates. 34xmf

Do you need drilling and blasting?
KJ. licensed. Fair rates. Call 256-9544 - if no answer leave a message. 43x3p

Remodeling-Painting-Drywall. Call after 5 p.m. 256-5738. 42x4p

Fun Fitness Affordable, too!
Clogging Classes \$2.00 per lesson. Reg., inter., and adv. Tues. - Thurs. 6:30 to 9:30
Helen Neal, instructor. 355-7464
County Line Cloggers

Crab Orchard Scrap Metal: Main St. Crab Orchard, Ky. Now paying .40 to .45 cents per pound for aluminum cans. \$2.10 to 2.35 each for batteries. Phone 1-355-2644.14xmf

YARD SALES
Yard Sale: Friday and Saturday, 8 to 2, baby, maternity and toddler clothes, jeans, bedspreads, toys and much more. Straight up hill from Trinity's Market, home of Ritsie Gentry. Cancelled in case of rain.

Yard Sale: 5 families. Saturday, September 1, 9-30 to 2 p.m. at the home of Bobby Kendrick on Langdon St. behind First Baptist Church. Children, teen and adult clothing, misc. and furniture.

Yard Sale: Saturday, September 1, 8 til 7 Empty lot beside Farm Bureau. Lots of children's clothes, baby shoes, baby swing, walker, car seat, two maternity dresses, lots more. Cancel in case of rain.

Yard Sale: Back to school sale. Saturday, 9 to 1, home of Sue Hamm on Hwy. 1250.

Call classifedts to 256-2244

Traders Mill Outlet Flea Market is now called
Ky. Mill Outlet at Conway
OPEN FRIDAY, SATURDAY AND SUNDAY
We have Ceramics, Frog Skin Purses, Guns, Knives, Tools and much more. Open Monday Sept. 3, Labor Day!!
Owned and Operated by Oscar and Barbara Gregory
We invite every to come by and browse - Dealers Welcome
To Rent Booths - Call 256-3689

Madison Termite and Pest Control
Call Paul Burton 256-2318
Mt. Vernon - Day or night
STOP
TERMITES ROACHES WATERBURGS

Don't Call Strangers, Call Us!!!
Eaton's Wrecker Service
Central Body Service
256-4210

David's Tire Center and Wrecker Service
Now Open at New Location
2-1/2 Miles West of Mt. Vernon on Highway 150
Large Selection of Foreign and Domestic used Auto Parts

Big selection of Used Tires & Recaps Sizes 13", 14", 15", 16", 16.5" & Used Truck Tires
24 Hour Wrecker Service
"Big or Small - We Tuo Them All"
Days 256-4606 Nights 256-3573
David Thompson - Owner & Operator

Yard Sale: Home of Cleidis Baker, Countryside Estates, across from Plastics Factory, boys clothes, 2 to 8; dishes, Tredle sewing machine; coffee table; exercise bike; lots of other items. Friday and Saturday.

Yard Sale: 4 families. Baby clothes, women clothes of all sizes, books and misc. free items, free puppies, located at the old Conway Garage. Saturday and Monday, 9:30 to 7 Sunday, 2 to 7

Yard Sale: Several families, Saturday, September 1, 9 to 7 Lots of clothing, all sizes; misc. items, home of Rose Taylor on Newcomb St.

Yard Sale: Saturday, September 1, 9 to 3, 3 families off Hwy. 70 in Willowlita Gr. 4th house on right across from Fairview Church. Various items include clothing, big men's, misses, some baby clothes, curtiains, kitchen items, and much more.

Yard Sale: 5 families, Friday and Saturday, 9 to 4 at Claris Denney's on 461. Children's winter coats and clothes. Antique jars and lots more.

Basement Sale: 5 families, boys and girls, baby clothes; 2 color tv's; new VCR; electric typewriter; Home Interiors; icebox; Victrola with records; shadow box; antique buffet; iron bed; Thursday, Friday and Saturday; 8 a.m. to 8 p.m., rain or shine at home of R.W. and Lena Buston on Chestnut Ridge Rd.

Yard Sale: 3 families, Friday and Saturday, 10 to 6 at Haynes 1 1/2 miles on right off 1004. Good clothing for office or back to school, dresses, pants coats, sweaters, shoes, purses, shirts, children clothing, toys, household items from remodeling. Red outdoor carpet. D50 Dodge camper. You are sure to find something for everyone.

Yard Sale: 3 families, Saturday only Tyree St. in Brodhead.

Yard Sale: at home of Joe Cromer on Hwy. 150 just out of Brodhead. Lots of little girl's dresses, 3 to 4 Saturday.

Yard Sale: Thursday, Friday and Saturday, West Main St. Mt. Vernon.

Yard Sale: Saturday, September 1st from 8 to 10 a.m. Boys clothes, sizes 2 thru 8. Women and mens clothing; bedspreads; curtains; bunk beds; coffee table. 700 many items to mention. Given by Alvanda Fair and Debbie Shafer on T Street in Mt. Vernon.

Yard Sale: Furniture, misc. items at Best Western Motel Friday and Saturday August 31 and September 1st.

Yard Sale: Saturday, September 1st, 9 to 7 First and only yard sale this year. Clothes for all season, 6 long leather blazer, odds and ends. Something for everyone. Glenna and Jerry Brooks, Silver St. Brodhead.

Yard Sale: at home of Mary Ponder, near to high school. Thursday and Friday.

Moving Sale: at the Eaton house on Lovell Court. Twin bed, lamps, pictures, Home Interiors, clothes, misc. items, Saturday, September 1 from 9 to 7

Yard Sale: 4 families at Nicely's Campground, 2 miles south of Mt. Vernon, August 31, and September 1 to 3. Items include lots of boy baby clothes, household items, formal gowns, shoes, clothes, camouflage uniforms, light fixtures and a whole lot more.

NOTICES
Notice: On September 6, 1990 I will sell the following vehicle for storage and repair. 1981 Pontiac Wagon. 1G2AF35A9BP647937. Town and Country Chevron, US 25, Mt. Vernon. 44x3p

Classified Deadline is noon Tuesday

Rockcastle Safe & Lock Co.
Sales - Lock Sales - Service
Combinations Changed
Keying Changed
Master Keying
Gun Safes
DELMAR VANZANT
256-4662 Mt. Vernon

TRANSMISSION SERVICE
ONE DAY SERVICE

• BRAY'S •
TRANSMISSION SERVICE
Since 1970
758-8854
Hwy 70 13 Miles West of Hwy 150
Brodhead, Kentucky

Hysinger Carpet
has many famous brand names and colors to choose from and Armstrong No Wax Vinyl. For all your floor coverings and supplies, visit Hysinger Carpet in Mt. Vernon.
256-5413

Salesman
For Electrolux Vacuum Cleaners. For new cleaners, supplies and service, call
Curtis Bradley
606-758-8584
Brodhead, Ky. 40409

Morgan's Electric
Mt. Vernon, Ky.
RESIDENTIAL and COMMERCIAL
WIRING
Business 256-2400
Home 758-8640

SEPTIC TANKS PUMPED
Gray Construction Co.
P. 256-4301
Junior Gary, Owner
Permit No. 202-3
Mt. Vernon, Ky.

Notice: On Thursday, September 6, 1990, at 10 a.m. I will sell the following vehicle for storage and repair bill. 1986 Camaro. vin 1G1GF87H3G9152120. McClure's Garage, Rt. 1 Mt. Vernon. Phone 256-4062. 44x3

Notice is hereby given that Victor Hysinger, Rt. 4, Box 525, Mt. Vernon, Ky., and Douglas Hysinger, 1510 Day Lane, London, Ky., has been appointed co-executors of the estate of Lucille Livyville Hysinger. Any persons having claims against said estate shall present them according to law, to the said Victor Hysinger or Douglas Hysinger on or before February 18, 1991. 44x3

Notice is hereby given that an order has been entered dispensing with administration of the estate of Elbert O. McNew, deceased. All persons having claims against said estate shall present them, verified according to law, to Sudds McNew, Rt. 2, Box 633, Mt. Vernon, Ky. for said estate, no later than Sept. 5, 1991. 44x2

News and Advertising Deadline is noon Tuesday

POSTED
No hunting or trespassing on land belonging to James Anderkin on Cupps Chapel Rd. (Former Gary Gentry property in Brodhead.) Violators WILL be prosecuted.

ALL IN ONE
Carpentry, Heating, Electric, Plumbing Repairs.
GEORGE GRIFFIN
256-9009

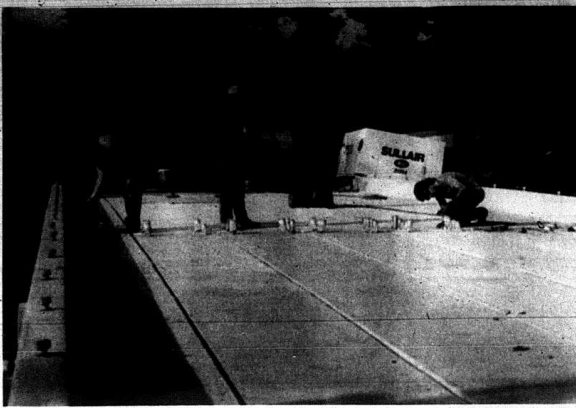
Mid-State Home Improvement
Rt. 2, Box 515
Mt. Vernon
References Ph. 606-256-2723
Therma-Tilt Replacement Windows - Vinyl Siding
Lendis Harding 1-800-541-0914

N & N Contracting
New homes, electrical work, additions, remodeling, all types of concrete work. Backhoe and dump truck service.
256-5936 or 256-2823

Tim's Transmission Service
2 mi. south of Mt. Vernon on Rt. 25
All work guaranteed
Call day or night
256-5637

Septic Tanks or Water Box Parking Blocks
Concrete Steps
Stepping Stones - call
Jack's Hardware
Mt. Vernon, Ky.
256-4353

Jim's Body Shop Used Cars
U.S. 25 South
Mt. Vernon
24 Hour
Wrecker Service
Ph. 256-5510
After 3 p.m. Ph. 256-5329
Insurance Est. Welcome



Work will soon be complete on a new bridge that crosses Dix River near Broadhead. The \$119,600 project will be completed ahead of schedule. The old bridge had been condemned by the State Highway Department for some time.

Tailgating: An All-American Tradition

By Carrie Shugart
PM Editorial Services

The approach of fall, with leaves changing colors and the weather cooling, inspires many people to head for the nearest football stadium. On a crisp autumn day, what could be better? Only the added attraction of a tailgate picnic.

Tailgating is an all-American tradition enjoyed by generations of football fans. The first college football game featured Princeton and Rutgers in 1869, and tailgating couldn't have been far behind.

A tailgate party traditionally involves staking out a parking spot outside the stadium prior to the game. The party is centered around the tailgate of the car (preferably a station wagon or a hatchback), usually with tables and chairs set up alongside. Creative tailgaters often embellish their picnic with decorations commemorating their team. Others endeavor to give their tailgate a unique theme with ornaments, banners or balloons to set them apart from the crowd.

With the exception of good friends, the most important component of a successful tailgate is good food—and lots of it. Some go for relatively maintenance-free eats prepared before the big day such as fried chicken, hoagies, potato salad and chips. One sure hit is the deli-garden sandwich round. To pregame, you'll need:

- 1/2 cup Miracle Whip salad dressing
- 1/4 cup finely chopped, seeded cucumber



Want to kick off football season in style? Plan a tailgate picnic the next time you head to the stadium.

- 1/2 teaspoon dried basil leaves, crushed
- 1 (1 1/2 lb.) round sourdough bread loaf
- 6 salami slices
- 6 green pepper rings
- 6 American cheese slices
- 6 red onion rings
- 6 cooked turkey slices
- 6 red pepper rings

Mix salad dressing, cucumber, basil. Chill. Cut slice from top of bread loaf; remove center of bottom of bread loaf, leaving 1/2-inch shell; discard removed bread. Layer salami, green pepper and half of salad dressing mixture in shell. Cover with cheese, onions and remaining salad dressing mixture; top with turkey and red pepper. Cover with top of bread loaf. Chill 3 hours or overnight. Cut into six wedges to serve.

Other ambitious tailgaters dress the event up a bit with a tablecloth, silver and fresh flower arrangements. They complement the decor with a more elaborate menu, including exotic dips and salads. Others go as far as serving hot foods right from a grill set up

behind the car. Bowls full of steaming hot chili and homemade soups also are real crowd pleasers on a cold autumn day.

Popular beverages at tailgates include soft drinks, hot chocolate or coffee, and beer. And who can forget dessert? Quick pick-me-up desserts are a favorite, especially ones that travel well and serve easily. One delicious choice is chocolate caramel nut bars. To prepare you'll need:

- 1 (14 oz.) bag Kraft caramels
- 1 (5 fl. oz.) can evaporated milk, divided
- 1 two-layer German chocolate cake mix with pudding
- 1/2 cup margarine, melted
- 1 cup Baker's real semi-sweet chocolate chips
- 1 1/2 cups chopped walnuts, divided

Preheat oven to 350 degrees. In medium saucepan, melt caramels with 1/2 cup milk over low heat, stirring until smooth. Set aside. In large bowl, mix together remaining milk, cake mix and margarine. Press half of cake mixture onto bottom of ungreased 13 x 9-inch baking pan. Bake 8 minutes. Sprinkle chocolate pieces and 1 cup of walnuts over crust; top with caramel mixture, spreading to edges of pan. With teapoonfuls of remaining cake mixture, press gently into caramel mixture. Sprinkle with remaining walnuts. Bake 16 to 18 minutes. Cool. Cut into two dozen bars.

Whatever your taste, tailgate picnics are lots of fun. Let's hope you make it into the stadium in time for the kickoff. **H!**

© 1990, PM Editorial Services

Soviets Protest Shortage

Soviets are used to standing in line to purchase everyday goods, but a recent shortage has caused a crisis marked by more than long lines. A chronic cigarette shortage in the Soviet Union has sparked rallies, strikes and even violence.

Official explanations for the shortage include a failure by the Soviet government to satisfy demand, a huge drop in tobacco production due to outdated equipment in desperate need of repair, the closing of plants that are no longer workable, and refusal of laborers to work in tobacco fields without proper equipment.

Ethnic strife in Armenia also has been a contributing factor, as Armenia is the leading Soviet manufacturer of filters. And a shortage of hard currency has led to a decrease of imports. Cigarettes have become a No. 1 item on the black market, with prices rising to at least 10 times the official, state-subsidized prices.

Despite the problems, Soviet officials are promising relief in the near future. **H!**

© 1990, PM Editorial Services

All news items need to be in the Signal office by 4 p.m. Tuesday due to closing on Labor Day.

Don't trash it -- Sell it fast in the Classifieds!

"Learning in America" (Cont. from B7)

kind of climate, less to do with innovations than with values and relationships."

The program makes it clear that a teacher's responsibilities in the classroom go beyond reading, writing, and arithmetic. Teachers often provide students with the structure, or-

Please donate non-perishable food items to REAP.

WE SELL PARTS AND MORE PARTS

for
BUICK, PONTIAC, GMC, CHEVROLET, OLDSMOBILE, CADILLAC, GEO, JEEP, EAGLE, CHRYSLER, PLYMOUTH, DODGE CAR, DODGE TRUCK.

864-2218

"LET ME MAKE THIS PERFECTLY CLEAR..."

Open Saturdays 9 to 5

Mr. Goodwrench

BANNER
London, KY

MT. VERNON

FOODTOWN

Labor Day Sale!

Boneless Whole
New York Strips
Western Grain Fed
Sliced Free
12-14 lb. avg.

2.99

lb. half ... 3.19 lb.
steaks ... 3.99 lb.



Great On The Grill!

Banquet Fried Chicken
28 oz. pkg., reg. only

1.99



Stokely's Catsup
32 oz. bottle

.99



Parkay Margarine
1 lb. quarters

.48



Van Camp's Pork & Beans
16 oz. can

.39



Fischer's Wieners
12 oz. pkg.

.99



Foodtown
Hamburger or Hot Dog Buns
8 ct. pkg.

.49



Shurline
Soft Drinks
12 oz. cans, six pack

24 Cans 3.99



Birds Eye
Cool Whip
8 oz. container, regular or extra cream

.89



U.S. No. 1 All Purpose
Round White Potatoes

.99



2.28

3 for 1

.98

.38

FOODTOWN

With this coupon

Cottonelle
Bathroom Tissues
4 roll pkg.

.99

FOODTOWN

With this coupon

Paper Towels
1 roll pkg.

.79

*****3-DIGIT 405
1842-0000-09/09/99
UNIVERSITY OF KENTUCKY
KING LIBRARY
LEXINGTON, KY 40566

Rockcastle County shows 5% growth

Bike-a-thon is September 8th in Brodhead

Kirby dispatching for county agencies again

Page B-1

Page B-1

Rockets
kick Russell
for 2nd win

Page B-2

Mount Vernon Signal

MOUNT VERNON KENTUCKY 40456

Volume 102 - Number 45

Thursday August 30, 1990

14,000 square foot annex gets approval



Penny Blanton, left, and Anita Hedrick help co-worker Rita McCowan to her car after she was overcome by an odor at Rockcastle Manufacturing Tuesday afternoon. The plant is closed until September 4th.

New structure would be larger than present facility

By: Ray McClure

A new court annex adjacent to the Rockcastle Courthouse has been approved by the Administrative Office of the Courts (ADG), Facilities Unit in Frankfort. The annex will be about 14,000 square feet as prescribed by the ADG and will cost an estimated \$1.3 million. In fact the new building will have more square feet than the present courthouse which contains about 12,000 square feet.

Bids are expected to be taken about the first of the year, according to County Judge/Executive Roland Mullins. It will take about a year to complete. The new annex will allow the county to meet its needs for the next 50 to 60 years, and the building will not cost the county any tax money," the judge said.

Attached to the present courthouse, the building will be accessible to the second and third floors of the courthouse by elevator. First Street, east of the courthouse, will be closed by the city and parking will be partly on recently optioned property owned by Henry Hines and on the city owned lot that extends from the Hines property to Sears.

Judge Mullins confirmed the county will lose "some rent money," during the course move, but noted the Property Valuation Administrators office, the sheriff's office and the county clerk's office are all overcrowded and could use the space that will become available. Also, there is no room now for an office for the county attorney and the county surveyor.

"We will also need space for the solid waste coordinator when one is chosen," the judge continued. The added space could possibly allow us to expand the number of beds in the jail to overcome loss of the rent."

The state and federal government pays the county to house state and federal prisoners on occasion. Guidelines for the court annex was discussed at a meeting last week in Frankfort. Those attending in addition to Judge Mullins were Supreme Court Justice Joseph Lambert, who was instrumental in obtaining the court annex; Circuit Judge Daniel Venters; District Judge William Cain; Circuit Court Clerk Denver Miller and County Attorney James H. Lambert. District Judge Walter Maguire was in court and unable to attend.

There will be public waiting areas; circuit and district courtrooms and trial commissioner room; attorney client conference room; two rooms for witness waiting; secure holding facility; jury assembly room; jury deliberation room; formal and informal Cont. to A-14

Robinson gets 40 years for Lincoln Co. shooting

A Mount Vernon man was sentenced last week in Lincoln Circuit Court to a total of 40 years for the robbery and murder of a Dog Walk store owner, almost two years ago. Steven Dale Robinson, 22, pleaded guilty to amended charges of "wanton murder" and complicity to commit robbery in connection with the brutal murder of Alma Jean Brown.

Lincoln Circuit Judge Robert Jackson sentenced Robinson to 20 years on each charge. The terms must run consecutively and not concurrently, according to Lincoln County court records. Prosecutors in the case say that Robinson will not be eligible for parole until the year 2010.

In his signed guilty plea, Robinson said that he and his brother, Kenneth Wayne Robinson, also of Mt. Vernon, had agreed to rob the store but he didn't know that Mrs. Brown had been shot until after his brother came out of the store where Steven Robinson was waiting in the car.

Don Brown, husband of the murdered woman, told a Lincoln County newspaper that he was satisfied with the plea bargain arrangement, "under the circumstances."

The "circumstances" are Brown's bitter dissatisfaction with the outcome of the trial of Steven Robinson's younger brother, earlier this year and his resulting lack of respect for jury trials. The younger Robinson was the confessed triggerman in the robbery and murder, in which Mrs. Brown was shot five times with a .22 rifle. Kenneth Wayne Robinson testified during his February trial that the two brothers robbed the Dog Walk Grocery store on September 15, 1988 because they needed money to pay for cocaine they had bought on credit.

There is no gas leak but...

Rockcastle Manufacturing closed again

By: Richard Anderkin
Rockcastle Manufacturing is experiencing problems once again. The plant, which plants work uniforms, was shut down Monday and part of the day Tuesday because of an odor that filled the plant and caused several of the employees to become ill.

The odor, could actually be smelled as far away as Main Street in Mt. Vernon.

Some news agencies have reported that there has been a gas leak at the plant, which has been served by natural gas for the past couple of years, but that is not the case, according to Martin McElwee, Director of Engineering for Cintas Corporation, which owns the plant.

On June 6th of this year the plant was shut down for three days after the building was filled with the same odor.

State officials could not find any readings of gas in the plant at that time, nor could they locate any gas Tuesday either.

McElwee said that the odor is an

agent used to scrub the natural gas, which is very high in sulfur. The agent was spilled on the ground and when the wind blows toward the plant and the air conditioning unit picks up the odor and puts it in the plant.

In June the chemical "Alkoxylated Amines" was spilled in two or three different locations, including directly behind the plant.

"At that time we had the gas cut off and we have been using fuel oil at the plant ever since," McElwee said.

"There is no gas leak, because there is no gas to leak," McElwee said. The odor has reappeared again because employees of Rockcastle Resources, which owns the gas wells, were changing some equipment on the wells last week and had to purge the lines going from the wells to the factory.

"When they blew those lines out, the chemical was still in them from June and is now on the ground," McElwee said.

Regardless of what is making employees sick, 16 have been treated

at the Rockcastle Hospital since Monday morning and work there both days.

Many employees of the plant are very disgruntled about the entire situation.

"We can't keep working three

Carner killed in wreck increase in 1989

A Mt. Vernon man was killed and another seriously injured in a one vehicle crash at 1:45 a.m. Wednesday on I-64 in Franklin County.

Dead at the scene was Anthony Wayne Cameron, 26, son of Billy Joe Cameron of Anville.

Treated at Kings Daughters Hospital in Frankfort and transferred to the U.K. Medical Center was Joe Bussell Jr., 23, of Mt. Vernon, son of Willis

Joey and Joyce Bussell. According to State Police at the Frankfort Post, the men were on their way to Indiana to pick up a trailer when Cameron, who was driving, went to sleep ran off the interstate and overturned.

Cameron will be taken to Dowell and Martin Funeral Home where arrangements are incomplete.

Cont. to A-14

Two new workers at PVA's

Two temporary employees who will compile property characteristic data in the county will be hired by Rockcastle Property Valuation

Administrator (PVA) Elmer Hale. The new data will not be used at the present time to change property assessments, according to Hale. However, at some future date the new

Cont. to A-14

Heavy rainfall hits Rockcastle

Two thunderstorms rumbled across Rockcastle Wednesday morning bringing heavy rain, thunder and lightning but little wind, at least at Cox Funeral Home weather station at Mt. Vernon

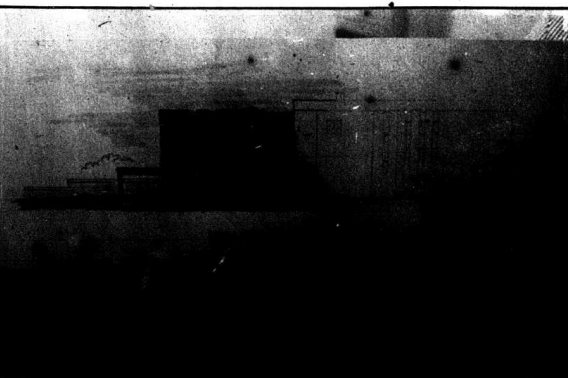
The two storms brought a total of 1.20 inches of rain which increased the total for August to 5.24 inches.

The two storms had progressed across Illinois and Indiana into Kentucky leaving a trail of heavy tornado damage to Chicago area communities.

The first storm came into the county about 7:30 a.m. when .07 of an inch fell. A second storm followed about 9:30 a.m. which brought an added 1.13 inches, and sent streams out of their banks and water over roadways.

With only two days left in the month there may not be more rain after the cold front that followed the storms moved through.

High for the month as of Wednesday was 93 on Aug. 20. The low was 50 on Aug. 7.



Architect's drawing of the courthouse once the annex is built.

New school program for four-year-olds

Thanks to Kentucky's new Education Reform Act, this year, for the first time, Rockcastle County schools will offer a preschool program for four-year-old children.

It is not mandatory that schools participate in this school year (1990-91), but next school year (1991-92) the programs for four-year olds will serve all eligible children.

The new half-day preschool program is free to parents and is designed to help young children become better prepared for success in school.

The school system believes that this is a great program to help most children get a good start in school. Every eligible child is encouraged to enroll, according to Superintendent Blue Tovey Jr.

The program will emphasize play activities, which will help children develop physical, mental, and social skills they need for success in school.

each six children in the program. Food will be provided daily and transportation will be provided to those who request it.

Parent participation and frequent visitation will be encouraged because quality education is partnership among parents, teachers, and children.

Eligible children should be four by October 1st and qualify for free lunch. Other four-year old children will be accepted, at space permits, on a first come, first serve basis.

Children who enroll in the program will need to have a TB test, a physical, a copy of their birth certificate, a copy of their immunization record, and a copy of their social security card on file as their school enrollment records for this program.

Registration for the program will be offered at Rockcastle Elementary and Brodhead Elementary schools.

CARTER'S MARKET

U.S. 25 South • Mt. Vernon • 256-2102
 Open 24 Hours a Day—Seven Days a Week!

WE GAIN BAR FOR THE LONG WEEKEND



Pepsi
 16 Oz. Returnables
\$1.99



Pepsi
 12 Pack Cans
\$2.89

Hanover Pork & Beans
 14 Oz.
3/99¢



Speas Farm Apple Juice
 46 Oz.
\$1.43



Hyde Park Bread
 16 Oz. Loaf
2/79¢

Cousin Willie's Micro Wave Popcorn
 10.5 Oz.
\$1.39

JFG Peanut Butter
 4 Oz.
\$3.69

Apple Leaf Apple Sauce
 25 Oz.
69¢

Hunt's Manwich Sloppy Joe Sauce
 15 Oz.
99¢

Kraft Grape Jelly
 18 Oz.
\$1.29



Wesson Vegetable Shortening
 48 Oz.
\$1.99



Wesson Vegetable Oil
 48 oz.
\$3.19




Charmin Bath Tissue
 4 Roll Pkg.
\$1.35

Good Sense Lawn & Leaf Bags
 39 Gallon
\$1.59



Frito Lay Ruffles Potato Chips
99¢



Tom's Snack Time Candy Bars
 4/\$1⁰⁰

Meat



Ribeye Steak
 1 Lb.
\$4.99

- Fischer's Hot Dogs—12 Oz.—\$1.39
- Fischer's Ham & Cheese Loaf—\$2.89 Lb.
- Fischer's Special Bacon—\$1.59 Lb.

Produce



#1 Idaho Potatoes
 10 Lb.
\$2.39

- Carrots—1 Lb. Bags—2/49¢
- Oranges—4 Lb.—\$1.59
- Cabbage—19¢ Lb.
- Jumbo Celery—59¢

Our Readers Write

Dear Editor:

As I sat alone pondering the news of the recent crisis, created by Iraq's Saddam, I fell into a kind of reverie, thinking of Irving Berlin. His works in the First World War. How utterly different things are now. Berlin was drafted and sent to work in the kitchen. He called his buddies dough-boys. He wrote songs at night and played the piano and sang. He loved the song "Mandy". Eventually he was asked to write a play. He did. It cost \$35,000 to put it on. Fannie Brice and many other old timers played in it.

Now the main horror of war is that it kills or mangles the finest potential doctors, scientists and thousands of the very finest young men and of course, thousands of potential fathers who would bring forth chil-

dren, who make the world grow. I remember the day the First World War was over, 1918, school was let out, the children all went down to Main Street to see the soldiers march through town. First of them carrying a casket, covered with an American flag, the remains of Chester Howard, killed in action.

His mother, aunt Betty Howard was at home ailing from grief. After the marchers were all gone by, I walked home, a very sad child. I thank you sincerely, Margaret Dyhouse 900 Rue De La Paix Apt.#506 Cincinnati, Ohio 45220-1043

P.S. Everyone is invited to write to me.

Dear Family,

This is a letter to all of you who were present at Nina and Murph Cash's home on Aug. 12. Thanks to each of you for the money. It has been put into a fund for Christian. Please pray for us.

Penny and Jim Shibley 202 Sands Ave. Monroe, Oh. 45050

Social Security business can be handled by telephone

Most Social Security business can be handled completely by phone, according to Gerry Hunt, Social Security manager in Richmond.

Social Security's toll-free 800 number telephone service is available now from 7 a.m. to 7 p.m. on weekdays. Appointments for office visits can also be arranged by telephoning Hunt.

The best times to call are early in the morning and late afternoon. And if possible, it is best to call later in the week and later in the month. People calling during those times may find that the telephone service representatives have more time to help. If people have urgent business, however, they should call anytime.

Social Security's toll-free number is 1-800-234-SSA (1-800-234-5772). The Richmond office is located in the University Shopping Center.

Charting Rockcastle

(Cont. From A2)

pose he bought his stock with his own money, so I think McConnell is way off base with his latest accusation. Of course I have never been real sure that McConnell was ever on base. And the truly sad part of all this is that McConnell is probably the best candidate. Of course you have to use the word best, very lightly here.

Saturday night Kentucky Life in Rockcastle County aired on Channel 18 a Lexington based television station.

A good program, but my parents did not buy the newspaper from Col. James Merritt who started it in 1888. I did not say that, but with a little editing of my interview that is what I said. It would have been kind of hard for them to buy it from Col. Marci, since they did not do so until 1966. The Colonel had probably only been dead for about 30 days at that time. What I said, was that they bought it from my Dad's brother in '66.

Committee ready for action if Kentucky Guardmen and reservist activated for crisis

Members of the Kentucky Committee for employers Support of the Guard and Reserve are ready to help with employee relations problems if Kentucky Guardmen and reservists are activated during the current Middle East buildup, according to Edward F. Hessel Jr., state chairman.

The committee, a Department of Defense sponsored organization, is made up of volunteers whose duty is to smooth the differences that may arise between an employer and his citizen soldier employee.

A Reservist/Guardman has an obligation to keep his or her employer completely informed of active duty requirements and time tables. By the same token, the employer has a moral and legal obligation to facilitate the employee's compliance with military requirements", Hessel added.

If a problem arises, the employer should contact the unit of assignment to which the employee belongs. If that fails to clear the problem, he should contact Hessel at (502) 459-1690 or national headquarters at 1-800-336-4390.

Forty-four percent of the nation's defense is made up by the Reserve and National Guard forces.

Genealogy book for sale from county historical society

Wallis J. Clark, Sr. (1802-1875) by Lily M. Clark, 1990.

The family and descendants of Wallis Clark are traced up-to-date. It is family indexed, and easy to use. Includes marriage records, out-of-state cemeteries, and family pictures. Information is compiled from census records, tax lists, wills, and Bible records.

Some surnames: Chasteen, Chesnut, Seals, Stewart, Proctor, Jones, McGuire, Laswell, Bowman and many Clarks.

The book can be bought from Rockcastle County Historical Society, P.O. Box 930, Mt. Vernon, Ky. 40456 - price \$20.00 postpaid or pick up at the Historical Society (Library Center) for \$18.00.



Sand • Mortar
Concrete Mix • Block
Concrete • Brick
Rental Equipment

Located in Rockcastle Industrial Park
Monday-Friday 7:30 to 5:00
Saturday 7:30 to 12:00
256-9052

New! Fun! Exciting!

Rockcastle County Schools Program for Four-Year-Olds

What: 4-Year-Olds, Half-day Preschool
Who: Any child in Rockcastle County who will be four-years-old by October 1st and qualifying for free lunch. Others may start when space is available.
Where: Brodhead Elementary School (afternoon sessions)
Roundstone Elementary School (morning and afternoon sessions)

Preschool Registration

TUESDAY September 4, 1990 10 a.m. - 2 p.m.
SATURDAY September 8, 1990 10 a.m. - 2 p.m.

at Roundstone and Brodhead Elementary Schools
If your child plans to attend the Rockcastle County Schools Preschool this year, he/she must be registered.

Your child will also need a copy of their birth certificate, social security card, a physical, TB skin test and immunization record BEFORE they can begin the program.



RITE
AID

CompuRITE

The Rite Aid Computer Network now assists our 5,000 pharmacists in over 2,300 Rite Aid drugstores in 22 states.

- With CompuRITE Rite Aid can help protect you against possible drug interaction. See our pharmacist for further information.
- CompuRITE makes prescription refills easier and quicker. Our pharmacist enters your name and accurately obtains all of your Rite Aid prescription information.
- With CompuRITE your entire Rite Aid prescription record is always at your pharmacist's fingertips. And it's available to you for important insurance and tax purposes.

TALK TO YOUR RITE AID PHARMACIST ABOUT CompuRITE TODAY!

We Have All Your Back to School Supplies!

 TYPING PAPER 200 SHEETS 109	 AMERICAN 10 PACK PENCILS 2 PACKS FOR 89c	 RITE AID HEAVY DUTY "AA" BATTERIES 4 PACK 99c	 PAPERMAATE WRITE BROS. 10 PACK PENS 89c
 STUART HALL POCKET PACKER BINDER SET 369	 MEAD 3 SUBJECT NOTEBOOK 120 SHEETS 89c	 AUSTIN PEANUT BUTTER CRACKERS 74 OZ. BONUS PACK 89c	

 OXY 10 ACNE LOTION 1 OZ. 349	 GILLETTE GOOD NEWS! OR DAISY PLUS RAZORS 10 PACK 249	 RITE AID TAMPONS 49'S 289	 PRELL SHAMPOO 7 OZ. 149
 L'OREAL PERFORMING PREFERENCE HAIR COLOR 499	 RITE AID CENTRA-VITE VITAMINS 130'S 399	 CHARCOAL LIGHTER FLUID QUART 89c	 RITE AID CHARCOAL BRIQUETS 10 LB. 139

 LISTERINE ANTISEPTIC OR LISTERMINT MOUTHWASH 32 OZ. 359	 NESTLE RAISINETTS 7 OZ. 99c	 VINYL MULTI-POSITION CHAISE LOUNGE 999
 MYLANTA-II ANTACID LIQUID 12 OZ. 399	 EXTRA-STRENGTH TYLENOL TABLETS 100'S 579	 2.99 COKE 12 PACK 12 OZ. CANS PRICE NOTED ABOVE GOES HERE
 CORTAID CREAM OR OINTMENT 6.5 OZ. 199	 SUDAFED TABLETS 24'S 289	<p><small>NOT ALL PACKAGES AVAILABLE IN ALL FLAVORS</small></p> YOU COULD BE SAVING UP TO 50% ON YOUR NEXT PRESCRIPTION WITH GENERIC DRUGS ASK YOUR RITE AID PHARMACIST FOR COMPLETE DETAILS. <small>Beverage Price plus deposit where required by law.</small>

Help Wanted - Cashiers
Rite Aid is looking to hire responsible personnel to fill cashier position. Apply in person at your nearest Rite Aid.

PRICES EFFECTIVE AUG. 27 THRU SEPT. 2, 1990 • WE RESERVE THE RIGHT TO LIMIT QUANTITIES

RITE AID DISCOUNT PHARMACY

P.O. Box 1003
Richmond Street
MT. VERNON, KY
PHARMACY PHONE: 256-9207

Society



Wren - Ramsey

On May 19, Mrs. Jerri L. Wren and Gary W. Ramsey, of Mt. Vernon, were united in marriage at the Gattinburg Wedding Chapel. The couple remained in Gattinburg for several days for their honeymoon. They now reside in Mt. Vernon.

Homemakers hold annual picnic at Proctor home

By: Elizabeth F. Mullins

As Brodhead Willing Workers walked to the back of Clara Proctor's home around 6:30 p.m., Fri. Aug. 24th, blooming daisies, mums, etc. at the edge of the Proctor's lower deck, could be seen.

The upper larger deck was large enough for two long tables and chairs, one round table and chairs and two long benches.

Clara's art could be seen all over the place!

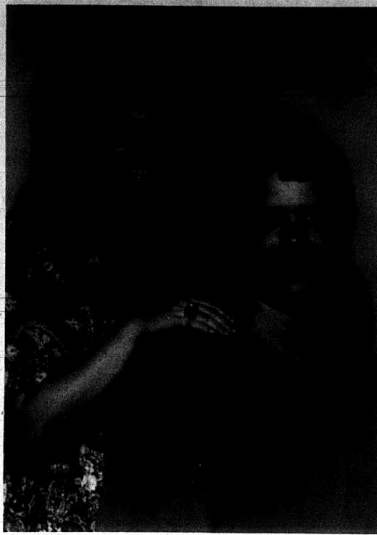
Macrame plant hangers and bird cage; painted woodpecker, butterflies, floppy-eared dog; woven reed basket and nature's Indian corn ears hanging by their shucks.

"Did she make the concrete bird bath?" I wouldn't doubt it!

Something new, to most of us, was added to the bountiful table of food. It was Wing-Dings! They are the

Birthday celebrated

Mrs. Maggie Dermon celebrated her birthday last Wednesday, Aug. 22nd, at her home with her son, Wade Lee Dermon, Jr. She had a very enjoyable day, lots of phone calls from family, relatives and friends and lots of cards wishing her the best return of the day.



McGuire - DeBorje

Mr. and Mrs. Gary McGuire and Mr. and Mrs. Garlan DeBorje, of all Mt. Vernon, announce the forthcoming marriage of their children, Tammy Michelle and Guy Morton, on September 1, 1990 at 2 p.m. at the Brush Creek Holiness Church. All friends and relatives are invited to attend. A reception will follow at the church.

Mrs. Fletcher, also, gave each of us a Christmas catalogue, to buy or take orders and make money for our depleting account.

The club voted to donate part of the cost of radio and headphones for Emily Glovak that continues to be in

Lexington Nursing Home. The manager of the home said she could use it.

Mary McWhorter was our guest besides the husbands.

As we left, Clara brought a baby to show us. Elizabeth Mullins exclaimed, "The Proctors have a new baby in their family."

No, it wasn't a real baby, but a painted doll face by Clara, made it look real!

We left this memorable family picnic, looking forward to September 27th meeting, at Margie Brock's home.

Household Shower

There will be a household shower at the library Thurs., Aug. 30 at 7 p.m. for Charles and Rhonda Hurd Alcorn who are newlyweds. Everyone invited.

Golden Anniversary celebration


Mava June Owens Stamper is happy to announce the 50th wedding anniversary of her parents, Ghressel Irene and Henry Owens.

Friends and relatives of the couple are invited for refreshments to help celebrate at the Old Blue Springs School on Sunday, Sept. 16, from 2 to 4:30 p.m. No gifts please.




Five Generations

Five generations of the McKinney family were together recently. They are, standing: Mrs. Lillian Renner and her mother, Mrs. Marie McKinney. Seated, from left: Mrs. Renner's daughter, Mrs. Teresa Herbert and Mrs. Herbert's daughter, Mrs. Tonya Squires, holding her son, Shane.



U.S. 25 South, Mt. Vernon 256-9401 • 758-9719

"BACK-TO-SCHOOL" LOCK-IN



September 1st
7 to 7
\$7.00

Doors Lock at 11
Parental Permission Required
Regular Admission 7-10
No Alcohol

Senior Citizens MENU

September 3 through 7th, 1990

Monday: Closed

Tuesday: Fried chicken, creamed peas, cole slaw, roll/oleo, hot cobler, 2% milk

Wednesday: Meat loaf, sweet potato patties, green beans, hot roll/oleo, watermelon, 2% milk

Thursday: Pinto beans/ham, greens, beets, cornbread/oleo, fruit cup, 2% milk

Friday: Mackerel patties, golden hominy, sliced tomato, roll/oleo, banana nut cake, 2% milk

Attend funeral

Mr. and Mrs. L.D. Bond and Lela Jones were in Manchester Wednesday to attend the funeral of Joe Jones.

SHEPHERD'S

MIDWAY BETWEEN RICHMOND AND BEREA ON U.S. 25

2 Day

CLEAN-UP

FRIDAY, AUGUST 31st

SATURDAY, SEPT. 1st

SIDEWALK SALE

ON THE SIDEWALK, IN THE PARKING LOT, IN THE WAREHOUSE, IN THE STORE

ALL REMAINING PATIO FURNITURE 60% OFF LIST PRICE

SOFAS AS LOW AS \$199⁰⁰

LOVE SEATS AS LOW AS \$149⁰⁰

WING CHAIRS AS LOW AS \$99⁰⁰

SOFA, CHAIR, ROCKER, 2 END TABLES, 1 COFFEE TABLE \$399⁰⁰

OUR SALE ALSO INCLUDES GREAT SAVINGS ON BEDROOM SUITES, DINING ROOM SUITES, FAMILY ROOM GROUPS, RECLINERS, SWIVEL ROCKERS, TVs, LAMPS, MIRROR, PICTURES, AND MORE!!



SHEPHERD'S
Home Justifications

Always a Friendly Welcome
Open 9:30 to Monday, Saturday

- Free Delivery
- Free Set Up
- Better Quality
- Better Selection
- Better Service

Midway Between Richmond & Berea on U.S. 25
624-0852



LOOK FOR OUR FULL-COLOR CIRCULAR FOR MORE GREAT BUYS

Fabulous FALL Sale

 COLGATE® INSTANT SHAVE 89¢ <small>11 oz. Aftershave</small>	 OIL OF OLAY® 539 <small>4 oz. Regular or Sensitive Skin</small>	 OS-CAL 500® OR 500 + D® 569 <small>60 ct. Tablets</small>	 STUART HALL® TABLET 57¢ <small>100 Sheets, Fluted or Unfluted</small>
 TYLENOL® EXTRA-STRENGTH 619 <small>100 ct. Tablets</small>	 STUART HALL® POCKET NOTEBOOK 3/79¢ <small>60 Sheets, 3" x 5"</small>	 STUART HALL® BOXED ENVELOPES 57¢ <small>100 ct. Letter Size or 50 ct. Legal Size</small>	 SCOTCH® MAGIC TAPE 2/99¢ <small>1/2" or 3/4"</small>

THESE ARE SUGGESTED ASSOCIATED DRUGGISTS PRICES OPTIONAL WITH PARTICIPATING STORES. WE RESERVE THE RIGHT TO LIMIT QUANTITIES AT SALE PRICES.

YOUNG'S PHARMACY

Main St. - Mt. Vernon - 256-4613
SALE STARTS TODAY

Price Less.

Once again, our specials prove that Super 1 Foods has the lowest possible prices. Lower than Kroger. Lower than anybody. Even with their so-called specials, your Super 1 total will still be considerably less. Now isn't that worth thinking about?



12 Pack, 12 oz. Cans
COKE PRODUCTS **1.99** EACH



ICE CREAM
All Varieties
Half Gallon Hyde Park
ICE CREAM **99¢** EA.



Fresh Super Pack
GROUND BEEF **99¢** LB.



JFG
32 Oz. Jar
SALAD DRESSING **89¢** EA.



32 oz. Jar
Paramount Hamburger
DILL SLICES **69¢** EA.



SHOWBOAT
15 oz. Can
PORK N BEANS **3 for 79¢**



16 oz. Package
ECKRICH FRANKS **89¢** EA.



32 oz. Bottle
RED GOLD KETCHUP **59¢** EA.



Deli-Style
TURKEY BREAST **2.49** POUND




Vine Ripe
WHOLE WATERMELON **1.29** EACH



Redeem this coupon for one 8 ct. pkg. of Super 1 hotdog or hamburger buns. Coupon expires Tuesday, September 4, 1990. Customer must be 18 years or older to redeem coupon and must pay all applicable sales tax. Limit one per family. None sold to dealers. #895

SUPER 1 COUPON FREE
SUPER 1 HOT DOG OR HAMBURGER BUNS



4 Roll Package
Soft N Gentle
BATH TISSUE **69¢** EA.

Super 1 Foods®

SUPER LOW PRICES.

449 EASTERN BY-PASS (former WAL-MART location)
OPEN 24 HOURS. 7 DAYS.

We're Really Flattered.

Italian Dressing	Cheese Spread
Oliver Dressing	Cottage Cheese
Sabano Sauce	Yogurt
Kosher Shinkins	Tea Bags
Pink Salmon	Post Toasties
Raid Ant & Roach	Gatorade
Pineapple Juice	Doritos
Tomato Juice	Catsup
Mandarin Oranges	Capri Sun Drinks
Pork & Beans	Fruit Cocktail
Tomato Sauce	Cat Food
Chocolate Frosting	Hair Spray
Crinkle Cut Potatoes	Dove Liquid
Orange Juice	Sweet & Low
Crescent Rolls	2 Lb. Carrots
Margarine	1/2 Lb. Turkey Breast
Shredded Mozzarella	1/2 Lb. Roast Beef
Worcestershire Sauce	

Winn-Dixie
October 29, 1989

\$70.20

(Taxes not included)

Winn-Dixie
August 22, 1990

\$64.66

(Taxes not included)

Super 1 Foods
August 22, 1990

\$60.51

(Taxes not included)

They say that imitation is the sincerest form of flattery. Super 1 Foods came to town 10 months ago, with a promise to bring lower food prices to Richmond shoppers. Now Winn Dixie has seen fit to follow our lead and lower their prices. Now they claim to have the lowest prices. But as you can see from the price comparisons above, with the same shopping list we used in Oct. 89, Richmond shoppers still save more by shopping at Super 1 Foods. This leaves only one thing left to say to Winn-Dixie. Don't flatter yourselves.

Super Foods®

SUPER LOW PRICES.

449 EASTERN BY-PASS (former WAL-MART location)
OPEN 24 HOURS. 7 DAYS.

School news & activities

Over two hundred from here enrolled at Eastern for fall

About 223 students from Rockcastle County are among the more than 14,500 students -- an all-time record -- returning to Eastern Kentucky University this month for fall semester classes.

Fall classes began at EKU on Thursday, Aug. 23.

In addition to the local students, Eastern has more than 383 alumni living in the county.

"We're dedicating ourselves this year as never before to providing better educational services to students on our campus and in our primary service area," said EKU President Harty Funderburk.

This improved service includes new construction and renovation on the Richmond campus as well as the July 30 opening of an off-campus facility for classes in Corbin.

"We have new classroom buildings going up as well as improvements to existing facilities," Dr. Funderburk said. "We're offering more extended campus classes -- especially in the Corbin area -- and

we're expecting a record enrollment."

Across the region, Eastern is offering more than 250 off-campus courses at more than 30 sites.

Dr. Funderburk noted the continuing tradition of excellence in teaching that is EKU's primary institutional mission.

"We have a number of exciting things planned this year at Eastern Kentucky University," he said. "We're looking forward to a great semester."

Last year, EKU also set an enrollment record with 14,268 students attending fall semester classes.

Some important dates in the fall semester include:

The University will observe the Labor Day holiday on Monday, Sept. 3; Columbus Day on Monday, Oct. 8; Homecoming on Saturday, Oct. 20; Thanksgiving on Nov. 20-26; and the semester will end on Wednesday, Dec. 19.

Registration information may be obtained from the EKU Division of Admissions at (606) 622-2106.

Tiger Pause

Broadhead Elementary wishes to extend congratulations to the students, faculty and staff of Mt. Vernon Elementary upon the completion of their new school. Your building is beautiful.

Our kindergarten bus schedule ran smoothly the first week. Kindergarten students now attend half-day sessions daily, which had posed a need for rescheduling. We appreciate the patience of parents and bus drivers who aided in this change. If you drive -- please remember to watch for our children while buses are loading and unloading.

Mary Ann Bussell Childress is working with the Early Childhood Program as instructional assistant. Our "cookers" (often fondly called this by some of our kindergarten and first grade students) are continuing to prepare breakfast and lunch to help us make it through the day. Their warmth and caring create a pleasant atmosphere for our children to dine. Listen to WRVK or read this newspaper for the daily school menu.

We continue to stress the importance of good attendance. Excessive or sporadic absenteeism impedes the learning process, which is a continuum of steps, building toward a mastery of skills. Our attendance has been excellent thus far, and much credit goes to you parents who get them going each morning.

Friday, Aug. 31, our students will be wearing orange ribbons as a reminder of the U.S. Servicemen in the Middle East conflict.

Student pictures will be made Tuesday, Sept. 4th.

There will be no school Monday, Sept. 3.

Rockcastle County Elementary Schools MENU

September 3 - 7, 1990

Breakfast
 Monday: Labor Day
 Tuesday: Saeck biscuit, juice, milk
 Wednesday: Cereal, toast/felly, juice, milk
 Thursday: Peanut butter/honey sandwich, juice, milk
 Friday: Scrambled egg, toast/felly, juice, milk

Lunch
 Monday: Labor Day
 Tuesday: Breaded fish & macaroni/cheese, mixed greens, pinto beans, cornbread, milk, honey bun
 Wednesday: Chicken patty on bun, french fries, lettuce, tomato & pickles, milk, frosty creme
 Thursday: Pizza, buttered corn, garden salad, milk, fruit
 Friday: Taco salad, potato tots, milk, banana pudding

Rockcastle County High School MENU

September 3 - 7, 1990

Breakfast will be served each day.

Monday: Labor Day
 Tuesday: Chef's salad or pizza, buttered corn, garden salad, milk, choice of offered desserts
 Wednesday: Chef's salad or breaded chicken on bun, french fries, lettuce, tomato & pickles, milk, choice of offered desserts
 Thursday: Chef's salad or steak nuggets, whipped potatoes, green beans, roll, milk, choice of offered desserts
 Friday: Chef's salad or fish & cheese on bun, potato wedges, cole slaw, milk, choice of offered desserts

Sue Bennett offering free computer training this fall

Sue Bennett College is offering free training in computer accounting this fall as part of the Job Training Partnership Act, according to Lois McWhorter, JTPA director at the college.

Enrollment in the program is limited to 15 students. McWhorter said, students will take classes in computerized accounting, microcomputer applications for business communication, keyboarding for computers, and word processing using Word Perfect and Wordstar programs.

To be eligible for the 16-week program, applicants must reside in Laurel, Whitley or Rockcastle Counties and meet all JTPA guidelines. To schedule an interview, call McWhorter at 864-2255 or 864-2238.

Berea College gets challenge grant

The Kresge Foundation of Troy, Mich., has approved a challenge grant of \$750,000 for the Hutchins Library Project at Berea College.

The grant is contingent upon the college securing the balance of funds needed for completion of the \$8.2 million project by January 1992.

The project involves expansion and renovation of the existing structure, automation of information services, installation of a computer network

linking the library with other campus buildings and establishment of an endowed fund for acquisitions.

Enhancement of an library and computer services is a major project financed by Berea College's \$65 million campaign, "The Berea VI."

(Cont. to A10)

<p>FOCUS IN ON GREAT VALUES</p> <p>STORAGE BOXES Plastic full-duty storage box or cabinet. \$1.39</p>	<p>SCOTCH TAPE 3/4" x 240' Roll</p> <p>The largest roll on the market today.</p> <p>77c</p>	<p>Chameleon color change paint</p> <p>Rolling new paint changes colors with a slight change in temperature. 100% acrylic. 100% water based.</p> <p>\$2.48</p>
<p>NOVELTY BANDAGES Many designs. Great for applying wood glue, carnauba and more.</p> <p>89c</p>	<p>TEDDY BEARS Used for a variety of craft projects, for gift giving, etc. Honey-scented teddy bears.</p> <p>\$1.99</p>	<p>KODAK KODACOLOR GOLD FILM 135-36</p> <p>\$3.39</p>
<p>COLOR & ACTIVITY FUN Full color activity book, 144 pages, coloring book, 40 pages.</p> <p>2 for \$1.00</p>	<p>SATIN RIBBON Overdye roll, 100% polyester. Selection of 12 colors.</p> <p>69c</p>	<p>HAIR ACCESSORY SPECIALS Large selection of ponytails, barrettes, and more.</p> <p>77c</p>
<p>100 file folders letter size</p> <p>\$4.49</p>	<p>BOXED GREETING CARDS Pick from: Everyday, Birthday, All Occasions, or 1st Mail, 12 cards each.</p> <p>88c</p>	<p>TE-DYE "SLOUCH SOCK" 100% bulky cotton, ribbed top in te-dyed pattern. Colors: 11.</p> <p>\$1.77</p>
<p>PRICES GOOD AUG. 30 - SEPT. 8</p> <p>"GREEN THUMB" POTTING SOIL Rich quality potting soil for all year growing needs.</p> <p>\$1.27 20 quart bag</p>	<p>Masking Tape</p> <p>2 rolls for \$1.00</p>	<p>ELECTRIC COFFEE MAKER</p> <p>\$8.47</p>
<p>"GREEN THUMB" POTTING SOIL Rich quality potting soil for all year growing needs.</p> <p>\$1.27 20 quart bag</p>	<p>WICKER BASKETS Variety of sizes and styles in stained and natural woods.</p> <p>2 for \$3.00</p>	<p>POLY-FIL FIBERFIL 100% polyester. Box bag.</p> <p>84c</p>
<p>90" Muslin Bleached and Unbleached</p> <p>\$3.49 Yard</p>	<p>Stamped Pillowcases</p> <p>\$4.49 pair</p>	<p>FLASHLIGHT Pocket model, 3 batteries.</p> <p>\$1.47</p>
<p>Sue Bennett offering free computer training this fall</p>	<p>CROSS STITCH KIT Kit includes: 21" cross bar frame, fabric, needles, floss, chart, and instructions.</p> <p>2 for 79c</p>	<p>Wood Embroidery Hoops</p> <p>2 for \$1</p>
<p>Playtex Bras & Girdles</p> <p>Timex & Lorus Watches</p> <p>20% Off</p>	<p>Giatt's</p> <p>5 & 10</p> <p>Main Street, Mt. Vernon • 256-2691</p>	

UK Preview Night set for Sept. 12

Rockcastle County students and their parents can learn more about the University of Kentucky and scheduled UK Preview Night, scheduled for 7 p.m. Sept. 12 at the Civic Center, KY 312-Chamber of Commerce, Civic Grounds, in Corbin.

University faculty, staff and students will be on hand to discuss and answer questions about admission requirements, financial aid and scholarships, housing, academic programs, career planning and student life.

High school seniors who are considering UK are especially encouraged to attend with their parents, to learn about application procedures and deadlines.

County students, all students and their parents from the following Kentucky counties are invited: Bell, Clay, Laurel, Jackson, Knox, Laurel, Leslie, McCreary, Owsley, Putnack, Wayne and Whitley.

Students from the following Tennessee counties have been invited: Anderson, Blount, Campbell, Claiborne, Cooke, Cumberland, Grainger, Greene, Hamblen, Hancock, Hawkins, Jefferson, Knox, Loudon, McMinn, Meigs, Monroe, Morgan, Roane, Scott, Sevier and Union.

For more information, contact Randy Mills, associate director of admissions, at 606-257-2000 or toll-free in Kentucky at 800-432-0967.

R.C.H.S.'s Minute

Student parking lot blacktopped

Over the summer the rest of the student parking lot has been blacktopped. This action has won those responsible the praise of many here at the high school. Later this year the parking lot will be marked off, and it is a possibility that students driving to school during the 1990-91 school year will be assigned parking spaces by the numbered parking tag they purchase at the beginning of the next school year.

Breakfast

RCHS students were surprised when they returned to school this fall to learn that they now have a 10 minute break. Because of Federal lunchroom regulations, the school will not be allowed to sell food or drink from machines until 7:30 (1/2 an hour after lunch). According to Mr. Cash, a majority of the students enjoy this mid-afternoon break.

Rockets are winning

The 90-91 football season started earlier this year than usual. The Rockets started off the season on the right foot beating Lynn Camp by the final score of 26-16. Last week the Rockets celebrated another victory by defeating the Russell County Lakers 18-13. Hopefully the Rockets can keep the winning touch and beat McCreary Central this Friday.

MVES PTA says "Thank You"

The Mt. Vernon Elementary School PTA would like to thank everyone who attended our Open House for the new elementary school on Sunday, August 19. It was very gratifying to see so many people interested in education and our new building. The building is just a building, the thing that makes it a school is the teachers and staff and parents who get involved in the education process. This is the most important part of our future. Without a good education the youth of this generation cannot get a job, support a family, or go into a profession. Our community is working very hard to keep our students involved in the education process.

The New Education Reform Act is going to change the way our schools are run, it is going to be very important for parents to become involved in schools and PTA. Councils will be formed at each school and each school will decide on how that particular school will be run by the council.

Parents and PTA will have a very large part to play in the decision making of the future. We would like to encourage you to join the PTA for several reasons. It is very important to everyone that we have as many parents, no-parents, friends, neighbors, or just people who are interested in the future education of our children to join PTA.

You do not have to attend meetings. We would like to have you there if you can come. You do not have to come to school and help out, we would like to have you participate if you are able and willing. You do not have to be a parent, or even have a child in school in order to join PTA. The only requirement is that you are over 16 years of age and that you do not belong to another PTA. You can live in any area of the United States and join PTA in Mt. Vernon. The important thing to remember is that each member has a vote and PTA is very powerful in working towards anything that is a benefit to our children. Everything that PTA does is for the well-being of our children. Each member is one vote and each vote counts.

The membership for this year is **(Cont. to A10)**

Kraft Dressing
8 Oz.
\$1.19




Kraft Parkay Quarters
1 Lb. **59¢**
Limit 2 with \$10 Additional Order



- Hungry Jack Pancake Mix 2 Lb. \$1.29
- Pillsbury Cake Mix 18 Oz. 79¢
Limit 1 with \$10 Additional Order
- Pillsbury RTS Frosting 16 Oz. \$1.39
- Hunts Snack Pack 4 Pk. \$1.19
- Maxwell House Coffee 13 Oz. \$1.99
Limit 1 with \$10 Additional Order

Delmonte Green Beans, Corn, and Peas
17 Oz.
3/\$1.19
Limit 6 Each with \$10 Additional Order

Delmonte Fruit Cocktail, Mixed Fruit, Peaches, and Pears
16 Oz. **89¢**



Kraft Grape Jelly
2 Lb.
\$1.29



Kraft Miracle Whip
32 Oz. **\$1.69**
Limit 1 with \$10 Additional Order



- Sanka Coffee 13 Oz. Tin \$3.39
- Maxwell House Instant Coffee 8 Oz. \$2.99
Limit 2 with \$10 Additional Order
- Maxwell House Instant Decaf 8 Oz. \$3.99
- Trail Blazer Dog Food 20 Lb. \$3.39

Martha White Meal
5 Lb.
\$1.29



Martha White Flour
5 Lb. **99¢**
1 with \$10 Additional Order



- Van Camp Pork & Beans 16 Oz. 3/\$1.19
Limit 6 with \$10 Additional Order
- Heinz Ketchup 32 Oz. \$1.29
Limit 1 with \$10 Additional Order
- Heinz 57 Sauce 5.2 Oz. \$1.39
- Ragù Spaghetti Sauce 28 Oz. \$1.69
- Delminico Macaroni & Spaghetti 7 Oz. 3/99¢
- Great Lakes Sugar 5 Lb. \$1.29
Limit 1 with \$10 Additional Order
- Swiftning Shortening 42 Oz. 99¢
Limit 1 with \$10 Additional Order

- Page Towels 1 Roll 59¢
Limit 2 with \$10 Additional Order
- Angel Soft Tissue 4 Roll 99¢
- Purex Bleach Gallon 79¢
Limit 1 with \$10 Additional Order
- Kraft American Singles 12 Oz. \$2.39

- Snuggle Fabric Softener 64 Oz. \$2.39
- Surf Detergent 42 Oz. \$1.79
Limit 1 with \$10 Additional Order
- Banquet Fried Chicken 28 Oz. \$2.50
- Banquet Cream Pies 14 Oz. 79¢
- Eggo Waffles 11 Oz. \$1.49
- Birdseye Cool Whip 8 Oz. 89¢
- Ore-Ida Tater Tots 2 Lb. \$1.59
- Pillsbury Biscuits 4 Pk. \$1.09
- Pepsi Products \$1.99
8-16 Oz. Returnables
- Pepsi Products \$3.19
12 Pk. Cans

Delmonte Pineapples
15 1/4 Oz.
69¢



Delmonte Fruit Cups
4 Pack
\$1.89



Armour Potted Meat
3 Oz. **3/89¢**

Armour Vienna Sausage
5 Oz. **2/99¢**

ARMOUR Armour Beef Stew
24 Oz. **\$1.59**

Armour Chili Beans
15 Oz. **89¢**

The Best in Fresh Produce!

Yellow Onions 3 Lb. Bag 89¢	Idaho Potatoes 10 Lb. Bag \$2.29
---	--

Paula Red Apples
3 Lb./\$1.29

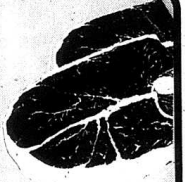
Cukes, Peppers, Radishes, Green Onions
4/\$1.00

- Vine Ripe Tomatoes 69¢ Lb.
- Bartlett Pears 59¢ Lb.
- Green Cabbage 19¢ Lb.
- Golden Ripe Bananas 3 Lb./99¢



Great Values in the Meat Department!

Cube Steak \$2.59/Lb.	Boneless Chuck Roast \$1.99/Lb.	Round Steak \$1.69/Lb.
Laurel Farms Bacon 12 Oz. \$1.19 Lb.	Laurel Farms Hot Dogs 12 Oz. \$1.09	
1/4 Pork Loin \$1.99/Lb.	Fischer's Bologna 1 Lb. \$1.59	



Prices Good August 30th—September 5th

SUPERIOR Food Market
SYMBOL OF QUALITY
U.S. 25 South • Mt. Vernon




County Correspondents

Around Brodhead

By: Mary McWhorter

Mr. and Mrs. Ronnie Adams and daughters, Vanessa and Brandi and Bertha Adams had dinner together last Sunday at Draubers. Bertha and Carolyn were also in Mt. Vernon Saturday.

Mrs. Mae Doan spent a few days in Lebanon, Ohio with her children and grandchildren and Friday brought her back and spent the weekend with her and his dad, Walter Doan, at the nursing home.

Ronnie and Linda Adams and daughters, Vanessa and Brandi, were recent visitors of Mrs. Bertha Adams.

Mrs. Bertha Adams had a letter from Mary Adams' sister, Mrs. Ruth White, stating Mary isn't doing so well at this time. Our prayers are for

her and we miss her very much around Brodhead. She had a fall cracking her hip and spent ten days in the hospital having a pin put in her hip. We hope and pray she will improve if it's the Lord's Will.

Larry McWhorter spent Monday night with his parents, Bert and Georgia McWhorter, enroute to Pinewille on his job.

Mrs. Velma Croley of Ohio spent a few days this week with her mother, Mrs. Cuba Croley.

I spent the weekend in London visiting Gerry, Carol and Craig Singleton and attended church with them seeing a lot of old friends, Mrs. Rebecca Carey add her daughter and lots of other. I can't think of right now.

Quail News

By: Vivian Owens

Roxanne Reynolds and friends spent Tuesday night with Mr. and Mrs. Elmer Ponder.

Danny McKibben and Ben spent Thursday night and Friday with his mother Mrs. Mildred McKibben.

Mr. and Mrs. Charlie Cupp and Florence Albright were Thursday dinner guests of Mr. and Mrs. Elmer Ponder.

Roxanne Reynolds and friends of Georgia spent Wednesday night with Florence Albright.

Florence Albright had supper with Mr. and Mrs. Charlie Cupp Friday evening.

Mrs. Zelma Hayes returned home Tuesday after spending Monday and Tuesday with her daughters, Mr. and Mrs. Butch Carl and family of Versailles and Mrs. Jennifer Stewart.

The Week at Livingston

By: Mrs. Eva Black

Lee Mullins visited his brother Demas in Covington who remains on the sick list.

Mr. and Mrs. Gene Sentes visited her mother Mrs. Gladys Smith Sunday afternoon.

Mrs. Holt Carpenter and Mrs. Carrie Loudermilk were in Corbin and London shopping Friday.

There will be a yard sale in front of Lee Mullins' Store Friday and Saturday to benefit the Ward Cemetery upkeep.

Mr. and Mrs. Al Grote of Louisville visited her parents Mr. and Mrs. Denver Mullins last week.

Lois Mullins visited her sister Minnie in Florence last Thursday.

Ronald D. Black of Lexington visited his mother Mrs. Eva Black Saturday.

Mrs. Margaret Burdine and daughters attended the Browning Station at Levi Jackson Park last Saturday. A large crowd attended with lots of food. Everyone enjoyed the day.

Deep sympathy is extended to Charles Wagner in the death of his brother Paul who was laid to rest Friday in the family cemetery on Gauley Branch. A large crowd of

relatives from out of town attended. Recent visitors of Miss Frances Dickerson were John and Joseph Dickerson of Diablo, Ca. They were enroute to visit their parents Mr. and Mrs. Joe W. Dickerson in Dayton, Ohio.

Miss Brenda Burdine has returned from a two week visit with her cousin Karen Cottingham in Covington.

Beulah Black was in Mt. Vernon Friday on business.

"Free Training at Sue Bennett"

(Cont. From A8)

Learning, Labor and Service. Expansion and renovation of the Hutchins Library building began this spring and is expected to cost \$5 million.

The three-story addition to the building's north side will house the computer center, microcomputer labs, computer-equipped classrooms, new study areas and the library's Special Collections Department.

"Thank You"

(Cont. From A8)

S3, and you receive a coupon book with approximately \$100 worth of coupons with this membership. Several of our high school students have joined this year and we are anxious to have their input in our programs.

We will have a contest for the classroom who joins up the most members, with a prize for the classroom, and also a prize for the student who joins the most people. No door to door will be allowed, because of the dangers involved. You parents can call or talk with your relatives, friends, neighbors, and ask them to join. We will send the coupon books and membership cards home with the child who brings in the Membership Form.

Help us make this the best year ever. Our meetings are on the second Tuesday of the month at 7 p.m. and last no longer than one hour. Please come join us.

Together we can make a difference. The sun shines brighter on Kentucky.

Sincerely,
Mt. Vernon Elementary
PTA Officers

Mt. Vernon Personals

By: Mrs. Vallie Burton

Mrs. Vivian Owens visited her aunt Mrs. Sella Scoggins and Gurus Sunday afternoon.

Gilbert Taylor of Texas is spending some time with his aunt Ruth Mink.

Paul 'Sonny' Robbins and daughters and their grandmother Mrs. Isabelle Higgemeyer of Indiana and Ronald Owens of Ohio, spent the weekend with Mrs. Mattie Owens.

Mrs. Isabelle Jones and son Tom of Illinois and Mrs. Molly Bryant visited Ruth Mink Monday afternoon.

Fairview News

By: Mrs. Hubert Chasteen

Hello to all you readers of the Signal, hope you are well and happy.

Worship services were well attended at the Fairview Baptist Church over the weekend. Sunday School attendance was one hundred and twenty six for which we are thankful.

Our Sunday School average attendance for the month of August was one hundred and twenty.

We extend our deepest heartfelt sympathy to the family of Mrs. Lucille Lakes of Franklin, Ohio, who passed away Thursday of last week. Mrs. Lakes is the mother of Mrs. Douglas (Evelyn) Ponder of the Lambert Road in the Fairview area. Doug, Evelyn and son Scott left for Franklin on Friday morning. May God comfort this family in this time of sorrow. Leaving for Franklin later for visit.

(Cont. to A11)

Viola Sebree of Richmond, Va. and Mrs. Irene Watson of Frankfort visited their sister Shirley Burton during the weekend.

Mrs. Linda Easton and girls visited Mr. and Mrs. Curtis Miller Sunday afternoon.

Mrs. Charles Holt and children of Louisville spent a few days last week with Mrs. Arthie Kirby and Mr. and Mrs. Raymond Kirby.

Mr. and Mrs. Virgil Brock visited Mrs. Arthie Kirby last Thursday.

Mr. and Mrs. Warren Clark of Ohio visited Mr. and Mrs. Raymond Kirby and Mrs. Arthie Kirby during the weekend.

Mr. and Mrs. Edward Stephens and daughter Amanda visited Mrs. Arthie Kirby and Mr. and Mrs. Raymond Kirby recently.

Weekend visitors of Mr. and Mrs. C.S. McKinney were his brother Mr. and Mrs. David McKinney of Reading, Ohio.

Weekend visitors of Mrs. Ollie Mink and son Ricky were her daughter Mrs. Lesa Northern and granddaughter Alice.

Mr. and Mrs. C.S. McKinney visited Mr. and Mrs. Keith Norton last Tuesday night.

Mr. and Mrs. Floyd Kirby of Conway visited Mr. and Mrs. C.S. McKinney last Thursday night.

Jack Lovins and girl friend, Sandy,

visited his grandparents, Mr. and Mrs. C.S. McKinney, last Wednesday night.

Friday visitors of Mr. and Mrs. C.S. McKinney were their daughter Mrs. Lillian Renner and granddaughter Mrs. Teresa Herbst and husband John, all of Reading, Ohio.

Mr. and Mrs. C.S. McKinney visited Mr. and Mrs. R.B. Miller and also their daughter Mr. and Mrs. Joe Lovins Sunday.

Mr. and Mrs. Bill Houston and children of Dayton, Ky. visited Mr. and Mrs. Coleman Houston one day last week on their way to Tennessee.

Recent visitors of Mr. and Mrs. Coleman Houston were Mr. and Mrs. James Houston of Ohio and Charles Houston and grandsons Adam and Justin.

Sympathy is extended to all who have lost loved ones recently in their time of sorrow. May the Lord bless each one.

Mrs. Harris Burton visited Mrs. Vallie Burton awhile Saturday.

Mr. and Mrs. Fred M. Ramsey of Louisville visited Mrs. Hazel Ramsey recently.

Mrs. Isabelle Jones of Villa Grove, Ill. is visiting her sister Mrs. Mollie Bryant and brother, Phillip Davis and wife. She was accompanied to Kentucky by her son Thomas M. Jones of Paxton, Ill.

BEST PRICES IN SOUTHERN KENTUCKY!



• New and Used Guitars and Amps
• PAs and Accessories
• EMG Pick-Ups
• COMPLETE INSTRUMENT REPAIR

10 a.m. to 5 p.m. Monday-Saturday

0% APR FINANCING
Available on select models.

1990 Wipe-Out

You keep the factory rebate
Up To **\$3500**

PLUS
Choose the Vacation of Your Choice From Over 75 Locations When You Purchase a New or Used Car or Truck from Banner!

ALL 1990s Must Go! Look At These Prices!

<p>New 1990 EAGLE PREMIER LX</p> <p>List \$17,285 Discount -2,000 Sale Price \$12,785</p>	<p>1990 BUICK PARK AVENUE</p> <p>List \$17,474 Discount -2,200 Sale Price \$16,950</p>	<p>New 1990 BUICK SKYLARK SEDAN</p> <p>List \$15,379 Discount -2,500 Sale Price \$12,878</p>	<p>1990 PONTIAC LEMANS</p> <p>List \$11,879 Discount -2,200 Sale Price \$7950</p>
<p>1990 PONTIAC GRAND AM</p> <p>List \$13,450 Discount -2,000 Sale Price \$8950</p>	<p>New 1990 BUICK REGAL COUPE</p> <p>List \$17,474 Discount -2,200 Sale Price \$15,274</p>	<p>1990 PONTIAC GRAND PRIZ</p> <p>List \$11,879 Discount -2,200 Sale Price \$10,950</p>	<p>New 1990 BUICK CENTURY CUSTOM</p> <p>List \$17,822 Discount -2,200 Sale Price \$14,882</p>
<p>New 1990 PONTIAC 8000 LE</p> <p>List \$15,502 Discount -2,000 Sale Price \$13,502</p>	<p>1990 BUICK SKYLARK CUSTOM</p> <p>List \$13,450 Discount -2,000 Sale Price \$8950</p>	<p>New 1990 GMC SIERRA CLASSIC</p> <p>List \$16,647 Discount -2,000 Sale Price \$14,647</p>	<p>1990 BUICK REGAL COUPE</p> <p>List \$13,450 Discount -2,000 Sale Price \$11,950</p>

THE BANNER GUARANTEE

We will beat any dealer's best price or we will pay you \$100 CASH or meet your last week's paycheck. -Mike Evans, General Manager.

BANNER

BUICK PONTIAC
GMC
JEEP EAGLE

864-2218

Across from KY State Police
LONDON, KY.

*Tax and license extra. **You will receive a resort certificate entitling you to select the resort of your choice for 3 days/2 nights accommodations. You will be provided guaranteed arrival dates from which you may choose one. Transportation is not included.

APOLLO AND Family Arcade

U.S. 25 South
256-5000

Bring the Family! In for Games, Fun, and Fantastic Pizza!!

SATISFACTION GUARANTEED!!

APOLLO PIZZA

256-5000

Present this Coupon and Receive a **LARGE SUPREME PIZZA**

\$10.95

for only \$10.95

Not Valid with Any Other Offers. Expires 9/15/90

APOLLO PIZZA

256-5000

Present this Coupon and Receive **2 LARGE 2-TOPPING PIZZAS**

\$10.95

for only \$10.95

Not Valid with Any Other Offers. Expires 9/15/90

APOLLO PIZZA

256-5000

LUNCH SPECIAL
11 a.m. - 2 p.m.; M-F

Present this Coupon and Receive a **6" PERSONAL PIZZA with 1 TOPPING**

\$1.00

for only \$1.00

CARRY-OUT OR DRIVE-IN ONLY
Not Valid with Any Other Offers. Expires 9/30/90

APOLLOS!!
Where the Second Pizza Always Cost Just \$4.00 More, Including Specials!!

**Hours: Sunday-Thursday 11 a.m. to 11 p.m.;
Friday and Saturday 11 a.m. to 1 a.m.**

FREE DELIVERY!!

256-5000

Area Deaths and Funerals

Luther Coffey

Luther Calvin Coffey, 56, of Cooper Creek Hill, died Aug. 22, 1990 at his residence.

He was born in Rockcastle County Sept. 20, 1933, the son of Lonzie and Maggie Jane Huff Coffey. He was a member of the New Testament Baptist Church.

He is survived by his wife, Della Louise Coffey, two daughters, Shirley Mae Coffey of New York and Brenda Jean Felner of Florida; a step-son, Jimmy Reams of Green Hill; two brothers, David Coffey and Wallace Coffey, both of Flat Gap; four sisters, Frances Saylor, Christine Nicholas and Pearl Campbell, all of Rt. 3, Mt. Vernon, and Louella Miller of Conway. Also surviving are four grandchildren.

Services were Aug. 25 at Dowell and Martin Funeral Home by Bro. John Roberts, burial was in the Rimmell Cemetery.

Palbearers were: Tim Saylor, Donnie Saylor, Donnie Lamb, Bob Dammel, Clarence Hall and Roger Alexander.

Ina Reynolds

Mrs. Ina McKinney Reynolds, 67, of Rt. 1, Broadhead, died Aug. 27, 1990 at the Rockcastle Hospital.

She was born in Rockcastle County May 5, 1923, the daughter of James Arthur and Lisa Brown McKinney. She was a member of the Providence Church of Christ.

She is survived by her husband, James Clifton Reynolds of Rt. 1 Broadhead; two sons, J.C. Reynolds and Harold Ray Reynolds, both of Broadhead; two daughters, Doris Lawrence and Lois Lawrence, also of Broadhead; five brothers, Arthur McKinney of Broadhead, Clyde McKinney of Hazard, Robert McKinney of Science Hill, Balie McKinney of Eubank and E.J. McKinney of Lawrenceburg; a sister, Mae Bullock of Wayneburg; and a half-sister, Berneice Reynolds of Eubank and also an aunt, Marie Noe of Mt. Vernon and seven grandchildren.

Services were Aug. 29 at the Providence Church of Christ with Bro. Danny McKibben and Austin Motley officiating. Burial was in the Providence Cemetery.

Arrangements were by Dowell and

Martin Funeral Home

Palbearers were: Jimmy McKinney, Billy McKinney, Jackie McKinney, Danny McKinney, Darrell McKinney and Lloyd Caldwell.

James Wagner

James Paul Wagner, 65, of Livingston, died Aug. 22, 1990 at Central Baptist Hospital in Lexington.

He was born in Rockcastle County Feb. 4, 1925, the son of Mills and Mary Woodall Wagner. He was a retired forklift operator for General Motors Corporation, a member of the Livingston Christian Church and a Navy veteran of World War II.

He is survived by a daughter, Janie Davis of Cincinnati and a brother, Charles Wagner of Livingston, and two grandchildren. Services were Aug. 24 at Dowell and Martin Funeral Home by Bro. Billy Medley and Sam Hampton. Burial was in the Mobbey Cemetery. Palbearers were Charles Allen Wagner, Edgar Lee Wagner, John Hall, Bobby Lee McClure, Matthew Belvins and Steven Wagner.

age and are certain the food has been properly processed. In Kentucky, boiling for 13 minutes destroys the toxin that causes poisoning.

About Canned Tomatoes

Select only disease-free, preferably vine-ripened, firm fruit for canning. Do not use tomatoes from dead or frost-killed vines because they may be low in acid. Green tomatoes are more acidic than ripened tomatoes and so can be canned safely using any of the methods described in this guide.

Acidification directions: To ensure safety acidity in whole, crushed or juiced tomatoes, add two tablespoons of bottled lemon juice per quart to the jar, following acidification directions on page 4. Heat juice again to boiling. Add one teaspoon of salt per quart to the jar, if desired. Fill jars with hot tomato juice, leaving 1/2-inch headspace. Adjust lids and process.

PROCESSING TIME: Boiling-water Canner -- Hot Pack: process pints for 40 minutes; quarts, 45 minutes.

Dial-gauge Pressure Canner -- Hot Pack: process pints or quarts for 15 minutes at 12 pounds of pressure.

Weighted-gauge Pressure Canner -- Hot Pack: process pints or quarts for 15 minutes at 15 pounds of pres-

sure. Crush, heat and simmer for five minutes before heating.

Press both types of heated juice through a sieve or food mill to remove skins and seeds. Add two tablespoons of bottled lemon juice per quart to the jar, following acidification directions on page 4. Heat juice again to boiling. Add one teaspoon of salt per quart to the jar, if desired. Fill jars with hot tomato juice, leaving 1/2-inch headspace. Adjust lids and process.

PROCESSING TIME: Boiling-water Canner -- Hot Pack: process pints for 40 minutes; quarts, 45 minutes.

Dial-gauge Pressure Canner -- Hot Pack: process pints or quarts for 15 minutes at 12 pounds of pressure.

Weighted-gauge Pressure Canner -- Hot Pack: process pints or quarts for 15 minutes at 15 pounds of pres-

Tomato & Vegetable Juice Blend

QUANTITY: An average of 22 pounds of tomatoes is needed per canner load of seven quarts. No more than three cups of other vegetables may be added for each 22 pounds of tomatoes.

PROCEDURE: Crush and simmer tomatoes as for making Tomato Juice. Add any combination of finely chopped celery, onions, carrots and peppers. Simmer mixture 20 minutes. Press hot cooked tomatoes and vegetables through a sieve or food mill to remove skins and seeds. Add two tablespoons of bottled lemon juice per quart to the jar, following acidification directions. Add one teaspoon of salt per quart to the jar, if

(Cont. to A12)

Frank Daugherty

Frank Daugherty, 59, of Mt. Vernon, died Aug. 25, 1990 at the Rockcastle Hospital.

He was born in Rockcastle County July 27, 1931, the son of Leonard and Liza Hundley Daugherty.

He is survived by two sons, Raymond Daugherty and Roger Daugherty, both of Mt. Vernon, and three daughters, Addie Pingleton of Berea, Linda Howard and Wanda Daugherty, both of Mt. Vernon; three brothers, George Bowles of Orlando, Caleb Daugherty of London and Virgil Daugherty of Berea, Ind., and one sister, Beacie Singleton of Livingston. Also surviving are four grandchildren.

Services were Aug. 27 at Morning View Holiness Church by Bro. Jasper Carpenter. Burial was in the Daugherty Cemetery at Red Hill. Arrangements were by Dowell and Martin Funeral Home.

Palbearers were: Wayne Rector, Clayton Singleton, Roy Daugherty, George Shackelford, Gary Pruitt and Randy Tankersley.

"FAIRVIEW"

(Cont. From A10)

tation and the funeral were Mrs. Paulette Ponder and daughter Beth and Paulette's mother Mrs. Essie Burchley, and Doug's mother Mrs. Lucille Ponder. They all returned home Monday evening. Evelyn, just always remember that you have our love and prayers.

We also sympathize with the family and loved ones of Luther Coffey who passed away last week also. I'm sure there are many others who need our prayers also, let's remember them all.

Mr. and Mrs. Ernest Cope of Houston, Texas are visiting relatives here, his mother Mrs. Mary Cope and his mother, Mrs. Vida Richmond and families.

Hubert and I visited our son Junior and family in Berea recently. They daughter Robin Harold and infant daughter Kendra were there also. It was very enjoyable visit.

The W.M.U. organization sponsored a church wide supper last Friday night in the Fairview Church Educational Building. It was well attended and everyone enjoyed the delicious food and the evening of warm fellowship.

Well, we ladies have been canning, freezing, preserving and pickling our garden produce with which the Lord has so bountifully blessed us. Despite the dry weather we had for a while most of us have had the best, or one of the best gardens we have ever raised. When we plant our garden I always ask God's blessings on it. And all through the growing season I thank Him and especially harvest time. I believe in asking God for the things we need and then always remember to thank Him for the blessings that we receive. He blesses us far and beyond what we deserve. I like the quote that Rev. Ira Dean had in his interview with the Berea Citizen Newspaper--when he said, "Don't grumble because you don't have what you want: be thankful you don't get what you deserve." I'm sure that applies to all of us.

We were so pleased to have Mr. and Mrs. Charles and Donna Borst of Port William, Ohio stop by to attend worship service with us last Sunday morning. They spent the weekend here visiting Renfro Valley and other places and had also been to the Fairview Cemetery before coming to church. I'm sure many people around here will remember Mrs. Maggie Wren and family. She had a daughter by a previous marriage named Hazle

Extension Home Economics

By: Cheryl Witt
Co. Ext Agent
for Home Economics

Home Canning Notes

DANGER! Guard Against Food Poisoning

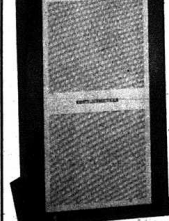
Pressure canning is the only recommended method for canning meat, poultry, seafood and most vegetables. The bacterium *Clostridium botulinum* in low-acid foods is destroyed when they are processed at the correct time and pressure in pressure canners. Using boiling-water canners for these foods poses a real risk of botulism



poisoning. If these bacteria survive and grow inside a sealed jar of food, they can produce a poisonous toxin. Even a taste of food containing this toxin can be fatal. Low-acid foods should be boiled after their jars are opened, even if you detect no signs of spoil-

The New Combustioneer Oil Fired Space Heater

Reliable, efficient, convenient heating in a compact package.



MT. VERNON OIL & TIRE
Hwy. 150 • Mt. Vernon • 256-9411 • Home 256-2012
DOUN HAMM, Owner

The PH250 Combustioneer Power Oil Heater provides effective heating for your home, room addition, recreation room, cabin--just about everywhere. And there's no duct work required, so the PH250 is easy to install.

Rugged, heavy-duty primary and secondary heat exchangers squeeze more useable heat from less fuel. The Beckett flame retention oil burner gives you added heating efficiency while burning less fuel.

A quiet, two-speed circulating air fan gently delivers approximately 58,000 BTUs of warmed air throughout the area to be heated. Minneapolis-Honeywell controls ensure reliable, worry-free heating.

Versatile, the Combustioneer is capable of burning #1 or money-saving #2 fuel oil. And, there's no need to install the oil tank above the burner for gravity feeding. Plus the PH250 has an attractive, easy-care appliance-styled finish which blends with any decor.

WHY WAIT FOR YOUR GLASSES?

Dr. Gary King has an ON-SITE LAB!

This means that you, the patient, will have less waiting on your glasses and you will have only one trip to the doctor's office. Most glasses will be completed in our lab in Berea.

We have over 500 of the latest frame styles, including Ray-Ban sunglasses to choose from. All types of contact lenses are available. Prescription forms from other doctors are welcome. Evening appointments are available.

Your Entire Family Will Receive Through Courtesy Attention from the Friendly Eye Care Professionals at:

DR. GARY KING, OPTOMETRIST
111 Boone Street Berea 986-7027
Vista MasterCard Discover and Medical Cards Accepted



Livingston Homecoming '90

Aug. 31 - Sept. 2

Aug. 31, Friday:
7 p.m. Billy Medley's Gospel Singing

Sept. 1, Saturday:
11 a.m. Parade
12 Noon Homecoming Ceremonies
1 p.m. Homecoming Queen
1-4 p.m. Chicken Dinner - Livingston Baptist Church Basement
Sponsored by Livingston Ladies Auxiliary - Catered by Famous Recipe of London

4 p.m. Auction
5 p.m. Male Beauty Contest
5:30 p.m. Bittersweet Cloggers
6:30 p.m. Old-Timers Ballgame
9 p.m. Trivia Band and Hilltop Stompers

Sept. 2, Sunday:
11 a.m. Devotional Services at Livingston Christian Church
1 p.m. Outstanding Citizen
1:30 p.m. Award of Excellence - Dowell and Martin Funeral Home
2 p.m. Priddy Baby Contest
3 p.m. Southern Lace Band
5 p.m. Canning and Baking Contest
7 p.m. Trivia Band and Hilltop Stompers
10 p.m. Fireworks
10:30 p.m. Trivia Band and Hilltop Stompers

During the week end, Dunsmore Concession and Games will be with us. Craft and Flea Market Booths as well as civic groups. Come and Join the FUN.

Parent and Child Education (P. A. C. E.)

A Good Beginning

PACE means a good beginning for 3-and 4-year olds. Preschool activities make learning fun. Children like learning.

At the same time...

A Great Finish

PACE means a great opportunity for parents. While their children go to preschool, mothers or fathers without high school diplomas go to small classes designed for adults. They can earn GED certificates—a great "second chance" to finish high school and begin a better future!

As an added benefit...

Together

PACE also has special times for parents and children to work together. Parents help their children learn in the preschool classroom, and they find out how to help make learning at home fun.

TUESDAY & SATURDAY
September 4, 1990 & September 8, 1990
10:00 to 2:00 at 10:00 to 2:00

BRODHEAD ELEMENTARY SCHOOL

For More Information, Contact
Rockcastle County Schools
Route 5, Box 69
Mt. Vernon, Kentucky 40456
256-2125
(Ask for Tammy Gabbard)

Rockcastle gains to 14,775 in population, according to census; Jackson Co. down

Rockcastle County grew moderately during the past 10 years as early census reports prove accurate.

The county now has a population of 14,775, up 5.73 percent, or about 13,000 from 10 years ago.

Although Rockcastle grew, in the area, Laurel County was up 16.62 percent to 57,014.

State officials hope that when the final tally is made in December will change things, but they do not hold out much hope.

If changes in the Congressional makeup is coming the Kentucky Legislature will redraw the congressional boundaries.

Extension Home Economics (Cont. From A11)

desired. Reheat juice blend to boiling and fill immediately into jars, leaving 1/2-inch head-space. Adjust lids and process.

PROCESSING TIME: Boiling-water Canner - Hot Pack: process pints for 40 minutes; quarters, 45 minutes.

Dial-gauge Pressure canner - Hot Pack: process pints or quarts for 15 minutes at 12 pounds of pressure.

Weighted-gauge Pressure canner - Hot Pack: process pints or quarts for 15 minutes at 15 pounds of pressure.

For more information, contact the County Extension Office at 256-2403.

List of populations for state counties

Associated Press

FRANKFORT — Here is the list of Kentucky counties and their preliminary population figures from the 1990 U.S. census. The population figures are subject to change.

The county names are followed by the estimated population and increase or decrease.

Air: 15,254, up 0.13; Allen: 14,587, up 3.34; Anderson: 14,851, up 15.73;

Ballard: 7,864, down 10.38; Barren: 33,594, down 0.51; Bell: 9,657, down 3.87; Bell: 30,850, down 9.92; Boone: 17,049, up 25.52; Bourbon: 10,023, down 2.67; Boyd: 51,288, down 7.89; Boyle: 26,483, up 1.62; Breathitt: 11,101, down 1.25; Breathitt: 15,678, down 7.81; Breckinridge: 18,200, down 1.94; Bullitt: 47,487, up 9.26; Butler: 11,288, up 1.48;

Caldwell: 13,216, down 1.90; Caldwell: 70,629, up 1.06; Campbell: 51,218, down 0.95; Carter: 22,678, up 1.98; Carroll: 6,288, down 0.12; Carter: 24,236, down 3.00; Casey: 14,029, down 4.85; Christian: 69,507, up 3.92; Clark: 29,816, up 4.50; Clay: 20,958, down 7.88; Clinton: 68,769, up 0.70; Crittendon: 9,172, down 0.38; Cumberland: 6,782, down 7.38; Daviess: 38,790, up 0.67; DeBarr: 10,325, up 5.64; Elliott: 6,427, down 6.81; Estlin:

14,444, down 0.95; Fayette: 229,810, up 9.62; Fleming: 12,673, down 0.46; Floyd: 48,445, up 10.92; Franklin: 43,221, up 4.04; Fulton: 8,995, down 7.96; Garrard: 3,978, up 11.8; Garrard: 11,887, up 4.73; Grant: 15,870, up 17.74; Grant: 33,497, down 1.65; Grant: 29,818, up 0.29; Grant: 10,349, down 0.28; Greenup: 26,658, down 8.26; Hancock: 7,854, up 1.41; Hancock: 89,000, down 0.01; Harlan: 38,046, down 13.84; Harlan: 16,184, up 6.77; Hart: 14,677, down 3.44; Henderson: 42,768, up 4.69; Herby: 12,738, up 0.37; Hickman: 5,529, down 8.34; Hopkins: 45,958, down 0.10;

Independence: 11,498, down 4.15; Jefferson: 69,463, down 3.57; Jessamine: 20,348, up 16.07; Johnson: 23,228, down 4.02; Kenton: 14,284, up 3.50; Kenton: 17,894, down 0.52;

Knox: 29,198, down 3.41; LaRue: 11,941, down 2.58; Laurel: 61,192, up 10.62; Lawrence: 19,383, down 0.97; Lee: 7,418, down 4.37; Leslie: 15,150, down 11.38; Letcher: 26,582, down 12.07; Lewis: 13,018, down 11,983, up 9.04; Perry: 30,110, down 10,811, up 9,017, down 2.15; Logan: 24,539, up 0.83, up 5.19; Polk: 49,057, up 7.12; Boone: 21,211, down 6.58; Rockcastle: 14,775, up 5.73; Rowan: 29,938, up 6.71; Russell: 14,697, up 6.96; Scott: 21,778, up 8.99; Shelby: 24,708, up 6.19; Simpson: 5,031, up 2.42; Spencer: 9,787, up 14.47;

Taylor: 20,924, down 1.06; Todd: 10,928, down 8.16; Trigg: 10,333, up 10,238, down 9.88; Warren: 75,241, up 6.28; Wayne: 10,424, down 5.82; Wayne: 17,492, up 2.22; Webster: 13,870, down 6.48; Whitley: 22,114, down 0.26; Wolfe: 6,499, down 4.97; Woodford: 19,874, up 11.80.

Minor earthquake last week centered north of Harlan

A minor earthquake felt last week in southeastern Kentucky and north-eastern Tennessee was centered 3 to 4 miles north of Harlan, University of Kentucky geologist Ron Street said yesterday.

Street said the quake, which struck at 5:01 p.m., registered 3.6 on the Richter scale.

"It wasn't much of an event," he said.

A lumber company's foundation might have been damaged. Windows shook and some objects fell from shelves.

Earlier reports from the U.S. Geological Survey in Golden, Colo., placed the epicenter about 60 miles northeast of Knoxville and the magnitude at 4.0.

Recent predictions from persons other than the Survey believe a major earthquake will occur along the New Madrid, Mo. fault early in December.

Most of Kentucky would be affected by a major earthquake, especially in Western Kentucky.

Gov. Wilkinson in 5th District

Gov. Wallace Wilkinson will take his Capitol to the Counties program to Kentucky's 5th Congressional district next month, his office announced Friday.

The program allows Kentuckians to visit the governor and top government officials during office hours in local schools and community centers.

Excluding the months when the legislature was in session, the program has been held about every other six weeks during the Wilkinson administration. He has held office hours in 14 locations.

The 5th district program will begin Sept. 5 with office hours from 9 a.m. to 4 p.m. at Campbellsville College. A regional issues forum will be held that day from 3 to 4 p.m. at Somerset Community College.

On Sept. 6, office hours will be held from 1 to 4 p.m. at Union College in Barbourville.

Drive carefully - watch our school children!

Tim Tassie, network director for broadcasting, said the move was made to accommodate most viewers' preferred time for Sesame Street and to provide older children with viewing options both right after school and later in the afternoon.

Government checks must now be cashed within year of issue

Old U.S. Government checks, including Social Security checks, must be cashed by Sept. 30, 1990, or they will be cancelled, Gerry Hunt, Social Security manager in Richmond, said today.

Under a law which went into effect Oct. 1, 1989, U.S. Government checks began to carry the notation "Valid After One Year." This means that banks will not cash the checks after one year from the issue date.

All checks printed before Oct. 1, 1989, need to be cashed by Sept. 30, 1990.

People who find that a bank will not accept a Social Security check because it is more than one year old will need to ask Social Security to reissue the check.

The Richmond Social Security office is located in the University Shopping center.

KET alters afternoon children's schedule

In order to provide quality after-school television viewing for both younger and older children at convenient times, KET has altered its afternoon programming line. The changes are effective Monday, September 3.

3-2-1 Contact will air at 3:30 p.m., followed by Sesame Street at 4 p.m.

Mr. Rogers' Neighborhood moves to 5 p.m., followed by Reading Rainbow at 5:30 p.m. Reading Rainbow wraps up its current season Friday, September 7 and thereafter

will air only on the instructional schedule at 1 p.m. Thursday, repeating at 1:15 p.m. Fridays.

The new season of Square One TV premieres Monday, September 10, filling the vacated Reading Rainbow slot at 5:30 p.m.

Tim Tassie, network director for broadcasting, said the move was made to accommodate most viewers' preferred time for Sesame Street and to provide older children with viewing options both right after school and later in the afternoon.

Signal office will be closed Monday for Labor Day

Real Estate For Sale

Commercial
1.44 Acres - Near Reno Valley Exit off I-75 - city water - 309 ft. of front footage - high traffic count - excellent commercial potential - only \$110,000. M166

1.2 Acres - Reno Valley, Kentucky - Excellent commercial site - fronts on US 25 next door to Shell station - is part of the growth of the valley! \$250,000. M173

Singing Hills Development - New Commercial Development - Reno Valley - Acre Lots and Upland Prices Start at \$60,000. Be a part of the growth! M227

Reno Valley - 1.38 Acres - Excellent location for any type of business - mostly level land - improved with a 30x40 concrete block building - priced to sell at \$50,000. M212

Commercial Property - Berea, Ky. - 4.89 Acres - Zoned B-2 over 400' of road frontage on Hwy. 21 and access off of Wallaceton Pike. Excellent Development property. Priced to sell. Call Sonja.

FARMS & ACREAGE

118 Acre Farm - Modern Brick Home - House has 3 bedrooms, living room, kitchen/dining room combination, 1-1/2 baths and full basement. Also 2 barns - 108' of road frontage - development potential. Priced at \$140,000. M220

100 Acres - more or less - East Fork/Skaggs Creek section of Rockcastle County. Spring water. Priced at \$39,900. M207

Small Farm - 25 Acres - more or less - 14 x 70, 2 bedroom mobile home - 44 x 70 tobacco barn - excellent location - Broadhoughton section - Reduced to \$25,000. Call Sonja. M267

5 Acres - Ottawa Section - Rockcastle County - improved 1/2 acre on 52' wide road - city water is available. Priced at \$12,000. M250

26 Acre Farm more or less located in Orlando Section - Approximately 14 acres cropland and pasture, balance wooded - 1,400' lbs. of tobacco - 4 bedroom farmhouse - Barn and 2 storage buildings. Priced at \$44,900. M229

Highland - 17 Acres - more or less - pond - spring - city water is available - 1487 lb. tobacco base - priced at \$16,900. M185

53 Acres - more or less - Pine Hill Section - Rockcastle County - some marketable timber - well - springs - woodland - priced at \$19,500. M183

700+ Acres - Near Mullins Station in Rockcastle. Coal Possibilities or hunting retreat. Owner will consider selling off smaller tracts. Priced at \$200 per acre as a whole. M231

HOMES \$50,000 & UP

Brick Home - Windy Hills Subdivision - Mt. Vernon-Home has 3 bedrooms, living room, dining room, kitchen, den, utility room and 1-1/2 baths. Also has washer/dryer hookup, storm doors and windows, and carpet. Over/under and refrigerator included. Priced at \$56,900. M188

New Brick Home - Under Construction - Evergreen Estates Subdivision - 1 1/2 Acres - 3 Bedrooms - baths - heat pump - over/under - dishwasher - carpet - washer/dryer hookup - \$54,900. M210

3 Bedroom Brick Home - Near Maretburg - 1 1/2 baths, kitchen/dining room combination, utility room, total electric, washer/dryer hookup, carport - 20 x 30 detached garage - situated on 2.5 acre lot. Priced at \$55,900. M264

Brodhed - Lovely 1 1/2 Story Brick Home - approximately 1 Acre - House has living room, kitchen, dining room, family room and 1 bedroom on the first floor with 3 bedrooms, bath and utility room on second floor - washer/dryer hookup, large front porch - country living at its best yet convenient. All for \$59,900. M265

Homes \$30,000 - \$40,000

Maple Grove Area - Ranch style brick with 3 bedrooms, living room, kitchen, bath, utility and carport - wall to wall carpet - storm doors and windows - washer/dryer hookup - good level lot. Good buy at only \$38,000. M230

Reno Valley - House and Lot - 7/10 of an acre - House has 2 bedrooms, living room, dining room/kitchen combination and bath. Also has wall to wall carpet, electric heat and 1 car garage. Reduced to \$39,900.00. M224

House and 2 Acres - Just off old Brodhed road - house has living room, kitchen/dining room combination, 2 bedrooms, bath and utility room - also washer/dryer hookup - central air - storage building - fruit trees - priced at \$40,000. M269

Homes Under \$30,000

4 Bedroom House - Near High School - Mt. Vernon - House also has 2 baths, large eat-in kitchen, large living room, utility room, electric heat, and central air, fenced-in yard - good buy at only \$29,500. M218

West Main Street - 1-1/2 Story Frame House with living room, kitchen, family room, 2 bedrooms, utility room and 2 baths. Also has storm doors and

windows, washer/dryer hookup and wall to wall carpet. Priced at \$29,900. M194

1971 12x65 Mobile Home - to be moved - house has 2 bedrooms, living room, kitchen and bath - also has flu for stove - over/under - priced at \$4,000. M249

Mobile Home and Lot - Barrett Road - 1977 12x65 mobile home has living room/dining room combination, kitchen, 2 bedrooms and bath - also has washer/dryer hookup - front porch deck - washer & dryer included - air conditioner included - priced at \$16,000. M271

Home - Main Street - Livingstone - House has 3 bedrooms, living room, dining room, kitchen and bath - maple kitchen cabinets - 3 ceiling fans - cable TV available - washer/dryer hookup - priced at \$24,900. M273

West Main Street - Frame house with 2 bedrooms, living room, dining room, kitchen, bath and storage room. Also has wall to wall carpet, washer/dryer hookup, full basement. Situated on a handy 50 x 200 lot. Reduced to \$29,500. M223

Mobile Home - 12x60 with attached porch and city water - Mobile Home has 2 bedrooms, living room, kitchen and bath. Priced at \$12,900. M259

Two Mobile Homes - on one country lot - located near Pine Hill - has privacy - each of the mobile homes measure 12x50 - 2 bedrooms, living room, kitchen, bath, oil furnace. Only 4 miles from Mt. Vernon. Good buy at only \$19,900. M258

Near Brodhed - Just off Chestnut Grove Road - frame house with 3 bedrooms, living room, kitchen/dining room combination and bath. Also has storm doors and windows, washer/dryer hook-up and wall to wall carpet. Priced at \$30,900. M232

LOTS
Building or Mobile Home Lot - Septic tank and city water - 1 1/2 acres - Call Sonja - priced at \$12,900. M123

Subdivision Near Lake - Located on the Barrett Road - 26 lots measuring 1/2 acre and up. Several of the lots front on a backlot road and city water is available. Ranging from \$1,500 to \$4,000.

Ford Realty & Auction Co.

Sammy Ford - 256-4588
Roy Adams - 758-8400

Selling the Country
Mt. Vernon, Ky. 256-4545
KENTUCKY TOLL FREE 1-800-435-5454

NOTICE
All Livingston Homecoming Parade Participants, please be at White Star Auto Parts at 10 a.m. on Sept. 1.

Attention
All off-road vehicles taking part in Livingston's Homecoming Parade
You have 30 minutes after parade to get minutes off streets.

SOLD
New Subdivision - Rolling Hills - Highway 461 near Ron's Country Market - Large spacious lots - restricted - city water - choose yours today! Priced from \$2,500 to \$55,000. M163

SOLD
Lot - Brodhed - Corner of Pike Street and Sigmom Avenue - near Brodhed School - city water and sewer - priced at \$2,800. M215

SOLD
Restricted Building Lot - Houston Point Estates - corner lot - priced at \$3,900. M245

SOLD
2 Lots - Rolling Hills - Highway 461 near Ron's Country Market - restricted - city water - large spacious lots.

SOLD
3 Lots - Rolling Hills Subdivision - Highway 461 near Ron's Country Market - restricted - city water - large spacious lots.

SOLD
Large Lake Lot - Approximately 1.5/4 acres - 200 ft. of road frontage - city water available - priced at \$13, 500. M266

SOLD
6 Lots - Approximately 1 acre each - city water available - highway 150 - Brodhed - \$4,900 each. M272

FUTURE AUCTIONS

Absolute Auction of Mr. and Mrs. Edward Carroll's House/Lot and Personal Property Sat., Sept. 1, 1990 10:30 a.m. Crab Orchard, Kentucky

Absolute Auction of Shroyer Estates 63 Residential Lots - 16 Commercial Lots Sat., Sept. 8, 1990 - 10:30 a.m. South Highway 27 - Somerset, Kentucky

Estate Auction of the Late Mrs. Elgene Lewis Gross' 2.82 acres in 3 tracts Sat., Sept. 15 1990 - 10:30 a.m. U.S. 25 - London, Ky.

Rockcastle Teen Center to open September 4th

After a year of closed doors, the Rockcastle Teen Center, located on Williams Street across from the new elementary school, will again be open for our young people.

Christian Appalachian Project has restructured its youth services so that the Teen Centers in Rockcastle and Carroll Counties are now part of Project Turning Point.

Teen programs and services will be expanded under the directorship of John Wiley of Berea, and program coordination of Ginny Gilpatrick of Mt. Vernon.

On Tuesday, Sept. 4, from 3 to 8 p.m., teens and their parents will be welcome to visit the Teen Center. At that time the staff will be on hand to talk about the program, hand out in-

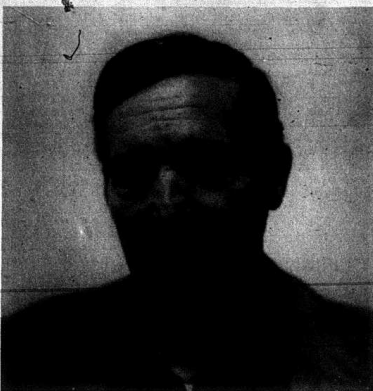
formation on schedules and eligibility, and distribute permission forms for transportation and medical release. Teens will have an opportunity to look around, try out the games, and indicate their interests and ideas. Light refreshments will be served.

Teen Center schedules will appear regularly in the Mt. Vernon Signal. All teens are encouraged to become regular members or to try out those activities that seem interesting.

Offerings will include trips, games, tournaments, movies, swimming, volleyball, arts, drama, service projects, homework-tutoring, special events, holiday celebrations and dances.

A Teen Council, open to all members of the Center, will be involved in decision-making.

Still at large . . .



"Dispatching" Cont. from front

mer police officers Bill Mink and Kevin Teter and Willie Swenney. Residents outside the city limits that need assistance can call 256-2178. Those in Mt. Vernon should call 256-2121.

"Rockcastle Manufacturing" Cont. from Front

tas was making a concerted effort to get the gas company's insurance to pay the lost wages of the plant's workers.

Many of the workers signed up for unemployment Wednesday in Somerset.

"We know it is frustrating for our employees and it is equally frustrating for us," he said. "We are going to do everything possible to correct this problem, but there simply is no gas leak," he said.

Boyce Stapp with the state's office of Safety and Health agrees with McElwee. "We have been to the plant several times and there is no gas leak. There is an odor that smells somewhat like a skunk, but there is not a gas leak," he said.

Stapp and other OSHA personnel were at the plant Tuesday when the odor reappeared.

Several Mt. Vernon residents, especially those along the by-pass have also smelled the odor since last weekend.

"I thought we had a skunk at our house Sunday night said Mt. Vernon police officer Jack Forner, who lives on West Main Street in Mt. Vernon, about a mile from the plant.

During this writing Wednesday morning the odor was quite evident in Mt. Vernon, but officials think the rainfall will help dissipate the smell.

Plant Manager Tandy Pedigo said that the plant will be closed until Tuesday, September 4th.

Dr. Gary Rogers of the Kentucky Poison Center said that the chemical being smelled is a mild irritant that can cause burning and or itching in the eyes, but that it is not harmful otherwise.

"Annexation" Cont. from Front

hearing rooms; chambers for judges; court reporter/law clerk room; law library; circuit court clerk offices; Supreme Court; Justice Lambert's offices; storage areas and restrooms.

According to court guidelines, the court annex should have an overall appearance of dignity and efficiency.

"The unique purpose of the court and its status as a separate branch of government should be reflected in the appearance of court facilities to distinguish them from other government operations," the guidelines stress. Further:

"The appearance of court facilities affects the public's respect for the court as an institution. It also affects the attitude of personnel who work in the court building. The court premises, therefore, should be of a character and quality commensurate with the proper and effective administration of justice. The court facilities should be well maintained (by the county). Dilapidated walls, dirty windows, peeling paint, run down furnishings and messy floors do not convey a proper image of the court."

Among other things, the court annex will have a directory at each public entrance and a coordinated sign system throughout the building. It will have central heat and air conditioning. The building will be accessible to the physical handicapped in compliance with the Kentucky Building Code.

Architect for the annex is Garlan Vanhook of Stanford. Earlier, he presented the Rockcastle Fiscal Court with drawings showing his rendition of the new facility as he envisioned it. The court accepted his building program.

"PVA employees" Cont. from front

information would be readily available should the need arise.

The new employees will take measurements of buildings and note changes and additions that have been made in property compared to the past description.

Hale said he had sent two names to George Wilson of the Department of Taxation, Revenue Cabinet, Frankfort, for approval.

They are: Sheila Marlene Lear of Scaffold Cane area and Sherry Lynn Bullock of Ky. 461, Mt. Vernon.

Hale said if one or neither are approved he would send the names of others.

If approved, the employees will work from four to six months and will receive \$772 a month. Since they are temporary they will not be given annual leave, retirement benefits, or insurance. The state will pay the salaries.

Since PVA is considered a state job, the last Legislature passed KRS 132.590 which says each PVA is authorized to "appoint any persons approved by the Revenue Cabinet to assist him in the discharge of his duties."

Hale's tentative appointments could be turned down by the state; however, it is unlikely since he will be their supervisor. They could be turned down if they are not qualified according to state requirements.

Hale stressed that county property is not being re-assessed as it is in some 25 Kentucky counties where the state has taken control.

The county PVA looks at assessments at the beginning of each year on a routine basis. The state makes a spot check of assessments every two years.

"We have not had any problems with our assessments," Hale said. "I try to be fair in assessing property, and we abide by the rules and regulations set down by the state."

A Manchester man that escaped from the Rockcastle County jail last week is still at large. A reward is being offered. Call 233-2513 for more information.

Economic conference set for September 13 at local courthouse

Final preparations were made this week for a Rockcastle Economic Development Conference scheduled from 8 a.m. to noon, Sept. 13 at the county courthouse.

Information to be presented include: How to borrow money at 5 percent; how to develop a business plan; how to get assistance in paying personnel; how to get assistance in training of personnel; and how to get marketing information, and other information.

The conference is sponsored by the Rockcastle Fiscal Court, U.S. Rep. Harold Rogers' office, and Southern Kentucky Economic Development Inc.

Businesses to be promoted include retailing, manufacturing, tourist, service, development and banking.

Co-sponsors are the cities of Mt. Vernon, Livingston and Brodhead, Rockcastle Industrial Authority and Improvement Council; Leadership Rockcastle; Citizens for Growth; Rockcastle Chamber of Commerce; Coroner Billy Dowell, State Rep. Danny Ford; Property Valuation Administrator Elmer Hale, County Clerk Norma Houk, Jailer Billy Kirby, County Attorney James H. Lambert, Supreme Court Justice Joseph Lambert, Circuit Court Clerk Denver Miller, State Sen. John Rogers, and Sheriff Shirley Smith.

Rockcastle Co. High School Class of 1985

REUNION

Sept. 9, 1990 4:30 p.m.
Quail Community Park

Hwy. 70, Brodhead

This will be a pot-luck.

Everyone bring a covered dish.

"I lost 110 lbs. and kept it off with Nutri/System. Now my husband is seeing a new woman. Me."



"I feel I'm a much happier, healthier, more caring person — my husband agrees and I'm going to stay this way forever. I couldn't have done it without Nutri/System. My husband and I just renewed our vows. They helped me discover my problem — when I was bored, I would eat. Once I learned that, it wasn't a problem anymore."

I was able to lose weight and keep it off for 6 months. Now the romance is back in my marriage. My husband and I just renewed our vows. It's like being a newlywed again."

Nancy E. Meozzi

The Nutri/System® Weight Loss Program includes a variety of delicious meals and snacks, nutritional and behavioral counseling, light activity, and weight maintenance.

Don't Wait, Call Today.
We Succeed Where Diets Fail You.®

nutri/system
weight loss centers

"ALL THE WEIGHT YOU WANT TO LOSE FOR THE PRICE OF A 10-LB. PROGRAM."

Nutri-System
3425 Southport Dr.
Somerset, Ky.
Ph. 679-8464
Mastercard of VISA

New Hours:
Mon. 9-5; Tues. 9-7
Wed. 9-5; Thurs. 9-7
Sat. 9-1
Closed Friday

nutri/system
weight loss centers

You Just Won't Find Friendlier Customer Service

If your past experience makes you dread each visit to the bank, we invite you to visit us for a change. While you're here, take a moment to talk with some of our customers. They can tell you better than anyone that it's not only possible to treat each customer like a valued friend, we do it every day!



BMV

The Bank of Mt. Vernon
Main Street
Mt. Vernon, Kentucky
256-5141
MEMBER FDIC

Mount Vernon Signal

Second Section

Thursday August 30, 1990



Mt. Vernon Mayor Gary Cromer, far right, and Postmaster William Hammond inspected the new mail box that has been placed on Main Street in Mt. Vernon. Mail is picked up daily at the box. Anyone wanting mail to go out the same day must have mail at the box by 2:30 p.m.

Kirby is dispatching for county

A few months ago Rockcastle County jailer Billy Kirby said that he wanted to quit dispatching calls for police and fire department from the local jail.

But, what he must have meant was that he wanted to quit dispatching calls for the City of Mt. Vernon, only.

At least that seems to be the case since the jailer is still dispatching for Brodhead, Livingston and the sheriff's department.

Kirby said last week that it was simply too much work to take care of the Mt. Vernon police department.

"We would have 25 calls a night from the Mt. Vernon officers and numerous license checks, it was just more than we could do," he said.

"We can handle the rest of the agencies without any problem and they need someone to do it," the jailer said.

The sheriff's department will dispatch their own calls during the day.

For his efforts the jailer will receive the same \$25 month from Brod-

head and Livingston and \$50 a month from the county as before. The city of Mt. Vernon was paying Kirby \$125 per month.

In August the city of Mt. Vernon began dispatching their own calls from city hall.

With Mt. Vernon's obvious financial problems some residents are concerned about the cost of running their own dispatch system.

Mayor Gary R. Cromer has said that he has a plan to pay for the dispatching, but hasn't revealed it to the city council as yet.

Dispatching for the city are for-

Cont. to A-14

Roberts passing petition

A petition opposing a vehicle sticker tax for the City of Mt. Vernon is being circulated by Mt. Vernon barber Curt Roberts.

The petition is at his barbershop and persons wishing to sign should come to the shop, Roberts said.

City Councilman Lloyd Cain brought suggestions for saving money by the city from Roberts at a recent city council meeting.

Cain said Roberts suggested the city sell the Sears lot on East Main Street; stop city policemen from taking police cruisers home at night and driving outside the city limits, and that there were too many employees at city hall.

Roberts said none are part of the petition, only the sticker tax. However, he said he agreed about police use of cruisers and selling the Sears lot. He denied he mentioned city hall employees.

The Sears lot was purchased by the city from Billy Hiatt to construct a fire department station, but since then it was agreed the lot will be developed and used for parking for the courthouse when the new court annex is completed.

The state earlier had asked the city to build a fire station on the south side of the railroad so fire trucks would not be blocked in going to a fire. The building was put on hold when CSX decided to abandon the railroad west of the Rockcastle Industrial Park. The railroad now serves only the park industries.

No date has been set on when the city will make a decision on how to raise money to pay \$21,000 owed by the city. The city must raise the money, or have definite plans on how it will raise the money, by Sept. 1. The state set the deadline.

The council was presented at the last meeting with three alternatives on raising the money: A sticker tax, a tax on all insurance premiums, and a payroll tax on persons holding jobs in the city.

The council voted earlier to consider a sticker tax, but did not approve it. That tax or some other could be decided at the Sept. 4 council meeting.

David Ott still Brodhead chief

For those who have asked, David Ott is still fire chief at Brodhead. He was reported earlier in the Signal that he had been fired by the mayor at a fire that damaged Fletcher Grocery.

Apparently, an agreement was reached by both parties and Ott continues as fire chief.

225 'pot' plants found by police

A Laurel County man and his two sons are scheduled to take lie detector tests on Sept. 6 to prove they had nothing to do with growing 225 marijuana plants on their property.

Ernie Tackett, who owns eight McDonald Restaurants in eastern Kentucky, and who lives in a castle-like home on U.S. 25 just south of the Rockcastle County line, said the test will end rumors he had anything to do with growing the marijuana.

Laurel Sheriff Floyd Brummett reported deputies found the "pot" from an airplane. It was 300 to 400 feet down the hill from Tackett's yard.

Brummett said the marijuana was too far from the Tackett house to justify an arrest. The sheriff also denied a cover-up because of Tackett's prominence in the area. However, rumors have been rampant which one deputy said, "hit us hard."

The grand jury will get lie detector test results.

Rockcastle crimes increase in 1989

How many crimes took place in Rockcastle County during 1989, is one section of the Kentucky State Police "Crime in Kentucky" report released recently.

The total of all crimes in the county during 1989 is listed at 804, much less than expected. The report does not indicate if local agencies reported all of the crimes to state police.

The report addresses crimes in all 120 counties.

Part I crimes (most severe) shows in 1989 there were 7 murders in the county; 2 forcible rapes; 2 robberies, 25 aggravated assaults, 9 burglaries, 16 larceny thefts and 3 auto thefts.

In Part 2 crimes, by far the most

Livingston woman killed in accident

A Livingston woman was killed Aug. 23, 1990 after she lost control of her car on Interstate 75 in Madison County. Bobbie Jean Durham, 41, died at the scene of the 3:05 a.m. accident one-half mile south of Richmond, state police said.

The accident occurred after Durham lost control of the 1979 Oldsmobile she was driving south-bound on the interstate. The car left the road, striking an embankment, state police said. It then overturned and flipped into the northbound lane, where it came to a stop.

Mrs. Durham's husband, Veryl Durham, 37, was treated at Patu A. Clay Hospital in Richmond and released, police said.

She was born in Middletown, Ohio, Nov. 12, 1948, the daughter of Jean Lawson Frye and the late Richard Frye. She was an employee of Mt. Vernon Plastics.

In addition to her mother, Jean Appleberry of Middletown, Ohio, she is survived by her husband, Veryl, and a brother, Larry Frye of Middletown, Ohio.

Services were Aug. 26 at Dowell and Martin Funeral Home by Bro. Jimmy Miller, burial was in the Lear Cemetery.

Pallbearers were: Charlie Whitt, Eugene Whitt, Michael Whitt, Ricky Johnson, Lee Stokes and Ellis Kirby.

were alcohol related. There were 264 drunk cases in the county and 197 driving under the influence cases. There were 41 cases of assaults other than Class 1 assaults.

Other crimes include: Stolen property, 16; vandalism, 14; weapons possession, 15; narcotics, drugs, 46; liquor laws, 18; disorderly conduct, 43; offenses against family, 6; sex offenses other than rape and prostitution, 3; arson, 5; and all other offenses, other than traffic, 61.

The statewide arrest total in 1989 was 249,161. Of that amount, 12,940 were committed by juveniles. Total arrests by sex were 200,251 by males and 44,126 by females.

Angela McKinney is new Miss Ky. RECC

Angela McKinney, daughter of Mr. and Mrs. Danny McKinney of Brodhead, was crowned Miss Kentucky RECC, Aug. 20, in Louisville.

Lee Roy Cole, president and general manager, said, "We are very proud of Angela for her fine representation of our cooperative and the honor she has brought to us by her wonderful accomplishments. We also appreciate the fine cooperation and support of Angela's parents, Danny and Betty Jo."

Angela is the first winner in the Miss Kentucky RECC Beauty Pageant for Jackson County RECC since 1965.

Following her graduation from Rockcastle County High School this summer, Angela was crowned Miss Jackson County RECC and also won the Miss Rockcastle County Pageant. She then went on to compete in the Miss Kentucky USA Pageant. Angela enjoys reading, needlepoint, tennis and playing the piano.

Angela's parents are also very proud of her and the honors she has received. Both parents are very active in business and in their community. McKinney is executive secretary-treasurer of the Kentucky Barley



Angela McKinney

Growers Cooperative and Mrs. McKinney is area program consultant for the Rockcastle County Board of education.

Angela seems ready to follow in their footsteps of success as she be-

gins her college education. She will be a freshman this fall at Vanderbilt University in Nashville, where she

intends to major in English and later enter Law School.

Annual Cystic Fibrosis Bike-a-thon set for Sept. 8th at Brodhead

A Bike-A-Thon for Cystic Fibrosis will be held Saturday, Sept. 8 at Brodhead School from 1 to 4 p.m. In case of rain the event will be Sept. 15th.

Cystic Fibrosis - (CF) a chronic, degenerative disease that primarily attacks the lungs and digestive system.

The Cystic Fibrosis Foundation (CFF) established in 1955, is a non-profit voluntary health organization, dedicated to improving the outlook for the CF patient and ultimately finding the answer to the cause of and cure for CF.

The center funds supports 127 patient care centers nationwide which provides the best available equipment and staff to treat the disease and which work in research seeking a cure or control for cystic fibrosis.

Nothing is more valuable than being able to save thousands of lives. Cystic Fibrosis research has progressed at such remarkable rate that we are on the threshold of opening up the future for those who have this disease now. Children and young adults with this disease require very special care, which is available at more than 120 Cystic Fibrosis Foundation Care Centers across the nation.

Tremendous advances in diagnosis and treatment have significantly improved the outlook for people with

CF. In 1955, when the Cystic Fibrosis Foundation was established, few children with CF lived to attend elementary school. Today, more than half are living into their early twenties - still an unacceptable fact.

There is no cure, so far, but today, through the foundation's efforts, after decades of research, scientists are making dramatic strides in their understanding of CF and that puts the CFF in the home stretch of this race to conquer the disease.

Still we need to quicken the pace if we are to save the thousands of children and young adults who have CF now. By participating in this bike-a-thon you are helping us do just that, because the dollars collected through this event will fund research that hopefully, will soon bring us a cure.

Come join the fun, and help sick children, you can also win something for yourself.

The prizes given through the Cystic Fibrosis Foundation are: A CFF T-Shirt for collecting \$35. Toe bag and T-Shirt for collecting \$65. AM/FM clock radio or 6-Pak cooler and T-Shirt for collecting \$100 and many more choices listed on the back of each sponsor sheet. Also collect \$10 and get ice cream cone from Dan-Delie. In addition to these prizes, local prizes will be awarded to the six collecting the most money. These

prizes include: jewelry box, sleeping bag, tape player, large ceramic horse, am/fm shower radio and telephone. The local prizes are on display in the window at Fletcher's Grocery. The one collecting the most money may choose -- then second -- then third - fourth - fifth - and sixth.

Get pledge sheets from the office Brodhead School or your classroom or at the Citizens Bank. Help with the fight against Cystic Fibrosis. This is one battle we MUST win.

No age limit on riders, if under 18 years old, parent or guardian must sign pledge sheet before you can ride.

We need your help. The elements needed for this disease are in place. However, continued support of these life-saving efforts is crucial. With your involvement, we can help those who have CF today. Together, we can make Cystic Fibrosis history.

We've come too far and seen too many recent breakthroughs to turn back now. We must keep the wheels of progress in motion.

Cystic Fibrosis Bike-A-Thon Chairperson, Clara Proctor Brodhead - 758-8585

To sign-up for bike-a-thon Call 758-8585



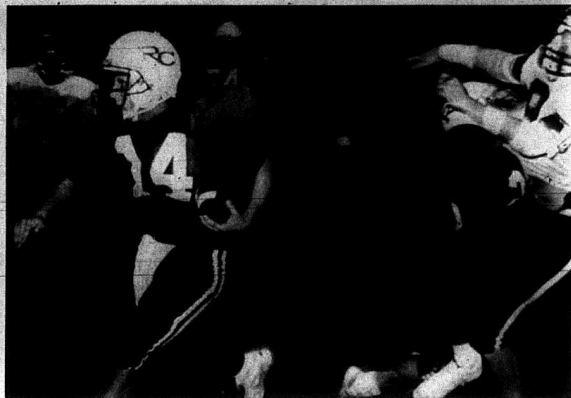
Tom Miller, center, quartermaster at the VFW Post 5908 at Mt. Vernon, presents a \$100 contribution to Mt. Vernon police Sgt. Jack Fortner, left, to help fund the "Drug, Abuse, Resistance, Education" (DARE) program at Mt. Vernon. With them is police chief Joe Howard. Sgt. Fortner lectures at schools, clubs and other organizations on drug abuse. Councilman Wayne Aams attended the presentation.

Sports

Got a Sports Item?
Planning a Tournament?
Call: Spencer Bengé (256-2244)



Shown closing in for the kill on a Russell County runner are Rockets (left to right) Kevin Goff, Scotty Hines and William Hellard. The Rockets' defense pressured Russell all night during their, 18-13, win in Friday's game at RCHS and obtained seven sacks in the process.



Rockets quarterback Scott Parkey found a little running room against the Russell County Lakers after good block from halfback J.D. Harris, who literally knocked the Lakers' defender out of the picture. The Rockets defeated the visiting Lakers, 18-13, in a very good ballgame Friday night. Parkey is expected to play this Friday against McCreary Central, although he suffered a broken nose in a automobile accident last Friday night.

Russell no match as Rockets win second game 18 to 13

By: Spencer Bengé

There's not a better feeling for a football team than getting a big win in front of a home crowd and the Rockcastle County High School football team did just that last Friday night.

Involved in yet another close game that went to the wire, the Rockets (2-0) rose to the occasion and stopped the visiting Russell County Lakers dead in their tracks to gain a 18-13 win.

Rockets' head coach Tom Larkey said, earlier this week, that his team made a lot less mental errors against Russell County than they did in the Lynn Camp game two weeks ago. "Our defense did extremely well

but I was a little disappointed in our offense at times," he said.

And the Rockets, who went into the game without starters Jonathon Saylor and Billy Todd, due to injuries in the Lynn Camp game, did struggle in executing their offense and the result was the Lakers' defense posting the first score of the game.

In fact, both teams had difficulty in advancing the ball through the first 11 minutes of the first quarter but it was the Rockets' who paid the price.

Faced with a fourth and 20 situation and forced to punt from their own 25 yard line, the Rockets had an attempted punt by Scott Parkey blocked by a rushing Laker defense. The ball, which ended up in the end-zone, was quickly converged upon

by the Lakers' defense, thus allowing the Lakers to score the first touchdown of the game. The Lakers added an extra point and took a 7-0 lead with 50 seconds left in the first quarter.

Giving Russell County the first score of the game, especially gift wrapped, was foremost on Larkey's mind, who considered Russell to be the third or fourth toughest opponent on their schedule this year.

"After they blocked the punt, things seemed to be down," Larkey said. "And I really didn't know what the outcome of the game would be."

But the outcome of the game was decided on the very next play and it was postmarked by sophomore J.D. Harris.

Harris received the Lakers' kick-off on the Rockets' 25 yard line and, behind some solid blocking, cut through the middle and went the distance for the touchdown. Harris also tacked on the two-point conversion to his 75 yard carry to give the Rockets an 8-7 lead at the end of the first quarter.

Just as in the first quarter, the second quarter began as a defensive battle. The Lakers were keying on the Rockets' running game while the Rockets were keying on the Lakers' quarterback.

Solid pressure by Scotty Hines, Darrell Sizemore, Jay Brown and Mike Spires allowed the Rockets to sack the Lakers' quarterback seven times during the game.

"We were hammering their quarterback," Larkey said. "Our line is dominating others and it's keeping us in the game," he added.

The Rockets' defense shut down the Lakers' offense in the second quarter and in doing so, allowed the Rockets' offense to come up with another score in the closing seconds of the first half.

On fourth down with three yards to go from Russell's 15 yard line, Rockets' quarterback Scott Parkey completed a 13 yard pass to William

Hellard who took the ball in for the Rockets' second touchdown of the game. Curtis Cotton's extra point attempt went through the uprights allowing the Rockets to go into the half leading the Lakers 15-7.

The Rockets' defense was there again in the opening minutes of the third quarter and the end result was another Rockcastle score.

Russell County received to start the second half and after two downs during the possession, were faced with a third and 12 situation from their own 37 yard line. An attempted pass by the Lakers was deflected by the Rockets and intercepted by William Hellard, giving the Rockets possession on the Lakers' 46 yard line.

Allowing the clock to run off, the Rockets marched 44 yards in nine plays to threaten the Lakers on their two yard line. But threatened was all the Rockets could do as the Lakers' defense held solid.

Breaking through the Lakers' line wasn't the easiest of tasks for the Rockets. It took all four downs before Scott Parkey could slip into the end-zone and then it was called back due to a penalty flag thrown against Rockcastle for illegal procedure.

Faced with a five yard penalty, the Rockets countered with a Curtis Cotton field goal to take a 18-7 lead with only 1:02 remaining in the third quarter.

But Russell County heightened interest in the game during their second possession of the fourth quarter with their only successful drive of the halfgame. The Lakers advanced 60 yards in 11 plays to set up their second touchdown and close the gap with the Rockets with only 4:21 left in the game. The Lakers' attempt at the two-point conversion was denied by the Rockets' defense and the score was set at 18-13.

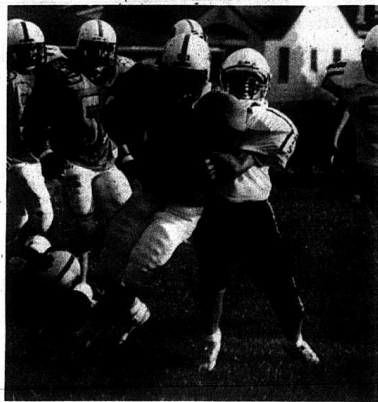
Gaining possession, after the kick-off, on their own 35 yard line with 3:50 remaining in the game brought Rockcastle spectators to the edge of their seats.

Mike Spires started the attack with two consecutive runs gaining

(Cont. to B-3)



Rockets sophomore halfback J.D. Harris swings around the end against the Russell County Lakers at RCHS, Friday night. Harris led the Rockets in rushing, with 24 carries for 65 yards, for the second consecutive week.



The Rockcastle County junior varsity Rockets stomped the host Lynn Camp junior varsity Wildcats in Monday's opening JV game. The Rockets held the Wildcats to only one first down in their big, 32-0, win.

Rocket's JV win opener, beat Lynn Camp 32-0

The Rockcastle County junior varsity Rockets chalked up a 32-0 win in their opening game against host Lynn Camp junior varsity Wildcats, Monday.

The 32 points scored on the Lynn Camp field is the most scored by any RCHS team since 1974.

The Rockets, who lost to Lynn Camp, 14-12, last year, limited the Wildcats to only one first down which

came in the second quarter. A 30 yard touchdown pass from Jason Kirby to Billy Phillips in the first quarter started the Rockets' attack. Bobby Coffey followed with the two-point conversion to give the Rockets the early 8-0 lead.

Coffey also followed with a touchdown run and another two-point conversion to push the score to 16-0.

(Cont. to B-3)

Statistics

Offensive			
Bobby Coffey	1 carry		2 yards
J.D. Harris	24 carries		65 yards
Mike Spires	8 carries		44 yards
Scott Parkey	6 carries		7 yards
William Bullens	1 carry		7 yards
Passing			
Scott Parkey	4 of 8		33 yards
Receiving			
Chuck Davis	1 reception		11 yards
William Hellard	2 receptions		22 yards
Defensive			
Tackles		Solo	Assists
Scotty Hines	5	4	1
Kevin Goff	6	5	1
Darrell Sizemore	5	0	5
Jay Brown	6	2	4
Mike Spires	5	3	2
Chuck Davis	2	0	2
Curtis Cotten	3	1	2
J.D. Harris	7	3	4
William Bullens	8	3	5
Scott Parkey	4	0	4
William Hellard	4	1	3
Bobby Coffey	1	1	0

Note: Scotty Hines had 3 sacks, Jay Brown 2 sacks, Darrell Sizemore and Mike Spires each had 1 sack. J.D. Harris and William Hellard both had interceptions and Curtis Cotton knocked down a pass.

Attention:
Rockcastle
Mixed League
Maroon Lanes Richmond
Begins
September 6th
Meeting 7:30
Bowling 8:30
For more information, Call:
256-9412 or
256-5068

L SPRINGS PAY LAKE
TOURNAMENT
Hwy. 39 - Somerset
Sat., Sept. 1 7 p.m. to 11 p.m.
First Place - \$200
Second Place - \$100 Third Place - \$50
Phone 423-3832

Channel Catfish 4-6" @ .35/each and 6-8" @ .45/each; Farley's F-1 Superbue Hybrid Bluegills 1-3" @ .35/each; Large Mouth Bass 2-4" @ .85/each; Fathead Minnows @ \$6.25/lb.; Triplod Grass Carp @ 7.25/each; Video "Successful Fish Farming" 29.95/each. Compare prices before stocking your pond.

FISH
For Pond and Lake Stocking
Delivery will be: Monday, August 31
Mount Vernon - Stewart's Farm Supply
12 Noon to 1 p.m. Ph. 256-2167
Minimum Order of twenty-Five (25) Fish - We family year hauling containers.
To place an order, call your local store or call: 1-800-247-2615
Orders do not have to be placed in advance
Farley's Fish Farm - Rt. 1, Cash, Arkansas 72421