



# Obituaries

## Elsie Banks

Elsie Banks, 74, of Rt. 3, Mt. Vernon, died Tuesday, February 18, 1997 at a Lexington Hospital. She was born in Rockcastle County on June 26, 1922, the daughter of Chester Arthur Dixon and Fannie Mae Emmert Dixon.

Survivors are her husband, Robert Banks, Sr.; one son, Robert L. Banks, Jr., of Rt. 3, Mt. Vernon; one daughter, Mrs. Edna Mae Mathis of Richmond; three brothers, Joe Dixon of Junction City, Henry Dixon of Mt. Vernon and George Dixon of Southfield, Michigan; four sisters, Julie Martin, Martha Bullock and Grace Evans, all of Mt. Vernon and Mabel Roe of Berea and five grandchildren and seven great grandchildren.

Services will be Friday, February 21, 1997 at 2:00 p.m. at the Dowell and Martin Funeral Home Chapel with Bro. Carl D. Sears officiating. Burial will follow in the Elmwood Cemetery in Mt. Vernon.

Arrangements are by the Dowell and Martin Funeral Home where friends may call after 6:00 p.m. Thursday (today).

## Christopher Andrew Mink

Christopher Andrew Mink, infant son of Timothy and Amy Smith Mink, was born February 16, 1997 at the Patsy A. Clay Hospital in Richmond. He died February 17, 1997 at the U.K. Medical Center in Lexington.

Survivors are his parents, Timothy and Amy Smith Mink of Rt. 5, Mt. Vernon; one sister, Danielle Mink of Mt. Vernon; his paternal grandparents, Bill and Louise Mink of Mt. Vernon; maternal grandparents, Shirley and Alma Jean Smith of Pine Hill and his paternal great grandmother, Ada Payne of Pine Hill.

Graveside services were Wednesday, February 19, at Pine Hill Cemetery with Bro. Tim Hampton officiating. Burial was in the Pine Hill Cemetery.

Arrangements were by Dowell and Martin Funeral Home.

## Thomas Hickey

Thomas William Hickey, 73, of Sigmon St., Mt. Vernon, died Sunday, February 16, 1997 at St. Elizabeth Hospital in Edgewood. He was born in Rockcastle County on January 16, 1923, the son of Lorenzo and Laura Willhite Hickey and was a member of the Maple Grove Baptist Church.

Survivors are several nieces and nephews and two sisters, Mrs. Bessie Hickey of Orlando and Mrs. Teresa Hickey of Baltimore, Maryland.

Services were Wednesday, February 19, 1997 at the Dowell and Martin Funeral Home Chapel with Bro. Ballard Rader officiating. Burial was in the Maple Grove Cemetery.

## Eva Mullins

Eva R. Mullins, 92, of Rt. 3, Mt. Vernon, died Wednesday, February 12, 1997 at the Rockcastle Hospital. She was born in Jackson County on September 16, 1904, the daughter of Isaac Ison and Cordia Roark Ison and was a retired Rockcastle County School Teacher and a member of the Clear Creek Baptist Church.

Survivors are two brothers, Sewell Ison of Detroit, Michigan and Ott Ison of Florida; two sisters, Osia Abner of McKee and Lucille Bowman of Berea. She was preceded in death by her husband, Bert Mullins.

Services were Saturday, February 15, at Dowell and Martin Funeral Home with Bro. Mike Bryant officiating. Burial was in the Scaffold Cane Cemetery.

Pallbearers were Stephen Mullins, Randy Linville, Bert Mullins, Steve Armstrong, Harold Bowman and John Nugent, Jr.

## Virgil Hollandsworth

Virgil Lee Hollandsworth, 61, of Rt. 2, Orlando, died Sunday, February 16, 1997 at his residence. He was born in Madison County on September 30, 1935 the son of Ruben and Orlena Barnett Hollandsworth and

was a machinist and a member of the Pine Hill Holiness Church.

Survivors are his wife, Fannie Hensley Hollandsworth of Orlando; four sons, Billy Wayne Hollandsworth of Orlando, Frankie Lee Hollandsworth of Owensboro, Tony Hollandsworth of Berea and Robert Earl Hollandsworth of Orlando; one stepson, Chris Vanwick of Orlando; one daughter, Judith Gail of Florida; two stepdaughters, Nancy Renee Vanwick and Amy Sue Vanwick, both of Orlando; four brothers, Lewis Hollandsworth and Charles Hollandsworth, both of Waynesville, Ohio, Vernon Hollandsworth of Connersville, Indiana and Lawrence Hollandsworth of Cincinnati, Ohio; two sisters, Lucy Lamb of Paint Lick and Bernice Lynch of Connersville, Indiana and six grandchildren and one great grandchild.

Services will be 1:00 p.m. Thursday, February 20 (today), at the Pine Hill Holiness Church with Bro. Allen Hensley officiating. Burial will follow in the Briar Field Cemetery.

Friends may call at the Pine Hill Holiness Church. Arrangements are by Dowell and Martin Funeral Home.

## Vieta Sowder

Vieta Jane Sowder Simpson, 84, of Evangeline Road, Cincinnati, Ohio, and formerly of Crab Orchard, died January 29, 1997 at the Mercy North Hospital in Hamilton, Ohio after a short illness. She was the widow of Eihmer Jackson Simpson and was born March 4, 1912 in Rockcastle County, the daughter of the late Charlie and Agnes Proctor Sowder. She was a homemaker and a member of the Mt. Zion Church of Christ and had lived with her son for the last nine and half years.

Besides her son, Harold Simpson of Cincinnati, other survivors are one daughter-in-law, JoAnn Simpson, of Cincinnati; two sisters, Verna Martin of Brodhead and Marie Black of Florence; two brothers, her twin, Earl Sowder of Midway and Loyd Sowder of Cincinnati, Ohio; six grandchildren, 15 great grandchildren and four great grandchildren. She was

preceded in death by her parents; husband and one daughter, Lorene Simpson Taylor.

Services were Saturday, February 1, 1997 at McKnight-Martin Funeral Home Chapel with Minister Marklee Raulerson officiating. Burial was in the Mt. Zion Church of Christ Cemetery.

Pallbearers were Gary Taylor, Dale Simpson, Andrew Cahill, Barry Cosler, Bro. Proctor and Loren Simpson.

## Allie Sparks

Allie Marcum Sparks, 72, died Thursday, February 13, 1997. She was born October 8, 1924 in Jackson County, the daughter of the late Johnny and Lizzie Ellen Mays Marcum. She was a homemaker and a member of the Holiness faith and was the widow of Herman Sparks.

Survivors are nine sons, Lester (Wanda) Sparks of Kerby Knob, Wesley Sparks of Conway, Jerry (Louise) Sparks of Brodhead, Homer (Linda) Sparks and Fred (Debbie) Sparks, both of Lincoln County, Letcher Sparks of Richmond, Lloyd (Nancy) Sparks, Roy (Carolyn) Sparks and Eugene (Rosie) Sparks, all of Berea; five daughters, Mrs. Clyde (Eleanor) Land of Poosey, Mrs. Gamett (Freda) Bolton and Mrs. Hershel (Carolyn) Isaacs, both of Lancaster, Mary Abner and Mrs. Charles (Barbara) McKinney, both of Berea; four brothers, Arthur Marcum of Gray Hawk, Jimmy

Marcum, Joe Marcum and Harman Marcum, all of Hamilton, Ohio; two sisters, Katherine Gray of Berea and Gaiher Sparks of Gray Hawk; two half-sisters, Myrtle Marcum and Hazel Hurley, both of Hamilton, Ohio; 41 grandchildren, 20 great grandchildren and a host of nieces, nephews and other relatives and friends. She was preceded in death by her husband, Herman; three sisters, Celest Pearson, Neely Burns and Thelmie Gray and two brothers, Stanley "Bud" Marcum and Jesse Marcum.

Services were Saturday, February 15, 1997 at Williams Funeral Home with Bro. Donnie Pingleton and Bro. Bruce Akson officiating. Burial was in the Berea Cemetery.

Pallbearers were David Abner, Billy Sparks, Joey Sparks, Tony Sparks, Randall Sparks, Jonathan Sparks, Robbie Sparks and Tony Harrison.

## Roy Peters

Roy Lee Peters, Sr., 71, of Richmond, died Sunday, February 9, 1997 at his residence. He was born in Wildie and had been lifelong resident of the Madison-Rockcastle area. He was a member of the Christian faith, a retired self-employed painter and a veteran of World War II.

Survivors are four sons, Gary "Poocho" Peters, Roy Peters, Jr., and Danny Ray Peters, all of Richmond and Robert Wayne Peters of Lexington; two daughters, Josie Lee Neal of Irvine and Debra Kay Smith of Cape Coral, Florida; three brothers, Walter Peters of Alexandria, Elnor Peters of

Lexington; two sisters, Anna T. Thomas of Paris and Jean Peters of Berea; seven grandchildren and two great grandchildren and two former wives and children, Helen Darnrell and Lillie Peters, both of Richmond. He was preceded in death by his parents, Jess and Addie Mullins Peters; one daughter, Sharon Elaine Peters; one son, Michael Theodore Peters and two brothers, William "Bill" Peters and Jesse Peters.

Services were Sunday, February 16, 1997 at the Williams Funeral Home with Rev. Orbin Moberly officiating. Burial will be in the Oak Hill Cemetery in Rockcastle.

## Cards of Thanks

The family of Leroy Monk wishes to express our deepest appreciation and would like to thank each and everyone that visited, sent money, flowers, food and cards. Special thanks to Bro. Eugene Gentry, Cox Funeral Home and everyone that has been so kind. May God bless each and everyone

of **Betty Bullock Monk and family**. Every expression of love and sympathy shown to us during the long illness and loss of our loved one has meant so much. Our heart felt thanks and appreciation to everyone. May God bless you. The Family of Cleveland E. Payne

## In Loving Memories

In Memory of Verla Crank Birthday - February 16th, 1958

When I was a child  
On her I could always depend  
To laugh with and play with  
My big sister, my forever friend.

As time passed  
The sicker she became  
At ten, she had the operation  
It left her not the same.

But still she was there  
To listen and to care

On her, I could still depend  
My big sister, my forever friend.

Then when she was fifteen  
God took her to heaven  
I was so alone and shocked  
For I was only eleven.

Throughout my life  
I've had many friends  
On whom I could depend  
But no one could take the place  
Of my big sister, my forever friend.

Sadly missed my sister,  
Ruth Ann DeBoard

## Hillcrest Treasures

Antiques & Collectibles  
Used Furniture

Exit 59 - 25 North (Next to Superior Food Market)

Now Open

Wednesday - Sunday 9 a.m. to 5 p.m.



## THE BEST VALUE IN SATELLITE TV!

Satellite Mini-Dish • Professional Installation  
Tons of Channels • Crystal Clear Picture • CD Quality Sound  
ONLY PRIMESTAR OFFERS YOU THE OPTION TO RENT OR BUY!

RENT and get tons of channels starting at about \$1 a day!  
Get a FREE MONTH of programming — up to a \$54.99 value!  
And get \$50 OFF INSTALLATION—now only \$149!

or, BUY your own satellite mini-dish for just \$199 with the purchase of one year of programming! —save \$50 on install—now only \$149!

With PRIMESTAR, you'll enjoy crystal-clear digital picture and CD-quality sound on every channel. Other satellite companies give you a limited 90-day manufacturer's warranty but PRIMESTAR gives you a "worry-free" warranty that includes service calls to your home.

### StarLink Satellite Services

Corbin  
(606) 526-1168  
Somerset  
(606) 677-9625

### Call Today!

Rockcastle Sales Office  
(606) 256-9506



### Leon's Furniture Center

Corbin  
(606) 523-2283  
Berea  
(606) 986-1885

\*Does not include installation. Based on select packages. †Subject to credit approval. Free programming valued up to \$54.99, depending on the selected package. Cannot be combined with any other offer. Limited time offer. Prices are subject to change. Sales tax may apply. (Subject to credit approval. Limited time offer available to new customers pre-paying for a 12-month subscription. Standard installation price is \$199. Cannot be combined with any other offer. Prices are subject to change. No refunds. Sales tax may apply. ABC, CBS, FOX, NBC and PBS channels are intended for private home viewing and are available only to households that cannot receive that network off-the-air from the local TV station using a conventional rooftop antenna and have not received that network by cable TV within 90 days prior to satellite service. Prices available for residential service only. Offers only available from selected sellers. © 1997 PRIMESTAR BY TCI.

# Hays Furniture

## Let Serta End Your Day



SERTA SALE	
Anniversary Set	Tiffany Pillow Set
Twin Set \$260	Twin Set \$399
Full Set \$339	Full Set \$499
Queen Set \$425	Queen Set \$599
King Set \$579	King Set \$699

591 West Chestnut St. • Berea, Ky. • 986-4144 or 986-8004  
FAMILY OWNED & OPERATED  
Furniture • Appliances • Bedding • Wallcovering • More  
• Free Delivery & Set-Up • Same Day Delivery In Most Cases  
• In-Store Financing • Months Same As Cash • Reasonable Offer on Trade-Ins  
Used Appliances and Used Furniture Available  
Quality & Personal Service. Don't Cost More At Hays Furniture

Winter Hours  
Monday thru Saturday  
8:00 - 6:00



At RCHS



Local chapter observes

At RCHS



Girls break record; are now 20-4  
Pg. A-9

At RCHS



Seniors and Parents honored recently  
Pg A-10

# Mount Vernon Signal

Mount Vernon, Ky. 40458

Volume 111 - Number 20

Thursday, February 20, 1997

## Court gives approval to 911 service

By: Richard Anderkin  
911 emergency dispatching has crossed its first major hurdle in Rockcastle County.

The approval was after the first reading of an ordinance that will make the service law in seven to twenty-one days.

During that time, the court must publish the ordinance and give its approval after a second reading for it to become law.

After a lengthy discussion the

court voted to approve the ordinance and a \$2.00 fee will be added to all telephone lines in Rockcastle County to pay for the service.

The only exemption will be businesses or homes that have more than one line. Those businesses and residents will pay on one line only.

A representative from GTE told the court that the basic 911 service would be in operation in 60 to 90 days after it became law.

The court indicated that they would like to start with basic 911 and move to enhanced.

The enhanced version would take about two years to implement, but all

court members indicated they wanted the basic service to be expanded into enhanced.

The court voted to put thirteen members on the 911 board with County Judge-Executive Buzz Carlotis serving as its chair for a period of two years.

Several residents, including Mrs.

Betty Castro of Brodhead, took part in the discussion and most people in the audience seemed pleased that the court passed the first reading of the ordinance.

Carlotis has not set a date for the second reading of the ordinance, but he expects magistrates to give their approval.

## Drugs found after jailer searches returning prisoners

Rockcastle County Jailer Joe Howard reported recently that preliminary searches of two inmates reporting to the jail turned up drugs, including valium and tylox pills.

A search of Karl Wayne Pittman, 23, on February 7, turned up eight narcotic pills in his shoe.

Pittman was reporting to jail for

(Cont. to A11)

## Rockcastle has lowest jobless rate in area

Unemployment rates in Rockcastle County continue to be the lowest in the six county labor force area that includes Clay, Jackson, Knox, Laurel, Whitley and Rockcastle.

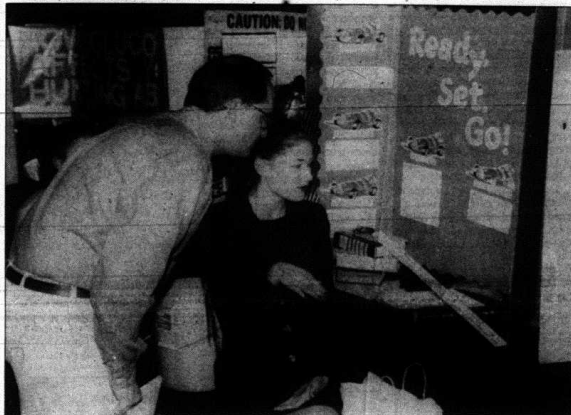
According to figures from the Corban Labor Office, Rockcastle's unemployment rate in November was 5.3, compared to 4.8 percent in October.

Kentucky's unemployment rate is 4.8 percent for November.

According to the Labor office's statistics, 5,934 Rockcastle countians are in the labor force and 5,620 of them had jobs in November.

The highest unemployment rate was in Knox County with 14 percent of the labor force unemployed.

In the six county area the unemployment rate was 8.5.



Eighth grader Mindy Bullock talks with Judge John McQueary during the Rockcastle County Middle School's Annual Science Fair last week. Mindy's project was titled Friction and Velocity.

## 26 indictments handed down

It wasn't a very loving Valentine's Day for a lot of Rockcastle countians.

The Rockcastle County Grand Jury handed down twenty-six indictments Friday for crimes ranging from receiving stolen property to selling drugs within 1000 yards of a grade school.

James "Junior" Weaver, 26, of Clear Creek Road, was indicted for receiving stolen property.

According to the indictment Weaver had a .22 caliber rifle in his possession when police went to his home on January 16.

The rifle was the same gun that Weaver accidentally shot his eight-year-old son with on January 16, while

he was shooting targets on the family's outhouse.

Weaver was not indicted for any crime relating to the shooting, although evidence from the incident was presented to the Grand Jury.

Joshua Lee Weaver is recovering from the accident at Cardinal Hill Hospital in Lexington.

Junior Weaver will be arraigned on March 14.

Three Lexington men were indicted on six counts of theft by unlawful taking in connection with an October 21st incident at the Rockcastle County High School.

The three men are accused of breaking into six cars in the parking

lot of the school last Fall.

James Farthing, 22, Eric Bethards, 22, and Owen Hill, 19, of Lexington will be arraigned in Rockcastle Circuit Court on March 14.

A London man, who was convicted of reckless homicide in Laurel County on April 24 of 1995, was indicted on three counts.

Gerald Collier, 42, of George Road, was charged by Rockcastle Deputy Sheriff Doug Thomas with trafficking in cocaine and methamphetamine and carrying a concealed deadly weapon on October 7, 1996.

He will be arraigned on February 28.

Phillip Palin, 23, of Orlando and Charles D. Brock, 30, of Brodhead were indicted for second degree arson in connection with the burning of a vehicle belonging to Mt. Vernon police officer Barry Adams on January 6.

Brock was also indicted for being a persistent felony offender and for possessing a controlled substance on December 12, 1996.

Both men are being held in the Rockcastle County jail under a \$100,000 cash bond.

They will be arraigned on February 28.

Eric Moore, 24, of Mt. Vernon, who was arrested at the time of the incident, was not indicted.

Roy D. Fredricks, 33, of Mt. Vernon was indicted for possession of cocaine on May 3, 1996.

Fredricks will be arraigned on March 14.

Carlene Davidson, 50, of Barnett Road, was indicted for cultivating marijuana after police found an indoor growing operation at her home on January 23.

According to the indictment, police found 54 plants inside her home. She will be arraigned on February 28.

Raymond Miracle, 29, of Mt. Vernon was indicted for possession of a handgun by a convicted felon. Miracle was arrested during

homecoming festivities at Livingston on August 31. He is being held in the Rockcastle County jail and will be arraigned on March 14.

Richard Caudill, 26, of Livingston was indicted on three counts after a December 17th incident involving Debbie Hellard of Livingston.

Caudill is accused of shooting a shotgun at Hellard and hitting her with the same gun. He was also charged with receiving stolen property.

He will be arraigned on February 28.

A Dayton, Ohio man was charged with receiving stolen property and criminal mischief.

Tim Bradley, 29, is accused of stealing a 1986 Chevrolet Blazer from the county garage on January 23 and totaling it. He will be arraigned on March 14.

Jackie Woodall, 29, of Brodhead, was indicted for selling drugs within 1,000 yards of Brodhead School.

Jamie Silmon, 17, of Orlando, who was certified as an adult in Rockcastle Circuit Court, was indicted for first degree burglary after he entered the residence of Tony Mahaffey on October 1. According to court records, Silmon was armed when he stole guns from Mahaffey's residence.

William L. Mason, 20, of Orlando was indicted for selling marijuana within 1000 yards of the Rockcastle Middle School.

He was also indicted for possessing cocaine.

Woodall, Mason and Silmon will be arraigned on March 4.

Two former employees of Dari Mart in Mt. Vernon were indicted for stealing \$2,600 in money orders during a three day span in January.

Jennifer Lynn Bustle, 22, of Rt. 3, Mt. Vernon and Glenna Faye Williams, 31, of Berea will be arraigned on February 28.

(Cont. to A11)

## Magistrates vote down insurance premium tax

By: Richard Anderkin

The Rockcastle County Fiscal Court voted down a proposed insurance premium tax during a special called meeting Thursday.

The court had passed the first reading of the special levy on insurance tax premiums two weeks earlier, but on Thursday they failed to make it law.

Over 100 people filled the old Circuit Court room mostly to voice their opposition to the levy that would have taxed all insurance premiums paid in the county at a rate of four

percent.

Rockcastle County Judge-Executive made an hour long appeal to the magistrates asking them to pass the tax because of what he called serious financial problems.

Carlotis told the magistrates that they had taken an oath to operate the county on a firm financial basis and that by not being able to balance the county's general fund, they and he were in violation of the law.

Local insurance agent William K. Bullen, an agent for Kentucky Farm Bureau Insurance in the county and Mt. Vernon resident Bill Cash both presented petitions to the court opposed to the tax. Bullens said he had 500 signatures on his petition and Cash said his contained 247.

Bullens said the four percent would generate about \$100,000 from his customers alone.

Local farmer Dale Sowder asked the court how residents were supposed to pay for the new tax. "I was 3,000 pounds short on my tobacco, cattle are down by half, how are we supposed to pay," Sowder asked the court.

The County Judge reminded Sowder that he had paid \$700 of his own money to keep a juvenile in jail in Madison County and Sowder retorted that the Judge made his money "sitting on his butt."

Carlotis told the crowd that a loss of coal severance money and increased expenses for emergency dispatching services had caused the financial problems for the general fund.

The Judge said the jail fund had been hit hard by the cost of keeping juveniles in jail.

County treasurer Joe Clontz said the jail fund owed other counties nearly \$40,000 at this point with no way to pay.

The county treasurer also told the magistrates and the Judge that there was no way the general fund or the jail fund would balance this year.

"We (this court) have been in violation of KRS-316 for a long time," Clontz said.

That statute law requires the county to pay their bills 30 days after they receive them. "We haven't done that for a long time," Clontz said.

Carlotis said the special levy would bring in \$160,000 to \$180,000 a year to the county's general fund, which could be used however needed.

Carlotis said his earlier statement that the tax would generate about \$400,000 annually was incorrect.

Although Carlotis tried to convince the magistrates that the state would step in and make the court balance their budget, if they didn't

(Cont. to A12)

## Countywide Spelling Bee



Brittany Himes, far left, a fifth grader at Brodhead Elementary School, was the winner of the Countywide Spelling Bee held last week at the administration building in Mt. Vernon. Second place winner was Joseph Lambert, a seventh grader at RCMS. Tying for third place were Brittany Cromer, a fifth grader at RES and Allison Anderkin, a fifth grader at MYES. Each child was the winner of their school's Spelling Bee. Brittany will represent Rockcastle County in the State Spelling Bee on March 29 in Louisville.

# Viewpoints



## Points East

By: Ike Adams

A couple of weeks ago Ralph and Betty King along with Loretta and yours truly, hosted our annual "rounding party at the King's new place just outside Berea. It was a much tamer affair, as have been the last several, than the ones we used to throw 20 years ago. I suppose that has something to do with our being twenty years older than we used to be.

The music, for example, never got so loud that you could hear it in the parking lot. I can remember groundhog parties that had people complaining for miles around. This year it was more like an afternoon tea party at the old folks home.

However, even though the music was turned down, it was easily the best groundhog celebration we've ever had. Twenty years ago it was common for us to bring in a van load of sound equipment and a rock & roll band. This year we were strictly acoustic but it was top of the line acoustic.

Vicky Simmons and Dale Ann Bradley of The New Coon Creek Girls showed up and allowed Jake Jacobs and I to sit in. Basically all I did was sit because I kept getting cold shivers up and down my legs and arms and I kept pinching myself to make sure I wasn't dreaming. In addition to the songs on their several albums, Vicky and Dale know just about every bluegrass tune ever recorded.

All four of the New Coon Creek Girls will be at the Walnut Meadow Campground Music Hall in Berea this Friday night (February 21). They will be playing songs off their own albums as well as taking requests from the crowd. The New Coon Creek Girls, incidentally, are on the front cover of the December issue of Bluegrass Unlimited which is sort of the Bible for serious bluegrass music fans. They've also just released a gospel CD that has the critics raving.

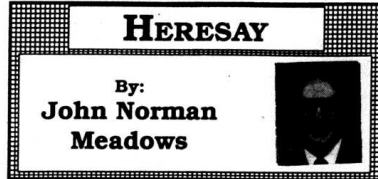
If you want to take your family to a good, clean musical event that you'll remember for a long, long time, Walnut Meadow is the place to be Friday night. Loretta and I will be there along with most of the fifty folks who attended the groundhog celebration.

Walnut Meadow is located west of Berea just off exit 76. Simply head west off the exit toward Paint Lick

for about a quarter of a mile and you'll see the campground on your left. The music will get underway about 7:30. I'm not sure how much

tickets cost, but it'll be less than \$10.00 and you'll get fifty dollars worth of entertainment.

As the old saying goes, be there or be square.



## HERESAY

By: John Norman Meadows

**P**RECIOUS SOULS, CHILDREN OF AN EVIL AGE, greetings and plaudits from the hustlin', bustlin' berg of Wab, home of the late Deodurus Farkendille, long-time Professor of Pharmacology at Wab'd's College of Human and Animal Studies for Men, and part-time hawk of Villheimer's Light Weight Lorngettes for Ladies, who said, "Sometime, when you argue with a fool, he is doing the same."

A-mercy! Last week's *Heresay* prompted a few compliments. As you might recall, beloved, I wrote about my seminary mentor, the late Clyde T. Francisco, Professor of Old Testament Studies at the Southern Baptist Theological Seminary in Louisville. In last week's missive I noted his "chirch savvy," i.e., advice to young pastors on how to survive in a modern day Baptist church. No easy task.

Dear hearts, I left out a couple of choice samples of Dr. Francisco's sagacity. The deadline for my *Signal* script was drawing nigh, and after considerable editing, I finished the draft at 4:30 a.m. Why would I stay up so late just to write this article? The answer is plain and clear - because I love you, man!

Dr. Francisco, or "Fran," as I

called him - but never to his face! - cautioned students about loading down their congregations with the new, and oft times exciting, knowledge they acquired on a daily basis in seminary school. If, however, you haven't prepared well," Fran cautioned, "you'll find yourself preaching out of the dress - and before long you might find yourself preaching somewhere else."

I remember so well his wisdom about "changing a church." Many times new pastors find themselves mired in churches that think only old thoughts, thoughts that are often more steeped in tradition than in Scripture.

"How do you change a situation like that?" Fran would ask rhetorically. "Well, you could attack it like a prophet. Just cut loose and tell them that their ways are stupid. Demand their repentance. And while you're delivering your fiery oration, your wife should stay home and commence packing for your next move." Ha!

"No, no," the good doctor said, "That's the wrong approach. If you would change a congregation, you must first show them that you love them. And show them your love, don't just tell them about it. The saying is still so, 'I'd rather see a sermon than hear one any day.'"

"Now, when people know you love them," Fran explained, "you can suggest change." Then an impish little grin would come across his face as he added, "More likely than not, they won't change. But because they know you love them, they will respect you and your opinion, even if they don't agree with it."

When Dr. Francisco was himself an undergraduate at Southern, he was the weekend pastor of the Bedford Baptist Church, northeast of Louisville. During one of those pastoral years, a terrible drought set in. In July it was so severe that the farmers of the area asked the ministers of the community to call a meeting to pray for rain.

Before the community-wide meeting took place, Fran met with the deacons of his church and told them they had little ground for asking the Lord to send rain. He told them that for years an educational building had been needed at Bedford Baptist, that there had been ample money to raise such an edifice, and that the Lord might be more inclined to hear their plea for rain if they vowed something in return. Which they did - pledges sufficient to commence work at that educational building.

Then came the community-wide day of prayer for rain. A huge crowd assembled in the high school gymnasium. But when Fran arrived, he took one look around, then went to the microphone, and said, "This is quite a turnout, but I suggest we all get in our cars and go home. God answers the prayer of faith, but the fact that I haven't seen one umbrella in this crowd makes me think you aren't really serious about praying for rain."

The crowd dispersed but then returned, umbrellas in hand. And everyone prayed. And by day's end, dark clouds commenced forming in the southwest, and over night a gentle rain fell. So was the next day. And the next.

Some story, eh? Yes, and very true.

One more Franciscan tale, beloved, and I'll call it quits for today. Dr. Francisco was the evangelist for many a "revival meeting." When ever a pastor contacted Fran about "holding a meeting," Fran would ask, "When do you plan to take your vacation?"

(Cont. to A3)

## Bulletin Board

### TOPS

TOPS (Take Off Pounds Sensibly) meets Thursday at 6 p.m. at the First Church of God on Main St. in Broadhead. Phone: 800-932-TOPS for more info.

### Bookmobile Schedule

Mon., Feb. 24th: Broadhead and Copper Creek.  
Tues., Feb. 25th: Green Hill, Corwa, Boone, Fairview, & Lumber Rd.  
Wed., Feb. 26th: Mt. Vernon Manor, Brindle Ridge and Ramsey Trailer Ct.

### Project Graduation

Project Graduation '97 will hold meetings every Monday at 7:00 in the RCHS Library. Your help is needed in making Project Graduation a continued success. All interested parents are encouraged to attend. For information on future meetings, donations, fund raising, etc. call Myra Childress at 256-2123, Geneva Ruppert at 256-2765, Pam Chaliff at 256-5180 or Mitzi Calhoun at 256-9365.

### New Hours

The Rockcastle County Library will have new hours for Thursday during January and February. They library will open at 10 a.m. and close at 5 p.m.

### Retired Teachers

Retired Teachers meeting, Monday, February 24th at 6:00, RCHS. All retired urged to attend.

### Classes Available

First Responders & EMTc. Continuing education classes are available. Contact Eddie at 256-9157 or 758-9638.

### Clothing 4-H

After-school Project Volunteers are needed to assist with after-school 4-H Clothing Projects. Dates are March 10-13 at Broadhead Elementary; March 17-20 at the fair.

### Bulletin Board Sponsored By



**Cox Funeral Home**  
MT. VERNON, KY 256-2345

**Guaranteed Lowest Prices!!**  
Trade-ins Welcome • No Matter What You Own!

### Cars

1995 Geo Prizm, 4 dr., Auto, Air	\$9,450
1995 Ford Taurus, GL, Loaded	\$9,995
1995 Mercury Tracer, 4 dr., Auto, Air	\$8,450
1995 Nissan Sentra, GXE, 4 dr., Auto, Air	\$10,500
1996 Olds Clera, V6, 4 dr., Auto, Loaded	\$10,995
1996 Chev. Cavalier, 4 dr., Auto, Loaded	\$10,995
1994 Olds Achieve, 4 dr., Auto, Local Trade	\$7,995
1994 Olds Cutlass Supreme, 4 dr., V6, Like new	\$10,500
1996 Buick Regal, 4 dr., Loaded	\$13,500
1995 Chev. Monte Carlo, All options	\$11,995
1995 Pontiac Firebird, Auto, 31,000 miles	\$11,995
1996 Ford Contour, Auto, All options	\$10,995
1994 Pontiac Grand Am, SE, 2 dr., V6, Auto, Spoiler	\$9,450
1994 Buick Century, V6, Loaded	\$8,995
1995 Buick Skylark, 4 dr., V6, Loaded, Low miles	\$9,995
1989 Chev. Cavalier 224, Local trade, clean	\$3,500

### Trucks - Vans - 4x4's

1994 Ford Explorer, XLT, 4x4, Auto, Loaded, Black	\$15,500
1994 Ford Explorer, Sport Pkg., 30,000 miles, loaded	\$15,500
1996 Ford Ranger, Air, Stereo, 15,000 miles	\$8,995
1995 Nissan Pickup, XE, Air, Stereo, 10,000 miles	\$8,995
1996 Ford F150, XLT, Loaded	\$12,995
1990 Chev. 3/4 Ton, Long bed, Auto, 350, V8	\$8,995
1989 Ford Ranger, 4x4, Local trade, Low miles	\$6,995
1995 Chev. 3-10, "Outlaw Conversion", 10,000 miles	\$10,995
1995 Nissan XE Pickup, 4x4, Air, 10,000 miles	\$12,995
1995 Ford Ranger, XLT, 4x4, 4.0 V6, Auto, Sharp	\$12,995

All With Warranty • More Cars and Trucks by Weekend  
Under These Low Prices, No Money Down!  
LOW, LOW PAYMENTS!!  
100% FINANCING ON MOST CARS

6 year, 100,000 mile warranty available on some cars  
"Our reputation is our most valuable asset"  
LOW PAYMENTS\*

**Pleasant Retreat Motors**  
2 Locations to Serve You

1475 S. 25 North  
Mt. Vernon  
606-256-4379

940 Stanford Rd.  
Lancaster.  
606-792-8601

\*APR & Term varies per customer, credit rating and vehicle

## Mount Vernon Signal

Publication Number 366-000  
Periodical Postage Paid in Mt. Vernon, Ky. 40456  
606-256-2244

Published every Thursday since November, 1887. Offices in the Mt. Vernon Signal Building on Main Street in Mt. Vernon, Ky. 40456. Postmaster, send address changes to P.O. Box 185, Mt. Vernon, Kentucky 40456.

James Anderson, Jr., Publisher - Perlina M. Anderkin, Editor  
Richard F. Anderson, Managing Editor

### SUBSCRIPTION RATES

In County - \$15.00 Yr. Out-of-County In State \$20.00 Yr.  
Out-of-State \$26 Yr.



Try the best pizza in town

Large Combo Pizza \$8.99

Offer valid with coupon only • Expires Feb. 28, 1997

### Hours

Sunday thru Thursday 11 a.m. to 10 p.m.  
Friday and Saturday 11 a.m. to 10:30 p.m.

**SATISFACTION GUARANTEED.**  
If you are not completely satisfied with our product, bring it back in...and we'll fix you another pizza or refund your money.

Located in Carter's Market Mt. Vernon  
256-5079

## Wednesday Night Special

Special: 2 medium pizzas, 1 medium breadsticks with cheese, 2 liter of Pepsi

**\$13.99**

Valid with this coupon



## Rockcastle students honored by UK Deans

Geoffrey McGuire and Callie Mullins, both of Rockcastle County have been honored by the University of Kentucky for outstanding academic work.

The UK students were named to the dean's list of their respective colleges for the fall semester and are among the top five percent of all undergraduate students enrolled in

the University of Kentucky. "We are proud of the ever-increasing academic quality of our students," said UK President Charles T. Wethington, Jr. "Sometimes who are being honored for achievement in their studies deserve our recognition and appreciation for their hard work and efforts."

Wethington, Jr. "Sometimes who are being honored for achievement in their studies deserve our recognition and appreciation for their hard work and efforts."

## Local students receive Dean's Award at EKU

Three Rockcastle Countians are among 280 students at Eastern Kentucky University who received the Dean's Award for the fall semester study.

The local EKU Dean's Award recipients include: Amy Childress, Sandy Coning and Elizabeth Waddle. To earn the Dean's Award, students must achieve Dean's List honors at EKU for three semesters, not necessarily consecutive.

The lapel pin is presented to students by the dean of their academic college, according to Jill Alliger, EKU registrar. "Achieving the Dean's List

three times is a significant accomplishment," she said.

To achieve Dean's List honors at Eastern, students attempting 14 or more credit hours must earn a 3.5 grade point average out of a possible 4.0. Students attempting 13 credit hours must earn a 3.65 GPA, and students attempting 12 credit hours must earn a 3.75 GPA.

Eastern Kentucky University is a comprehensive university serving about 15,200 students on its 560-acre Richmond campus, throughout its 22-county extended service region, and beyond.

## Twelve local students among graduates at EKU

Twelve Rockcastle Countians received degrees from Eastern Kentucky University at the end of EKU's fall semester.

The EKU graduates include Jeffrey Carpenter, Christy Carr, Regina Crawford, Donisha Freeman, Angela

but, all fall semester graduates are invited back to participate in the annual spring commencement, which this year is scheduled for May 10 at Hanger Field.

The new degree holders join more than 65,000 alumni in Kentucky and across the United States.

Eastern Kentucky University is a comprehensive university serving about 15,200 students on its 560-acre Richmond campus, throughout its 22-county extended service region, and beyond.

Hunt, Cynthia Maggard, Janet McNeal, Gwyn McNew, William Merritt, Melissa Mylin, Diana Taylor and Tammy White-Cornet.

Eastern holds no formal commencement ceremonies in Decem-

## Four full scholarships to be awarded in Rockcastle County

The University of Kentucky's Robinson Scholars Program will announce its first class of scholars in mid-1997. Currently, private and public school systems are assisting with the nomination process of students who meet the program's criteria for eligibility. A scholarship, which includes full tuition, fees, books, housing, dining and a variety of other benefits, will be awarded to four Rockcastle County students. The program's primary goal is to increase the college-going rate in Eastern Kentucky.

Students targeted for the program are eighth graders who would be first

generation college graduates in their immediate families. They will be tracked academically throughout high school and will be awarded scholarships to the University of Kentucky-Lexington or any of its community colleges if they maintain the academic standards required by the program.

"This program, through its many support functions, assists young people in realizing their dreams and pursuing higher education that will help make those dreams come true," says Paula Whitaker, regional coordinator of the program at Southeast Community College.

The Robinson Scholars Program is funded by the Robinson Trust which gets its money from mining and timber leases of the Robinson Forest, a tract of land given to the University by the late timber baron E.O. Robinson.

The program is administered through three community colleges in the region. Southeast Community College in Cumberland, Hazard Com-

munity College and Prestonburg Community College serve as the program's regional administrative centers. The counties included in this program are Bell, Breathitt, Carter, Clay, Elliott, Estill, Floyd, Harlan, Jackson, Johnson, Knott, Knox, Laurel, Lawrence, Lee, Leslie, Letcher, Magoffin, Martin, McCreary, Menifee, Morgan, Owsley, Perry, Pike, Powell, Rockcastle, Whitley and Wolfe.

## Tiger Pause

The Brodhead Family Resource Center Advisory Council will meet on Thursday, February 20, at 6:00 p.m. in the center. The meeting is open to the public.

Family Night is also scheduled for Thursday, February 20, at 6:00 p.m. Always note that if school is canceled or not in session for any reason Family Night will also be canceled. Congratulations to Brittany Himes the winner of the 1997 Rockcastle County Spelling Bee. Brittany will

participate at the state level on March 29, in Louisville.

MARK YOUR CALENDARS! Saturday, March 1, at 8:30 a.m. B.E.S. will be featured on WRVK. Some our students will be talking about Micro-Society. Be sure to listen!

Please remember that it is very important for you to call the school if your child is absent. Attendance is taken first thing each morning and your cooperation is appreciated. The school's number is 758-8512.

## "Heresay"

(Cont. from A2)

That question baffledzled everyone. "What," a preacher might think, "does the date of my vacation have to do with a revival meeting?"

"Just this," Fran replied, "The Devil does some of his best work right after a revival. A church can have a

glorious gathering and be riding high, spiritually speaking. Then the pastor goes away for a week or two. That's when the Devil works triple-time to undo the good that was accomplished during the revival."

Suffern! Shadrach! How right he was. I'll attest to that, as will my

pastors, I'm sure. Oops! I must take leave of you dear hearts. Lately, my misses have been a tad too long, by my standards So, until next week, the Rammaker willing, give a measure of consider-

ation to the words of Adolphus W. Eck, long-time Wabdan quarry man, and part-time connoisseur of red cabbage, who said, "Frequent stops will keep you from growing old - especially if taken while driving."



## It's A Sweetheart Deal!

Bring in this ad and receive a 10% discount on wedding invitations now through March 31, 1997.

NOW IS THE TIME TO ORDER FOR SPRING & SUMMER WEDDINGS!

FOR MORE INFORMATION CALL: 256-5515

**Mt. Vernon Printing**  
220 East Main Street  
Mt. Vernon, Kentucky 40456

Owners: Willie and Tammi Hines



# Whirlpool SPRING FLING Sale Blitz

**Whirlpool LSR5233E**  
27" Super Capacity Plus Automatic Washer

- Cycle Logic™ Color-Coded Controls
- 5 Automatic Cycles
- White-on-White Styling

**Whirlpool LER5848E**  
Super Capacity Plus Electric Dryer

- Cycle Logic™ Color-Coded Controls
- 5 Drying Cycles
- White-on-White Styling

**Whirlpool LER4634E**  
Extra-Large Capacity Electric Dryer

- 4 Drying Cycles
- 3 Temperature Settings (in Timer)
- Automatic DRY-MISER® Control
- Large Reversible Side-Swing Door
- White-on-White and Almond-on-Almond Styling

**Whirlpool LSR7233E**  
27" Super Capacity Plus Automatic Washer

- 7 Automatic Cycles
- 2 Wash/Spin Speeds
- White-on-White and Almond-on-Almond Styling

**Whirlpool ET16KXD**  
18 1/2 Cu. Ft. Top-Mount Refrigerator

- Cash/lever Glass Shelves
- Flex-Store™ Fixed Door with Gallon Storage
- Flex-Shelf™ Flip-Up Utility Shelf
- White or Almond Styling

**Whirlpool ED22DXE**  
21.7 cu. ft. Side-by-Side DesignerStyle™ Refrigerator

- ThrustCrush™ Thrust-Door Ice and Water Dispenser with Crushed/Cube Ice
- EZ-Vue™ System
- White or Almond Styling

**Whirlpool RF36PXE**  
36" Self-Cleaning Freestanding Electric Range

- Super Capacity 4.65 Cu. Ft. Oven
- AccuBake™ Advanced Temperature Management System
- White or Almond Styling

**Whirlpool RD22PXE**  
21.7 cu. ft. Side-by-Side DesignerStyle™ Refrigerator

- ThrustCrush™ Thrust-Door Ice and Water Dispenser with Crushed/Cube Ice
- EZ-Vue™ System
- White or Almond Styling

**Whirlpool RD22PXE**  
21.7 cu. ft. Side-by-Side DesignerStyle™ Refrigerator

- ThrustCrush™ Thrust-Door Ice and Water Dispenser with Crushed/Cube Ice
- EZ-Vue™ System
- White or Almond Styling

**QUIET WASH™ Plus Series Dishwasher with SOUND GUARD™ System Model DU9150WDB**

- CLEAN TOUCH™ Console with 11 Cycle/Option Combinations
- 3-Level POWER CLEAN™ Wash System with Heavy-Duty Food Disposer Eliminates Pre-rinsing
- In-the-Door Silverware Basket Frees Up Rack Space

**Self-Cleaning Electric Range with SPILLGUARD™ Cootop Model RF36SPKY**

- Cooks Easily Inside and Out
- 3.9 Cu. Ft. Capacity Oven Fits Your Cooking Needs
- Easy-to-Use Automatic MEALTIMER™ Clock with Minute Timer

**FREE ICE MAKER**

**HURRY! CASHBACK ENDS SOON!**

**Appliance Service Center**  
Mt. Vernon • 256-2626  
"Rockcastle County's Largest Appliance Dealer"

**COME IN TODAY FOR THESE OTHER GREAT DEALS**

THREE FARM MACHINERY CONSIGNMENT INDUSTRIAL EQUIPMENT

# Auctions

**Auction No. 1**  
16TH ANNUAL LONDON FARM MACHINERY CONSIGNMENT AUCTION  
SATURDAY, FEBRUARY 22, 1997 - 9:30 A.M.  
LAUREL COUNTY FAIRGROUNDS

On Hwy. 229, Near Lavi Jackson State Park, London, Kentucky  
Consignments accepted Wed., Feb. 19th, Thurs., Feb. 20th, & Fri., Feb. 21st from 8 a.m. to 5:30 p.m.

**Auction No. 2**  
22ND ANNUAL BRODHEAD FARM MACHINERY CONSIGNMENT AUCTION  
SATURDAY, MARCH 1, 1997 - 9:30 A.M.  
BRODHEAD FAIRGROUNDS

Brodhead, Kentucky  
Consignments accepted Wed., Feb. 26th, Thurs., Feb. 27th, & Fri., Feb. 28th from 8 a.m. to 5:30 p.m.

**Auction No. 3**  
4TH ANNUAL SOMERSET FARM MACHINERY CONSIGNMENT AUCTION  
SATURDAY, MARCH 8, 1997 - 9:30 A.M.  
PULASKI COUNTY FAIRGROUNDS

Just off Ky. 80 West, Somerset, Kentucky  
Consignments accepted Wed., March 5th, Thurs., March 6th & Fri., March 7th from 8 a.m. to 5:30 p.m.

**ATTENTION: TOBACCO ALLOTMENT OWNERS**

If you're thinking of selling your tobacco base, our firm will be offering some tobacco bases in Rockcastle County for Rockcastle County farmers. Whether you have a few pounds or a few thousand pounds you want to convert to cash, then call or stop by our office in Mt. Vernon for more details.

**FORD BROTHERS, INC.**  
AUCTIONEERS-REALTORS  
606-256-4545  
1-800-435-5145  
Auctioneer - Sam Ford

# Rockcastle County FFA celebrates National FFA Week

The Rockcastle County FFA Chapter is joining thousands of FFA members in all fifty states, Puerto Rico and Guam in celebrating National FFA Week, February 17-22. National FFA Week is always held during the week of George Washington's birthday. Washington, the father of our country, is considered a role model for FFA members to follow, because of his leadership abilities and contributions to our nation.

Governor Paul Patton will be asked to sign a proclamation declaring National FFA Week in the state of Kentucky, and County Judge/Executive Buzz Carloloffs has signed a proclamation declaring this National FFA

Week in Rockcastle County. To celebrate FFA Week our chapter is planning a variety of special activities. Each day during the Talk and Trade Program on WRVK we will be having an FFA Quiz question. The first caller with the correct answer will win a 12 pack of any Pepsi product. Throughout the week we will be holding a quiz contest in the high school. Each person who gets a correct answer will have the chance to win a 1996 FFA Commemorative tractor or \$30.00. On Thursday, February 20, we will be holding our spring semester Greenhand Ceremony at 7:00 p.m. This is a special night for our freshman students and we encourage parents, teachers, and

community leaders to attend. We will close out the week by participating in a basketball tournament at Madison Southern High School.

## Free Colorado Blue Spruce trees

Ten free Colorado blue spruce trees will be given to each person who joins The National Arbor Day Foundation during February 1997. The free trees are part of the non-profit Foundation's campaign to plant trees for America during 1997, the 125th anniversary of Arbor Day.

(Cont. to A6)



Shown above are Rockcastle County FFA Officers with County Judge/Executive Buzz Carloloffs. From left to right are: Charles Leger, Sentinel; Micah Owens, Asst. Vice President; Matt Chaliff, Vice President; Judge Carloloffs; Jon Adams, President; Amanda Clark, Secretary; and William Leger, Treasurer.

## Many opportunities available for FFA members

Each year, FFA members have the chance to participate in a variety of trips, contests and leadership building activities. These activities help our members become better students, better leaders and ultimately better citizens.

Each year in November, thousands of FFA members gather in Kansas

City, Missouri for the National FFA Convention. During the convention they listen to motivational speakers, see the national officers in action, and meet FFA members throughout the nation. In June, we attend the State FFA Convention in Louisville. During this time we have the state finalists for many of our contests. Each summer, members attend the

Washington Leadership Conference in Washington, DC. Also during the summer we attend FFA Camp at Hardinsburg, where our officers receive training for their office and our officers team learns to work together. FFA members also have

chance to compete in various contests. Proficiency contests are based on the records that our members have kept concerning their projects. In judging contests, members have the chance to show off their skills and knowledge about various aspects of

agriculture. Speech contests help our members improve their speaking skills. Other contests, such as Parliamentary Procedure and Agriculture Sales help prepare our members for college and careers.

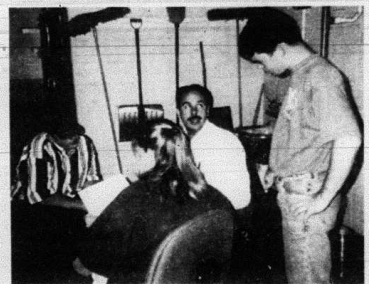
The Washington Leadership Conference, Made for Excellence, and UK Leadership Conference all help our members improve leadership and

team building skills. These skills are needed for success in the FFA as well as life.

FFA Members gain a great deal by being involved in our organization. Whether or not they are interested in a career in agriculture, students benefit in many ways by their involvement in agriculture education and the FFA.



Ten of our members attended Made For Excellence at EKU.



Mr. Reynolds having a high level conference in the shop.



Kendall Mink and Marcus Sigmon are working in the shop.



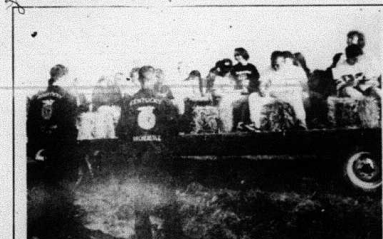
William Leger, Jon Adams, and Matt Chaliff after receiving leadership awards at camp.



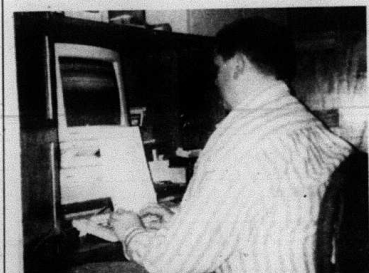
Several members participated in the quiz contest at the Greenhand Ceremony in October.



Chris Bengel and Eric Helton participated in the poinsettia sales.



Matt Chaliff and Jon Adams talking to fifth graders at the NRCS Sigmon Farm Field Day.



Roy Adams working hard in the ag office.



Amanda Clark playing volleyball at FFA Camp.

## Youth Yak

Rockcastle County High School Parents Can Make A Difference

There are things all parents can do that will keep their kids happier in school even if they aren't thinking of dropping out:

1. Talk about your own educational background. Tell them how much you appreciate it or how you wish you could have done better.
2. Ask your teen everyday about his/her experience that day in school.
3. Support your teen's efforts to get his/her homework. Make sure they have what they need to study at home.
4. Boost their confidence by praising them. Express your belief in their abilities.

5. Limit their television time. Set rules about television and phones and stick with them.

6. Limit their work hours if they have an outside job. While they may feel as if they have to be spending money, their education is their biggest investment. The returns will be far greater than a part time job.

7. Contact the school, don't wait for problems. Our high school staff believes the most important person in a teen's life is a parent. Take the time to call or come by regularly.

## National FFA Convention moves to Louisville

The National FFA Convention is one of the greatest experiences that any FFA member can have. By participating in Career Development Events, attending the FFA Career Show, and attending the sessions filled with patriotism, motivational speeches, and emotion, members learn a great deal about themselves and their organization.

In 1999, the National FFA Convention will be moving to Louisville, after having been in Kansas City, Missouri since our organization was founded in 1928. The national board of directors decided that the convention, which drew over 40,000 people in 1996, had outgrown Kansas City.

Eventually, the board decided that the Kentucky Fair and Exposition Center in Louisville was the best location for the FFA Convention.

By moving to Louisville, our members will have better access to hotel rooms, more members will be able to attend sessions and, with over 700,000 square feet of space, we will be able to expand to meet our members needs well into the 21st century.

Needless to say, we in Kentucky are happy about the move to Louisville. Because the convention will be so much closer to us, many of our members will have the chance to experience the thrill of attending the National FFA Convention.

## School News Deadline is NOON Tuesday



# QUALITY SELECTION VALUE...

## You've Got It All Here!



**R.C. Products**  
2 Liter  
**.79**



**CRISCO OIL**  
48 oz.  
**1.99**

Applications for stock and carryout boy being taken. Apply in person only.



**PARKAY MARGARINE**  
1 LB. QTRS.  
**2/\$1**



**Tropicana ORANGE JUICE**  
1/2 Gal. Ctn.  
**1.79**

Prices Eff. February 20-25

- Cincinnati Chili ..... 15 oz. **1.29**
- Lunch Bucket Microwave Meals  
8 oz. **.89**
- Final Touch Fabric Softener  
64 oz. **1.99**
- Hi Dri Towels ..... **2/99**
- Green Giant Creations ..21 oz. **2/500**
- Sara Lee Fruit Pies  
40 oz. **2.99**

**Morton Pot Pies**  
7 oz.  
**.39**

- Shurfine Cherry Pie Filling  
21 oz. **.99**
- Armour Vienna Sausage  
5 oz. **2/89**
- Wisk Liquid Detergent  
50 oz. **2.99**
- Armour Beef Stew ..... 24 oz. **1.49**

**Nunn Better FLOUR**  
5 lb.  
**1.49**

**Nunn Better Meal**  
5 lb. **1.29**



Campbell's Cream of Chicken SOUP  
Campbell's Cream of Mushroom SOUP  
Campbell's Celery SOUP  
Nunn Better Meal  
Gravy  
Nunn Better Meal  
Kleenex

- Wisconsin Shredded Cheese  
8 oz. **1.49**
- Campbell's Cream Soups  
10.5 oz. **.79**
- Franco American Gravy  
10 oz. **.79**
- Kleenex Facial Tissue  
175 c t. **.99**

We reserve the right to limit quantities and correct typographical errors.

**Meat Specials**

- Fresh Ground Beef ..... 3 lb. or more Lb. **.79**
- 1/4 Pork Loin **1.59** Lb.
- Boneless Chuck Roast **1.29** Lb.
- Uncle Charlie's Sausage Links or Patties **1.69** Lb.
- Fischer's Bologna ..... lb. **1.49**
- Fischer's Hot Dogs ..... 12 oz. **.99**

**Fresh Produce**

- Idaho Potatoes  
10 lb. bag **1.69**
- Head Lettuce ..... **.69**
- Tomatoes ..... lb. **.79**
- Texas Spring Sweet Onions lb. **.59**
- Red or Yellow Apples 5 lb. bag **1.89**

## Quail News

By Vivian Owens

Mrs. Dawn Brock, Everett Albright and Mrs. Bobby Lawrence and granddaughter, Angie visited Mr. and Mrs. Willard Nicely, Sunday evening.

Mr. and Mrs. Curtis Rogers and Mr. and Mrs. Gene Rogers of Ohio visited Mrs. Lillian Brooks, Sunday

morning.

Mr. and Mrs. Billy Owens of Ohio and Mrs. Maggie Fleming of Crab Orchard spent Friday night with Mrs. Owens' mother, Mrs. Ruby Taylor. Mr. Owens was here to attend the funeral of Harold Owens.

Mr. and Mrs. Carl Taylor of Ohio,

visited Ruth Mink, Tuesday. They were on their way home from Florida.

Mrs. Mattie Owens has been on the sick list and spent two weeks with her son, Mr. and Mrs. W.A. Owens. Mrs. Owens is improving at this time.

Mrs. Ray Lunsford and Mrs. Jesse Taylor visited Mrs. Jamie May Jones

one day last week.

Monday dinner guests of Jewel and Tootie Albright were Murphy and Nina Cash, Jean and Zach Gentry, Ben Joseph Taylor, Kathleen Stephens and Gladys Jones of Nashville, TN.

Gladys Jones of Nashville, TN, is visiting relatives in Rockcastle.

For careless words, spoken in anger, can sever and pierce like a sword; Can leave one, who's searching for answers, resenting and doubting our Lord. If we're to win souls for the Master, if we're to be shepherds of sheep, We must be sincere in our efforts His blessed Commandments to keep: The image portrayed of our Savior and the path that leads homeward must be. Attractive to those who are grasping for anchors on life's stormy sea. Each soul we offend or discourage; each one we might cause to be lost. We'll find it's been charged to our record, and, oh, what a terrible cost! There's One who is listening and watching from the portals of glory above For signs of the Comforting Spirit He sent to unite us in love. Though we are divided in method, we each share the same common goal. But we must embrace all of God's "other sheep" if we're to be part of the fold!

## "Free Trees"

(Cont. from A4)

Colorado blue spruces have silver blue-green color and compact conical shape. They can be used as individual ornamentals, an energy-saving windbreak, a privacy screen, or as living Christmas trees.

The trees will be shipped postpaid at the right time for planting between February 1 and May 31 with enclosed planting instructions. The six to twelve inch trees are guaranteed to grow, or they will be replaced free of charge.

To become a member of the Foundation and to receive the free trees, send a \$10 contribution to TEN FREE BLUE SPRUCES, National Arbor Day Foundation, 100 Arbor Avenue, Nebraska City, NE 68410, by February 28, 1997.

## Green Thumbs in the Kitchen available now

It's 4:30 a.m. in the starchy Kentucky morning. Coffee perks in a bright kitchen as a few early birds begin their day with a song. A woman in a flowered apron stirs pots, turns bacon, and mixes biscuit dough with the precision of a symphony conductor. Soon the family and hired hands will sit around the scrubbed oak table to enjoy this hearty breakfast before they begin their farm chores or run for the school bus. Fifty years later, the woman's daughter, now a Green Thumb worker, will share the biscuit recipe she loved so well.

*Green Thumbs in the Kitchen* is a new cookbook with heirloom recipes from the farms and hamlets of rural America. The cookbook reflects a time when life was simpler, when much of the food was grown at home and agricultural extension agents taught farmwives how to use new products. *Green Thumbs in the Kitchen* serves up warm memories, comfort foods, childhood favorites, and traditions. The 272-page book is packed with "my family's favorite" recipes. Proceeds support Green Thumb training and employment programs for older workers.

This cookbook is a wonderful gift for new and experienced cooks, cookbook collectors, or anyone who enjoys anecdotes from the "olden" days. Purchases may be made at the Orfen

Thumb Field Office, located in The Rockcastle County Court House (across the hall from Anna Mullins' Office), by calling (606)256-4100, or by mailing a check in the amount of \$15.90 made payable to "Green Thumb, Inc.", P.O. Box 3085, Mt. Vernon, KY 40356-2926.

Green Thumb is the nation's oldest and largest provider of mature worker training and community service employment, and operates primarily in rural areas of 44 states and Puerto Rico. Last year in Kentucky, 693 Green Thumb participants worked more than 479,898 hours in community service jobs. In addition, 26% of these older workers fortunately found jobs in the private sector. Nearly one-third of our older workers nationwide move off the program into higher-paying jobs each year.

## Poet's Corner

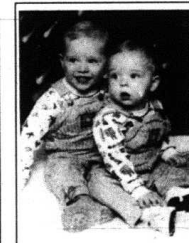
### The Other Sheep

By Christine McKinney

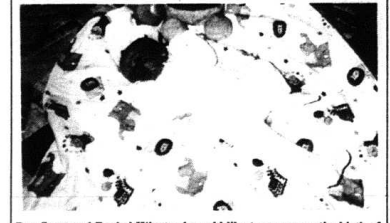
My God did not author confusion. His plan of salvation is clear; He is no respecter of persons, in His sight we are equally dear. Though some of us have different talents that we are commanded to use. But none can assume we've been specially blessed with the right to speak words that abuse.



Christopher and Lawana Collins would like to announce the birth of their daughter, Cassidy Christina. She was born on January 24, 1997 at 5:49 p.m. at Lake Cumberland Regional Hospital in Somerset. She weighed 9 lbs. 5 1/2 ozs. and was 21 1/2 inches long. She was welcomed home by her grandparents, Raymond and Lucille Miller of Mt. Vernon and Rachel "Lee" and Barbara Collins of Mt. Vernon.



Dan and Beth Gray would like to wish their sons, Bryson and Blaine a happy birthday. Bryson was two years old on November 6th and Blaine turned one year old on February 8th. Bryson and Blaine are the grandsons of Harold and Ann Amyx of Mt. Vernon and the great grandsons of Hattie Amyx of Sowder Nursing Home. Bryson would like to thank his Uncle Jason for organizing his party at Pizza Hut. Blaine would like to thank his pappaw for decorating his party for him. Thanks to everyone for their love, gifts, and prayers and most of all they would like to thank God for keeping them safe through a lot of hard times, so they could have a happy birthday!



Roy Scott and Rachel Winstead would like to announce the birth of their son, Roy Scott Winstead II, born Saturday, February 8th at Ephraim McDowell in Danville. He weighed 7 lbs. 3 ozs. Grandparents are Gilbert Mullins and Roy Dale and Laverne Winstead. Great grandparents are George Clark Mullins, Oscar and Dorothy Chastain, and Roy and Virginia Winstead.

**Commonwealth of Kentucky  
28th Judicial Circuit  
Rockcastle Circuit Court  
Case No. 96-CI-00208 • Division II**

**The Bank of Mt. Vernon** Plaintiff  
**V.**  
**TRL, Inc., Thurman Jones, Individually  
Rodney Jones, Individually,  
Larry Jones, Individually  
Commonwealth of Kentucky and  
United States of America** Defendants

**NOTICE OF SALE**

Pursuant to judgment and order of sale entered in this action on January 2, 1997, for the purpose of satisfying the judgment against the defendants in the amount of **Fifty Five Thousand Six Hundred Thirty Dollars and 00/100 (\$55,630.00)** plus interest, costs and attorney fees. I will offer at public auction the hereinafter described real property in Rockcastle County, Kentucky.

**At the Courthouse on East Main Street  
Mt. Vernon, Kentucky  
on March 7, 1997  
Beginning at the hour of 10:00 a.m.**

said property being more particularly bounded and described as follows:

Beginning at a corner at the intersection of right-of-way of Old U.S. Hwy. #25 said corner being 40 feet right of centerline station number 48+00 of existing U.S. Hwy. #25; thence going with the North right-of-way of Old U.S. Hwy. #25 S 12 degrees 04'E, 48.0 feet S 44 degrees 00' E, 130.0 feet; S 52 degrees 01'E, 50.0 feet; S 65 degrees 27'E, 50.0 feet; S 80 degrees 49'E, 50.0 feet; N 84 degrees 59'E 8.0 feet to a new corner to Eugene Philbeck; thence leaving said right-of-way and going with a new line of Philbeck N 18 degrees 45' 13" E, 137.05 feet to a post corner in the south right-of-way of existing U.S. Hwy. #25; thence with said right-of-way N 82 degrees 30'W, 85.4 feet; N 76 degrees 55' W, 48.3 feet S 13 degrees 05'W, 40.0 feet; N 76 degrees 55' W, 25.0 feet; N 13 degrees 05'E, 40.0 feet; N 76 degrees 55' W 26.7 feet; N 71 degrees 10' W, 110.5 feet to the beginning and containing 0.629 acres.

Being the same property conveyed to Rodney Jones, et al., by deed dated March 31, 1986 executed by Robert Eugene Philbeck, et ux., and recorded in Deed Book 127, Page 426, in the office of the Clerk of the Rockcastle County Court, Kentucky.

**The Property will be sold upon the following terms and conditions:**

1. The real property shall be sold for cash or upon a credit of thirty (30) days with the purchaser required to pay a minimum of twenty five percent (25%) of the purchase price in cash on the date of sale and to secure the balance with a bond approved by the Master Commissioner.
2. The bond shall bear interest at the rate of twelve percent (12%) per annum until paid. The bond shall have the force and effect of Judgment and shall be and remain a lien upon the property sold as additional surety for the payment of the purchase price.
3. Unpaid taxes or liens of record at the time of entry of judgment shall be paid out of the proceeds of sale.
4. The purchaser shall have possession of the premises upon compliance with the terms of sale.
5. The 1997 county, state and school taxes shall be paid by the purchaser.
6. In the event the plaintiff is the successful bidder and the sale price does not exceed the amount of the plaintiff's judgment, no deposit or bond shall be required.
7. The United States Government reserves their statutory right of redemption.
8. The sale shall be made subject to all easements, set back lines, restrictions or covenants of record or otherwise.

**Willis G. Coffey, Master Commissioner of the  
Rockcastle Circuit Court**

## 104th Birthday

Mrs. Carrie Smith wishes to thank everyone for making her recent birthday party a joyous occasion. She was 104 years young on February 7th. She enjoyed all the nice cards and gifts she received and had a great time visiting with family and friends who came to help her celebrate. The staff at Sowder Nursing Home were busy getting the party room decorated for her and helping in every way to make her day special. A special thanks to Pam Martin who served cake and ice cream with a smile. She hopes to see everyone again same time next year.

**Brodhead Depot Southbound**

**Now Available**

Artist: Mark McFerron, Photography: Doug Brock

The Old Brodhead, Kentucky L&N Depot in Full Color on 100% Rag Paper, Image Size 11 3/4" x 20 1/2" Special Limited Edition of 1000 Signed by the Artist \$100.00 each

For more information and to order call or write Brock Studio, 40 W. Main, Brodhead, KY 40409, (606) 758-9621 Antioch, 424 Whitehead Rd, Louisville, KY 40243, (502) 254-5863

**Happy Birthday Dana Reece  
Your Family Loves  
You Very Much**

## Are You Interested In Saving CASH?

Just take a short drive and it **WILL** be worth your time and money.

Now open under new management. We would like to invite all our friends and former customers. So if you've been missing us, now you know where you can find us.

**John Kain**  
General Manager

**Clayton Howard**  
Sales Manager

**5 NEW CAR LINES TO CHOOSE FROM**

# Kain

**Chevrolet - Geo - Chrysler - Plymouth - Dodge**

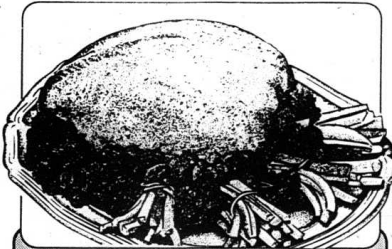
Just off I-75 on exit 11 in Williamsburg

**1-800-607-9558 (606) 549-1650**



# SUPER SAVER

## FOOD CENTER



4 to 7 lb. average - Bone-In Frozen

**USDA Grade A Turkey Breast**

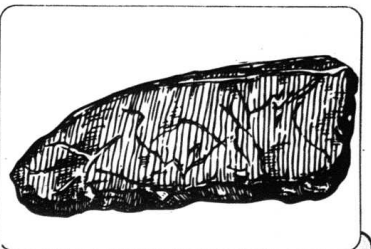
**.99**  
Lb.



48 oz. Bottle - Reg., Corn, Canola or Best Blend

**Wesson Cooking Oil**

**179**



USDA Western Grain-Fed

**Boneless Beef Top Round Steak**

**259**  
Lb.



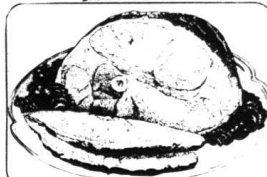
8 to 28 oz. pkgs. • Assort. Varieties

Freezer Queen

**Family Entrees**

**2/\$3**

25 Oz. Pkgs. - Assorted Varieties **2/\$5**  
Deluxe Entrees.....



U.S. Govt. Inspected Fully Cooked Water Added

Bone-In Portions

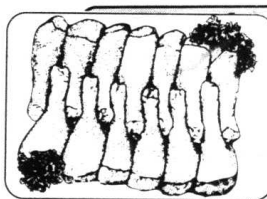
**Smoked Ham**

**\$149**  
Lb.

12 pk., 12 oz. cans • Assort. Var. Reg. or Diet

**Pepsi Cola Products**

**279**



USDA Fresh Grade A Fryer

**Drumsticks**

**99c**  
Lb.

**Sunday Chicken SPECIAL**

**12 Piece Bucket Chicken**  
**1 Lb. Mashed Potatoes**  
**1 Lb. Green beans**  
**1 Lb. Cole Slaw**  
**Cherry or Apple Pie**  
**\$14.99**

**Our Special Touch**  
**Pumpkin or Sweet Potato Pies**  
**\$1.99**

Pecan Pies - \$3.29

Our Special Touch

Golden Dinner Rolls ..... 12 oz. pkg. **1.49**

Sara Lee Cherry Pies ..... 37 oz. **2/\$5**

16 oz. tub • Reg. or Churn Style

Shedd's Country Crock Spread ..... **.99**

Ruby Red Grapefruit, Tangerine/Orange, Homestyle, Premium or Grovestand  
Tropicana Pure Premium Orange Juice

64 oz. ctn. **2.29**

**Sparkle Paper Towels**

Single Roll - Prints

**.59**



Juicy Florida Oranges ..... 4 lb. bag **1.99**

Superior's Cajun Ham ..... Sliced to Order Lb. **3.99**

Farmer's Cheese ..... low Cholesterol-Low Sodium Lb. **2.79**

Crez my Macaroni Salad ..... lb. **.99**



12 roll pkg.

**Angel Soft Bath Tissue**

**2/\$5**

**FOR YOUR CONVENIENCE**

• Food Stamps & WIC Vouchers Welcome  
• We Redeem Manufacturer's Coupons  
**YOUR SATISFACTION 100% GUARANTEED**

Prices Good Tues., Feb. 18 thru Mon., Feb. 24

**OPEN 7 DAYS A WEEK - 8 A.M. 'TIL 9 P.M.**

305 U.S. HIGHWAY 150  
MT. VERNON, KY. 40456

Phone:  
256-2514

**WE ACCEPT USDA FOOD STAMPS & WIC VOUCHERS**  
We Reserve the Right to Limit Quantities & Correct Printing Errors. None Sold to Dealers.

# Agricultural News

Warden Alexander, Director

Producers who have not returned their tobacco marketing cards need to do this as soon as possible. Quota notices for the 1997 crop year are scheduled to be mailed out February 28. If a farmer's marketing card has not been returned prior to preparation of the notices, this will cause the notice for the farm to be in error. Also, if a farm had sales after February 1, their initial notice will more than likely be in error, but a corrected notice will follow.

FCIC Insurance is now available for purchase through FSA. Producers who did not purchase the insurance in 1996, and wish to purchase it for 1997, should come in no later than March 15, as this is considered a new policy. Limited resource producers (who net less than \$20,000 per year) are offered this insurance coverage at no charge, but they must come in and fill out the required paperwork to take advantage of this offer. Deadline for application of new policies is March 15. Producers who purchased the insurance for 1996, and wish to keep the coverage have until June 30 to pay fees. Producers who had the insurance in 1996 and wish to keep the coverage have until July 15, their policies will be canceled. If you have

any questions concerning the FCIC program, please feel free to contact this office.

The Dairy Refund Payment Program is open for applications through close of business March 17. Producers who qualify may get a refund of withheld amounts if they can show that they marketed less pounds in the refund period (1996) as compared to the base period (1995). Receipts with the monthly marketing must be submitted at the time of application.

We have received notification that the three will increase of 11.2% to burley tobacco basic quotas for the 1997 crop year.

We would like to remind owners or burley tobacco farms that tobacco quotas MUST be produced or leased 2 out of every 3 years. The quota will be dropped or any farm that does not have a record of production of tobacco OR transfer of quota by lease in at least 2 of the preceding 3 years. Tobacco must be grown on the farm of transferred by lease to another farm. This means that farms which have leased out every other year in the past can no longer skip in this manner, or they will fall into the category that will have the base dropped.

court has addressed, at least in part, the need to repeal a tax that has negative economic consequences for all Kentuckians.

Kentucky citizens who own out-of-state corporate stock or bank deposits are now eligible to file for refunds for intangible property taxes paid on these assets. This does not cover all intangible taxes, but only corporate stock (including stock in trust accounts, mutual funds, margin accounts, affiliated company stock at the 1 1/2 cent rate, and stocks held in qualified retirement plans such as IRAs) and out-of-state bank deposits. Other types of intangible property continue to be taxable.

The court's ruling allows refunds for taxes paid on these assets in the two year period prior to the date a request for refund is filed with the Kentucky Revenue Cabinet. For most taxpayers, this will mean refunds for intangible property taxes paid in 1995 and 1996. For example, if you are claiming a refund for 1995 and paid on file by November 15, 1995, you must file your request for refund by November 15, 1997 (or within two years from the date marketed paid on your receipt).

Taxpayers will be paid interest on these refunds. The interest will ac-

crue at the rate of the tax, beginning 60 days from the date the tax was originally paid through the date that the Revenue Cabinet prepares your refund check.

In order to receive a refund, taxpayers should write the Kentucky Revenue Cabinet, Intangible Tax Refund Program, P.O. Box 1727, Frankfort, KY 40602-1727. The letter should reference the St. Ledger Decision (St. Ledger v. KY Revenue Cabinet Court case), and should include proof of payment of the tax (a tax bill marked paid by the Sheriff's office, cancelled checks, and/or a statement from the Sheriff's office as to the amount of tax paid will be accepted by the Revenue Cabinet to determine proof of payment). The letter should include the tax years claimed and should list the name, address and social security number of the taxpayer and spouse, and be signed by the taxpayer and spouse. The first refund checks should be mailed by June of 1997, and all of the refunds are expected to be paid by June of 1998.

Questions concerning refunds may be directed to the KY Revenue Cabinet at the address listed above, or by calling (502)564-9792 or by sending a fax to (502)564-9894.

the first national medical group to require members to keep up with medical advancements through regular continuing medical education.

Dr. Griffith has been an Active AAFP member since 1978. As a family physician, Dr. Griffith is qualified to work in all major areas of health care and trained to treat patients of all

ages for the vast majority of health problems.

The AAFP, which is headquartered in Kansas City, MO, provides education, legal, insurance and lobbying services to its members and publishes American Family Physician, a 150,000 circulation clinical journal.

## A Letter To Dad

William McFerron  
We know we came close to losing you and we thank the staff and Dr. McElwain at the Rockcastle Co. Hospital who worked hard to get you better.

You mean so much to us that we hold and cherish every moment that God allows us to be together in this

life. We realize it was not easy being both mother and father to the five of us since we lost our mother when the oldest child was 11 and the youngest was 9 months. We realize you had your hands full, working and taking

care of us but you handled this task with a big heart and never once did we ever hear you complain.

You are truly Our Hero. Now the oldest is 55 and the youngest is 44 and you have a loving wife and three children with her and it amazes all of us how you have been able to show us all love and devotion.

If it was up to us, you would receive the Father of the Year Award for this year and every year we have been with you.

We Love You Daddy,  
Geneva, Jeannet, Genevieve  
Pearl, Charles

# Legislative Update

By Danny Ford

The long discussed issue of intangible taxes was addressed by the Kentucky Supreme Court in a ruling on January 30. The Court ruled that the state's method of taxing stock in out-of-state companies is unconstitutional, and ordered the state to make refunds. This is a tax that stifles the

incentive to invest and save, and for a number of years, the Republican party has fought to make such a change to repeal the property tax on intangibles. I am very happy that the

## Local doctor retains membership in AAFP

George Wm. Griffith, MD of Mt. Vernon, has completed continuing medical education requirements to retain Active membership in the American Academy of Family Physicians (AAFP), the national association of family doctors.

AAFP members are required to complete a minimum of 150 hours of accredited continuing medical study every three years. The AAFP, which has more than 75,000 members, is one of the largest medical specialty organizations in the country. It was

## PRIMESTAR

PRIMESTAR BY TCI

**No Expensive Equipment To Buy or Repair**

**\$60 Off**

**Installation Plus A Free Month**

**Of Programming Only**

# \$149

**1-800-204-2672 PIN # 9513**

FOR A LIMITED TIME ONLY. QUALITY SATELLITE OF KENTUCKY GARY KING


### CITY OF MT. VERNON, KENTUCKY COMBINED BALANCE SHEET ALL FUND TYPES AND ACCOUNT GROUPS June 30, 1995

GOVERNMENTAL FUND TYPES		PROPRIETARY FUND TYPE	ACCOUNT GROUP	TOTALS MEMORANDUM ONLY
GENERAL	SPECIAL REVENUE	WATER AND SEWER	GENERAL FIXED ASSETS	JUNE 30, 1995
ASSETS				
Cash	\$ 77,486	\$	\$ 255,868	\$ 333,354
Receivables:				
Taxes (less allowance for doubtful accounts of \$955)	3,412			3,412
Accounts (including \$44,171 in unbilled receivables and less allowance for doubtful accounts of \$4,298)		138,490		138,490
Interest receivable	8,745	2,834		11,579
Other receivables	5,543			5,543
Note receivable	100,000	95,002		195,002
Due from other funds	361	101,654	59,908	161,923
Deferred charges			51,181	51,181
Prepaid insurance	4,955		6,055	10,910
Restricted assets:				
Cash		154,470	458,709	613,179
Land and buildings			419,372	553,163
Improvements			6,200,324	6,398,260
Machinery and equipment			123,110	123,110
Accumulated Depreciation			<2,345,917>	<2,345,917>
<b>TOTAL ASSETS</b>	<b>\$200,402</b>	<b>\$351,126</b>	<b>\$5,369,934</b>	<b>\$6,253,189</b>

### CITY OF MT. VERNON, KENTUCKY COMBINED BALANCE SHEET (CONTINUED) ALL FUND TYPES AND ACCOUNT GROUPS June 30, 1995

GOVERNMENTAL FUND TYPES		PROPRIETARY FUND TYPE	ACCOUNT GROUP	TOTALS MEMORANDUM ONLY
GENERAL	SPECIAL REVENUE	WATER AND SEWER	GENERAL FIXED ASSETS	JUNE 30, 1995
LIABILITIES AND FUND EQUITY				
Liabilities:				
Accounts payable	\$ 3,861	\$ 139	\$ 28,278	\$ 32,278
Refundable deposits			30,820	30,820
Accrued benefits and expense	12,969		25,908	38,877
Due to other funds	161,923			161,923
Short term note payable			42,086	42,086
Long term note payable			836,720	836,720
Revenue bonds payable				
Current			39,000	39,000
Long term			357,000	357,000
Total Liabilities	\$178,753	\$ 139	\$1,359,812	\$1,538,704
Fund Equity:				
Contributed capital			3,680,857	3,680,857
Investment in general fixed assets				331,727
Retained earnings:				
Reserved for debt service and depreciation			458,709	458,709
Unreserved			< 129,444>	< 129,444>
Grant funds	9,000			9,000
Fund balances, unreserved:				
Designated for economic development		219,933		219,933
Designated for street repairs		131,054		131,054
Undesignated	12,649			12,649
<b>Total fund equity</b>	<b>21,649</b>	<b>350,987</b>	<b>4,010,122</b>	<b>4,719,483</b>
<b>Total liabilities and fund equity</b>	<b>\$200,402</b>	<b>\$351,126</b>	<b>\$5,369,934</b>	<b>\$6,253,189</b>

(Cont. to A11)



I would tell you my name, but I really don't have one yet because my brother, my sister and myself are looking to be adopted by some really nice family who'll give us some really nice names. There are four of us in the family and we really hate to leave the nice family into which we were born but they can't keep us and we understand that. We are mostly black in color with some white under our chins and we are really fuzzy and cuddly. Four of us are guys, but we have one little sister. We love little kids, but we also like to bark when we see people in our driveway. If you would like to take us to your house and make us part of your family, you can call 758-9508 and arrange to meet us. We'd love to meet you and we'll be waiting. WE ARE FREE.

### Public Notice

Pursuant to Section 251 of the Job Training Partnership Act, known as Public Law 102-367, the Cumberland Service Delivery Area, acting under the authority of the Cumberlands Private Industry Council, will be accepting Request for Proposals starting at 8 a.m. Central Daylight Time on February 3, 1997 until 4 p.m. Central Time on April 11, 1997, for funds to be utilized by public and private organizations to provide Academic Enrichment Services to approximately 140 disadvantaged youth ages 15-21.

The Academic Enrichment component will consist of Basic Skills Remediation which will include but not be limited to Math, English, Reading, Vocabulary, and will begin approximately June 16, 1997 and end approximately August 1, 1997. These services will be a component of the Title II-B Summer Youth Program.

Academic Enrichment will be offered to Thirteen (13) counties of the Cumberlands Service Delivery Area which include Adair, Casey, Clinton, Cumberland, Green, McCracken, Laurel, Pulaski, Rockcastle, Russell, Taylor, Wayne and Whitley Counties. If possible, those agencies not currently on the bidders list of the Cumberlands Service Delivery Area may request application packets and those agencies requesting additional information shall submit all inquiries to Mr. Nick Hazel, Contract Specialist of the Lake Cumberland Area Development District, PO box 1570, Russell Springs, Kentucky 46242 or call 758-9508.



# Lady Rockets are "winningest" team ever at RCHS

The Lady Rockets got their 19th win of the season last Thursday night — and it was sweet as it set a new school record for wins by any ball team, according to Coach Chrysti Noble.

The win came against a weak Madison Southern team (6-15) that actually stayed with the Rockets a little longer than expected. The score was tied 20 all at the end of the first quarter but a 14 point second quarter for the Rockets gave them a 34-27 half-time edge. Madison Southern hung tough in the third quarter, losing it by only one, 9 to 8, but in the fourth, the Lady Rockets came on strong to outscore Southern 24-11 for the final 67-46 win.

Leading the Lady Rockets in scoring was Suzie Carpenter with 23 points, 15 in the first half; Tiffany McClure got 14; Amy Robinson 11; Kristi Moore 10; Jessica Albright 4; Brandy Reynolds and Nikki Bullock 2 each and Suzanne Brown 1.

It didn't take long for the Lady Rockets to add to their winning edge as they defeated the Lady Engineers at Estill Co. Monday night 60-55.

The Rockets managed only three points the first quarter to Estill's 10 but came on strong to win the second quarter 16-9 for a 19-19 half-time tie. The Rockets took the third quarter 22-16 for a six point edge and outlasted the Engineers in the fourth quarter 19-20 for the final 60-55 win.

This time, it was Amy Robinson who took scoring honors with 16 points; Carpenter got 14 (7-10 from the free throw line); Moore 8; Albright 10 (6-7 from the charity stripe); Tiffany McClure 6 and Suzanne Brown 6.

## Jayvees win two

The Lady Rocket Jayvees put two more in their win column — easily defeating both Madison Southern and Estill Co. and, in both cases, exactly doubling the scoring on their opponents.

Against Madison Southern, eight Lady Rockets scored with Amanda Osborne leading with 15 points.

## Boys beat Russell Co.; lose rematch with Barbourville

The Rockets managed one win and one loss in their last two outings, a 59-51 win over Russell Co. (4-17) and a 60-53 loss to Barbourville.

At Russell Co., the Rockets were ahead by two at the end of the first quarter 10-8; at half-time 25-15 and at the end of the third quarter 38-28. Freshman Andrew Cash was the only Rocket in double figures with 21 points (8-9 from the free throw line); Layne Nicely and Stevie Bradley each got 7; Dusty McClure, Blake Childress and Matt Ford each scored 6 points; John Brown got 4 and Matt Brown 2. As a team, the Rockets were 18-24 from the free throw line.

Tuesday night, the Barbourville Tigers came to town looking to avenge an earlier season two point loss to the Rockets and they did just that, outlasting the Rockets 60-53.

In the first game, the Tigers had been without the services of sophomore forward Patrick Smith. This time, the Rockets were without the services of the two players who had hurt Barbourville the most in the first game, Andy Hale who scored a game high 24 points and Travis Anderkin with 19 points. Both were on the bench in street clothes, both having suffered injuries in later games.

The Rockets were only down 13-12 at the end of the first quarter, thanks to a last second three point shot by Layne Nicely. And, in the second quarter, the Rockets took the lead 18-15 on a three-pointer by Andrew Cash. The Tigers came back to tie the game at 18 all and then, Stevie Bradley gave the Rockets a two-point lead at 20-18 but that was the last

time the Rockets would enjoy an advantage in the scoring column as the Tigers ended the half ahead 25-22. The Tigers also lost senior Raymond Moody toward the end of the first half when he fouled McClure on a lay-up and injured his right knee.

In the third quarter, the Tigers went on an 8-0 run before Nicely sank a three pointer with 5:05 left in the quarter and, from there the Rockets fought back to be down by only six at the third quarter stop 39-33. In the fourth quarter, the Rockets pulled to within three 50-47 on a three-point basket by Bradley, but the Tigers hung on for the final 60-53 win.

Nicely and Cash were the only two Rockets in double figures with 19 and 10, respectively; Bradley got 9; Childress 6; John Brown 4 and Matt Ford and Dusty McClure, 2 each.

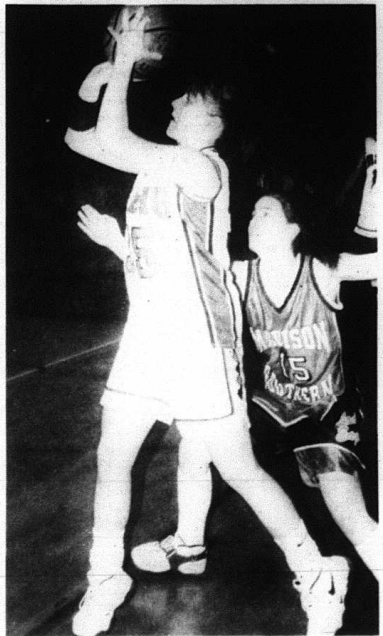
## Jayvees Win

Coach Barry Noble called it UGLY but it was another win for the Rocket Jayvees 35-27 over the Barbourville Tiger Jayvees. Coach Noble was apparently not satisfied with the Jayvees offense which managed only three points the first quarter and seven the first half for a 10-7 half-time deficit for the Rockets. But, in the second half, no doubt following an "inspirational" half-time talk by Noble, the Jayvees came out strong to score 28 points to the Tigers 17 for the 35-27 win.

Stevie Bradley led the scoring with 10 points, getting 8 of them in the fourth quarter; Jared Reams got 9; Billy Kirby 6; John Renner 5; Matt Brown 4 and Daniel Morgan 1.

At Russell Co. last Friday night, the Jayvees made it a lot simpler for Coach Noble, getting out to a first half 27-16 lead and, even with losing the third quarter 18-9, went on to win 47-42.

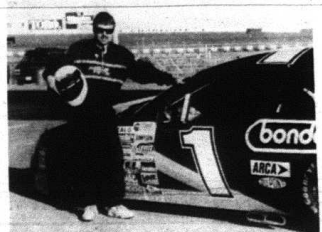
Bradley again led the scoring for the Rockets, this time with 22 points; Matt Brown got 11; Jared Reams 6; Jacob Burtlett 5; Billy Kirby 2 and Blake Calhoun 1.



Freshman Jessica Cobb tries a short jump shot in the Jayvees game against Madison Southern last Thursday night. The Lady Rocket Jayvees won 54-27.



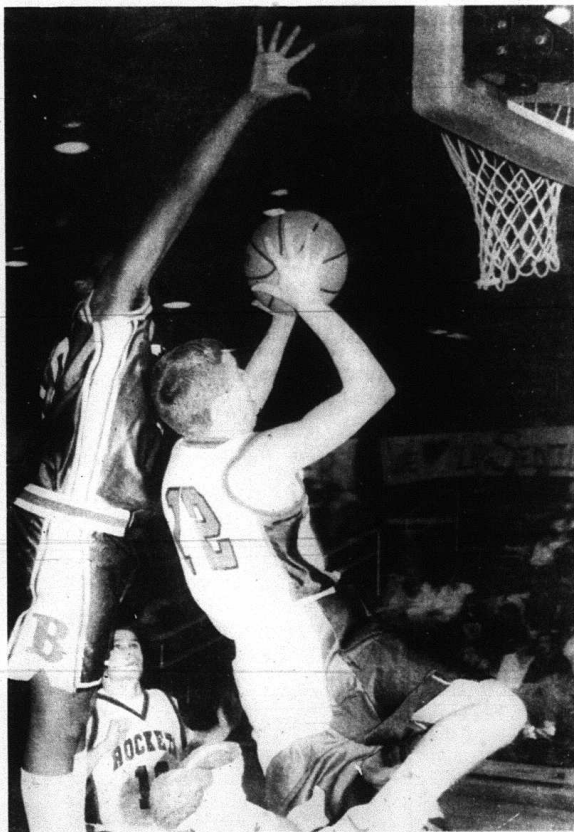
Freshman Joanna LewAllen tries a jumper over a Madison Southern defender in the Jayvees win last Thursday night.



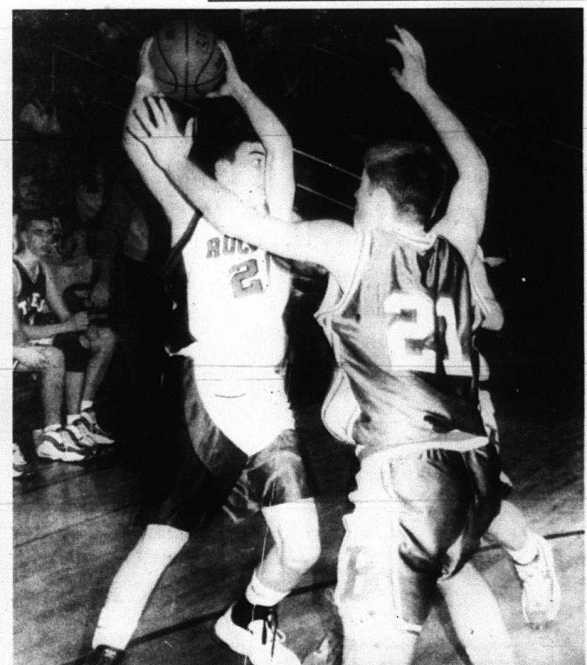
JEFF MCKINNEY was the recent winner of the Napa Nascar Driving Experience. He attended the High Performance Nascar Driving School at the Charlotte Motor Speedway February 15, 1997.

Jeff completed 10 laps at the speed of up to 150 miles per hour.

*Congratulations Jeff from all of us at Napa*  
James, Perry, Cindy,  
Larry, Robert, Valerie, Kelley and Andy



Sophomore Layne Nicely led the scoring for the Rockets in the game against Barbourville with 19 points and two of them came on this strong move to the basket against senior Tiger Raymond Moody. Moody later was injured attempting to block a lay-up by Dusty McClure and had to leave the game.



Freshman guard Andrew Cash looks for help against a Barbourville defender Tuesday night as the Rockets lost the rematch with the Tigers 60-53. Cash had 10 points in the game.

# Seniors Honored

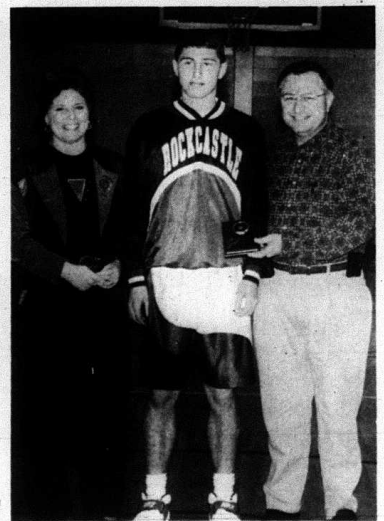
Last Thursday night, just before the Lady Rockets varsity game against Madison Southern, the senior ball players, cheerleaders and team personnel and their parents/guardians were recognized by the school.



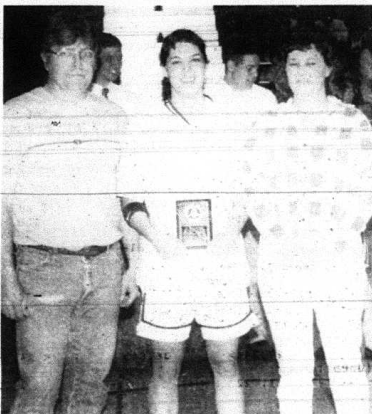
Suzie Carpenter, daughter of Johnny and Gladys Carpenter.



Amy Robinson, daughter of Charles and Judy Robinson.



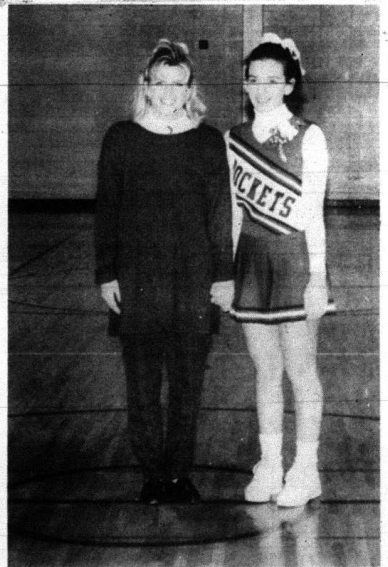
Matt Ford, son of Danny and Sue Ford.



Kristi Moore, daughter of Harold and Doris Moore.



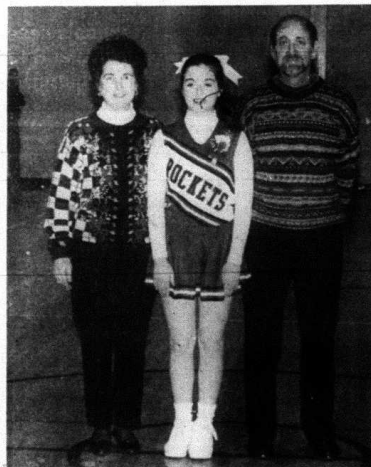
Jessica Albright, daughter of Steve Albright and Delores Albright.



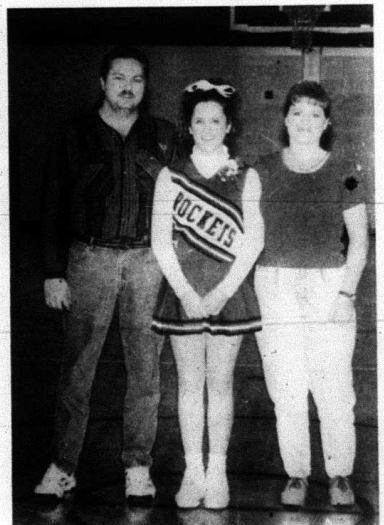
Amy Whitter, daughter of Bobby Whitter and Brenda Renner, was escorted by Julie Cruse, cheerleading sponsor.



Amber Coffey, daughter of Thomas and Kathy Coffey.



Jill Cummins, daughter of Jimmy and Judy Cummins.



Heather Smith, daughter of Tina Renfro.

## Benefit Basketball Game

Where: Rockcastle County High School  
 Time: 7:30 p.m. Date: Feb. 20, 1997 (Thursday night)  
 Admission: \$3.00

"K-93 All Stars" vs. Wendy's of Mt. Vernon

Proceeds will be used to help pay excessive cancer treatment expenses incurred by School Bus Driver Wesley Mays and School Bus Mechanic Harold Kelly.

### Keep The Tradition Going!!

Project Graduation will celebrate its tenth year of success this spring. Students and their parents are planning an all-night, chemical-free graduation celebration for the 1997 seniors. For more information on how you can help, call

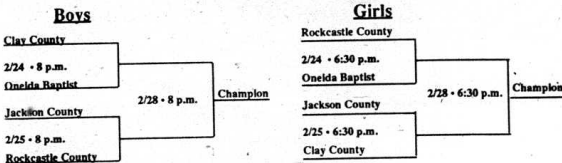
**256-2125**



# 49th District Basketball Tournament

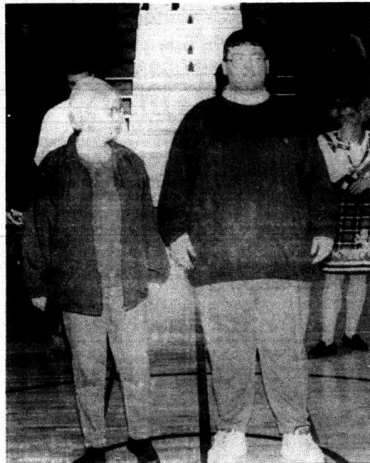
## Jackson County High School February 24, 25, 28

CITY OF MT. VERNON, KENTUCKY  
COMBINED STATEMENT OF REVENUES, EXPENDITURES AND  
CHANGES IN FUND BALANCES  
ALL GOVERNMENTAL FUND TYPES  
FOR THE YEAR ENDED JUNE 30, 1995



**6th Grade  
Lion's Club  
Tournament  
February 20  
Jackson Co. vs.  
Madison Middle at 6 p.m.  
Rockcastle Co. vs.  
Berea at 7:15 p.m.  
February 21  
Finals**

Andrew Simpson, son of Eddie and Audrey Jones and Reed Simpson.



Chad Hensley and grandmother, Pat Cameron.

**Benefit Basketball Game**  
February 20 • RCHS • 7 p.m. • \$3  
K-93 All Stars vs. "Wendy's of Mt. Vernon"

### "Indictments"

(Cont. from front)

Timothy Renner, 26, of Pine Hill was indicted for stabbing Freddie Hampton on January 18.  
Johnny Lamb, 20, of Wildie was indicted for stealing a van owned by David Parsons of Wildie on August 4, 1996.  
Both men will be arraigned on February 28.  
Eric D. Burke, 26, of Brodhead was indicted on ten counts of forgery and Alvin Knuckles, 30, of Mt. Vernon was indicted on second degree escape charges. They will be arraigned on March 4.

### "Jail Search"

(Cont. from front)

weekend service on unrelated charges. He was charged for Promoting Contraband 1st Degree, a Class D Felony and held under 5,000 cash bond.  
Another search turned up narcotics including valium and tylox on the person of Pat Croucher, 37, of McKee. Croucher, who is serving one year for Theft by Unlawful Taking was returned to the jail after a day of work release at the courthouse, when a search revealed the drugs. Croucher was charged with Promoting Contraband 1st Degree, a Class D Felony, and remains in jail with her work release terminated.  
Jailer Howard said that inmates returning from work release or reporting for weekend service are subject to extensive searches to prevent the introduction of contraband into the jail.  
"I hope this sends a message that contraband of any kind in this jail will not be tolerated, and anyone doing so will be prosecuted," Howard said.

	Governmental Fund Types		Totals
	General	Special Revenue	June 30, 1995 (Memorandum Only)
Revenue:			
Property taxes	\$ 84,189	\$	\$ 84,189
Franchise fees	70,104		70,104
Privilege licenses	13,201		13,201
Vehicle tax	14,179		14,179
Arrest fees, fines, etc.	2,255		2,255
Interest income	14,679	6,293	20,972
Boat docking fees	2,425		2,425
Fire department revenue	3,927		3,927
Other	8,218		8,218
Intergovernmental revenues:			
Municipal road aid		38,501	38,501
Coal and mineral grants		4,067	4,067
Base court revenue	11,301		11,301
Hud repayment	13,266		13,266
State law enforcement subsidies	10,142		10,142
<b>Total revenues</b>	<b>\$247,886</b>	<b>\$48,861</b>	<b>\$296,747</b>

CITY OF MT. VERNON, KENTUCKY  
COMBINED STATEMENT OF REVENUES, EXPENDITURES AND  
CHANGES IN FUND BALANCES (CONTINUED)  
ALL GOVERNMENTAL FUND TYPES  
FOR THE YEAR ENDED JUNE 30, 1995

	Governmental Fund Types		Totals
	General	Special Revenue	June 30, 1995 (Memorandum Only)
Expenditures:			
General government	\$ 44,460	\$	\$ 44,460
Police department	180,922		180,922
Fire department	35,016		35,016
Streets		12,018	12,018
Capital outlay:			
Police department	14,722		14,722
<b>Total Expenditures</b>	<b>275,130</b>	<b>12,018</b>	<b>287,148</b>
Excess of revenues over (under) expenditures	< 27,244 >	36,843	< 14,597 >
Other financing sources (uses):			
Sale of Assets	1,722		1,722
Operating transfers in (out)	28,166	< 15,116 >	12,830
Excess of revenues and other financing sources over (under) expenditures	2,644	21,507	29,149
Fund balances, beginning of year as previously reported	10,005	129,480	139,485
Fund balances, end of year	\$ 12,649	\$250,987	\$263,636

### INDEPENDENT AUDITOR'S REPORT

The Honorable Mayor and Members of the City Council  
City of Mt. Vernon, Kentucky

I have audited the accompanying general purpose financial statements of the City of Mt. Vernon, Kentucky as of and for the year ended June 30, 1995. These general purpose financial statements are the responsibility of the City of Mt. Vernon, Kentucky, management. My responsibility is to express an opinion on these general purpose financial statements based on my audit.

I conducted my audit in accordance with generally accepted auditing standards and Government Auditing Standards issued by the Comptroller General of the United States. Those standards require that I plan and perform the audit to obtain reasonable assurance about whether the general purpose financial statements are free of material misstatement. An audit includes examining, on a test basis, evidence supporting the amounts and disclosures in the general purpose financial statements. An audit also includes assessing the accounting principles used and significant estimates made by management, as well as evaluating the overall general purpose financial statement presentation. I believe that my audit provides a reasonable basis for my opinion.

In my opinion, the general purpose financial statements referred to above present fairly, in all material respects, the financial position of the City of Mt. Vernon, Kentucky, as of June 30, 1995 and the results of its operations and cash flows of its proprietary fund types for the year then ended in conformity with generally accepted accounting principles.

My audit was made for the purpose of forming an opinion on the general purpose financial statements taken as a whole. The combining and individual fund and account group financial statements and schedules listed in the table of contents are presented for purposes of additional analysis and are not a required part of general purpose financial statements of the City of Mt. Vernon, Kentucky. Such information has been subjected to the auditing procedures applied in the audit of the general purpose financial statements and, in my opinion, is fairly presented in all material respects in relation to the general purpose financial statements taken as a whole.

Mt. Vernon, Ky  
January 21, 1997

## Stock Reduction Sale

# 50% off

Single - Double & Triple  
**RUFFLED LACE**  
Various Sizes and Colors

**HIATT'S 5 & 10**

Main St. • Mt. Vernon • 256-2691

# Hemp report released: economics of market may be problematic

By Randy Weckman  
An economic report about the potential of world hemp production, issued this week by the University of Kentucky College of Agriculture, noted that potential Kentucky producers would face a myriad of economic hurdles should the state legalize industrial hemp production.

Obstacles to profitable production include an apparently slack market for both hemp fiber and hemp oil, the two major products made from industrial hemp. Total global trade in hemp fiber and oil last year was only 11.5 million and has steadily declined since the 1960s.

In addition, competition from third world countries where inexpensive labor in plentiful may preclude long-term profitability, according to the report. In the European Union, where the price of industrial hemp is heavily subsidized by many governments, production remains flat.

The report's author, agricultural economist Valerie Vaneuse, warned that the report's findings should be considered tentative because supplies for industrial hemp could change rapidly, altering the profitability picture quickly.  
In the report, Vaneuse said that while current world prices for hemp fiber and oil are above production costs, the U.S. possesses only a small domestic market and no active hemp processing industry. Thus, she said most U.S. production would have to be exported as a raw commodity unless economics would stimulate construction of such facilities.

would be greatly reduced. At average yields and prices, profits might be comparable to corn production, however still well below an average of \$1,050 per acre for tobacco and less than \$775 per acre for processing tonnage.  
She also said that legalizing industrial hemp production in the U.S. may have a negative impact on prices.

"When Canada doubled its production in the mid-1980s, world prices plummeted. Specialty crops such as industrial hemp are extremely price sensitive to even small swings in production," she said.  
Hemp at first will be seed, which will need to be imported from Europe. Domestic seed production should cut production costs considerably since transportation costs would be reduced substantially.

Currently, industrial hemp production is illegal throughout the U.S., but Vermont and the Navajo Indian reservation have legalized experimental research plots. In Canada, where industrial hemp was legalized in 1994, production in 1995 was limited to seven contract holders, she said.

Several large multinational companies have expressed interest in the industrial hemp market. However, she said, investment by these companies in the world market remains negligible although industrial hemp production is legal throughout most of the world.

Although some progress has been made in industrial hemp processing equipment, industrial hemp processing remains expensive relative to processing costs for other substitutes such as cotton and soybean oil and wood pulping technologies.

cas of the forest compatible with OHV use.

"We have seen a dramatic increase of OHV use in the forest," said Forest Supervisor Benjamin Worthington. "The increased use is leading to increased impacts to the resources especially soil and water. Because we are an agency which operates under a multiple use mission, our charge is to find the proper balance of use which allows for recreational opportunities which will not adversely impact the resources."

Currently, approximately 80 percent of the forest, much of which is located in Rockcastle County, is open to cross-country OHV travel. OHVs include 4x4s, quad runners, railcars and motorcycles.

The Forest Service is legally directed to provide wide use of the resources as long as it does not lead to the overall detriment of the resources. The Forest Service has noticed an increase in user-developed, cross-country trails and hill climbs.

These types of general use seem to be contributors to much of the resource impact identified on National Forest System lands.

Although the impacts to a number of individual sites have been repaired, one of the concerns is that trail maintenance, land restoration and enforcement of restrictions have not kept up with the increased use of and its corresponding impacts.

Under the new proposal, all currently designated trails and roads where OHVs are designated as an appropriate use will be included in the analysis. All future routes to be designated constructed would undergo a separate, site-specific environmental analysis.

In addition, cross country travel, including hill climbs would be eliminated.

in. In recent contracts with the public with regard to the Forest Plan revision, the issue of OHV management on the Forest was identified as one of the major issues.

Due to the large number of OHVs in use in the Forest, the Forest Service has observed, and members of the public have brought to their attention, areas of soil erosion, sediment washed into streams and lakes, and possible direct and indirect impacts to federally threatened and endangered species areas.

Specific areas of concern include the Cumberland River drainage, with its large numbers of federally listed threatened and endangered bald hibernaculus and maternity sites.

The Forest Service is once again seeking public comments on this issue. "We realize that this proposed action is not the only possible solution to the problem," said Worthington. "Therefore, we continue to seek comments from the public that we will use to develop and consider alternative solutions."

Under Forest Service policy, an action is proposed; the public comments on the action; the Forest Service develops alternatives based on those comments, as well as scientific analysis; the public comments on the alternatives; and a decision is made.

Worthington said he hopes to make a decision by October. This decision would most likely be included in the revised Forest Land and Resource Management Plan which is currently underway.

If you would like additional information please contact Dispersed Recreation Specialist Jorge Hersel at the Daniel Boone National Forest, 1700 Bypass Road, Winchester, KY 40391; 606-745-3182.

ing the Professional Education Preparation Program, Kentucky Council on Higher Education, 1024 Capital Center Drive, Suite 320, Frankfort, KY 40601, phone (502)573-1555. Applications must be received by

March 1, 1997.  
Graduating seniors from Rockcastle County are eligible to apply for the workshop.  
For further information, contact Larry Fowler at (502)573-1555.

**Rockcastle Co. Little League Sign-ups**  
Feb. 22 • 10 a.m. to 3 p.m.  
Thacker Field • Brodhead  
Anyone interested in helping coach or umpire call Coy Taylor at 758-9220 or Ronnie Brown at 256-5768.  
New players bring birth certificates

**FENTON**  
Sitting pretty, Fenton's clay figurines are available in an abundance of colors and hand-painted designs. For a wonderful gift or decorative accent, choose from a variety of available figurines.  
Come in and see our latest selections.



**Hatt's 5&10**

# Changes may be forthcoming for OHV's in national forest

Rockcastle Countians riding Off-Highway Vehicles (OHVs) in the Daniel Boone National Forest may be in for some changes in 1997.

est is proposing to amend the current Forest Plan direction pertaining to Off-Highway Vehicle management. The proposal would allow OHV use only on designated routes in ar-

# Workshops to be held for would-be hunters, dentists

Seventy-two high school seniors who live in certain Kentucky counties and who want to become physicians or dentists will get an early start toward their goal next summer at the University of Kentucky or the University of Louisville.

Students will be chosen to attend a six-week college preparatory workshop at either UK or UoL from among applicants who live in Kentucky counties or areas of some counties that have too few physicians or dentists.

Two workshops are part of the state's Professional Education Preparation Program (PEPP), which was designed to help increase the number of students in medical or dental school from Kentucky counties experiencing a shortage of physicians or dentists.

Students attending the workshops will meet and work with medical and dental students and professionals and receive instruction in reading, writing, study skills and problem solving. They will also have classes in biology, chemistry, and other sciences

to improve their chances of doing well in their premedical or pre-dental college studies. Room and board, all workshop instruction, and an expense allowance will be provided to most participants.

The workshops will be only the first in a series of activities that will be provided to participants. Additional programs and services designed to help them succeed in becoming physicians or dentists will be provided throughout their undergraduate and medical or dental school studies.

Interested high school seniors can get further information and application forms from their high school counselor or principal, or by contact-

**Instructors To Give Concealed Weapons Permit Classes**  
For Dates and Information call Mahaffey's Sporting Goods at 256-9699  
**Now Open**  
**Mahaffey's Gun Pawn Shop**  
256-9699

**Commonwealth of Kentucky**  
**28th Judicial Circuit**  
**Rockcastle Circuit Court**  
Case No. 96-CI-00214 • Division I

**Chase Financial Corporation**  
f/k/a Chemical Financial Management Corporation Plaintiff

**V.**

**Preston J. Cameron, Jr.,**  
**Carolyn Sue Cameron,**  
**Lora Sue Cameron** Defendants

**NOTICE OF SALE**

Pursuant to an Order of Sale entered in this action on February 3, 1997, for the purpose of satisfying the judgment against the defendants in the amount of Sixty Two Thousand Eight Hundred Sixty Eight Dollars and 11/100 (\$62,868.11) plus interest, I will offer at public auction the hereinafter described real property in Rockcastle County, Kentucky.

At the Courthouse on East Main Street Mt. Vernon, Kentucky on March 7, 1997  
Beginning at the hour of 10:30 a.m.

said property being more particularly bounded and described as follows:

Beginning at an iron stake at intersection of Ferguson St. and Tooms St., thence S 27 W 199 feet to an iron stake; thence N 56 1/4 W 300 feet to a stake at Woodlawn Street; thence N 25 1/2 E 122 feet to an iron stake at intersection of Woodlawn and Tooms St.; Thence S 55 E 303 feet to the beginning, containing Lots Nos. 5, 6, 7, 8, 9, 10, 11, 12 and 19 feet frontage on Lot No. 4 and 22 feet frontage on Lot No. 13 in Block C of plat recorded in County Clerk's Office of Rockcastle County.

Being the same property conveyed to Preston Cameron, et ux, by deed dated May 20, 1992 and recorded in Deed Book 146, Page 376, in the office of the Clerk of the Rockcastle County Court, Kentucky and Lora Cameron will receive a 1/2 future interest when she reaches age 18 by virtue of Contract to Make Deed dated May 20, 1991 in Deed Book 146, Page 437 in the Office of the Clerk of the Rockcastle County Court.

The Property will be sold upon the following terms and conditions:

- The real property shall be sold for cash or upon a credit of thirty (30) days with the purchaser required to pay a minimum of twenty five percent (25%) of the purchase price in cash on the date of sale and to secure the balance with a bond approved by the Master Commissioner.
- The bond shall bear interest at the rate of twelve percent (12%) per annum until paid. The bond shall have the force and effect of Judgment and shall be and remain a lien upon the property sold as additional surety for the payment of the purchase price.
- Unpaid taxes or liens of record at the time of entry of judgment shall be paid out of the proceeds of sale.
- The purchaser shall have possession of the premises upon compliance with the terms of sale.
- The 1997 county, state and school taxes shall be paid by the purchaser.
- The sale shall be made subject to all easements, set back lines, restrictions or covenants of record or otherwise.

**Willis G. Coffey, Master Commissioner of the Rockcastle Circuit Court**

# "Insurance Tax" (Cont. from front)

balance in to their own, his plea fell on deaf ears.  
Magistrates John Holbrook and Amos Burdette voted in favor of the tax, while magistrates Bill McKinney, Donald Bullock and Jack Bradley voted against it. Carolotis said he did not have to vote but would. He voted in favor, making the vote a three to three tie and killing the special levy.  
Heaven help you when the state steps in," Carolotis told the magistrates.

Many of those in attendance questioned the Judge as to why the residents of Brodhead and Livingston did not have to pay the county tax.  
Carolotis said the two-city councils had already passed an insurance tax higher than the proposed four percent county tax and therefore the county could not collect any funds in the city limits of those two towns.

"We could have set a higher rate than them and gotten the difference, but we did not," Carolotis said.  
Several residents said the tax should be the same for all county residents and those that did not pay the tax should not get any county services.

"The state has been telling Rockcastle County for years that the general fund was in trouble and that something had to be done, but no one would listen," the Judge said.

After the vote, a visibly upset County Judge asked the magistrates to make a motion to cut services, although he said he would vote against them.

The Judge was reminded that the special called meeting did not have such an item on the agenda and could not be brought up.

**Ford URGENT Ford**  
**INVENTORY REDUCTION!**

**1996 THUNDERBIRD LX**  
V6, automatic, moonroof, loaded  
List \$21,117 YOUR PRICE \$15,997

**1996 FORD WINDSTAR LX**  
V6, automatic, moonroof, loaded  
List \$28,400 YOUR PRICE \$22,997

**1996 FORD MUSTANG COUPE**  
V6, automatic, power windows, cruise, AM/FM stereo, cassette, 11K0  
List \$18,422 YOUR PRICE \$13,997

**1995 TAURUS GL WAGON**  
V6, powertrain, rear 3rd seat, loaded!  
List \$20,800 YOUR PRICE \$10,997

**1997 TAURUS SHO**  
Toronado mod. V6, Polished Wheels, CD, leather, power, moonroof, only 900!  
List \$22,010 YOUR PRICE \$23,997

**1996 FORD TAURUS GL**  
V6, dual air bags, front wheel drive, anti-lock brakes!  
List \$20,717 YOUR PRICE \$14,997

**OVERSTOCKED USED CARS**  
Prices Have Been Slashed On All Winter Trades!

'93 Toyota Corolla 3DR, auto, 5 speed, 100K miles, \$12,997	'93 Ford Contour GL, auto, air, power glass, 100K miles, \$12,997	'94 Ford Mustang LX, auto, air, 100K miles, \$12,997
'94 Toyota Corolla 3DR, auto, 5 speed, 100K miles, \$12,997	'94 Ford F150 XL, 4-cyl, auto, air, 100K miles, \$12,997	'94 Ford Taurus GL, auto, power seats, 100K miles, \$12,997
'94 Ford Ranger XL, 4-cyl, auto, power windows, air, 100K miles, \$12,997	'94 Ford Taurus LX, auto, air, 100K miles, \$12,997	'94 Mercury Cougar LX, auto, 100K miles, \$12,997
'94 Ford Probe, auto, power windows, air, 100K miles, \$12,997	'94 Ford Taurus SE, auto, air, 100K miles, \$12,997	'94 Ford Ranger STX, 4-cyl, auto, 100K miles, \$12,997
'94 Mercury Cougar 3DR, 4-cyl, power windows, air, 100K miles, \$12,997	'94 Ford Taurus SE, auto, air, 100K miles, \$12,997	'94 Ford Taurus SE, auto, air, 100K miles, \$12,997
'94 Ford Taurus SE, auto, air, 100K miles, \$12,997	'94 Ford Taurus SE, auto, air, 100K miles, \$12,997	'94 Lincoln Town Car, 100K miles, \$12,997
'94 Ford Taurus SE, auto, air, 100K miles, \$12,997	'94 Ford Taurus SE, auto, air, 100K miles, \$12,997	'94 GMC Jimmy 4-cyl, auto, power, 100K miles, \$12,997
'94 Ford Taurus SE, auto, air, 100K miles, \$12,997	'94 Ford Taurus SE, auto, air, 100K miles, \$12,997	'94 Ford Taurus SE, auto, air, 100K miles, \$12,997
'94 Ford Taurus SE, auto, air, 100K miles, \$12,997	'94 Ford Taurus SE, auto, air, 100K miles, \$12,997	'94 Lincoln Continental, 100K miles, \$12,997
'94 Ford Taurus SE, auto, air, 100K miles, \$12,997	'94 Ford Taurus SE, auto, air, 100K miles, \$12,997	'94 Mercury Taurus Wagon, auto, loaded, \$12,997
'94 Ford Taurus SE, auto, air, 100K miles, \$12,997	'94 Ford Taurus SE, auto, air, 100K miles, \$12,997	'94 Ford F150, 4-cyl, auto, 100K miles, \$12,997
'94 Ford Taurus SE, auto, air, 100K miles, \$12,997	'94 Ford Taurus SE, auto, air, 100K miles, \$12,997	'94 Ford Taurus SE, auto, air, 100K miles, \$12,997

**SALE HOURS:**  
Daily 10 a.m. - 6 p.m.  
1-800-882-5762  
606-966-7283



## Cub Scouts learn about personal safety; donate food to REAP

At their January pack meeting, members of Cub Scout Pack 263 participated in a discussion of personal safety led by Detective Gilbert Accardo of the Kentucky State Police Post from London, Kentucky. This was the culminating activity for the Scouts in their study of crime prevention. At each level of scouting, boys learn about personal safety, crime, prevention and community leaders such as police officers, citizenship and leadership.

Pack 263 was also recognized by the Bluegrass Council of Boy Scouts of America and by the National Boy Scouts of America. Pack 263 has received the 1997 Quality Unit Award. To qualify our pack had to have more than 80% attendance at both den and pack meetings, have an active leadership committee, have a Tiger Cub den, participate in service or community projects, such as the

REAP food drive, and have a chartering sponsor. Our sponsor this year is the Sand Hill Baptist Church. To honor our sponsor, our pack will attend church at the Sand Hill Baptist Church on Scout Sunday to be held in March.

Tiger Cubs who received white beads for completing numerous family activities from their Tiger Cubs Family Activity Booklet were: Chris Ayers, Gary Keith Caldwell, Michael Hansel, Kyle Lear, Freddie Mason and Anthony Smith.

Todd Davidson, of the Wolf Den, has also earned two yellow beads and his Wolf badge for completing activities in his Cub Scout Wolf Book.

Joseph Alcorn, of the Bear Den, received three red beads for completing activities in his Bear Cub Scout Book. Matthew Taylor, also of the Bear Den, received an additional red bead for completing Bear Scout ac-

tivities.

Cody Alexander, Matthew Carie, David Miller and Josh Prewitt of the Webelos Den each received their Soccer Sports Belt Loops.

All participating Cub Scouts received their Pinewood Derby Cars. Each March, Cub Scouts around the world hold the Pinewood Derby. The boys construct miniature race cars which must weigh as close to five ounces as possible. The boys learn how to sand their cars to a smooth finish, how to paint their cars, and learn about sportsmanship. **Mr. Danny Settles of Wendy's** is our sponsor for the 1997 Pinewood Derby. He donated the funding to purchase the mini cars for the boys.

Our next pack meeting will be February 21, 1997. We will be celebrating the 87th birthday of Boy Scouting in America.



As part of their service to their community, the Scouts of Cub Scout Pack 263 recently held a food drive to benefit the Rockcastle Economic Assistance Program (REAP). Area grocers allowed the Cub Scouts to place food carts near the exits for contributions of non-perishable foods to be donated. Carter's

Market, Superior, Super Saver, and Foodland were some of the local businesses that helped the Cub Scouts in their food drive. The donations were made to Mrs. LuEd Nielson. Pictured are: (first row) Michael Hansel, Anthony Smith, Freddie Mason, Kyle Lear and Gary Keith Caldwell. Second row is Todd Davidson, Matthew Miller, Wesley Durham, Wesley Miller, Justin Miller, Matthew Taylor, Joseph Alcorn and Gabe Guilfoill. Back row is Josh Prewitt, Paul Harper, Matthew Carie, Gerald Alexander, CubMaster Jerry Bullock, Samuel Isaacs, Cody Alexander, Carolyn Durham, Virginia Miller, David Miller, Kathy Howard, Leda Taylor, Michael Lovell, Daniel Martin, and Eddie Taylor. Cub Scout Pack 263 would like to say thank you to Steve and Chris Ponder. These gentlemen donated the wood that Santa used to make our tie toe games. We would also like to thank Sand Hill Baptist Church for sponsoring our cub scouting program.



Members of the Bear den of Cub Scout Pack 263 are pictured. They are Joseph Alcorn, Samuel Isaacs, Gabe Guilfoill, Robert McFerron, Matthew Taylor, Michael Lovell, and Justin Miller. Parents are in the background. Several of the boys received red beads, whittling chip cards, and popcorn awards for their efforts in Cub Scouting.



Members of the Webelos den of Cub Scout Pack 263 are pictured. They are from left: Cody Alexander, Webelos leader, David Miller and his mother Virginia Miller, Josh Prewitt and his mother, and Matthew Carie. Cub Master Jerry Bullock is shown presenting an award to Matthew.



Members of the Wolf Den of Cub Scout Pack 263 recently received several recognitions for their efforts in Cub Scouting. Cub Scouts pictured are Matthew Miller, Wesley Miller, Todd Davidson, Wesley Durham. The den leaders are Virginia Miller and Carolyn Durham. These boys have completed activities in their Wolf Den and have earned both badges and beads for their efforts.



Members of the Tiger Cub Scouts of Pack 263 recently earned their Tiger Totem Paws. These awards are earned by completing family activities, den activities and pack activities. Leaders are Paul Harper and Kathy Howard. Tigers pictured are Michael Hansel, Freddie Mason, Anthony Smith, Gary Keith Caldwell, and Jeffrey Kyle Lear. These boys have participated in the REAP food drive, the Broadhead Christmas Parade, the Cub Scout Hayride, and various other pack activities.

## McFerron to compete in 1997 Kentucky National Teen-Ager Scholarship Program

Miss Glenda Jo McFerron, age 13, daughter of Bill McFerron and Glenda McFerron of Mt. Vernon, has been selected as a State Finalist in the 1997 Kentucky National Teen-Ager Scholarship Program to be held at The Galt House in Louisville on March 28-29, 1997. The Kentucky National Teen-Ager Program is the official state finals to the 26th Annual America's National Teen-Ager Program to be held in August, 1997 at Opryland, USA in Nashville, Tennessee.

The state winner in each division (Junior: 13-15 and Senior: 16-18) will receive a \$500 Cash Scholarship or a \$1000 Savings Bond, a full tuition \$1000 scholarship from the John Robert Powers School of Modeling and a trip to Opryland, USA to compete in the national finals. The senior state winner will also receive a full tuition scholarship (worth \$11,500) to The Art Institute and a full two-year tuition scholarship (worth \$14,000) to Oklahoma City University.

The Kentucky National Teen-Ager Program will be awarding over \$50,000 in cash and tuition scholarships to various universities during the weekend event. Every state finalist will receive a \$200 scholarship to the John Robert Powers School of

Modeling. Amber Godsey of Burlington is the 1996 Junior Kentucky National Teen-Ager, Marie Hickey of Georgetown was named the 1996 Kentucky National Teen-Ager and went on to be selected the 1996 National Teen-Ager. Marie received a \$10,000 cash scholarship plus \$20,000 in tuition scholarships. The 1996 Junior Teen-Ager received a \$5,000 cash scholarship. Both national winners receive many other prizes and enjoy a year of travel.

State finalists will be judged on scholastic achievement, leadership involvement, interview and poise-personality. As part of separate competition, a talent or essay presentation may be given at the option of each participant. Each finalist may also participate in the Volunteer Community Service Program of America's National Teen-Ager. This program encourages and rewards teenagers to participate in school, civic and service activities.

Miss Glenda Jo is being sponsored by Dr. John Sipple, D.C., Berea; Mt. Vernon Florist; Judy McFerron; Dr. Larry Smith, D.C.; Peg's Food Mart; Circle H, Inc.; Karen Saylor, M.D.; GM McFerron Trucking.

Miss Glenda Jo McFerron



**Benefit Basketball Game**  
February 20 • RCHS • 7 p.m. • \$3  
K-93 All Stars vs. "Wendy's of Mt. Vernon"

### LUMBER KING INCORPORATED

Onelda, Tn. 423-569-4200	Whitley City, Ky. 606-376-5096	Jamestown, Tn. 615-879-1750	Mt. Vernon, Ky. 606-256-1100
-----------------------------	-----------------------------------	--------------------------------	---------------------------------

In our ongoing effort to bring our customers greater service and value, we are excited to announce our newest program.

LUMBER KING now offers a new and expanded credit program to our valued customers. one credit program is for consumers and a second is for contractors.

The Do It Best consumer card will allow qualified customers credit lines up to \$10,000, no annual fee, fast easy credit approval and low monthly payments.

THE Do It Best contractor card offers credit lines up to \$25,000, no annual fee, instant credit for immediate purchases.

To apply for the Do It Best credit card our customers can apply either in person at any of our four locations or call 1-888-222-2171.

Raise your allowance

Like it? Need It? Charge it!

Apply by phone! 1-888-222-2171

Apply for instant credit

No annual fee • Fast, easy credit approval • Instant credit for immediate purchases • Credit lines up to \$10,000 • Low monthly payments • Major purchase program

Your best power tool

Put it to work in your business!

Get a revolving line of credit

Flexible payments terms help with your cash flow

No annual fee • Instant credit for immediate purchases • Credit lines up to \$25,000 • Low monthly payment

# County Statistics

## Deeds Recorded

Julius K. and Dorothy Blair, et al., real property located in Rockcastle County, to Julius K. Blair, Tax 7.00.  
Doris Kelly, attorney in fact for Emma Isaacs, real property located in Rockcastle County, to Julius K. Blair, Tax 7.00.  
Julius D. and Dorothy Blair, real property located in Rockcastle County, to Jerry M. and Elaine Blair, Tax 7.50.

Charlie and Lois Lamb, real property located in Rockcastle County, to Charlie and Lois Lamb, No tax.  
Allen Wayne and Mina Kay Embs, real property located in Rockcastle County, to Allen Wayne and Mina Kay Embs, No tax.  
James Russell Barron, real property located in Rockcastle County, to Russell and Marie Barron, Tax 22.50.  
Blanche Powell, real property located in Rockcastle County, to Randall Quintin Powell, No tax.  
Hazel Bullock, real property located in Rockcastle County, to Estill and Marie Kirby, Tax 30.00.  
Kenneth and Shirley Gilliam, real property located in Rockcastle County, to Chuck Baker and Rosemary D. Baker, Tax 3.00.

Sue E. French and Olen French, Jr., real property located in Rockcastle County, to Carl R. Clontz and Joseph B. Clontz, Tax 20.00.  
Alberta Winstead, real property located in Rockcastle County, to James L. Winstead and Edra Jo Mickey, No tax.  
Carter Lynn and Carla Clontz Parsons and John E. and Lisa L. Clontz, real property located in Rockcastle County, to Edward Keith and Jerri Lynn Smith, Tax 80.00.  
Patricia May Laird and Delores G. Shapiro, real property located in Rockcastle County, to Michael Hamilton, Tax 6.50.  
Lillie Moore and Ronald E. Moore, real property located in Rockcastle County, to Ronald E. Moore, No tax.  
Martin and Margie Vanzant, et al., real property located on the waters of Wolfe Creek, to Barbara and James Rader, No tax.

Spohn and Jill Ponder, et al., real property located in Rockcastle County, to Jeremy Brock and Barbie Adams, Tax 6.00.  
Benton and Theresa Bullock, real property located in Rockcastle County, to Perry R. and Rhonda B. Sams, Tax 7.00.

Pate Bullock, Jr., real property located in Rockcastle County, to Nina P. Sandlin, Tax 15.00.

## Marriage Licenses

Judy Lee Christian Morris, 41, Ohio, RN, to Malcolm Keith Morris, 45, Ohio, self-employed, Feb. 14, 1997.  
Linda Kay Adams, 22, Crab Orchard, CNA, to Luis Julian Zanahua Ch., 21, Eubank, Barron Pallet, Feb. 10, 1997.  
Shawndra Michelle Sutton, 25, Berea, Mt. Vernon Plastics, to William Randall Chastain, 21, Berea, Lanham Iron and Metal, Feb. 13, 1997.  
Hearther Dawn Wallin, 18, Mt. Vernon, unemployed, to Arthur Ansell Bailey, 18, Mt. Vernon, unemployed, Feb. 18, 1997.  
Gwendolyn Ruby Brewer, 26, Mt.

Vernon, student, to Jerome S. Fish, 11, 40, Mt. Vernon, lawyer, Feb. 11, 1997.  
Jennifer Gayle Singleton, 22, Mt. Vernon, unemployed, to Bobby Gene Dick, 28, Eubank, farmer, Feb. 11, 1997.

## District Civil Suits

Credit Acceptance Corporation vs. William DeBord, et al. complaint for money claimed due, 97-C-00010.  
In Re: The Estate of Dwight Jackson, a minor, petition for approval of direct payment of settlement proceeds to custodian of minor, 97-C-00011.  
Household Recovery Service, Assigner of the Chemical Banking Corp vs. Donna Sue Hubbard, complaint for \$2151.01, 97-C-00012.  
Kentucky Finance Co. vs. Jerry Slusher, et al, 97-C-00013.  
Kentucky Finance Co. vs. William Shelton, et al, 97-C-00014.

## Circuit Civil Suits

Jackie S. Wass vs. Boyd W. Durham, uniform support petition, 97-CI-00031.  
Frankie Earl Bob Marler vs. Tammy Lynn Marler, petition for dissolution of marriage, 97-CI-00032.  
Donald Roark vs. Anna Roark, petition for dissolution of marriage, 97-CI-00033.  
Jimmy Guinn vs. Gene Caldwell, d/b/a Thornguy Trucking and Earl Vaughn, complaint, 97-CI-00035.  
Regina Jo Carrier and Michael Carrier, joint petition for dissolution of marriage, 97-CI-00036.  
Dwight Spurlock vs. Amelia Spurlock, petition for dissolution of marriage, 97-CI-00037.  
Commonwealth of Kentucky Cabinet for Families and Children, Ex'Rel Jeffrey L. Owens vs. Chrisy Rol, complaint for child support and medical support, 97-CI-00038.  
Theresa G. Colson vs. David G. Colson, petition for dissolution of marriage, 97-CI-00039.  
Geneva Roberts vs. Alvin Earl Roberts, petition for dissolution of marriage, 97-CI-00040.

## Small Claims

Jerry R. Overbey vs. Barry Lee Hillebrand, \$900 claimed due for services, 97-S-00011.  
Raymond Graves vs. Dwayne Steve Blair, \$182.50 claimed due for survey, 97-S-00012.

## District Court News

Feb. 12, 1997  
*Hon. Walter F. Maguire*  
Aarone L. Blackburn: OMV Und. Inf. Intox. Bev., \$200 and costs, \$200 service fee, \$10 VCF, 7 days.  
Bobby Lee McClure: Operating on Sus. License, \$100 and costs, 30 days, concurrent; OMV Und. Inf. Intox., \$500 and costs; \$200 service fee, \$10 victim crime fund, 180 days/

to serve 30.  
Robert A. Offill: Simple Assault, \$100 and costs, 30 days/serve 8/ time served.  
Julena D. Pitman: Speeding, amended to defective equipment, \$20 and costs.  
Darrrell J. Rogers: Possession of marijuana, 6 months, concurrent with circuit court sentence.  
Medeanna G. Stamper: No operator's license, \$50 and costs and 10 days; Contempt of court, \$50.  
Jeffery D. Winstead: Speeding, amended to faulty equipment, \$20 and costs.  
Joyce C. Jones: Speeding, amended to faulty equipment, \$20 and costs.  
Danny L. Hansel: Fines and costs converted to 20 hours community service work.

Shane V. Linville: Operating vehicle/alcohol or other substance, amended to alcohol intoxication, \$100 and costs.  
Glenn D. Browning: No Ky. Registration, \$25 and costs.  
Chuckie A. Conn: Possession of marijuana, \$25 and costs, 6 months/ to serve 1 days/time served.  
Timmy Denny: Fines due (\$27.50), warrant issued, license suspended.

John L. Hammond: OMV Und. Inf. Intox. Bev., amended to failure to yield, \$25 and costs.  
Sharon Helton: No insurance, \$500 and costs/suspend \$450 vehicle/

Timothy C. Johnson: OMV Und. Inf. Intox. (amended to alcohol intoxication), \$50 and costs.  
Raymond D. Mason: No Ky. Registration plates, \$25 and costs.  
Angela S. Hay: Driving Contrary to Law, \$25 and costs.

Frances L. Mayfield: Theft by Deception, warrant issued.  
Scott A. McClain: Speeding, amended to faulty equipment, \$20 and costs.  
Lesli C. Penrod: Fines due (\$117.50), warrant issued, license suspended.  
Eual D. Robertson: Violation Part 395FSR Hrs. Service, \$25 and costs.  
Fred Leland Rowland: No Ky.

Registration Plates and other charges, warrant issued for failure to appear.  
Wanda Russell: Theft by deception, warrant issued.  
Larry Suidham: No operator's license, \$100 and costs, 10 days/probated on condition; No insurance, \$500/suspend \$450.  
Frankie L. Woodall: Possession of marijuana, \$100 and costs, 6 months/serve 2 days/time served/balance probated 1 year.

Dear Editor,  
The cookies are here! Today, thousands of boxes of these famous cookies were delivered to the Girl Scouts in Rockcastle County. We will start delivery on Monday, February 24, 1997. Dozens of Troop Cookie Managers, who volunteered to help coordinate the biggest money-making project for the Girl Scouts, arrived at London Service Center to start distributing the hundreds of thousands of cookies that the Wilderness Road Girl Scout troops have sold this year. In the next couple of weeks the Girl Scout troops will be delivering the cookies ordered. Girl Scout Cookies are available only at set up at local retailers during the month of March, to sell cookies to those that have not had a chance to order cookie or need more.

Girl Scout Cookie sale proceeds make up the majority of the Girl Scout Council's budget. The most successful cookie sale is, the more programs and opportunities the Council can offer the 22,000 Girl Scouts they serve.

Contact Marcie Rose at 758-4112, Vickie Chastain at 256-4817, Angie Lawless at 256-4357 or Becky Anglin at 758-4118.

## Our Readers Write

Dear Editor,  
In light of the many scandals going on in the military now, "Hoizing", "tall look" and others I am reminded of my initiation on crossing the equator for the first time.

I grew up in the "lower" part of the county and some 40 years ago I joined the Navy and sobered up on the mighty USS Mc. McKinley in the Pacific soon to cross the equator. Working in the engine room I was served with a "supena" to appear before "King Neptune's" court" charged with "going from mule driving to ship driving" in too soon a time. A very serious charge and the punishment would be most severe. I appeared on said date and hour, I was placed in a large wooden barber chair where my hair was butchered and skinned, used motor oil was then poured on my head. A lever was then pulled, over backwards I went into a tank of soap from the mess deck, "saved for weeks." On emerging from the slop tank I was forced into a gauntlet of "old hands" beating me

with water hoses, swerving this I was hit with a high pressure fire hose which washed me across the deck about 50 feet. Then I was thrown into a tank of red dye and was colored red from head to toe. At that time I thought I came a "Royal Shellback". We wore the title proudly. We were young and tough and didn't "whine" about it. Although it did set me to wondering.

Thank you,  
James D. Norton  
Renfro Valley, KY

## PRIMESTAR

With dozens of excellent channels to choose from already, PRIMESTAR is adding "55 MORE". With scores of choice available, there's something for everyone. Movies, Westerns, Sports, Cartoons, Mysteries, Sci-Fi, Disney, News, Comedy, Weather and more, all starting at about a \$1 a day, all with digital sound and picture. \$50 off making installation only \$149. The first month programming "FREE" (at \$54.99 value), nothing to buy, nothing to mail. Call 1-800-397-1064  
Quality Satellite of Kentucky - J.B. Combs, Area Sales Rep.

REAL ESTATE
FOR SALE

**Ford Brothers, Inc.**  
Auctioneers - Realtors  
606-256-4545  
1-800-435-5454

Sam Ford - 256-4588 • Danny Ford - 256-4446 • Roy Adams - 758-9300  
David Henderson - 256-2034 • Tony Hopkins - 256-4627 • Greg Philbeck - 758-4708  
Gail Holbrook - 758-8012

### Commercial Property

**Think Ahead! Good Investment Property!** 20 acres of prime commercial 175 property at Renfro Valley, Kentucky. Great visibility from I-75, city water and sewer and good terrain with tremendous possibilities. Owner may consider lease. This may be your opportunity at \$350,000. M538.

**Choice Commercial Property:** Intersection of Highway 150 and U.S. 27 in Stanford across from McDonald's. City water, sewer, electric and gas available. Zoned B-3 commercial. Great visibility and easy access. Priced at \$50,000 and up. M817

**Just Listed!** 17 acres of commercial land located near the US 25/461 junction. City water and sewer available. Owners live out of state! Priced to sell at \$85,000. M938

### Mobile Homes

**If You're In The Market For a New Mobile Home** that is set up and ready for you to move into, come take a look at this 3 bedroom, 2 bath 1995 Fairmount mobile home. Situated on 3/4 acres 1/10 lot. Priced at \$42,000. Call Sonja at 355-7000 to look today. Possible 95% financing. M801

**Enjoy Overlooking The Lake While Living In This Holly Park Mobile Home!** Situated on 1/2 acres, this home has living room, dining room, kitchen, 2 bedrooms, bath and washer/dryer hookup plus a new gas furnace, city water and cable available. Added features included are a stove, refrigerator, a washer and dryer. Priced at \$24,900. M931

**Purr Risby Road!** Mobile home with large addition situated on a 1 acre lot. This home has a large living room, dining/kitchen combination with all new oak cabinets, 3 bedrooms and a bath plus a new conditioning system. Excellent condition—completely redone! Priced at \$31,500. M925

**Bowling Ridge!** Situated on a nice 3 acres more or less, this 12x60 mobile home has living room, dining, kitchen, 2 bedrooms and a bath plus washer/dryer hookup. In addition, there's also a storage building. \$14,900. M941

### FARMS

**If You're Looking for a spot to hunt this fall,** come take a look at this 65 acres w/wooded tract near Pine Grove Road. Priced at \$29,900. M599

**88 Acres** located in the Pine Hill section of Rockcastle County! Good investment potential. Won't last long. Priced at \$24,900. M863.

**150 Acres** located in the Long Branch section of Rockcastle County! Near I-75 and the Rockcastle River! Unlimited potential! Priced at \$44,900. M862

**267 Acres!** Two miles south of Mt. Vernon off Highway 1249. Some young timber and cleared bottom land. Priced at \$425 per acre. M867

**80 Acres of Wooded Land!** Price Hollow Road, south of Mt. Vernon. Young timber! \$425 per acre. M868

**82 Acres M/L** with 30x40 barn and 1361 lbs. of tobacco. Nice site for your new home or mobile home with well and septic system. Located on Old Gally Road in the Lamero section of Rockcastle County and priced at \$42,000. M871

**Saylor Road, Lincoln County!** 135 acres more or less in 7 tracts! Tract sizes range from 4.28 acres to 48.19 acres. City water is available to several tracts. For further details, call Sonja at 355-7000. M936

### Homes \$50,000 and Up

**Green Hill Section!** Nice brick home situated on 1 1/4 acre more or less. This home offers 4 bedrooms, living room, dining room, kitchen, entrance foyer plus central heat and air, city water, and cable available. In addition, there's a large barn with loft, shop building, and storage building. Priced at \$51,900. M908.

**Beautiful Contemporary Home** with 2 private wooded acres! 4 bedrooms, 2 baths, living room, kitchen, dining room, stone fireplace and lots of glass. All for only \$95,000. M906.

**Beauty and the Best of Everything Are Found in this** delightful brand new brick and vinyl home! Located in the new Ridgeway Estate, this home offers 3,320 sq. ft. of living area and a floor plan of living/dining/kitchen combination, 3 bedrooms, 2 baths, and utility room plus a one car attached garage. Awaiting your call for an appointment. Priced at \$76,900. M920.

**Here's An Abundance of Luxury, Convenience, and Privacy!** Located just one mile south of Mt. Vernon on Chestnut Ridge Road! This nice bedford stone home offers entrance hall, living room, dining room, and kitchen on the first floor, 3 bedrooms and 2 baths on the second floor, and family room, 1/2 bath and 2 car attached garage in the basement. Come out and be ready to buy for only \$74,900. M919.

**Dust Off Your Dreams!** Get ready for real family living in this brand new home located in the Sunset Place Subdivision! This vinyl sided home offers an entrance hall, living room, dining/kitchen, 3 bedrooms, 2 baths and utility room. Additional features include heat pump, balcony, front porch, and rear deck. Priced at \$69,900. M935

### Homes \$40,000-\$50,000

**Just Reduced! Financing Sale, Mt. Vernon!** This nice home offers living room, dining room, kitchen, 2 bedrooms, 2 baths, utility room. Added features include refrigerator, fuel oil furnace, washer/dryer hookup. This home is waiting for that growing family of yours! Now priced at only \$46,900. M859

**Twice is Nice! That's Right!** This is a double value! Live in the 2 bedroom home and rent the efficiency apartment in the basement. The home also has living room, kitchen, bath and back patio. The apartment offers kitchen/living room/bedroom combination and a laundry room/bath. Income potential of \$500 more or less. Located in Livingston and priced right at \$45,000. L847

### LOTS

**Restricted Lot!** Paved street, city water, 4 large lots measuring approximately 1/2 acre each. Located in the Woodland Place Subdivision and priced at \$9,000. Call M714

**Golden Opportunity! Sunset Place!** Mareburg's newest development. 48 Restricted building lots with city water available, plus some backlot road frontage available. These lots measure between 1/2 acre to 1 1/2 acres and range in price from \$5,000 - \$10,000. Start your dream home today! Call M712

**Pine Grove Road!** Thinking of building a log home, this wooded tract just might suit your needs! Contains 6.4 acres with backlot road frontage. It's priced at \$16,000. M778

**Will Chancellor Road!** 4 bent tobacco barn situated on 5 acres m/l. City water available soon. Priced at \$25,000. Call Sonja for additional information. M820

**Restricted Country Building Lot!** Evergreen Estates Subdivision - Blacktop street - city water - Lot measures approximately 55/100 of an acre. One of Rockcastle's best neighborhoods. Owners will finance and will consider trade. Priced at just \$7,900. M834

**Rolling Hills Subdivision!** Two restricted building lots located just off Highway 461. One lot offers 8/10 of an acre and the other offers 7/10 of an acre. Take your pick and make plans to begin your new home! Priced at \$7,000 each. M937

**New Overlooking Lake Linville!** Two lots located near the boat dock with city water, septic tank (on both lots) and electric. These docks must be sold together and are priced at only \$6,000. M934

### FUTURE AUCTIONS

**16th Annual London Farm Machinery Consignment Auction**  
Saturday, February 22nd at 9:30 a.m.  
Laurel County Fairgrounds

**22nd Annual Brodhead Farm Machinery Consignment Auction**  
Saturday, March 1st at 9:30 a.m.  
Brodhead Fairgrounds

**4th Annual Somerset Farm Machinery Consignment Auction**  
Saturday, March 8th at 9:30 a.m.  
Pulaski County Fairgrounds

# Berea Attic Sale

## 1/2 Price

## Yellow Ticket Sale

Fri., Feb. 21 and Sat., Feb. 22nd only

Items without tickets will not be sold.

Located on US 25 South, Berea



## From Our Files

35 years ago this week...

Miss Darlene Hopkins was named to the University of Kentucky Committee of 240, an information organization made up of students from each 120 counties.

A six percent increase in burley tobacco acreage allotments was granted by the Department of Agriculture, Sixth District Rep. John C. Watts.

Miss Mary Ellen Hansel, of Mt. Vernon represented District 8 of the American Dairy Association of Kentucky in the annual Dairy Princess Contest.

30 years ago this week...

The Mt. Vernon Lion's Club established a Nursing Scholarship Fund for graduating seniors going into Nursing School.

Faith Noday was selected as Area Home Agent.

Paul Owens of Mt. Vernon was named news director in the Public Relations Department at the University of Kentucky.

Dr. G.W. Schneider, Associate Director of the Extension Service at the University of Kentucky presented Mr. and Mrs. Roy Brown with a certificate award to Rockcastle County for Outstanding 4-H Council Program in 1966.

25 years ago this week...

The Brodhead Tigers continued their winning ways. The Tigers really tore up Owen County 95 to 57 and defeated Trimble County 76 to 73.

Mt. Vernon Future Homemakers Club presented puppets they had made to the hospital for children that are patients there.

Mays Construction Company of Williamsburg was the successful low bidder on laying the water lines for the Northern Rockcastle Water District. Fifteen bids ranging from \$427,830.85 to the low of \$236,162.35, were submitted on the project.

20 years ago this week...

Dave Jackson Lodge 731 F&AM Livingstone installed new officers: C.L. Mounts, Gary Mink, W.A. Stokes, C.R. Stokes, R.L. Stokes, Ronald Mink, Walter Morris, Fortner Mink, Sr., C.F. Mullins, Harold Kelly, Johnny Lewis and Money Ed Cummins.

G.H. "Hobe" Griffin announced his candidacy for the Republican nomination for County Judge Executive of Rockcastle County.

Carl R. Clontz of Mt. Vernon has been elected to membership in the American Angus Association at St. Joseph, Missouri.

Quail Teen 4-H Club was recognized for their community pride project at the Wilderness Trail Area 4-H Community Pride Awards night.

15 years ago this week...

Mayor Roland Mullins announced that the City of Mt. Vernon had received a 3 year \$20,000 grant, funded through the Appalachian Regional Commission to be used to finance a downtown revitalization effort.

Peter Monteyne arrived from Saskatoon, Saskatchewan, Canada to begin practice in Mt. Vernon.

Amy Sue Hamm will appear on CBS's PM Magazine, Amy's picture was one of twenty-one published in the book, "Is Going to a Dentist Worth The Trouble It Sometimes Takes?"

Debbie Hansel was named Chairperson of the Spring '82 Makin' Tracks campaign in Mt. Vernon.

10 years ago this week...

Becky Burdette, Don Amyx, Trudi Lay, Alicia Machal, Kim Carroll, Sherri Hays, Amanda Napier, Susan Smith and Natalie Pybas participated in the All-State Honors Chorus in Louisville.

Burgess Evans received a blue hard hat and watch for 35 years service with Kentucky Stone Company, making the presentation was Robert French, General Superintendent.

Rockcastle Improvement Council President Sammy Ford presented local dentists, Drs. Jack and Joe Henderson with the council's improvement award. The Hendersons were recognized for their efforts in promoting and improving Rockcastle County.

5 years ago this week...

Carter/Ford property site was

The Mt. Vernon Signal Thursday, February 20, 1997 P-83

picked for new high school.

Judge Executive Roland Mullins and Mayor Gary Cromer signed a joint proclamation declaring February 18th National Vocational Education week.

Susan and Sarah Witt, Marilyn Coffey, Julie Coffey, Angie Stallsworth, Paul Cox, Stacy Thacker, Courtney Adams, Chris Dillingham, Andy Martin, Dallas Graves, William Linville, Anthony Mink and Scott Mullins participated in the District Governor's Cup.

Rockets defeated Mercer County in overtime 81-79. William Bullens scored 29 points in the Rocket overtime victory.



# \$18.95\* Per Month Gets you going!



There couldn't be a better time than now!  
20 Minutes FREE each month! Additional minutes only 25c. No activation fee! Phones start at 99c!

## Ramcell™

Quality Cellular Phone Service

1527 S. Main St., London, 878-6000 or Toll-Free 1-888-RAMCELL  
London Wal-Mart, 877-0028; Somerset Wal-Mart, 679-0679  
Agents: Radio Shack, London Shopping Center, 878-8488

\*Two-year service agreement required. Limited time offer. Other restrictions may apply.

## SATISFACTION GUARANTEED OR YOUR MONEY BACK ON EVERYTHING WE SELL!

Family Pack  
Ground  
Beef

**.79**

Mt. Vernon

# SAVE·A·LOT

10 Lb.  
Idaho  
Potatoes

**1.69**

Ph. 256-9810

### FOOD STORES

910 W. Main St.

**Extra Savings**

Seedless White or Red

Grapes

**.99** lb.

**Extra Savings**

Crisp

Lettuce

**.69** head

**Extra Savings**

Family Pack

Leg Qtrs.

**.39** lb.

**Extra Savings**

Country Style

Pork Ribs

**1.29** lb.

**Extra Savings**

Boneless Beef

Rump Roast

**1.59** lb.

**Extra Savings**

Boneless Bottom

Round Steak

**1.69** lb.

**Extra Savings**

3 Lb. Bag

Yellow Onions

**.79** lb.

**Extra Savings**

Red Ripe

Tomatoes

**.79** lb.

Aunt Jemima  
Syrup **1.99**  
Large 24 oz. bottle

Aunt Jemima  
Pancake Mix **.99**  
Lg. 22 oz. box

Kellogg's  
Sugar Smacks  
Cereal **1.99**  
17 oz. box

2 Liter  
Pepsis **.99**

**We Accept WIC • Save up to 40% • 100 Satisfaction Guaranteed**

# Library News

By Geraldine Robbins

The Local Art Show will be held this spring but a definite date has not been set. It was decided by myself and the Library Board to have the art show when we have an Open House. We are waiting for this until the building has a new roof and the parking lot is paved. We have completed most of the work on the inside of the building but since the outside work has not been done, we want to wait until everything is finished. Just keep the Art Show in mind and be prepared for this event. We want a lot of people to participate in the show and preparations need to be made soon. The only rules that need to be known now are, each participant must be a resident of Rockcastle County and all art work must be framed and suitable for hanging or for display on an easel.

During National Library Week, we will be having a display of art work from any students enrolled in a Rockcastle County School. Allen Fennell will be working with the students to prepare for this. We hope to encourage our young people to get involved in different programs at schools and especially the art programs. My son is a fifth grade teacher at the Mt. Vernon Elementary School and he is working with a group of students after school hours in an art program. This is not necessarily paintings but all phases of art and we hope to have an exhibit of his students' work later.

For more information on this exhibit, contact me or Mr. Pensol and we will be glad to help in any way possible.

In talking to different people about our internet system, I am finding out that a lot of people still do not realize that we have this valuable resource at the library. I know that not everyone reads my articles, probably not anyone that doesn't have an interest in libraries so I am asking that those of you that are using our internet service please tell your friends and especially parents of school children. It is hard to find all the information on a lot of the assignments given by the teachers without outside help. There is not always time at school to find this information and most people do not have access to computers at home and not all parents are willing to help their children anyway with this extra work. This is one of the reasons that we have worked so hard to provide this service at the library. Hopefully parents could at least drop their children off at the library, for a period of time to do some research. We are willing to help them get started with this work.

I have more new books to tell you about. Three are fiction and two are non-fiction. 1. HORNET'S NEST by Patricia Cornwell... With Charlotte, NC as her shimmering background, she propels into the core of the force through the lives of a dynamic trio of heroes. Andy Brazil, an ambitious young reporter for the Charlotte Observer and an eager-sometimes too eager volunteer cop; Police Chief Judy Hammer, the professionally strong yet personally troubled guardian of Charlotte's law and order, and

her deputy chief, Virginia West, a genuine head-turner who is married to her job. To walk the beat with Hammer, West and Brazil is to learn the inner secrets of police work: the tension and the tedium, the hilarity and the heartbreak, the unexpected pump of adrenaline and the rush of courage that can lead to heroics... or death.

HORNET'S NEST is a real as tough as spicet butter and page-turning as Cornwell can be.

2. ERRANDS by Judith Guest... As best-selling author of critically acclaimed masterpiece ORDINARY PEOPLE, Guest once again gives us an unforgettable family that finds the fabric of their lives unraveling.

North of Bay City, Michigan, past the small highway town of An Gres, past acres of sugar beets and fields of grazing sheep, the Browner family enters the slow curve in the road that leads to the town of Lake Huron. Keith, Annie and their three children have had the same cottage for the past six years. They know this place like the back of their station wagon. But a shadow has fallen over this particular trip. Keith is dying of cancer. It is a fate he has accepted. Annie however cannot, will not.

Seating in his depiction of despair, warm in his evocation of family and the fragile ties that bind them and tempered with gentle humor and dazzling wit, ERRANDS is nothing less than a triumph.

A new historical novel, 3. DRUMS OF AUTUMN by Diana Galabodon... This novel continues the remarkable story of Claire and Jamie Fraser. Cast ashore in the American colonies, the Frasers are faced with a bleak choice: return to a Scotland fallen with famine and poverty, or seize the risky chance of a new life in the new world menaced by Claire's certain knowledge of the coming revolution.

Still a Highlander is born to risk and so is a time traveler, their daughter, Brianna, is safe-they think - on the other side of a dangerous future; their lives are as one to venture as they will. With faith in themselves and in each other, they seek a new beginning among the exiled Scottish Highlanders of the Cape Fear, in the fertile river valleys of the colony of North Carolina.

But history spares no one, and when Brianna follows her mother into the past, not even the mountains can shelter a Highlander. For Brianna too has an urgent quest; not only to find the mother she has lost and the father she has never met, but to save them both from a future that only she can see.

1. MASTERING THE ZONE by Dr. Barry Sears... In his first book, the phenomenal number one New York Times bestseller THE ZONE, Dr. Sears sparked a revolution with the startling revelation that eating fat doesn't make you fat and that the high carbohydrate bagel and pasta diet of most Americans must be the real risk to our national health, now in *Mastering The Zone*. Dr. Sears provides you with a vast array of tools,

techniques and tricks that will help you achieve Superhealth.

In *Mastering The Zone*, learn how to set a starting point, choose goals based on your own personal activity level and desired results, evaluate your progress on the zone plan, and fine-tune your program for even more superior results.

2. UNDAUNTED COURAGE by Stephen Ambrose... From the best-selling author of the definitive book on D-Day comes a book on the most momentous expedition in American history and one of the great adventure stories of all times.

In 1803 President Thomas Jefferson selected his personal secretary, Captain Meriwether Lewis to lead a voyage up the Missouri River to the Rockies, over the mountains, down the Columbia River to the Pacific Ocean, and back. Lewis was the perfect choice. He endured incredible hardships and saw incredible sights.

This is a book about a hero. This is a book about national unity. But it is also a tragedy. When Lewis returned to Washington in the fall of 1806, he was a national hero. But for Lewis it was failure. Jefferson had hoped to find an all-water route to the Pacific with a short hop over the Rockies. Lewis discovered there was no such passage. Jefferson hoped the Louisiana Purchase would provide endless land to support farming - but Lewis discovered that the Great Plains were too dry.

High adventure, high politics, suspense, drama and diplomacy combine with high romance and personal tragedy to make this outstanding work of scholarship as readable as a novel.



Little Rent-A-Car  
Low Rates  
Free Miles  
986-8888 • Berea, KY

## The Family Room

By: Dr. Don Whitehead

One of the joys of writing a column such as this is receiving mail from readers. Recently, I received a letter that requires an answer. Since the letter was unsigned, I will answer it in today's column.

"Dear Dr. Whitehead I enjoy your weekly articles on family and Christian issues. Many times your advice is to obtain counseling, which I think is excellent advice, but the truth of the matter is a vast number of us cannot afford it. I am a newly divorced person, and after monthly bills are paid, I do not have the luxury of spending that much money on myself.

I would like to see someone or some organization form a divorce recovery group. I spent many hours in prayer before divorcing my emotionally and verbally abusive husband who had more than one involvement with another woman, but I am still having difficulty in "letting go." My prayer is that you will feel a "calling" to start such a group. May God bless you and keep those articles coming.

[Signed] A Hopeful Reader

Dear Hopeful Reader,

I often do recommend counseling

because of how it has helped me and others. There is counseling available that you can afford. Some counseling agencies receive government and/or private funds that allow them to charge a lower fee for services. Most private counseling agencies, such as Associates in Counseling with whom I work, will do all they can to make sure that you receive the counseling you need.

As far as money is concerned, you may have resources you have not yet fully utilized. I am certain that, if one of your children (I am assuming you have some) needed something that cost \$60 or \$600, you would find the money somehow. You are just as important as any other family member. You are a person of worth and it is OK to spend money on your needs.

If you will call me (606-679-1134), I will help you find counseling that is appropriate for you, and that you can afford. No one who wants counseling need go without it because of a lack of financial resources. There is help available, and I hope you will take advantage of it.

Going through a divorce is a painful experience. Many emotions such as guilt, hurt, anger and fear come to

the surface. Individual counseling and group support are both helpful during this time. When you call me, we can talk about beginning a divorce recovery group. If there is enough interest, I am open to the possibility of starting such a group. Anyone else who is interested may also call me at the number above. The more calls I get, the more likely it is that we can begin such a group.

Keep reading and thanks for writing. I look forward to your call.

Sincerely,  
Don Whitehead  
Pastoral Counselor  
Somerset, Kentucky

Classified deadline is NOON Tuesday

**Doris'**  
Tanning Bed  
is now open  
256-5217

## Attention: Tobacco Allotment Owners

If you're thinking of selling your tobacco base, our firm will be offering some tobacco bases in Rockcastle County for Rockcastle County farmers at the Brodhead farm machinery consignment auction.

Whether you have a few pounds or a few thousand pounds you want to convert to cash, then call or stop by our office in Mt. Vernon for more details.

## FORD BROTHERS, INC.

AUCTIONEERS - REALTORS



London, Ky.  
606-878-7111



Mt. Vernon, Ky.  
606-256-4545  
Toll Free 1-800-435-5454



Somerset, Ky.  
606-679-2212

# Guarantee Yourself a Tax Break This Year!



Open an Individual Retirement Account. With an IRA you can deposit up to \$2,000 each year and all interest is tax deferred. You may be able to deduct all or part of the \$2,000.

Let us show you how an IRA can be a great benefit. There's no obligation.

**REMEMBER, YOU CAN MAKE 1996 IRA DEPOSITS 'TIL APRIL 15, 1997**

## "IT IS WRITTEN"

In our last column we had an article concerning a clarification of the use of the New Living Translation. We pointed out that the NLT of Matthew 7:23 was a wonderful translation of that verse. We observed that there was a problem we wanted to discuss that is found in this translation as well as the NIV, and that is the false idea of inherited sin.

It seems that the translators of the NLT and the NIV were biased when it came to translating the word "flesh" in these translations. These men convinced that people are born sinners, i.e. the doctrine of inherited sin, arbitrarily inserted words like "sinful nature" or "evil nature" in these translations. Yet they showed their inconsistency in their translation, when the same original word would be translated "flesh" or "human" in other places. For instance in passages like Galatians 5:16-24 and Ephesians 2:1-3, they would use words like "sinful nature" or "evil nature" several times. But then in places like Jn. 1:14 these translations would read, "So the Word became human and lived here on earth among us" NLT; "The Word became flesh and lived for a while among us" NIV. Why didn't they consistently translate it, "So the Word became *sinful nature* and lived here on earth among us" or "The Word became *sinful nature* and lived for a while among us"??? Surely they couldn't be biased could they?

No beloved, we do not inherit sin, consider Ezekiel 18:20, "The soul that sinneth, it shall die. The son shall not bear the iniquity of the father, neither shall the father bear the iniquity of the son: the righteousness of the righteous shall be upon him, and the wickedness of the wicked shall be upon him." And what shall we say about Jesus being born of woman, born into tabernacle of flesh, did he inherit a "sinful nature"? What about babies that are supposedly "born sinners", do they need to be saved from sin? What happens to them if they should die in their infancy, will these "totally depraved sinners" be lost in their sin which they are supposed to inherit? You can see that this erroneous doctrine of "inherited sin" creates all kinds of problems with the scriptures, and which has also led to all sorts of other erroneous doctrines.

### PROVIDENCE CHURCH OF CHRIST

Dan McKibben - 758-9316, e-mail - Dan.McKibben@Juno.com  
Home Page - <http://www.skn.net/~elawrence/Index.html>

Time of Services: Sunday 10am Bible Study, Worship 10:35 & 6pm; Wednesday 7:00pm. Radio programs, Sunday 8am, Saturday 12 noon a call-in show, WRVK 1460 AM.



## The Bank of Mt. Vernon

Main Street • Mt. Vernon • 256-5141

Lobby Hours - 8:30 a.m. to 4:00 p.m. Mon. - Fri.

Saturday: 9:30 a.m. to Noon

Drive-Thru Hours - Mon. - Fri. 8:30 to 4:00 p.m.

Sat. 8:30 to Noon

Member FDIC





WE GLADLY ACCEPT WIC AND  
FEDERAL FOOD STAMPS

We reserve the right to limit  
quantities, correct typographic  
or pictorial errors and not to  
sell to dealers.

Berea, Ky.  
986-9401

# SUPERIOR FOOD MARKET

PRICES EFFECTIVE FEBRUARY 17  
THROUGH FEBRUARY 23

## *Still Celebrating After All These Years!* Huge 25th Anniversary Sale

24 PACK COCA COLA AND  
Coke Products



\$4<sup>99</sup>

LIMIT 2, PLEASE WITH ADDITIONAL \$10.00 PURCHASE

USDA WHOLE BONELESS  
Ribeyes



\$2<sup>99</sup>  
Lb.

LIMIT 1 WITH ADDITIONAL \$10.00 PURCHASE

GREEN GIANT  
Vegetables

Whole Kernel Corn, Cream Corn, Peas, Cut Green Beans & French Style & Niblets



3/\$1

LIMIT 12 TOTAL CANS

BOUNTY 1 ROLL  
Paper Towels



68¢

White  
or  
Designer

LIMIT 4, PLEASE

ULTRA- 3 VARIETIES  
Tide



\$5<sup>75</sup>

92 - 103  
OZ.

FRESH HEAD  
Lettuce



2/\$1

**Extension Home Economics**

**Auto Dealers Top 1996 Complaint List**

By: Hazel Jackson  
County Extension Agent  
for Home Economics



Franchised automobile dealers and used cars again ranked first among consumer complaints registered in 1996 by the Kentucky Better Business Bureau (BBB) of Central and Eastern Kentucky.

According to the Better Business Bureau, auto repair shops and home furnishings/accessory stores retained their respective second and third place rankings, the same as in 1995. Auto dealers (used cars only) rose from 6th to 4th place in 1996.

Home remodeling contractors, which ranked 13th in 1995, jumped to 5th in number of complaints last year. Based on 1996 statistical data compiled by the BBB, inquiries on home remodeling contractors have risen by 50% over the past twelve months, making it the most inquired-about industry among Kentucky consumers.

But while complaints against remodeling contractors which were handled by the BBB increased 75%, its settlement rate of resolving those disputes fell by 66%, to a 38% resolution rate.

Complaints against mobile home dealers dropped to the number six spot, down from 3rd. An increase in complaints was seen against telephone companies and long distance carriers, which rose from 11th in 1995 to 7th for 1996.

Likewise, roofing and gutting (residential) inched up to 8th place from being 10th in 1995.

While complaints against heating and air conditioning sales/service retained 9th place, manufacturers/producers/distributors gained four notches to end up 10th for 1996.

The most dramatic change which was not part of the top ten was seen in complaints related to check cashing/guarantee services, which moved from number 25 in 1995 to 11th last year.

One way to reduce your chances becoming a victim is to call your closest Better Business Bureau office at 1-800-866-6668 to obtain information about a prospective home repair or remodeling company. Even this method is not completely foolproof; if the BBB has not had a complaint registered against a company, it cannot steer you clear of the potential danger.

You can reduce your risk of being cheated by a remodeler by talking with acquaintances who have recently made home improvements. Work of mouth recommendations help build a company's reputation, for good or bad.

If you have a complaint about a company, report it to the Consumer Protection Division of the Kentucky

Attorney General's Office. That office can help prevent others from being cheated by shoddy workmanship or work not completed.

**Health Consumers Beware**

Consumers spend billions of dollars each year on miracle pills, ointments and other questionable products and treatments hoping to improve their health. Instead, consumers are left with the disappointment of no results. Or even worse, the products or treatments cause bodily harm and ruin overall health.

Often quack products are fairly easy to spot, like magic pills that keep you young forever or claim to melt off weight while you sleep. In more recent years, companies have become more sophisticated in their claims and often use a small portion of a medical report that has been in the news.

Quackery has many well-defined characteristics. If you answer yes to any of the following questions you are considering buying, quackery probably is involved.

- Is the product or service being offered a secret remedy or a recent discovery not available from other sources?
- Does the sponsor claim to be battling the medical profession which does not accept this discovery? In truth, most legitimate health discoveries are made by researchers in the medical field. Doctors readily use health treatments and medications that are proven to have actually worked and have been approved for use by the Food and Drug Administration.
- Is the remedy being sold by a self-styled "health advisor" who has no background in the medical profession? Medical doctors and Registered Dietitians have a degree

and extensive training in their particular fields; their credentials are checked by the state before a license is granted. Anyone can call himself/herself a "health advisor" or "nutritionist" since there is no licensing in the state of Kentucky for these titles.

- Is this miracle product being promoted by an individual or company that will profit if you buy the product? Of course, he/she will tell you that it works to get you to buy it.
- Is the product good for many different illnesses? Most real medical treatments are good for a range of very related conditions. Real treatments don't work for conditions ranging from wrinkles and hair loss to cancer and arthritis.

Does the promoter suggest that you use the product instead of seeking medical treatment? This is a dangerous suggestion often made by unscrupulous companies or individuals that can cost consumers precious time in getting the appropriate treatment.

If you suspect that a product or claim might be fraudulent, check out the company and product with the Better Business Bureau, Kentucky Attorney General's Office, the Food and Drug Administration, and seek your physician's advice. The phone numbers for these agencies are listed below; contact the Extension Office at 256-2403 for questions or the addresses of these agencies:

- Better Business Bureau (606)259-1008 or 1-800-722-5080
- Ky Attorney General's Office (502)573-2200
- FDA District Office (513)684-3501
- FDA Food Complaint Hotline 1-800-437-2382

Other reasons are related to a herd's management and productivity.

By following a controlled, seasonal calving program, better care can be given cows at calving time. Percent calf crop is the major economic factor in a cow-calf operation and care at calving time affects percent calf crop. It is very difficult to properly check cows which are on a year-round calving season.

Herd health and management is facilitated. There are many jobs which are important to the health and management of a herd which are more likely to be properly done if your cows are on a controlled calving season. Some of these practices are vaccination, dehorning, castration, identification, de-worming, and weaning. If a farmer can perform all these jobs at one time, it is much more likely that they will be done and the labor requirement will be much less. Pregnancy testing and culling open cows can greatly influence percent calf crop and herd profits. However, it cannot be conveniently carried out with year-round calving.

Brood cow nutrition can be improved. Winter feeding of the brood cow is the most expensive phase of cow-calf production. If some of the cows are dry and some are nursing calves during the winter, the herd cannot be fed in the most efficient manner. Since cows nursing calves require at least 50 percent more protein than dry cows, neither group can be fed properly if they are running together.

Marketing of stocker-finisher operations are improved. A calf crop which is uniform in age and size can be marketed to a better advantage. Large uniform groups of calves will usually bring several cents per pound more than those sold individually. If calves are uniform in age, they will also fit into on-the-farm stocker or feeding

programs. Culling and selection of replacements based on production records can be better accomplished. To make meaningful comparisons among brood cows, calves must be born within a 90 to 120 day period. One of the main criteria for culling cows is the relative performance of their calves. Acceptable comparisons between cows cannot be made if the calving season is too extended. Acceptable performance implies not only weaning weight, but also that a cow producing a calf every 120

**How Does a Farm Start Controlled Calving Season?**

In most herds with a year-round calving season, a natural calving concentration already exists. Nutrition is the major factor responsible for brood cows cycling and conceiving. Since pastures are usually at their peak of quality in late winter and spring (March, April), No system of calving a controlled breeding program can completely eliminate the delaying of some cows from their current calving schedule. However, by taking advantage of the natural concentration in a herd, the problem can be minimized.

A system for converting from year-round to a 90-day controlled calving season over a period of three years would present less loss and fewer problems than to try to convert in one year. The following steps are suggested for getting on a controlled breeding system, when a natural spring concentration exists.

- Build a good, strong bull pen or well-fenced bull pasture. An electric fence, in addition to regular fence will likely be needed.
- Remove bull from herd. If a natural concentration of calving exists, remove the bull within 30 days after the first calf is born. In small herds with December and

(Cont. to B7)

**Dr. Larry R. Smith,**  
formerly of Mt. Vernon Chiropractic,  
is now serving all of his patients  
from Mt. Vernon,  
Brodhead, Crab  
Orchard, Living-  
ston and sur-  
rounding areas at  
Accident, Injury &  
Illness Treatment Center  
805 S. Main • London  
(Carnaby Square  
Shopping Center)  
606-877-9397

**Farm News**  
By: Tom Mills  
County Extension Agent  
for Agriculture  
**Controlled  
Calving Season**

Why should beef farmers be concerned with developing a scheduled or controlled calving season?

Surveys show that two out of three beef herds are on year round calving. Of those herds, 40 percent of their calves are born in June through August or the summer months. Calves born in summer months can be expected to weigh

over 100 pounds lighter at weaning than those dropped at other times.

FREE ESTIMATES! BUY FACTORY DIRECT METAL ROOFING & SIDING TRUSSES & INSULATION

12 COLORS! Order custom! Call to the color you want!

Trim - Skylights Sliding Door Track Nails, Screws Treated Lumber Walk Thru Doors Ventilators

**DAVCO STEEL**  
DANVILLE - KY  
1-800-474-4321

WALK-INS WELCOME  
Ideal for Agricultural, Commercial, Residential Buildings  
JOBSITE DELIVERY

**Give your grandchildren a grand future.**

Want to provide money to your grandchildren when they are ready? Or purchase homes when they are ready?

Name them beneficiaries of life insurance plan by naming them Modern Woodmen. You can make the gift that gives after you're gone.

Chatter Lakes Rt. 3 Box 1183 Brodhead, Ky. 606-784-9710

**MODERN WOODMEN OF AMERICA**  
A Fraternal Life Insurance Society  
Member Since 1890 - 1898

LIFE • ANNUITIES • IRAs • FRATERNAL PROGRAMS

**Our affordable protection gives your child a head start on life.**

With the Junior Protector plan from Modern Woodmen, the cost of a \$5,000 life insurance plan is as low as \$18 a year (until the age of 18).

Plus, you can choose that additional permanent protection can be purchased when your child reaches age 18 - about showing evidence of insurability. Call for details.

Chatter Lakes Rt. 3 Box 1183 Brodhead, Ky. 606-784-9710

**MODERN WOODMEN OF AMERICA**  
A Fraternal Life Insurance Society  
Member Since 1890 - 1898

LIFE • ANNUITIES • IRAs • FRATERNAL PROGRAMS

**Time - we make it mean money for your family.**

Many young families don't have much extra income. But there's another asset - time.

Modern Woodmen life insurance can be used to help you make the most of the year you have. In the meantime, it helps protect your family if something happens to you. Call today.

Chatter Lakes Rt. 3 Box 1183 Brodhead, Ky. 606-784-9710

**MODERN WOODMEN OF AMERICA**  
A Fraternal Life Insurance Society  
Member Since 1890 - 1898

LIFE • ANNUITIES • IRAs • FRATERNAL PROGRAMS

**A blessing for those who need it most.**

Terminal illness destroys more than life. It can ruin careers, family's financial independence.

Modern Woodmen's Accelerated Benefit program helps if you become terminally ill. It provides your family with the cash you need for your life insurance death benefits you're living.

Accelerated benefits - benefits you need them most.

Chatter Lakes Rt. 3 Box 1183 Brodhead, Ky. 606-784-9710

**MODERN WOODMEN OF AMERICA**  
A Fraternal Life Insurance Society  
Member Since 1890 - 1898

LIFE • ANNUITIES • IRAs • FRATERNAL PROGRAMS

**Down about low CD interest rates? Our annuities will cheer you up!**

Annuities from Modern Woodmen of America offer you competitive interest rates and deferred accumulations.

Before you purchase or renewing certificate of deposit or money market fund, learn about the flexible alternatives - the annuities, as offered benefits of Modern Woodmen annuities. Call today.

Chatter Lakes Rt. 3 Box 1183 Brodhead, Ky. 606-784-9710

**MODERN WOODMEN OF AMERICA**  
A Fraternal Life Insurance Society  
Member Since 1890 - 1898

LIFE • ANNUITIES • IRAs • FRATERNAL PROGRAMS

**It's called "universal" life because of the way it adapts.**

Life insurance offers financial protection. But your circumstances may change. You need a plan with flexibility.

The new "universal" life insurance from Modern Woodmen. It accommodates change and earns competitive interest rates. Ask me for details.

Chatter Lakes Rt. 3 Box 1183 Brodhead, Ky. 606-784-9710

**MODERN WOODMEN OF AMERICA**  
A Fraternal Life Insurance Society  
Member Since 1890 - 1898

LIFE • ANNUITIES • IRAs • FRATERNAL PROGRAMS

**London Tobacco Market TOBACCO FARMER SALE**

**Greenhouse Tobacco Plants \$35/thousand**  
Delivery May 1 - June 15

**Greenhouse Float Bed Trays \$1.50 each**  
200/242/253/288 cell sizes

**Float Bed Potting Soil \$7.00 each**  
3 cubic feet

**6 mil Black Plastic \$38.00 each**  
20 ft. by 100 ft.

**Tobacco Sticks 12 cents each**

**Tobacco Seeders, Tobacco Seeds, Greenhouses, Greenhouse supplies, water bed fertilizer, scaffolding supplies, and crop insurance.**

**Everything for the tobacco farmer. Now in stock.**

CALL TODAY FOR RESERVATIONS, PRICES OR INFORMATION

**LONDON TOBACCO MARKET**  
800-867-6586  
400 Tobacco Road • London, Kentucky



## Legislators meet at Somerset Community College



Dr. Rollin J. Watson, president of Somerset Community College, hosted a luncheon meeting for area legislators on the SCC campus, Wednesday, January 29. The purpose of the meeting was to discuss various challenges and issues that concern area residents including educational needs. After lunch, the legislators were given a tour of the campus. Attending the meeting were, from left: Joyce Flynn, Director of Community/Public Relations; Senator Vernie McGaha, Russell Springs; Representative and Minority Floor Leader, Danny Ford, Mt. Vernon; Representative Will Scott, Raywick; Representative Jeffrey Hoover, Jamestown; Representative Tommy Turner, Somerset; and President Watson.

State Representative Danny Ford met recently with Dr. Rollin Watson, president of Somerset Community College and Joyce Flynn, Director of Community & Public Relations at the College.

Rep. Ford, House Republican Floor Leader, is a member of the Governor's Task Force on Post Secondary Education, which has been meeting since last summer. The Task Force is reviewing educational needs and programs and hearing testimony from students, educators and other involved citizens relative to Kentucky's Higher Education programs. This has included the Community College System, as well as the four year universities and technical education programs.

During a luncheon with Dr. Watson, Rep. Ford, and other invited legislators representing various districts in the area of the College, learned first hand of the programs offered at Somerset Community College and discussed present and future educational needs for this area of the Commonwealth. Dr. Watson explained

the inner workings of the Community College System and commented on the importance of their affiliation with the University of Kentucky.

"It is vitally important that we continue to meet the needs of our students in both classic and technical education, and that we continue to formulate programs to meet the challenge of change as we move toward

the 21st Century," said Rep. Ford. "SCC continues to be vitally important to the citizens of this entire region in providing two year Associate Degrees and a good foundation for advanced studies," noted Ford.

A tour of the Campus facilities provided further insight into the many advantages now offered and future potential of SCC. "This kind of first

hand knowledge and communication is so important," commented Rep. Ford, and will assist us in representing the needs of the community effectively." A Special Session of the General Assembly is expected to be called in late spring to make changes in Kentucky's Post Secondary Education Program.

### Annual Beef Producers Meeting

Specialist, will discuss bull selection for the 1998 calf crop. With cattle prices expected to

recover by 1998, the bulls used to produce that calf crop will have a large influence of farm profits.

### Calving Season (Cont. from B6)

January calves this year, you may still start this program by using Prostaglandins that cause cattle to cycle again. Be sure the bull lot is ready and in use. The first season will require the longest use of the bull lot. After a calving season is formed, 40 days in the bull lot is all that is necessary.

Put bulls back with the herd so that you decide when calving season will be. For a season beginning March 1st, bulls should be placed with cows on May 20th.

Late calvers can be handled two ways. Culling July and August calving cows may be the easiest way to concentrate a calving season. Some farmers may choose to move these to a fall herd. However, keeping two calving seasons can be difficult. Over a period of years, adding heifers to calve first will help concentrate the calving season even more.

Start breeding, replacement heifers 20 to 30 days ahead of the final long-range planned breeding date for your herd (May 1).

By using a bull lot, adding heifers to calve first, and culling late calvers, most herds can be on a 60-day calving season within three to five years.

The ideal season would be 60 days. By starting breeding on May 20th to July 20th, calves would drop March 1st and continue over the next 60 days. Advantages of this concept are as follows: dry cows are taken through the winter and require less stored feed. Rebreeding is improved by increased grazing during late spring and early summer. Herd health and other management practices can be done at one time. Calves will be grouped by size better. The feed supply of spring grass will provide higher weaning weight. Replacement heifers may be chosen from larger, older animals by performance records.

The advantages all lead to more efficient and profitable beef production.

### Lice Control on Beef Cattle

Lice populations build up on livestock in the colder periods of the year when the environment on the animal is more conducive to lice survival. The entire cattle lice

life cycle (eggs, nymphs and adults) exists only on cattle. None of the life stages can survive off the host. They cannot survive on other types of livestock or humans.

Lice are transferred from animal to animal by body contact. In this fashion, an entire herd can become infested. During the summer, lice numbers are very low and usually concentrate on a few "carrier" animals. Late summer and fall is a good time to try to eliminate lice from the herd. However, if this is not followed, there is still time to eliminate lice before they have a great effect on cattle. Lice biology makes it feasible to totally eliminate these pests from a herd if all animals are thoroughly treated.

1. All animals must be treated -- if only one animal is left infested, that animal can serve as the reinfection source for the rest of the herd.

2. Treat each animal twice -- the first insecticide treatment kills the adult and nymph stage lice but leaves the eggs unaffected. The second treatment, 2-3 weeks after the first, kills the nymphs that have hatched from these eggs.

3. Keep the herd isolated from non-treated cattle -- any non-treated animal serves as a potential reinfection source. Any new animals brought into the herd must be put through the "Double Treatment" program before they are allowed to join the herd. Also, cattle should be kept out of contact with neighboring herds unless those animals have also been put through a similar "lice elimination" program.

As you think about controlling lice, there are many effective ways and the cost varies with products used. Contact your local vet for the proper type of compound to use. Many products are available in a pour-on form which will allow you to treat animals without using a head gate. As cattle line up at

the feed bunk, pour-on's can be applied with very little work. Using the "Double Treatment" on all cattle can assure you very little chance of lice problems in your beef herd.

The Annual Beef Producer meetings will get started on Thursday, February 20th at 6:30 p.m. in the Extension Office Basement Meeting Room. Dr. Darth Bullock, UK Extension Beef

## News Deadline is Noon Tuesday

# Today In Banking

Some "Straight Talk" On Banking Today... That Can Make Banking Better For You...

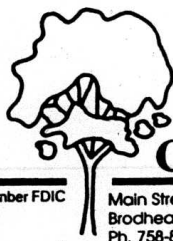
**18- and 30-Month Certificates...**  
**When the Rate Is Great —**  
**Lock It In**

When rates are up it's a good time to invest long term. You can lock in a guaranteed rate with 18- and 30-month Certificates of Deposit. Your rate is guaranteed and your investment is insured by FDIC.

The money you invest with us stays right here in the community in the form of loans. When you stop to consider that out-of-town investments re-invest your deposits out of town, it's a good idea to keep it local.

**Making Banking Better For You!**

*Stop by one of our three locations today*



**Citizens Bank**

Member FDIC

Main Street  
Brodhead Ky. 40409  
Ph. 758-8212

Highway 150 West  
Mt. Vernon, KY 40456  
(PHONE) 256-2500

Hwy. 421 South, McKee, Ky. 40447 287-8390



We do not discriminate because of race, color, national origin, religion, sex, handicap, familial status, (having children under the age of 18).

## NEW YEAR... NEW LOOK

When you purchase a pair of eyeglasses,\*  
*bring this coupon* and receive a  
**50% DISCOUNT**  
on each additional pair of eyeglasses.\*

**Richmond Street Eyecare**

**256-3937**

335 Richmond St. • Mt. Vernon, Kentucky

Store Hours: M-F: 9-5 • Sat.: 9-Noon

Offer expires 2/28/97

\* applies to complete (frames & lenses) purchases only  
\* applies to same prescription purchases only

# Church News

ence. Have a pizza and help one of our own teens make the trip to our nation's capitol.

## Video Series

Bible Baptist Church will host a 'Creation Video Series on Wednesday nights at 7:00 p.m. Everyone welcome.



## YOUR HOUSE OF WORSHIP CAN HELP SOLVE YOUR PROBLEMS

Life brings problems to all of us; to ourselves, to some close relative, or to a dear friend. These can involve health, finances, human relationships and many other things, and we must decide what if anything we can do about them. If ordinary common sense cannot provide the answer, we should seek the appropriate source of professional help. However, we should also seek guidance at our House of Worship. Attend it regularly if you are not already doing so, and talk to your clergyman. You will feel the comfort of his advice and his prayers for you, reminding you that God is watching over you and will help you or the other person either overcome those problems or learn to cope with them. You will then learn for yourself that this is the greatest reward of faith: a better life.



God is above all earthly rulers, and his law above all human laws.  
—James H. Churchill

# Community Church Directory

### Church of the Nazarene

Fall Ave. Mt. Vernon  
S.S. 10 am/Worship 11 am  
Wed. Evening 6 pm - Wed. 7 pm  
Rev.: Richard Parker

### Clear Creek Baptist Church

S.S. 10 am/Worship 11 am  
Sunday Evening 7:00 unit time chg.  
Wau. Prayer Service 7:00 p.m.  
Song Leaders Music:  
Mr. and Mrs. Jerry Nicely  
Pastor: Bro. Sherman Hill

### Climax Christian Church

S.S. 10 am/Worship 11 am  
Raymond Tincher, Minister

### Community Holiness Church

Fairground Hill, Mt. Vernon  
Sunday Services 10 am  
Lsg. Broadcast 12 noon Sun.  
Sunday Evening 7 pm  
Saturday & Wed. Service 7 pm  
Pastor: Bro. Pete Hurd

### Conway Baptist Church

S.S. 10 am/Worship 11 am  
Evening Worship 7 pm  
Wednesday 7 pm

### Conway Church of God

S.S. 10 am/Worship 11 am  
Sunday evening 6:30 pm  
\*Wednesday 7 pm  
Pastor: C.W. Williams

### Conway First Resurrection

Penitential Church  
S.S. 10:30/Worship 11:30 am  
Sun. 7 p.m. Sun. Even. 6 pm  
Thursday 7 pm  
Pastors: Arnold Akers

### Corinth Holiness Church

Sunday Sun. and Sat. night of each mo.  
Sun. 11 a.m. and Sat. night 7 p.m.  
Sey. Friday night 7 p.m.  
Everyone Welcome

### Corner Pentecostal Church

In Livingston  
S.S. 10 am/Sunday Even. 6 pm  
Wed. Evening 7:30  
Pastor Bentley Carpenter

### Fairview Baptist Church

Just off U.S. 25 at Fairview  
S.S. 10 am/Worship 11 am  
Sunday Evening 7 pm  
Wednesday Evening 7 pm  
Pastor: Harvey Pensol

### Fifth Chapel Pentecostal

Wed. 7 p.m. Sat. 7 p.m.  
Sunday 10 a.m. Sun. Worship 11 a.m.  
Sunday night 7 p.m.  
Virgil Bustle, Pastor

### First Baptist Church

West Main St., Mt. Vernon  
S.S. 9:40 am/Worship 10:40 am  
WRVK Service 11 am  
Children's Worship 11 am  
Youth Ministry 4:30 pm  
Discipleship Training 6 pm  
Evening Worship 7 pm  
Wed. Youth Music 6:30 pm  
Mission Groups 7 pm  
Prayer/Bible study 7 pm  
Pastor: Dr. Maynard Reed

### First Christian Church

West Main St., Mt. Vernon • 256-2876  
S.S. 10 am/Worship 11 am  
Sunday Evening 7:30 pm  
Lsg. Program on WRVK 1460 am  
Sunday 8:45 am  
Wednesday Youth Training and Adults 7 pm  
Minister: Eddie Hammond

### First Church of Jesus Christ

Sand Springs  
Saturday Evening 7:30 pm  
Sunday Morning 10:30 am  
Pastor: Bro. James E. Nicely

### Flatrock Baptist Church

Otando, KY  
S.S. 10 am/Worship 11 am  
Sunday Evening 6 pm  
Wednesday 7 pm  
Pastor: Bro. Gene Noe

### Freedom Baptist Church

Freedom  
S.S. 10 am/Worship 11 am  
Discipleship Training 6 pm  
Sunday Evening 7 pm  
Wednesday Bible Study 7 pm  
256-2988  
Bro. Shawn Madden

### Grace Christian Church

U.S. 25 at Roundstone  
S.S. 10 am/Worship 11 am  
Evening Worship 7 pm  
Wednesday Prayer Meeting 7 pm  
WRVK Radio 9:15 am  
Pastor: Bro. Raymond Offutt

### Hickory Grove Free

Penitential Church  
S.S. 10 am/Worship 11 am  
Sunday Evening 7 pm  
Wednesday Evening prayer  
Youth Meeting 1 & 3 Saturdays  
Radio WRVK Sunday 1:45 pm  
Pastor: Randall Adams

### Lighthouse Assembly of God

Brush Creek Road  
S.S. 10 am/Worship 11 am  
Sunday Evening 7 pm  
Wednesday - Family night  
Activities for all 7 pm  
Pastor: Delight Hensley

### Livingston Baptist Church

Main St. Livingston  
S.S. 10 am/Worship 11 am  
Sunday Evening 7 pm  
Wednesday Evening 7 pm  
Pastor: Bro. Clyde Miller

### Livingston Christian Church

Main Street Livingston  
S.S. 10 am/Worship 11 am  
Evening Worship Services begin at 6 pm.  
Minister: Arthur Hunt

### Livingston Pentecostal

Church  
S.S. 10 am/Worship 11 am  
Wed. Service 7 pm  
Saturday rite Service 7 p.m.  
3rd Sat. of each month  
Pastor: Bro. James Miller

### Macedonia Baptist Church

S.S. 10 am/Worship 6 pm  
Wednesday 6 pm  
Pastor: Bro. Denton Sears

### Maple Grove Baptist Church

Rd. 1004 at Otando  
S.S. 10 am/Worship 11 am  
WRVK Service 12:30 pm  
Evening Worship 6 pm  
Wednesday 7:00 pm  
Pastor: Bro. Lester Arnold  
Asst. Bro. Tom Karpston  
256-4884

### Mareburg Baptist Church

Hwy. 150  
S.S. 10 am/Worship 11 am  
Discipleship Training/Youth 6 pm  
Sunday Evening 7 pm  
Wednesday 7 pm  
Pastor: Wayne Harding

### Mt. Pleasant Baptist Church

S.S. 10 am/Worship 11 am  
Discipleship Training 7 pm  
Sunday Evening Worship 8 pm  
Wednesday 7 pm  
Pastor: Bro. Roy Vincent

### Mt. Vernon Church of Christ

Sunday Services 10 am  
Pastor: Bro. Russell McFarron

### Mt. Vernon Church of God

Nest to the High school  
S.S. 10 am/Worship 11 am  
Sunday Evening 7 pm  
Wednesday 7 pm  
Everyone Welcome  
Pastor: Rev. Bobby Owens

### Mt. Vernon Pentecostal

Church  
Lovell St., Mt. Vernon  
S.S. 10 am/Worship 11 am  
Sunday Evening 6 pm  
Wednesday Bible Study 7 pm  
Pastor: Buford Parkerson

### Mt. Zion Baptist Church

S.S. 10 am/Worship 11 am  
Radio Program Sunday 2:30  
Sunday Evening 7 pm  
Wednesday 7 pm  
Pastor: Gary Messer

### McNew Chapel Community

Baptist Church  
Cove Branch Road  
SS 10 am/Worship 11 am  
Sun. Even. 6 pm/Wed. 7 pm  
Pastor: Jerry Bollinger

### New Hope Baptist Church

Ottawa, Ky.  
SS 10 am/Worship 11 am  
Sunday Even. 6 pm  
Wednesday Even. 7 pm  
Pastor: Doug Collins

### Northside Baptist Church

High Street, Mt. Vernon  
S.S. 10 am/Worship 11 am  
Discipleship Training 6 pm  
Sunday Evening 7 pm  
Wednesday Prayer/Bible Study 7 pm  
For transportation call 256-9027  
Pastor: Lester Caldwell

### Ottawa Baptist Church

Ottawa Community St., 1660  
Bible Study 10 am/Worship 11 am  
Discipleship Training 6 pm  
Evening Worship 7 pm  
Wednesday Prayer/Bible Study 7 pm  
758-8453  
Pastor: Tim C. Smothers

### Our Lady of St. Vernon

Catholic Church  
Williams St., Mt. Vernon  
Mass 5 p.m. Saturday  
7 p.m. Tuesday  
Pastor: Rev. John Curtis  
Associates: Ed and Vicki Cortes

### Philadelphia United Baptist

Bryant Ridge Rd., Brodhead  
2nd & 4th Saturdays 7 pm  
Sunday Services 10 am & 7 pm  
Telephone: (613) 472-2650  
758-9266  
Pastor: James W. Bryant

### Pine Hill Holiness Church

U.S. 25 S. Mt. Vernon  
Sunday School 10 am  
Sunday Evening 7 pm  
Thursday & Saturday evenings 7:30  
Pastor: Allen Hensley

### Pleasant Run Baptist Church

Lamero  
S.S. 10 am/Worship 11 am  
Sunday Evening 6 pm  
Wednesday evening 7 pm  
Pastor: Bro. Steve Weaver

### Poplar Grove Baptist Church

Hwy. 70, Willetts  
Sunday Bible Study 10 am  
Worship 10:35 am  
Sunday evening 6 pm  
Radio 8 am Sunday & col. in radio  
Program 12:12:30 each Saturday  
WRVK 1460 AM  
Wednesday Bible Study 7:00 pm  
758-9316  
Preacher: Dan McKittrben

### Providence Church of Christ

Sunday Bible Study 10 am  
Worship 10:35 am  
Sunday evening 6 pm  
Radio 8 am Sunday & col. in radio  
Program 12:12:30 each Saturday  
WRVK 1460 AM  
Wednesday Bible Study 7:00 pm  
758-9316  
Preacher: Dan McKittrben

### Community Worship

'A Full Gospel Church'  
Off I-70, 5 miles west on Hwy. 5245  
S.S. 10 am/Worship 11 am  
Sun. Even. 6 pm/Thurs. 7 pm  
Pastor: Keith Asher

### Tabernacle of Love

Fairground Hill  
Wednesday & Friday 7 pm  
Saturday 1 p.m.  
Everyone Welcome  
Pastor: Bro. Clyde Hodge  
256-5894

### Tinley Independent

Baptist Church  
2001 old 401 on Keith Souder Rd  
S.S. 10 am/Worship 11 am  
Sunday Evening 6 pm  
Wednesday Prayer Service 7 pm  
Pastor: Jackie Renner  
Everyone Welcome

### Tred Hill Baptist Church

(Union Baptist)  
Sunday School 10 am/Church 11 am  
Pastor: Bro. Dale Walters  
Everyone Invited

### Well Hope Baptist Church

Chestnut Ridge  
Sunday services 1:30 pm  
Pastor: Burgess King

### West Brodhead Church of God

Negro Creek Rd., Brodhead  
S.S. 10 am/Worship 11 am  
Sunday Evening 6 pm/Wed. 7:30 pm  
Pastor: Bro. John Irwin

### Wildie Christian Church

S.S. 10 am/Worship 11 am  
Evening Worship 6 pm/Youth 6 pm  
Wednesday Bible Study 7 pm  
Youth Choir 7 pm  
WRVK Sunday 6:30 am  
256-4494  
Minister: Kenton Parkey

### Skaggs Creek United Baptist

Hwy. 1250  
S.S. 10 am/Worship 11 am  
Sunday evening 7 pm  
Pastor: Bro. Ed Gibbs

### Three Links Christian Church

Sunday School 10 am  
Worship 11 am  
Pastor: Jack D. Martin

### First Pine Hill Missionary

Baptist Church  
Hwy. 1250  
S.S. 10 am/Morning Worship 11 am  
Sunday Evening Worship 6 pm  
6 pm. Wednesday  
Pastor: Bro. Wayne Hanson

The Church Page is provided by the sponsors listed below.

## BMW

### 256-5141

## Citizens Bank

Brodhead 738-8212 • Mt. Vernon 256-

## Cox Florist

FFD Floral Services  
256-3333

## Rockcastle Hospital & Respiratory Care, Inc.

Newcomb Avenue • 256-2195

## Jean's Restaurant

Good home cookin  
I-75 & Exit 59 • Mt. Vernon • 256-5347

## Rockcastle Association of Baptists

Bro. Jack Bruce, Director  
256-4571



# Classifieds

## CLASSIFIED RATES

- Local Rates—10¢/Word, Minimum \$2.50
- Cards of Thanks—5¢/Word, Minimum \$2.00
- In Memories—5¢/Word, Minimum \$2.00
- Display Classifieds—\$3.50/Inch

Deadline for Classifieds is  
NOON Tuesday

## FOR RENT

For Rent: Brick house in McGuire Subdivision. Three bedrooms, full basement, and garage. References required. No pets. \$350 a month, \$350 deposit. Gas furnace. Call 758-9318. 20x1

For Rent: Located in the country in Scaffold Cane, large 2 bedroom, 2 bath mobile home. \$300 month plus dep. Call 256-5230. 20x1

## For Rent

Lots with complete hookups, concrete footers, new trailers only  
Gary W. Mink  
Trailer Park  
606-256-5105

## Castle Village Apartments HAS IMMEDIATE OCCUPANCY

on large 1 bedroom apartments and 2 & 3 bedroom townhouses with private entrances and patio, kitchen appliances and central air. Children's play area. HUD Section 8 assistance makes these apartments affordable for all families. Now accepting applications on Monday thru Friday from 10 a.m. to 2 p.m. Apply at 165 Castle Village Dr., Brodhead, KY, 40409. 758-4111. Equal Housing Opportunity

**Don Foster & Associates**

711 Chestnut St. • Berea • 986-8401  
1-800-998-2063 fax 986-6173

Office Hours: Mon-Fri. 9:5-Sat. 9:1-Sun. by appt.

**MOVE IN SOON—NOW VACANT.** Move into this good looking cozy 3 bedroom brick home and enjoy country living in town. Also has living room, dining room, kitchen combo, 1 bath, and carport. City water, city sewer, CTV. Located at Brodhead. Only \$44,900.

**1.9 ACRES +/- OF OCEANVIEW** in a beautiful spring-fed setting with building spot cleared. Perfect for the artist, writer, or retiree with nothing but peace and quiet. Located in Rockcastle. Only \$26,500. Call today.

**NEW HOME** almost finished with 3 bedrooms, 1 bath on 2.83 acres, vinyl siding, 2 pane hot water, heat pump with central air. Great view of the mountains. Little Clear Creek area near Berea. Only \$52,000.

**HOUSE, BARN, AND 1.0 ACRES.** Level land, backs up to Dix River near Brodhead. House has one bedroom, 1 bath, living room, kitchen, utility room, front and back porch, city water and city sewer. Some repairs needed. All for only \$37,000. Call today.

**NEW LISTING 80 ACRES M/L.** Good hunting or a nice place to build that new home in the woods. Some good timber, nice view, no restrictions. \$21,900. Call today.

**45 ACRES SAND HILL AREA.** Mostly wooded, may be some marketable timber. Priced at only \$14,500

**GREAT LOCATION IN TOWN:** City water, sewer, 3 bedroom, additional room could be made into fourth bedroom. Also has living room, kitchen, bath, large porch and lots of shade. \$43,000 with extra lot or will sell separately.

**BUY OR BUYER:** Going business well established service station, great location, no competition, high potential for growth. Good traffic flow. Easy in, easy out with 1 1/2 acres of land with large metal barn for additional income or business. Price \$69,900.

**128 ACRE FARM.** Brush Creek area. Approx. 50 acres of farm land, bel. in woods, mostly fenced, spring water, old house site, electric on property, stream for cattle water. On blacktop road with plenty road frontage. \$50,000. Call today.

**REDUCED TO \$28,900 - BIG HOUSE, BIG BARGAIN.** Plenty of room in this spacious older home located on a large lot. 4 bedrooms, living room, family room, kitchen, 1 1/2 baths, and utility room on first floor. 5 unfinished rooms on second floor. Mobile home hookup on back street of lot.

**COUNTRY GROCERY STORE -** Ongoing grocery business which includes store building, inventory and equipment. Has approximately 1800 sq. ft. of living quarters upstairs (very nice). Located near Berea on Scaffold Cane Road. Owners retiring. Priced to sell at \$52,000.

**For Rent:** In the country, 3 br., 1 bath, total electric, \$250 a month, \$250 deposit. Call (606)355-7302. 19x2

**For Rent or Sale:** 3 bedroom, 2 bath, A-frame on Lake Linville Road. \$450 a month plus deposit. References required. Call 256-0185. 19x1

**House Trailer For Rent:** 2 bedroom trailer in Bee Lick area. Call (606)355-2740 after 4 p.m. 19x2

## MISCELLANEOUS FOR SALE

**For Sale:** Cemetery lots, Cresthaven Cemetery, Mt. Vernon. Call 256-5648. 31x1x1

**For Sale:** Lots in the Elmwood Cemetery at \$250 per lot. Call 256-2617 or see Clarence Carter at 310 Williams St. in Mt. Vernon. 8x12

**A Big Screen TV:** Magnavox 46". Buy for \$10 down/\$10 a month, free VCR. Home Products 1-800-779-0536. 10x1

## Ace Printing

- Business Cards
  - We now offer raised letter business cards
  - All types of printing
- For all your wedding invitations and accessories  
256-9795

**For Sale:** Wood crafts, quilt racks, reindeer, snowmen, bird houses, bird feeders, wall shelves with clocks, decoration lights and more. Roy G. Brown, Rt. 1 Box 298, Brodhead, KY 40409. 758-8581. 16x1

**Camcorder:** Magnavox. Buy for \$10 down/\$10 a month. Home Products 1-800-779-0536. 10x1

**Rental Equipment Available at Lumber King:** Call Leon at 256-1100. 48x1

**Washer/Dryer:** New. Buy for \$10 down/\$10 a month. Free vacuum cleaner. Home Products 1-800-779-0536. 10x1

**Free Camcorder:** With purchase of 52" big screen TV. Just \$10 down/\$10 a month. Home Products 1-800-779-0536. 10x1

**Home Stereo System:** 100 watt with free CD Player. Call toll free 1-800-779-0536. Home Products. 17x1

**For Sale:** Firewood \$40 truck load, delivered locally. Call 256-3976. 7x1

**Satellite:** 18" RCA. Just \$10 down/\$10 a month. Call Home Products 1-800-779-0536. 10x1

**Computer with Free Printer:** Buy for \$10 down/\$10 a month. Call Home Products 1-800-779-0536. 10x1

**Refrigerator:** New. Buy for \$10 down/\$10 a month. Free Microwave. Home Products 1-800-779-0536. 10x1

**For Sale:** Size 10 wedding dress accessed with pearls and lace and Victorian sleeves. Also has a 5 ft. train. Must see. \$150. Call 256-5071. 10x1

**For Sale:** 1986 model 29 ft. Wilderness Cimarron Camper, pull type, loaded, sleeps 6. Must see to appreciate, in good condition. Call 256-0032 after 4 p.m. 20x2

**For Sale:** Tobacco base. \$2.00 lb. Call 256-0143. 20x1

**For Sale:** Straw. Call 758-8451 or 758-4774 nights. 20x2

## Virginia McKinney INCOME TAX SERVICE

256-4804

NOW OPEN

## THOMPSON'S GUITAR SHOP

240 W. Main St. • Mt. Vernon • 256-3819

Professional repairs on all stringed instruments • Also instrument and accessory sales

Wanted: Any quality guitars, banjos, fiddles, mandolins, keyboards, amplifiers and wind instruments that you need to sell. Preferably name brand instruments. Will sell on consignment. Call Glenn Thompson for info. 256-3819 or 256-4740 nights

## Doris Durham Income Tax Service

Fast Easy Accurate

Fast Easy Accurate

Rt. 5 Box 203 • Mt. Vernon • 256-5819

## Bluegrass Inn Apartments

Efficiency Apartments \$265

A/C, Furnished  
Paid Utilities  
Cable Included

Call 256-2444

Come Join Us at LIVINGSTON MANOR

If you are 62 or over, handicapped or disabled, you should be living in our community! Call today to find out if you qualify for these apartments and just how low your rent can be located on Main St., Livingston, Ky.

Office Hours  
Tues., 8 a.m.-Noon  
TODD 1-800-247-2519  
Call 986-4331

Equal Housing Opportunity

## Mink's Home Garbage Pickup

Weekly Service  
Reasonable Rates  
256-3372 after 4 p.m.

## Wedding Cakes & Ornaments

256-5811

## Bob's Gun Repair

All types of repair  
We do special orders

Located upstairs in the back of Mary Ida's Store on Main St. between Lambert Law Office & Hysinger Carpet  
256-5029

FOR RESIDENTIAL GARBAGE COLLECTION  
CALL 256-2334

Dalton Mill Direct  
400 Jefferson Street  
Berea, KY 40403

Open: Mon-Fri 8-6  
Saturday 9-4  
Ph. (606) 986-3117

## Turner Carpet Outlet

90 Days SAC  
6 Months Def.

Carpet • Hardwood  
Vinyl • Ceramic

## Miller's Auto Sales

Ph. 256-2629

## MADISON TERMITE and PEST CONTROL

Call Paul Burton • Day or Night  
256-2318 - Mt. Vernon

STOP  
TERMITES ROACHES WATERBUGS

## Chris Newland's Home Improvement

Floor and Wall Tile • New and Old •  
Drywall/Paint • Any Repairs Inside and Out  
No Job Too Big  
Call 758-8473

## Town & Country Chevron

24 HR. WRECKER SERVICE

All Types of Mechanic Work

Call 256-9634 days or  
256-4650 nights

CLIFFORD (606) 256-2535

BACKHOE, BULLDOZER CUSTOM HAULING S-E-R-V-I-C-E

"Let us take care of your needs whether they be large or small"

Septic tanks and D-Boxes now available

**P-810 The Mt. Vernon Signal Thursday, February 20, 1997**

**For Sale:** Car Hearts Brown Duck Insulated Bib Overalls, \$69.95. Brown Duck or Blue Denim Blanket Lined Chore Coats by Car Hearts \$49.95. Car Hearts Brown Duck Insulated Coveralls \$89.50. Napier Bros. Clothes, 35 Public Sq., Lancaster. 792-2535. 11mf

**For Sale:** Brown Duck Insulated Bib Overalls by Key \$46.00. Brown Duck Blanket Line Chore Coats by Key \$37.50. Napier Bros. Clothes, 35 Public Sq., Lancaster. 792-2535. 11mf

**For Sale:** Bib Overalls (low back) starting at \$26.50 waist sizes 29-50 in stock. Napier Bros. Clothes, 35 Public Sq., Lancaster. 792-2535. 11mf

**For Sale:** Square bales of alfalfa and orchard grass. Call 758-4514. 17mf

**For Sale:** Firewood .525 a load. Delivered locally. Call 758-8140. 13mf

**Reduce:** Burn off fat while you sleep. Take LIPAL available at Saylor Pharmacy, Richmond St., Mt. Vernon. 16x5

**For Sale:** Grass hay, 2nd cutting, clean, no rain. \$2.00 bale. 758-8220. 18x8

**For Sale:** 2 AKC Labrador Retrievers, 15 months old, males. Licensed and all papers. \$100 each or \$200 for pair. Call 758-4183 after 4 p.m. or leave message. 19x2

**For Sale:** Complete Queen Bedroom Suit with Free mattress set. \$10 down and \$10 a month. Home Products, 1-800-779-0536. 19mf

**For Sale:** 371 Detroit diesel power unit, runs good. 1972 Chevy 3/4 ton p/u, rough. Corewood saw, 2 cyl. Wisconsin eng., twin sid clutch, extra blades. Call 256-5403. 20x1

**Sales Associate**  
Fortune 500 company has immediate opening for a sales representative. Spend 80% of your selling time calling on established local accounts. Company paid training, complete company benefits. First year income \$25,000+. Send resume to: Personnel RL 3354 Perimeter Hill #375, Nashville, TN 37211

**Renfro Valley**  
IS LOOKING FOR FULL SERVICE RESTAURANT MANAGERS TO JOIN OUR TEAM. EXPERIENCE REQUIRED  
SEND RESUME OR APPLY IN PERSON AT:  
RENFRIO VALLEY ENTERTAINMENT CENTER  
I-75 EXIT 62  
RENFRIO VALLEY, KY 40473



To better serve its customers, Dollar General will be opening a second location in Mt. Vernon this spring beside Sav-A-Lot on Hwy. 1326. We will still keep our original site on Hwy. 150W beside Super Saver  
Dollar General Store is now hiring for this new location. If you are a team player and enjoy hard work and take pride in the job you do, Dollar General could be what you're looking for.  
Excellent package possibilities for full-time permanent personnel  
•Paid Holidays •Bonus Plan  
•Health Insurance •Dental Insurance  
•Stock Option Plan  
Requirements: Initially filling for temporary position to set store. Must be able to work long and flexible hours. Not afraid of physical labor and enjoys working with the public.  
Applications taken daily at store beside Super Saver.  
EEO

**For Sale:** AKC Registered Dalmatian, 8wks. old., \$150 each. Call after 5 p.m., 256-9162. 20x1

**For Sale:** Sq. bales of good grass hay. \$1.75 bale on Copper Creek Rd. Call (606)925-3741. 20x1

**Tobacco Base For Sale and Lease:** Call 256-5266. 20x2

**For Sale:** French Prov. twin beds, mattress and springs. \$40 pair. 20x2

**HELP WANTED**

**Postal Jobs**  
Start \$12.68/hr. plus benefits. For application and exam info. call 1-800-256-7606. Ext. KY165, 7 days. 19x2

**Wildlife/Conservation Jobs:** New hiring Game Warden, Security, Maintenance, Park Rangers, No Exp. necessary. For application and info call 800-299-2470. Ext. KY154C, 7 days. 19x2

**Help Wanted:** Chair side dental assistant, experience required, send resume to P.O. box 1359, London, KY 40743. 18x4

**Help Wanted:** Live-in care giver for elderly female in Broadhead. \$150 a week plus room and board. Call after 7 p.m., (606)986-8636. 19x3

**Help Wanted:** The Courier Journal is accepting applications for a daily and Sunday morning motor route carrier in Mt. Vernon area. This opening requires approx. one hour per day with monthly earnings of approx. \$300. Use of economy transportation is essential. A small security deposit is required. For further info call toll free 1-800-866-2211. 19x3

**\*\*POSTAL JOBS\*\***  
Attention: Mt. Vernon \$12.68/hr. to start, plus benefits. Carriers, sorters, computer trainees, maintenance. Call today for application and information. 9 a.m. to 9 p.m. 7 days. 1-800-267-5715, ext. 93.

**Help Wanted:** House keeper needed. Holiday Motel in Berea. Apply in person. 20x2

**Hiring Now:** We are looking for 10 people who are self motivated and willing to work and achieve their goals. Immediate openings for carpet cleaners at \$11.37 an hour. Interviews will be given, Monday thru Saturday. Call now to setup your appointment. 985-0072 or 986-6019. 20mf

**MOBILE HOMES FOR SALE**

**For Sale:** '81 Norris Mobile Home 14x70. 3 bedroom, 1 bath, kitchen/dining combo, hardwood floors, washer/dryer hookup, fireplace, Central heat & air, 2 decks. Very clean throughout. \$8900. Must be moved. Call 758-4271, leave a message and we'll call back. 19mf

**For Sale By Owner:** 1996 Nissan 16x80, 3 br., 2 bath and garden tub, oak cabinets, upgraded, central air/heat pump, vinyl siding, single roof, set-up on rented lot, with porch. Call 256-9765. Must see. 14mf

**Absolute Liquidation New and Used Mobile Homes:** Amazing Savings. New and Used Homes from Out of Business Dealer. Below Factory Cost. Singles and Doubles. Full Warranty. Over 60 to Choose From. Hurry! These Won't Last! Phone (606)624-2013. 15x7

**NEW '97 14x70:** 3 bdrm., Fleetwood with 5 yr. Warranty Std., Less than \$169 mo. THE AFFORDABLE HOUSING MART, LONDON, 1-75 & HWY 80, London, 606-878-0013 or 800-755-5361. 18x4

**NEW '97 16x80:** 3 bdrm., 2 bath, Fleetwood with 5 yr. Warranty Std. Now less than \$199 mo. THE AFFORDABLE HOUSING MART, LONDON, 1-75 & HWY 80, London, 606-878-0013 or 800-755-5361. 18x4

**NEW '97 14x70:** 3 bdrm., Fleetwood with 5 yr. Warranty Std., Less than \$169 mo. THE AFFORDABLE HOUSING MART, LONDON, 1-75 & HWY 80, London, 606-878-0013 or 800-755-5361. 18x4

**For Sale:** Entertainment Center with 27 inch TV. 2 years old. \$450. Call 256-9699

**K&P Limestone**  
Home 256-5391  
Mobile 687-5388  
"Let us handle your gravel needs"

**HYSINGER CARPET**  
\*We have many famous brand names and colors to choose from and Armstrong No Wax Vinyl. For all your floor coverings and supplies visit us in Mt. Vernon. 256-5413

**FOR SALE**  
New and Used Vacuum Cleaners  
Parts and Repairs on all makes and models  
Call Curtis Bradley  
Ph. 606-758-8584  
Broadhead, Ky.

**Lincoln Scrap Metal**  
(Formerly known as Crab Orchard Scrap)  
Junction City - 854-6965  
Crab Orchard - 355-2644

**Car Bodies - \$60/ton**  
**Tin - \$30/ton**  
**Cans - .45 to .50**  
**Short Steel - \$75/ton**  
**Batteries - \$1.25 to \$1.75**  
Prices subject to change without notice

**New '97:** Spacious 3 bdrm., 2 bath Fleetwood Doublehome Home with concrete footers and air. Now less than \$249 mo. THE AFFORDABLE HOUSING MART, LONDON, 1-75 & HWY 80, London, 606-878-0013 or 800-755-5361. 18x4

**Nice Used '93:** 14x52, 2 bdrm., less than \$139 mo. THE AFFORDABLE HOUSING MART, LONDON, 1-75 & HWY 80, London, 606-878-0013 or 800-755-5361. 18x4

**Why Are You Renting?** When you could own the home of your dreams. 97s with under \$200 month. 97 Doublewides under \$300 month. Clayton Homes, Richmond, ask for Brent, (606)623-9404. 20x1

**No Down Payment:** Bring your car deed and you may qualify with no money down - that's right!!! Clayton Homes of Richmond is ready to get down to business. Call Brent (606)623-9404. 20x1

**Help:** Ask me how you can make money by sending potential customers to me. Call Brent at Clayton Homes of Richmond. (606)623-9404. 20x1

**For Sale:** 14x50, 1990 Fleetwood, 2 bedroom mobile home. \$9500. Can be seen at KOA Campground from 3-6 p.m. daily or call 256-2474. 20mf

**The Screamers Have Arrived:** Hurry!!! New 1997, 3 bedroom, 2 bath, upgrade insulation. Payments as low as \$163 mo. Call today (606)624-5161. 20x1

**For Sale**  
From Estate of Betty Lewis  
**Whirlpool (large capacity) washer & dryer (new motor in wash) \$375**  
**L.g. window air conditioner 18,000 BTU \$600 (Used 3 weeks)**  
**Frigidaire Stove \$100**  
**1988 Eagle Summit, dependable, front wheel drive, \$2,300**  
Ph. 758-4825 (Lisa Clontz) 3

**SUPER SERVICE, INC.**  
PAYS FOR OVER THE ROAD TRUCK EXPERIENCE  
If you have at least six months recent over the road driving experience, we will pay you from \$.26 to \$.33 per mile, based on your experience with your last employer. All conventional fleet, dry van freight, satellite communications and personalized dispatch.

**NEED TRAINING?**  
Super Service offers an eight week on the job training program for persons with no experience in Somerset, Ky. You are hired and paid a weekly salary while training to be an over the road truck driver. No tricks, no gimmicks, no cost if you work for us for your first 100,000 miles. Lodging provided for persons living more than 75 miles from our training facility. To receive more information and an application, call  
**800-347-5263**  
**250 Super Service Dr. Somerset, Ky.**

**CENTRAL BODY SERVICE**  
•Precision Frame Alignment  
•Expert Body & Paint Refinishing  
•Front End Alignment  
**24-HOUR Small-Medium-Large WRECKER SERVICE**  
**256-4210**  
AAA

**Helen Abney**  
**INCOME TAX SERVICE**  
**256-5273**



**For Sale By Owner**  
Beautiful home in Chestnut Hills Subdivision  
Minutes from schools and stores. Situated on nice wooded lot. First floor has family room with fireplace, exercise room, and bath with utility room. Second floor has living room with fireplace, dining room and kitchen with ceramic tile flooring. Third floor has 3 bedrooms, 2 baths with ceramic tile, and opened attic for playroom or storage. Home has been newly remodeled. 2 car detached garage with guest house or office. 20x40 in ground pool, gazebo with stone grill. Shown by appointment only - 256-2404

**Karen King**  
**INCOME TAX SERVICE**  
22 years experience  
Call 256-3976 for appt.

**HENSLEY'S USED CARS**  
Salt Peter Cave, Road HWY 1004 Orlando, Ky.  
24 YEARS EXPERIENCE

"At Your Local Firestone Dealer"  
**Bishop's Tire Service**  
495 Richmond St. • Mt. Vernon • 256-4029  
We Guarantee Brains Services • "Specials" • We Turn Rotors  
31.10.50x15 ATX Firehawks/RWL ..... 91<sup>90</sup>  
31.10.50x15 Wide Climber/RWL ..... 84<sup>80</sup>  
185/12 Goodyear Metric ..... 33<sup>30</sup>  
"Winter Special!"  
165/80/13 GY GS WW ..... 35<sup>30</sup>  
All prices include balancing and installation \*  
\*Complete line of 2210 Firestone firehaws \*  
We do computer alignment and oil changes

**Federal-State Market News**  
**Garrard County Stockyards**  
Lancaster, Ky.  
February 14, 1997  
Cattle: 1434  
For The Week: 1549  
Compared to Last Week: Slaughter Cows steady 1.00 higher; Slaughter Bulls 2.00 higher; Feeder Steers steady 1.00 higher; Feeder Heifers 1.00-2.00 lower.  
Slaughter Cows: Breaking Utility and Commercial #3-5 32.75-36.75, low dressing individuals 27.50-30.75; High Cuts and Boning Utility #1-3 33.75-36.75, high dressing individuals 37.75-40.75; Cutters #1-2 27.75-31.75; Camers 22.50-26.75.  
Heiferettes: 950-1100 lbs. 50-53.50.  
Slaughter Bulls: Yield Grade #1-2 1575-2225 lbs. indicating 79-82 carcass boning percent 45.25-50.50; Yield Grade #2 1360-1465 lbs. indicating 77-78 carcass boning percent 40.25-45.75; Yield Grade #2-3 1150-1680 lbs. indicating 74-76 carcass boning percent 36.75-37.75; Feeder Steers: Medium and Large Frame #1 200-300 lbs. 52-97; 300-400 lbs. 88-95; 400-500 lbs. 77-84; 500-600 lbs. 70-78; 600-700 lbs. 64-73.50; 700-800 lbs. 60.50-68.50.  
Small Frame: #1 300-500 lbs. 67-75; 500-700 lbs. 60-66.50.  
Medium Frame: #2 300-500 lbs. 70-78; 500-700 lbs. 49-55.  
Large Frame: #2 (Holsteins) 250-400 lbs. 50-55; 400-600 lbs. 49-57; 600-800 lbs. 53.50-53.50, package 40 head 765 lbs. 53.30.  
Feeder Heifers: Medium and Large Frame #1 200-300 lbs. 52-65; 300-400 lbs. 61-70; 400-500 lbs. 60-66.50; 500-600 lbs. 59-64.50; 600-700 lbs. 57.75-62; 700-800 lbs. 57-60.  
Small Frame: #1 300-500 lbs. 55-59; 500-700 lbs. 47-55.  
Medium Frame: #2 300-500 lbs. 48-54; 500-700 lbs. 45-52.  
Per Head: Medium and Large Frame #1 Stock Cows 4#6 yrs. old with 150-350 lb. calves by side 530-650; Medium and Small Frame #1 Stock Cows 2-10 yrs. old with 80-150 lb. calves by side 235-490; Medium and Large Frame #1 Stock Cows 2-8 yrs. old 4-8 months bred 440-530; Medium and Small Frame #1 Stock Cows 2-10 yrs. old 2-7 months bred 180-420.  
Stock Bulls: 430-690.  
Baby Calves: 35-110, weaned 60-70.  
PHONE 792-2118  
Owners: R.C. Freeman, 734-7460, Manager  
Edwin Freeman, Miller Horn III and Don Horn  
Asst Mgrs. Allen Day - 925-2088 Dickie Arnold-925-3471