

U.S. ARMY SAYS LATE FEBRUARY, EARLY MARCH

'Swift Solution' to be completed soon

By Renika Shannon
Register News Writer

The first step of phase two in Operation Swift Solution at the Blue Grass Army Depot is complete, leaving one more step in that phase followed by phase three.

Operations are expected to be complete in the late February/early March time frame, according to Katherine B. DeWeese, communications and congressional affairs, U.S. Army Element Assembled Chemical Weapons Alternatives.

Operation Swift Solution is an Army initiative that started operations Nov. 12, 2008, to destroy the contents of three steel containers commonly referred to as "ton containers," that held a corrosive mixture of the nerve agent GB and its breakdown product.

ation began Jan. 5 to decontaminate the interior of the steel containers, cut them in half and prepare them for off-site recycling.

The operations team has completed the first step in Phase 2. This involved adding water and sodium hydroxide to the containers and rotating them frequently to ensure the neutralizing solution chemically reacted and decontaminated any remaining material inside the containers. The liquid mixture was sampled and the contents met the required treatment goal.

As of Jan. 14, two of the containers had been cut in half and are now being monitored to ensure decontamination. The third and final container will be cut and decontaminated later this week.

The final step in Phase 2 includes preparing the contain-

ers for shipment to a recycling facility.

Phase 3 of the mission involves processing the wastes generated during the management of current and previous operations associated with these containers.

When this is completed, the operational facilities will be shut down and the temporary structures and equipment will be shipped back to Aberdeen Proving Ground, Md.

Army teams including members from the Edgewood Chemical Biological Center, the Blue Grass Army Depot (BGAD), the Chemical Materials Agency and the U.S. Army Element, Assembled Chemical Weapons Alternatives are involved in the destruction effort, with cooperation and oversight from local and state

government agencies, and daily oversight from the Kentucky Department for Environmental Protection.

Despite recent inclement weather, there have been virtually no setbacks in the operation's schedule.

"Thanks to the teamwork among the Army players involved, and with oversight from the Kentucky Department for Environmental Protection, the phases of the operation are being accomplished according to plan," DeWeese said.

The work is being performed by Edgewood Chemical Biological Center (ECBC) operators who are extensively trained and experienced in chemical operations, especially in neutralization and destruction of chemical warfare materiel, she said.

"Due to the unknowns regarding the nerve agent and its

breakdown products in the containers, there were some initial challenges, but they were overcome by rigorous planning, analytical studies and pre-operational testing," she said.

Operation Swift Solution has been a 24/7 operation since the beginning with the average workday being between 14 and 15 hours.

According to Dennis Bolt, an Army mechanical engineer and Operation Swift Solution project manager, things have gone very well since the beginning of operations.

"We have taken every possible step to perform this job safely, and we're pleased with the progress so far, Bolt said.

Visit www.pmacwa.army.mil/ky-swift_solution.htm for previous Operation Swift Solution advisories and additional information about the project.

EKU offering many community outreach courses this spring

Special to the Register

Eastern Kentucky University's Division of Continuing Education and Outreach will offer approximately 140 community education courses this spring semester, including 28 instructor-facilitated online courses through a partnership with Ed2Go.

The classes meet a wide variety of needs and interests among all ages and skill levels. Courses are scheduled in arts and crafts, computers, personal development and recreation and exercise. Many of the classes meet only once, while others meet over a period of several weeks. Most are conducted in the Perkins Building, located on Kit Carson Drive, where public parking spaces are plentiful. Other classes are

conducted elsewhere on campus or in the community.

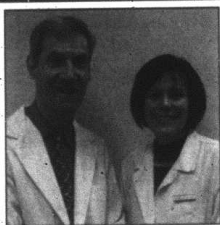
Pre-registration is urged for all classes. To register, for more information or to obtain a brochure, call 1-

859-622-1228, or, toll-free 1-877-358-6742, between 8 a.m. and 4:30 p.m. weekdays, or visit www.ceo.eku.edu/communityeducation to enroll online.

Madison County Properties
FOR SALE



Madison County Board of REALTORS



Stuart Tobin M.D. and Ragan Davies Nurse Practitioner

Stuart Tobin M.D.
Dermatologist
proudly announces
the addition of
Ragan Davies
Dermatological Nurse
Practitioner

Visit us at our newly expanded facility located at

351 Radio Park Dr. • Richmond, Ky

Through our new facility we will be able to provide more efficient and timely care for our patients with shorter scheduling times for appointments. Our new facility will continue the same high level of professionalism we have shown our patients over the past 30 years.

Call

859-623-4241

for your appointment today

Get Your Money Back FAST!



Get a \$1,500 Refund Advance

- Individual Taxes
- Business Taxes
- Payroll, Quarterly & Annual Taxes



Tax-Wise

Independently Owned & Operated

WALK-INS WELCOME!

FEDERAL REFUND AS SOON AS 24 HOURS!

STATE REFUNDS AS SOON AS 7 DAYS!

TAX-WISE is open 12 months, not just for tax time!

IRVINE

141 Main St.
(606) 726-0453

RICHMOND

2161 Lexington Rd. Ste. 6
(859) 625-9473

BEREA

210 N. Broadway
(859) 985-9473

COMING SOON
Medical Laser Center
 NOW OPEN
Also doing Botox and Dental Fillings
 1110 Lancaster Rd. Ste. 500
 Richmond, KY 40475
 (859) 623-1370

234 Brenwood St.
 Berea, KY 40403
 507 W. Kentucky Boulevard
 Phone: (859) 985-0302
 Fax: (859) 985-0308
 www.bereaurgentcare.com

The newspaper WORKS For You.
 Richmond Register
 (859) 623-1669

We're not just a newspaper; we're a smooth-running machine, gathering the day's newsworthy events from around the area and the world, and distilling these into an insightful, entertaining format that readers look to every day to stay informed.

ADVERTISE HERE & GET MAXIMUM EXPOSURE!

Vinyl Replacement Windows, Vinyl Siding & Trim, Seamless Gutter
 Professional Installation • Licensed and Insured
 Call for a free estimate.
Reuben W. Rose, Inc.
 534 Charlie Norris Road, Richmond, Ky
 859-661-1145 (Day) •
 859-369-5229 (Evening)

MADISON MONTHLY

Volume 3, Issue 1 380 Big Hill Avenue Richmond, Ky, 40475 January 2009

Central Kentucky Surgery now open in four locations
 Offices in Richmond, Irvine, Berea, Mount Vernon

Central Kentucky Surgery, PSC has been in existence in the central Kentucky area over the last 20 years. Originally established in Richmond, Ky, it now has clinics located not only in Richmond, but in Irvine, Berea and Mount Vernon. The physicians comprising Central Kentucky Surgery are also very active at the Kentucky Surgery Center located in Lexington, Ky. near St. Joseph East Hospital. Richard Stone, M.D., H.I. Koury, M.D., FACS, Kent J. Kessler, M.D., FACS and Christian Knecht, M.D., FACS are the surgeons that make up Central Kentucky Surgery and are proud to have expertise in the full range of general-vascular surgical interventions that

you or your family may someday need. All the above physicians have many years of experience in all manners of colonoscopy and upper endoscopy, laparoscopic procedures for the gallbladder, colon, or hernia, surgical interventions ranging from treatment of hemorrhoids to thyroid nodules, vascular interventions such as surgical intervention for treatment of blockage of the carotid or peripheral vessels, any breast surgical treatment for benign and malignant breast disease, and in-office procedures that can be performed under local anesthetic. Central Kentucky Surgery is proud to have a vascular laboratory consisting of ultrasonography

located in the office in Richmond at 1110 Lancaster Rd., Suite 5 and offer the full range of ultrasonography and interventions such as breast mamotome biopsies that can be performed in the office for abnormalities noted on mammography or breast ultrasonography. Vascular ultrasonography as well as general ultrasonography including breast, thyroid, gallbladder, and abdominal are also offered. The outreach clinics located in Irvine, Mount Vernon and Berea are extremely convenient for patients so that they do not have to travel long distances in order to see their surgeon. Patients wishing for procedures to be performed at

local area hospitals are certainly accommodated, but also patients that wish for outpatient or inpatient surgical procedures to be performed in Lexington are most satisfied with the Kentucky Surgery Center or St. Joseph East Hospital. Central Kentucky Surgery accepts Medicare, Medicaid, and private insurance and most of the time patients will not need explicit referral from the primary care physician to be seen in our offices. Full communication is established with the patient's primary care physician, both before and after any surgical intervention if they are needed, in order to allow all members of your health care team to have knowledge of your specific issues and problems.



Members of the surgical staff at Central Kentucky Surgery are, from left: Kent J. Kessler, M.D., F.A.C.S.; Richard A. Stone, M.D.; H.I. Koury, M.D., F.A.C.S.; and Christian Knecht, M.D., F.A.C.S.

Whether it be for routine screening colonoscopy or vascular issues such as lower extremity pain with ambulation, the physicians of Central Kentucky Surgery are more than happy to see you in consultation. (REG-SPR-09-001)

234 Brenwood St, Berea, KY. Exit 76, Across from Wal-Mart

(859) 985-0302

Berea Urgent Care

You have a question? Email us at bereaurgentcare@windstream.net

Why Berea Urgent Care?

You do the Math:

1. No appointment needed +
2. Convenient location +
3. Convenient hours +
4. Less waiting than in the Emergency Room +
5. Less Co Pay than Emergency Room +
6. Wide range of clinical services +
7. Most insurance plans accepted including (Medicare & Medicaid) +

= An essential part of your personal healthcare system.

Walk-In Medical Services

Open 7 days a week (including holidays)
 10 am-8 pm

www.BereaUrgentCare.com

Couples Special!!!

Couple V3's

JOHN'S

For \$2.14* Thru 2-14
 For Valentines Day!

1/2 off* any rate plan for six months
 AND FREE ACTIVATION
 ON BOTH!*

BREA 219 Prince Royal Dr. 859-228-0188	MT. VERNON 635 Richmond St. 606-256-9300	S. LONDON 565 Hwy 92 606-862-4052
SOMERSET Hwy 27 Stoplight 11 606-676-0700	DANVILLE 905 Hustonville Rd. 859-236-2655	N. LONDON 1574 N. Main. St. 606-878-0810

*Certain Terms and Conditions Apply.
 Good With A 2 New Year Activation.
 Good Thru February 14, 2009

CELLULARONE
 Authorized Dealer