

# Mount Vernon Signal

Serving Rockcastle County Since 1887

Mount Vernon, Kentucky 40456 - (606) 256-2244 Volume 125 • Number 11 .50 per copy Thursday, February 17, 2011



Rockcastle Lady Rockets senior Sara Hammond was named to the prestigious McDonald's All-American team last week. The McDonald's All-American game will be played March 30th in Chicago. Hammond is also the leading candidate for Kentucky's Miss Basketball.

## First girl in Kentucky

# Hammond honored as a McDonald's All-American

By: Sara Coguer

Rockcastle County native and University of Louisville recruit Sara Hammond has earned the most prestigious award given to a high school player -- being named a McDonald's All American.

The announcement came on ESPN last Thursday. Hammond was chosen as one of twenty four high school girls to be named to the McDonald's All-American team from across the country.

Hammond, who is also the leading candidate for Miss Kentucky Basketball, will play for the East team when they take the court on March 30 at the United Center in Chicago.

The girls All-American game has been played since 2002, and Hammond is the first girl from Kentucky to be named to the high school all-star basketball team.

Coach Chrysti Noble heard the big news a couple of weeks ago, when she received a letter confirming Sara's place on the team. When Coach Noble told Hammond the news, she was understandably stunned. "I just had to stop for a few seconds and think in my head, 'Is this for real, is this true?'" said Hammond.

She went on to say how excited she was and that she was honored to represent Kentucky in such a national event. "To be an All-Ameri-

can from Kentucky is such a privilege."

Hammond is ranked the 12th best player in the nation by ESPN's Hoopgurlz.com, and will be Louisville Coach Jeff

Walz's first All-American.

Averaging 15.5 points and 12.2 rebounds per game, Sara is both a threat in the post position, as well

(Cont. to A10)

## Lambert Road condemnation lawsuit filed

Over a year after attempts were first made to obtain easements to widen Lambert Road in northern Rockcastle County, a condemnation suit to obtain right-of-way through eight pieces of property has been filed.

The suit, filed in circuit court last week by Circuit Attorney Billy Reynolds on

behalf of the county, names seven individuals, one living trust and three financial institutions, who have an interest in some of the property, as defendants.

According to Kathy Robinson, from Reynolds' office, three commissioners have been named to value

(Cont. to A10)

## Spoonamore receives 10 year sentence

A Brodhead man was sentenced to 10 years imprisonment on Wednesday, February 9th during Rocket Docket hearings.

Mark Spoonamore, 40, pled guilty to second and third degree burglary charges, according to Assistant Commonwealth Attorney Jeremy A. Bartley, who handled the prosecution.

The charges stemmed from an investigation by the

Sheriff's Department that determined that Spoonamore had broken into a shed in late January and into a home earlier this month. A television was stolen from the residence.

Spoonamore entered his guilty pleas in the expedited Rocket Docket proceedings, bypassing both the preliminary proceedings in District

(Cont. to A10)

## Wreck claims woman's life

A single car accident claimed the life of a Eubank woman early Monday morning.

According to state police, Dessie S. Smith, 67, of Eubank, was traveling southbound on White Rock Road (Old Hwy. 461) when her vehicle left the right shoulder of the roadway and struck an embankment. Her 1998 Toyota Corolla became airborne and then came to rest on its wheels against a residence along

the road.

Smith was not wearing a seatbelt and was transported to the Rockcastle Regional Hospital where she was pronounced dead at 7 a.m.

State Trooper Jason Vanhook, who is in charge of the investigation, stated that no alcohol or drug involvement is suspected.

Vanhook was assisted at the scene by the Mt. Vernon Rescue Squad and the Rockcastle County EMS.

## County's finances look to be in good shape thru December

Rockcastle County Treasurer Joe Clontz presented the fiscal court with a summary of their income and

expenditures through December, 2010 - one-half of their fiscal year - at Tuesday's regular meeting

of the court.

According to the summary, total receipts through December, for all nine accounts of the county was \$4,609,903.95. Claims paid during the six month period was \$3,945,819.85, claims owed but not paid totaled \$188,597.33. Checks outstanding on the accounts totaled \$92,005.94 leaving a

(Cont. to A10)

## Crawford steps down as RCIDA executive director

By: Sara Coguer

The offer to become U.S. Senator Mitch McConnell's Field Representative for the 6th District was too enticing for RCIDA Executive Director Regina Crawford to refuse.

Crawford, who has been in her present position for six months, will be leaving effective Friday, Feb. 25th to take her her duties

with the Senator on March 1st.

Being a field representative is not a new situation for Crawford, who worked for U.S. Representative Jim Bunning in that capacity before his retirement.

His retirement, and the vacancy left by RCIDA executive director Aaron

(Cont. to A10)

## Distance Earning Forum a success

By: Sara Coguer

Over 30 people attended the Distance Earning Forum held at the Rockcastle County Courthouse Tuesday night.

Josh L. Ball, Distance Earning Business Specialist, spoke to the crowd about the future of distance earn-

ing, or being able to work from your home.

Participants who attended last night will have a rare opportunity to get their foot in the door early if they take the initiative to pursue this avenue of work,

(Cont. to A10)

## Dog attacks young boy

By: Sara Coguer

A four year old boy was attacked by a neighbor's

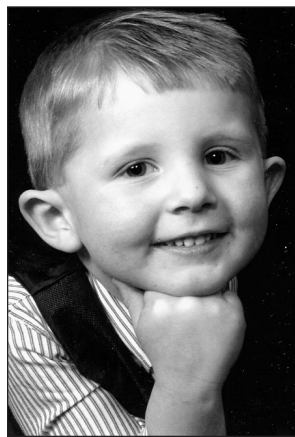
German Shepherd last Thursday in the Brush Creek area.

Malachi Anthony Hayes, son of William Hayes and Krystal Hayes, was playing in his grandparents' yard on Dogwood Lane, with his sister and cousins, when the German Shepherd attacked him.

The German Shepherd ripped Malachi's coat off and bit him on his back, ear and the back of his head before an older cousin, Elijah Didelot, 12, was able to beat the dog off with a rake.

The dog is now chained up on his owner's property under a mandatory ten day

(Cont. to A10)



Malachi Hayes



Joshua L. Ball of the Distance Earning Initiative through Hazard Community College spoke with over 30 people Tuesday night at the Rockcastle Courthouse. Ball was presenting information to residents who are interested in teleworking from home.



The above 1998 Toyota Corolla, driven by Dessie S. Smith, of Eubank, was totaled early Monday morning when Ms. Smith left the shoulder on White Rock Road. Ms. Smith later died of her injuries at Rockcastle Regional Hospital.

## Ramblings . . .

A New Generation  
by:  
Sara Coguer, Editor



Hats off to Lady Rocket Sara Hammond, I am so proud of her I could spit. You know, she was named after me (well, Roxanne, her mom, mentioned to me one time how much she liked the name Sara and she does spell it the same way . . .) but regardless, I think the honor of being named the first girl from Kentucky to the McDonald's All American team is fantastic.

I was deeply offended, if not surprised, by the Herald Leader's article on the announcement, which they buried on page 5 of the sports section last Friday. Although they did mention Sara's name in the head, as they should have, they didn't have the decency to even put her picture with the story. Do they not have email up there in Lexington? I would have gladly sent them an action photo of Sara to use. Instead, they used a picture of a player from Indiana (which is not in Kentucky), who is a UK recruit. I bet if she weren't from "the mountains," the head, the story and the photo would have been placed much more prominently.

Of course, we all know Rockcastle County's geographical location is southern Kentucky, and only the eastern edge of the county is in the foothills of the Appalachian Mountains, but whatever. It amuses me to no end though, when I see a cameraman from WYMT show up at one of our sporting events. The poor thing had to drive to Mt. Vernon all the way from Hazard. Have you driven to Hazard lately? I can get to Lexington and back twice by the time the poor soul arrives here to cover our "mountain" sports.

Oh well, no rest for the downtrodden, but we know the jewel we have sitting right here in our little corner of the world, ready and waiting to be polished and shined and brought out for her debut. Thankfully, there are a lot of good people going about the business of promoting our county, trying to bring jobs here so our kids won't have to leave.

trying to dispel the notions of backwardness that have plagued our community for decades, and trying to bring about a prosperous way of life for us all. I just wish others would leave them alone and let them go about their business.

And so it begins. The weather is nice, finally, and I absolutely must start exercising. I put it off as long as I could, citing the bad weather, but I no longer have that excuse. I have done pretty well on my other resolutions, especially the one about drinking one Diet Pepsi a day. I have gotten use to less caffeine in my body, but I'm thinking I'll need more once I actually start exercising, so it's just a big Catch-22.

I really love water spiked with lemon, and I got this bright idea to buy the lemon packets that you find at restaurants. Well, you wouldn't believe the process that was. After Jason found out the

(Cont. to A4)

## The Roots of Rockcastle

by: Tonya J. Cook



A Little of Rockcastle Goes a Long Way

Much to my surprise, I've learned that Rockcastle County has been a major supplier of rock to the local road systems that have been built in the last thirty to forty years. It has also fulfilled the needs of power companies in states to the south, as well. At one time, in years past, the mining of rock was a major industry here in the county, and one quarry is still in existence.

A quarry within the city limits of Mount Vernon has been in existence since 1908, according to Mike Hansel of Hanson Aggregates, and the quarry site has been through several different owners. The quarry employs about twenty or more people at present, and is currently owned by Heidelberg

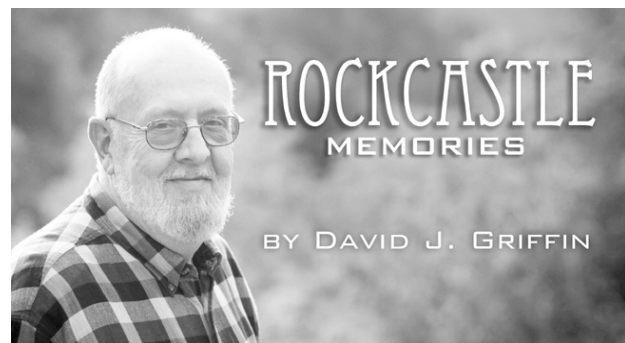
Cement Company of Heidelberg, Germany. They bought it approximately five years ago, although the name has remained the same. "Beazer" was the name of a housebuilder in Bath, England, who owned the quarry for a time. In recent years, it has been known as the Kentucky Stone Company as well as the present, Hanson. Hanson also owns several quarries, as well as pipeline factories.

At one time, in the early 1900s and in the years to follow, stone was a major export of Rockcastle County. Tons of stone were transported out of the county on the L&N Railroad. At that time, there was a large stone mining operation at Mullins Station. It closed at about 1975.

About halfway up Burr Hill is an old abandoned quarry. It is what was the Sparks operation. They supplied rock for the paving of several miles of I-75 in the area and for the Daniel Boone Parkway, beginning at London and proceeding through Eastern Kentucky. These projects were in the late 1960s and the early 1970s. Mike Hansel remembers, in 1967, when I-75 had reached south to Wildie, there was an on and off ramp there.

Other than the road system, the Hanson quarry supplied rock for the needs of power plants as far away as Atlanta, Georgia, those in

(Cont. to A4)



Where is that old-fashioned school spirit?

While recently watching a local, hotly-contested, high school basketball game, I could not help but notice the number of empty seats in the gymnasium. Such a sight always takes me back, because I never experienced such a thing when I was growing up. At Mt Vernon High School, and for that matter all around us, the physical and emotional support for one's school was extremely elevated. We had what we called school spirit! Almost every student was present for all home games and most away games as well.

Before each game, we gathered in the gymnasium to "pump up" the teams by hosting a pep rally. I only learned of late that there are young students today who do not even know what a pep rally is. I find this unimaginable.

Pep rallies were regular, routine events in my day. Most any competition that was between our high school and another was preceded by a pep rally. The noise level was beyond amazing. I recall that, during my junior year, those cheerleaders who lead us were: Nancy Helton, Carla Baker, Sharon Owens, Martha Sowder, Jewell Anderkin, and Dorcas Woodall. For some reason, these particular cheerleaders personified the role of "spirit leaders" at MVHS in my mind.

At the beginning and at the end of each pep rally, the cheerleaders led the student body in our MVHS Fight Song. (My personal thanks to Marty Cox for helping me with the lyrics to this "golden oldie.")

When ole MVHS falls in line  
Were gonna win this game  
another time

And for old MVHS we love  
so well

Were gonna yell and yell  
and yell and yell and yell!!

And when the team rolls up  
another score

We will circle in and then  
will yell some more

We're gonna roll ole  
Brodhead on the floor

Out the door  
Fight-Fight-Fight

To clarify the use of Brodhead High School in the fight song, it should be noted that when I entered school at MVHS, there were three schools in Rockcastle County. Brodhead, Mt. Vernon, and Livingston each had their own schools, and the rivalries were extreme. The games that were played among these three high schools were the most important regular-season

(Cont. to A4)

## Points East

By Ike Adams



I believe, very strongly, that the best thing the University of Kentucky gives to Kentuckians from Paducah to Pike County has little to do with basketball and football teams and how they fare upon on the grass there on football playing field or the hardwood courts where basketballs are dribbled and passed about Where women practice volleyball on the hallowed floors of Memorial Coliseum. Where athletics induce us to measure accomplishment by the population in terms of athletic ability.

I am, instead, a huge fan of the UK Extension Service. I believe that most counties, if not all, have a place where farmers can go to get professional advice, where homemakers can get sound advice on ways to make the kitchen and household better places to live and where your questions are considered and answered with a high degree of accuracy.

Over the years, I have relied on Extension Personnel to help build community support for any number of endeavors that included down-town renovation to building industrial sites. If I

commenced mentioning them by name, it would be a Who's Who of UK Heroes who don't get mentioned often in the press. Your county agents and their support staff are easily the best kept secret in your county. All you have to do is use them. Talk about best kept secrets.

So last Saturday, Ralph King and I went to a seminar on growing giant pumpkins and giant watermelons that was put on by the Madison County Office of the UK Extension Service. Arranged by Amanda Spears who is my favorite horticulturist in the whole wide world, the seminar drew more than a hundred participants and they had to move it out to a church on the North end of the county.

One old fellow who was going to brag about his watermelons allowed that he was going to stretch the truth on the weight and size of his melons. And then the Extension Service had moved the Seminar to a church.

Thank you, Amanda Spears!

Thank you UK everywhere. You make it nice to be Kentucky.

## Letters to the Editor Policy

Letters to the editor must be no more than 300 words without prior arrangements having been made. Letters are published in the order in which they are received as space permits. Letters must not contain libelous materials. Letters must be in the Signal office before 4 p.m. on Monday to be considered for that week's publication. All letters must include the author's name, signature, address and telephone numbers. Illegible letters will not be considered for publication. Letters not meeting these guidelines will neither be published nor returned to the author. For questions or to make arrangements for a letter exceeding the word limit, contact the editor at 256-2244.

## Mount Vernon Signal

Publication Number 366-000  
Periodical Postage Paid in Mt. Vernon, Ky. 40456  
606-256-2244

Published every Thursday since November, 1887. Offices in the Mt. Vernon Signal Building on Main Street in Mt. Vernon, Ky. 40456. Postmaster, send address changes to P.O. Box 185, Mt. Vernon, Kentucky 40456.

James Anderkin, Jr., Publisher Emeritus  
Perlina M. Anderkin, Managing Editor  
Sara Coguer, Editor  
Paige Anderkin Benge, Advertising Manager

### SUBSCRIPTION RATES

In County - \$20.00 Yr.  
Out-of-County In State - \$27.00 Yr.  
Out-of-State \$35.00 Yr.

e-mail address - mvsignal@windstream.net

# Bobby Amburgey

## Attorney-At-Law

606-308-4091

606-256-0404

185 School St. • Mount Vernon, Kentucky



## Now Open!

# EASTERN KENTUCKY RECYCLING



Visit us at our new

# Crab Orchard

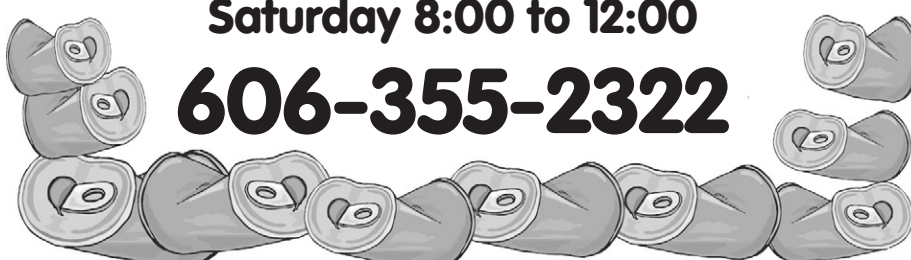
facility located  
beside Dollar Store

Buying Copper, Aluminum,  
Brass, Cars, Tin & Steel

Monday - Friday 8:00 to 4:30

Saturday 8:00 to 12:00

606-355-2322



# Obituaries



## Connie Smith

Connie Ann Neeley Smith, 66, of Crab Orchard, died Friday, February 11, 2011 at the Compassionate Care Center in Richmond. She entered into this life on March 2, 1944 in Lexington, the daughter of Nancy Christine Prewitt Fain and Jack Dempsey Neeley, both of whom preceded her in death. She was a lumber sales clerk with Perry Lumber and Wick's Lumber. She was of the Christian faith and will be remembered for her love of birds, reading, photography and wildlife.

She will be lovingly remembered by: her son, Ronald Dean Smith, Jr. and Lillie Clay of Lexington; one grandson, Dean Norton "Bugs" Smith of Lexington; her companion of 30 years, Walter Aubrey of Crab Orchard; one brother, Jack Dempsey (Dorothy) Neeley Jr. of Lexington; one sister, Robin Kelsey (James) Jones of Beattyville; her special Aunt Gracie of Winchester; and a host of nieces, nephews, friends and neighbors.

Besides her parents, she is preceded in death by her infant daughter, Susan Christine Smith.

Funeral services were conducted Sunday, February 13, 2011 at the Marvin E. Owens Home for Funerals with Bro. Rick Reynolds officiating. Interment was in the Piney Grove Cemetery.

Casketbearers were: David Aubrey, Walter Aubrey, Jr., Andrew Nelson, Jack Foster, Jr., Jerry Foster, Herbert Shanks, and James Jones. Honorary casketbearers were: Dr. Kevin Rowe, Larry Klug, Jack Foster, Sr., Danny Baker, U.K. Markey Cancer Center, Matt Preston, Hospice of Richmond, Jason and Jack Neeley, and Robin and James Jones Children.

Condolences can be sent online [www.marvineowensfuneralhome.com](http://www.marvineowensfuneralhome.com)



## Clea Southard

Miss Clea Southard, 97 of Mt. Vernon, died Saturday February 12, 2011 at the Rockcastle Health & Rehabilitation Center in Brodhead. She was born on April 23, 1913 in Pulaski County the daughter of the late Charlie Leonard and Geno Fields Southard. She had been a school teacher in Rockcastle County for 38 years, a Kentucky Colonel, she received the Community and Family award at the nursing home, and was a member of the Chestnut Ridge Church of Christ.

Survivors are: one nephew, Jesse Frederick of Hazard; three nieces, Carol Hamm of Mt. Vernon, Nancy Parkerson of Brodhead, and Mary K. Insko of Lexington; and three cousins and several great nieces and nephews.

Services were held Tuesday, February 15, 2011 at the Cox Funeral Home Chapel with Bros. Buford Parkerson and Dale McNew officiating. Burial was in Hansel Cemetery.

Send condolences online at [www.coxfuneralhomeky.com](http://www.coxfuneralhomeky.com)

## Dessie Smith

Dessie Smith, 67, of Brodhead and formerly of Louisville, died Monday, February 14, 2011 at the Rockcastle Regional Hospital.

Funeral services will be conducted (today) Thursday, February 17 at 11 a.m. at the Dowell & Martin Funeral Home Chapel. Burial will follow in the Smith Cemetery.

A complete obituary will appear in next week's Signal.

Please visit [www.DowellMartin.com](http://www.DowellMartin.com) to view online obituary.



## Melvin Winkler

Melvin Winkler, 74, of Okeechobee, FL, and formerly of Rockcastle County, died Monday, February 7, 2011 at the Hamrick Home Hospice. He was born in Mt. Vernon, on November 3, 1936 the son of Ambrose and Grace Barnett Winkler. He was a US Marine Corps veteran of the Korean War. He enjoyed fishing and golf.

He is survived by: his wife of 53 years, Loretta Winkler; two sons, Ronnie (Sandy) Winkler of Concord, NC and Jimmy (Suzanne) Winkler of Mobile, AL; and six grandchildren.

Funeral services were conducted Saturday, February 12, 2011 at the Dowell & Martin Funeral Home Chapel by Bro. Jimmy Miller. Burial was in the Corinth Cemetery.

Pallbearers were: Phillip R. Allen, Shane Brock, Carl Cawood, Travis Harris, Jesse Strunk, Aaron Winkler, Cleo Winkler, Hannah Winkler and Ricky Winkler.

Honorary Pallbearers were: Caleb Winkler and Jacob Winkler.

Please visit [www.DowellMartin.com](http://www.DowellMartin.com) to view online obituary.

## Negro Creek Cemetery Notice

To those who have loved ones buried in Negro Creek Cemetery:

Please send donations to Monticello Banking Trust Dept., 475 East Hwy. 80, Somerset, Ky. 42501 Attn: Mr. Martin or to Paul Blanton, 95 Hock Lane, Brodhead, Ky. 40409.

These are the only two that use the money for upkeep of this cemetery.

Paul Blanton  
Keeper of Cemetery

## Nancy Miller

Nancy Miller, 63, of Mt. Vernon, died Sunday February 13, 2011 at the Compassionate Care Center in Richmond. She was born on May 26, 1947 in Roanoke, VA, the daughter of the late Harrel and Ida Sweeney Lawrence. She was a quality technician at the Toyota Parts Factory and was a member of the Grace Baptist Church.

Survivors are: her husband, Zeke Miller of Mt. Vernon; three daughters, Pamela of Christiansburg, VA, Rachael of Somerset, and Wendy of Mt. Vernon; one sister, Ann Lee of Lorane, OH; and three

grandchildren.

Funeral services will be conducted at 2 pm. (today) Thursday, February 17, 2011 at the Cox Funeral Home Chapel with Bro. Randy McPherson officiat-

ing. The family has chosen cremation to follow the services.

View the complete obituary, sign the guest registry, or send condolences to the family online at [www.coxfuneralhomeky.com](http://www.coxfuneralhomeky.com)

## Waterfalls, Ponds, Streams, Fountains, Stone Work

Max Phelps

606-416-3911

[www.rockcastles.com](http://www.rockcastles.com)

Free t-shirt after completion of program

## Fitness Classes

Only \$10 per week

Official sign-ups for Dr. Tackett's Fitness Classes will be Monday, February 21st and Thursday, Feb. 24th from 8:30 - 12:00 and 1:30 - 6:00

**GET FIT** - a low-impact, less intense cardio workout designed for beginners to help you lose weight and boost your metabolism so you continually burn more calories. The workouts aren't high-intensity but are still calorie burners.

**BEACH BODY BLAST** - a higher-intensity, calorie scorching workout that will tighten and tone your body and have you ready for the beach/bikini season. Summer is only a few months away, now's the time to start.

### SCHEDULE OF CLASSES

**Get Fit:** Monday - Thursday 1:30 to 2:30 p.m.; Monday & Thursday evening from 5:30 - 6:30 p.m.; Saturday 8:00 - 9:00 a.m. & 9:00 - 10:00 a.m.

**Beach Body Blast:** Tuesday & Thursday 8:30 - 9:30 a.m.

Classes begin March 7th

Programs require a 10 week commitment and consist of at least 2 workouts/week with a 3rd day for weigh-in, measurements and body fat testing. Individual goals will be set and evaluated periodically.

Space is limited to 12 spots in each class so reservations will be required. Additional classes may be added depending on demand.

Classes taught at Mt. Vernon Chiropractic by Matthew Tackett, D.C.

Call 256-1986 for more information

Dr. Tackett is a certified group exercise instructor and classes are separate and not affiliated with Mt. Vernon Chiropractic.

## SAVE A LOT

Great Food Great Prices!

\*\*Save up to 40% Everyday on your total grocery bill\*\*

We Gladly Accept WIC and EBT

<b>Extra Savings</b> Whole Boneless Pork Loin <b>189</b> lb.	<b>Extra Savings</b> Half-Sliced Pork Loin <b>249</b> lb. <b>Extra Savings</b> Family Pack Cubed Steaks <b>299</b> lb.	<b>Extra Savings</b> Lean Beef Stew Meat <b>319</b> lb.	
<b>Extra Savings</b> Jumbo Sweet Onions <b>79¢</b> lb.	<b>Extra Savings</b> 1 lb. bag Mini Carrots <b>99¢</b>	<b>Extra Savings</b> Red/White Seedless Grapes <b>99¢</b> lb.	<b>Extra Savings</b> 1 lb. pack Strawberries <b>250</b>
<b>Extra Savings</b> Boneless Beef Top Round Roast <b>279</b> lb.	<b>Extra Savings</b> Family Pack Fryer Leg Quarters <b>49¢</b> lb.		

910 W. Main St. • Mt. Vernon • Phone 606-256-9810  
Open Monday - Saturday 8 to 9 • Sunday 9 to 9

## Go Red at the Red Barn

### 3rd annual Women's Heart Health Expo

Monday, February 28, 2011  
Renfro Valley Red Barn

Featuring Special Guests:



Schedule of Events:  
5:30 Entertainment, dinner & booths  
6:00 Welcome  
6:15 Dr. Rick McClure  
6:45 Break  
7:15 Local woman's story  
7:30 Amber Philpott  
7:45 Door prizes and booths

Attendees must register. Call Arielle Reese by February 21 at (606) 256-7880

Join us for an educational and fun-filled event to learn about the dangers of heart disease. This FREE event will also feature entertainment, guest speakers, door prizes, educational booths, and a heart healthy meal.



Heart disease: #1 killer of women

## Our Readers Write

### Road Department doing an excellent job...

Dear Editor,

My congratulations to our county's road department for their great job on removing snow from the county roads last week.

I informed the magistrates that I had initiated a new system for snow removal, and it did, indeed, work well. I was extremely pleased with the way the road department crew handled the new system.

I also know that major snowfalls in the future will make the work time much longer, but the system does work. My thanks to the magistrates for allowing my office to make the necessary equipment improvements and purchases possible, and for working with me on this and other projects and problems the county has faced.

Respectfully,  
Buzz Carloftis

County Judge-Executive

### Hammonds have brought honor to county...

Dear Editor,

I am sure that others join me in the spirit of thanks and congratulations to two recent outstanding and much-deserved recognitions, that of Larry Hammond and Sara Hammond.

Mr. Larry Hammond was recently named the 2011 Outstanding School Superintendent from Kentucky, and Sara is a member of the McDonald All American girls' basketball team, the first ever for a player from Kentucky.

Thanks to both of you for your hard work and dedication. I am so glad it has not gone unnoticed. No doubt both of these humble persons would say that they have had a lot of cooperation and support over the years from teachers, coaches, family and friends. So thanks and congratulations to all these people too. Even though I was not part of this support group, I can't help feeling pride too -- just to know these two achievers and to be from their same place.

Nancy Mullins

### Critics not commenting on county's progress...

Dear Editor,

When the Fiscal Court recently made a payment of \$782,000 on the \$2.5 million loan for the new industrial park, the silence from my critics was deafening.

During this past year's elections, one of the major concerns of my opponents was that I had placed the County into an unbearable debt.

In fact, that's all I heard. To my harshest critics, it evidently didn't matter that the debt was incurred to save jobs that were definitely go-

ing to leave Rockcastle County, and that our community now has land that can be used for future jobs.

From my critics, I heard only one refrain: a debt. Well, to my critics' chagrin, it appears that we, on the fiscal court and our industrial authority board, actually knew what we were doing.

We have now received \$420,000 (EDA funds) and \$782,000 (Transportation funds) that were returned to the County for debt payment. Contrary to my critics regarding this progressive-thinking project, the debt is not what it initially appeared. We knew what we were doing.

We, on the fiscal court and our industrial authority board, will continue our work to make our county attractive for future employers. That's what other counties have been doing for decades. It is very unfortunate that some people in our county still want no progress and fight it at every turn.

Respectfully,  
Buzz Carloftis

County Judge-Executive

### Thank You

Dear Editor,

The Mt. Vernon ADT and the children's program would like to sincerely thank each and everyone who donated money or items for the 2010 Christmas Season. It was a great success also for those who sponsored the children and bought their gifts.

Donors were: Community Trust Bank, Citizens Bank, Rtec, Mt. Vernon Drug, Main Street Pharmacy, Young's Pharmacy, Dowell and Martin Funeral Home, Cox Funeral Home, Marvin E. Owens Home for Funerals, Attorney Jerry Cox, Attorney Jerome Fish, Cash Express, Davis and Powell Funeral Home, Berea Walmart, London Walmart.

Save-A-Lot, IGA, County Attorney Billy Reynolds, State Farm Insurance, Mary Mathis Insurance, Farm Bureau Insurance, Bishop Tire, Town and Country Chevron, Mt. Vernon Scrap, NAPA/Radio Shack, Brodhead Tobacco Barn, Tobacco Barn, Norma Houk.

Mike Peters, James Miller, Buzz Carloftis, Margaret Offutt, Teresa Vanzant, Sylvia's Cut and Curl, Saylor's Furniture, Jake's Furniture, Tincer Williams Auto Sales, Legacy Nissan, Cummins Sportsman Shp, Brenda's Collectibles, Linda's Variety, Jamie Lainhart, Ralph Powell Logging, 84 Lumber, Kiwanis Club, Ford Brothers, Coffey & Ford, Mt. Vernon Signal.

Michael P. McGuire, D&S Computers, Appliance Service Center, Mt. Vernon Plumbing and Electric, Singleton Insurance, Bradley's Barber Shop, Rocket Apparel, Family Dollar Store, Tuch of Class, Headquarters for Hair Design, Aunt Polly House,

B&M Liquidators, Mitchell Tolle, Something Olde Shoppe, Mt. Vernon Florist, Mt. Vernon Chiropractic.

Cox Hardware, Mimi's, Valley Treasures, Sparks Flower Shop, Mt. Vernon Weight Loss, Brodhead Pharmacy, Clifford Collins, Joe Clontz CPA and Regina Lay, Dr. Lee Cain, Bible Baptist Church, First Baptist Church, Central Body, Peoples Bank, Derby City, Roger Maple's Store at Renfro Valley, Dolly Sodds, Renfro Valley Entertainment.

Hopefully, we have not left anyone off the list but if we have, please call 606-256-2129 and you will be added. Again, thank you and may God richly bless you and yours.

Lyla Powell, ADT Acting Instructor and Trainer  
Helen Doan, ADT Trainer  
Mary Newcomb, ADT Trainer  
Tonya Stall, ADT Trainer  
Sheryl Luczak, ADT Case Manager  
Alicia Gilreath, Tabitha Harris, Steve Bolton and Devon Bussell, Childrens' Programs

### "Ramblings"

(Cont. from A2)

ordering information and was told we could order one day and pick up the next, we called GFS in Lexington on a Friday and of course, they didn't have pickup on Saturday. It would be the next Monday. We told them that was fine, and about Wednesday of the next week I asked my brother-in law Rick to pick it up for me.

Well, first off, he went to GNC instead and they had no clue what he was talking about (men...). When he figured out it was GFS, he went there and they had no record of our order. So he ordered it again and went several days later to pick it up, and they gave it to us for free -- for our trouble. His only question to my sister Jamie was why we wanted 500 packets of lemon juice. Well, when I remember to keep it in my purse, it has been a fantastic buy!

Enjoy the beautiful weekend we have in store, because in Kentucky, you can never be sure what plans Mother Nature still has in for us.

### "Roots"

(Cont. from A2)

the state of North Carolina, and others. All of this rock was produced here in the county.

According to office manager, Peggy Robbins, who has been with the quarry for thirty-three years, the rock is transported by train to these destinations. About once or twice a week, approximately sixty-seven hundred tons of Rockcastle is hauled away by the railroad system, in as many as sixty railroad cars at a time. This has been the case for at least two years. These cars come through on the tracks located in downtown Mount Vernon, usually at night or on the weekend. Before that, the rock was

primarily transported by truck. She has seen a lot of changes in those thirty-three years, especially in the weighing process. As most everything else, it has been given over to the technology of the computer. Things have gotten easier in the quarry industry, when you consider there are retired employees here in the county who can remember using wheelbarrows on the job.

Our local quarries have supplied the area with many jobs through the years, and boosted the local economy. They have also supplied quite a bit of the country with "a piece of the rock".

### "Memories"

(Cont. from A2)

games of the year. The feeling was that if you could defeat the other two schools, then your season was considered very successful.

As I reflect on my high school days, I am reminded of the MVHS gymnasium. It was like a very large sunken swimming pool surrounded by the halls and classrooms. The gym was completely encircled by these halls. Only a few rows of seats were found on each side of the gym floor. The remaining spectators sat or leaned on guard rails that were on the second floor. I can vividly remember several rows of both students and their parents watching basketball games by looking down into the gym from above.

When I graduated from MVHS, the population of the town was only 1,106 (at least that was what the signs reported). So it was just natural that high school basketball, football, and baseball games were an important form of

recreation for students, parents, and citizens alike.

Large numbers of fans gathered to witness MVHS playing any other school in any sport. These games provided us with a reason to be proud of our school. I suppose the Beach Boys said it best in their hit song, Be True to Your School. The song appeared on the album Little Deuce Coupe.

When some loud braggart tries to put me down  
And says his school is great  
I tell him right away  
"Now what's the matter buddy  
Ain't you heard of my school  
It's number one in the state..."

So be true to your school now  
Just like you would to your girl or guy  
Be true to your school now  
Let your colors fly  
Be true to your school...

The song goes on to describe having a letterman's sweater for athletic achievement. It does an excellent job of describing how we looked at things concerning our school identity in those days.

After I graduated from college and began my career as a chemistry teacher, I was extremely blessed to find myself part of the faculty at two small high schools in Kentucky. My first teaching assignment was at Campbellsville High School. The number of students was similar to MVHS, and so was the amount of "school spirit." The Eagles had a similar rivalry because there were two high schools in the same city. The competition reminded me of the three high schools in Rockcastle County and was just as much fun to be a part of -- even as a young adult.

My second teaching position was at Mt. Sterling High School. Again, the number of students and faculty was very

much like my own home school. Each time I attended any sporting event at Mt. Sterling High School, it felt just as it did back home in Mt. Vernon. As a matter of fact, the Trojans had the most successful following of fans of any place that I have ever witnessed. It seemed like EVERYONE attended every game! In addition, that gym was very much like MVHS because it only seated a limited number of fans. Usually, both sides of the court were filled with home team supporters. The remaining fans crowded into the doorways to witness the games.

It is sort of sad to me that things aren't like that these days. I suppose that both young and old have other things on which they want to spend their time. But they are all missing something so very special.

If an entire community supports local high schools' athletic programs, it provides a different, and may I say better, environment for all of us. Students are more inclined to feel that they are part of a special group -- one that calls upon everyone to do their best in supporting their teams. And the community itself becomes more involved with the schools and with the students. Nothing but good can become of such things. I'd bet you that anyone from the boomer generation will declare that this is true.

So tell me, where can I find that kind of school spirit? Is it only to be found in my memories? If so, it is a shame. It is an investment that I believe reaps very tangible rewards. So maybe we boomers need to show the young people of today how it's done. Do you think it would help if we all started singing "Be true to your school ...?"

Beige • Brown • Wood Grain Windows Also Available

White Vinyl Welded Double Hung Replacement WINDOWS

Any Size! **\$189** INSTALLED

DOUBLE PANE INSULATED GLASS

Call For a FREE In-Home Estimate!

1224 South Main Street Corbin, Ky. **606-878-7994**

ENTRY DOORS & STORM DOORS NOW AVAILABLE

Window World, inc. Simply the Best for Less!

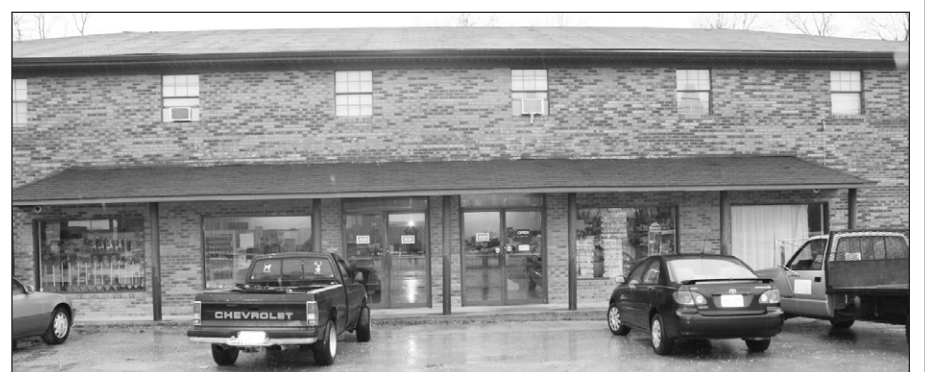
VISIT OUR SHOWROOM

TOLL FREE 1-800-353-4313

www.windowworldinc.com

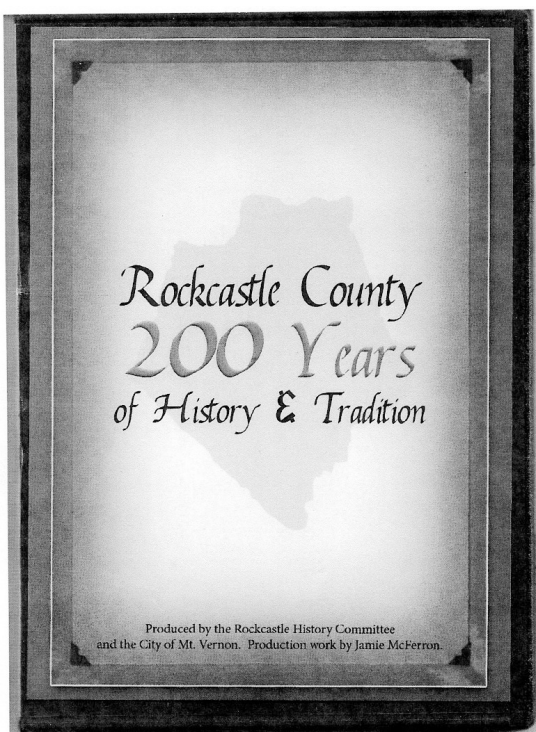
## Mt. Vernon Plumbing & Electrical

has moved to  
1251 So. Wilderness Rd.  
Mount Vernon  
(former Rockcastle Auto Parts building)



Open 8:00 to 5:00 Monday - Friday • 8:00 to 2:00 Saturday  
**256-3669**

### Rockcastle County 200 Years of History & Tradition



DVD \$10

Can be purchased at Mt. Vernon City Hall  
For more information call 606-256-3437

AUTO | HOME | LIFE | BUSINESS | A MEMBER SERVICE | KYFB.COM

## Different quotes for different folks.



You're committed to good driving, and Kentucky Farm Bureau is committed to saving you money with multi-policy, good student, driver training and experienced driver discounts\*.

\* Discounts subject to digibility.

**Marlene Lawson, Agency Mgr.**

Shelley Mullins, Agent

US 25 S • Mt. Vernon

**606-256-2050**

KENTUCKY FARM BUREAU  BIG ON COMMITMENT.®

# Agricultural News

By: Warden Alexander, FSA Director

## County Committee Election Results

The December 2010 election for Rockcastle County FSA LAA-1 resulted in Timothy Mink being appointed to the COC. A total of 68 votes were received with Timothy Mink receiving 67 votes and John Newland receiving 1 vote.

The 2011 Rockcastle FSA County Committee will be comprised of John D King, Chairman, Donnie Hurst, Vice Chairman and Timothy Mink, Member.

The COC meets each month with the first Thursday being the scheduled meeting date with the time as 8:00 am in the Rockcastle County FSA Office. The public is invited to attend.

## USDA to measure the financial health of American farms

Starting in January, the U.S. Department of Agriculture's National Agricultural Statistics Service (NASS) will contact farmers and ranchers across the nation to conduct the Agricultural Resource Management Survey (ARMS). This

survey will provide farmers and ranchers with an opportunity to provide accurate, real-world data that will help shape the policies, programs and issues that affect them. ARMS asks a small, but representative, sample of farmers about their operation in order to understand the current financial state of U.S. agriculture. The survey will be conducted between January and April 2011. Producers will be asked to provide data on their operating expenditures, production costs and household charac-

teristics. Farm organizations, the U.S. Department of Agriculture, other government agencies, members of Congress, and State and local officials use the collective information from ARMS to answer questions and make important decisions concerning the economic viability of American agriculture, the rural economy and other emerging issues. The economic data gathered in ARMS will be published in the annual Farm Production Expenditures report on August 2, 2011. All NASS reports are available online at [www.nass.usda.gov](http://www.nass.usda.gov).

## 2011 Noninsured Crop Disaster Assistance Program (NAP)

The Farm Service

Agency (FSA) reminds agricultural producers of deadlines to apply for the Noninsured Crop Disaster Assistance Program (NAP) for crops in order to be eligible for the agency's Disaster Assistance Programs.

The NAP provides financial assistance to producers of noninsurable crops when low yields, loss of inventory or prevented planting occur because of natural disasters.

Producers must purchase at least catastrophic (CAT) level of insurance for all insurable crops and/or FSA's NAP coverage for non-insurable crops to be eligible for the USDA Farm Service Agency Disaster Assistance Programs.

The final dates to apply for coverage under NAP for 2010 for the following crops are:

March 1, 2011-Hay, pasture

Producers must apply for coverage before a disaster strikes. Like regular crop insurance, once an application period closes, the opportunity to obtain coverage is gone.

## Payments

Rockcastle County FSA has now issued all payable Tobacco Transition Pro-

gram Payments (TTPP) at this time. If you have not received your payment within 2 weeks from the date of this notice please notify our office. For those who receive payments by direct deposit: Remember to review your bank statement before calling our office.

## Bank account changes

If your bank account number changes or there is a change in your bank name notify FSA immediately to ensure payments reach your account timely.

This is very important to those receiving FSA payments as payments (TTPP) payments go out in January) can be delayed if we are not aware of changes to your account or routing numbers.

## Important program dates and Interest Rates

Direct and Counter Cyclical Program signup ends June 1, 2011

Milk Income Loss Contract (MILC) Program-signup continues

Conservation Reserve Program-signup continues

Farm Storage Facility Loan Program continues

Maximum Discount Rate for TTPP

Farm Ownership Loans (Direct) continues

Farm Operating Loans

(Direct) continues

Limited Resource Loans continues

Emergency Loans continues

The US Department of Agriculture (USDA) prohibits discrimination in all its programs and activities on the basis of race, color, national origin, age, disability, sex, marital status, familial status, parental status, religion, sexual orientation, genetic information, political beliefs, reprisal, or because all or part of an individual's income is derived from any public assistance program. (Not all prohibited basis apply to all programs). Persons with disabilities who require alternative means for communication or program information (Braille, large print, audiotape, etc) should contact USDA's Target Center at 202-720-2600 (voice and TDD)

To file a complaint of discrimination write USDA, Director, Office of Civil Rights, 1400 Independence Avenue, SW, Washington, DC 20250-9410 Or call (800) 795-3272 (voice) or (202) 720-6382 (TDD).

USDA is an equal opportunity provider, employer and lender.

# Mamaw's Kitchen

By Regina Poynter Hoskins

## MICHIGAN BROCCOLI CASSEROLE

Will and I introduced this recipe to the family before broccoli was common in the South. The vegetable was served in the dining room at Boone Tavern Hotel in Kentucky where Will and I had both worked while we attended Berea College. Being students at the time, we couldn't afford to eat there.

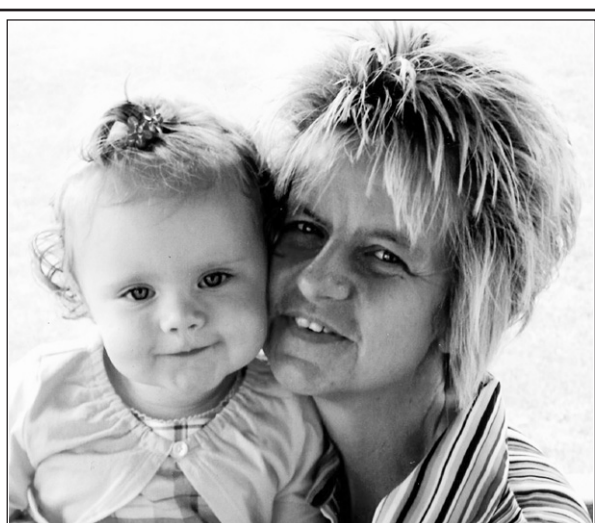
After Will's graduation from Berea in 1973, we moved to Ann Arbor, Michigan. Because it was always available there, we discovered the wonderful taste of broccoli.

2 packages (10 ounces each) frozen broccoli  
OR 2 bunches fresh broccoli  
1/2 cup mayonnaise or Miracle Whip®  
2 eggs, slightly beaten  
1 can cream of mushroom soup  
1 cup sharp cheddar cheese, shredded  
1 stack Ritz® crackers, crushed  
1 stick butter  
Preheat oven to 350°. Cook broccoli according to package directions. If using fresh, cut into bite-sized pieces and steam or boil until fork tender. Drain. Add Miracle Whip®, eggs, soup and cheese. Mix thoroughly. Pour into buttered 2-quart casserole dish. Melt butter. Add to crushed crackers; spread evenly over casserole. Bake for 35 minutes. NOTE: I have also used the Mexican Blend of cheese in this casserole with great results.

## SF CHICKEN CASSEROLE

This recipe came from a friend who worked with me at the United States Federal Reserve Bank in San Francisco in 1988. She was originally from Tennessee, but we didn't know one another until we each moved to California.

4 to 5 pounds chicken breast, cooked  
1 can cream of celery soup  
1 can cream of chicken soup  
1 package cornbread stuffing mix  
1 stick butter or margarine  
1 1/2 cups chicken broth  
Preheat oven to 350°. Butter a 9 x 13 baking dish or spray with a non-stick spray. Shred chicken or cut into bite-sized pieces. Mix chicken with soups. Pour into prepared dish. Sprinkle with dry stuffing mix. Melt butter in broth and slowly pour over stuffing. Do not mix. Bake for 40 to 50 minutes.



Lacey Michelle Hayes celebrated her second birthday at her papaw J.R.'s house with a Barbie party Sunday, February 6th. She was surprised with a Bassett Hound puppy named "Bo" from Mommy and Daddy. We would like to thank everyone who attended and for the gifts and cards she received.



Rockcastle Kiwanis Club welcomed Heather Scalf to their February 10th meeting held at the Rockfire Steak House. Heather is an Instructor/Job Developer with Somerset L.Y.N.C. Heather works with adults ages 16-21 through our Rockcastle Adult Education Center helping prepare them for our local workforce through Education Training Resource. The Kiwanis Club meets every Thursday at noon at the Rock Fire Steak House. The public is invited. Shown in the photo, from left: Kiwanis member Eliza York, Kiwanis president William Reynolds, Heather Scalf and program committee chairperson Glenda Smith.



## Everyone Wants a Big Check at Tax Time!

But, at Jackson Hewitt® you'll get even more.

- FREE with every paid return:
- Accuracy Guarantee\*
  - Electronic filing
  - 24/7 status alerts when your refund is ready
  - Safe storage of your prior-year return
  - And more!



\*Terms and conditions apply. Ask your tax preparer for details.

**SAVE \$30**  
on Tax Preparation at Jackson Hewitt®

606-256-9012  
567 Richmond Street  
Mt. Vernon KY 40456

1110 North Main Street  
London KY 40741

## Farm Machinery Consignment & Industrial Equipment

# Auctions

30th Annual London

## Farm Machinery Consignment Auction

Saturday, February 26, 2011 at 9:30 a.m.

Approx. 4 miles from I-75 Exit 41

Corner of Hal Rogers Parkway and Hwy 192 • London, KY

Consignments accepted: Wednesday, February 23rd, Thursday, February 24th, and Friday, February 25th from 8:30 am to 5:00 pm

## 36th Annual Brodhead

## Farm Machinery Consignment Auction

Saturday, March 5, 2011 at 9:30 a.m.

Brodhead Fairgrounds

Highway 150, Brodhead, Ky

Consignments accepted: Wednesday, March 2nd, Thursday, March 3rd and Friday, March 4th from 8:30 am to 5:00 pm

There will be a **BUYER'S FEE** added to the winning bid on each item to determine its final price.

**NO SALES FEES ARE AS FOLLOWS:**

Over \$3,000 = \$25.00  
\$2,000 - \$2,999.99 = \$15.00  
\$1,000-\$1,999.99 = \$10.00  
\$500 - \$999.99 = \$5.00  
Below \$500 = \$3.00

**BUYER'S FEE IS AS FOLLOWS:**

3% on any item \$100.00 and over  
10% on any item \$99.99 or less



[www.fordbrothersinc.com](http://www.fordbrothersinc.com)  
Mt. Vernon, KY 606-256-4545  
1-800-455-5454  
London, KY 606-878-7111  
1-800-526-1637

Somerset, KY 606-679-2212  
1-800-526-9450

**Mann / What a Deal! Mann / What a Deal! Mann / What a Deal! Mann / What a Deal!**

**TRUCK MONTH**  
STRENGTH IN NUMBERS

*Mann ...*  
**What a Deal!**

**NEW 2010 Dodge**  
*Caliber Mainstreet*  
Stk. #510095

WAS: \$18,915  
NOW: **\$14,988**

**NEW 2011 Dodge**  
*Nitro Heat 4x4*  
Stk. #28008T

WAS: \$25,240  
NOW: **\$20,988**

**NEW 2011 Dodge**  
*Ram 1500 Quad 4x4*  
Stk. #26025T

WAS: \$31,740  
NOW: **\$23,988**

**NEW 2011 Dodge**  
*Ram 3500 Crew 4x4*  
Diesel, Dually, Stk. #26804T

WAS: \$44,905  
NOW: **\$37,988**

**NEW VEHICLE SPECIALS**

<p><b>2010 Avenger Express</b> #52013S ..... was \$22,825 NOW <b>\$16,988</b></p> <p><b>2010 C300C</b> #42004S ..... was \$41,265 NOW <b>\$40,988</b></p> <p><b>2010 Charger</b> #53006S ..... was \$26,195 NOW <b>\$19,988</b></p> <p><b>2010 Challenger</b> #52572S ..... was \$26,435 NOW <b>\$21,988</b></p> <p><b>2010 Town &amp; Country</b> #43023S ..... was \$26,860 NOW <b>\$19,988</b></p> <p><b>2010 Grand Caravan</b> #54013S ..... was \$24,590 NOW <b>\$18,988</b></p> <p><b>2010 Wrangler Sahara Unlimited</b> #62524S ..... was \$31,750 NOW <b>\$28,888</b></p> <p><b>2011 Grand Cherokee 4x4</b> #33006T ..... was \$32,995 NOW <b>\$29,995</b></p> <p><b>2011 Durango Crew AWD</b> #27005T ..... was \$37,035 NOW <b>\$33,988</b></p> <p><b>2011 Patriot 4x4</b> #30501T ..... was \$21,030 NOW <b>\$18,988</b></p>	<p><b>2011 Nitro Heat 4x4 pic</b> #28008T ..... was \$25,240 NOW <b>\$20,988</b></p> <p><b>2011 Dakota Crew SLT4x4</b> #25000T ..... was \$32,585 NOW <b>\$25,988</b></p> <p><b>2011 Ram 1500 SLT 4x4</b> #26004T ..... was \$33,330 NOW <b>\$26,688</b></p> <p><b>2011 Ram 1500 Quad 4x4 pic</b> #26025T ..... was \$31,740 NOW <b>\$23,988</b></p> <p><b>2011 Ram 1500 Quad SLT 4x4</b> #26013T ..... was \$36,765 NOW <b>\$27,788</b></p> <p><b>2011 Ram 1500 Crew SLT 4x4</b> #26000T ..... was \$40,055 NOW <b>\$30,988</b></p> <p><b>2011 Ram 3500 4x4 Cab'n Chassis</b> Diesel, #26803T ..... was \$39,540 NOW <b>\$31,988</b></p> <p><b>2011 Ram 2500 Crew 4x4</b> Diesel, #26570T ..... was \$43,910 NOW <b>\$36,988</b></p> <p><b>2011 Ram 4500 Crew 4x4 Cab'n Chassis</b> Diesel, #71001T ..... was \$46,415 NOW <b>\$37,988</b></p>
---	---

Must finance thru GMAC. With approved credit. Price does not include tax, tag and fees. All rebates assigned to dealer. Due to ad deadlines, vehicles may be sold. Artwork for illustration only. Thanks for reading the fine print.

**MANN CAN HELP FINANCE YOU!**  
Call Bill at 877-847-6266

**Richmond**  
On the Bypass At Irvine Road  
**859-625-1422**  
or toll free  
**877-847-6266**

**Mann**  
CHRYSLER • DODGE • Jeep  
Check Out Our Daily Specials At  
**[mannchrysler.com](http://mannchrysler.com)**

# CHURCH NEWS

**Benefit Singing**  
Benefit singing for Alva Robinson February 25th at 7 p.m. at Brush Creek Holiness Church with local singers and singers from the church (McGuire Sisters and others). Everyone welcome.

**Benefit Service**  
Faith Chapel Pentecostal invites all to a benefit service for Bro. Dennis Doan on Sat., Feb. 19th, beginning at 7 p.m. Everyone welcome!!

**Benefit Singing**  
There will be a benefit singing for Brother Andy Miller to help with medical expenses at McNew Chapel Baptist Church at Cove Branch off Hwy. 1004 on

Saturday, February 19th at 7 p.m. Pastor Jerry Ballinger and congregation invites everyone to attend. Special singers will be announced at a later date.

**Singing**  
There will be a Singing at New Hope First Church of God on Sunday night, February 20th. The service will begin at 6 o'clock and Charlie Napier will be singing. The church is on Hwy. 39, south of Crab Orchard about 6 miles. Donald LEar is pastor. Everyone welcome.

**Let the Bible Speak**  
Tune into "Let the Bible Speak," with Brett Hickey, on Sunday mornings at 8:30 a.m. on WDKY Fox 56.



**The Rockcastle Co. Kiwanis Club's annual Valentine's Day Gala was held Friday night in Renfro Valley with Robert Lawson as Master of Ceremonies. Betty Frederick welcomed the large group on behalf of the Kiwanis Club. Bro. Bruce Ross, pastor of First Christian Church of Mt. Vernon, gave the blessing of our meal. After a wonderful dinner, music was provided by Keith Bussell and Melissa Singleton. The reigning 2010 King and Queen Bentley and Lela Cromer crowned the new 2011 King and Queen, Larry and Rebekah Hammond, shown above. A wonderful evening of fellowship, food and laughter was enjoyed by everyone. Proceeds from the evening will go to the Rockcastle Boy Scouts for Summer Camp.**

## Fundraiser being held for Scott Brock

A benefit fundraiser for Scott Brock of Berea who has been diagnosed with terminal neuroendocrine cancer, and has known for less than a year.

Scott just turned 40 on January 30th, and is married to Sheila (Patrick) Brock, the daughter of Bill and Verna Patrick of Fairview.

As he awaits his SS disability, we need to come together and help them meet their many financial obligations and medical needs.

The benefit will be held Friday, February 25th from 7-11 p.m. with doors opening at 6:30 p.m., at the Russell Acton Folk Center in Berea.

Entertainment for the

event will be Kristi Miller and Yogi Brown, Will (Teen King) Reynolds doing his Elvis performance, and last but not least, Josh Logan.

Admission is \$10 for ages 12 and up and \$5 for ages 6-11. Children 4 and under are free.

There will also be a donation box to give extra money privately, only if you are able to do so. We understand that times are hard for everyone, and appreciate your kindness.

Snacks and refreshments will be sold during the duration of the shows for \$1 or less per item. All proceeds will go to Scott and Sheila Brock. Please join us for this great cause!

An encouraging word:

### The Soul of the Nation

By Howard Coop



Frequently, soul, a word familiar to almost everyone, is defined as "an entity that is regarded as being the immortal or spiritual part of the person and, though having no physical or material reality, is credited with the functions of thinking and willing, and hence determining all behavior."

Then, there is another less often used but significant definition of soul that is worthy of note. Using this definition, soul may be defined as the "embodiment or personification" of something. William Gladstone, a prominent English statesman of the later part of the nineteenth century, is frequently credited with relying upon this definition

when he said, "The homes of the people are the soul of the nation."

Robert Frost, the noted New England poet of the early part of the twentieth century, wrote in a poem entitled THE DEATH OF THE HIRED MAN, "Home is the place where, when you have to go there, they have to take you in." But home is more, much more, than that. Beyond the structure, simple or elegant, in which it is housed, the home is the place where caring and loving parents, a good father and a good mother, work side by side to create a favorable atmosphere that enables the children who are dear to them to develop into reliable, dependable, trustworthy, and self-reliant individuals that grow up to be persons who have strong moral character and are willingly to assume responsibility and act accordingly in both ordinary and extraordinary circumstances.

Children who grow up in such homes become a powerful influence for good, and they are a saving and preserving force in human society. They grow up to become involved citizens who are the embodiment or personality of the country in which they live. By the way they live, they determine at all times the course of the nation. Therefore, Gladstone was right. The homes of the nation are, indeed, the soul of the nation.

## Hunter Education Course

Attention youth. There will be a Hunter Education course offered February 24th, 25th and 26th at the Rockcastle County High School auditorium. The program will begin on Thursday evening the 24th from 6 p.m. to 9 p.m. and continue on Friday evening from 6 p.m. to 9 p.m. with the final test being given in the Friday night session. The course will conclude with range work on Saturday the 26th from 9 a.m. to noon, destination will be announced during class. Participants must attend all three sessions. Call a neighbor or a friend and bring them to these important sessions. Call Extension Office at 606-256-2403 for more information.

Educational programs of the Kentucky Cooperative Extension Service serve all people regardless of race, color, age, sex, religion, disability or national origin.

Subscribe to the Signal

## Rockcastle Community Bulletin Board

Sponsored By  
**Cox Funeral Home**  
Family Owned & Operated Since 1907  
80 Maple Drive, Mt. Vernon, Ky. Ph. 256-2345  
Toll Free 1-888-825-2345 • 24 Hour Obit Line 256-5454  
[www.coxfuneralhomeky.com](http://www.coxfuneralhomeky.com)

**Bookmobile Schedule**  
Mon., Feb. 21st: Scaffold Cane, Disputanta, Clear Creek, Wildie. Tues., Feb. 22nd: Pongo, KY Hwy. 3245, Brindle Ridge. Wed., Feb. 23rd: Day Health/Senior Citizens.

**County History DVD on Sale**  
A history of the county entitled "Rockcastle County 200 Years of History and Tradition" is on sale at Mt. Vernon City Hall for \$10. For more information, call 606-256-3437.

**Retired Teachers Meeting**  
Retired teachers' meeting Monday, February 28th at Rock Fire Steak House at 6 p.m.

**Class of 1977**  
RCHS Class of 1977 will hold a meeting to begin planning for their 35th reunion in 2012 on Saturday, March 12 at 4 p.m. at El Cazador Mexican Restaurant. This will be the class's second reunion since graduation and everyone is encouraged to come out and help plan the event.

**Cost Share Program for Dead Animal Burial**  
The Rockcastle County Conservation District is now offering a cost share program for dead animal burial. Please contact the office for more information and guidelines for this program at 256-2525 ext. 3 and speak with Sandy or Zach.

**Extension Office Classes**  
February 21: 10 a.m. Kentucky's Quilt Trail: learn about counties in the state that are participating in the Ky. Barn Quilt Project.

11 a.m. Vintage Look Brooch or Ring (supplies are needed). Call 256-2403 for more information.

**Project Graduation Meeting Rescheduled**  
Parents of Seniors are encouraged to attend the next Project Graduation meeting. The meeting scheduled for Thursday, Feb. 24th at 6:30 at the high school cafeteria has been rescheduled to February 22nd.

**Foster Parent Orientation**  
How can you make a difference in a child's future? Come join Benchmark Family Services for foster parent orientation from 5 to 6 p.m. on February 21st. Benchmark Family Services is located at 700 Chestnut St., Berea, Ky. Phone is 859-986-0650. Refreshments provided.

**Book Discussion Group**  
Read a good book lately? Interested in sharing with a discussion group? Call 606-256-2388, leave your name and phone number. If there is enough interest in forming a discussion group, you will be contacted at a later date.

**Mt. Vernon City Council Date Change**  
The City of Mt. Vernon's council meeting for February 21st will be held on February 28th at 7 p.m. due to President's Day. City Hall will also be closed on the 21st for the holiday.

**NAMI Meeting**  
There will be a NAMI meeting Thursday, Feb. 17th at the Comp Care building from 12:30 to 1:30 p.m.

**Courthouse Offices Holiday Closing**  
All courthouse offices, except 911, will be closed Monday, Feb. 21st for the Presidents' Day Holiday.

**Cardio Tone Class at Berea**  
A Cardio Tone class is continuing at the Russel Acton Folk Center in Berea. This class is designed for those at an intermediate fitness level and is held on Monday and Wednesday nights from 5:45 to 6:45 p.m. Other classes offered are Zumga, yoga, kickboxing or spinning. For ages 14 and up. Space is limited. Call 859-986-9402 for more info.

**Hunter Education Course**  
Hunter Education course will be Thursday and Friday, February 24th and 25th from 6 to 9 p.m. and Saturday, February 26th from 9 a.m. to noon at the Rockcastle County High School auditorium. For more information call Rockcastle Extension Service at 256-2403. Must be 9 years of age to take course.

**Kiwanis Club Meetings**  
The Rockcastle Kiwanis Club meets every Thursday at noon at Rock Fire Grill. Everyone welcome.

**VFW News**  
VFW Post 5988 is open Monday, Wednesday and Thursday at 5 p.m. for members and their guests. The monthly meeting will be held the fourth Thursday of each month, beginning at 7 p.m. Bingo is held at the post every Tuesday, beginning at 6:30 p.m. and is open to the public.

**Brodhead Lodge Meeting**  
The Brodhead Masonic Lodge #556 meets every third Saturday at 7 p.m. on Main Street in Brodhead above Brodhead Pharmacy.

**CCFFG Meeting**  
Next meeting of the Concerned Citizens for Fair Government, CCFFG, will be at 6 p.m. on Thursday, February 17th in the Rockcastle Courthouse, 3rd floor, please use rear entrance. Everyone is encouraged to attend.

**Historical Society Hours**  
The Rockcastle Historical Society is open on Mondays from 10 a.m. to 2 p.m. in the RTEC garage building. Monthly society meetings are held the 4th Friday of each month at 5:30 p.m. at the Senior Citizens Building in Mt. Vernon.

**RCIDA Meetings**  
The Rockcastle County Industrial Development Authority holds its regular meeting the first Monday of each month at noon on the third floor of the courthouse.

**NA Women's Meeting**  
The Women's NA Serenity Group of Mt. Vernon meets each Monday at 8 p.m. at the Christian Appalachian Project Community Center, 64 Beiting Lane, Mt. Vernon. Open meeting, non-smoking.

**Women's Narcotics Meeting**  
There will be a Women's Narcotics Anonymous Meeting every Monday evening at 8 p.m. at the Community Center, sponsored by Christian Appalachian Center. For more information, contact the Healing Rain Center at 256-5810.

**Alcoholics Anonymous**  
Alcoholics Anonymous meets Tuesday nights at 8 p.m. behind Our Lady of Mt. Vernon Church on Williams St. in Mt. Vernon.

**Anthem**  **Stop by and see Marlene Lawson for all your life and health insurance needs!**

You can have an affordable managed care plan with the freedom of choice and the security of Anthem Blue Cross and Blue Shield — Blue Access.

(606) 256-2050




Visit us on the Internet at <https://www.kyfb.com/rockcastle/insurance/>

• Prescription drug abuse has risen 400% in the last decade.  
• Kentucky leads the nation in abuse of prescription drugs — at a rate 3 times the national average.  
• In southern and eastern Kentucky the average age of first-time drug use is age 11.  
• Most teens first experiment with medications they find at home or a friend's home.

**Are you an Accidental Dealer?**

• Keep your medicines locked up  
• Take a monthly inventory of your prescriptions  
• Discuss the dangers of prescription drugs with your children

To schedule a 30 minute presentation for your group, contact Cindy McCullough @ 606-308-2395 or email: [cmccullough@roadrunner.com](mailto:cmccullough@roadrunner.com)



[www.operationunite.org](http://www.operationunite.org)

## Skywarn Spotter Training

Thursday, March 10, 2011 @ 600 PM

Rockcastle County High School Auditorium  
1545 Lake Cumberland Road  
Mount Vernon, Kentucky

Hosted by Rockcastle County Emergency Management  
Questions? Call 606-256-8436 for additional information

## Robbins creates brooms at KY Artisan Center

On Saturday, Feb. 26, Christopher Robbins of Brodhead will demonstrate broom making from 10:30 a.m. - 3:30 p.m. at the Kentucky Artisan Center at Berea.

At the age of 14, Christopher Robbins began working in the Broom Shop at the Bittersweet Cabins in Renfro Valley, Ky., where he developed a love of broom making. Robbins then had the good fortune of meeting master broom maker Jim Harmon, of Springfield, Ky. who helped Robbins refine his skills and acquire the equipment needed to produce brooms.

Robbins makes all of his brooms either totally by hand or with the assistance of 100+ year-old broom making equipment. He uses a 100-year-old winder that was constructed with wooden pegs to attach the broomcorn to the broom handle. His vice, which is used to tie the brooms, is dated Sept. 10, 1878.

Broomcorn, used to make brooms, is a member of the millet family. This tall plant has little foliage and woody stalks, but looks somewhat like sweet corn. It produces bristles laden with seeds

### Love My Library

The Rockcastle County Public Library celebrates "Love my Library" during the month of February. All fines on overdue items are forgiven during this month.

If your child is registered for "Books for Bikes," their reading forms must be returned to the library by 4 p.m. Saturday, March 5th. Extra forms are available at the circulation desk.

The library has federal tax forms and instructions. The state no longer provides the forms. The library can print these forms for a small fee. Library hours are 10-6 Monday thru Friday and 10-4 Saturdays.

rather than an ear of seed and these bristles are processed after drying in multiple ways depending on how they will be used in producing brooms, brushes, or floral arrangements.

In 2002, Robbins was juried into the Kentucky Crafted Marketing Program - one of the youngest craftsmen ever to be awarded this honor. He is also a juried member of the Kentucky Guild of Artists and Craftsmen and the Sheltoe Artisan Guild. Robbins says, "It feels good to be knowledgeable and able to carry on the art of such an old craft."

In 2010, Robbins was hired by Berea College to head and run the college's Broomcraft Program. The College Student Crafts Program is one of many labor departments and learning environments in which Berea College students work as part of their liberal arts education. Broomcraft has been a part of the Berea College Student Craft Program since 1920 when equipment from a broom factory was given to the college.

Works by Christopher Robbins are regularly found at the Kentucky Artisan Center at Berea, located at 975 Walnut Meadow Road, just off Interstate 75 at exit 77 (Berea). The center's exhibits, shopping and travel information areas are open daily. Winter Hours in effect from Jan. 4 - March 10, will be 8:30 a.m. to 6:30 p.m. and the café will be open 9 a.m. - 4 p.m. Admission is free. The center currently features works by more than 650 artisans from 100 counties across the Commonwealth. For more information call 859-985-5448 or visit the center's website at [www.kentuckyartisancenterky.gov](http://www.kentuckyartisancenterky.gov)



Christopher Robbins



**In Memory of Mrs. Geraldine Holbrook**  
9-17-32 to 6-15-2008  
Sadly missed by a friend from Whitley Co.  
We will see each other again beyond the sky so blue.

**FOR SALE:** 4 male full-blooded Yorkies registered with baby doll face. Price reduced to \$350. Also, 3 beautiful male Chihuahua, registered. \$250 or best offer. 606-231-5498 or 606-308-9709. 11x5p

## Frankfort Report

Legislative committees were hard at work this week approving many bills that then moved to the Senate floor for consideration by the full body.

The passage of Senate Bill 2 will have the most impact on the types of services state government provides. Kentucky's billions of dollars in unfunded liability in our state employee retirement system puts ever-increasing pressure on your already stretched tax dollars. While the Legislature has funded the state pension system as much as the Governor has requested every budget cycle, the nature of the current system is one that will likely bankrupt the state in the not-so-distant future. SB 2 stabilizes the state employee retirement system and protects the tax-payer



by moving new hires to a 401(k)-style plan for future state employees and legislators. Over the next 10 years, these changes will save local governments over \$1.1 billion. This move is fair to the tax-payer and helps us keep our commitment to both current workers and retirees without affecting teachers.

Senate Bill 41 encourages civic engagement in all citizens. The bill allows Independent voters to vote in either the Democratic or Republican Party primaries. To assure integrity in the process, if you are an Independent, you must be registered no later than December 31st immediately preceding the primary. This is the same date a voter can switch parties; which assures that those voters are committed Independents, and are not doing something to inappropriately influence the primary of a party in bad

faith.

Senate Bill 56 directs high schools to offer non-denominational Bible classes on an elective basis. So much of our cultural, legal, and literary heritage is from the Bible that offering these lessons can only help create well-rounded students.

Diabetes is one of the top diseases Kentuckians battle. With Senate Bill 63, the appropriate state government agencies will work together to identify goals and benchmarks to reduce the incidence of diabetes in Kentucky. This will make the first time a collaborative and comprehensive plan will be developed.

All these bills as well as others we passed will now move to the House of Representatives for their consideration. If you feel strongly about these or other issues, please do not hesitate to call me toll-free at 1-800-372-7181 or TTY 1-800-896-0305. You can also follow legislative meetings via the Internet at website address

[www.lrc.state.ky.us](http://www.lrc.state.ky.us).

Note: Senator Jared Carpenter (R-Berea) serves on the Appropriations and Revenue Committee, the Banking and Insurance Committee, the Budget Review Subcommittee on Education, the Capital Projects and Bond Oversight Committee, the Economic Development, Tourism, and Labor Committee, and the Education Committee. He represents the 34th District including Lincoln, Madison, and Rockcastle counties. For a high-resolution .jpeg of Senator Carpenter, please log onto website address [www.lrc.state.ky.us/pubinfo/epphoto.htm](http://www.lrc.state.ky.us/pubinfo/epphoto.htm).

**OPERATION UNITE**  
Drug Tip Hotline  
**1-866-424-4382**  
Toll-free Treatment Help Line  
**1-866-90-UNITE**

**LOWEST PRICES IN TOWN** **LOWEST PRICES IN TOWN** **LOWEST PRICES IN TOWN**

**Elaine's CARPET BARN**

**SERIOUSLY OVERSTOCKED CARPET SALE**

<b>Mohawk 65 oz. Plush Destroys Pet &amp; Household Odors</b> <b>\$14<sup>99</sup></b> Sq. Yd.	<b>20 Yr Laminate Exotic Tigerwood</b> <b>\$1<sup>49</sup></b> Sq. Ft.	<b>10 mil Vinyl</b> <b>\$4<sup>99</sup></b> Sq. Yd. (or <b>55¢</b> Sq. Ft.)	<b>Vinyl &amp; Carpet Remnants</b> Starting At <b>\$2<sup>99</sup></b> Sq. Yd. (or <b>33¢</b> Sq. Ft.)	<b>Armstrong Sticky Tiles</b> <b>\$22</b> /Ctn 45 Sq. Ft. Ctn
<b>Custom Made/Bound Area Rugs</b> <b>\$1<sup>00</sup></b> Linear. Ft.	<b>Berber Carpet</b> <b>\$3<sup>99</sup></b> Sq. Yd. (or <b>44¢</b> Sq. Ft.)	<b>Commercial Carpet Prints</b> Starting At <b>\$4<sup>99</sup></b> Sq. Yd. (or <b>55¢</b> Sq. Ft.)	<b>15 Yr Laminate</b> <b>69¢</b> Sq. Ft.	

**Elaine's CARPET BARN Dalton Carpet Outlet**  
914 Bypass Somerset on Carpet Mountain  
Phone (606) 679-2333 Fax: (606) 451-0223  
Hours: Mon.-Fri. 9 a.m.-5 p.m.; Sat. 9 a.m.-1 p.m.

**We Will Not Be Undersold**  
©2011 Newspaper Holdings, Inc.

**LOWEST PRICES IN TOWN** **LOWEST PRICES IN TOWN** **LOWEST PRICES IN TOWN**

For All Your Hometown News . . .

Subscribe to the

**Mount Vernon Signal**

**In-County - \$20.00**

**Out-of-County - \$27.00**

**Out-of-State - \$35.00**

**Prices Per Year**

**10% Discount to Senior Citizens**

Name \_\_\_\_\_

Address \_\_\_\_\_

City \_\_\_\_\_

State \_\_\_\_\_ Zip \_\_\_\_\_

Please specify.....

New \_\_\_\_\_ Renewal \_\_\_\_\_

Mail to: Mt. Vernon Signal • PO Box 185 • Mt. Vernon, KY 40456

Beat Southwestern and McCreary

# Lady Rockets win battle with E-town

By: Sara Coguer

With the win over the tenth ranked team in the state Saturday, the Lady Rockets have now been victorious over five of the top twenty teams in the state.

The Lady Rockets beat the Elizabethtown Lady Panthers 73-64 in a hard fought battle at John Hardin High School.

Seven Lady Rockets scored in the victory, making it very hard for the Lady Panthers to try and stop only one or two players. Four Rockcastle players were in double figures, with Sara Hammond leading the way with 17 points in the winning effort, followed closely by Angie Lawrence with 16.

"This was a good test of our tournament readiness," said Coach Chrysti Noble. "It is good for us to face some stiff competition going into districts and regionals. We know we have a target on our backs, but we also know we are focused on one goal. One game at a time."

The Lady Rockets won

the first quarter of the game, outscoring the Lady Panthers 23-18, which is often a halftime score. Both teams would add double digits to their score in the second quarter, with the Lady Rockets going into the locker room at halftime up 40-37.

Rockcastle would outscore the Lady Panthers by five in the third, and go on to claim the victory, 73-64.

Other scoring for Rockcastle: Sydney Arvin, 11; Michaela Hunter, 10; Kristin Abney, 8; Shanlee Burton, 7 and Ella McQueary, 4.

### Rockcastle vs. Southwestern

Another twelfth district team took aim at the Lady Rockets last Friday night, when Rockcastle visited the Lady Warriors of Southwestern in Pulaski County.

The Rockets were not to be contained however, bringing the 52-39 victory home.

Another big scoring night for Rockcastle's two



Senior Sydney Arvin goes for two from an outlet pass in Monday night's action. Arvin had 8 points on the night.

leading scorers -- Sara Hammond with 21 and Angie Lawrence with 15 -- as well as a lackluster third quarter by the Lady Warriors helped fuel Rockcastle's win.

Rockcastle was up 15-12 at the end of the first quarter, and the Lady Warriors

managed to score even with the Lady Rockets at eight each in the second quarter to go into the locker room down only three to Rockcastle, 23-20.

However, the Lady Rockets outscored South

(Cont. to A9)

# Rockets swim team competes at Regionals

Submitted

The Rockcastle swim team recently completed their second season by competing in the KHSAA region 5 meet this past Friday and Saturday. Even with the team growing in size from 3 swimmers the first year to 9 swimmers this year the Rockcastle team is still small compared to the other 23 teams competing in the meet.

The 200 yard Medley relay of Lauren Burton, Kellan Coffey, Holly Cromer, and Cali Parker qualified Friday to swim in the finals on Saturday and finished 14th in the finals. The 200 yard Freestyle relay also qualified for Saturday's final and also finished 14th.

The Freestyle relay swam Friday's preliminary heat over five seconds faster than their seed time and in Saturday's final they dropped another two seconds off of Friday's time. The Freestyle team consisted of Lauren Burton, Rebecca Barron, Kellan Coffey, and Holly Cromer.

The boys 200 yard Medley Relay consisted of

Ashton Arvin, Andrew Burton, Lige Graves, and Jacob "JT" Taylor and they also qualified for Saturday's final by lowering their seed time by nearly four seconds.

In the individual events all four boys either matched or lowered their seed time with basically no practice at all for Ashton Arvin and Andrew Burton. Ashton lowered his time in the 50 free as Andrew matched his time in the 50 free and the 100 breast. While competing in the 50 and 100 free Lige Graves had his personal best in the 50 free. Jacob Taylor had personal best times in the 50 and 100 free by lowering his seed time for the 100 free by more than four seconds.

For the girls Cali Parker was able to improve her time in the 100 free by more than six seconds. Holly Cromer bettered her times in the 100 free by two seconds and in the 100 breast by three and a half seconds. Rebecca Barron also had her best meet of the year by swimming her fastest time in the 50 free and 100 free

(Cont. to A9)

# Rockets drop to 6-20 on year after losses to Mercer and Whitley

By: Sara Coguer

The Rockcastle County Rockets are now 6-20 on the year, losing last Friday to Mercer County and Tuesday night to Whitley County.

Despite senior Travis Carpenter's 28 point effort, the Rockets came up short to Mercer County 90-72.

Rockcastle was down 27-21 at the end of the first quarter, and trailed by 13 at the half, 50-37. Rockcastle did manage to outscore the Scotties in the third quarter, 23-20, but would eventually fall 90-72.

Other scoring for Rockcastle: Ashton Arvin and Josh McKinney, 7 each; Jaden Brock, 2; Ben Allen, 14; Bryson Amyx, 6 and Corey McPhetridge, 8.

Rockcastle vs. Whitley

Tuesday night saw more of the same for the young Rockets, as they traveled to Whitley County to only come home with another loss, 73-56.

It was a big night for sophomore Ben Allen who dished in 19 points for the Rockets, but the Colonels took an early 19-6 lead and never looked back.

Rockcastle went into the locker room at halftime down 41-21, and would not regain any momentum in the third, only able to score seven points, before eventually falling 73-56.

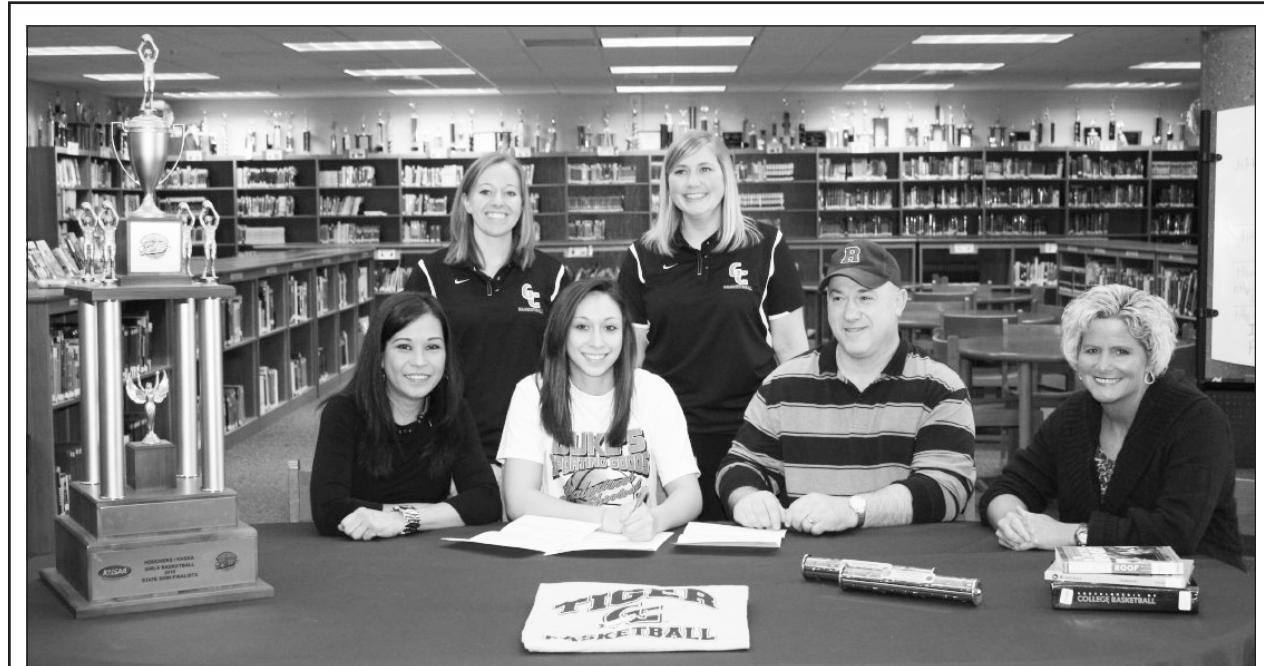
Other scoring for Rockcastle: Ashton Arvin, 8; Travis Carpenter, 10; Josh McKinney and Bryson Amyx, 4 each; Jaden Brock, 2; John Curtis Wilson, 3 and Corey McPhetridge, 6.



Junior Katie Cowan put in her best varsity performance of the year Monday night with 11 points off the bench for the Lady Rockets.



Senior guard Kristin Abney goes for two of her four points in Monday night's 84-22 rout of McCreary Central.



Senior point guard Angie Lawrence signed with Georgetown College Monday afternoon to continue her basketball career there. This season, as a Lady Rocket, Angie averages 14.1 points per game, 5.3 assists per game and 1.3 rebounds per game and is shooting 44.8% from two point range and 40% from three point range. In the above photo, with Angie on signing day was her mother and father, Marcy and Teddy Lawrence, Head Coach Chrysti Noble and back row, Georgetown Student Assistant Heidi Messer and new Georgetown Head Coach Andrea McClosky.



Rockcastle County High School Senior Dylan Thacker, a 6'0, 212 lb. offensive guard/defensive tackle signed Monday after to continue his football career playing for Cambellsville University. Dylan will join his older brother Derek, who signed with Cambellsville last year. Joining Dylan at his signing Monday were his grandparents, Diane and Walter Delaney, his parents, Greg and Angie Thacker and Head Coach Scott Parkey.

**NWTF**  
Conserve. Hunt. Share.

*Rockcastle County NWTF*  
*11th Annual*

**Hunting Heritage**  
**Banquet**

**February 26th**  
**Rockcastle County**  
**Middle School**

945 West Main St. • Mt. Vernon

Doors open: 6 p.m.  
Dinner Starts: 7:30 p.m.

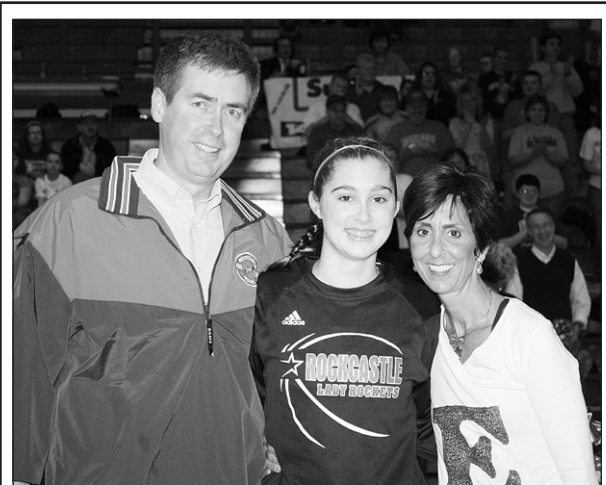
Single Ticket: \$45  
Couples Ticket: \$60  
Sponsor Ticket: \$250  
Jakes Ticket: \$10  
WITO Ticket: \$45  
Visiting Member: \$15



# Lady Rockets and Cheerleaders have Senior Night festivities



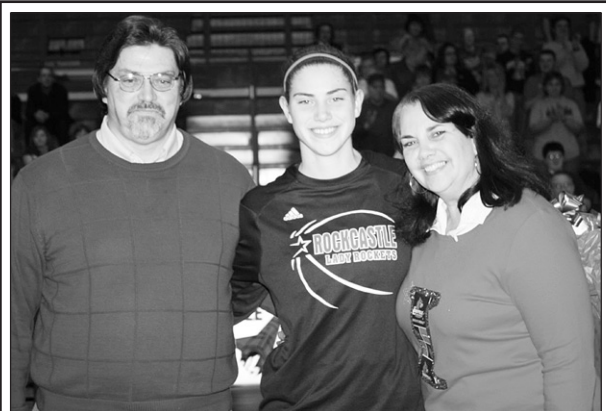
The Rockcastle County Lady Rockets honored their seven seniors Monday night before their last home game, which was against the McCreary County Lady Raiders. Above, Kristin Abney was escorted by her parents Johnny Fred and Penny Abney.



Sydney Arvin was escorted by her parents, Tony and Rebekah Arvin.



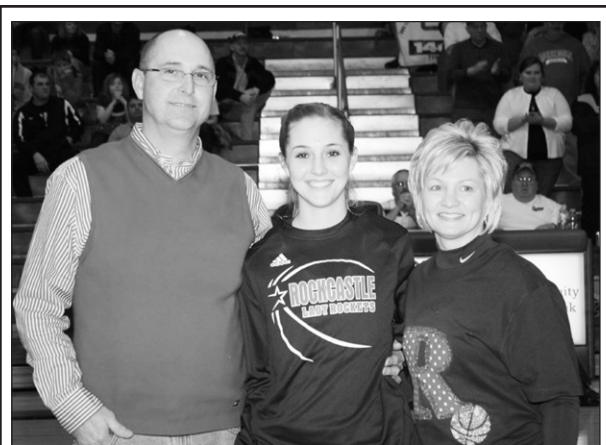
Shanlee Burton was escorted by her parents, Shannon and Charon Burton.



Sara Hammond was escorted by her parents, Eddie and Roxanne Hammond. Rockets #1 fan David Brock also escorted Sara.



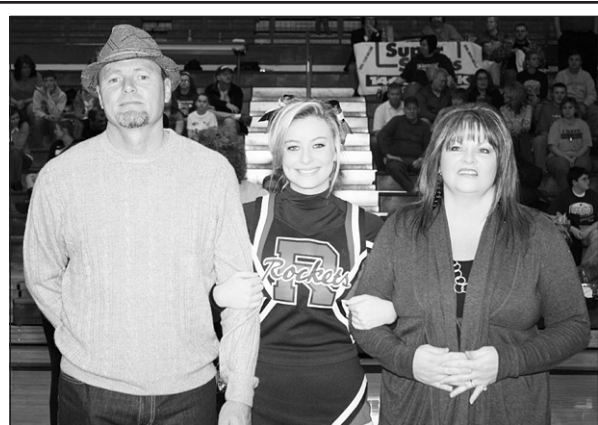
Angie Lawrence shown with her parents, Teddy and Marcy Lawrence.



Ella McQueary was escorted by her parents, John and Sheila McQueary.



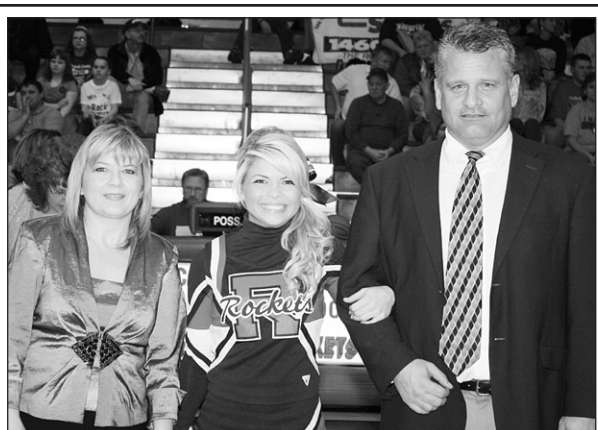
Manager Katie Linville was escorted by her parents, Roger and Phyllis Linville.



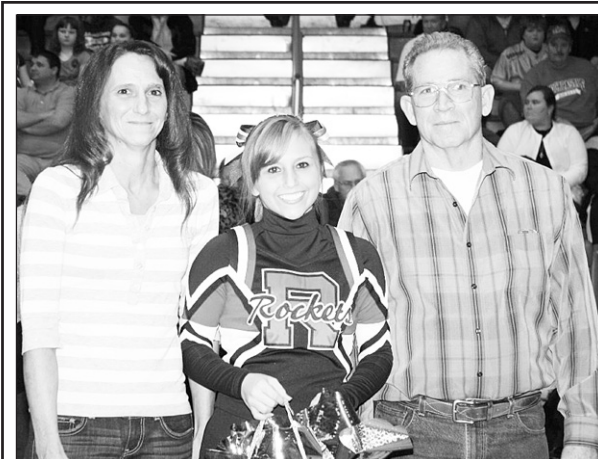
The Rockcastle County Rockets senior cheerleaders were also honored Monday night. Above, Rachel Nicely was escorted by her parents, Rick and Shelia Nicely.



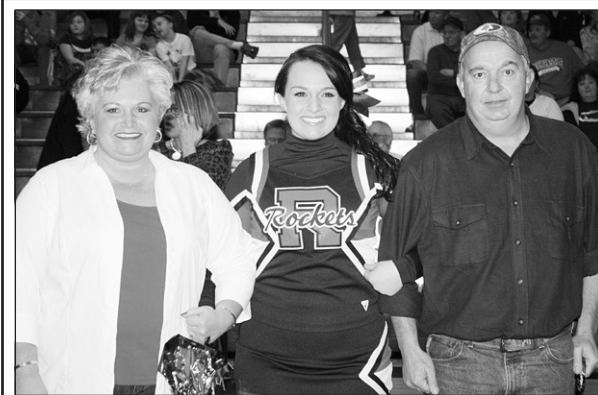
Morgan Hunt was escorted by her parents, Angie and Jeff Hunt.



Allyson Washburn was escorted by her parents Sherry and Lewis Cox.



Beth Guinn was escorted by her parents, Libbie and Leamon Clark.



Alivia Bullock was escorted by her parents, Celena and Ricky Bullock.



Kara Canterbury is the daughter of Ken Canterbury of Washington D.C., and Kitty and Don Reese, who escorted her.

## “Lady Rockets” (Cont. from A8)

western 16-7 in the third and 13-12 in the fourth to win 52-39.

Other scoring for Rockcastle: Sydney Arvin, 7; Shanlee Burton, 4; Kristin Abney, 3 and Michaela Hunter, 2.

### Rockcastle vs. McCreary

The Lady Rockets senior night brought in a packed house to showcase the six exiting seniors, and it was a rout from the beginning as the Lady Raiders fell heavily to Rockcastle, 84-22.

McCreary Central,

which started a 7th and an 8th grader and who is currently in a rebuilding year, could not do much but watch helplessly as seniors Sara Hammond, Angie Lawrence and Sydney Arvin put on a fun first quarter show.

The show included two alley-oop passes to Hammond for the easy score, three steals from Lawrence and two baskets from Arvin that helped the Lady Rockets to a 20-11 lead at the end of the first quarter.

The nine that the Lady Raiders were down at the end of the first was as close as they would get, as Shanlee Burton and junior Katie Cowan would get in

on the scoring action, along with Ella McQueary and Hammond during the second quarter to help the Lady Rockets extend their lead to 25 at the half, 40-15.

Rockcastle would add another 21 points to their total in the third quarter, behind some big threes by Lawrence, Cowan and sophomore Sara Adams, while McCreary Central could only muster a basket and two free throws, to end the quarter down 61-19.

The fourth quarter saw the Lady Rockets bench come alive again with scoring help from junior Holly Ham and sophomore Emily Miller, to end the game with an 84-22 Rockcastle win.

Scoring totals for Rockcastle: Angie Lawrence and Sara Hammond, 15 each; Shanlee Burton, 14; Sydney

Arvin, 8; Katie Cowan, 11; Kristin Abney, 6; Ella McQueary and Kadi Cobb, 2 each and Emily Miller and Holly Ham, 4 each.

The Lady Rockets and Rockets will travel to South Laurel Friday night for a doubleheader beginning at 6:00 p.m.

## “Swim Team” (Cont. from A8)

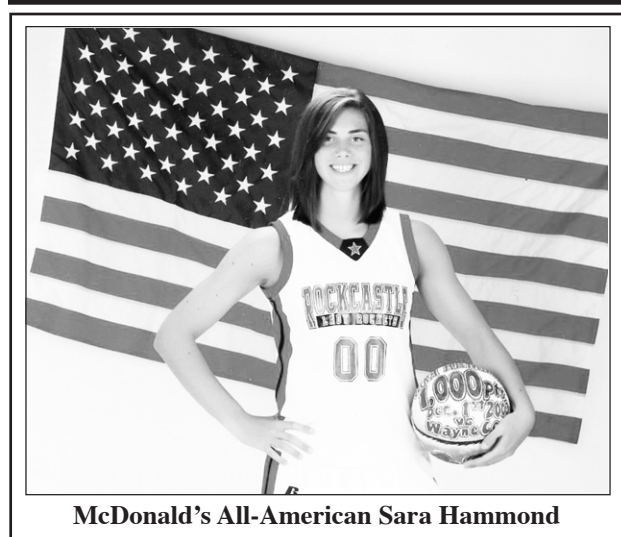
by two seconds. Kellan Coffey also saved her best for the last meet by swimming faster in her 50 free and her 100 free by two and a half seconds. Lauren Burton also improved her time on the 50 free in Friday’s prelims and qualified for Saturday’s final and in the 50 free final on Saturday Lauren finished 12th overall.



The Rockcastle County Rockets swim team competed in the 12th regional championships last weekend. Members of the team are, from left: Ashton Arvin, Assistant Coach Shannon Burton, Cali Parker, Lige Graves, Lauren Burton, Andrew Burton, Kellen Coffey, Jacob Taylor, Holly Cromer, Rebecca Barron and Coach Charon Burton.



Members of the JROTC at the Rockcastle County High School presented colors at Monday night’s girls basketball game against McCreary Central. Pictured above, from left: Second Lieutenant Brady McClure, Second Lieutenant Logan Durham, Captain Jacob Houk, and Second Lieutenant Justin Houk.



McDonald's All-American Sara Hammond

## “Hammond”

(Cont. from front)

as from the three point arc. She is shooting 57.5% from the field this year.

Sara has had a stellar career with the Lady Rockets, beginning in the 7th grade when she first dressed out for the high school varsity team and played in 13 games that season. She joined the very exclusive 1000 point club during her junior year, on December 1, 2009, during a game against Wayne County.

Behind Hammond, the Lady Rockets basketball team has enjoyed much success, including a state tournament run that ended in the semi-finals last season. The Lady Rockets also went to the state tournament Hammond's freshman year.

## “Condemned”

(Cont. from front)

the property to be condemned and, after that process, landowners named in the suit will be served with the suit and with a copy of the commissioners' evaluations. Following that, the landowners will have 20 days to answer the suit or accept the commissioners' evaluations. Commissioners appointed were Tommy Harold Mink, Darrell Whitaker and Gary Mink.

Over 50 landowners on the road have already provided easements to the county.

The road is three miles in length and the county plans to begin widening, ditching and building up the shoulders for about a mile, starting at the back end.

“We need a 40 ft. easement but the road bed itself will only be about 17 feet wide,” County Judge/Executive Buzz Carloftis said Wednesday. Carloftis added that no buildings will have to be moved and “any fencing that has to be removed will be replaced in as good a shape, if not better, than before.”

Carloftis also pointed out that if the condemnation suit is successful, ownership of the land needed is given over to the county as opposed to ownership being retained by the landowners who provided an easement.

“My office and the magistrates want only one thing, to make Lambert Road much safer for its many residents. It is unfortunate that a few landowners have failed to cooperate with the county. If they had been cooperative, the road work could have been completed over a year ago. Let's remember exactly where the blame for the delay lies -- with the landowners -- not with me, the magistrates, the county attorney or county government,” Carloftis said Wednesday.

## “Forum”

(Cont. from front)

Ball said.

“There is a huge disconnect between the public and the resources that are out there,” said Ball. “It is my job to go to companies we all know and hear about on a daily basis and ask them to invest in the incredible human talent of Eastern Kentucky.”

Ball went on to say, “We have to do a better job of giving our children a better opportunity to work and live at home.”

According to an informational brochure distributed at the meeting, “The Distance Earning Initiative

executive Buzz Carloftis told the court that they should consider making a major payment on of \$40,000 in March. The note is set up to mature in 2027.

Of course, several of the loans are paid by other entities, including the courthouse annex which is paid by the Administrative Offices of the Court; three notes for ambulances which are paid by the Rockcastle Ambulance Service; a KIA loan to Western Rockcastle Water Association, paid by the association and, of course, the \$2.7 million loan for the building for SourceCorp which is being paid from rent proceeds.

RCIDA chairman Corey Craig told the court recently that all of the proceeds of the rent payment is being applied to the loan, causing it to be paid off at a faster pace than originally scheduled. Through December over \$300,000 had already been paid on the principal of the note.

Concerning the county's financial condition, Carloftis commented, “The county government is, without argument, in the best financial condition in its 200 year history. For the first time ever, the magistrates and I will be able to provide local government functions that other local governments have done for years. One of the most important functions is to help create an environment attractive for the growth of private businesses and jobs. The new industrial park is a result of our fiscal court's commitment to make local investments for future job growth.”

## “Crawford”

(Cont. from front)

Anderkin, made for a smooth transition for Crawford, who was highly qualified for the position. Her experience, in working for Bunning throughout the state, gave her many opportunities to help grow Rockcastle County.

In her short tenure, Crawford oversaw many projects, including a small business expansion, a Distance Earning Forum for those wanting to work from home, and implementing a feasibility study for a health and wellness/recreation facility to improve the quality of life for Rockcastle Countians.

“I have thoroughly enjoyed working with Corey Craig and the Rockcastle County Industrial Development Board, Judge Carloftis, the fiscal court and our local mayors,” Crawford said Tuesday. “We are fortunate to have strong leadership in the county who have the county's best interests at heart. I look forward to working with my successor to create a smooth transition to continue the many projects currently in progress.”

Crawford went on to say, “the offer to represent U.S. Senate Minority Leader Mitch McConnell was unexpected, but it is a high honor that I could not turn down. Although I will be representing him in the 6th District, my door will always be open and I will remain a strong advocate for Rockcastle County, continuing to do everything possible to help the county move forward.”

RCIDA Board Chairman Corey Craig said of Crawford's resignation, “The RCIDA is disappointed that Regina will be leaving. But, we are grateful for the time she was with us and for the good work she did. We wish her much success in her new role as field representative for Senator McConnell and look forward to working with her to improve our region and all of Kentucky.” He went on to add, “The RCIDA will work as quickly as possible to fill the vacancy so we can continue to build on the momentum that we have as we continue to work toward growing and improving the economy of Rockcastle County.”

## “Sentenced”

(Cont. from front)

Court and grand jury indictment. These proceedings normally can take up to sixty-plus days. Bartley, recommended a ten year sentence.

Judge Burdette proceeded directly into sentencing, also bypassing the thirty-plus days normally required to finalize sentencing matters. Burdette noted the recommendation of the Commonwealth and informed Spoonamore that “this court has considered all the options by which you could be rehabilitated, but even more so, the court notes your propensity to be a criminal.”

The judge also noted that Spoonamore had been through the system numerous times and that he, according to his prior sentencing reports, had not completed school, a factor that the judge noted “leads to the need to create more jails” and for Spoonamore, made him “less likely to be successful in leading a crime-free life” should he be granted probation.

Judge Burdette decided, based on these factors, there was “no choice but to sentence you to the ten years recommended.”

Following the hearing, Bartley told the *Signal*, “Again, a man who is no stranger to the court system has been handed a lengthy but deserved prison sentence, and because of the joint efforts of all involved, this case was resolved at a minimal cost to the county.”

Commonwealth Attorney Eddy F. Montgomery again expressed his appreciation for the fiscal court, Jailer Jmes Miller, the judges, County Attorney Billy Reynolds and Circuit Clerk Teresa VanZant's office for cooperating in the Rocket Docket process. “I hope this sentence sends a message that we will not tolerate the sanctity of someone's home being violated. The Sheriff's Department did an excellent job in bringing this man to justice and we are pleased, once

again, that this case was not drawn out, which would only add more of a burden on the county taxpayers.”

Spoonamore was remanded to the Department of Corrections, where he will be classified and sent to a state prison.

## “Attacked”

(Cont. from front)

quarantine by the health department and possible further legal action is pending by Rockcastle County Attorney Billy Reynolds.

## Central Body Service

275 Richmond Street - Mt. Vernon

### Precision

## Collision - Repair

## Quality Work Since 1966

Free Estimates - All Work Guaranteed

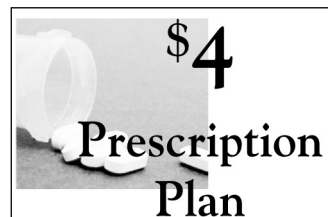
606-256-4210

## Main Street

PHARMACY

The People You Know...The People You Trust

The things you love...at prices you can afford



Jewelry



COLONIAL CANDLE

Main St. • Mt. Vernon • 256-0475

Danetta Craig, Pharmacist/Owner



You're invited to a free catered dinner and presentation featuring

## Drug Abuse Prevention

Dr. Karen Saylor • John and Nancy Hale

## Patient Safety Topics

Traci Bullens, RN

March 8, 2011 • 6:00 p.m.

Hickory Grove Pentecostal Church

Hwy. 1505 • Brodhead

Please sign up before March 1 by calling 256-7746 or e-mail s.brown@rhrcc.org



ROCKCASTLE REGIONAL HOSPITAL RESPIRATORY CARE CENTER

# News from the Rockcastle Courthouse

## Circuit Civil Suits

City of Mt. Vernon, Commonwealth of Kentucky vs. Ruth Girt, condemnation suit.

Ky. Housing Corp. vs. Michael Brock, et al, \$51,877.15 plus claimed due.

Asset Acceptance LLC vs. Phyllis M. Sowder, \$6,171.72 plus claimed due.

Ernest A. Mobley vs. April D. Mobley, petition for dissolution of marriage.

Kimberly Ann Phillips Sparks Baker vs. James Roy Sparks, petition for dissolution of marriage.

Opal Wilder, et al vs. Melinda Bowles, et al, verified petition for permanent custody.

PYOD LLC vs. Penney Hensley,

\$4,543.78 plus claimed due.

Chase Home Finance LLC vs. Lisa K. Allen et al, \$9,920.48 plus claimed due.

JP Morgan Chase Bank vs. Byron Jackson et al, \$17,114.92 plus claimed due.

## Marriage Licenses

Misty Dawn Shelton, 30, Lancaster, unemployed to Brian Keith Gibson, 38, Nicholasville, Central Ky. Processing, 2/7/11.

## District Civil Suits

KY Collect LLC vs. Richard Gibbs, \$1,036.32 plus claimed due.

Proctor Brock vs. Robert Douglas et al, forcible detainer complaint.

Portfolio Recovery Asso. LLC vs. Tina Juddy, \$2,080.15 plus claimed due.

Midland Funding LLC vs. Wayne Hart,

\$1,882.87 plus claimed due.

Midland Funding LLC vs. Aaron Collins, \$1,906.25 plus claimed due.

KY Farm Bureau Mutual Ins. Co. vs. J. Bingham, \$2,327.51 plus claimed due.

## Deeds Recorded

Bank of America, property on Hwy. 1505 to Shannon L. Osborne and Robert William Perkins. Tax \$27.

Melinda G. Higgins, property on McHargue Branch Road, to Merrill K. Brown. No tax.

Begley Properties LLC, property in Possum Kingdom section, to Boone Forestlands LLC. Tax \$101.50

Tricia Doty and James C. Robbins, property on KY 70, to Steven Jones. Tax \$10.

## "In God We Trust" Plates

Customers now have two standard issue choices when renewing their tags. "In God We Trust" and Unbridled Spirit" are both standard issue and the price for both is \$21.00.

If the customer wishes to receive the "In God We Trust Plate", they should bring their current plate to the clerk's office at time of renewal. If a customer wishes to change plates prior to their renewal deadline they may bring their current plate and trade it for the new plate for a \$6.00 charge.

"In God We Trust" plates may also be personalized. The \$25.00 personalization charge will apply.

## District Court

Feb. 7-9, 2011  
Hon. Jeffrey S. Lawless  
Hon. Ralph McClanahan II

Claudetta Ruth Alexander: operating motor vehicle under influence of alcohol/drugs, sentencing order entered.

Kyle A. Barron: expired temporary plate, and three other charges, license suspended for failure to appear (fta).

Speeding: Jennifer D. Dansby, paid \$158 total; Cory G. Mogul, license suspended for fta; Estill W. Norton, paid; Joey W. Bullock, 3 days in jail in lieu of fine/costs; Johna C. Henderlight, \$24 fine plus costs;

Jennifer D. Short: possession of marijuana and drug paraphernalia - buy/possess, \$100 each charge/\$200 plus costs.

Raymond Blankenship III: defective equipment, \$50 plus costs.

Ashley Bussell: public intoxication and possession of marijuana, sentencing orders entered.

Donald Gadd: escape, 90 days/to serve 30/costs waived.

Summer McCowan: terroristic threatening, \$100 fine and costs.

Gregory McGuire: operating motor vehicle under influence of alcohol/drugs, operating on suspended/revoked operators license, possession controlled substance and possession of marijuana, sentencing orders entered.

Medina G. Stamper: no/expired registration lplates l- receipt; operating on suspended/revoked operators license; failure to maintain required insurance; failure to produce insurance

card, failure to register transfer of motor vehicle, improper display of registration plates (two counts), 15 days in jail/concurrent.

Connie M. Sciberras: careless driving, \$50 fine and costs.

Landon L. Fletcher: improper registration, \$25 fine; instructional permit violations, \$25 fine; failure to wear seat belts, \$25 fine; failure to maintain required insurance, \$500 fine/suspended on condition.

Benson J. Ingram: No operators/moped license, bench warrant(bw) issued for fta.

James L. Jones;no/expired registration plates, \$25 fine; no operators license in possession, \$25 fine.

Phillip G. Lark: stalking, terroristic threatening, paid \$193 total.

Paula M. Stewart: operating motor vehicle under influence of alcohol/drugs, sentencing order entered.

Veronica Bray: public intoxication, 20 days/probated 12 months on condition plus costs.

Jamey D. Fleming: reckless driving, \$50 and costs; no operators license in possession, \$50 fine.

**Country Care Daycare**

State Licensed Child Care Home  
Juetta Potter, Director/Owner

\*Safety First!  
\*Clean, Country Air!  
\*Lots of Fun, Learning & TLC!  
\*15 Years Experience

**3 STARS RATED BY THE STATE!**  
Located in Quail area of Rockcastle Co.  
Brodhead School District  
637 Shug Road, Mount Vernon

**Phone: 606.256.KIDS(5437)**

\*Openings for ALL AGES  
\*Flexible hours available  
\*References available  
\*Licensed since 2000

juetta@countrycaredaycare.com      www.countrycaredaycare.com  
"Quality Care with a Mother's Touch"

**Douglas G. Owen, M.D., F.A.C.S.**

Eye Care for You and Your Family



*Specializing In*

Cataracts ~ Glaucoma ~ Diabetes  
Ocular Plastics ~ Eye Exams

Dr. Owen is pleased to announce the opening of his new office at

**332 Highland Park Drive  
Richmond, Kentucky 40475**

Call today for an appointment  
**859-623-5070**  
or Toll Free  
**1-866-656-EYES (3937)**

Looking forward to assisting you with your eye care needs.

**CMI / BURDETTE TAX SERVICE**

480 W. Main, Mt. Vernon  
606-256-3224 or 9150  
Gail Burdette, owner  
burdettetax.com

**Rockcastle County Clerk's Office**

**NEW OFFICE HOURS**

Monday - Wednesday & Friday  
8:30 a.m. to 4:00 p.m.

Thursday  
8:30 a.m. to 6:00 p.m.

Saturday - 8:30 a.m. to Noon

No out-of-state titles or salvage vehicles can be processed after 4 p.m. on Thursdays.  
For additional information call the clerk's office at 606-256-2831.

*Danetta Ford Allen, Clerk*

3rd Annual  
**Rockcastle County Relay for Life BASKETBALL TOURNAMENT**

**March 18-19, 2011**  
**RCMS Gym**  
**Cost \$175**

\*Space limited to first 10 teams\*

Event is free to the public.  
Concessions will be available.  
We invite everyone to come join us and cheer on your team!

**For more information or to register a team, call Jessica Evans at 256-7748.**

**Team Registration Form**

Team Name: \_\_\_\_\_ Color: \_\_\_\_\_

Team Captain: \_\_\_\_\_

Address: \_\_\_\_\_

Phone: \_\_\_\_\_

E-mail: \_\_\_\_\_

Team Member Information:

	Name	Shirt Size (S-XL)	Number
1.	_____	_____	_____
2.	_____	_____	_____
3.	_____	_____	_____
4.	_____	_____	_____
5.	_____	_____	_____
6.	_____	_____	_____
7.	_____	_____	_____
8.	_____	_____	_____
9.	_____	_____	_____
10.	_____	_____	_____

**Registration Deadline: Friday, March 4, 2011.**  
**Cost: \$175 • Make checks payable to Rockcastle Regional**  
Mail to: Attn: Jessica Evans, P.O. Box 1310, Mt. Vernon, KY 40456

**All proceeds benefit RELAY FOR LIFE.**

• Attention Taxpayers •

If you have built a new house, garage, barn, etc., purchased or sold a mobile home or made any changes in your existing property since last year, it is especially important that you notify us. Also, if you own property and did not receive your tax bill, check with the Sheriff's Office of PVA Office to see if we have the correct address.

• Attention Senior Citizens •

The Homestead Exemption for 2011 will be \$34,000. If you own and occupy your home and will be 65 years of age any time during the year, you must file an application with the P.V.A. in order to be eligible for this exemption. If you are already receiving the Homestead Exemption, \$34,000 will be automatically deducted from your 2011 assessment, and it will not be necessary for you to fill out an additional application.

• Attention Disabled Persons •

The Homestead Exemption also applies to anyone who is totally disabled. In order to qualify for this, you must receive 100% disability payments for the entire calendar year and must reapply each year.

The PVA office is located on the third floor of the courthouse and is open from 8:00 - 4:00, Monday - Friday.

Margaret Offutt

Property Valuation Administrator

# Dates for CRP general signup announced

John W. McCauley, Executive Director of USDA's Farm Service Agency in Kentucky, today announced Agriculture Secretary Tom Vilsack has set general signup for the Conservation Reserve Program (CRP) to begin on March 14, 2011,

and continue through April 15, 2011. During the signup period, farmers and ranchers may offer eligible land for CRP's competitive general signup at their county Farm Service Agency (FSA) office.

"Over the past 25 years,

CRP's benefits have grown thanks to many unexpected, but welcomed improvements to our natural resources — cleaner water, improved air quality, better habitat for wildlife, viewing opportunities of that wildlife and of course, a huge reduction in soil erosion," said McCauley. "Today's announcement will help this administration continue its strong conservation legacy."

Land currently not enrolled in CRP may be offered in this signup provided all eligibility requirements are met. Additionally, current CRP participants with contracts expiring this fall may make new contract offers. Contracts awarded under this signup are scheduled to become effective Oct. 1, 2011.

To help ensure that interested farmers and ranchers are aware of the signup period, USDA has signed partnership agreements with sev-

eral conservation and wildlife organizations that will play an active role in USDA's 2011 CRP outreach efforts.

FSA, which administers the CRP, will evaluate and rank eligible CRP offers using an Environmental Benefits Index (EBI) that shows the environmental benefits to be gained from enrolling the land in CRP. The EBI consists of five environmental factors (wildlife, water, soil, air and enduring benefits) and cost. Decisions on the EBI cutoff will be made after the sign-up ends and after analyzing the EBI data of all the offers.

In addition to the general sign-up, CRP's continuous sign-up program will be ongoing. Continuous acres represent the most environmentally desirable and sensitive land. For more information, visit <http://www.fsa.usda.gov/crp>.



The Mt. Vernon Lions Club recognized officers at the Christmas dinner on December 21, 2010. Lion president Mike Debord, above left, was presented a plaque for being an outstanding president of the organization for several years by Lion Bobby Kendrick. Lion Virginia Darst was presented a plaque for being an outstanding secretary of the organization this past year. Lions Tom and Virginia Darst also received the Lion of the Year plaque.



## Conservation District Cost Share Program

The Rockcastle County Conservation District is accepting requests for cost share funding under the Kentucky Soil Erosion and Water Quality Cost Share Program beginning February 1 and extending through February 28, 2011.

The Kentucky Soil Erosion and Water Quality Cost Share Program was created in 1994 by the Kentucky General Assembly to help agricultural and silviculture operations protect the soil and water resources of the Commonwealth. This financial and technical assistance program assists individual agriculture producers in the development and implementation of their agriculture water quality plans, which are required under state law. Any person engaged in agricultural or silvicultural operations is eligible to apply through the local conservation district, which oversees the installation of best management practices. The State Cost Share program gives a high priority to animal waste related problems and agricultural district participants where pollution problems have been identified. The best management practices, approved through the State Cost Share Program, help reduce animal waste nutrients, prevent the loss of topsoil, and minimize sediment and other pollutants to Kentucky's streams, rivers, lakes and ground-water supplies. Among the

eighteen practices eligible under the State Cost Share Program, some of the most frequently installed practices are Agricultural Waste Control Facility, Heavy Use Area Protection, Rotational Grazing System Establishment, Stream Crossing, and Streambank Stabilization. Please contact your local conservation district office for details on all eligible practices. In the first twelve years of this program, the Division of Conservation has received 21,465 applications seeking \$214 million in cost share assistance. Based on the available funds to the program in each of these years, 7,725 of those applications have been approved for a total of \$82.5 million.

Funding for practices will be approved by the Soil and Water Conservation Commission and the Kentucky Division of Conservation, located in Frankfort, as funds are available. Approved applicants will be notified in June or July of 2011 and they will have 12 months to complete their practice.

For more information stop by the Rockcastle County Conservation District Office located in the USDA Service Center at 2019 New Brodhead Rd., Mt. Vernon, KY. Office hours are Monday through Friday from 8:00 a.m. to 4:30 p.m. Phone: 256-2525 Ext. 3.

### Commonwealth of Kentucky 28th Judicial Circuit Rockcastle Circuit Court • Division II Civil Action No. 09-CI-00221

**Flagstar Bank, FSB** Plaintiff

V.

**Ronnie W. Pennington,  
Sherry R. Pennington,  
Mortgage Electronic Registration  
Systems, Inc., American General  
Financial Services, Inc. and  
United States of America** Defendants

#### NOTICE OF SALE

Pursuant to a judgment and order of sale entered in this action on March 12, 2010 and order entered on January 14, 2011 for the purpose of satisfying the judgment against the defendants in the amount of ONE HUNDRED NINE THOUSAND FIFTY FOUR DOLLARS AND 77/100 (\$109,054.77) plus interest, costs and attorney fees. I will offer at public auction the hereinafter described real property in Rockcastle County, Kentucky.

**At the Courthouse on East Main Street  
Mt. Vernon, Kentucky  
on Friday, February 18, 2011  
Beginning at the Hour of 11:30 a.m.**

Said property being more particularly bounded & described as follows:

5190 Copper Creek Road, Crab Orchard, KY 40419  
Lot Number 6- Located on the South side of Copper Creek Road, to wit:  
Beginning on a steel pin set in the South right of way of the Copper Creek Road, also a corner of a 30 foot right of way; thence with the South right of way of the Copper Creek Road, North 74° 16' 47" East, 88.05 feet to a stake; thence with the South right of way of the Copper Creek Road, North 58° 24' 30" East, 38.99 feet to a steel pin, a corner of Lot 7; thence with the property line of Lot 7, South 22° 33' 01" East, 205.30 feet to a steel pin; thence South 64° 08' 18" West, 152.35 feet to a steel pin, a corner of a 30 foot right of way; thence North 15° 43' 13" West, 220 feet to the point of beginning.  
Containing 0.665 acres, more or less.  
The parties acknowledged that the Grantors have retained a 30 foot easement adjacent the western line of the above described real property. The parties further acknowledge that Grantees shall have the right to use said easement provided Grantees bear 1/2 cost of the developing said easement and 1/2 of the cost of maintaining said easement.

Being the same property conveyed to Ronnie W. Pennington, et ux. by deed dated February 7, 2007 of record in Deed Book 214, Page 421 in the Rockcastle County Clerk's Office.

#### The property shall be sold on the following terms & conditions:

1. The real property shall be sold for cash or upon a credit of thirty (30) days with the purchaser required to pay a minimum of twenty percent (20%) of the purchase price in cash on the date of sale and to secure the balance with a bond approved by the Master Commissioner.
2. The bond shall bear interest at the rate of twelve percent (12%) per annum until paid in full. The bond shall have the force and effect of a judgment and shall be and remain a lien upon the property sold as additional surety for the payment of the purchase price.
3. Unpaid taxes of record at the time of entry of judgment shall be paid out of the proceeds of the sale.
4. The purchaser shall pay the 2010 local, county and state property taxes.
5. Full satisfaction of the plaintiff's judgment shall be paid out of the proceeds of the sale.
6. The purchaser shall have possession of the real property upon compliance with the terms of the sale.
7. In the event that the plaintiff is the successful bidder and the sale price does not exceed the amount of the plaintiff's judgment, no deposit or bond shall be required.
8. The successful bidder shall at bidder's own expense carry fire and extended insurance coverage on said improvements from the date of sale until the purchase price is paid in full with a loss payable clause to the Rockcastle Master Commissioner.
9. The sale shall be made subject to all easements, set back lines, restrictions or covenants of record or otherwise and shall be sold "as is".

**John D. Ford  
Master Commissioner  
Rockcastle Circuit Court**

### Commonwealth of Kentucky 28th Judicial Circuit Rockcastle Circuit Court • Division II Civil Action No. 10-CI-00219

**Tax Ease Lien Investments 1, LLC** Plaintiff

V.

**Countrywide Homes, Inc. Et. Al** Defendants

#### NOTICE OF SALE

Pursuant to a judgment and order of sale entered in this action on December 10, 2010 for the purpose of satisfying the judgment against the defendants in the amount of TWO HUNDRED SEVENTY SEVEN DOLLARS AND 70/100 (\$277.70) plus interest, costs and attorney fees. I will offer at public auction the hereinafter described real property in Rockcastle County, Kentucky.

**At the Courthouse on East Main Street  
Mt. Vernon, Kentucky  
on Friday, February 18, 2011  
Beginning at the Hour of 11:30 a.m.**

Said property being more particularly bounded & described as follows:

Lying to the northwest of the new road leading from Clear Creek to U.S. Highway 421, and beginning at a fence on the north edge of the new road, corner to Dewey Thomas; thence with the fence and Thomas Line, to line of Jimmy Coins; thence with Coins' line and the fence to the corner of Berea College; thence south with the line of Berea College to the right of way of the new road; thence with the right of way of said road to the point of beginning, and containing thirty-five (35) acres more or less.

EXCLUDED: There is excepted from and not included in this conveyance the property conveyed to Johnny T. Dees and Peggy A. Dees, husband and wife, by Deed dated April 14, 1995 and recorded in Deed Book 157, page 299, in the Rockcastle County Clerk's office.

EXCLUDED: There is excepted from and not included in this conveyance the property (3/4 of an acre ±) conveyed to Carl Wayne Isaacs and Wanda Carolyn Isaacs, husband and wife, by Deed dated January 28, 1998 and recorded in Deed Book 133, page 192, in the Rockcastle County Clerk's office.

EXCLUDED: There is excepted from and not included in this conveyance the property (2.22 acres) conveyed to Carl Wayne Isaacs and Wanda Isaacs, spouses, by Deed dated July 18, 2000 and recorded in Deed Book 180, page 443, Rockcastle County Clerk's office.

EXCLUDED: The property being conveyed herein is subject to a right of easement granted by James L. Dees to the Kentucky Department of Highways and/or Rockcastle County Fiscal Court by right of Easement for School Bus Turn Around dated December 17, 1986 and recorded in Deed Book 130, page 57, in the Rockcastle County Clerk's office.

THERE IS EXCEPTED THEREFROM, the following property conveyed to Lloyd Dees and Donna Dees, husband and wife, by Deed dated April 24, 2008, and recorded in Deed Book 221, Page 375, in the Office of the Rockcastle County Court Clerk.

Situated in the Commonwealth of Kentucky, County of Rockcastle and being a part of the property as conveyed to Country Homes, Inc. by Deed Book 215, Page 66 and Deed Book 215, Page 70 as recorded in the Office of the Rockcastle County Clerk and being more particularly bounded and described as follows;

Beginning, for REFERENCE, at an iron pin set in an intersection of the northerly right-of-way of Hammonds Fork Road and Blue Jay Loop and being a common corner to the properties as conveyed to Carl Wayne Isaacs and Wanda Isaacs by Deed Book 180, Page 442 and Deed Book 133, Page 192;

Thence with the northerly right-of-way of Blue Jay Loop, N 65° 51' 13" E a distance of 305.06 feet to an iron pin found with cap labeled #2463;

Thence S 09° 05' 41" W a distance of 14.74 feet to the centerline of Blue Jay Loop;

Thence with the centerline said Blue Jay Loop, N 54° 56' 06" E a distance of 109.98 feet to the TRUE POINT OF BEGINNING of Tract herein to be described;

Thence with the centerline said Blue Jay Loop and crossing through aforesaid Country Homes, Inc. the following four (4) new courses: N 54° 56' 06" E a distance of 53.98 feet to an iron pin set; N 23° 52' 41" E a distance 186.55 feet to an iron pin set; S 74° 55' 16" E a distance of 124.12 feet to an iron pin set; S 09° 20' 00" W a distance of 321.11 feet to an iron pin set in the northerly right-of-way of Hammonds Fork Road; Thence with the northerly right-of-way of Hammonds Fork Road, S 68° 16' 21" W a distance of 41.71 feet to an iron pin set;

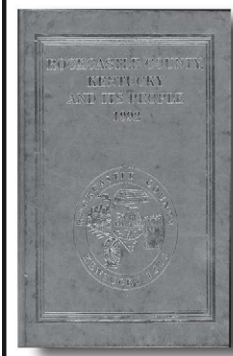
Thence crossing through said Country Homes, Inc. N 42° 22' 24" W a distance of 220.65 feet to the Point of Beginning, passing an iron pin set at 208.60 feet and containing 1.131 acres by survey, subject to all legal highways and rights-of-ways whether of record or not. All iron pins set are 1/2" by 18" rebar with orange plastic caps labeled "HUPP #3623". All measurements are based upon an actual field survey made by Covenant Surveying, LLC on the 19th day of April in the year of our Lord 2007. All bearings are based on an easterly line of the property as conveyed to aforesaid Don Dees as being S 39° 45' 00" E by Deed Book 183, Page 505.

#### The property shall be sold on the following terms & conditions:

1. The real property shall be sold for cash or upon a credit of thirty (30) days with the purchaser required to pay a minimum of twenty-five percent (25%) of the purchase price in cash on the date of sale and to secure the balance with a bond approved by the Master Commissioner.
2. The bond shall bear interest at the rate of twelve percent (12%) per annum until paid in full. The bond shall have the force and effect of a judgment and shall be and remain a lien upon the property sold as additional surety for the payment of the purchase price.
3. Unpaid taxes of record at the time of entry of judgment shall be paid out of the proceeds of the sale.
4. The purchaser shall pay the 2011 local, county and state property taxes.
5. Full satisfaction of the plaintiff's judgment shall be paid out of the proceeds of the sale.
6. The purchaser shall have possession of the real property upon compliance with the terms of the sale.
7. In the event that the plaintiff is the successful bidder and the sale price does not exceed the amount of the plaintiff's judgment, no deposit or bond shall be required.
8. The sale shall be made subject to all easements, set back lines, restrictions or covenants of record or otherwise and shall be sold "as is".

**John D. Ford  
Master Commissioner  
Rockcastle Circuit Court**

## Rockcastle Co., KY and its People — 1992



Only a few copies remain!  
Come to the  
**Mt. Vernon Signal**  
or call the publisher at  
877-Co-Herit

# Classifieds

## CLASSIFIED RATES

- Local Rates - \$4 for 25 words or less - .10 each additional word
- Display Classifieds \$5.00/Inch

**Deadline for Classifieds is 10 a.m. TUESDAY**

## For Rent

**For Rent:** 2 and 3 bedroom mobile homes, starting at \$150 per month plus deposit. 308-5389. 9x4p

**For Rent:** Small 3 bedroom house w/central heat and air. KU electric. Conveniently located in Mt. Vernon. \$400 month/\$400 deposit. 859-559-9903 or 606-758-9882.

**For Rent:** 3BR/1BA house in town. Has gas heat, central air. \$440 month/\$400 deposit. Includes water and sewer. Call 308-4509.

**For Rent**  
Maple St. Storage  
of Brodhead  
256-2884 or  
606-308-2491



**Home for Sale • 152 Tyree St. - Brodhead, Ky.**  
Home has 4/5 bedrooms, 2 baths, large eat-in kitchen, large living room, den and laundry room. There is also a detached garage with office space.  
**For more information call David or Diane Ott at 606-758-8630**

## LAND LAND LAND Pulaski County



Between Somerset & Mt. Vernon 2 bdrm Farm House that needs TLC and it sits on 3.9 acres with great country & mountains view. \$39,500 (\$3,950 down, \$350.07/month).

Single wide with a new septic system on 3.92 acres \$33,500 (\$3,350 down, \$296.90/month).

Barn on 3.43 acres would be good for horses \$27,900 (\$2,790 down, \$247.27/month).

**Owner Financing Available! Call Today!!!**  
1-877-331-4888  
**DGSHELL.COM**

## Property For Sale

**For Sale:** 5 acres, 2176 sq. ft. brick house w/3 bedrooms, 2 baths, eat-in kitchen w/oak cabinets, tile and carpet. Two machinery sheds. Located on Hwy. 150

Lincoln-Rockcastle line. \$135,000. 758-0051. 10x4p  
**For Sale:** 5 room, 1 bath home. Good barn with 32 acres, more or less, two miles from Mt. Vernon. Call 606-274-4167. 4x8p

**For Sale:** 1.9 acre wooded lot on Freedom School Road. Septic tank and city water already there. 3/4 mile

## Land For Sale • Reduced!

Looking for a retreat? Your own Winter Wonderland? 127 acres for sale on Birch Hollow Rd. off 1955 in the Red Hill area. Wooded area with beautiful views. "Old John D. Shepherd Farm". Reduced to \$190,500. Call 606-308-2834.



## House For Sale By Owner • \$127,000

**163 Coral Ln. • Mt. Vernon • Castle Ridge Subd.**

5 year old, 3 bedroom, 2 bathroom, one owner home located in Mount Vernon city limits. Home has approximately 1,675 sq. ft. on a nice level .52 acre lot. Residence has a 2 car attached garage, vaulted ceilings, atrium windows, jetted bath tub in the master suite, huge closets throughout the house, and a 12 x 16 deck. Home has fabulous hardwood flooring, carpeted bedrooms, and an incredible kitchen. All appliances go with the home including washer and dryer. Home uses KU electric and city sewer, these utility bills are amazing. Home is move-in ready and close to everything while having a private setting.

To schedule an appointment call

Chris or Brooke Bishop at 606-308-1696 or 606-308-3950

## Home For Sale in Rainbow Ridge Subdivision



Priced reduced by \$5,000. Beautiful country setting located close to everything! This 4 bedroom, 2 bath home is perfect for any family. Enjoy the 20x20 family room in the winter and the double deck and pool in the summer. Extra storage in the newly constructed outbuilding. Gorgeous office as well as amazing utility bills make this property irresistible. This scenic property can be yours for \$154,900.

Call Mike at 606-308-9888 or Becky at 606-308-3731 to schedule your appointment. Owner/Agent



## House For Sale By Owner • Evergreen Estates - Maretburg

3 bedroom, 2 bath brick ranch located in Evergreen Estates, Maretburg. Home was remodeled in 2008 and has approx. 1,850 sq. ft. on 3/4 acre lot. Hardwood floors in living area, tile in bathrooms and new carpet in bedrooms. All new vinyl windows and doors, and lighting inside and out. New roof in 2008. Wired for security. Home has large kitchen with island, large family room, living room, dining area, walk-in pantry, separate office/multi-purpose room, large back porch and 2 car carport with attached storage. There is also a separate 12x16 storage building on property. All stainless steel appliances stay with property, as well as front load washer and dryer. Asking \$130,000. Price negotiable. Shown by appointment only.

Call Jason or Sara Coguer at 606-308-5033 or 606-308-3742.

from 150. 606-308-2290. 37xntf

**Lots For Sale:** Castle Ridge Subdivision. Use same entry way as Bible Baptist Church. All lots have city sewer and underground utilities. starting at \$12,900. 606-256-5692 • 256-4504 • 308-3730. 20xntf

**For Sale:** Mobile home lots, located in Sunnyside Mobile Home Park. 1/2 acre lots - \$500 down and \$100 per month. Call 606-256-5692 or 606-256-5648. 43xntf

## Posted

**Posted:** No trespassing on James Smith, Jr. property on McHargue Branch Road. 7x7p

**Posted:** No trespassing, hunting or fishing on property belonging to James O. and Rita Kirby, located on Hwy. 3274. Violators will be prosecuted. 10x3p

**Posted:** Absolutely no trespassing on property of Dell Ponder on Red Hill and Black Bear lick Lane. Violators will be prosecuted.

**No hunting or trespassing** on the property of Ricky Barron, located in Blue Springs on Barron Road. 8x4p

**Posted:** No trespassing on land belonging to James and Dorothy Rash heirs on Rash Branch Road off Chestnut Ridge. No hunting, camping, ATVs, trespassing for any purpose. Not responsible for accidents to anyone. Violators prosecuted. (12/29/11)

**Posted:** No hunting or trespassing on property belonging to Farmer Waddle and Clista Spivey heirs on Hwy. 490. Violators will be prosecuted. Not responsible for accidents. 7/6/11

**Posted:** No trespassing on Crawford Place - Old Brodhead Road. Danny Smith. 47tfn

**Posted:** Absolutely no hunting, fishing or trespassing on property belonging to Mark and Debbie Cummins. Violators will be prosecuted. 9x52p

**Posted:** No hunting, trespassing or ATVs on land belonging to Jason and Sara Coguer at Roundstone. Not responsible for accidents.

**Posted:** No trespassing on property known as C.B. Owens Farm across from Fairgrounds in Brodhead. Violators will be prosecuted. 25tfn

## Miscellaneous For Sale

**Wood For Sale:** Truck load \$50. 16 ft. trailer load \$140. Delivered and unloaded. Call 606-669-9568 or 859-893-2729. 10x3p

**For Sale or Trade:** 400 - 4x4 rolls, good, dry, barn kept grass hay. Discount prices or will trade for farm machinery, junk vehicles, etc. Will load. Also, square bales \$2-\$2.50. Copper Creek. 859-925-2394. 11x2

**For Sale:** 4x5 rolls of good mixed grass hay. Barn kept. \$20 roll. 256-2604. 8x4p

**Hay For Sale:** 4x5 rolls. 859-626-2383. 8x8p

**Quality New Farm Gates:** From 4 to 20 ft. All kinds of hay feeders. Specializing in name gates, treated posts. 606-305-7965. 6x12p

**For Sale:** 18'x24' prefab steel building with 10' openings end to end. Used as an animal walk-through. \$5,250 - you move. Call 256-1619. 10x2p

**For Sale:** A-C 6040 Allis Chalmers 1976 diesel tractor. 859-661-2814. 5xntf

**For Sale:** 1963 Farm-All Cub Tractor with cultivators. 859-661-2814. 5xntf

**For Sale:** 1995 Jayco RK 305 Eagle Series Fifth Wheel RV trailer. 30 or 31 ft. long. \$4,500. 606-308-3303. 48xntf

**For Sale:** Cemetery lots, Cresthaven Cemetery, Mt. Vernon. Call Bill Dowell at 308-1058. 31xntf

## Motor Vehicles For Sale

**For Sale:** 2011 Hyundai Sonata, less than 7,000 miles. Loaded with options. Asking \$19,000. Call 606-256-8430. 11x2p

**For Sale:** 1986 pick-up truck. 256-2383. 38xntf

## Pets

**For Sale:** Lab mix pups. \$50 each. Have first shots and wormed. 758-9040. 10x2p

## STRUGGLING WITH ADDICTION?

Toll-free Treatment Help Line  
**1-866-90-UNITE**

Take control of your life  
TODAY!

Subscribe to the Signal  
Call 256-2244

## GILLIAM

REAL ESTATE & AUCTION  
427 Chestnut St., Berea, KY • 859-986-9797

John Gilliam • Principal Broker  
Realtor Loretta Powell - 859-302-8411

www.gilliamrealestate.com

306 Rolling Hills Rd.  
Mt. Vernon  
\$224,900



Reduced!  
19 Silver Mist Corner  
Mt. Vernon  
\$279,900



Reduced!  
504 Poplar Gap Rd.  
Orlando  
\$134,900



700 Hamilton Valley Rd. (Garrard Co.) - \$76,000

Gray Hawk Rd. - 4 lots from \$12,700 to \$18,500

1722 Gabbard Rd. 12.25 A - \$44,900

Reduced! Quail Rd. (14.26 A) Owner/Agent - \$45,000

Reduced! 3.03 A on Menifee Hill Rd. - \$19,900

2.5 A on Menifee Hill Rd. - \$18,900

SOLD! Lot #7 - Hwy. 1249, 3.7 A. - \$21,000

## 22 Acres For Sale

Completely developed subdivision for sale.

22+ acres, 17 lots available.

City water, paved streets.

Hwy. 2549 across from SourceCorp in industrial park.

4 homes already built.

\$42,500

Owner financing • No money down

606-510-3719 - Cecil King

606-510-3759 - Judy King

## Rocket Carpet Cleaners

Now Carrying

Electrolux products

Vacuum cleaners - air purifiers

vacuum bags, etc.

David Owens - Operator  
(606) 256-9870



**Prudential Don Foster Realtors®**

**Kathy Riley REALTOR®**

cell (606) 308-3188

711 Chestnut Street  
Berea, KY 40403

katriley@windstream.net



www.donfosterrealty.com  
email: prudentialbera@donfoster.com

**Prudential Don Foster Realtors®**



Phil Malicote, GRI-- 582-8882; Al White-- 986-2558; Janet Bowman--302-3123;  
Kathy Riley--308-3188; Leonard Wilder--986-3306  
Steve Clark--625-4370; Yvonne Lovern--582-0263

711 Chestnut St. • Berea • 859-986-8401  
1-800-998-2063 fax 986-6173

Office Hours: Mon. - Fri. 9 to 5; Sat. 9 to 1; Sun. by appt.

193 BISHOP LANE - 3 bedroom, 2 bath singlewide, 12.2 acres. \$42,000. MLS 38481

175B STEPHENS RD - 1 bedroom, 2 bath, 38 acres. \$124,900. MLS 38835

126 TULIP CRT. LANE - 3 bedrooms, 2 bath doublewide, 21 acres. \$139,000. MLS 38740

914 PLEASANT DR - 7.2 acres. \$12,900. MLS38127

6732 BRINDLE RIDGE - 3 bedroom, 2 bath manufactured home, 5 acres. \$129,900. MLS 37601

COPPER CREEK RD. - 138 acres. Blacktop road frontage. \$225,000. MLS 36693

8 C. VALLEY DRIVE - 40 acres. Has several home sites. Doublewides welcome. \$89,000

BEREA. We have many nice homes listed in Berea. Call one of the above agents for a showing.



**Virginia McKinney**  
**Income Tax Service**  
**606-256-4804**  
*32 years experience*  
 Authorized Electronic Filing Provider

**CMI-BURDETTE TAX SERVICE**  
 Locally owned & operated by Gail Burdette  
*serving you for over 25 years*  
**FIRST IN INNOVATIVE SERVICE**  
 Member  480 W. Main Mt. Vernon  
**606-256-9150**  
 or **256-3224**  
 www.burdettetax.com

**Karen K. King**  
**INCOME TAX SERVICE**  
 Individuals - Partnerships - Corporations  
 Electronic Filing Available For an appointment Call 256-3976

**John's** Appliance Repair  
 Repair  
**Faucet & Toilet Repair**  
**Mobile Home Repair**  
*John Tyler, Owner • 606-308-5646*

**Lester Kirby**  
**Tree Trimming**  
*No Job Too Big or Too Small*  
*Fully Insured • Free Estimates*  
 Home 606-256-3626 • Cell 606-308-2016  
 Cell 606-308-3548

**Winstead's**  
**Heating & Air**  
 **Now selling**  
**Trane equipment!**  
**Pat Winstead** M04434  
**606-256-1038 • 606-308-4825**

**Caudill Dump Truck Service**  
 Rock • Gravel Rock & Job Quotes  
 Agr. Lime Driveway Spreading  
 Sand Dumping/Stockpile  
  
 Contact for competitive pricing:  
 Myron - (606) 308-1387  
 Randall - (606) 308-3280

Aluminum **Mark's** Cast Iron  
**Welding & Fabrication**  
 U.S. 25 North, Renfro Valley  
**606-256-1504 • 606-308-4579**  
 Hand Open 8 to 4 Monday thru Friday  
 Rails **"Sandblasting"** Gates

**David's**  
**General Handyman**  
 Service  
  
*Hard work at an honest price;*  
*Dependable Dave will treat you nice.*  
 PHILIPPIANS 4:13  
**(859) 985-0106** Painting • Mowing  
**302-0197** Landscaping • Roofing  
 Free Estimates, but not over phone House Washing • Drywalling  
 All Construction

**Angel's**  
**Upholstery** Angel Smith Owner  
 55 Indian Lane  
 Mount Vernon, KY  
 40456  
 606-682-9247  
 smithmama1@aol.com  
 www.angelsupholstery4U.com  
  
 Boats Furniture Enclosures Bimini Seats Boat Covers Slip Covers

**PERRY'S Autobody &**  
**Auto Rental Service**  
 Full body, frame and paint service  
 \*New Location\* 110 Old Somerset Rd. • Mt. Vernon  
**PERRY & AMY MINK PROPERTIES, LLC**  
 Storage and Rental Units • 12x20 units fully lined  
 floor to ceiling & fenced for your security  
 Fairground Hill off Hwy. 150 • Formerly AB Thomason Property  
**606-256-5198 or 606-308-1008**

CE63745 ME28463  
**LAKESIDE**  
**ELECTRIC**  
 INDUSTRIAL/COMMERCIAL/RESIDENTIAL  
 LICENSED & INSURED  
 Danny Offutt Phone (606) 271-6367  
 Owner

**Mobley's**  
**Heating & Air**  
*"We put quality first to make them last"*  
 Owner: Aaron Mobley  
**1-606-224-8941** MO# 4920

**Heating & Air**  
   
 LASTS AND LASTS AND LASTS. Thank goodness for Goodman.  
**COMPLETE HOME COMFORT**  
 Locally owned and Located at:  
 575 Richmond Street • Mt. Vernon, Ky.  
**Rodney Smith**  
**Office: 606-256-1683 • Cell: 859-661-5986**  
 We service all Brands and Models • 20+ years experience  
 Free Estimates - Affordable Service - Call for Rates  
 Expert Installation & Troubleshooting • Friendly Hometown Service  
**Heat Pumps and Gas Furnaces**  
**We also sell Gas Logs and Heaters**  
 Fully Licensed and Insured HVAC and Electrical • MO-4808 and CE63779

**Kentucky**  
**Auto Exchange**  
 Public Auto Auction  
 Every Saturday and  
 Tuesday at 7 p.m.  
**OPEN TO**  
**THE PUBLIC**  
 Dealers  
 Welcome!   
 Located on Exit 38 in  
 London on Hwy. 1006  
**606-878-7815**

**Men's & Women's**  
**Alterations**  
*Martha's Sewing, Mending,*  
*Dressmaking Alterations*  
**(606) 453-4483**  
*Now Full Time*

**Firewood**  
**For Sale**  
*We accept heat*  
*vouchers*  
**Terry Harris**  
**308-3574**

 **B&D**   
**Hauling & Excavating**  
 Backhoe, Bulldozer, & Bobcat Work  
 Structure Demolition & Removal  
 Top Soil, Fill Dirt, & Gravel Hauling  
 Farm & Residential  
 Home **606-758-4248** Cell **606-271-2417**



**David**  
**Spoonamore**  
**ROOFING**  
 Free Estimates  
 25 Years experience  
 Call 758-4457 or  
**606-231-4118**

**Covenant Surveying, LLC**  
 Land surveying, topographical  
 mapping, construction staking.  
 Professionally Licensed  
 Surveyor  
**606-256-0224**

**MOBILE PRESSURE WASHING**  
 Decks, concrete, aluminum and vinyl  
 siding, brick and stone, machinery,  
 equipment and much more.  
**Benny Rader**  
 606-308-3149 or 606-256-3293  
 Big Discount for all Churches - Call us!

**Carpenter's Dozer**  
**& Backhoe Service**   
 equipment hauling ~ basements ~ building sites roads ~ ponds  
 crushed stone ~ fill dirt ~ topsoil ~ finish grading ~ clearing  
 general farm maintenance ~ underground utilities ~ footers  
 certified septic tanks ~ licensed septic system installation  
**606-256-5370 or 859-661-2814**

**On-Site**  
**Computer**  
**Service**  
 Tired of  
 sending your  
 computer away to  
 get it fixed?  
 Call and  
 let us come  
 to you  
 for all your  
 computer needs!  
  
**Setup, Consultation,**  
**Software/Hardware**  
**Conflicts**  
**Virus/Spyware Removal**  
**Reasonable Rates**  
**Call Spencer Bengé at**  
**606-308-5653**

 **Mechanic**   
**On Duty**  
**All Types of Repairs**  
**We do muffler &**  
**exhaust replacement and**  
**custom pipe bending**

**David's Tire Center**  
 24 Hr. Towing & Recovery LLC  
**1431 S. Wilderness Rd. (US 25)**  
**Mt. Vernon**  
 David & Josh Thompson, Owners Save On All Major Brand  
 Office/24 Hr. Wrecker Tires For Cars & Trucks  
 606-256-4606 Farm Tractors • Lawn & More

**CLIFFORD** (606) 256-2535  
  
**BACKHOE, LLC.**  
**Excavating and Hauling**  
**Septic Tanks & Other Concrete Products**  
**5076 S Wilderness Rd. • Mt. Vernon, Ky.**

**MADISON TERMITES**  
**and PEST CONTROL**  
 Call Paul Burton - Day or Night  
 256-2318 - Mt. Vernon  
 STOP TERMITES ROACHES WATERBUGS

**Morgan Plumbing**  
**Service & Repair**  
 **New Construction • Commercial &**  
**Residential Service**  
*Fully Insured • All Work Guaranteed*  
**256-4766 • 606-232-0666**  
 MPL #6761

**Town & Country**  
**24 HR. WRECKER SERVICE**  
*All Types of Mechanic Work*  
 Call 256-9634 days or  
 256-4650 nights

**BEE Garbage**  
**256-2334**  
*Weekly residential*  
*curbside pickup*   
**\$17<sup>00</sup> per month with Curb Cart**

## MVES Academic Awards

### Entry Level

*Alexander a.m.*  
Halli Bales, Garrett Bryant, Bailey Bullock, Alexis Clouse, Gavin Foley, Dawson Gibbons, Mya Hunt, Jenna Loudermilk, Conner McGuire, Kylie Miller, Emma Phillips, Laura Beth Saylor, Kenton Shannon, Jackson Vanzant.

*Alexander p.m.*  
Will Bishop, Trevor Christian, Peyton Colton, Ethan Cromer, Wessen Falin, Bella Forbes, Kayce Kirby, Hannah Lawson, Caden Napier, Emily Sturgill, Alexis Weaver.

*Lambert-Todd a.m.*  
Nikolas Deborde, Eris Lawson, Ethan Medley, Tammy Shields, Jace Thomas.

*Lambert-Todd p.m.*  
Jase Cameron, Matthew Collins, Logen Dykes, Mackenzie Lopez, Allison McCoy, Lindsay Rowe, Makayla Smith-Chaney.

*Lovell a.m.*  
Olivia Albright, Alexis Brock, Alyssa Bugg, Chase Gilliam, Riley Lovins, Miranda Shoemaker, Austin Sweat, Nataleigh Wilkerson, Matthew Wilson.

*Lovell p.m.*  
Aaron Asher, Adam Bullock, Andrew Callahan, Jacob Cromer, Timothy Duncan, Valor Pennington, Brooklyn Robinson, Joey Smith, Rachel Spoonamore, Emily Taylor, Dylan Thompson, Carter Vanzant.

*First Grade*  
*Brown*  
Christian Ashcraft, Allison Dunn, Xander Fletcher, Jada Hayes, Carson King, Ian Rogers, Kaylee Shoemaker, Jamason Smith, Caleb Tompkins, Katie West, Gabe Wynn.

*Bryant*  
Trinity Baggett, Chris Blanton, Azlan Brock, Reese Coguer, Becky Daniel, Silas Durham, Luree Gabbard, Landon Gentry, Jamie Gray, Jailey Martin, Tommy Moore, Daniel Mullins.

*Davis*  
Caitlin Blanton, Gabriel Blevins, Jessie Bradley, Ethan Cotton, Brooke Lovell, Scott Martin, Maggie Mason, Addison McClure, Elizabeth Mikeworth, Halek Payne, Ethan Puckett, Gary Ramsey, Carley Smith, Cammie Tow.

*Isaacs*  
Jordon Abney, John Asher, Kayli Blevins, Ashley Hilton, Peyton Isaacs, Emily Maupin, Johnathon McClure, Journey McGuire, Haylie Owens, Sean Price, Celia Shaffer, Logan VanWinkle, Melanie VanWinkle.

### Price

Jaydon Albright, Caroline Brickley, Caleb Cameron, Natalee Dillingham, Olivia Fugate, Christian Johnson, Nate Linville, Joshua Mudd, Connor Philbeck, Chelsea Roberts, Mark Sanders, Natalie Tolle, Cyndi Yocum.

### Smith

Sydney Carrera, Sean Cash, LeAnn Doan, Natalie Erwin, Valerie Gray, Kaleb Haling, Jetta Lear, Jacob Luczak, Charlie Pearson, Landan Smith, Kaleb Whitaker

### Second Grade

*Burton*  
Dylan Allen, Sara Allen, Asa Gerson, Analeise Guinn, Zoey Holland, Thomas Ligon, Aleya Lopez, Madisen Petrey, Dougie Shields, Gabriel Tackett, Addyson Topf Aliyah Lopez, Madisen Petrey.

### Cable

Owen Falin, Abby Langford, Hayley Muncy, Kyra Ramsey, Cassidy Shepherd, Christopher Whitehead.

### Clontz

Kyle Coffey, Brianna Collins, Amy Cornelius, Hannah Davis, Bailee DeBorde, Alyssa Lunsford, Mikahlyn Poynter, Silas Shaffer, Aidan Thompson.

### Cowan

Jacob Cook, Justin Mink, Gentry Phillips, Delani Reynolds, Paige Ruppe.

### Floyd

Nick Anderson, Kaylan Bullock, Dillan Cromer, Jason Karr, Jacob Mason, Noah Parkey, Kennedy Vinson.

### Third Grade

*K. Asher*  
Jacob Adams, Bailee Allen, Jacob Adams, Brexton Cromer, Nichole Griffin, Cody Moore, Zackary Sadler, Alex Vanzant.

### Barnett

Hannah Abney, Drew Bullock, C J Cameron, Jonas Cox, Paishence Johnson, Holly Miller, Robert Mullins, Alexis Stewart, Hannah Suffridge, Paul Young.

### McClure

Logan Bowman, Cameron Bullock, Kyle Fain, Jonah Hosier, Morgan Johnson, Callie Lewis, Gracelyn Owens.

### Parkerson

Logan Bullock, Acton Cash, Kaden Fletcher, Eva Jackson, Ashton Monk, Dawson Nicely, Nora Pulliam, Lebrana Sparks, Leann Tankersley, Zachary Taylor, Tristan Winstead.

### Rumsey

Aden Amburgey, Tarrylton Dunn, Dustin Hamilton, Andrew Hurt, Reece McGuire, Allie

Phanis, Noah Reams.

### White

Ashlyn Brock, Aidan Cain, Wesley Clark, Katherine Coffey, Will Isaacs, Blayne Kelley, Jacob Loudermilk, Braden Parker, Jaylon Ponder, Abby Stephens, Ella White.

### Fourth Grade

*J. Asher*  
*Principal's List*  
Cade Burdette, Melanie Mink.

### Honor Roll

Savannah Bullock, Zephyr Kennedy, Noah Mink, Katelin Smith, Lindsey Smith, Tyler Wood.

### Bowman

*Principal's List*  
Michael Allen, Peyton Bowman, Caroline White.

### Honor Roll

Sarah Cornelius, Amber Doan, Brittany Doan, Samantha Douglas.

### T. Coffey

*Principal's List*  
Levi Allen, Alexis Anderson, Hannah Mullins, Kaitlyn Smith.

### Honor Roll

Clifton Boone, Sierra Hansel, Sydney Hines, Jayden Payne, Heather Thomas, Ben Tyler.

### Collins

*Principal's List*  
Sheradyn Cox, Brianna Headrick, Aleya Powell, Keaton Renfro, Chase Roberts,

### Honor Roll

Patrick Gadd, Elizabeth Kidwell, Chase Moore, Shawn Smith.

### Cummins

*Principal List*  
John Cromer, Hannah Denny.

### Honor Roll

Janelle Brown, Hallie Hines.

### Parkey

*Principal's List*  
Aliah Gerson, Brookelynn Smithern, Jacyrayn Strunk.

### Honor Roll

Alisha Denny, Melanie Gadd, Kayla Ginter, Jacob Hansel, Benton Kuntz, Shannon McCormick, Katlyn Williams, Woodrow William.

### Fifth Grade

*Cameron*  
*Principal's List*  
Emily Adams, Hunter Rigsby, Sarah Roberts.

### Honor Roll

Aaron Helton, Kailey Lovell, Lindsey Newcomb, Kira Owens, Austin Smith.

### S. Coffey

*Principal's List*  
Isaiah Amyx, Emily Deubel, Chelsea Helton, Matthew Leonard, Tyler Lovell, Morgan Mason, Jacob McGuire, Kiersten Mink, Megan Peacock, Makayla Singleton.

### Honor Roll

Parker Hall, Skyler Horn, Natalie Singleton, Michael Sizemore, Chris

Smith.

### Kincer

*Principal's List*  
Hannah Artley, Megan Bond, Sam Brickley, Hannah Cotton, Joe Cowan, Rebekah Lake, Devon Mullins, Lauren Prewitt, Vina Renner, Ryan Windstead.

### Honor Roll

Ryan Carpenter, Savannah Meadows, Noah Prickett, Jesse Smith.

### King

*Principal's List*  
Haley Bullock, Peggy Lawson, Brent Lovell, Pamela Miller.

### Honor Roll

Logan Barnett, Tanner Carrera, Julie Cox, Michelle Mink, Dustin Patterson, Brooklyn Reynolds, Andrew Spoonamore, Patsy Thomas.

### McQueary

*Principal's List*  
Grant Bryant, Morgan Cromer, Anthony Houk, Sydney Hughes, Grant Isaacs, Logan Miller, Breonya Napier, Makayla Roberts, Apryl Volk, Kristen Wilson.

### Honor Roll

Kyle Cash, Cameron Cornelius, Ashely Crouch, Tyler Harris.

### Mullins

*Principal's List*  
Haley Carpenter, Carlee Cash, Cora Machal, Taylor Mink.

### Honor Roll

Holdan Barnett, Bethany Blevins, Courtney Slusher, Kimberley Wheat.

## Working Together Works

Things you need to know:

Thursday, Feb. 17th School Based Decision Making Council 5 pm

PTG 6 pm Little Ceaser's Pizza Fundraiser order forms and payment are due Friday Feb. 18th, make checks to Brodhead PTG. Delivery day is set for Wed. March 2nd 3-6pm at BES

March 3rd - Parent/Teacher Conference

Book Fair March 3rd - 8th

Spring Pictures March 15th

There were 226 students who had perfect attendance during month of January. Students received a pencil and a free food coupon from Brodhead FRC.

Always send a note on the day your child returns to school from an absence, a doctor's statement or handwritten note is required for the absence to be excused.

## Kentucky Afield Outdoors

### Change hunting strategies for late season squirrels

Squirrel hunting during the last month of Kentucky's 106-day fall season is a much different experience than early fall.

In winter, the food that squirrels are looking for is mostly on the ground.

"They create a cache of nuts and seeds," said Ben Robinson, small game biologist for the Kentucky Department of Fish and Wildlife Resources. "They go back to the nuts they have buried or stashed in tree cavities."

In August and September, the leaves are still on the trees. Hickory nuts, acorns, beechnuts and walnuts are just starting to ripen. Squirrels abound in the leafy treetops; the spot and stalk method is the best hunting strategy. Shotguns are ideal for the early season because squirrels are in thick foliage and partially hidden most of the time.

In winter, food is in much shorter supply, so hunters may have to look for remaining food sources to find squirrels.

"By Kentucky standards this has been a cold winter, and snow on the ground makes finding food more difficult for squirrels. There's also a lot of competition for acorns from deer, wild turkey and bear," said Robinson.

With the leaves down, the forest floor is often dry and crunchy. It's not as easy to walk quietly. Squirrels are on the ground more and are quick to pick up movement. A successful late season hunting strategy is to sit tight and wait for squirrels to appear.

Shots tend to be longer, so .22 rifles and small-caliber muzzleloaders are ideal for bagging squirrels in late season.

Hunter harvest of squirrels drops off in the late season in part because there are fewer hunters. The 2009-10 Squirrels Hunter Cooperator Survey indicated hunter effort is greatest toward the beginning of the fall season and declines as the season progresses.

According to the survey, about 4 percent of squirrel hunts were held in January and around 2 percent in February. About half as many squirrels were observed then compared to August and September.

Squirrel season continues through Feb. 28, 2011, with a daily bag limit of six squirrels.

**\$ Dollar Value Plus & Variety \$**  
2750 Battlefield Memorial Hwy. US 421  
at Kingston, Berea, KY 40403  
Phone: (859) 986-1217  
PET FOODS · Dog & Cat Foods and Toys and Accessories  
Winter Clothing Sale 20% - 50% Off  
Purses 40% Off · Zebra, Giraffe and other designs  
**FULL LINE OF GROCERIES**  
Meal, Flour, Sugar, Coffee, Pop, Snacks, etc.  
**DAIRY FROZEN FOODS**  
Milk, Butter, Eggs, Biscuits, Bacon, Sausage, Vegetables,  
Desserts, Ice Cream, Pizzas, etc.  
**HUNDREDS OF NEW ITEMS ARRIVING DAILY**  
FABRIC - Quilting Material, Quilting Batting, Fleece,  
Baby Fleece, Camouflage, Print, Notions, Yarn, Thread,  
Zippers, Coates & Clark, Patterns, etc.

**Central Body Service**  
275 Richmond Street - Mt. Vernon  
**Precision**  
**Collision - Repair**  
**Quality Work Since 1966**  
*Free Estimates - All Work Guaranteed*  
**606-256-4210**

### Financial Aid Tip of the Month

## State offers several student aid programs

Kentucky students who choose to attend college or technical school in state may qualify for financial aid programs administered by the Kentucky Higher Education Assistance Authority (KHEAA).

Kentucky's need-based programs include the College Access Program (CAP) Grant and Kentucky Tuition Grant (KTG). CAP grants may be used at all of Kentucky's public and private colleges. KTG awards may be used at Kentucky's private colleges. Students may apply for the CAP and KTG programs by completing the Free Application for Federal Student Aid, or FAFSA, online at [www.fafsa.ed.gov](http://www.fafsa.ed.gov).

Perhaps the best known program is the merit-based Kentucky Educational Excellence Scholarship (KEES). Students attending certified Kentucky high schools earn college scholarships based on their yearly grade point average and their best ACT score. High school students who qualify for the free or reduced-price lunch program may also earn additional KEES

money by scoring well on Advanced Placement or International Baccalaureate exams. Home school and GED graduates may earn KEES awards based on their ACT score.

Students do not need to apply for a KEES award. If they attend a participating Kentucky college, KHEAA will automatically send the scholarship money to the college after the school reports that the student is attending classes.

KEES, CAP and KTG are funded by Kentucky Lottery revenues.

KHEAA also administers the Osteopathic Medicine Scholarship and Early Childhood Development Scholarship. Students may apply online for these scholarships through Zip Access.

To find links to other useful education websites, go to [www.gotocollege.ky.gov](http://www.gotocollege.ky.gov). For more information about Kentucky scholarships and grants, visit [www.kheaa.com](http://www.kheaa.com); write KHEAA, P.O. Box 798, Frankfort, KY 40602-0798; or call (800) 928-8926, ext. 6-7372.

**\$4.00 Each Way**  
**Seniors, Veterans and Disabled half price**

**Rural Transit Enterprises Coordinated, Inc.**  
*"The Way to go is Transit"*

**Shopping Shuttle to London**  
**Tuesdays & Fridays**

Pickup Locations:  
RTEC Lobby, Apartments, Senior Citizens Center  
Call 256-9835 to reserve your ride on the Shopping Shuttle  
10:00 a.m. bus leaves Mt. Vernon going to London  
1:30 p.m. Bus leaves London returning to Mt. Vernon

Call RTEC for more information  
Call 256-9835 or toll free 1-800-321-7832  
Fax: 606-256-4319  
[www.4rtec.com](http://www.4rtec.com)  
Wheelchair Accessible Vehicles



Points of Interest Include:  
Wal-Mart Super Center  
Dollar Tree  
Golden Corral  
Hibbit's Sports  
Peebles  
Burger King/Shoe Inn  
Tractor Supply  
Phone 606-256-9835

**RTEC**  
Transporte Publico • 1-800-321-7832