

Mount Vernon Signal

Serving Rockcastle County Since 1887

Mount Vernon, Kentucky 40456 - (606) 256-2244

Volume 126 • Number 29

.50 per copy

Thursday, June 28, 2012



Farmers struggle during drought and heat wave

By: Doug Ponder

Many farmers in Rockcastle County are struggling to keep their crops alive due to the recent drought and heat wave sweeping the area.

Local weatherman Bud Cox said the last rain in the county was reported on June 11th. Rain totals for the county are down from 6.79 inches of rain in May to only .47 inches in June. Cox also said the 7 day forecast shows triple-digit temperatures with no rain in sight.

Whitaker Farms Operator Jeff Albright, 22, of Mt. Vernon planted his corn, soybeans and tobacco crops in late April and early May. Albright said the recent drought and heat-wave has stunted the growth of these early crops.

"Our early corn is tasseling and already making ears," Albright said. "I'm afraid it won't make much after harvesting."

Albright said they also had more soybeans left that they intended to plant but have decided to hold off planting them due to the lack of rain.

"I completely quit planting soybeans," Albright said. "There's just no moisture in the ground to even sprout them with."

Rockcastle County Executive Director for FSA Warden Alexander said if it doesn't rain in the next 7-10 days that farmers will have a major problem.

"It's not too bad right now but it can get there real quick," Alexander said. "Some crops in the county are showing sign of lower quality but none of them have been reported as a total loss yet."

(Cont. to pg. A10)

Taylor resigns as RCIDA chairman

By: Perlina Anderkin

At last Thursday's special meeting of the Rockcastle County Fiscal Court, several budgets of local taxing entities were presented for approval for the 2012-13 fiscal year.

One of those, the budget of the Rockcastle County Industrial Development Au-

thority which was presented for its second reading, drew some resistance from the magistrates and county treasurer Joe Clontz.

Clontz told RCIDA Chairman Steve Taylor that the court questioned the \$7,000 bonus paid to Executive Director Holly Hopkins during the 2011-12

fiscal year. Hopkins' contract called for up to \$7,500 in bonus pay and this amount, along with a \$750 increase, was figured into her salary for the 2012-13 fiscal year for a total salary of \$73,250. Clontz said it was questionable whether the paying of a bonus by RCIDA was legal.

Taylor told the court that he refused to tell Hopkins that she would be receiving a cut in pay and that he would resign before he would at which time he left the meeting.

Corey Craig and Robert Lawson, members of the RCIDA stayed at the meeting to discuss the issue with the court and, at a special meeting of the RCIDA on Monday, the RCIDA budget was amended to reflect

Hopkins' salary at \$65,000.

Lawson has been appointed acting chairman of RCIDA until Taylor's position can be officially filled.

The court also approved the budgets of the Soil Conservation District, the public library, Daniel Boone Community Action Agency, Mt. Vernon Tourism and Cumberland Valley Area Development District.

The budgets for the

(Cont. to pg. A10)

Two arrested for manufacturing meth

By: Doug Ponder

Two men were arrested Tuesday morning for manufacturing methamphetamine after police raided a home on Topaz Lane in Mt. Vernon.

Arrested at the scene were Steven E. Coffey, 26, of Berea and Nathan L. Gadd, 26, of Brodhead.

According to Kentucky State Police reports, Trooper Scottie Pennington had received several complaints that Coffey and Gadd were "cooking meth" at the residence.

After arriving at the residence, officers could smell a strong chemical odor coming from two different trash

(Cont. to pg. A10)

Boat ride leads to theft on Lake Linville

By: Doug Ponder

Two people were arrested and charged with theft Monday morning after police responded to a theft of a purse reportedly containing a \$14,000 diamond ring on Lake Linville in Mt. Vernon.

Those arrested were Amy Rose, 28, and Harlan B. Lawson, 36, both of Mt. Vernon.

According to Mt. Vernon Police reports, Kim and Patrick Webb of Mt. Vernon told officers they gave Rose and Lawson a ride on their boat Sunday night and didn't notice the purse was missing until leaving to go home.

(Cont. to pg. A10)

Drug bust in city parking lot

By: Doug Ponder

Two people were arrested for drug trafficking Monday afternoon after officers from the Mt. Vernon Police Department responded to a reported drug deal at the city parking lot in Mt. Vernon.

Arrested at the scene were Angela M. Hopkins, 36, of Mt. Vernon and William L. Mason, 59, of Orlando.

According to Mt. Vernon Police records, Assistant Chief

(Cont. to pg. A10)

Over 350 participate in Longest Day of Play

The annual Longest Day of Play and Community Health Fair was held last Wednesday at RCMS.

This community health event, organized by Rockcastle Healthy Communities, emphasized health education prevention and promoted physical activity.

Over 350 participants registered at the event and over 40 exhibitors of local agencies were present with a variety

(Cont. to pg. A10)



Over 350 people participated in the annual Longest Day of Play last Wednesday at RCMS. The community health event was organized by Rockcastle Healthy Communities to promote health education prevention and physical activity. In the above photo, attendees are shown walking and running around the track as part of the Countywide Stride Series. Activities were also held inside the gym including a karate demonstration by Eric Bullock and his students Rockcastle Shaolin Do and a youth worship service sponsored by Bible Baptist Church and Jeremy Ellis.



Of Special Note Inside

- Viewpoints Pg. A2
- Letters Pg. A4
- Obituaries Pg. A3
- News from the Courthouse Pg. B2
- Church News Pg. A5
- Classifieds Pgs. B5-7

Contact us at: mvsignal@windstream.net • Deadline submission is Noon Tuesday



The Way I See it

By Doug Ponder

Many people in the county will be attending community events and family barbecues this weekend to celebrate Independence Day, more commonly known as the Fourth of July.

Independence Day is a federal holiday commemorating the adoption of the Declaration of Independence on July 4, 1776.

The Declaration of Independence went on to become one of our nation's most treasured documents as it announced to Great Britain that their thirteen American colonies now considered themselves an independent country and no longer a part of the British realm.

On July 2, 1776, the Continental Congress voted unanimously to adopt Virginia's Richard Henry Lee's resolution that the "United Colonies are, and of right ought to be, free and independent states."

After congress passed Lee's resolution, Thomas Jefferson, and a few other delegates, drafted a document declaring independence from Great Britain and presented it to congress two days later on July 4th. The Declaration of Independence was then edited by congress and adopted the same day.

While learning about the Declaration of Independence in school, we all get caught up in the patriotic symphonies we share as Americans.

What a lot of people tend to forget is the 56 men who signed the Declaration committed treason against Great Britain and the punishment for that was death without a trial or jury. In other words, to sign the Declaration meant that you were also signing your own death

warrant as well.

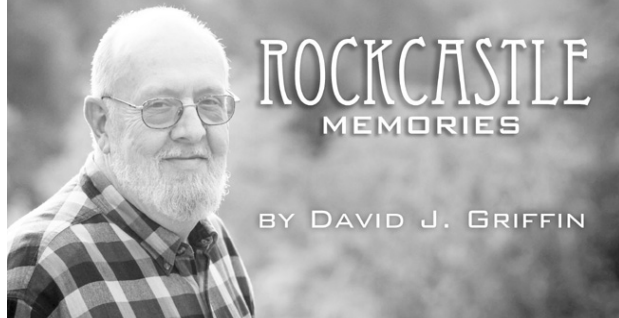
The signers fully understood the sacrifices they had to make as it was explained in the last sentence of the Declaration of Independence.

"And for the support of this Declaration, with a firm reliance on the protection of divine providence, we mutually pledge to each other our lives, our fortunes and our sacred honor."

Unfortunately, some of the signers had to sacrifice one or more of those last three things stated in the Declaration.

During the American Revolutionary War nine Declaration signers died, five were captured and killed by the British and eighteen had their homes looted or burned by British soldiers.

So as we celebrate Independence Day, I believe it's not only important for us to honor the adoption of the Declaration of Independence but we should also use this time to pay tribute to the signers of the Declaration who sacrificed their lives, families and homes for the sake of our freedom.



"The Platters"

I heard on the news that the last surviving member of the Platters, Herb Reed, died on Monday, June 4, 2012, after a period of declining health. The memory of that very popular group of the 50's and 60's will always be a part of my fondest recollections.

I could never forget the first time that I heard them on the radio—and I was only eleven years old. Their first 45 RPM record, "Only You" hit the charts and quickly moved into the number five position in 1955. Can't you just hear the harmony and smooth vocals of this song?

Only you
Can make this world seem right
Only you
Can make the darkness bright
Only you and you alone
Can thrill me like you do
And fill my heart with love for only you

The Platters had a lengthy string of hits that reached the number ONE slot on the American pop

charts including: "The Great Pretender" – 1955, "My Prayer" – 1956, "Twilight Time" – 1958, and "Smoke Gets in Your Eyes" – 1958. I suppose the song of theirs that I love most is "The Great Pretender."

By that time, I had already purchased my own record player and had my own copy of the song. That had to be one record that I left the arm up and to the side in order for the tune to play over and over and over...

Oh yes, I'm the great pretender
Pretending that I'm doing well
My need is such
I pretend too much
I'm lonely but no one can tell
Oh yes, I'm the great pretender
Pretending that I'm doing well
Adrift in a world of my own
I play the game but to my real shame
You've left me to dream all alone

Too real is this feeling of make-believe
Too real when I feel what my heart can conceal
Oh yes, I'm the great pretender
Just laughing and gay like a clown
I seem to be what I'm not you see
I'm wearing my heart like a crown... pretending that you're still around.

In 1959, when I was a freshman at Mt. Vernon High School, the Platters released an album entitled Remember When, and I purchased a copy for my collection. Once again I kept the arm up on the record player so that the song would play repeatedly. Usually, when I allowed a record to play in this fashion, my mother would eventually yell, "David Joe, you are going to wear that record out!" However, with this particular signing group she made no such remarks because she also loved the soulful sounds.

In the late 60's, I started teaching and coaching at Mt. Sterling High School in Montgomery County. One day I was listening to the radio and heard that The

(Cont. to A4)

Points East

By Ike Adams



I may not have the prettiest garden I've ever grown and, for sure, I have downsized, both in terms of square footage and the number of vegetable varieties I used to grow by about half, but I do have the cleanest little vegetable patch I've ever had.

It's still over 2,500 square feet, thanks to the best friend a man could ever have. Actually, Ralph King and I are more like brothers than just being close friends and business partners over the last 35 years. Suffice to say that none of our ventures have ever gone to trade on the public stock market and we've never been tempted to sell ourselves out to venture capitalists even though we were once described, by the regional press, as the "Snow Pea Barons of central Kentucky."

You didn't have to grow more than a couple acres of snow pea to saturate the market for a few weeks back then.

The problem was getting them picked before migrant farm workers started showing up to rescue what was and still is left of Kentucky's agriculture economy.

Ralph and I tried to hire high school kids to pick peas at more than double the minimum wage. Unfortunately, the outside temperature was approaching 90 degrees in June when the peas came in, whereupon we discovered that our labor force was generally willing

to work about an hour before resigning, collecting their pay and then retiring to the Berea City swimming pool.

Anyway, Ralph showed up at my place in mid May, towing his big new, rear-tine tiller and proceeded to fix me up a garden patch some 50 x 75 feet and I now have it crammed full of veggies. And there's not a weed in it. I haven't fired up a tiller since Ralph was here even though morning glories, lamb's quarter, hogweed, and sundry other nuisances sprouted up thicker than the hair on a dog's back within a week of Ralph's endeavor.

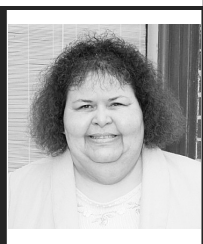
But my buddy also gave me what I now call The Miracle Hoe. Ralph has never, ever seen a new gardening implement without exclaiming, "I gotta have me one of them," so a year or so ago he was in a hardware store in Stanford and they had this hoe-handled tool hanging on the wall and Ralph asked em what it was for. And the guy who owns the place told him it was supposed to be some kind of gardening tool but it had been hanging there for over 20 years because nobody had any idea how to go about using it.

And that's like playing Ralph's favorite song "Something to Figure Out". And, of course, he did just that in pretty short order. At that point in time I was rather impressed because

(Cont. to A4)

The Roots of Rockcastle

by: Tonya J. Cook



The Wondrous William Whitley House

Part I

As many already know, the birth of Rockcastle County was made possible through land from Lincoln County, the site of the William Whitley House. The Whitley House played a significant part in the early de-

velopment and history of Rockcastle County and Kentucky in general.

Recently, I had an opportunity to tour this wonderful old house. To my shame, I must admit this was my first visit to the site. What a treasure we have here in our own backyard!

William Whitley came to the area from Virginia, along with his brother-in-law. They found the area around Crab Orchard abundant in a variety of game and rich in tall timber, suitable for the building of homes.

Out of this timber he built a home for his family, but it was burned by the native tribes in the area. This prompted him to build a more substantial structure from brick. These bricks were made on the grounds surrounding the home.

The house was begun in 1787, and completed in 1794. It is a red brick home with the initials "W W" boldly stated on its front. The most noteworthy fact about the house is that it was the first brick home in Kentucky.

There appears to be a basement of limestone but it wasn't accessible on the tour. The first floor consists of a very fine parlor to the left of the entrance. It is dominated by a huge fire-

(Cont. to A4)

Mount Vernon Signal

Publication Number 366-000

Periodical Postage Paid in Mt. Vernon, Ky. 40456
606-256-2244

Published every Thursday since November, 1887. Offices in the Mt. Vernon Signal Building on Main Street in Mt. Vernon, Ky. 40456. Postmaster, send address changes to P.O. Box 185, Mt. Vernon, Kentucky 40456.

James Anderkin, Jr., Publisher Emeritus
Perlina M. Anderkin, Managing Editor
Sara Coguer, Editor
Paige Anderkin Bengé, Advertising Manager

SUBSCRIPTION RATES

In County - \$20.00 Yr.
Out-of-County In State - \$27.00 Yr.
Out-of-State \$35.00 Yr.

e-mail address - mvsignal@windstream.net

Allergy, Asthma, & Immunology, PSC

Dr. Livas

- Board-Certified Allergist and a graduate of Johns Hopkins University -

Don't let spring time allergies get you down. We can help!

- ✓ Sinus or Ear Infections
- ✓ Allergies or Asthma
- ✓ Hives or Skin Rashes
- ✓ Chronic Cough
- ✓ Frequent Headaches
- ✓ Insect Sting Reactions
- ✓ Food or Drug Allergies
- ✓ Trouble Breathing



With his advanced training and experience, Dr. Livas is naturally well-suited to diagnose and treat a variety of conditions in both children and adults.

Mt. Vernon Clinic
140 Newcomb Avenue
3rd Floor, Suite D

Call today to schedule your appointment
(800) 640-0246 or (859) 277-3114
or visit our website at www.drLivas.com

Trusted allergy and asthma care that can improve the health and quality of life for you and your loved ones.

The Phone Store

635 Richmond St. Mt. Vernon
256-9300



Customer Appreciation Day June 29th

Hot Dogs • Coke • Live Remote by WRVK

Register for tickets for Randy Travis concert in Renfro Valley
* Register at any Phone Store location * Drawing July 13th

Stop in and let manager Donovan Howard, and sales associates Randy Coffey and Jared Brown earn your business!

COUPON

\$5.00 off accessories

Expires 6-30-12

COUPON

\$10.00 off Basic Phone
\$25.00 off Smart Phone

Excludes I-Phone Coupon good June 29th only

ABSOLUTE ESTATE Auction of Carter Family Trust's

28 Acres m/l in Tracts

Saturday, July 7th • 10:00 a.m.

Adjoining I-75 Exit 59, Route 1004, Mt. Vernon, Ky.

Directions: Turn off US 25 near I-75 Exit 59 onto State Route 1004 by the Shell Station. Proceed 1/10 mile to the auction site.

Carter Family Trust is in the process of liquidating some of their assets and have contracted our firm to sell this property for the absolute high dollar.

Multi-Parcel Auction: The property will be offered in tracts utilizing the multi-parcel method and selling in the manner that reflects the best returns for the sellers. This concept gives each and every prospective buyer the ability to purchase his or her individual tract or combination.

Tract 1: 2.288 acres with frontage on 1004.

Tract 2: 2.424 acres with access off 1004.

Tract 3: 4.308 acres with access off 1004.

Tract 4: 18.985 acres with access off 1004.

Auctioneer's Note: Each of the tracts offer good visibility from Exit 59 making them ideal for commercial development. All of them have city water and electric available. Exit 59 offers several gas stations, two motels, and three restaurants. This property offers potential for both the investor and developer. Don't miss this absolute auction on Saturday, July 7th at 10:00 a.m.

Terms: 20% down day of sale balance in 30 days. Announcements day of sale take precedence over printed matter.

For additional information, contact the selling agents.



www.fordbrothersinc.com
Mt. Vernon, KY
606-256-4545 • 800-455-5454

REALTOR/AUCTIONEER:
SAM FORD Somerset, KY
606-679-2212

London, KY
606-878-7111



Obituaries

Cards of Thanks



John Lee Brock

John Lee Brock, 48, husband of Brenda, of Brodhead, died Saturday, June 16, 2012 at the University of Kentucky Medical Center.

He was born November 13, 1963 in Mt. Vernon, to Margaret Catherine Brock and the late Carl Brock. He was joined in holy matrimony to Brenda Bishop Brock on May 7, 1988, and from their union came two children. He owned his own trucking companies, Brock's Transportation Inc. and Silver Dollar Express. He enjoyed truck driving, working on trucks, auctions and his kids.

Those left to mourn include: his loving wife of 24 years, Brenda Brock of Brodhead; two children, John Travis Brock and Breanna Leigh Brock, both of Brodhead; his mother, Margaret Brock of Junction City; one sister, Brenda Gail (Don) Kidwell of Berea; five brothers, Neville Brock and Richard Brock, both of California, Richard Quarries of Mt. Vernon, and Keith Quarries and Jim Brock, both of Brodhead; one brother-in-law, Kenny Stephens of California; and several nephews, nieces, aunts, uncles and friends.

He is preceded in death by: his father: Carl Brock; two sisters: Johnetta Brock and Donna Jean Stephens and a brother: Calvin Quarries.

Funeral services were held Thursday, June 21, 2012 at the Marvin E. Owens Home for Funerals Chapel with Bro. Billy Bryant, Bro. Dewayne Clark and Bro. Don Kidwell officiating. Burial was at Negro Creek Cemetery.

Casketbearers were: Troy Henry, Jack McIntosh, Mike Blair, Alton Anderson, Leon L. Nichols, Joe Brown, Gary Cromer and Dewey Vanwinkle.

Honorary casketbearers were: Raymond Asher, Corey Craig, Tom Wilson, Greg Howard, Austin Barron, Cody Gilbert, Rick Gray and Leon Vickers.

Condolences for his family may be made at marvineowensfuneralhome.com.

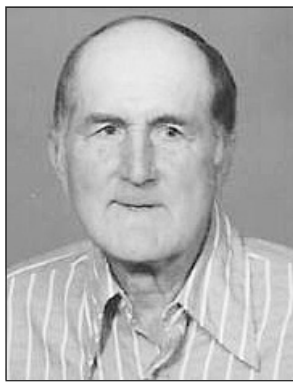
Kenneth Renner

Kenneth Renner, 64, of West Chester, OH, formerly of Calloway, died unexpectedly Tuesday, June 26, 2012.

He is survived by his devoted wife, Lucy Marie (York) Renner. He was the devoted father of Regina (Michael) Courtney of Batavia, OH, Michael (Lori) of Batavia, OH, and Mitchell (Jenny) of Trenton, OH. He was blessed with: six beautiful grandchildren, Ian, Michaela, Aydan, Caleb, Cayden, Emma; his mother, Thelma Cottongim Renner of Mt. Vernon; brother, James (Edith) of Forest Park, OH; sisters, Naomi (Monroe) Gibson of Lockland, OH, Lela (George) Sturgill of Louisville, and Della Hedge of Mt. Vernon; a host of nieces and nephews; and special friends, Jack and Judy Lawwill.

He was preceded in death by his father James Raymond Renner, and his sisters, Mildred, Georgia, Irene, Evelyn.

Condolences may be sent to the Mueller & Parker Funeral Home. www.muellerparker.com



J.S. Craig, Jr.

J.S. Craig, Jr., 89, of Mt. Vernon, died Sunday, June 17, 2012 at Harrodsburg Health Care Center.

He was born on May 17, 1923 in Crab Orchard, to the late Joe Sam Craig, Sr. and Nannie Susan Craig. He spent his days as a farmer. He was a member of Providence Church of Christ, and he enjoyed mules and farming.

Those left to mourn include: two children, Johnny (Louise) Craig and Jerry Craig, all of Eubank; his former wife, Opal Christine Reynolds Craig; two grandchildren; four great grandchildren; two brothers, Gatliff (Nell) Craig of Brodhead, and Benny C. Craig of Mt. Vernon; and a host of nieces, nephews, friends and neighbors.

Besides his parents, he was preceded in death by: four brothers, John Craig, Jennings Craig, Bill Craig and an infant brother; and four sisters, Mabel Taylor, Mary McWhorter, Martha Cope and Julia Hunt.

Funeral services were held Wednesday, June 20, 2012 at the Marvin E. Owens Home for Funerals chapel with Chris Craig officiating. Burial followed at Providence Cemetery.

Casketbearers were: Jeff Craig, Janson Craig, Josh Craig, Ronnie Singleton, Neil Craig, and Tom Craig.

Condolences may be made at marvineowensfuneralhome.com.



Carl Edward Houston

Carl Edward Houston, 79, of Mt. Vernon, died Tuesday, June 19, 2012 at his home. He was born in Hazel Patch, February 23, 1933 the son of W. C. and Rose Cromer Houston. He was a retired employee of Parker Seal Corporation, a US Army Veteran and was a member of the Cornerstone Fellowship Church.

He is survived by his wife of almost 55 years, Geneva Saylor Houston of Mt. Vernon; one daughter-in-law, Tina Houston of Mt. Vernon; two brothers, Charles (Glenna) Houston of Mt. Vernon and James (Ester) Houston of Cincinnati, OH; and one sister, Phyllis (Steve) Fielder of Tucson, AZ. Also surviving are several nieces and nephews. In addition to his parents, he was preceded in death by one son, Gary Edward Houston, and one brother, Eugene Houston.

Funeral services were conducted Saturday, June 23, 2012 at the Cornerstone Fellowship Church by Bro. Buford Parkerson and Bro. Gary Cromer. Burial followed in the Cresthaven Cemetery.

Pallbearers were: Virgil Alcorn, Gary Cromer, Darren Hensley Fielder, Renee Griffith, Brent Houston and Charles Houston.

Honorary pallbearers were: Henry Coffey, Steve Fielder, James Houston, Albert Saylor and William Saylor.

Visit www.DowellMartin.com to view online obituary



Jo Ann Barnes

Jo Ann Barnes, 58, wife of Donnie of Mt. Vernon, died Thursday, June 21, 2012 at the University of Kentucky Medical Center.

She was born November 12, 1953 in Manchester, to Everett and Agnes Collett Harrison. She was joined in holy matrimony to Donnie Barnes for 21 years. She was a homemaker, and she enjoyed crafts, spending time with her grandchildren, and talking on the phone.

Those left to mourn include: her loving husband, Donnie Barnes of Mt. Vernon; her son, Rodney (Tonya) Stewart of Brodhead; her parents, Everett and Agnes Harrison of Brodhead; three grandchildren, Brandon Stewart, Madison Stewart, and Tyler Holman; two brothers: Wilbur (Tammy) Harrison and Wayne (Janet) Harrison, all of Brodhead; three sisters, Barbara Frith, Charlotte (Gary) Hendricks and Pearl (Oppie) Sowder, all of Brodhead; and a host of nieces, nephews, friends, and neighbors.

Funeral services were held Sunday, June 24, 2012 at the Marvin E. Owens Home for Funerals Chapel with Bro. Buford Parkerson officiating. Burial was at Oak Hill Cemetery.

Casketbearers will be: Tyler Holman, Brandon Stewart, Tony Barnes, Benny Barnes, Justin Barnes, Gary Hendricks, Andy Elam, and Donnie Cromer. Honorary casket bearers will be: Wayne Harrison, Wilbur Harrison, and Oppie Sowder.

Condolences may be sent to marvineowensfuneralhome.com.

In Loving Memory



In Loving Memory Bonne Jean (Thomas) Bussell

May 19, 1972 - March 3, 2012

Although your time came so soon, you're still here in our hearts and minds. Your spirit still lives within me with every day that passes by. I cherish the time I had with you, everything we did you were by my side. It is not fair that you had to go the way you did, but only God knows why. It could have been better without those days watching you cry, some might have forgotten you but never will I.

Now, you're in Heaven watching over me, and all I di is cry. Someday sis my time will come, we will be together again in Heaven's sweet by and by.

Sadly Missed By Your Sister, Betty Gail Lainhart

Betty Jane Harding
The family of Betty Jane Harding, who passed on May 27, 2012, would like to offer a special thank you to everyone for the caring loving and support for our mother.

Our tears were replaced with smiles with all the kindness and friendships during her viewing and funeral.

We need to thank Cox Funeral Home and the Mt. Vernon Florist. Everything was beautiful and serene.

A special thanks to First Baptist Church for the use of their fellowship hall and the food prepared by church members, family and friends.

Our Mom was truly and open, amazing, giving soul. She cooked and helped many people when they needed support.

Special thanks to the Rockcastle Hospital staff and clergy for taking excellent care of our Mom.

We received lots of sympathy cards, messages, flowers, food and gifts from family, co-workers and friends. We were honored for the loving words given by our uncle (her brother), Bro. Wayne Harding. Also special thanks to Bro. Eddie Nation for his kind heartfelt words.

Our Mother, the most beautiful loving person, worked hard at raising her children. She was always telling everyone how proud of her children she was. Her motto was "one day at a time." We know this holds true for everyone in this day and time.

Our family appreciated all the prayers. Our Mom was greatly loved by all who knew her.

Vicki Anglin, Millie Eaton, Marylou Murphy, Jr. Lear, Jonimae Jones

Eugene "Gene" Senters

We would like to thank each and everyone who showed their love and friendship during my husband's passing.

To all of those who brought or sent food to our home and also Lisa's Diner, it was truly appreciated. A thank you to everyone who sent flowers or donations. Thanks to Dowell & Martin Funeral Home, Roy and his staff, for their thoughts and care during this difficult time. Also thanks to Bro. Billy Medley, Bro. George Poynter and Bro. Raymond Offutt for their service and kind words.

Thanks so much to everyone.

The family of Eugene "Gene" Senters

Wife, Nivra Ann and children, Liz and Ralph Tipton, Larry and Tammy Senters, Paul and Lester Senters and Angela and Mike McKinney

Revival at Freedom Baptist starts Sunday

Freedom Baptist Church, on Freedom School Road, will be in Revival July 1-4 with evangelist Bro. Tommy Floyd from Monticello.

Sunday morning services begin at 11 a.m. and Sunday night, July 1st, we will have a 4th of July cook-out at 6 p.m. and a fireworks display at dusk. Monday through Wednesday services begin at 7 p.m.

Bro. David Sargent and congregation invite everyone to attend.

For more information, call 256-2968.

M Andrew Durand OD

- Comprehensive Eye Exams
- Contact Lenses
- Treatment of Eye Diseases
- Evening Appts. Available

116 Mini Mall Dr. • Berea (Next to Berea Optical)

859-985-0078



Replacement Windows
Guaranteed Lowest Pricing!
Any Size White Vinyl Double Hung Insulated
\$189 Installed
COMPARE AT \$600
*Max size 4ft. x 6ft. Ask for details.

Window World
"Simply the Best for Less"

606-258-1774 • 1-800-353-4313
142 American Greeting Rd., Corbin

WindowWorld.com

FREE IN-HOME ESTIMATES | 6 MONTHS SAME AS CASH | 0% FINANCING

"Not only do we stand behind our windows...we stand on them!"
- J.J. Hart, Local Owner

Learn how to make a scarf at Cindy's Place

Friday, June 29th
Classes all day from 9 to 5 with Noreitta Thompson
Looms and Yarn In Stock!!
Main Street • Mt. Vernon • 606-256-3431

Mann... What a Deal! Cool Summer Deals!
CHRYSLER • DODGE • JEEP
Check Out Our Daily Specials At mannchrysler.com

| UNDER \$10,000 | VANS |
|--|---|
| 2003 Dodge Grand Caravan SE #112398 \$2,980 | 2011 Dodge Grand Caravan Crew #748771 \$21,980 |
| 2001 Dodge Ram 1500 4x4 Quad Cab #247674 \$3,980 | 2008 Chrysler Town & Country Limited #106049 \$22,980 |
| 2003 Chevrolet S10 4x4 Extended Cab #209183 \$3,980 | 2011 Dodge Grand Caravan Crew #791014 \$23,980 |
| 1998 Ford F350 4x4 #882583 \$4,980 | 2011 Dodge Grand Caravan Crew #751668 \$23,980 |
| 2002 Dodge Dakota Sport #506447 \$5,980 | 2011 Dodge Grand Caravan Crew #751303 \$23,980 |
| 1997 Ford F150 XLT #D27186 \$5,980 | 2011 Dodge Grand Caravan Mainstreet #786965 \$23,980 |
| 2004 Chrysler PT Cruiser #321743 \$5,980 | 2011 Dodge Grand Caravan Mainstreet #739081 \$23,980 |
| 1997 Chevrolet Silverado 4x2 #244298 \$5,980 | 2011 Dodge Grand Caravan Crew #786767 \$24,980 |
| 2001 Chevrolet S10 4x2 #153019 \$6,980 | 2011 Dodge Grand Caravan Crew #741369 \$24,980 |
| 2003 Ford Windstar SEL #A39178 \$6,980 | 2011 Dodge Grand Caravan Mainstreet #650701 \$24,980 |
| 2005 Chrysler Town & Country LX #177384 \$7,980 | |
| 2001 Lincoln Town Car Signature #609545 \$7,980 | SUV |
| 2002 Jeep Grand Cherokee Laredo #312187 \$8,980 | 2004 Volvo XC90 AWD T6 6-Passenger #043054 \$10,980 |
| 2005 Jeep Liberty Limited #722016 \$9,980 | 2009 Subaru Forester 2.5X Premium #788669 \$12,980 |
| 2005 Buick Terraza CXL #241249 \$9,980 | 2005 Jeep Grand Cherokee Limited #572935 \$12,980 |
| 2005 Chevrolet TrailBlazer LS #178372 \$9,980 | 2008 Suzuki XL7 Luxury #126156 \$17,980 |
| | 2011 Jeep Compass 2WD #62144 \$18,980 |
| | 2010 Kia Forte SX #048742 \$18,980 |
| CARS | 2011 Kia Soul + #7204244 \$18,980 |
| 2008 Chevrolet Impala LT #102438 \$10,980 | 2004 Jeep Wrangler X #719938 \$18,980 |
| 2007 Hyundai Sonata Limited #205962 \$11,980 | 2011 Jeep Compass 4x4 #258174 \$19,980 |
| 2008 Honda Accord LX V6 Sedan #032127 \$12,980 | 2011 Jeep Compass 4x4 #257983 \$19,980 |
| 2007 Mercury Grand Marquis LS #609061 \$13,980 | 2007 Honda CR-V EX-L #001053 \$19,980 |
| 2010 Nissan Sentra 2.0 SR #644395 \$14,980 | 2011 Kia Forte Koup EX #448856 \$19,980 |
| 2007 Nissan Altima 3.5 SE #468744 \$15,980 | 2010 Jeep Liberty 4x4 Sport #139628 \$21,980 |
| 2010 Toyota Corolla LE #272301 \$15,980 | 2011 Nissan Juke SL #001122 \$22,488 |
| 2011 Dodge Avenger Express #578704 \$17,980 | 2009 Chevrolet Traverse LT #129630 \$23,980 |
| 2011 Dodge Avenger Mainstreet #560950 \$17,980 | 2009 Nissan Pathfinder SE #608915 \$25,980 |
| 2011 Dodge Avenger Mainstreet #586670 \$17,980 | 2010 Chevrolet Equinox LTZ #233942 \$26,980 |
| 2011 Dodge Avenger Mainstreet #561218 \$17,980 | 2011 Chevrolet Traverse AWD LT #328131 \$28,980 |
| 2006 Mini Cooper S #369133 \$17,980 | 2011 Chevrolet Traverse AWD LT #398905 \$28,980 |
| 2007 Chrysler 300 Touring #885288 \$18,480 | 2011 Jeep Wrangler Sahara #511492 \$29,980 |
| 2011 Dodge Avenger Express #586788 \$18,980 | |
| 2009 Dodge Charger SXT #514207 \$18,980 | TRUCKS |
| 2010 Chevrolet Malibu LS #311443 \$18,980 | 2002 Toyota Tundra 4x2 Access Cab Limited #324519 \$10,980 |
| 2010 Chrysler Sebring Limited #162981 \$18,980 | 2007 Ford F150 XL #887465 \$14,980 |
| 2010 Toyota Camry LE #540075 \$20,980 | 2006 Dodge Ram 1500 Laramie #221148 \$20,980 |
| 2011 Chrysler 200 Limited #609833 \$21,980 | 2006 Dodge Ram 2500 SLT #253900 \$20,980 |
| 2011 Chrysler 200 Limited #526761 \$22,980 | 2008 Dodge Ram 1500 SLT #109282 \$24,980 |
| 2011 Dodge Charger SE #605947 \$22,980 | 2011 Chevy Silverado 2500 4x4 EC W/T #288078 \$36,980 |
| 2012 Hyundai Genesis Coupe 2.0T #071663 \$22,980 | 2008 Chevy Silverado 3500 4x4 Crew Cab #165509 \$36,980 |
| 2010 Dodge Challenger R/T #296786 \$27,980 | |

Over 100 More To Choose From!
Tax, tag & fees not included.
MANN CAN HELP FINANCE YOU!
Call 877-847-6266

Richmond
On the Bypass At Irvine Road
877-847-6266
859-625-1422

Our Readers Write

Thank you...

Dear Editor,
I would like to thank the enthusiastic crowd of over 400 community members and exhibitors who participated in the 2012 Longest Day of Play annual physical activity extravaganza and Community Health Fair last week at Rockcastle County Middle School. I am deeply grateful to the increasing number of community partners who embraced this event and gave their time and energy to assist with this year's evening of "play." This event wouldn't be possible without the many driven volunteers.
In an effort to increase activity among adults and youth and to promote a healthier Rockcastle County, each June the Rockcastle Healthy Communities hosts a "longest day of play" to celebrate summer solstice, the day with the longest amount of daylight. This year's event was packed with indoor and outdoor games and activities....and it all was FREE!
Inside the gymnasium, participants received health screenings and educational materials from a wide range of booths set up by community agencies to create an

awareness of services they provide. Attendees received free items ranging from hand sanitizer to fresh fruit and massages.
On behalf of Rockcastle Healthy Communities, I would like to express appreciation and gratitude to over 100 volunteer and staff who assisted during the event as well as those who participated in planning over the past months. While it is impossible to list each agency and individual who contributed to the success of Longest Day of Play, I want to publicly thank some key folks who made our event possible: Rockcastle County Middle School and Mr. Jason Coguer, Jesse Mahaffey, Rhonda Childress and HOSA group, JROTC, WRVK and the Mt. Vernon Signal, DJ Charlie Napier, King Bottling, Shari Proctor and the Bittersweet Cloggers, Rockcastle Regional Hospital Maintenance staff, and Eric Bullock with the Rockcastle Shaolin Do.
Overall, the event provided exercise for the "whole" person- mind, body and spirit, as well as education about available community services. The Rockcastle Healthy Communities group is composed of individuals and agencies

with a common commitment to making Rockcastle a healthier county.
With Thanks,
W. Anne Harris
Rockcastle Healthy Communities
Congratulations...
Dear Editor,
I feel moved to write and congratulate our friends in Livingston and those individuals and organizations that are helping to make a "Trail Town" designation by the State Tourism Office a reality. Mayor J.C. Griffin should be very proud of the accomplishments made over the past three years which now contribute to new economic opportunities for this community.
I am also happy to see the Lions Club making a comeback in Livingston. I was a Livingston Lions Club member for many years and look forward to seeing the club active once again.
Gatliff Craig - former LHS teacher
Thank you...
Dear Editor,
We, at Mt. Vernon Drug, would like to express our deepest thanks and appreciation to our customers and friends for all the prayers, love and concern that has been shown to us during the loss of our beloved friend and co-worker, Mrs. Sarah Hart.
Sarah was such a wonderful person and she will be sadly missed by all who knew her.
Our sincere thanks to you all.
The Staff at Mt. Vernon Drug

lor in defiance of the English pound.
On the second floor was the bedrooms. To the right was the master bedroom. The younger children, under three or four years of age, slept in the bedroom as well.
The bed was a canopy style that had something resembling a curtain all the way around it. In the summer, the bed was moved to the center of the room, the curtains around the bed closed to keep out the bugs, and the windows on each side of the room opened so as to catch a cross-breeze. In the winter, the bed was moved closer to the fireplace in the corner.
Having no indoor plumbing, there was a chamberpot placed on a shelf under a chair. There was a removable seat to allow one to sit and use the chamberpot. It was a chore for the children to empty the chamberpot in the outhouse the next morning.
Across the hall was another bedroom used for their eight daughters. Not all of the daughters were at home at the same time. Some of the older daughters had married. Women's feet, on average, were smaller in that era. Their shoes were about a size 4 by today's standards. The shoes were also very narrow, with a pointed toe. The heel of their shoes was flat and about an inch or less high.
The three boys slept on the third floor. It was also a workroom for the girls, for sewing and spinning, etc. It was also used for entertaining at parties, especially in the winter. One of the Whitley children was stillborn.
The house remained in the Whitley family until 1938, when it was sold and made a state park. Various changes have been made to the house over the years, such as an addition to the house added in the early 1800s.
The tour was not only educational but a step back in time. Look for more about the Whitley House in the next Roots of Rockcastle.
The information in this article is from the tour and in part from Google Search. (Remember, I'm always looking for a bit of Rockcastle history. If you have a story to tell, and all of us do, please contact me at therootsofrockcastle@windstream.net)

Time
Out of the mist your voice is calling, tis Twilight Time
When purple-colored curtains mark the end of day I'll hear you, my dear, at Twilight Time.
I am not sure how long the two of us stood as we listened to one song after another, singing along to the words of each verse. Their unique vocal style captured the entire audience, and it seemed that everyone at the concert knew the full lyrics to most every song that was performed that night. I suppose because the group first sang pop tunes and then moved into rock and roll, each member of the audience could relate to the individual songs. I recall this as one of the most enjoyable concerts that I ever attended.
An article from The Rock and Roll Hall of Fame summed up the popularity of the Platters: "Even after their high profile waned on the national scene, The Platters remained popular along the Southeast coast, where they rank among the foremost examples of the 'beach music' sound. Elsewhere, they're fondly remembered as a throwback to a golden era when pop, rhythm & blues, and rock and roll flowed together in perfect harmony." Yes, I remember that 'golden era,' and in my

estimation the group truly had "The Magic Touch."
"Points East"
(Cont. from A2)
the blade would cut and dig in any direction you pushed or pulled it, but it was light as a feather and, frankly, did not seem hefty enough to do any serious cultivation.
But Ralph left it with me when he finished plowing because, as he said, "Even a one armed man can use this thing."
As you know, I am essentially one armed since having the stroke. But over the last six weeks, I have learned how to do more work, twice as fast, using only my right arm than I was ever able to do with the Amish Hoe that I had previously considered to be the best garden too ever invented. I can and do go through my garden almost effortlessly as fast as I can wobble and weeds don't have a prayer. Morning glory sprouts just wilt and die when they see me coming with my Miracle Hoe.
So last night I was on the phone with Ralph and I told him that we needed figure out a way to manufacture mass market this thing because, I am convinced that sales would put the pocket fisherman and the banjo minnow to absolute shame.

Kentucky Crossword # 541

www.kentuckycrosswords.com

| | | | | | | | | | | | | |
|----|----|----|----|----|----|---|---|----|----|----|----|----|
| 1 | 2 | 3 | 4 | 5 | 6 | 7 | 8 | 9 | 10 | 11 | 12 | 13 |
| 14 | | | | 15 | | | | 16 | | | | |
| 17 | | | | 18 | | | | 19 | | | | |
| 20 | | | | 21 | | | | 22 | | | | |
| 23 | | | | 24 | | | | 25 | 26 | 27 | | |
| 28 | 29 | 30 | | 31 | 32 | | | 33 | | | | |
| 34 | | | | 35 | | | | 36 | | | | |
| 37 | | | | 38 | | | | 39 | | | | |
| 40 | | | 41 | 42 | | | | 43 | 44 | | | |
| 45 | | | 46 | | | | | 47 | | | | |
| 48 | | | 49 | | | | | 50 | | | | |
| 51 | | | 52 | 53 | | | | 54 | 55 | 56 | | |
| 57 | 58 | 59 | | 60 | | | | 61 | | | | |
| 62 | | | | 63 | | | | 64 | | | | |
| 65 | | | | 66 | | | | 67 | | | | |

©Copyright 2012 Vicki A Bengé. All Rights Reserved. [KY541]

"Roots"

(Cont. from A2)

place. There were period pieces of furniture but not of the Whitley family. They were beautiful, especially the antique piano. The Whitleys entertained such notable guests as George Rogers Clark and Daniel Boone.
Across the entry is the dining room. At some point, the dining room was divided and a portion was made into a winter kitchen (in the summer the cooking was done in another building to allow the heat to remain outside the residence). The dining room had a fireplace, as well. There was a small dining room table set with pewter dinnerware. The spoon wasn't in use yet, only knives and a crude-looking two-prong fork were available. There was a unique chest with a lock for the purpose of storing sugar, a rare commodity in that era. It would hold about twenty to thirty pounds of sugar, probably a year or more's supply. Both the living room and dining room had wood paneling with hidden shelves behind doors. The house also had two false ceilings for the purpose of hiding, especially the children, in case of a native raid.
In the entrance, there was a staircase with thirteen steps to represent the thirteen original colonies. In this era, just after the Revolutionary War, it was popular to be patriotic. They even had dollar signs engraved over the fireplace in the par-

ACROSS
1. Immediately
5. Encircle
9. Kentucky county of Georgetown
14. State Park headquartered at Sassafras, KY, ___ Creek
15. Mixed bag
16. "M*A*S*H" setting, or Menifee Co. community
17. Bullets and such
18. Sit a spell
19. Miscalculated
20. A Western Kentucky river
23. Strait-laced
24. Greenup Co. native, author Jesse
28. Daniel of Nicaragua
31. Fishing need
33. Nave bench
34. Bowling Green once a significant port on this waterway
36. Rob Roy's refusal
37. Long narrative poem
38. Mimic
39. Big name in pineapples
40. PC "brain"
41. Washington Co.'s seat
45. Cool, once
46. James Baker Hall, e.g.
47. Track events
48. Clooney film, "Ocean's ___"

DOWN
1. Union foe
2. Author Janowitz
3. Lexington Bluegrass ___ Depot
4. Some Kentucky State Police
5. Complicated problem, ___ knot
6. Small intestine part
7. Computer architecture
8. Creator of Paducah's "Wacinton"
9. Kentuckian, county music singer Davis
10. Horn-shaped part
11. Legend on the ice
12. Summer wear
13. Tiny amount
21. Push for
22. ___ of Wight
25. Sleep problem?
26. In fact
27. Some suits
28. Tropical tree

50. Former Governor Patton
51. Kenton Co. city
57. Mayhem
60. Campus figure
61. "Listen!"
62. Spry, or 1905 Derby winner
63. Former UK coach
64. Chills and fever
65. Sub detector
66. Celestial bear
67. Thanksgiving dish

29. Descend by rope
30. Ensemble
31. Small songbird
32. Letcher Co. hamlet, ___ Fork, or microwave, e.g.
35. Hard to find
39. Kentuckian, archaeologist
41. Home county of Taylorsville Lake State Park
42. Popular Land Between the Lakes spot, Golden ___
43. Nickname of Kentuckian, banjo player, Louis Marshall Jones
44. Quarrel
49. Orchestra seat
50. Sneaks a look
52. Light beige
53. Rain down hard
54. Hindu ascetic
55. Longtime U of L basketball coach
56. Squeaks (out)
57. Secures
58. Years
59. Auto ID number

SOLUTION TO KY540
ALBION THOR WILD
MOORE RUISE ODOA
ASHEN INLY NAGA
HERRINGTON THAW
PISCIS TIC
DODRE PENDLETON
DELLI PERTIS RONE
SOUTHLAND SLOTS
TOLLIS PHOTOS
ALBEDO IRE
MOON OUMBERLAND
BOYO GRAS MINER
ISLE NAME ARETE
TEEN ELIAN NEWSY

Rockcastle Community Bulletin Board

Sponsored By
Cox Funeral Home
Family Owned & Operated Since 1907
80 Maple Drive, Mt. Vernon, Ky. Ph. 256-2345
Toll Free 1-888-825-2345 • 24 Hour Obit Line 256-5454
www.coxfuneralhomeky.com

Bookmobile Schedule
Mon., July 2nd: Spiro, Level Green, Willailla and Country Care. **Tues., June 3rd:** Ottawa and Bee Lick. **Storytelling at the Library on Thursday, June 28th at 4 p.m.**

Class of 1977 Reunion
The RCHS Class of 1977 will hold their Class Reunion Thursday, July 21st, from 6 to 9 p.m. at ElCazador Restaurant at Burr. No reservations required.

Country Ham Breakfast at Crab Orchard
Crab Orchard's 4th of July Country Ham Breakfast will be held at the grade school on June 30th from 7:30 to 9:30 a.m. \$5. The menu will be: biscuits, gravy, eggs, ham, apples, coffee and juice. Come enjoy a day of celebration.

Hip-Hop Dance Camp
Rockcastle Regional Hospital will host a Hip-Hop Dance Camp July 16-20 for ages 7-14. For more information, call Loretta Johnson, instructor, at 606-305-9887.

Weight Watchers Note
Weight Watchers meets on Wednesdays at 5:30 p.m. at Mt. Vernon Elementary in the lunchroom. Weigh in begins at 5 p.m. All are welcome!

Berea Fireworks
Fourth of July fireworks will be held at the Berea City Park on Wednesday, July 4th, beginning at 5 p.m. **Teen Night** at the Berea Swimming Pool will be held July 14, beginning at 7:30 p.m. and will include swimming, bungee jumping, airbrush tattoos, games, music and grand prizes. Also, at 6:30 p.m. the same night, join the Madison Southern FRYSC for a 3 on 3 basketball tournament. This is a free event for ages 13-18. **Shakespeare in the Park:** The Rose Barn Theatre will be performing "Love's Labor Lost" on the outdoor stage at the Russel Acton Folk Center, 212 Jefferson St., on July 13, 14, 15 and 20, 21 and 22. All performances are free (donations appreciated) and will begin at 8 p.m. For more information on these events, call 859-986-9402.

VFW News
VFW Post 5908 is open Sunday thru Tuesday and Friday and Saturday from 5 to 7 p.m. (closed Wednesday and Thursday) for members, their guests and all other military members who would like to come and visit. The monthly meeting is every 4th Thursday at 7 p.m.

Kiwanis Club Meetings
The Rockcastle Kiwanis Club meets every Thursday at noon at The Renfro Valley Lodge in Renfro Valley. Everyone welcome.

Brodhead Lodge Meeting
The Brodhead Masonic Lodge #556 meets every third Saturday at 7 p.m. on Main Street in Brodhead above Brodhead Pharmacy.

Historical Society Hours
The Rockcastle Historical Society is open on Mondays from 10 a.m. to 2 p.m. in the RTEC garage building.

RCIDA Meetings
The Rockcastle County Industrial Development Authority holds its regular meeting the first Monday of each month at noon on the third floor of the courthouse.

NA Women's Meeting
The Women's NA Serenity Group of Mt. Vernon meets each Monday at 8 p.m. at the Christian Appalachian Project Community Center, 64 Beiting Lane, Mt. Vernon. Open meeting, non-smoking.

Women's Narcotics Meeting
A Women's Narcotics Anonymous Meeting is held every Monday evening at 8 p.m. at the Community Center, sponsored by Christian Appalachian Center. For more information, contact the Healing Rain Center at 256-5810.

Alcoholics Anonymous
Alcoholics Anonymous meets Tuesday nights at 8 p.m. behind Our Lady of Mt. Vernon Church on Williams St. in Mt. Vernon.

If Kentucky Farm Bureau isn't looking out for you, then just look out.



Who's behind you when you are behind the wheel?
Talk to a Kentucky Farm Bureau agent today about the variety of affordable auto policies and money-saving discounts available*.
* Discounts subject to eligibility.

Marlene Lawson, Agency Mgr.
Shelly Mullins, Agent
U.S. Hwy. 25 S. • Mt. Vernon
606-256-2050

CHURCH NEWS

Free Bible Courses
Free Bible Correspondence Course. Send your name and address to 3168 Quail Road, Mt. Vernon, Ky. 40456.

Let the Bible Speak
Tune into "Let the Bible Speak," with Brett Hickey, on Sunday mornings at 8:30 a.m. on WDKY Fox 56.

Singing
Union Baptist Church on Red Hill would like to invite everyone to a singing June 30th at 7 p.m. featuring Joyful Noise. Please come, fellowship with us. Everyone is welcome.

VBS at Scaffold Cane Baptist
Scaffold Cane Baptist Church invites everyone to attend Vacation Bible

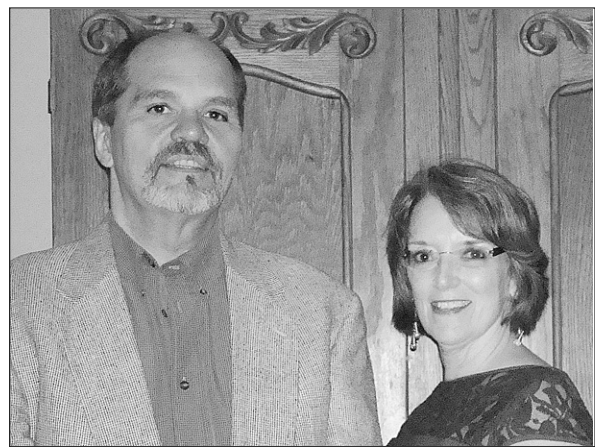
School July 9-13! Come join us in the fun and in discovering God's *Amazing Wonders* at 6:30 nightly.

Revival at Freedom Baptist
Freedom Baptist Church, on Freedom School Road, will be in Revival July 1-4 with evangelist Bro. Tommy Floyd from Monticello.

Sunday morning services begin at 11 a.m. and Sunday night, July 1st, we will have a 4th of July cook-out at 6 p.m. and a fireworks display at dusk. Monday through Wednesday services begin at 7 p.m.

Bro. David Sargent and congregation invite everyone to attend.

For more information, call 256-2968.



Hawley - Moyer

Gregg Moyer and Deborah Hawley are very pleased to announce their engagement.

Gregg is a self-employed woodworker/musician, owner/operator of Gregg's Woodworking in Mt. Vernon. Debbie works in the School of Music at the University of Louisville.

A November wedding is planned.



Carter - Tift

Charles and Janet Carter are happy to announce the marriage of their daughter, Allison Elizabeth Carter, to Aaron Christian Tift on July 14, 2012.

Allison is a 2006 graduate of Rockcastle County High School. Allison earned her Bachelor's degree at Oral Roberts University in Tulsa, Oklahoma in 2010 and her Master's degree at the University of Kentucky in 2011. Aaron is a 2011 graduate of Oral Roberts University, and currently works at Nexus Medical Consulting in San Marcos, Texas.

After the wedding, the couple will reside in Kyle, Texas.

Upcoming Reunions

Phelps Reunion

The Phelps Family Reunion will be held Saturday, July 7th at Kentucky Christian Camp in Brodhead. The gate will be opened at 11 a.m. Lunch will be served at 1 p.m. Bring a covered dish and join us for a day of fellowship and fun.

For directions or information, call 606-758-8617 or 606-308-1886. Hope to see you there.

Hayes Reunion

The Hayes Family Reunion will be held at Logan Hubble Park in Lancaster on Sunday, July 8th with lunch served around 1 p.m. Bring a covered dish and come visit with friends and family.

Burdette Reunion

The Burdette Family Reunion will be held Sunday,

July 8th, beginning at 1 p.m., at the home of Jeff and Twila Burdette (old homeplace of Jim and Rekka Burdette). For more information, call 758-8962.

Bring your lawn chair and a covered dish and have a good time.

Miller Reunion

The Miller Family Reunion will be held at the Maple Grove Baptist Church Fellowship Hall on Saturday, July 14th.

Descendants of the late Bill and Susie Miller, John and Mary Miller, Ervin and Lettie Miller, Orville and Ida Miller and Oliver and Harriett Miller, and their families are invited.

Lunch will be provided at noon. For more information, call 606-758-4988 or 606-256-3805.

An encouraging word:

Hope does not disappoint

By Howard Coop



It was an interesting event that, somewhat by accident, I partially witnessed. A group of men, apparently discussing a difficult situation that had been experienced by one, or all, of them, were grim-faced and, apparently, a bit disappointed. After a bit, one of the men, with a hint of a smile on his face, walked away from the group. As he did so, he turned toward them and said, "Well, at least, I can hope, can't I?"

That, to me, was a powerful statement about real life, and it was, indeed, uplifting. As that man indicated, one can, if there is the will to do so, hope in any, and every, situation, and the results are always pleasantly and surprisingly amazing. In those situations, there can be, and often is, a profound discovery that is most helpful: Hope, desire accompanied by anticipation, is a tremendously powerful force in human life. It can be transforming, and it can lift one out of an extremely difficult situation. Robert G. Ingersoll, a man known as "the great agnostic" of the

nineteenth century, has been quoted as saying that, even in the darkest of human situations, "Hope sees a star." Too, another individual, writing anonymously, penned these poignant words: "When hope is alive, the night is less dark; the solitude less deep, fear less acute."

In the seemingly impossible situations one often faces in the unpleasant struggles with the enormous problems of everyday life, transforming hope enables one to look through the gloom and see realistic possibilities and, in spite of seemingly insurmountable obstacles, move toward the realization of those possibilities.

In everyday life, there is an observable fact that can be seen: There are frequent disappointments that come at unexpected times and all too often. Many things do not work out to our satisfaction. But for centuries, there has been a guiding principle tested in the crucible of life by which we can live: "Hope does not disappoint us."

Dean's List at SCC

Several students were named to Somerset Community College Dean's List for the Spring 2012 semester. SCC's enrollment is more than 10,000 students with a total of 663 students making the spring Dean's List.

To be a member of the Dean's List, a student must maintain a 3.5 grade point average and be a full-time student at Somerset Community College. A full-time student must take 12 credit hours during a semester, excluding developmental classes.

Local students named were:

Brodhead: Stephen Burdine, Ashley Bussell, Janet Bussell, Rachel Denney, Constance Irvin, Darrin McKinney and Kristyna McKinney.

Mount Vernon: Kayla Barnett, Athena Bowling,

Rebecca Hacker, Zandell Hasty, Jonathan Higgins, Rick Liming, Roy Lucas, Kevin Mason, Elizabeth McClure, Joseph McClure, Billy McFerron, Sandy Ramsey and Regina Thompson.

Orlando: Kayla Hensley.



Lacey Eaine Shepherd, daughter of Sgt. Zachary and Tabitha Shepherd, was born April 7, 2012 in Blanchfield Community Army Hospital in Fort Campbell where Sgt. Shepherd is now stationed. She is welcomed by two brothers, James Michael and Marcus Alan. Proud grandparents are Cynthia and Anthony Hansle of William, Patricia and Robyn Isaacs of Somerset, Manuel Shepherd, Jr. of Lexington and the late Lani White. Great grandparents are Harley and Elaine Tillman of Missouri and Leon and Judy Rowe of Mt. Vernon and the late Cleda and Manuel Shepherd, Sr.

STRUGGLING WITH ADDICTION?

Toll-free Treatment Help Line
1-866-90-UNITE

Take control of your life
TODAY!

Save a lot

food stores

EXTRA SAVINGS

| | |
|--|--|
| Fresh Iceberg LETTUCE 99¢ | Whole Boneless Beef EYE OF ROUND \$2.59 Lb. |
| Vidalia Sweet ONIONS 79¢ Lb. | Whole Boston Butt PORK ROAST \$1.59 Lb. |
| Fresh Bunch BROCCOLI \$1.79 | Fresh Fryer Boneless Breast or BREAST TENDERS \$1.99 Lb. |
| Dole Cole Slaw MIX 99¢ 12 Oz. Bag | Fresh Pork Steaks or Country Style PORK RIBS \$1.79 Lb. |
| LAY'S POTATO CHIPS 2/\$4 Assorted Varieties 11 Oz. Bag | Fairgrounds HOT DOGS 99¢ 12 Oz. Pkg. |
| BUBBA COLA PRODUCTS 2 Liter Btl. 85¢ 12 Pack 12 Oz. Cans \$2.48 Assorted Flavors | |

AD PRICES GOOD MONDAY, JUNE 25TH THRU SUNDAY, JULY 1ST 2012

SPECIAL BUYS AT SPECIAL PRICES

| | | | |
|--|--|--|--|
| Kurtz Tomato Ketchup 32 Oz. Bottle \$1.00 | Assorted Varieties Gatorade 32 Oz. Bottle \$1.00 | Keebler Club Crackers 16 Oz. Box 2/\$5.00 | Crystal 2 O Drinking Water 24 Pack - Half Liter \$2.48 |
| Morning Delight Buttermilk Pancake Mix 32 Oz. Box \$1.89 | Morning Delight Pancake Syrup Buttery or Original 24 Oz. Bottle \$1.79 | O Days Mac and Cheese Dinner 7.25 Oz. Box 39¢ | Westcott Vegetable Oil 48 Oz. Bottle \$2.79 |
| Assorted Varieties - 6 Oz. Coburn Farm Yogurt 43¢ | Wylwood Potato Puffs or Crinkle Cut Fries 32 Oz. Bag \$1.99 | Hawaiian Punch Freezer Bars 24 Ct. - 60 Oz. \$2.49 | Scott Paper Towels Single Rolls 97¢ |

WE ACCEPT WIC EBT, DEBIT, VISA OR MASTER CARD AND PERSONAL CHECKS FOR AMOUNT OF PURCHASE

savings made easy

Open Monday - Saturday 8 a.m. to 9 p.m. • Sunday 9 a.m. to 9 p.m.
910 W. Main St. - Mt. Vernon - 606-256-9810

NOTICE

Notice is hereby given that Kentucky Utilities Company seeks approval by the Public Service Commission, Frankfort, Kentucky of an adjustment of electric rates and charges proposed to become effective on and after August 1, 2012, subject to the "Stay-Out" Commitment in Article I.1.1 of the Settlement Agreement approved in September 30, 2010 Public Service Commission Order in Case No. 2010-00204, under which the change in rates may be filed with the Public Service Commission during 2012, but not take effect before January 1, 2013.

KU CURRENT AND PROPOSED ELECTRIC RATES

Residential Service - Rate RS

| | Current | Proposed |
|---------------------------------|-----------|-----------|
| Basic Service Charge per Month: | \$8.50 | \$13.00 |
| Energy Charge per kWh: | \$0.06987 | \$0.07235 |

Volunteer Fire Department Service - Rate VFD

| | Current | Proposed |
|---------------------------------|-----------|-----------|
| Basic Service Charge per Month: | \$8.50 | \$13.00 |
| Energy Charge per kWh: | \$0.06987 | \$0.07235 |

General Service - Rate GS

| | Current | Proposed |
|---|-----------|-----------|
| Basic Service Charge per Meter Per Month: | | |
| Single-Phase | \$17.50 | \$20.00 |
| Three-Phase | \$32.50 | \$35.00 |
| Energy Charge per kWh: | \$0.08332 | \$0.08678 |

Availability of Service: Text changes clarify that demand component of eligibility for taking service under this rate will be calculated on 12-month average of monthly maximum loads. Also clarifies that a customer taking service under this rate schedule who ceases to take service hereunder must meet eligibility requirements of new customer to again take service under this rate schedule.

Determination of Maximum Load: New provision states how maximum load will be measured.

All Electric School - Rate AES

| | Current | Proposed |
|---|-----------|-----------|
| Basic Service Charge per Meter Per Month: | | |
| Single-Phase | \$17.50 | \$20.00 |
| Three-Phase | \$32.50 | \$35.00 |
| Energy Charge per kWh: | \$0.06670 | \$0.07060 |

Availability of Service: Text change clarifies that customer taking service under this rate schedule who later ceases to take such service may not again take service under this rate schedule because it is closed.

Power Service - Rate PS

| Secondary Service | Current | Proposed |
|--|------------|------------|
| Basic Service Charge (per Month) | \$90.00 | \$90.00 |
| Energy Charge (per kWh) | \$ 0.03300 | \$ 0.03349 |
| Demand Charge (per kW per month of billing demand) | | |
| Summer Rate (May through September) | \$13.90 | \$14.40 |
| Winter Rate (All Other Months) | \$11.65 | \$12.10 |

| Primary Service | Current | Proposed |
|--|------------|------------|
| Basic Service Charge (per Month) | \$90.00 | \$125.00 |
| Energy Charge (per kWh) | \$ 0.03300 | \$ 0.03349 |
| Demand Charge (per kW per month of billing demand) | | |
| Summer Rate (May through September) | \$13.72 | \$ 14.75 |
| Winter Rate (All Other Months) | \$11.45 | \$ 12.73 |

Availability of Service: Text changes clarify that demand component of eligibility for taking service under this rate will be calculated on 12-month average of monthly maximum loads. Also clarifies that a customer taking service under this rate schedule who ceases to take service hereunder must meet eligibility requirements of new customer to again take service under this rate schedule.

Time-of-Day Secondary Service Rate TODS

| | Current | Proposed |
|--|------------|------------|
| Basic Service Charge (per Month) | \$200.00 | \$200.00 |
| Energy Charge (per kWh) | \$ 0.03490 | \$ 0.03590 |
| Maximum Load Charge (per kW per month) | | |
| Peak Demand Period | \$ 3.89 | \$ 4.50 |
| Intermediate Demand Period | \$ 2.43 | \$ 2.80 |
| Base Demand Period | \$ 3.05 | \$ 3.50 |

Availability of Service: Text changes clarify that demand component of eligibility for taking service under this rate will be calculated on 12-month average of monthly maximum loads.

Time-of-Day Primary Service Rate TODP

| | Current | Proposed |
|---|------------|------------|
| Basic Service Charge (per Month) | \$300.00 | \$300.00 |
| Energy Charge (per kWh) | \$ 0.03522 | \$ 0.03557 |
| Maximum Load Charge (per kVA per month) | | |
| Peak Demand Period | \$ 3.67 | \$ 4.30 |
| Intermediate Demand Period | \$ 2.31 | \$ 2.70 |
| Base Demand Period | \$ 1.28 | \$ 1.60 |

Availability of Service: Text changes clarify that demand component of eligibility for taking service under this rate will be calculated on 12-month average of monthly maximum loads.

Retail Transmission Service Rate RTS

| | Current | Proposed |
|---|------------|------------|
| Basic Service Charge (per Month) | \$500.00 | \$750.00 |
| Energy Charge (per kWh) | \$ 0.03414 | \$ 0.03408 |
| Maximum Load Charge (per kVA per month) | | |
| Peak Demand Period | \$ 3.54 | \$ 3.90 |
| Intermediate Demand Period | \$ 2.30 | \$ 2.90 |
| Base Demand Period | \$ 0.85 | \$ 1.30 |

Availability of Service: Text changes clarify that demand component of eligibility for taking service under this rate will be calculated on 12-month average of monthly maximum loads.

Fluctuating Load Service - Rate FLS

| Primary Service | Current | Proposed |
|---|------------|------------|
| Basic Service Charge (per Month) | \$500.00 | \$750.00 |
| Energy Charge (per kWh) | \$ 0.03419 | \$ 0.03419 |
| Maximum Load Charge (per kVA per month) | | |
| Peak Demand Period | \$ 2.30 | \$ 2.40 |
| Intermediate Demand Period | \$ 1.41 | \$ 1.44 |
| Base Demand Period | \$ 1.57 | \$ 1.75 |

| Transmission Service | Current | Proposed |
|---|------------|------------|
| Basic Service Charge (per Month) | \$500.00 | \$750.00 |
| Energy Charge (per kWh) | \$ 0.02947 | \$ 0.03092 |
| Maximum Load Charge (per kVA per month) | | |
| Peak Demand Period | \$ 2.30 | \$ 2.40 |
| Intermediate Demand Period | \$ 1.41 | \$ 1.44 |
| Base Demand Period | \$ 0.82 | \$ 1.00 |

Current:

Where:

- the monthly billing demand for the Primary Peak and Intermediate Demand Periods is the greater of:
 - the maximum measured load in the current billing period, or
 - a minimum of 60% of the highest billing demand in the preceding eleven (11) monthly billing periods, and
 the monthly billing demand for the Primary Base Demand Period is the greater of:
 - the maximum measured load in the current billing period but not less than 20,000 kVA, or
 - a minimum of 75% of the highest billing demand in the preceding eleven (11) monthly billing periods, or
 - a minimum of 75% of the contract capacity based on the maximum load expected on the system or on facilities specified by Customer.
- the monthly billing demand for the Transmission Peak and Intermediate Demand Periods is the greater of:
 - the maximum measured load in the current billing period, or
 - a minimum of 40% of the highest billing demand in the preceding eleven (11) monthly billing periods, and
 the monthly billing demand for the Transmission Base Demand Period is the greater of:
 - the maximum measured load in the current billing period but not less than 20,000 kVA, or
 - a minimum of 40% of the highest billing demand in the preceding eleven (11) monthly billing periods, or
 - a minimum of 40% of the contract capacity based on the maximum load expected on the system or on facilities specified by Customer.

Proposed:

Where:

- the monthly billing demand for the Peak and Intermediate Demand Periods is the greater of:
 - the maximum measured load in the current billing period, or
 - a minimum of 50% of the highest billing demand in the preceding eleven (11) monthly billing periods, and
 the monthly billing demand for the Base Demand Period is the greater of:
 - the maximum measured load in the current billing period but not less than 20,000 kVA, or
 - a minimum of 75% of the highest billing demand in the preceding eleven (11) monthly billing periods, or
 - a minimum of 75% of the contract capacity based on the maximum load expected on the system or on facilities specified by Customer.

Street Lighting Service - Rate ST.LT. and Private Outdoor Lighting - Rate P.O.LT.

Street Lighting Service (Rate ST.LT. - Sheet No. 35) and Private Outdoor Lighting Service (Rate P.O.LT. - Sheet No. 36) are being reorganized into two rate schedules. The first schedule will be named Lighting Services (Rate LS) and will be a consolidation of lighting fixtures currently offered. The second schedule will be named Restricted Lighting Service (Rate RLS) and will be a consolidation of lighting fixtures that are in service but no longer available for new or replacement installations. The current and proposed rates are presented below based on the lights to be included in Rate LS and Rate RLS. The lights proposed to be contained in the specific schedule are shown in bold type with the current light and rate sheet shown below the proposed light.

Proposed Lighting Service Rate LS

| | Current Rate Sheet | Rate Per Light Per Month | |
|--|--------------------|--------------------------|----------|
| | | Current | Proposed |
| OVERHEAD SERVICE | | | |
| High Pressure Sodium | | | |
| 462 Cobra Head, 5800 Lum. Std | | | |
| 5800 Lum. HPS Std | St. Lt. 35 | \$ 7.90 | \$ 8.33 |
| 472 Cobra Head, 5800 Lum. Ornfil | | | |
| 5800 Lum. HPS Ornfil | St. Lt. 35 | \$10.73 | \$11.32 |
| 463 Cobra Head, 9500 Lum. Std | | | |
| 9500 Lum. HPS Std | St. Lt. 35 | \$ 8.41 | \$ 8.87 |
| 473 Cobra Head, 9500 Lum. Ornfil | | | |
| 9500 Lum. HPS Ornfil | St. Lt. 35 | \$11.45 | \$12.08 |
| 464 Cobra Head, 22000 Lum. Std | | | |
| 22000 Lum. HPS Std | St. Lt. 35 | \$13.04 | \$13.75 |
| 22000 Lum. Cobra Head HPS Std | P.O.Lt. 36 | \$13.04 | |
| 474 Cobra Head, 22000 Lum. Ornfil | | | |
| 22000 Lum. HPS Ornfil | St. Lt. 35 | \$16.08 | \$16.96 |
| 465 Cobra Head, 50000 Lum. Std | | | |
| 50000 Lum. HPS Std | St. Lt. 35 | \$20.95 | \$22.10 |
| 50000 Lum. Cobra Head HPS Std | P.O.Lt. 36 | \$20.95 | |
| 475 Cobra Head, 50000 Lum. Ornfil | | | |
| 50000 Lum. HPS Ornfil | St. Lt. 35 | \$22.51 | \$23.74 |
| 487 Directional, 9500 Lum. Std | | | |
| 9500 Lum. Directional HPS | P.O.Lt. 36 | \$ 8.27 | \$ 8.72 |
| 488 Directional, 22000 Lum. Std | | | |
| 22000 Lum. Directional HPS | P.O.Lt. 36 | \$12.45 | \$13.13 |
| 489 Directional, 50000 Lum. Std | | | |
| 50000 Lum. Directional HPS | P.O.Lt. 36 | \$17.70 | \$18.67 |
| 428 Open Bottom, 9500 Lum. Std | | | |
| 9500 Lum. Open Bottom HPS | P.O.Lt. 36 | \$ 7.16 | \$ 7.55 |
| Metal Halide | | | |
| 450 Directional, 12000 Lum. Std | | | |
| 12000 Lum. Fixture Only Dir. MH | P.O.Lt. 36.3 | \$13.04 | \$13.75 |
| 451 Directional, 32000 Lum. Std | | | |
| 32000 Lum. Fixture Only Dir. MH | P.O.Lt. 36.3 | \$18.45 | \$19.46 |
| 452 Directional, 107800 Lum. Std | | | |
| 107800 Lum. Fixture Only Dir. MH | P.O.Lt. 36.3 | \$38.48 | \$40.58 |

| | Current Rate Sheet | Rate Per Light Per Month | |
|---|--------------------|--------------------------|------------|
| | | Current | Proposed |
| UNDERGROUND SERVICE | | | |
| High Pressure Sodium | | | |
| 467 Colonial, 5800 Lum. Decorative | | | |
| 5800 Lum. Colonial HPS UG | St. Lt. 35.1 | \$ 9.93 | \$10.47 |
| 5800 Lum. Colonial Decor. UG | P.O.Lt. 36.1 | \$ 9.93 | |
| 468 Colonial, 9500 Lum. Decorative | | | |
| 9500 Lum. Colonial HPS UG | St. Lt. 35.1 | \$10.35 | \$10.92 |
| 9500 Lum. Colonial Decor. UG | P.O.Lt. 36.1 | \$10.35 | |
| 401 Acorn, 5800 Lum. Smooth Pole | | | |
| 5800L Acorn Dec. Pole HPS UG | St. Lt. 35.1 | \$13.86 | \$14.62 |
| 5800L Acorn Dec. Pole UG | P.O.Lt. 36.1 | \$13.86 | |
| 411 Acorn, 5800 Lum. Fluted Pole | | | |
| 5800L Acorn Hist. Pole HPS UG | St. Lt. 35.1 | \$20.14 | \$21.24 |
| 5800L Acorn Hist. Pole UG | P.O.Lt. 36.1 | \$20.14 | |
| 420 Acorn, 9500 Lum. Smooth Pole | | | |
| 9500L Acorn Dec. Pole HPS UG | St. Lt. 35.1 | \$14.39 | \$15.18 |
| 9500L Acorn Dec. Pole UG | P.O.Lt. 36.1 | \$14.39 | |
| 430 Acorn, 9500 Lum. Fluted Pole | | | |
| 9500L Acorn Hist. Pole HPS UG | St. Lt. 35.1 | \$20.78 | \$21.92 |
| 9500L Acorn Hist. Pole UG | P.O.Lt. 36.1 | \$20.78 | |
| 414 Victorian, 5800 Lum. Fluted Pole | | | |
| 5800 Lum. Coach HPS UG | P.O.Lt. 36.1 | \$29.24 | \$30.84 |
| 415 Victorian, 9500 Lum. Fluted Pole | | | |
| 9500 Lum. Coach HPS UG | P.O.Lt. 36.1 | \$29.65 | \$31.27 |
| 476 Contemporary, 5800 Lum. Fixt./Pole | | | |
| 5800 Lum. Contemporary HPS UG | St. Lt. 35.1 | \$15.66 | \$16.58 |
| 5800 Lum. Contemporary HPS UG | P.O.Lt. 36.1 | \$21.81 | |
| 492 Contemporary, 5800 Lum. 2nd Fixt. | | | |
| 5800L Contemp/Fixt. Only/HPS/UG | P.O.Lt. 36.1 | \$14.35 | \$15.13 |
| 477 Contemporary, 9500 Lum. Fixt./Pole | | | |
| 9500 Lum. Contemporary Decor. UG | St. Lt. 35.1 | \$18.19 | \$20.87 |
| 9500 Lum. Contemporary HPS UG | P.O.Lt. 36.1 | \$21.85 | |
| 497 Contemporary, 9500 Lum. 2nd Fixt. | | | |
| 9500 Lum. Contemp/Decor/ Fix Only | P.O.Lt. 36.1 | \$14.38 | \$15.17 |
| 478 Contemporary, 22000L Fixt./Pole | | | |
| 22000 Lum. Contemp. Decor. UG | St. Lt. 35.1 | \$22.11 | \$26.55 |
| 22000 Lum. Contemporary HPS UG | P.O.Lt. 36.1 | \$27.84 | |
| 498 Contemporary, 22000 Lum. 2nd Fixt. | | | |
| 22000 Lum. Contemp. Add Fixture | P.O.Lt. 36.1 | \$16.37 | \$17.27 |
| 479 Contemporary, 50000L Fixt./Pole | | | |
| 50000 Lum. Contemp. Decor. UG | St. Lt. 35.1 | \$28.13 | \$32.54 |
| 50000 Lum. Contemporary HPS UG | P.O.Lt. 36.1 | \$31.12 | |
| 499 Contemporary, 50000 Lum. 2nd Fixt. | | | |
| 50000L Contemp. Decor. Fixt. Only | P.O.Lt. 36.1 | \$19.65 | \$20.72 |
| 300 Dark Sky, 4000 Lumen | | | |
| 4000 Lum. HPS DSK Lantern | DSK 39 | \$21.31 | \$22.48 |
| 301 Dark Sky, 9500 Lumen | | | |
| 9500 Lum. HPS DSK Lantern | DSK 39 | \$22.22 | \$23.44 |
| 360 Granville Pole and Fixture, 16000L | | | |
| Granville Pole and Fixture | St. Lt. 35.1 | \$51.00 | \$53.79 |
| Granville Pole and Fixture | P.O.Lt. 36.2 | \$51.00 | |
| (Granville Accessories) | | | |
| Single Crossarm Bracket | St. Lt. 35.1 | \$17.78 | Eliminated |
| | P.O.Lt. 36.2 | \$17.78 | Eliminated |
| Twin Crossarm Bracket (Inc. 1 Fixture) | St. Lt. 35.1 | \$19.79 | \$20.87 |
| | P.O.Lt. 36.2 | \$19.79 | |
| 24 Inch Banner Arm | St. Lt. 35.1 | \$ 3.09 | \$ 3.26 |
| | P.O.Lt. 36.2 | \$ 3.09 | |
| 24 Inch Clamp Banner Arm | St. Lt. 35.1 | \$ 4.26 | \$ 4.49 |
| | P.O.Lt. 36.2 | \$ 4.26 | |
| 18 Inch Banner Arm | St. Lt. 35.1 | \$ 2.84 | \$ 3.00 |
| | P.O.Lt. 36.2 | \$ 2.84 | |
| 18 Inch Clamp On Banner Arm | St. Lt. 35.1 | \$ 3.52 | \$ 3.71 |
| | P.O.Lt. 36.2 | \$ 3.52 | |
| Flagpole Holder | St. Lt. 35.1 | \$ 1.31 | \$ 1.38 |
| | P.O.Lt. 36.2 | \$ 1.31 | |
| Post-Mounted Receptacle | St. Lt. 35.1 | \$18.46 | \$19.47 |
| | P.O.Lt. 36.2 | \$18.46 | |
| Base-Mounted Receptacle | St. Lt. 35.1 | \$17.81 | Eliminated |
| | P.O.Lt. 36.2 | \$17.81 | Eliminated |
| Additional Receptacles | St. Lt. 35.1 | \$ 2.52 | \$ 2.66 |
| | P.O.Lt. 36.2 | \$ 2.52 | |
| Planter | St. Lt. 35.1 | \$ 4.28 | \$ 4.51 |
| | P.O.Lt. 36.2 | \$ 4.28 | |
| Clamp On Planter | St. Lt. 35.1 | \$ 4.75 | \$ 5.01 |
| | P.O.Lt. 36.2 | \$ 4.75 | |
| Metal Halide | | | |
| 490 Contemporary, 12000L Fixt. Only | | | |
| 12000 Lum. Contemp. Fix. Only MH | P.O.Lt. 36.3 | \$14.21 | \$14.99 |

| | | | |
|---|--------------|---------|---------|
| 494 Contemporary, 12000 Lum. Fixture w/Smooth Pole 12000 Lum. Cont. Fix. w/M Pole MH | P.O.Lt. 36.3 | \$26.62 | \$28.08 |
| 491 Contemporary, 32000 Lum. Fix. Only 32000 Lum. Contemp. Fix. Only MH | P.O.Lt. 36.3 | \$20.12 | \$21.22 |
| 495 Contemporary, 32000 Lum. Fixture w/Smooth Pole 32000 Lum. Cont. Fix. w/M Pole MH | P.O.Lt. 36.3 | \$32.53 | \$34.31 |
| 493 Contemporary, 107800L Fixt./Only 107800 Lum. Contemp. Fix. Only MH | P.O.Lt. 36.3 | \$41.70 | \$43.98 |
| 496 Contemporary, 107800 Lum. Fixture w/Smooth Pole 107800 Lum. Cont. Fix. w/M Pole MH | P.O.Lt. 36.3 | \$54.11 | \$57.07 |

Proposed Restricted Lighting Service Rate RLS

| | Current Rate Sheet | Rate Per Light Per Month | |
|---|--------------------------|--------------------------|----------|
| | | Current | Proposed |
| OVERHEAD SERVICE | | | |
| High Pressure Sodium | | | |
| 461 Cobra Head, 4000 Lum. Fixt. Only 4000 Lum. HPS Std | St. Lt. 35 | \$ 6.93 | \$ 7.31 |
| 471 Cobra Head, 4000 Lum. Fixt/Pole 4000 Lum. HPS Orntl | St. Lt. 35 | \$ 9.76 | \$10.29 |
| 409 Cobra Head, 50000 Lum. Fixt. Only 50000 Lum. HPS Special Lighting | P.O.Lt. 36 | \$10.25 | \$10.81 |
| 426 Open Bottom, 5800 Lum. Fixt. Only 5800 Lum. Open Bottom HPS Std | P.O.Lt. 36 | \$ 6.72 | \$ 7.09 |
| | | | |
| Metal Halide | | | |
| 454 Direct, 12000 Lum. Flood Fixt/Pole 12000L Fixt/Pole Dir. MH | P.O.Lt. 36.3 | \$17.27 | \$18.21 |
| 455 Direct, 32000 Lum. Flood Fixt/Pole 32000L Fixt/Pole Dir. MH | P.O.Lt. 36.3 | \$22.68 | \$23.92 |
| 459 Direct, 107800 Lum. Flood Fixt/Pole 107800L Fixt/Pole Dir. MH | P.O.Lt. 36.3 | \$42.71 | \$45.05 |
| | | | |
| Mercury Vapor | | | |
| 446 Cobra Head, 7000 Lum. Fixt. Only 7000 Lum. MV Std | St. Lt. 35 | \$ 8.72 | \$ 9.20 |
| 456 Cobra Head, 7000 Lum. Fixt/Pole 7000 Lum. MV Orntl | St. Lt. 35 | \$10.94 | \$11.54 |
| 447 Cobra Head, 10000 Lum. Fixt. Only 10000 Lum. MV Std | St. Lt. 35 | \$10.29 | \$10.85 |
| 457 Cobra Head, 10000 Lum. Fixt/Pole 10000 Lum. MV Orntl | St. Lt. 35 | \$12.26 | \$12.93 |
| 448 Cobra Head, 20000 Lum. Fixt. Only 20000 Lum. MV Std 20000 Lum. MV Special Ltg. | St. Lt. 35 P.O.Lt. 36 | \$12.57 \$ 7.85 | \$12.19 |
| 458 Cobra Head, 20000 Lum. Fixt/Pole 20000 Lum. MV Orntl 20000 Lum. Cobra Head MV Std | St. Lt. 35 P.O.Lt. 36 | \$14.14 \$12.57 | \$14.49 |
| 404 Open Bottom, 7000 Lum. Fixt. Only 7000 Lum. Open Bottom MV Std | P.O.Lt. 36 | \$ 9.69 | \$10.22 |
| | | | |
| Incandescent | | | |
| 421 Tear Drop, 1000 Lum. Fixt. Only 1000 Lum. Incand. Std | St. Lt. 35 | \$ 3.08 | \$ 3.25 |
| 422 Tear Drop, 2500 Lum. Fixt. Only 2500 Lum. Incand. Std | St. Lt. 35 | \$ 4.09 | \$ 4.31 |
| 424 Tear Drop, 4000 Lum. Fixt. Only 4000 Lum. Incand. Std | St. Lt. 35 | \$ 6.08 | \$ 6.41 |
| 434 Tear Drop, 4000 Lum. Fixt./Pole 4000 Lum. Incand. Orntl | St. Lt. 35 | \$ 7.00 | \$ 7.38 |
| 425 Tear Drop, 6000 Lum. Fixt. Only 6000 Lum. Incand. Std | St. Lt. 35 | \$ 8.11 | \$ 8.55 |

| | Current Rate Sheet | Rate Per Light Per Month | |
|--|------------------------------|--------------------------|----------|
| | | Current | Proposed |
| UNDERGROUND SERVICE | | | |
| Metal Halide | | | |
| 460 Direct, 12000 Lum. Flood Fixt/Pole 12000L Fixt. w/M. Pole Dir. MH | P.O.Lt. 36.3 | \$ 25.45 | \$26.84 |
| 469 Direct, 32000 Lum. Flood Fixt/Pole 32000L Fixt. w/M. Pole Dir. MH | P.O.Lt. 36.3 | \$ 30.86 | \$32.55 |
| 470 Direct, 107800 Lum. Flood Fixt/Pole 107800L Fixt. w/M. Pole Dir. MH | P.O.Lt. 36.3 | \$ 50.89 | \$53.67 |
| | | | |
| High Pressure Sodium | | | |
| 440 Acorn, 4000 Lum. Flood Fixt/Pole 4000L Acorn (Decor) HPS UG | P.O.Lt. 36.1 | \$12.77 | \$13.47 |
| | | | |
| 410 Acorn, 4000 Lum. Fluted Pole 4000L Acorn (Hist Pole) HPS UG 4000L Acorn (Hist Pole) HPS UG | St. Lt. 35.1 P.O.Lt. 36.1 | \$19.16 \$19.16 | \$20.21 |
| 466 Colonial, 4000 Lum. Smooth Pole 4000 Lum. Colonial HPS UG 4000 Lum. Colonial Decor. UG | St. Lt. 35.1 P.O.Lt. 36.1 | \$ 8.93 \$ 8.93 | \$ 9.42 |
| 412 Coach, 5800 Lum. Smooth Pole 5800 Lum. Coach Decor. UG | St. Lt. 35.1 | \$ 29.24 | \$30.84 |
| 413 Coach, 9500 Lum. Smooth Pole 9500 Lum. Coach Decor. UG | St. Lt. 35.1 | \$ 29.65 | \$31.27 |

Lighting Energy Service Rate LE

| | Current | Proposed |
|------------------------|-----------|-----------|
| Energy Charge per kWh: | \$0.05647 | \$0.05958 |

Traffic Energy Service Rate TE

| | Current | Proposed |
|---------------------------------|-----------|-----------|
| Basic Service Charge per Month: | \$3.14 | \$3.25 |
| Energy Charge per kWh: | \$0.07182 | \$0.07614 |

Dark Sky Friendly Rate DSK

| Current Rate | | | |
|--------------|-------|------|---------|
| DSK Lantern | 4.000 | .050 | \$21.31 |
| DSK Lantern | 9.500 | .100 | \$22.22 |

Proposed Rate
This rate schedule is proposed to be included in Lighting Service Rate LS.

Cable Television Attachment Charges – Rate CTAC

| | Current | Proposed |
|---|---------|----------|
| Attachment Charge per year for each attachment to pole: | \$5.40 | \$10.01 |

Curtailable Service Rider 10 – Rider CSR10

| | Current (per kW) | Proposed (Per kVA) |
|------------------------|---------------------|-----------------------|
| Monthly Demand Credit: | | |
| Primary | (\$5.50) | (\$2.80) |
| Transmission | (\$5.40) | (\$2.75) |
| Non-Compliance Charge: | \$16.00 | \$16.00 |

Proposed Contract Option: Removes restriction that KU may only use physical curtailment during system reliability events. Also changes contract options' demand from a 15-minute demand basis to the one the customer's standard rate schedule uses.

Curtailable Service Rider 30 – Rider CSR30

| | Current (per kW) | Proposed (Per kVA) |
|-------------------------------|---------------------|-----------------------|
| Monthly Demand Credit per KW: | | |
| Primary | (\$4.40) | (\$2.30) |
| Transmission | (\$4.30) | (\$2.25) |
| Non-Compliance Charge per KW: | \$16.00 | \$16.00 |

Proposed Contract Option: Removes restriction that KU may only use physical curtailment during system reliability events. Also changes contract options' demand from a 15-minute demand basis to the one the customer's standard rate schedule uses.

Load Reduction Incentive Rider – Rider LRI

| | |
|---------------|--|
| Current Rate | Up to \$0.30 per kWh |
| Proposed Rate | This rate schedule is proposed to be eliminated. |

Standard Rider for Excess Facilities – Rider EF

| Current Rate | | |
|--|--|-------|
| Customer shall pay for excess facilities by: | | |
| Monthly Charge for Leased Facilities: | | 1.54% |
| Monthly Charge for Facilities Supported By a One-Time CIAC Payment: | | 0.74% |

Proposed Rate

No adjustment in the monthly charge for a replacement of facilities will be made during the initial five (5) year term of contract.

Customer shall pay for excess facilities by:

(a) Making a monthly Excess Facilities charge payment equal to the installed cost of the excess facilities times the following percentage:

Percentage with No Contribution-in-Aid-of-Construction 1.28%

(b) Making a one-time Contribution-in-Aid-of-Construction equal to the installed cost of the excess facilities plus a monthly Excess Facilities Charge payment equal to the installed cost of the excess facilities times the following percentage:

Percentage with Contribution-in-Aid-of-Construction 0.49%

Standard Rider for Redundant Capacity Charge – Rider RC

| | Current (per kW) | Proposed (Per kVA) |
|--|---------------------|-----------------------|
| Capacity Reservation Charge per Month: | | |
| Secondary Distribution | \$0.85 | \$1.55 |
| Primary Distribution | \$0.68 | \$0.99 |

Standard Rider for Supplemental or Standby Service – Rider SS

| | Current (per kW) | Proposed (Per kVA) |
|----------------------------|---------------------|-----------------------|
| Contract Demand per month: | | |
| Secondary | \$6.54 | \$12.91 |
| Primary | \$6.17 | \$12.35 |
| Transmission | \$5.99 | \$11.17 |

Availability of Service: Text addition clarifies that KU has no obligation to supply non-firm service to a customer-generator unless the customer seeks supplemental or standby service under Rider SS. This requirement does not apply to Net Metering Service (Rider NMS).

Temporary and/or Seasonal Electric Service Rider TS

Availability of Service: Text change clarifies that service is available when it is not necessary for KU to install permanent facilities.

Conditions: Customer will pay for non-salvageable materials plus a monthly charge for the salvageable equipment at the Percentage With No Contribution in-Aid-of-Construction specified on the Excess Facilities Rider.

Real-Time Pricing Rider RTP

Current Rate: Billing under this Rider is formulaic.
Proposed Rate: This rate schedule is proposed to be eliminated.

Standard Rate for Low Emission Vehicle Service – Rate LEV

| | Current | Proposed |
|---------------------------------|-----------|------------|
| Basic Service Charge per Month: | \$8.50 | \$13.00 |
| Energy Charge per kWh: | | |
| Off-Peak Hours | \$0.04904 | \$ 0.05078 |
| Intermediate Hours | \$0.07005 | \$ 0.07254 |
| Peak Hours | \$0.13315 | \$ 0.13788 |

Availability of Service: Clarifies that rate is available to customers eligible for Rate RS or GS where the GS service is used in conjunction with an RS service to provide service to a detached garage and energy usage is no more than 300 kWh per month.

Meter Test Charge

| | |
|----------------------|---------|
| Current Rate | \$60.00 |
| Proposed Rate | \$75.00 |

Disconnecting and Reconnecting Service Charge

| | |
|----------------------|---------|
| Current Rate | \$25.00 |
| Proposed Rate | \$28.00 |

Meter Pulse Charge

Current Rate: \$9.00 per month per installed set of pulse-generating equipment
Proposed Rate: \$15.00 per month per installed set of pulse-generating equipment

Customer Deposits

Kentucky Utilities Company is proposing no change to the required Customer Deposit for residential electric customers served under Residential Rate RS from the current amount of \$135.00 (0% increase), and the required Customer Deposit for general service customers served under General Service Rate GS from the current amount of \$220.00 (0% increase). Text change states when Rate GS deposit may be waived in conjunction with taking service under Rate RS.

Kentucky Utilities Company proposes to change the text of the following electric tariffs: General Service Rate GS, All Electric School Rate AES, Power Service Rate PS, Time-of-Day Secondary Service Rate TODS, Time-of-Day Primary Service Rate TODP, Retail Transmission Service Rate RTS, Fluctuating Load Service Rate FLS, Street Lighting Service Rate ST.LT, Private Outdoor Lighting Rate P.O.LT, Cable Television Attachment Charges Rate CTAC, Curtailable Service Rider CSR10, Curtailable Service Rider CSR30, Excess Facilities Rider EF, Redundant Capacity Rider RC, Supplemental/Standby Service Rider SS, Rider IL for Intermittent Loads, Temporary/Seasonal Service Rider TS, Large Green Energy Rider LGE, Low Emission Vehicle Service Rate LEV, Fuel Adjustment Clause FAC, Demand Side Management Cost Recovery Mechanism DSM, Environmental Cost Recovery Surcharge ECR, and the Terms and Conditions.

Changes to the Terms and Conditions include proposed clarifications on terms and conditions for determining customer rate assignments, as well as when standby or supplemental service must be purchased if customer desires non-firm service.

Although KU is not proposing to change the text of its Fuel Adjustment Clause ("FAC"), other than the correction of a minor typographical error in Paragraph (3), it is proposing to recover certain costs through the FAC to ensure that the correct amounts are collected through base rates and the FAC.

Complete copies of the proposed tariffs containing text changes and proposed rates may be obtained by contacting Lonnie E. Bellar, Kentucky Utilities Company at 220 West Main Street, Louisville, Kentucky, 502-627-4830, or visiting Kentucky Utilities Company's website at www.lge-ku.com.

The foregoing rates reflect a proposed annual increase in revenues of approximately 6.5% to Kentucky Utilities Company.

The estimated amount of the annual change and the average monthly bill to which the proposed electric rates will apply for each electric customer class is as follows:

| Electric Rate Class | Annual \$ Increase | Annual % Increase | Mthly Bill \$ Increase | Mthly Bill % Increase |
|---------------------|--------------------|-------------------|------------------------|-----------------------|
| Residential | \$37,381,886 | 8.03% | \$ 7.41 | 8.03% |
| General Service | \$ 9,081,201 | 4.97% | \$ 9.20 | 4.97% |
| All Electric School | \$ 635,467 | 5.81% | \$ 82.81 | 5.81% |
| Power Service | \$ 6,849,989 | 2.53% | \$ 96.29 | 2.53% |
| TODS (Secondary) | \$ 1,907,198 | 6.59% | \$ 1,160.80 | 6.59% |
| TODP (Primary) | \$12,380,611 | 6.62% | \$ 6,159.51 | 6.62% |
| Retail Transmission | \$ 5,128,398 | 6.50% | \$ 11,982.24 | 6.50% |
| Fluctuating Load | \$ 1,417,956 | 6.25% | \$118,163.01 | 6.25% |
| Outdoor Lights | \$ 1,267,776 | 5.41% | \$ 0.62 | 5.41% |
| Lighting Energy | \$ 124 | 5.42% | \$ 11.27 | 5.42% |
| Traffic Energy | \$ 6,388 | 5.40% | \$ 0.79 | 5.40% |
| CTAC | \$ 681,722 | 85.37% | N/A | N/A |

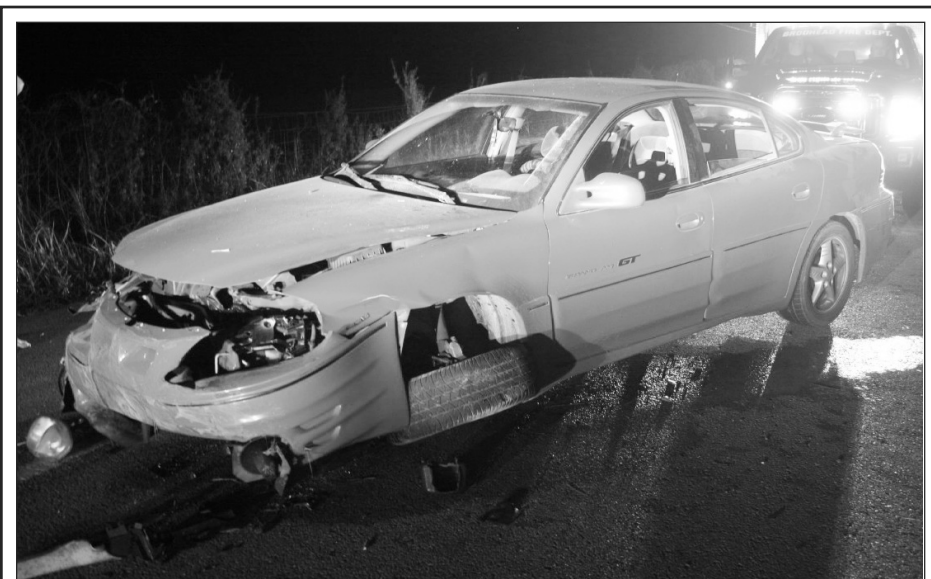
The rates contained in this notice are the rates proposed by Kentucky Utilities Company; however, the Public Service Commission may order rates to be charged that differ from the proposed rates contained in this notice.

Notice is further given that any corporation, association, body politic or person with a substantial interest in the matter may by written request, within thirty (30) days after publication of the notice of the proposed rate changes, request to intervene. The motion shall be submitted to the Public Service Commission, 211 Sower Boulevard, P. O. Box 615, Frankfort, Kentucky 40601, and shall set forth the grounds for the request, including the status and interest of the party. Intervention may be granted beyond the thirty (30) day period for good cause shown. Any person who has been granted intervention may obtain copies of the application and any other filing made by the utility by contacting Lonnie E. Bellar, Vice President – State Regulation and Rates, Kentucky Utilities Company, c/o LG&E and KU Energy LLC, 220 West Main Street, Louisville, Kentucky, 502-627-4830.

A copy of the application and testimony shall be available for public inspection at the office of Kentucky Utilities Company, 100 Quality Street, Lexington, Kentucky, or the Public Service Commission, 211 Sower Boulevard, Frankfort, Kentucky.

A copy of this Notice and the proposed tariff, once filed, shall also be available for public inspection on Kentucky Utilities Company's website at www.lge-ku.com.

| | |
|---|--|
| Kentucky Utilities Company c/o LG&E and KU Energy LLC 220 West Main Street P. O. Box 32010 Louisville, Kentucky 40232 502-627-4830 | Public Service Commission 211 Sower Boulevard P. O. Box 615 Frankfort, Kentucky 40601 502-564-3940 |
|---|--|



The Brodhead Fire Department responded to a single car accident Saturday night on Hwy 1505 in Brindle Ridge. Authorities say Hannah Durham, 21, of Brodhead was traveling east on Hwy 1505 when she lost control of her vehicle after she overcorrected. Durham was transported to the Rockcastle Regional Hospital where she was treated and released.

Yards to Paradise

By Max Phelps
Creating Structure in the Landscape

Composition and configuration: These are special terms as they relate to a landscape. Think of Tinker Toys or Lego's and you might select what might could be used for a wheel. Then select pieces to create spokes or axles – you suddenly have some structure. So it is in landscaping as you use hardscaping and softscape elements and tie them together in such a way as to create a unique and attractive whole.

Anything “constructed” creates structure in the landscape. Things like decks, pergolas, arbors, fences, patios, retaining walls, big boulders, large planting beds, pools, ponds, and cer-

tainly garages, sheds and other buildings.

Simpler things like bird houses, benches, latticework to hide a trash can, etc, can also be described as adding to structure.

Winter is a fine time, while the leave are missing to see the 'bones' of the yard. These are the primary structure in the landscape. Greenery gives additional structure in the landscape, ofcourse.

Structure is not just a building of some sort, it is a spatial relationship that can be created even more easily with plantings. For example, a pyramidal evergreen holly or spruce can cover a large windowless wall, or perhaps anchor the corner of the building. A limbed-up de-

ciduous tree with layers of plantings (taller in back, shorter in front) can create some luxurious landscaping structure when put together appropriately. Yards with just shrubs, grasses or flowers of similar shapes and sizes and textures and colors are a landscape without structure.

Terracing can create structure. On a slope more useful space can be created as a bonus to the improved appearance by using terracing. (Raised beds are sort of the same terracing concept used on a flatter lawn.)

Garden ornaments, stones, plus birdbaths and feeders and the like can contribute to a yard's structure.

Water always adds to the structural elements in one's garden. From the birdbath or bubbling rock to a large stream with waterfalls and pond. Rain harvesting and rain gardens are a growing aspect of additional structure to consider.

Stone, soil, wood, etc., make up hardscaping. Permanent types of structures should be added early on in the landscaping of a home, Extra trees or flowering beds can be added over time. Outdoor entertaining seems to be here to stay, so allow room for this as you create a master plan for the structure you hope your home will pleasingly showcase some day. (Those content to watch tv re-runs all summer can live in an apartment or condo, without knowing the joys they are missing, and they probably haven't read this far anyhow.)

In landscaping your place, you'll think of colors, smells, blossoms, and you may want to make room for a favorite plant. Just don't forget the need for structure. Even an informal landscape has structure. Try throwing five darts, and plant a tree or shrub where each lands – you'll still end up with some random structure as some will grow big and others not so much. Spatial relationships and their composition can be manipulated to create some awesome landscaping. After all, everyone could buy the same plants at a big garden center, but some turn them into a magnificent yard, and others not so lovely. For making your place more into paradise, consider the structure of your landscaping.

The author is a landscaper specializing in waterfeatures. Contact Max: rockcastles.net

Dance Camp scheduled

The Wellness Center at Rockcastle Regional Hospital will host a Hip-Hop Dance Camp taught by instructor Loretta Johnson. Students will learn various steps, combinations and several choreographed routines. The camp is July 16-July 20 at the Wellness Center (located on the 3rd floor of Outpatient Services Building).

Camp hours are 9:00 a.m. - 11:00 a.m. for ages 7-10 and 12:00 p.m. - 2:00 p.m. for ages 11-14. The fee for the week-long camp is \$50.00 per child. Healthy snacks will be available for purchase. Contact certified Hip Hop Hustle instructor Loretta Johnson at 606-305-9887 to reserve your child's spot today. Or visit www.rockcastlehospital.org/wellnesscenter



The Family Fun Relay Race was held during the Fit Family Run at The Longest Day of Play on June 20. Pictured above is the Fastest Family, the Burtons of Mt. Vernon, from left, Andrew, Lauren, Charon and Shannon. The purpose of the Fit Family Run was to promote family fitness and fight hunger. One hundred forty-four participated in the event and 381 pounds of food was collected for the Grateful Bread Food Pantry.



The Fastest Kids in Town - pictured from left, Hunter Spivey (boys age 9-10), Robert Reams (boys age 7-under), Laurel Yates (girls age 9-10). Not pictured: Grace Reams (girls age 7-under). This race was part of the Fit Family Run held during The Longest Day of Play on June 20.

Help protect yourself against identity theft

Identity theft can affect anyone — including students. In fact, students under age 18 are often targeted because they often have no reason to check their credit scores to see if someone has been using their Social Security number (SSN). There are several measures you can take to help protect yourself and your identity, according to the Kentucky Higher Education Assistance Authority (KHEAA).

Never provide personal information such as your SSN, bank account or credit card numbers in response to a phone call, fax, letter or email. Shred any documents that contain personal or financial information. Don't respond to emails that claim to be from the Internal Revenue Service (IRS). The IRS doesn't contact taxpayers by email.

Friends, family members, roommates and contract workers in homes make up a large percentage of identity thieves because they have easier access to your confidential information. Make sure you don't leave personal information where they can see it.

Pick up your mail as soon as possible after delivery or use a locked mailbox. Put outgoing mail in a blue Postal Service mailbox, hand it to a mail carrier or take it to the post office. Never provide bank,

credit card or other sensitive data when visiting a website that doesn't explain how your personal information will be protected, including the use of encryption to safely transmit and store data. A site with “https” instead of just “http” at the beginning of the address is a secure site.

If you're using an ATM card or debit card, ensure no one standing nearby can see your personal identification number (PIN).

On your personal computer, install a free or low-cost firewall to stop intruders from gaining remote access to your PC. Download and frequently update security patches offered by your operating system and software vendors to correct weaknesses that a hacker could exploit.

KHEAA is the state agency that administers Kentucky's grant and scholarship programs, including the Kentucky Educational Excellence Scholarship (KEES).

To learn how to plan and prepare for higher education, go to www.gotocollege.ky.gov. For more information about Kentucky scholarships and grants, visit www.kheaa.com; write KHEAA, P.O. Box 798, Frankfort, KY 40602-0798; or call 800-928-8926, ext. 6-7372.

Due to July 4th holiday, deadline for next week's paper is 4 p.m. Monday

Fireworks

Going out of Business Warehouse Sale

Griffin's Fireworks

on Purrigsby Rd.
Friday - Sunday • June 29th - July 1st and Wednesday, July 4th

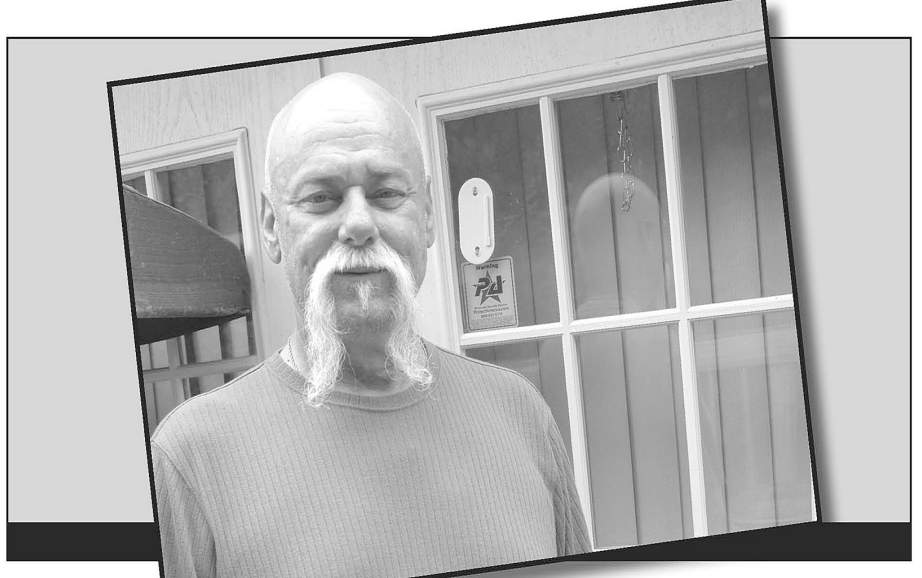
For weekday sales call 859-893-4210

Upward Soccer

It's not too late to join in on all the fun! We are still taking applications for those children entering kindergarten through 8th grade this fall. Cost is \$50 per player. Shorts (optional) are additional \$15. If you register after June 30th there will be a \$25 late fee. Scholarships are available. For more information please contact:

First Baptist Church
340 West Main Street
Mt. Vernon, KY 40456
(606)256-2922

"No one was more surprised than me when my summer and winter electric bills dropped by half..."



Carson Smith of Clay County was tired of paying what he knew were too-high electric bills and by making his home more energy efficient, he cut those bills nearly in half!

"When I could look around the frame of my back door and literally see outside I knew I was paying a lot of unnecessary dollars trying to heat my backyard," said Smith. "I knew I was bound to be losing a lot of my cool air in the summertime, too. That's why I decided to call Jackson Energy."

Learn More!
www.jacksonenergy.com
www.myjacksonenergy.com

"Working for Carson Smith!"

JACKSON ENERGY
A Touchstone Energy® Cooperative

1-800-262-7480

Want to Save Dollars AND Energy? Visit us online or give us a call with your questions or savings story today!



The minor league Red Sox were regular season and tournament champions this year finishing with a record of 13-1. Team members are, front from left: Jacob Collinsworth, Logan Bowman, Robert Mullins, Xander Fletcher, Kaden Fletcher and Zach Taylor. Second row from left: Blaine Allen, Blaine Rumsey, Jonas Cox, CJ Cameron, Caleb Burns and Jaden Carpenter. Back row from left: Coach Kyle Fletcher and Coach Troy Taylor. Not pictured Coach Steve Rumsey. Congratulations guys on a great season.

Establish small plots of clover to improve deer and turkey hunting

Establishing small plots of clover throughout your hunting area can pay big dividends during deer and wild turkey seasons.

Summer is a good time to start preparations for an initial planting in the fall.

"If managed correctly, stands of clover can last for three to five years without re-seeding," said Chris Grasz, a private lands biologist who works in the Bluegrass Region for the Kentucky Department of Fish and Wildlife Resources. "Plots can be as small as 1/4- to 1/2-acre in size and should be located where there's full sun at least part of the day."

Clover needs to be mowed periodically, at least once a year, and doesn't thrive in shady areas. This perennial cool-season legume helps increase soil fertility and provides an almost year-round source of high quality forage for deer. Clover starts growing in the early spring and lasts until it is killed back by the heaviest frosts of late fall.

The first step in this habitat improvement project is to find the right area to establish a plot and prepare the soil for planting.

Secluded woods openings are especially attractive to deer because they feel safe feeding there in the late afternoons, offering good opportunities for close shots.

One option is to locate

the plot at the edge of a field or existing opening that deer are already using. Make sure your tree stand or ground blind can be located within easy shooting range.

A second option, which is especially important for bow hunting deer, is creating a wildlife opening between heavy cover, where deer are known to bed, and the travel routes they take through adjacent woodlands.

Pick a level spot with decent soil fertility. Old fields covered with weeds, brush or small trees can be cleared using hand tools, a chainsaw or mower. A tiller can also be used to prepare the area for planting.

If the area is covered with fescue, Grasz recommends using herbicide to kill back the tall grass. "If the site already has some clover, there are herbicides available that will kill the fescue without harming the clover," he said.

A chemical-free option is solarization, which uses the heat of the sun to kill the grass, vegetation or weed seeds in the soil. On a sunny summer day, place sheets of clear plastic on the ground and weigh them down with rocks on each corner. The extreme heat that develops under the plastic will kill grass and weeds down to their roots in a few days.

Conduct a soil test to measure the nutrient levels -- nitrogen (N), phosphorus

(P), and potassium (K) -- and pH level (acidity) of the soil. Soil test kits are available at most farm stores. Follow directions carefully.

Consider using 10-10-10, a formulation commonly available in 50-pound bags, if fertilizer needs to be added to your plot. Both fertilizer and agricultural lime are available in pellet form for easy application with a hand-crank spreader.

Lime improves water penetration and the uptake of nutrients to plants growing in acidic soils.

"If fertilizer needs to be added to the site, I suggest cutting the amount in half from what is recommended for crop production," said Grasz. "But don't skimp on the amount of lime that is recommended; low pH is usually the issue with our soils."

Winter wheat is a good choice for an initial planting in the fall because it's high protein, is easily digestible by wildlife and makes a good nurse crop for clover. It grows best when the soil has a pH of 5.8 to 6.5.

"Winter wheat should be planted from Aug. 15 to Oct. 15 and you might try mixing in some clover seed," said Grasz. "I recommend planting ladino (white) with some medium red clover."

Clover can also be planted the following year in February or early March. Seed can be spread on a cover of light snow, or in advance of light rain or snow. The freezing and thawing action helps the seed move down into the soil so it can germinate and become established quickly.

Use these long summer days to plant a patch of clover and improve your deer hunting this fall.



Jake Woodall graduated May 5th, 2012 with honors from Union College with a bachelors of Science degree in Elementary Education. He competed on Union's golf team and was part of their 2010 Conference Championship. He is the grandson of Dollie and Curt Roberts and the late Rhoda Woodall. He is the son of David and Terri Woodall.

The Family Room

By: Amy Oakly

One of my favorite fairy tale characters has always been Cinderella. She was a girl who lost her father at an early age and grew up with a stepfamily who forced her to do all of the work in the house and kept her completely shut off from the rest of the world. Her future was less than bright. All that changed, however, when a crazy fairy showed up, waved a magic wand, and helped her become fancy. She went to the ball and met Prince Charming, who was so intrigued by her that he was willing to go searching for her with her glass slipper in tow, shoving it on every female foot in town until he found her. Eventually the shoe fit, they fell in love, and then they lived happily ever after.

Sometimes I wonder what happened to Cinderella after her official story ended. There are so many questions. Was she happy being a princess? Did she still have to do all the work in the house after they got married? Was Prince Charming really as great as he seemed, or was he charming only on the outside? Did either of them ever regret rushing into marriage so quickly?

It is common for women to hope for their own Prince Charming to come rushing in to save the day and sweep them off their feet. Sometimes this dream really does come true. Other times, they

realize that their charming prince isn't really so charming after all.

Charm can be deceiving. It is one of the most common traits of men who abuse their spouses. Abusers will often seem charming in the early stages of relationships, telling the victim everything she wants to hear: how pretty she is, how smart she is, how she has changed his life and is the most amazing person he has ever met. He will also seem charming to her friends and family, tricking them into believing he is a great guy. Often the friends and family of a victim do not believe her when she tells them she is being abused. This is because the abuser is very good at hiding his true self—he only abuses her when no one is watching, and acts like a perfect gentleman when in

public. It is important not to get swept away by someone who is charming. If something or someone seems too good to be real, it probably is.

Life is not a fairy tale. A magical godmother is never going to appear out of thin air to turn you into a more glamorous version of yourself, and a handsome prince isn't going to chase you down if you lose your shoe at his party. Waiting for someone else to show up and create your "happily ever after" will not work. It is up to you to create it for yourself. Was Cinderella's prince really as charming as he seemed in the story? The world will never know.

If you are in an abusive relationship, there is help. Family Life Abuse Center offers emergency services and shelter for domestic violence victims and their children. Nonresidential services are also available. All services are free and confidential. For more information, please call them at any time at 1-800-755-5348.

Replacement Windows
Guaranteed Lowest Pricing!

\$189 Installed
*Max size 4ft. x 6ft. Ask for details.

Any Size
White Vinyl
Double Hung
Insulated

COMPARE AT \$600

Window World
"Simply the Best for Less"

606-258-1774 • 1-800-353-4313
142 American Greeting Rd., Corbin

WindowWorld.com

FREE IN-HOME ESTIMATES | 6 MONTHS SAME AS CASH | 0% FINANCING

"Not only do we stand behind our windows...we stand on them!"
- J.J. Hart, Local Owner

Due to July 4th holiday, deadline for next week's paper is 4 p.m. Monday



18 FLAVORS OF ICE CREAM!

SORGHUM & HONEY QUILTS & THROWS
JAMS & JELLIES
GOURMET FUDGE
SHIRTS & HATS
KENTUCKY PRODUCTS

AUNT POLLY HOUSE

CIRCA 1817



FOR MORE INFORMATION CALL:
(606) 256-5281
OR (606) 256-1000

RENFRO VALLEY, KENTUCKY
OWNED AND OPERATED BY
THE KENTUCKY MUSIC HALL OF FAME

2012 Lincoln County Fair July 2nd - July 7th

MONDAY, JULY 2

9:00-11:30 amCheck in Floral Hall (non-horticulture).....Floral Hall
3:00 pm.....Tractor Driving and Small Engine.....Warm up Track
6:30 pm.....Open Youth Holstein and Jersey Shows.....Livestock Show Barn
7:00 pm.....Miss Lincoln County Fair.....Pageant Building
7:30 pm.....Pedal Pull.....Basketball Court
7:30 pm.....Broken Horn Rodeo.....Motor Sport Track
8:30 pm.....Mother/Daughter Look a Like.....Pageant Building

TUESDAY, JULY 3

6:30 pm.....Open/Youth Brown Swiss, Ayrshire and Guernsey Show.....Livestock Show Barn
7:00 pm.....3 on 3 Basketball Outdoor Half Court.....Basketball Court
7:00 pm.....Miss Pro Teen.....Pageant Building
7:30 pm.....Lightning Valley Go Cart Race Race.....Motor Sports Track
8:00 pm.....Miss Teen.....Pageant Building

WEDNESDAY, JULY 4

7:00 pm.....Market Lamb Show.....Livestock Show Barn
7:00 pm.....Power Wheels.....Warm up Track
7:00 pm.....Open Cornhole Tournament.....Basketball Court
7:30 pm.....Demolition Derby.....Motor Sport Track
Around 10:30 p.m.....Fireworks.....Fairgrounds

THURSDAY, JULY 5

9:00 - 11:30 am.....Check in floral, garden, field crop, and horticulture exhibits.....Floral Hall
6:30 pm.....Open Goat Show.....Livestock Show Barn
7:00 pm.....Co Ed Cornhole Tournament.....Basketball Court
7:00 pm.....Tiny Tots.....Pageant Building
7:00 pm.....Battle of the Bluegrass Truck and Tractor Pull.....Motor Sport Track
8:00 pm.....Little Mr and Miss.....Pageant Building

FRIDAY, JULY 6

10:00 - 11:30 am.....Fairgrounds open for Free Visit to Senior Citizens
6:30 pm.....Beef Show - A, C, L & Other.....Live Stock Show Barn
7:00 pm.....Horse Shoe Pitch Single.....Horsehoe Pit
7:00 pm.....Cola Cola Talent Contest.....Pageant Building
7:00 pm.....KTPA Truck and Tractor Pull.....Motor Sport Track

SATURDAY, JULY 7

9:00 - 11:00 am.....Check Out Floral Hall Exhibits.....Floral Hall
6:30 pm.....Beef Show - A, S, C, H, A, O, B Combined.....Livestock Show Barn
7:00 - 10:00 pm.....Eddie Barber - Country Music Band.....Pageant Building
7:00 pm.....Horsehoe Pitch - Singles.....Horsehoe Pit
7:00 pm.....KTPA Truck and Tractor Pull.....Motor Sport Track
7:30 pm.....Moon Pie Eating Contest.....Floral Hall Patio

DAILY

5:00 to Midnight.....Gates Open.....
6:00 pm to Midnight.....Myers International Midway.....Carnival Area
6:00-10:00 pm.....Floral Hall Open.....Floral Hall
6:00 - 10:00 pm.....Commercial Exhibits Open.....Commercial Building
6:00 pm to Midnight.....Zoopestars.....Horse Show Ring

For Event Rules visit us at HYPERLINK "http://www.lincolnfair.net" www.lincolnfair.net
Admission \$10 per person includes rides and events
Physical Address: 3786 Somerset Rd. Stanford, KY 40484 • Phone : 606-365-3840





A corn crop in one of Albright's cornfields on Wabb Jones Road in Mt. Vernon. Albright's corn crop, and others around the county visibly show a brown/tan color on the bottom of their stalks due to the recent drought and excessive heat.

“Drought”

(Cont. from front)

According to a report from the National Agricultural Statistics Service field office in Kentucky, the state's corn crop was rated at 35 percent fair, 33 percent good, 18 percent poor, 8 percent very poor and only 6 percent excellent.

The statewide tobacco crop was rated at 9 percent excellent, 50 percent good, 29 percent fair, 9 percent poor and 3 percent very poor. The soybean crop is also showing signs of lower quality as well.

Alexander said that if it doesn't rain before July 9th that the governor will likely issue Kentucky in a natural disaster area due to the drought.

Albright said it is hard for he and his fellow farmers to stay optimistic as they are watching their crops wilt away.

“It's the most frustrating feeling in the world knowing you've spent so much time, money and effort trying to have the best crop possible just to have them dry up to nothing because the rain shuts off.” Albright said.

Although the forecast shows no rain in sight, Albright said he is aggravated but is still hoping and praying for rain in the near future.

“We are all still hoping and praying for rain,” Albright said. “Right now would be the perfect time for a miracle to happen.”

“Taylor”

(Cont. from front)

health department and extension district were also submitted but were not approved because additional figures were needed.

The court also approved the property tax settlement submitted by the sheriff's department showing disbursements of \$2,944,987.42 to all taxing districts from the property tax collected.

The court, on a motion by Gary Burdette, seconded by Bill McKinney, also approved a Resolution allowing FLEX funds to be used for paving two miles of the Lambert Road. Up to \$231,094 of the over \$500,000 available will be used on the project. The funds, which can be used only for repaving, represent several years of contributions to the fund for the county by the state and are normally shared equally among the magisterial districts.

In other action, the court appointed County Judge/Executive Buzz Carloftis as Open Records Officer.

“Blasts”

(Cont. from front)

beginning at 4 p.m. Entertainment will be provided by: The Medley Boys, Southern Strings, Wild River Band and Renfro Valley entertainers.

Concessions will be available from the Mt.

Vernon, Brindle Ridge and Livingston Fire Departments and the Renfro Valley Entertainment Center.

The fireworks display will be held after dark.

This event is a joint effort of the Mt. Vernon/Rockcastle County Tourist Commission, the Rockcastle County Fiscal Court and the City of Mt. Vernon.

“Burn Ban”

(Cont. from front)

June 29th.

The ban orders no outdoor burning due to extremely low humidity coupled with wind gusts and no rainfall expected for the county in the foreseeable future.

The only exception for the ban is for Independence Day celebrations in the county. Carloftis strongly suggests that citizens keep backyard fireworks displays to a minimum and that they attend public fireworks functions instead.

“Meth”

(Cont. from front)

dumps near the home.

Upon receiving consent from Coffey to search the residence, nothing was found inside. However, inside the trash dumps officers found two one-step meth labs in Mountain Dew bottles along with numerous other items used to manufacture meth. Officers also found eight marijuana plants growing behind the house.

Coffey and Gadd were both charged with manufacturing methamphetamine, cultivating marijuana (5 plants or more), Tampering with physical evidence and possession of drug paraphernalia.

Both Coffey and Gadd remain lodged in the Rockcastle County Detention Center on a \$25,000 cash/property bond.

Dance Camp scheduled

The Wellness Center at Rockcastle Regional Hospital will host a Hip-Hop Dance Camp taught by instructor Loretta Johnson. Students will learn various steps, combinations and several choreographed routines. The camp is July 16-July 20 at the Wellness Center (located on the 3rd floor of Outpatient Services Building).

Camp hours are 9:00 a.m. - 11:00 a.m. for ages 7-10 and 12:00 p.m. - 2:00 p.m. for ages 11-14. The fee for the week-long camp is \$50.00 per child. Healthy snacks will be available for purchase. Contact certified Hip Hop Hustle instructor Loretta Johnson at 606-305-9887 to reserve your child's spot today. Or visit www.rockcastleregional.org/wellnesscenter

Subscribe to the Signal

“Bust”

(Cont. from front)

Barry Adams was notified of a drug deal taking place in the city parking lot next to the Cox Law Office.

Once officers arrived, they observed Hopkins attempting to hide something in her shorts pockets and when questioned stated “she had nothing on her.”

Upon receiving consent from Mason to search his vehicle, officers found two separate ledgers containing names and dollar amounts of people who owed them money for drugs.

Officers arrested Mason at the scene and found over a \$1,000 in his pockets and wallet.

Officers arrested Hopkins at the scene and found nine Xanax pills inside a plastic wrapper in her shorts pocket. Officers also found a chrome container inside Hopkins purse containing two one-halves of an oxycodone pill.

Hopkins and Mason were both charged with trafficking a controlled substance, first degree. Both were lodged in the Rockcastle County Detention Center and were later released on bond.

“Play”

(Cont. from front)

of active and educational activities.

Highlights from the event included: a blood drive for the Kentucky Blood Center, child identifications/fingerprints by the KY State Police, 96 stroke

screenings, over 100 children educated on how to call 911 by Rockcastle Regional Hospital, Spine/Chiro screens and blood pressure and blood sugar screenings.

Education from the event included: hand washing, child and summer safety, tobacco and drugs, cancer and more!

Outdoor activities included: inflatables, water play, casting activity, duck pond, hula hoops and jump rope.

In addition to the ongoing play and education, entertainment was provided by the Bittersweet Cloggers and a Karate demonstration by Eric Bullock and his students of Rockcastle Shaolin Do. Rockcastle Regional Hospital sponsored the Fit Family Fun Run at the track with over 144 participants.

A youth worship service was sponsored by Bible Baptist Church and Jeremy Ellis. The Rockcastle Adventures group brought an Air boat, Canoe, Horse, and bicycles to advertise the new adventure offerings in Livingston.

The event was emceed by Charlie Napier and broadcast live on WRVK.

Although the weather was hot, the event was filled with free fun and fellowship among community families and agencies.

OPERATION UNITE

Drug Tip Hotline
1-866-424-4382
(No fee - your name is not required)

Toll-free Treatment Help Line
1-866-90-UNITE

“Theft”

(Cont. from front)

The victims also told officers they remembered Lawson exiting the boat with an unfolded shirt in his hand but that they didn't think of it as anything suspicious at the time.

Assistant Chief Barry Adams received information that Lawson and Adams had been staying at a campsite in the woods on the south side of Lake Linville.

After arriving at the abandoned campsite, officers found the victim's purse along with her id and car

keys. Officers also found several other ids at the campsite as well but were unable to locate the diamond ring.

The following morning, both Rose and Lawson were arrested after Adams received information that they were staying at Rose's father's residence on Old Rocky Road in Mt. Vernon.

Both Rose and Lawson are charged with theft by unlawful taking and identity theft. Rose was released on a \$15,000 surety bond while Lawson remains lodged in the Rockcastle County Detention Center.

Subscribe to the Signal
606-256-2244

Central Body Service

has teamed with
Haddix Custom Detailing to offer another great service.

Basic hand wash to a full detail that is guaranteed to make your vehicle look great!
Free pickup and delivery

Stop by Central Body Service or give us a call today to make an appointment.

606-256-4210 or 606-308-1490

Recognize & Respond to Stroke FAST

Stroke is an emergency. By knowing common stroke warning signs, you might save a life by acting FAST at the first sign of a stroke.

Memorize this easy-to-remember tool so you can act FAST and help determine if someone might be having a stroke.

FACE
Ask the person to smile. Does one side of the face droop?



ARMS
Ask the person to raise both arms. Does one arm drift downward?



SPEECH
Ask the person to repeat a simple phrase. Is their speech slurred or strange?



TIME
If you observe any of these signs, call 9-1-1 immediately.



Learn more about stroke and other sudden warning signs at www.stroke.org/symp







**CRAB ORCHARD
AUTO PARTS
and SERVICE**

233 Main Street • Crab Orchard, KY 40419 • Phone (606) 355-2691



HERE TO SERVE YOU
We Test Starters, Alternators And Batteries.
ASE Certified Technician
Free Computer Diagnostics For All
European, Foreign And Domestic Auto



**Lawn Mower And Small Engine Parts
Heavy Duty Truck Parts**

Large Selection Of Auto Parts And Accessories



Hours Of Operation: 8 a.m. - 5 p.m. Monday - Friday; 8 a.m. - 2 p.m. Saturday; Closed Sunday

Mount Vernon Signal

Serving Rockcastle County Since 1887

Second Section

Thursday, June 28, 2012

Korean War Veterans hold annual reunion in Mount Vernon

By: Doug Ponder

Korean War Veterans from Company D, 35th infantry regiment of the 25th division held their 27th reunion in Mt. Vernon this past weekend.

Company D of the 35th infantry regiment served in the Korean War for almost three years from 1950 to 1953 and saw fighting in numerous battles within the Kangwon providence of North Korea and the city of Seoul in South Korea.

After the war ended in the summer of 1953, many of the veterans returned home and went years without seeing any of their fellow comrades.

However, in the early 1980s, a few of the Company D veterans decided to contact their fellow comrades in hopes of organizing a reunion.

Reunion President Emerson Rowlands said he and his fellow veterans held their first reunion at one of their comrade's home in 1985.

"It's good to see the people you served in the war with again," Rowlands said. "We were all close during the war and have become even closer friends throughout the years by attending these reunions."

This year, the veterans held their reunion in Mt. Vernon where they attended shows at the Renfro Valley Entertainment Center and participated in activities at the local VFW on Lake Linville Road. The veterans stayed at the National Heritage Inn where they also participated in special activities sponsored by the hotel.

"We really appreciate everyone who went out of their way to do things for us and make us feel at home," Rowlands said.

Rowlands said they decided on having their 27th reunion at Mt. Vernon after everyone said they enjoyed the reunion they previously had here in 2004. Rowlands said they hope to come back to Mt. Vernon for some of their future reunions as well. "I really hope to come back here for another reunion one day," Rowlands said. "You don't get that same Kentucky hospitality everywhere else you go."

Seventh Race in County-Wide Stride Series

Country Sunset Race is set for July 13th

The seventh race in Rockcastle Regional's County-Wide Stride Series will be Friday, July 13, 2012 at Owens Garden Center in Somerset, Kentucky. The Country Sunset 4-mile Run/Walk will begin at 7:00 p.m. Race day registration will begin at 5:45 p.m.

Pre-register by July 11 for \$12 or register at the race for \$15. For detailed race information and to register on-line go to rockcastleregional.org/countywidestrade. All proceeds of this race will go to the Miracle Fund at Rockcastle Regional Hospital which provides assistance to the ventilator patients of the Respiratory Care Center.

This race will feature awards to overall male and female race winner, fastest male and female walker and top three male and female finishers in age groups.

For more information contact Susan Brown-Turley at 256-7746 or s.brown@rhcc.org.

Farmers Market low income nutrition coupons

Two local organizations are supporting the Rockcastle Farmer's Market while assisting low income residents.

The Rockcastle Senior Citizens Center has been provided a Department of Agriculture Grant for 191 low income senior adults to receive vegetables from the farmers market. Senior Center staff will take applications Friday, July 6th starting at 7:30am at the Senior Center on Hwy 25 South. Please have proof of income, age and residency available at the time of application. If more than 191 apply, a waiting list will be developed, should additional funds become available later this summer.

The Rockcastle Health Department is providing (WIC) Women Infant and Children clients with free nutrition coupons as well. If you are a WIC client or qualify, please see Health Department Staff for assistance.

The Rockcastle Famers Market will get underway Saturday, June 30th at 8:00am until noon at the Aunt Polly's house in Renfro Valley. This year's locations are; Saturday's 8:00am until noon at the Renfro Valley Aunt Polly's house. Wednesday's 8:00am until noon at Brodhead Fairgrounds. On 1st and 3rd Thursday's 11:00am until 1:00pm in Livingston. A new location in Mt. Vernon will be Thursday's on Richmond Street between the Health Department and school board learning center. Famers Market members started this new location on Thursdays from 2:00pm till 5:00pm to better serve those working public jobs.

We encourage you to help your family eat healthy locally grown fresh vegetables this summer by supporting our local Famer's Market.

Rockcastle Hospital hosting Hip-Hop Dance Camp

Rockcastle Regional Hospital will host a Hip-Hop Dance Camp July 16-20 for ages 7-14.

For more information, call Loretta Johnson, instructor, at 606-305-9887.



Korean War Veterans from Company D, 35th infantry regiment of the 25th division held their 27th reunion in Mt. Vernon this past weekend. Veterans are shown above from left to right: Julius Herritz of Reedsburg Wisconsin; Paul Meyer of Poplar Grove, Illinois; Emerson Rowlands of Zanersville, Ohio; Arnold Weirup of Maquoket, a Iowa; Will Borchardt of Pepin, Wisconsin; Amando Montes of Watsonville, California and Paul Ponschke of Chicago, Illinois.

Fiscal Court receives \$6,604 from KACo

Rockcastle Co. Fiscal Court is receiving a check for \$6,604 from the Kentucky Association of Counties.

The check represents a dividend payment to the County from the KACo Workers Compensation Fund, which provides workers compensation insurance coverage to county governments and other political subdivisions across Kentucky. KACo insures 113 of Kentucky's 120 counties through the Workers Compensation Fund. Rockcastle County also received, in 2010, a dividend payment of \$12,644 from the KACo All Lines Fund (KALF) which provides property and liability insurance. Since 2010, as a member of the KACo insurance programs, the Rockcastle County Fiscal Court has received \$19,248 in dividend payments.

Rockcastle County

Judge Executive Buzz Carloftis said: "I am extremely pleased with the recent financial results of KACo's insurance programs."

"The dividend is possible because county governments in Kentucky are working together through KACo to effectively manage their insurance pro-

grams," said Mark Miller, director of insurance for KACo. "By working together fiscal courts are able to lower premium payments and save taxpayers money."

KACo Executive Director Denny Nunnelley complimented both the KACo staff and the insurance agents of the Work-

ers Compensation Fund. "We have a dedicated team in place that works hard with the counties to make the insurance program work. This dividend is no surprise and illustrates how KACo will continue to serve Kentucky's counties effectively in the years ahead."



Rockcastle County Judge Executive Buzz Carloftis, and KACo Regional Agent Joe Greathouse.

SUNDAY, JULY 1, 2012

BLAST IN THE VALLEY

LIVE MUSICAL ENTERTAINMENT STARTS AT 4:00 PM

Kids... INFLATABLES Open at 2:00 PM

Fireworks at 10 p.m.

PRESENTED BY:

- MT. VERNON/ROCKCASTLE COUNTY TOURIST COMMISSION
- ROCKCASTLE COUNTY FISCAL COURT
- CITY OF MT. VERNON

U.S Highway 25 • Renfro Valley, KY 40473

ENTERTAINMENT PROVIDED BY:

- THE MEDLEY BOYS
- SOUTHERN STRINGS
- WILD RIVER BAND
- RENFRO VALLEY ENTERTAINERS

CONCESSIONS PROVIDED BY:

- Mt. Vernon • Brindle Ridge and Livingston Fire Departments
- Renfro Valley Entertainment Center

SPECIAL THANKS TO:

- Renfro Valley Entertainment Center
- Blast In The Valley Show Committee
- Mt. Vernon / Brindle Ridge and Livingston Fire Departments

News from the Rockcastle Courthouse



Circuit Civil Suits

JP Morgan Chase Bank vs. Donnie Carpenter, et al, \$68,198.25 plus claimed due
Eric Michael Stokes vs. Ladonna Beth Stokes, petition for dissolution of marriage.
Karen Faye Powell vs. George Edward Powell, verified petition for dissolution of marriage.
Tammy Elizabeth Bustle vs. Lonnie Dale Bustle, pe-

tion for dissolution of marriage.

National Collegiate Student Loan vs. Roy Brown, et al, \$25,506.94 plus claimed due. CI-00150

District Civil Suits

Portfolio Recovery Asso. LLC vs. Dwight E. Hayes, \$3,231.63 plus claimed due.
Ralph Brooks, et al vs. Doug Anderson, forcible detainer complaint. C-00119

Deeds Recorded

Harvey and Tamara Whittemore, property in Rockcastle County, to Andrew Thomas Whittemore. No tax.

Donald Dees, property in Rockcastle County, to Thomas L. Dees. Tax \$93.

Sherry Halcomb Kirby and Gary D. Kirby, property on KY 150, to Dale and Joyce Lark. Tax \$6.50.

Troy A. Mahaffey and Jackie R. Mahaffey, property in Hunters Ridge Subdv., to Sandra Brown. No tax

Billy R. and Betty E. Barnes, property in Rockcastle County, to Wesley Kyle Lellon McHargue and Miranda M. Kirby. Tax \$31

Vanderbilt Mortgage Co., property on Pleasant View Road, to Glen S. and Mary K. Burr. Tax \$7

Home Solutions Partners IV REO, property on Big Cave Road, to Transportation Alliance Bank, Inc. Tax \$8.50.

Russell Tim Foley, property on Conway to Berea Road, to Lisa Gail Woods and others. Tax 50c

Roger and Janet Robinson, property in Rockcastle County, to Logan Cable. Tax \$35.

David and Pam Mink, property on High St., to Rockcastle Hospital and Rehabilitation Center Inc. Tax \$115.

Bernard K. and Billie Jean Hohenstein, property in Rockcastle County, to Blevins Law, PLLC, trustee and Bernard K. Hohenstein. No tax

William L. and Barbara Fain and Judy C. and Bobby Bullock, property in Mt. Vernon, to Larry and Rebekah Hammond. tax \$65

Scott Thompson, property in Lear Crest Subdv., to Angel Thompson. No tax

Marriage Licenses

Melanie Jo York, 37, Lancaster, SRNA to Charles Lee York, 40, Lancaster, unemployed. 6/20/12

Clara Avery Pigg, 39, Mt. Vernon, RESPA Care to Eli Powell, 48, Mt. Vernon, self-employed. 6/21/12

District Court

June 18, 2012

Hon. Jeffrey S. Lawless
Dwayne S. Bradley: alcohol intoxication, \$50 and costs.

Matthew B. Childress: theft by unlawful taking and assault, 4th degree, bench warrant (bw) issued for failure to appear (fta).

Johnny L. Davidson: speeding, and four other charges, bw issued for fta.

Jessica Ann DeKorte: unlawful transaction with a minor (three counts), sen-

tencing orders entered.

Kevin D. Holt: disorderly conduct, sentencing order entered.

Jason D. Stewart: failure of owner to maintain required insurance, \$500 fine/\$450 suspended on condition.

Jesse Coats: failure to wear seat belts, \$25 fine.

Speeding: Tawana L. Collins, Jordan A. Taylor, license suspended for fta; James B. Dennison, Elizabeth A. Elder, Shirley A. Hopkins, paid.

"In God We Trust" plates available at clerk's office

Customers now have two standard issue choices when renewing their tags. "In God We Trust" and Unbridled Spirit" are both standard issue and the price for both is \$21.00.

If the customer wishes to receive the "In God We Trust Plate", they should bring their current plate to the County Clerk's office at time of renewal.

If a customer wishes to change plates prior to their renewal deadline they may bring their current plate and trade it for the new plate for a \$6.00 charge.

"In God We Trust" plates may also be personalized. The \$25.00 personalization charge will apply.

Subscribe to the Signal
606-256-2244

Now Selling Fireworks!
Best Prices in Town!

Daisy Mae's

Garden Center and Produce

Located beside KFC

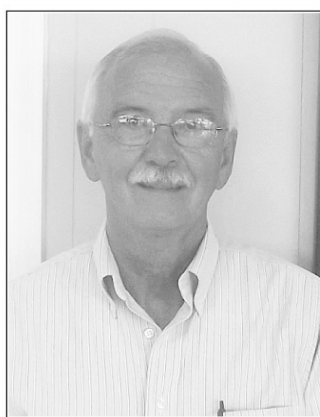
Fresh Produce • Potted Plants

3 Kinds of Mulch • River Rock

Open 8 to 8 Seven Days A Week



We're excited to announce that Mike Berry is now a part of our sales team.



Mike would like for all his customers to come and visit him.

768 Eastern Bypass • Richmond
859-248-7701

Anthem



Stop by and see Marlene Lawson for all your life and health insurance needs!

You can have an

affordable managed care

plan with the freedom of

choice and the security of

Anthem Blue Cross and

Blue Shield — Blue Access.

Visit us on the Internet at <https://www.kyfb.com/rockcastle/insurance/>

(606)

256-2050



CELEBRATE INDEPENDENCE DAY



0% APR AVAILABLE* ON SELECT VEHICLES!

'12 CHEVY CRUZE LT
#5966. MSRP 20,345

SALE \$19,276

'12 CHEVY CRUZE LT
#5901. MSRP 20,905

SALE \$19,766

'12 CHEVY CRUZE LT
#5908. MSRP 20,920

SALE \$20,920

'12 CHEVY IMPALA LT
#5921. MSRP 27,995

SALE \$24,693

'12 CHEVY EQUINOX FWD LT
#5882. MSRP 28,200

SALE \$27,494

'12 CHEVY SILVERADO 1500 REG. CAB
#5808. MSRP 34,330. LT, 4X4

SALE \$32,000

'12 CHEVY SILVERADO 1500 EXT. CAB
#5791. MSRP 36,235. LT, 4X4

SALE \$34,000

'12 CHEVY CAMARO COUPE
#6150. MSRP 33,890

CALL FOR BEST PRICE!

All prices plus tax and license. *Select vehicles only. Not all customers will qualify.

JACK BURFORD



On the Bypass in Richmond
859-623-3350 or 1-800-336-8583

www.jackburford.com



Ky. Wholesale Fireworks

130 Mt. Vernon Rd., Berea

www.kywholesalefireworks.com

859-986-0020

Why are you paying tent prices for fireworks?

We are a retail store that sells fireworks

all year which keeps our prices MUCH, MUCH lower than tents.

Videos in-store and take home.

Locally owned and operated





Three Eastern Kentucky University AmeriCorps members recently wrapped up another successful year serving Rockcastle County Schools. Pictured, front from left are: Eileen Cackowski, executive director of the Kentucky Commission of Volunteerism and Service; Corps member Shannon Brookman, and EKU AmeriCorps Program Director Nancy Thames. Back row from left: Corps member Sonya Parker, Sister Andrea Sieloff of the KCVS, and Corps member Jameson Cable. Serving in several local schools throughout the area this past year, AmeriCorps members have tutored at-risk reading students in one-on-one and small group reading tutoring programs with more than 85 percent of the tutored students' reading levels climbing to at or above grade level. EKU AmeriCorps members have also coordinated Make a Difference Day canned food drives, Red Ribbon Week and Too Good for Drugs drug education programs, Soldier Care Package projects, Veteran's Day ceremonies, breakfast/reading with grandparents and Family Read Night programs, Read Across America and Dr. Seuss's Birthday activities, Martin Luther King Jr. Birthday commemorations, Fill a Backpack canned food drives, Recycling Relays, Salvation Army Bell ringing, Internet safety presentations and presentations on environmental education.

The Cost of Drug Addiction

Fourth in a series of articles concerning the scourge of drug addiction in our county. This series is being printed with the support of Cumberland River Mental Health; County Judge Exec. Buzz Carloftis, UNITE and Mayors Walter Cash, Mike Bryant and J.C. Griffin

Committing suicide, a hundred thousand or so cells at a time is something we just fail to understand or discuss. However, it is happening in neighborhoods all around us. A friend over coffee recently discussed this issue. Specifically he related that people continue to "huff" substances that alter their consciousness. This high, as do all, comes with a liability that accumulates toward total self-destruction. Gasoline, paint and glue, historically were utilized, but currently, according to this friend, these addicts have gone high tech. Sales of the cleaner used to clean the keyboard on computers is being monitored by marketers for abusive use.

I asked, "How does a person get started in this downward spiral of destroying his/her brain thousands of cells at a time?" His response, "The brain has so many functions, so many cells that loss of several cells today may go unnoticed. It is not until memory, gait, speech, judgment, work skills or personal interactions are lost that the

impact of the cumulative destruction is felt. Then it is too late. The situation is not reversible and abusers have no understanding of what has happened at that point." This still didn't explain the initial experimentation. He went on to reveal a discussion with one person who first "huffed" with his mother as an example. We don't know for certain but her parent may have done the same with the mother.

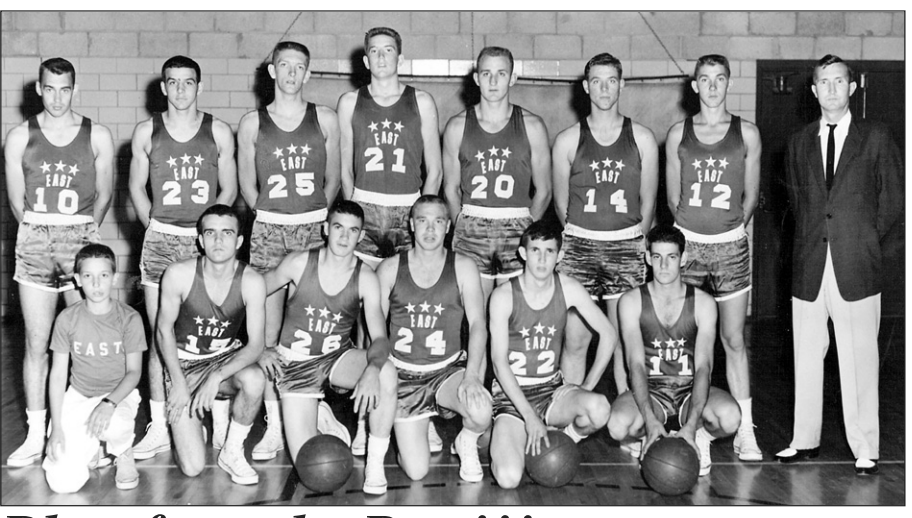
The substances being thus abused are perfectly good and necessary products. They are stored in our garages, outbuildings, cleaning supply areas and the list goes on. They cannot be kept under lock and key, or under constant surveillance at all times. What are we to do?

Apparently the preventive process begins early. Danger is taught. The desire to succeed, to not self destruct, to respect self are also taught. As parents and guardians of children, it is our responsibility to be in tune with the child, to provide proper care from conception, to be an example and to give advice. This improper use problem is not

propagated by a cartel, driven by greed, or organized as a pyramid money-making scheme. This issue comes from within. The desire to dull the mind, enhance certain pleasure zones within the brain, to escape from the reality around us is taught. Throughout history, we observe the existence and use of mood-altering substances such as tribal use of hallucinogenic substances before battle. It may be something in our very nature to desire an altered reality. Pricking this zone for some overtakes the equally natural desire to survive.

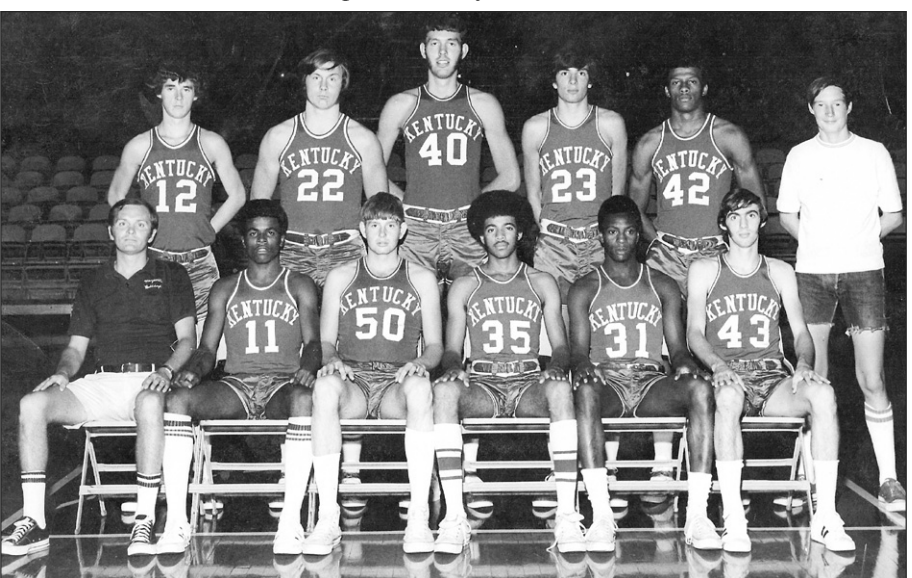
How to break the cycle of destructive behavior among certain groups, within certain families continues to be elusive. I guess until we solve these issues, we'll just have to watch carefully the behavior of our children, who their friends are, and advise/teach very early.

Note: While no data is available on the extent of the "huffing" problem, the prospects for users are so severe even one case is too extreme.



Blast from the Past!!!

This week's photographs are of the 1956 and 1972 East Squads of the annual Kentucky High School All-Star Basketball Game. The top photograph is of the 1956 team. Kenneth Cornelius of Mt. Vernon High School is shown, front row, second from the right, number 22. The bottom photograph is the 1972 team. Tommy Mullins of Brodhead High School is shown front row third from left, number 50. These photographs are from the forthcoming book, Before Consolidation: The Golden Age of Rockcastle Basketball. If you have a photo for Blast From The Past or for the book, contact David Owens at 606-256-9870 or scoopowens24@yahoo.com.



We're Selling the Country!

Ford Brothers, Inc.
Selling the Country

This is only a partial list of our available property.

For complete listings, please visit our website at www.fordbrothersinc.com

www.fordbrothersinc.com
Mt. Vernon, KY
606-256-4545

Watch for different listings next week.

HOMES FOR SALE

2006 Doublewide - This 28 x 44 vinyl sided doublewide is situated on 1.96 acres and features a kitchen and dining combo, LR, 3 BR, 2 BA, and Utility room. Other amenities include: electric heat, central air, front/side porch, city water, and septic system. \$57,500. MLS8897162

This 1992 singlewide mobile home has central heat/air and city water. It is situated on 1 acre +/- at the end of Cindy Lane. All appliances remain with home. Call for more details. \$29,900. MLS8897063

Brick House + 1 Acre - this property consists of 1.013 acres m/l and is improved with a brick house. The home features 2 BR and 1 BA. There has been an 8x25 addition built onto the house and a wood burning flu. Other improvements include: 32x60 barn and a 11x29 carport. \$53,900. MLS8896788

Reduced
Cute & Cozy! This nice home features 3 bedrooms, 1 bath, living room, and kitchen/dining room. The home is situated on 1.5 acres +/- and is located in city limits. Other amenities include: central heat and air, KU electric, small storage bldg, city water and sewer, and offers a secluded feel. Reduced to \$ 64,500. MLS8897161

A Cozy Feel ...This vinyl sided home features a LR, eat-in kitchen, 2 BR, and 1 BA. Other amenities include electric baseboard heat, window unit AC, covered front porch, city water and city sewer. Priced at \$36,000. MLS8897067

Picturesque! This farm consists of 110 acres with a good stand of grass and woods with marketable timber. The farm is improved with a lovely, ranch-style brick home with approx. 3,000 sq ft of living area. The 1st floor features 2 BR, 2 BA, LR, Kit, DR and an extra-large sunroom. The finished basement features 2 BR, 1 BA, utility room, spacious FR w/ fireplace, and a rec room. There's a wraparound deck on the rear of the house that overlooks the farm and Cedar Creek Lake. There's also a barn and garage/workshop. Priced at \$565,000. MLS8897343

Great Neighborhood - This beautiful home is situated in a great neighborhood and close to town. Features include 3 bedrooms, 2.5 baths, Living room, Kitchen, Dining room, Den, and Laundry area. Amenities include: city water, central air, 2-car attached garage, landscaping with mature trees, a nice patio area, and additional lots. Priced at \$179,900. MLS8897540

Super Nice! The home has been well kept. It consists of 3 BR, 2 BA and is located between Brodhead and Crab Orchard with road frontage along the new Hwy 150. This property has 4+ acres with a 48 x 48 machinery shed, a 32 x 100 shed and an additional 16 x 40 building. Priced at \$135,900. MLS8897346

320 Hunter Street - This beautiful stone house features an Eat-in Kitchen, DR, LR, Foyer, Laundry, 3 BR, and 1 Bath. Other amenities include: central air, heat pump, built-in oven, stove top, dishwasher, 2-car detached Garage, concrete driveway, city water and city sewer. Priced at \$110,000. MLS8897450

End of the Road Privacy ~ 60 Acres +/- with a stream and a pond. Approximately 25 acres in grass and the balance in woods. There's a beautiful 1 1/2 story home with a full basement, 6 bedrooms, and 3 baths. Amenities include: a small barn and a workshop building. Priced at only \$234,900. MLS8897464

House, Garage & 1.75 Acres - This 1 story vinyl home features 4 BR, 2 BA, Eat-in Kitchen, LR and 2-car attached garage. Other amenities include: a storage building, rear walk-out deck with above ground pool, concrete sidewalks, blacktop driveway, landscaping, central heat/air, city water, and septic system. Priced at \$139,900. M2768

In the Valley...Renfro Valley, that is!! Located on US 25 (Richmond Road), this doublewide offers 1,450 sq. ft. with 2 bedrooms, living room, kitchen, bath. This property has been used as a business and has ample parking containing over 6/10 acre. The property has city water and sewer and is within walking distance to the Renfro Valley Entertainment complex. Priced at \$79,900. M2689

This 1.5 story home features a Kit/DR combo, LR, 2BR, 1 BA and 2 BR upstairs. Other amenities include: double pane windows, front and side covered porch, heat pump, central air, city water, city sewer, and a 1-car detached garage with office and storage area, metal carport and a 30x40 2-car detached metal garage bldg. with game room. MLS8897259

SOLD
Fixer Upper! Situated on 1 acre with a 2-car garage this home features 3 BR, 1 BA, LR and Kit. There is a pond on this property and it is only 2 miles out of Crab Orchard. MLS8897078

LOTS/LAND

Reduced! 26 acres of pasture land + 15 acres of hay. There are two barns, a corral and loading area and 2 springs. The property is fenced and ready for you to view! \$105,000. MLS8897142

4 LOTS AVAILABLE in South Ridge Estates - Ranging in size from 0.29 acres to 0.49 acres. Selling as a whole and priced at \$18,000. MLS8896806

68 Acres +/- located on Hwy 192 in Somerset and priced at \$64,695. MLS8897440

Lots Available! Now in the Lear Crest Subdivision. There are 7 lots to choose from so hurry to take your pick. Call for more details. M2346

13 Acres overlooking Mt. Vernon on Old US 25. Building sites - convenience. This won't last long priced at \$24,900. M2444

Hideaway ...with timber. Here's 66 acres +/- near Mt. Vernon - all wooded, very private! Priced at \$49,900. M2762

Ideal - This commercial lot has blacktop road frontage on Hwy 25 and is located next to Subway. There is city water and city sewer available and a survey of the property is pending. Call for more details. \$60,000. MLS# 8897451

Level Corner Lot - This lot is located in Valley Manor Subdivision and is restricted. Surrounded by nice, quality homes, this lot measures 127 x 100 x 125 x 125 and has city water and sewer available as well as KU Electric. This is an ideal building site. M2666

Make this lot your building site... Measuring 0.73 of an acre this lot is located in Cedar Point Subdivision. M2617

Restricted lot in Houston Pt. Subdivision. Lot has city water and measures 1/2 acre. Located in a well established area among some of Rockcastle's nicest homes. \$10,900. M2742

Check it out! This lot is improved with a 12x22 picnic shelter, a 2-car garage measuring 24x26 and a wood storage building. Other amenities include: blacktop driveway, septic system, electric, and city water. Priced at \$23,000. MLS8897442

COMMERCIAL PROPERTY

While Others Spend, You Invest! Profitable future comes with this 6 acres +/- of prime land adjoining Wal-Mart on Hwy 27 (South side) in Stanford. All utilities on land, zoned commercial, ideal for strip mall or any type of business. Start preparing today! M2215

Commercial Property at a Great Location. Nearly 3/4 of an acre across from Rockcastle County High School. Blacktop lot, water, sewer, ideal for offices-food-auto. Priced at \$199,900. M2510

GREAT INVESTMENT OPPORTUNITY! 19.138 acres overlooking Renfro Valley and joining the KOA campground. City water and sewer available. Lots of development potential. \$115,000. MLS8896757

Why Pay Rent? This commercial building has been used as a hair salon but has multiple uses. Strong traffic count - great visibility - Immediate occupancy... call for more details. \$199,900. MLS8896781

23 Acres of Hunting Retreat/Building Site! There are 2-3 acres of bottom land and the balance of land is in woods. There's a creek and it's priced at \$29,500. Make an offer! MLS8897091

This is a commercial lot in Mt. Vernon next to IGA - city water, sewer, KU electric, high traffic count (7500-8000 per day). This lot can be offered with adjoining lot for sale or can sell separately. \$59,900 (per lot). MLS#s 8897251 & 8897252

Great location!!!! Conveniently located just off the new Hwy. 150 this 9/10 of an acre +/- is improved with a vinyl sided building that was previously a store front. Amenities include: city water, RECC utilities and gas heat. If you're looking for a great commercial building close to everything, then look no further, priced at \$44,500. MLS8897345

FUTURE AUCTIONS

Absolute Online Only Auction of Building Lot
Bidding Ends: Thursday, June 28th at Approx. 3:00 p.m. EST
Eagles Bluff Road - Wayne County
Absolute Online Only Auction of House & Workshop
Bidding Ends: Thursday, June 28th at Approx. 3:00 p.m. EST
300 N. Hwy 127 - Russell Springs
Absolute Online Only Auction of House & Approx. 10 Acres
Bidding Ends: Thursday, June 28th at Approx. 3:00 p.m. EST
2701 Witt Road
Simpson County

Absolute Auction Ms. Patricia Estridge's House, Barn, Bldgs. & Approx. 3.72 Acres
Saturday, June 30th at 10:00 a.m.
8271 East Laurel Road, London, KY
Absolute Auction of 48 Acre Farm in Tracts
Sat. June 30th at 10 a.m. - Hwy 192 - Somerset
Absolute Auction of Carter Family Tracts
28 acres more or less
Saturday, July 7th at 10:00 a.m.
Hwy 1004, Rockcastle Co. Ky
Absolute Estate Auction of the Late Donald Hargis' Trucks, Van & Personal Property
Sat. July 7th at 10:00 a.m.
4345 Mark Welborn Rd - Somerset

Online Only Auction of 2 Lots in Lake Forest (#28 and #50)
Bidding Ends: Friday, June 29th at Approx. 4:00 p.m.
Absolute Estate Auction of The Late Mr. Kevin Allen Martin's Truck ~ Tools ~ Furniture ~ Personal Property
Saturday, June 30, 2012 at 10:00 a.m.
Laurel Co Fairgrounds
London, KY

Call Our Agents Or Visit Our Website
At www.fordbrothersinc.com
For Information About These And More Properties!

| | |
|-------------------------------------|--|
| Sam Ford308-4400 | Johnny Alcorn256-4510 |
| Danny Ford256-4446 | Jeff Burdette256-3538 |
| Jeff Cromer308-1314 | Doug Bishop859-544-7208 |
| Teresa Stevens758-8051 | Jennifer Hand606-392-1999 |
| Matthew Silcox308-2339 | |

Mamaw's Kitchen

By Regina Poynter Hoskins

BARRY'S MASHED POTATO SALAD

We met Lelia Prater at Berea College in the early 70's. Lelia had to watch her brother Barry make this salad and write the recipe down so I could be included in Mamaw's Kitchen. Lelia and Barry have graciously given me permission to use it here. **NOTE FROM LELIA:** Barry learned how to make this potato salad from our mom. Mom never used specific measurements when cooking, but everything was always delicious. This potato salad is best when served warm.

chopped eggs, pimientos, dill pickles and onion to the potatoes. Use potato masher to bend ingredients together. Finally, add the Miracle Whip® and stir with spoon until the salad dressing is distributed evenly in the mixture. Transfer to bowl and enjoy.

UNCLE JACK'S POTATO PANCAKES

4 cups mashed potatoes
2 large eggs
1/4 cup flour
1/2 cup onion diced very small
1 cup grated parmesan cheese

Optional ingredients: 1/2 cup thinly diced bell pepper
1/2 cup thinly cut mushrooms

Oil or bacon grease for cooking

Mix all ingredients except oil or bacon grease together. Spoon drop into sizzling hot skillet of oil (bacon grease is even better)...go easy on the oil or bacon grease. Gently press spoon down onto mixture to make pancake shape. Brown on both sides. Drain on paper towels. These are even better the next day heated up in microwave. Makes at least 15 medium size potato pancakes.

Come by and visit

Valley Treasures Antiques & Vendors Mall

Just north of Ky. Music Hall of Fame in Renfro Valley
If you are looking for that special gift, a souvenir, antiques, fashion jewelry, knives, coins, musical instruments, Mary Kay, glassware, CDs or DVDs, primitive decor, you can find all these and much more at

VALLEY TREASURES • 606-256-0021

Open Monday - Saturday 10 a.m. to 6 p.m. • Closed Sunday

Royal Palace Rugs

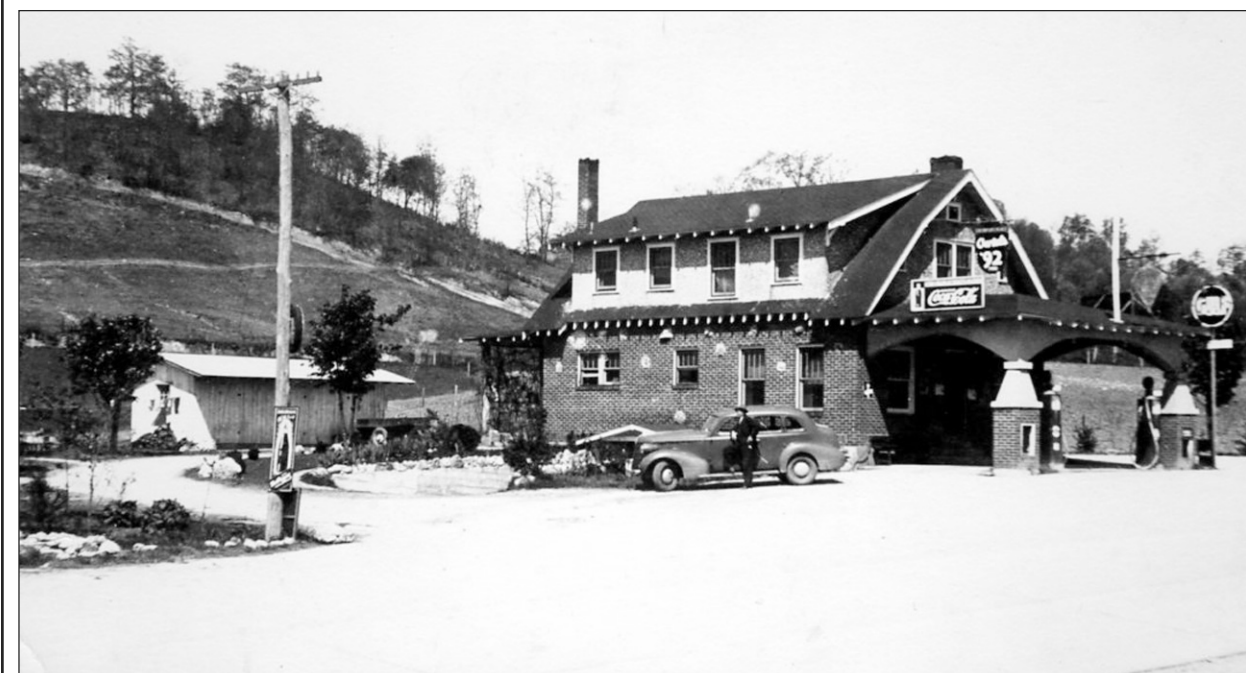
New Shipment

3x5, Round, Hall Runners

Booth 37 **Valley Treasures** Booth 37

Flea Market, Antiques & Collectibles

Next to Kentucky Music Hall of Fame



Shown above is a photo from many years ago of the Rock Garden Inn on then Highway 150 in Brodhead. The building served many purposes. Downstairs contained a restaurant which, at the time, served alcoholic beverages (note the Ortels 92 sign) and a Gulf Oil station. Upstairs was the residence of Dr. George Payne and his wife Lou and also served as Dr. Payne's dental office.



Rent river tubes, bikes, canoes, kayaks or take an airboat ride. Bring your horse or your personal outdoor recreational equipment.

Join us for a day of adventure and fun on the surrounding Livingston trails. The City of Livingston will offer food, competitive games and other activities to provide a full day of fun in and around the city.

- **HORSEBACK RIDERS** - join the riders from the Red Hill Horse Camp on a ride to Livingston and parade through town at noon (contact Gene Philbeck at 606-308-5900)
- **COMPETITIVE GAMES** - organize a team and participate in the Livingston "Tug of War" (contact Tonya Cook at 606-453-2218 or 308-1851 to sign your team up)
- **LIONS CLUB YARD SALE & WIENER COOK-OUT**
- **LUMBERJACK COMPETITION** - contact Carl Swanigan at 419-307-3969 to sign-up

GAMES!
FOOD!
FUN!

July 7, 2012
11 am to 6 pm

NOTICE TO

Rockcastle County Taxpayers

Danetta Ford Allen, Rockcastle County Clerk, pursuant to KRS 424.130 announces that the 2011 Delinquent Real Property Tax Bills (Certificates of Delinquency) will be published in the *Mount Vernon Signal* on July 4, 2012. The list of Certificates of Delinquency is also available for public inspection during the hours of Monday - Friday 8:30 a.m. to 4:00 p.m. and Saturday 8:30 a.m. to Noon at the County Clerk's office located at 205 East Main Street, 2nd floor, Mt. Vernon, Kentucky. This list may also be inspected on the Rockcastle County Clerk website. The Uniform Resource Locator (URL) of the website is www.rockcastlecountyky.com or www.rockcastlecountyclerk.com

The tax sale will be held on August 10, 2012 beginning at 2:00 p.m. All interested participants must register with the County Clerk's office by the close of business on Priority - July 26, 2012 and Current - July 31, 2012. Please contact the County Clerk's office if you need additional information about the tax sale registration process, the required registration fee or the deposit amounts that will be needed. Taxpayers can continue to pay their delinquent tax bills to the County Clerk's office anytime prior to the tax sale.

Please Note: All payments must be received in the County Clerk's office prior to the tax sale date listed in this advertisement. Payments received after the tax sale has been conducted will be returned without exception. Some delinquencies - although they have been advertised - will be excluded from the tax sale in accordance with the provisions of KRS 134.504(10)(b).

If you have any questions, please do not hesitate to contact the County Clerk's office at 606-256-2831

Classifieds

CLASSIFIED RATES

• Local Rates - \$4 for 25 words or less - .10 each additional word
 • Display Classifieds \$5.00/Inch
Deadline for Classifieds is 10 a.m. TUESDAY

For Rent

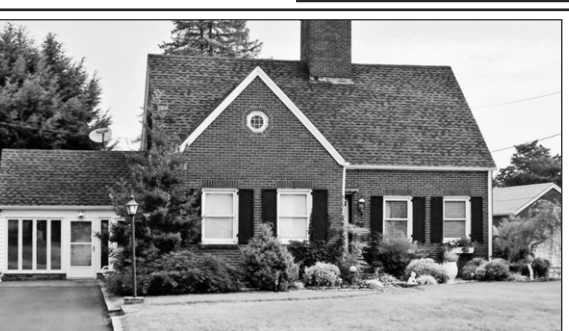
For Rent: Trailer in Mt. Vernon. 256-9183. 29x1
For Rent: 3BR, 1 1/2 bath mobile home in Mt. Vernon. \$600 month rent includes water/electric. \$200 deposit. No pets. 308-4983. 29x1p
For Rent: Like new trailer on a nice lot overlooking the lake. Appliances included. \$375 month/\$375 deposit. Call 606-308-3847. 28xntf
For Rent: Office space, Main St., Mt. Vernon. 256-0063 or 308-3750. 26x4p
For Rent: Trailer in Mt. Vernon area. 2 bedrooms. No pets. \$350 month plus deposit. 606-308-5459. 26xntf
For Rent: Accepting applications at Mt. Vernon Housing Authority on Mondays 9 a.m. til 12 noon. Rent based on income. 256-4185. 14xntf
Accepting Applications: For 2 and 3 bedroom units at Valley View Apartments. Rent based on income. Call 256-5912. Equal Housing Opportunity, TDD for hearing impaired only. 1-800-247-2510. 36tfn

Property For Sale

For Sale: Charming 3 bedroom, 1 1/2 bath home for sale on over 7 acres in Crab Orchard. Quiet country setting. \$120,000. 606-308-5813. 29x1
For Sale: House in Brodhead, 247 Proffitt St. 3 BR with large closets, 2 BA, LR, kitchen and dining with oak cabinets, refrigerator and range. Large utility room with washer/dryer, 12x17 sunroom. 2 car attached garage. 36x36 detached garage. 606-758-8419.
Lots For Sale: Castle Ridge Subdivision. Use same entry way as Bible Baptist Church. All lots have city sewer and underground utilities. starting at \$12,900. 606-256-5692 • 256-4504 • 308-3730. 50x1
For Sale: 2 BR fixer upper house on 2.75 acres. In north end of the county. 606-308-3777.

For Rent

Maple St. Storage of Brodhead
256-2884 or 606-308-2491



House For Sale • 190 West Main St. Mt. Vernon

Brick, 3 levels, full finished basement consisting of lg. family room with fireplace, large laundry room, storm shelter. Main level has newly redone kitchen and sun room, formal dining room with window seat, living room, bedroom, bath. Upstairs has 2 bedrooms, bath, large walk-in attic. Lots of closets and storage in the house. Also has 20' x 40' inground pool (recently redone) with separate pool house, bath and shower, out buildings. Beautiful landscaping and sitting areas. Separate apartment bldg. with living/dining room, kitchen, washer/dryer hookup, bedroom, large bathroom, handicap accessible. All convenient to town and grocery.

For more information call 606-308-9002

Mobile Homes For Sale

Bank Repos, single and doubles - some withland. Owner financing available. Perfect credit not required. Will also do land in lieu of down payment. Call Jim at 859-985-0344 or 859-623-3089. D&D Mobile Homes at Clays Ferry Exit 97 on 1075 northof Richmond. Open 7 days. visit us on the web at www.usedmobilehomesRus.com

Miscellaneous For Sale

For Sale: White half-runner green beans. \$40 bushel. 308-1438. 29x1
For Sale: 24,000 btu air conditioner, \$175; Craftsman Band Saw, \$60; Murray riding lawn mower, 46" cut, \$250; under-the-counter dishwasher, \$50. 606-304-4428
For Sale: Day Lilies. Asking \$2-\$4. Call John Holbrook at 256-2996.
For Sale: Hay. \$10 per roll. \$3 per bale. Kenmore refrigerator, \$95; propane cook stove, \$65. In Wildie, Ky. Call Jim 513-313-0840.
100% Wood Heat, no worries. Keep your family safe and warm with an OUT-DOOR WOOD FURNACE from Central Boiler. Burnside Greenhouse 606-271-0342. 29x1
Bed Bugs? Use Harris Bed Bug Killer. Odorless and non-staining. Available at Jack's Hardware, 160 Williams St. Mt. Vernon, Ky. 24x6

Motor Vehicles For Sale

For Sale: 1959 Ford Edsel, in good condition, \$5,500; tanning bed (like new), asking \$2,500. 1756 Big Cave Road, Orlando. For more information, call 606-308-2785. 27x4p
For Sale: 1999 Bobcat, 763 diesel, with tooth bucket, plumbed for attachments. \$7,900. Call Jim 513-313-0840. 28x2p
For Sale: 65 h.p. 24 ft. Pontoon, all aluminum, \$2,500; 1999 Triton, 200 hp, fully loaded bass boat, \$9,500 obo; '86 Dodge Deluxe SE, ps/pb, air, 70,000 original miles, \$3,500; 801 Work Master, \$3,000; 1950 Chevy Deluxe Street Rod, many new parts, new motor, interior, etc., \$7,500; Three - 14, 16 and 18 h.p. Power Team tractors, direct drive w/3 pt. hydraulic lift with all types of equipment, \$3,000 for all. Two boats, \$700 for both. Several pull trailers, \$500. 256-4739 or 308-4739.

Notices

Signon Farm Produce is now open. Call 256-2781 to see what is available. 29x1
Need job staying with elderly lady during the day. Will do housework, cooking, whatever needs to be done. 10 years experience 256-4454. 29x1p

Conceal-Carry Class July 10th at 9 a.m. For information call 256-3800.

Notice is hereby given that Mary Halcomb, 4429 Blue Springs Road, Mt. Vernon, Ky. 40456 has been appointed guardian of the estate of Christopher L. Moore, a minor on the 18th day of June, 2012. Any person having claims against said estate shall present them according to law to the said Mary Halcomb or to Hon. Timothy E. Palmquist, Issaacs & Isaacs, P.S.C., 900 Cherokee Road, Louisville, Ky. 40204-2325 on or before Dec. 19, 2012 at 11 a.m. 29x2

Notice is hereby given that Donald Eckland, 49 N. Buncombe School Rd., Weaversville, N.C. 28787 has been appointed Personal Representative of the Estate of Ruth Okla Eckland on the 18th day of June, 2012. Any person having claims against said estate shall present them, according to law, to the said Donald Eckland or to Hon. Steven Connelly, P.O. Box 1077, 438 Chestnut St., Berea, Ky. 40403 on or before Dec. 19, 2012 at 11 a.m. 29x3

Notice is hereby given that Gerald William Russell, 397 Hance Road, Verona, Ky. 41092 has been appointed executor of the estate of Bill Russell on the 11th day of June, 2012. Any person having claims against said estate shall present them according to law to the said Gerald William Russell or to Hon. William D. Gregory, 740 East Main St., P.O. Drawer 220, Mt. Vernon, Ky. 40456 on or before Dec. 12, 2012 at 11 a.m. 28x3

Notice is given that Sadie BethMink, 762 Cut Gap Rd., Livingston, Ky. 40445 has filed a Final Settlement of her accounts as Executrix of the estate of Evelyn Mink, deceased. A hearing n said settlement will be held July 30, 2012 at 11 a.m. Any exceptions to said settlement must be filed before said date. 29x1

Notice is hereby given that Daniel L. Renner, 226 Stone Mason Rd., Orlando, Ky. 40460 and Teresa Boling, 7611 Lake Pointe Drive, Crestwood, Ky. 40014 have been appointed co-execu-

tors of the estate of Wendell Renner, Sr. Any person having claims against said estate shall present them, according to the law, to the said Daniel L. Renner and Teresa Boling to to Hon. William D. Reynolds, P.O. Box 1250, 140 West Main St., Mt. Vernon, Ky. 40456 on or before December 19, 2012 at 11 a.m. 29x3

OPERATION UNITE
 Drug Tip Hotline
1-866-424-4382
(no fee - your words are not required)
 Toll-free Treatment Help Line
1-866-90-UNITE

Commonwealth of Kentucky 28th Judicial Circuit Rockcastle Circuit Court • Division I Civil Action No. 12-CI-00009

Citizens Bank Plaintiff
Louis A. Pavao; his unknown spouse; Suzanne E. Willis; and her unknown spouse Defendants

NOTICE OF SALE

Pursuant to a judgment and order of sale entered in this action on April 27, 2012 for the purpose of satisfying the judgment against the defendants in the amount of SEVENTY FOUR THOUSAND NINETY NINE DOLLARS AND 45/100 (\$74,099.45) plus interest and costs. I will offer at public auction the real property located in Rockcastle County, Kentucky, and more particularly described herein. The sale will occur:
At the Courthouse on East Main Street Mt. Vernon, Kentucky on Friday, June 29, 2012 Beginning at the Hour of 1:30 p.m.

Said property being more particularly bounded and described as follows:

Unless stated otherwise any monument referred to herein as a "rebar with cap" is set 1/2" diameter rebar with a plastic cap stamped RLS #2773. All bearings are referred to bearing of record (N 85° 00' 00" E) as shown in Brenda Sue and Elizabeth Ann Morgan's Deed Book 148, Page 449 as recorded in the Rockcastle County Court Clerk's Office.
 BEGINNING at a rebar with a cap set at the base of a black oak on the South side of a roadway and being a corner to Paul Nicely (DB 112 PG. 116); thence going with the south side of roadway the following calls: S 40° 15' 19" W, 140.74 feet; S 77° 04' 13" W, 42.49 feet; S 87° 04' 18" W, 106.40 feet; S 85° 27' 53" W, 176.80 feet; S 71° 10' 42" W, 127.55 feet; S 69° 58' 31" W, 90.57 feet; S 55 degrees 30' 38" W, 246.84 feet; S 57° 59' 41" W, 313.64 feet to a rebar with a cap on the South side of said roadway and on the East side of an old road bed leading to a cemetery; thence going with the East side of old road bed the following calls: S 21° 12' 05" E, 63.75 feet; S 47 degrees 39' 45" E, 52.30 feet to a 24" hickory; S 26° 51' 49" E, 142.76 feet to a fence post; S 46° 03' 44" E, 64.07 feet to a fence post; S 56° 54' 34" E, 131.15 feet to a rebar with a cap set at the base of twin maples on the East side of old road bed and corner to Brenda Sue and Elizabeth Ann Morgan (DB 148, Pg. 449); thence leaving old road bed and going with the Morgan line N 81° 58' 22" E, 568.39 feet to a rebar with cap set at the base of a 36" maple; N 85° 00' 00" E, 580.72 feet to a rebar with cap set at the base of a 40" popular in the Morgan line and corner to Paul Nicely the following calls: N 12° 41' 41" E, 409.58 feet to a rebar with cap set at the base of a 25" hickory; N 44° 09' 32" W, 99.03 feet to a 15" twin maple; N 53° 46' 48" W, 448.03 feet to the point of beginning and containing 19.17 acres according to a survey by C. Douglas Mullins, RLS # 2773, with Charles Mullins Land Surveyors on October 28, 1998.

Being the same real property the defendants, Louis A. Pavao and Suzanne E. Willis obtained by deed dated May 4, 2007, executed by Rodney Cameron, et ux., of record in Deed Book 215, Page 599, in the Office of the Clerk of the Rockcastle County Court, Mt. Vernon, Kentucky. Further Suzanne E. Willis quitclaimed her interest in the above-described real property to Louis Pavao by deed dated January 27, 2009 of record in 225 page 24 in the office of the Rockcastle County Court Clerk.

The property shall be sold on the following terms & conditions:

- The real property shall be sold for cash or upon a credit of thirty (30) days with the purchaser required to pay a minimum of twenty-five percent (25%) of the purchase price in cash on the date of sale and to secure the balance with a bond approved by the Master Commissioner.
- The bond shall bear interest at the rate of ten percent (10%) per annum until paid in full. The bond shall have a force and effect of a judgment and shall be and remain a lien upon the property sold as additional surety for the payment of the purchase price.
- Unpaid taxes or liens of record at the time of entry of judgment shall be paid out of the proceeds of the sale, subject to the priority set out in the judgment entered on April 27, 2012.
- The purchaser shall pay the 2012 local, county, state and school property taxes.
- Full satisfaction of the plaintiff's judgment shall be paid from the proceeds of the sale.
- The purchaser shall have possession of the real property upon compliance with the terms of the sale.
- In the event that the plaintiff is the successful bidder and the sale price does not exceed the amount of the plaintiff's judgment, no deposit or bond shall be required, and the property will be conveyed to the plaintiff in due season upon payment of the expenses of sale.
- The sale shall be made subject to all easements, set back lines, restrictions or covenants of record or otherwise and shall be sold "as is".

Jerome S. Fish
Special Master Commissioner
Rockcastle Circuit Court

Rocket Carpet Cleaning
 "A Clean Carpet is a Healthy Carpet!"
 David Owens manager 606-256-9870

B.C.C. Metals
 Featuring metal roofing, siding, trim and insulation.
 Same day service available on most orders.
Contact Jerry Blair
 Toll Free 1-800-658-4902 • 256-4700
 Located 4 miles s. of Berea, off U.S. 25 at 862 Lambert Rd.
 Serving Rockcastle County & surrounding counties.
www.bccmfg.com

Subscribe

Help Wanted

Rural Transit Enterprises Coordinated, Inc. (RTEC) is seeking a qualified applicant to fill the **2nd shift dispatcher position** at the RTEC office in Mt. Vernon. Requirements include high school diploma or equivalent. Good computer skills a must. Begin at \$9.45/hr. Excellent benefits. Applications may be obtained at the RTEC office, 100 Main St., Mt. Vernon, Ky., or local unemployment office. RTEC operates a drug and alcohol-free workplace and is an Equal Opportunity Employer. Minorities encouraged to apply. 28x2

Rural Transit Enterprises Coordinated, Inc. (RTEC) is seeking a qualified applicant to fill the **IT position** at the RTEC office in Mt. Vernon. Requirements include Bachelor Degree specializing in Computer Electronic Networking. Experience a plus. Duties include maintaining inside 7 servers, 50 personal computers, EPF and 2 IVR lines. Also requires field work on AVL and Mobile Data computers that may require travel. Salary negotiable. Excellent benefits. Applications may be obtained at the RTEC office, 100 Main St., Mt. Vernon, Ky., or local unemployment office. RTEC operates a drug and alcohol-free workplace and is an Equal Opportunity Employer. Minorities encouraged to apply. 28x2

General Labor: Packers needed for all shifts \$8.50 hour up to 40 hours per week. Must be able to keep up in fast-paced environment. Taking applications Monday-Friday at Impact Employment Solutions office inside Hearthsides Foods, 1188 S. Laurel Road

in London - 606-864-0571. must pass a drug screen and background check. EOE. 26x4

Wanted

Oklahoma Oil Drillers need oil and gas leases in Rockcastle County, Ky, NW Laurel Co., Ky. and Western Jackson County. Call Denny 918-231-0977 or Bill 918-977-0604. 27x6p

Wanted: Looking to buy blackberries. Call Shirley Kennedy at 256-2090.

Wanted: 2 gallons of blackberries. 72 Calloway Branch Rd. Mt. Vernon. 453-2301.

Wanted: to keep infants in my home up to 18 months old. Much experience and loving care. 256-2383.

Wanted To Buy: Your antiques and collectibles. Antique glassware, furniture, quilts, all types of military items, clocks, watches (working or not), pocket watches and wrist watch parts, pocket knives, coins and paper money. All types of gold, silver scrap, cast iron banks, toys, lighters, crock jugs, cast iron skillets, marbles, pocket knives, fishing items, Indian Arrowheads, and much, much more. Also buying partial estates. Over 25 years experience. Call Clarence Reece at 606-531-0467. 47xntf

Wanted: to do house cleaning, laundry, windows. No job too big or too small. References available. Reasonable rates. Also will do odd jobs. Call Glenda at 606-309-6792 or 606-260-7866. 22x8p

Subscribe to the Signal

Pets

For Sale: Boxer puppies. Taking deposits now on Maltese female puppies; Shih Tzu m/f, Yorkies m/f, Malti Poos m/f, Dachshunds m/f, Chihuahua m/f and also new litter of Boxer puppies, solid white. Warranties offered. Shots, wormed and registered. 606-231-5498, 606-308-9709 text or leave message. We offer grooming and boarding. Join us as a member on Facebook to view photo gallery of puppies. Sand Springs Puppy Paws. 8x12p

For Sale: 3 and 4 year old adult Pugs. 2 females and 1 male. 606-843-0145.

Classified deadline for next week's paper is 4 p.m. Monday

Professional Services

Hayes Gravel Hauling. Single axle loads. Driveways. 256-4695 or 859-544-7730. ntf

Jonathan Collins Remodeling and Repair Service. Home improvements of any kind from doors and windows, painting, new floors to roofs and decks - will do it all. Any home, any problem, we're the one to call. 606-308-3533. 29x4p

Owens Monument: Located behind Owens Funeral Home in Brodhead. Open Mon-F 8 to 5 and Sat. 9 a.m. to noon. 606-758-9600. 14xntf

Notice: Will haul off or buy scrap metal, junk cars or trucks. Metal hauled for free. 231-6788. 14xntf

Grave Markers & Monuments: In stock at all times. McNew Monument Sales, US 25, 4 miles north of Mt. Vernon. Phone 256-2232. **U Call We Haul!** Moving? Need Help? Cars, furniture, construction cleanup -- anything that fits on a truck, large or small! *No Garbage!!* Light backhoe and landscaping. 256-9222 or 606-308-1629.

P&P Guttering: 5 & 6 inch seamless gutters, siding, soffit and window installation. Call 256-4393. Free estimates.

Gail's Pampered Pooch
57 West Main St. • Brodhead

For appt. call 606-758-0064

Yard Sales

Yard Sale: Friday, June 29th and Sat., June 30th at Miller's Country Club on 461 next to Barnett's Cycle. Boy's baby clothes - new-

born - 6 mos; baby swing; bassinet; TV, women's and girl's clothing; misc. items. Too much to mention. Given by Sherri Turner, Sherri Harness and Betty Wright. 8 a.m. to ? Rain cancels.

Yard Sale: Friday, June 29th and Sat., June 30th at Hunter's Ridge Subdv.

Yard Sale: Friday, 8 to 2, 2 families, 65 Westview Rd., Mt. Vernon. Lots of stuff.

Moving/Yard Sale: July 2-7. Living room, coffee table and end tables, computers, printers, sheets, queen cherry bed, dressers, kitchen table, chairs, 2 microwaves, small tables, dishes, clothes, shoes, lots more. Everything must go. Mt. Village Apts., #703. Rain or shine. 9 a.m. to ?

Yard Sale: This Friday and Saturday in Lear Crest Subdv. off 1505. Couch, chair, home decor and plenty of name brand clothes for kiddos.



business: 606-256-3841
cell: 606-458-4560

We also buy batteries, converters, aluminum wheels and radiators, starters, and alternators.

Used tires and parts for sale at dirt cheap prices.

Make \$1,000 selling your old scrap cars-trucks and farm equipment and machinery.

Call 24 hours a day. If no answer, leave message and your call will be returned. 859-358-3560 or 606-256-3841 anytime

Tell 'em you saw their ad in the **Mount Vernon Signal**

Absolutely no classifieds can be placed over the phone without paying at time of placing advertisement

CLASSIFIED ADS NOTICE

All classified advertisements must be paid for in advance.

For your convenience, we accept VISA and Mastercard
To place your classified, have your credit card ready and call 606-256-2244

PEACH CITY

**Now Hiring
Apply in Person**

6512 Hwy. 461



KELLY SERVICES

IMMEDIATE OPENINGS!

Team Up With The Employer Who Goes To Work For You.

www.kellyservices.com

2130 Lexington Rd., Suite B, Richmond, KY 40475
(859) 624-1644

EST Tool & Machine, Inc.

located in Brodhead, is now hiring for all positions and all shifts.

Salary commensurate with experience.

Apply in person or send resume to PO Box 351 • Brodhead, KY 40409

The Terrace

**Nursing & Rehabilitation Facility
Part-Time Position Available**

Security Guard

Saturday and Sunday 6P - 7A

\$10.00 Per Hour

Apply at: 1043 Brooklyn Blvd., Berea, Ky.

The Terrace is non-discriminatory in admissions & employment, EOE

The Terrace

**Nursing & Rehabilitation Facility
Position Available:**

RN

Full-Time Position

13 Hr. Shifts 6:30 a.m. to 7:30 p.m.

(Tues., Thurs., Fri. w/ an occasional weekend)

*Full Benefit Package Available

Apply at: 1043 Brooklyn Blvd., Berea, Ky.

The Terrace is non-discriminatory in admissions & employment, EOE

For All Your Hometown News . . .

Subscribe to the

Mount Vernon Signal

In-County - \$20.00 • Out-of-County - \$27.00

Out-of-State - \$35.00 • Prices Per Year

10% Discount to Senior Citizens

Name _____

Address _____

City _____

State _____ Zip _____

Please specify.....

New _____ Renewal _____

Mail to: Mt. Vernon Signal • PO Box 185 • Mt. Vernon, KY 40456

Lester Kirby Tree Trimming

No Job Too Big or Too Small
Fully Insured • Free Estimates
We also do stump removal

Home 606-256-3626 • Cell 606-308-2016
Cell 606-308-3548

Winstead's Heating & Air



Pat Winstead HM04434
606-256-1038 • 606-308-4825

Town & Country 24 HR. WRECKER SERVICE

All Types of Mechanic Work

Call 256-9634 days or
256-4650 nights

David's General Handyman Service

Hard work at an honest price;
Dependable Dave will treat you nice.
PHILIPPIANS 4:13

Mowing
Tiling • Flooring • Roofing
House Washing • Drywalling
General Construction

859-302-0197
Free Estimates, but not over phone
Painting (Commercial & Residential)

Morgan Plumbing Service & Repair

New Construction •
Commercial & Residential Service

Fully Insured • All Work Guaranteed

256-4766 • 606-232-0666

MADISON TERMITE and PEST CONTROL

Call Paul Burton - Day or Night
256-2318 - Mt. Vernon

STOP TERMITES ROACHES WATERBUGS

Tell 'em you saw their ad in the Mount Vernon Signal

CAREER OPPORTUNITIES • A KENTUCKY BARBER COLLEGE

TRI-STATE

LOOKING FOR A GREAT CAREER?
Become a Barber/Stylist.

I.O.N.D.O.N

JADE • LONDON CAMPUS
195 Commercial Drive • Suite 100
London KY 40344
(606) 864-4247

Caudill Dump Truck Service

Rock • Gravel
Agr. Lime
Sand

Rock & Job Quotes
Driveway Spreading
Dumping/Stockpile

Contact for competitive pricing:
Myron - (606) 308-1387

Award-Winning Water Features & Landscaping

Max Phelps
Member I.P.P.C.A

606-416-3911
www.rockcastles.net

Covenant Surveying, LLC

Land surveying, topographical mapping, construction staking.
Professionally Licensed Surveyor
606-256-0224

MOBILE PRESSURE WASHING

Decks, concrete, aluminum and vinyl siding, brick and stone, machinery, equipment and much more.
Benny Rader
606-308-2163 or 606-256-3293
Big Discount for all Churches - Call us!

John's Repair

Appliance Repair

Faucet & Toilet Repair
Mobile Home Repair

John Tyler, Owner • 606-308-5646



HOPKINS ROOFING

New or Old Roofs • Free Estimates
Tim Hopkins • 606-758-9055

Bobcat Services

\$40 per hour
606-386-1521
ask for James

Kentucky Auto Exchange

Public Auto Auction • Dealers Welcome
Every Saturday and Tuesday at 7 p.m.
OPEN TO THE PUBLIC
Located on Exit 38 in London on Hwy. 1006
(606) 878-7815

CE63745 ME28463

LAKESIDE ELECTRIC

INDUSTRIAL/COMMERCIAL/RESIDENTIAL
LICENSED & INSURED

Danny Offutt Phone (606) 271-6367
Owner

Heating & Air



COMPLETE HOME COMFORT

Locally owned and Located at:
575 Richmond Street • Mt. Vernon, Ky.
Rodney Smith
Office: 606-256-1683 • Cell: 859-661-5986

We service all Brands and Models • 20+ years experience
Free Estimates - Affordable Service - Call for Rates
Expert Installation & Troubleshooting • Friendly Hometown Service

Heat Pumps and Gas Furnaces

We also sell Gas Logs and Heaters

Fully Licensed and Insured HVAC and Electrical • MO-4808 and CE63779

On-Site Computer Service

Tired of sending your
computer
away to get
it fixed?



Call and let us come to
you for all your computer
needs!

Setup, Consultation,
Software/Hardware Conflicts
Virus/Spyware Removal

Reasonable Rates

Call
Spencer Bengé
606-308-5653

DOGWOOD GIFTS & GARDEN CENTER

Out-Of-Season Sale
All Impatiens & Petunias
\$1.00 - 6 pack
256-3007

Hwy. 25 Junction 3275 -
corner of Brindle Ridge Rd.

David Spoonamore ROOFING

Free Estimates
25 Years experience
Call 758-4457 or
606-392-3573

Newland Construction Co., Inc.

Asphalt & Concrete Paving,
Sealing & Striping Driveways,
Streets & Parking Lots
Free Estimates

(606) 256-0782



B&D Hauling & Excavating

Backhoe, Bulldozer, & Bobcat Work • Structure Demolition & Removal
Top Soil, Fill Dirt, & Gravel Hauling • Farm & Residential
Licensed Septic Installer • Excavator

Brian Cell 271-2417 Home 758-4248
Jamie Cell 606-231-4285

Mechanic On Duty

All Types of Repairs
We do muffler &
exhaust replacement and
custom pipe bending

David's Tire Center

24 Hr. Towing & Recovery LLC

1431 S. Wilderness Rd. (US 25)
Mt. Vernon

David & Josh Thompson, Owners
Office/24 Hr. Wrecker
606-256-4606

Save On All Major Brand
Tires For Cars & Trucks
Farm Tractors • Lawn & More

(606) 256-2535



CLIFFORD Collins BACKHOE, LLC.

Excavating and Hauling
Septic Tanks & Other Concrete Products

5076 S Wilderness Rd. • Mt. Vernon, Ky.

BEE Garbage

256-2334

Weekly residential
curbside pickup

\$17⁰⁰ per month with Curb Cart

Thinking About Cleaning Your Carpet!

Some things to think about...

What is the best way to clean my carpet, should I use the old technology of steam cleaning or the new technology of dry foam?

Test results from Consumer Report, 2008.

Option 1: Steam Cleaning-How does it work?
A. Steam Cleaners saturate your carpet and floor pad with hot (150° degree) soapy water containing lye and bleach to help dissolve stains.
B. After your carpet reaches its maximum saturation point the solution is then extracted by means of a commercial shop vacuum.
The results: Removes less than 20% of the soil from the carpet driving the remainder down deeper into the carpet fibers. The lye/bleach solution used by steam cleaners to dissolve stains fades carpet colors. Drying time is 1 to 5 days depending on the carpet texture. As a result of the water saturation, carpet fibers harden and the floor pad remains damp, which promotes bacteria growth and mildewing, causing carpet threads to rot, shorting the life of your carpet. Carpet manufacturers recommend that you do not steam clean carpets.

Option 2: Dry Foam-How does it work?
C. Carpet fibers are agitated with carpet combs to separate the fibers loosening dirt particles, which are then dry cleaned with an industrial strength vacuum.
D. The carpet is then shampooed with horse hair brushes using Dry-Foam lather, a solution that contains six different cleaners and fabric softener, color brightener, deodorizer, disinfectant, crystalline agent, scotch guard, & degreaser. Does not contain lye or bleach.
E. Carpet fibers are then groomed to fluff up worn walk areas to give a uniform look to the carpet.
The results: Removes over 90% of carpet soil. Rejuvenates and brightens colors and patterns of carpets. Drying times is less than 2 hours. Floor pads remain dry-Fabric Softener makes carpets soft again-Promoting the life of the carpet.
Carpet manufacturers recommend Dry Foam to clean Carpets.

Rocket Carpet Cleaners

Circular Dry Foam Cleaning

(606) 256-9870



45 campers, teens and adults attended Feltner 4-H Camp the week of June 10-13. Pictured are: Kristen Ginter, Keashawna Ginter, Kayla Ginter, Selena Burdine, Sarah Powell, Shaylin Howerton, Hannah Renner, Eva Jackson, Delani Reynolds, Bailey Johnson, Nora Pulliam, Emilee Thomas, Alexandria Hasty, Katie Vance, Jaylon Ponder, Hailey Harper, Kristen Taylor, Scarlett Eaton, Joseph Coffey, Tanner Pillion, Jonah Pillion, Elijah McKinney, Jacob Mobley, Jacob Hunt, Dalton Durham, Dylan Bullock, Evan Hendrickson, Logan Kidwell, Rant Saylor, Aiden Cain, Tyler Wood, Logan Noel, Drew McGuire, Jaden Carpenter, Daniel Mason, Keaton Renfro, Vashaun Alexander and Aaron Clark. Special thanks to scholarship donors: Community Trust Bank- \$100, Kiwanis- \$200, Farm Bureau- \$150, Citizens Bank- \$300, Rockcastle Hospital- \$150, Thursday's Club- \$150, Peoples Bank- \$100, Jackson Energy Cooperative- \$150, Quail Homemaker- \$150 and Castle Quilters and Nine Patcher's Quilt Clubs- \$150.



Shaylin Howerton and Keashawna Ginter canoeing at Feltner 4-H Camp.



Katie Vance, Sarah Powell and Aiden Cain doing recreation at 4-H Camp.

NOTICE OF PUBLIC HEARING

(Pursuant to 401 KAR 4 & 5, KRS 424 and 40 CFR 25.5 & 25.6)

The City of Mt. Vernon, City Hall, 125 Richmond Street, P.O. Box 1465, Mt. Vernon, Kentucky 40456, has drafted Amendment No. 2 to the Mt. Vernon 201 Facilities Plan (hereinafter the 'Plan'), presenting projected requirements and proposed plans for waste water collection (sewers) and treatment (sewer plant) improvements, including estimated costs, within the Mt. Vernon facility planning area to be served, as described therein. A copy of the draft Plan Amendment No. 2 will be maintained available for public review in the Mt. Vernon City Hall during regular business hours. Interested parties may obtain further information, including copies of the draft Plan Amendment No. 2, by contacting Ms. Jeanette Robinson, City Clerk, at the above listed business address, or by e-mail to jrobinson@mtvernonky.org, or by calling (606) 256-3437 between the hours of 9:00 a.m. and 4:00 p.m. on Monday through Friday.

A public hearing will be held on Wednesday, July 11, 2012 at 1:30 PM local time in the Mt. Vernon City Hall at the above listed address. The purpose of the hearing is to discuss the draft Plan Amendment No. 2 and its contents, specifically the proposed future project alternatives, project costs, financing sources, user charges and hook-up/tap-on fees. The public is encouraged to attend and participate in this hearing and shall have the right to comment on the Plan Amendment No. 2, in writing to the above address, for a period of thirty (30) days from the date of initial publication of this notice or upon termination of the public hearing, whichever is later. A longer comment period may be requested in writing. All persons who believe any condition of the draft Plan Amendment No. 2 is inappropriate, inaccurate, incomplete, or otherwise not in the best interest of the public and the environment must raise all reasonable issues and submit all reasonable arguments, facts and comments with supporting documents to the above listed contact person by the close of the prescribed comment period.

City of Mt. Vernon
Hon. Mike Bryant, Mayor

OPERATION UNITE
Drug Tip Hotline
1-866-424-4382
(Call toll-free - no need to register)
Toll-free Treatment Help Line
1-866-90-UNITE

EASTERN KENTUCKY RECYCLING 

Visit us at our
Crab Orchard
facility located beside Dollar Store
Buying Copper, Aluminum, Brass,
Cars, Tin & Steel
Monday - Friday 8:00 to 4:00
Saturday 8:00 to 12:00
606-355-2322

Most fire and all fireworks banned on national forest

Due to current drought conditions, management officials have issued emergency orders concerning visitors' use of fire in the Daniel Boone National Forest.

Beginning June 27, campfires, charcoal grills, candles and open-flame torches are prohibited outside of developed recreation areas on national forest lands. Fires are allowed in developed sites within Forest Service designated fire rings constructed of metal or concrete.

Portable lanterns and stoves that use gas, jellied petroleum or pressurized liquid fuel are permitted, which allows for the use of tabletop and backpack stoves that are popular with many campers and hikers.

A separate order prohibits "possessing, discharging or using any kind of firework or other pyrotechnic device" anywhere on national forest lands of the Daniel Boone.

"When considering the current drought conditions and the extended forecast with little to no rain in sight, these orders were issued to help ensure public safety and reduce the chance for wildfires," said Deputy Forest Supervisor Bill Lorenz.

"The fire bans are needed as an added safeguard for our visitors, employees, neighbors, and adjacent property."

Forest Service fire managers closely monitor the potential for wildfire during extended periods of dry weather. Weather data and computer models are used to determine fire risks. The current indicators show high fire danger for this time of year.

"The lack of rain and high temperatures has caused the forest ground fuels to become extremely dry over the past few weeks," added Lorenz.

"Over the past several years, some of the most damaging wildfires affecting our natural resources have occurred during drought conditions. These fires started from escaped campfires or campers using fireworks or candles."

In Kentucky, the official fire hazard seasons run from February 15 - April 30 and October 1 - December 15. Wildfires in Kentucky rarely occur outside of these timeframes unless drought conditions are in progress.

Inside the developed recreation areas where campfires are allowed, officials recommend that campfires be kept to a minimum and contained in designated fire rings or grills within developed recreation areas.

Any individual caught violating the campfire or fireworks ban on national forest lands will be issued a minimum \$300 fine. Individuals or groups responsible for causing a wildfire may also be held liable for suppression costs, which can become extensive once firefighters and heavy equipment are needed.

The commercial firework displays that are scheduled to occur at Laurel River Lake and Cave Run Lake for the Fourth of July are exempted from the emergency order banning fireworks in the national forest.



ADAM H. EDELEN
AUDITOR OF PUBLIC ACCOUNTS

The Honorable Buzz Carloftis, Rockcastle County Judge/Executive
The Honorable Michael E. Peters, Rockcastle County Sheriff
Members of the Rockcastle County Fiscal Court

Independent Auditor's Report

We have audited the accompanying statement of revenues, expenditures, and excess fees - regulatory basis of the Sheriff of Rockcastle County, Kentucky, for the year ended December 31, 2011. This financial statement is the responsibility of the Sheriff. Our responsibility is to express an opinion on this financial statement based on our audit.

We conducted our audit in accordance with auditing standards generally accepted in the United States of America, the standards applicable to financial audits contained in Government Auditing Standards issued by the Comptroller General of the United States, and the Audit Guide for County Fee Officials issued by the Auditor of Public Accounts, Commonwealth of Kentucky. Those standards require that we plan and perform the audit to obtain reasonable assurance about whether the financial statement is free of material misstatement. An audit includes examining, on a test basis, evidence supporting the amounts and disclosures in the financial statement. An audit also includes assessing the accounting principles used and significant estimates made by management, as well as evaluating the overall financial statement presentation. We believe that our audit provides a reasonable basis for our opinion. As described in Note 1, the Sheriff's office prepares the financial statement on a regulatory basis of accounting that demonstrates compliance with the laws of Kentucky, which is a comprehensive basis of accounting other than accounting principles generally accepted in the United States of America.

In our opinion, the financial statement referred to above presents fairly, in all material respects, the revenues, expenditures, and excess fees of the Sheriff for the year ended December 31, 2011, in conformity with the regulatory basis of accounting described in Note 1.

In accordance with Government Auditing Standards, we have also issued our report dated May 31, 2012 on our consideration of the Rockcastle County Sheriff's internal control over financial reporting and on our tests of its compliance with certain provisions of laws, regulations, contracts and grant agreements, and other matters. The purpose of that report is to describe the scope of our testing of internal control over financial reporting and compliance and the results of that testing, and not to provide an opinion on the internal control over financial reporting or on compliance. That report is an integral part of an audit performed in accordance with Government Auditing Standards and should be considered in assessing the results of our audit.

Based on the results of our audit, we have presented the accompanying comment and recommendation, included herein, which discusses the following report comment:

2011-01 The Sheriff's Office Lacks Adequate Segregation Of Duties Over Receipts
This report is intended solely for the information and use of the Sheriff and Fiscal Court of Rockcastle County, Kentucky, and the Commonwealth of Kentucky and is not intended to be and should not be used by anyone other than these interested parties.

Respectfully submitted,



Adam H. Edelen
Auditor of Public Accounts

May 31, 2012
State law requires the Auditor of Public Accounts to annually audit fiscal courts, county clerks, and sheriffs; and print the results in a newspaper having general circulation in the county. The complete audit and any other audit of state agencies, fiscal courts, county clerks, sheriffs, and property valuation administrators may be viewed in the reports section of the Auditor of Public Accounts' website at www.auditor.ky.gov or upon request by calling 1-800-247-9126.