

Mount Vernon Signal

Serving Rockcastle

152 *****ECRLOT 0168A**R007
 ROCKCASTLE LIBRARY
 60 FORD DR
 MOUNT VERNON KY 40455-2148

Mount Vernon, Kentucky 40456 - (606) 256-2244 Volume 126 Number 48 50 per copy Thursday, November 20, 2014



Rockcastle County Schools were closed Tuesday for inclement weather the for the first time during the 2014-2015 calendar year. According to the National Weather Service, Rockcastle County received less than an inch of snow on Tuesday with slightly larger amounts in higher elevations. Shown above is a section of Purr Rigsby Road where snow partially covered the roadway. Road crews were out treating the roadways early Tuesday morning but struggled due to the low temperatures affecting the melting rate.

Schools closed after first snowfall

By: Doug Ponder
 Rockcastle County students received an extra day off this week on Tuesday as a result of a snow system that pushed its way across the state. All Rockcastle County Schools were closed Tuesday because a lot of county roads were too slick for school buses as a result of the snowfall. According to the National Weather Service in Jackson, all of Rockcastle County received less than an inch of snow on Tuesday. However, the mini-

mal amount of snow that fell remained stuck to the roads with temperatures well below freezing. State highway crews and county road crews were out treating the roads early Tuesday morning but struggled to treat the roadways during that time period due to the low temperatures affecting the melting rates. Tuesday was the first "snow day" for Rockcastle County Schools during the 2014-2015 calendar year. According to the school cal-

endar, if fewer than ten days are missed for inclement weather or other emergencies by the last Monday in February then the school board can ap-

prove a calendar amendment to dismiss for Spring Break on March 30th through April 3rd.
 (Cont. to A8)

EST Tool and Machine plans to add 8 to 12 employees

By: Doug Ponder
 A Brodhead manufacturing company is increasing their production and will be adding eight to twelve employees within the next year. According to a news release from Carla Blanton Consulting, EST Tool and Machine will be purchasing two new machines within the next year to meet the growing demand of their new and existing customers. EST Tool and Machine's clients include several companies in Kentucky and Arkansas.

include machinists, tool makers and even some entry-level positions," Taylor said. "These positions are a result of us increasing our capacity to meet our customers demand." Taylor went on to say that his company is currently working with local schools to encourage more students to take more manufacturing classes. "We are currently working with Rockcastle County High School to offer more machinists and tool making classes," Taylor said. "We also offer a \$1,000 memorial scholarship in my brother Tims name. The scholarship is for those pursuing machinists or tool-making careers at Somerset Community College. Rockcastle County students also have the first pick."

Kentucky Highlands Investment Corporation recently approved a loan package of up to \$750,000 for EST Tool and Machine to finance a vertical mulling machine and a horizontal boring mill. EST President Steve Taylor said they are currently hiring for six positions and expect to add up to six more positions in the near future. "These positions will

include machinists, tool makers and even some entry-level positions," Taylor said. "These positions are a result of us increasing our capacity to meet our customers demand." Taylor went on to say that his company is currently working with local schools to encourage more students to take more manufacturing classes. "We are currently working with Rockcastle County High School to offer more machinists and tool making classes," Taylor said. "We also offer a \$1,000 memorial scholarship in my brother Tims name. The scholarship is for those pursuing machinists or tool-making careers at Somerset Community College. Rockcastle County students also have the first pick."

Nine local people arrested for drug trafficking

By: Doug Ponder
 Nine Rockcastle Countians were arrested for drug trafficking this past week as a result of a drug raid by the Rockcastle County Attorney's Office and Mt. Vernon Police Department. According to the County Attorney's Office, twenty separate drug trafficking warrants were recently issued by Assistant County Attorney William Leger and signed by MVPD Assistant Chief Barry Adams. The following people were arrested on warrants taken by Adams: Rhonda Cromer, 44, of Mt. Vernon was charged with two counts of trafficking in a controlled substance. She was lodged in the Rockcastle County Detention Center and later released on a \$5,000 unsecured bond. Terry Monroe Cromer, 49, of Mt. Vernon was charged with three counts of trafficking in a controlled substance. He remains lodged in the Rockcastle County Detention Center on a \$5,000 cash/property bond. Ronnie Dale Cromer, 44, of Mt. Vernon was charged with three counts of trafficking in a controlled substance. He remains lodged in the Rockcastle County Detention Center on a \$5,000 cash/property bond.

Earl Wesley Daniels, 47, of Mt. Vernon was charged with one count of trafficking in a controlled substance. He was lodged in the Rockcastle County Detention Center where he was later released on a \$5,000 cash bond. Paula Michelle Daniels, 45, of Mt. Vernon was charged with one count of trafficking in a controlled substance. She was lodged in the Rockcastle County Detention Center and was later released on a \$5,000 cash bond. Jennifer Kidwell, 39, of Mt. Vernon was charged with three counts of trafficking in a controlled substance. She was lodged in the Rockcastle County Detention Center and has been released on a \$5,000 unsecured bond. Gary Russell Ramsey, 29, of Mount Vernon was charged with one count of trafficking in a controlled substance (heroin.) He was lodged in the Rockcastle County Detention Center and later released on a \$5,000 cash bond. County Attorney Billy Reynolds said that he appreciated the initiative shown by Leger, Adams and all the agencies involved in the drug raid. "I want drug dealers to be aware that we are raising the stakes," Reynolds said. "If you deal dope, we will get you."

Kentucky Highlands Investment Corporation recently approved a loan package of up to \$750,000 for EST Tool and Machine to finance a vertical mulling machine and a horizontal boring mill. EST President Steve Taylor said they are currently hiring for six positions and expect to add up to six more positions in the near future. "These positions will

include machinists, tool makers and even some entry-level positions," Taylor said. "These positions are a result of us increasing our capacity to meet our customers demand." Taylor went on to say that his company is currently working with local schools to encourage more students to take more manufacturing classes. "We are currently working with Rockcastle County High School to offer more machinists and tool making classes," Taylor said. "We also offer a \$1,000 memorial scholarship in my brother Tims name. The scholarship is for those pursuing machinists or tool-making careers at Somerset Community College. Rockcastle County students also have the first pick."

Fiscal Court will borrow \$280,000 for upgrades

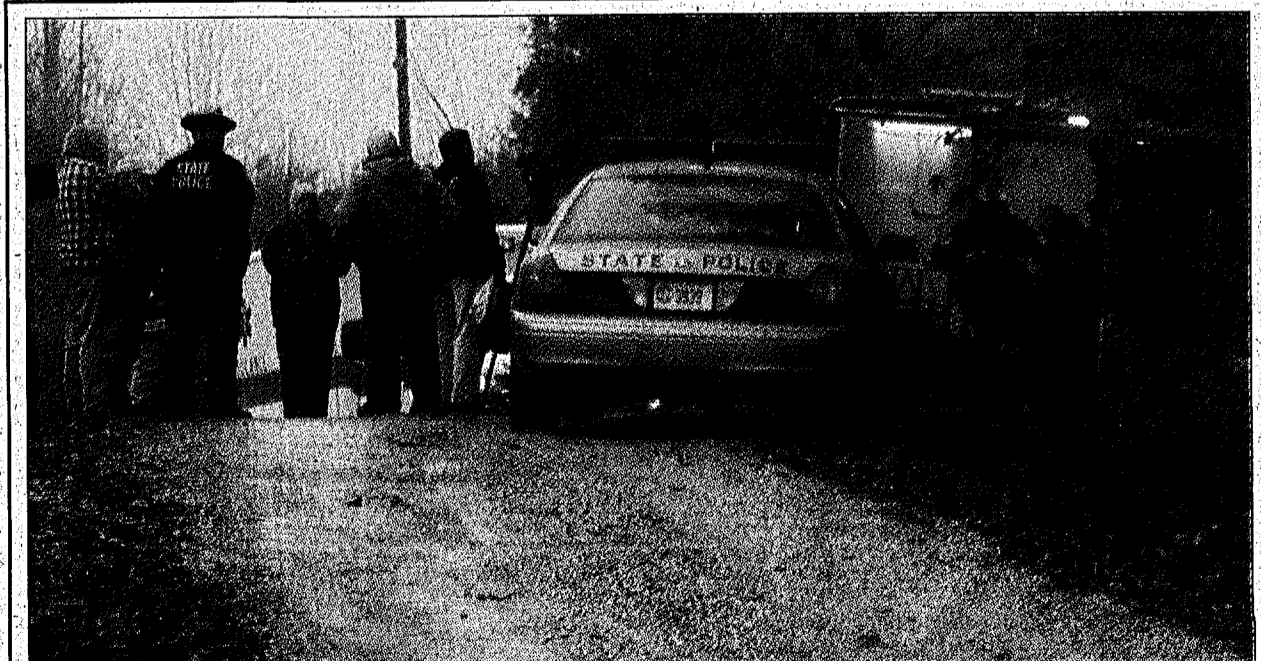
For five local fire departments
 At last Thursday's meeting of the Rockcastle Fiscal Court, Christmas came early for five fire departments in the county as the fiscal court voted to buy needed equipment for the departments to the tune of \$280,000. The list of equipment to be purchased by department, include: Livingston Fire Department, a pumper with small tanker for \$55,000; Western Fire Department, a brush truck for \$30,000; Brindle Ridge Fire Department, a pumper for \$65,000 and Mt. Vernon Fire Department, a tanker for \$70,000. Brodhead Fire Department will receive \$60,000 which will be used to buy a skid unit for \$10,000 to be used on a truck they purchased with a \$50,000 Homeland Security grant enabling the truck to be used as a brush truck. They will also buy 7 sets

of turn-out gear for around \$1,800 each and the rest will be used to pay off loans the department has taken out to buy equipment. Magistrate Bill McKinney expressed some hesitancy about the proposal, saying "we don't have the money and we have to have 35% of our budget revenue left on January 1st for the new court." He also pointed out that if the money was borrowed, the court hasn't budgeted for the payments from January through June of 2015 of about \$2900 a month. County Treasurer Joe Clontz, on question from County Judge/Executive Buzz Carloftis said he felt the county would be able to make the loan payments and still have the required 35% of bud-
 (Cont. to A8)

Local man injured in hunting accident after falling from cliff

By: Doug Ponder
 A local man was injured in a hunting accident Monday morning after he fell off a cliff in the woods around Lower River Road near the Rockcastle-Laurel County line. According to the Rockcastle County Sheriff's Department, John Carpenter, 19, of Livingston was hunting in a remote area near Lower River Road when he lost his balance and fell approximately 40 feet off a cliff. Carpenter managed to call his father and Rockcastle 911 on his cell phone for help. When

emergency responders arrived they had to use rescue UTVs due to the rough terrain of the abandoned logging trail where Carpenter was located. Once emergency responders arrived at the scene, they had to use a rope system to hoist Carpenter to safety. Carpenter remained conscious throughout the rescue but was starting to show signs of hypothermia. Carpenter was transported by ambulance to the UK Medical Center where he remains in stable condition and is currently being treated for a broken leg and broken arm.



A local man was injured while hunting Monday morning around Lower River Road near the Rockcastle-Laurel County line. Authorities say John Carpenter, 19, of Livingston was hunting in the remote area when he lost his balance and fell approximately 40 feet off a cliff. Emergency responders had to use rescue UTVs because of the rough terrain of the abandoned logging trail where Carpenter was located. Carpenter was showing signs of hypothermia and they had to use a rope system to hoist him to safety. Carpenter was transported by ambulance to the UK Medical Center where his condition is listed as stable.

Of Special Note Inside

Contact us at: mvsignal@windstream.net
 Deadline submission is Noon Tuesday

- Viewpoints Pg. A2
- Classifieds Pgs. B6-7
- Obituaries Pg. A3
- Courthouse News Pg. B2
- Church News Pg. A3
- Letters Pgs. A4

Call 606-256-2244 for Advertising & Subscriptions

ramblings

by: perlina m. anderkin
 We bowl on Tuesday nights, well, let me rephrase that, we show up on most Tuesdays although daughter, Jane, had a really good night this week she's just not strong enough to carry the rest of us.
 My problem with the commitment is that Tuesday night is also my favorite night for TV. Two of the shows I love are *NCIS* and *Person of Interest*. Mark Harmon and Jim Caviezel, along with Denzil Washington, really do it for me. I would pay good money to sit for two hours and just look at Caviezel and Washington (Harmon is really not that pretty). They wouldn't have to do anything, well, maybe smile at me occasionally and for that I would pay double.

I said all that to lead into my real intention of this column.

If I had to rank my TV shows by favorites, I would have to go with Megyn Kelly's show which comes on at 9 o'clock each night on Fox as number one. She is a lawyer who clerked at the Supreme Court, decided she didn't care for the law profession and switched to broadcasting -- I'm so glad she did.

She will take anyone on and isn't afraid to ask the hard questions. It is one of the most informative shows I watch and I really appreciate her intensity, integrity and knowledge. She is very good at presenting both sides of an issue but doesn't like to be fed nonsense.

When I come in from bowling on Tuesday nights, her show is already on but, even though two of my other favorite shows are also on that night, I watch hers from the beginning and then squeeze in another one. *Happenings* week when I had to start watching the UK game because I was going to watch *Happenings* Now first.

I then proceeded to watch the UK game and managed to view *Person of Interest* before dragging myself off to bed a lot later than I should have. But, the philosophy "you can sleep when you're dead" works for me.

My other can't miss show is *Big Bang Theory* on Thursdays and that's about it. *Stalker* and *Criminal Minds* are usually too scary

so I tape them and watch them in the daylight.

I say *Stalker* and *Criminal Minds* are scary but they actually don't compare with the antics of our government these days. But, what do I know? According to Dr. Jonathan Gruber, the Obamacare architect, I am one of the "stupid Americans" who doesn't know what's good for them so the government has to lie, deceive and manipulate to get their programs (Obamacare) across for our own good. And then he has the gall to stand before a bank of cameras and say that every step of the process was transparent and that Gruber "was not one of the staffers who worked on it" and implied that he barely knew him.

Poppycock! He was only the man who visited the
 (Cont. to A4)

Points East

By Ike Adams



Last week's column on funny things kids had been heard to say was so well-received and I received so much email feedback that I have decided to continue with a similar vein this week.

An old friend and now retired teacher, Lisa Hammonds, once taught fourth and fifth grade grade at a private school in Louisville. One year when school had just started back in the fall, she asked how many of her students had gone to a camp over the summer.

Every hand went up, so she asked the class to write a homework paper, on which they would be graded, about something

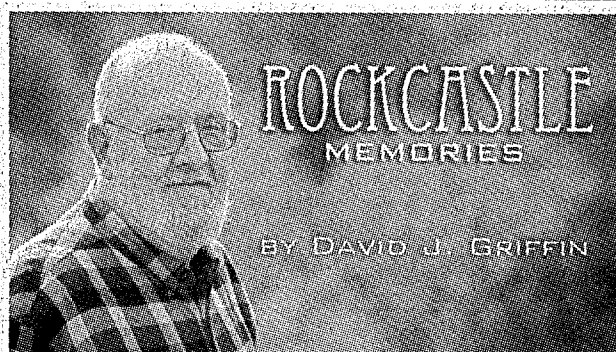
they had learned at summer camp. Here are some of the actual papers that received an A+.

Lisa once planned to publish a book of short essays written by her students over the years. I don't believe she has gotten around to it yet but she did tell me, several years ago, that I could use these, and several others in the stack she sent me. I've been unable to track her down this week because she has an unlisted number in south Florida, but I am assuming the offer still holds.

One boy wrote, "I learned that you should never try to catch a rattlesnake because it could kill you to death. First it would bite you and make you hurt really awful and then you would get real sick and puke up every thing you have ever eat and then it would wrap around your neck and choke you to finish you off and then it would swallow you whole and they'd have to shoot its head off so they could cut it open and get you out so they could bury you slime and all"

A little girl wrote that, "you should always knock on the toilet door before you go inside to use it because there might be a boy in there and they never lock the door even if they are doing number 2. I forgot to knock one time and when I opened the door a boy was standing there with his pants down. It was the most awful thing I have ever seen and I screamed and almost passed out before I slammed the door shut. I don't know how many times I knocked on the door after that when the in use sign was not showing and it was some stupid boy in there every time so I just yelled hurry up"

(Cont. to A4)



Ride Out

Upon recently learning that Bob Seger has released a new CD (called *Ride Out*), I was overjoyed. My purchase was immediate. I am, and have been, a huge fan of Seger for the past 40 years. I have seen him in concert twice at Rupp Arena. It is my understanding that this will likely be his last studio album -- let's hope not! Once again, he has not let us down. I find it amazing that this fellow (who is my age) continues to produce rock-and-roll gold.

Seger has always included "classic cars" and Harley motorcycles in many of his songs and, certainly, in his best hits. His latest CD is no exception. He opens his latest recording with a song called "Detroit Made." It is about a definitive automobile of the early years -- from 1959 until the mid-seventies. He refers to this hot car as a deuce and a quarter.

Actually, I surprised myself when I realized that I remembered the exact Buick Electra that was called by this nickname. I called my friend Bud Cox to see if he also remembered the handle.

of this classic car. He did. I knew that he would. (The deuce and a quarter moniker is in reference to the overall length of the car, which is 225 inches from bumper to bumper.)

One of my teacher friends at Mt. Sterling High School had one of these later models. I became intimately familiar with it when he hired me to install an eight-track player in the dash. (Wow -- that really dates a person, huh?) That Electra would simply fly. It seemed as if you were riding in a large boat when it was fully un-wound.

The lyrics to Seger's testament to the vehicle are as follows:

*Got me a deuce and a quarter, Babe
 She will ride you right
 Pick you up 'bout half past nine
 We can ride all night
 She's a Detroit made
 Deuce and a quarter, babe
 She's a Detroit made
 Deuce and a quarter, babe
 Big block, she'll do all the work
 So we can ride in style
 Leather on those bucket seats*

(Cont. to A4)

T.J.'s Journal

by: Tonya J. Cook

Memories and Oatmeal Cookies

Dear Journal,
 Sometimes you get a craving for something and can't get it out of your mind. This is the case with me for the past week. I've been craving homemade oatmeal cookies. The only way to overcome the craving is to submit to the urge.
 I stopped everything about eleven o'clock this morning and got the various ingredients together. I got out the butter (everything is better with real butter in it), then the sugar, eggs, flour, and oatmeal.

As I stirred and mixed, I recalled as a child my older brother, Don, making oatmeal cookies for his guests. He always had a few friends over and he always served the oatmeal cookies with lime Kool-Aid. He sometimes served pop corn with the Kool-Aid, too. We would all gather in front of that old black and white television and watch *Bonanza*, *Gunsmoke*, *The Virginian*, and other classics of the day.

That was back in the days when watching television was an event for the whole family and friends. The lights were dimmed in order

to see the screen better, and not a word was spoken until commercial time. It was a real treat because there wasn't a television in every room like today. Some families didn't even own a television. Amazingly, too, there wasn't but about two or three stations available from which to select your programming.

My cookies are beginning to brown and get crispy around the edges. It won't be long now.

I remember one time Don was making his cookies and got the bright idea to use a mixer instead of having to stir the thick batter. He burned up the motor in my grandma's good electric mixer. Boy, did she get mad!

My cookies are ready. I think I'll have a little lunch and have the oatmeal cookies for dessert. I'll hurry through lunch and then I'll sink my teeth into one of the cookies while it is still warm... get out the cold milk and here I come. The rich buttery flavor will mingle with the sweetness and the oats. It will be good eating, let me tell you! The old memories aren't such a bad thing, either.

ABSOLUTE ONLINE ONLY

Auction

David Bishop's
 Large Selection of GUNS & AMMO
 Knives - Coins - Stamps & More

BIDDING ENDS: Monday, November 24, 2014 @ approx. 6:00 p.m.
 Bid Online: www.fordbrothersinc.com

This auction offers a wide variety of Guns, Ammo, and Cases/Sleeves. There are also some Knives, Coins, and Collector Stamps. There are over 400 items in this auction so, please, log on to www.fordbrothersinc.com to bid. Remember, **LAST BID WILL BUY!**

PREVIEW DATES: Friday, November 14th from 1:00 p.m. - 6:00 p.m. and Friday, November 21st from 1:00 p.m. - 6:00 p.m.

PICKUP DATE: There will be only ONE pickup date, Wednesday, November 26th from 11:00 a.m. - 6:00 p.m. This pickup will take place at our London office location: 64 Keavy Road, London, KY.

BUYER'S PREMIUM: There will be a 10% Buyer's Premium added to the winning bid. The sum of the winning bid plus the buyer's premium will be the sales price.

TERMS: Items must be paid for in full at pickup by 6:00 p.m. on Wednesday, November 26th or the credit card used for registration will be charged with a 3% processing fee. ***

With the purchase of a firearm you will be required to have a background check completed before taking possession of the firearm. If you have your Concealed Deadly Weapons License you will still have to fill out the forms.

For a complete list of terms and conditions please visit our website: www.fordbrothersinc.com.

Announcements take precedence over printed matter. For additional information contact Sam Ford, Auctioneer at 1-800-435-5454 or 1-606-308-4400.

REALTOR/AUCTIONEER: SAM FORD

www.fordbrothersinc.com
 Mt. Vernon, KY
 606-256-4545 • 800-435-5454

London, KY
 606-878-7111

Your co-op...

... Your community partner

Operation Round-Up is an easy way for co-op members to help their local community for only pennies a month.

Jackson Energy members who join Operation Round-Up allow the co-op to "round up" the cents on their electric bill to the next even dollar amount. The spare change funds grants for charitable organizations in their home county. Since 2003, Operation Round-Up has awarded \$20,535 to Rockcastle County groups - like the Quail Homemakers.

Jackson Energy - Your co-op, Your community partner.

To find out more, call 1.800.262.7480.

Jackson Energy

Working for You

www.jacksonenergy.com • 1.800.262.7480

Obituaries



Wanda Jean Moore

Wanda Jean Moore, 81, of Mt. Vernon, died Tuesday, November 18, 2014 at Compassionate Care Center in Richmond. She was born in Wildie on October 12, 1933 the daughter of Luther and Sallie Dalton Bishop. She was a homemaker, a member of Pine Hill Baptist Church and loved gardening and animals.

She is survived by: her husband, Roland Moore of Mt. Vernon; two daughters, Vickie Hedge of Oxford, OH and Debbie Pitman of Hamilton, OH; six brothers, Jimmy Bishop of Lancaster, CA, Jack Bishop of Wildie, GA, Bishop of Hamilton, OH, Robert Bishop of Los Angeles, CA, Ronnie Bishop of Fairfield, OH and Shirley Bishop of Pensacola, FL; and two sisters, Pauline Ramsey of Wildie and Christine Marconi of Canton, OH. Also surviving are: two grandchildren, Fawn and Ray Taylor and Joshua and Holly Pitman; two great grandchildren, Gambriel White and Sarah Pitman; and family friend Ron Taylor.

In addition to her parents, she was preceded in death by two sisters, Helen Renner and Nannie Crews.

There will be no visitation or funeral service.

The family has requested that any donations be made to the Rockcastle County Animal Shelter in memory of Mrs. Wanda Moore and her love of animals. Address is Rockcastle County Animal Shelter, PO Box 255, Mt. Vernon, KY 40456.

Arrangements were by Dowell & Martin Funeral Home.

Please visit www.DowellMartin.com to view online obituary.



Larry Earl Payne

Larry Earl Payne, 64, died October 2, 2014 after a short battle with cancer. He was born June 6, 1950 to Earl B. and Marie Overbay Payne in Rockcastle County. He was a graduate of Crisp County High School where he was active in various school activities.

After graduation from high school, he volunteered for the U.S. Army and served in Vietnam where he was wounded and received The Purple Heart. After service in the army, he attended and graduated from Georgia Southwestern University. During his time at Georgia Southwestern, he was the president of the Student Government Association

and also served as president of the Gamma Beta Phi Honor Society and Gold Key honors society, Vice president of Kappa Sigma Fraternity. In addition he was selected as an intern with Senator Sam Nunn in Washington D.C. and Who's Who Among Students in American Colleges and Universities.

On June 2, 1975 he was united in marriage to Martha Brinson. To this union was born two children, Tully and Christy.

He was a member and trustee of First Baptist Church of Cordele.

He is survived by: Martha, his wife of 39 years; two children, Tully and his wife Setrina and Christy and her husband Devan; six granddaughters; his mother, Marie Payne of Cordele, GA; one brother, Jeff (Sharon) Payne of Pineview, GA; five sisters, Carol Ann Cox (Denny) of Remington, VA., Dawn (Joe) Farmer of Warner Robins, GA., Traci (Harold) Dickerson, Melody (Randy) Coffee and Edna (Tim) Veal, all of Cordele, GA; and numerous nieces and nephews.

He was preceded in death by his father, Earl Payne and a sister, Jill Payne Rogers.

Funeral services were held Sunday, October 5, 2014 at First Baptist Church of Cordele. Burial was in Zion Hope Cemetery.

This service entrusted to Hughes & Wright Funeral Home.

Online condolences may be left at www.hughesandwright.com



Patricia Jean Cromer

Patricia Jean Cromer, 48, of Brodhead, died Tuesday, November 18, 2014 at her home in Brodhead. She was born in Mount Vernon on April 20, 1966, a daughter of Mac Hampton and Hilda Morrow Hampton. She was a Legal Secretary for ARDF of KY and enjoyed needle point, Kentucky basketball, drag racing with her husband, reading, puzzles and gardening. She was a member of Cedar Hill Baptist Church in Delta in Wayne County. On July 5th, 1986 she was united in matrimony to Ricky Dale Cromer and from that union came one daughter, Adrienne Beth Cromer of Lexington.

She is survived by: her husband, Ricky Dale Cromer; a daughter, Adrienne Beth Cromer of Lexington; her parents, Mac Hampton and Hilda Morrow Hampton; two brothers, Douglas Glen Hampton of Eubank and Bro. Timothy Dean (Kimberly) Hampton of Mt. Vernon; and a host of friends and neighbors.

Funeral services will be conducted (today) Thursday, November 20, 2014 at 1 p.m. at the Marvin E. Owens Home for Funerals with Bro. Tim Hampton officiating. Burial will follow in the Ottawa Cemetery in Brodhead.

Condolences to the family may be made at her online registry at marvineowensfuneralhome.com.

An encouraging word:

We Owe a Debt

By Howard Coop



Three hundred ninety four years ago, the MAYFLOWER, after a stormy voyage across the Atlantic, anchored in what is now Provincetown Harbor at the northern tip of Cape Cod. That was a great distance north of the Virginia Colony, its original destination.

One hundred one Pilgrims who were fleeing religious persecution in England were aboard the MAYFLOWER. Recognizing that they were out of English territory, those Pilgrims decided that they "would use their own liberty; for none had the power to command them."

That decision led to the Mayflower Compact that was signed onboard the MAYFLOWER on November 11, 1620. Since the Julian calendar was the official calendar of England until 1752 when the Gregorian calendar was adopted there was a difference of 10 days in the two calendars, so the date of the signing, according to today's calendar, was November 21, 1620.

The Mayflower Compact is a short document. "We, whose names are, underwritten...solemnly and mutually, in the presence of God, and one another, covenant and combine ourselves together into a civil body politic." That union was for a purpose: "For our better ordering, and preservation and furtherance of the ends aforesaid; and by virtue hereof to enact, constitute, and frame such just and equal laws, ordinances, acts, constitutions, and offices, from time to time, as shall be thought most meet and convenient for the general good of the colony; unto which we promise all due submission and obedience." This action was undertaken "for the glory of God, and advancement of the Christian faith."

That document, consisting of 195 words, was not a constitution, but it was the first governing document of the Plymouth Colony. Charles Francis Potter called it "one of the most important documents not only of American history but of the long struggle of mankind toward free institutions."

The influence of the document is significant. "We, whose names are underwritten" became "We the people" to frame the constitution of the United States, and the desire of the pilgrims to escape religious persecution found expression in the first article of the Bill of Rights, the first amendment to the Constitution. That article emphatically says, "Congress shall make no law respecting an establishment of religion, or prohibiting the free exercise thereof."

We owe a tremendous debt to those Pilgrims.

OPEN
Thanksgiving Day

Open 10 a.m. to 6 p.m.

Now taking reservations for Thanksgiving Dinner

We also offering catering for your Thanksgiving festivities

Limestone Grille

Located at Exit 62 (former Rockcastle Steakhouse)

Phone 606-256-0131

Combining quality and cost is one of the things we do best

A cost much lower than you would expect.

As a locally-owned firm, we understand the importance of keeping costs within a budget. Because we offer a wide choice of services, families can select only what is affordable and meaningful to them. Every service is performed with dignity and receives personal attention, regardless of what is chosen.

We invite you to compare cost but most of all we invite you to compare quality.

Dowell & MARTIN
Funeral Home

365 West Main Street • Mount Vernon, Kentucky 40456

606-256-2991 • (800) 572-6986

www.dowellmartin.com



Free Bible Courses

Free Bible Correspondence Course. Send your name and address to 3168 Quail Road, Mt. Vernon, Ky. 40456.

Let the Bible Speak

Tune in to "Let the Bible Speak," with Brett Hickey, on Sunday mornings at 8:30 a.m. on WDKY Fox 56.

John Lanier at

Crossroads Assembly
Evangelist and Christian recording artist John Lanier will be singing at Crossroads Assembly of God in Brodhead on Sunday, November 23rd at 11 a.m.

Services at

Copper Creek
Bro. Kenneth Thompson of Monticello will be preaching Saturday nights at Copper Creek Baptist Church beginning Nov. 22nd and Saturday nights thereafter for several weeks.

Singing

There will be a singing Saturday, November 22nd at Sand Springs Baptist Church beginning at 6 p.m. and featuring the Jarvis

Family.

Pastor Eugene Gentry and congregation welcome everyone.

Services at Union Missionary Baptist

Union Missionary Baptist Church at Red Hill is now having church services every Thursday night at 7 o'clock. Bro. Jack Stallworth, pastor of Flat Rock Baptist Church, is conducting the Thursday night services.

Sunday morning services are also being held at the church with Sunday School at 10 a.m. and morning worship at 11 a.m.

Wherever you live in the community, please come out and support your local church.

Gospel Singing

There will be a Gospel Singing at Lighthouse Baptist Church on Saturday, December 6th beginning at 6 p.m. featuring the Kentucky Mountain Trio from Stearns.

The church is located at 1391 Gabbardtown Road, Berea.

Premium Windows
\$59 PER MONTH
JUST 60 MOS.
*Eight 4000-Series windows
*No hidden fees
*Solar-Zone glass
*Energy Star approved
*Standard Installation

FREE IN-HOME ESTIMATES
606-258-1774 • 800-353-4313
WindowWorld.com

"Not only do we stand behind our windows... we stand on them!"
Local Owner, J.J. Hart

WindowWorld
"Simply the Best for Less"

Exceptional Quality
Made in the USA

*Monthly payment based on 7.99% for 60 months. Bank approval needed.

Absolute AUCTION
November 22nd
Country Sam Furniture Warehouse
On U.S. 25
@1022 S. Wilderness Road, Mt. Vernon,
one mile off I-75, Exit 59

New Furniture for Every Room!

- 1. Furniture Sale begins at 9 a.m. and continues until sale ends**
*Open House Previews on Location
10 a.m. - 5 p.m.,
Sat., Nov. 15th & Friday, Nov. 21st
- 2. Machine Shop Liquidation!**
on Hwy. 2549 at 1548 White Rock Rd.
Approx. 2 miles from Junction of U.S. Hwy. 150, Mt. Vernon, Ky.
Fri., December 5th, 9 a.m.
Open House Thurs., Dec. 4th
10 a.m. to 5 p.m.
- 3. Miscellaneous Estate Inventory!**
Saturday, Dec. 13th, 9 a.m.

Open House

Central Body Service
offers Haddix Custom Detailing.

Basic hand wash to a full detail that is guaranteed to make your vehicle look great!

Free pickup and delivery

Stop by Central Body Service or give us a call today to make an appointment.

606-256-4210 or 606-308-1490

Intervernon.com

Equal Housing Opportunity



LETTERS TO THE EDITOR

Thank you for Kenna's Kitchen donations...

Dear Editor,
Mount Vernon Elementary School has completed our food drive for Kenna's Kitchen Community Thanksgiving Dinner. We collected a total of 332 cans of corn, 607 cans of green beans, 369 cans of peas, 227 boxes of instant potatoes and 341 boxes of stuffing. We appreciate the continued support students and families in our effort to make the 13th year a great success.

We are continuing to receive donation from the community for Kenna's Kitchen. The annual community Thanksgiving dinner is made possible by donations and volunteers in Rockcastle County.

We would like to thank the following organizations and businesses for their donations: Brindle Ridge Baptist Church, Brodhead Baptist Church, Cindy's Place, Citizens' Bank, Citizens' Insurance Group, Climax Water, Coca-Cola, Cornerstone Fellowship Church, Cox Funeral Home, Dowell & Martin Funeral Home, Flat Rock Baptist Church, Godfather's Pizza, King Bottling, Marcella's Farm to Fork, Mimi's General Store, Mount Vernon IGA, Mount Vernon NAPA, Mount

Vernon Signal, People's Bank, RCHS FCCLA, RCHS Key Club, Rockcastle Ambulance Service, Rockcastle Unite Coalition, Save-A-Lot, Rite Aid, Town and Country, Janet Vaughn, Jennifer White's Class, Wildie Christian Church and WRVK Radio.

If any business, group or organization would like to help our community Thanksgiving dinner, please contact me at Mount Vernon Elementary at 606.256.2953 or MVES Family Resource Center at 606.256.5173.

Thank you,
Kay Carpenter,
FRC Assistant

Need more items to help others...

Dear Editor,
Thank you once again for printing our letters.

We have collected several hats and coats a couple blankets and a few throws and some gloves. We need to collect more of these donated items. Although we have a large amount to distribute, we don't have enough. We will make a delivery on December 3, to Lexington, weather permitting.

The Ashley House in Mt. Vernon is needing queen size sheets, blankets, towels, wash cloths, personal hygiene items and furniture. If

you would like to give to them, please call us or you may bring what you have to Daniel Boone Development.

We all know how cold it has been this past week. I cannot even imagine what it would be like to be homeless, and I don't ever want for my family to have to live outside in this weather. I can't help everyone but together with help from the kind, caring people in Rockcastle County, we can help many keep warm. If anyone would like to donate any clean and barely worn items, please call 758-0277. Any items can be picked up.

Thanks to all for sharing with others. Betsy, my daughter who asked to help her start this mission to collect for the less fortunate, wants to say a big THANK YOU to everyone.

God bless you.
Kathleen Bretz

"ramblings"

(Cont. from A2)

White House time and again and met directly with the President a couple of those times and was paid almost \$400,000 for his efforts besides the millions he made from the Dept. of Justice, other federal agencies and states he advised on the same subject. Besides news agencies have tapes of his being praised by Obama for his efforts in promoting Obamacare.

The recent election results buoyed, my spirits somewhat until I realized that this administration and present Senate are too, do I dare say it, stupid to realize that their agenda was solidly rejected by a majority of the American people and are just going to sail along and do as much damage as they can in their remaining two

months, for the Senate, and two years, for Obama.

But then, I'm stupid and my Comrades know what's best for me.

"Memories"

(Cont. from A2)

*Carpet, double pile
Chrome that takes the
moonlight on
Sea to shining sea
You can hear those glass
packs rumble
To the Statue of Liberty
Now, I can't say everything's
okay
Ridin' in my car
But I got me a deuce and a
quarter babe*

She goes like a shootin' star
In this one tune, Seger brings back so many memories from our teenage crusin' days. And I particularly like the repeated emphasis that this car is "Detroit made." Seger is a patriot at heart, and his loyalty to the good ole USA is naturally displayed in much of his music. (Note the reference to the Statue of Liberty.)

And what a great description of the big-block V-8 engine with glass packs rumbling! When I listen to the song, I hear it so clearly. The sounds of big engines running—those are the sounds of my era. Those are the sounds of the prime of our youth. Those are the sounds of the truly fine automobiles of our day.

With the leather bucket seats and the double-pile carpet, Seger completes the picture of his treasured deuce and a quarter. And once again, he has captured my complete attention and my continuing admiration.

Bob Seger has done it again.

(You can reach me at themtman@att.net or you can drop me a line at 2167 Furnace Road - Stanton, KY 40380. I appreciate your comments and suggestions.)

"Points East"

(Cont. from A2)

Another young fellow wrote, "I learned that you should never use poison ivy when you are trying to start a camp fire because it will make you break out all over and swell your eyes and ears shut and make you scratch yourself so hard that you could bleed to death. Plus anyone who smelled the smoke could have their noses fall right off and if they breathed the smoke in it could get in their guts and make them rot and fall right out of their belly button."

Another paper said, "You should always go to sleep as soon as the lights are turned off so that all the counselors can sneak out and kiss on each other. One of them that taught swimming lessons last year could not come back this year because she had a little baby girl that she had to take home after she got caught kissing on the life guard so she has to stay at home and babysit all summer."

From a boy, "You should never pee anywhere but the toilet because if you pee on the grass while you are outside a rabbit might come along and eat it and get blood poisoning and have an awful way to die and if you do number 2 a bear might eat it and die the same way which I think would be a good thing because I hate bears. But if one of the other campers stepped in it they might die too and I would hate to see that happen unless it was that one little jerk who stayed in Wild Turkey Cabin because he would be better off dead."

One young lady wrote, "They should not tell all of those scary stories at the campfire shows. Because one girl in my cabin had a real bad dream the very first night we were there and she wet in her sleeping bag. They hung it out to dry on a tree limb and brought it back inside but we had to put up with that smell all week. I made sure that I used the toilet every night right before I went to sleep

so I wouldn't do the same thing. It smelled bad enough in there already."

Another girl wrote, "Always wear a one piece swim suit so nobody can pull your bottoms down like someone did to my friend Sara and all the boys went woohoo and laughed their heads off. Even though the boys just have to wear bottoms, nobody ever pulls them down because you'd get sick if you ever saw what they've got in there"

And yet another boy wrote, "I wish they wouldn't make us sing that old Kume bahh yahh song after all the campfires every night. If they are going to make us sing it anyway I think it should be first and get it out of the way. I also get sick of She'll be coming round the Mountain

when she comes. I don't know why they don't let us sing some real songs like

The old man from the mountains coming home or Lying here with Linda on my mind. That's not something I'd ever do myself but you have to admit it's still a real good song"

Lisa said that, right after she graded the papers, she made a point of teaching the use of punctuation marks, especially the comma.

So teachers, or anyone else out there, who might want to share amusing stuff that kids have said or written, please feel free to send them to me by email or snail mail and I will try to remember who sent what for a future column. The response I had to last week's column makes me feel like I've struck gold.

Mamaw's Kitchen

By Regina Poynter Hoskins

If it weren't for cornbread dressing, I might never have started a cookbook. Mum and Mamaw made the most delicious cornbread dressing. Since my dressing was close to what they used to make, Robbie kept asking me to write the recipe down. He wanted his mother and girlfriend to know how to make it. I started a list of all the recipes that needed to be written down so they could indeed be handed down to today's young folks and the ones who will come after them. That's when I realized that many of my memories of the people closest to me were food-related—Daddy's green thumb, Mum's love of cooking, Judy's need to talk while fishing, etc. I decided to combine those memories with the recipes. Behold, Mamaw's Kitchen was born.

CORNBREAD DRESSING
4 cups chicken or turkey broth
6 cups cornbread
4 slices white bread, toasted
3/4 cup chopped celery
1 medium onion, chopped
Salt and pepper
4 to 5 tablespoons sage
2 eggs, beaten
Heat broth to boiling point. Reduce heat; simmer. Spray a 9 x 13 baking dish with non-stick spray. Crumble cornbread and white bread into a large bowl. Combine

chopped celery, onion, salt, pepper, and sage with bread crumbs. Gently pour broth into mixture. Mix thoroughly. Taste to make sure it is seasoned to your taste. Add beaten eggs and stir until incorporated into cornbread mixture. Pour into prepared baking dish. Bake at 350° for one hour.

CRANBERRY SALAD
I don't wait until Thanksgiving to make this salad. It is wonderful with any entrée. As soon as the fresh cranberries come into season, I buy several bags and freeze them to use anytime. The salad also freezes well once it has been made.

1 bag fresh or frozen cranberries
2 medium oranges
1/2 to 3/4 cup sugar
Wash and sort cranberries. Using a food processor or chopper, coarsely chop cranberries. Peel one orange. Chop both oranges—one with the peeling, one without. Add sugar to taste and let sit for 10 minutes or until sugar dissolves.

OPERATION UNITE

Drug Tip Hotline
1-866-424-4382

Toll-free Treatment Help Line
1-866-90-UNITE

EASTERN KENTUCKY RECYCLING

PAYING TOP DOLLAR ON ALL SCRAP METAL

Fast, Friendly Service - Accurate, Honest Weights

We operate a fleet of trucks and can provide roll-off containers and trailers to be placed at industrial and demolition sites.

Visit our website
www.easternkentuckyrecycling.com

COPPER • ALUMINUM • BRASS

TIN BATTERIES

CAR BODIES

SHORT STEEL

<p>Crab Orchard Location 345 Main Street • (next to Dollar General Store) 606-355-2322 Open: Mon-Fri 8am to 4pm Sat 8am to Noon</p>	<p>Junction City Location 367 Phillips Lane • (beside Ponderosa Speedway) 850-854-6905 Open: Mon-Fri 8am to 4pm</p>
<p>Manchester Location 2525 South Hwy 421 (behind Hot Rod's Service Center) 606-598-1122 Open: Mon-Fri 8am to 4pm</p>	<p>Williamsburg Location 300 Saw-O-Road (behind Firestone) 606-549-8512 Open: Mon-Fri 8am to 4:15 pm</p>

At this special time of year, we'd like to extend our warm wishes to you and yours for a joyous Thanksgiving celebration.

We really appreciate your loyal support.

With Our Gratitude

Farm Bureau Insurance

Mt. Vernon
256-2050

Farm Bureau will be closed
November 27th & 28th

Rockcastle Community Bulletin Board

Sponsored By
Cox Funeral Home

Family Owned & Operated Since 1907
80 Maple Drive, Mt. Vernon, Ky. Ph. 256-2345
Toll Free 1-888-825-2345 • 24 Hour Obir Line 256-5454
www.coxfuneralhomeky.com

Bookmobile Schedule

Mon., Nov. 24th: Brodhead and Copper Creek. **Tues., Nov. 25th:** Green Hill, Fairview, Lambert Road, Sweetwater Road.

Extension Office Holiday Hours

The Rockcastle County Extension Office will be closed Thursday, Nov. 27th and Fri., Nov. 28th in observance of the Thanksgiving Holidays.

Livingston Fire & Rescue Turkey Shoots

Livingston Fire & Rescue will hold Turkey Shoots on Saturday, Nov. 22nd and 29th and December 27th, beginning at 10 a.m. at David Mason's garage, north of Livingston on U.S. 25. 410-16-20-12 gauge shotguns only! No custom guns. Judge's decision final. \$2 a shot. Shells furnished by fire department. Concessions will be sold.

DAR Meetings

The Rockcastle Chapter of the Daughters of the American Revolution meets the first Monday of each month, September-May at 6 p.m. at First Christian Church in Mt. Vernon. All prospective members are welcome to attend.

Brodhead Lodge Meeting

The Brodhead Masonic Lodge #566 meets every third Saturday at 7 p.m. on Main Street in Brodhead above Brodhead Pharmacy.

Alcoholics Anonymous

Alcoholics Anonymous meets Tuesday nights at 8 p.m. behind Our Lady of Mt. Vernon Church on Williams St. in Mt. Vernon.

Kiwanis Club Meetings

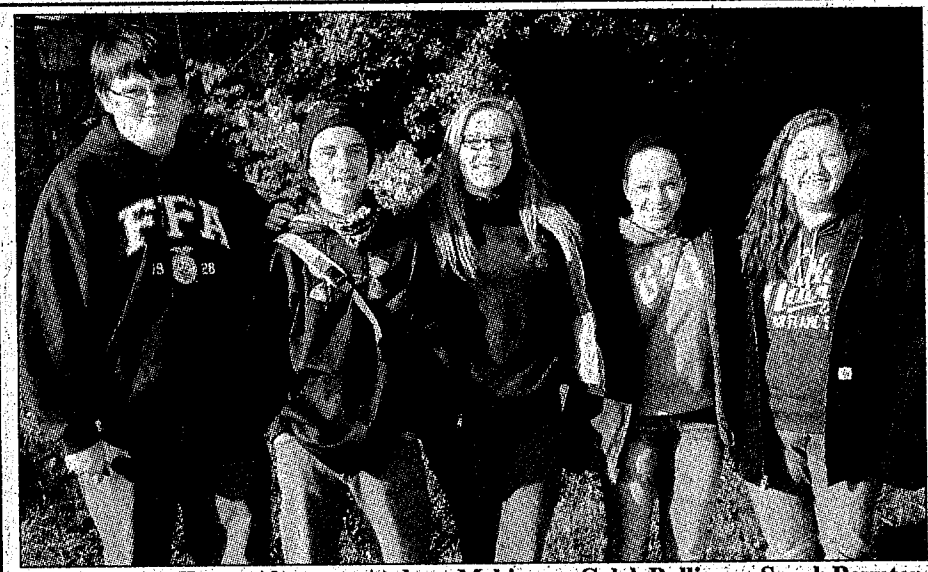
The Rockcastle Kiwanis Club meets every Thursday at noon at the Limestone Grill. Everyone is invited.

Historical Society Hours

The Rockcastle Historical Society is open on Mondays from 10 a.m. to 2 p.m. in the RTEC garage building.

American Legion Post 71

American Legion Post 71 meets the second Thursday at 6 p.m. of each month at the Limestone Grill. Commander Tommy Hodges invites all Rockcastle veterans to join this organization that honors American soldiers, sailors and airmen.



Land Judging Team: Alternate Andrew Mckinney, Caleb Ballinger, Sarah Poynter, Allie Johnson, and Sierra Sturgill.



Junior Varsity Parliamentary Procedure Team members are: Maggie Bourland, Brittany Taylor, Shelby Goff, Pamela Miller, Noah Vanwinkle, Austin Kirby, Jarred Brown, Dillon Long, and Tyler Lovell.

FFA Regional Field Day

Submitted by Reporter Brianna Mink

On October 23rd, a group of students from the local FFA traveled to EKV Thursday morning to compete in the fall region field day where they competed in

various competitions. The Rockcastle County FFA had a very successful day. The land judging team won 1st in the region. Members are Caleb Ballinger who received regional high individual, Sierra Sturgill

who placed 3rd in the region, Ally Johnson, Sarah Poynter and alternate Andrew Mckinney.

Gary Prewitt competed in the junior tractor driving division and received regional 1st place. Jarod Robinson competed in the senior tractor driving division and placed 2nd in the region.

The junior varsity parliamentary procedure team also placed 1st in the region. Members are: President-Shelby Goff, Vice President-Pamela Miller, Secretary-Tyler Lovell, Treasurer-Jarred Brown, Reporter-Dillon Long, Sentinel-Noah Vanwinkle. Other members are: Maggie Bourland, Brittany Taylor, and Austin Kirby.

The Teams that placed 1st in the region will go onto compete at the state level.



Gary Prewitt competed in the junior tractor driving division and received regional 1st place. Jarod Robinson competed in the senior tractor driving division and placed 2nd in the region.

Cedar Creek Lake receives 12,000 rainbow trout

Lincoln County's Cedar Creek Lake received 12,000 rainbow trout in a stocking recently by the Kentucky Department of Fish and Wildlife Resources. Trout stockings first began at this popular 762-acre lake in October 2012.

Fisheries Research Biologist Dave Dreyes said the lake remains a hidden gem among trout anglers.

"Our evaluation of the 2012-2013 rainbow trout stocking at Cedar Creek showed that there wasn't as much fishing pressure and harvest as we expected," Dreyes said. "We think anglers will flock there once word gets out - especially when they realize there's so much bank access that you don't need to have a boat to catch trout."

Anglers can catch rainbow trout with worms, cheese, corn, salmon eggs and Powerbait, as well as small in-line spinners and other lures.

The department stocked fish at three sites: the ramp at the dam; the ramp on old U.S. 150, located in mid-lake; and at the fishing access area in the upper lake, located adjacent to the KY 1770 bridge. Each site received 4,000 trout.

"The trout going into water averaged 10 inches long," noted Southeastern District Fisheries Biologist John Williams. "This provides a great opportunity for people to keep catching fish at the lake throughout the winter, when other kinds of fish just aren't biting."

Another stocking of 9,000 trout will follow in February. Anglers can expect to catch trout through June. Cedar Creek is considered a "put and take" lake for trout. Because trout cannot survive in the warmer water temperatures of summer, the department encourages anglers to keep what they catch. There is no size limit on trout in the lake.

Anglers may keep up to eight rainbow trout.

Visitors to Cedar Creek Lake can go online to the Kentucky Fish and Wildlife website at fw.ky.gov to see a map and other information about the lake.

Fisheries personnel tagged 600 trout in this stocking and will tag another 600 in the February stocking in an attempt to determine angler use. This information will be used to evaluate whether to continue trout stockings in the lake.

The department will conduct a creel survey through the end of May to help determine utilization.

Dreyes encourages

people to return the tag from any tagged fish. The department has placed four metal boxes around the lake where anglers may get an envelope, fill out the information about the catch then deposit the envelope.

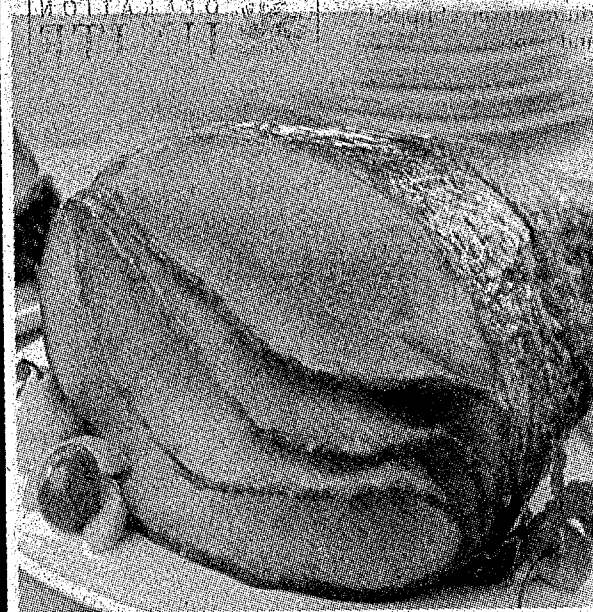
Boxes are located at each stocking site as well as the Cowan Road boat ramp. The envelopes are postage paid. Anglers may take them home to fill them out, then send them back to Kentucky Fish and Wildlife. Anglers must include their name, address, phone number and whether they kept the trout or released it.

Participants will receive

(Cont. to A8)

HONEYBAKED TO THE RESCUE

Your family makes the holiday. We make the meal.



\$7 OFF Bone-In Half Ham 8 lbs. or large

HONEYBAKED The world's best ham.

Mount Vernon Signal

\$3 OFF Half or Whole Boneless Ham

HONEYBAKED The world's best ham.

Mount Vernon Signal

London/Corbin Pick-up Location

Hwy. 25 South across from Don Franklin Ford

1813 S. Hwy. 27 • Somerset, KY 42501 • Next to Cracker Barrel For Reservations call 606-677-1241

Salvation Army's Angel Tree

Names have been distributed in Rockcastle County by Salvation Army volunteers for the Angel Tree program.

Thus far, Angel Tree tags, with children's wishes and desires for Christmas, are available at: Sawb's A Lot, IGA, PBK Bank, Citizens Bank, Rockcastle County Health Dept. and Peoples Bank.

The Angel Tree program is an opportunity to spread joy and cheer to the less fortunate during the holidays.

Through Angel Tree, families and children have their specific needs and wants met for a warm and joyous holiday experience.

You can also donate individually by simply purchasing a new toy, boots, gloves, outerwear and drop it off (unwrapped) at your nearest Salvation Army location or partnering agency.

Corporation sponsorship opportunities are available for the Angel Tree program. Call 859-624-5826 to find out how your company can partner with The Salvation Army by donating monies, having a toy drive or clothing drive (coats, hats and gloves).

Serving Madison, Rockcastle, Lee, Jackson and Estill counties.

Limestone Grille

Dinner Specials

Thursday 11/20 Monday 11/24

Grilled, Chicked over Rice w/ Choice of Sides

White Northern Beans cooked w/ Country Ham, Greens & Baked Cornbread

Friday 11/21

All you can eat Catfish

Saturday 11/22

Prime Rib

Choice of Two Sides

Sunday 11/23

Chicken/Dumplings & Dressing or Meat Loaf w/ Choice of Two Sides

Wednesday 11/26

Italian Day

1/2 Off Appetizers During UK Games

Pastor Appreciation Pastors eat free on Sundays!

New Fall Hours • 7 days a week 10 a.m. to 9 p.m.

Located at Exit 62 (former Rockcastle Steakhouse)

Phone 606-256-0131

Thanksgiving Buffet

Join us on Thanksgiving for a Special Buffet prepared especially for you & your loved ones.

Featuring...

MEATS

Turkey & Dressing • Smoked Ham • Fried Chicken • Sliced Roast Beef

SIDES

Mashed Potatoes & Gravy • Green Beans • Corn • Corn Pudding • Sweet Potato Casserole • Cooked Cabbage • Baked Beans & Cornbread • Broccoli Casserole • Cranberry Sauce

DESSERTS

Cobblers • Cakes • Pies • Homemade Cobblers • Sugar-Free Desserts & Pudding

Buffet Hours: 11:00 a.m. - 8:00 p.m.

Don't forget to book your holiday parties with us!

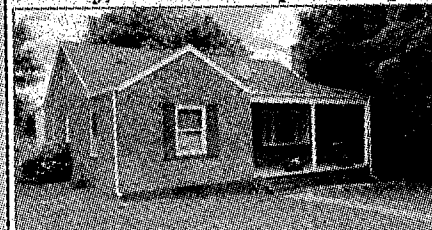
(859) 986-0830

SMOKEHOUSE GRILL & BUFFET
359 Peggy Flats Road, Berea • Exit 77

Weichert

OPEN HOUSE WEEKEND!

Thursday, Nov. 20th • 4:00 p.m. - 6:00 p.m.



80 Crawford Lane Mt. Vernon, Ky. MIS #50001 - \$84,900. Listing Agent and Host: Matthew Silcox

Friday, Nov. 21st • 4:00 p.m. - 6:00 p.m.



60 Denny Subdivision Rd. Mt. Vernon, Ky. MIS #50791 - \$164,900. Listing Agent and Host: Matthew Silcox

Friday, Nov. 21st • 4:00 p.m. - 6:00 p.m.



253 Hemlock Circle Mt. Vernon, Ky. MIS #50692 - \$129,900. Listing Agent and Host: Jennifer Hand

Weichert Realtors

Ford Brothers PO Box 1435 • Mt. Vernon, KY 40456 606-256-5229 1-800-435-5454

mtvernon@fordbrothersinc.com • www.wrmtvernon.com

© 2012 Weichert, Realtors®. Each WEICHERT® franchised office is independently owned and operated. WEICHERT® is a federally registered trademark owned by Weichert Co. All other trademarks are the property of their respective owners. REALTOR® is a federally registered collective membership mark which identifies a real estate professional who is a member of the NATIONAL ASSOCIATION OF REALTORS® and subscribes to its strict Code of Ethics.

Yards to Paradise

By Max Phelps
LANDSCAPING: Smart Money Investment

Is landscaping a good investment? Does it add value over time to your home? Does it give instant return if you're wanting to sell the home? And how much, where and why might you want to invest in your property with wise landscaping? My readers should have quite a bit of new and useful information on landscaping as an investment by the time we conclude.

Spending 5% of the total value of your home on landscaping, doing it wisely, can add 15% or more to the value of your home, according to Smart Money magazine in its March 2003 edition. A caveat, poor design and installation could have the opposite effect, so wise use of money is needed in order to reap such nice gains. I am betting a chance to add \$30,000 in value to a \$200,000 home with a \$10,000 investment will encourage you to read on.

A Clemson University study found that prospective buyers value landscaping as

adding up to 11.5% to their estimation of a property's worth versus a similar home that is not landscaped. Traditional thinking is that a kitchen or bath update or upgrade will return from 75 percent to 125 percent on the dollars spent. While it's not recommended someone wanting to market their home immediately spend on major landscape upgrades, minor work that delivers a positive curb appeal is a super idea. And, in time, a good landscape can deliver up to 200% or more in return. (Example: a tree that you buy and plant for \$100 or one you hire done for \$225—that tree, depending upon species and what part of the country you're talking about, may be valued by an appraiser at somewhere between \$1,000 and \$10,000 in a decade or two when it becomes a large tree, provided it's healthy and was planted in an appropriate spot to begin with.)

In the real estate sales business they talk a lot about "comps" or comparable homes. Above average landscaping raises pricing

4-5 percent. However, landscaping below neighborhood standards can negatively affect price 8 to 10 percent!

Landscape improvements not only add value, they can help a property sell 5 to 6 weeks faster, according to the American Nursery and Landscaping Association. Again, we have to qualify this to modest expenditures that improve appearance of a home. Fancy or extensive new landscaping to a place you are selling is not wise, both from a cost/return perspective and also that the more elaborate projects will only appeal to a smaller portion of prospective new homeowners looking at your home with the 'for sale' sign. Fairly simple but tasteful is the key. Let the next owner do the big expensive stuff.

What about the homeowner who plans to keep his property for many years and wants to invest in the landscaping? There is more freedom here to do involved projects, and those that are on his family's need or wish list. A swimming pool or a jungle gym may not return full value at selling time, but if it means the kids and grandkids really have a good time and it makes for a much better quality of life, who is to say it isn't money well spent! (Not everything can be totaled up with a dollar value.)

Long term, some of the best return on money spent comes from planting small but healthy trees and shrubs, and they become much more valuable in time. Hardscaping such as patios, decks, terraces, swales, walks, water features and so on are also important to long term satisfaction and reward to the homeowners. The tough part for the beginning new homeowner is visualizing when they plant that shade tree that it shouldn't be planted in a certain spot if a pool or patio or new driveway or a second garage will need to go there at some future date. Hiring a designer early on in this matter may be much cheaper than dealing with mistakes as time passes and some things have to be removed to make way for more projects at a later date. Planning is useful—so often I see people shopping for trees or shrubs and they have little idea until they get home how it is going to fit in some good looking scheme.

Right tree? Not only right size, right shape needs to be considered. What does your proposed tree look like in each of the four seasons? Will it bloom? Should it be an evergreen tree? Will it tolerate sun, shade, drought, swampy areas, poor soil,

acid or alkaline soils? Will it survive salt trucks, salt mist or runoff water from treated streets that is salty?

Considering just the color of the leaves, or that it has such a pretty bloom can lead to poor choices and followed on by poor performance if planting conditions and other factors are not in line with the preferences of the tree you dream about. This could lead to negative return on your investment, or even death of the tree, not to mention the time wasted and the delay in having the dream tree you want.

The value of a good looking yard that also is functional and usable is huge. Broken sidewalks, rotten porches, unfenced yard with pets: these detract from values. A yard that appeals to the most people will be a winner if selling is in your future. Having all the little particulars you want are fine if you plan on staying awhile, your own comfort and preferences may be a good investment for you and your yard.

Trees and greenery relax people. So does the sound of water. And sometimes wind. Being able to swim, grow a garden, cook outdoors, all of these can be wise investments. They just may not return the same good returns if you are just looking at dollars return for dollars spent. Again, not everything can be priced as having a certain dollar value. Making your place the way you want it is money smart too.

Doing things your self will save money in the short run. And perhaps even long term, if you do your home-

(Cont. to A8)

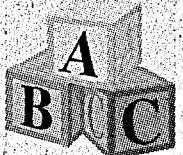
Deadline for next week's paper is 4 pm Monday

If you are in need of child care, call

Donna's Day Care

Owned and Operated by Donna Dalton
located 1 1/2 miles out Chestnut Ridge off U.S. 25

Certified Home
Capacity to 6 Children
Over 20 years experience
in the McKee area



Openings available in all age groups

606-224-9115 • 256-1803

donnaw83@hotmail



BUGS R US PEST CONTROL

We take care of things that BUG U

We'd like to announce Philip Scott and Matt Stepp (formerly of Tri-County Pest Control) have joined Bugs-R-Us Pest Control.

We are now servicing Rockcastle County and invite all our friends to call us at 606-344-2344 or 606-528-8555.



Minds in the Middle

Parent Teacher conferences will be held on Thursday from 3:00-5:30. The 8th grade will also be sponsoring a Cake Walk and selling hot dogs with chili, chips, and drinks in an effort to raise funds for an 8th grade trip at the end of the year. Come and show support for your child. Report cards may be picked up at the conferences.

The annual Unite Club food drive will continue through November 25th. Our local food bank is in need of our donations. Send non-perishable food items to help our community.

We are now taking orders for yearbooks. Students should have brought home order forms. Extra forms are available in the office. These are available for \$30 until Christmas break. Best Wishes Ads are available to 8th grade parents. Forms for purchasing ads are also available in the office and must be returned no later than November 21st.

Congratulations to Mr. McGuire's 7th grade Shooting Stars homeroom and Mrs. Ballinger's 6th grade Enterprisers homeroom on winning the attendance race last week.

We now have ESS on Thursdays. Students who need some extra help with

their assignments can stay after school until 4:45. Transportation is provided.

Congratulations to our Y-Club students who attended the Kentucky Youth Assembly this week. More details about their achievements will come later.

We now have drug testing kits free to all parents. The test is a saliva test and is very easy to give. This is a great resource for parents who have suspicions that their child may be using drugs. The kits are sponsored by Unite and can be picked up in our Youth Services Center.

Tuesday will be Hat Day. Students can donate \$1 to the 8th grade trip fund and wear a hat for the day.

We appreciate your support. There is no school on November 24-26. Enjoy time with your family!

The Box Tops have been counted and two teams were within a few box tops of each other in last month's race. Those teams were the Enterprisers with 2,910 box tops and the Challengers with 2,890 box tops. Congratulations for a job well done! The next race goes through February 24th! Help our school by asking all your family members to save box tops.

CUMBERLAND FOOT & ANKLE CENTERS OF KENTUCKY
1-800-FOOT-DOC
www.MyHappyFoot.com

Suffering From Foot or Ankle Pain?

Now accepting patients in Mt. Vernon!

Rockcastle Medical Arts
140 Newcomb Avenue
Mt. Vernon, Ky.

Call today for an appointment with Dr. Jamie Settles-Carter

DIAGNOSIS & TREATMENT OF:
Diabetic Foot Care, Ingrown & Discolored Toenails, Heel Pain, Corns & Calluses, Bunions & Hammertoes, Fractures & Sprains, Nerve Problems (burning and tingling feet), Wound Care.

ALSO OFFERING:
Full Service Diabetic/Therapeutic Shoe Program and Custom Made Insoles

929 N. Main St. 1007 Cumberland Falls Hwy.
London, KY 40741 Corbin, KY 40701
(606) 862-0956 (606) 258-8637
(606) 861-0488 (606) 258-8610

Monday - Friday 8 a.m. to 5 p.m.

AUCTION

Mobile Home & 4 Acres +/-
Plus Personal Property of Carlene Saylor
Sat., November 22, 2014 • 10 a.m.

3442 Hwy. 3245, Brodhead
(Off Hwy. 150, take Hwy. 3245 3 miles to the property)

Mobile home is a 2001 model, 16x80 and features living room and kitchen combination, three bedrooms, two baths, enclosed back porch and front porch. There is central heat and air and county water. Situated on 4 acres +/-, with unattached two-car garage with electric, small barn, chicken house and two other outbuildings. All fenced with lots of trees and creek on property.

Partial List of Personal Property: Refrigerator, washer, 52" TV, 5 pc. cedar bedroom suite, coffee and end tables, 3 pc. bedroom suite, wrought iron table and chairs, mirrors and pictures, stove, dryer, recliner, corner shelf, chest of drawers, dresser, lamps, what-nots, table and 4 chairs, living room suite, desk and chair, cedar chest, gun cabinet, floor lamp, dishes, small table and lots more items too numerous to mention.

Terms: 10% down day of sale on property with balance on or before 30 days with deed. Personal property - cash or good check day of sale.

NAPIER REAL ESTATE & AUCTION CO.

3540 U.S. Hwy. 27 South - Stanford, Ky. • 606-365-3589
Col. Bill Napier and Larry Johnson, Auctioneers

All written material came from owner and is assumed to be accurate. Announcements made sale day take precedence over written material.



Jesus said, "Let the little children come to me... for the kingdom of heaven belongs to such as these."
Matthew 19:14

Operation Christmas Child brings joy and hope to children in desperate situations worldwide through gift-filled shoe boxes and the Good News of God's love. Here is how you can pack a shoe box and make a difference in the lives of those children:

- Pack A Shoe Box:** Use an empty shoe box (standard size) or plastic container. Determine whether your gift will be for a boy or girl, and the child's age category: 2-4, 5-9, or 10-14, then fill the box with gifts. Some suggestions are:
- School Supplies** (pens, pencils, crayons, markers)
 - Toys** (small cars, balls, dolls, stuffed animals, yo-yos, jump ropes)
 - Hygiene Items** (toothbrush, toothpaste, mild soap, comb, washcloth)
 - Other:** hard candy and lollipops, mints, gum, T-shirts, socks, ball caps, sunglasses, hair clips, toy jewelry, watches, flashlights with extra batteries
- Include \$7 (make checks to Samaritan's Purse) to help cover shipping and project costs.**

OPERATION CHRISTMAS CHILD SHOE BOX DROP OFF:

First Baptist Church

340 West Main Street
Mt. Vernon, KY 40456
For more information call (606)256-2922

HOURS OF OPERATION:

November 17: 9am-3pm
November 18: 9am-12pm
November 19: 1pm-8pm
November 20: 1pm-5pm
November 21: 1pm-5pm
November 22: 9am-12pm
November 23: 1pm-6pm
November 24: 9am-12pm

Mount Vernon Signal

Second Section

Thursday, November 20, 2014

Hidden Among Us

The American Revolutionary War Patriots of Rockcastle

By Karen Hamm Adams

To celebrate and honor the county's American Revolutionary War Patriots and to enlighten the community about the service and sacrifice of these brave men, on behalf of the Rockcastle Chapter of the Daughters of the American Revolution, I have compiled highlights of the service of the known patriots living in the county and who applied for a pension between the years of 1818 and 1842. All information was taken from the patriot's own account from his pension application and other historical documents. More information can be found on each patriot at the local library or the Rockcastle Historical Society. (Copyright Pending). If

Salvation Army's Angel Tree

Names have been distributed in Rockcastle County by Salvation Army volunteers for the Angel Tree program.

Thus far, Angel Tree tags, with children's wishes and desires for Christmas, are available at: Save-A-Lot, IGA, PBK Bank, Citizens Bank, Rockcastle County Health Dept. and Peoples Bank.

The Angel Tree program is an opportunity to spread joy and cheer to the less fortunate during the holidays. Through Angel Tree, families and children have their specific needs and wants met for a warm and joyous holiday experience.

If you wish your business to participate you should:

Call the Salvation Army to get registration information at 859-624-5826 then display your tags on a tree, bulletin board or anywhere you would like or you can simply distribute the tags to willing participants;

Collect unwrapped gifts from participants with tags attached then contact your Salvation Army representative to arrange for pick-up or drop off of the toys.

You can also donate individually by simply purchasing a new toy, boots, gloves, outerwear and drop it off (unwrapped) at your nearest Salvation Army location or partnering agency.

Corporation sponsorship opportunities are available for the Angel Tree program. Call 859-624-5826 to find out how your company can partner with The Salvation

(Cont. to B8)

you are interested in joining the Daughters of the American Revolution or the Children of American Revolution, please contact Debbie Brown (606) 758-8659 or Iris Young (606) 256-2851.

John Pruett

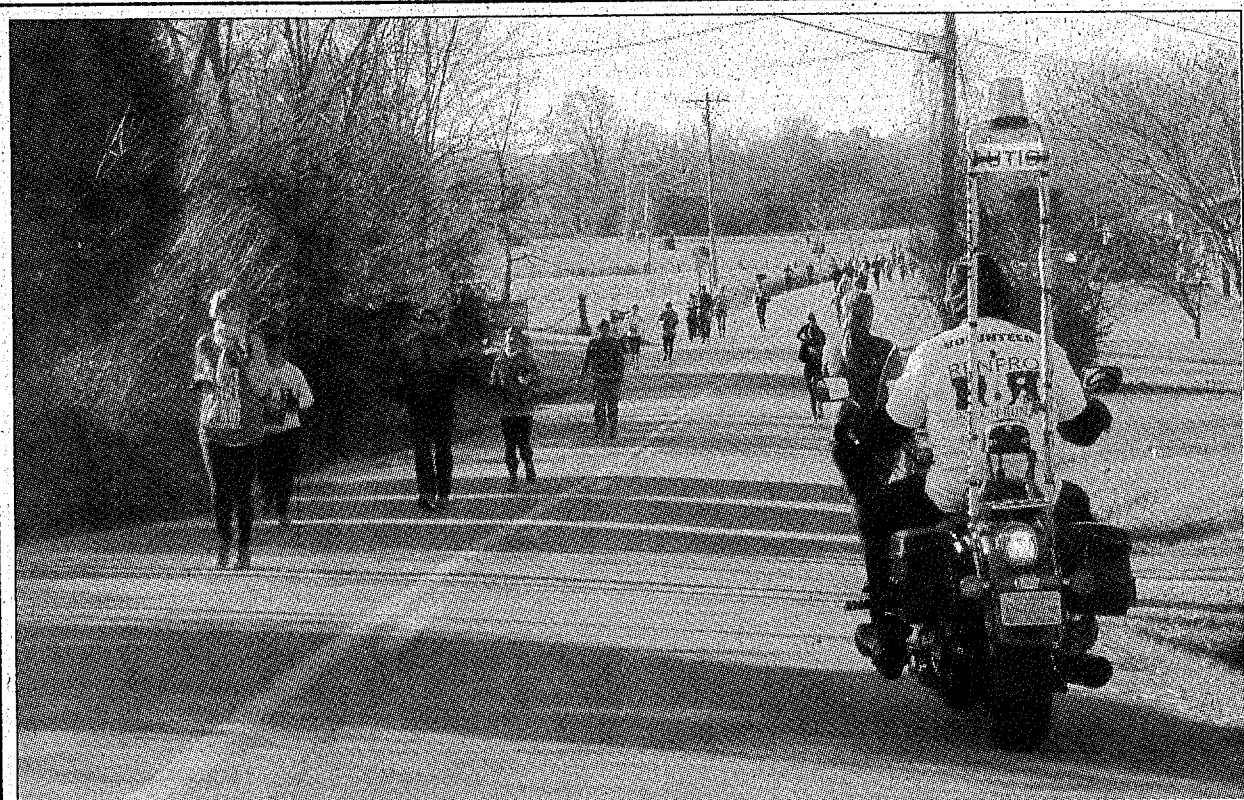
John Pruett was born in October 1742 in Caroline Co. VA and died 30 May 1836 in Rockcastle Co. KY. According to his pension application, John gave the following account of his service on 29 June 1829 Rockcastle Co. KY at the age of seventy-five. He enlisted for a term of eighteen months in 1781 about six months before the Battle of Eutaw Springs in South Carolina (8 September 1781) in Henry Co. VA in the company commanded by Captain Brice Martain in the Regiment commanded by Colonel Stevens on the line of the state of Virginia on Continental establishment. Shortly after the Battle of Eutaw Springs, John was placed under the command of Captain William Dooling for three years enlistment and belonged to the line of the state of North Carolina. He served out his time of service and was discharged by Captain Dooling at Gilford Courthouse in the state of North Carolina. John stated in his application that he was in the Battle of Gilford Courthouse and was wounded in the knee.

At the time of his pension application, John had the following assets listed: one hundred acres of land worth sixty dollars; two cows and two yearlings worth twenty dollars; ten or twelve hogs worth twelve dollars. His application was approved and he was allowed a pension executed 26 September 1830 at the rate of eight dollars per month for service as a private for eighteen months in the Virginia Line.

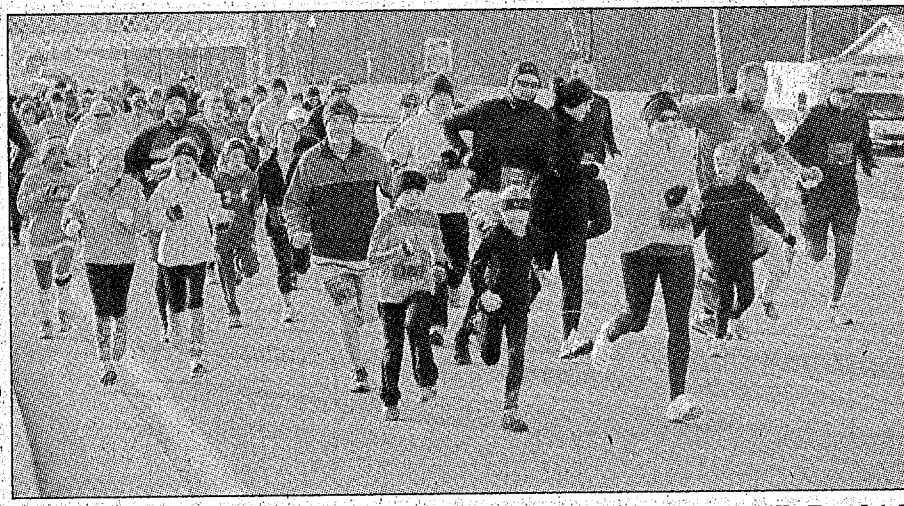
John married Rebecca Elizabeth Day (1756VA-1854 Rockcastle Co. KY) about 1785 in Virginia. They moved from Virginia to Kentucky around the year 1808. He died 30 May 1836 in Rockcastle Co. KY. Rebecca followed some years later in 1854. Their burial place is unknown.

John unfortunately did not name any spouse or children in his application. It is thought that there were at least five children born from this union. As to date, no descendant of John Pruett has joined the Daughters of the American Revolution. He would be considered a new patriot to the Society.

(Cont. to B8)



Hundreds of runners from across the state came out for the annual Renfro Rock N' Run Half Marathon and 5K last Saturday. 261 runners participated in the half marathon and 144 in the 5K. Shown in the top photo are runners in the half marathon on Hwy 1505 in Brindle Ridge. The route for the half marathon went down Lake Linville Road to Barnett Road, Purr Rigsby Road, Hwy 1505, then back down Mt. Zion Church Road to Lake Linville Road. Shown at right are runners starting the 5K which traveled down Lake Linville Road 1.5 miles before turning around. Both races started and ended at Renfro Valley.



The Rockcastle County PVA staff recently threw a retirement party for County PVA Margaret Offutt who is retiring in December after serving in the position for 33 years. Deputy PVA Janet Vaughn was elected to the position and will take office in January. Shown above is Offutt's staff from left to right: Ruth Thompson, Mrs. Offutt, Janet Vaughn and Cyndie Offutt.

Fundraiser for St. Jude's

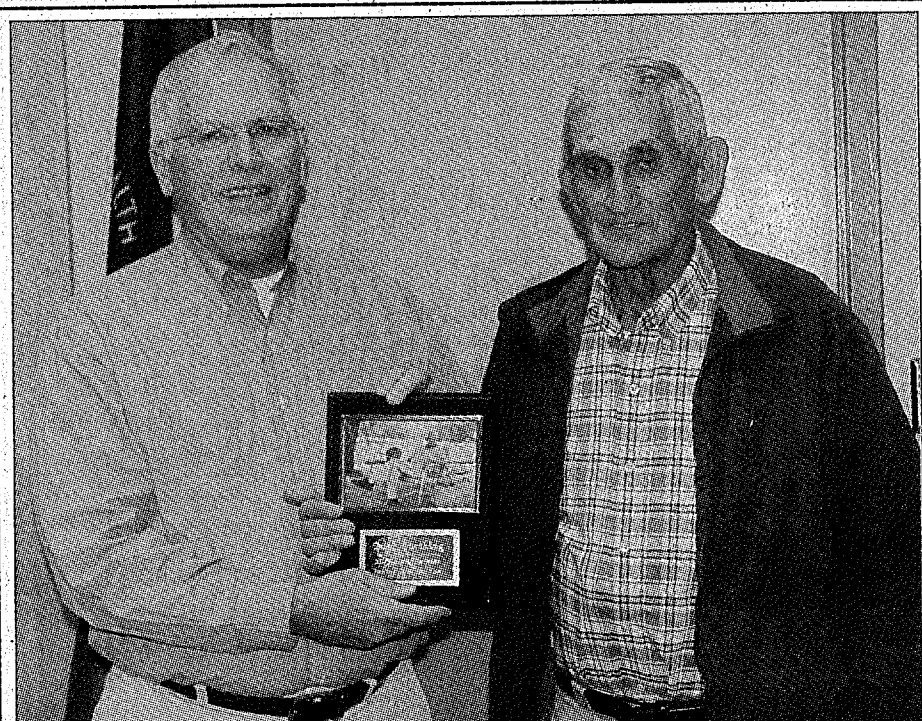
A fundraiser for St. Jude's Children's Hospital will be held this Sunday, November 23rd at Brodhead's Dollar General Store from 10 a.m. to ?

The fundraiser consists of a meal for \$3 which includes: hot dog or chili dog, chips, drink, snack cake and ice cream. Also a raffle of a variety of gift cards, items and products for \$1 per ticket or 6 tickets for \$5 and you do not have to be

(Cont. to B8)



The Mt. Vernon Police Department recently swore-in Lucas Tucker as a new police officer. Tucker is a former Kentucky Fish and Wildlife game warden and is shown above with Mt. Vernon Police Chief Brian Carter and Mt. Vernon Mayor Mike Bryant.



County Judge Executive Buzz Carloftis is shown presenting County Dog Warden Buck Farthing a plaque of appreciation. Farthing recently retired from the position after 20 years of service.

Anthem

Stop by and see Marlene Lawson for all your life and health insurance needs!

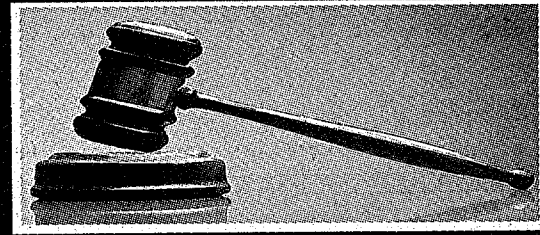
You can have an affordable managed care plan with the freedom of choice and the security of Anthem Blue Cross and Blue Shield — Blue Access.

(606) 256-2050



Visit us on the Internet at <https://www.kyfb.com/rockcastle/insurance/>

News from the Rockcastle Courthouse



Circuit Civil Suits

Commonwealth of Kentucky vs. Jamica Pennington, complaint for child support and medical support.
Commonwealth of Kentucky vs. Reginald Pennington, complaint for child support and medical support.
Midland Funding LLC vs. Sandra Sowder, \$9,615.37 plus claimed due, CI-00258

District Civil Suits

Dalè Lark vs. Bill Grgymals, forcible detainer complaint.
Tony Baugh vs. Farrah Martin, forcible detainer complaint.
Capital One Bank vs. Robin D. Barrett, \$2,465.15 plus claimed due, C-00253

Subscribe to the Signal

Deeds Recorded

Joe and Joann Allen, property in Renfro Valley, to David J. and Dicie Allen. Tax \$1.50
David and Betty Newcomb and others, property on Main and Mullins St., Livingston, to Jacob Mahaffey. No tax.
Correction
Janet and Randall Parsons and Gail and Gary Wayne Keith, property on Gilbert Burton Road, to Thomas and Kathy Burgin. Tax \$9

Marriage Licenses

Ashleigh Dawn Soderling, 22, Mt. Vernon, housewife to Daniel A. Martin, 24, Mt. Vernon, forklift operator. 11/7/14
Emily Breanne Goins, 25, Rockholds, Hooper-Holmes to Adam Carrier Dailey, 28, Louisville, police dept. 11/8/14

District Court

Nov. 10, 2014
Hon. Kathryn G. Wood
Marsha S. Banks: public intoxication, 10 days in lieu of fine and costs.
Echo N. Cooley: operating motor vehicle under influence of alcohol/drugs, \$200 fine and costs, \$375 service fee, 30 days operator license suspension/ADE authorized.
Eric Lee Hughes: violation of Kentucky EPO/DVO, 180 days/probated 24 months on condition plus costs.
Jason K. Kates: public intoxication, \$100 fine and costs.
David R. Ross: terroristic threatening, 30 days/probated 24 months on condition plus costs.

Ronald Abney: criminal trespassing, \$200 fine/suspended \$150 on condition plus costs.

Tonya Bosley: fines/fees due (\$153 and \$753), bench warrant (bw) issued for failure to appear (fta)/20 days in jail or payment in full.

Ruben Cantera Dominguez: no operators/moped license, \$100 fine and costs.

Alan L. Gaddis: failure to or improper signal, failure to wear seat belts, driving DUI suspended license, bw issued for fta.

Jamie L. Grubb: operating on suspended/revoked operators license, \$100 fine and costs.

Walter A. Hembree: fines/fees due (\$733), bw issued for fta/15 days in jail or payment in full.

Billy T. Hines: fines/fees ldue (\$113 and \$188), bw issued for fta/7 days in jail or paymet in full.

Larry C. Love: operating motor vehicle under influence of alcohol/drugs, \$200 fine and costs, \$375 service fee, 30 days operator license suspensiion/ADE authorized.

Terry D. Montjoy: fines/fees due (\$633), converted to 13 days in jail/concurrent.

Daniel Wayne Rose: criminal trespassing, bw issued for fta.

Nathan T. Stewart: fines/fees due (\$233), bw issued for fta/5 days in jail or payment in full.

Cynthia L. Vanwinkle: fines/fees due (\$233), bw issued for fta/5 days in jail or payment in full.

Shane P. Ware: fines/fees due (\$233), bw issued for fta/5 days in jail or payment in full.

Speeding: William J. Wright, Robert Spurlock, \$48 fine and costs/fine suspended on condition; Paul A. Brown, license suspended for fta.

Nicholas M. McCoy: failure to wear seat belts, license suspended for fta.

Aaron M. Vaught: careless driving, license suspended for fta.

KU matching customer donations

Heating assistance program funds available for residents in need during frigid winter

Winter is several days away, but with snow falling and temperatures in the region dipping below freezing, area residents are already beginning to feel the chill of the colder season.

To assist customers who may have difficulty paying their heating bills during the winter months, Kentucky Utilities Company is once again matching residential customers' donations to Community WinterCare, the utility's primary heating assistance program, \$1 for \$1.

With the match in effect from October 1, 2014 through March 31, 2015, the utility encourages customers to consider making a tax-deductible donation to the program by making a monthly pledge or a one-time contribution. Even rounding up a payment to the next whole dollar makes a difference.

"Since 2009, customer donations and matching funds from KU and its sister company Louisville Gas and Electric Company have raised nearly \$2 million," said LG&E and KU Vice President of Customer Services John Malloy. "Combining our dollars creates a greater pool of funds, which ultimately go a long way toward helping our neighbors having a tough time paying their utility bills and keeping their families comfortable during frigid conditions that have only just begun."

About the program
Community WinterCare is a third-party nonprofit organization that helps customers in financial crises pay their heating bills.

Eligibility for heating assistance benefits is determined by the WinterCare nonprofit organization. The program assists families in dire financial situations and lack of resources, a family with no heat or the immediate prospect of no heat; and families with a family member who is elderly, very young, seriously ill or disabled. KU plays no part in determining eligibility. Families in need of assistance will be interviewed by WinterCare service partners, usually local Community Action Agencies or other non-profit assistance groups, who customers should call to apply for funds.

Take caution during winter weather

With highs and lows forecast to hover around and below freezing the rest of the week, KU reminds customers to take safety precautions during winter weather.

Have your furnace checked by a certified professional to make sure it's in peak operating condition. Remember to check your filter each month and replace it as necessary, based on the manufacturer's recommendation.

(Cont. to B3)

Sweet Sauce BBQ

Sweet Sauce BBQ is a new BBQ Catering business, looking forward to serving your next event. Fully insured and health department compliant. Contact us for your next event!
*Whole Hog *Ribs *Brisket
*Pork Shoulders *Chicken *Sides & More
Serving Rockcastle and surrounding counties
606-875-1347

Virginia Lominac Sears Attorney At Law, PLLC

- Divorce
 - Custody/Adoption
 - Criminal Defense
 - Auto Accident/Personal Injury
 - Social Security
 - Disability
 - General Legal Practice
- Call 606-862-1224 to discuss your legal issue today.
This is an advertisement

ONLINE ONLY Auction

David Bishop's

Vehicles ~ Tools ~ Personal Property

Bidding Ends: Monday, November 24th at approx. 6 p.m.

Bid Online: www.fordbrothersinc.com

Directions to 1146 Purr Rigby Road, Brodhead, KY. Turn west off Hwy 461 Bypass near Rockcastle County High School onto Hwy 1326 (Old Brodhead Road). Follow Hwy 1326 (Old Brodhead Road) approximately 2 miles to the top of the hill. Turn north (right) onto Purr Rigby Road. Go approximately 1 mile to the auction site. Signs are posted. The items listed below are only a PARTIAL list of the items being offered at online only auction:

Vehicles & Boats: 1972 Corvette Stingray ~ Mon-Ark Boat and Trailer ~ several car parts/pieces including: rear ends, motors, transmissions and much more!

The following vehicles/boat will be selling subject to seller's confirmation: 1967 Chevy II ~ 1963 Chevy II ~ 1978 Monte Carlo ~ 2008 Suzuki Boulevard Motorcycle ~ 1996 Sunracker 21d Party Barge and Trail star Trailer ~ 1996 Cobra.

Farm Machinery, Storage Buildings, & Tools: 1984 Case 2590 Tractor ~ Woods Brand Hydraulic Hoist ~ Old 6' Bush Hog ~ 3pt Hitch ~ Old Grader Blade ~ Assorted Pipe ~ Pull Behind Lawnmower ~ Bolens 1 h.p., 42" Cut, Riding Mower ~ 3 Point Hitch Hay Spear ~ Feed Trough ~ 325 Gallon Water Tank ~ Solar Powered Electric Fence Energizer ~ Cattle Rubs ~ Cordless Mulching Mower ~ Small Utility Trailer ~ 2 Storage Buildings ~ Generator ~ Manual Pallet Lift ~ Wheel Balancer ~ Industrial Paint Spray ~ Scaffolding ~ Steel Mounting Plate Shop Vise ~ Come-a-longs ~ Chain booms ~ several Hand tools ~ Torque wrenches ~ and much more!

Household Goods, Lawn Furniture & More: There are numerous items for the home, lawn, garden & much more.

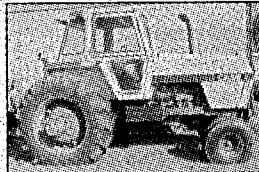
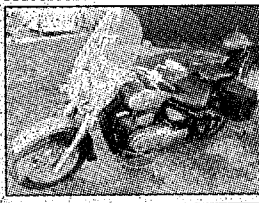
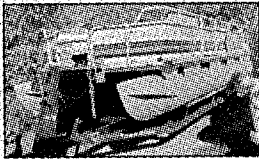
Preview Dates: Friday, November 14th from 1:00 p.m. ~ 6:00 p.m. and Friday, November 21st from 1:00 p.m. ~ 6:00 p.m.

Pickup Date: There will be only ONE pickup date, Tuesday, November 25th from 12 Noon ~ 6:00 p.m. The pickup will take place on-site at 1146 Purr Rigby Rd.

Buyer's Premium: There will be a 10% Buyer's Premium added to the winning bid. The sum of the winning bid plus the buyer's premium will be the sales price.

Terms: Cash or good check in full the day of the pickup. MasterCard and Visa will also be accepted with a processing fee. Any items not picked up/paid for by 6:00 p.m. on Tuesday, November 25th will be charged to the credit card on file.

For complete list of items/terms, please log on to www.fordbrothersinc.com. You may contact the auctioneer, Sam Ford, at 606-308-4400 and our auction staff at 1-800-435-5454 for any questions or concerns.



LIVE ABSOLUTE ESTATE Auction

the late Bob & Juanita Witt's

Vehicles ~ Jewelry ~ Personal Property

Saturday, November 22nd at 10:00 a.m.

2933 Sunny Ridge Farm Road - Orlando, Ky.

Location: Turn off of US 25 near Exit 59 (off I-75) onto State Road 1004, beside the Shell Station. Follow 1004 approximately 3 miles to the Witt farm. Watch for auction signs.

In order to settle the estate, Mr. and Mrs. Witt's son, Gary Witt, has authorized our company to sell all vehicles, jewelry and personal property for the absolute high dollar.

Most of the vehicles listed below are not in running condition:

Vehicles & Parts: T-Bird (no title) ~ 1991 Ford Tempo ~ Ford Fiesta ~ 1991 Ford ~ Buick ~ tent Camper trailer ~ 1957 Oldsmobile ~ 1962 Plymouth ~ 1958 Chevy ~ 1957 Oldsmobile ~ Buick ~ Buick Special ~ International Truck ~ 1965 Oldsmobile ~ 1964 Chevy ~ 1963 Chevy ~ 1929 Model A Ford Sedan ~ Chevy fleet line ~ 1991 Ford Lariat Pickup ~ and more!

Farm Machinery & Tools: Farmall 130 Tractor ~ plow cultivator ~ tooth harrow ~ Farmall Tractor with McCormick basket ~ assortment of hand tools ~ Cycle mower ~ McCormick 46 square hay baler ~ and more!

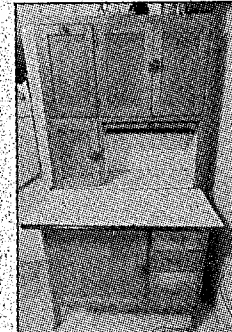
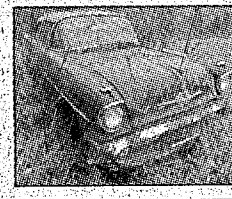
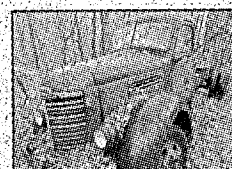
Jewelry: 14k Gold Herringbone bracelet ~ University of Nebraska class ring ~ Diamond band anniversary ring (diamond missing) ~ 25 Diamond/gold engagement ring ~ and more!

Personal Property: Oak Hooster Cabinet with flour bin ~ Bosch front load washer and dryer ~ potato box ~ metal kitchen table ~ Frigidaire refrigerator ~ GE microwave ~ toaster ~ miscellaneous glassware ~ cookie jars ~ silverware ~ numerous baskets ~ metal filing cabinet ~ wooden kitchen table ~ 2-drawer filing cabinet ~ half bed ~ dehumidifier ~ electric sewing machine ~ hide-a-bed couch ~ recliner ~ 4-drawer dresser ~ Sanyo T.V. ~ lift chair ~ VCR ~ DVD player ~ bookcase ~ small portable T.V. ~ Jon boat and trailer ~ GE Upright freezer ~ wheel chair ~ old stove ~ bicycles ~ Pfleger electric trolling motor with foot pedal ~ Seabee Boat ~ and more!

Auctioneer's Note: If you're an old car buff then you don't want to miss out on this auction. There are lots of old cars that could be a restorer's dream. Be there... Bid Last and BUY!!

Terms: Payment in full the day of the sale. Payment methods include: cash, personal check, company check, MasterCard and Visa (with processing fee).

Auctioneer/Broker/Seller Disclaimer: The information contained herein is believed to be correct to the best of the auctioneer's knowledge. The information is being furnished for the bidder's convenience and it is the responsibility of the bidder to determine the information contained herein is accurate and complete. The property is being sold in its "as is" condition. Announcements day of auction take precedence over printed matter. For additional information, contact the selling agents.



MARKNET ALLIANCE
Ford Brothers Inc. Auctioneers
Sam Ford, Auctioneer
www.fordbrothersinc.com
Somerset, KY 606-679-2212
Mt. Vernon, KY 606-256-4545 • 800-435-5454
London, KY 606-878-7111
NAA Auctioneer

MARKNET ALLIANCE
Ford Brothers Inc. Auctioneers
SAM FORD, AUCTIONEER
www.fordbrothersinc.com
Mt. Vernon, KY 606-256-4545 • 800-435-5454
NAA Auctioneer

RCMS students participate in G2-TECS and GEMS

Somerset Community College (SCC) hosted a Guys Geared up for Technology, Engineering, Computers and Science (G2-TECS) Conference and a Girls Exploring Math and Science Conference (GEMS) recently on the SCC Somerset Campus. Students from 13 area middle schools including Casey, Cumberland, McCreary, Meece, North Laurel, Northern, Rockcastle, Russell, Science Hill, Somerset Christian, South Laurel, Southern and Wayne County took part in the conferences after being selected from an application process.

G2-TECS and GEMS was created as a way to encourage students to consider mathematics-oriented and science-oriented careers, to gain confidence in mathematics and science and to take advanced level mathematics and science courses in high school. The G2-TECS program is designed to promote the National Science Foundation's (NSF) program which promotes a larger and more diverse science and engineering workforce.

After the welcome, each student participated in workshops focused on five occupations or career areas: 3D Printing & Robotic Welding, Electrical Engineering and Electronics, Culinary Arts, Aeronautics and Space and Respiratory Therapy.

The 3D printing and robotic welding workshop was hosted by Eric Woodbridge, mechanical engineer and SCC associate professor, Karl Watson, SCC associate professor and Scott Stringer, SCC instructional specialist. The Electrical Engineering and Electronics workshop was hosted by Curt Null, SCC assistant professor in Electronics/Electrical Technology and Phillip Moran, SCC assistant professor of Electronics/Electrical Technology. The Culinary Arts workshop was hosted by SCC Chefs Michael Wells and Ed Nazario. The Respiratory Therapy workshop was hosted by Jess Hoskins, SCC Advanced-Level Res-

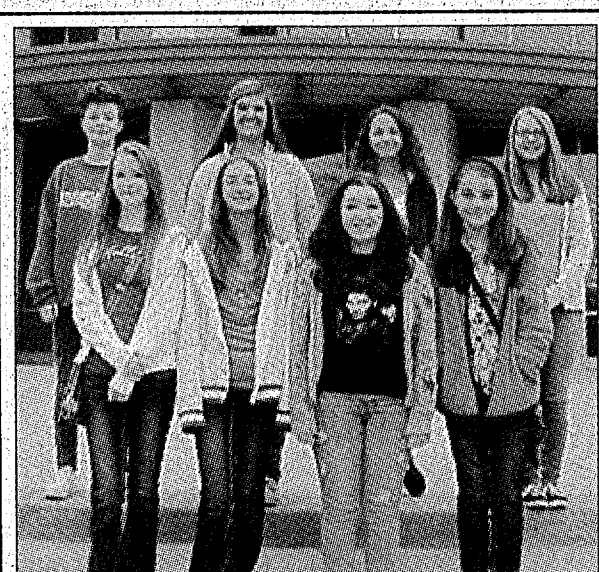
piratory Therapist Program director, Jason Asher, SCC Director of clinical education, Angie Mills, SCC laboratory director, and SCC Respiratory Therapy students Kristin Helmer and Jillian Morrison. The Aeronautics and Space workshop was hosted by Tom Cravens, director of the Challenger Learning Center of Kentucky.

After lunch from Fazoli's and workshops, each student attended a career expo where they were able to meet STEM professionals and participate in hands-on activities at each STEM booth, which included: aviation technology, pre-medicine and pre-pharmacy, biology, math and natural sciences, radiography, industrial maintenance technology, medical laboratory technology, physical therapy assistant, paramedic technology, surgical technology, radiography, Robotic Innovative Group, Project Lead the Way and scholarships.

SCC Student Ambassadors were assigned to assist the groups. The ambassadors were: Shannon Plagge, Rebecca Dunmore, Parth Patel, Autumn Smith, Caitlyn Huff, Audrey Lovell, Abi Perkins, Christian Miller, Dominic Rodriguez, Cassandra Casada, Teia Daniel and Tiffany Russell.

SCC G2-TECS and GEMS Team Members include: Carol Calcaterra, Cindy Byrd, Judy Covey, Tanya Cowan, Veronica DeBord, Martha Deitz, Carrie Fitzpatrick, Jamie Foster, Alesa Johnson, Kelly Johnson, Scott McClendon, Ronald Meade, Karen Plagge, DeAnna Proctor, Cecilia Ramilo, Gail Stringer and Jennifer Wilson.

Somerset Community College is a comprehensive two-year institution of higher education. SCC has campuses in Somerset and London, and centers in Clinton, McCreary, Casey, and Russell counties. For admission and program information, visit their website at somerset.kctcs.edu.



RCMS students participating in GEMS at SCC were: Janelle Brown, Tiffany McGuire, Tessa Pickle, Daya McGuire, Katie Cook-Vance, Brooklyn Smitherm, Caroline White and Casey Rowland.



RCMS students participating in G2-TECS at SCC were: Cole Ballinger, Jordan Nicely, Jimmy Sharp, Bailey Taylor, Keaton Renfro, Joseph Coffey, Michael Allen, B.J. Wynn, Isaac Stratton, Evan Hendrickson, Brendan Kirby, J.D. Hamilton, Matt Gustin, and Chase Roberts.

"Court"

(Cont. from B2)

dations. A dirty filter will slow air flow, making the system work harder to keep the indoor air temperature at a consistent, comfortable setting.

•Seal leaks and gaps around your home with caulk, spray foam, or weather-stripping to keep the heat in and the cold out.

•Build an emergency kit that includes a battery-powered radio, flashlights for everyone in the family, fresh batteries for any devices, first-aid kit, and over-the-counter and prescription medications. A complete list of essential emergency kit supplies can be found at www.ready.gov

•Always operate a portable generator safely and outdoors to allow for proper venting. Consult with a qualified, licensed electrician and/or review the manufacturer's instructions before you install the generator.

•Snow and ice accumulation on tree branches can sometimes cause them to break and fall into power lines. Stay away and consider all fallen wires dangerous.

•KU customers should call 800-981-0600 to report a downed wire or power outage. KU customers can also report an outage online at lge-ku.com after registering their account.

•Be sure to use LG&E and KU's outage map on your computer at lge-ku.com/storm or other mobile devices to receive near

real-time information about outages throughout our system, a summary of outages by zip code and county and estimated restoration time.

BES Academic List...

Principal's List Green

Lexi Dotson, Ella Bussell, Isabella Whitaker, Lexie Neeley, Wessin Falin, Landon Carlton, Kyra Gibson.

Scheffler

Ezekiel Graves, Hailey McCoy.

York

Cheyenna Bustle, Makayla Denney, Skyler Durham, Ethan Fetters, Rylee Smith, Elijah Winkler.

B. Adams

Madison Blevins, Hunter Day, Mackenzie Lopez, Savannah Santo, Riley Sherrow, Karlee Smith.

Alcorn

Kara Bullock, Journey Calder, Madeline Ellis, John T. Kelley, Kaden Kidwell, Keelee King, Jameson Mink, Robert Reams, Leah Taulbee, Madalyn White.

McClure

Kaitlyn Burgin, Sam Burdine, Callie Burdette, Hallie Brown, Callie Creech, Sara Foreman.

D. Bussell

Alex Burke, Bailey Cromer, Granville Graves, Kylie Martin, Darby Smith, Haley Thacker, Hunter Zanet.

Jones

Kenya Cromer, Destiny Adams, Alyssa Hacker, Reina Lykins, TJ Ramsey, Lindsey Robinson.

Stevens

Nate Allen, Elizabeth Denny, Kirsten Fletcher, Karalinn Loudermilk, Cole McGuire, Madalyn Morgan, Courtney Payne, Eric Sparks, Meghan Sumner.

Honor Roll Green - 3rd

Jamie Cromer, Lee Rowe, Harley Cope, Haven King, Connor VanWinkle, Leigha Crutcher.

Scheffler - 3rd

Anthony Goodin, Molly Irvin, Callie Bengel, Brycedon Brown, Shelby Chesnut, Benjamin Brown.

York - 3rd

Kaylee Carpenter, Averi Dillingham, Dawson Farrow, Erika McKinney, Austin Potter, Nikki Sparkman.

B. Adams - 4th

Ernest Bryant, Clella Bussell, Makinlee Goff, Olivia Goodson, Scott Martin.

Alcorn - 4th

Zaydan Barnett, Sarah Barron, Jaidan Burton, Dylan Gross.

McClure - 4th

Alyssa York, Luke Cromer, Kaylee Chadwell, Matthew Brock.

D. Bussell - 5th

Jaylen Cash, Brett Gardiner, Hannah Goff, Hunter Miller, Kayleigh Mink, Mallory Morgan, Devin Tillett.

Jones - 5th

Ethan Bengel, Brent Bradley, Heather Carroll, Heaven Clines, Kennedy Dooley, Dalton Gibbs, Jesse Jones, Ben Hamm, Azlynn McFeron.

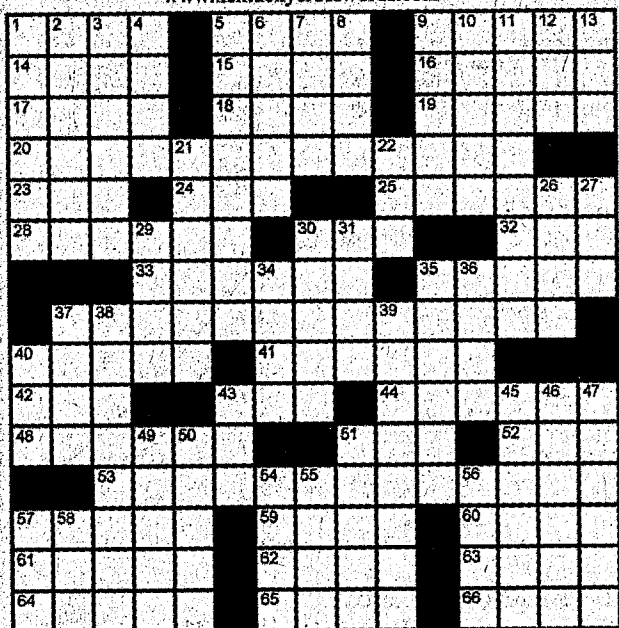
Stevens - 5th

Travis Durham, Isabella Clouse.

Subscribe to the Signal

Kentucky Crossword #658

www.kentuckycrosswords.com



©Copyright 2014 Vicki A Benga. All Rights Reserved. [KY 658]

ACROSS

- Algebra or trig
- Computer info
- Babes in the woods
- Subtle glow
- Not politically correct in texting
- Winged
- TV health expert
- Cast a ballot
- Like a ballerina
- Switzer in Franklin Co. or Goddard in Fleming Co.
- "... we there yet?"
- Louisville-to-Covington dir.
- Kentucky county, named for 5th U.S. president
- Thanksgiving Day event
- North Pole toymaker
- Type of radio listening
- "O temporal O mores!" orator
- Inquired
- Location of Kentucky's highest elevation
- Noted psychologist Fergus
- Something unusual
- Nave bench
- Broke bread
- Kentuckian Darrell Waltrip won its cup series 3X
- Post ___ Manley Hopkins
- UK's NCAA conf.
- The Buckeyes, briefly
- Harding Co.'s historic

DOWN

- Like the Marx Brothers
- Light show
- Common-law action
- Confusion
- Kentuckian, influential Realist artist
- Battery terminal
- "The powers that be" in Internet slang
- Tennis whiz
- Three-time Masters winner
- Adjust, in a way
- Action at Cumberland Lake?
- Greatest possible
- "Understand?"
- J. J. of the NBA
- Worldwide financial org.
- This Kentucky county's name plus "ton" names its

seat

- Neighbor of Nigeria
- Basketball
- Hall-of-Famer Archibald
- Managed, with "out"
- Killer whales
- On the mark
- Grinding machine
- Fliers in V's
- Cable staple
- Brazilian soccer legend
- Everyday essentials; Abbr.
- Woodworker's tool
- Gingersnap, e.g.
- Too
- Ladder step
- Assumed name
- Wash cycle
- Establish
- Some chips, maybe
- Blocks
- Office fill-in
- Welland
- "... he drove out of sight..."

SOLUTION TO KY657



Diabetes Vaccine Tips

Diabetes and Influenza Vaccine Guide *

- People with diabetes, aged 6 months and older, should receive a yearly "seasonal" influenza (flu) shot as soon as the vaccine becomes available.
- Children with diabetes, aged 6 months through 8 years, who get the "seasonal" flu shot (vaccine) for the first time should get 2 doses at least 4 weeks apart.
- People with diabetes SHOULD receive the inactivated "seasonal" flu vaccine as a shot (injection) and SHOULD NOT receive the live, attenuated, nasal-spray flu vaccine (FluMist®).

*NOTE: If YOU are allergic to eggs or have had other allergic reactions - check with your health care provider before receiving the flu vaccine.

People with Diabetes who become sick with the flu...

- Should see their health care provider as soon as possible and ask about using antiviral drugs (like Tamiflu or Relenza), preferably within 2 days after becoming ill.

Diabetes and Pneumococcal Vaccine Guide

- A series of pneumococcal conjugate vaccinations is routinely given to all children, with and without diabetes, beginning at age 2 months. Pneumococcal vaccines provide protection against the bacteria that cause invasive pneumococcal diseases including pneumonia.
- Children aged 2 years and older (after completing all recommended doses of the pneumococcal conjugate vaccine) and adults with diabetes should receive pneumococcal polysaccharide vaccine (PPSV23).
- A one-time "revaccination" with PPSV23, five years after the first dose, is recommended for children and adults with diabetes younger than age 65 years at highest risk for serious pneumococcal infection ** AND adults age 65 years and older who received their first dose when they were younger than age 65. Discuss the need for "revaccination" with your healthcare provider.
- Adults with diabetes who receive their first dose of PPSV23 at or after age 65 years should only receive a single dose.

**Persons at highest risk for serious pneumococcal infection include: children aged two years and older and adults with functional or anatomic asplenia, HIV infection, leukemia, lymphoma, Hodgkin's disease, multiple myeloma, generalized malignancy, chronic renal failure, nephrotic syndrome, or other conditions associated with immunosuppression (such as organ or bone marrow transplantation), and those receiving immunosuppressive chemotherapy, including long-term corticosteroids.

Reviewed / No Updates Needed October 2013

Hope at the Holidays

TREE LIGHTING CEREMONY

Tuesday, December 2 at 7:00 pm
Rockcastle Regional Hospital Outpatient Services Building

Honor, celebrate, or remember loved ones by purchasing a personalized ornament which will be displayed on the Relay For Life Christmas Tree

Proceeds benefit Relay For Life.

ORDER FORM

- Ornament Size
 Small \$5 Medium \$8 Photo Frame Ornament \$10 (2-sided)*
- Name to be written on ornament: _____
- Optional Special Message to be written on ornament: _____
- Ribbon Color
 Pink (Breast Cancer) Orange (Leukemia) Dark Blue (Colon Cancer) Black (Melanoma)
 White (Bone Cancer) Blue (Prostate Cancer) Red (Lymphoma) Purple (Cancer Survivor)

Your Name: _____ Phone: _____

*Photos can be emailed or mailed to Community Relations at P.O. Box 1310 Mt. Vernon, KY 40456
Please make checks payable to Rockcastle Regional Hospital.

NOTICE

Notice is hereby given that, in a November 26, 2014 Application, Kentucky Utilities Company is seeking approval by the Public Service Commission of an adjustment of electric rates and charges proposed to become effective on and after January 1, 2015.

KU CURRENT AND PROPOSED ELECTRIC RATES

Residential Service - Rate RS

	Current	Proposed
Basic Service Charge per Month:	\$10.75	\$18.00
Energy Charge per kWh:	\$ 0.07744	\$ 0.08057

Availability of Service: Text proposed to be added to clarify that single phase service is for secondary service only.

Residential Time-of-Day Energy Service - Rate RTOD-Energy

Current - This rate schedule is not currently available.

Proposed

	Current	Proposed
Basic Service Charge per Month:		\$18.00
Plus an Energy Charge per kWh:		
Off-Peak Hours	\$ 0.05100	
On-Peak Hours	\$ 0.25874	

Availability of Service: Service under this rate schedule is limited to a maximum of five hundred (500) customers taking service on RTOD-Energy and RTOD-Demand combined that are eligible for Rate RS. This service is also available to customers on Rate Schedule GS (where the GS service is used in conjunction with an RS service to provide service to a detached garage and energy usage is no more than 300 kWh per month) who demonstrate power delivered to such detached garage is consumed in part for the powering of low emission vehicles licensed for operation on public street or highways. A customer electing to take service under this rate schedule who subsequently elects to take service under the standard Rate RS may not be allowed to return to this optional rate for 12 months from the date of exiting the rate schedule.

Determination of Pricing Periods: Pricing periods are established in Eastern Standard Time year round by season for weekdays and weekends.

Summer Period - Five Billing Periods of May through September

Weekdays: Off Peak (5pm-1pm), On Peak (1pm-5pm)

Weekends: Off Peak (All Hours), On Peak (N/A)

Winter Period - All Other Months

Weekdays: Off Peak (11am-7am), On Peak (7am-11am)

Weekends: Off Peak (All Hours), On Peak (N/A)

Minimum Bill: The Basic Service Charge shall be the minimum charge.

Residential Time-of-Day Demand Service - Rate RTOD-Demand

Current - This rate schedule is not currently available.

Proposed

	Current	Proposed
Basic Service Charge per Month:		\$18.00
Plus an Energy Charge per kWh:		\$ 0.04008
Plus a Demand Charge per kW:		
Off-Peak Hours	\$ 3.25	
On-Peak Hours	\$11.56	

Availability of Service: Service under this rate schedule is limited to a maximum of five hundred (500) customers taking service on RTOD-Energy and RTOD-Demand combined that are eligible for Rate RS. This service is also available to customers on Rate Schedule GS (where the GS service is used in conjunction with an RS service to provide service to a detached garage and energy usage is no more than 300 kWh per month) who demonstrate power delivered to such detached garage is consumed in part for the powering of low emission vehicles licensed for operation on public street or highways. A customer electing to take service under this rate schedule who subsequently elects to take service under the standard Rate RS may not be allowed to return to this optional rate for 12 months from the date of exiting the rate schedule.

Determination of Pricing Periods: Pricing periods are established in Eastern Standard Time year round by season for weekdays and weekends.

Summer Period - Five Billing Periods of May through September

Weekdays: Off Peak (5pm-1pm), On Peak (1pm-5pm)

Weekends: Off Peak (All Hours), On Peak (N/A)

Winter Period - All Other Months

Weekdays: Off Peak (11am-7am), On Peak (7am-11am)

Weekends: Off Peak (All Hours), On Peak (N/A)

Minimum Bill: The Basic Service Charge shall be the minimum charge.

Volunteer Fire Department Service - Rate VFD

	Current	Proposed
Basic Service Charge per Month:	\$10.75	\$18.00
Energy Charge per kWh:	\$ 0.07744	\$ 0.08057

General Service - Rate GS

	Current	Proposed
Single Phase		
Basic Service Charge per Month:	\$20.00	\$25.00
Energy Charge per kWh:	\$ 0.09225	\$ 0.10055
Three Phase		
Basic Service Charge per Month:	\$35.00	\$40.00
Energy Charge per kWh:	\$ 0.09225	\$ 0.10055

All Electric School - Rate AES

	Current	Proposed
Single Phase		
Basic Service Charge per Month:	\$20.00	\$25.00
Energy Charge per kWh:	\$ 0.07440	\$ 0.08231
Three Phase		
Basic Service Charge per Month:	\$35.00	\$40.00
Energy Charge per kWh:	\$ 0.07440	\$ 0.08231

Power Service - Rate PS

	Current	Proposed
Secondary Service		
Basic Service Charge (per Month):	\$90.00	\$90.00
Energy Charge (per kWh):	\$ 0.03564	\$ 0.03570
Demand Charge (per kW per month of billing demand)		
Summer Rate (May through September)	\$15.30	\$18.01
Winter Rate (All Other Months)	\$13.20	\$15.91

	Current	Proposed
Primary Service		
Basic Service Charge (per Month):	\$170.00	\$200.00
Energy Charge (per kWh):	\$ 0.03562	\$ 0.03445
Demand Charge (per kW per month of billing demand)		
Summer Rate (May through September)	\$ 15.28	\$ 18.50
Winter Rate (All Other Months)	\$ 13.18	\$ 16.40

Time-of-Day Secondary Service - Rate TODS

	Current	Proposed
Basic Service Charge (per Month):	\$200.00	\$200.00
Energy Charge (per kWh):	\$ 0.03773	\$ 0.03526
Maximum Load Charge (per kW per month)		
Peak Demand Period	\$ 4.55	\$ 5.92
Intermediate Demand Period	\$ 2.95	\$ 4.32
Base Demand Period	\$ 3.62	\$ 4.99

Time-of-Day Primary Service - Rate TODP

Availability of Service:
Present: This schedule is available for primary service. Service under this schedule will be limited to customers whose 12-month-average monthly minimum average loads exceed 250 kVA and whose 12-month-average monthly maximum new loads do not exceed 50,000 kVA. Existing customers may increase loads to a 12-month-average monthly maximum of 75,000 kVA by up to 2,000 kVA per year or in greater increments with approval of Company's transmission operator.
Proposed: This schedule is available for primary service to any customer: (1) who has a 12-month average monthly minimum average demand exceeding 250 kVA; and (2) whose new or additional load receives any required approval of Company's transmission operator.

	Current	Proposed
Basic Service Charge (per Month):	\$300.00	\$300.00
Energy Charge (per kWh):	\$ 0.03765	\$ 0.03427
Maximum Load Charge (per kVA per month)		
Peak Demand Period	\$ 4.26	\$ 5.76
Intermediate Demand Period	\$ 2.76	\$ 4.26
Base Demand Period	\$ 1.71	\$ 3.21

Retail Transmission Service - Rate RTS

Availability of Service:
Current: This schedule is available for transmission service. Service under this schedule will be limited to customers whose 12-month-average monthly maximum new loads do not exceed 50,000 kVA. Existing customers may increase loads to a 12-month-average monthly maximum of 75,000 kVA by up to 2,000 kVA per year or in greater increments with approval of Company's transmission operator.
Proposed: This schedule is available for transmission service to any customer: (1) who has a 12-month average monthly minimum average demand exceeding 250 kVA; and (2) whose new or additional load receives any required approval of Company's transmission operator.

	Current	Proposed
Basic Service Charge (per Month):	\$750.00	\$1,000.00
Energy Charge (per kWh):	\$ 0.03634	\$ 0.03352
Maximum Load Charge (per kVA per month)		
Peak Demand Period	\$ 3.97	\$ 4.63
Intermediate Demand Period	\$ 2.87	\$ 4.53
Base Demand Period	\$ 1.34	\$ 3.00

Fluctuating Load Service - Rate FLS

	Current	Proposed
Primary Service		
Basic Service Charge (per Month):	\$750.00	\$1,000.00
Energy Charge (per kWh):	\$ 0.03643	\$ 0.03643
Maximum Load Charge (per kVA per month)		
Peak Demand Period	\$ 2.41	\$ 2.86
Intermediate Demand Period	\$ 1.52	\$ 1.97
Base Demand Period	\$ 1.80	\$ 2.25

	Current	Proposed
Transmission Service		
Basic Service Charge (per Month):	\$750.00	\$1,000.00
Energy Charge (per kWh):	\$ 0.03261	\$ 0.03343

	Current	Proposed
Maximum Load Charge (per kVA per month)		
Peak Demand Period	\$ 2.41	\$ 2.86
Intermediate Demand Period	\$ 1.52	\$ 1.97
Base Demand Period	\$ 1.05	\$ 1.50

Lighting Service - Rate LS

	Current	Proposed
OVERHEAD SERVICE		
High Pressure Sodium		
462 Cobra Head - 5,800 Lumen - Fixture Only	\$ 8.66	\$ 9.52
472 Cobra Head - 5,800 Lumen - Ornamental	\$11.60	\$12.75
463 Cobra Head - 9,500 Lumen - Fixture Only	\$ 9.14	\$10.05
473 Cobra Head - 9,500 Lumen - Ornamental	\$12.30	\$13.52
464 Cobra Head - 22,000 Lumen - Fixture Only	\$14.25	\$15.67
474 Cobra Head - 22,000 Lumen - Ornamental	\$17.41	\$19.14
465 Cobra Head - 50,000 Lumen - Fixture Only	\$22.84	\$25.11
475 Cobra Head - 50,000 Lumen - Ornamental	\$24.46	\$26.89
487 Directional - 9,500 Lumen - Fixture Only	\$ 9.00	\$ 9.90
488 Directional - 22,000 Lumen - Fixture Only	\$13.64	\$15.00
489 Directional - 50,000 Lumen - Fixture Only	\$19.46	\$21.40
428 Open Bottom - 9,500 Lumen - Fixture Only	\$ 7.84	\$ 8.62
Metal Halide		
450 Directional - 12,000 Lumen - Fixture Only	\$14.25	\$15.67
451 Directional - 32,000 Lumen - Fixture Only	\$20.20	\$22.21
452 Directional - 107,800 Lumen - Fixture Only	\$42.35	\$46.56

	Current	Proposed
UNDERGROUND SERVICE		
High Pressure Sodium		
467 Colonial - 5,800 Lumen - Decorative	\$10.77	\$11.84
468 Colonial - 9,500 Lumen - Decorative	\$11.16	\$12.27
401 Acorn - 5,800 Lumen - Smooth Pole	\$14.86	\$16.34
411 Acorn - 5,800 Lumen - Fluted Pole	\$21.38	\$23.51
420 Acorn - 9,500 Lumen - Smooth Pole	\$15.36	\$16.89
430 Acorn - 9,500 Lumen - Fluted Pole	\$22.00	\$24.19
414 Victorian - 5,800 Lumen - Fluted Pole	\$30.84	\$33.91
415 Victorian - 9,500 Lumen - Fluted Pole	\$31.22	\$34.33
476 Contemporary - 5,800 Lumen - Fixture/Pole	\$16.79	\$18.46
492 Contemporary - 5,800 Lumen - 2nd Fixture	\$15.37	\$16.90
477 Contemporary - 9,500 Lumen - Fixture/Pole	\$20.97	\$23.06
497 Contemporary - 9,500 Lumen - 2nd Fixture	\$15.35	\$16.88
478 Contemporary - 22,000 Lumen - Fixture/Pole	\$26.86	\$29.53
498 Contemporary - 22,000 Lumen - 2nd Fixture	\$17.72	\$19.48
479 Contemporary - 50,000 Lumen - Fixture/Pole	\$33.12	\$36.42
499 Contemporary - 50,000 Lumen - 2nd Fixture	\$21.49	\$23.63
300 Dark Sky - 4,000 Lumen	\$22.49	\$24.73
301 Dark Sky - 9,500 Lumen	\$23.50	\$25.84
360 Granville Pole and Fixture, 16,000 Lumen		
And Accessories		
Metal Halide		
490 Contemporary - 12,000 Lumen - Fixture Only	\$15.47	\$17.01
494 Contemporary - 12,000 Lumen - Smooth Pole	\$28.37	\$31.19
491 Contemporary - 32,000 Lumen - Fixture Only	\$21.93	\$24.11
495 Contemporary - 32,000 Lumen - Smooth Pole	\$34.83	\$38.30
493 Contemporary - 107,800 Lumen - Fixture Only	\$45.70	\$50.25
496 Contemporary - 107,800 Lumen - Smooth Pole	\$58.59	\$64.42

Restricted Lighting Service - Rate RLS

Availability of Service:
Present: Service under this rate schedule is restricted to those lighting fixtures in service as of August 1, 2012, except where a spot replacement maintains the continuity of multiple fixtures/poles composing a neighborhood lighting system.
Proposed: Service under this rate schedule is restricted to those lighting fixtures in service as of January 1, 2013, except where a spot replacement maintains the continuity of multiple fixtures/poles composing a neighborhood lighting system or continuity is desired for a subdivision being developed in phases.

	Current	Proposed
OVERHEAD SERVICE		
High Pressure Sodium		
461 Cobra Head - 4,000 Lumen - Fixture Only	\$ 7.54	\$ 8.29
471 Cobra Head - 4,000 Lumen - Fixture & Pole	\$10.49	\$11.53
409 Cobra Head - 50,000 Lumen - Fixture Only	\$11.71	\$12.88
426 Open Bottom - 5,800 Lumen - Fixture Only	\$ 7.44	\$ 8.18
Metal Halide		
454 Direct - 12,000 Lumen - Flood Fixture & Pole	\$18.65	\$20.51
455 Direct - 32,000 Lumen - Flood Fixture & Pole	\$24.59	\$27.04
459 Direct - 107,800 Lumen - Flood Fixture & Pole	\$46.74	\$51.39
Mercury Vapor		
446 Cobra Head - 7,000 Lumen - Fixture Only	\$ 9.56	\$10.51
456 Cobra Head - 7,000 Lumen - Fixture & Pole	\$11.87	\$13.05
447 Cobra Head - 10,000 Lumen - Fixture Only	\$11.32	\$12.45
457 Cobra Head - 10,000 Lumen - Fixture & Pole	\$13.36	\$14.69
448 Cobra Head - 20,000 Lumen - Fixture Only	\$12.81	\$14.08
458 Cobra Head - 20,000 Lumen - Fixture & Pole	\$15.08	\$16.58
404 Open Bottom - 7,000 Lumen - Fixture Only	\$10.57	\$11.62
Incandescent		
421 Tear Drop - 1,000 Lumen - Fixture Only	\$ 3.39	\$ 3.73
422 Tear Drop - 2,500 Lumen - Fixture Only	\$ 4.54	\$ 4.99
424 Tear Drop - 4,000 Lumen - Fixture Only	\$ 6.78	\$ 7.45
434 Tear Drop - 4,000 Lumen - Fixture & Pole	\$ 7.74	\$ 8.51
425 Tear Drop - 6,000 Lumen - Fixture Only	\$ 9.06	\$ 9.96

	Current	Proposed
UNDERGROUND SERVICE		
Metal Halide		
460 Direct - 12,000 Lumen - Flood Fixture & Pole	\$27.15	\$29.85
469 Direct - 32,000 Lumen - Flood Fixture & Pole	\$33.10	\$36.39
470 Direct - 107,800 Lumen - Flood Fixture & Pole	\$55.25	\$60.75
High Pressure Sodium		
440 Acorn - 4,000 Lumen - Flood Fixture & Pole	\$13.61	\$14.96
410 Acorn - 4,000 Lumen - Fluted Pole	\$20.26	\$22.28
466 Colonial - 4,000 Lumen - Smooth Pole	\$ 9.62	\$10.58
412 Coach - 5,800 Lumen - Smooth Pole	\$30.84	\$33.91
413 Coach - 9,500 Lumen - Smooth Pole	\$31.22	\$34.33
360 Granville Pole and Fixture, 16,000 Lumen		
and Accessories		
360 Granville Pole and Fixture, 16000L (Granville Accessories)	\$55.33	\$60.84
Twin Crossarm Bracket (Inc. 1 Fixture)	\$20.57	N/A
24 Inch Banner Arm	\$ 3.21	N/A
24 Inch Clamp Banner Arm	\$ 4.43	N/A
18 Inch Banner Arm	\$ 2.95	N/A
18 Inch Clamp Banner Arm	\$ 3.66	N/A
Flagpole Holder	\$ 1.38	N/A
Post-Mounted Receptacle	\$19.19	N/A
Additional Post-Mounted Receptacle	\$ 2.62	N/A
Planter	\$ 4.45	N/A
Clamp On Planter	\$ 4.94	N/A

Lighting Energy Service - Rate LE

	Current	Proposed
Energy Charge per kWh:	\$0.06380	\$0.07020

Traffic Energy Service - Rate TE

	Current	Proposed
Basic Service Charge per Month:	\$3.25	\$4.00
Energy Charge per kWh:	\$0.07978	\$0.08501

Cable Television Attachment Charges - Rate CTAC

	Current	Proposed
Attachment Charge per year for each attachment to pole:	\$9.69	\$9.69

Curtailable Service Rider 10 - Rider CSR10

	Current	Proposed

2014 Farm Bill

Farm and Home News

Tom Mills

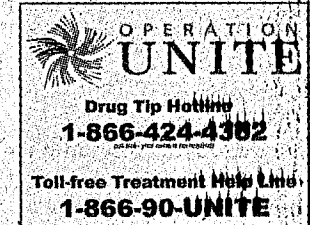
Rockcastle County Extension Office

The 2014 Farm Bill provides dairy and grain farmers with income protection. For dairy (MPP) Margin Protection Program replaces the Milk Income Loss Contract Program. For grain producers the (ARC) Agriculture Risk Coverage and (PLC) Price Loss Coverage require farmers to choose a program. Producers are advised to visit FSA staff to update yields, history and verify base acres from now until February 27, 2015. Producers may make a one-time election of either ARC or PLC for the 2014 through 2018 crop years starting November 17, 2014 through March 31, 2015. Producers sign Contracts for 2014 and 2015 crop years, starting mid-April through summer 2015.

Due to the large number of bases and limited FSA staff, producers are advised to start working on their choice early. Visit FSA staff soon. To help producers determine which program may best suit their farm a Regional Work Shop will be

held Thursday November 20th at 10:00 a.m. at the Fayette County Extension Office on Red Mile Road.

State Beef Assessment (Kentucky Beef Check Off) Referendum will be held Thursday November 20th 2014 from 8:00 a.m. to 6:00pm in the Rockcastle Extension Office at 1050 West Main Street. The referendum will ask Kentucky Beef and Dairy Producers, "Shall the producers of bovine animals assess themselves an additional ONE DOLLAR (\$1.00) per head sold and use the funds collected by the Kentucky Beef Promotion Council to finance a program to promote and stimulate by research, marketing, development, and education, the use and sale, domestic and foreign, of bovine animal products?"




Rockcastle FBLA attended the annual Fall Leadership Conference at Eastern Kentucky University on Tuesday October 21st. The theme for this year's conference was Suit Up for the Challenge. The keynote speaker was Laura Barthel, professor of Lecturer of Corporate Communication and Technology. The students attended morning and afternoon workshops including, officer classes, Continuing into College, College 101, Dress Code, Fundraising and many more. In between workshops, they enjoyed lunch on the beautiful ECU campus. A total of 44 FBLA members from Rockcastle attended the conference, along with advisers Vicky Castle, Ashley Mullins, and chaperone MaryAnn Childress. Pictured are front row from left: Jacklynne Thacker, Hannah Childress, Ashley Fletcher, Brittany Carpenter, Emily Payne, Samantha Skinner, Hannah Cotton, Kiana Harris, Skyler Horn, Holly Teague, Becky Barron, Heather Damrell, Deanna Alexander, Lona Morgan, Rebekah Hurley, Kayla Horn, Aaryn Thompson, Makaya McGuire, Leanna Thacker, Dezarae Miller, Dana Robbins, Brittany Taylor, Lexi King, Ashley Whitehead, Cheyenne Parman, and Tiffany King. Back row from left: Oleevia Montano, Sharly Dees, Tabitha Tompkins, Logan Jett, Calan Cromer, Tyler Napier, Austin Brown, Austin Napier, Dustin Samples, Kyle Denny, Zach Loudermilk, Brad Taylor, Jesse Smith, Phillip Cope, Tyler Neal, Andrew Spoonamore, Ethan Vanzant, and Layne Jasper.

Early Deadline For Next Week's Paper

Deadline for next week's paper is 4 p.m. Monday, due to the Thanksgiving holiday.

Standard Rider for Excess Facilities - Rider FF		
	Current	Proposed
Customer shall pay for excess facilities by:		
(a) Making a monthly Excess Facilities charge payment equal to the installed cost of the excess facilities times the following percentage:		
Percentage with No Contribution-in-Aid-of-Construction	1.24%	1.24%
(b) Making a one-time Contribution-in-Aid-of-Construction equal to the installed cost of the excess facilities plus a monthly Excess Facilities Charge payment equal to the installed cost of the excess facilities times the following percentage:		
Percentage with Contribution-in-Aid-of-Construction	0.48%	0.48%

Net Metering Service - Rate NMS
Company proposes text changes to the definition of "Billing Period Credit" to clarify that such a credit is a kWh-denominated electricity credit only, not a monetary credit. Company further proposes text changes to the Metering and Billing section to clarify how the Company accounts for billing period credits for customers taking service under time-of-day rates.

Standard Rider for Redundant Capacity Charge - Rider RC		
	Current (Per kW/kVA)	Proposed (Per kW/kVA)
Capacity Reservation Charge per Month:	\$1.49	\$1.12
Secondary Distribution	\$1.25	\$1.11
Primary Distribution	\$1.25	\$1.11

Standard Rider for Supplemental or Standby Service - Rider SS		
	Current (Per kW/kVA)	Proposed (Per kW/kVA)
Contract Demand per month:		
Secondary	\$12.54	\$12.04
Primary	\$11.99	\$11.63
Transmission	\$10.84	\$10.58

Also, Company proposes text changes to the Minimum Charge provision to clarify that for a Rider SS customer, Company will bill the customer monthly for all of the charges under the customer's applicable rate schedule, including, but not limited to, the applicable basic service charge, energy charges, and adjustment clauses. In addition to those charges, Company will bill the customer monthly a demand charge that is the greater of: (1) the customer's total demand charge calculated under the applicable rate schedule; or (2) the demand charge calculated using the applicable demand rate shown above applied to the Contract Demand.

Temporary and/or Seasonal Electric Service - Rider TS
Availability of Service:
Current: This rider is available at the option of the Customer where Customer's business does not require permanent installation of Company's facilities and is of such nature to require:
1. only seasonal service or temporary service, including service provided for construction of residences or commercial buildings, and where in the judgment of Company the local and system electrical facility capacities are adequate to serve the load without impairment of service to other customers; or
2. where Customer has need for temporary use of Company facilities and Company has facilities it is willing to provide.
This service is available for not less than one (1) month (approximately 30 days), but when service is used longer than one (1) month, any fraction of a month's use will be prorated for billing purposes.
Proposed: This rider is available at the option of Company where:
1. Customer's business does not require permanent installation of Company's facilities excluding service provided for construction of permanent delivery points for residences and commercial buildings, and is of such nature to require only seasonal service or temporary service; or
2. the service is over 50 kW, provided for construction purposes, and where in the judgment of Company the local and system electrical facility capacities are adequate to serve the load without impairment of service to other customers; or
3. where Customer has need for temporary intermittent use of Company facilities and Company has facilities it is willing to provide Customer for installation and operational testing of Customer's equipment.
This service is available for not less than one (1) month (approximately thirty (30) days), but when service is used longer than one (1) month, any fraction of a month's use will be prorated for billing purposes. Where this service is provided under 2 or 3 above, Company will determine the term of service, which shall not exceed one (1) year.

Standard Rate for Low Emission Vehicle Service - Rate LEV	
Current	Proposed
Basic Service Charge per Month:	\$10.75
Energy Charge per kWh:	
Off-Peak Hours	\$0.05587
Intermediate Hours	\$0.07763
Peak Hours	\$0.14297

Proposed - This rate schedule is proposed to be eliminated. The Company will make all reasonable efforts to contact Rate LEV customers to advise them of their new rate options after the Commission approves the new rates but before they take effect (at which time Rate LEV will terminate). Because Rate RTOD-Energy is the new rate most similar to Rate LEV, the Company will automatically transfer to Rate RTOD-Energy all Rate LEV customers who have not responded to the Company's outreach efforts by the effective date of the new rates; however, the Company will continue to make reasonable efforts to obtain those customers' input even after the rate change.

Economic Development Rider - Rider EDR
Company proposes changes to Rider EDR's Terms and Conditions to: (1) clarify the minimum demand required for the rider to be available to customer; (2) increase the range of certifications that can make a customer eligible for Rider EDR to include the Kentucky Business Investment Program (KBI), or the Kentucky Industrial Revitalization Act (KIRA), or the Kentucky Jobs Retention Act (KJRA), or other comparable programs approved by the Commonwealth of Kentucky; and (3) clarify that no credit under EDR will be calculated or applied to a customer's billing in any billing month in which the customer's metered load is less than the load required to be eligible for either Brownfield Development or Economic Development.

Meter Test Charge	
Current Rate	Proposed Rate
\$75.00	\$75.00

Disconnecting and Reconnecting Service Charge	
Current Rate:	Proposed Rate:
\$28.00	\$28.00

Meter Pulse Charge	
Current Rate:	Proposed Rate:
\$15.00 per month per installed set of pulse-generating equipment	\$15.00 per month per installed set of pulse-generating equipment

Customer Deposits	
Current Rate:	Proposed Rate:
For Customers Served Under Residential Service Rate RS:	\$135.00
For Customers Served Under General Service Rate GS:	\$220.00
For all other Customers not classified herein, the deposit will be no more than 2/12 of Customer's actual or estimated annual bill where bills are rendered monthly.	
Proposed Rate:	
For Customers Served Under Residential Service Rates RS, RTOD-Energy, and RTOD-Demand:	\$160.00
For Customers Served Under General Service Rate GS:	\$240.00
For all other Customers not classified herein, the deposit will be no more than 2/12 of Customer's actual or estimated annual bill where bills are rendered monthly.	

Terms and Conditions - Customer Responsibilities
Adding the following provision that could result in a charge to certain customers:
Changes in Service
Where Customer is receiving service and desires relocation or change in facilities not supported by additional load, Customer is responsible for the cost of the relocation or change in facilities through a Non-Refundable Advance.

Terms and Conditions - Budget Payment Plan
Current:
Company's Budget Payment Plan is available to any residential customer or general service customer. Under this plan, a customer may elect to pay, each billing period, a budgeted amount in lieu of billings for actual usage. A customer may enroll in the plan at any time.
Proposed:
Company's Budget Payment Plan is available to any residential customer served under Residential Service Rate RS, or any general service customer served under General Service Rate GS. If a residential customer, who is currently served under Residential Service Rate RS and is currently enrolled in the Budget Payment Plan, elects to take service under Residential Time-of-Day Energy Service Rate RTOD-Energy or Residential Time-of-Day Demand Service Rate RTOD-Demand, such customer would be removed from the Budget Payment Plan and restored to regular billing. Under this plan, a customer may elect to pay, each billing period, a budgeted amount in lieu of billings for actual usage. A customer may enroll in the plan at any time.

Kentucky Utilities Company also proposes to change the text of the following electric tariffs: Residential Service Rate RS, General Service Rate GS, All Electric School Rate AES, Time-of-Day Primary Service Rate TODP, Retail Transmission Service Rate RTS, Lighting Service Rate LS, Restricted Lighting Service Rate RLS, Special Charges, Curtailable Service Rider CSR10, Curtailable Service Rider CSR30, Net Metering Service Rate NMS, Supplemental or Standby Service Rider SS, Temporary and/or Seasonal Service Rider TS, Economic Development Rider, Low Emission Vehicle Service Rate LEV, Demand Side Management Cost Recovery Mechanism DSM, Environmental Cost Recovery Surcharge ECR, and the Terms and Conditions.

Changes to the Terms and Conditions include the addition of a section on Company as a Federal Contractor, meter placement, proposed clarifications on terms and conditions specific to residential electric service, and expanded options for the Company to provide written notice for discontinuance of service due to nonpayment or non-compliance.

Complete copies of the proposed tariffs containing text changes and proposed rates may be obtained by contacting Edwin R. Staton, Kentucky Utilities Company at 220 West Main Street, Louisville, Kentucky, 502-627-4314, or visiting Kentucky Utilities Company's website at www.lge-ku.com.

The foregoing rates reflect a proposed annual increase in revenues of approximately 9.6% to Kentucky Utilities Company.

The estimated amount of the annual change and the average monthly bill to which the proposed electric rates will apply for each electric customer class is as follows:

Electric Rate Class	Average Monthly Usage (kWh)	Annual \$ Increase	Annual % Increase	Monthly Bill \$ Increase	Monthly Bill % Increase
Residential	1,200	56,838,067	9.57	11.01	9.57
General Service	1,934	20,741,924	9.56	21.05	9.56
All Electric School	19,934	1,238,148	9.57	162.68	9.57
Power Service	40,301	21,023,825	9.57	360.95	9.57
TODS (Secondary)	267,430	11,341,999	9.56	2,026.09	9.56
TODP (Primary)	1,406,795	27,203,590	9.57	8,907.53	9.57
Retail Transmission	4,181,329	9,554,633	9.57	24,881.86	9.57
Fluctuating Load	46,733,045	3,010,052	9.57	250,837.67	9.57
Outdoor Lights	59	2,473,044	9.59	1.23	9.63
Lighting Energy	12,325	2,840	9.58	78.89	9.58
Traffic Energy	138	13,216	9.57	1.48	9.60
CTAC	N/A	0	0	0	0
LEV to RTOD-Energy	1,158	1,344	15.51	15.81	15.51

The rates contained in this notice are the rates proposed by Kentucky Utilities Company; however, the Public Service Commission may order rates to be charged that differ from the proposed rates contained in this notice.

Notice is further given that any corporation, association, body politic or person with a substantial interest in the matter may by written request, within thirty (30) days after publication of the notice of the proposed rate changes, request to intervene. The request shall be submitted to the Public Service Commission, P. O. Box 615, Frankfort, Kentucky 40602, and shall set forth the grounds for the request, including the status and interest of the party. Intervention may be granted beyond the thirty (30) day period for good cause shown, however, if the Commission does not receive a written request for intervention within thirty (30) days of initial publication, the Commission may take final action on the application. Any person who has been granted intervention may obtain copies of the application and any other filing made by the utility by contacting Edwin R. Staton, Vice President - State Regulation and Rates, Kentucky Utilities Company, c/o LG&E and KU Energy LLC, 220 West Main Street, Louisville, Kentucky, 502-627-4314.

A copy of the application and testimony shall be available for public inspection at the office of Kentucky Utilities Company, 100 Quality Street, Lexington, Kentucky.

A copy of the application and testimony shall also be available for public inspection at the offices of the Kentucky Public Service Commission located at 211 Sower Boulevard, Frankfort, Kentucky, Monday through Friday, 8:00 a.m. to 4:30 p.m., or through the commission's Web site at <http://psc.ky.gov>. Comments regarding the application may be submitted to the Public Service Commission through its Web site or by mail to Public Service Commission, Post Office Box 615, Frankfort, Kentucky 40602.

A copy of this Notice and the proposed tariff, once filed, shall also be available for public inspection on Kentucky Utilities Company's website at www.lge-ku.com, or through the Public Service Commission's website at <http://psc.ky.gov>.

Kentucky Utilities Company
c/o LG&E and KU Energy LLC
220 West Main Street
P. O. Box 32010
Louisville, Kentucky 40232
502-627-4314

Public Service Commission
211 Sower Boulevard
P. O. Box 615
Frankfort, Kentucky 40601
502-564-3940

Classifieds

CLASSIFIED RATES

- Local Rates - \$4 for 25 words or less - .10 each additional word
- Display Classifieds \$5.00/Inch

Deadline for Classifieds is 10 a.m. TUESDAY

For Rent

Trailer. Deposit required. \$375 month. 859-358-3560. 48xntf

One Bedroom Apartment. Central heat and air. Near Mt. Vernon Elementary. \$400 month/\$400 deposit. 606-758-9882. 859-559-9903. 48x1

3 Bedroom, 2 bath mobile home with large deck and large covered front porch on .49 acres. Off Hwy. 934 (Rockcastle/Pulaski line). Reference and deposit required. 270-816-8066. 48x1

Duplex in Mt. Vernon. Castle Ridge Subdivision. Call Amy Nicely 256-8700. 46xntf

Duplex in Brodhead. All appliances furnished: Call Patty, 758-9666. 17xntf

Trailers and house in Brodhead. No pets. 758-8922. ntf

Accepting applications at Mt. Vernon Housing Authority on Mondays 4 to 8 p.m. and Wednesdays and Fridays, 4 to 6 p.m. Rent based on income. 256-4185. 14xntf

Accepting Applications: For 2 and 3 bedroom units at Valley View Apartments. Rent based on income. Call 256-5912. Equal Housing Opportunity, TDD for hearing impaired only. 1-800-247-2510. 36tfn

For Rent

Maple St. Storage of Brodhead
256-2884 or 606-308-2491

Property For Sale

1 1/2 Acre Trailer Lot. City water. 859-358-3560. 40xntf

2BR/2BA 1450 sq. ft. Selling for \$89,900. Rick Szaks, Broker: 859-255-7777. Lincoln Real Estate, Inc. rickszaks@aol.com 18xntf

Between Mt. Vernon and Somerset: 5.7 wooded acres for \$31,500. Near Berea - 10.2 acres \$31,900. Owner financing available. Call Dwight at 859-331-4888. 8xntf

Lots in Castle Ridge Subdivision. Use same entry way as Bible Baptist Church. All lots have city sewer and underground utilities. starting at \$12,900. 606-256-5692 • 256-4504 • 308-3730. 50x1

Mobile home lots, located in Sunnyside Mobile Home Park. 1/2 acre lots - \$500 down and \$100 per month. Call 606-256-5692 or 606-256-5648. 50x1

Posted

Posted: No hunting or trespassing at 1435 Marler Hollow. Not responsible for bodily injury. Violators will be prosecuted. 47x24p

Posted: No trespassing on property at Location 0 on Sunset Ridge Road. (Property originally owned by Rance Coffey and presently owned by Patricia Rucker). This means all people including those who have been using land in any way and/or are currently using the land, except those given notarized written permission by Scott or Patricia Rucker or Amber Huntman. Violators will be prosecuted. 48x3p

Posted: No hunting, trespassing or ATVs on any Rogers' property on Brown Road (former Carl Brown Road). 44x10p

Posted: No hunting, trespassing or 4-wheeling on land belonging to Shirley and Tom Still at KY 3245. Violators will be arrested and prosecuted. 41x9

Posted: No trespassing on property belonging to Charles Delph at 20 Smith St. in Brodhead. Not responsible for accidents.

Posted: No hunting or trespassing on land belonging to Glen Roberts at 560 Dix River Branch Road, Brodhead. Violators will be prosecuted. 35xntf

Posted: No trespassing on land belonging to James and Dorothy Rash heirs on Rash Branch Road off Chestnut Ridge. No hunting, camping, ATVs, trespassing for any purpose. Not responsible for accidents. Violators will be prosecuted.

Posted: No trespassing on Crawford Place - Old Brodhead Road. Danny Smith. 47fn

Posted: Absolutely no hunting, fishing or trespassing on property belonging to Mark and Debbie Cummins. Violators will be prosecuted.

Posted: No trespassing on property known as C.B. Owens Farm across from Fairgrounds in Brodhead. Violators will be prosecuted.

Mobile Homes For Sale

Bank Repos: Single and doubles - some with land. Owner financing available. Perfect credit not required. Will also do land in lieu of down payment. We also buy mobile homes. Call Jim at 859-985-0344 or 859-623-3089. D&D Mobile Homes at Clays Ferry Exit 97 on I-75 North of Richmond. Open 7 days. Visit us at www.usedmobilehomesrus.com

Help Wanted

Job Opportunity: Rural Transit Enterprises Coordinated, Inc. (RTEC) is seeking a good computer operator to fill the shift dispatcher position. \$10.50 per hour. Full time: 2nd shift 2 p.m. to 10:30 p.m. Part time: Saturday and Sunday 6 a.m. to 6 p.m. Requirements include high school diploma or equivalent and a valid Kentucky driver's license for five (5) years. Apply at RTEC office, 100 Main St., Mt. Vernon, Ky. RTEC operates a drug and alcohol free workplace and is an Equal Opportunity Employer. Minorities are encouraged to apply. 47x2

Health Careers/Health Education Coordinator. Do you have a passion for education, health care and health promotion? The Southern Kentucky Area Health Education Center (AHEC) is looking for an energetic self-starter who is willing to travel throughout our 15-county region teaching children about health and health careers. The position of Health Careers/Health Education Coordinator requires a bachelor's in education or health-related field, great oral and written communication skills, and the ability to manage events and coordinate summer health career camps. Duties include but are not limited to health and health-care presentations to large and small groups, management of youth health career camps, organization of health career clubs, delivery of health education, coordination of job shadowing experiences, and other duties relating to the So. KY AHEC mission as may be assigned. For more information about the mission of the Southern KY AHEC, please visit www.soahecc.org. The Southern KY AHEC is state and federally funded and is hosted by Rockcastle Regional Hospital. Apply online at rockcastlehospital.org/careers, or email cover letter and resume to Carmen Poynter, Rockcastle Regional Hospital human resources director, at c.poynter@rhrcc.org, or mail to Rockcastle Regional Hospital and Respiratory Care, Inc., P.O. Box 1310, Mt.

Vernon, KY 40456. Deadline to apply is Nov. 28, 2014. EOE.

Notices

Looking for some land/acreage to rent or lease. Please call Johnny at 606-308-3259. 48x2p

Need Leaves Raked or any other yard clean-up for the winter? Call Rockcastle 4th grade AAU coach Jesse Bugg for help. Donations accepted and appreciated for work done. All work done by players supervised by adults. 606-425-1190, leave message if no answer.

Notice is hereby given that Donna K. McClure, P.O. Box 183, Mt. Vernon, Ky. 40456 has been appointed executrix of the estate of Juanita S. Stanley on the 12th day of Nov. 2014. Any person having claims against said estate shall present them according to law, to the said Donna K. McClure or to Hon. John D. Ford, Coffey & Ford, P.O. Box 247, Mt. Vernon, Ky. 40456 on or before May 12, 2015. 48x3

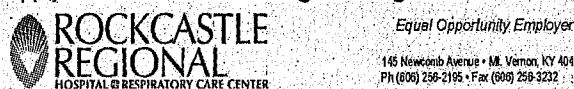
Wanted

Wanted To Buy: Your antiques and collectibles. Antique glassware, furniture, quilts, all types of military items, clocks, watches (working or not), pocket watches and wrist watch parts, pocket knives, coins and paper money. All types of gold, silver, scrap, cast iron banks, toys, lighters, crock jugs, cast iron skillet,

PUBLIC NOTICE
Pursuant to 405 KAR 8:010, Section 16(5), the following is a summary of permitting decisions made by the Department for Natural Resources, Division of Mine Permits with respect to applications to conduct surface coal mining and reclamation operations in Rockcastle County.
JAMIESON CONSTRUCTION COMPANY 9020051 10/23/14

Full-time LPN Position Available

Rockcastle Family Wellness is currently seeking a full-time LPN. Job offers an excellent benefits package, no week-ends and no holidays. Experience preferred but not required. For question please email b.bullock@rhrcc.org and apply on-line at rockcastlehospital.org/careers.



Horizon Adult Health Care, an EOE, has the following job opportunity available in: Rockcastle/Jackson County.

Case Manager: Full-Time- Mon-Fri. day-time position Case Manager needed for Rockcastle/Jackson County. Must be able to communicate and facilitate care along a continuum through effective resource coordination. Required degree: Social Worker, RN, or Bachelors degree in a health care related field. Competitive wage and benefit package available. Minorities are encouraged to apply. Call 606-309-9068 with any questions.

Please send resume to:
American Health Management, Attn: Julie Branham, BSN, RN, P.O. Box 1091, Mt. Vernon, KY. 40456.

marbles, pocket knives, fishing items, Indian Arrowheads, and much, much more. Also buying partial estates. Over 25 years experience. Call Clarence Reece at 606-531-0467. 47xntf

Miscellaneous For Sale

5211 Zetor Tractor w/ loader. Inquire at Brodhead Farm Equipment, 28 W. Main St., Brodhead, Ky. 606-758-9532. 47xntf

Firewood For Sale. We accept heat assistance and wood vouchers. Call or text 859-353-1653 or 859-661-2296. 44x5p

Older Camper for \$300 or will part out. Call 256-0655.

Motor Vehicles For Sale

1989 Chev. 1/2 ton 350, 4 wheel needs work. Have new calipers and fuel filter, need installing. \$1200 obo. Call 606-308-5459. 44xntf
For Sale: 2002 diesel truck, with 7.3 engine, 4 door, super duty fold. Asking \$11,500. 2005 Chevy 3.2 super duty truck, asking \$8,700. 24 foot Pontoon boat, asking \$2,400. 2003 Sandpiper two slide camper, asking \$8,700. 2000 Chevy 4-wheel drive truck, \$3,700. Kawasaki Mule, fully enclosed, \$3,700. 1997 Camper w/sliderside, \$3,700. 1989 Bayliner, 17 1/2 ft. bass boat. New rebuilt motor, 85 hp Evinrude, \$3,700. Case large loader, asking \$5,700. 4 wheel drive John Deere 1755 Tractor, \$5,700. 2000 850 Ford and 35 restored Ferguson. 1960 Chevy Street Rod, \$18,500 and 1950 Chevy Street Rod, \$12,500. 256-4739 or 308-4739. 48x1

Lost/Found

Lost: Beloved family pet. Male Australian Shepherd/Blue Heeler answers to "Cinch." Lost in Calloway area. Call 970-420-1906 or 606-256-5142. 48x1

Found: Male Dog, possibly 1/2 Pomeranian and 1/2 Pug on White Rock Road, Mt. Vernon. Black and Brown with white paws. 256-0786, leave message if no answer.

NOTICE OF BOND RELEASE

PERMIT NO. 902-0052 INCREMENT NO. 1, 2 & 3 PHASE 1 BOND RELEASE
In accordance with the provisions of KRS:350, notice is hereby given that Jamieson Construction Company of 30 Jamieson Lane, London, Kentucky 40744, phone 606-878-7966, intends to apply for a Phase 1 Bond Release on Permit Number 902-0052, Increments Number 1, 2 & 3 which was last issued on April 5, 2012. The application covers an area of approximately 68.18 acres on the Increments of which 68.18 acres was disturbed. The area is located in Rockcastle & Pulaski Counties, Kentucky, approximately, 1.27 mile Northeast from KY 80's junction with KY 1956 and located 1.58 miles Northwest of the confluence of Line Creek and the Cumberland River, 0.5 miles southwest of Billows, Kentucky. The Latitude is 37 deg. 09 min. 59 sec. and the Longitude is 84 deg. 18 min. 13 sec.
The total bonds now in effect for these permit increments are One Hundred and Seventy-Four Thousand and Five Hundred Dollars (\$374,500.00) of which approximately Sixty percent (60%) of the amount will be released by the state and the remainder held until application for Phase 2 Bond Release.
Reclamation work performed includes: backfilling, grading, liming, fertilizing and seeding according to the re-vegetation plan and soil analysis. This work was completed in the Fall of 2014.

A public hearing has been scheduled for December 30, 2014 at 9:30 am, at the Department of Surface Mining, Reclamation and Enforcement, London Regional Office, 85 State Police Road, London, Kentucky 40741. Written comments, objections and requests to attend this public hearing may be submitted to the Director of Field Services, #2 Hudson Hollow, Frankfort, Kentucky 40601 or the Department of Surface Mining, Reclamation and Enforcement, London Regional Office, 85 State Police Road, London, Kentucky 40741. This hearing will be canceled if the Cabinet does not receive a request in writing for the public hearing before December 29, 2014.

B.C.C. Metals

Featuring metal roofing, siding, trim and insulation.

Same day service available on most orders.

Contact Jerry Blair

Toll Free 1-800-658-4902 • 256-4700

Located 4 miles s. of Berea, off U.S. 25 at 862 Lambert Rd. Serving Rockcastle County & surrounding counties.

www.bccmf.com

Mount Vernon Signal

In-County - \$20.00 • Out-of-County - \$27.00 • Out-of-State - \$35.00
Prices Per Year • 10% Discount to Senior Citizens

Name _____
Address _____
City _____
State _____ Zip _____
Please specify.....
New _____ Renewal _____

Mail to: Mt. Vernon Signal • PO Box 185 • Mt. Vernon, KY 40456

22 Creekside Dr., Mt. Vernon.
Home priced at \$129,900. Qualifies for no money down.
Call Megan Hendricks today at 606-392-8555 for you showing.

BERKSHIRE HATHAWAY
HomeServices
Foster, REALTORS®