

Serving Rockcastle County Since 1887

Mount Vernon, Kentucky 40456 - (606) 256-2244

Volume 131 • Number 22 .50 per copy

Thursday, June 8, 2017



### Jeremy Rowe sworn-in as new County Attorney for Rockcastle

A large crowd came out last Thursday for the swearing-in ceremony of newly-appointed Rockcastle County Attorney Jeremy Rowe. In the above photo, District Judge Scott Lawless speaks to the crowd in attendance about the duties of the county attorney and Ralph Baker, pastor of Brodhead Baptist Church, gave the invocation. At left, Chief Circuit Judge Jeffrey Burdette swears in Rowe as his wife Jacinda and daughter Cynthia look on.

## Man steals Jeep, leaves his own vehicle sitting

After robbing car in McDonald's parking lot

By: Mike French

Mount Vernon Police Chief Brian Carter, along with other officers, was called to the local McDonald's Monday morning after a vehicle was reported broken into and several items stolen from inside.

Fortunately for the vehicle owner and police, the local business had joined many other businesses in town in upgrading their video surveillance system recently and police spent most of the morning watching high definition video from the robbery.

"This high def security is making a huge difference in our community," said Carter. "The days of that old black and white fuzzy, poorly-lit image is about gone. And so are the days of not being able to tell who it is in the video."

In another report, during the day sometime Monday, some items had been reported stolen at a different

location.

Later that same day, Carter received a call from Madison County about a stolen Jeep. "Apparently this guy liked the looks of the Jeep better than his own vehicle because he just pulled up beside the Jeep, got out of his own vehicle and took off in the Jeep just leaving his vehicle sitting there," said Carter.

Carter then happened up behind the stolen Jeep on U.S. 461 in Mount Vernon and was able to stop it.

However, while interviewing the suspect at the Mount Vernon Police station, Carter began to notice something familiar about the suspect, Michael Richmond, 36, of Mount Vernon.

"I told the suspect to get up and turn around," said Carter. "Turns out the guy I was interviewing about stealing the Jeep was the same guy I had been watching on the McDonald's video all morning."

Then, upon inspecting the Jeep, stolen items were found in the back seat and the trunk.

"Apparently the same guy who robbed the vehicle at McDonald's was the same guy who stole the Jeep in Madison County," said Carter. "As for the stolen items inside the Jeep, we aren't sure yet who put them there or which robbery they are from but we will get to the bottom of it. As of now, Richmond is charged with two felonies."

Richmond is lodged in the Rockcastle County Detention Center and charged with receiving stolen property but Carter said Madison County police will file the charge of TBUT for the stolen vehicle and the owner of the stolen items found inside the Jeep are still under investigation.

"Carter said the Mount Vernon Police Department has already had over 300 arrests this year which is greatly more than usual by this time of year.

"That is a lot of arrests for a town this size," said Carter. (See "Jeep" on A5)

## First reading of county's budget held at special meeting

At a special called meeting of the Rockcastle Fiscal Court Tuesday, the first reading of the county's 2017-18 budget was held and approved by the court.

The budget, presented by County Treasurer Joe Clontz, shows total expected revenue in the next fiscal year, beginning July 1st, of \$6,943,962, including \$943,485 in carryovers from different accounts.

The general fund part of the budget will mainly come from the occupational

license fee/tax of \$1,525,000 and \$525,000 from the insurance license fee tax. Other areas of revenue for the general fund includes \$287,000 from property taxes on real estate and \$198,828 in rental income from the Administrative Office of the Court for the annex.

Total expected revenue in the general fund amounts to \$3,154,194, which includes a carryover of \$650,000 and transfers out of \$659,746, mainly to the

detention center (\$505,613) and 911 (\$130,422).

The road department expects \$1,482,096 in revenue, which includes \$200,000 in carryover from the 2016-17 fiscal year.

The detention center's revenue is expected to be \$1,338,581, which includes the transfer of \$505,613 from the general fund and \$650,000 from the state for housing state prisoners.

The 911 fund is expected to receive \$215,000 from the telephone fee/tax, \$130,442

as a transfer from the general fund and a \$30,000 carryover for a total of \$375,467.

The Local Government Economic Assistance fund's anticipated revenue of \$234,191 comes from \$130,000 in mineral tax revenue, \$30,600 from state

grants, \$1,700 from recycling receipts and \$40,000 in carryover funds. The CSEPP fund expects revenue of \$325,443, all provided by the federal Homeland Security office.

Besides the \$505,613

(See "Budget" on A5)

## Corey Craig elected SKED Board of Directors President

A Rockcastle County native will lead the Southeast Kentucky Economic Development Corporation's (SKED) Board of Directors for the next two years.

Corey Craig was installed as the nonprofit economic development organization's president at the April Board meeting. Craig takes the reins of the

31-year-old organization from Darryl McGaha who had served as the Board's president since April 2015.

Craig brings six years of SKED experience to the office, having served previously as the organization's secretary and vice-president. He's been a director since 2011 but worked closely with SKED before

that as a part of SKED's General Membership, since 2009, and as chairman of the Rockcastle County Industrial Development Authority.

"SKED is an organization that has been very suc-

(See "SKED" on A5)

## RCIDA holds monthly meeting

By: Mike French

Members of the Rockcastle County Industrial; Development Authority held their regular monthly meeting Monday.

Acting Director Corey Craig informed the board that the Mount Vernon Chamber of Commerce has asked them to purchase an advertisement in their upcoming magazine which will feature the county's many assets.

Craig said the \$1,500 ad will be a full page display that can be used for several benefits, including placing a copy of the magazine in possible promotion or marketing packages to potential site locators who may be interested in moving their business to the county.

The board agreed with purchasing the advertisement.

Craig also explained to (See "RCIDA" on A5)

## River Sweep is June 17th

The 2017 Rockcastle River Sweep will be held Saturday, June 17th from 8:30 to 1 p.m. to help remove tires and trash from the Rockcastle River.

Anyone willing to help may bring a canoe or a flat bottom boat and be ready to get wet and muddy.

Those participating should meet at the river where you ford the river over to Wildcat Mountain. Free t-shirts will be given to participants while supplies last and lunch will be provided after the cleanup.

For more information about the event, call the Rockcastle Solid Waste Office at (606) 256-1902

## Annual Longest Day of Play is June 15th

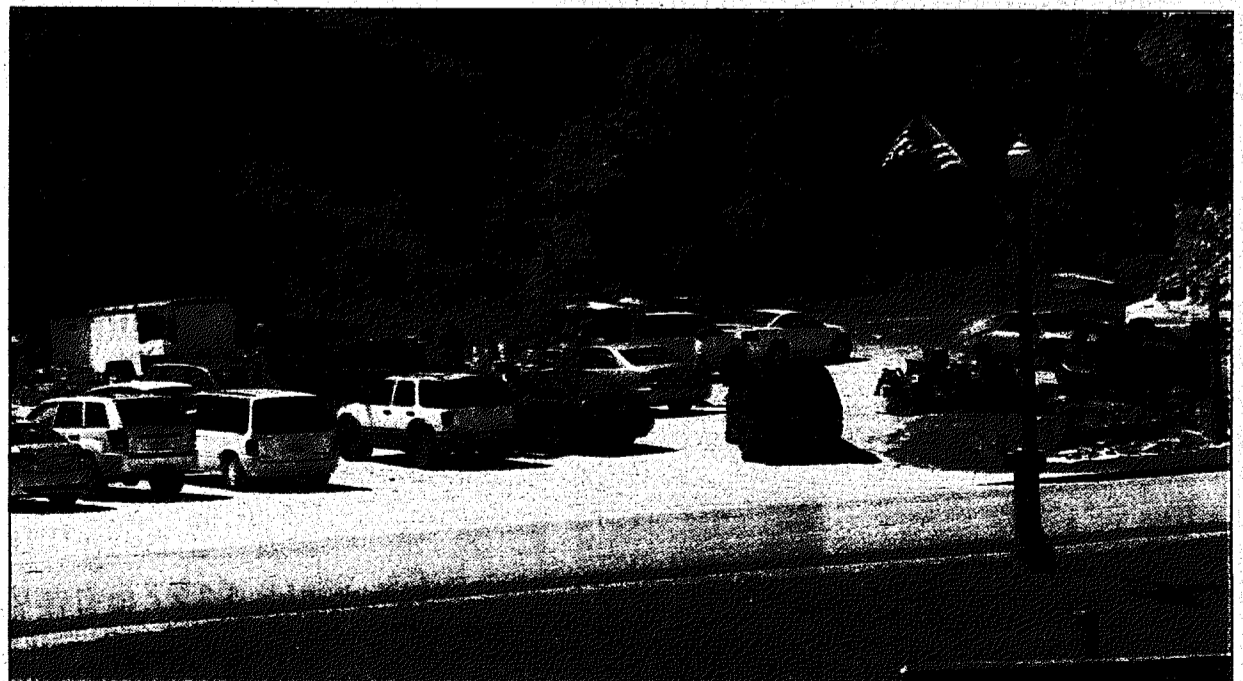
By: Mike French

The annual Longest Day of Play will be held this year on Thursday, June 15th from 5:30 to 8 p.m. The event will once again be hosted by the Rockcastle Healthy Community Coalition.

Activities will be held at RCMS and will include educational booths, inflatables, demonstrations from Shaolin Do and many other activities for children of all ages.

(See "Play" on A5)

## Thousands visit US 25 Yard Sales



Bargain hunters from across the state hit the road last weekend during the sixth annual US 25 Yard Sale. The event stretches from northern Kentucky into Tennessee and involves thousands of yard sales along the highway each year. The three day event brings treasure hunters from surrounding states as seen here at several sales alongside US 25 across from the Derby City Truck Plaza in Mount Vernon.

### Of Special Note Inside

- Viewpoints ..... Pg. A2
- Church News .....Pg. B3
- Classifieds ..... Pgs. B6&7
- Courthouse News .....Pg. B2
- Obituaries ..... Pg. A4
- Sports ..... Pg. B1 & A6

Contact us at: mvsignal@windstream.net  
Deadline submission is Noon Tuesday

Call  
606-256-2244 for  
Advertising &  
Subscriptions



## Aces Over

By Mike French



I get so tickled watching documentaries about evolution of Darwinism. I watch because most of them are funnier than Andy Griffith re-runs, sometimes.

If people can be convinced that we all came from a glob of mucus that floated out of the ocean (which just happened to be there) and a lightning bolt hit it and turned it into a monkey, then I'm pretty sure we could convince people that fairy dust causes pimples and make a fortune selling anti-fairy dust cream.

I hear these narrators talking so seriously about how one turtle developed a low shell so he could make his way through sticks and weeds while another turtle developed high shells so he could reach food. I guess the old "low-shell turtle" doesn't want food.

A story this weekend about giraffes evolving long necks so they could reach high up for food made me wonder how a cow eats with such a short neck.

I especially like how convincing they try to be in explaining why certain animals evolved one way while another evolved another way. In every case, the process of evolution occurred so that a creature could better itself.

Depending upon their environment, these "scientists" say, each creature evolved so that life could be easier for them and they could go forth and multiply (kind of like the Bible suggested).

It's fascinating to me that humans crawled out of the primordial pool so that we could breath air. That wasn't a very good job of evolving if you ask me.

Once our ancestors left the oceans and became land dwelling, air breathers, we eliminated 80% of the earth's surface for our existence.

We "evolved" in such a way that now if we try to breath under water, we die. That was smart.

Our evolution has limited us to 20% of the Earth's surface and we eliminated our ability to survive under water. Duh!

Way to go evolution.

However, there are indeed some forms of evolution that do make sense to me.

For example, we have evolved into a society that will believe anything we are told as long as the guy telling us about it is wearing a suit and tie.

We have evolved into a chemical-dependent, fad-embracing society with no personal responsibility.

The evolution of the "it's someone else's fault" society has been growing every year.

If you want a good laugh, tune into the next documentary about evolution and try to keep a straight face.

It's a great way to spend an afternoon on a rainy day.

## T.J.'s Journal

by: Tonya J. Cook

## Points East

By Ike Adams



Back in the 1980s we had a retired neighbor who decided that she was going to get the wild morning glories out of her garden once and for all.

I'll call her "Nancy" in this column even though that was not her real name. She never wanted her name in the paper back then and, even though she went over to the other side nearly 20 years ago, I'm not going to dishonor it now.

Anyway, Nancy, like most gardeners in our neck of the woods, spent the bulk of her gardening time chopping or pulling purple pig weed, lamb's quarter, crab grass, wild lettuce and wild morning glories out of the

various veggies she liked to grow.

As most gardeners know, morning glories are far more difficult to combat than all other weeds combined and, if you raise a garden larger than a hundred square feet or so, you soon discover that it is impossible to kill all of them unless you stay at it from mid-March until December.

Nancy's plan was pretty simple. She grew some "patio" cucumbers ("awful tasting things") and several tomato plants ("better than no tomatoes at all") in containers scattered around her back yard and simply bought the stuff she normally grew from her neighbors. For instance, I tried to give her a 5 gallon bucket of beets to pickle but she would not take them unless I was willing to accept \$5.00 in payment.

I would catch her gone and leave beans, sweet corn, cabbage, real cucumbers, green onions, lettuce, new potatoes and stuff like that on her front porch but more than once I found unaddressed envelopes with \$\$ in them lying on the seat of my truck.

In the meantime Nancy hired a fellow to mow and spray weed killer all around the perimeter of her garden.

She also hired him to till it once a week or she did it herself. It was not unusual to see Nancy out in the last hour of daylight chopping morning glory sprouts and crab grass out of a 1,000 square feet "garden" that had absolutely nothing else growing in it. She kept it as clean as a clay tennis court and that's the way it looked when planting time rolled around in the spring of 1986 or '87, I forget exactly which.

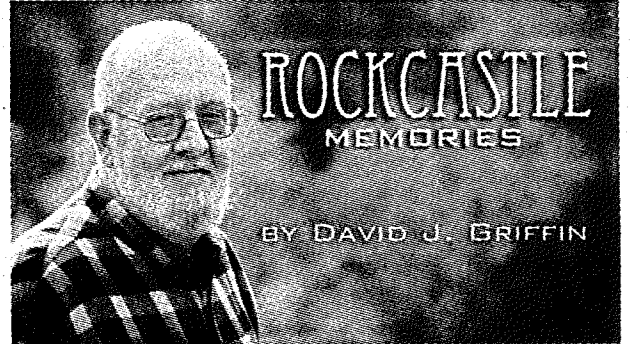
Anyway, the year after she had made sure that not a single morning glory, nor, for that matter, any other weed had gone to seed in or within 20 feet or so of her garden the previous year, Nancy plowed, tilled and set

called 911 to report the sighting. The local dispatch put me through to the Statal Police or the Fish and Game people. I felt ridiculous as I relayed the incident. I just knew they probably thought, "Does that big black bear have a big pink elephant following it?" or "Are there any little green men getting out of a UFO?"

We turned around and went back up to the Renfro Valley exit to see what had happened to the bear. We hoped it hadn't been run over or even shot.

By the time we got back, the Mount Vernon Police were there and looking for the bear. We talked for a bit and reasoned that it had gone into the woods behind the Silver Eagle, which was just opening. See, even bears like to get out and enjoy themselves every once in a while.

(Continued on A-3)



### My First Bicycle

I wonder how many of you remember your first bicycle. I will never forget how I got mine. My grandfather (Pop) and I were shopping at Logan Bryant's hardware and appliance store on Main Street in Mt. Vernon when I noticed a row of bikes in the corner. I was approximately eight-years-old.

Pop saw me looking at a particular model, and he asked, "Do you think you can ride that bike?" Of course, I responded with a resounding, "Yes!" It was then that Pop and Mr. Bryant, who were personal friends, discussed that particular model bike and whether it was the right size for me. Finally, everyone was in agreement. Then Pop, with hand extended, said, "Dave, take my keys and put your new bike in the trunk of my car." To say the least, I was thrilled!

Even though that bike was a no-frills model, it was awesome to me. It was a 24-inch, orange bike with no fenders, but it did have a small "luggage rack" over the back tire.

Upon our arrival at home, I immediately rode my new acquisition to

Kenneth Hansel's house, just to show him. We took turns riding on old US 25 in front of his house. When we decided to ride up to Winstead's store to get an RC Cola, I let him sit on the crossbars, while I did the peddling. It was a small bike, but the two of us could manage to ride together with little discomfort.

Other kids in the neighborhood already had bikes, and we often rode together down old US 25 to the cemetery in Mt. Vernon. I distinctly remember one day when Kenneth was sitting on the crossbars that Earl Benton Cromer approached to ask if he could ride on the luggage rack on the back. So we stopped to allow him to get on, and the three of us rode all the way to Mt. Vernon. Of course, it was impossible for the three of us to ride back up the long hill to our homes, so we solved that problem by taking rides as the other two walked alongside.

I also remember one afternoon when several of us were riding on the street in front of Kenneth's house. Somebody pulled a baseball card out of his pocket and wedged it between the spokes, thereby transform-

(Continued on A-3)

## Mount Vernon Signal

Publication Number 366-000  
 Periodical Postage Paid in Mt. Vernon, Ky. 40456  
 606-256-2244

Published every Thursday since November, 1887. Offices in the Mt. Vernon Signal Building on Main Street in Mt. Vernon, Ky. 40456. Postmaster, send address changes to P.O. Box 185, Mt. Vernon, Kentucky 40456.

James Anderkin, Jr., Publisher Emeritus  
 Perlina M. Anderkin, Publisher/Editor

**SUBSCRIPTION RATES**  
 In County - \$23.00 Yr. Out-of-County - \$27.00 Yr.  
 Out-of-State \$35.00 Yr.  
 e-mail address - mvsignal@windstream.net

**ABSOLUTE ONLINE ONLY Auction** Mr. Bill Cash's

### Commercial Property

860 Richmond St. • Mt. Vernon, Ky.

Bid online at:  
[www.fordbrothersinc.com](http://www.fordbrothersinc.com)

Bidding ends: Friday, June 9, 2017 @ 5 p.m.

Directions: US 25 North from Ford Brothers office toward Renfro Valley, approximately 1/2 mile on right. Property is located near Rite-Aid and McDonald's.

Mr. Cash is building a home and moving to Brodhead & doesn't have the required time to look after a rental property and has authorized our company to sell this property at absolute high dollar.

This property has operated for many years as Ernie's T&M Market and has also been used as other retail businesses. Mr. Cash has kept it up well and has added additional parking by filling in land adjacent to the store building. It would be ideal for many uses such as retail or office space, car lot or dwelling.

Property consists of 3.38 acres. The pictured building has approximately 1800 sq. ft. with open floor plan w/ office space and 1 restroom.

Preview Dates: June 5th & 9th from 3-5 p.m.

Buyer's Premium: A 10% Buyer's Premium will be added to the winning bid to determine the final sale price.

Terms: 20% down due within 48 hours of close of bidding, and balance in 30 days.

**Lord's Auctioneer: SAM FORD**

[www.fordbrothersinc.com](http://www.fordbrothersinc.com)  
 Mt. Vernon, KY 40456-4545  
 606-256-4545 • 800-435-5454

## SourceHOV

PEOPLE | KNOWLEDGE | INNOVATION

### MT VERNON, KY LOCATION

# JOB FAIR!

WEDNESDAY AND THURSDAY  
 JUNE 14<sup>TH</sup>-15<sup>TH</sup>

WEDNESDAY-10AM-5PM  
 THURS-10AM-6PM

Full-Time Positions Available!

### General Clerk Opportunities!

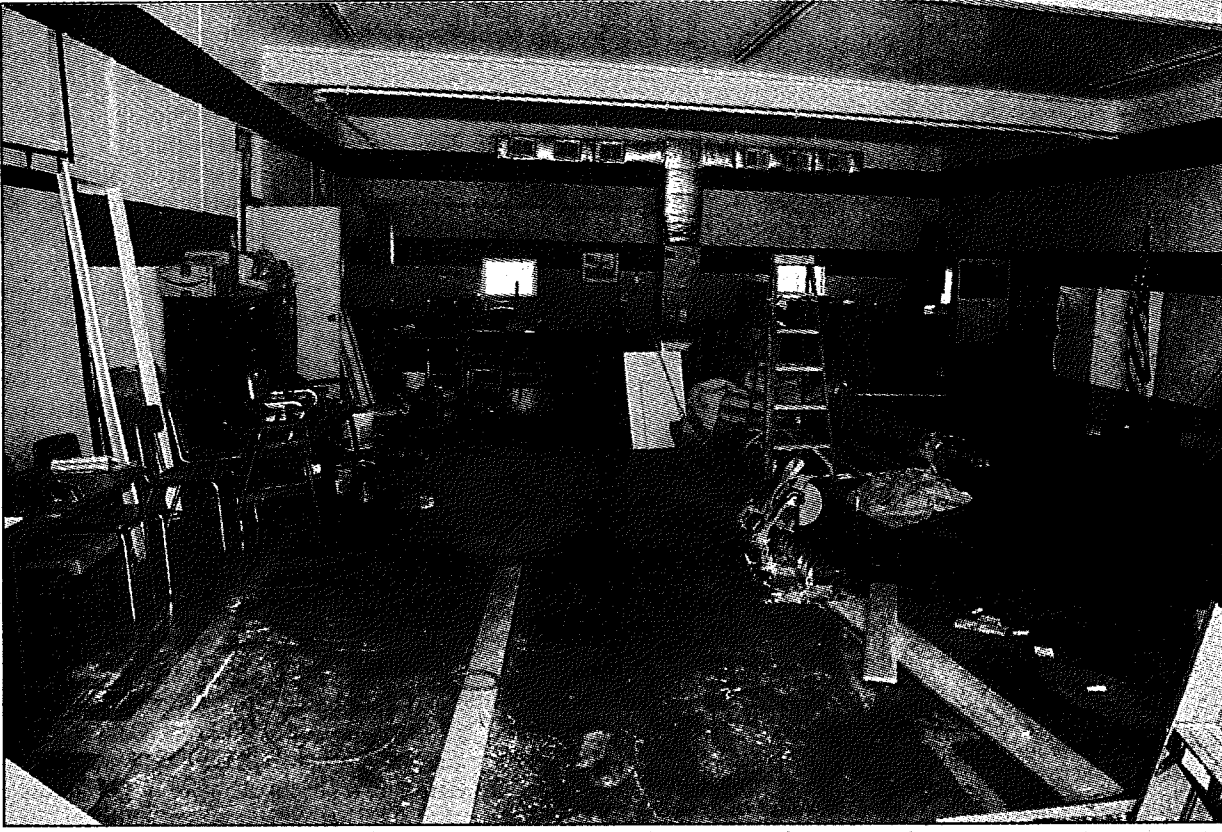
2<sup>nd</sup> shift Available-  
 3:30pm-12am

Base Rate: \$11.21 per hour  
 -plus \$4.27 in health and welfare stipend=\$15.48  
 Referral Bonuses available!!

Job Offers will be made on the spot!

Come see us in person at  
 Rockcastle Adult Education Center  
 955 W Main St. Mt Vernon, KY 40456

SourceHOV is a proud sponsor of the 100,000 jobs Mission to employ America's veterans. We believe that hiring veterans is not only the right thing to do for veterans, but it's a great thing to do for our business. Our Nation's military veterans represent the best this country has to offer and they bring meaningful skills to the workplace. Additionally we are an Equal Opportunity Employer. All qualified applicants will receive consideration for employment without regard to race, color, religion, gender, national origin, age, sexual orientation, gender identification, disability or veteran status. EOE/Minorities/Females/Veterans/Disabled



**Council chambers/police department upgrades underway**

The City of Mt. Vernon's budget surplus this year, along with long term planning, has allowed for the remodeling of the council chambers and police department. The remodeling of the space beside city hall will include new handicapped accessible restrooms, as well as a state-required rear emergency exit to the building. What has been the council chamber in recent years will now be divided into two sections with council chamber housing in the rear half of the building and the Mount Vernon Police Department moved from the basement into the front half of the space facing Richmond Street. Council chambers will receive some upgrades, including a much-needed public address system so that those in attendance may better hear council members during meetings. The police station will also include some upgrades, including office space and needed equipment. Evidence storage will remain in the basement area. Mt. Vernon Police Chief Brian Carter said the force appreciates the attention given to the upgrades by council members and Mayor Michael Bryant. "We will be much more visible and accessible to the public now and these changes will provide us with the means to better protect the people of our city," said Carter. Officials say renovations are expected to be completed by winter.

**"Points East"**

(Continued from A-2)

about planting her garden. One day, around the first of June, she waved and motioned for me to stop as I drove by.

"I want you to come and take a look at my garden," she hollered from her front porch.

I figured she was going to brag on her sweet corn because it was at least 2 weeks ahead of mine or that maybe she was going to offer me a mess of lettuce, radishes and green onions, of which she was also way ahead of me, but the scowl on her face told me that generosity was the farthest thing from her mind.

"I want you to come out here and look at this and tell me what's going on," she said as we walked out

to her garden.

The reason for Nancy's dismay was conspicuous as soon as we got to the edge of the garden. Thousands upon thousands of morning glories in the 2-leaf, just-sprouted stage were all over the garden.

"There was not a weed in here when I finished hoeing just three days ago," she muttered, "and you know as well as I do that I didn't let a one go to seed last year. The seeds are too heavy for the wind to blow them very far, so how on earth did these morning glories get here?"

I told her that maybe it was an act of God.

"Act of God, my foot!" Nancy exclaimed. "If wild morning glories are an act of anything

It's the devil that's behind it."

"All I can say to that is Amen," I told her.

**"Memories"**

(Continued from A-2)

ing the bike into a "motorcycle." Within a few minutes, we were all "buzzing" along as we rode together, feeling free as the wind itself.

Because the ride from my house to Mt. Vernon was entirely downhill, sometimes Pop would drive quite slowly from the cemetery up the road to our house while all along I was holding on to his door handle. He basically used the vehicle to pull me and my bike up the hill.

The guys in our neighborhood rode bikes everywhere together. We could, and would, ride all day and with never a complaint of being tired. The world was our playground.

Friendships were cemented because of our bikes, our love of riding together, and the explorations that we took. Our adventures on our bikes were a big part of growing up and developing lasting relationships. Those were the good old days indeed.

(You can reach me at themtman@att.net or you can drop me a line at 2167 Furnace Road - Stanton, KY 40380. I appreciate your comments and suggestions.)

**Rockcastle Community Bulletin Board**  
Sponsored By  
**Cox Funeral Home**

**Family Owned & Operated Since 1907**  
80 Maple Drive, Mt. Vernon, Ky. Ph. 256-2345  
Toll Free 1-888-825-2345 • 24-Hour Obit Line 256-5454  
[www.coxfuneralhomeky.com](http://www.coxfuneralhomeky.com)

**Bookmobile Schedule**  
**Monday, June 12th:** KY 3245, Bryant Ridge. **Tuesday, June 13th:** Scaffold Cane, Clear Creek and Wildie.

**RRTA Meeting**  
The Rockcastle Retired Teachers' Association will meet Wednesday, June 21st at 11:30 a.m. at Limestone Grille. A dedication and remembrance program is planned for those members who have passed during the last year. Please join us for this very special program. New officers for 2017-18 will be elected.

**Open Day for Cornerstone Clothing Ministry**

Cornerstone Clothing Ministry will have its open day this Saturday, June 10th from 10 a.m. to 2 p.m. The clothing ministry is located at 50 Lovell Court in Mt. Vernon. We have summer clothes, ranging from infants to adults. We also have scrubs for anyone in the medical field. You can go to our Facebook page (Cornerstone of Mt. Vernon) for updates.

**Ride for the Cure**  
On Saturday, June 10th, beginning at 10 a.m. Ride for the Cure will be held at Richmond Motorsports (RMS) behind Cracker Barrel. \$15 per rider and \$10 per passenger. Includes silent auction, chapter challenge and a scenic, escorted ride. Lunch provided. Pre-register at RMC or register at 10 a.m. on the 10th. Ride begins at 11:30 a.m. All proceeds benefit Hospice Care Plus. Contact Patsy Bennett at RMS for more info 623-5900.

**VA State Service Officer in London**  
A certified and trained State Service Officer will be at the London DAV building on East 80, behind Valero Truck Stop on Tuesday, June 13, 2017 from 8 a.m. to noon to assist all veterans, for free, and their dependents with VA claims. For more information, call 606-862-0032 or 606-877-1308.

**Chamber of Commerce Meetings**  
The Rockcastle County Chamber of Commerce meets once a month, on the third Tuesday, at noon at Limestone Grille. All members are encouraged to attend.

**VFW Post Item**  
VFW Post 5908 at Lake Linville welcomes all members and is also looking for new and associate members. New hours are: Wed. - Sat., 5 p.m. to ? Call 606-386-1490 for more information.

**Rockcastle County Recovery Meetings**  
\*Celebrate Recovery-Brodhead: Located in the Community Outreach Center (next to Fairgrounds), every Monday, 6 to 8 p.m. 606-308-3368 or 606-308-3099.  
\*Celebrate Recovery-Northside Baptist every Tuesday, 6 to 8 p.m. 606-256-5577.  
\*Celebrate Recovery-Step Stuffers, Northside Baptist, Wednesday at 7 p.m. 606-256-5577.  
\*Broken Chains Bible Study at Cruisers Motorcycle Sales on Hwy. 25 North, 4 miles north of Mt. Vernon every Thursday at 6:30 p.m. 859-302-2431.  
\*Celebrate Recovery-Livingston at Livingston School cafeteria. Friday, 6 to 8 p.m. 859-314-7828.

**DAR Meetings**  
The Rockcastle Chapter of the Daughters of the American Revolution meets the first Monday of each month, September-May at 6 p.m. at First Christian Church in Mt. Vernon. All prospective members are welcome to attend.

**Brodhead Lodge Meeting**  
The Brodhead Masonic Lodge #566 meets every third Saturday at 7 p.m. on Main Street in Brodhead above Brodhead Pharmacy.

**Alcoholics Anonymous**  
Alcoholics Anonymous meets Tuesday nights at 8 p.m. behind Our Lady of Mt. Vernon Catholic Church on Williams St. in Mt. Vernon.

**Kiwanis Club Meetings**  
The Rockcastle Kiwanis Club meets every Thursday at noon at the Limestone Grill. Everyone is invited.

**Historical Society Hours**  
The Rockcastle Historical Society is open on Mondays from 10 a.m. to 2 p.m. in the RTEC garage building.

**American Legion Post 71**  
American Legion Post 71 meets the second Thursday at 6 p.m. of each month at the Limestone Grill. Commander Rick Bobo (308-2271) invites all Rockcastle veterans to join this organization that honors American soldiers, sailors and airmen.

**Thank You for your Service!**

CENTURY 21 Advantage Realty, A Robinson Company, through our participating agents, is now offering a discount program for those who protect, defend, serve and care for our Country and our communities!

21% discount! Qualified buyers and sellers may receive a 21% discount of our fees!\*

Call your local CENTURY 21 Advantage Realty office or agent today for details!

[www.century21advantage.com](http://www.century21advantage.com)

\* Additional terms and conditions apply.  
\* Applicants must be or have been employed in the following service professions below.

**Call Jennifer Hand**  
**606-392-1999**

AUTO | HOME | LIFE | BUSINESS | A MEMBER SERVICE | KYFB.COM

**Accidents happen close to home. Shouldn't that be where your insurance is?**

No matter where you live in Kentucky, there's a Kentucky Farm Bureau Insurance agent nearby committed to taking care of your insurance needs.

**Marlene Lawson, Agency Mgr.**  
Shelly Mullins - Agent • John Lawson - Agent  
US Hwy. 25 S • Mt. Vernon  
**606-256-2050**

**KENTUCKY FARM BUREAU** **BIG ON COMMITMENT.**

*News and advertising deadline is noon Tuesday*  
*Call 256-2244*

**King's Eye Care**

*"Our Focus is on Your Eyes"*

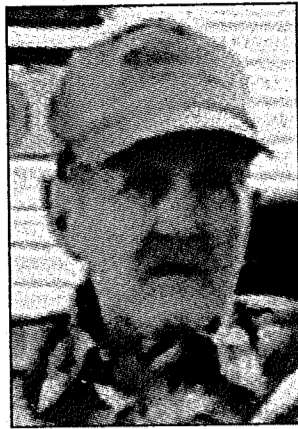
**Dr. Gary E. King & Dr. Sarah King**  
- Optometrists

Eye Exams • Contact Lenses • Glasses  
Evening Appointments Available

**859-986-7027**  
**800-347-2318**

109 Boone St. • Berea, KY 40403  
[www.eyedoctorberea.net](http://www.eyedoctorberea.net)

# Obituaries



## James Arvil McKinney

James Arvil McKinney, 75, of Mt. Vernon, died Monday, June 5, 2017 at his home. He loved hunting, fishing, camping, gardening and being with his family and friends. He was a member of the Baptist faith, also a Missionary Baptist Preacher for about 32 years.

He was the loving husband of Elizabeth Irene (Bullock) McKinney of 54 years. They were united in Holy Matrimony on August 6, 1963 and from that union came five children: Donna Bowling, Denita (Kevin) Bullock, Jimmy (Lisa) McKinney, Johnny McKinney and Jason McKinney, all of Mt. Vernon. He was blessed with 10 grandchildren and seven great grandchildren, as well as several nieces and nephews.

He was the son of the late Clyde Russell McKinney and Jennie Mae (McClure) McKinney. He was the brother of Brenda Abbott (and the late Joel Abbott) and Barbara Evans (and the late Marion Evans), both of Somerset, and Larry Dale McKinney of Eubank.

Besides his parents, he was preceded in death by several aunts and uncles.

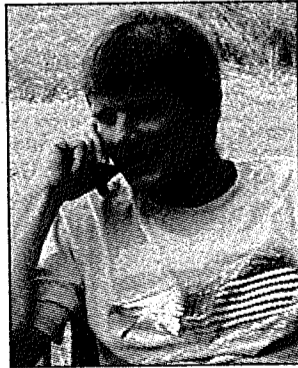
Visitation will be held from 6 p.m. - 9 p.m. (today) Thursday, June 8 at the Marvin E. Owens Home for Funerals and again from 10 a.m. - 1 p.m. Friday, June 9 at the funeral home.

Funeral services will be conducted at 1 p.m. Friday, June 9, 2017 with Bro. Eugene Gentry and Bro. Zandal Hasty officiating. Burial will follow in Popular Grove Cemetery.

Casketbearers will be: Matt Bullock, Steven McKinney, Tim McKinney, Josh McKinney, and Jacob McKinney.

Donations in memory of Arvil may be made to the Popular Grove Cemetery Fund.

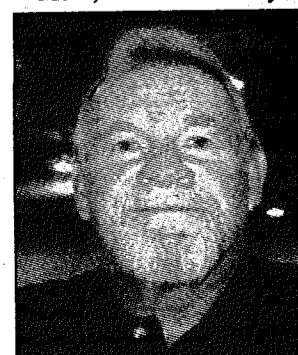
Condolences may be made at [www.marvineowensfuneralhome.com](http://www.marvineowensfuneralhome.com)



## In Loving Memory of Brian K. Cromer

July 14, 1969-June 7, 2011  
The pain has eased but never gone away.

Sadly Missed,  
Mom, Dad and Family



## In Loving Memory of Leon Rowe

June 12, 1944-  
December 20, 2013

Sadly Missed by Family  
Judy, Pat, Leigh Ann and Scott, Lucas and Morgan, Zachary and Tabitha, James Marcus and Lacey.  
We love you and still miss you.



## Jeff A. Carr

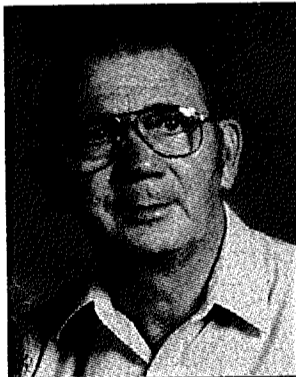
Jeff A. Carr, 58, of Brodhead, died Thursday, June 1, 2017 at the Rockcastle Hospital. He was born December 20, 1958, in Springfield, IL to Rev. Charles Franklin and Faye (Jenkins) Carr. He worked at Okonite Cable Company in Richmond. He was a member of the Church of God and enjoyed riding his motorcycle, fishing, buying and trading guns, and spending time with his grandbabies. He was also a member of the Patriot Guard Rider Club.

Those left to celebrate his life are: his wife, Carrie Carr of Livingston; his daughter, Stephanie (Scott) Daugherty of Brodhead; his mother, Faye Carr of Brodhead; his grandchildren, Aiden, Ashton and Addley Daugherty, all of Brodhead; his brothers, Frank Carr of Brodhead, Rev. Michael (Lou Ann) Carr of Hilton Head, SC, and Chris (DeAnn) Carr of Cabot, AR; his sister, Patty (Raymond, Jr.) Asher of Brodhead; as well as a host of friends and neighbors.

Besides his father, Rev. Charles Franklin Carr, he was preceded in death by his sister, Felicia Carr.

Funeral services were held Sunday, June 4, 2017 at the Marvin E. Owens Home for Funerals with Bro. Gary Parker officiating. Burial was in Piney Grove Cemetery.

Condolences may be made at [www.marvineowensfuneralhome.com](http://www.marvineowensfuneralhome.com)



## Martin Vance

Martin Dee Vance, 85, of Canoe, Ky., died Wednesday, May 24, 2017 at Baptist Health in Lexington with his wife by his side.

He was born January 2, 1932 in Rockcastle County, to the late John Dee and Vera Graves Vance. He was a member of Turkey Creek Baptist Church in Breathitt County.

Survivors include his wife of 52 years, Jackie Smith Vance; his six children, Jackie (Jeff) Davenport of Somerset, Louise Newsome of Science Hill, Clint (Brenda) Vance of Science Hill, Barbara Vance of Cincinnati, Glee (Rob) Mudd of Lexington and Martina Vance of Jackson; 15 grandchildren and three sisters, Iva Dean Vance and Glee Crowder, both of Indianapolis, Indiana and Wathalyne Payne of Somerset.

Besides his parents, he was preceded in death by three infant grandchildren; a sister, Clara Kay Wall and a nephew, Vincent Pittman. Funeral services were conducted Saturday, May 27th at Watts Funeral Home in Jackson by Bro. Daid Caudill.

Burial was in the Fern Valley Smith Family Cemetery at Canoe.



## Laura Ruth Kirby

Laura Ruth (Bingham) Kirby, 82, of Nancy, died Friday, June 2, 2017, at Lake Cumberland Regional Medical Center in Somerset. Born December 19, 1934, in Livingston, she was a daughter of the late Dewey and Bertha Parker Bingham. She will be fondly remembered as owner operator of Bingham's Restaurant. She was active in the Dunnville Christian Church. She enjoyed having guests in her home and providing hospitality for them. She was passionate about politics. She was an artist, painter, and adventure seeker. She was an entrepreneur and realtor.

Survivors include: her husband, whom she wed on December 19, 1967, Thomas Kirby; daughter, Laura Lee (Steve) Fox of Dunnville; two grandsons, Jason (Emily) Fox of Elizabethtown and Charlie (Natalie) Fox of Lexington; and four great grandchildren, Stella, Vivian, Stanley, and Boone Thomas.

Funeral services were held Monday, June 5, 2017, at the Dunnville Christian Church with Jason and Charlie Fox officiating. Burial was in the Lakeside Memorial Gardens in Nancy. Pallbearers were: David VanHoosier, Pat Terry, Kyle Terry, Carl Kirby, Derek Kirby, and William Kirby. Honorary pallbearers were Boone Thomas Fox and Stanley Fox.

Memorial contributions are suggested to the Dunnville Christian Church Building Fund, PO Box 149, Dunnville, KY 42528.

Arrangements entrusted to McKinney-Brown Funeral Home with online guestbook at [www.mckinneybrown.com](http://www.mckinneybrown.com).  
Courtesy of Marvin E. Owens Home for Funerals

## Vernon Cameron

Vernon Cameron, 66, of Indianapolis, Indiana died June 1, 2017.

He was born September 8, 1950 in Mt. Vernon to Dan and Helen Cameron, both now deceased.

Survivors include his son, Gary Lee Bullock; daughter, Melinda Faye Cameron Lucas; grandchildren, Melina Bullock, Landon Wade Roberts, Nancy Leeann Roberts and great grandchildren, Allen and Steven Bullock.

Besides his parents, he was preceded in death by his siblings, Nelson Ray Cameron, Brady Marshall Cameron, Sharon Woodall, Eula Cameron Renner, Cleda Pearl Cameron Lovell and Wanda Cameron Ramsey.

## Cemetery Notices

### Piney Grove Cemetery

All decorations on the ground at Piney Grove Cemetery shall be removed by noon June 10, 2017 so mowing can resume.

Thanks to all who donated for upkeep of the cemetery. Donations can be made to Piney Grove Cemetery, 16 Silver St., Brodhead, Ky. 40409.



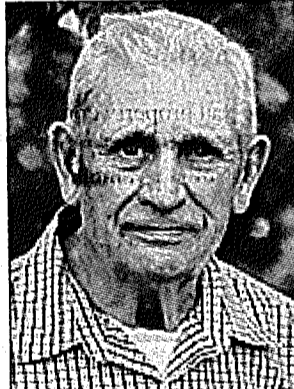
## Barbara Ann Lovell

Barbara Ann Lovell, 75, of Mt. Vernon, died Friday, June 2, 2017 at the Hospice Inpatient Care Center in Louisville. She was born November 17, 1941 in Sand Gap, the daughter of the late Andy and Goldie Mullins Overbay. She was a homemaker, enjoyed spending time with her family, friends, and grandchildren and was a member of the Protestant faith.

Survivors are: one daughter, Melissa Finley of Louisville; two sisters, Marie Drew and Karen Haviland; three grandchildren; and one great grandchild. Besides her parents, she was preceded in death by: her husband, Doug Lovell; and one son, Tim McIntosh

Funeral services were conducted Monday, June 5, 2017 at the Cox Funeral Home with Bro. Luther Allen officiating. Burial was in the Freedom Cemetery.

View the complete obituary, sign the guest registry, or send condolences to the family online at: [www.coxfuneralhome.com](http://www.coxfuneralhome.com)



## Walter McCoy, Jr.

Walter McCoy, Jr., 85, of Fort Smith, AR and formerly of Rockcastle County, died Tuesday, May 30, 2017 at Ashton Place Nursing Home in Fort Smith, AR. He was born in Columbus, OH on April 8, 1932, the son of Walter and Ella Griffin McCoy. He was a retired machinist for Bluegrass Army Depot, an Army Veteran of the Korean

War, a member of Brodhead Masonic Lodge #566 and a member of Brush Creek Holiness Church. He enjoyed fishing, gardening and flea markets.

He is survived by: his wife, Nannie Mae McGuire McCoy of Fort Smith, AR; two sons, Walter Bradley and Karen McCoy of Brodhead and Darrell Glenn McCoy of Scranton, AR; one daughter, Mary (Bill) Reith of Fort Smith, AR; five grandchildren, Tasha Taylor, Chris McCoy, Travis McCoy, Nikki Owens and Alisha Thompson; and nine great grandchildren, Bradin Owens, Alexas Owens, Nathan Owens, Michael McCoy, Hailey McCoy, Allison McCoy, Andrew McCoy, Christian Thompson and Hayzenn Thompson.

In addition to his parents, he was preceded in death by one brother, John McCoy.

Funeral services were conducted Saturday, June 3, 2017 at Brush Creek Holiness Church by Bro. Lonnie McGuire. Burial followed in Briarfield Cemetery.

Pallbearers were: Chris McCoy, Travis McCoy, Rick McCoy, Bill Reith, Manual McCoy, Glenn and Matthew Owens.

Arrangements were by Dowell & Martin Funeral Home.

Visit [www.DowellMartin.com](http://www.DowellMartin.com) to view online obituary.

## Anna Mae VanWinkle

Anna Mae VanWinkle, 70, of Orlando, died Wednesday, May 31, 2017 at Baptist Health Hospital in Richmond. She was born in Rockcastle County on September 28, 1946, the daughter of Raymond and Ruby Himes Croucher. She was a saw mill operator, homemaker and a life-long member of New Hope Baptist Church. She enjoyed gardening and flowers, going to church and loved cooking. She loved everyone including her church family where she was the card lady and she especially loved her little dog "Little Bit". She was loved by all and will be missed very much.

She is survived by: her husband of 53 happy years, Wendell VanWinkle; one son, Dowell (Linda) VanWinkle of Mt. Vernon; one daughter, Marecca Owens and Alan Leblanc of Orlando; two brothers, Letcher Croucher of Mt. Vernon and Darrell Croucher of Berea; two sisters, Minnie Pearl Mullins of Livingston and Louise VanWinkle of Orlando; her sister-in-law, Geneva VanWinkle of Orlando; and seven half-brothers and sisters. Also surviving are eight grandchildren, Cody and Maria Owens of Mt. Vernon, Jeremy Owens of Orlando, Krista and Jason Allen of Orlando, Kendra and David Lynch of McKee, Dowell VanWinkle, Jr. of Mt. Vernon, Ashley VanWinkle of Berea, Aaron and Sara VanWinkle of Berea and Andrea VanWinkle of Mt. Vernon; 14 great grandchildren; and a host of friends and family.

In addition to her parents, she was preceded in death by two great grandchildren and other family members.

Funeral services were conducted Sunday, June 4, 2017 at New Hope Baptist Church by Bros. Keith Carr and David Carpenter. Burial followed in the Johnetta Cemetery.

Pallbearers were: James Ray VanWinkle, James Bowles, Ronnie Baker, Raymond Baker, Cody Owens and D.J. VanWinkle.

Arrangements were by Dowell & Martin Funeral Home. Visit [www.DowellMartin.com](http://www.DowellMartin.com) to view online obituary.

## Rita Huff

Rita Ann Huff, 67, of Mt. Vernon, died Friday, June 2, 2017 at the Berea Health & Rehabilitation Center in Berea. She was born in Washington County on September 7, 1949, the daughter of Plumer and Edna Fowler Reynolds. She retired from Rockcastle Regional Hospital as an LPN after over 20 years of service. She loved fishing and was a member of Grace Baptist Church.

She is survived by: her sons, Jackie Huff of Livingston and Tim (Victoria) Huff of Conway; a brother, Dave Reynolds of Springfield; and two grandchildren, Christopher Huff and Annie Martina Fields, both of Conway. She was preceded in death by her husband, Jackie Huff and a brother, Gerald Reynolds.

Funeral services were conducted Monday, June 5, 2017 at the Dowell & Martin Funeral Home Chapel by Bro. Raymond Offutt. Burial followed in Cresthaven Memorial Cemetery.

Pallbearers were: Vester Maples, Vince Huff, Gary McNally, Chris Huff, Andy Pigg and Tim Griffiths.

Visit [www.DowellMartin.com](http://www.DowellMartin.com) to view online obituary.

## Upcoming Reunions

### Stewart-Leger Reunion

The Stewart-Leger Reunion will be held Sat., July 1st at Flat Rock Baptist Church, beginning at noon. Bring a covered dish.

### Ambrose Reunion

The Ambrose Reunion will be held at the home of Roxie Ambrose, on Scaffold Cane Loop, on Sunday, June 11th, beginning at 1 p.m. Bring a covered dish and chair. Everyone welcome.

### Harrison Family Reunion

The Harrison Family Reunion will be held Saturday, June 24th, beginning at noon at the Woodstock Community Center.

All family and friends are invited.

### Thacker/Brooks Reunion

The Thacker/Brooks Reunion will be held Saturday, June 10th, starting around noon at Roundstone Baptist Church. Bring a covered side dish or dessert. All family and friends invited.

### Cope Reunion

The annual Cope Reunion will be held Sunday, June 18th at Berea Park on Chestnut St., 10 a.m. to dark. Lunch will be served at 1 p.m.

All family and friends are invited to come. Bring a covered dish.

## Nifty Nifty - Look Who's 50!

Chrysti "Coach" Noble  
From: Guess Who?

## Posted:

No trespassing at 38 Town Branch Road in Mount Vernon.

## HONEY BEE SWARM REMOVAL

Eight out of ten Honey Bee swarms will not survive without our help!  
"Become a Honey Bee Guardian"  
When you see a swarm of honey bees call D & A Swarm Chasers  
Doug Brock at 606-386-1890  
Audy D. Faulkner at 606-758-8636  
Doug & Audy  
or Email us at: [cdougbrock@hotmail.com](mailto:cdougbrock@hotmail.com)!  
So Who You Gona Call? D & A Swarm Chasers  
Doug at 386-1890 & Audy at 758-8636  
This is a FREE community service by: D & A Swarm Chasers  
Bees will be relocated to a safe place!!!!

**SKED**

(Continued from front) ccessful at helping the small businesses and communities of Southeast Kentucky for many years," Craig said. "I am honored to be a small part of it."

Craig is President/CEO and a director of Citizens Bank and Rockcastle Bancorp, Inc. He has a BS in Business Administration from Berea College and is a 2003 graduate of the Louisiana State University School of Banking. He also serves on the boards of the Bankers Bank of Kentucky, Bluegrass Community Bankers Association, Rockcastle County Industrial Development Authority and the Mountain Association for Community Economic Development (MACED).

Assisting Craig in SKED's oversight during the next two years are the remaining members of the SKED Executive Committee: Ben Sams, account executive with Cisco Systems, vice-president; Praetorian Standard Inc. Project Manager David Blakeman as secretary; Somerset CPA Shirley Gifford as treasurer; and Lake Cumberland Area Development District Director Darryl McGaha as at-large director.

Other directors currently serving on the SKED Board are as follows: Charlene Harris, president and CEO of First National Bank of Russell Springs; Dr. Jo Marshall, president of Somerset Community College; Virginia Flanagan, special assistant to the President of Campbellsville University; Tim Barnes, president and CEO of Hometown Bank; Daryl Smith, economic development project manager with Kentucky Utilities; Tim Gibbs, president and CEO of Ashland Alliance and Carol Wright, president and CEO of Jackson Energy Cooperative.

SKED Executive Director, Brett Traver, says the corporation is honored to be represented by such distinguished and experienced directors, as it begins its 31st year of service to the region.

"Our volunteer board members take time from their busy schedules each month to help lead the organization's programs and make important financial decisions," Traver said. "Their volunteer efforts are invaluable to SKED's future success. We look forward to working with Corey and the new executive committee during the next two years."

SKED is a non-profit economic development organization and has been designated a Certified Development Corporation (CDC) by the U.S. Small Business Administration. The organization was formed 31 years ago by Fifth District Congressman Hal Rogers to create jobs in Southeast Kentucky.

Its offices are based in Somerset, and serve a 45-county service region. A staff of eight professionals work with business owners, small and large, to identify financing solutions to fund their location, expansion and working capital needs, and provides technical assistance and training.

For more information about SKED, visit [www.southeastkentucky.com](http://www.southeastkentucky.com) or call (606) 677-6100.

**Budget**

(Continued from front)

budgeted for transfer to the detention center, appropriations for the general fund, totaling \$3,154,194, other expense items include \$376,954 to the sheriff's office, with the two major expenditures being \$170,000 in program support and \$157,449 in employee benefits paid from the general fund; \$73,679 to the county clerk's office, mainly for employee benefits; \$38,290 to the county attorney's office; \$199,036 for maintenance personnel, utilities, supplies and insurance; \$118,370 for the annex for custodial personnel, supplies and insurance; \$83,102 to the five county fire departments for program support and utilities; \$74,166 to the animal shelter for wages, employee benefits, etc; \$70,000 to the ambulance service, \$60,000 of which is program support; \$668,819 for debt service of which amount \$198,071 is reimbursed to the county for a lease payment from SourceCorp and a reimbursement of \$13,813 from the KMHF; \$48,000 in program support and public safety support to the cities of Livingston and Brodhead and \$430,642 for a contingency fund.

The major appropriations from the road fund include \$475,000 for road supervisor and workers salaries, \$100,000 for road materials, \$75,000 for equipment repairs, \$50,000 for machinery and equipment, \$60,000 for petroleum products and \$176,023 for debt service with \$133,039 set aside for contingencies.

The detention center's appropriations of \$1,338,581, includes \$604,387 for the jailer's, supervisors and other personnel salaries; \$170,000 for food, \$130,000 for routine medical, \$95,000 for principal and interest on leased funds and \$243,850 for employee benefits, including \$116,305 for retirement benefits.

The L.G.E.A. account's expenditures of \$234,191 includes: \$12,750 for the coroner and deputies wages; \$5,000 to the coroner's office for program support; \$21,000 to the RCIDA for program support; \$33,500 for road work release supervisors; \$35,600 for roadside litter and dump clean up and \$34,500 for solid waste coordinator wages.

911 appropriations, which total \$375,467, includes \$192,400 for the coordinator, full-time and part-time salaries; \$31,250 for mapping, \$22,348 for dispatch equipment and maintenance and \$25,000 for telephone service.

The budget must now be submitted to the state for approval and the second reading must be held and approved by the court before the end of the fiscal year which is June 30, 2017.

During the meeting, the court heard a presentation by representatives of

Binswanger, a company who specializes in selling and leasing commercial properties throughout the country and internationally, concerning selling/leasing the former Anchor Packaging building. This is the second time Binswanger has made a presentation to the court.

James A. Medberry, a senior vice president, with the company told the court that the property had great potential for many reasons, including its "great location," the dual rail spur, its plastic silos and the fact that the building has been well maintained by the court.

Medberry explained to the court his company's plan for marketing the building, including direct mail to companies that would have the most interest in this type of building. "We find people rather than waiting for people to find us," Medberry said.

The matter was not discussed by the court, after the presentation, but, if they decide to sign an 18 month contract with Binswanger, their initial investment will be \$15,154 to the company for the marketing budget. Medberry said the marketing campaign would be "customized to Mt. Vernon."

If successful in selling or leasing the building, the company's commission would be 6% of the sale or lease price. Medberry told the court that his recommendation for a sale price would be \$3 million. He added that the sale price might be lowered if a company would be bringing a lot of jobs to the county and the reverse if there were fewer jobs involved.

The county currently owes \$2.4 million on the Anchor building.

During the meeting, the court also approved an expenditure of \$9,000 for a used tractor (\$6,500) and two batwing mowers (\$1,500 each) and approved a 7.4% real property county tax rate; 8.2% for personal property, motor vehicles and watercraft and a 2.5% bank deposit rate.

**"Jeep"**

(Continued from front)

Carter, "and I attribute a large part of it to the better surveillance in the area. This is making our job a lot easier and is helping business owners retrieve their property, on the same day many times.

By the end of the day Monday, the McDonald's robbery had been solved and the Jeep robbery had been solved and the Jeep returned to its owner. The origination of the stolen items found inside the Jeep are still under investigation.

**RCIDA**

(Continued from front)

members present that the \$2,400 in the budget to Jackson Energy covers the cost of lighting at the Industrial Park including a maintenance program. Craig also asked members of the board to keep an eye out for burned out lighting at the park. "Originally, it was my understanding that Jackson

Energy was going to keep an eye on the lights at the park and keep them replaced as needed. But that has sort of changed over the years and it's up to us to police the area now," said Craig. "If you should see a burned out light, please let us know and we will contact Jackson Energy to have it replaced."

Craig also led the discussion concerning the RCIDA website. "Most, if not all, of the information on the site is stale now and needs to be updated," he said. "Mainly some new colors and upgrades and links should be added to let people know that we are keeping up with it and keep interest sparked for those who may visit the site."

The board currently spends nearly \$400 per year on the site and Craig said the board should be thinking about the subject. "We should probably revisit our goals and objectives for having the site and better maximize it's potential or do away with it completely," said Craig.

All board members present agreed that the website could be a useful tool for the county and will discuss the growth and development of the site in more detail after more thought has been given to the issue.

Craig said he believes the last upgrade to the site was made in 2009.

The board then entered into closed session to discuss real estate issues. The next regular meeting is planned for July 3.

**Play**

(Continued from front)

The Fit Family Run is also planned. This provides an opportunity for parents and children to participate in events together while helping raise money for great causes in the area.

There will also be the popular fastest kid-in-town race, a family relay race and the half-hour charity chase. A free light meal will be served and there will be prize drawings for a girl's and boy's bicycle.

During the charity race, participants will walk or run around the track as many times as possible in 30 minutes and the Rockcastle Regional Hospital will donate \$1 for every lap completed to a charity chosen upon registering.

As in years past, the registration fee will be a canned goods product that will be donated to the Grateful Bread Food Pantry.

There is a 200-participant limit on the race. For

more information about the scheduling, visit [rockcastle.org/race/june/](http://rockcastle.org/race/june/).

The Longest Day of Play is an opportunity for the community to come together for an afternoon of health awareness and physical activity.

**Kentucky Afield Outdoors**

**Spring turkey season among highest on record**

Turkey hunters in Kentucky encountered wind, rain and wild temperature swings this past spring season but did not let factors out of their control keep them from posting impressive results.

The 2017 youth-only and general seasons produced a total harvest of 33,061 turkeys—a 6.5 percent increase over 2016 and the third highest on record for the state.

"We were expecting a pretty good harvest this spring because we had decent hatches in 2014 and in 2015," said Zak Danks, wild turkey program coordinator with the Kentucky Department of Fish and Wildlife Resources. "We knew this would provide a bunch of 2- to 3-year-old gobblers for hunters to pursue. But seeing this spring's big harvest was welcome news, and it's a testament to the skill and passion of Kentucky hunters."

Wild turkeys are found across the state thanks to an extensive restoration effort conducted from 1978-1997, and the spring turkey harvest has ballooned since hunters took 13,505 birds in the first modern day, statewide season in 1996.

The spring harvest has held steady since hunters bagged a record 36,097 birds in 2010 with an average of 31,814 birds taken in the seven seasons since 2010. By comparison, the average spring harvest in the seven seasons before 2010 was 26,982.

"Judging by our recent spring harvest totals, turkey populations are strong across the state," Danks said. "I attribute this to our sound season timing and bag limit."

Most counties show stable to increasing harvest totals while some have declined over the past five years. Danks believes any declines are due in part to a natural correction after high population years fueled by excellent poult production.

Brood production has leveled off over the past decade, which Danks interprets as a sign the popula-

The Kentucky Blood Center Bloodmobile will be holding a blood drive during the event.

For more information about the event, contact Taylor Readnower at [treadnower@soahcc.org](mailto:treadnower@soahcc.org) or call (606) 256-0950.

tion is stabilizing with the habitat's carrying capacity. Carrying capacity is the number of animals the habitat can support and it can vary from year to year based on a variety of factors.

"Some states have seen population and harvest declines, so we want to be cautious and not put extra pressure on the population right now," Danks said. "We are seeing pockets of counties with declining harvest, and several factors are probably impacting populations. Foremost is brood production and recruitment of young birds into the population during summer and fall."

"Weather and predators impact the hatch from year to year, but having enough nesting and brood-rearing habitat provides a strong buffer. We have biologists across the state who can help private landowners improve turkey habitat at the local level, so contact them for options. But, again, our turkey population appears in good shape and we want to keep it that way."

The top five counties by total spring harvest in 2017 were Muhlenberg (682), Logan (663), Pulaski (610), Hart (606) and Ohio (556). When comparing the number of turkeys harvested per square mile in a county, Pendleton County was first in the state (1.76) followed by Campbell (1.56) and Bracken (1.53).

Kentucky ranks among the top, among surrounding states in birds taken per square mile.

The final tally for the 2017 spring season was impressive considering the uneven weather encountered by hunters.

Average temperatures in April across Kentucky were among the warmest on record while most of the state was wetter than average.

The two-day youth season opened to below-normal temperatures and ended buffeted by wind. While the youth season harvest finished down 9 percent, it re-

(Continued on A7)

**NOTICE OF SECOND READING OF ORDINANCE**

The Fiscal Court of the County of Rockcastle, Kentucky, at a meeting to be held at 4 p.m., local time, on June 19, 2017 in the Fiscal Court, at 205 E. Main Street, Mt. Vernon, KY 40456 in the County of Rockcastle, Kentucky, will consider for passage, the following ordinance:

**AN ORDINANCE APPROVING A LEASE IN AN AGGREGATE PRINCIPAL AMOUNT OF APPROXIMATELY \$750,000 FOR THE PURPOSE OF REFINANCING A PRIOR LEASE AND PAYING THE COSTS RELATED THERETO; PROVIDING FOR THE PAYMENT AND SECURITY OF THE LEASE; CREATING A SINKING FUND; AND AUTHORIZING THE EXECUTION OF VARIOUS DOCUMENTS RELATED TO SUCH LEASE.**

It is hereby certified that the foregoing ordinance provides for approval of a lease with the bank, financial institution or finance corporation offering the lowest and best interest rate, as lessor for financing certain public improvements and provides a general obligation pledge to assess and levy sufficient taxes to comply with the obligations to make lease payments, establishes and maintains a sinking fund for the deposit and application of tax revenues, and makes certain designations regarding the Lease.

A complete copy of the ordinance may be reviewed at the office of the County of Rockcastle, Kentucky at 205 E. Main St., Mt. Vernon, KY 40456.

/s/ Doug Bishop, Judge-Executive

**The market is HOT!**

**Your Home Could Be Listed Here!**

 Commercial Property 1.66 AC 701 Faith Mountain Rd. • Mt. Vernon \$149,900	 100 Red Bud Dr. • Mt. Vernon \$139,900	 3240 S Wilderness Rd. • Mt. Vernon \$134,900
 55 Thrasher Ln. • Crab Orchard \$99,900	 500 W. Main St. • Mt. Vernon \$94,900	 1168 Red Hill Rd. • Livingston \$79,900
 74 Acres 3287 Climax Rd. • Mt. Vernon \$69,900	 4525 Brindle Ridge • Brodhead \$62,900	 80 Hill St. • Mt. Vernon \$54,900

**Weichert, Realtors**

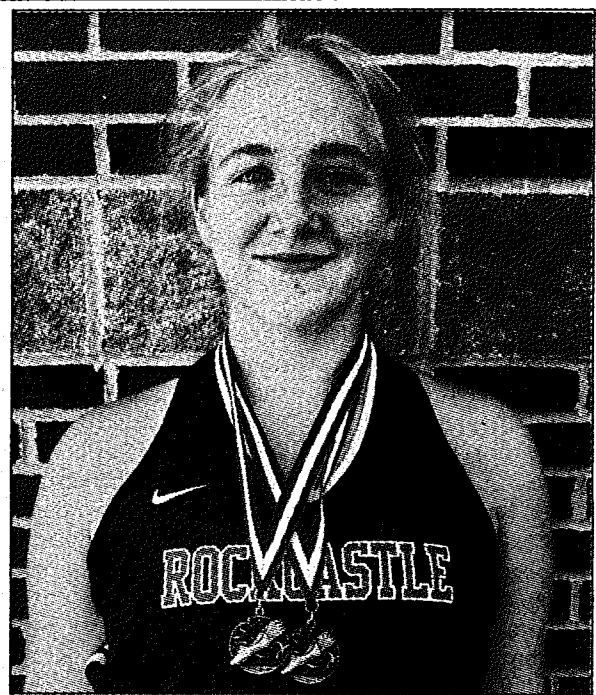
**Ford Brothers**

**(606) 256-5229**

[richmond@fordbrothersinc.com](mailto:richmond@fordbrothersinc.com)  
[www.fordbrothersinc.com](http://www.fordbrothersinc.com)



# SPORTS



## Kendrick wins state in discus

RCMS 8th grader Valerie Kendrick won the discus state championship at the KTCCCA Middle School State Track and Field Championships at the University of Louisville on Saturday. Valerie dominated the competition, winning by an amazing margin of 11'3" with an awesome throw of 99'2". She had a great performance in shot put as well, placing 4th overall with an incredible throw of 34'11.5". She also led RCMS in scoring with 15 total points.



The RCMS girls' track team had a great performance at the KTCCCA Middle School State Track & Field Championships at the University of Louisville on Saturday. After losing over 50 points from last year's two-time defending state championship team, the girls' finished in 11th place overall out of 150 schools that were entered. They were only one point away from 9th place and not far away from the top five. Team members are from left: Lexi Dotson, Hannah Davis, Jailey Martin, Allie Martin, Reina Lykins, Valerie Kendrick, Jessalyn Burton, Aliyah Lopez, Bethany Martin, Jasmine Ashcraft, and Destiny Bullen.

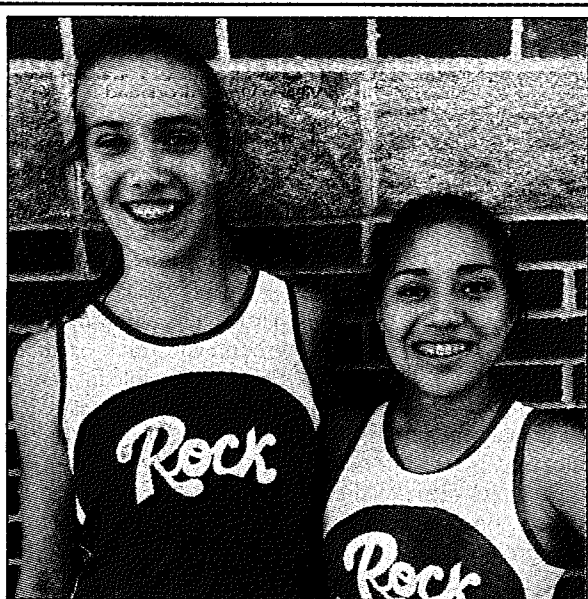
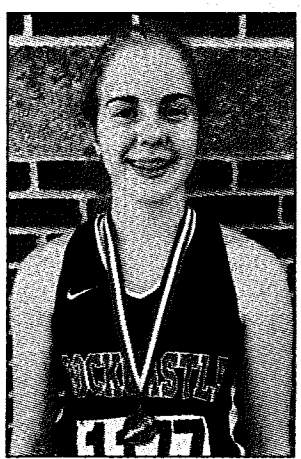
RCMS 7th grader Reina Lykins had two amazing performances in the hurdles at the KTCCCA Middle School State Track and Field Championships at the University of Louisville on Saturday. In the 100-meter hurdles, she won her heat and placed 8th in her first-ever appearance in the race at the middle school state level with an awesome time of 17.96 seconds. She finished as the top 7th grader in the state in the event. In the 300-meter hurdles, Reina shattered her all-time personal best, winning her heat and placing 6th overall with an incredible time of 51.86 seconds. She finished 2nd among all 7th grade competitors.



The RCMS girls' 4x400-meter relay team had an amazing performance at the KTCCCA Middle School State Track and Field Championships on Saturday at the University of Louisville. From left, the team of 7th grader Reina Lykins, 7th grader Jailey Martin, 8th grader Aliyah Lopez, and 7th grader Allie Martin ran an awesome season's best time of 4:43.29, placing an impressive 17th overall.



RCMS 7th grader Allie Martin had amazing performances in the sprints and long jump at the KTCCCA Middle School State Track and Field Championships on Saturday at the University of Louisville. In the 400-meter dash, she placed 6th overall with an awesome time of 1:02.92, just missing her all-time personal best in the event. She finished 2nd among all 7th grade competitors. In the 200-meter dash, Allie missed scoring by only two hundredths of a second, placing 9th overall while shattering her all-time personal best in the event with an incredible all-time personal best of 27.23 seconds. She finished 4th among all 7th grade competitors. In long jump, Allie had another great performance, placing 11th overall and 3rd among all 7th graders with an awesome jump of 14'10.5".

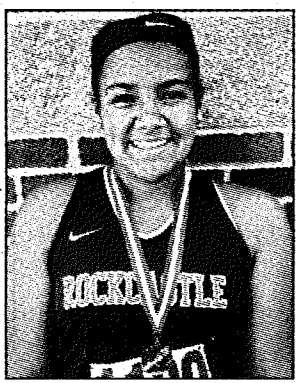


The RCMS girls' 4x200-meter relay team had an impressive performance at the KTCCCA Middle School State Track and Field Championships at the University of Louisville on Saturday. The youngest relay group competing at state in the event, the team included 8th grader Hannah Davis (right), along with 5th graders Bethany Martin (left), Destiny Bullen (not pictured), and Lexi Dotson (not pictured). They placed 36th overall with a great time of 2:11.44.

RCMS 7th grader Jailey Martin had a great performance in triple jump at the KTCCCA Middle School State Track and Field Championships on Saturday at the University of Louisville. Jailey jumped an impressive 28'5" in her first-ever attempt at the event at the state level, placing 14th overall and 3rd among all 7th grade competitors. Amazingly, she started doing the event after only a couple weeks of training and has had several jumps of 32' plus in practice. She should be a top contender to win the event at state next year.



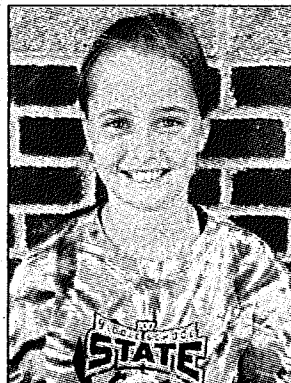
RCMS 8th grader Jessalyn Burton had two great performances in the throwing events in her first-ever appearance at the KTCCCA Middle School State Track and Field Championships on Saturday at the University of Louisville. In discus, she just missed scoring with a 9th place finish and an awesome throw of 79'5". In shot put, Jessalyn earned a state medal with an impressive 8th place finish overall and an amazing throw of 33'0.5".



RCMS 8th grader Aliyah Lopez had a great performance in the javelin throw at the KTCCCA Middle School State Track and Field Championships on Saturday at the University of Louisville. The all-time RCMS record holder in the event, Aliyah threw an amazing 72'9" and placed 14th overall.



Rockcastle 5th grader Lexi Dotson had an amazing performance in the 800-meter run at the KTCCCA Middle School State Track and Field Championships on Saturday at the University of Louisville. She placed an impressive 20th overall with an awesome all-time personal best of 2:42.23, shattering her previous best by over 4 seconds. Lexi was the only 5th grader that competed in the state finals.



The RCMS girls' 4x800-meter relay team had an amazing performance at the KTCCCA Middle School State Track and Field Championships on Saturday at the University of Louisville. From left, the team of 8th grader Jasmine Ashcraft, 7th grader Jailey Martin, 5th grader Lexi Dotson, and 5th grader Destiny Bullen (not pictured) shattered their season's best time by over 25 seconds, placing 16th overall and running an incredible time of 11:31.65.

RCMS 8th grader Jasmine Ashcraft had a great performance in the distance events at the KTCCCA Middle School State Track and Field Championships. In the 1600-meter run, she placed 11th overall with a great time of 5:54.67. She followed that with a 12th place finish in the 3200-meter run with another great time of 13:05.21.



## Residents urged to work together to prevent problems with bears

John Hast has a word of advice for anyone tempted to throw doughnuts or food scraps to a bear: Don't.

"We've found that time and time again, a fed bear is a dead bear," said Hast, the bear program coordinator for the Kentucky Department of Fish and Wildlife Resources. "A bear that is used to human food, whether it's scraps or garbage, begins to lose its fear of people. And that's where the problems begin."

Department employees have already euthanized more than one bear this year because the animals had been fed by humans and presented a potential danger to the public. Hast said communities working together can prevent this kind of outcome.

"How can people help keep the wild in wildlife?" Hast said. "The solution can be as easy as not putting your garbage out until the morning it's picked up. A garbage can set out overnight is a tempting target for a bear, and teaches them that humans are a source of food."

The need for bear awareness now extends beyond the mountains of eastern Kentucky as the state's bear population expands. Because young male bears displaced from their home areas may wander widely in the spring and summer, it's possible to see a roaming bear anywhere in the state. This week, Kentucky Fish and Wildlife officials have received reports of a bear working its way through Henry County into Shelby then Spencer counties.

"The bear observed in Spencer County this week is likely a male that got kicked out of the breeding range in the mountains recently," Hast said. "We had two bears move through central Kentucky last summer; one ended up crossing the river to Indiana while the other spent time at Bernheim Forest."

Residents in bear areas can do more than just keep their garbage in a secure location until pickup. Other suggestions for making an area less attractive to bears include:

- Only feeding outside pets what they will eat at one sitting, and not leaving pet food out overnight.
- Removing birdfeeders in spring and summer. Birds have plenty of natural foods available at this time of year.
- Keeping grills clean and changing drip pans frequently.
- Throwing food scraps in the trash, not a yard or fire pit.
- Surrounding beehives with an electric fence, an effective bear deterrent.

As for those doughnuts? Feeding a bear is against the law in Kentucky. Call 1-800-25-ALERT if you spot someone doing this.

Kentucky Fish and Wildlife maintains an extensive amount of information on its website. Go online to fw.ky.gov and search under the key words, "black bear."

"We all can help wildlife remain wild by being responsible with our food scraps and garbage," Hast said. "A few small changes in our habits, like keeping garbage secure and inaccessible, can keep bears, coyotes and other animals that are only looking for an easy meal from becoming a nuisance."

*Kentucky Afield Outdoors*

# Two good State Resort Parks for early bass fishing

The months of May and June make for two of the best for catching largemouth bass. The weather is warm, but not too hot, and the largemouth bass feed heavily as warmer water temperatures increase their desire to eat.

Largemouth bass are one of the most popular sport fish in Kentucky. Two of Kentucky's excellent state resort parks, Barren River Lake State Resort and Lake Barkley State Resort Park, lie on two of the best largemouth bass lakes in our state.

A buddy weekend of largemouth bass fishing while staying at one of these top class state resort parks could be the trip of the year.

1) Barren River Lake State Resort Park:

The 2017 Fishing Forecast produced by the Fisheries Division of the Kentucky Department of Fish and Wildlife Resources rated the largemouth bass fishery in Barren River Lake as good/excellent, noting the lake is chock full of 2- to 4-pound fish.

"You are launching at a good spot at the Barren River State Resort Park camp," said Geoff Roberts, conservation educator at Kentucky Fish and Wildlife's Salato Wildlife Education Center. "You are within a very short run to the biggest tributaries on the lake: Skaggs Creek and Pecker Creek. Barren River State Resort is also near deep main lake spots that are productive for largemouth bass in summer."

Roberts knows Barren River Lake like the back of his hand and has landed myriad largemouth bass in the 3- to 5-pound range from the lake over the years with some larger bass mixed in with these. In early summer, he likes a jig in hues of green pumpkin, brown, orange with a touch of chartreuse or a medium running shad-colored crankbait to catch largemouths.

"The bass move to main lake points after they spawn," Roberts said. "Focus on ones that are near deep water. They need deep water nearby in summer."

A river or major creek channel swinging close to one of those points supplies the needed deep water sanctuary.

"As you fish those points, work the drop that

falls off into the river or creek channel," Roberts said. A jig fished in a slow pull and drop retrieve works great in these spots as does the crankbait worked shallow to deep.

"The state resort park is also close to main lake bluffs that are productive for largemouth and Kentucky spotted bass in hot weather," Roberts said. A crankbait worked parallel to the bluff walls picks off bass suspended in the water column near the bluff, waiting for a school of shad to amble by.

"I also like to throw topwater baits in the early morning during summer," Roberts said.

2) Lake Barkley State Resort Park:

Lake Barkley is not only one of the best largemouth bass lakes in Kentucky, but also one of the best in the nation. It consistently rates high in Bassmaster Magazine's Best 100 Bass Lakes in the country.

Lake Barkley State Resort Park is in the Little River arm of the lake. A bass angler could have an excellent weekend of early summer largemouth bass fishing without ever leaving the Little River arm.

A shallow lake by Kentucky standards, fishing near the submerged creek channels is key to catching early summer largemouths on Lake Barkley. Anglers who pound shallow cover near the bank will pick off the occasional small largemouth, but anglers who want quality must fish near the channel.

In the early morning, largemouth bass move onto the flats near the channel to feed on shad or small bluegill. Those flats with some brush or other cover on them are best. A medium-running shad-colored crankbait fished on the flat allows an angler to cover water and catch bass. A white buzzbait fished in the same area draws vicious hits from bass in the low light of dawn.

As the sun rises in the sky, an old school 3/16-ounce Texas rigged curly tailed worm in the plum glitter or junebug colors fished along the channel drops draws strikes. A 6-inch green pumpkin lizard fished on a 1/2-ounce Carolina rig also works well in summer, especially if the water has some color to it. Cast the Carolina rig onto the flat and work it back into the chan-

nel. When the truly hot weather sets in, bass anglers move to the main lake and the mouths of major creek arms and fish humps and channel drops near deep water. Locals call these spots "ledges." A 10-inch

plum glitter or red shad-colored curly tailed worm fished on 5/8-ounce Shakey heads draws strikes. A 3/4-ounce black and blue jig and trailer combination also works well on the ledges for largemouth bass. Slowly crawl these lures

on the bottom along the ledge. Fishing the ledges may present the best chance of the year to catch a largemouth bass larger than 6 pounds.

Head to Barren River Lake or Lake Barkley State Resort Parks for a fun week-

end of bass fishing and boating this summer.

*Author Lee McClellan is a nationally award-winning associate editor for Kentucky Afield magazine, the official publication of the Kentucky Department of Fish and Wildlife Resources. He is a life-long hunter and angler, with a passion for smallmouth bass fishing.*

## "Turkey"

(Continued from A5)

main within 2 percent of the five-year average of 1,728 turkeys.

The 23-day general season opened on Easter week-

### Friendly Reminder

## Check your driver's license expiration date

The Department of Transportation has stopped sending out renewal reminders.

Circuit Court Clerk Eliza York reminds everyone to check your driver's license's expiration date. You may renew your license up to six months prior to expiration.

Driver's licenses can be renewed Monday through Friday from 8 a.m. to 4 p.m. The circuit clerk's office is also open the first Saturday of each month from 8:30 a.m. to noon.

CDL drivers are advised to come in Monday through Friday as they sometimes require special attention.

If you have any questions, call the Circuit Clerk's office at 606-256-2581 for assistance.

end in April and closed May 7. Opening day weather was close to ideal but rain affected parts of the state that Sunday. Nevertheless, hunters posted the third highest opening weekend harvest behind 2010 and 2012. The 20,975 turkeys taken over the season's final 21 days were a 4.9 percent increase

over the previous year.

"This spring was just fantastic," Danks said. "Now let's cross our fingers for good weather over the next few weeks to help those broods survive and thrive. Let's work to provide good habitat, too. Then let's chase them again come fall."

### Financial Aid Tip for Students

## Private loans bridge gap between college costs

Most college-bound students qualify for financial aid to help pay for their education, such as federal and state grants, scholarships and Federal Direct and PLUS Loans. In addition, local scholarships are often available, according to the Kentucky Higher Education Assistance Authority (KHEAA). A parent can also borrow a federal loan to help pay their child's college costs.

Those programs make it easier to pay for college. However, they may not cover all the costs. When that happens, many people turn to private student loans, also called alternative loans.

The interest rates on private loans largely depend on the borrower's credit rating. So some students and parents may have to pay higher interest rates than they would on federal student loans. In addition, many lenders require students to have a cosigner, and some require the college to certify that the student needs the loan.

Students and parents are encouraged to do research before committing to any loan. They should compare the loans offered by various lenders to find the best possible deal.

KHEAA is the state agency that administers

Kentucky's student financial aid programs, including the Kentucky Educational Excellence Scholarship (KEES). Its sister agency, the Kentucky Higher Education Student Loan Corporation (KHESLC), offers Advantage Loans to help students and parents pay for college or to refinance student loans. For more information about Advantage Loans, visit [www.advantageeducationloan.com](http://www.advantageeducationloan.com).

For more information about Kentucky scholarships and grants, visit [www.kheaa.com](http://www.kheaa.com); write KHEAA, P.O. Box 798, Frankfort, KY 40602; or call 800-928-8926, ext. 6-7214.

# Free Summer Meals FOR KIDS & TEENS

No income guidelines, registration or enrollment required. All children 18 and under are welcome!

**COMMUNITY OUTREACH CENTER**  
36 Castle Village Drive, Brodhead

**Thursdays**  
June 1, 2017 - August 3, 2017  
Meals served 2:00 - 4:00 PM

**BRODHEAD FARMER'S MARKET**  
Parking Lot Beside Depot Park

**Saturdays**  
June 17, 2017 - July 22, 2017  
Meals served 10:30 AM - 12:00 PM

**LONGEST DAY OF PLAY**  
Rockcastle County Middle School

**Thursday, June 15**  
Meals served 5:30 - 8:00 PM



Programs made possible by USDF, Rockcastle County Schools, Brodhead Farmer's Market, Gord's Food Pantry, Bank and PANK Community Mission Team. These partnerships are equal opportunity providers.

For All Your Hometown News . . .

Subscribe to the

# Mount Vernon Signal

In-County - \$23.00

Out-of-County - \$27.00

Out-of-State - \$35.00

Prices Per Year

10% Discount to Senior Citizens

Name \_\_\_\_\_

Address \_\_\_\_\_

City \_\_\_\_\_

State \_\_\_\_\_ Zip \_\_\_\_\_


Please specify.....


New \_\_\_\_\_ Renewal \_\_\_\_\_


Mail to: Mt. Vernon Signal • PO Box 185 • Mt. Vernon, KY 40456

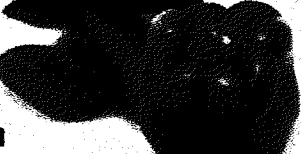
# Save a lot food stores


## FRESH PRODUCE ITEMS

Fresh **Strawberries** \$2.29  
1 lb. pkg. 

Fresh Red or White **SEEDLESS Grapes** \$1.49  
lb. 

Fresh Large **ATHENA Cantaloupes** \$2.29  


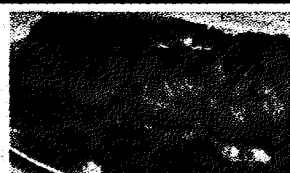
Fresh Green **Peppers or Cucumbers** .59  
each 


Assorted Varieties **LITTLE DEBBIE Big Pack SNACK CAKES** 2/\$6  



Assorted Varieties **Lays Potato Chips** 2/\$6  
9.5-10 oz bag  Assorted Varieties **Doritos** 2/\$5  
10.5 oz bag 

## FRESH MEAT ITEMS!

Fresh Boneless Beef **Sirloin Tip ROAST** \$2.79  
lb. 

Fresh Boneless **Pork Sirloin ROAST** \$1.59  
lb. 

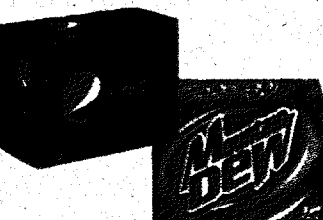
Jumbo Pack Fresh Fryer **Leg Quarters** .49  
(5 lbs. or more) lb. 

Family Pack Boneless Sirloin **Pork Chops or Ribs** \$1.79  
lb. 

Family Pack Boneless Beef **Sirloin Tip Steaks** \$2.99  
lb. 

Fresh Boneless **Pork Cube STEAKS** \$1.99  
lb. 

Try our **PICK 5** Fresh Meat & Frozen Products **MIX & MATCH!** **PICK 5 FOR \$19.99**

12 Pack/12 Oz. Cans **Pepsi & Products** 3/\$10  


AD PRICES GOOD JUNE 5th - 11th, 2017

## SPECIAL BUYS

Assorted Varieties <b>Betty Crocker Hamburger Helper</b> \$1 5.9-6.6 oz. pkg. 	Assorted Varieties <b>KNORR Pasta or Rice SIDES</b> \$1 4.3 - 5.6 oz pkg. 	Assorted Varieties <b>Betty Crocker Butter Recipe Cake Mix</b> \$1 15.25 oz box 	<b>Betty Crocker Pancake, Muffin or Biscuit Mix</b> .99 6.5 - 7.5 oz. pkg. 
<b>Pillsbury Grands Buttermilk, Butter Tastin or Flaky Biscuits</b> \$1 10.2 oz. pkg. 	<b>Nestle Toll House Chocolate Chip Cookie Dough</b> \$4.99 36 oz. tub 	<b>TGI Friday's Cheddar Bacon or Bacon Ranch Potato Skins</b> \$3.49 18 oz. bag 	<b>Ore Ida Golden or Crinkle Cut Fries</b> \$5.99 5 lb. bag 

## NEW LOWER PRICES

<b>WYWOOD Whole Kernel Corn, Cream Style Corn, Cut or French Style Green Beans</b> .49 14.5 - 15.25 oz. can 	Assorted Varieties <b>Del Pino's Can PASTA</b> .79 14.5 - 15oz. can 	<b>GINGER EVANS Granulated Sugar</b> \$1.79 4 lb. bag 	<b>PORTSIDE Chunk Light in water TUNA</b> .69 5 oz can 
<b>J. Higgs Buttery Round SNACK CRACKERS</b> \$1.79 15.1 oz. box 	<b>Hargis House BBQ, Chicken or Original Vienna Sausages</b> .49 4.6 oz can 	Assorted Varieties <b>World's Fair ICE CREAM</b> \$4.99 4 qt. tub 	<b>CRYSTAL 2-0 DRINKING WATER</b> \$2.29 24 Pack 16.9 oz Bottles 

WE ACCEPT WIC, EBT, DEBIT, VISA, MASTER CARD & PERSONAL CHECKS FOR AMOUNT OF PURCHASE

# savings made easy

WE ACCEPT WIC, EBT, DEBIT, VISA, MASTER CARD & PERSONAL CHECKS FOR AMOUNT OF PURCHASE

910 W. Main St. - Mt. Vernon - 606-256-9810 - Open Sunday through Saturday 8 am - 10 pm



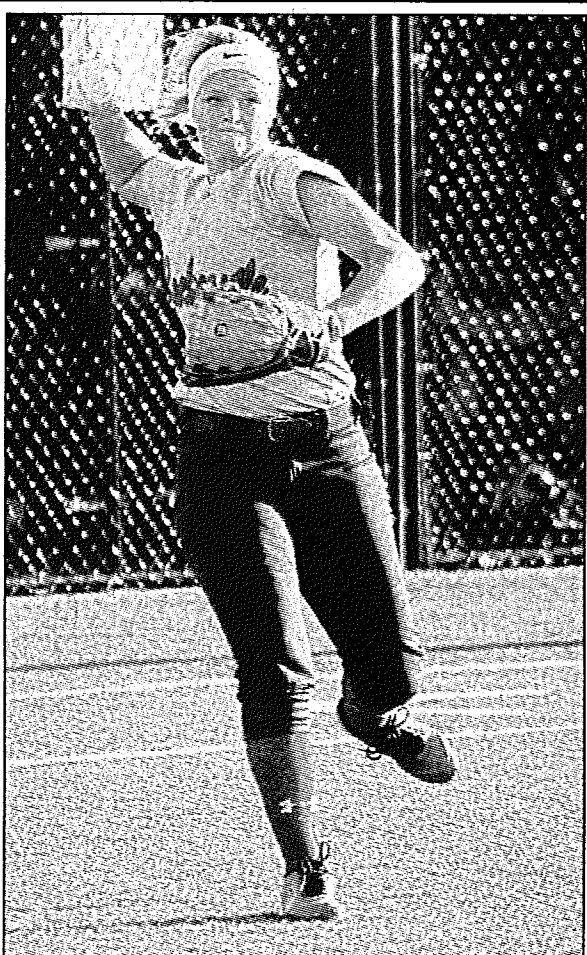
Visit us at [savealot.com](http://savealot.com)



# Mount Vernon Signal

Second Section

Thursday, June 8, 2017



Third baseman Bailey Chasteen makes a play to first base during the Rockets' 6-1 loss to Boyle County in the 12th Region championship game last Wednesday.

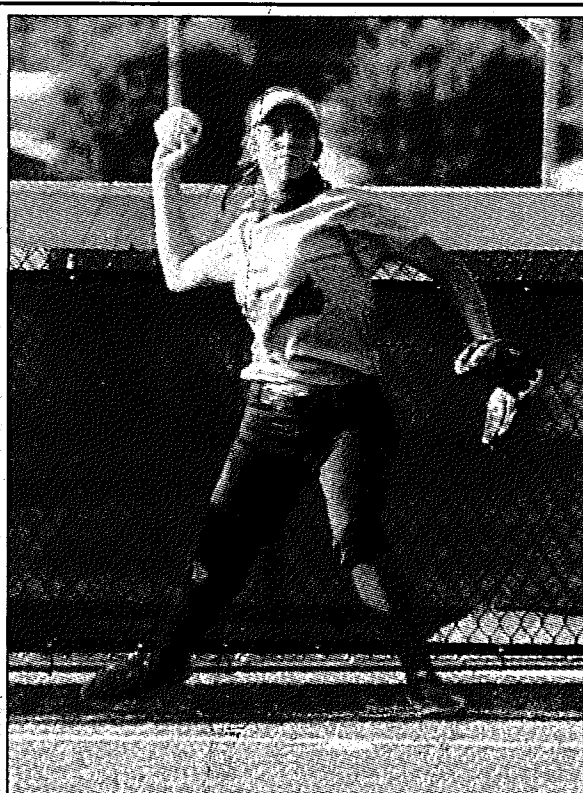


The Rockcastle Rocket softball team's season came to an end last Wednesday night with a 6-1 loss to Boyle County in the finals of the 12th Region Tournament. Team members are shown above, front row from left: Selicity Broaddus, Ravyn Bullens, Juliann Kirby, Bailey Chasteen, Mahala Saylor, Breonya Napier, Emma Smith, Shelby Ham, Emme Barker, Jayna Albright and Jordyn Powell. Back row from left: coach Aaron Rupard, Courtney Wren, coach Steve Holcomb, Jaylon Ponder, Kristin Holcomb, Lauryn Carpenter and head coach Matt Brown.

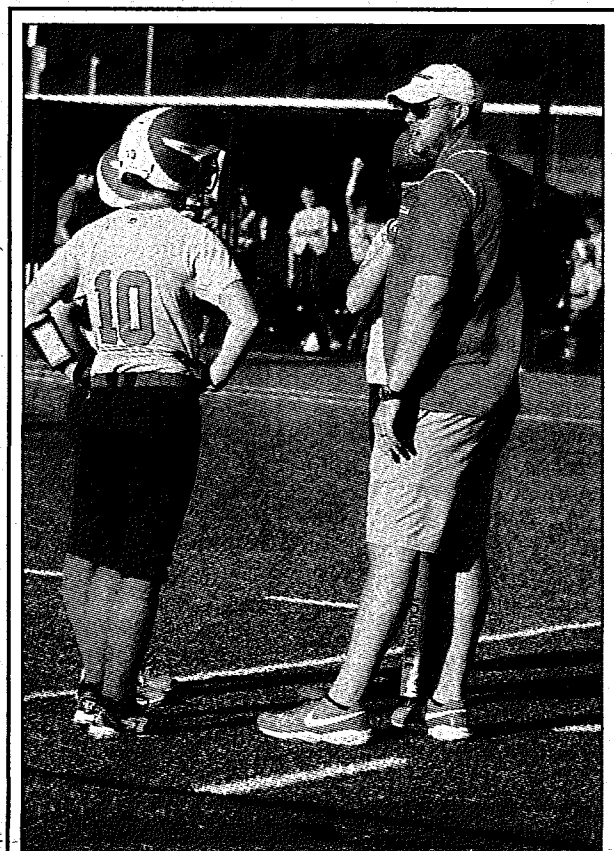
## Rocket softball falls 6-1 in 12th Region Championship game



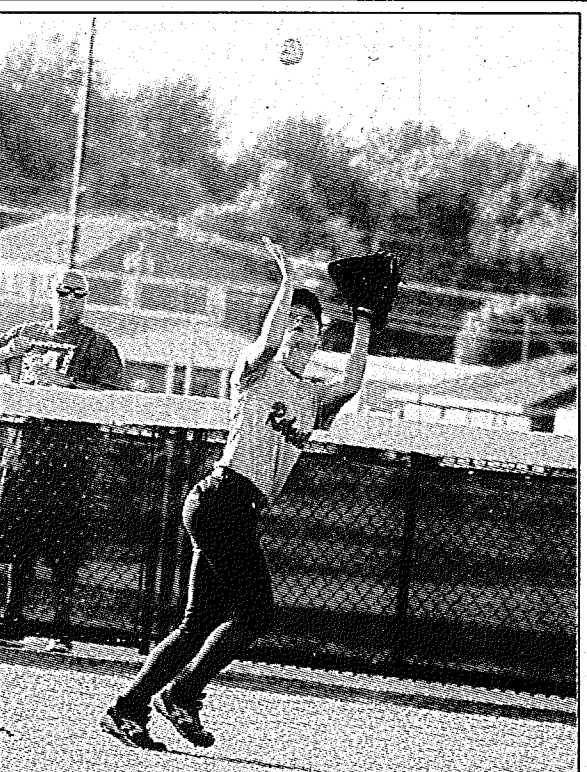
Left fielder Breonya Napier goes into foul territory to make a catch during the Rockets' 6-1 loss to Boyle County in the 12th Region championship game last Wednesday.



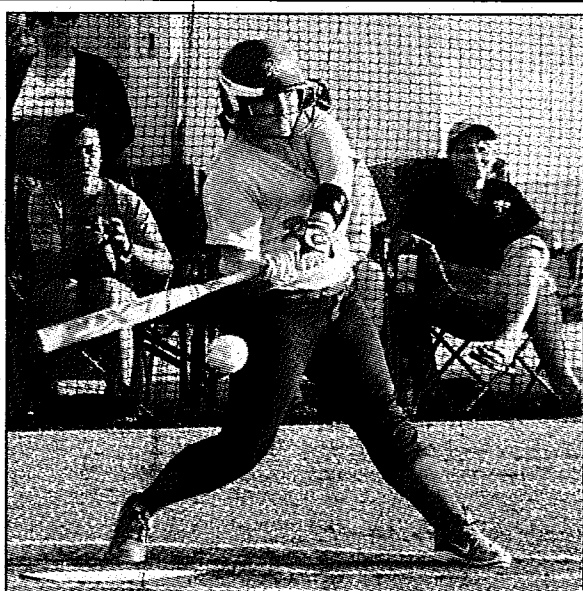
Center fielder Emme Barker gets the ball back into the infield during the Rockets' 6-1 loss to Boyle County in the 12th Region championship game last Wednesday.



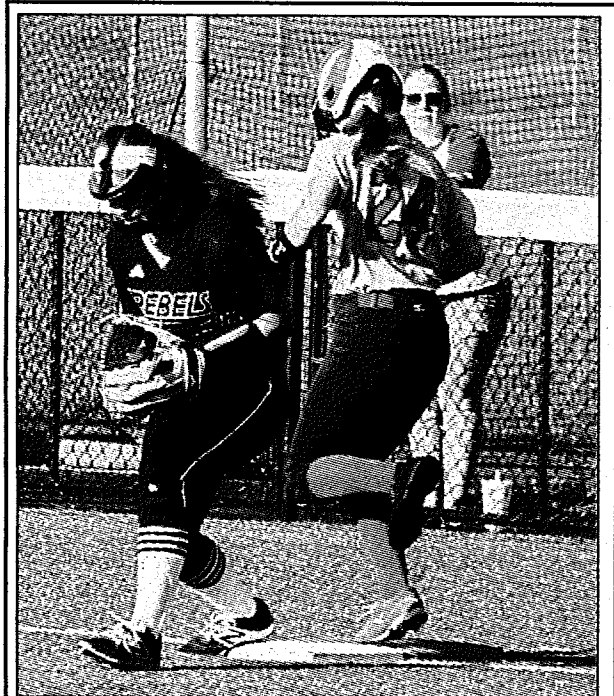
Rocket softball head coach Matt Brown talks to players during the 12th Region championship game last Wednesday night. Brown was named 12th Region Coach of the Year this past week.



Right fielder Jordyn Powell goes back to make a catch in the Rockets' loss to Boyle last Wednesday.



Shelby Ham takes a swing during an at bat in the Rockets' 6-1 loss to Boyle County in the 12th Region championship game last Wednesday.



Juliann Kirby attempts to beat out a throw to first base in the Rockets' loss to Boyle County last Wednesday.

*Ends season with 28-6 record; District Championship and Regional Runner-Up*



Jordyn Powell, Bailey Chasteen and Mahala Saylor were named to the 12th Region All-Tournament Team last Wednesday. The Rockets fell one game shy of making it to the softball state tournament.

**Let's talk about getting you more from Medicare.**



**Talk with your local licensed Humana sales agent today.**

**DANNY MILLER**  
**Insurance & Financial Services, Inc.**  
 208 Pauline Drive Suite C  
 Berea, KY 40403  
 859-985-8473  
 danny@danmillerinsurance.com

**Humana.**

\*No obligation to enroll.

Humana is a Medicare Advantage HMO, PPO and PFFS organization and a stand-alone prescription drug plan with a Medicare contract. Enrollment in any Humana plan depends on contract renewal. This information is available for free in other languages. Please contact a licensed Humana sales agent at 1 (859) 985-8473 (TTY: 711), 8 a.m. - 8 p.m., Monday - Friday.

**English: ATTENTION:** If you do not speak English, language assistance services, free of charge, are available to you. Call 1 (859) 985-8473 (TTY: 711), 8 a.m. - 8 p.m., Monday - Friday.

Y0040\_GHHXDEEN17 Accepted

# News from the Rockcastle Courthouse



## Marriage Licenses

Betty Dowell Niceley, 81, Mt. Vernon, retired and James W. Harrison, 85, Berea, retired. 5/30/17  
 Elizabeth Anne Lawrence, 22, Mt. Vernon, Rockcastle County Schools and Billy Lee Cameron III, 23, Mt. Vernon, farmer. 5/31/17  
 Marlena Jane Singleton, 39, Brodhead, disabled and Michael Wayne Tussey, 47, Brodhead, unemployed. 5/31/17  
 Okie Elaine Henderson, 45, Brodhead, factory and Garland Thomas Gill, 47, Brodhead, factory. 5/31/17  
 Stacy Leeann Eversole, 32, Berea, homemaker and Kenneth Preston Kelley, 34, Mt. Vernon, construction.  
 Deloris June Sowder, 61, Mt. Vernon, disabled and Jeffery Owens, 49, disabled. 6/2/17

Gary Lee and Peggy Dickerson. Tax \$553

Mount Vernon Enterprises LLC, property on W. Main St., to Kentucky Highlands Community Development Corp. Tax \$250

Robyn L. Isaacs and Patricia L. Isaacs, property in Rockcastle County, to Patricia L. Isaacs. No tax  
 21st Mortgage Corp., property in Rockcastle County, to Cody Lee Ross. Tax \$95

Myron and Mary Lee Rader, property in Rockcastle County, to Ronald Parker. Tax \$15

Russell Blackburn, property in Mt. Vernon and Livingston, to Daniel Blackburn and Della Horn. No tax

Bob Lunsford, property in Rockcastle County, to

tems v. Daniel Seth Allen, \$1,827.13 plus claimed due. C-00094

## District Court

May 24-30, 2017

Hon. Kathryn G. Wood  
 Brandon Baker: fines/fees due (\$268), bench warrant (bw) issued for failure to appear (fta)/6 days in jail or payment in full.

Kristopher Bustle: operating motor vehicle under influence of alcohol/drugs and drug paraphernalia buy/possess, bw issued for fta/license suspended.

Speeding: Zachary Carlson, \$40 fine plus costs; Earl Jay Maggard, Thomas Boffro, Mark Darren, Giovanni D. Travis, license suspended for fta; Mitchell D. Nolan, \$44 fine plus costs; Alisha Hollin, \$20 fine plus costs; Connie J. Fletcher, Penny Nicole Whitson, action slips; Mary L. Moore, \$44 fine plus costs.

Benjamin C. Pace: speeding, improper equipment, failure to produce insurance card, license suspended for fta.

Kevin L. Eaton: part 395/Fed Safety Regs - hours of service for drivers, bw issued for fta.

Paul Christopher Pearson: speeding, operating on suspended/revoked operators license, possessing license when privileges are revoked/suspended, bw issued for fta/license suspended.

Amanda R. Peters: fines/fees due (\$243), bw issued for fta/5 days in jail or payment in full.

Joseph Poole: failure of owner to maintain required insurance/security, 90 days/probated 24 months on condition plus costs and restitution.

Anthony R. Powell: operating on suspended/revoked operators license, \$100 fine plus costs; failure of non-owner operators to maintain req. insurance, \$500 fine, costs merged.

Barbara Mae Pritchard: flagrant non-support, bw issued for fta.

Brittany Michelle Ramsey: failure of owner to maintain required insurance/security, \$1000 fine/\$800 suspended on condition plus costs.

Tristan Franklin Sallee: operating on suspended/revoked operators license, bw issued for fta/license suspended.

Steven O. Saylor: no/expired registration plates - receipt, operating on suspended/revoked operators license, giving officer false name or address, failure of non-owner operator to maintain req. insurance, failure to produce insurance card, improper equipment, bw issued for fta/license suspended.

Jason A. Vincent: no/expired registration plates - receipt, failure to produce insurance card, operating on suspended/revoked opera-

tors license, bw issued for fta/license suspended.

Kimberly Ann Wade: no/expired registration plates - receipt, bw issued for fta.

Loretta Faye Whitaker: public intoxication, \$50 fine plus costs.

Whitney Whitaker: unlawful transaction with a minor, bw issued for fta.

Brian Paul Wilson: unlawful transaction with a minor, bw issued for fta.

Lisa York: assault, bw issued for fta.

Michael Johnson: disregarding traffic control device, license to be in possession, operating vehicle w/expired license, failure to produce insurance card, bw issued for fta.

Priscilla A. Miller: flagrant non-support, bw issued for fta.

Leroy Monk, Jr: assault, bw issued for fta.

Donald Newcomb: failure to wear seat belts, \$25 fine.

Jennifer A. Caudill: improper passing, \$25 fine plus costs.

Kena A. Coates: no/expired registration plates, \$25 fine; no/expired Kentucky registration receipt, \$25 fine; failure of non-owner operator to maintain req. insurance, \$500 fine (suspend \$450) on condition plus costs.

Stefani L. Cole: fines/fees due (\$168), bw issued for fta/four day in jail or payment in full.

Robert J. Fabre: fines/fees due (\$243), bw issued for fta/6 days in jail or payment in full.

Fancie Lynn Ferguson: no/expired registration plates - receipt, failure to wear seat belts, bw issued for fta.

Gloria A. Floyd: no/expired registration plates - receipt, bw issued for fta.

Carolyn Jean Foley: fines/fees due (\$133), bw issued for fta/3 days in jail or payment in full.

Naomi L. Goff: operating motor vehicle under influence of alcohol/drugs, \$200 fine plus costs, \$375 service fee, 30 days operator license suspension.

Johnny Harper: rear li-

cence not illuminated and operating on suspended/revoked operators license (two counts), rear license not illuminated, no/expired registration plates - receipt, failure of owner to maintain required insurance/security, failure to produce insurance card, bw issued for fta/license suspended.

Billy E. Hines: fines/fees due (\$298), bw issued for fta/6 days in jail or payment in full.

Jeffery Brooks Ingram: operating motor vehicle under influence of alcohol/drugs, RIDE program ordered.

Cody L. Isaacs: speeding, reckless driving, failure to produce insurance card, no/expired Kentucky registration receipt - plates, license to be in possession, license suspended for fta/bw issued.

Melissa A. Kirby: possession of marijuana, \$100 fine plus costs.

Robert Lear: criminal trespass, bw issued for fta.

Aaron D. Medley: possession of marijuana, \$100 fine plus costs; drug paraphernalia - buy/possess, 90 days/probated 12 months on condition.

Danny Quang Nguyen: possession of marijuana, \$100 fine plus costs.

Michael K. Poole: possession of marijuana, \$100 fine plus costs; drug paraphernalia - buy/possess, 30 days/probated 12 months on condition.

Tabitha Renner: no operators/moped license (two counts), failure of non-owner operator to maintain req. insurance (two counts), failure to produce insurance card (two counts), rear license not illuminated, bw issued for fta/license suspended.

Hallie M. Simpson: license plate not legible and failure of owner to maintain required insurance/security, bw issued for fta/license suspended.

Tracey Michelle Slusher: fines/fees due (\$233), bw issued for fta/5 days in jail or payment in full.

William Eugene St. Lawrence, operating motor

vehicle under influence of alcohol/drugs, ordered to complete RIDE program.

Randy D. Thomas: fines/fees due (\$158), bw issued for fta/4 days in jail or payment in full.

Shannon C. Vaughn: promotion of contraband, tampering with physical evidence, possession controlled substance (three counts), drug paraphernalia - buy/possess, flagrant non-support, bw issued for fta.

Jeremy Wagers: operating on suspended/revoked operators license, \$100 fine plus costs.

Halona L. Wynn: theft by unlawful taking and public intoxication, bw issued for fta.

Jason E. Smith: drug paraphernalia - buy/possess, 365 days/probated 24 months on condition plus merged costs.

Anthony D. Blymer: alcohol intoxication, \$50 fine plus costs.

Jamie C. Bowling: theft by unlawful taking, bw issued for fta.

Johnny Bowling: operating on suspended/revoked operators license, failure to produce insurance card, failure to notify address change to dept. of transp., bw issued for fta/license suspended.

Mason Lee Bowling: improper/no windshield, \$20 fine plus costs.

Lora Regina Brown: fines/fees due (\$203), bw issued for fta/3 days in jail or payment in full.

Laura Carpenter: fines/fees due (\$145), bw issued for fta/3 days in jail or payment in full.

Tyler R. Cox: failure to wear seat belts, operating on suspended/revoked operators license, obstructed vision and/or windshield, bw issued for fta/license suspended.

William H. Cummins: fines/fees due (\$196), bw issued for fta/4 days in jail or payment in full.

Desiree Fitzpatrick: no operators/moped license, license suspended for fta.

Debra Grimes: operating on suspended/revoked operators license, \$100 fine plus costs.

## Deeds Recorded

Darrell Griffin, property north of Mt. Vernon, to Brenda Houk Kidwell. No tax

Donald Dees, property in Rockcastle County, to Joshua D. and Jamie Ann Newton. Tax \$9

Clifford M. and Connie S. Damrell, property on Fairview Road, to Kimberly Renee and Randy Shawn Akemon. tax \$280

Edith Chaney and Glennys Pulliam, property in Rockcastle County, to Christopher Ponder. Tax \$5  
 Linda F. Gregory, property in Owens Subdv., to

## Circuit Civil Suits

Michael Duane Clemens v. Regina Clemens, verified petition for dissolution of marriage.

Credit Acceptance Corp. v. Alisha Brewer, \$6,563.25 plus claimed due. CI-00143.

## District Court Suits

Bert King v. Vedenia Byrd, et al, eviction notice. LNVN Funding v. Timothy Nicely, \$594.59 plus claimed due.

LNVN Funding v. Heather Lear, \$629.11 plus claimed due.

Jefferson Capital Sys-

## Rockcastle County Recycling Center open for recycling drop-offs

The Rockcastle County Recycling Center is located at 2528 South Wilderness Rd (US 25 South) beside the Rockcastle County Road Department Garage and is open Monday thru Friday from 7 a.m. until 3 p.m. (closed on major holidays).

### The following items may be recycled:

Newspapers w/inserts, magazines, catalogs, office paper, junk mail, shredded paper (needs to be bagged), books, phone books (paper products cannot be plastic lined or coated), cardboard (corrugated and slick), plastics #1 Pet or Pete, plastics #2 HDPE, plastic grocery store bags, bread bags, and shrink wrap (no other sheet plastics can be accepted), metal cans, aerosol cans, aluminum cans, aluminum foil, aluminum pie plates, glass bottles and glass jars (lids must be removed and discarded), old cell phones, car batteries, empty printer and toner cartridges, old computers (we no longer accept monitors of any kind) and all related accessories, telephones, radios, digital clocks, rechargeable batteries (if the battery says rechargeable on it, then it is recyclable), and large bulky metal items.

Clean used motor oil may also be dropped off at the Rockcastle County Road Department.

### Recycling Drop-Off Trailers are available for use at:

- Brodhead (at the back baseball field)
- Conway (by Brindle Ridge Volunteer Fire Dept.)
- Livingston (gravel lot between City Hall & Fire Dept.)
- Pongo (by Pongo Volunteer Fire Dept.)
- Climax (by Climax Volunteer Fire Dept.)

Violations will be issued for putting trash in the recycling trailers!!!

If you have any questions, you may call the Rockcastle Solid Waste Office at 606-256-1902.

Funded in part through a grant from the Kentucky Pride Fund, Division of Waste Management.



## Anthem

You can have an affordable managed care plan with the freedom of choice and the security of Anthem Blue Cross and Blue Shield — Blue Access.

Stop by and see Marlene Lawson for all your life and health insurance needs!

(606) 256-2050



Visit us on the Internet at <https://www.kyfb.com/rockcastle/insurance/>

## ONLINE ONLY Auction

of 66 1/2 Acres m/l

S. Wilderness Road (Hwy. 25)

Bidding Ends: Tuesday, June 20, 2017 at 6:00 p.m.

Bid Online: [www.fordbrothersinc.com](http://www.fordbrothersinc.com)

Directions: From I-75, Exit 59 in Mt. Vernon, KY, follow Hwy 25 South 4/10 mile to the property located on the right. Watch for auction signs!

These 66 1/2 acres m/l has a blacktop drive entrance to the property. The property has some cleared areas with the balance in woods. The property is currently being used for hunting. There are some ideal building sites with a great view! City water is available! Note: The property is selling as a whole and will not be offered in tracts!!

Buyer's Premium: There will be a 10% buyer's premium added to the winning bid to determine the final sales price.

Terms: 20% down within 48 hours from the conclusion of the online auction with balance due in 30 days. Auctioneer's Note: Whether you're looking for some acreage close to town for your dream home, acreage for hunting, a weekend get-a-way, or simply an investment opportunity, then be sure to register & bid online. Only at auction can you buy at Your own Price!! For additional information, please contact the Auctioneer at 800-435-5454!



MARKET ALLIANCE



Jeff Cromer, Auctioneer

[www.fordbrothersinc.com](http://www.fordbrothersinc.com)

Somerset, KY 606-679-2212

Mt. Vernon, KY 606-256-4545 • 800-435-5454

London, KY 606-878-7111

# CHURCH NEWS

**Rockcastle County Recovery Meetings**  
**\*Celebrate Recovery-Brodhead:** Located in the Community Outreach Center (next to Fairgrounds), every Monday, 6 to 8 p.m. 606-308-3368 or 606-308-3099.  
**\*Celebrate Recovery-Northside Baptist** every Tuesday, 6 to 8 p.m. 606-256-5577.  
**\*Celebrate Recovery-Step Studies.** Northside Baptist, Wednesday at 7 p.m. 606-256-5577.  
**\*Broken Chains Bible Study** at Cruisers Motorcycle Sales on Hwy. 25 North, 4 miles north of Mt. Vernon every Thursday at 6:30 p.m. 859-302-2431.  
**\*Celebrate Recovery-Livingston** at Livingston School cafeteria. Friday, 6 to 8 p.m. 859-314-7828.  
**VBS at Red Hill-Union Baptist**  
 Vacation Bible School will be held at Red Hill-Union Baptist Church June 8th and 9th, 6 to 8 p.m. and on June 10th from 11 a.m. to 1 p.m.  
 Parents should arrive at 1 p.m. for food, fun and games.  
**Gospel Singing**  
 Sand Springs Baptist Church will be having a Gospel Singing Saturday,

June 17th at 6 p.m. with Final Call featured singers.  
 Bro. Eugene and congregation invite everyone.  
 Starting Monday, June 19th, revival services will begin at the church and will run through June 24th, at 7 o'clock each evening, with Bro. David Lawson preaching.  
**Special Service**  
 Berea Gospel Tabernacle, U.S. 25, Berea, will have a special service on Friday, June 9th, beginning at 7 p.m. Speakers will be Charlie Wilson and Evan Reid.  
 Everyone invited.  
**VBS at Conway Missionary Baptist**  
 Please join us for Vacation Bible School at Conway Missionary Baptist Church Sunday, June 11th through Thursday, June 15th, 6:30 to 9 o'clock nightly.  
 Come join us as we soar among the wonders of the Heavens and God's Universe through our Bible studies!  
 Classes available for all ages. Children three years and under must be accompanied by an adult.  
 Van service available.  
 Call 606-256-5709 or 606-758-4007 for more info.  
 Pastor Bobby Turner.



## Parsons' piano students give recital

Piano students of Mrs. Marsha Parsons gave a Spring Recital at Wildie Christian Church in Wildie, KY Friday evening, May 19th. The students played a variety of selections in front of a delighted audience of family, friends, and other members of the community. Mrs. Parsons awarded each of the students with a trophy following the performances. The pianists are front from left: Madison Cromer, Jonah Brown, Kiki Cope, Makaylee McNally and Conrad Caldwell. Second row from left: Joshua Eaton, Seth Sizemore, Jack Ryan Parsons, Alyssa Barron, Christian Hargis, Gracie Peavie, Ezra Brown and Nathan Eaton. Back row from left: Bailey Bullock, Joliann Parsons, Mrs. Marsha Parsons (instructor), Luke Peavie, Thomas Eaton and Connor Noble.

### An encouraging word:

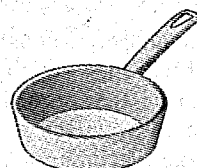
**There's No Place Like Home**  
 By Howard Coop



Who remembers Johnny Cash, the popular country music singer, singing words he wrote, "Well, I feel so homesick I wanna go home?"  
 While I have vague memories of Cash singing that hit song of 1959, I do have vivid memories of being so homesick I wanted to go home and did. After graduating from high school, I began a summer job that promised so much and gave so little. That job took me to the mountains of Eastern Kentucky, a place strange to me. I worked for a commission rather than a salary, and after about six weeks, I was making just enough to pay my expenses. Hopes for college vanished, and I became homesick, so homesick I went home.  
 I'll never forget my arrival. The house was empty, and I walked over the hill toward the barn. Everyone was working in "the cane patch." Immediately, my youngest brother looked up and, when he saw me, he yelled, "Willie Howard is home!" Then, throwing

his hoe down, he ran up the hill to me, threw his arms around me, and wept with joy.  
 Thinking of that experience, I remember a famous line Robert Frost, the New England poet, wrote: "Home is the place where, when you have to go there, they have to take you in." I have said that the poet missed the point, for home is the place where, when you have to go there, they welcome you because of love.  
 In everyday language, we use the words "house" and "home" interchangeably, but they are different. John Henry Jowett made an apt distinction between the two: "A house," he wrote, "is an agglomeration of bricks and stones, with an assorted collection of manufactured goods." But, he went on to say, "A home is the abiding place of ardent affection, of fervent hope, of genial trust."  
 John Howard Payne got it right when he wrote, "Be it ever so humble there's no place like home."

## Mamaw's Kitchen



By Regina Poynter Hoskins

**MARINATED MOZZARELLA AND TOMATOES**  
 1/4 cup extra virgin olive oil  
 1/4 cup chopped basil  
 1 pound ciliegine mozzarella (cherry-size mozzarella balls)  
 Kosher salt and freshly ground black pepper, to taste  
 1 pint cherry or grape tomatoes  
 3 tablespoons balsamic vinegar  
 Combine the oil and basil in a bowl. Add the mozzarella and season to taste with salt and pepper. Cover and let marinate for at least 30 minutes in the refrigerator. Add tomatoes and vinegar to the mozzarella and toss to combine. Season to taste with more salt and pepper if desired, and serve immediately.  
**CHUNKY GAZPACHO**  
 1 to 2 pounds tomatoes, about 7 to 9 large ones  
 1 garlic clove, minced  
 A handful of fresh basil leaves  
 1 medium cucumber, peeled, finely chopped  
 1/2 medium sweet bell pepper, (not a green one) finely chopped  
 1/4 cup sweet onion, finely chopped  
 12 Kalamata olives, finely chopped  
 1 Tbsp brine from olives  
 1 tablespoon red wine vinegar  
 2 tablespoons olive oil  
 Salt and pepper to taste

Cut the stem end from tomatoes, then cut tomatoes into quarters. Place in a blender and pulse a few times until tomatoes are coarsely chopped. Transfer all but about one cup to a large bowl. Add the garlic and all but about 4 to 5 leaves of basil to the blender. Puree for 30 seconds. Pour into bowl with the rest of the tomatoes. Chop the reserved basil leaves and add to the bowl. Add the remaining ingredients and mix well. Refrigerate at least 4 hours, or overnight preferably. Remove from the refrigerator about 30 minutes before serving.  
**BROCCOLI SALAD**  
 1 small head of chopped broccoli  
 1 small head of chopped cauliflower  
 2 diced tomatoes  
 1 can black olives, halved  
 1/2 cup diced red onion  
 1/2 cup sunflower kernels  
 6 slices bacon, cooked and crumbled  
 1/2 cup prepared ranch dressing  
 1/2 cup creamy Caesar dressing  
 1/2 cup parmesan cheese  
 Salt & Pepper to taste  
 Combine the veggies, toss with both dressings, add sunflower kernels and crumbled bacon. Salt and pepper to taste. Chill or server at room temperature.

You are invited to attend a  
**Gospel Meeting**  
 at the  
**Blue Springs Church of Christ**  
 with  
**Brett Hickey of Let The Bible Speak**  
**June 14th - 18th**  
 7:30 p.m. Nightly  
**Lord's Day Worship:**  
 Sunday, June 18th - 10 a.m. and 2 p.m.  
 Church is located on Hwy. 1249 - 7 miles south of Mt. Vernon

**Brodhead Baptist Church**  
 360 Silver Street - Brodhead, KY  
 www.brodheadbaptistchurch.org

**VBS Celebration**  
**June 10**  
**4-6pm**  
**FREE FOOD!**  
**INFLATABLES!**  
**Register for VBS**  
**Everyone welcome!!!**

**VACATION BIBLE SCHOOL!**  
 Nightly classes - June 11 thru 15  
 6:00 - 9:00pm  
 Ages 4 thru High School  
 Dinner served nightly!  
 Van Pick-up Available  
 Call 758-8316 for more info

Looking for an affordable, local and Christ-centered community church camp?  
 KCA has been operating for 52 years in the Rockcastle Co. community...please check out our website at kcacc.org for further details. We hope to see you there!

**REFLECT**  
*galatians*  
 2:20  
**THE SON**  
 #SELFLESS

**First Chance CAMP (\$40):** (completed K-2) June 4 - 6, 2017  
 \* Dean: Bro. Gary Pettyjohn, Wildie Christian  
**Day CAMP (\$15):** (Ages 3 - Preschool) - 9am-3pm June 7, 2017  
 \* Dean: Bro. Josh Haines, First Christian  
**High School/College RETREAT (tbd):** (completed 10+ College) June 8-10, 2017  
 \* Dean: Bro. Gary Pettyjohn, Wildie Christian & Scott Parkey, First Christian  
**Junior Week CAMP (\$100):** (completed 3-5) June 11 - 16, 2017  
 \* Dean: Bro. Tracy Valentine, Brodhead Christian  
**Middle School CAMP (\$100):** (completed 6-9) June 18 - 23, 2017  
 \* Dean: Bro. Josh Haines, First Christian

# Yards to Paradise

By Max Phelps  
Perennials for Easy Gardening

A perennial is a plant that continues to live and grow year after year. Trees and shrubs are "woody" perennials.

Many flowering perennials have soft tissue that dies to the ground in the fall, although a few are evergreen. We will skip the trees and shrubs and talk about the flowers and smaller plants that return year after year in today's cold climate. We'll focus on selecting the right perennials for your spot. And we will also talk about how to make some perennial beds if you don't have many appropriate spots for planting things. Allow perennials to grow with only minimal care, such as weeding or using pre-emergent herbicides.

Perennials are usually categorized as sun-loving and shade-loving. Other divisions would be dry versus wet soil (clay or other poorly draining conditions). How tall will they get and how often will they need dividing before getting too crowded and declining? Let us pick some of these situations and find some excellent flowers and foliage that will give pleasing results.

For hot sunny locations, roadsides or raised beds in full sunshine, here are suggestions. For wet sites with poor drainage, try hardy hibiscus, Baby Joe joe-pye weed, many of the daylilies, some sedums such as "Autumn Joy" or "Brilliant", swamp milkweed (butterfly milkweed), and amsonia. (I find old fashioned black-eyed-susans, but not the hybrid rudbeckias work in soggy spots.) For the sunny location that drains well, there are so many; so, pick your favorites. Daylilies, cone flowers, bee balm, veronica, salvia, some coral bells, yarrow, rudbeckia, asters, daisies, mums, coreopsis, bearded iris, dianthus, and phlox are some options.

For part-shade and dappled shade locations here are some options: hellebores, (a.k.a "Lenten Rose") astilbe, anemone, epimediums, coral bells, columbine, brunnera, geraniums, hosta, ligularia and lupines. Many plants will live in deep shade, but not thrive as well as they would in dappled shade; hosta, hellebores, green and yellow leaved coral bells,

tiarella, galium, lamium, bleeding hearts and Monroe's White monkey grass, and Japanese forest grass.

Deer resistant perennials (there's probably no completely "deer proof" plant if a deer is hungry enough) include hellebores, nepeta (catmint), bee balm, rudbeckia, digitalis, daffodils, lavender, amsonia, butterfly bushes, alliums (onions), euphorbias, geraniums, Russian sage, and stachys (lamb's ears).

To attract bees and butterflies and other pollinating insects, here are a few of the many perennials that will work. Agastache, asclepias, asters, buddleas, caryopteris, echinaceas, echinops, eupatoriums, geums, heleniums, leucanthemums, lupines, monarda, salvias, sedums, trumpet vines and wisterias. Actually, any mint plant that blooms will attract butterflies and bees...that includes about all of them.

For the rock garden and for arid conditions, here are some suggestions: yarrow, globe thistle, ice plant, sunflowers, yucca, lantana, balloon flower, catmint, creeping thyme, oregano, sedums and sempervivens.

If you want to grow desert loving plants under normal conditions, you'll have to plant them in sand or somehow reduce how much rain falls on them.

If you have a special flower which you want to grow, then sometimes you have to create the conditions that it likes in order to succeed. If you have no shade, maybe you can plant a tree in the middle of a raised bed, and plant shade lovers underneath it. If you love a tall plant, maybe you can put it against a fence, lattice or wall, and put one or more layers of smaller plants in front of it. If your soil won't drain, a raised bed will allow you to grow many things you otherwise would have difficulty with. Even the selection of the soil to go in such a bed can help with success.

You can even grow moisture loving plants and drought loving plants in the same bed; a small area in the middle of a bed can be raised. Try stones or some retaining wall blocks, filling the cavity with sandy soil. This combination will enable growing plants that like dry conditions in a bed of

regular flowers. Putting pottery or other planters in a bed is another way to combine plants that like different growing conditions.

And, if you want color that doesn't require a lot of attention, try Stella daylilies and perhaps Happy Returns, Going Bananas, and

Chicago Apache cultivars. Spiderwort and liriop (monkey grass) are also good-proof perennials.

Gardeners both young and old are doing more edible gardening, so if you can find a perennial or dwarf woody shrub that blooms and bears fruit such as blue-

berries and cranberries, or is edible such as horseradish or rhubarb, you can double up and get the benefits of blooming perennials, plus some delicious berries or plants.

Finding the right perennial for your spot, or creating the right spot for the pe-

rennials you wish to grow, should be the ticket to a winning garden with lots of pretty flowering plants that keep on coming year after year.

The author, Max Phelps, is a landscaper. Contact: rockcastles@gmail.com, www.rockcastles.net



## Super Star Chef Day Camp

The Rockcastle County Extension Service offered a day camp called "Super Star Chef" on May 30, 31, and June 1.

22 youth ranging from 9 years old to 16 learned basics of food preparation and nutrition. Pictured front from left are: Raychel Carpenter, Brilee Bussell, Leigha Crutcher, Markley Richards, Paige Cash, Kelsey Rowe, Lila Holt, Grace Reams, Lauren McClure and Celia Shaffer. Back row from left: Reagan Rumsey, Hanna Barnett, Alyssa Martin, Kameryn Medley, Gracie Payne, Kylie Martin, Carlee Cameron, Kaylee Cameron, Eva Jackson, Ashton Monk, Mya Hunt and Brock Mason. Teaching the day camp sessions were 4-H Agent John McQueary, Family & Consumer Sciences Agent Hazel Jackson, Nutrition Education Assistant Rachel Wright, and Summer Intern Alyssa Cox.

## RCMS students named for 2017 Rogers Explorers

Four middle school students from Rockcastle County have been selected to attend The Center for Rural Development's 2017 Rogers Explorers youth leadership program.

Kyle Aaron "Kyle" Coffey, son of Scottie and Wanda Coffey of Mt. Vernon; Kerrigan Medley, daughter of Anthony and Monica Jill Medley of Mt. Vernon; Faith Harris, daughter of Johnny and Worth Anne Harris of Brodhead; and Camden Mink, son of Daniel Mink and Kaci Brown of Mt. Vernon, are students at Rockcastle County Middle School.

Rogers Explorers is open to eighth-grade students in Southern and Eastern Kentucky who have a strong interest in developing their skills in leadership, technology, math, science, and community service.

Two hundred and twelve students—the largest class ever—will converge on the campuses of seven Kentucky colleges and universities this summer for the Rogers Explorers program.

"Rogers Explorers gives students a one-of-a-kind learning experience to explore possible career paths in the fields of math, science, and technology," said Delaney Stephens, community liaison and youth programs coordinator for The Center. "The program also encourages creative thinking and teamwork and

builds leadership skills as the region's next generation of leaders and entrepreneurs."

Rogers Explorers is presented by The Center for Rural Development in partnership with Lindsey Wilson College, University of the Cumberlands, Eastern Kentucky University, Morehead State University,

Asbury University, the University of Pikeville, and the newest host site, Union College.

Students spend three days and two nights on one of these leading Kentucky college campuses, where experts guide them through hands-on assignments, all of which encourages participants to build their math,

science, and technology skills. The program is provided tuition-free to eligible students within The Center's 45-county primary service area.

For more information on Rogers Explorers, call The Center at 606-677-6000, email youth@centertech.com, or visit www.centeryouthprograms.com.

## Dr. Rachel Beth Woodall receives Doctor of Pharmacy degree from UK

Dr. Rachel Beth Woodall of Brodhead, daughter of Harold and Mary Woodall, recently received a Doctor of Pharmacy degree from the University of Kentucky College of Pharmacy.

The University of Kentucky awarded 140 Doctor of Pharmacy degrees to students on May 5, at the UK Singletary Center for the Arts.

UK College of Pharmacy Dean Kip Guy presided over the ceremony.

Established in 1870, the UK College of Pharmacy is a nationally ranked top-10 College of Pharmacy and is known for its innovations in the classroom, laboratory, and community. Graduates from the College of Pharmacy have gone on to become leaders in community pharmacy, clinical settings, industry, academia, and policy. The College is committed to diversity, inclu-

sion, and accessibility to better equip graduates to

serve diverse patient populations worldwide.

## Angela DeBord receives Doctor of Osteopathic Medicine Degree

Angela DeBord of Mount Vernon, Kentucky, received a Doctor of Osteopathic Medicine degree from Lincoln Memorial University DeBusk College of Osteopathic Medicine (LMU-DCOM) in Harrogate, Tennessee, on May 13.

DeBord received her undergraduate degree from Eastern Kentucky University. She will continue her medical training in a family medicine residency at University of Kentucky Medical Center in Lexington, Kentucky. She is the daughter of Tommy and Gayle

DeBord, and the fiancée of Kevin Brandon Isaacs of Berea, Kentucky.

The DeBusk College of Osteopathic Medicine is located on the campus of Lincoln Memorial University in Harrogate, Tennessee. LMU-DCOM is an integral part of LMU's values-based learning community, and is dedicated to preparing the next generation of osteopathic physicians to provide health care in the often underserved region of Appalachia and beyond. For more information about LMU-DCOM visit <http://med.LMUnet.edu>.

**ABSOLUTE LIVE Auction** of CHRISTIAN APPALACHIAN PROJECT'S VEHICLES & TRAILERS  
FRIDAY, JUNE 9, 2017 @ 10 A.M.  
310 BEITING LANE, MT. VERNON, KY

DIRECTIONS: Just off of Hwy 25 North (toward Berea), past Renfro Valley. Watch for auction signs.

The following vehicles will be available: 2008 Chevy Uplander 125,000 miles ~ 2008 Chevy Uplander 106,000 miles ~ 2008 Chevy Uplander 150,801 miles ~ 2008 Chevy Cobalt 129,294 miles ~ 2008 Chevy Cobalt 65,000 miles ~ 2010 Chevy Cobalt 49,726 miles ~ 2008 Chevy Cobalt 165,000 miles ~ 2002 GMC 1500 pickup 130,127 miles ~ 2002 GMC Sierra pickup 160,279 miles ~ 2008 Chevy Cobalt 81,511 miles, black ~ 2010 Dodge Grand Caravan, salvage.

Trailers: 1982 semi-trailer, length unknown ~ 1989 48' semi-trailer, 53' semi-trailer ~ 2001 Trakker dump trailer.

Set of Tires: 235/60R16, Like New

BUYER'S PREMIUM: A 10% Buyer's Premium will be added to the winning bid to determine final sale price.

TERMS: Payment in full day of sale in the form of cash, check, Visa or MasterCard with an additional 3% processing fee (\$3 minimum).

Announcements made day of sale take precedence over printed material.

**Lord's Auction**  
www.lordsauction.com  
Mt. Vernon, KY  
606-256-4545 • 800-433-5454 • 606-677-7111

**Longest Day of Play 2017**  
June 15 • 5:30-8 PM

Free Meal  
Blood Drive  
Inflatables

Join us at Rockcastle Middle School for this annual FREE event for Rockcastle County families featuring educational booths, inflatables, Rockcastle Shaolin Do Karate demonstration, and activities for children of all ages!

Fit Family Run @ Track  
Entry Fee: Non-perishable food item

Register to win a bicycle

Activities for all ages!

For more information, contact Taylor Readnow at [treadnow@soathec.org](mailto:treadnow@soathec.org) or (606) 256-0950



# Kentucky Proud for 225 Years

By Jonathon Shell  
State Representative

This past week, the Commonwealth of Kentucky eclipsed a milestone, reaching 225 years of age. Our treasure of a state is known for a variety of things, including our vast and diverse landscape, the numerous figures who shaped our heritage, and a history like no other.

Further, Kentucky remains prominently situated on the national stage today. The Commonwealth has a strong seat at the table with U.S. Senate Majority Leader Mitch McConnell, and we've been fortunate to have been visited multiple times by President Trump and Vice President Pence. We are blessed with a sound agricultural economy, vast tourism opportunities, and rich traditions like coal, horse racing, tobacco, and our natural beauty. These things have not only contributed to our economic and cultural livelihood, but form the backbone of who we are as a state.



Upon coming through the Cumberland Gap, Daniel Boone famously remarked that "heaven must be a Kentucky kind of place." As the first House Republican Floor Leader in the 225-year history of the Commonwealth, I could not agree with this sentiment more. This is the place where I was born and raised, and where I have chosen to raise my kids. I can think of no better area to do so then right here, in our part of the state.

Kentucky is a unique treasure found in the heart of America. Nowhere else in our nation can people the likes of ours be found, whether it be our friends and family, or the many leaders from our state who went on to shape the entire nation. People like President Abraham Lincoln, Daniel Boone, and others have left a firm imprint on the Commonwealth, an imprint that has stood the test of time.

I am immensely proud to be from Kentucky and

In addition to our people, we also possess a natural landscape in Kentucky like no other. Treasures like the Appalachian Mountains, Cumberland Falls, and the vast collection of lakes, found in both the East and West, are the visual identity of Kentucky. These gems, which we should all cherish, create many tourism opportunities throughout the Commonwealth. Thankfully, we have a system of state parks that provides wonderful opportunities to see Kentucky's beauty up close, and that also gives families the opportunity to vacation and support our local economies at the same time.

Kentucky has served a vital role in the history of America, and remains on the frontlines of this great nation today. We served as a key border state in the Civil War, where divided loyalties were common amongst our citizens, and even within families. Our state is responsible for producing leaders who have fundamentally shaped our society for good, including President Lincoln, Henry Clay, and numerous civil rights icons.

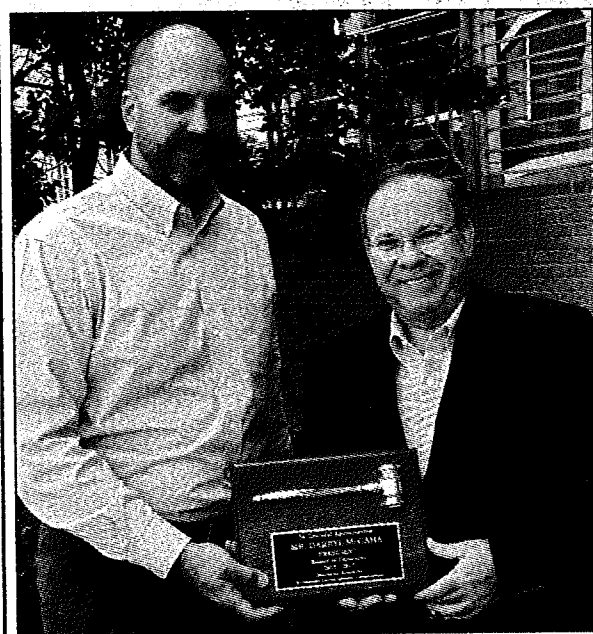
Further, Kentucky remains prominently situated on the national stage today. The Commonwealth has a strong seat at the table with U.S. Senate Majority Leader Mitch McConnell, and we've been fortunate to have been visited multiple times by President Trump and Vice President Pence. We are blessed with a sound agricultural economy, vast tourism opportunities, and rich traditions like coal, horse racing, tobacco, and our natural beauty. These things have not only contributed to our economic and cultural livelihood, but form the backbone of who we are as a state.

Our Commonwealth has accomplished a great deal

over 225 years, and has much to be proud of. But the best is still yet to come, and it is a privilege for me to serve as your State Representative, where I will continue fighting to maximize Kentucky's full potential.

Rep. Jonathon Shell is the Majority Floor Leader in the State House of Representatives. He represents the 71st district, which includes western Madison as well as all of Garrard and Rockcastle counties. Contact him with any questions, concerns, or advice. He can be reached through the toll-free message line in Frankfort at 1-800-372-7181, or via e-mail at [Jonathon.Shell@lrc.ky.gov](mailto:Jonathon.Shell@lrc.ky.gov).

## SKED plaque of appreciation



Incoming Southeast Kentucky Economic Development Corporation (SKED) Board Chairman Corey Craig, left, presented outgoing chairman Darryl McGaha with a plaque of appreciation at their recent SKED Board of Directors' meeting. McGaha led the nonprofit organization from 2015-2017.



MIKE HARMON  
AUDITOR OF PUBLIC ACCOUNTS

The Commonwealth of Kentucky's Office of the Auditor of Public Accounts announces the completion of the financial audit of the Rockcastle County Fiscal Court for the fiscal year ended June 30, 2016. The following transmittal letter was prepared, on behalf of the Office of the Auditor of Public Accounts, by the firm of RFH, PLLC. The Office of the Auditor of Public Accounts engaged RFH, PLLC to perform the financial audit of the Rockcastle County Fiscal Court and worked closely with the firm during our report review process.



To the People of Kentucky  
Honorable Matthew G. Bevin, Governor  
William M. Landrum III, Secretary  
Finance and Administration Cabinet  
Honorable Doug Bishop, Rockcastle County Judge/Executive  
Members of the Rockcastle County Fiscal Court

### Independent Auditor's Report

**Report on the Financial Statement**  
We have audited the accompanying Statement of Receipts, Disbursements, and Changes in Fund Balances - Regulatory Basis of Rockcastle County Fiscal Court, for the year ended June 30, 2016, and the related notes to the financial statement which collectively comprise the Rockcastle County Fiscal Court's financial statement as listed in the table of contents.

**Management's Responsibility for the Financial Statement**  
Management is responsible for the preparation and fair presentation of this financial statement in accordance with accounting practices prescribed or permitted by the Department for Local Government to demonstrate compliance with the Commonwealth of Kentucky's regulatory basis of accounting and budget laws. This includes determining that the regulatory basis of accounting is an acceptable basis for the preparation of the financial statement in the circumstances. Management is also responsible for the design, implementation, and maintenance of internal control relevant to the preparation and fair presentation of a financial statement that is free from material misstatement, whether due to fraud or error.

**Auditor's Responsibility**  
Our responsibility is to express an opinion on this financial statement based on our audit. We conducted our audit in accordance with auditing standards generally accepted in the United States of America, the standards applicable to financial audits contained in *Government Auditing Standards*, issued by the Comptroller General of the United States and the *Audit Guide for Fiscal Court Audits* issued by the Auditor of Public Accounts, Commonwealth of Kentucky. Those standards require that we plan and perform the audit to obtain reasonable assurance about whether the financial statement is free from material misstatement.

An audit involves performing procedures to obtain audit evidence about the amounts and disclosures in the financial statement. The procedures selected depend on the auditor's judgment, including the assessment of the risks of material misstatement of the financial statement, whether due to fraud or error. In making those risk assessments, the auditor considers internal control relevant to the entity's preparation and fair presentation of the financial statement in order to design audit procedures that are appropriate in the circumstances, but not for the purpose of expressing an opinion on the effectiveness of the entity's internal control. Accordingly, we express no such opinion. An audit also includes evaluating the appropriateness of accounting policies used and the reasonableness of significant accounting estimates made by management, as well as evaluating the overall presentation of the financial statement.

We believe that the audit evidence we have obtained is sufficient and appropriate to provide a basis for our audit opinion.  
**Basis for Adverse Opinion on U.S. Generally Accepted Accounting Principles**  
As described more fully in Note 1 of the financial statement, the financial statement is prepared by the Rockcastle County Fiscal Court on the basis of the accounting practices prescribed or permitted by the Department for Local Government to demonstrate compliance with the Commonwealth of Kentucky's regulatory basis of accounting and budget laws, which is a basis of accounting other than accounting principles generally accepted in the United States of America.

The effects on the financial statement of the variances between the regulatory basis of accounting described in Note 1 and accounting principles generally accepted in the United States of America, although not reasonably determinable, are presumed to be material.

**Adverse Opinion on U.S. Generally Accepted Accounting Principles**  
In our opinion, because of the significance of the matter discussed in the Basis for Adverse Opinion on U.S. Generally Accepted Accounting Principles paragraph, the financial statement referred to above does not present fairly, in accordance with accounting principles generally accepted in the United States of America, the financial position of the Rockcastle County Fiscal Court as of June 30, 2016, or changes in financial position or cash flows thereof for the year then ended.

**Opinion on Regulatory Basis of Accounting**  
In our opinion, the financial statement referred to above presents fairly, in all material respects, the fund balances of the Rockcastle County Fiscal Court as of June 30, 2016, and their respective cash receipts and disbursements, and budgetary results for the year then ended, in accordance with the basis of accounting practices prescribed or permitted by the Department for Local Government described in Note 1.

**Other Matters**  
**Supplementary Information**  
Our audit was conducted for the purpose of forming an opinion on the financial statement taken as a whole of the Rockcastle County Fiscal Court. The Budgetary Comparison Schedules and Capital Asset Schedule are presented for purposes of additional analysis and are not a required part of the financial statement; however, they are required to be presented in accordance with accounting practices prescribed or permitted by the Department for Local Government to demonstrate compliance with the Commonwealth of Kentucky's regulatory basis of accounting and budget laws.

**Other Matters (Continued)**  
**Supplementary Information (Continued)**  
The accompanying Budgetary Comparison Schedules and Capital Asset Schedule are the responsibility of management and were derived from and relate directly to the underlying accounting and other records used to prepare the financial statement. Such information has been subjected to the auditing procedures applied in the audit of the financial statement and certain additional procedures, including comparing and reconciling such information directly to the underlying accounting and other records used to prepare the financial statement or to the financial statement itself, and other additional procedures in accordance with auditing standards generally accepted in the United States of America. In our opinion, the Budgetary Comparison Schedules and Capital Asset Schedule are fairly stated in all material respects in relation to the financial statement as a whole.

**Other Reporting Required by Government Auditing Standards**  
In accordance with *Government Auditing Standards*, we have also issued our report dated January 30, 2017 on our consideration of the Rockcastle County Fiscal Court's internal control over financial reporting and on our tests of its compliance with certain provisions of laws, regulations, contracts, and grant agreements and other matters. The purpose of that report is to describe the scope of our testing of internal control over financial reporting and compliance and the results of that testing, and not to provide an opinion on the internal control over financial reporting or on compliance. That report is an integral part of an audit performed in accordance with *Government Auditing Standards* in considering the Rockcastle County Fiscal Court's internal control over financial reporting and compliance. Based on the results of our audit, we present the accompanying Schedule of Findings and Responses included herein, which discusses the following report comments:

- 2016-001 The Fiscal Court Did Not Ensure All Timesheets Were Prepared And Approved Prior To Payment
  - 2016-002 The Fiscal Court Did Not Have Controls Over Purchase Orders
  - 2016-003 The Fiscal Court Did Not Approve A Detailed Salary Schedule
  - 2016-004 The Fiscal Court Did Not Ensure All County Employees Accrued Leave In Accordance With The County Administrative Policy
  - 2016-005 The Jailer Did Not Present A Jail Commissary Financial Statement To The County Treasurer For Fiscal Year Ending June 30, 2016
  - 2016-006 The Jail Commissary Lacks Adequate Segregation Of Duties Over Receipts, Disbursements, And Reconciliations
  - 2016-007 The Jailer Did Not Establish Procedures To Reconcile Book And Bank Balances On A Monthly Basis
- Respectfully submitted.



RFH, PLLC  
Lexington, Kentucky

January 30, 2017

State law requires the Auditor of Public Accounts to annually audit fiscal courts, county clerks, and sheriffs; and print the results in a newspaper having general circulation in the county. The complete audit and any other audit of state agencies, fiscal courts, county clerks, sheriffs, and property valuation administrators may be viewed in the reports section of the Auditor of Public Accounts' website at [www.auditor.ky.gov](http://www.auditor.ky.gov) or upon request by calling 1-800-247-9126.

209 ST. CLAIR STREET  
FRANKFORT, KY 40601-1817

AN EQUAL OPPORTUNITY EMPLOYER M / F / D

TELEPHONE 502.564.5841  
FACSIMILE 502.564.2912  
[WWW.AUDITOR.KY.GOV](http://WWW.AUDITOR.KY.GOV)

**Mann Chrysler**  
Credit Approval  
**Guaranteed**  
[mannchrysler.com](http://mannchrysler.com)  
859.625.1422  
**Mann**

**2017 Rockcastle River Sweep**  
Join us on  
Saturday, June 17th from 8:30 am to 1 pm  
to help remove tires and trash from  
the Rockcastle River.  
Bring a canoe or flat bottom boat and be ready to  
get wet and muddy!  
Meet at the Rockcastle River where you ford the river over to  
Wildcat Mountain.  
Free t-shirts while supplies last & lunch will be provided after the cleanup.  
Call the Rockcastle Solid Waste Office at  
606-256-1902 for more information.

Rockcastle County Schools is participating in the Summer Food Service Program. Meals will be provided to all children without charge and are the same for all children regardless of race, color, national origin, sex, age or disability, and there will be no discrimination in the course of the meal service. Meals will be provided, at a first come, first serve basis, at the sites and times as follows:

Rockcastle County Middle School  
Thursday, June 15, 2017  
5:30-8:00 PM  
975 West Main Street  
Mt. Vernon, KY 40456

Brodhead Farmer's Market  
Parking Lot Beside Depot Park  
Saturdays  
June 17, 2017 - July 22, 2017  
Meals served 10:30 AM - 12:00 PM

To file a program complaint of discrimination, complete the USDA Program Discrimination Complaint Form (AD-3027), found online at [http://www.ascr.usda.gov/complaint\\_filing\\_cust.html](http://www.ascr.usda.gov/complaint_filing_cust.html) and at any USDA office, or write a letter addressed to USDA and provide in the letter all of the information requested in the form. To request a copy of the complaint form, call (866) 632-9992.

Submit your completed form or letter to USDA by:  
(1) Mail: U.S. Department of Agriculture  
Office of the Assistant Secretary for Civil Rights  
1400 Independence Avenue, SW  
Washington, D.C. 20250-9410;  
(2) Fax: (202) 690-7442; or  
(3) Email: [program.intake@usda.gov](mailto:program.intake@usda.gov).

This institution is an equal opportunity provider.

# Classifieds

## CLASSIFIED RATES

- Local Rates - \$4 for 25 words or less - .10 each additional word
  - Display Classifieds \$5.00/Inch
- Deadline for Classifieds is 10 a.m. TUESDAY

## For Rent

**Mobile Home in Mt. Vernon.** Neat 2 bedroom. Low rent. No pets, don't ask. 606-614-9861. 22xntf

**Trailer in Livingston** with stove and refrigerator, central air, KU electric. \$350 month, plus deposit. 606-453-3121. 22xntf

**House and trailers.** No pets. 758-4729. 15xntf

**2BR/1BA Mobile Home** in Livingston. KU electric, city water. All appliances. \$350 month plus deposit. 453-3121 or 308-9546. 19xntf

**Redwood house with 2BR/1 lg. BA** on one acre lot. Stove and refrigerator furnished, electric heat. Located off Hwy. 150, between Mt. Vernon and Brodhead. \$450 deposit/ \$450 month. Credit check and references required. Come by appointment. No pets. Available June 15th. No calls after 7 p.m. 606-256-8156. 19xntf

**House in Brodhead** with living room, 2BRs, kitchen, dining room, bath. Electric heat, no appliances. \$400 month/\$400 deposit. No pets. 758-8491. 19x2

**Chism Drive Thru Storage.** 9 1/2 x14 indoor units. \$50. 24 hr. access and security cameras. 859-559-9903. 3xntf

**Trailers and house** in Brodhead. No pets. 758-8922. ntf

Accepting applications at Mt. Vernon Housing Authority on Mondays 4 to 8 p.m. and Wednesdays and Fridays, 4 to 6 p.m. Rent based on income. 256-4185.

Accepting Applications: For 2 and 3 bedroom units at Valley View Apartments. Rent based on income. Call 256-5912. Equal Housing Opportunity, TDD for hearing impaired only. 1-800-247-2510. 36tfn

## For Rent

**Maple St. Storage of Brodhead**  
256-2884 or  
606-308-2491

## Property For Sale

**House For Sale.** 120 McFerron St., Mt. Vernon. 256-2608. 21x3p

**3 BR/2BA House** on 1/2 acre lot, located at Rainbow Ridge Subdivision in Mt. Vernon. 606-392-3388.

## Mobile Homes For Sale/Lease

**Lease Purchase:** 16x80 3BR/2BA Mobile Home. Large living room and kitchen, newly remodeled, \$32,900, \$3,290 down payment with \$425 monthly payment. Call 606-308-5459 or 606-256-8603.

**For Sale:** New 2017 28x48 3BR/2BA Clayton doublewide. Priced with northern insulation, thermopane windows. Great floor plan! \$39,900 or \$293 a month w.a.c. Delivery and set up included. Call Blue Ridge Homes in Whitley City, Ky. 606-376-2170. 20xntf

**For Sale:** New 2017 3BR/2BA 28x56 Clayton doublewide. Nice home! Large kitchen with lots of cabinets. \$44,900 or \$325 month w.a.c. Delivery and set up included. Call Blue Ridge Homes in Whitley City, Ky. 606-376-2170. 20xntf

**For Sale:** New 2017 4BR/2BA 28x72 Clayton doublewide. Big home! Two large living areas, big bedrooms. Thermo windows, 2x6 side walls with extra insulation. \$52,900 or \$395 a month w.a.c. Delivery and set up included. Call Blue Ridge Homes in Whitley City, Ky. 606-376-2170. 20xntf

## Posted

**Posted:** Property of Rossie Lee Perkins, located on both sides of Mahaffey Hollow Road. No hunting or trespassing for any purpose. 22x2p

**Posted:** No trespassing, including 4 wheelers and dirt bikes on land at Calloway Hollow, bordering Sand Hill and belonging to Bud Cottengim. Property is fences - no cutting of fence. Not responsible for accidents. Violators will be prosecuted. 22x4

**Posted:** No trespassing on property belonging to Sondra Mullins. No hiking, walking, camping, riding four wheelers, dirt bikes or any other vehicles in boundaries of High St. - Richmond St. - Dailey St. and thereof. Not responsible for accidents. 21x4

**Posted:** No hunting or trespassing on property belonging to Heather Barnes and located at 110 Dogwood Lane, Orlando. Violators will be prosecuted. 20x3p

**Posted:** No trespassing on land belonging to James and

Dorothy Rash heirs on Rash Branch Road off Chestnut Ridge. No hunting, camping, ATVs, trespassing for any purpose. Not responsible for accidents. Violators will be prosecuted. 5x51

**Posted:** No trespassing on property belonging to Eric Eversole, in the Green Pond Ridge area and lying on the waters of Brush Creek and Clear Creek. Not responsible for accidents. 9x25

**Posted:** No hunting, trespassing, 4-wheeling on property belonging to James and Juanita Chasteen, located on Little Hurricane Branch Road in Rockcastle County. Violators will be prosecuted. 44xntf

**Posted:** Property belonging to Don and Kitty Reese on Smallwood Road at Roundstone. All trespassers will be prosecuted. 49xntf

**Posted:** No hunting or trespassing on land belonging to Glen Roberts at 560 Dix River Branch Road, Brodhead. Violators will be prosecuted. 35xntf

**Posted:** No hunting, trespassing or ATVs on land belonging to Jason and Sara Coguer at Roundstone. Not responsible for accidents.

**Posted:** No trespassing on Crawford Place - Old Brodhead Road. Danny Smith. 47tfn

**Posted:** Absolutely no hunting, fishing or trespassing on property belonging to Mark and Debbie Cummins. Violators will be prosecuted. 9x52p

**Posted:** No trespassing, hunting or fishing on land belonging to Rachel Denney on Hwy. 3245 (former Reggie Bengé property).

**Posted:** No trespassing on property known as C.B. Owens Farm across from Fairgrounds in Brodhead. Violators will be prosecuted. 25tfn

## Notices

**M&M Jewelry Design.** Certified welder/graduate of Penn Foster Jewelry Design & Repair. Michael and Mary Muncy. 606-308-3608 or 859-302-6685. paparazziaccessories.com/61676 19x5

**This is to warn Regina Clemens** that you have litigation pending against you in Rockcastle Circuit Court, Case #17-CI-142. Anyone that knows of the whereabouts of Regina Clemens is asked to contact Nicholas Calmes at 859-868-1009. 22x2

**Notice is hereby given** that Nancy Ramsey, 470 Williams St., P.O. Box 594, Mt. Vernon, Ky. 40456 has been appointed Administratrix of the estate of Rebecca Lynn Barron on the 22nd day of May, 2017. Any person having claims against said estate shall present them, according to law, to the said Nancy Ramsey or to Hon. William A. Leger, Law Offices of William D. Reynolds, P.O. Box 1250, Mt. Vernon, Ky. 40456 on or before November 22, 2017 at 9:30 a.m. 20x3

**Notice is hereby given** that Lora L. Mullins, 10075 E. Hwy. 70, Eubank, Ky. 42567 and Theresa G. Davis, 7357 Hwy. 328, Crab Orchard, Ky. 40419 have been appointed co-executors of the estate of Betty Ann Glovak on the 31st day of May, 2017. Any person having claims against said estate shall present them, according to law, to the said Lora L. Mullins and Theresa G. Davis or to Hon. John D. Ford, Coffey & Ford PSC, P.O. Box 247, Mt. Vernon, Ky. 40456 on or before Dec. 4, 2017 at 11 a.m. 22x3

**Notice is hereby given** that Virginia L. Hansel, 4802 Willailla Road, Brodhead, Ky. 40409 has been appointed Executrix of the es-

tate of Paul E. Hansel on the 5th day of June, 2017. Any person having claims against said estate shall present them, according to law, to the said Virginia L. Hansel or to Hon. John D. Ford, Coffey & Ford PSC, 45 East Main St., P.O. Box 247, Mt. Vernon, Ky. 40456 on or before December 6, 2017 at 11 a.m. 22x3

**Notice is hereby given** that Susan Palladino, 1181 Pittman Branch Road, Mt. Vernon, Ky. 40456 has been appointed Administratrix of the estate of Johnny Palladino on the 24th day of May, 2017. Any person having claims against said estate shall present them, according to law, to the said Susan Palladino or to Hon. Bobby Amburgey, P.O. Box 3118, Mt. Vernon, Ky. 40456 on or before November 27, 2017 at 9:30 a.m. 21x3

**Notice is hereby given** that Anita Lou Bostrom, 190 Heritage Road, Versailles, Ky. 40383 has been appointed Executrix of the estate of Dennis R. Griffin on the 22nd day of May, 2017. Any person having claims against said estate shall present them, according to law, to the said Anita Lou Bostrom or to the Hon. Thomas C. Marks, 271 W. Short St., Ste 600, Lexington, Ky. 40407 on or before Nov. 22, 2017 at 9:30 a.m. 21x3

## Miscellaneous For Sale

**17 ft. Runabout Boat.** 1980 Bomber, 165 HP Mercury w/trailer. \$1,500. 606-256-0001. Sold as is. 21x5

**Bed Bugs?** Use Harris Bed Bug Killer. Odorless and non staining. Available at Jack's Hardware. 22x4

**Crethaven Cemetery Plots.** Contact Billy Dowell, 606-308-1058. 39xntf

## Yard Sales

**Yard Sale:** June 9th and 10th, 8 a.m. to 3 p.m. Hwy. 2549 White Rock Road (first loop of Old 461), first subdivision on left, first house on left.

**Multi-Family Yard Sale:** Friday, June 9th, 8 a.m. to ? 190 Perciful St., Mt. Vernon (behind hospital). Items for the whole family.

**Yard Sale:** Thursday and Friday. Lots of stuff. Turn at J&J Auction. Signs will be posted. Given by Beverly and Lauren Smith.

**Yard Sale:** Friday, June 9th, 8 a.m. to ? One day only at Cave Valley Apts., behind Tobacco Barn in Mt. Vernon. Given by Tena Mullins and Sonya Robinson. This is a personal sale, not part of last week's community sale. All new items. Items will be inside and outside of community room. In case of rain, sale will be inside only.

**Yard Sale:** Friday and Saturday, 305 Lone Oak Road, 3 miles south on 461. Tools, hundreds of fishing tackle items, antiques, furniture, name brand clothes, toys, home decor. Inside.

**Huge Multi-Family Yard Sale:** Thursday, Friday and Saturday. Girl's clothes 5T-7/8, boy's clothes 3T-5/6, men's and women's clothes, name brand jeans. Household items, plastic kid's slidee, lawnmower canopy, motorcycle helmet, tools., porcelain dolls, keyboard. Thomas toys and much more! One mile out Freedom School Road on Breezy Hollow Lane. Follow signs. **Multi-Family Yard Sale:** Sat., June 10th, 8 to 4. 256 Gray Buck Dr., Benton Bullock Subdv. Household items, clothes, toys, too much to mention.

**Yard Sale:** Saturday, June 10th, 8:30 a.m. to 1 p.m. behind FBC on Lovell Lane in Mt. Vernon by Leshia Cromer. Men's, women's, boy's clothes in a variety of sizes. Various household items, toys, books, miscellaneous items.

**Yard Sale:** Saturday, June 10th, starting at 8 a.m. Rain or shine. 18 Pagoda Lane off of Cedar Rapids Road on the left past the golf course. Men's clothing sizes L, XL and XXL, pants 36x31. Women's clothing sizes L & XL, pants and shorts 14 & 16, women's shoes 8 and 8 1/2, girl's and junior size clothing, 14, 3 & 5 and XS and small. Household items, entertainment center, pushlawnmower, wicker chest, wicker armoire,

wicker night stand, under the cabinet microwaver, various items, Christmas decorations, women's jewelry, Coach purses.

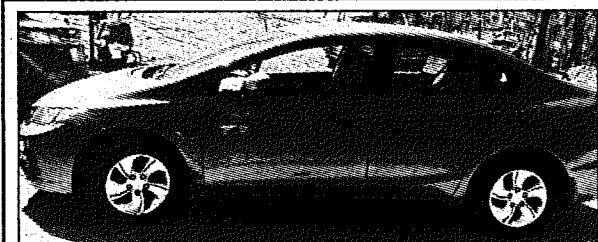
**Yard Sale:** At home of Melvin and Lela Harrison, 445 Williams St., Mt. Vernon. 3 Family. Saturday, June 10th, 8 a.m. to 3 p.m. Clothes, furniture. Rain cancels.

**Garage Sale:** June 8, 9 and 10. 292 Mareburg Road, 3rd house on right. Christmas decorations Galore! Some household appliances, dishes, furniture and antiques, linens. Thursday and Friday, 8 a.m. to 6 p.m. Saturday, 8 a.m. to 3 p.m.

**Yard Sale:** Friday and Saturday, June 9th and 10th at old firehouse in Livingston.

## 3 FAMILY GARAGE SALE Fri., Sat. & Sun., June 9, 10 & 11 76 McClure St., Livingston

Farm and yard equipment, furniture. Lots and lots of other stuff. Rain or shine. Friday and Saturday, 11 a.m. to 7 p.m. and Sunday after church.



For Sale: 2013 Honda Civic 49,000 miles. \$9,000. Call 606-308-3536.



Rockcastle Regional Hospital and Respiratory Care Center is currently seeking:

## DIETARY AIDES HOUSEKEEPERS JANITOR

Starting rate of pay \$10 per hour

Positions are full-time. High school diploma or equivalent required.

Apply on-line  
[rockcastleregional.org/careers](http://rockcastleregional.org/careers)

Equal Opportunity Employer

## B.C.C. Metals

Featuring metal roofing, siding, trim and insulation. Same day service available on most orders.

Contact Jerry Blair

Toll Free 1-800-658-4902 • 256-4700

Located 4 miles s. of Berea, off U.S. 25 at 862 Lambert Rd. Serving Rockcastle County & surrounding counties. [www.bccmf.com](http://www.bccmf.com)

## Electrolux

For all your Electrolux needs contact County Agent David Owens at Rocket Carpet Cleaners

606-256-9870 • 606-386-0187

We sale the best & service the rest!

## Rock Castles Landscaping

Consultations, Landscape Design & Construction, Waterfalls, Stonework, Edibles

Max Phelps, Owner

606-416-3911

[www.rockcastles.net](http://www.rockcastles.net)

## Subscribe to the Mount Vernon Signal

- \$23 in county
  - \$27 out of county/ in-state
  - \$35 out of state
  - 10% discount for seniors
- 606-256-2244

**Professional Services**

**J and R Pressure Washing.** Pressure washing of all type homes, outbuildings, decks, sidewalks and concrete patios. Owner and operator Jonathon Collins. Free estimates. 606-308-3533 or 758-1986. 49x4p

**Jonathan Collins Remodeling and Repair Service.** Home improvements of any kind from doors and windows, painting, new floors, to roofs and decks - will do

it all. Any home, any problem, "we're the one to call." 606-308-3533 or 758-1986. 49x4

**Owens Monument:** Located behind Owens Funeral Home in Brodhead. Open Mon-Fri. 8 to 5 and Sat. 9 a.m. to noon. 606-758-9600. 14xntf

**Notice:** Will haul off or buy scrap metal, junk cars or trucks. Metal hauled for free. 231-6788. 14xntf

**Grave Markers & Monuments:** In stock at all times. McNew Monument Sales, US 25, 4 miles north of Mt. Vernon. Phone 256-2232.

**U Call We Haul!** Anything that fits on a truck. Local or long distance. Building - demolition - moving - clean-ups - landscaping. No garbage. 606-256-9222 or 308-1629. 35xntf

**Gail's Pampered Pooch** 57 West Main St., Brodhead. For appt. call 606-758-0064 20xntf

**STRUGGLING WITH ADDICTION?**

Toll-free Treatment Help Line  
**1-866-90-UNITE**

Take control of your life TODAY!

**Lawn Service:**  
Mowing, Trimming, Blow Driveways, etc.  
Dependable • Reasonable  
**606-386-0347**

**Brown's Backhoe and Bobcat Service**  
Lic. septic tank installer, footers, waterlines, general backhoe work.  
Buck Brown, owner.  
**606-386-1516 or 606-308-0289**  
25 years experience.  
References available.

**John's Repair**  
Appliance & Plumbing  
Faucet & Toilet  
**308-5646**  
John Tyler, Owner

**PERRY'S Autobody & Auto Rental Service**  
24/7 Wrecker Service Available  
**PERRY & AMY MINK PROPERTIES, LLC**  
Storage and Rental Units • 12x20 units fully lined floor to ceiling & fenced for your security  
Fairground Hill off Hwy. 150 • 110 Old Somerset Rd. Mt. Vernon  
**606-256-5198 or 606-308-1008**

**CLIFFORD Collins BACKHOE, LLC.**  
**Septic Tanks**  
• Cisterns • Farm Products  
• Storm Shelters • Retaining Walls  
**606-256-2535**

Tell 'em you saw their ad in the  
**Mount Vernon Signal**

**Morgan Plumbing Service & Repair**  
New Construction • Commercial & Residential Service  
Fully Insured • All Work Guaranteed  
**256-4766 • 606-232-0666**

**Mechanic On Duty**  
All Types of Repairs  
We do muffler & exhaust replacement and custom pipe bending  
**David's Tire Center**  
24 Hr. Towing & Recovery LLC  
1431 S. Wilderness Rd. (US 25) Mt. Vernon  
David & Josh Thompson, Owners Office/24 Hr. Wrecker 606-256-4606  
Save On All Major Brand Tires For Cars & Trucks Farm Tractors • Lawn & More

**BURKE ROOFING**  
(606) 386-9732  
**Robert Burke**  
Shingles or Metal  
New and Old Roofs

**BISHOP TIRE & AUTO CARE**  
195 RICHMOND STREET • MT. VERNON, KY  
We Sell Custom Rims  
SALES@BISHOPTIRES.COM  
**606-256-4029**

STATE OF THE ART COMPUTER DIAGNOSTICS  
NEWEST ALIGNMENT EQUIPMENT  
LARGEST SELECTION OF TIRES IN STOCK!  
WRECKER SERVICE

**K-9 KUTZ**  
Grooming  
Boarding  
Pet Supplies  
**606-392-1940**

**Winstead's Heating & Air**  
Financing Available through Wells Fargo \*w/ approved credit  
American Standard  
Visa, Mastercard, Discover  
**Pat Winstead HM04434**  
**606-256-1038 • 606-308-4825**

**Lester Kirby Tree Trimming**  
No Job Too Big or Too Small  
Fully Insured • Free Estimates  
Stump Removal  
• Firewood For Sale •  
Home 606-256-3626 • Cell 606-308-2016

**On-Site Computer Service**  
Tired of sending your computer away to get it fixed?  
Call and let us come to you for all your computer needs!  
Setup, Consultation, Software/Hardware Conflicts  
Virus/Spyware Removal  
**Reasonable Rates**  
Call  
**Spencer Bengé**  
**606-308-5653**

**BEE Garbage**  
**256-2334**  
Weekly residential curbside pickup  
**\$17<sup>00</sup> per month with Curb Cart**

**Town & Country 24 HR. WRECKER SERVICE**  
All Types of Mechanic Work  
Call 256-9634 days or 256-4650 nights

**Heating & Air**  
Amana Goodman  
LASTS AND LASTS AND LASTS! Thank goodness for Goodman.  
**COMPLETE HOME COMFORT**  
Locally owned and Located at:  
**523 West St. • Brodhead, Ky.**  
**Rodney Smith**  
758-0155 • 256-1683 • 859-661-5986  
We service all Brands and Models • 20+ years experience  
Free Estimates - Affordable Service - Call for Rates  
Expert Installation & Troubleshooting • Friendly Hometown Service  
**Heat Pumps and Gas Furnaces**  
Fully Licensed and Insured HVAC and Electrical • MO-4808 and CE63779

Classified Deadline is Noon Tuesday

**CLASSIFIED ADS NOTICE**  
NO classifieds can be placed over the phone without paying at time of placing advertisement  
For your convenience, we accept VISA, Mastercard, Discover, American Express.  
To place your classified, have your credit card ready and call  
**(606) 256-2244**

Kentucky Afield Outdoors

# Two good options for early summer fishing

June is one of the best months for outside activities such as fishing. However, many predator species, such as largemouth bass, have already completed their annual reproductive ritual and kind of sulk through June.

It can be a tough month for fishing in lakes and reservoirs, but two options will produce fishing that compares to the marvelous weather.

Largemouth bass in farm ponds:

June is a transitional month for largemouth bass in our larger lakes, but the confined nature of a farm pond ups the odds in the angler's favor.

"You can catch largemouth bass all summer in a farm pond," said Jeff Ross, assistant director of fisheries for the Kentucky Department of Fish and Wildlife Resources.

Successful summer largemouth bass fishing in farm ponds is all about tim-

ing and changing approaches as the day progresses. Wake up early enough that dew soaks your shoes as you walk to the pond.

Old school topwater lures such as the Hula Popper or a Jitterbug in the bullfrog color draw vicious strikes when slowly worked along the edge of vegetation in the low light of early morning.

As the sun rises, switch to fishing a weightless 7-inch ribbon-tailed worm in the junebug color. "Bass hold tight to cover during the middle of the day on a farm pond," Ross said. "Fish the shady side of the pond if there is one."

The weightless ribbon-tailed worm slowly falls through the cover attracting largemouth bass snuggled deeply in it. If the pond has no cover, fish the worm slowly along any weedlines or under any floating vegetation.

As day fades into night, the topwater bite again comes into play. Anglers also catch many farm pond bass in the dark on a 1/4-ounce black spinnerbait with a round Colorado blade.

Fish the spinnerbait just above bottom and let the Colorado blade thump. Hold on tight as largemouth bass often savage this presentation.

Channel catfish: Channel catfish spawn in Kentucky mainly in June. "They are cavity spawners," Ross said. "You often find them near riprap or chunk rock."

Riprap consists of cantaloupe-sized rock used to protect the face of dams, bridge abutments and marinas from erosion caused by the pounding of waves. A 3/8-ounce slip-sinker rig with a 4/0 circle hook is a good choice for catfish when fished on or near riprap or areas of chunk rock lining

the banks.

A slip-sinker rig consists of an 18-inch fluorocarbon or monofilament leader with the circle hook on one end. Tie the other end of the leader to a barrel swivel. After threading the main line coming from your rod through an egg sinker followed by a glass bead, tie the main line to the open loop of the barrel swivel.

A circle hook prevents gut hooking catfish. Resist the temptation to set the hook, simply reel in slack line until you feel the catfish swimming and keep your rod tip high. The catfish will hook itself in the side of the mouth with a circle hook.

"Hot dogs, shrimp, chicken liver or beef liver, channel catfish will eat practically anything," Ross said. "I like chicken liver best for channels."

Ross also said any cavity near a root wad or stump also holds channel catfish in June on our lakes and reservoirs.

The many creeks coursing through Kentucky hold surprising numbers of channel catfish. Those with rocky bottoms and water at least chest deep are best.

Undercut banks are key to finding channel catfish in streams. Use a slip-sinker rig with enough weight to

hold it in place in current. Use a 3/0 circle hook with a piece of cleaning sponge impaled on it.

Drop the sponge into a tub of commercially made stink bait, also called dip bait, and push it to the bottom with a stick. Hold it there to soak up as much of the smelly dip bait as the sponge can hold and cast it to an undercut bank. The sponge emits a plume of funk downstream that channel catfish follow back to the sponge and eat it.

You can also use chicken livers, nightcrawlers or rancid cheese for this presentation, but the dip bait sponge is hard to beat in a

stream. You will catch many 16- to 21-inch long channel catfish in streams, perfect size for a dinner. Channel catfish from a cool stream offer fantastic table fare.

June is a wonderful month weather wise, but a transition time as predator fish move into their summer locations. Farm pond largemouth bass and channel catfish provide excellent sport during this unpredictable month.

Author Lee McClellan is a nationally award-winning associate editor for Kentucky Afield magazine, the official publication of the Kentucky Department of Fish and Wildlife Resources. He is a lifelong hunter and angler, with a passion for smallmouth bass fishing.



Rockcastle Chapter DAR members recently placed wreaths at the courthouse and Elmwood and Newcomb Cemeteries in honor of Memorial Day. Pictured from left are Kathy Bobo, Tanya Cook and Patsy McFalls.

**Premium Windows**

**\$59**

**PER MONTH**

JUST 60 MOS. **NO DOWN!**

**Window World**

"Simply the Best for Less"

**FREE In-Home Estimates:**

**606-258-1774 • 800-353-4313**

142 American Greeting Rd., Corbin • Fully Licensed & Insured

**WindowWorld.com**

\*PAYMENT BASED ON 7.99% APR. UNSECURED LOANS. BANK APPROVAL NEEDED. ASK FOR DETAILS.

## On-Site Computer Service

Call and let us come to you for all your computer needs!

Setup, Consultation, Software/Hardware Conflicts  
Virus/Spyware Removal

**Spencer Bengé • 606-308-5653**

RELAY FOR LIFE  
American Cancer Society

# Kentucky Inspired

## ROCKCASTLE COUNTY RELAY FOR LIFE

FEATURING:

- Inflatables
- Activities
- Food
- Live Auction
- And more!

FRIDAY, JUNE 23, 2017

ROCKCASTLE MIDDLE SCHOOL

SURVIVOR DINNER 5:30 PM  
OPENING CEREMONY 7:00 PM

For more information, call Melissa Brock at 606.256.7703

## ROCKCASTLE COUNTY RELAY FOR LIFE

Join the fight against cancer

You're Invited...

## Cancer Survivors Dinner

**C**ancer Survivors: in honor of your battle against cancer, the 2017 Relay For Life of Rockcastle County would like to extend to you a special invitation to participate in our Survivor's Dinner. You are a personal testimony of the progress we're making in our fight to eradicate cancer!

Please join us **June 23, 2017 at 5:30 p.m. at Rockcastle Middle School** for a dinner in your honor.

The dinner is co-sponsored by Rockcastle Regional Hospital and Grandtazztics: Grandmas for Awareness, and Rockcastle

County Retired Teachers Association.

Stephanie Hines is providing entertainment during the dinner. Special guest speaker is Lorna Huffaker, Relay For Life, Hero of Hope.

Each Survivor is entitled to bring one guest to the Survivor Dinner. There is no cost for you or your guest to attend this Survivor Celebration! All Survivors will receive a gift!

After the dinner, we invite you to come to **Rockcastle Middle School** for Relay for Life Survivor Ceremony at 7:00 p.m.

**Please register by Tuesday, June 20.**  
Call **Morgan Bray** at 256-7704  
or **Melissa Brock** at 256-7703

## LUMINARIA ORDER FORM

Remember loved ones lost to cancer and honor those battling the disease

### Luminaria Order Form

In Memory	In Honor	Name of Person Being Honored	White Bag \$5	Purple Caregiver Bag \$5	Torch of Hope \$50
<input type="checkbox"/>	<input type="checkbox"/>	Of	<input type="checkbox"/>	<input type="checkbox"/>	<input type="checkbox"/>
<input type="checkbox"/>	<input type="checkbox"/>	Of	<input type="checkbox"/>	<input type="checkbox"/>	<input type="checkbox"/>
<input type="checkbox"/>	<input type="checkbox"/>	Of	<input type="checkbox"/>	<input type="checkbox"/>	<input type="checkbox"/>
<input type="checkbox"/>	<input type="checkbox"/>	Of	<input type="checkbox"/>	<input type="checkbox"/>	<input type="checkbox"/>
<input type="checkbox"/>	<input type="checkbox"/>	Of	<input type="checkbox"/>	<input type="checkbox"/>	<input type="checkbox"/>

Your Name \_\_\_\_\_

Address \_\_\_\_\_

City/State/Zip \_\_\_\_\_

Phone \_\_\_\_\_

Relay Team Name \_\_\_\_\_

Total amount enclosed: \$ \_\_\_\_\_

Check

Cash

Make checks payable to: American Cancer Society

Mail form and donation to:  
Rockcastle Regional, Attn: Worth Anne Harris  
P.O. Box 1310  
Mt. Vernon, KY 40456